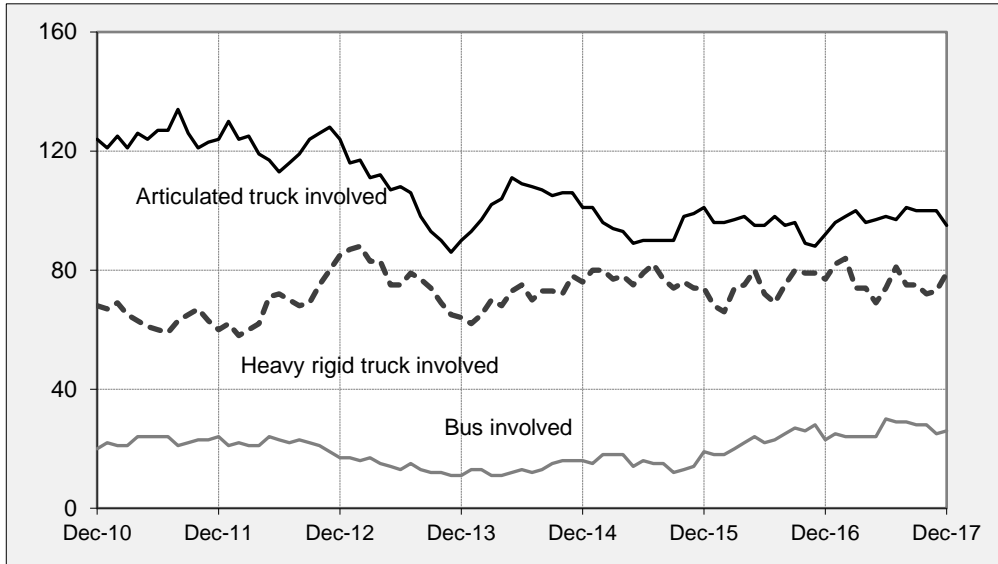




Fatal crashes involving heavy vehicles, Australia — moving annual total

(Each point shows the number of fatal crashes during the preceding 12 months)



Key features

- During the 12 months to the end of December 2017, 185 people died from 168 fatal crashes involving heavy trucks. These included 107 deaths from 95 crashes involving articulated trucks, 85 deaths from 79 crashes involving heavy rigid trucks and 7 deaths from 6 crashes involving both a heavy rigid truck and an articulated truck.^a
- Fatal crashes involving heavy trucks:
 - increased by 2.4 per cent compared with the corresponding period one year earlier (from 164 to 168 crashes)
 - decreased by an average of 1.9 per cent per year over the three years to December 2017.
 - Fatal crashes involving articulated trucks:
 - increased by 3.3 per cent compared with the corresponding period one year earlier (from 92 to 95 crashes)
 - decreased by an average of 2.7 per cent per year over the three years to December 2017.
 - Fatal crashes involving heavy rigid trucks:
 - increased by 2.6 per cent compared with the corresponding period one year earlier (from 77 to 79 crashes)
 - increased by an average of 1.6 per cent per year over the three years to December 2017.
- During the 12 months to December 2017, 30 people died in 26 fatal crashes involving buses.
- Fatal crashes involving buses:
 - increased by 13.0 per cent compared with the corresponding period one year earlier (from 23 to 26 crashes)
 - increased by an average of 17.9 per cent per year over the three years to December 2017.

^a Figures sum to more than the total because some crashes involved more than one type of heavy vehicle.

ARTICULATED TRUCK INVOLVEMENT

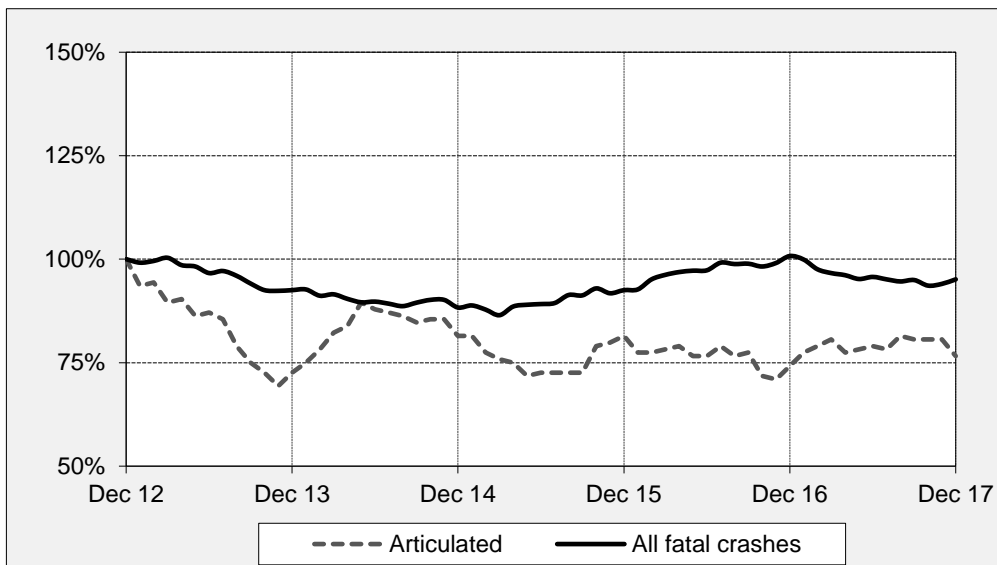
Table I Fatal crashes involving articulated trucks by State/Territory

	NSW	Vic	Qld	SA	WA	Tas	NT	ACT	Australia
Calendar Years									
2013	30	13	26	8	8	2	3	0	90
2014	28	25	26	10	6	4	0	2	101
2015	31	21	23	12	11	2	0	1	101
2016	22	20	23	10	9	3	4	1	92
2017	40	20	17	7	9	2	0	0	95
Quarters									
2015									
December	10	6	6	5	5	0	0	0	32
2016									
March	4	3	5	2	4	0	1	0	19
June	7	3	6	4	0	3	0	0	23
September	5	8	6	1	1	0	0	1	22
December	6	6	6	3	4	0	3	0	28
2017									
March	11	7	6	2	1	0	0	0	27
June	11	3	3	2	1	1	0	0	21
September	11	5	5	2	1	0	0	0	24
December	7	5	3	1	6	1	0	0	23
12 Months ended									
December 2016	22	20	23	10	9	3	4	1	92
December 2017	40	20	17	7	9	2	0	0	95
% change	81.8	0.0	-26.1	-30.0	0.0	-33.3	-100.0	-100.0	3.3
During the 12 months to the end of December 2017, 185 people died from 168 fatal crashes involving heavy trucks.									
<i>12 mths end Dec 2015</i>									
to 12 mths end Dec 2017	7.5	-6.9	-12.0	-11.8	10.7	-15.4	-	-	-2.7

a Average annual percentage change based on the exponential trend for the last three 12-month periods.

Index of fatal crashes involving articulated trucks in Australia — five years ended December 2017

Each point shows the number of fatal crashes in the preceding 12 months expressed as a percentage of the corresponding number of fatal crashes in the 12 months to the end of December 2012.



ARTICULATED TRUCK INVOLVEMENT

Table 2 Deaths from crashes involving articulated trucks by State/Territory

	NSW	Vic	Qld	SA	WA	Tas	NT	ACT	Australia
Calendar Years									
2013	32	15	35	11	11	2	4	0	110
2014	31	27	32	12	6	5	0	2	115
2015	34	21	28	15	12	3	0	1	114
2016	26	22	25	11	10	5	5	1	105
2017	50	20	19	7	9	2	0	0	107
Quarters									
2015									
December	11	6	8	5	6	0	0	0	36
2016									
March	4	3	5	3	4	0	1	0	20
June	9	5	7	4	0	5	0	0	30
September	5	8	7	1	1	0	0	1	23
December	8	6	6	3	5	0	4	0	32
2017									
March	13	7	6	2	1	0	0	0	29
June	16	3	5	2	1	1	0	0	28
September	14	5	5	2	1	0	0	0	27
December	7	5	3	1	6	1	0	0	23
12 Months ended									
December 2016	26	22	25	11	10	5	5	1	105
December 2017	50	20	19	7	9	2	0	0	107
% change	92.3	-9.1	-24.0	-36.4	-10.0	-60.0	-100.0	-100.0	1.9
During the 12 months to the end of December 2017, 185 people died from 168 fatal crashes involving heavy truck									
12 mths end Dec 2015									
to 12 mths end Dec 2017	12.4	-8.2	-15.4	-17.5	10.9	-20.1	-	-	-2.9

a Average annual percentage change based on the exponential trend for the last three 12-month periods.

Table 3 Deaths from crashes involving articulated trucks by State/Territory and road user — 12 months ended December 2017

	NSW	Vic	Qld	SA	WA	Tas	NT	ACT	Australia
Drivers ^a	27	16	14	5	5	2	0	0	69
Passengers ^a	16	0	4	0	2	0	0	0	22
Pedestrians	4	1	1	2	0	0	0	0	8
Motorcyclists ^b	3	1	0	0	2	0	0	0	6
Pedal cyclists ^b	0	1	0	0	0	0	0	0	1
All road users ^c	50	20	19	7	9	2	0	0	107

a Includes drivers/passengers of light and heavy vehicles.

b Includes pillion passengers.

c Includes road users not separately specified.

Table 4 Deaths from crashes involving articulated trucks by State/Territory and crash type — 12 months ended December 2017

	NSW	Vic	Qld	SA	WA	Tas	NT	ACT	Australia
Single vehicle crashes	5	4	4	1	0	0	0	0	14
Multiple vehicle crashes	41	15	14	4	9	2	0	0	85
Pedestrian crashes	4	1	1	2	0	0	0	0	8
All crash types	50	20	19	7	9	2	0	0	107

HEAVY RIGID TRUCK INVOLVEMENT

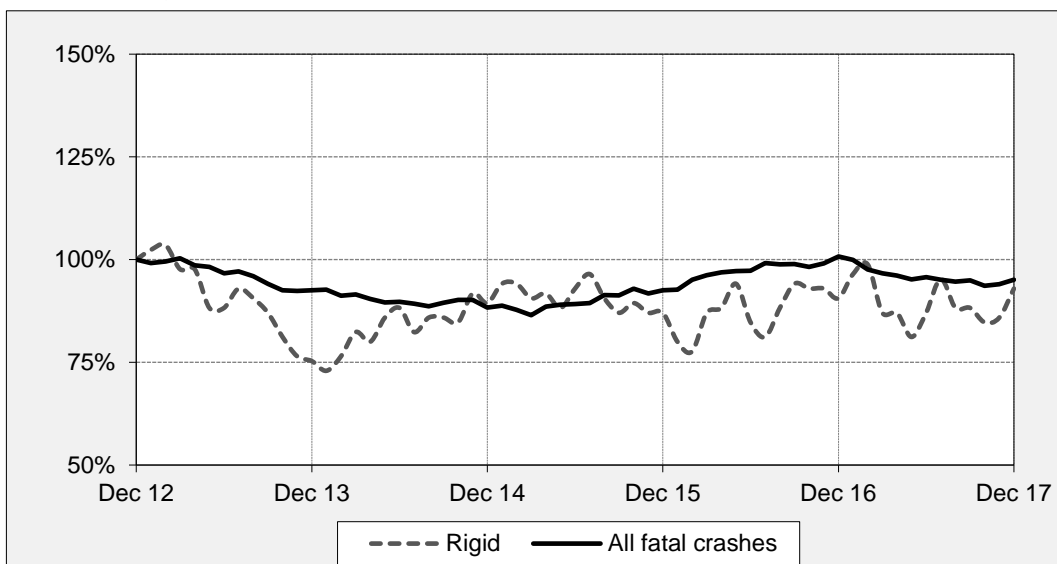
Table 5 Fatal crashes involving heavy rigid trucks by State/Territory

	NSW	Vic	Qld	SA	WA	Tas	NT	ACT	Australia
Calendar Years									
2013	22	12	11	4	15	0	0	0	64
2014	21	23	9	10	10	3	0	0	76
2015	22	18	16	2	10	5	1	0	74
2016	30	16	12	5	10	4	0	0	77
2017	30	15	11	5	13	5	0	0	79
Quarters									
2015									
December	5	6	5	0	2	2	0	0	20
2016									
March	10	5	3	0	2	1	0	0	21
June	8	3	2	2	2	3	0	0	20
September	6	3	3	2	5	0	0	0	19
December	6	5	4	1	1	0	0	0	17
2017									
March	8	4	2	1	2	1	0	0	18
June	7	3	6	0	3	1	0	0	20
September	9	3	2	2	3	1	0	0	20
December	6	5	1	2	5	2	0	0	21
12 Months ended									
December 2016	30	16	12	5	10	4	0	0	77
December 2017	30	15	11	5	13	5	0	0	79
% change	0.0	-6.3	-8.3	0.0	30.0	25.0	-	-	2.6
During the 12 months to the end of December 2017, 185 people died from 168 fatal crashes involving heavy trucks.									
12 mths end Dec 2015									
to 12 mths end Dec 2017	14.8	-13.1	3.2	-11.0	8.2	14.0	-	-	1.6

a Average annual percentage change based on the exponential trend for the last three 12-month periods.

Index of fatal crashes involving heavy rigid trucks in Australia — five years ended December 2017

Each point shows the number of fatal crashes in the preceding 12 months expressed as a percentage of the corresponding number of fatal crashes in the 12 months to the end of December 2012.



HEAVY RIGID TRUCK INVOLVEMENT

Table 6 Deaths from crashes involving heavy rigid trucks by State/Territory

	NSW	Vic	Qld	SA	WA	Tas	NT	ACT	Australia
Calendar Years									
2013	24	13	13	4	15	0	0	0	69
2014	21	29	9	15	11	3	0	0	88
2015	25	20	17	3	11	5	1	0	82
2016	32	18	13	8	11	6	0	0	88
2017	34	16	11	5	14	5	0	0	85
Quarters									
2015									
December	7	6	6	0	2	2	0	0	23
2016									
March	10	7	3	0	3	1	0	0	24
June	8	3	3	5	2	5	0	0	26
September	7	3	3	2	5	0	0	0	20
December	7	5	4	1	1	0	0	0	18
2017									
March	9	4	2	1	2	1	0	0	19
June	7	3	6	0	4	1	0	0	21
September	11	3	2	2	3	1	0	0	22
December	7	6	1	2	5	2	0	0	23
12 Months ended									
December 2016	32	18	13	8	11	6	0	0	88
December 2017	34	16	11	5	14	5	0	0	85
% change	6.3	-11.1	-15.4	-37.5	27.3	-16.7	-	-	-3.4
During the 12 months to the end of December 2017, 185 people died from 168 fatal crashes involving heavy trucks.									
12 mths end Dec 2015									
to 12 mths end Dec 2017	18.4	-17.2	3.4	-20.7	7.5	18.7	-	-	-0.3

a Average annual percentage change based on the exponential trend for the last three 12-month periods.

Table 7 Deaths from crashes involving heavy rigid trucks by State/Territory and road user — 12 months ended December 2017

	NSW	Vic	Qld	SA	WA	Tas	NT	ACT	Australia
Drivers ^a	16	11	4	2	11	3	0	0	47
Passengers ^a	4	1	1	1	2	0	0	0	9
Pedestrians	7	2	4	2	0	0	0	0	15
Motorcyclists ^b	7	1	2	0	0	2	0	0	12
Pedal cyclists ^b	0	1	0	0	1	0	0	0	2
All road users ^c	34	16	11	5	14	5	0	0	85

a Includes drivers/passengers of light and heavy vehicles.

b Includes pillion passengers.

c Includes road users not separately specified.

Table 8 Deaths from crashes involving heavy rigid trucks by State/Territory and crash type — 12 months ended December 2017

	NSW	Vic	Qld	SA	WA	Tas	NT	ACT	Australia
Single vehicle crashes	3	2	2	1	2	1	0	0	11
Multiple vehicle crashes	24	12	5	2	12	4	0	0	59
Pedestrian crashes	7	2	4	2	0	0	0	0	15
All crash types	34	16	11	5	14	5	0	0	85

BUS INVOLVEMENT

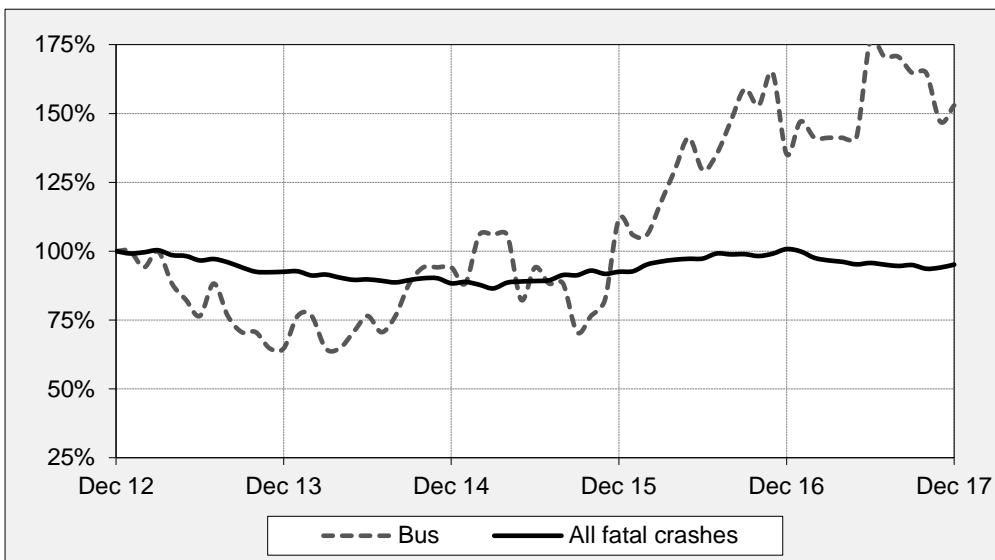
Table 9 Fatal crashes involving buses by State/Territory

	NSW	Vic	Qld	SA	WA	Tas	NT	ACT	Australia
Calendar Years									
2013	2	3	5	0	0	0	1	0	11
2014	6	3	1	1	4	0	0	1	16
2015	5	6	2	1	2	1	1	1	19
2016	10	2	3	3	3	1	1	0	23
2017	7	6	8	0	2	1	2	0	26
Quarters									
2015									
December	1	4	2	0	1	0	1	0	9
2016									
March	2	0	1	1	1	0	0	0	5
June	3	1	1	0	1	0	0	0	6
September	4	0	0	0	1	1	1	0	7
December	1	1	1	2	0	0	0	0	5
2017									
March	2	0	4	0	0	0	0	0	6
June	4	2	3	0	1	1	1	0	12
September	1	2	1	0	1	0	0	0	5
December	0	2	0	0	0	0	1	0	3
12 Months ended									
December 2016	10	2	3	3	3	1	1	0	23
December 2017	7	6	8	0	2	1	2	0	26
% change	-30.0	200.0	166.7	-100.0	-33.3	0.0	100.0	-	13.0
During the 12 months to the end of December 2017, 185 people died from 168 fatal crashes involving heavy truck									
12 mths end Dec 2015									
to 12 mths end Dec 2017	12.3	10.3	94.3	-	-15.4	-	-	-	17.9

a Average annual percentage change based on the exponential trend for the last three 12-month periods.

Index of fatal crashes involving buses in Australia — five years ended December 2017

Each point shows the number of fatal crashes in the preceding 12 months expressed as a percentage of the corresponding number of fatal crashes in the 12 months to the end of December 2012.



BUS INVOLVEMENT

Table 10 Deaths from crashes involving buses by State/Territory

	NSW	Vic	Qld	SA	WA	Tas	NT	ACT	Australia
Calendar Years									
2013	2	3	6	0	0	0	1	0	12
2014	6	4	1	1	7	0	0	1	20
2015	5	7	2	1	2	1	3	1	22
2016	10	2	3	3	3	1	2	0	24
2017	7	8	10	0	2	1	2	0	30
Quarters									
2015									
December	1	4	2	0	1	0	3	0	11
2016									
March	2	0	1	1	1	0	0	0	5
June	3	1	1	0	1	0	0	0	6
September	4	0	0	0	1	1	2	0	8
December	1	1	1	2	0	0	0	0	5
2017									
March	2	0	4	0	0	0	0	0	6
June	4	4	5	0	1	1	1	0	16
September	1	2	1	0	1	0	0	0	5
December	0	2	0	0	0	0	1	0	3
12 Months ended									
December 2016	10	2	3	3	3	1	2	0	24
December 2017	7	8	10	0	2	1	2	0	30
% change	-30.0	300.0	233.3	-100.0	-33.3	0.0	0.0	-	25.0
During the 12 months to the end of December 2017, 185 people died from 168 fatal crashes involving heavy trucks.									
12 mths end Dec 2015									
to 12 mths end Dec 2017	12.3	8.6	107.8	-	-28.5	-	-	-	13.9

a Average annual percentage change based on the exponential trend for the last three 12-month periods.

Table 11 Deaths from crashes involving buses by State/Territory by road user - and road user — 12 months ended December 2017

	NSW	Vic	Qld	SA	WA	Tas	NT	ACT	Australia
Drivers ^a	2	1	2	0	0	1	0	0	6
Passengers ^a	3	5	2	0	1	0	0	0	11
Pedestrians	2	2	5	0	0	0	2	0	11
Motorcyclists ^b	0	0	1	0	0	0	0	0	1
Pedal cyclists ^b	0	0	0	0	1	0	0	0	1
All road users ^c	7	8	10	0	2	1	2	0	30

a Includes drivers/passengers of light and heavy vehicles.

b Includes pillion passengers.

c Includes road users not separately specified.

Table 12 Deaths from crashes involving buses by State/Territory by crash type - and crash type — 12 months ended December 2017

	NSW	Vic	Qld	SA	WA	Tas	NT	ACT	Australia
Single vehicle crashes	1	3	0	0	0	0	0	0	4
Multiple vehicle crashes	4	3	5	0	2	1	0	0	15
Pedestrian crashes	2	2	5	0	0	0	2	0	11
All crash types	7	8	10	0	2	1	2	0	30

APPENDIX

Glossary Note. The following definitions are general explanations only. The precise definitions vary across the organisations that provide the source data. These differences may result in minor inconsistencies between jurisdictions for some variables.

Articulated truck A motor vehicle primarily for load carrying, consisting of a prime mover that has no significant load carrying area but with a turntable device which can be linked to one or more trailers.

Heavy rigid truck A motor vehicle of GVM greater than 4.5 tonnes constructed with a load carrying area. Includes a rigid truck with a tow bar, draw bar or other non-articulated coupling on the rear of the vehicle.

Gross Vehicle Mass (GVM) Tare weight (i.e. unladen weight) of the motor vehicle plus its maximum carrying capacity excluding trailers.

Bus A motor vehicle constructed for the carriage of passengers which has at least 10 seats, including the driver's seat.

Crash Any apparently unpremeditated event reported to police, or other relevant authority, and resulting in death, injury or property damage attributable to the movement of a road vehicle on a public road.

Road Death or Fatality A person who dies within 30 days of a crash as a result of injuries received in that crash.

Fatal crash A crash for which there is at least one death.

Preliminary data Data for recent months are preliminary and subject to revision.

Estimation of three year trends In this bulletin, the figures for the 'Average annual per cent change over 3 years' are calculated by fitting an exponential trend line to the last four data points (years 0 to 3). The Excel function LOGEST performs the fit. The resulting trend line represents a constant annual percent change over the period. (Note: when fitted to a series containing small numbers, this may not be a reliable indicator of a stable trend.)

involving heavy trucks.

Data Sources The data presented here are obtained from the following sources:

- Transport for New South Wales
- VicRoads
- Queensland Department of Transport and Main Roads
- Department of Planning, Transport and Infrastructure South Australia
- Western Australian Police
- Department of State Growth, Tasmania
- Department of Transport, Northern Territory
- Territory and Municipal Services Directorate, Australian Capital Territory

An online version of the database used to produce this bulletin is available from:

< http://www.bitre.gov.au/statistics/safety/fatal_road_crash_database.aspx >

Inquiries For further information about data in this bulletin, contact:

Bureau of Infrastructure, Transport and Regional Economics
Department of Infrastructure, Regional Development and Cities
GPO Box 501 Canberra ACT 2601
Email: roadsafety@infrastructure.gov.au
Internet: < <http://www.bitre.gov.au> >
