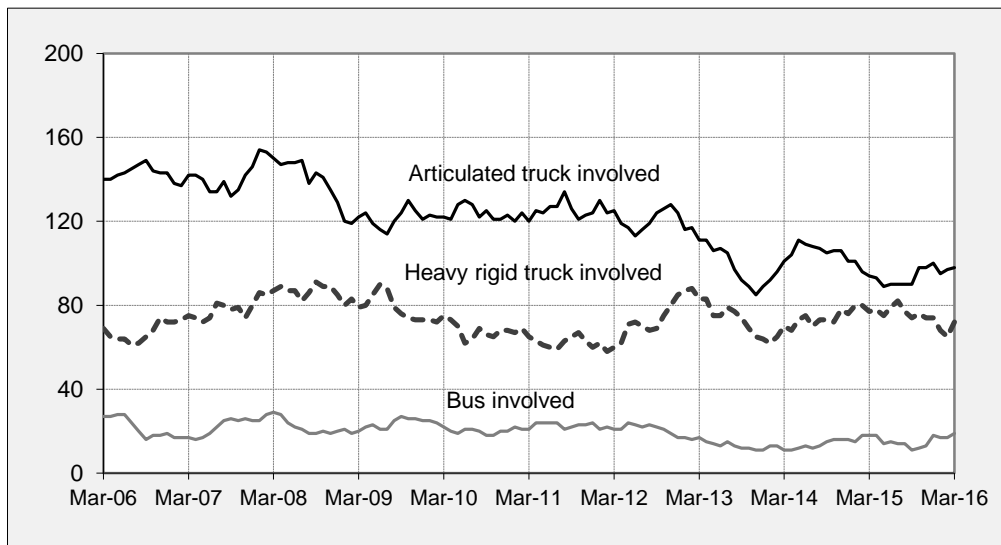




## Fatal crashes involving heavy vehicles, Australia — moving annual total

(Each point shows the number of fatal crashes during the preceding 12 months)



### Key features

- During the 12 months to the end of March 2016, 204 people died from 186 fatal crashes involving heavy trucks or buses. These included:
  - 108 deaths from 98 crashes involving articulated trucks
  - 77 deaths from 72 crashes involving heavy rigid trucks
  - 22 deaths from 19 crashes involving buses<sup>a</sup>.
- Fatal crashes involving articulated trucks:
  - increased by 4.3 per cent compared with the corresponding period one year earlier
  - decreased by an average of 4.4 per cent per year over the three years to March 2016.
- Fatal crashes involving heavy rigid trucks:
  - decreased by 6.5 per cent compared with the corresponding period one year earlier
  - decreased by an average of 3.3 per cent per year over the three years to March 2016.

<sup>a</sup> Figures sum to more than the total because some crashes involved more than one type of heavy vehicle.

# ARTICULATED TRUCK INVOLVEMENT

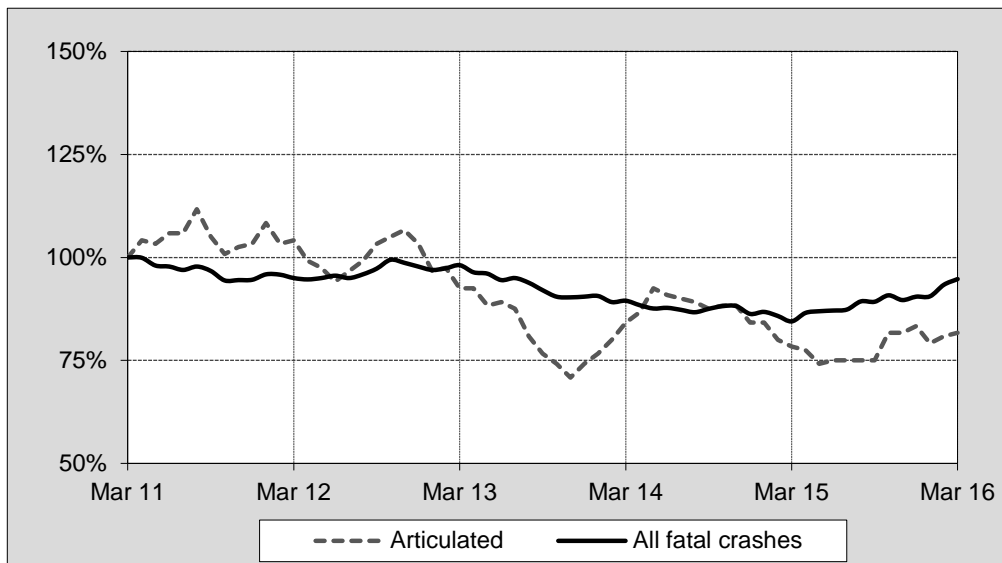
**Table I Fatal crashes involving articulated trucks by State/Territory**

	NSW	Vic	Qld	SA	WA	Tas	NT	ACT	Australia
<b>Calendar Years</b>									
2011	43	21	32	12	11	2	3	0	124
2012	39	29	35	9	7	3	2	0	124
2013	30	12	26	8	8	2	3	0	89
2014	28	25	26	10	6	4	0	2	101
2015	31	20	23	12	11	2	0	1	100
<b>Quarters</b>									
<b>2014</b>									
March	11	6	10	3	0	0	0	0	30
June	8	9	6	4	1	0	0	1	29
September	5	4	3	2	3	4	0	0	21
December	4	6	7	1	2	0	0	1	21
<b>2015</b>									
March	7	6	5	3	2	0	0	0	23
June	8	7	6	2	2	0	0	0	25
September	6	2	6	2	2	2	0	1	21
December	10	5	6	5	5	0	0	0	31
<b>2016</b>									
March	6	3	5	2	4	0	1	0	21
<b>12 Months ended</b>									
March 2015	24	25	21	10	8	4	0	2	94
March 2016	30	17	23	11	13	2	1	1	98
% change	25.0	-32.0	9.5	10.0	62.5	-50.0	-	-50.0	4.3
<b>Average annual % change over 3 years<sup>a</sup></b>									
<i>12 mths end Mar 2014</i>									
<i>to 12 mths end Mar 2016</i>	-7.5	-10.6	-12.1	17.1	33.2	14.9	-	-	-4.4

a Average annual percentage change based on the exponential trend for the last three 12-month periods.

## Index of fatal crashes involving articulated trucks in Australia — five years ended March 2016

Each point shows the number of fatal crashes in the preceding 12 months expressed as a percentage of the corresponding number of fatal crashes in the 12 months to the end of March 2011.



## ARTICULATED TRUCK INVOLVEMENT

**Table 2 Deaths from crashes involving articulated trucks by State/Territory**

	NSW	Vic	Qld	SA	WA	Tas	NT	ACT	Australia
<b>Calendar Years</b>									
2011	47	23	39	13	13	2	3	0	140
2012	50	30	45	10	8	3	2	0	148
2013	32	14	35	11	11	2	4	0	109
2014	31	27	32	12	6	5	0	2	115
2015	34	20	28	15	12	3	0	1	113
<b>Quarters</b>									
2014									
March	11	6	10	3	0	0	0	0	30
June	9	9	7	5	1	0	0	1	32
September	6	6	5	2	3	5	0	0	27
December	5	6	10	2	2	0	0	1	26
2015									
March	8	6	6	5	2	0	0	0	27
June	9	7	7	2	2	0	0	0	27
September	6	2	7	3	2	3	0	1	24
December	11	5	8	5	6	0	0	0	35
2016									
March	6	3	5	3	4	0	1	0	22
<b>12 Months ended</b>									
March 2015	28	27	28	14	8	5	0	2	112
March 2016	32	17	27	13	14	3	1	1	108
% change	14.3	-37.0	-3.6	-7.1	75.0	-40.0	-	-50.0	-3.6
<b>Average annual % change over 3 years<sup>a</sup></b>									
12 mths end Mar 2014									
to 12 mths end Mar 2016	-10.0	-11.1	-16.0	15.5	24.9	32.7	-	-	-6.7

a Average annual percentage change based on the exponential trend for the last three 12-month periods.

**Table 3 Deaths from crashes involving articulated trucks by State/Territory and road user — 12 months ended March 2016**

	NSW	Vic	Qld	SA	WA	Tas	NT	ACT	Australia
Drivers <sup>a</sup>	22	12	18	8	13	2	0	1	76
Passengers <sup>a</sup>	2	1	6	3	1	1	0	0	14
Pedestrians	5	2	2	0	0	0	0	0	9
Motorcyclists <sup>b</sup>	3	1	0	0	0	0	1	0	5
Pedal cyclists <sup>b</sup>	0	1	1	2	0	0	0	0	4
All road users <sup>c</sup>	32	17	27	13	14	3	1	1	108

a Includes drivers/passengers of light and heavy vehicles.

b Includes pillion passengers.

c Includes road users not separately specified.

**Table 4 Deaths from crashes involving articulated trucks by State/Territory and crash type — 12 months ended March 2016**

	NSW	Vic	Qld	SA	WA	Tas	NT	ACT	Australia
Single vehicle crashes	3	0	10	2	1	0	0	0	16
Multiple vehicle crashes	24	15	15	11	13	3	1	1	83
Pedestrian crashes	5	2	2	0	0	0	0	0	9
All crash types	32	17	27	13	14	3	1	1	108

# HEAVY RIGID TRUCK INVOLVEMENT

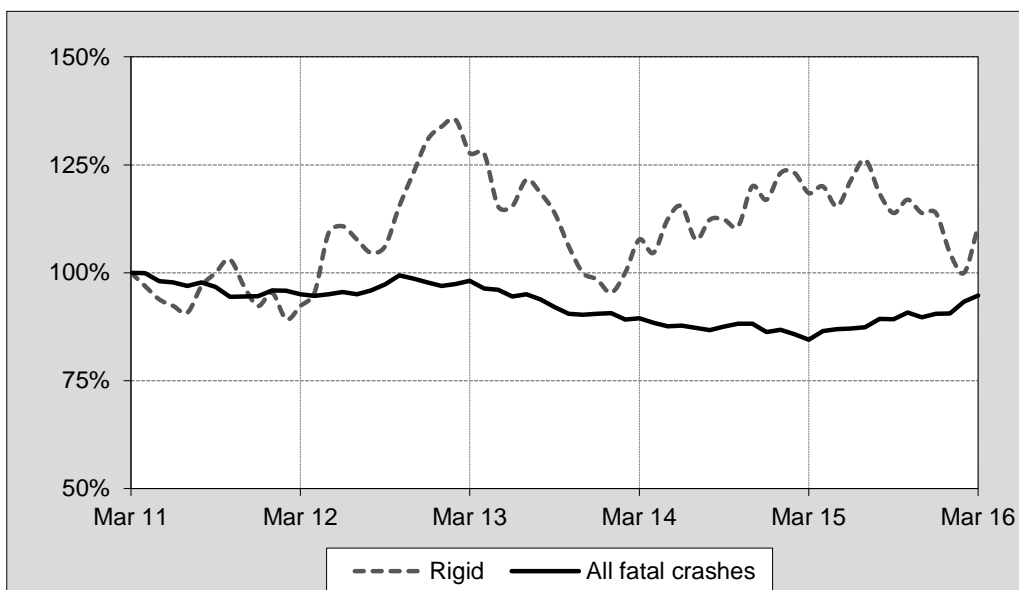
**Table 5 Fatal crashes involving heavy rigid trucks by State/Territory**

	NSW	Vic	Qld	SA	WA	Tas	NT	ACT	Australia
<b>Calendar Years</b>									
2011	15	14	13	6	8	2	2	0	60
2012	22	14	23	6	16	2	1	1	85
2013	22	12	11	4	15	0	0	0	64
2014	21	23	9	10	10	3	0	0	76
2015	22	18	16	2	10	5	1	0	74
<b>Quarters</b>									
<b>2014</b>									
March	8	5	1	3	2	1	0	0	20
June	5	6	3	2	2	2	0	0	20
September	4	3	4	1	4	0	0	0	16
December	4	9	1	4	2	0	0	0	20
<b>2015</b>									
March	5	6	3	1	5	1	0	0	21
June	7	4	5	1	3	1	1	0	22
September	5	2	3	0	0	1	0	0	11
December	5	6	5	0	2	2	0	0	20
<b>2016</b>									
March	10	4	2	0	2	1	0	0	19
<b>12 Months ended</b>									
March 2015	18	24	11	8	13	3	0	0	77
March 2016	27	16	15	1	7	5	1	0	72
% change	50.0	-33.3	36.4	-87.5	-46.2	66.7	-	-	-6.5
<b>Average annual % change over 3 years<sup>a</sup></b>									
<i>12 mths end Mar 2014</i>									
to 12 mths end Mar 2016	5.1	9.9	-8.7	-41.5	-23.4	46.9	-	-	-3.3

a Average annual percentage change based on the exponential trend for the last three 12-month periods.

## Index of fatal crashes involving heavy rigid trucks in Australia — five years ended March 2016

Each point shows the number of fatal crashes in the preceding 12 months expressed as a percentage of the corresponding number of fatal crashes in the 12 months to the end of March 2011.



## HEAVY RIGID TRUCK INVOLVEMENT

**Table 6 Deaths from crashes involving heavy rigid trucks by State/Territory**

	NSW	Vic	Qld	SA	WA	Tas	NT	ACT	Australia
<b>Calendar Years</b>									
2011	17	20	14	6	9	2	4	0	72
2012	23	15	27	7	19	4	1	1	97
2013	24	13	13	4	15	0	0	0	69
2014	21	29	9	15	11	3	0	0	88
2015	24	20	17	3	11	5	1	0	81
<b>Quarters</b>									
2014									
March	8	9	1	4	3	1	0	0	26
June	5	7	3	2	2	2	0	0	21
September	4	3	4	2	4	0	0	0	17
December	4	10	1	7	2	0	0	0	24
2015									
March	6	7	3	2	6	1	0	0	25
June	7	5	5	1	3	1	1	0	23
September	5	2	3	0	0	1	0	0	11
December	6	6	6	0	2	2	0	0	22
2016									
March	10	5	2	0	3	1	0	0	21
<b>12 Months ended</b>									
March 2015	19	27	11	13	14	3	0	0	87
March 2016	28	18	16	1	8	5	1	0	77
% change	47.4	-33.3	45.5	-92.3	-42.9	66.7	-	-	-11.5
<b>Average annual % change over 3 years<sup>a</sup></b>									
12 mths end Mar 2014									
to 12 mths end Mar 2016	6.0	9.4	-13.3	-42.1	-24.0	19.3	-	-	-5.1

a Average annual percentage change based on the exponential trend for the last three 12-month periods.

**Table 7 Deaths from crashes involving heavy rigid trucks by State/Territory and road user — 12 months ended March 2016**

	NSW	Vic	Qld	SA	WA	Tas	NT	ACT	Australia
Drivers <sup>a</sup>	21	11	11	1	5	4	0	0	53
Passengers <sup>a</sup>	2	3	2	0	0	0	0	0	7
Pedestrians	2	2	0	0	1	1	1	0	7
Motorcyclists <sup>b</sup>	2	0	1	0	2	0	0	0	5
Pedal cyclists <sup>b</sup>	1	2	2	0	0	0	0	0	5
All road users <sup>c</sup>	28	18	16	1	8	5	1	0	77

a Includes drivers/passengers of light vehicles.

b Includes pillion passengers.

c Includes road users not separately specified.

**Table 8 Deaths from crashes involving heavy rigid trucks by State/Territory and crash type — 12 months ended March 2016**

	NSW	Vic	Qld	SA	WA	Tas	NT	ACT	Australia
Single vehicle crashes	1	1	5	0	1	1	0	0	9
Multiple vehicle crashes	25	15	11	1	6	3	0	0	61
Pedestrian crashes	2	2	0	0	1	1	1	0	7
All crash types	28	18	16	1	8	5	1	0	77

## BUS INVOLVEMENT

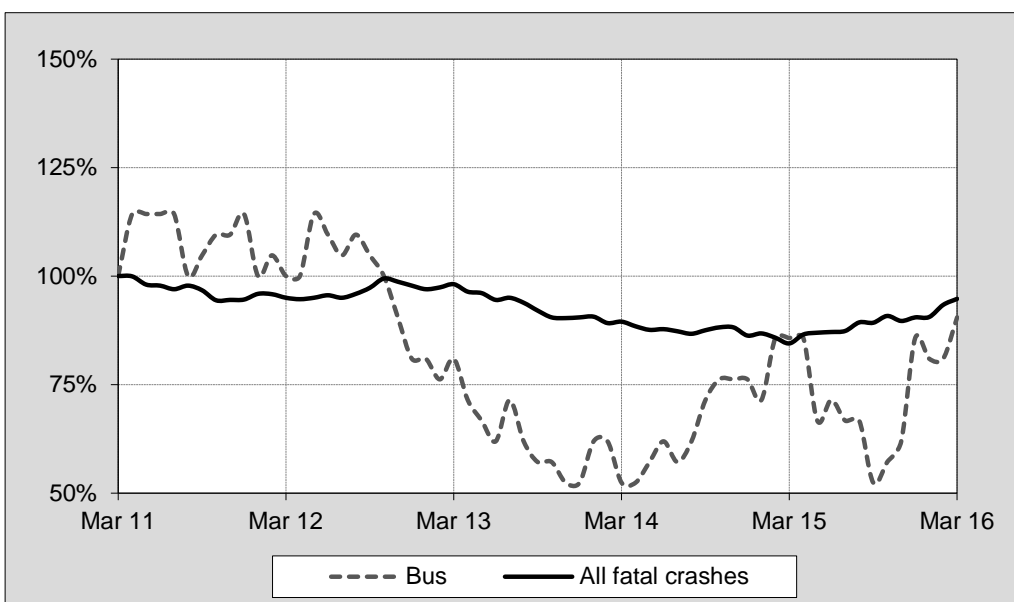
**Table 9 Fatal crashes involving buses by State/Territory**

	NSW	Vic	Qld	SA	WA	Tas	NT	ACT	Australia
<b>Calendar Years</b>									
2011	11	5	7	0	1	0	0	0	24
2012	6	3	6	1	1	0	0	0	17
2013	2	3	5	0	0	0	1	0	11
2014	6	3	1	1	4	0	0	1	16
2015	5	6	2	0	2	1	1	1	18
<b>Quarters</b>									
2014									
March	1	0	0	0	1	0	0	0	2
June	3	2	0	0	1	0	0	0	6
September	2	1	1	1	0	0	0	1	6
December	0	0	0	0	2	0	0	0	2
2015									
March	2	1	0	0	1	0	0	0	4
June	2	0	0	0	0	0	0	1	3
September	0	1	0	0	0	1	0	0	2
December	1	4	2	0	1	0	1	0	9
2016									
March	2	0	1	1	1	0	0	0	5
<b>12 Months ended</b>									
March 2015	7	4	1	1	4	0	0	1	18
March 2016	5	5	3	1	2	1	1	1	19
% change	-28.6	25.0	200.0	0.0	-50.0	-	-	0.0	5.6
<b>Average annual % change over 3 years<sup>a</sup></b>									
12 mths end Mar 2014									
to 12 mths end Mar 2016	8.8	14.6	-29.3	-	41.4	-	-	-	8.6

<sup>a</sup> Average annual percentage change based on the exponential trend for the last three 12-month periods.

### Index of fatal crashes involving buses in Australia — five years ended March 2016

Each point shows the number of fatal crashes in the preceding 12 months expressed as a percentage of the corresponding number of fatal crashes in the 12 months to the end of March 2011.



## BUS INVOLVEMENT

**Table 10 Deaths from crashes involving buses by State/Territory**

	NSW	Vic	Qld	SA	WA	Tas	NT	ACT	Australia
<b>Calendar Years</b>									
2011	11	5	8	0	1	0	0	0	25
2012	6	3	7	1	1	0	0	0	18
2013	2	3	6	0	0	0	1	0	12
2014	6	4	1	1	7	0	0	1	20
2015	5	7	2	0	2	1	3	1	21
<b>Quarters</b>									
2014									
March	1	0	0	0	1	0	0	0	2
June	3	2	0	0	1	0	0	0	6
September	2	2	1	1	0	0	0	1	7
December	0	0	0	0	5	0	0	0	5
2015									
March	2	1	0	0	1	0	0	0	4
June	2	0	0	0	0	0	0	1	3
September	0	2	0	0	0	1	0	0	3
December	1	4	2	0	1	0	3	0	11
2016									
March	2	0	1	1	1	0	0	0	5
<b>12 Months ended</b>									
March 2015	7	5	1	1	7	0	0	1	22
March 2016	5	6	3	1	2	1	3	1	22
% change	-28.6	20.0	200.0	0.0	-71.4	-	-	0.0	0.0
<b>Average annual % change over 3 years<sup>a</sup></b>									
12 mths end Mar 2014									
to 12 mths end Mar 2016	8.8	23.8	-35.1	-	49.6	-	-	-	12.0

a Average annual percentage change based on the exponential trend for the last three 12-month periods.

**Table 11 Deaths from crashes involving buses by State/Territory by road user - and road user — 12 months ended March 2016**

	NSW	Vic	Qld	SA	WA	Tas	NT	ACT	Australia
Drivers <sup>a</sup>	3	3	1	0	1	0	1	0	9
Passengers <sup>a</sup>	1	3	1	0	0	0	2	0	7
Pedestrians	1	0	0	0	0	1	0	0	2
Motorcyclists <sup>b</sup>	0	0	1	1	1	0	0	1	4
Pedal cyclists <sup>b</sup>	0	0	0	0	0	0	0	0	0
All road users <sup>c</sup>	5	6	3	1	2	1	3	1	22

a Includes drivers/passengers of light vehicles.

b Includes pillion passengers.

c Includes road users not Decarately specified.

**Table 12 Deaths from crashes involving buses by State/Territory by crash type - and crash type — 12 months ended March 2016**

	NSW	Vic	Qld	SA	WA	Tas	NT	ACT	Australia
Single vehicle crashes	0	1	1	0	0	0	0	0	2
Multiple vehicle crashes	4	5	2	1	2	0	3	1	18
Pedestrian crashes	1	0	0	0	0	1	0	0	2
All crash types	5	6	3	1	2	1	3	1	22

## APPENDIX

**Glossary** Note. The following definitions are general explanations only. The precise definitions vary across the organisations that provide the source data. These differences may result in minor inconsistencies between jurisdictions for some variables.

<i>Articulated truck</i>	A motor vehicle primarily for load carrying, consisting of a prime mover that has no significant load carrying area but with a turntable device which can be linked to one or more trailers.
<i>Heavy rigid truck</i>	A motor vehicle of GVM greater than 4.5 tonnes constructed with a load carrying area. Includes a rigid truck with a tow bar, draw bar or other non-articulated coupling on the rear of the vehicle.
<i>Gross Vehicle Mass (GVM)</i>	Tare weight (i.e. unladen weight) of the motor vehicle plus its maximum carrying capacity excluding trailers.
<i>Bus</i>	A motor vehicle constructed for the carriage of passengers which has at least 10 seats, including the driver's seat.
<i>Crash</i>	Any apparently unpremeditated event reported to police, or other relevant authority, and resulting in death, injury or property damage attributable to the movement of a road vehicle on a public road.
<i>Road Death or Fatality</i>	A person who dies within 30 days of a crash as a result of injuries received in that crash.
<i>Fatal crash</i>	A crash for which there is at least one death.

**Preliminary data** Data for recent months are preliminary and subject to revision.

**Estimation of three year trends** In this bulletin, the figures for the 'Average annual per cent change over 3 years' are calculated by fitting an exponential trend line to the last four data points (years 0 to 3). The Excel function LOGEST performs the fit. The resulting trend line represents a constant annual percent change over the period. (Note: when fitted to a series containing small numbers, this may not be a reliable indicator of a stable trend.)

**Data Sources** The data presented here are obtained from the following sources:

- Transport for New South Wales
- VicRoads
- Queensland Department of Transport and Main Roads
- Department of Planning, Transport and Infrastructure South Australia
- Western Australian Police
- Department of State Growth, Tasmania
- Department of Transport, Northern Territory
- Territory and Municipal Services Directorate, Australian Capital Territory

An online version of the database used to produce this bulletin is available from:  
< [http://www.bitre.gov.au/statistics/safety/fatal\\_road\\_crash\\_database.aspx](http://www.bitre.gov.au/statistics/safety/fatal_road_crash_database.aspx) >

**Inquiries** For further information about data in this bulletin, contact:

Bureau of Infrastructure, Transport and Regional Economics  
Department of Infrastructure and Regional Development  
GPO Box 501 Canberra ACT 2601  
Email: [roadsafety@infrastructure.gov.au](mailto:roadsafety@infrastructure.gov.au)  
Internet: < <http://www.bitre.gov.au> >