



Australian Government

Department of Infrastructure and Regional Development

Bureau of Infrastructure, Transport and Regional Economics

STATISTICAL REPORT



Aviation

Domestic aviation activity
August 2013

© Commonwealth of Australia 2013

ISSN: 1832 - 1968

Ownership of intellectual property rights in this publication

Unless otherwise noted, copyright (and any other intellectual property rights, if any) in this publication is owned by the Commonwealth of Australia (referred to below as the Commonwealth).

Disclaimer

The material contained in this publication is made available on the understanding that the Commonwealth is not providing professional advice, and that users exercise their own skill and care with respect to its use, and seek independent advice if necessary.

The Commonwealth makes no representations or warranties as to the contents or accuracy of the information contained in this publication. To the extent permitted by law, the Commonwealth disclaims liability to any person or organisation in respect of anything done, or omitted to be done, in reliance upon information contained in this publication.

Creative Commons licence

With the exception of (a) the Coat of Arms; and (b) the Department of Infrastructure's photos and graphics, copyright in this publication is licensed under a Creative Commons Attribution 3.0 Australia Licence.

Creative Commons Attribution 3.0 Australia Licence is a standard form licence agreement that allows you to copy, communicate and adapt this publication provided that you attribute the work to the Commonwealth and abide by the other licence terms. A summary of the licence terms is available from <http://creativecommons.org/licenses/by/3.0/au/deed.en>. The full licence terms are available from <http://creativecommons.org/licenses/by/3.0/au/legalcode>.

Use of the Coat of Arms

The Department of the Prime Minister and Cabinet sets the terms under which the Coat of Arms is used. Please refer to the Department's Commonwealth Coat of Arms and Government branding web page <http://www.dpmc.gov.au/guidelines/index.cfm#brand> and, in particular, the Guidelines on the use of the Commonwealth Coat of Arms publication.

An appropriate citation for this report is:

Bureau of Infrastructure, Transport and Regional Economics (BITRE), 2013, Domestic aviation activity, Statistical Report, BITRE, Canberra ACT.

Contact us

This publication is available in PDF format. All other rights are reserved, including in relation to any Departmental logos or trade marks which may exist. For enquiries regarding the licence and any use of this publication, please contact:

Bureau of Infrastructure, Transport and Regional Economics (BITRE)
Department of Infrastructure and Regional Development
GPO Box 501, Canberra ACT 2601, Australia
Telephone: (international) +61 2 6274 7210
Fax: (international) +61 2 6274 6855
Email: bitre@infrastructure.gov.au
Website: www.bitre.gov.au

Inquiries

Should you require additional information about the statistics contained in this publication:

Glen Malam

Telephone (02) 6274 7786 or Facsimile (02) 6274 6855

Electronic mail: AVSTATS@infrastructure.gov.au

Glen.Malam@infrastructure.gov.au

Web site: <http://www.bitre.gov.au/statistics/aviation/domestic.aspx>

FOREWORD

This report provides an overview of domestic (including regional and charter) commercial aviation activity in Australia for the month of August 2013.

The data cover revenue passengers carried by Australian-registered operators of scheduled regular public transport services over Australian flight stages and fixed-wing charter operators. These estimates include passengers carried between domestic airports on international flights operated by these carriers. The passengers carried refer to traffic on board by stages.

Estimates of passengers and aircraft movements for charter aviation are included in this publication, where BITRE confidentiality standards are met.

Individual routes shown are restricted to those with an average exceeding 8 000 passengers per month where two or more airlines operate in competition. For the month of August 2013 there were 62 such routes.

Information on the total network for the month of August 2013 and on the Regular Public Transport (RPT) network for the month of August 2013 is presented on page 2, with estimates for the year ended August 2013 presented on page 3.

Detailed information on the 62 individual routes can be found in the RPT summary pages 4–9 of this publication.

The top ten airports in terms of RPT passenger movements are shown on page 10. Data on domestic RPT cargo movements at the top five cargo airports are provided on page 11. The table includes cargo carried on passenger flights operated by the Qantas group (including Jetstar), Virgin Australia, Air North, Skippers and Skytrans as well as the cargo carried by dedicated freighter aircraft operated by Qantas Freight, Australian Air Express and Toll Priority.

The long-term trends for the top ten competitive RPT routes are presented graphically on pages 12–21.

Domestic passenger movements at the top 50 regional airports are presented in this issue for the first time (pages 22-23).

Tables providing estimates of domestic charter aviation activity are shown on page 24. BITRE confidentiality standards restrict publication of detailed airport-level estimates for all Australian airports, with the exception of Perth Airport.

A list of definitions can be found on page 25.

This report was prepared by the Aviation Statistics Section of the Bureau of Infrastructure, Transport and Regional Economics with data provided by airlines.

Estimates are included where data were not available and data presented in this publication may contain revisions to previously published data.

Where figures have been rounded, discrepancies may occur between sums of component items and totals, and in percentage changes which are derived from figures prior to rounding.

CONTENTS

Highlights	1
Total network	2
RPT network	2
Top competitive routes	4
Top ten airports – passenger movements	10
Top five airports – cargo movements	11
Top ten routes	12
1. Melbourne – Sydney	12
2. Brisbane – Sydney	13
3. Brisbane – Melbourne	14
4. Gold Coast – Sydney	15
5. Adelaide – Melbourne	16
6. Melbourne – Perth	17
7. Perth – Sydney	18
8. Adelaide – Sydney	19
9. Gold Coast – Melbourne	20
10. Hobart – Melbourne	21
Top fifty regional airports	22
Domestic charter activity	24
Definitions	25

This page is intentionally left blank.

HIGHLIGHTS

There were 5.13 million passengers carried on Australian domestic commercial aviation (including regional and charter operations) in August 2013, an increase of 1.9 per cent on August 2012. For the month of August 2013 there were 60 232 aircraft trips, a decrease of 1.0 per cent on the previous August.

4.91 million passengers were carried on RPT flights in August 2013, an increase of 1.5 per cent on August 2012. For the year ending August 2013 there were 57.40 million passengers, an increase of 3.6 per cent compared with the year ending August 2012.

RPT revenue passenger kilometres (RPKs) performed were 5.80 billion for the month, up 1.9 per cent compared with August 2012. Capacity, measured by available seat kilometres (ASKs), increased 1.0 per cent compared with August 2012 to a total of 7.57 billion.

With RPT passenger traffic increasing at a faster rate than capacity, the industry wide load factor (RPKs/ASKs) increased from 76.0 per cent in August 2012 to 76.6 per cent in August 2013. Load factors on individual routes increased on 26 of the 57 RPT routes for which data is available in both years.

For the month of August 2013, Melbourne – Sydney remained Australia's busiest RPT route with 709 921 passengers, an increase of 0.7 per cent compared with August 2012. It was followed by Brisbane – Sydney with 378 477 passengers (up 0.3 per cent) and Brisbane – Melbourne with 279 458 passengers (up 2.7 per cent).

The greatest percentage increase in RPT passenger numbers, compared to August 2012, was on the Melbourne – Sunshine Coast (Maroochydore) route (up 57.1 per cent). There were large increases on a number of other routes, including Launceston – Sydney (up 28.3 per cent), Hobart – Melbourne (up 21.4 per cent), Adelaide – Gold Coast (up 21.2 per cent) and Cairns – Melbourne (up 20.0 per cent).

In August 2013, Sydney remained Australia's busiest domestic airport with 2.15 million passenger movements, followed by Melbourne with 1.97 million passenger movements and Brisbane with 1.46 million passenger movements.

Total cargo movements at Australian airports on domestic RPT flights were 33.7 thousand tonnes in August 2013, a decrease of 10.1 per cent compared to August 2012. For the month of August 2013, Sydney was the busiest airport in terms of cargo movements (9.2 thousand tonnes) followed by Melbourne (8.9 thousand tonnes) and Brisbane (5.3 thousand tonnes).

Estimates of domestic passenger movements at regional airports are included in this issue of *Domestic Aviation Activity* for the first time. In August 2013 the number of domestic aviation passengers travelling through regional airports was 2.14 million, 4.5 per cent higher than in August 2012. Out of the top 50 regional airports, the strongest growth was at Roma airport (up 64.1 per cent on August 2012), while the strongest fall was at Ayers Rock (Uluru), down 26.8 per cent on August 2012.

Fixed-wing charter operators carried over 223 thousand passengers in August 2013, an increase of 12.8 per cent on August 2012. More than one-third of all charter passengers in Australia took flights either to or from Perth Airport.

TOTAL NETWORK

Summary of monthly commercial aviation activity

	Aug 2012	Aug 2013	% Change
Total passengers carried (millions)	5.03	5.13	1.9
Aircraft trips (000s)	60.8	60.2	-1.0

Note: Regular Public Transport and charter aviation activity
Helicopter and leisure charter flights not included

RPT NETWORK

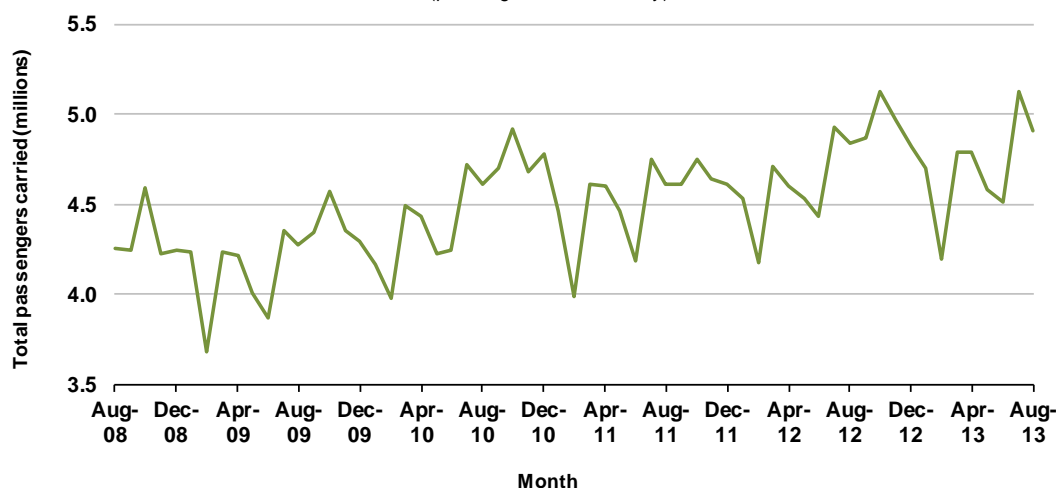
Summary of monthly RPT activity

	Aug 2012	Aug 2013	% Change
Total passengers carried (millions)	4.84	4.91	1.5
Revenue passenger kilometres (billions)	5.69	5.80	1.9
Available seats (millions)	6.55	6.60	0.8
Available seat kilometres (billions)	7.49	7.57	1.0
Load factor %	76.0	76.6	0.6 *
Aircraft trips (000s)	55.8	55.4	-0.8

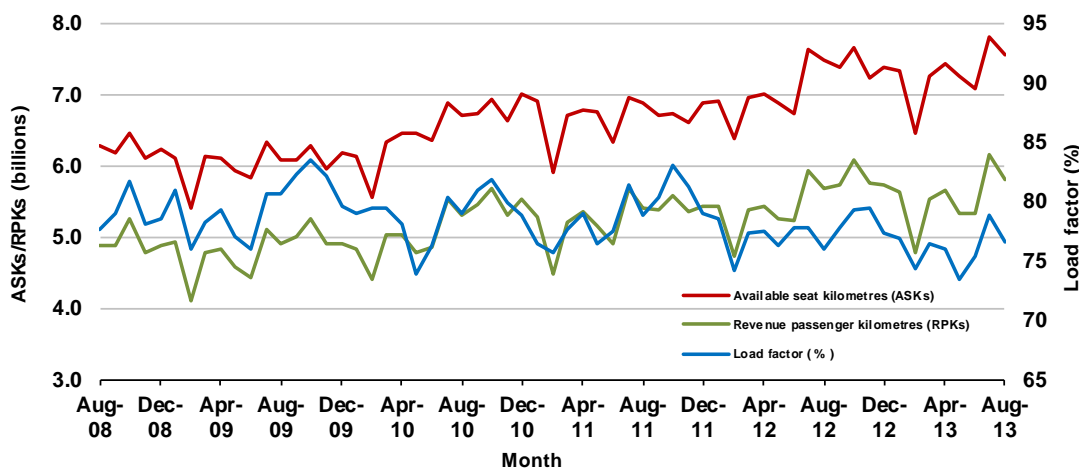
* percentage point difference

Domestic RPT passenger traffic

(passenger traffic - monthly)



RPT Network utilisation



TOTAL NETWORK

Summary of annual commercial aviation activity

	YE Aug 2012	YE Aug 2013	% Change
Total passengers carried (millions)	57.41	59.83	4.2
Aircraft trips (000s)	673.3	701.4	4.2

Note: Regular Public Transport and charter aviation activity
Helicopter and leisure charter flights not included

RPT NETWORK

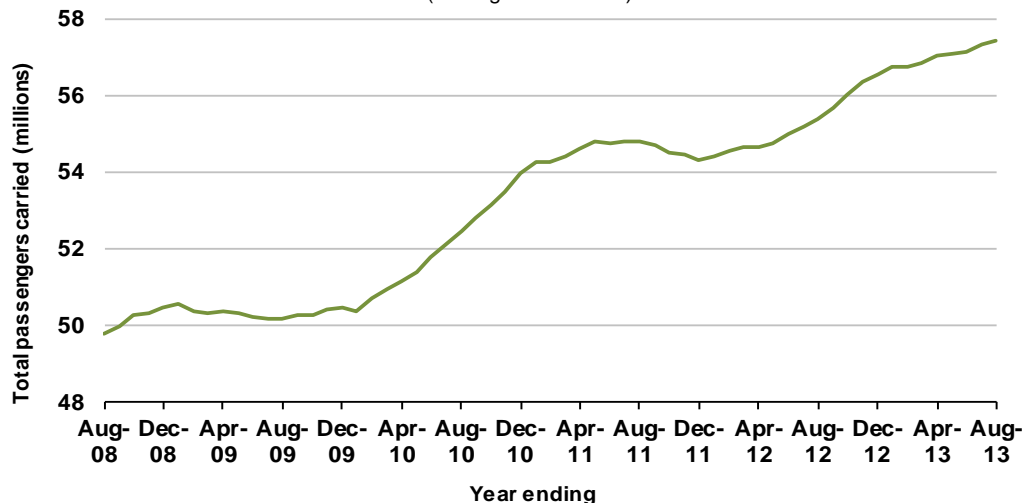
Summary of annual RPT activity

	YE Aug 2012	YE Aug 2013	% Change
Total passengers carried (millions)	55.39	57.40	3.6
Revenue passenger kilometres (billions)	64.88	67.50	4.0
Available seats (millions)	72.27	76.95	6.5
Available seat kilometres (billions)	82.90	87.81	5.9
Load factor %	78.3	76.9	-1.4 *
Aircraft trips (000s)	621.6	642.7	3.4

* percentage point difference

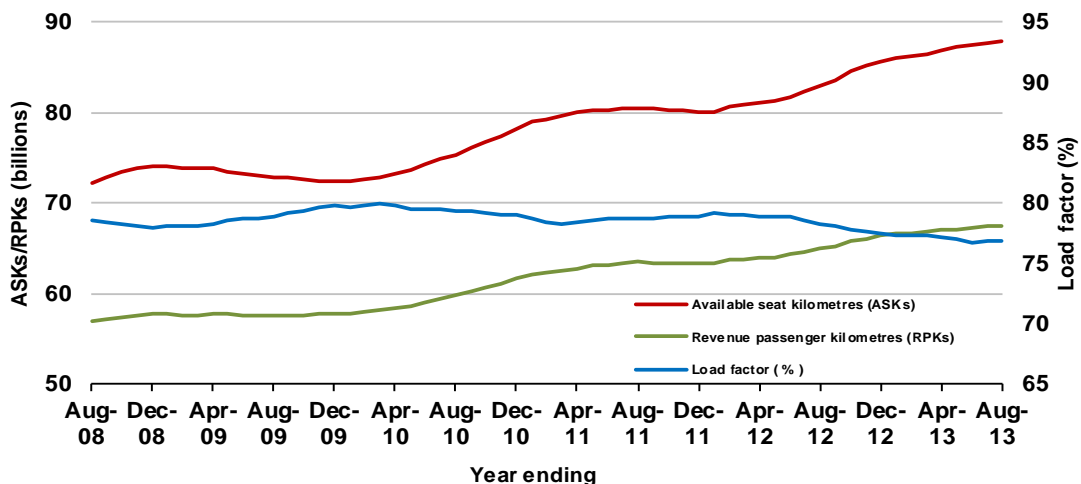
Domestic RPT passenger traffic

(moving annual totals)



RPT Network utilisation

(moving annual totals)



TOP COMPETITIVE ROUTES

Table 1: Passengers carried (000s) — annual activity

	City-Pair	YE Aug 2012	YE Aug 2013	% Change
1	Melbourne - Sydney	7 830.8	8 239.5	5.2
2	Brisbane - Sydney	4 337.2	4 436.3	2.3
3	Brisbane - Melbourne	3 173.4	3 177.3	0.1
4	Gold Coast - Sydney	2 286.3	2 566.1	12.2
5	Melbourne - Perth	1 982.8	2 229.7	12.5
6	Adelaide - Melbourne	2 061.5	2 148.3	4.2
7	Perth - Sydney	1 792.7	1 801.5	0.5
8	Adelaide - Sydney	1 716.9	1 754.0	2.2
9	Gold Coast - Melbourne	1 734.5	1 711.7	-1.3
10	Hobart - Melbourne	1 152.0	1 376.2	19.5
11	Brisbane - Cairns	1 159.8	1 196.6	3.2
12	Canberra - Sydney	1 055.9	1 036.8	-1.8
13	Canberra - Melbourne	1 014.9	1 002.0	-1.3
14	Brisbane - Perth	928.5	993.2	7.0
15	Brisbane - Townsville	997.8	963.6	-3.4
16	Cairns - Sydney	926.7	952.1	2.7
17	Brisbane - Mackay	974.5	897.2	-7.9
18	Launceston - Melbourne	805.1	875.9	8.8
19	Karratha - Perth	748.8	753.4	0.6
20	Adelaide - Brisbane	702.5	745.0	6.1
21	Cairns - Melbourne	522.7	654.2	25.2
22	Brisbane - Rockhampton	653.9	628.7	-3.9
23	Adelaide - Perth	606.5	623.7	2.8
24	Brisbane - Canberra	628.3	585.9	-6.8
25	Brisbane - Newcastle	601.4	577.3	-4.0
26	Hobart - Sydney	466.3	501.6	7.6
27	Perth - Port Hedland	467.2	463.6	-0.8
28	Sunshine Coast - Sydney	453.8	459.6	1.3
29	Newman - Perth	326.2	452.3	38.7
30	Brisbane - Gladstone	372.0	452.3	21.6
31	Melbourne - Newcastle	423.5	437.4	3.3
32	Brisbane - Darwin	368.5	368.1	-0.1
33	Melbourne - Sunshine Coast	322.6	361.3	12.0
34	Darwin - Sydney	149.8	356.1	NA (a)
35	Coffs Harbour - Sydney	316.4	346.8	9.6
36	Broome - Perth	317.0	322.4	1.7
37	Ballina - Sydney	270.2	297.4	10.1
38	Brisbane - Emerald	165.0	291.1	NA (b)
39	Darwin - Melbourne	284.9	283.0	-0.7
40	Launceston - Sydney	215.7	256.3	18.8
41	Albury - Sydney	248.9	237.5	-4.6
42	Brisbane - Proserpine	220.1	234.5	6.5
43	Kalgoorlie - Perth	240.5	225.4	-6.3
44	Hamilton Island - Sydney	193.6	202.1	4.4
45	Melbourne - Mildura	199.0	197.5	-0.7

(continued)

Table 1: (continued) Passengers carried (000s) — annual activity

	City-Pair	YE Aug 2012	YE Aug 2013	% Change
46	Adelaide - Gold Coast	182.3	195.3	7.1
47	Adelaide - Port Lincoln	194.7	193.4	-0.7
48	Port Macquarie - Sydney	199.4	192.5	-3.5
49	Sydney - Townsville	186.6	183.6	-1.6
50	Adelaide - Canberra	177.6	180.7	1.8
51	Sydney - Wagga Wagga	181.4	179.0	-1.3
52	Dubbo - Sydney	174.9	175.8	0.5
53	Brisbane - Mount Isa	..	175.7	NA (c)
54	Cairns - Townsville	186.5	167.9	-9.9
55	Darwin - Perth	161.9	166.8	3.1
56	Brisbane - Hamilton Island	159.3	156.8	-1.6
57	Ayers Rock - Sydney	151.7	142.9	-5.8
58	Geraldton - Perth	104.7	130.9	NA (d)
59	Brisbane - Moranbah	..	65.4	NA (e)
60	Brisbane - Bundaberg	..	54.5	NA (f)
61	Alice Springs - Melbourne	..	50.8	NA (g)
62	Alice Springs - Sydney	..	41.5	NA (h)
	Total domestic network	55 385.3	57 401.9	3.6

(a) Darwin - Sydney route included from May 2012, prior data not shown.

(b) Brisbane - Emerald route included from February 2012, prior data not shown.

(c) Brisbane - Mount Isa route included from September 2012, prior data not shown.

(d) Geraldton - Perth route included from December 2011, prior data not shown.

(e) Brisbane - Moranbah route included from May 2013, prior data not shown.

(f) Brisbane - Bundaberg route included from May 2013, prior data not shown.

(g) Alice Springs - Melbourne route included from May 2013, prior data not shown.

(h) Alice Springs - Sydney route included from June 2013, prior data not shown.

Table 2: Passengers carried (000s) — monthly activity

	City-Pair	Aug 2012	Aug 2013	% Change
1	Melbourne - Sydney	704.9	709.9	0.7
2	Brisbane - Sydney	377.4	378.5	0.3
3	Brisbane - Melbourne	272.2	279.5	2.7
4	Gold Coast - Sydney	194.8	201.6	3.5
5	Adelaide - Melbourne	170.1	182.2	7.1
6	Melbourne - Perth	177.7	180.3	1.5
7	Perth - Sydney	146.1	142.7	-2.3
8	Adelaide - Sydney	141.8	140.5	-0.9
9	Gold Coast - Melbourne	146.9	136.8	-6.9
10	Hobart - Melbourne	92.5	112.2	21.4
11	Brisbane - Cairns	109.4	110.1	0.6
12	Cairns - Sydney	85.6	94.1	10.0
13	Canberra - Sydney	96.2	92.3	-4.1
14	Brisbane - Townsville	87.3	85.4	-2.2
15	Canberra - Melbourne	83.2	82.8	-0.5
16	Brisbane - Perth	76.7	81.1	5.7
17	Brisbane - Mackay	82.7	72.7	-12.1
18	Cairns - Melbourne	57.7	69.2	20.0
19	Launceston - Melbourne	66.1	67.9	2.8
20	Adelaide - Brisbane	62.7	60.5	-3.4
21	Karratha - Perth	67.7	59.4	-12.1
22	Brisbane - Rockhampton	55.6	57.8	3.9
23	Brisbane - Canberra	52.5	51.3	-2.4
24	Adelaide - Perth	49.8	49.1	-1.5
25	Brisbane - Newcastle	49.1	48.2	-1.8
26	Brisbane - Gladstone	37.4	41.5	10.8
27	Newman - Perth	36.9	39.5	6.9
28	Perth - Port Hedland	47.3	39.0	-17.7
29	Darwin - Sydney	38.0	38.4	1.1
30	Melbourne - Sunshine Coast	23.7	37.2	57.1
31	Melbourne - Newcastle	33.5	36.6	9.3
32	Brisbane - Darwin	33.9	35.7	5.3
33	Sunshine Coast - Sydney	35.7	35.0	-1.7
34	Hobart - Sydney	32.9	33.9	2.8
35	Broome - Perth	34.2	33.7	-1.6
36	Coffs Harbour - Sydney	26.4	30.9	16.9
37	Darwin - Melbourne	27.4	27.5	0.3
38	Brisbane - Emerald	26.3	23.7	-9.9
39	Ballina - Sydney	21.7	22.8	5.2
40	Albury - Sydney	23.1	21.3	-7.8
41	Brisbane - Proserpine	20.5	20.3	-0.9
42	Kalgoorlie - Perth	24.7	20.1	-18.7
43	Launceston - Sydney	14.1	18.1	28.3
44	Melbourne - Mildura	17.9	18.1	1.0
45	Adelaide - Gold Coast	13.9	16.9	21.2
46	Dubbo - Sydney	15.2	16.8	10.1
47	Hamilton Island - Sydney	16.1	16.5	2.8
48	Sydney - Wagga Wagga	16.3	16.3	0.0
49	Port Macquarie - Sydney	15.9	16.1	1.2
50	Darwin - Perth	15.5	15.7	1.3
51	Sydney - Townsville	15.8	15.6	-1.2
52	Brisbane - Moranbah	..	15.3	NA (a)
53	Brisbane - Mount Isa	..	15.1	NA (b)
54	Adelaide - Canberra	13.3	15.0	12.1
55	Adelaide - Port Lincoln	16.2	14.9	-8.0
56	Cairns - Townsville	15.3	14.3	-6.5
57	Alice Springs - Sydney	..	14.0	NA (c)
58	Brisbane - Bundaberg	..	13.7	NA (d)
59	Brisbane - Hamilton Island	12.0	13.2	9.9
60	Alice Springs - Melbourne	..	13.0	NA (e)
61	Geraldton - Perth	12.9	11.8	-8.8
62	Ayers Rock - Sydney	14.0	11.3	-19.7
	Total domestic network	4 835.5	4 907.2	1.5

(a) Brisbane - Moranbah route included from May 2013, prior data not shown.

(b) Brisbane - Mount Isa route included from September 2012, prior data not shown.

(c) Alice Springs - Sydney route included from June 2013, prior data not shown.

(d) Brisbane - Bundaberg route included from May 2013, prior data not shown.

(e) Alice Springs - Melbourne route included from May 2013, prior data not shown.

Table 3: Available seats (000s) — monthly activity

	City-Pair	Aug 2012	Aug 2013	% Change
1	Melbourne - Sydney	915.8	849.5	-7.2
2	Brisbane - Sydney	494.0	474.2	-4.0
3	Brisbane - Melbourne	345.7	350.1	1.3
4	Gold Coast - Sydney	253.1	256.8	1.5
5	Adelaide - Melbourne	223.1	236.9	6.2
6	Melbourne - Perth	234.5	242.1	3.3
7	Perth - Sydney	201.6	181.5	-10.0
8	Adelaide - Sydney	195.3	178.9	-8.4
9	Gold Coast - Melbourne	175.9	154.1	-12.4
10	Hobart - Melbourne	117.8	142.9	21.3
11	Brisbane - Cairns	129.5	141.1	9.0
12	Cairns - Sydney	101.8	112.5	10.5
13	Canberra - Sydney	148.2	144.4	-2.6
14	Brisbane - Townsville	109.4	115.3	5.4
15	Canberra - Melbourne	131.3	126.9	-3.4
16	Brisbane - Perth	96.5	106.5	10.4
17	Brisbane - Mackay	109.4	114.0	4.2
18	Cairns - Melbourne	67.6	82.2	21.6
19	Launceston - Melbourne	92.0	90.3	-1.9
20	Adelaide - Brisbane	82.3	79.4	-3.5
21	Karratha - Perth	104.5	104.7	0.1
22	Brisbane - Rockhampton	77.4	82.1	6.1
23	Brisbane - Canberra	70.4	73.3	4.1
24	Adelaide - Perth	66.9	63.4	-5.3
25	Brisbane - Newcastle	61.7	65.3	6.0
26	Brisbane - Gladstone	58.0	68.2	17.6
27	Newman - Perth	50.2	64.3	28.0
28	Perth - Port Hedland	70.7	66.1	-6.4
29	Darwin - Sydney	48.8	46.3	-5.0
30	Melbourne - Sunshine Coast	25.9	44.3	71.0
31	Melbourne - Newcastle	44.5	49.9	12.0
32	Brisbane - Darwin	40.4	40.7	0.6
33	Sunshine Coast - Sydney	42.6	43.2	1.2
34	Hobart - Sydney	46.5	42.2	-9.2
35	Broome - Perth	41.6	42.1	1.1
36	Coffs Harbour - Sydney	38.4	44.0	14.8
37	Darwin - Melbourne	32.5	31.5	-3.1
38	Brisbane - Emerald	43.9	43.9	0.2
39	Ballina - Sydney	32.5	29.9	-8.1
40	Albury - Sydney	33.6	29.7	-11.5
41	Brisbane - Proserpine	25.2	27.4	8.5
42	Kalgoorlie - Perth	41.8	40.4	-3.4
43	Launceston - Sydney	21.1	27.8	31.6
44	Melbourne - Mildura	25.4	24.6	-3.0
45	Adelaide - Gold Coast	17.6	22.4	27.1
46	Dubbo - Sydney	23.0	26.1	13.5
47	Hamilton Island - Sydney	21.8	21.4	-2.1
48	Sydney - Wagga Wagga	24.6	25.1	1.7
49	Port Macquarie - Sydney	23.7	22.4	-5.3
50	Darwin - Perth	19.2	18.8	-2.1
51	Sydney - Townsville	18.4	19.0	3.2
52	Brisbane - Moranbah	..	33.3	NA (a)
53	Brisbane - Mount Isa	..	23.7	NA (b)
54	Adelaide - Canberra	20.6	24.1	17.1
55	Adelaide - Port Lincoln	29.3	29.6	0.8
56	Cairns - Townsville	25.9	26.4	1.8
57	Alice Springs - Sydney	..	16.9	NA (c)
58	Brisbane - Bundaberg	..	19.0	NA (d)
59	Brisbane - Hamilton Island	16.5	17.4	5.6
60	Alice Springs - Melbourne	..	16.5	NA (e)
61	Geraldton - Perth	18.0	20.0	11.0
62	Ayers Rock - Sydney	16.6	13.3	-19.9
	Total domestic network	6 545.9	6 596.4	0.8

(a) Brisbane - Moranbah route included from May 2013, prior data not shown.

(b) Brisbane - Mount Isa route included from September 2012, prior data not shown.

(c) Alice Springs - Sydney route included from June 2013, prior data not shown.

(d) Brisbane - Bundaberg route included from May 2013, prior data not shown.

(e) Alice Springs - Melbourne route included from May 2013, prior data not shown.

Table 4: Load factors (%) — monthly activity

	City-Pair	Aug 2012	Aug 2013	% Point diff
1	Melbourne - Sydney	77.0	83.6	6.6
2	Brisbane - Sydney	76.4	79.8	3.4
3	Brisbane - Melbourne	78.7	79.8	1.1
4	Gold Coast - Sydney	77.0	78.5	1.5
5	Adelaide - Melbourne	76.2	76.9	0.7
6	Melbourne - Perth	75.8	74.5	-1.3
7	Perth - Sydney	72.5	78.6	6.1
8	Adelaide - Sydney	72.6	78.5	5.9
9	Gold Coast - Melbourne	83.5	88.8	5.3
10	Hobart - Melbourne	78.5	78.5	0.0
11	Brisbane - Cairns	84.5	78.0	-6.5
12	Cairns - Sydney	84.0	83.6	-0.4
13	Canberra - Sydney	64.9	63.9	-1.0
14	Brisbane - Townsville	79.8	74.1	-5.7
15	Canberra - Melbourne	63.4	65.3	1.9
16	Brisbane - Perth	79.6	76.1	-3.5
17	Brisbane - Mackay	75.6	63.8	-11.8
18	Cairns - Melbourne	85.3	84.2	-1.1
19	Launceston - Melbourne	71.8	75.2	3.4
20	Adelaide - Brisbane	76.2	76.2	0.0
21	Karratha - Perth	64.7	56.8	-7.9
22	Brisbane - Rockhampton	71.8	70.3	-1.5
23	Brisbane - Canberra	74.6	69.9	-4.7
24	Adelaide - Perth	74.4	77.4	3.0
25	Brisbane - Newcastle	79.6	73.8	-5.8
26	Brisbane - Gladstone	64.5	60.8	-3.7
27	Newman - Perth	73.5	61.4	-12.1
28	Perth - Port Hedland	67.0	58.9	-8.1
29	Darwin - Sydney	77.9	82.9	5.0
30	Melbourne - Sunshine Coast	91.4	84.0	-7.4
31	Melbourne - Newcastle	75.2	73.4	-1.8
32	Brisbane - Darwin	83.9	87.9	4.0
33	Sunshine Coast - Sydney	83.6	81.2	-2.4
34	Hobart - Sydney	70.8	80.2	9.4
35	Broome - Perth	82.2	80.0	-2.2
36	Coffs Harbour - Sydney	68.9	70.1	1.2
37	Darwin - Melbourne	84.3	87.3	3.0
38	Brisbane - Emerald	59.9	53.9	-6.0
39	Ballina - Sydney	66.7	76.4	9.7
40	Albury - Sydney	68.8	71.7	2.9
41	Brisbane - Proserpine	81.2	74.2	-7.0
42	Kalgoorlie - Perth	59.1	49.7	-9.4
43	Launceston - Sydney	66.9	65.3	-1.6
44	Melbourne - Mildura	70.4	73.3	2.9
45	Adelaide - Gold Coast	78.9	75.2	-3.7
46	Dubbo - Sydney	66.2	64.3	-1.9
47	Hamilton Island - Sydney	73.6	77.3	3.7
48	Sydney - Wagga Wagga	66.2	65.0	-1.2
49	Port Macquarie - Sydney	67.2	71.8	4.6
50	Darwin - Perth	80.5	83.3	2.8
51	Sydney - Townsville	85.9	82.3	-3.6
52	Brisbane - Moranbah	..	45.8	NA (a)
53	Brisbane - Mount Isa	..	64.0	NA (b)
54	Adelaide - Canberra	64.8	62.0	-2.8
55	Adelaide - Port Lincoln	55.2	50.4	-4.8
56	Cairns - Townsville	58.9	54.1	-4.8
57	Alice Springs - Sydney	..	82.6	NA (c)
58	Brisbane - Bundaberg	..	72.3	NA (d)
59	Brisbane - Hamilton Island	72.6	75.5	2.9
60	Alice Springs - Melbourne	..	78.4	NA (e)
61	Geraldton - Perth	71.7	58.8	-12.9
62	Ayers Rock - Sydney	84.5	84.8	0.3
	Total domestic network	76.0	76.6	0.6

(a) Brisbane - Moranbah route included from May 2013, prior data not shown.

(b) Brisbane - Mount Isa route included from September 2012, prior data not shown.

(c) Alice Springs - Sydney route included from June 2013, prior data not shown.

(d) Brisbane - Bundaberg route included from May 2013, prior data not shown.

(e) Alice Springs - Melbourne route included from May 2013, prior data not shown.

Table 5: Aircraft trips — monthly activity

	City-Pair	Aug 2012	Aug 2013	% Change
1	Melbourne - Sydney	4 805	4 573	-4.8
2	Brisbane - Sydney	2 757	2 645	-4.1
3	Brisbane - Melbourne	2 016	2 066	2.5
4	Gold Coast - Sydney	1 437	1 478	2.9
5	Adelaide - Melbourne	1 390	1 453	4.5
6	Melbourne - Perth	1 048	1 071	2.2
7	Perth - Sydney	792	713	-10.0
8	Adelaide - Sydney	1 121	1 042	-7.0
9	Gold Coast - Melbourne	977	831	-14.9
10	Hobart - Melbourne	679	860	26.7
11	Brisbane - Cairns	806	858	6.5
12	Cairns - Sydney	564	616	9.2
13	Canberra - Sydney	1 637	1 654	1.0
14	Brisbane - Townsville	710	712	0.3
15	Canberra - Melbourne	940	950	1.1
16	Brisbane - Perth	450	468	4.0
17	Brisbane - Mackay	785	762	-2.9
18	Cairns - Melbourne	373	450	20.6
19	Launceston - Melbourne	629	682	8.4
20	Adelaide - Brisbane	531	485	-8.7
21	Karratha - Perth	703	703	0.0
22	Brisbane - Rockhampton	817	821	0.5
23	Brisbane - Canberra	530	510	-3.8
24	Adelaide - Perth	413	418	1.2
25	Brisbane - Newcastle	508	532	4.7
26	Brisbane - Gladstone	735	762	3.7
27	Newman - Perth	336	418	24.4
28	Perth - Port Hedland	457	448	-2.0
29	Darwin - Sydney	250	240	-4.0
30	Melbourne - Sunshine Coast	150	248	65.3
31	Melbourne - Newcastle	257	279	8.6
32	Brisbane - Darwin	203	204	0.5
33	Sunshine Coast - Sydney	242	243	0.4
34	Hobart - Sydney	315	284	-9.8
35	Broome - Perth	331	345	4.2
36	Coffs Harbour - Sydney	420	480	14.3
37	Darwin - Melbourne	174	186	6.9
38	Brisbane - Emerald	551	560	1.6
39	Ballina - Sydney	233	212	-9.0
40	Albury - Sydney	588	592	0.7
41	Brisbane - Proserpine	170	168	-1.2
42	Kalgoorlie - Perth	307	299	-2.6
43	Launceston - Sydney	123	156	26.8
44	Melbourne - Mildura	418	414	-1.0
45	Adelaide - Gold Coast	118	138	16.9
46	Dubbo - Sydney	572	567	-0.9
47	Hamilton Island - Sydney	124	121	-2.4
48	Sydney - Wagga Wagga	472	509	7.8
49	Port Macquarie - Sydney	393	396	0.8
50	Darwin - Perth	116	114	-1.7
51	Sydney - Townsville	106	108	1.9
52	Brisbane - Moranbah	..	474	NA (a)
53	Brisbane - Mount Isa	..	157	NA (b)
54	Adelaide - Canberra	154	192	24.7
55	Adelaide - Port Lincoln	632	636	0.6
56	Cairns - Townsville	435	439	0.9
57	Alice Springs - Sydney	..	98	NA (c)
58	Brisbane - Bundaberg	..	314	NA (d)
59	Brisbane - Hamilton Island	96	99	3.1
60	Alice Springs - Melbourne	..	96	NA (e)
61	Geraldton - Perth	296	315	6.4
62	Ayers Rock - Sydney	124	97	-21.8
	Total domestic network	55 801	55 361	-0.8

(a) Brisbane - Moranbah route included from May 2013, prior data not shown.

(b) Brisbane - Mount Isa route included from September 2012, prior data not shown.

(c) Alice Springs - Sydney route included from June 2013, prior data not shown.

(d) Brisbane - Bundaberg route included from May 2013, prior data not shown.

(e) Alice Springs - Melbourne route included from May 2013, prior data not shown.

TOP TEN AIRPORTS – PASSENGER MOVEMENTS

Table 6: Top ten airports, RPT passenger movements (000s) - annual activity

Airport	YE Aug 2012	YE Aug 2013	% Change	% of Total
1 Sydney	24 371.8	25 390.2	4.2	22.1
2 Melbourne	21 651.8	22 919.7	5.9	20.0
3 Brisbane	16 534.2	16 851.5	1.9	14.7
4 Perth	8 699.1	9 075.2	4.3	7.9
5 Adelaide	6 348.8	6 531.5	2.9	5.7
6 Gold Coast	4 672.0	4 978.2	6.6	4.3
7 Cairns	3 578.0	3 749.5	4.8	3.3
8 Canberra	3 120.1	3 000.5	-3.8	2.6
9 Hobart	1 824.6	2 070.2	13.5	1.8
10 Darwin	1 821.4	1 806.7	-0.8	1.6
Total top ten airports	92 621.9	96 373.2	4.1	83.9
Total domestic network	110 770.6	114 801.5	3.6	100.0

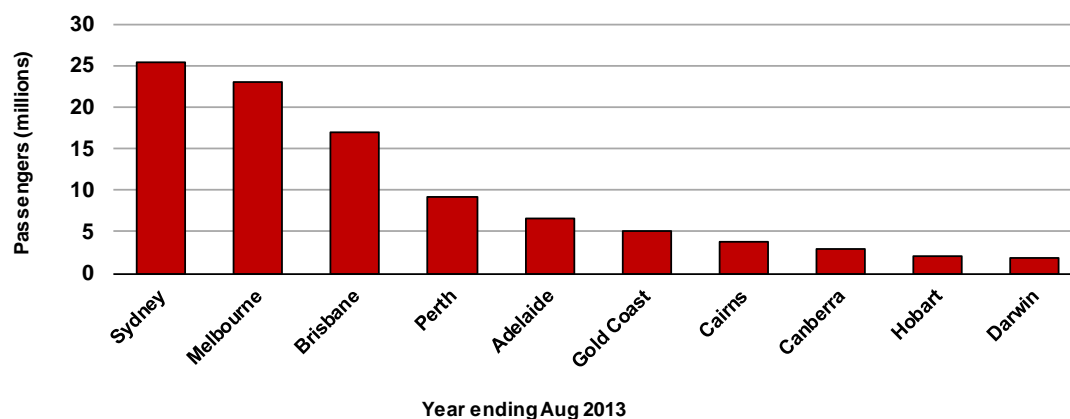
Table 7: Top ten airports, RPT passenger movements (000s) - monthly activity

Airport	Aug 2012	Aug 2013	% Change	% of Total
1 Sydney	2 126.6	2 150.2	1.1	21.9
2 Melbourne	1 887.3	1 965.7	4.2	20.0
3 Brisbane	1 447.0	1 463.8	1.2	14.9
4 Perth	775.0	747.5	-3.6	7.6
5 Adelaide	530.5	539.6	1.7	5.5
6 Gold Coast	391.5	398.5	1.8	4.1
7 Cairns	334.2	359.9	7.7	3.7
8 Canberra	265.4	254.2	-4.2	2.6
9 Darwin	176.8	177.6	0.4	1.8
10 Hobart	140.2	159.6	13.9	1.6
Total top ten airports	8 074.6	8 216.7	1.8	83.7
Total domestic network	9 671.0	9 814.4	1.5	100.0

Note: Airport passenger movement numbers are the sum of passenger arrivals and departures at each airport.

Top ten airports, passenger movements

(Domestic and regional passenger traffic - traffic on board)



TOP FIVE AIRPORTS – CARGO MOVEMENTS

Table 8: Top five airports, domestic RPT cargo movements (000s tonnes) - annual activity

Airport	YE Aug 2012	YE Aug 2013	% Change	% of Total
1 Sydney	126.0	116.1	-7.9	27.5
2 Melbourne	117.4	111.5	-5.0	26.4
3 Brisbane	75.5	66.6	-11.7	15.8
4 Perth	55.1	47.6	-13.6	11.3
5 Adelaide	29.3	27.7	-5.4	6.6
Total top five airports	403.3	369.5	-8.4	87.5
Total domestic network	466.1	422.1	-9.4	100.0

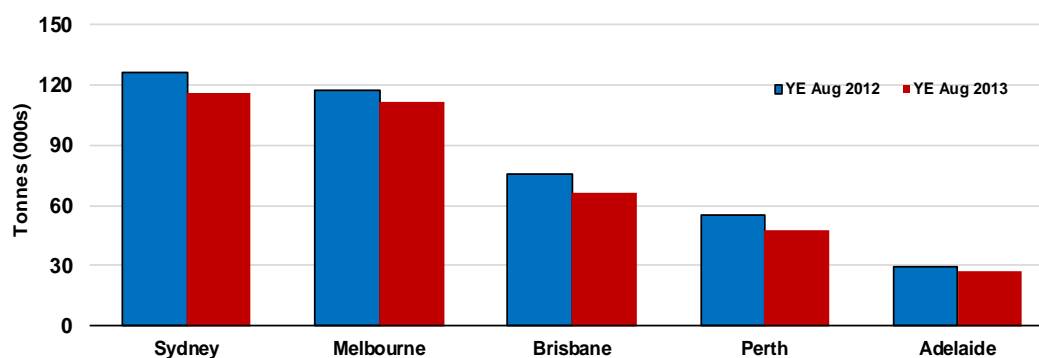
Table 9: Top five airports, domestic RPT cargo movements (000s tonnes) - monthly activity

Airport	Aug 2012	Aug 2013	% Change	% of Total
1 Sydney	10.2	9.2	-9.9	27.2
2 Melbourne	9.7	8.9	-7.6	26.5
3 Brisbane	5.8	5.3	-7.0	15.9
4 Perth	4.5	3.8	-16.1	11.2
5 Adelaide	2.5	2.2	-12.3	6.5
Total top five airports	32.6	29.4	-9.7	87.3
Total domestic network	37.5	33.7	-10.1	100.0

Note: Airport cargo tonnes are the sum of cargo tonnes on arrivals and departures at each airport.

Top five airports, cargo movements

(Domestic and regional cargo traffic - traffic on board)



TOP TEN ROUTES

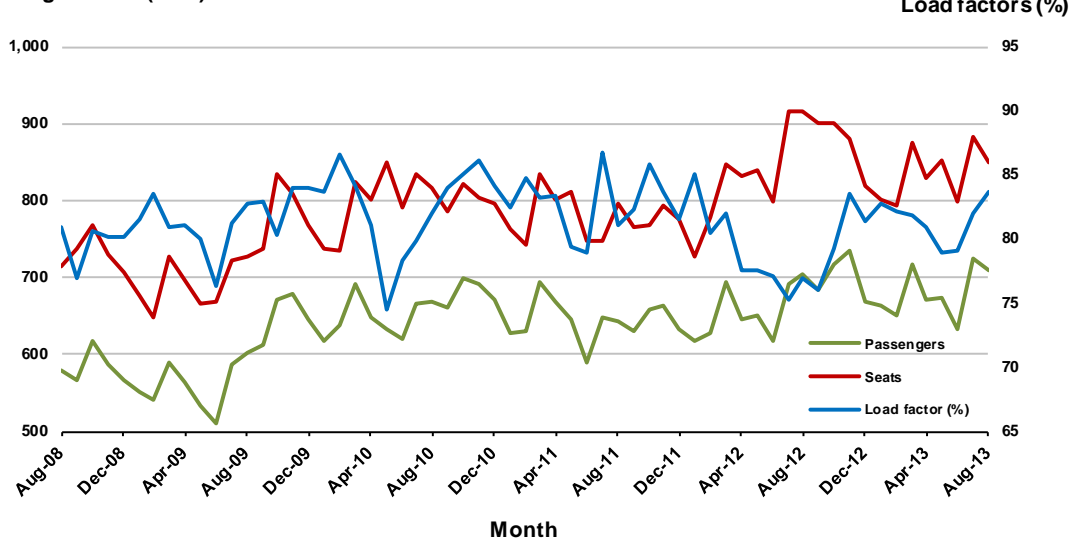
1. Melbourne - Sydney

Monthly data

	Aug 2012	Aug 2013	% Change
Passengers carried (000s)	704.9	709.9	0.7
Seats (000s)	915.8	849.5	-7.2
Load factor %	77.0	83.6	6.6 *
Aircraft trips	4 805	4 573	-4.8

* percentage point difference

Passengers/seats(000s)

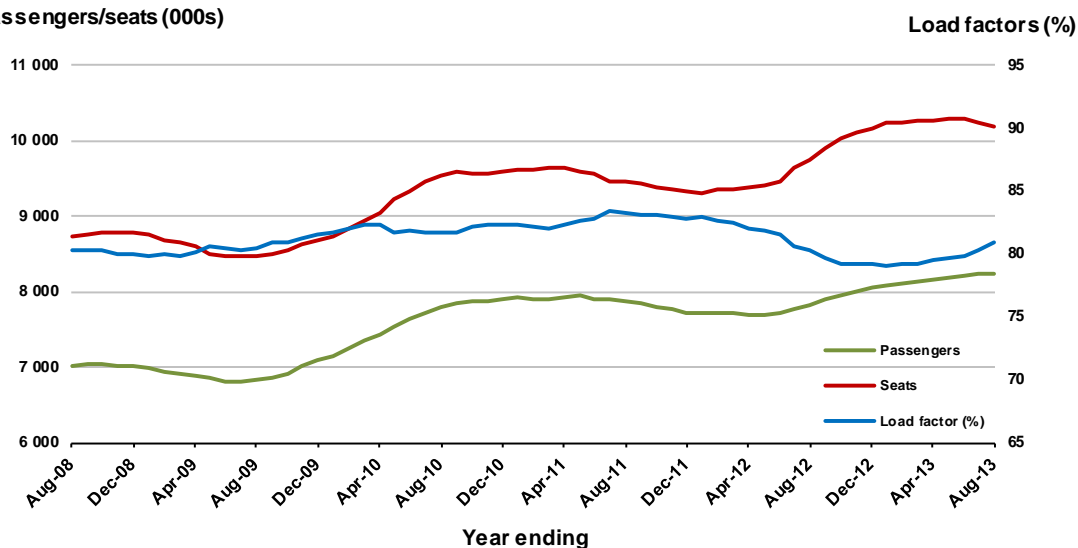


Moving annual data

	YE Aug 2012	YE Aug 2013	% Change
Passengers carried (000s)	7 830.8	8 239.5	5.2
Seats (000s)	9 755.5	10 180.3	4.4
Load factor %	80.2	80.9	0.7 *
Aircraft trips	51 821	53 415	3.1

* percentage point difference

Passengers/seats (000s)



2. Brisbane - Sydney

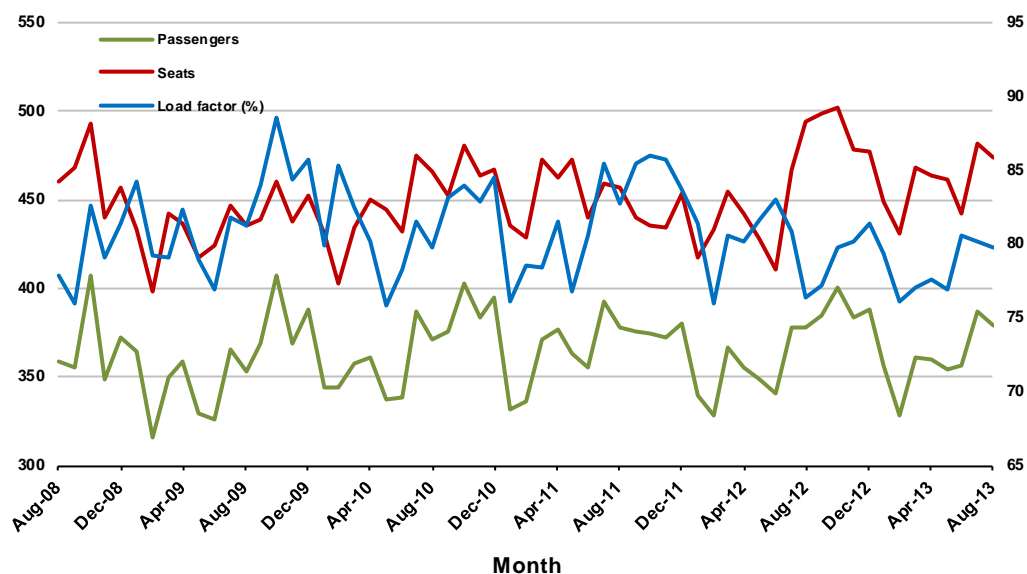
Monthly data

	Aug 2012	Aug 2013	% Change
Passengers carried (000s)	377.4	378.5	0.3
Seats (000s)	494.0	474.2	-4.0
Load factor %	76.4	79.8	3.4 *
Aircraft trips	2 757	2 645	-4.1

* percentage point difference

Passengers/seats (000s)

Load factors (%)



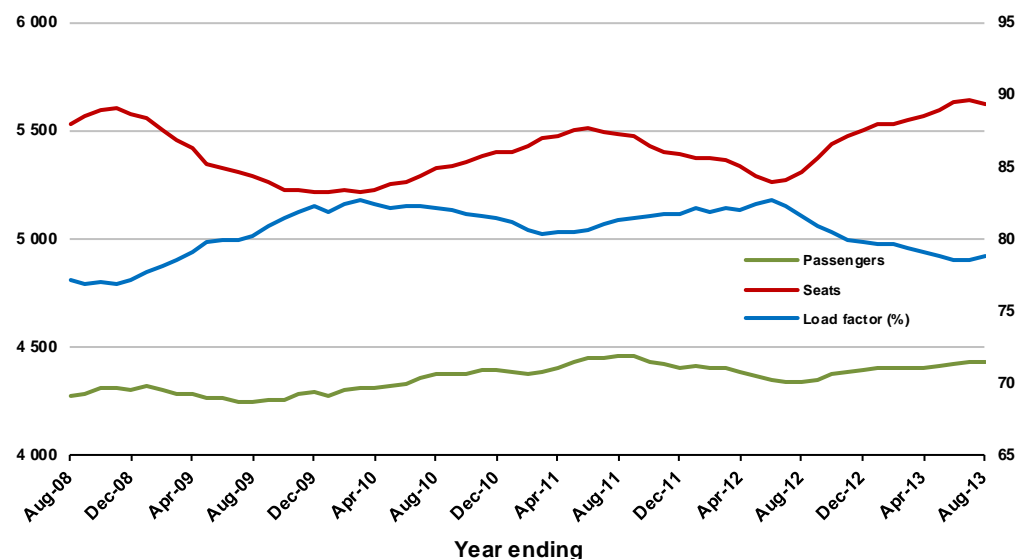
Moving annual data

	YE Aug 2012	YE Aug 2013	% Change
Passengers carried (000s)	4 337.2	4 436.3	2.3
Seats (000s)	5 310.7	5 626.6	5.9
Load factor %	81.7	78.9	-2.8 *
Aircraft trips	29 601	31 340	5.9

* percentage point difference

Passengers/seats (000s)

Load factors (%)

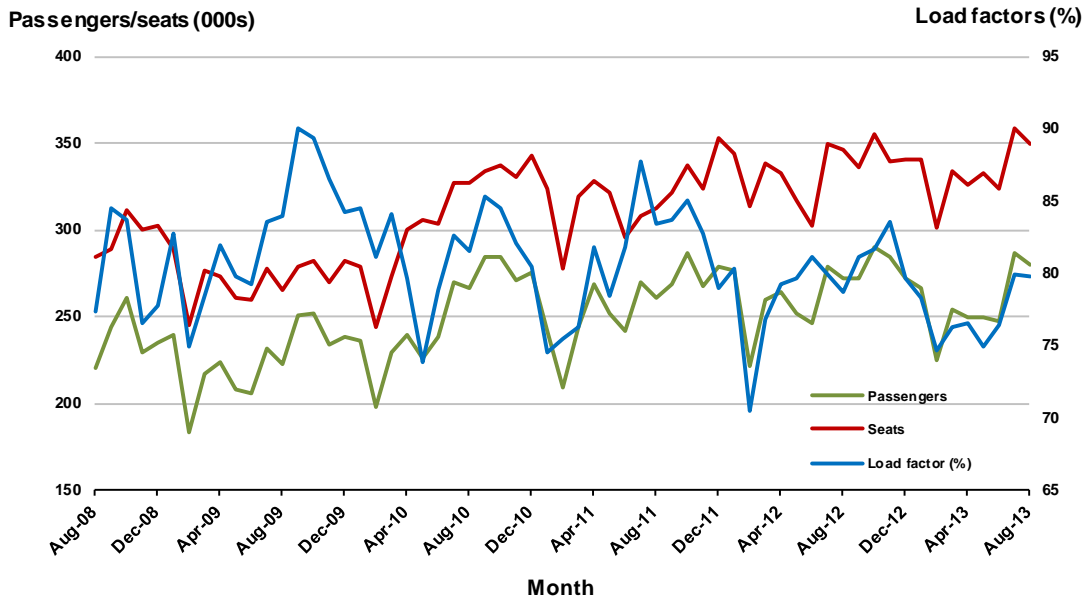


3. Brisbane - Melbourne

Monthly data

	Aug 2012	Aug 2013	% Change
Passengers carried (000s)	272.2	279.5	2.7
Seats (000s)	345.7	350.1	1.3
Load factor %	78.7	79.8	1.1 *
Aircraft trips	2 016	2 066	2.5

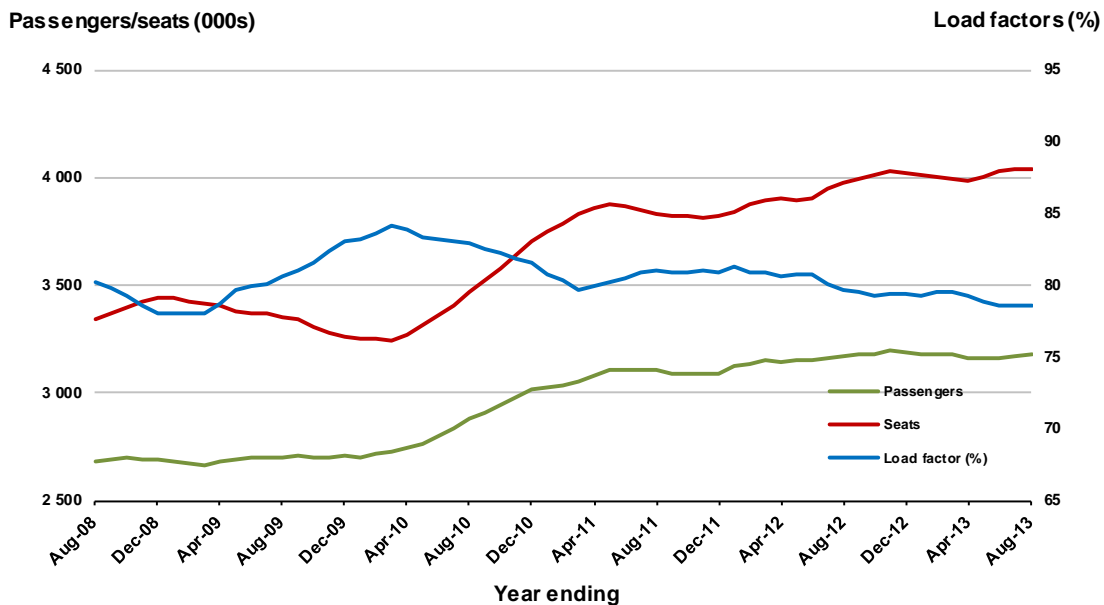
* percentage point difference



Moving annual data

	YE Aug 2012	YE Aug 2013	% Change
Passengers carried (000s)	3 173.4	3 177.3	0.1
Seats (000s)	3 980.2	4 040.0	1.5
Load factor %	79.7	78.6	-1.1 *
Aircraft trips	23 429	23 616	0.8

* percentage point difference



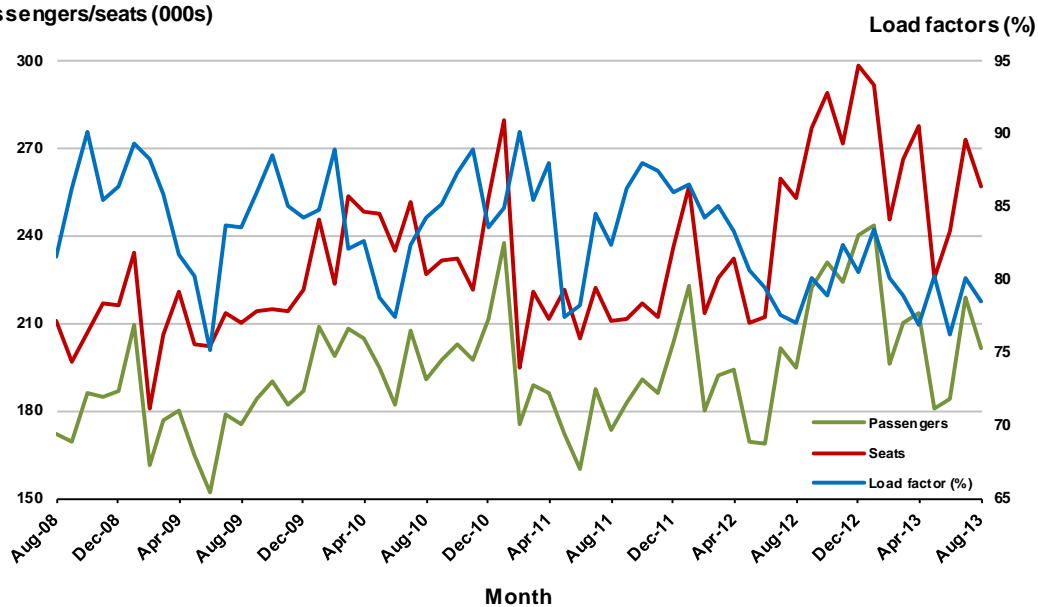
4. Gold Coast - Sydney

Monthly data

	Aug 2012	Aug 2013	% Change
Passengers carried (000s)	194.8	201.6	3.5
Seats (000s)	253.1	256.8	1.5
Load factor %	77.0	78.5	1.5 *
Aircraft trips	1 437	1 478	2.9

* percentage point difference

Passengers/seats (000s)

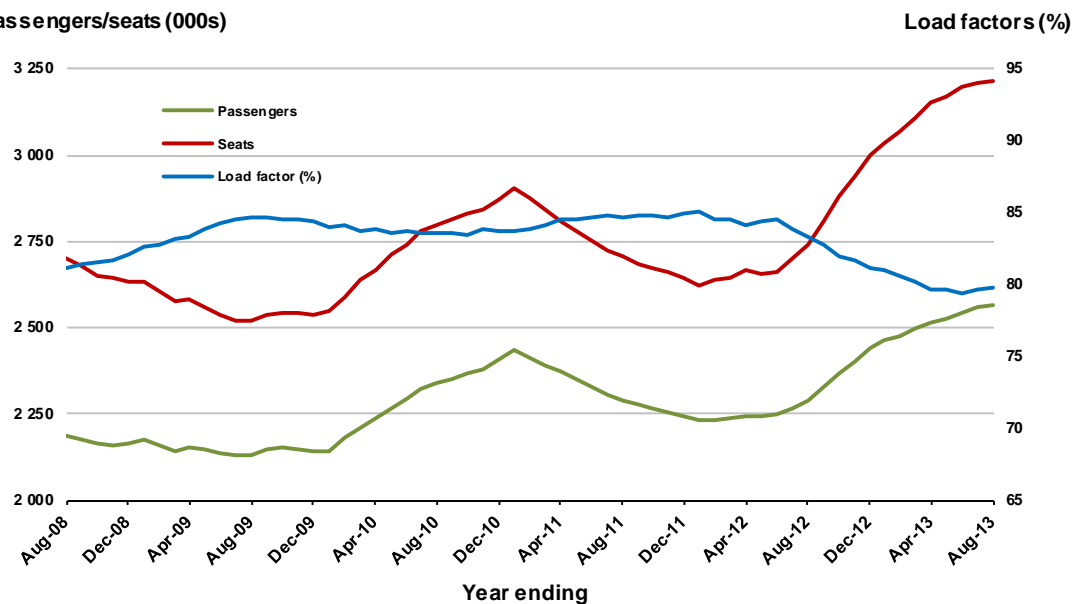


Moving annual data

	YE Aug 2012	YE Aug 2013	% Change
Passengers carried (000s)	2 286.3	2 566.1	12.2
Seats (000s)	2 741.7	3 214.7	17.3
Load factor %	83.3	79.7	-3.6 *
Aircraft trips	15 663	18 418	17.6

* percentage point difference

Passengers/seats (000s)



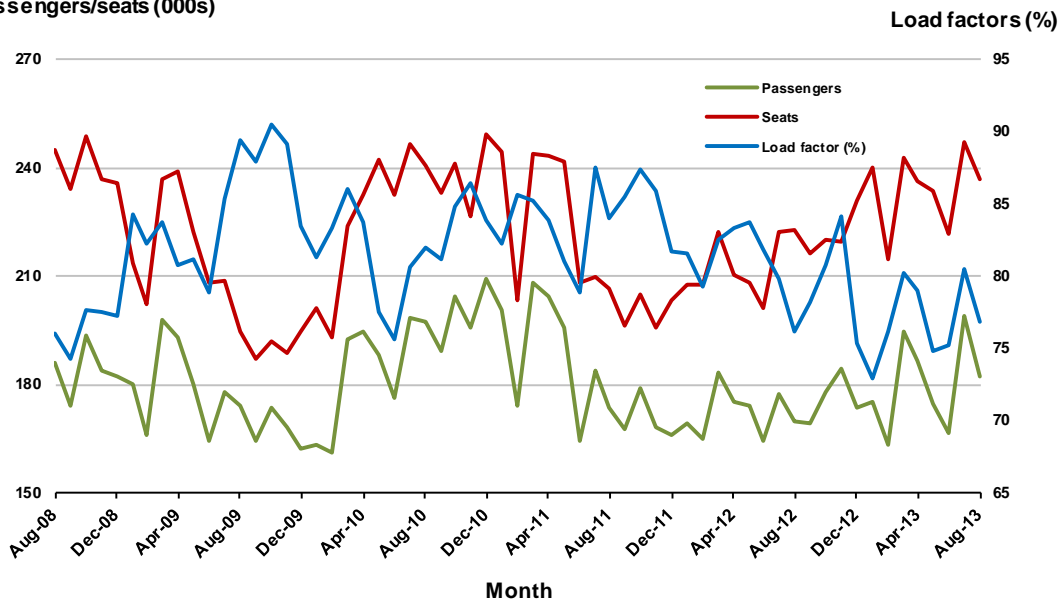
5. Adelaide - Melbourne

Monthly data

	Aug 2012	Aug 2013	% Change
Passengers carried (000s)	170.1	182.2	7.1
Seats (000s)	223.1	236.9	6.2
Load factor %	76.2	76.9	0.7 *
Aircraft trips	1 390	1 453	4.5

* percentage point difference

Passengers/seats (000s)

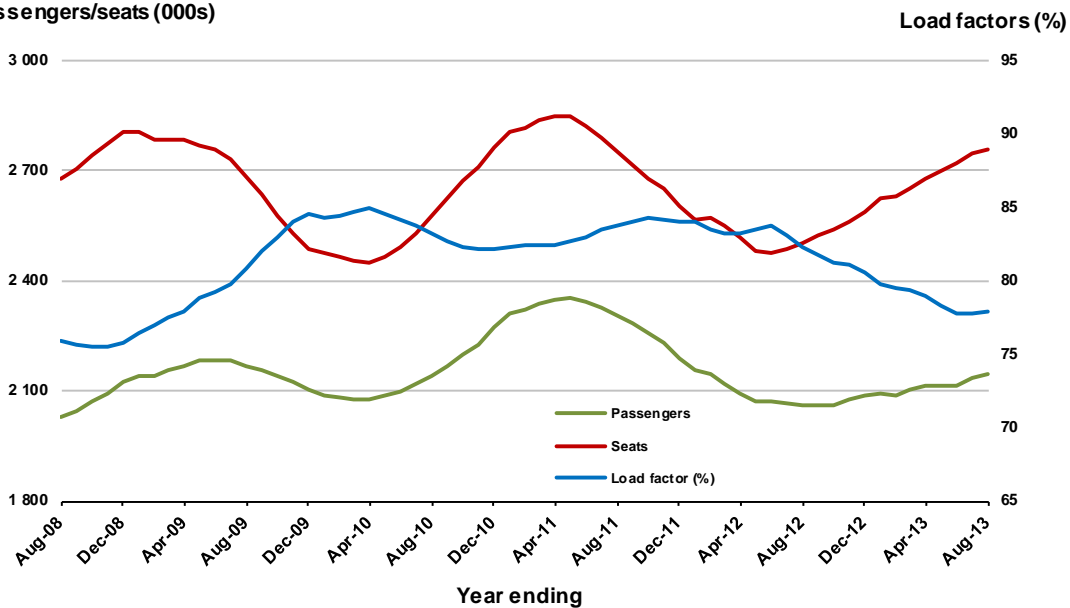


Moving annual data

	YE Aug 2012	YE Aug 2013	% Change
Passengers carried (000s)	2 061.5	2 148.3	4.2
Seats (000s)	2 503.7	2 759.6	10.2
Load factor %	82.3	77.8	-4.5 *
Aircraft trips	15 923	17 189	8.0

* percentage point difference

Passengers/seats (000s)



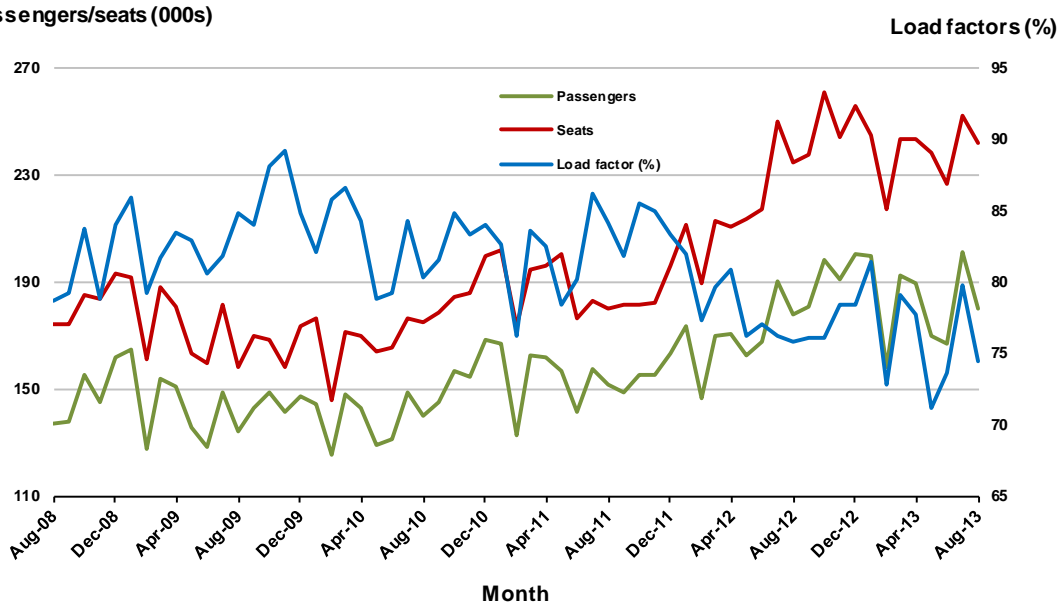
6. Melbourne - Perth

Monthly data

	Aug 2012	Aug 2013	% Change
Passengers carried (000s)	177.7	180.3	1.5
Seats (000s)	234.5	242.1	3.3
Load factor %	75.8	74.5	-1.3 *
Aircraft trips	1 048	1 071	2.2

* percentage point difference

Passengers/seats (000s)

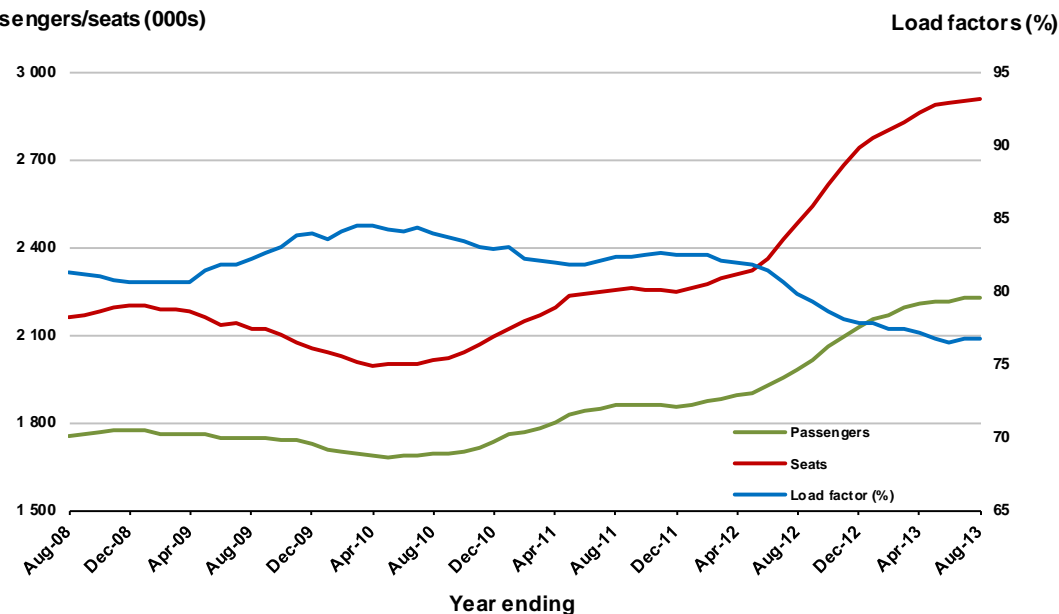


Moving annual data

	YE Aug 2012	YE Aug 2013	% Change
Passengers carried (000s)	1 982.8	2 229.7	12.5
Seats (000s)	2 483.5	2 907.5	17.1
Load factor %	79.8	76.7	-3.2 *
Aircraft trips	11 547	12 233	5.9

* percentage point difference

Passengers/seats (000s)



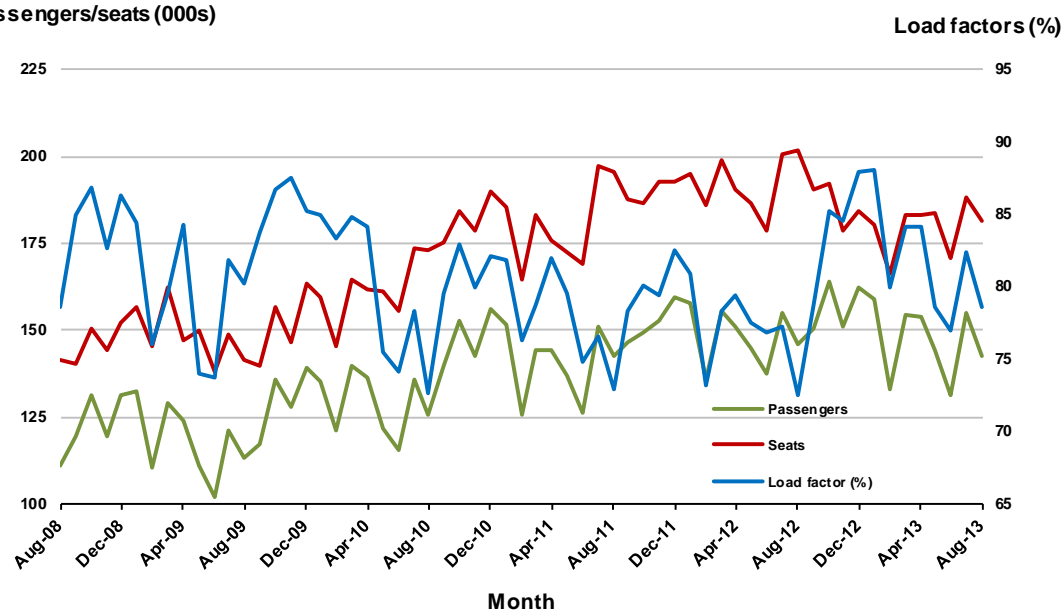
7. Perth - Sydney

Monthly data

	Aug 2012	Aug 2013	% Change
Passengers carried (000s)	146.1	142.7	-2.3
Seats (000s)	201.6	181.5	-10.0
Load factor %	72.5	78.6	6.1 *
Aircraft trips	792	713	-10.0

* percentage point difference

Passengers/seats (000s)

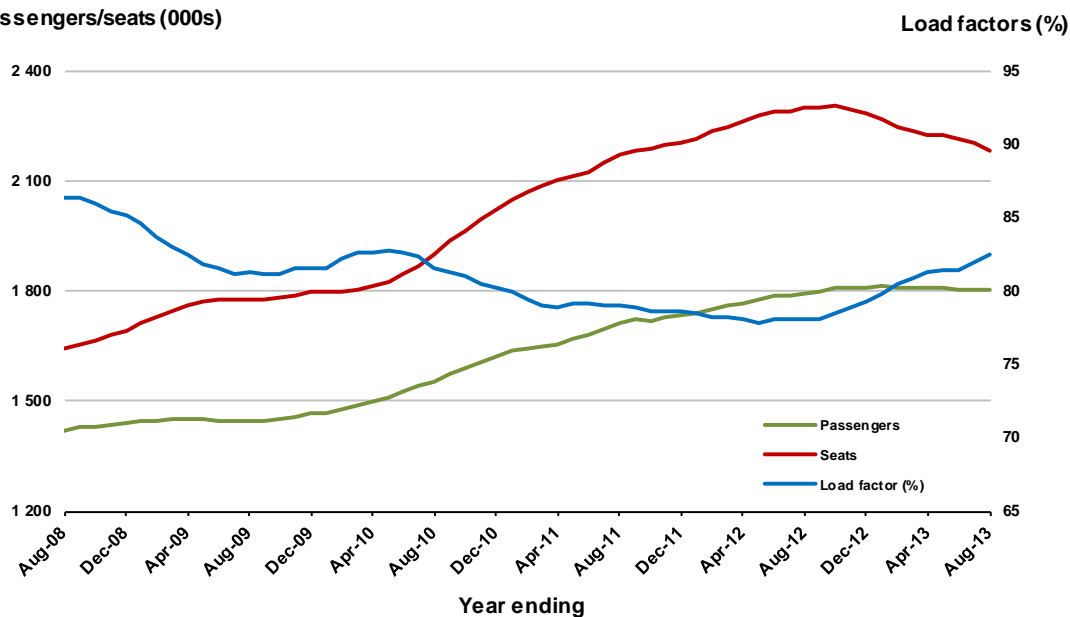


Moving annual data

	YE Aug 2012	YE Aug 2013	% Change
Passengers carried (000s)	1 792.7	1 801.5	0.5
Seats (000s)	2 297.6	2 183.5	-5.0
Load factor %	78.0	82.5	4.5 *
Aircraft trips	9 375	8 672	-7.5

* percentage point difference

Passengers/seats (000s)



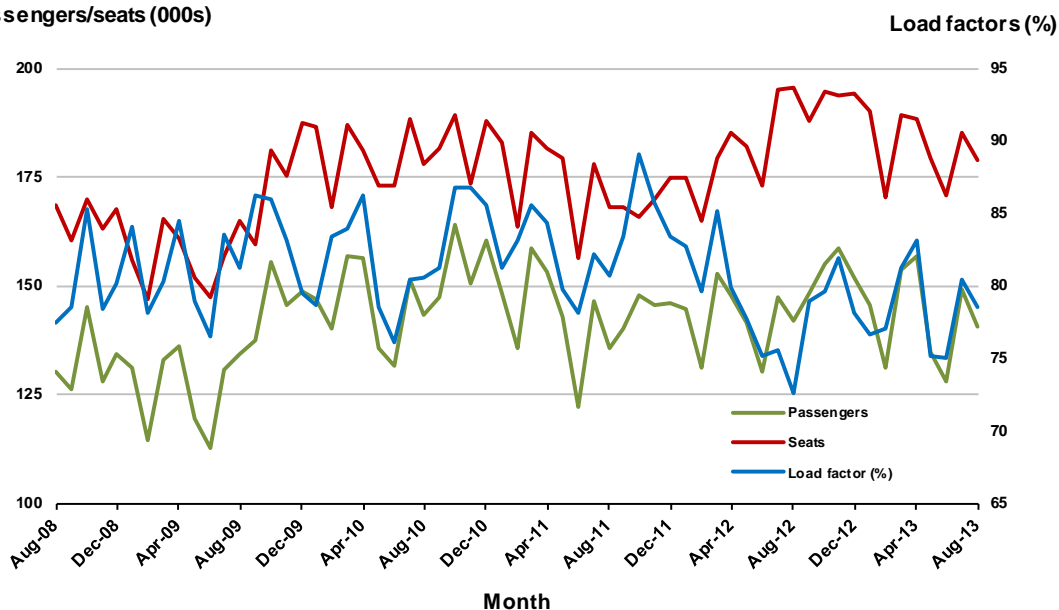
8. Adelaide - Sydney

Monthly data

	Aug 2012	Aug 2013	% Change
Passengers carried (000s)	141.8	140.5	-0.9
Seats (000s)	195.3	178.9	-8.4
Load factor %	72.6	78.5	5.9 *
Aircraft trips	1 121	1 042	-7.0

* percentage point difference

Passengers/seats (000s)

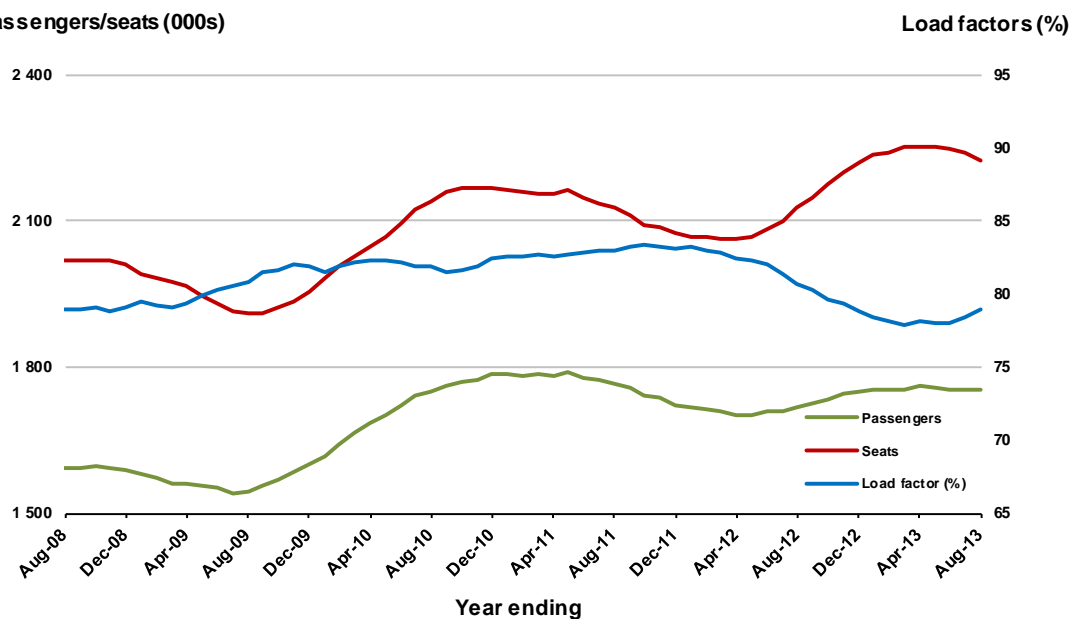


Moving annual data

	YE Aug 2012	YE Aug 2013	% Change
Passengers carried (000s)	1 716.9	1 754.0	2.2
Seats (000s)	2 128.7	2 222.9	4.4
Load factor %	80.7	78.9	-1.7 *
Aircraft trips	12 391	12 859	3.8

* percentage point difference

Passengers/seats (000s)



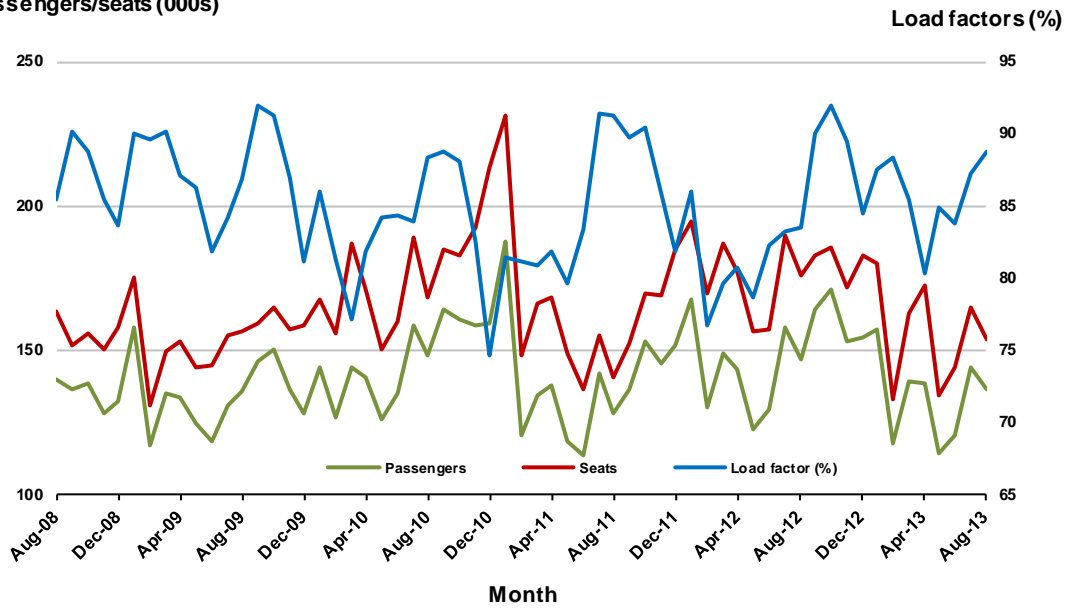
9. Gold Coast - Melbourne

Monthly data

	Aug 2012	Aug 2013	% Change
Passengers carried (000s)	146.9	136.8	-6.9
Seats (000s)	175.9	154.1	-12.4
Load factor %	83.5	88.8	5.3 *
Aircraft trips	977	831	-14.9

* percentage point difference

Passengers/seats (000s)

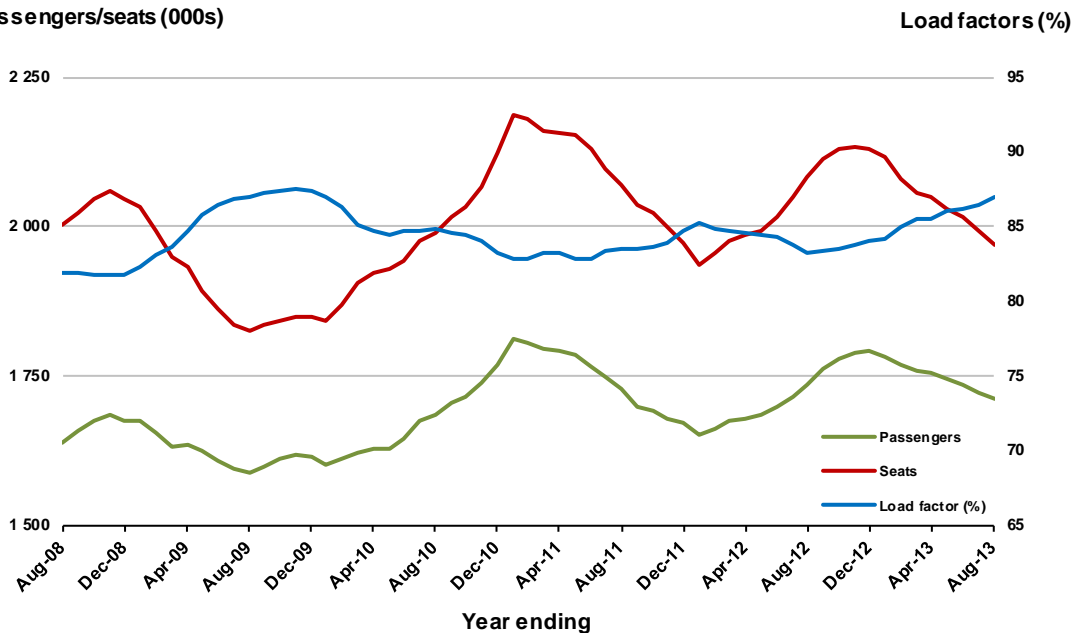


Moving annual data

	YE Aug 2012	YE Aug 2013	% Change
Passengers carried (000s)	1 734.5	1 711.7	-1.3
Seats (000s)	2 084.2	1 969.1	-5.5
Load factor %	83.2	86.9	3.7 *
Aircraft trips	11 565	10 813	-6.5

* percentage point difference

Passengers/seats (000s)



10. Hobart - Melbourne

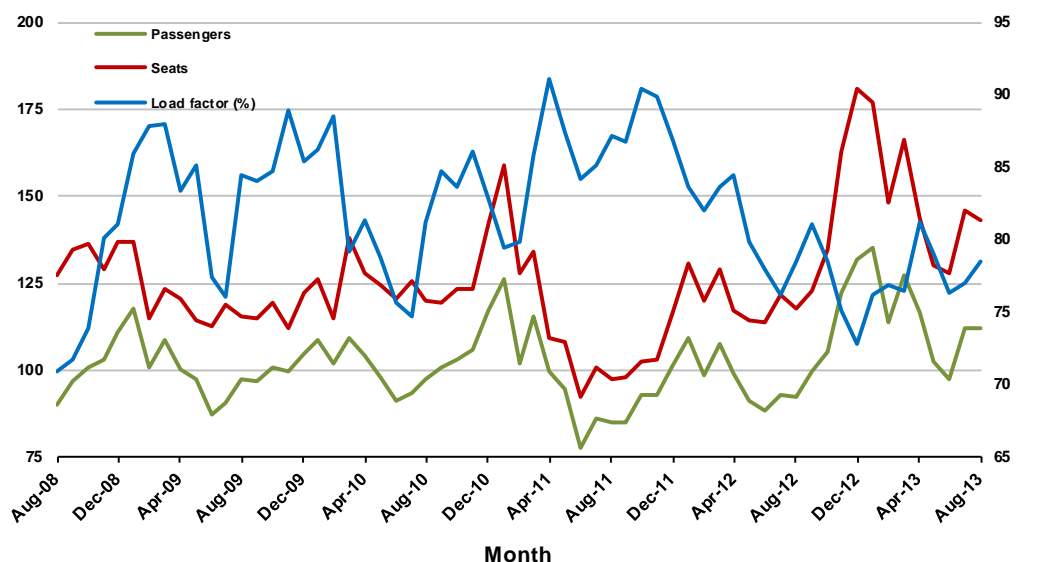
Monthly data

	Aug 2012	Aug 2013	% Change
Passengers carried (000s)	92.5	112.2	21.4
Seats (000s)	117.8	142.9	21.3
Load factor %	78.5	78.5	0.0 *
Aircraft trips	679	860	26.7

* percentage point difference

Passengers/seats (000s)

Load factors (%)



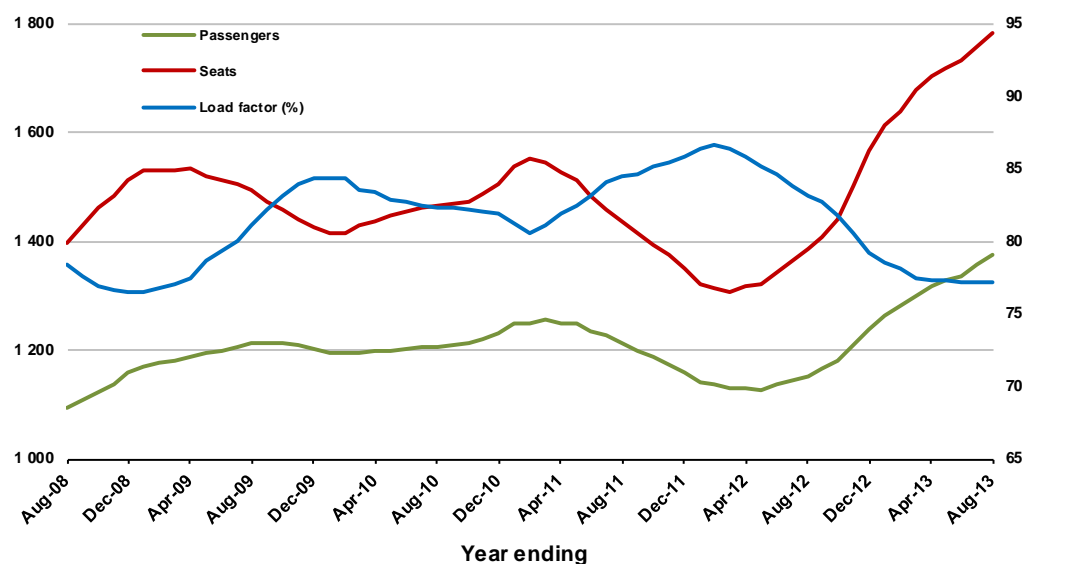
Moving annual data

	YE Aug 2012	YE Aug 2013	% Change
Passengers carried (000s)	1 152.0	1 376.2	19.5
Seats (000s)	1 385.2	1 781.9	28.6
Load factor %	83.2	77.2	-5.9 *
Aircraft trips	8 161	10 443	28.0

* percentage point difference

Passengers/seats (000s)

Load factors (%)



TOP FIFTY REGIONAL AIRPORTS

Table 10: Top fifty regional airports (000s) — passenger movements, monthly

	Airport	Aug 2012	Aug 2013	% Change
1	Cairns	359.9	381.8	6.1
2	Darwin	193.0	189.4	-1.9
3	Hobart	140.6	164.9	17.2
4	Townsville	153.0	153.7	0.4
5	Williamstown	100.0	105.2	5.1
6	Mackay	104.2	103.4	-0.8
7	Launceston	83.8	100.8	20.3
8	Karratha	72.5	70.4	-3.0
9	Rockhampton	70.0	67.2	-4.1
10	Alice Springs	55.3	66.8	20.6
11	Broome	52.5	52.5	-0.2
12	Gladstone	37.7	46.1	22.3
13	Newman	34.2	45.0	31.9
14	Port Hedland	50.6	43.9	-13.2
15	Hamilton Island	35.8	37.0	3.4
16	Coffs Harbour	28.2	32.5	15.2
17	Ballina	28.9	32.3	11.8
18	Emerald	26.9	24.4	-9.2
19	Mount Isa	22.9	23.6	3.0
20	Albury	24.5	22.7	-7.3
21	Paraburdoo	25.6	21.6	-15.7
22	Mildura	20.5	21.4	4.4
23	Proserpine	21.6	21.2	-1.9
24	Ayers Rock	27.4	20.1	-26.8
25	Roma	12.2	20.0	64.1
26	Kalgoorlie	23.9	19.7	-17.6
27	Port Macquarie	18.9	18.1	-4.1
28	Wagga Wagga	17.9	17.5	-2.2
29	Dubbo	15.2	17.4	14.3
30	Moranbah	11.7	17.0	45.5
31	Port Lincoln	15.7	14.5	-7.9
32	Bundaberg	10.6	13.9	31.2
33	Kununurra	13.1	13.2	0.8
34	Tamworth	13.4	13.0	-3.2
35	Hervey Bay	12.3	12.5	2.0
36	Devonport	11.0	12.2	10.1
37	Gove	10.0	11.6	15.6
38	Geraldton	12.7	11.5	-9.4
39	Learmonth	8.6	9.0	4.1
40	Armidale	8.5	9.0	5.3
41	Thursday Island	8.8	8.9	1.6
42	Olympic Dam	7.1	6.7	-5.8
43	Mount Gambier	7.3	6.5	-11.2
44	Burnie	5.5	6.2	12.2
45	Weipa	6.1	6.0	-1.4
46	Whyalla	6.5	5.9	-9.3
47	Griffith	5.2	5.6	7.6
48	Broken Hill	5.6	5.2	-7.2
49	Derby-Curtin	4.3	4.9	14.3
50	Narrandera	4.6	4.6	-1.1
	Total regional airports	2 046.8	2 138.3	4.5
	Total domestic network	9 671.0	9 814.4	1.5

Note: Airport passenger movement numbers are the sum of passenger arrivals and departures at each airport.

Table 11: Top fifty regional airports (000s) — passenger movements, annual

Airport	YE Aug 2012	YE Aug 2013	% Change
1 Cairns	3 578.0	3 749.5	4.8
2 Hobart	1 824.6	2 070.2	13.5
3 Darwin	1 821.4	1 806.7	-0.8
4 Townsville	1 684.8	1 634.2	-3.0
5 Launceston	1 132.7	1 246.3	10.0
6 Williamtown	1 206.1	1 205.3	-0.1
7 Mackay	1 196.2	1 168.0	-2.4
8 Karratha	807.9	804.5	-0.4
9 Rockhampton	791.2	740.1	-6.5
10 Alice Springs	576.1	619.2	7.5
11 Port Hedland	509.0	501.6	-1.4
12 Gladstone	393.0	485.9	23.6
13 Newman	327.3	453.4	38.5
14 Hamilton Island	445.8	452.5	1.5
15 Broome	440.9	443.9	0.7
16 Coffs Harbour	338.9	366.8	8.2
17 Ballina	331.9	365.2	10.0
18 Emerald	253.9	291.5	14.8
19 Mount Isa	261.0	277.5	6.3
20 Albury	282.6	265.1	-6.2
21 Paraburdoo	303.8	254.9	-16.1
22 Kalgoorlie	267.3	250.3	-6.4
23 Mildura	206.1	243.5	18.1
24 Ayers Rock	299.2	243.5	-18.6
25 Proserpine	220.8	234.5	6.2
26 Port Macquarie	229.2	228.4	-0.3
27 Wagga Wagga	209.7	207.2	-1.2
28 Roma	115.3	194.2	68.5
29 Port Lincoln	194.7	193.4	-0.7
30 Dubbo	187.2	188.1	0.5
31 Moranbah	128.0	158.0	23.5
32 Tamworth	160.1	155.1	-3.1
33 Hervey Bay	149.7	150.6	0.6
34 Bundaberg	124.4	141.1	13.4
35 Geraldton	145.9	137.7	-5.6
36 Devonport	139.2	126.6	-9.1
37 Kununurra	118.1	117.6	-0.4
38 Gove	112.1	116.2	3.7
39 Armidale	107.2	108.1	0.8
40 Thursday Island	98.1	93.5	-4.6
41 Learmonth	91.9	93.0	1.2
42 Olympic Dam	91.5	81.4	-11.1
43 Mount Gambier	89.2	81.0	-9.2
44 Whyalla	71.8	70.3	-2.1
45 Weipa	72.6	68.5	-5.7
46 Burnie	69.3	67.8	-2.1
47 Griffith	70.0	64.9	-7.3
48 Broken Hill	65.5	63.9	-2.4
49 Narrandera	58.4	58.7	0.6
50 Albany	59.2	58.5	-1.2
Total regional airports	24 050.5	24 714.8	2.8
Total domestic network	110 770.6	114 801.5	3.6

Note: Airport passenger movement numbers are the sum of passenger arrivals and departures at each airport.

DOMESTIC CHARTER ACTIVITY

Table 12: Charter passengers carried and aircraft trips - annual activity

	YE Aug 2012	YE Aug 2013	% Change
Total domestic charter passengers	2 021 916	2 431 507	20.3
Total domestic charter aircraft trips	51 758	58 673	13.4

Note: Helicopter and leisure charter flights not included.

Table 13: Charter passengers carried and aircraft trips - monthly activity

	Aug-12	Aug-13	% Change
Total domestic charter passengers	197 979	223 361	12.8
Total domestic charter aircraft trips	5 026	4 871	-3.1

Note: Helicopter and leisure charter flights not included.

Table 14: Domestic airports - charter activity - annual

	YE Aug 2012	YE Aug 2013	% Change
Total domestic charter passenger movements	4 043 832	4 863 014	20.3
Total domestic charter aircraft movements	103 516	117 346	13.4
Perth airport charter passenger movements	1 489 888	1 753 383	17.7
Perth airport charter aircraft movements	36 708	40 197	9.5

Note: Helicopter and leisure charter flights not included.

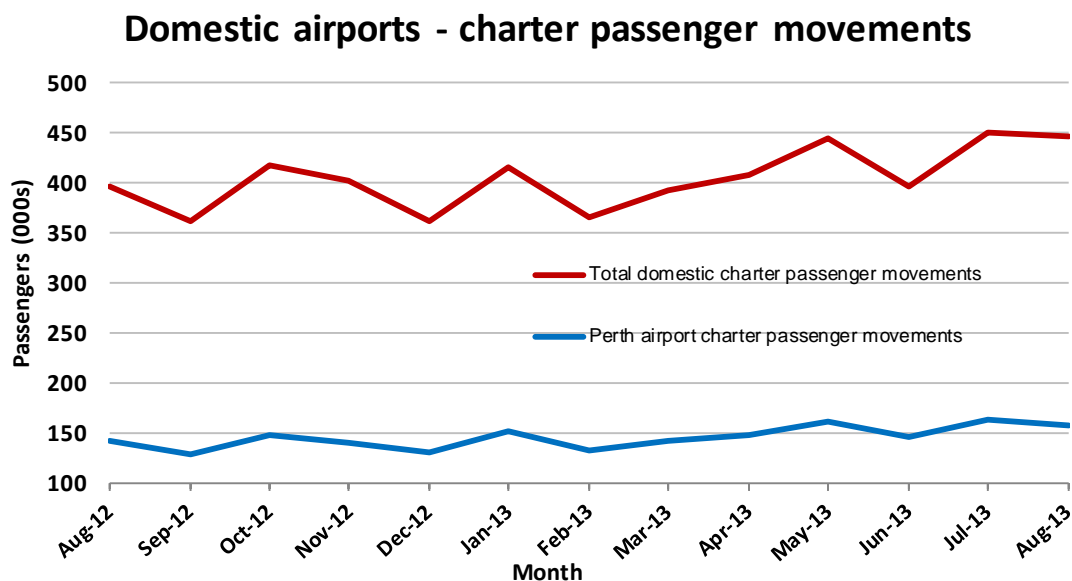
Charter passenger and aircraft movement numbers are the sum of arrivals and departures at each airport.

Table 15: Domestic airports - charter activity - monthly

	Aug-12	Aug-13	% Change
Total domestic charter passenger movements	395 958	446 722	12.8
Total domestic charter aircraft movements	10 052	9 742	-3.1
Perth airport charter passenger movements	142 138	157 665	10.9
Perth airport charter aircraft movements	3 469	3 229	-6.9

Note: Helicopter and leisure charter flights not included.

Charter passenger and aircraft movement numbers are the sum of arrivals and departures at each airport.



DEFINITIONS

Aircraft Trips	The number of flight stages. A return flight counts as two aircraft trips.
Airport Movements	Airport movements (passenger and cargo) are measured once on arrival and once on departure. Each domestic trip generates two movements at airports. For example, a trip from Melbourne to Sydney will be counted twice, as a passenger departure at Melbourne and as a passenger arrival at Sydney. At the national level, the sum of all domestic airport traffic will therefore be equal to twice the number of trips undertaken.
Available Seat Kilometres (ASKs)	Calculated by multiplying the number of seats available on each flight stage, by the distance in kilometres between the ports. The distances used are Great Circle Distances.
City-Pair	The ports shown make up the city-pair route. Passenger movements shown for a city pair reflect total traffic in both directions.
Flight Stage	The operation of an aircraft from take-off to landing.
Load Factor	The total revenue passenger kilometres performed as a percentage of the total available seat kilometres.
Passengers Carried	Revenue passengers carried.
Regular Public Transport Services (RPT)	All air service operations in which aircraft are available for the transport of members of public and are conducted in accordance with fixed schedules. It does not include charter or other non-scheduled operations.
Revenue Passengers	All passengers paying any fare. Frequent flyer redemption travellers are regarded as revenue passengers.
Revenue Passenger Kilometres (RPKs)	Calculated by multiplying the number of revenue passengers travelling on each flight stage, by the distance in kilometres between the ports. The distances used are Great Circle Distances.
Traffic on board by stages	The total of all traffic (revenue passengers) on each flight stage between two directly connected airports.
..	Data not included
NA	Not applicable