



Australian Government

Department of Infrastructure and Transport

Bureau of Infrastructure, Transport and Regional Economics

STATISTICAL REPORT



Aviation

Domestic aviation activity
December 2012

© Commonwealth of Australia 2013

ISSN: 1832 - 1968

Ownership of intellectual property rights in this publication

Unless otherwise noted, copyright (and any other intellectual property rights, if any) in this publication is owned by the Commonwealth of Australia (referred to below as the Commonwealth).

Disclaimer

The material contained in this publication is made available on the understanding that the Commonwealth is not providing professional advice, and that users exercise their own skill and care with respect to its use, and seek independent advice if necessary.

The Commonwealth makes no representations or warranties as to the contents or accuracy of the information contained in this publication. To the extent permitted by law, the Commonwealth disclaims liability to any person or organisation in respect of anything done, or omitted to be done, in reliance upon information contained in this publication.

Creative Commons licence

With the exception of (a) the Coat of Arms; and (b) the Department of Infrastructure's photos and graphics, copyright in this publication is licensed under a Creative Commons Attribution 3.0 Australia Licence.

Creative Commons Attribution 3.0 Australia Licence is a standard form licence agreement that allows you to copy, communicate and adapt this publication provided that you attribute the work to the Commonwealth and abide by the other licence terms. A summary of the licence terms is available from <http://creativecommons.org/licenses/by/3.0/au/deed.en>. The full licence terms are available from <http://creativecommons.org/licenses/by/3.0/au/legalcode>.

Use of the Coat of Arms

The Department of the Prime Minister and Cabinet sets the terms under which the Coat of Arms is used. Please refer to the Department's Commonwealth Coat of Arms and Government branding web page <http://www.dPMC.gov.au/guidelines/index.cfm#brand> and, in particular, the Guidelines on the use of the Commonwealth Coat of Arms publication.

An appropriate citation for this report is:

Bureau of Infrastructure, Transport and Regional Economics (BITRE), 2013, Domestic aviation activity, Statistical Report, BITRE, Canberra ACT.

Contact us

This publication is available in PDF format. All other rights are reserved, including in relation to any Departmental logos or trade marks which may exist. For enquiries regarding the licence and any use of this publication, please contact:

Bureau of Infrastructure, Transport and Regional Economics (BITRE)
Department of Infrastructure and Transport
GPO Box 501, Canberra ACT 2601, Australia
Telephone: (international) +61 2 6274 7210
Fax: (international) +61 2 6274 6855
Email: bitre@infrastructure.gov.au
Website: www.bitre.gov.au

Inquiries

Should you require additional information about the statistics contained in this publication:

Nebojsa Pavlovic

Telephone (02) 6274 6817 or Facsimile (02) 6274 7727

Electronic mail: AVSTATS@infrastructure.gov.au

Nebojsa.Pavlovic@infrastructure.gov.au

Web site: <http://www.bitre.gov.au/statistics/aviation/domestic.aspx>

FOREWORD

This report provides an overview of domestic (including regional and charter) commercial aviation activity in Australia for the month of December 2012.

The data cover revenue passengers carried by Australian-registered operators of scheduled regular public transport services over Australian flight stages and fixed-wing charter operators. These estimates include passengers carried between domestic airports on international flights operated by these carriers. The passengers carried refer to traffic on board by stages.

Estimates of passengers and aircraft movements for charter aviation are included in this publication, where BITRE confidentiality standards are met.

Individual routes shown are restricted to those with an average exceeding 8 000 passengers per month where two or more airlines operate in competition. For the month of December 2012 there were 58 such routes.

Information on the total network for the month of December 2012 and on the Regular Public Transport (RPT) network for the month of December 2012 is presented on page 2, with estimates for the year ended December 2012 presented on page 3.

Detailed information on the 58 individual routes can be found in the RPT summary pages 4–9 of this publication.

The top ten airports in terms of RPT passenger movements are shown on page 10. Data on domestic RPT cargo movements at the top five cargo airports are provided on page 11. The table includes cargo carried on passenger flights operated by the Qantas group (including Jetstar), Virgin Australia, Air North, Skippers and Skytrans as well as the cargo carried by dedicated freighter aircraft operated by Australian Air Express and Toll Priority.

The long-term trends for the top ten competitive RPT routes are presented graphically on pages 12–21.

Tables providing estimates of domestic charter aviation activity are shown on page 22. BITRE confidentiality standards restrict publication of detailed airport-level estimates for all Australian airports, with the exception of Perth Airport.

A list of definitions can be found on page 23.

This report was prepared by the Aviation Statistics Section of the Bureau of Infrastructure, Transport and Regional Economics with data provided by airlines.

Estimates are included where data were not available and data presented in this publication may contain revisions to previously published data.

Where figures have been rounded, discrepancies may occur between sums of component items and totals, and in percentage changes which are derived from figures prior to rounding.

CONTENTS

Highlights	1
Total network	2
RPT network	2
Top competitive routes	4
Top ten airports – passenger movements	10
Top five airports – cargo movements	11
Top ten routes	12
1. Melbourne – Sydney	12
2. Brisbane – Sydney	13
3. Brisbane – Melbourne	14
4. Gold Coast – Sydney	15
5. Melbourne – Perth	16
6. Adelaide – Melbourne	17
7. Perth – Sydney	18
8. Gold Coast – Melbourne	19
9. Adelaide – Sydney	20
10. Hobart – Melbourne	21
Domestic charter activity	22
Definitions	23

This page is intentionally left blank.

HIGHLIGHTS

There were 5.00 million passengers carried on Australian domestic commercial aviation (including regional and charter operations) in December 2012, an increase of 4.8 per cent on December 2011. For the month of December 2012 there were 57 058 aircraft trips, an increase of 3.8 per cent on the previous December.

4.82 million passengers were carried on RPT flights in December 2012, an increase of 4.4 per cent on December 2011. For the year ending December 2012 there were 56.55 million passengers, an increase of 4.1 per cent compared with the year ending December 2011.

Tiger Airways have been operating a restricted schedule since the grounding of their fleet in July 2011. The restrictions on Tiger Airways were lifted at the end of October 2012.

RPT revenue passenger kilometres (RPKs) performed were 5.72 billion for the month, up 5.4 per cent compared with December 2011. Capacity, measured by available seat kilometres (ASKs), increased 7.6 per cent compared with December 2011 to a total of 7.39 billion.

With RPT capacity increasing at a faster rate than passenger traffic, the industry wide load factor (RPKs/ASKs) decreased from 79.0 per cent in December 2011 to 77.4 per cent in December 2012. Load factors on individual routes decreased on 37 of the 55 RPT routes for which data is available in both years.

For the month of December 2012, Melbourne – Sydney remained Australia's busiest RPT route with 667 134 passengers, an increase of 5.6 per cent compared with December 2011. It was followed by Brisbane – Sydney with 387 658 passengers (up 2.0 per cent) and Brisbane – Melbourne with 271 701 passengers (down 2.6 per cent).

The greatest percentage increase in RPT passenger numbers, compared to December 2011, was on the Newman – Perth route (up 37.9 per cent). There were large increases on a number of other routes, including Cairns – Melbourne (up 36.6 per cent), Hobart – Melbourne (up 30.1 per cent), Launceston – Sydney (up 26.7 per cent), Melbourne – Perth (up 22.5 per cent) and Brisbane – Gladstone (up 21.5 per cent).

RPT routes with traffic decreases in December 2012 compared with December 2011, included Cairns – Townsville (down 17.0 per cent), Brisbane – Canberra (down 13.3 per cent), Geraldton – Perth (down 7.4 per cent) and Brisbane – Hamilton Island (down 6.2 per cent).

In December 2012, Sydney remained Australia's busiest domestic airport with 2.16 million passengers movements, followed by Melbourne with 1.92 million passenger movements and Brisbane with 1.43 million passenger movements.

Total cargo movements at Australian airports on domestic RPT flights were 38.7 thousand tonnes in December 2012, a decrease of 10.3 per cent compared to December 2011. For the month of December 2012, Sydney was the busiest airport in terms of cargo movements (10.8 thousand tonnes, down 8.7 per cent compared to December 2011), followed by Melbourne (10.0 thousand tonnes, down 6.0 per cent) and Brisbane (6.1 thousand tonnes, down 15.1 per cent).

Fixed-wing charter operators carried 181 thousand passengers in December 2012, an increase of 17.0 per cent on December 2011. More than one third of all charter passengers in Australia took flights either to or from Perth Airport.

TOTAL NETWORK

Summary of monthly commercial aviation activity

	Dec 2011	Dec 2012	% Change
Total passengers carried (millions)	4.77	5.00	4.8
Aircraft trips (000s)	55.0	57.1	3.8

RPT NETWORK

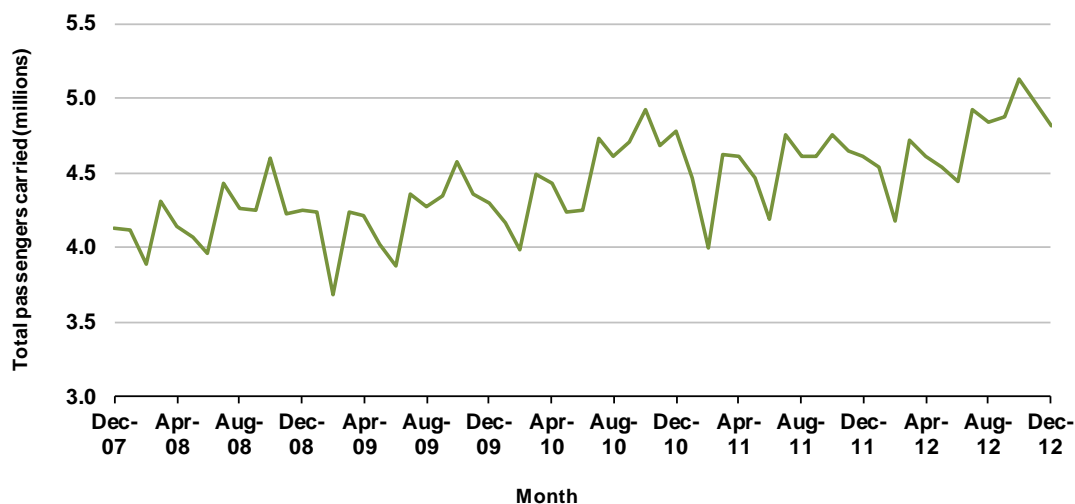
Summary of monthly RPT activity

	Dec 2011	Dec 2012	% Change
Total passengers carried (millions)	4.61	4.82	4.4
Revenue passenger kilometres (billions)	5.43	5.72	5.4
Available seats (millions)	5.96	6.42	7.7
Available seat kilometres (billions)	6.87	7.39	7.6
Load factor %	79.0	77.4	-1.6 *
Aircraft trips (000s)	50.8	52.3	2.8

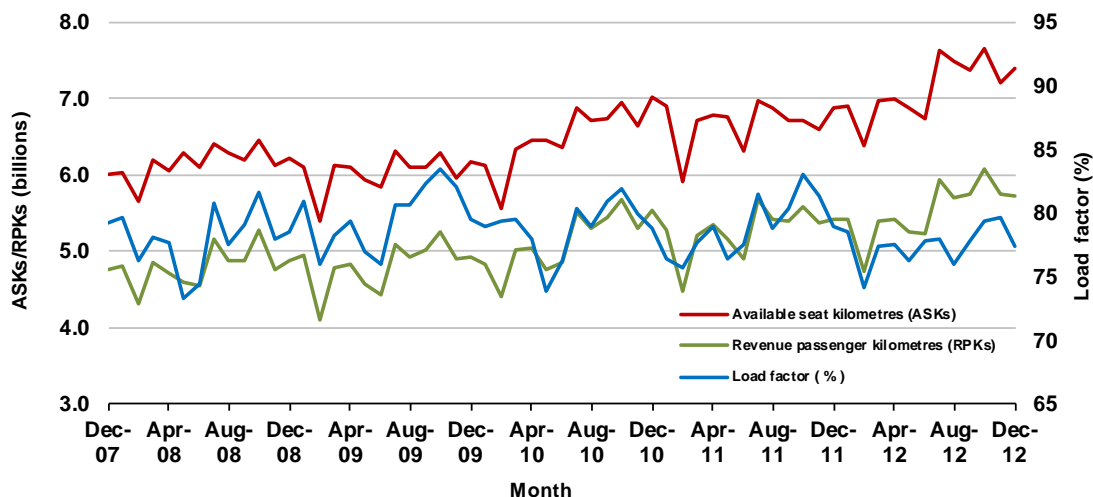
* percentage point difference

Domestic RPT passenger traffic

(passenger traffic - monthly)



RPT Network utilisation



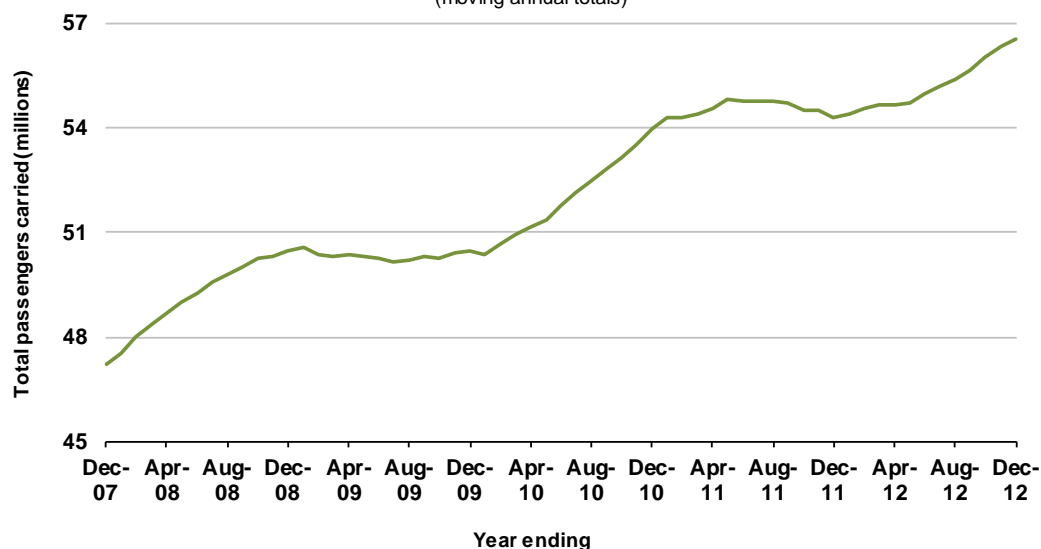
Summary of annual RPT activity

	YE Dec 2011	YE Dec 2012	% Change
Total passengers carried (millions)	54.32	56.55	4.1
Revenue passenger kilometres (billions)	63.22	66.39	5.0
Available seats (millions)	69.90	74.78	7.0
Available seat kilometres (billions)	80.11	85.64	6.9
Load factor %	78.9	77.5	-1.4 *
Aircraft trips (000s)	606.7	634.0	4.5

* percentage point difference

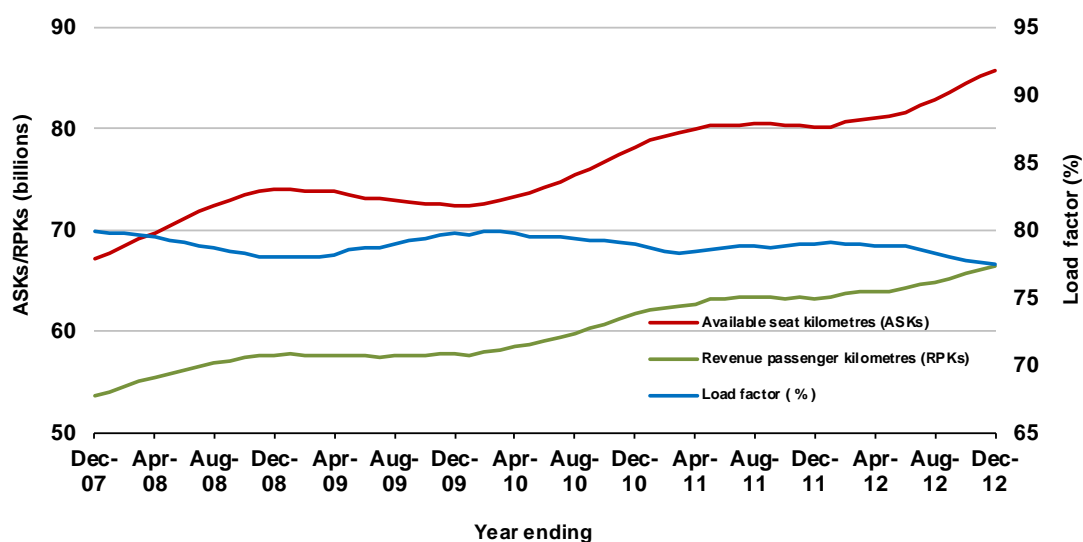
Domestic RPT passenger traffic

(moving annual totals)



RPT Network utilisation

(moving annual totals)



TOP COMPETITIVE ROUTES

Table 1: Passengers carried (000s) — annual activity

	City-Pair	YE Dec 2011	YE Dec 2012	% Change
1	Melbourne - Sydney	7 727.5	8 056.0	4.3
2	Brisbane - Sydney	4 406.0	4 390.4	-0.4
3	Brisbane - Melbourne	3 090.4	3 189.4	3.2
4	Gold Coast - Sydney	2 244.8	2 442.9	8.8
5	Melbourne - Perth	1 855.9	2 130.7	14.8
6	Adelaide - Melbourne	2 186.7	2 085.2	-4.6
7	Perth - Sydney	1 731.7	1 811.4	4.6
8	Gold Coast - Melbourne	1 671.3	1 790.8	7.2
9	Adelaide - Sydney	1 722.7	1 751.2	1.7
10	Hobart - Melbourne	1 157.9	1 239.6	7.1
11	Brisbane - Cairns	1 108.0	1 187.2	7.1
12	Canberra - Sydney	1 069.1	1 053.2	-1.5
13	Canberra - Melbourne	1 065.2	1 003.1	-5.8
14	Brisbane - Townsville	977.4	994.2	1.7
15	Brisbane - Mackay	908.9	964.7	6.1
16	Brisbane - Perth	867.5	951.5	9.7
17	Cairns - Sydney	894.3	937.6	4.8
18	Launceston - Melbourne	790.5	835.6	5.7
19	Karratha - Perth	646.1	760.3	17.7
20	Adelaide - Brisbane	679.8	729.2	7.3
21	Brisbane - Rockhampton	606.4	644.4	6.3
22	Adelaide - Perth	592.5	621.7	4.9
23	Brisbane - Canberra	620.5	605.4	-2.4
24	Brisbane - Newcastle	582.2	591.8	1.6
25	Cairns - Melbourne	504.8	581.8	15.3
26	Perth - Port Hedland	370.1	494.4	33.6
27	Hobart - Sydney	472.8	477.9	1.1
28	Sunshine Coast - Sydney	475.1	463.6	-2.4
29	Melbourne - Newcastle	429.7	425.2	-1.0
30	Brisbane - Gladstone	209.8	411.6	NA (a)
31	Brisbane - Darwin	366.0	375.9	2.7
32	Newman - Perth	250.0	372.2	48.9
33	Melbourne - Sunshine Coast	382.0	324.8	-15.0
34	Broome - Perth	310.0	324.3	4.6
35	Coffs Harbour - Sydney	308.1	320.2	3.9
36	Darwin - Melbourne	295.6	295.5	0.0
37	Ballina - Sydney	262.9	280.7	6.7
38	Brisbane - Emerald	..	264.3	NA (b)
39	Darwin - Sydney	..	263.9	NA (c)
40	Albury - Sydney	241.9	247.3	2.2
41	Kalgoorlie - Perth	242.9	241.0	-0.8
42	Brisbane - Proserpine	204.8	232.3	13.4
43	Launceston - Sydney	223.1	222.7	-0.2
44	Hamilton Island - Sydney	180.8	200.5	10.9
45	Melbourne - Mildura	193.8	200.4	3.4

(continued)

Table 1: (continued) Passengers carried (000s) — annual activity

	City-Pair	YE Dec 2011	YE Dec 2012	% Change
46	Port Macquarie - Sydney	206.4	197.9	-4.1
47	Adelaide - Port Lincoln	197.5	196.0	-0.8
48	Sydney - Townsville	179.5	189.6	5.6
49	Adelaide - Gold Coast	182.1	181.6	-0.2
50	Sydney - Wagga Wagga	180.0	181.0	0.5
51	Cairns - Townsville	188.8	179.8	-4.8
52	Adelaide - Canberra	185.4	174.9	-5.6
53	Dubbo - Sydney	173.6	174.3	0.4
54	Darwin - Perth	155.3	161.9	4.2
55	Ayers Rock - Sydney	150.3	153.5	2.2
56	Brisbane - Hamilton Island	168.1	153.1	-8.9
57	Geraldton - Perth	10.6	139.5	NA (d)
58	Brisbane - Mount Isa	..	59.9	NA (e)
	Total domestic network	54 315.1	56 548.2	4.1

(a) Brisbane - Gladstone route included from May 2011, prior data not shown.

(b) Brisbane - Emerald route included from February 2012, prior data not shown.

(c) Darwin - Sydney route included from May 2012, prior data not shown.

(d) Geraldton - Perth route included from December 2011, prior data not shown.

(e) Brisbane - Mount Isa route included from September 2012, prior data not shown.

Table 2: Passengers carried (000s) — monthly activity

	City-Pair	Dec 2011	Dec 2012	% Change
1	Melbourne - Sydney	631.8	667.1	5.6
2	Brisbane - Sydney	380.0	387.7	2.0
3	Brisbane - Melbourne	279.0	271.7	-2.6
4	Gold Coast - Sydney	203.4	240.4	18.2
5	Melbourne - Perth	163.8	200.7	22.5
6	Adelaide - Melbourne	166.3	173.9	4.6
7	Perth - Sydney	159.3	162.2	1.8
8	Gold Coast - Melbourne	151.6	154.6	2.0
9	Adelaide - Sydney	145.9	151.7	4.0
10	Hobart - Melbourne	101.2	131.6	30.1
11	Brisbane - Cairns	97.9	99.5	1.6
12	Brisbane - Perth	82.3	89.3	8.5
13	Brisbane - Townsville	87.5	82.9	-5.2
14	Launceston - Melbourne	73.6	79.8	8.4
15	Brisbane - Mackay	79.8	77.0	-3.4
16	Canberra - Melbourne	81.4	77.0	-5.4
17	Cairns - Sydney	76.6	75.0	-2.0
18	Canberra - Sydney	78.0	74.7	-4.2
19	Adelaide - Brisbane	57.9	64.8	11.8
20	Karratha - Perth	51.4	57.6	12.1
21	Adelaide - Perth	51.3	53.3	3.8
22	Hobart - Sydney	47.1	51.4	9.1
23	Brisbane - Rockhampton	53.1	50.2	-5.4
24	Brisbane - Newcastle	51.9	49.3	-5.0
25	Brisbane - Canberra	56.7	49.1	-13.3
26	Cairns - Melbourne	35.3	48.2	36.6
27	Sunshine Coast - Sydney	41.8	43.2	3.4
28	Melbourne - Newcastle	35.3	37.3	5.7
29	Brisbane - Gladstone	28.2	34.3	21.5
30	Perth - Port Hedland	32.4	33.8	4.2
31	Melbourne - Sunshine Coast	29.7	29.6	-0.4
32	Brisbane - Darwin	28.9	29.1	0.5
33	Newman - Perth	20.8	28.8	37.9
34	Ballina - Sydney	24.7	28.2	14.2
35	Coffs Harbour - Sydney	27.4	28.1	2.5
36	Launceston - Sydney	22.0	27.8	26.7
37	Darwin - Sydney	..	27.4	NA (a)
38	Brisbane - Emerald	..	22.7	NA (b)
39	Broome - Perth	20.6	22.1	7.3
40	Darwin - Melbourne	22.1	21.8	-1.3
41	Brisbane - Proserpine	17.5	20.6	17.4
42	Albury - Sydney	20.1	19.0	-5.4
43	Hamilton Island - Sydney	16.6	18.4	11.2
44	Adelaide - Port Lincoln	16.9	17.3	1.9
45	Port Macquarie - Sydney	17.3	17.2	-0.6
46	Sydney - Townsville	16.6	17.1	2.6
47	Kalgoorlie - Perth	17.9	17.0	-5.0
48	Adelaide - Gold Coast	15.7	16.8	7.2
49	Melbourne - Mildura	15.9	15.6	-1.8
50	Adelaide - Canberra	15.2	15.3	0.8
51	Brisbane - Hamilton Island	15.7	14.8	-6.2
52	Brisbane - Mount Isa	..	14.2	NA (c)
53	Sydney - Wagga Wagga	14.1	14.1	0.5
54	Darwin - Perth	13.0	13.3	2.4
55	Dubbo - Sydney	13.0	12.6	-3.7
56	Cairns - Townsville	14.9	12.4	-17.0
57	Ayers Rock - Sydney	10.6	11.8	12.0
58	Geraldton - Perth	10.6	9.9	-7.4
	Total domestic network	4 614.6	4 816.7	4.4

(a) Darwin - Sydney route included from May 2012, prior data not shown.

(b) Brisbane - Emerald route included from February 2012, prior data not shown.

(c) Brisbane - Mount Isa route included from September 2012, prior data not shown.

Table 3: Available seats (000s) — monthly activity

	City-Pair	Dec 2011	Dec 2012	% Change
1	Melbourne - Sydney	775.2	819.3	5.7
2	Brisbane - Sydney	453.8	476.5	5.0
3	Brisbane - Melbourne	353.1	341.1	-3.4
4	Gold Coast - Sydney	236.4	298.7	26.3
5	Melbourne - Perth	196.4	256.1	30.4
6	Adelaide - Melbourne	203.5	230.8	13.4
7	Perth - Sydney	193.0	184.3	-4.5
8	Gold Coast - Melbourne	185.2	183.1	-1.2
9	Adelaide - Sydney	174.9	194.1	11.0
10	Hobart - Melbourne	116.3	180.8	55.4
11	Brisbane - Cairns	118.2	132.3	11.9
12	Brisbane - Perth	99.5	104.3	4.8
13	Brisbane - Townsville	109.7	111.3	1.4
14	Launceston - Melbourne	93.3	107.5	15.3
15	Brisbane - Mackay	98.2	106.0	8.0
16	Canberra - Melbourne	116.5	113.8	-2.3
17	Cairns - Sydney	87.4	89.9	2.9
18	Canberra - Sydney	122.5	115.8	-5.5
19	Adelaide - Brisbane	71.1	82.5	15.9
20	Karratha - Perth	85.8	99.5	15.9
21	Adelaide - Perth	60.6	64.2	5.8
22	Hobart - Sydney	54.4	66.9	22.9
23	Brisbane - Rockhampton	68.1	69.6	2.1
24	Brisbane - Newcastle	62.9	66.7	6.1
25	Brisbane - Canberra	74.6	64.2	-13.9
26	Cairns - Melbourne	40.9	62.8	53.5
27	Sunshine Coast - Sydney	51.4	54.0	5.0
28	Melbourne - Newcastle	47.5	49.4	4.1
29	Brisbane - Gladstone	37.5	50.6	35.1
30	Perth - Port Hedland	50.9	61.1	19.9
31	Melbourne - Sunshine Coast	37.0	35.2	-5.0
32	Brisbane - Darwin	37.6	37.6	0.1
33	Newman - Perth	35.6	53.4	49.9
34	Ballina - Sydney	29.0	34.5	18.8
35	Coffs Harbour - Sydney	35.1	36.8	4.9
36	Launceston - Sydney	28.2	39.1	38.7
37	Darwin - Sydney	..	39.9	NA (a)
38	Brisbane - Emerald	..	40.2	NA (b)
39	Broome - Perth	30.9	30.1	-2.6
40	Darwin - Melbourne	29.6	29.4	-0.4
41	Brisbane - Proserpine	21.6	26.0	20.3
42	Albury - Sydney	31.2	27.5	-11.9
43	Hamilton Island - Sydney	21.8	21.6	-1.1
44	Adelaide - Port Lincoln	27.6	26.7	-3.2
45	Port Macquarie - Sydney	24.3	23.8	-1.9
46	Sydney - Townsville	19.5	21.1	8.2
47	Kalgoorlie - Perth	29.3	37.7	28.5
48	Adelaide - Gold Coast	18.8	21.4	14.3
49	Melbourne - Mildura	23.2	23.9	3.0
50	Adelaide - Canberra	20.5	22.0	7.6
51	Brisbane - Hamilton Island	20.8	17.6	-15.5
52	Brisbane - Mount Isa	..	22.6	NA (c)
53	Sydney - Wagga Wagga	21.2	21.7	2.5
54	Darwin - Perth	19.8	18.7	-5.3
55	Dubbo - Sydney	19.3	19.6	1.3
56	Cairns - Townsville	25.7	23.4	-8.9
57	Ayers Rock - Sydney	17.0	16.4	-3.6
58	Geraldton - Perth	19.9	16.9	-14.9
	Total domestic network	5 960.3	6 421.6	7.7

(a) Darwin - Sydney route included from May 2012, prior data not shown.

(b) Brisbane - Emerald route included from February 2012, prior data not shown.

(c) Brisbane - Mount Isa route included from September 2012, prior data not shown.

Table 4: Load factors (%) — monthly activity

	City-Pair	Dec 2011	Dec 2012	% Point diff
1	Melbourne - Sydney	82.0	81.0	-1.0
2	Brisbane - Sydney	84.0	81.0	-3.0
3	Brisbane - Melbourne	79.0	80.0	1.0
4	Gold Coast - Sydney	86.0	81.0	-5.0
5	Melbourne - Perth	83.0	78.0	-5.0
6	Adelaide - Melbourne	82.0	75.0	-7.0
7	Perth - Sydney	83.0	88.0	5.0
8	Gold Coast - Melbourne	82.0	85.0	3.0
9	Adelaide - Sydney	83.0	78.0	-5.0
10	Hobart - Melbourne	87.0	73.0	-14.0
11	Brisbane - Cairns	83.0	75.0	-8.0
12	Brisbane - Perth	83.0	86.0	3.0
13	Brisbane - Townsville	80.0	75.0	-5.0
14	Launceston - Melbourne	79.0	74.0	-5.0
15	Brisbane - Mackay	81.0	73.0	-8.0
16	Canberra - Melbourne	70.0	68.0	-2.0
17	Cairns - Sydney	88.0	83.0	-5.0
18	Canberra - Sydney	64.0	65.0	1.0
19	Adelaide - Brisbane	81.0	79.0	-2.0
20	Karratha - Perth	60.0	58.0	-2.0
21	Adelaide - Perth	85.0	83.0	-2.0
22	Hobart - Sydney	87.0	77.0	-10.0
23	Brisbane - Rockhampton	78.0	72.0	-6.0
24	Brisbane - Newcastle	83.0	74.0	-9.0
25	Brisbane - Canberra	76.0	77.0	1.0
26	Cairns - Melbourne	86.0	77.0	-9.0
27	Sunshine Coast - Sydney	81.0	80.0	-1.0
28	Melbourne - Newcastle	74.0	76.0	2.0
29	Brisbane - Gladstone	75.0	68.0	-7.0
30	Perth - Port Hedland	64.0	55.0	-9.0
31	Melbourne - Sunshine Coast	80.0	84.0	4.0
32	Brisbane - Darwin	77.0	77.0	0.0
33	Newman - Perth	59.0	54.0	-5.0
34	Ballina - Sydney	85.0	82.0	-3.0
35	Coffs Harbour - Sydney	78.0	76.0	-2.0
36	Launceston - Sydney	78.0	71.0	-7.0
37	Darwin - Sydney	..	69.0	NA (a)
38	Brisbane - Emerald	..	57.0	NA (b)
39	Broome - Perth	67.0	73.0	6.0
40	Darwin - Melbourne	75.0	74.0	-1.0
41	Brisbane - Proserpine	81.0	79.0	-2.0
42	Albury - Sydney	64.0	69.0	5.0
43	Hamilton Island - Sydney	76.0	85.0	9.0
44	Adelaide - Port Lincoln	61.0	65.0	4.0
45	Port Macquarie - Sydney	71.0	72.0	1.0
46	Sydney - Townsville	86.0	81.0	-5.0
47	Kalgoorlie - Perth	61.0	45.0	-16.0
48	Adelaide - Gold Coast	84.0	78.0	-6.0
49	Melbourne - Mildura	68.0	65.0	-3.0
50	Adelaide - Canberra	74.0	69.0	-5.0
51	Brisbane - Hamilton Island	76.0	84.0	8.0
52	Brisbane - Mount Isa	..	63.0	NA (c)
53	Sydney - Wagga Wagga	66.0	65.0	-1.0
54	Darwin - Perth	66.0	71.0	5.0
55	Dubbo - Sydney	68.0	64.0	-4.0
56	Cairns - Townsville	58.0	53.0	-5.0
57	Ayers Rock - Sydney	62.0	72.0	10.0
58	Geraldton - Perth	54.0	58.0	4.0
	Total domestic network	79.0	77.4	-1.6

(a) Darwin - Sydney route included from May 2012, prior data not shown.

(b) Brisbane - Emerald route included from February 2012, prior data not shown.

(c) Brisbane - Mount Isa route included from September 2012, prior data not shown.

Table 5: Aircraft trips — monthly activity

	City-Pair	Dec 2011	Dec 2012	% Change
1	Melbourne - Sydney	4 181	4 264	2.0
2	Brisbane - Sydney	2 510	2 633	4.9
3	Brisbane - Melbourne	2 087	1 991	-4.6
4	Gold Coast - Sydney	1 356	1 705	25.7
5	Melbourne - Perth	925	1 055	14.1
6	Adelaide - Melbourne	1 320	1 465	11.0
7	Perth - Sydney	802	746	-7.0
8	Gold Coast - Melbourne	1 035	1 016	-1.8
9	Adelaide - Sydney	1 036	1 120	8.1
10	Hobart - Melbourne	707	1 039	47.0
11	Brisbane - Cairns	727	808	11.1
12	Brisbane - Perth	456	480	5.3
13	Brisbane - Townsville	710	670	-5.6
14	Launceston - Melbourne	687	773	12.5
15	Brisbane - Mackay	725	732	1.0
16	Canberra - Melbourne	866	818	-5.5
17	Cairns - Sydney	484	492	1.7
18	Canberra - Sydney	1 423	1 369	-3.8
19	Adelaide - Brisbane	464	514	10.8
20	Karratha - Perth	585	657	12.3
21	Adelaide - Perth	403	421	4.5
22	Hobart - Sydney	331	420	26.9
23	Brisbane - Rockhampton	678	793	17.0
24	Brisbane - Newcastle	490	534	9.0
25	Brisbane - Canberra	558	511	-8.4
26	Cairns - Melbourne	229	333	45.4
27	Sunshine Coast - Sydney	298	304	2.0
28	Melbourne - Newcastle	276	282	2.2
29	Brisbane - Gladstone	524	647	23.5
30	Perth - Port Hedland	363	433	19.3
31	Melbourne - Sunshine Coast	213	200	-6.1
32	Brisbane - Darwin	188	189	0.5
33	Newman - Perth	266	373	40.2
34	Ballina - Sydney	251	239	-4.8
35	Coffs Harbour - Sydney	410	405	-1.2
36	Launceston - Sydney	164	221	34.8
37	Darwin - Sydney	..	234	NA (a)
38	Brisbane - Emerald	..	513	NA (b)
39	Broome - Perth	244	246	0.8
40	Darwin - Melbourne	157	168	7.0
41	Brisbane - Proserpine	124	166	33.9
42	Albury - Sydney	523	542	3.6
43	Hamilton Island - Sydney	124	124	0.0
44	Adelaide - Port Lincoln	589	564	-4.2
45	Port Macquarie - Sydney	388	389	0.3
46	Sydney - Townsville	115	120	4.3
47	Kalgoorlie - Perth	198	284	43.4
48	Adelaide - Gold Coast	122	137	12.3
49	Melbourne - Mildura	403	390	-3.2
50	Adelaide - Canberra	151	178	17.9
51	Brisbane - Hamilton Island	124	100	-19.4
52	Brisbane - Mount Isa	..	154	NA (c)
53	Sydney - Wagga Wagga	419	419	0.0
54	Darwin - Perth	121	114	-5.8
55	Dubbo - Sydney	482	479	-0.6
56	Cairns - Townsville	391	387	-1.0
57	Ayers Rock - Sydney	124	124	0.0
58	Geraldton - Perth	292	277	-5.1
	Total domestic network	50 838	52 268	2.8

(a) Darwin - Sydney route included from May 2012, prior data not shown.

(b) Brisbane - Emerald route included from February 2012, prior data not shown.

(c) Brisbane - Mount Isa route included from September 2012, prior data not shown.

TOP TEN AIRPORTS – PASSENGER MOVEMENTS

Table 6: Top ten airports, RPT passenger movements (000s) - annual activity

Airport	YE Dec 2011	YE Dec 2012	% Change	% of Total
1 Sydney	24 169.2	24 929.8	3.1	22.0
2 Melbourne	21 353.2	22 295.7	4.4	19.7
3 Brisbane	15 984.2	16 743.6	4.8	14.8
4 Perth	8 021.9	9 000.9	12.2	8.0
5 Adelaide	6 454.6	6 450.0	-0.1	5.7
6 Gold Coast	4 583.6	4 888.4	6.7	4.3
7 Cairns	3 505.5	3 652.1	4.2	3.2
8 Canberra	3 208.3	3 066.6	-4.4	2.7
9 Hobart	1 844.8	1 919.0	4.0	1.7
10 Darwin	1 834.9	1 803.2	-1.7	1.6
Total top ten airports	90 960.3	94 749.4	4.2	83.8
Total domestic network	108 630.2	113 096.5	4.1	100.0

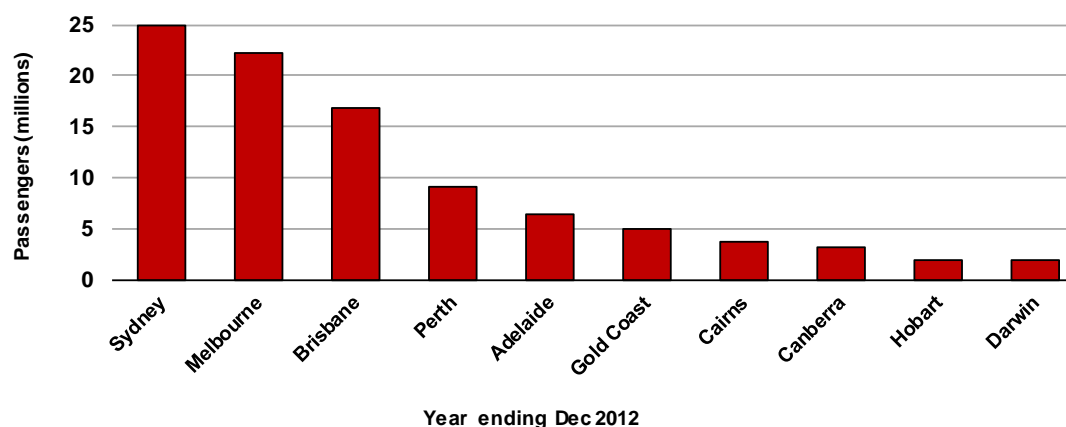
Table 7: Top ten airports, RPT passenger movements (000s) - monthly activity

Airport	Dec 2011	Dec 2012	% Change	% of Total
1 Sydney	2 052.5	2 158.9	5.2	22.4
2 Melbourne	1 796.8	1 923.3	7.0	20.0
3 Brisbane	1 412.9	1 430.4	1.2	14.8
4 Perth	708.3	759.7	7.2	7.9
5 Adelaide	524.8	547.8	4.4	5.7
6 Gold Coast	410.6	456.0	11.0	4.7
7 Cairns	289.6	300.5	3.8	3.1
8 Canberra	252.3	234.1	-7.2	2.4
9 Hobart	167.1	201.2	20.4	2.1
10 Townsville	143.1	139.2	-2.8	1.4
Total top ten airports	7 758.1	8 151.0	5.1	84.6
Total domestic network	9 229.2	9 633.4	4.4	100.0

Note: Airport passenger movement numbers are the sum of passenger arrivals and departures at each airport.

Top ten airports, passenger movements

(Domestic and regional passenger traffic - traffic on board)



TOP FIVE AIRPORTS – CARGO MOVEMENTS

Table 8: Top five airports, domestic RPT cargo movements (000s tonnes) - annual activity

Airport	YE Dec 2011	YE Dec 2012	% Change	% of Total
1 Sydney	134.6	122.4	-9.1	27.1
2 Melbourne	122.9	115.9	-5.7	25.7
3 Brisbane	81.1	71.3	-12.0	15.8
4 Perth	55.5	53.2	-4.1	11.8
5 Adelaide	30.2	29.3	-3.0	6.5
Total top five airports	424.3	392.0	-7.6	86.9
Total domestic network	493.2	451.1	-8.5	100.0

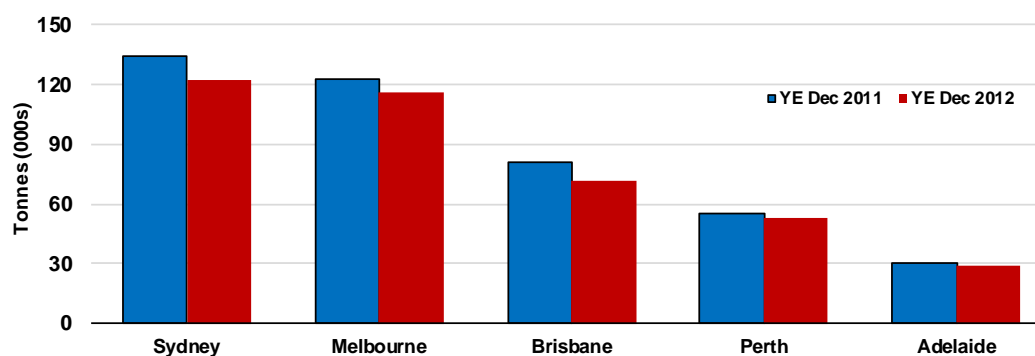
Table 9: Top five airports, domestic RPT cargo movements (000s tonnes) - monthly activity

Airport	Dec 2011	Dec 2012	% Change	% of Total
1 Sydney	11.8	10.8	-8.7	27.9
2 Melbourne	10.7	10.0	-6.0	26.0
3 Brisbane	7.2	6.1	-15.1	15.7
4 Perth	5.0	4.5	-10.9	11.5
5 Adelaide	2.6	2.6	0.0	6.7
Total top five airports	37.2	33.9	-8.8	87.7
Total domestic network	43.1	38.7	-10.3	100.0

Note: Airport cargo tonnes are the sum of cargo tonnes on arrivals and departures at each airport.

Top five airports, cargo movements

(Domestic and regional cargo traffic - traffic on board)



TOP TEN ROUTES

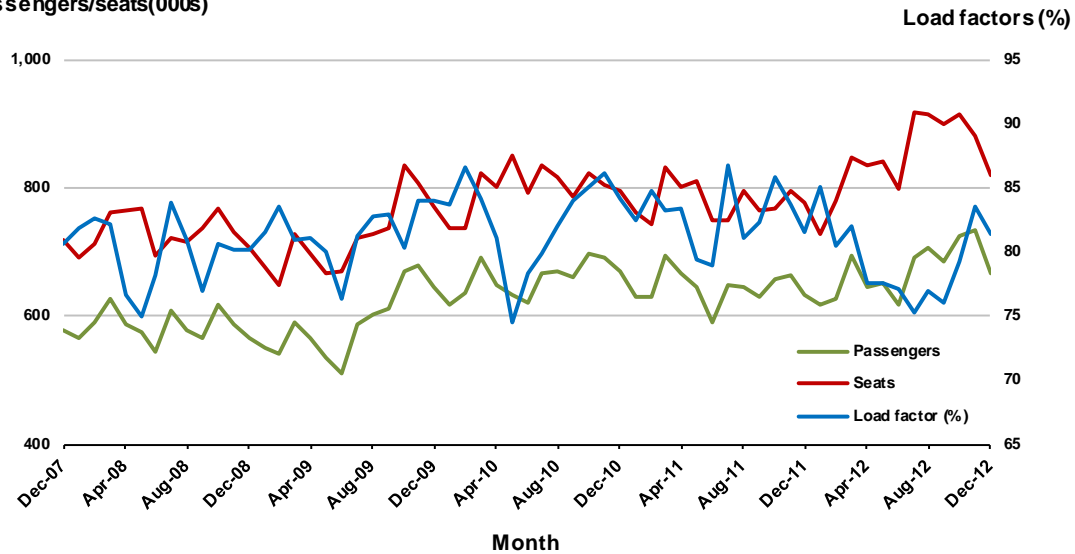
1. Melbourne - Sydney

Monthly data

	Dec 2011	Dec 2012	% Change
Passengers carried (000s)	631.8	667.1	5.6
Seats (000s)	775.2	819.3	5.7
Load factor %	82.0	81.0	-1.0 *
Aircraft trips	4 181	4 264	2.0

* percentage point difference

Passengers/seats(000s)

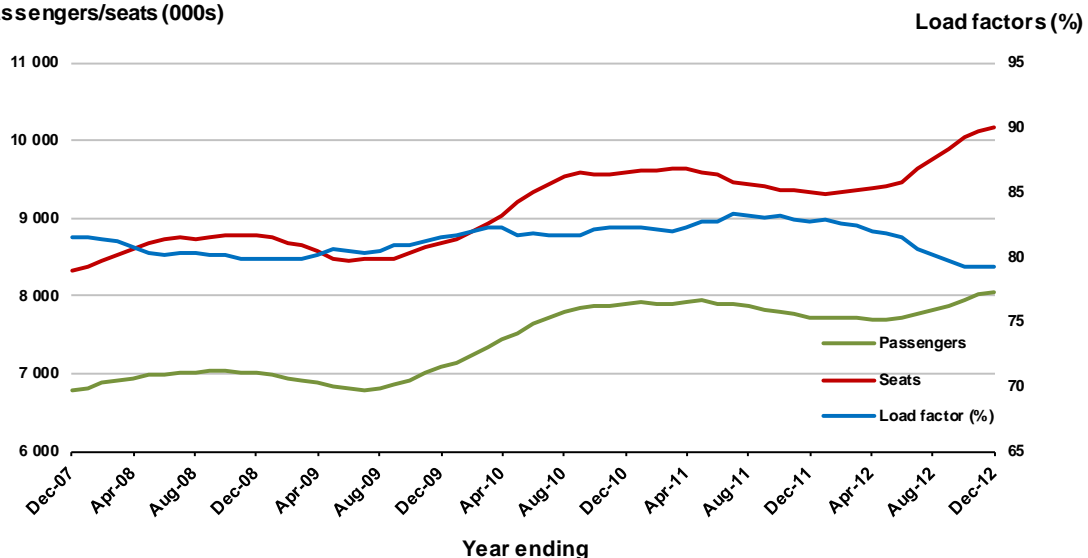


Moving annual data

	YE Dec 2011	YE Dec 2012	% Change
Passengers carried (000s)	7 727.5	8 056.0	4.3
Seats (000s)	9 339.9	10 170.6	8.9
Load factor %	83.0	79.2	-3.8 *
Aircraft trips	49 332	53 645	8.7

* percentage point difference

Passengers/seats (000s)



2. Brisbane - Sydney

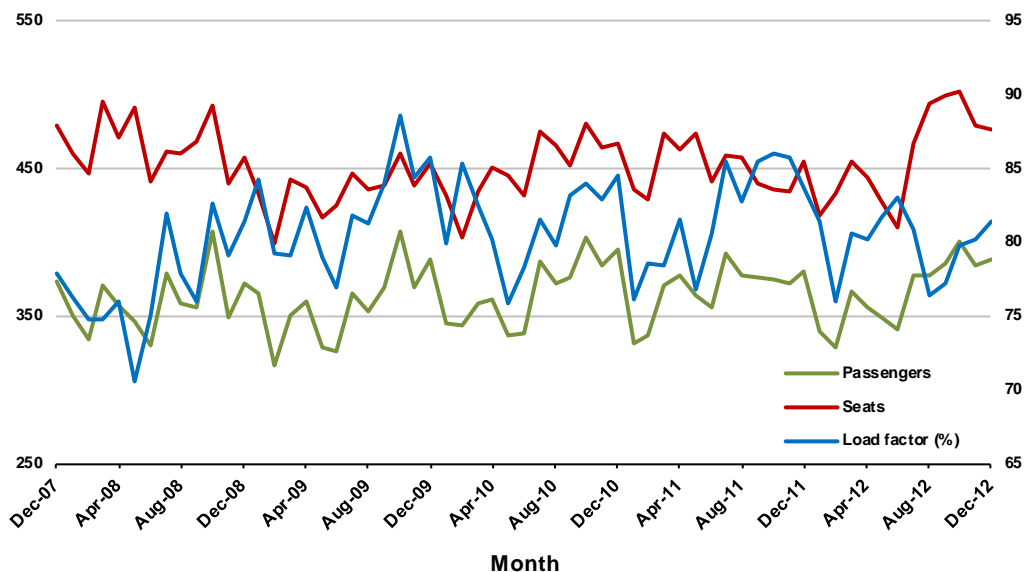
Monthly data

	Dec 2011	Dec 2012	% Change
Passengers carried (000s)	380.0	387.7	2.0
Seats (000s)	453.8	476.5	5.0
Load factor %	84.0	81.0	-3.0 *
Aircraft trips	2 510	2 633	4.9

* percentage point difference

Passengers/seats (000s)

Load factors (%)



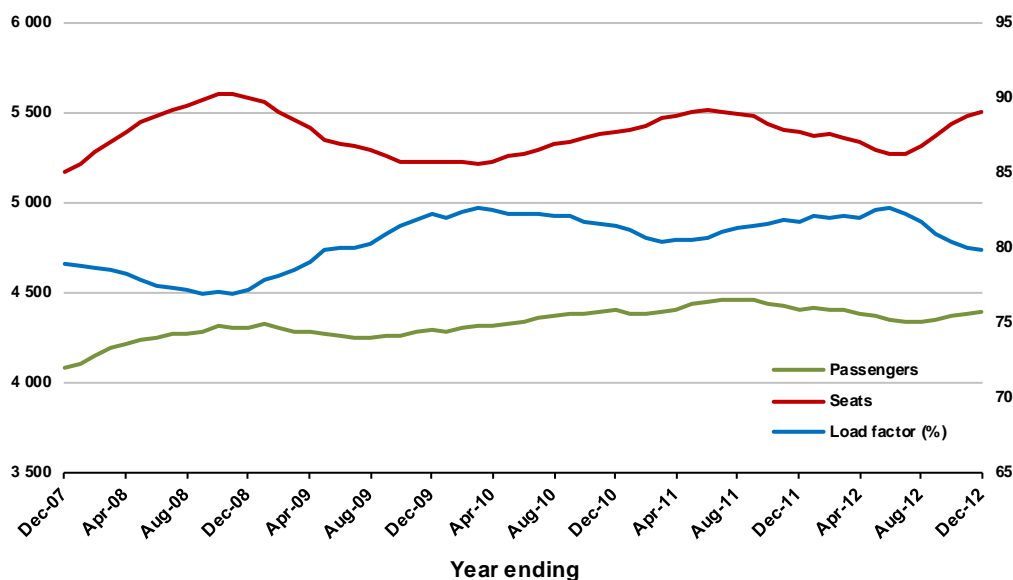
Moving annual data

	YE Dec 2011	YE Dec 2012	% Change
Passengers carried (000s)	4 406.0	4 390.4	-0.4
Seats (000s)	5 391.6	5 502.1	2.0
Load factor %	82.0	79.8	-2.2 *
Aircraft trips	29 612	30 754	3.9

* percentage point difference

Passengers/seats (000s)

Load factors (%)

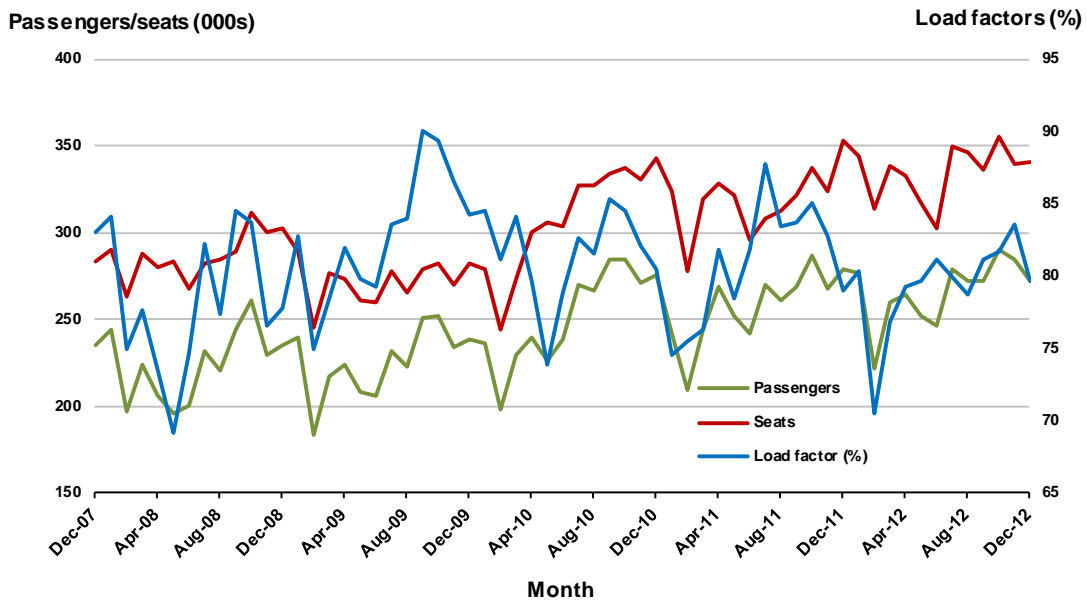


3. Brisbane - Melbourne

Monthly data

	Dec 2011	Dec 2012	% Change
Passengers carried (000s)	279.0	271.7	-2.6
Seats (000s)	353.1	341.1	-3.4
Load factor %	79.0	80.0	1.0 *
Aircraft trips	2 087	1 991	-4.6

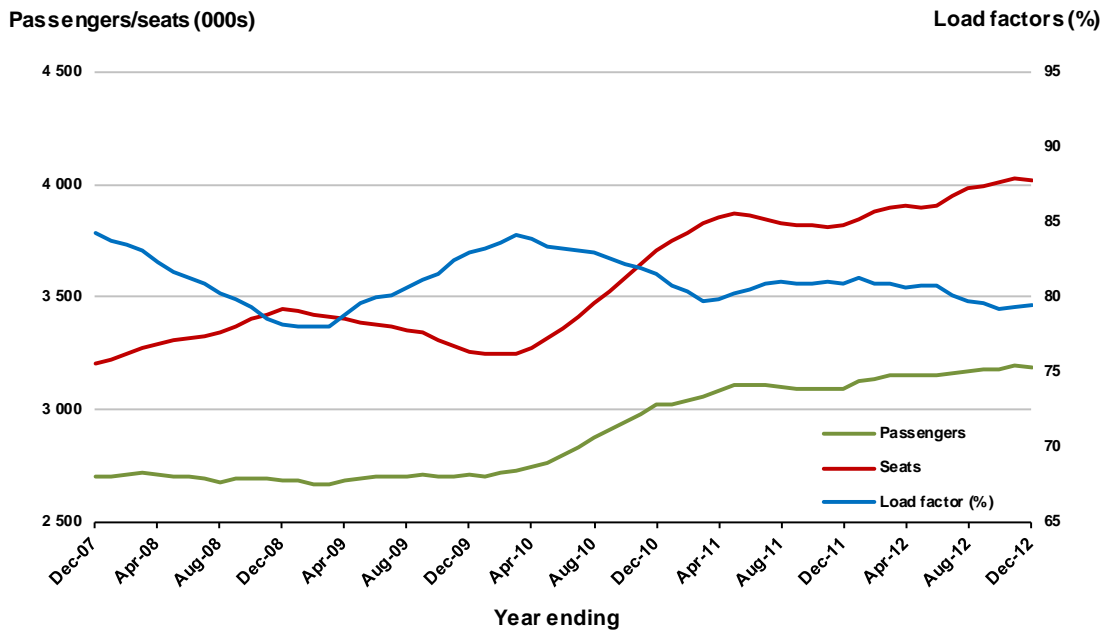
* percentage point difference



Moving annual data

	YE Dec 2011	YE Dec 2012	% Change
Passengers carried (000s)	3 090.4	3 189.4	3.2
Seats (000s)	3 821.9	4 017.5	5.1
Load factor %	81.0	79.4	-1.6 *
Aircraft trips	22 805	23 545	3.2

* percentage point difference



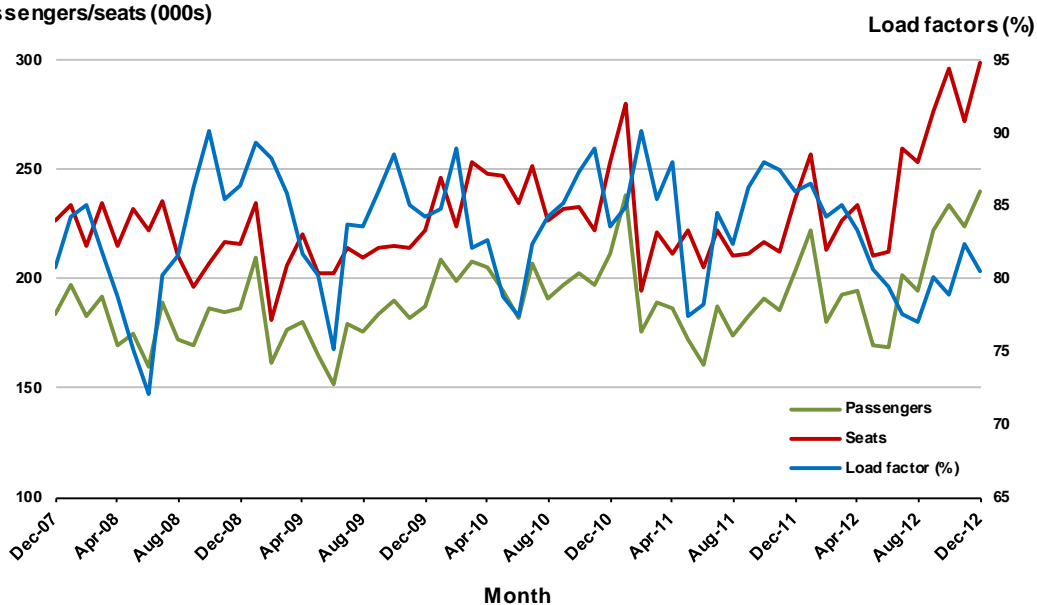
4. Gold Coast - Sydney

Monthly data

	Dec 2011	Dec 2012	% Change
Passengers carried (000s)	203.4	240.4	18.2
Seats (000s)	236.4	298.7	26.3
Load factor %	86.0	81.0	-5.0 *
Aircraft trips	1 356	1 705	25.7

* percentage point difference

Passengers/seats (000s)

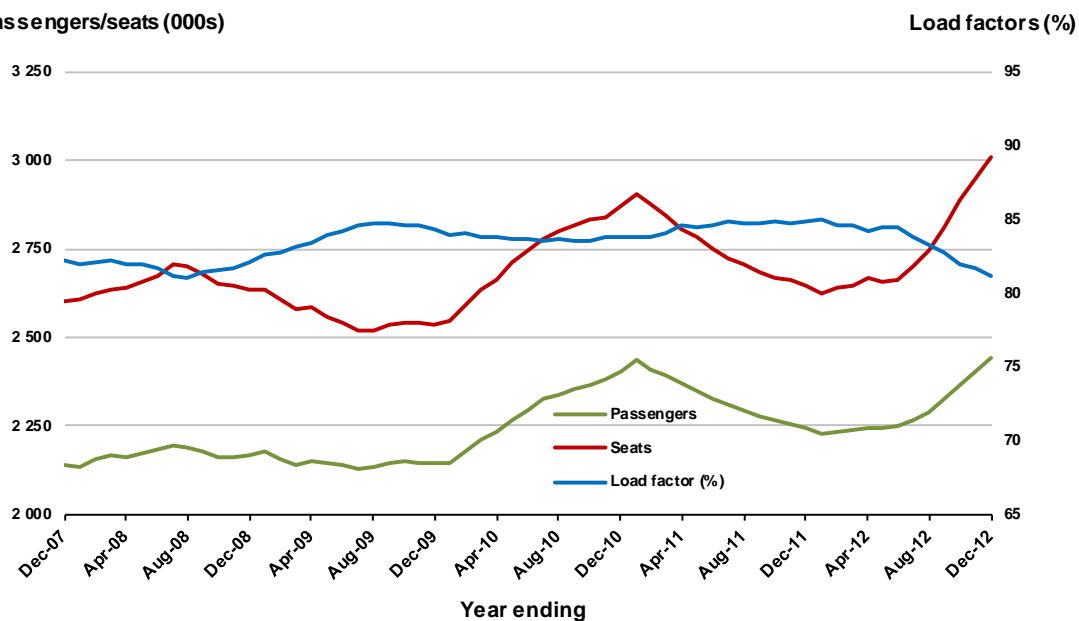


Moving annual data

	YE Dec 2011	YE Dec 2012	% Change
Passengers carried (000s)	2 244.8	2 442.9	8.8
Seats (000s)	2 644.3	3 008.8	13.8
Load factor %	85.0	81.2	-3.8 *
Aircraft trips	15 452	17 088	10.6

* percentage point difference

Passengers/seats (000s)



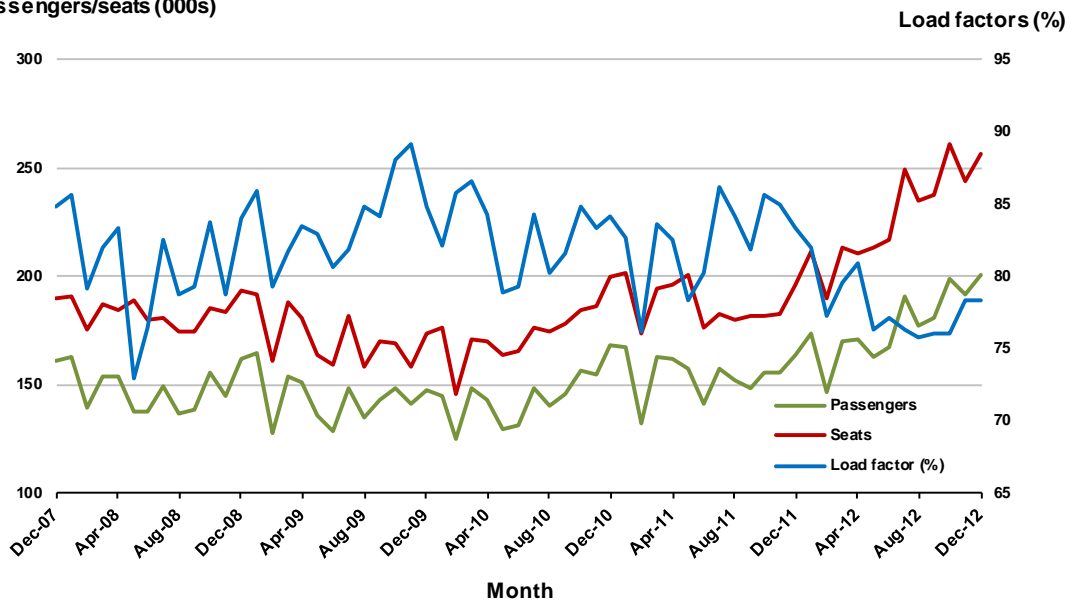
5. Melbourne - Perth

Monthly data

	Dec 2011	Dec 2012	% Change
Passengers carried (000s)	163.8	200.7	22.5
Seats (000s)	196.4	256.1	30.4
Load factor %	83.0	78.0	-5.0 *
Aircraft trips	925	1 055	14.1

* percentage point difference

Passengers/seats (000s)

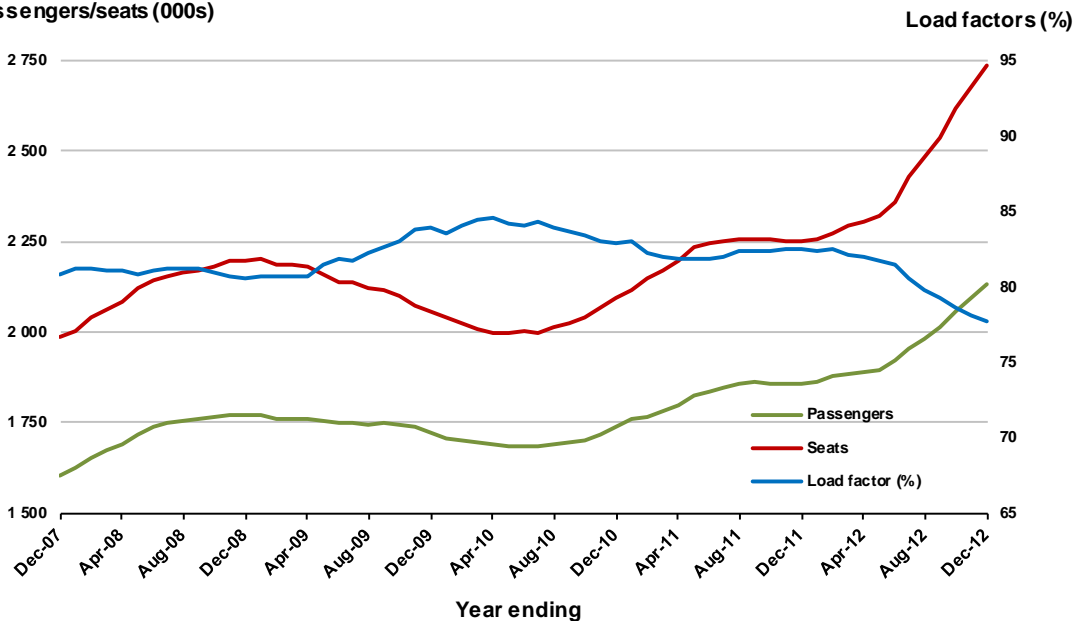


Moving annual data

	YE Dec 2011	YE Dec 2012	% Change
Passengers carried (000s)	1 855.9	2 130.7	14.8
Seats (000s)	2 249.3	2 739.2	21.8
Load factor %	83.0	77.8	-5.2 *
Aircraft trips	10 713	12 287	14.7

* percentage point difference

Passengers/seats (000s)



6. Adelaide - Melbourne

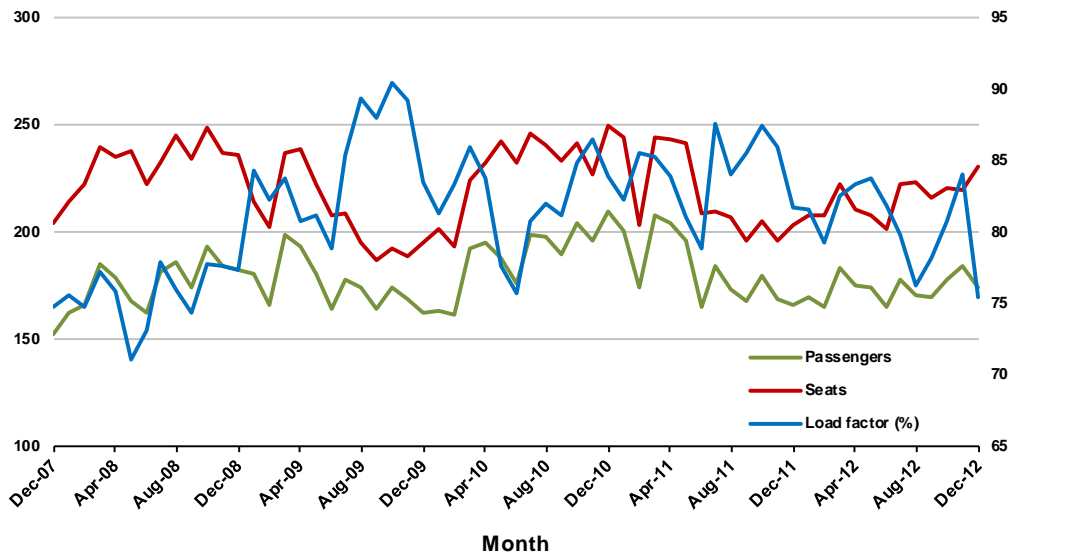
Monthly data

	Dec 2011	Dec 2012	% Change
Passengers carried (000s)	166.3	173.9	4.6
Seats (000s)	203.5	230.8	13.4
Load factor %	82.0	75.0	-7.0 *
Aircraft trips	1 320	1 465	11.0

* percentage point difference

Passengers/seats (000s)

Load factors (%)



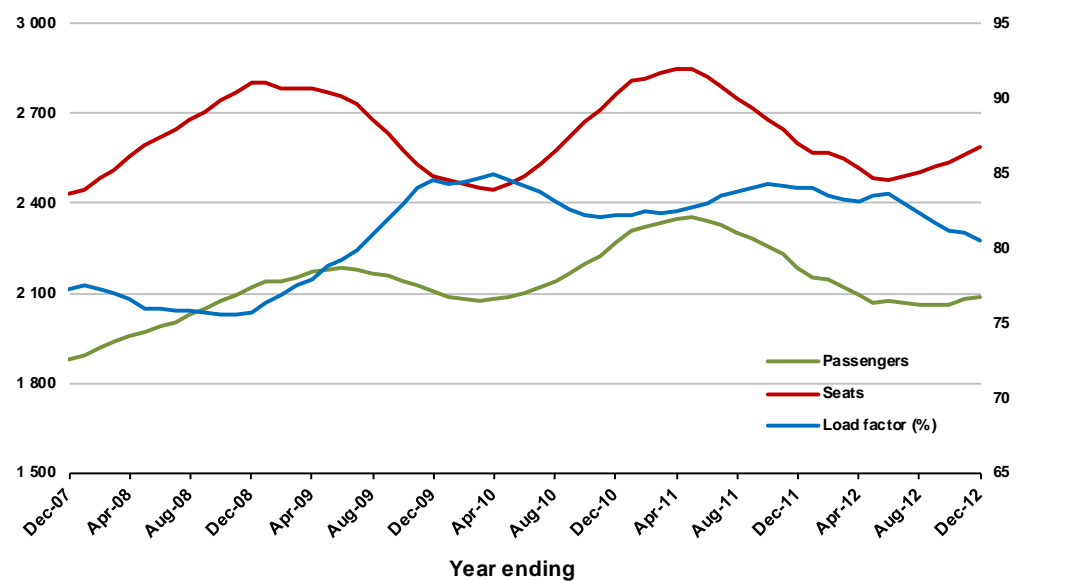
Moving annual data

	YE Dec 2011	YE Dec 2012	% Change
Passengers carried (000s)	2 186.7	2 085.2	-4.6
Seats (000s)	2 602.8	2 589.4	-0.5
Load factor %	84.0	80.5	-3.5 *
Aircraft trips	16 726	16 372	-2.1

* percentage point difference

Passengers/seats (000s)

Load factors (%)



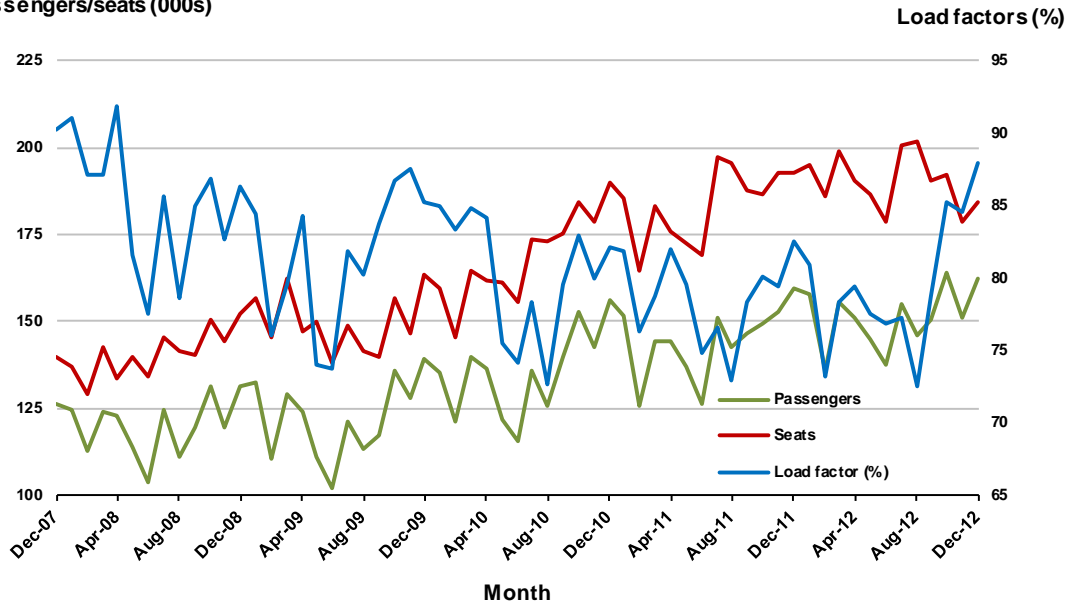
7. Perth - Sydney

Monthly data

	Dec 2011	Dec 2012	% Change
Passengers carried (000s)	159.3	162.2	1.8
Seats (000s)	193.0	184.3	-4.5
Load factor %	83.0	88.0	5.0 *
Aircraft trips	802	746	-7.0

* percentage point difference

Passengers/seats (000s)

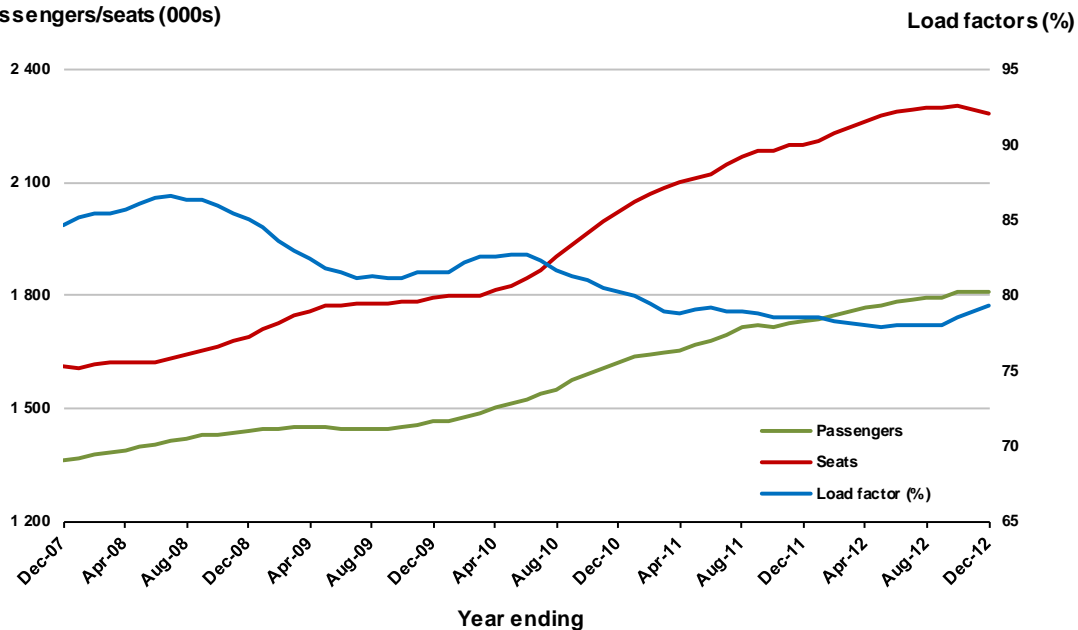


Moving annual data

	YE Dec 2011	YE Dec 2012	% Change
Passengers carried (000s)	1 731.7	1 811.4	4.6
Seats (000s)	2 203.0	2 283.6	3.7
Load factor %	79.0	79.3	0.3 *
Aircraft trips	9 444	9 203	-2.6

* percentage point difference

Passengers/seats (000s)



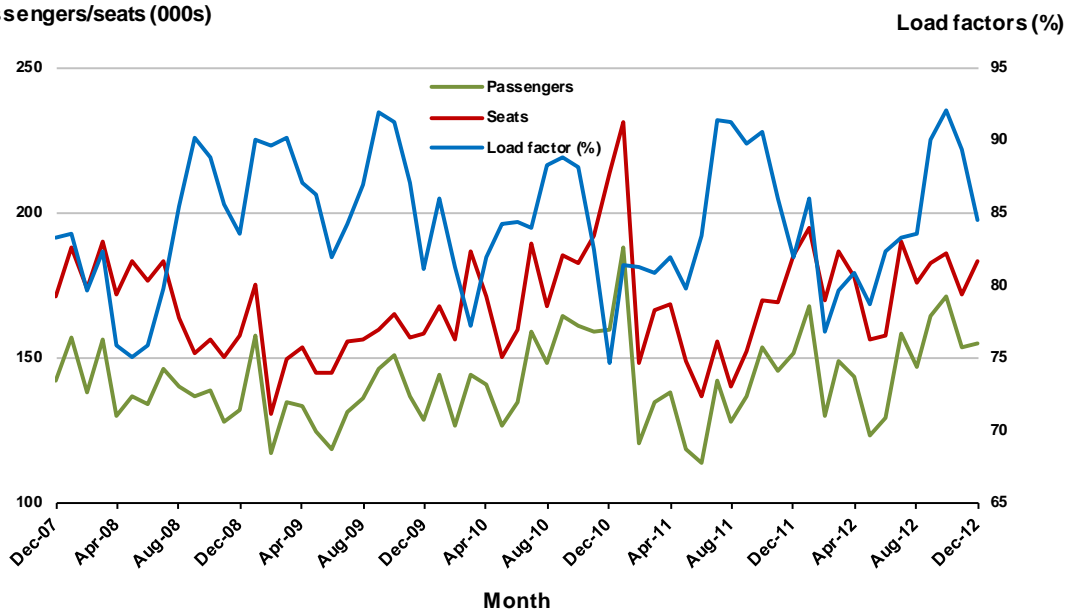
8. Gold Coast - Melbourne

Monthly data

	Dec 2011	Dec 2012	% Change
Passengers carried (000s)	151.6	154.6	2.0
Seats (000s)	185.2	183.1	-1.2
Load factor %	82.0	85.0	3.0 *
Aircraft trips	1 035	1 016	-1.8

* percentage point difference

Passengers/seats (000s)

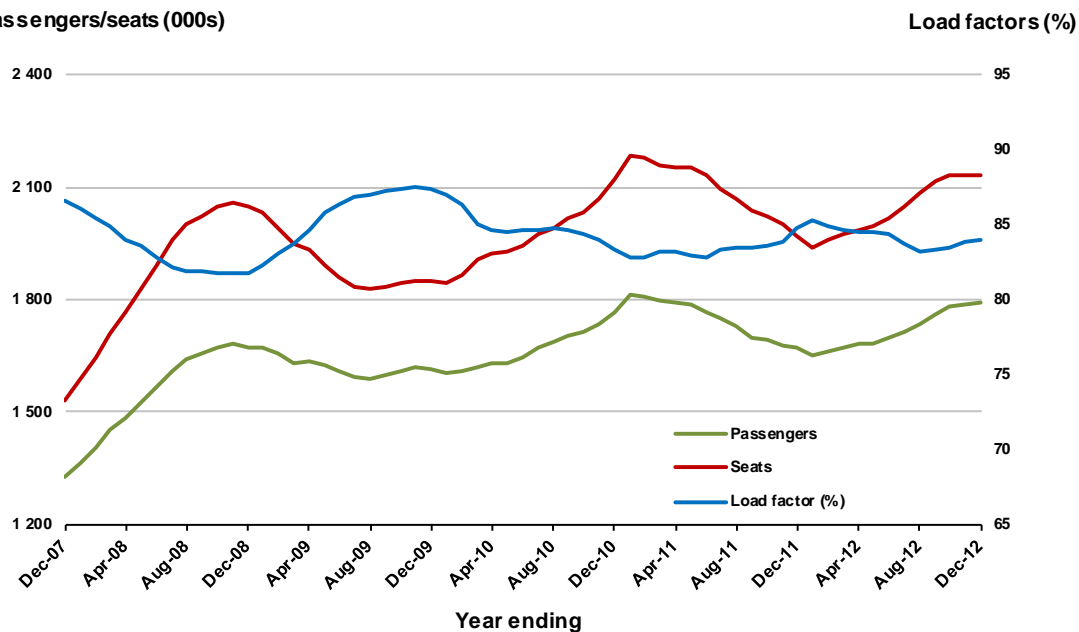


Moving annual data

	YE Dec 2011	YE Dec 2012	% Change
Passengers carried (000s)	1 671.3	1 790.8	7.2
Seats (000s)	1 972.0	2 131.2	8.1
Load factor %	85.0	84.0	-1.0 *
Aircraft trips	11 045	11 795	6.8

* percentage point difference

Passengers/seats (000s)



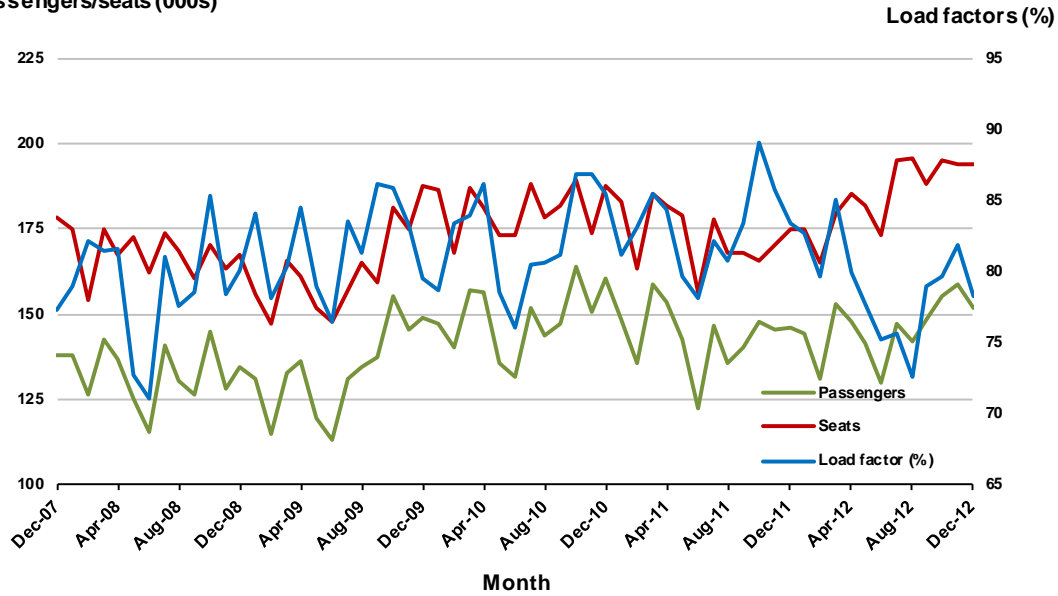
9. Adelaide - Sydney

Monthly data

	Dec 2011	Dec 2012	% Change
Passengers carried (000s)	145.9	151.7	4.0
Seats (000s)	174.9	194.1	11.0
Load factor %	83.0	78.0	-5.0 *
Aircraft trips	1 036	1 120	8.1

* percentage point difference

Passengers/seats (000s)

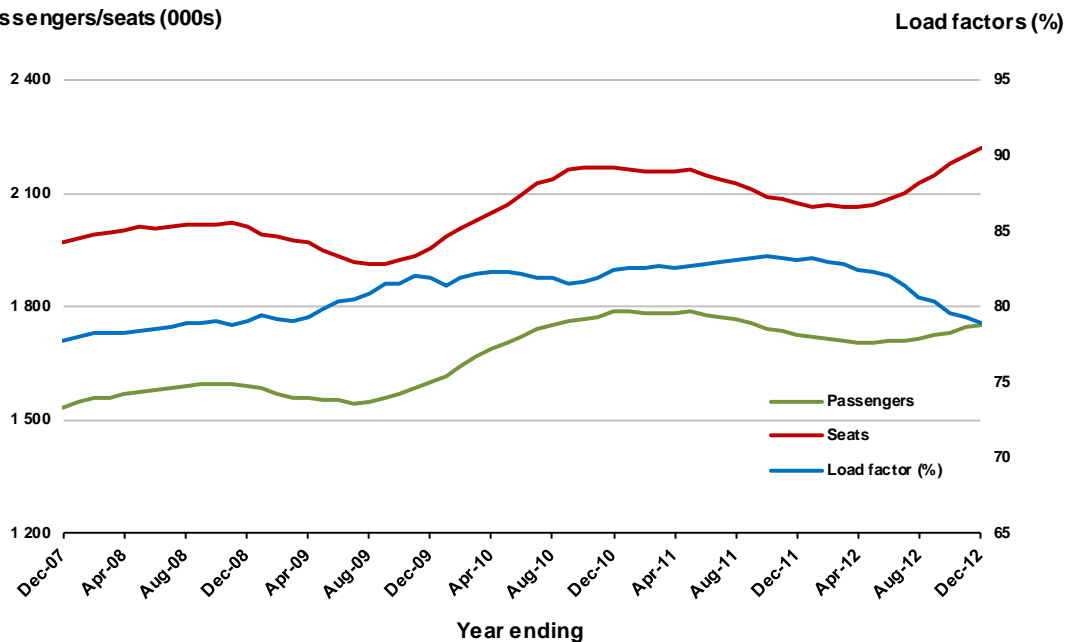


Moving annual data

	YE Dec 2011	YE Dec 2012	% Change
Passengers carried (000s)	1 722.7	1 751.2	1.7
Seats (000s)	2 073.7	2 220.3	7.1
Load factor %	83.0	78.9	-4.1 *
Aircraft trips	12 441	12 802	2.9

* percentage point difference

Passengers/seats (000s)



10. Hobart - Melbourne

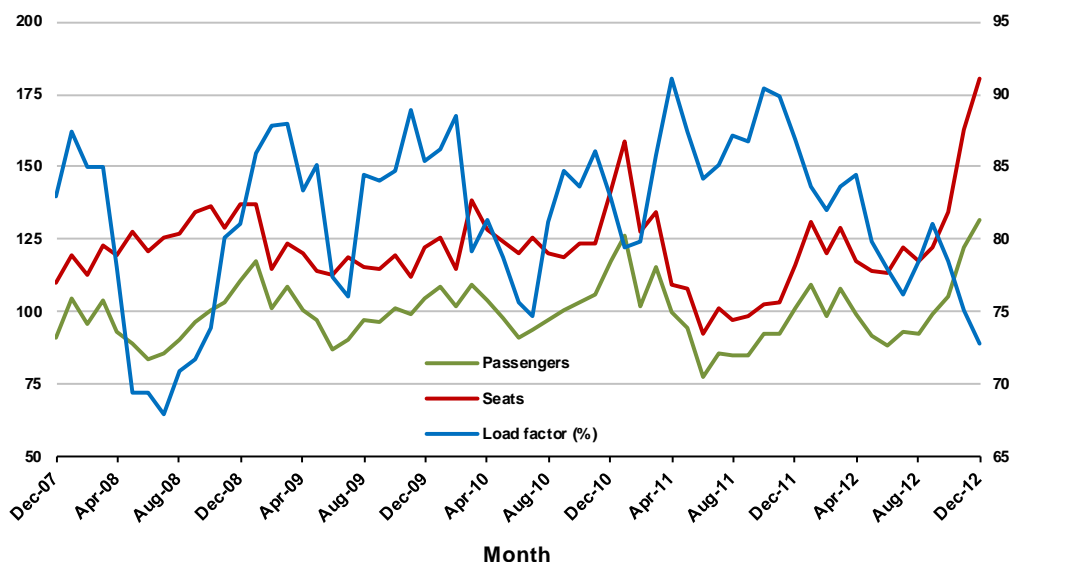
Monthly data

	Dec 2011	Dec 2012	% Change
Passengers carried (000s)	101.2	131.6	30.1
Seats (000s)	116.3	180.8	55.4
Load factor %	87.0	73.0	-14.0 *
Aircraft trips	707	1 039	47.0

* percentage point difference

Passengers/seats (000s)

Load factors (%)



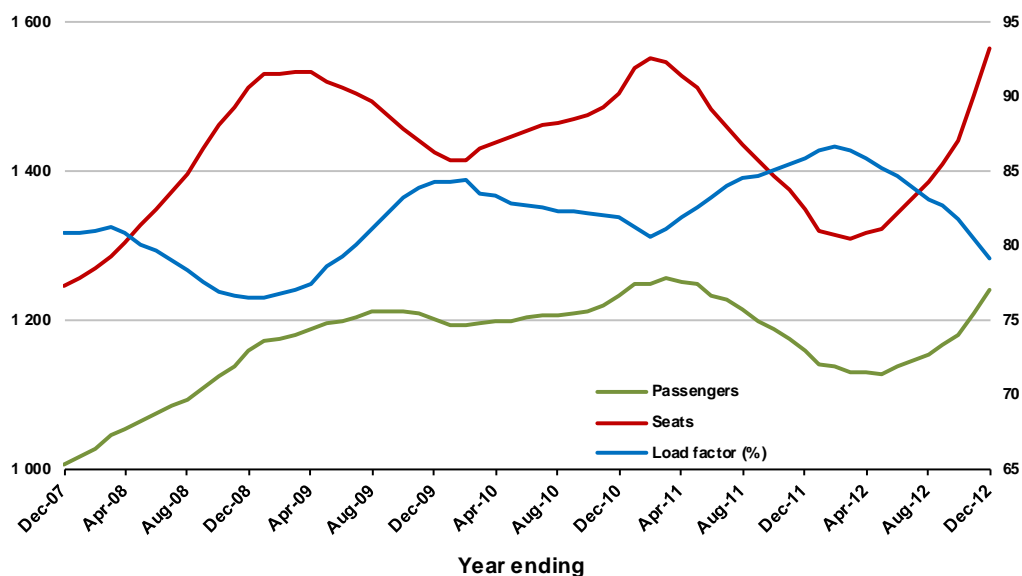
Moving annual data

	YE Dec 2011	YE Dec 2012	% Change
Passengers carried (000s)	1 157.9	1 239.6	7.1
Seats (000s)	1 349.2	1 566.3	16.1
Load factor %	86.0	79.1	-6.9 *
Aircraft trips	8 032	9 072	12.9

* percentage point difference

Passengers/seats (000s)

Load factors (%)



DOMESTIC CHARTER ACTIVITY

Table 10: Domestic charter passengers carried and aircraft trips

	YE Dec 2012	Dec-11	Dec-12	% Change
Total domestic charter passengers	2 190 213	154 913	181 261	17.0
Total domestic charter aircraft trips	56 102	4 137	4 790	15.8

Note: data prior July 2011 not available, helicopter and leisure charter flights not included.

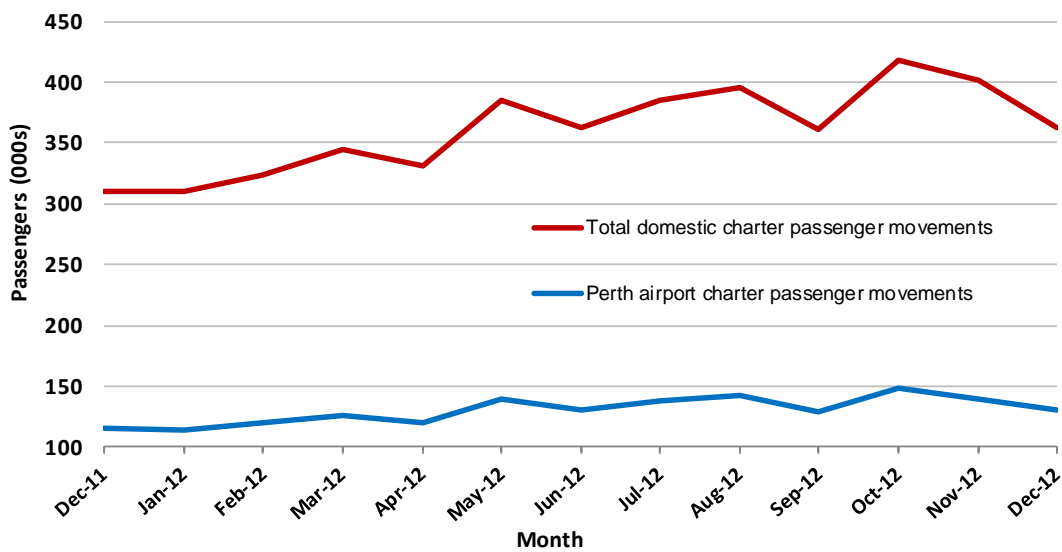
Table 11: Domestic airports - charter passengers and aircraft movements

	YE Dec 2012	Dec-11	Dec-12	% Change
Total domestic charter passenger movements	4 380 426	309 826	362 522	17.0
Total domestic charter aircraft movements	112 204	8 274	9 580	15.8
Perth airport charter passenger movements	1 582 541	115 915	130 558	12.6
Perth airport charter aircraft movements	39 041	2 944	3 350	13.8

Note: data prior July 2011 not available, helicopter and leisure charter flights not included.

Charter passenger and aircraft movement numbers are the sum of arrivals and departures at each airport.

Domestic airports - charter passenger movements



DEFINITIONS

Aircraft Trips	The number of flight stages. A return flight counts as two aircraft trips.
Airport Movements	Airport movements (passenger and cargo) are measured once on arrival and once on departure. Each domestic trip generates two movements at airports. For example, a trip from Melbourne to Sydney will be counted twice, as a passenger departure at Melbourne and as a passenger arrival at Sydney. At the national level, the sum of all domestic airport traffic will therefore be equal to twice the number of trips undertaken.
Available Seat Kilometres (ASKs)	Calculated by multiplying the number of seats available on each flight stage, by the distance in kilometres between the ports. The distances used are Great Circle Distances.
City-Pair	The ports shown make up the city-pair route. Passenger movements shown for a city pair reflect total traffic in both directions.
Flight Stage	The operation of an aircraft from take-off to landing.
Load Factor	The total revenue passenger kilometres performed as a percentage of the total available seat kilometres.
Passengers Carried	Revenue passengers carried.
Regular Public Transport Services (RPT)	All air service operations in which aircraft are available for the transport of members of public and are conducted in accordance with fixed schedules. It does not include charter or other non-scheduled operations.
Revenue Passengers	All passengers paying any fare. Frequent flyer redemption travellers are regarded as revenue passengers.
Revenue Passenger Kilometres (RPKs)	Calculated by multiplying the number of revenue passengers travelling on each flight stage, by the distance in kilometres between the ports. The distances used are Great Circle Distances.
Traffic on board by stages	The total of all traffic (revenue passengers) on each flight stage between two directly connected airports.
..	Data not included
NA	Not applicable