



Australian Government

Department of Infrastructure and Regional Development

Bureau of Infrastructure, Transport and Regional Economics

STATISTICAL REPORT



Aviation

Domestic aviation activity
September 2016

© Commonwealth of Australia 2016

ISSN: 1832 - 1968

Ownership of intellectual property rights in this publication

Unless otherwise noted, copyright (and any other intellectual property rights, if any) in this publication is owned by the Commonwealth of Australia (referred to below as the Commonwealth).

Disclaimer

The material contained in this publication is made available on the understanding that the Commonwealth is not providing professional advice, and that users exercise their own skill and care with respect to its use, and seek independent advice if necessary.

The Commonwealth makes no representations or warranties as to the contents or accuracy of the information contained in this publication. To the extent permitted by law, the Commonwealth disclaims liability to any person or organisation in respect of anything done, or omitted to be done, in reliance upon information contained in this publication.

Creative Commons licence

With the exception of (a) the Coat of Arms; and (b) the Department of Infrastructure and Regional Development's photos and graphics, copyright in this publication is licensed under a Creative Commons Attribution 3.0 Australia Licence.

Creative Commons Attribution 3.0 Australia Licence is a standard form licence agreement that allows you to copy, communicate and adapt this publication provided that you attribute the work to the Commonwealth and abide by the other licence terms. A summary of the licence terms is available from <http://creativecommons.org/licenses/by/3.0/au/deed.en>. The full licence terms are available from <http://creativecommons.org/licenses/by/3.0/au/legalcode>.

Use of the Coat of Arms

The Department of the Prime Minister and Cabinet sets the terms under which the Coat of Arms is used. Please refer to the Department's Commonwealth Coat of Arms and Government branding web page <http://www.dpmc.gov.au/guidelines/index.cfm#brand> and, in particular, the Guidelines on the use of the Commonwealth Coat of Arms publication.

An appropriate citation for this report is:

Bureau of Infrastructure, Transport and Regional Economics (BITRE), 2016, Domestic aviation activity, Statistical Report, BITRE, Canberra ACT.

Contact us

This publication is available in PDF format. All other rights are reserved, including in relation to any Departmental logos or trade marks which may exist. For enquiries regarding the licence and any use of this publication, please contact:

Bureau of Infrastructure, Transport and Regional Economics (BITRE)
Department of Infrastructure and Regional Development
GPO Box 501, Canberra ACT 2601, Australia
Telephone: (international) +61 2 6274 7210
Fax: (international) +61 2 6274 6855
Email: bitre@infrastructure.gov.au
Website: www.bitre.gov.au

Inquiries

Should you require additional information about the statistics contained in this publication:

Nebojsa Pavlovic

Telephone (02) 6274 6817 or Facsimile (02) 6274 7727

Electronic mail: AVSTATS@infrastructure.gov.au

Nebojsa.Pavlovic@infrastructure.gov.au

Web site: <http://www.bitre.gov.au/statistics/aviation/domestic.aspx>

FOREWORD

This report provides an overview of domestic (including charter) commercial aviation activity in Australia for the month of September 2016.

The data cover revenue passengers carried by Australian-registered operators of scheduled regular public transport services over Australian flight stages and fixed-wing charter operators. These estimates include passengers carried between domestic airports on international flights operated by these carriers. The passengers carried refer to traffic on board by stages.

Estimates of passengers and aircraft movements for charter aviation are included in this publication, where BITRE confidentiality standards are met.

Individual routes shown are restricted to those with an average exceeding 8 000 passengers per month over the previous six months where two or more airlines operate in competition. For the month of September 2016 there were 66 such routes.

Information on the total network for the month of September 2016 and on the Regular Public Transport (RPT) network for the month of September 2016 is presented on page 2, with estimates for the year ended September 2016 presented on page 3.

Detailed information on the 66 individual routes can be found in the RPT summary pages 4-13 of this publication.

The top ten airports in terms of RPT passenger movements are shown on page 14.

BITRE have identified inaccuracies in domestic RPT cargo data reported by airlines. These inaccuracies have an impact on published tables usually presented on page 15. The publication of domestic cargo statistics has been suspended from July 2015. BITRE is working with airlines to resolve this matter as quickly as possible so that cargo data reporting can resume.

The long-term trends for the top ten competitive RPT routes are presented graphically on pages 16-25.

Domestic RPT passenger movements at the top 50 regional airports are presented on pages 26-27.

Tables providing estimates of domestic charter aviation activity are shown on page 28. BITRE confidentiality standards restrict publication of detailed estimates for individual Australian airports, with the exception of Perth Airport.

A list of definitions can be found on page 29.

This report was prepared by the Aviation Statistics Section of the Bureau of Infrastructure, Transport and Regional Economics with data provided by airlines.

Estimates are included where data were not available and data presented in this publication may contain revisions to previously published data.

Where figures have been rounded, discrepancies may occur between sums of component items and totals, and in percentage changes which are derived from figures prior to rounding.

CONTENTS

Highlights	1
Total network	2
RPT network	2
Top competitive routes	4
Top ten airports – passenger movements	14
Top ten routes	16
1. Melbourne – Sydney	16
2. Brisbane – Sydney	17
3. Brisbane – Melbourne	18
4. Gold Coast – Sydney	19
5. Adelaide – Melbourne	20
6. Gold Coast – Melbourne	21
7. Melbourne – Perth	22
8. Adelaide – Sydney	23
9. Perth – Sydney	24
10. Hobart – Melbourne	25
Top fifty regional airports	26
Domestic charter activity	28
Definitions	29

This page is intentionally left blank.

HIGHLIGHTS

There were 5.25 million passengers carried on Australian domestic commercial aviation (including charter operations) in September 2016, an increase of 2.5 per cent on September 2015. For the month of September 2016 there were 58 103 aircraft trips, a decrease of 0.4 per cent compared with September 2015.

5.06 million passengers were carried on RPT flights in September 2016, an increase of 3.2 per cent on September 2015.

For the year ending September 2016 there were 58.69 million RPT passengers, an increase of 2.4 per cent on the year ending September 2015.

RPT revenue passenger kilometres (RPKs) performed were 6.00 billion for the month, up 3.2 per cent compared with September 2015. Capacity, measured by available seat kilometres (ASKs), increased by 1.0 per cent compared with September 2015 to a total of 7.64 billion.

With RPT passenger traffic increasing at a faster rate than capacity, the industry wide load factor (RPKs/ASKs) increased from 76.9 per cent in September 2015 to 78.6 per cent in September 2016. Load factors on individual routes increased on 39 of the 66 RPT routes.

For the month of September 2016, Melbourne – Sydney remained Australia's busiest RPT route with 749 396 passengers, an increase of 6.1 per cent compared with September 2015. It was followed by Brisbane – Sydney with 403 375 passengers (up 3.3 per cent) and Brisbane – Melbourne with 311 849 passengers (up 5.8 per cent).

The greatest percentage increase in RPT passenger numbers, compared to September 2015, was on the Hamilton Island – Melbourne route (up 28.8 per cent). There were large increases on a number of other routes, including Sydney – Tamworth (up 16.2 per cent), Hobart – Sydney (up 15.5 per cent) and Ayers Rock (Uluru) – Sydney (up 12.6 per cent).

Routes with traffic decreases in September 2016 compared with September 2015 included Karratha – Perth (down 18.6 per cent), Brisbane – Gladstone (down 17.1 per cent), Brisbane – Moranbah (down 16.8 per cent) and Newman – Perth (down 12.0 per cent).

In September 2016, Sydney remained Australia's busiest domestic airport with 2.29 million passenger movements, followed by Melbourne with 2.12 million passenger movements and Brisbane with 1.49 million passenger movements.

In September 2016 there were 2.08 million domestic passenger movements through regional airports, 2.2 per cent higher than in September 2015. Out of the top 50 regional airports, the strongest growth was at Wellcamp airport (up 87.3 per cent on September 2015), while the largest decrease was at Roma airport (down 35.0 per cent on September 2015).

Fixed-wing charter operators carried 195.99 thousand passengers in September 2016, a decrease of 14.2 per cent on September 2015. Almost 40.0 per cent of all charter passengers in Australia took flights either to or from Perth Airport.

TOTAL NETWORK

Summary of monthly commercial aviation activity

	Sep 2015	Sep 2016	% Change
Total passengers carried (millions)	5.13	5.25	2.5
Aircraft trips (000s)	58.4	58.1	-0.4

Note: Regular Public Transport and charter aviation activity
Helicopter, joyflights and sightseeing charter flights not included.

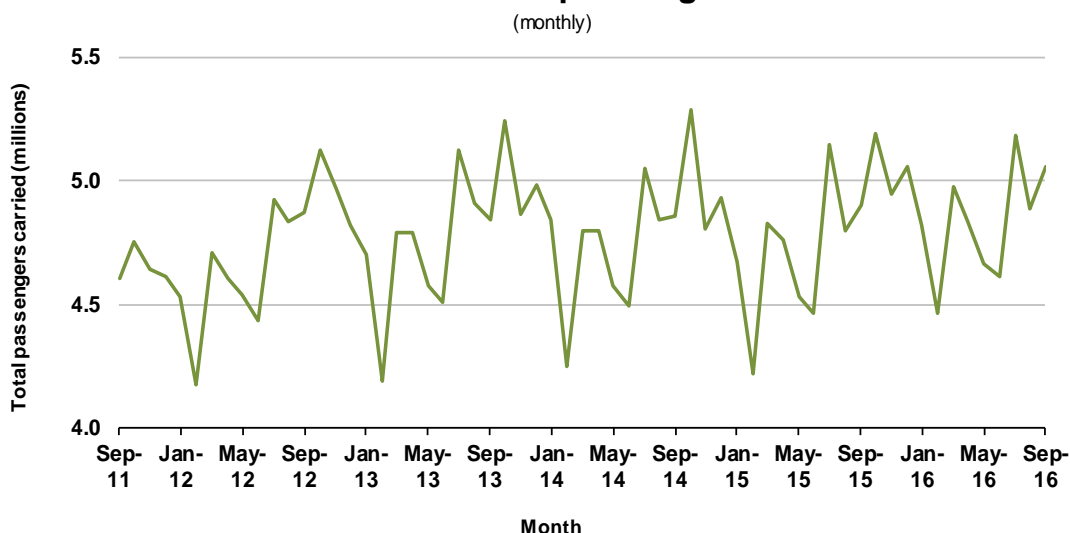
RPT NETWORK

Summary of monthly RPT activity

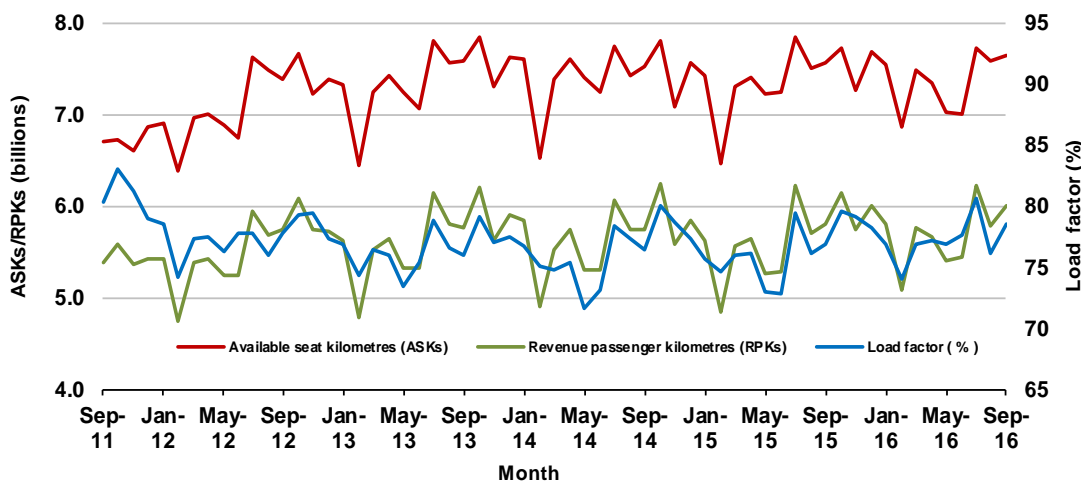
	Sep 2015	Sep 2016	% Change
Total passengers carried (millions)	4.90	5.06	3.2
Revenue passenger kilometres (billions)	5.81	6.00	3.2
Available seats (millions)	6.52	6.59	1.1
Available seat kilometres (billions)	7.56	7.64	1.0
Load factor %	76.9	78.6	1.6 *
Aircraft trips (000s)	54.0	54.6	1.1

* percentage point difference

Domestic RPT passenger traffic



RPT Network utilisation



TOTAL NETWORK

Summary of annual commercial aviation activity

	YE Sep 2015	YE Sep 2016	% Change
Total passengers carried (millions)	59.99	61.15	1.9
Aircraft trips (000s)	686.7	683.8	-0.4

Note: Regular Public Transport and charter aviation activity
Helicopter, joyflights and sightseeing charter flights not included.

RPT NETWORK

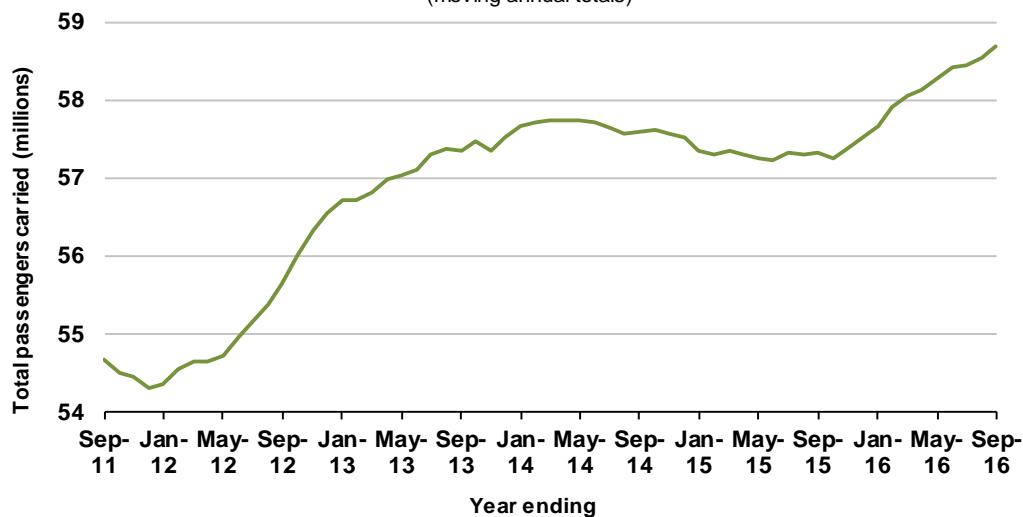
Summary of annual RPT activity

	YE Sep 2015	YE Sep 2016	% Change
Total passengers carried (millions)	57.33	58.69	2.4
Revenue passenger kilometres (billions)	67.62	69.09	2.2
Available seats (millions)	76.62	77.23	0.8
Available seat kilometres (billions)	88.45	88.93	0.5
Load factor %	76.5	77.7	1.2 *
Aircraft trips (000s)	633.8	638.1	0.7

* percentage point difference

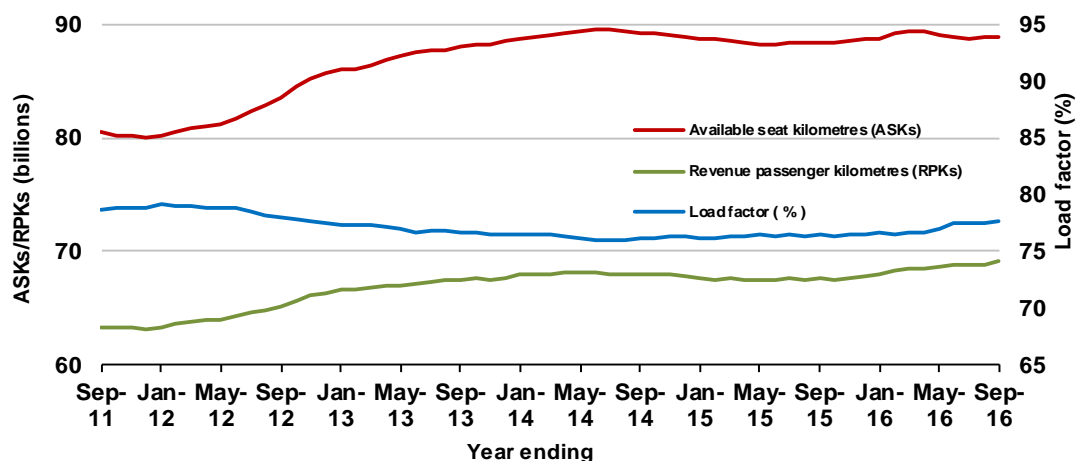
Domestic RPT passenger traffic

(moving annual totals)



RPT Network utilisation

(moving annual totals)



TOP COMPETITIVE ROUTES

Table 1: Passengers carried (000s) — annual activity

	City-Pair	YE Sep 2015	YE Sep 2016	%Change
1	Melbourne - Sydney	8 532.2	8 866.1	3.9
2	Brisbane - Sydney	4 432.8	4 645.8	4.8
3	Brisbane - Melbourne	3 338.4	3 478.6	4.2
4	Gold Coast - Sydney	2 602.4	2 713.6	4.3
5	Adelaide - Melbourne	2 293.7	2 378.1	3.7
6	Melbourne - Perth	2 136.9	2 093.6	-2.0
7	Gold Coast - Melbourne	1 789.3	1 931.3	7.9
8	Adelaide - Sydney	1 822.0	1 873.6	2.8
9	Perth - Sydney	1 773.9	1 759.4	-0.8
10	Hobart - Melbourne	1 468.7	1 540.0	4.9
11	Brisbane - Cairns	1 290.2	1 344.4	4.2
12	Cairns - Sydney	1 013.2	1 093.4	7.9
13	Canberra - Melbourne	981.3	1 008.1	2.7
14	Brisbane - Perth	1 008.1	994.3	-1.4
15	Brisbane - Townsville	956.4	987.4	3.2
16	Canberra - Sydney	953.7	951.7	-0.2
17	Launceston - Melbourne	867.6	918.5	5.9
18	Adelaide - Brisbane	786.7	826.9	5.1
19	Cairns - Melbourne	751.2	812.9	8.2
20	Brisbane - Mackay	691.2	691.3	0.0
21	Adelaide - Perth	607.1	615.7	1.4
22	Hobart - Sydney	538.2	600.9	11.6
23	Brisbane - Canberra	557.2	568.3	2.0
24	Brisbane - Rockhampton	591.8	566.8	-4.2
25	Brisbane - Newcastle	541.2	564.0	4.2
26	Sunshine Coast - Sydney	469.1	525.6	12.0
27	Karratha - Perth	625.5	520.2	-16.8
28	Melbourne - Newcastle	442.7	443.0	0.1
29	Melbourne - Sunshine Coast	393.0	434.4	10.5
30	Brisbane - Darwin	394.4	404.4	2.5
31	Ballina - Sydney	347.3	375.3	8.1
32	Brisbane - Gladstone	422.8	353.4	-16.4
33	Perth - Port Hedland	416.3	345.7	-17.0
34	Coffs Harbour - Sydney	334.8	337.7	0.9
35	Darwin - Sydney	323.4	317.7	-1.8
36	Newman - Perth	341.2	313.5	-8.1
37	Broome - Perth	301.6	300.5	-0.4
38	Darwin - Melbourne	278.4	297.6	6.9
39	Launceston - Sydney	290.4	290.2	-0.1
40	Hamilton Island - Sydney	227.8	256.9	12.8
41	Brisbane - Proserpine	236.3	231.9	-1.9
42	Kalgoorlie - Perth	219.6	228.9	4.2
43	Albury - Sydney	218.1	224.5	2.9
44	Adelaide - Gold Coast	218.4	222.7	2.0
45	Melbourne - Mildura	195.3	205.0	5.0
46	Brisbane - Hobart	197.4	203.7	3.2
47	Brisbane - Emerald	220.1	201.2	-8.6
48	Port Macquarie - Sydney	185.1	193.0	4.2
49	Sydney - Wagga Wagga	182.9	189.3	3.4
50	Dubbo - Sydney	188.9	186.9	-1.1

continued

Table 1: (continued) Passengers carried (000s) — annual activity

	City-Pair	YE Sep 2015	YE Sep 2016	% Change
51	Darwin - Perth	186.1	183.0	-1.6
52	Adelaide - Port Lincoln	187.7	181.5	-3.3
53	Ayers Rock - Sydney	159.5	176.5	10.7
54	Sydney - Tamworth	53.7	170.8	NA (a)
55	Adelaide - Canberra	173.2	170.7	-1.4
56	Brisbane - Bundaberg	156.5	170.6	9.0
57	Sydney - Townsville	170.2	158.5	-6.9
58	Brisbane - Hamilton Island	128.4	146.9	14.4
59	Cairns - Townsville	36.6	139.8	NA (b)
60	Armidale - Sydney	122.5	127.3	3.9
61	Brisbane - Mount Isa	132.1	121.6	-7.9
62	Adelaide - Alice Springs	63.0	120.0	NA (c)
63	Brisbane - Moranbah	146.2	119.4	-18.3
64	Geraldton - Perth	118.2	118.6	0.4
65	Alice Springs - Darwin	72.9	116.2	NA (d)
66	Hamilton Island - Melbourne	110.7	106.0	-4.2
	Total domestic network	57 333.4	58 692.8	2.4

(a) Sydney - Tamworth route included from June 2015, prior data not shown.

(b) Cairns - Townsville route included from July 2015, prior data not shown.

(c) Adelaide - Alice Springs route included from April 2015, prior data not shown.

(d) Alice Springs - Darwin route included from April 2015, prior data not shown.

Table 2: Passengers carried (000s) — monthly activity

	City-Pair	Sep 2015	Sep 2016	% Change
1	Melbourne - Sydney	706.0	749.4	6.1
2	Brisbane - Sydney	390.5	403.4	3.3
3	Brisbane - Melbourne	294.7	311.8	5.8
4	Gold Coast - Sydney	229.5	224.2	-2.3
5	Adelaide - Melbourne	188.7	195.8	3.8
6	Gold Coast - Melbourne	168.1	180.6	7.5
7	Melbourne - Perth	168.7	169.3	0.4
8	Adelaide - Sydney	151.2	155.0	2.5
9	Perth - Sydney	143.6	149.4	4.0
10	Hobart - Melbourne	112.9	120.4	6.7
11	Brisbane - Cairns	110.7	114.2	3.2
12	Cairns - Sydney	90.4	95.3	5.3
13	Brisbane - Townsville	86.3	88.4	2.4
14	Canberra - Melbourne	82.6	87.3	5.7
15	Brisbane - Perth	85.3	84.7	-0.8
16	Canberra - Sydney	82.4	84.6	2.6
17	Cairns - Melbourne	72.3	79.1	9.5
18	Adelaide - Brisbane	65.0	69.6	7.1
19	Launceston - Melbourne	63.8	68.6	7.7
20	Brisbane - Mackay	63.0	58.9	-6.4
21	Brisbane - Canberra	50.8	52.0	2.4
22	Adelaide - Perth	50.1	51.3	2.5
23	Brisbane - Rockhampton	50.1	50.6	0.9
24	Brisbane - Newcastle	47.2	50.4	6.8
25	Hobart - Sydney	41.5	47.9	15.5
26	Sunshine Coast - Sydney	45.3	46.3	2.1
27	Melbourne - Sunshine Coast	40.3	44.1	9.5
28	Karratha - Perth	51.1	41.6	-18.6
29	Melbourne - Newcastle	37.4	40.8	9.2
30	Brisbane - Darwin	36.6	38.2	4.4
31	Ballina - Sydney	32.0	33.9	6.2
32	Broome - Perth	28.2	29.6	5.2
33	Darwin - Sydney	29.9	29.6	-0.9
34	Perth - Port Hedland	33.0	29.1	-11.7
35	Coffs Harbour - Sydney	28.8	28.8	-0.1
36	Brisbane - Gladstone	33.0	27.4	-17.1
37	Darwin - Melbourne	26.5	27.0	1.7
38	Newman - Perth	29.4	25.9	-12.0
39	Hamilton Island - Sydney	21.7	23.4	7.9
40	Albury - Sydney	18.5	20.2	9.5
41	Kalgoorlie - Perth	19.6	20.0	1.9
42	Launceston - Sydney	19.5	19.7	0.9
43	Brisbane - Proserpine	21.0	19.5	-7.1
44	Adelaide - Gold Coast	19.7	18.7	-5.2
45	Darwin - Perth	17.0	17.4	2.1
46	Melbourne - Mildura	16.6	17.3	4.6
47	Ayers Rock - Sydney	15.4	17.3	12.6
48	Brisbane - Emerald	17.6	17.1	-2.9
49	Dubbo - Sydney	16.7	17.0	1.5
50	Port Macquarie - Sydney	15.7	16.8	7.4

continued

Table 2: (continued) Passengers carried (000s) — monthly activity

	City-Pair	Sep 2015	Sep 2016	% Change
51	Brisbane - Hobart	15.8	16.8	6.3
52	Sydney - Wagga Wagga	16.2	16.4	1.0
53	Adelaide - Canberra	14.9	15.9	7.2
54	Sydney - Tamworth	13.5	15.7	16.2
55	Brisbane - Bundaberg	13.9	14.9	7.5
56	Sydney - Townsville	14.3	14.2	-0.8
57	Adelaide - Port Lincoln	14.4	14.0	-2.5
58	Brisbane - Hamilton Island	12.5	13.6	8.5
59	Cairns - Townsville	12.0	12.3	2.3
60	Hamilton Island - Melbourne	8.9	11.4	28.8
61	Adelaide - Alice Springs	10.5	11.1	5.9
62	Alice Springs - Darwin	11.0	10.8	-2.3
63	Armidale - Sydney	10.4	10.4	0.4
64	Geraldton - Perth	9.8	10.4	5.8
65	Brisbane - Mount Isa	11.6	10.2	-11.5
66	Brisbane - Moranbah	11.4	9.4	-16.8
	Total domestic network	4 899.5	5 058.1	3.2

Table 3: Available seats (000s) — monthly activity

	City-Pair	Sep 2015	Sep 2016	% Change
1	Melbourne - Sydney	890.5	910.0	2.2
2	Brisbane - Sydney	478.7	493.4	3.1
3	Brisbane - Melbourne	369.7	374.0	1.2
4	Gold Coast - Sydney	274.8	268.1	-2.4
5	Adelaide - Melbourne	252.2	257.1	1.9
6	Gold Coast - Melbourne	198.0	208.3	5.2
7	Melbourne - Perth	232.3	220.3	-5.2
8	Adelaide - Sydney	199.1	193.3	-2.9
9	Perth - Sydney	186.9	181.4	-2.9
10	Hobart - Melbourne	144.1	154.7	7.4
11	Brisbane - Cairns	136.0	140.7	3.4
12	Cairns - Sydney	111.7	116.4	4.2
13	Brisbane - Townsville	112.1	111.1	-0.9
14	Canberra - Melbourne	116.4	128.9	10.7
15	Brisbane - Perth	103.4	103.9	0.5
16	Canberra - Sydney	118.9	116.9	-1.7
17	Cairns - Melbourne	84.8	92.1	8.7
18	Adelaide - Brisbane	85.3	92.6	8.6
19	Launceston - Melbourne	88.3	88.5	0.3
20	Brisbane - Mackay	80.9	76.2	-5.8
21	Brisbane - Canberra	65.5	67.4	2.9
22	Adelaide - Perth	67.2	77.0	14.7
23	Brisbane - Rockhampton	68.2	70.6	3.4
24	Brisbane - Newcastle	60.0	66.6	11.0
25	Hobart - Sydney	53.2	59.1	11.1
26	Sunshine Coast - Sydney	55.2	54.7	-0.9
27	Melbourne - Sunshine Coast	44.8	49.6	10.5
28	Karratha - Perth	90.2	70.6	-21.7
29	Melbourne - Newcastle	46.5	51.3	10.4
30	Brisbane - Darwin	43.0	46.8	8.8
31	Ballina - Sydney	40.3	42.4	5.2
32	Broome - Perth	38.2	36.5	-4.4
33	Darwin - Sydney	37.2	38.1	2.7
34	Perth - Port Hedland	56.1	51.9	-7.5
35	Coffs Harbour - Sydney	37.1	38.5	3.9
36	Brisbane - Gladstone	56.6	45.7	-19.3
37	Darwin - Melbourne	31.3	31.3	-0.2
38	Newman - Perth	54.5	51.8	-5.0
39	Hamilton Island - Sydney	26.1	28.9	10.9
40	Albury - Sydney	28.9	29.7	2.8
41	Kalgoorlie - Perth	33.4	32.1	-3.9
42	Launceston - Sydney	24.9	24.5	-1.9
43	Brisbane - Proserpine	25.4	21.8	-13.8
44	Adelaide - Gold Coast	25.6	24.6	-3.8
45	Darwin - Perth	22.9	23.2	1.4
46	Melbourne - Mildura	25.4	27.3	7.7
47	Ayers Rock - Sydney	19.4	21.2	8.9
48	Brisbane - Emerald	32.1	31.5	-1.7
49	Dubbo - Sydney	25.8	25.1	-2.8
50	Port Macquarie - Sydney	21.7	21.4	-1.2

continued

Table 3: (continued) Available seats (000s) — monthly activity

	City-Pair	Sep 2015	Sep 2016	% Change
51	Brisbane - Hobart	19.6	20.2	3.1
52	Sydney - Wagga Wagga	25.5	25.4	-0.6
53	Adelaide - Canberra	21.2	22.5	6.1
54	Sydney - Tamworth	21.9	24.8	12.9
55	Brisbane - Bundaberg	20.6	19.4	-5.8
56	Sydney - Townsville	16.4	19.2	17.1
57	Adelaide - Port Lincoln	24.3	24.3	0.1
58	Brisbane - Hamilton Island	14.8	15.9	7.6
59	Cairns - Townsville	25.2	24.4	-3.5
60	Hamilton Island - Melbourne	10.4	13.0	25.2
61	Adelaide - Alice Springs	14.4	14.9	3.6
62	Alice Springs - Darwin	19.5	19.5	0.0
63	Armidale - Sydney	17.3	16.5	-4.4
64	Geraldton - Perth	17.1	20.8	21.8
65	Brisbane - Mount Isa	21.7	19.8	-8.9
66	Brisbane - Moranbah	24.6	21.8	-11.7
	Total domestic network	6 521.7	6 593.9	1.1

Table 4: Load factors (%) — monthly activity

	City-Pair	Sep 2015	Sep 2016	% Point diff
1	Melbourne - Sydney	79.3	82.4	3.1
2	Brisbane - Sydney	81.6	81.8	0.2
3	Brisbane - Melbourne	79.7	83.4	3.7
4	Gold Coast - Sydney	83.5	83.6	0.1
5	Adelaide - Melbourne	74.8	76.2	1.4
6	Gold Coast - Melbourne	84.9	86.7	1.8
7	Melbourne - Perth	72.6	76.9	4.3
8	Adelaide - Sydney	75.9	80.2	4.3
9	Perth - Sydney	76.9	82.4	5.5
10	Hobart - Melbourne	78.3	77.8	-0.5
11	Brisbane - Cairns	81.4	81.2	-0.2
12	Cairns - Sydney	81.0	81.9	0.9
13	Brisbane - Townsville	77.0	79.5	2.5
14	Canberra - Melbourne	71.0	67.7	-3.3
15	Brisbane - Perth	82.5	81.5	-1.0
16	Canberra - Sydney	69.3	72.3	3.0
17	Cairns - Melbourne	85.3	85.9	0.6
18	Adelaide - Brisbane	76.2	75.2	-1.0
19	Launceston - Melbourne	72.2	77.6	5.4
20	Brisbane - Mackay	77.8	77.3	-0.5
21	Brisbane - Canberra	77.5	77.1	-0.4
22	Adelaide - Perth	74.5	66.6	-7.9
23	Brisbane - Rockhampton	73.5	71.7	-1.8
24	Brisbane - Newcastle	78.7	75.8	-2.9
25	Hobart - Sydney	78.0	81.1	3.1
26	Sunshine Coast - Sydney	82.1	84.5	2.4
27	Melbourne - Sunshine Coast	89.9	89.1	-0.8
28	Karratha - Perth	56.7	58.9	2.2
29	Melbourne - Newcastle	80.4	79.6	-0.8
30	Brisbane - Darwin	84.9	81.6	-3.3
31	Ballina - Sydney	76.8	80.0	3.2
32	Broome - Perth	73.8	81.2	7.4
33	Darwin - Sydney	80.4	77.6	-2.8
34	Perth - Port Hedland	58.8	56.1	-2.7
35	Coffs Harbour - Sydney	77.7	74.7	-3.0
36	Brisbane - Gladstone	58.3	59.9	1.6
37	Darwin - Melbourne	84.7	86.3	1.6
38	Newman - Perth	54.0	50.0	-4.0
39	Hamilton Island - Sydney	83.2	81.0	-2.2
40	Albury - Sydney	63.9	68.1	4.2
41	Kalgoorlie - Perth	59.1	62.3	3.2
42	Launceston - Sydney	78.2	80.4	2.2
43	Brisbane - Proserpine	82.8	89.3	6.5
44	Adelaide - Gold Coast	77.2	76.1	-1.1
45	Darwin - Perth	74.2	74.7	0.5
46	Melbourne - Mildura	65.3	63.5	-1.8
47	Ayers Rock - Sydney	79.3	81.9	2.6
48	Brisbane - Emerald	54.7	54.1	-0.6
49	Dubbo - Sydney	64.9	67.8	2.9
50	Port Macquarie - Sydney	72.3	78.6	6.3

continued

Table 4: (continued) Load factors (%) — monthly activity

	City-Pair	Sep 2015	Sep 2016	% Point diff
51	Brisbane - Hobart	80.7	83.2	2.5
52	Sydney - Wagga Wagga	63.6	64.6	1.0
53	Adelaide - Canberra	70.0	70.7	0.7
54	Sydney - Tamworth	61.5	63.3	1.8
55	Brisbane - Bundaberg	67.4	76.9	9.5
56	Sydney - Townsville	87.4	74.0	-13.4
57	Adelaide - Port Lincoln	59.3	57.8	-1.5
58	Brisbane - Hamilton Island	84.9	85.6	0.7
59	Cairns - Townsville	47.7	50.6	2.9
60	Hamilton Island - Melbourne	85.3	87.7	2.4
61	Adelaide - Alice Springs	72.9	74.5	1.6
62	Alice Springs - Darwin	56.4	55.1	-1.3
63	Armidale - Sydney	59.9	62.9	3.0
64	Geraldton - Perth	57.5	50.0	-7.5
65	Brisbane - Mount Isa	53.3	51.7	-1.6
66	Brisbane - Moranbah	46.1	43.4	-2.7
	Total domestic network	76.9	78.6	1.6

Table 5: Aircraft trips ^(a) — monthly activity

	City-Pair	Sep 2015	Sep 2016	% Change
1	Melbourne - Sydney	5 005	5 064	1.2
2	Brisbane - Sydney	3 074	3 047	-0.9
3	Brisbane - Melbourne	2 218	2 235	0.8
4	Gold Coast - Sydney	1 588	1 577	-0.7
5	Adelaide - Melbourne	1 611	1 654	2.7
6	Gold Coast - Melbourne	1 063	1 113	4.7
7	Melbourne - Perth	1 058	999	-5.6
8	Adelaide - Sydney	1 218	1 163	-4.5
9	Perth - Sydney	745	755	1.3
10	Hobart - Melbourne	927	981	5.8
11	Brisbane - Cairns	861	899	4.4
12	Cairns - Sydney	653	666	2.0
13	Brisbane - Townsville	771	762	-1.2
14	Canberra - Melbourne	889	919	3.4
15	Brisbane - Perth	474	486	2.5
16	Canberra - Sydney	1 517	1 439	-5.1
17	Cairns - Melbourne	456	489	7.2
18	Adelaide - Brisbane	541	560	3.5
19	Launceston - Melbourne	690	721	4.5
20	Brisbane - Mackay	650	660	1.5
21	Brisbane - Canberra	499	504	1.0
22	Adelaide - Perth	474	477	0.6
23	Brisbane - Rockhampton	799	789	-1.3
24	Brisbane - Newcastle	493	551	11.8
25	Hobart - Sydney	325	380	16.9
26	Sunshine Coast - Sydney	309	334	8.1
27	Melbourne - Sunshine Coast	252	279	10.7
28	Karratha - Perth	651	588	-9.7
29	Melbourne - Newcastle	264	287	8.7
30	Brisbane - Darwin	266	285	7.1
31	Ballina - Sydney	276	285	3.3
32	Broome - Perth	299	301	0.7
33	Darwin - Sydney	224	226	0.9
34	Perth - Port Hedland	386	412	6.7
35	Coffs Harbour - Sydney	438	449	2.5
36	Brisbane - Gladstone	644	599	-7.0
37	Darwin - Melbourne	184	178	-3.3
38	Newman - Perth	382	378	-1.0
39	Hamilton Island - Sydney	149	176	18.1
40	Albury - Sydney	524	549	4.8
41	Kalgoorlie - Perth	277	286	3.2
42	Launceston - Sydney	147	142	-3.4
43	Brisbane - Proserpine	162	124	-23.5
44	Adelaide - Gold Coast	144	139	-3.5
45	Darwin - Perth	142	141	-0.7
46	Melbourne - Mildura	404	423	4.7
47	Ayers Rock - Sydney	120	120	0.0
48	Brisbane - Emerald	446	416	-6.7
49	Dubbo - Sydney	563	556	-1.2
50	Port Macquarie - Sydney	381	382	0.3

continued

Table 5: (continued) Aircraft trips ^(a) — monthly activity

	City-Pair	Sep 2015	Sep 2016	% Change
51	Brisbane - Hobart	120	116	-3.3
52	Sydney - Wagga Wagga	500	495	-1.0
53	Adelaide - Canberra	148	151	2.0
54	Sydney - Tamworth	356	404	13.5
55	Brisbane - Bundaberg	341	328	-3.8
56	Sydney - Townsville	112	129	15.2
57	Adelaide - Port Lincoln	627	626	-0.2
58	Brisbane - Hamilton Island	110	122	10.9
59	Cairns - Townsville	438	437	-0.2
60	Hamilton Island - Melbourne	60	75	25.0
61	Adelaide - Alice Springs	93	94	1.1
62	Alice Springs - Darwin	158	158	0.0
63	Armidale - Sydney	413	391	-5.3
64	Geraldton - Perth	259	208	-19.7
65	Brisbane - Mount Isa	163	156	-4.3
66	Brisbane - Moranbah	351	302	-14.0
	Total domestic network	53 964	54 560	1.1

(a) Includes RPT Cargo flights.

TOP TEN AIRPORTS – PASSENGER MOVEMENTS

Table 6: Top ten airports, RPT passenger movements (000s) - annual activity

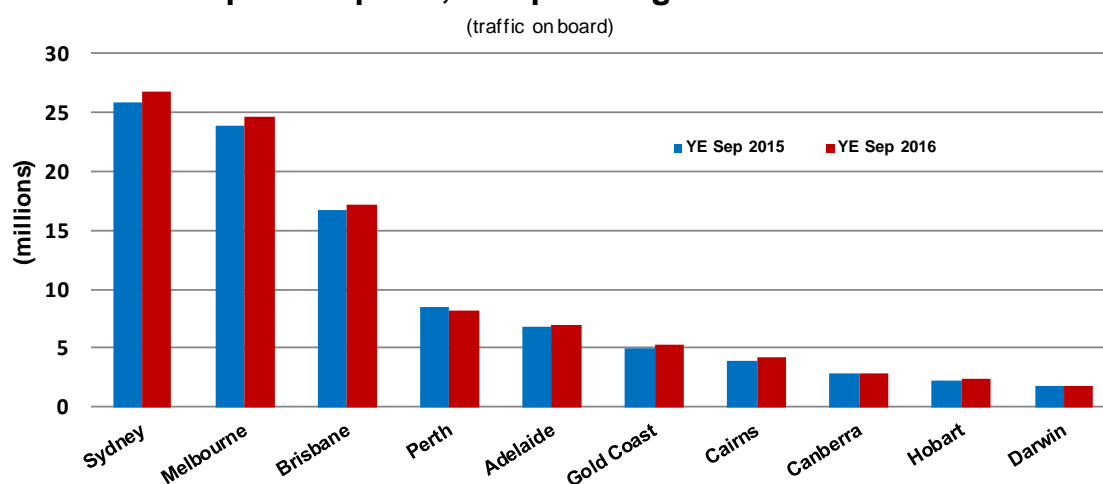
Airport	YE Sep 2015	YE Sep 2016	% Change	% of Total
1 Sydney	25 769.5	26 794.2	4.0	22.8
2 Melbourne	23 841.2	24 633.5	3.3	21.0
3 Brisbane	16 764.1	17 083.1	1.9	14.6
4 Perth	8 476.9	8 201.9	-3.2	7.0
5 Adelaide	6 766.5	6 955.4	2.8	5.9
6 Gold Coast	5 049.7	5 296.0	4.9	4.5
7 Cairns	3 966.9	4 197.3	5.8	3.6
8 Canberra	2 804.8	2 833.4	1.0	2.4
9 Hobart	2 204.9	2 345.1	6.4	2.0
10 Darwin	1 775.5	1 784.2	0.5	1.5
Total top ten airports	97 420.0	100 124.2	2.8	85.3
Total domestic network	114 666.9	117 385.6	2.4	100.0

Table 7: Top ten airports, RPT passenger movements (000s) - monthly activity

Airport	Sep 2015	Sep 2016	% Change	% of Total
1 Sydney	2 200.4	2 287.0	3.9	22.6
2 Melbourne	2 014.4	2 119.2	5.2	20.9
3 Brisbane	1 460.3	1 491.3	2.1	14.7
4 Perth	699.5	693.4	-0.9	6.9
5 Adelaide	563.6	582.3	3.3	5.8
6 Gold Coast	454.7	462.5	1.7	4.6
7 Cairns	355.7	376.3	5.8	3.7
8 Canberra	242.2	251.4	3.8	2.5
9 Hobart	170.2	185.1	8.8	1.8
10 Darwin	162.5	163.2	0.5	1.6
Total top ten airports	8 323.5	8 611.7	3.5	85.1
Total domestic network	9 799.0	10 116.1	3.2	100.0

Note: Airport passenger movement numbers are the sum of passenger arrivals and departures at each airport.

Top ten airports, RPT passenger movements



BITRE have identified inaccuracies in domestic cargo statistics provided by airlines. Publication of these statistics has been suspended (from July 2015) until this matter is resolved.

TOP TEN ROUTES

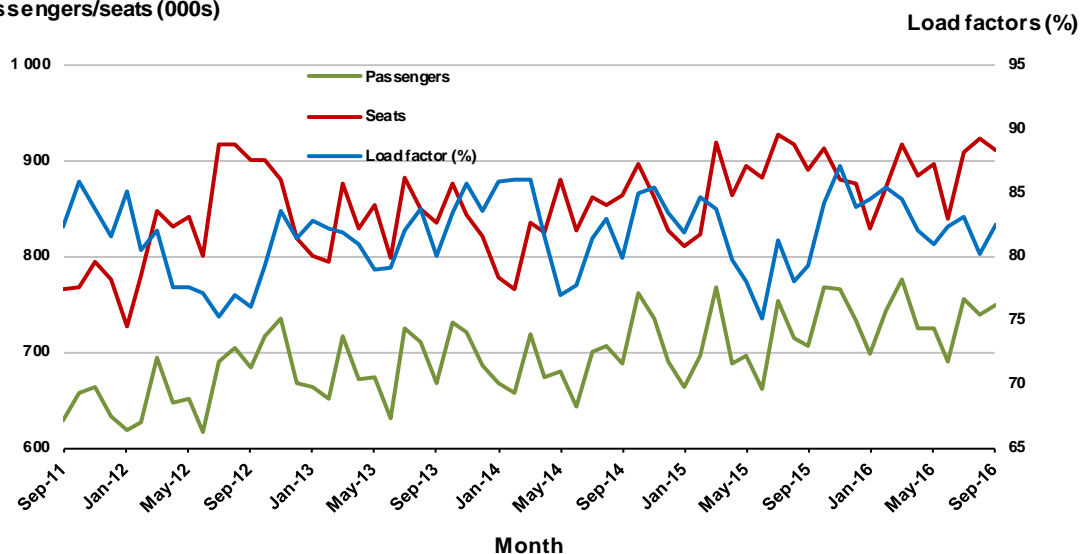
1. Melbourne - Sydney

Monthly data

	Sep 2015	Sep 2016	% Change
Passengers carried (000s)	706.0	749.4	6.1
Seats (000s)	890.5	910.0	2.2
Load factor %	79.3	82.4	3.1 *
Aircraft trips	5 005	5 064	1.2

* percentage point difference

Passengers/seats (000s)

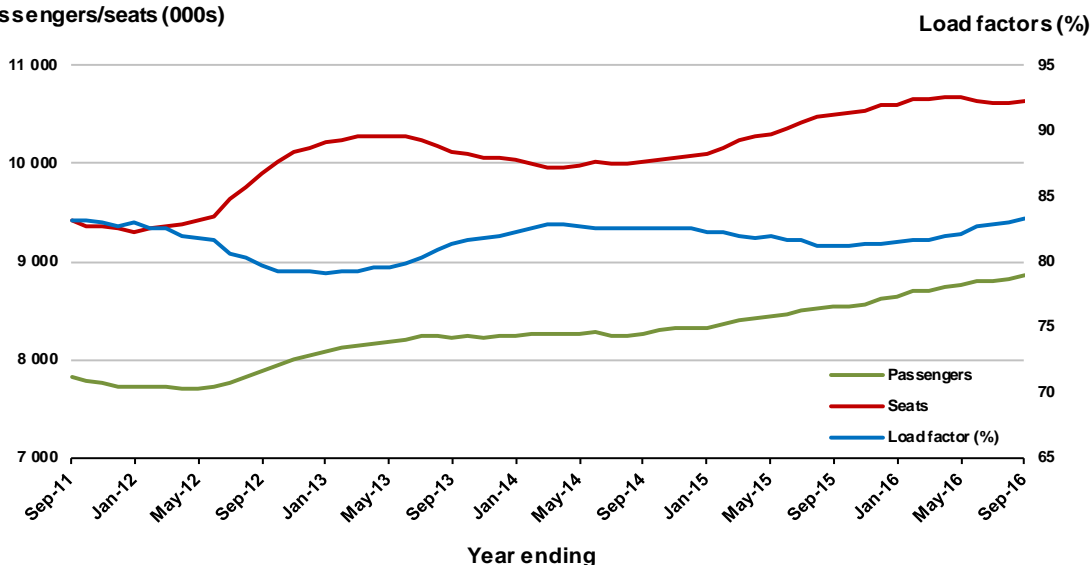


Moving annual data

	YE Sep 2015	YE Sep 2016	% Change
Passengers carried (000s)	8 532.2	8 866.1	3.9
Seats (000s)	10 505.5	10 643.2	1.3
Load factor %	81.2	83.3	2.1 *
Aircraft trips	59 442	59 487	0.1

* percentage point difference

Passengers/seats (000s)

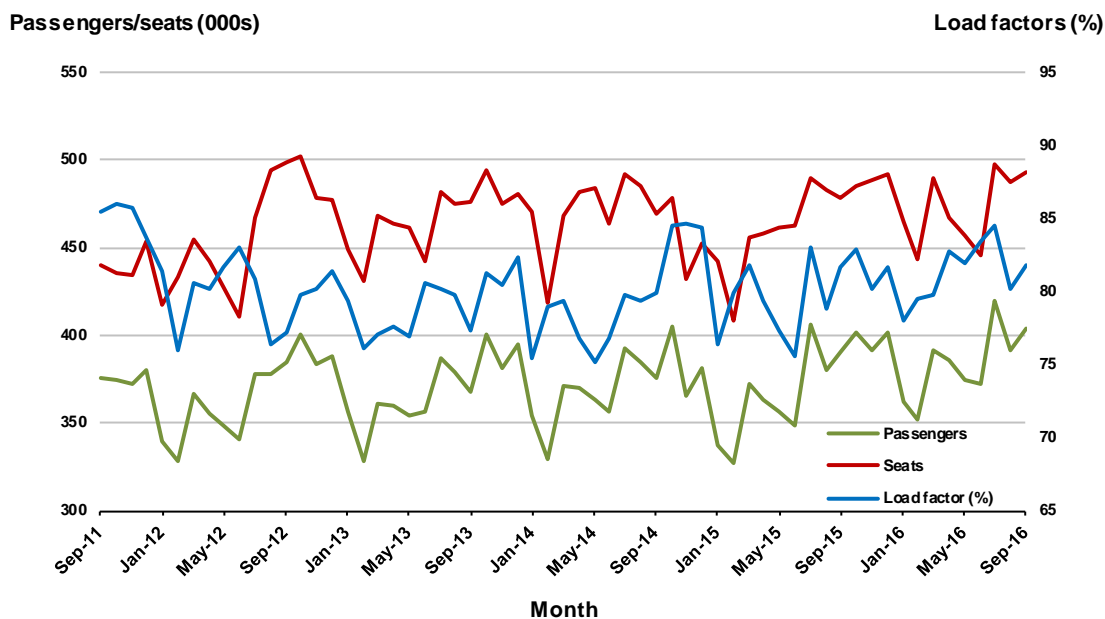


2. Brisbane - Sydney

Monthly data

	Sep 2015	Sep 2016	% Change
Passengers carried (000s)	390.5	403.4	3.3
Seats (000s)	478.7	493.4	3.1
Load factor %	81.6	81.8	0.2 *
Aircraft trips	3 074	3 047	-0.9

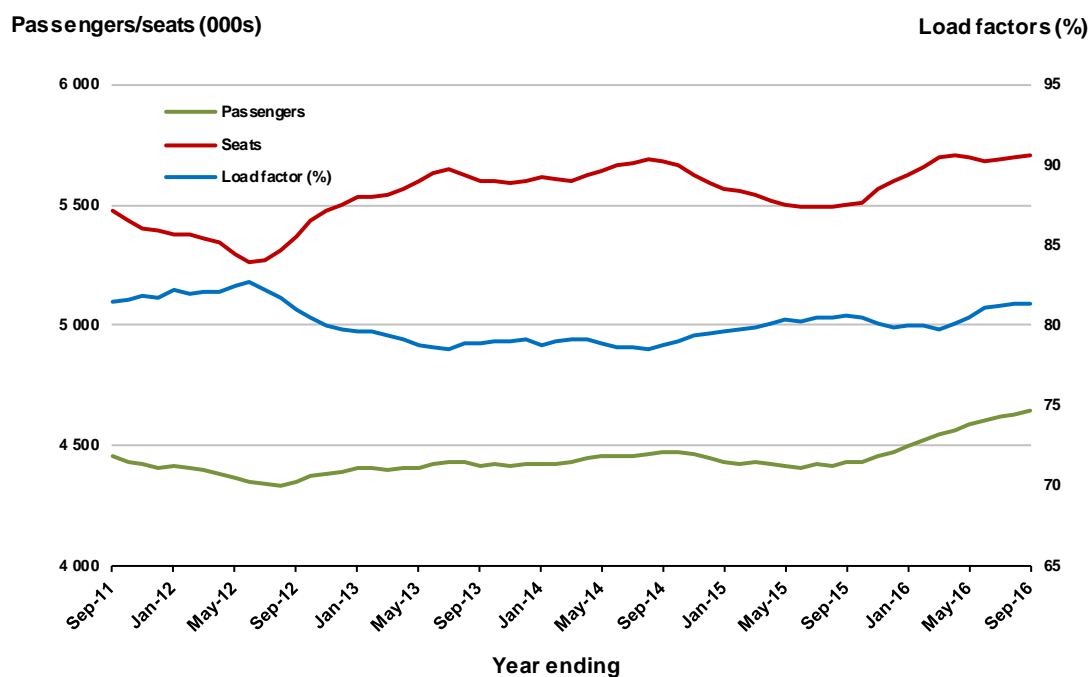
* percentage point difference



Moving annual data

	YE Sep 2015	YE Sep 2016	% Change
Passengers carried (000s)	4 432.8	4 645.8	4.8
Seats (000s)	5 500.3	5 709.4	3.8
Load factor %	80.6	81.4	0.8 *
Aircraft trips	34 693	35 484	2.3

* percentage point difference

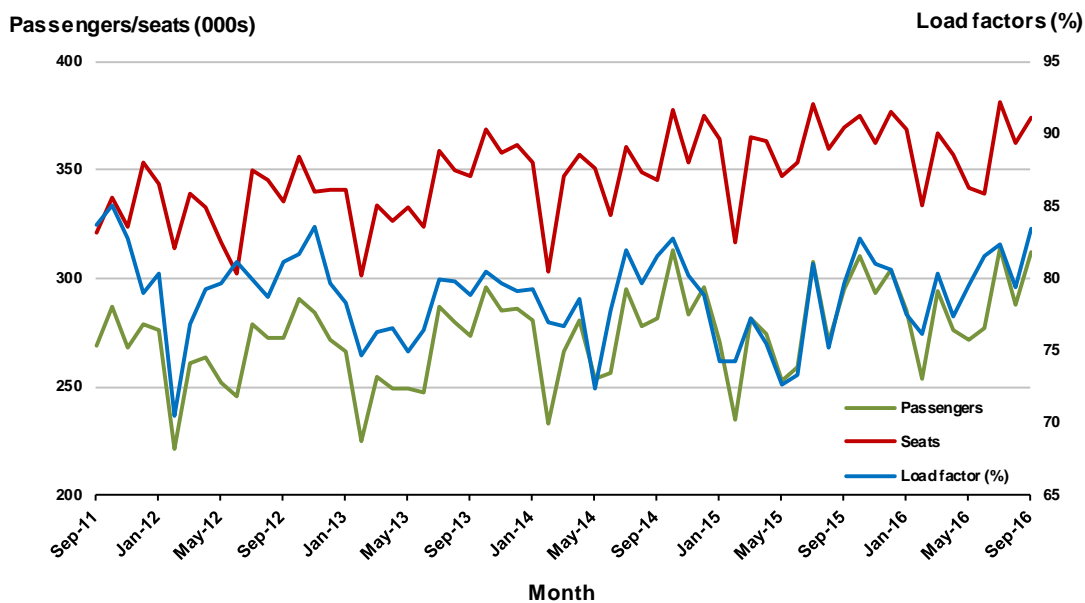


3. Brisbane - Melbourne

Monthly data

	Sep 2015	Sep 2016	% Change
Passengers carried (000s)	294.7	311.8	5.8
Seats (000s)	369.7	374.0	1.2
Load factor %	79.7	83.4	3.7 *
Aircraft trips	2 218	2 235	0.8

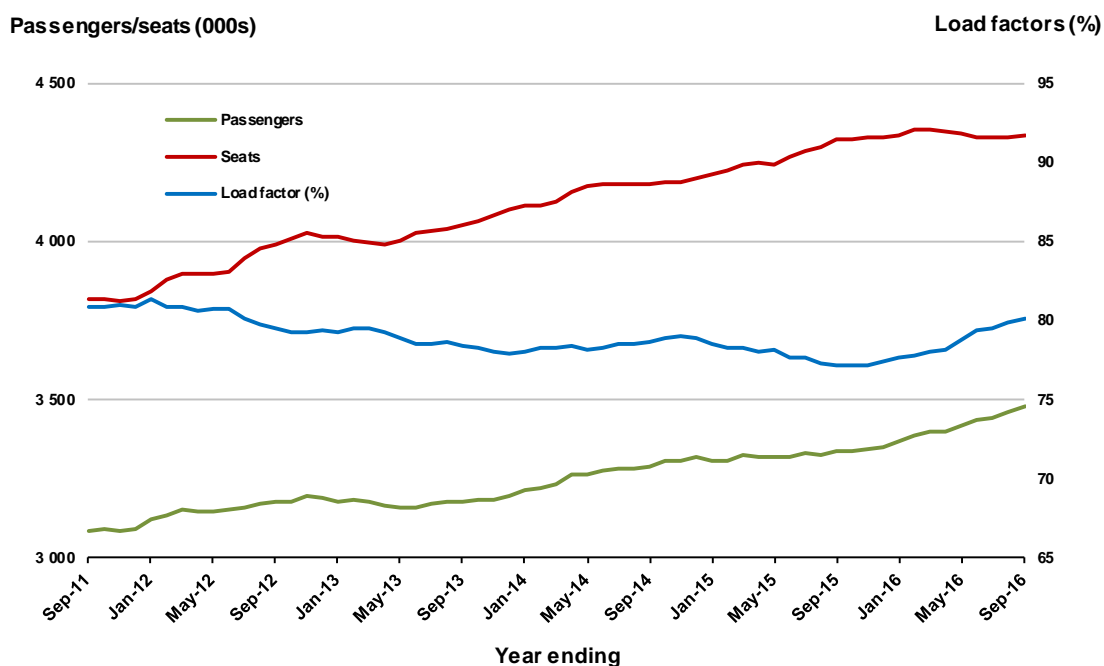
* percentage point difference



Moving annual data

	YE Sep 2015	YE Sep 2016	% Change
Passengers carried (000s)	3 338.4	3 478.6	4.2
Seats (000s)	4 325.8	4 337.0	0.3
Load factor %	77.2	80.2	3.0 *
Aircraft trips	26 027	25 975	-0.2

* percentage point difference



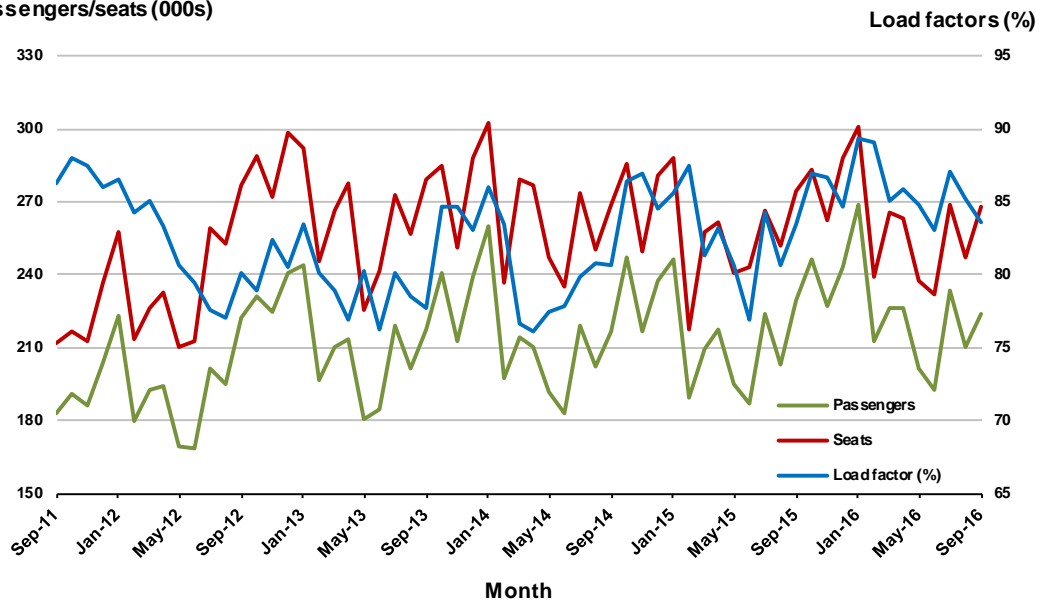
4. Gold Coast - Sydney

Monthly data

	Sep 2015	Sep 2016	% Change
Passengers carried (000s)	229.5	224.2	-2.3
Seats (000s)	274.8	268.1	-2.4
Load factor %	83.5	83.6	0.1 *
Aircraft trips	1 588	1 577	-0.7

* percentage point difference

Passengers/seats (000s)

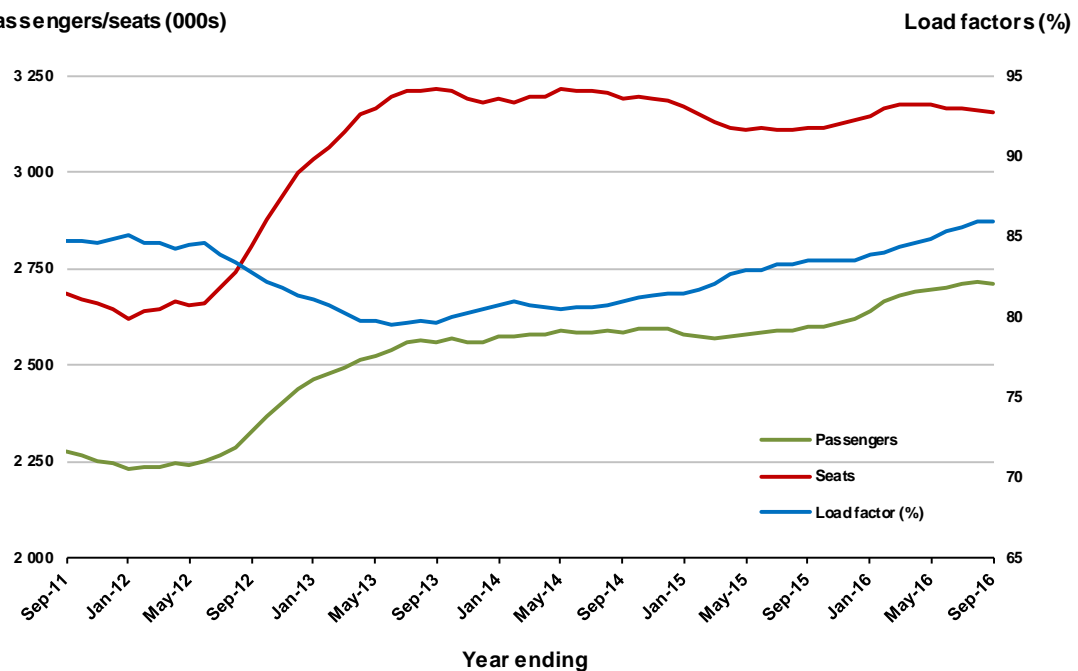


Moving annual data

	YE Sep 2015	YE Sep 2016	% Change
Passengers carried (000s)	2 602.4	2 713.6	4.3
Seats (000s)	3 116.4	3 155.4	1.3
Load factor %	83.5	86.0	2.5 *
Aircraft trips	17 989	18 448	2.6

* percentage point difference

Passengers/seats (000s)



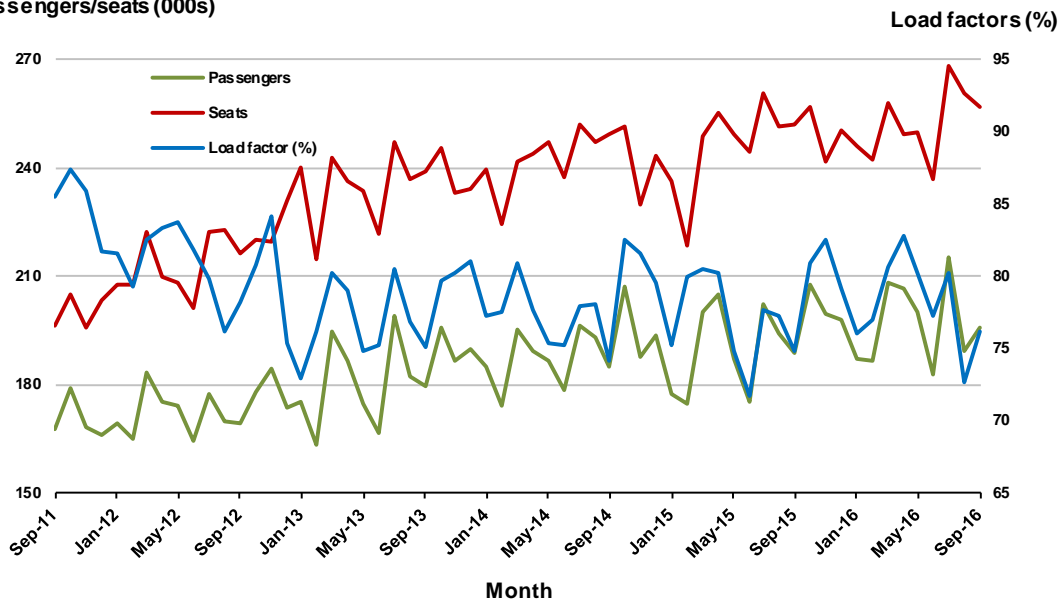
5. Adelaide - Melbourne

Monthly data

	Sep 2015	Sep 2016	% Change
Passengers carried (000s)	188.7	195.8	3.8
Seats (000s)	252.2	257.1	1.9
Load factor %	74.8	76.2	1.4 *
Aircraft trips	1 611	1 654	2.7

* percentage point difference

Passengers/seats (000s)

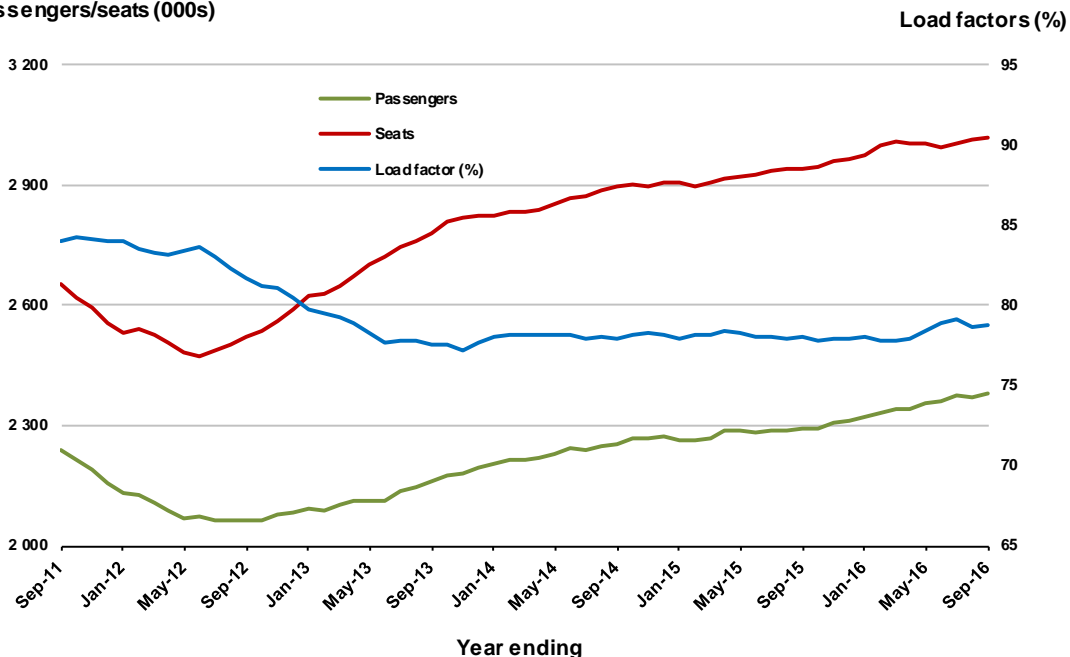


Moving annual data

	YE Sep 2015	YE Sep 2016	% Change
Passengers carried (000s)	2 293.7	2 378.1	3.7
Seats (000s)	2 941.2	3 017.5	2.6
Load factor %	78.0	78.8	0.8 *
Aircraft trips	18 965	19 300	1.8

* percentage point difference

Passengers/seats (000s)



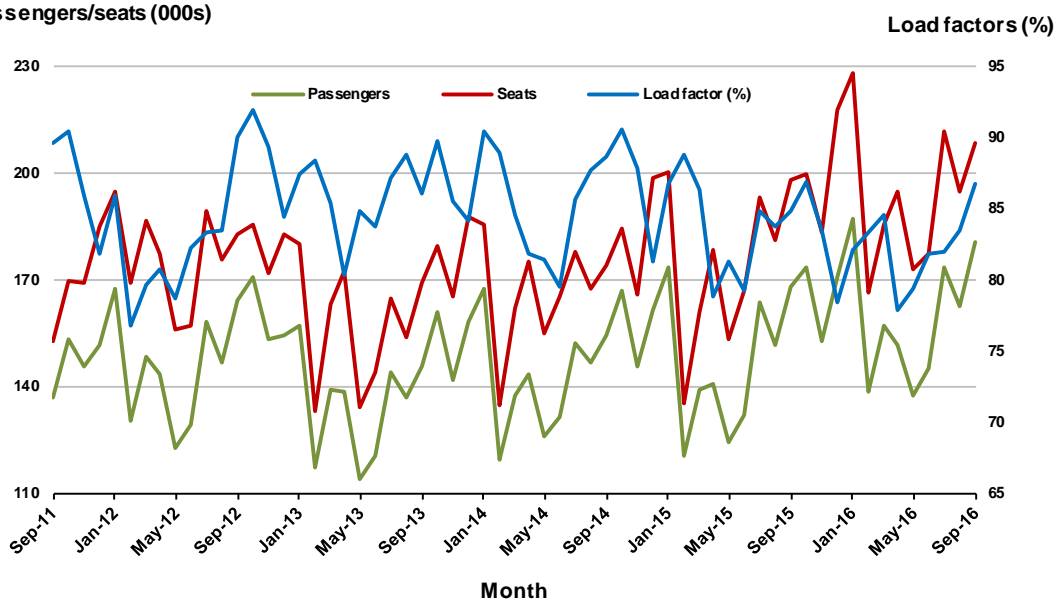
6. Gold Coast - Melbourne

Monthly data

	Sep 2015	Sep 2016	% Change
Passengers carried (000s)	168.1	180.6	7.5
Seats (000s)	198.0	208.3	5.2
Load factor %	84.9	86.7	1.8 *
Aircraft trips	1 063	1 113	4.7

* percentage point difference

Passengers/seats (000s)

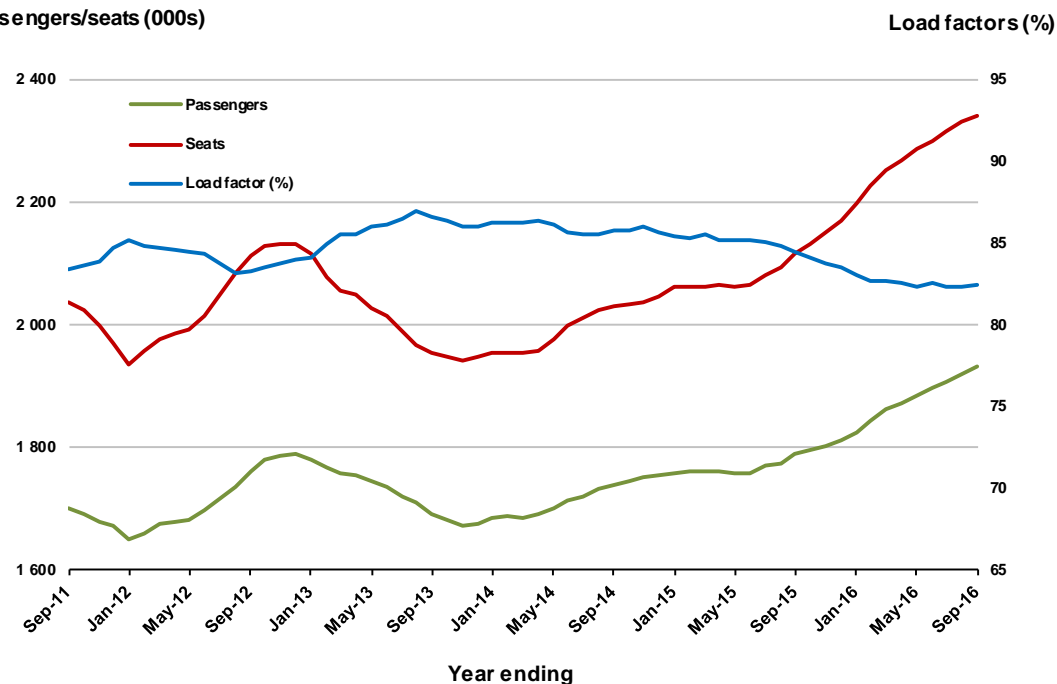


Moving annual data

	YE Sep 2015	YE Sep 2016	% Change
Passengers carried (000s)	1 789.3	1 931.3	7.9
Seats (000s)	2 118.1	2 341.1	10.5
Load factor %	84.5	82.5	-2.0 *
Aircraft trips	11 380	12 564	10.4

* percentage point difference

Passengers/seats (000s)



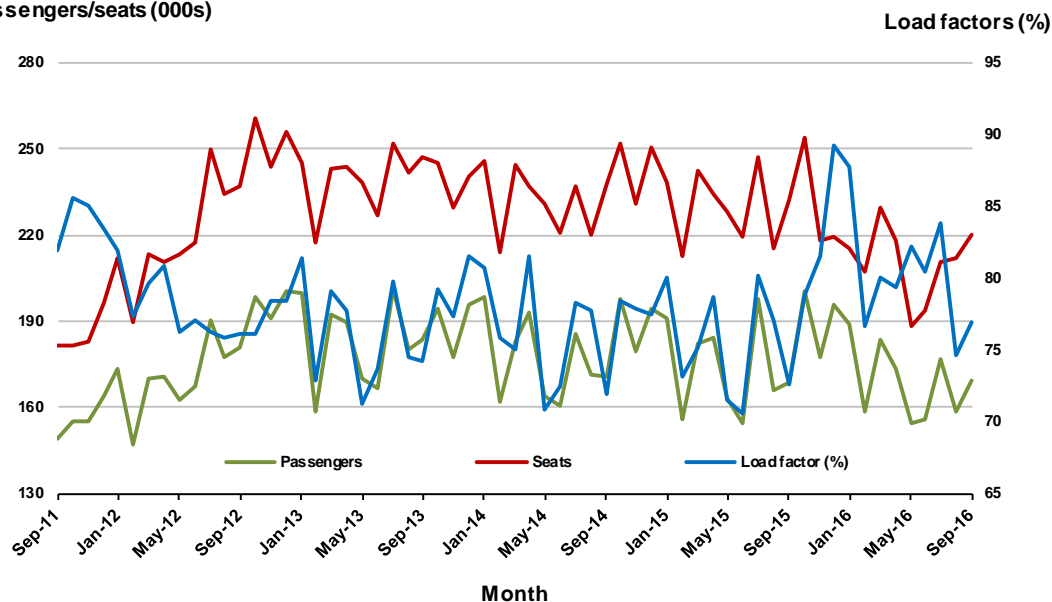
7. Melbourne - Perth

Monthly data

	Sep 2015	Sep 2016	% Change
Passengers carried (000s)	168.7	169.3	0.4
Seats (000s)	232.3	220.3	-5.2
Load factor %	72.6	76.9	4.3 *
Aircraft trips	1 058	999	-5.6

* percentage point difference

Passengers/seats (000s)

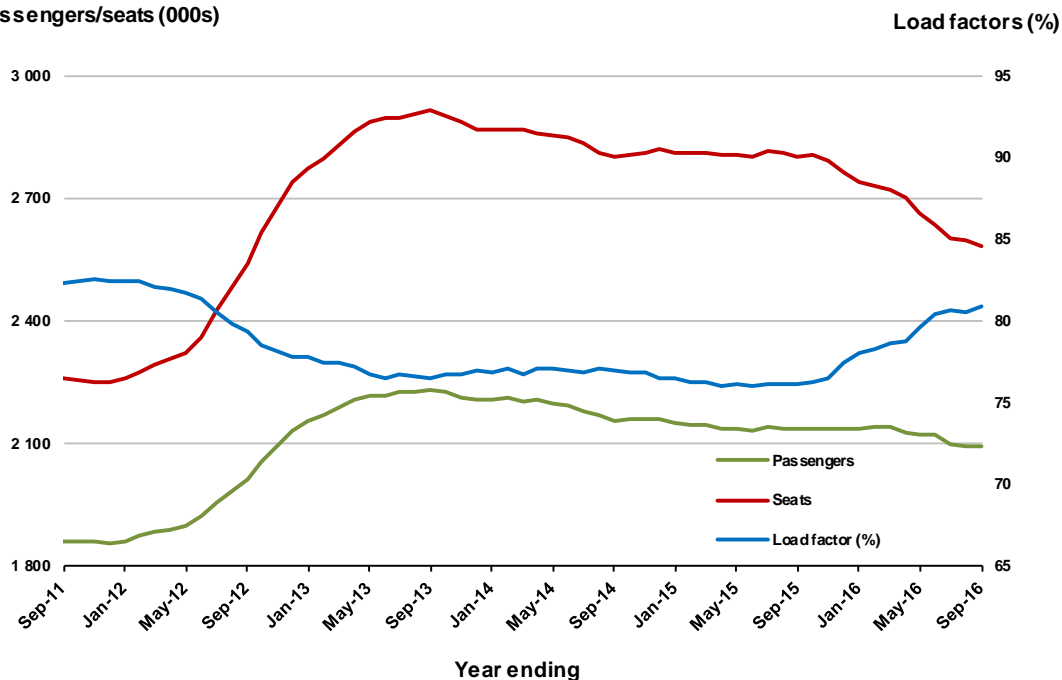


Moving annual data

	YE Sep 2015	YE Sep 2016	% Change
Passengers carried (000s)	2 136.9	2 093.6	-2.0
Seats (000s)	2 804.9	2 586.4	-7.8
Load factor %	76.2	80.9	4.8 *
Aircraft trips	12 339	11 650	-5.6

* percentage point difference

Passengers/seats (000s)



8. Adelaide - Sydney

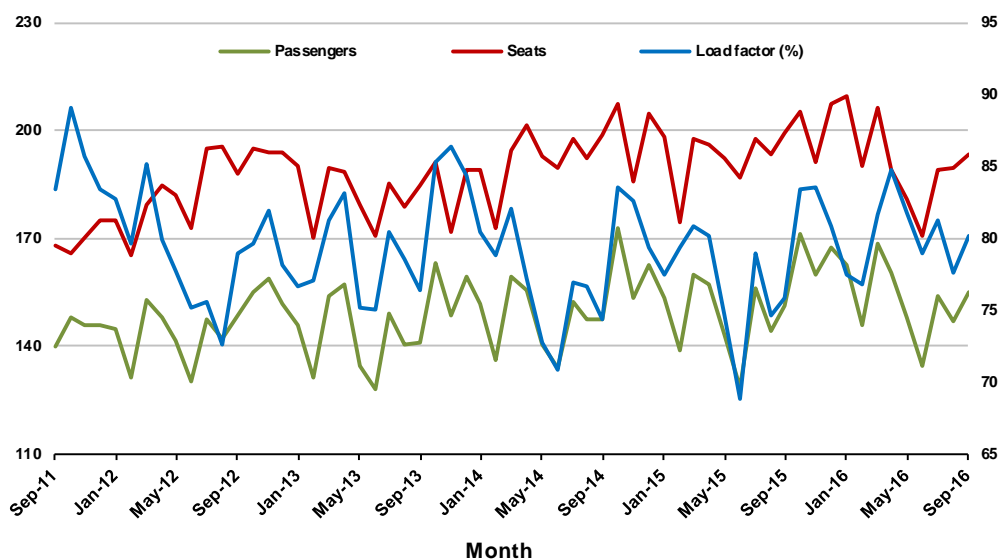
Monthly data

	Sep 2015	Sep 2016	% Change
Passengers carried (000s)	151.2	155.0	2.5
Seats (000s)	199.1	193.3	-2.9
Load factor %	75.9	80.2	4.3 *
Aircraft trips	1 218	1 163	-4.5

* percentage point difference

Passengers/seats (000s)

Load factors (%)



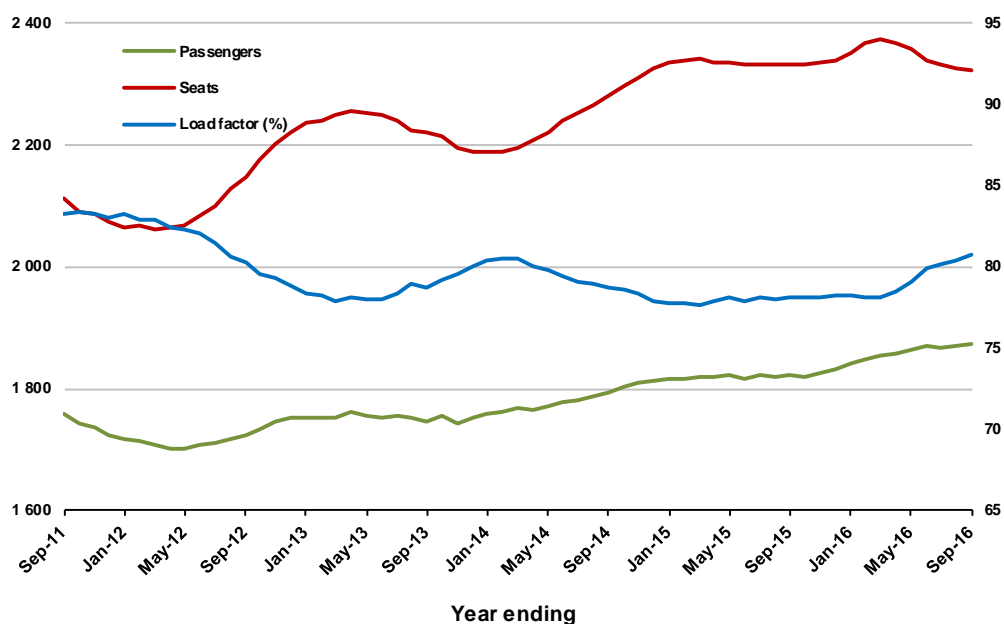
Moving annual data

	YE Sep 2015	YE Sep 2016	% Change
Passengers carried (000s)	1 822.0	1 873.6	2.8
Seats (000s)	2 333.1	2 321.5	-0.5
Load factor %	78.1	80.7	2.6 *
Aircraft trips	14 228	14 142	-0.6

* percentage point difference

Passengers/seats (000s)

Load factors (%)



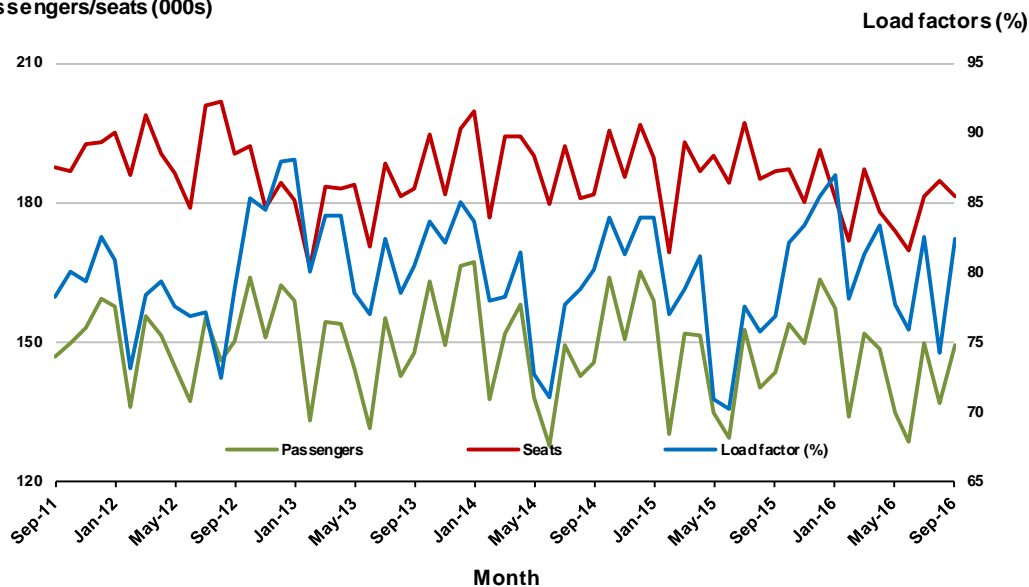
9. Perth - Sydney

Monthly data

	Sep 2015	Sep 2016	% Change
Passengers carried (000s)	143.6	149.4	4.0
Seats (000s)	186.9	181.4	-2.9
Load factor %	76.9	82.4	5.5 *
Aircraft trips	745	755	1.3

* percentage point difference

Passengers/seats (000s)

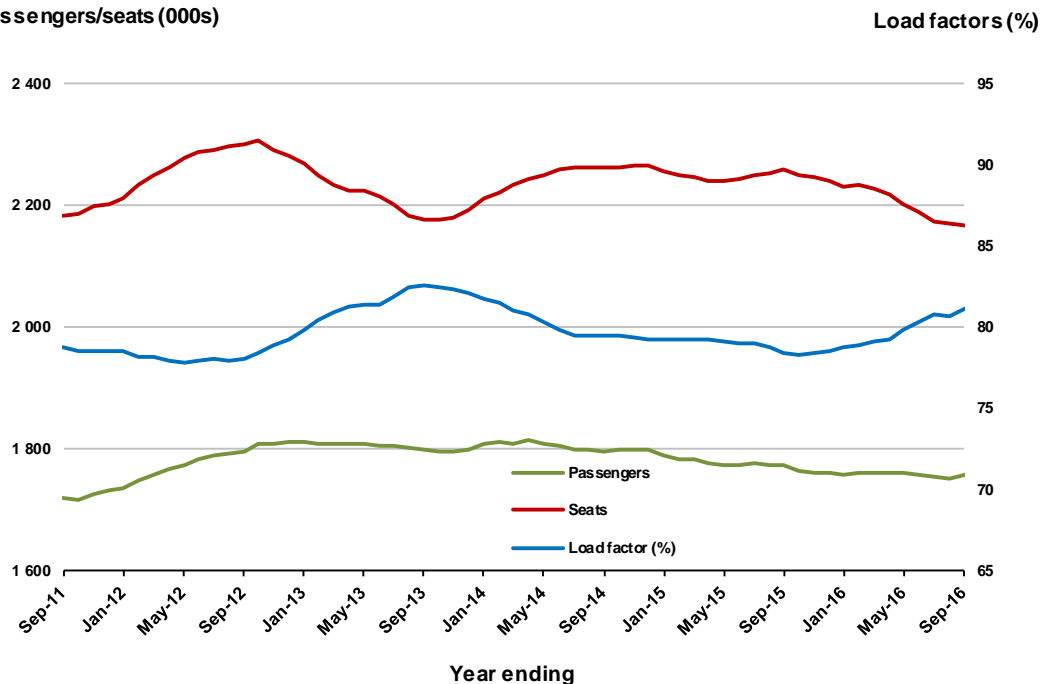


Moving annual data

	YE Sep 2015	YE Sep 2016	% Change
Passengers carried (000s)	1 773.9	1 759.4	-0.8
Seats (000s)	2 259.9	2 167.2	-4.1
Load factor %	78.5	81.2	2.7 *
Aircraft trips	9 074	9 151	0.8

* percentage point difference

Passengers/seats (000s)

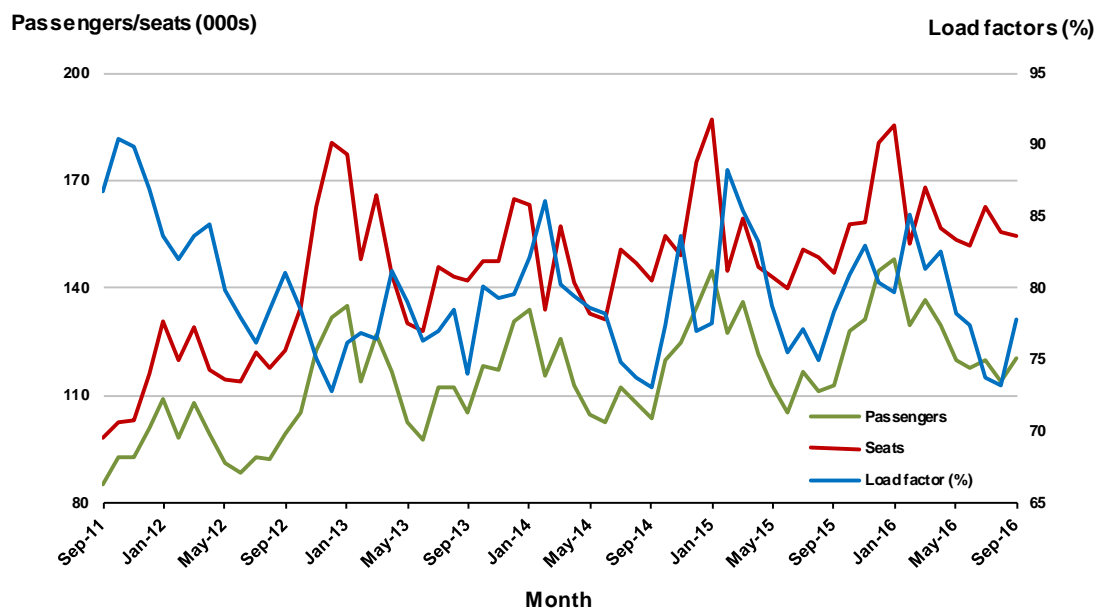


10. Hobart - Melbourne

Monthly data

	Sep 2015	Sep 2016	% Change
Passengers carried (000s)	112.9	120.4	6.7
Seats (000s)	144.1	154.7	7.4
Load factor %	78.3	77.8	-0.5 *
Aircraft trips	927	981	5.8

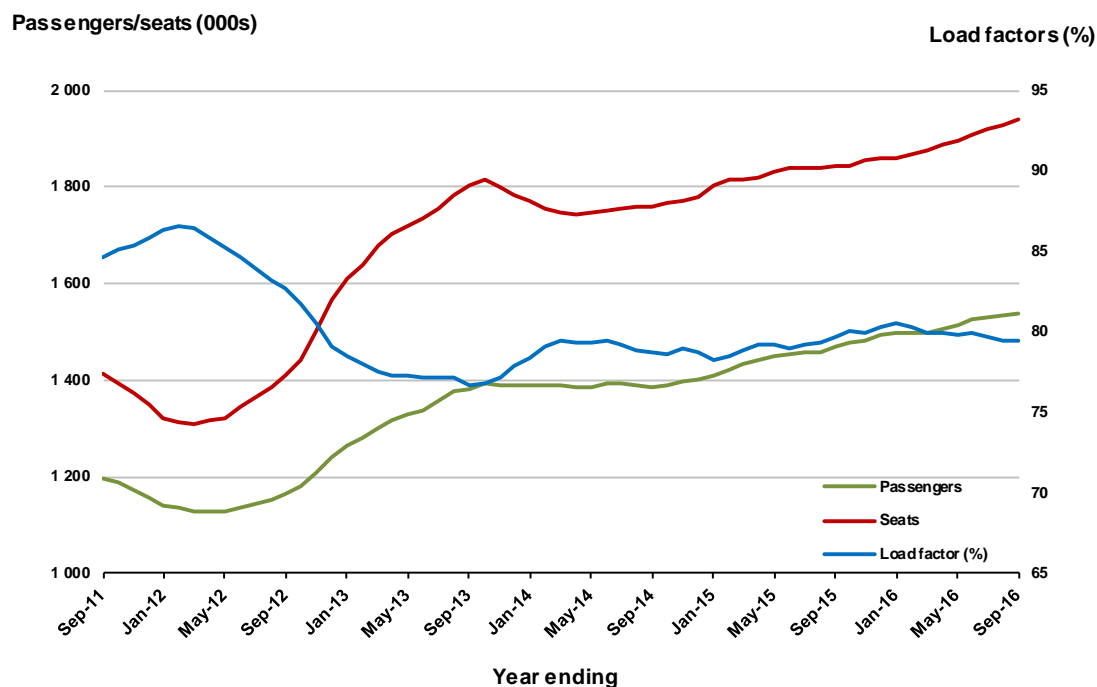
* percentage point difference



Moving annual data

	YE Sep 2015	YE Sep 2016	% Change
Passengers carried (000s)	1 468.7	1 540.0	4.9
Seats (000s)	1 842.4	1 938.2	5.2
Load factor %	79.7	79.5	-0.2 *
Aircraft trips	11 662	12 209	4.7

* percentage point difference



TOP FIFTY REGIONAL AIRPORTS

Table 10: Top fifty regional airports (000s) — passenger movements, monthly

	Airport	Sep 2015	Sep 2016	% Change
1	Cairns	355.7	376.3	5.8
2	Hobart	170.2	185.1	8.8
3	Darwin	162.5	163.2	0.5
4	Townsville	138.4	138.6	0.1
5	Williamstown	100.2	107.5	7.3
6	Launceston	93.7	98.9	5.6
7	Mackay	75.4	67.9	-10.0
8	Alice Springs	51.8	56.3	8.7
9	Rockhampton	52.1	52.3	0.3
10	Hamilton Island	44.9	50.8	13.1
11	Ballina	41.6	42.0	1.0
12	Karratha	51.8	41.6	-19.7
13	Broome	37.8	37.5	-1.0
14	Coffs Harbour	30.5	33.5	10.0
15	Ayers Rock	29.1	33.1	13.9
16	Port Hedland	36.0	30.5	-15.5
17	Proserpine	30.5	29.7	-2.6
18	Gladstone	33.0	27.5	-16.8
19	Newman	29.5	26.1	-11.5
20	Albury	20.6	22.4	9.1
21	Mildura	20.1	20.8	3.5
22	Kalgoorlie	20.3	20.6	1.5
23	Port Macquarie	18.7	18.9	0.7
24	Wagga Wagga	18.5	18.8	1.6
25	Dubbo	17.9	18.3	2.2
26	Emerald	17.7	17.2	-2.8
27	Mount Isa	17.7	16.5	-6.8
28	Tamworth	13.6	15.8	15.9
29	Bundaberg	14.0	15.1	8.1
30	Hervey Bay	15.1	14.6	-2.8
31	Port Lincoln	14.4	14.1	-2.4
32	Paraburdoo	14.1	14.0	-0.8
33	Wellcamp	6.6	12.4	87.3
34	Devonport	11.2	12.3	9.2
35	Armidale	10.5	10.6	0.1
36	Geraldton	10.0	10.4	4.4
37	Moranbah	11.4	9.6	-15.8
38	Kununurra	9.1	9.4	2.9
39	Thursday Island	8.6	9.2	7.1
40	Gove	6.1	7.3	20.7
41	Roma	11.2	7.3	-35.0
42	Learmonth	7.2	7.2	-0.2
43	Weipa	6.6	6.7	1.5
44	Mount Gambier	6.7	6.5	-3.8
45	Griffith	6.1	6.4	3.9
46	Narrandera	4.0	5.4	35.5
47	Merimbula	5.0	5.2	3.5
48	Whyalla	5.8	5.1	-12.3
49	Broken Hill	4.8	5.0	4.5
50	Burnie	5.0	5.0	0.9
Total top 50 regional airports		1 923.3	1 966.1	2.2
Total regional airports		2 036.9	2 080.7	2.2
Total domestic network		9 799.0	10 116.1	3.2

Note: Airport passenger movement numbers are the sum of passenger arrivals and departures at each airport.

Table 11: Top fifty regional airports (000s) — passenger movements, annual

Airport	YE Sep 2015	YE Sep 2016	% Change
1 Cairns	3 966.9	4 197.3	5.8
2 Hobart	2 204.9	2 345.1	6.4
3 Darwin	1 775.5	1 784.2	0.5
4 Townsville	1 547.8	1 544.0	-0.2
5 Launceston	1 276.3	1 332.5	4.4
6 Williamtown	1 157.2	1 184.6	2.4
7 Mackay	951.8	809.6	-14.9
8 Alice Springs	584.9	607.3	3.8
9 Rockhampton	636.5	586.8	-7.8
10 Hamilton Island	487.3	533.8	9.5
11 Karratha	634.3	524.3	-17.3
12 Ballina	445.4	468.8	5.2
13 Coffs Harbour	354.5	386.0	8.9
14 Broome	392.3	380.4	-3.0
15 Port Hedland	446.5	366.1	-18.0
16 Gladstone	432.4	354.0	-18.1
17 Ayers Rock	313.3	351.0	12.0
18 Proserpine	300.1	344.8	14.9
19 Newman	342.2	315.1	-7.9
20 Albury	243.3	250.2	2.8
21 Mildura	237.7	245.9	3.4
22 Kalgoorlie	227.8	237.5	4.3
23 Port Macquarie	223.3	225.3	0.9
24 Wagga Wagga	209.3	215.4	2.9
25 Emerald	220.3	201.2	-8.7
26 Dubbo	199.6	201.0	0.7
27 Mount Isa	210.0	190.7	-9.2
28 Port Lincoln	187.7	181.6	-3.3
29 Tamworth	156.3	172.8	10.5
30 Bundaberg	156.9	171.0	9.0
31 Hervey Bay	163.4	169.8	3.9
32 Paraburdoo	173.1	163.8	-5.4
33 Devonport	145.3	146.7	1.0
34 Armidale	123.6	129.1	4.4
35 Moranbah	146.3	119.6	-18.3
36 Geraldton	119.9	119.4	-0.4
37 Kununurra	106.1	108.5	2.2
38 Wellcamp	56.4	104.8	NA
39 Thursday Island	90.3	98.2	8.8
40 Roma	176.7	94.2	-46.7
41 Learmonth	85.5	86.0	0.5
42 Weipa	68.8	77.9	13.3
43 Gove	74.1	77.3	4.3
44 Mount Gambier	77.2	76.4	-1.0
45 Griffith	67.2	69.1	2.8
46 Whyalla	64.5	64.6	0.2
47 Merimbula	59.9	62.1	3.8
48 Burnie	63.2	60.7	-3.9
49 Albany	55.4	54.0	-2.6
50 Moruya	53.0	53.3	0.7
Total top 50 regional airports	22 491.9	22 643.7	0.7
Total regional airports	23 826.6	23 947.3	0.5
Total domestic network	114 666.9	117 385.6	2.4

Note: Airport passenger movement numbers are the sum of passenger arrivals and departures at each airport.

(a) RPT service commenced from November 2014.

DOMESTIC CHARTER ACTIVITY

Table 12: Charter passengers carried and aircraft trips - annual activity

	YE Sep 2015	YE Sep 2016	% Change
Total domestic charter passengers	2 652 481	2 456 652	-7.4
Total domestic charter aircraft trips	52 903	45 671	-13.7

Note: Helicopter, joyflights and sightseeing charter flights not included.

Table 13: Charter passengers carried and aircraft trips - monthly activity

	Sep 2015	Sep 2016	% Change
Total domestic charter passengers	228 328	195 990	-14.2
Total domestic charter aircraft trips	4 394	3 543	-19.4

Note: Helicopter, joyflights and sightseeing charter flights not included.

Table 14: Domestic airports - charter activity - annual

	YE Sep 2015	YE Sep 2016	% Change
Total domestic charter passenger movements	5 304 962	4 913 304	-7.4
Total domestic charter aircraft movements	105 806	91 342	-13.7
Perth airport charter passenger movements	1 965 455	1 884 637	-4.1
Perth airport charter aircraft movements	34 888	31 465	-9.8

Note: Helicopter, joyflights and sightseeing charter flights not included.

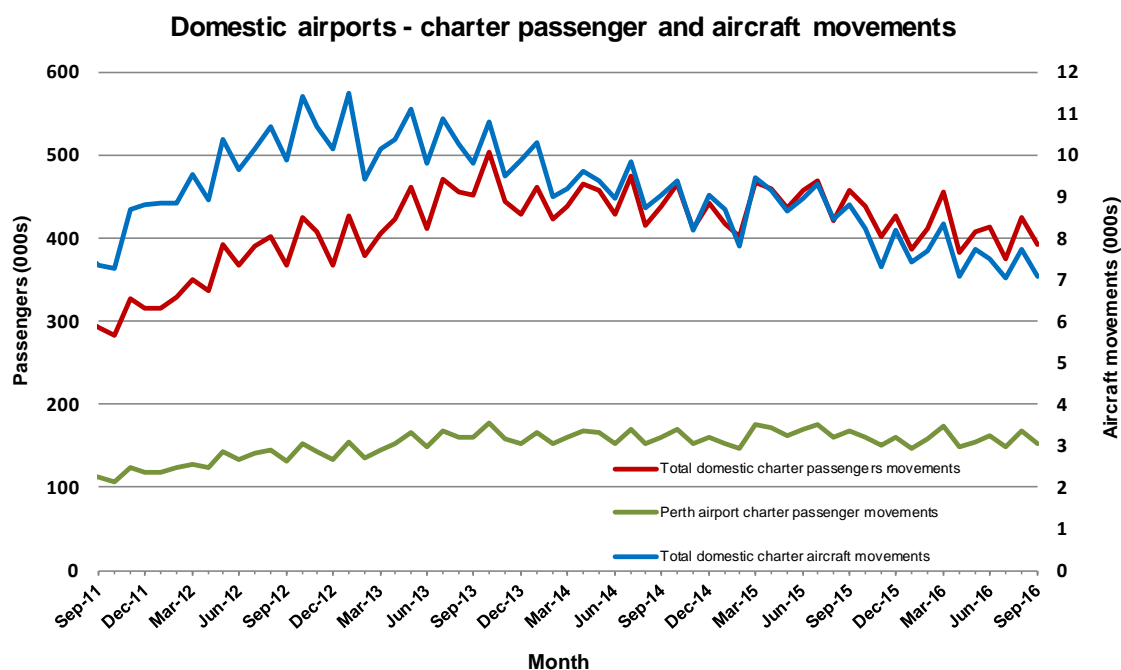
Charter passenger and aircraft movement numbers are the sum of arrivals and departures at each airport.

Table 15: Domestic airports - charter activity - monthly

	Sep 2015	Sep 2016	% Change
Total domestic charter passenger movements	456 656	391 980	-14.2
Total domestic charter aircraft movements	8 788	7 086	-19.4
Perth airport charter passenger movements	168 532	152 834	-9.3
Perth airport charter aircraft movements	2 859	2 497	-12.7

Note: Helicopter, joyflights and sightseeing charter flights not included.

Charter passenger and aircraft movement numbers are the sum of arrivals and departures at each airport.



DEFINITIONS

Aircraft Trips	The number of flight stages. A return flight counts as two aircraft trips.
Airport Movements	Airport movements (passenger and cargo) are measured once on arrival and once on departure. Each domestic trip generates two movements at airports. For example, a trip from Melbourne to Sydney will be counted twice, as a passenger departure at Melbourne and as a passenger arrival at Sydney. At the national level, the sum of all domestic airport traffic will therefore be equal to twice the number of trips undertaken.
Available Seat Kilometres (ASKs)	Calculated by multiplying the number of seats available on each flight stage, by the distance in kilometres between the ports. The distances used are Great Circle Distances.
City-Pair	The ports shown make up the city-pair route. Passenger movements shown for a city pair reflect total traffic in both directions.
Flight Stage	The operation of an aircraft from take-off to landing.
Load Factor	The total revenue passenger kilometres performed as a percentage of the total available seat kilometres.
Passengers Carried	Revenue passengers carried.
Regular Public Transport Services (RPT)	All air service operations in which aircraft are available for the transport of members of the public and are conducted in accordance with fixed schedules. It does not include charter or other non-scheduled operations.
Revenue Passengers	All passengers paying any fare. Frequent flyer redemption travellers are regarded as revenue passengers.
Revenue Passenger Kilometres (RPKs)	Calculated by multiplying the number of revenue passengers travelling on each flight stage, by the distance in kilometres between the ports. The distances used are Great Circle Distances.
Traffic on board by stages	The total of all traffic (revenue passengers) on each flight stage between two directly connected airports.
..	Data not included
NA	Not applicable