



Australian Government

Department of Infrastructure and Regional Development

Bureau of Infrastructure, Transport and Regional Economics

STATISTICAL REPORT



Aviation

Domestic aviation activity
April 2017

© Commonwealth of Australia 2017

ISSN: 1832 - 1968

Ownership of intellectual property rights in this publication

Unless otherwise noted, copyright (and any other intellectual property rights, if any) in this publication is owned by the Commonwealth of Australia (referred to below as the Commonwealth).

Disclaimer

The material contained in this publication is made available on the understanding that the Commonwealth is not providing professional advice, and that users exercise their own skill and care with respect to its use, and seek independent advice if necessary.

The Commonwealth makes no representations or warranties as to the contents or accuracy of the information contained in this publication. To the extent permitted by law, the Commonwealth disclaims liability to any person or organisation in respect of anything done, or omitted to be done, in reliance upon information contained in this publication.

Creative Commons licence

With the exception of (a) the Coat of Arms; and (b) the Department of Infrastructure and Regional Development's photos and graphics, copyright in this publication is licensed under a Creative Commons Attribution 3.0 Australia Licence.

Creative Commons Attribution 3.0 Australia Licence is a standard form licence agreement that allows you to copy, communicate and adapt this publication provided that you attribute the work to the Commonwealth and abide by the other licence terms. A summary of the licence terms is available from <http://creativecommons.org/licenses/by/3.0/au/deed.en>. The full licence terms are available from <http://creativecommons.org/licenses/by/3.0/au/legalcode>.

Use of the Coat of Arms

The Department of the Prime Minister and Cabinet sets the terms under which the Coat of Arms is used. Please refer to the Department's Commonwealth Coat of Arms and Government branding web page <http://www.dpmc.gov.au/guidelines/index.cfm#brand> and, in particular, the Guidelines on the use of the Commonwealth Coat of Arms publication.

An appropriate citation for this report is:

Bureau of Infrastructure, Transport and Regional Economics (BITRE), 2017, Domestic aviation activity, Statistical Report, BITRE, Canberra ACT.

Contact us

This publication is available in PDF format. All other rights are reserved, including in relation to any Departmental logos or trade marks which may exist. For enquiries regarding the licence and any use of this publication, please contact:

Bureau of Infrastructure, Transport and Regional Economics (BITRE)
Department of Infrastructure and Regional Development
GPO Box 501, Canberra ACT 2601, Australia
Telephone: (international) +61 2 6274 7210
Fax: (international) +61 2 6274 6855
Email: bitre@infrastructure.gov.au
Website: www.bitre.gov.au

Inquiries

Should you require additional information about the statistics contained in this publication:

Nebojsa Pavlovic

Telephone (02) 6274 6817 or Facsimile (02) 6274 7727

Electronic mail: AVSTATS@infrastructure.gov.au

Nebojsa.Pavlovic@infrastructure.gov.au

Web site: <http://www.bitre.gov.au/statistics/aviation/domestic.aspx>

FOREWORD

This report provides an overview of domestic (including charter) commercial aviation activity in Australia for the month of April 2017.

The data cover revenue passengers carried by Australian-registered operators of scheduled regular public transport services over Australian flight stages and fixed-wing charter operators. These estimates include passengers carried between domestic airports on international flights operated by these carriers. The passengers carried refer to traffic on board by stages.

Estimates of passengers and aircraft movements for charter aviation are included in this publication, where BITRE confidentiality standards are met.

Individual routes shown are restricted to those with an average exceeding 8 000 passengers per month over the previous six months where two or more airlines operate in competition. For the month of April 2017 there were 65 such routes compared to 66 published in April 2017 as the Hamilton Island – Melbourne route became non-competitive. In April 2017, Qantas and Virgin Australia temporarily suspended a number of direct flights on the Hamilton Island - Melbourne route due to the impact of cyclone Debbie.

Information on the total network for the month of April 2017 and on the Regular Public Transport (RPT) network for the month of April 2017 is presented on page 2, with estimates for the year ended April 2017 presented on page 3.

Detailed information on the 65 individual routes can be found in the RPT summary pages 4-13 of this publication.

The top ten airports in terms of RPT passenger movements are shown on page 14.

Data on domestic RPT cargo movements at the top five cargo airports are provided on page 15. The table includes cargo carried on passenger flights operated by the Qantas group (including Jetstar), Virgin Australia, Air North and Skippers as well as the cargo carried by dedicated freighter aircraft operated by Qantas Freight, Toll Priority and Virgin Australia Cargo.

The long-term trends for the top ten competitive RPT routes are presented graphically on pages 16-25.

Domestic RPT passenger movements at the top 50 regional airports are presented on pages 26-27.

Tables providing estimates of domestic charter aviation activity are shown on page 28. BITRE confidentiality standards restrict publication of detailed estimates for individual Australian airports, with the exception of Perth Airport.

A list of definitions can be found on page 29.

This report was prepared by the Aviation Statistics Section of the Bureau of Infrastructure, Transport and Regional Economics with data provided by airlines.

Estimates are included where data were not available and data presented in this publication may contain revisions to previously published data.

Where figures have been rounded, discrepancies may occur between sums of component items and totals, and in percentage changes which are derived from figures prior to rounding.

CONTENTS

Highlights	1
Total network.....	2
RPT network.....	2
Top competitive routes.....	4
Top ten airports – passenger movements.....	14
Top five airports – cargo movements.....	15
Top ten routes	16
1. Melbourne – Sydney	16
2. Brisbane – Sydney	17
3. Brisbane – Melbourne	18
4. Gold Coast – Sydney	19
5. Adelaide – Melbourne	20
6. Melbourne – Perth	21
7. Gold Coast – Melbourne	22
8. Adelaide – Sydney	23
9. Perth – Sydney	24
10. Hobart – Melbourne	25
Top fifty regional airports.....	26
Domestic charter activity.....	28
Definitions	29

This page is intentionally left blank.

HIGHLIGHTS

There were 5.12 million passengers carried on Australian domestic commercial aviation (including charter operations) in April 2017, an increase of 1.9 per cent on April 2016. For the month of April 2017 there were 54 982 aircraft trips, a decrease of 2.4 per cent compared with April 2016.

4.94 million passengers were carried on RPT flights in April 2017, an increase of 2.1 per cent on April 2016.

For the year ending April 2017 there were 59.10 million RPT passengers, an increase of 1.7 per cent on the year ending April 2016.

RPT revenue passenger kilometres (RPKs) performed were 5.81 billion for the month, up 2.6 per cent compared with April 2016. Capacity, measured by available seat kilometres (ASKs), decreased by 0.6 per cent compared with April 2016 to a total of 7.31 billion.

With RPT passenger traffic increasing and capacity falling, the industry wide load factor (RPKs/ASKs) increased from 77.1 per cent in April 2016 to 79.5 per cent in April 2017. Load factors on individual routes increased on 38 of the 65 RPT routes available for publishing.

For the month of April 2017, Melbourne – Sydney remained Australia's busiest RPT route with 727 051 passengers, an increase of 0.4 per cent compared with April 2016. It was followed by Brisbane – Sydney with 384 014 passengers (down 0.5 per cent) and Brisbane – Melbourne with 291 176 passengers (up 5.5 per cent).

The greatest percentage increase in RPT passenger numbers, compared to April 2016, was on the Cairns – Melbourne route (up 28.5 per cent). There were large increases on a number of other routes, including Melbourne – Newcastle (up 27.9 per cent), Sydney – Townsville (up 21.3 per cent) and Melbourne – Sunshine Coast (up 20.6 per cent).

Routes with traffic decreases in April 2017 compared with April 2016 included Hamilton Island – Sydney (down 65.2 per cent), Brisbane – Hamilton Island (down 45.5 per cent), Brisbane – Rockhampton (down 39.2 per cent) and Karratha – Perth (down 14.4 per cent).

In April 2017, Sydney remained Australia's busiest domestic airport with 2.24 million passenger movements, followed by Melbourne with 2.09 million passenger movements and Brisbane with 1.41 million passenger movements.

Total cargo movements at Australian airports on domestic RPT flights were 33.3 thousand tonnes in April 2017, an increase of 1.5 per cent compared to April 2016.

In April 2017 there were 2.01 million domestic passenger movements through regional airports, 2.8 per cent higher than in April 2016. Out of the top 50 regional airports, the strongest growth was at Wellcamp airport (up 24.8 per cent on April 2016), while the largest decrease was at Hamilton Island airport (down 62.3 per cent on April 2016).

Fixed-wing charter operators carried 183.62 thousand passengers in April 2017, a decrease of 3.9 per cent on April 2016. Perth airport accounted for 38.6 per cent of all charter passengers in Australia.

TOTAL NETWORK

Summary of monthly commercial aviation activity

	Apr 2016	Apr 2017	% Change
Total passengers carried (millions)	5.03	5.12	1.9
Aircraft trips (000s)	56.3	55.0	-2.4

Note: Regular Public Transport and charter aviation activity
Helicopter, joyflights and sightseeing charter flights not included.

RPT NETWORK

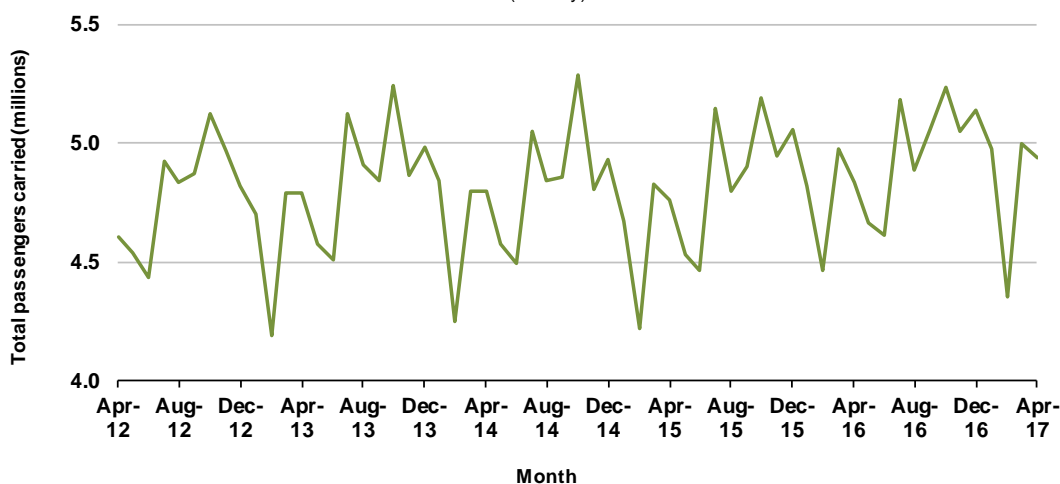
Summary of monthly RPT activity

	Apr 2016	Apr 2017	% Change
Total passengers carried (millions)	4.84	4.94	2.1
Revenue passenger kilometres (billions)	5.67	5.81	2.6
Available seats (millions)	6.38	6.34	-0.6
Available seat kilometres (billions)	7.35	7.31	-0.6
Load factor %	77.1	79.5	2.4 *
Aircraft trips (000s)	52.8	51.6	-2.3

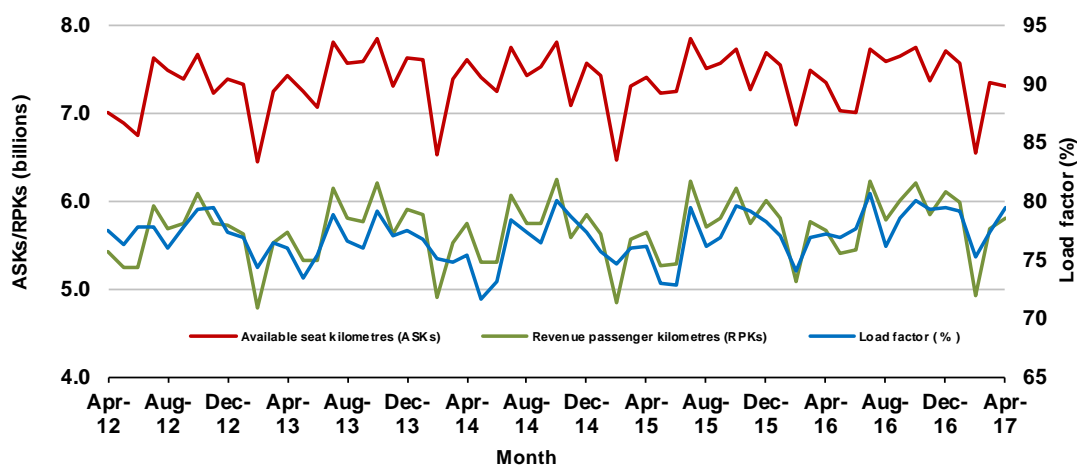
* percentage point difference

Domestic RPT passenger traffic

(monthly)



RPT Network utilisation



TOTAL NETWORK

Summary of annual commercial aviation activity

	YE Apr 2016	YE Apr 2017	% Change
Total passengers carried (millions)	60.70	61.48	1.3
Aircraft trips (000s)	687.2	680.4	-1.0

Note: Regular Public Transport and charter aviation activity
Helicopter, joyflights and sightseeing charter flights not included.

RPT NETWORK

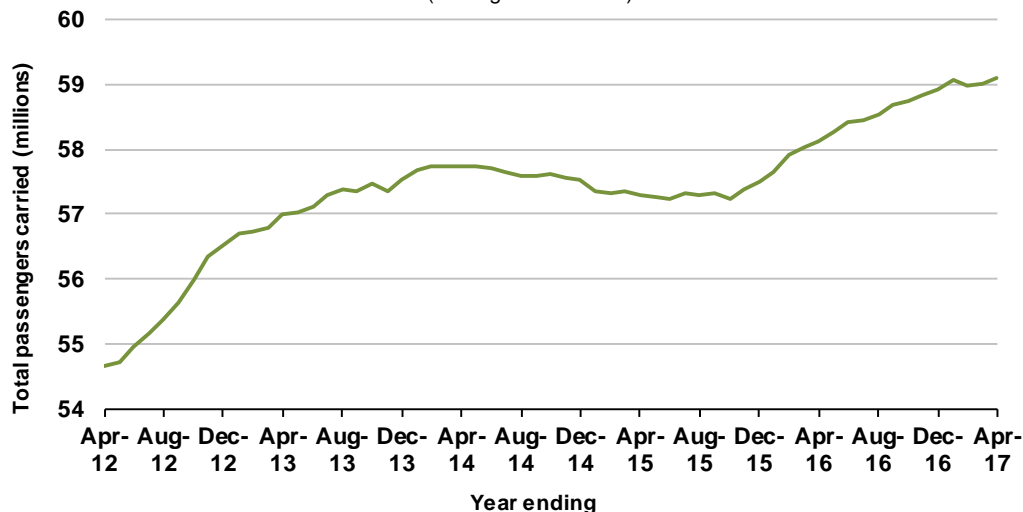
Summary of annual RPT activity

	YE Apr 2016	YE Apr 2017	% Change
Total passengers carried (millions)	58.12	59.10	1.7
Revenue passenger kilometres (billions)	68.53	69.41	1.3
Available seats (millions)	77.41	77.02	-0.5
Available seat kilometres (billions)	89.31	88.58	-0.8
Load factor %	76.7	78.4	1.6 *
Aircraft trips (000s)	638.1	636.0	-0.3

* percentage point difference

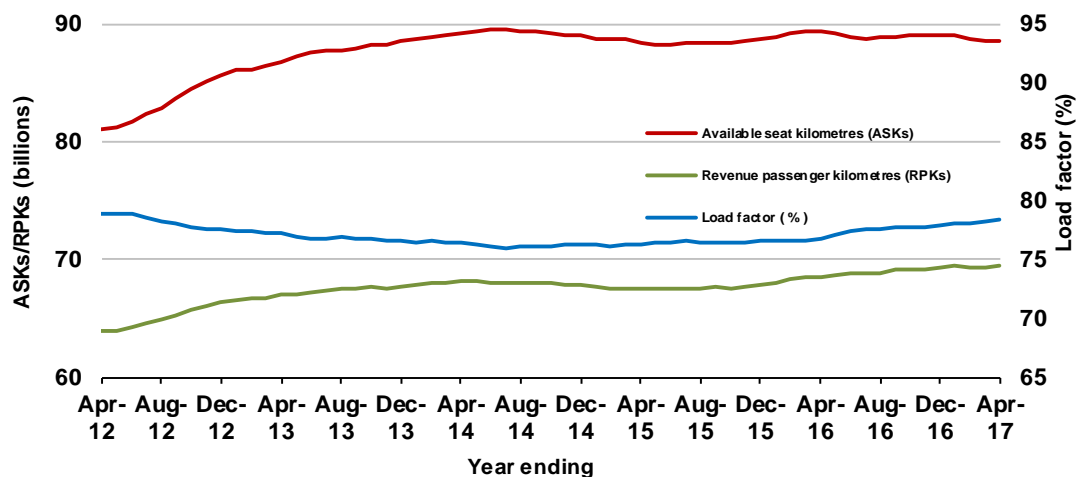
Domestic RPT passenger traffic

(moving annual totals)



RPT Network utilisation

(moving annual totals)



TOP COMPETITIVE ROUTES

Table 1: Passengers carried (000s) — annual activity

	City-Pair	YE Apr 2016	YE Apr 2017	%Change
1	Melbourne - Sydney	8 739.5	8 918.0	2.0
2	Brisbane - Sydney	4 567.4	4 673.0	2.3
3	Brisbane - Melbourne	3 401.8	3 497.4	2.8
4	Gold Coast - Sydney	2 689.4	2 698.3	0.3
5	Adelaide - Melbourne	2 341.7	2 402.9	2.6
6	Melbourne - Perth	2 129.8	2 053.2	-3.6
7	Gold Coast - Melbourne	1 872.7	1 984.4	6.0
8	Adelaide - Sydney	1 859.1	1 875.7	0.9
9	Perth - Sydney	1 760.3	1 739.5	-1.2
10	Hobart - Melbourne	1 507.0	1 593.5	5.7
11	Brisbane - Cairns	1 326.2	1 355.1	2.2
12	Cairns - Sydney	1 068.2	1 125.4	5.4
13	Canberra - Melbourne	998.8	1 056.2	5.7
14	Brisbane - Townsville	970.4	970.3	0.0
15	Brisbane - Perth	1 001.4	965.4	-3.6
16	Canberra - Sydney	954.5	950.4	-0.4
17	Launceston - Melbourne	900.9	918.2	1.9
18	Cairns - Melbourne	791.9	836.4	5.6
19	Adelaide - Brisbane	808.0	829.9	2.7
20	Brisbane - Mackay	698.9	673.6	-3.6
21	Hobart - Sydney	572.0	630.0	10.1
22	Adelaide - Perth	612.8	619.0	1.0
23	Brisbane - Newcastle	555.0	584.1	5.2
24	Brisbane - Canberra	560.2	582.9	4.1
25	Sunshine Coast - Sydney	508.4	552.8	8.7
26	Brisbane - Rockhampton	580.2	544.8	-6.1
27	Karratha - Perth	561.0	470.5	-16.1
28	Melbourne - Newcastle	441.4	467.1	5.8
29	Melbourne - Sunshine Coast	418.0	459.7	10.0
30	Brisbane - Darwin	402.0	409.8	1.9
31	Ballina - Sydney	367.9	392.6	6.7
32	Perth - Port Hedland	364.1	344.1	-5.5
33	Coffs Harbour - Sydney	337.3	341.0	1.1
34	Darwin - Sydney	320.6	320.3	-0.1
35	Brisbane - Gladstone	378.8	313.9	-17.1
36	Darwin - Melbourne	284.8	305.0	7.1
37	Newman - Perth	321.3	298.0	-7.3
38	Launceston - Sydney	289.0	292.2	1.1
39	Broome - Perth	303.0	287.0	-5.3
40	Hamilton Island - Sydney	245.6	246.3	0.3
41	Kalgoorlie - Perth	222.7	234.3	5.2
42	Albury - Sydney	220.2	224.0	1.7
43	Brisbane - Proserpine	239.7	223.4	-6.8
44	Adelaide - Gold Coast	221.0	216.8	-1.9
45	Melbourne - Mildura	200.8	206.6	2.9
46	Brisbane - Hobart	201.7	206.3	2.3
47	Brisbane - Emerald	207.3	198.5	-4.3
48	Port Macquarie - Sydney	188.8	192.0	1.7
49	Ayers Rock - Sydney	164.7	191.2	16.1
50	Dubbo - Sydney	187.6	188.2	0.3

continued

Table 1: (continued) Passengers carried (000s) — annual activity

	City-Pair	YE Apr 2016	YE Apr 2017	% Change
51	Darwin - Perth	183.8	187.5	2.0
52	Sydney - Wagga Wagga	187.9	186.7	-0.7
53	Sydney - Tamworth	150.3	178.6	NA (a)
54	Adelaide - Port Lincoln	182.8	176.0	-3.7
55	Adelaide - Canberra	169.6	175.1	3.3
56	Brisbane - Bundaberg	163.9	173.7	6.0
57	Sydney - Townsville	165.4	158.8	-4.0
58	Brisbane - Hamilton Island	138.2	144.6	4.6
59	Cairns - Townsville	113.9	139.2	NA (b)
60	Armidale - Sydney	127.5	125.7	-1.4
61	Adelaide - Alice Springs	119.1	122.5	2.9
62	Brisbane - Mount Isa	124.9	120.0	-3.9
63	Brisbane - Moranbah	128.2	117.9	-8.0
64	Alice Springs - Darwin	122.0	116.5	-4.5
65	Geraldton - Perth	117.7	114.8	-2.5
	Total domestic network	58 123.9	59 097.0	1.7

(a) Sydney - Tamworth route included from June 2015, prior data not shown.

(b) Cairns - Townsville route included from July 2015, prior data not shown.

Table 2: Passengers carried (000s) — monthly activity

	City-Pair	Apr 2016	Apr 2017	% Change
1	Melbourne - Sydney	724.2	727.1	0.4
2	Brisbane - Sydney	385.9	384.0	-0.5
3	Brisbane - Melbourne	275.9	291.2	5.5
4	Gold Coast - Sydney	226.3	234.8	3.7
5	Adelaide - Melbourne	206.6	202.7	-1.9
6	Melbourne - Perth	173.2	176.0	1.6
7	Gold Coast - Melbourne	151.9	169.9	11.8
8	Adelaide - Sydney	160.3	159.6	-0.4
9	Perth - Sydney	148.4	147.3	-0.8
10	Hobart - Melbourne	129.6	140.3	8.2
11	Brisbane - Cairns	104.6	118.0	12.8
12	Cairns - Sydney	86.8	97.0	11.7
13	Canberra - Melbourne	86.5	90.2	4.2
14	Launceston - Melbourne	81.0	81.2	0.3
15	Brisbane - Townsville	78.8	79.5	0.9
16	Brisbane - Perth	82.4	77.8	-5.5
17	Cairns - Melbourne	56.1	72.0	28.5
18	Canberra - Sydney	79.9	71.1	-11.0
19	Adelaide - Brisbane	70.0	70.9	1.3
20	Brisbane - Mackay	56.9	59.9	5.2
21	Hobart - Sydney	50.9	55.9	10.0
22	Sunshine Coast - Sydney	45.0	53.1	18.0
23	Adelaide - Perth	53.7	51.0	-5.0
24	Brisbane - Newcastle	46.6	49.7	6.8
25	Brisbane - Canberra	46.1	46.8	1.6
26	Melbourne - Sunshine Coast	36.7	44.2	20.6
27	Melbourne - Newcastle	33.2	42.4	27.9
28	Ballina - Sydney	31.8	37.7	18.7
29	Karratha - Perth	41.5	35.5	-14.4
30	Brisbane - Darwin	32.4	33.1	2.1
31	Perth - Port Hedland	27.1	29.4	8.7
32	Brisbane - Gladstone	28.1	29.2	4.0
33	Brisbane - Rockhampton	46.6	28.3	-39.2
34	Coffs Harbour - Sydney	27.8	28.0	1.1
35	Darwin - Sydney	25.8	26.3	1.9
36	Darwin - Melbourne	24.6	25.8	4.9
37	Launceston - Sydney	24.3	25.3	3.9
38	Broome - Perth	25.1	22.9	-8.8
39	Newman - Perth	24.9	21.7	-12.7
40	Albury - Sydney	19.2	19.4	1.5
41	Brisbane - Proserpine	18.2	19.4	6.1
42	Brisbane - Hobart	16.6	18.3	10.4
43	Kalgoorlie - Perth	19.0	18.2	-4.3
44	Adelaide - Gold Coast	18.5	17.5	-5.3
45	Melbourne - Mildura	17.9	17.5	-2.2
46	Ayers Rock - Sydney	15.9	16.4	2.9
47	Sydney - Townsville	13.0	15.8	21.3
48	Brisbane - Emerald	15.9	15.8	-0.5
49	Port Macquarie - Sydney	16.4	15.5	-5.8
50	Sydney - Wagga Wagga	15.9	15.4	-3.3

continued

Table 2: (continued) Passengers carried (000s) — monthly activity

	City-Pair	Apr 2016	Apr 2017	% Change
51	Sydney - Tamworth	13.8	15.2	10.3
52	Darwin - Perth	14.3	15.2	6.7
53	Dubbo - Sydney	15.2	15.0	-1.1
54	Adelaide - Canberra	14.7	14.5	-1.4
55	Adelaide - Port Lincoln	15.2	14.5	-4.4
56	Brisbane - Bundaberg	14.6	14.2	-2.7
57	Cairns - Townsville	11.5	11.2	-2.7
58	Armidale - Sydney	11.6	10.8	-6.5
59	Adelaide - Alice Springs	9.5	10.7	12.7
60	Brisbane - Mount Isa	9.5	9.5	0.1
61	Alice Springs - Darwin	9.7	9.2	-4.8
62	Geraldton - Perth	10.5	9.2	-11.9
63	Brisbane - Moranbah	9.6	9.0	-6.9
64	Hamilton Island - Sydney	22.3	7.8	-65.2
65	Brisbane - Hamilton Island	12.5	6.8	-45.5
	Total domestic network	4 837.7	4 938.6	2.1

Table 3: Available seats (000s) — monthly activity

	City-Pair	Apr 2016	Apr 2017	% Change
1	Melbourne - Sydney	883.4	852.5	-3.5
2	Brisbane - Sydney	466.4	468.7	0.5
3	Brisbane - Melbourne	356.6	362.2	1.6
4	Gold Coast - Sydney	263.3	276.1	4.9
5	Adelaide - Melbourne	249.5	250.2	0.3
6	Melbourne - Perth	218.2	203.1	-6.9
7	Gold Coast - Melbourne	195.1	199.3	2.2
8	Adelaide - Sydney	188.9	194.1	2.8
9	Perth - Sydney	178.0	173.7	-2.4
10	Hobart - Melbourne	156.9	163.7	4.3
11	Brisbane - Cairns	132.0	143.9	9.1
12	Cairns - Sydney	106.4	115.8	8.8
13	Canberra - Melbourne	124.6	135.8	9.0
14	Launceston - Melbourne	96.0	98.1	2.2
15	Brisbane - Townsville	108.6	101.9	-6.2
16	Brisbane - Perth	103.1	93.5	-9.3
17	Cairns - Melbourne	75.7	87.4	15.5
18	Canberra - Sydney	115.8	102.6	-11.4
19	Adelaide - Brisbane	91.3	92.6	1.4
20	Brisbane - Mackay	75.6	72.6	-4.0
21	Hobart - Sydney	59.3	65.4	10.4
22	Sunshine Coast - Sydney	53.3	66.1	24.1
23	Adelaide - Perth	68.7	69.1	0.5
24	Brisbane - Newcastle	60.0	65.1	8.5
25	Brisbane - Canberra	65.9	65.2	-1.1
26	Melbourne - Sunshine Coast	46.6	54.7	17.2
27	Melbourne - Newcastle	39.6	54.0	36.5
28	Ballina - Sydney	36.5	45.4	24.4
29	Karratha - Perth	69.6	56.0	-19.6
30	Brisbane - Darwin	42.7	42.5	-0.3
31	Perth - Port Hedland	53.2	44.0	-17.2
32	Brisbane - Gladstone	50.0	37.0	-26.0
33	Brisbane - Rockhampton	66.0	33.5	-49.3
34	Coffs Harbour - Sydney	36.3	36.5	0.5
35	Darwin - Sydney	36.6	35.9	-1.9
36	Darwin - Melbourne	31.6	31.7	0.6
37	Launceston - Sydney	26.5	29.8	12.4
38	Broome - Perth	36.1	31.4	-12.9
39	Newman - Perth	51.0	42.0	-17.7
40	Albury - Sydney	29.0	28.1	-3.1
41	Brisbane - Proserpine	20.9	28.8	37.8
42	Brisbane - Hobart	19.4	21.4	10.7
43	Kalgoorlie - Perth	32.1	31.5	-1.7
44	Adelaide - Gold Coast	24.1	22.3	-7.5
45	Melbourne - Mildura	26.0	26.5	1.7
46	Ayers Rock - Sydney	19.7	21.2	7.4
47	Sydney - Townsville	17.6	19.7	11.8
48	Brisbane - Emerald	30.6	25.1	-18.0
49	Port Macquarie - Sydney	22.5	21.6	-4.0
50	Sydney - Wagga Wagga	24.8	24.0	-3.4

continued

Table 3: (continued) Available seats (000s) — monthly activity

	City-Pair	Apr 2016	Apr 2017	% Change
51	Sydney - Tamworth	21.7	24.2	11.8
52	Darwin - Perth	19.7	20.7	5.3
53	Dubbo - Sydney	23.9	23.9	-0.2
54	Adelaide - Canberra	21.6	21.2	-1.9
55	Adelaide - Port Lincoln	24.0	23.0	-4.2
56	Brisbane - Bundaberg	20.7	18.8	-9.3
57	Cairns - Townsville	24.3	22.8	-6.0
58	Armidale - Sydney	16.9	15.4	-8.8
59	Adelaide - Alice Springs	14.4	14.8	2.8
60	Brisbane - Mount Isa	19.3	14.8	-23.4
61	Alice Springs - Darwin	19.2	18.3	-4.7
62	Geraldton - Perth	20.7	18.1	-12.6
63	Brisbane - Moranbah	22.4	16.9	-24.2
64	Hamilton Island - Sydney	26.8	18.5	-31.0
65	Brisbane - Hamilton Island	16.2	15.5	-4.0
	Total domestic network	6 375.2	6 339.3	-0.6

Table 4: Load factors (%) — monthly activity

	City-Pair	Apr 2016	Apr 2017	% Point diff
1	Melbourne - Sydney	82.0	85.3	3.3
2	Brisbane - Sydney	82.7	81.9	-0.8
3	Brisbane - Melbourne	77.4	80.4	3.0
4	Gold Coast - Sydney	85.9	85.0	-0.9
5	Adelaide - Melbourne	82.8	81.0	-1.8
6	Melbourne - Perth	79.4	86.6	7.2
7	Gold Coast - Melbourne	77.9	85.2	7.3
8	Adelaide - Sydney	84.8	82.2	-2.6
9	Perth - Sydney	83.4	84.8	1.4
10	Hobart - Melbourne	82.6	85.7	3.1
11	Brisbane - Cairns	79.3	82.0	2.7
12	Cairns - Sydney	81.6	83.8	2.2
13	Canberra - Melbourne	69.4	66.4	-3.0
14	Launceston - Melbourne	84.4	82.8	-1.6
15	Brisbane - Townsville	72.6	78.1	5.5
16	Brisbane - Perth	79.9	83.2	3.3
17	Cairns - Melbourne	74.1	82.4	8.3
18	Canberra - Sydney	69.0	69.3	0.3
19	Adelaide - Brisbane	76.7	76.6	-0.1
20	Brisbane - Mackay	75.2	82.5	7.3
21	Hobart - Sydney	85.8	85.5	-0.3
22	Sunshine Coast - Sydney	84.6	80.4	-4.2
23	Adelaide - Perth	78.2	73.9	-4.3
24	Brisbane - Newcastle	77.6	76.4	-1.2
25	Brisbane - Canberra	69.9	71.8	1.9
26	Melbourne - Sunshine Coast	78.7	80.9	2.2
27	Melbourne - Newcastle	83.8	78.5	-5.3
28	Ballina - Sydney	86.9	83.0	-3.9
29	Karratha - Perth	59.6	63.4	3.8
30	Brisbane - Darwin	76.0	77.9	1.9
31	Perth - Port Hedland	50.9	66.8	15.9
32	Brisbane - Gladstone	56.2	79.0	22.8
33	Brisbane - Rockhampton	70.6	84.7	14.1
34	Coffs Harbour - Sydney	76.5	76.9	0.4
35	Darwin - Sydney	70.5	73.2	2.7
36	Darwin - Melbourne	78.0	81.4	3.4
37	Launceston - Sydney	91.7	84.8	-6.9
38	Broome - Perth	69.5	72.8	3.3
39	Newman - Perth	48.8	51.8	3.0
40	Albury - Sydney	66.1	69.2	3.1
41	Brisbane - Proserpine	87.4	67.3	-20.1
42	Brisbane - Hobart	85.8	85.6	-0.2
43	Kalgoorlie - Perth	59.3	57.7	-1.6
44	Adelaide - Gold Coast	76.9	78.7	1.8
45	Melbourne - Mildura	68.7	66.0	-2.7
46	Ayers Rock - Sydney	80.8	77.5	-3.3
47	Sydney - Townsville	73.9	80.1	6.2
48	Brisbane - Emerald	51.9	63.0	11.1
49	Port Macquarie - Sydney	72.9	71.5	-1.4
50	Sydney - Wagga Wagga	64.1	64.1	0.0

continued

Table 4: (continued) Load factors (%) — monthly activity

	City-Pair	Apr 2016	Apr 2017	% Point diff
51	Sydney - Tamworth	63.7	62.9	-0.8
52	Darwin - Perth	72.5	73.4	0.9
53	Dubbo - Sydney	63.5	63.0	-0.5
54	Adelaide - Canberra	68.3	68.7	0.4
55	Adelaide - Port Lincoln	63.2	63.1	-0.1
56	Brisbane - Bundaberg	70.4	75.5	5.1
57	Cairns - Townsville	47.5	49.2	1.7
58	Armidale - Sydney	68.5	70.2	1.7
59	Adelaide - Alice Springs	65.9	72.3	6.4
60	Brisbane - Mount Isa	49.1	64.3	15.2
61	Alice Springs - Darwin	50.5	50.4	-0.1
62	Geraldton - Perth	50.5	50.9	0.4
63	Brisbane - Moranbah	43.1	53.0	9.9
64	Hamilton Island - Sydney	83.1	41.9	-41.2
65	Brisbane - Hamilton Island	77.6	44.0	-33.6
	Total domestic network	77.1	79.5	2.4

Table 5: Aircraft trips ^(a) — monthly activity

	City-Pair	Apr 2016	Apr 2017	% Change
1	Melbourne - Sydney	4 877	4 732	-3.0
2	Brisbane - Sydney	2 892	2 883	-0.3
3	Brisbane - Melbourne	2 143	2 128	-0.7
4	Gold Coast - Sydney	1 555	1 579	1.5
5	Adelaide - Melbourne	1 578	1 561	-1.1
6	Melbourne - Perth	979	912	-6.8
7	Gold Coast - Melbourne	1 043	1 086	4.1
8	Adelaide - Sydney	1 166	1 163	-0.3
9	Perth - Sydney	746	757	1.5
10	Hobart - Melbourne	1 004	1 013	0.9
11	Brisbane - Cairns	814	884	8.6
12	Cairns - Sydney	623	638	2.4
13	Canberra - Melbourne	927	902	-2.7
14	Launceston - Melbourne	724	735	1.5
15	Brisbane - Townsville	716	718	0.3
16	Brisbane - Perth	478	469	-1.9
17	Cairns - Melbourne	404	452	11.9
18	Canberra - Sydney	1 469	1 235	-15.9
19	Adelaide - Brisbane	555	560	0.9
20	Brisbane - Mackay	628	616	-1.9
21	Hobart - Sydney	380	411	8.2
22	Sunshine Coast - Sydney	318	399	25.5
23	Adelaide - Perth	478	446	-6.7
24	Brisbane - Newcastle	494	507	2.6
25	Brisbane - Canberra	486	488	0.4
26	Melbourne - Sunshine Coast	262	308	17.6
27	Melbourne - Newcastle	226	302	33.6
28	Ballina - Sydney	249	301	20.9
29	Karratha - Perth	574	501	-12.7
30	Brisbane - Darwin	261	255	-2.3
31	Perth - Port Hedland	384	380	-1.0
32	Brisbane - Gladstone	631	484	-23.3
33	Brisbane - Rockhampton	769	425	-44.7
34	Coffs Harbour - Sydney	437	418	-4.3
35	Darwin - Sydney	219	213	-2.7
36	Darwin - Melbourne	181	180	-0.6
37	Launceston - Sydney	154	173	12.3
38	Broome - Perth	294	268	-8.8
39	Newman - Perth	362	307	-15.2
40	Albury - Sydney	522	506	-3.1
41	Brisbane - Proserpine	118	162	37.3
42	Brisbane - Hobart	118	122	3.4
43	Kalgoorlie - Perth	281	271	-3.6
44	Adelaide - Gold Coast	136	126	-7.4
45	Melbourne - Mildura	404	389	-3.7
46	Ayers Rock - Sydney	120	120	0.0
47	Sydney - Townsville	116	118	1.7
48	Brisbane - Emerald	422	339	-19.7
49	Port Macquarie - Sydney	384	366	-4.7
50	Sydney - Wagga Wagga	483	454	-6.0

continued

Table 5: (continued) Aircraft trips ^(a) — monthly activity

	City-Pair	Apr 2016	Apr 2017	% Change
51	Sydney - Tamworth	348	382	9.8
52	Darwin - Perth	131	124	-5.3
53	Dubbo - Sydney	533	517	-3.0
54	Adelaide - Canberra	144	128	-11.1
55	Adelaide - Port Lincoln	618	590	-4.5
56	Brisbane - Bundaberg	321	318	-0.9
57	Cairns - Townsville	404	367	-9.2
58	Armidale - Sydney	398	360	-9.5
59	Adelaide - Alice Springs	92	93	1.1
60	Brisbane - Mount Isa	156	144	-7.7
61	Alice Springs - Darwin	156	149	-4.5
62	Geraldton - Perth	207	181	-12.6
63	Brisbane - Moranbah	311	245	-21.2
64	Hamilton Island - Sydney	158	109	-31.0
65	Brisbane - Hamilton Island	122	117	-4.1
	Total domestic network	52 779	51 561	-2.3

(a) Includes RPT Cargo flights.

TOP TEN AIRPORTS – PASSENGER MOVEMENTS

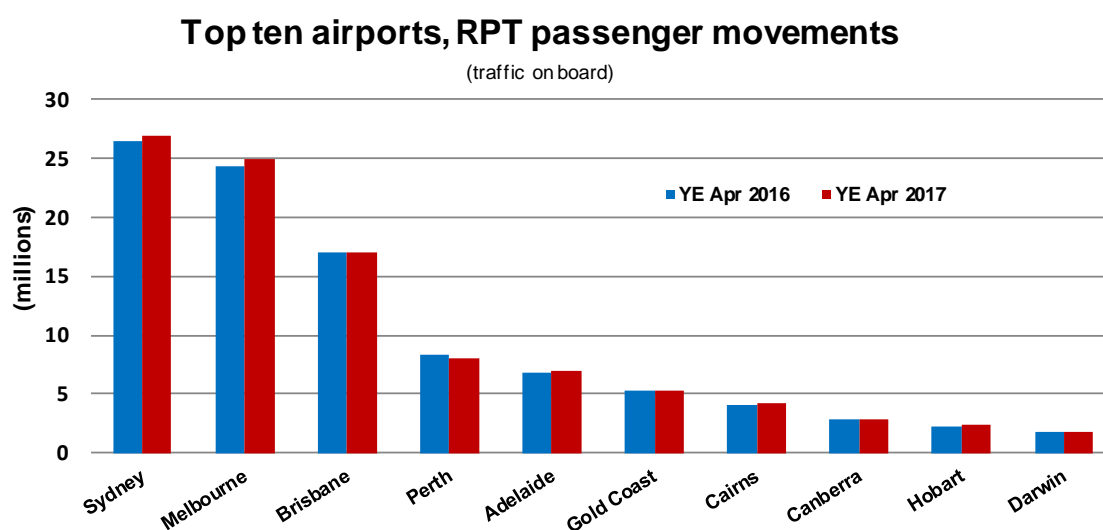
Table 6: Top ten airports, RPT passenger movements (000s) - annual activity

Airport	YE Apr 2016	YE Apr 2017	% Change	% of Total
1 Sydney	26 433.4	26 959.8	2.0	22.8
2 Melbourne	24 324.7	24 919.4	2.4	21.1
3 Brisbane	16 936.7	17 073.5	0.8	14.4
4 Perth	8 316.9	8 045.0	-3.3	6.8
5 Adelaide	6 874.0	7 028.5	2.2	5.9
6 Gold Coast	5 222.0	5 337.8	2.2	4.5
7 Cairns	4 104.5	4 283.6	4.4	3.6
8 Canberra	2 819.6	2 901.0	2.9	2.5
9 Hobart	2 281.3	2 430.0	6.5	2.1
10 Darwin	1 777.1	1 809.6	1.8	1.5
Total top ten airports	99 090.2	100 788.3	1.7	85.3
Total domestic network	116 247.8	118 194.0	1.7	100.0

Table 7: Top ten airports, RPT passenger movements (000s) - monthly activity

Airport	Apr 2016	Apr 2017	% Change	% of Total
1 Sydney	2 227.0	2 243.1	0.7	22.7
2 Melbourne	2 013.1	2 093.6	4.0	21.2
3 Brisbane	1 388.6	1 408.0	1.4	14.3
4 Perth	683.4	669.8	-2.0	6.8
5 Adelaide	594.2	591.1	-0.5	6.0
6 Gold Coast	433.6	463.9	7.0	4.7
7 Cairns	323.6	365.6	13.0	3.7
8 Canberra	239.2	236.2	-1.3	2.4
9 Hobart	197.1	214.5	8.9	2.2
10 Darwin	142.9	143.3	0.2	1.5
Total top ten airports	8 242.7	8 429.0	2.3	85.3
Total domestic network	9 675.4	9 877.3	2.1	100.0

Note: Airport passenger movement numbers are the sum of passenger arrivals and departures at each airport.



TOP FIVE AIRPORTS – CARGO MOVEMENTS

Table 8: Top five airports, domestic RPT cargo movements (000s tonnes) - annual activity

Airport	YE Apr 2016	YE Apr 2017	% Change	% of Total
1 Melbourne	107.1	126.3	17.9	28.6
2 Sydney	96.0	105.0	9.3	23.8
3 Brisbane	56.3	66.6	18.3	15.1
4 Perth	52.3	60.6	15.9	13.7
5 Adelaide	22.6	25.3	11.9	5.7
Total top five airports	334.3	383.8	14.8	86.9
Total domestic network	381.8	441.9	15.7	100.0

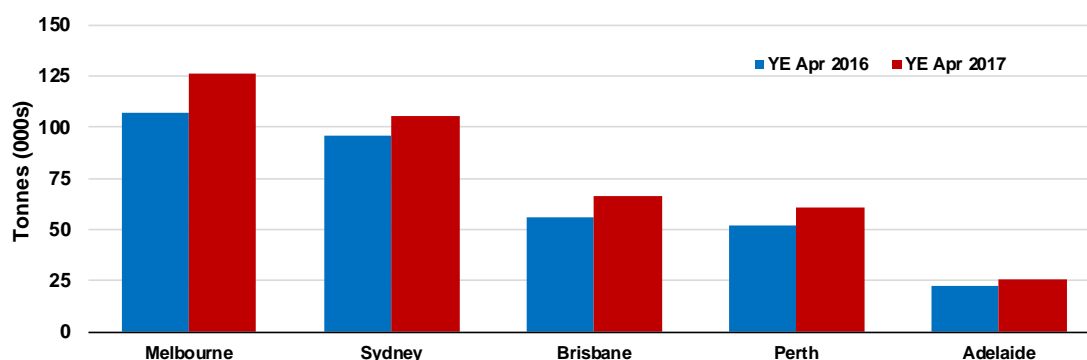
Table 9: Top five airports, domestic RPT cargo movements (000s tonnes) - monthly activity

Airport	Apr 2016	Apr 2017	% Change	% of Total
1 Melbourne	9.0	9.4	4.5	28.3
2 Sydney	8.0	7.9	-1.3	23.6
3 Perth	5.1	5.0	-1.5	15.0
4 Brisbane	4.6	4.9	5.8	14.6
5 Adelaide	1.9	1.9	3.7	5.8
Total top five airports	28.5	29.1	2.0	87.4
Total domestic network	32.8	33.3	1.5	100.0

Note: Airport cargo tonnes are the sum of cargo tonnes on arrivals and departures at each airport.

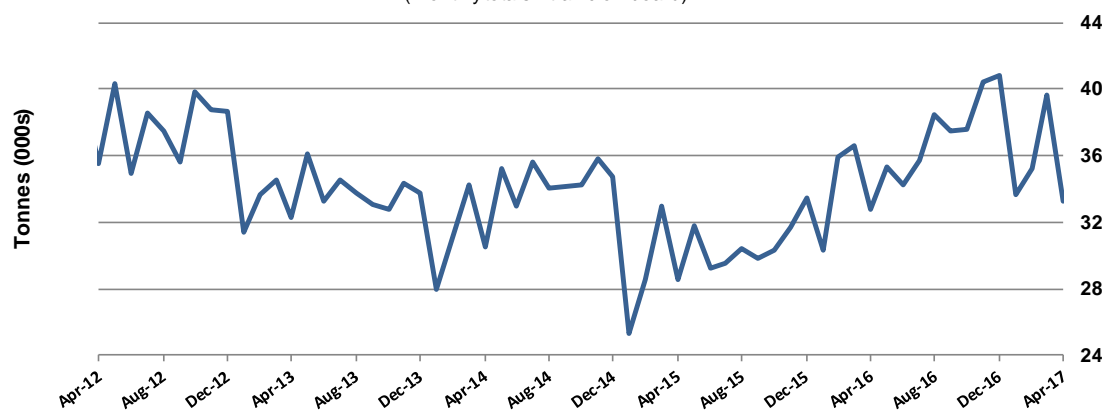
Top five airports, cargo movements

(Domestic cargo traffic - traffic on board)



Total domestic network - cargo movement

(monthly totals - traffic on board)



Note: Airport cargo tonnes are the sum of cargo tonnes on arrivals and departures at each airport.

TOP TEN ROUTES

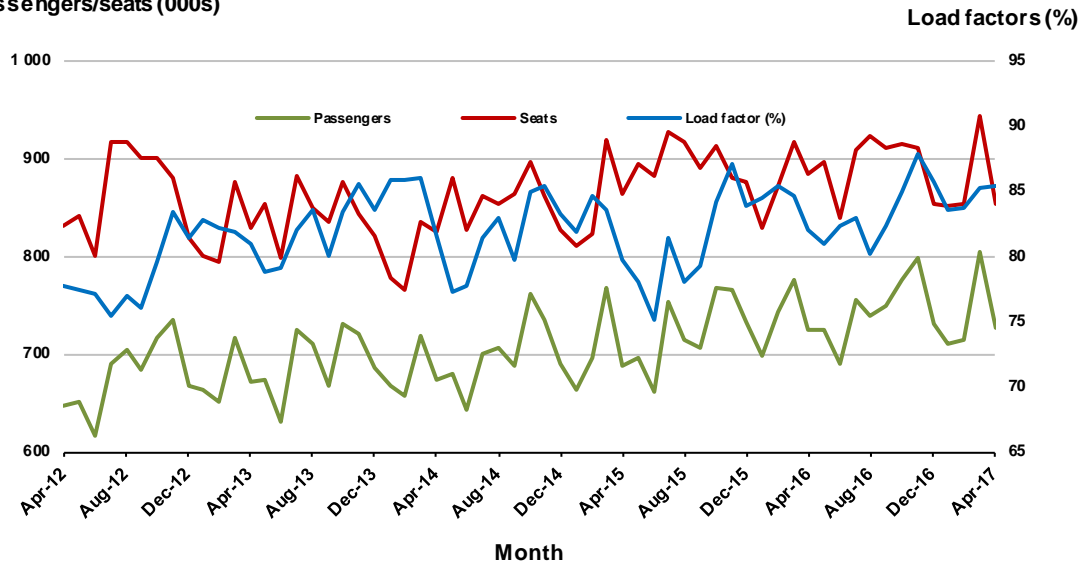
1. Melbourne - Sydney

Monthly data

	Apr 2016	Apr 2017	% Change
Passengers carried (000s)	724.2	727.1	0.4
Seats (000s)	883.4	852.5	-3.5
Load factor %	82.0	85.3	3.3 *
Aircraft trips	4 877	4 732	-3.0

* percentage point difference

Passengers/seats (000s)

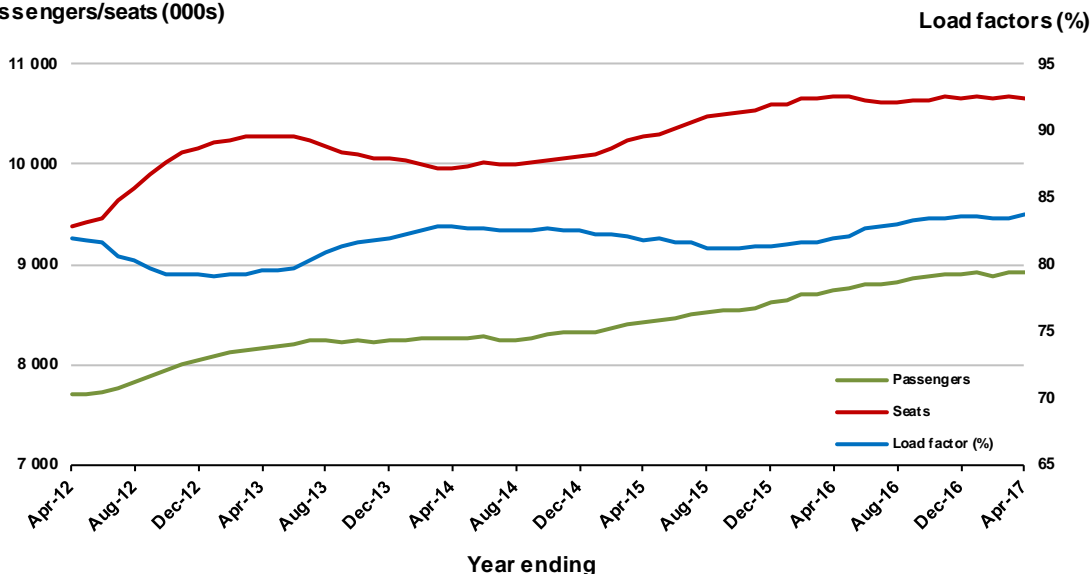


Moving annual data

	YE Apr 2016	YE Apr 2017	% Change
Passengers carried (000s)	8 739.5	8 918.0	2.0
Seats (000s)	10 673.2	10 651.0	-0.2
Load factor %	81.9	83.7	1.8 *
Aircraft trips	59 992	59 218	-1.3

* percentage point difference

Passengers/seats (000s)

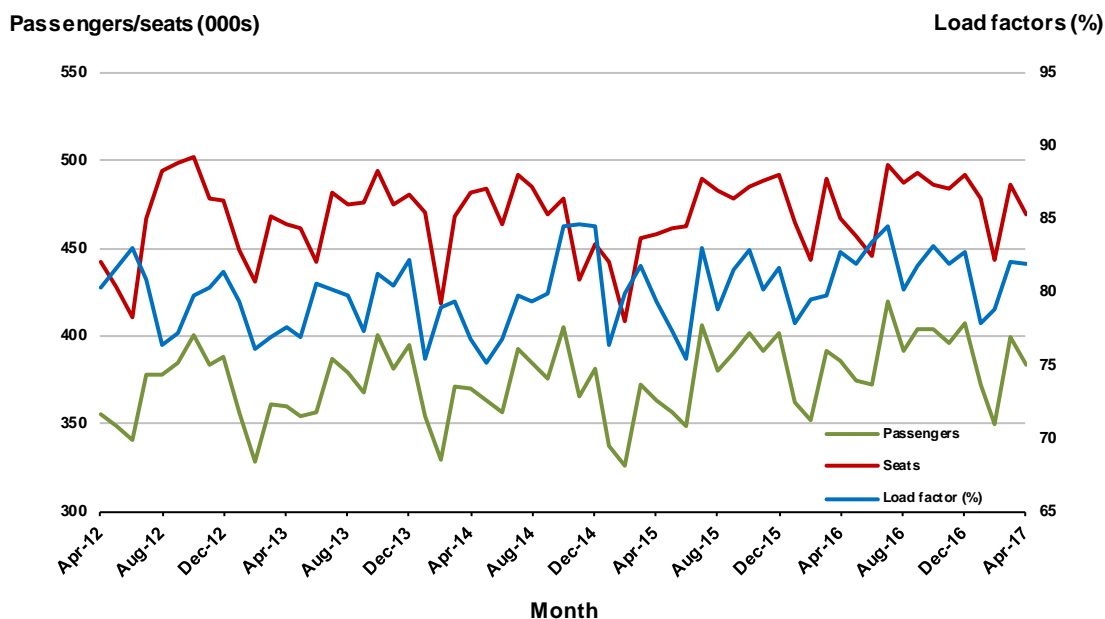


2. Brisbane - Sydney

Monthly data

	Apr 2016	Apr 2017	% Change
Passengers carried (000s)	385.9	384.0	-0.5
Seats (000s)	466.4	468.7	0.5
Load factor %	82.7	81.9	-0.8 *
Aircraft trips	2 892	2 883	-0.3

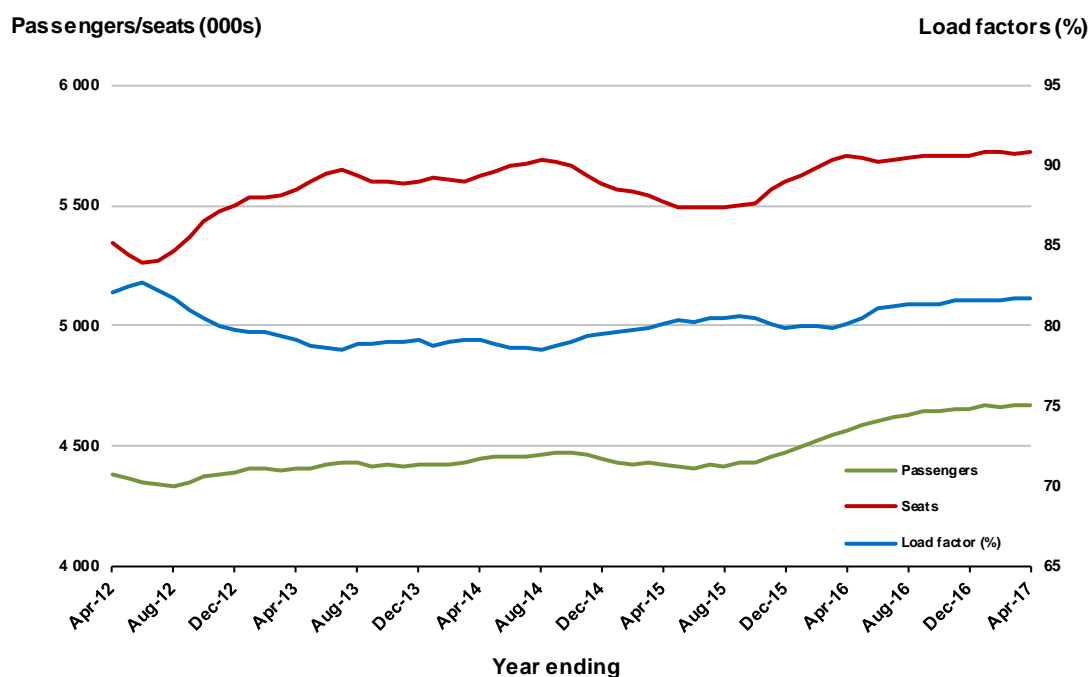
* percentage point difference



Moving annual data

	YE Apr 2016	YE Apr 2017	% Change
Passengers carried (000s)	4 567.4	4 673.0	2.3
Seats (000s)	5 702.7	5 719.8	0.3
Load factor %	80.1	81.7	1.6 *
Aircraft trips	35 860	35 416	-1.2

* percentage point difference

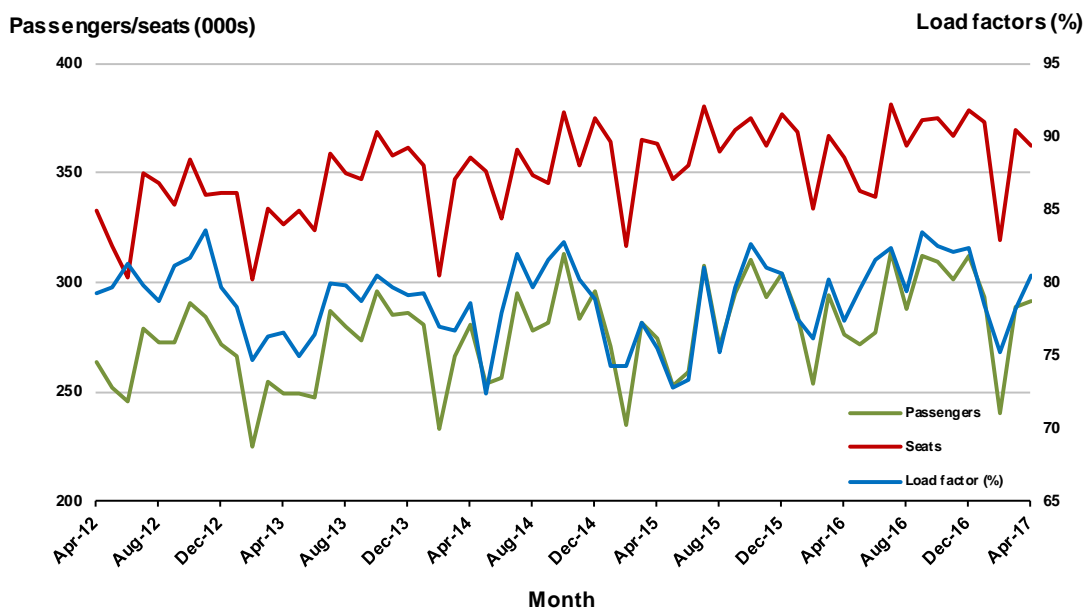


3. Brisbane - Melbourne

Monthly data

	Apr 2016	Apr 2017	% Change
Passengers carried (000s)	275.9	291.2	5.5
Seats (000s)	356.6	362.2	1.6
Load factor %	77.4	80.4	3.0 *
Aircraft trips	2 143	2 128	-0.7

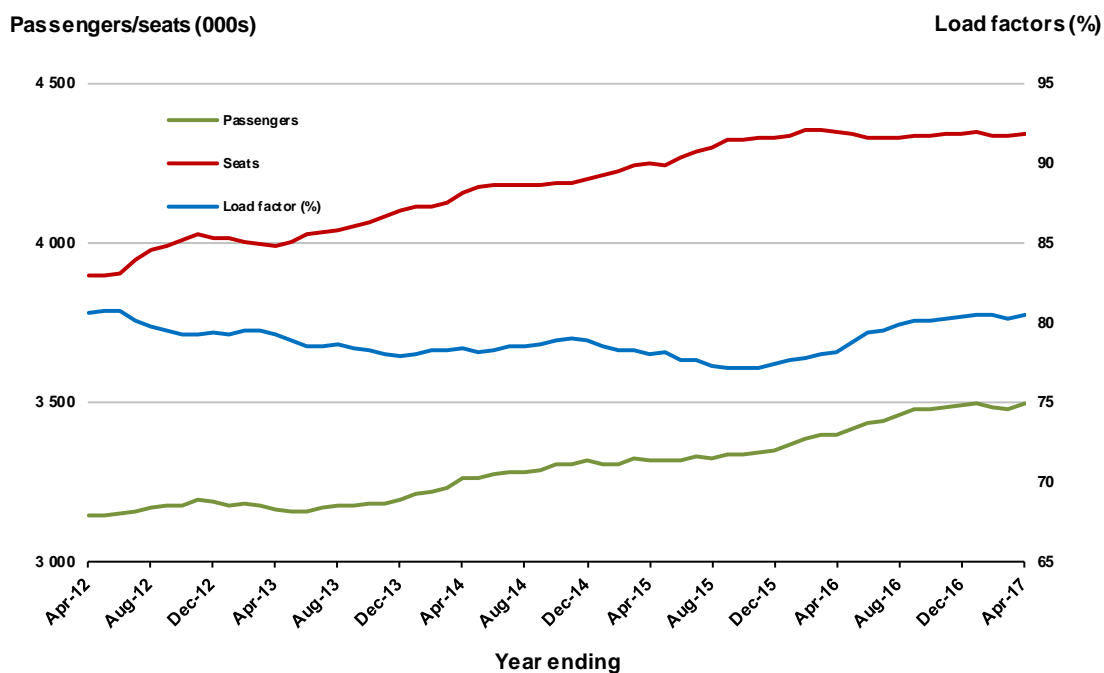
* percentage point difference



Moving annual data

	YE Apr 2016	YE Apr 2017	% Change
Passengers carried (000s)	3 401.8	3 497.4	2.8
Seats (000s)	4 349.6	4 342.7	-0.2
Load factor %	78.2	80.5	2.3 *
Aircraft trips	26 175	25 760	-1.6

* percentage point difference



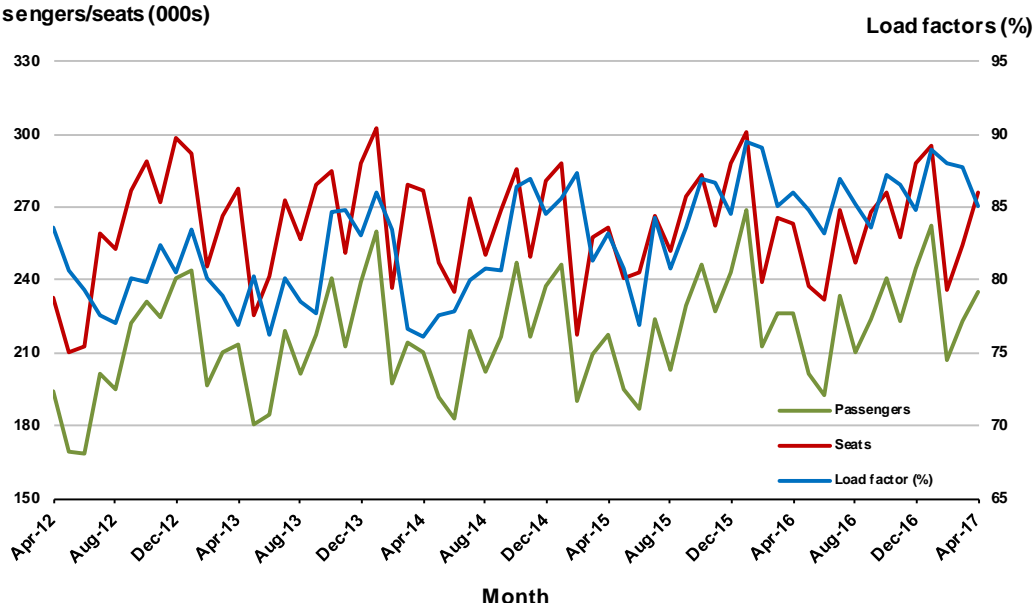
4. Gold Coast - Sydney

Monthly data

	Apr 2016	Apr 2017	% Change
Passengers carried (000s)	226.3	234.8	3.7
Seats (000s)	263.3	276.1	4.9
Load factor %	85.9	85.0	-0.9 *
Aircraft trips	1 555	1 579	1.5

* percentage point difference

Passengers/seats (000s)

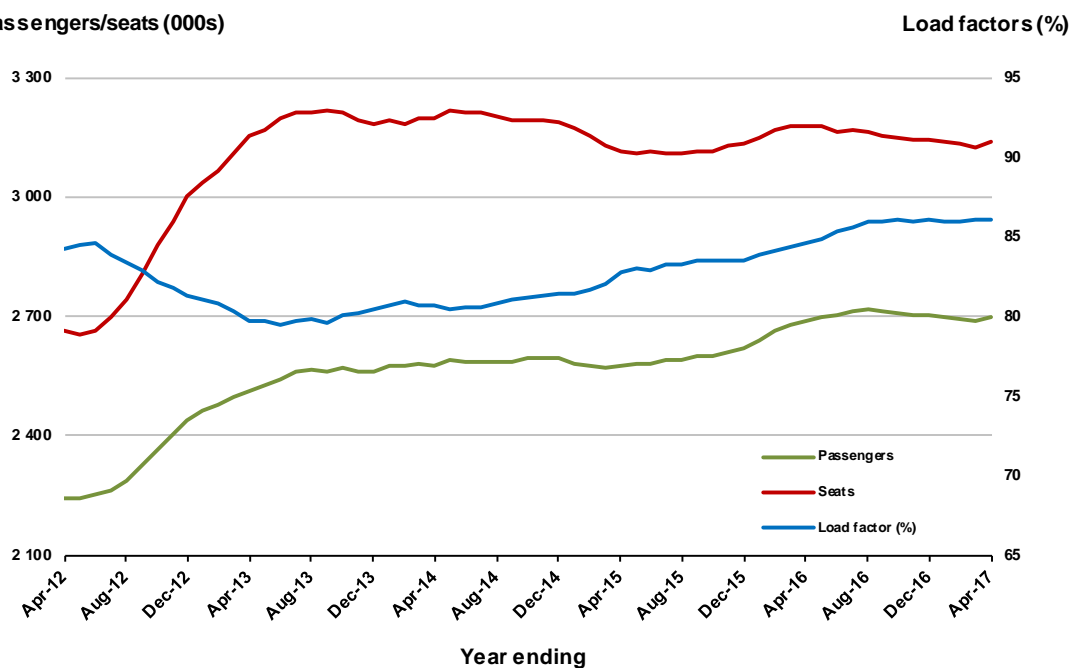


Moving annual data

	YE Apr 2016	YE Apr 2017	% Change
Passengers carried (000s)	2 689.4	2 698.3	0.3
Seats (000s)	3 178.8	3 136.3	-1.3
Load factor %	84.6	86.0	1.4 *
Aircraft trips	18 456	18 268	-1.0

* percentage point difference

Passengers/seats (000s)



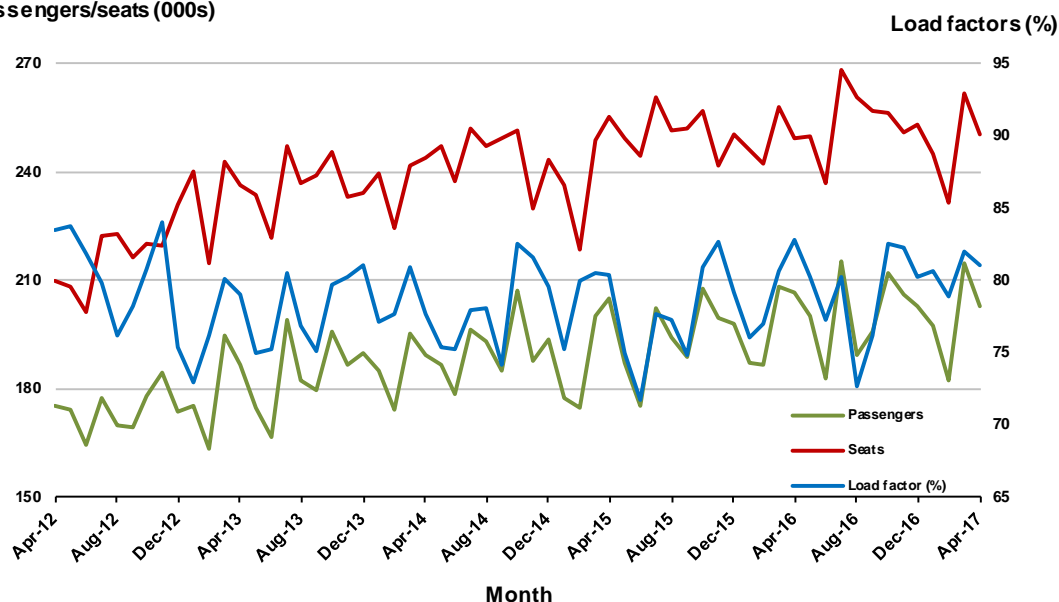
5. Adelaide - Melbourne

Monthly data

	Apr 2016	Apr 2017	% Change
Passengers carried (000s)	206.6	202.7	-1.9
Seats (000s)	249.5	250.2	0.3
Load factor %	82.8	81.0	-1.8 *
Aircraft trips	1 578	1 561	-1.1

* percentage point difference

Passengers/seats (000s)

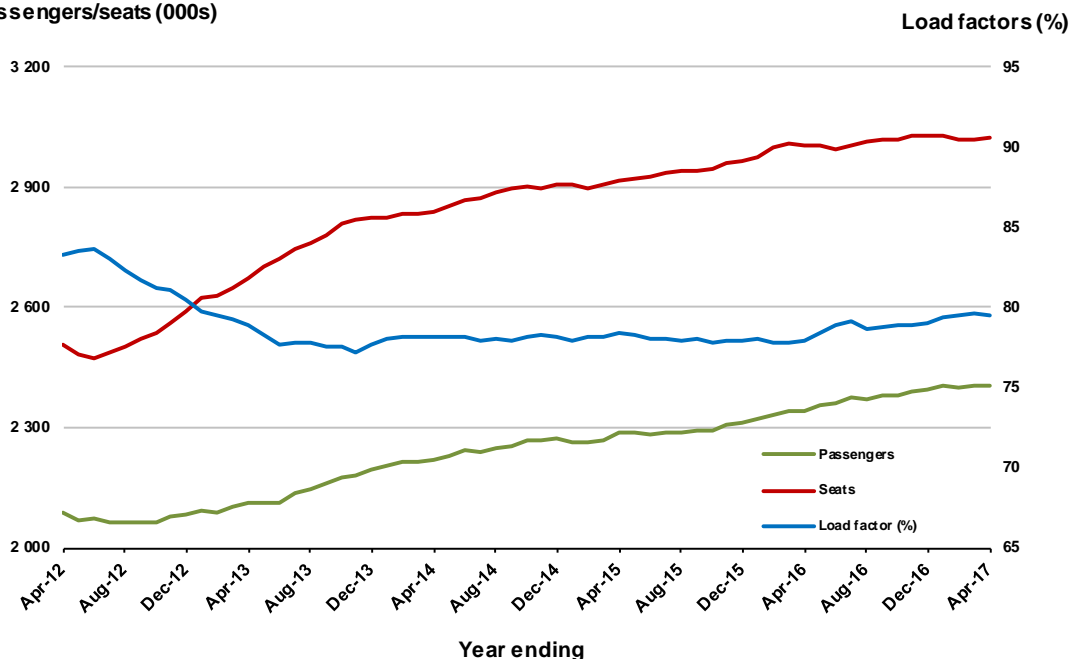


Moving annual data

	YE Apr 2016	YE Apr 2017	% Change
Passengers carried (000s)	2 341.7	2 402.9	2.6
Seats (000s)	3 002.8	3 021.6	0.6
Load factor %	78.0	79.5	1.5 *
Aircraft trips	19 286	19 169	-0.6

* percentage point difference

Passengers/seats (000s)



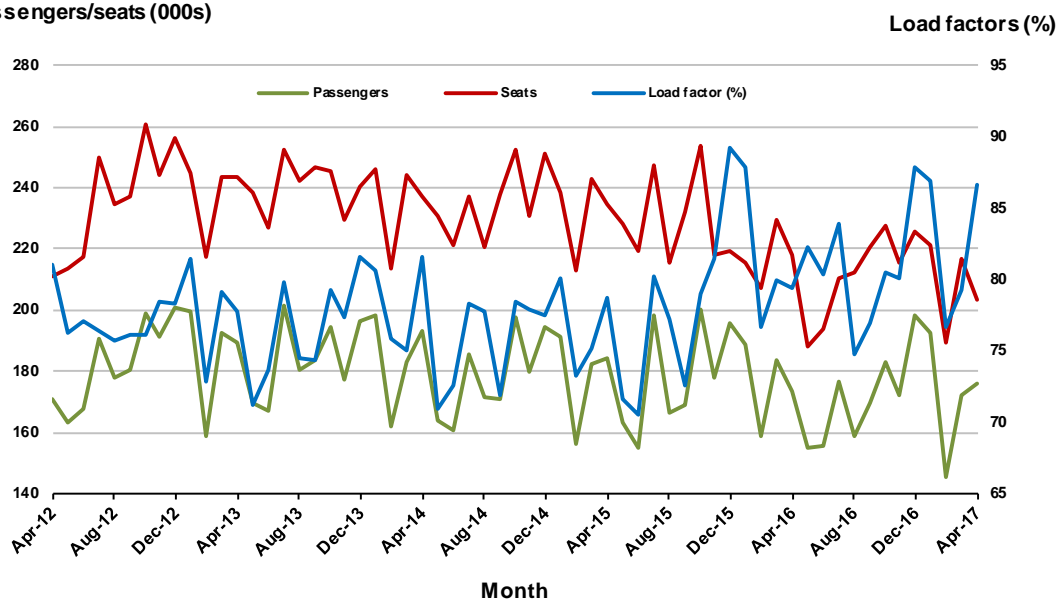
6. Melbourne - Perth

Monthly data

	Apr 2016	Apr 2017	% Change
Passengers carried (000s)	173.2	176.0	1.6
Seats (000s)	218.2	203.1	-6.9
Load factor %	79.4	86.6	7.2 *
Aircraft trips	979	912	-6.8

* percentage point difference

Passengers/seats (000s)

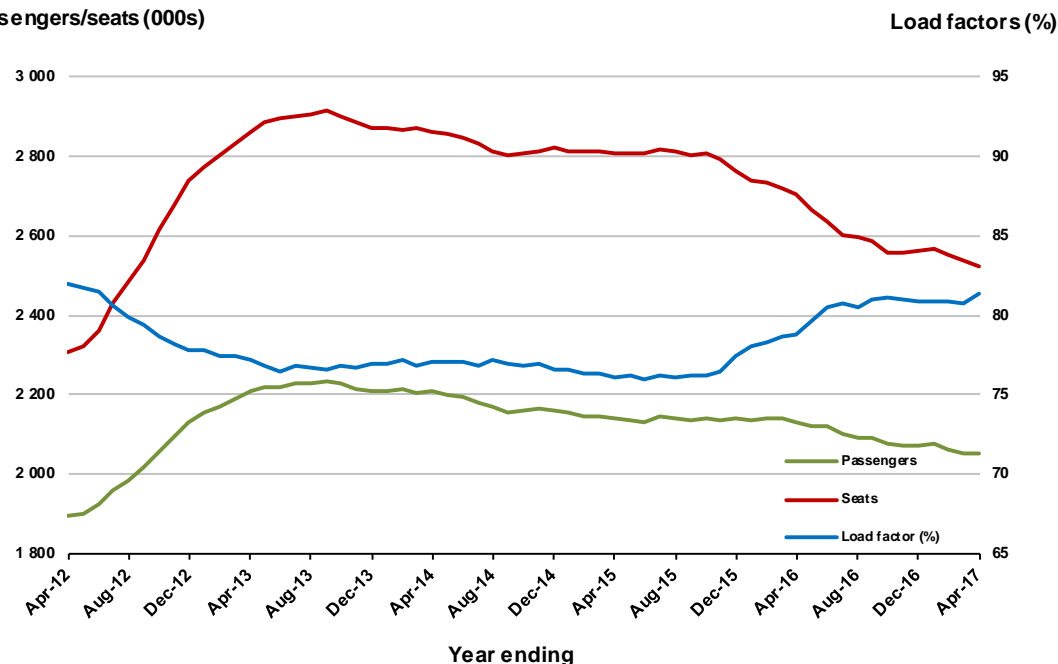


Moving annual data

	YE Apr 2016	YE Apr 2017	% Change
Passengers carried (000s)	2 129.8	2 053.2	-3.6
Seats (000s)	2 704.1	2 523.3	-6.7
Load factor %	78.8	81.4	2.6 *
Aircraft trips	12 083	11 423	-5.5

* percentage point difference

Passengers/seats (000s)



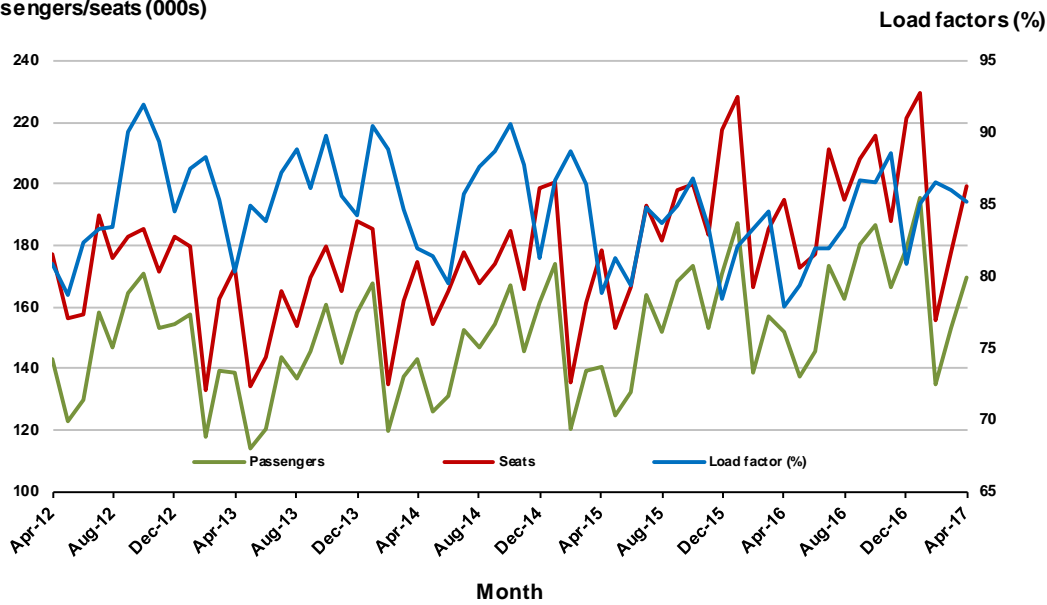
7. Gold Coast - Melbourne

Monthly data

	Apr 2016	Apr 2017	% Change
Passengers carried (000s)	151.9	169.9	11.8
Seats (000s)	195.1	199.3	2.2
Load factor %	77.9	85.2	7.3 *
Aircraft trips	1 043	1 086	4.1

* percentage point difference

Passengers/seats (000s)

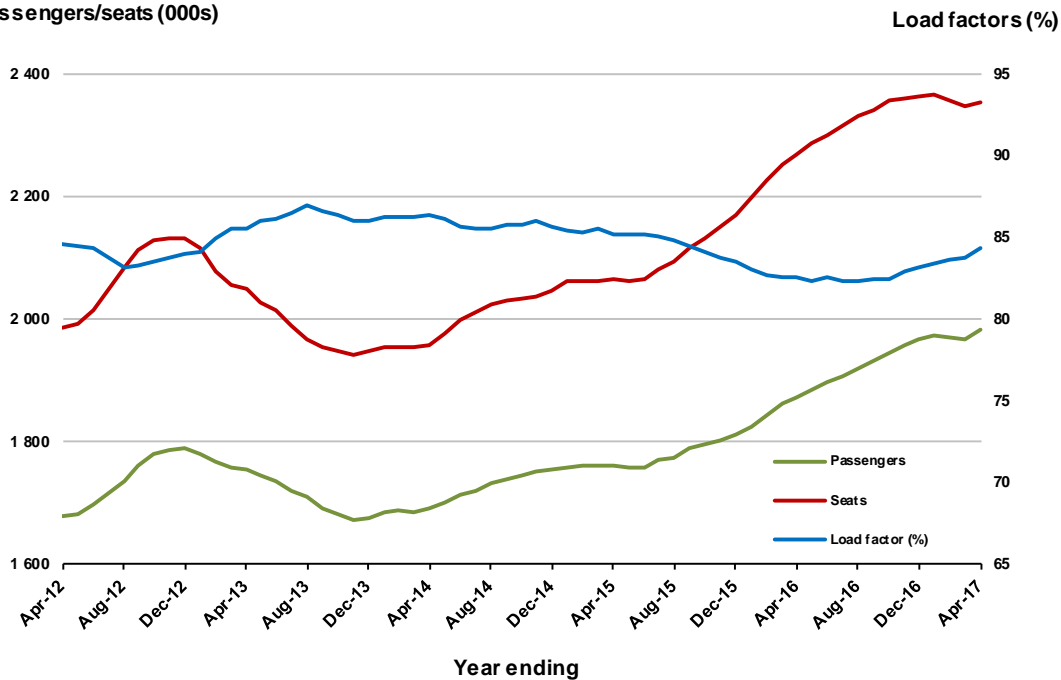


Moving annual data

	YE Apr 2016	YE Apr 2017	% Change
Passengers carried (000s)	1 872.7	1 984.4	6.0
Seats (000s)	2 269.0	2 352.6	3.7
Load factor %	82.5	84.3	1.8 *
Aircraft trips	12 181	12 594	3.4

* percentage point difference

Passengers/seats (000s)

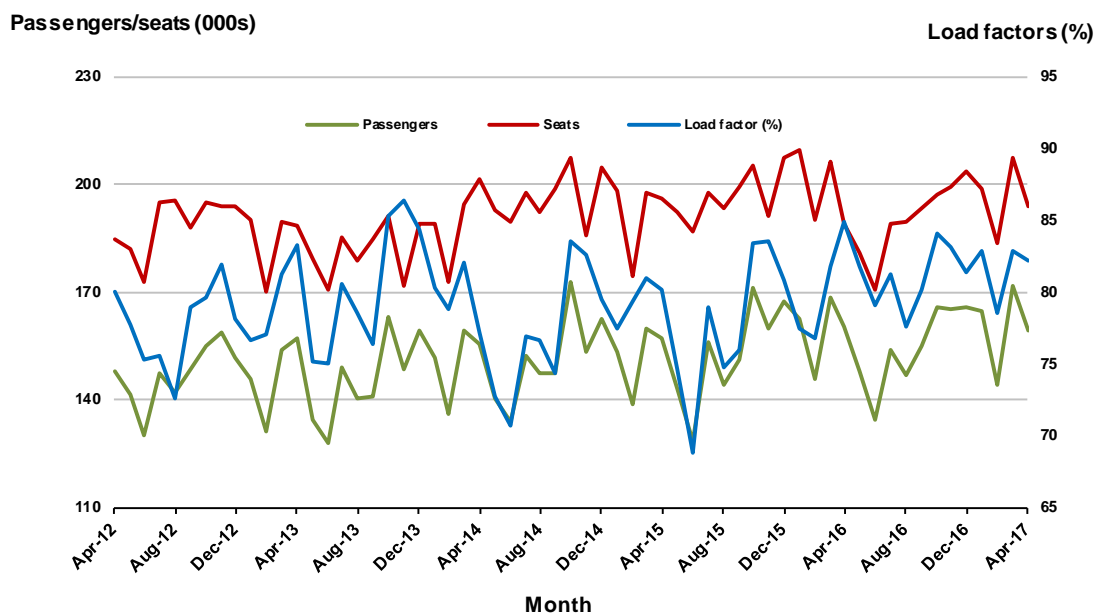


8. Adelaide - Sydney

Monthly data

	Apr 2016	Apr 2017	% Change
Passengers carried (000s)	160.3	159.6	-0.4
Seats (000s)	188.9	194.1	2.8
Load factor %	84.8	82.2	-2.6 *
Aircraft trips	1 166	1 163	-0.3

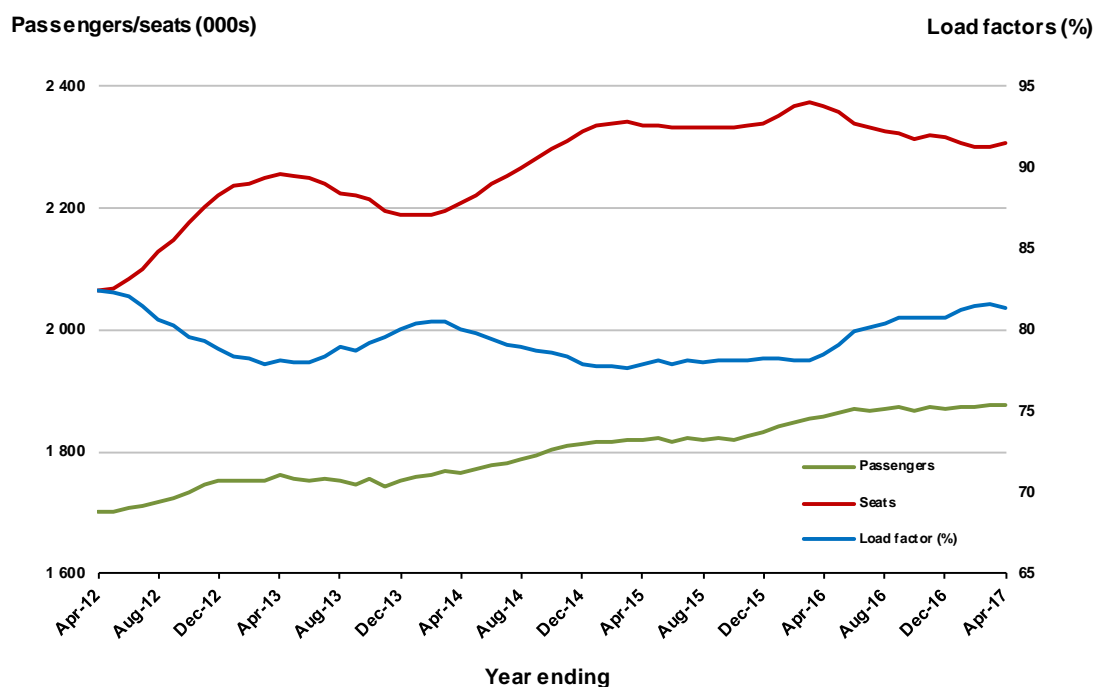
* percentage point difference



Moving annual data

	YE Apr 2016	YE Apr 2017	% Change
Passengers carried (000s)	1 859.1	1 875.7	0.9
Seats (000s)	2 367.6	2 306.4	-2.6
Load factor %	78.5	81.3	2.8 *
Aircraft trips	14 467	14 000	-3.2

* percentage point difference



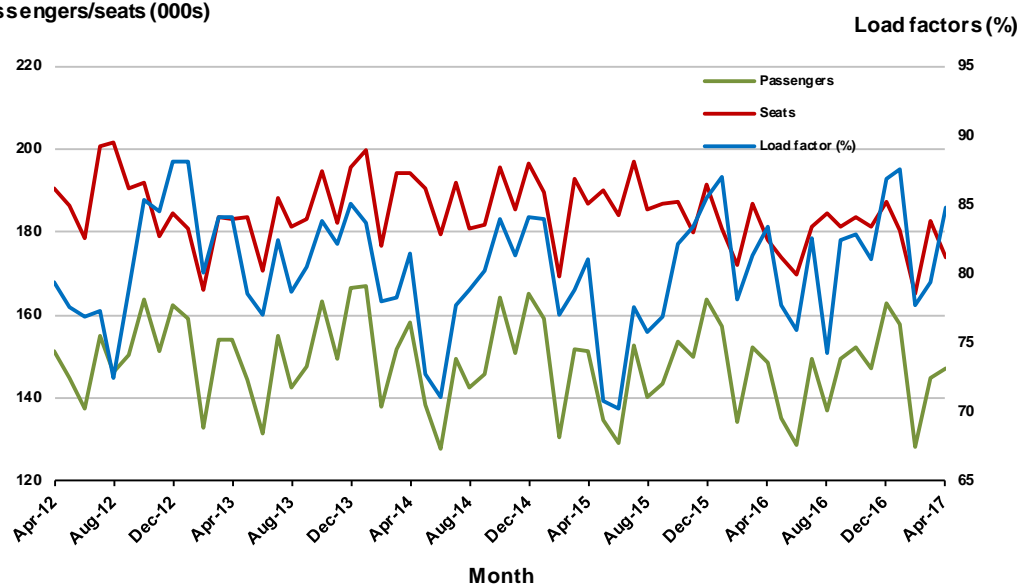
9. Perth - Sydney

Monthly data

	Apr 2016	Apr 2017	% Change
Passengers carried (000s)	148.4	147.3	-0.8
Seats (000s)	178.0	173.7	-2.4
Load factor %	83.4	84.8	1.4 *
Aircraft trips	746	757	1.5

* percentage point difference

Passengers/seats (000s)

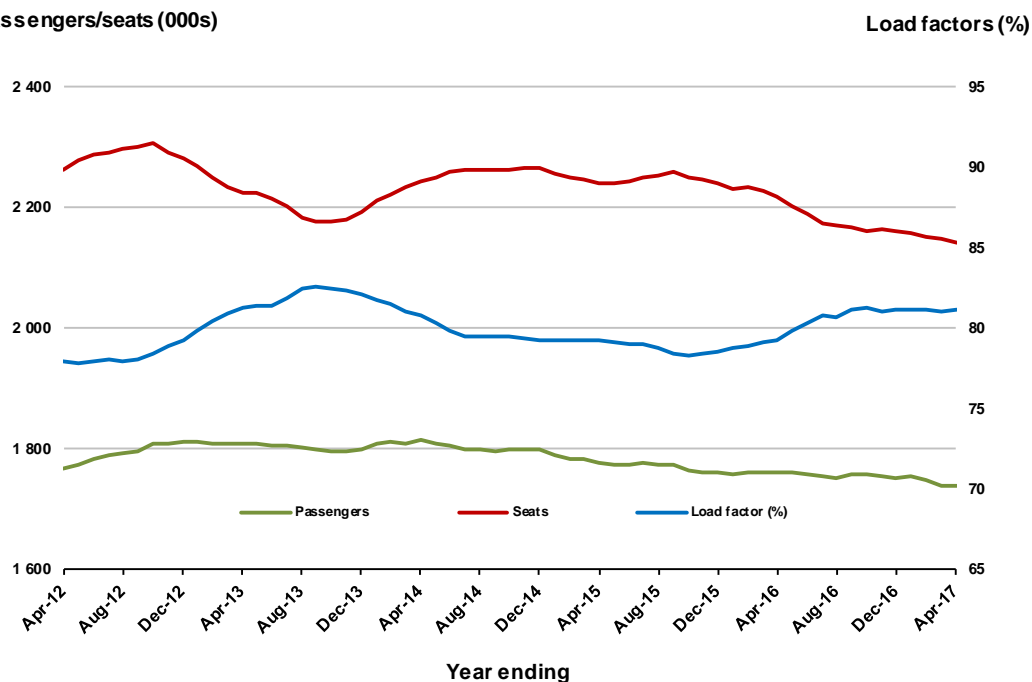


Moving annual data

	YE Apr 2016	YE Apr 2017	% Change
Passengers carried (000s)	1 760.3	1 739.5	-1.2
Seats (000s)	2 220.1	2 143.9	-3.4
Load factor %	79.3	81.1	1.8 *
Aircraft trips	9 218	9 086	-1.4

* percentage point difference

Passengers/seats (000s)

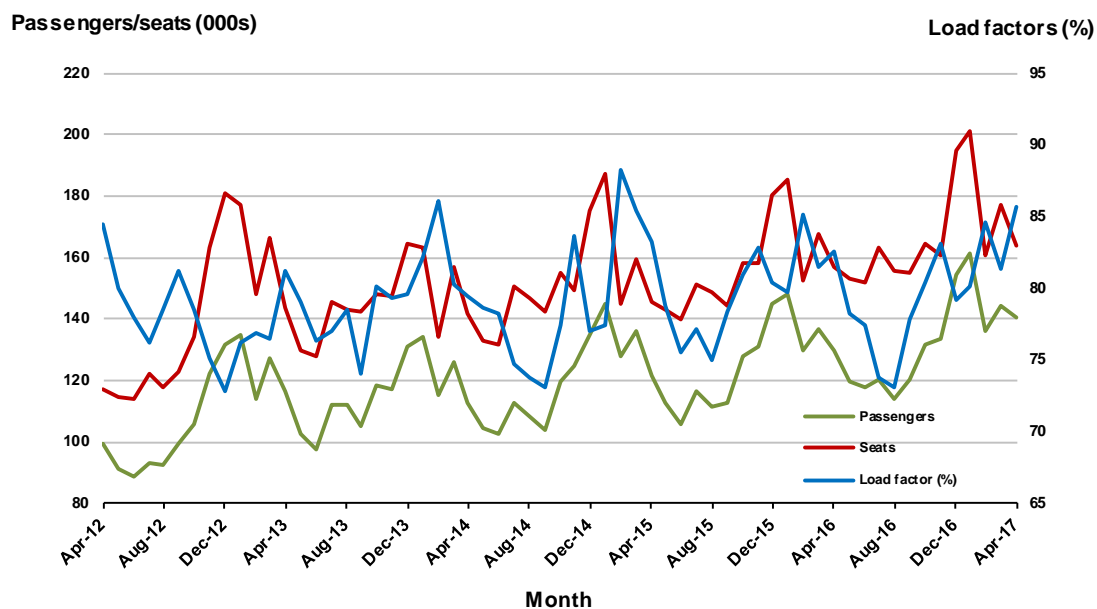


10. Hobart - Melbourne

Monthly data

	Apr 2016	Apr 2017	% Change
Passengers carried (000s)	129.6	140.3	8.2
Seats (000s)	156.9	163.7	4.3
Load factor %	82.6	85.7	3.1 *
Aircraft trips	1 004	1 013	0.9

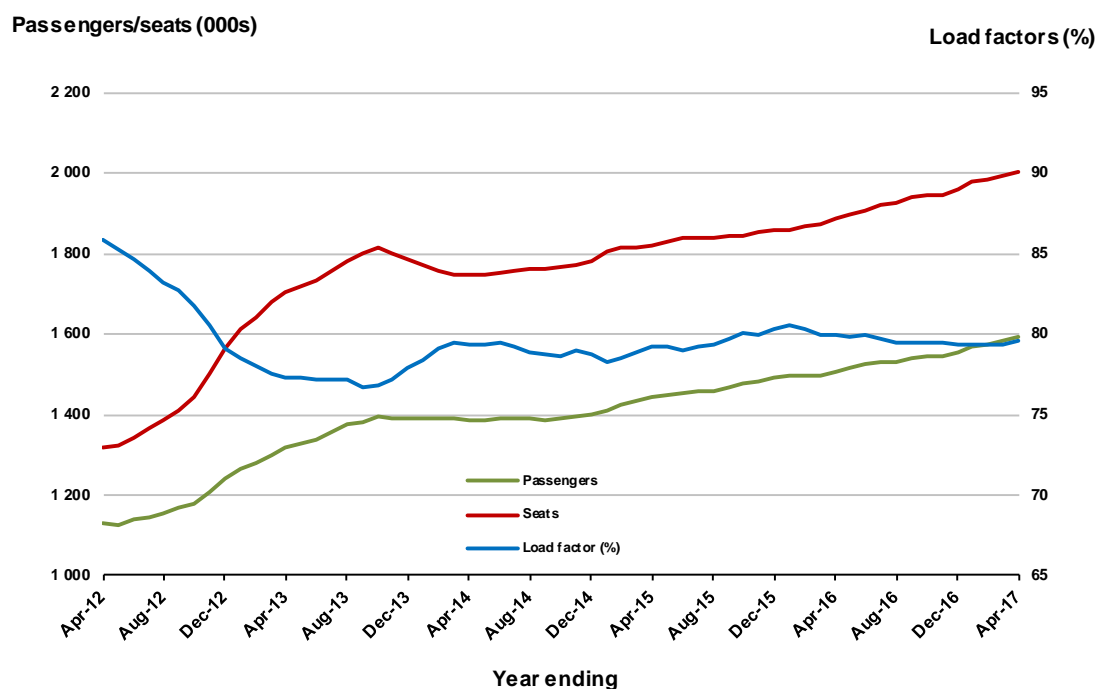
* percentage point difference



Moving annual data

	YE Apr 2016	YE Apr 2017	% Change
Passengers carried (000s)	1 507.0	1 593.5	5.7
Seats (000s)	1 885.7	2 001.2	6.1
Load factor %	79.9	79.6	-0.3 *
Aircraft trips	11 925	12 446	4.4

* percentage point difference



TOP FIFTY REGIONAL AIRPORTS

Table 10: Top fifty regional airports (000s) — passenger movements, monthly

	Airport	Apr 2016	Apr 2017	% Change
1	Cairns	323.6	365.6	13.0
2	Hobart	197.1	214.5	8.9
3	Darwin	142.9	143.3	0.2
4	Townsville	124.2	130.7	5.2
5	Launceston	115.4	119.0	3.1
6	Williamstown	94.7	108.3	14.3
7	Mackay	67.0	66.5	-0.8
8	Alice Springs	49.9	51.9	4.0
9	Ballina	39.4	48.1	21.9
10	Karratha	41.9	35.6	-15.1
11	Coffs Harbour	32.4	33.7	3.9
12	Proserpine	27.4	30.6	11.6
13	Ayers Rock	29.1	30.6	4.9
14	Rockhampton	48.3	30.1	-37.6
15	Port Hedland	28.6	30.1	5.3
16	Gladstone	28.1	29.4	4.5
17	Broome	31.1	28.4	-8.4
18	Albury	21.1	23.0	8.7
19	Newman	25.0	21.8	-12.9
20	Mildura	21.3	20.9	-1.9
21	Kalgoorlie	19.7	19.0	-4.0
22	Dubbo	16.3	18.7	14.4
23	Port Macquarie	19.6	18.5	-5.2
24	Wagga Wagga	18.1	18.2	0.7
25	Tamworth	13.9	16.9	21.2
26	Hamilton Island	44.6	16.8	-62.3
27	Emerald	15.9	15.8	-0.2
28	Mount Isa	14.5	15.1	3.5
29	Port Lincoln	15.2	14.5	-4.3
30	Hervey Bay	14.3	14.3	-0.2
31	Bundaberg	14.6	14.2	-3.0
32	Paraburdoo	13.2	14.1	6.9
33	Devonport	12.4	12.7	2.4
34	Wellcamp	9.8	12.2	24.8
35	Armidale	11.7	11.4	-2.2
36	Geraldton	10.5	9.2	-11.6
37	Moranbah	9.6	9.0	-6.7
38	Kununurra	10.0	8.8	-12.5
39	Learmonth	8.4	8.0	-4.9
40	Thursday Island	7.9	7.7	-3.5
41	Weipa	6.5	7.0	7.1
42	Roma	7.3	6.5	-10.1
43	Gove	6.3	6.5	3.2
44	Mount Gambier	6.6	6.1	-6.8
45	Norfolk Island	5.3	6.0	12.3
46	Griffith	5.8	5.8	0.1
47	Burnie	5.4	5.4	-0.4
48	Merimbula	5.0	5.3	5.3
49	Orange	4.4	4.8	10.4
50	Whyalla	5.6	4.8	-14.4
Total top 50 regional airports		1 847.1	1 895.2	2.6
Total regional airports		1 954.7	2 008.9	2.8
Total domestic network		9 675.4	9 877.3	2.1

Note: Airport passenger movement numbers are the sum of passenger arrivals and departures at each airport.

Table 11: Top fifty regional airports (000s) — passenger movements, annual

Airport	YE Apr 2016	YE Apr 2017	% Change
1 Cairns	4 104.5	4 283.6	4.4
2 Hobart	2 281.3	2 430.0	6.5
3 Darwin	1 777.1	1 809.6	1.8
4 Townsville	1 538.6	1 537.2	-0.1
5 Launceston	1 314.2	1 342.0	2.1
6 Williamstown	1 171.0	1 233.6	5.3
7 Mackay	860.5	774.0	-10.0
8 Alice Springs	600.6	618.2	2.9
9 Rockhampton	601.9	568.7	-5.5
10 Hamilton Island	507.7	522.3	2.9
11 Ballina	464.9	494.2	6.3
12 Karratha	569.3	473.6	-16.8
13 Coffs Harbour	370.5	399.5	7.8
14 Ayers Rock	328.5	367.3	11.8
15 Broome	388.1	362.5	-6.6
16 Port Hedland	390.4	354.4	-9.2
17 Proserpine	341.3	338.9	-0.7
18 Gladstone	379.3	314.5	-17.1
19 Newman	322.3	299.7	-7.0
20 Albury	245.0	258.2	5.4
21 Mildura	241.7	248.5	2.8
22 Kalgoorlie	231.3	243.2	5.2
23 Port Macquarie	221.9	226.4	2.1
24 Wagga Wagga	213.9	215.0	0.5
25 Dubbo	200.0	214.6	7.3
26 Emerald	207.7	198.9	-4.3
27 Mount Isa	193.8	190.4	-1.8
28 Tamworth	164.6	187.0	13.6
29 Port Lincoln	182.8	176.1	-3.7
30 Bundaberg	164.1	174.1	6.1
31 Hervey Bay	168.3	170.0	1.0
32 Paraburdoo	163.3	165.6	1.4
33 Devonport	144.2	146.1	1.3
34 Wellcamp	80.7	135.4	67.9
35 Armidale	128.8	128.1	-0.5
36 Moranbah	128.3	118.3	-7.8
37 Geraldton	119.1	115.0	-3.5
38 Kununurra	103.9	104.4	0.5
39 Thursday Island	93.7	100.9	7.7
40 Gove	70.9	84.7	19.5
41 Roma	119.6	84.3	-29.5
42 Learmonth	85.4	82.9	-3.0
43 Weipa	74.6	79.0	5.8
44 Mount Gambier	77.5	77.2	-0.4
45 Griffith	67.7	71.2	5.2
46 Merimbula	61.6	64.1	4.0
47 Whyalla	68.3	61.4	-10.1
48 Burnie	61.9	60.2	-2.8
49 Narrandera	45.3	57.2	26.3
50 Norfolk Island	51.5	56.7	10.2
Total top 50 regional airports	22 493.4	22 818.9	1.4
Total regional airports	23 800.1	24 152.1	1.5
Total domestic network	116 247.8	118 194.0	1.7

Note: Airport passenger movement numbers are the sum of passenger arrivals and departures at each airport.

DOMESTIC CHARTER ACTIVITY

Table 12: Charter passengers carried and aircraft trips - annual activity

	YE Apr 2016	YE Apr 2017	% Change
Total domestic charter passengers	2 571 544	2 378 055	-7.5
Total domestic charter aircraft trips	49 107	44 328	-9.7

Note: Helicopter, joyflights and sightseeing charter flights not included.

Table 13: Charter passengers carried and aircraft trips - monthly activity

	Apr 2016	Apr 2017	% Change
Total domestic charter passengers	191 017	183 616	-3.9
Total domestic charter aircraft trips	3 536	3 421	-3.3

Note: Helicopter, joyflights and sightseeing charter flights not included.

Table 14: Domestic airports - charter activity - annual

	YE Apr 2016	YE Apr 2017	% Change
Total domestic charter passenger movements	5 143 088	4 756 110	-7.5
Total domestic charter aircraft movements	98 214	88 656	-9.7
Perth airport charter passenger movements	1 935 422	1 849 021	-4.5
Perth airport charter aircraft movements	32 917	31 353	-4.8

Note: Helicopter, joyflights and sightseeing charter flights not included.

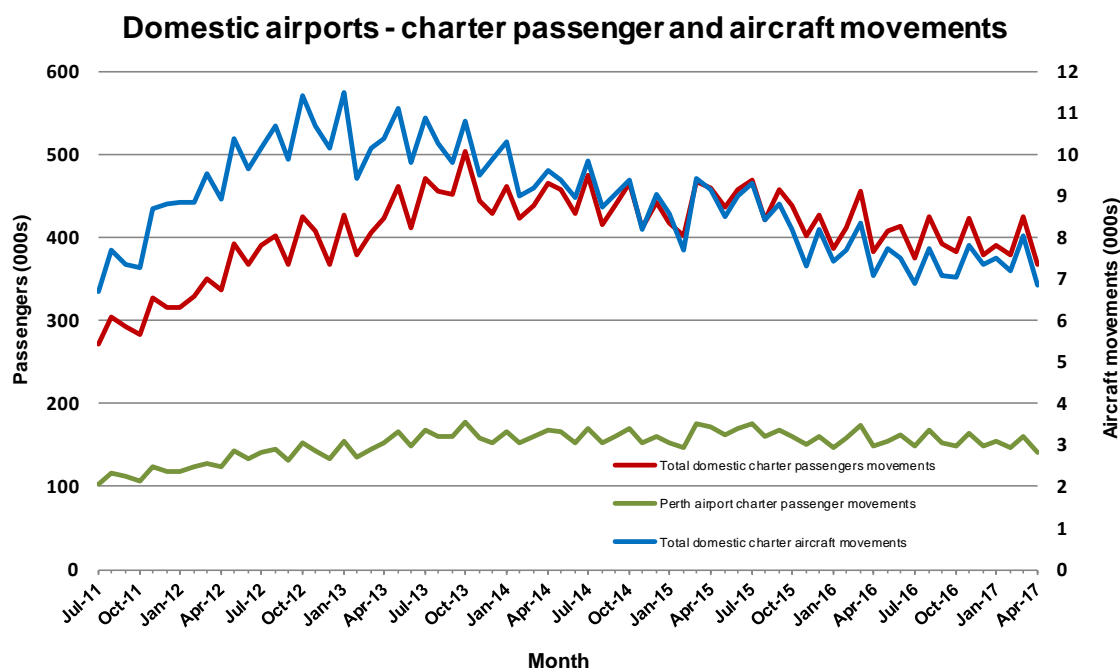
Charter passenger and aircraft movement numbers are the sum of arrivals and departures at each airport.

Table 15: Domestic airports - charter activity - monthly

	Apr 2016	Apr 2017	% Change
Total domestic charter passenger movements	382 034	367 232	-3.9
Total domestic charter aircraft movements	7 072	6 842	-3.3
Perth airport charter passenger movements	148 812	141 628	-4.8
Perth airport charter aircraft movements	2 479	2 380	-4.0

Note: Helicopter, joyflights and sightseeing charter flights not included.

Charter passenger and aircraft movement numbers are the sum of arrivals and departures at each airport.



DEFINITIONS

Aircraft Trips	The number of flight stages. A return flight counts as two aircraft trips.
Airport Movements	Airport movements (passenger and cargo) are measured once on arrival and once on departure. Each domestic trip generates two movements at airports. For example, a trip from Melbourne to Sydney will be counted twice, as a passenger departure at Melbourne and as a passenger arrival at Sydney. At the national level, the sum of all domestic airport traffic will therefore be equal to twice the number of trips undertaken.
Available Seat Kilometres (ASKs)	Calculated by multiplying the number of seats available on each flight stage, by the distance in kilometres between the ports. The distances used are Great Circle Distances.
City-Pair	The ports shown make up the city-pair route. Passenger movements shown for a city pair reflect total traffic in both directions.
Flight Stage	The operation of an aircraft from take-off to landing.
Load Factor	The total revenue passenger kilometres performed as a percentage of the total available seat kilometres.
Passengers Carried	Revenue passengers carried.
Regular Public Transport Services (RPT)	All air service operations in which aircraft are available for the transport of members of the public and are conducted in accordance with fixed schedules. It does not include charter or other non-scheduled operations.
Revenue Passengers	All passengers paying any fare. Frequent flyer redemption travellers are regarded as revenue passengers.
Revenue Passenger Kilometres (RPKs)	Calculated by multiplying the number of revenue passengers travelling on each flight stage, by the distance in kilometres between the ports. The distances used are Great Circle Distances.
Traffic on board by stages	The total of all traffic (revenue passengers) on each flight stage between two directly connected airports.
..	Data not included
NA	Not applicable