



Australian Government

Department of Infrastructure, Regional Development and Cities

Bureau of Infrastructure, Transport and Regional Economics

STATISTICAL REPORT



Aviation

Domestic aviation activity
December 2017

© Commonwealth of Australia 2018

ISSN: 1832 - 1968

Ownership of intellectual property rights in this publication

Unless otherwise noted, copyright (and any other intellectual property rights, if any) in this publication is owned by the Commonwealth of Australia (referred to below as the Commonwealth).

Disclaimer

The material contained in this publication is made available on the understanding that the Commonwealth is not providing professional advice, and that users exercise their own skill and care with respect to its use, and seek independent advice if necessary.

The Commonwealth makes no representations or warranties as to the contents or accuracy of the information contained in this publication. To the extent permitted by law, the Commonwealth disclaims liability to any person or organisation in respect of anything done, or omitted to be done, in reliance upon information contained in this publication.

Creative Commons licence

With the exception of (a) the Coat of Arms; and (b) the Department of Infrastructure, Regional Development and Cities' photos and graphics, copyright in this publication is licensed under a Creative Commons Attribution 3.0 Australia Licence.

Creative Commons Attribution 3.0 Australia Licence is a standard form licence agreement that allows you to copy, communicate and adapt this publication provided that you attribute the work to the Commonwealth and abide by the other licence terms. A summary of the licence terms is available from <http://creativecommons.org/licenses/by/3.0/au/deed.en>. The full licence terms are available from <http://creativecommons.org/licenses/by/3.0/au/legalcode>.

Use of the Coat of Arms

The Department of the Prime Minister and Cabinet sets the terms under which the Coat of Arms is used. Please refer to the Department's Commonwealth Coat of Arms and Government branding web page <http://www.dpmc.gov.au/guidelines/index.cfm#brand> and, in particular, the Guidelines on the use of the Commonwealth Coat of Arms publication.

An appropriate citation for this report is:

Bureau of Infrastructure, Transport and Regional Economics (BITRE), 2018, Domestic aviation activity, Statistical Report, BITRE, Canberra ACT.

Contact us

This publication is available in PDF format. All other rights are reserved, including in relation to any Departmental logos or trade marks which may exist. For enquiries regarding the licence and any use of this publication, please contact:

Bureau of Infrastructure, Transport and Regional Economics (BITRE)
Department of Infrastructure, Regional Development and Cities
GPO Box 501, Canberra ACT 2601, Australia
Telephone: (international) +61 2 6274 7210
Fax: (international) +61 2 6274 6855
Email: bitre@infrastructure.gov.au
Website: www.bitre.gov.au

Inquiries

Should you require additional information about the statistics contained in this publication:

Nebojsa Pavlovic

Telephone (02) 6274 6817 or Facsimile (02) 6274 7727

Electronic mail: AVSTATS@infrastructure.gov.au

Nebojsa.Pavlovic@infrastructure.gov.au

Web site: <http://www.bitre.gov.au/statistics/aviation/domestic.aspx>

FOREWORD

This report provides an overview of domestic (including charter) commercial aviation activity in Australia for the month of December 2017.

The data cover revenue passengers carried by Australian-registered operators of scheduled regular public transport services over Australian flight stages and fixed-wing charter operators. These estimates include passengers carried between domestic airports on international flights operated by these carriers. The passengers carried refer to traffic on board by stages.

Estimates of passengers and aircraft movements for charter aviation are included in this publication, where BITRE confidentiality standards are met.

Individual routes shown are restricted to those with an average exceeding 8 000 passengers per month over the previous six months where two or more airlines operate in competition. For the month of December 2017 there were 66 such routes.

Information on the total network for the month of December 2017 and on the Regular Public Transport (RPT) network for the month of December 2017 is presented on page 2, with estimates for the year ended December 2017 presented on page 3.

Detailed information on the 66 individual routes can be found in the RPT summary pages 4-13 of this publication.

The top ten airports in terms of RPT passenger movements are shown on page 14.

Data on domestic RPT cargo movements at the top five cargo airports are provided on page 15. The table includes cargo carried on passenger flights operated by the Qantas group (including Jetstar), Virgin Australia, Air North and Skippers as well as the cargo carried by dedicated freighter aircraft operated by Qantas Freight, Toll Priority and Virgin Australia Cargo.

The long-term trends for the top ten competitive RPT routes are presented graphically on pages 16-25.

Domestic RPT passenger movements at the top 50 regional airports are presented on pages 26-27.

Tables providing estimates of domestic charter aviation activity are shown on page 28. BITRE confidentiality standards restrict publication of detailed estimates for individual Australian airports, with the exception of Perth Airport.

A list of definitions can be found on page 29.

This report was prepared by the Aviation Statistics Section of the Bureau of Infrastructure, Transport and Regional Economics with data provided by airlines.

Estimates are included where data were not available and data presented in this publication may contain revisions to previously published data.

Where figures have been rounded, discrepancies may occur between sums of component items and totals, and in percentage changes which are derived from figures prior to rounding.

CONTENTS

Highlights	1
Total network	2
RPT network	2
Top competitive routes	4
Top ten airports – passenger movements	14
Top five airports – cargo movements	15
Top ten routes	16
1. Melbourne – Sydney	16
2. Brisbane – Sydney	17
3. Brisbane – Melbourne	18
4. Gold Coast – Sydney	19
5. Adelaide – Melbourne	20
6. Melbourne – Perth	21
7. Gold Coast – Melbourne	22
8. Adelaide – Sydney	23
9. Perth – Sydney	24
10. Hobart – Melbourne	25
Top fifty regional airports	26
Domestic charter activity	28
Definitions	29

This page is intentionally left blank.

HIGHLIGHTS

There were 5.43 million passengers carried on Australian domestic commercial aviation (including charter operations) in December 2017, an increase of 1.9 per cent on December 2016. For the month of December 2017 there were 56 360 aircraft trips, a decrease of 1.8 per cent compared to December 2016.

5.25 million passengers were carried on RPT flights in December 2017, an increase of 2.1 per cent on December 2016.

For the year ending December 2017 there were 59.98 million RPT passengers, an increase of 1.7 per cent on the year ending December 2016.

RPT revenue passenger kilometres (RPKs) performed were 6.20 billion for the month, up 1.5 per cent compared with December 2016. Capacity, measured by available seat kilometres (ASKs), decreased by 0.6 per cent compared with December 2016 to a total of 7.65 billion.

With RPT passenger traffic increasing and capacity decreasing, the industry wide load factor (RPKs/ASKs) increased from 79.4 per cent in December 2016 to 81.0 per cent in December 2017. Load factors on individual routes increased on 48 of the 64 RPT routes for which data is available for publishing in both years.

For the month of December 2017, Melbourne – Sydney remained Australia's busiest RPT route with 757 582 passengers, an increase of 3.6 per cent compared with December 2016. It was followed by Brisbane – Sydney with 411 956 passengers (up 1.3 per cent) and Brisbane – Melbourne with 309 031 passengers (down 0.8 per cent).

The greatest percentage increase in RPT passenger numbers, compared to December 2016, was on the Broome – Perth route (up 26.9 per cent). There were large increases on a number of other routes, including Brisbane – Proserpine (up 18.7 per cent), Melbourne – Sunshine Coast (up 13.9 per cent) and Adelaide – Gold Coast (up 12.9 per cent).

Routes with traffic decreases in December 2017 compared with December 2016 included Hamilton Island – Sydney (down 19.7 per cent), Brisbane – Gladstone (down 15.5 per cent), Brisbane – Hamilton Island (down 14.7 per cent) and Brisbane – Rockhampton (down 14.3 per cent).

In December 2017, Sydney remained Australia's busiest domestic airport with 2.38 million passenger movements, followed by Melbourne with 2.22 million passenger movements and Brisbane with 1.51 million passenger movements.

Total cargo movements at Australian airports on domestic RPT flights were 42.4 thousand tonnes in December 2017, an increase of 3.9 per cent compared with December 2016.

In December 2017 there were 2.11 million domestic passenger movements through regional airports, 1.4 per cent higher than in December 2016. Out of the top 50 regional airports, the strongest growth was at Olympic Dam airport (up 51.1 per cent on December 2016), while the largest decrease was at Moranbah airport (down 23.8 per cent on December 2016).

Fixed-wing charter operators carried 180.37 thousand passengers in December 2017, a decrease of 4.4 per cent on December 2016. Perth airport accounted for 37.7 per cent of all charter passengers in Australia.

TOTAL NETWORK

Summary of monthly commercial aviation activity

	Dec 2016	Dec 2017	% Change
Total passengers carried (millions)	5.33	5.43	1.9
Aircraft trips (000s)	57.4	56.4	-1.8

Note: Regular Public Transport and charter aviation activity
Helicopter, joyflights and sightseeing charter flights not included.

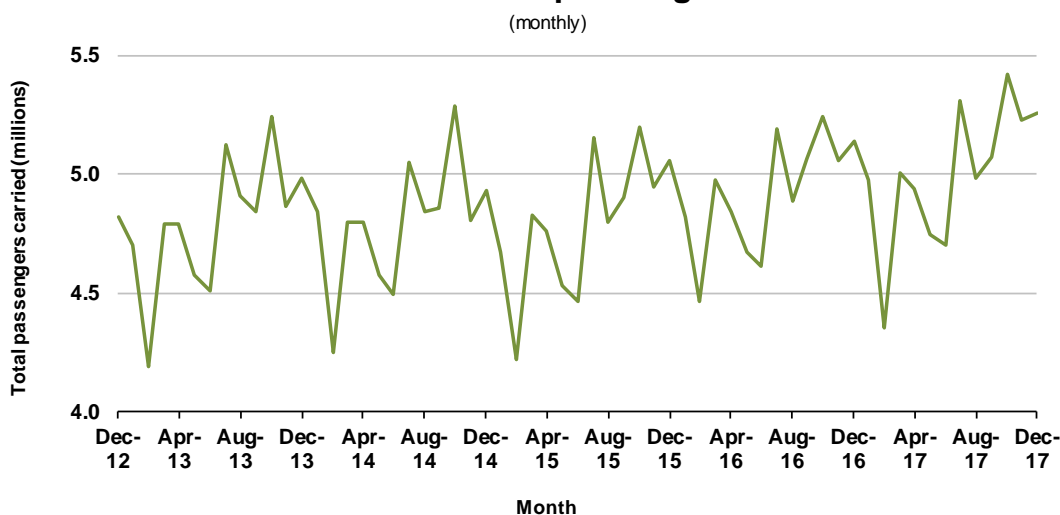
RPT NETWORK

Summary of monthly RPT activity

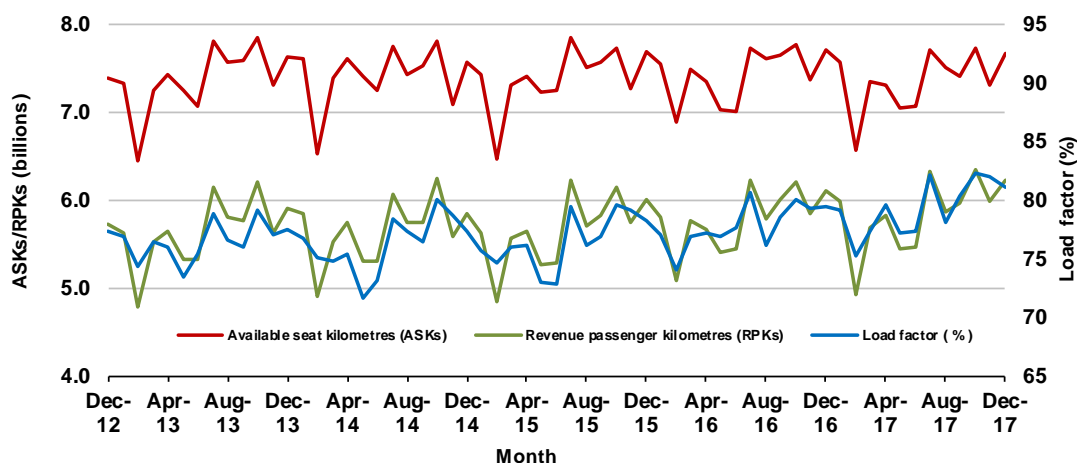
	Dec 2016	Dec 2017	% Change
Total passengers carried (millions)	5.14	5.25	2.1
Revenue passenger kilometres (billions)	6.11	6.20	1.5
Available seats (millions)	6.63	6.62	-0.1
Available seat kilometres (billions)	7.70	7.65	-0.6
Load factor %	79.4	81.0	1.6 *
Aircraft trips (000s)	53.7	52.8	-1.7

* percentage point difference

Domestic RPT passenger traffic



RPT Network utilisation



TOTAL NETWORK

Summary of annual commercial aviation activity

	YE Dec 2016	YE Dec 2017	% Change
Total passengers carried (millions)	61.38	62.41	1.7
Aircraft trips (000s)	688.1	684.7	-0.5

Note: Regular Public Transport and charter aviation activity
Helicopter, joyflights and sightseeing charter flights not included.

RPT NETWORK

Summary of annual RPT activity

	YE Dec 2016	YE Dec 2017	% Change
Total passengers carried (millions)	58.97	59.98	1.7
Revenue passenger kilometres (billions)	69.34	70.01	1.0
Available seats (millions)	77.38	77.15	-0.3
Available seat kilometres (billions)	89.08	88.20	-1.0
Load factor %	77.8	79.4	1.5 *
Aircraft trips (000s)	643.3	638.7	-0.7

* percentage point difference

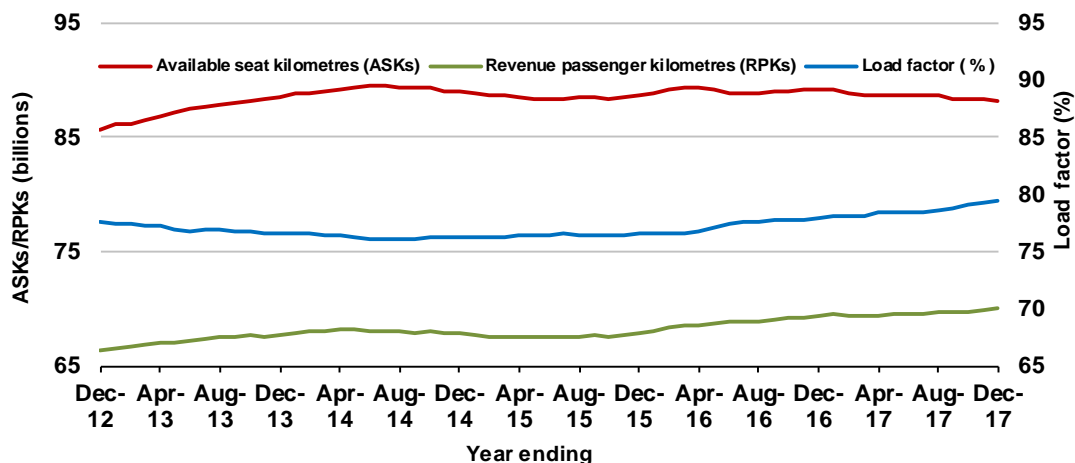
Domestic RPT passenger traffic

(moving annual totals)



RPT Network utilisation

(moving annual totals)



TOP COMPETITIVE ROUTES

Table 1: Passengers carried (000s) — annual activity

	City-Pair	YE Dec 2016	YE Dec 2017	% Change
1	Melbourne - Sydney	8 904.6	9 097.1	2.2
2	Brisbane - Sydney	4 658.1	4 746.2	1.9
3	Brisbane - Melbourne	3 493.3	3 541.1	1.4
4	Gold Coast - Sydney	2 704.4	2 740.7	1.3
5	Adelaide - Melbourne	2 393.6	2 456.4	2.6
6	Melbourne - Perth	2 072.8	2 033.2	-1.9
7	Gold Coast - Melbourne	1 966.1	2 012.6	2.4
8	Adelaide - Sydney	1 872.0	1 898.3	1.4
9	Perth - Sydney	1 753.7	1 716.5	-2.1
10	Hobart - Melbourne	1 555.5	1 630.3	4.8
11	Brisbane - Cairns	1 346.9	1 377.9	2.3
12	Canberra - Melbourne	1 026.1	1 133.0	10.4
13	Cairns - Sydney	1 115.3	1 129.3	1.3
14	Brisbane - Perth	984.1	969.1	-1.5
15	Brisbane - Townsville	976.6	960.2	-1.7
16	Canberra - Sydney	959.4	949.2	-1.1
17	Launceston - Melbourne	918.0	923.2	0.6
18	Adelaide - Brisbane	830.3	849.6	2.3
19	Cairns - Melbourne	823.4	841.3	2.2
20	Brisbane - Mackay	678.5	697.9	2.9
21	Hobart - Sydney	616.6	655.9	6.4
22	Adelaide - Perth	617.1	614.1	-0.5
23	Brisbane - Canberra	576.1	594.3	3.1
24	Brisbane - Newcastle	574.0	590.7	2.9
25	Sunshine Coast - Sydney	539.8	582.7	7.9
26	Brisbane - Rockhampton	563.8	522.1	-7.4
27	Melbourne - Sunshine Coast	441.8	485.8	10.0
28	Melbourne - Newcastle	449.5	476.1	5.9
29	Karratha - Perth	490.6	436.9	-11.0
30	Brisbane - Darwin	407.7	406.2	-0.4
31	Ballina - Sydney	385.2	403.9	4.9
32	Coffs Harbour - Sydney	339.0	347.2	2.4
33	Perth - Port Hedland	339.1	340.7	0.5
34	Darwin - Sydney	318.8	321.7	0.9
35	Broome - Perth	295.2	313.7	6.3
36	Darwin - Melbourne	301.0	306.3	1.8
37	Launceston - Sydney	288.6	286.4	-0.7
38	Newman - Perth	307.6	285.3	-7.3
39	Brisbane - Gladstone	331.0	281.9	-14.8
40	Brisbane - Proserpine	227.9	259.5	13.9
41	Kalgoorlie - Perth	231.7	241.9	4.4
42	Albury - Sydney	225.1	224.0	-0.5
43	Adelaide - Gold Coast	221.5	214.2	-3.3
44	Brisbane - Hobart	205.8	212.7	3.4
45	Melbourne - Mildura	205.7	212.0	3.1
46	Darwin - Perth	184.4	198.4	7.6
47	Brisbane - Emerald	198.9	197.6	-0.7
48	Hamilton Island - Sydney	265.8	196.0	-26.2
49	Port Macquarie - Sydney	193.4	192.3	-0.5
50	Ayers Rock - Sydney	184.1	191.5	4.0

continued

Table 1: (continued) Passengers carried (000s) — annual activity

	City-Pair	YE Dec 2016	YE Dec 2017	%Change
51	Dubbo - Sydney	188.2	190.8	1.4
52	Sydney - Wagga Wagga	188.4	182.8	-3.0
53	Adelaide - Canberra	174.0	181.6	4.3
54	Sydney - Tamworth	175.1	180.7	3.2
55	Brisbane - Bundaberg	172.7	173.3	0.3
56	Adelaide - Port Lincoln	178.9	171.5	-4.1
57	Sydney - Townsville	158.4	160.6	1.4
58	Cairns - Townsville	139.2	141.8	1.9
59	Brisbane - Hamilton Island	149.1	128.2	-14.0
60	Armidale - Sydney	127.7	126.2	-1.2
61	Brisbane - Mount Isa	119.7	125.3	4.7
62	Adelaide - Alice Springs	120.7	124.5	3.1
63	Alice Springs - Darwin	116.4	118.8	2.0
64	Geraldton - Perth	117.6	111.9	-4.8
65	Melbourne - Townsville	..	54.2	NA (a)
66	Proserpine - Sydney	..	47.4	NA (b)
	Total domestic network	58 968.4	59 979.0	1.7

(a) Melbourne - Townsville route included from September 2017, prior data not shown.

(b) Proserpine - Sydney route included from September 2017, prior data not shown.

Table 2: Passengers carried (000s) — monthly activity

	City-Pair	Dec 2016	Dec 2017	% Change
1	Melbourne - Sydney	731.5	757.6	3.6
2	Brisbane - Sydney	406.7	412.0	1.3
3	Brisbane - Melbourne	311.7	309.0	-0.8
4	Gold Coast - Sydney	244.3	253.1	3.6
5	Adelaide - Melbourne	203.1	216.5	6.6
6	Melbourne - Perth	198.4	192.7	-2.9
7	Gold Coast - Melbourne	179.0	182.2	1.8
8	Adelaide - Sydney	165.9	170.3	2.7
9	Perth - Sydney	162.8	159.9	-1.8
10	Hobart - Melbourne	154.2	156.4	1.4
11	Brisbane - Cairns	120.0	117.6	-2.0
12	Cairns - Sydney	97.3	99.9	2.6
13	Launceston - Melbourne	89.7	93.5	4.2
14	Canberra - Melbourne	87.6	92.3	5.3
15	Brisbane - Perth	90.0	90.0	0.1
16	Brisbane - Townsville	82.3	84.4	2.6
17	Adelaide - Brisbane	72.7	79.5	9.4
18	Cairns - Melbourne	70.3	70.3	0.0
19	Canberra - Sydney	71.0	69.5	-2.1
20	Hobart - Sydney	66.2	68.2	3.1
21	Brisbane - Mackay	57.0	60.9	6.8
22	Sunshine Coast - Sydney	52.1	58.3	11.9
23	Adelaide - Perth	57.5	56.7	-1.5
24	Brisbane - Canberra	51.2	53.0	3.6
25	Brisbane - Newcastle	51.2	52.1	1.8
26	Melbourne - Sunshine Coast	41.4	47.2	13.9
27	Melbourne - Newcastle	40.7	43.0	5.7
28	Brisbane - Rockhampton	48.5	41.6	-14.3
29	Ballina - Sydney	38.3	41.1	7.3
30	Karratha - Perth	35.2	32.9	-6.6
31	Launceston - Sydney	33.4	32.7	-1.9
32	Brisbane - Darwin	33.0	31.8	-3.5
33	Coffs Harbour - Sydney	29.1	29.1	0.1
34	Perth - Port Hedland	24.9	27.8	11.8
35	Brisbane - Proserpine	22.5	26.7	18.7
36	Broome - Perth	20.1	25.5	26.9
37	Darwin - Sydney	25.3	25.2	-0.2
38	Brisbane - Hobart	20.4	22.7	11.2
39	Darwin - Melbourne	23.5	22.6	-3.9
40	Newman - Perth	20.7	21.3	3.0
41	Brisbane - Gladstone	24.9	21.0	-15.5
42	Hamilton Island - Sydney	25.4	20.4	-19.7
43	Adelaide - Gold Coast	17.9	20.2	12.9
44	Kalgoorlie - Perth	18.0	18.8	4.4
45	Melbourne - Mildura	16.7	17.7	6.1
46	Albury - Sydney	18.2	17.5	-3.8
47	Port Macquarie - Sydney	17.2	16.8	-2.4
48	Sydney - Townsville	15.7	16.5	4.6
49	Darwin - Perth	14.8	15.9	7.4
50	Adelaide - Canberra	14.8	15.4	4.1

continued

Table 2: (continued) Passengers carried (000s) — monthly activity

	City-Pair	Dec 2016	Dec 2017	% Change
51	Adelaide - Port Lincoln	15.9	14.9	-6.5
52	Brisbane - Emerald	15.8	14.6	-7.5
53	Dubbo - Sydney	15.2	14.3	-5.9
54	Brisbane - Bundaberg	15.3	14.0	-8.4
55	Ayers Rock - Sydney	12.8	13.9	9.3
56	Sydney - Tamworth	14.5	13.8	-4.6
57	Melbourne - Townsville	..	13.8	NA (a)
58	Sydney - Wagga Wagga	15.2	13.6	-10.4
59	Proserpine - Sydney	..	12.4	NA (b)
60	Brisbane - Hamilton Island	12.8	10.9	-14.7
61	Cairns - Townsville	10.9	10.6	-2.7
62	Armidale - Sydney	10.6	10.0	-5.8
63	Adelaide - Alice Springs	9.5	9.7	2.2
64	Brisbane - Mount Isa	9.6	9.5	-1.0
65	Geraldton - Perth	9.3	8.7	-6.9
66	Alice Springs - Darwin	7.5	7.5	-0.4
	Total domestic network	5 141.0	5 248.7	2.1

(a) Melbourne - Townsville route included from September 2017, prior data not shown.

(b) Proserpine - Sydney route included from September 2017, prior data not shown.

Table 3: Available seats (000s) — monthly activity

	City-Pair	Dec 2016	Dec 2017	% Change
1	Melbourne - Sydney	854.0	873.2	2.3
2	Brisbane - Sydney	491.3	482.5	-1.8
3	Brisbane - Melbourne	378.3	374.3	-1.1
4	Gold Coast - Sydney	288.0	290.1	0.7
5	Adelaide - Melbourne	253.0	267.6	5.8
6	Melbourne - Perth	225.9	217.0	-4.0
7	Gold Coast - Melbourne	221.3	215.9	-2.4
8	Adelaide - Sydney	203.7	203.1	-0.3
9	Perth - Sydney	187.4	182.6	-2.6
10	Hobart - Melbourne	194.7	198.9	2.2
11	Brisbane - Cairns	147.5	133.9	-9.2
12	Cairns - Sydney	121.2	116.9	-3.6
13	Launceston - Melbourne	119.9	118.3	-1.3
14	Canberra - Melbourne	122.7	135.1	10.1
15	Brisbane - Perth	103.8	104.3	0.5
16	Brisbane - Townsville	107.1	108.0	0.8
17	Adelaide - Brisbane	93.3	100.9	8.2
18	Cairns - Melbourne	86.4	84.6	-2.1
19	Canberra - Sydney	98.1	97.0	-1.0
20	Hobart - Sydney	82.8	85.8	3.6
21	Brisbane - Mackay	68.0	75.2	10.6
22	Sunshine Coast - Sydney	64.4	74.6	15.8
23	Adelaide - Perth	75.1	73.3	-2.5
24	Brisbane - Canberra	73.0	70.3	-3.6
25	Brisbane - Newcastle	67.2	70.2	4.5
26	Melbourne - Sunshine Coast	50.2	59.1	17.6
27	Melbourne - Newcastle	52.5	52.0	-0.8
28	Brisbane - Rockhampton	63.3	52.3	-17.3
29	Ballina - Sydney	46.7	48.8	4.6
30	Karratha - Perth	60.4	53.6	-11.3
31	Launceston - Sydney	42.5	38.6	-9.2
32	Brisbane - Darwin	45.8	41.3	-9.7
33	Coffs Harbour - Sydney	37.9	37.9	0.0
34	Perth - Port Hedland	40.7	45.3	11.3
35	Broome - Perth	28.7	36.2	26.2
36	Brisbane - Proserpine	27.5	32.0	16.5
37	Darwin - Sydney	39.6	35.8	-9.6
38	Brisbane - Hobart	23.5	27.8	18.4
39	Darwin - Melbourne	32.0	30.6	-4.3
40	Newman - Perth	42.5	41.4	-2.6
41	Brisbane - Gladstone	34.1	28.6	-16.3
42	Hamilton Island - Sydney	33.0	29.3	-11.0
43	Adelaide - Gold Coast	22.1	24.1	9.1
44	Kalgoorlie - Perth	30.0	32.8	9.3
45	Melbourne - Mildura	25.9	27.3	5.4
46	Albury - Sydney	28.9	24.8	-14.0
47	Port Macquarie - Sydney	23.1	21.4	-7.4
48	Sydney - Townsville	19.5	19.7	1.0
49	Darwin - Perth	22.2	21.3	-4.0
50	Adelaide - Canberra	22.1	22.6	1.9

continued

Table 3: (continued) Available seats (000s) — monthly activity

	City-Pair	Dec 2016	Dec 2017	% Change
51	Adelaide - Port Lincoln	23.7	22.8	-4.0
52	Brisbane - Emerald	27.3	21.9	-19.6
53	Dubbo - Sydney	23.6	19.9	-15.5
54	Brisbane - Bundaberg	19.9	19.9	-0.1
55	Ayers Rock - Sydney	18.7	18.7	-0.4
56	Sydney - Tamworth	23.6	21.2	-10.3
57	Melbourne - Townsville	..	16.9	NA (a)
58	Sydney - Wagga Wagga	23.4	20.2	-13.5
59	Proserpine - Sydney	..	14.4	NA (b)
60	Brisbane - Hamilton Island	16.9	15.1	-10.5
61	Cairns - Townsville	23.3	20.0	-14.2
62	Armidale - Sydney	14.9	13.9	-6.2
63	Adelaide - Alice Springs	15.9	15.2	-4.2
64	Brisbane - Mount Isa	14.6	13.4	-8.4
65	Geraldton - Perth	18.8	17.0	-9.6
66	Alice Springs - Darwin	15.5	14.7	-5.2
	Total domestic network	6 627.9	6 619.7	-0.1

(a) Melbourne - Townsville route included from September 2017, prior data not shown.

(b) Proserpine - Sydney route included from September 2017, prior data not shown.

Table 4: Load factors (%) — monthly activity

	City-Pair	Dec 2016	Dec 2017	% Point diff
1	Melbourne - Sydney	85.7	86.8	1.1
2	Brisbane - Sydney	82.8	85.4	2.6
3	Brisbane - Melbourne	82.4	82.6	0.2
4	Gold Coast - Sydney	84.8	87.2	2.4
5	Adelaide - Melbourne	80.3	80.9	0.6
6	Melbourne - Perth	87.8	88.8	1.0
7	Gold Coast - Melbourne	80.9	84.4	3.5
8	Adelaide - Sydney	81.4	83.9	2.5
9	Perth - Sydney	86.9	87.6	0.7
10	Hobart - Melbourne	79.2	78.6	-0.6
11	Brisbane - Cairns	81.4	87.8	6.4
12	Cairns - Sydney	80.3	85.5	5.2
13	Launceston - Melbourne	74.8	79.0	4.2
14	Canberra - Melbourne	71.4	68.3	-3.1
15	Brisbane - Perth	86.7	86.3	-0.4
16	Brisbane - Townsville	76.8	78.2	1.4
17	Adelaide - Brisbane	77.9	78.8	0.9
18	Cairns - Melbourne	81.4	83.1	1.7
19	Canberra - Sydney	72.4	71.6	-0.8
20	Hobart - Sydney	79.9	79.5	-0.4
21	Brisbane - Mackay	83.9	81.0	-2.9
22	Sunshine Coast - Sydney	80.8	78.1	-2.7
23	Adelaide - Perth	76.6	77.4	0.8
24	Brisbane - Canberra	70.2	75.4	5.2
25	Brisbane - Newcastle	76.2	74.2	-2.0
26	Melbourne - Sunshine Coast	82.5	79.9	-2.6
27	Melbourne - Newcastle	77.5	82.6	5.1
28	Brisbane - Rockhampton	76.6	79.4	2.8
29	Ballina - Sydney	82.1	84.2	2.1
30	Karratha - Perth	58.2	61.3	3.1
31	Launceston - Sydney	78.4	84.7	6.3
32	Brisbane - Darwin	72.0	77.0	5.0
33	Coffs Harbour - Sydney	76.7	76.7	0.0
34	Perth - Port Hedland	61.1	61.4	0.3
35	Broome - Perth	70.0	73.6	3.6
36	Brisbane - Proserpine	81.7	83.3	1.6
37	Darwin - Sydney	63.8	70.4	6.6
38	Brisbane - Hobart	87.1	81.8	-5.3
39	Darwin - Melbourne	73.6	73.9	0.3
40	Newman - Perth	48.7	51.5	2.8
41	Brisbane - Gladstone	72.9	73.6	0.7
42	Hamilton Island - Sydney	77.0	69.5	-7.5
43	Adelaide - Gold Coast	80.8	83.6	2.8
44	Kalgoorlie - Perth	60.0	57.3	-2.7
45	Melbourne - Mildura	64.6	65.0	0.4
46	Albury - Sydney	63.1	70.6	7.5
47	Port Macquarie - Sydney	74.6	78.6	4.0
48	Sydney - Townsville	80.9	83.8	2.9
49	Darwin - Perth	66.9	74.8	7.9
50	Adelaide - Canberra	66.7	68.1	1.4

continued

Table 4: (continued) Load factors (%) — monthly activity

	City-Pair	Dec 2016	Dec 2017	% Point diff
51	Adelaide - Port Lincoln	67.0	65.3	-1.7
52	Brisbane - Emerald	57.9	66.7	8.8
53	Dubbo - Sydney	64.5	71.8	7.3
54	Brisbane - Bundaberg	76.9	70.5	-6.4
55	Ayers Rock - Sydney	68.0	74.7	6.7
56	Sydney - Tamworth	61.3	65.2	3.9
57	Melbourne - Townsville	..	81.3	NA (a)
58	Sydney - Wagga Wagga	65.0	67.3	2.3
59	Proserpine - Sydney	..	86.4	NA (b)
60	Brisbane - Hamilton Island	75.8	72.2	-3.6
61	Cairns - Townsville	46.6	52.9	6.3
62	Armidale - Sydney	71.7	71.9	0.2
63	Adelaide - Alice Springs	60.1	64.1	4.0
64	Brisbane - Mount Isa	65.7	71.0	5.3
65	Geraldton - Perth	49.6	51.0	1.4
66	Alice Springs - Darwin	48.4	50.8	2.4
	Total domestic network	79.4	81.0	1.6

(a) Melbourne - Townsville route included from September 2017, prior data not shown.

(b) Proserpine - Sydney route included from September 2017, prior data not shown.

Table 5: Aircraft trips ^(a) — monthly activity

	City-Pair	Dec 2016	Dec 2017	% Change
1	Melbourne - Sydney	4 745	4 875	2.7
2	Brisbane - Sydney	3 030	2 944	-2.8
3	Brisbane - Melbourne	2 258	2 223	-1.6
4	Gold Coast - Sydney	1 652	1 628	-1.5
5	Adelaide - Melbourne	1 595	1 655	3.8
6	Melbourne - Perth	1 017	987	-2.9
7	Gold Coast - Melbourne	1 184	1 150	-2.9
8	Adelaide - Sydney	1 270	1 212	-4.6
9	Perth - Sydney	803	800	-0.4
10	Hobart - Melbourne	1 166	1 168	0.2
11	Brisbane - Cairns	911	836	-8.2
12	Cairns - Sydney	671	648	-3.4
13	Launceston - Melbourne	883	863	-2.3
14	Canberra - Melbourne	861	896	4.1
15	Brisbane - Perth	494	519	5.1
16	Brisbane - Townsville	765	746	-2.5
17	Adelaide - Brisbane	578	597	3.3
18	Cairns - Melbourne	460	444	-3.5
19	Canberra - Sydney	1 219	1 180	-3.2
20	Hobart - Sydney	503	495	-1.6
21	Brisbane - Mackay	611	578	-5.4
22	Sunshine Coast - Sydney	390	446	14.4
23	Adelaide - Perth	474	486	2.5
24	Brisbane - Canberra	493	507	2.8
25	Brisbane - Newcastle	544	498	-8.5
26	Melbourne - Sunshine Coast	289	343	18.7
27	Melbourne - Newcastle	295	288	-2.4
28	Brisbane - Rockhampton	777	627	-19.3
29	Ballina - Sydney	311	304	-2.3
30	Karratha - Perth	547	478	-12.6
31	Launceston - Sydney	243	221	-9.1
32	Brisbane - Darwin	277	249	-10.1
33	Coffs Harbour - Sydney	443	401	-9.5
34	Perth - Port Hedland	351	397	13.1
35	Broome - Perth	249	333	33.7
36	Brisbane - Proserpine	160	181	13.1
37	Darwin - Sydney	234	212	-9.4
38	Brisbane - Hobart	134	156	16.4
39	Darwin - Melbourne	182	174	-4.4
40	Newman - Perth	330	322	-2.4
41	Brisbane - Gladstone	465	376	-19.1
42	Hamilton Island - Sydney	198	174	-12.1
43	Adelaide - Gold Coast	125	136	8.8
44	Kalgoorlie - Perth	267	284	6.4
45	Melbourne - Mildura	386	379	-1.8
46	Albury - Sydney	510	440	-13.7
47	Port Macquarie - Sydney	375	347	-7.5
48	Sydney - Townsville	114	112	-1.8
49	Darwin - Perth	132	129	-2.3
50	Adelaide - Canberra	142	134	-5.6

continued

Table 5: (continued) Aircraft trips ^(a) — monthly activity

	City-Pair	Dec 2016	Dec 2017	% Change
51	Adelaide - Port Lincoln	604	580	-4.0
52	Brisbane - Emerald	366	289	-21.0
53	Dubbo - Sydney	500	425	-15.0
54	Brisbane - Bundaberg	328	275	-16.2
55	Ayers Rock - Sydney	106	106	0.0
56	Sydney - Tamworth	375	331	-11.7
57	Melbourne - Townsville	..	96	NA (b)
58	Sydney - Wagga Wagga	440	364	-17.3
59	Proserpine - Sydney	..	80	NA (c)
60	Brisbane - Hamilton Island	141	119	-15.6
61	Cairns - Townsville	386	327	-15.3
62	Armidale - Sydney	348	326	-6.3
63	Adelaide - Alice Springs	99	110	11.1
64	Brisbane - Mount Isa	144	141	-2.1
65	Geraldton - Perth	188	170	-9.6
66	Alice Springs - Darwin	126	134	6.3
	Total domestic network	53 713	52 799	-1.7

(a) Includes RPT Cargo flights.

(b) Melbourne - Townsville route included from September 2017, prior data not shown.

(c) Proserpine - Sydney route included from September 2017, prior data not shown.

TOP TEN AIRPORTS – PASSENGER MOVEMENTS

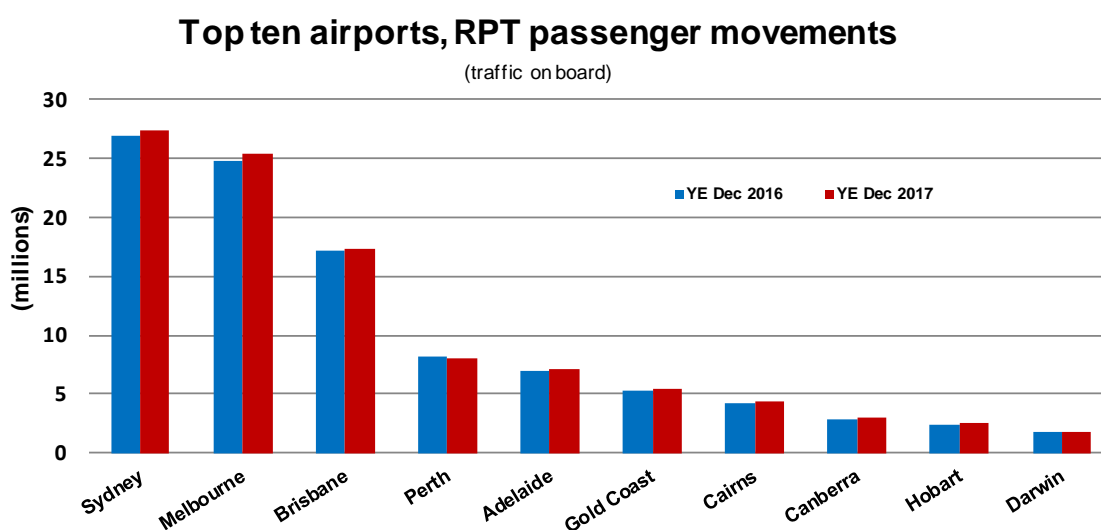
Table 6: Top ten airports, RPT passenger movements (000s) - annual activity

Airport	YE Dec 2016	YE Dec 2017	% Change	% of Total
1 Sydney	26 942.0	27 326.5	1.4	22.8
2 Melbourne	24 779.7	25 346.4	2.3	21.1
3 Brisbane	17 080.9	17 295.2	1.3	14.4
4 Perth	8 126.4	8 001.3	-1.5	6.7
5 Adelaide	6 997.1	7 149.2	2.2	6.0
6 Gold Coast	5 327.0	5 420.0	1.7	4.5
7 Cairns	4 243.4	4 312.2	1.6	3.6
8 Canberra	2 886.4	3 022.4	4.7	2.5
9 Hobart	2 378.1	2 510.3	5.6	2.1
10 Darwin	1 803.4	1 802.5	0.0	1.5
Total top ten airports	100 564.5	102 186.0	1.6	85.2
Total domestic network	117 936.9	119 957.9	1.7	100.0

Table 7: Top ten airports, RPT passenger movements (000s) - monthly activity

Airport	Dec 2016	Dec 2017	% Change	% of Total
1 Sydney	2 331.2	2 380.7	2.1	22.7
2 Melbourne	2 167.6	2 216.0	2.2	21.1
3 Brisbane	1 498.9	1 514.0	1.0	14.4
4 Perth	714.8	712.2	-0.4	6.8
5 Adelaide	606.0	640.9	5.8	6.1
6 Gold Coast	483.1	504.4	4.4	4.8
7 Cairns	369.2	369.3	0.0	3.5
8 Hobart	240.8	255.5	6.1	2.4
9 Canberra	238.2	245.5	3.0	2.3
10 Townsville	132.3	140.8	6.4	1.3
Total top ten airports	8 782.1	8 979.2	2.2	85.5
Total domestic network	10 282.1	10 497.4	2.1	100.0

Note: Airport passenger movement numbers are the sum of passenger arrivals and departures at each airport.



TOP FIVE AIRPORTS – CARGO MOVEMENTS

Table 8: Top five airports, domestic RPT cargo movements (000s tonnes) - annual activity

Airport	YE Dec 2016	YE Dec 2017	% Change	% of Total
1 Melbourne	123.7	132.0	6.7	29.0
2 Sydney	104.0	106.2	2.1	23.4
3 Brisbane	66.9	66.5	-0.6	14.6
4 Perth	59.8	64.6	7.9	14.2
5 Adelaide	24.4	26.9	10.1	5.9
Total top five airports	378.9	396.2	4.6	87.1
Total domestic network	435.6	454.8	4.4	100.0

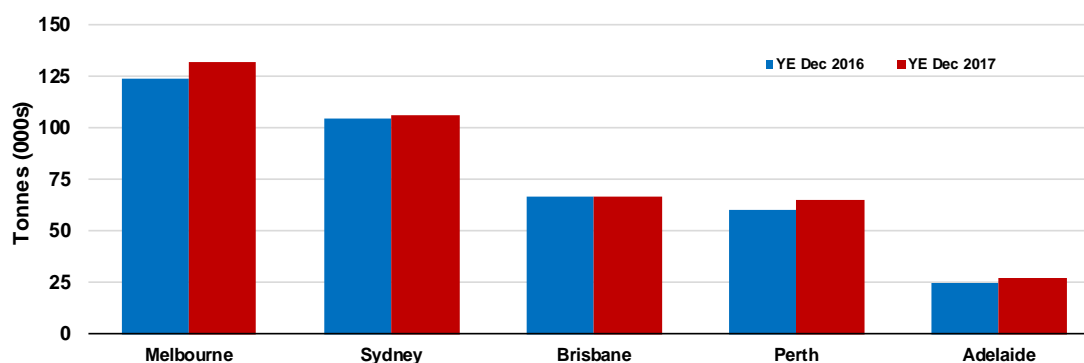
Table 9: Top five airports, domestic RPT cargo movements (000s tonnes) - monthly activity

Airport	Dec 2016	Dec 2017	% Change	% of Total
1 Melbourne	11.7	12.5	6.3	29.4
2 Sydney	9.7	9.9	2.0	23.2
3 Brisbane	6.2	6.2	-0.4	14.7
4 Perth	5.7	6.0	6.6	14.2
5 Adelaide	2.3	2.6	13.7	6.1
Total top five airports	35.6	37.2	4.5	87.6
Total domestic network	40.9	42.4	3.9	100.0

Note: Airport cargo tonnes are the sum of cargo tonnes on arrivals and departures at each airport.

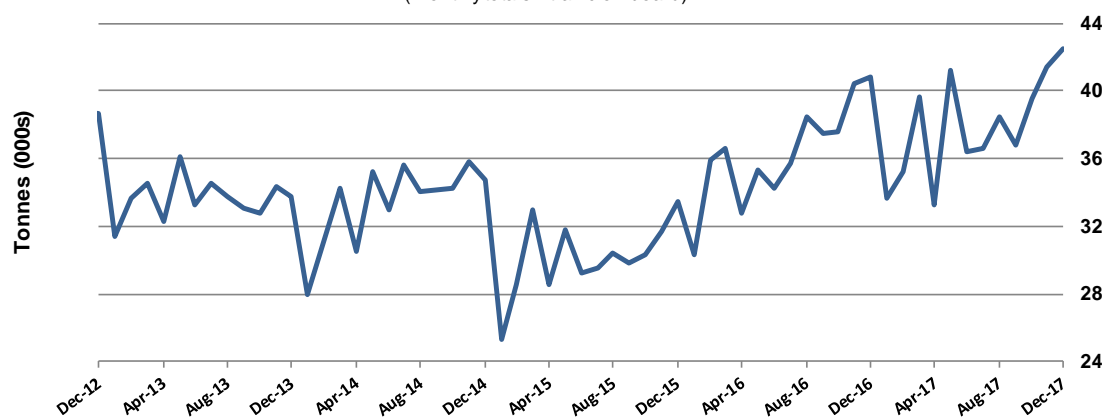
Top five airports, cargo movements

(Domestic cargo traffic - traffic on board)



Total domestic network - cargo movement

(monthly totals - traffic on board)



Note: Airport cargo tonnes are the sum of cargo tonnes on arrivals and departures at each airport.

TOP TEN ROUTES

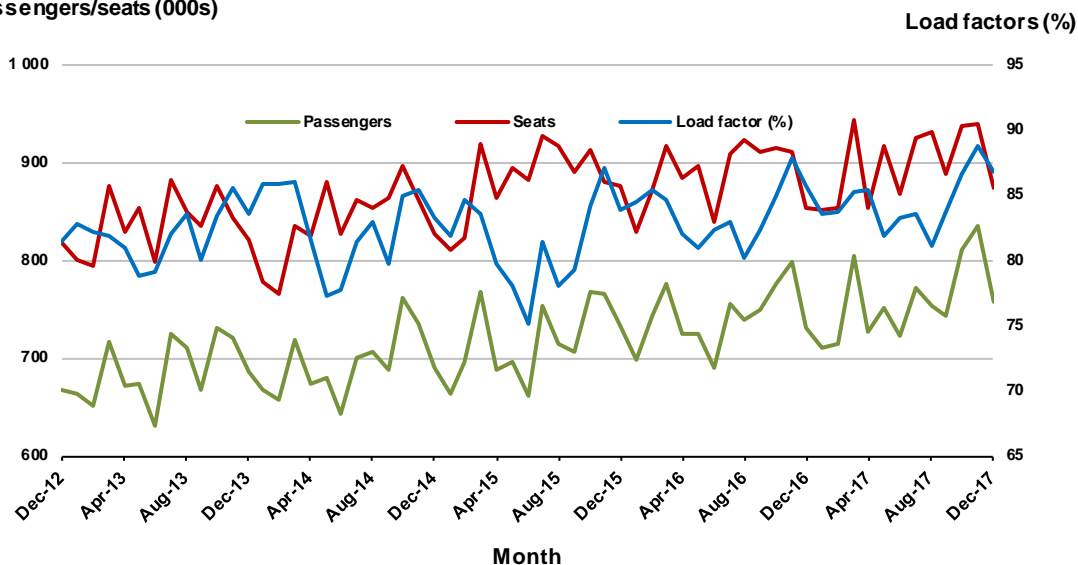
1. Melbourne - Sydney

Monthly data

	Dec 2016	Dec 2017	% Change
Passengers carried (000s)	731.5	757.6	3.6
Seats (000s)	854.0	873.2	2.3
Load factor %	85.7	86.8	1.1 *
Aircraft trips	4 745	4 875	2.7

* percentage point difference

Passengers/seats (000s)

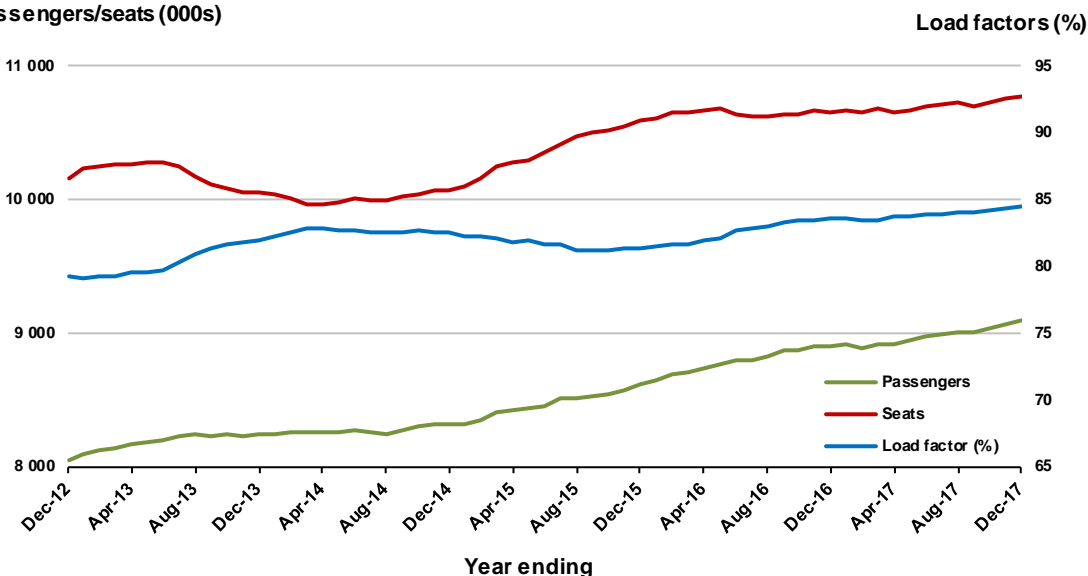


Moving annual data

	YE Dec 2016	YE Dec 2017	% Change
Passengers carried (000s)	8 904.6	9 097.1	2.2
Seats (000s)	10 652.1	10 772.6	1.1
Load factor %	83.6	84.5	0.9 *
Aircraft trips	59 269	60 059	1.3

* percentage point difference

Passengers/seats (000s)

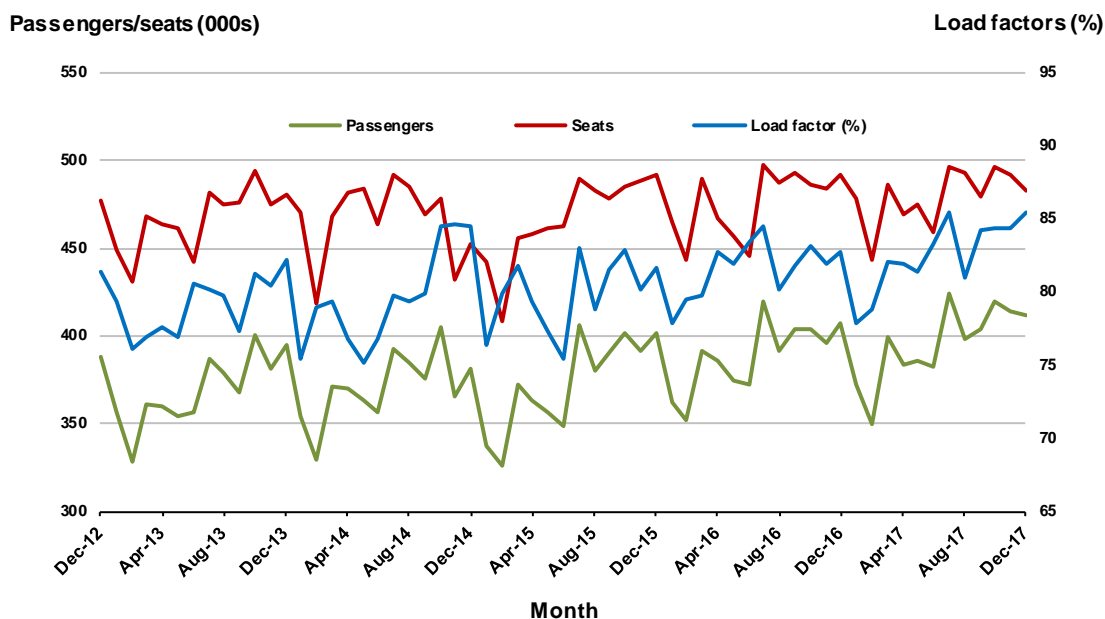


2. Brisbane - Sydney

Monthly data

	Dec 2016	Dec 2017	% Change
Passengers carried (000s)	406.7	412.0	1.3
Seats (000s)	491.3	482.5	-1.8
Load factor %	82.8	85.4	2.6 *
Aircraft trips	3 030	2 944	-2.8

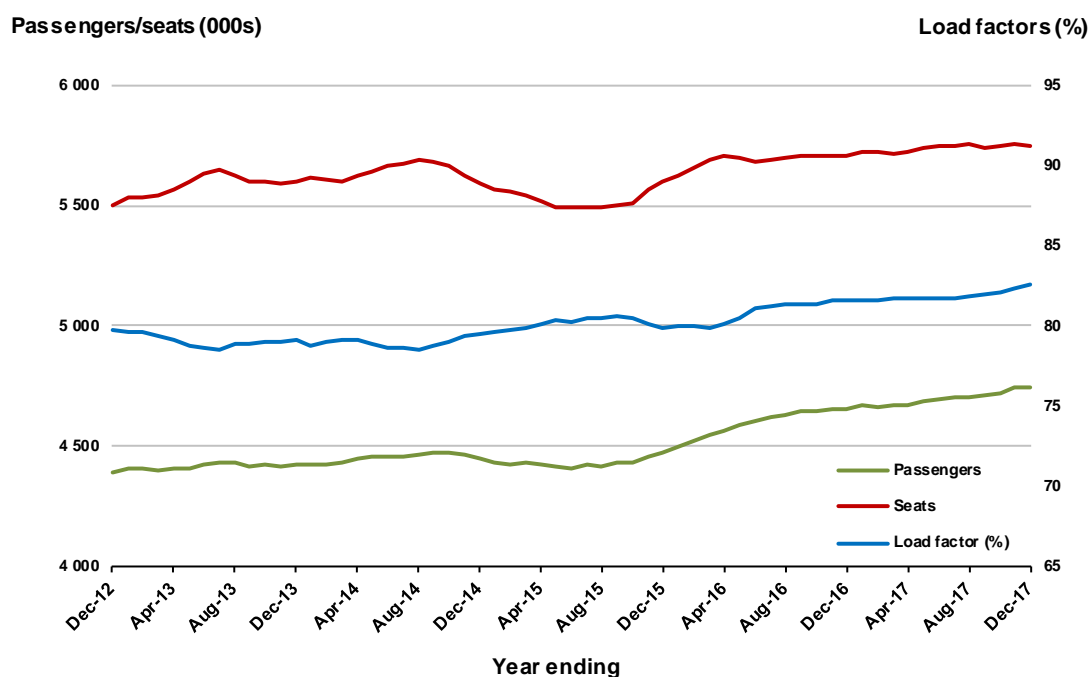
* percentage point difference



Moving annual data

	YE Dec 2016	YE Dec 2017	% Change
Passengers carried (000s)	4 658.1	4 746.2	1.9
Seats (000s)	5 706.0	5 749.6	0.8
Load factor %	81.6	82.5	0.9 *
Aircraft trips	35 396	35 390	0.0

* percentage point difference

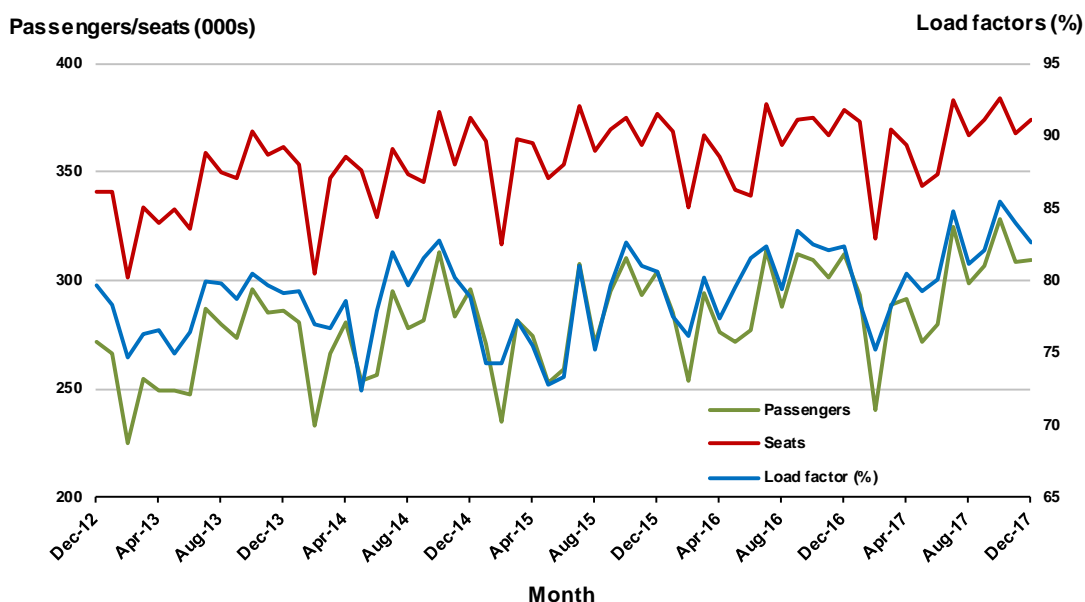


3. Brisbane - Melbourne

Monthly data

	Dec 2016	Dec 2017	% Change
Passengers carried (000s)	311.7	309.0	-0.8
Seats (000s)	378.3	374.3	-1.1
Load factor %	82.4	82.6	0.2 *
Aircraft trips	2 258	2 223	-1.6

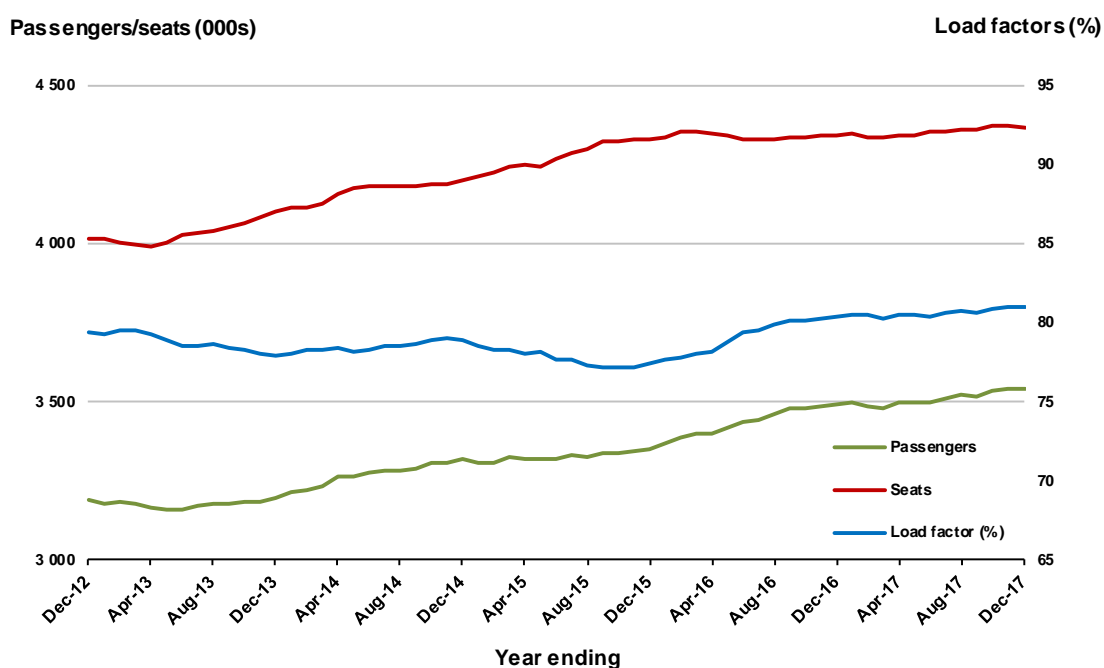
* percentage point difference



Moving annual data

	YE Dec 2016	YE Dec 2017	% Change
Passengers carried (000s)	3 493.3	3 541.1	1.4
Seats (000s)	4 343.0	4 367.8	0.6
Load factor %	80.4	81.1	0.6 *
Aircraft trips	25 933	25 806	-0.5

* percentage point difference



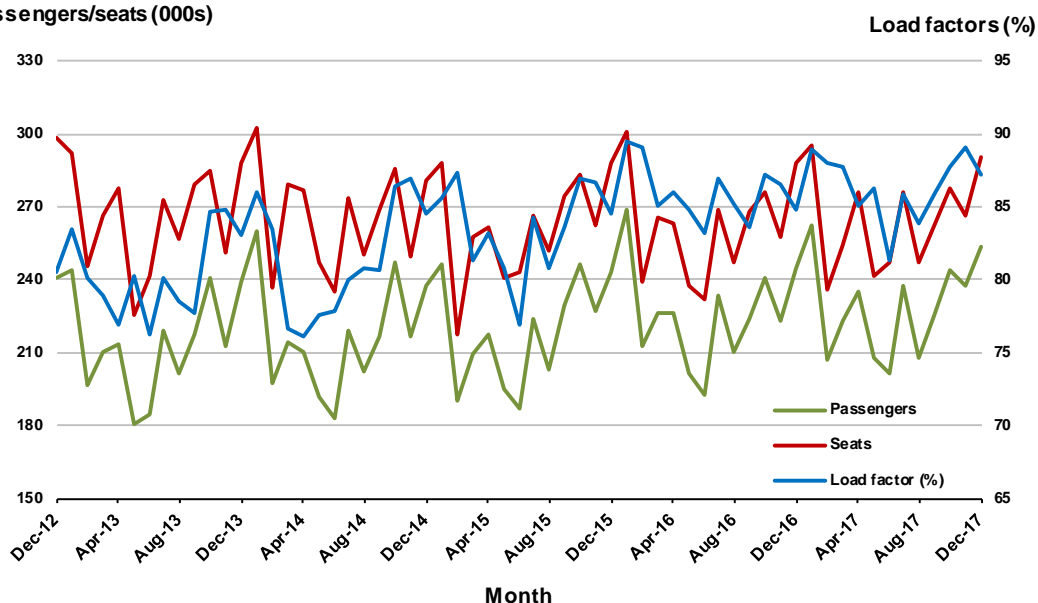
4. Gold Coast - Sydney

Monthly data

	Dec 2016	Dec 2017	% Change
Passengers carried (000s)	244.3	253.1	3.6
Seats (000s)	288.0	290.1	0.7
Load factor %	84.8	87.2	2.4 *
Aircraft trips	1 652	1 628	-1.5

* percentage point difference

Passengers/seats (000s)

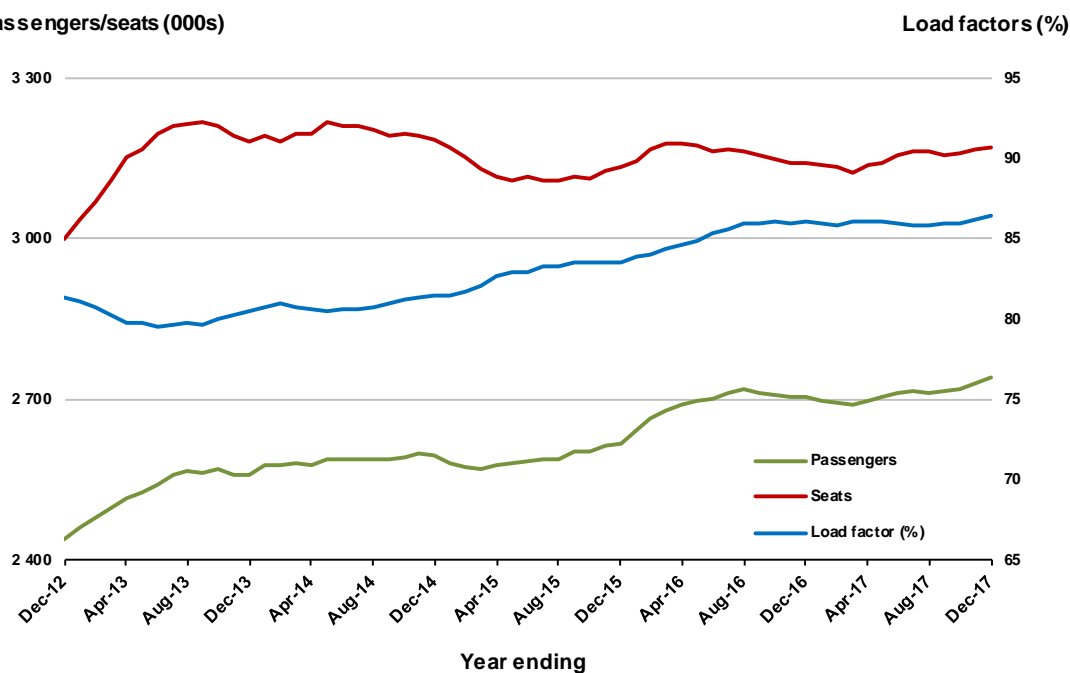


Moving annual data

	YE Dec 2016	YE Dec 2017	% Change
Passengers carried (000s)	2 704.4	2 740.7	1.3
Seats (000s)	3 143.3	3 170.5	0.9
Load factor %	86.0	86.4	0.4 *
Aircraft trips	18 379	18 038	-1.9

* percentage point difference

Passengers/seats (000s)



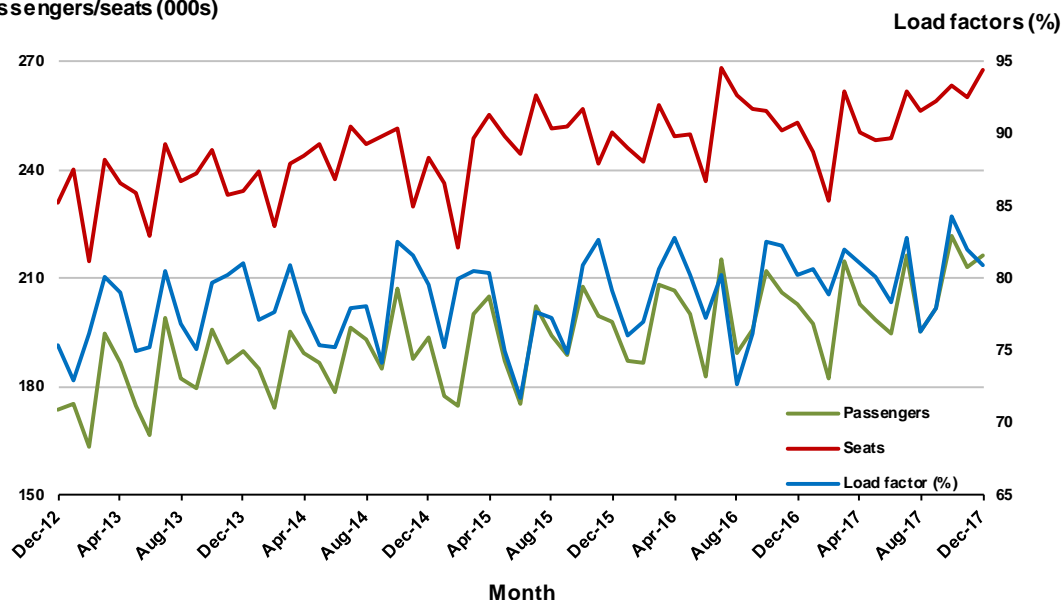
5. Adelaide - Melbourne

Monthly data

	Dec 2016	Dec 2017	% Change
Passengers carried (000s)	203.1	216.5	6.6
Seats (000s)	253.0	267.6	5.8
Load factor %	80.3	80.9	0.6 *
Aircraft trips	1 595	1 655	3.8

* percentage point difference

Passengers/seats (000s)

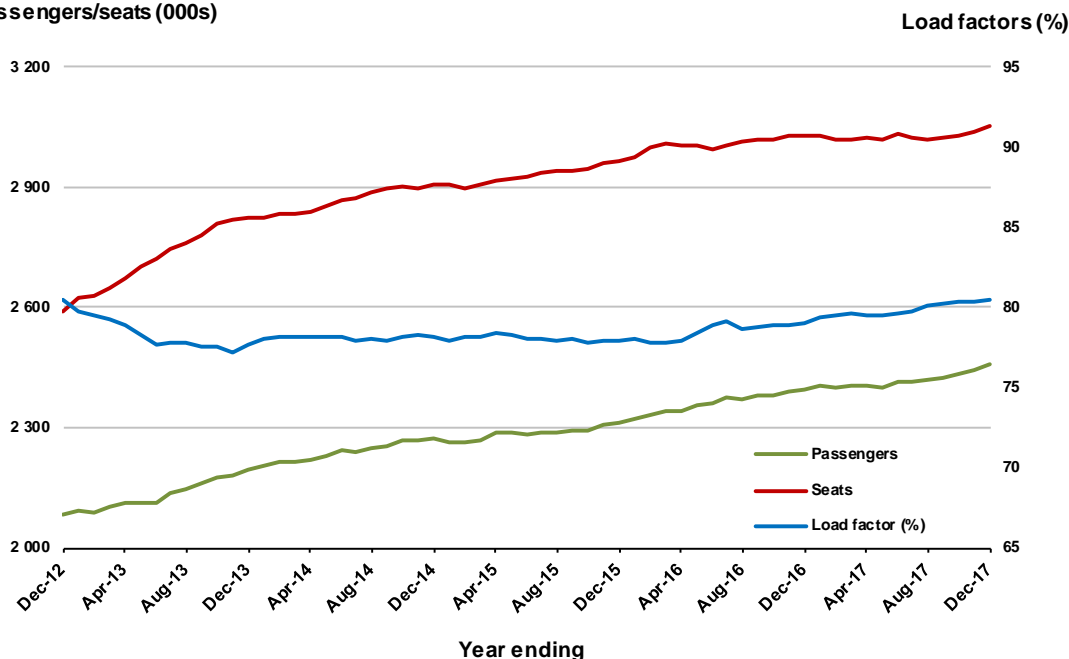


Moving annual data

	YE Dec 2016	YE Dec 2017	% Change
Passengers carried (000s)	2 393.6	2 456.4	2.6
Seats (000s)	3 029.0	3 053.2	0.8
Load factor %	79.0	80.5	1.4 *
Aircraft trips	19 322	19 125	-1.0

* percentage point difference

Passengers/seats (000s)



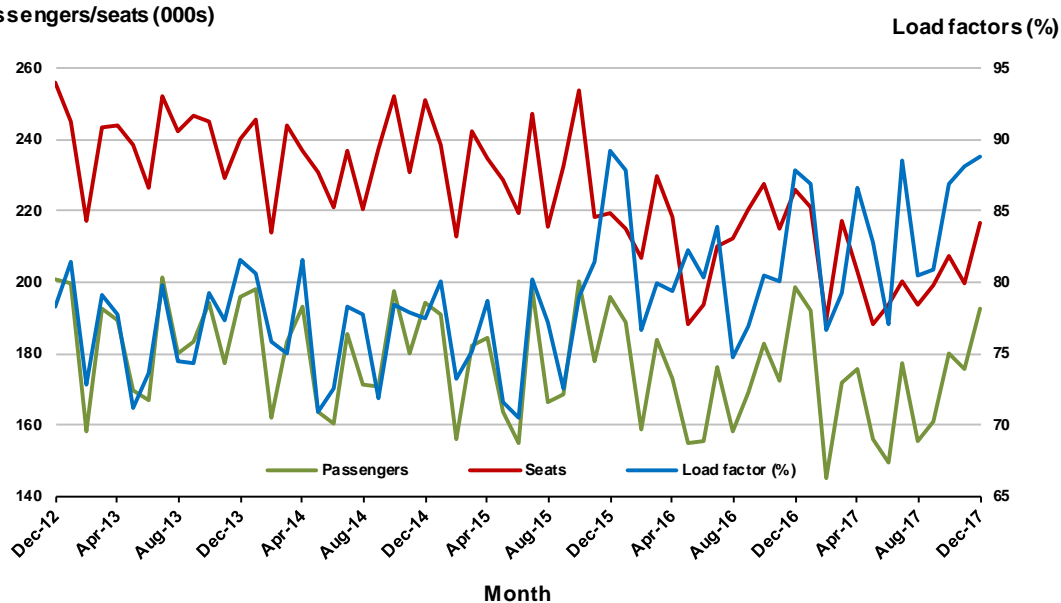
6. Melbourne - Perth

Monthly data

	Dec 2016	Dec 2017	% Change
Passengers carried (000s)	198.4	192.7	-2.9
Seats (000s)	225.9	217.0	-4.0
Load factor %	87.8	88.8	1.0 *
Aircraft trips	1 017	987	-2.9

* percentage point difference

Passengers/seats (000s)

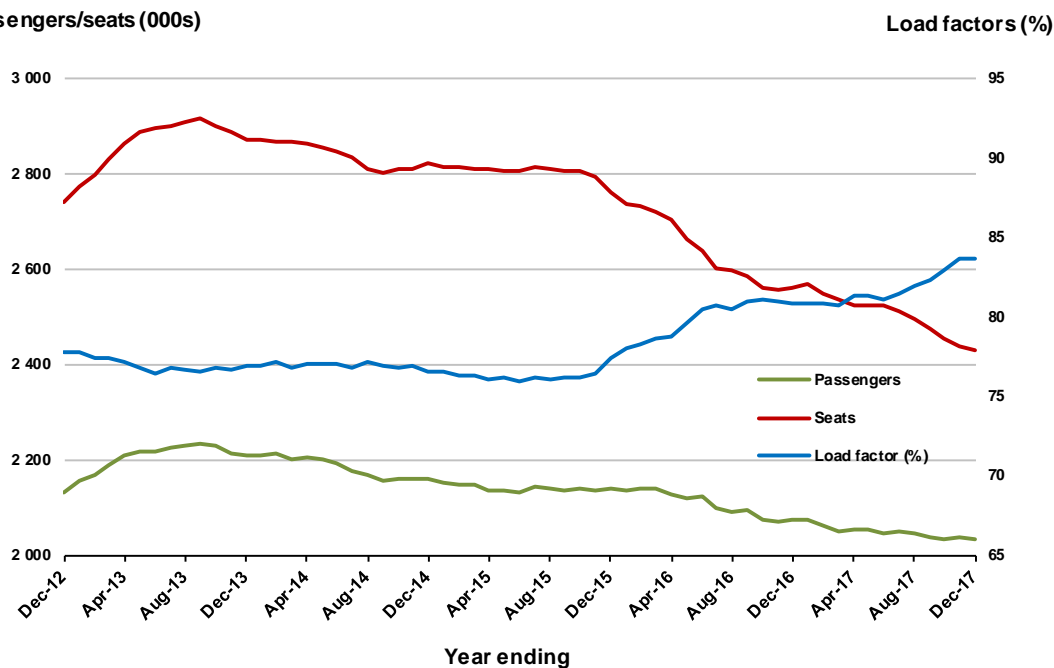


Moving annual data

	YE Dec 2016	YE Dec 2017	% Change
Passengers carried (000s)	2 072.8	2 033.2	-1.9
Seats (000s)	2 562.9	2 429.2	-5.2
Load factor %	80.9	83.7	2.8 *
Aircraft trips	11 581	11 110	-4.1

* percentage point difference

Passengers/seats (000s)



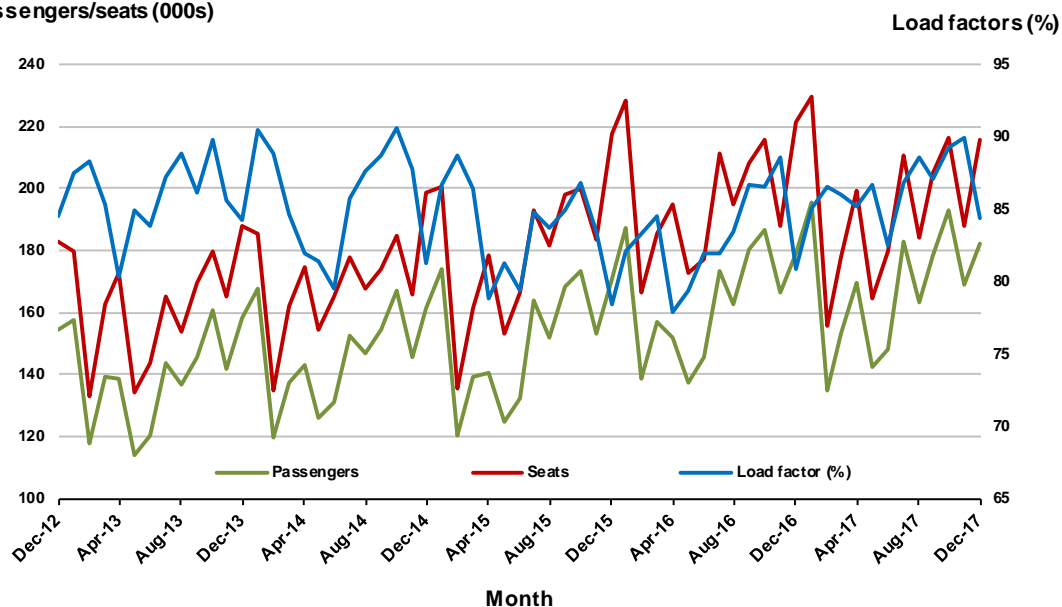
7. Gold Coast - Melbourne

Monthly data

	Dec 2016	Dec 2017	% Change
Passengers carried (000s)	179.0	182.2	1.8
Seats (000s)	221.3	215.9	-2.4
Load factor %	80.9	84.4	3.5 *
Aircraft trips	1 184	1 150	-2.9

* percentage point difference

Passengers/seats (000s)

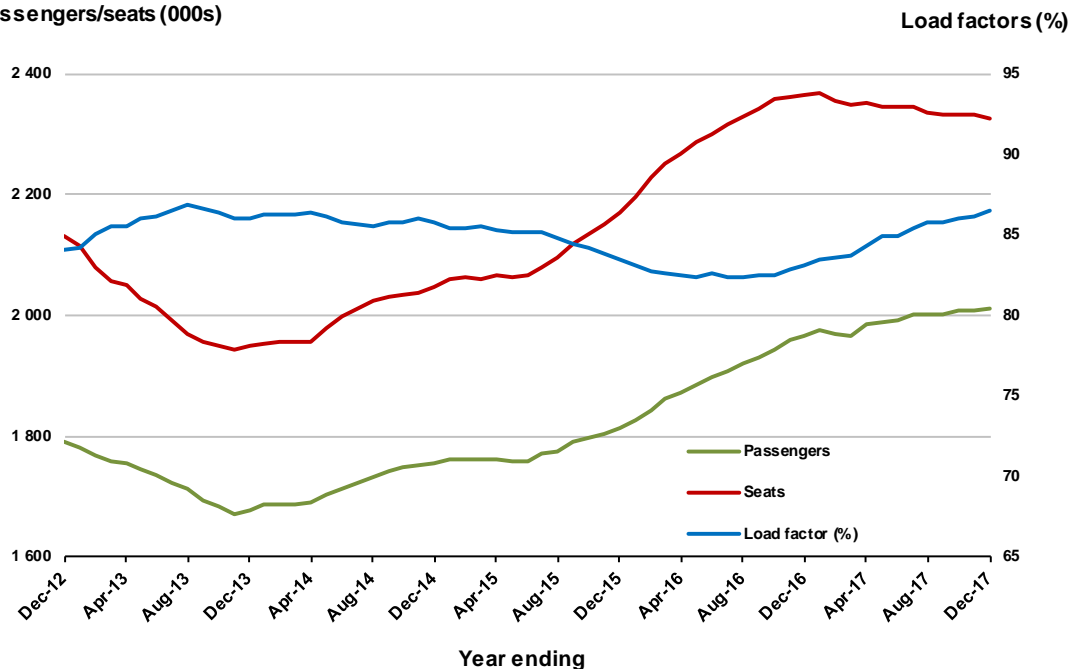


Moving annual data

	YE Dec 2016	YE Dec 2017	% Change
Passengers carried (000s)	1 966.1	2 012.6	2.4
Seats (000s)	2 365.1	2 326.6	-1.6
Load factor %	83.1	86.5	3.4 *
Aircraft trips	12 666	12 389	-2.2

* percentage point difference

Passengers/seats (000s)



8. Adelaide - Sydney

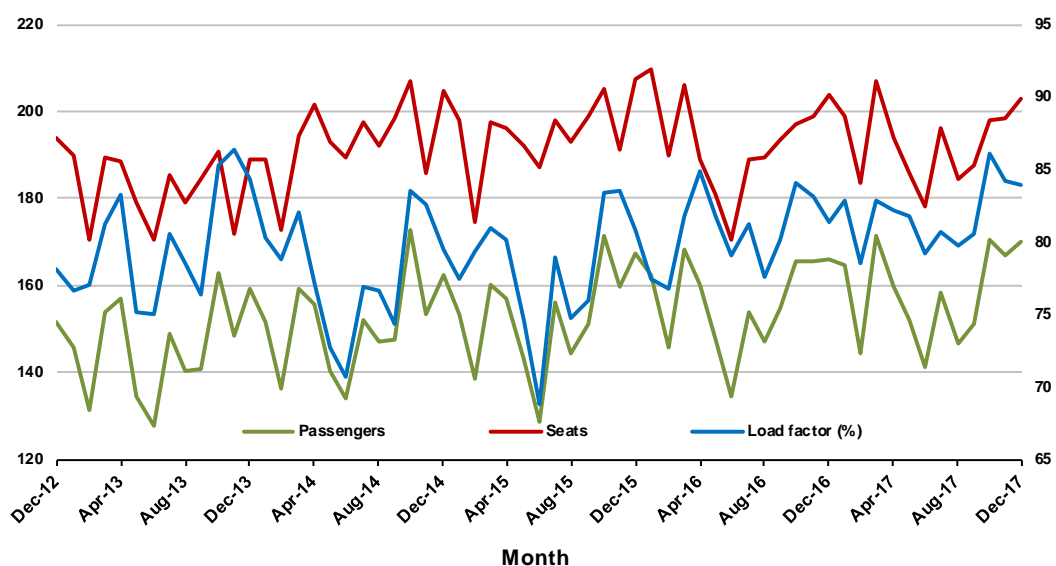
Monthly data

	Dec 2016	Dec 2017	% Change
Passengers carried (000s)	165.9	170.3	2.7
Seats (000s)	203.7	203.1	-0.3
Load factor %	81.4	83.9	2.5 *
Aircraft trips	1 270	1 212	-4.6

* percentage point difference

Passengers/seats (000s)

Load factors (%)



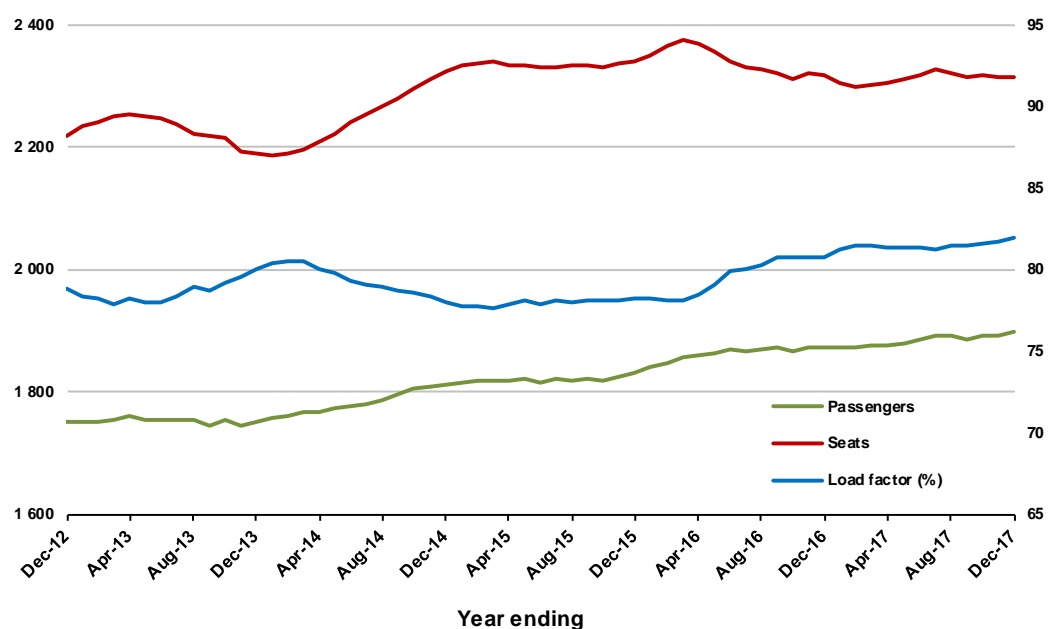
Moving annual data

	YE Dec 2016	YE Dec 2017	% Change
Passengers carried (000s)	1 872.0	1 898.3	1.4
Seats (000s)	2 317.1	2 315.8	-0.1
Load factor %	80.8	82.0	1.2 *
Aircraft trips	14 114	13 931	-1.3

* percentage point difference

Passengers/seats (000s)

Load factors (%)



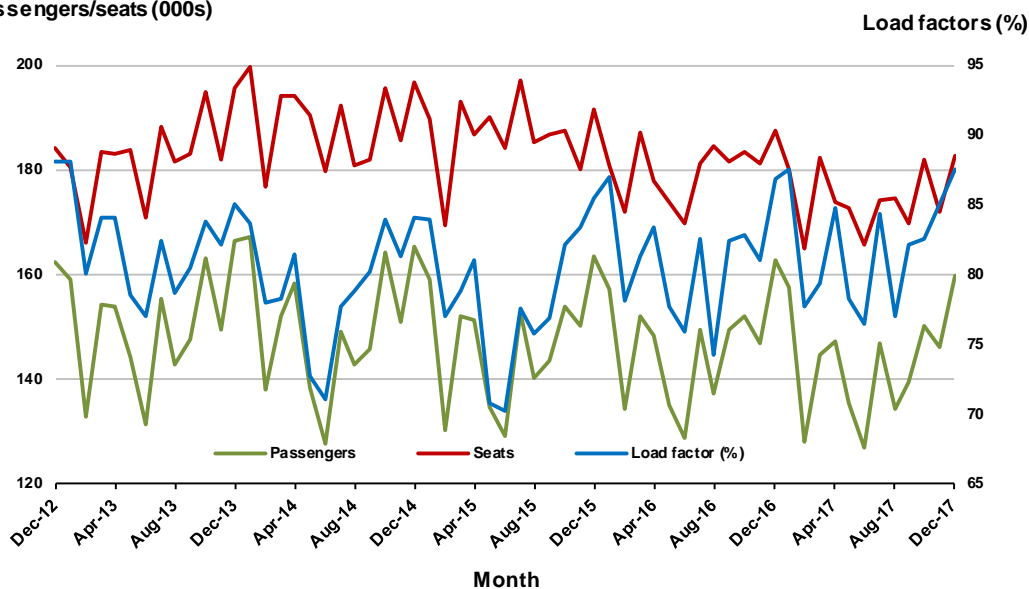
9. Perth - Sydney

Monthly data

	Dec 2016	Dec 2017	% Change
Passengers carried (000s)	162.8	159.9	-1.8
Seats (000s)	187.4	182.6	-2.6
Load factor %	86.9	87.6	0.7 *
Aircraft trips	803	800	-0.4

* percentage point difference

Passengers/seats (000s)

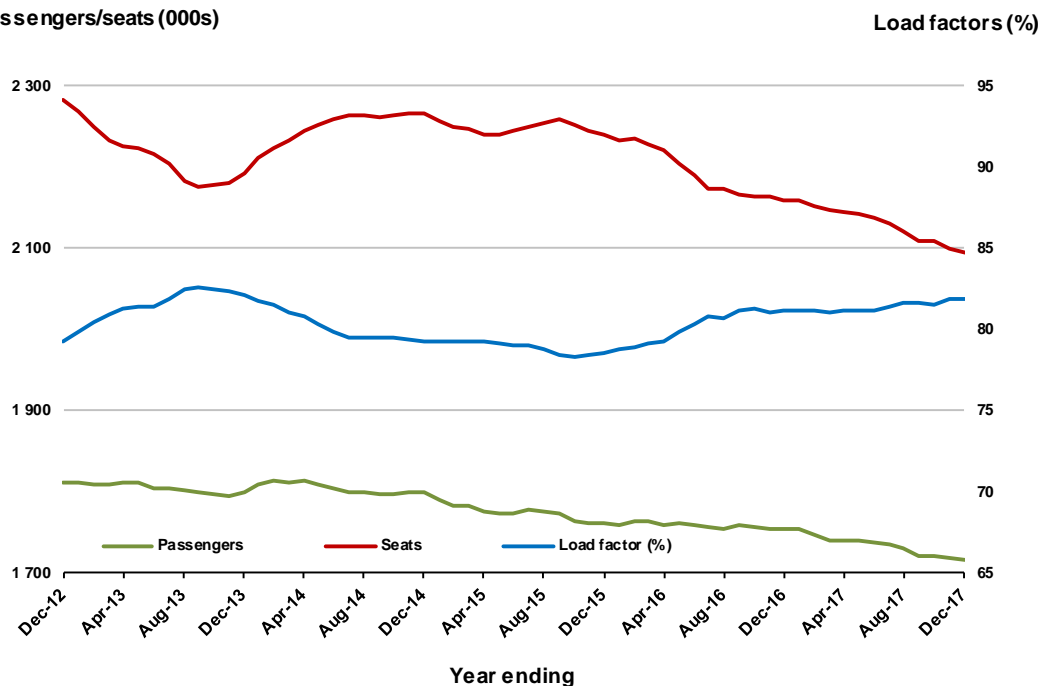


Moving annual data

	YE Dec 2016	YE Dec 2017	% Change
Passengers carried (000s)	1 753.7	1 716.5	-2.1
Seats (000s)	2 160.5	2 094.4	-3.1
Load factor %	81.2	82.0	0.8 *
Aircraft trips	9 154	9 031	-1.3

* percentage point difference

Passengers/seats (000s)

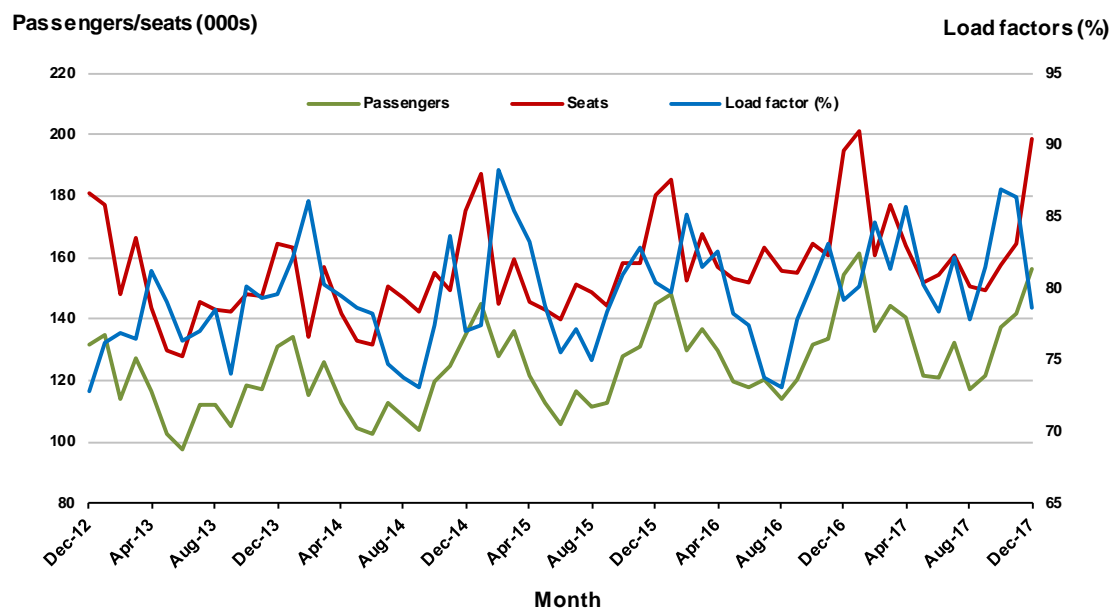


10. Hobart - Melbourne

Monthly data

	Dec 2016	Dec 2017	% Change
Passengers carried (000s)	154.2	156.4	1.4
Seats (000s)	194.7	198.9	2.2
Load factor %	79.2	78.6	-0.6 *
Aircraft trips	1 166	1 168	0.2

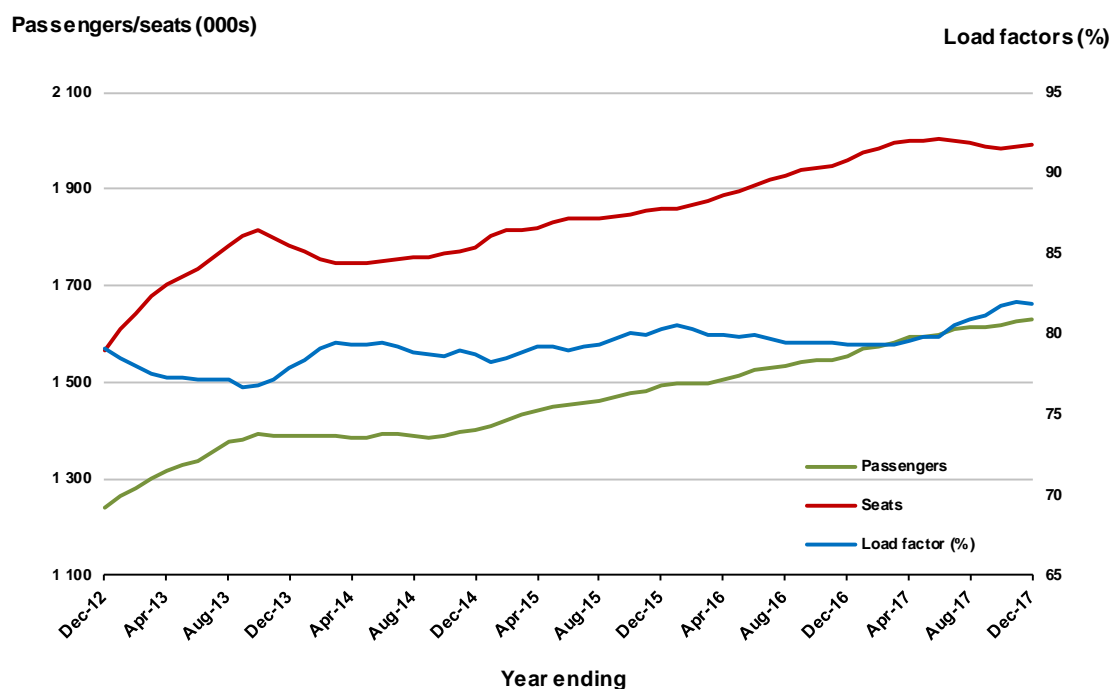
* percentage point difference



Moving annual data

	YE Dec 2016	YE Dec 2017	% Change
Passengers carried (000s)	1 555.5	1 630.3	4.8
Seats (000s)	1 960.9	1 990.6	1.5
Load factor %	79.3	81.9	2.6 *
Aircraft trips	12 286	12 161	-1.0

* percentage point difference



TOP FIFTY REGIONAL AIRPORTS

Table 10: Top fifty regional airports (000s) — passenger movements, monthly

	Airport	Dec 2016	Dec 2017	% Change
1	Cairns	369.2	369.3	0.0
2	Hobart	240.8	255.5	6.1
3	Townsville	132.3	140.8	6.4
4	Launceston	136.3	140.4	3.1
5	Darwin	139.8	137.2	-1.9
6	Newcastle	110.1	114.3	3.9
7	Mackay	65.3	67.9	4.0
8	Ballina	50.3	51.3	2.0
9	Alice Springs	45.9	46.1	0.3
10	Rockhampton	51.2	45.2	-11.7
11	Proserpine	32.8	45.1	37.5
12	Hamilton Island	50.8	39.2	-22.8
13	Coffs Harbour	35.0	35.1	0.5
14	Karratha	35.3	33.2	-5.9
15	Broome	23.2	28.7	23.9
16	Port Hedland	27.5	28.5	3.6
17	Ayers Rock	25.9	28.5	10.1
18	Albury	22.3	22.4	0.6
19	Newman	20.8	21.5	3.4
20	Mildura	20.3	21.3	5.2
21	Gladstone	24.9	21.0	-15.7
22	Kalgoorlie	18.8	19.9	6.0
23	Port Macquarie	20.9	19.9	-5.0
24	Dubbo	18.6	18.0	-3.1
25	Wagga Wagga	17.1	17.7	3.3
26	Hervey Bay	15.9	15.4	-3.3
27	Mount Isa	15.0	15.1	1.0
28	Tamworth	15.4	15.1	-2.4
29	Port Lincoln	15.9	14.9	-6.7
30	Emerald	15.8	14.7	-7.2
31	Bundaberg	15.3	14.0	-8.4
32	Toowoomba Wellcamp	12.5	13.1	4.6
33	Devonport	12.6	12.3	-2.5
34	Paraburdoo	12.3	12.2	-1.1
35	Armidale	10.8	10.6	-2.0
36	Thursday Island	8.8	8.8	0.3
37	Geraldton	9.3	8.7	-6.9
38	Moranbah	9.2	7.0	-23.8
39	Gove	6.6	6.7	2.1
40	Kununurra	6.9	6.6	-4.5
41	Weipa	6.4	6.3	-0.6
42	Roma	6.0	6.2	4.3
43	Mount Gambier	5.9	6.1	3.3
44	Olympic Dam	4.0	6.0	51.1
45	Merimbula	6.1	5.8	-4.3
46	Burnie	5.4	5.7	5.6
47	Griffith	5.3	5.7	5.8
48	Learmonth	5.3	5.2	-1.9
49	Norfolk Island	4.8	5.2	8.0
50	Whyalla	4.8	5.1	5.7
	Total top 50 regional airports	1 971.6	2 000.4	1.5
	Total regional airports	2 075.7	2 105.5	1.4
	Total domestic network	10 282.1	10 497.4	2.1

Note: Airport passenger movement numbers are the sum of passenger arrivals and departures at each airport.

Table 11: Top fifty regional airports (000s) — passenger movements, annual

	Airport	YE Dec 2016	YE Dec 2017	% Change
1	Cairns	4 243.4	4 312.2	1.6
2	Hobart	2 378.1	2 510.3	5.6
3	Darwin	1 803.4	1 802.5	0.0
4	Townsville	1 535.0	1 590.5	3.6
5	Launceston	1 332.4	1 341.8	0.7
6	Newcastle	1 235.7	1 289.8	4.4
7	Mackay	790.0	786.4	-0.5
8	Alice Springs	612.2	618.5	1.0
9	Rockhampton	584.7	557.1	-4.7
10	Ballina	487.9	509.7	4.5
11	Karratha	494.9	439.2	-11.3
12	Proserpine	342.8	425.6	24.1
13	Hamilton Island	550.0	423.6	-23.0
14	Coffs Harbour	396.2	416.1	5.0
15	Broome	372.6	388.5	4.3
16	Ayers Rock	359.4	366.0	1.8
17	Port Hedland	356.4	350.5	-1.6
18	Newman	309.4	286.3	-7.4
19	Gladstone	331.7	282.3	-14.9
20	Albury	254.4	269.8	6.0
21	Mildura	246.5	255.4	3.6
22	Kalgoorlie	240.2	252.1	4.9
23	Dubbo	208.1	237.3	14.0
24	Port Macquarie	226.3	228.1	0.8
25	Wagga Wagga	215.0	225.1	4.7
26	Mount Isa	188.3	200.7	6.6
27	Tamworth	178.6	198.3	11.1
28	Emerald	199.3	197.8	-0.7
29	Bundaberg	173.1	174.1	0.6
30	Hervey Bay	170.3	174.0	2.2
31	Port Lincoln	179.0	171.7	-4.1
32	Paraburdoo	164.2	166.5	1.4
33	Toowoomba Wellcamp	120.7	152.0	25.9
34	Devonport	147.8	147.6	-0.1
35	Armidale	129.3	133.0	2.9
36	Moranbah	117.7	115.6	-1.8
37	Geraldton	117.9	112.1	-4.9
38	Kununurra	107.4	104.6	-2.6
39	Thursday Island	100.3	100.4	0.1
40	Gove	81.6	84.2	3.1
41	Roma	87.9	83.8	-4.7
42	Learmonth	84.6	82.6	-2.4
43	Mount Gambier	76.1	80.3	5.6
44	Weipa	77.9	78.1	0.3
45	Griffith	69.4	73.7	6.2
46	Olympic Dam	51.1	69.6	36.3
47	Merimbula	63.2	65.5	3.6
48	Whyalla	62.8	64.8	3.3
49	Orange	52.6	64.1	21.9
50	Broken Hill	53.4	61.6	15.3
	Total top 50 regional airports	22 761.4	23 121.1	1.6
	Total regional airports	24 065.8	24 478.3	1.7
	Total domestic network	117 936.9	119 957.9	1.7

Note: Airport passenger movement numbers are the sum of passenger arrivals and departures at each airport.

DOMESTIC CHARTER ACTIVITY

Table 12: Charter passengers carried and aircraft trips - annual activity

	YE Dec 2016	YE Dec 2017	% Change
Total domestic charter passengers	2 414 385	2 432 258	0.7
Total domestic charter aircraft trips	44 797	45 972	2.6

Note: Helicopter, joyflights and sightseeing charter flights not included.

Table 13: Charter passengers carried and aircraft trips - monthly activity

	Dec 2016	Dec 2017	% Change
Total domestic charter passengers	188 728	180 372	-4.4
Total domestic charter aircraft trips	3 657	3 561	-2.6

Note: Helicopter, joyflights and sightseeing charter flights not included.

Table 14: Domestic airports - charter activity - annual

	YE Dec 2016	YE Dec 2017	% Change
Total domestic charter passenger movements	4 828 770	4 864 516	0.7
Total domestic charter aircraft movements	89 594	91 944	2.6
Perth airport charter passenger movements	1 873 595	1 844 952	-1.5
Perth airport charter aircraft movements	31 529	31 229	-1.0

Note: Helicopter, joyflights and sightseeing charter flights not included.

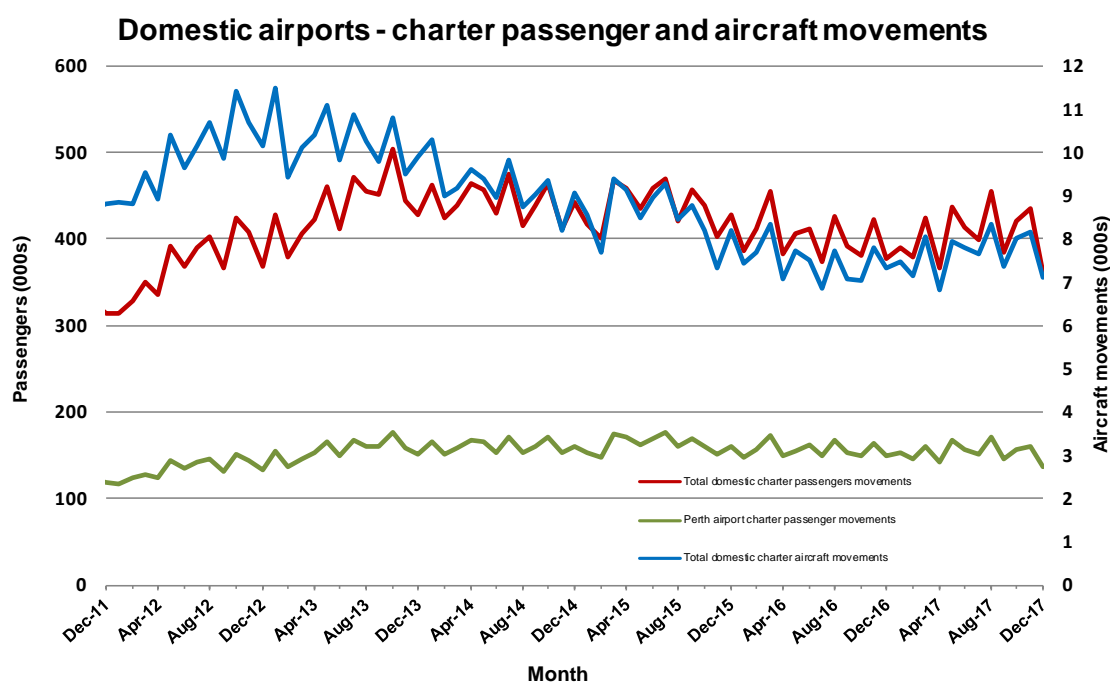
Charter passenger and aircraft movement numbers are the sum of arrivals and departures at each airport.

Table 15: Domestic airports - charter activity - monthly

	Dec 2016	Dec 2017	% Change
Total domestic charter passenger movements	377 456	360 744	-4.4
Total domestic charter aircraft movements	7 314	7 122	-2.6
Perth airport charter passenger movements	148 760	136 039	-8.6
Perth airport charter aircraft movements	2 618	2 387	-8.8

Note: Helicopter, joyflights and sightseeing charter flights not included.

Charter passenger and aircraft movement numbers are the sum of arrivals and departures at each airport.



DEFINITIONS

Aircraft Trips	The number of flight stages. A return flight counts as two aircraft trips.
Airport Movements	Airport movements (passenger and cargo) are measured once on arrival and once on departure. Each domestic trip generates two movements at airports. For example, a trip from Melbourne to Sydney will be counted twice, as a passenger departure at Melbourne and as a passenger arrival at Sydney. At the national level, the sum of all domestic airport traffic will therefore be equal to twice the number of trips undertaken.
Available Seat Kilometres (ASKs)	Calculated by multiplying the number of seats available on each flight stage, by the distance in kilometres between the ports. The distances used are Great Circle Distances.
City-Pair	The ports shown make up the city-pair route. Passenger movements shown for a city pair reflect total traffic in both directions.
Flight Stage	The operation of an aircraft from take-off to landing.
Load Factor	The total revenue passenger kilometres performed as a percentage of the total available seat kilometres.
Passengers Carried	Revenue passengers carried.
Regular Public Transport Services (RPT)	All air service operations in which aircraft are available for the transport of members of the public and are conducted in accordance with fixed schedules. It does not include charter or other non-scheduled operations.
Revenue Passengers	All passengers paying any fare. Frequent flyer redemption travellers are regarded as revenue passengers.
Revenue Passenger Kilometres (RPKs)	Calculated by multiplying the number of revenue passengers travelling on each flight stage, by the distance in kilometres between the ports. The distances used are Great Circle Distances.
Traffic on board by stages	The total of all traffic (revenue passengers) on each flight stage between two directly connected airports.
..	Data not included
NA	Not applicable