

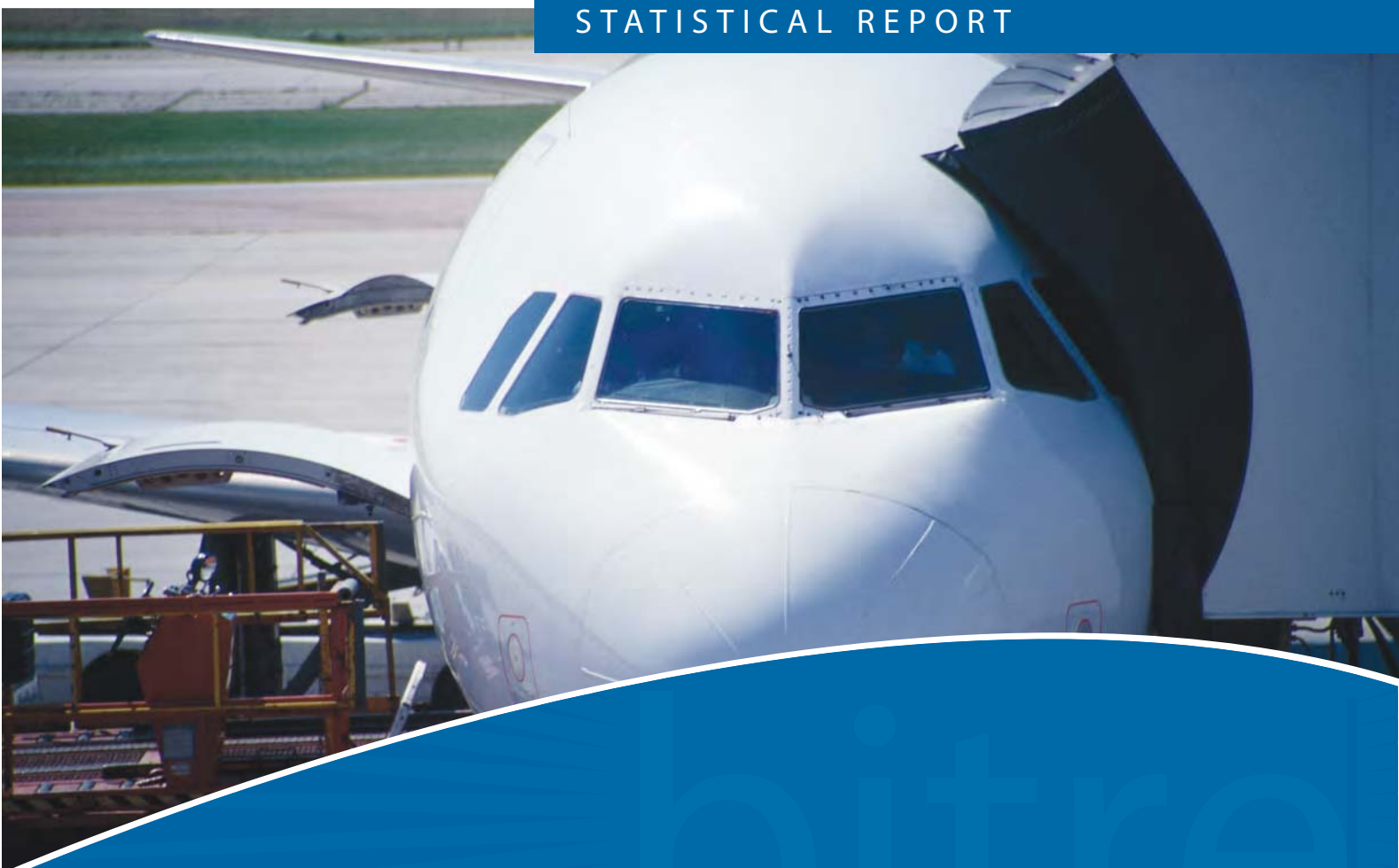


**Australian Government**

**Department of Infrastructure and Regional Development**

Bureau of Infrastructure, Transport and Regional Economics

STATISTICAL REPORT



# Aviation

Domestic aviation activity  
September 2017

© Commonwealth of Australia 2017

ISSN: 1832 - 1968

### **Ownership of intellectual property rights in this publication**

Unless otherwise noted, copyright (and any other intellectual property rights, if any) in this publication is owned by the Commonwealth of Australia (referred to below as the Commonwealth).

### **Disclaimer**

The material contained in this publication is made available on the understanding that the Commonwealth is not providing professional advice, and that users exercise their own skill and care with respect to its use, and seek independent advice if necessary.

The Commonwealth makes no representations or warranties as to the contents or accuracy of the information contained in this publication. To the extent permitted by law, the Commonwealth disclaims liability to any person or organisation in respect of anything done, or omitted to be done, in reliance upon information contained in this publication.

### **Creative Commons licence**

With the exception of (a) the Coat of Arms; and (b) the Department of Infrastructure and Regional Development's photos and graphics, copyright in this publication is licensed under a Creative Commons Attribution 3.0 Australia Licence.

Creative Commons Attribution 3.0 Australia Licence is a standard form licence agreement that allows you to copy, communicate and adapt this publication provided that you attribute the work to the Commonwealth and abide by the other licence terms. A summary of the licence terms is available from <http://creativecommons.org/licenses/by/3.0/au/deed.en>. The full licence terms are available from <http://creativecommons.org/licenses/by/3.0/au/legalcode>.

### **Use of the Coat of Arms**

The Department of the Prime Minister and Cabinet sets the terms under which the Coat of Arms is used. Please refer to the Department's Commonwealth Coat of Arms and Government branding web page <http://www.dpmc.gov.au/guidelines/index.cfm#brand> and, in particular, the Guidelines on the use of the Commonwealth Coat of Arms publication.

An appropriate citation for this report is:

Bureau of Infrastructure, Transport and Regional Economics (BITRE), 2017, Domestic aviation activity, Statistical Report, BITRE, Canberra ACT.

### **Contact us**

This publication is available in PDF format. All other rights are reserved, including in relation to any Departmental logos or trade marks which may exist. For enquiries regarding the licence and any use of this publication, please contact:

Bureau of Infrastructure, Transport and Regional Economics (BITRE)  
Department of Infrastructure and Regional Development  
GPO Box 501, Canberra ACT 2601, Australia  
Telephone: (international) +61 2 6274 7210  
Fax: (international) +61 2 6274 6855  
Email: [bitre@infrastructure.gov.au](mailto:bitre@infrastructure.gov.au)  
Website: [www.bitre.gov.au](http://www.bitre.gov.au)

### **Inquiries**

Should you require additional information about the statistics contained in this publication:

Nebojsa Pavlovic

Telephone (02) 6274 6817 or Facsimile (02) 6274 7727

Electronic mail: [AVSTATS@infrastructure.gov.au](mailto:AVSTATS@infrastructure.gov.au)

[Nebojsa.Pavlovic@infrastructure.gov.au](mailto:Nebojsa.Pavlovic@infrastructure.gov.au)

Web site: <http://www.bitre.gov.au/statistics/aviation/domestic.aspx>

## FOREWORD

This report provides an overview of domestic (including charter) commercial aviation activity in Australia for the month of September 2017.

The data cover revenue passengers carried by Australian-registered operators of scheduled regular public transport services over Australian flight stages and fixed-wing charter operators. These estimates include passengers carried between domestic airports on international flights operated by these carriers. The passengers carried refer to traffic on board by stages.

Estimates of passengers and aircraft movements for charter aviation are included in this publication, where BITRE confidentiality standards are met.

Individual routes shown are restricted to those with an average exceeding 8 000 passengers per month over the previous six months where two or more airlines operate in competition. For the month of September 2017 there were 67 such routes.

Information on the total network for the month of September 2017 and on the Regular Public Transport (RPT) network for the month of September 2017 is presented on page 2, with estimates for the year ended September 2017 presented on page 3.

Detailed information on the 67 individual routes can be found in the RPT summary pages 4-13 of this publication.

The top ten airports in terms of RPT passenger movements are shown on page 14.

Data on domestic RPT cargo movements at the top five cargo airports are provided on page 15. The table includes cargo carried on passenger flights operated by the Qantas group (including Jetstar), Virgin Australia, Air North and Skippers as well as the cargo carried by dedicated freighter aircraft operated by Qantas Freight, Toll Priority and Virgin Australia Cargo.

The long-term trends for the top ten competitive RPT routes are presented graphically on pages 16-25.

Domestic RPT passenger movements at the top 50 regional airports are presented on pages 26-27.

Tables providing estimates of domestic charter aviation activity are shown on page 28. BITRE confidentiality standards restrict publication of detailed estimates for individual Australian airports, with the exception of Perth Airport.

A list of definitions can be found on page 29.

This report was prepared by the Aviation Statistics Section of the Bureau of Infrastructure, Transport and Regional Economics with data provided by airlines.

Estimates are included where data were not available and data presented in this publication may contain revisions to previously published data.

Where figures have been rounded, discrepancies may occur between sums of component items and totals, and in percentage changes which are derived from figures prior to rounding.

# CONTENTS

<b>Highlights</b> .....	<b>1</b>
<b>Total network</b> .....	<b>2</b>
<b>RPT network</b> .....	<b>2</b>
<b>Top competitive routes</b> .....	<b>4</b>
<b>Top ten airports – passenger movements</b> .....	<b>14</b>
<b>Top five airports – cargo movements</b> .....	<b>15</b>
<b>Top ten routes</b> .....	<b>16</b>
1. Melbourne – Sydney .....	16
2. Brisbane – Sydney .....	17
3. Brisbane – Melbourne .....	18
4. Gold Coast – Sydney.....	19
5. Adelaide – Melbourne .....	20
6. Gold Coast – Melbourne .....	21
7. Melbourne – Perth.....	22
8. Adelaide – Sydney .....	23
9. Perth – Sydney.....	24
10. Hobart – Melbourne .....	25
<b>Top fifty regional airports</b> .....	<b>26</b>
<b>Domestic charter activity</b> .....	<b>28</b>
<b>Definitions</b> .....	<b>29</b>

This page is intentionally left blank.

## HIGHLIGHTS

There were 5.26 million passengers carried on Australian domestic commercial aviation (including charter operations) in September 2017, an increase of 0.1 per cent on September 2016. For the month of September 2017 there were 56 865 aircraft trips, a decrease of 2.8 per cent compared to September 2016.

5.07 million passengers were carried on RPT flights in September 2017, an increase of 0.2 per cent on September 2016.

For the year ending September 2017 there were 59.52 million RPT passengers, an increase of 1.3 per cent on the year ending September 2016.

RPT revenue passenger kilometres (RPKs) performed were 5.96 billion for the month, down 0.7 per cent compared with September 2016. Capacity, measured by available seat kilometres (ASKs), decreased by 3.0 per cent compared with September 2016 to a total of 7.41 billion.

With RPT capacity decreasing at a faster rate than passenger traffic, the industry wide load factor (RPKs/ASKs) increased from 78.6 per cent in September 2016 to 80.4 per cent in September 2017. Load factors on individual routes increased on 50 of the 65 RPT routes for which data is available for publishing in both years.

For the month of September 2017, Melbourne – Sydney remained Australia's busiest RPT route with 742 212 passengers, a decrease of 1.0 per cent compared with September 2016. It was followed by Brisbane – Sydney with 403 876 passengers (up 0.1 per cent) and Brisbane – Melbourne with 307 122 passengers (down 1.5 per cent).

The greatest percentage increase in RPT passenger numbers, compared to September 2016, was on the Brisbane – Proserpine route (up 32.4 per cent). There were large increases on a number of other routes, including Canberra – Melbourne (up 12.8 per cent), Brisbane – Mount Isa (up 10.8 per cent) and Brisbane – Mackay (up 9.0 per cent).

Routes with traffic decreases in September 2017 compared with September 2016 included Hamilton Island – Sydney (down 28.0 per cent), Brisbane – Hamilton Island (down 20.9 per cent), Karratha – Perth (down 15.5 per cent) and Brisbane – Gladstone (down 14.6 per cent).

In September 2017, Sydney remained Australia's busiest domestic airport with 2.27 million passenger movements, followed by Melbourne with 2.12 million passenger movements and Brisbane with 1.50 million passenger movements.

Total cargo movements at Australian airports on domestic RPT flights were 36.4 thousand tonnes in September 2017, a decrease of 2.7 per cent compared with September 2016.

In September 2017 there were 2.10 million domestic passenger movements through regional airports, 0.7 per cent higher than in September 2016. Out of the top 50 regional airports, the strongest growth was at Olympic Dam airport (up 57.5 per cent on September 2016), while the largest decrease was at Hamilton Island airport (down 24.3 per cent on September 2016).

Fixed-wing charter operators carried 191.77 thousand passengers in September 2017, a decrease of 2.2 per cent on September 2016. Perth airport accounted for 37.8 per cent of all charter passengers in Australia.

## TOTAL NETWORK

### Summary of monthly commercial aviation activity

	Sep 2016	Sep 2017	% Change
Total passengers carried (millions)	5.26	5.26	0.1
Aircraft trips (000s)	58.5	56.9	-2.8

Note: Regular Public Transport and charter aviation activity  
Helicopter, joyflights and sightseeing charter flights not included.

## RPT NETWORK

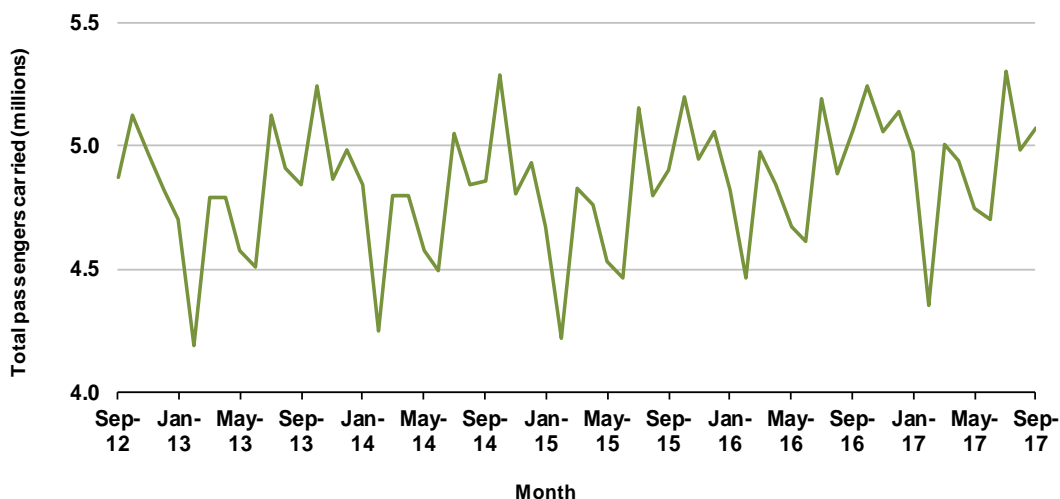
### Summary of monthly RPT activity

	Sep 2016	Sep 2017	% Change
Total passengers carried (millions)	5.06	5.07	0.2
Revenue passenger kilometres (billions)	6.00	5.96	-0.7
Available seats (millions)	6.60	6.43	-2.5
Available seat kilometres (billions)	7.64	7.41	-3.0
Load factor %	78.6	80.4	1.8 *
Aircraft trips (000s)	55.0	53.2	-3.2

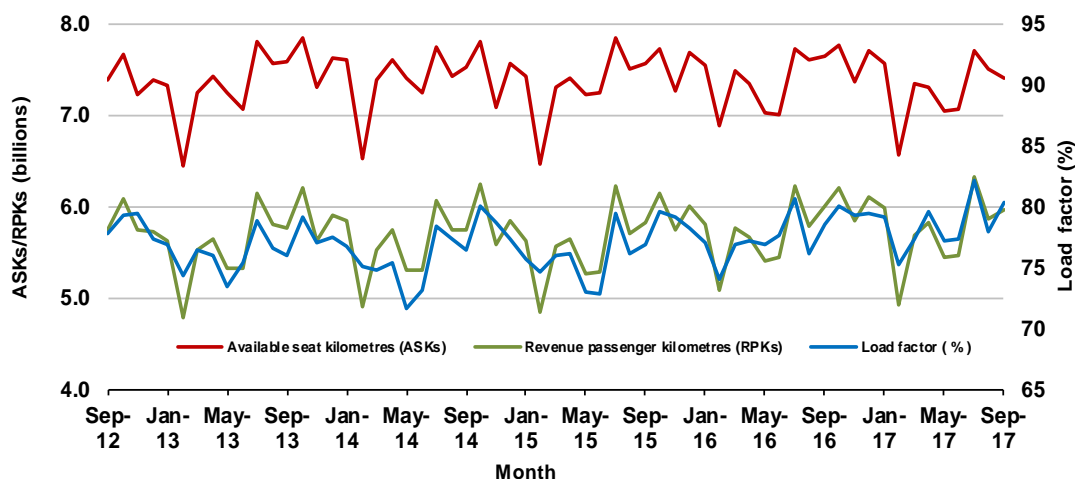
\* percentage point difference

### Domestic RPT passenger traffic

(monthly)



### RPT Network utilisation





## TOTAL NETWORK

### Summary of annual commercial aviation activity

	YE Sep 2016	YE Sep 2017	% Change
Total passengers carried (millions)	61.19	61.93	1.2
Aircraft trips (000s)	687.8	684.6	-0.5

Note: Regular Public Transport and charter aviation activity  
Helicopter, joyflights and sightseeing charter flights not included.

## RPT NETWORK

### Summary of annual RPT activity

	YE Sep 2016	YE Sep 2017	% Change
Total passengers carried (millions)	58.73	59.52	1.3
Revenue passenger kilometres (billions)	69.10	69.62	0.8
Available seats (millions)	77.31	77.08	-0.3
Available seat kilometres (billions)	88.95	88.33	-0.7
Load factor %	77.7	78.8	1.1 *
Aircraft trips (000s)	642.2	639.3	-0.4

\* percentage point difference

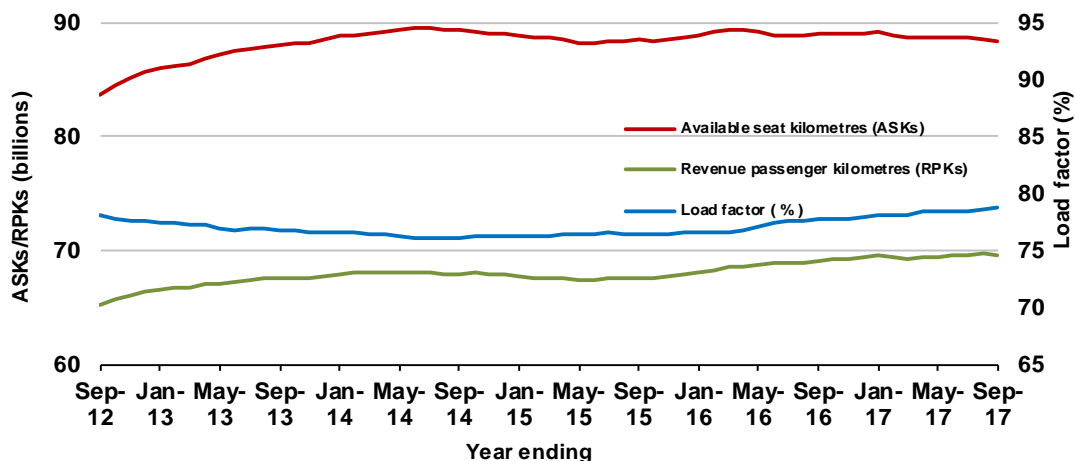
### Domestic RPT passenger traffic

(moving annual totals)



### RPT Network utilisation

(moving annual totals)



## TOP COMPETITIVE ROUTES

**Table 1: Passengers carried (000s) — annual activity**

	City-Pair	YE Sep 2016	YE Sep 2017	% Change
1	Melbourne - Sydney	8 866.1	8 999.5	1.5
2	Brisbane - Sydney	4 645.7	4 708.2	1.3
3	Brisbane - Melbourne	3 478.6	3 517.3	1.1
4	Gold Coast - Sydney	2 713.6	2 714.3	0.0
5	Adelaide - Melbourne	2 378.1	2 426.0	2.0
6	Melbourne - Perth	2 093.2	2 038.1	-2.6
7	Gold Coast - Melbourne	1 931.3	2 000.4	3.6
8	Adelaide - Sydney	1 873.6	1 887.3	0.7
9	Perth - Sydney	1 759.4	1 722.0	-2.1
10	Hobart - Melbourne	1 540.0	1 614.8	4.9
11	Brisbane - Cairns	1 344.4	1 369.3	1.9
12	Cairns - Sydney	1 093.4	1 127.5	3.1
13	Canberra - Melbourne	1 008.1	1 109.0	10.0
14	Brisbane - Perth	994.3	966.9	-2.8
15	Brisbane - Townsville	987.4	955.5	-3.2
16	Canberra - Sydney	952.1	953.5	0.2
17	Launceston - Melbourne	918.7	914.4	-0.5
18	Cairns - Melbourne	812.9	837.9	3.1
19	Adelaide - Brisbane	826.9	834.6	0.9
20	Brisbane - Mackay	691.3	684.9	-0.9
21	Hobart - Sydney	600.9	644.7	7.3
22	Adelaide - Perth	615.9	613.8	-0.3
23	Brisbane - Newcastle	564.0	589.1	4.5
24	Brisbane - Canberra	568.3	587.2	3.3
25	Sunshine Coast - Sydney	525.6	567.2	7.9
26	Brisbane - Rockhampton	566.8	535.4	-5.5
27	Melbourne - Newcastle	443.0	468.4	5.7
28	Melbourne - Sunshine Coast	434.4	466.6	7.4
29	Karratha - Perth	518.6	446.6	-13.9
30	Brisbane - Darwin	404.4	407.5	0.8
31	Ballina - Sydney	375.3	396.5	5.6
32	Coffs Harbour - Sydney	337.8	343.8	1.8
33	Perth - Port Hedland	345.7	342.0	-1.1
34	Darwin - Sydney	317.7	321.2	1.1
35	Darwin - Melbourne	297.6	307.2	3.2
36	Broome - Perth	298.3	297.3	-0.3
37	Brisbane - Gladstone	353.4	292.5	-17.2
38	Launceston - Sydney	290.2	288.0	-0.8
39	Newman - Perth	313.5	284.8	-9.2
40	Brisbane - Proserpine	231.9	244.4	5.4
41	Kalgoorlie - Perth	228.9	238.6	4.2
42	Albury - Sydney	224.5	224.6	0.1
43	Hamilton Island - Sydney	256.9	214.5	-16.5
44	Adelaide - Gold Coast	222.7	214.3	-3.8
45	Brisbane - Hobart	203.7	209.8	3.0
46	Melbourne - Mildura	205.0	209.3	2.1
47	Brisbane - Emerald	200.9	198.5	-1.2
48	Darwin - Perth	183.0	193.6	5.8
49	Port Macquarie - Sydney	193.0	193.3	0.2
50	Dubbo - Sydney	186.9	190.7	2.1

continued

**Table 1: (continued) Passengers carried (000s) — annual activity**

	<b>City-Pair</b>	<b>YE Sep 2016</b>	<b>YE Sep 2017</b>	<b>%Change</b>
51	Ayers Rock - Sydney	176.5	190.4	7.9
52	Sydney - Wagga Wagga	189.3	184.9	-2.3
53	Sydney - Tamworth	170.9	182.4	6.7
54	Adelaide - Canberra	170.7	178.1	4.3
55	Brisbane - Bundaberg	170.6	176.0	3.1
56	Adelaide - Port Lincoln	181.5	173.7	-4.3
57	Sydney - Townsville	158.5	159.3	0.5
58	Cairns - Townsville	139.8	140.0	0.2
59	Brisbane - Hamilton Island	146.9	134.8	-8.2
60	Armidale - Sydney	127.2	126.7	-0.4
61	Brisbane - Mount Isa	121.6	124.0	2.0
62	Adelaide - Alice Springs	120.0	123.1	2.6
63	Brisbane - Moranbah	119.4	120.5	0.9
64	Alice Springs - Darwin	116.2	117.8	1.4
65	Geraldton - Perth	118.6	112.5	-5.1
66	Melbourne - Townsville	..	14.0	NA (a)
67	Proserpine - Sydney	..	10.9	NA (b)
	<b>Total domestic network</b>	<b>58 729.1</b>	<b>59 516.4</b>	<b>1.3</b>

(a) Melbourne - Townsville route included from September 2017, prior data not shown.

(b) Proserpine - Sydney route included from September 2017, prior data not shown.

**Table 2: Passengers carried (000s) — monthly activity**

	<b>City-Pair</b>	<b>Sep 2016</b>	<b>Sep 2017</b>	<b>% Change</b>
1	Melbourne - Sydney	749.4	742.2	-1.0
2	Brisbane - Sydney	403.4	403.9	0.1
3	Brisbane - Melbourne	311.8	307.1	-1.5
4	Gold Coast - Sydney	224.2	225.1	0.4
5	Adelaide - Melbourne	195.8	201.7	3.0
6	Gold Coast - Melbourne	180.6	178.6	-1.1
7	Melbourne - Perth	169.3	161.0	-4.9
8	Adelaide - Sydney	155.0	151.2	-2.5
9	Perth - Sydney	149.4	139.4	-6.7
10	Hobart - Melbourne	120.4	121.8	1.2
11	Brisbane - Cairns	114.2	117.6	3.0
12	Canberra - Melbourne	87.3	98.4	12.8
13	Cairns - Sydney	95.3	96.4	1.2
14	Brisbane - Townsville	88.4	85.3	-3.5
15	Brisbane - Perth	84.7	83.0	-1.9
16	Canberra - Sydney	84.6	82.6	-2.3
17	Cairns - Melbourne	79.1	78.8	-0.5
18	Adelaide - Brisbane	69.6	73.2	5.2
19	Launceston - Melbourne	68.6	69.6	1.3
20	Brisbane - Mackay	58.9	64.2	9.0
21	Brisbane - Canberra	52.0	55.2	6.1
22	Brisbane - Newcastle	50.4	50.8	0.7
23	Adelaide - Perth	51.3	50.5	-1.5
24	Sunshine Coast - Sydney	46.3	50.0	8.0
25	Hobart - Sydney	47.9	49.7	3.8
26	Melbourne - Sunshine Coast	44.1	47.1	6.7
27	Brisbane - Rockhampton	50.6	46.5	-8.0
28	Melbourne - Newcastle	40.8	41.9	2.7
29	Ballina - Sydney	33.9	36.0	6.1
30	Brisbane - Darwin	38.2	35.6	-6.7
31	Karratha - Perth	41.6	35.1	-15.5
32	Broome - Perth	29.6	32.2	8.8
33	Coffs Harbour - Sydney	28.8	30.0	4.2
34	Darwin - Sydney	29.6	29.8	0.8
35	Perth - Port Hedland	29.1	28.5	-2.0
36	Darwin - Melbourne	27.0	27.1	0.7
37	Brisbane - Proserpine	19.5	25.8	32.4
38	Newman - Perth	25.9	23.6	-8.8
39	Brisbane - Gladstone	27.4	23.4	-14.6
40	Kalgoorlie - Perth	20.0	20.6	2.8
41	Albury - Sydney	20.2	19.6	-3.0
42	Launceston - Sydney	19.7	18.9	-4.0
43	Adelaide - Gold Coast	18.7	18.5	-1.3
44	Brisbane - Hobart	16.8	17.9	7.0
45	Darwin - Perth	17.4	17.8	2.7
46	Melbourne - Mildura	17.3	17.7	2.0
47	Ayers Rock - Sydney	17.3	17.1	-1.3
48	Hamilton Island - Sydney	23.4	16.9	-28.0
49	Brisbane - Emerald	17.1	16.8	-1.6
50	Dubbo - Sydney	17.0	16.6	-2.5

continued

**Table 2: (continued) Passengers carried (000s) — monthly activity**

	<b>City-Pair</b>	<b>Sep 2016</b>	<b>Sep 2017</b>	<b>% Change</b>
51	Adelaide - Canberra	15.9	16.3	2.2
52	Port Macquarie - Sydney	16.8	15.9	-5.7
53	Sydney - Wagga Wagga	16.4	15.6	-4.6
54	Sydney - Townsville	14.2	15.5	8.9
55	Sydney - Tamworth	15.7	15.4	-1.9
56	Brisbane - Bundaberg	14.9	14.8	-0.9
57	Adelaide - Port Lincoln	14.0	14.0	0.0
58	Melbourne - Townsville	..	14.0	NA (a)
59	Cairns - Townsville	12.3	12.3	-0.6
60	Brisbane - Mount Isa	10.2	11.3	10.8
61	Adelaide - Alice Springs	11.1	11.1	-0.7
62	Alice Springs - Darwin	10.8	11.0	1.8
63	Proserpine - Sydney	..	10.9	NA (b)
64	Brisbane - Hamilton Island	13.6	10.7	-20.9
65	Armidale - Sydney	10.4	10.2	-1.4
66	Geraldton - Perth	10.4	9.4	-9.5
67	Brisbane - Moranbah	9.4	8.7	-8.3
	<b>Total domestic network</b>	<b>5 062.1</b>	<b>5 070.5</b>	<b>0.2</b>

(a) Melbourne - Townsville route included from September 2017, prior data not shown.

(b) Proserpine - Sydney route included from September 2017, prior data not shown.

**Table 3: Available seats (000s) — monthly activity**

	<b>City-Pair</b>	<b>Sep 2016</b>	<b>Sep 2017</b>	<b>% Change</b>
1	Melbourne - Sydney	910.0	886.8	-2.5
2	Brisbane - Sydney	493.4	479.8	-2.8
3	Brisbane - Melbourne	374.0	374.2	0.1
4	Gold Coast - Sydney	268.1	262.5	-2.1
5	Adelaide - Melbourne	257.1	258.9	0.7
6	Gold Coast - Melbourne	208.3	204.9	-1.6
7	Melbourne - Perth	220.3	199.0	-9.7
8	Adelaide - Sydney	193.3	187.6	-2.9
9	Perth - Sydney	181.4	169.7	-6.5
10	Hobart - Melbourne	154.7	149.4	-3.4
11	Brisbane - Cairns	140.7	139.6	-0.8
12	Canberra - Melbourne	128.9	144.6	12.2
13	Cairns - Sydney	116.4	116.9	0.5
14	Brisbane - Townsville	111.1	104.7	-5.8
15	Brisbane - Perth	103.9	100.7	-3.1
16	Canberra - Sydney	116.9	106.7	-8.7
17	Cairns - Melbourne	92.1	91.1	-1.1
18	Adelaide - Brisbane	92.6	92.4	-0.1
19	Launceston - Melbourne	88.5	87.2	-1.5
20	Brisbane - Mackay	76.2	79.2	3.9
21	Brisbane - Canberra	67.4	71.9	6.7
22	Brisbane - Newcastle	66.6	63.9	-4.0
23	Adelaide - Perth	77.0	69.5	-9.7
24	Sunshine Coast - Sydney	54.7	59.8	9.2
25	Hobart - Sydney	59.1	60.0	1.6
26	Melbourne - Sunshine Coast	49.6	52.0	4.9
27	Brisbane - Rockhampton	70.6	53.5	-24.3
28	Melbourne - Newcastle	51.3	51.1	-0.5
29	Ballina - Sydney	42.4	44.0	3.6
30	Brisbane - Darwin	46.8	41.1	-12.1
31	Karratha - Perth	70.6	53.4	-24.5
32	Broome - Perth	36.5	40.9	12.0
33	Coffs Harbour - Sydney	38.5	37.6	-2.4
34	Darwin - Sydney	38.1	36.8	-3.5
35	Perth - Port Hedland	51.9	43.4	-16.5
36	Darwin - Melbourne	31.3	31.6	1.1
37	Brisbane - Proserpine	21.8	29.7	36.0
38	Newman - Perth	51.8	42.8	-17.3
39	Brisbane - Gladstone	45.7	30.1	-34.2
40	Kalgoorlie - Perth	32.1	35.9	11.7
41	Albury - Sydney	29.7	26.7	-10.0
42	Launceston - Sydney	24.5	22.1	-9.8
43	Adelaide - Gold Coast	24.6	21.2	-13.6
44	Brisbane - Hobart	20.2	20.4	1.4
45	Darwin - Perth	23.2	21.8	-6.3
46	Melbourne - Mildura	27.3	28.8	5.3
47	Ayers Rock - Sydney	21.2	21.2	0.1
48	Hamilton Island - Sydney	28.9	27.5	-4.9
49	Brisbane - Emerald	31.5	23.7	-24.8
50	Dubbo - Sydney	25.1	21.7	-13.3

continued

**Table 3: (continued) Available seats (000s) — monthly activity**

	<b>City-Pair</b>	<b>Sep 2016</b>	<b>Sep 2017</b>	<b>% Change</b>
51	Adelaide - Canberra	22.5	24.7	9.7
52	Port Macquarie - Sydney	21.4	19.9	-7.3
53	Sydney - Wagga Wagga	25.4	24.0	-5.4
54	Sydney - Townsville	19.2	19.0	-1.2
55	Sydney - Tamworth	24.8	22.7	-8.5
56	Brisbane - Bundaberg	19.4	20.1	3.8
57	Adelaide - Port Lincoln	24.3	24.7	1.7
58	Melbourne - Townsville	..	16.9	NA (a)
59	Cairns - Townsville	24.4	23.2	-4.5
60	Brisbane - Mount Isa	19.8	15.5	-21.5
61	Adelaide - Alice Springs	14.9	14.7	-1.3
62	Alice Springs - Darwin	19.5	19.1	-2.4
63	Proserpine - Sydney	..	14.0	NA (b)
64	Brisbane - Hamilton Island	15.9	15.2	-4.4
65	Armidale - Sydney	16.5	14.1	-14.6
66	Geraldton - Perth	20.8	18.6	-10.6
67	Brisbane - Moranbah	21.8	13.7	-37.2
	<b>Total domestic network</b>	<b>6 601.8</b>	<b>6 434.1</b>	<b>-2.5</b>

(a) Melbourne - Townsville route included from September 2017, prior data not shown.

(b) Proserpine - Sydney route included from September 2017, prior data not shown.

**Table 4: Load factors (%) — monthly activity**

	<b>City-Pair</b>	<b>Sep 2016</b>	<b>Sep 2017</b>	<b>% Point diff</b>
1	Melbourne - Sydney	82.4	83.7	1.3
2	Brisbane - Sydney	81.8	84.2	2.4
3	Brisbane - Melbourne	83.4	82.1	-1.3
4	Gold Coast - Sydney	83.6	85.8	2.2
5	Adelaide - Melbourne	76.2	77.9	1.7
6	Gold Coast - Melbourne	86.7	87.1	0.4
7	Melbourne - Perth	76.9	80.9	4.0
8	Adelaide - Sydney	80.2	80.6	0.4
9	Perth - Sydney	82.4	82.2	-0.2
10	Hobart - Melbourne	77.8	81.5	3.7
11	Brisbane - Cairns	81.2	84.3	3.1
12	Canberra - Melbourne	67.7	68.1	0.4
13	Cairns - Sydney	81.9	82.4	0.5
14	Brisbane - Townsville	79.5	81.5	2.0
15	Brisbane - Perth	81.5	82.5	1.0
16	Canberra - Sydney	72.3	77.4	5.1
17	Cairns - Melbourne	85.9	86.4	0.5
18	Adelaide - Brisbane	75.2	79.2	4.0
19	Launceston - Melbourne	77.6	79.8	2.2
20	Brisbane - Mackay	77.3	81.1	3.8
21	Brisbane - Canberra	77.1	76.7	-0.4
22	Brisbane - Newcastle	75.8	79.5	3.7
23	Adelaide - Perth	66.6	72.7	6.1
24	Sunshine Coast - Sydney	84.5	83.7	-0.8
25	Hobart - Sydney	81.1	82.8	1.7
26	Melbourne - Sunshine Coast	89.1	90.6	1.5
27	Brisbane - Rockhampton	71.7	87.0	15.3
28	Melbourne - Newcastle	79.6	82.1	2.5
29	Ballina - Sydney	80.0	81.9	1.9
30	Brisbane - Darwin	81.6	86.6	5.0
31	Karratha - Perth	58.9	65.8	6.9
32	Broome - Perth	81.2	78.8	-2.4
33	Coffs Harbour - Sydney	74.7	79.7	5.0
34	Darwin - Sydney	77.6	81.0	3.4
35	Perth - Port Hedland	56.1	65.8	9.7
36	Darwin - Melbourne	86.3	85.9	-0.4
37	Brisbane - Proserpine	89.3	86.9	-2.4
38	Newman - Perth	50.0	55.2	5.2
39	Brisbane - Gladstone	59.9	77.8	17.9
40	Kalgoorlie - Perth	62.3	57.3	-5.0
41	Albury - Sydney	68.1	73.4	5.3
42	Launceston - Sydney	80.4	85.6	5.2
43	Adelaide - Gold Coast	76.1	87.0	10.9
44	Brisbane - Hobart	83.2	87.8	4.6
45	Darwin - Perth	74.7	81.9	7.2
46	Melbourne - Mildura	63.5	61.5	-2.0
47	Ayers Rock - Sydney	81.9	80.7	-1.2
48	Hamilton Island - Sydney	81.0	61.3	-19.7
49	Brisbane - Emerald	54.1	70.8	16.7
50	Dubbo - Sydney	67.8	76.3	8.5

continued



**Table 4: (continued) Load factors (%) — monthly activity**

	<b>City-Pair</b>	<b>Sep 2016</b>	<b>Sep 2017</b>	<b>% Point diff</b>
51	Adelaide - Canberra	70.7	65.9	-4.8
52	Port Macquarie - Sydney	78.6	79.9	1.3
53	Sydney - Wagga Wagga	64.6	65.1	0.5
54	Sydney - Townsville	74.0	81.6	7.6
55	Sydney - Tamworth	63.3	67.8	4.5
56	Brisbane - Bundaberg	76.9	73.4	-3.5
57	Adelaide - Port Lincoln	57.8	56.8	-1.0
58	Melbourne - Townsville	..	82.6	NA (a)
59	Cairns - Townsville	50.6	52.7	2.1
60	Brisbane - Mount Isa	51.7	73.1	21.4
61	Adelaide - Alice Springs	74.5	74.9	0.4
62	Alice Springs - Darwin	55.1	57.5	2.4
63	Proserpine - Sydney	..	77.9	NA (b)
64	Brisbane - Hamilton Island	85.6	70.8	-14.8
65	Armidale - Sydney	62.9	72.5	9.6
66	Geraldton - Perth	50.0	50.6	0.6
67	Brisbane - Moranbah	43.4	63.4	20.0
	<b>Total domestic network</b>	<b>78.6</b>	<b>80.4</b>	<b>1.8</b>

(a) Melbourne - Townsville route included from September 2017, prior data not shown.

(b) Proserpine - Sydney route included from September 2017, prior data not shown.

**Table 5: Aircraft trips <sup>(a)</sup> — monthly activity**

	<b>City-Pair</b>	<b>Sep 2016</b>	<b>Sep 2017</b>	<b>% Change</b>
1	Melbourne - Sydney	5 064	4 952	-2.2
2	Brisbane - Sydney	3 047	2 954	-3.1
3	Brisbane - Melbourne	2 235	2 207	-1.3
4	Gold Coast - Sydney	1 577	1 482	-6.0
5	Adelaide - Melbourne	1 654	1 605	-3.0
6	Gold Coast - Melbourne	1 113	1 079	-3.1
7	Melbourne - Perth	999	915	-8.4
8	Adelaide - Sydney	1 163	1 127	-3.1
9	Perth - Sydney	755	746	-1.2
10	Hobart - Melbourne	981	932	-5.0
11	Brisbane - Cairns	899	866	-3.7
12	Canberra - Melbourne	919	978	6.4
13	Cairns - Sydney	666	632	-5.1
14	Brisbane - Townsville	762	735	-3.5
15	Brisbane - Perth	486	509	4.7
16	Canberra - Sydney	1 439	1 354	-5.9
17	Cairns - Melbourne	489	485	-0.8
18	Adelaide - Brisbane	560	558	-0.4
19	Launceston - Melbourne	721	698	-3.2
20	Brisbane - Mackay	660	621	-5.9
21	Brisbane - Canberra	504	520	3.2
22	Brisbane - Newcastle	551	496	-10.0
23	Adelaide - Perth	477	465	-2.5
24	Sunshine Coast - Sydney	334	362	8.4
25	Hobart - Sydney	380	381	0.3
26	Melbourne - Sunshine Coast	279	293	5.0
27	Brisbane - Rockhampton	789	671	-15.0
28	Melbourne - Newcastle	287	286	-0.3
29	Ballina - Sydney	285	287	0.7
30	Brisbane - Darwin	285	254	-10.9
31	Karratha - Perth	588	484	-17.7
32	Broome - Perth	301	360	19.6
33	Coffs Harbour - Sydney	449	400	-10.9
34	Darwin - Sydney	226	218	-3.5
35	Perth - Port Hedland	412	364	-11.7
36	Darwin - Melbourne	178	180	1.1
37	Brisbane - Proserpine	124	168	35.5
38	Newman - Perth	378	318	-15.9
39	Brisbane - Gladstone	599	397	-33.7
40	Kalgoorlie - Perth	286	286	0.0
41	Albury - Sydney	549	498	-9.3
42	Launceston - Sydney	142	130	-8.5
43	Adelaide - Gold Coast	139	120	-13.7
44	Brisbane - Hobart	116	116	0.0
45	Darwin - Perth	141	130	-7.8
46	Melbourne - Mildura	423	415	-1.9
47	Ayers Rock - Sydney	120	120	0.0
48	Hamilton Island - Sydney	176	168	-4.5
49	Brisbane - Emerald	416	322	-22.6
50	Dubbo - Sydney	556	499	-10.3

continued

**Table 5: (continued) Aircraft trips <sup>(a)</sup> — monthly activity**

	<b>City-Pair</b>	<b>Sep 2016</b>	<b>Sep 2017</b>	<b>% Change</b>
51	Adelaide - Canberra	151	145	-4.0
52	Port Macquarie - Sydney	382	343	-10.2
53	Sydney - Wagga Wagga	495	468	-5.5
54	Sydney - Townsville	129	108	-16.3
55	Sydney - Tamworth	404	357	-11.6
56	Brisbane - Bundaberg	328	306	-6.7
57	Adelaide - Port Lincoln	626	640	2.2
58	Melbourne - Townsville	..	94	NA (b)
59	Cairns - Townsville	437	376	-14.0
60	Brisbane - Mount Isa	156	150	-3.8
61	Adelaide - Alice Springs	94	106	12.8
62	Alice Springs - Darwin	158	167	5.7
63	Proserpine - Sydney	..	78	NA (c)
64	Brisbane - Hamilton Island	122	124	1.6
65	Armidale - Sydney	391	336	-14.1
66	Geraldton - Perth	208	186	-10.6
67	Brisbane - Moranbah	302	190	-37.1
	<b>Total domestic network</b>	<b>54 985</b>	<b>53 224</b>	<b>-3.2</b>

(a) Includes RPT Cargo flights.

(b) Melbourne - Townsville route included from September 2017, prior data not shown.

(c) Proserpine - Sydney route included from September 2017, prior data not shown.

## TOP TEN AIRPORTS – PASSENGER MOVEMENTS

**Table 6: Top ten airports, RPT passenger movements (000s) - annual activity**

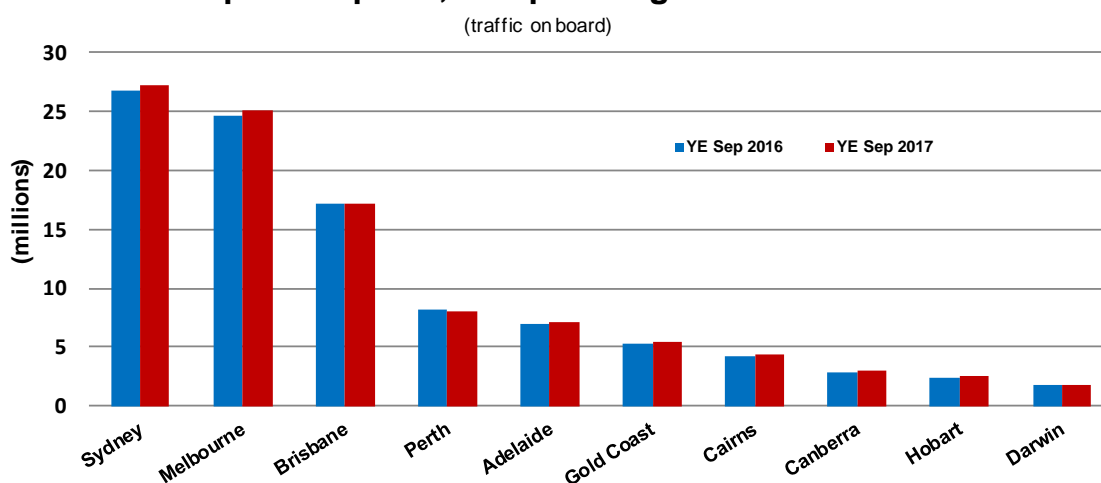
Airport	YE Sep 2016	YE Sep 2017	% Change	% of Total
1 Sydney	26 809.6	27 133.0	1.2	22.8
2 Melbourne	24 633.7	25 114.7	2.0	21.1
3 Brisbane	17 083.1	17 175.4	0.5	14.4
4 Perth	8 199.7	7 995.5	-2.5	6.7
5 Adelaide	6 955.4	7 079.7	1.8	5.9
6 Gold Coast	5 296.0	5 370.1	1.4	4.5
7 Cairns	4 197.3	4 297.5	2.4	3.6
8 Canberra	2 849.6	2 989.2	4.9	2.5
9 Hobart	2 345.1	2 469.9	5.3	2.1
10 Darwin	1 784.2	1 810.8	1.5	1.5
<b>Total top ten airports</b>	<b>100 153.8</b>	<b>101 435.8</b>	<b>1.3</b>	<b>85.2</b>
<b>Total domestic network</b>	<b>117 458.2</b>	<b>119 032.9</b>	<b>1.3</b>	<b>100.0</b>

**Table 7: Top ten airports, RPT passenger movements (000s) - monthly activity**

Airport	Sep 2016	Sep 2017	% Change	% of Total
1 Sydney	2 288.3	2 271.3	-0.7	22.4
2 Melbourne	2 119.2	2 119.1	0.0	20.9
3 Brisbane	1 491.3	1 498.7	0.5	14.8
4 Perth	693.4	666.9	-3.8	6.6
5 Adelaide	582.3	591.6	1.6	5.8
6 Gold Coast	462.5	461.8	-0.2	4.6
7 Cairns	376.3	377.8	0.4	3.7
8 Canberra	253.0	267.4	5.7	2.6
9 Hobart	185.1	189.5	2.4	1.9
10 Darwin	163.2	159.9	-2.0	1.6
<b>Total top ten airports</b>	<b>8 614.6</b>	<b>8 603.9</b>	<b>-0.1</b>	<b>84.8</b>
<b>Total domestic network</b>	<b>10 124.2</b>	<b>10 141.0</b>	<b>0.2</b>	<b>100.0</b>

Note: Airport passenger movement numbers are the sum of passenger arrivals and departures at each airport.

### Top ten airports, RPT passenger movements



## TOP FIVE AIRPORTS – CARGO MOVEMENTS

**Table 8: Top five airports, domestic RPT cargo movements (000s tonnes) - annual activity**

Airport	YE Sep 2016	YE Sep 2017	% Change	% of Total
1 Melbourne	116.5	130.0	11.6	28.9
2 Sydney	101.3	104.7	3.4	23.3
3 Brisbane	62.8	66.3	5.6	14.7
4 Perth	56.2	63.6	13.1	14.1
5 Adelaide	23.2	26.2	13.2	5.8
<b>Total top five airports</b>	<b>359.9</b>	<b>390.8</b>	<b>8.6</b>	<b>86.9</b>
<b>Total domestic network</b>	<b>412.2</b>	<b>449.9</b>	<b>9.1</b>	<b>100.0</b>

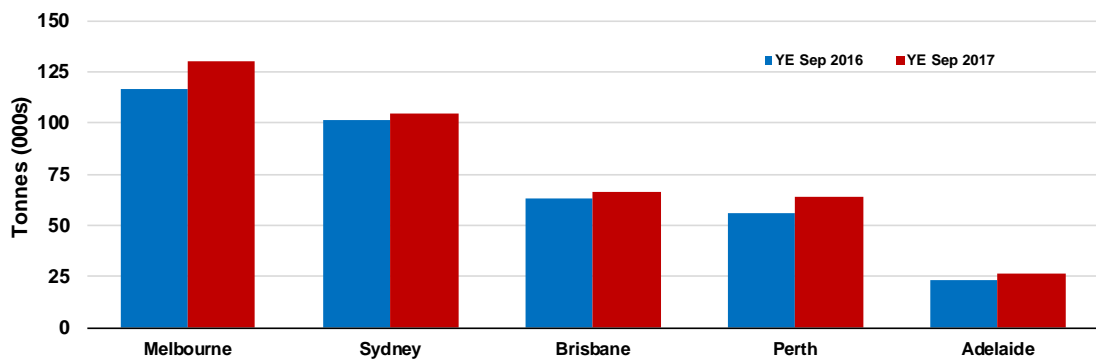
**Table 9: Top five airports, domestic RPT cargo movements (000s tonnes) - monthly activity**

Airport	Sep 2016	Sep 2017	% Change	% of Total
1 Melbourne	10.6	10.5	-0.4	28.9
2 Sydney	8.7	8.4	-3.8	23.0
3 Perth	5.0	5.4	8.1	14.8
4 Brisbane	6.0	5.3	-11.0	14.6
5 Adelaide	2.1	1.9	-9.6	5.3
<b>Total top five airports</b>	<b>32.4</b>	<b>31.5</b>	<b>-2.6</b>	<b>86.6</b>
<b>Total domestic network</b>	<b>37.4</b>	<b>36.4</b>	<b>-2.7</b>	<b>100.0</b>

Note: Airport cargo tonnes are the sum of cargo tonnes on arrivals and departures at each airport.

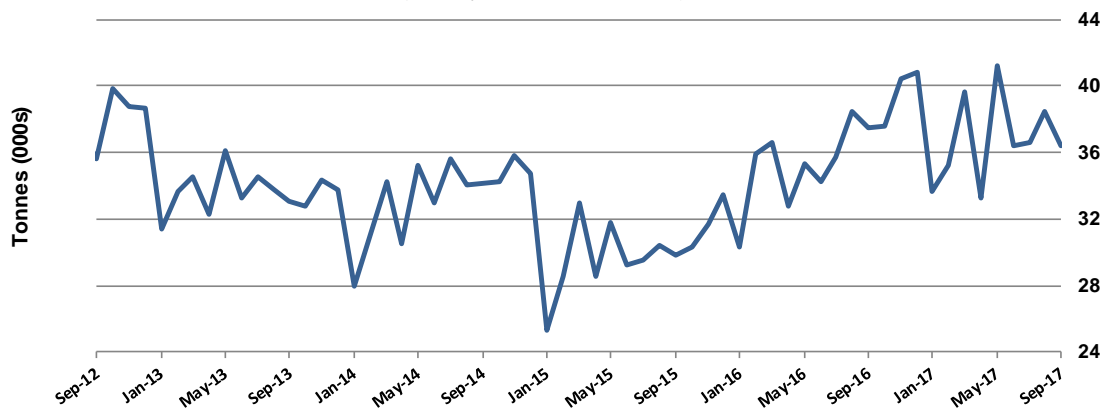
### Top five airports, cargo movements

(Domestic cargo traffic - traffic on board)



### Total domestic network - cargo movement

(monthly totals - traffic on board)



Note: Airport cargo tonnes are the sum of cargo tonnes on arrivals and departures at each airport.

## TOP TEN ROUTES

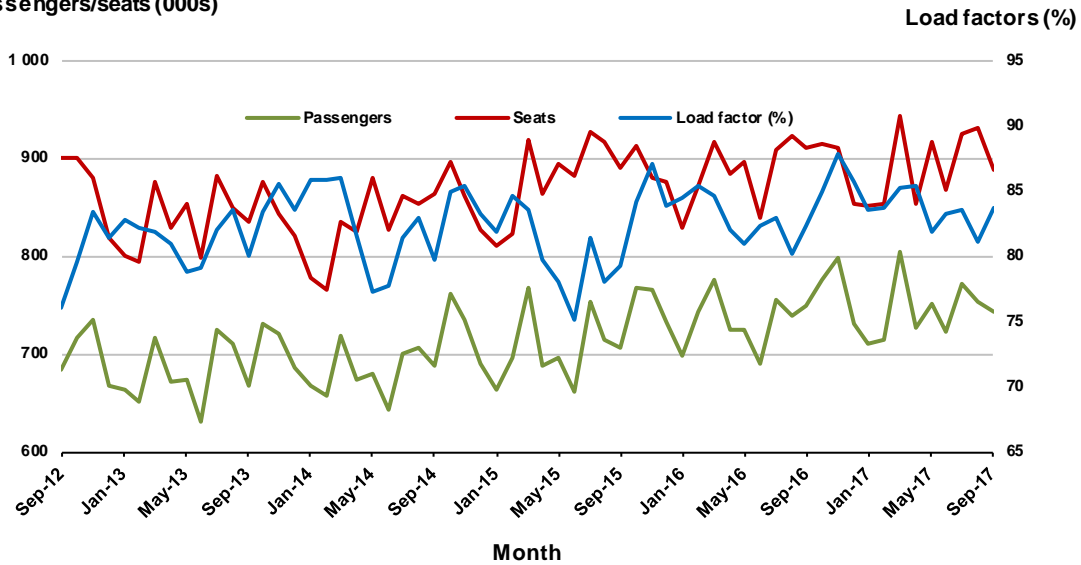
### 1. Melbourne - Sydney

#### Monthly data

	Sep 2016	Sep 2017	% Change
Passengers carried (000s)	749.4	742.2	-1.0
Seats (000s)	910.0	886.8	-2.5
Load factor %	82.4	83.7	1.3 *
Aircraft trips	5 064	4 952	-2.2

\* percentage point difference

#### Passengers/seats (000s)

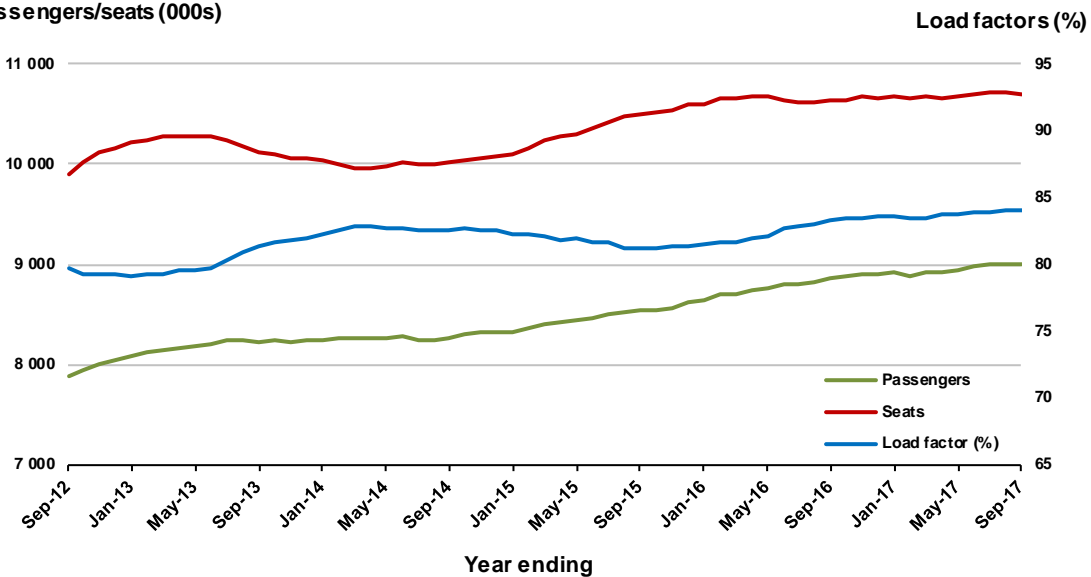


#### Moving annual data

	YE Sep 2016	YE Sep 2017	% Change
Passengers carried (000s)	8 866.1	8 999.5	1.5
Seats (000s)	10 643.2	10 700.5	0.5
Load factor %	83.3	84.1	0.8 *
Aircraft trips	59 487	59 624	0.2

\* percentage point difference

#### Passengers/seats (000s)



## 2. Brisbane - Sydney

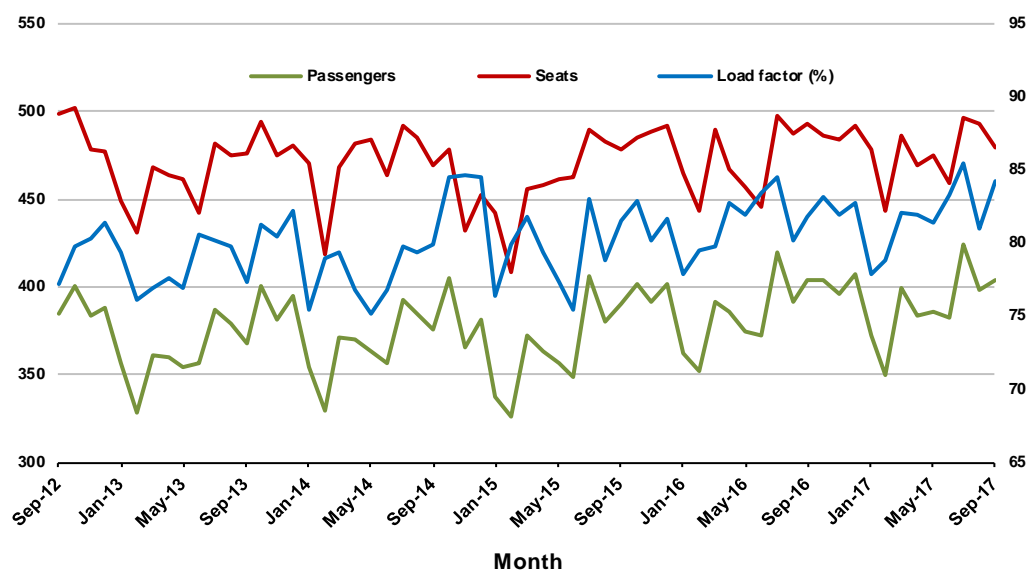
### Monthly data

	Sep 2016	Sep 2017	% Change
Passengers carried (000s)	403.4	403.9	0.1
Seats (000s)	493.4	479.8	-2.8
Load factor %	81.8	84.2	2.4 *
Aircraft trips	3 047	2 954	-3.1

\* percentage point difference

### Passengers/seats (000s)

### Load factors (%)



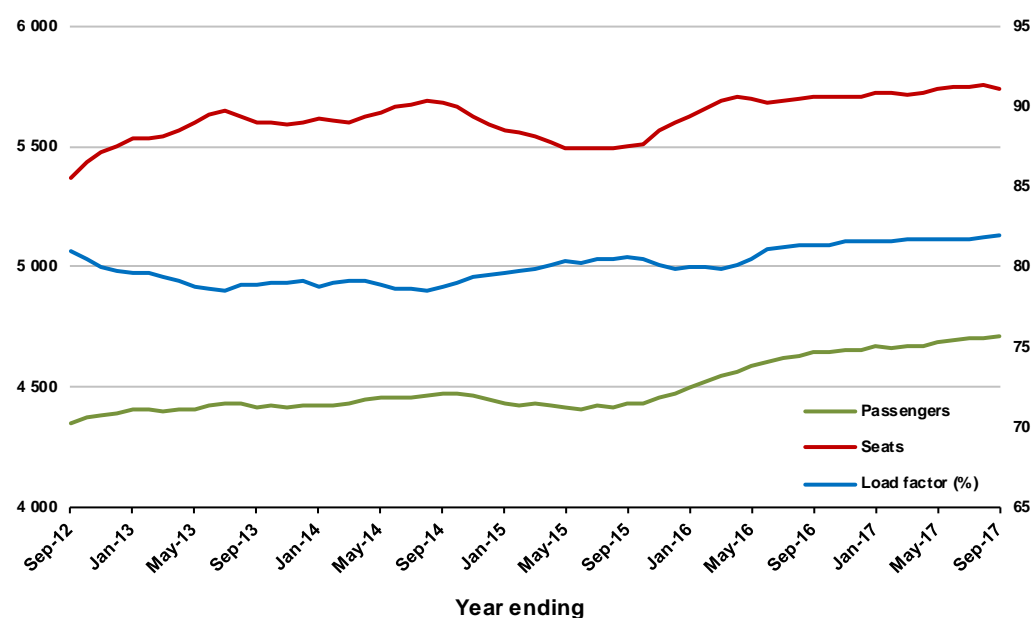
### Moving annual data

	YE Sep 2016	YE Sep 2017	% Change
Passengers carried (000s)	4 645.7	4 708.2	1.3
Seats (000s)	5 709.2	5 740.6	0.6
Load factor %	81.4	82.0	0.6 *
Aircraft trips	35 511	35 403	-0.3

\* percentage point difference

### Passengers/seats (000s)

### Load factors (%)

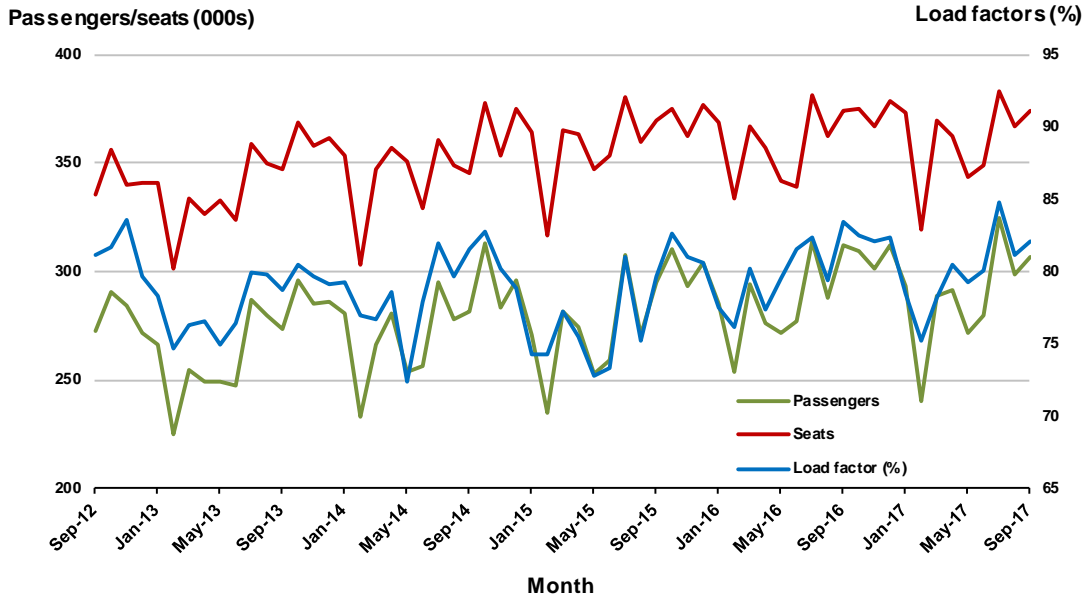


### 3. Brisbane - Melbourne

#### Monthly data

	Sep 2016	Sep 2017	% Change
Passengers carried (000s)	311.8	307.1	-1.5
Seats (000s)	374.0	374.2	0.1
Load factor %	83.4	82.1	-1.3 *
Aircraft trips	2 235	2 207	-1.3

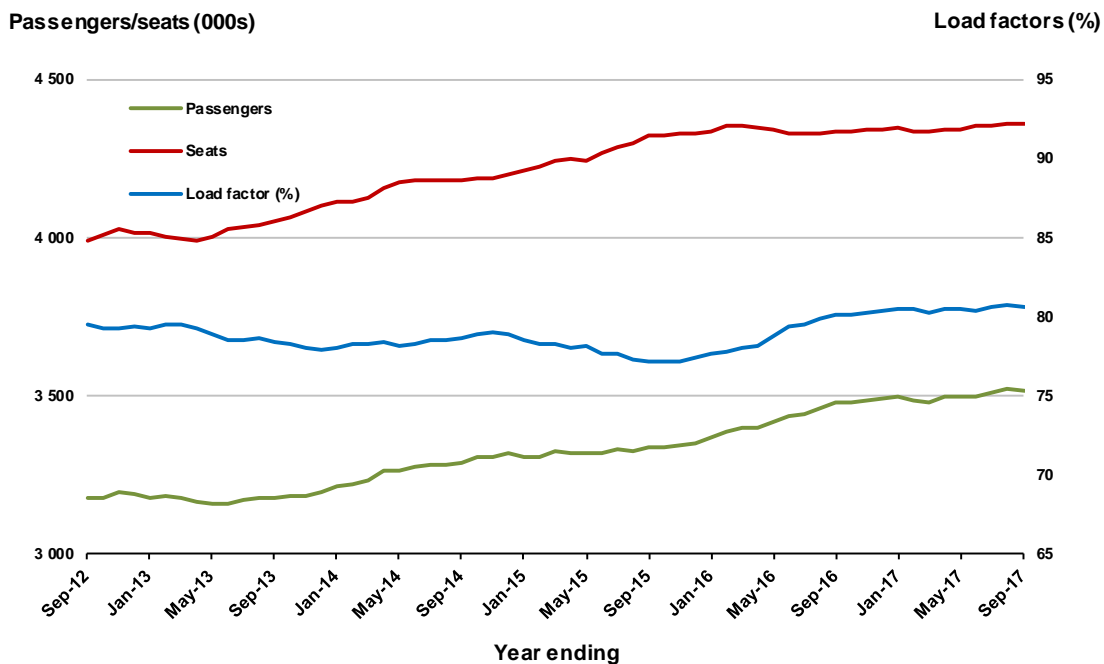
\* percentage point difference



#### Moving annual data

	YE Sep 2016	YE Sep 2017	% Change
Passengers carried (000s)	3 478.6	3 517.3	1.1
Seats (000s)	4 337.0	4 361.9	0.6
Load factor %	80.2	80.6	0.4 *
Aircraft trips	25 975	25 791	-0.7

\* percentage point difference





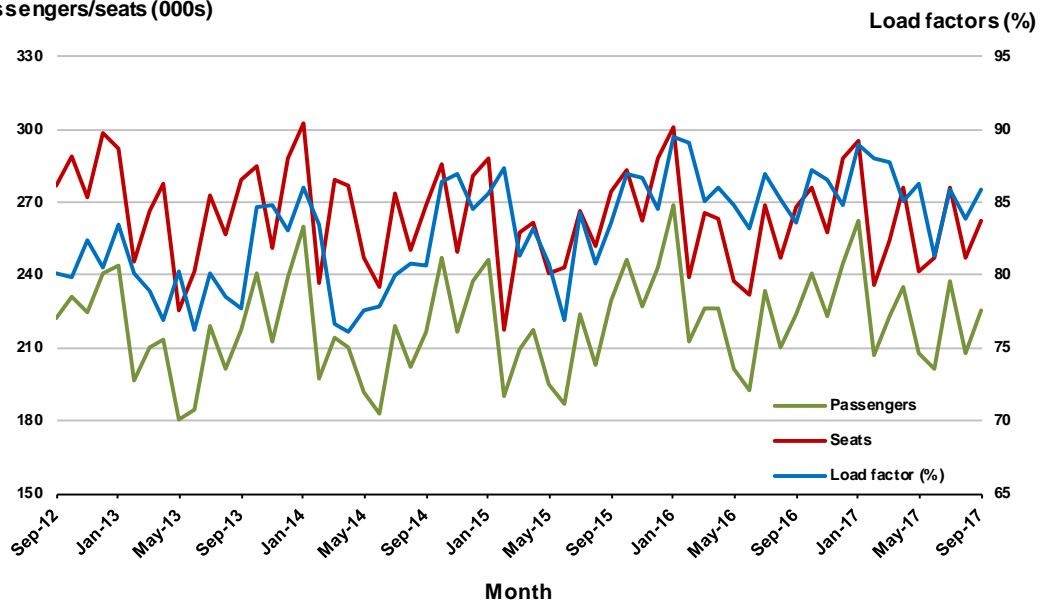
## 4. Gold Coast - Sydney

### Monthly data

	Sep 2016	Sep 2017	% Change
Passengers carried (000s)	224.2	225.1	0.4
Seats (000s)	268.1	262.5	-2.1
Load factor %	83.6	85.8	2.2 *
Aircraft trips	1 577	1 482	-6.0

\* percentage point difference

### Passengers/seats (000s)

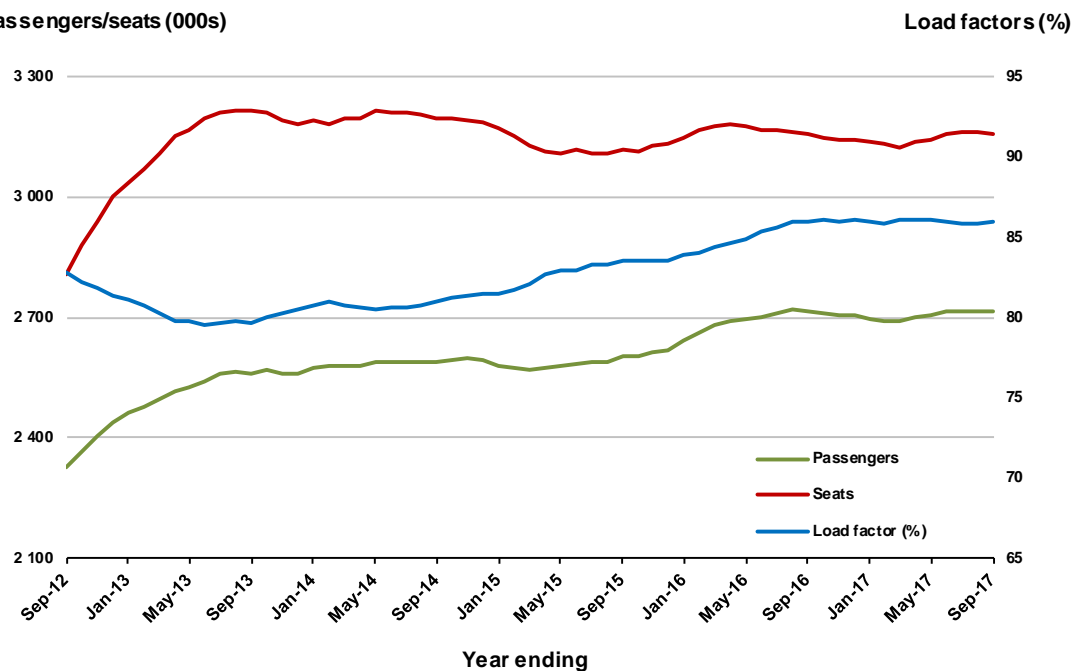


### Moving annual data

	YE Sep 2016	YE Sep 2017	% Change
Passengers carried (000s)	2 713.6	2 714.3	0.0
Seats (000s)	3 155.4	3 157.4	0.1
Load factor %	86.0	86.0	0.0 *
Aircraft trips	18 448	18 093	-1.9

\* percentage point difference

### Passengers/seats (000s)



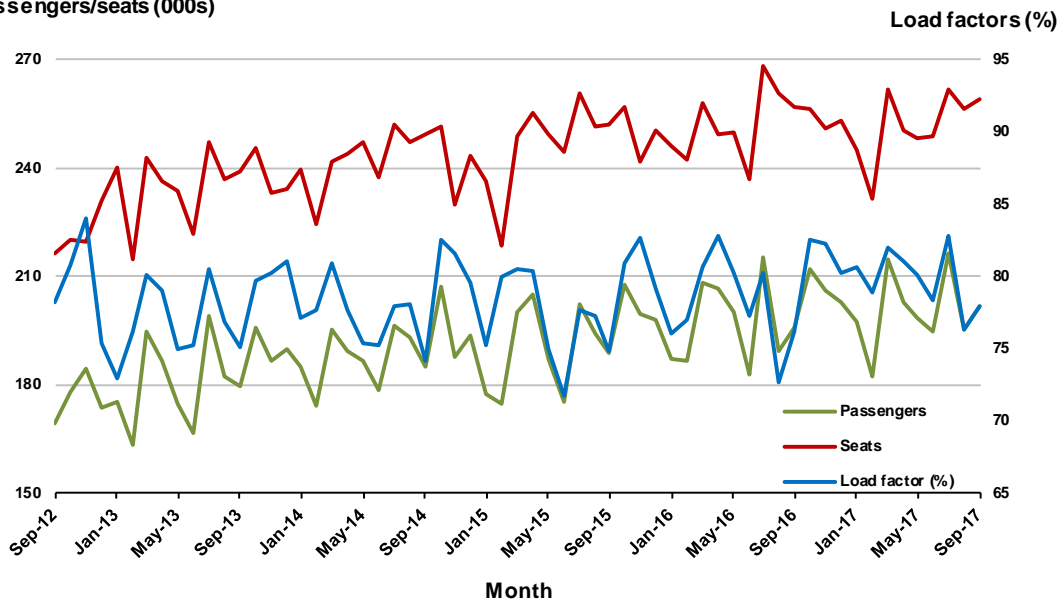
## 5. Adelaide - Melbourne

### Monthly data

	Sep 2016	Sep 2017	% Change
Passengers carried (000s)	195.8	201.7	3.0
Seats (000s)	257.1	258.9	0.7
Load factor %	76.2	77.9	1.7 *
Aircraft trips	1 654	1 605	-3.0

\* percentage point difference

### Passengers/seats (000s)

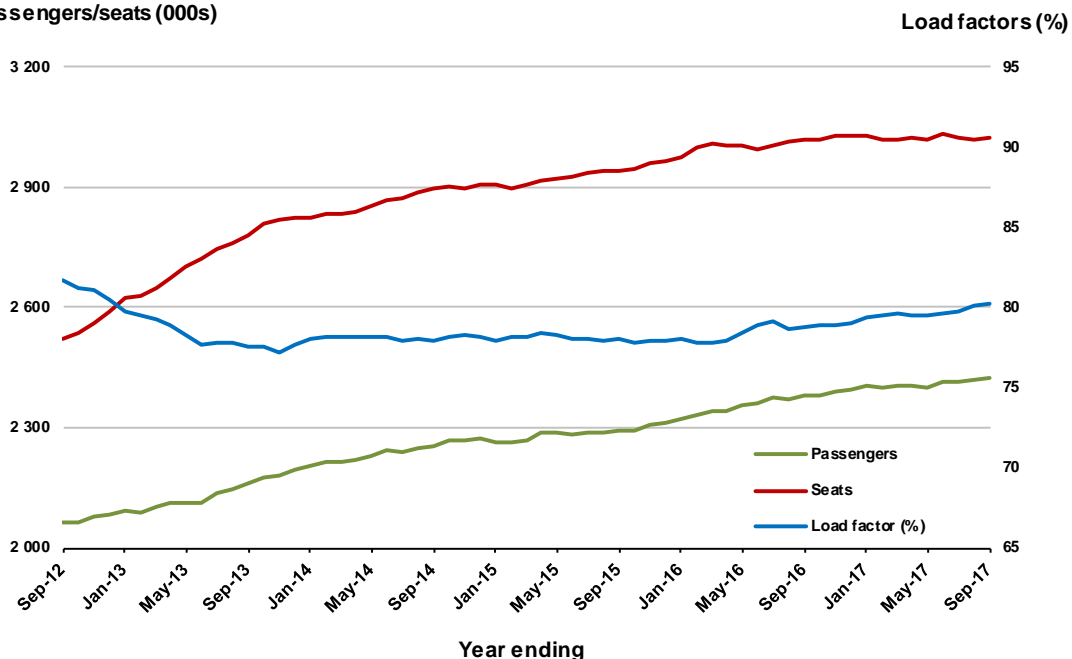


### Moving annual data

	YE Sep 2016	YE Sep 2017	% Change
Passengers carried (000s)	2 378.1	2 426.0	2.0
Seats (000s)	3 017.5	3 022.4	0.2
Load factor %	78.8	80.3	1.5 *
Aircraft trips	19 300	19 079	-1.1

\* percentage point difference

### Passengers/seats (000s)



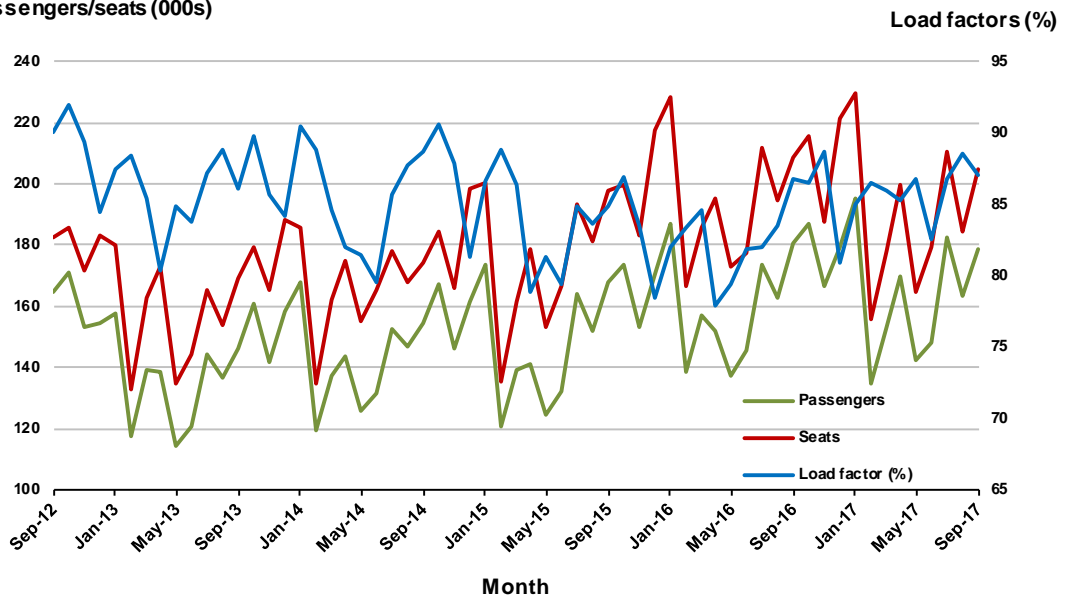
## 6. Gold Coast - Melbourne

### Monthly data

	Sep 2016	Sep 2017	% Change
Passengers carried (000s)	180.6	178.6	-1.1
Seats (000s)	208.3	204.9	-1.6
Load factor %	86.7	87.1	0.4 *
Aircraft trips	1 113	1 079	-3.1

\* percentage point difference

### Passengers/seats (000s)

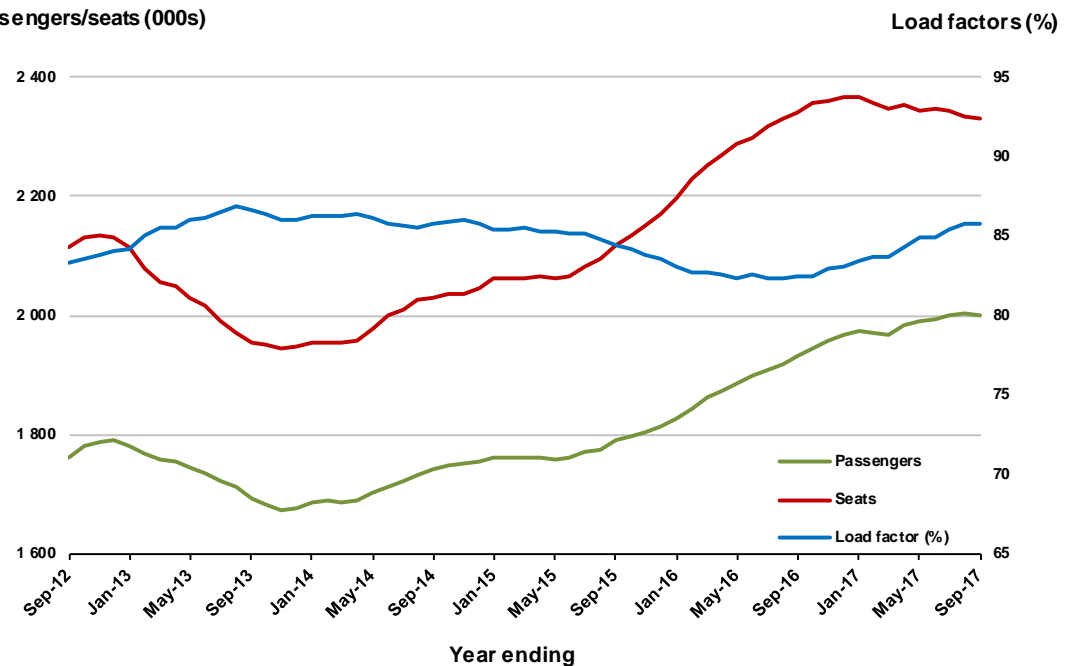


### Moving annual data

	YE Sep 2016	YE Sep 2017	% Change
Passengers carried (000s)	1 931.3	2 000.4	3.6
Seats (000s)	2 341.1	2 331.3	-0.4
Load factor %	82.5	85.8	3.3 *
Aircraft trips	12 564	12 437	-1.0

\* percentage point difference

### Passengers/seats (000s)



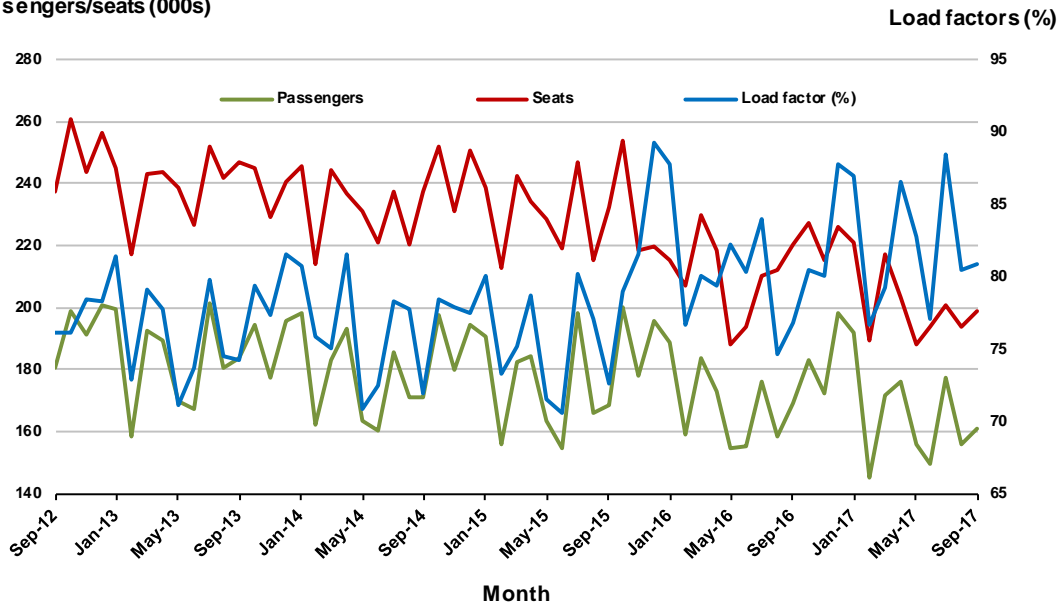
## 7. Melbourne - Perth

### Monthly data

	Sep 2016	Sep 2017	% Change
Passengers carried (000s)	169.3	161.0	-4.9
Seats (000s)	220.3	199.0	-9.7
Load factor %	76.9	80.9	4.0 *
Aircraft trips	999	915	-8.4

\* percentage point difference

### Passengers/seats (000s)

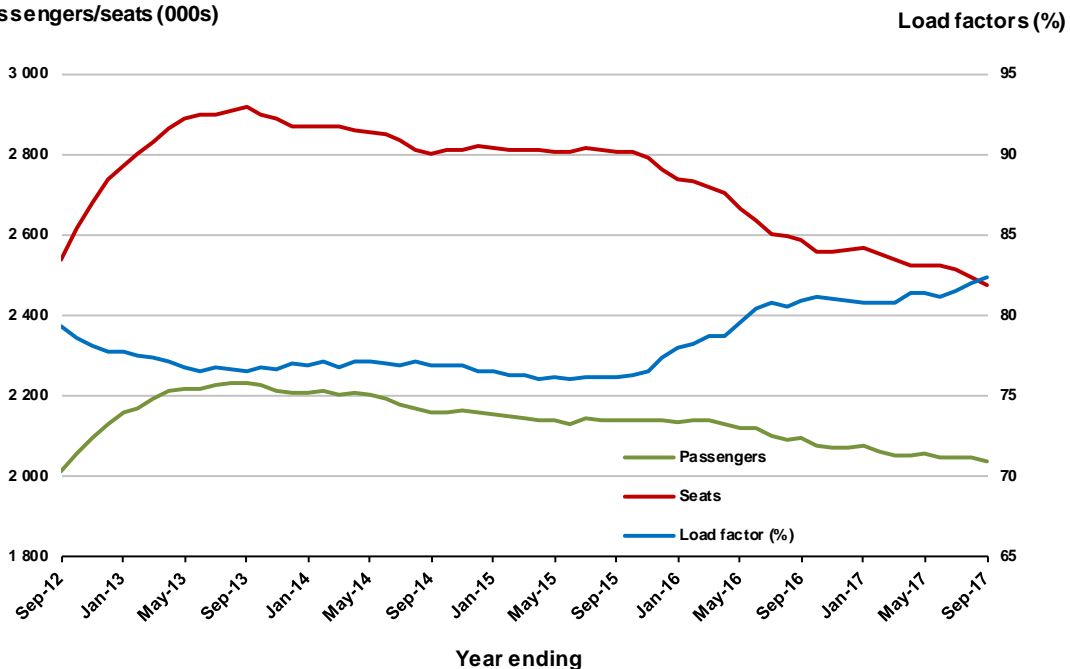


### Moving annual data

	YE Sep 2016	YE Sep 2017	% Change
Passengers carried (000s)	2 093.2	2 038.1	-2.6
Seats (000s)	2 586.0	2 473.9	-4.3
Load factor %	80.9	82.4	1.4 *
Aircraft trips	11 697	11 235	-3.9

\* percentage point difference

### Passengers/seats (000s)

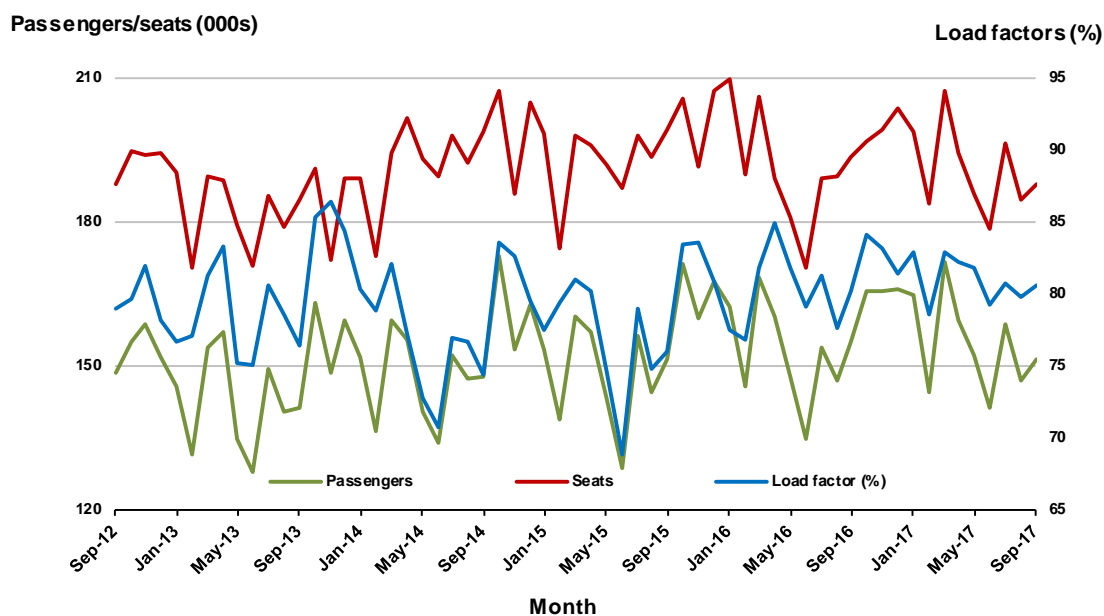


## 8. Adelaide - Sydney

### Monthly data

	Sep 2016	Sep 2017	% Change
Passengers carried (000s)	155.0	151.2	-2.5
Seats (000s)	193.3	187.6	-2.9
Load factor %	80.2	80.6	0.4 *
Aircraft trips	1 163	1 127	-3.1

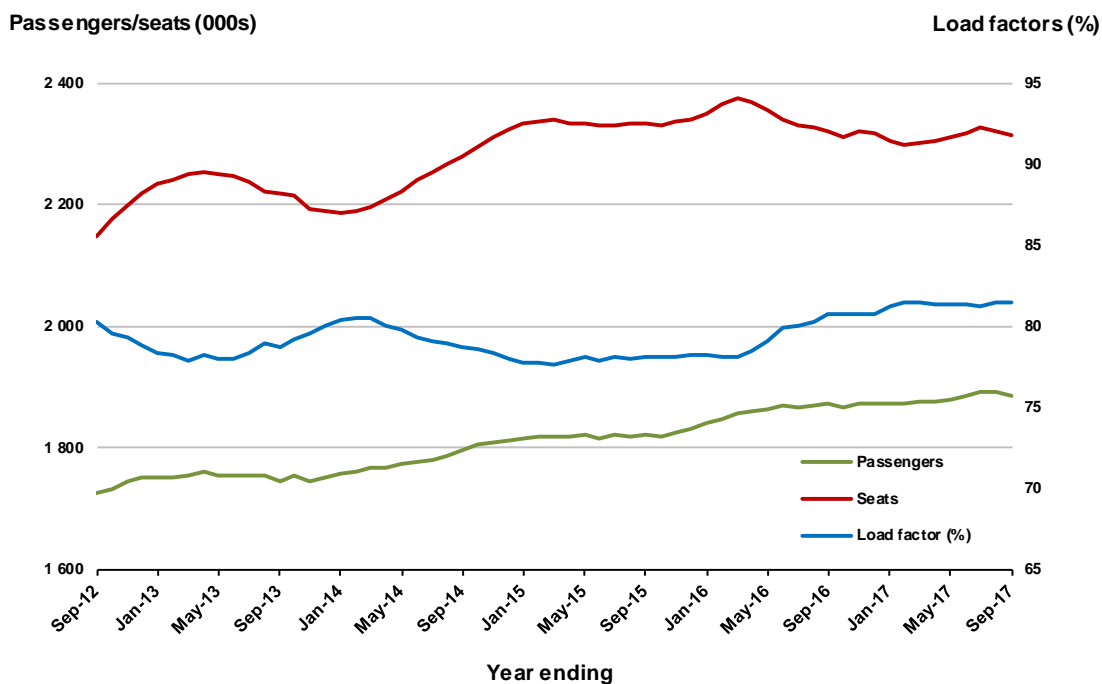
\* percentage point difference



### Moving annual data

	YE Sep 2016	YE Sep 2017	% Change
Passengers carried (000s)	1 873.6	1 887.3	0.7
Seats (000s)	2 321.5	2 316.0	-0.2
Load factor %	80.7	81.5	0.8 *
Aircraft trips	14 142	14 026	-0.8

\* percentage point difference



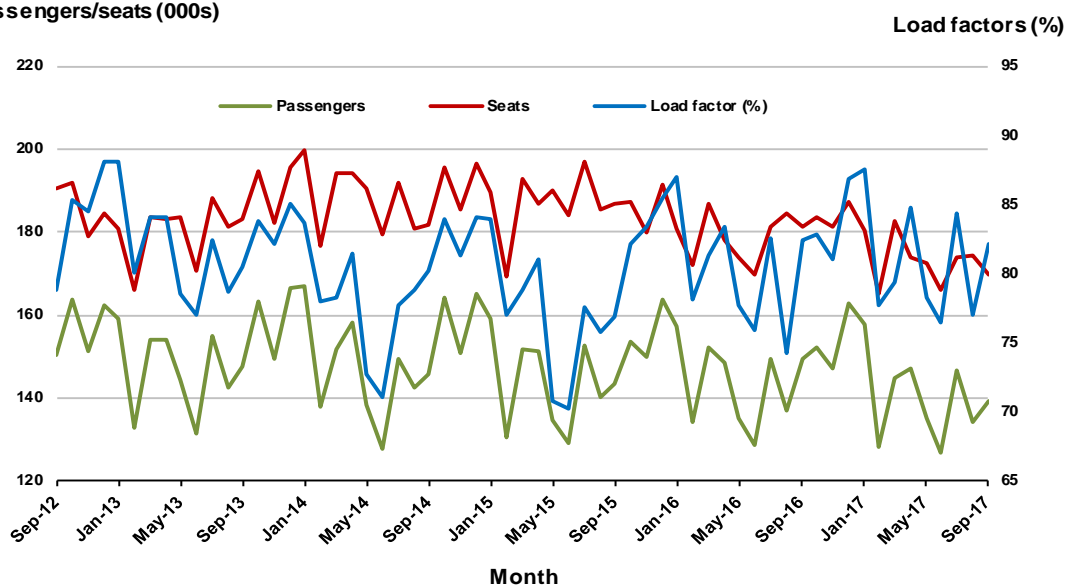
## 9. Perth - Sydney

### Monthly data

	Sep 2016	Sep 2017	% Change
Passengers carried (000s)	149.4	139.4	-6.7
Seats (000s)	181.4	169.7	-6.5
Load factor %	82.4	82.2	-0.2 *
Aircraft trips	755	746	-1.2

\* percentage point difference

### Passengers/seats (000s)

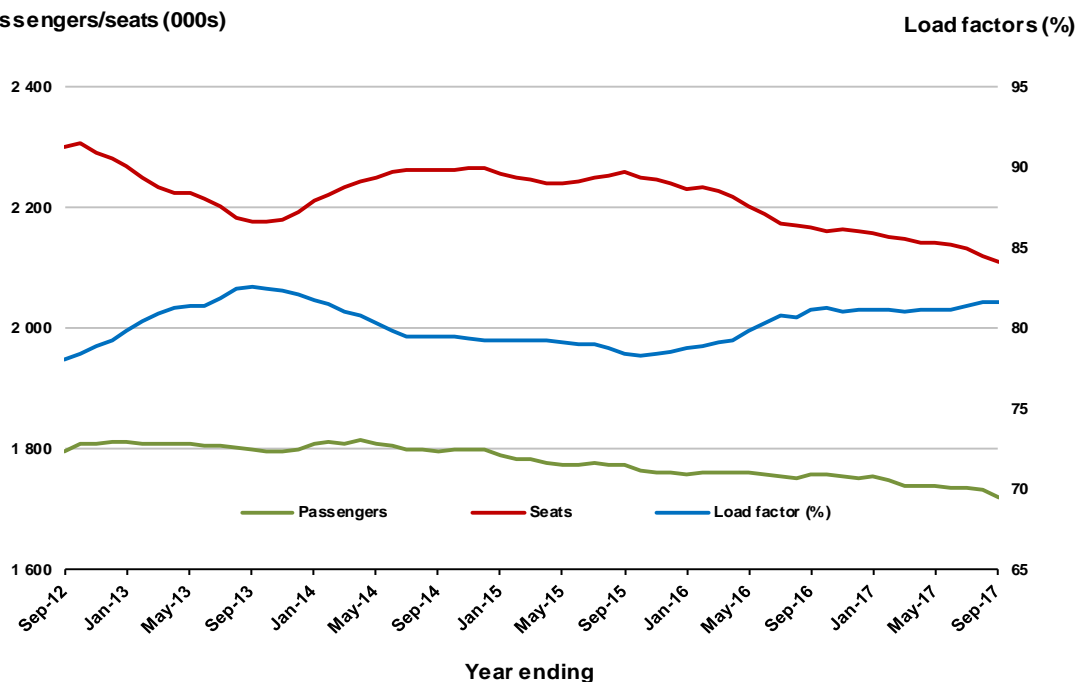


### Moving annual data

	YE Sep 2016	YE Sep 2017	% Change
Passengers carried (000s)	1 759.4	1 722.0	-2.1
Seats (000s)	2 167.2	2 110.0	-2.6
Load factor %	81.2	81.6	0.4 *
Aircraft trips	9 152	9 070	-0.9

\* percentage point difference

### Passengers/seats (000s)

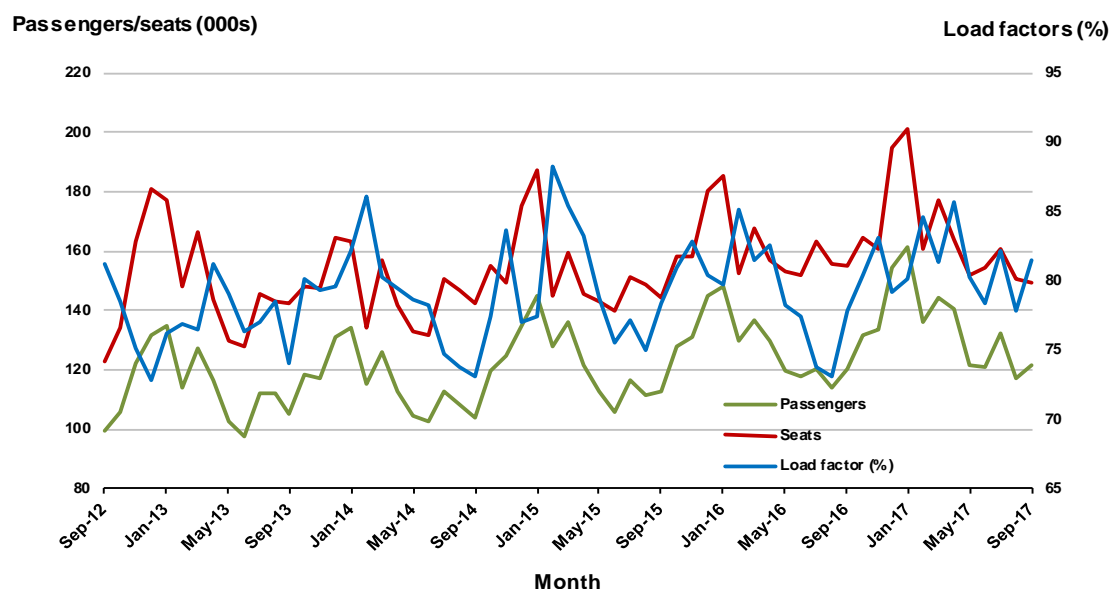


## 10. Hobart - Melbourne

### Monthly data

	Sep 2016	Sep 2017	% Change
Passengers carried (000s)	120.4	121.8	1.2
Seats (000s)	154.7	149.4	-3.4
Load factor %	77.8	81.5	3.7 *
Aircraft trips	981	932	-5.0

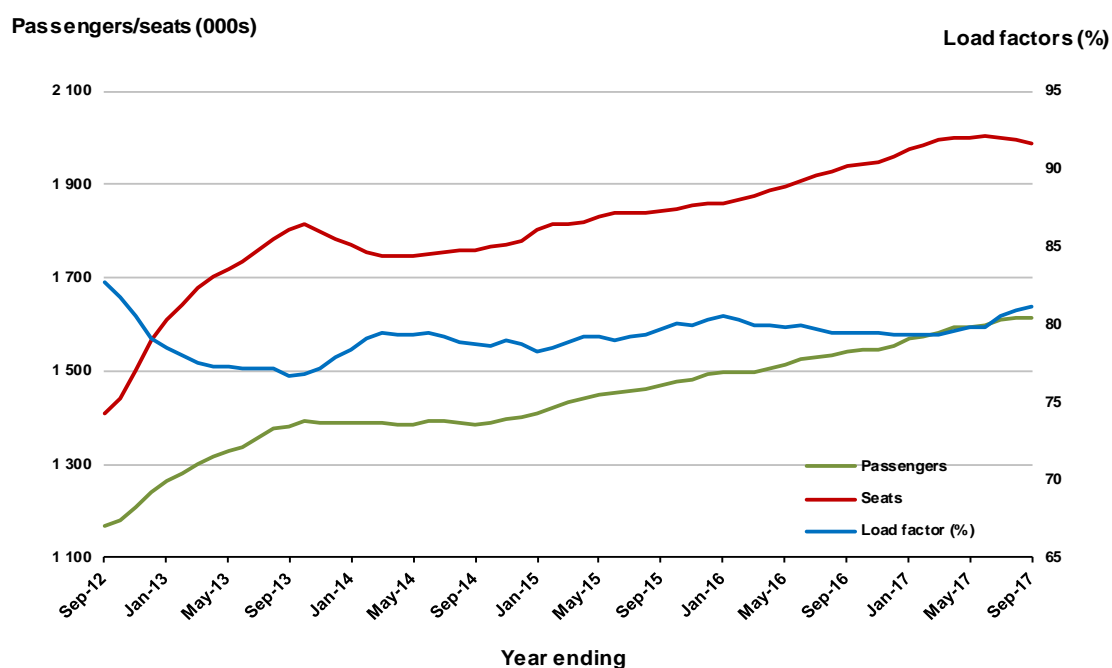
\* percentage point difference



### Moving annual data

	YE Sep 2016	YE Sep 2017	% Change
Passengers carried (000s)	1 540.0	1 614.8	4.9
Seats (000s)	1 938.2	1 989.3	2.6
Load factor %	79.5	81.2	1.7 *
Aircraft trips	12 195	12 235	0.3

\* percentage point difference



## TOP FIFTY REGIONAL AIRPORTS

**Table 10: Top fifty regional airports (000s) — passenger movements, monthly**

	<b>Airport</b>	<b>Sep 2016</b>	<b>Sep 2017</b>	<b>% Change</b>
1	Cairns	376.3	377.8	0.4
2	Hobart	185.1	189.5	2.4
3	Darwin	163.2	159.9	-2.0
4	Townsville	138.6	144.4	4.2
5	Newcastle	110.6	112.1	1.4
6	Launceston	99.0	98.6	-0.4
7	Mackay	67.9	72.2	6.4
8	Alice Springs	56.3	54.3	-3.4
9	Rockhampton	52.3	49.3	-5.8
10	Ballina	42.7	44.0	3.1
11	Proserpine	29.7	42.0	41.6
12	Broome	37.5	39.8	6.3
13	Hamilton Island	50.8	38.5	-24.3
14	Coffs Harbour	33.5	36.1	7.9
15	Karratha	41.6	35.3	-15.2
16	Ayers Rock	33.1	31.4	-5.0
17	Port Hedland	30.5	29.2	-4.0
18	Newman	26.1	23.6	-9.4
19	Gladstone	27.5	23.5	-14.7
20	Albury	22.4	22.9	2.2
21	Kalgoorlie	20.6	21.7	5.1
22	Mildura	20.8	21.3	2.1
23	Dubbo	18.7	20.5	9.6
24	Port Macquarie	18.9	19.3	2.6
25	Wagga Wagga	18.8	19.2	2.0
26	Mount Isa	16.5	17.7	7.5
27	Tamworth	15.8	16.9	7.2
28	Emerald	17.2	16.8	-2.1
29	Hervey Bay	14.6	15.6	6.5
30	Wellcamp	12.4	14.8	18.9
31	Bundaberg	15.1	14.8	-2.1
32	Port Lincoln	14.1	14.0	-0.1
33	Paraburdoo	14.0	13.6	-2.8
34	Devonport	12.3	11.7	-4.4
35	Armidale	10.6	10.9	3.6
36	Kununurra	9.4	9.8	5.0
37	Geraldton	10.4	9.4	-9.5
38	Thursday Island	9.2	9.2	-0.6
39	Moranbah	9.6	8.7	-9.4
40	Learmonth	7.2	7.8	9.0
41	Roma	7.3	7.2	-0.4
42	Gove	7.3	7.2	-1.1
43	Olympic Dam	4.4	7.0	57.5
44	Mount Gambier	6.5	6.9	7.2
45	Griffith	6.4	6.7	4.6
46	Weipa	6.7	6.6	-2.8
47	Whyalla	5.1	5.9	15.9
48	Broken Hill	5.0	5.9	16.9
49	Orange	4.6	5.5	18.4
50	Merimbula	5.2	5.4	4.3
<b>Total top 50 regional airports</b>		<b>1 969.0</b>	<b>1 982.5</b>	<b>0.7</b>
<b>Total regional airports</b>		<b>2 085.2</b>	<b>2 100.9</b>	<b>0.7</b>
<b>Total domestic network</b>		<b>10 124.2</b>	<b>10 141.0</b>	<b>0.2</b>

Note: Airport passenger movement numbers are the sum of passenger arrivals and departures at each airport.



**Table 11: Top fifty regional airports (000s) — passenger movements, annual**

<b>Airport</b>	<b>YE Sep 2016</b>	<b>YE Sep 2017</b>	<b>% Change</b>
1 Cairns	4 197.3	4 297.5	2.4
2 Hobart	2 345.1	2 469.9	5.3
3 Darwin	1 784.2	1 810.8	1.5
4 Townsville	1 544.0	1 558.1	0.9
5 Launceston	1 332.7	1 333.0	0.0
6 Newcastle	1 212.4	1 277.9	5.4
7 Mackay	809.6	776.0	-4.1
8 Alice Springs	607.3	614.8	1.2
9 Rockhampton	586.8	564.0	-3.9
10 Ballina	474.1	503.9	6.3
11 Hamilton Island	533.8	460.3	-13.8
12 Karratha	524.3	448.6	-14.4
13 Coffs Harbour	386.0	411.3	6.5
14 Proserpine	344.8	387.7	12.4
15 Broome	378.2	372.1	-1.6
16 Ayers Rock	351.0	361.7	3.1
17 Port Hedland	366.1	349.4	-4.5
18 Gladstone	354.0	292.9	-17.3
19 Newman	315.1	286.0	-9.2
20 Albury	250.2	264.3	5.7
21 Mildura	245.9	252.0	2.5
22 Kalgoorlie	237.5	248.2	4.5
23 Dubbo	202.0	234.1	15.8
24 Port Macquarie	225.3	230.8	2.4
25 Wagga Wagga	215.4	218.5	1.4
26 Emerald	201.2	198.9	-1.1
27 Tamworth	172.8	197.8	14.5
28 Mount Isa	190.7	197.1	3.4
29 Bundaberg	171.0	176.7	3.4
30 Hervey Bay	169.8	173.9	2.4
31 Port Lincoln	181.6	173.9	-4.2
32 Paraburdoo	163.8	166.5	1.7
33 Wellcamp	104.8	148.4	41.5
34 Devonport	146.7	146.5	-0.1
35 Armidale	129.1	131.6	2.0
36 Moranbah	119.6	121.0	1.1
37 Geraldton	119.4	114.3	-4.2
38 Kununurra	108.5	103.9	-4.2
39 Thursday Island	98.2	100.5	2.3
40 Gove	77.3	84.0	8.7
41 Roma	94.2	83.4	-11.5
42 Learmonth	86.0	82.0	-4.6
43 Mount Gambier	76.4	79.5	4.0
44 Weipa	77.9	77.4	-0.6
45 Griffith	69.1	73.0	5.7
46 Merimbula	62.1	65.6	5.6
47 Whyalla	64.6	63.0	-2.5
48 Olympic Dam	51.1	60.9	19.0
49 Burnie	60.7	60.4	-0.5
50 Orange	51.0	59.9	17.4
<b>Total top 50 regional airports</b>	<b>22 670.7</b>	<b>22 964.1</b>	<b>1.3</b>
<b>Total regional airports</b>	<b>23 986.7</b>	<b>24 341.5</b>	<b>1.5</b>
<b>Total domestic network</b>	<b>117 458.2</b>	<b>119 032.9</b>	<b>1.3</b>

Note: Airport passenger movement numbers are the sum of passenger arrivals and departures at each airport.

## DOMESTIC CHARTER ACTIVITY

**Table 12: Charter passengers carried and aircraft trips - annual activity**

	YE Sep 2016	YE Sep 2017	% Change
Total domestic charter passengers	2 456 746	2 412 647	-1.8
Total domestic charter aircraft trips	45 587	45 292	-0.6

Note: Helicopter, joyflights and sightseeing charter flights not included.

**Table 13: Charter passengers carried and aircraft trips - monthly activity**

	Sep 2016	Sep 2017	% Change
Total domestic charter passengers	196 017	191 765	-2.2
Total domestic charter aircraft trips	3 546	3 641	2.7

Note: Helicopter, joyflights and sightseeing charter flights not included.

**Table 14: Domestic airports - charter activity - annual**

	YE Sep 2016	YE Sep 2017	% Change
Total domestic charter passenger movements	4 913 492	4 825 294	-1.8
Total domestic charter aircraft movements	91 174	90 584	-0.6
Perth airport charter passenger movements	1 884 653	1 853 262	-1.7
Perth airport charter aircraft movements	31 464	31 468	0.0

Note: Helicopter, joyflights and sightseeing charter flights not included.

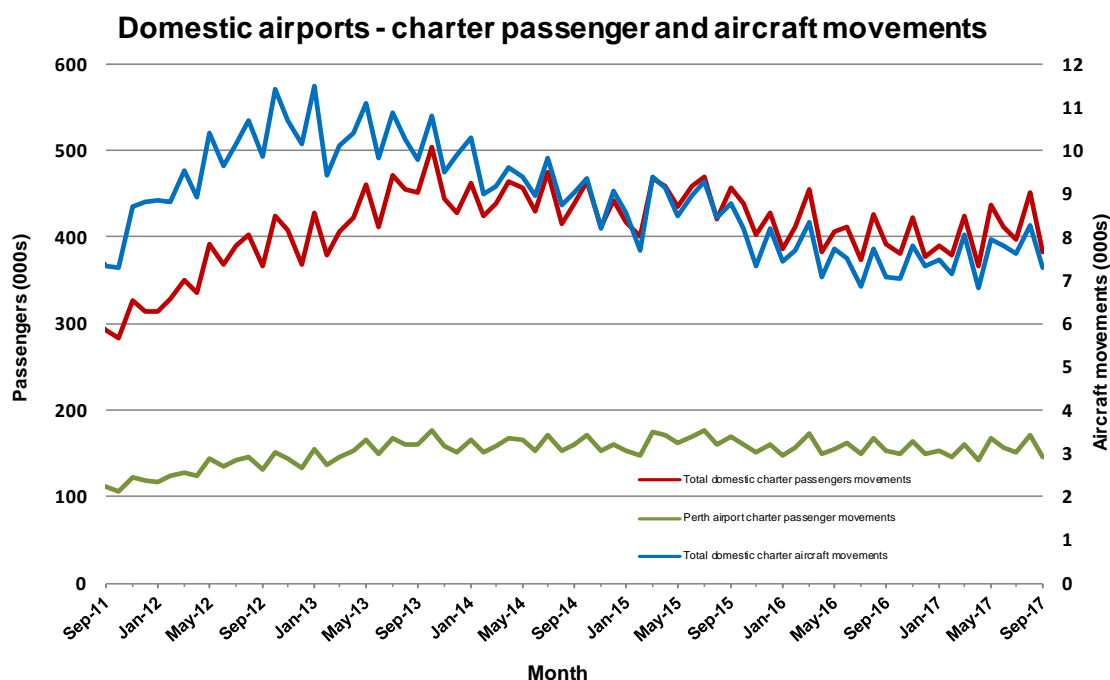
Charter passenger and aircraft movement numbers are the sum of arrivals and departures at each airport.

**Table 15: Domestic airports - charter activity - monthly**

	Sep 2016	Sep 2017	% Change
Total domestic charter passenger movements	392 034	383 530	-2.2
Total domestic charter aircraft movements	7 092	7 282	2.7
Perth airport charter passenger movements	152 834	144 854	-5.2
Perth airport charter aircraft movements	2 497	2 447	-2.0

Note: Helicopter, joyflights and sightseeing charter flights not included.

Charter passenger and aircraft movement numbers are the sum of arrivals and departures at each airport.



## DEFINITIONS

Aircraft Trips	The number of flight stages. A return flight counts as two aircraft trips.
Airport Movements	Airport movements (passenger and cargo) are measured once on arrival and once on departure. Each domestic trip generates two movements at airports. For example, a trip from Melbourne to Sydney will be counted twice, as a passenger departure at Melbourne and as a passenger arrival at Sydney. At the national level, the sum of all domestic airport traffic will therefore be equal to twice the number of trips undertaken.
Available Seat Kilometres (ASKs)	Calculated by multiplying the number of seats available on each flight stage, by the distance in kilometres between the ports. The distances used are Great Circle Distances.
City-Pair	The ports shown make up the city-pair route. Passenger movements shown for a city pair reflect total traffic in both directions.
Flight Stage	The operation of an aircraft from take-off to landing.
Load Factor	The total revenue passenger kilometres performed as a percentage of the total available seat kilometres.
Passengers Carried	Revenue passengers carried.
Regular Public Transport Services (RPT)	All air service operations in which aircraft are available for the transport of members of the public and are conducted in accordance with fixed schedules. It does not include charter or other non-scheduled operations.
Revenue Passengers	All passengers paying any fare. Frequent flyer redemption travellers are regarded as revenue passengers.
Revenue Passenger Kilometres (RPKs)	Calculated by multiplying the number of revenue passengers travelling on each flight stage, by the distance in kilometres between the ports. The distances used are Great Circle Distances.
Traffic on board by stages	The total of all traffic (revenue passengers) on each flight stage between two directly connected airports.
..	Data not included
NA	Not applicable