



Australian Government

Department of Infrastructure, Transport,
Regional Development and Local Government
Bureau of Infrastructure, Transport and Regional Economics



AVIATION STATISTICS

International Scheduled Air Transport 2007

IAA 125

© Commonwealth of Australia

Canberra

May 2008

ISSN 1324-5074

This work is copyright and the data contained in this publication should not be reproduced or used in any form without acknowledgement.

Inquiries

Should you require additional information about the statistics contained in this publication, please contact Mr Mano Manoranjan in Canberra by telephone (02) 6274 7790 or by facsimile (02) 6274 7727 or write to:

Aviation Statistics, Bureau of Infrastructure, Transport and Regional Economics
Department of Infrastructure, Transport, Regional Development and Local Government
GPO Box 594
Canberra ACT 2601

Electronic mail: AVSTATS@infrastructure.gov.au

Web site: <http://www.bitre.gov.au/info.aspx?NodeId=49>

CONTENTS

Explanatory Notes 4-6

Data Issues and Airlines Commencing/Withdrawing Services.....7

Highlights 8-15

Detailed Annual Tables

- 1. Scheduled International Air Traffic to and from Australia 16-18
- 2. Scheduled Operator Market Shares and Growth..... 19-23
- 3. Airline Passenger Capacity and Utilisation to and from Australia by Operator ... 24-26
- 4. Australian International Airport Scheduled Traffic and Aircraft Movements27
- 5. Scheduled International Passengers and Freight by City Pairs 28-35
- 6. International Airlines Own Stopover Revenue Passengers, Australian City Pairs36
- 7. Total Aircraft Movements at Australian International Airports by Aircraft Types37

EXPLANATORY NOTES

INTRODUCTION

1. This publication continues the series of publications on a calendar year basis presenting statistical information on the scheduled operations of international airlines operating into/out of Australia.
2. The figures in this publication were obtained from reports submitted by scheduled international carriers and are the best available at the time of publication.

COVERAGE

3. These statistics show uplift/discharge data – These data detail, by direction, the revenue traffic between the actual points of uplift and discharge within each flight, aggregated for all flights within the period. It shows the movement of traffic between two airports not necessarily directly connected but within the same flight number. Typically, flight numbers change when an aircraft reaches its home country. This means that uplift/discharge data for the port in the operator's home country are likely to be overstated by traffic whose origin/destination point is beyond that port. For example, uplift/discharge traffic reported in this publication as Singapore could include traffic whose origin/destination is Europe.
4. These statistics cover revenue traffic carried by the operators of scheduled regular public international air transport services only and do not include charter traffic.
5. Some airlines (generally, dedicated freighter operators) operate scheduled services into Australia but operate non-scheduled services out of Australia and therefore outbound activity is not recorded in this data collection.

PRODUCTION AND INTERPRETATION

6. Tables 1 and 2 show the country of the relevant uplift or discharge port served by that airline. For example, traffic uplifted/discharged between Sydney and Singapore by British Airways would be shown as Singapore traffic in Tables 1 and 2.
7. Table 3 shows figures for the country of service (or route) for each airline and therefore may not equate to the data in Tables 1 and 2. For example, the British Airways UK service identified in Table 3 could include passengers uplifted or discharged in Singapore or Thailand as well as the UK; these passengers would be shown individually under those countries in Tables 1 and 2. The difference in treatment of data between Tables 1 and 2 and Table 3 is necessary in order to work out a meaningful Seat Utilisation figure for Table 3.

Figures shown in Table 3 may include total traffic into and out of Australia for airlines that fly through Australia (also necessary in order to work out a meaningful Seat Utilisation figure). Therefore, figures in Table 3 may not equate to figures in Tables 1 and 2. For example, passengers carried by Qantas Airways from New Zealand via Australia to the UK will be included in Table 3 but will not be included in Tables 1 or 2 as these passengers were not uplifted/discharged in Australia.

8. Table 5 – shows uplift/discharge passenger and freight data for city pairs with same flight number international flight connections.
9. Where figures have been rounded, discrepancies may occur between sums of component items and totals, and in percentage changes which are derived from figures prior to rounding.
10. Published figures may be revised where figures missing at the time of publication are received or misreporting/miscalculation necessitates revisions.

DEFINITIONS

11. The following definitions have been used in this publication:
- (a) Aircraft Movement: A landing or a take off.
 - (b) Freight: The aggregate of all revenue freight uplifted.
 - (c) Inbound: Inbound to Australia/Australian international airport.
 - (d) Mail: The aggregate of all mail uplifted.
 - (e) Outbound: Outbound from Australia/Australian international airport.
 - (f) Revenue Passengers: please refer to paragraph 12.
 - (g) Seat Utilisation: The ratio of passengers carried to seats available, expressed as a percentage.
 - (h) Seats Available: Generally based on standard aircraft configuration, the aggregate of seats available on all flights operated over a particular service.
 - (i) Services: Scheduled flights over authorised routes which are listed according to the main ports involved.

COMPARABILITY OF DATA OVER TIME

12. Revenue Passengers:
- For July 2000 and onwards: All passengers paying any fare (frequent flyer redemption passengers are regarded as revenue passengers). In most cases, Revenue Passengers will now include all passengers excluding Free Of Charge passengers and positioning crew.
 - To December 1999: The aggregate of all passengers paying 25% or more of the standard air fare (as defined by ICAO).
 - January 2000 to June 2000: Transition period.

The Revenue Passenger definition change could result in approximately a three per cent increase in passenger numbers over a full period (month or year).

13. Country and City data – reporting of Uplift/Discharge data by Qantas Airways:
- Prior to January 2003: Uplift/Discharge within Qantas Airways' international network.
 - For January 2003 and onwards: Uplift/Discharge within flight number – as per the standard definition.

For example, what was previously reported as Adelaide to London (no direct services between these two cities) will now be reported as either Adelaide to Singapore or Melbourne/Sydney to London.

This change has been introduced in order to make the data comparable across all airlines operating services to/from Australia.

The effect of this change – comparing data under the two methods of reporting:

- Country of Port data (Tables 1 & 2) – There will be a shift in traffic to countries such as Singapore which are used as hubs and away from countries such as France, Germany and Italy which previously received traffic channelled through hubs. The total volume of traffic is not affected.
- Country of Service data (Table 3) – no change, as the Uplift/Discharge definition is not applicable to classifying the country of service.
- Australian International Airports (Table 4) – there may be a shift of traffic to the major airports.
- City Pairs (Table 5) – There will be a shift in traffic to cities such as Singapore which are used as hubs and away from cities such as Paris, Frankfurt and Rome which previously received traffic channelled through hubs. The total volume of traffic is not affected. Prior to the change, statistics reported for city pairs without “same flight number” international flight connections mainly reflected carriage on interconnecting international services by Qantas Airways. That traffic should have been interpreted as increasing the volume of traffic between the primary international ports rather than as an indicator of traffic volumes between ports without “same flight number” international flight connections. It should be noted however, that there was no double counting of traffic.

14. Country of Service classification by Qantas Airways:

- For July 2002 and onwards: based on the foreign country where same flight number services commence or cease – as per the standard definition. For example, Sydney-Denpasar-Singapore services would be classified as Country of Service = Singapore.
- Prior to July 2002: based on Qantas classification – this mainly affected Indonesia and Singapore Countries of Service. For example, Sydney-Denpasar-Singapore services were classified as Country of Service = Indonesia.

15. Airline data – Reporting of code share services:

Reporting of traffic split by airline code for code share arrangements was discontinued as of June 2000. For July 2000 and onwards, ALL traffic carried is reported under the operating airline regardless of code share arrangements.

Monthly airline market share figures for July 2001 onwards will be comparable with the same month in the previous year. However, these figures may not be comparable with monthly data prior to July 2000.

SYMBOLS AND OTHER USAGE

- nil or zero
- .. not applicable

INDEMNITY STATEMENT

The Bureau of Infrastructure, Transport and Regional Economics has taken due care in preparing the information contained in this publication. However, noting that data have been provided by third parties, the Commonwealth gives no warranty as to the accuracy, reliability, fitness for purpose, or otherwise of the information.

DATA ISSUES

Air Vanuatu	Traffic carried under code share arrangements may not be included for July 2000 to June 2006. No mail data received for August 2007 and onwards.
Austrian Airlines/Lauda Air	No outbound freight data for September 2000 onwards. No inbound freight data for April 2001 onwards. Service ceased March 2007.
Jetstar	Freight data for services to/from Singapore is not available prior to July 2007. No mail data.
Royal Brunei Airlines	Data under review for November and December 2007.
Vietnam Airlines	No data received for inbound operations to Sydney for August 2002 to May 2004, July 2004 to November 2004, January 2005 to March 2005 and May 2005. Data for Outbound operations have been received for July 2003 onwards.

AIRLINES COMMENCING/WITHDRAWING SERVICES DURING 2007

Commencing:

AirAsia X

Airnorth

Etihad Airways

Withdrawing:

Austrian Airlines

Gulf Air

Japan Airlines

Merpati Nusantara Airlines

HIGHLIGHTS – YEAR ENDED DECEMBER 2007

- Fifty-five international scheduled airlines operated services to/from Australia during the year (includes six dedicated freight airlines but excludes airlines operating only via code share arrangements).
- International scheduled passenger traffic in 2007 was 22.772 million compared to 21.487 million in 2006 – an increase of 6.0%.
- Chart I shows total passenger traffic for the years 1997 to 2007. Over this period, 2002 and 2003 were the only years that recorded a decrease in traffic compared to the previous year. Passenger traffic in 2002 was affected by the terrorist attacks on the USA in September 2001 and the collapse of Ansett International (also in September 2001). Passenger traffic in 2003 was affected by the SARS crisis (April, May and June 2003 in particular) and the war in Iraq.
- Following the two years of negative growth, each month since September 2003 has recorded the highest level of passenger traffic when compared to the same month in any previous year with the exception of March 2006. As a result of this, 2004, 2005 and 2006 were record years and 2007 has recorded the highest level of passenger traffic ever carried in a calendar year. Chart II compares monthly passenger traffic for 2007 with monthly passenger traffic for 2006.
- **Airline shares:** Chart III shows the airline market shares in terms of passenger carriage for the top ten airlines for 1997, 2002 and 2007. In the latest year, Qantas Airways had the largest share of the market with 26.8% followed by Singapore Airlines with 11.1%, Air New Zealand with 9.0%, Emirates with 7.4% and Jetstar with 4.9%.
- Compared to 1997, Qantas Airways' share has decreased by 11.7 percentage points, Singapore Airlines' share has increased by 4.4 percentage points, Air New Zealand's share has decreased by 0.6 percentage points, Emirates' share has increased by 7.0 percentage points (commenced operations to/from Australia in December 1996) and Jetstar did not commence international operations until December 2005. The decrease in share for the Qantas group (Qantas and Jetstar in 2007 compared to Qantas in 1997) was 6.8 percentage points. The Air New Zealand group's (Air New Zealand and Freedom Air) share has remained stable over the same period.
- **Australian airline share:** The share of passenger traffic accounted for by Australian designated airlines has decreased from 43.0% in 1997 (Qantas Airways, Ansett International and National Jet Systems) to 34.0% in 2002 (Qantas Airways and Australian Airlines) and to 33.0% in 2007 (Qantas Airways, Jetstar, Pacific Blue's operations to Fiji, Tonga, Vanuatu and some New Zealand services and Airnorth).
- **Seats and seat utilisation:** Total seats made available on international scheduled operations in 2007 totaled 29.830 million – a decrease of 0.3% compared to 2006 and a decrease of 1.4% compared to 2005. The overall seat utilisation percentage has increased from 70.2% in 2005 to 72.9% in 2006 and to 77.5% in 2007.
- **Low Cost Carrier (LCC) share:** The share of passenger traffic accounted for by LCCs has increased strongly over the last few years. In 2007, AirAsia X, Freedom Air International, Jetstar, Pacific Blue, Polynesian Blue and Tiger Airways together accounted for 10.0%. This compares to the LCC share of 6.4% in 2006, 4.5% in 2005 and 4.2% in 2004.

- **Freight:** International scheduled air freight traffic in 2007 increased by 2.0% over 2006 to 761 687 tonnes. Inbound freight traffic has increased by 2.8% and outbound freight traffic has increased by 0.9%.
- **Dedicated freighters:** In 2007, scheduled dedicated freighter operations accounted for 29.2% of scheduled inbound air freight to Australia, 14.2% of scheduled outbound air freight from Australia and 23.1% of total scheduled air freight. Note that some freighters do not pick up freight in Australia – this accounts for the difference in inbound and outbound percentages. There are some smaller scheduled dedicated freighter operators who are not covered in these figures.
- **Hubs for passenger traffic:** Table VI on page 13 shows all passengers carried between Australia and the top fifteen international cities with non-stop air service connections. Singapore accounted for the largest number of passenger movements with 20.5% of the total.
- Total non-stop passenger movements between Australia and Singapore were 4.676 million, total uplift/discharge passenger movements were 3.860 million and total transit passenger movements on “same flight number” services were 0.817 million. By comparison, total non-stop passenger movements between Australia and Dubai were 0.571 million and total uplift/discharge passenger movements were 1.059 million with the difference of 0.488 million passenger movements being those carried via either Singapore or Bangkok on “same flight number” services.
- **Transit passengers at hubs:** Table VII on page 13 shows the transit passenger traffic carried via international cities on “same flight number” services. In 2007, there were 1.962 million transit passenger movements (8.6% of total passenger movements to/from Australia). Singapore accounted for 41.6% of this transit total followed by Bangkok with 19.5%, Hong Kong with 11.8%, Auckland with 8.7%, Honolulu with 4.6% and Kuala Lumpur with 1.3%. Together, these six cities accounted for 87.5% of the transit traffic. Other transit traffic mainly covered movements from one city to another city in the same country. New York via Los Angeles for example.
- The information on Traffic On Board and Transits is derived from the uplift/discharge data used to produce the main Tables in this publication.
- Page 14 is a diagrammatic representation of passenger movements by region. The region is based on international cities with non-stop air service connections with Australia. In 2007, 38.4% of the 22.772 million passenger movements to/from Australia were either to/from or via South-East Asia. New Zealand had 23.4% of all passenger movements followed by North-East Asia with 21.0%.
- Page 15 shows the operation of “same flight number” services beyond the non-stop point to/from Australia. Europe via South-East Asia accounted for the majority of the beyond passenger movements with 691 743 followed by Middle-East via South-East Asia with 532 866. Note that these beyond movements do not take account of passengers whose travel to/from Australia involves a change in flight number at the non-stop point to/from Australia.

YEAR ENDED DECEMBER 2007

Chart I Total International Passengers Carried (millions) - Years ended December 1997 to 2007

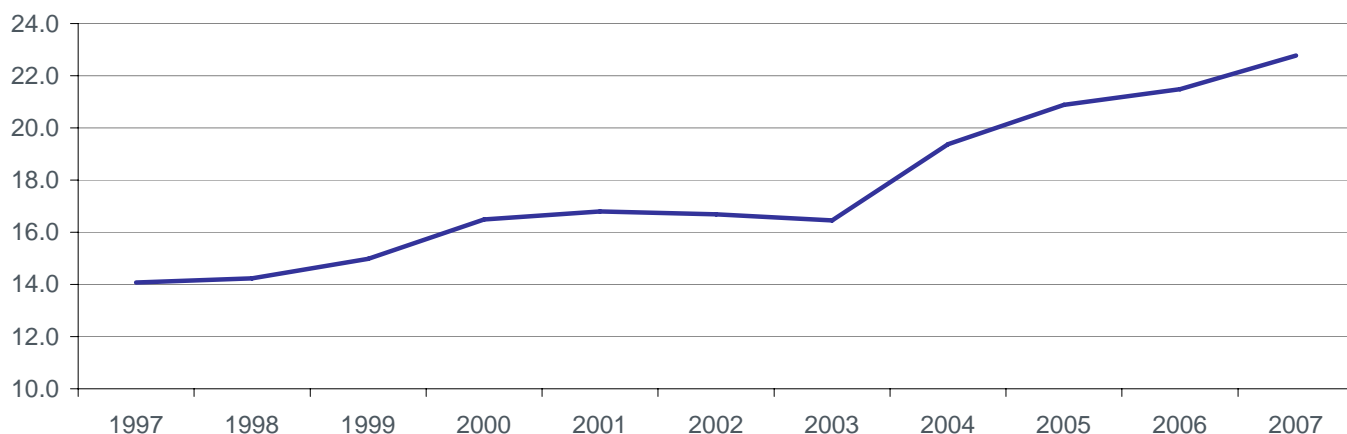


Chart II Total International Passengers Carried (millions) - By Month

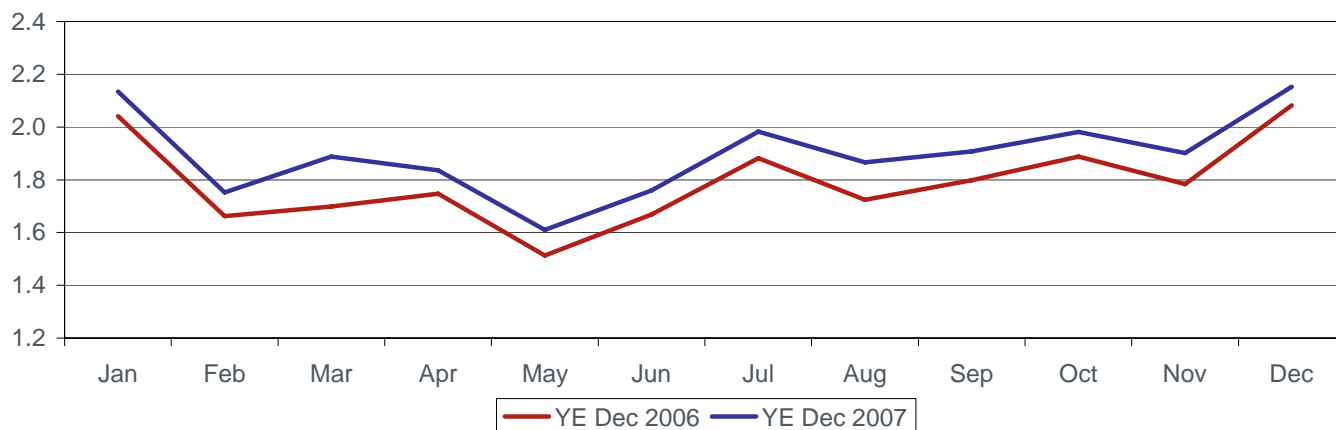


Table I International Passengers by Uplift/Discharge City Pairs (a)

Foreign Port	Australian Port	Year ended December 2005	Year ended December 2006	Year ended December 2007	% of Total	% Change 2007/06
Auckland	Sydney	1 242 633	1 190 630	1 231 395	5.4%	3.4%
Singapore	Sydney	936 773	977 456	999 076	4.4%	2.2%
Singapore	Perth	805 693	818 436	929 257	4.1%	13.5%
Hong Kong	Sydney	779 387	868 789	904 265	4.0%	4.1%
Singapore	Melbourne	792 898	831 338	838 060	3.7%	0.8%
Auckland	Brisbane	772 279	764 201	814 859	3.6%	6.6%
Auckland	Melbourne	652 711	661 491	703 323	3.1%	6.3%
Singapore	Brisbane	654 097	697 100	680 320	3.0%	-2.4%
Bangkok	Sydney	484 163	551 511	626 129	2.7%	13.5%
Los Angeles	Sydney	648 205	635 517	598 198	2.6%	-5.9%
Top 10 City Pairs		7 768 839	7 996 469	8 324 882	36.6%	4.1%
Other City Pairs		13 109 560	13 490 615	14 446 800	63.4%	7.1%
ALL CITY PAIRS		20 878 399	21 487 084	22 771 682	100.0%	6.0%

Table II International Freight (tonnes) by Uplift/Discharge City Pairs (a)

Foreign Port	Australian Port	Year ended December 2005	Year ended December 2006	Year ended December 2007	% of Total	% Change 2007/06
Auckland	Sydney	61 402	59 845	58 955	7.7%	-1.5%
Singapore	Melbourne	49 075	56 558	51 944	6.8%	-8.2%
Hong Kong	Sydney	42 655	43 733	45 521	6.0%	4.1%
Singapore	Sydney	34 976	36 333	37 351	4.9%	2.8%
Singapore	Perth	29 468	32 455	33 952	4.5%	4.6%
Hong Kong	Melbourne	33 375	30 835	32 107	4.2%	4.1%
Auckland	Melbourne	35 757	32 963	31 431	4.1%	-4.6%
Kuala Lumpur	Sydney	11 031	21 098	26 375	3.5%	25.0%
Singapore	Brisbane	20 767	23 984	24 419	3.2%	1.8%
Kuala Lumpur	Melbourne	15 470	17 316	22 129	2.9%	27.8%
Top 10 City Pairs		333 974	355 122	364 184	47.8%	2.6%
Other City Pairs		374 694	391 606	397 504	52.2%	1.5%
ALL CITY PAIRS		708 668	746 728	761 687	100.0%	2.0%

Table III International Passengers by Uplift/Discharge Country (a)

Country	Year ended December 2005	Year ended December 2006	Year ended December 2007	% of Total	% Change 2007/06
New Zealand	4 885 568	4 915 086	5 154 498	22.6%	4.9%
Singapore	3 473 169	3 691 318	3 860 391	17.0%	4.6%
Hong Kong	1 649 203	1 741 724	1 782 331	7.8%	2.3%
USA	1 576 611	1 665 593	1 731 852	7.6%	4.0%
Japan	1 680 271	1 569 870	1 472 515	6.5%	-6.2%
Thailand	854 176	990 209	1 359 629	6.0%	37.3%
United Arab Emirates	730 611	931 135	1 153 420	5.1%	23.9%
Malaysia	1 180 879	1 101 027	1 148 076	5.0%	4.3%
UK	752 587	765 395	789 046	3.5%	3.1%
Indonesia	716 834	479 432	632 054	2.8%	31.8%
Top 10 Countries	17 499 909	17 850 789	19 083 812	83.8%	6.9%
Other Countries	3 378 490	3 636 295	3 687 870	16.2%	1.4%
ALL COUNTRIES	20 878 399	21 487 084	22 771 682	100.0%	6.0%

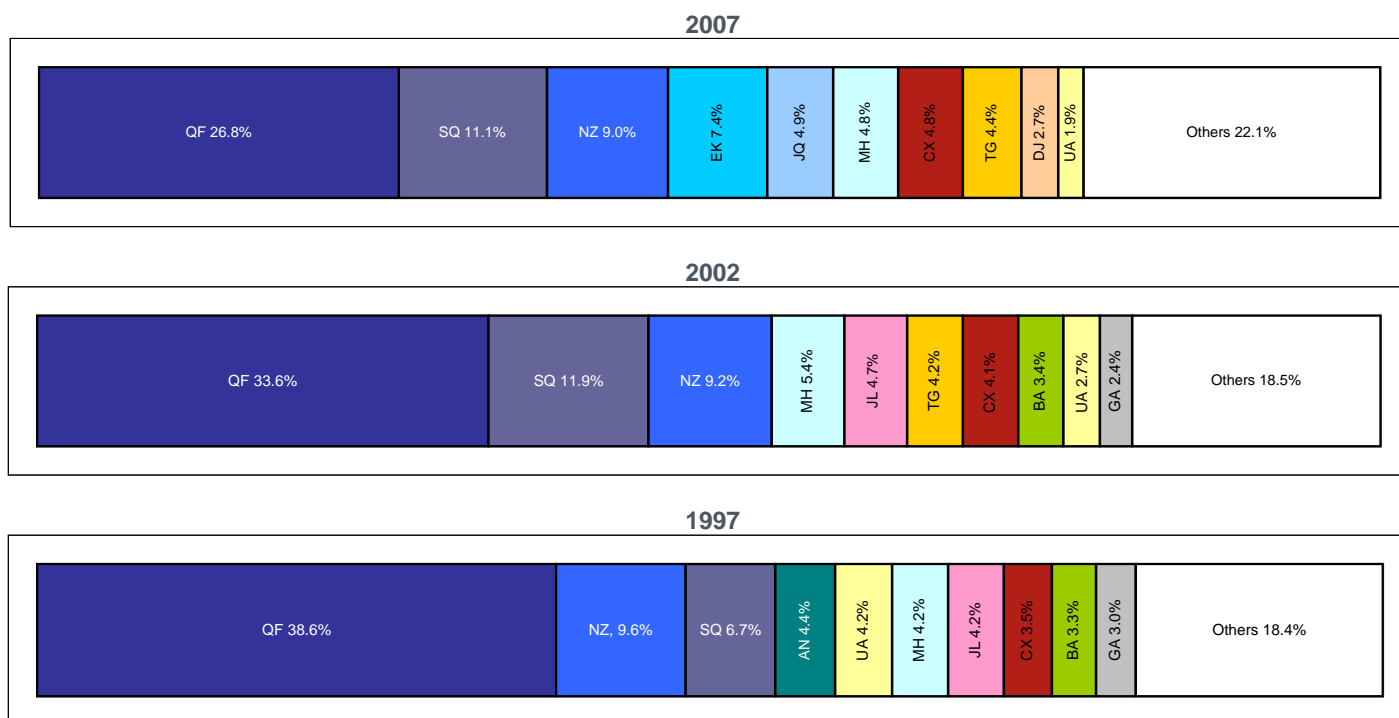
Table IV International Passenger Traffic through Australian International Airports (a)

Airport	Year ended December 2005	Year ended December 2006	Year ended December 2007	% of Total	% Change 2007/06
Sydney	9 515 983	9 865 970	10 376 699	45.6%	5.2%
Melbourne	4 224 635	4 291 290	4 565 084	20.0%	6.4%
Brisbane	3 606 690	3 763 314	3 919 776	17.2%	4.2%
Perth	2 007 025	2 034 877	2 373 568	10.4%	16.6%
Cairns	862 184	791 709	702 048	3.1%	-11.3%
Adelaide	334 298	400 489	455 149	2.0%	13.6%
Gold Coast/Coolangatta	203 523	193 441	210 762	0.9%	9.0%
Darwin	104 382	126 828	151 319	0.7%	19.3%
Norfolk Island	19 679	19 166	17 277	0.1%	-9.9%
ALL AIRPORTS	20 878 399	21 487 084	22 771 682	100.0%	6.0%

(a) Please refer to Explanatory notes - paragraphs 3 & 13 in particular.

Note that there were some freighter operations in Townsville in March, April and May 2006 but no scheduled passenger operations.

Chart III International Passengers by Major Airlines - Top 10 in each year - Years ended December



AN - Ansett International
 BA - British Airways
 CX - Cathay Pacific Airways
 DJ - Pacific Blue
 EK - Emirates

GA - Garuda Indonesia
 JL - Japan Airlines
 JQ - Jetstar
 MH - Malaysia Airlines
 NZ - Air New Zealand

QF - Qantas Airways
 SQ - Singapore Airlines
 TG - Thai Airways
 UA - United Airlines

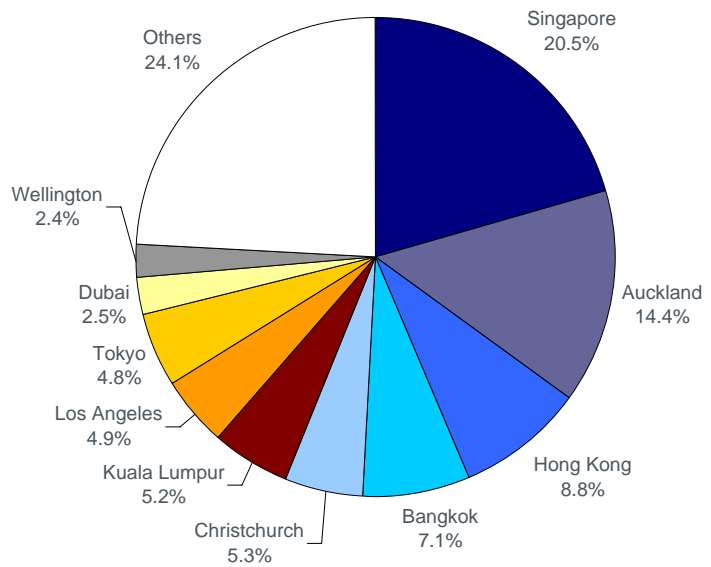
Table V Summary Statistics

	Year ended December 2005	Year ended December 2006	Year ended December 2007	Growth compared to	
				2006	2005
Passengers carried	20 878 399	21 487 084	22 771 682	6.0%	9.1%
Freight (tonnes)	708 668	746 728	761 687	2.0%	7.5%
Mail (tonnes)	30 999	32 031	35 802	11.8%	15.5%
Available Seats	30 253 594	29 930 922	29 829 962	-0.3%	-1.4%
Flights	118 752	118 118	120 615	2.1%	1.6%
Aircraft Movements	134 323	131 550	134 472	2.2%	0.1%

Table VI Traffic on Board Passenger Movements Between Australia and International Cities

Top Fifteen Based on Non-Stop Services - Year ended December 2007 (a)

First on departure from Australia or Last before arrival in Australia	Passenger Movements
Singapore	4 675 839
Auckland	3 269 731
Hong Kong	2 013 319
Bangkok	1 623 121
Christchurch	1 213 665
Kuala Lumpur	1 173 891
Los Angeles	1 111 445
Tokyo	1 087 430
Dubai	570 870
Wellington	550 311
Nadi	505 084
Denpasar	501 264
Seoul	466 148
Shanghai	404 667
Honolulu	337 481
Others	3 267 416
	22 771 682



(a) Includes transit passengers on "same flight number" services. Does not include passengers not uplifted/discharged in Australia. For example: Dubai-Auckland passengers on services that operate via Australia to Auckland.

TABLE VII TRANSITTING PASSENGER TRAFFIC THROUGH INTERNATIONAL CITIES

Based on "Same Flight Number" Services - Year ended December 2007

Hubs	Transitting to/from	Passenger Movements	Share
Singapore	Europe and Middle East	816 998	41.6%
Bangkok	Europe and Middle East	381 796	19.5%
Hong Kong	Europe	230 988	11.8%
Auckland	USA and South America	171 280	8.7%
Honolulu	Canada	89 744	4.6%
Kuala Lumpur	Europe	25 815	1.3%
Others (b)		245 043	12.5%
Total Transit traffic		1 961 664	

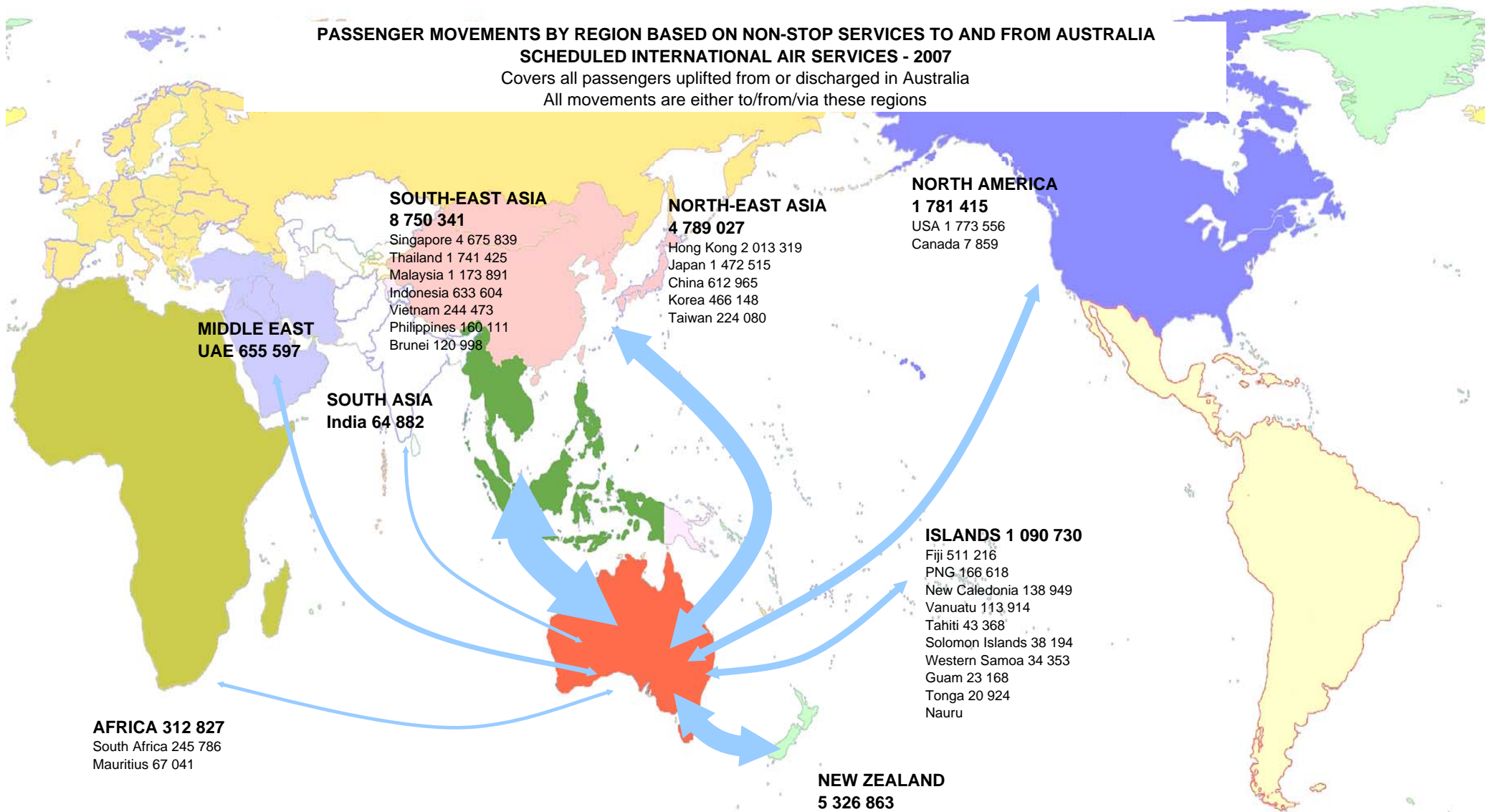
(b) Mainly covers transitting traffic from one city to another city in the same country. For example: New York via Los Angeles.

Note: The information on Traffic On Board and Transits is derived from the uplift/discharge data used to produce the main Tables in this publication.

Passengers whose travel to/from Australia involves a change in flight number at the non-stop point are not covered in these transit figures.

**PASSENGER MOVEMENTS BY REGION BASED ON NON-STOP SERVICES TO AND FROM AUSTRALIA
SCHEDULED INTERNATIONAL AIR SERVICES - 2007**

Covers all passengers uplifted from or discharged in Australia
All movements are either to/from/via these regions



Total Passenger Movements = 22 771 682 South-East Asia = 38.4%, New Zealand = 23.4%, North-East Asia = 21.0%, North America = 7.8%, Islands = 4.8%, Middle East = 2.9% Africa = 1.4% & South Asia = 0.3%

**INTER-REGIONAL PASSENGER MOVEMENTS ON "SAME FLIGHT NUMBER" OPERATIONS BEYOND NON-STOP POINTS
SCHEDULED INTERNATIONAL AIR SERVICES - 2007**

Covers all passengers uplifted from or discharged in Australia

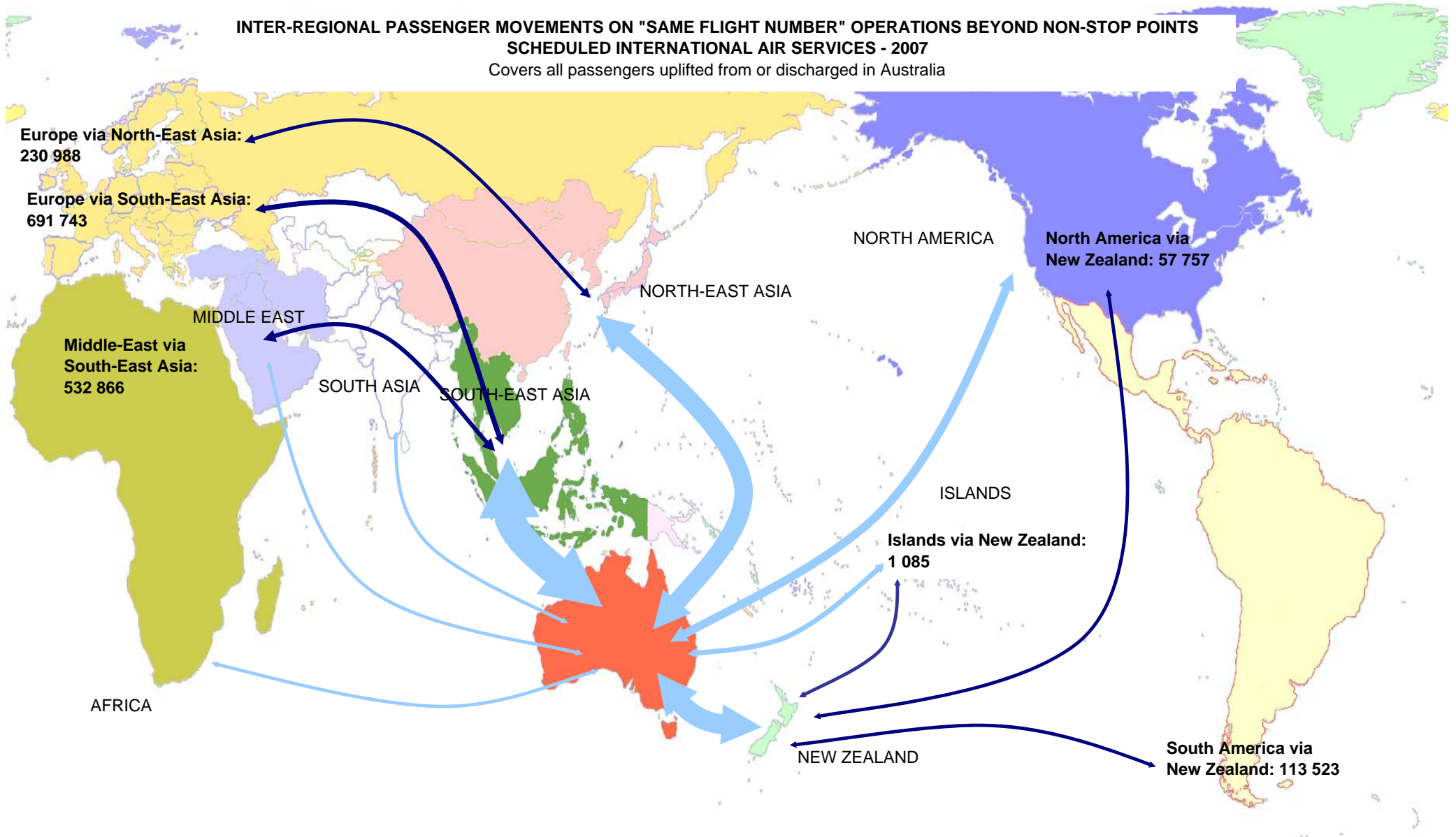


TABLE 1 SCHEDULED INTERNATIONAL AIR TRAFFIC TO AND FROM AUSTRALIA: Year ended December 2007

Scheduled Operator	Country to/from	Inbound			Outbound		
		Passengers	Freight (tonnes)	Mail (tonnes)	Passengers	Freight (tonnes)	Mail (tonnes)
Aerolineas Argentinas	Argentina	21 237	100.7	5.1	18 892	203.1	-
"	New Zealand	15 266	472.6	-	18 237	603.3	-
"	ALL SERVICES	36 503	573.3	5.1	37 129	806.4	-
Air Caledonie	New Caledonia	44 107	56.9	6.5	43 658	789.9	33.6
Air Canada	Canada	46 589	63.7	0.0	51 014	51.9	-
"	USA	12 953	1 658.8	37.3	9 080	1 922.0	1.0
"	ALL SERVICES	59 542	1 722.5	37.3	60 094	1 973.9	1.0
Air China	China	78 111	2 033.2	148.9	70 817	1 382.5	22.9
Air Mauritius	Mauritius	34 216	954.2	3.0	32 825	734.7	-
Air Nauru	Marshall Islands	186	4.8	-
"	Nauru	2 631	3.7	0.6	2 627	99.5	4.8
"	Solomon Islands	2 192	0.8	0.0	1 878	19.0	0.0
"	ALL SERVICES	4 823	4.5	0.6	4 691	123.3	4.8
Air New Zealand	China	275.7	-
"	Cook Islands	504	0.0	-	581	-	-
"	Germany	..	21.3	-	..	10.6	-
"	New Zealand	1 017 392	22 008.9	2 440.4	1 017 591	19 510.7	106.3
"	USA	8 903	5 356.5	67.4	10 685	81.1	-
"	ALL SERVICES	1 026 799	27 386.8	2 507.8	1 028 857	19 878.2	106.3
Air Niugini	Papua New Guinea	67 261	874.1	25.3	69 179	2 274.7	277.8
Air Pacific	Fiji	183 997	3 679.6	0.1	184 009	3 691.1	182.5
Air Tahiti Nui	Tahiti	21 738	904.1	-	21 630	722.2	-
Air Vanuatu (a)	Vanuatu	41 534	164.4	6.7	41 370	417.4	28.9
AirAsia X (b)	Malaysia	6 766	141.2	-	7 905	6.4	-
Airlines PNG	Papua New Guinea	15 381	29.9	0.0	14 797	265.4	0.2
Airnorth (c)	Indonesia	1 560	-	-	1 958	0.1	-
Asian Express Airlines	New Zealand	..	3 563.6	-	..	3 907.7	-
Asiana Airlines	Korea	87 018	2 834.7	329.7	80 875	1 445.2	-
Austrian Airlines (d)	Austria	17 786	-	-	20 780	-	-
"	Malaysia	5 300	-	-	3 852	-	-
"	Singapore	2 776	-	-	1 923	-	-
"	ALL SERVICES	25 862	-	-	26 555	-	-
British Airways	Singapore	29 085	1 429.4	7.9	29 193	2 865.1	-
"	Thailand	51 274	656.0	1.4	45 665	464.2	-
"	UK	98 541	4 778.2	795.6	101 865	1 073.4	0.1
"	ALL SERVICES	178 900	6 863.6	804.9	176 723	4 402.8	0.1
Cargolux Airlines Intl	Luxembourg	..	4 217.5	-	..	26.7	-
"	New Zealand	3 270.3	-
"	Singapore	..	313.6	-
"	USA	1 076.4	-
"	ALL SERVICES	-	4 531.1	-	-	4 373.4	-
Cathay Pacific Airways	Hong Kong	555 162	36 535.5	1 312.9	542 605	28 376.6	342.8
China Airlines	Taiwan	79 231	1 963.7	141.6	84 833	481.2	0.2
China Eastern Airlines	China	84 119	1 620.2	116.7	74 176	553.3	17.3
China Southern Airlines	China	69 906	3 065.4	192.8	63 696	222.0	24.2
Continental Micronesia	Guam	11 522	6.8	0.0	11 646	24.5	0.1
Emirates	New Zealand	282 847	14 192.9	92.3	264 117	11 342.8	-
"	Singapore	28 288	2 063.5	257.5	22 374	4 859.5	6.6
"	Thailand	13 847	521.8	-	12 361	70.1	-
"	United Arab Emirates	532 597	17 753.6	1 248.4	526 053	17 230.1	68.3
"	ALL SERVICES	857 579	34 531.8	1 598.2	824 905	33 502.5	74.9
Etihad Airways (e)	Singapore	5 377	72.9	-	5 602	120.7	-
"	United Arab Emirates	46 540	2 194.0	61.6	48 230	2 714.1	153.5
"	ALL SERVICES	51 917	2 266.9	61.6	53 832	2 834.8	153.5
Eva Air	Taiwan	30 441	1 546.4	43.5	29 575	700.7	12.0
Federal Express Corporation	Philippines	1 860.2	-
"	USA	..	11 944.3	305.9
"	ALL SERVICES	-	11 944.3	305.9	-	1 860.2	-
Freedom Air International	New Zealand	174 082	-	-	174 771	-	-
Garuda Indonesia	Indonesia	175 070	3 207.2	56.5	176 169	1 643.8	8.4
Gulf Air (f)	Bahrain	17 458	513.4	40.8	17 585	709.3	79.1
"	Singapore	5 489	368.6	1.6	5 417	365.5	-
"	ALL SERVICES	22 947	882.0	42.4	23 002	1 074.8	79.1
Hawaiian Airlines	USA	31 229	104.6	50.0	31 207	699.8	0.0
JALways	Japan	143 017	2 915.0	1 551.8	142 155	2 612.1	12.7
Japan Airlines (g)	Japan	124 164	2 316.6	234.5	118 270	2 054.0	9.5

TABLE 1 SCHEDULED INTERNATIONAL AIR TRAFFIC TO AND FROM AUSTRALIA: Year ended December 2007

Scheduled Operator	Country to/from	Inbound			Outbound		
		Passengers	Freight (tonnes)	Mail (tonnes)	Passengers	Freight (tonnes)	Mail (tonnes)
Jetstar (h) (i)	Indonesia	58 549	1 539.5	-	60 016	52.1	-
"	Japan	88 320	2 349.6	-	88 098	1 655.3	-
"	Malaysia	9 504	555.4	-	12 069	184.5	-
"	New Zealand	193 812	236.8	-	193 047	245.4	-
"	Singapore	48 784	61.8	-	51 707	18.0	-
"	Thailand	73 945	2 121.6	-	73 317	733.1	-
"	USA	50 395	1 430.2	-	51 558	748.4	-
"	Vietnam	32 974	1 509.4	-	32 950	394.7	-
"	ALL SERVICES	556 283	9 804.5	-	562 762	4 031.5	-
Korean Air	Korea	148 060	11 268.3	787.4	146 147	7 522.9	37.5
Lan Chile	Chile	36 172	2 443.8	4.1	37 222	1 105.4	44.6
"	New Zealand	22 225	274.0	-	30 336	465.1	1.0
"	ALL SERVICES	58 397	2 717.8	4.1	67 558	1 570.4	45.5
Malaysia Airlines	Malaysia	556 418	44 407.2	78.5	546 262	16 463.0	0.0
Martinair Holland	Hong Kong	440.9	-
"	Japan	36.9	-
"	Netherlands	..	7 897.5	-	..	1 488.8	-
"	New Zealand	1.4	-
"	Thailand	35.1	-
"	UK	30.5	-
"	United Arab Emirates	337.0	-
"	ALL SERVICES	-	7 897.5	-	-	2 370.7	-
Merpati Nusantara Airlines (j)	Indonesia	1 173	-	-	1 255	-	-
Pacific Air Express (k)	Solomon Islands	..	33.4	-	..	956.7	-
Pacific Blue	Fiji	71 537	204.3	-	71 673	304.2	-
"	New Zealand	208 036	746.8	-	218 187	429.6	-
"	Tonga	10 237	35.6	-	10 687	18.2	-
"	Vanuatu	15 499	-	-	15 511	65.3	-
"	ALL SERVICES	305 309	986.6	-	316 058	817.3	-
Philippine Airlines	Philippines	41 427	1 221.2	50.8	40 008	371.8	-
Polynesian Blue	Western Samoa	16 968	22.8	-	17 385	35.4	-
Qantas Airways	Bahrain	..	102.5	-	..	104.1	-
"	Canada	4 413	23.5	12.1	5 304	34.9	29.4
"	China	88 768	6 344.8	-	83 372	1 370.9	26.3
"	Germany	46 702	5 455.5	34.4	48 417	196.2	506.9
"	Hong Kong	313 641	16 877.1	293.6	294 715	7 173.0	649.7
"	India	34 209	375.0	-	30 673	483.6	54.5
"	Indonesia	78 641	902.1	42.3	77 663	1 095.6	38.8
"	Italy	104.7	-
"	Japan	382 750	8 102.2	1 362.8	385 741	6 291.0	1 147.2
"	Kenya	..	99.4	-
"	Korea	2 008	30.2	-	2 040	5.0	1.1
"	New Caledonia	25 564	16.0	2.8	25 620	204.3	20.1
"	New Zealand	641 373	18 122.6	51.6	654 774	22 228.5	2 427.2
"	Nigeria	104.9	-
"	Papua New Guinea	18.0	0.4
"	Philippines	39 842	1 022.2	55.8	38 834	753.0	23.2
"	Qatar	102.0	-
"	Singapore	499 656	18 676.9	900.5	466 466	20 452.7	1 888.1
"	South Africa	75 432	1 433.7	55.0	67 334	654.9	173.8
"	Thailand	48 842	1 993.6	103.1	42 633	953.9	175.8
"	UK	249 872	5 590.4	746.7	254 073	1 719.8	2 089.2
"	United Arab Emirates	284.9	-
"	USA	543 037	26 793.9	3 379.6	554 273	7 046.2	2 253.0
"	ALL SERVICES	3 074 750	111 961.5	7 040.2	3 031 932	71 382.1	11 504.6
Royal Brunei Airlines (l)	Brunei	63 767	1 553.4	0.9	57 231	2 032.3	-
"	New Zealand	15 197	185.8	-	13 208	336.4	-
"	ALL SERVICES	78 964	1 739.2	0.9	70 439	2 368.7	-
Singapore Airlines	New Zealand	..	588.8	-	..	3 293.5	-
"	Singapore	1 279 048	59 026.6	1 256.8	1 240 325	50 033.7	16.7
"	ALL SERVICES	1 279 048	59 615.5	1 256.8	1 240 325	53 327.2	16.7
Solomon Airlines	Solomon Islands	14 043	117.8	-	14 663	114.1	-
South African Airways	South Africa	54 455	741.1	67.5	48 565	2 084.3	23.5
Thai Airways International	Thailand	509 249	20 271.3	1 781.0	488 496	11 740.4	52.9
Tiger Airways	Singapore	68 151	-	-	70 730	-	-
United Airlines	USA	214 382	644.5	1 995.2	214 150	6 666.5	81.4

TABLE 1 SCHEDULED INTERNATIONAL AIR TRAFFIC TO AND FROM AUSTRALIA: Year ended December 2007

Scheduled Operator	Country to/from	Inbound			Outbound		
		Passengers	Freight (tonnes)	Mail (tonnes)	Passengers	Freight (tonnes)	Mail (tonnes)
United Parcel Service	Hong Kong	85.5	-
"	Singapore	225.8	-
"	USA	..	11 050.1	-
"	ALL SERVICES	-	11 050.1	-	-	311.3	-
Vietnam Airlines	Vietnam	92 133	2 695.5	-	86 416	354.1	-
Virgin Atlantic Airways	Hong Kong	41 465	5 846.5	-	34 743	2 020.2	-
"	UK	40 892	546.3	-	43 803	530.0	-
"	ALL SERVICES	82 357	6 392.8	-	78 546	2 550.2	-
TOTAL		11 476 071	452 812.7	22 646.6	11 295 611	308 874.4	13 155.0

Please refer to explanatory notes - paragraphs 3, 6 and 13 in particular.

(a) No mail data for August 2007 and onwards.

(b) Service commenced November 2007.

(c) Service commenced October 2007.

(d) Service ceased March 2007. No outbound freight data for September 2000 onwards. No inbound freight data for April 2001 onwards.

(e) Service commenced March 2007.

(f) Service ceased June 2007.

(g) Operations taken over by JALWays in October 2007.

(h) Freight data for services to/from Singapore is not included prior to July 2007.

(i) No Mail data.

(j) Operations are reported under Airnorth for November 2007 and onwards.

(k) Commenced reporting in December 2007 and data has been provided back to January 2007.

(l) Data under review for November and December 2007.

TABLE 2 SCHEDULED OPERATOR MARKET SHARES AND GROWTH: Year ended December

Scheduled Operators	Country to/from	Total Passengers				Total Freight (tonnes)				Total Mail (tonnes)			
		2006	2007	(%) of TOTAL	(%) Change	2006	2007	(%) of TOTAL	(%) Change	2006	2007	(%) of TOTAL	(%) Change
Aerolineas Argentinas	Argentina	39 248	40 129	0.2	2.2	364.8	303.8	0.0	-16.7	3.3	5.1	0.0	51.2
"	New Zealand	25 989	33 503	0.1	28.9	686.6	1 075.9	0.1	56.7	-	-	-	..
"	ALL SERVICES	65 237	73 632	0.3	12.9	1 051.4	1 379.7	0.2	31.2	3.3	5.1	0.0	51.2
Air Caledonie	New Caledonia	81 427	87 765	0.4	7.8	759.1	846.8	0.1	11.6	20.2	40.1	0.1	98.7
Air Canada	Canada	105 544	97 603	0.4	-7.5	5.8	115.6	0.0	1878.2	8.2	0.0	0.0	-99.9
"	USA	25 258	22 033	0.1	-12.8	4 076.2	3 580.8	0.5	-12.2	195.2	38.3	0.1	-80.4
"	ALL SERVICES	130 802	119 636	0.5	-8.5	4 082.0	3 696.4	0.5	-9.4	203.4	38.3	0.1	-81.2
Air China	China	140 412	148 928	0.7	6.1	1 736.7	3 415.7	0.4	96.7	48.5	171.9	0.5	254.4
Air Mauritius	Mauritius	52 049	67 041	0.3	28.8	1 022.1	1 688.9	0.2	65.2	3.2	3.0	0.0	-4.9
Air Nauru	Marshall Islands	166	186	0.0	12.0	2.0	4.8	0.0	137.9	-	-	-	..
"	Nauru	4 476	5 258	0.0	17.5	39.7	103.2	0.0	159.6	6.9	5.4	0.0	-21.9
"	Solomon Islands	446	4 070	0.0	812.6	0.6	19.8	0.0	3290.9	-	0.0	0.0	..
"	ALL SERVICES	5 088	9 514	0.0	87.0	42.3	127.8	0.0	201.8	6.9	5.4	0.0	-21.5
Air New Zealand	China	159.1	275.7	0.0	73.3	-	-	-	..
"	Cook Islands	824	1 085	0.0	31.7	-	0.0	0.0	..	-	-	-	..
"	Germany	120.5	32.0	0.0	-73.5	-	-	-	..
"	New Zealand	1 925 480	2 034 983	8.9	5.7	39 477.5	41 519.6	5.5	5.2	1 399.8	2 546.6	7.1	81.9
"	USA	16 162	19 588	0.1	21.2	6 076.9	5 437.6	0.7	-10.5	0.1	67.4	0.2	105239.1
"	ALL SERVICES	1 942 466	2 055 656	9.0	5.8	45 834.1	47 264.9	6.2	3.1	1 399.9	2 614.0	7.3	86.7
Air Niugini	Papua New Guinea	138 139	136 440	0.6	-1.2	4 067.3	3 148.9	0.4	-22.6	268.5	303.0	0.8	12.9
Air Pacific	Fiji	405 113	368 006	1.6	-9.2	7 991.5	7 370.7	1.0	-7.8	210.6	182.6	0.5	-13.3
Air Tahiti Nui	Tahiti	45 409	43 368	0.2	-4.5	1 814.3	1 626.3	0.2	-10.4	-	-	-	..
Air Vanuatu (a)	Vanuatu	64 285	82 904	0.4	29.0	582.2	581.8	0.1	-0.1	105.9	35.6	0.1	-66.4
AirAsia X (b)	Malaysia	..	14 671	0.1	147.6	0.0	-	-	..
Airlines PNG	Papua New Guinea	13 857	30 178	0.1	117.8	116.1	295.3	0.0	154.4	-	0.2	0.0	..
Airmorth (c)	Indonesia	..	3 518	0.0	0.1	0.0	-	-	..
Asian Express Airlines	New Zealand	7 348.2	7 471.3	1.0	1.7	-	-	-	..
Asiana Airlines	Korea	170 691	167 893	0.7	-1.6	4 354.8	4 279.9	0.6	-1.7	123.6	329.7	0.9	166.7
Australian Airlines (d)	Hong Kong	22 506	-100.0	934.9	-100.0	-
"	Indonesia	45 861	-100.0	140.7	-100.0	0.2	-100.0
"	Japan	157 870	-100.0	1 585.6	-100.0	41.9	-100.0
"	Singapore	44 365	-100.0	967.4	-100.0	29.7	-100.0
"	Thailand	3 668	-100.0	3.9	-100.0	-
"	ALL SERVICES	274 270	-	-	-100.0	3 632.5	-	-	-100.0	71.7	-	-	-100.0
Austrian Airlines (e)	Austria	186 554	38 566	0.2	-79.3	-	-	-	..	1.7	-	-	-100.0
"	Malaysia	30 324	9 152	0.0	-69.8	-	-	-	..	-	-	-	..
"	Singapore	12 078	4 699	0.0	-61.1	-	-	-	..	-	-	-	..
"	ALL SERVICES	228 956	52 417	0.2	-77.1	-	-	-	..	1.7	-	-	-100.0
British Airways	Singapore	98 658	58 278	0.3	-40.9	4 010.6	4 294.5	0.6	7.1	-	7.9	0.0	..
"	Thailand	122 177	96 939	0.4	-20.7	1 844.4	1 120.2	0.1	-39.3	0.0	1.4	0.0	4038.2
"	UK	218 468	200 406	0.9	-8.3	5 486.2	5 851.7	0.8	6.7	334.3	795.7	2.2	138.0
"	ALL SERVICES	439 303	355 623	1.6	-19.0	11 341.2	11 266.4	1.5	-0.7	334.3	805.0	2.2	140.8

TABLE 2 SCHEDULED OPERATOR MARKET SHARES AND GROWTH: Year ended December

Scheduled Operators	Country to/from	Total Passengers				Total Freight (tonnes)				Total Mail (tonnes)			
		2006	2007	(%) of TOTAL	(%) Change	2006	2007	(%) of TOTAL	(%) Change	2006	2007	(%) of TOTAL	(%) Change
Cargolux Airlines Intl	Luxembourg	4 889.5	4 244.3	0.6	-13.2	-	-	-	..
"	New Zealand	3 970.3	3 270.3	0.4	-17.6	-	-	-	..
"	Singapore	-	313.6	0.0	..	-	-	-	..
"	USA	288.1	1 076.4	0.1	273.6	-	-	-	..
"	ALL SERVICES	-	-	-	..	9 147.9	8 904.6	1.2	-2.7	-	-	-	..
Cathay Pacific Airways	Hong Kong	1 024 175	1 097 767	4.8	7.2	61 068.3	64 912.1	8.5	6.3	1 309.8	1 655.7	4.6	26.4
China Airlines	Taiwan	132 838	164 064	0.7	23.5	3 396.2	2 445.0	0.3	-28.0	220.6	141.8	0.4	-35.7
China Eastern Airlines	China	157 738	158 295	0.7	0.4	3 393.6	2 173.5	0.3	-36.0	216.3	134.0	0.4	-38.0
China Southern Airlines	China	118 837	133 602	0.6	12.4	3 161.3	3 287.4	0.4	4.0	79.6	216.9	0.6	172.5
Continental Micronesia	Guam	24 000	23 168	0.1	-3.5	42.3	31.3	0.0	-25.9	0.2	0.1	0.0	-25.3
Emirates	New Zealand	442 469	546 964	2.4	23.6	23 697.5	25 535.7	3.4	7.8	49.0	92.3	0.3	88.2
"	Singapore	54 107	50 662	0.2	-6.4	6 916.3	6 923.0	0.9	0.1	255.0	264.0	0.7	3.6
"	Thailand	42 906	26 208	0.1	-38.9	837.6	592.0	0.1	-29.3	-	-	-	..
"	United Arab Emirates	931 135	1 058 650	4.6	13.7	34 209.6	34 983.7	4.6	2.3	343.1	1 316.7	3.7	283.8
"	ALL SERVICES	1 470 617	1 682 484	7.4	14.4	65 661.1	68 034.3	8.9	3.6	647.1	1 673.1	4.7	158.6
Etihad Airways (f)	Singapore	..	10 979	0.0	193.5	0.0	-	-	..
"	United Arab Emirates	..	94 770	0.4	4 908.2	0.6	215.0	0.6	..
"	ALL SERVICES	-	105 749	0.5	..	-	5 101.7	0.7	..	-	215.0	0.6	..
Eva Air	Taiwan	67 605	60 016	0.3	-11.2	2 717.4	2 247.1	0.3	-17.3	36.3	55.5	0.2	53.0
Federal Express Corporation	Philippines	2 384.8	1 860.2	0.2	-22.0	-	-	-	..
"	USA	13 253.5	11 944.3	1.6	-9.9	1.3	305.9	0.9	23541.2
"	ALL SERVICES	-	-	-	..	15 638.3	13 804.5	1.8	-11.7	1.3	305.9	0.9	23541.2
Freedom Air International	New Zealand	361 369	348 853	1.5	-3.5	-	-	-	..	-	-	-	..
Garuda Indonesia	Indonesia	273 055	351 239	1.5	28.6	5 413.0	4 851.0	0.6	-10.4	72.8	64.9	0.2	-10.8
"	New Zealand	16 256	-100.0	1 038.9	-100.0	-
"	ALL SERVICES	289 311	351 239	1.5	21.4	6 451.9	4 851.0	0.6	-24.8	72.8	64.9	0.2	-10.8
Gulf Air (g)	Bahrain	101 027	35 043	0.2	-65.3	4 356.0	1 222.7	0.2	-71.9	288.4	119.9	0.3	-58.4
"	Singapore	25 084	10 906	0.0	-56.5	2 505.9	734.1	0.1	-70.7	2.7	1.6	0.0	-41.0
"	ALL SERVICES	126 111	45 949	0.2	-63.6	6 861.9	1 956.8	0.3	-71.5	291.1	121.5	0.3	-58.3
Hawaiian Airlines	USA	62 061	62 436	0.3	0.6	991.1	804.5	0.1	-18.8	53.0	50.1	0.1	-5.5
JALways (h)	Japan	56 478	285 172	1.3	404.9	1 354.6	5 527.2	0.7	308.0	297.6	1 564.5	4.4	425.8
Japan Airlines (i)	Japan	622 091	242 434	1.1	-61.0	12 712.3	4 370.6	0.6	-65.6	1 169.0	244.0	0.7	-79.1
Jetstar (j) (k)	Indonesia	6 779	118 565	0.5	1649.0	67.7	1 591.6	0.2	2250.4	-	-	-	..
"	Japan	..	176 418	0.8	4 005.0	0.5	-	-	..
"	Malaysia	..	21 573	0.1	739.9	0.1	-	-	..
"	New Zealand	355 937	386 859	1.7	8.7	407.7	482.2	0.1	18.3	-	-	-	..
"	Singapore	16 451	100 491	0.4	510.9	-	79.8	0.0	..	-	-	-	..
"	Thailand	13 073	147 262	0.6	1026.5	239.8	2 854.8	0.4	1090.7	-	-	-	..
"	USA	1 299	101 953	0.4	7748.6	7.9	2 178.6	0.3	27481.2	-	-	-	..
"	Vietnam	5 211	65 924	0.3	1165.1	93.0	1 904.1	0.2	1947.0	-	-	-	..
"	ALL SERVICES	398 750	1 119 045	4.9	180.6	816.1	13 836.0	1.8	1595.4	-	-	-	..
Korean Air	Korea	243 969	294 207	1.3	20.6	15 070.9	18 791.2	2.5	24.7	476.3	824.9	2.3	73.2

TABLE 2 SCHEDULED OPERATOR MARKET SHARES AND GROWTH: Year ended December

Scheduled Operators	Country to/from	Total Passengers				Total Freight (tonnes)				Total Mail (tonnes)			
		2006	2007	(%) of TOTAL	(%) Change	2006	2007	(%) of TOTAL	(%) Change	2006	2007	(%) of TOTAL	(%) Change
Lan Chile	Chile	61 076	73 394	0.3	20.2	2 512.4	3 549.1	0.5	41.3	40.4	48.6	0.1	20.3
"	New Zealand	43 013	52 561	0.2	22.2	800.6	739.1	0.1	-7.7	-	1.0	0.0	..
"	ALL SERVICES	104 089	125 955	0.6	21.0	3 312.9	4 288.2	0.6	29.4	40.4	49.6	0.1	22.7
Malaysia Airlines	Malaysia	1 070 703	1 102 680	4.8	3.0	52 610.3	60 870.3	8.0	15.7	124.1	78.5	0.2	-36.8
Martinair Holland	Hong Kong	407.7	440.9	0.1	8.1	-	-	-	..
"	Japan	36.9	0.0	-	-	..
"	Netherlands	8 497.9	9 386.3	1.2	10.5	-	-	-	..
"	New Zealand	1.4	0.0	-	-	..
"	Thailand	57.0	35.1	0.0	-38.4	-	-	-	..
"	UK	30.5	0.0	-	-	..
"	United Arab Emirates	320.2	337.0	0.0	5.3	-	-	-	..
"	ALL SERVICES	-	-	-	..	9 282.8	10 268.1	1.3	10.6	-	-	-	..
Merpati Nusantara Airlines (l)	Indonesia	3 465	2 428	0.0	-29.9	-	-	-	..	-	-	-	..
Pacific Air Express (m)	Solomon Islands	990.0	0.1	-	-	..
Pacific Blue	Fiji	125 162	143 210	0.6	14.4	384.2	508.5	0.1	32.4	-	-	-	..
"	New Zealand	370 654	426 223	1.9	15.0	823.6	1 176.3	0.2	42.8	-	-	-	..
"	Tonga	20 218	20 924	0.1	3.5	50.2	53.8	0.0	7.1	-	-	-	..
"	Vanuatu	26 956	31 010	0.1	15.0	60.0	65.3	0.0	9.0	-	-	-	..
"	ALL SERVICES	542 990	621 367	2.7	14.4	1 317.9	1 804.0	0.2	36.9	-	-	-	..
Philippine Airlines	Philippines	72 600	81 435	0.4	12.2	1 618.4	1 593.0	0.2	-1.6	38.0	50.8	0.1	33.9
Polynesian Blue	Western Samoa	34 135	34 353	0.2	0.6	129.4	58.2	0.0	-55.0	-	-	-	..
Qantas Airways	Bahrain	98.5	206.6	0.0	109.7	-	-	-	..
"	Canada	7 566	9 717	0.0	28.4	120.0	58.5	0.0	-51.3	52.8	41.4	0.1	-21.5
"	China	154 850	172 140	0.8	11.2	7 383.8	7 715.7	1.0	4.5	24.5	26.3	0.1	7.5
"	Germany	90 519	95 119	0.4	5.1	5 021.6	5 651.7	0.7	12.5	510.2	541.2	1.5	6.1
"	Hong Kong	610 040	608 356	2.7	-0.3	25 519.4	24 050.1	3.2	-5.8	991.7	943.3	2.6	-4.9
"	India	62 259	64 882	0.3	4.2	890.9	858.6	0.1	-3.6	63.1	54.5	0.2	-13.7
"	Indonesia	150 272	156 304	0.7	4.0	1 530.7	1 997.7	0.3	30.5	66.9	81.1	0.2	21.2
"	Italy	104.7	0.0	-	-	..
"	Japan	733 431	768 491	3.4	4.8	16 015.0	14 393.2	1.9	-10.1	2 297.4	2 510.0	7.0	9.3
"	Kenya	99.4	0.0	-	-	..
"	Korea	4 041	4 048	0.0	0.2	97.1	35.2	0.0	-63.8	9.8	1.1	0.0	-88.3
"	New Caledonia	46 439	51 184	0.2	10.2	217.5	220.3	0.0	1.3	27.4	22.9	0.1	-16.3
"	New Zealand	1 341 361	1 296 147	5.7	-3.4	49 392.7	40 351.1	5.3	-18.3	2 918.6	2 478.8	6.9	-15.1
"	Nigeria	104.9	0.0	-	-	..
"	Papua New Guinea	18.0	0.0	0.4	0.0	..
"	Philippines	73 456	78 676	0.3	7.1	1 409.7	1 775.2	0.2	25.9	60.7	79.0	0.2	30.0
"	Qatar	102.0	0.0	-	-	..
"	Singapore	967 767	966 122	4.2	-0.2	38 040.9	39 129.6	5.1	2.9	2 908.2	2 788.6	7.8	-4.1
"	South Africa	130 412	142 766	0.6	9.5	2 177.9	2 088.6	0.3	-4.1	200.4	228.8	0.6	14.2
"	Thailand	96 170	91 475	0.4	-4.9	2 755.3	2 947.4	0.4	7.0	293.6	278.9	0.8	-5.0
"	UK	488 372	503 945	2.2	3.2	8 352.8	7 310.2	1.0	-12.5	3 492.5	2 835.9	7.9	-18.8

TABLE 2 SCHEDULED OPERATOR MARKET SHARES AND GROWTH: Year ended December

Scheduled Operators	Country to/from	Total Passengers				Total Freight (tonnes)				Total Mail (tonnes)			
		2006	2007	(%) of TOTAL	(%) Change	2006	2007	(%) of TOTAL	(%) Change	2006	2007	(%) of TOTAL	(%) Change
Qantas Airways	United Arab Emirates	149.5	284.9	0.0	90.6	-	-	-	..
"	USA	1 090 955	1 097 310	4.8	0.6	39 242.3	33 840.1	4.4	-13.8	5 807.2	5 632.6	15.7	-3.0
"	ALL SERVICES	6 047 910	6 106 682	26.8	1.0	198 415.6	183 343.6	24.1	-7.6	19 724.8	18 544.9	51.8	-6.0
Royal Brunei Airlines (n)	Brunei	142 063	120 998	0.5	-14.8	4 101.0	3 585.7	0.5	-12.6	0.4	0.9	0.0	132.5
"	New Zealand	32 558	28 405	0.1	-12.8	405.6	522.2	0.1	28.8	-	-	-	..
"	ALL SERVICES	174 621	149 403	0.7	-14.4	4 506.6	4 107.9	0.5	-8.8	0.4	0.9	0.0	132.5
Singapore Airlines	Indonesia	43.2	-100.0	-
"	New Zealand	2 809.8	3 882.3	0.5	38.2	-	-	-	..
"	Singapore	2 432 415	2 519 373	11.1	3.6	112 182.2	109 060.3	14.3	-2.8	1 334.7	1 273.4	3.6	-4.6
"	ALL SERVICES	2 432 415	2 519 373	11.1	3.6	115 035.3	112 942.6	14.8	-1.8	1 334.7	1 273.4	3.6	-4.6
Solomon Airlines	Solomon Islands	28 743	28 706	0.1	-0.1	186.9	231.9	0.0	24.1	-	-	-	..
South African Airways	South Africa	88 723	103 020	0.5	16.1	3 041.0	2 825.4	0.4	-7.1	101.8	91.0	0.3	-10.6
Thai Airways International	Thailand	712 215	997 745	4.4	40.1	25 325.8	32 011.7	4.2	26.4	1 273.3	1 834.0	5.1	44.0
Tiger Airways	Singapore	40 393	138 881	0.6	243.8	-	-	-	..	-	-	-	..
Transair (o)	Papua New Guinea	277.7	-100.0	-
United Airlines	USA	469 858	428 532	1.9	-8.8	8 274.1	7 310.9	1.0	-11.6	1 720.2	2 076.6	5.8	20.7
United Parcel Service	China	7.0	-100.0	-
"	Fiji	-	-
"	Hong Kong	90.8	85.5	0.0	-5.8	-	-	-	..
"	Singapore	225.8	0.0	-	-	..
"	USA	7 604.7	11 050.1	1.5	45.3	-	-	-	..
"	ALL SERVICES	-	-	-	..	7 702.5	11 361.3	1.5	47.5	-	-	-	..
Vietnam Airlines	Vietnam	167 212	178 549	0.8	6.8	3 179.4	3 049.6	0.4	-4.1	0.2	-	-	-100.0
Virgin Atlantic Airways	Hong Kong	85 003	76 208	0.3	-10.3	6 767.1	7 866.8	1.0	16.2	-	-	-	..
"	UK	58 555	84 695	0.4	44.6	1 483.3	1 076.3	0.1	-27.4	-	-	-	..
"	ALL SERVICES	143 558	160 903	0.7	12.1	8 250.4	8 943.0	1.2	8.4	-	-	-	..
TOTAL		21 487 084	22 771 682	100.0	6.0	746 727.9	761 687.1	100.0	2.0	32 030.5	35 801.6	100.0	11.8

TABLE 2 SCHEDULED OPERATOR MARKET SHARES AND GROWTH: Year ended December

Please refer to explanatory notes - paragraphs 3, 6 and 13 in particular.

(a) Traffic carried under code share arrangements may not be included for July 2000 to June 2006. No mail data for August 2007 and onwards.

(b) Service commenced November 2007.

(c) Service commenced October 2007.

(d) Service ceased June 2006.

(e) Service ceased March 2007. No outbound freight data for September 2000 onwards. No inbound freight data for April 2001 onwards.

(f) Service commenced March 2007.

(g) Service ceased June 2007.

(h) Service commenced October 2006.

(i) Operations taken over by JALWays in October 2007.

(j) Freight data for services to/from Singapore is not included prior to July 2007.

(k) No Mail data.

(l) Operations are reported under Airnorth for November 2007 and onwards.

(m) Commenced reporting in December 2007 and data has been provided back to January 2007.

(n) Data under review for November and December 2007.

(o) Service ceased December 2006.

TABLE 3 AIRLINE PASSENGER CAPACITY AND UTILISATION TO AND FROM AUSTRALIA BY OPERATOR: Year ended December 2007

Scheduled Operator	Service to/from	Inbound				Outbound			
		No. of Flights	Pax Carried	Seats Available	Seat Utilisation %	No. of Flights	Pax Carried	Seats Available	Seat Utilisation %
Aerolineas Argentinas	Argentina	162	36 503	40 014	91.2	162	37 129	40 014	92.8
Air Caledonie	New Caledonia	318	44 107	57 553	76.6	319	43 658	57 824	75.5
Air Canada	Canada	362	59 542	79 156	75.2	364	60 094	79 313	75.8
Air China	China	376	78 111	90 240	86.6	376	70 817	90 240	78.5
Air Mauritius	Mauritius	152	34 216	44 916	76.2	151	32 825	44 622	73.6
Air Nauru	Nauru	87	4 823	10 902	44.2	88	4 691	11 088	42.3
Air New Zealand	Cook Islands	39	4 087	5 912	69.1	40	4 920	6 074	81.0
"	Germany	96	..	-	..	96	..	-	..
"	New Zealand	6 575	918 684	1 182 359	77.7	6 529	903 157	1 167 399	77.4
" (a)	USA	391	104 028	132 545	78.5	422	120 780	144 346	83.7
"	ALL SERVICES	7 101	1 026 799	1 320 816	77.7	7 087	1 028 857	1 317 819	78.1
Air Niugini	Papua New Guinea	849	67 261	123 549	54.4	845	69 179	123 693	55.9
Air Pacific	Fiji	1 013	183 997	274 812	67.0	1 013	184 009	275 104	66.9
Air Tahiti Nui	Tahiti	114	21 738	33 516	64.9	114	21 630	33 516	64.5
Air Vanuatu	Vanuatu	461	41 534	58 086	71.5	459	41 370	57 834	71.5
AirAsia X (b)	Malaysia	35	6 766	11 025	61.4	34	7 905	10 710	73.8
Airlines PNG	Papua New Guinea	502	15 381	24 324	63.2	502	14 797	24 324	60.8
Airnorth (c)	Indonesia	41	1 560	2 330	67.0	41	1 958	2 330	84.0
Asian Express Airlines (d)	New Zealand	237	..	-	..	237	..	-	..
Asiana Airlines	Korea	359	87 018	111 290	78.2	359	80 875	111 290	72.7
Austrian Airlines (e)	Austria	106	25 862	33 119	78.1	106	26 555	33 119	80.2
British Airways	UK	729	178 900	213 472	83.8	729	176 723	213 550	82.8
Cargolux Airlines Intl (d)	Luxembourg	98	..	-	..	100	..	-	..
Cathay Pacific Airways	Hong Kong	2 602	555 162	666 447	83.3	2 601	542 605	666 193	81.4
China Airlines	Taiwan	345	79 231	106 541	74.4	345	84 833	106 307	79.8
China Eastern Airlines	China	410	84 119	110 224	76.3	408	74 176	109 615	67.7
China Southern Airlines	China	335	69 906	94 214	74.2	335	63 696	94 214	67.6
Continental Micronesia	Guam	105	11 522	16 170	71.3	105	11 646	16 170	72.0
Emirates	New Zealand	1 450	282 847	456 640	61.9	1 450	264 117	456 640	57.8
"	United Arab Emirates	2 552	574 732	842 562	68.2	2 552	560 788	842 610	66.6
"	ALL SERVICES	4 002	857 579	1 299 202	66.0	4 002	824 905	1 299 250	63.5
Etihad Airways (f)	United Arab Emirates	267	51 917	68 232	76.1	267	53 832	68 232	78.9
Eva Air	Taiwan	157	30 441	39 564	76.9	157	29 575	39 564	74.8
Federal Express Corporation (d)	Philippines	-	..	-	..	263
"	USA	264	-	..	-	..
"	ALL SERVICES	264	-	-	..	263	-	-	..
Freedom Air International	New Zealand	1 534	174 082	228 946	76.0	1 533	174 771	228 837	76.4
Garuda Indonesia	Indonesia	1 211	175 070	233 132	75.1	1 210	176 169	232 839	75.7
Gulf Air (g)	Bahrain	129	22 947	32 121	71.4	129	23 002	32 121	71.6
Hawaiian Airlines	USA	156	31 229	39 542	79.0	156	31 207	39 542	78.9
JALways	Japan	457	143 017	192 419	74.3	457	142 155	192 524	73.8
Japan Airlines (h)	Japan	356	124 164	156 552	79.3	356	118 270	156 784	75.4
Jetstar	Indonesia	226	58 549	68 478	85.5	226	60 016	68 478	87.6

TABLE 3 AIRLINE PASSENGER CAPACITY AND UTILISATION TO AND FROM AUSTRALIA BY OPERATOR: Year ended December 2007

Scheduled Operator	Service to/from	Inbound				Outbound			
		No. of Flights	Pax Carried	Seats Available	Seat Utilisation %	No. of Flights	Pax Carried	Seats Available	Seat Utilisation %
Jetstar	Japan	454	88 320	137 562	64.2	455	88 098	137 865	63.9
"	Malaysia	47	9 504	14 241	66.7	48	12 069	14 544	83.0
"	New Zealand	1 455	193 812	257 535	75.3	1 457	193 047	257 889	74.9
"	Singapore	365	48 784	65 340	74.7	365	51 707	65 340	79.1
"	Thailand	308	73 945	93 324	79.2	312	73 317	94 536	77.6
"	USA	246	50 395	74 538	67.6	248	51 558	75 144	68.6
"	Vietnam	155	32 974	46 965	70.2	156	32 950	47 268	69.7
"	ALL SERVICES	3 256	556 283	757 983	73.4	3 267	562 762	761 064	73.9
Korean Air	Korea	751	148 060	203 955	72.6	750	146 147	203 057	72.0
Lan Chile	Chile	309	58 397	80 031	73.0	309	67 558	80 031	84.4
Malaysia Airlines	Malaysia	2 441	556 418	682 950	81.5	2 417	546 262	682 414	80.0
Martinair Holland (d)	Netherlands	101	..	-	..	99	..	-	..
Merpati Nusantara Airlines (i)	Indonesia	85	1 173	2 550	46.0	85	1 255	2 546	49.3
Pacific Air Express (d) (j)	Solomon Islands	59	59
Pacific Blue	Fiji	517	71 537	93 060	76.9	517	71 673	93 060	77.0
"	New Zealand	1 472	208 036	264 960	78.5	1 472	218 187	264 960	82.3
"	Tonga	106	10 237	19 080	53.7	104	10 687	18 720	57.1
"	Vanuatu	105	15 499	18 900	82.0	106	15 511	19 080	81.3
"	ALL SERVICES	2 200	305 309	396 000	77.1	2 199	316 058	395 820	79.8
Philippine Airlines	Philippines	167	41 427	50 565	81.9	167	40 008	50 565	79.1
Polynesian Blue	Western Samoa	160	16 968	28 800	58.9	160	17 385	28 800	60.4
Qantas Airways	Bahrain	2	2
"	Canada	47	13 970	16 031	87.1	47	14 747	16 613	88.8
"	China	420	89 967	110 876	81.1	423	86 659	110 754	78.2
"	Germany	415	140 281	149 600	93.8	408	136 773	149 618	91.4
"	Hong Kong	1 141	275 210	320 210	85.9	1 130	253 363	318 964	79.4
"	India	156	36 126	41 247	87.6	156	32 484	46 248	70.2
"	Indonesia	477	66 673	92 697	71.9	476	64 148	92 551	69.3
"	Italy	1
"	Japan	2 030	388 850	512 949	75.8	2 035	391 167	514 404	76.0
"	Korea	12	2 112	2 724	77.5	12	2 374	2 724	87.2
"	New Caledonia	206	29 737	39 505	75.3	206	29 675	39 488	75.1
"	New Zealand	4 692	634 162	782 991	81.0	4 693	625 949	798 260	78.4
"	Philippines	211	44 298	48 057	92.2	210	41 463	48 048	86.3
"	Singapore	1 360	324 901	388 178	83.7	1 359	301 498	387 985	77.7
"	South Africa	265	86 520	101 151	85.5	265	76 451	99 522	76.8
"	UK	1 458	489 602	548 599	89.2	1 459	494 072	549 098	90.0
"	United Arab Emirates	2
"	USA	2 430	635 119	778 292	81.6	2 428	659 438	787 120	83.8
"	ALL SERVICES	15 322	3 257 528	3 933 107	82.8	15 312	3 210 261	3 961 397	81.0
Royal Brunei Airlines (k)	Brunei	666	63 767	124 991	51.0	660	57 231	123 857	46.2
"	New Zealand	156	15 197	32 724	46.4	158	13 208	33 120	39.9
"	ALL SERVICES	822	78 964	157 715	50.1	818	70 439	156 977	44.9

TABLE 3 AIRLINE PASSENGER CAPACITY AND UTILISATION TO AND FROM AUSTRALIA BY OPERATOR: Year ended December 2007

Scheduled Operator	Service to/from	Inbound				Outbound			
		No. of Flights	Pax Carried	Seats Available	Seat Utilisation %	No. of Flights	Pax Carried	Seats Available	Seat Utilisation %
Singapore Airlines	New Zealand	27	..	-	..	27	..	-	..
"	Singapore	4 593	1 279 048	1 488 288	85.9	4 600	1 240 325	1 488 284	83.3
"	ALL SERVICES	4 620	1 279 048	1 488 288	85.9	4 627	1 240 325	1 488 284	83.3
Solomon Airlines	Solomon Islands	247	14 043	28 634	49.0	248	14 663	28 770	51.0
South African Airways	South Africa	268	54 455	67 514	80.7	267	48 565	67 264	72.2
Thai Airways International	Thailand	1 893	509 249	619 353	82.2	1 893	488 496	619 353	78.9
Tiger Airways	Singapore	516	68 151	92 880	73.4	516	70 730	92 880	76.2
United Airlines	USA	772	214 382	267 884	80.0	763	214 150	264 761	80.9
United Parcel Service (d)	Hong Kong	-	..	-	..	88
"	Singapore	-	..	-	..	35
"	USA	257	-	..	-	..
"	ALL SERVICES	257	-	-	..	123	-	-	..
Vietnam Airlines	Vietnam	358	92 133	120 851	76.2	361	86 416	121 865	70.9
Virgin Atlantic Airways	UK	365	82 357	112 176	73.4	364	78 546	111 870	70.2
TOTAL		60 401	11 658 849	14 903 662	78.2	60 214	11 473 940	14 926 300	76.9

Please refer to explanatory notes - paragraphs 4, 5, 7 and 14 in particular.

In addition to the above, please note the following regarding **Seat Factors** shown in this table:

Traffic shown in this table for Australian Airlines and Qantas Airways will differ from traffic shown in Tables 1 and 2 because of the inclusion in this table of total traffic into and ex Australia (for seat factor purposes) whereas Tables 1 and 2 include uplift/discharge traffic only.

All other airlines report uplift/discharge traffic only. Therefore, for other airlines operating **via** Australia, the seat factors shown here reflect the total seats on the aircraft but only the Australian uplift/discharge portion of passengers on the aircraft. The true seat factors for airlines that operate **via** Australia will most likely be higher than what is shown in this table.

For example, on Dubai-Sydney-Auckland services:

Seats on the Dubai-Sydney sector are taken up by Dubai-Sydney and Dubai-Auckland passengers. However, when calculating seat factors, only the Dubai-Sydney passengers are used.

Similarly, seats on the Sydney-Auckland sector are taken up by Sydney-Auckland and Dubai-Auckland passengers. However, when calculating seat factors, only the Sydney-Auckland passengers are used.

The following airlines are affected:

Emirates and Royal Brunei Airlines

(a) For November 2007 and onwards no "same flight number" services inbound to Australia from the USA.

(b) Service commenced November 2007.

(c) Service commenced October 2007.

(d) Freight flights only.

(e) Service ceased March 2007.

(f) Service commenced March 2007.

(g) Service ceased June 2007.

(h) Operations taken over by JALWays in October 2007.

(i) Operations are reported under Airnorth for November 2007 and onwards.

(j) Commenced reporting in December 2007 and data has been provided back to January 2007.

(k) Data under review for November and December 2007.

TABLE 4 SCHEDULED INTERNATIONAL AIRPORT TRAFFIC AND AIRCRAFT MOVEMENTS: Year ended December

		Inbound		(%)	Outbound		(%)	Total		(%)	(%) of
		2006	2007	Change	2006	2007	Change	2006	2007	Change	TOTAL
Adelaide	Passengers	209 029	234 751	12.3	191 460	220 398	15.1	400 489	455 149	13.6	2.0
"	Freight (Tonnes)	9 236	8 930	-3.3	9 588	9 095	-5.1	18 824	18 025	-4.2	2.4
"	Aircraft Movements	1 423	1 526	7.2	1 422	1 522	7.0	2 845	3 048	7.1	2.3
Brisbane	Passengers	1 902 026	1 970 506	3.6	1 861 288	1 949 270	4.7	3 763 314	3 919 776	4.2	17.2
"	Freight (Tonnes)	46 645	43 839	-6.0	43 125	42 445	-1.6	89 770	86 284	-3.9	11.3
"	Aircraft Movements	11 488	11 919	3.8	11 477	11 878	3.5	22 965	23 797	3.6	17.7
Cairns	Passengers	399 459	353 748	-11.4	392 250	348 300	-11.2	791 709	702 048	-11.3	3.1
"	Freight (Tonnes)	3 309	2 568	-22.4	6 111	4 948	-19.0	9 420	7 516	-20.2	1.0
"	Aircraft Movements	4 122	3 906	-5.2	4 120	3 900	-5.3	8 242	7 806	-5.3	5.8
Darwin	Passengers	61 497	74 859	21.7	65 331	76 460	17.0	126 828	151 319	19.3	0.7
"	Freight (Tonnes)	340	64	-81.2	222	164	-26.4	562	228	-59.5	0.0
"	Aircraft Movements	1 355	1 584	16.9	1 356	1 584	16.8	2 711	3 168	16.9	2.4
Gold Coast/Coolangatta	Passengers	96 136	104 756	9.0	97 305	106 006	8.9	193 441	210 762	9.0	0.9
"	Freight (Tonnes)	1	144	16611.3	3	7	152.4	4	151	3948.9	0.0
"	Aircraft Movements	1 052	845	-19.7	1 049	841	-19.8	2 101	1 686	-19.8	1.3
Melbourne	Passengers	2 181 306	2 308 615	5.8	2 109 984	2 256 469	6.9	4 291 290	4 565 084	6.4	20.0
"	Freight (Tonnes)	109 470	111 958	2.3	91 258	91 349	0.1	200 728	203 307	1.3	26.7
"	Aircraft Movements	11 985	12 129	1.2	11 964	12 103	1.2	23 949	24 232	1.2	18.0
Norfolk Island	Passengers	9 429	8 615	-8.6	9 737	8 662	-11.0	19 166	17 277	-9.9	0.1
"	Freight (Tonnes)	92	101	10.4	16	13	-16.3	108	115	6.5	0.0
"	Aircraft Movements	104	104	..	105	104	-1.0	209	208	-0.5	0.2
Perth	Passengers	1 042 765	1 212 943	16.3	992 112	1 160 625	17.0	2 034 877	2 373 568	16.6	10.4
"	Freight (Tonnes)	30 624	34 801	13.6	33 339	31 559	-5.3	63 963	66 360	3.7	8.7
"	Aircraft Movements	5 149	5 996	16.4	5 151	5 996	16.4	10 300	11 992	16.4	8.9
Sydney	Passengers	4 941 157	5 207 278	5.4	4 924 813	5 169 421	5.0	9 865 970	10 376 699	5.2	45.6
"	Freight (Tonnes)	240 962	250 408	3.9	122 338	129 294	5.7	363 300	379 702	4.5	49.9
"	Aircraft Movements	29 131	29 321	0.7	29 091	29 214	0.4	58 222	58 535	0.5	43.5
Townsville (a)	Passengers	-	-
"	Freight (Tonnes)	-	51	..	-100.0	51	-	-100.0	..
"	Aircraft Movements	3	..	-100.0	3	..	-100.0	6	-	-100.0	..
TOTAL	Passengers	10 842 804	11 476 071	5.8	10 644 280	11 295 611	6.1	21 487 084	22 771 682	6.0	100.0
	Freight (Tonnes)	440 678	452 813	2.8	306 050	308 874	0.9	746 728	761 687	2.0	100.0
	Aircraft Movements	65 812	67 330	2.3	65 738	67 142	2.1	131 550	134 472	2.2	100.0

(a) Freighter operations only - during March, April and May 2006.

TABLE 5 SCHEDULED INTERNATIONAL TRAFFIC BY CITY PAIRS: Year ended December

Foreign Port	Australian Port	Passengers						Freight (tonnes)					
		2006			2007			2006			2007		
		Inbound	Outbound	Total	Inbound	Outbound	Total	Inbound	Outbound	Total	Inbound	Outbound	Total
Auckland	Adelaide	28 020	27 194	55 214	31 057	33 065	64 122	137.2	109.2	246.4	222.3	276.2	498.5
Bombay	"	0	0	0	27	0	27	0.0	0.0	0.0	0.0	0.0	0.0
Denpasar	"	3 815	3 989	7 804	0	0	0	112.2	23.0	135.2	0.0	0.0	0.0
Hong Kong	"	21 375	15 212	36 587	28 004	19 600	47 604	770.9	625.6	1 396.5	709.5	914.6	1 624.1
Kuala Lumpur	"	45 101	44 460	89 561	47 977	46 905	94 882	2 142.6	611.1	2 753.7	2 000.8	707.1	2 707.9
Singapore	"	110 718	100 605	211 323	127 686	120 828	248 514	6 073.0	8 218.8	14 291.8	5 997.1	7 197.1	13 194.2
Total	Adelaide	209 029	191 460	400 489	234 751	220 398	455 149	9 235.8	9 587.7	18 823.5	8 929.7	9 095.0	18 024.7
Abu Dhabi	Brisbane	0	0	0	4 562	5 481	10 043	0.0	0.0	0.0	301.6	295.7	597.3
Anchorage	"	0	0	0	0	0	0	0.0	0.0	0.0	0.0	0.0	0.0
Auckland	"	372 917	391 284	764 201	405 462	409 397	814 859	9 970.1	9 321.7	19 291.8	9 470.1	6 767.8	16 237.9
Bahrain	"	0	0	0	0	0	0	96.7	0.0	96.7	102.5	104.1	206.6
Bandar Seri Begawan	"	16 330	15 845	32 175	13 314	13 058	26 372	312.4	960.6	1 273.0	380.3	914.1	1 294.5
Bangkok	"	45 867	46 362	92 229	63 702	72 452	136 154	2 042.7	958.1	3 000.8	2 220.9	1 938.6	4 159.5
Chicago	"	0	0	0	0	0	0	2.5	0.0	2.5	18.8	0.0	18.8
Christchurch	"	156 524	156 877	313 401	170 108	170 570	340 678	553.1	540.3	1 093.4	512.0	363.4	875.4
Denpasar	"	18 582	18 060	36 642	450	545	995	637.3	195.8	833.1	22.8	21.7	44.5
Dubai	"	74 609	75 678	150 287	79 963	81 466	161 429	1 465.7	2 093.5	3 559.2	1 736.6	2 004.5	3 741.1
Dunedin	"	19 044	19 384	38 428	19 365	19 260	38 625	0.0	0.0	0.0	0.0	0.0	0.0
Espiritu Santo	"	0	0	0	521	726	1 247	0.0	0.0	0.0	0.2	1.0	1.1
Frankfurt	"	0	0	0	0	0	0	0.0	0.0	0.0	22.4	0.0	22.4
Hamilton	"	18 139	18 763	36 902	18 137	18 851	36 988	0.0	0.0	0.0	0.0	0.0	0.0
Hong Kong	"	115 864	109 505	225 369	115 169	109 666	224 835	5 876.2	3 525.3	9 401.5	5 345.6	3 980.7	9 326.3
Honiara	"	14 574	14 615	29 189	16 235	16 541	32 776	125.0	62.5	187.5	152.0	1 089.8	1 241.8
Honolulu	"	0	0	0	0	0	0	1.8	0.0	1.8	0.0	0.0	0.0
Indianapolis	"	0	0	0	0	0	0	160.3	165.4	325.7	154.7	148.4	303.1
Jakarta	"	0	0	0	0	0	0	0.0	0.0	0.0	0.0	120.0	120.0
Kuala Lumpur	"	61 035	62 567	123 602	55 624	64 240	119 864	3 151.9	3 021.9	6 173.8	1 672.8	2 787.2	4 459.9
Los Angeles	"	80 583	83 421	164 004	84 623	89 955	174 578	821.1	982.8	1 803.9	911.1	813.0	1 724.0
Majuro	"	0	166	166	0	186	186	0.0	2.0	2.0	0.0	4.8	4.8
Manila	"	6 636	6 723	13 359	7 108	7 057	14 165	27.5	69.1	96.7	56.9	64.3	121.2
Nadi	"	71 131	73 409	144 540	72 993	75 270	148 263	195.3	467.7	663.0	203.3	454.2	657.5
Nauru	"	2 280	2 196	4 476	2 631	2 627	5 258	2.6	37.2	39.7	3.7	99.5	103.2
New York	"	0	0	0	2	0	2	0.0	0.0	0.0	28.4	8.2	36.6
Noumea	"	19 117	20 565	39 682	20 301	21 936	42 237	12.1	142.6	154.7	10.1	165.1	175.2
Osaka	"	77 742	26 820	104 562	59 463	16 127	75 590	856.2	1 197.6	2 053.8	281.4	164.0	445.4
Palmerston	"	21 531	21 452	42 983	20 282	19 952	40 234	0.0	0.0	0.0	0.0	0.0	0.0
Port Moresby	"	35 155	40 481	75 636	41 966	47 201	89 167	916.7	2 593.4	3 510.2	644.6	2 183.2	2 827.8
Port Vila	"	24 782	25 131	49 913	29 236	29 580	58 816	44.1	194.2	238.3	44.4	207.6	252.0
Queenstown	"	3 988	4 540	8 528	4 415	5 011	9 426	0.0	0.0	0.0	0.0	0.0	0.0
San Francisco	"	0	0	0	10	0	10	0.0	0.0	0.0	0.0	0.0	0.0
Seoul	"	40 522	37 179	77 701	53 354	47 215	100 569	852.2	1 035.3	1 887.5	1 291.7	1 310.3	2 602.0
Shanghai	"	288	0	288	1 749	2 719	4 468	27.7	0.0	27.7	0.0	2.5	2.5
Singapore	"	358 069	339 031	697 100	344 063	336 257	680 320	11 854.6	12 129.7	23 984.4	11 712.0	12 707.0	24 419.1
Taipei	"	58 188	58 524	116 712	65 685	66 731	132 416	3 289.9	918.0	4 207.8	2 858.8	875.5	3 734.3
Tokyo	"	121 456	124 170	245 626	129 451	127 792	257 243	3 283.4	2 457.5	5 740.9	3 596.1	2 786.3	6 382.4

TABLE 5 SCHEDULED INTERNATIONAL TRAFFIC BY CITY PAIRS: Year ended December

Foreign Port	Australian Port	Passengers						Freight (tonnes)					
		2006			2007			2006			2007		
		Inbound	Outbound	Total	Inbound	Outbound	Total	Inbound	Outbound	Total	Inbound	Outbound	Total
Toledo	Brisbane	0	0	0	0	0	0	0.0	0.0	0.0	0.0	0.0	0.0
Wellington	"	67 073	68 540	135 613	70 562	71 401	141 963	65.8	52.8	118.5	83.0	62.3	145.4
Total	Brisbane	1 902 026	1 861 288	3 763 314	1 970 506	1 949 270	3 919 776	46 645.0	43 124.9	89 769.9	43 838.7	42 444.9	86 283.6
Auckland	Cairns	22 947	25 777	48 724	25 159	27 667	52 826	125.8	325.7	451.5	152.6	351.7	504.3
Beijing	"	0	0	0	7	0	7	0.0	0.0	0.0	0.0	0.0	0.0
Fukuoka	"	5 905	6 724	12 629	0	0	0	0.1	35.1	35.2	0.0	0.0	0.0
Guam	"	11 984	12 016	24 000	11 522	11 646	23 168	4.3	38.0	42.3	6.8	24.5	31.3
Hong Kong	"	36 297	35 403	71 700	26 582	25 117	51 699	393.9	2 367.9	2 761.9	350.7	2 720.1	3 070.8
Nagoya	"	66 199	65 846	132 045	55 686	53 476	109 162	520.6	526.8	1 047.4	608.5	295.7	904.2
Osaka	"	61 534	56 328	117 862	48 544	49 193	97 737	851.6	1 321.0	2 172.6	961.2	814.2	1 775.4
Port Moresby	"	33 441	26 503	59 944	33 007	26 868	59 875	132.6	409.0	541.5	99.3	202.8	302.1
Sapporo	"	4 937	5 715	10 652	3 757	4 103	7 860	0.5	3.5	4.0	0.8	0.7	1.5
Shanghai	"	0	0	0	0	0	0	0.0	0.0	0.0	0.0	0.0	0.0
Singapore	"	32 469	37 187	69 656	29 414	36 551	65 965	431.1	149.0	580.2	27.1	9.4	36.4
Tokyo	"	123 746	120 751	244 497	120 070	113 679	233 749	848.7	934.7	1 783.3	360.8	529.5	890.3
Total	Cairns	399 459	392 250	791 709	353 748	348 300	702 048	3 309.2	6 110.7	9 419.8	2 567.9	4 948.5	7 516.4
Auckland	Darwin	0	0	0	0	0	0	0.0	0.0	0.0	0.0	0.0	0.0
Bandar Seri Begawan	"	5 234	4 730	9 964	4 093	4 020	8 113	19.1	4.2	23.3	20.0	4.0	24.0
Bombay	"	0	3 113	3 113	0	3 871	3 871	0.0	45.1	45.1	0.0	31.1	31.1
Chicago	"	0	0	0	0	0	0	0.0	0.0	0.0	0.0	0.0	0.0
Denpasar	"	11 352	12 847	24 199	18 267	18 947	37 214	0.0	5.7	5.7	0.1	1.9	2.0
Dubai	"	0	0	0	0	0	0	0.0	0.0	0.0	0.0	0.0	0.0
Frankfurt	"	0	0	0	0	0	0	0.0	0.0	0.0	0.0	0.0	0.0
Hong Kong	"	0	0	0	2	0	2	0.0	0.0	0.0	0.0	0.0	0.0
Kuala Lumpur	"	0	0	0	0	0	0	0.0	0.0	0.0	0.0	112.8	112.8
Kupang	"	1 320	2 145	3 465	1 340	1 579	2 919	0.0	0.0	0.0	0.0	0.1	0.1
London	"	2	58	60	1	0	1	0.0	0.0	0.0	0.0	0.0	0.0
Manila	"	18	0	18	0	0	0	0.0	0.0	0.0	0.0	0.0	0.0
New York	"	0	0	0	0	0	0	0.0	0.0	0.0	0.0	0.0	0.0
Shanghai	"	0	0	0	0	0	0	68.1	0.0	68.1	0.0	0.0	0.0
Singapore	"	43 571	42 438	86 009	51 156	48 043	99 199	253.2	167.1	420.3	44.0	13.7	57.7
Total	Darwin	61 497	65 331	126 828	74 859	76 460	151 319	340.4	222.1	562.5	64.2	163.5	227.7
Auckland	Gold Coast/Coolangatta	42 186	43 886	86 072	45 941	47 294	93 235	0.9	1.3	2.1	2.9	0.9	3.7
Christchurch	"	30 650	29 234	59 884	28 489	27 850	56 339	0.0	0.0	0.0	0.0	0.0	0.0
Dunedin	"	1 552	1 697	3 249	0	0	0	0.0	0.0	0.0	0.0	0.0	0.0
Fukuoka	"	12	0	12	0	0	0	0.0	0.0	0.0	0.0	0.0	0.0
Hamilton	"	9 437	9 420	18 857	12 061	11 949	24 010	0.0	0.0	0.0	0.0	0.0	0.0
Kuala Lumpur	"	0	0	0	6 766	7 905	14 671	0.0	0.0	0.0	141.2	6.4	147.6
Osaka	"	2 534	3 583	6 117	0	0	0	0.0	1.6	1.6	0.0	0.0	0.0
Tokyo	"	0	0	0	209	0	209	0.0	0.0	0.0	0.0	0.0	0.0
Wellington	"	9 765	9 485	19 250	11 290	11 008	22 298	0.0	0.0	0.0	0.0	0.0	0.0
Total	Gold Coast/Coolangatta	96 136	97 305	193 441	104 756	106 006	210 762	0.9	2.9	3.7	144.1	7.3	151.3
Abuja	Melbourne	0	0	0	0	0	0	0.0	0.0	0.0	0.0	104.9	104.9
Anchorage	"	0	0	0	0	0	0	0.0	0.0	0.0	0.0	0.0	0.0
Auckland	"	332 254	329 237	661 491	350 613	352 710	703 323	16 303.5	16 659.4	32 962.8	15 165.1	16 265.7	31 430.8

TABLE 5 SCHEDULED INTERNATIONAL TRAFFIC BY CITY PAIRS: Year ended December

Foreign Port	Australian Port	Passengers						Freight (tonnes)					
		2006			2007			2006			2007		
		Inbound	Outbound	Total	Inbound	Outbound	Total	Inbound	Outbound	Total	Inbound	Outbound	Total
Bahrain	Melbourne	0	0	0	0	0	0	0.0	0.0	0.0	0.0	0.0	0.0
Bangkok	"	110 303	115 696	225 999	192 016	190 170	382 186	5 809.4	5 109.7	10 919.1	9 149.7	6 608.6	15 758.3
Beijing	"	12 933	11 684	24 617	15 026	9 926	24 952	69.4	139.0	208.4	79.0	298.7	377.8
Bombay	"	1 504	270	1 774	73	0	73	15.1	2.7	17.7	0.0	0.0	0.0
Chicago	"	31	0	31	19	0	19	5 538.9	0.0	5 538.9	6 287.8	6.3	6 294.1
Christchurch	"	129 057	131 383	260 440	138 817	139 797	278 614	605.7	653.0	1 258.7	596.2	623.8	1 220.0
Denpasar	"	36 345	37 180	73 525	58 481	56 923	115 404	1 129.9	1 280.7	2 410.5	1 876.2	900.5	2 776.7
Dubai	"	145 359	141 388	286 747	145 774	145 353	291 127	5 891.0	7 493.4	13 384.3	5 606.0	7 481.2	13 087.2
Dunedin	"	4 537	4 463	9 000	4 631	4 543	9 174	0.0	0.0	0.0	0.0	0.0	0.0
Frankfurt	"	13	0	13	0	0	0	51.4	85.6	137.0	75.9	10.6	86.5
Guangzhou	"	21 510	15 235	36 745	21 560	16 207	37 767	518.9	89.5	608.5	492.9	66.6	559.5
Hamilton	"	5 293	5 024	10 317	2 925	2 809	5 734	0.0	0.0	0.0	0.0	0.0	0.0
Hanoi	"	4 308	5 416	9 724	4 771	5 946	10 717	0.0	22.5	22.5	0.0	19.5	19.5
Ho Chi Minh City	"	37 378	32 184	69 562	38 893	34 240	73 133	1 105.3	289.0	1 394.3	1 048.6	180.9	1 229.5
Hong Kong	"	194 830	197 449	392 279	196 454	205 274	401 728	16 913.2	13 922.3	30 835.5	17 354.0	14 752.7	32 106.7
Honolulu	"	51	253	304	15 371	14 687	30 058	0.0	0.0	0.0	402.1	75.1	477.2
Jakarta	"	219	0	219	0	212	212	2.0	0.0	2.0	0.0	0.6	0.6
Johannesburg	"	0	0	0	1	0	1	0.0	0.0	0.0	0.0	0.0	0.0
Kuala Lumpur	"	171 308	166 834	338 142	178 930	173 894	352 824	11 225.7	6 089.9	17 315.7	14 727.6	7 401.7	22 129.3
London	"	114 346	115 022	229 368	114 409	115 130	229 539	2 424.0	451.6	2 875.6	1 676.4	502.7	2 179.1
Los Angeles	"	165 919	160 955	326 874	156 684	156 101	312 785	4 171.9	4 720.6	8 892.5	2 714.7	4 682.5	7 397.2
Luxembourg	"	0	0	0	0	0	0	4 880.5	8.9	4 889.5	4 217.5	26.7	4 244.3
Manila	"	15 359	12 086	27 445	17 342	14 685	32 027	587.8	347.6	935.4	652.7	184.0	836.7
Mauritius	"	7 718	8 028	15 746	6 925	6 976	13 901	208.2	181.9	390.1	251.1	178.7	429.8
Milan	"	0	0	0	0	0	0	0.0	0.0	0.0	0.0	104.7	104.7
Nadi	"	42 129	41 676	83 805	34 906	34 600	69 506	1 010.5	1 591.8	2 602.3	897.7	1 321.7	2 219.4
Nagoya	"	0	0	0	0	0	0	0.0	0.0	0.0	0.0	0.0	0.0
New York	"	1 945	2 489	4 434	1 850	2 308	4 158	201.1	0.0	201.1	504.0	12.3	516.2
Noumea	"	0	0	0	0	0	0	0.0	0.0	0.0	0.0	30.4	30.4
Palmerston	"	4 781	4 483	9 264	2 908	2 509	5 417	0.0	0.0	0.0	0.0	0.0	0.0
Phuket	"	0	1 078	1 078	0	0	0	0.0	0.0	0.0	0.0	0.0	0.0
Queenstown	"	2 619	2 833	5 452	3 288	3 662	6 950	0.0	0.0	0.0	0.0	0.0	0.0
Rarotonga	"	225	350	575	103	581	684	0.0	0.0	0.0	0.0	0.0	0.0
San Francisco	"	1 932	1 822	3 754	8 755	9 129	17 884	3.4	28.4	31.8	338.2	54.3	392.5
Sapporo	"	22	77	99	867	695	1 562	0.0	0.1	0.1	0.0	0.2	0.2
Seoul	"	0	0	0	4 158	4 255	8 413	0.0	0.0	0.0	171.5	213.2	384.8
Shanghai	"	42 740	33 723	76 463	46 230	33 790	80 020	1 254.2	651.2	1 905.5	1 229.6	761.9	1 991.5
Singapore	"	434 538	396 800	831 338	426 337	411 723	838 060	27 262.7	29 295.5	56 558.2	25 021.3	26 922.9	51 944.2
Tianjin	"	0	0	0	0	0	0	0.0	0.0	0.0	0.0	62.3	62.3
Tokyo	"	48 680	38 079	86 759	42 763	30 705	73 468	2 112.9	1 828.1	3 941.0	1 252.4	1 263.1	2 515.5
Vancouver	"	209	381	590	411	398	809	6.0	14.3	20.3	5.6	3.2	8.8
Vienna	"	28 000	30 288	58 288	5 853	6 898	12 751	0.0	0.0	0.0	0.0	0.0	0.0
Wellington	"	62 911	66 118	129 029	70 471	69 633	140 104	167.4	301.2	468.6	164.1	226.7	390.8
Total	Melbourne	2 181 306	2 109 984	4 291 290	2 308 615	2 256 469	4 565 084	109 469.9	91 257.9	200 727.8	111 957.9	91 349.1	203 307.0
Auckland	Norfolk Island	9 429	9 737	19 166	8 615	8 662	17 277	91.8	15.8	107.6	101.4	13.2	114.6

TABLE 5 SCHEDULED INTERNATIONAL TRAFFIC BY CITY PAIRS: Year ended December

Foreign Port	Australian Port	Passengers						Freight (tonnes)					
		2006			2007			2006			2007		
		Inbound	Outbound	Total	Inbound	Outbound	Total	Inbound	Outbound	Total	Inbound	Outbound	Total
Total	Norfolk Island	9 429	9 737	19 166	8 615	8 662	17 277	91.8	15.8	107.6	101.4	13.2	114.6
Anchorage	Perth	0	0	0	0	0	0	0.0	0.0	0.0	0.0	0.0	0.0
Auckland	"	58 469	57 024	115 493	61 280	60 134	121 414	2 305.0	1 221.2	3 526.2	2 444.0	1 272.3	3 716.3
Bahrain	"	0	0	0	0	0	0	0.0	0.0	0.0	0.0	0.0	0.0
Bandar Seri Begawan	"	31 004	30 863	61 867	26 872	25 034	51 906	180.3	600.9	781.2	179.0	449.7	628.8
Bangkok	"	54 332	37 120	91 452	69 158	44 373	113 531	1 352.8	1 426.3	2 779.1	1 263.7	1 228.3	2 492.1
Bombay	"	0	0	0	1	0	1	0.0	0.0	0.0	0.0	0.0	0.0
Chicago	"	0	0	0	0	0	0	0.0	0.0	0.0	0.0	0.0	0.0
Christchurch	"	0	0	0	0	0	0	0.0	0.0	0.0	88.0	0.0	88.0
Denpasar	"	66 309	67 708	134 017	89 303	91 849	181 152	88.9	100.7	189.6	82.9	24.1	106.9
Dubai	"	122 947	110 759	233 706	169 461	158 798	328 259	3 212.0	3 695.0	6 906.9	4 324.0	4 013.8	8 337.8
Durban	"	0	0	0	0	0	0	0.0	0.0	0.0	1.2	0.0	1.2
Frankfurt	"	0	0	0	0	0	0	0.0	0.0	0.0	0.0	0.0	0.0
Hong Kong	"	78 926	68 074	147 000	79 150	73 048	152 198	3 081.5	3 578.0	6 659.5	3 091.5	2 615.1	5 706.6
Jakarta	"	15 283	15 654	30 937	28 613	27 380	55 993	40.8	2.4	43.1	106.1	28.1	134.2
Johannesburg	"	48 706	41 738	90 444	54 901	48 952	103 853	853.5	2 207.5	3 061.0	748.9	2 084.7	2 833.6
Kuala Lumpur	"	99 615	100 660	200 275	107 856	108 196	216 052	3 938.5	1 288.1	5 226.6	4 373.0	1 452.1	5 825.1
Kuching	"	2 319	2 062	4 381	0	0	0	0.2	20.5	20.6	0.0	0.0	0.0
London	"	6 443	7 239	13 682	0	0	0	99.3	29.6	128.9	0.0	0.0	0.0
Mauritius	"	11 499	10 901	22 400	19 347	19 393	38 740	126.4	324.7	451.1	489.4	414.2	903.6
Mombasa	"	0	0	0	0	0	0	0.0	0.0	0.0	99.4	0.0	99.4
Phuket	"	0	17 286	17 286	0	24 603	24 603	0.0	14.5	14.5	0.0	32.2	32.2
Shanghai	"	0	0	0	0	0	0	0.0	0.0	0.0	0.0	0.0	0.0
Singapore	"	420 146	398 290	818 436	478 597	450 660	929 257	14 403.9	18 051.4	32 455.3	16 774.9	17 176.9	33 951.7
Tokyo	"	26 767	26 734	53 501	28 404	28 205	56 609	940.7	778.3	1 719.0	735.1	767.5	1 502.6
Total	Perth	1 042 765	992 112	2 034 877	1 212 943	1 160 625	2 373 568	30 623.7	33 338.9	63 962.6	34 801.0	31 559.1	66 360.1
Abu Dhabi	Sydney	0	0	0	41 978	42 749	84 727	0.0	0.0	0.0	1 892.4	2 418.4	4 310.9
Abuja	"	0	0	0	0	0	0	0.0	0.0	0.0	0.0	0.0	0.0
Amsterdam	"	0	0	0	0	0	0	7 160.8	1 337.1	8 497.9	7 897.5	1 488.8	9 386.3
Anchorage	"	0	0	0	0	0	0	0.0	1.1	1.1	0.0	0.0	0.0
Apia	"	16 881	17 254	34 135	16 968	17 385	34 353	95.3	34.2	129.4	22.8	35.4	58.2
Auckland	"	592 417	598 213	1 190 630	612 372	619 023	1 231 395	26 193.0	33 652.4	59 845.3	24 673.6	34 281.3	58 954.8
Bahrain	"	51 680	49 347	101 027	17 458	17 585	35 043	1 895.9	2 462.0	4 357.8	513.4	709.3	1 222.7
Bandar Seri Begawan	"	19 340	18 717	38 057	19 488	15 119	34 607	1 060.8	962.7	2 023.5	974.0	664.5	1 638.4
Bangkok	"	285 018	266 493	551 511	333 979	292 150	626 129	10 075.2	4 199.7	14 274.9	12 103.0	4 168.2	16 271.3
Beijing	"	56 807	54 277	111 084	63 688	63 607	127 295	689.9	706.9	1 396.7	758.2	1 067.2	1 825.4
Bombay	"	30 790	26 582	57 372	34 108	26 802	60 910	493.8	334.3	828.1	375.0	452.5	827.5
Buenos Aires	"	20 199	19 049	39 248	21 237	18 892	40 129	145.7	219.1	364.8	100.7	203.1	303.8
Chicago	"	12 663	14 040	26 703	10 717	10 606	21 323	8 764.7	49.9	8 814.5	7 091.3	122.7	7 214.0
Christchurch	"	263 333	253 735	517 068	273 108	263 841	536 949	6 078.2	4 724.6	10 802.7	6 416.6	4 799.8	11 216.5
Denpasar	"	52 162	55 126	107 288	81 344	83 648	164 992	1 558.7	705.9	2 264.6	2 733.3	721.2	3 454.5
Dohar	"	0	0	0	0	0	0	0.0	0.0	0.0	0.0	102.0	102.0
Dubai	"	129 685	130 710	260 395	137 399	140 436	277 835	5 543.0	4 907.4	10 450.4	6 087.0	4 015.5	10 102.5
Dunedin	"	13 686	13 422	27 108	12 475	12 588	25 063	0.0	0.0	0.0	0.0	0.0	0.0
Durban	"	0	0	0	0	0	0	0.0	0.0	0.0	0.0	181.5	181.5

TABLE 5 SCHEDULED INTERNATIONAL TRAFFIC BY CITY PAIRS: Year ended December

Foreign Port	Australian Port	Passengers						Freight (tonnes)					
		2006			2007			2006			2007		
		Inbound	Outbound	Total	Inbound	Outbound	Total	Inbound	Outbound	Total	Inbound	Outbound	Total
Frankfurt	Sydney	44 488	46 018	90 506	46 702	48 417	95 119	4 823.6	181.5	5 005.2	5 378.6	196.2	5 574.7
Guangzhou	"	42 390	43 952	86 342	48 346	47 489	95 835	2 455.6	117.7	2 573.4	2 572.4	183.2	2 755.6
Hamilton	"	15 868	16 014	31 882	14 294	14 973	29 267	0.0	0.0	0.0	0.0	0.0	0.0
Hanoi	"	7 422	8 038	15 460	9 472	9 728	19 200	0.0	9.3	9.3	0.0	2.9	2.9
Ho Chi Minh City	"	38 506	39 171	77 677	71 971	69 452	141 423	1 696.0	150.3	1 846.3	3 156.4	545.5	3 701.9
Hong Kong	"	446 740	422 049	868 789	464 907	439 358	904 265	31 656.0	12 077.4	43 733.4	32 407.9	13 113.0	45 520.9
Honolulu	"	102 982	92 762	195 744	111 029	106 650	217 679	3 046.7	3 152.1	6 198.9	3 436.4	3 577.3	7 013.8
Indianapolis	"	0	0	0	0	0	0	0.0	0.0	0.0	0.0	0.0	0.0
Jakarta	"	30 948	30 388	61 336	37 195	35 978	73 173	440.0	871.6	1 311.5	827.4	973.5	1 800.9
Johannesburg	"	66 066	62 625	128 691	74 985	66 947	141 932	1 808.2	349.8	2 157.9	1 424.7	473.0	1 897.8
Kuala Lumpur	"	174 692	170 012	344 704	180 835	168 948	349 783	19 261.7	1 836.1	21 097.8	22 188.5	4 186.6	26 375.1
Kuching	"	0	362	362	0	0	0	0.0	22.2	22.2	0.0	0.0	0.0
London	"	259 039	263 246	522 285	274 895	284 611	559 506	9 715.9	2 601.8	12 317.8	9 238.5	2 851.0	12 089.5
Los Angeles	"	314 768	320 749	635 517	299 268	298 930	598 198	21 161.4	6 338.4	27 499.9	16 348.6	4 649.2	20 997.8
Louisville	"	0	0	0	0	0	0	7 604.7	0.0	7 604.7	11 050.1	0.0	11 050.1
Manila	"	54 462	50 772	105 234	56 819	57 100	113 919	1 337.6	658.4	1 996.0	1 533.9	876.5	2 410.3
Mauritius	"	7 776	6 127	13 903	7 944	6 456	14 400	108.8	72.1	180.9	213.7	141.8	355.5
Milan	"	0	0	0	0	0	0	0.0	0.0	0.0	0.0	0.0	0.0
Nadi	"	145 293	140 671	285 964	144 941	142 374	287 315	2 621.9	2 469.7	5 091.6	2 782.7	2 213.7	4 996.4
Nagoya	"	3 656	3 838	7 494	190	636	826	250.5	100.1	350.6	268.8	127.5	396.3
New York	"	29 102	29 341	58 443	35 608	35 493	71 101	5 884.1	275.2	6 159.3	6 258.7	204.5	6 463.2
Noumea	"	44 773	43 411	88 184	49 370	47 342	96 712	34.6	787.3	821.9	62.8	798.7	861.5
Osaka	"	35 647	76 550	112 197	26 610	65 738	92 348	1 686.7	869.5	2 556.2	1 703.6	1 403.9	3 107.5
Palmerston	"	10 283	10 279	20 562	11 505	11 484	22 989	0.0	0.0	0.0	0.0	0.0	0.0
Papeete	"	22 247	23 162	45 409	21 738	21 630	43 368	1 207.3	607.0	1 814.3	904.1	722.2	1 626.3
Phuket	"	4 187	6 467	10 654	38 302	38 724	77 026	72.8	2.6	75.4	826.9	20.9	847.8
Port Moresby	"	7 617	8 799	16 416	7 669	9 907	17 576	246.5	162.9	409.4	160.1	172.1	332.2
Port Vila	"	21 228	20 100	41 328	27 276	26 575	53 851	137.5	266.4	403.8	119.8	274.2	394.0
Queenstown	"	17 641	18 577	36 218	19 276	20 003	39 279	0.0	0.6	0.6	0.0	0.7	0.7
Rarotonga	"	134	115	249	401	0	401	0.0	0.0	0.0	0.0	0.0	0.0
San Francisco	"	123 395	126 390	249 785	136 963	147 094	284 057	872.0	3 677.8	4 549.8	1 206.5	3 886.6	5 093.2
Santiago	"	29 946	31 130	61 076	36 172	37 222	73 394	1 679.1	833.3	2 512.4	2 443.8	1 105.4	3 549.1
Sapporo	"	0	0	0	0	0	0	0.0	0.0	0.0	0.0	36.9	36.9
Seoul	"	171 945	169 055	341 000	179 574	177 592	357 166	12 057.8	5 577.5	17 635.3	12 670.0	7 449.6	20 119.6
Shanghai	"	122 180	114 118	236 298	124 298	118 323	242 621	7 756.8	1 296.5	9 053.3	7 931.4	1 362.1	9 293.4
Sharjah	"	0	0	0	0	0	0	0.0	327.8	327.8	0.0	337.0	337.0
Singapore	"	502 958	474 498	977 456	509 401	489 675	999 076	22 314.0	14 019.3	36 333.3	22 436.9	14 913.9	37 350.8
Subic Bay	"	0	0	0	0	0	0	0.0	2 384.8	2 384.8	0.0	1 860.2	1 860.2
Suva	"	6 629	9 337	15 966	2 694	3 438	6 132	0.4	18.4	18.8	0.2	5.7	5.8
Taipei	"	42 115	41 616	83 731	43 987	47 677	91 664	1 349.8	555.9	1 905.7	651.3	306.4	957.8
Tokyo	"	205 278	230 540	435 818	222 237	243 915	466 152	5 401.2	4 860.4	10 261.6	5 914.7	4 459.9	10 374.6
Toledo	"	0	0	0	0	0	0	2 188.5	0.0	2 188.5	2 231.6	0.0	2 231.6
Tongatapu	"	10 330	9 888	20 218	10 237	10 687	20 924	25.1	25.1	50.2	35.6	18.2	53.8
Toronto	"	521	555	1 076	788	609	1 397	4.1	0.0	4.1	11.3	0.0	11.3
Vancouver	"	52 848	58 596	111 444	49 803	55 311	105 114	20.5	81.0	101.4	70.3	83.7	154.1

TABLE 5 SCHEDULED INTERNATIONAL TRAFFIC BY CITY PAIRS: Year ended December

Foreign Port	Australian Port	Passengers						Freight (tonnes)					
		2006			2007			2006			2007		
		Inbound	Outbound	Total	Inbound	Outbound	Total	Inbound	Outbound	Total	Inbound	Outbound	Total
Vienna	Sydney	61 513	66 753	128 266	11 933	13 882	25 815	0.0	0.0	0.0	0.0	0.0	0.0
Wellington	"	118 883	121 777	240 660	121 324	124 622	245 946	279.2	403.4	682.5	301.1	328.6	629.7
Total	Sydney	4 941 157	4 924 813	9 865 970	5 207 278	5 169 421	10 376 699	240 961.5	122 338.3	363 299.8	250 407.9	129 293.9	379 701.8
Anchorage	Townsville (a)	0	0	0	0	0	0	0.0	0.0	0.0	0.0	0.0	0.0
Chicago	"	0	0	0	0	0	0	0.0	0.0	0.0	0.0	0.0	0.0
Hong Kong	"	0	0	0	0	0	0	0.0	0.0	0.0	0.0	0.0	0.0
Honolulu	"	0	0	0	0	0	0	0.0	0.0	0.0	0.0	0.0	0.0
New York	"	0	0	0	0	0	0	0.0	0.0	0.0	0.0	0.0	0.0
Shanghai	"	0	0	0	0	0	0	0.0	0.0	0.0	0.0	0.0	0.0
Sharjah	"	0	0	0	0	0	0	0.0	50.6	50.6	0.0	0.0	0.0
Singapore	"	0	0	0	0	0	0	0.0	0.0	0.0	0.0	0.0	0.0
Total	Townsville	0	0	0	0	0	0	0.0	50.6	50.6	0.0	0.0	0.0
Abu Dhabi	Australia	0	0	0	46 540	48 230	94 770	0.0	0.0	0.0	2 194.0	2 714.1	4 908.2
Abuja	"	0	0	0	0	0	0	0.0	0.0	0.0	0.0	104.9	104.9
Amsterdam	"	0	0	0	0	0	0	7 160.8	1 337.1	8 497.9	7 897.5	1 488.8	9 386.3
Anchorage	"	0	0	0	0	0	0	0.0	1.1	1.1	0.0	0.0	0.0
Apia	"	16 881	17 254	34 135	16 968	17 385	34 353	95.3	34.2	129.4	22.8	35.4	58.2
Auckland	"	1 458 639	1 482 352	2 940 991	1 540 499	1 557 952	3 098 451	55 127.1	61 306.6	116 433.8	52 231.9	59 229.1	111 461.0
Bahrain	"	51 680	49 347	101 027	17 458	17 585	35 043	1 992.5	2 462.0	4 454.5	615.9	813.4	1 429.3
Bandar Seri Begawan	"	71 908	70 155	142 063	63 767	57 231	120 998	1 572.6	2 528.5	4 101.0	1 553.4	2 032.3	3 585.7
Bangkok	"	495 520	465 671	961 191	658 855	599 145	1 258 000	19 280.2	11 693.7	30 973.9	24 737.4	13 943.8	38 681.2
Beijing	"	69 740	65 961	135 701	78 721	73 533	152 254	759.3	845.8	1 605.1	837.2	1 365.9	2 203.1
Bombay	"	32 294	29 965	62 259	34 209	30 673	64 882	508.8	382.1	890.9	375.0	483.6	858.6
Buenos Aires	"	20 199	19 049	39 248	21 237	18 892	40 129	145.7	219.1	364.8	100.7	203.1	303.8
Chicago	"	12 694	14 040	26 734	10 736	10 606	21 342	14 306.1	49.9	14 356.0	13 397.8	129.0	13 526.8
Christchurch	"	579 564	571 229	1 150 793	610 522	602 058	1 212 580	7 236.9	5 917.9	13 154.8	7 612.7	5 787.1	13 399.8
Denpasar	"	188 565	194 910	383 475	247 845	251 912	499 757	3 527.1	2 311.6	5 838.7	4 715.2	1 669.4	6 384.6
Dohar	"	0	0	0	0	0	0	0.0	0.0	0.0	0.0	102.0	102.0
Dubai	"	472 600	458 535	931 135	532 597	526 053	1 058 650	16 111.6	18 189.3	34 300.9	17 753.6	17 515.0	35 268.6
Dunedin	"	38 819	38 966	77 785	36 471	36 391	72 862	0.0	0.0	0.0	0.0	0.0	0.0
Durban	"	0	0	0	0	0	0	0.0	0.0	0.0	1.2	181.5	182.7
Espiritu Santo	"	0	0	0	521	726	1 247	0.0	0.0	0.0	0.2	1.0	1.1
Frankfurt	"	44 501	46 018	90 519	46 702	48 417	95 119	4 875.0	267.1	5 142.1	5 476.9	206.8	5 683.7
Fukuoka	"	5 917	6 724	12 641	0	0	0	0.1	35.1	35.2	0.0	0.0	0.0
Guam	"	11 984	12 016	24 000	11 522	11 646	23 168	4.3	38.0	42.3	6.8	24.5	31.3
Guangzhou	"	63 900	59 187	123 087	69 906	63 696	133 602	2 974.6	207.3	3 181.8	3 065.4	249.8	3 315.2
Hamilton	"	48 737	49 221	97 958	47 417	48 582	95 999	0.0	0.0	0.0	0.0	0.0	0.0
Hanoi	"	11 730	13 454	25 184	14 243	15 674	29 917	0.0	31.8	31.8	0.0	22.4	22.4
Ho Chi Minh City	"	75 884	71 355	147 239	110 864	103 692	214 556	2 801.3	439.3	3 240.6	4 204.9	726.4	4 931.4
Hong Kong	"	894 032	847 692	1 741 724	910 268	872 063	1 782 331	58 691.7	36 096.6	94 788.3	59 259.1	38 096.3	97 355.3
Honiara	"	14 574	14 615	29 189	16 235	16 541	32 776	125.0	62.5	187.5	152.0	1 089.8	1 241.8
Honolulu	"	103 033	93 015	196 048	126 400	121 337	247 737	3 048.5	3 152.1	6 200.7	3 838.5	3 652.5	7 491.0
Indianapolis	"	0	0	0	0	0	0	160.3	165.4	325.7	154.7	148.4	303.1
Jakarta	"	46 450	46 042	92 492	65 808	63 570	129 378	482.8	873.9	1 356.7	933.6	1 122.1	2 055.7
Johannesburg	"	114 772	104 363	219 135	129 887	115 899	245 786	2 661.7	2 557.3	5 218.9	2 173.6	2 557.7	4 731.3

TABLE 5 SCHEDULED INTERNATIONAL TRAFFIC BY CITY PAIRS: Year ended December

Foreign Port	Australian Port	Passengers						Freight (tonnes)					
		2006			2007			2006			2007		
		Inbound	Outbound	Total	Inbound	Outbound	Total	Inbound	Outbound	Total	Inbound	Outbound	Total
Kuala Lumpur	Australia	551 751	544 533	1 096 284	577 988	570 088	1 148 076	39 720.4	12 847.1	52 567.5	45 103.9	16 653.9	61 757.8
Kuching	"	2 319	2 424	4 743	0	0	0	0.2	42.6	42.8	0.0	0.0	0.0
Kupang	"	1 320	2 145	3 465	1 340	1 579	2 919	0.0	0.0	0.0	0.0	0.1	0.1
London	"	379 830	385 565	765 395	389 305	399 741	789 046	12 239.2	3 083.1	15 322.3	10 914.9	3 353.7	14 268.6
Los Angeles	"	561 270	565 125	1 126 395	540 575	544 986	1 085 561	26 154.4	12 041.8	38 196.2	19 974.4	10 144.8	30 119.1
Louisville	"	0	0	0	0	0	0	7 604.7	0.0	7 604.7	11 050.1	0.0	11 050.1
Luxembourg	"	0	0	0	0	0	0	4 880.5	8.9	4 889.5	4 217.5	26.7	4 244.3
Majuro	"	0	166	166	0	186	186	0.0	2.0	2.0	0.0	4.8	4.8
Manila	"	76 475	69 581	146 056	81 269	78 842	160 111	1 953.0	1 075.1	3 028.1	2 243.4	1 124.8	3 368.2
Mauritius	"	26 993	25 056	52 049	34 216	32 825	67 041	443.4	578.7	1 022.1	954.2	734.7	1 688.9
Milan	"	0	0	0	0	0	0	0.0	0.0	0.0	0.0	104.7	104.7
Mombasa	"	0	0	0	0	0	0	0.0	0.0	0.0	99.4	0.0	99.4
Nadi	"	258 553	255 756	514 309	252 840	252 244	505 084	3 827.7	4 529.2	8 356.9	3 883.7	3 989.6	7 873.4
Nagoya	"	69 855	69 684	139 539	55 876	54 112	109 988	771.1	627.0	1 398.1	877.4	423.2	1 300.6
Nauru	"	2 280	2 196	4 476	2 631	2 627	5 258	2.6	37.2	39.7	3.7	99.5	103.2
New York	"	31 047	31 830	62 877	37 460	37 801	75 261	6 085.2	275.2	6 360.4	6 791.0	224.9	7 015.9
Noumea	"	63 890	63 976	127 866	69 671	69 278	138 949	46.7	929.9	976.6	72.9	994.2	1 067.2
Osaka	"	177 457	163 281	340 738	134 617	131 058	265 675	3 394.6	3 389.7	6 784.3	2 946.2	2 382.1	5 328.3
Palmerston	"	36 595	36 214	72 809	34 695	33 945	68 640	0.0	0.0	0.0	0.0	0.0	0.0
Papeete	"	22 247	23 162	45 409	21 738	21 630	43 368	1 207.3	607.0	1 814.3	904.1	722.2	1 626.3
Phuket	"	4 187	24 831	29 018	38 302	63 327	101 629	72.8	17.0	89.8	826.9	53.1	880.0
Port Moresby	"	76 213	75 783	151 996	82 642	83 976	166 618	1 295.8	3 165.3	4 461.1	904.1	2 558.1	3 462.2
Port Vila	"	46 010	45 231	91 241	56 512	56 155	112 667	181.5	460.6	642.1	164.2	481.8	646.0
Queenstown	"	24 248	25 950	50 198	26 979	28 676	55 655	0.0	0.6	0.6	0.0	0.7	0.7
Rarotonga	"	359	465	824	504	581	1 085	0.0	0.0	0.0	0.0	0.0	0.0
San Francisco	"	125 327	128 212	253 539	145 728	156 223	301 951	875.4	3 706.2	4 581.6	1 544.7	3 940.9	5 485.7
Santiago	"	29 946	31 130	61 076	36 172	37 222	73 394	1 679.1	833.3	2 512.4	2 443.8	1 105.4	3 549.1
Sapporo	"	4 959	5 792	10 751	4 624	4 798	9 422	0.5	3.6	4.1	0.8	37.8	38.7
Seoul	"	212 467	206 234	418 701	237 086	229 062	466 148	12 910.0	6 612.9	19 522.8	14 133.2	8 973.1	23 106.3
Shanghai	"	165 208	147 841	313 049	172 277	154 832	327 109	9 106.9	1 947.8	11 054.6	9 161.0	2 126.5	11 287.4
Sharjah	"	0	0	0	0	0	0	0.0	378.4	378.4	0.0	337.0	337.0
Singapore	"	1 902 469	1 788 849	3 691 318	1 966 654	1 893 737	3 860 391	82 592.5	82 030.9	164 623.4	82 013.3	78 940.8	160 954.2
Subic Bay	"	0	0	0	0	0	0	0.0	2 384.8	2 384.8	0.0	1 860.2	1 860.2
Suva	"	6 629	9 337	15 966	2 694	3 438	6 132	0.4	18.4	18.8	0.2	5.7	5.8
Taipei	"	100 303	100 140	200 443	109 672	114 408	224 080	4 639.7	1 473.9	6 113.6	3 510.1	1 182.0	4 692.1
Tianjin	"	0	0	0	0	0	0	0.0	0.0	0.0	0.0	62.3	62.3
Tokyo	"	525 927	540 274	1 066 201	543 134	544 296	1 087 430	12 586.9	10 858.9	23 445.8	11 859.1	9 806.3	21 665.3
Toledo	"	0	0	0	0	0	0	2 188.5	0.0	2 188.5	2 231.6	0.0	2 231.6
Tongatapu	"	10 330	9 888	20 218	10 237	10 687	20 924	25.1	25.1	50.2	35.6	18.2	53.8
Toronto	"	521	555	1 076	788	609	1 397	4.1	0.0	4.1	11.3	0.0	11.3
Vancouver	"	53 057	58 977	112 034	50 214	55 709	105 923	26.4	95.3	121.7	76.0	86.9	162.8
Vienna	"	89 513	97 041	186 554	17 786	20 780	38 566	0.0	0.0	0.0	0.0	0.0	0.0
Wellington	"	258 632	265 920	524 552	273 647	276 664	550 311	512.3	757.3	1 269.7	548.2	617.7	1 165.9
Total	Australia	10 842 804	10 644 280	21 487 084	11 476 071	11 295 611	22 771 682	440 678.1	306 049.7	746 727.9	452 812.7	308 874.4	761 687.1

TABLE 5 SCHEDULED INTERNATIONAL TRAFFIC BY CITY PAIRS: Year ended December

Please refer to explanatory notes - paragraphs 3, 8 and 13 in particular.
(a) Freighter operations only - during March, April and May 2006.

**TABLE 6 INTERNATIONAL AIRLINES OWN STOPOVER REVENUE PASSENGERS,
AUSTRALIAN CITY PAIRS: Year ended December 2007**

City Pair Route	Total Passengers
Melbourne/Sydney	32 190
Brisbane/Sydney	8 036
Brisbane/Cairns	1 659
Adelaide/Melbourne	95
TOTAL	41 980

Notes:

1. Own Stopover Revenue Passengers : The aggregate of revenue passengers uplifted at one Australian airport and discharged (excluding transit passengers) at another Australian airport by the same foreign registered international airline on which they entered or left Australia.
2. City Pair Route represents the aggregation of passengers travelling in both directions.
3. This data is additional to the information presented in tables 1-5 which cover only those passengers travelling to/from overseas airports.

TABLE 7 TOTAL AIRCRAFT MOVEMENTS AT AUSTRALIAN INTERNATIONAL AIRPORTS BY AIRCRAFT TYPES: Year ended December 2007

Airport	Passenger Aircraft													Freighters			All Types
	32S	330	340	380	737	747	767	777	100	DH8	E70	EM2	Other	72F/73F	74F	M1F	
Adelaide	336	1 103			170		80	1 165							194		3 048
Brisbane	4 371	3 184	24		6 029	2 980	2 974	3 729	138		162		58	118	30		23 797
Cairns	925	1 031			216	13	3 975	16	934	696							7 806
Darwin	2 152	376			371	8	4				50	202			5		3 168
Gold Coast/Coolangatta	1 396	71			219												1 686
Melbourne	3 332	4 437	1 703		1 746	5 138	996	5 604							1 276		24 232
Norfolk Island	40				168												208
Perth	667	2 637	769		2 033	116	1 635	4 100							35		11 992
Sydney	6 436	10 328	4 337	129	4 128	15 845	9 409	4 733	2				10	474	1 797	907	58 535
Total	19 655	23 167	6 833	129	15 080	24 100	19 073	19 347	1 074	696	212	202	68	592	3 337	907	134 472
% of All Types	14.6%	17.2%	5.1%	0.1%	11.2%	17.9%	14.2%	14.4%	0.8%	0.5%	0.2%	0.2%	0.1%	0.4%	2.5%	0.7%	100.0%

NOTE:

These figures only cover scheduled operations of the airlines listed in this publication. Charter/ferry operations are not included.

Aircraft Types (all series)

Airbus	32S	330	340	380				
Boeing	737	747	767	777	72F	73F	74F	
McDonnell Douglas	M1F							
Fokker	100							
Embraer	EM2	E70						