



Australian Government

Department of Infrastructure and Transport

Bureau of Infrastructure, Transport and Regional Economics

STATISTICAL REPORT



Aviation

International airline activity 2012

© Commonwealth of Australia 2013

ISSN: 1324-5074

Ownership of intellectual property rights in this publication

Unless otherwise noted, copyright (and any other intellectual property rights, if any) in this publication is owned by the Commonwealth of Australia (referred to below as the Commonwealth).

Disclaimer

The material contained in this publication is made available on the understanding that the Commonwealth is not providing professional advice, and that users exercise their own skill and care with respect to its use, and seek independent advice if necessary.

The Commonwealth makes no representations or warranties as to the contents or accuracy of the information contained in this publication. To the extent permitted by law, the Commonwealth disclaims liability to any person or organisation in respect of anything done, or omitted to be done, in reliance upon information contained in this publication.

Creative Commons licence

With the exception of (a) the Coat of Arms; and (b) the Department of Infrastructure's photos and graphics, copyright in this publication is licensed under a Creative Commons Attribution 3.0 Australia Licence.

Creative Commons Attribution 3.0 Australia Licence is a standard form licence agreement that allows you to copy, communicate and adapt this publication provided that you attribute the work to the Commonwealth and abide by the other licence terms. A summary of the licence terms is available from <http://creativecommons.org/licenses/by/3.0/au/deed.en>. The full licence terms are available from <http://creativecommons.org/licenses/by/3.0/au/legalcode>.

Use of the Coat of Arms

The Department of the Prime Minister and Cabinet sets the terms under which the Coat of Arms is used. Please refer to the Department's Commonwealth Coat of Arms and Government branding web page <http://www.dpmc.gov.au/guidelines/index.cfm#brand> and, in particular, the Guidelines on the use of the Commonwealth Coat of Arms publication.

An appropriate citation for this report is:

Bureau of Infrastructure, Transport and Regional Economics (BITRE), 2013, International airline activity, Statistical Report, BITRE, Canberra ACT.

Contact us

This publication is available in PDF format. All other rights are reserved, including in relation to any Departmental logos or trade marks which may exist. For enquiries regarding the licence and any use of this publication, please contact:

Bureau of Infrastructure, Transport and Regional Economics (BITRE)
Department of Infrastructure and Transport
GPO Box 501, Canberra ACT 2601, Australia
Telephone: (international) +61 2 6274 7210
Fax: (international) +61 2 6274 6855
Email: bitre@infrastructure.gov.au
Website: www.bitre.gov.au

Inquiries

Should you require additional information about the statistics contained in this publication:

Telephone (02) 6274 7790 or Facsimile (02) 6274 7727

Electronic mail: AVSTATS@infrastructure.gov.au

Web site: <http://www.bitre.gov.au/statistics/aviation/international.aspx>

CONTENTS

Explanatory Notes 4-6

Data Issues and Notes on Airline Services..... 7

Highlights 8-15

Detailed Monthly Tables

- 1. Scheduled International Air Traffic to and from Australia..... 16-18
- 2. Scheduled Operator Market Shares and Growth..... 19-22
- 3. Airline Passenger Capacity and Utilisation to and from Australia by Operator ..23-26
- 4. Australian International Airport Scheduled Traffic and Aircraft Movements 27
- 5. Scheduled International Passengers and Freight by City Pairs.....28-33
- 6. International Airlines Own Stopover Revenue Passengers, Australian City Pairs ... 34
- 7. Total Aircraft Movements at Australian International Airports by Aircraft Types ... 35

EXPLANATORY NOTES

INTRODUCTION

1. This publication continues the series of publications on a calendar year basis presenting statistical information on the scheduled operations of international airlines operating into/out of Australia.
2. The figures in this publication were obtained from reports submitted by scheduled international carriers and are the best available at the time of publication.

COVERAGE

3. These statistics show uplift/discharge data – These data detail, by direction, the revenue traffic between the actual points of uplift and discharge within each flight, aggregated for all flights within the period. It shows the movement of traffic between two airports not necessarily directly connected but within the same flight number. Typically, flight numbers change when an aircraft reaches its home country. This means that uplift/discharge data for the port in the operator's home country are likely to be overstated by traffic whose origin/destination point is beyond that port. For example, uplift/discharge traffic reported in this publication as Singapore could include traffic whose origin/destination is Europe.
4. These statistics cover revenue traffic carried by the operators of scheduled regular public international air transport services only and do not include charter traffic.
5. Some airlines (generally, dedicated freighter operators) operate scheduled services into Australia but operate non-scheduled services out of Australia and therefore outbound activity is not recorded in this data collection.

PRODUCTION AND INTERPRETATION

6. Tables 1 and 2 show the country of the relevant uplift or discharge port served by that airline. For example, traffic uplifted/discharged between Sydney and Singapore by British Airways would be shown as Singapore traffic in Tables 1 and 2.
7. Table 3 shows figures for the country of service (or route) for each airline and therefore may not equate to the data in Tables 1 and 2. For example, the British Airways UK service identified in Table 3 could include passengers uplifted or discharged in Singapore or Thailand as well as the UK; these passengers would be shown individually under those countries in Tables 1 and 2. The difference in treatment of data between Tables 1 and 2 and Table 3 is necessary in order to work out a meaningful Seat Utilisation figure for Table 3.

Figures shown in Table 3 may include total traffic into and out of Australia for airlines that fly through Australia (also necessary in order to work out a meaningful Seat Utilisation figure). Therefore, figures in Table 3 may not equate to figures in Tables 1 and 2. For example, passengers carried by Qantas Airways from New Zealand via Australia to the UK will be included in Table 3 but will not be included in Tables 1 or 2 as these passengers were not uplifted/discharged in Australia.

8. Table 5 – shows uplift/discharge passenger and freight data for city pairs with “same flight number” international flight connections.
9. Where figures have been rounded, discrepancies may occur between sums of component items and totals, and in percentage changes which are derived from figures prior to rounding.

10. Published figures may be revised where figures missing at the time of publication are received or misreporting/miscalculation necessitates revisions.

DEFINITIONS

11. The following definitions have been used in this publication:
- (a) Aircraft Movement: A landing or a take off.
 - (b) Freight: The aggregate of all revenue freight uplifted.
 - (c) Inbound: Inbound to Australia/Australian international airport.
 - (d) Mail: The aggregate of all mail uplifted.
 - (e) Outbound: Outbound from Australia/Australian international airport.
 - (f) Revenue Passengers: please refer to paragraph 12.
 - (g) Seat Utilisation: The ratio of passengers carried to seats available, expressed as a percentage.
 - (h) Seats Available: Generally based on standard aircraft configuration, the aggregate of seats available on all flights operated over a particular service.
 - (i) Services: Scheduled flights over authorised routes which are listed according to the main ports involved.

COMPARABILITY OF DATA OVER TIME

12. Revenue Passengers:

- For July 2000 and onwards: All passengers paying any fare (frequent flyer redemption passengers are regarded as revenue passengers). In most cases, Revenue Passengers will now include all passengers excluding Free Of Charge passengers and positioning crew.
- To December 1999: The aggregate of all passengers paying 25% or more of the standard air fare (as defined by ICAO).
- January 2000 to June 2000: Transition period.

The Revenue Passenger definition change could result in approximately a three per cent increase in passenger numbers over a full period (month or year).

13. Country and City data – reporting of Uplift/Discharge data by Qantas Airways:

- Prior to January 2003: Uplift/Discharge within Qantas Airways' international network.
- For January 2003 and onwards: Uplift/Discharge within flight number – as per the standard definition.

For example, what was previously reported as Adelaide to London (no direct services between these two cities) will now be reported as either Adelaide to Singapore or Melbourne/Sydney to London.

This change has been introduced in order to make the data comparable across all airlines operating services to/from Australia.

The effect of this change – comparing data under the two methods of reporting:

- Country of Port data (Tables 1 & 2) – There will be a shift in traffic to countries such as Singapore which are used as hubs and away from countries such as France, Germany and Italy which previously received traffic channelled through hubs. The total volume of traffic is not affected.
- Country of Service data (Table 3) – no change, as the Uplift/Discharge definition is not applicable to classifying the country of service.

- Australian International Airports (Table 4) – there may be a shift of traffic to the major airports.
- City Pairs (Table 5) – There will be a shift in traffic to cities such as Singapore which are used as hubs and away from cities such as Paris, Frankfurt and Rome which previously received traffic channelled through hubs. The total volume of traffic is not affected.
- Prior to the change, statistics reported for city pairs without “same flight number” international flight connections mainly reflected carriage on interconnecting international services by Qantas Airways. That traffic should have been interpreted as increasing the volume of traffic between the primary international ports rather than as an indicator of traffic volumes between ports without “same flight number” international flight connections. It should be noted however, that there was no double counting of traffic.

14. Country of Service classification by Qantas Airways:

- For July 2002 and onwards: based on the foreign country where same flight number services commence or cease – as per the standard definition. For example, Sydney-Denpasar-Singapore services would be classified as Country of Service = Singapore.
- Prior to July 2002: based on Qantas classification – this mainly affected Indonesia and Singapore Countries of Service. For example, Sydney-Denpasar-Singapore services were classified as Country of Service = Indonesia.

15. Airline data – Reporting of code share services:

Reporting of traffic split by airline code for code share arrangements was discontinued as of June 2000. For July 2000 and onwards, ALL traffic carried is reported under the operating airline regardless of code share arrangements.

Monthly airline market share figures for July 2001 onwards will be comparable with the same month in the previous year. However, these figures may not be comparable with monthly data prior to July 2000.

SYMBOLS AND OTHER USAGE

- nil or zero
- .. not applicable

DATA ISSUES

Air Austral	Operations between Australia and New Caledonia are shown under Air Caledonie. Service ceased August 2012.
Air Vanuatu	Traffic carried under code share arrangements may not be included for July 2000 to June 2006. No mail data for August 2007 to July 2010.
Vietnam Airlines	The split of inbound passenger movements from Ho Chi Minh City and Hanoi to Sydney has been estimated for June 2010 and onwards. No data received for inbound operations to Sydney for August 2002 to May 2004, July 2004 to November 2004, January 2005 to March 2005 and May 2005. Data for Outbound operations have been received for July 2003 onwards.

AIRLINES COMMENCING/WITHDRAWING SERVICES DURING 2012

Commencing:

Polar Air Cargo – Service recommenced July 2012.

Scoot – Service commenced June 2012.

Silk Air – Service recommenced March 2012.

Ceasing:

Air Austral – Service ceased August 2012.

Air Australia – Service ceased February 2012.

Hainan Airlines – Service ceased February 2012.

HIGHLIGHTS – YEAR ENDED DECEMBER 2012

- Fifty-six international scheduled airlines operated services to/from Australia during the year (includes 5 dedicated freight airlines but excludes airlines operating only via code share arrangements).
- International scheduled passenger traffic in 2012 was 29.624 million compared to 28.155 million in 2011 – an increase of 5.2 per cent.
- Chart I shows total passenger traffic for the years 2002 to 2012. Over this period, 2003 was the only year that recorded a decrease in traffic compared to the previous year. Passenger traffic in 2003 was affected by the SARS crisis (April, May and June 2003 in particular) and the war in Iraq.
- Chart II compares monthly passenger traffic for 2012 with monthly passenger traffic for 2011. March 2011 (-1.6 per cent) was the only month since March 2009 to record decreased traffic compared to the same month in the previous year.
- Chart III shows the airline market shares in terms of passenger carriage for the top ten airlines for 2002, 2007 and 2012. In the latest year, Qantas Airways had the largest share of the market with 17.7 per cent followed by Singapore Airlines with 9.2 per cent, Emirates with 8.4 per cent, Virgin Australia with 8.3 per cent and Jetstar also with 8.3 per cent.
- Compared to 2002, Qantas Airways' share has decreased by 15.9 percentage points, Singapore Airlines' share has decreased by 2.8 percentage points and Emirates' share has increased by 6.4 percentage points. Virgin Australia did not commence international operations until January 2004 and Jetstar did not commence international operations until December 2005. The decrease in share for the Qantas group (Qantas Airways, Jetstar and Jetstar Asia in 2012 compared to Qantas and Australian Airlines in 2002) was 7.7 percentage points.
- The share of passenger traffic accounted for by Australian designated airlines decreased from 34.0 per cent in 2002 to 33.0 per cent in 2007 and to 32.3 per cent in 2012. Qantas Airways, Jetstar, Virgin Australia (excluding services operated under New Zealand designation) and Air Australia contributed to the Australian airline share in 2012.
- Seats made available on international scheduled operations in 2012 totaled 38.828 million – an increase of 2.0 per cent compared to 2011. The overall seat utilisation percentage decreased from 76.2 per cent in 2010 to 74.8 per cent in 2011 but has increased to 77.3 per cent in 2012. Note that operated seats by Emirates have been adjusted to show seats available for uplift/discharge Australia traffic for November 2011 and onwards which generates a higher seat utilisation percentage when compared to prior periods that have not been adjusted in this way.
- In 2012, Low Cost Carriers AirAsia X, Air Australia (to February 2012), Indonesia AirAsia, Jetstar, Jetstar Asia, Scoot (commenced in June 2012) and Tiger Airways together accounted for 13.6 per cent of total international passenger traffic. This compares to the LCC share of 18.6 per cent in 2011. The decrease in the LCC share is mainly because Virgin Australia replaced the low cost brands Pacific Blue and Polynesian Blue with the full service brands Virgin Australia and Virgin Samoa in December 2011.
- International scheduled air freight traffic increased by 3.8 per cent to 870 105 tonnes in 2012. Inbound freight increased by 3.8 per cent to 541 205 tonnes. Outbound freight also increased by 3.8 per cent to 328 900 tonnes.

- In 2012, scheduled dedicated freighter operations accounted for 24.1 per cent of scheduled inbound air freight to Australia, 13.0 per cent of scheduled outbound air freight from Australia and 19.9 per cent of total scheduled air freight. Note that some freighters do not pick up freight in Australia and that accounts for the difference in inbound and outbound percentages.
- Table VI on page 13 shows Traffic On Board passenger movements, flights and operated seats at Australian international airports. All traffic is shown against the first Australian airport for arrivals to Australia and the last Australian airport for departures from Australia. Movements between Australian airports are not accounted for.
- Seat utilisation at capital city airports in 2012 increased at Brisbane (3.7 percentage points), Sydney (2.9 percentage points), Melbourne (2.1 percentage points), Darwin (1.1 percentage points) and Perth (0.8 percentage points) but declined at Adelaide (3.0 percentage points). Melbourne recorded the highest rate at 78.5 per cent while of the major airports, Cairns had the lowest rate at 67.0 per cent. Of the 38.828 million seats operated to/from Australia in 2012, Sydney accounted for 42.0 per cent followed by Melbourne with 22.3 per cent, Brisbane with 15.3 per cent, Perth with 12.2 per cent and Gold Coast with 2.7 per cent.
- Table VII on page 14 shows Traffic On Board passenger movements, flights and operated seats between Australia and the top thirty countries with non-stop air service connections.
- New Zealand, Singapore, USA, Hong Kong (SAR) and Indonesia were the top five countries in terms of traffic on board passenger movements in 2012. Seat utilisation was highest for Canada with 85.2 per cent followed by United Arab Emirates with 84.3 per cent and USA with 83.1 per cent.
- Table VIII on page 14 shows Traffic On Board passenger movements, flights and operated seats between Australia and the top thirty international cities with non-stop air service connections.
- In 2012, 18.2 per cent of the passenger movements to/from Australia were either to/from or via Singapore. Auckland was the next largest hub accounting for 13.1 per cent followed by Hong Kong (SAR) which accounted for 7.5 per cent.
- Page 15 is a diagrammatic representation of Traffic On Board passenger movements, flights and operated seats by region. The region is based on international cities with non-stop air service connections with Australia. In 2012, 40.2 per cent of the 38.828 million seats operated to/from Australia were either to/from or via South East Asia. New Zealand had 20.3 per cent of the total followed by North East Asia with 17.4 per cent.
- The information on Traffic On Board is derived from the uplift/discharge data used to produce the main Tables in this publication.

YEAR ENDED DECEMBER 2012

Chart I Total International Passengers Carried (millions) - Years ended December

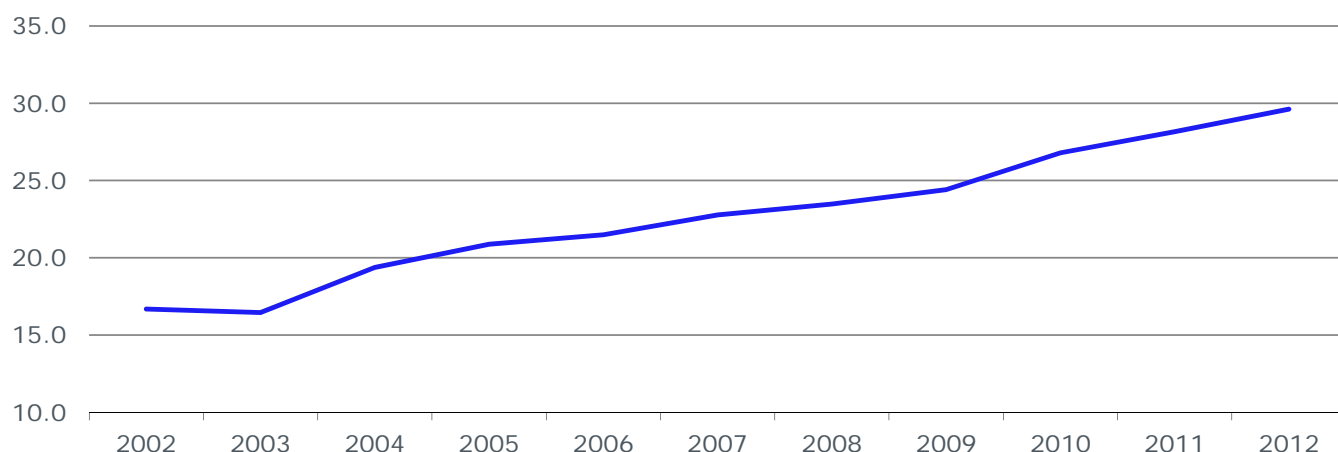


Chart II Total International Passengers Carried (millions) - By Month

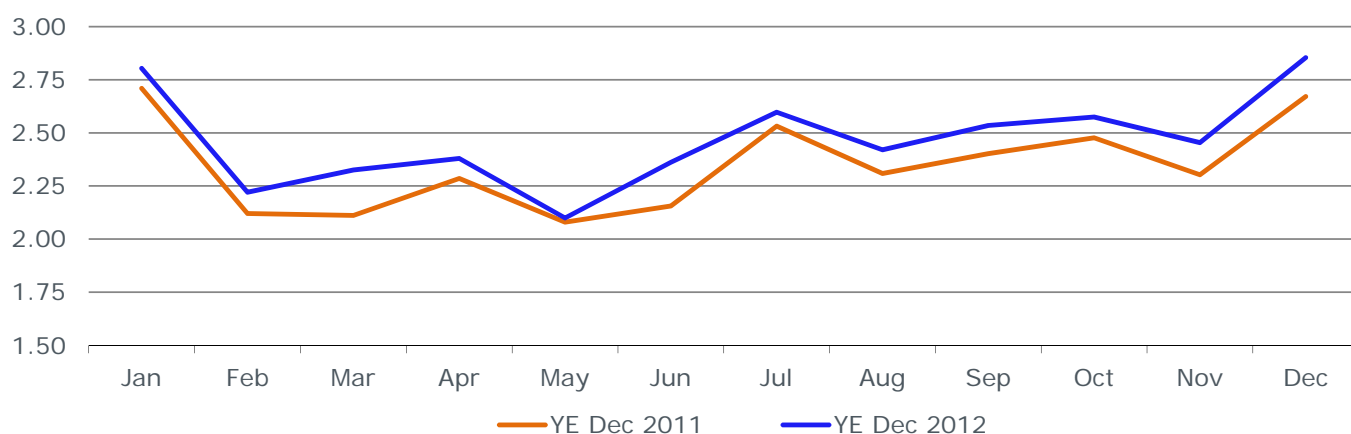


Table I International Passengers by Uplift/Discharge City Pairs

Foreign Port	Australian Port	Year ended December 2010	Year ended December 2011	Year ended December 2012	% of Total	% Change 2012/11
Auckland	Sydney	1 413 704	1 403 299	1 366 947	4.6%	-2.6%
Singapore	Sydney	1 093 138	1 131 780	1 271 410	4.3%	12.3%
Singapore	Melbourne	925 650	1 062 995	1 064 277	3.6%	0.1%
Singapore	Perth	909 789	965 513	1 013 007	3.4%	4.9%
Hong Kong	Sydney	948 251	939 293	943 037	3.2%	0.4%
Auckland	Melbourne	794 107	901 246	935 400	3.2%	3.8%
Los Angeles	Sydney	915 247	937 395	879 391	3.0%	-6.2%
Denpasar	Perth	729 280	806 233	849 201	2.9%	5.3%
Auckland	Brisbane	707 893	794 141	836 145	2.8%	5.3%
Singapore	Brisbane	698 111	718 594	802 124	2.7%	11.6%
Top 10 City Pairs		9 135 170	9 660 489	9 960 939	33.6%	3.1%
Other City Pairs		17 655 145	18 494 520	19 663 102	66.4%	6.3%
ALL CITY PAIRS		26 790 315	28 155 009	29 624 041	100.0%	5.2%

Table II International Freight (tonnes) by Uplift/Discharge City Pairs

Foreign Port	Australian Port	Year ended December 2010	Year ended December 2011	Year ended December 2012	% of Total	% Change 2012/11
Auckland	Sydney	58 603	59 448	57 931	6.7%	-2.6%
Singapore	Melbourne	46 470	49 371	51 441	5.9%	4.2%
Singapore	Sydney	44 767	47 844	48 237	5.5%	0.8%
Hong Kong	Sydney	44 679	48 513	46 958	5.4%	-3.2%
Hong Kong	Melbourne	35 404	34 235	32 936	3.8%	-3.8%
Singapore	Brisbane	29 167	30 555	32 335	3.7%	5.8%
Singapore	Perth	27 184	27 942	29 750	3.4%	6.5%
Dubai	Melbourne	16 373	20 170	27 901	3.2%	38.3%
Los Angeles	Sydney	28 072	26 752	27 171	3.1%	1.6%
Auckland	Melbourne	24 795	26 675	26 545	3.1%	-0.5%
Top 10 City Pairs		355 515	371 506	381 206	43.8%	2.6%
Other City Pairs		450 887	466 966	488 899	56.2%	4.7%
ALL CITY PAIRS		806 402	838 472	870 105	100.0%	3.8%

Table III International Passengers by Uplift/Discharge Country

Country	Year ended December 2010	Year ended December 2011	Year ended December 2012	% of Total	% Change 2012/11
New Zealand	5 540 500	5 652 936	5 733 220	19.4%	1.4%
Singapore	4 030 442	4 256 610	4 665 218	15.7%	9.6%
USA	2 231 227	2 394 530	2 527 865	8.5%	5.6%
United Arab Emirates	1 812 286	1 914 689	2 285 629	7.7%	19.4%
Hong Kong (SAR)	2 067 887	2 082 312	2 136 798	7.2%	2.6%
Indonesia	1 651 628	2 028 704	2 129 450	7.2%	5.0%
Malaysia	1 812 638	1 920 821	1 975 996	6.7%	2.9%
Thailand	1 368 753	1 429 596	1 492 241	5.0%	4.4%
China	900 161	1 246 321	1 440 129	4.9%	15.6%
Japan	992 334	751 732	837 255	2.8%	11.4%
Top 10 Countries	22 407 856	23 678 251	25 223 801	85.1%	6.5%
Other Countries	4 382 459	4 476 758	4 400 240	14.9%	-1.7%
ALL COUNTRIES	26 790 315	28 155 009	29 624 041	100.0%	5.2%

Table IV International Passenger Traffic through Australian International Airports

Airport	Year ended December 2010	Year ended December 2011	Year ended December 2012	% of Total	% Change 2012/11
Sydney	11 455 537	11 748 582	12 372 246	41.8%	5.3%
Melbourne	5 872 511	6 460 958	6 819 242	23.0%	5.5%
Brisbane	4 282 257	4 444 867	4 483 409	15.1%	0.9%
Perth	3 133 709	3 349 468	3 618 768	12.2%	8.0%
Gold Coast	786 669	715 863	824 424	2.8%	15.2%
Adelaide	532 392	583 073	650 077	2.2%	11.5%
Cairns	495 873	504 072	511 359	1.7%	1.4%
Darwin	217 005	326 935	328 714	1.1%	0.5%
Norfolk Island	10 009	10 113	10 089	0.0%	-0.2%
Sunshine Coast (a)	5 713	0.0%	..
Port Hedland (b)	3 039	1 486
Townsville (c)	1 314	9 592
ALL AIRPORTS	26 790 315	28 155 009	29 624 041	100.0%	5.2%

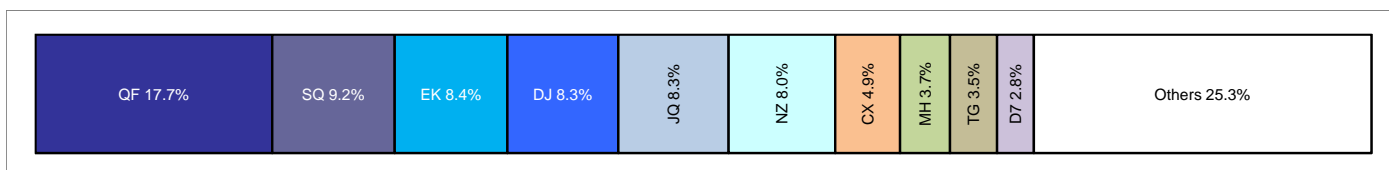
(a) Scheduled services operated from July 2012 to September 2012.

(b) Scheduled services recommenced August 2010 and ceased in March 2011.

(c) Scheduled services recommenced December 2010 and ceased October 2011.

Chart III International Passengers by Major Airlines - Years ended December

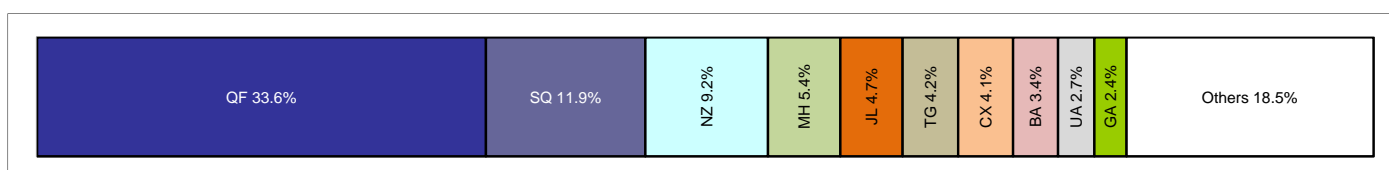
Top 10 in 2012



Top 10 in 2007



Top 10 in 2002



BA - British Airways
 CX - Cathay Pacific Airways
 D7 - AirAsia X
 DJ - Virgin Australia
 EK - Emirates

GA - Garuda Indonesia
 JL - Japan Airlines
 JQ - Jetstar
 MH - Malaysia Airlines
 NZ - Air New Zealand

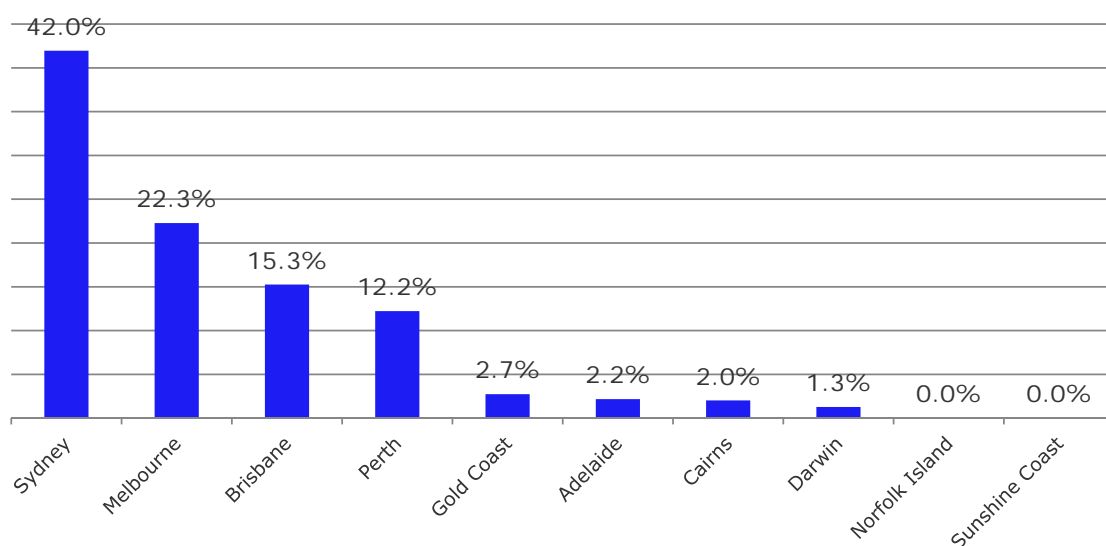
QF - Qantas Airways
 SQ - Singapore Airlines
 TG - Thai Airways
 UA - United Airlines

Table V Summary Statistics

	Year ended December 2010	Year ended December 2011	Year ended December 2012	Growth compared to	
				2011	2010
Passengers carried	26 790 315	28 155 009	29 624 041	5.2%	10.6%
Freight (tonnes)	806 402	838 472	870 105	3.8%	7.9%
Mail (tonnes)	39 707	43 826	42 917	-2.1%	8.1%
Available Seats	35 601 889	38 080 909	38 828 372	2.0%	9.1%
Flights	146 041	154 653	157 796	2.0%	8.0%
Aircraft Movements	157 764	163 548	167 098	2.2%	5.9%

Table VI Traffic on Board Passenger Movements, Flights and Seats at Australian International Airports - Scheduled International Passenger Services

First/Last port of call *	Year	No. of Flights	Passenger Movements	Seats	Utilisation %
Adelaide	2011	2 936	586 208	726 483	80.7%
	2012	3 433	655 788	843 852	77.7%
Brisbane	2011	26 070	4 445 124	6 121 845	72.6%
	2012	25 060	4 524 424	5 925 784	76.4%
Cairns	2011	4 782	490 749	761 664	64.4%
	2012	4 859	526 026	785 621	67.0%
Darwin	2011	3 077	411 776	589 556	69.8%
	2012	2 646	349 469	492 828	70.9%
Gold Coast	2011	4 026	716 108	966 175	74.1%
	2012	4 269	828 222	1 062 251	78.0%
Melbourne	2011	31 231	6 449 327	8 451 013	76.3%
	2012	32 384	6 788 702	8 652 553	78.5%
Norfolk Island	2011	104	10 113	16 899	59.8%
	2012	105	10 089	17 377	58.1%
Perth	2011	19 042	3 349 556	4 439 581	75.4%
	2012	19 893	3 619 150	4 747 797	76.2%
Port Hedland	2011	24	1 486	3 648	40.7%
	2012
Sunshine Coast	2011
	2012	48	5 713	7 919	72.1%
Sydney	2011	58 569	12 024 617	15 988 205	75.2%
	2012	60 131	12 722 015	16 292 390	78.1%
Townsville	2011	104	9 592	15 840	60.6%
	2012
Total	2011	149 965	28 494 656	38 080 909	74.8%
	2012	152 828	30 029 598	38 828 372	77.3%



The information on Traffic On Board is derived from the uplift/discharge data used to produce the main Tables in this publication. The figures above include some adjustments. The data shown here covers non-stop international connections only - it does not include movements between Australian airports.

Please see notes on page 14 as well.

* First port of call for arrivals to Australia or last port of call for departures from Australia.

Table VII Traffic on Board Passenger Movements, Flights and Seats on Non-Stop Passenger Services By Country - 2012

Country *	No. of Flights	Passengers	Seats	Seat Utilisation %
New Zealand	40 389	6 002 691	7 863 018	76.3%
Singapore	21 698	5 469 234	6 847 106	79.9%
USA	8 812	2 554 745	3 073 313	83.1%
Hong Kong (SAR)	10 519	2 241 077	2 904 096	77.2%
Indonesia	14 433	2 137 537	2 864 518	74.6%
Malaysia	8 714	2 108 668	2 822 453	74.7%
United Arab Emirates	6 709	1 787 122	2 119 493	84.3%
Thailand	6 611	1 653 059	2 074 313	79.7%
China	7 005	1 443 194	1 827 751	79.0%
Japan	3 737	842 653	1 135 341	74.2%
Fiji	5 125	789 227	1 019 222	77.4%
Korea	2 211	485 092	624 440	77.7%
South Africa	1 398	324 340	434 441	74.7%
Papua New Guinea	4 248	299 460	524 620	57.1%
Vietnam	1 474	293 888	404 402	72.7%
Philippines	1 454	278 085	398 397	69.8%
Taiwan	943	189 870	275 587	68.9%
Qatar	924	188 708	247 828	76.1%
Canada	743	170 845	200 604	85.2%
Vanuatu	1 433	157 409	247 510	63.6%
New Caledonia	1 107	151 224	199 381	75.8%
Brunei	659	114 940	187 815	61.2%
Chile	246	72 353	89 372	81.0%
Solomon Islands	633	54 719	100 266	54.6%
Argentina	226	50 435	63 245	79.7%
Mauritius	214	48 269	60 022	80.4%
Western Samoa	410	47 438	73 800	64.3%
Tonga	206	22 771	37 080	61.4%
Guam	210	17 369	26 964	64.4%
Cook Islands	104	15 313	23 891	64.1%
Others	233	17 863	58 083	30.8%
Total	152 828	30 029 598	38 828 372	77.3%

Table VIII Traffic on Board Passenger Movements, Flights and Seats on Non-Stop Passenger Services By City - 2012

First/Last port of call *	No. of Flights	Passengers	Seats	Seat Utilisation %
Singapore	21 698	5 469 234	6 847 106	79.9%
Auckland	24 798	3 930 245	5 121 089	76.7%
Hong Kong	10 519	2 241 077	2 904 096	77.2%
Kuala Lumpur	8 680	2 105 250	2 817 047	74.7%
Denpasar	12 701	1 854 779	2 451 691	75.7%
Los Angeles	5 671	1 751 824	2 103 749	83.3%
Bangkok	5 644	1 471 011	1 839 960	79.9%
Dubai	4 517	1 243 664	1 477 775	84.2%
Christchurch	7 216	1 033 255	1 313 942	78.6%
Nadi	5 125	789 227	1 019 222	77.4%
Wellington	5 690	707 459	963 828	73.4%
Shanghai	3 100	670 031	794 613	84.3%
Tokyo	2 811	649 806	853 195	76.2%
Guangzhou	3 228	641 818	874 632	73.4%
Abu Dhabi	2 192	543 458	641 718	84.7%
Seoul	2 211	485 092	624 440	77.7%
Honolulu	1 801	416 153	502 275	82.9%
Johannesburg	1 398	324 340	434 441	74.7%
Port Moresby	4 248	299 460	524 620	57.1%
Ho Chi Minh City	1 474	293 888	404 402	72.7%
Jakarta	1 732	282 758	412 827	68.5%
Manila	1 454	278 085	398 397	69.8%
Queenstown	1 730	218 180	295 158	73.9%
San Francisco	727	215 008	271 898	79.1%
Osaka	926	192 847	282 146	68.4%
Taipei	943	189 870	275 587	68.9%
Doha	924	188 708	247 828	76.1%
Phuket	967	182 048	234 353	77.7%
Dallas	613	171 760	195 391	87.9%
Vancouver	743	170 845	200 604	85.2%
Others	7 347	1 018 418	1 500 342	67.9%
Total	152 828	30 029 598	38 828 372	77.3%

The information on Traffic On Board is derived from the uplift/discharge data used to produce the main Tables in this publication. The figures above include some adjustments.

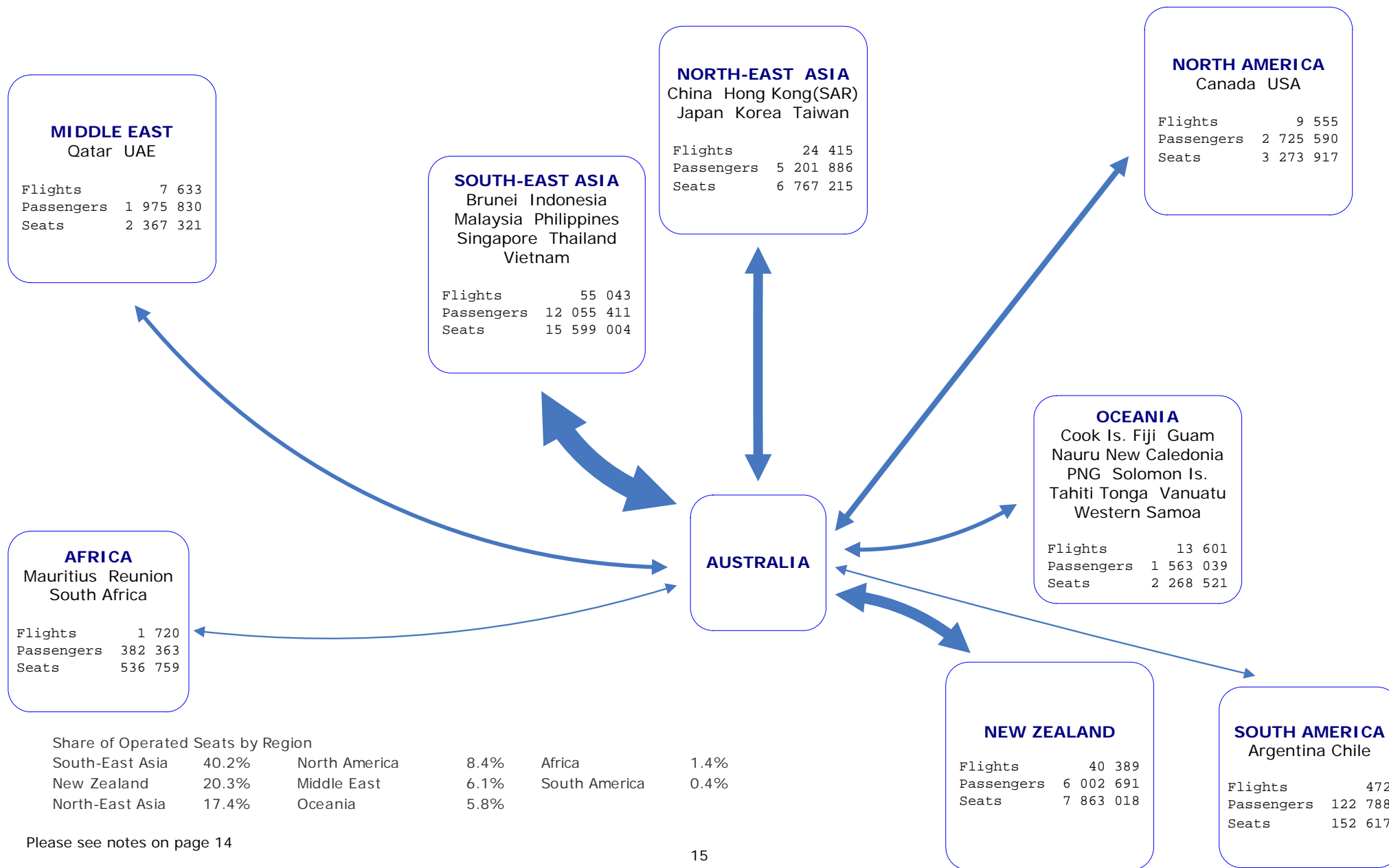
The total number of flights, passenger movements and seats shown correspond to total passenger services reported in Table 3.

Passenger numbers shown here do not include passengers not uplifted/discharged in Australia for airlines other than Qantas Airways.

* First country/port of call for departures from Australia or last country/port of call for arrivals to Australia.

TRAFFIC ON BOARD PASSENGER MOVEMENTS, FLIGHTS AND SEATS BY REGION BASED ON NON-STOP SERVICES TO AND FROM AUSTRALIA

SCHEDULED INTERNATIONAL PASSENGER AIR SERVICES – Year ended December 2012



Share of Operated Seats by Region

South-East Asia	40.2%	North America	8.4%	Africa	1.4%
New Zealand	20.3%	Middle East	6.1%	South America	0.4%
North-East Asia	17.4%	Oceania	5.8%		

Please see notes on page 14

TABLE 1 SCHEDULED INTERNATIONAL AIR TRAFFIC TO AND FROM AUSTRALIA: Year ended December 2012

Scheduled Operator	Country to/from	Inbound			Outbound			
		Passengers	Freight (tonnes)	Mail (tonnes)	Passengers	Freight (tonnes)	Mail (tonnes)	
Aerolineas Argentinas	Argentina	24 147	112.6	14.1	22 382	283.7	-	
	New Zealand	7 469	324.8	-	9 206	312.0	-	
Aerolineas Argentinas	ALL SERVICES	31 616	437.4	14.1	31 588	595.7	-	
Air Austral (a)	France	244	-	-	106	0.6	-	
	Reunion	4 492	2.6	-	4 912	86.5	-	
Air Austral	ALL SERVICES	4 736	2.6	-	5 018	87.1	-	
Air Australia (b)	Indonesia	3 185	-	-	2 829	-	-	
	Thailand	6 445	-	-	6 446	-	-	
	USA	5 362	-	-	4 861	-	-	
Air Australia	ALL SERVICES	14 992	-	-	14 136	-	-	
Air Caledonie	New Caledonia	44 916	25.4	6.5	45 758	1 050.2	28.7	
Air Canada	Canada	84 680	3 758.0	478.1	86 165	2 358.8	225.0	
Air China	China	147 758	4 430.3	513.9	151 196	2 838.5	186.1	
Air Mauritius (c)	Mauritius	24 494	602.7	4.2	23 775	194.0	-	
Air New Zealand	Cook Islands	7 198	3.8	0.1	8 115	238.6	0.9	
	New Zealand	1 184 531	23 908.1	3 368.7	1 165 232	20 341.8	97.8	
	Tahiti	127	-	-	146	-	-	
Air New Zealand	ALL SERVICES	1 191 856	23 912.0	3 368.8	1 173 493	20 580.4	98.7	
Air Niugini	Papua New Guinea	96 960	773.2	6.4	98 028	3 941.4	152.5	
Air Pacific	Fiji	210 698	3 028.6	29.6	212 920	2 567.0	122.9	
Air Vanuatu	Vanuatu	55 142	216.7	58.1	55 461	439.8	37.1	
AirAsia X	Malaysia	409 663	9 101.4	-	409 057	2 251.9	-	
Airlines PNG	Papua New Guinea	1 884	1.7	0.0	1 768	34.7	0.1	
Asiana Airlines	Korea	81 526	1 870.0	263.2	79 319	1 016.3	-	
British Airways	Netherlands	27	-	-	
	Singapore	37 785	644.1	4.1	34 277	923.1	-	
	Thailand	9 628	76.2	-	6 731	52.8	-	
	UK	63 715	3 676.6	390.2	64 129	1 121.9	1.4	
	ALL SERVICES	111 128	4 396.9	394.4	105 164	2 097.8	1.4	
Cathay Pacific Airways	Hong Kong (SAR)	727 829	45 520.0	2 444.4	709 662	29 734.6	277.6	
China Airlines	New Zealand	28 412	1 074.7	1.4	44 085	1 094.3	7.0	
	Taiwan	69 571	2 060.7	598.2	84 272	1 415.5	18.8	
China Airlines	ALL SERVICES	97 983	3 135.4	599.6	128 357	2 509.9	25.8	
China Eastern Airlines	China	176 301	2 244.0	248.2	171 377	1 203.7	34.1	
China Southern Airlines	China	326 043	14 379.5	508.7	315 775	772.4	271.3	
Continental Micronesia (d)	Guam	1 557	0.2	0.0	1 388	1.9	0.0	
Delta Air Lines	USA	79 124	3 235.8	1 403.2	81 745	2 533.5	-	
Emirates	Malaysia	23 968	25.5	-	27 019	160.0	-	
	New Zealand	288 291	16 801.8	0.0	265 361	8 590.5	1.5	
	Singapore	78 607	2 263.9	2.4	68 240	4 958.7	-	
	Thailand	28 916	73.4	-	26 304	155.8	-	
	United Arab Emirates	845 742	43 240.7	1 029.2	849 893	32 791.5	0.3	
Emirates	ALL SERVICES	1 265 524	62 405.3	1 031.7	1 236 817	46 656.4	1.8	
Etihad Airways	Singapore	10 846	480.1	-	11 189	551.2	-	
	United Arab Emirates	261 726	10 093.7	1 011.5	260 135	12 456.3	332.3	
Etihad Airways	ALL SERVICES	272 572	10 573.7	1 011.5	271 324	13 007.4	332.3	
Eva Air	Taiwan	18 385	885.2	107.9	17 642	475.5	-	
Federal Express Corporation	China	154.7	-	
	USA	..	10 296.4	297.6	
Federal Express Corporation	ALL SERVICES	..	10 296.4	297.6	..	154.7	-	
Garuda Indonesia	Indonesia	315 251	8 293.9	291.4	303 702	1 721.2	5.5	
Hainan Airlines (e)	China	2 945	70.3	-	3 006	10.1	-	
Hawaiian Airlines	USA	89 029	922.6	22.0	88 386	556.7	0.5	
Indonesia AirAsia	Indonesia	143 064	-	-	137 183	-	-	
Japan Airlines	Japan	73 711	2 126.9	1 914.1	73 229	1 230.2	2.3	
Jetstar (f)	China	1 364	54.7	-	2 504	14.7	-	
	Fiji	28 689	-	-	29 099	-	-	
	Indonesia	310 974	3 924.9	-	327 824	299.1	6.3	
	Japan	242 023	4 793.0	154.6	240 351	1 840.2	187.2	
	New Zealand	297 761	131.9	95.5	308 836	311.1	187.8	
	Philippines	22 586	-	-	25 429	-	-	
	Singapore	134 153	3 398.6	69.8	141 575	2 745.4	41.7	
	Thailand	80 647	3 206.2	138.9	82 201	835.9	13.3	
	USA	79 108	1 895.2	169.6	79 768	491.2	4.9	
	Vietnam	5 125	13.6	-	4 981	0.8	-	
	Jetstar	ALL SERVICES	1 202 430	17 418.2	628.3	1 242 568	6 538.5	441.2
	Jetstar Asia	Singapore	48 598	-	-	52 846	-	-
	Korean Air	Korea	165 669	3 564.5	1 397.8	158 578	5 518.7	52.1
LAN Airlines	Chile	31 493	2 598.3	26.8	27 224	1 723.1	51.3	
	New Zealand	25 277	295.8	0.4	27 967	823.5	0.9	

TABLE 1 SCHEDULED INTERNATIONAL AIR TRAFFIC TO AND FROM AUSTRALIA: Year ended December 2012

Scheduled Operator	Country to/from	Inbound			Outbound		
		Passengers	Freight (tonnes)	Mail (tonnes)	Passengers	Freight (tonnes)	Mail (tonnes)
LAN Airlines	ALL SERVICES	56 770	2 894.1	27.2	55 191	2 546.6	52.1
Malaysia Airlines	China	-	1 162.2	-
	Indonesia	-	473.8	-
	Malaysia	589 498	36 224.8	264.1	516 791	14 568.9	0.0
Malaysia Airlines	ALL SERVICES	589 498	37 387.0	264.1	516 791	15 042.6	0.0
Our Airline	Nauru	3 830	4.0	0.3	4 006	138.9	4.7
Pacific Air Express	Papua New Guinea	..	56.8	-	..	1 060.0	-
	Solomon Islands	..	283.2	-	..	530.1	-
	Vanuatu	..	152.9	-	..	38.6	-
Pacific Air Express	ALL SERVICES	..	492.9	-	..	1 628.6	-
Philippine Airlines	Philippines	67 957	3 882.3	-	63 151	1 333.8	-
Polar Air Cargo (g)	Hong Kong (SAR)	0.5	-
	USA	..	2 996.7	-
Polar Air Cargo	ALL SERVICES	..	2 996.7	-	..	0.5	-
Qantas Airways	Argentina	9 976	121.4	-	9 938	63.6	2.4
	Chile	34 541	216.5	-	36 192	72.4	1.9
	China	73 668	10 898.4	318.5	68 192	1 916.3	104.1
	Germany	39 052	1 421.6	312.9	37 106	145.6	487.7
	Hong Kong (SAR)	308 128	15 754.2	282.7	287 426	7 934.6	327.5
	India	2 258	114.6	-	1 451	3.9	2.4
	Indonesia	37 388	1 458.3	2.5	37 858	964.5	19.4
	Japan	100 928	1 443.5	330.5	107 013	2 375.4	464.2
	Kazakhstan	635.2	-
	Macau	61.0	-
	Mauritius	92.9	-
	New Caledonia	25 415	29.0	2.5	24 882	215.9	13.8
	New Zealand	568 624	10 599.7	600.5	551 131	12 233.5	2 048.1
	Papua New Guinea	26 972	-	-	24 303	-	-
	Philippines	45 187	877.9	44.8	43 454	684.3	18.5
	Qatar	89.0	-
	Singapore	487 734	16 475.8	1 055.3	469 259	15 187.4	1 692.9
	South Africa	94 674	1 669.5	73.0	88 092	1 020.3	107.5
	Thailand	72 949	2 188.2	858.9	71 967	1 668.1	150.1
	UK	151 181	4 841.3	454.0	145 679	576.8	1 242.0
	USA	580 780	26 747.0	2 906.5	583 785	3 996.1	1 449.6
	Vietnam	104.0	-
	Western Samoa	..	-	-	..	5.5	-
Qantas Airways	ALL SERVICES	2 659 455	94 856.9	7 242.6	2 587 728	50 046.3	8 132.0
Qatar Airways	Qatar	97 026	5 037.8	125.8	91 682	7 645.1	0.2
Royal Brunei Airlines	Brunei	54 834	2 493.3	5.9	60 106	3 993.1	-
Scoot (h)	Singapore	113 075	3 855.1	-	119 938	955.2	-
Silk Air (i)	Singapore	12 220	81.9	0.0	12 051	16.9	0.1
Singapore Airlines	New Zealand	..	4 172.0	-	..	6 733.9	4.5
	Singapore	1 378 554	75 159.5	3 149.3	1 336 917	44 466.9	11.4
Singapore Airlines	ALL SERVICES	1 378 554	79 331.5	3 149.3	1 336 917	51 200.8	15.9
Solomon Airlines	Solomon Islands	19 090	105.8	-	18 413	204.7	-
South African Airways	South Africa	63 121	1 038.1	5.7	62 794	3 036.5	32.2
Tasman Cargo Airlines	New Zealand	-	4 536.7	-	-	4 854.9	-
Thai Airways International	Thailand	519 916	22 094.1	2 349.2	524 117	14 859.9	56.4
Tiger Airways	Singapore	56 660	-	-	60 694	-	-
United Airlines	Guam	7 066	0.9	0.0	7 358	9.1	0.1
	USA	218 735	202.2	2 049.2	218 207	4 610.5	63.0
United Airlines	ALL SERVICES	225 801	203.2	2 049.2	225 565	4 619.6	63.0
United Parcel Service	China	326.9	-
	Hong Kong (SAR)	49.6	-
	Singapore	1 206.9	-
	Taiwan	149.6	-
	USA	..	21 037.6	-	..	0.6	-
United Parcel Service	ALL SERVICES	..	21 037.6	-	..	1 733.7	-
Vietnam Airlines	Vietnam	146 637	6 544.4	-	137 145	1 990.5	-
Virgin Atlantic Airways	Hong Kong (SAR)	55 334	5 491.7	-	48 419	3 508.7	-
	UK	31 903	486.8	-	37 599	142.0	-
Virgin Atlantic Airways	ALL SERVICES	87 237	5 978.6	-	86 018	3 650.7	-
Virgin Australia	Fiji	154 912	130.5	-	152 559	141.8	-
	Indonesia	251 203	-	-	258 989	-	-
	New Zealand	476 907	790.2	-	484 130	454.1	-
	Papua New Guinea	24 558	1.7	-	24 987	262.8	-
	Solomon Islands	8 131	-	-	9 085	93.3	-
	Thailand	28 495	-	-	27 479	-	-
	Tonga	10 935	22.6	-	11 836	7.0	-

TABLE 1 SCHEDULED INTERNATIONAL AIR TRAFFIC TO AND FROM AUSTRALIA: Year ended December 2012

Scheduled Operator	Country to/from	Inbound			Outbound		
		Passengers	Freight (tonnes)	Mail (tonnes)	Passengers	Freight (tonnes)	Mail (tonnes)
Virgin Australia	United Arab Emirates	34 476	947.6	-	33 657	1 300.6	-
	USA	206 316	6 736.2	-	212 659	4 331.4	-
	Vanuatu	23 326	82.1	-	23 480	109.8	-
Virgin Australia	ALL SERVICES	1 219 259	8 710.9	-	1 238 861	6 700.9	-
Virgin Samoa	Western Samoa	23 679	13.9	-	23 759	20.8	-
TOTAL		14 912 683	541 205.4	32 263.2	14 711 358	328 899.9	10 653.6

Please refer to explanatory notes - paragraphs 3, 6 and 13 in particular.

(a) Operations between Australia and New Caledonia are shown under Air Caledonie. Service ceased August 2012.

(b) Operated as Strategic Airlines prior to November 2011. Service ceased February 2012.

(c) Data for operations to/from Melbourne and Sydney for May 2012 were not received and have been estimated.

(d) Operations taken over by United Airlines for March 2012 and onwards.

(e) Service ceased February 2012.

(f) No mail data received for December 2012. Missing data has been estimated.

(g) Service recommenced July 2012.

(h) Service commenced June 2012.

(i) Service recommenced March 2012.

TABLE 2 SCHEDULED OPERATOR MARKET SHARES AND GROWTH: Year ended December

Scheduled Operators	Country to/from	Total Passengers				Total Freight (tonnes)				Total Mail (tonnes)			
		2011	2012	(%) of TOTAL	(%) Change	2011	2012	(%) of TOTAL	(%) Change	2011	2012	(%) of TOTAL	(%) Change
Aerolineas Argentinas	Argentina	34 127	46 529	0.2	36.3	434.5	396.3	0.0	-8.8	16.2	14.1	0.0	-13.0
	New Zealand	23 254	16 675	0.1	-28.3	1 055.1	636.9	0.1	-39.6	-	-	-	..
Aerolineas Argentinas	ALL SERVICES	57 381	63 204	0.2	10.1	1 489.6	1 033.2	0.1	-30.6	16.2	14.1	0.0	-13.0
Air Austral (a)	France	1 302	350	0.0	-73.1	136.0	0.6	0.0	-99.6	-	-	-	..
	Reunion	17 935	9 404	0.0	-47.6	217.2	89.1	0.0	-59.0	-	-	-	..
Air Austral	ALL SERVICES	19 237	9 754	0.0	-49.3	353.2	89.6	0.0	-74.6	-	-	-	..
Air Australia (b)	Indonesia	65 323	6 014	0.0	-90.8	-	-	-	..	-	-	-	..
	Thailand	72 683	12 891	0.0	-82.3	133.5	-	-	-100.0	-	-	-	..
	USA	3 515	10 223	0.0	190.8	0.3	-	-	-100.0	-	-	-	..
Air Australia	ALL SERVICES	141 521	29 128	0.1	-79.4	133.8	-	-	-100.0	-	-	-	..
Air Caledonie	New Caledonia	92 020	90 674	0.3	-1.5	1 179.9	1 075.6	0.1	-8.8	26.7	35.2	0.1	31.9
Air Canada	Canada	164 534	170 845	0.6	3.8	5 644.8	6 116.8	0.7	8.4	745.0	703.2	1.6	-5.6
Air China	China	282 025	298 954	1.0	6.0	7 784.3	7 268.7	0.8	-6.6	560.1	700.0	1.6	25.0
Air Mauritius (c)	Mauritius	45 623	48 269	0.2	5.8	1 078.6	796.7	0.1	-26.1	0.6	4.2	0.0	640.6
Air New Zealand	Cook Islands	8 499	15 313	0.1	80.2	42.0	242.5	0.0	477.3	-	1.0	0.0	..
	New Zealand	2 331 778	2 349 763	7.9	0.8	41 543.0	44 250.0	5.1	6.5	3 099.7	3 466.4	8.1	11.8
	Tahiti	..	273	0.0	-	-	-	-	..
Air New Zealand	ALL SERVICES	2 340 277	2 365 349	8.0	1.1	41 585.0	44 492.4	5.1	7.0	3 099.7	3 467.5	8.1	11.9
Air Niugini	Papua New Guinea	189 295	194 988	0.7	3.0	4 453.0	4 714.6	0.5	5.9	188.0	158.9	0.4	-15.5
Air Pacific	Fiji	420 067	423 618	1.4	0.8	9 055.5	5 595.6	0.6	-38.2	151.6	152.5	0.4	0.6
Air Vanuatu	Vanuatu	98 993	110 603	0.4	11.7	717.0	656.5	0.1	-8.4	109.7	95.2	0.2	-13.2
AirAsia X	Malaysia	671 169	818 720	2.8	22.0	9 157.4	11 353.3	1.3	24.0	-	-	-	..
Airlines PNG	Papua New Guinea	3 628	3 652	0.0	0.7	47.6	36.3	0.0	-23.6	0.4	0.1	0.0	-75.5
Asiana Airlines	Korea	157 399	160 845	0.5	2.2	3 314.5	2 886.2	0.3	-12.9	455.4	263.2	0.6	-42.2
British Airways	Netherlands	..	27	0.0	-	-	-	-	..
	Singapore	62 447	72 062	0.2	15.4	2 957.1	1 567.2	0.2	-47.0	-	4.1	0.0	..
	Thailand	87 789	16 359	0.1	-81.4	889.7	129.0	0.0	-85.5	1.2	-	-	-100.0
	UK	174 939	127 844	0.4	-26.9	6 475.2	4 798.5	0.6	-25.9	743.1	391.7	0.9	-47.3
British Airways	ALL SERVICES	325 175	216 292	0.7	-33.5	10 321.9	6 494.7	0.7	-37.1	744.4	395.8	0.9	-46.8
Cathay Pacific Airways	Hong Kong (SAR)	1 441 020	1 437 491	4.9	-0.2	80 419.9	75 254.6	8.6	-6.4	3 665.4	2 722.0	6.3	-25.7
China Airlines	New Zealand	51 577	72 497	0.2	40.6	1 364.0	2 169.0	0.2	59.0	7.9	8.4	0.0	6.3
	Taiwan	161 691	153 843	0.5	-4.9	2 637.2	3 476.2	0.4	31.8	262.9	617.1	1.4	134.7
China Airlines	ALL SERVICES	213 268	226 340	0.8	6.1	4 001.2	5 645.3	0.6	41.1	270.8	625.5	1.5	130.9
China Eastern Airlines	China	273 905	347 678	1.2	26.9	4 978.3	3 447.7	0.4	-30.7	400.1	282.3	0.7	-29.4
China Southern Airlines	China	515 370	641 818	2.2	24.5	11 636.1	15 151.9	1.7	30.2	1 200.3	780.0	1.8	-35.0
Continental Micronesia (d)	Guam	24 321	2 945	0.0	-87.9	16.9	2.1	0.0	-87.4	0.1	0.0	0.0	-84.3
Delta Air Lines	USA	163 682	160 869	0.5	-1.7	6 105.0	5 769.3	0.7	-5.5	1 360.8	1 403.2	3.3	3.1
Emirates	Malaysia	67 627	50 987	0.2	-24.6	268.7	185.5	0.0	-31.0	0.7	-	-	-100.0
	New Zealand	551 145	553 652	1.9	0.5	27 887.6	25 392.3	2.9	-8.9	13.0	1.5	0.0	-88.3
	Singapore	171 463	146 847	0.5	-14.4	7 450.6	7 222.6	0.8	-3.1	46.9	2.4	0.0	-94.8
	Thailand	59 405	55 220	0.2	-7.0	183.1	229.1	0.0	25.1	-	-	-	..
	United Arab Emirates	1 361 753	1 695 635	5.7	24.5	50 938.5	76 032.3	8.7	49.3	981.6	1 029.6	2.4	4.9
Emirates	ALL SERVICES	2 211 393	2 502 341	8.4	13.2	86 728.3	109 061.7	12.5	25.8	1 042.2	1 033.5	2.4	-0.8
Etihad Airways	Singapore	17 461	22 035	0.1	26.2	1 208.6	1 031.3	0.1	-14.7	-	-	-	..
	United Arab Emirates	487 854	521 861	1.8	7.0	19 568.1	22 549.9	2.6	15.2	1 536.4	1 343.8	3.1	-12.5

TABLE 2 SCHEDULED OPERATOR MARKET SHARES AND GROWTH: Year ended December

Scheduled Operators	Country to/from	Total Passengers				Total Freight (tonnes)				Total Mail (tonnes)			
		2011	2012	(%) of TOTAL	(%) Change	2011	2012	(%) of TOTAL	(%) Change	2011	2012	(%) of TOTAL	(%) Change
Etihad Airways	ALL SERVICES	505 315	543 896	1.8	7.6	20 776.7	23 581.2	2.7	13.5	1 536.4	1 343.8	3.1	-12.5
Eva Air	Taiwan	37 684	36 027	0.1	-4.4	1 261.7	1 360.8	0.2	7.9	78.6	107.9	0.3	37.3
Federal Express Corporation	China	253.9	154.7	0.0	-39.1	-	-	-	..
	USA	11 988.6	10 296.4	1.2	-14.1	273.1	297.6	0.7	9.0
Federal Express Corporation	ALL SERVICES	12 242.4	10 451.1	1.2	-14.6	273.1	297.6	0.7	9.0
Garuda Indonesia	Indonesia	574 095	618 953	2.1	7.8	9 352.7	10 015.1	1.2	7.1	87.0	296.8	0.7	241.0
Hainan Airlines (e)	China	33 555	5 951	0.0	-82.3	1 418.6	80.4	0.0	-94.3	-	-	-	..
Hawaiian Airlines	USA	128 699	177 415	0.6	37.9	598.9	1 479.3	0.2	147.0	29.0	22.5	0.1	-22.5
Indonesia AirAsia	Indonesia	371 126	280 247	0.9	-24.5	-	-	-	..	-	-	-	..
Japan Airlines	Japan	130 778	146 940	0.5	12.4	3 961.1	3 357.1	0.4	-15.2	1 963.5	1 916.3	4.5	-2.4
Jetstar (f)	China	522	3 868	0.0	641.0	-	69.5	0.0	..	-	-	-	..
	Fiji	56 891	57 788	0.2	1.6	-	-	-	..	-	-	-	..
	Guam	411	-100.0	-	-
	Indonesia	478 850	638 798	2.2	33.4	3 337.9	4 224.1	0.5	26.5	7.8	6.3	0.0	-19.0
	Japan	435 667	482 374	1.6	10.7	6 339.8	6 633.2	0.8	4.6	276.0	341.8	0.8	23.8
	New Zealand	630 615	606 597	2.0	-3.8	607.3	443.0	0.1	-27.1	267.1	283.3	0.7	6.1
	Philippines	36 119	48 015	0.2	32.9	0.9	-	-	-100.0	-	-	-	..
	Singapore	279 932	275 728	0.9	-1.5	5 007.3	6 144.0	0.7	22.7	191.7	111.4	0.3	-41.9
	Thailand	153 662	162 848	0.5	6.0	3 137.1	4 042.1	0.5	28.9	30.9	152.2	0.4	392.4
	USA	121 845	158 876	0.5	30.4	1 907.9	2 386.4	0.3	25.1	81.3	174.5	0.4	114.7
	Vietnam	45 681	10 106	0.0	-77.9	46.5	14.5	0.0	-68.9	-	-	-	..
Jetstar	ALL SERVICES	2 240 195	2 444 998	8.3	9.1	20 384.7	23 956.7	2.8	17.5	854.9	1 069.5	2.5	25.1
Jetstar Asia	Singapore	101 661	101 444	0.3	-0.2	-	-	-	..	-	-	-	..
Korean Air	Korea	311 349	324 247	1.1	4.1	16 708.0	9 083.2	1.0	-45.6	1 353.2	1 449.9	3.4	7.1
LAN Airlines	Chile	62 604	58 717	0.2	-6.2	4 525.1	4 321.4	0.5	-4.5	100.5	78.0	0.2	-22.4
	New Zealand	48 536	53 244	0.2	9.7	910.3	1 119.3	0.1	23.0	5.4	1.3	0.0	-75.7
LAN Airlines	ALL SERVICES	111 140	111 961	0.4	0.7	5 435.4	5 440.7	0.6	0.1	105.9	79.3	0.2	-25.1
Malaysia Airlines	China	..	-	-	..	510.0	1 162.2	0.1	127.9	-	-	-	..
	Indonesia	-	-	-	..	602.8	473.8	0.1	-21.4	-	-	-	..
	Malaysia	1 182 025	1 106 289	3.7	-6.4	45 930.9	50 793.7	5.8	10.6	255.0	264.1	0.6	3.6
Malaysia Airlines	ALL SERVICES	1 182 025	1 106 289	3.7	-6.4	47 043.7	52 429.7	6.0	11.4	255.0	264.1	0.6	3.6
Our Airline	Kiribati	147	-100.0	0.5	-100.0	-
	Nauru	4 226	7 836	0.0	85.4	100.1	142.9	0.0	42.8	5.1	5.0	0.0	-1.3
	Solomon Islands	170	-100.0	1.2	-100.0	-
Our Airline	ALL SERVICES	4 543	7 836	0.0	72.5	101.7	142.9	0.0	40.5	5.1	5.0	0.0	-1.3
Pacific Air Express	Papua New Guinea	1 069.7	1 116.8	0.1	4.4	-	-	-	..
	Solomon Islands	706.8	813.2	0.1	15.1	-	-	-	..
	Vanuatu	335.9	191.4	0.0	-43.0	-	-	-	..
Pacific Air Express	ALL SERVICES	2 112.3	2 121.5	0.2	0.4	-	-	-	..
Philippine Airlines	Philippines	133 050	131 108	0.4	-1.5	4 150.3	5 216.1	0.6	25.7	-	-	-	..
Polar Air Cargo (g)	Hong Kong (SAR)	0.5	0.0	-	-	..
	USA	2 996.7	0.3	-	-	..
Polar Air Cargo	ALL SERVICES	2 997.2	0.3	-	-	..
Qantas Airways	Argentina	69 813	19 914	0.1	-71.5	1 454.9	185.0	0.0	-87.3	12.5	2.4	0.0	-81.2
	Chile	..	70 733	0.2	289.0	0.0	1.9	0.0	..

TABLE 2 SCHEDULED OPERATOR MARKET SHARES AND GROWTH: Year ended December

Scheduled Operators	Country to/from	Total Passengers				Total Freight (tonnes)				Total Mail (tonnes)			
		2011	2012	(%) of TOTAL	(%) Change	2011	2012	(%) of TOTAL	(%) Change	2011	2012	(%) of TOTAL	(%) Change
Qantas Airways	China	140 944	141 860	0.5	0.6	10 562.4	12 814.7	1.5	21.3	402.9	422.6	1.0	4.9
	Germany	76 165	76 158	0.3	0.0	1 668.1	1 567.2	0.2	-6.0	737.7	800.6	1.9	8.5
	Hong Kong (SAR)	541 715	595 554	2.0	9.9	23 518.0	23 688.8	2.7	0.7	639.5	610.2	1.4	-4.6
	India	10 737	3 709	0.0	-65.5	451.8	118.5	0.0	-73.8	8.4	2.4	0.0	-71.3
	Indonesia	74 370	75 246	0.3	1.2	2 576.5	2 422.9	0.3	-6.0	33.6	21.9	0.1	-34.8
	Japan	185 287	207 941	0.7	12.2	3 915.3	3 818.8	0.4	-2.5	875.9	794.7	1.9	-9.3
	Kazakhstan	821.9	635.2	0.1	-22.7	-	-	-	..
	Korea	160.2	-	-	-100.0	-	-	-	..
	Macau	73.0	61.0	0.0	-16.4	-	-	-	..
	Malaysia	229.5	-	-	-100.0	-	-	-	..
	Mauritius	92.9	0.0	-	-	..
	New Caledonia	50 362	50 297	0.2	-0.1	166.2	244.8	0.0	47.3	23.4	16.3	0.0	-30.2
	New Zealand	1 132 276	1 119 755	3.8	-1.1	22 519.3	22 833.2	2.6	1.4	2 549.2	2 648.5	6.2	3.9
	Papua New Guinea	45 479	51 275	0.2	12.7	-	-	-	..	-	-	-	..
	Philippines	85 919	88 641	0.3	3.2	1 561.3	1 562.2	0.2	0.1	156.7	63.3	0.1	-59.6
	Qatar	311.0	89.0	0.0	-71.4	-	-	-	..
	Singapore	993 779	956 993	3.2	-3.7	35 160.6	31 663.3	3.6	-9.9	2 739.0	2 748.2	6.4	0.3
	South Africa	172 387	182 766	0.6	6.0	2 474.8	2 689.8	0.3	8.7	169.0	180.5	0.4	6.8
	Taiwan	315.0	-100.0	-
	Thailand	79 995	144 916	0.5	81.2	2 782.1	3 856.3	0.4	38.6	172.6	1 009.0	2.4	484.5
	UK	392 811	296 860	1.0	-24.4	6 189.3	5 418.1	0.6	-12.5	2 454.3	1 695.9	4.0	-30.9
	United Arab Emirates	84.7	-	-	-100.0	-	-	-	..
	USA	1 077 996	1 164 565	3.9	8.0	28 633.9	30 743.1	3.5	7.4	5 005.7	4 356.2	10.2	-13.0
	Vietnam	58.6	104.0	0.0	77.4	-	-	-	..
	Western Samoa	5.5	0.0	..	-	-	-	..
Qantas Airways	ALL SERVICES	5 130 035	5 247 183	17.7	2.3	145 688.4	144 903.3	16.7	-0.5	15 980.2	15 374.6	35.8	-3.8
Qatar Airways	Qatar	141 839	188 708	0.6	33.0	9 600.2	12 682.9	1.5	32.1	58.9	126.0	0.3	113.8
Royal Brunei Airlines	Brunei	180 038	114 940	0.4	-36.2	4 291.2	6 486.4	0.7	51.2	1.0	5.9	0.0	470.9
Scoot (h)	Singapore	..	233 013	0.8	4 810.3	0.6	-	-	..
Silk Air (i)	Singapore	..	24 271	0.1	98.8	0.0	0.1	0.0	..
Singapore Airlines	Malaysia	217.5	-100.0	-
	New Zealand	12 903.1	10 905.9	1.3	-15.5	8.0	4.5	0.0	-43.8
	Singapore	2 529 282	2 715 471	9.2	7.4	113 964.0	119 626.4	13.7	5.0	2 903.1	3 160.7	7.4	8.9
Singapore Airlines	ALL SERVICES	2 529 282	2 715 471	9.2	7.4	127 084.5	130 532.3	15.0	2.7	2 911.1	3 165.2	7.4	8.7
Solomon Airlines	Solomon Islands	36 115	37 503	0.1	3.8	235.1	310.5	0.0	32.1	-	-	-	..
South African Airways	South Africa	123 232	125 915	0.4	2.2	3 543.3	4 074.6	0.5	15.0	41.5	37.8	0.1	-8.8
Tasman Cargo Airlines	New Zealand	..	-	-	..	9 017.7	9 391.6	1.1	4.1	-	-	-	..
Thai Airways International	Thailand	913 031	1 044 033	3.5	14.3	45 581.1	36 954.0	4.2	-18.9	2 577.5	2 405.6	5.6	-6.7
Tiger Airways	Singapore	100 585	117 354	0.4	16.7	-	-	-	..	-	-	-	..
United Airlines	Guam	..	14 424	0.0	10.1	0.0	0.1	0.0	..
	USA	453 605	436 942	1.5	-3.7	5 103.2	4 812.7	0.6	-5.7	1 677.0	2 112.1	4.9	25.9
United Airlines	ALL SERVICES	453 605	451 366	1.5	-0.5	5 103.2	4 822.7	0.6	-5.5	1 677.0	2 112.2	4.9	25.9
United Parcel Service	China	40.8	326.9	0.0	700.6	-	-	-	..
	Hong Kong (SAR)	15.1	49.6	0.0	229.5	-	-	-	..
	Singapore	1 095.8	1 206.9	0.1	10.1	-	-	-	..

TABLE 2 SCHEDULED OPERATOR MARKET SHARES AND GROWTH: Year ended December

Scheduled Operators	Country to/from	Total Passengers				Total Freight (tonnes)				Total Mail (tonnes)			
		2011	2012	(%) of TOTAL	(%) Change	2011	2012	(%) of TOTAL	(%) Change	2011	2012	(%) of TOTAL	(%) Change
United Parcel Service	Taiwan	177.4	149.6	0.0	-15.7	-	-	-	..
	USA	22 156.1	21 038.2	2.4	-5.0	-	-	-	..
United Parcel Service	ALL SERVICES	23 485.2	22 771.3	2.6	-3.0	-	-	-	..
V Australia (j)	South Africa	11 564	-100.0	39.8	-100.0	-
	Thailand	18 858	-100.0	205.9	-100.0	-
	United Arab Emirates	56 630	-100.0	1 170.0	-100.0	-
	USA	408 278	-100.0	8 424.5	-100.0	-
V Australia	ALL SERVICES	495 330	-100.0	9 840.2	-100.0	-
Vietnam Airlines	Vietnam	242 664	283 782	1.0	16.9	7 068.8	8 534.9	1.0	20.7	-	-	-	..
Virgin Atlantic Airways	Hong Kong (SAR)	99 577	103 753	0.4	4.2	8 212.7	9 000.4	1.0	9.6	-	-	-	..
	UK	56 662	69 502	0.2	22.7	718.5	628.8	0.1	-12.5	-	-	-	..
Virgin Atlantic Airways	ALL SERVICES	156 239	173 255	0.6	10.9	8 931.3	9 629.2	1.1	7.8	-	-	-	..
Virgin Australia (j)	Fiji	321 387	307 471	1.0	-4.3	192.8	272.4	0.0	41.2	-	-	-	..
	Indonesia	464 940	510 192	1.7	9.7	-	-	-	..	-	-	-	..
	New Zealand	883 755	961 037	3.2	8.7	1 448.0	1 244.2	0.1	-14.1	-	-	-	..
	Papua New Guinea	42 390	49 545	0.2	16.9	215.7	264.5	0.0	22.6	-	-	-	..
	Solomon Islands	18 120	17 216	0.1	-5.0	71.3	93.3	0.0	30.8	-	-	-	..
	Thailand	44 173	55 974	0.2	26.7	-	-	-	..	-	-	-	..
	Tonga	24 737	22 771	0.1	-7.9	27.2	29.6	0.0	8.8	-	-	-	..
	United Arab Emirates	8 452	68 133	0.2	706.1	206.7	2 248.2	0.3	987.5	-	-	-	..
	USA	36 910	418 975	1.4	>999.9	867.7	11 067.6	1.3	>999.9	-	-	-	..
	Vanuatu	48 389	46 806	0.2	-3.3	188.0	192.0	0.0	2.1	-	-	-	..
Virgin Australia	ALL SERVICES	1 893 253	2 458 120	8.3	29.8	3 217.5	15 411.8	1.8	379.0	-	-	-	..
Virgin Samoa (k)	Western Samoa	43 243	47 438	0.2	9.7	34.0	34.7	0.0	2.2	-	-	-	..
TOTAL		28 155 009	29 624 041	100.0	5.2	838 471.7	870 105.3	100.0	3.8	43 826.4	42 916.8	100.0	-2.1

Please refer to explanatory notes - paragraphs 3, 6 and 13 in particular.

(a) Operations between Australia and New Caledonia are shown under Air Caledonie. Service ceased August 2012.

(b) Operated as Strategic Airlines prior to November 2011. Service ceased February 2012.

(c) Data for operations to/from Melbourne and Sydney for May 2012 were not received and have been estimated.

(d) Operations taken over by United Airlines for March 2012 and onwards.

(e) Service ceased February 2012.

(f) No mail data received for December 2012. Missing data has been estimated.

(g) Service recommenced July 2012.

(h) Service commenced June 2012.

(i) Service recommenced March 2012.

(j) Pacific Blue and V Australia were re-branded as Virgin Australia in December 2011. Figures for V Australia which operated under its own airline code are shown separately prior to December 2011 and should be added to Virgin Australia figures if calculating changes in market share between the two periods shown in this table.

(k) Polynesian Blue was re-branded as Virgin Samoa in December 2011.

TABLE 3 AIRLINE PASSENGER CAPACITY AND UTILISATION TO AND FROM AUSTRALIA BY OPERATOR: Year ended December 2012

Scheduled Operator	Service to/from	Inbound				Outbound			
		No. of Flights	Pax Carried	Seats Available	Seat Utilisation %	No. of Flights	Pax Carried	Seats Available	Seat Utilisation %
Aerolineas Argentinas	Argentina	155	31 616	38 285	82.6	155	31 588	38 285	82.5
Air Austral (a) (b)	France	32	3 020	13 184	22.9	26	2 462	10 132	24.3
	Reunion	22	1 716	7 964	21.5	28	2 556	11 016	23.2
Air Austral	ALL SERVICES	54	4 736	21 148	22.4	54	5 018	21 148	23.7
Air Australia (c)	Indonesia	27	3 185	4 104	77.6	27	2 829	4 104	68.9
	Thailand	26	6 445	7 098	90.8	27	6 446	7 371	87.5
	USA	25	5 362	6 825	78.6	26	4 861	7 098	68.5
Air Australia	ALL SERVICES	78	14 992	18 027	83.2	80	14 136	18 573	76.1
Air Caledonie	New Caledonia	343	44 916	60 381	74.4	342	45 758	60 225	76.0
Air Canada	Canada	371	84 680	100 167	84.5	372	86 165	100 437	85.8
Air China	China	776	147 758	177 682	83.2	776	151 196	177 682	85.1
Air Mauritius (d)	Mauritius	107	24 494	30 011	81.6	107	23 775	30 011	79.2
Air New Zealand	Cook Islands	52	7 198	11 930	60.3	52	8 115	11 961	67.8
	New Zealand	7 339	1 184 531	1 433 263	82.6	7 329	1 165 232	1 432 326	81.4
	Tahiti	1	127	230	55.2	1	146	304	48.0
Air New Zealand	ALL SERVICES	7 392	1 191 856	1 445 423	82.5	7 382	1 173 493	1 444 591	81.2
Air Niugini	Papua New Guinea	1 151	96 960	169 471	57.2	1 144	98 028	168 379	58.2
Air Pacific	Fiji	1 228	210 698	270 085	78.0	1 227	212 920	269 923	78.9
Air Vanuatu	Vanuatu	514	55 142	87 380	63.1	515	55 461	87 550	63.3
AirAsia X	Malaysia	1 403	409 663	528 931	77.5	1 399	409 057	527 423	77.6
Airlines PNG	Papua New Guinea	111	1 884	3 867	48.7	109	1 768	3 803	46.5
Asiana Airlines	Korea	339	81 526	102 717	79.4	339	79 319	102 717	77.2
British Airways	UK	423	111 128	132 643	83.8	424	105 164	132 744	79.2
Cathay Pacific Airways	Hong Kong (SAR)	3 757	727 829	929 256	78.3	3 750	709 662	927 426	76.5
China Airlines (e)	New Zealand	193	28 412	59 237	48.0	193	44 085	59 237	74.4
	Taiwan	373	69 571	112 999	61.6	372	84 272	112 692	74.8
China Airlines	ALL SERVICES	566	97 983	172 236	56.9	565	128 357	171 929	74.7
China Eastern Airlines	China	759	176 301	201 111	87.7	757	171 377	200 543	85.5
China Southern Airlines	China	1 614	326 043	437 316	74.6	1 614	315 775	437 316	72.2
Continental Micronesia	Guam	17	1 557	2 122	73.4	17	1 388	2 122	65.4
Delta Air Lines	USA	363	79 124	97 647	81.0	363	81 745	97 647	83.7
Emirates (f)	New Zealand	1 459	288 291	456 426	63.2	1 460	265 361	455 308	58.3
	United Arab Emirates	3 840	977 233	1 230 247	79.4	3 743	971 456	1 231 496	78.9
Emirates	ALL SERVICES	5 299	1 265 524	1 686 673	75.0	5 203	1 236 817	1 686 804	73.3
Etihad Airways	United Arab Emirates	1 126	272 572	316 149	86.2	1 126	271 324	316 143	85.8
Eva Air	Taiwan	98	18 385	24 696	74.4	100	17 642	25 200	70.0
Federal Express Corporation (g)	China	-	316
	USA	316	-
Federal Express Corporation	ALL SERVICES	316	316
Garuda Indonesia	Indonesia	2 107	315 251	433 290	72.8	2 106	303 702	433 103	70.1

TABLE 3 AIRLINE PASSENGER CAPACITY AND UTILISATION TO AND FROM AUSTRALIA BY OPERATOR: Year ended December 2012

Scheduled Operator	Service to/from	Inbound				Outbound			
		No. of Flights	Pax Carried	Seats Available	Seat Utilisation %	No. of Flights	Pax Carried	Seats Available	Seat Utilisation %
Hainan Airlines (h)	China	12	2 945	3 408	86.4	13	3 006	3 692	81.4
Hawaiian Airlines	USA	381	89 029	106 558	83.5	381	88 386	106 558	82.9
Indonesia AirAsia	Indonesia	1 098	143 064	197 640	72.4	1 098	137 183	197 640	69.4
Japan Airlines	Japan	366	73 711	89 805	82.1	366	73 229	89 805	81.5
Jetstar	China	277	60 852	84 512	72.0	278	63 752	84 815	75.2
	Fiji	208	28 689	37 159	77.2	206	29 099	36 768	79.1
	Indonesia	1 533	268 095	346 356	77.4	1 545	279 563	348 809	80.1
	Japan	1 316	261 481	379 263	68.9	1 318	264 240	379 694	69.6
	New Zealand	2 073	287 263	370 104	77.6	2 076	299 250	370 644	80.7
	Philippines	40	5 880	7 116	82.6	42	5 943	7 473	79.5
	Singapore	893	125 290	180 002	69.6	880	133 771	177 858	75.2
	Thailand	332	80 647	101 170	79.7	331	82 201	100 860	81.5
	USA	320	79 108	97 450	81.2	325	79 768	98 972	80.6
	Vietnam	39	5 125	6 957	73.7	39	4 981	6 957	71.6
Jetstar	ALL SERVICES	7 031	1 202 430	1 610 089	74.7	7 040	1 242 568	1 612 850	77.0
Jetstar Asia	Singapore	366	48 598	65 880	73.8	366	52 846	65 880	80.2
Korean Air	Korea	781	165 669	209 390	79.1	782	158 578	209 616	75.7
LAN Airlines	Chile	305	56 770	78 092	72.7	308	55 191	78 860	70.0
Malaysia Airlines	China	21	-	-
	Indonesia	-	1	-
	Malaysia	2 689	589 498	751 741	78.4	2 700	516 791	750 946	68.8
Malaysia Airlines	ALL SERVICES	2 710	589 498	751 741	78.4	2 701	516 791	750 946	68.8
Our Airline	Nauru	61	3 830	7 568	50.6	62	4 006	7 685	52.1
Pacific Air Express (g)	Papua New Guinea	98	98
	Solomon Islands	52	52
Pacific Air Express	ALL SERVICES	150	150
Philippine Airlines	Philippines	330	67 957	106 098	64.1	329	63 151	105 834	59.7
Polar Air Cargo (g) (i)	Hong Kong (SAR)	-	4
	USA	49	-
Polar Air Cargo	ALL SERVICES	49	4
Qantas Airways	Argentina	36	10 299	12 586	81.8	36	10 438	12 621	82.7
	Chile	123	34 957	44 683	78.2	123	37 396	44 689	83.7
	China	434	75 148	94 711	79.3	435	74 024	94 884	78.0
	Germany	356	112 847	131 630	85.7	358	114 558	132 420	86.5
	Hong Kong (SAR)	1 232	300 573	384 492	78.2	1 228	281 602	383 233	73.5
	India	52	14 430	16 251	88.8	51	13 208	15 927	82.9
	Indonesia	205	41 554	55 756	74.5	205	40 947	55 855	73.3
	Japan	367	104 279	131 292	79.4	367	110 927	131 310	84.5
	New Caledonia	211	30 282	39 023	77.6	211	29 680	39 024	76.1
	New Zealand	5 363	647 118	850 699	76.1	5 364	626 571	853 380	73.4

TABLE 3 AIRLINE PASSENGER CAPACITY AND UTILISATION TO AND FROM AUSTRALIA BY OPERATOR: Year ended December 2012

Scheduled Operator	Service to/from	Inbound				Outbound			
		No. of Flights	Pax Carried	Seats Available	Seat Utilisation %	No. of Flights	Pax Carried	Seats Available	Seat Utilisation %
Qantas Airways	Papua New Guinea	619	26 972	45 806	58.9	622	24 303	46 026	52.8
	Philippines	203	50 021	58 321	85.8	203	47 201	58 345	80.9
	Singapore	1 171	281 145	347 045	81.0	1 169	267 793	348 030	76.9
	South Africa	365	102 974	128 880	79.9	365	95 451	128 914	74.0
	Thailand	276	69 511	81 976	84.8	309	72 295	82 036	88.1
	UK	886	344 946	385 489	89.5	884	326 935	386 041	84.7
	USA	2 249	615 677	706 593	87.1	2 212	616 678	731 461	84.3
	Western Samoa	1	1
Qantas Airways	ALL SERVICES	14 149	2 862 733	3 515 233	81.4	14 143	2 790 007	3 544 196	78.7
Qatar Airways	Qatar	462	97 026	123 914	78.3	462	91 682	123 914	74.0
Royal Brunei Airlines	Brunei	330	54 834	94 050	58.3	329	60 106	93 765	64.1
Scoot (j)	Singapore	357	113 075	143 514	78.8	356	119 938	143 112	83.8
Silk Air (k)	Singapore	161	12 220	21 964	55.6	160	12 051	21 814	55.2
Singapore Airlines	New Zealand	103	109
	Singapore	5 470	1 378 554	1 689 616	81.6	5 459	1 336 917	1 689 491	79.1
Singapore Airlines	ALL SERVICES	5 573	1 378 554	1 689 616	81.6	5 568	1 336 917	1 689 491	79.1
Solomon Airlines	Solomon Islands	211	19 090	31 650	60.3	212	18 413	31 800	57.9
South African Airways	South Africa	334	63 121	88 322	71.5	334	62 794	88 325	71.1
Tasman Cargo Airlines (g)	New Zealand	240	-	-	..	240	-	-	..
Thai Airways International	Thailand	1 940	519 916	659 225	78.9	1 942	524 117	659 861	79.4
Tiger Airways	Singapore	372	56 660	66 960	84.6	372	60 694	66 960	90.6
United Airlines	Guam	88	7 066	11 360	62.2	88	7 358	11 360	64.8
	USA	728	218 735	272 272	80.3	719	218 207	268 906	81.1
United Airlines	ALL SERVICES	816	225 801	283 632	79.6	807	225 565	280 266	80.5
United Parcel Service (g)	China	-	290
	Hong Kong (SAR)	-	38
	Singapore	-	51
	Taiwan	-	28
	USA	419	1
United Parcel Service	ALL SERVICES	419	408
Vietnam Airlines	Vietnam	699	146 637	195 538	75.0	697	137 145	194 950	70.3
Virgin Atlantic Airways	UK	366	87 237	112 728	77.4	366	86 018	112 728	76.3
Virgin Australia	Fiji	1 127	154 912	202 382	76.5	1 128	152 559	202 552	75.3
	Indonesia	1 902	251 203	333 210	75.4	1 904	258 989	333 562	77.6
	New Zealand	3 488	476 907	625 632	76.2	3 495	484 130	626 896	77.2
	Papua New Guinea	246	24 558	43 634	56.3	246	24 987	43 634	57.3
	Solomon Islands	105	8 131	18 408	44.2	105	9 085	18 408	49.4
	Thailand	224	28 495	39 298	72.5	225	27 479	39 468	69.6
	Tonga	102	10 935	18 360	59.6	104	11 836	18 720	63.2
	United Arab Emirates	128	34 476	46 208	74.6	126	33 657	45 486	74.0

TABLE 3 AIRLINE PASSENGER CAPACITY AND UTILISATION TO AND FROM AUSTRALIA BY OPERATOR: Year ended December 2012

Scheduled Operator	Service to/from	Inbound				Outbound			
		No. of Flights	Pax Carried	Seats Available	Seat Utilisation %	No. of Flights	Pax Carried	Seats Available	Seat Utilisation %
Virgin Australia	USA	727	206 316	262 447	78.6	726	212 659	262 086	81.1
	Vanuatu	202	23 326	36 290	64.3	202	23 480	36 290	64.7
Virgin Australia	ALL SERVICES	8 251	1 219 259	1 625 869	75.0	8 261	1 238 861	1 627 102	76.1
Virgin Samoa	Western Samoa	207	23 679	37 260	63.6	203	23 759	36 540	65.0
TOTAL		78 994	15 115 961	19 402 458	77.9	78 802	14 913 637	19 425 914	76.8

Please refer to explanatory notes - paragraphs 4, 5, 7 and 14 in particular.

In addition to the above, please note the following regarding **Seat Factors** shown in this table:

Traffic shown in this table for Qantas Airways will differ from traffic shown in Tables 1 and 2 because of the inclusion in this table of total traffic into and ex Australia (for seat factor purposes) whereas Tables 1 and 2 include uplift/discharge traffic only.

All other airlines report uplift/discharge traffic only. Therefore, for other airlines operating **via** Australia, the seat factors shown here reflect the total seats on the aircraft but only the Australian uplift/discharge portion of passengers on the aircraft. The true seat factors for airlines that operate **via** Australia will most likely be higher than what is shown in this table.

The following airlines are affected:

Air Austral, China Airlines and Emirates

- (a) Traffic carried via Australia to/from New Caledonia is not recorded and therefore, reported seat utilisation figures are understated.
- (b) Operations between Australia and New Caledonia are shown under Air Caledonie. Service ceased August 2012.
- (c) Operated as Strategic Airlines prior to November 2011. Service ceased February 2012.
- (d) Data for operations to/from Melbourne and Sydney for May 2012 were not received and have been estimated.
- (e) Traffic carried via Australia to/from New Zealand is not recorded and therefore, reported seat utilisation figures are understated.
- (f) Traffic carried via Australia to/from New Zealand is not recorded. In order to provide more accurate seat utilisation figures, operated seats have been adjusted to show the seats available only for uplift/discharge traffic.
- (g) Freight flights only.
- (h) Service ceased February 2012.
- (i) Service recommenced July 2012.
- (j) Service commenced June 2012.
- (k) Service recommenced March 2012.

TABLE 4 SCHEDULED INTERNATIONAL AIRPORT TRAFFIC AND AIRCRAFT MOVEMENTS: Year ended December

		Inbound		(%)	Outbound		(%)	Total		(%)	(%) of
		2011	2012	Change	2011	2012	Change	2011	2012	Change	TOTAL
Adelaide	Passengers	296 137	330 842	11.7	286 936	319 235	11.3	583 073	650 077	11.5	2.2
	Freight (Tonnes)	9 489	10 310	8.6	8 552	9 017	5.4	18 041	19 327	7.1	2.2
	Aircraft Movements	1 728	2 020	16.9	1 727	2 026	17.3	3 455	4 046	17.1	2.4
Brisbane	Passengers	2 232 345	2 271 825	1.8	2 212 522	2 211 584	0.0	4 444 867	4 483 409	0.9	15.1
	Freight (Tonnes)	53 698	55 867	4.0	47 609	47 224	-0.8	101 307	103 091	1.8	11.8
	Aircraft Movements	13 709	13 272	-3.2	13 700	13 346	-2.6	27 409	26 618	-2.9	15.9
Cairns	Passengers	254 540	257 389	1.1	249 532	253 970	1.8	504 072	511 359	1.4	1.7
	Freight (Tonnes)	2 521	1 820	-27.8	3 444	3 485	1.2	5 966	5 305	-11.1	0.6
	Aircraft Movements	3 022	2 867	-5.1	3 020	2 809	-7.0	6 042	5 676	-6.1	3.4
Darwin	Passengers	160 648	161 735	0.7	166 287	166 979	0.4	326 935	328 714	0.5	1.1
	Freight (Tonnes)	181	218	20.9	164	78	-52.3	345	296	-14.0	0.0
	Aircraft Movements	2 241	1 891	-15.6	2 239	1 862	-16.8	4 480	3 753	-16.2	2.2
Gold Coast	Passengers	356 305	409 401	14.9	359 558	415 023	15.4	715 863	824 424	15.2	2.8
	Freight (Tonnes)	4 835	5 030	4.0	1 105	1 210	9.4	5 940	6 240	5.0	0.7
	Aircraft Movements	2 018	2 230	10.5	2 021	2 230	10.3	4 039	4 460	10.4	2.7
Melbourne	Passengers	3 248 438	3 439 570	5.9	3 212 520	3 379 672	5.2	6 460 958	6 819 242	5.5	23.0
	Freight (Tonnes)	125 732	127 904	1.7	102 591	110 192	7.4	228 323	238 096	4.3	27.4
	Aircraft Movements	16 905	17 724	4.8	16 870	17 691	4.9	33 775	35 415	4.9	21.2
Norfolk Island	Passengers	5 033	5 049	0.3	5 080	5 040	-0.8	10 113	10 089	-0.2	0.0
	Freight (Tonnes)	76	75	-1.6	3	7	129.1	79	82	3.6	0.0
	Aircraft Movements	52	53	1.9	52	52	..	104	105	1.0	0.1
Perth	Passengers	1 696 939	1 831 576	7.9	1 652 529	1 787 192	8.1	3 349 468	3 618 768	8.0	12.2
	Freight (Tonnes)	40 329	47 152	16.9	29 549	32 274	9.2	69 878	79 426	13.7	9.1
	Aircraft Movements	9 557	9 963	4.2	9 558	9 957	4.2	19 115	19 920	4.2	11.9
Port Hedland	Passengers	783	..	-100.0	703	..	-100.0	1 486	..	-100.0	..
	Freight (Tonnes)	-	-	-
	Aircraft Movements	12	..	-100.0	12	..	-100.0	24	..	-100.0	..
Sunshine Coast	Passengers	..	2 864	2 849	..	-	5 713	..	0.0
	Freight (Tonnes)	..	-	-	..	-	-
	Aircraft Movements	..	24	24	..	-	48	..	0.0
Sydney	Passengers	5 895 629	6 202 432	5.2	5 852 953	6 169 814	5.4	11 748 582	12 372 246	5.3	41.8
	Freight (Tonnes)	284 622	292 830	2.9	123 972	125 413	1.2	408 593	418 242	2.4	48.1
	Aircraft Movements	32 559	33 601	3.2	32 442	33 456	3.1	65 001	67 057	3.2	40.1
Townsville	Passengers	5 046	..	-100.0	4 546	..	-100.0	9 592	..	-100.0	..
	Freight (Tonnes)	-	-	-
	Aircraft Movements	52	..	-100.0	52	..	-100.0	104	..	-100.0	..
TOTAL	Passengers	14 151 843	14 912 683	5.4	14 003 166	14 711 358	5.1	28 155 009	29 624 041	5.2	100.0
	Freight (Tonnes)	521 483	541 205	3.8	316 989	328 900	3.8	838 472	870 105	3.8	100.0
	Aircraft Movements	81 855	83 645	2.2	81 693	83 453	2.2	163 548	167 098	2.2	100.0

TABLE 5 SCHEDULED INTERNATIONAL TRAFFIC BY CITY PAIRS: Year ended December

Foreign Port	Australian Port	Passengers						Freight (tonnes)					
		2011			2012			2011			2012		
		Inbound	Outbound	Total	Inbound	Outbound	Total	Inbound	Outbound	Total	Inbound	Outbound	Total
Astana	Adelaide	0	0	0	0	0	0	0.0	0.0	0.0	0.0	183.0	183.0
Auckland		32 472	34 748	67 220	33 510	37 411	70 921	251.8	167.4	419.2	256.1	91.4	347.5
Chicago		0	0	0	0	0	0	0.0	0.0	0.0	0.0	0.0	0.0
Denpasar		26 721	29 146	55 867	31 860	35 705	67 565	0.0	0.0	0.0	0.0	0.0	0.0
Dubai		0	0	0	7 185	8 989	16 174	0.0	0.0	0.0	334.6	494.0	828.6
Hong Kong		42 622	33 632	76 254	44 339	34 139	78 478	1 474.3	2 054.0	3 528.3	1 431.8	2 066.1	3 498.0
Kuala Lumpur		65 876	65 527	131 403	72 423	64 787	137 210	2 279.5	943.6	3 223.1	2 989.7	1 710.7	4 700.4
New York		0	0	0	0	0	0	0.0	0.0	0.0	0.0	0.0	0.0
Singapore		128 446	123 883	252 329	141 525	138 204	279 729	5 483.6	5 386.7	10 870.3	5 297.3	4 472.2	9 769.5
Total	Adelaide	296 137	286 936	583 073	330 842	319 235	650 077	9 489.2	8 551.7	18 040.9	10 309.6	9 017.4	19 326.9
Abu Dhabi	Brisbane	23 952	22 955	46 907	24 726	21 810	46 536	660.9	785.0	1 445.8	747.3	726.3	1 473.7
Apia		5 607	5 602	11 209	6 418	6 081	12 499	0.1	0.1	0.1	0.0	0.1	0.1
Auckland		398 551	395 590	794 141	418 674	417 471	836 145	8 331.8	6 992.7	15 324.5	8 828.6	6 363.3	15 191.9
Bandar Seri Begawan		48 804	44 045	92 849	0	0	0	962.2	895.9	1 858.1	0.0	0.0	0.0
Bangkok		65 050	69 116	134 166	90 239	91 087	181 326	4 696.7	2 529.5	7 226.2	4 244.4	2 666.9	6 911.3
Beijing		536	595	1 131	7 737	6 652	14 389	0.0	0.0	0.0	0.0	3.6	3.6
Bombay		6 085	4 652	10 737	2 258	1 451	3 709	429.3	22.5	451.8	114.6	3.9	118.5
Chicago		0	0	0	0	0	0	19.8	0.0	19.8	48.9	0.0	48.9
Christchurch		150 403	147 662	298 065	115 992	118 566	234 558	465.6	340.8	806.4	430.1	236.9	667.0
Dallas		19 824	0	19 824	48 432	0	48 432	34.6	0.0	34.6	184.8	0.0	184.8
Denpasar		81 789	98 008	179 797	65 886	74 354	140 240	0.0	0.0	0.0	0.0	5.9	5.9
Doha		0	0	0	0	0	0	0.0	69.0	69.0	0.0	0.0	0.0
Dubai		131 181	127 644	258 825	151 913	152 670	304 583	4 132.0	3 290.7	7 422.7	5 343.1	4 458.1	9 801.2
Dunedin		25 884	25 723	51 607	26 733	27 285	54 018	0.3	0.4	0.8	0.0	0.0	0.0
Espiritu Santo		2 032	2 605	4 637	2 149	2 501	4 650	2.3	6.2	8.5	3.7	5.4	9.0
Guangzhou		33 991	31 356	65 347	39 316	36 350	75 666	1 361.5	45.7	1 407.2	2 075.4	39.3	2 114.7
Hamilton		19 560	19 470	39 030	15 626	15 263	30 889	0.0	0.0	0.0	0.0	0.0	0.0
Hong Kong		138 581	134 345	272 926	140 688	135 012	275 700	7 055.2	5 474.1	12 529.2	6 622.2	4 396.7	11 018.9
Honiara		27 044	27 361	54 405	27 221	27 498	54 719	110.3	904.1	1 014.4	389.0	828.1	1 217.1
Honolulu		573	1 326	1 899	4 931	5 649	10 580	0.0	0.3	0.3	0.0	35.4	35.4
Kuala Lumpur		53 699	55 778	109 477	55 085	48 966	104 051	2 391.3	1 177.7	3 569.0	3 080.7	1 488.1	4 568.7
London		0	0	0	173	0	173	0.0	0.0	0.0	11.2	0.0	11.2
Los Angeles		160 437	156 074	316 511	153 632	152 083	305 715	3 933.7	1 775.4	5 709.1	4 029.6	1 866.9	5 896.4
Manila		8 800	8 466	17 266	9 454	9 216	18 670	25.3	31.1	56.4	22.7	46.7	69.4
Nadi		107 673	104 635	212 308	99 548	96 553	196 101	680.4	323.5	1 003.8	210.2	277.1	487.4
Nauru		2 104	2 122	4 226	3 830	4 006	7 836	6.2	93.9	100.1	4.0	138.9	142.9
New York		0	0	0	0	0	0	1.0	0.0	1.0	0.0	0.0	0.0
Noumea		19 827	22 888	42 715	20 328	21 974	42 302	7.3	234.4	241.7	3.8	234.0	237.8
Osaka		92	0	92	152	0	152	0.0	0.0	0.0	0.0	0.0	0.0
Phuket		22 986	22 955	45 941	3 315	3 349	6 664	149.4	1.1	150.5	0.0	0.0	0.0
Port Moresby		87 075	85 403	172 478	92 556	89 796	182 352	841.1	4 208.6	5 049.6	716.7	4 818.2	5 534.8
Port Vila		33 302	33 691	66 993	35 959	36 637	72 596	549.4	348.0	897.4	392.7	342.0	734.7
Queenstown		12 593	14 196	26 789	12 602	14 776	27 378	0.3	0.2	0.4	0.0	0.1	0.1
San Francisco		37	0	37	0	0	0	0.0	0.0	0.0	0.0	0.0	0.0
Seoul		44 323	45 387	89 710	51 697	47 281	98 978	336.3	1 195.3	1 531.7	384.4	1 070.2	1 454.6
Shanghai		0	0	0	0	0	0	0.0	0.0	0.0	89.1	0.0	89.1
Singapore		362 053	356 541	718 594	405 636	396 488	802 124	14 715.9	15 839.2	30 555.1	16 276.6	16 058.7	32 335.3
Taipei		47 037	53 612	100 649	43 513	55 135	98 648	1 763.5	984.4	2 747.9	1 611.4	1 112.7	2 724.1
Tarawa		78	69	147	0	0	0	0.0	0.5	0.5	0.0	0.0	0.0

TABLE 5 SCHEDULED INTERNATIONAL TRAFFIC BY CITY PAIRS: Year ended December

Foreign Port	Australian Port	Passengers						Freight (tonnes)					
		2011			2012			2011			2012		
		Inbound	Outbound	Total	Inbound	Outbound	Total	Inbound	Outbound	Total	Inbound	Outbound	Total
Tokyo	Brisbane	254	0	254	677	0	677	0.0	0.0	0.0	2.1	0.0	2.1
Wellington		90 528	92 650	183 178	94 729	95 624	190 353	34.3	39.3	73.5	0.0	0.0	0.0
Total	Brisbane	2 232 345	2 212 522	4 444 867	2 271 825	2 211 584	4 483 409	53 697.8	47 609.2	101 307.0	55 867.3	47 223.6	103 090.9
Auckland	Cairns	36 066	38 059	74 125	37 602	40 444	78 046	101.5	28.6	130.1	72.2	47.4	119.6
Denpasar		0	0	0	731	0	731	0.0	0.0	0.0	0.0	0.0	0.0
Guam		12 121	12 431	24 552	8 623	8 746	17 369	1.7	15.2	16.9	1.1	11.1	12.2
Hong Kong		31 260	29 447	60 707	32 391	30 647	63 038	239.7	2 440.5	2 680.2	354.0	2 696.3	3 050.3
Osaka		38 524	33 141	71 665	43 779	43 626	87 405	532.0	213.8	745.8	157.4	60.7	218.1
Port Moresby		48 062	46 052	94 114	51 429	49 441	100 870	76.1	224.1	300.2	61.6	185.5	247.1
Shanghai		0	0	0	4 182	4 155	8 337	0.0	0.0	0.0	1.2	0.0	1.2
Singapore		18 304	19 174	37 478	2 267	3 458	5 725	0.0	0.0	0.0	0.0	0.0	0.0
Tokyo		70 203	71 228	141 431	76 385	73 453	149 838	1 570.5	522.0	2 092.5	1 172.8	484.0	1 656.8
Total	Cairns	254 540	249 532	504 072	257 389	253 970	511 359	2 521.5	3 444.2	5 965.7	1 820.3	3 484.9	5 305.2
Denpasar	Darwin	86 882	90 451	177 333	67 339	67 768	135 107	31.6	4.3	35.9	33.6	0.3	33.9
Ho Chi Minh City		16 209	15 546	31 755	5 125	4 981	10 106	43.0	3.6	46.5	13.6	0.8	14.5
Manila		14 498	15 428	29 926	22 586	25 429	48 015	0.0	0.9	0.9	0.0	0.0	0.0
Osaka		0	0	0	22	37	59	0.0	0.0	0.0	0.0	0.0	0.0
Singapore		43 059	44 862	87 921	65 771	67 848	133 619	106.0	155.4	261.3	170.9	77.2	248.1
Tokyo		0	0	0	892	916	1 808	0.0	0.0	0.0	0.0	0.0	0.0
Total	Darwin	160 648	166 287	326 935	161 735	166 979	328 714	180.5	164.1	344.6	218.2	78.3	296.5
Auckland	Gold Coast	124 591	132 619	257 210	128 282	133 666	261 948	28.3	66.7	94.9	31.7	88.6	120.2
Christchurch		22 565	21 184	43 749	36 458	35 747	72 205	5.2	33.2	38.4	3.9	46.7	50.6
Guam		0	180	180	0	0	0	0.0	0.0	0.0	0.0	0.0	0.0
Kuala Lumpur		95 204	91 086	186 290	82 403	80 682	163 085	2 336.7	206.2	2 542.9	1 096.7	74.2	1 170.9
Osaka		59 085	58 652	117 737	47 563	47 453	95 016	1 323.9	460.1	1 784.0	792.6	393.1	1 185.7
Queenstown		7 519	9 166	16 685	0	0	0	0.0	0.0	0.0	0.0	0.0	0.0
Singapore		0	0	0	46 540	48 787	95 327	0.0	0.0	0.0	1 431.9	157.3	1 589.2
Tokyo		47 341	46 671	94 012	68 155	68 688	136 843	1 140.6	339.2	1 479.8	1 673.2	449.7	2 122.8
Total	Gold Coast	356 305	359 558	715 863	409 401	415 023	824 424	4 834.7	1 105.4	5 940.1	5 029.9	1 209.6	6 239.5
Abu Dhabi	Melbourne	77 519	78 811	156 330	83 281	83 599	166 880	3 451.2	4 887.6	8 338.8	3 268.8	5 458.4	8 727.3
Almaty		0	0	0	0	0	0	0.0	180.0	180.0	0.0	115.0	115.0
Astana		0	0	0	0	0	0	0.0	641.9	641.9	0.0	337.2	337.2
Auckland		456 925	444 321	901 246	475 859	459 541	935 400	15 845.9	10 829.3	26 675.2	15 843.2	10 701.4	26 544.6
Bandar Seri Begawan		23 375	25 412	48 787	54 834	60 106	114 940	1 001.1	1 198.2	2 199.3	2 493.3	3 993.1	6 486.4
Bangkok		195 165	201 353	396 518	214 415	222 540	436 955	11 900.3	8 030.4	19 930.7	9 987.8	7 649.7	17 637.5
Beijing		29 417	29 338	58 755	30 057	30 296	60 353	582.6	835.1	1 417.8	384.6	730.0	1 114.6
Chicago		3 361	3 966	7 327	979	578	1 557	1 559.1	0.6	1 559.7	1 555.6	8.5	1 564.1
Christchurch		130 377	132 363	262 740	128 995	129 396	258 391	689.4	439.0	1 128.4	498.3	559.1	1 057.4
Cincinnati		0	0	0	0	0	0	0.0	0.0	0.0	457.9	0.0	457.9
Denpasar		128 484	122 257	250 741	161 218	156 709	317 927	2 364.2	320.2	2 684.4	2 896.6	327.5	3 224.0
Doha		70 617	71 222	141 839	75 312	73 700	149 012	3 755.2	5 845.0	9 600.2	3 985.5	6 811.1	10 796.5
Dubai		182 098	174 988	357 086	212 908	210 015	422 923	8 871.1	11 299.1	20 170.2	10 641.6	17 259.2	27 900.8
Dunedin		2 471	2 347	4 818	2 003	1 934	3 937	0.0	0.0	0.0	0.0	0.0	0.0
Guangzhou		79 584	87 703	167 287	107 361	107 438	214 799	2 906.2	515.5	3 421.7	4 320.6	314.9	4 635.5
Hanoi		6 133	8 889	15 022	7 853	10 995	18 848	0.0	620.3	620.3	0.0	684.6	684.6
Ho Chi Minh City		51 611	46 778	98 389	63 773	55 073	118 846	2 322.1	646.2	2 968.3	2 975.6	842.5	3 818.0
Hohhot		0	0	0	0	0	0	0.0	296.1	296.1	0.0	0.0	0.0
Hong Kong		247 618	253 495	501 113	267 682	261 917	529 599	19 365.7	14 868.8	34 234.6	18 266.6	14 669.8	32 936.4
Honolulu		367	2 490	2 857	3 625	5 050	8 675	0.0	2.2	2.2	3.5	3.5	6.9

TABLE 5 SCHEDULED INTERNATIONAL TRAFFIC BY CITY PAIRS: Year ended December

Foreign Port	Australian Port	Passengers						Freight (tonnes)					
		2011			2012			2011			2012		
		Inbound	Outbound	Total	Inbound	Outbound	Total	Inbound	Outbound	Total	Inbound	Outbound	Total
Jakarta	Melbourne	27 258	26 886	54 144	35 459	34 592	70 051	1 208.6	682.1	1 890.8	1 300.5	464.5	1 765.0
Johannesburg		5 870	5 694	11 564	0	0	0	6.4	33.4	39.8	0.0	0.0	0.0
Kuala Lumpur		335 418	333 030	668 448	319 905	301 544	621 449	12 740.8	7 096.1	19 836.9	12 559.6	6 067.6	18 627.2
London		91 926	88 377	180 303	73 430	66 979	140 409	1 716.8	382.6	2 099.4	1 652.4	279.7	1 932.1
Los Angeles		207 765	211 241	419 006	227 503	228 937	456 440	1 731.4	3 090.7	4 822.1	1 934.1	3 056.9	4 991.0
Manila		29 851	23 732	53 583	27 178	24 557	51 735	1 408.3	359.0	1 767.3	1 822.8	398.0	2 220.8
Mauritius		8 866	8 418	17 284	3 446	3 386	6 832	205.8	94.5	300.3	57.8	11.5	69.3
Nadi		67 274	69 210	136 484	69 574	74 066	143 640	1 350.7	577.3	1 928.0	418.8	341.4	760.1
New York		0	0	0	0	0	0	1 413.9	5.4	1 419.2	1 302.2	5.4	1 307.6
Ningbo		0	0	0	0	0	0	0.0	103.0	103.0	0.0	0.0	0.0
Phuket		22 708	22 892	45 600	3 151	3 101	6 252	188.7	0.2	188.9	0.0	0.0	0.0
Port Vila		2 316	3 874	6 190	2 302	3 142	5 444	1.6	6.0	7.5	1.1	4.3	5.5
Queenstown		21 288	23 755	45 043	27 122	29 755	56 877	0.2	0.3	0.4	0.1	0.0	0.1
Seoul		26 072	27 596	53 668	27 052	27 197	54 249	983.4	2 077.7	3 061.1	402.6	1 901.4	2 304.0
Shanghai		88 149	80 724	168 873	103 936	100 269	204 205	2 953.7	1 795.2	4 748.9	2 685.3	1 371.6	4 056.9
Singapore		542 686	520 309	1 062 995	536 976	527 301	1 064 277	25 013.8	24 356.9	49 370.7	25 966.1	25 475.2	51 441.3
Taipei		0	0	0	0	0	0	0.0	315.0	315.0	0.0	0.0	0.0
Tianjin		0	0	0	0	0	0	0.0	0.0	0.0	0.0	199.5	199.5
Wellington		85 869	81 049	166 918	92 381	85 959	178 340	193.5	160.1	353.6	221.1	149.7	370.8
Total	Melbourne	3 248 438	3 212 520	6 460 958	3 439 570	3 379 672	6 819 242	125 732.0	102 590.9	228 322.8	127 904.0	110 191.9	238 095.8
Auckland	Norfolk Island	5 033	5 080	10 113	5 049	5 040	10 089	76.2	3.2	79.3	74.9	7.2	82.2
Total	Norfolk Island	5 033	5 080	10 113	5 049	5 040	10 089	76.2	3.2	79.3	74.9	7.2	82.2
Auckland	Perth	69 928	66 507	136 435	82 243	77 834	160 077	2 809.7	1 450.1	4 259.8	3 236.1	1 473.2	4 709.4
Bandar Seri Begawan		19 996	18 406	38 402	0	0	0	133.9	99.9	233.9	0.0	0.0	0.0
Bangkok		54 922	48 798	103 720	64 743	65 154	129 897	2 687.1	1 462.4	4 149.5	2 781.9	1 679.4	4 461.3
Beijing		602	768	1 370	5 288	3 923	9 211	57.5	0.2	57.7	280.5	7.8	288.3
Chicago		0	0	0	0	0	0	27.7	0.0	27.7	0.0	0.0	0.0
Denpasar		403 226	403 007	806 233	421 875	427 326	849 201	182.2	53.0	235.2	121.1	31.1	152.2
Doha		0	0	0	21 714	17 982	39 696	0.0	242.0	242.0	1 052.3	923.0	1 975.3
Dubai		170 537	166 275	336 812	200 205	197 374	397 579	5 850.7	3 479.1	9 329.8	7 862.6	3 671.3	11 533.9
Guangzhou		2 343	3 706	6 049	23 590	22 486	46 076	70.7	13.2	83.9	764.0	72.4	836.5
Hong Kong		119 036	112 983	232 019	127 659	119 287	246 946	5 572.2	5 107.8	10 680.0	5 469.7	5 062.8	10 532.5
Jakarta		13 500	14 198	27 698	15 785	16 636	32 421	0.0	0.0	0.0	0.0	0.0	0.0
Johannesburg		63 206	60 026	123 232	63 121	62 794	125 915	900.3	2 642.9	3 543.3	1 038.1	3 036.5	4 074.6
Kota Kinabalu		14 497	14 352	28 849	1 959	1 459	3 418	1.3	2.1	3.4	0.0	0.3	0.3
Kuala Lumpur		216 955	216 863	433 818	233 646	220 741	454 387	6 158.6	1 954.6	8 113.2	7 443.2	2 805.1	10 248.4
Mauritius		10 761	10 170	20 931	18 706	18 160	36 866	301.4	162.3	463.8	473.3	257.1	730.4
New York		0	0	0	0	0	0	0.5	0.1	0.6	0.0	0.0	0.0
Phuket		35 230	40 603	75 833	38 152	35 919	74 071	57.5	198.5	256.0	47.7	85.3	133.0
Shanghai		0	0	0	0	0	0	0.0	13.1	13.1	0.0	0.0	0.0
Singapore		495 145	470 368	965 513	512 890	500 117	1 013 007	15 335.9	12 606.3	27 942.2	16 580.9	13 169.1	29 750.0
Tokyo		7 055	5 499	12 554	0	0	0	181.6	61.3	242.9	0.0	0.0	0.0
Total	Perth	1 696 939	1 652 529	3 349 468	1 831 576	1 787 192	3 618 768	40 328.8	29 549.0	69 877.8	47 151.6	32 274.5	79 426.1
Denpasar	Port Hedland	783	703	1 486	0	0	0	0.0	0.0	0.0	0.0	0.0	0.0
Total	Port Hedland	783	703	1 486	0	0	0	0.0	0.0	0.0	0.0	0.0	0.0
Auckland	Sunshine Coast	0	0	0	2 864	2 849	5 713	0.0	0.0	0.0	0.0	0.0	0.0
Total	Sunshine Coast	0	0	0	2 864	2 849	5 713	0.0	0.0	0.0	0.0	0.0	0.0
Abu Dhabi	Sydney	174 262	175 437	349 699	188 195	188 383	376 578	6 294.3	4 950.6	11 245.0	7 025.1	7 572.1	14 597.2
Amsterdam		0	0	0	0	27	27	0.0	0.0	0.0	0.0	0.0	0.0

TABLE 5 SCHEDULED INTERNATIONAL TRAFFIC BY CITY PAIRS: Year ended December

Foreign Port	Australian Port	Passengers						Freight (tonnes)					
		2011			2012			2011			2012		
		Inbound	Outbound	Total	Inbound	Outbound	Total	Inbound	Outbound	Total	Inbound	Outbound	Total
Apia	Sydney	16 185	15 849	32 034	17 261	17 678	34 939	8.5	25.4	33.9	13.9	26.2	40.1
Auckland		697 938	705 361	1 403 299	689 205	677 742	1 366 947	23 326.3	36 121.8	59 448.1	23 795.1	34 136.1	57 931.2
Bangkok		280 530	268 927	549 457	290 378	280 909	571 287	14 441.0	5 469.9	19 910.8	8 804.4	5 383.7	14 188.1
Beijing		62 551	67 643	130 194	67 195	76 743	143 938	1 621.5	1 608.1	3 229.6	1 781.0	1 456.2	3 237.1
Buenos Aires		52 222	51 718	103 940	34 123	32 320	66 443	1 093.2	796.2	1 889.4	234.0	347.2	581.2
Chicago		7 760	8 144	15 904	1 913	1 072	2 985	8 666.1	69.0	8 735.1	10 669.0	75.8	10 744.8
Chongqing		0	0	0	0	0	0	0.0	0.0	0.0	0.0	71.3	71.3
Christchurch		226 809	216 409	443 218	224 876	218 333	443 209	8 053.9	1 843.9	9 897.8	9 117.5	1 536.0	10 653.5
Cincinnati		0	0	0	0	0	0	0.0	0.0	0.0	2 360.1	0.0	2 360.1
Dallas		12 770	36 887	49 657	28 042	95 114	123 156	118.0	192.6	310.6	257.3	398.1	655.4
Denpasar		147 010	144 688	291 698	173 381	169 980	343 361	3 742.7	205.0	3 947.7	5 078.9	264.2	5 343.1
Dubai		202 257	206 773	409 030	273 531	280 845	554 376	9 457.6	4 558.2	14 015.8	19 058.8	6 908.9	25 967.7
Dunedin		3 109	3 007	6 116	2 038	2 108	4 146	0.2	0.0	0.2	0.0	0.0	0.0
Frankfurt		38 744	37 421	76 165	39 052	37 106	76 158	1 472.4	195.7	1 668.1	1 421.6	145.6	1 567.2
Guangzhou		139 296	134 890	274 186	142 751	138 926	281 677	6 149.9	810.3	6 960.2	6 938.9	494.6	7 433.5
Hangzhou		4 879	4 483	9 362	891	883	1 774	459.7	14.2	473.9	31.3	0.0	31.3
Hanoi		11 302	12 853	24 155	14 118	13 224	27 342	0.0	107.8	107.8	0.0	44.6	44.6
Ho Chi Minh City		60 145	58 879	119 024	60 893	57 853	118 746	2 999.5	431.6	3 431.0	3 568.9	522.8	4 091.7
Hong Kong		474 883	464 410	939 293	478 532	464 505	943 037	37 791.2	10 722.2	48 513.4	34 621.6	12 336.3	46 957.9
Honolulu		156 694	157 336	314 030	199 734	194 360	394 094	2 397.8	1 006.8	3 404.6	3 548.1	1 109.1	4 657.2
Jakarta		87 946	86 169	174 115	87 531	85 315	172 846	4 138.5	2 937.5	7 076.0	4 246.5	2 318.4	6 564.8
Johannesburg		88 887	83 500	172 387	94 674	88 092	182 766	1 555.5	919.3	2 474.8	1 669.5	1 020.3	2 689.8
Kota Kinabalu		0	0	0	0	0	0	0.0	0.0	0.0	2.9	0.0	2.9
Kuala Lumpur		183 683	178 853	362 536	257 708	234 688	492 396	14 768.7	3 746.6	18 515.3	18 178.9	4 801.8	22 980.7
Kuching		0	0	0	0	0	0	0.0	0.0	0.0	0.0	33.0	33.0
London		224 171	219 938	444 109	173 196	180 428	353 624	9 060.6	2 223.0	11 283.6	7 341.1	1 561.0	8 902.1
Los Angeles		466 330	471 065	937 395	441 765	437 626	879 391	19 976.5	6 775.3	26 751.8	20 110.3	7 061.2	27 171.5
Louisville		0	0	0	0	0	0	22 156.1	0.0	22 156.1	21 037.6	0.0	21 037.6
Luzon Island		0	0	0	0	0	0	0.0	63.0	63.0	0.0	58.0	58.0
Macau		0	0	0	0	0	0	0.0	73.0	73.0	0.0	61.0	61.0
Manila		79 251	75 062	154 313	76 512	72 832	149 344	2 378.8	1 446.1	3 824.9	2 914.6	1 515.5	4 430.0
Mauritius		3 972	3 436	7 408	2 342	2 229	4 571	238.0	76.6	314.6	71.5	18.4	89.9
Nadi		225 055	224 498	449 553	225 177	223 959	449 136	4 300.7	2 015.8	6 316.5	2 530.1	2 090.3	4 620.5
Nanjing		0	0	0	232	316	548	0.0	0.0	0.0	0.7	0.1	0.8
New York		37 083	34 277	71 360	45 950	43 558	89 508	5 985.4	218.5	6 203.9	6 413.0	367.5	6 780.4
Noumea		50 919	48 748	99 667	50 003	48 666	98 669	61.7	1 042.6	1 104.3	50.6	1 032.1	1 082.6
Osaka		5 225	4 992	10 217	4 398	5 876	10 274	156.3	81.4	237.7	995.0	404.6	1 399.6
Papeete		0	0	0	127	146	273	0.0	0.0	0.0	0.0	0.0	0.0
Paris		602	700	1 302	244	106	350	0.0	136.0	136.0	0.0	0.6	0.6
Phuket		39 153	39 208	78 361	42 603	43 186	85 789	1 016.1	83.8	1 099.9	1 771.8	107.6	1 879.4
Port Moresby		5 665	8 535	14 200	6 389	9 849	16 238	194.6	241.6	436.1	55.1	295.1	350.3
Port Vila		36 220	33 342	69 562	38 058	36 661	74 719	65.2	262.3	327.5	54.3	236.5	290.8
Queenstown		46 579	50 345	96 924	62 032	67 088	129 120	0.1	0.0	0.1	0.1	0.0	0.1
Rarotonga		3 884	4 615	8 499	7 198	8 115	15 313	6.9	35.1	42.0	3.8	238.6	242.5
Rotorua		10 530	10 988	21 518	10 112	10 450	20 562	0.9	0.0	0.9	0.4	0.0	0.4
San Francisco		117 906	120 817	238 723	101 948	105 384	207 332	385.1	2 730.3	3 115.4	157.7	2 531.8	2 689.4
Santiago		32 428	30 176	62 604	66 034	63 416	129 450	2 643.5	1 881.6	4 525.1	2 814.8	1 795.6	4 610.4
Seoul		163 942	161 428	325 370	168 446	163 419	331 865	9 737.4	5 852.5	15 589.9	4 647.4	3 563.4	8 210.8
Shanghai		174 444	165 130	339 574	193 489	181 490	374 979	10 976.5	3 050.0	14 026.5	13 847.7	2 144.6	15 992.3

TABLE 5 SCHEDULED INTERNATIONAL TRAFFIC BY CITY PAIRS: Year ended December

Foreign Port	Australian Port	Passengers						Freight (tonnes)					
		2011			2012			2011			2012		
		Inbound	Outbound	Total	Inbound	Outbound	Total	Inbound	Outbound	Total	Inbound	Outbound	Total
Shenzhen	Sydney	11 910	12 283	24 193	2 054	2 123	4 177	843.2	101.5	944.7	39.0	331.5	370.5
Singapore		578 122	553 658	1 131 780	646 627	624 783	1 271 410	36 665.1	11 179.2	47 844.3	36 635.3	11 602.1	48 237.5
St Denis de la Reunion		8 770	9 165	17 935	4 492	4 912	9 404	15.5	201.7	217.2	2.6	86.5	89.1
Surabaya		0	0	0	0	0	0	0.0	0.0	0.0	0.0	46.9	46.9
Taipei		48 397	50 329	98 726	44 443	46 779	91 222	629.8	698.7	1 328.5	1 334.5	928.0	2 262.5
Tokyo		150 780	152 990	303 770	174 639	180 544	355 183	3 495.2	4 138.2	7 633.4	3 570.4	3 653.7	7 224.1
Toledo		0	0	0	0	0	0	1 512.3	0.0	1 512.3	0.0	0.0	0.0
Tongatapu		11 946	12 791	24 737	10 935	11 836	22 771	14.4	12.8	27.2	22.6	7.0	29.6
Toronto		17 600	14 720	32 320	18 129	16 309	34 438	0.0	1.7	1.7	0.0	0.0	0.0
Vancouver		65 680	66 534	132 214	66 551	69 856	136 407	3 398.7	2 244.3	5 643.1	3 758.0	2 358.8	6 116.8
Wellington		149 203	153 546	302 749	152 285	151 666	303 951	151.0	372.2	523.1	226.3	312.5	538.8
Total	Sydney	5 895 629	5 852 953	11 748 582	6 202 432	6 169 814	12 372 246	284 621.9	123 971.5	408 593.4	292 829.5	125 412.6	418 242.2
Denpasar	Townsville	5 046	4 546	9 592	0	0	0	0.0	0.0	0.0	0.0	0.0	0.0
Total	Townsville	5 046	4 546	9 592	0	0	0	0.0	0.0	0.0	0.0	0.0	0.0
Abu Dhabi	Australia	275 733	277 203	552 936	296 202	293 792	589 994	10 406.4	10 623.1	21 029.6	11 041.3	13 756.9	24 798.1
Almaty		0	0	0	0	0	0	0.0	180.0	180.0	0.0	115.0	115.0
Amsterdam		0	0	0	0	27	27	0.0	0.0	0.0	0.0	0.0	0.0
Apia		21 792	21 451	43 243	23 679	23 759	47 438	8.6	25.4	34.0	13.9	26.3	40.2
Astana		0	0	0	0	0	0	0.0	641.9	641.9	0.0	520.2	520.2
Auckland		1 821 504	1 822 285	3 643 789	1 873 288	1 851 998	3 725 286	50 771.4	55 659.7	106 431.1	52 138.0	52 908.6	105 046.6
Bandar Seri Begawan		92 175	87 863	180 038	54 834	60 106	114 940	2 097.2	2 194.0	4 291.2	2 493.3	3 993.1	6 486.4
Bangkok		595 667	588 194	1 183 861	659 775	659 690	1 319 465	33 725.0	17 492.2	51 217.2	25 818.5	17 379.7	43 198.2
Beijing		93 106	98 344	191 450	110 277	117 614	227 891	2 261.6	2 443.4	4 705.1	2 446.0	2 197.6	4 643.6
Bombay		6 085	4 652	10 737	2 258	1 451	3 709	429.3	22.5	451.8	114.6	3.9	118.5
Buenos Aires		52 222	51 718	103 940	34 123	32 320	66 443	1 093.2	796.2	1 889.4	234.0	347.2	581.2
Chicago		11 121	12 110	23 231	2 892	1 650	4 542	10 272.7	69.6	10 342.3	12 273.5	84.3	12 357.8
Chongqing		0	0	0	0	0	0	0.0	0.0	0.0	0.0	71.3	71.3
Christchurch		530 154	517 618	1 047 772	506 321	502 042	1 008 363	9 214.1	2 656.9	11 871.0	10 049.9	2 378.7	12 428.6
Cincinnati		0	0	0	0	0	0	0.0	0.0	0.0	2 818.0	0.0	2 818.0
Dallas		32 594	36 887	69 481	76 474	95 114	171 588	152.5	192.6	345.2	442.1	398.1	840.2
Denpasar		879 941	892 806	1 772 747	922 290	931 842	1 854 132	6 320.7	582.4	6 903.1	8 130.2	628.9	8 759.2
Doha		70 617	71 222	141 839	97 026	91 682	188 708	3 755.2	6 156.0	9 911.2	5 037.8	7 734.1	12 771.9
Dubai		686 073	675 680	1 361 753	845 742	849 893	1 695 635	28 311.3	22 627.2	50 938.5	43 240.7	32 791.5	76 032.3
Dunedin		31 464	31 077	62 541	30 774	31 327	62 101	0.5	0.4	1.0	0.0	0.0	0.0
Espiritu Santo		2 032	2 605	4 637	2 149	2 501	4 650	2.3	6.2	8.5	3.7	5.4	9.0
Frankfurt		38 744	37 421	76 165	39 052	37 106	76 158	1 472.4	195.7	1 668.1	1 421.6	145.6	1 567.2
Guam		12 121	12 611	24 732	8 623	8 746	17 369	1.7	15.2	16.9	1.1	11.1	12.2
Guangzhou		255 214	257 655	512 869	313 018	305 200	618 218	10 488.3	1 384.7	11 873.1	14 099.0	921.2	15 020.2
Hamilton		19 560	19 470	39 030	15 626	15 263	30 889	0.0	0.0	0.0	0.0	0.0	0.0
Hangzhou		4 879	4 483	9 362	891	883	1 774	459.7	14.2	473.9	31.3	0.0	31.3
Hanoi		17 435	21 742	39 177	21 971	24 219	46 190	0.0	728.1	728.1	0.0	729.2	729.2
Ho Chi Minh City		127 965	121 203	249 168	129 791	117 907	247 698	5 364.5	1 081.4	6 445.9	6 558.1	1 366.1	7 924.2
Hohhot		0	0	0	0	0	0	0.0	296.1	296.1	0.0	0.0	0.0
Hong Kong		1 054 000	1 028 312	2 082 312	1 091 291	1 045 507	2 136 798	71 498.4	40 667.4	112 165.8	66 766.0	41 228.0	107 993.9
Honiara		27 044	27 361	54 405	27 221	27 498	54 719	110.3	904.1	1 014.4	389.0	828.1	1 217.1
Honolulu		157 634	161 152	318 786	208 290	205 059	413 349	2 397.8	1 009.3	3 407.0	3 551.6	1 148.0	4 699.6
Jakarta		128 704	127 253	255 957	138 775	136 543	275 318	5 347.1	3 619.6	8 966.7	5 547.0	2 782.8	8 329.8
Johannesburg		157 963	149 220	307 183	157 795	150 886	308 681	2 462.2	3 595.6	6 057.8	2 707.6	4 056.8	6 764.4
Kota Kinabalu		14 497	14 352	28 849	1 959	1 459	3 418	1.3	2.1	3.4	2.9	0.3	3.2

TABLE 5 SCHEDULED INTERNATIONAL TRAFFIC BY CITY PAIRS: Year ended December

Foreign Port	Australian Port	Passengers						Freight (tonnes)					
		2011			2012			2011			2012		
		Inbound	Outbound	Total	Inbound	Outbound	Total	Inbound	Outbound	Total	Inbound	Outbound	Total
Kuala Lumpur	Australia	950 835	941 137	1 891 972	1 021 170	951 408	1 972 578	40 675.6	15 125.0	55 800.5	45 348.8	16 947.5	62 296.3
Kuching		0	0	0	0	0	0	0.0	0.0	0.0	0.0	33.0	33.0
London		316 097	308 315	624 412	246 799	247 407	494 206	10 777.4	2 605.6	13 383.0	9 004.7	1 840.7	10 845.4
Los Angeles		834 532	838 380	1 672 912	822 900	818 646	1 641 546	25 641.6	11 641.4	37 283.0	26 074.1	11 984.9	38 059.0
Louisville		0	0	0	0	0	0	22 156.1	0.0	22 156.1	21 037.6	0.0	21 037.6
Luzon Island		0	0	0	0	0	0	0.0	63.0	63.0	0.0	58.0	58.0
Macau		0	0	0	0	0	0	0.0	73.0	73.0	0.0	61.0	61.0
Manila		132 400	122 688	255 088	135 730	132 034	267 764	3 812.5	1 836.9	5 649.5	4 760.1	1 960.2	6 720.3
Mauritius		23 599	22 024	45 623	24 494	23 775	48 269	745.3	333.4	1 078.6	602.7	287.0	889.6
Nadi		400 002	398 343	798 345	394 299	394 578	788 877	6 331.8	2 916.6	9 248.4	3 159.1	2 708.9	5 868.0
Nanjing		0	0	0	232	316	548	0.0	0.0	0.0	0.7	0.1	0.8
Nauru		2 104	2 122	4 226	3 830	4 006	7 836	6.2	93.9	100.1	4.0	138.9	142.9
New York		37 083	34 277	71 360	45 950	43 558	89 508	7 400.8	224.0	7 624.8	7 715.1	372.9	8 088.0
Ningbo		0	0	0	0	0	0	0.0	103.0	103.0	0.0	0.0	0.0
Noumea		70 746	71 636	142 382	70 331	70 640	140 971	69.0	1 277.0	1 346.0	54.4	1 266.0	1 320.4
Osaka		102 926	96 785	199 711	95 914	96 992	192 906	2 012.2	755.3	2 767.5	1 945.0	858.4	2 803.4
Papeete		0	0	0	127	146	273	0.0	0.0	0.0	0.0	0.0	0.0
Paris		602	700	1 302	244	106	350	0.0	136.0	136.0	0.0	0.6	0.6
Phuket		120 077	125 658	245 735	87 221	85 555	172 776	1 411.6	283.7	1 695.2	1 819.5	192.9	2 012.4
Port Moresby		140 802	139 990	280 792	150 374	149 086	299 460	1 111.7	4 674.2	5 786.0	833.4	5 298.8	6 132.2
Port Vila		71 838	70 907	142 745	76 319	76 440	152 759	616.3	616.2	1 232.5	448.1	582.8	1 030.9
Queenstown		87 979	97 462	185 441	101 756	111 619	213 375	0.5	0.4	0.9	0.2	0.1	0.3
Rarotonga		3 884	4 615	8 499	7 198	8 115	15 313	6.9	35.1	42.0	3.8	238.6	242.5
Rotorua		10 530	10 988	21 518	10 112	10 450	20 562	0.9	0.0	0.9	0.4	0.0	0.4
San Francisco		117 943	120 817	238 760	101 948	105 384	207 332	385.1	2 730.3	3 115.4	157.7	2 531.8	2 689.4
Santiago		32 428	30 176	62 604	66 034	63 416	129 450	2 643.5	1 881.6	4 525.1	2 814.8	1 795.6	4 610.4
Seoul		234 337	234 411	468 748	247 195	237 897	485 092	11 057.2	9 125.5	20 182.7	5 434.4	6 535.0	11 969.4
Shanghai		262 593	245 854	508 447	301 607	285 914	587 521	13 930.2	4 858.3	18 788.5	16 623.3	3 516.1	20 139.4
Shenzhen		11 910	12 283	24 193	2 054	2 123	4 177	843.2	101.5	944.7	39.0	331.5	370.5
Singapore		2 167 815	2 088 795	4 256 610	2 358 232	2 306 986	4 665 218	97 320.2	69 523.7	166 843.9	102 359.1	71 011.8	173 370.9
St Denis de la Reunion		8 770	9 165	17 935	4 492	4 912	9 404	15.5	201.7	217.2	2.6	86.5	89.1
Surabaya		0	0	0	0	0	0	0.0	0.0	0.0	0.0	46.9	46.9
Taipei		95 434	103 941	199 375	87 956	101 914	189 870	2 393.3	1 998.0	4 391.3	2 946.0	2 040.7	4 986.6
Tarawa		78	69	147	0	0	0	0.0	0.5	0.5	0.0	0.0	0.0
Tianjin		0	0	0	0	0	0	0.0	0.0	0.0	0.0	199.5	199.5
Tokyo		275 633	276 388	552 021	320 748	323 601	644 349	6 387.9	5 060.7	11 448.6	6 418.4	4 587.4	11 005.8
Toledo		0	0	0	0	0	0	1 512.3	0.0	1 512.3	0.0	0.0	0.0
Tongatapu		11 946	12 791	24 737	10 935	11 836	22 771	14.4	12.8	27.2	22.6	7.0	29.6
Toronto		17 600	14 720	32 320	18 129	16 309	34 438	0.0	1.7	1.7	0.0	0.0	0.0
Vancouver		65 680	66 534	132 214	66 551	69 856	136 407	3 398.7	2 244.3	5 643.1	3 758.0	2 358.8	6 116.8
Wellington		325 600	327 245	652 845	339 395	333 249	672 644	378.7	571.5	950.3	447.3	462.2	909.6
Total	Australia	14 151 843	14 003 166	28 155 009	14 912 683	14 711 358	29 624 041	521 482.6	316 989.2	838 471.7	541 205.4	328 899.9	870 105.3

Please refer to explanatory notes - paragraphs 3, 8 and 13 in particular.

**TABLE 6 INTERNATIONAL AIRLINES OWN STOPOVER REVENUE PASSENGERS,
AUSTRALIAN CITY PAIRS: Year ended December 2012**

City Pair Route	Total Passengers
Melbourne/Sydney	44 949
Brisbane/Cairns	2 740
Brisbane/Sydney	1 773
Adelaide/Melbourne	223
TOTAL	49 685

Notes:

1. Own Stopover Revenue Passengers : The aggregate of revenue passengers uplifted at one Australian airport and discharged (excluding transit passengers) at another Australian airport by the same foreign registered international airline on which they entered or left Australia.
2. City Pair Route represents the aggregation of passengers travelling in both directions.
3. This data is additional to the information presented in tables 1-5 which cover only those passengers travelling to/from overseas airports.

TABLE 7 TOTAL AIRCRAFT MOVEMENTS AT AUSTRALIAN INTERNATIONAL AIRPORTS BY AIRCRAFT TYPES: Year ended December 2012

Airport	Passenger Aircraft											Freighters			All Types	
	32S	330	340	380	737	747	757	767	777	100	DH8	73F/75F/77F/33X	74F	76F		M1F
Adelaide	558	2 836		4	520				98				30			4 046
Brisbane	2 510	6 649	95	7	9 820	1 866	8	1 099	4 051	193		300	18	2		26 618
Cairns	860	2 189			210	2				530	1 885					5 676
Darwin	3 745			2		2							4			3 753
Gold Coast	1 654	1 809			700			4	293							4 460
Melbourne	4 712	11 155	1 036	2 689	5 731	1 128		558	7 698				706	2		35 415
Norfolk Island	101				4											105
Perth	5 347	6 300	723		3 346	2		505	3 672			1	24			19 920
Sunshine Coast	48															48
Sydney	6 801	15 482	3 238	4 599	10 830	9 921	1	2 221	9 677			704	1 506	618	1 459	67 057
Total	26 336	46 420	5 092	7 301	31 161	12 921	9	4 387	25 489	723	1 885	1 005	2 288	622	1 459	167 098
Share of All Types	15.8%	27.8%	3.0%	4.4%	18.6%	7.7%	0.0%	2.6%	15.3%	0.4%	1.1%	0.6%	1.4%	0.4%	0.9%	100.0%

NOTE:

These figures only cover scheduled operations of the airlines listed in this publication. Charter/ferry operations are not included.

Aircraft Types (all series)

Airbus	330	340	380	32S (319, 320, 321)			33X									
Boeing	737	747	757	767	777	72F	73F	75F	74F	76F	77F					
Bombardier	DH8															
Fokker	100															
McDonnell Douglas	M1F															