



Australian Government

Department of Transport and Regional Services

Bureau of Transport and Regional Economics

AIR TRANSPORT STATISTICS

INTERNATIONAL AIRLINES

2003-04

**INTERNATIONAL SCHEDULED
AIR TRANSPORT**

2003-04

**BUREAU OF
TRANSPORT AND REGIONAL ECONOMICS**

**DEPARTMENT OF
TRANSPORT AND REGIONAL SERVICES**

© COMMONWEALTH OF AUSTRALIA

CANBERRA

OCTOBER 2004

ISSN 1324-5074

This work is copyright and the data contained in this publication should not be reproduced or used in any form without acknowledgment.

INQUIRIES

Should you require additional information about the statistics contained in this publication, please contact Mrs Betty Kell in Canberra by telephone (02) 6274 7791 or by facsimile (02) 6274 7727

or write to:

AVSTATS, Bureau of Transport and Regional Economics
Department of Transport and Regional Services

GPO Box 594

Canberra ACT 2601

Electronic Mail: AVSTATS@dotars.gov.au

CONTENTS

Table		Page
..	Explanatory Notes	iv-vi
..	Data Status & Airlines Commencing/Withdrawing Services	vii
..	Overview	viii-xii
1	Scheduled International Air Traffic to and from Australia	1-3
2	Scheduled Operator Market Shares and Growth.....	4-7
3	Airline Passenger Capacity and Utilisation to and from Australia by Operator	8-10
4	Australian International Airport Scheduled Traffic and Aircraft Movements	11
5	Scheduled International Passengers and Freight by City Pairs	12-20
6	International Airlines Own Stopover Revenue Passengers, Australian City Pairs	21
7	Total Aircraft Movements at Australian International Airports by Aircraft Types	22

EXPLANATORY NOTES

INTRODUCTION

1. This publication continues the series of publications on a financial year basis presenting statistical information on the scheduled operations of international airlines operating into/out of Australia.
2. The figures in this publication were obtained from reports submitted by scheduled international carriers and are the best available at the time of publication.

COVERAGE

3. These statistics show **uplift/discharge** data – These data detail, by direction, the revenue traffic between the actual points of uplift and discharge within each flight, aggregated for all flights within the period. It shows the movement of traffic between two airports not necessarily directly connected but within the same flight number. Typically, flight numbers change when an aircraft reaches its home country. This means that uplift/discharge data for the port in the operator's home country are likely to be overstated by traffic whose origin/destination point is beyond that port. For example, uplift/discharge traffic reported in this publication as Singapore could include traffic whose origin/destination is Europe.
4. These statistics cover **revenue** traffic carried by the operators of scheduled regular public international air transport services only and **do not include charter traffic**.
5. Some airlines (generally, dedicated freighter operators) operate scheduled services into Australia but operate non-scheduled services out of Australia and therefore outbound activity is not recorded in this data collection.

PRODUCTION AND INTERPRETATION

6. **Tables 1 and 2** show the country of the relevant uplift or discharge port served by that airline. For example, traffic uplifted/discharged between Sydney and Singapore by British Airways would be shown as Singapore traffic in Tables 1 and 2.
7. **Table 3** shows figures for the country of service (or route) for each airline and therefore may not equate to the data in Tables 1 and 2. For example, the British Airways UK service identified in Table 3 could include passengers uplifted or discharged in Singapore or Thailand as well as the UK; these passengers would be shown individually under those countries in Tables 1 and 2. The difference in treatment of data between Tables 1 and 2 and Table 3 is necessary in order to work out a meaningful Seat Utilisation figure for Table 3.

Figures shown in Table 3 may include **total traffic** into and out of Australia for airlines that fly through Australia (also necessary in order to work out a meaningful Seat Utilisation figure). Therefore, figures in Table 3 may not equate to figures in Tables 1 and 2. For example, passengers carried by Qantas Airways from New Zealand **via** Australia to the UK will be included in Table 3 but will not be included in Tables 1 or 2 as these passengers were not uplifted/discharged in Australia.

8. **Table 5** – shows uplift/discharge passenger and freight data for city pairs with same flight number international flight connections.
9. Where figures have been rounded, discrepancies may occur between sums of component items and totals, and in percentage changes which are derived from figures prior to rounding.
10. Published figures may be revised where figures missing at the time of publication are received or misreporting/miscalculation necessitates revisions.

DEFINITIONS

11. The following definitions have been used in this publication:
 - (a) Aircraft Movement: A landing or a take off.
 - (b) Freight: The aggregate of all revenue freight uplifted.
 - (c) Inbound: Inbound to Australia/Australian international airport.
 - (d) Mail: The aggregate of all mail uplifted.
 - (e) Outbound: Outbound from Australia/Australian international airport.
 - (f) Revenue Passengers: please refer to paragraph 12.

- (g) Seat Utilisation: The ratio of passengers carried to seats available, expressed as a percentage.
- (h) Seats Available: Generally based on standard aircraft configuration, the aggregate of seats available on all flights operated over a particular service.
- (i) Services: Scheduled flights over authorised routes which are listed according to the main ports involved.

COMPARABILITY OF DATA OVER TIME

12. Revenue Passengers:

- For July 2000 and onwards: All passengers paying any fare (frequent flyer redemption passengers are regarded as revenue passengers). In most cases, Revenue Passengers will now include all passengers excluding Free Of Charge passengers and positioning crew.
- To December 1999: The aggregate of all passengers paying 25% or more of the standard air fare (as defined by ICAO).
- January 2000 to June 2000: Transition period.

The Revenue Passenger definition change could result in approximately a three per cent increase in passenger numbers over a full period (month or year).

13. Country and City data – reporting of Uplift/Discharge data by Qantas Airways:

- Prior to January 2003: Uplift/Discharge within Qantas Airways' international network.
- For January 2003 and onwards: Uplift/Discharge within flight number – as per the standard definition.

For example, what was previously reported as Adelaide to London (no direct services between these two cities) will now be reported as either Adelaide to Singapore or Melbourne/Sydney to London.

This change has been introduced in order to make the data comparable across all airlines operating services to/from Australia.

The effect of this change – comparing data under the two methods of reporting:

- Country of Port data (Tables 1 & 2) – There will be a shift in traffic to countries such as Singapore which are used as hubs and away from countries such as France, Germany and Italy which previously received traffic channelled through hubs. The total volume of traffic is not affected.
- Country of Service data (Table 3) – no change, as the Uplift/Discharge definition is not applicable to classifying the country of service.
- Australian International Airports (Table 4) – there may be a shift of traffic to the major airports.
- City Pairs (Table 5) – There will be a shift in traffic to cities such as Singapore which are used as hubs and away from cities such as Paris, Frankfurt and Rome which previously received traffic channelled through hubs. The total volume of traffic is not affected.

Prior to the change, statistics reported for city pairs without “same flight number” international flight connections mainly reflected carriage on interconnecting international services by Qantas Airways. That traffic should have been interpreted as increasing the volume of traffic between the primary international ports rather than as an indicator of traffic volumes between ports without “same flight number” international flight connections. It should be noted however, that there was no double counting of traffic.

14. Country of Service classification by Qantas Airways:

- For July 2002 and onwards: based on the foreign country where same flight number services commence or cease – as per the standard definition. For example, Sydney-Denpasar-Singapore services would be classified as Country of Service = Singapore.
- Prior to July 2002: based on Qantas classification – this mainly affected Indonesia and Singapore Countries of Service. For example, Sydney-Denpasar-Singapore services were classified as Country of Service = Indonesia.

15. Airline data – Reporting of code share services:

Reporting of traffic split by airline code for code share arrangements was discontinued as of June 2000. For July 2000 and onwards, ALL traffic carried is reported under the operating airline regardless of code share arrangements.

Monthly airline market share figures for July 2001 onwards will be comparable with the same month in the previous year. However, these figures may not be comparable with monthly data prior to July 2000.

SYMBOLS AND OTHER USAGE

- nil or zero
- .. not applicable

INDEMNITY STATEMENT

The Bureau of Transport and Regional Economics has taken due care in preparing the information contained in this publication. However, noting that data have been provided by third parties, the Commonwealth gives no warranty as to the accuracy, reliability, fitness for purpose, or otherwise of the information.

NO/INCOMPLETE DATA FOR 2003-04 PROVIDED BY THE FOLLOWING AIRLINES PRIOR TO FINALISATION OF THIS PUBLICATION

Lauda Air	No outbound freight data for September 2000 onwards. No inbound freight data for April 2001 onwards.
Merpati Nusantara Airlines	Jakarta/Christmas Island scheduled services commenced in August 2001 and ceased in February 2004 – no data has been received for these services. Kupang/Darwin services recommenced in June 2004 – no data has been received for these services.
Polar Air Cargo	No data received for March 2003 and onwards.
Royal Tongan Airlines	Operated services recommenced in December 2002 and ceased in April 2004. No data received for July 2003 and onwards.
Vietnam Airlines	No data received for inbound operations to Sydney for August 2002 to May 2004. No data received for outbound operations from Sydney for August 2002 to June 2003.

AIRLINES COMMENCING/WITHDRAWING SERVICES DURING 2003-04

The following airlines commenced operated services to/from Australia

- Gulf Air (recommenced)
- Hawaiian Airlines (recommenced)
- Pacific Blue

The following airline ceased operated services to/from Australia

- Royal Tongan Airlines

YEAR ENDED JUNE 2004

Fifty international scheduled airlines operated services to/from Australia during 2003-04 (includes seven dedicated freight airlines but excludes airlines operating only via code share arrangements).

International scheduled passenger traffic in the year ended June 2004 was 18.131 million compared to 16.108 million in the year ended June 2003 – an increase of 12.6%.

Chart I shows total passenger traffic for the years ended June 1994 to 2004. Over this period, 2001-02 and 2002-03 were the only years that recorded a decrease in traffic compared to the previous year.

Passenger traffic in 2001-02 was affected by the terrorist attacks on the USA in September 2001 and the collapse of Ansett International (also in September 2001). Passenger traffic in 2002-03 was affected by the SARS crisis (April, May and June 2003 in particular) and the war in Iraq.

In 2003-04, month on month increases in passenger traffic commenced in September 2003 with record traffic levels registered in the months of November 2003 to June 2004 – highest level of traffic recorded when compared to the same month in any previous year. Chart II shows total passenger traffic by month for 2001-02, 2002-03 and 2003-04.

Chart III shows the passenger market shares for the top ten airlines for 2003-04. The top ten airlines accounted for 77.4% of the total market. Australian Airlines has replaced Freedom Air in the top ten airline list in 2003-04 when compared to 2002-03. Emirates has improved its ranking from ninth in 2002-03 to fifth in 2003-04 with a 4.2% share of the total market.

The Australian airline market share has decreased from 34.3% in 2002-03 to 33.6% in 2003-04. Qantas Airways' market share has decreased from 32.7% to 30.5% while its wholly owned subsidiary Australian Airlines which commenced operations in October 2002 has increased its share from 1.6% to 3.0%.

New Zealand continues to be the major source of uplift/discharge passenger traffic to and from Australia accounting for nearly a quarter of the total traffic in 2003-04 (23.6%). This share has increased from 21.3% in 2001-02 and 22.6% in 2002-03.

During 2003-04, thirteen international airlines operated scheduled passenger uplift/discharge services between Australia and New Zealand. Emirates commenced operating Trans-Tasman services as extensions to its services to Australia in August 2003 and had 4.6% of the Trans-Tasman market in 2003-04. Pacific Blue commenced operations in January 2004 and had 2.6% of the market. Qantas Airways' share has decreased from 41.9% in 2002-03 to 40.8 in 2003-04. The combined share for Air New Zealand and Freedom Air has declined from 51.3% in 2002-03 to 47.2% in 2003-04. Thai Airways, Royal Brunei Airlines, Lan Chile, Malaysia Airlines (Trans-Tasman operations ceased in March 2004), Garuda Indonesia, Aerolineas Argentinas, Polynesian Airlines and Royal Tongan Airlines (operations ceased in April 2004) were the other operators on the Trans-Tasman in 2003-04.

In terms of aircraft movements, the Boeing 747 was the most popular aircraft type operated to and from Australia, accounting for 26.6% of total aircraft movements in 2003-04. The next most popular type was the Boeing 767 with 24.9%, followed by the Boeing 737 with 16.0% and the Boeing 777 with 12.0%. All Airbus types accounted for a total of 15.5% up from 7.9% in 2002-03.

International scheduled freight traffic in the year ended June 2004 was 627,002 tonnes compared to 635,135 tonnes in the year ended June 2003 – a decrease of 1.3%. Inbound freight traffic has increased by 10.3% while outbound freight traffic has decreased by 12.3%.

Freight carried on dedicated freight aircraft accounted for 25.5% of inbound freight to Australia, 14.0% of outbound freight from Australia and 20.3% of total freight. Note that some freighters operate as charters out of Australia or do not pick up freight in Australia – this accounts for the difference in inbound and outbound percentages.

**CHART I: TOTAL INTERNATIONAL PASSENGERS CARRIED
YEARS ENDED JUNE 1994 TO 2004**

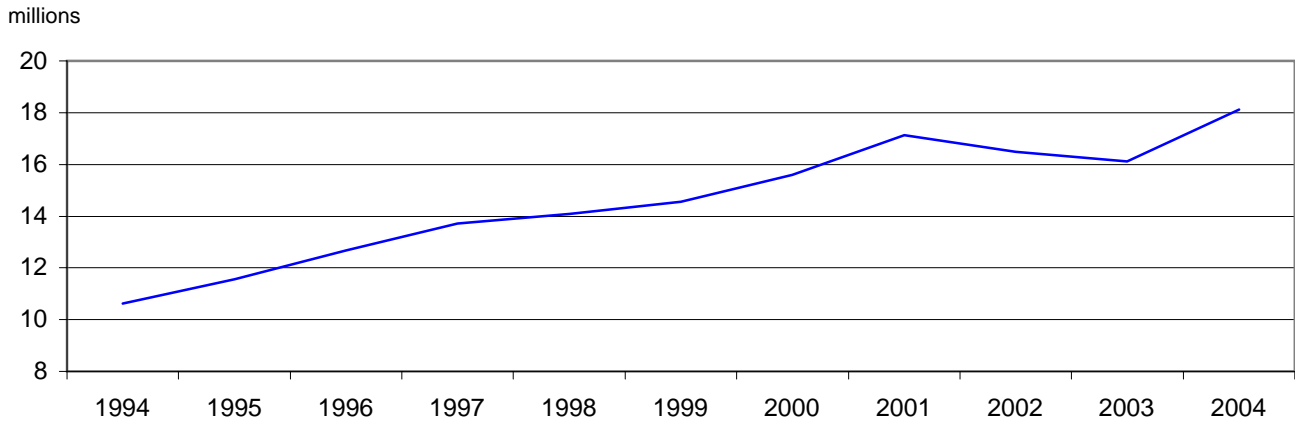
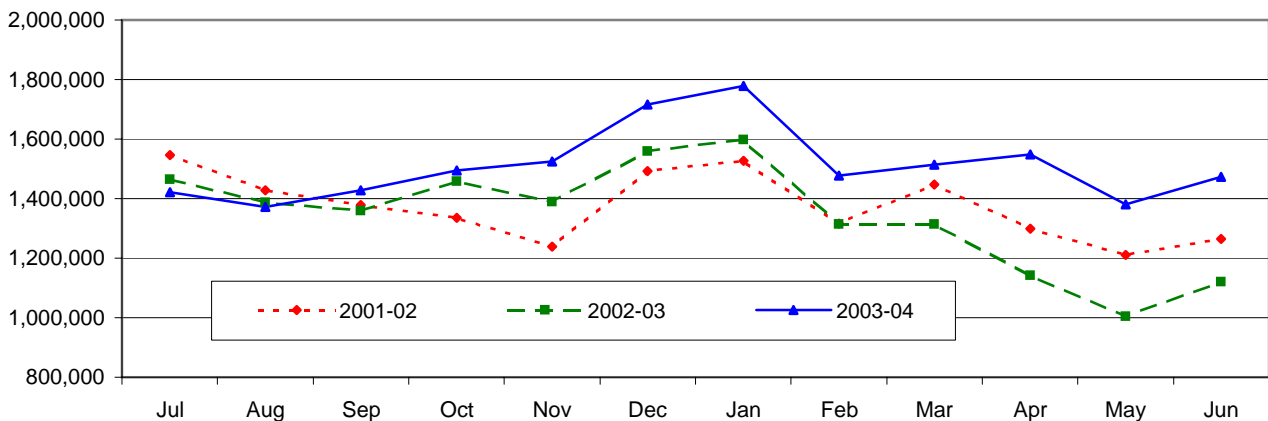
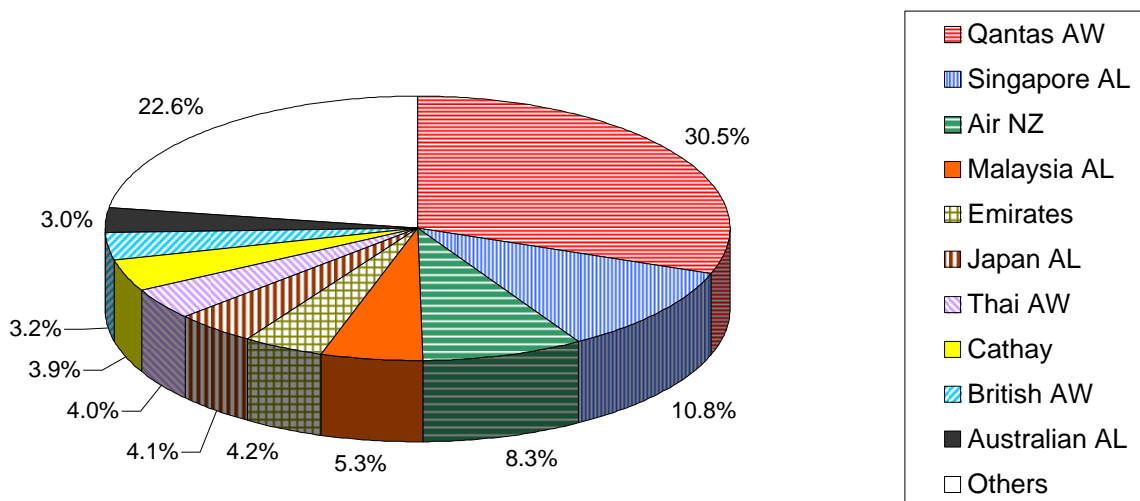


CHART II: TOTAL INTERNATIONAL PASSENGERS CARRIED BY MONTH



**CHART III: INTERNATIONAL PASSENGERS BY MAJOR AIRLINES
YEAR ENDED JUNE 2004**



**TABLE I: INTERNATIONAL PASSENGERS BY UPLIFT/DISCHARGE CITY PAIRS
YEARS ENDED JUNE 2002, 2003 AND 2004**

Foreign Port	Australian Port	Year ended June 2002	Year ended June 2003	Year ended June 2004	% of Total	% Change 2004 over 2003
Auckland	Sydney	969,920	1,027,961	1,231,735	6.8	19.8
Singapore	Sydney	962,406	890,986	980,894	5.4	10.1
Singapore	Perth	687,016	649,112	698,653	3.9	7.6
Singapore	Melbourne	663,586	617,175	683,125	3.8	10.7
Auckland	Brisbane	446,545	472,074	617,672	3.4	30.8
Los Angeles	Sydney	680,992	640,905	608,856	3.4	-5.0
Singapore	Brisbane	424,351	488,949	602,179	3.3	23.2
Auckland	Melbourne	521,746	485,956	598,554	3.3	23.2
Hong Kong	Sydney	563,141	530,635	577,178	3.2	8.8
Christchurch	Sydney	393,385	417,063	483,728	2.7	16.0
Top 10 City Pairs		6,313,088	6,220,816	7,082,574	39.1	13.9
Other City Pairs		10,173,255	9,887,601	11,048,563	60.9	11.7
ALL CITY PAIRS		16,486,343	16,108,417	18,131,137	100.0	12.6

**TABLE II: INTERNATIONAL FREIGHT (TONNES) BY UPLIFT/DISCHARGE CITY PAIRS
YEARS ENDED JUNE 2002, 2003 AND 2004**

Foreign Port	Australian Port	Year ended June 2002	Year ended June 2003	Year ended June 2004	% of Total	% Change 2004 over 2003
Auckland	Sydney	48,350	48,938	54,316	8.7	11.0
Singapore	Melbourne	48,720	52,085	48,480	7.7	-6.9
Singapore	Sydney	51,061	45,664	41,410	6.6	-9.3
Auckland	Melbourne	31,953	32,014	34,256	5.5	7.0
Hong Kong	Sydney	29,229	30,492	31,297	5.0	2.6
Singapore	Perth	27,211	25,658	28,576	4.6	11.4
Hong Kong	Melbourne	23,082	23,503	27,685	4.4	17.8
Los Angeles	Sydney	27,665	25,276	23,285	3.7	-7.9
Singapore	Brisbane	17,810	19,391	18,518	3.0	-4.5
Kuala Lumpur	Melbourne	15,454	22,435	18,518	3.0	-17.5
Top 10 City Pairs		320,535	325,457	326,342	52.0	0.3
Other City Pairs		313,807	309,678	300,660	48.0	-2.9
ALL CITY PAIRS		634,341	635,135	627,002	100.0	-1.3

**TABLE III: INTERNATIONAL PASSENGERS BY UPLIFT/DISCHARGE COUNTRY
YEARS ENDED JUNE 2002, 2003 AND 2004**

Country	Year ended June 2002	Year ended June 2003	Year ended June 2004	% of Total	% Change 2004 over 2003
New Zealand	3,514,281	3,642,898	4,287,516	23.6	17.7
Singapore	2,920,335	2,816,610	3,189,464	17.6	13.2
Japan	1,543,903	1,574,096	1,650,114	9.1	4.8
USA	1,352,391	1,333,770	1,361,918	7.5	2.1
Hong Kong	1,119,781	1,070,964	1,202,433	6.6	12.3
Malaysia	908,781	860,483	996,686	5.5	15.8
Thailand	828,367	782,294	828,689	4.6	5.9
Indonesia	736,832	536,975	681,202	3.8	26.9
UK	628,461	586,877	610,183	3.4	4.0
United Arab Emirates	204,322	345,372	517,959	2.9	50.0
Top 10 Countries	13,757,454	13,550,339	15,326,164	84.5	13.1
Other Countries	2,728,889	2,558,078	2,804,973	15.5	9.7
ALL COUNTRIES	16,486,343	16,108,417	18,131,137	100.0	12.6

**TABLE IV: INTERNATIONAL PASSENGER TRAFFIC
THROUGH AUSTRALIAN INTERNATIONAL AIRPORTS
YEARS ENDED JUNE 2002, 2003 AND 2004**

Airport	Year ended June 2002	Year ended June 2003	Year ended June 2004	% of Total	% Change 2004 over 2003
Sydney	7,968,165	7,752,988	8,594,354	47.4	10.9
Melbourne	3,303,486	3,136,420	3,601,072	19.9	14.8
Brisbane	2,476,511	2,442,918	2,912,444	16.1	19.2
Perth	1,597,721	1,573,543	1,734,238	9.6	10.2
Cairns	690,632	752,526	800,801	4.4	6.4
Adelaide	229,625	207,128	250,013	1.4	20.7
Gold Coast/Coolangatta	66,833	136,030	137,379	0.8	1.0
Darwin	127,768	89,306	83,957	0.5	-6.0
Norfolk Island	16,697	15,482	16,879	0.1	9.0
Newcastle (a)	8,485	2,076
Broome (b)	273
Townsville (c)	147
ALL AIRPORTS	16,486,343	16,108,417	18,131,137	100.0	12.6

(a) International operations commenced December 2001 and ceased September 2002.

(b) International operations recommenced April 2000 and ceased again in July 2001.

(c) International operations recommenced October 2001 and ceased again in March 2002.

TABLE V: SUMMARY STATISTICS

	Year ended June 2002	Year ended June 2003	Year ended June 2004	Growth compared to	
				2003	2002
Passengers Carried	16,486,343	16,108,417	18,131,137	12.6	10.0
Freight (tonnes)	634,341	635,135	627,002	-1.3	-1.2
Mail (tonnes)	29,206	27,499	28,444	3.4	-2.6
Available Seats	22,892,570	23,062,891	25,885,407	12.2	13.1
Flights	87,557	89,374	100,326	12.3	14.6
Aircraft Movements	105,347	106,085	117,932	11.2	11.9
Seat Utilisation (%)	73.8	71.8	71.5		

Please refer to explanatory notes - paragraphs 3 & 13 in particular.

STATISTICAL TABLES

2003-04

TABLE 1: SCHEDULED INTERNATIONAL AIR TRAFFIC TO AND FROM AUSTRALIA: Year ended June 2004

Scheduled Operator	Country to/from	Inbound			Outbound		
		Passengers	Freight (tonnes)	Mail (tonnes)	Passengers	Freight (tonnes)	Mail (tonnes)
Aerolineas Argentinas	Argentina	15,792	106.1	7.4	15,932	169.2	-
"	New Zealand	3,159	719.8	-	3,689	762.6	-
"	ALL SERVICES	18,951	825.9	7.4	19,621	931.9	-
Air Caledonie	New Caledonia	38,097	25.9	5.9	37,588	582.0	14.8
Air Canada	Canada	47,036	419.3	27.1	53,030	42.2	0.0
"	USA	23,895	2,396.6	223.0	20,021	3,078.5	2.4
"	ALL SERVICES	70,931	2,815.8	250.0	73,051	3,120.7	2.4
Air China	China	69,442	973.1	21.1	69,364	595.5	-
Air Mauritius	Mauritius	16,221	405.6	2.2	16,442	545.4	0.0
Air Nauru	Nauru	5,709	32.1	3.9	5,120	224.5	5.4
"	Solomon Islands	1,316	-	-	909	0.0	-
"	ALL SERVICES	7,025	32.1	3.9	6,029	224.5	5.4
Air New Zealand	New Zealand	751,334	15,226.8	1,989.4	760,351	14,924.2	117.4
Air Niugini	Papua New Guinea	64,576	1,522.3	23.1	66,139	2,337.2	263.0
Air Pacific	Fiji	204,049	3,717.0	23.2	204,583	4,058.5	160.8
Air Paradise International	Indonesia	75,778	493.4	-	78,950	187.5	-
Air Vanuatu	Vanuatu	30,853	85.8	109.7	30,847	303.2	48.5
Asian Express Airlines	New Zealand	..	3,389.7	-	..	4,035.3	-
Asiana Airlines	Korea	72,844	2,945.4	92.9	70,702	1,759.4	-
Australian Airlines	Hong Kong	25,579	811.8	-	19,606	1,827.9	-
"	Indonesia	42,342	225.4	-	44,249	41.5	0.2
"	Japan	164,836	1,734.7	21.1	161,183	3,092.5	3.4
"	Malaysia	11,911	378.6	-	12,505	143.2	-
"	Singapore	34,277	1,436.1	0.8	36,505	476.2	13.7
"	ALL SERVICES	278,945	4,586.7	21.8	274,048	5,581.3	17.4
British Airways	Singapore	81,011	2,205.5	1.5	75,335	3,959.1	-
"	Thailand	63,329	1,511.5	-	68,581	1,015.3	-
"	UK	151,971	5,367.1	60.9	136,028	1,310.4	5.8
"	ALL SERVICES	296,311	9,084.1	62.3	279,944	6,284.8	5.8
Cargolux Airlines Intl	Luxembourg	..	4,240.5	-
"	Malaysia	..	264.5	-
"	New Zealand	4,982.2	-
"	ALL SERVICES	-	4,504.9	-	-	4,982.2	-
Cathay Pacific Airways	Hong Kong	356,993	30,126.7	380.3	355,070	26,167.6	121.5
China Airlines	Taiwan	58,190	1,848.8	156.7	60,395	854.2	0.3
China Eastern Airlines	China	47,471	3,136.0	12.7	47,283	341.1	1.2
China Southern Airlines	China	32,116	1,735.8	27.0	31,656	207.3	0.0
Continental Micronesia	Guam	13,438	0.2	0.9	14,157	39.8	-
Emirates	New Zealand	100,987	9,494.9	0.1	96,995	7,453.8	1.9
"	Singapore	25,087	2,661.4	110.5	21,178	3,636.0	6.9
"	United Arab Emirates	255,592	6,867.0	149.1	262,367	8,492.2	10.5
"	ALL SERVICES	381,666	19,023.3	259.7	380,540	19,582.0	19.3
Eva Air	Taiwan	41,791	1,697.2	46.8	40,503	1,618.3	-
Federal Express Corporation	Philippines	5,062.9	-
"	USA	..	13,792.6	19.1
"	ALL SERVICES	-	13,792.6	19.1	-	5,062.9	-
Freedom Air International	New Zealand	256,363	-	-	254,437	-	-
Garuda Indonesia	Indonesia	145,473	3,765.2	11.5	146,482	3,131.4	0.3
"	New Zealand	4,969	1,115.9	-	5,553	621.4	-
"	ALL SERVICES	150,442	4,881.1	11.5	152,035	3,752.8	0.3
Gulf Air (a)	Bahrain	22,264	585.2	14.2	30,450	654.4	35.3
"	Singapore	8,692	862.2	25.8	7,966	774.7	0.4
"	ALL SERVICES	30,956	1,447.4	40.0	38,416	1,429.1	35.7
Hawaiian Airlines (b)	USA	3,858	4.7	0.6	4,790	36.5	0.0
Japan Airlines	Japan	369,900	6,897.9	1,065.9	368,187	9,637.1	73.6
Korean Air	Korea	138,775	8,672.1	645.3	130,943	7,103.3	9.2
Lan Chile	Chile	19,623	1,110.0	-	20,232	355.6	34.3
"	New Zealand	9,580	166.3	3.0	11,041	267.5	5.7
"	ALL SERVICES	29,203	1,276.2	3.0	31,273	623.1	40.0
Lauda Air (c)	Austria	79,748	-	-	87,504	-	-
"	Malaysia	11,771	-	-	12,653	-	-
"	Singapore	211	-	-	284	-	-
"	ALL SERVICES	91,730	-	-	100,441	-	-
Lufthansa German Airlines	Germany	..	771.5	0.0	..	1,337.7	6.0

TABLE 1: SCHEDULED INTERNATIONAL AIR TRAFFIC TO AND FROM AUSTRALIA: Year ended June 2004

Scheduled Operator	Country to/from	Inbound			Outbound		
		Passengers	Freight (tonnes)	Mail (tonnes)	Passengers	Freight (tonnes)	Mail (tonnes)
Lufthansa German Airlines	India	2.6	-
"	Malaysia	..	9.5	-	..	278.0	-
"	New Zealand	..	2,770.9	3.3	..	29.7	-
"	Pakistan	18.0	-
"	Thailand	25.5	-
"	United Arab Emirates	..	1.5	-	..	3.8	-
"	USA	..	5,084.1	-	..	353.7	-
"	ALL SERVICES	-	8,637.6	3.3	-	2,049.0	6.0
Malaysia Airlines	Malaysia	482,020	30,223.5	55.3	465,826	12,636.1	1.7
"	New Zealand	9,163	235.6	-	9,040	223.8	-
"	ALL SERVICES	491,183	30,459.2	55.3	474,866	12,859.8	1.7
Martinair Holland	China	146.2	-
"	Hong Kong	793.5	-
"	Ireland	25.7	-
"	Japan	143.0	-
"	Macau	83.0	-
"	Netherlands	..	8,260.9	-	..	1,198.6	-
"	New Zealand	32.1	-
"	Thailand	220.5	-
"	UK	7.5	-
"	United Arab Emirates	131.0	-
"	ALL SERVICES	-	8,260.9	-	-	2,781.0	-
Merpati Nusantara Airlines (d) (e)	Indonesia	..	-	-	..	-	-
Pacific Blue (f)	New Zealand	57,123	-	-	56,439	-	-
Philippine Airlines	Philippines	34,749	1,201.5	2.3	33,727	831.6	0.1
Polar Air Cargo (g)	USA	..	-	-
Polynesian Airlines	New Zealand	1,574	0.1	0.4	1,383	11.2	5.8
"	Niue	59	0.7	0.3	17	-	-
"	Tonga	1,310	15.9	0.4	1,470	14.8	8.0
"	Western Samoa	5,648	42.3	0.4	6,464	26.3	4.9
"	ALL SERVICES	8,591	59.1	1.5	9,334	52.3	18.7
Qantas Airways	China	53.0	-
"	France	9,497	335.0	0.4	7,877	26.1	11.7
"	Germany	43,561	1,952.8	189.9	39,417	200.6	518.5
"	Hong Kong	222,615	9,704.2	282.0	222,570	5,627.1	793.1
"	Indonesia	72,155	595.7	2.8	75,773	1,629.5	64.2
"	Italy	2,251	109.6	0.0	1,580	1.5	3.2
"	Japan	290,904	4,985.1	643.2	295,104	7,584.0	1,775.2
"	New Caledonia	21,675	10.8	3.4	20,585	177.8	27.8
"	New Zealand	856,087	22,406.2	72.6	894,379	22,246.1	2,185.5
"	Philippines	43,434	1,010.1	37.3	42,524	733.2	34.7
"	Singapore	486,784	13,381.4	1,227.2	446,232	20,221.3	2,283.6
"	South Africa	67,507	1,393.9	42.1	60,095	442.5	114.7
"	Thailand	53,564	784.7	95.7	47,719	714.0	236.0
"	UK	153,066	5,636.1	1,490.0	169,118	750.4	2,221.7
"	USA	445,993	9,982.3	1,380.3	446,876	5,335.9	2,221.1
"	ALL SERVICES	2,769,093	72,288.1	5,467.0	2,769,849	65,743.0	12,491.0
Royal Brunei Airlines	Brunei	47,434	1,011.6	0.7	51,277	2,228.3	-
"	New Zealand	10,701	246.3	-	10,353	470.8	-
"	ALL SERVICES	58,135	1,257.9	0.7	61,630	2,699.1	-
Royal Tongan Airlines (h)	New Zealand	..	-	-
"	Tonga	..	-	-	..	-	-
"	ALL SERVICES	-	-	-	-	-	-
Singapore Airlines	Indonesia	38.2	-
"	New Zealand	..	31.0	-	..	2,912.9	-
"	Singapore	988,346	52,058.3	1,206.1	977,556	45,455.9	48.9
"	ALL SERVICES	988,346	52,089.3	1,206.1	977,556	48,407.0	48.9
Solomon Airlines	Solomon Islands	9,335	90.8	-	9,913	48.6	-
South African Airways	South Africa	49,664	1,575.4	31.7	43,814	2,084.9	18.8
Thai Airways International	New Zealand	65,142	2,876.4	0.3	57,674	3,643.4	0.3
"	Thailand	293,726	11,858.4	1,347.0	301,770	10,386.8	5.0
"	ALL SERVICES	358,868	14,734.7	1,347.2	359,444	14,030.2	5.3
United Airlines	USA	205,336	1,270.9	1,404.8	211,149	5,273.0	114.8
United Parcel Service	Hong Kong	95.5	-

TABLE 1: SCHEDULED INTERNATIONAL AIR TRAFFIC TO AND FROM AUSTRALIA: Year ended June 2004

Scheduled Operator	Country to/from	Inbound			Outbound		
		Passengers	Freight (tonnes)	Mail (tonnes)	Passengers	Freight (tonnes)	Mail (tonnes)
United Parcel Service	Philippines	170.8	-
"	Taiwan	181.9	-
"	USA	..	4,475.2	-
"	ALL SERVICES	-	4,475.2	-	-	448.2	-
Vietnam Airlines (i)	Vietnam	30,021	715.3	-	66,938	495.5	-
TOTAL		9,058,693	342,290.5	14,802.4	9,072,444	284,711.5	13,641.9

Please refer to explanatory notes - paragraphs 3, 6 and 13 in particular.

(a) Service recommenced November 2003.

(b) Service recommenced May 2004.

(c) No outbound freight data for September 2000 onwards. No inbound freight data for April 2001 onwards.

(d) Jakarta/Christmas Island scheduled services commenced in August 2001 and ceased in February 2004. No data has been received for these services.

(e) Kupang/Darwin services recommenced in June 2004. No data has been received for these services.

(f) Service commenced January 2004.

(g) No data received for March 2003 and onwards.

(h) Operated services recommenced in December 2002 and ceased in April 2004. No data received for July 2003 and onwards.

(i) No data received for inbound operations to Sydney for August 2002 to May 2004. No data received for outbound operations from Sydney for August 2002 to June 2003.

TABLE 2: SCHEDULED OPERATOR MARKET SHARES AND GROWTH: Year ended June

Scheduled Operators	Country to/from	Total Passengers				Total Freight (tonnes)				Total Mail (tonnes)			
		2003	2004	(%) of TOTAL	(%) Change	2003	2004	(%) of TOTAL	(%) Change	2003	2004	(%) of TOTAL	(%) Change
Aerolineas Argentinas	Argentina	26,503	31,724	0.2	19.7	289.4	275.3	0.0	-4.9	3.7	7.4	0.0	98.5
"	New Zealand	12,720	6,848	0.0	-46.2	1,349.1	1,482.4	0.2	9.9	-	-	-	..
"	ALL SERVICES	39,223	38,572	0.2	-1.7	1,638.5	1,757.8	0.3	7.3	3.7	7.4	0.0	98.5
Air Caledonie	New Caledonia	72,827	75,685	0.4	3.9	556.6	607.9	0.1	9.2	25.3	20.7	0.1	-18.1
Air Canada	Canada	86,188	100,066	0.6	16.1	1,792.6	461.5	0.1	-74.3	116.6	27.1	0.1	-76.8
"	USA	61,040	43,916	0.2	-28.1	3,690.5	5,475.0	0.9	48.4	190.9	225.4	0.8	18.1
"	ALL SERVICES	147,228	143,982	0.8	-2.2	5,483.0	5,936.5	0.9	8.3	307.5	252.5	0.9	-17.9
Air China	China	115,900	138,806	0.8	19.8	1,701.2	1,568.6	0.3	-7.8	21.6	21.1	0.1	-2.2
Air Mauritius	Mauritius	26,860	32,663	0.2	21.6	993.7	951.0	0.2	-4.3	0.9	2.2	0.0	139.2
Air Nauru	Nauru	11,302	10,829	0.1	-4.2	275.1	256.6	0.0	-6.7	9.3	9.3	0.0	0.5
"	Solomon Islands	..	2,225	0.0	0.0	0.0	-	-	..
"	ALL SERVICES	11,302	13,054	0.1	15.5	275.1	256.6	0.0	-6.7	9.3	9.3	0.0	0.5
Air New Zealand	New Zealand	1,412,889	1,511,685	8.3	7.0	39,213.5	30,151.0	4.8	-23.1	1,746.5	2,106.8	7.4	20.6
"	USA	93,519	-100.0	2,451.7	-100.0	41.8	-100.0
"	ALL SERVICES	1,506,408	1,511,685	8.3	0.4	41,665.3	30,151.0	4.8	-27.6	1,788.2	2,106.8	7.4	17.8
Air Niugini	Papua New Guinea	117,037	130,715	0.7	11.7	3,689.3	3,859.5	0.6	4.6	238.3	286.0	1.0	20.0
Air Pacific	Fiji	348,266	408,632	2.3	17.3	7,560.3	7,775.5	1.2	2.8	179.6	184.0	0.6	2.4
Air Paradise International (a)	Indonesia	26,364	154,728	0.9	486.9	67.2	680.8	0.1	912.8	-	-	-	..
Air Vanuatu	Vanuatu	56,481	61,700	0.3	9.2	407.0	389.1	0.1	-4.4	79.9	158.1	0.6	97.8
Asian Express Airlines	New Zealand	7,731.7	7,425.0	1.2	-4.0	-	-	-	..
Asiana Airlines	Korea	145,754	143,546	0.8	-1.5	7,714.1	4,704.8	0.8	-39.0	108.5	92.9	0.3	-14.3
Australian Airlines (b)	Hong Kong	20,416	45,185	0.2	121.3	1,286.5	2,639.6	0.4	105.2	0.1	-	-	-100.0
"	Indonesia	348	86,591	0.5	>999.9	-	266.9	0.0	..	-	0.2	0.0	..
"	Japan	188,082	326,019	1.8	73.3	2,679.8	4,827.2	0.8	80.1	42.1	24.5	0.1	-41.8
"	Malaysia	283	24,416	0.1	8527.6	0.1	521.9	0.1	>999.9	-	-	-	..
"	Singapore	26,768	70,782	0.4	164.4	572.5	1,912.3	0.3	234.0	10.9	14.5	0.1	33.4
"	Taiwan	16,550	-100.0	482.3	-100.0	22.5	-100.0
"	ALL SERVICES	252,447	552,993	3.0	119.1	5,021.2	10,168.0	1.6	102.5	75.6	39.2	0.1	-48.1
British Airways	Singapore	140,596	156,346	0.9	11.2	9,066.0	6,164.6	1.0	-32.0	5.4	1.5	0.0	-73.3
"	Thailand	137,093	131,910	0.7	-3.8	2,771.1	2,526.8	0.4	-8.8	0.4	-	-	-100.0
"	UK	247,081	287,999	1.6	16.6	6,255.7	6,677.5	1.1	6.7	69.5	66.7	0.2	-4.1
"	ALL SERVICES	524,770	576,255	3.2	9.8	18,092.8	15,368.9	2.5	-15.1	75.4	68.1	0.2	-9.6
Cargolux Airlines Intl	Luxembourg	4,086.4	4,240.5	0.7	3.8	-	-	-	..
"	Malaysia	617.8	264.5	0.0	-57.2	-	-	-	..
"	New Zealand	5,291.1	4,982.2	0.8	-5.8	-	-	-	..
"	ALL SERVICES	-	-	-	..	9,995.3	9,487.1	1.5	-5.1	-	-	-	..
Cathay Pacific Airways	Hong Kong	634,722	712,063	3.9	12.2	52,681.0	56,294.3	9.0	6.9	189.3	501.7	1.8	165.0
China Airlines	Taiwan	60,852	118,585	0.7	94.9	2,283.2	2,702.9	0.4	18.4	98.4	157.0	0.6	59.6
China Eastern Airlines	China	64,626	94,754	0.5	46.6	2,069.9	3,477.1	0.6	68.0	14.5	13.9	0.0	-3.7
China Southern Airlines	China	62,651	63,772	0.4	1.8	2,469.9	1,943.1	0.3	-21.3	40.8	27.0	0.1	-33.8
Continental Micronesia	Guam	21,968	27,595	0.2	25.6	39.6	40.0	0.0	0.9	0.5	0.9	0.0	101.3
EgyptAir (c)	Egypt	2,411	-100.0	62.6	-100.0	2.0	-100.0
"	Singapore	392	-100.0	58.7	-100.0	1.4	-100.0

TABLE 2: SCHEDULED OPERATOR MARKET SHARES AND GROWTH: Year ended June

Scheduled Operators	Country to/from	Total Passengers				Total Freight (tonnes)				Total Mail (tonnes)			
		2003	2004	(%) of TOTAL	(%) Change	2003	2004	(%) of TOTAL	(%) Change	2003	2004	(%) of TOTAL	(%) Change
EgyptAir	ALL SERVICES	2,803	-	-	-100.0	121.3	-	-	-100.0	3.4	-	-	-100.0
Emirates	New Zealand	..	197,982	1.1	16,948.7	2.7	2.0	0.0	..
"	Singapore	52,253	46,265	0.3	-11.5	8,049.5	6,297.4	1.0	-21.8	75.2	117.4	0.4	56.1
"	United Arab Emirates	345,372	517,959	2.9	50.0	12,646.9	15,359.3	2.4	21.4	75.1	159.6	0.6	112.5
"	ALL SERVICES	397,625	762,206	4.2	91.7	20,696.4	38,605.3	6.2	86.5	150.3	279.0	1.0	85.6
Eva Air	Taiwan	68,976	82,294	0.5	19.3	3,750.6	3,315.5	0.5	-11.6	37.5	46.8	0.2	25.0
Federal Express Corporation	Philippines	8,880.8	5,062.9	0.8	-43.0	-	-	-	..
"	USA	13,723.4	13,792.6	2.2	0.5	127.1	19.1	0.1	-85.0
"	ALL SERVICES	-	-	-	..	22,604.2	18,855.5	3.0	-16.6	127.1	19.1	0.1	-85.0
Freedom Air International	New Zealand	456,979	510,800	2.8	11.8	-	-	-	..	-	-	-	..
Garuda Indonesia	Indonesia	292,733	291,955	1.6	-0.3	8,381.7	6,896.6	1.1	-17.7	3.9	11.8	0.0	202.7
"	New Zealand	27,842	10,522	0.1	-62.2	2,278.6	1,737.3	0.3	-23.8	-	-	-	..
"	ALL SERVICES	320,575	302,477	1.7	-5.6	10,660.3	8,633.9	1.4	-19.0	3.9	11.8	0.0	202.7
Gemini Air Cargo (d) (e)	Fiji	0.4	-100.0	-
"	USA	3,981.4	-100.0	109.7	-100.0
"	ALL SERVICES	-	-	-	..	3,981.8	-	-	-100.0	109.7	-	-	-100.0
Gulf Air (f)	Bahrain	..	52,714	0.3	1,239.6	0.2	49.5	0.2	..
"	Singapore	..	16,658	0.1	1,636.9	0.3	26.2	0.1	..
"	ALL SERVICES	-	69,372	0.4	..	-	2,876.5	0.5	..	-	75.7	0.3	..
Hawaiian Airlines (g)	USA	..	8,648	0.0	41.2	0.0	0.6	0.0	..
Japan Airlines	Japan	721,112	738,087	4.1	2.4	18,038.1	16,535.0	2.6	-8.3	1,110.8	1,139.5	4.0	2.6
Korean Air	Korea	234,512	269,718	1.5	15.0	10,945.2	15,775.4	2.5	44.1	568.6	654.5	2.3	15.1
Lan Chile	Chile	36,414	39,855	0.2	9.4	632.1	1,465.6	0.2	131.9	13.0	34.3	0.1	164.4
"	New Zealand	15,877	20,621	0.1	29.9	1,058.8	433.8	0.1	-59.0	53.0	8.8	0.0	-83.5
"	ALL SERVICES	52,291	60,476	0.3	15.7	1,690.9	1,899.4	0.3	12.3	66.0	43.1	0.2	-34.7
Lauda Air (h)	Austria	163,502	167,252	0.9	2.3	-	-	-	..	-	-	-	..
"	Malaysia	23,380	24,424	0.1	4.5	-	-	-	..	-	-	-	..
"	Singapore	..	495	0.0	-	-	-	-	..
"	ALL SERVICES	186,882	192,171	1.1	2.8	-	-	-	..	-	-	-	..
Lufthansa German Airlines	Germany	1,419.5	2,109.1	0.3	48.6	1.8	6.1	0.0	244.6
"	India	42.5	2.6	0.0	-94.0	-	-	-	..
"	Malaysia	901.7	287.5	0.0	-68.1	-	-	-	..
"	New Zealand	3,387.9	2,800.6	0.4	-17.3	5.9	3.3	0.0	-44.3
"	Pakistan	28.4	18.0	0.0	-36.6	-	-	-	..
"	Thailand	25.5	0.0	-	-	..
"	United Arab Emirates	14.2	5.4	0.0	-62.3	-	-	-	..
"	USA	4,790.9	5,437.8	0.9	13.5	-	-	-	..
"	ALL SERVICES	-	-	-	..	10,585.2	10,686.5	1.7	1.0	7.6	9.4	0.0	22.5
Malaysia Airlines	Malaysia	836,820	947,846	5.2	13.3	44,313.9	42,859.6	6.8	-3.3	52.9	57.0	0.2	7.8
"	New Zealand	32,384	18,203	0.1	-43.8	2,056.8	459.4	0.1	-77.7	-	-	-	..
"	ALL SERVICES	869,204	966,049	5.3	11.1	46,370.7	43,319.0	6.9	-6.6	52.9	57.0	0.2	7.8
Martinair Holland	China	146.2	0.0	-	-	..
"	Hong Kong	704.3	793.5	0.1	12.7	-	-	-	..

TABLE 2: SCHEDULED OPERATOR MARKET SHARES AND GROWTH: Year ended June

Scheduled Operators	Country to/from	Total Passengers				Total Freight (tonnes)				Total Mail (tonnes)			
		2003	2004	(%) of TOTAL	(%) Change	2003	2004	(%) of TOTAL	(%) Change	2003	2004	(%) of TOTAL	(%) Change
Martinair Holland	Ireland	25.7	0.0	-	-	..
"	Japan	105.0	143.0	0.0	36.2	-	-	-	..
"	Macau	83.0	0.0	-	-	..
"	Netherlands	11,730.3	9,459.4	1.5	-19.4	-	-	-	..
"	New Zealand	32.1	0.0	-	-	..
"	Taiwan	32.6	-100.0	-
"	Thailand	118.0	220.5	0.0	86.9	-	-	-	..
"	UK	7.5	0.0	-	-	..
"	United Arab Emirates	40.8	131.0	0.0	220.9	-	-	-	..
"	ALL SERVICES	-	-	-	..	12,731.0	11,041.8	1.8	-13.3	-	-	-	..
Merpati Nusantara Airlines (i) (j)	Indonesia	-	-	-	..	-	-	-	..
Olympic Airways (k) (l) (m)	Greece	10,960	-100.0	62.3	-100.0	15.2	-100.0
"	Thailand	612	-100.0	58.5	-100.0	-
"	ALL SERVICES	11,572	-	-	-100.0	120.8	-	-	-100.0	15.2	-	-	-100.0
Pacific Blue (n)	New Zealand	..	113,562	0.6	-	-	-	-	..
Philippine Airlines	Philippines	62,896	68,476	0.4	8.9	1,952.5	2,033.1	0.3	4.1	28.2	2.4	0.0	-91.5
Polar Air Cargo (o)	USA	5,224.2	-	-	-100.0	-	-	-	..
Polynesian Airlines	New Zealand	9,838	2,957	0.0	-69.9	9.4	11.3	0.0	20.1	7.3	6.2	0.0	-15.3
"	Niue	49	76	0.0	55.1	0.1	0.7	0.0	430.4	0.1	0.3	0.0	213.9
"	Tahiti	1,905	-100.0	3.3	-100.0	27.4	-100.0
"	Tonga	1,992	2,780	0.0	39.6	58.4	30.8	0.0	-47.3	2.2	8.4	0.0	285.0
"	Western Samoa	9,225	12,112	0.1	31.3	105.4	68.6	0.0	-34.9	10.9	5.3	0.0	-51.3
"	ALL SERVICES	23,009	17,925	0.1	-22.1	176.6	111.4	0.0	-36.9	47.9	20.2	0.1	-57.7
Qantas Airways	China	53.0	0.0	-	-	..
"	Fiji	1,849	-100.0	29.6	-100.0	0.7	-100.0
"	France	37,270	17,374	0.1	-53.4	609.3	361.0	0.1	-40.7	153.1	12.1	0.0	-92.1
"	Germany	108,813	82,978	0.5	-23.7	3,238.3	2,153.4	0.3	-33.5	1,298.8	708.5	2.5	-45.5
"	Hong Kong	415,826	445,185	2.5	7.1	15,651.9	15,331.3	2.4	-2.0	912.1	1,075.1	3.8	17.9
"	Indonesia	217,530	147,928	0.8	-32.0	2,611.7	2,225.2	0.4	-14.8	75.8	67.0	0.2	-11.6
"	Italy	51,795	3,831	0.0	-92.6	1,006.9	111.1	0.0	-89.0	52.0	3.2	0.0	-93.8
"	Japan	664,902	586,008	3.2	-11.9	15,260.9	12,569.1	2.0	-17.6	2,222.6	2,418.4	8.5	8.8
"	New Caledonia	40,050	42,260	0.2	5.5	191.5	188.6	0.0	-1.5	25.8	31.2	0.1	21.2
"	New Zealand	1,525,185	1,750,466	9.7	14.8	43,933.5	44,652.4	7.1	1.6	2,392.0	2,258.2	7.9	-5.6
"	Papua New Guinea	9,119	-100.0	204.4	-100.0	33.9	-100.0
"	Philippines	70,142	85,958	0.5	22.5	1,843.4	1,743.3	0.3	-5.4	63.6	71.9	0.3	13.1
"	Singapore	769,865	933,016	5.1	21.2	34,257.3	33,602.7	5.4	-1.9	2,181.9	3,510.8	12.3	60.9
"	South Africa	123,042	127,602	0.7	3.7	1,415.6	1,836.4	0.3	29.7	148.1	156.8	0.6	5.9
"	Taiwan	13,969	-100.0	458.4	-100.0	23.6	-100.0
"	Thailand	99,172	101,283	0.6	2.1	1,382.3	1,498.7	0.2	8.4	314.5	331.7	1.2	5.5
"	UK	339,796	322,184	1.8	-5.2	5,107.1	6,386.6	1.0	25.1	4,730.5	3,711.7	13.0	-21.5
"	USA	784,511	892,869	4.9	13.8	11,789.8	15,318.2	2.4	29.9	3,365.2	3,601.4	12.7	7.0
"	ALL SERVICES	5,272,836	5,538,942	30.5	5.0	138,992.1	138,031.1	22.0	-0.7	17,993.9	17,957.9	63.1	-0.2
Royal Brunei Airlines	Brunei	106,486	98,711	0.5	-7.3	3,732.7	3,239.8	0.5	-13.2	0.6	0.7	0.0	14.7

TABLE 2: SCHEDULED OPERATOR MARKET SHARES AND GROWTH: Year ended June

Scheduled Operators	Country to/from	Total Passengers				Total Freight (tonnes)				Total Mail (tonnes)			
		2003	2004	(%) of TOTAL	(%) Change	2003	2004	(%) of TOTAL	(%) Change	2003	2004	(%) of TOTAL	(%) Change
Royal Brunei Airlines	New Zealand	..	21,054	0.1	717.2	0.1	-	-	..
"	ALL SERVICES	106,486	119,765	0.7	12.5	3,732.7	3,957.0	0.6	6.0	0.6	0.7	0.0	14.7
Royal Tongan Airlines (p)	New Zealand	1,222	-100.0	0.3	-	-	-100.0	-	-	-	..
"	Tonga	3,715	-100.0	17.5	-	-	-100.0	-	-	-	..
"	ALL SERVICES	4,937	-	-	-100.0	17.8	-	-	-100.0	-	-	-	..
Singapore Airlines	Indonesia	38.2	0.0	-	-	..
"	New Zealand	3,020.3	2,943.9	0.5	-2.5	-	-	-	..
"	Singapore	1,826,736	1,965,902	10.8	7.6	98,686.7	97,514.2	15.6	-1.2	1,285.5	1,255.0	4.4	-2.4
"	ALL SERVICES	1,826,736	1,965,902	10.8	7.6	101,707.0	100,496.3	16.0	-1.2	1,285.5	1,255.0	4.4	-2.4
Solomon Airlines	Solomon Islands	16,874	19,248	0.1	14.1	191.8	139.4	0.0	-27.3	-	-	-	..
South African Airways	South Africa	94,690	93,478	0.5	-1.3	3,294.5	3,660.3	0.6	11.1	58.6	50.5	0.2	-13.7
Thai Airways International	New Zealand	147,962	122,816	0.7	-17.0	6,594.3	6,519.8	1.0	-1.1	1.2	0.6	0.0	-50.0
"	Thailand	545,417	595,496	3.3	9.2	23,070.2	22,245.2	3.5	-3.6	1,018.9	1,352.0	4.8	32.7
"	ALL SERVICES	693,379	718,312	4.0	3.6	29,664.6	28,765.0	4.6	-3.0	1,020.1	1,352.6	4.8	32.6
United Airlines	USA	394,700	416,485	2.3	5.5	9,794.7	6,543.9	1.0	-33.2	1,550.0	1,519.5	5.3	-2.0
United Parcel Service	Hong Kong	95.5	0.0	-	-	..
"	Philippines	34.5	170.8	0.0	395.2	-	-	-	..
"	Taiwan	181.9	0.0	-	-	..
"	USA	5,007.2	4,475.2	0.7	-10.6	-	-	-	..
"	ALL SERVICES	-	-	-	..	5,041.7	4,923.4	0.8	-2.3	-	-	-	..
Vietnam Airlines (q)	Vietnam	53,657	96,959	0.5	80.7	912.1	1,210.8	0.2	32.7	4.1	-	-	-100.0
TOTAL		16,108,417	18,131,137	100.0	12.6	635,134.5	627,002.0	100.0	-1.3	27,499.0	28,444.3	100.0	3.4

Please refer to explanatory notes - paragraphs 3, 6 and 13 in particular.

(a) Service commenced February 2003.

(b) Service commenced October 2002.

(c) Service ceased July 2002.

(d) Traffic carried on behalf of Qantas Airways.

(e) Service commenced March 2002 and ceased March 2003.

(f) Service recommenced November 2003.

(g) Service recommenced May 2004.

(h) No outbound freight data for September 2000 onwards. No inbound freight data for April 2001 onwards.

(i) Jakarta/Christmas Island scheduled services commenced in August 2001 and ceased in February 2004. No data has been received for these services.

(j) Kupang/Darwin services recommenced in June 2004. No data has been received for these services.

(k) Service ceased November 2002.

(l) Data not received for operation to/from Sydney for September, October and November 2002.

(m) Data not received for operations to/from Melbourne for October 2002.

(n) Service commenced January 2004.

(o) No data received for March 2003 and onwards.

(p) Operated services recommenced in December 2002 and ceased in April 2004. No data received for July 2003 and onwards.

(q) No data received for inbound operations to Sydney for August 2002 to May 2004. No data received for outbound operations from Sydney for August 2002 to June 2003.

TABLE 3: AIRLINE PASSENGER CAPACITY AND UTILISATION TO AND FROM AUSTRALIA BY OPERATOR: Year ended June 2004

Scheduled Operator	Service to/from	Inbound				Outbound			
		No. of Flights	Pax Carried	Seats Available	Seat Utilisation %	No. of Flights	Pax Carried	Seats Available	Seat Utilisation %
Aerolineas Argentinas	Argentina	118	18,951	29,146	65.0	119	19,621	29,393	66.8
Air Caledonie	New Caledonia	320	38,097	55,165	69.1	319	37,588	55,019	68.3
Air Canada	Canada	397	70,931	102,433	69.2	397	73,051	102,144	71.5
Air China	China	339	69,442	104,823	66.2	339	69,364	104,823	66.2
Air Mauritius	Mauritius	86	16,221	21,304	76.1	87	16,442	21,592	76.1
Air Nauru	Nauru	103	7,025	12,110	58.0	102	6,029	11,354	53.1
Air New Zealand	New Zealand	5,960	751,334	1,029,580	73.0	5,944	760,351	1,027,522	74.0
Air Niugini	Papua New Guinea	869	64,576	110,801	58.3	863	66,139	110,061	60.1
Air Pacific	Fiji	1,034	204,049	297,382	68.6	1,034	204,583	297,382	68.8
Air Paradise International	Indonesia	490	75,778	106,098	71.4	490	78,950	106,098	74.4
Air Vanuatu	Vanuatu	425	30,853	53,634	57.5	428	30,847	54,008	57.1
Asian Express Airlines (a)	New Zealand	221	..	-	..	221	..	-	..
Asiana Airlines	Korea	366	72,844	113,460	64.2	366	70,702	113,460	62.3
Australian Airlines	Hong Kong	140	25,675	37,200	69.0	140	19,656	37,275	52.7
"	Indonesia	87	18,039	22,970	78.5	87	18,525	22,979	80.6
"	Japan	845	165,150	226,745	72.8	845	161,393	226,761	71.2
"	Malaysia	131	21,939	34,445	63.7	132	22,587	34,696	65.1
"	Singapore	274	52,056	72,656	71.6	274	55,885	72,601	77.0
"	ALL SERVICES	1,477	282,859	394,016	71.8	1,478	278,046	394,312	70.5
British Airways	UK	1,090	296,311	397,290	74.6	1,090	279,944	397,190	70.5
Cargolux Airlines Intl (a)	Luxembourg	98	-	..	-	..
"	New Zealand	-	..	-	..	101
"	ALL SERVICES	98	-	-	..	101	-	-	..
Cathay Pacific Airways	Hong Kong	1,880	356,993	473,301	75.4	1,880	355,070	473,301	75.0
China Airlines	Taiwan	297	58,190	79,269	73.4	297	60,395	79,269	76.2
China Eastern Airlines	China	291	47,471	83,587	56.8	291	47,283	83,587	56.6
China Southern Airlines	China	166	32,116	47,642	67.4	166	31,656	47,642	66.4
Continental Micronesia	Guam	156	13,438	24,024	55.9	156	14,157	24,024	58.9
Emirates	New Zealand	907	100,987	310,977	32.5	907	96,995	310,977	31.2
"	United Arab Emirates	1,342	280,679	441,766	63.5	1,342	283,545	441,766	64.2
"	ALL SERVICES	2,249	381,666	752,743	50.7	2,249	380,540	752,743	50.6
Eva Air	Taiwan	234	41,791	53,078	78.7	234	40,503	53,078	76.3
Federal Express Corporation (a)	Philippines	-	..	-	..	259
"	USA	262	-	..	-	..
"	ALL SERVICES	262	-	-	..	259	-	-	..
Freedom Air International	New Zealand	2,564	256,363	350,658	73.1	2,564	254,437	362,872	70.1
Garuda Indonesia	Indonesia	996	145,473	222,001	65.5	995	146,482	221,708	66.1
"	New Zealand	109	4,969	31,703	15.7	109	5,553	31,703	17.5
"	ALL SERVICES	1,105	150,442	253,704	59.3	1,104	152,035	253,411	60.0
Gulf Air (b)	Bahrain	218	30,956	57,770	53.6	216	38,416	57,240	67.1
Hawaiian Airlines (c)	USA	25	3,858	6,600	58.5	25	4,790	6,600	72.6
Japan Airlines	Japan	1,102	369,900	491,426	75.3	1,100	368,187	488,062	75.4

TABLE 3: AIRLINE PASSENGER CAPACITY AND UTILISATION TO AND FROM AUSTRALIA BY OPERATOR: Year ended June 2004

Scheduled Operator	Service to/from	Inbound				Outbound			
		No. of Flights	Pax Carried	Seats Available	Seat Utilisation %	No. of Flights	Pax Carried	Seats Available	Seat Utilisation %
Korean Air	Korea	575	138,775	181,132	76.6	575	130,943	181,132	72.3
Lan Chile	Chile	154	29,203	39,886	73.2	154	31,273	39,886	78.4
Lauda Air	Austria	371	91,730	127,624	71.9	370	100,441	127,280	78.9
Lufthansa German Airlines (a)	Germany	172	..	-	..	171	..	-	..
Malaysia Airlines	Malaysia	2,471	482,020	707,775	68.1	2,449	465,826	708,066	65.8
"	New Zealand	120	9,163	46,130	19.9	119	9,040	45,745	19.8
"	ALL SERVICES	2,591	491,183	753,905	65.2	2,568	474,866	753,811	63.0
Martinair Holland (a)	Netherlands	105	..	-	..	106	..	-	..
Merpati Nusantara Airlines (d) (e)	Indonesia	-	..	-	..	-	..	-	..
Pacific Blue (f)	New Zealand	484	57,123	87,120	65.6	484	56,439	87,120	64.8
Philippine Airlines	Philippines	161	34,749	48,761	71.3	161	33,727	48,761	69.2
Polar Air Cargo (a) (g)	USA	-	..	-	..	-	..	-	..
Polynesian Airlines	Western Samoa	102	8,591	15,708	54.7	102	9,334	15,708	59.4
Qantas Airways	France	142	46,892	61,167	76.7	142	46,029	61,220	75.2
"	Germany	366	133,451	156,918	85.0	366	133,861	157,021	85.3
"	Hong Kong	1,101	229,474	303,942	75.5	1,101	231,107	301,760	76.6
"	Indonesia	583	73,633	113,940	64.6	585	74,301	114,343	65.0
"	Italy	20	6,841	8,645	79.1	20	6,910	7,819	88.4
"	Japan	1,385	299,290	409,253	73.1	1,385	303,443	409,431	74.1
"	New Caledonia	211	26,133	37,017	70.6	211	25,651	36,795	69.7
"	New Zealand	5,354	831,561	1,033,281	80.5	5,361	851,574	1,037,402	82.1
"	Philippines	173	47,139	61,027	77.2	173	45,865	61,063	75.1
"	Singapore	1,101	256,704	325,120	79.0	1,100	236,761	326,839	72.4
"	South Africa	236	80,145	97,150	82.5	236	71,274	91,028	78.3
"	UK	1,065	351,640	411,399	85.5	1,065	346,430	411,501	84.2
"	USA	1,911	564,597	698,120	80.9	1,945	576,123	702,301	82.0
"	ALL SERVICES	13,648	2,947,500	3,716,979	79.3	13,690	2,949,329	3,718,523	79.3
Royal Brunei Airlines	Brunei	506	47,434	94,240	50.3	503	51,277	93,728	54.7
"	New Zealand	140	10,701	30,678	34.9	141	10,353	30,876	33.5
"	ALL SERVICES	646	58,135	124,918	46.5	644	61,630	124,604	49.5
Royal Tongan Airlines (h)	Tonga	-	..	-	..	-	..	-	..
Singapore Airlines	Singapore	3,830	988,346	1,239,457	79.7	3,829	977,556	1,239,177	78.9
Solomon Airlines	Solomon Islands	108	9,335	14,688	63.6	111	9,913	15,100	65.6
South African Airways	South Africa	258	49,664	70,461	70.5	258	43,814	70,586	62.1
Thai Airways International	New Zealand	518	65,142	192,870	33.8	518	57,674	192,870	29.9
"	Thailand	1,354	293,726	475,030	61.8	1,352	301,770	474,340	63.6
"	ALL SERVICES	1,872	358,868	667,900	53.7	1,870	359,444	667,210	53.9
United Airlines	USA	734	205,336	254,698	80.6	731	211,149	253,657	83.2
United Parcel Service (a)	Hong Kong	-	..	-	..	37
"	Philippines	-	..	-	..	13
"	Taiwan	-	..	-	..	39
"	USA	104	-	..	-	..

TABLE 3: AIRLINE PASSENGER CAPACITY AND UTILISATION TO AND FROM AUSTRALIA BY OPERATOR: Year ended June 2004

Scheduled Operator	Service to/from	Inbound				Outbound			
		No. of Flights	Pax Carried	Seats Available	Seat Utilisation %	No. of Flights	Pax Carried	Seats Available	Seat Utilisation %
United Parcel Service	ALL SERVICES	104	-	-	..	89	-	-	..
Vietnam Airlines (i)	Vietnam	318	30,021	96,105	31.2	319	66,938	96,279	69.5
TOTAL		50,175	9,241,014	12,940,386	71.4	50,151	9,255,922	12,945,021	71.5

Please refer to explanatory notes - paragraphs 4, 5, 7 and 14 in particular.

In addition to the above, please note the following regarding **Seat Factors** shown in this table:

Traffic shown in this table for Australian Airlines and Qantas Airways will differ from traffic shown in Tables 1 and 2 because of the inclusion in this table of total traffic into and ex Australia (for seat factor purposes) whereas Tables 1 and 2 include uplift/discharge traffic only.

All other airlines report uplift/discharge traffic only. Therefore, for other airlines operating **via** Australia, the seat factors shown here reflect the total seats on the aircraft but only the Australian uplift/discharge portion of passengers on the aircraft. The true seat factors for airlines that operate **via** Australia will most likely be higher than what is shown in this table.

For example, on Dubai-Sydney-Auckland services:

Seats on the Dubai-Sydney sector are taken up by Dubai-Sydney and Dubai-Auckland passengers. However, when calculating seat factors, only the Dubai-Sydney passengers are used.

Similarly, seats on the Sydney-Auckland sector are taken up by Sydney-Auckland and Dubai-Auckland passengers. However, when calculating seat factors, only the Sydney-Auckland passengers are used.

The following airlines are affected:

Emirates, Garuda Indonesia, Malaysia Airlines, Royal Brunei Airlines and Thai Airways International

- (a) Freight flights only.
- (b) Service recommenced November 2003.
- (c) Service recommenced May 2004.
- (d) Jakarta/Christmas Island scheduled services commenced in August 2001 and ceased in February 2004. No data has been received for these services.
- (e) Kupang/Darwin services recommenced in June 2004. No data has been received for these services.
- (f) Service commenced January 2004.
- (g) No data received for March 2003 and onwards.
- (h) Operated services recommenced in December 2002 and ceased in April 2004. No data received for July 2003 and onwards.
- (i) No data received for inbound operations to Sydney for August 2002 to May 2004. No data received for outbound operations from Sydney for August 2002 to June 2003.

TABLE 4: SCHEDULED INTERNATIONAL AIRPORT TRAFFIC AND AIRCRAFT MOVEMENTS: Year ended June

		Inbound		Change	Outbound		Change	Total		Change	TOTAL
		2003	2004		2003	2004		2003	2004		
Adelaide	Passengers	108,579	128,367	18.2	98,549	121,646	23.4	207,128	250,013	20.7	1.4
"	Freight (Tonnes)	5,188	5,829	12.4	7,000	7,728	10.4	12,188	13,557	11.2	2.2
"	Aircraft Movements	842	953	13.2	838	951	13.5	1,680	1,904	13.3	1.6
Brisbane	Passengers	1,258,863	1,481,043	17.6	1,184,055	1,431,401	20.9	2,442,918	2,912,444	19.2	16.1
"	Freight (Tonnes)	28,933	32,806	13.4	43,563	36,245	-16.8	72,496	69,052	-4.8	11.0
"	Aircraft Movements	8,576	9,262	8.0	8,569	9,272	8.2	17,145	18,534	8.1	15.7
Cairns	Passengers	375,953	407,687	8.4	376,573	393,114	4.4	752,526	800,801	6.4	4.4
"	Freight (Tonnes)	2,262	2,387	5.5	8,849	8,614	-2.7	11,111	11,000	-1.0	1.8
"	Aircraft Movements	3,755	4,011	6.8	3,757	4,027	7.2	7,512	8,038	7.0	6.8
Darwin	Passengers	44,404	41,704	-6.1	44,902	42,253	-5.9	89,306	83,957	-6.0	0.5
"	Freight (Tonnes)	278	331	19.2	454	436	-4.0	732	767	4.8	0.1
"	Aircraft Movements	656	700	6.7	655	700	6.9	1,311	1,400	6.8	1.2
Gold Coast/Coolangatta	Passengers	68,256	68,818	0.8	67,774	68,561	1.2	136,030	137,379	1.0	0.8
"	Freight (Tonnes)	339	812	139.4	101	2	-98.3	441	814	84.8	0.1
"	Aircraft Movements	856	976	14.0	854	943	10.4	1,710	1,919	12.2	1.6
Melbourne	Passengers	1,606,937	1,808,427	12.5	1,529,483	1,792,645	17.2	3,136,420	3,601,072	14.8	19.9
"	Freight (Tonnes)	93,814	96,596	3.0	95,930	83,944	-12.5	189,744	180,539	-4.9	28.8
"	Aircraft Movements	10,528	11,814	12.2	10,466	11,831	13.0	20,994	23,645	12.6	20.0
Newcastle	Passengers	1,066	..	-100.0	1,010	..	-100.0	2,076	-	-100.0	..
"	Freight (Tonnes)	-	-	-	-
"	Aircraft Movements	18	..	-100.0	18	..	-100.0	36	-	-100.0	..
Norfolk Island	Passengers	7,832	8,464	8.1	7,650	8,415	10.0	15,482	16,879	9.0	0.1
"	Freight (Tonnes)	104	134	28.7	14	14	-1.4	118	148	25.1	0.0
"	Aircraft Movements	103	105	1.9	99	105	6.1	202	210	4.0	0.2
Perth	Passengers	811,860	885,621	9.1	761,683	848,617	11.4	1,573,543	1,734,238	10.2	9.6
"	Freight (Tonnes)	16,401	19,856	21.1	34,385	33,155	-3.6	50,786	53,011	4.4	8.5
"	Aircraft Movements	4,196	4,578	9.1	4,227	4,630	9.5	8,423	9,208	9.3	7.8
Sydney	Passengers	3,844,052	4,228,562	10.0	3,908,936	4,365,792	11.7	7,752,988	8,594,354	10.9	47.4
"	Freight (Tonnes)	162,996	183,540	12.6	134,524	114,574	-14.8	297,520	298,114	0.2	47.5
"	Aircraft Movements	23,623	26,586	12.5	23,449	26,488	13.0	47,072	53,074	12.8	45.0
TOTAL	Passengers	8,127,802	9,058,693	11.5	7,980,615	9,072,444	13.7	16,108,417	18,131,137	12.6	100.0
	Freight (Tonnes)	310,315	342,291	10.3	324,819	284,711	-12.3	635,135	627,002	-1.3	100.0
	Aircraft Movements	53,153	58,985	11.0	52,932	58,947	11.4	106,085	117,932	11.2	100.0

TABLE 5: SCHEDULED INTERNATIONAL TRAFFIC BY CITY PAIRS: Year ended June

Foreign Port	Australian Port	Passengers						Freight (tonnes)					
		2003			2004			2003			2004		
		Inbound	Outbound	Total	Inbound	Outbound	Total	Inbound	Outbound	Total	Inbound	Outbound	Total
Amsterdam	Adelaide	0	0	0	0	0	0	172.0	0.0	172.0	0.0	0.0	0.0
Auckland	"	45	56	101	0	0	0	130.6	136.5	267.2	0.0	0.0	0.0
Bangkok	"	0	12	12	0	0	0	6.1	4.6	10.7	0.0	0.0	0.0
Chicago	"	0	0	0	0	0	0	0.0	0.0	0.0	0.0	0.0	0.0
Christchurch	"	469	7	476	0	0	0	56.1	31.4	87.5	0.0	0.0	0.0
Denpasar	"	6,410	6,330	12,740	12,508	13,062	25,570	133.7	277.0	410.7	236.1	72.7	308.8
Frankfurt	"	474	481	955	0	0	0	33.6	0.6	34.2	0.0	0.0	0.0
Hong Kong	"	15,656	11,007	26,663	13,206	9,331	22,537	498.0	721.7	1,219.7	573.8	761.0	1,334.8
Honolulu	"	0	0	0	0	0	0	0.0	1.8	1.8	0.0	0.0	0.0
Jakarta	"	0	3	3	0	0	0	0.6	21.9	22.5	0.0	0.0	0.0
Johannesburg	"	0	0	0	0	0	0	23.8	2.4	26.2	0.0	0.0	0.0
Kuala Lumpur	"	34,131	31,444	65,575	40,834	39,865	80,699	1,594.9	1,050.8	2,645.6	1,779.7	1,429.9	3,209.6
London	"	703	614	1,317	0	0	0	22.0	7.0	29.0	0.0	0.0	0.0
Los Angeles	"	948	173	1,121	0	0	0	8.4	101.1	109.5	0.0	0.0	0.0
Manila	"	0	45	45	0	0	0	19.7	0.6	20.3	0.0	0.0	0.0
Nagoya	"	0	0	0	0	0	0	1.2	20.9	22.0	0.0	0.0	0.0
New York	"	2	0	2	0	0	0	1.5	1.0	2.5	0.0	0.0	0.0
Noumea	"	0	0	0	0	0	0	0.0	0.4	0.5	0.0	0.0	0.0
Osaka	"	0	0	0	0	0	0	13.8	25.9	39.7	0.0	0.0	0.0
Paris	"	10	68	78	0	0	0	6.8	0.3	7.1	0.0	0.0	0.0
Port Moresby	"	0	0	0	0	0	0	0.0	0.5	0.5	0.0	0.0	0.0
Queenstown	"	5	2	7	0	0	0	0.0	0.0	0.0	0.0	0.0	0.0
Rome	"	211	407	618	0	0	0	13.6	0.0	13.6	0.0	0.0	0.0
Singapore	"	49,247	47,891	97,138	61,819	59,388	121,207	2,195.1	4,517.0	6,712.1	3,239.3	5,464.2	8,703.5
Taipei	"	0	0	0	0	0	0	5.7	0.8	6.5	0.0	0.0	0.0
Tokyo	"	263	1	264	0	0	0	249.8	74.8	324.6	0.0	0.0	0.0
Wellington	"	5	8	13	0	0	0	0.4	1.2	1.7	0.0	0.0	0.0
Total	Adelaide	108,579	98,549	207,128	128,367	121,646	250,013	5,187.6	7,000.2	12,187.7	5,828.8	7,727.9	13,556.7
Auckland	Brisbane	235,365	236,709	472,074	305,118	312,554	617,672	7,402.6	8,064.4	15,467.1	7,290.3	7,669.4	14,959.8
Bandar Seri Begawan	"	25,851	27,271	53,122	20,054	22,343	42,397	791.6	1,650.4	2,442.0	796.1	1,174.0	1,970.1
Bangkok	"	26,367	27,602	53,969	33,288	33,142	66,430	845.1	1,254.9	2,100.0	1,055.9	1,412.5	2,468.4
Beijing	"	0	0	0	0	0	0	0.0	0.0	0.0	0.0	0.0	0.0
Chicago	"	0	0	0	0	0	0	1.4	0.0	1.4	0.0	0.0	0.0
Christchurch	"	73,141	72,314	145,455	97,526	96,077	193,603	716.4	1,033.2	1,749.6	387.5	485.6	873.1
Denpasar	"	21,484	20,271	41,755	23,438	24,222	47,660	542.2	375.0	917.3	616.8	345.9	962.7
Dubai	"	0	0	0	30,578	32,778	63,356	0.0	0.0	0.0	564.7	600.9	1,165.6
Dunedin	"	15,926	16,149	32,075	15,305	15,984	31,289	0.0	0.0	0.0	0.0	0.0	0.0
Frankfurt	"	4,714	4,625	9,339	0	0	0	152.0	8.5	160.5	0.0	0.0	0.0
Hamilton	"	21,917	23,366	45,283	21,888	21,897	43,785	0.0	0.0	0.0	0.0	0.0	0.0
Hong Kong	"	54,892	51,427	106,319	63,271	60,708	123,979	2,416.2	3,412.4	5,828.6	3,447.9	2,946.8	6,394.7
Honiara	"	8,266	8,608	16,874	10,651	10,822	21,473	105.0	86.8	191.8	90.8	48.6	139.4
Honolulu	"	722	12	734	0	0	0	4.5	31.5	36.0	0.0	0.0	0.0
Jakarta	"	1,173	158	1,331	0	0	0	0.6	7.2	7.8	0.0	0.0	0.0
Johannesburg	"	0	113	113	0	0	0	10.4	3.8	14.2	0.0	0.0	0.0

TABLE 5: SCHEDULED INTERNATIONAL TRAFFIC BY CITY PAIRS: Year ended June

Foreign Port	Australian Port	Passengers						Freight (tonnes)					
		2003			2004			2003			2004		
		Inbound	Outbound	Total	Inbound	Outbound	Total	Inbound	Outbound	Total	Inbound	Outbound	Total
Kota Kinabalu	Brisbane	0	0	0	0	0	0	0.0	0.0	0.0	0.0	70.3	70.3
Kuala Lumpur	"	44,346	43,296	87,642	53,479	52,598	106,077	1,358.3	1,252.4	2,610.7	1,576.6	945.4	2,522.0
London	"	8,460	7,663	16,123	0	0	0	99.1	22.6	121.7	0.0	0.0	0.0
Los Angeles	"	36,558	33,686	70,244	46,139	45,594	91,733	804.9	529.5	1,334.4	828.3	488.5	1,316.8
Manila	"	6,531	5,516	12,047	8,344	7,529	15,873	6.7	53.6	60.3	11.4	84.1	95.6
Nadi	"	29,647	28,826	58,473	39,840	40,253	80,093	127.2	252.2	379.4	202.0	480.0	681.9
Nagoya	"	3,706	326	4,032	0	0	0	1.5	380.9	382.3	0.0	0.0	0.0
Nauru	"	4,423	4,238	8,661	4,414	3,806	8,220	13.0	205.4	218.4	31.5	194.5	225.9
New York	"	190	48	238	16	0	16	18.0	1.7	19.7	0.0	0.0	0.0
Noumea	"	16,591	18,007	34,598	16,577	17,666	34,243	23.5	169.1	192.6	11.4	163.3	174.7
Osaka	"	92,297	26,478	118,775	87,553	25,369	112,922	616.8	1,445.0	2,061.7	809.2	1,240.8	2,050.0
Palmerston	"	17,682	17,677	35,359	19,407	19,127	38,534	0.0	0.0	0.0	0.0	0.0	0.0
Paris	"	1,142	1,404	2,546	0	0	0	12.7	2.2	14.9	0.0	0.0	0.0
Port Moresby	"	26,677	29,728	56,405	29,294	32,704	61,998	1,077.5	1,838.3	2,915.8	1,079.5	1,967.1	3,046.6
Port Vila	"	10,033	9,815	19,848	11,498	11,542	23,040	41.5	127.9	169.3	28.6	120.6	149.2
Queenstown	"	2,413	2,423	4,836	2,257	2,626	4,883	0.0	0.0	0.0	0.0	0.0	0.0
Rome	"	1,887	6,809	8,696	0	951	951	74.4	13.8	88.2	0.0	0.3	0.3
Seoul	"	28,574	23,972	52,546	33,402	26,402	59,804	429.5	1,639.3	2,068.8	625.4	1,495.0	2,120.4
Shanghai	"	0	0	0	175	175	350	0.0	0.0	0.0	0.0	0.0	0.0
Singapore	"	246,458	242,491	488,949	299,515	302,664	602,179	7,069.5	12,321.9	19,391.4	8,639.0	9,879.2	18,518.2
Taipei	"	25,354	25,659	51,013	39,551	39,958	79,509	1,365.4	1,320.7	2,686.1	1,592.4	921.1	2,513.5
Tokyo	"	119,191	120,419	239,610	123,105	126,571	249,676	2,791.4	6,038.9	8,830.3	3,115.0	3,496.5	6,611.5
Toledo	"	0	0	0	0	0	0	0.5	0.0	0.5	0.0	0.0	0.0
Wellington	"	46,885	46,949	93,834	45,360	45,339	90,699	13.2	19.1	32.4	6.1	15.0	21.1
Total	Brisbane	1,258,863	1,184,055	2,442,918	1,481,043	1,431,401	2,912,444	28,932.6	43,562.9	72,495.5	32,806.3	36,245.3	69,051.7
Auckland	Cairns	21,255	25,163	46,418	22,142	23,922	46,064	277.9	157.4	435.2	175.0	175.2	350.2
Bangkok	"	214	112	326	0	0	0	2.5	1.5	4.0	0.0	0.0	0.0
Christchurch	"	564	1,715	2,279	0	0	0	2.9	1.4	4.3	0.0	0.0	0.0
Denpasar	"	63	112	175	0	0	0	2.2	1.2	3.4	0.0	0.0	0.0
Frankfurt	"	2,709	5,568	8,277	0	0	0	7.5	2.4	9.8	0.0	0.0	0.0
Fukuoka	"	10,072	11,237	21,309	21,674	22,562	44,236	14.8	83.4	98.2	21.5	373.6	395.2
Guam	"	10,856	11,112	21,968	13,438	14,157	27,595	0.3	39.3	39.6	0.2	39.8	40.0
Hong Kong	"	38,921	30,911	69,832	44,764	37,279	82,043	412.5	4,112.5	4,524.9	990.4	3,445.7	4,436.1
Honolulu	"	155	190	345	0	0	0	0.0	0.3	0.3	0.0	0.0	0.0
Jakarta	"	88	86	174	0	0	0	0.0	2.3	2.3	0.0	0.0	0.0
Johannesburg	"	34	88	122	0	0	0	0.5	0.3	0.7	0.0	0.0	0.0
Kota Kinabalu	"	0	0	0	622	643	1,265	0.0	0.0	0.0	6.2	0.0	6.2
London	"	2,870	3,728	6,598	0	0	0	0.4	4.5	4.9	0.0	0.0	0.0
Los Angeles	"	2,764	4,729	7,493	0	0	0	2.1	107.2	109.3	0.0	0.0	0.0
Manila	"	39	35	74	0	0	0	0.1	3.4	3.5	0.0	0.0	0.0
Nagoya	"	60,647	65,272	125,919	69,663	66,118	135,781	149.8	1,177.2	1,327.0	117.6	994.2	1,111.8
New York	"	13	16	29	0	0	0	0.0	0.6	0.6	0.0	0.0	0.0
Noumea	"	0	8	8	0	0	0	0.0	0.1	0.1	0.0	0.0	0.0

TABLE 5: SCHEDULED INTERNATIONAL TRAFFIC BY CITY PAIRS: Year ended June

Foreign Port	Australian Port	Passengers						Freight (tonnes)					
		2003			2004			2003			2004		
		Inbound	Outbound	Total	Inbound	Outbound	Total	Inbound	Outbound	Total	Inbound	Outbound	Total
Osaka	Cairns	49,649	43,403	93,052	55,525	51,470	106,995	469.2	972.2	1,441.5	199.9	1,532.5	1,732.5
Paris	"	565	981	1,546	0	0	0	0.0	0.2	0.2	0.0	0.0	0.0
Port Moresby	"	24,442	21,772	46,214	25,705	22,326	48,031	80.6	225.9	306.5	66.3	173.0	239.3
Queenstown	"	33	18	51	0	0	0	0.0	0.0	0.0	0.0	0.0	0.0
Rome	"	345	1,323	1,668	0	0	0	0.5	2.7	3.2	0.0	0.0	0.0
Sapporo	"	0	96	96	0	0	0	0.0	0.0	0.0	0.0	0.0	0.0
Singapore	"	20,704	20,873	41,577	31,130	33,670	64,800	261.8	463.7	725.5	617.2	168.0	785.2
Taipei	"	7,799	7,686	15,485	0	0	0	373.6	108.7	482.3	0.0	0.0	0.0
Tokyo	"	120,523	119,930	240,453	123,024	120,967	243,991	203.1	1,379.2	1,582.4	192.2	1,711.9	1,904.1
Wellington	"	629	409	1,038	0	0	0	0.0	1.4	1.4	0.0	0.0	0.0
Total	Cairns	375,953	376,573	752,526	407,687	393,114	800,801	2,262.4	8,849.0	11,111.4	2,386.5	8,613.9	11,000.4
Auckland	Darwin	18	162	180	0	0	0	1.6	0.8	2.3	0.0	0.0	0.0
Bandar Seri Begawan	"	6,414	6,480	12,894	7,614	7,979	15,593	43.8	52.3	96.1	46.0	56.8	102.8
Bangkok	"	5	6	11	0	234	234	0.1	0.3	0.4	0.0	0.0	0.0
Christchurch	"	6	67	73	0	0	0	0.0	0.0	0.0	0.0	0.0	0.0
Denpasar	"	15,868	17,001	32,869	13,848	15,676	29,524	6.6	3.4	10.0	5.8	4.0	9.8
Frankfurt	"	3,309	2,811	6,120	0	0	0	0.4	1.1	1.5	0.0	0.0	0.0
Hong Kong	"	183	18	201	0	0	0	25.2	95.8	121.0	0.0	0.0	0.0
Jakarta	"	3	0	3	0	0	0	0.0	0.5	0.5	0.0	0.0	0.0
Johannesburg	"	0	0	0	0	0	0	0.0	0.3	0.3	0.0	0.0	0.0
Kupang	"	0	0	0	0	0	0	0.0	0.0	0.0	0.0	0.0	0.0
London	"	2,184	2,405	4,589	0	0	0	4.6	14.6	19.2	0.0	0.0	0.0
Los Angeles	"	79	60	139	0	0	0	0.2	1.0	1.2	0.0	0.0	0.0
Manila	"	0	0	0	0	0	0	0.0	0.0	0.0	0.0	0.0	0.0
New York	"	0	0	0	0	0	0	0.0	0.2	0.2	0.0	0.0	0.0
Osaka	"	0	0	0	0	0	0	0.0	0.0	0.0	0.0	0.0	0.0
Paris	"	4	420	424	0	0	0	0.4	3.4	3.8	0.0	0.0	0.0
Port Moresby	"	0	0	0	0	0	0	0.0	0.1	0.1	0.0	0.0	0.0
Rome	"	437	343	780	0	0	0	0.3	0.9	1.2	0.0	0.0	0.0
Singapore	"	15,885	15,098	30,983	20,242	18,364	38,606	176.6	277.4	454.0	279.6	374.8	654.4
Tokyo	"	7	9	16	0	0	0	18.2	1.8	20.0	0.0	0.0	0.0
Wellington	"	2	22	24	0	0	0	0.0	0.0	0.0	0.0	0.0	0.0
Total	Darwin	44,404	44,902	89,306	41,704	42,253	83,957	278.0	453.8	731.8	331.4	435.7	767.0
Auckland	Gold Coast/Coolangatta	33,173	34,154	67,327	30,198	29,727	59,925	0.0	0.0	0.0	0.0	0.0	0.0
Christchurch	"	8,672	8,021	16,693	14,375	14,086	28,461	0.0	0.0	0.0	0.0	0.0	0.0
Dunedin	"	5,268	5,095	10,363	6,200	6,221	12,421	0.0	0.0	0.0	0.0	0.0	0.0
Fukuoka	"	834	599	1,433	499	0	499	0.0	0.0	0.0	6.0	0.0	6.0
Hamilton	"	9,352	9,038	18,390	9,399	9,344	18,743	0.0	0.0	0.0	0.0	0.0	0.0
Hong Kong	"	91	586	677	0	0	0	0.0	0.0	0.0	0.0	0.0	0.0
Nagoya	"	3,628	3,155	6,783	0	0	0	138.0	46.3	184.2	0.0	0.0	0.0
Osaka	"	4,727	4,031	8,758	8,147	9,183	17,330	201.4	54.9	256.3	806.3	1.7	808.0
Palmerston	"	1,949	1,898	3,847	0	0	0	0.0	0.0	0.0	0.0	0.0	0.0
Singapore	"	0	690	690	0	0	0	0.0	0.0	0.0	0.0	0.0	0.0

TABLE 5: SCHEDULED INTERNATIONAL TRAFFIC BY CITY PAIRS: Year ended June

Foreign Port	Australian Port	Passengers						Freight (tonnes)					
		2003			2004			2003			2004		
		Inbound	Outbound	Total	Inbound	Outbound	Total	Inbound	Outbound	Total	Inbound	Outbound	Total
Taipei	Gold Coast/Coolangatta	562	507	1,069	0	0	0	0.0	0.0	0.0	0.0	0.0	0.0
Total	Gold Coast/Coolangatta	68,256	67,774	136,030	68,818	68,561	137,379	339.4	101.2	440.5	812.3	1.7	814.0
Amsterdam	Melbourne	0	0	0	0	0	0	75.6	4.1	79.7	37.9	0.0	37.9
Athens	"	3,057	2,553	5,610	0	0	0	26.7	9.2	35.9	0.0	0.0	0.0
Atlanta	"	0	0	0	0	0	0	1,035.4	0.0	1,035.4	785.6	0.0	785.6
Auckland	"	239,619	246,337	485,956	299,197	299,357	598,554	15,589.4	16,424.7	32,014.1	17,209.1	17,046.9	34,256.0
Bangkok	"	98,061	89,102	187,163	102,903	99,593	202,496	4,982.1	5,393.4	10,375.4	4,662.4	4,875.1	9,537.5
Beijing	"	9,771	5,021	14,792	10,866	7,249	18,115	145.1	205.3	350.4	121.8	202.1	323.9
Chicago	"	2,028	1,915	3,943	829	1,156	1,985	4,646.0	0.0	4,646.0	4,298.5	228.7	4,527.2
Christchurch	"	81,774	80,533	162,307	95,388	93,187	188,575	2,269.1	1,478.2	3,747.3	911.8	590.7	1,502.5
Denpasar	"	39,321	35,330	74,651	58,560	57,993	116,553	1,440.1	1,633.3	3,073.4	1,557.5	1,654.2	3,211.7
Dubai	"	75,439	74,422	149,861	81,710	85,993	167,703	2,021.4	4,509.0	6,530.4	2,028.8	3,485.5	5,514.3
Dunedin	"	8,505	8,497	17,002	10,462	10,110	20,572	0.0	0.0	0.0	0.0	0.0	0.0
Frankfurt	"	5,324	4,127	9,451	0	0	0	1,099.4	1,592.4	2,691.8	771.5	1,337.7	2,109.1
Guangzhou	"	15,064	10,699	25,763	12,833	10,587	23,420	829.1	399.6	1,228.7	489.1	129.6	618.7
Hamilton	"	12,853	12,558	25,411	11,667	11,632	23,299	0.0	0.0	0.0	0.0	0.0	0.0
Hanoi	"	2,005	2,290	4,295	2,770	3,469	6,239	0.0	26.7	26.7	0.0	69.2	69.2
Ho Chi Minh City	"	21,022	20,094	41,116	24,255	24,471	48,726	541.8	170.2	712.0	606.0	210.1	816.1
Hong Kong	"	131,147	125,881	257,028	154,351	163,884	318,235	9,613.8	13,889.4	23,503.1	13,784.1	13,900.6	27,684.7
Honiara	"	0	0	0	0	0	0	0.0	0.0	0.0	0.0	0.0	0.0
Honolulu	"	3,919	7,805	11,724	0	7,714	7,714	131.4	165.9	297.3	0.0	78.5	78.5
Jakarta	"	3,183	175	3,358	0	0	0	8.4	107.0	115.4	0.0	33.2	33.2
Johannesburg	"	41	856	897	0	0	0	38.8	10.4	49.2	0.0	0.0	0.0
Karachi	"	0	0	0	0	0	0	0.0	11.2	11.2	0.0	11.5	11.5
Kuala Lumpur	"	114,492	116,494	230,986	137,507	136,324	273,831	13,249.3	9,185.6	22,434.9	12,009.8	6,508.2	18,518.0
Lahore	"	0	0	0	0	0	0	0.0	17.2	17.2	0.0	6.6	6.6
London	"	89,309	86,593	175,902	106,467	100,725	207,192	3,227.5	524.9	3,752.4	4,069.4	481.2	4,550.6
Los Angeles	"	115,835	116,462	232,297	137,866	132,725	270,591	2,816.6	3,863.9	6,680.4	2,299.6	3,599.5	5,899.1
Luxembourg	"	0	0	0	0	0	0	4,086.4	0.0	4,086.4	4,240.5	0.0	4,240.5
Manila	"	12,945	10,587	23,532	14,068	11,740	25,808	449.5	723.4	1,173.0	546.5	687.2	1,233.8
Mauritius	"	7,804	7,501	15,305	8,406	8,485	16,891	354.7	275.0	629.6	281.2	226.7	507.9
Nadi	"	32,468	32,337	64,805	41,881	41,304	83,185	887.6	1,027.3	1,914.9	761.3	1,050.5	1,811.8
Nagoya	"	0	0	0	0	0	0	6.8	22.1	28.9	0.0	0.0	0.0
Nauru	"	1,268	1,373	2,641	1,295	1,314	2,609	1.4	55.3	56.6	0.7	30.0	30.7
New Delhi	"	0	0	0	0	0	0	0.0	42.5	42.5	0.0	2.6	2.6
New York	"	2,523	3,023	5,546	1,080	1,341	2,421	558.3	227.2	785.5	0.0	0.0	0.0
Noumea	"	6	15	21	0	0	0	0.0	4.0	4.0	0.0	0.0	0.0
Osaka	"	0	138	138	0	0	0	31.3	16.7	48.0	0.0	0.0	0.0
Palmerston	"	9,400	9,325	18,725	9,108	8,726	17,834	0.0	0.0	0.0	0.0	0.0	0.0
Paris	"	2,056	2,340	4,396	0	0	0	34.7	2.8	37.5	0.0	0.0	0.0
Penang	"	0	0	0	0	0	0	508.9	120.1	629.0	146.7	42.4	189.0
Phuket	"	0	0	0	0	7,445	7,445	0.0	0.0	0.0	0.0	89.5	89.5
Port Moresby	"	26	0	26	0	0	0	0.0	3.0	3.0	0.0	0.0	0.0

TABLE 5: SCHEDULED INTERNATIONAL TRAFFIC BY CITY PAIRS: Year ended June

Foreign Port	Australian Port	Passengers						Freight (tonnes)					
		2003			2004			2003			2004		
		Inbound	Outbound	Total	Inbound	Outbound	Total	Inbound	Outbound	Total	Inbound	Outbound	Total
Queenstown	Melbourne	1,007	943	1,950	0	0	0	0.0	0.0	0.0	0.0	0.0	0.0
Rome	"	14,238	4,307	18,545	0	0	0	514.1	3.9	518.0	0.0	0.0	0.0
San Francisco	"	5,080	5,169	10,249	0	0	0	56.9	393.5	450.4	0.0	0.0	0.0
Shanghai	"	5,944	3,724	9,668	16,422	12,411	28,833	5.2	14.0	19.2	252.4	104.2	356.7
Sharjah	"	0	0	0	0	0	0	0.0	14.2	14.2	1.5	3.8	5.4
Singapore	"	317,158	300,017	617,175	344,256	338,869	683,125	21,205.1	30,880.4	52,085.5	23,248.6	25,231.8	48,480.4
Taipei	"	372	222	594	0	0	0	2.2	7.9	10.1	0.0	0.0	0.0
Tianjin	"	0	0	0	0	0	0	0.0	0.0	0.0	0.0	61.0	61.0
Tokyo	"	51,846	26,240	78,086	48,165	31,906	80,071	1,130.6	2,224.2	3,354.8	1,292.6	1,817.3	3,109.9
Toledo	"	0	0	0	0	0	0	14.6	0.0	14.6	0.0	0.0	0.0
Toronto	"	906	927	1,833	0	0	0	30.2	119.0	149.3	0.0	0.0	0.0
Vienna	"	21,894	22,563	44,457	22,730	25,605	48,335	0.0	0.0	0.0	0.0	0.0	0.0
Wellington	"	48,227	50,988	99,215	53,385	57,330	110,715	149.0	131.4	280.4	180.8	147.8	328.5
Total	Melbourne	1,606,937	1,529,483	3,136,420	1,808,427	1,792,645	3,601,072	93,814.1	95,929.6	189,743.7	96,595.7	83,943.8	180,539.5
Auckland	Newcastle	1,066	1,010	2,076	0	0	0	0.0	0.0	0.0	0.0	0.0	0.0
Total	Newcastle	1,066	1,010	2,076	0	0	0	0.0	0.0	0.0	0.0	0.0	0.0
Auckland	Norfolk Island	7,832	7,650	15,482	8,464	8,415	16,879	103.9	14.3	118.2	133.7	14.1	147.8
Total	Norfolk Island	7,832	7,650	15,482	8,464	8,415	16,879	103.9	14.3	118.2	133.7	14.1	147.8
Auckland	Perth	39,231	39,548	78,779	40,869	40,250	81,119	1,641.4	847.0	2,488.3	1,427.3	1,012.3	2,439.6
Bandar Seri Begawan	"	20,021	20,449	40,470	19,766	20,955	40,721	183.1	1,011.6	1,194.7	169.4	997.5	1,166.9
Bangkok	"	35,738	34,692	70,430	39,298	32,611	71,909	1,187.7	1,852.5	3,040.2	1,625.8	1,686.5	3,312.3
Chicago	"	0	0	0	0	0	0	0.0	0.0	0.0	0.0	0.0	0.0
Christchurch	"	151	0	151	0	0	0	0.6	1.7	2.3	0.0	0.0	0.0
Denpasar	"	65,696	64,592	130,288	92,097	93,131	185,228	218.3	439.5	657.7	142.9	271.6	414.5
Dubai	"	42,973	41,766	84,739	72,506	71,505	144,011	401.4	1,219.4	1,620.8	1,276.8	1,548.0	2,824.8
Frankfurt	"	3,896	3,779	7,675	0	0	0	11.4	22.9	34.3	0.0	0.0	0.0
Hong Kong	"	41,586	38,023	79,609	39,615	38,846	78,461	1,270.4	3,364.2	4,634.6	1,461.3	2,545.4	4,006.6
Honolulu	"	0	0	0	0	0	0	0.0	0.1	0.1	0.0	0.0	0.0
Jakarta	"	15,258	15,941	31,199	13,114	15,874	28,988	129.3	526.9	656.2	63.6	418.0	481.6
Johannesburg	"	51,939	45,897	97,836	50,750	44,413	95,163	1,378.0	1,918.7	3,296.6	1,577.1	2,085.1	3,662.2
Kuala Lumpur	"	86,594	81,985	168,579	101,532	95,908	197,440	2,025.3	2,714.8	4,740.1	2,084.5	1,344.7	3,429.2
Kuching	"	4,126	3,964	8,090	6,583	6,599	13,182	0.9	260.2	261.1	0.4	230.5	230.9
London	"	14,355	10,201	24,556	45	0	45	32.6	6.4	39.1	0.0	0.0	0.0
Los Angeles	"	42	0	42	0	0	0	0.2	4.6	4.8	0.0	0.0	0.0
Mauritius	"	5,746	5,809	11,555	6,310	6,633	12,943	33.7	330.4	364.1	109.5	242.3	351.7
New York	"	3	0	3	0	0	0	0.8	0.0	0.8	0.0	0.0	0.0
Noumea	"	0	0	0	0	0	0	0.0	0.0	0.0	0.0	0.0	0.0
Paris	"	7,439	5,626	13,065	9,371	7,873	17,244	274.7	38.1	312.8	335.0	25.5	360.4
Phuket	"	11,331	10,711	22,042	4,075	10,062	14,137	0.0	66.2	66.2	0.0	101.1	101.1
Port Moresby	"	0	0	0	0	0	0	0.0	0.0	0.0	0.0	0.0	0.0
Queenstown	"	10	0	10	0	0	0	0.0	0.0	0.0	0.0	0.0	0.0
Rome	"	3,312	1,747	5,059	1,723	0	1,723	137.7	1.5	139.2	100.6	0.0	100.6
Shanghai	"	0	0	0	0	0	0	0.0	0.0	0.0	0.0	0.0	0.0

TABLE 5: SCHEDULED INTERNATIONAL TRAFFIC BY CITY PAIRS: Year ended June

Foreign Port	Australian Port	Passengers						Freight (tonnes)					
		2003			2004			2003			2004		
		Inbound	Outbound	Total	Inbound	Outbound	Total	Inbound	Outbound	Total	Inbound	Outbound	Total
Singapore	Perth	336,732	312,380	649,112	360,950	337,703	698,653	7,025.8	18,632.2	25,658.0	9,028.1	19,548.2	28,576.3
Taipei	"	0	0	0	0	0	0	0.0	0.0	0.0	0.0	0.0	0.0
Tokyo	"	25,628	24,573	50,201	27,017	26,254	53,271	448.0	1,125.8	1,573.9	453.9	1,098.7	1,552.6
Wellington	"	53	0	53	0	0	0	0.0	0.0	0.0	0.0	0.0	0.0
Total	Perth	811,860	761,683	1,573,543	885,621	848,617	1,734,238	16,401.2	34,384.6	50,785.8	19,856.1	33,155.3	53,011.4
Abu Dhabi	Sydney	0	0	0	0	0	0	0.0	8.6	8.6	0.0	34.2	34.2
Amsterdam	"	0	0	0	0	0	0	9,805.6	1,673.0	11,478.6	8,223.0	1,198.6	9,421.5
Apia	"	4,473	4,752	9,225	5,648	6,464	12,112	61.8	43.6	105.4	42.3	26.3	68.6
Athens	"	2,695	2,655	5,350	0	0	0	17.6	8.8	26.4	0.0	0.0	0.0
Atlanta	"	0	0	0	0	0	0	244.1	0.0	244.1	0.0	0.0	0.0
Auckland	"	503,061	524,900	1,027,961	605,778	625,957	1,231,735	21,512.0	27,426.0	48,938.0	24,821.4	29,495.0	54,316.4
Bahrain	"	0	0	0	22,264	30,450	52,714	0.0	0.0	0.0	585.2	654.4	1,239.6
Bangkok	"	223,410	224,931	448,341	231,055	231,256	462,311	6,920.0	4,883.2	11,803.2	6,810.5	4,197.4	11,007.9
Beijing	"	25,411	27,147	52,558	21,929	25,473	47,402	272.9	474.0	746.9	208.2	273.6	481.8
Buenos Aires	"	13,383	13,120	26,503	15,792	15,932	31,724	94.9	194.5	289.4	106.1	169.2	275.3
Cairo	"	1,662	749	2,411	0	0	0	34.1	28.5	62.6	0.0	0.0	0.0
Chicago	"	7,213	6,351	13,564	8,231	9,125	17,356	1,812.7	0.0	1,812.7	0.0	0.0	0.0
Christchurch	"	207,127	209,936	417,063	240,647	243,081	483,728	4,903.3	4,817.0	9,720.3	5,759.1	5,753.6	11,512.7
Denpasar	"	63,710	66,262	129,972	81,818	85,337	167,155	1,675.3	1,446.3	3,121.7	1,936.1	1,015.8	2,951.8
Dubai	"	53,510	57,262	110,772	70,798	72,091	142,889	2,159.1	2,347.7	4,506.8	2,996.6	2,882.0	5,878.7
Dunedin	"	9,355	9,183	18,538	10,722	10,698	21,420	0.0	0.0	0.0	0.0	0.0	0.0
Frankfurt	"	33,574	33,422	66,996	43,561	39,417	82,978	1,599.9	125.8	1,725.7	1,952.8	200.6	2,153.4
Guangzhou	"	26,766	27,899	54,665	29,755	32,423	62,178	1,401.3	250.0	1,651.3	1,555.4	136.1	1,691.6
Hamilton	"	11,364	11,673	23,037	11,065	10,684	21,749	0.0	0.0	0.0	0.0	0.0	0.0
Hanoi	"	518	345	863	405	5,655	6,060	0.0	0.0	0.0	0.0	0.0	0.0
Ho Chi Minh City	"	3,975	3,408	7,383	2,591	33,343	35,934	104.3	69.1	173.4	109.3	216.2	325.5
Hong Kong	"	275,678	254,957	530,635	289,980	287,198	577,178	15,834.4	14,657.4	30,491.8	20,385.4	10,912.1	31,297.5
Honolulu	"	68,289	60,215	128,504	72,769	58,777	131,546	1,941.0	2,245.5	4,186.5	3,031.0	3,554.2	6,585.2
Jakarta	"	37,359	41,098	78,457	40,365	40,159	80,524	583.1	1,478.8	2,061.8	521.1	1,212.8	1,733.8
Johannesburg	"	63,114	55,650	118,764	66,421	59,496	125,917	1,004.0	318.8	1,322.8	1,392.2	442.3	1,834.5
Kota Kinabalu	"	20	263	283	11,289	11,862	23,151	0.0	0.1	0.1	372.4	143.2	515.6
Kuala Lumpur	"	157,617	141,711	299,328	153,856	147,185	301,041	8,952.6	3,559.4	12,512.0	12,899.8	2,342.7	15,242.6
London	"	171,068	186,724	357,792	198,525	204,421	402,946	5,766.7	1,629.9	7,396.6	6,933.9	1,587.1	8,521.0
Los Angeles	"	317,692	323,213	640,905	299,973	308,883	608,856	19,651.0	5,624.7	25,275.8	19,660.6	3,624.4	23,285.0
Louisville	"	0	0	0	0	0	0	5,007.2	0.0	5,007.2	4,475.2	0.0	4,475.2
Luzon Island	"	0	0	0	0	0	0	0.0	34.5	34.5	0.0	170.8	170.8
Macau	"	0	0	0	0	0	0	0.0	0.0	0.0	0.0	83.0	83.0
Manchester (US)	"	0	0	0	0	5	5	0.0	0.0	0.0	0.0	0.0	0.0
Manila	"	49,526	47,814	97,340	55,771	56,982	112,753	1,544.1	994.6	2,538.7	1,653.7	793.4	2,447.1
Mauritius	"	0	0	0	1,505	1,324	2,829	0.0	0.0	0.0	15.0	76.4	91.4
Nadi	"	104,484	104,104	208,588	114,888	112,343	227,231	2,706.4	2,575.0	5,281.4	2,753.2	2,512.3	5,265.5
Nagoya	"	4,875	5,695	10,570	9,328	11,850	21,178	153.6	45.6	199.1	583.4	190.4	773.8
New York	"	18,535	18,228	36,763	19,674	20,904	40,578	2,891.7	528.7	3,420.4	810.9	145.0	955.9

TABLE 5: SCHEDULED INTERNATIONAL TRAFFIC BY CITY PAIRS: Year ended June

Foreign Port	Australian Port	Passengers						Freight (tonnes)					
		2003			2004			2003			2004		
		Inbound	Outbound	Total	Inbound	Outbound	Total	Inbound	Outbound	Total	Inbound	Outbound	Total
Niue	Sydney	49	0	49	59	17	76	0.1	0.0	0.1	0.7	0.0	0.7
Noumea	"	40,682	37,568	78,250	43,195	40,507	83,702	25.4	525.4	550.9	25.3	596.6	621.8
Osaka	"	39,673	102,530	142,203	38,528	95,912	134,440	1,234.5	2,538.2	3,772.7	1,146.6	2,012.5	3,159.1
Palmerston	"	8,848	8,598	17,446	8,917	8,655	17,572	0.0	0.0	0.0	0.0	0.0	0.0
Papeete	"	0	1,905	1,905	0	0	0	0.0	3.3	3.3	0.0	0.0	0.0
Paris	"	8,109	7,106	15,215	126	4	130	215.8	17.2	233.0	0.0	0.6	0.6
Phuket	"	0	0	0	0	3,727	3,727	0.0	0.0	0.0	0.0	0.0	0.0
Port Moresby	"	11,858	11,653	23,511	9,577	11,109	20,686	358.3	309.4	667.7	376.5	197.1	573.6
Port Vila	"	18,415	18,218	36,633	19,355	19,305	38,660	59.5	178.2	237.6	57.2	182.6	239.8
Queenstown	"	7,694	8,362	16,056	6,717	7,881	14,598	0.0	0.0	0.1	0.0	0.0	0.1
Rome	"	8,262	8,167	16,429	528	629	1,157	235.4	8.1	243.5	9.0	1.2	10.2
San Francisco	"	82,423	87,462	169,885	92,453	96,537	188,990	1,200.7	3,161.6	4,362.3	816.6	2,358.7	3,175.3
Santiago	"	17,416	18,998	36,414	19,623	20,232	39,855	403.6	228.5	632.1	1,110.0	355.6	1,465.6
Sapporo	"	0	0	0	0	0	0	0.0	25.0	25.0	0.0	47.9	47.9
Seattle	"	0	0	0	52	75	127	0.0	0.0	0.0	0.0	0.0	0.0
Seoul	"	167,492	160,228	327,720	178,217	175,243	353,460	5,567.0	11,023.5	16,590.6	10,992.1	7,367.6	18,359.8
Shanghai	"	44,575	41,156	85,731	57,049	59,985	117,034	1,891.7	352.8	2,244.5	3,217.8	379.2	3,597.0
Shannon	"	0	0	0	0	0	0	0.0	0.0	0.0	0.0	25.7	25.7
Sharjah	"	0	0	0	0	0	0	0.0	21.2	21.2	0.0	72.6	72.6
Singapore	"	465,607	425,379	890,986	506,496	474,398	980,894	25,861.7	19,802.6	45,664.2	27,553.1	13,856.9	41,410.0
Subic Bay	"	0	0	0	0	0	0	0.0	8,880.8	8,880.8	0.0	5,062.9	5,062.9
Suva	"	7,721	10,528	18,249	7,440	10,683	18,123	1.3	13.3	14.7	0.5	15.7	16.3
Taipei	"	47,218	44,968	92,186	60,430	60,940	121,370	1,650.6	2,171.4	3,822.1	1,953.6	1,733.2	3,686.8
Tianjin	"	0	0	0	0	0	0	0.0	0.0	0.0	0.0	57.4	57.4
Tokyo	"	200,219	232,179	432,398	213,412	236,312	449,724	4,220.9	6,290.1	10,511.1	4,873.5	5,938.5	10,812.1
Toledo	"	0	0	0	0	0	0	611.9	0.0	611.9	0.0	0.0	0.0
Tongatapu	"	2,543	3,164	5,707	1,310	1,470	2,780	74.0	1.9	75.9	15.9	14.8	30.8
Toronto	"	205	0	205	0	0	0	1.7	5.9	7.7	0.0	0.0	0.0
Vancouver	"	39,945	44,205	84,150	47,036	53,030	100,066	318.1	1,317.5	1,635.6	419.3	42.2	461.5
Vienna	"	58,230	60,815	119,045	57,018	61,899	118,917	0.0	0.0	0.0	0.0	0.0	0.0
Wellington	"	107,404	112,080	219,484	124,621	128,467	253,088	408.8	158.8	567.6	377.9	211.4	589.3
Total	Sydney	3,844,052	3,908,936	7,752,988	4,228,562	4,365,792	8,594,354	162,995.9	134,524.0	297,519.9	183,539.7	114,573.8	298,113.5
Abu Dhabi	Australia	0	0	0	0	0	0	0.0	8.6	8.6	0.0	34.2	34.2
Amsterdam	"	0	0	0	0	0	0	10,053.2	1,677.1	11,730.3	8,260.9	1,198.6	9,459.4
Apia	"	4,473	4,752	9,225	5,648	6,464	12,112	61.8	43.6	105.4	42.3	26.3	68.6
Athens	"	5,752	5,208	10,960	0	0	0	44.3	18.0	62.3	0.0	0.0	0.0
Atlanta	"	0	0	0	0	0	0	1,279.5	0.0	1,279.5	785.6	0.0	785.6
Auckland	"	1,080,665	1,115,689	2,196,354	1,311,766	1,340,182	2,651,948	46,659.4	53,071.0	99,730.5	51,056.8	55,413.0	106,469.8
Bahrain	"	0	0	0	22,264	30,450	52,714	0.0	0.0	0.0	585.2	654.4	1,239.6
Bandar Seri Begawan	"	52,286	54,200	106,486	47,434	51,277	98,711	1,018.4	2,714.3	3,732.7	1,011.6	2,228.3	3,239.8
Bangkok	"	383,795	376,457	760,252	406,544	396,836	803,380	13,943.6	13,390.4	27,334.0	14,154.6	12,171.5	26,326.1
Beijing	"	35,182	32,168	67,350	32,795	32,722	65,517	418.0	679.3	1,097.3	330.0	475.6	805.7
Buenos Aires	"	13,383	13,120	26,503	15,792	15,932	31,724	94.9	194.5	289.4	106.1	169.2	275.3

TABLE 5: SCHEDULED INTERNATIONAL TRAFFIC BY CITY PAIRS: Year ended June

Foreign Port	Australian Port	Passengers						Freight (tonnes)					
		2003			2004			2003			2004		
		Inbound	Outbound	Total	Inbound	Outbound	Total	Inbound	Outbound	Total	Inbound	Outbound	Total
Cairo	Australia	1,662	749	2,411	0	0	0	34.1	28.5	62.6	0.0	0.0	0.0
Chicago	"	9,241	8,266	17,507	9,060	10,281	19,341	6,460.0	0.0	6,460.0	4,298.5	228.8	4,527.3
Christchurch	"	371,904	372,593	744,497	447,936	446,431	894,367	7,948.4	7,363.0	15,311.3	7,058.3	6,829.9	13,888.3
Denpasar	"	212,552	209,898	422,450	282,269	289,421	571,690	4,018.4	4,175.8	8,194.2	4,495.1	3,364.2	7,859.2
Dubai	"	171,922	173,450	345,372	255,592	262,367	517,959	4,581.9	8,076.0	12,657.9	6,867.0	8,516.4	15,383.4
Dunedin	"	39,054	38,924	77,978	42,689	43,013	85,702	0.0	0.0	0.0	0.0	0.0	0.0
Frankfurt	"	54,000	54,813	108,813	43,561	39,417	82,978	2,904.2	1,753.6	4,657.8	2,724.3	1,538.3	4,262.5
Fukuoka	"	10,906	11,836	22,742	22,173	22,562	44,735	14.8	83.4	98.2	27.5	373.6	401.2
Guam	"	10,856	11,112	21,968	13,438	14,157	27,595	0.3	39.3	39.6	0.2	39.8	40.0
Guangzhou	"	41,830	38,598	80,428	42,588	43,010	85,598	2,230.4	649.6	2,880.0	2,044.6	265.7	2,310.3
Hamilton	"	55,486	56,635	112,121	54,019	53,557	107,576	0.0	0.0	0.0	0.0	0.0	0.0
Hanoi	"	2,523	2,635	5,158	3,175	9,124	12,299	0.0	26.7	26.7	0.0	69.2	69.2
Ho Chi Minh City	"	24,997	23,502	48,499	26,846	57,814	84,660	646.1	239.3	885.4	715.3	426.3	1,141.6
Hong Kong	"	558,154	512,810	1,070,964	605,187	597,246	1,202,433	30,070.4	40,253.4	70,323.8	40,642.7	34,511.6	75,154.3
Honiara	"	8,266	8,608	16,874	10,651	10,822	21,473	105.0	86.8	191.8	90.8	48.6	139.4
Honolulu	"	73,085	68,222	141,307	72,769	66,491	139,260	2,076.9	2,445.1	4,522.0	3,031.0	3,632.7	6,663.7
Jakarta	"	57,064	57,461	114,525	53,479	56,033	109,512	721.9	2,144.5	2,866.5	584.6	1,664.0	2,248.6
Johannesburg	"	115,128	102,604	217,732	117,171	103,909	221,080	2,455.4	2,254.7	4,710.1	2,969.3	2,527.4	5,496.8
Karachi	"	0	0	0	0	0	0	0.0	11.2	11.2	0.0	11.5	11.5
Kota Kinabalu	"	20	263	283	11,911	12,505	24,416	0.0	0.1	0.1	378.6	213.5	592.2
Kuala Lumpur	"	437,180	414,930	852,110	487,208	471,880	959,088	27,180.5	17,762.9	44,943.4	30,350.4	12,570.9	42,921.4
Kuching	"	4,126	3,964	8,090	6,583	6,599	13,182	0.9	260.2	261.1	0.4	230.5	230.9
Kupang	"	0	0	0	0	0	0	0.0	0.0	0.0	0.0	0.0	0.0
Lahore	"	0	0	0	0	0	0	0.0	17.2	17.2	0.0	6.6	6.6
London	"	288,949	297,928	586,877	305,037	305,146	610,183	9,152.9	2,209.9	11,362.8	11,003.2	2,068.3	13,071.5
Los Angeles	"	473,918	478,323	952,241	483,978	487,202	971,180	23,283.4	10,232.0	33,515.4	22,788.5	7,712.4	30,500.9
Louisville	"	0	0	0	0	0	0	5,007.2	0.0	5,007.2	4,475.2	0.0	4,475.2
Luxembourg	"	0	0	0	0	0	0	4,086.4	0.0	4,086.4	4,240.5	0.0	4,240.5
Luzon Island	"	0	0	0	0	0	0	0.0	34.5	34.5	0.0	170.8	170.8
Macau	"	0	0	0	0	0	0	0.0	0.0	0.0	0.0	83.0	83.0
Manchester (US)	"	0	0	0	0	5	5	0.0	0.0	0.0	0.0	0.0	0.0
Manila	"	69,041	63,997	133,038	78,183	76,251	154,434	2,020.2	1,775.6	3,795.9	2,211.6	1,564.8	3,776.4
Mauritius	"	13,550	13,310	26,860	16,221	16,442	32,663	388.4	605.4	993.7	405.6	545.4	951.0
Nadi	"	166,599	165,267	331,866	196,609	193,900	390,509	3,721.2	3,854.5	7,575.7	3,716.5	4,042.7	7,759.2
Nagoya	"	72,856	74,448	147,304	78,991	77,968	156,959	450.7	1,692.9	2,143.7	701.0	1,184.6	1,885.6
Nauru	"	5,691	5,611	11,302	5,709	5,120	10,829	14.4	260.7	275.1	32.1	224.5	256.6
New Delhi	"	0	0	0	0	0	0	0.0	42.5	42.5	0.0	2.6	2.6
New York	"	21,266	21,315	42,581	20,770	22,245	43,015	3,470.4	759.4	4,229.8	810.9	145.0	955.9
Niue	"	49	0	49	59	17	76	0.1	0.0	0.1	0.7	0.0	0.7
Noumea	"	57,279	55,598	112,877	59,772	58,173	117,945	48.9	699.1	748.0	36.7	759.9	796.5
Osaka	"	186,346	176,580	362,926	189,753	181,934	371,687	2,567.0	5,052.9	7,619.9	2,962.1	4,787.5	7,749.6
Palmerston	"	37,879	37,498	75,377	37,432	36,508	73,940	0.0	0.0	0.0	0.0	0.0	0.0
Papeete	"	0	1,905	1,905	0	0	0	0.0	3.3	3.3	0.0	0.0	0.0

TABLE 5: SCHEDULED INTERNATIONAL TRAFFIC BY CITY PAIRS: Year ended June

Foreign Port	Australian Port	Passengers						Freight (tonnes)					
		2003			2004			2003			2004		
		Inbound	Outbound	Total	Inbound	Outbound	Total	Inbound	Outbound	Total	Inbound	Outbound	Total
Paris	Australia	19,325	17,945	37,270	9,497	7,877	17,374	545.1	64.1	609.3	335.0	26.1	361.0
Penang	"	0	0	0	0	0	0	508.9	120.1	629.0	146.7	42.4	189.0
Phuket	"	11,331	10,711	22,042	4,075	21,234	25,309	0.0	66.2	66.2	0.0	190.6	190.6
Port Moresby	"	63,003	63,153	126,156	64,576	66,139	130,715	1,516.4	2,377.2	3,893.7	1,522.3	2,337.2	3,859.5
Port Vila	"	28,448	28,033	56,481	30,853	30,847	61,700	101.0	306.0	407.0	85.8	303.2	389.1
Queenstown	"	11,162	11,748	22,910	8,974	10,507	19,481	0.0	0.0	0.1	0.0	0.0	0.1
Rome	"	28,692	23,103	51,795	2,251	1,580	3,831	976.0	30.9	1,006.9	109.6	1.5	111.1
San Francisco	"	87,503	92,631	180,134	92,453	96,537	188,990	1,257.5	3,555.1	4,812.7	816.6	2,358.7	3,175.3
Santiago	"	17,416	18,998	36,414	19,623	20,232	39,855	403.6	228.5	632.1	1,110.0	355.6	1,465.6
Sapporo	"	0	96	96	0	0	0	0.0	25.0	25.0	0.0	47.9	47.9
Seattle	"	0	0	0	52	75	127	0.0	0.0	0.0	0.0	0.0	0.0
Seoul	"	196,066	184,200	380,266	211,619	201,645	413,264	5,996.5	12,662.8	18,659.3	11,617.5	8,862.7	20,480.2
Shanghai	"	50,519	44,880	95,399	73,646	72,571	146,217	1,896.9	366.8	2,263.7	3,470.3	483.4	3,953.7
Shannon	"	0	0	0	0	0	0	0.0	0.0	0.0	0.0	25.7	25.7
Sharjah	"	0	0	0	0	0	0	0.0	35.4	35.4	1.5	76.4	78.0
Singapore	"	1,451,791	1,364,819	2,816,610	1,624,408	1,565,056	3,189,464	63,795.6	86,895.1	150,690.7	72,604.9	74,523.2	147,128.1
Subic Bay	"	0	0	0	0	0	0	0.0	8,880.8	8,880.8	0.0	5,062.9	5,062.9
Suva	"	7,721	10,528	18,249	7,440	10,683	18,123	1.3	13.3	14.7	0.5	15.7	16.3
Taipei	"	81,305	79,042	160,347	99,981	100,898	200,879	3,397.6	3,609.5	7,007.2	3,546.0	2,654.3	6,200.3
Tianjin	"	0	0	0	0	0	0	0.0	0.0	0.0	0.0	118.4	118.4
Tokyo	"	517,677	523,351	1,041,028	534,723	542,010	1,076,733	9,062.1	17,134.9	26,197.0	9,927.2	14,062.8	23,990.0
Toledo	"	0	0	0	0	0	0	627.0	0.0	627.0	0.0	0.0	0.0
Tongatapu	"	2,543	3,164	5,707	1,310	1,470	2,780	74.0	1.9	75.9	15.9	14.8	30.8
Toronto	"	1,111	927	2,038	0	0	0	32.0	125.0	157.0	0.0	0.0	0.0
Vancouver	"	39,945	44,205	84,150	47,036	53,030	100,066	318.1	1,317.5	1,635.6	419.3	42.2	461.5
Vienna	"	80,124	83,378	163,502	79,748	87,504	167,252	0.0	0.0	0.0	0.0	0.0	0.0
Wellington	"	203,205	210,456	413,661	223,366	231,136	454,502	571.5	311.9	883.4	564.8	374.2	938.9
Total	Australia	8,127,802	7,980,615	16,108,417	9,058,693	9,072,444	18,131,137	310,315.1	324,819.4	635,134.5	342,290.5	284,711.5	627,002.0

Please refer to explanatory notes - paragraphs 3, 8 and 13 in particular.

**TABLE 6 : INTERNATIONAL AIRLINES
OWN STOPOVER REVENUE PASSENGERS,
AUSTRALIAN CITY PAIRS**

YEAR ENDED JUNE 2004

City Pair Route	Total Passengers
Brisbane/Sydney	43,091
Melbourne/Sydney	37,306
Brisbane/Cairns	1,872
Adelaide/Melbourne	157
Perth/Sydney	2
TOTAL	82,428

Notes:

1. Own Stopover Revenue Passengers : The aggregate of revenue passengers uplifted at one Australian airport and discharged (excluding transit passengers) at another Australian airport by the same foreign registered international airline on which they entered or left Australia.
2. City Pair Route represents the aggregation of passengers travelling in both directions.
3. This data are supplementary to the information previously supplied to the Department by most international airlines. Tables 1-5 cover only those passengers travelling to/from overseas airports. The inclusion of this additional data provides a more complete coverage of international airline activity.

TABLE 7: TOTAL AIRCRAFT MOVEMENTS AT AUSTRALIAN INTERNATIONAL AIRPORTS BY AIRCRAFT TYPES: Year ended June 2004

Airport	Aircraft Types																			
	Passenger/Mixed																Freighters			
	AB3	310	32S	330	340	737	747	757	767	777	M11	100	146	F28	DH8	72F	74F	76F	M1F	
Adelaide		34		450		36	2		484	802							96			1,904
Brisbane			129	2,038	166	5,720	4,974	4	2,783	2,110	608						2			18,534
Cairns				418		312	479		5,711			2	248	866	2					8,038
Darwin		54	169			411	6	22	738											1,400
Gold Coast/Coolangatta						1,224			695											1,919
Melbourne	358	48	1,315	1,907	263	3,115	5,487		5,165	4,279	526						839		343	23,645
Norfolk Island						210														210
Perth	2	334	14	1,174	415	1,086	905	46	2,410	2,800								22		9,208
Sydney	328	16	3,028	1,678	3,941	6,717	19,524	0	11,378	4,211	63					442	1,135	92	521	53,074
Australia	688	486	4,655	7,665	4,785	18,831	31,377	72	29,364	14,202	1,197	2	248	866	2	442	2,094	92	864	117,932

% of All Types 0.6 0.4 3.9 6.5 4.1 16.0 26.6 0.1 24.9 12.0 1.0 0.0 0.2 0.7 0.0 0.4 1.8 0.1 0.7 100.0

NOTE:
 These figures only cover scheduled operations of the airlines listed in this publication. Charter/ferry operations are not included.
 These figures are available electronically for January 2001 onwards. Prior to this, aircraft type data is not readily accessible.

Aircraft Types (all series)									
Airbus	AB3	310	32S	330	340				
Boeing	737	747	757	767	777	72F	74F	76F	
McDonnell Douglas	M11	M1F							
Fokker	F28	100							
BAE	146								
de Havilland	DH8								