



Australian Government
Department of Transport and Regional Services
Bureau of Transport and Regional Economics

BUREAU OF TRANSPORT AND REGIONAL ECONOMICS

international scheduled air transport 2004-05

AVIATION STATISTICS

IAA 120

©Commonwealth of Australia

Canberra

November 2005

ISSN 1324-5074

This work is copyright and the data contained in this publication should not be reproduced or used in any form without acknowledgement.

Inquiries

Should you require additional information about the statistics contained in this publication, please contact Mrs Betty Kell in Canberra by telephone (02) 6274 7791 or by facsimile (02) 6274 7727 or write to:

Aviation Statistics, Bureau of Transport and Regional Economics
Department of Transport and Regional Services
GPO Box 594
Canberra ACT 2601

Electronic mail: AVSTATS@dotars.gov.au

Web site: www.btre.gov.au/statistics/statsindex.aspx

CONTENTS

Explanatory Notes iv-vi

Data Issues and Airlines Commencing/Withdrawing Services..... vii

Highlightsviii-xi

Detailed Monthly Tables

- 1. Scheduled International Air Traffic to and from Australia 1-3
- 2. Scheduled Operator Market Shares and Growth..... 4-7
- 3. Airline Passenger Capacity and Utilisation to and from Australia by Operator 8-10
- 4. Australian International Airport Scheduled Traffic and Aircraft Movements11
- 5. Scheduled International Passengers and Freight by City Pairs 12-18
- 6. International Airlines Own Stopover Revenue Passengers, Australian City Pairs19
- 7. Total Aircraft Movements at Australian International Airports by Aircraft Types20

EXPLANATORY NOTES

INTRODUCTION

1. This publication continues the series of publications on a financial year basis presenting statistical information on the scheduled operations of international airlines operating into/out of Australia.
2. The figures in this publication were obtained from reports submitted by scheduled international carriers and are the best available at the time of publication.

COVERAGE

3. These statistics show uplift/discharge data – These data detail, by direction, the revenue traffic between the actual points of uplift and discharge within each flight, aggregated for all flights within the period. It shows the movement of traffic between two airports not necessarily directly connected but within the same flight number. Typically, flight numbers change when an aircraft reaches its home country. This means that uplift/discharge data for the port in the operator's home country are likely to be overstated by traffic whose origin/destination point is beyond that port. For example, uplift/discharge traffic reported in this publication as Singapore could include traffic whose origin/destination is Europe.
4. These statistics cover revenue traffic carried by the operators of scheduled regular public international air transport services only and do not include charter traffic.
5. Some airlines (generally, dedicated freighter operators) operate scheduled services into Australia but operate non-scheduled services out of Australia and therefore outbound activity is not recorded in this data collection.

PRODUCTION AND INTERPRETATION

6. Tables 1 and 2 show the country of the relevant uplift or discharge port served by that airline. For example, traffic uplifted/discharged between Sydney and Singapore by British Airways would be shown as Singapore traffic in Tables 1 and 2.
7. Table 3 shows figures for the country of service (or route) for each airline and therefore may not equate to the data in Tables 1 and 2. For example, the British Airways UK service identified in Table 3 could include passengers uplifted or discharged in Singapore or Thailand as well as the UK; these passengers would be shown individually under those countries in Tables 1 and 2. The difference in treatment of data between Tables 1 and 2 and Table 3 is necessary in order to work out a meaningful Seat Utilisation figure for Table 3.

Figures shown in Table 3 may include total traffic into and out of Australia for airlines that fly through Australia (also necessary in order to work out a meaningful Seat Utilisation figure). Therefore, figures in Table 3 may not equate to figures in Tables 1 and 2. For example, passengers carried by Qantas Airways from New Zealand via Australia to the UK will be included in Table 3 but will not be included in Tables 1 or 2 as these passengers were not uplifted/discharged in Australia.

8. Table 5 – shows uplift/discharge passenger and freight data for city pairs with same flight number international flight connections.
9. Where figures have been rounded, discrepancies may occur between sums of component items and totals, and in percentage changes which are derived from figures prior to rounding.
10. Published figures may be revised where figures missing at the time of publication are received or misreporting/miscalculation necessitates revisions.

DEFINITIONS

11. The following definitions have been used in this publication:
- (a) Aircraft Movement: A landing or a take off.
 - (b) Freight: The aggregate of all revenue freight uplifted.
 - (c) Inbound: Inbound to Australia/Australian international airport.
 - (d) Mail: The aggregate of all mail uplifted.
 - (e) Outbound: Outbound from Australia/Australian international airport.
 - (f) Revenue Passengers: please refer to paragraph 12.
 - (g) Seat Utilisation: The ratio of passengers carried to seats available, expressed as a percentage.
 - (h) Seats Available: Generally based on standard aircraft configuration, the aggregate of seats available on all flights operated over a particular service.
 - (i) Services: Scheduled flights over authorised routes which are listed according to the main ports involved.

COMPARABILITY OF DATA OVER TIME

12. Revenue Passengers:
- For July 2000 and onwards: All passengers paying any fare (frequent flyer redemption passengers are regarded as revenue passengers). In most cases, Revenue Passengers will now include all passengers excluding Free Of Charge passengers and positioning crew.
 - To December 1999: The aggregate of all passengers paying 25% or more of the standard air fare (as defined by ICAO).
 - January 2000 to June 2000: Transition period.

The Revenue Passenger definition change could result in approximately a three per cent increase in passenger numbers over a full period (month or year).

13. Country and City data – reporting of Uplift/Discharge data by Qantas Airways:
- Prior to January 2003: Uplift/Discharge within Qantas Airways' international network.
 - For January 2003 and onwards: Uplift/Discharge within flight number – as per the standard definition.

For example, what was previously reported as Adelaide to London (no direct services between these two cities) will now be reported as either Adelaide to Singapore or Melbourne/Sydney to London.

This change has been introduced in order to make the data comparable across all airlines operating services to/from Australia.

The effect of this change – comparing data under the two methods of reporting:

- Country of Port data (Tables 1 & 2) – There will be a shift in traffic to countries such as Singapore which are used as hubs and away from countries such as France, Germany and Italy which previously received traffic channelled through hubs. The total volume of traffic is not affected.
- Country of Service data (Table 3) – no change, as the Uplift/Discharge definition is not applicable to classifying the country of service.
- Australian International Airports (Table 4) – there may be a shift of traffic to the major airports.
- City Pairs (Table 5) – There will be a shift in traffic to cities such as Singapore which are used as hubs and away from cities such as Paris, Frankfurt and Rome which previously received traffic channelled through hubs. The total volume of traffic is not affected. Prior to the change, statistics reported for city pairs without “same flight number” international flight connections mainly reflected carriage on interconnecting international services by Qantas Airways. That traffic should have been interpreted as increasing the volume of traffic between the primary international ports rather than as an indicator of traffic volumes between ports without “same flight number” international flight connections. It should be noted however, that there was no double counting of traffic.

14. Country of Service classification by Qantas Airways:

- For July 2002 and onwards: based on the foreign country where same flight number services commence or cease – as per the standard definition. For example, Sydney-Denpasar-Singapore services would be classified as Country of Service = Singapore.
- Prior to July 2002: based on Qantas classification – this mainly affected Indonesia and Singapore Countries of Service. For example, Sydney-Denpasar-Singapore services were classified as Country of Service = Indonesia.

15. Airline data – Reporting of code share services:

Reporting of traffic split by airline code for code share arrangements was discontinued as of June 2000. For July 2000 and onwards, ALL traffic carried is reported under the operating airline regardless of code share arrangements.

Monthly airline market share figures for July 2001 onwards will be comparable with the same month in the previous year. However, these figures may not be comparable with monthly data prior to July 2000.

SYMBOLS AND OTHER USAGE

- nil or zero
- .. not applicable

INDEMNITY STATEMENT

The Bureau of Transport and Regional Economics has taken due care in preparing the information contained in this publication. However, noting that data have been provided by third parties, the Commonwealth gives no warranty as to the accuracy, reliability, fitness for purpose, or otherwise of the information.

DATA ISSUES

Lauda Air	No outbound freight data for September 2000 onwards. No inbound freight data for April 2001 onwards.
Merpati Nusantara Airlines	Jakarta/Christmas Island scheduled services commenced in August 2001 and ceased in February 2004 – no data has been received for these services.
Norfolk Jet Express	Service commenced August 2004 and ceased December 2004. No data has been received.
Polar Air Cargo	No data received for March 2003 and onwards.
Royal Tongan Airlines	Operated services recommenced in December 2002 and ceased in April 2004. No data received for July 2003 and onwards.
Vietnam Airlines	No data received for inbound operations to Sydney for August 2002 to May 2004 and for July 2004 to November 2004 and January 2005 to March 2005 and May 2005. Data for Outbound operations have been received for July 2003 onwards.

AIRLINES COMMENCING/WITHDRAWING SERVICES DURING 2004-05

The following airlines commenced operated services to/from Australia

- Value Air
- Virgin Atlantic Airways

The following airline ceased operated services to/from Australia

- Norfolk Jet Express

HIGHLIGHTS – YEAR ENDED JUNE 2005

- Fifty-three international scheduled airlines operated services to/from Australia during the year (includes eight dedicated freight airlines but excludes airlines operating only via code share arrangements).
- International scheduled passenger traffic in 2004-05 was 20.310 million compared to 18.131 million in 2003-04 – an increase of 12.0%.
- Chart I shows total passenger traffic for the years 1994-95 to 2004-05. Over this period, 2001-02 and 2002-03 were the only years that recorded a decrease in traffic compared to the previous year.
- Passenger traffic in 2001-02 was affected by the terrorist attacks on the USA in September 2001 and the collapse of Ansett International (also in September 2001). Passenger traffic in 2002-03 was affected by the SARS crisis (April, May and June 2003 in particular) and the war in Iraq.
- Following the two years of negative growth, each month since September 2003 has recorded the highest level of passenger traffic when compared to the same month in any previous year. As a result of this, 2003-04 recorded the highest level of passenger traffic ever carried in a financial year and 2004-05 is another record financial year. Chart II compares monthly passenger traffic for 2004-05 with monthly passenger traffic for 2003-04. It can be seen that traffic in each month in 2004-05 is well above what was recorded in 2003-04.
- Chart III shows the airline market shares in terms of passenger carriage for the top ten airlines for 1994-95, 1999-00 and 2004-05. In the latest year, Qantas Airways had the largest share of the market with 28.6% followed by Singapore Airlines with 10.3%, Air New Zealand with 8.5%, Malaysia Airlines with 5.5% and Emirates with 5.3%.
- Compared to 1994-95, Qantas Airways' share has decreased by 11.7 percentage points, Singapore Airlines' share has increased by 3.8 percentage points, Air New Zealand's share has decreased by 2.5 percentage points, Malaysia Airlines' share has increased by 2.0 percentage points and Emirates did not operate to Australia in 1994-95. Note that the decrease in share for the Qantas group (Qantas and Australian Airlines in 2004-05 compared to Qantas and Australia Asia Airlines in 1994-95) was 9.5 percentage points. The Air New Zealand group's (Air New Zealand and Freedom Air in 2004-05) share has remained basically unchanged over the same period.
- The share of passenger traffic accounted for by Australian airlines has decreased from 43.3% in 1994-95 (Qantas Airways, Ansett International and Australia Asia Airlines) to 37.9% in 1999-00 (Qantas Airways, Ansett International and Flight West Airlines) and to 32.1% in 2004-05 (Qantas Airways, Australian Airlines and Pacific Blue's operations to Fiji, Vanuatu and some New Zealand services).
- International scheduled air freight traffic in 2004-05 increased by 12.1% over 2003-04 to 702 799 tonnes. Inbound freight traffic has increased by 17.8% while outbound freight traffic has increased by 5.3%.
- In 2004-05, dedicated freighter operations accounted for 28.0% of inbound air freight to Australia, 13.6% of outbound air freight from Australia and 21.8% of total air freight. Note that some freighters do not pick up freight in Australia – this accounts for the difference in inbound and outbound percentages. Polar Air has not reported.

YEAR ENDED JUNE 2005

Chart I: Total International Passengers Carried (millions) - Years ended June 1995 to 2005

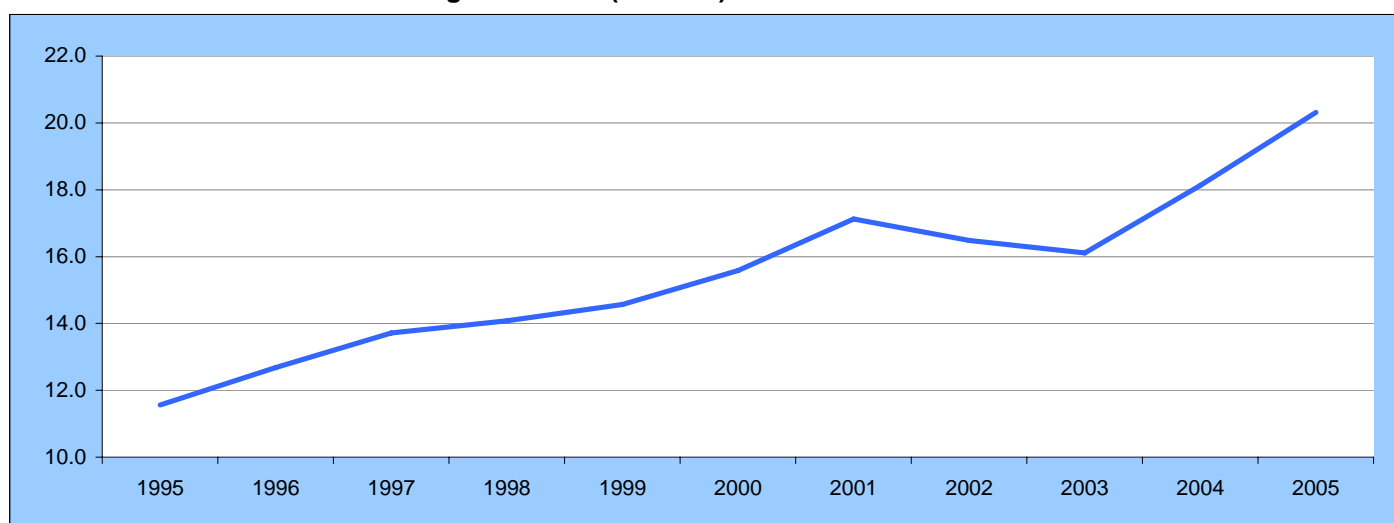


Chart II: Total International Passengers Carried (millions) - By Month

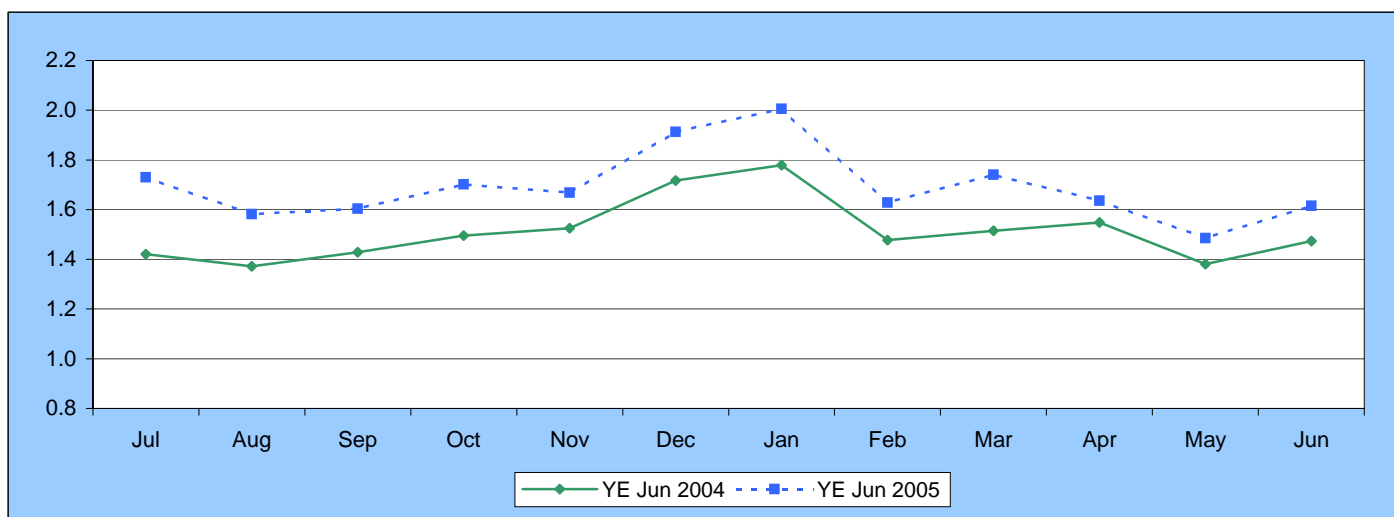


Table I: International Passengers by Uplift/Discharge City Pairs (a)

Foreign Port	Australian Port	Year ended June 2003	Year ended June 2004	Year ended June 2005	% of Total	% Change 2005/04
Auckland	Sydney	1 027 961	1 231 735	1 257 620	6.2	2.1
Singapore	Sydney	890 986	980 894	946 667	4.7	-3.5
Singapore	Melbourne	617 175	683 125	765 302	3.8	12.0
Singapore	Perth	649 112	698 653	764 209	3.8	9.4
Auckland	Brisbane	472 074	617 672	759 193	3.7	22.9
Hong Kong	Sydney	530 635	577 178	681 311	3.4	18.0
Auckland	Melbourne	485 956	598 554	648 876	3.2	8.4
Singapore	Brisbane	488 949	602 179	644 372	3.2	7.0
Los Angeles	Sydney	640 905	608 856	636 037	3.1	4.5
Christchurch	Sydney	417 063	483 728	516 414	2.5	6.8
Top 10 City Pairs		6 220 816	7 082 574	7 620 001	37.5	7.6
Other City Pairs		9 887 601	11 048 712	12 690 279	62.5	14.9
ALL CITY PAIRS		16 108 417	18 131 286	20 310 280	100.0	12.0

Table II: International Freight (tonnes) by Uplift/Discharge City Pairs (a)

Foreign Port	Australian Port	Year ended June 2003	Year ended June 2004	Year ended June 2005	% of Total	% Change 2005/04
Auckland	Sydney	48 938	54 316	59 503	8.5	9.5
Singapore	Melbourne	52 085	48 480	48 754	6.9	0.6
Hong Kong	Sydney	30 492	31 297	38 377	5.5	22.6
Singapore	Sydney	45 664	41 410	37 943	5.4	-8.4
Auckland	Melbourne	32 014	34 256	35 589	5.1	3.9
Hong Kong	Melbourne	23 503	27 685	33 382	4.7	20.6
Singapore	Perth	25 658	28 576	29 589	4.2	3.5
Los Angeles	Sydney	25 276	23 285	27 036	3.8	16.1
Seoul	Sydney	16 591	18 360	21 796	3.1	18.7
Singapore	Brisbane	19 391	18 518	19 803	2.8	6.9
Top 10 City Pairs		319 613	326 184	351 772	50.1	7.8
Other City Pairs		315 522	300 818	351 026	49.9	16.7
ALL CITY PAIRS		635 135	627 002	702 799	100.0	12.1

Table III: International Passengers by Uplift/Discharge Country (a)

Country	Year ended June 2003	Year ended June 2004	Year ended June 2005	% of Total	% Change 2005/04
New Zealand	3 642 898	4 287 516	4 851 246	23.9	13.1
Singapore	2 816 610	3 189 464	3 389 932	16.7	6.3
Japan	1 574 096	1 650 114	1 693 879	8.3	2.7
USA	1 333 770	1 361 918	1 521 092	7.5	11.7
Hong Kong	1 070 964	1 202 433	1 495 898	7.4	24.4
Malaysia	860 483	996 686	1 162 073	5.7	16.6
Thailand	782 294	828 689	841 903	4.1	1.6
Indonesia	536 975	681 351	789 741	3.9	15.9
UK	586 877	610 183	679 388	3.3	11.3
United Arab Emirates	345 372	517 959	625 984	3.1	20.9
Top 10 Countries	13 550 339	15 326 313	17 051 136	84.0	11.3
Other Countries	2 558 078	2 804 973	3 259 144	16.0	16.2
ALL COUNTRIES	16 108 417	18 131 286	20 310 280	100.0	12.0

Table IV: International Passenger Traffic through Australian International Airports (a)

Airport	Year ended June 2003	Year ended June 2004	Year ended June 2005	% of Total	% Change 2005/04
Sydney	7 752 988	8 594 354	9 275 239	45.7	7.9
Melbourne	3 136 420	3 601 072	4 144 155	20.4	15.1
Brisbane	2 442 918	2 912 444	3 483 857	17.2	19.6
Perth	1 573 543	1 734 238	1 945 686	9.6	12.2
Cairns	752 526	800 801	858 145	4.2	7.2
Adelaide	207 128	250 013	317 971	1.6	27.2
Gold Coast/Coolangatta	136 030	137 379	159 444	0.8	16.1
Darwin	89 306	84 106	103 215	0.5	22.7
Norfolk Island	15 482	16 879	20 572	0.1	21.9
Canberra (b)	1 996	0.0	..
Newcastle (c)	2 076
ALL AIRPORTS	16 108 417	18 131 286	20 310 280	100.0	12.0

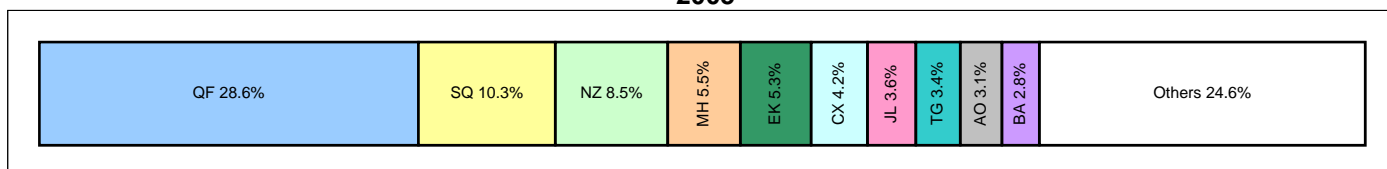
(a) Please refer to Explanatory notes - paragraphs 3 & 13 in particular.

(b) International operations commenced July 2004 and ceased September 2004.

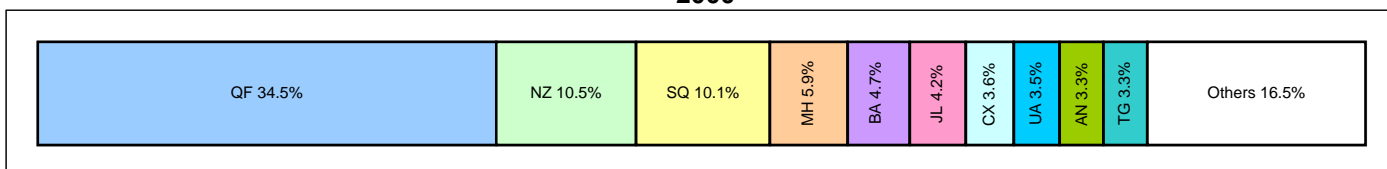
(c) International operations commenced December 2001 and ceased September 2002.

Chart III: International Passengers by Major Airlines - Top 10 in each year - Years ended June

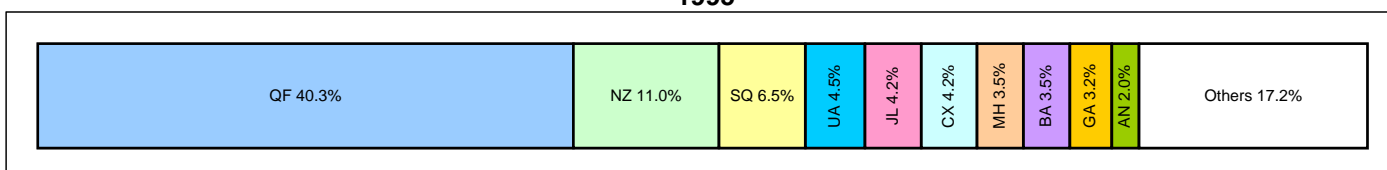
2005



2000



1995



AN - Ansett International
 AO - Australian Airlines
 BA - British Airways
 CX - Cathay Pacific Airways
 EK - Emirates

GA - Garuda Indonesia
 JL - Japan Airlines
 MH - Malaysia Airlines
 NZ - Air New Zealand
 QF - Qantas Airways

SQ - Singapore Airlines
 TG - Thai Airways
 UA - United Airlines

Summary Statistics

	Year ended June 2003	Year ended June 2004	Year ended June 2005	Growth compared to	
				2004	2003
Passengers carried	16 108 417	18 131 286	20 310 280	12.0	26.1
Freight (tonnes)	635 135	627 002	702 799	12.1	10.7
Mail (tonnes)	27 499	28 444	29 337	3.1	6.7
Available Seats	23 062 891	25 885 687	29 720 830	14.8	28.9
Flights	89 374	100 336	116 091	15.7	29.9
Aircraft Movements	106 085	117 942	133 357	13.1	25.7

TABLE 1: SCHEDULED INTERNATIONAL AIR TRAFFIC TO AND FROM AUSTRALIA: Year ended June 2005

Scheduled Operator	Country to/from	Inbound			Outbound		
		Passengers	Freight (tonnes)	Mail (tonnes)	Passengers	Freight (tonnes)	Mail (tonnes)
Aerolineas Argentinas	Argentina	16 668	138.7	5.8	16 149	229.0	-
"	New Zealand	8 717	744.7	-	8 701	575.9	-
"	ALL SERVICES	25 385	883.4	5.8	24 850	804.9	-
Air Caledonie	New Caledonia	41 436	69.4	6.2	40 796	752.7	13.5
Air Canada	Canada	55 939	122.6	20.5	60 133	127.4	-
"	USA	16 803	2 615.0	302.8	12 599	2 486.0	2.1
"	ALL SERVICES	72 742	2 737.5	323.4	72 732	2 613.4	2.1
Air China	China	70 503	540.8	40.7	67 616	712.2	2.8
Air Mauritius	Mauritius	20 505	322.3	2.9	19 725	497.1	0.1
Air Nauru	Nauru	4 450	15.1	0.1	4 134	189.4	6.2
"	Solomon Islands	2 782	4.8	-	2 478	1.6	-
"	ALL SERVICES	7 232	19.9	0.1	6 612	191.0	6.2
Air New Zealand	China	36.6	-
"	Cook Islands	103	-	-	112	-	-
"	Germany	..	34.3	-	..	40.0	-
"	New Zealand	858 046	14 723.3	1 798.0	862 018	13 353.1	105.9
"	USA	..	1 191.2	-
"	ALL SERVICES	858 149	15 948.7	1 798.0	862 130	13 429.7	105.9
Air Niugini	Papua New Guinea	66 458	1 920.6	28.4	67 788	3 272.8	257.6
Air Pacific	Fiji	210 265	4 746.2	18.0	209 245	4 180.8	198.9
Air Paradise International	Indonesia	112 084	791.5	0.0	111 429	304.7	-
Air Vanuatu	Vanuatu	29 660	138.2	35.2	28 840	314.4	50.8
Asian Express Airlines	New Zealand	..	3 617.1	-	..	4 158.9	-
Asiana Airlines	Korea	85 151	2 873.1	223.4	83 851	1 245.6	-
Australian Airlines	Hong Kong	28 741	770.8	-	25 407	1 441.0	-
"	Indonesia	55 198	293.3	-	57 309	76.6	0.5
"	Japan	175 545	1 261.3	68.5	171 443	2 899.1	0.0
"	Malaysia	13 666	3.5	-	13 167	198.5	-
"	Singapore	44 877	1 401.5	1.4	50 350	684.3	48.2
"	ALL SERVICES	318 027	3 730.4	69.9	317 676	5 299.5	48.7
British Airways	Singapore	85 898	2 041.5	0.2	78 748	4 032.8	-
"	Thailand	66 359	1 527.8	-	69 452	819.6	-
"	UK	143 966	7 106.6	64.7	132 047	1 320.0	9.9
"	ALL SERVICES	296 223	10 675.9	64.9	280 247	6 172.4	9.9
Cargolux Airlines Intl	Luxembourg	..	4 868.3	-
"	Malaysia	..	-	-
"	New Zealand	5 597.9	-
"	Singapore	..	-	-
"	ALL SERVICES	-	4 868.3	-	-	5 597.9	-
Cathay Pacific Airways	Hong Kong	443 684	35 122.1	497.1	416 806	24 066.5	429.8
China Airlines	Taiwan	66 561	2 750.4	88.3	67 611	722.7	-
China Eastern Airlines	China	80 541	3 891.7	61.0	71 012	494.3	8.8
China Southern Airlines	China	53 520	2 668.0	63.7	51 528	235.8	-
Continental Micronesia	Guam	13 550	3.8	0.4	13 971	55.9	0.0
Emirates (a)	New Zealand	197 834	14 264.3	-	202 299	11 713.5	0.6
"	Singapore	29 667	2 055.0	148.5	23 069	3 308.6	-
"	Thailand	3 336	252.0	5.5	3 266	12.5	-
"	United Arab Emirates	317 552	9 499.9	319.0	308 403	12 316.6	9.4
"	ALL SERVICES	548 389	26 071.3	473.0	537 037	27 351.2	9.9
Eva Air	Taiwan	46 779	2 266.7	40.6	45 680	1 625.6	-
Federal Express Corporation	Philippines	5 411.4	-
"	USA	..	13 662.5	21.9
"	ALL SERVICES	-	13 662.5	21.9	-	5 411.4	-
Freedom Air International	New Zealand	250 291	-	-	248 225	-	-
Garuda Indonesia	Indonesia	163 344	3 682.0	24.5	162 849	2 812.5	0.3
"	New Zealand	6 848	895.8	-	5 471	199.8	-
"	ALL SERVICES	170 192	4 577.7	24.5	168 320	3 012.3	0.3
Gulf Air	Bahrain	53 615	1 764.8	98.1	54 028	1 916.2	101.8
"	Singapore	12 013	1 799.7	2.4	12 277	975.1	0.0
"	ALL SERVICES	65 628	3 564.5	100.5	66 305	2 891.3	101.8
Hawaiian Airlines	USA	33 043	264.9	20.3	35 014	440.9	0.1
Japan Airlines	Japan	371 036	7 858.5	1 245.9	369 205	11 132.1	44.3
Korean Air	Korea	131 144	12 795.7	477.4	131 118	7 109.9	26.3
Lan Chile	Chile	22 189	1 169.6	3.0	22 618	552.3	33.9
"	New Zealand	12 483	311.6	5.4	15 362	160.6	0.2
"	ALL SERVICES	34 672	1 481.3	8.3	37 980	712.9	34.1
Lauda Air (b)	Austria	91 216	-	-	92 678	-	-
"	Malaysia	12 087	-	-	10 130	-	-

TABLE 1: SCHEDULED INTERNATIONAL AIR TRAFFIC TO AND FROM AUSTRALIA: Year ended June 2005

Scheduled Operator	Country to/from	Inbound			Outbound		
		Passengers	Freight (tonnes)	Mail (tonnes)	Passengers	Freight (tonnes)	Mail (tonnes)
Lauda Air	Singapore	5 456	-	-	6 215	-	-
"	ALL SERVICES	108 759	-	-	109 023	-	-
Lufthansa German Airlines	Germany	..	1 221.0	-	..	942.7	-
"	Malaysia	..	0.9	-	..	33.0	-
"	New Zealand	..	1 865.6	-	..	16.2	-
"	Pakistan	-	-
"	Thailand	40.0	-
"	United Arab Emirates	..	-	-
"	USA	..	4 121.0	-	..	499.1	-
"	ALL SERVICES	-	7 208.5	-	-	1 531.0	-
Malaysia Airlines	Malaysia	554 142	29 042.2	61.3	558 881	10 128.9	-
Martinair Holland	Bahrain	15.0	-
"	Hong Kong	550.0	-
"	Netherlands	..	7 769.1	-	..	1 294.5	-
"	Thailand	107.6	-
"	United Arab Emirates	204.0	-
"	ALL SERVICES	-	7 769.1	-	-	2 171.2	-
Merpati Nusantara Airlines	Indonesia	1 195	-	-	1 605	-	-
Norfolk Jet Express (c)	New Zealand	..	-	-	..	-	-
Pacific Blue	Fiji	29 016	-	-	31 793	-	-
"	New Zealand	160 969	-	-	164 785	-	-
"	Vanuatu	7 123	-	-	7 847	-	-
"	ALL SERVICES	197 108	-	-	204 425	-	-
Philippine Airlines	Philippines	35 524	1 149.7	-	33 024	636.0	-
Polar Air Cargo (d)	USA	..	-	-
Polynesian Airlines	New Zealand	374	0.6	1.2	232	4.0	1.6
"	Tonga	3 262	18.5	-	3 018	26.6	6.4
"	Western Samoa	6 996	34.4	0.7	7 644	27.2	7.9
"	ALL SERVICES	10 632	53.6	1.9	10 894	57.7	15.9
Qantas Airways	Brazil	78.0	-
"	China	20 140	4 264.1	-	20 176	670.5	7.2
"	Fiji	..	-	-	..	0.0	-
"	France	3 860	119.7	-	2 725	0.4	3.1
"	Germany	40 208	3 824.2	60.2	41 154	195.4	493.4
"	Greece	314	-	-
"	Hong Kong	278 721	17 752.9	152.3	272 278	7 908.1	776.7
"	India	31 705	763.3	-	29 121	85.1	37.2
"	Indonesia	61 613	625.0	0.7	63 115	1 161.7	53.9
"	Japan	306 348	5 763.5	964.0	300 302	8 508.8	1 472.3
"	New Caledonia	22 722	13.8	3.4	22 139	209.5	22.8
"	New Zealand	846 160	24 358.1	77.3	871 955	24 686.5	2 062.5
"	Philippines	42 728	752.0	26.7	41 152	510.4	31.0
"	Singapore	475 060	14 280.3	969.0	433 554	19 157.0	1 925.3
"	South Africa	58 566	1 541.7	36.1	54 577	656.3	123.6
"	Thailand	56 913	1 155.6	89.4	49 948	522.2	237.6
"	UK	184 373	6 759.6	1 577.0	202 979	1 683.8	2 302.5
"	United Arab Emirates	29	-	-
"	USA	485 457	24 195.6	2 316.4	486 027	7 023.9	2 190.8
"	ALL SERVICES	2 914 917	106 169.3	6 272.6	2 891 202	73 057.7	11 739.8
Royal Brunei Airlines	Brunei	56 685	1 115.8	0.2	57 751	1 850.4	-
"	New Zealand	20 627	249.1	-	17 865	517.7	-
"	ALL SERVICES	77 312	1 364.8	0.2	75 616	2 368.1	-
Singapore Airlines	Indonesia	49.0	-
"	Malaysia	194.4	-
"	New Zealand	..	14.8	-	..	4 254.0	-
"	Singapore	1 060 228	52 337.3	1 489.6	1 037 898	45 752.0	30.3
"	ALL SERVICES	1 060 228	52 352.1	1 489.6	1 037 898	50 249.4	30.3
Solomon Airlines	Solomon Islands	10 611	144.4	0.6	11 430	51.1	-
South African Airways	South Africa	50 022	1 056.6	36.1	42 248	2 263.2	22.9
Thai Airways International	New Zealand	48 490	2 927.4	0.7	43 494	3 870.6	0.1
"	Thailand	296 685	12 662.2	1 208.5	295 944	10 374.9	5.3
"	ALL SERVICES	345 175	15 589.7	1 209.2	339 438	14 245.5	5.3
Transair (e)	Papua New Guinea	..	32.7	-	..	102.8	-
United Airlines	USA	225 152	1 617.2	1 247.6	226 997	6 612.3	108.2
United Parcel Service	Hong Kong	181.6	-
"	Taiwan	32.4	-
"	USA	..	4 544.3	-
"	ALL SERVICES	-	4 544.3	-	-	214.0	-

TABLE 1: SCHEDULED INTERNATIONAL AIR TRAFFIC TO AND FROM AUSTRALIA: Year ended June 2005

Scheduled Operator	Country to/from	Inbound			Outbound		
		Passengers	Freight (tonnes)	Mail (tonnes)	Passengers	Freight (tonnes)	Mail (tonnes)
Valuair (f)	Singapore	17 370	9.2	-	17 252	1.2	-
Vietnam Airlines (g)	Vietnam	44 010	1 272.8	3.7	75 707	429.2	-
Virgin Atlantic Airways (f)	Hong Kong	14 792	2 565.0	-	15 469	526.1	-
"	UK	8 160	265.4	-	7 863	273.4	-
"	ALL SERVICES	22 952	2 830.4	-	23 332	799.6	-
TOTAL		10 197 959	403 069.1	16 062.7	10 112 321	299 729.4	13 274.3

Please refer to explanatory notes - paragraphs 3, 6 and 13 in particular.

(a) Some Melbourne and Sydney data is still under review.

(b) No outbound freight data for September 2000 onwards. No inbound freight data for April 2001 onwards.

(c) Service commenced August 2004 and ceased December 2004. No data was received.

(d) No data received for March 2003 and onwards.

(e) Commenced reporting from January 2005.

(f) Service commenced December 2004.

(g) No data received for inbound operations to Sydney for August 2002 to May 2004 and for July 2004 to November 2004 and January 2005 to March 2005 and May 2005. Data for outbound operations have been received for July 2003 onwards.

TABLE 2: SCHEDULED OPERATOR MARKET SHARES AND GROWTH: Year ended June

Scheduled Operators	Country to/from	Total Passengers				Total Freight (tonnes)				Total Mail (tonnes)			
		2004	2005	(%) of TOTAL	(%) Change	2004	2005	(%) of TOTAL	(%) Change	2004	2005	(%) of TOTAL	(%) Change
Aerolineas Argentinas	Argentina	31 724	32 817	0.2	3.4	275.3	367.7	0.1	33.5	7.4	5.8	0.0	-21.1
"	New Zealand	6 848	17 418	0.1	154.4	1 482.4	1 320.6	0.2	-10.9	-	-	-	..
"	ALL SERVICES	38 572	50 235	0.2	30.2	1 757.8	1 688.3	0.2	-4.0	7.4	5.8	0.0	-21.1
Air Caledonie	New Caledonia	75 685	82 232	0.4	8.7	607.9	822.0	0.1	35.2	20.7	19.6	0.1	-5.1
Air Canada	Canada	100 066	116 072	0.6	16.0	461.5	249.9	0.0	-45.8	27.1	20.5	0.1	-24.2
"	USA	43 916	29 402	0.1	-33.0	5 475.0	5 100.9	0.7	-6.8	225.4	305.0	1.0	35.3
"	ALL SERVICES	143 982	145 474	0.7	1.0	5 936.5	5 350.9	0.8	-9.9	252.5	325.5	1.1	28.9
Air China	China	138 806	138 119	0.7	-0.5	1 568.6	1 253.1	0.2	-20.1	21.1	43.5	0.1	106.1
Air Mauritius	Mauritius	32 663	40 230	0.2	23.2	951.0	819.4	0.1	-13.8	2.2	3.0	0.0	37.1
Air Nauru	Nauru	10 829	8 584	0.0	-20.7	256.6	204.5	0.0	-20.3	9.3	6.3	0.0	-32.3
"	Solomon Islands	2 225	5 260	0.0	136.4	0.0	6.3	0.0	>999.9	-	-	-	..
"	ALL SERVICES	13 054	13 844	0.1	6.1	256.6	210.8	0.0	-17.8	9.3	6.3	0.0	-32.3
Air New Zealand	China	36.6	0.0	-	-	..
"	Cook Islands	..	215	0.0	-	-	-	-	..
"	Germany	74.3	0.0	-	-	..
"	New Zealand	1 511 685	1 720 064	8.5	13.8	30 151.0	28 076.4	4.0	-6.9	2 106.8	1 903.9	6.5	-9.6
"	USA	1 191.2	0.2	-	-	..
"	ALL SERVICES	1 511 685	1 720 279	8.5	13.8	30 151.0	29 378.4	4.2	-2.6	2 106.8	1 903.9	6.5	-9.6
Air Niugini	Papua New Guinea	130 715	134 246	0.7	2.7	3 859.5	5 193.4	0.7	34.6	286.0	286.1	1.0	0.0
Air Pacific	Fiji	408 632	419 510	2.1	2.7	7 775.5	8 927.0	1.3	14.8	184.0	216.9	0.7	17.9
Air Paradise International	Indonesia	154 728	223 513	1.1	44.5	680.8	1 096.2	0.2	61.0	-	0.0	0.0	..
Air Vanuatu	Vanuatu	61 700	58 500	0.3	-5.2	389.1	452.5	0.1	16.3	158.1	86.0	0.3	-45.6
Asian Express Airlines	New Zealand	7 425.0	7 776.0	1.1	4.7	-	-	-	..
Asiana Airlines	Korea	143 546	169 002	0.8	17.7	4 704.8	4 118.7	0.6	-12.5	92.9	223.4	0.8	140.4
Australian Airlines	Hong Kong	45 185	54 148	0.3	19.8	2 639.6	2 211.8	0.3	-16.2	-	-	-	..
"	Indonesia	86 591	112 507	0.6	29.9	266.9	369.9	0.1	38.6	0.2	0.5	0.0	95.0
"	Japan	326 019	346 988	1.7	6.4	4 827.2	4 160.4	0.6	-13.8	24.5	68.5	0.2	179.8
"	Malaysia	24 416	26 833	0.1	9.9	521.9	202.0	0.0	-61.3	-	-	-	..
"	Singapore	70 782	95 227	0.5	34.5	1 912.3	2 085.8	0.3	9.1	14.5	49.6	0.2	242.1
"	ALL SERVICES	552 993	635 703	3.1	15.0	10 168.0	9 029.9	1.3	-11.2	39.2	118.5	0.4	202.3
British Airways	Singapore	156 346	164 646	0.8	5.3	6 164.6	6 074.3	0.9	-1.5	1.5	0.2	0.0	-88.3
"	Thailand	131 910	135 811	0.7	3.0	2 526.8	2 347.5	0.3	-7.1	-	-	-	..
"	UK	287 999	276 013	1.4	-4.2	6 677.5	8 426.6	1.2	26.2	66.7	74.6	0.3	11.9
"	ALL SERVICES	576 255	576 470	2.8	0.0	15 368.9	16 848.3	2.4	9.6	68.1	74.8	0.3	9.8
Cargolux Airlines Intl	Luxembourg	4 240.5	4 868.3	0.7	14.8	-	-	-	..
"	Malaysia	264.5	-	-	-100.0	-	-	-	..
"	New Zealand	4 982.2	5 597.9	0.8	12.4	-	-	-	..
"	Singapore	-	-	-	-	..
"	ALL SERVICES	-	-	-	..	9 487.1	10 466.1	1.5	10.3	-	-	-	..
Cathay Pacific Airways	Hong Kong	712 063	860 490	4.2	20.8	56 294.3	59 188.5	8.4	5.1	501.7	926.8	3.2	84.7
China Airlines	Taiwan	118 585	134 172	0.7	13.1	2 702.9	3 473.2	0.5	28.5	157.0	88.3	0.3	-43.7
China Eastern Airlines	China	94 754	151 553	0.7	59.9	3 477.1	4 386.0	0.6	26.1	13.9	69.8	0.2	400.4
China Southern Airlines	China	63 772	105 048	0.5	64.7	1 943.1	2 903.8	0.4	49.4	27.0	63.7	0.2	136.1
Continental Micronesia	Guam	27 595	27 521	0.1	-0.3	40.0	59.8	0.0	49.5	0.9	0.4	0.0	-51.0
Emirates (a)	New Zealand	197 982	400 133	2.0	102.1	16 948.7	25 977.8	3.7	53.3	2.0	0.6	0.0	-70.3

TABLE 2: SCHEDULED OPERATOR MARKET SHARES AND GROWTH: Year ended June

Scheduled Operators	Country to/from	Total Passengers				Total Freight (tonnes)				Total Mail (tonnes)			
		2004	2005	(%) of TOTAL	(%) Change	2004	2005	(%) of TOTAL	(%) Change	2004	2005	(%) of TOTAL	(%) Change
Emirates	Singapore	46 265	52 736	0.3	14.0	6 297.4	5 363.6	0.8	-14.8	117.4	148.5	0.5	26.5
"	Thailand	..	6 602	0.0	264.6	0.0	5.5	0.0	..
"	United Arab Emirates	517 959	625 955	3.1	20.9	15 359.3	21 816.4	3.1	42.0	159.6	328.4	1.1	105.7
"	ALL SERVICES	762 206	1 085 426	5.3	42.4	38 605.3	53 422.5	7.6	38.4	279.0	483.0	1.6	73.1
Eva Air	Taiwan	82 294	92 459	0.5	12.4	3 315.5	3 892.3	0.6	17.4	46.8	40.6	0.1	-13.3
Federal Express Corporation	Philippines	5 062.9	5 411.4	0.8	6.9	-	-	-	..
"	USA	13 792.6	13 662.5	1.9	-0.9	19.1	21.9	0.1	14.7
"	ALL SERVICES	-	-	-	..	18 855.5	19 073.9	2.7	1.2	19.1	21.9	0.1	14.7
Freedom Air International	New Zealand	510 800	498 516	2.5	-2.4	-	-	-	..	-	-	-	..
Garuda Indonesia	Indonesia	291 955	326 193	1.6	11.7	6 896.6	6 494.4	0.9	-5.8	11.8	24.8	0.1	110.0
"	New Zealand	10 522	12 319	0.1	17.1	1 737.3	1 095.6	0.2	-36.9	-	-	-	..
"	ALL SERVICES	302 477	338 512	1.7	11.9	8 633.9	7 590.0	1.1	-12.1	11.8	24.8	0.1	110.0
Gulf Air (b)	Bahrain	52 714	107 643	0.5	104.2	1 239.6	3 680.9	0.5	197.0	49.5	199.9	0.7	303.5
"	Singapore	16 658	24 290	0.1	45.8	1 636.9	2 774.8	0.4	69.5	26.2	2.4	0.0	-90.8
"	ALL SERVICES	69 372	131 933	0.6	90.2	2 876.5	6 455.8	0.9	124.4	75.7	202.3	0.7	167.2
Hawaiian Airlines (c)	USA	8 648	68 057	0.3	687.0	41.2	705.8	0.1	1612.3	0.6	20.4	0.1	3410.0
Japan Airlines	Japan	738 087	740 241	3.6	0.3	16 535.0	18 990.6	2.7	14.9	1 139.5	1 290.2	4.4	13.2
Korean Air	Korea	269 718	262 262	1.3	-2.8	15 775.4	19 905.6	2.8	26.2	654.5	503.7	1.7	-23.0
Lan Chile	Chile	39 855	44 807	0.2	12.4	1 465.6	1 721.9	0.2	17.5	34.3	36.8	0.1	7.4
"	New Zealand	20 621	27 845	0.1	35.0	433.8	472.3	0.1	8.9	8.8	5.6	0.0	-36.4
"	ALL SERVICES	60 476	72 652	0.4	20.1	1 899.4	2 194.2	0.3	15.5	43.1	42.4	0.1	-1.5
Lauda Air (d)	Austria	167 252	183 894	0.9	10.0	-	-	-	..	-	-	-	..
"	Malaysia	24 424	22 217	0.1	-9.0	-	-	-	..	-	-	-	..
"	Singapore	495	11 671	0.1	2257.8	-	-	-	..	-	-	-	..
"	ALL SERVICES	192 171	217 782	1.1	13.3	-	-	-	..	-	-	-	..
Lufthansa German Airlines (e)	Germany	2 109.1	2 163.7	0.3	2.6	6.1	-	-	-100.0
"	India	2.6	-100.0	-
"	Malaysia	287.5	33.9	0.0	-88.2	-	-	-	..
"	New Zealand	2 800.6	1 881.8	0.3	-32.8	3.3	-	-	-100.0
"	Pakistan	18.0	-	-	-100.0	-	-	-	..
"	Thailand	25.5	40.0	0.0	56.6	-	-	-	..
"	United Arab Emirates	5.4	-	-	-100.0	-	-	-	..
"	USA	5 437.8	4 620.1	0.7	-15.0	-	-	-	..
"	ALL SERVICES	-	-	-	..	10 686.5	8 739.5	1.2	-18.2	9.4	-	-	-100.0
Malaysia Airlines	Malaysia	947 846	1 113 023	5.5	17.4	42 859.6	39 171.1	5.6	-8.6	57.0	61.3	0.2	7.6
"	New Zealand	18 203	-100.0	459.4	-100.0	-
"	ALL SERVICES	966 049	1 113 023	5.5	15.2	43 319.0	39 171.1	5.6	-9.6	57.0	61.3	0.2	7.6
Martinair Holland	Bahrain	15.0	0.0	-	-	..
"	China	146.2	-100.0	-
"	Hong Kong	793.5	550.0	0.1	-30.7	-	-	-	..
"	Ireland	25.7	-100.0	-
"	Japan	143.0	-100.0	-
"	Macau	83.0	-100.0	-
"	Netherlands	9 459.4	9 063.7	1.3	-4.2	-	-	-	..
"	New Zealand	32.1	-100.0	-

TABLE 2: SCHEDULED OPERATOR MARKET SHARES AND GROWTH: Year ended June

Scheduled Operators	Country to/from	Total Passengers				Total Freight (tonnes)				Total Mail (tonnes)			
		2004	2005	(%) of TOTAL	(%) Change	2004	2005	(%) of TOTAL	(%) Change	2004	2005	(%) of TOTAL	(%) Change
Martinair Holland	Thailand	220.5	107.6	0.0	-51.2	-	-	-	..
"	UK	7.5	-100.0	-
"	United Arab Emirates	131.0	204.0	0.0	55.7	-	-	-	..
"	ALL SERVICES	-	-	-	..	11 041.8	9 940.3	1.4	-10.0	-	-	-	..
Merpati Nusantara Airlines (f) (g)	Indonesia	149	2 800	0.0	1779.2	-	-	-	..	-	-	-	..
Norfolk Jet Express (h)	New Zealand	-	-	-	..
Pacific Blue (i)	Fiji	..	60 809	0.3	-	-	-	-	..
"	New Zealand	113 562	325 754	1.6	186.9	-	-	-	..	-	-	-	..
"	Vanuatu	..	14 970	0.1	-	-	-	-	..
"	ALL SERVICES	113 562	401 533	2.0	253.6	-	-	-	..	-	-	-	..
Philippine Airlines	Philippines	68 476	68 548	0.3	0.1	2 033.1	1 785.8	0.3	-12.2	2.4	-	-	-100.0
Polar Air Cargo (j)	USA	-	-	-	..	-	-	-	..
Polynesian Airlines	New Zealand	2 957	606	0.0	-79.5	11.3	4.6	0.0	-59.4	6.2	2.8	0.0	-54.6
"	Niue	76	-100.0	0.7	-100.0	0.3	-100.0
"	Tonga	2 780	6 280	0.0	125.9	30.8	45.1	0.0	46.5	8.4	6.4	0.0	-23.5
"	Western Samoa	12 112	14 640	0.1	20.9	68.6	61.6	0.0	-10.2	5.3	8.6	0.0	63.3
"	ALL SERVICES	17 925	21 526	0.1	20.1	111.4	111.3	0.0	-0.1	20.2	17.9	0.1	-11.6
Qantas Airways	Brazil	78.0	0.0	-	-	..
"	China	..	40 316	0.2	..	53.0	4 934.7	0.7	9205.1	-	7.2	0.0	..
"	Fiji	0.0	0.0	-	-	..
"	France	17 374	6 585	0.0	-62.1	361.0	120.1	0.0	-66.7	12.1	3.1	0.0	-74.1
"	Germany	82 978	81 362	0.4	-1.9	2 153.4	4 019.5	0.6	86.7	708.5	553.6	1.9	-21.9
"	Greece	..	314	0.0	-	-	-	-	..
"	Hong Kong	445 185	550 999	2.7	23.8	15 331.3	25 661.1	3.7	67.4	1 075.1	929.1	3.2	-13.6
"	India	..	60 826	0.3	848.4	0.1	37.2	0.1	..
"	Indonesia	147 928	124 728	0.6	-15.7	2 225.2	1 786.7	0.3	-19.7	67.0	54.6	0.2	-18.4
"	Italy	3 831	-100.0	111.1	-100.0	3.2	-100.0
"	Japan	586 008	606 650	3.0	3.5	12 569.1	14 272.2	2.0	13.6	2 418.4	2 436.3	8.3	0.7
"	New Caledonia	42 260	44 861	0.2	6.2	188.6	223.3	0.0	18.4	31.2	26.2	0.1	-16.2
"	New Zealand	1 750 466	1 718 115	8.5	-1.8	44 651.9	49 044.6	7.0	9.8	2 258.2	2 139.8	7.3	-5.2
"	Philippines	85 958	83 880	0.4	-2.4	1 743.3	1 262.5	0.2	-27.6	71.9	57.6	0.2	-19.9
"	Singapore	933 016	908 614	4.5	-2.6	33 602.7	33 437.4	4.8	-0.5	3 510.8	2 894.3	9.9	-17.6
"	South Africa	127 602	113 143	0.6	-11.3	1 836.4	2 198.0	0.3	19.7	156.8	159.7	0.5	1.9
"	Thailand	101 283	106 861	0.5	5.5	1 498.7	1 677.8	0.2	11.9	331.7	327.0	1.1	-1.4
"	UK	322 184	387 352	1.9	20.2	6 386.6	8 443.4	1.2	32.2	3 711.7	3 879.5	13.2	4.5
"	United Arab Emirates	..	29	0.0	-	-	-	-	..
"	USA	892 869	971 484	4.8	8.8	15 318.7	31 219.5	4.4	103.8	3 601.4	4 507.2	15.4	25.2
"	ALL SERVICES	5 538 942	5 806 119	28.6	4.8	138 031.1	179 227.1	25.5	29.8	17 957.9	18 012.4	61.4	0.3
Royal Brunei Airlines	Brunei	98 711	114 436	0.6	15.9	3 239.8	2 966.1	0.4	-8.4	0.7	0.2	0.0	-69.0
"	New Zealand	21 054	38 492	0.2	82.8	717.2	766.8	0.1	6.9	-	-	-	..
"	ALL SERVICES	119 765	152 928	0.8	27.7	3 957.0	3 732.9	0.5	-5.7	0.7	0.2	0.0	-69.0
Royal Tongan Airlines (k)	New Zealand	-	-
"	Tonga	-	-
"	ALL SERVICES	-	-	-	..	-	-	-	..	-	-	-	..

TABLE 2: SCHEDULED OPERATOR MARKET SHARES AND GROWTH: Year ended June

Scheduled Operators	Country to/from	Total Passengers				Total Freight (tonnes)				Total Mail (tonnes)			
		2004	2005	(%) of TOTAL	(%) Change	2004	2005	(%) of TOTAL	(%) Change	2004	2005	(%) of TOTAL	(%) Change
Singapore Airlines	Indonesia	38.2	49.0	0.0	28.2	-	-	-	..
"	Malaysia	194.4	0.0	-	-	..
"	New Zealand	2 943.9	4 268.8	0.6	45.0	-	-	-	..
"	Singapore	1 965 902	2 098 126	10.3	6.7	97 514.2	98 089.4	14.0	0.6	1 255.0	1 519.9	5.2	21.1
"	ALL SERVICES	1 965 902	2 098 126	10.3	6.7	100 496.3	102 601.5	14.6	2.1	1 255.0	1 519.9	5.2	21.1
Solomon Airlines	Solomon Islands	19 248	22 041	0.1	14.5	139.4	195.5	0.0	40.3	-	0.6	0.0	..
South African Airways	South Africa	93 478	92 270	0.5	-1.3	3 660.3	3 319.8	0.5	-9.3	50.5	59.0	0.2	16.8
Thai Airways International	New Zealand	122 816	91 984	0.5	-25.1	6 519.8	6 798.1	1.0	4.3	0.6	0.8	0.0	37.2
"	Thailand	595 496	592 629	2.9	-0.5	22 245.2	23 037.1	3.3	3.6	1 352.0	1 213.8	4.1	-10.2
"	ALL SERVICES	718 312	684 613	3.4	-4.7	28 765.0	29 835.2	4.2	3.7	1 352.6	1 214.6	4.1	-10.2
Transair (l)	Papua New Guinea	135.5	0.0	-	-	..
United Airlines	USA	416 485	452 149	2.2	8.6	6 543.9	8 229.5	1.2	25.8	1 519.5	1 355.8	4.6	-10.8
United Parcel Service	Hong Kong	95.5	181.6	0.0	90.2	-	-	-	..
"	Philippines	170.8	-100.0	-
"	Taiwan	181.9	32.4	0.0	-82.2	-	-	-	..
"	USA	4 475.2	4 544.3	0.6	1.5	-	-	-	..
"	ALL SERVICES	-	-	-	..	4 923.4	4 758.3	0.7	-3.4	-	-	-	..
Valuair (m)	Singapore	..	34 622	0.2	10.4	0.0	-	-	..
Vietnam Airlines (n)	Vietnam	96 959	119 717	0.6	23.5	1 210.8	1 702.0	0.2	40.6	-	3.7	0.0	..
Virgin Atlantic Airways (m)	Hong Kong	..	30 261	0.1	3 091.2	0.4	-	-	..
"	UK	..	16 023	0.1	538.8	0.1	-	-	..
"	ALL SERVICES	-	46 284	0.2	..	-	3 630.0	0.5	..	-	-	-	..
TOTAL		18 131 286	20 310 280	100.0	12.0	627 002.0	702 798.5	100.0	12.1	28 444.3	29 337.0	100.0	3.1

Please refer to explanatory notes - paragraphs 3, 6 and 13 in particular.

(a) Some Melbourne and Sydney data is still under review.

(b) Service recommenced November 2003.

(c) Service recommenced May 2004.

(d) No outbound freight data for September 2000 onwards. No inbound freight data for April 2001 onwards.

(e) Service ceased March 2005.

(f) Jakarta/Christmas Island scheduled services commenced in August 2001 and ceased in February 2004 - no data has been received for these services.

(g) Kupang/Darwin services recommenced in June 2004.

(h) Service commenced August 2004 and ceased December 2004. No data was received.

(i) Service recommenced January 2004.

(j) No data received for March 2003 and onwards.

(k) Operated services recommenced in December 2002 and ceased in April 2004. No data received for July 2003 and onwards.

(l) Commenced reporting from January 2005.

(m) Service recommenced December 2004.

(n) No data received for inbound operations to Sydney for August 2002 to May 2004 and for July 2004 to November 2004 and January 2005 to March 2005 and May 2005.

Data for outbound operations have been received for July 2003 onwards.

TABLE 3: AIRLINE PASSENGER CAPACITY AND UTILISATION TO AND FROM AUSTRALIA BY OPERATOR: Year ended June 2005

Scheduled Operator	Service to/from	Inbound				Outbound			
		No. of Flights	Pax Carried	Seats Available	Seat Utilisation %	No. of Flights	Pax Carried	Seats Available	Seat Utilisation %
Aerolineas Argentinas	Argentina	147	25 385	36 309	69.9	147	24 850	36 309	68.4
Air Caledonie	New Caledonia	321	41 436	57 241	72.4	321	40 796	57 241	71.3
Air Canada	Canada	433	72 742	100 346	72.5	433	72 732	99 844	72.8
Air China	China	363	70 503	106 141	66.4	363	67 616	106 141	63.7
Air Mauritius	Mauritius	111	20 505	26 446	77.5	111	19 725	26 446	74.6
Air Nauru	Nauru	104	7 232	13 904	52.0	105	6 612	11 920	55.5
Air New Zealand	Cook Islands	12	867	1 752	49.5	12	853	1 752	48.7
"	Germany	25	..	-	..	25	..	-	..
"	New Zealand	6 626	857 282	1 202 353	71.3	6 609	861 277	1 200 047	71.8
"	ALL SERVICES	6 663	858 149	1 204 105	71.3	6 646	862 130	1 201 799	71.7
Air Niugini	Papua New Guinea	778	66 458	129 851	51.2	780	67 788	130 184	52.1
Air Pacific	Fiji	1 098	210 265	308 738	68.1	1 098	209 245	308 738	67.8
Air Paradise International	Indonesia	682	112 084	148 538	75.5	683	111 429	148 760	74.9
Air Vanuatu	Vanuatu	477	29 660	60 582	49.0	477	28 840	60 466	47.7
Asian Express Airlines (a)	New Zealand	236	..	-	..	236	..	-	..
Asiana Airlines	Korea	364	85 151	112 840	75.5	364	83 851	112 840	74.3
Australian Airlines	Hong Kong	155	28 820	41 368	69.7	156	25 465	41 672	61.1
"	Indonesia	165	29 895	44 460	67.2	165	27 823	44 457	62.6
"	Japan	913	175 779	245 233	71.7	914	171 572	245 579	69.9
"	Malaysia	87	13 688	23 031	59.4	87	13 385	23 057	58.1
"	Singapore	394	74 038	105 536	70.2	394	83 827	105 682	79.3
"	ALL SERVICES	1 714	322 220	459 628	70.1	1 716	322 072	460 447	69.9
British Airways	UK	1 095	296 223	401 845	73.7	1 094	280 247	401 494	69.8
Cargolux Airlines Intl (a)	Luxembourg	101	-	..	-	..
"	New Zealand	-	..	-	..	100
"	ALL SERVICES	101	-	-	..	100	-	-	..
Cathay Pacific Airways	Hong Kong	2 349	443 684	602 244	73.7	2 348	416 806	602 029	69.2
China Airlines	Taiwan	380	66 561	103 285	64.4	380	67 611	103 285	65.5
China Eastern Airlines	China	404	80 541	116 154	69.3	404	71 012	116 154	61.1
China Southern Airlines	China	269	53 520	78 974	67.8	268	51 528	78 687	65.5
Continental Micronesia	Guam	156	13 550	24 024	56.4	155	13 971	23 870	58.5
Emirates (b)	New Zealand	1 410	197 834	451 431	43.8	1 411	202 299	451 766	44.8
"	United Arab Emirates	1 853	350 555	569 409	61.6	1 852	334 738	569 074	58.8
"	ALL SERVICES	3 263	548 389	1 020 840	53.7	3 263	537 037	1 020 840	52.6
Eva Air	Taiwan	275	46 779	67 700	69.1	275	45 680	67 700	67.5
Federal Express Corporation (a)	Philippines	-	..	-	..	262
"	USA	262	-	..	-	..
"	ALL SERVICES	262	-	-	..	262	-	-	..
Freedom Air International	New Zealand	2 673	250 291	366 311	68.3	2 665	248 225	376 160	66.0
Garuda Indonesia	Indonesia	1 126	163 344	234 360	69.7	1 122	162 849	233 359	69.8
"	New Zealand	103	6 848	30 739	22.3	103	5 471	30 739	17.8
"	ALL SERVICES	1 229	170 192	265 099	64.2	1 225	168 320	264 098	63.7
Gulf Air	Bahrain	364	65 628	96 460	68.0	362	66 305	95 930	69.1
Hawaiian Airlines	USA	209	33 043	54 626	60.5	209	35 014	54 626	64.1
Japan Airlines	Japan	1 136	371 036	504 842	73.5	1 136	369 205	499 875	73.9

TABLE 3: AIRLINE PASSENGER CAPACITY AND UTILISATION TO AND FROM AUSTRALIA BY OPERATOR: Year ended June 2005

Scheduled Operator	Service to/from	Inbound				Outbound			
		No. of Flights	Pax Carried	Seats Available	Seat Utilisation %	No. of Flights	Pax Carried	Seats Available	Seat Utilisation %
Korean Air	Korea	658	131 144	176 929	74.1	658	131 118	176 929	74.1
Lan Chile	Chile	186	34 672	48 174	72.0	185	37 980	47 915	79.3
Lauda Air	Austria	458	108 759	152 392	71.4	458	109 023	152 392	71.5
Lufthansa German Airlines (a)	Germany	140	..	-	..	140	..	-	..
Malaysia Airlines	Malaysia	2 562	554 142	758 085	73.1	2 537	558 881	758 183	73.7
Martinair Holland (a)	Netherlands	98	..	-	..	100	..	-	..
Merpati Nusantara Airlines	Indonesia	105	1 195	3 044	39.3	105	1 605	3 044	52.7
Norfolk Jet Express (c)	New Zealand	-	..	-	..	-	..	-	..
Pacific Blue	Fiji	265	29 016	47 700	60.8	266	31 793	47 880	66.4
"	New Zealand	1 405	160 969	252 900	63.6	1 405	164 785	252 900	65.2
"	Vanuatu	80	7 123	14 400	49.5	82	7 847	14 760	53.2
"	ALL SERVICES	1 750	197 108	315 000	62.6	1 753	204 425	315 540	64.8
Philippine Airlines	Philippines	156	35 524	47 235	75.2	156	33 024	47 235	69.9
Polar Air Cargo (a) (d)	USA	-	-	..	-	..
Polynesian Airlines	Western Samoa	103	10 632	15 948	66.7	105	10 894	16 256	67.0
Qantas Airways	China	108	20 350	26 722	76.2	109	20 366	27 017	75.4
"	France	53	17 373	22 782	76.3	52	13 787	22 351	61.7
"	Germany	408	132 104	156 220	84.6	407	128 808	156 723	82.2
"	Greece	2	539	811	66.5				
"	Hong Kong	1 349	275 024	407 659	67.5	1 345	271 357	407 780	66.5
"	India	130	33 789	57 314	59.0	130	31 040	49 264	63.0
"	Indonesia	569	63 966	108 981	58.7	571	65 312	109 368	59.7
"	Japan	1 574	315 644	445 869	70.8	1 579	318 979	446 786	71.4
"	New Caledonia	210	27 113	39 050	69.4	211	27 422	39 510	69.4
"	New Zealand	5 734	836 342	1 090 975	76.7	5 735	843 219	1 092 497	77.2
"	Philippines	179	45 493	59 716	76.2	179	43 656	59 717	73.1
"	Singapore	1 098	262 409	333 007	78.8	1 094	247 668	332 841	74.4
"	South Africa	227	70 422	82 005	85.9	227	64 804	80 143	80.9
"	Thailand	1	40	215	18.6				
"	UK	1 298	407 237	491 403	82.9	1 300	400 830	491 941	81.5
"	USA	2 214	588 388	761 213	77.3	2 213	604 999	776 610	77.9
"	ALL SERVICES	15 154	3 096 233	4 083 942	75.8	15 152	3 082 247	4 092 548	75.3
Royal Brunei Airlines	Brunei	588	56 685	107 143	52.9	590	57 751	107 463	53.7
"	New Zealand	174	20 627	36 672	56.2	174	17 865	36 672	48.7
"	ALL SERVICES	762	77 312	143 815	53.8	764	75 616	144 135	52.5
Singapore Airlines	Singapore	4 292	1 060 228	1 390 248	76.3	4 293	1 037 898	1 390 527	74.6
Solomon Airlines	Solomon Islands	135	10 611	18 104	58.6	151	11 430	20 424	56.0
South African Airways	South Africa	263	50 022	63 563	78.7	262	42 248	63 326	66.7
Thai Airways International	New Zealand	518	48 490	202 279	24.0	518	43 494	202 279	21.5
"	Thailand	1 355	296 685	488 984	60.7	1 351	295 944	487 584	60.7
"	ALL SERVICES	1 873	345 175	691 263	49.9	1 869	339 438	689 863	49.2
Transair (a) (e)	Papua New Guinea	74	74
United Airlines	USA	773	225 152	268 231	83.9	770	226 997	267 190	85.0
United Parcel Service (a)	Hong Kong	-	..	-	..	59
"	Taiwan	-	..	-	..	42

TABLE 3: AIRLINE PASSENGER CAPACITY AND UTILISATION TO AND FROM AUSTRALIA BY OPERATOR: Year ended June 2005

Scheduled Operator	Service to/from	Inbound				Outbound			
		No. of Flights	Pax Carried	Seats Available	Seat Utilisation %	No. of Flights	Pax Carried	Seats Available	Seat Utilisation %
United Parcel Service	USA	100	..	-	..	-	..	-	..
"	ALL SERVICES	100	-	-	..	101	-	-	..
Valuair (f)	Singapore	211	17 370	32 790	53.0	210	17 252	32 664	52.8
Vietnam Airlines (g)	Vietnam	351	44 010	117 259	37.5	354	75 707	118 293	64.0
Virgin Atlantic Airways (f)	UK	204	22 952	62 694	36.6	204	23 332	62 694	37.2
TOTAL		58 064	10 383 468	14 855 789	69.9	58 027	10 307 762	14 865 041	69.3

Please refer to explanatory notes - paragraphs 4, 5, 7 and 14 in particular.

In addition to the above, please note the following regarding **Seat Factors** shown in this table:

Traffic shown in this table for Australian Airlines and Qantas Airways will differ from traffic shown in Tables 1 and 2 because of the inclusion in this table of total traffic into and ex Australia (for seat factor purposes) whereas Tables 1 and 2 include uplift/discharge traffic only.

All other airlines report uplift/discharge traffic only. Therefore, for other airlines operating **via** Australia, the seat factors shown here reflect the total seats on the aircraft but only the Australian uplift/discharge portion of passengers on the aircraft. The true seat factors for airlines that operate **via** Australia will most likely be higher than what is shown in this table.

For example, on Dubai-Sydney-Auckland services:

Seats on the Dubai-Sydney sector are taken up by Dubai-Sydney and Dubai-Auckland passengers. However, when calculating seat factors, only the Dubai-Sydney passengers are used.

Similarly, seats on the Sydney-Auckland sector are taken up by Sydney-Auckland and Dubai-Auckland passengers. However, when calculating seat factors, only the Sydney-Auckland passengers are used.

The following airlines are affected:

Emirates, Garuda Indonesia, Royal Brunei Airlines and Thai Airways International

(a) Freight flights only.

(b) Some Melbourne and Sydney data is still under review.

(c) Service commenced August 2004 and ceased December 2004. No data was received.

(d) No data received for March 2003 and onwards.

(e) Commenced reporting from January 2005.

(f) Service commenced December 2004.

(g) No data received for inbound operations to Sydney for August 2002 to May 2004 and for July 2004 to November 2004 and January 2005 to March 2005 and May 2005. Data for outbound operations have been received for July 2003 onwards.

TABLE 4: SCHEDULED INTERNATIONAL AIRPORT TRAFFIC AND AIRCRAFT MOVEMENTS: Year ended June

		Inbound		(%)	Outbound		(%)	Total		(%)	(%) of
		2004	2005	Change	2004	2005	Change	2 004	2 005	Change	TOTAL
Adelaide	Passengers	128 367	163 911	27.7	121 646	154 060	26.6	250 013	317 971	27.2	1.6
"	Freight (Tonnes)	5 829	6 617	13.5	7 728	7 816	1.1	13 557	14 432	6.5	2.1
"	Aircraft Movements	953	1 108	16.3	951	1 108	16.5	1 904	2 216	16.4	1.7
Brisbane	Passengers	1 481 043	1 764 467	19.1	1 431 401	1 719 390	20.1	2 912 444	3 483 857	19.6	17.2
"	Freight (Tonnes)	32 806	41 318	25.9	36 245	39 663	9.4	69 052	80 980	17.3	11.5
"	Aircraft Movements	9 262	11 124	20.1	9 272	11 137	20.1	18 534	22 261	20.1	16.7
Cairns	Passengers	407 687	431 937	5.9	393 114	426 208	8.4	800 801	858 145	7.2	4.2
"	Freight (Tonnes)	2 387	3 166	32.7	8 614	8 135	-5.6	11 000	11 301	2.7	1.6
"	Aircraft Movements	4 011	4 169	3.9	4 027	4 166	3.5	8 038	8 335	3.7	6.3
Canberra	Passengers	..	994	1 002	..	-	1 996	..	0.0
"	Freight (Tonnes)	..	-	-	..	-	-
"	Aircraft Movements	..	21	21	..	-	42	..	0.0
Darwin	Passengers	41 746	52 031	24.6	42 360	51 184	20.8	84 106	103 215	22.7	0.5
"	Freight (Tonnes)	331	411	24.0	436	261	-40.0	767	672	-12.4	0.1
"	Aircraft Movements	705	994	41.0	705	993	40.9	1 410	1 987	40.9	1.5
Gold Coast/Coolangatta	Passengers	68 818	79 068	14.9	68 561	80 376	17.2	137 379	159 444	16.1	0.8
"	Freight (Tonnes)	812	-	-100.0	2	21	1148.8	814	21	-97.4	0.0
"	Aircraft Movements	976	1 126	15.4	943	1 117	18.5	1 919	2 243	16.9	1.7
Melbourne	Passengers	1 808 427	2 105 282	16.4	1 792 645	2 038 873	13.7	3 601 072	4 144 155	15.1	20.4
"	Freight (Tonnes)	96 596	112 137	16.1	83 944	88 984	6.0	180 539	201 121	11.4	28.6
"	Aircraft Movements	11 814	13 862	17.3	11 831	13 866	17.2	23 645	27 728	17.3	20.8
Norfolk Island	Passengers	8 464	10 191	20.4	8 415	10 381	23.4	16 879	20 572	21.9	0.1
"	Freight (Tonnes)	134	110	-17.5	14	14	2.2	148	125	-15.7	0.0
"	Aircraft Movements	105	104	-1.0	105	104	-1.0	210	208	-1.0	0.2
Perth	Passengers	885 621	990 168	11.8	848 617	955 518	12.6	1 734 238	1 945 686	12.2	9.6
"	Freight (Tonnes)	19 856	22 932	15.5	33 155	33 475	1.0	53 011	56 407	6.4	8.0
"	Aircraft Movements	4 578	5 188	13.3	4 630	5 235	13.1	9 208	10 423	13.2	7.8
Sydney	Passengers	4 228 562	4 599 910	8.8	4 365 792	4 675 329	7.1	8 594 354	9 275 239	7.9	45.7
"	Freight (Tonnes)	183 540	216 379	17.9	114 574	121 361	5.9	298 114	337 740	13.3	48.1
"	Aircraft Movements	26 586	29 001	9.1	26 488	28 913	9.2	53 074	57 914	9.1	43.4
TOTAL	Passengers	9 058 735	10 197 959	12.6	9 072 551	10 112 321	11.5	18 131 286	20 310 280	12.0	100.0
	Freight (Tonnes)	342 291	403 069	17.8	284 711	299 729	5.3	627 002	702 799	12.1	100.0
	Aircraft Movements	58 990	66 697	13.1	58 952	66 660	13.1	117 942	133 357	13.1	100.0

TABLE 5: SCHEDULED INTERNATIONAL TRAFFIC BY CITY PAIRS: Year ended June

Foreign Port	Australian Port	Passengers						Freight (tonnes)					
		2004			2005			2004			2005		
		Inbound	Outbound	Total	Inbound	Outbound	Total	Inbound	Outbound	Total	Inbound	Outbound	Total
Auckland	Adelaide	0	0	0	9 173	8 912	18 085	0.0	0.0	0.0	44.1	11.1	55.3
Bombay	"	0	0	0	5	0	5	0.0	0.0	0.0	0.0	0.0	0.0
Denpasar	"	12 508	13 062	25 570	20 700	20 699	41 399	236.1	72.7	308.8	285.7	59.2	344.9
Hong Kong	"	13 206	9 331	22 537	16 062	10 070	26 132	573.8	761.0	1 334.8	641.9	646.9	1 288.8
Jakarta	"	0	0	0	5	0	5	0.0	0.0	0.0	0.0	0.0	0.0
Kuala Lumpur	"	40 834	39 865	80 699	47 091	47 257	94 348	1 779.7	1 429.9	3 209.6	1 631.5	904.4	2 535.9
London	"	0	0	0	14	0	14	0.0	0.0	0.0	0.0	0.0	0.0
Singapore	"	61 819	59 388	121 207	70 829	67 122	137 951	3 239.3	5 464.2	8 703.5	4 013.2	6 194.1	10 207.4
Tokyo	"	0	0	0	32	0	32	0.0	0.0	0.0	0.0	0.0	0.0
Total	Adelaide	128 367	121 646	250 013	163 911	154 060	317 971	5 828.8	7 727.9	13 556.7	6 616.5	7 815.7	14 432.3
Auckland	Brisbane	305 118	312 554	617 672	369 536	389 657	759 193	7 290.3	7 669.4	14 959.8	9 262.3	8 991.0	18 253.4
Bandar Seri Begawan	"	20 054	22 343	42 397	16 588	16 651	33 239	796.1	1 174.0	1 970.1	458.1	998.7	1 456.8
Bangkok	"	33 288	33 142	66 430	38 372	36 572	74 944	1 055.9	1 412.5	2 468.4	1 418.0	1 074.9	2 493.0
Beijing	"	0	0	0	0	0	0	0.0	0.0	0.0	0.0	0.0	0.0
Belo Horizonte	"	0	0	0	0	0	0	0.0	0.0	0.0	0.0	78.0	78.0
Christchurch	"	97 526	96 077	193 603	133 858	133 730	267 588	387.5	485.6	873.1	250.2	222.3	472.6
Denpasar	"	23 438	24 222	47 660	32 142	31 413	63 555	616.8	345.9	962.7	688.9	238.9	927.7
Dubai	"	30 578	32 778	63 356	54 849	57 434	112 283	564.7	600.9	1 165.6	1 399.7	1 488.5	2 888.3
Dunedin	"	15 305	15 984	31 289	16 616	16 961	33 577	0.0	0.0	0.0	0.0	0.0	0.0
Hamilton	"	21 888	21 897	43 785	19 845	20 417	40 262	0.0	0.0	0.0	0.0	0.0	0.0
Hong Kong	"	63 271	60 708	123 979	95 277	87 431	182 708	3 447.9	2 946.8	6 394.7	4 876.2	3 190.9	8 067.0
Honiara	"	10 651	10 822	21 473	13 393	13 908	27 301	90.8	48.6	139.4	149.2	52.7	201.9
Honolulu	"	0	0	0	0	0	0	0.0	0.0	0.0	0.0	0.0	0.0
Jakarta	"	0	0	0	186	0	186	0.0	0.0	0.0	0.0	0.0	0.0
Kota Kinabalu	"	0	0	0	0	0	0	0.0	70.3	70.3	0.0	0.0	0.0
Kuala Lumpur	"	53 479	52 598	106 077	61 559	64 813	126 372	1 576.6	945.4	2 522.0	1 827.1	942.0	2 769.2
Los Angeles	"	46 139	45 594	91 733	75 345	74 986	150 331	828.3	488.5	1 316.8	1 054.5	754.8	1 809.2
Manila	"	8 344	7 529	15 873	7 975	7 648	15 623	11.4	84.1	95.6	9.4	109.2	118.7
Nadi	"	39 840	40 253	80 093	61 677	59 378	121 055	202.0	480.0	681.9	213.6	481.8	695.4
Nauru	"	4 414	3 806	8 220	3 850	3 487	7 337	31.5	194.5	225.9	14.4	170.0	184.5
New York	"	16	0	16	13	0	13	0.0	0.0	0.0	0.0	0.0	0.0
Noumea	"	16 577	17 666	34 243	18 635	20 268	38 903	11.4	163.3	174.7	32.5	148.3	180.8
Osaka	"	87 553	25 369	112 922	86 130	25 562	111 692	809.2	1 240.8	2 050.0	938.9	1 730.7	2 669.6
Palmerston	"	19 407	19 127	38 534	21 230	20 553	41 783	0.0	0.0	0.0	0.0	0.0	0.0
Port Moresby	"	29 294	32 704	61 998	30 246	35 094	65 340	1 079.5	1 967.1	3 046.6	1 411.7	2 803.2	4 214.9
Port Vila	"	11 498	11 542	23 040	16 244	15 605	31 849	28.6	120.6	149.2	34.1	124.2	158.3
Queenstown	"	2 257	2 626	4 883	2 328	2 670	4 998	0.0	0.0	0.0	0.0	0.0	0.0
Rome	"	0	951	951	0	0	0	0.0	0.3	0.3	0.0	0.0	0.0
Seoul	"	33 402	26 402	59 804	33 933	28 343	62 276	625.4	1 495.0	2 120.4	796.6	1 431.4	2 228.0
Shanghai	"	175	175	350	0	0	0	0.0	0.0	0.0	0.0	0.0	0.0
Singapore	"	299 515	302 664	602 179	325 258	319 114	644 372	8 639.0	9 879.2	18 518.2	10 280.4	9 522.7	19 803.1
Taipei	"	39 551	39 958	79 509	51 973	51 448	103 421	1 592.4	921.1	2 513.5	2 879.1	979.6	3 858.7
Tokyo	"	123 105	126 571	249 676	122 488	131 621	254 109	3 115.0	3 496.5	6 611.5	3 308.8	4 109.9	7 418.7
Wellington	"	45 360	45 339	90 699	54 921	54 626	109 547	6.1	15.0	21.1	13.8	19.0	32.9
Total	Brisbane	1 481 043	1 431 401	2 912 444	1 764 467	1 719 390	3 483 857	32 806.3	36 245.3	69 051.7	41 317.5	39 662.9	80 980.5

TABLE 5: SCHEDULED INTERNATIONAL TRAFFIC BY CITY PAIRS: Year ended June

Foreign Port	Australian Port	Passengers						Freight (tonnes)					
		2004			2005			2004			2005		
		Inbound	Outbound	Total	Inbound	Outbound	Total	Inbound	Outbound	Total	Inbound	Outbound	Total
Auckland	Cairns	22 142	23 922	46 064	21 828	23 294	45 122	175.0	175.2	350.2	120.8	81.8	202.5
Fukuoka	"	21 674	22 562	44 236	23 956	23 291	47 247	21.5	373.6	395.2	41.5	325.9	367.4
Guam	"	13 438	14 157	27 595	13 550	13 971	27 521	0.2	39.8	40.0	3.8	55.9	59.8
Hong Kong	"	44 764	37 279	82 043	48 304	45 377	93 681	990.4	3 445.7	4 436.1	931.3	2 818.5	3 749.7
Kota Kinabalu	"	622	643	1 265	0	0	0	6.2	0.0	6.2	0.0	0.0	0.0
Nagoya	"	69 663	66 118	135 781	69 238	67 189	136 427	117.6	994.2	1 111.8	163.3	794.2	957.4
Osaka	"	55 525	51 470	106 995	58 043	52 601	110 644	199.9	1 532.5	1 732.5	604.0	1 451.0	2 054.9
Port Moresby	"	25 705	22 326	48 031	28 017	23 882	51 899	66.3	173.0	239.3	130.6	283.2	413.8
Sapporo	"	0	0	0	8 598	8 532	17 130	0.0	0.0	0.0	9.6	5.3	15.0
Singapore	"	31 130	33 670	64 800	36 875	45 497	82 372	617.2	168.0	785.2	715.9	242.9	958.8
Tokyo	"	123 024	120 967	243 991	123 528	122 574	246 102	192.2	1 711.9	1 904.1	445.2	2 076.6	2 521.8
Total	Cairns	407 687	393 114	800 801	431 937	426 208	858 145	2 386.5	8 613.9	11 000.4	3 165.9	8 135.2	11 301.1
Nadi	Canberra	0	0	0	994	1 002	1 996	0.0	0.0	0.0	0.0	0.0	0.0
Total	Canberra	0	0	0	994	1 002	1 996	0.0	0.0	0.0	0.0	0.0	0.0
Bandar Seri Begawan	Darwin	7 614	7 979	15 593	8 596	8 477	17 073	46.0	56.8	102.8	31.7	15.4	47.1
Bangkok	"	0	234	234	0	0	0	0.0	0.0	0.0	0.0	0.0	0.0
Denpasar	"	13 848	15 676	29 524	15 943	18 302	34 245	5.8	4.0	9.8	5.0	5.1	10.0
Hong Kong	"	0	0	0	1	0	1	0.0	0.0	0.0	0.0	0.0	0.0
Jakarta	"	0	0	0	0	37	37	0.0	0.0	0.0	0.0	0.6	0.6
Kuala Lumpur	"	0	0	0	0	0	0	0.0	0.0	0.0	0.0	33.8	33.8
Kupang	"	42	107	149	1 195	1 605	2 800	0.0	0.0	0.0	0.0	0.0	0.0
Singapore	"	20 242	18 364	38 606	26 296	22 763	49 059	279.6	374.8	654.4	374.3	206.5	580.8
Total	Darwin	41 746	42 360	84 106	52 031	51 184	103 215	331.4	435.7	767.0	410.9	261.4	672.3
Auckland	Gold Coast/Coolangatta	30 198	29 727	59 925	29 388	29 735	59 123	0.0	0.0	0.0	0.0	0.0	0.0
Christchurch	"	14 375	14 086	28 461	22 885	21 673	44 558	0.0	0.0	0.0	0.0	0.0	0.0
Dunedin	"	6 200	6 221	12 421	7 527	7 301	14 828	0.0	0.0	0.0	0.0	0.0	0.0
Fukuoka	"	499	0	499	94	67	161	6.0	0.0	6.0	0.0	0.0	0.0
Hamilton	"	9 399	9 344	18 743	9 505	9 453	18 958	0.0	0.0	0.0	0.0	0.0	0.0
Osaka	"	8 147	9 183	17 330	8 239	10 718	18 957	806.3	1.7	808.0	0.0	20.9	20.9
Wellington	"	0	0	0	1 430	1 429	2 859	0.0	0.0	0.0	0.0	0.0	0.0
Total	Gold Coast/Coolangatta	68 818	68 561	137 379	79 068	80 376	159 444	812.3	1.7	814.0	0.0	20.9	20.9
Amsterdam	Melbourne	0	0	0	0	0	0	37.9	0.0	37.9	0.0	0.0	0.0
Anchorage	"	0	0	0	0	0	0	0.0	0.0	0.0	0.0	0.0	0.0
Atlanta	"	0	0	0	0	0	0	785.6	0.0	785.6	0.0	0.0	0.0
Auckland	"	299 197	299 357	598 554	323 725	325 151	648 876	17 208.7	17 046.9	34 255.5	17 970.4	17 618.9	35 589.3
Bangkok	"	102 903	99 593	202 496	105 065	92 073	197 138	4 662.4	4 875.1	9 537.5	4 935.6	5 275.9	10 211.5
Beijing	"	10 866	7 249	18 115	11 407	8 013	19 420	121.8	202.1	323.9	49.7	116.1	165.8
Chicago	"	829	1 156	1 985	0	0	0	4 298.5	228.7	4 527.2	5 376.9	385.1	5 762.0
Christchurch	"	95 388	93 187	188 575	132 905	132 890	265 795	911.8	590.7	1 502.5	3 102.6	1 417.1	4 519.7
Denpasar	"	58 560	57 993	116 553	69 765	68 116	137 881	1 557.5	1 654.2	3 211.7	1 559.5	1 577.8	3 137.3
Dubai	"	81 710	85 993	167 703	114 700	110 885	225 585	2 028.8	3 485.5	5 514.3	3 749.3	4 762.7	8 511.9
Dunedin	"	10 462	10 110	20 572	10 305	9 437	19 742	0.0	0.0	0.0	0.0	0.0	0.0
Frankfurt	"	0	0	0	0	0	0	771.5	1 337.7	2 109.1	1 255.3	982.7	2 238.0
Guangzhou	"	12 833	10 587	23 420	16 824	14 041	30 865	489.1	129.6	618.7	469.7	153.7	623.4
Hamilton	"	11 667	11 632	23 299	9 734	9 408	19 142	0.0	0.0	0.0	0.0	0.0	0.0

TABLE 5: SCHEDULED INTERNATIONAL TRAFFIC BY CITY PAIRS: Year ended June

Foreign Port	Australian Port	Passengers						Freight (tonnes)					
		2004			2005			2004			2005		
		Inbound	Outbound	Total	Inbound	Outbound	Total	Inbound	Outbound	Total	Inbound	Outbound	Total
Hanoi	Melbourne	2 770	3 469	6 239	3 568	4 327	7 895	0.0	69.2	69.2	0.0	36.7	36.7
Ho Chi Minh City	"	24 255	24 471	48 726	32 365	29 322	61 687	606.0	210.1	816.1	1 025.3	216.8	1 242.0
Hong Kong	"	154 351	163 884	318 235	198 871	199 474	398 345	13 784.1	13 900.6	27 684.7	18 978.9	14 402.7	33 381.7
Honiara	"	0	0	0	0	0	0	0.0	0.0	0.0	0.0	0.0	0.0
Honolulu	"	0	7 714	7 714	79	3 302	3 381	0.0	78.5	78.5	0.0	60.9	60.9
Jakarta	"	0	0	0	0	0	0	0.0	33.2	33.2	0.0	49.0	49.0
Karachi	"	0	0	0	0	0	0	0.0	11.5	11.5	0.0	0.0	0.0
Kuala Lumpur	"	137 507	136 324	273 831	165 709	164 558	330 267	12 009.8	6 508.2	18 518.0	12 099.2	5 606.4	17 705.6
Lahore	"	0	0	0	0	0	0	0.0	6.6	6.6	0.0	0.0	0.0
London	"	106 467	100 725	207 192	98 633	97 594	196 227	4 069.4	481.2	4 550.6	4 943.3	757.3	5 700.6
Los Angeles	"	137 866	132 725	270 591	144 444	133 772	278 216	2 300.1	3 599.5	5 899.6	3 020.7	4 570.1	7 590.8
Luxembourg	"	0	0	0	0	0	0	4 240.5	0.0	4 240.5	4 868.3	0.0	4 868.3
Manila	"	14 068	11 740	25 808	14 099	11 948	26 047	546.5	687.2	1 233.8	604.4	570.8	1 175.2
Mauritius	"	8 406	8 485	16 891	6 347	6 540	12 887	281.2	226.7	507.9	142.0	224.9	366.9
Nadi	"	41 881	41 304	83 185	54 487	57 478	111 965	761.3	1 050.5	1 811.8	1 215.5	1 345.3	2 560.8
Nauru	"	1 295	1 314	2 609	600	647	1 247	0.7	30.0	30.7	0.7	19.4	20.0
New Delhi	"	0	0	0	0	0	0	0.0	2.6	2.6	0.0	0.0	0.0
New York	"	1 080	1 341	2 421	1 889	2 346	4 235	0.0	0.0	0.0	103.2	0.0	103.2
Noumea	"	0	0	0	32	0	32	0.0	0.0	0.0	0.0	0.0	0.0
Palmerston	"	9 108	8 726	17 834	9 715	9 407	19 122	0.0	0.0	0.0	0.0	0.0	0.0
Penang	"	0	0	0	0	0	0	146.7	42.4	189.0	0.0	0.8	0.8
Phuket	"	0	7 445	7 445	0	9 228	9 228	0.0	89.5	89.5	0.0	12.4	12.4
Port Vila	"	0	0	0	2 026	3 209	5 235	0.0	0.0	0.0	0.0	0.0	0.0
Queenstown	"	0	0	0	1 258	1 564	2 822	0.0	0.0	0.0	0.0	0.0	0.0
Rarotonga	"	0	0	0	103	112	215	0.0	0.0	0.0	0.0	0.0	0.0
Sapporo	"	0	0	0	0	0	0	0.0	0.0	0.0	0.0	0.0	0.0
Shanghai	"	16 422	12 411	28 833	35 365	29 404	64 769	252.4	104.2	356.7	1 277.5	763.9	2 041.4
Sharjah	"	0	0	0	0	0	0	1.5	3.8	5.4	0.0	0.0	0.0
Singapore	"	344 256	338 869	683 125	393 457	371 845	765 302	23 248.6	25 231.8	48 480.4	23 076.2	25 677.7	48 753.9
Tianjin	"	0	0	0	0	0	0	0.0	61.0	61.0	0.0	0.0	0.0
Tokyo	"	48 165	31 906	80 071	52 914	38 433	91 347	1 292.6	1 817.3	3 109.9	1 889.9	2 129.3	4 019.2
Vienna	"	22 730	25 605	48 335	29 161	29 078	58 239	0.0	0.0	0.0	0.0	0.0	0.0
Wellington	"	53 385	57 330	110 715	65 730	65 271	131 001	180.8	147.8	328.5	423.1	249.3	672.4
Total	Melbourne	1 808 427	1 792 645	3 601 072	2 105 282	2 038 873	4 144 155	96 595.7	83 943.8	180 539.5	112 137.0	88 983.6	201 120.6
Auckland	Norfolk Island	8 464	8 415	16 879	10 191	10 381	20 572	133.7	14.1	147.8	110.3	14.4	124.7
Total	Norfolk Island	8 464	8 415	16 879	10 191	10 381	20 572	133.7	14.1	147.8	110.3	14.4	124.7
Auckland	Perth	40 869	40 250	81 119	52 103	50 761	102 864	1 427.3	1 012.3	2 439.6	1 754.9	1 071.8	2 826.7
Bandar Seri Begawan	"	19 766	20 955	40 721	21 810	22 219	44 029	169.4	997.5	1 166.9	127.1	483.2	610.3
Bangkok	"	39 298	32 611	71 909	44 196	35 314	79 510	1 625.8	1 686.5	3 312.3	1 694.2	1 809.3	3 503.5
Bombay	"	0	0	0	0	0	0	0.0	0.0	0.0	50.1	0.0	50.1
Chicago	"	0	0	0	0	0	0	0.0	0.0	0.0	0.0	3.1	3.1
Denpasar	"	92 097	93 131	185 228	111 592	113 120	224 712	142.9	271.6	414.5	123.6	237.7	361.3
Dubai	"	72 506	71 505	144 011	79 561	76 749	156 310	1 276.8	1 548.0	2 824.8	1 634.1	2 668.2	4 302.2
Frankfurt	"	0	0	0	0	0	0	0.0	0.0	0.0	3.0	0.0	3.0
Hong Kong	"	39 615	38 846	78 461	61 288	52 432	113 720	1 461.3	2 545.4	4 006.6	2 683.5	3 336.7	6 020.2

TABLE 5: SCHEDULED INTERNATIONAL TRAFFIC BY CITY PAIRS: Year ended June

Foreign Port	Australian Port	Passengers						Freight (tonnes)					
		2004			2005			2004			2005		
		Inbound	Outbound	Total	Inbound	Outbound	Total	Inbound	Outbound	Total	Inbound	Outbound	Total
Jakarta	Perth	13 114	15 874	28 988	13 922	14 475	28 397	63.6	418.0	481.6	62.0	165.1	227.0
Johannesburg	"	50 750	44 413	95 163	50 022	42 248	92 270	1 577.1	2 085.1	3 662.2	1 196.8	2 272.9	3 469.7
Kuala Lumpur	"	101 532	95 908	197 440	103 182	102 681	205 863	2 084.5	1 344.7	3 429.2	2 281.4	859.2	3 140.6
Kuching	"	6 583	6 599	13 182	7 899	8 598	16 497	0.4	230.5	230.9	0.7	82.2	82.9
London	"	45	0	45	17 107	17 441	34 548	0.0	0.0	0.0	314.0	82.9	396.9
Mauritius	"	6 310	6 633	12 943	7 111	7 253	14 364	109.5	242.3	351.7	60.5	252.6	313.1
Paris	"	9 371	7 873	17 244	3 860	2 725	6 585	335.0	25.5	360.4	119.7	0.4	120.1
Phuket	"	4 075	10 062	14 137	0	8 219	8 219	0.0	101.1	101.1	0.0	45.2	45.2
Rome	"	1 723	0	1 723	0	0	0	100.6	0.0	100.6	0.0	0.0	0.0
Shanghai	"	0	0	0	0	0	0	0.0	0.0	0.0	0.0	5.7	5.7
Singapore	"	360 950	337 703	698 653	389 165	375 044	764 209	9 028.1	19 548.2	28 576.3	10 327.3	19 261.9	29 589.3
Tokyo	"	27 017	26 254	53 271	27 350	26 239	53 589	453.9	1 098.7	1 552.6	499.3	836.5	1 335.7
Total	Perth	885 621	848 617	1 734 238	990 168	955 518	1 945 686	19 856.1	33 155.3	53 011.4	22 932.0	33 474.6	56 406.5
Abu Dhabi	Sydney	0	0	0	0	0	0	0.0	34.2	34.2	0.0	0.0	0.0
Amsterdam	"	0	0	0	0	0	0	8 223.0	1 198.6	9 421.5	7 769.1	1 294.5	9 063.7
Apia	"	5 648	6 464	12 112	6 996	7 644	14 640	42.3	26.3	68.6	34.4	27.2	61.6
Athens	"	0	0	0	314	0	314	0.0	0.0	0.0	0.0	0.0	0.0
Atlanta	"	0	0	0	0	0	0	0.0	0.0	0.0	0.0	0.0	0.0
Auckland	"	605 778	625 957	1 231 735	625 654	631 966	1 257 620	24 821.4	29 495.0	54 316.4	25 785.5	33 717.7	59 503.2
Bahrain	"	22 264	30 450	52 714	53 615	54 028	107 643	585.2	654.4	1 239.6	1 764.8	1 931.2	3 695.9
Bandar Seri Begawan	"	0	0	0	9 691	10 404	20 095	0.0	0.0	0.0	498.9	353.1	851.9
Bangkok	"	231 055	231 256	462 311	235 620	232 145	467 765	6 810.5	4 197.4	11 007.9	7 549.8	3 659.1	11 209.0
Beijing	"	21 929	25 473	47 402	22 832	25 756	48 588	208.2	273.6	481.8	127.5	415.5	543.0
Belo Horizonte	"	0	0	0	0	0	0	0.0	0.0	0.0	0.0	0.0	0.0
Bombay	"	0	0	0	31 700	29 121	60 821	0.0	0.0	0.0	713.3	85.1	798.3
Buenos Aires	"	15 792	15 932	31 724	16 668	16 149	32 817	106.1	169.2	275.3	138.7	229.0	367.7
Chicago	"	8 231	9 125	17 356	12 882	12 116	24 998	0.0	0.0	0.0	4 833.5	2.0	4 835.4
Christchurch	"	240 647	243 081	483 728	259 062	257 352	516 414	5 759.1	5 753.6	11 512.7	4 603.1	5 330.2	9 933.3
Denpasar	"	81 818	85 337	167 155	94 038	95 071	189 109	1 936.1	1 015.8	2 951.8	2 110.8	1 075.5	3 186.4
Dubai	"	70 798	72 091	142 889	68 471	63 335	131 806	2 996.6	2 882.0	5 878.7	2 716.8	3 397.2	6 114.0
Dunedin	"	10 722	10 698	21 420	11 775	11 483	23 258	0.0	0.0	0.0	0.0	0.0	0.0
Frankfurt	"	43 561	39 417	82 978	40 208	41 154	81 362	1 952.8	200.6	2 153.4	3 821.2	195.4	4 016.6
Guangzhou	"	29 755	32 423	62 178	46 834	47 726	94 560	1 555.4	136.1	1 691.6	2 405.3	122.1	2 527.4
Hamilton	"	11 065	10 684	21 749	10 088	10 326	20 414	0.0	0.0	0.0	0.0	0.0	0.0
Hanoi	"	405	5 655	6 060	1 391	6 816	8 207	0.0	0.0	0.0	0.0	0.0	0.0
Ho Chi Minh City	"	2 591	33 343	35 934	6 686	35 242	41 928	109.3	216.2	325.5	247.5	175.7	423.2
Hong Kong	"	289 980	287 198	577 178	346 135	335 176	681 311	20 385.4	10 912.1	31 297.5	28 099.1	10 277.6	38 376.8
Honolulu	"	72 769	58 777	131 546	101 593	91 358	192 951	3 031.0	3 554.2	6 585.2	3 676.3	3 356.6	7 032.9
Jakarta	"	40 365	40 159	80 524	33 946	33 469	67 415	521.1	1 212.8	1 733.8	556.4	995.6	1 552.0
Johannesburg	"	66 421	59 496	125 917	58 566	54 577	113 143	1 392.2	442.3	1 834.5	1 401.5	646.6	2 048.1
Kota Kinabalu	"	11 289	11 862	23 151	13 666	13 167	26 833	372.4	143.2	515.6	3.5	198.5	202.0
Kuala Lumpur	"	153 856	147 185	301 041	180 789	179 793	360 582	12 899.8	2 342.7	15 242.6	11 203.1	1 901.2	13 104.3
Kuching	"	0	0	0	0	1 311	1 311	0.0	0.0	0.0	0.0	26.3	26.3
London	"	198 525	204 421	402 946	220 745	227 854	448 599	6 933.9	1 587.1	8 521.0	8 874.3	2 437.0	11 311.3
Los Angeles	"	299 973	308 883	608 856	311 670	324 367	636 037	19 660.6	3 624.4	23 285.0	22 131.9	4 904.6	27 036.4

TABLE 5: SCHEDULED INTERNATIONAL TRAFFIC BY CITY PAIRS: Year ended June

Foreign Port	Australian Port	Passengers						Freight (tonnes)					
		2004			2005			2004			2005		
		Inbound	Outbound	Total	Inbound	Outbound	Total	Inbound	Outbound	Total	Inbound	Outbound	Total
Louisville	Sydney	0	0	0	0	0	0	4 475.2	0.0	4 475.2	4 544.3	0.0	4 544.3
Luzon Island	"	0	0	0	0	0	0	0.0	170.8	170.8	0.0	0.0	0.0
Macau	"	0	0	0	0	0	0	0.0	83.0	83.0	0.0	0.0	0.0
Manchester (US)	"	0	5	5	0	0	0	0.0	0.0	0.0	0.0	0.0	0.0
Manila	"	55 771	56 982	112 753	56 178	54 580	110 758	1 653.7	793.4	2 447.1	1 287.9	466.5	1 754.4
Mauritius	"	1 505	1 324	2 829	7 047	5 932	12 979	15.0	76.4	91.4	119.8	19.6	139.4
Miami	"	0	0	0	0	0	0	0.0	0.0	0.0	75.5	0.0	75.5
Nadi	"	114 888	112 343	227 231	115 226	112 946	228 172	2 753.2	2 512.3	5 265.5	3 316.7	2 334.0	5 650.8
Nagoya	"	9 328	11 850	21 178	7 377	9 045	16 422	583.4	190.4	773.8	442.9	301.9	744.8
New York	"	19 674	20 904	40 578	19 357	21 096	40 453	810.9	145.0	955.9	5 112.8	140.6	5 253.5
Niue	"	59	17	76	0	0	0	0.7	0.0	0.7	0.0	0.0	0.0
Noumea	"	43 195	40 507	83 702	45 491	42 667	88 158	25.3	596.6	621.8	50.6	813.9	864.6
Osaka	"	38 528	95 912	134 440	36 271	88 121	124 392	1 146.6	2 012.5	3 159.1	1 422.9	1 970.3	3 393.3
Palmerston	"	8 917	8 655	17 572	9 268	9 043	18 311	0.0	0.0	0.0	0.0	0.0	0.0
Paris	"	126	4	130	0	0	0	0.0	0.6	0.6	0.0	0.0	0.0
Phuket	"	0	3 727	3 727	40	5 059	5 099	0.0	0.0	0.0	0.0	0.0	0.0
Port Moresby	"	9 577	11 109	20 686	8 195	8 812	17 007	376.5	197.1	573.6	411.1	289.2	700.2
Port Vila	"	19 355	19 305	38 660	18 513	17 873	36 386	57.2	182.6	239.8	104.1	190.1	294.2
Queenstown	"	6 717	7 881	14 598	9 057	11 180	20 237	0.0	0.0	0.1	0.0	0.0	0.0
Rome	"	528	629	1 157	0	0	0	9.0	1.2	10.2	0.0	0.0	0.0
San Francisco	"	92 453	96 537	188 990	92 486	96 506	188 992	816.6	2 358.7	3 175.3	770.4	2 884.5	3 654.9
Santiago	"	19 623	20 232	39 855	22 189	22 618	44 807	1 110.0	355.6	1 465.6	1 169.6	552.3	1 721.9
Sapporo	"	0	0	0	0	0	0	0.0	47.9	47.9	0.0	0.0	0.0
Seattle	"	52	75	127	697	788	1 485	0.0	0.0	0.0	0.0	0.0	0.0
Seoul	"	178 217	175 243	353 460	182 362	186 626	368 988	10 992.1	7 367.6	18 359.8	14 872.2	6 924.0	21 796.2
Shanghai	"	57 049	59 985	117 034	91 442	85 392	176 834	3 217.8	379.2	3 597.0	7 035.1	572.3	7 607.4
Shannon	"	0	0	0	0	0	0	0.0	25.7	25.7	0.0	0.0	0.0
Sharjah	"	0	0	0	0	0	0	0.0	72.6	72.6	0.0	204.0	204.0
Singapore	"	506 496	474 398	980 894	488 689	457 978	946 667	27 553.1	13 856.9	41 410.0	25 137.4	12 805.2	37 942.6
Subic Bay	"	0	0	0	0	0	0	0.0	5 062.9	5 062.9	0.0	5 411.4	5 411.4
Suva	"	7 440	10 683	18 123	6 897	10 234	17 131	0.5	15.7	16.3	0.5	19.7	20.2
Taipei	"	60 430	60 940	121 370	61 367	61 843	123 210	1 953.6	1 733.2	3 686.8	2 138.1	1 401.1	3 539.1
Tianjin	"	0	0	0	0	0	0	0.0	57.4	57.4	0.0	0.0	0.0
Tokyo	"	213 412	236 312	449 724	228 671	236 957	465 628	4 873.5	5 938.5	10 812.1	5 117.0	6 787.6	11 904.6
Toledo	"	0	0	0	0	0	0	0.0	0.0	0.0	1 511.7	0.0	1 511.7
Tongatapu	"	1 310	1 470	2 780	3 262	3 018	6 280	15.9	14.8	30.8	18.5	26.6	45.1
Vancouver	"	47 036	53 030	100 066	55 939	60 133	116 072	419.3	42.2	461.5	122.6	127.4	249.9
Vienna	"	57 018	61 899	118 917	62 055	63 600	125 655	0.0	0.0	0.0	0.0	0.0	0.0
Wellington	"	124 621	128 467	253 088	150 199	154 376	304 575	377.9	211.4	589.3	531.1	364.1	895.2
Total	Sydney	4 228 562	4 365 792	8 594 354	4 599 910	4 675 329	9 275 239	183 539.7	114 573.8	298 113.5	216 379.0	121 360.7	337 739.8
Abu Dhabi	Australia	0	0	0	0	0	0	0.0	34.2	34.2	0.0	0.0	0.0
Amsterdam	"	0	0	0	0	0	0	8 260.9	1 198.6	9 459.4	7 769.1	1 294.5	9 063.7
Anchorage	"	0	0	0	0	0	0	0.0	0.0	0.0	0.0	0.0	0.0
Apia	"	5 648	6 464	12 112	6 996	7 644	14 640	42.3	26.3	68.6	34.4	27.2	61.6
Athens	"	0	0	0	314	0	314	0.0	0.0	0.0	0.0	0.0	0.0

TABLE 5: SCHEDULED INTERNATIONAL TRAFFIC BY CITY PAIRS: Year ended June

Foreign Port	Australian Port	Passengers						Freight (tonnes)					
		2004			2005			2004			2005		
		Inbound	Outbound	Total	Inbound	Outbound	Total	Inbound	Outbound	Total	Inbound	Outbound	Total
Atlanta	Australia	0	0	0	0	0	0	785.6	0.0	785.6	0.0	0.0	0.0
Auckland	"	1 311 766	1 340 182	2 651 948	1 441 598	1 469 857	2 911 455	51 056.4	55 413.0	106 469.3	55 048.3	61 506.8	116 555.1
Bahrain	"	22 264	30 450	52 714	53 615	54 028	107 643	585.2	654.4	1 239.6	1 764.8	1 931.2	3 695.9
Bandar Seri Begawan	"	47 434	51 277	98 711	56 685	57 751	114 436	1 011.6	2 228.3	3 239.8	1 115.8	1 850.4	2 966.1
Bangkok	"	406 544	396 836	803 380	423 253	396 104	819 357	14 154.6	12 171.5	26 326.1	15 597.7	11 819.3	27 417.0
Beijing	"	32 795	32 722	65 517	34 239	33 769	68 008	330.0	475.6	805.7	177.2	531.6	708.8
Belo Horizonte	"	0	0	0	0	0	0	0.0	0.0	0.0	0.0	78.0	78.0
Bombay	"	0	0	0	31 705	29 121	60 826	0.0	0.0	0.0	763.3	85.1	848.4
Buenos Aires	"	15 792	15 932	31 724	16 668	16 149	32 817	106.1	169.2	275.3	138.7	229.0	367.7
Chicago	"	9 060	10 281	19 341	12 882	12 116	24 998	4 298.5	228.8	4 527.3	10 210.4	390.1	10 600.5
Christchurch	"	447 936	446 431	894 367	548 710	545 645	1 094 355	7 058.3	6 829.9	13 888.3	7 956.0	6 969.6	14 925.6
Denpasar	"	282 269	289 421	571 690	344 180	346 721	690 901	4 495.1	3 364.2	7 859.2	4 773.4	3 194.2	7 967.7
Dubai	"	255 592	262 367	517 959	317 581	308 403	625 984	6 867.0	8 516.4	15 383.4	9 499.9	12 316.6	21 816.4
Dunedin	"	42 689	43 013	85 702	46 223	45 182	91 405	0.0	0.0	0.0	0.0	0.0	0.0
Frankfurt	"	43 561	39 417	82 978	40 208	41 154	81 362	2 724.3	1 538.3	4 262.5	5 079.4	1 178.1	6 257.5
Fukuoka	"	22 173	22 562	44 735	24 050	23 358	47 408	27.5	373.6	401.2	41.5	325.9	367.4
Guam	"	13 438	14 157	27 595	13 550	13 971	27 521	0.2	39.8	40.0	3.8	55.9	59.8
Guangzhou	"	42 588	43 010	85 598	63 658	61 767	125 425	2 044.6	265.7	2 310.3	2 875.0	275.8	3 150.8
Hamilton	"	54 019	53 557	107 576	49 172	49 604	98 776	0.0	0.0	0.0	0.0	0.0	0.0
Hanoi	"	3 175	9 124	12 299	4 959	11 143	16 102	0.0	69.2	69.2	0.0	36.7	36.7
Ho Chi Minh City	"	26 846	57 814	84 660	39 051	64 564	103 615	715.3	426.3	1 141.6	1 272.8	392.5	1 665.3
Hong Kong	"	605 187	597 246	1 202 433	765 938	729 960	1 495 898	40 642.7	34 511.6	75 154.3	56 210.9	34 673.4	90 884.2
Honiara	"	10 651	10 822	21 473	13 393	13 908	27 301	90.8	48.6	139.4	149.2	52.7	201.9
Honolulu	"	72 769	66 491	139 260	101 672	94 660	196 332	3 031.0	3 632.7	6 663.7	3 676.3	3 417.5	7 093.8
Jakarta	"	53 479	56 033	109 512	48 059	47 981	96 040	584.6	1 664.0	2 248.6	618.3	1 210.2	1 828.6
Johannesburg	"	117 171	103 909	221 080	108 588	96 825	205 413	2 969.3	2 527.4	5 496.8	2 598.3	2 919.5	5 517.8
Karachi	"	0	0	0	0	0	0	0.0	11.5	11.5	0.0	0.0	0.0
Kota Kinabalu	"	11 911	12 505	24 416	13 666	13 167	26 833	378.6	213.5	592.2	3.5	198.5	202.0
Kuala Lumpur	"	487 208	471 880	959 088	558 330	559 102	1 117 432	30 350.4	12 570.9	42 921.4	29 042.3	10 247.0	39 289.3
Kuching	"	6 583	6 599	13 182	7 899	9 909	17 808	0.4	230.5	230.9	0.7	108.5	109.2
Kupang	"	42	107	149	1 195	1 605	2 800	0.0	0.0	0.0	0.0	0.0	0.0
Lahore	"	0	0	0	0	0	0	0.0	6.6	6.6	0.0	0.0	0.0
London	"	305 037	305 146	610 183	336 499	342 889	679 388	11 003.2	2 068.3	13 071.5	14 131.6	3 277.2	17 408.7
Los Angeles	"	483 978	487 202	971 180	531 459	533 125	1 064 584	22 789.0	7 712.4	30 501.4	26 207.0	10 229.4	36 436.5
Louisville	"	0	0	0	0	0	0	4 475.2	0.0	4 475.2	4 544.3	0.0	4 544.3
Luxembourg	"	0	0	0	0	0	0	4 240.5	0.0	4 240.5	4 868.3	0.0	4 868.3
Luzon Island	"	0	0	0	0	0	0	0.0	170.8	170.8	0.0	0.0	0.0
Macau	"	0	0	0	0	0	0	0.0	83.0	83.0	0.0	0.0	0.0
Manchester (US)	"	0	5	5	0	0	0	0.0	0.0	0.0	0.0	0.0	0.0
Manila	"	78 183	76 251	154 434	78 252	74 176	152 428	2 211.6	1 564.8	3 776.4	1 901.8	1 146.5	3 048.2
Mauritius	"	16 221	16 442	32 663	20 505	19 725	40 230	405.6	545.4	951.0	322.3	497.1	819.4
Miami	"	0	0	0	0	0	0	0.0	0.0	0.0	75.5	0.0	75.5
Nadi	"	196 609	193 900	390 509	232 384	230 804	463 188	3 716.5	4 042.7	7 759.2	4 745.8	4 161.1	8 906.9
Nagoya	"	78 991	77 968	156 959	76 615	76 234	152 849	701.0	1 184.6	1 885.6	606.2	1 096.1	1 702.2
Nauru	"	5 709	5 120	10 829	4 450	4 134	8 584	32.1	224.5	256.6	15.1	189.4	204.5

TABLE 5: SCHEDULED INTERNATIONAL TRAFFIC BY CITY PAIRS: Year ended June

Foreign Port	Australian Port	Passengers						Freight (tonnes)					
		2004			2005			2004			2005		
		Inbound	Outbound	Total	Inbound	Outbound	Total	Inbound	Outbound	Total	Inbound	Outbound	Total
New Delhi	Australia	0	0	0	0	0	0	0.0	2.6	2.6	0.0	0.0	0.0
New York	"	20 770	22 245	43 015	21 259	23 442	44 701	810.9	145.0	955.9	5 216.1	140.6	5 356.7
Niue	"	59	17	76	0	0	0	0.7	0.0	0.7	0.0	0.0	0.0
Noumea	"	59 772	58 173	117 945	64 158	62 935	127 093	36.7	759.9	796.5	83.2	962.2	1 045.4
Osaka	"	189 753	181 934	371 687	188 683	177 002	365 685	2 962.1	4 787.5	7 749.6	2 965.8	5 172.9	8 138.7
Palmerston	"	37 432	36 508	73 940	40 213	39 003	79 216	0.0	0.0	0.0	0.0	0.0	0.0
Paris	"	9 497	7 877	17 374	3 860	2 725	6 585	335.0	26.1	361.0	119.7	0.4	120.1
Penang	"	0	0	0	0	0	0	146.7	42.4	189.0	0.0	0.8	0.8
Phuket	"	4 075	21 234	25 309	40	22 506	22 546	0.0	190.6	190.6	0.0	57.5	57.5
Port Moresby	"	64 576	66 139	130 715	66 458	67 788	134 246	1 522.3	2 337.2	3 859.5	1 953.3	3 375.6	5 328.9
Port Vila	"	30 853	30 847	61 700	36 783	36 687	73 470	85.8	303.2	389.1	138.2	314.4	452.5
Queenstown	"	8 974	10 507	19 481	12 643	15 414	28 057	0.0	0.0	0.1	0.0	0.0	0.0
Rarotonga	"	0	0	0	103	112	215	0.0	0.0	0.0	0.0	0.0	0.0
Rome	"	2 251	1 580	3 831	0	0	0	109.6	1.5	111.1	0.0	0.0	0.0
San Francisco	"	92 453	96 537	188 990	92 486	96 506	188 992	816.6	2 358.7	3 175.3	770.4	2 884.5	3 654.9
Santiago	"	19 623	20 232	39 855	22 189	22 618	44 807	1 110.0	355.6	1 465.6	1 169.6	552.3	1 721.9
Sapporo	"	0	0	0	8 598	8 532	17 130	0.0	47.9	47.9	9.6	5.3	15.0
Seattle	"	52	75	127	697	788	1 485	0.0	0.0	0.0	0.0	0.0	0.0
Seoul	"	211 619	201 645	413 264	216 295	214 969	431 264	11 617.5	8 862.7	20 480.2	15 668.8	8 355.4	24 024.2
Shanghai	"	73 646	72 571	146 217	126 807	114 796	241 603	3 470.3	483.4	3 953.7	8 312.5	1 342.0	9 654.5
Shannon	"	0	0	0	0	0	0	0.0	25.7	25.7	0.0	0.0	0.0
Sharjah	"	0	0	0	0	0	0	1.5	76.4	78.0	0.0	204.0	204.0
Singapore	"	1 624 408	1 565 056	3 189 464	1 730 569	1 659 363	3 389 932	72 604.9	74 523.2	147 128.1	73 924.6	73 911.1	147 835.7
Subic Bay	"	0	0	0	0	0	0	0.0	5 062.9	5 062.9	0.0	5 411.4	5 411.4
Suva	"	7 440	10 683	18 123	6 897	10 234	17 131	0.5	15.7	16.3	0.5	19.7	20.2
Taipei	"	99 981	100 898	200 879	113 340	113 291	226 631	3 546.0	2 654.3	6 200.3	5 017.1	2 380.7	7 397.8
Tianjin	"	0	0	0	0	0	0	0.0	118.4	118.4	0.0	0.0	0.0
Tokyo	"	534 723	542 010	1 076 733	554 983	555 824	1 110 807	9 927.2	14 062.8	23 990.0	11 260.2	15 939.8	27 200.0
Toledo	"	0	0	0	0	0	0	0.0	0.0	0.0	1 511.7	0.0	1 511.7
Tongatapu	"	1 310	1 470	2 780	3 262	3 018	6 280	15.9	14.8	30.8	18.5	26.6	45.1
Vancouver	"	47 036	53 030	100 066	55 939	60 133	116 072	419.3	42.2	461.5	122.6	127.4	249.9
Vienna	"	79 748	87 504	167 252	91 216	92 678	183 894	0.0	0.0	0.0	0.0	0.0	0.0
Wellington	"	223 366	231 136	454 502	272 280	275 702	547 982	564.8	374.2	938.9	968.1	632.3	1 600.5
Total	Australia	9 058 735	9 072 551	18 131 286	10 197 959	10 112 321	20 310 280	342 290.5	284 711.5	627 002.0	403 069.1	299 729.4	702 798.5

Please refer to explanatory notes - paragraphs 3, 8 and 13 in particular.

**TABLE 6 : INTERNATIONAL AIRLINES OWN STOPOVER REVENUE PASSENGERS,
AUSTRALIAN CITY PAIRS: Year ended June 2005**

City Pair Route	Total Passengers
Melbourne/Sydney	40 969
Brisbane/Sydney	39 014
Brisbane/Cairns	2 070
Adelaide/Melbourne	181
TOTAL	82 234

Notes:

1. Own Stopover Revenue Passengers : The aggregate of revenue passengers uplifted at one Australian airport and discharged (excluding transit passengers) at another Australian airport by the same foreign registered international airline on which they entered or left Australia.
2. City Pair Route represents the aggregation of passengers travelling in both directions.
3. This data are supplementary to the information previously supplied to the Department by most international airlines. Tables 1-5 cover only those passengers travelling to/from overseas airports. The inclusion of this additional data provides a more complete coverage of international airline activity.

TABLE 7: TOTAL AIRCRAFT MOVEMENTS AT AUSTRALIAN INTERNATIONAL AIRPORTS BY AIRCRAFT TYPES: Year ended June 2005

Airport	Aircraft Types																	All Types					
	Passenger/Mixed											Freighters											
	AB3	310	32S	330	340	737	747	74M	757	767	777	M11	100	146	EM2	Metro	72F	74F	76F	M1F	D1F		
Adelaide	10	136		641	2	233	4			206	834							150					2 216
Brisbane		130	1 034	2 447	278	6 919	4 960	2	4	2 156	4 048	270	12					1					22 261
Cairns		255	124	420		311	77			6 327			670	3		148							8 335
Canberra						42																	42
Darwin			305	341		410	4			709					210			8					1 987
Gold Coast/Coolangatta			2			1 515				726													2 243
Melbourne	346	96	3 149	3 026	1 795	3 041	6 407			3 387	4 804	459						926		280	12		27 728
Norfolk Island						208							0										208
Perth	14	269	449	1 666	1 255	1 692	1 003		74	2 055	1 890							56					10 423
Sydney	344	90	5 355	3 373	5 232	4 715	20 428			11 311	4 146	44					472	1 824	88	492			57 914
Australia	714	976	10 418	11 914	8 562	19 086	32 883	2	78	26 877	15 722	773	682	3	210	148	472	2 965	88	772	12		133 357
% of All Types	0.5	0.7	7.8	8.9	6.4	14.3	24.7	0.0	0.1	20.2	11.8	0.6	0.5	0.0	0.2	0.1	0.4	2.2	0.1	0.6	0.0		100.0

Share of passenger aircraft movements:

Airbus	25.2%
Boeing	73.3%
Other	1.4%

NOTE:

These figures only cover scheduled operations of the airlines listed in this publication. Charter/ferry operations are not included. These figures are available electronically for January 2001 onwards. Prior to this, aircraft type data is not readily accessible.

Aircraft Types (all series)

Airbus	AB3	310	32S	330	340			
Boeing	737	747	757	767	777	72F	74F	76F
McDonnell Douglas	M11	M1F	D1F					
Fokker	100							
BAE	146							
Metro	Metro							
Embraer	EM2							