



Australian Government

Department of Transport and Regional Services

Bureau of Transport and Regional Economics



otre

AVIATION STATISTICS

International Scheduled Air Transport 2005-06

IAM 122

© Commonwealth of Australia

Canberra

November 2006

ISSN 1324-5074

This work is copyright and the data contained in this publication should not be reproduced or used in any form without acknowledgement.

Inquiries

Should you require additional information about the statistics contained in this publication, please contact Mrs Betty Kell in Canberra by telephone (02) 6274 7791 or by facsimile (02) 6274 7727 or write to:

Aviation Statistics, Bureau of Transport and Regional Economics
Department of Transport and Regional Services
GPO Box 594
Canberra ACT 2601

Electronic mail: AVSTATS@dotars.gov.au

Web site: www.btre.gov.au/statistics/statsindex.aspx

CONTENTS

Explanatory Notes iv-vi

Data Issues and Airlines Commencing/Withdrawing Services..... vii

Highlightsviii-xv

Detailed Monthly Tables

- 1. Scheduled International Air Traffic to and from Australia 1-3
- 2. Scheduled Operator Market Shares and Growth..... 4-8
- 3. Airline Passenger Capacity and Utilisation to and from Australia by Operator 9-11
- 4. Australian International Airport Scheduled Traffic and Aircraft Movements12
- 5. Scheduled International Passengers and Freight by City Pairs 13-19
- 6. International Airlines Own Stopover Revenue Passengers, Australian City Pairs20
- 7. Total Aircraft Movements at Australian International Airports by Aircraft Types21

EXPLANATORY NOTES

INTRODUCTION

1. This publication continues the series of publications on a financial year basis presenting statistical information on the scheduled operations of international airlines operating into/out of Australia.
2. The figures in this publication were obtained from reports submitted by scheduled international carriers and are the best available at the time of publication.

COVERAGE

3. These statistics show uplift/discharge data – These data detail, by direction, the revenue traffic between the actual points of uplift and discharge within each flight, aggregated for all flights within the period. It shows the movement of traffic between two airports not necessarily directly connected but within the same flight number. Typically, flight numbers change when an aircraft reaches its home country. This means that uplift/discharge data for the port in the operator's home country are likely to be overstated by traffic whose origin/destination point is beyond that port. For example, uplift/discharge traffic reported in this publication as Singapore could include traffic whose origin/destination is Europe.
4. These statistics cover revenue traffic carried by the operators of scheduled regular public international air transport services only and do not include charter traffic.
5. Some airlines (generally, dedicated freighter operators) operate scheduled services into Australia but operate non-scheduled services out of Australia and therefore outbound activity is not recorded in this data collection.

PRODUCTION AND INTERPRETATION

6. Tables 1 and 2 show the country of the relevant uplift or discharge port served by that airline. For example, traffic uplifted/discharged between Sydney and Singapore by British Airways would be shown as Singapore traffic in Tables 1 and 2.
7. Table 3 shows figures for the country of service (or route) for each airline and therefore may not equate to the data in Tables 1 and 2. For example, the British Airways UK service identified in Table 3 could include passengers uplifted or discharged in Singapore or Thailand as well as the UK; these passengers would be shown individually under those countries in Tables 1 and 2. The difference in treatment of data between Tables 1 and 2 and Table 3 is necessary in order to work out a meaningful Seat Utilisation figure for Table 3.

Figures shown in Table 3 may include total traffic into and out of Australia for airlines that fly through Australia (also necessary in order to work out a meaningful Seat Utilisation figure). Therefore, figures in Table 3 may not equate to figures in Tables 1 and 2. For example, passengers carried by Qantas Airways from New Zealand via Australia to the UK will be included in Table 3 but will not be included in Tables 1 or 2 as these passengers were not uplifted/discharged in Australia.

8. Table 5 – shows uplift/discharge passenger and freight data for city pairs with same flight number international flight connections.
9. Where figures have been rounded, discrepancies may occur between sums of component items and totals, and in percentage changes which are derived from figures prior to rounding.
10. Published figures may be revised where figures missing at the time of publication are received or misreporting/miscalculation necessitates revisions.

DEFINITIONS

11. The following definitions have been used in this publication:
- (a) Aircraft Movement: A landing or a take off.
 - (b) Freight: The aggregate of all revenue freight uplifted.
 - (c) Inbound: Inbound to Australia/Australian international airport.
 - (d) Mail: The aggregate of all mail uplifted.
 - (e) Outbound: Outbound from Australia/Australian international airport.
 - (f) Revenue Passengers: please refer to paragraph 12.
 - (g) Seat Utilisation: The ratio of passengers carried to seats available, expressed as a percentage.
 - (h) Seats Available: Generally based on standard aircraft configuration, the aggregate of seats available on all flights operated over a particular service.
 - (i) Services: Scheduled flights over authorised routes which are listed according to the main ports involved.

COMPARABILITY OF DATA OVER TIME

12. Revenue Passengers:
- For July 2000 and onwards: All passengers paying any fare (frequent flyer redemption passengers are regarded as revenue passengers). In most cases, Revenue Passengers will now include all passengers excluding Free Of Charge passengers and positioning crew.
 - To December 1999: The aggregate of all passengers paying 25% or more of the standard air fare (as defined by ICAO).
 - January 2000 to June 2000: Transition period.

The Revenue Passenger definition change could result in approximately a three per cent increase in passenger numbers over a full period (month or year).

13. Country and City data – reporting of Uplift/Discharge data by Qantas Airways:
- Prior to January 2003: Uplift/Discharge within Qantas Airways' international network.
 - For January 2003 and onwards: Uplift/Discharge within flight number – as per the standard definition.

For example, what was previously reported as Adelaide to London (no direct services between these two cities) will now be reported as either Adelaide to Singapore or Melbourne/Sydney to London.

This change has been introduced in order to make the data comparable across all airlines operating services to/from Australia.

The effect of this change – comparing data under the two methods of reporting:

- Country of Port data (Tables 1 & 2) – There will be a shift in traffic to countries such as Singapore which are used as hubs and away from countries such as France, Germany and Italy which previously received traffic channelled through hubs. The total volume of traffic is not affected.
- Country of Service data (Table 3) – no change, as the Uplift/Discharge definition is not applicable to classifying the country of service.
- Australian International Airports (Table 4) – there may be a shift of traffic to the major airports.
- City Pairs (Table 5) – There will be a shift in traffic to cities such as Singapore which are used as hubs and away from cities such as Paris, Frankfurt and Rome which previously received traffic channelled through hubs. The total volume of traffic is not affected. Prior to the change, statistics reported for city pairs without “same flight number” international flight connections mainly reflected carriage on interconnecting international services by Qantas Airways. That traffic should have been interpreted as increasing the volume of traffic between the primary international ports rather than as an indicator of traffic volumes between ports without “same flight number” international flight connections. It should be noted however, that there was no double counting of traffic.

14. Country of Service classification by Qantas Airways:

- For July 2002 and onwards: based on the foreign country where same flight number services commence or cease – as per the standard definition. For example, Sydney-Denpasar-Singapore services would be classified as Country of Service = Singapore.
- Prior to July 2002: based on Qantas classification – this mainly affected Indonesia and Singapore Countries of Service. For example, Sydney-Denpasar-Singapore services were classified as Country of Service = Indonesia.

15. Airline data – Reporting of code share services:

Reporting of traffic split by airline code for code share arrangements was discontinued as of June 2000. For July 2000 and onwards, ALL traffic carried is reported under the operating airline regardless of code share arrangements.

Monthly airline market share figures for July 2001 onwards will be comparable with the same month in the previous year. However, these figures may not be comparable with monthly data prior to July 2000.

SYMBOLS AND OTHER USAGE

- nil or zero
- .. not applicable

INDEMNITY STATEMENT

The Bureau of Transport and Regional Economics has taken due care in preparing the information contained in this publication. However, noting that data have been provided by third parties, the Commonwealth gives no warranty as to the accuracy, reliability, fitness for purpose, or otherwise of the information.

DATA ISSUES

Air Paradise International	No data received for November 2005 and missing data for Adelaide and Melbourne for September 2005. Service ceased November 2005.
Austrian Airlines/Lauda Air	No outbound freight data for September 2000 onwards. No inbound freight data for April 2001 onwards.
Norfolk Jet Express	Service commenced August 2004 and ceased December 2004. No data has been received.
Polar Air Cargo	No data received for March 2003 and onwards. Service ceased October 2005.
Polynesian Airlines	Data not received for August, September and October 2005. Service ceased October 2005.
Value Air	Data not received for September and October 2005. Service ceased October 2005.
Vietnam Airlines	No data received for inbound operations to Sydney for August 2002 to May 2004 and for July 2004 to November 2004 and January 2005 to March 2005 and May 2005. Data for Outbound operations have been received for July 2003 onwards.

AIRLINES COMMENCING/WITHDRAWING SERVICES DURING 2005-06

The following airlines commenced operated services to/from Australia

- Air Tahiti Nui
- Airlines PNG
- Jetstar
- Polynesian Blue
- Tiger Airways

The following airline ceased operated services to/from Australia

- Air Paradise International
- Australian Airlines
- Polar Air Cargo
- Polynesian Airlines
- Value Air

HIGHLIGHTS – YEAR ENDED JUNE 2006

- Fifty-six international scheduled airlines operated services to/from Australia during the year (includes seven dedicated freight airlines but excludes airlines operating only via code share arrangements).
- International scheduled passenger traffic in 2005-06 was 21.097 million compared to 20.310 million in 2004-05 – an increase of 3.9%.
- Chart I shows total passenger traffic for the years 1995-96 to 2005-06. Over this period, 2001-02 and 2002-03 were the only years that recorded a decrease in traffic compared to the previous year. Passenger traffic in 2001-02 was affected by the terrorist attacks on the USA in September 2001 and the collapse of Ansett International (also in September 2001). Passenger traffic in 2002-03 was affected by the SARS crisis (April, May and June 2003 in particular) and the war in Iraq.
- Following the two years of negative growth, each month since September 2003 has recorded the highest level of passenger traffic when compared to the same month in any previous year with the exception of March 2006. As a result of this, 2003-04 and 2004-05 were record years and 2005-06 has recorded the highest level of passenger traffic ever carried in a financial year. Chart II compares monthly passenger traffic for 2005-06 with monthly passenger traffic for 2004-05.
- Chart III shows the airline market shares in terms of passenger carriage for the top ten airlines for 1995-96, 2000-01 and 2005-06. In the latest year, Qantas Airways had the largest share of the market with 27.5% followed by Singapore Airlines with 11.0%, Air New Zealand with 8.9%, Emirates with 6.5% and Malaysia Airlines with 5.1%.
- Compared to 1995-96, Qantas Airways' share has decreased by 10.3 percentage points, Singapore Airlines' share has increased by 4.2 percentage points, Air New Zealand's share has decreased by 2.3 percentage points, Emirates did not operate to Australia in 1995-96 and Malaysia Airlines' share has increased by 1.3 percentage points. The decrease in share for the Qantas group (Qantas, Australian Airlines and Jetstar in 2005-06 compared to Qantas and Australia Asia Airlines in 1995-96) was 7.4 percentage points. The Air New Zealand group's (Air New Zealand and Freedom Air in 2005-06) share has decreased by 0.4 percentage points over the same period.
- The share of passenger traffic accounted for by Australian designated airlines has decreased from 41.9% in 1995-96 (Qantas Airways, Ansett International and Australia Asia Airlines) to 37.5% in 2000-01 (Qantas Airways and Ansett International) and to 32.1% in 2005-06 (Qantas Airways, Australian Airlines, Jetstar and Pacific Blue's operations to Fiji, Tonga, Vanuatu and some New Zealand services).
- International scheduled air freight traffic in 2005-06 increased by 3.3% over 2004-05 to 725 798 tonnes. Inbound freight traffic has increased by 5.8% while outbound freight traffic has hardly changed.
- In 2005-06, dedicated freighter operations accounted for 26.8% of inbound air freight to Australia, 11.9% of outbound air freight from Australia and 20.7% of total air freight. Note that some freighters do not pick up freight in Australia – this accounts for the difference in inbound and outbound percentages. Data has not been received from Polar Air and there are also some other smaller dedicated freighter operators who are not covered.

- Page xiii is a diagrammatic representation of passenger movements by region. The region is based on international cities with non-stop air service connections with Australia. In 2005-06, 38.2% of the 21.097 million passenger movements to/from Australia were either to/from or via South-East Asia. New Zealand had 23.8% of all passenger movements followed by North-East Asia with 21.7%.
- Page xiv shows the operation of “same flight number” services beyond the non-stop point to/from Australia. Europe via South-East Asia accounted for the majority of the beyond passenger movements with nearly 950 000 followed by Middle-East via South-East Asia with nearly 515 000. Note that these beyond movements do not take account of passengers whose travel to/from Australia involves a change in flight number at the non-stop point to/from Australia.
- Table VI on page xv shows all passengers carried between Australia and international cities with non-stop air service connections. Singapore accounted for the largest number of passenger movements with 21.7% of the total. Total passenger movements between Australia and Singapore were 4.587 million compared to 3.575 million uplift/discharge passenger movements.
- Table VII on page xv shows the transit passenger traffic carried via international cities on “same flight number” services. In 2005-06, there were 2.038 million transit passenger movements. Singapore accounted for 50.0% of this total followed by Bangkok with 14.7%, Auckland and Kuala Lumpur with 6.8% each and Honolulu and Hong Kong with 5.2% each. Other transit traffic mainly covered movements from one city to another city in the same country. New York via Los Angeles for example.
- The information on Traffic On Board and Transits is derived from the uplift/discharge data used to produce the main Tables in this publication.

YEAR ENDED JUNE 2006

Chart I: Total International Passengers Carried (millions) - Years ended June 1996 to 2006

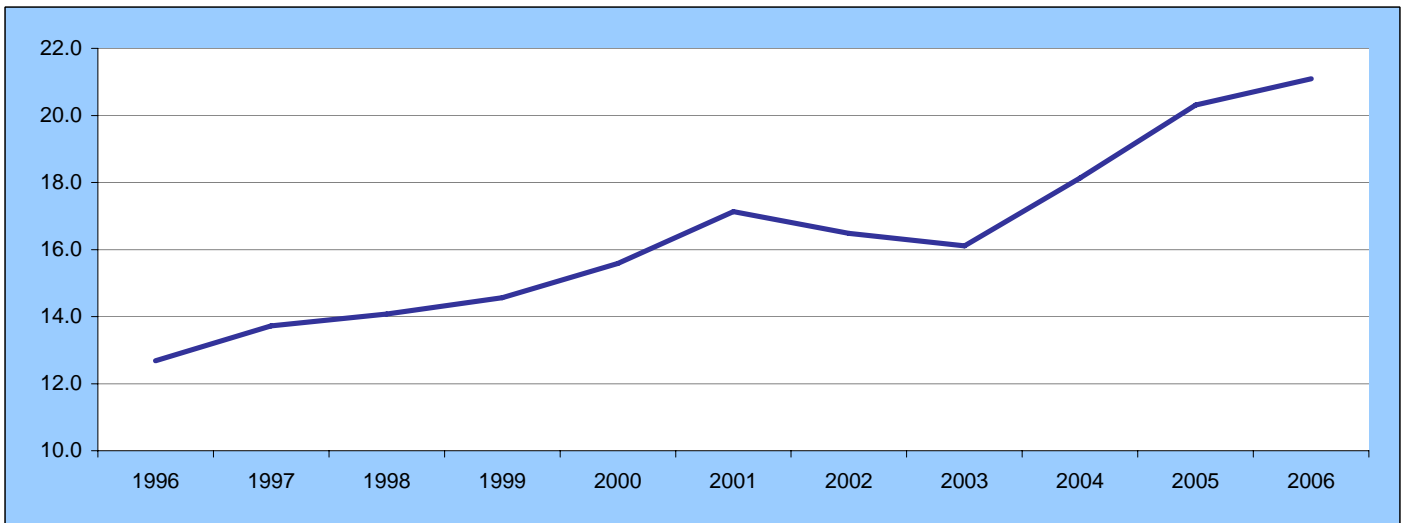


Chart II: Total International Passengers Carried (millions) - By Month

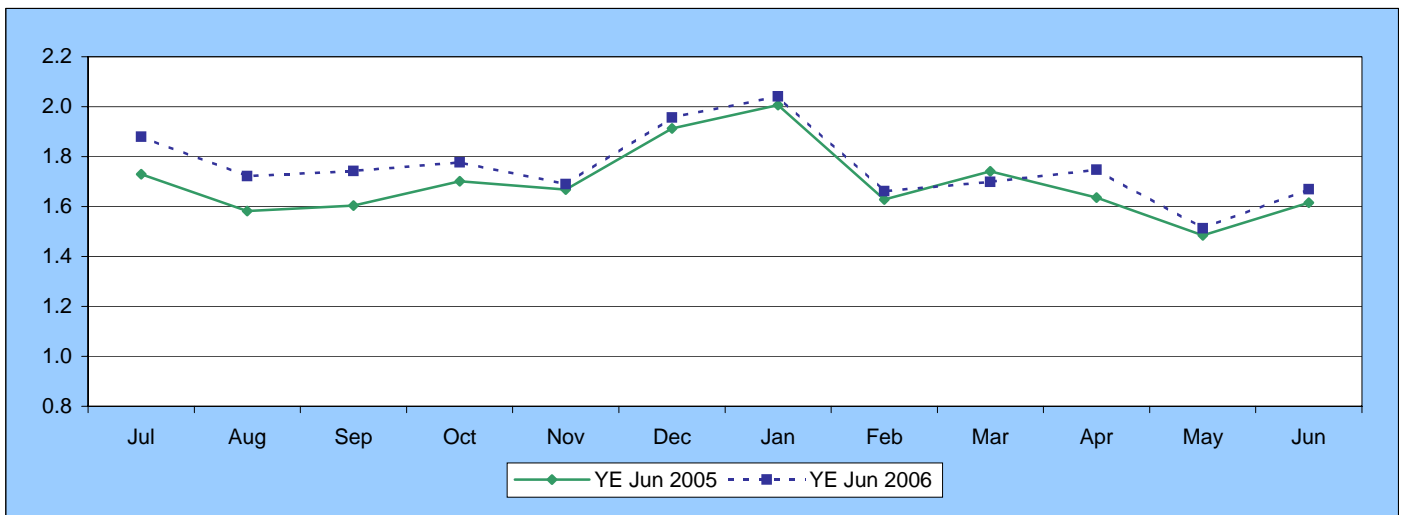


Table I: International Passengers by Uplift/Discharge City Pairs (a)

Foreign Port	Australian Port	Year ended June 2004	Year ended June 2005	Year ended June 2006	% of Total	% Change 2005/04
Auckland	Sydney	1 231 735	1 257 073	1 215 552	5.8	-3.3
Singapore	Sydney	980 894	946 667	957 168	4.5	1.1
Hong Kong	Sydney	577 178	681 311	825 890	3.9	21.2
Singapore	Melbourne	683 125	765 302	818 703	3.9	7.0
Singapore	Perth	698 653	764 209	802 753	3.8	5.0
Auckland	Brisbane	617 672	759 193	754 473	3.6	-0.6
Singapore	Brisbane	602 179	644 372	677 138	3.2	5.1
Auckland	Melbourne	598 554	648 876	655 075	3.1	1.0
Los Angeles	Sydney	608 856	636 037	648 059	3.1	1.9
Christchurch	Sydney	483 728	516 414	521 108	2.5	0.9
Top 10 City Pairs		7 082 574	7 619 454	7 875 919	37.3	3.4
Other City Pairs		11 048 712	12 690 279	13 221 032	62.7	4.2
ALL CITY PAIRS		18 131 286	20 309 733	21 096 951	100.0	3.9

Table II: International Freight (tonnes) by Uplift/Discharge City Pairs (a)

Foreign Port	Australian Port	Year ended June 2004	Year ended June 2005	Year ended June 2006	% of Total	% Change 2005/04
Auckland	Sydney	54 316	59 503	61 270	8.4	3.0
Singapore	Melbourne	48 480	48 754	53 566	7.4	9.9
Hong Kong	Sydney	31 297	38 377	43 835	6.0	14.2
Singapore	Sydney	41 410	37 943	35 833	4.9	-5.6
Auckland	Melbourne	34 256	35 589	33 645	4.6	-5.5
Hong Kong	Melbourne	27 685	33 382	32 982	4.5	-1.2
Singapore	Perth	28 576	29 589	30 763	4.2	4.0
Los Angeles	Sydney	23 285	27 036	28 308	3.9	4.7
Singapore	Brisbane	18 518	19 803	22 813	3.1	15.2
Auckland	Brisbane	14 960	18 253	19 725	2.7	8.1
Top 10 City Pairs		322 784	348 230	362 740	50.0	4.2
Other City Pairs		304 218	354 188	363 058	50.0	2.5
ALL CITY PAIRS		627 002	702 418	725 798	100.0	3.3

Table III: International Passengers by Uplift/Discharge Country (a)

Country	Year ended June 2004	Year ended June 2005	Year ended June 2006	% of Total	% Change 2005/04
New Zealand	4 287 516	4 850 699	4 873 461	23.1	0.5
Singapore	3 189 464	3 389 932	3 574 900	16.9	5.5
Hong Kong	1 202 433	1 495 898	1 723 271	8.2	15.2
Japan	1 650 114	1 693 879	1 634 377	7.7	-3.5
USA	1 361 918	1 521 092	1 624 028	7.7	6.8
Malaysia	996 686	1 162 073	1 112 840	5.3	-4.2
Thailand	828 689	841 903	912 719	4.3	8.4
United Arab Emirates	517 959	625 984	842 876	4.0	34.6
UK	610 183	679 388	763 775	3.6	12.4
Indonesia	681 351	789 741	557 127	2.6	-29.5
Top 10 Countries	15 326 313	17 050 589	17 619 374	83.5	3.3
Other Countries	2 804 973	3 259 144	3 477 577	16.5	6.7
ALL COUNTRIES	18 131 286	20 309 733	21 096 951	100.0	3.9

Table IV: International Passenger Traffic through Australian International Airports (a)

Airport	Year ended June 2004	Year ended June 2005	Year ended June 2006	% of Total	% Change 2005/04
Sydney	8 594 354	9 274 692	9 667 554	45.8	4.2
Melbourne	3 601 072	4 144 155	4 253 268	20.2	2.6
Brisbane	2 912 444	3 483 857	3 646 891	17.3	4.7
Perth	1 734 238	1 945 686	1 979 750	9.4	1.8
Cairns	800 801	858 145	855 949	4.1	-0.3
Adelaide	250 013	317 971	347 064	1.6	9.1
Gold Coast/Coolangatta	137 379	159 444	210 495	1.0	32.0
Darwin	84 106	103 215	116 454	0.6	12.8
Norfolk Island	16 879	20 572	19 526	0.1	-5.1
Canberra (b)	..	1 996
ALL AIRPORTS	18 131 286	20 309 733	21 096 951	100.0	3.9

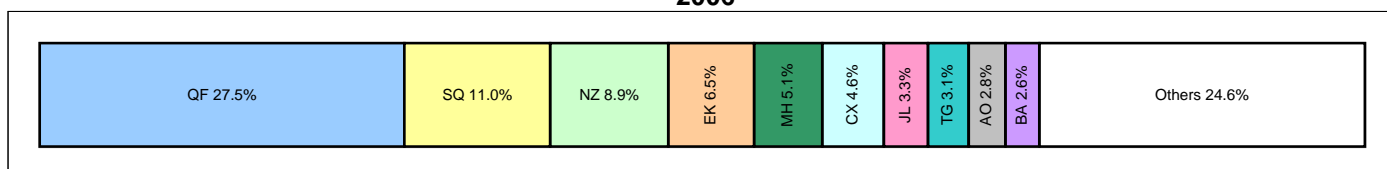
(a) Please refer to Explanatory notes - paragraphs 3 & 13 in particular.

(b) International operations commenced July 2004 and ceased September 2004.

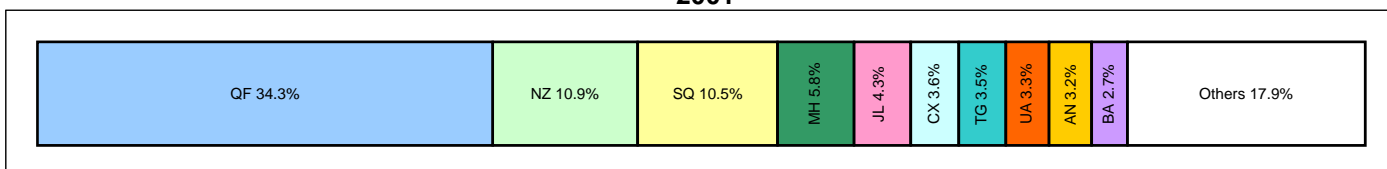
Note that there were some freighter operations in Townsville in March, April and May 2006 but no scheduled passenger operations.

Chart III: International Passengers by Major Airlines - Top 10 in each year - Years ended June

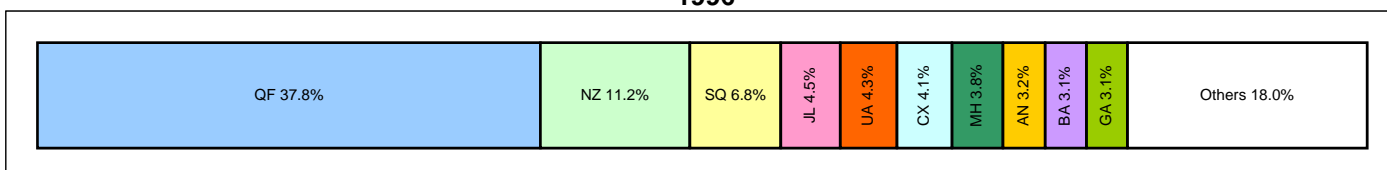
2006



2001



1996



AN - Ansett International
 AO - Australian Airlines
 BA - British Airways
 CX - Cathay Pacific Airways
 EK - Emirates

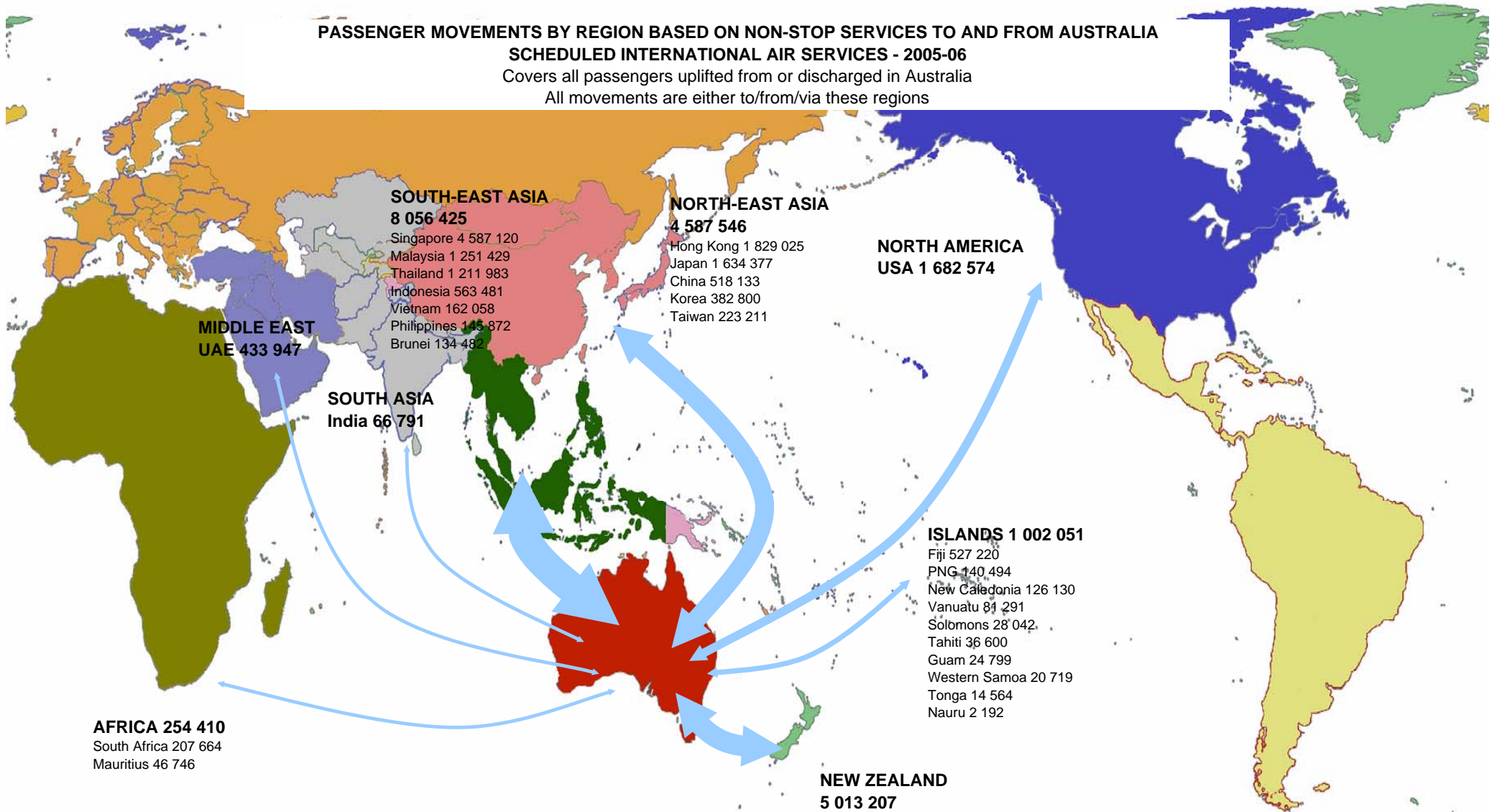
GA - Garuda Indonesia
 JL - Japan Airlines
 MH - Malaysia Airlines
 NZ - Air New Zealand
 QF - Qantas Airways

SQ - Singapore Airlines
 TG - Thai Airways
 UA - United Airlines

Table V: Summary Statistics

	Year ended June 2004	Year ended June 2005	Year ended June 2006	Growth compared to	
				2005	2004
Passengers carried	18 131 286	20 309 733	21 096 951	3.9	16.4
Freight (tonnes)	627 002	702 418	725 798	3.3	15.8
Mail (tonnes)	28 444	29 342	31 842	8.5	11.9
Available Seats	25 885 687	29 691 278	30 041 002	1.2	16.1
Flights	100 336	116 087	117 790	1.5	17.4
Aircraft Movements	117 942	133 353	132 392	-0.7	12.3

PASSENGER MOVEMENTS BY REGION BASED ON NON-STOP SERVICES TO AND FROM AUSTRALIA
SCHEDULED INTERNATIONAL AIR SERVICES - 2005-06
 Covers all passengers uplifted from or discharged in Australia
 All movements are either to/from/via these regions



Total Passenger Movements = 21 096 951 South-East Asia = 38.2%, New Zealand = 23.8%, North-East Asia = 21.7%, North America = 8.0%, Islands = 4.7%, Middle East = 2.1% Africa = 1.2% & South Asia = 0.3%

TABLE VI: TRAFFIC ON BOARD PASSENGER MOVEMENTS BETWEEN AUSTRALIA AND INTERNATIONAL CITIES BASED ON NON-STOP SERVICES - 2005-06 (a)

First on departure from Australia or Last before arrival in Australia	Passenger Movements
Singapore	4 587 120
Auckland	3 065 125
Hong Kong	1 829 025
Kuala Lumpur	1 210 906
Bangkok	1 171 968
Los Angeles	1 123 517
Christchurch	1 114 058
Tokyo	1 080 298
Wellington	515 376
Nadi	512 194
Denpasar	472 467
Dubai	433 947
Seoul	382 800
Osaka	354 981
Shanghai	344 462
Honolulu	312 640
San Francisco	246 417
Taipei	223 211
Johannesburg	207 664
Ho Chi Minh City	162 058
Nagoya	149 626
Manila	145 872
Guangzhou	144 538
Port Moresby	140 494
Bandar Seri Begawan	134 482
Noumea	126 130
Hamilton	107 564
Dunedin	88 392
Jakarta	87 829
Port Vila	81 291
Palmerston	79 264
Bombay	66 791
Mauritius	46 746
Queenstown	43 428
Kuching	40 523
Phuket	40 015
Papeete	36 600
Fukuoka	35 308
Beijing	29 133
Honiara	28 042
Guam	24 799
Apia	20 719
Suva	15 026
Tongatapu	14 564
Sapporo	14 164
Kupang	3 185
Nauru	2 192

21 096 951

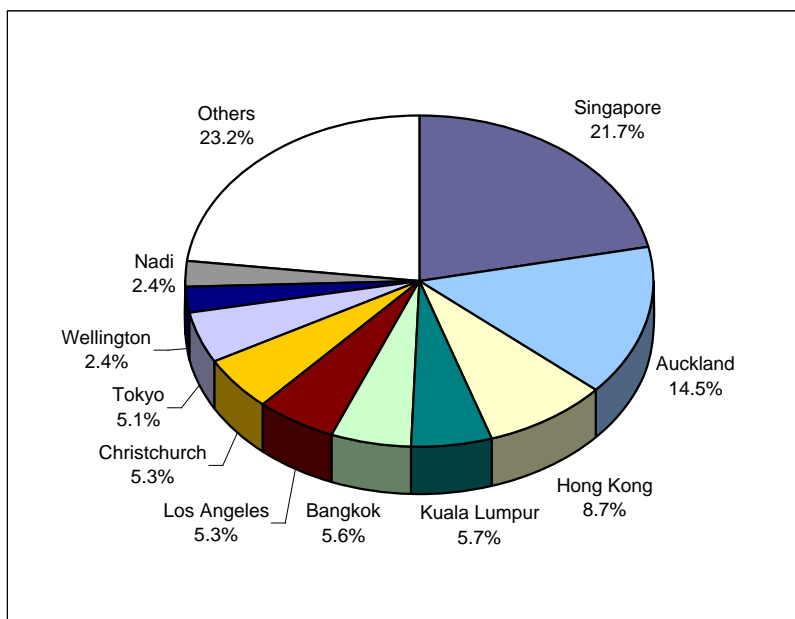


TABLE VII: TRANSITTING PASSENGER TRAFFIC THROUGH INTERNATIONAL CITIES on "same flight number" services 2005-06

Hubs	Transitting to/from	Passenger Movements	Share
Singapore	Europe and Middle East	1 018 574	50.0%
Bangkok	Europe and Middle East	299 264	14.7%
Auckland	USA and South America	138 590	6.8%
Kuala Lumpur	Europe	138 589	6.8%
Honolulu	Canada	105 926	5.2%
Hong Kong	Europe	105 754	5.2%
Others (b)		231 790	11.4%
Total Transit traffic		2 038 487	

(b) Mainly covers transitting traffic from one city to another city in the same country.
For example: New York via Los Angeles.

(a) Includes transit passengers on "same flight number" services.

Does not include passengers not uplifted/discharged in Australia. For example: Dubai-Auckland passengers on services that operate via Australia to Auckland.

Note: The information on Traffic On Board and Transits is derived from the uplift/discharge data used to produce the main Tables in this publication.

TABLE 1: SCHEDULED INTERNATIONAL AIR TRAFFIC TO AND FROM AUSTRALIA: Year ended June 2006

Scheduled Operator	Country to/from	Inbound			Outbound		
		Passengers	Freight (tonnes)	Mail (tonnes)	Passengers	Freight (tonnes)	Mail (tonnes)
Aerolineas Argentinas	Argentina	20 243	191.0	3.4	19 795	273.8	-
"	New Zealand	12 541	311.7	-	12 936	407.1	-
"	ALL SERVICES	32 784	502.7	3.4	32 731	680.9	-
Air Caledonie	New Caledonia	39 443	24.0	6.8	40 424	634.8	11.0
Air Canada	Canada	50 945	48.7	26.4	54 981	3.4	-
"	USA	16 466	2 114.9	341.0	11 244	2 260.0	1.8
"	ALL SERVICES	67 411	2 163.7	367.5	66 225	2 263.4	1.8
Air China	China	72 683	830.9	20.5	69 832	697.8	12.3
Air Mauritius	Mauritius	24 053	244.6	3.4	22 693	468.2	-
Air Nauru	Nauru	2 953	7.4	0.5	2 883	125.9	8.9
"	Solomon Islands	1 157	-	-	668	0.0	-
"	ALL SERVICES	4 110	7.4	0.5	3 551	125.9	8.9
Air New Zealand	China	179.8	-
"	Cook Islands	553	-	-	603	-	-
"	Germany	..	62.7	-	..	125.7	-
"	New Zealand	939 797	19 385.7	533.1	932 958	17 330.5	85.2
"	USA	2 437	5 156.9	0.1	3 060	0.0	0.0
"	ALL SERVICES	942 787	24 605.3	533.2	936 621	17 636.0	85.2
Air Niugini	Papua New Guinea	66 956	1 458.8	21.8	67 880	3 384.2	251.2
Air Pacific	Fiji	204 048	4 345.8	18.1	208 417	4 127.0	207.2
Air Paradise International (a)	Indonesia	38 950	295.7	-	36 641	100.5	-
Air Tahiti Nui (b)	Tahiti	17 214	814.0	-	19 386	482.7	-
Air Vanuatu	Vanuatu	29 388	165.7	43.8	28 790	384.3	44.0
Airlines PNG (c)	Papua New Guinea	2 930	7.9	-	2 728	27.6	-
Asian Express Airlines	New Zealand	..	3 492.9	-	..	4 054.6	-
Asiana Airlines	Korea	75 137	2 334.0	107.1	71 627	1 013.2	-
Australian Airlines (d)	Hong Kong	28 996	520.0	-	25 475	1 625.1	-
"	Indonesia	47 681	140.9	-	50 268	138.7	0.5
"	Japan	165 908	1 139.2	84.4	161 754	2 385.0	0.0
"	Singapore	48 163	1 163.6	0.3	49 043	838.7	61.3
"	Thailand	2 726	24.0	-	3 008	3.6	-
"	ALL SERVICES	293 474	2 987.7	84.8	289 548	4 991.2	61.8
Austrian Airlines (e) (f)	Austria	97 203	-	7.1	104 590	-	-
"	Malaysia	15 558	-	-	12 590	-	-
"	Singapore	4 875	-	-	5 568	-	-
"	ALL SERVICES	117 636	-	7.1	122 748	-	-
British Airways	Singapore	78 253	1 985.9	1.0	70 049	3 765.2	-
"	Thailand	65 078	1 297.9	-	65 616	771.9	-
"	UK	137 608	5 786.3	256.2	126 575	1 028.0	8.1
"	ALL SERVICES	280 939	9 070.1	257.1	262 240	5 565.1	8.1
Cargolux Airlines Intl	Luxembourg	..	5 005.7	-
"	Malaysia	..	-	-
"	New Zealand	4 901.9	-
"	Singapore	..	-	-
"	ALL SERVICES	-	5 005.7	-	-	4 901.9	-
Cathay Pacific Airways	Hong Kong	498 737	37 156.8	778.1	479 632	26 409.2	283.6
China Airlines	Taiwan	68 656	2 813.7	139.3	66 619	856.6	-
China Eastern Airlines	China	82 058	3 389.2	204.0	73 525	446.4	12.7
China Southern Airlines	China	57 704	3 038.9	74.3	53 205	212.0	-
Continental Micronesia	Guam	12 050	4.1	0.7	12 749	61.0	0.1
Emirates	New Zealand	213 148	14 402.4	0.5	212 865	10 440.6	0.9
"	Singapore	31 153	2 204.7	257.2	23 648	4 615.5	2.6
"	Thailand	23 625	969.2	-	20 069	11.8	-
"	United Arab Emirates	417 240	14 142.4	302.7	425 636	15 851.2	21.3
"	ALL SERVICES	685 166	31 718.6	560.4	682 218	30 919.1	24.8
Eva Air	Taiwan	44 574	2 408.9	35.0	43 362	1 201.6	-
Federal Express Corporation	Philippines	2 998.1	-
"	USA	..	13 354.2	5.5
"	ALL SERVICES	-	13 354.2	5.5	-	2 998.1	-
Freedom Air International	New Zealand	199 338	-	-	201 215	-	-
Garuda Indonesia	Indonesia	140 531	3 459.7	52.0	138 216	2 517.0	0.2
"	New Zealand	10 107	752.8	-	8 816	360.4	-
"	ALL SERVICES	150 638	4 212.5	52.0	147 032	2 877.4	0.2
Gulf Air	Bahrain	52 494	1 635.7	99.1	52 364	2 337.4	135.2
"	Singapore	9 904	1 672.2	5.8	9 452	1 009.6	0.4
"	ALL SERVICES	62 398	3 307.9	104.9	61 816	3 347.0	135.7
Hawaiian Airlines	USA	36 866	272.9	55.2	37 429	728.2	0.2
Japan Airlines	Japan	354 526	6 977.9	1 376.5	346 819	6 377.4	36.8

TABLE 1: SCHEDULED INTERNATIONAL AIR TRAFFIC TO AND FROM AUSTRALIA: Year ended June 2006

Scheduled Operator	Country to/from	Inbound			Outbound		
		Passengers	Freight (tonnes)	Mail (tonnes)	Passengers	Freight (tonnes)	Mail (tonnes)
Jetstar (g)	New Zealand	100 684	-	-	98 791	-	-
Korean Air	Korea	116 667	9 089.1	394.0	114 840	5 010.7	29.0
Lan Chile	Chile	25 405	1 442.3	1.0	24 338	688.4	39.5
"	New Zealand	17 261	414.9	4.3	17 858	193.9	2.7
"	ALL SERVICES	42 666	1 857.2	5.3	42 196	882.3	42.1
Malaysia Airlines	Malaysia	547 431	28 980.0	95.7	537 261	10 805.6	0.3
Martinair Holland	Hong Kong	383.1	-
"	Netherlands	..	7 153.8	-	..	1 393.6	-
"	Thailand	90.4	-
"	United Arab Emirates	234.7	-
"	ALL SERVICES	-	7 153.8	-	-	2 101.9	-
Merpati Nusantara Airlines	Indonesia	1 300	-	-	1 885	-	-
Pacific Blue	Fiji	57 395	79.6	-	57 360	194.5	-
"	New Zealand	170 402	201.8	-	174 425	173.4	-
"	Tonga	5 759	6.2	-	6 302	8.3	-
"	Vanuatu	11 550	-	-	11 563	29.7	-
"	ALL SERVICES	245 106	287.5	-	249 650	405.8	-
Philippine Airlines	Philippines	35 396	1 117.3	32.1	33 637	473.7	-
Polar Air Cargo (h)	USA	..	-	-
Polynesian Airlines (i)	Tonga	407	1.2	-	398	0.3	1.6
"	Western Samoa	821	2.1	-	1 020	1.8	0.5
"	ALL SERVICES	1 228	3.3	-	1 418	2.1	2.0
Polynesian Blue (j)	Western Samoa	9 899	14.7	-	10 677	20.5	-
Qantas Airways	Canada	446	0.9	-	983	10.3	10.2
"	China	55 430	5 781.6	-	53 696	1 505.1	18.3
"	Fiji	..	93.4	-	..	-	-
"	Germany	40 529	5 315.0	32.7	42 297	173.5	505.5
"	Hong Kong	305 330	17 953.0	289.6	290 130	7 250.4	724.8
"	India	34 425	687.4	-	32 366	262.5	68.7
"	Indonesia	51 123	512.2	21.7	50 532	1 000.3	47.2
"	Japan	301 238	6 936.3	986.5	304 132	7 150.8	1 496.2
"	Kazakhstan	15.4	-
"	Korea	2 510	91.5	-	2 019	18.4	10.8
"	Malaysia	223.4	-
"	Netherlands	-	-
"	New Caledonia	23 385	13.5	3.1	22 878	201.5	24.9
"	New Zealand	734 384	25 589.9	1 178.1	757 722	26 267.2	2 230.4
"	Philippines	39 653	701.0	31.3	37 186	455.0	30.9
"	Singapore	463 466	15 204.7	873.9	428 136	17 802.9	1 941.1
"	South Africa	61 398	1 634.6	38.6	58 090	422.3	142.6
"	Thailand	54 972	2 047.6	66.0	50 655	766.2	237.1
"	UK	221 181	6 756.3	1 928.0	242 929	1 777.4	2 265.0
"	United Arab Emirates	58.2	-
"	USA	521 661	29 370.0	3 103.8	520 104	8 741.1	2 319.1
"	ALL SERVICES	2 911 131	118 689.0	8 553.2	2 893 855	74 101.7	12 072.6
Royal Brunei Airlines	Brunei	67 639	1 389.3	0.3	66 843	2 573.7	-
"	New Zealand	19 820	85.0	-	16 370	357.0	-
"	ALL SERVICES	87 459	1 474.3	0.3	83 213	2 930.7	-
Singapore Airlines	Indonesia	36.2	-
"	New Zealand	..	22.8	-	..	3 807.0	-
"	Singapore	1 180 556	58 246.7	1 391.5	1 143 974	48 754.7	16.3
"	ALL SERVICES	1 180 556	58 269.5	1 391.5	1 143 974	52 597.9	16.3
Solomon Airlines	Solomon Islands	11 381	100.8	-	11 192	41.6	-
South African Airways	South Africa	47 360	868.9	70.7	40 816	2 359.3	22.6
Thai Airways International	New Zealand	10 727	415.9	0.1	11 296	710.0	-
"	Thailand	314 909	14 862.3	1 305.0	312 061	9 020.7	10.9
"	ALL SERVICES	325 636	15 278.2	1 305.1	323 357	9 730.7	10.9
Tiger Airways (g)	Singapore	9 393	-	-	10 124	-	-
Transair	Papua New Guinea	..	68.3	-	..	236.8	-
United Airlines	Fiji	-	-	-
"	USA	235 689	1 271.7	1 638.9	239 072	7 243.5	102.5
"	ALL SERVICES	235 689	1 271.7	1 638.9	239 072	7 243.5	102.5
United Parcel Service	China	-	-
"	Fiji	..	-	-
"	Hong Kong	104.5	-
"	USA	..	5 964.6	-
"	ALL SERVICES	-	5 964.6	-	-	104.5	-
Valuair (k)	Singapore	4 788	5.9	-	4 355	4.0	-

TABLE 1: SCHEDULED INTERNATIONAL AIR TRAFFIC TO AND FROM AUSTRALIA: Year ended June 2006

Scheduled Operator	Country to/from	Inbound			Outbound		
		Passengers	Freight (tonnes)	Mail (tonnes)	Passengers	Freight (tonnes)	Mail (tonnes)
Vietnam Airlines	Vietnam	81 833	2 721.0	10.9	80 225	486.2	-
Virgin Atlantic Airways	Hong Kong	48 905	5 274.9	-	46 066	1 317.2	-
"	UK	16 308	959.0	-	19 174	506.2	-
"	ALL SERVICES	65 213	6 233.9	-	65 240	1 823.4	-
TOTAL		10 623 470	426 461.6	18 358.3	10 473 481	299 336.3	13 483.8

Please refer to explanatory notes - paragraphs 3, 6 and 13 in particular.

(a) Service ceased November 2005. No data received for November 2005 and missing data for Adelaide and Melbourne for September 2005.

(b) Service commenced July 2005.

(c) Scheduled services commenced in November 2005.

(d) Service ceased June 2006.

(e) Shown as Lauda Air to June 2005.

(f) No outbound freight data for September 2000 onwards. No inbound freight data for April 2001 onwards.

(g) Service commenced December 2005.

(h) Service ceased October 2005. No data received for March 2003 and onwards.

(i) Data not received for August, September & October 2005. Service ceased October 2005.

(j) Service commenced November 2005.

(k) Data not received for September & October 2005. Service commenced December 2004 and ceased October 2005.

TABLE 2: SCHEDULED OPERATOR MARKET SHARES AND GROWTH: Year ended June

Scheduled Operators	Country to/from	Total Passengers				Total Freight (tonnes)				Total Mail (tonnes)			
		2005	2006	(%) of TOTAL	(%) Change	2005	2006	(%) of TOTAL	(%) Change	2005	2006	(%) of TOTAL	(%) Change
Aerolineas Argentinas	Argentina	32 817	40 038	0.2	22.0	367.7	464.8	0.1	26.4	5.8	3.4	0.0	-41.7
"	New Zealand	17 418	25 477	0.1	46.3	1 320.6	718.8	0.1	-45.6	-	-	-	..
"	ALL SERVICES	50 235	65 515	0.3	30.4	1 688.3	1 183.6	0.2	-29.9	5.8	3.4	0.0	-41.7
Air Caledonie	New Caledonia	82 232	79 867	0.4	-2.9	822.0	658.7	0.1	-19.9	19.6	17.7	0.1	-9.7
Air Canada	Canada	116 072	105 926	0.5	-8.7	249.9	52.1	0.0	-79.2	20.5	26.4	0.1	28.7
"	USA	29 402	27 710	0.1	-5.8	5 100.9	4 374.9	0.6	-14.2	305.0	342.8	1.1	12.4
"	ALL SERVICES	145 474	133 636	0.6	-8.1	5 350.9	4 427.1	0.6	-17.3	325.5	369.3	1.2	13.4
Air China	China	138 119	142 515	0.7	3.2	1 253.1	1 528.7	0.2	22.0	43.5	32.8	0.1	-24.7
Air Mauritius	Mauritius	40 230	46 746	0.2	16.2	819.4	712.8	0.1	-13.0	3.0	3.4	0.0	11.7
Air Nauru	Nauru	8 584	5 836	0.0	-32.0	204.5	133.3	0.0	-34.8	6.3	9.4	0.0	48.8
"	Solomon Islands	5 260	1 825	0.0	-65.3	6.3	0.0	0.0	-99.9	-	-	-	..
"	ALL SERVICES	13 844	7 661	0.0	-44.7	210.8	133.3	0.0	-36.8	6.3	9.4	0.0	48.8
Air New Zealand	China	36.6	179.8	0.0	391.8	-	-	-	..
"	Cook Islands	215	1 156	0.0	437.7	-	-	-	..	-	-	-	..
"	Germany	74.3	188.4	0.0	153.6	-	-	-	..
"	New Zealand	1 720 064	1 872 755	8.9	8.9	28 076.4	36 716.2	5.1	30.8	1 903.9	618.3	1.9	-67.5
"	USA	..	5 497	0.0	..	1 191.2	5 156.9	0.7	332.9	-	0.1	0.0	..
"	ALL SERVICES	1 720 279	1 879 408	8.9	9.3	29 378.4	42 241.3	5.8	43.8	1 903.9	618.4	1.9	-67.5
Air Niugini	Papua New Guinea	134 246	134 836	0.6	0.4	5 193.4	4 843.0	0.7	-6.7	286.1	273.0	0.9	-4.6
Air Pacific	Fiji	419 510	412 465	2.0	-1.7	8 927.0	8 472.9	1.2	-5.1	216.9	225.3	0.7	3.9
Air Paradise International (a)	Indonesia	223 513	75 591	0.4	-66.2	1 096.2	396.2	0.1	-63.9	0.0	-	-	-100.0
Air Tahiti Nui (b)	Tahiti	..	36 600	0.2	1 296.6	0.2	-	-	..
Air Vanuatu	Vanuatu	58 500	58 178	0.3	-0.6	452.5	550.1	0.1	21.5	86.0	87.8	0.3	2.1
Airlines PNG (c)	Papua New Guinea	..	5 658	0.0	35.5	0.0	-	-	..
Asian Express Airlines	New Zealand	7 776.0	7 547.5	1.0	-2.9	-	-	-	..
Asiana Airlines	Korea	169 002	146 764	0.7	-13.2	4 118.7	3 347.1	0.5	-18.7	223.4	107.1	0.3	-52.0
Australian Airlines (d)	Hong Kong	54 148	54 471	0.3	0.6	2 211.8	2 145.1	0.3	-3.0	-	-	-	..
"	Indonesia	112 507	97 949	0.5	-12.9	369.9	279.7	0.0	-24.4	0.5	0.5	0.0	-4.0
"	Japan	346 988	327 662	1.6	-5.6	4 160.4	3 524.2	0.5	-15.3	68.5	84.4	0.3	23.2
"	Malaysia	26 833	-100.0	202.0	-100.0	-
"	Singapore	95 227	97 206	0.5	2.1	2 085.8	2 002.3	0.3	-4.0	49.6	61.6	0.2	24.4
"	Thailand	..	5 734	0.0	27.6	0.0	-	-	..
"	ALL SERVICES	635 703	583 022	2.8	-8.3	9 029.9	7 978.9	1.1	-11.6	118.5	146.5	0.5	23.6
Austrian Airlines (e) (f)	Austria	..	201 793	1.0	-	-	7.1	0.0	..
"	Malaysia	..	28 148	0.1	-	-	-	-	..
"	Singapore	..	10 443	0.0	-	-	-	-	..
"	ALL SERVICES	-	240 384	1.1	..	-	-	-	..	-	7.1	0.0	..
British Airways	Singapore	164 646	148 302	0.7	-9.9	6 074.3	5 751.1	0.8	-5.3	0.2	1.0	0.0	458.8
"	Thailand	135 811	130 694	0.6	-3.8	2 347.5	2 069.8	0.3	-11.8	-	-	-	..
"	UK	276 013	264 183	1.3	-4.3	8 426.6	6 814.2	0.9	-19.1	74.6	264.2	0.8	254.1
"	ALL SERVICES	576 470	543 179	2.6	-5.8	16 848.3	14 635.1	2.0	-13.1	74.8	265.2	0.8	254.6
Cargolux Airlines Intl	Luxembourg	4 868.3	5 005.7	0.7	2.8	-	-	-	..
"	Malaysia	-	-	-	..	-	-	-	..
"	New Zealand	5 597.9	4 901.9	0.7	-12.4	-	-	-	..
"	Singapore	-	-	-	..	-	-	-	..

TABLE 2: SCHEDULED OPERATOR MARKET SHARES AND GROWTH: Year ended June

Scheduled Operators	Country to/from	Total Passengers				Total Freight (tonnes)				Total Mail (tonnes)			
		2005	2006	(%) of TOTAL	(%) Change	2005	2006	(%) of TOTAL	(%) Change	2005	2006	(%) of TOTAL	(%) Change
Cargolux Airlines Intl	ALL SERVICES	-	-	-	..	10 466.1	9 907.7	1.4	-5.3	-	-	-	..
Cathay Pacific Airways	Hong Kong	860 490	978 369	4.6	13.7	59 188.5	63 566.0	8.8	7.4	926.8	1 061.7	3.3	14.6
China Airlines	Taiwan	134 172	135 275	0.6	0.8	3 473.2	3 670.4	0.5	5.7	88.3	139.3	0.4	57.7
China Eastern Airlines	China	151 553	155 583	0.7	2.7	4 386.0	3 835.5	0.5	-12.6	69.8	216.7	0.7	210.5
China Southern Airlines	China	105 048	110 909	0.5	5.6	2 903.8	3 251.0	0.4	12.0	63.7	74.3	0.2	16.6
Continental Micronesia	Guam	27 521	24 799	0.1	-9.9	59.8	65.2	0.0	9.1	0.4	0.8	0.0	80.1
Emirates	New Zealand	399 586	426 013	2.0	6.6	25 977.8	24 843.0	3.4	-4.4	0.6	1.4	0.0	128.3
"	Singapore	52 736	54 801	0.3	3.9	5 363.6	6 820.1	0.9	27.2	148.5	259.8	0.8	75.0
"	Thailand	6 602	43 694	0.2	561.8	264.6	981.0	0.1	270.8	5.5	-	-	-100.0
"	United Arab Emirates	625 955	842 876	4.0	34.7	21 435.6	29 993.6	4.1	39.9	328.4	324.0	1.0	-1.3
"	ALL SERVICES	1 084 879	1 367 384	6.5	26.0	53 041.6	62 637.7	8.6	18.1	483.0	585.2	1.8	21.2
Eva Air	Taiwan	92 459	87 936	0.4	-4.9	3 892.3	3 610.5	0.5	-7.2	40.6	35.0	0.1	-13.7
Federal Express Corporation	Philippines	5 411.4	2 998.1	0.4	-44.6	-	-	-	..
"	USA	13 662.5	13 354.2	1.8	-2.3	21.9	5.5	0.0	-75.0
"	ALL SERVICES	-	-	-	..	19 073.9	16 352.4	2.3	-14.3	21.9	5.5	0.0	-75.0
Freedom Air International	New Zealand	498 516	400 553	1.9	-19.7	-	-	-	..	-	-	-	..
Garuda Indonesia	Indonesia	326 193	278 747	1.3	-14.5	6 494.4	5 976.8	0.8	-8.0	24.8	52.2	0.2	110.5
"	New Zealand	12 319	18 923	0.1	53.6	1 095.6	1 113.2	0.2	1.6	-	-	-	..
"	ALL SERVICES	338 512	297 670	1.4	-12.1	7 590.0	7 089.9	1.0	-6.6	24.8	52.2	0.2	110.5
Gulf Air	Bahrain	107 643	104 858	0.5	-2.6	3 680.9	3 973.1	0.5	7.9	199.9	234.3	0.7	17.2
"	Singapore	24 290	19 356	0.1	-20.3	2 774.8	2 681.8	0.4	-3.4	2.4	6.2	0.0	155.6
"	ALL SERVICES	131 933	124 214	0.6	-5.9	6 455.8	6 654.9	0.9	3.1	202.3	240.5	0.8	18.9
Hawaiian Airlines	USA	68 057	74 295	0.4	9.2	705.8	1 001.1	0.1	41.8	20.4	55.4	0.2	172.0
Japan Airlines	Japan	740 241	701 345	3.3	-5.3	18 990.6	13 355.3	1.8	-29.7	1 290.2	1 413.3	4.4	9.5
Jetstar (g)	New Zealand	..	199 475	0.9	-	-	-	-	..
Korean Air	Korea	262 262	231 507	1.1	-11.7	19 905.6	14 099.9	1.9	-29.2	503.7	423.0	1.3	-16.0
Lan Chile	Chile	44 807	49 743	0.2	11.0	1 721.9	2 130.7	0.3	23.7	36.8	40.5	0.1	9.8
"	New Zealand	27 845	35 119	0.2	26.1	472.3	608.8	0.1	28.9	5.6	6.9	0.0	24.5
"	ALL SERVICES	72 652	84 862	0.4	16.8	2 194.2	2 739.5	0.4	24.9	42.4	47.4	0.1	11.8
Lauda Air (h)	Austria	183 894	-100.0	-	-
"	Malaysia	22 217	-100.0	-	-
"	Singapore	11 671	-100.0	-	-
"	ALL SERVICES	217 782	-	-	-100.0	-	-	-	..	-	-	-	..
Lufthansa German Airlines (i)	Germany	2 163.7	-100.0	-
"	Malaysia	33.9	-100.0	-
"	New Zealand	1 881.8	-100.0	-
"	Pakistan	-	-
"	Thailand	40.0	-100.0	-
"	United Arab Emirates	-	-
"	USA	4 620.1	-100.0	-
"	ALL SERVICES	-	-	-	..	8 739.5	-	-	-100.0	-	-	-	..
Malaysia Airlines	Malaysia	1 113 023	1 084 692	5.1	-2.5	39 171.1	39 785.7	5.5	1.6	61.3	96.0	0.3	56.7
Martinair Holland	Bahrain	15.0	-100.0	-
"	Hong Kong	550.0	383.1	0.1	-30.3	-	-	-	..
"	Netherlands	9 063.7	8 547.4	1.2	-5.7	-	-	-	..

TABLE 2: SCHEDULED OPERATOR MARKET SHARES AND GROWTH: Year ended June

Scheduled Operators	Country to/from	Total Passengers				Total Freight (tonnes)				Total Mail (tonnes)			
		2005	2006	(%) of TOTAL	(%) Change	2005	2006	(%) of TOTAL	(%) Change	2005	2006	(%) of TOTAL	(%) Change
Martinair Holland	Thailand	107.6	90.4	0.0	-16.0	-	-	-	..
"	United Arab Emirates	204.0	234.7	0.0	15.0	-	-	-	..
"	ALL SERVICES	-	-	-	..	9 940.3	9 255.6	1.3	-6.9	-	-	-	..
Merpati Nusantara Airlines	Indonesia	2 800	3 185	0.0	13.8	-	-	-	..	-	-	-	..
Norfolk Jet Express (j)	New Zealand	-	-
Pacific Blue	Fiji	60 809	114 755	0.5	88.7	-	274.0	0.0	..	-	..	-	..
"	New Zealand	325 754	344 827	1.6	5.9	-	375.1	0.1	..	-	-	-	..
"	Tonga	..	12 061	0.1	14.6	0.0	-	-	..
"	Vanuatu	14 970	23 113	0.1	54.4	-	29.7	0.0	..	-	-	-	..
"	ALL SERVICES	401 533	494 756	2.3	23.2	-	693.4	0.1	..	-	-	-	..
Philippine Airlines	Philippines	68 548	69 033	0.3	0.7	1 785.8	1 591.0	0.2	-10.9	-	32.1	0.1	..
Polar Air Cargo (k)	USA	-	-	-	..	-	-	-	..
Polynesian Airlines (l)	New Zealand	606	-100.0	4.6	-100.0	2.8	-100.0
"	Tonga	6 280	805	0.0	-87.2	45.1	1.6	0.0	-96.6	6.4	1.6	0.0	-75.8
"	Western Samoa	14 640	1 841	0.0	-87.4	61.6	3.9	0.0	-93.7	8.6	0.5	0.0	-94.5
"	ALL SERVICES	21 526	2 646	0.0	-87.7	111.3	5.4	0.0	-95.1	17.9	2.0	0.0	-88.7
Polynesian Blue (m)	Western Samoa	..	20 576	0.1	35.2	0.0	-	-	..
Qantas Airways	Brazil	78.0	-100.0	-
"	Canada	..	1 429	0.0	11.1	0.0	10.2	0.0	..
"	China	40 316	109 126	0.5	170.7	4 934.7	7 286.7	1.0	47.7	7.2	18.3	0.1	156.0
"	Fiji	0.0	93.4	0.0	>999.9	-	-	-	..
"	France	6 585	-100.0	120.1	-100.0	3.1	-100.0
"	Germany	81 362	82 826	0.4	1.8	4 019.5	5 488.5	0.8	36.5	553.8	538.2	1.7	-2.8
"	Greece	314	-100.0	-	-
"	Hong Kong	550 999	595 460	2.8	8.1	25 661.1	25 203.4	3.5	-1.8	929.1	1 014.4	3.2	9.2
"	India	60 826	66 791	0.3	9.8	848.4	949.8	0.1	12.0	37.2	68.7	0.2	84.4
"	Indonesia	124 728	101 655	0.5	-18.5	1 786.7	1 512.5	0.2	-15.3	54.6	68.9	0.2	26.2
"	Japan	606 650	605 370	2.9	-0.2	14 272.2	14 087.1	1.9	-1.3	2 436.3	2 482.6	7.8	1.9
"	Kazakhstan	15.4	0.0	-	-	..
"	Korea	..	4 529	0.0	109.9	0.0	10.8	0.0	..
"	Malaysia	223.4	0.0	-	-	..
"	Netherlands	-	-	-	-	..
"	New Caledonia	44 861	46 263	0.2	3.1	223.3	215.0	0.0	-3.7	26.2	28.0	0.1	7.0
"	New Zealand	1 718 115	1 492 106	7.1	-13.2	49 044.6	51 857.1	7.1	5.7	2 139.8	3 408.4	10.7	59.3
"	Philippines	83 880	76 839	0.4	-8.4	1 262.5	1 156.0	0.2	-8.4	59.5	62.2	0.2	4.5
"	Singapore	908 614	891 602	4.2	-1.9	33 437.4	33 007.6	4.5	-1.3	2 894.3	2 815.0	8.8	-2.7
"	South Africa	113 143	119 488	0.6	5.6	2 198.0	2 056.9	0.3	-6.4	162.6	181.2	0.6	11.5
"	Thailand	106 861	105 627	0.5	-1.2	1 677.8	2 813.8	0.4	67.7	327.0	303.1	1.0	-7.3
"	UK	387 352	464 110	2.2	19.8	8 443.4	8 533.7	1.2	1.1	3 879.5	4 192.9	13.2	8.1
"	United Arab Emirates	29	-100.0	-	58.2	0.0	..	-	-	-	..
"	USA	971 484	1 041 765	4.9	7.2	31 219.5	38 111.0	5.3	22.1	4 507.2	5 422.9	17.0	20.3
"	ALL SERVICES	5 806 119	5 804 986	27.5	0.0	179 227.1	192 790.6	26.6	7.6	18 017.4	20 625.8	64.8	14.5
Royal Brunei Airlines	Brunei	114 436	134 482	0.6	17.5	2 966.1	3 962.9	0.5	33.6	0.2	0.3	0.0	56.0
"	New Zealand	38 492	36 190	0.2	-6.0	766.8	442.0	0.1	-42.4	-	-	-	..
"	ALL SERVICES	152 928	170 672	0.8	11.6	3 732.9	4 404.9	0.6	18.0	0.2	0.3	0.0	56.0

TABLE 2: SCHEDULED OPERATOR MARKET SHARES AND GROWTH: Year ended June

Scheduled Operators	Country to/from	Total Passengers				Total Freight (tonnes)				Total Mail (tonnes)			
		2005	2006	(%) of TOTAL	(%) Change	2005	2006	(%) of TOTAL	(%) Change	2005	2006	(%) of TOTAL	(%) Change
Singapore Airlines	Indonesia	49.0	36.2	0.0	-26.1	-	-	-	..
"	Malaysia	194.4	-100.0	-
"	New Zealand	4 268.8	3 829.9	0.5	-10.3	-	-	-	..
"	Singapore	2 098 126	2 324 530	11.0	10.8	98 089.4	107 001.4	14.7	9.1	1 519.9	1 407.7	4.4	-7.4
"	ALL SERVICES	2 098 126	2 324 530	11.0	10.8	102 601.5	110 867.4	15.3	8.1	1 519.9	1 407.7	4.4	-7.4
Solomon Airlines	Solomon Islands	22 041	22 573	0.1	2.4	195.5	142.4	0.0	-27.2	0.6	-	-	-100.0
South African Airways	South Africa	92 270	88 176	0.4	-4.4	3 319.8	3 228.2	0.4	-2.8	59.0	93.3	0.3	58.2
Thai Airways International	New Zealand	91 984	22 023	0.1	-76.1	6 798.1	1 125.9	0.2	-83.4	0.8	0.1	0.0	-86.2
"	Thailand	592 629	626 970	3.0	5.8	23 037.1	23 883.0	3.3	3.7	1 213.8	1 315.9	4.1	8.4
"	ALL SERVICES	684 613	648 993	3.1	-5.2	29 835.2	25 008.9	3.4	-16.2	1 214.6	1 316.0	4.1	8.4
Tiger Airways (g)	Singapore	..	19 517	0.1	-	-	-	-	..
Transair (n)	Papua New Guinea	135.5	305.1	0.0	125.1	-	-	-	..
United Airlines	Fiji	..	-	-	-	-	-	-	..
"	USA	452 149	474 761	2.3	5.0	8 229.5	8 515.2	1.2	3.5	1 355.8	1 741.5	5.5	28.4
"	ALL SERVICES	452 149	474 761	2.3	5.0	8 229.5	8 515.2	1.2	3.5	1 355.8	1 741.5	5.5	28.4
United Parcel Service	China	-	-	-	-	..
"	Fiji	-	-	-	-	..
"	Hong Kong	181.6	104.5	0.0	-42.5	-	-	-	..
"	Taiwan	32.4	-100.0	-
"	USA	4 544.3	5 964.6	0.8	31.3	-	-	-	..
"	ALL SERVICES	-	-	-	..	4 758.3	6 069.1	0.8	27.5	-	-	-	..
Valuair (o)	Singapore	34 622	9 143	0.0	-73.6	10.4	10.0	0.0	-4.3	-	-	-	..
Vietnam Airlines (p)	Vietnam	119 717	162 058	0.8	35.4	1 702.0	3 207.2	0.4	88.4	3.7	10.9	0.0	193.8
Virgin Atlantic Airways (q)	Hong Kong	30 261	94 971	0.5	213.8	3 091.2	6 592.2	0.9	113.3	-	-	-	..
"	UK	16 023	35 482	0.2	121.4	538.8	1 465.2	0.2	171.9	-	-	-	..
"	ALL SERVICES	46 284	130 453	0.6	181.9	3 630.0	8 057.4	1.1	122.0	-	-	-	..
TOTAL		20 309 733	21 096 951	100.0	3.9	702 417.7	725 797.8	100.0	3.3	29 341.9	31 842.1	100.0	8.5

TABLE 2: SCHEDULED OPERATOR MARKET SHARES AND GROWTH: Year ended June

Scheduled Operators	Country to/from	Total Passengers			Total Freight (tonnes)			Total Mail (tonnes)		
		2005	2006	(%) of TOTAL Change	2005	2006	(%) of TOTAL Change	2005	2006	(%) of TOTAL Change

Please refer to explanatory notes - paragraphs 3, 6 and 13 in particular.

(a) Service ceased November 2005. No data received for November 2005 and missing data for Adelaide and Melbourne for September 2005.

(b) Service commenced July 2005.

(c) Scheduled services commenced in November 2005.

(d) Service ceased June 2006.

(e) Shown as Lauda Air to June 2005.

(f) No outbound freight data for September 2000 onwards. No inbound freight data for April 2001 onwards.

(g) Service commenced December 2005.

(h) Shown as Austrian Airlines for July 2005 and onwards.

(i) Service ceased March 2005.

(j) Service commenced August 2004 and ceased December 2004. No data was received.

(k) Service ceased October 2005. No data received for March 2003 and onwards.

(l) Data not received for August, September & October 2005. Service ceased October 2005.

(m) Service commenced November 2005.

(n) Commenced reporting from January 2005.

(o) Data not received for September & October 2005. Service commenced December 2004 and ceased October 2005.

(p) No data received for inbound operations to Sydney for August 2002 to May 2004 and for July 2004 to November 2004 and January 2005 to March 2005 and May 2005. Data for outbound operations have been received for July 2003 onwards.

(q) Service commenced December 2004.

TABLE 3: AIRLINE PASSENGER CAPACITY AND UTILISATION TO AND FROM AUSTRALIA BY OPERATOR: Year ended June 2006

Scheduled Operator	Service to/from	Inbound				Outbound			
		No. of Flights	Pax Carried	Seats Available	Seat Utilisation %	No. of Flights	Pax Carried	Seats Available	Seat Utilisation %
Aerolineas Argentinas	Argentina	157	32 784	38 779	84.5	157	32 731	38 779	84.4
Air Caledonie	New Caledonia	315	39 443	56 156	70.2	315	40 424	56 156	72.0
Air Canada	Canada	428	67 411	90 324	74.6	426	66 225	89 404	74.1
Air China	China	387	72 683	98 984	73.4	387	69 832	98 984	70.5
Air Mauritius	Mauritius	119	24 053	28 679	83.9	119	22 693	28 560	79.5
Air Nauru	Nauru	75	4 110	8 967	45.8	75	3 551	7 672	46.3
Air New Zealand	Cook Islands	39	3 727	5 720	65.2	38	3 735	5 572	67.0
"	Germany	98	..	-	..	97	..	-	..
"	New Zealand	6 928	916 418	1 303 724	70.3	6 913	908 340	1 302 611	69.7
"	USA	91	22 642	35 761	63.3	90	24 546	35 373	69.4
"	ALL SERVICES	7 156	942 787	1 345 205	70.1	7 138	936 621	1 343 556	69.7
Air Niugini	Papua New Guinea	828	66 956	137 173	48.8	818	67 880	135 102	50.2
Air Pacific	Fiji	1 078	204 048	300 732	67.9	1 080	208 417	301 636	69.1
Air Paradise International (a)	Indonesia	257	38 950	60 629	64.2	256	36 641	60 407	60.7
Air Tahiti Nui (b)	Tahiti	114	17 214	33 516	51.4	114	19 386	33 516	57.8
Air Vanuatu	Vanuatu	418	29 388	52 808	55.7	418	28 790	52 808	54.5
Airlines PNG (c)	Papua New Guinea	178	2 930	5 874	49.9	180	2 728	5 940	45.9
Asian Express Airlines (d)	New Zealand	244	..	-	..	244	..	-	..
Asiana Airlines	Korea	308	75 137	95 480	78.7	308	71 627	95 480	75.0
Australian Airlines (e)	Hong Kong	143	29 090	37 968	76.6	144	25 588	38 323	66.8
"	Indonesia	171	25 279	44 885	56.3	169	22 756	44 376	51.3
"	Japan	917	166 174	242 572	68.5	916	161 975	242 393	66.8
"	Singapore	393	73 461	103 311	71.1	394	79 622	103 721	76.8
"	Thailand	18	2 726	4 518	60.3	18	3 019	4 546	66.4
"	ALL SERVICES	1 642	296 730	433 254	68.5	1 641	292 960	433 359	67.6
Austrian Airlines (f)	Austria	467	117 636	158 272	74.3	466	122 748	157 928	77.7
British Airways	UK	995	280 939	367 445	76.5	997	262 240	368 147	71.2
Cargolux Airlines Intl (d)	Luxembourg	102	-	..	-	..
"	New Zealand	-	..	-	..	102
"	ALL SERVICES	102	-	-	..	102	-	-	..
Cathay Pacific Airways	Hong Kong	2 524	498 737	639 076	78.0	2 524	479 632	639 076	75.1
China Airlines	Taiwan	376	68 656	103 776	66.2	376	66 619	103 776	64.2
China Eastern Airlines	China	393	82 058	114 059	71.9	393	73 525	114 059	64.5
China Southern Airlines	China	280	57 704	75 940	76.0	280	53 205	75 940	70.1
Continental Micronesia	Guam	131	12 050	20 174	59.7	132	12 749	20 328	62.7
Emirates	New Zealand	1 446	213 148	457 222	46.6	1 449	212 865	458 029	46.5
"	United Arab Emirates	2 257	472 018	711 205	66.4	2 255	469 353	710 683	66.0
"	ALL SERVICES	3 703	685 166	1 168 427	58.6	3 704	682 218	1 168 712	58.4
Eva Air	Taiwan	260	44 574	65 520	68.0	260	43 362	65 520	66.2
Federal Express Corporation (d)	Philippines	-	..	-	..	263
"	USA	263	-	..	-	..
"	ALL SERVICES	263	-	-	..	263	-	-	..
Freedom Air International	New Zealand	1 976	199 338	290 776	68.6	1 972	201 215	293 198	68.6
Garuda Indonesia	Indonesia	1 046	140 531	215 198	65.3	1 045	138 216	214 905	64.3
"	New Zealand	103	10 107	30 179	33.5	104	8 816	30 472	28.9
"	ALL SERVICES	1 149	150 638	245 377	61.4	1 149	147 032	245 377	59.9

TABLE 3: AIRLINE PASSENGER CAPACITY AND UTILISATION TO AND FROM AUSTRALIA BY OPERATOR: Year ended June 2006

Scheduled Operator	Service to/from	Inbound				Outbound			
		No. of Flights	Pax Carried	Seats Available	Seat Utilisation %	No. of Flights	Pax Carried	Seats Available	Seat Utilisation %
Gulf Air	Bahrain	363	62 398	96 195	64.9	363	61 816	96 195	64.3
Hawaiian Airlines	USA	206	36 866	52 388	70.4	206	37 429	52 388	71.4
Japan Airlines	Japan	1 095	354 526	476 059	74.5	1 095	346 819	474 154	73.1
Jetstar (g)	New Zealand	814	100 684	144 078	69.9	814	98 791	144 078	68.6
Korean Air	Korea	613	116 667	154 289	75.6	613	114 840	154 196	74.5
Lan Chile	Chile	224	42 666	58 016	73.5	222	42 196	57 498	73.4
Malaysia Airlines	Malaysia	2 538	547 431	726 951	75.3	2 533	537 261	726 448	74.0
Martinair Holland (d)	Netherlands	90	..	-	..	90	..	-	..
Merpati Nusantara Airlines	Indonesia	106	1 300	3 180	40.9	106	1 885	3 180	59.3
Pacific Blue	Fiji	540	57 395	97 200	59.0	543	57 360	97 740	58.7
"	New Zealand	1 345	170 402	242 100	70.4	1 341	174 425	241 380	72.3
"	Tonga	70	5 759	12 600	45.7	69	6 302	12 420	50.7
"	Vanuatu	102	11 550	18 360	62.9	102	11 563	18 360	63.0
"	ALL SERVICES	2 057	245 106	370 260	66.2	2 055	249 650	369 900	67.5
Philippine Airlines	Philippines	156	35 396	47 112	75.1	156	33 637	47 112	71.4
Polar Air Cargo (d) (h)	USA	-	-	..	-	..
Polynesian Airlines (i)	Tonga	-	..	-	..	1	144	154	93.5
"	Western Samoa	9	1 228	1 386	88.6	9	1 274	1 386	91.9
"	ALL SERVICES	9	1 228	1 386	88.6	10	1 418	1 540	92.1
Polynesian Blue (j)	Western Samoa	103	9 899	18 540	53.4	104	10 677	18 720	57.0
Qantas Airways	Canada	8	2 490	2 744	90.7	8	2 543	2 744	92.7
"	China	296	55 994	77 917	71.9	292	54 682	78 127	70.0
"	Fiji	1	1
"	Germany	433	130 575	151 521	86.2	438	132 568	152 248	87.1
"	Hong Kong	1 228	284 893	374 520	76.1	1 218	271 253	374 224	72.5
"	India	154	36 097	52 460	68.8	155	33 926	51 614	65.7
"	Indonesia	472	52 487	89 080	58.9	469	51 975	88 646	58.6
"	Japan	1 534	308 581	432 422	71.4	1 538	310 863	433 291	71.7
"	Korea	18	2 565	4 085	62.8	18	2 022	4 085	49.5
"	Malaysia	1
"	Netherlands	3
"	New Caledonia	210	28 326	40 431	70.1	211	28 015	40 633	68.9
"	New Zealand	5 163	725 653	976 783	74.3	5 170	726 306	979 849	74.1
"	Philippines	189	42 855	55 356	77.4	189	39 152	55 407	70.7
"	Singapore	1 143	267 309	342 619	78.0	1 138	253 723	342 639	74.0
"	South Africa	240	71 393	91 404	78.1	240	67 093	89 354	75.1
"	UK	1 431	451 446	539 421	83.7	1 431	454 946	539 457	84.3
"	USA	2 383	615 305	784 716	78.4	2 373	630 580	794 280	79.4
"	ALL SERVICES	14 903	3 075 969	4 015 479	76.6	14 893	3 059 647	4 026 598	76.0
Royal Brunei Airlines	Brunei	644	67 639	119 477	56.6	643	66 843	119 280	56.0
"	New Zealand	156	19 820	32 571	60.9	156	16 370	32 520	50.3
"	ALL SERVICES	800	87 459	152 048	57.5	799	83 213	151 800	54.8
Singapore Airlines	Singapore	4 669	1 180 556	1 526 423	77.3	4 669	1 143 974	1 526 100	75.0
Solomon Airlines	Solomon Islands	124	11 381	16 864	67.5	125	11 192	17 000	65.8
South African Airways	South Africa	265	47 360	62 568	75.7	265	40 816	62 554	65.2
Thai Airways International	New Zealand	107	10 727	42 901	25.0	108	11 296	43 306	26.1

TABLE 3: AIRLINE PASSENGER CAPACITY AND UTILISATION TO AND FROM AUSTRALIA BY OPERATOR: Year ended June 2006

Scheduled Operator	Service to/from	Inbound				Outbound			
		No. of Flights	Pax Carried	Seats Available	Seat Utilisation %	No. of Flights	Pax Carried	Seats Available	Seat Utilisation %
Thai Airways International	Thailand	1 332	314 909	478 817	65.8	1 329	312 061	477 738	65.3
"	ALL SERVICES	1 439	325 636	521 718	62.4	1 437	323 357	521 044	62.1
Tiger Airways (g)	Singapore	108	9 393	19 440	48.3	108	10 124	19 440	52.1
Transair (d)	Papua New Guinea	173	..	-	..	173	..	-	..
United Airlines	USA	797	235 689	276 559	85.2	794	239 072	275 518	86.8
United Parcel Service (d)	China	-	..	-	..	54
"	Hong Kong	-	..	-	..	98
"	USA	155	-	..	-	..
"	ALL SERVICES	155	-	-	..	152	-	-	..
Valuair (k)	Singapore	62	4 788	9 360	51.2	62	4 355	9 360	46.5
Vietnam Airlines	Vietnam	367	81 833	123 076	66.5	367	80 225	123 066	65.2
Virgin Atlantic Airways	UK	363	65 213	111 151	58.7	363	65 240	111 151	58.7
TOTAL		58 922	10 791 564	15 018 542	71.9	58 868	10 642 685	15 022 460	70.8

Please refer to explanatory notes - paragraphs 4, 5, 7 and 14 in particular.

In addition to the above, please note the following regarding **Seat Factors** shown in this table:

Traffic shown in this table for Australian Airlines and Qantas Airways will differ from traffic shown in Tables 1 and 2 because of the inclusion in this table of total traffic into and ex Australia (for seat factor purposes) whereas Tables 1 and 2 include uplift/discharge traffic only.

All other airlines report uplift/discharge traffic only. Therefore, for other airlines operating **via** Australia, the seat factors shown here reflect the total seats on the aircraft but only the Australian uplift/discharge portion of passengers on the aircraft. The true seat factors for airlines that operate **via** Australia will most likely be higher than what is shown in this table.

For example, on Dubai-Sydney-Auckland services:

Seats on the Dubai-Sydney sector are taken up by Dubai-Sydney and Dubai-Auckland passengers. However, when calculating seat factors, only the Dubai-Sydney passengers are used.

Similarly, seats on the Sydney-Auckland sector are taken up by Sydney-Auckland and Dubai-Auckland passengers. However, when calculating seat factors, only the Sydney-Auckland passengers are used.

The following airlines are affected:

Emirates, Garuda Indonesia, Royal Brunei Airlines and Thai Airways International

(a) Service ceased November 2005. No data received for November 2005 and missing data for Adelaide and Melbourne for September 2005.

(b) Service commenced July 2005.

(c) Scheduled services commenced in November 2005.

(d) Freight flights only.

(e) Service ceased June 2006.

(f) Shown as Lauda Air to June 2005.

(g) Service commenced December 2005.

(h) Service ceased October 2005. No data received for March 2003 and onwards.

(i) Data not received for August, September & October 2005. Service ceased October 2005.

(j) Service commenced November 2005.

(k) Data not received for September & October 2005. Service commenced December 2004 and ceased October 2005.

TABLE 4: SCHEDULED INTERNATIONAL AIRPORT TRAFFIC AND AIRCRAFT MOVEMENTS: Year ended June

		Inbound		(%)	Outbound		(%)	Total		(%)	(%) of
		2005	2006	Change	2005	2006	Change	2005	2006	Change	TOTAL
Adelaide	Passengers	163 911	179 665	9.6	154 060	167 399	8.7	317 971	347 064	9.1	1.6
"	Freight (Tonnes)	6 617	8 198	23.9	7 816	8 844	13.2	14 432	17 042	18.1	2.3
"	Aircraft Movements	1 108	1 233	11.3	1 108	1 231	11.1	2 216	2 464	11.2	1.9
Brisbane	Passengers	1 764 467	1 844 375	4.5	1 719 390	1 802 516	4.8	3 483 857	3 646 891	4.7	17.3
"	Freight (Tonnes)	41 318	44 879	8.6	39 663	40 275	1.5	80 980	85 155	5.2	11.7
"	Aircraft Movements	11 124	11 173	0.4	11 137	11 163	0.2	22 261	22 336	0.3	16.9
Cairns	Passengers	431 937	432 723	0.2	426 208	423 226	-0.7	858 145	855 949	-0.3	4.1
"	Freight (Tonnes)	3 166	3 484	10.0	8 135	8 120	-0.2	11 301	11 604	2.7	1.6
"	Aircraft Movements	4 169	4 253	2.0	4 166	4 251	2.0	8 335	8 504	2.0	6.4
Canberra	Passengers	994	..	-100.0	1 002	..	-100.0	1 996	-	-100.0	..
"	Freight (Tonnes)	-	-	-	-
"	Aircraft Movements	21	..	-100.0	21	..	-100.0	42	-	-100.0	..
Darwin	Passengers	52 031	58 340	12.1	51 184	58 114	13.5	103 215	116 454	12.8	0.6
"	Freight (Tonnes)	411	398	-3.2	261	158	-39.4	672	556	-17.2	0.1
"	Aircraft Movements	994	1 155	16.2	993	1 154	16.2	1 987	2 309	16.2	1.7
Gold Coast/Coolangatta	Passengers	79 068	104 097	31.7	80 376	106 398	32.4	159 444	210 495	32.0	1.0
"	Freight (Tonnes)	-	0	..	21	63	201.3	21	63	202.0	0.0
"	Aircraft Movements	1 126	1 245	10.6	1 117	1 244	11.4	2 243	2 489	11.0	1.9
Melbourne	Passengers	2 105 282	2 161 805	2.7	2 038 873	2 091 463	2.6	4 144 155	4 253 268	2.6	20.2
"	Freight (Tonnes)	112 137	107 869	-3.8	88 900	89 111	0.2	201 037	196 980	-2.0	27.1
"	Aircraft Movements	13 860	12 601	-9.1	13 864	12 612	-9.0	27 724	25 213	-9.1	19.0
Norfolk Island	Passengers	10 191	9 654	-5.3	10 381	9 872	-4.9	20 572	19 526	-5.1	0.1
"	Freight (Tonnes)	110	91	-17.8	14	14	-0.5	125	105	-15.8	0.0
"	Aircraft Movements	104	103	-1.0	104	103	-1.0	208	206	-1.0	0.2
Perth	Passengers	990 168	1 009 750	2.0	955 518	970 000	1.5	1 945 686	1 979 750	1.8	9.4
"	Freight (Tonnes)	22 932	26 797	16.9	33 475	32 892	-1.7	56 407	59 689	5.8	8.2
"	Aircraft Movements	5 188	5 105	-1.6	5 235	5 119	-2.2	10 423	10 224	-1.9	7.7
Sydney	Passengers	4 599 363	4 823 061	4.9	4 675 329	4 844 493	3.6	9 274 692	9 667 554	4.2	45.8
"	Freight (Tonnes)	216 379	234 745	8.5	121 063	119 807	-1.0	337 442	354 553	5.1	48.9
"	Aircraft Movements	29 001	29 354	1.2	28 913	29 287	1.3	57 914	58 641	1.3	44.3
Townsville (a)	Passengers	-	-
"	Freight (Tonnes)	..	-	51	..	-	51	..	0.0
"	Aircraft Movements	..	3	3	..	-	6	..	0.0
TOTAL	Passengers	10 197 412	10 623 470	4.2	10 112 321	10 473 481	3.6	20 309 733	21 096 951	3.9	100.0
	Freight (Tonnes)	403 069	426 462	5.8	299 349	299 336	0.0	702 418	725 798	3.3	100.0
	Aircraft Movements	66 695	66 225	-0.7	66 658	66 167	-0.7	133 353	132 392	-0.7	100.0

(a) Freighter operations only - during March, April and May 2006.

TABLE 5: SCHEDULED INTERNATIONAL TRAFFIC BY CITY PAIRS: Year ended June

Foreign Port	Australian Port	Passengers						Freight (tonnes)					
		2005			2006			2005			2006		
		Inbound	Outbound	Total	Inbound	Outbound	Total	Inbound	Outbound	Total	Inbound	Outbound	Total
Auckland	Adelaide	9 173	8 912	18 085	19 683	18 941	38 624	44.1	11.1	55.3	124.5	59.0	183.4
Bombay	"	5	0	5	0	0	0	0.0	0.0	0.0	0.0	0.0	0.0
Denpasar	"	20 700	20 699	41 399	9 099	8 645	17 744	285.7	59.2	344.9	203.2	37.5	240.7
Hong Kong	"	16 062	10 070	26 132	17 492	12 168	29 660	641.9	646.9	1 288.8	686.7	572.5	1 259.3
Jakarta	"	5	0	5	0	0	0	0.0	0.0	0.0	0.0	0.0	0.0
Kuala Lumpur	"	47 091	47 257	94 348	47 731	45 889	93 620	1 631.5	904.4	2 535.9	1 690.4	731.8	2 422.2
London	"	14	0	14	0	0	0	0.0	0.0	0.0	0.0	0.0	0.0
Singapore	"	70 829	67 122	137 951	85 660	81 756	167 416	4 013.2	6 194.1	10 207.4	5 493.4	7 443.2	12 936.7
Tokyo	"	32	0	32	0	0	0	0.0	0.0	0.0	0.0	0.0	0.0
Total	Adelaide	163 911	154 060	317 971	179 665	167 399	347 064	6 616.5	7 815.7	14 432.3	8 198.3	8 844.1	17 042.3
Anchorage	Brisbane	0	0	0	0	0	0	0.0	0.0	0.0	0.0	0.0	0.0
Auckland	"	369 536	389 657	759 193	367 627	386 846	754 473	9 262.3	8 991.0	18 253.4	10 144.1	9 580.6	19 724.7
Bandar Seri Begawan	"	16 588	16 651	33 239	15 413	15 451	30 864	458.1	998.7	1 456.8	294.8	951.1	1 246.0
Bangkok	"	38 372	36 572	74 944	39 814	39 460	79 274	1 418.0	1 074.9	2 493.0	1 759.9	810.7	2 570.6
Belo Horizonte	"	0	0	0	0	0	0	0.0	78.0	78.0	0.0	0.0	0.0
Cebu	"	0	0	0	0	0	0	0.0	0.0	0.0	0.0	19.5	19.5
Chicago	"	0	0	0	0	0	0	0.0	0.0	0.0	0.0	0.0	0.0
Christchurch	"	133 858	133 730	267 588	139 682	139 760	279 442	250.2	222.3	472.6	423.6	434.2	857.8
Denpasar	"	32 142	31 413	63 555	24 920	23 835	48 755	688.9	238.9	927.7	663.1	222.6	885.7
Dubai	"	54 849	57 434	112 283	69 523	70 984	140 507	1 399.7	1 488.5	2 888.3	1 411.7	1 947.2	3 358.9
Dunedin	"	16 616	16 961	33 577	20 855	21 989	42 844	0.0	0.0	0.0	0.0	0.0	0.0
Frankfurt	"	0	0	0	0	0	0	0.0	0.0	0.0	0.0	0.0	0.0
Hamilton	"	19 845	20 417	40 262	19 036	19 770	38 806	0.0	0.0	0.0	0.0	0.0	0.0
Hong Kong	"	95 277	87 431	182 708	112 176	104 713	216 889	4 876.2	3 190.9	8 067.0	6 023.3	3 509.7	9 533.1
Honiara	"	13 393	13 908	27 301	12 538	11 860	24 398	149.2	52.7	201.9	100.8	41.6	142.4
Honolulu	"	0	0	0	0	0	0	0.0	0.0	0.0	0.0	0.0	0.0
Jakarta	"	186	0	186	0	0	0	0.0	0.0	0.0	0.0	0.0	0.0
Kuala Lumpur	"	61 559	64 813	126 372	61 328	61 395	122 723	1 827.1	942.0	2 769.2	2 454.3	1 799.5	4 253.8
Los Angeles	"	75 345	74 986	150 331	83 506	85 331	168 837	1 054.5	754.8	1 809.2	1 028.1	894.5	1 922.6
Manila	"	7 975	7 648	15 623	7 177	7 197	14 374	9.4	109.2	118.7	20.0	81.1	101.1
Nadi	"	61 677	59 378	121 055	67 001	69 529	136 530	213.6	481.8	695.4	204.5	401.9	606.4
Nauru	"	3 850	3 487	7 337	2 953	2 883	5 836	14.4	170.0	184.5	7.4	125.9	133.3
New York	"	13	0	13	3	0	3	0.0	0.0	0.0	0.0	0.0	0.0
Noumea	"	18 635	20 268	38 903	18 856	20 659	39 515	32.5	148.3	180.8	9.6	143.0	152.6
Osaka	"	86 130	25 562	111 692	80 908	26 375	107 283	938.9	1 730.7	2 669.6	784.5	689.6	1 474.1
Palmerston	"	21 230	20 553	41 783	22 489	22 141	44 630	0.0	0.0	0.0	0.0	0.0	0.0
Port Moresby	"	30 246	35 094	65 340	30 969	37 191	68 160	1 411.7	2 803.2	4 214.9	1 113.1	2 976.7	4 089.8
Port Vila	"	16 244	15 605	31 849	21 959	22 045	44 004	34.1	124.2	158.3	46.6	149.7	196.3
Queenstown	"	2 328	2 670	4 998	2 904	3 047	5 951	0.0	0.0	0.0	0.0	0.0	0.0
Seoul	"	33 933	28 343	62 276	35 906	33 813	69 719	796.6	1 431.4	2 228.0	703.7	1 090.8	1 794.4
Shanghai	"	0	0	0	0	0	0	0.0	0.0	0.0	0.0	0.0	0.0
Singapore	"	325 258	319 114	644 372	345 223	331 915	677 138	10 280.4	9 522.7	19 803.1	11 617.0	11 196.0	22 813.1
Taipei	"	51 973	51 448	103 421	56 438	56 384	112 822	2 879.1	979.6	3 858.7	3 219.7	961.9	4 181.7
Tokyo	"	122 488	131 621	254 109	119 048	122 300	241 348	3 308.8	4 109.9	7 418.7	2 795.1	2 199.0	4 994.0
Wellington	"	54 921	54 626	109 547	66 123	65 643	131 766	13.8	19.0	32.9	54.2	48.6	102.8
Total	Brisbane	1 764 467	1 719 390	3 483 857	1 844 375	1 802 516	3 646 891	41 317.5	39 662.9	80 980.5	44 879.1	40 275.4	85 154.5

TABLE 5: SCHEDULED INTERNATIONAL TRAFFIC BY CITY PAIRS: Year ended June

Foreign Port	Australian Port	Passengers						Freight (tonnes)					
		2005			2006			2005			2006		
		Inbound	Outbound	Total	Inbound	Outbound	Total	Inbound	Outbound	Total	Inbound	Outbound	Total
Auckland	Cairns	21 828	23 294	45 122	22 496	24 801	47 297	120.8	81.8	202.5	122.6	500.7	623.4
Fukuoka	"	23 956	23 291	47 247	17 281	17 493	34 774	41.5	325.9	367.4	23.2	169.8	193.0
Guam	"	13 550	13 971	27 521	12 050	12 749	24 799	3.8	55.9	59.8	4.1	61.0	65.2
Hong Kong	"	48 304	45 377	93 681	51 085	48 445	99 530	931.3	2 818.5	3 749.7	715.8	2 921.6	3 637.3
Nagoya	"	69 238	67 189	136 427	68 445	67 456	135 901	163.3	794.2	957.4	201.4	402.0	603.3
Osaka	"	58 043	52 601	110 644	60 555	54 244	114 799	604.0	1 451.0	2 054.9	369.7	1 532.3	1 902.0
Port Moresby	"	28 017	23 882	51 899	31 492	24 772	56 264	130.6	283.2	413.8	128.3	419.8	548.1
Sapporo	"	8 598	8 532	17 130	6 638	7 526	14 164	9.6	5.3	15.0	6.8	13.8	20.7
Singapore	"	36 875	45 497	82 372	36 643	42 355	78 998	715.9	242.9	958.8	568.0	342.6	910.6
Tokyo	"	123 528	122 574	246 102	126 038	123 385	249 423	445.2	2 076.6	2 521.8	1 343.7	1 756.7	3 100.4
Total	Cairns	431 937	426 208	858 145	432 723	423 226	855 949	3 165.9	8 135.2	11 301.1	3 483.7	8 120.3	11 604.0
Nadi	Canberra	994	1 002	1 996	0	0	0	0.0	0.0	0.0	0.0	0.0	0.0
Total	Canberra	994	1 002	1 996	0	0	0	0.0	0.0	0.0	0.0	0.0	0.0
Bandar Seri Begawan	Darwin	8 596	8 477	17 073	7 065	6 516	13 581	31.7	15.4	47.1	19.8	4.6	24.4
Bombay	"	0	0	0	0	1 313	1 313	0.0	0.0	0.0	0.0	3.9	3.9
Chicago	"	0	0	0	0	0	0	0.0	0.0	0.0	0.0	0.0	0.0
Denpasar	"	15 943	18 302	34 245	12 021	13 423	25 444	5.0	5.1	10.0	2.3	6.3	8.6
Hong Kong	"	1	0	1	0	0	0	0.0	0.0	0.0	0.0	0.0	0.0
Jakarta	"	0	37	37	0	0	0	0.0	0.6	0.6	0.0	0.0	0.0
Kuala Lumpur	"	0	0	0	0	0	0	0.0	33.8	33.8	0.0	0.0	0.0
Kupang	"	1 195	1 605	2 800	1 300	1 885	3 185	0.0	0.0	0.0	0.0	0.0	0.0
Manila	"	0	0	0	18	0	18	0.0	0.0	0.0	0.0	0.0	0.0
New York	"	0	0	0	0	0	0	0.0	0.0	0.0	0.0	0.0	0.0
Shanghai	"	0	0	0	0	0	0	0.0	0.0	0.0	68.1	0.0	68.1
Singapore	"	26 296	22 763	49 059	37 936	34 788	72 724	374.3	206.5	580.8	307.6	143.7	451.4
Tokyo	"	0	0	0	0	189	189	0.0	0.0	0.0	0.0	0.0	0.0
Total	Darwin	52 031	51 184	103 215	58 340	58 114	116 454	410.9	261.4	672.3	397.9	158.5	556.4
Auckland	Gold Coast/Coolangatta	29 388	29 735	59 123	44 040	44 684	88 724	0.0	0.0	0.0	0.2	0.9	1.1
Christchurch	"	22 885	21 673	44 558	32 742	31 660	64 402	0.0	0.0	0.0	0.0	0.0	0.0
Dunedin	"	7 527	7 301	14 828	2 133	2 104	4 237	0.0	0.0	0.0	0.0	0.0	0.0
Fukuoka	"	94	67	161	22	0	22	0.0	0.0	0.0	0.0	0.0	0.0
Hamilton	"	9 505	9 453	18 958	10 081	10 305	20 386	0.0	0.0	0.0	0.0	0.0	0.0
Osaka	"	8 239	10 718	18 957	6 112	8 733	14 845	0.0	20.9	20.9	0.0	62.0	62.0
Wellington	"	1 430	1 429	2 859	8 967	8 912	17 879	0.0	0.0	0.0	0.0	0.0	0.0
Total	Gold Coast/Coolangatta	79 068	80 376	159 444	104 097	106 398	210 495	0.0	20.9	20.9	0.2	62.9	63.1
Anchorage	Melbourne	0	0	0	0	0	0	0.0	0.0	0.0	0.0	0.0	0.0
Atlanta	"	0	0	0	0	0	0	0.0	0.0	0.0	0.0	0.0	0.0
Auckland	"	323 725	325 151	648 876	331 236	323 839	655 075	17 970.4	17 618.9	35 589.3	16 850.5	16 794.4	33 644.8
Bangkok	"	105 065	92 073	197 138	105 247	95 905	201 152	4 935.6	5 275.9	10 211.5	5 786.3	4 517.6	10 303.9
Beijing	"	11 407	8 013	19 420	13 718	11 826	25 544	49.7	116.1	165.8	54.4	147.3	201.7
Bombay	"	0	0	0	1 306	270	1 576	0.0	0.0	0.0	13.2	2.7	15.9
Chicago	"	0	0	0	31	0	31	5 376.9	385.1	5 762.0	4 811.9	0.0	4 811.9
Christchurch	"	132 905	132 890	265 795	123 351	124 599	247 950	3 102.6	1 417.1	4 519.7	696.5	517.4	1 213.9
Denpasar	"	69 765	68 116	137 881	42 924	41 877	84 801	1 559.5	1 577.8	3 137.3	1 192.8	1 487.3	2 680.0
Dubai	"	114 700	110 885	225 585	137 904	138 098	276 002	3 749.3	4 679.4	8 428.6	5 420.8	7 078.9	12 499.7
Dunedin	"	10 305	9 437	19 742	7 124	7 029	14 153	0.0	0.0	0.0	0.0	0.0	0.0

TABLE 5: SCHEDULED INTERNATIONAL TRAFFIC BY CITY PAIRS: Year ended June

Foreign Port	Australian Port	Passengers						Freight (tonnes)					
		2005			2006			2005			2006		
		Inbound	Outbound	Total	Inbound	Outbound	Total	Inbound	Outbound	Total	Inbound	Outbound	Total
Frankfurt	Melbourne	0	0	0	0	0	0	1 255.3	982.7	2 238.0	79.2	125.8	205.0
Guangzhou	"	16 824	14 041	30 865	22 130	16 107	38 237	469.7	153.7	623.4	643.7	131.3	775.0
Hamilton	"	9 734	9 408	19 142	8 524	8 371	16 895	0.0	0.0	0.0	0.0	0.0	0.0
Hanoi	"	3 568	4 327	7 895	4 258	5 190	9 448	0.0	36.7	36.7	0.0	24.7	24.7
Ho Chi Minh City	"	32 365	29 322	61 687	35 215	31 692	66 907	1 025.3	216.8	1 242.0	1 138.0	299.7	1 437.7
Hong Kong	"	198 871	199 474	398 345	212 360	203 331	415 691	18 978.9	14 402.7	33 381.7	18 312.7	14 669.2	32 981.8
Honolulu	"	79	3 302	3 381	73	0	73	0.0	60.9	60.9	0.0	0.0	0.0
Jakarta	"	0	0	0	0	0	0	0.0	49.0	49.0	0.0	0.0	0.0
Karachi	"	0	0	0	0	0	0	0.0	0.0	0.0	0.0	0.0	0.0
Kuala Lumpur	"	165 709	164 558	330 267	165 533	163 342	328 875	12 099.2	5 606.4	17 705.6	9 352.3	5 591.0	14 943.2
Lahore	"	0	0	0	0	0	0	0.0	0.0	0.0	0.0	0.0	0.0
London	"	98 633	97 594	196 227	111 009	113 541	224 550	4 943.3	757.3	5 700.6	3 516.9	652.3	4 169.3
Los Angeles	"	144 444	133 772	278 216	155 473	147 889	303 362	3 020.7	4 570.1	7 590.8	3 245.8	4 453.6	7 699.5
Luxembourg	"	0	0	0	0	0	0	4 868.3	0.0	4 868.3	5 005.7	0.0	5 005.7
Manila	"	14 099	11 948	26 047	14 130	11 644	25 774	604.4	570.8	1 175.2	652.7	376.4	1 029.1
Mauritius	"	6 347	6 540	12 887	6 943	7 588	14 531	142.0	224.9	366.9	129.5	156.0	285.5
Nadi	"	54 487	57 478	111 965	48 076	49 564	97 640	1 215.5	1 345.3	2 560.8	1 139.6	1 462.4	2 601.9
Nagoya	"	0	0	0	0	0	0	0.0	0.0	0.0	0.0	0.0	0.0
Nauru	"	600	647	1 247	0	0	0	0.7	19.4	20.0	0.0	0.0	0.0
New York	"	1 889	2 346	4 235	2 056	2 632	4 688	103.2	0.0	103.2	398.0	0.0	398.0
Noumea	"	32	0	32	0	0	0	0.0	0.0	0.0	0.0	0.0	0.0
Palmerston	"	9 715	9 407	19 122	7 108	6 861	13 969	0.0	0.0	0.0	0.0	0.0	0.0
Penang	"	0	0	0	0	0	0	0.0	0.8	0.8	0.0	0.0	0.0
Phuket	"	0	9 228	9 228	0	8 563	8 563	0.0	12.4	12.4	0.0	0.3	0.3
Port Vila	"	2 026	3 209	5 235	0	0	0	0.0	0.0	0.0	0.0	0.0	0.0
Queenstown	"	1 258	1 564	2 822	1 186	1 381	2 567	0.0	0.0	0.0	0.0	0.0	0.0
Rarotonga	"	103	112	215	553	603	1 156	0.0	0.0	0.0	0.0	0.0	0.0
San Francisco	"	0	0	0	405	134	539	0.0	0.0	0.0	0.8	6.4	7.2
Sapporo	"	0	0	0	0	0	0	0.0	0.0	0.0	0.0	0.0	0.0
Shanghai	"	35 365	29 404	64 769	39 038	37 749	76 787	1 277.5	763.9	2 041.4	1 284.3	801.4	2 085.7
Sharjah	"	0	0	0	0	0	0	0.0	0.0	0.0	0.0	0.0	0.0
Singapore	"	393 457	371 845	765 302	422 711	395 992	818 703	23 076.2	25 677.7	48 753.9	25 935.0	27 630.9	53 565.8
Tianjin	"	0	0	0	0	0	0	0.0	0.0	0.0	0.0	60.2	60.2
Tokyo	"	52 914	38 433	91 347	48 137	38 038	86 175	1 889.9	2 129.3	4 019.2	1 943.7	1 826.7	3 770.4
Vancouver	"	0	0	0	9	57	66	0.0	0.0	0.0	0.0	0.0	0.0
Vienna	"	29 161	29 078	58 239	30 552	32 652	63 204	0.0	0.0	0.0	0.0	0.0	0.0
Wellington	"	65 730	65 271	131 001	63 485	65 099	128 584	423.1	249.3	672.4	265.3	296.7	562.1
Total	Melbourne	2 105 282	2 038 873	4 144 155	2 161 805	2 091 463	4 253 268	112 137.0	88 900.3	201 037.3	107 869.5	89 110.5	196 980.0
Auckland	Norfolk Island	10 191	10 381	20 572	9 654	9 872	19 526	110.3	14.4	124.7	90.6	14.3	104.9
Total	Norfolk Island	10 191	10 381	20 572	9 654	9 872	19 526	110.3	14.4	124.7	90.6	14.3	104.9
Auckland	Perth	52 103	50 761	102 864	54 432	52 832	107 264	1 754.9	1 071.8	2 826.7	2 304.4	1 090.2	3 394.6
Bandar Seri Begawan	"	21 810	22 219	44 029	26 875	27 167	54 042	127.1	483.2	610.3	151.9	666.0	817.9
Bangkok	"	44 196	35 314	79 510	46 335	34 831	81 166	1 694.2	1 809.3	3 503.5	1 500.0	1 612.2	3 112.2
Bombay	"	0	0	0	0	0	0	50.1	0.0	50.1	0.0	0.0	0.0
Chicago	"	0	0	0	0	0	0	0.0	3.1	3.1	0.0	0.0	0.0
Denpasar	"	111 592	113 120	224 712	80 224	79 465	159 689	123.6	237.7	361.3	75.9	142.3	218.2

TABLE 5: SCHEDULED INTERNATIONAL TRAFFIC BY CITY PAIRS: Year ended June

Foreign Port	Australian Port	Passengers						Freight (tonnes)					
		2005			2006			2005			2006		
		Inbound	Outbound	Total	Inbound	Outbound	Total	Inbound	Outbound	Total	Inbound	Outbound	Total
Dubai	Perth	79 561	76 749	156 310	88 166	91 407	179 573	1 634.1	2 668.2	4 302.2	2 022.8	2 680.1	4 702.9
Frankfurt	"	0	0	0	0	0	0	3.0	0.0	3.0	0.0	0.0	0.0
Hong Kong	"	61 288	52 432	113 720	72 558	63 053	135 611	2 683.5	3 336.7	6 020.2	2 791.8	3 956.3	6 748.1
Jakarta	"	13 922	14 475	28 397	14 323	14 391	28 714	62.0	165.1	227.0	28.0	1.9	29.9
Johannesburg	"	50 022	42 248	92 270	48 811	41 726	90 537	1 196.8	2 272.9	3 469.7	893.8	2 369.5	3 263.3
Kuala Lumpur	"	103 182	102 681	205 863	102 634	99 325	201 959	2 281.4	859.2	3 140.6	2 883.0	1 007.9	3 890.9
Kuching	"	7 899	8 598	16 497	5 483	6 271	11 754	0.7	82.2	82.9	0.7	51.1	51.8
London	"	17 107	17 441	34 548	21 167	21 149	42 316	314.0	82.9	396.9	358.1	98.8	456.9
Mauritius	"	7 111	7 253	14 364	9 669	8 993	18 662	60.5	252.6	313.1	49.0	267.2	316.2
Osaka	"	0	0	0	158	0	158	0.0	0.0	0.0	0.0	0.0	0.0
Paris	"	3 860	2 725	6 585	0	0	0	119.7	0.4	120.1	0.0	0.0	0.0
Phuket	"	0	8 219	8 219	0	11 276	11 276	0.0	45.2	45.2	0.0	10.9	10.9
Shanghai	"	0	0	0	0	0	0	0.0	5.7	5.7	0.0	0.0	0.0
Singapore	"	389 165	375 044	764 209	411 955	390 798	802 753	10 327.3	19 261.9	29 589.3	12 755.2	18 008.2	30 763.4
Tokyo	"	27 350	26 239	53 589	26 960	27 316	54 276	499.3	836.5	1 335.7	982.4	929.7	1 912.0
Total	Perth	990 168	955 518	1 945 686	1 009 750	970 000	1 979 750	22 932.0	33 474.6	56 406.5	26 797.2	32 892.2	59 689.4
Almaty	Sydney	0	0	0	0	0	0	0.0	0.0	0.0	0.0	15.4	15.4
Amsterdam	"	0	0	0	0	0	0	7 769.1	1 294.5	9 063.7	7 153.8	1 393.6	8 547.4
Anchorage	"	0	0	0	0	0	0	0.0	0.0	0.0	0.0	0.0	0.0
Apia	"	6 996	7 644	14 640	10 720	11 697	22 417	34.4	27.2	61.6	16.8	22.3	39.1
Athens	"	314	0	314	0	0	0	0.0	0.0	0.0	0.0	0.0	0.0
Atlanta	"	0	0	0	0	0	0	0.0	0.0	0.0	0.0	0.0	0.0
Auckland	"	625 107	631 966	1 257 073	603 810	611 742	1 215 552	25 785.5	33 717.7	59 503.2	27 110.0	34 160.3	61 270.3
Bahrain	"	53 615	54 028	107 643	52 494	52 364	104 858	1 764.8	1 931.2	3 695.9	1 635.7	2 337.4	3 973.1
Bandar Seri Begawan	"	9 691	10 404	20 095	18 286	17 709	35 995	498.9	353.1	851.9	922.7	952.0	1 874.7
Bangkok	"	235 620	232 145	467 765	267 188	253 591	520 779	7 549.8	3 659.1	11 209.0	10 130.7	3 708.3	13 839.0
Beijing	"	22 832	25 756	48 588	38 777	38 685	77 462	127.5	415.5	543.0	348.6	588.6	937.2
Belo Horizonte	"	0	0	0	0	0	0	0.0	0.0	0.0	0.0	0.0	0.0
Bombay	"	31 700	29 121	60 821	33 119	30 783	63 902	713.3	85.1	798.3	674.1	255.9	930.0
Buenos Aires	"	16 668	16 149	32 817	20 243	19 795	40 038	138.7	229.0	367.7	191.0	273.8	464.8
Cebu	"	0	0	0	0	0	0	0.0	0.0	0.0	0.0	0.0	0.0
Chicago	"	12 882	12 116	24 998	13 835	15 287	29 122	4 833.5	2.0	4 835.4	8 387.3	64.4	8 451.7
Christchurch	"	259 062	257 352	516 414	265 494	255 614	521 108	4 603.1	5 330.2	9 933.3	6 505.4	5 071.3	11 576.7
Denpasar	"	94 038	95 071	189 109	64 879	64 801	129 680	2 110.8	1 075.5	3 186.4	1 761.3	860.5	2 621.8
Dubai	"	68 471	63 335	131 806	121 647	125 147	246 794	2 716.8	3 099.6	5 816.5	5 287.0	4 144.9	9 431.9
Dunedin	"	11 775	11 483	23 258	13 777	13 381	27 158	0.0	0.0	0.0	0.0	0.0	0.0
Fairbanks	"	0	0	0	0	0	0	0.0	0.0	0.0	0.0	0.0	0.0
Frankfurt	"	40 208	41 154	81 362	40 529	42 297	82 826	3 821.2	195.4	4 016.6	5 298.6	173.3	5 471.9
Guangzhou	"	46 834	47 726	94 560	43 582	44 796	88 378	2 405.3	122.1	2 527.4	2 497.5	96.6	2 594.0
Hamilton	"	10 088	10 326	20 414	15 735	15 742	31 477	0.0	0.0	0.0	0.0	0.0	0.0
Hanoi	"	1 391	6 816	8 207	6 753	7 936	14 689	0.0	0.0	0.0	0.0	9.3	9.3
Ho Chi Minh City	"	6 686	35 242	41 928	35 607	35 407	71 014	247.5	175.7	423.2	1 583.0	152.5	1 735.5
Hong Kong	"	346 135	335 176	681 311	416 297	409 593	825 890	28 099.1	10 277.6	38 376.8	32 374.5	11 460.2	43 834.8
Honolulu	"	101 593	91 358	192 951	108 310	98 331	206 641	3 676.3	3 356.6	7 032.9	2 840.7	3 362.6	6 203.3
Jakarta	"	33 946	33 469	67 415	29 895	29 220	59 115	556.4	995.6	1 552.0	481.9	1 034.4	1 516.3
Johannesburg	"	58 566	54 577	113 143	59 947	57 180	117 127	1 401.5	646.6	2 048.1	1 609.7	412.1	2 021.8

TABLE 5: SCHEDULED INTERNATIONAL TRAFFIC BY CITY PAIRS: Year ended June

Foreign Port	Australian Port	Passengers						Freight (tonnes)					
		2005			2006			2005			2006		
		Inbound	Outbound	Total	Inbound	Outbound	Total	Inbound	Outbound	Total	Inbound	Outbound	Total
Kota Kinabalu	Sydney	13 666	13 167	26 833	0	0	0	3.5	198.5	202.0	0.0	0.0	0.0
Kuala Lumpur	"	180 789	179 793	360 582	180 280	172 382	352 662	11 203.1	1 901.2	13 104.3	12 599.3	1 821.5	14 420.9
Kuching	"	0	1 311	1 311	0	1 247	1 247	0.0	26.3	26.3	0.0	26.3	26.3
London	"	220 745	227 854	448 599	242 921	253 988	496 909	8 874.3	2 437.0	11 311.3	9 626.5	2 560.4	12 186.9
Los Angeles	"	311 670	324 367	636 037	320 151	327 908	648 059	22 131.9	4 904.6	27 036.4	22 007.9	6 300.3	28 308.2
Louisville	"	0	0	0	0	0	0	4 544.3	0.0	4 544.3	5 964.6	0.0	5 964.6
Manila	"	56 178	54 580	110 758	53 724	51 982	105 706	1 287.9	466.5	1 754.4	1 145.6	451.7	1 597.3
Mauritius	"	7 047	5 932	12 979	7 441	6 112	13 553	119.8	19.6	139.4	66.2	44.9	111.1
Miami	"	0	0	0	0	0	0	75.5	0.0	75.5	0.0	0.0	0.0
Nadi	"	115 226	112 946	228 172	140 081	137 943	278 024	3 316.7	2 334.0	5 650.8	3 174.5	2 438.6	5 613.1
Nagoya	"	7 377	9 045	16 422	6 855	6 870	13 725	442.9	301.9	744.8	538.0	205.2	743.1
New York	"	19 357	21 096	40 453	22 889	24 488	47 377	5 112.8	140.6	5 253.5	5 887.7	298.5	6 186.2
Noumea	"	45 491	42 667	88 158	43 972	42 643	86 615	50.6	813.9	864.6	27.8	693.2	721.0
Osaka	"	36 271	88 121	124 392	37 719	80 902	118 621	1 422.9	1 970.3	3 393.3	1 237.4	1 036.9	2 274.2
Palmerston	"	9 268	9 043	18 311	10 330	10 335	20 665	0.0	0.0	0.0	0.0	0.0	0.0
Papeete	"	0	0	0	17 214	19 386	36 600	0.0	0.0	0.0	814.0	482.7	1 296.6
Phuket	"	40	5 059	5 099	2 726	7 783	10 509	0.0	0.0	0.0	24.0	4.7	28.7
Port Moresby	"	8 195	8 812	17 007	7 425	8 645	16 070	411.1	289.2	700.2	293.6	252.1	545.7
Port Vila	"	18 513	17 873	36 386	18 979	18 308	37 287	104.1	190.1	294.2	119.1	264.3	383.4
Queenstown	"	9 057	11 180	20 237	16 829	18 081	34 910	0.0	0.0	0.0	0.0	0.2	0.2
San Francisco	"	92 486	96 506	188 992	106 387	108 909	215 296	770.4	2 884.5	3 654.9	654.1	3 592.5	4 246.5
Santiago	"	22 189	22 618	44 807	25 405	24 338	49 743	1 169.6	552.3	1 721.9	1 442.3	688.4	2 130.7
Seattle	"	697	788	1 485	0	0	0	0.0	0.0	0.0	0.0	0.0	0.0
Seoul	"	182 362	186 626	368 988	158 408	154 673	313 081	14 872.2	6 924.0	21 796.2	10 810.9	4 951.5	15 762.4
Shanghai	"	91 442	85 392	176 834	110 630	101 095	211 725	7 035.1	572.3	7 607.4	8 144.0	1 215.8	9 359.8
Sharjah	"	0	0	0	0	0	0	0.0	204.0	204.0	0.0	242.3	242.3
Singapore	"	488 689	457 978	946 667	490 423	466 745	957 168	25 137.4	12 805.2	37 942.6	23 807.4	12 026.0	35 833.3
Subic Bay	"	0	0	0	0	0	0	0.0	5 411.4	5 411.4	0.0	2 998.1	2 998.1
Suva	"	6 897	10 234	17 131	6 285	8 741	15 026	0.5	19.7	20.2	0.2	18.6	18.8
Taipei	"	61 367	61 843	123 210	56 792	53 597	110 389	2 138.1	1 401.1	3 539.1	2 002.8	1 096.3	3 099.2
Tianjin	"	0	0	0	0	0	0	0.0	0.0	0.0	0.0	0.0	0.0
Tokyo	"	228 671	236 957	465 628	216 796	231 878	448 674	5 117.0	6 787.6	11 904.6	4 827.5	5 089.7	9 917.2
Toledo	"	0	0	0	0	0	0	1 511.7	0.0	1 511.7	2 278.4	0.0	2 278.4
Tongatapu	"	3 262	3 018	6 280	6 166	6 700	12 866	18.5	26.6	45.1	7.5	8.7	16.1
Toronto	"	0	0	0	1 603	1 452	3 055	0.0	0.0	0.0	46.2	2.3	48.5
Vancouver	"	55 939	60 133	116 072	49 779	54 455	104 234	122.6	127.4	249.9	3.4	11.3	14.7
Vienna	"	62 055	63 600	125 655	66 651	71 938	138 589	0.0	0.0	0.0	0.0	0.0	0.0
Wellington	"	150 199	154 376	304 575	117 276	119 871	237 147	531.1	364.1	895.2	384.0	434.9	818.8
Total	Sydney	4 599 363	4 675 329	9 274 692	4 823 061	4 844 493	9 667 554	216 379.0	121 063.2	337 442.3	234 745.2	119 807.4	354 552.5
Anchorage	Townsville (a)	0	0	0	0	0	0	0.0	0.0	0.0	0.0	0.0	0.0
Chicago	"	0	0	0	0	0	0	0.0	0.0	0.0	0.0	0.0	0.0
Hong Kong	"	0	0	0	0	0	0	0.0	0.0	0.0	0.0	0.0	0.0
Honolulu	"	0	0	0	0	0	0	0.0	0.0	0.0	0.0	0.0	0.0
New York	"	0	0	0	0	0	0	0.0	0.0	0.0	0.0	0.0	0.0
Shanghai	"	0	0	0	0	0	0	0.0	0.0	0.0	0.0	0.0	0.0
Sharjah	"	0	0	0	0	0	0	0.0	0.0	0.0	0.0	50.6	50.6

TABLE 5: SCHEDULED INTERNATIONAL TRAFFIC BY CITY PAIRS: Year ended June

Foreign Port	Australian Port	Passengers						Freight (tonnes)					
		2005			2006			2005			2006		
		Inbound	Outbound	Total	Inbound	Outbound	Total	Inbound	Outbound	Total	Inbound	Outbound	Total
Singapore	Townsville	0	0	0	0	0	0	0.0	0.0	0.0	0.0	0.0	0.0
Total	Townsville	0	0	0	0	0	0	0.0	0.0	0.0	0.0	50.6	50.6
Almaty	Australia	0	0	0	0	0	0	0.0	0.0	0.0	0.0	15.4	15.4
Amsterdam	"	0	0	0	0	0	0	7 769.1	1 294.5	9 063.7	7 153.8	1 393.6	8 547.4
Anchorage	"	0	0	0	0	0	0	0.0	0.0	0.0	0.0	0.0	0.0
Apia	"	6 996	7 644	14 640	10 720	11 697	22 417	34.4	27.2	61.6	16.8	22.3	39.1
Athens	"	314	0	314	0	0	0	0.0	0.0	0.0	0.0	0.0	0.0
Atlanta	"	0	0	0	0	0	0	0.0	0.0	0.0	0.0	0.0	0.0
Auckland	"	1 441 051	1 469 857	2 910 908	1 452 978	1 473 557	2 926 535	55 048.3	61 506.8	116 555.1	56 746.8	62 200.3	118 947.2
Bahrain	"	53 615	54 028	107 643	52 494	52 364	104 858	1 764.8	1 931.2	3 695.9	1 635.7	2 337.4	3 973.1
Bandar Seri Begawan	"	56 685	57 751	114 436	67 639	66 843	134 482	1 115.8	1 850.4	2 966.1	1 389.3	2 573.7	3 962.9
Bangkok	"	423 253	396 104	819 357	458 584	423 787	882 371	15 597.7	11 819.3	27 417.0	19 177.0	10 648.8	29 825.7
Beijing	"	34 239	33 769	68 008	52 495	50 511	103 006	177.2	531.6	708.8	403.0	735.9	1 138.9
Belo Horizonte	"	0	0	0	0	0	0	0.0	78.0	78.0	0.0	0.0	0.0
Bombay	"	31 705	29 121	60 826	34 425	32 366	66 791	763.3	85.1	848.4	687.4	262.5	949.8
Buenos Aires	"	16 668	16 149	32 817	20 243	19 795	40 038	138.7	229.0	367.7	191.0	273.8	464.8
Cebu	"	0	0	0	0	0	0	0.0	0.0	0.0	0.0	19.5	19.5
Chicago	"	12 882	12 116	24 998	13 866	15 287	29 153	10 210.4	390.1	10 600.5	13 199.1	64.4	13 263.5
Christchurch	"	548 710	545 645	1 094 355	561 269	551 633	1 112 902	7 956.0	6 969.6	14 925.6	7 625.5	6 022.9	13 648.4
Denpasar	"	344 180	346 721	690 901	234 067	232 046	466 113	4 773.4	3 194.2	7 967.7	3 898.6	2 756.4	6 655.1
Dubai	"	317 581	308 403	625 984	417 240	425 636	842 876	9 499.9	11 935.7	21 435.6	14 142.4	15 851.2	29 993.6
Dunedin	"	46 223	45 182	91 405	43 889	44 503	88 392	0.0	0.0	0.0	0.0	0.0	0.0
Fairbanks	"	0	0	0	0	0	0	0.0	0.0	0.0	0.0	0.0	0.0
Frankfurt	"	40 208	41 154	81 362	40 529	42 297	82 826	5 079.4	1 178.1	6 257.5	5 377.8	299.2	5 676.9
Fukuoka	"	24 050	23 358	47 408	17 303	17 493	34 796	41.5	325.9	367.4	23.2	169.8	193.0
Guam	"	13 550	13 971	27 521	12 050	12 749	24 799	3.8	55.9	59.8	4.1	61.0	65.2
Guangzhou	"	63 658	61 767	125 425	65 712	60 903	126 615	2 875.0	275.8	3 150.8	3 141.2	227.9	3 369.1
Hamilton	"	49 172	49 604	98 776	53 376	54 188	107 564	0.0	0.0	0.0	0.0	0.0	0.0
Hanoi	"	4 959	11 143	16 102	11 011	13 126	24 137	0.0	36.7	36.7	0.0	34.0	34.0
Ho Chi Minh City	"	39 051	64 564	103 615	70 822	67 099	137 921	1 272.8	392.5	1 665.3	2 721.0	452.2	3 173.2
Hong Kong	"	765 938	729 960	1 495 898	881 968	841 303	1 723 271	56 210.9	34 673.4	90 884.2	60 904.8	37 089.6	97 994.4
Honiara	"	13 393	13 908	27 301	12 538	11 860	24 398	149.2	52.7	201.9	100.8	41.6	142.4
Honolulu	"	101 672	94 660	196 332	108 383	98 331	206 714	3 676.3	3 417.5	7 093.8	2 840.7	3 362.6	6 203.3
Jakarta	"	48 059	47 981	96 040	44 218	43 611	87 829	618.3	1 210.2	1 828.6	509.9	1 036.3	1 546.3
Johannesburg	"	108 588	96 825	205 413	108 758	98 906	207 664	2 598.3	2 919.5	5 517.8	2 503.6	2 781.6	5 285.1
Karachi	"	0	0	0	0	0	0	0.0	0.0	0.0	0.0	0.0	0.0
Kota Kinabalu	"	13 666	13 167	26 833	0	0	0	3.5	198.5	202.0	0.0	0.0	0.0
Kuala Lumpur	"	558 330	559 102	1 117 432	557 506	542 333	1 099 839	29 042.3	10 247.0	39 289.3	28 979.3	10 951.7	39 931.0
Kuching	"	7 899	9 909	17 808	5 483	7 518	13 001	0.7	108.5	109.2	0.7	77.4	78.1
Kupang	"	1 195	1 605	2 800	1 300	1 885	3 185	0.0	0.0	0.0	0.0	0.0	0.0
Lahore	"	0	0	0	0	0	0	0.0	0.0	0.0	0.0	0.0	0.0
London	"	336 499	342 889	679 388	375 097	388 678	763 775	14 131.6	3 277.2	17 408.7	13 501.5	3 311.6	16 813.1
Los Angeles	"	531 459	533 125	1 064 584	559 130	561 128	1 120 258	26 207.0	10 229.4	36 436.5	26 281.8	11 648.5	37 930.2
Louisville	"	0	0	0	0	0	0	4 544.3	0.0	4 544.3	5 964.6	0.0	5 964.6
Luxembourg	"	0	0	0	0	0	0	4 868.3	0.0	4 868.3	5 005.7	0.0	5 005.7
Manila	"	78 252	74 176	152 428	75 049	70 823	145 872	1 901.8	1 146.5	3 048.2	1 818.3	909.2	2 727.5

TABLE 5: SCHEDULED INTERNATIONAL TRAFFIC BY CITY PAIRS: Year ended June

Foreign Port	Australian Port	Passengers						Freight (tonnes)					
		2005			2006			2005			2006		
		Inbound	Outbound	Total	Inbound	Outbound	Total	Inbound	Outbound	Total	Inbound	Outbound	Total
Mauritius	Australia	20 505	19 725	40 230	24 053	22 693	46 746	322.3	497.1	819.4	244.6	468.2	712.8
Miami	"	0	0	0	0	0	0	75.5	0.0	75.5	0.0	0.0	0.0
Nadi	"	232 384	230 804	463 188	255 158	257 036	512 194	4 745.8	4 161.1	8 906.9	4 518.6	4 302.9	8 821.4
Nagoya	"	76 615	76 234	152 849	75 300	74 326	149 626	606.2	1 096.1	1 702.2	739.4	607.1	1 346.5
Nauru	"	4 450	4 134	8 584	2 953	2 883	5 836	15.1	189.4	204.5	7.4	125.9	133.3
New York	"	21 259	23 442	44 701	24 948	27 120	52 068	5 216.1	140.6	5 356.7	6 285.6	298.5	6 584.2
Noumea	"	64 158	62 935	127 093	62 828	63 302	126 130	83.2	962.2	1 045.4	37.5	836.2	873.7
Osaka	"	188 683	177 002	365 685	185 452	170 254	355 706	2 965.8	5 172.9	8 138.7	2 391.6	3 320.8	5 712.3
Palmerston	"	40 213	39 003	79 216	39 927	39 337	79 264	0.0	0.0	0.0	0.0	0.0	0.0
Papeete	"	0	0	0	17 214	19 386	36 600	0.0	0.0	0.0	814.0	482.7	1 296.6
Paris	"	3 860	2 725	6 585	0	0	0	119.7	0.4	120.1	0.0	0.0	0.0
Penang	"	0	0	0	0	0	0	0.0	0.8	0.8	0.0	0.0	0.0
Phuket	"	40	22 506	22 546	2 726	27 622	30 348	0.0	57.5	57.5	24.0	15.9	39.9
Port Moresby	"	66 458	67 788	134 246	69 886	70 608	140 494	1 953.3	3 375.6	5 328.9	1 535.0	3 648.6	5 183.6
Port Vila	"	36 783	36 687	73 470	40 938	40 353	81 291	138.2	314.4	452.5	165.7	414.0	579.7
Queenstown	"	12 643	15 414	28 057	20 919	22 509	43 428	0.0	0.0	0.0	0.0	0.2	0.2
Rarotonga	"	103	112	215	553	603	1 156	0.0	0.0	0.0	0.0	0.0	0.0
San Francisco	"	92 486	96 506	188 992	106 792	109 043	215 835	770.4	2 884.5	3 654.9	654.9	3 598.9	4 253.8
Santiago	"	22 189	22 618	44 807	25 405	24 338	49 743	1 169.6	552.3	1 721.9	1 442.3	688.4	2 130.7
Sapporo	"	8 598	8 532	17 130	6 638	7 526	14 164	9.6	5.3	15.0	6.8	13.8	20.7
Seattle	"	697	788	1 485	0	0	0	0.0	0.0	0.0	0.0	0.0	0.0
Seoul	"	216 295	214 969	431 264	194 314	188 486	382 800	15 668.8	8 355.4	24 024.2	11 514.6	6 042.3	17 556.9
Shanghai	"	126 807	114 796	241 603	149 668	138 844	288 512	8 312.5	1 342.0	9 654.5	9 496.4	2 017.2	11 513.5
Sharjah	"	0	0	0	0	0	0	0.0	204.0	204.0	0.0	292.9	292.9
Singapore	"	1 730 569	1 659 363	3 389 932	1 830 551	1 744 349	3 574 900	73 924.6	73 911.1	147 835.7	80 483.7	76 790.6	157 274.2
Subic Bay	"	0	0	0	0	0	0	0.0	5 411.4	5 411.4	0.0	2 998.1	2 998.1
Suva	"	6 897	10 234	17 131	6 285	8 741	15 026	0.5	19.7	20.2	0.2	18.6	18.8
Taipei	"	113 340	113 291	226 631	113 230	109 981	223 211	5 017.1	2 380.7	7 397.8	5 222.6	2 058.3	7 280.8
Tianjin	"	0	0	0	0	0	0	0.0	0.0	0.0	0.0	60.2	60.2
Tokyo	"	554 983	555 824	1 110 807	536 979	543 106	1 080 085	11 260.2	15 939.8	27 200.0	11 892.4	11 801.7	23 694.1
Toledo	"	0	0	0	0	0	0	1 511.7	0.0	1 511.7	2 278.4	0.0	2 278.4
Tongatapu	"	3 262	3 018	6 280	6 166	6 700	12 866	18.5	26.6	45.1	7.5	8.7	16.1
Toronto	"	0	0	0	1 603	1 452	3 055	0.0	0.0	0.0	46.2	2.3	48.5
Vancouver	"	55 939	60 133	116 072	49 788	54 512	104 300	122.6	127.4	249.9	3.4	11.3	14.7
Vienna	"	91 216	92 678	183 894	97 203	104 590	201 793	0.0	0.0	0.0	0.0	0.0	0.0
Wellington	"	272 280	275 702	547 982	255 851	259 525	515 376	968.1	632.3	1 600.5	703.5	780.2	1 483.7
Total	Australia	10 197 412	10 112 321	20 309 733	10 623 470	10 473 481	21 096 951	403 069.1	299 348.5	702 417.7	426 461.6	299 336.3	725 797.8

Please refer to explanatory notes - paragraphs 3, 8 and 13 in particular.

(a) Freighter operations only - during March, April and May 2006.

**TABLE 6 : INTERNATIONAL AIRLINES OWN STOPOVER REVENUE PASSENGERS,
AUSTRALIAN CITY PAIRS: Year ended June 2006**

City Pair Route	Total Passengers
Melbourne/Sydney	44 309
Brisbane/Sydney	35 595
Brisbane/Cairns	1 683
Adelaide/Melbourne	97
TOTAL	81 684

Notes:

1. Own Stopover Revenue Passengers : The aggregate of revenue passengers uplifted at one Australian airport and discharged (excluding transit passengers) at another Australian airport by the same foreign registered international airline on which they entered or left Australia.
2. City Pair Route represents the aggregation of passengers travelling in both directions.
3. This data is additional to the information presented in tables 1-5 which cover only those passengers travelling to/from overseas airports.

TABLE 7: TOTAL AIRCRAFT MOVEMENTS AT AUSTRALIAN INTERNATIONAL AIRPORTS BY AIRCRAFT TYPES: Year ended June 2006

Airport	Aircraft Types																	
	Passenger/Mixed														Freighters			All Types
	AB3	310	32S	330	340	737	747	767	777	M11	DH8	100	EM2	Metro	72F	74F	M1F	
Adelaide		52	83	873		303	80	882								191		2 464
Brisbane	4	66	3 466	3 083	314	4 952	3 653	2 100	4 612			76				10		22 336
Cairns			166	422		287	74	6 112			403	694		346				8 504
Darwin			508	780		401	10	394					212			4		2 309
Gold Coast/Coolangatta			998			844		647										2 489
Melbourne	164	14	3 414	3 328	2 213	1 741	6 171	2 419	4 524	217						1 008		25 213
Norfolk Island						206												206
Perth		213	156	2 616	1 412	1 310	722	1 339	2 444							12		10 224
Sydney	166	18	6 546	5 032	5 786	4 220	18 657	10 156	5 064						488	1 711	797	58 641
Townsville																6		6
Australia	334	363	15 337	16 134	9 725	14 264	29 367	23 167	17 526	217	403	770	212	346	488	2 942	797	132 392
% of All Types	0.3	0.3	11.6	12.2	7.3	10.8	22.2	17.5	13.2	0.2	0.3	0.6	0.2	0.3	0.4	2.2	0.6	100.0

Share of passenger aircraft movements:

Airbus	32.7%
Boeing	65.8%
Other	1.5%

NOTE:

These figures only cover scheduled operations by the airlines listed in this publication. Charter/ferry operations are not included. These figures are available electronically for January 2001 onwards. Prior to this, aircraft type data is not readily accessible.

Aircraft Types (all series)

Airbus	AB3	310	32S	330	340			
Boeing	737	747	757	767	777	72F	74F	76F
McDonnell Douglas	M11	M1F	D1F					
Fokker	100							
BAE	146							
Metro	Metro							
Embraer	EM2							