



Australian Government

Department of Infrastructure, Transport,  
Regional Development and Local Government  
Bureau of Infrastructure, Transport and Regional Economics



bitre

## AVIATION STATISTICS

# International Scheduled Air Transport 2007-08

IAA 126

© Commonwealth of Australia

Canberra

November 2008

ISSN 1324-5074

This work is copyright and the data contained in this publication should not be reproduced or used in any form without acknowledgement.

Inquiries

Should you require additional information about the statistics contained in this publication, please contact Mr Mano Manoranjan in Canberra by telephone (02) 6274 7790 or by facsimile (02) 6274 7727 or write to:

Aviation Statistics, Bureau of Infrastructure, Transport and Regional Economics  
Department of Infrastructure, Transport, Regional Development and Local Government  
GPO Box 594  
Canberra ACT 2601

Electronic mail: [AVSTATS@infrastructure.gov.au](mailto:AVSTATS@infrastructure.gov.au)

Web site: <http://www.bitre.gov.au/info.aspx?NodeId=49>

# CONTENTS

---

Explanatory Notes ..... 4-6

Data Issues and Airlines Commencing/Withdrawing Services.....7

Highlights ..... 8-15

Detailed Annual Tables

- 1. Scheduled International Air Traffic to and from Australia ..... 16-18
- 2. Scheduled Operator Market Shares and Growth..... 19-23
- 3. Airline Passenger Capacity and Utilisation to and from Australia by Operator ... 24-26
- 4. Australian International Airport Scheduled Traffic and Aircraft Movements .....27
- 5. Scheduled International Passengers and Freight by City Pairs ..... 28-34
- 6. International Airlines Own Stopover Revenue Passengers, Australian City Pairs ....35
- 7. Total Aircraft Movements at Australian International Airports by Aircraft Types .....36

# EXPLANATORY NOTES

---

## INTRODUCTION

1. This publication continues the series of publications on a financial year basis presenting statistical information on the scheduled operations of international airlines operating into/out of Australia.
2. The figures in this publication were obtained from reports submitted by scheduled international carriers and are the best available at the time of publication.

## COVERAGE

3. These statistics show uplift/discharge data – These data detail, by direction, the revenue traffic between the actual points of uplift and discharge within each flight, aggregated for all flights within the period. It shows the movement of traffic between two airports not necessarily directly connected but within the same flight number. Typically, flight numbers change when an aircraft reaches its home country. This means that uplift/discharge data for the port in the operator's home country are likely to be overstated by traffic whose origin/destination point is beyond that port. For example, uplift/discharge traffic reported in this publication as Singapore could include traffic whose origin/destination is Europe.
4. These statistics cover revenue traffic carried by the operators of scheduled regular public international air transport services only and do not include charter traffic.
5. Some airlines (generally, dedicated freighter operators) operate scheduled services into Australia but operate non-scheduled services out of Australia and therefore outbound activity is not recorded in this data collection.

## PRODUCTION AND INTERPRETATION

6. Tables 1 and 2 show the country of the relevant uplift or discharge port served by that airline. For example, traffic uplifted/discharged between Sydney and Singapore by British Airways would be shown as Singapore traffic in Tables 1 and 2.
7. Table 3 shows figures for the country of service (or route) for each airline and therefore may not equate to the data in Tables 1 and 2. For example, the British Airways UK service identified in Table 3 could include passengers uplifted or discharged in Singapore or Thailand as well as the UK; these passengers would be shown individually under those countries in Tables 1 and 2. The difference in treatment of data between Tables 1 and 2 and Table 3 is necessary in order to work out a meaningful Seat Utilisation figure for Table 3.

Figures shown in Table 3 may include total traffic into and out of Australia for airlines that fly through Australia (also necessary in order to work out a meaningful Seat Utilisation figure). Therefore, figures in Table 3 may not equate to figures in Tables 1 and 2. For example, passengers carried by Qantas Airways from New Zealand via Australia to the UK will be included in Table 3 but will not be included in Tables 1 or 2 as these passengers were not uplifted/discharged in Australia.

8. Table 5 – shows uplift/discharge passenger and freight data for city pairs with same flight number international flight connections.
9. Where figures have been rounded, discrepancies may occur between sums of component items and totals, and in percentage changes which are derived from figures prior to rounding.
10. Published figures may be revised where figures missing at the time of publication are received or misreporting/miscalculation necessitates revisions.

## DEFINITIONS

11. The following definitions have been used in this publication:
- (a) Aircraft Movement: A landing or a take off.
  - (b) Freight: The aggregate of all revenue freight uplifted.
  - (c) Inbound: Inbound to Australia/Australian international airport.
  - (d) Mail: The aggregate of all mail uplifted.
  - (e) Outbound: Outbound from Australia/Australian international airport.
  - (f) Revenue Passengers: please refer to paragraph 12.
  - (g) Seat Utilisation: The ratio of passengers carried to seats available, expressed as a percentage.
  - (h) Seats Available: Generally based on standard aircraft configuration, the aggregate of seats available on all flights operated over a particular service.
  - (i) Services: Scheduled flights over authorised routes which are listed according to the main ports involved.

## COMPARABILITY OF DATA OVER TIME

12. Revenue Passengers:
- For July 2000 and onwards: All passengers paying any fare (frequent flyer redemption passengers are regarded as revenue passengers). In most cases, Revenue Passengers will now include all passengers excluding Free Of Charge passengers and positioning crew.
  - To December 1999: The aggregate of all passengers paying 25% or more of the standard air fare (as defined by ICAO).
  - January 2000 to June 2000: Transition period.

The Revenue Passenger definition change could result in approximately a three per cent increase in passenger numbers over a full period (month or year).

13. Country and City data – reporting of Uplift/Discharge data by Qantas Airways:
- Prior to January 2003: Uplift/Discharge within Qantas Airways' international network.
  - For January 2003 and onwards: Uplift/Discharge within flight number – as per the standard definition.

For example, what was previously reported as Adelaide to London (no direct services between these two cities) will now be reported as either Adelaide to Singapore or Melbourne/Sydney to London.

This change has been introduced in order to make the data comparable across all airlines operating services to/from Australia.

The effect of this change – comparing data under the two methods of reporting:

- Country of Port data (Tables 1 & 2) – There will be a shift in traffic to countries such as Singapore which are used as hubs and away from countries such as France, Germany and Italy which previously received traffic channelled through hubs. The total volume of traffic is not affected.
- Country of Service data (Table 3) – no change, as the Uplift/Discharge definition is not applicable to classifying the country of service.
- Australian International Airports (Table 4) – there may be a shift of traffic to the major airports.
- City Pairs (Table 5) – There will be a shift in traffic to cities such as Singapore which are used as hubs and away from cities such as Paris, Frankfurt and Rome which previously received traffic channelled through hubs. The total volume of traffic is not affected. Prior to the change, statistics reported for city pairs without “same flight number” international flight connections mainly reflected carriage on interconnecting international services by Qantas Airways. That traffic should have been interpreted as increasing the volume of traffic between the primary international ports rather than as an indicator of traffic volumes between ports without “same flight number” international flight connections. It should be noted however, that there was no double counting of traffic.

14. Country of Service classification by Qantas Airways:

- For July 2002 and onwards: based on the foreign country where same flight number services commence or cease – as per the standard definition. For example, Sydney-Denpasar-Singapore services would be classified as Country of Service = Singapore.
- Prior to July 2002: based on Qantas classification – this mainly affected Indonesia and Singapore Countries of Service. For example, Sydney-Denpasar-Singapore services were classified as Country of Service = Indonesia.

15. Airline data – Reporting of code share services:

Reporting of traffic split by airline code for code share arrangements was discontinued as of June 2000. For July 2000 and onwards, ALL traffic carried is reported under the operating airline regardless of code share arrangements.

Monthly airline market share figures for July 2001 onwards will be comparable with the same month in the previous year. However, these figures may not be comparable with monthly data prior to July 2000.

SYMBOLS AND OTHER USAGE

- nil or zero
- .. not applicable

INDEMNITY STATEMENT

The Bureau of Infrastructure, Transport and Regional Economics has taken due care in preparing the information contained in this publication. However, noting that data have been provided by third parties, the Commonwealth gives no warranty as to the accuracy, reliability, fitness for purpose, or otherwise of the information.

## DATA ISSUES

---

|   |  |
|---|--|
| <b>Air Vanuatu</b>                        | Traffic carried under code share arrangements may not be included for July 2000 to June 2006. No mail data received for August 2007 and onwards.   |
| <b>Austrian Airlines/Lauda Air</b>        | No outbound freight data for September 2000 onwards. No inbound freight data for April 2001 onwards. Service ceased March 2007.  |
| <b>Jetstar</b>                            | Freight data for services to/from Singapore is not available prior to July 2007. No mail data prior to November 2007.  |
| <b>Pacific Blue &amp; Polynesian Blue</b> | Mail data is included in freight data.   |
| <b>Vietnam Airlines</b>                   | No data received for inbound operations to Sydney for August 2002 to May 2004, July 2004 to November 2004, January 2005 to March 2005 and May 2005. Data for Outbound operations have been received for July 2003 onwards. |

## AIRLINES COMMENCING/WITHDRAWING SERVICES DURING 2007-08

---

### Commencing:

AirAsia X

Airnorth

OzJet

Silk Air

SkyAirWorld

### Withdrawing:

Freedom Air International

Japan Airlines

Merpati Nusantara Airlines

Silk Air

## HIGHLIGHTS – YEAR ENDED JUNE 2008

---

- Fifty-six international scheduled airlines operated services to/from Australia during the year (includes six dedicated freight airlines but excludes airlines operating only via code share arrangements).
- International scheduled passenger traffic in 2007-08 was 23.265 million compared to 22.138 million in 2006-07 – an increase of 5.1%.
- Chart I shows total passenger traffic for the years 1997-98 to 2007-08. Over this period, 2001-02 and 2002-03 were the only years that recorded a decrease in traffic compared to the previous year. Passenger traffic in 2001-02 was affected by the terrorist attacks on the USA in September 2001 and the collapse of Ansett International (also in September 2001). Passenger traffic in 2002-03 was affected by the SARS crisis (April, May and June 2003 in particular) and the war in Iraq.
- Following the two years of negative growth, each month since September 2003 has recorded the highest level of passenger traffic when compared to the same month in any previous year with the exception of March 2006. 2007-08 has recorded the highest level of passenger traffic ever carried in a financial year. Chart II compares monthly passenger traffic for 2007-08 with monthly passenger traffic for 2006-07.
- **Airline shares:** Chart III shows the airline market shares in terms of passenger carriage for the top ten airlines for 1997-98, 2002-03 and 2007-08. In the latest year, Qantas Airways had the largest share of the market with 25.8% followed by Singapore Airlines with 11.0%, Air New Zealand with 9.2%, Emirates with 7.2% and Jetstar with 5.7%.
- Compared to 1997-98, Qantas Airways' share has decreased by 11.6 percentage points, Singapore Airlines' share has increased by 3.8 percentage points, Air New Zealand's share has decreased by 0.1 percentage point, Emirates' share has increased by 6.8 percentage points (commenced operations to/from Australia in December 1996) and Jetstar did not commence international operations until December 2005. The decrease in share for the Qantas group (Qantas and Jetstar in 2007-08 compared to Qantas in 1997-98) was 5.8 percentage points. The Air New Zealand group's (Air New Zealand and Freedom Air) share has hardly changed over the same period (increase of 0.1 percentage point).
- **Australian airline share:** The share of passenger traffic accounted for by Australian designated airlines has decreased from 41.8% in 1997-98 (Qantas Airways, Ansett International and National Jet Systems) to 34.3% in 2002-03 (Qantas Airways and Australian Airlines) and to 33.0% in 2007-08 (Qantas Airways, Jetstar, Pacific Blue's operations to Fiji, Tonga, Vanuatu and some New Zealand services, Airnorth, OzJet and SkyAirWorld).
- **Seats and seat utilisation:** Total seats made available on international scheduled operations in 2007-08 totaled 30.625 million – an increase of 2.9% compared to 2006-07 and an increase of 1.9% compared to 2005-06. The overall seat utilisation percentage has increased from 71.3% in 2005-06 to 75.6% in 2006-07 and to 77.1% in 2007-08.
- **Low Cost Carrier (LCC) share:** The share of passenger traffic accounted for by LCCs has increased strongly over the last few years. In 2007-08, AirAsia X, Freedom Air International, Jetstar, Pacific Blue, Polynesian Blue and Tiger Airways together accounted for 10.9%. This compares to the LCC share of 7.8% in 2006-07, 5.4% in 2005-06 and 4.4% in 2004-05.



- **Freight:** International scheduled air freight traffic in 2007-08 increased by 3.5% over 2006-07 to 780 993 tonnes. Inbound freight traffic has increased by 6.5% and outbound freight traffic has decreased by 0.8%.
- **Dedicated freighters:** In 2007-08, scheduled dedicated freighter operations accounted for 28.5% of scheduled inbound air freight to Australia, 14.0% of scheduled outbound air freight from Australia and 22.8% of total scheduled air freight. Note that some freighters do not pick up freight in Australia – this accounts for the difference in inbound and outbound percentages. There are some smaller scheduled dedicated freighter operators who are not covered in these figures.
- **Traffic On Board Airport Traffic:** Table VI on page 13 shows Traffic On Board passenger movements, flights and operated seats at Australian international airports. All traffic is shown against the first Australian airport for arrivals to Australia and the last Australian airport for departures from Australia. Movements between Australian airports are not accounted for.
- Seat utilisation at all of the capital city airports other than Darwin was higher than 75% in 2007-08. Melbourne recorded the highest rate at 80.5%. Of the 30.625 million seats operated to/from Australia, Sydney accounted for 46.3% followed by Melbourne with 18.6% and Brisbane with 17.0%.
- **Traffic On Board Country:** Table VII on page 14 shows Traffic On Board passenger movements, flights and operated seats between Australia and countries with non-stop air service connections.
- New Zealand, Singapore, Hong Kong, Thailand and USA were the top five countries in terms of traffic on board passenger movements in 2007-08. Of these countries, New Zealand had the lowest seat utilisation rate at 75.7% while Singapore had the highest rate at 81.7% and the others had rates of around 80%. Note that the rate for New Zealand is most likely understated – see notes on page 14.
- **Hubs for passenger traffic:** Table VIII on page 14 shows Traffic On Board passenger movements, flights and operated seats between Australia and the top twenty-five international cities with non-stop air service connections.
- In 2007-08, 20.3% of the passenger movements to/from Australia were either to/from or via Singapore. Auckland was the next largest hub accounting for 14.4% followed by Hong Kong which accounted for 9.1%.
- **Traffic On Board Region:** Page 15 is a diagrammatic representation of Traffic On Board passenger movements, flights and operated seats by region. The region is based on international cities with non-stop air service connections with Australia. In 2007-08, 37.1% of the 30.625 million seats operated to/from Australia were either to/from or via South-East Asia. New Zealand had 23.8% of the total followed by North-East Asia with 21.1%.
- The information on Traffic On Board is derived from the uplift/discharge data used to produce the main Tables in this publication.

## YEAR ENDED JUNE 2008

Chart I Total International Passengers Carried (millions) - Years ended June 1998 to 2008

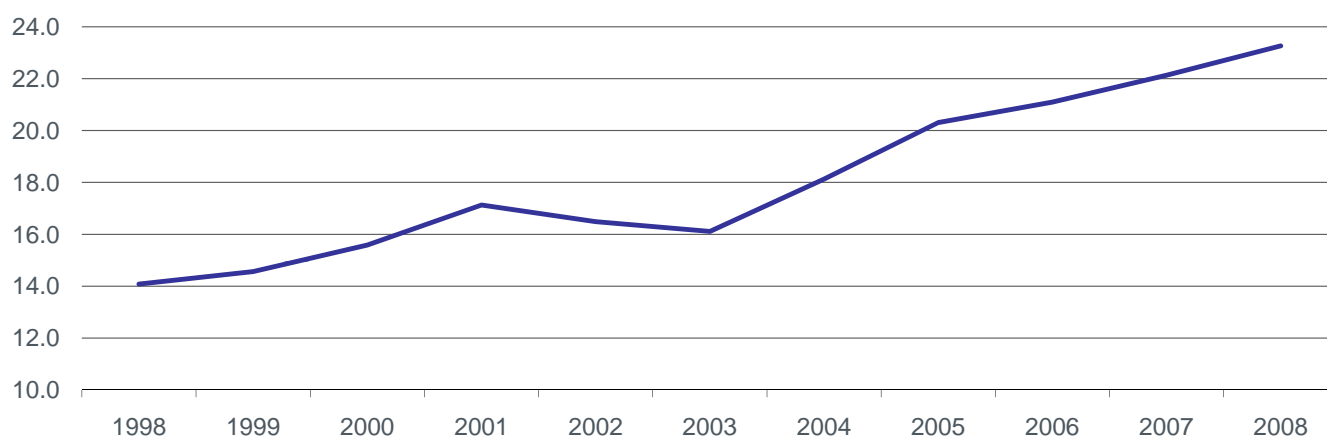


Chart II Total International Passengers Carried (millions) - By Month

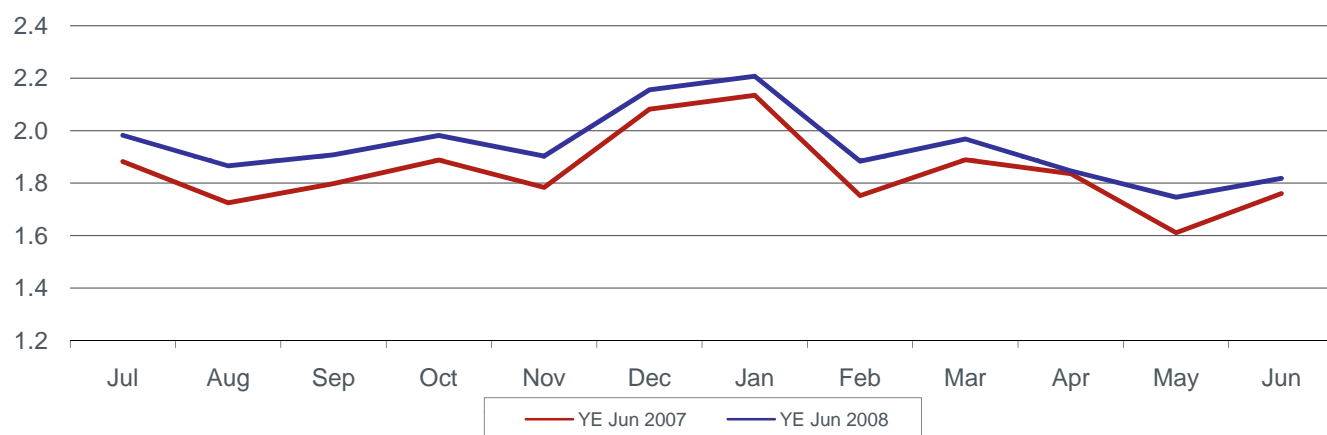


Table I International Passengers by Uplift/Discharge City Pairs (a)

| Foreign Port      | Australian Port | Year ended June 2006 | Year ended June 2007 | Year ended June 2008 | % of Total | % Change 2008/07 |
|-------------------|-----------------|----------------------|----------------------|----------------------|------------|------------------|
| Auckland          | Sydney          | 1 215 552            | 1 210 628            | 1 236 791            | 5.3%       | 2.2%             |
| Singapore         | Sydney          | 957 168              | 996 382              | 1 013 725            | 4.4%       | 1.7%             |
| Singapore         | Perth           | 802 753              | 870 674              | 956 474              | 4.1%       | 9.9%             |
| Hong Kong         | Sydney          | 825 890              | 892 307              | 901 794              | 3.9%       | 1.1%             |
| Singapore         | Melbourne       | 818 703              | 844 595              | 840 180              | 3.6%       | -0.5%            |
| Auckland          | Brisbane        | 754 473              | 797 323              | 828 746              | 3.6%       | 3.9%             |
| Auckland          | Melbourne       | 655 075              | 673 526              | 705 889              | 3.0%       | 4.8%             |
| Singapore         | Brisbane        | 677 138              | 696 020              | 694 053              | 3.0%       | -0.3%            |
| Bangkok           | Sydney          | 520 779              | 593 926              | 647 162              | 2.8%       | 9.0%             |
| Los Angeles       | Sydney          | 648 059              | 622 743              | 560 138              | 2.4%       | -10.1%           |
| Top 10 City Pairs |                 | 7 875 590            | 8 198 124            | 8 384 952            | 36.0%      | 2.3%             |
| Other City Pairs  |                 | 13 221 361           | 13 939 643           | 14 879 621           | 64.0%      | 6.7%             |
| ALL CITY PAIRS    |                 | 21 096 951           | 22 137 767           | 23 264 573           | 100.0%     | 5.1%             |

**Table II International Freight (tonnes) by Uplift/Discharge City Pairs (a)**

| Foreign Port      | Australian Port | Year ended June 2006 | Year ended June 2007 | Year ended June 2008 | % of Total | % Change 2008/07 |
|-------------------|-----------------|----------------------|----------------------|----------------------|------------|------------------|
| Auckland          | Sydney          | 61 270               | 59 798               | 59 759               | 7.7%       | -0.1%            |
| Singapore         | Melbourne       | 53 566               | 55 134               | 52 459               | 6.7%       | -4.9%            |
| Hong Kong         | Sydney          | 43 835               | 44 608               | 45 792               | 5.9%       | 2.7%             |
| Singapore         | Sydney          | 35 833               | 35 907               | 38 758               | 5.0%       | 7.9%             |
| Hong Kong         | Melbourne       | 32 982               | 29 808               | 34 824               | 4.5%       | 16.8%            |
| Singapore         | Perth           | 30 763               | 33 351               | 34 156               | 4.4%       | 2.4%             |
| Auckland          | Melbourne       | 33 645               | 32 672               | 31 240               | 4.0%       | -4.4%            |
| Kuala Lumpur      | Sydney          | 14 421               | 24 538               | 25 669               | 3.3%       | 4.6%             |
| Singapore         | Brisbane        | 22 813               | 24 006               | 25 226               | 3.2%       | 5.1%             |
| Kuala Lumpur      | Melbourne       | 14 943               | 21 110               | 21 069               | 2.7%       | -0.2%            |
| Top 10 City Pairs |                 | 344 071              | 360 931              | 368 952              | 47.2%      | 2.2%             |
| Other City Pairs  |                 | 381 955              | 393 525              | 412 041              | 52.8%      | 4.7%             |
| ALL CITY PAIRS    |                 | 726 027              | 754 456              | 780 993              | 100.0%     | 3.5%             |

**Table III International Passengers by Uplift/Discharge Country (a)**

| Country              | Year ended June 2006 | Year ended June 2007 | Year ended June 2008 | % of Total | % Change 2008/07 |
|----------------------|----------------------|----------------------|----------------------|------------|------------------|
| New Zealand          | 4 873 461            | 5 036 228            | 5 173 083            | 22.2%      | 2.7%             |
| Singapore            | 3 574 900            | 3 801 144            | 3 944 324            | 17.0%      | 3.8%             |
| Hong Kong            | 1 723 271            | 1 739 317            | 1 882 350            | 8.1%       | 8.2%             |
| USA                  | 1 624 028            | 1 710 607            | 1 703 534            | 7.3%       | -0.4%            |
| Thailand             | 912 719              | 1 189 799            | 1 409 165            | 6.1%       | 18.4%            |
| Japan                | 1 634 377            | 1 513 902            | 1 398 496            | 6.0%       | -7.6%            |
| United Arab Emirates | 842 876              | 1 007 911            | 1 262 794            | 5.4%       | 25.3%            |
| Malaysia             | 1 112 840            | 1 130 685            | 1 149 299            | 4.9%       | 1.6%             |
| UK                   | 763 775              | 779 368              | 781 613              | 3.4%       | 0.3%             |
| Indonesia            | 557 127              | 542 226              | 719 273              | 3.1%       | 32.7%            |
| Top 10 Countries     | 17 619 374           | 18 451 187           | 19 423 931           | 83.5%      | 5.3%             |
| Other Countries      | 3 477 577            | 3 686 580            | 3 840 642            | 16.5%      | 4.2%             |
| ALL COUNTRIES        | 21 096 951           | 22 137 767           | 23 264 573           | 100.0%     | 5.1%             |

**Table IV International Passenger Traffic through Australian International Airports (a)**

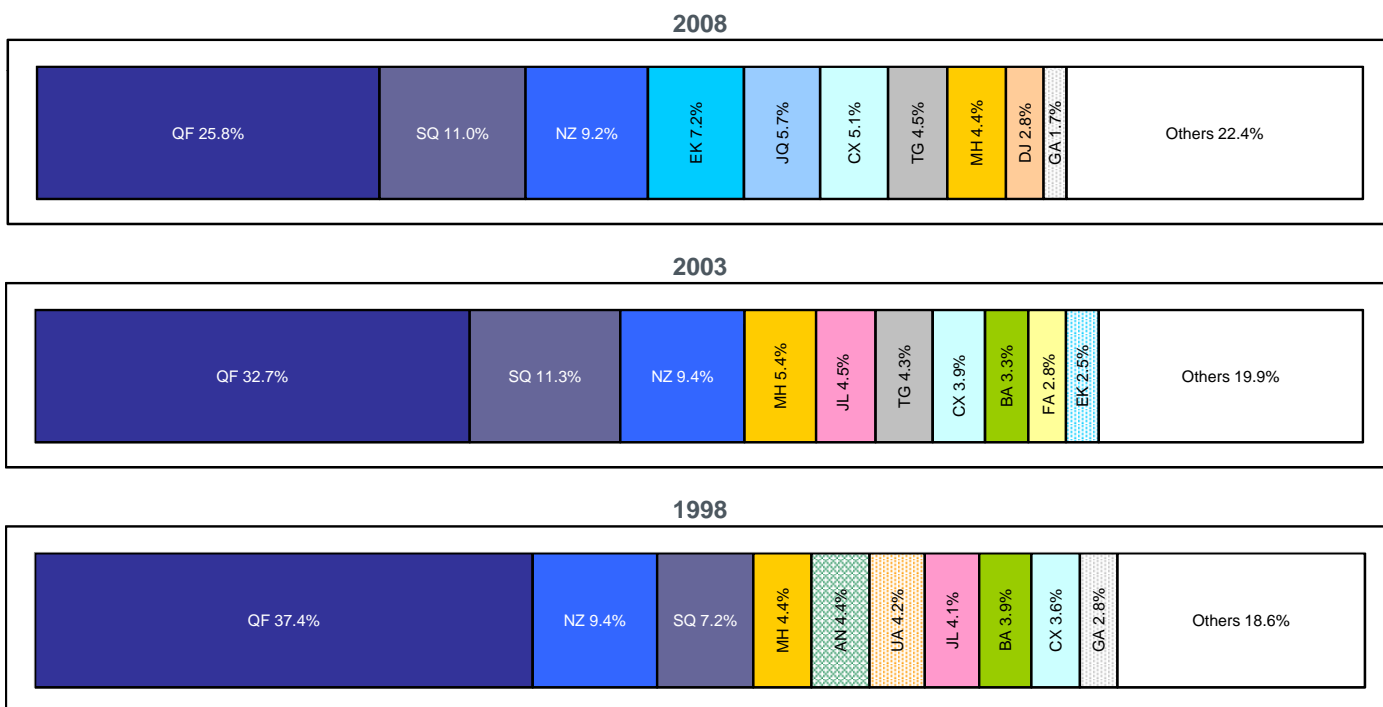
| Airport                | Year ended June 2006 | Year ended June 2007 | Year ended June 2008 | % of Total | % Change 2008/07 |
|------------------------|----------------------|----------------------|----------------------|------------|------------------|
| Sydney                 | 9 667 554            | 10 124 409           | 10 560 840           | 45.4%      | 4.3%             |
| Melbourne              | 4 253 268            | 4 419 551            | 4 662 037            | 20.0%      | 5.5%             |
| Brisbane               | 3 646 891            | 3 885 906            | 3 984 835            | 17.1%      | 2.5%             |
| Perth                  | 1 979 750            | 2 191 721            | 2 477 820            | 10.7%      | 13.1%            |
| Cairns                 | 855 949              | 729 664              | 655 919              | 2.8%       | -10.1%           |
| Adelaide               | 347 064              | 441 360              | 471 341              | 2.0%       | 6.8%             |
| Gold Coast/Coolangatta | 210 495              | 192 820              | 261 092              | 1.1%       | 35.4%            |
| Darwin                 | 116 454              | 134 217              | 173 243              | 0.7%       | 29.1%            |
| Norfolk Island         | 19 526               | 18 119               | 15 724               | 0.1%       | -13.2%           |
| Christmas Island (b)   | ..                   | ..                   | 1 722                | 0.0%       | ..               |
| ALL AIRPORTS           | 21 096 951           | 22 137 767           | 23 264 573           | 100.0%     | 5.1%             |

(a) Please refer to Explanatory notes - paragraphs 3 & 13 in particular.

(b) Scheduled services recommenced in December 2007 and ceased in May 2008.

Note that there were some freighter operations in Townsville in March, April and May 2006 but no scheduled passenger operations.

Chart III International Passengers by Major Airlines - Top 10 in each year - Years ended June



AN - Ansett International  
 BA - British Airways  
 CX - Cathay Pacific Airways  
 DJ - Pacific Blue  
 EK - Emirates

FA - Freedom Air International  
 GA - Garuda Indonesia  
 JL - Japan Airlines  
 JQ - Jetstar  
 MH - Malaysia Airlines

NZ - Air New Zealand  
 QF - Qantas Airways  
 SQ - Singapore Airlines  
 TG - Thai Airways  
 UA - United Airlines

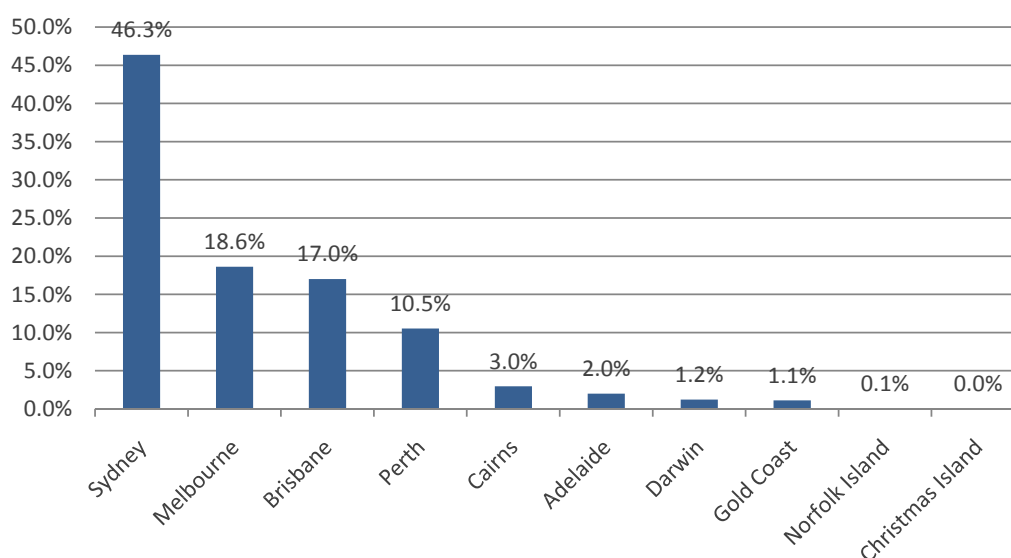
Table V Summary Statistics

|                    | Year ended<br>June 2006 | Year ended<br>June 2007 | Year ended<br>June 2008 | Growth compared to |       |
|--------------------|-------------------------|-------------------------|-------------------------|--------------------|-------|
|                    |                         |                         |                         | 2007               | 2006  |
| Passengers carried | 21 096 951              | 22 137 767              | 23 264 573              | 5.1%               | 10.3% |
| Freight (tonnes)   | 726 027                 | 754 456                 | 780 993                 | 3.5%               | 7.6%  |
| Mail (tonnes)      | 31 842                  | 33 476                  | 38 921                  | 16.3%              | 22.2% |
| Available Seats    | 30 041 002              | 29 768 595              | 30 625 242              | 2.9%               | 1.9%  |
| Flights            | 117 790                 | 119 330                 | 124 176                 | 4.1%               | 5.4%  |
| Aircraft Movements | 132 392                 | 132 674                 | 138 356                 | 4.3%               | 4.5%  |

**Table VI Traffic on Board Passenger Movements, Flights and Seats at Australian International Airports - Scheduled International Passenger Services**

| First/Last port of call * | Year    | No. of Flights | Passenger Movements | Seats      | Seat Utilisation % |
|---------------------------|---------|----------------|---------------------|------------|--------------------|
| Adelaide                  | 2006-07 | 2 286          | 462 339             | 583 355    | 79.3%              |
|                           | 2007-08 | 2 347          | 490 257             | 616 236    | 79.6%              |
| Brisbane                  | 2006-07 | 21 667         | 3 913 952           | 5 223 638  | 74.9%              |
|                           | 2007-08 | 22 079         | 3 947 980           | 5 211 255  | 75.8%              |
| Cairns                    | 2006-07 | 5 409          | 699 688             | 968 966    | 72.2%              |
|                           | 2007-08 | 4 907          | 661 419             | 913 718    | 72.4%              |
| Christmas Island          | 2007-08 | 52             | 1 722               | 7 096      | 24.3%              |
| Darwin                    | 2006-07 | 2 077          | 227 096             | 345 268    | 65.8%              |
|                           | 2007-08 | 2 396          | 263 644             | 380 656    | 69.3%              |
| Melbourne                 | 2006-07 | 19 964         | 4 325 573           | 5 518 261  | 78.4%              |
|                           | 2007-08 | 21 012         | 4 591 010           | 5 699 918  | 80.5%              |
| Norfolk Island            | 2006-07 | 208            | 18 119              | 28 478     | 63.6%              |
|                           | 2007-08 | 209            | 15 724              | 29 278     | 53.7%              |
| Gold Coast/Coolangatta    | 2006-07 | 1 744          | 192 611             | 273 228    | 70.5%              |
|                           | 2007-08 | 1 910          | 261 092             | 344 780    | 75.7%              |
| Perth                     | 2006-07 | 11 129         | 2 191 952           | 2 963 291  | 74.0%              |
|                           | 2007-08 | 12 490         | 2 476 728           | 3 227 879  | 76.7%              |
| Sydney                    | 2006-07 | 50 107         | 10 466 074          | 13 864 110 | 75.5%              |
|                           | 2007-08 | 51 635         | 10 901 882          | 14 194 426 | 76.8%              |
| Total                     | 2006-07 | 114 591        | 22 497 404          | 29 768 595 | 75.6%              |
|                           | 2007-08 | 119 037        | 23 611 458          | 30 625 242 | 77.1%              |

**Chart IV Share of Operated Seats at Australian International Airports - 2007-08**



\* First port of call for arrivals to Australia or last port of call for departures from Australia. The information on Traffic On Board is derived from the uplift/discharge data used to produce the main Tables in this publication. The figures above include some estimates and adjustments. The data shown here covers non-stop international connections only - it does not include movements between Australian airports. Please see notes on page 14 as well.

**Table VII Traffic on Board Passenger Movements, Flights and Seats on Non-Stop Passenger Services By Country - 2007-08**

| Country *            | No. of         |                   | Seats             | Seat Utilisation % |
|----------------------|----------------|-------------------|-------------------|--------------------|
|                      | Flights        | Passengers        |                   |                    |
| New Zealand          | 36 601         | 5 503 706         | 7 275 161         | 75.7%              |
| Singapore            | 18 495         | 4 803 606         | 5 880 063         | 81.7%              |
| Hong Kong            | 9 331          | 2 143 149         | 2 684 915         | 79.8%              |
| Thailand             | 6 766          | 1 811 774         | 2 245 388         | 80.7%              |
| USA                  | 6 459          | 1 717 455         | 2 131 347         | 80.6%              |
| Japan                | 6 190          | 1 408 978         | 1 895 129         | 74.3%              |
| Malaysia             | 4 891          | 1 149 299         | 1 495 894         | 76.8%              |
| United Arab Emirates | 3 660          | 739 226           | 1 024 950         | 72.1%              |
| Indonesia            | 4 760          | 724 496           | 915 155           | 79.2%              |
| China                | 3 332          | 669 476           | 900 601           | 74.3%              |
| Fiji                 | 3 152          | 556 378           | 768 614           | 72.4%              |
| Korea                | 2 165          | 485 303           | 663 377           | 73.2%              |
| South Africa         | 1 070          | 276 010           | 337 652           | 81.7%              |
| Vietnam              | 1 044          | 251 515           | 341 952           | 73.6%              |
| Taiwan               | 1 072          | 227 052           | 312 676           | 72.6%              |
| Philippines          | 858            | 183 320           | 228 437           | 80.2%              |
| Papua New Guinea     | 2 800          | 170 575           | 305 442           | 55.8%              |
| New Caledonia        | 1 060          | 155 513           | 200 266           | 77.7%              |
| Brunei               | 1 378          | 135 216           | 266 954           | 50.7%              |
| Vanuatu              | 1 164          | 117 744           | 175 538           | 67.1%              |
| Canada               | 396            | 86 405            | 113 888           | 75.9%              |
| Mauritius            | 316            | 70 835            | 93 888            | 75.4%              |
| India                | 314            | 67 633            | 82 617            | 81.9%              |
| Tahiti               | 216            | 38 962            | 63 504            | 61.4%              |
| Solomon Islands      | 790            | 37 682            | 91 348            | 41.3%              |
| Western Samoa        | 326            | 35 059            | 58 680            | 59.7%              |
| Guam                 | 220            | 22 980            | 33 880            | 67.8%              |
| Tonga                | 210            | 22 085            | 37 800            | 58.4%              |
| Nauru                | 1              | 26                | 126               | 20.6%              |
| <b>Total</b>         | <b>119 037</b> | <b>23 611 458</b> | <b>30 625 242</b> | <b>77.1%</b>       |

**Table VIII Traffic on Board Passenger Movements, Flights and Seats on Non-Stop Passenger Services By City Top Twenty-Five Based on Passengers - 2007-08**

| First/Last port of call * | No. of         |                   | Seats             | Seat Utilisation % |
|---------------------------|----------------|-------------------|-------------------|--------------------|
|                           | Flights        | Passengers        |                   |                    |
| Singapore                 | 18 495         | 4 803 606         | 5 880 063         | 81.7%              |
| Auckland                  | 19 236         | 3 389 639         | 4 415 764         | 76.8%              |
| Hong Kong                 | 9 331          | 2 143 149         | 2 684 915         | 79.8%              |
| Bangkok                   | 6 298          | 1 691 014         | 2 101 278         | 80.5%              |
| Christchurch              | 9 686          | 1 269 784         | 1 737 024         | 73.1%              |
| Kuala Lumpur              | 4 891          | 1 149 299         | 1 495 894         | 76.8%              |
| Los Angeles               | 3 716          | 1 099 987         | 1 315 707         | 83.6%              |
| Tokyo                     | 4 530          | 1 080 734         | 1 405 656         | 76.9%              |
| Dubai                     | 2 928          | 593 499           | 848 534           | 69.9%              |
| Denpasar                  | 3 432          | 589 118           | 717 260           | 82.1%              |
| Wellington                | 5 313          | 586 600           | 764 824           | 76.7%              |
| Nadi                      | 3 152          | 556 378           | 768 614           | 72.4%              |
| Seoul                     | 2 165          | 485 303           | 663 377           | 73.2%              |
| Shanghai                  | 2 134          | 420 014           | 558 764           | 75.2%              |
| San Francisco             | 1 246          | 326 703           | 433 798           | 75.3%              |
| Honolulu                  | 1 497          | 290 765           | 381 842           | 76.1%              |
| Johannesburg              | 1 070          | 276 010           | 337 652           | 81.7%              |
| Ho Chi Minh City          | 1 044          | 251 515           | 341 952           | 73.6%              |
| Osaka                     | 1 175          | 237 158           | 347 106           | 68.3%              |
| Taipei                    | 1 072          | 227 052           | 312 676           | 72.6%              |
| Manila                    | 858            | 183 320           | 228 437           | 80.2%              |
| Port Moresby              | 2 800          | 170 575           | 305 442           | 55.8%              |
| Noumea                    | 1 060          | 155 513           | 200 266           | 77.7%              |
| Abu Dhabi                 | 732            | 145 727           | 176 416           | 82.6%              |
| Guangzhou                 | 720            | 145 321           | 210 548           | 69.0%              |
| Others                    | 10 456         | 1 343 675         | 1 991 433         | 67.5%              |
| <b>Total</b>              | <b>119 037</b> | <b>23 611 458</b> | <b>30 625 242</b> | <b>77.1%</b>       |

\* First country/port of call for departures from Australia or last country/port of call for arrivals to Australia.

The information on Traffic On Board is derived from the uplift/discharge data used to produce the main Tables in this publication.

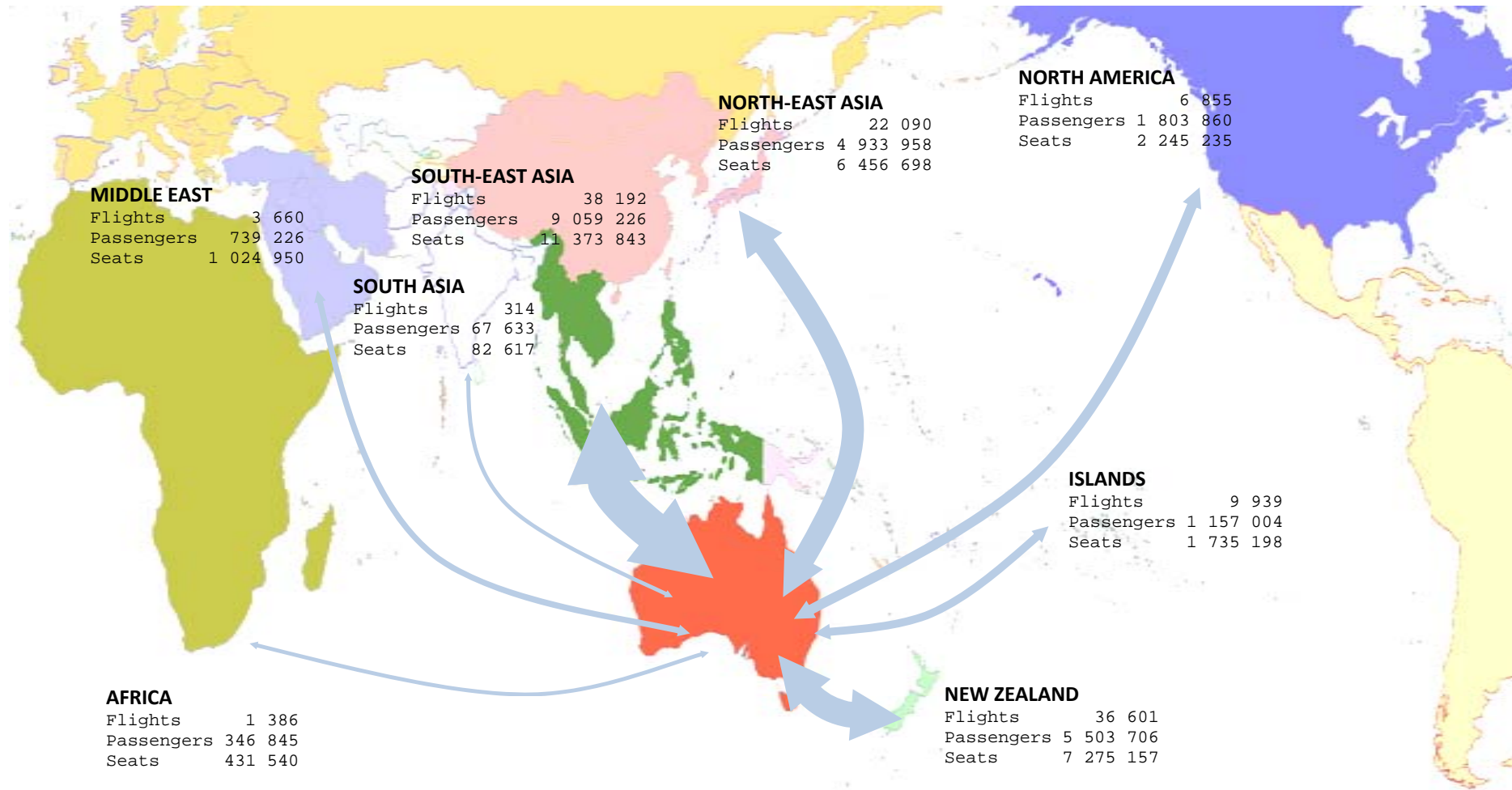
The figures above include some estimates and adjustments.

The total number of flights, passenger movements and seats shown correspond to total passenger services reported in Table 3 - please read the explanatory notes shown under Table 3 for coverage (page 24).

The data shown here does not include passengers not uplifted/discharged in Australia for airlines other than Qantas Airways.

For example: Dubai-Auckland passengers on services that operate via Australia to Auckland. Services by Emirates and Royal Brunei Airlines are affected.

**TRAFFIC ON BOARD PASSENGER MOVEMENTS, FLIGHTS AND SEATS BY REGION BASED ON NON-STOP SERVICES TO AND FROM AUSTRALIA**  
 SCHEDULED INTERNATIONAL PASSENGER AIR SERVICES - Year ended June 2008



Share of Operated Seats by Region

|                 |       |               |      |            |      |
|-----------------|-------|---------------|------|------------|------|
| South-East Asia | 37.1% | North America | 7.3% | Africa     | 1.4% |
| New Zealand     | 23.8% | Islands       | 5.7% | South Asia | 0.3% |
| North-East Asia | 21.1% | Middle East   | 3.3% |            |      |

Please see notes on page 14.



**TABLE 1 SCHEDULED INTERNATIONAL AIR TRAFFIC TO AND FROM AUSTRALIA: Year ended June 2008**

| Scheduled Operator            | Country to/from      | Inbound    |                     |                  | Outbound   |                     |                  |
|-------------------------------|----------------------|------------|---------------------|------------------|------------|---------------------|------------------|
|                               |                      | Passengers | Freight<br>(tonnes) | Mail<br>(tonnes) | Passengers | Freight<br>(tonnes) | Mail<br>(tonnes) |
| Aerolineas Argentinas         | Argentina            | 22 069     | 91.4                | 5.8              | 18 755     | 202.6               | -                |
| "                             | New Zealand          | 16 647     | 567.6               | -                | 19 647     | 715.6               | -                |
| "                             | ALL SERVICES         | 38 716     | 659.0               | 5.8              | 38 402     | 918.2               | -                |
| Air Caledonie                 | New Caledonia        | 46 617     | 58.7                | 6.9              | 46 459     | 852.6               | 31.2             |
| Air Canada                    | Canada               | 62 404     | 1 481.9             | 0.1              | 65 730     | 1 287.1             | 0.0              |
| "                             | USA                  | 6 537      | 804.7               | 17.6             | 4 581      | 928.1               | 0.3              |
| "                             | ALL SERVICES         | 68 941     | 2 286.6             | 17.6             | 70 311     | 2 215.2             | 0.3              |
| Air China                     | China                | 92 015     | 2 192.2             | 255.3            | 85 287     | 1 402.1             | 22.1             |
| Air Mauritius                 | Mauritius            | 36 766     | 1 154.3             | 4.3              | 34 069     | 937.4               | 0.0              |
| Air Nauru                     | Kiribati             | 210        | -                   | -                | 184        | -                   | -                |
| "                             | Marshall Islands     | ..         | ..                  | ..               | 8          | 0.1                 | -                |
| "                             | Nauru                | 2 584      | 4.7                 | 0.4              | 2 501      | 107.9               | 4.0              |
| "                             | Solomon Islands      | 2 034      | 0.3                 | 0.0              | 1 981      | 17.2                | 0.0              |
| "                             | ALL SERVICES         | 4 828      | 4.9                 | 0.4              | 4 674      | 125.2               | 4.0              |
| Air New Zealand               | China                | ..         | ..                  | ..               | ..         | 267.1               | -                |
| "                             | Cook Islands         | 617        | 0.0                 | -                | 537        | -                   | -                |
| "                             | Germany              | ..         | 29.9                | -                | ..         | -                   | -                |
| "                             | New Zealand          | 1 067 130  | 23 857.8            | 2 429.0          | 1 064 318  | 19 828.5            | 102.1            |
| "                             | USA                  | 5 591      | 5 405.0             | 20.0             | 7 829      | 16.4                | -                |
| "                             | ALL SERVICES         | 1 073 338  | 29 292.6            | 2 449.0          | 1 072 684  | 20 112.0            | 102.1            |
| Air Niugini                   | Papua New Guinea     | 66 300     | 1 077.5             | 27.5             | 71 011     | 2 446.5             | 188.3            |
| Air Pacific                   | Fiji                 | 204 501    | 3 708.8             | 0.0              | 195 881    | 3 655.1             | 183.0            |
| Air Tahiti Nui                | Tahiti               | 18 904     | 850.4               | -                | 20 058     | 751.3               | -                |
| Air Vanuatu (a)               | Vanuatu              | 43 669     | 158.2               | -                | 43 091     | 468.7               | 7.2              |
| AirAsia X (b)                 | Malaysia             | 32 369     | 422.2               | -                | 31 077     | 75.4                | -                |
| Airlines PNG                  | Papua New Guinea     | 16 823     | 35.4                | 0.1              | 16 441     | 261.2               | 0.3              |
| Airnorth (c)                  | Indonesia            | 6 283      | -                   | -                | 7 285      | 0.1                 | -                |
| Asian Express Airlines        | New Zealand          | ..         | 3 623.0             | -                | ..         | 3 937.7             | -                |
| Asiana Airlines               | Korea                | 90 112     | 2 837.0             | 341.3            | 84 934     | 1 298.0             | -                |
| British Airways               | Singapore            | 28 055     | 1 503.0             | 4.3              | 30 005     | 2 289.1             | -                |
| "                             | Thailand             | 48 597     | 725.7               | 2.9              | 45 777     | 433.6               | -                |
| "                             | UK                   | 101 933    | 4 764.9             | 954.3            | 101 113    | 1 195.1             | -                |
| "                             | ALL SERVICES         | 178 585    | 6 993.6             | 961.6            | 176 895    | 3 917.7             | -                |
| Cargolux Airlines Intl        | Luxembourg           | ..         | 3 886.4             | -                | ..         | 18.4                | -                |
| "                             | New Zealand          | ..         | ..                  | ..               | ..         | 3 285.9             | -                |
| "                             | Singapore            | ..         | 925.1               | -                | ..         | ..                  | ..               |
| "                             | USA                  | ..         | ..                  | ..               | ..         | 1 170.8             | -                |
| "                             | ALL SERVICES         | -          | 4 811.4             | -                | -          | 4 475.1             | -                |
| Cathay Pacific Airways        | Hong Kong            | 613 340    | 39 913.5            | 1 335.5          | 578 405    | 28 188.2            | 397.8            |
| China Airlines                | Taiwan               | 83 562     | 1 733.8             | 135.4            | 87 126     | 555.7               | 0.6              |
| China Eastern Airlines        | China                | 82 155     | 1 762.5             | 124.4            | 73 052     | 507.1               | 18.3             |
| China Southern Airlines       | China                | 77 076     | 3 233.8             | 239.5            | 68 245     | 237.3               | 27.6             |
| Continental Micronesia        | Guam                 | 11 439     | 8.4                 | 0.0              | 11 541     | 24.4                | 0.1              |
| Emirates                      | New Zealand          | 283 541    | 14 056.9            | 103.5            | 260 286    | 11 172.3            | -                |
| "                             | Singapore            | 20 655     | 2 140.8             | 298.3            | 16 556     | 4 364.5             | -                |
| "                             | Thailand             | 13 278     | 343.2               | -                | 11 117     | 86.2                | -                |
| "                             | United Arab Emirates | 551 190    | 18 909.0            | 1 679.1          | 528 027    | 17 205.9            | 54.3             |
| "                             | ALL SERVICES         | 868 664    | 35 449.8            | 2 081.0          | 815 986    | 32 828.8            | 54.3             |
| Etihad Airways (d)            | Singapore            | 9 548      | 342.7               | -                | 9 194      | 454.4               | -                |
| "                             | United Arab Emirates | 89 409     | 3 730.2             | 124.3            | 94 168     | 4 082.7             | 262.6            |
| "                             | ALL SERVICES         | 98 957     | 4 072.9             | 124.3            | 103 362    | 4 537.1             | 262.6            |
| Eva Air                       | Taiwan               | 29 031     | 1 596.5             | 38.2             | 27 333     | 657.9               | 24.6             |
| Federal Express Corporation   | Philippines          | ..         | ..                  | ..               | ..         | 1 689.6             | -                |
| "                             | USA                  | ..         | 10 942.0            | 824.4            | ..         | ..                  | ..               |
| "                             | ALL SERVICES         | -          | 10 942.0            | 824.4            | -          | 1 689.6             | -                |
| Freedom Air International (e) | New Zealand          | 121 486    | -                   | -                | 124 912    | -                   | -                |
| Garuda Indonesia              | Indonesia            | 202 489    | 3 782.8             | 83.0             | 201 265    | 1 538.8             | 1.6              |
| Hawaiian Airlines             | USA                  | 28 876     | 144.3               | 48.7             | 29 293     | 783.6               | 0.1              |
| JALways                       | Japan                | 198 947    | 3 734.6             | 1 955.0          | 196 779    | 3 873.0             | 12.6             |
| Japan Airlines (f)            | Japan                | 33 923     | 714.5               | 58.8             | 31 834     | 654.4               | -                |
| Jetstar (g) (h)               | Indonesia            | 69 225     | 2 023.6             | -                | 72 158     | 193.0               | 1.7              |
| "                             | Japan                | 148 434    | 3 505.3             | 361.7            | 148 573    | 2 238.5             | 82.3             |
| "                             | Malaysia             | 26 633     | 1 334.0             | -                | 29 451     | 445.4               | 29.7             |
| "                             | New Zealand          | 201 258    | 230.2               | -                | 199 552    | 275.7               | -                |
| "                             | Singapore            | 54 623     | 135.1               | 0.0              | 57 515     | 40.6                | 99.8             |
| "                             | Thailand             | 76 161     | 2 475.8             | 7.5              | 74 782     | 751.8               | 13.1             |



**TABLE 1 SCHEDULED INTERNATIONAL AIR TRAFFIC TO AND FROM AUSTRALIA: Year ended June 2008**

| Scheduled Operator             | Country to/from      | Inbound    |                     |                  | Outbound   |                     |                  |
|--------------------------------|----------------------|------------|---------------------|------------------|------------|---------------------|------------------|
|                                |                      | Passengers | Freight<br>(tonnes) | Mail<br>(tonnes) | Passengers | Freight<br>(tonnes) | Mail<br>(tonnes) |
| Jetstar                        | USA                  | 55 656     | 1 771.2             | 3.4              | 55 443     | 745.4               | 8.9              |
| "                              | Vietnam              | 34 130     | 1 697.6             | -                | 33 957     | 401.7               | 13.0             |
| "                              | ALL SERVICES         | 666 120    | 13 173.0            | 372.6            | 671 431    | 5 092.0             | 248.5            |
| Korean Air                     | Korea                | 154 402    | 12 040.4            | 1 188.7          | 151 349    | 7 115.1             | 35.1             |
| Lan Chile                      | Chile                | 38 411     | 3 127.3             | 5.8              | 41 031     | 1 163.4             | 50.5             |
| "                              | New Zealand          | 24 766     | 150.7               | -                | 30 894     | 434.2               | 0.1              |
| "                              | ALL SERVICES         | 63 177     | 3 278.0             | 5.8              | 71 925     | 1 597.6             | 50.6             |
| Malaysia Airlines              | Malaysia             | 519 834    | 42 270.5            | 164.1            | 509 935    | 15 223.6            | -                |
| Martinair Holland              | Bahrain              | ..         | ..                  | ..               | ..         | 22.5                | -                |
| "                              | Hong Kong            | ..         | ..                  | ..               | ..         | 281.2               | -                |
| "                              | Netherlands          | ..         | 8 061.6             | -                | ..         | 1 672.4             | -                |
| "                              | New Zealand          | ..         | ..                  | ..               | ..         | 1.4                 | -                |
| "                              | Thailand             | ..         | ..                  | ..               | ..         | 55.8                | -                |
| "                              | United Arab Emirates | ..         | ..                  | ..               | ..         | 207.6               | -                |
| "                              | ALL SERVICES         | -          | 8 061.6             | -                | -          | 2 240.9             | -                |
| Merpati Nusantara Airlines (i) | Indonesia            | 577        | -                   | -                | 574        | -                   | -                |
| OzJet (j)                      | Indonesia            | 669        | -                   | -                | 744        | -                   | -                |
| Pacific Air Express            | Solomon Islands      | ..         | 42.5                | -                | ..         | 827.7               | -                |
| Pacific Blue (k)               | Fiji                 | 77 453     | 239.4               | -                | 78 543     | 285.6               | -                |
| "                              | New Zealand          | 220 534    | 761.2               | -                | 229 226    | 385.4               | -                |
| "                              | Tonga                | 11 023     | 24.0                | -                | 11 062     | 17.8                | -                |
| "                              | Vanuatu              | 15 490     | -                   | -                | 15 494     | 74.5                | -                |
| "                              | ALL SERVICES         | 324 500    | 1 024.6             | -                | 334 325    | 763.4               | -                |
| Philippine Airlines            | Philippines          | 51 059     | 1 779.5             | 34.1             | 47 783     | 404.9               | -                |
| Polynesian Blue (k)            | Western Samoa        | 17 498     | 19.4                | -                | 17 561     | 26.0                | -                |
| Qantas Airways                 | Bahrain              | ..         | 102.5               | -                | ..         | 104.1               | -                |
| "                              | Canada               | 3 839      | 16.7                | 12.7             | 4 268      | 4.5                 | 14.0             |
| "                              | China                | 96 860     | 8 116.9             | 12.6             | 89 843     | 1 633.6             | 38.0             |
| "                              | Germany              | 51 543     | 5 427.1             | 39.0             | 53 409     | 155.3               | 547.5            |
| "                              | Hong Kong            | 325 578    | 18 266.5            | 264.6            | 296 034    | 7 114.8             | 646.4            |
| "                              | India                | 33 569     | 547.7               | -                | 30 238     | 471.6               | 54.4             |
| "                              | Indonesia            | 80 026     | 1 045.9             | 30.1             | 77 978     | 1 067.0             | 39.0             |
| "                              | Japan                | 320 412    | 7 459.3             | 2 340.7          | 319 594    | 5 311.6             | 1 047.7          |
| "                              | Korea                | 1 962      | 57.2                | -                | 1 975      | 9.6                 | 0.7              |
| "                              | New Caledonia        | 27 041     | 23.2                | 2.8              | 26 963     | 211.3               | 23.1             |
| "                              | New Zealand          | 629 894    | 17 257.5            | 44.2             | 650 033    | 21 294.2            | 2 341.0          |
| "                              | Nigeria              | ..         | ..                  | ..               | ..         | 104.9               | -                |
| "                              | Papua New Guinea     | ..         | ..                  | ..               | ..         | 18.0                | 0.4              |
| "                              | Philippines          | 39 677     | 964.1               | 58.0             | 37 804     | 799.6               | 24.4             |
| "                              | Singapore            | 501 992    | 18 833.0            | 1 097.7          | 463 570    | 19 687.1            | 1 836.9          |
| "                              | South Africa         | 78 572     | 1 497.1             | 60.4             | 70 821     | 646.5               | 158.3            |
| "                              | Thailand             | 55 263     | 2 187.3             | 88.4             | 45 421     | 861.8               | 165.5            |
| "                              | UK                   | 240 270    | 5 572.7             | 658.7            | 246 836    | 1 749.8             | 2 052.9          |
| "                              | United Arab Emirates | ..         | ..                  | ..               | ..         | 49.5                | -                |
| "                              | USA                  | 549 852    | 26 265.6            | 3 522.7          | 558 799    | 6 409.1             | 2 216.2          |
| "                              | ALL SERVICES         | 3 036 350  | 113 640.3           | 8 232.7          | 2 973 586  | 67 703.9            | 11 206.2         |
| Royal Brunei Airlines          | Brunei               | 68 851     | 1 671.8             | 1.1              | 66 365     | 1 852.5             | -                |
| "                              | New Zealand          | 15 949     | 354.9               | -                | 13 010     | 365.8               | -                |
| "                              | ALL SERVICES         | 84 800     | 2 026.8             | 1.1              | 79 375     | 2 218.3             | -                |
| Silk Air (l)                   | Singapore            | 808        | 72.3                | 16.2             | 914        | 0.5                 | -                |
| Singapore Airlines             | Malaysia             | ..         | ..                  | ..               | ..         | 296.8               | -                |
| "                              | New Zealand          | ..         | 957.3               | -                | ..         | 3 903.7             | -                |
| "                              | Singapore            | 1 308 482  | 61 470.0            | 1 337.6          | 1 255 376  | 50 647.0            | 15.4             |
| "                              | ALL SERVICES         | 1 308 482  | 62 427.4            | 1 337.6          | 1 255 376  | 54 847.5            | 15.4             |
| SkyAirWorld (m)                | Solomon Islands      | 1 437      | -                   | -                | 1 344      | -                   | -                |
| Solomon Airlines               | Solomon Islands      | 11 811     | 127.3               | -                | 13 614     | 85.1                | -                |
| South African Airways          | South Africa         | 56 656     | 728.2               | 73.9             | 49 394     | 1 844.1             | 24.1             |
| Thai Airways International     | Thailand             | 534 663    | 22 304.9            | 1 794.8          | 504 106    | 12 680.1            | 54.1             |
| Tiger Airways                  | Singapore            | 94 147     | -                   | -                | 92 884     | -                   | -                |
| United Airlines                | USA                  | 199 793    | 1 076.2             | 1 538.6          | 201 284    | 6 564.9             | 70.5             |
| United Parcel Service          | Hong Kong            | ..         | ..                  | ..               | ..         | 45.8                | -                |
| "                              | Singapore            | ..         | ..                  | ..               | ..         | 1 070.9             | -                |
| "                              | USA                  | ..         | 13 354.9            | -                | ..         | ..                  | ..               |
| "                              | ALL SERVICES         | -          | 13 354.9            | -                | -          | 1 116.7             | -                |
| Vietnam Airlines               | Vietnam              | 94 707     | 2 860.5             | -                | 88 721     | 358.4               | -                |
| Virgin Atlantic Airways        | Hong Kong            | 37 379     | 6 015.0             | -                | 31 614     | 1 865.7             | -                |

**TABLE 1 SCHEDULED INTERNATIONAL AIR TRAFFIC TO AND FROM AUSTRALIA: Year ended June 2008**

| Scheduled Operator      | Country to/from | Inbound           |                     |                  | Outbound          |                     |                  |
|-------------------------|-----------------|-------------------|---------------------|------------------|-------------------|---------------------|------------------|
|                         |                 | Passengers        | Freight<br>(tonnes) | Mail<br>(tonnes) | Passengers        | Freight<br>(tonnes) | Mail<br>(tonnes) |
| Virgin Atlantic Airways | UK              | 45 942            | 471.0               | -                | 45 519            | 441.7               | -                |
| "                       | ALL SERVICES    | 83 321            | 6 486.1             | -                | 77 133            | 2 307.4             | -                |
| <b>TOTAL</b>            |                 | <b>11 773 523</b> | <b>474 049.9</b>    | <b>25 878.2</b>  | <b>11 491 050</b> | <b>306 943.2</b>    | <b>13 043.3</b>  |

Please refer to explanatory notes - paragraphs 3, 6 and 13 in particular.

(a) No mail data for August 2007 and onwards.

(b) Service commenced November 2007.

(c) Service commenced October 2007.

(d) Split of passenger numbers between Abu Dhabi and Brisbane and between Singapore and Brisbane has been estimated for October 2007.

(e) Service ceased March 2008.

(f) Operations taken over by JALWays in October 2007.

(g) Freight data for services to/from Singapore is not included prior to July 2007.

(h) No Mail data prior to November 2007.

(i) Operations reported under Airnorth for November 2007 onwards.

(j) Scheduled services commenced June 2008.

(k) Mail data is included in freight data.

(l) Scheduled service commenced December 2007 and ceased May 2008.

(m) Service commenced March 2008.

**TABLE 2 SCHEDULED OPERATOR MARKET SHARES AND GROWTH: Year ended June**

| Scheduled Operators    | Country to/from  | Total Passengers |           |                 |               | Total Freight (tonnes) |          |                 |               | Total Mail (tonnes) |         |                 |               |
|------------------------|------------------|------------------|-----------|-----------------|---------------|------------------------|----------|-----------------|---------------|---------------------|---------|-----------------|---------------|
|                        |                  | 2007             | 2008      | (%) of<br>TOTAL | (%)<br>Change | 2007                   | 2008     | (%) of<br>TOTAL | (%)<br>Change | 2007                | 2008    | (%) of<br>TOTAL | (%)<br>Change |
| Aerolineas Argentinas  | Argentina        | 38 578           | 40 824    | 0.2             | 5.8           | 325.2                  | 294.0    | 0.0             | -9.6          | 3.7                 | 5.8     | 0.0             | 58.9          |
| "                      | New Zealand      | 29 450           | 36 294    | 0.2             | 23.2          | 821.6                  | 1 283.2  | 0.2             | 56.2          | -                   | -       | -               | ..            |
| "                      | ALL SERVICES     | 68 028           | 77 118    | 0.3             | 13.4          | 1 146.8                | 1 577.2  | 0.2             | 37.5          | 3.7                 | 5.8     | 0.0             | 58.9          |
| Air Caledonie          | New Caledonia    | 85 310           | 93 076    | 0.4             | 9.1           | 835.1                  | 911.3    | 0.1             | 9.1           | 31.1                | 38.1    | 0.1             | 22.6          |
| Air Canada             | Canada           | 95 011           | 128 134   | 0.6             | 34.9          | 2.0                    | 2 769.0  | 0.4             | >999.9        | 0.5                 | 0.1     | 0.0             | -90.2         |
| "                      | USA              | 23 980           | 11 118    | 0.0             | -53.6         | 3 855.9                | 1 732.8  | 0.2             | -55.1         | 68.4                | 17.9    | 0.0             | -73.8         |
| "                      | ALL SERVICES     | 118 991          | 139 252   | 0.6             | 17.0          | 3 857.8                | 4 501.8  | 0.6             | 16.7          | 68.9                | 17.9    | 0.0             | -74.0         |
| Air China              | China            | 142 524          | 177 302   | 0.8             | 24.4          | 2 441.5                | 3 594.2  | 0.5             | 47.2          | 99.1                | 277.4   | 0.7             | 179.9         |
| Air Mauritius          | Mauritius        | 59 159           | 70 835    | 0.3             | 19.7          | 1 285.1                | 2 091.7  | 0.3             | 62.8          | 2.3                 | 4.3     | 0.0             | 83.5          |
| Air Nauru              | Kiribati         | ..               | 394       | 0.0             | ..            | ..                     | -        | -               | ..            | -                   | -       | -               | ..            |
| "                      | Marshall Islands | 344              | 8         | 0.0             | -97.7         | 6.8                    | 0.1      | 0.0             | -99.0         | -                   | -       | -               | ..            |
| "                      | Nauru            | 5 090            | 5 085     | 0.0             | -0.1          | 78.9                   | 112.5    | 0.0             | 42.7          | 6.2                 | 4.4     | 0.0             | -28.6         |
| "                      | Solomon Islands  | 2 233            | 4 015     | 0.0             | 79.8          | 13.1                   | 17.5     | 0.0             | 33.3          | 0.0                 | 0.0     | 0.0             | -90.0         |
| "                      | ALL SERVICES     | 7 667            | 9 502     | 0.0             | 23.9          | 98.8                   | 130.1    | 0.0             | 31.7          | 6.2                 | 4.4     | 0.0             | -28.9         |
| Air New Zealand        | China            | ..               | ..        | ..              | ..            | 212.2                  | 267.1    | 0.0             | 25.9          | -                   | -       | -               | ..            |
| "                      | Cook Islands     | 850              | 1 154     | 0.0             | 35.8          | -                      | 0.0      | 0.0             | ..            | -                   | -       | -               | ..            |
| "                      | Germany          | ..               | ..        | ..              | ..            | 62.5                   | 29.9     | 0.0             | -52.2         | -                   | -       | -               | ..            |
| "                      | New Zealand      | 1 982 551        | 2 131 448 | 9.2             | 7.5           | 40 840.6               | 43 686.3 | 5.6             | 7.0           | 2 258.0             | 2 531.0 | 6.5             | 12.1          |
| "                      | USA              | 22 061           | 13 420    | 0.1             | -39.2         | 6 054.2                | 5 421.3  | 0.7             | -10.5         | 47.4                | 20.0    | 0.1             | -57.8         |
| "                      | ALL SERVICES     | 2 005 462        | 2 146 022 | 9.2             | 7.0           | 47 169.5               | 49 404.7 | 6.3             | 4.7           | 2 305.4             | 2 551.1 | 6.6             | 10.7          |
| Air Niugini            | Papua New Guinea | 138 088          | 137 311   | 0.6             | -0.6          | 3 166.7                | 3 524.0  | 0.5             | 11.3          | 298.5               | 215.8   | 0.6             | -27.7         |
| Air Pacific            | Fiji             | 377 004          | 400 382   | 1.7             | 6.2           | 7 500.4                | 7 363.8  | 0.9             | -1.8          | 191.8               | 183.0   | 0.5             | -4.6          |
| Air Tahiti Nui         | Tahiti           | 48 295           | 38 962    | 0.2             | -19.3         | 1 880.6                | 1 601.7  | 0.2             | -14.8         | -                   | -       | -               | ..            |
| Air Vanuatu (a)        | Vanuatu          | 74 447           | 86 760    | 0.4             | 16.5          | 557.8                  | 627.0    | 0.1             | 12.4          | 84.5                | 7.2     | 0.0             | -91.4         |
| AirAsia X (b)          | Malaysia         | ..               | 63 446    | 0.3             | ..            | ..                     | 497.6    | 0.1             | ..            | ..                  | -       | -               | ..            |
| Airlines PNG           | Papua New Guinea | 22 593           | 33 264    | 0.1             | 47.2          | 235.2                  | 296.5    | 0.0             | 26.1          | -                   | 0.4     | 0.0             | ..            |
| Airnorth (c)           | Indonesia        | ..               | 13 568    | 0.1             | ..            | ..                     | 0.1      | 0.0             | ..            | ..                  | -       | -               | ..            |
| Asian Express Airlines | New Zealand      | ..               | ..        | ..              | ..            | 7 371.6                | 7 560.7  | 1.0             | 2.6           | -                   | -       | -               | ..            |
| Asiana Airlines        | Korea            | 169 053          | 175 046   | 0.8             | 3.5           | 4 611.2                | 4 134.9  | 0.5             | -10.3         | 220.5               | 341.3   | 0.9             | 54.8          |
| Austrian Airlines (d)  | Austria          | 129 327          | ..        | ..              | -100.0        | -                      | ..       | ..              | ..            | -                   | ..      | ..              | ..            |
| "                      | Malaysia         | 24 734           | ..        | ..              | -100.0        | -                      | ..       | ..              | ..            | -                   | ..      | ..              | ..            |
| "                      | Singapore        | 11 968           | ..        | ..              | -100.0        | -                      | ..       | ..              | ..            | -                   | ..      | ..              | ..            |
| "                      | ALL SERVICES     | 166 029          | -         | -               | -100.0        | -                      | -        | -               | ..            | -                   | -       | -               | ..            |
| British Airways        | Singapore        | 64 332           | 58 060    | 0.2             | -9.7          | 3 670.5                | 3 792.1  | 0.5             | 3.3           | 4.2                 | 4.3     | 0.0             | 2.7           |
| "                      | Thailand         | 108 161          | 94 374    | 0.4             | -12.7         | 1 298.5                | 1 159.3  | 0.1             | -10.7         | 0.0                 | 2.9     | 0.0             | >999.9        |
| "                      | UK               | 196 329          | 203 046   | 0.9             | 3.4           | 5 318.3                | 5 960.0  | 0.8             | 12.1          | 529.4               | 954.3   | 2.5             | 80.3          |
| "                      | ALL SERVICES     | 368 822          | 355 480   | 1.5             | -3.6          | 10 287.4               | 10 911.3 | 1.4             | 6.1           | 533.7               | 961.6   | 2.5             | 80.2          |
| Cargolux Airlines Intl | Luxembourg       | ..               | ..        | ..              | ..            | 4 573.1                | 3 904.8  | 0.5             | -14.6         | -                   | -       | -               | ..            |
| "                      | New Zealand      | ..               | ..        | ..              | ..            | 3 475.8                | 3 285.9  | 0.4             | -5.5          | -                   | -       | -               | ..            |
| "                      | Singapore        | ..               | ..        | ..              | ..            | -                      | 925.1    | 0.1             | ..            | -                   | -       | -               | ..            |
| "                      | USA              | ..               | ..        | ..              | ..            | 788.1                  | 1 170.8  | 0.1             | 48.6          | -                   | -       | -               | ..            |
| "                      | ALL SERVICES     | -                | -         | -               | ..            | 8 836.9                | 9 286.6  | 1.2             | 5.1           | -                   | -       | -               | ..            |

**TABLE 2 SCHEDULED OPERATOR MARKET SHARES AND GROWTH: Year ended June**

| Scheduled Operators           | Country to/from      | Total Passengers |           |                 |               | Total Freight (tonnes) |          |                 |               | Total Mail (tonnes) |         |                 |               |
|-------------------------------|----------------------|------------------|-----------|-----------------|---------------|------------------------|----------|-----------------|---------------|---------------------|---------|-----------------|---------------|
|                               |                      | 2007             | 2008      | (%) of<br>TOTAL | (%)<br>Change | 2007                   | 2008     | (%) of<br>TOTAL | (%)<br>Change | 2007                | 2008    | (%) of<br>TOTAL | (%)<br>Change |
| Cathay Pacific Airways        | Hong Kong            | 1 043 995        | 1 191 745 | 5.1             | 14.2          | 61 287.6               | 68 101.8 | 8.7             | 11.1          | 1 480.9             | 1 733.3 | 4.5             | 17.0          |
| China Airlines                | Taiwan               | 145 800          | 170 688   | 0.7             | 17.1          | 2 739.3                | 2 289.5  | 0.3             | -16.4         | 204.4               | 136.0   | 0.3             | -33.5         |
| China Eastern Airlines        | China                | 162 415          | 155 207   | 0.7             | -4.4          | 2 420.6                | 2 269.7  | 0.3             | -6.2          | 162.4               | 142.7   | 0.4             | -12.1         |
| China Southern Airlines       | China                | 124 314          | 145 321   | 0.6             | 16.9          | 3 115.2                | 3 471.1  | 0.4             | 11.4          | 109.8               | 267.1   | 0.7             | 143.2         |
| Continental Micronesia        | Guam                 | 23 136           | 22 980    | 0.1             | -0.7          | 32.4                   | 32.7     | 0.0             | 1.1           | 0.1                 | 0.1     | 0.0             | -29.4         |
| Emirates                      | New Zealand          | 486 185          | 543 827   | 2.3             | 11.9          | 24 223.3               | 25 229.2 | 3.2             | 4.2           | 90.9                | 103.5   | 0.3             | 14.0          |
| "                             | Singapore            | 56 411           | 37 211    | 0.2             | -34.0         | 6 754.1                | 6 505.2  | 0.8             | -3.7          | 248.7               | 298.3   | 0.8             | 20.0          |
| "                             | Thailand             | 31 795           | 24 395    | 0.1             | -23.3         | 820.1                  | 429.4    | 0.1             | -47.6         | -                   | -       | -               | ..            |
| "                             | United Arab Emirates | 993 262          | 1 079 217 | 4.6             | 8.7           | 35 463.9               | 36 114.9 | 4.6             | 1.8           | 633.1               | 1 733.5 | 4.5             | 173.8         |
| "                             | ALL SERVICES         | 1 567 653        | 1 684 650 | 7.2             | 7.5           | 67 261.5               | 68 278.7 | 8.7             | 1.5           | 972.6               | 2 135.3 | 5.5             | 119.5         |
| Etihad Airways (e) (f)        | Singapore            | ..               | 18 742    | 0.1             | ..            | ..                     | 797.1    | 0.1             | ..            | ..                  | -       | -               | ..            |
| "                             | United Arab Emirates | 14 649           | 183 577   | 0.8             | >999.9        | 711.7                  | 7 812.8  | 1.0             | 997.8         | 9.0                 | 386.9   | 1.0             | >999.9        |
| "                             | ALL SERVICES         | 14 649           | 202 319   | 0.9             | >999.9        | 711.7                  | 8 610.0  | 1.1             | >999.9        | 9.0                 | 386.9   | 1.0             | >999.9        |
| Eva Air                       | Taiwan               | 58 422           | 56 364    | 0.2             | -3.5          | 2 294.8                | 2 254.4  | 0.3             | -1.8          | 44.9                | 62.9    | 0.2             | 39.9          |
| Federal Express Corporation   | Philippines          | ..               | ..        | ..              | ..            | 1 964.7                | 1 689.6  | 0.2             | -14.0         | -                   | -       | -               | ..            |
| "                             | USA                  | ..               | ..        | ..              | ..            | 13 234.6               | 10 942.0 | 1.4             | -17.3         | 0.0                 | 824.4   | 2.1             | >999.9        |
| "                             | ALL SERVICES         | -                | -         | -               | ..            | 15 199.4               | 12 631.6 | 1.6             | -16.9         | 0.0                 | 824.4   | 2.1             | >999.9        |
| Freedom Air International (g) | New Zealand          | 363 136          | 246 398   | 1.1             | -32.1         | -                      | -        | -               | ..            | -                   | -       | -               | ..            |
| Garuda Indonesia              | Indonesia            | 304 176          | 403 754   | 1.7             | 32.7          | 4 710.6                | 5 321.7  | 0.7             | 13.0          | 65.4                | 84.7    | 0.2             | 29.5          |
| "                             | New Zealand          | 7 108            | ..        | ..              | -100.0        | 489.5                  | ..       | ..              | -100.0        | -                   | ..      | ..              | ..            |
| "                             | ALL SERVICES         | 311 284          | 403 754   | 1.7             | 29.7          | 5 200.1                | 5 321.7  | 0.7             | 2.3           | 65.4                | 84.7    | 0.2             | 29.5          |
| Gulf Air (h)                  | Bahrain              | 87 330           | ..        | ..              | -100.0        | 3 471.2                | ..       | ..              | -100.0        | 298.4               | ..      | ..              | -100.0        |
| "                             | Singapore            | 24 473           | ..        | ..              | -100.0        | 2 043.6                | ..       | ..              | -100.0        | 3.1                 | ..      | ..              | -100.0        |
| "                             | ALL SERVICES         | 111 803          | -         | -               | -100.0        | 5 514.9                | -        | -               | -100.0        | 301.4               | -       | -               | -100.0        |
| Hawaiian Airlines             | USA                  | 58 965           | 58 169    | 0.3             | -1.3          | 870.4                  | 927.9    | 0.1             | 6.6           | 55.2                | 48.8    | 0.1             | -11.6         |
| JALways (i)                   | Japan                | 162 414          | 395 726   | 1.7             | 143.7         | 3 309.4                | 7 607.5  | 1.0             | 129.9         | 857.1               | 1 967.6 | 5.1             | 129.6         |
| Japan Airlines (j)            | Japan                | 461 137          | 65 757    | 0.3             | -85.7         | 10 043.9               | 1 368.9  | 0.2             | -86.4         | 686.0               | 58.8    | 0.2             | -91.4         |
| Jetstar (k) (l)               | Indonesia            | 60 222           | 141 383   | 0.6             | 134.8         | 668.3                  | 2 216.6  | 0.3             | 231.7         | -                   | 1.7     | 0.0             | ..            |
| "                             | Japan                | 34 337           | 297 007   | 1.3             | 765.0         | 836.0                  | 5 743.8  | 0.7             | 587.1         | -                   | 444.0   | 1.1             | ..            |
| "                             | Malaysia             | ..               | 56 084    | 0.2             | ..            | ..                     | 1 779.4  | 0.2             | ..            | ..                  | 29.7    | 0.1             | ..            |
| "                             | New Zealand          | 364 114          | 400 810   | 1.7             | 10.1          | 454.4                  | 505.9    | 0.1             | 11.3          | -                   | -       | -               | ..            |
| "                             | Singapore            | 63 104           | 112 138   | 0.5             | 77.7          | -                      | 175.7    | 0.0             | ..            | -                   | 99.8    | 0.3             | ..            |
| "                             | Thailand             | 82 086           | 150 943   | 0.6             | 83.9          | 1 377.8                | 3 227.6  | 0.4             | 134.3         | -                   | 20.6    | 0.1             | ..            |
| "                             | USA                  | 48 047           | 111 099   | 0.5             | 131.2         | 859.2                  | 2 516.6  | 0.3             | 192.9         | -                   | 12.3    | 0.0             | ..            |
| "                             | Vietnam              | 38 570           | 68 087    | 0.3             | 76.5          | 1 010.3                | 2 099.3  | 0.3             | 107.8         | -                   | 13.0    | 0.0             | ..            |
| "                             | ALL SERVICES         | 690 480          | 1 337 551 | 5.7             | 93.7          | 5 206.1                | 18 265.0 | 2.3             | 250.8         | -                   | 621.1   | 1.6             | ..            |
| Korean Air                    | Korea                | 275 104          | 305 751   | 1.3             | 11.1          | 17 133.2               | 19 155.5 | 2.5             | 11.8          | 595.1               | 1 223.8 | 3.1             | 105.6         |
| Lan Chile                     | Chile                | 71 016           | 79 442    | 0.3             | 11.9          | 3 054.0                | 4 290.7  | 0.5             | 40.5          | 42.3                | 56.3    | 0.1             | 33.2          |
| "                             | New Zealand          | 51 957           | 55 660    | 0.2             | 7.1           | 903.6                  | 584.9    | 0.1             | -35.3         | 0.9                 | 0.1     | 0.0             | -93.3         |
| "                             | ALL SERVICES         | 122 973          | 135 102   | 0.6             | 9.9           | 3 957.6                | 4 875.6  | 0.6             | 23.2          | 43.2                | 56.4    | 0.1             | 30.6          |
| Malaysia Airlines             | Malaysia             | 1 105 951        | 1 029 769 | 4.4             | -6.9          | 59 781.7               | 57 494.1 | 7.4             | -3.8          | 102.5               | 164.1   | 0.4             | 60.2          |
| Martinair Holland             | Bahrain              | ..               | ..        | ..              | ..            | ..                     | 22.5     | 0.0             | ..            | ..                  | -       | -               | ..            |

**TABLE 2 SCHEDULED OPERATOR MARKET SHARES AND GROWTH: Year ended June**

| Scheduled Operators            | Country to/from      | Total Passengers |           |                 |               | Total Freight (tonnes) |           |                 |               | Total Mail (tonnes) |          |                 |               |
|--------------------------------|----------------------|------------------|-----------|-----------------|---------------|------------------------|-----------|-----------------|---------------|---------------------|----------|-----------------|---------------|
|                                |                      | 2007             | 2008      | (%) of<br>TOTAL | (%)<br>Change | 2007                   | 2008      | (%) of<br>TOTAL | (%)<br>Change | 2007                | 2008     | (%) of<br>TOTAL | (%)<br>Change |
| Martinair Holland              | Hong Kong            | ..               | ..        | ..              | ..            | 476.7                  | 281.2     | 0.0             | -41.0         | -                   | -        | -               | ..            |
| "                              | Japan                | ..               | ..        | ..              | ..            | 36.9                   | ..        | ..              | -100.0        | -                   | ..       | ..              | ..            |
| "                              | Netherlands          | ..               | ..        | ..              | ..            | 9 056.0                | 9 733.9   | 1.2             | 7.5           | -                   | -        | -               | ..            |
| "                              | New Zealand          | ..               | ..        | ..              | ..            | ..                     | 1.4       | 0.0             | ..            | ..                  | -        | -               | ..            |
| "                              | Thailand             | ..               | ..        | ..              | ..            | 36.9                   | 55.8      | 0.0             | 51.3          | -                   | -        | -               | ..            |
| "                              | UK                   | ..               | ..        | ..              | ..            | 30.5                   | ..        | ..              | -100.0        | -                   | ..       | ..              | ..            |
| "                              | United Arab Emirates | ..               | ..        | ..              | ..            | 386.3                  | 207.6     | 0.0             | -46.3         | -                   | -        | -               | ..            |
| "                              | ALL SERVICES         | -                | -         | -               | ..            | 10 023.3               | 10 302.5  | 1.3             | 2.8           | -                   | -        | -               | ..            |
| Merpati Nusantara Airlines (m) | Indonesia            | 3 174            | 1 151     | 0.0             | -63.7         | -                      | -         | -               | ..            | -                   | -        | -               | ..            |
| OzJet (n)                      | Indonesia            | ..               | 1 413     | 0.0             | ..            | ..                     | -         | -               | ..            | ..                  | -        | -               | ..            |
| Pacific Air Express (o)        | Solomon Islands      | ..               | ..        | ..              | ..            | 481.8                  | 870.2     | 0.1             | 80.6          | -                   | -        | -               | ..            |
| Pacific Blue (p)               | Fiji                 | 128 337          | 155 996   | 0.7             | 21.6          | 463.8                  | 525.0     | 0.1             | 13.2          | -                   | -        | -               | ..            |
| "                              | New Zealand          | 397 528          | 449 760   | 1.9             | 13.1          | 1 190.5                | 1 146.6   | 0.1             | -3.7          | -                   | -        | -               | ..            |
| "                              | Tonga                | 20 199           | 22 085    | 0.1             | 9.3           | 66.5                   | 41.8      | 0.0             | -37.2         | -                   | -        | -               | ..            |
| "                              | Vanuatu              | 30 395           | 30 984    | 0.1             | 1.9           | 71.9                   | 74.5      | 0.0             | 3.7           | -                   | -        | -               | ..            |
| "                              | ALL SERVICES         | 576 459          | 658 825   | 2.8             | 14.3          | 1 792.7                | 1 788.0   | 0.2             | -0.3          | -                   | -        | -               | ..            |
| Philippine Airlines            | Philippines          | 75 306           | 98 842    | 0.4             | 31.3          | 1 454.0                | 2 184.4   | 0.3             | 50.2          | 43.1                | 34.1     | 0.1             | -21.0         |
| Polynesian Blue (p)            | Western Samoa        | 34 056           | 35 059    | 0.2             | 2.9           | 127.8                  | 45.4      | 0.0             | -64.5         | -                   | -        | -               | ..            |
| Qantas Airways                 | Bahrain              | ..               | ..        | ..              | ..            | 98.5                   | 206.6     | 0.0             | 109.7         | -                   | -        | -               | ..            |
| "                              | Canada               | 10 707           | 8 107     | 0.0             | -24.3         | 152.0                  | 21.2      | 0.0             | -86.1         | 61.2                | 26.7     | 0.1             | -56.3         |
| "                              | China                | 164 193          | 186 703   | 0.8             | 13.7          | 7 014.5                | 9 750.5   | 1.2             | 39.0          | 24.9                | 50.6     | 0.1             | 103.4         |
| "                              | Germany              | 91 672           | 104 952   | 0.5             | 14.5          | 5 271.8                | 5 582.4   | 0.7             | 5.9           | 505.3               | 586.5    | 1.5             | 16.1          |
| "                              | Hong Kong            | 615 801          | 621 612   | 2.7             | 0.9           | 24 479.1               | 25 381.3  | 3.2             | 3.7           | 998.6               | 911.0    | 2.3             | -8.8          |
| "                              | India                | 63 190           | 63 807    | 0.3             | 1.0           | 823.4                  | 1 019.3   | 0.1             | 23.8          | 57.3                | 54.4     | 0.1             | -5.1          |
| "                              | Indonesia            | 174 654          | 158 004   | 0.7             | -9.5          | 1 621.2                | 2 112.9   | 0.3             | 30.3          | 64.6                | 69.1     | 0.2             | 6.9           |
| "                              | Italy                | ..               | ..        | ..              | ..            | 104.7                  | ..        | ..              | -100.0        | -                   | ..       | ..              | ..            |
| "                              | Japan                | 856 014          | 640 006   | 2.8             | -25.2         | 16 648.7               | 12 770.8  | 1.6             | -23.3         | 2 188.7             | 3 388.5  | 8.7             | 54.8          |
| "                              | Kenya                | ..               | ..        | ..              | ..            | 99.4                   | ..        | ..              | -100.0        | -                   | ..       | ..              | ..            |
| "                              | Korea                | 4 048            | 3 937     | 0.0             | -2.7          | 35.2                   | 66.8      | 0.0             | 90.0          | 1.1                 | 0.7      | 0.0             | -43.0         |
| "                              | New Caledonia        | 49 813           | 54 004    | 0.2             | 8.4           | 194.1                  | 234.5     | 0.0             | 20.8          | 24.7                | 25.8     | 0.1             | 4.6           |
| "                              | New Zealand          | 1 324 913        | 1 279 927 | 5.5             | -3.4          | 46 119.5               | 38 551.7  | 4.9             | -16.4         | 2 550.4             | 2 385.2  | 6.1             | -6.5          |
| "                              | Nigeria              | ..               | ..        | ..              | ..            | ..                     | 104.9     | 0.0             | ..            | ..                  | -        | -               | ..            |
| "                              | Papua New Guinea     | ..               | ..        | ..              | ..            | ..                     | 18.0      | 0.0             | ..            | ..                  | 0.4      | 0.0             | ..            |
| "                              | Philippines          | 75 432           | 77 481    | 0.3             | 2.7           | 1 573.0                | 1 763.7   | 0.2             | 12.1          | 65.4                | 82.4     | 0.2             | 26.0          |
| "                              | Qatar                | ..               | ..        | ..              | ..            | 102.0                  | ..        | ..              | -100.0        | -                   | ..       | ..              | ..            |
| "                              | Singapore            | 994 775          | 965 562   | 4.2             | -2.9          | 40 587.2               | 38 520.1  | 4.9             | -5.1          | 2 973.8             | 2 934.5  | 7.5             | -1.3          |
| "                              | South Africa         | 135 868          | 149 393   | 0.6             | 10.0          | 2 045.1                | 2 143.6   | 0.3             | 4.8           | 224.5               | 218.7    | 0.6             | -2.6          |
| "                              | Thailand             | 85 418           | 100 684   | 0.4             | 17.9          | 2 812.9                | 3 049.1   | 0.4             | 8.4           | 284.8               | 253.9    | 0.7             | -10.9         |
| "                              | UK                   | 504 985          | 487 106   | 2.1             | -3.5          | 7 700.4                | 7 322.5   | 0.9             | -4.9          | 3 066.3             | 2 711.6  | 7.0             | -11.6         |
| "                              | United Arab Emirates | ..               | ..        | ..              | ..            | 326.6                  | 49.5      | 0.0             | -84.8         | -                   | -        | -               | ..            |
| "                              | USA                  | 1 111 845        | 1 108 651 | 4.8             | -0.3          | 37 419.8               | 32 674.7  | 4.2             | -12.7         | 5 914.7             | 5 738.9  | 14.7            | -3.0          |
| "                              | ALL SERVICES         | 6 263 328        | 6 009 936 | 25.8            | -4.0          | 195 228.9              | 181 344.2 | 23.2            | -7.1          | 19 006.3            | 19 438.9 | 49.9            | 2.3           |

**TABLE 2 SCHEDULED OPERATOR MARKET SHARES AND GROWTH: Year ended June**

| Scheduled Operators        | Country to/from  | Total Passengers  |                   |                 |               | Total Freight (tonnes) |                  |                 |               | Total Mail (tonnes) |                 |                 |               |
|----------------------------|------------------|-------------------|-------------------|-----------------|---------------|------------------------|------------------|-----------------|---------------|---------------------|-----------------|-----------------|---------------|
|                            |                  | 2007              | 2008              | (%) of<br>TOTAL | (%)<br>Change | 2007                   | 2008             | (%) of<br>TOTAL | (%)<br>Change | 2007                | 2008            | (%) of<br>TOTAL | (%)<br>Change |
| Royal Brunei Airlines      | Brunei           | 132 833           | 135 216           | 0.6             | 1.8           | 3 938.4                | 3 524.3          | 0.5             | -10.5         | 0.6                 | 1.1             | 0.0             | 68.3          |
| "                          | New Zealand      | 29 286            | 28 959            | 0.1             | -1.1          | 423.9                  | 720.8            | 0.1             | 70.1          | -                   | -               | -               | ..            |
| "                          | ALL SERVICES     | 162 119           | 164 175           | 0.7             | 1.3           | 4 362.2                | 4 245.1          | 0.5             | -2.7          | 0.6                 | 1.1             | 0.0             | 68.3          |
| Silk Air (q)               | Singapore        | ..                | 1 722             | 0.0             | ..            | ..                     | 72.8             | 0.0             | ..            | ..                  | 16.2            | 0.0             | ..            |
| Singapore Airlines         | Indonesia        | ..                | ..                | ..              | ..            | 7.0                    | ..               | ..              | -100.0        | -                   | ..              | ..              | ..            |
| "                          | Malaysia         | ..                | ..                | ..              | ..            | ..                     | 296.8            | 0.0             | ..            | ..                  | -               | -               | ..            |
| "                          | New Zealand      | ..                | ..                | ..              | ..            | 2 884.6                | 4 861.0          | 0.6             | 68.5          | -                   | -               | -               | ..            |
| "                          | Singapore        | 2 515 503         | 2 563 858         | 11.0            | 1.9           | 109 790.6              | 112 117.0        | 14.4            | 2.1           | 1 249.7             | 1 353.0         | 3.5             | 8.3           |
| "                          | ALL SERVICES     | 2 515 503         | 2 563 858         | 11.0            | 1.9           | 112 682.3              | 117 274.9        | 15.0            | 4.1           | 1 249.7             | 1 353.0         | 3.5             | 8.3           |
| SkyAirWorld (r)            | Solomon Islands  | ..                | 2 781             | 0.0             | ..            | ..                     | -                | -               | ..            | ..                  | -               | -               | ..            |
| Solomon Airlines           | Solomon Islands  | 30 690            | 25 425            | 0.1             | -17.2         | 222.1                  | 212.3            | 0.0             | -4.4          | -                   | -               | -               | ..            |
| South African Airways      | South Africa     | 94 633            | 106 050           | 0.5             | 12.1          | 2 965.4                | 2 572.3          | 0.3             | -13.3         | 92.8                | 98.0            | 0.3             | 5.6           |
| Thai Airways International | Thailand         | 882 339           | 1 038 769         | 4.5             | 17.7          | 29 027.6               | 34 985.0         | 4.5             | 20.5          | 1 592.4             | 1 848.9         | 4.8             | 16.1          |
| Tiger Airways              | Singapore        | 70 578            | 187 031           | 0.8             | 165.0         | -                      | -                | -               | ..            | -                   | -               | -               | ..            |
| Transair (s)               | Papua New Guinea | ..                | ..                | ..              | ..            | 137.0                  | ..               | ..              | -100.0        | -                   | ..              | ..              | ..            |
| United Airlines            | USA              | 445 709           | 401 077           | 1.7             | -10.0         | 7 566.5                | 7 641.1          | 1.0             | 1.0           | 1 955.2             | 1 609.2         | 4.1             | -17.7         |
| United Parcel Service      | China            | ..                | ..                | ..              | ..            | 7.0                    | ..               | ..              | -100.0        | -                   | ..              | ..              | ..            |
| "                          | Fiji             | ..                | ..                | ..              | ..            | -                      | ..               | ..              | ..            | -                   | ..              | ..              | ..            |
| "                          | Hong Kong        | ..                | ..                | ..              | ..            | 89.3                   | 45.8             | 0.0             | -48.7         | -                   | -               | -               | ..            |
| "                          | Singapore        | ..                | ..                | ..              | ..            | ..                     | 1 070.9          | 0.1             | ..            | ..                  | -               | -               | ..            |
| "                          | USA              | ..                | ..                | ..              | ..            | 9 327.4                | 13 354.9         | 1.7             | 43.2          | -                   | -               | -               | ..            |
| "                          | ALL SERVICES     | -                 | -                 | -               | ..            | 9 423.7                | 14 471.6         | 1.9             | 53.6          | -                   | -               | -               | ..            |
| Vietnam Airlines           | Vietnam          | 171 195           | 183 428           | 0.8             | 7.1           | 2 797.3                | 3 218.9          | 0.4             | 15.1          | -                   | -               | -               | ..            |
| Virgin Atlantic Airways    | Hong Kong        | 79 521            | 68 993            | 0.3             | -13.2         | 7 369.2                | 7 880.7          | 1.0             | 6.9           | -                   | -               | -               | ..            |
| "                          | UK               | 78 054            | 91 461            | 0.4             | 17.2          | 1 432.0                | 912.7            | 0.1             | -36.3         | -                   | -               | -               | ..            |
| "                          | ALL SERVICES     | 157 575           | 160 454           | 0.7             | 1.8           | 8 801.2                | 8 793.4          | 1.1             | -0.1          | -                   | -               | -               | ..            |
| <b>TOTAL</b>               |                  | <b>22 137 767</b> | <b>23 264 573</b> | <b>100.0</b>    | <b>5.1</b>    | <b>754 456.2</b>       | <b>780 993.0</b> | <b>100.0</b>    | <b>3.5</b>    | <b>33 475.9</b>     | <b>38 921.5</b> | <b>100.0</b>    | <b>16.3</b>   |

**TABLE 2 SCHEDULED OPERATOR MARKET SHARES AND GROWTH: Year ended June**

---

Please refer to explanatory notes - paragraphs 3, 6 and 13 in particular.

- (a) Traffic carried under code share arrangements may not be included for July 2000 to June 2006. No mail data for August 2007 and onwards.
- (b) Service commenced November 2007.
- (c) Service commenced October 2007.
- (d) Service ceased March 2007. No outbound freight data for September 2000 onwards. No inbound freight data for April 2001 onwards.
- (e) Split of passenger numbers between Abu Dhabi and Brisbane and between Singapore and Brisbane has been estimated for October 2007.
- (f) Service commenced March 2007.
- (g) Service ceased March 2008.
- (h) Service ceased June 2007.
- (i) Service commenced October 2006.
- (j) Operations taken over by JALWays in October 2007.
- (k) Freight data for services to/from Singapore is not included prior to July 2007.
- (l) No Mail data prior to November 2007.
- (m) Operations reported under Airnorth for November 2007 onwards.
- (n) Scheduled services commenced June 2008.
- (o) Commenced reporting in December 2007. Back data is available from January 2007.
- (p) Mail data is included in freight data.
- (q) Scheduled service commenced December 2007 and ceased May 2008.
- (r) Service commenced March 2008.
- (s) Service ceased December 2006.

**TABLE 3 AIRLINE PASSENGER CAPACITY AND UTILISATION TO AND FROM AUSTRALIA BY OPERATOR: Year ended June 2008**

| Scheduled Operator              | Service to/from      | Inbound        |             |                 |                    | Outbound       |             |                 |                    |
|---------------------------------|----------------------|----------------|-------------|-----------------|--------------------|----------------|-------------|-----------------|--------------------|
|                                 |                      | No. of Flights | Pax Carried | Seats Available | Seat Utilisation % | No. of Flights | Pax Carried | Seats Available | Seat Utilisation % |
| Aerolineas Argentinas           | Argentina            | 176            | 38 716      | 43 472          | 89.1               | 176            | 38 402      | 43 472          | 88.3               |
| Air Caledonie                   | New Caledonia        | 323            | 46 617      | 60 283          | 77.3               | 323            | 46 459      | 60 283          | 77.1               |
| Air Canada                      | Canada               | 362            | 68 941      | 91 591          | 75.3               | 365            | 70 311      | 92 069          | 76.4               |
| Air China                       | China                | 449            | 92 015      | 107 760         | 85.4               | 449            | 85 287      | 107 760         | 79.1               |
| Air Mauritius                   | Mauritius            | 158            | 36 766      | 46 944          | 78.3               | 158            | 34 069      | 46 944          | 72.6               |
| Air Nauru                       | Nauru                | 87             | 4 828       | 10 962          | 44.0               | 88             | 4 674       | 11 088          | 42.2               |
| Air New Zealand (a)             | Cook Islands         | 42             | 4 431       | 6 374           | 69.5               | 43             | 5 020       | 6 532           | 76.9               |
| "                               | Germany              | 96             | ..          | -               | ..                 | 96             | ..          | -               | ..                 |
| "                               | New Zealand          | 7 223          | 1 009 962   | 1 328 756       | 76.0               | 7 129          | 979 784     | 1 293 867       | 75.7               |
| "                               | USA                  | 235            | 58 945      | 73 782          | 79.9               | 316            | 87 880      | 104 497         | 84.1               |
| "                               | ALL SERVICES         | 7 596          | 1 073 338   | 1 408 912       | 76.2               | 7 584          | 1 072 684   | 1 404 896       | 76.4               |
| Air Niugini                     | Papua New Guinea     | 947            | 66 300      | 124 963         | 53.1               | 950            | 71 011      | 125 132         | 56.7               |
| Air Pacific                     | Fiji                 | 1 047          | 204 501     | 289 087         | 70.7               | 1 047          | 195 881     | 289 087         | 67.8               |
| Air Tahiti Nui                  | Tahiti               | 108            | 18 904      | 31 752          | 59.5               | 108            | 20 058      | 31 752          | 63.2               |
| Air Vanuatu                     | Vanuatu              | 472            | 43 669      | 67 964          | 64.3               | 471            | 43 091      | 67 794          | 63.6               |
| AirAsia X (b)                   | Malaysia             | 139            | 32 369      | 43 785          | 73.9               | 138            | 31 077      | 43 470          | 71.5               |
| Airlines PNG                    | Papua New Guinea     | 505            | 16 823      | 27 483          | 61.2               | 510            | 16 441      | 27 864          | 59.0               |
| Airnorth (c)                    | Indonesia            | 149            | 6 283       | 8 680           | 72.4               | 149            | 7 285       | 8 686           | 83.9               |
| Asian Express Airlines (d)      | New Zealand          | 237            | ..          | -               | ..                 | 239            | ..          | -               | ..                 |
| Asiana Airlines                 | Korea                | 363            | 90 112      | 112 530         | 80.1               | 363            | 84 934      | 112 530         | 75.5               |
| British Airways                 | UK                   | 729            | 178 585     | 203 137         | 87.9               | 729            | 176 895     | 203 201         | 87.1               |
| Cargolux Airlines Intl (d)      | Luxembourg           | 99             | ..          | -               | ..                 | 100            | ..          | -               | ..                 |
| Cathay Pacific Airways          | Hong Kong            | 2 898          | 613 340     | 750 158         | 81.8               | 2 895          | 578 405     | 749 400         | 77.2               |
| China Airlines                  | Taiwan               | 381            | 83 562      | 117 587         | 71.1               | 381            | 87 126      | 116 969         | 74.5               |
| China Eastern Airlines          | China                | 420            | 82 155      | 112 617         | 73.0               | 420            | 73 052      | 112 617         | 64.9               |
| China Southern Airlines         | China                | 360            | 77 076      | 105 274         | 73.2               | 360            | 68 245      | 105 274         | 64.8               |
| Continental Micronesia          | Guam                 | 110            | 11 439      | 16 940          | 67.5               | 110            | 11 541      | 16 940          | 68.1               |
| Emirates                        | New Zealand          | 1 454          | 283 541     | 454 462         | 62.4               | 1 455          | 260 286     | 454 722         | 57.2               |
| "                               | United Arab Emirates | 2 560          | 585 123     | 829 049         | 70.6               | 2 559          | 555 700     | 828 731         | 67.1               |
| "                               | ALL SERVICES         | 4 014          | 868 664     | 1 283 511       | 67.7               | 4 014          | 815 986     | 1 283 453       | 63.6               |
| Etihad Airways                  | United Arab Emirates | 485            | 98 957      | 127 044         | 77.9               | 485            | 103 362     | 127 044         | 81.4               |
| Eva Air                         | Taiwan               | 155            | 29 031      | 39 060          | 74.3               | 155            | 27 333      | 39 060          | 70.0               |
| Federal Express Corporation (d) | Philippines          | -              | ..          | -               | ..                 | 264            | ..          | ..              | ..                 |
| "                               | USA                  | 264            | ..          | ..              | ..                 | -              | ..          | -               | ..                 |
| "                               | ALL SERVICES         | 264            | -           | -               | ..                 | 264            | -           | -               | ..                 |
| Freedom Air International (e)   | New Zealand          | 1 086          | 121 486     | 162 313         | 74.8               | 1 081          | 124 912     | 161 543         | 77.3               |
| Garuda Indonesia                | Indonesia            | 1 346          | 202 489     | 254 747         | 79.5               | 1 345          | 201 265     | 254 454         | 79.1               |
| Hawaiian Airlines               | USA                  | 157            | 28 876      | 39 885          | 72.4               | 157            | 29 293      | 39 885          | 73.4               |
| JALways                         | Japan                | 640            | 198 947     | 270 286         | 73.6               | 639            | 196 779     | 269 788         | 72.9               |
| Japan Airlines (f)              | Japan                | 92             | 33 923      | 39 498          | 85.9               | 92             | 31 834      | 39 679          | 80.2               |
| Jetstar                         | Indonesia            | 279            | 69 225      | 84 537          | 81.9               | 280            | 72 158      | 84 840          | 85.1               |
| "                               | Japan                | 738            | 148 434     | 223 614         | 66.4               | 740            | 148 573     | 224 220         | 66.3               |
| "                               | Malaysia             | 124            | 26 633      | 37 572          | 70.9               | 126            | 29 451      | 38 178          | 77.1               |
| "                               | New Zealand          | 1 446          | 201 258     | 255 942         | 78.6               | 1 447          | 199 552     | 256 119         | 77.9               |



**TABLE 3 AIRLINE PASSENGER CAPACITY AND UTILISATION TO AND FROM AUSTRALIA BY OPERATOR: Year ended June 2008**

| Scheduled Operator             | Service to/from      | Inbound        |             |                 |                    | Outbound       |             |                 |                    |
|--------------------------------|----------------------|----------------|-------------|-----------------|--------------------|----------------|-------------|-----------------|--------------------|
|                                |                      | No. of Flights | Pax Carried | Seats Available | Seat Utilisation % | No. of Flights | Pax Carried | Seats Available | Seat Utilisation % |
| Jetstar                        | Singapore            | 439            | 54 623      | 78 003          | 70.0               | 439            | 57 515      | 78 000          | 73.7               |
| "                              | Thailand             | 311            | 76 161      | 94 233          | 80.8               | 313            | 74 782      | 94 839          | 78.9               |
| "                              | USA                  | 252            | 55 656      | 76 356          | 72.9               | 255            | 55 443      | 77 265          | 71.8               |
| "                              | Vietnam              | 156            | 34 130      | 47 268          | 72.2               | 156            | 33 957      | 47 268          | 71.8               |
| "                              | ALL SERVICES         | 3 745          | 666 120     | 897 525         | 74.2               | 3 756          | 671 431     | 900 729         | 74.5               |
| Korean Air                     | Korea                | 829            | 154 402     | 216 942         | 71.2               | 828            | 151 349     | 215 401         | 70.3               |
| Lan Chile                      | Chile                | 333            | 63 177      | 86 247          | 73.3               | 334            | 71 925      | 86 506          | 83.1               |
| Malaysia Airlines              | Malaysia             | 2 376          | 519 834     | 667 410         | 77.9               | 2 338          | 509 935     | 665 479         | 76.6               |
| Martinair Holland (d)          | Netherlands          | 103            | ..          | -               | ..                 | 101            | ..          | -               | ..                 |
| Merpati Nusantara Airlines (g) | Indonesia            | 35             | 577         | 1 050           | 55.0               | 35             | 574         | 1 050           | 54.7               |
| OzJet (h)                      | Indonesia            | 8              | 669         | 848             | 78.9               | 8              | 744         | 848             | 87.7               |
| Pacific Air Express (d)        | Solomon Islands      | 56             | ..          | -               | ..                 | 56             | ..          | -               | ..                 |
| Pacific Blue                   | Fiji                 | 529            | 77 453      | 95 220          | 81.3               | 529            | 78 543      | 95 220          | 82.5               |
| "                              | New Zealand          | 1 535          | 220 534     | 276 300         | 79.8               | 1 536          | 229 226     | 276 480         | 82.9               |
| "                              | Tonga                | 105            | 11 023      | 18 900          | 58.3               | 105            | 11 062      | 18 900          | 58.5               |
| "                              | Vanuatu              | 110            | 15 490      | 19 800          | 78.2               | 111            | 15 494      | 19 980          | 77.5               |
| "                              | ALL SERVICES         | 2 279          | 324 500     | 410 220         | 79.1               | 2 281          | 334 325     | 410 580         | 81.4               |
| Philippine Airlines            | Philippines          | 220            | 51 059      | 66 440          | 76.8               | 220            | 47 783      | 66 440          | 71.9               |
| Polynesian Blue                | Western Samoa        | 162            | 17 498      | 29 160          | 60.0               | 164            | 17 561      | 29 520          | 59.5               |
| Qantas Airways                 | Bahrain              | 2              | ..          | ..              | ..                 | 2              | ..          | ..              | ..                 |
| "                              | Canada               | 38             | 11 335      | 13 013          | 87.1               | 38             | 11 926      | 13 423          | 88.8               |
| "                              | China                | 495            | 98 231      | 124 743         | 78.7               | 496            | 93 415      | 124 556         | 75.0               |
| "                              | Germany              | 417            | 140 980     | 150 561         | 93.6               | 397            | 136 718     | 150 541         | 90.8               |
| "                              | Hong Kong            | 1 189          | 289 576     | 343 967         | 84.2               | 1 188          | 259 042     | 342 287         | 75.7               |
| "                              | India                | 157            | 35 463      | 40 227          | 88.2               | 157            | 32 170      | 42 390          | 75.9               |
| "                              | Indonesia            | 459            | 67 160      | 90 508          | 74.2               | 460            | 64 133      | 90 754          | 70.7               |
| "                              | Japan                | 1 623          | 325 742     | 413 556         | 78.8               | 1 626          | 324 746     | 414 488         | 78.3               |
| "                              | Korea                | 12             | 2 033       | 2 724           | 74.6               | 13             | 2 257       | 3 021           | 74.7               |
| "                              | New Caledonia        | 207            | 31 287      | 39 871          | 78.5               | 207            | 31 150      | 39 829          | 78.2               |
| "                              | New Zealand          | 4 643          | 621 762     | 770 252         | 80.7               | 4 642          | 620 446     | 785 403         | 79.0               |
| "                              | Philippines          | 210            | 44 349      | 48 017          | 92.4               | 210            | 40 494      | 47 998          | 84.4               |
| "                              | Singapore            | 1 357          | 325 470     | 393 249         | 82.8               | 1 354          | 296 022     | 392 390         | 75.4               |
| "                              | South Africa         | 268            | 89 883      | 101 852         | 88.2               | 269            | 80 077      | 100 782         | 79.5               |
| "                              | Thailand             | 1              | ..          | ..              | ..                 | ..             | ..          | ..              | ..                 |
| "                              | UK                   | 1 461          | 486 711     | 545 714         | 89.2               | 1 461          | 489 739     | 545 434         | 89.8               |
| "                              | United Arab Emirates | ..             | ..          | ..              | ..                 | 14             | ..          | ..              | ..                 |
| "                              | USA                  | 2 452          | 641 762     | 782 782         | 82.0               | 2 445          | 662 742     | 787 967         | 84.1               |
| "                              | ALL SERVICES         | 14 991         | 3 211 744   | 3 861 036       | 83.2               | 14 979         | 3 145 077   | 3 881 263       | 81.0               |
| Royal Brunei Airlines          | Brunei               | 693            | 68 851      | 134 218         | 51.3               | 685            | 66 365      | 132 736         | 50.0               |
| "                              | New Zealand          | 159            | 15 949      | 32 706          | 48.8               | 165            | 13 010      | 33 894          | 38.4               |
| "                              | ALL SERVICES         | 852            | 84 800      | 166 924         | 50.8               | 850            | 79 375      | 166 630         | 47.6               |
| Silk Air (i)                   | Singapore            | 26             | 808         | 3 548           | 22.8               | 26             | 914         | 3 548           | 25.8               |
| Singapore Airlines             | New Zealand          | 49             | ..          | -               | ..                 | 49             | ..          | -               | ..                 |
| "                              | Singapore            | 4 722          | 1 308 482   | 1 541 387       | 84.9               | 4 728          | 1 255 376   | 1 540 972       | 81.5               |

**TABLE 3 AIRLINE PASSENGER CAPACITY AND UTILISATION TO AND FROM AUSTRALIA BY OPERATOR: Year ended June 2008**

| Scheduled Operator         | Service to/from | Inbound        |                   |                   |                    | Outbound       |                   |                   |                    |
|----------------------------|-----------------|----------------|-------------------|-------------------|--------------------|----------------|-------------------|-------------------|--------------------|
|                            |                 | No. of Flights | Pax Carried       | Seats Available   | Seat Utilisation % | No. of Flights | Pax Carried       | Seats Available   | Seat Utilisation % |
| Singapore Airlines         | ALL SERVICES    | 4 771          | 1 308 482         | 1 541 387         | 84.9               | 4 777          | 1 255 376         | 1 540 972         | 81.5               |
| SkyAirWorld (j)            | Solomon Islands | 85             | 1 437             | 6 910             | 20.8               | 85             | 1 344             | 6 910             | 19.5               |
| Solomon Airlines           | Solomon Islands | 223            | 11 811            | 27 802            | 42.5               | 223            | 13 614            | 27 802            | 49.0               |
| South African Airways      | South Africa    | 268            | 56 656            | 67 509            | 83.9               | 268            | 49 394            | 67 509            | 73.2               |
| Thai Airways International | Thailand        | 1 979          | 534 663           | 637 723           | 83.8               | 1 978          | 504 106           | 637 418           | 79.1               |
| Tiger Airways              | Singapore       | 707            | 94 147            | 127 260           | 74.0               | 706            | 92 884            | 127 080           | 73.1               |
| United Airlines            | USA             | 742            | 199 793           | 257 474           | 77.6               | 735            | 201 284           | 255 045           | 78.9               |
| United Parcel Service (d)  | Hong Kong       | -              | ..                | -                 | ..                 | 37             | ..                | ..                | ..                 |
| "                          | Singapore       | -              | ..                | -                 | ..                 | 165            | ..                | ..                | ..                 |
| "                          | USA             | 276            | ..                | ..                | ..                 | -              | ..                | -                 | ..                 |
| "                          | ALL SERVICES    | 276            | -                 | -                 | ..                 | 202            | -                 | -                 | ..                 |
| Vietnam Airlines           | Vietnam         | 366            | 94 707            | 123 708           | 76.6               | 366            | 88 721            | 123 708           | 71.7               |
| Virgin Atlantic Airways    | UK              | 365            | 83 321            | 111 814           | 74.5               | 364            | 77 133            | 111 508           | 69.2               |
| <b>TOTAL</b>               |                 | <b>62 151</b>  | <b>11 948 917</b> | <b>15 307 162</b> | <b>78.1</b>        | <b>62 025</b>  | <b>11 662 541</b> | <b>15 318 080</b> | <b>76.1</b>        |

Please refer to explanatory notes - paragraphs 4, 5, 7 and 14 in particular.

In addition to the above, please note the following regarding Seat Factors shown in this table:

Traffic shown in this table for Qantas Airways will differ from traffic shown in Tables 1 and 2 because of the inclusion in this table of total traffic into and ex Australia (for seat factor purposes) whereas Tables 1 and 2 include uplift/discharge traffic only.

All other airlines report uplift/discharge traffic only. Therefore, for other airlines operating via Australia, the seat factors shown here reflect the total seats on the aircraft but only the Australian uplift/discharge portion of passengers on the aircraft. The true seat factors for airlines that operate via Australia will most likely be higher than what is shown in this table.

For example, on Dubai-Sydney-Auckland services:

Seats on the Dubai-Sydney sector are taken up by Dubai-Sydney and Dubai-Auckland passengers. However, when calculating seat factors, only the Dubai-Sydney passengers are used.

Similarly, seats on the Sydney-Auckland sector are taken up by Sydney-Auckland and Dubai-Auckland passengers. However, when calculating seat factors, only the Sydney-Auckland passengers are used.

The following airlines are affected:

Emirates and Royal Brunei Airlines

(a) From November 2007 to February 2008, there were no "same flight number" services inbound to Australia from the USA corresponding to Melbourne-Auckland-Los Angeles services. This accounts for the difference between inbound and outbound services for New Zealand and USA.

(b) Service commenced November 2007.

(c) Service commenced October 2007.

(d) Freight flights only.

(e) Service ceased March 2008.

(f) Operations taken over by JALWays in October 2007.

(g) Operations reported under Airnorth for November 2007 onwards.

(h) Scheduled services commenced June 2008.

(i) Scheduled service commenced December 2007 and ceased May 2008.

(j) Service commenced March 2008.

**TABLE 4 SCHEDULED INTERNATIONAL AIRPORT TRAFFIC AND AIRCRAFT MOVEMENTS: Year ended June**

|                        |                    | Inbound    |            | (%)    | Outbound   |            | (%)    | Total      |            | (%)    | (%) of |
|------------------------|--------------------|------------|------------|--------|------------|------------|--------|------------|------------|--------|--------|
|                        |                    | 2007       | 2008       | Change | 2007       | 2008       | Change | 2007       | 2008       | Change | TOTAL  |
| Adelaide               | Passengers         | 230 016    | 244 487    | 6.3    | 211 344    | 226 854    | 7.3    | 441 360    | 471 341    | 6.8    | 2.0    |
| "                      | Freight (Tonnes)   | 9 346      | 9 314      | -0.3   | 9 322      | 9 830      | 5.4    | 18 668     | 19 144     | 2.5    | 2.5    |
| "                      | Aircraft Movements | 1 520      | 1 605      | 5.6    | 1 518      | 1 603      | 5.6    | 3 038      | 3 208      | 5.6    | 2.3    |
| Brisbane               | Passengers         | 1 965 894  | 2 006 766  | 2.1    | 1 920 012  | 1 978 069  | 3.0    | 3 885 906  | 3 984 835  | 2.5    | 17.1   |
| "                      | Freight (Tonnes)   | 45 286     | 45 737     | 1.0    | 43 771     | 42 640     | -2.6   | 89 057     | 88 377     | -0.8   | 11.3   |
| "                      | Aircraft Movements | 11 873     | 12 409     | 4.5    | 11 864     | 12 404     | 4.6    | 23 737     | 24 813     | 4.5    | 17.9   |
| Cairns                 | Passengers         | 368 590    | 331 041    | -10.2  | 361 074    | 324 878    | -10.0  | 729 664    | 655 919    | -10.1  | 2.8    |
| "                      | Freight (Tonnes)   | 2 933      | 2 348      | -19.9  | 5 084      | 4 318      | -15.1  | 8 018      | 6 666      | -16.9  | 0.9    |
| "                      | Aircraft Movements | 4 014      | 3 763      | -6.3   | 4 013      | 3 763      | -6.2   | 8 027      | 7 526      | -6.2   | 5.4    |
| Christmas Island (a)   | Passengers         | ..         | 808        | ..     | ..         | 914        | ..     | -          | 1 722      | ..     | 0.0    |
| "                      | Freight (Tonnes)   | ..         | 72         | ..     | ..         | 0          | ..     | -          | 73         | ..     | 0.0    |
| "                      | Aircraft Movements | ..         | 26         | ..     | ..         | 26         | ..     | -          | 52         | ..     | 0.0    |
| Darwin                 | Passengers         | 65 662     | 86 808     | 32.2   | 68 555     | 86 435     | 26.1   | 134 217    | 173 243    | 29.1   | 0.7    |
| "                      | Freight (Tonnes)   | 149        | 127        | -14.9  | 178        | 171        | -4.1   | 327        | 298        | -9.0   | 0.0    |
| "                      | Aircraft Movements | 1 475      | 1 711      | 16.0   | 1 476      | 1 710      | 15.9   | 2 951      | 3 421      | 15.9   | 2.5    |
| Gold Coast/Coolangatta | Passengers         | 96 633     | 131 255    | 35.8   | 96 187     | 129 837    | 35.0   | 192 820    | 261 092    | 35.4   | 1.1    |
| "                      | Freight (Tonnes)   | 2          | 440        | >999.9 | 0          | 127        | >999.9 | 2          | 567        | >999.9 | 0.1    |
| "                      | Aircraft Movements | 874        | 960        | 9.8    | 870        | 954        | 9.7    | 1 744      | 1 914      | 9.7    | 1.4    |
| Melbourne              | Passengers         | 2 249 222  | 2 361 882  | 5.0    | 2 170 329  | 2 300 155  | 6.0    | 4 419 551  | 4 662 037  | 5.5    | 20.0   |
| "                      | Freight (Tonnes)   | 111 883    | 115 256    | 3.0    | 91 629     | 91 184     | -0.5   | 203 512    | 206 439    | 1.4    | 26.4   |
| "                      | Aircraft Movements | 11 967     | 12 457     | 4.1    | 11 938     | 12 427     | 4.1    | 23 905     | 24 884     | 4.1    | 18.0   |
| Norfolk Island         | Passengers         | 9 001      | 7 801      | -13.3  | 9 118      | 7 923      | -13.1  | 18 119     | 15 724     | -13.2  | 0.1    |
| "                      | Freight (Tonnes)   | 91         | 98         | 7.5    | 16         | 9          | -45.8  | 108        | 107        | -0.7   | 0.0    |
| "                      | Aircraft Movements | 104        | 104        | ..     | 104        | 105        | 1.0    | 208        | 209        | 0.5    | 0.2    |
| Perth                  | Passengers         | 1 121 941  | 1 275 209  | 13.7   | 1 069 780  | 1 202 611  | 12.4   | 2 191 721  | 2 477 820  | 13.1   | 10.7   |
| "                      | Freight (Tonnes)   | 32 198     | 37 257     | 15.7   | 32 588     | 31 462     | -3.5   | 64 786     | 68 719     | 6.1    | 8.8    |
| "                      | Aircraft Movements | 5 579      | 6 276      | 12.5   | 5 581      | 6 272      | 12.4   | 11 160     | 12 548     | 12.4   | 9.1    |
| Sydney                 | Passengers         | 5 080 918  | 5 327 466  | 4.9    | 5 043 491  | 5 233 374  | 3.8    | 10 124 409 | 10 560 840 | 4.3    | 45.4   |
| "                      | Freight (Tonnes)   | 243 270    | 263 400    | 8.3    | 126 708    | 127 202    | 0.4    | 369 978    | 390 602    | 5.6    | 50.0   |
| "                      | Aircraft Movements | 28 992     | 29 930     | 3.2    | 28 912     | 29 851     | 3.2    | 57 904     | 59 781     | 3.2    | 43.2   |
| TOTAL                  | Passengers         | 11 187 877 | 11 773 523 | 5.2    | 10 949 890 | 11 491 050 | 4.9    | 22 137 767 | 23 264 573 | 5.1    | 100.0  |
|                        | Freight (Tonnes)   | 445 158    | 474 050    | 6.5    | 309 298    | 306 943    | -0.8   | 754 456    | 780 993    | 3.5    | 100.0  |
|                        | Aircraft Movements | 66 398     | 69 241     | 4.3    | 66 276     | 69 115     | 4.3    | 132 674    | 138 356    | 4.3    | 100.0  |

(a) Scheduled services recommenced December 2007 and ceased May 2008.

**TABLE 5 SCHEDULED INTERNATIONAL TRAFFIC BY CITY PAIRS: Year ended June**

| Foreign Port        | Australian Port | Passengers     |                |                |                |                |                | Freight (tonnes) |                |                 |                |                |                 |
|---------------------|-----------------|----------------|----------------|----------------|----------------|----------------|----------------|------------------|----------------|-----------------|----------------|----------------|-----------------|
|                     |                 | 2007           |                |                | 2008           |                |                | 2007             |                |                 | 2008           |                |                 |
|                     |                 | Inbound        | Outbound       | Total          | Inbound        | Outbound       | Total          | Inbound          | Outbound       | Total           | Inbound        | Outbound       | Total           |
| Auckland            | Adelaide        | 33 065         | 33 195         | 66 260         | 30 876         | 33 456         | 64 332         | 137.4            | 215.8          | 353.2           | 256.3          | 256.2          | 512.5           |
| Bombay              | "               | 0              | 0              | 0              | 43             | 0              | 43             | 0.0              | 0.0            | 0.0             | 0.0            | 0.0            | 0.0             |
| Denpasar            | "               | 1 395          | 1 355          | 2 750          | 0              | 0              | 0              | 51.4             | 10.4           | 61.8            | 0.0            | 0.0            | 0.0             |
| Hong Kong           | "               | 24 850         | 17 494         | 42 344         | 35 064         | 24 601         | 59 665         | 780.9            | 750.0          | 1 530.9         | 1 109.1        | 1 186.3        | 2 295.3         |
| Kuala Lumpur        | "               | 45 700         | 44 173         | 89 873         | 47 951         | 46 832         | 94 783         | 2 085.0          | 609.5          | 2 694.5         | 2 234.2        | 988.4          | 3 222.6         |
| Singapore           | "               | 125 006        | 115 127        | 240 133        | 130 553        | 121 965        | 252 518        | 6 291.4          | 7 736.5        | 14 027.9        | 5 714.9        | 7 398.6        | 13 113.5        |
| <b>Total</b>        | <b>Adelaide</b> | <b>230 016</b> | <b>211 344</b> | <b>441 360</b> | <b>244 487</b> | <b>226 854</b> | <b>471 341</b> | <b>9 346.1</b>   | <b>9 322.2</b> | <b>18 668.3</b> | <b>9 314.5</b> | <b>9 829.5</b> | <b>19 144.0</b> |
| Abu Dhabi           | Brisbane        | 0              | 0              | 0              | 18 077         | 19 773         | 37 850         | 0.0              | 0.0            | 0.0             | 693.0          | 595.5          | 1 288.4         |
| Anchorage           | "               | 0              | 0              | 0              | 0              | 0              | 0              | 0.0              | 0.0            | 0.0             | 0.0            | 0.0            | 0.0             |
| Auckland            | "               | 392 407        | 404 916        | 797 323        | 414 384        | 414 362        | 828 746        | 9 152.3          | 8 451.8        | 17 604.1        | 9 944.1        | 7 116.3        | 17 060.5        |
| Bahrain             | "               | 0              | 0              | 0              | 0              | 0              | 0              | 96.7             | 0.0            | 96.7            | 102.5          | 104.1          | 206.6           |
| Bandar Seri Begawan | "               | 14 908         | 13 335         | 28 243         | 21 250         | 22 382         | 43 632         | 324.5            | 1 009.7        | 1 334.2         | 520.9          | 922.4          | 1 443.4         |
| Bangkok             | "               | 59 262         | 61 320         | 120 582        | 62 911         | 75 154         | 138 065        | 2 411.1          | 1 583.2        | 3 994.3         | 2 251.0        | 2 058.7        | 4 309.6         |
| Chicago             | "               | 0              | 0              | 0              | 0              | 0              | 0              | 3.4              | 0.0            | 3.4             | 87.3           | 0.0            | 87.3            |
| Christchurch        | "               | 162 782        | 162 492        | 325 274        | 176 356        | 177 198        | 353 554        | 554.6            | 506.7          | 1 061.3         | 527.3          | 325.0          | 852.3           |
| Denpasar            | "               | 10 368         | 10 164         | 20 532         | 0              | 0              | 0              | 386.4            | 113.0          | 499.4           | 0.0            | 0.0            | 0.0             |
| Dubai               | "               | 78 197         | 78 809         | 157 006        | 79 124         | 79 190         | 158 314        | 1 638.1          | 2 134.9        | 3 773.0         | 1 709.3        | 1 882.3        | 3 591.6         |
| Dunedin             | "               | 19 856         | 19 885         | 39 741         | 18 612         | 18 226         | 36 838         | 0.0              | 0.0            | 0.0             | 0.0            | 0.2            | 0.2             |
| Espiritu Santo      | "               | 0              | 0              | 0              | 1 254          | 1 629          | 2 883          | 0.0              | 0.0            | 0.0             | 2.5            | 3.0            | 5.5             |
| Frankfurt           | "               | 0              | 0              | 0              | 0              | 0              | 0              | 0.0              | 0.0            | 0.0             | 48.6           | 0.0            | 48.6            |
| Hamilton            | "               | 18 443         | 19 142         | 37 585         | 17 283         | 17 790         | 35 073         | 0.0              | 0.0            | 0.0             | 0.6            | 0.2            | 0.8             |
| Hong Kong           | "               | 118 898        | 110 780        | 229 678        | 122 422        | 110 986        | 233 408        | 5 627.3          | 3 716.0        | 9 343.3         | 5 548.9        | 4 216.3        | 9 765.2         |
| Honiara             | "               | 16 296         | 16 627         | 32 923         | 15 282         | 16 939         | 32 221         | 131.6            | 585.5          | 717.1           | 170.1          | 930.0          | 1 100.1         |
| Honolulu            | "               | 0              | 0              | 0              | 0              | 0              | 0              | 1.8              | 0.0            | 1.8             | 0.0            | 0.0            | 0.0             |
| Indianapolis        | "               | 0              | 0              | 0              | 0              | 0              | 0              | 160.3            | 165.4          | 325.7           | 154.7          | 148.4          | 303.1           |
| Jakarta             | "               | 0              | 0              | 0              | 0              | 0              | 0              | 0.0              | 120.0          | 120.0           | 0.0            | 0.0            | 0.0             |
| Kuala Lumpur        | "               | 63 314         | 64 759         | 128 073        | 46 571         | 56 457         | 103 028        | 2 647.9          | 3 325.2        | 5 973.1         | 1 438.7        | 2 001.1        | 3 439.8         |
| Los Angeles         | "               | 83 478         | 88 137         | 171 615        | 89 864         | 92 052         | 181 916        | 845.6            | 983.3          | 1 829.0         | 987.7          | 696.8          | 1 684.4         |
| Majuro              | "               | 0              | 344            | 344            | 0              | 8              | 8              | 0.0              | 6.8            | 6.8             | 0.0            | 0.1            | 0.1             |
| Manila              | "               | 6 797          | 6 817          | 13 614         | 8 194          | 7 277          | 15 471         | 24.0             | 70.4           | 94.4            | 60.8           | 93.0           | 153.8           |
| Nadi                | "               | 70 692         | 72 714         | 143 406        | 81 343         | 82 434         | 163 777        | 184.5            | 476.1          | 660.5           | 205.2          | 471.0          | 676.1           |
| Nagoya              | "               | 0              | 0              | 0              | 61             | 0              | 61             | 0.0              | 0.0            | 0.0             | 0.0            | 0.0            | 0.0             |
| Nauru               | "               | 2 583          | 2 507          | 5 090          | 2 584          | 2 501          | 5 085          | 3.4              | 75.5           | 78.9            | 4.7            | 107.9          | 112.5           |
| New York            | "               | 2              | 0              | 2              | 2              | 0              | 2              | 0.0              | 8.2            | 8.2             | 28.4           | 0.0            | 28.4            |
| Noumea              | "               | 19 911         | 21 404         | 41 315         | 21 894         | 23 719         | 45 613         | 11.9             | 152.0          | 163.8           | 9.6            | 190.0          | 199.5           |
| Osaka               | "               | 72 948         | 22 075         | 95 023         | 51 547         | 15 543         | 67 090         | 713.2            | 989.4          | 1 702.6         | 197.6          | 0.0            | 197.6           |
| Palmerston          | "               | 22 219         | 22 378         | 44 597         | 12 740         | 12 718         | 25 458         | 0.0              | 0.0            | 0.0             | 0.0            | 0.0            | 0.0             |
| Port Moresby        | "               | 39 668         | 44 294         | 83 962         | 42 343         | 49 172         | 91 515         | 544.3            | 2 244.3        | 2 788.6         | 909.7          | 2 441.6        | 3 351.4         |
| Port Vila           | "               | 28 509         | 28 959         | 57 468         | 28 656         | 28 832         | 57 488         | 31.9             | 210.5          | 242.3           | 53.5           | 223.2          | 276.7           |
| Queenstown          | "               | 4 104          | 4 696          | 8 800          | 4 453          | 5 293          | 9 746          | 0.0              | 0.0            | 0.0             | 0.0            | 0.0            | 0.0             |
| San Francisco       | "               | 9              | 0              | 9              | 1              | 0              | 1              | 0.0              | 0.0            | 0.0             | 0.0            | 0.0            | 0.0             |
| Seoul               | "               | 46 703         | 43 371         | 90 074         | 50 283         | 44 061         | 94 344         | 1 080.2          | 1 233.9        | 2 314.0         | 1 121.4        | 1 129.0        | 2 250.3         |
| Shanghai            | "               | 1 548          | 1 518          | 3 066          | 2 338          | 2 007          | 4 345          | 27.7             | 0.0            | 27.7            | 5.4            | 7.2            | 12.6            |
| Singapore           | "               | 356 334        | 339 686        | 696 020        | 353 647        | 340 406        | 694 053        | 11 845.6         | 12 160.1       | 24 005.6        | 12 256.7       | 12 969.6       | 25 226.3        |
| Taipei              | "               | 61 278         | 62 960         | 124 238        | 64 264         | 63 101         | 127 365        | 3 052.5          | 926.4          | 3 978.9         | 2 678.9        | 906.4          | 3 585.3         |
| Tarawa              | "               | 0              | 0              | 0              | 210            | 184            | 394            | 0.0              | 0.0            | 0.0             | 0.0            | 0.0            | 0.0             |

**TABLE 5 SCHEDULED INTERNATIONAL TRAFFIC BY CITY PAIRS: Year ended June**

| Foreign Port        | Australian Port               | Passengers |           |           |           |           |           | Freight (tonnes) |          |          |          |          |          |
|---------------------|-------------------------------|------------|-----------|-----------|-----------|-----------|-----------|------------------|----------|----------|----------|----------|----------|
|                     |                               | 2007       |           |           | 2008      |           |           | 2007             |          |          | 2008     |          |          |
|                     |                               | Inbound    | Outbound  | Total     | Inbound   | Outbound  | Total     | Inbound          | Outbound | Total    | Inbound  | Outbound | Total    |
| Tokyo               | Brisbane                      | 123 365    | 124 588   | 247 953   | 127 906   | 125 751   | 253 657   | 3 693.3          | 2 466.5  | 6 159.9  | 3 949.8  | 3 039.1  | 6 988.9  |
| Toledo              | "                             | 0          | 0         | 0         | 0         | 0         | 0         | 0.0              | 0.0      | 0.0      | 0.0      | 0.0      | 0.0      |
| Wellington          | "                             | 71 015     | 71 335    | 142 350   | 70 910    | 72 924    | 143 834   | 92.0             | 56.6     | 148.6    | 68.2     | 61.8     | 130.0    |
| <b>Total</b>        | <b>Brisbane</b>               | 1 965 894  | 1 920 012 | 3 885 906 | 2 006 766 | 1 978 069 | 3 984 835 | 45 286.0         | 43 771.1 | 89 057.1 | 45 737.1 | 42 639.9 | 88 377.0 |
| Auckland            | Cairns                        | 23 050     | 25 019    | 48 069    | 25 199    | 28 546    | 53 745    | 112.7            | 279.6    | 392.2    | 179.0    | 322.7    | 501.7    |
| Beijing             | "                             | 0          | 0         | 0         | 7         | 0         | 7         | 0.0              | 0.0      | 0.0      | 0.0      | 0.0      | 0.0      |
| Guam                | "                             | 11 521     | 11 615    | 23 136    | 11 439    | 11 541    | 22 980    | 4.7              | 27.7     | 32.4     | 8.4      | 24.4     | 32.7     |
| Hong Kong           | "                             | 26 424     | 25 131    | 51 555    | 28 903    | 27 107    | 56 010    | 269.5            | 2 366.9  | 2 636.4  | 390.9    | 2 593.0  | 2 984.0  |
| Los Angeles         | "                             | 0          | 0         | 0         | 1         | 0         | 1         | 0.0              | 0.0      | 0.0      | 0.0      | 0.0      | 0.0      |
| Nagoya              | "                             | 62 004     | 62 451    | 124 455   | 50 396    | 44 017    | 94 413    | 853.4            | 476.1    | 1 329.5  | 484.3    | 264.9    | 749.3    |
| Osaka               | "                             | 58 402     | 54 659    | 113 061   | 36 917    | 42 584    | 79 501    | 1 120.4          | 1 095.3  | 2 215.6  | 796.3    | 428.7    | 1 225.0  |
| Port Moresby        | "                             | 32 234     | 25 926    | 58 160    | 33 548    | 29 247    | 62 795    | 113.0            | 317.3    | 430.3    | 100.5    | 192.0    | 292.5    |
| Sapporo             | "                             | 4 126      | 4 668     | 8 794     | 0         | 0         | 0         | 0.9              | 0.7      | 1.6      | 0.0      | 0.0      | 0.0      |
| Shanghai            | "                             | 0          | 0         | 0         | 0         | 0         | 0         | 0.0              | 0.0      | 0.0      | 0.0      | 0.0      | 0.0      |
| Singapore           | "                             | 30 555     | 35 562    | 66 117    | 28 753    | 33 126    | 61 879    | 144.7            | 25.8     | 170.5    | 53.3     | 16.6     | 69.9     |
| Tokyo               | "                             | 120 274    | 116 043   | 236 317   | 115 878   | 108 710   | 224 588   | 314.1            | 495.1    | 809.3    | 335.6    | 475.8    | 811.4    |
| <b>Total</b>        | <b>Cairns</b>                 | 368 590    | 361 074   | 729 664   | 331 041   | 324 878   | 655 919   | 2 933.4          | 5 084.4  | 8 017.8  | 2 348.4  | 4 318.1  | 6 666.5  |
| Singapore           | Christmas Island (a)          | 0          | 0         | 0         | 808       | 914       | 1 722     | 0.0              | 0.0      | 0.0      | 72.3     | 0.5      | 72.8     |
| <b>Total</b>        | <b>Christmas Island</b>       | 0          | 0         | 0         | 808       | 914       | 1 722     | 0.0              | 0.0      | 0.0      | 72.3     | 0.5      | 72.8     |
| Auckland            | Darwin                        | 0          | 0         | 0         | 0         | 0         | 0         | 0.0              | 0.0      | 0.0      | 0.0      | 0.0      | 0.0      |
| Bandar Seri Begawan | "                             | 4 803      | 4 671     | 9 474     | 2 625     | 2 462     | 5 087     | 20.4             | 5.5      | 25.9     | 10.7     | 1.1      | 11.8     |
| Bombay              | "                             | 0          | 3 676     | 3 676     | 0         | 2 245     | 2 245     | 0.0              | 47.9     | 47.9     | 0.0      | 25.3     | 25.3     |
| Denpasar            | "                             | 14 722     | 15 887    | 30 609    | 19 407    | 20 192    | 39 599    | 0.1              | 3.7      | 3.8      | 25.3     | 2.2      | 27.5     |
| Dubai               | "                             | 0          | 0         | 0         | 0         | 0         | 0         | 0.0              | 0.0      | 0.0      | 0.0      | 0.0      | 0.0      |
| Frankfurt           | "                             | 0          | 0         | 0         | 0         | 0         | 0         | 0.0              | 0.0      | 0.0      | 0.0      | 0.0      | 0.0      |
| Hong Kong           | "                             | 0          | 0         | 0         | 2         | 0         | 2         | 0.0              | 0.0      | 0.0      | 0.0      | 0.0      | 0.0      |
| Kuala Lumpur        | "                             | 0          | 0         | 0         | 0         | 0         | 0         | 0.0              | 0.0      | 0.0      | 0.0      | 112.8    | 112.8    |
| Kupang              | "                             | 1 332      | 1 842     | 3 174     | 1 134     | 1 403     | 2 537     | 0.0              | 0.0      | 0.0      | 0.0      | 0.1      | 0.1      |
| London              | "                             | 3          | 58        | 61        | 0         | 0         | 0         | 0.0              | 0.0      | 0.0      | 0.0      | 0.0      | 0.0      |
| Shanghai            | "                             | 0          | 0         | 0         | 0         | 0         | 0         | 0.0              | 0.0      | 0.0      | 0.0      | 0.0      | 0.0      |
| Singapore           | "                             | 44 802     | 42 421    | 87 223    | 63 640    | 60 133    | 123 773   | 128.8            | 120.7    | 249.6    | 91.1     | 29.1     | 120.2    |
| <b>Total</b>        | <b>Darwin</b>                 | 65 662     | 68 555    | 134 217   | 86 808    | 86 435    | 173 243   | 149.3            | 177.9    | 327.2    | 127.0    | 170.6    | 297.6    |
| Auckland            | Gold Coast/Coolangatta        | 43 631     | 45 220    | 88 851    | 48 006    | 48 837    | 96 843    | 1.6              | 0.5      | 2.1      | 13.0     | 35.3     | 48.3     |
| Christchurch        | "                             | 29 661     | 28 497    | 58 158    | 28 385    | 27 074    | 55 459    | 0.0              | 0.0      | 0.0      | 1.7      | 16.0     | 17.7     |
| Dunedin             | "                             | 1 552      | 1 697     | 3 249     | 0         | 0         | 0         | 0.0              | 0.0      | 0.0      | 0.0      | 0.0      | 0.0      |
| Hamilton            | "                             | 11 216     | 10 724    | 21 940    | 11 332    | 11 752    | 23 084    | 0.0              | 0.0      | 0.0      | 0.2      | 0.1      | 0.3      |
| Kuala Lumpur        | "                             | 0          | 0         | 0         | 32 369    | 31 077    | 63 446    | 0.0              | 0.0      | 0.0      | 422.2    | 75.4     | 497.6    |
| Tokyo               | "                             | 209        | 0         | 209       | 0         | 0         | 0         | 0.0              | 0.0      | 0.0      | 0.0      | 0.0      | 0.0      |
| Wellington          | "                             | 10 364     | 10 049    | 20 413    | 11 163    | 11 097    | 22 260    | 0.0              | 0.0      | 0.0      | 3.1      | 0.2      | 3.3      |
| <b>Total</b>        | <b>Gold Coast/Coolangatta</b> | 96 633     | 96 187    | 192 820   | 131 255   | 129 837   | 261 092   | 1.6              | 0.5      | 2.1      | 440.1    | 127.1    | 567.2    |
| Abuja               | Melbourne                     | 0          | 0         | 0         | 0         | 0         | 0         | 0.0              | 0.0      | 0.0      | 0.0      | 104.9    | 104.9    |
| Anchorage           | "                             | 0          | 0         | 0         | 0         | 0         | 0         | 0.0              | 0.0      | 0.0      | 0.0      | 0.0      | 0.0      |
| Auckland            | "                             | 338 106    | 335 420   | 673 526   | 353 847   | 352 042   | 705 889   | 15 895.7         | 16 776.2 | 32 671.9 | 15 490.4 | 15 749.5 | 31 239.9 |
| Bahrain             | "                             | 0          | 0         | 0         | 0         | 0         | 0         | 0.0              | 0.0      | 0.0      | 0.0      | 0.0      | 0.0      |
| Bangkok             | "                             | 150 633    | 154 611   | 305 244   | 200 740   | 200 614   | 401 354   | 7 333.6          | 6 141.1  | 13 474.7 | 9 798.2  | 6 715.0  | 16 513.1 |
| Beijing             | "                             | 14 796     | 10 064    | 24 860    | 16 007    | 14 262    | 30 269    | 74.1             | 175.1    | 249.2    | 166.1    | 352.5    | 518.6    |

**TABLE 5 SCHEDULED INTERNATIONAL TRAFFIC BY CITY PAIRS: Year ended June**

| Foreign Port        | Australian Port       | Passengers |           |           |           |           |           | Freight (tonnes) |          |           |           |          |           |
|---------------------|-----------------------|------------|-----------|-----------|-----------|-----------|-----------|------------------|----------|-----------|-----------|----------|-----------|
|                     |                       | 2007       |           |           | 2008      |           |           | 2007             |          |           | 2008      |          |           |
|                     |                       | Inbound    | Outbound  | Total     | Inbound   | Outbound  | Total     | Inbound          | Outbound | Total     | Inbound   | Outbound | Total     |
| Bombay              | Melbourne             | 271        | 0         | 271       | 0         | 0         | 0         | 1.8              | 0.0      | 1.8       | 0.0       | 0.0      | 0.0       |
| Chicago             | "                     | 19         | 0         | 19        | 0         | 0         | 0         | 5 920.1          | 1.6      | 5 921.6   | 6 688.3   | 20.8     | 6 709.0   |
| Christchurch        | "                     | 132 542    | 132 894   | 265 436   | 139 445   | 142 231   | 281 676   | 604.7            | 688.4    | 1 293.1   | 600.7     | 617.3    | 1 218.0   |
| Denpasar            | "                     | 47 250     | 47 664    | 94 914    | 62 095    | 59 735    | 121 830   | 1 301.0          | 992.9    | 2 293.9   | 2 118.8   | 910.2    | 3 029.0   |
| Dubai               | "                     | 147 083    | 139 939   | 287 022   | 151 653   | 147 445   | 299 098   | 5 992.7          | 7 443.7  | 13 436.4  | 5 761.5   | 7 393.7  | 13 155.2  |
| Dunedin             | "                     | 4 677      | 4 524     | 9 201     | 4 653     | 4 663     | 9 316     | 0.0              | 0.0      | 0.0       | 0.0       | 0.0      | 0.0       |
| Frankfurt           | "                     | 13         | 0         | 13        | 0         | 0         | 0         | 79.8             | 37.3     | 117.1     | 29.9      | 0.0      | 29.9      |
| Guangzhou           | "                     | 20 342     | 14 852    | 35 194    | 25 253    | 20 418    | 45 671    | 426.2            | 76.0     | 502.2     | 510.9     | 73.3     | 584.2     |
| Hamilton            | "                     | 4 537      | 4 524     | 9 061     | 0         | 0         | 0         | 0.0              | 0.0      | 0.0       | 0.0       | 0.0      | 0.0       |
| Hanoi               | "                     | 4 421      | 5 582     | 10 003    | 4 825     | 5 998     | 10 823    | 0.0              | 17.9     | 17.9      | 0.0       | 26.8     | 26.8      |
| Ho Chi Minh City    | "                     | 36 945     | 33 203    | 70 148    | 40 358    | 35 386    | 75 744    | 978.4            | 160.8    | 1 139.2   | 1 202.2   | 183.2    | 1 385.4   |
| Hong Kong           | "                     | 185 092    | 190 671   | 375 763   | 228 844   | 230 325   | 459 169   | 16 459.9         | 13 347.6 | 29 807.5  | 19 144.1  | 15 679.4 | 34 823.5  |
| Honolulu            | "                     | 8 513      | 8 443     | 16 956    | 6 909     | 7 680     | 14 589    | 185.2            | 44.2     | 229.4     | 216.9     | 31.1     | 248.0     |
| Jakarta             | "                     | 219        | 212       | 431       | 0         | 0         | 0         | 2.0              | 0.6      | 2.6       | 0.0       | 0.0      | 0.0       |
| Johannesburg        | "                     | 0          | 0         | 0         | 4         | 0         | 4         | 0.0              | 0.0      | 0.0       | 0.0       | 0.0      | 0.0       |
| Kuala Lumpur        | "                     | 181 103    | 173 970   | 355 073   | 168 326   | 163 660   | 331 986   | 13 704.5         | 7 405.2  | 21 109.6  | 13 959.8  | 7 108.9  | 21 068.6  |
| London              | "                     | 115 229    | 114 754   | 229 983   | 112 279   | 113 712   | 225 991   | 1 864.6          | 421.0    | 2 285.6   | 1 700.5   | 555.0    | 2 255.5   |
| Los Angeles         | "                     | 165 971    | 162 035   | 328 006   | 153 203   | 153 032   | 306 235   | 3 904.4          | 4 914.4  | 8 818.8   | 2 024.6   | 4 533.7  | 6 558.3   |
| Luxembourg          | "                     | 0          | 0         | 0         | 0         | 0         | 0         | 4 537.4          | 35.7     | 4 573.1   | 3 886.4   | 18.4     | 3 904.8   |
| Manila              | "                     | 16 041     | 12 765    | 28 806    | 21 630    | 17 417    | 39 047    | 523.8            | 240.4    | 764.2     | 923.2     | 240.8    | 1 164.0   |
| Mauritius           | "                     | 7 504      | 7 598     | 15 102    | 7 068     | 7 144     | 14 212    | 256.9            | 201.0    | 457.9     | 300.2     | 188.8    | 488.9     |
| Milan               | "                     | 0          | 0         | 0         | 0         | 0         | 0         | 0.0              | 104.7    | 104.7     | 0.0       | 0.0      | 0.0       |
| Nadi                | "                     | 37 168     | 36 258    | 73 426    | 39 622    | 38 104    | 77 726    | 942.0            | 1 525.8  | 2 467.8   | 810.4     | 1 295.9  | 2 106.3   |
| New York            | "                     | 1 803      | 2 347     | 4 150     | 1 625     | 1 942     | 3 567     | 463.6            | 12.3     | 475.8     | 418.4     | 0.0      | 418.4     |
| Noumea              | "                     | 0          | 0         | 0         | 0         | 0         | 0         | 0.0              | 0.0      | 0.0       | 0.0       | 30.4     | 30.4      |
| Palmerston          | "                     | 4 710      | 4 331     | 9 041     | 0         | 0         | 0         | 0.0              | 0.0      | 0.0       | 0.0       | 0.0      | 0.0       |
| Phuket              | "                     | 0          | 0         | 0         | 202       | 0         | 202       | 0.0              | 0.0      | 0.0       | 0.0       | 0.0      | 0.0       |
| Queenstown          | "                     | 2 619      | 2 833     | 5 452     | 4 547     | 4 777     | 9 324     | 0.0              | 0.0      | 0.0       | 0.0       | 0.3      | 0.3       |
| Rarotonga           | "                     | 0          | 409       | 409       | 408       | 537       | 945       | 0.0              | 0.0      | 0.0       | 0.0       | 0.0      | 0.0       |
| San Francisco       | "                     | 5 162      | 6 011     | 11 173    | 7 376     | 7 388     | 14 764    | 207.0            | 44.5     | 251.5     | 362.4     | 38.7     | 401.1     |
| Sapporo             | "                     | 889        | 772       | 1 661     | 0         | 0         | 0         | 0.0              | 0.3      | 0.3       | 0.0       | 0.0      | 0.0       |
| Seoul               | "                     | 0          | 0         | 0         | 15 909    | 14 894    | 30 803    | 0.0              | 0.0      | 0.0       | 484.3     | 625.5    | 1 109.9   |
| Shanghai            | "                     | 46 053     | 33 940    | 79 993    | 54 020    | 42 734    | 96 754    | 1 157.2          | 613.3    | 1 770.5   | 1 513.4   | 859.8    | 2 373.1   |
| Singapore           | "                     | 436 532    | 408 063   | 844 595   | 426 830   | 413 350   | 840 180   | 27 088.9         | 28 045.5 | 55 134.4  | 25 878.7  | 26 580.5 | 52 459.2  |
| Tianjin             | "                     | 0          | 0         | 0         | 0         | 0         | 0         | 0.0              | 62.3     | 62.3      | 0.0       | 0.0      | 0.0       |
| Tokyo               | "                     | 45 063     | 33 692    | 78 755    | 41 654    | 30 098    | 71 752    | 1 793.4          | 1 790.9  | 3 584.4   | 1 097.9   | 1 049.2  | 2 147.2   |
| Vancouver           | "                     | 435        | 542       | 977       | 261       | 276       | 537       | 10.1             | 17.4     | 27.5      | 1.5       | 0.7      | 2.2       |
| Vienna              | "                     | 21 177     | 19 515    | 40 692    | 0         | 0         | 0         | 0.0              | 0.0      | 0.0       | 0.0       | 0.0      | 0.0       |
| Wellington          | "                     | 66 304     | 67 891    | 134 195   | 72 289    | 70 291    | 142 580   | 174.0            | 291.1    | 465.0     | 165.8     | 199.7    | 365.5     |
| <b>Total</b>        | <b>Melbourne</b>      | 2 249 222  | 2 170 329 | 4 419 551 | 2 361 882 | 2 300 155 | 4 662 037 | 111 883.1        | 91 629.1 | 203 512.2 | 115 255.5 | 91 183.8 | 206 439.4 |
| Auckland            | Norfolk Island        | 9 001      | 9 118     | 18 119    | 7 801     | 7 923     | 15 724    | 91.3             | 16.4     | 107.8     | 98.1      | 8.9      | 107.0     |
| <b>Total</b>        | <b>Norfolk Island</b> | 9 001      | 9 118     | 18 119    | 7 801     | 7 923     | 15 724    | 91.3             | 16.4     | 107.8     | 98.1      | 8.9      | 107.0     |
| Anchorage           | Perth                 | 0          | 0         | 0         | 0         | 0         | 0         | 0.0              | 0.0      | 0.0       | 0.0       | 0.0      | 0.0       |
| Auckland            | "                     | 60 537     | 58 224    | 118 761   | 60 591    | 59 761    | 120 352   | 2 308.7          | 1 304.4  | 3 613.1   | 2 542.1   | 1 149.6  | 3 691.8   |
| Bahrain             | "                     | 0          | 0         | 0         | 0         | 0         | 0         | 0.0              | 0.0      | 0.0       | 0.0       | 0.0      | 0.0       |
| Bandar Seri Begawan | "                     | 30 644     | 28 620    | 59 264    | 26 711    | 25 595    | 52 306    | 184.4            | 545.6    | 730.0     | 175.8     | 429.8    | 605.6     |

**TABLE 5 SCHEDULED INTERNATIONAL TRAFFIC BY CITY PAIRS: Year ended June**

| Foreign Port        | Australian Port | Passengers       |                  |                  |                  |                  |                  | Freight (tonnes) |                 |                 |                 |                 |                 |
|---------------------|-----------------|------------------|------------------|------------------|------------------|------------------|------------------|------------------|-----------------|-----------------|-----------------|-----------------|-----------------|
|                     |                 | 2007             |                  |                  | 2008             |                  |                  | 2007             |                 |                 | 2008            |                 |                 |
|                     |                 | Inbound          | Outbound         | Total            | Inbound          | Outbound         | Total            | Inbound          | Outbound        | Total           | Inbound         | Outbound        | Total           |
| Bangkok             | Perth           | 63 644           | 41 278           | 104 922          | 72 563           | 45 766           | 118 329          | 1 230.7          | 1 335.5         | 2 566.3         | 1 558.7         | 1 153.9         | 2 712.5         |
| Bombay              | "               | 0                | 0                | 0                | 1                | 0                | 1                | 0.0              | 0.0             | 0.0             | 0.0             | 0.0             | 0.0             |
| Chicago             | "               | 0                | 0                | 0                | 0                | 0                | 0                | 0.0              | 0.0             | 0.0             | 0.0             | 0.0             | 0.0             |
| Christchurch        | "               | 0                | 0                | 0                | 0                | 0                | 0                | 79.9             | 0.0             | 79.9            | 8.1             | 0.0             | 8.1             |
| Denpasar            | "               | 76 434           | 78 919           | 155 353          | 109 641          | 110 669          | 220 310          | 98.0             | 60.5            | 158.5           | 103.3           | 29.4            | 132.7           |
| Dubai               | "               | 146 514          | 135 521          | 282 035          | 179 177          | 164 524          | 343 701          | 3 725.6          | 4 051.3         | 7 776.9         | 5 236.9         | 4 423.8         | 9 660.7         |
| Durban              | "               | 0                | 0                | 0                | 0                | 0                | 0                | 1.2              | 0.0             | 1.2             | 34.2            | 0.0             | 34.2            |
| Frankfurt           | "               | 0                | 0                | 0                | 0                | 0                | 0                | 0.0              | 0.0             | 0.0             | 0.0             | 0.0             | 0.0             |
| Hong Kong           | "               | 77 695           | 69 975           | 147 670          | 91 740           | 80 562           | 172 302          | 2 987.8          | 2 788.2         | 5 776.0         | 3 591.1         | 2 439.6         | 6 030.7         |
| Jakarta             | "               | 22 127           | 21 145           | 43 272           | 28 187           | 27 349           | 55 536           | 55.4             | 15.7            | 71.1            | 104.4           | 32.8            | 137.2           |
| Johannesburg        | "               | 50 758           | 44 135           | 94 893           | 57 428           | 50 062           | 107 490          | 773.8            | 2 191.6         | 2 965.4         | 736.9           | 1 845.7         | 2 582.6         |
| Kuala Lumpur        | "               | 102 939          | 104 387          | 207 326          | 103 049          | 102 782          | 205 831          | 4 117.8          | 1 348.3         | 5 466.1         | 4 657.5         | 1 399.8         | 6 057.3         |
| Mauritius           | "               | 14 505           | 15 141           | 29 646           | 21 605           | 20 565           | 42 170           | 179.7            | 377.7           | 557.4           | 631.7           | 630.0           | 1 261.7         |
| Mombasa             | "               | 0                | 0                | 0                | 0                | 0                | 0                | 99.4             | 0.0             | 99.4            | 0.0             | 0.0             | 0.0             |
| New York            | "               | 0                | 0                | 0                | 0                | 0                | 0                | 0.0              | 0.0             | 0.0             | 0.0             | 0.0             | 0.0             |
| Phuket              | "               | 0                | 22 561           | 22 561           | 0                | 25 452           | 25 452           | 0.0              | 13.1            | 13.1            | 0.0             | 50.4            | 50.4            |
| Shanghai            | "               | 0                | 0                | 0                | 0                | 0                | 0                | 0.0              | 0.0             | 0.0             | 0.0             | 0.0             | 0.0             |
| Singapore           | "               | 448 523          | 422 151          | 870 674          | 495 877          | 460 597          | 956 474          | 15 594.7         | 17 756.7        | 33 351.3        | 16 985.7        | 17 170.4        | 34 156.2        |
| Tokyo               | "               | 27 621           | 27 723           | 55 344           | 28 639           | 28 927           | 57 566           | 760.5            | 799.6           | 1 560.1         | 890.3           | 707.3           | 1 597.7         |
| <b>Total</b>        | <b>Perth</b>    | <b>1 121 941</b> | <b>1 069 780</b> | <b>2 191 721</b> | <b>1 275 209</b> | <b>1 202 611</b> | <b>2 477 820</b> | <b>32 197.6</b>  | <b>32 588.1</b> | <b>64 785.8</b> | <b>37 256.7</b> | <b>31 462.5</b> | <b>68 719.2</b> |
| Abu Dhabi           | Sydney          | 5 938            | 8 711            | 14 649           | 71 332           | 74 395           | 145 727          | 266.5            | 445.2           | 711.7           | 3 037.2         | 3 487.2         | 6 524.4         |
| Abuja               | "               | 0                | 0                | 0                | 0                | 0                | 0                | 0.0              | 0.0             | 0.0             | 0.0             | 0.0             | 0.0             |
| Amsterdam           | "               | 0                | 0                | 0                | 0                | 0                | 0                | 7 703.8          | 1 352.2         | 9 056.0         | 8 061.6         | 1 672.4         | 9 733.9         |
| Anchorage           | "               | 0                | 0                | 0                | 0                | 0                | 0                | 0.0              | 1.1             | 1.1             | 0.0             | 0.0             | 0.0             |
| Apia                | "               | 17 089           | 16 967           | 34 056           | 17 498           | 17 561           | 35 059           | 92.1             | 35.7            | 127.8           | 19.4            | 26.0            | 45.4            |
| Auckland            | "               | 603 745          | 606 883          | 1 210 628        | 614 325          | 622 466          | 1 236 791        | 25 900.4         | 33 897.6        | 59 798.0        | 24 981.5        | 34 777.5        | 59 758.9        |
| Bahrain             | "               | 46 236           | 41 094           | 87 330           | 0                | 0                | 0                | 1 600.7          | 1 872.3         | 3 473.1         | 0.0             | 22.5            | 22.5            |
| Bandar Seri Begawan | "               | 19 367           | 16 485           | 35 852           | 18 265           | 15 926           | 34 191           | 980.5            | 867.8           | 1 848.2         | 964.4           | 499.2           | 1 463.6         |
| Bangkok             | "               | 305 479          | 288 447          | 593 926          | 352 111          | 295 051          | 647 162          | 10 566.7         | 4 399.8         | 14 966.5        | 13 469.4        | 4 869.2         | 18 338.5        |
| Beijing             | "               | 60 984           | 59 089           | 120 073          | 74 715           | 72 339           | 147 054          | 665.5            | 911.7           | 1 577.2         | 1 018.0         | 1 065.2         | 2 083.2         |
| Bombay              | "               | 33 018           | 26 225           | 59 243           | 33 525           | 27 993           | 61 518           | 435.7            | 337.9           | 773.6           | 547.7           | 446.4           | 994.0           |
| Buenos Aires        | "               | 19 858           | 18 720           | 38 578           | 22 069           | 18 755           | 40 824           | 122.9            | 202.4           | 325.2           | 91.4            | 202.6           | 294.0           |
| Chicago             | "               | 12 206           | 12 328           | 24 534           | 8 679            | 9 308            | 17 987           | 8 256.3          | 20.6            | 8 276.9         | 6 971.4         | 116.1           | 7 087.5         |
| Christchurch        | "               | 262 786          | 255 068          | 517 854          | 279 145          | 267 891          | 547 036          | 6 182.0          | 4 827.7         | 11 009.7        | 6 641.7         | 4 598.9         | 11 240.6        |
| Denpasar            | "               | 61 410           | 62 745           | 124 155          | 101 669          | 104 779          | 206 448          | 1 901.6          | 649.1           | 2 550.7         | 3 528.0         | 761.2           | 4 289.2         |
| Dohar               | "               | 0                | 0                | 0                | 0                | 0                | 0                | 0.0              | 102.0           | 102.0           | 0.0             | 0.0             | 0.0             |
| Dubai               | "               | 133 259          | 133 940          | 267 199          | 141 236          | 136 868          | 278 104          | 5 990.4          | 4 813.8         | 10 804.2        | 6 201.3         | 3 555.6         | 9 756.9         |
| Dunedin             | "               | 13 538           | 13 682           | 27 220           | 11 362           | 11 450           | 22 812           | 0.0              | 0.0             | 0.0             | 0.0             | 0.2             | 0.2             |
| Durban              | "               | 0                | 0                | 0                | 0                | 0                | 0                | 0.0              | 181.5           | 181.5           | 0.0             | 99.5            | 99.5            |
| Frankfurt           | "               | 45 312           | 46 347           | 91 659           | 51 543           | 53 409           | 104 952          | 4 996.3          | 220.9           | 5 217.2         | 5 378.5         | 155.3           | 5 533.8         |
| Guangzhou           | "               | 44 175           | 44 945           | 89 120           | 51 823           | 47 827           | 99 650           | 2 475.3          | 144.7           | 2 619.9         | 2 722.9         | 191.7           | 2 914.6         |
| Hamilton            | "               | 13 999           | 14 702           | 28 701           | 13 172           | 13 641           | 26 813           | 0.0              | 0.0             | 0.0             | 1.7             | 0.0             | 1.7             |
| Hanoi               | "               | 8 718            | 8 557            | 17 275           | 9 360            | 10 405           | 19 765           | 0.0              | 2.9             | 2.9             | 3.9             | 0.6             | 4.5             |
| Ho Chi Minh City    | "               | 56 653           | 55 686           | 112 339          | 74 294           | 70 889           | 145 183          | 2 214.4          | 433.2           | 2 647.7         | 3 352.0         | 549.5           | 3 901.4         |
| Hong Kong           | "               | 462 258          | 430 049          | 892 307          | 469 322          | 432 472          | 901 794          | 31 491.0         | 13 116.7        | 44 607.8        | 34 411.0        | 11 381.1        | 45 792.1        |
| Honolulu            | "               | 104 309          | 96 341           | 200 650          | 118 300          | 113 260          | 231 560          | 3 102.4          | 3 382.8         | 6 485.2         | 3 260.5         | 2 743.0         | 6 003.5         |



**TABLE 5 SCHEDULED INTERNATIONAL TRAFFIC BY CITY PAIRS: Year ended June**

| Foreign Port  | Australian Port | Passengers |           |            |           |           |            | Freight (tonnes) |           |           |           |           |           |
|---------------|-----------------|------------|-----------|------------|-----------|-----------|------------|------------------|-----------|-----------|-----------|-----------|-----------|
|               |                 | 2007       |           |            | 2008      |           |            | 2007             |           |           | 2008      |           |           |
|               |                 | Inbound    | Outbound  | Total      | Inbound   | Outbound  | Total      | Inbound          | Outbound  | Total     | Inbound   | Outbound  | Total     |
| Indianapolis  | Sydney          | 0          | 0         | 0          | 0         | 0         | 0          | 0.0              | 0.0       | 0.0       | 0.0       | 0.0       | 0.0       |
| Jakarta       | "               | 34 189     | 32 847    | 67 036     | 37 136    | 35 877    | 73 013     | 523.6            | 721.8     | 1 245.4   | 972.6     | 1 063.0   | 2 035.6   |
| Jeju          | "               | 0          | 0         | 0          | 0         | 0         | 0          | 0.0              | 0.0       | 0.0       | 0.0       | 0.0       | 0.0       |
| Johannesburg  | "               | 70 570     | 65 038    | 135 608    | 77 796    | 70 153    | 147 949    | 1 507.0          | 355.4     | 1 862.4   | 1 454.3   | 545.3     | 1 999.6   |
| Kuala Lumpur  | "               | 179 890    | 170 450   | 350 340    | 180 570   | 169 655   | 350 225    | 21 851.5         | 2 686.7   | 24 538.3  | 21 314.3  | 4 354.8   | 25 669.1  |
| London        | "               | 272 435    | 276 889   | 549 324    | 275 686   | 279 756   | 555 442    | 9 438.3          | 2 757.3   | 12 195.7  | 9 108.1   | 2 831.6   | 11 939.7  |
| Los Angeles   | "               | 310 915    | 311 828   | 622 743    | 277 865   | 282 273   | 560 138    | 19 551.2         | 5 436.2   | 24 987.4  | 14 940.5  | 4 046.4   | 18 986.9  |
| Louisville    | "               | 0          | 0         | 0          | 0         | 0         | 0          | 9 327.4          | 0.0       | 9 327.4   | 13 354.9  | 0.0       | 13 354.9  |
| Manchester    | "               | 0          | 0         | 0          | 180       | 0         | 180        | 0.0              | 0.0       | 0.0       | 0.0       | 0.0       | 0.0       |
| Manila        | "               | 55 154     | 53 164    | 108 318    | 60 912    | 60 893    | 121 805    | 1 349.7          | 818.7     | 2 168.4   | 1 759.7   | 870.7     | 2 630.3   |
| Mauritius     | "               | 8 036      | 6 375     | 14 411     | 8 093     | 6 360     | 14 453     | 150.1            | 119.7     | 269.8     | 222.5     | 118.6     | 341.1     |
| Milan         | "               | 0          | 0         | 0          | 0         | 0         | 0          | 0.0              | 0.0       | 0.0       | 0.0       | 0.0       | 0.0       |
| Nadi          | "               | 138 860    | 135 338   | 274 198    | 160 989   | 153 886   | 314 875    | 2 506.9          | 2 313.5   | 4 820.4   | 2 932.6   | 2 173.9   | 5 106.5   |
| Nagoya        | "               | 0          | 0         | 0          | 842       | 2 157     | 2 999      | 0.0              | 0.0       | 0.0       | 355.0     | 130.8     | 485.9     |
| New York      | "               | 31 708     | 31 467    | 63 175     | 39 881    | 38 674    | 78 555     | 5 867.5          | 210.8     | 6 078.3   | 6 517.4   | 308.5     | 6 825.9   |
| Noumea        | "               | 47 580     | 46 228    | 93 808     | 51 764    | 49 703    | 101 467    | 46.3             | 819.0     | 865.3     | 72.3      | 843.5     | 915.8     |
| Osaka         | "               | 31 839     | 74 727    | 106 566    | 24 550    | 59 603    | 84 153     | 1 831.1          | 989.3     | 2 820.5   | 1 950.0   | 1 602.1   | 3 552.1   |
| Palmerston    | "               | 10 948     | 10 926    | 21 874     | 8 159     | 8 153     | 16 312     | 0.0              | 0.0       | 0.0       | 0.0       | 0.0       | 0.0       |
| Papeete       | "               | 24 195     | 24 100    | 48 295     | 18 904    | 20 058    | 38 962     | 1 197.2          | 683.4     | 1 880.6   | 850.4     | 751.3     | 1 601.7   |
| Phuket        | "               | 20 176     | 22 388    | 42 564     | 39 435    | 39 166    | 78 601     | 346.3            | 12.7      | 359.0     | 959.8     | 22.2      | 982.0     |
| Port Moresby  | "               | 8 348      | 10 211    | 18 559     | 7 232     | 9 033     | 16 265     | 168.8            | 151.2     | 320.0     | 102.7     | 92.0      | 194.7     |
| Port Vila     | "               | 24 149     | 23 225    | 47 374     | 29 249    | 28 124    | 57 373     | 142.8            | 244.5     | 387.3     | 102.2     | 317.1     | 419.3     |
| Queenstown    | "               | 18 573     | 19 195    | 37 768     | 19 891    | 21 336    | 41 227     | 0.0              | 1.0       | 1.0       | 0.0       | 0.1       | 0.1       |
| Rarotonga     | "               | 326        | 115       | 441        | 209       | 0         | 209        | 0.0              | 0.0       | 0.0       | 0.0       | 0.0       | 0.0       |
| San Francisco | "               | 131 262    | 136 313   | 267 575    | 142 599   | 151 620   | 294 219    | 979.6            | 3 698.3   | 4 677.9   | 1 718.0   | 3 934.9   | 5 652.8   |
| Santiago      | "               | 34 862     | 36 154    | 71 016     | 38 411    | 41 031    | 79 442     | 2 122.4          | 931.5     | 3 054.0   | 3 127.3   | 1 163.4   | 4 290.7   |
| Sapporo       | "               | 0          | 0         | 0          | 0         | 0         | 0          | 0.0              | 36.9      | 36.9      | 0.0       | 0.0       | 0.0       |
| Seoul         | "               | 179 641    | 178 490   | 358 131    | 180 284   | 179 303   | 359 587    | 12 444.7         | 7 020.9   | 19 465.6  | 13 328.9  | 6 668.2   | 19 997.1  |
| Shanghai      | "               | 124 497    | 116 643   | 241 140    | 123 943   | 116 840   | 240 783    | 7 014.0          | 1 387.7   | 8 401.8   | 9 368.6   | 1 497.5   | 10 866.1  |
| Sharjah       | "               | 0          | 0         | 0          | 0         | 0         | 0          | 0.0              | 386.3     | 386.3     | 0.0       | 207.6     | 207.6     |
| Singapore     | "               | 510 352    | 486 030   | 996 382    | 518 202   | 495 523   | 1 013 725  | 20 740.7         | 15 166.2  | 35 906.8  | 24 369.3  | 14 388.8  | 38 758.1  |
| Subic Bay     | "               | 0          | 0         | 0          | 0         | 0         | 0          | 0.0              | 1 964.7   | 1 964.7   | 0.0       | 1 689.6   | 1 689.6   |
| Suva          | "               | 6 051      | 8 260     | 14 311     | 0         | 0         | 0          | 0.4              | 15.0      | 15.5      | 0.0       | 0.0       | 0.0       |
| Taipei        | "               | 38 604     | 41 380    | 79 984     | 48 329    | 51 358    | 99 687     | 760.2            | 295.0     | 1 055.2   | 651.5     | 307.2     | 958.7     |
| Tokyo         | "               | 209 827    | 235 937   | 445 764    | 223 326   | 239 390   | 462 716    | 5 862.2          | 4 791.9   | 10 654.2  | 5 356.7   | 4 379.4   | 9 736.1   |
| Toledo        | "               | 0          | 0         | 0          | 0         | 0         | 0          | 2 276.7          | 0.0       | 2 276.7   | 2 032.7   | 0.0       | 2 032.7   |
| Tongatapu     | "               | 10 157     | 10 042    | 20 199     | 11 023    | 11 062    | 22 085     | 40.1             | 26.4      | 66.5      | 24.0      | 17.8      | 41.8      |
| Toronto       | "               | 0          | 0         | 0          | 7 385     | 7 897     | 15 282     | 0.0              | 0.0       | 0.0       | 190.1     | 26.5      | 216.6     |
| Vancouver     | "               | 49 601     | 55 140    | 104 741    | 58 597    | 61 825    | 120 422    | 26.4             | 100.1     | 126.5     | 1 307.0   | 1 264.4   | 2 571.3   |
| Vienna        | "               | 46 187     | 42 448    | 88 635     | 0         | 0         | 0          | 0.0              | 0.0       | 0.0       | 0.0       | 0.0       | 0.0       |
| Wellington    | "               | 121 649    | 125 132   | 246 781    | 122 279   | 125 980   | 248 259    | 251.7            | 346.5     | 598.3     | 293.6     | 364.5     | 658.1     |
| <b>Total</b>  | <b>Sydney</b>   | 5 080 918  | 5 043 491 | 10 124 409 | 5 327 466 | 5 233 374 | 10 560 840 | 243 269.6        | 126 708.3 | 369 978.0 | 263 400.1 | 127 202.4 | 390 602.5 |
| Abu Dhabi     | Australia       | 5 938      | 8 711     | 14 649     | 89 409    | 94 168    | 183 577    | 266.5            | 445.2     | 711.7     | 3 730.2   | 4 082.7   | 7 812.8   |
| Abuja         | "               | 0          | 0         | 0          | 0         | 0         | 0          | 0.0              | 0.0       | 0.0       | 0.0       | 104.9     | 104.9     |
| Amsterdam     | "               | 0          | 0         | 0          | 0         | 0         | 0          | 7 703.8          | 1 352.2   | 9 056.0   | 8 061.6   | 1 672.4   | 9 733.9   |
| Anchorage     | "               | 0          | 0         | 0          | 0         | 0         | 0          | 0.0              | 1.1       | 1.1       | 0.0       | 0.0       | 0.0       |



**TABLE 5 SCHEDULED INTERNATIONAL TRAFFIC BY CITY PAIRS: Year ended June**

| Foreign Port        | Australian Port | Passengers |           |           |           |           |           | Freight (tonnes) |          |           |          |          |           |
|---------------------|-----------------|------------|-----------|-----------|-----------|-----------|-----------|------------------|----------|-----------|----------|----------|-----------|
|                     |                 | 2007       |           |           | 2008      |           |           | 2007             |          |           | 2008     |          |           |
|                     |                 | Inbound    | Outbound  | Total     | Inbound   | Outbound  | Total     | Inbound          | Outbound | Total     | Inbound  | Outbound | Total     |
| Apia                | Australia       | 17 089     | 16 967    | 34 056    | 17 498    | 17 561    | 35 059    | 92.1             | 35.7     | 127.8     | 19.4     | 26.0     | 45.4      |
| Auckland            | "               | 1 503 542  | 1 517 995 | 3 021 537 | 1 555 029 | 1 567 393 | 3 122 422 | 53 600.1         | 60 942.2 | 114 542.3 | 53 504.6 | 59 416.1 | 112 920.7 |
| Bahrain             | "               | 46 236     | 41 094    | 87 330    | 0         | 0         | 0         | 1 697.4          | 1 872.3  | 3 569.7   | 102.5    | 126.6    | 229.1     |
| Bandar Seri Begawan | "               | 69 722     | 63 111    | 132 833   | 68 851    | 66 365    | 135 216   | 1 509.8          | 2 428.6  | 3 938.4   | 1 671.8  | 1 852.5  | 3 524.3   |
| Bangkok             | "               | 579 018    | 545 656   | 1 124 674 | 688 325   | 616 585   | 1 304 910 | 21 542.2         | 13 459.6 | 35 001.7  | 27 077.2 | 14 796.6 | 41 873.8  |
| Beijing             | "               | 75 780     | 69 153    | 144 933   | 90 729    | 86 601    | 177 330   | 739.6            | 1 086.8  | 1 826.5   | 1 184.2  | 1 417.7  | 2 601.8   |
| Bombay              | "               | 33 289     | 29 901    | 63 190    | 33 569    | 30 238    | 63 807    | 437.5            | 385.8    | 823.4     | 547.7    | 471.6    | 1 019.3   |
| Buenos Aires        | "               | 19 858     | 18 720    | 38 578    | 22 069    | 18 755    | 40 824    | 122.9            | 202.4    | 325.2     | 91.4     | 202.6    | 294.0     |
| Chicago             | "               | 12 225     | 12 328    | 24 553    | 8 679     | 9 308     | 17 987    | 14 179.7         | 22.2     | 14 201.9  | 13 747.0 | 136.8    | 13 883.9  |
| Christchurch        | "               | 587 771    | 578 951   | 1 166 722 | 623 331   | 614 394   | 1 237 725 | 7 421.2          | 6 022.8  | 13 443.9  | 7 779.5  | 5 557.2  | 13 336.7  |
| Denpasar            | "               | 211 579    | 216 734   | 428 313   | 292 812   | 295 375   | 588 187   | 3 738.6          | 1 829.5  | 5 568.1   | 5 775.4  | 1 703.0  | 7 478.4   |
| Dohar               | "               | 0          | 0         | 0         | 0         | 0         | 0         | 0.0              | 102.0    | 102.0     | 0.0      | 0.0      | 0.0       |
| Dubai               | "               | 505 053    | 488 209   | 993 262   | 551 190   | 528 027   | 1 079 217 | 17 346.9         | 18 443.6 | 35 790.5  | 18 909.0 | 17 255.4 | 36 164.4  |
| Dunedin             | "               | 39 623     | 39 788    | 79 411    | 34 627    | 34 339    | 68 966    | 0.0              | 0.0      | 0.0       | 0.0      | 0.3      | 0.3       |
| Durban              | "               | 0          | 0         | 0         | 0         | 0         | 0         | 1.2              | 181.5    | 182.7     | 34.2     | 99.5     | 133.7     |
| Espiritu Santo      | "               | 0          | 0         | 0         | 1 254     | 1 629     | 2 883     | 0.0              | 0.0      | 0.0       | 2.5      | 3.0      | 5.5       |
| Frankfurt           | "               | 45 325     | 46 347    | 91 672    | 51 543    | 53 409    | 104 952   | 5 076.1          | 258.2    | 5 334.3   | 5 456.9  | 155.3    | 5 612.3   |
| Guam                | "               | 11 521     | 11 615    | 23 136    | 11 439    | 11 541    | 22 980    | 4.7              | 27.7     | 32.4      | 8.4      | 24.4     | 32.7      |
| Guangzhou           | "               | 64 517     | 59 797    | 124 314   | 77 076    | 68 245    | 145 321   | 2 901.5          | 220.7    | 3 122.2   | 3 233.8  | 265.1    | 3 498.9   |
| Hamilton            | "               | 48 195     | 49 092    | 97 287    | 41 787    | 43 183    | 84 970    | 0.0              | 0.0      | 0.0       | 2.5      | 0.3      | 2.7       |
| Hanoi               | "               | 13 139     | 14 139    | 27 278    | 14 185    | 16 403    | 30 588    | 0.0              | 20.8     | 20.8      | 3.9      | 27.4     | 31.3      |
| Ho Chi Minh City    | "               | 93 598     | 88 889    | 182 487   | 114 652   | 106 275   | 220 927   | 3 192.9          | 594.0    | 3 786.9   | 4 554.2  | 732.6    | 5 286.9   |
| Hong Kong           | "               | 895 217    | 844 100   | 1 739 317 | 976 297   | 906 053   | 1 882 350 | 57 616.4         | 36 085.5 | 93 701.9  | 64 195.1 | 37 495.7 | 101 690.8 |
| Honiara             | "               | 16 296     | 16 627    | 32 923    | 15 282    | 16 939    | 32 221    | 131.6            | 585.5    | 717.1     | 170.1    | 930.0    | 1 100.1   |
| Honolulu            | "               | 112 822    | 104 784   | 217 606   | 125 209   | 120 940   | 246 149   | 3 289.4          | 3 427.0  | 6 716.4   | 3 477.4  | 2 774.1  | 6 251.5   |
| Indianapolis        | "               | 0          | 0         | 0         | 0         | 0         | 0         | 160.3            | 165.4    | 325.7     | 154.7    | 148.4    | 303.1     |
| Jakarta             | "               | 56 535     | 54 204    | 110 739   | 65 323    | 63 226    | 128 549   | 581.0            | 858.1    | 1 439.1   | 1 077.0  | 1 095.8  | 2 172.8   |
| Jeju                | "               | 0          | 0         | 0         | 0         | 0         | 0         | 0.0              | 0.0      | 0.0       | 0.0      | 0.0      | 0.0       |
| Johannesburg        | "               | 121 328    | 109 173   | 230 501   | 135 228   | 120 215   | 255 443   | 2 280.8          | 2 547.0  | 4 827.8   | 2 191.2  | 2 391.0  | 4 582.2   |
| Kuala Lumpur        | "               | 572 946    | 557 739   | 1 130 685 | 578 836   | 570 463   | 1 149 299 | 44 406.7         | 15 375.0 | 59 781.7  | 44 026.7 | 16 041.2 | 60 067.9  |
| Kupang              | "               | 1 332      | 1 842     | 3 174     | 1 134     | 1 403     | 2 537     | 0.0              | 0.0      | 0.0       | 0.0      | 0.1      | 0.1       |
| London              | "               | 387 667    | 391 701   | 779 368   | 387 965   | 393 468   | 781 433   | 11 303.0         | 3 178.3  | 14 481.3  | 10 808.7 | 3 386.6  | 14 195.2  |
| Los Angeles         | "               | 560 364    | 562 000   | 1 122 364 | 520 933   | 527 357   | 1 048 290 | 24 301.3         | 11 333.9 | 35 635.1  | 17 952.7 | 9 276.9  | 27 229.6  |
| Louisville          | "               | 0          | 0         | 0         | 0         | 0         | 0         | 9 327.4          | 0.0      | 9 327.4   | 13 354.9 | 0.0      | 13 354.9  |
| Luxembourg          | "               | 0          | 0         | 0         | 0         | 0         | 0         | 4 537.4          | 35.7     | 4 573.1   | 3 886.4  | 18.4     | 3 904.8   |
| Majuro              | "               | 0          | 344       | 344       | 0         | 8         | 8         | 0.0              | 6.8      | 6.8       | 0.0      | 0.1      | 0.1       |
| Manchester          | "               | 0          | 0         | 0         | 180       | 0         | 180       | 0.0              | 0.0      | 0.0       | 0.0      | 0.0      | 0.0       |
| Manila              | "               | 77 992     | 72 746    | 150 738   | 90 736    | 85 587    | 176 323   | 1 897.5          | 1 129.6  | 3 027.0   | 2 743.6  | 1 204.5  | 3 948.1   |
| Mauritius           | "               | 30 045     | 29 114    | 59 159    | 36 766    | 34 069    | 70 835    | 586.7            | 698.5    | 1 285.1   | 1 154.3  | 937.4    | 2 091.7   |
| Milan               | "               | 0          | 0         | 0         | 0         | 0         | 0         | 0.0              | 104.7    | 104.7     | 0.0      | 0.0      | 0.0       |
| Mombasa             | "               | 0          | 0         | 0         | 0         | 0         | 0         | 99.4             | 0.0      | 99.4      | 0.0      | 0.0      | 0.0       |
| Nadi                | "               | 246 720    | 244 310   | 491 030   | 281 954   | 274 424   | 556 378   | 3 633.4          | 4 315.4  | 7 948.8   | 3 948.2  | 3 940.7  | 7 888.9   |
| Nagoya              | "               | 62 004     | 62 451    | 124 455   | 51 299    | 46 174    | 97 473    | 853.4            | 476.1    | 1 329.5   | 839.4    | 395.7    | 1 235.1   |
| Nauru               | "               | 2 583      | 2 507     | 5 090     | 2 584     | 2 501     | 5 085     | 3.4              | 75.5     | 78.9      | 4.7      | 107.9    | 112.5     |
| New York            | "               | 33 513     | 33 814    | 67 327    | 41 508    | 40 616    | 82 124    | 6 331.1          | 231.2    | 6 562.3   | 6 964.1  | 308.5    | 7 272.6   |
| Noumea              | "               | 67 491     | 67 632    | 135 123   | 73 658    | 73 422    | 147 080   | 58.2             | 971.0    | 1 029.2   | 81.9     | 1 063.9  | 1 145.8   |

**TABLE 5 SCHEDULED INTERNATIONAL TRAFFIC BY CITY PAIRS: Year ended June**

| Foreign Port  | Australian Port  | Passengers        |                   |                   |                   |                   |                   | Freight (tonnes) |                  |                  |                  |                  |                  |
|---------------|------------------|-------------------|-------------------|-------------------|-------------------|-------------------|-------------------|------------------|------------------|------------------|------------------|------------------|------------------|
|               |                  | 2007              |                   |                   | 2008              |                   |                   | 2007             |                  |                  | 2008             |                  |                  |
|               |                  | Inbound           | Outbound          | Total             | Inbound           | Outbound          | Total             | Inbound          | Outbound         | Total            | Inbound          | Outbound         | Total            |
| Osaka         | Australia        | 163 189           | 151 461           | 314 650           | 113 014           | 117 730           | 230 744           | 3 664.8          | 3 074.0          | 6 738.8          | 2 943.8          | 2 030.8          | 4 974.7          |
| Palmerston    | "                | 37 877            | 37 635            | 75 512            | 20 899            | 20 871            | 41 770            | 0.0              | 0.0              | 0.0              | 0.0              | 0.0              | 0.0              |
| Papeete       | "                | 24 195            | 24 100            | 48 295            | 18 904            | 20 058            | 38 962            | 1 197.2          | 683.4            | 1 880.6          | 850.4            | 751.3            | 1 601.7          |
| Phuket        | "                | 20 176            | 44 949            | 65 125            | 39 637            | 64 618            | 104 255           | 346.3            | 25.8             | 372.1            | 959.8            | 72.6             | 1 032.4          |
| Port Moresby  | "                | 80 250            | 80 431            | 160 681           | 83 123            | 87 452            | 170 575           | 826.1            | 2 712.8          | 3 538.9          | 1 112.9          | 2 725.7          | 3 838.6          |
| Port Vila     | "                | 52 658            | 52 184            | 104 842           | 57 905            | 56 956            | 114 861           | 174.7            | 454.9            | 629.6            | 155.7            | 540.3            | 696.0            |
| Queenstown    | "                | 25 296            | 26 724            | 52 020            | 28 891            | 31 406            | 60 297            | 0.0              | 1.0              | 1.0              | 0.0              | 0.3              | 0.3              |
| Rarotonga     | "                | 326               | 524               | 850               | 617               | 537               | 1 154             | 0.0              | 0.0              | 0.0              | 0.0              | 0.0              | 0.0              |
| San Francisco | "                | 136 433           | 142 324           | 278 757           | 149 976           | 159 008           | 308 984           | 1 186.6          | 3 742.8          | 4 929.4          | 2 080.3          | 3 973.6          | 6 053.9          |
| Santiago      | "                | 34 862            | 36 154            | 71 016            | 38 411            | 41 031            | 79 442            | 2 122.4          | 931.5            | 3 054.0          | 3 127.3          | 1 163.4          | 4 290.7          |
| Sapporo       | "                | 5 015             | 5 440             | 10 455            | 0                 | 0                 | 0                 | 0.9              | 37.9             | 38.9             | 0.0              | 0.0              | 0.0              |
| Seoul         | "                | 226 344           | 221 861           | 448 205           | 246 476           | 238 258           | 484 734           | 13 524.8         | 8 254.8          | 21 779.6         | 14 934.6         | 8 422.7          | 23 357.3         |
| Shanghai      | "                | 172 098           | 152 101           | 324 199           | 180 301           | 161 581           | 341 882           | 8 199.0          | 2 001.1          | 10 200.0         | 10 887.4         | 2 364.5          | 13 251.9         |
| Sharjah       | "                | 0                 | 0                 | 0                 | 0                 | 0                 | 0                 | 0.0              | 386.3            | 386.3            | 0.0              | 207.6            | 207.6            |
| Singapore     | "                | 1 952 104         | 1 849 040         | 3 801 144         | 2 018 310         | 1 926 014         | 3 944 324         | 81 834.7         | 81 011.4         | 162 846.2        | 85 422.0         | 78 554.1         | 163 976.1        |
| Subic Bay     | "                | 0                 | 0                 | 0                 | 0                 | 0                 | 0                 | 0.0              | 1 964.7          | 1 964.7          | 0.0              | 1 689.6          | 1 689.6          |
| Suva          | "                | 6 051             | 8 260             | 14 311            | 0                 | 0                 | 0                 | 0.4              | 15.0             | 15.5             | 0.0              | 0.0              | 0.0              |
| Taipei        | "                | 99 882            | 104 340           | 204 222           | 112 593           | 114 459           | 227 052           | 3 812.7          | 1 221.4          | 5 034.2          | 3 330.4          | 1 213.6          | 4 543.9          |
| Tarawa        | "                | 0                 | 0                 | 0                 | 210               | 184               | 394               | 0.0              | 0.0              | 0.0              | 0.0              | 0.0              | 0.0              |
| Tianjin       | "                | 0                 | 0                 | 0                 | 0                 | 0                 | 0                 | 0.0              | 62.3             | 62.3             | 0.0              | 0.0              | 0.0              |
| Tokyo         | "                | 526 359           | 537 983           | 1 064 342         | 537 403           | 532 876           | 1 070 279         | 12 423.7         | 10 344.1         | 22 767.8         | 11 630.5         | 9 650.8          | 21 281.3         |
| Toledo        | "                | 0                 | 0                 | 0                 | 0                 | 0                 | 0                 | 2 276.7          | 0.0              | 2 276.7          | 2 032.7          | 0.0              | 2 032.7          |
| Tongatapu     | "                | 10 157            | 10 042            | 20 199            | 11 023            | 11 062            | 22 085            | 40.1             | 26.4             | 66.5             | 24.0             | 17.8             | 41.8             |
| Toronto       | "                | 0                 | 0                 | 0                 | 7 385             | 7 897             | 15 282            | 0.0              | 0.0              | 0.0              | 190.1            | 26.5             | 216.6            |
| Vancouver     | "                | 50 036            | 55 682            | 105 718           | 58 858            | 62 101            | 120 959           | 36.4             | 117.5            | 153.9            | 1 308.5          | 1 265.1          | 2 573.6          |
| Vienna        | "                | 67 364            | 61 963            | 129 327           | 0                 | 0                 | 0                 | 0.0              | 0.0              | 0.0              | 0.0              | 0.0              | 0.0              |
| Wellington    | "                | 269 332           | 274 407           | 543 739           | 276 641           | 280 292           | 556 933           | 517.6            | 694.2            | 1 211.9          | 530.7            | 626.2            | 1 156.9          |
| <b>Total</b>  | <b>Australia</b> | <b>11 187 877</b> | <b>10 949 890</b> | <b>22 137 767</b> | <b>11 773 523</b> | <b>11 491 050</b> | <b>23 264 573</b> | <b>445 158.1</b> | <b>309 298.2</b> | <b>754 456.2</b> | <b>474 049.9</b> | <b>306 943.2</b> | <b>780 993.0</b> |

Please refer to explanatory notes - paragraphs 3, 8 and 13 in particular.

(a) Scheduled services recommenced December 2007 and ceased May 2008.

**TABLE 6 INTERNATIONAL AIRLINES OWN STOPOVER REVENUE PASSENGERS,  
AUSTRALIAN CITY PAIRS: Year ended June 2008**

| City Pair Route    | Total<br>Passengers |
|--------------------|---------------------|
| Melbourne/Sydney   | 29 836              |
| Brisbane/Sydney    | 1 091               |
| Brisbane/Cairns    | 1 752               |
| Adelaide/Melbourne | 209                 |
| TOTAL              | 32 888              |

Notes:

1. Own Stopover Revenue Passengers : The aggregate of revenue passengers uplifted at one Australian airport and discharged (excluding transit passengers) at another Australian airport by the same foreign registered international airline on which they entered or left Australia.

2. City Pair Route represents the aggregation of passengers travelling in both directions.

3. This data is additional to the information presented in tables 1-5 which cover only those passengers travelling to/from overseas airports.

**TABLE 7 TOTAL AIRCRAFT MOVEMENTS AT AUSTRALIAN INTERNATIONAL AIRPORTS BY AIRCRAFT TYPES: Year ended June 2008**

| Airport                | Passenger Aircraft |               |              |            |               |               |            |               |               |              |            |            |            |            |            | Freighters |              |              | All Types      |
|------------------------|--------------------|---------------|--------------|------------|---------------|---------------|------------|---------------|---------------|--------------|------------|------------|------------|------------|------------|------------|--------------|--------------|----------------|
|                        | 32S                | 330           | 340          | 380        | 737           | 747           | 757        | 767           | 777           | 100          | DH8        | EM2        | E70        | E90        | Other      | 72F/73F    | 74F          | M1F          |                |
| Adelaide               | 503                | 1 289         |              |            | 16            | 2             | 38         | 1 188         |               |              |            |            |            |            |            |            | 172          | 3 208        |                |
| Brisbane               | 4 344              | 3 674         | 60           |            | 6 345         | 3 045         | 308        | 2 508         | 3 778         | 87           |            |            | 212        | 94         | 104        | 224        | 30           | 24 813       |                |
| Cairns                 | 926                | 1 509         |              |            | 220           | 6             | 3 185      | 20            | 942           | 718          |            |            |            |            |            |            |              | 7 526        |                |
| Christmas Island       | 52                 |               |              |            |               |               |            |               |               |              |            |            |            |            |            |            |              | 52           |                |
| Darwin                 | 2 508              | 254           |              |            | 272           | 6             | 8          |               |               |              |            | 170        | 193        | 5          |            |            | 5            | 3 421        |                |
| Gold Coast/Coolangatta | 1 397              | 279           |              |            | 238           |               |            |               |               |              |            |            |            |            |            |            |              | 1 914        |                |
| Melbourne              | 3 350              | 5 181         | 1 732        |            | 1 859         | 4 893         | 923        | 5 767         |               |              |            |            |            |            |            |            | 1 179        | 24 884       |                |
| Norfolk Island         | 56                 |               |              |            | 153           |               |            |               |               |              |            |            |            |            |            |            |              | 209          |                |
| Perth                  | 874                | 2 727         | 1 020        |            | 2 272         | 91            | 1 464      | 4 070         |               |              |            |            |            |            |            |            | 30           | 12 548       |                |
| Sydney                 | 6 296              | 11 423        | 4 339        | 479        | 4 181         | 14 888        | 44         | 8 857         | 5 889         | 2            |            |            |            | 42         | 24         | 476        | 1 835        | 1 006        | 59 781         |
| <b>Grand Total</b>     | <b>20 306</b>      | <b>26 336</b> | <b>7 151</b> | <b>479</b> | <b>15 556</b> | <b>22 931</b> | <b>352</b> | <b>16 983</b> | <b>20 712</b> | <b>1 031</b> | <b>718</b> | <b>170</b> | <b>405</b> | <b>136</b> | <b>133</b> | <b>700</b> | <b>3 251</b> | <b>1 006</b> | <b>138 356</b> |
| % of All Types         | 14.7%              | 19.0%         | 5.2%         | 0.3%       | 11.2%         | 16.6%         | 0.3%       | 12.3%         | 15.0%         | 0.7%         | 0.5%       | 0.1%       | 0.3%       | 0.1%       | 0.1%       | 0.5%       | 2.3%         | 0.7%         | 100.0%         |

**NOTE:**

These figures only cover scheduled operations of the airlines listed in this publication. Charter/ferry operations are not included.

**Aircraft Types (all series)**

|                   |   |     |     |     |     |     |     |     |  |
|-------------------|---|-----|-----|-----|-----|-----|-----|-----|--|
| Airbus            | 32S                                     | 330 | 340 | 380 |     |     |     |     |  |
| Boeing            | 737                                     | 747 | 757 | 767 | 777 | 72F | 73F | 74F |  |
| McDonnell Douglas | M1F                                     |     |     |     |     |     |     |     |  |
| Fokker            | 100                                     |     |     |     |     |     |     |     |  |
| Embraer           | EM2                                     | E70 | E90 |     |     |     |     |     |  |
| Other             | 114 Airbus 310, 14 Boeing 727 and 5 SWM |     |     |     |     |     |     |     |  |