



Department of Transport and Regional Services

Australian Transport Safety Bureau

**Road Fatalities Australia
2001 Statistical Summary**

Australian Transport Safety Bureau
PO Box 967,
Civic Square ACT 2608

As ATSB believes that safety information is of greatest value if it is passed on for the use of others, copyright restrictions do not apply to material printed in this report. Readers are encouraged to copy or reprint for further distribution, but should acknowledge ATSB as the source.

**AUSTRALIAN TRANSPORT SAFETY BUREAU
DOCUMENT RETRIEVAL INFORMATION**

Date	Pages	ISSN
September 2002	48	1323-3688

Title and Subtitle

ROAD FATALITIES AUSTRALIA: 2001 STATISTICAL SUMMARY

Performing organisations

Transport Safety Statistics Unit
Australian Transport Safety Bureau
PO Box 967
Civic Square
CANBERRA ACT 2608

Available from

Australian Transport Safety Bureau
PO Box 967
Civic Square
CANBERRA ACT 2608

Abstract

This publication presents an annual statistical summary of fatal road crashes and road fatalities in Australia.

This issue presents fatal crash data for 2001 and makes comparisons with 2000 and 1996. The data derive primarily from a fatal crash database compiled each month by the Australian Transport Safety Bureau using fatal crash unit record data forwarded from police and transport authorities in each State and Territory.

ACKNOWLEDGEMENTS

The Australian Transport Safety Bureau gratefully acknowledges the provision of police road crash data by the New South Wales Roads and Traffic Authority, Vicroads, Queensland Transport, South Australian Police, Western Australian Police and Main Roads, Tasmanian Department of Infrastructure, Energy and Resources, Northern Territory Police and Australian Capital Territory Department of Urban Services.

FOREWORD

This publication presents an annual statistical summary of Australian fatal road crashes and road fatalities. This issue presents fatal crash data for 2001 and makes comparisons with 2000 and 1996.

The data derive primarily from the Monthly Fatality Crash Database compiled by the Australian Transport Safety Bureau using fatal crash unit record data forwarded from police and transport authorities in each State and Territory. This database covers all fatal crashes from 1989. For each crash, it records the State/Territory, date, time of day, day of week, speed limit at crash site and number of vehicles involved. For each person killed, sex, age and road user classification is recorded. Also recorded is whether or not a bus or articulated truck was involved. Use is also made of the Australian Bureau of Statistics data on population, vehicle registrations and motor vehicle usage for deriving road fatality rates.

Acknowledgments

The Australian Transport Safety Bureau gratefully acknowledges the provision of police road crash data by the New South Wales Road & Traffic Authority, Vicroads, Queensland Transport, South Australian Police Department, Western Australian Police and Main Roads, Tasmanian Department of Infrastructure Energy and Resources, Northern Territory Police and the Australian Capital Territory Department of Urban Services.

Additional data

The police road crash data presented here represent a selection of that held by the Australian Transport Safety Bureau. Additional data can be obtained from the address below. Readers are also referred to the publications *Road Fatalities Australia, Monthly Bulletin*.

Inquiries

Inquiries about this publication should be directed to:

Transport Safety Statistics Unit
Australian Transport Safety Bureau
PO Box 967
Civic Square
CANBERRA ACT 2608

Telephone: 02 6274 7162

Email: stats@atsb.gov.au

Internet address: www.atsb.gov.au

TABLE OF CONTENTS

	Page
1. Main Findings	1
2. Road Crash Fatalities	
Number of fatalities	3
Gender and age of persons killed	5
Crash time for major fatality groups	12
3. Fatality Rates	15
4. Fatal Road Crashes	
Number of crashes	24
Summary of crash characteristics	20
Crashes involving vehicle occupant fatal	21
Crashes involving motor cyclist fatality	25
Pedestrian crashes	29
Fatalities per fatal crash	29
Fatal crashes involving articulated truck	30
Fatal crashes involving buses	32
5. Time series	
Fatal crashes	34
Fatalities	36

LIST OF TABLES

Table 1	Fatalities by State/Territory and road user, 2000 and 2001
Table 2	Fatalities by gender and age for individual road user groups, Australia, 2000 and 2001
Table 3	Fatalities by road user category, gender and age, Australia, 2001
Table 4	Share of fatalities by age for each road user and gender group, Australia, 1996 and 2001
Table 5	Share of fatalities by gender for each road user category, Australia, 1996 and 2001
Table 6	Fatalities by time of day and day of week of crash for major road user categories, Australia, 1999 to 2001
Table 7	Fatality rates by State/Territory, 1975 to 2001
Table 8	Fatalities per 100,000 population in individual age groups for drivers, Australia, 1980 to 2001
Table 9	Fatalities per 100,000 population in individual age groups for other occupants, Australia, 1980 to 2001
Table 10	Fatalities per 100,000 population in individual age groups for motorcycle riders & passengers, Australia, 1980 to 2001
Table 11	Fatalities per 100,000 population in individual age groups for pedestrians, Australia, 1980 to 2001
Table 12	Fatalities per 100,000 population in individual age groups for all road users, Australia, 1980 to 2001
Table 13	Fatality rates by State/Territory: registered motor vehicles, 1980 to 2001
Table 14	Fatality rates by State/Territory: registered motorcycles, 1980 to 2001
Table 15	Fatal crashes by State/Territory and speed limit at crash site, 2000 and 2001
Table 16	Fatal crashes: speed limit, time of day, crash type and time of week, Australia, 1996 and 2001
Table 17	Fatal crashes involving vehicle occupant fatality by time and crash type, Australia, 1996 and 2001
Table 18	Fatal crashes involving vehicle occupant fatality by crash type and speed limit at crash site, Australia, 1996 and 2001
Table 19	Fatal crashes involving motorcyclist fatality by time and crash type, Australia, 1996 and 2001
Table 20	Fatal crashes involving motorcyclist fatality by crash type and speed limit at crash site, Australia, 1996 and 2001
Table 21	Fatal crashes and fatalities involving articulated trucks by State/Territory, 1981 to 2001
Table 22	Fatal crashes and fatalities involving articulated trucks by State and speed limit at crash site, 1990 to 2001
Table 23	Summary of fatal articulated truck crashes: speed limit, time of day, crash type and time of week, Australia, 2001
Table 24	Fatal crashes involving articulated trucks by speed limit at site and crash type, Australia, 2001
Table 25	Fatal crashes and fatalities involving buses, by State/Territory, 1981 to 2001
Table 26	Fatal crashes and fatalities involving buses by State and speed limit at crash site, 1990 to 2001
Table 27	Summary of fatal bus crashes: speed limit, time of day, crash type and time of week, Australia, 2001
Table 28	Fatal crashes involving buses by speed limit at site and crash type, Australia, 2001
Table 29	Fatal crashes by State/Territory, 1980 to 2001
Table 30	Fatalities by State/Territory and road user, 1980 to 2001
Table 31	Fatalities by road user, gender and age, Australia, 1980 to 2001
Table 32	Fatalities by month, Australia, 1990 to 2001

1. MAIN FINDINGS

Long term fatality trend

- After steadily falling from the mid 1980s to 1997, the road toll from 1997 to 2001 was effectively constant.

Fatality trends since 2000

- In 2001, there were 1,736 persons killed in 1,583 road crashes.
 - This represents a 4.7% decrease on the 2000 road toll (1,822 persons killed in 1,630 crashes).
- The fatality pattern between 2000 and 2001 varied substantially between jurisdictions.
 - Western Australia had a decrease of 23%, following a 2% decrease the previous year.
 - Other decreases occurred in New South Wales (13%), the Australian Capital Territory (11%), South Australia (8%) and the Northern Territory (2%).
 - Tasmanian road fatalities increased by 30% compared with an 11% decrease the previous year.
 - Other increases occurred in Victoria (9%) and in Queensland (2%).
- Road user groups
 - Driver fatalities decreased 9% following a 4% increase the previous year.
 - Passenger fatalities decreased by 10%, following a 5% increase the previous year.
 - Pedestrian fatalities stayed constant following a 4% decrease the previous year.
 - Motorcyclist fatalities increased by 11% on top of an 11% increase the previous year.
 - Bicyclist fatalities increased from 31 to 46 between 2000 and 2001, following a decrease of 9 between 1999 and 2000.

Five-year trends

- Since 1996 there has been an average annual decrease of about 2.5% in national road fatalities, although most of this decrease was restricted to 1997.
- The five-year trend has varied between jurisdictions.
 - Western Australia has experienced the greatest average annual decrease (8%) followed by the Northern Territory and the Australian Capital Territory, (both 7%).
 - New South Wales, Queensland, South Australia, and Tasmania have experienced smaller average annual percentage decreases.
 - Victoria has experienced an average annual increase of 1.3%.
- The trend has also varied between road user groups.
 - Passenger and pedestrian fatalities showed the largest average annual decrease, both 4%.
 - Driver fatalities had an average annual decrease of 2%.
 - Motorcyclist fatalities have increased by an average of 2% annually.

Fatality rate per 100,000 population

- Between 2000 and 2001 the number of people killed per 100,000 of Australian population decreased from 9.5 to 9.0.
- Since 1996 there has been an average annual decrease of 3.6% in the national per capita fatality rate.
 - The five-year trend was downward in all States and Territories except Victoria. Average annual increases ranged from 1% in Tasmania to 9% in Western Australia and the Northern Territory. An average annual increase of 0.1% occurred in Victoria over this period.

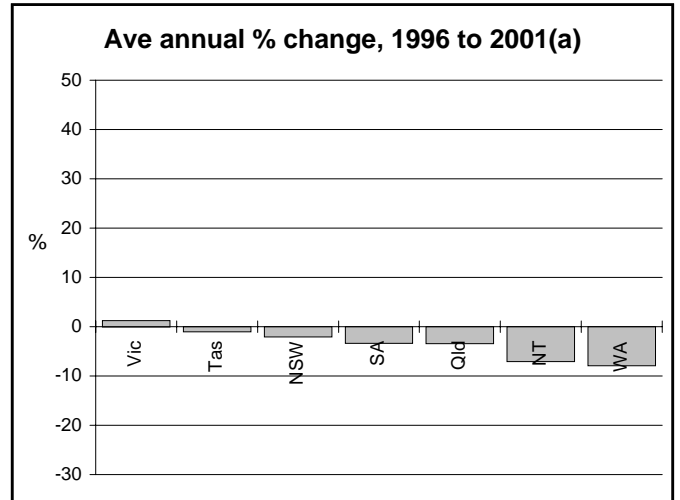
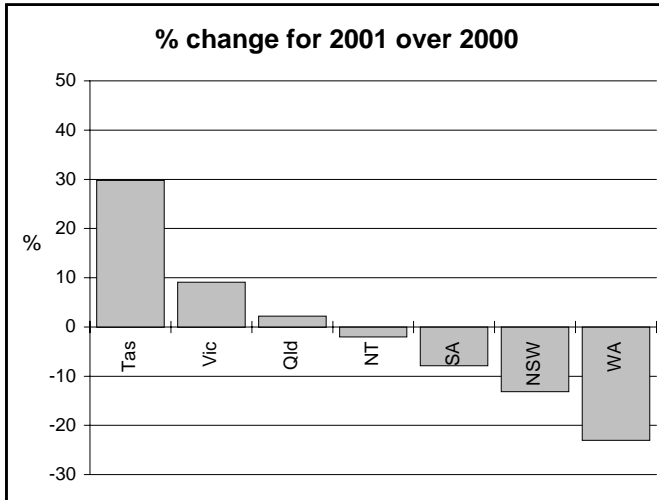
Crashes involving articulated trucks and buses

- In 2001, there were 146 fatal crashes involving articulated trucks, and these resulted in 178 fatalities. This represents a 14% decrease on the previous year's toll but remains 4% greater than that in 1997.
- There were 28 fatal crashes involving buses in 2001, and these resulted in 32 fatalities compared to 24 fatalities recorded the previous year.

2. ROAD CRASH FATALITIES

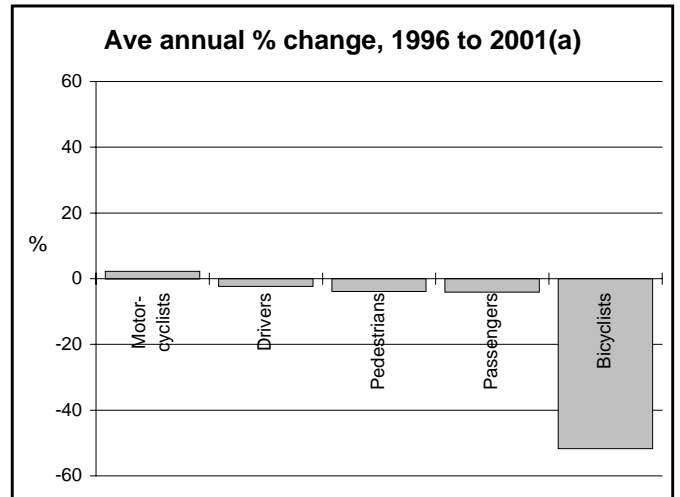
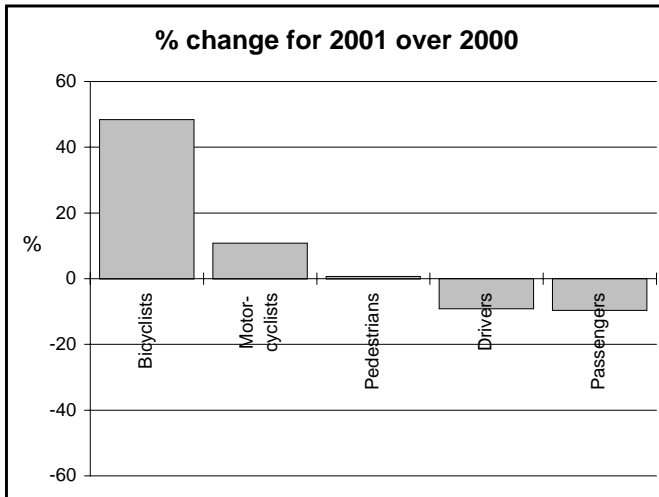
NUMBER OF FATALITIES

Percentage change in fatalities in each State and Territory (excluding ACT)



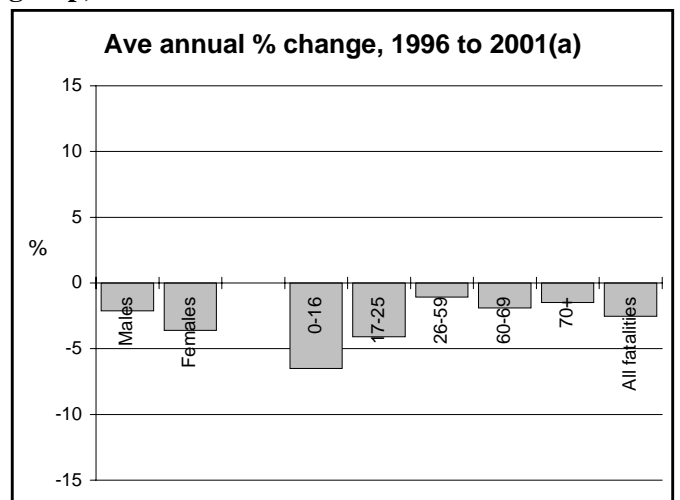
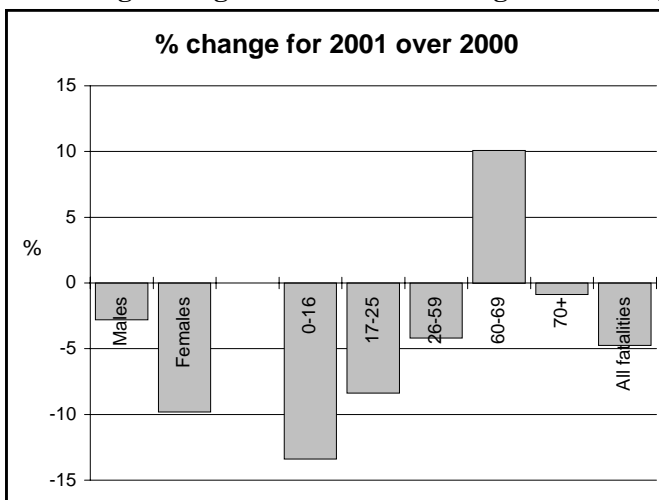
Source: Table 1

Percentage change in fatalities in each road user group, Australia



Source: Table 1

Percentage change in fatalities in each gender and age group, Australia



Source: Table 2

(a) Average annual exponential change between 1996 and 2001 annual counts

Table 1 Fatalities by State/Territory and road user, 2000 and 2001

	<i>NSW</i>	<i>Vic</i>	<i>Qld</i>	<i>SA</i>	<i>WA</i>	<i>Tas</i>	<i>NT</i>	<i>ACT</i>	<i>Australia</i>
Drivers									
<i>2001</i>	219	207	151	77	72	27	14	9	776
<i>2000</i>	278	195	157	91	91	18	16	7	853
<i>% change 2000-01</i>	-21.2	6.2	-3.8	-15.4	-20.9	50.0	-12.5	28.6	-9.0
<i>Ave chge 1996-01 (a)</i>	-1.3	0.8	-2.9	-4.1	-5.0	-5.6	-13.6	2.4	-2.2
Passengers									
<i>2001</i>	133	86	77	30	40	16	22	3	407
<i>2000</i>	146	93	82	37	62	11	13	6	450
<i>% change 2000-01</i>	-8.9	-7.5	-6.1	-18.9	-35.5	45.5	69.2	-50.0	-9.6
<i>Ave chge 1996-01 (a)</i>	-1.8	-0.9	-5.8	-4.1	-8.7	-1.2	-7.8	-19.7	-4.0
Pedestrians									
<i>2001</i>	88	81	51	26	19	10	11	3	289
<i>2000</i>	110	59	39	20	35	9	11	4	287
<i>% change 2000-01</i>	-20.0	37.3	30.8	30.0	-45.7	11.1	0.0	-25.0	0.7
<i>Ave chge 1996-01 (a)</i>	-7.5	1.3	-1.5	1.6	-16.2	4.6	4.1	0.0	-3.8
Motorcyclists (b)									
<i>2001</i>	70	64	29	14	28	7	3	1	216
<i>2000</i>	62	46	33	16	23	9	5	1	195
<i>% change 2000-01</i>	12.9	39.1	-12.1	-12.5	21.7	-22.2	-40.0	0.0	10.8
<i>Ave chge 1996-01 (a)</i>	3.8	10.4	-6.7	-4.9	-3.8	28.5	24.6	-	2.3
Bicyclists									
<i>2001</i>	13	6	15	6	5	1	0	0	46
<i>2000</i>	6	13	6	2	2	0	2	0	31
All road users (c)									
<i>2001</i>	524	444	324	153	164	61	50	16	1,736
<i>2000</i>	603	407	317	166	213	47	51	18	1,822
<i>% change 2000-01</i>	-13.1	9.1	2.2	-7.8	-23.0	29.8	-2.0	-11.1	-4.7
<i>Ave chge 1996-01 (a)</i>	-2.0	1.3	-3.4	-3.3	-7.9	-1.0	-7.0	-7.0	-2.5

(a) Average annual exponential change between the 1996 and 2001 annual counts

(b) Includes pillion passengers

(c) Includes fatalities of unstated road user group

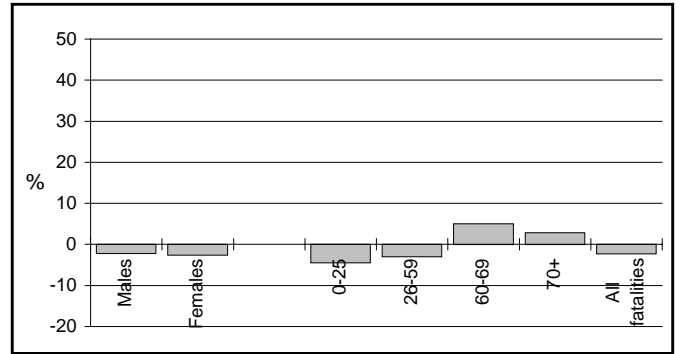
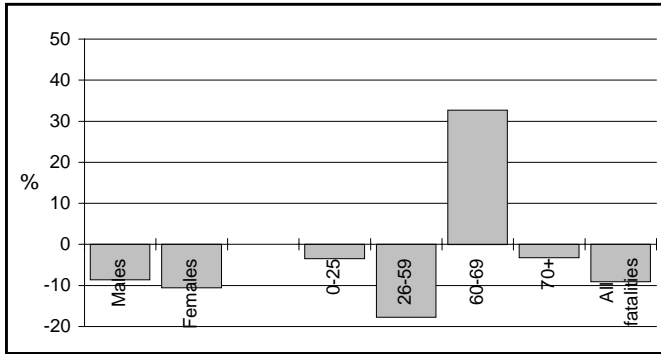
GENDER AND AGE OF PERSONS KILLED

Percentage change in fatalities by gender and age for each road user group, Australia

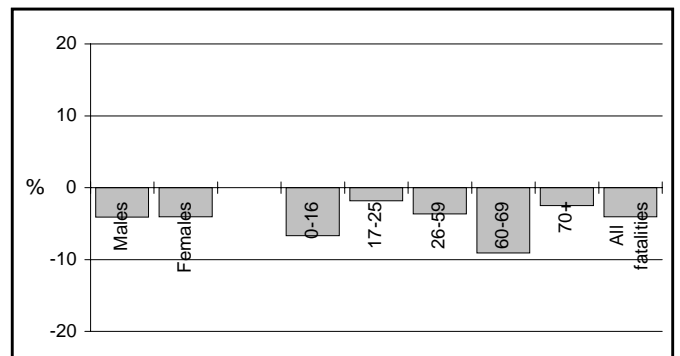
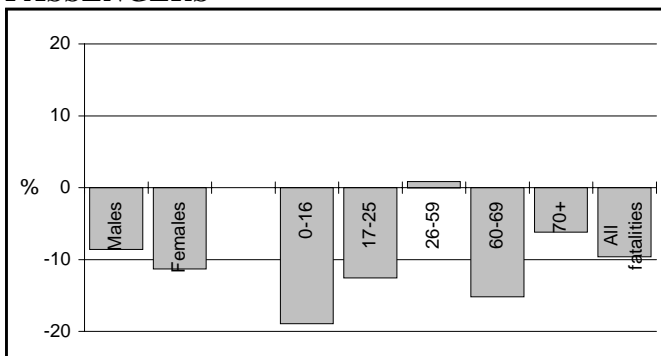
% change for 2001 over 2000

Average annual % change, 1996 to 2001 (a)

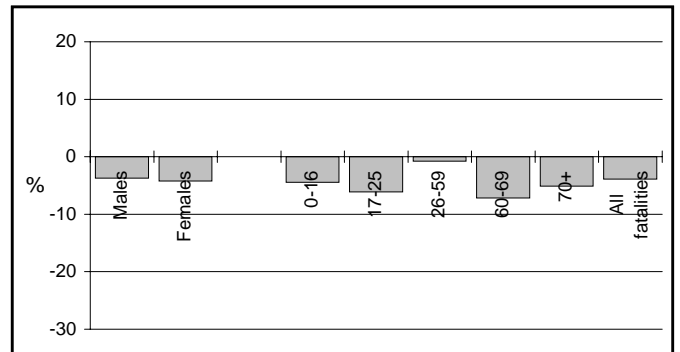
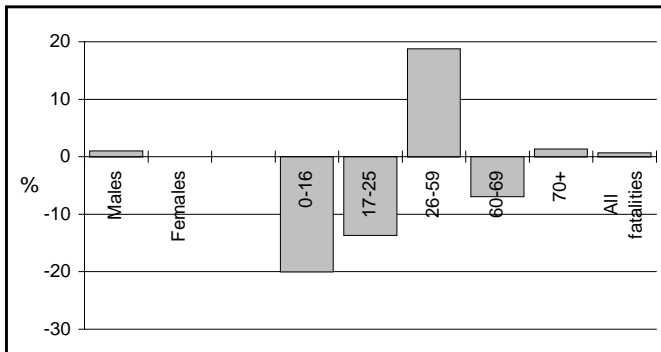
DRIVERS



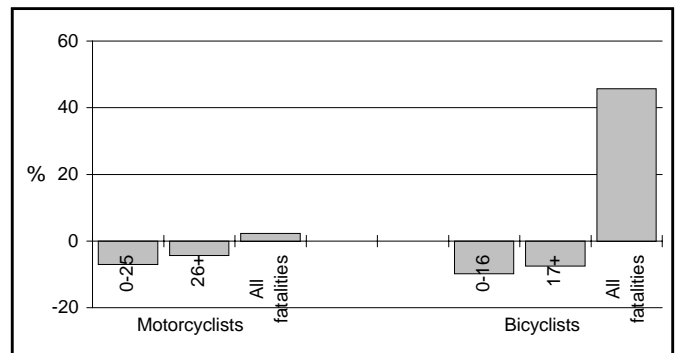
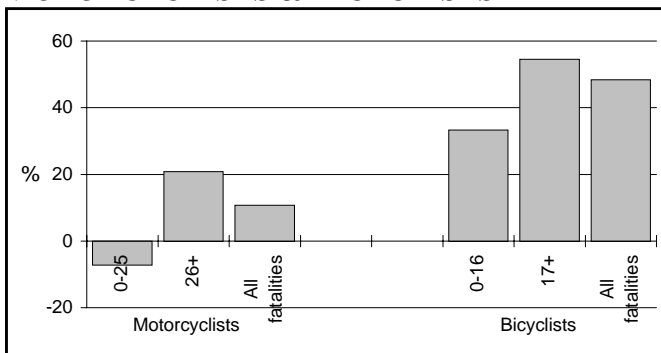
PASSENGERS



PEDESTRIANS



MOTORCYCLISTS & BICYCLISTS



Source: Table 2

(a) Average annual exponential change between 1996 & 2001 annual counts

Table 2 Fatalities by gender and age for individual road user groups, Australia, 2000 and 2001

	<i>Males</i>	<i>Females</i>	<i>0-16 years</i>	<i>17-25 years</i>	<i>26-59 years</i>	<i>60-69 years</i>	<i>70+ years</i>	<i>All fatalities (c)</i>
Drivers								
2001	589	187	10	217	387	69	93	776
2000	644	209	9	226	470	52	96	853
% change 2000-01	-8.5	-10.5	11.1	-4.0	-17.7	32.7	-3.1	-9.0
Ave chge 1996-01 (a)	-2.1	-2.6	-10.1	-4.1	-2.9	5.0	2.8	-2.2
Passengers								
2001	225	181	73	126	119	28	61	407
2000	246	204	90	144	118	33	65	450
% change 2000-01	-8.5	-11.3	-18.9	-12.5	0.8	-15.2	-6.2	-9.6
Ave chge 1996-01 (a)	-4.1	-4.0	-6.7	-1.8	-3.6	-9.1	-2.4	-4.0
Pedestrians								
2001	201	88	36	38	114	27	74	289
2000	199	88	45	44	96	29	73	287
% change 2000-01	1.0	0.0	-20.0	-13.6	18.8	-6.9	1.4	0.7
Ave chge 1996-01 (a)	-3.6	-4.2	-4.4	-6.1	-0.7	-7.1	-5.1	-3.8
Motorcyclists (b)								
2001	210	6	4	61	144	5	2	216
2000	182	13	4	66	119	4	2	195
% change 2000-01	15.4	-53.8	0.0	-7.6	21.0	25.0	0.0	10.8
Ave chge 1996-01 (a)	3.0	-12.9	-4.4	-7.1	8.4	4.6	-	2.3
Bicyclists								
2001	40	6	12	8	19	2	5	46
2000	28	3	9	6	14	1	1	31
All road users (d)								
2001	1,265	470	136	450	784	131	235	1,736
2000	1,301	521	157	491	818	119	237	1,822
% change 2000-01	-2.8	-9.8	-13.4	-8.4	-4.2	10.1	-0.8	-4.7
Ave chge 1996-01 (a)	-2.1	-3.6	-6.5	-4.1	-1.0	-1.9	-1.5	-2.5

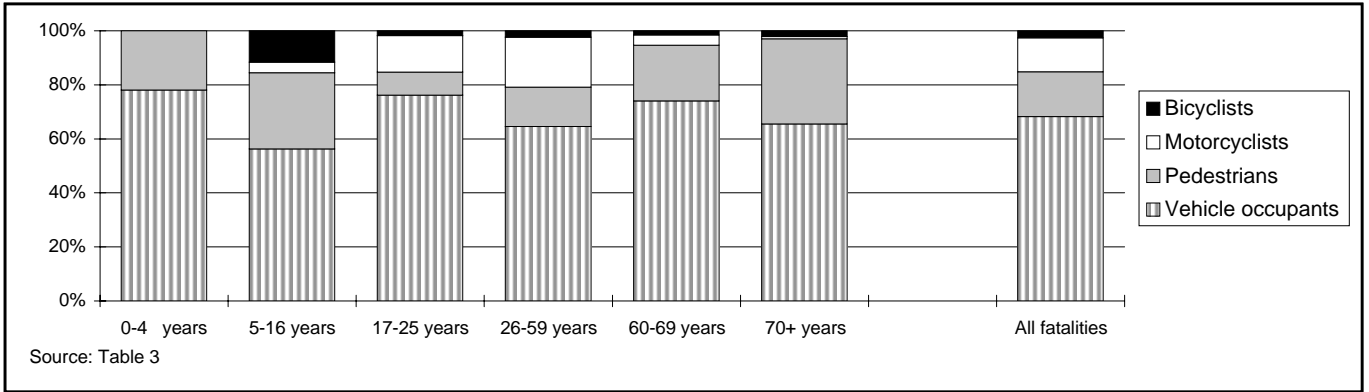
(a) Average annual exponential change between the 1996 and 2001 annual counts

(b) Includes pillion passengers

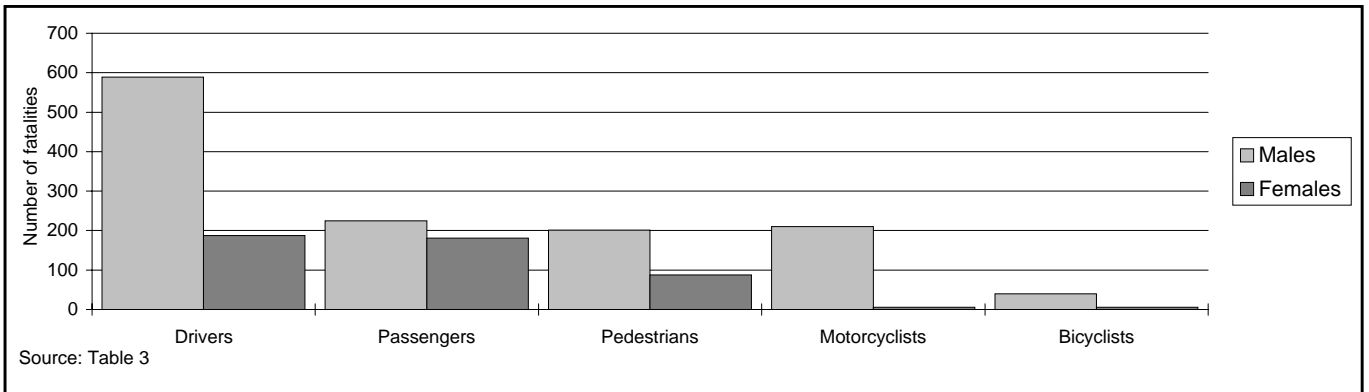
(c) Includes roadusers of unstated sex or age

(d) Includes fatalities of unstated road user group

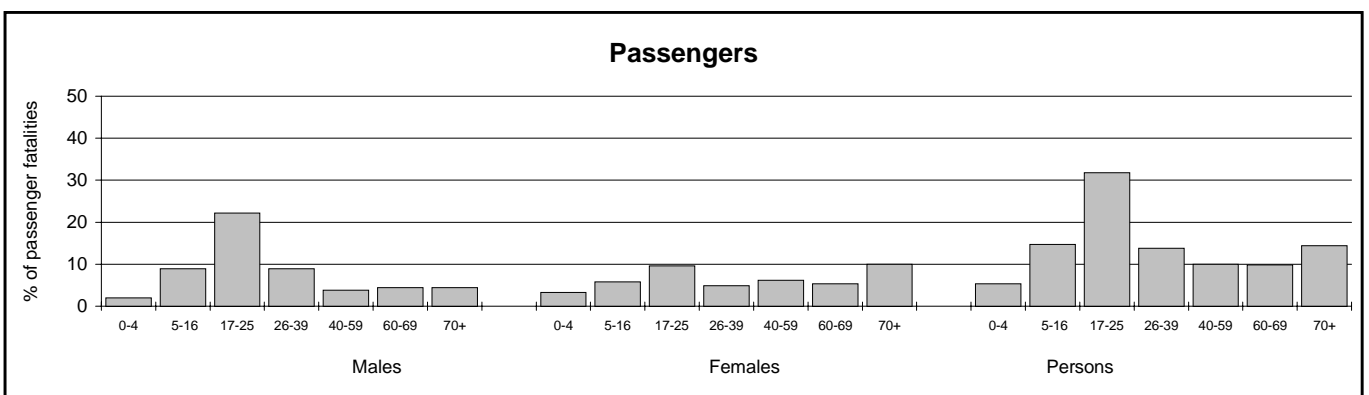
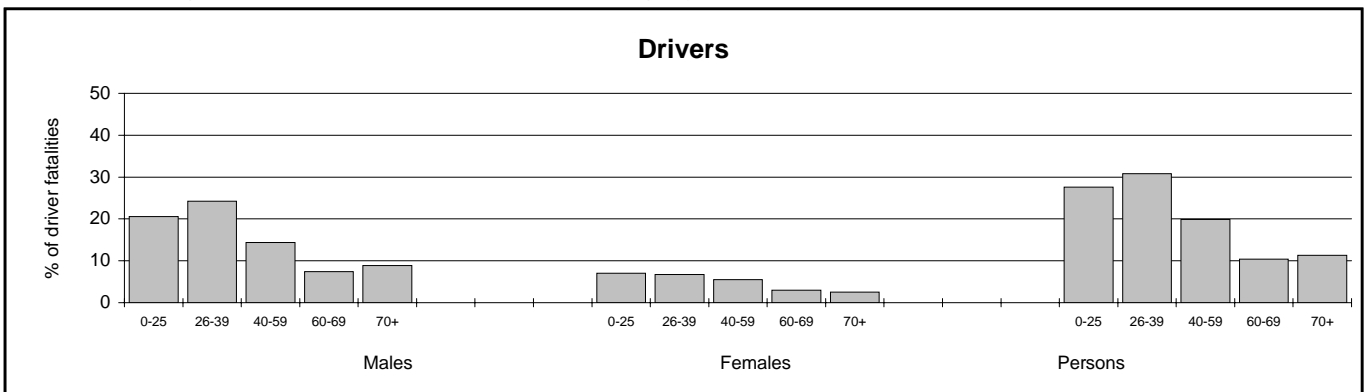
Road user profile of fatalities of each age group, Australia, 2001



Fatalities by road user category and gender, Australia, 2001

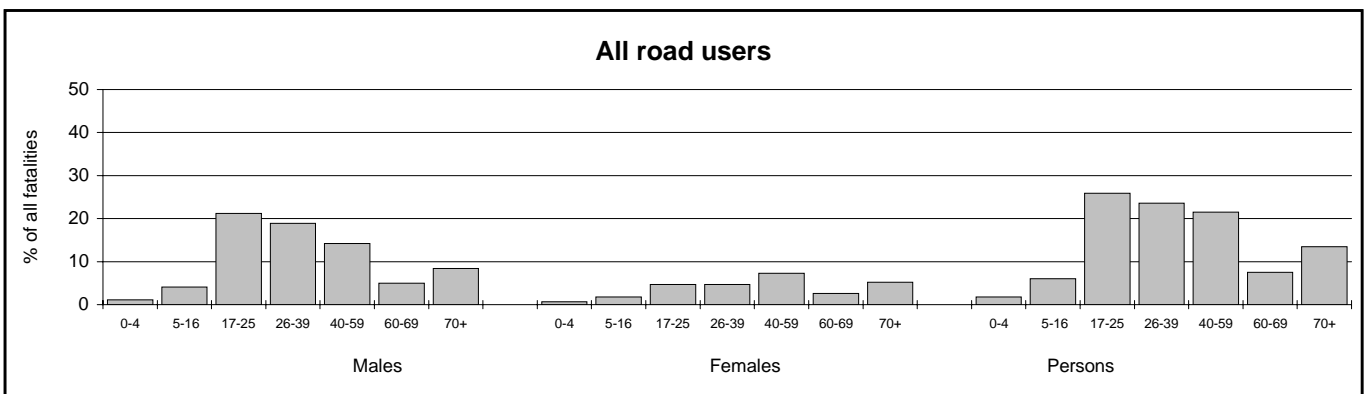
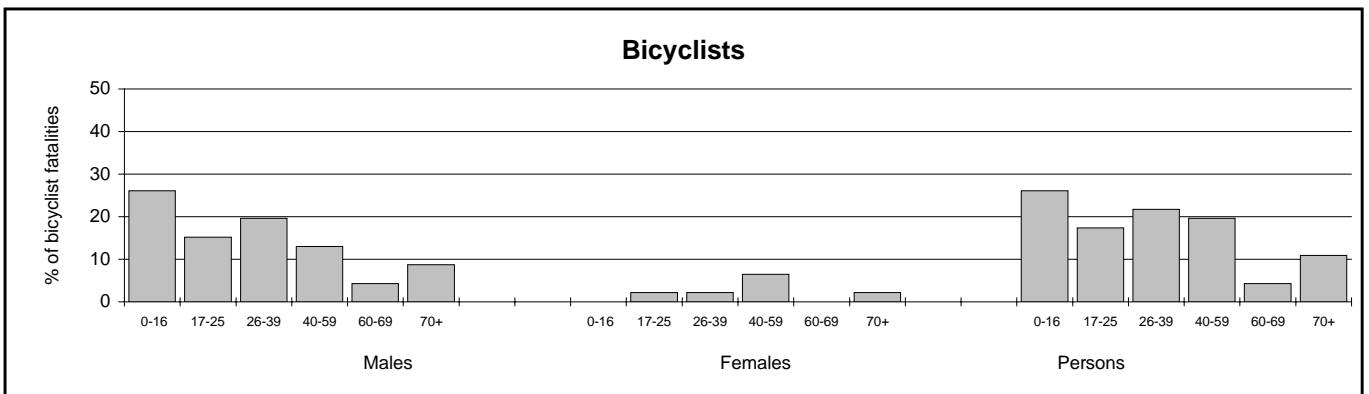
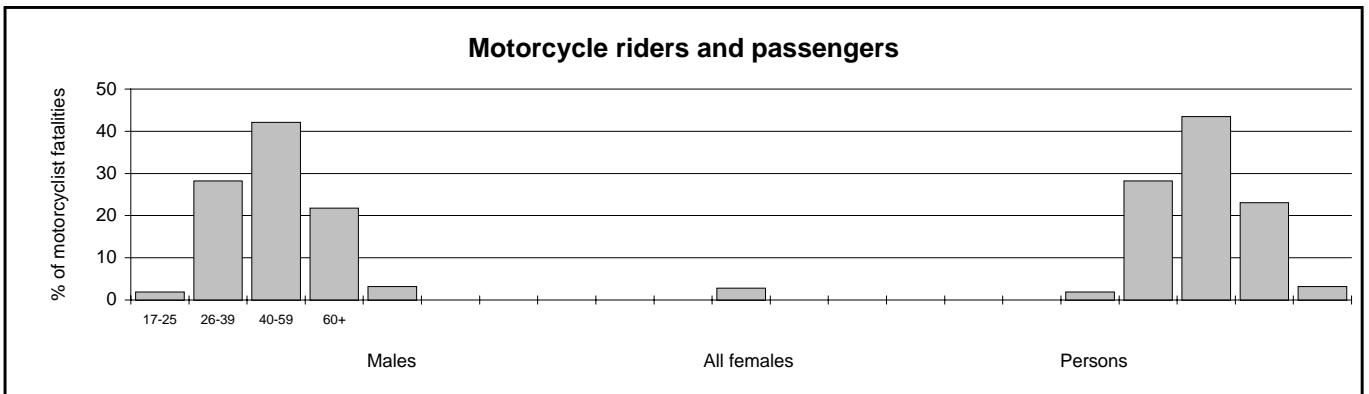
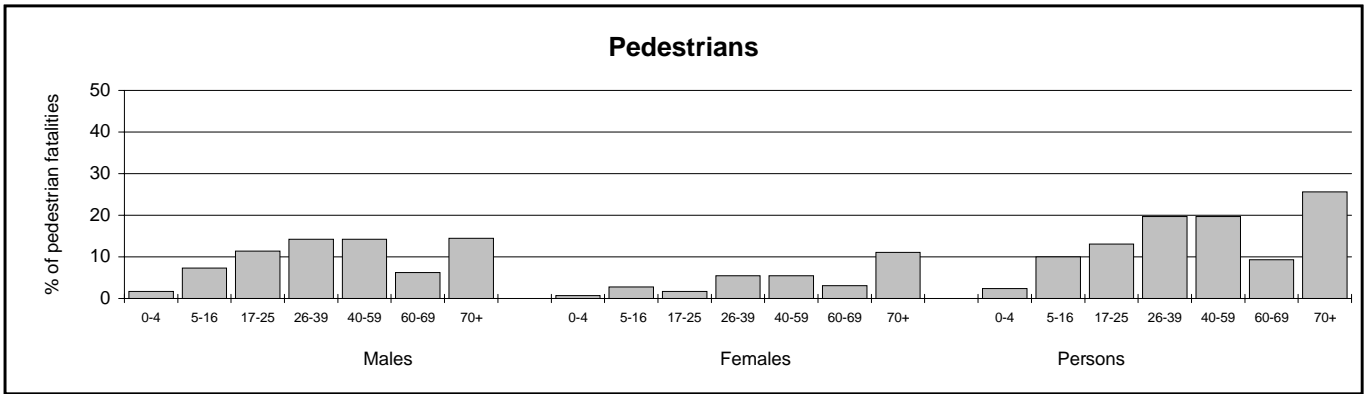


Gender and age of fatalities of each road user category, Australia, 2001



(Continued over page)

Gender and age of fatalities of each road user category, Australia, 2001 (continued)



Source: Table 3

Table 3 Fatalities by road user category, gender and age, Australia, 2001

	0-4 years	5-16 years	17-25 years	26-39 years	40-59 years	60-69 years	70+ years	All fatalities (a)
Drivers								
<i>Males</i>	0	7	183	143	133	51	72	589
<i>Females</i>	0	3	34	47	64	18	21	187
<i>Persons</i>	0	10	217	190	197	69	93	776
Passengers								
<i>Males</i>	14	28	84	44	20	10	25	225
<i>Females</i>	10	20	42	14	41	18	36	181
<i>Persons</i>	25	48	126	58	61	28	61	407
Pedestrians								
<i>Males</i>	5	21	33	41	41	18	42	201
<i>Females</i>	2	8	5	16	16	9	32	88
<i>Persons</i>	7	29	38	57	57	27	74	289
Motorcyclists (b)								
<i>Males</i>	0	4	61	91	47	5	2	210
<i>Females</i>	0	0	0	3	3	0	0	6
<i>Persons</i>	0	4	61	94	50	5	2	216
Bicyclists								
<i>Males</i>	0	12	7	9	6	2	4	40
<i>Females</i>	0	0	1	1	3	0	1	6
<i>Persons</i>	0	12	8	10	9	2	5	46
All road users (c)								
<i>Males</i>	19	72	368	328	247	86	145	1,265
<i>Females</i>	12	32	82	82	127	45	90	470
<i>Persons</i>	32	104	450	410	374	131	235	1,736

(a) Includes fatalities of unstated age

(b) Includes pillion passengers

(c) Includes fatalities of unstated road user group

Table 4 Share of fatalities by age for each road user and gender group, Australia, 1996 and 2001

		0-16 years	17-25 years	26-39 years	40-59 years	60-69 years	70+ years	All fatalities
DRIVERS								
Males	2001 (%)	1.2	31.1	24.3	22.6	8.7	12.2	100
	1996 (%)	1.8	32.5	28.4	22.9	5.9	8.4	100
Females	2001 (%)	1.6	18.2	25.1	34.2	9.6	11.2	100
	1996 (%)	2.3	25.4	26.8	26.3	7.0	12.2	100
Persons	2001 (%)	1.3	28.0	24.5	25.4	8.9	12.0	100
	1996 (%)	2.0	30.7	28.0	23.7	6.2	9.3	100
PASSENGERS								
Males	2001 (%)	18.7	37.3	19.6	8.9	4.4	11.1	100
	1996 (%)	19.5	35.4	17.7	12.6	7.2	7.6	100
Females	2001 (%)	16.6	23.2	7.7	22.7	9.9	19.9	100
	1996 (%)	22.1	18.0	9.9	16.7	11.3	21.6	100
Persons	2001 (%)	17.9	31.0	14.3	15.0	6.9	15.0	100
	1996 (%)	20.6	27.7	14.2	14.4	9.0	13.8	100
PEDESTRIANS								
Males	2001 (%)	12.9	16.4	20.4	20.4	9.0	20.9	100
	1996 (%)	12.0	17.8	16.1	18.2	11.2	24.4	100
Females	2001 (%)	11.4	5.7	18.2	18.2	10.2	36.4	100
	1996 (%)	14.7	8.3	19.3	12.8	11.0	33.9	100
Persons	2001 (%)	12.5	13.1	19.7	19.7	9.3	25.6	100
	1996 (%)	12.8	14.8	17.1	16.5	11.1	27.4	100
MOTORCYCLISTS (a)								
Persons	2001 (%)	1.9	28.2	43.5	23.1	2.3	0.9	100
	1996 (%)	2.6	45.6	35.2	14.5	2.1	0.0	100
BICYCLISTS								
Persons	2001 (%)	26.1	17.4	21.7	19.6	4.3	10.9	100
	1996 (%)	35.1	14.0	12.3	22.8	3.5	12.3	100
ALL ROAD USERS (b)								
Males	2001 (%)	7.2	29.1	25.9	19.5	6.8	11.5	100
	1996 (%)	8.4	31.7	24.4	18.8	6.5	10.1	100
Females	2001 (%)	9.4	17.4	17.4	27.0	9.6	19.1	100
	1996 (%)	12.8	19.1	18.8	20.0	9.4	19.7	100
Persons	2001 (%)	7.8	25.9	23.6	21.6	7.6	13.5	100
	1996 (%)	9.6	28.1	22.8	19.1	7.3	12.8	100

(a) Includes pillion passengers

(b) Includes fatalities of unstated road user group

Table 5 Share of fatalities by gender for each road user category, Australia, 1996 and 2001

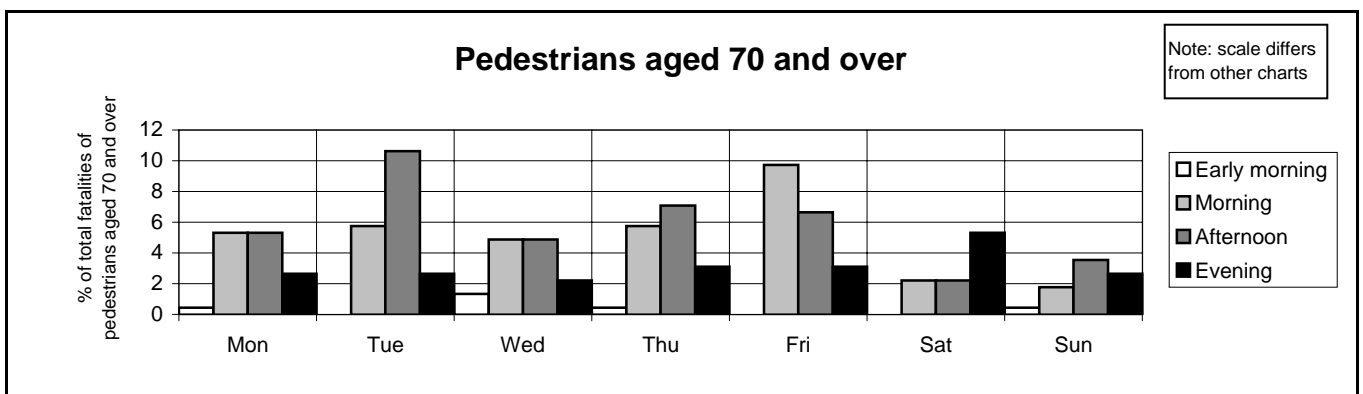
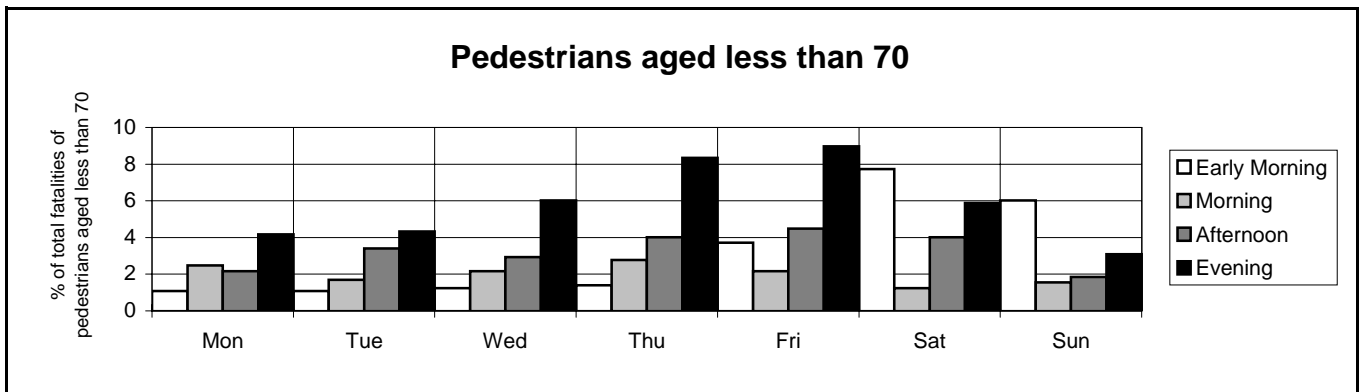
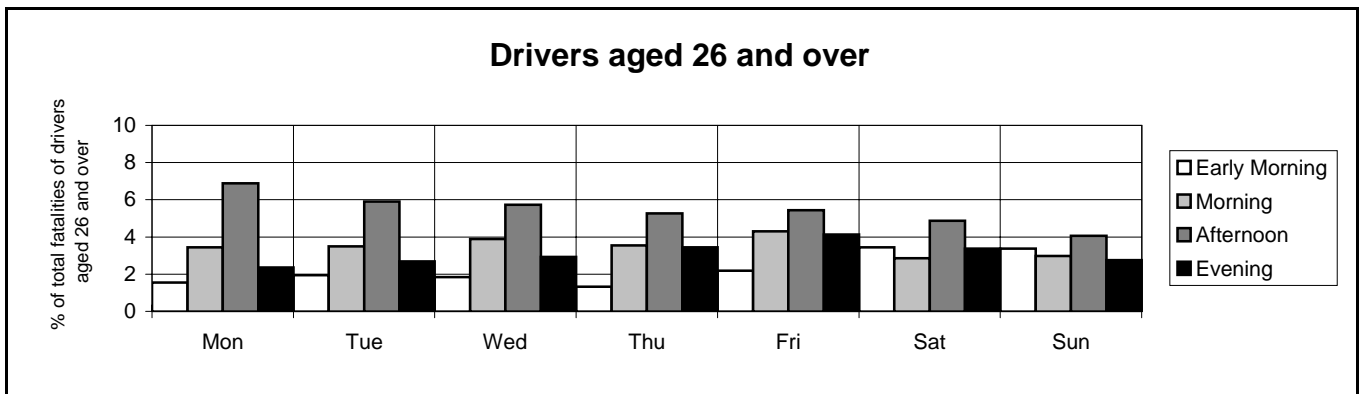
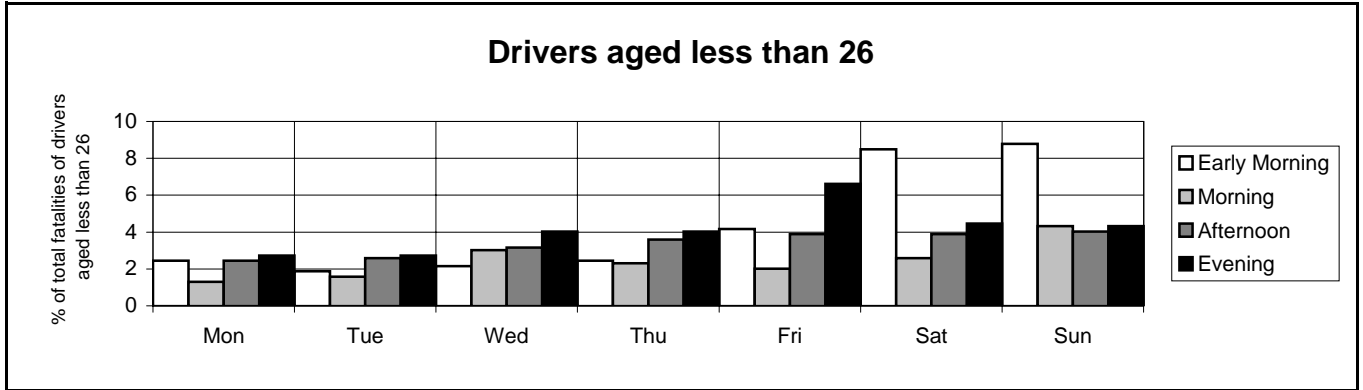
	<i>Male fatalities</i>	<i>Female fatalities</i>	<i>All fatalities</i>
Drivers			
2001 (%)	75.9	24.1	100
1996 (%)	75.5	24.5	100
Passengers			
2001 (%)	55.4	44.6	100
1996 (%)	55.5	44.5	100
Pedestrians			
2001 (%)	69.6	30.4	100
1996 (%)	68.9	31.1	100
Motorcyclists (a)			
2001 (%)	97.2	2.8	100
1996 (%)	93.8	6.2	100
Bicyclists			
2001 (%)	87.0	13.0	100
1996 (%)	86.0	14.0	100
All road users (b)			
2001 (%)	72.9	27.1	100
1996 (%)	71.4	28.6	100

(a) Includes pillion passengers

(b) Includes fatalities of unstated road user group

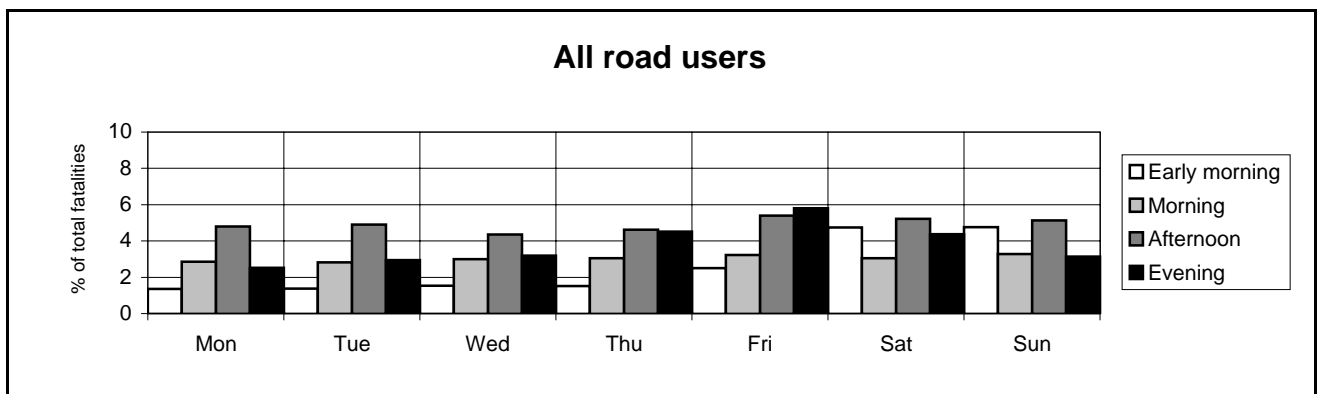
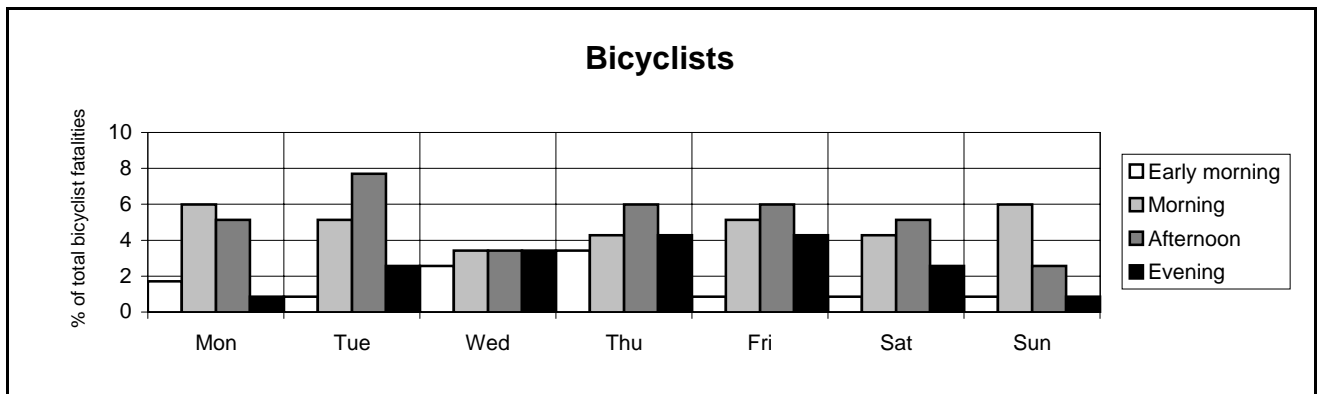
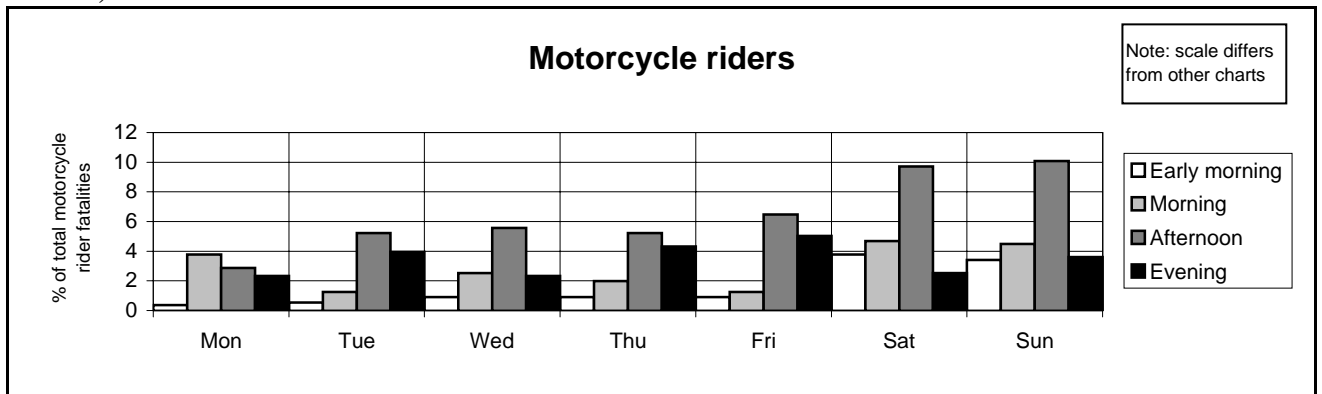
CRASH TIME FOR MAJOR FATALITY GROUPS

Fatalities by time of day and day of week of crash for major road user categories, Australia, 1999-2001



(Continued on next page)

**Fatalities by time of day and day of week of crash for major road user categories, Australia, 1999-2001
(continued)**



Source: Table 6

Legend
 Early morning Midnight to 5:59am
 Morning 6:00am to 11:59am
 Afternoon Noon to 5:59pm
 Evening 6:00 to 11:59pm

Table 6 Fatalities by time of day and day of the week of crash for major road user categories, Australia, 1999 to 2001

Time of day of crash	Day of week of crash							Total fatalities (a)
	Mon	Tue	Wed	Thur	Fri	Sat	Sun	
Drivers aged less than 26								
Early morning	17	13	15	17	29	59	61	211
Morning	9	11	21	16	14	18	30	119
Afternoon	17	18	22	25	27	27	28	164
Evening	19	19	28	28	46	31	30	201
Total fatalities	62	62	86	87	116	135	149	697
Drivers aged 26 and over								
Early morning	27	34	32	23	38	60	59	273
Morning	60	61	68	62	75	50	52	428
Afternoon	120	103	100	92	95	85	71	666
Evening	41	47	51	60	72	59	48	378
Total fatalities	248	245	253	237	281	254	231	1,749
Pedestrians aged less than 70								
Early morning	7	7	8	9	24	50	39	144
Morning	16	11	14	18	14	8	10	91
Afternoon	14	22	19	26	29	26	12	148
Evening	27	28	39	54	58	38	20	264
Total fatalities	64	68	80	107	125	124	81	649
Pedestrians aged 70 and over								
Early morning	1	0	3	1	0	0	1	6
Morning	12	13	11	13	22	5	4	80
Afternoon	12	24	11	16	15	5	8	91
Evening	6	6	5	7	7	12	6	49
Total fatalities	31	43	30	37	44	22	19	226
Motorcycle riders								
Early morning	2	3	5	5	5	21	19	60
Morning	21	7	14	11	7	26	25	111
Afternoon	16	29	31	33	36	54	56	255
Evening	13	22	13	24	28	14	20	134
Total fatalities	52	61	63	73	76	115	120	560
Bicyclists								
Early morning	2	1	3	4	1	1	1	13
Morning	7	6	4	5	6	5	7	40
Afternoon	6	9	4	7	7	6	3	42
Evening	1	3	4	5	5	3	1	22
Total fatalities	16	19	15	21	19	15	12	117
All road users (b)								
Early morning	72	73	81	81	133	252	253	945
Morning	150	147	160	161	172	162	175	1,127
Afternoon	254	260	232	249	285	277	274	1,831
Evening	134	157	170	240	309	233	167	1,410
Total fatalities	610	638	645	732	900	926	870	5,321

(a) Includes fatalities in crashes of unstated day of week (b) Includes fatalities of unstated road user group or age

Note:

Early morning	Midnight to 5:59am
Morning	6:00am to 11:59am
Afternoon	Noon to 5:59pm
Evening	6:00pm to 11:59pm

3. FATALITY RATES

Table 7 Fatality rates by State/Territory, 1975 to 2001

	<i>NSW</i>	<i>Vic</i>	<i>Qld</i>	<i>SA</i>	<i>WA</i>	<i>Tas</i>	<i>NT</i>	<i>ACT</i>	<i>Australia</i>
Fatalities per 100,000 population									
1975	26.12	24.03	30.96	26.79	26.32	29.75	68.91	16.08	26.59
1980	25.20	16.78	24.58	20.56	23.09	23.61	53.28	13.38	22.27
1985	19.53	16.58	19.52	19.54	17.13	17.61	45.11	13.13	18.63
1990	13.66	12.52	13.76	15.78	12.15	15.36	41.53	9.21	13.66
1991	11.24	11.38	13.34	12.72	12.65	16.50	40.49	5.88	12.23
1992	10.88	8.89	13.73	11.33	12.06	15.75	32.13	6.79	11.28
1993	9.68	9.73	12.73	14.92	12.46	12.30	25.77	4.01	11.05
1994	10.66	8.40	13.12	10.84	12.39	12.48	23.65	5.64	10.80
1995	10.12	9.25	13.97	12.32	12.05	12.03	34.36	4.92	11.16
1996	9.36	9.14	11.53	12.28	13.99	13.49	39.59	7.46	10.76
1997	9.18	8.19	10.63	10.00	10.96	6.76	32.10	5.52	9.54
1998	8.78	8.38	8.08	11.30	12.19	10.18	36.33	7.14	9.37
1999	9.02	8.14	8.95	10.12	11.68	11.26	25.42	6.14	9.31
2000	9.33	8.54	8.89	11.09	11.31	9.99	26.09	5.79	9.51
2001	8.02	9.19	8.93	10.18	8.59	12.97	25.30	5.09	8.95
% change 2000-01	-14.03	7.69	0.49	-8.14	-24.06	29.80	-3.02	-12.01	-5.85
Ave chge 1996-01 (a)	-3.05	0.11	-4.98	-3.67	-9.30	-0.78	-8.56	-7.35	-3.60
Fatalities per 100 million vehicle kilometres travelled (b)									
1976	3.70	3.38	3.86	3.20	3.21	3.91	7.96	2.32	3.55
1979	3.50	2.82	3.55	2.98	2.44	3.11	7.45	1.35	3.15
1982	2.92	2.19	2.78	2.45	1.91	2.66	6.16	1.35	2.56
1985	2.33	1.78	2.21	2.19	1.73	1.99	5.40	1.63	2.09
1988	2.06	1.63	2.16	1.72	1.49	1.87	4.75	1.35	1.88
1991	1.44	1.23	1.49	1.43	1.29	2.00	4.60	0.61	1.41
1995	1.27	0.97	1.32	1.33	1.18	1.32	4.23	0.50	1.21
1998	1.01	0.79	0.96	1.23	1.32	1.09	4.54	0.72	1.01
1999	1.04	0.78	0.96	1.16	1.17	1.37	3.10	0.62	0.99
2000	1.10	0.81	0.91	1.24	1.17	1.05	3.18	0.56	1.01
2001	Not available at the time of publication								

(a) Average annual exponential change between the 1996 and 2001 fatality rates

(b) Rates are calculated using the 12 month period covered by the Survey of Motor Vehicle Use ie. Prior to 1996, rates are calculated using data ranging from 1 October (in the year prior) to 30 September in year shown, from 1998 to 1999 rates are calculated using data ranging from 1 June (in the year prior) to 31 July in year shown and in 2000 from 1 November 1999 to 31 October 2000. Prior to 1995, data shown here for individual States and territories refers to place of registration of vehicle, and not necessarily the place where vehicle travel was conducted. Due to changes in survey method between 1995 and 1998, rates are not necessarily comparable across this time period.

Table 8 Fatalities per 100,000 population in individual age groups for drivers, Australia, 1980 to 2001

	0-16 years	17-25 years	26-39 years	40-59 years	60-69 years (b)	70+ years	All fatalities (c)
Males							
1980	0.4	34.8	18.6	12.6	21.6	..	13.9
1985	0.3	27.3	14.0	10.5	19.0	..	11.1
1990	0.2	18.0	9.9	7.6	7.8	15.0	8.2
1991	0.4	16.9	9.5	7.2	6.4	14.0	7.7
1992	0.4	14.3	9.4	6.3	6.4	9.1	6.8
1993	0.3	16.7	9.6	7.3	7.0	10.2	7.5
1994	0.4	14.9	7.9	6.2	8.6	13.1	7.0
1995	0.2	17.1	8.8	5.6	9.4	9.5	7.1
1996	0.5	17.0	9.3	6.6	5.6	8.8	7.2
1997	0.4	14.4	7.1	5.3	5.5	8.7	6.0
1998	0.3	13.0	7.1	5.9	5.7	9.5	6.0
1999	0.1	14.6	9.2	5.0	6.3	10.3	6.5
2000	0.4	13.3	10.1	5.9	5.4	10.6	6.8
2001	0.3	14.4	6.9	5.2	6.9	9.9	6.1
% change 2000-2001	14.4	-7.7	45.7	13.3	-22.3	7.6	10.7
Ave chge 1996-2001 (a)	-10.4	-3.2	-5.6	-4.8	4.2	2.2	-3.3
Females							
1980	0.1	5.9	4.1	3.5	5.4	..	2.9
1985	0.2	7.3	4.2	3.9	6.1	..	3.4
1990	0.1	6.7	3.1	2.8	2.5	3.0	2.8
1991	0.2	5.2	3.5	2.9	4.3	2.8	2.8
1992	0.0	6.1	2.7	2.6	1.5	3.6	2.5
1993	0.0	4.1	3.2	1.8	3.2	2.6	2.2
1994	0.1	4.6	2.3	2.2	2.2	2.7	2.1
1995	0.1	5.4	3.2	2.6	2.5	3.1	2.6
1996	0.2	4.5	2.8	2.5	2.1	2.9	2.3
1997	0.1	5.8	3.2	2.2	2.4	2.4	2.4
1998	0.1	3.5	2.2	1.9	1.7	3.5	1.9
1999	0.1	4.0	2.7	2.3	2.5	2.7	2.2
2000	0.0	4.9	2.8	2.3	1.8	2.2	2.2
2001	0.1	2.8	2.3	2.5	2.4	2.1	1.9
% change 2000-2001	-66.7	75.6	21.2	-7.0	-26.9	2.4	13.1
Ave chge 1996-2001 (a)	-9.9	-8.9	-4.2	0.0	2.8	-6.4	-3.7
Persons (d)							
1980	0.3	20.6	11.5	8.1	13.0	..	8.4
1985	0.2	17.5	9.1	7.3	12.3	..	7.2
1990	0.2	12.4	6.5	5.3	5.1	7.8	5.5
1991	0.3	11.1	6.5	5.1	5.3	7.3	5.3
1992	0.2	10.3	6.0	4.5	3.9	5.8	4.7
1993	0.2	10.5	6.4	4.6	5.1	5.7	4.9
1994	0.3	9.9	5.1	4.2	5.4	7.0	4.5
1995	0.2	11.4	6.0	4.1	5.9	5.7	4.8
1996	0.4	10.8	6.1	4.6	3.8	5.4	4.7
1997	0.2	10.1	5.2	3.8	3.9	5.0	4.2
1998	0.2	8.4	4.7	3.9	3.7	6.0	4.0
1999	0.1	9.4	5.9	3.7	4.4	5.9	4.3
2000	0.2	9.2	6.4	4.1	3.6	5.7	4.5
2001	0.2	8.7	4.6	3.8	4.7	5.4	4.0
% change 2000-2001	-9.9	5.4	39.6	6.7	-23.6	6.1	11.2
Ave chge 1996-2001 (a)	-10.2	-4.2	-5.3	-3.5	3.9	0.1	-3.3

(a) Average annual exponential change between the 1996 and 2001 fatality rates

(b) 60+ years for years 1980 & 1985

(c) Includes fatalities of unknown age

(d) Includes fatalities of unknown gender

Table 9 Fatalities per 100,000 population in individual age groups for other occupants, Australia, 1980 to 2001

	0-16 years	17-25 years	26-39 years	40-59 years	60-69 years (b)	70+ years	All fatalities (c)
Males							
1980	4.9	17.6	4.7	2.1	6.8	..	6.2
1985	3.6	16.1	4.5	2.3	6.2	..	5.5
1990	2.7	10.5	3.0	1.8	1.9	2.6	3.7
1991	2.7	9.7	2.6	1.8	2.0	2.9	3.5
1992	2.8	9.2	2.9	1.6	1.2	1.9	3.3
1993	2.4	9.0	2.7	1.6	2.0	2.7	3.2
1994	2.0	6.9	2.5	1.6	1.3	1.7	2.7
1995	2.0	8.2	2.9	1.4	0.9	2.7	2.9
1996	2.4	7.8	2.4	1.5	2.9	3.4	3.0
1997	2.2	7.5	1.9	0.9	1.4	2.0	2.5
1998	2.1	6.9	2.2	1.7	1.4	3.5	2.7
1999	1.6	7.5	1.8	0.8	1.3	1.6	2.2
2000	2.1	8.0	1.9	0.9	1.9	2.8	2.6
2001	1.8	6.6	2.1	0.8	1.4	3.4	2.3
% change 2000-2001	16.8	20.4	-8.9	17.9	42.2	-17.4	10.7
Ave chge 1996-2001 (a)	-5.1	-3.3	-2.7	-12.8	-14.0	0.3	-5.2
Females							
1980	3.9	9.2	3.7	3.9	14.5	..	5.3
1985	2.9	7.6	2.9	3.5	11.3	..	4.2
1990	2.4	6.6	1.9	2.2	7.1	8.0	3.7
1991	1.8	4.8	2.2	1.7	3.3	7.2	2.9
1992	1.8	6.2	2.0	2.2	4.6	6.3	3.2
1993	2.4	4.5	1.8	1.7	3.2	3.4	2.6
1994	2.3	3.8	2.1	2.1	4.5	6.4	2.9
1995	2.3	4.4	1.2	2.1	2.8	4.5	2.6
1996	2.3	3.3	1.1	1.7	3.5	5.4	2.4
1997	1.8	3.6	1.0	1.7	2.7	4.4	2.2
1998	2.0	3.8	1.3	1.4	2.9	4.4	2.3
1999	2.4	4.4	1.1	1.0	4.1	3.6	2.3
2000	1.9	3.7	1.1	1.3	2.6	4.6	2.1
2001	1.4	3.5	0.7	1.6	2.4	3.6	1.9
% change 2000-2001	36.7	6.0	57.1	-17.4	6.8	28.0	14.0
Ave chge 1996-2001 (a)	-9.5	0.9	-9.0	-0.7	-7.2	-7.8	-5.1
Persons (d)							
1980	4.4	13.5	4.2	3.0	10.9	..	5.7
1985	3.3	12.0	3.7	2.9	8.8	..	4.8
1990	2.6	8.6	2.5	2.0	4.6	5.8	3.7
1991	2.3	7.3	2.4	1.8	2.7	5.5	3.2
1992	2.3	7.7	2.4	1.9	2.9	4.5	3.3
1993	2.4	6.8	2.2	1.7	2.6	3.1	2.9
1994	2.2	5.4	2.3	1.8	2.9	4.5	2.8
1995	2.2	6.4	2.1	1.7	1.9	3.8	2.7
1996	2.3	5.6	1.8	1.6	3.2	4.6	2.7
1997	2.0	5.6	1.5	1.3	2.1	3.4	2.3
1998	2.1	5.4	1.7	1.5	2.2	4.0	2.5
1999	2.0	6.0	1.4	0.9	2.7	2.7	2.3
2000	2.0	5.9	1.5	1.1	2.3	3.9	2.3
2001	1.6	5.1	1.4	1.2	1.9	3.5	2.1
% change 2000-2001	23.4	15.6	7.0	-5.8	19.5	9.5	11.9
Ave chge 1996-2001 (a)	-6.8	-2.0	-4.4	-5.8	-10.0	-5.0	-5.1

(a) Average annual exponential change between the 1996 and 2001 fatality rates

(b) 60+ years for years 1980 & 1985

(c) Includes fatalities of unknown age

(d) Includes fatalities of unknown gender

Table 10 Fatalities per 100,000 population in individual age groups for motorcycle riders and passengers, Australia, 1980 to 2001

	0-16 years	17-25 years	26-39 years	40-59 years	60-69 years (b)	70+ years	All fatalities (c)
Males							
1980	1.0	26.4	4.1	0.9	0.8	..	5.6
1985	0.7	21.2	5.1	1.0	0.3	..	4.8
1990	0.5	10.2	4.4	0.8	0.3	0.0	2.9
1991	0.5	8.8	4.1	1.4	0.3	0.6	2.7
1992	0.5	6.0	3.9	0.8	0.4	0.2	2.1
1993	0.2	7.6	3.2	1.1	0.1	0.0	2.1
1994	0.3	6.2	3.8	0.7	0.4	0.2	2.0
1995	0.3	6.7	3.7	1.1	0.6	0.2	2.2
1996	0.2	6.8	3.2	1.1	0.4	0.0	2.0
1997	0.3	4.6	3.0	1.2	0.3	0.2	1.7
1998	0.2	5.2	3.3	1.3	0.3	0.2	1.8
1999	0.3	3.6	3.6	1.4	0.6	0.0	1.7
2000	0.2	4.8	3.6	1.6	0.4	0.3	1.9
2001	0.2	4.8	4.4	1.8	0.7	0.3	2.2
% change 2000-2001	0.1	-0.5	-18.6	-14.9	-39.1	3.3	-12.3
Ave chge 1996-2001 (a)	-0.2	-6.7	6.4	11.5	9.4	..	1.8
Females							
1980	0.2	1.8	0.2	0.1	0.0	..	0.4
1985	0.2	1.0	0.3	0.0	0.2	..	0.3
1990	0.0	0.7	0.3	0.1	0.0	0.0	0.2
1991	0.1	0.7	0.1	0.0	0.0	0.0	0.2
1992	0.0	0.3	0.2	0.2	0.0	0.0	0.1
1993	0.0	0.5	0.4	0.0	0.0	0.0	0.2
1994	0.0	0.2	0.3	0.1	0.1	0.0	0.1
1995	0.0	0.3	0.2	0.0	0.0	0.0	0.1
1996	0.0	0.2	0.1	0.2	0.1	0.0	0.1
1997	0.0	0.8	0.3	0.1	0.0	0.1	0.2
1998	0.0	0.5	0.1	0.1	0.1	0.0	0.1
1999	0.0	0.3	0.2	0.1	0.0	0.0	0.1
2000	0.0	0.5	0.2	0.0	0.1	0.0	0.1
2001	0.0	0.0	0.1	0.1	0.0	0.0	0.1
% change 2000-2001	66.6	-65.8	119.2
Ave chge 1996-2001 (a)	-0.4	-8.1	-13.9
Persons (d)							
1980	0.6	14.3	2.2	0.5	0.4	..	3.0
1985	0.4	11.3	2.7	0.5	0.2	..	2.6
1990	0.3	5.5	2.4	0.5	0.1	0.0	1.5
1991	0.3	4.8	2.1	0.7	0.1	0.2	1.4
1992	0.3	3.2	2.0	0.5	0.2	0.1	1.1
1993	0.1	4.1	1.8	0.6	0.1	0.0	1.1
1994	0.2	3.3	2.0	0.4	0.3	0.1	1.1
1995	0.2	3.6	1.9	0.6	0.3	0.1	1.1
1996	0.1	3.6	1.7	0.6	0.3	0.0	1.1
1997	0.2	2.7	1.7	0.6	0.1	0.1	1.0
1998	0.1	2.9	1.7	0.7	0.2	0.1	1.0
1999	0.2	2.0	1.9	0.8	0.3	0.0	0.9
2000	0.1	2.7	1.9	0.8	0.3	0.1	1.0
2001	0.1	2.5	2.3	1.0	0.3	0.1	1.1
% change 2000-2001	0.1	9.5	-15.9	-17.9	-18.9	2.8	-8.6
Ave chge 1996-2001 (a)	-4.5	-7.2	6.2	9.4	3.5	..	1.1

(a) Average annual exponential change between the 1996 and 2001 fatality rates

(b) 60+ years for years 1980 & 1985

(c) Includes fatalities of unknown age

(d) Includes fatalities of unknown gender

Table 11 Fatalities per 100,000 population in individual age groups for pedestrians, Australia, 1980 to 2001

	0-16 years	17-25 years	26-39 years	40-59 years	60-69 years (b)	70+ years	All fatalities (c)
Males							
1980	3.8	4.4	3.6	5.8	29.4	..	5.9
1985	3.3	3.1	3.3	3.9	19.7	..	4.5
1990	2.3	4.3	2.9	2.8	3.8	12.7	3.6
1991	1.7	2.9	2.1	1.7	5.1	9.9	2.7
1992	1.6	3.7	2.0	1.6	4.4	10.8	2.8
1993	1.2	3.2	2.1	1.8	2.2	10.4	2.5
1994	1.4	4.0	2.1	2.0	3.1	10.9	2.8
1995	1.6	4.0	2.9	2.0	3.0	11.0	3.1
1996	1.3	3.4	1.9	1.9	3.9	9.5	2.7
1997	1.2	3.6	2.7	1.5	2.9	6.4	2.4
1998	1.3	3.4	2.1	1.7	1.7	6.2	2.3
1999	0.8	3.1	2.1	1.4	3.1	5.8	2.1
2000	1.3	2.9	1.6	1.6	2.8	5.7	2.1
2001	1.1	2.6	2.0	1.6	2.5	5.8	2.1
% change 2000-2001	15.5	13.4	-19.4	-2.5	12.8	-1.6	0.2
Ave chge 1996-2001 (a)	-2.3	-5.4	0.5	-3.9	-8.9	-9.5	-4.8
Females							
1980	2.7	1.2	1.1	1.7	16.6	..	2.9
1985	2.0	1.6	0.8	1.7	12.6	..	2.3
1990	1.2	1.1	0.8	0.6	1.8	4.8	1.3
1991	0.7	1.0	0.7	0.6	2.2	5.6	1.3
1992	0.9	0.9	0.8	0.5	2.9	4.3	1.2
1993	0.9	1.1	0.8	0.6	1.8	4.5	1.2
1994	0.8	1.5	0.7	0.6	2.4	4.4	1.3
1995	0.8	0.6	0.8	1.0	2.0	5.0	1.3
1996	0.7	0.7	1.0	0.6	1.7	4.2	1.2
1997	0.5	1.1	0.6	0.7	1.8	4.4	1.1
1998	0.6	0.6	0.8	0.8	1.5	4.5	1.1
1999	0.7	0.7	0.5	0.7	1.5	4.1	1.1
2000	0.7	0.6	0.6	0.4	1.2	3.4	0.9
2001	0.5	0.4	0.8	0.6	1.2	3.2	0.9
% change 2000-2001	50.1	41.7	-18.8	-29.4	1.2	5.6	1.2
Ave chge 1996-2001 (a)	-9.1	-11.1	-5.7	0.0	-6.4	-5.1	-5.3
Persons (d)							
1980	3.2	2.8	2.4	3.8	22.6	..	4.4
1985	2.7	2.4	2.0	2.8	16.0	..	3.4
1990	1.8	2.8	1.8	1.8	2.8	8.0	2.5
1991	1.2	2.0	1.4	1.1	3.6	7.3	2.0
1992	1.2	2.3	1.4	1.0	3.6	6.9	2.0
1993	1.1	2.2	1.4	1.2	2.0	6.9	1.9
1994	1.1	2.8	1.4	1.3	2.7	7.0	2.1
1995	1.2	2.3	1.8	1.5	2.5	7.5	2.2
1996	1.0	2.1	1.5	1.3	2.8	6.4	1.9
1997	0.8	2.4	1.6	1.1	2.3	5.2	1.8
1998	0.9	2.0	1.4	1.3	1.6	5.2	1.7
1999	0.8	1.9	1.3	1.1	2.3	4.8	1.6
2000	1.0	1.8	1.1	1.0	2.0	4.3	1.5
2001	0.8	1.5	1.4	1.1	1.8	4.3	1.5
% change 2000-2001	25.1	17.2	-19.2	-10.0	8.9	1.4	0.5
Ave chge 1996-2001 (a)	-4.5	-6.2	-1.5	-2.9	-8.0	-7.6	-4.9

(a) Average annual exponential change between the 1996 and 2001 fatality rates

(b) 60+ years for years 1980 & 1985

(c) Includes fatalities of unknown age

(d) Includes fatalities of unknown gender

Table 12 Fatalities per 100,000 population in individual age groups for all road users, Australia, 1980 to 2001

	0-16 years	17-25 years	26-39 years	40-59 years	60-69 years (b)	70+ years	All fatalities (c)
Males							
1980	12.0	84.3	31.8	21.9	60.2	..	32.8
1985	9.5	68.5	27.3	18.4	47.4	..	26.9
1990	7.1	44.2	20.8	13.7	14.2	30.7	19.2
1991	6.1	39.3	18.5	12.4	14.3	27.7	17.2
1992	6.0	33.7	18.3	10.7	12.8	22.3	15.5
1993	4.6	36.7	18.0	12.2	11.8	24.0	15.8
1994	5.0	33.0	16.5	10.8	13.8	27.1	15.1
1995	4.6	36.7	18.8	10.2	14.5	24.2	15.7
1996	5.2	35.6	17.1	11.6	13.2	22.8	15.4
1997	4.7	30.5	15.2	9.3	10.3	18.3	13.1
1998	4.6	28.7	15.0	11.0	9.4	19.7	13.2
1999	3.1	29.0	16.9	9.0	11.9	18.2	12.9
2000	4.3	29.4	17.6	10.2	10.6	19.5	13.6
2001	4.0	29.0	15.9	9.6	11.7	19.9	13.1
% change 2000-2001	8.9	1.4	10.2	6.7	-9.1	-1.7	4.1
Ave chge 1996-2001 (a)	-5.2	-4.0	-1.4	-3.8	-2.3	-2.8	-3.2
Females							
1980	7.6	18.4	9.2	9.3	36.7	..	11.8
1985	5.7	17.9	8.4	9.0	30.3	..	10.4
1990	4.0	15.3	6.2	5.8	11.5	15.8	8.1
1991	3.0	11.7	6.6	5.2	9.8	15.6	7.3
1992	2.8	13.7	5.6	5.4	9.1	14.3	7.1
1993	3.6	10.1	6.4	4.2	8.4	10.6	6.3
1994	3.4	10.2	5.4	5.1	9.3	13.6	6.6
1995	3.4	10.9	5.6	5.8	7.3	12.6	6.7
1996	3.3	8.9	5.3	5.1	7.5	12.5	6.1
1997	2.6	11.2	5.2	4.7	6.9	11.4	6.0
1998	2.9	8.7	4.4	4.2	6.3	12.4	5.5
1999	3.5	9.4	4.7	4.2	8.3	10.5	5.7
2000	2.7	10.2	4.7	4.2	5.7	10.1	5.4
2001	2.0	6.7	4.0	5.0	6.1	9.0	4.8
% change 2000-2001	31.9	50.6	18.3	-16.8	-5.5	12.6	12.1
Ave chge 1996-2001 (a)	-9.5	-5.4	-5.4	-0.4	-4.1	-6.3	-4.7
Persons (d)							
1980	9.8	51.8	20.7	15.7	47.8	..	22.3
1985	7.6	43.6	18.0	13.8	38.5	..	18.6
1990	5.6	29.9	13.5	9.8	12.8	21.8	13.7
1991	4.6	25.7	12.6	8.9	12.0	20.5	12.2
1992	4.4	23.9	11.9	8.1	10.9	17.6	11.3
1993	4.1	23.6	12.2	8.3	10.1	16.0	11.1
1994	4.2	21.8	10.9	8.0	11.5	19.1	10.8
1995	4.0	24.0	12.2	8.0	10.9	17.4	11.2
1996	4.3	22.4	11.2	8.4	10.3	16.7	10.8
1997	3.7	21.0	10.2	7.0	8.6	14.3	9.5
1998	3.8	18.9	9.7	7.6	7.8	15.4	9.4
1999	3.3	19.4	10.8	6.6	10.1	13.7	9.3
2000	3.5	20.0	11.1	7.2	8.2	14.1	9.5
2001	3.0	18.1	10.0	7.3	8.9	13.6	9.0
% change 2000-2001	15.5	10.4	11.8	-1.3	-7.9	3.6	6.2
Ave chge 1996-2001 (a)	-6.6	-4.2	-2.3	-2.7	-2.9	-4.1	-3.6

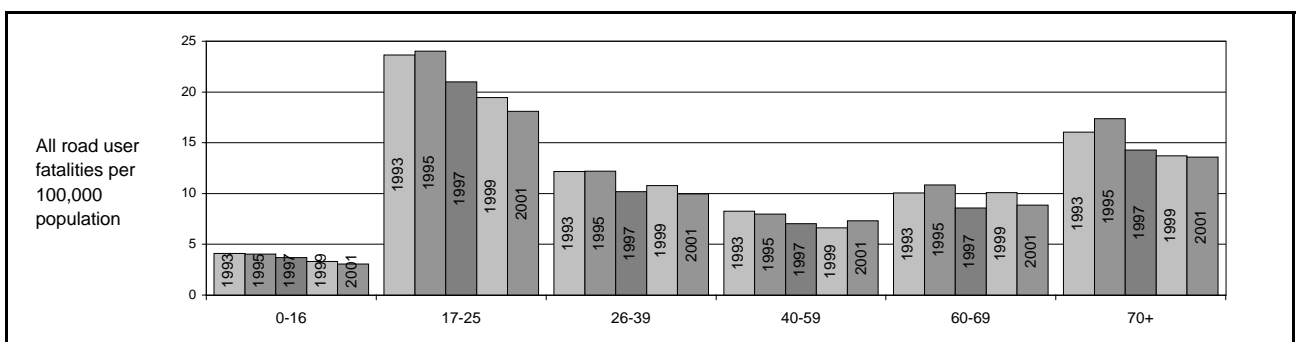
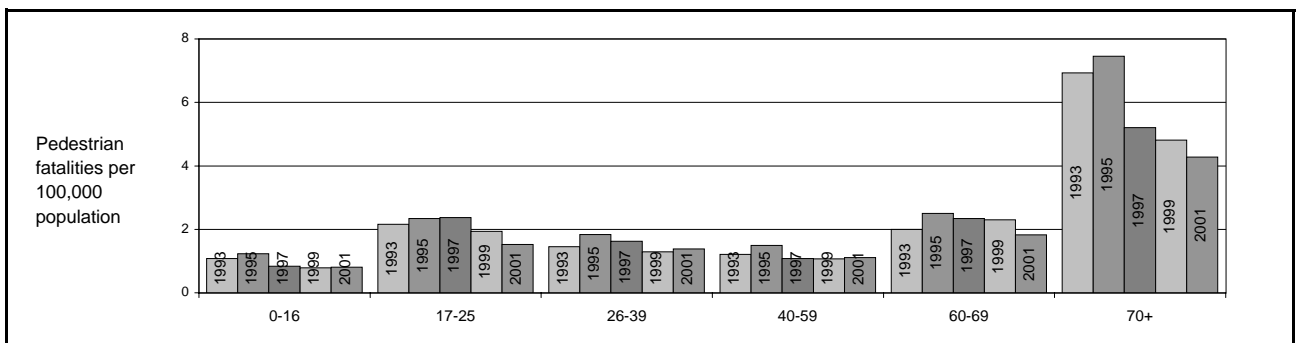
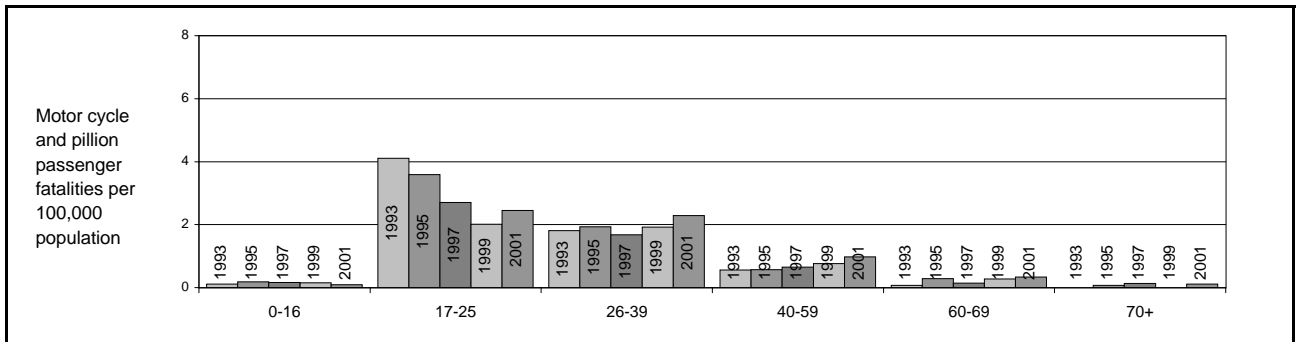
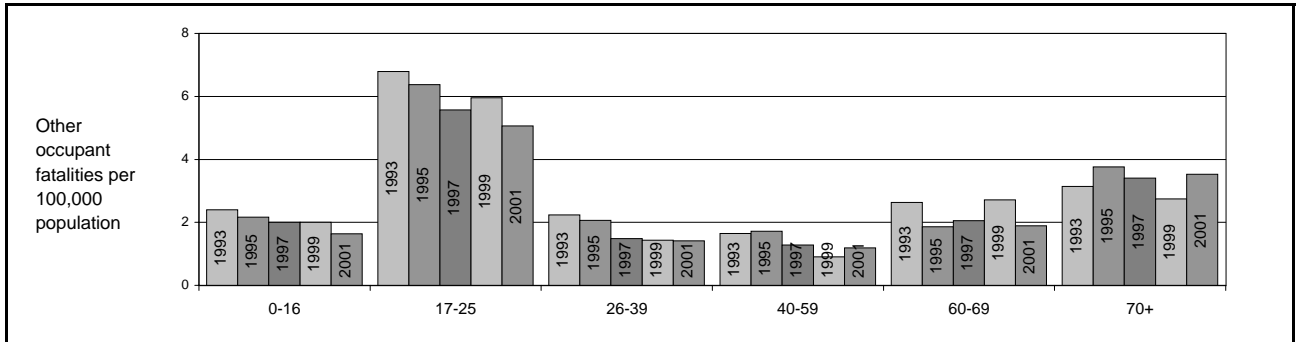
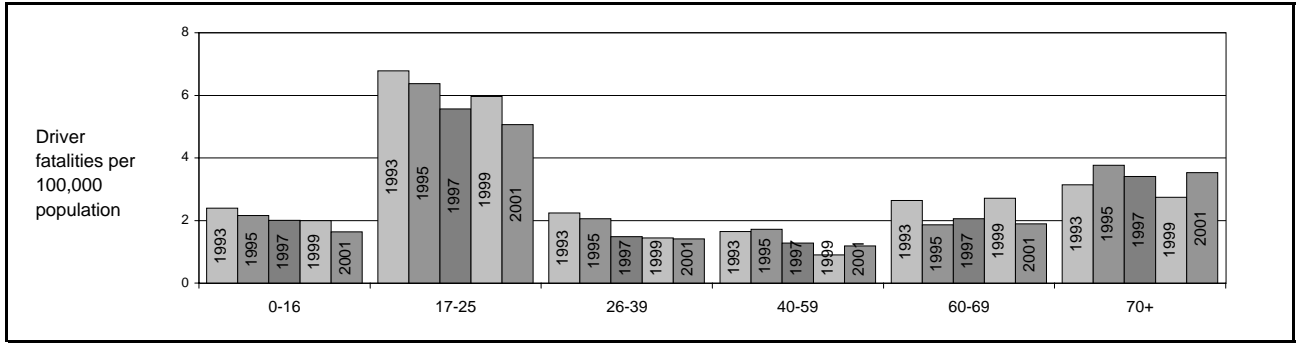
(a) Average annual exponential change between the 1996 and 2001 fatality rates

(b) 60+ years for years 1980 & 1985

(c) Includes fatalities of unknown age

(d) Includes fatalities of unknown gender

Fatalities per 100,000 population, selected road user categories, Australia, 1993 to 2001



Source: Table 6

Table 13 Fatality rates by State/Territory: registered motor vehicles, 1980 to 2001

	<i>NSW</i>	<i>Vic</i>	<i>Qld</i>	<i>SA</i>	<i>WA</i>	<i>Tas</i>	<i>NT</i>	<i>ACT</i>	<i>Australia</i>
<i>Fatalities per 10,000 registered motor vehicles (b)</i>									
1980	5.17	3.35	4.43	3.80	3.93	4.36	13.40	2.84	4.32
1985	3.57	2.80	3.25	3.28	2.81	2.93	9.33	2.58	3.23
1990	2.47	2.07	2.28	2.56	1.89	2.41	8.55	1.64	2.31
1991	2.17	1.81	2.40	2.15	1.95	2.58	8.91	1.08	2.13
1992	2.02	1.47	2.27	1.85	1.85	2.43	6.68	1.21	1.93
1993	1.80	1.60	2.09	2.41	1.88	1.87	5.26	0.69	1.87
1994	1.98	1.34	2.12	1.73	1.85	1.87	4.46	0.93	1.80
1995	1.86	1.46	2.27	1.88	1.78	1.78	6.75	0.82	1.84
1996	1.68	1.37	1.85	1.84	2.02	1.97	7.48	1.22	1.73
1997	1.63	1.21	1.69	1.49	1.55	0.98	6.24	0.86	1.52
1998	1.51	1.23	1.25	1.63	1.68	1.49	6.75	1.13	1.45
1999	1.57	1.17	1.36	1.46	1.61	1.61	4.75	0.96	1.44
2000	1.62	1.23	1.35	1.59	1.56	1.42	4.95	0.89	1.47
2001	1.40	1.34	1.38	1.46	1.20	1.84	4.86	0.79	1.39
% change 2000-01	15.8	-7.9	-1.6	9.1	30.7	-22.8	1.9	13.7	5.5
<i>Ave chge 1996-01 (a)</i>	-3.6	-0.4	-5.7	-4.6	-9.9	-1.3	-8.3	-8.4	-4.2

(a) Average annual exponential change between the 1996 and 2001 fatality rates.

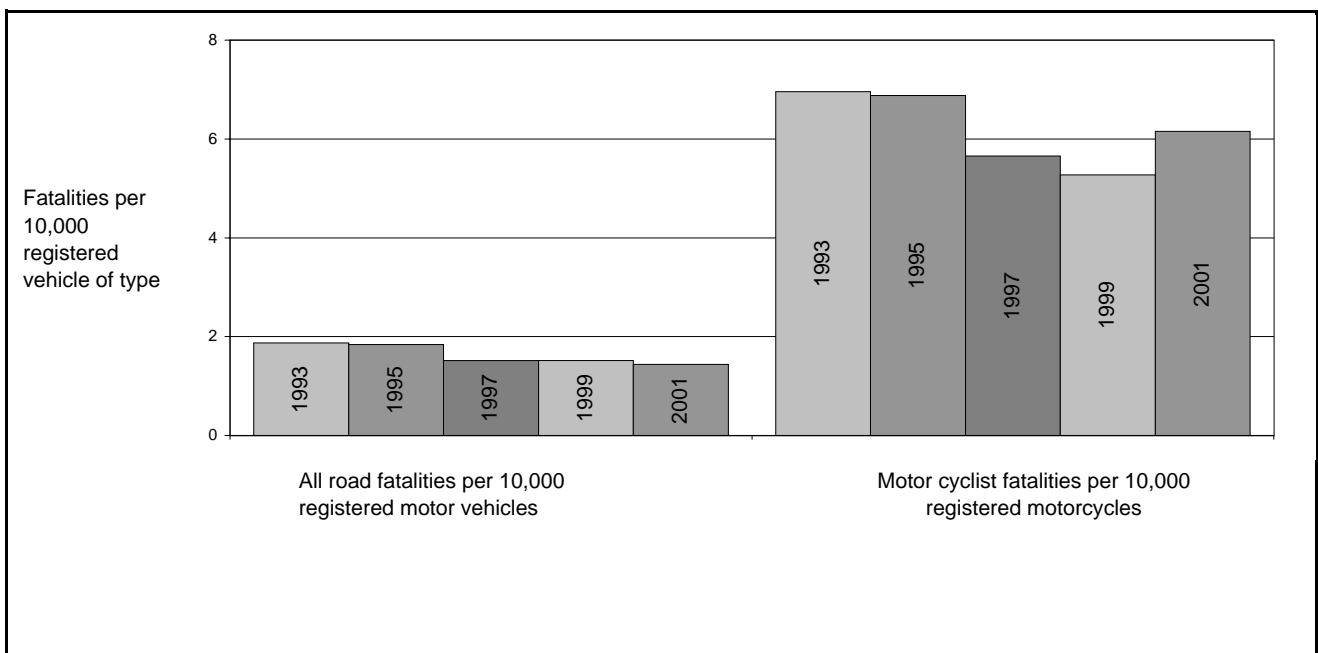
(b) Counts of registered motor vehicles obtained for years prior to 1996 from the ABS publication Motor Vehicle Registrations Australia and for years 1996 and thereafter from the ABS publication Motor Vehicle Census Australia except for year 2000 registrations which are linearly interpolated from 1999 and 2001 figures. Note that the counts pertain to the 12 months to June 30 for 1980 - 1994, to May 31 for 1995, to October 31 for 1996-1999 and to March 31 for 2001.

Table 14 Fatality rates by State/Territory: registered motorcycles, 1980 to 2001

	NSW	Vic	Qld	SA	WA	Tas	NT	ACT	Australia
Fatalities of motorcyclists per 10,000 registered motorcycles (b)									
1980	17.15	11.67	12.78	13.06	12.20	17.02	20.00	23.53	14.23
1985	10.76	8.51	10.21	11.83	9.67	12.31	22.22	16.28	10.38
1990	10.02	8.10	7.75	8.42	7.49	9.68	12.20	6.82	8.62
1991	8.35	7.89	7.71	7.82	10.82	12.90	16.67	15.22	8.71
1992	7.76	8.01	6.54	4.98	3.70	9.52	5.26	6.25	6.74
1993	6.28	6.11	6.98	10.83	7.12	10.61	2.63	4.17	6.96
1994	7.75	6.47	6.49	7.41	5.12	2.86	2.17	4.08	6.51
1995	7.79	6.09	7.90	4.19	4.56	9.72	15.27	12.04	6.88
1996	7.45	5.05	6.17	6.47	8.99	2.70	2.50	0.00	6.35
1997	5.46	5.11	6.46	4.88	4.83	5.26	17.50	8.33	5.65
1998	5.88	5.83	3.56	4.66	6.68	8.54	12.82	5.17	5.50
1999	6.43	4.32	5.60	5.74	4.44	2.33	13.72	1.70	5.27
2000	6.97	4.97	4.46	5.85	5.21	10.62	13.85	1.60	5.65
2001	7.71	6.76	3.90	5.01	6.26	8.31	8.35	1.55	6.16
% change 2000-01	-9.7	-26.4	14.4	16.8	-16.7	27.9	65.9	2.9	-8.2
Ave chge 1996-01 (a)	0.7	6.0	-8.8	-5.0	-7.0	25.2	27.3	..	-0.6

(a) Average annual exponential change between the 1996 and 2001 fatality rates.

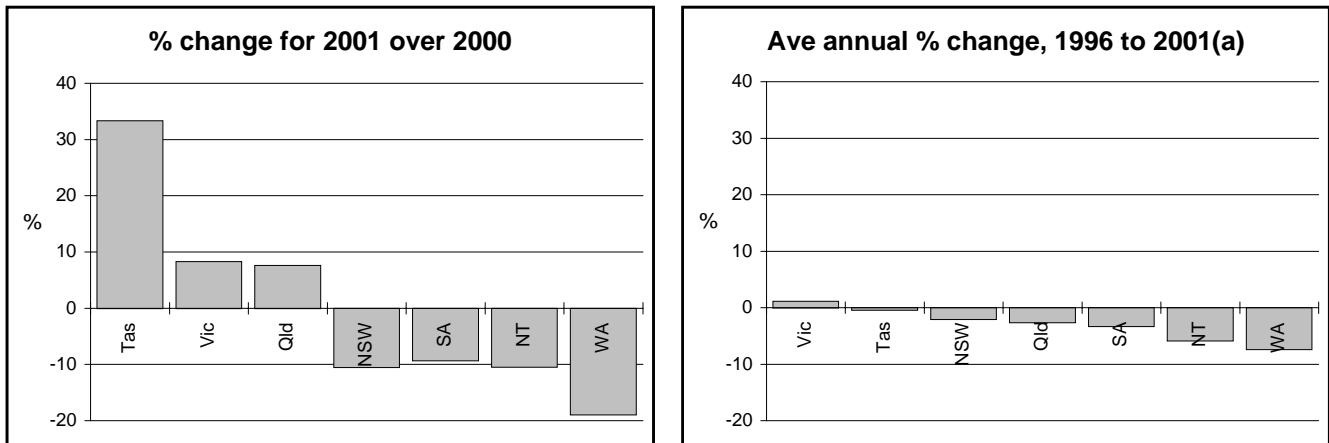
(b) Counts of registered motor vehicles obtained for years prior to 1996 from the ABS publication Motor Vehicle Registrations Australia and for years 1996 and thereafter from the ABS publication Motor Vehicle Census Australia except for year 2000 registrations which are linearly interpolated from 1999 and 2001 figures. Note that the counts pertain to the 12 months to June 30 for 1980 - 1994, to May 31 for 1995, to October 31 for 1996-1999 and to March 31 for 2001.



4. FATAL ROAD CRASHES

NUMBER OF CRASHES

Percentage change in fatal crashes in each state and Territory (excluding ACT)



(a) Average annual exponential change between 1996 & 2001 annual counts

Table 15 Fatal crashes by State/Territory and speed limit at crash site, 2000 and 2001

	NSW	Vic	Qld	SA	WA	Tas	NT	ACT (c)	Australia
Low speed zones(a)									
2001	288	198	155	73	74	21	9	..	818
2000	324	200	144	69	103	16	19	..	875
% change 2000-2001	-11.1	-1.0	7.6	5.8	-28.2	31.3	-52.6	..	-6.5
Ave chge 1996-2001(b)	-4.3	-0.1	-3.8	1.4	-9.2	7.0	-9.7	..	-3.2
High speed zones(a)									
2001	197	165	141	63	76	31	34	..	707
2000	219	160	131	80	81	23	29	..	723
% change 2000-2001	-10.0	3.1	7.6	-21.3	-6.2	34.8	17.2	..	-2.2
Ave chge 1996-2001(b)	2.2	-1.8	-1.2	-7.7	-5.3	-4.0	-4.6	..	-2.0
All crashes(d)									
2001	486	404	296	137	150	52	43	15	1,583
2000	543	373	275	151	185	39	48	16	1,630
% change 2000-2001	-10.5	8.3	7.6	-9.3	-18.9	33.3	-10.4	-6.3	-2.9
Ave chge 1996-2001(b)	-2.0	1.1	-2.6	-3.3	-7.4	-0.4	-5.8	-2.5	-2.2

(a) Low speed zones have speed limits below 100 km/h. High speed zones have speed limits of 100 km/h or more, including unrestricted zones

(b) Average annual exponential change between 1996 and 2001 annual counts

(c) Speed zone is not coded for ACT crashes

(d) Includes crashes of unstated speed zone

.. Not coded/percentage change not calculated

SUMMARY OF CRASH CHARACTERISTICS

Characteristics of fatal crashes, Australia, 1996 and 2001

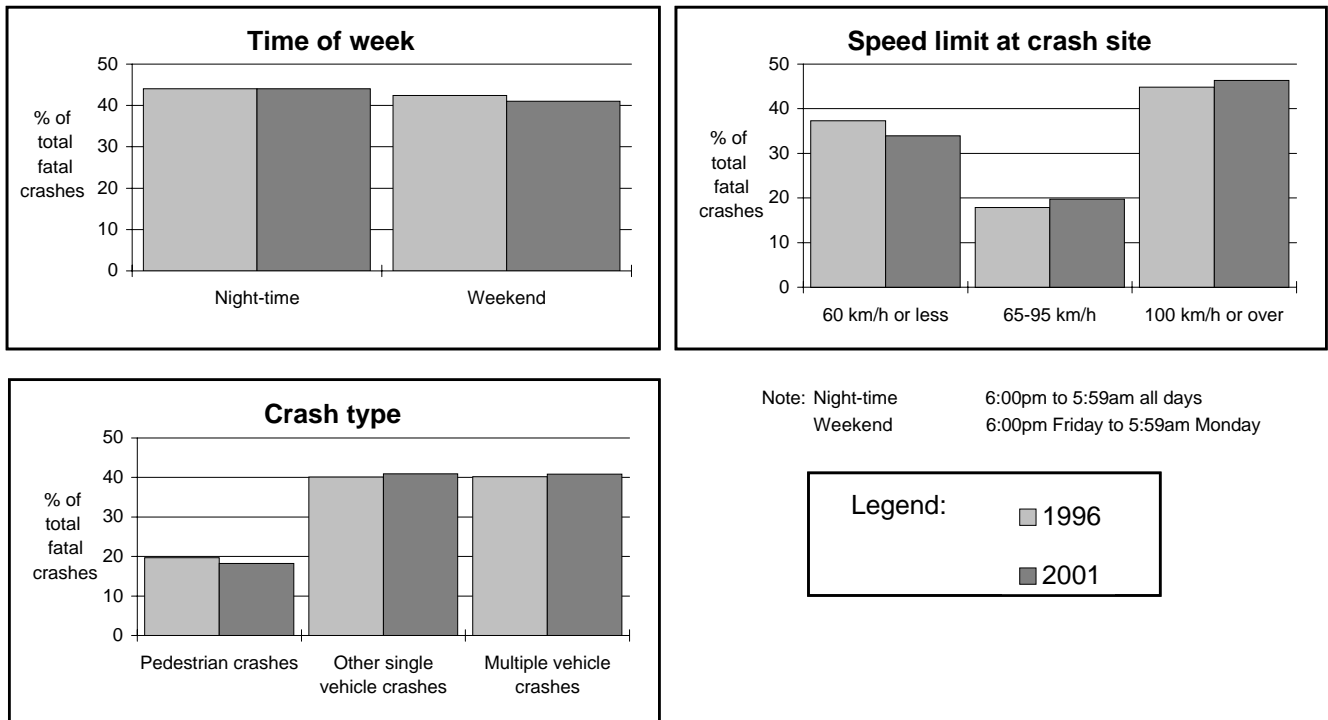


Table 16 Fatal crashes: speed limit, time of day, crash type and time of week, Australia, 1996 and 2001

		Speed limit at crash site (km/h)			Time of day		All fatal crashes (c)
		Up to 60	65-95	100+ (a)	Day	Night (b)	
2001	No	517	301	707	883	696	1,583
	%	33.9	19.7	46.4	55.9	44.1	100.0
1996	No	652	312	783	988	778	1,768
	%	37.3	17.9	44.8	55.9	44.1	100.0

		Crash type			Time of week		All fatal crashes (c)
		Ped'n crash	Other single vehicle crash	Multiple vehicle crash	Week day	Week-end(d)	
2001	No	289	648	646	934	649	1,583
	%	18.3	40.9	40.8	59.0	41.0	100.0
1996	No	348	709	711	1,018	749	1,768
	%	19.7	40.1	40.2	57.6	42.4	100.0

(a) Includes zones of unrestricted speed (b) 6:00 pm to 5:59 am all days

(c) Includes crashes of unstated speed limit, time of day, crash type or time of week (d) 6:00 pm Friday to 5:59 am Monday

Note: Percentages shown here are derived as percentages of total cases excluding those with missing values

CRASHES INVOLVING VEHICLE OCCUPANT FATALITY

Fatal crashes involving vehicle occupant fatality by time of the week and crash type, Australia, 1996 and 2001

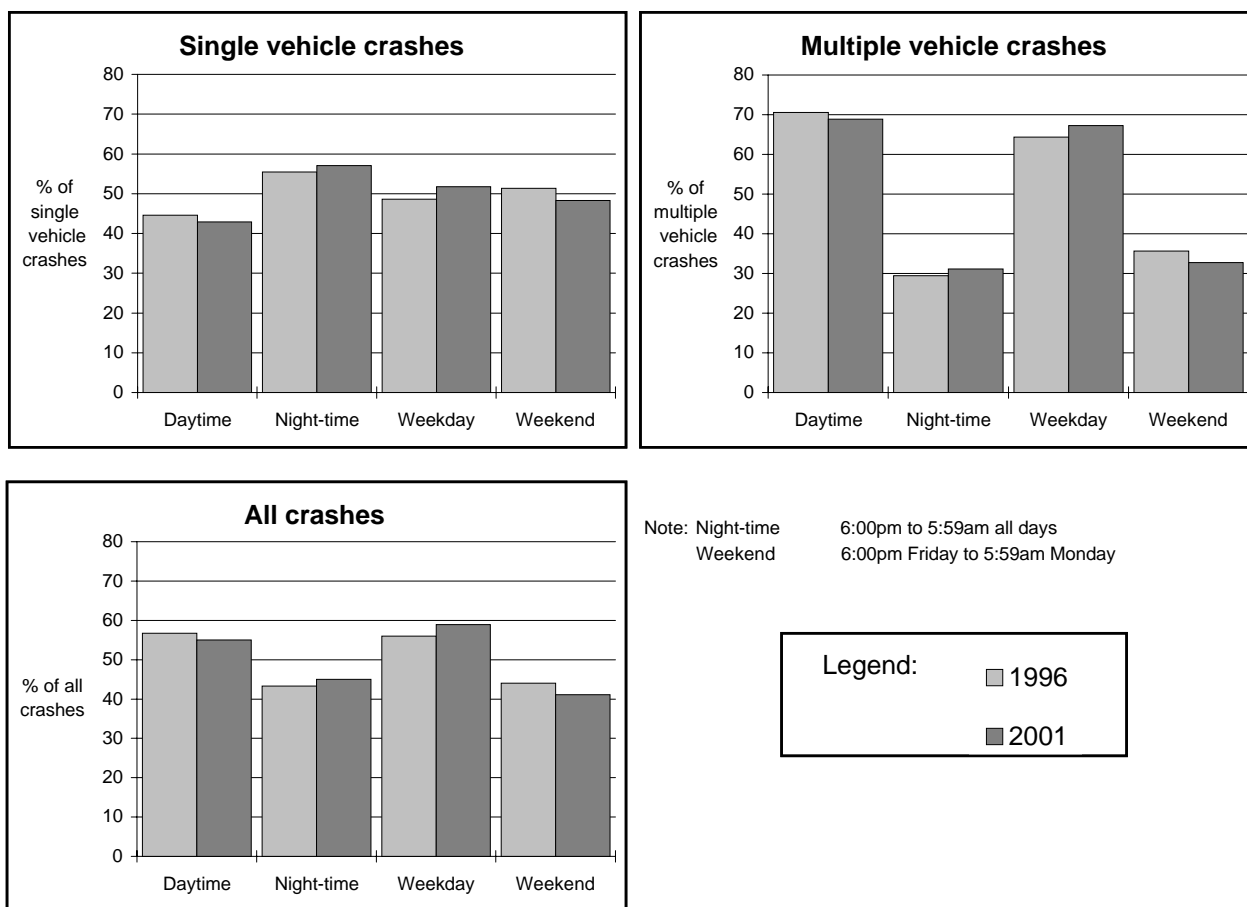


Table 17 Fatal crashes involving vehicle occupant fatality by time and crash type, Australia, 1996 and 2001

	<i>Day time</i>	<i>Night-time(b)</i>	<i>Week day</i>	<i>Week-end(a)</i>	<i>All fatal crashes (c)</i>
Single vehicle crashes					
2001	237	315	287	268	555
1996	278	346	304	321	626
Multiple vehicle crashes					
2001	330	149	322	157	479
1996	388	162	354	196	550
All crashes (d)					
2001	567	464	609	425	1,034
1996	666	508	658	517	1,176

(a) 6:00 pm Friday to 5:59 am Monday

(b) 6:00 pm to 5:59 am all days

(c) Includes crashes of unstated time of week or time of day

(d) Includes crashes of unstated crash type

Fatal crashes involving vehicle occupant fatality by crash type and speed limit at crash site, Australia 1996 to 2001

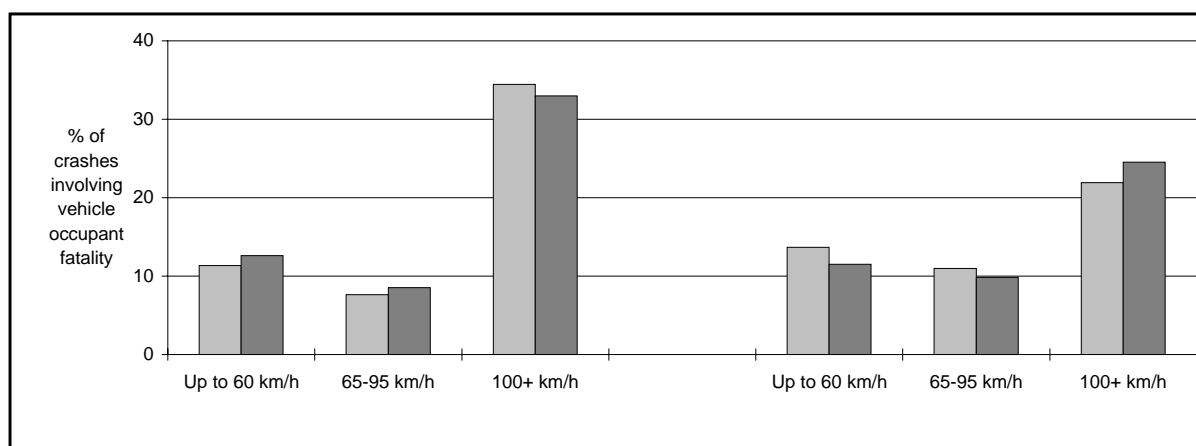


Table 18 Fatal crashes involving vehicle occupant fatality by crash type and speed limit at crash site, Australia, 1996 and 2001

<i>Crash sites with speed limit of -</i>	<i>Single vehicle crashes</i>	<i>Multiple vehicle crashes</i>	<i>All crashes</i>
Up to 60 km/h			
2001	127	116	243
1996	132	159	291
65-95 km/h			
2001	86	99	185
1996	89	128	217
100 km/h or above			
2001	332	247	579
1996	401	255	656
All crash sites (a)			
2001	555	479	1,034
1996	626	550	1,176

(a) Includes crashes of unstated speed limit

CRASHES INVOLVING MOTORCYCLIST FATALITY

Fatal crashes involving motorcyclist fatality by time of the week and crash type, Australia, 1996 and 2001

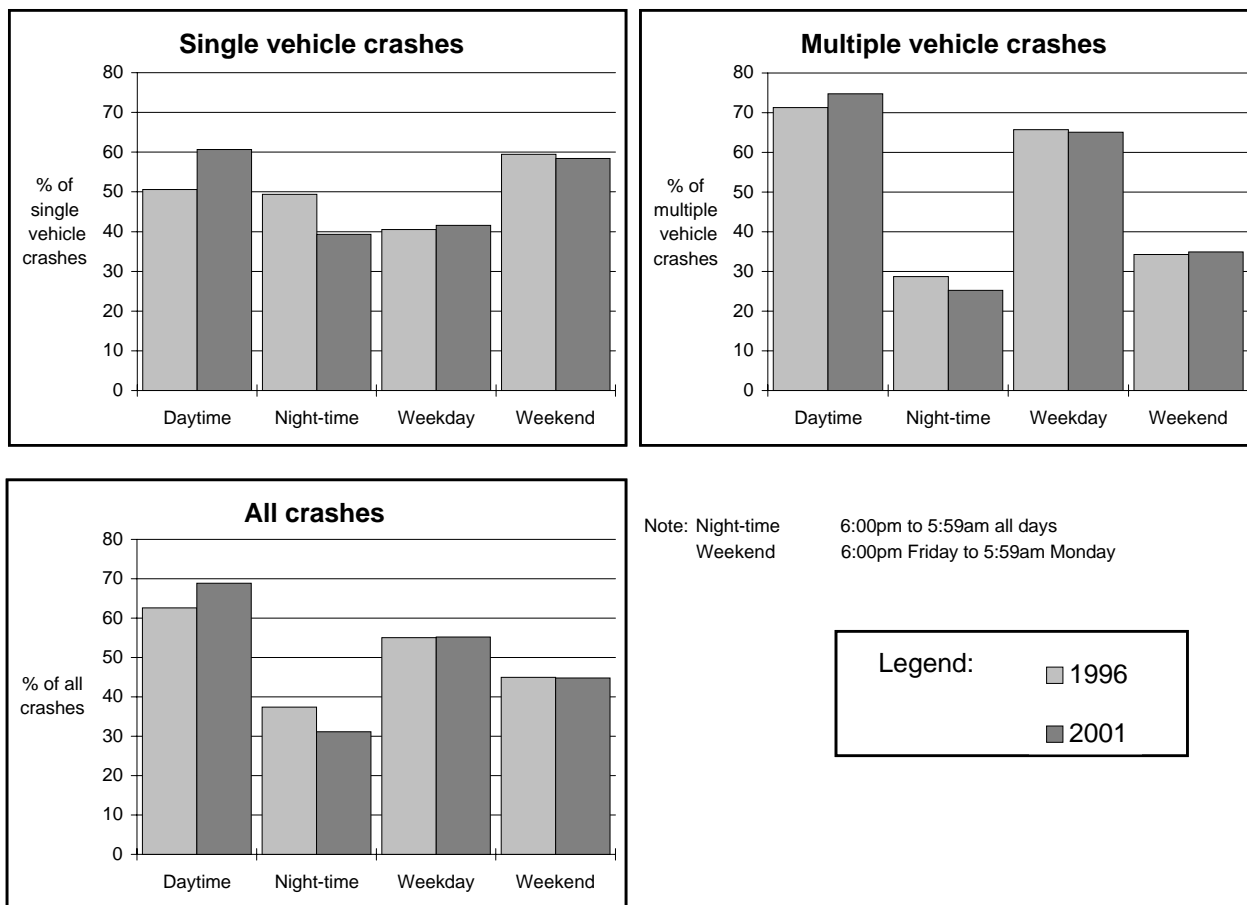


Table 19 Fatal crashes involving motorcyclist fatality by time and crash type, Australia, 1996 and 2001

	Day time	Night-time(b)	Week day	Week-end(a)	All fatal crashes (c)
Single vehicle crashes					
2001	54	35	37	52	89
1996	40	39	32	47	79
Multiple vehicle crashes					
2001	92	31	80	43	123
1996	77	31	71	37	108
All crashes (d)					
2001	146	66	117	95	212
1996	117	70	103	84	187

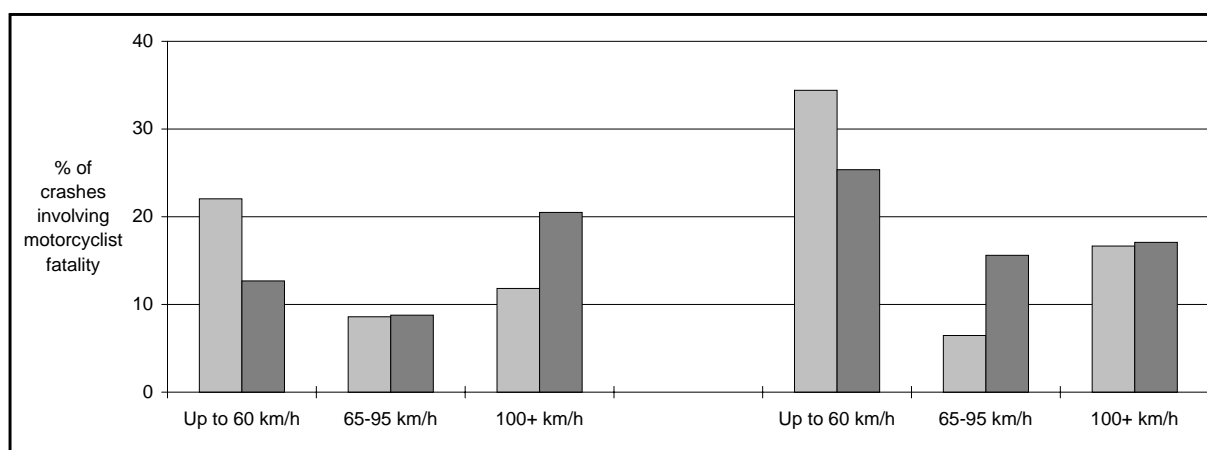
(a) 6:00 pm Friday to 5:59 am Monday

(b) 6:00 pm to 5:59 am all days

(c) Includes crashes of unstated time of week or time of day

(d) Includes crashes of unstated crash type

Fatal crashes involving motorcyclist fatality by crash type and speed limit at crash site, Australia 1996 to 2001



Legend: 1996 2001

Table 20 Fatal crashes involving motorcyclist fatality by crash type and speed limit at crash site, Australia, 1996 and 2001

<i>Crash sites with speed limit of -</i>	<i>Single vehicle crashes</i>	<i>Multiple vehicle crashes</i>	<i>All crashes</i>
Up to 60 km/h			
2001	26	52	78
1996	41	64	105
65-95 km/h			
2001	18	32	50
1996	16	12	28
100 km/h or above			
2001	42	35	77
1996	22	31	53
All crash sites (a)			
2001	89	123	212
1996	79	108	187

(a) Includes crashes of unstated speed limit

FATAL CRASHES INVOLVING ARTICULATED TRUCKS

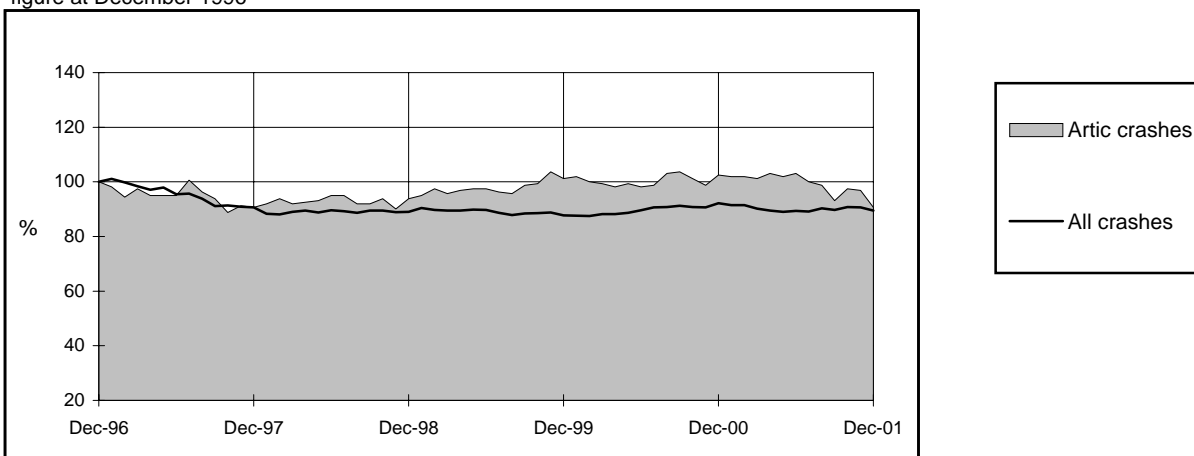
Table 21 Fatal crashes and fatalities involving articulated trucks by State/Territory, 1981 to 2001

	NSW	Vic	Qld	SA	WA	Tas	NT	ACT	Australia
Fatal crashes									
1981	113	44	47	11	12	4	5	0	236
1982	114	39	53	17	17	5	6	0	251
1983	105	42	29	15	15	7	3	0	216
1984	113	45	34	21	12	4	1	2	232
1985	98	36	36	18	18	8	4	0	218
1986	77	39	37	16	15	8	2	0	194
1987	59	52	36	28	17	4	3	0	199
1988	120	54	47	16	13	5	5	0	260
1989	99	57	45	23	18	4	3	1	250
1990	77	51	31	18	15	10	3	0	205
1991	64	35	23	18	11	4	1	0	156
1992	73	27	34	8	10	1	1	0	154
1993	60	34	38	17	18	3	1	0	171
1994	52	36	34	14	13	1	1	0	151
1995	49	31	47	17	12	4	4	1	165
1996	48	33	34	19	23	2	1	1	161
1997	60	26	29	12	13	4	2	0	146
1998	58	30	28	18	12	2	2	1	151
1999	55	35	30	17	20	2	3	1	163
2000	69	32	28	15	12	6	3	0	165
2001	48	32	31	17	11	4	0	3	146
Fatalities									
1981	145	13	14	4	7	0	..
1982	137	18	21	5	8	0	..
1983	127	46	..	22	17	7	4	0	..
1984	144	51	..	24	13	4	1	2	..
1985	114	46	..	22	18	9	4	0	..
1986	96	45	44	17	17	11	2	0	232
1987	75	65	42	32	21	5	3	0	243
1988	151	65	56	19	19	5	5	0	320
1989	143	68	60	31	20	9	3	1	335
1990	94	68	37	26	17	13	8	0	263
1991	78	40	26	22	12	4	1	0	183
1992	84	32	38	14	10	1	2	0	181
1993	69	50	42	18	21	3	1	0	204
1994	67	38	41	15	16	1	1	0	179
1995	63	38	55	19	14	5	4	1	199
1996	56	39	42	25	26	2	2	2	194
1997	71	27	35	18	14	4	2	0	171
1998	71	32	33	24	13	2	2	2	179
1999	64	39	38	21	23	2	3	1	191
2000	84	40	40	19	13	6	6	0	208
2001	60	45	33	18	14	5	0	3	178

.. = data not available

Count of fatal crashes involving articulated trucks, Australia, 1996 to 2001

Each point shows the number of fatal crashes in preceding 12 months expressed as percentage of comparable figure at December 1996



Source: ATSB Monthly Fatality Crash Database, 1996 to 2001

Table 22 Fatal crashes involving articulated trucks by State and speed limit at crash site 1990 to 2001

	NSW	Vic	Qld	SA	WA	Tas	Australia(b)
Low speed zones (a)							
1990	38	17	12	3	5	4	80
1991	17	11	13	8	2	0	51
1992	28	10	12	3	3	1	57
1993	18	12	12	8	5	1	56
1994	19	12	15	5	3	0	55
1995	18	10	14	4	8	1	55
1996	17	10	12	5	9	0	53
1997	21	9	8	1	4	2	46
1998	22	8	7	4	6	0	47
1999	25	9	17	8	5	0	65
2000	22	9	5	3	5	3	47
2001	14	12	8	6	6	1	47
High speed zones (a)							
1990	38	33	19	15	10	6	123
1991	45	24	10	10	9	4	103
1992	45	17	22	5	6	0	96
1993	42	22	26	9	11	2	113
1994	33	24	19	9	10	1	96
1995	31	20	33	13	4	3	108
1996	31	23	22	14	14	2	107
1997	39	17	21	11	9	2	100
1998	36	22	21	14	6	2	103
1999	30	26	13	9	15	2	97
2000	47	23	23	12	7	3	118
2001	33	20	23	11	5	3	95
All crashes (c)							
1990	77	51	31	18	15	10	205
1991	64	35	23	18	11	4	156
1992	73	27	34	8	10	1	154
1993	60	34	38	17	18	3	171
1994	52	36	34	14	13	1	151
1995	49	31	47	17	12	4	165
1996	48	33	34	19	23	2	161
1997	60	26	29	12	13	4	146
1998	58	30	28	18	12	2	151
1999	55	35	30	17	20	2	163
2000	69	32	28	15	12	6	165
2001	48	32	31	17	11	4	146

(a) Low speed zones have speed limits of less than 100 km/h. High speed zones have speed limits of 100 km/h or more, including unrestricted zones

(b) Includes Northern Territory and Australian Capital Territory, not separately shown (c) Includes crashes of unstated speed zone

Table 23 Summary of fatal articulated truck crashes: speed limit, time of day, crash type and time of week, Australia, 2001

	Speed limit at crash site (km/h)			Time of day		All fatal crashes (c)
	Up to 60	65-95	100+ (a)	Day	Night (b)	
No.	28	19	95	83	63	146
%	87.5	59.4	296.9	56.8	43.2	100.0
	Crash type			Time of week		All fatal crashes (c)
	Pedestrian crash	Other single vehicle crash	Multiple vehicle crash	Week day	Week-end (d)	
No.	18	17	111	111	35	146
%	12.3	11.6	76.0	76.0	24.0	100.0

(a) Includes zones of unrestricted speed (b) 6:00 pm to 5:59 am all days

(c) Includes crashes of unstated speed limit, time of day, crash type or time of week (d) 6:00 pm Friday to 5:59 am Monday

Note: percentages shown here are derived as percentages of total cases excluding those with missing values

Table 24 Fatal crashes involving articulated trucks by speed limit at site and crash type, Australia 2001

Type of fatal articulated truck crash	Speed limit at crash site (km/h)			All fatal crashes (a)
	Up to 60	65-95	100+	
Pedestrian crashes	7	3	7	18
Other single vehicle crashes	1	3	13	17
Multiple vehicle crashes	20	13	75	111
All articulated truck crashes	28	19	95	146

(a) Includes crashes of unstated speed limit

FATAL CRASHES INVOLVING BUSES

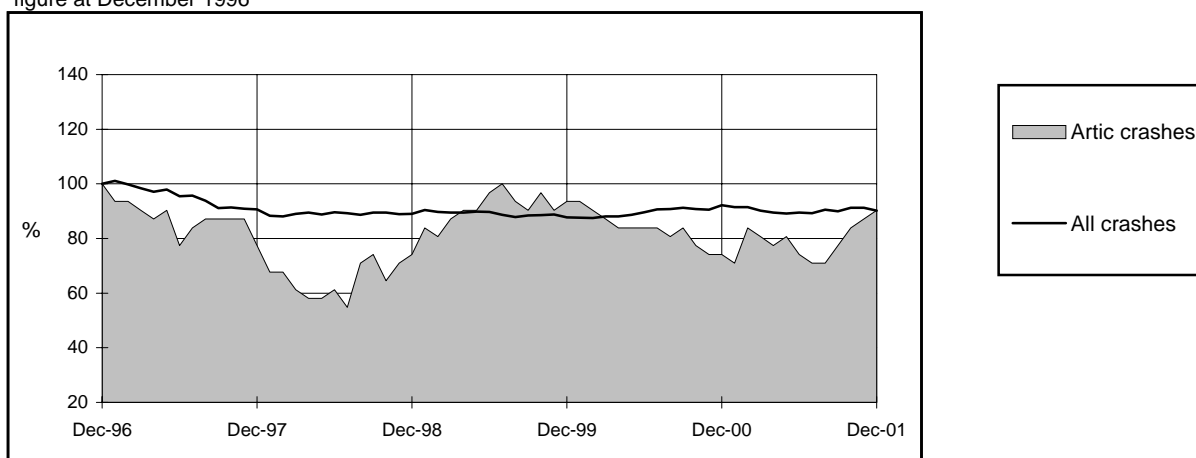
Table 25 Fatal crashes and fatalities involving buses by State/Territory, 1981 to 2001

	NSW	Vic	Qld	SA	WA	Tas	NT	ACT	Australia
Fatal crashes									
1981	7	2	4	3	2	2	0	0	20
1982	14	13	6	0	4	0	0	0	37
1983	15	2	5	5	2	0	0	1	30
1984	15	4	4	3	2	1	0	0	29
1985	24	11	7	1	2	2	2	2	51
1986	19	4	7	5	1	1	1	2	40
1987	17	7	6	2	0	1	2	0	35
1988	23	7	10	2	1	3	1	0	47
1989	25	5	9	2	1	0	0	3	45
1990	14	6	4	4	3	0	1	0	32
1991	6	6	12	3	1	1	0	1	30
1992	11	4	4	3	2	3	0	1	28
1993	14	5	7	2	5	1	1	1	36
1994	8	7	7	0	3	1	1	1	28
1995	9	3	6	1	2	1	0	0	22
1996	15	4	6	0	3	1	0	2	31
1997	13	1	2	0	5	1	1	1	24
1998	12	2	7	0	0	1	1	0	23
1999	10	2	12	2	1	1	0	1	29
2000	13	3	5	1	0	1	0	0	23
2001	11	7	4	2	0	2	0	2	28
Fatalities									
1981	10	2	5	3	2	2	0	0	24
1982	14	18	6	0	13	0	0	0	51
1983	17	2	5	6	2	0	0	1	33
1984	17	4	4	4	2	1	0	0	32
1985	25	12	7	1	2	2	2	2	53
1986	24	4	7	6	1	1	1	2	46
1987	21	12	13	2	0	1	2	0	51
1988	31	7	12	2	1	3	1	0	57
1989	84	5	9	2	1	0	0	3	104
1990	16	6	15	5	3	0	1	0	46
1991	7	6	13	3	1	1	0	1	32
1992	20	4	4	3	2	5	0	1	39
1993	15	15	8	2	6	1	1	1	49
1994	8	7	19	0	3	1	1	1	40
1995	9	3	6	2	2	1	0	0	23
1996	18	5	9	0	3	1	0	2	38
1997	14	1	3	0	5	2	1	1	27
1998	15	2	10	0	0	1	1	0	29
1999	13	2	12	2	1	1	0	1	32
2000	13	3	6	1	0	1	0	0	24
2001	12	7	4	2	0	5	0	2	32

.. = data not available

Count of fatal crashes involving buses, Australia, 1996 to 2001

Each point shows the number of fatal crashes in preceding 12 months expressed as percentage of comparable figure at December 1996



Source: ATSB Monthly Fatality Crash Database, 1996 to 2001

Table 26 Fatal crashes involving buses by State and speed limit at crash site 1990 to 2001

	NSW	Vic	Qld	SA	WA	Tas	Australia(b)
Low speed zones (a)							
1990	12	4	2	2	3	0	23
1991	4	6	9	2	1	1	23
1992	7	4	4	3	2	1	21
1993	11	1	4	1	4	0	22
1994	7	7	5	0	2	0	21
1995	7	2	3	0	1	0	13
1996	12	4	5	0	2	1	24
1997	11	1	1	0	3	0	16
1998	10	2	3	0	0	1	17
1999	10	2	9	1	1	0	23
2000	12	2	5	0	0	1	20
2001	10	4	2	2	0	2	20
High speed zones (a)							
1990	2	2	2	2	0	0	9
1991	2	0	3	1	0	0	6
1992	4	0	0	0	0	2	6
1993	3	4	3	1	1	1	13
1994	1	0	2	0	1	1	6
1995	2	1	3	1	1	1	9
1996	3	0	1	0	1	0	5
1997	2	0	1	0	2	1	7
1998	2	0	4	0	0	0	6
1999	0	0	3	1	0	1	5
2000	1	1	0	1	0	0	3
2001	1	3	2	0	0	0	6
All crashes (c)							
1990	14	6	4	4	3	0	32
1991	6	6	12	3	1	1	30
1992	11	4	4	3	2	3	28
1993	14	5	7	2	5	1	36
1994	8	7	7	0	3	1	28
1995	9	3	6	1	2	1	22
1996	15	4	6	0	3	1	31
1997	13	1	2	0	5	1	24
1998	12	2	7	0	0	1	23
1999	10	2	12	2	1	1	29
2000	13	3	5	1	0	1	23
2001	11	7	4	2	0	2	28

(a) Low speed zones have speed limits of less than 100 km/h. High speed zones have speed limits of 100 km/h or more, including unrestricted zones

(b) Includes Northern Territory and Australian Capital Territory, not separately shown (c) Includes crashes of unstated speed zone

Table 27 Summary of fatal bus crashes: speed limit, time of day, crash type and time of week, Australia, 2001

	Speed limit at crash site (km/h)			Time of day		All fatal crashes (c)
	Up to 60	65-95	100+ (a)	Day	Night (b)	
No.	14	6	6	20	8	28
%	233.3	100.0	100.0	71.4	28.6	100.0
	Crash type			Time of week		All fatal crashes (c)
	Pedestrian crash	Other single vehicle crash	Multiple vehicle crash	Week day	Week-end (d)	
No.	11	1	16	21	7	28
%	39.3	3.6	57.1	75.0	25.0	100.0

(a) Includes zones of unrestricted speed (b) 6:00 pm to 5:59 am all days

(c) Includes crashes of unstated speed limit, time of day, crash type or time of week (d) 6:00 pm Friday to 5:59 am Monday

Note: percentages shown here are derived as percentages of total cases excluding those with missing values

Table 28 Fatal crashes involving buses by speed limit at site and crash type, Australia 2001

Type of fatal articulated truck crash	Speed limit at crash site (km/h)			All fatal crashes (a)
	Up to 60	65-95	100+	
Pedestrian crashes	8	1	1	11
Other single vehicle crashes	1	0	0	1
Multiple vehicle crashes	5	5	5	16
All bus crashes	14	6	6	28

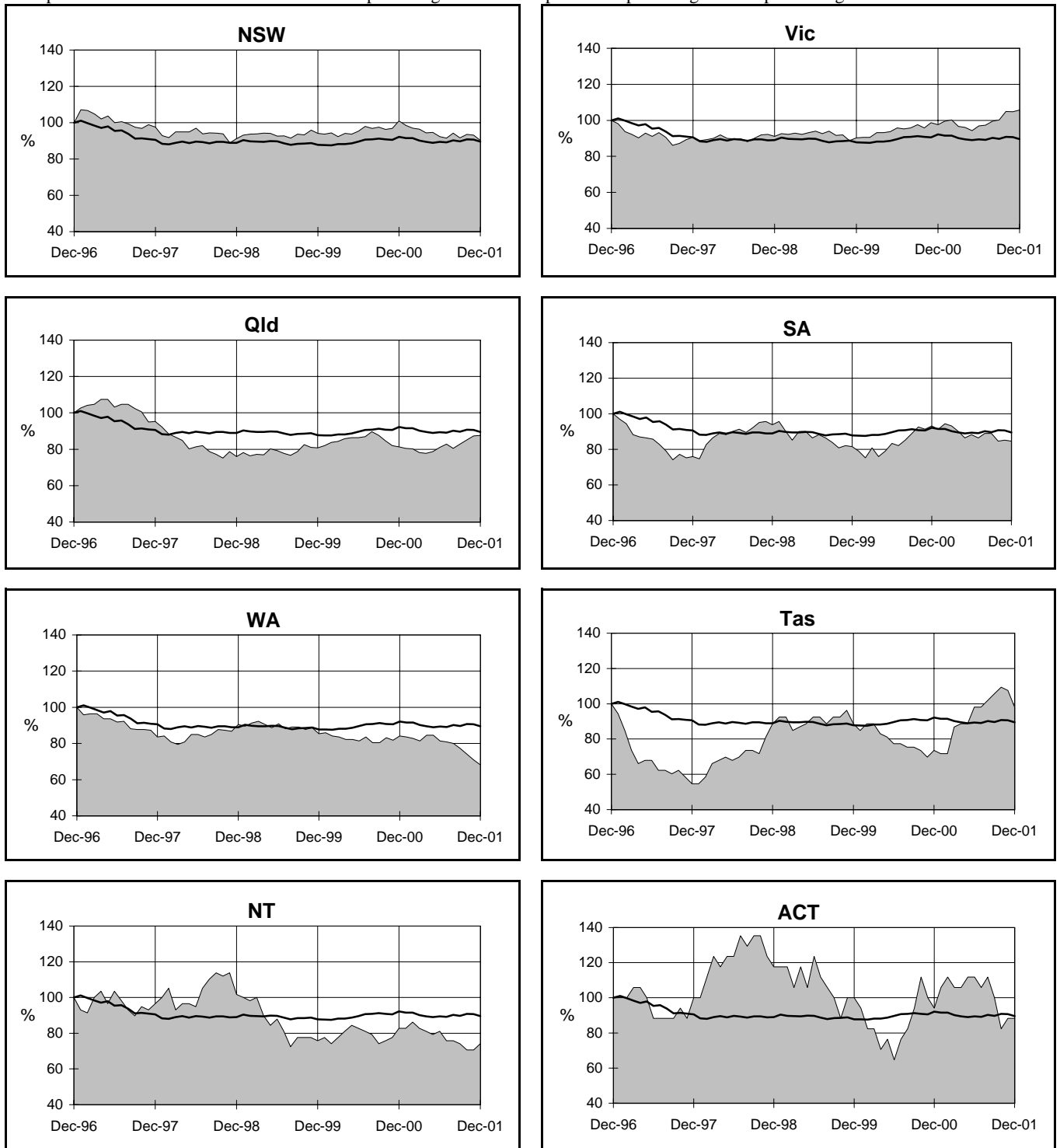
(a) Includes crashes of unstated speed limit

5. TIME SERIES

FATAL CRASHES

Count of fatal crashes in each State and Territory, 1996 to 2001

Each point shows the number of fatal crashes in preceding 12 months expressed as percentage of comparable figure at December 1996



Source: ATSB Monthly Fatality Crash Database, 1996 to 2001

State
Australia

Table 29 Fatal crashes by State/Territory, 1980 to 2001

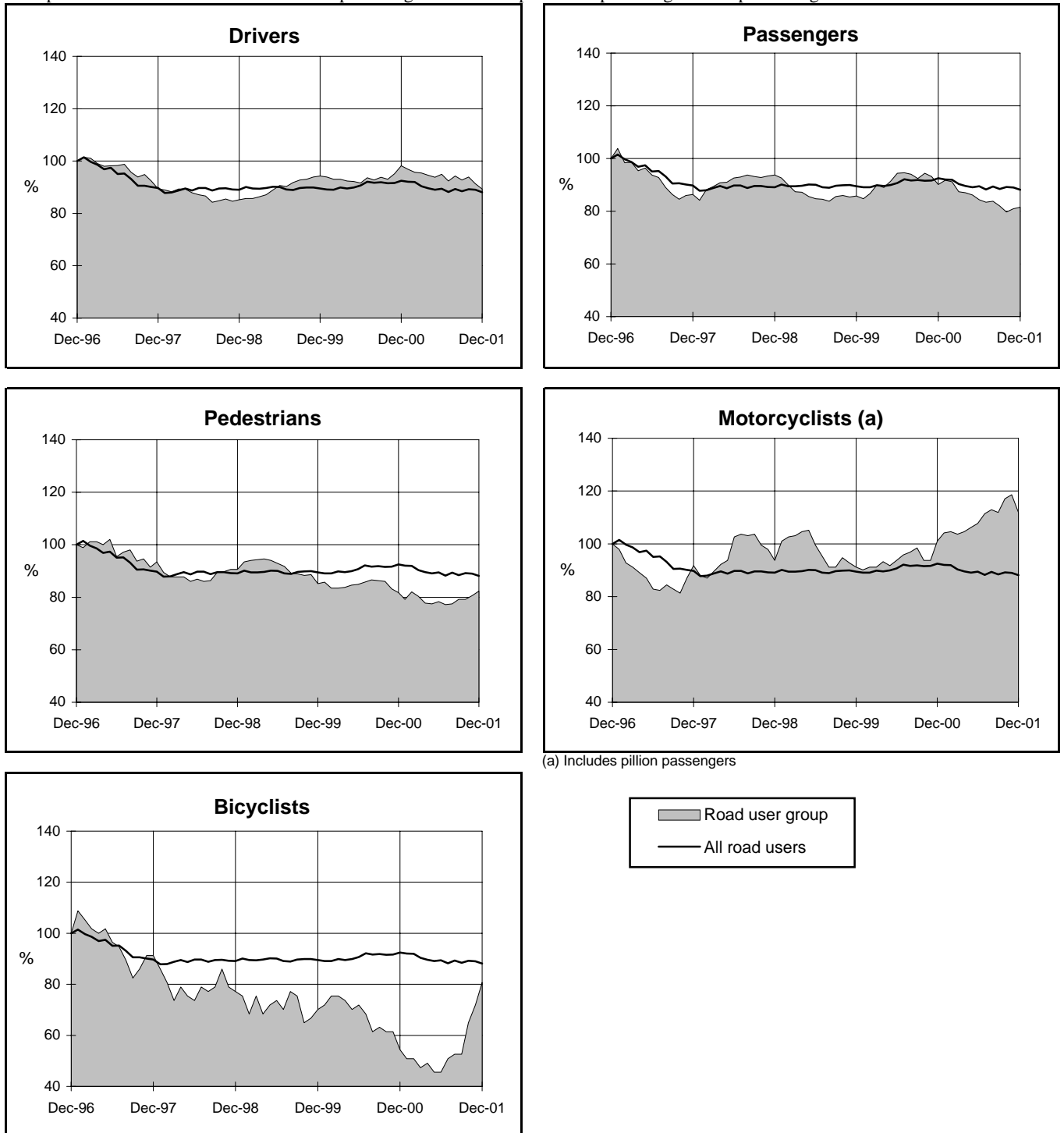
	<i>NSW</i>	<i>Vic</i>	<i>Qld</i>	<i>SA</i>	<i>WA</i>	<i>Tas</i>	<i>NT</i>	<i>ACT</i>	<i>Australia</i>
1980	1,152	608	508	240	268	96	55	27	2,954
1981	1,130	677	510	196	217	97	63	24	2,914
1982	1,115	631	522	239	203	84	52	26	2,872
1983	877	610	437	235	191	63	45	27	2,485
1984	910	584	448	205	204	77	45	35	2,508
1985	954	605	452	239	219	69	59	30	2,627
1986	908	610	421	259	208	78	63	30	2,577
1987	858	626	400	230	193	67	80	33	2,487
1988	912	627	483	206	199	68	46	31	2,572
1989	783	681	376	201	214	68	57	26	2,406
1990	702	492	347	187	181	63	54	24	2,050
1991	585	435	359	166	187	66	60	16	1,874
1992	576	365	363	142	171	59	42	18	1,736
1993	518	381	357	191	191	47	41	11	1,737
1994	552	345	364	143	195	52	36	15	1,702
1995	563	371	408	163	194	53	56	14	1,822
1996	538	382	338	162	220	53	58	17	1,768
1997	525	346	322	123	184	29	56	17	1,602
1998	491	348	257	152	199	47	59	20	1,573
1999	506	345	273	132	188	47	44	17	1,552
2000	543	373	275	151	185	39	48	16	1,630
2001	486	404	296	137	150	52	43	15	1,583
<i>% change 2000-01</i>	7.3	8.1	0.7	14.4	-1.6	-17.0	9.1	-5.9	5.0
<i>Ave chge 1996-01 (a)</i>	-0.7	0.1	-7.6	-1.5	-0.9	-6.0	-3.0	2.7	-2.2

(a) Average annual exponential change between the 1996 and 2001 annual counts

FATALITIES

Count of road toll for each road user group, Australia, 1996 to 2001

Each point shows the number of fatalities in preceding 12 months expressed as percentage of comparable figure at December 1996



Source: ATSB Monthly Fatality Crash Database, 1996 to 2001

Table 30 Fatalities by State/Territory and road user, 1980 to 2001

	<i>NSW</i>	<i>Vic</i>	<i>Qld</i>	<i>SA</i>	<i>WA</i>	<i>Tas</i>	<i>NT</i>	<i>ACT</i>	<i>Australia</i>
Drivers									
1980	487	233	211	100	126	45	26	8	1,236
1981	504	279	237	85	97	43	22	12	1,279
1982	453	263	255	104	79	46	25	12	1,237
1983	339	270	178	107	83	31	16	10	1,034
1984	374	246	192	80	79	35	16	14	1,036
1985	412	268	201	104	85	41	21	11	1,143
1986	393	280	186	118	85	37	23	12	1,134
1987	356	309	165	103	91	34	23	14	1,095
1988	403	284	222	92	85	29	17	12	1,144
1989	356	339	173	84	102	38	20	10	1,122
1990	310	232	153	88	81	37	21	13	935
1991	304	216	162	82	81	39	22	4	910
1992	287	146	167	66	88	36	17	8	815
1993	274	193	188	85	78	24	12	5	859
1994	257	169	176	67	90	28	12	10	809
1995	281	189	181	84	93	28	14	4	874
1996	234	199	175	95	93	36	29	8	869
1997	263	159	159	67	79	18	25	7	777
1998	247	148	121	72	95	24	26	8	741
1999	263	191	128	72	107	27	21	10	819
2000	278	195	157	91	91	18	16	7	853
2001	219	207	151	77	72	27	14	9	776
Passengers									
1980	359	156	140	73	67	20	20	7	842
1981	325	202	170	59	61	34	29	9	889
1982	322	187	152	68	79	20	19	3	850
1983	232	140	149	75	53	16	19	5	689
1984	275	162	150	74	54	17	17	7	756
1985	264	181	122	75	71	18	24	8	763
1986	262	160	132	68	61	21	22	4	730
1987	262	167	124	64	56	24	35	5	737
1988	270	183	158	50	76	18	17	4	776
1989	303	179	116	48	73	26	24	12	781
1990	200	144	113	75	47	15	34	6	634
1991	172	124	106	44	60	18	26	4	554
1992	176	92	113	52	78	27	26	6	570
1993	135	112	101	64	62	19	19	1	513
1994	181	89	108	36	58	16	10	3	501
1995	139	93	119	36	66	12	24	2	491
1996	146	90	104	37	63	17	33	9	499
1997	137	91	88	43	53	9	9	1	431
1998	148	102	75	44	62	9	22	6	468
1999	139	68	87	37	66	17	10	4	428
2000	146	93	82	37	62	11	13	6	450
2001	133	86	77	30	40	16	22	3	407
Pedestrians									
1980	252	167	87	43	56	24	9	6	644
1981	267	177	66	42	43	20	11	3	629
1982	256	148	71	47	40	17	10	2	591
1983	212	148	61	37	36	6	7	5	512
1984	211	139	66	42	47	17	10	9	541
1985	223	134	72	38	47	11	10	3	538
1986	191	139	65	50	48	21	15	8	537
1987	178	136	73	37	38	11	14	6	493
1988	205	154	78	43	33	15	14	6	548
1989	173	159	68	47	33	10	6	5	501
1990	177	93	65	32	31	12	8	2	420
1991	119	94	66	24	16	12	11	1	343
1992	121	89	74	31	19	4	9	3	350
1993	117	73	49	33	38	7	10	4	331
1994	129	63	76	31	38	11	17	2	367
1995	130	82	92	39	29	8	15	3	398
1996	130	76	55	24	46	8	9	3	351
1997	114	78	59	20	38	0	17	2	328
1998	102	79	48	35	31	8	13	2	318
1999	108	76	49	24	22	5	12	3	299
2000	110	59	39	20	35	9	11	4	287
2001	88	81	51	26	19	10	11	3	289

Table 30 Fatalities by State/Territory and road user, 1980 to 2001 (continued)

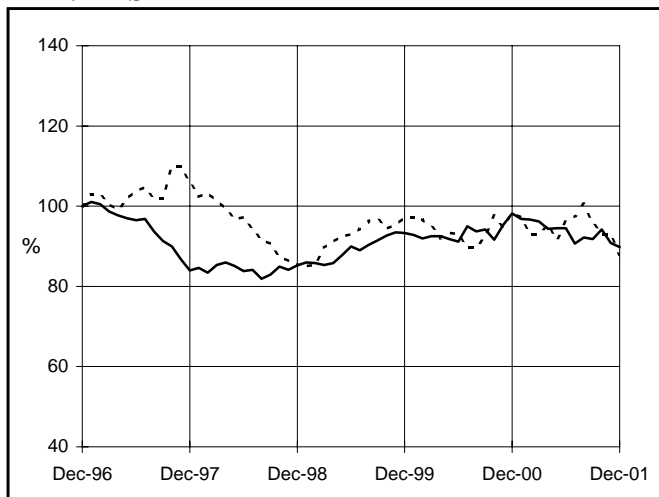
	<i>NSW</i>	<i>Vic</i>	<i>Qld</i>	<i>SA</i>	<i>WA</i>	<i>Tas</i>	<i>NT</i>	<i>ACT</i>	<i>Australia</i>
Motorcycle riders and passengers									
1980	173	63	104	44	36	8	6	8	442
1981	172	69	104	24	31	13	7	4	424
1982	203	82	105	40	30	8	6	8	482
1983	153	73	103	35	24	12	4	6	410
1984	153	80	80	28	28	9	7	5	390
1985	143	71	86	44	35	8	10	7	404
1986	164	72	82	42	20	10	9	6	405
1987	138	67	65	42	22	7	8	10	359
1988	123	62	59	31	27	12	1	8	323
1989	109	65	52	30	27	2	9	5	299
1990	90	55	50	25	28	6	5	3	262
1991	58	57	45	24	42	8	7	7	248
1992	59	56	43	14	14	6	2	3	197
1993	46	43	47	30	27	7	1	2	203
1994	56	45	45	20	19	2	1	2	190
1995	59	43	54	12	17	7	6	6	204
1996	58	39	41	18	34	2	1	0	193
1997	44	41	43	14	19	4	7	5	177
1998	52	48	25	13	28	7	5	3	181
1999	55	38	41	15	19	2	5	1	176
2000	62	46	33	16	23	9	5	1	195
2001	70	64	29	14	28	7	3	1	216
Bicyclists									
1980	30	30	14	9	6	2	1	1	93
1981	22	37	16	12	4	1	1	1	94
1982	19	26	18	11	8	5	0	1	88
1983	29	30	19	12	5	4	2	2	103
1984	23	28	16	8	10	4	0	1	90
1985	22	26	20	6	4	0	2	3	83
1986	19	16	15	10	14	0	2	2	78
1987	22	25	14	10	4	1	3	0	79
1988	34	17	21	4	7	1	2	1	87
1989	19	34	19	13	7	4	2	0	98
1990	20	24	18	6	9	1	0	2	80
1991	10	12	16	10	8	0	1	1	58
1992	6	13	18	2	1	1	0	0	41
1993	8	14	10	6	4	1	2	0	45
1994	23	11	13	5	4	2	1	0	59
1995	11	11	10	8	4	2	2	0	48
1996	13	13	10	7	10	1	0	3	57
1997	18	8	12	4	6	1	1	2	52
1998	7	13	9	4	6	0	2	3	44
1999	12	10	9	3	3	2	1	0	40
2000	6	13	6	2	2	0	2	0	31
2001	13	6	15	6	5	1	0	0	46
All road users (a)									
1980	1,303	657	557	269	293	100	63	30	3,272
1981	1,291	766	594	222	238	111	70	29	3,321
1982	1,253	709	602	270	236	96	60	26	3,252
1983	966	664	510	266	203	70	48	28	2,755
1984	1,037	657	505	232	221	83	50	37	2,822
1985	1,067	683	502	268	243	78	67	33	2,941
1986	1,029	668	481	288	228	91	71	32	2,888
1987	959	705	442	256	213	77	84	36	2,772
1988	1,037	701	539	223	230	75	51	31	2,887
1989	960	776	428	222	242	80	61	32	2,801
1990	797	548	399	226	196	71	68	26	2,331
1991	663	503	395	184	207	77	67	17	2,113
1992	649	396	416	165	200	74	54	20	1,974
1993	581	435	396	218	209	58	44	12	1,953
1994	646	377	418	159	211	59	41	17	1,928
1995	620	418	456	181	209	57	61	15	2,017
1996	581	417	385	181	247	64	72	23	1,970
1997	576	377	361	148	197	32	60	17	1,768
1998	556	390	279	168	223	48	69	22	1,755
1999	577	383	314	151	217	53	49	19	1,763
2000	603	407	317	166	213	47	51	18	1,822
2001	524	444	324	153	164	61	50	16	1,736

(a) Includes other and unknown road users

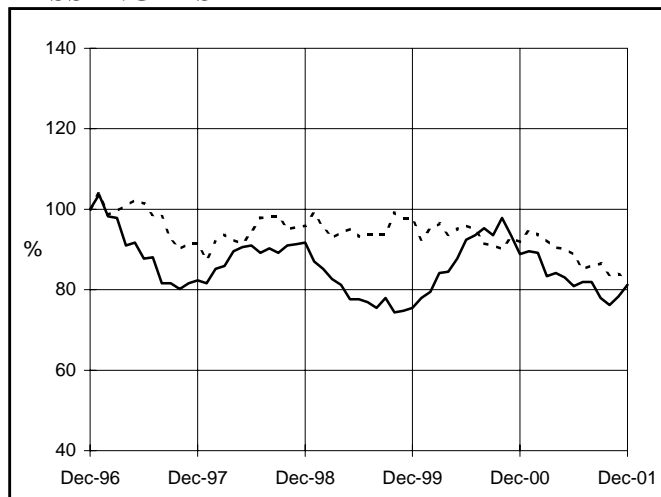
Count of road toll by road user and gender, Australia, 1996 to 2001

Each point shows the number of fatalities in preceding 12 months expressed as percentage of comparable figure at December 1996

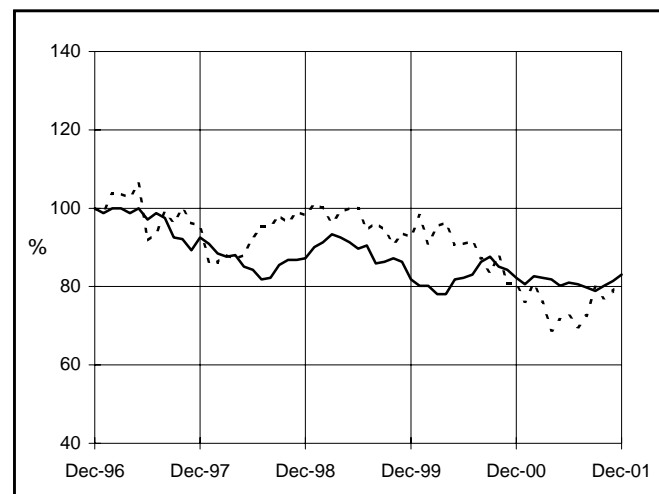
DRIVERS



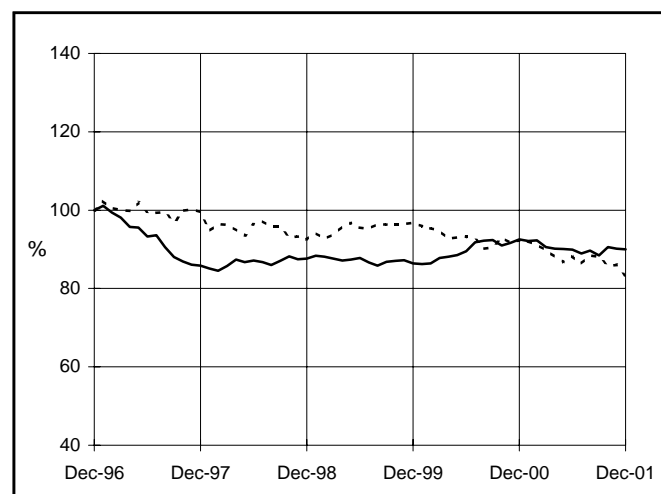
PASSENGERS



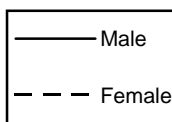
PEDESTRIANS



ALL ROAD USERS



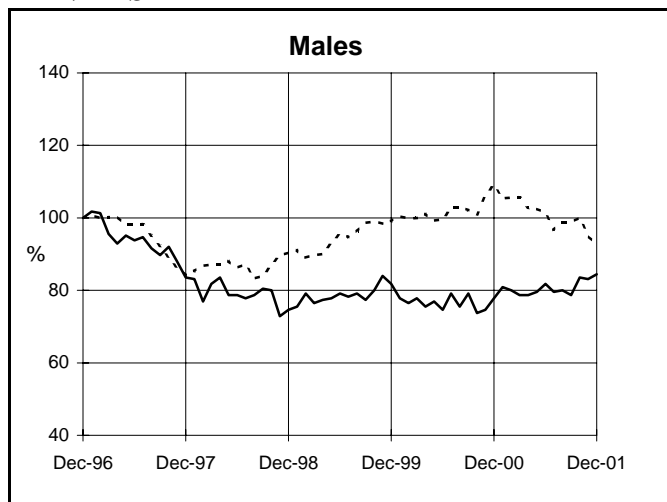
Source: ATSB Monthly Fatality Crash Database, 1996 to 2001



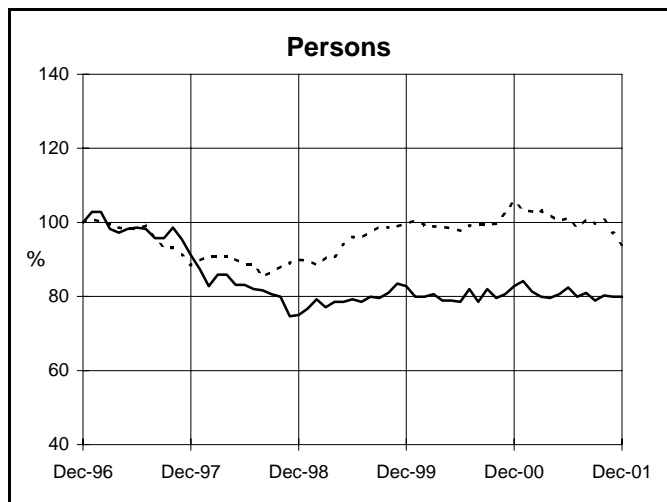
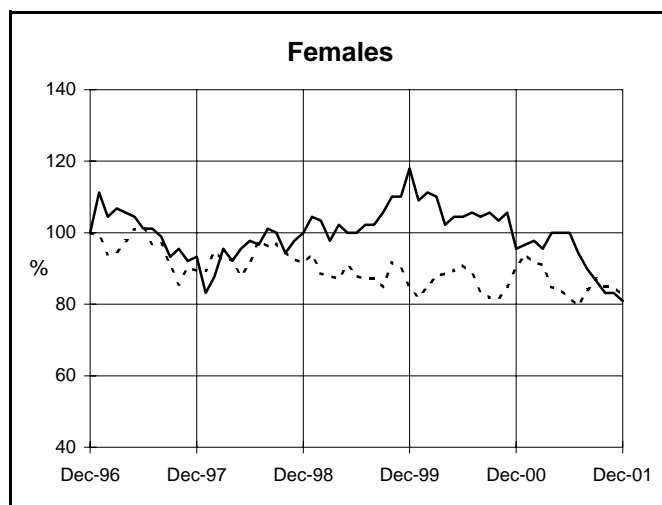
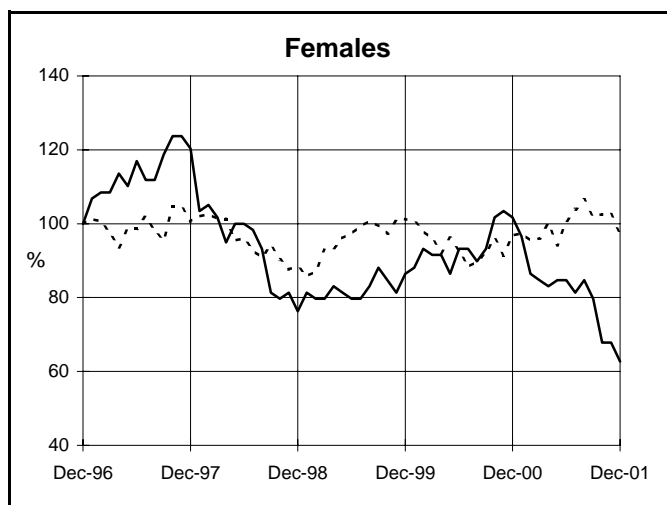
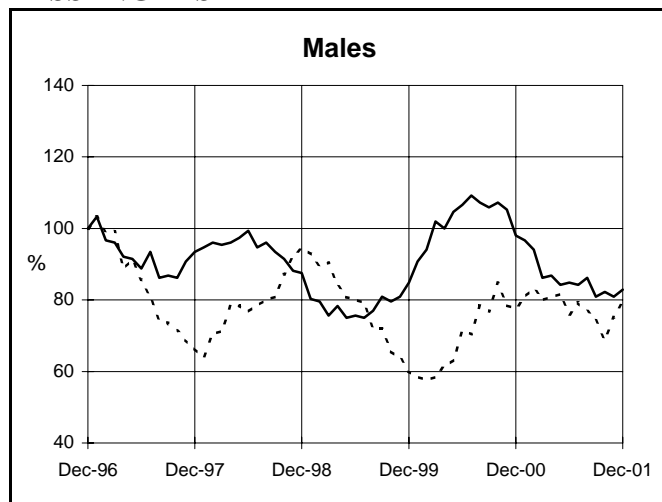
Count of road toll by road user, gender and selected age groups, Australia, 1996 to 2001

Each point shows the number of fatalities in preceding 12 months expressed as percentage of comparable figure at December 1996

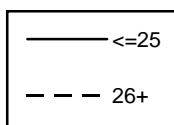
DRIVERS



PASSENGERS



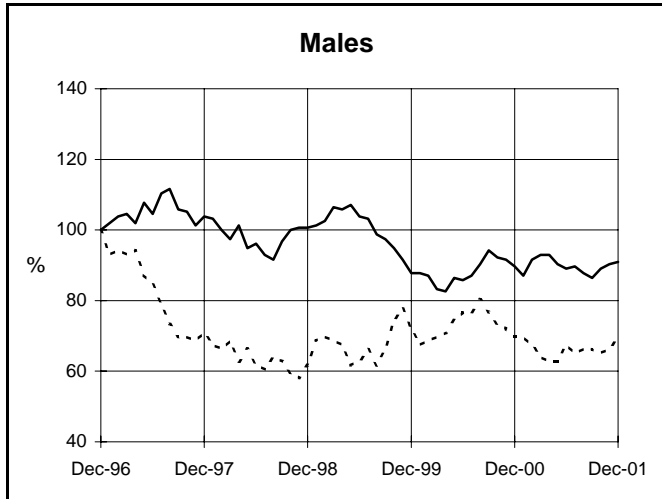
Source: ATSB Monthly Fatality Crash Database, 1996 to 2001



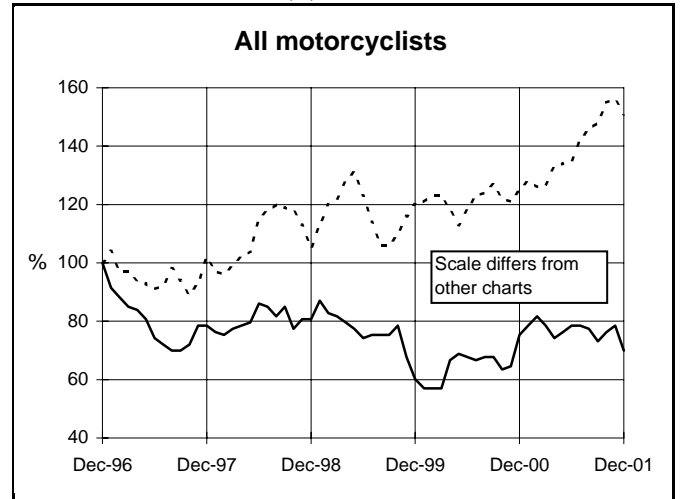
Count of road toll by road user, gender and selected age groups, Australia, 1996 to 2001 (continued)

Each point shows the number of fatalities in preceding 12 months expressed as percentage of comparable figure at December 1996

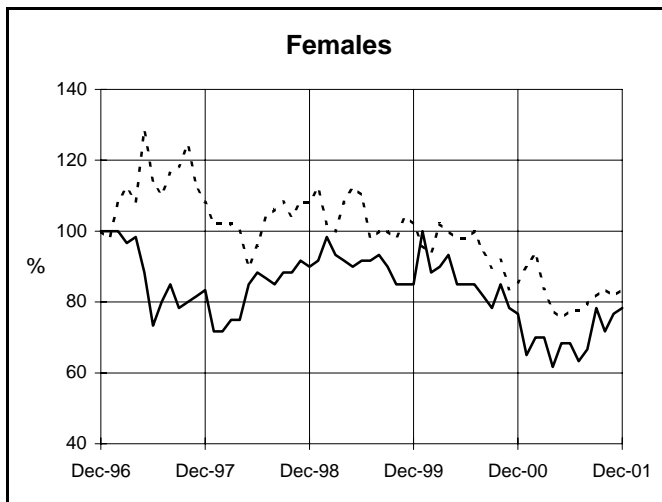
PEDESTRIANS



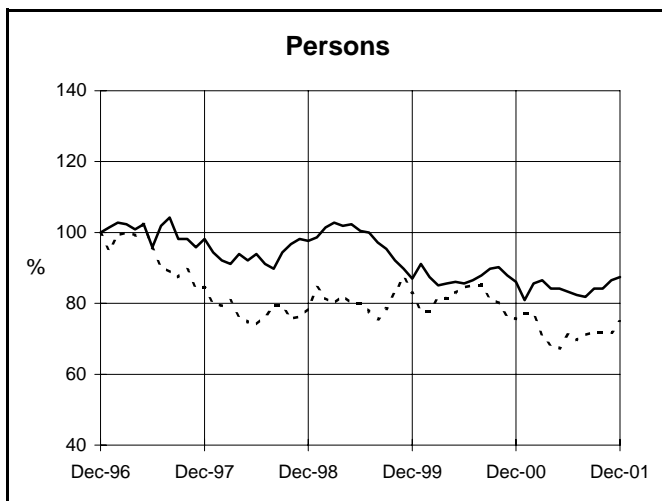
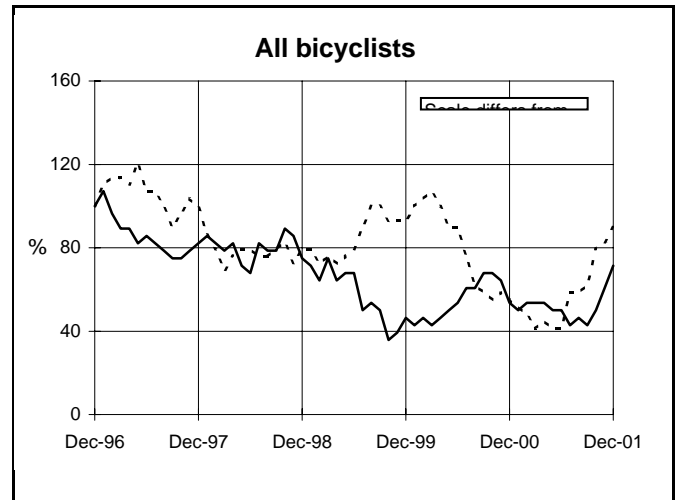
MOTORCYCLISTS (a)



(a) Includes pillion passengers



BICYCLISTS



Source: ATSB Monthly Fatality Crash Database, 1996 to 2001

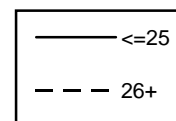
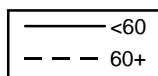


Table 31 Fatalities by road user, gender and age, Australia, 1980 to 2001

		0-16 yrs	17-25 yrs	26-39 yrs	40-59 yrs	60-69 yrs*	70+ yrs	All fatalities	Average age
DRIVERS									
Males	1980	8	408	293	196	114	..	1,019	..
	1981	11	417	276	224	113	..	1,044	..
	1982	12	373	304	211	109	..	1,010	..
	1983	11	320	233	152	96	..	814	..
	1984	11	283	216	169	110	..	790	..
	1985	6	332	250	176	114	..	878	..
	1986	2	308	255	179	124	..	871	..
	1987	6	273	248	166	132	..	825	..
	1988	8	300	263	186	128	..	885	..
	1989	12	295	267	179	60	53	866	36
	1990	5	228	192	147	53	74	699	38
	1991	9	216	184	142	44	72	667	39
	1992	8	182	184	129	44	49	596	38
	1993	6	212	189	152	48	57	664	38
	1994	9	189	155	132	59	76	620	40
	1995	5	216	175	123	65	57	641	39
	1996	12	213	186	150	39	55	656	38
	1997	9	179	144	124	38	56	551	39
	1998	7	161	144	142	40	63	559	40
	1999	3	181	188	122	45	71	612	40
	2000	8	167	208	147	39	75	644	40
2001	7	183	143	133	51	72	589	41	
Females	1980	3	67	63	52	32	..	217	..
	1981	3	85	72	44	31	..	235	..
	1982	1	79	56	52	39	..	227	..
	1983	1	93	59	39	28	..	220	..
	1984	1	89	58	58	40	..	246	..
	1985	4	85	73	62	40	..	265	..
	1986	1	93	74	55	39	..	263	..
	1987	2	98	78	54	38	..	270	..
	1988	1	87	69	62	40	..	259	..
	1989	2	88	74	53	22	17	256	37
	1990	2	83	59	52	18	22	236	37
	1991	4	64	68	55	31	21	243	41
	1992	1	76	52	51	11	28	219	39
	1993	1	51	62	37	23	21	195	41
	1994	2	57	45	46	16	23	189	41
	1995	3	66	63	56	18	27	233	40
	1996	5	54	57	56	15	26	213	41
	1997	2	69	65	51	17	22	226	39
	1998	3	42	46	45	12	33	182	44
	1999	3	48	56	56	18	26	207	42
	2000	1	59	57	58	13	21	209	40
2001	3	34	47	64	18	21	187	44	
Persons	1980	11	475	356	248	146	..	1,236	..
	1981	14	502	348	268	144	..	1,279	..
	1982	13	452	360	263	148	..	1,237	..
	1983	12	413	292	191	124	..	1,034	..
	1984	12	372	274	227	150	..	1,036	..
	1985	10	417	323	238	154	..	1,143	..
	1986	3	401	329	234	163	..	1,134	..
	1987	8	371	326	220	170	..	1,095	..
	1988	9	387	332	248	168	..	1,144	..
	1989	14	383	341	232	82	70	1,122	36
	1990	7	311	251	199	71	96	935	38
	1991	13	280	252	197	75	93	910	39
	1992	9	258	236	180	55	77	815	38
	1993	7	263	251	189	71	78	859	39
	1994	11	246	200	178	75	99	809	40
	1995	8	282	238	179	83	84	874	39
	1996	17	267	243	206	54	81	869	39
	1997	11	248	209	175	55	78	777	39
	1998	10	203	190	187	52	96	741	41
	1999	6	229	244	178	63	97	819	40
	2000	9	226	265	205	52	96	853	40
2001	10	217	190	197	69	93	776	41	

.. Average age not calculated

* 60+ for years 1980-88

Table 31 Fatalities by road user, gender and age, Australia, 1980 to 2001 (continued)

		0-16 yrs	17-25 yrs	26-39 yrs	40-59 yrs	60-69 yrs*	70+ yrs	All fatalities	Average age
PASSENGERS									
Males	1980	105	206	74	33	36	..	455	..
	1981	79	249	54	49	43	..	476	..
	1982	127	198	83	38	30	..	477	..
	1983	76	167	73	28	24	..	373	..
	1984	75	165	80	34	25	..	383	..
	1985	78	196	81	38	37	..	431	..
	1986	78	168	62	43	38	..	391	..
	1987	66	175	82	34	33	..	392	..
	1988	84	177	73	36	34	..	410	..
	1989	73	160	89	39	14	23	402	28
	1990	59	133	59	35	13	13	314	28
	1991	60	124	51	36	14	15	301	28
	1992	62	117	56	32	8	10	288	27
	1993	54	115	53	33	14	15	285	29
	1994	45	88	49	35	9	10	236	29
	1995	45	104	58	30	6	16	259	29
	1996	54	98	49	35	20	21	277	31
	1997	49	93	39	21	10	13	228	28
	1998	48	85	45	40	10	23	254	32
	1999	36	93	36	19	9	11	209	28
	2000	49	100	40	23	14	20	246	30
2001	42	84	44	20	10	25	225	31	
Females	1980	80	105	57	59	86	..	387	..
	1981	99	113	44	79	74	..	413	..
	1982	79	110	48	47	82	..	373	..
	1983	72	70	43	55	73	..	316	..
	1984	79	82	68	51	90	..	372	..
	1985	61	89	50	56	74	..	332	..
	1986	69	101	41	58	69	..	339	..
	1987	72	90	40	51	87	..	344	..
	1988	57	98	54	57	98	..	366	..
	1989	74	100	49	61	41	50	379	37
	1990	51	81	37	40	51	59	320	41
	1991	38	59	42	33	24	55	253	41
	1992	37	77	39	43	33	50	281	40
	1993	50	55	35	35	23	28	228	36
	1994	48	46	41	43	32	54	264	42
	1995	50	54	24	45	20	39	232	38
	1996	49	40	22	37	25	48	222	42
	1997	40	43	21	38	19	40	203	41
	1998	44	45	26	33	21	41	213	40
	1999	53	52	23	25	30	34	217	37
	2000	41	44	22	33	19	45	204	41
2001	30	42	14	41	18	36	181	42	
Persons	1980	185	311	131	92	122	..	842	..
	1981	178	362	98	128	117	..	889	..
	1982	206	308	131	85	112	..	850	..
	1983	148	237	116	83	97	..	689	..
	1984	155	247	148	85	115	..	756	..
	1985	139	285	131	94	111	..	763	..
	1986	147	269	103	101	107	..	730	..
	1987	138	265	122	85	120	..	736	..
	1988	141	275	127	93	132	..	776	..
	1989	147	260	138	100	55	73	781	32
	1990	110	214	96	75	64	72	634	34
	1991	98	183	93	69	38	70	554	34
	1992	99	194	95	75	41	60	570	33
	1993	104	170	88	68	37	43	513	32
	1994	94	134	90	78	41	64	501	36
	1995	95	158	82	75	26	55	491	33
	1996	103	138	71	72	45	69	499	36
	1997	89	136	60	59	29	53	431	34
	1998	93	130	71	73	31	64	468	35
	1999	89	145	59	44	39	45	428	33
	2000	90	144	62	56	33	65	450	35
2001	73	126	58	61	28	61	407	36	

.. Average age not calculated

* 60+ for years 1980-88

Table 31 Fatalities by road user, gender and age, Australia, 1980 to 2001 (continued)

		0-16 yrs	17-25 yrs	26-39 yrs	40-59 yrs	60-69 yrs*	70+ yrs	All fatalities	Average age
PEDESTRIANS									
Males	1980	82	51	56	90	155	..	434	..
	1981	101	53	48	88	155	..	447	..
	1982	81	50	57	77	134	..	399	..
	1983	54	53	34	72	120	..	334	..
	1984	76	54	45	55	124	..	354	..
	1985	73	38	58	66	118	..	354	..
	1986	67	41	64	54	118	..	344	..
	1987	64	56	43	54	108	..	325	..
	1988	56	69	52	54	134	..	365	..
	1989	48	62	76	59	36	68	350	42
	1990	50	55	56	55	26	63	305	41
	1991	37	37	40	33	35	51	233	44
	1992	35	47	39	32	30	58	241	44
	1993	27	41	42	38	15	58	221	44
	1994	32	51	42	43	21	63	252	44
	1995	36	51	57	43	21	66	276	44
	1996	29	43	39	44	27	59	242	45
	1997	27	45	54	35	20	41	224	41
	1998	30	42	43	41	12	41	211	41
	1999	19	39	43	35	22	40	198	44
	2000	30	37	33	39	20	40	199	42
	2001	26	33	41	41	18	42	201	43
Females	1980	55	14	17	25	98	..	210	..
	1981	37	13	11	31	90	..	182	..
	1982	39	15	13	26	99	..	192	..
	1983	42	9	10	23	94	..	178	..
	1984	44	21	9	24	89	..	187	..
	1985	41	19	14	27	83	..	184	..
	1986	47	21	17	22	86	..	193	..
	1987	34	13	16	28	78	..	169	..
	1988	42	18	14	22	86	..	183	..
	1989	25	19	9	18	27	53	151	51
	1990	26	14	15	12	13	35	115	45
	1991	14	12	13	11	16	43	110	53
	1992	18	11	15	9	21	34	109	50
	1993	20	13	15	12	13	37	110	48
	1994	16	18	14	13	17	37	115	49
	1995	18	7	16	22	14	43	122	51
	1996	16	9	21	14	12	37	109	49
	1997	10	13	12	15	13	40	104	53
	1998	12	7	16	19	11	42	107	54
	1999	16	8	10	17	11	39	101	53
	2000	15	7	13	11	9	33	88	50
	2001	10	5	16	16	9	32	88	53
Persons	1980	137	65	73	115	253	..	644	..
	1981	138	66	59	119	245	..	629	..
	1982	120	65	70	103	233	..	591	..
	1983	96	62	44	95	214	..	512	..
	1984	120	75	54	79	213	..	541	..
	1985	114	57	72	93	201	..	538	..
	1986	114	62	81	76	204	..	537	..
	1987	98	69	59	82	186	..	494	..
	1988	98	87	66	76	220	..	548	..
	1989	73	81	85	77	63	121	501	45
	1990	76	69	71	67	39	98	420	42
	1991	51	49	53	44	51	94	343	47
	1992	53	58	54	41	51	92	350	46
	1993	47	54	57	50	28	95	331	45
	1994	48	69	56	56	38	100	367	46
	1995	54	58	73	65	35	109	398	46
	1996	45	52	60	58	39	96	351	46
	1997	37	58	66	50	33	81	328	45
	1998	42	49	59	60	23	83	318	45
	1999	35	47	53	52	33	79	299	47
	2000	45	44	46	50	29	73	287	45
	2001	36	38	57	57	27	74	289	46

.. Average age not calculated

* 60+ for years 1980-88

Table 31 Fatalities by road user, gender and age, Australia, 1980 to 2001 (continued)

		0-16 yrs	17-25 yrs	26-39 yrs	40-59 yrs	60-69 yrs*	70+ yrs	All fatalities	Average age
MOTORCYCLE RIDERS AND PASSENGERS									
Males	1980	21	309	65	14	4	..	413	..
	1981	20	271	85	17	3	..	398	..
	1982	15	295	123	15	7	..	455	..
	1983	17	267	86	12	2	..	384	..
	1984	12	259	85	10	1	..	367	..
	1985	15	257	91	16	2	..	381	..
	1986	21	236	107	17	2	..	383	..
	1987	12	196	103	16	6	..	334	..
	1988	7	186	93	16	7	..	310	..
	1989	17	162	83	16	3	2	283	25
	1990	11	129	86	16	2	0	244	26
	1991	10	112	80	27	2	3	234	28
	1992	12	77	76	17	3	1	186	28
	1993	5	97	63	23	1	0	189	28
	1994	7	79	74	14	3	1	178	29
	1995	7	85	74	24	4	1	195	29
	1996	4	85	65	24	3	0	181	29
	1997	6	57	61	28	2	1	157	31
	1998	5	64	67	30	2	1	169	30
	1999	6	45	74	35	4	0	164	32
	2000	4	60	74	39	3	2	182	32
	2001	4	61	91	47	5	2	210	33
Females	1980	4	21	3	1	0	..	29	..
	1981	3	18	5	0	0	..	26	..
	1982	2	21	2	1	1	..	27	..
	1983	3	18	3	2	0	..	26	..
	1984	3	12	6	2	0	..	23	..
	1985	4	12	6	0	1	..	23	..
	1986	2	14	6	0	0	..	22	..
	1987	3	17	4	1	0	..	25	..
	1988	3	6	3	0	1	..	13	..
	1989	1	9	5	1	0	0	16	26
	1990	1	9	6	2	0	0	18	26
	1991	3	9	2	0	0	0	14	21
	1992	1	4	3	3	0	0	11	32
	1993	0	6	8	0	0	0	14	27
	1994	0	3	5	3	1	0	12	37
	1995	1	4	3	1	0	0	9	25
	1996	1	3	3	4	1	0	12	34
	1997	1	9	7	2	0	1	20	30
	1998	0	6	2	2	1	0	12	31
	1999	1	4	5	2	0	0	12	28
	2000	0	6	5	1	1	0	13	31
	2001	0	0	3	3	0	0	6	40
Persons	1980	25	330	68	15	4	..	442	..
	1981	23	289	90	17	3	..	424	..
	1982	17	316	125	16	8	..	482	..
	1983	20	285	89	14	2	..	410	..
	1984	15	271	91	12	1	..	390	..
	1985	19	269	97	16	3	..	404	..
	1986	23	250	113	17	2	..	405	..
	1987	15	213	107	17	6	..	359	..
	1988	10	192	96	16	8	..	323	..
	1989	18	171	88	17	3	2	299	25
	1990	12	138	92	18	2	0	262	26
	1991	13	121	82	27	2	3	248	28
	1992	13	81	79	20	3	1	197	28
	1993	5	103	71	23	1	0	203	28
	1994	7	82	79	17	4	1	190	29
	1995	8	89	77	25	4	1	204	29
	1996	5	88	68	28	4	0	193	30
	1997	7	66	68	30	2	2	177	31
	1998	5	70	69	32	3	1	181	30
	1999	7	49	79	37	4	0	176	32
	2000	4	66	79	40	4	2	195	32
	2001	4	61	94	50	5	2	216	33

.. Average age not calculated

* 60+ for years 1980-88

Table 31 Fatalities by road user, gender and age, Australia, 1980 to 2001 (continued)

		0-16 yrs	17-25 yrs	26-39 yrs	40-59 yrs	60-69 yrs*	70+ yrs	All fatalities	Average age
BICYCLISTS									
Males	1980	42	13	9	6	8	..	78	..
	1981	52	11	3	5	7	..	78	..
	1982	48	12	2	9	9	..	80	..
	1983	47	12	7	11	10	..	87	..
	1984	44	6	8	8	9	..	75	..
	1985	35	8	6	8	11	..	68	..
	1986	32	4	12	11	8	..	67	..
	1987	26	16	9	11	6	..	68	..
	1988	27	15	15	10	8	..	75	..
	1989	37	14	14	10	5	5	85	29
	1990	30	16	10	11	3	2	72	26
	1991	19	12	5	8	3	2	49	27
	1992	15	7	3	7	2	2	36	29
	1993	10	2	7	8	3	4	34	39
	1994	16	11	5	8	3	7	50	34
	1995	11	7	10	4	4	5	41	36
	1996	19	6	4	11	2	7	49	35
	1997	16	4	9	8	2	6	45	34
	1998	14	3	7	9	2	3	38	34
	1999	7	3	5	8	5	3	31	41
	2000	8	4	5	9	1	1	28	33
	2001	12	7	9	6	2	4	40	32
Females	1980	11	2	0	2	0	..	15	..
	1981	11	3	2	0	0	..	16	..
	1982	5	1	0	0	2	..	8	..
	1983	11	0	1	4	0	..	16	..
	1984	11	3	0	1	0	..	15	..
	1985	7	4	3	0	1	..	15	..
	1986	7	2	1	1	0	..	11	..
	1987	4	3	0	0	4	..	11	..
	1988	6	1	1	3	1	..	12	..
	1989	7	3	1	2	0	0	13	20
	1990	3	1	2	1	1	0	8	29
	1991	4	1	4	0	0	0	9	22
	1992	2	2	0	0	0	1	5	27
	1993	5	0	3	2	1	0	11	30
	1994	6	1	1	1	0	0	9	18
	1995	1	2	4	0	0	0	7	26
	1996	1	2	3	2	0	0	8	30
	1997	3	0	1	2	0	1	7	31
	1998	3	1	1	1	0	0	6	23
	1999	3	0	2	2	1	1	9	37
	2000	1	2	0	0	0	0	3	17
	2001	0	1	1	3	0	1	6	45
Persons	1980	53	15	9	8	8	..	93	..
	1981	63	14	5	5	7	..	94	..
	1982	53	13	2	9	11	..	88	..
	1983	58	12	8	15	10	..	103	..
	1984	55	9	8	9	9	..	90	..
	1985	42	12	9	8	12	..	83	..
	1986	39	6	13	12	8	..	78	..
	1987	30	19	9	11	10	..	79	..
	1988	33	16	16	13	9	..	87	..
	1989	44	17	15	12	5	5	98	27
	1990	33	17	12	12	4	2	80	26
	1991	23	13	9	8	3	2	58	26
	1992	17	9	3	7	2	3	41	29
	1993	15	2	10	10	4	4	45	37
	1994	22	12	6	9	3	7	59	32
	1995	12	9	14	4	4	5	48	34
	1996	20	8	7	13	2	7	57	34
	1997	19	4	10	10	2	7	52	34
	1998	17	4	8	10	2	3	44	32
	1999	10	3	7	10	6	4	40	40
	2000	9	6	5	9	1	1	31	31
	2001	12	8	10	9	2	5	46	34

.. Average age not calculated

* 60+ for years 1980-88

Table 31 Fatalities by road user, gender and age, Australia, 1980 to 2001 (continued)

		0-16 yrs	17-25 yrs	26-39 yrs	40-59 yrs	60-69 yrs*	70+ yrs	All fatalities	Average age
ALL ROADUSERS									
Males	1980	258	988	501	341	318	..	2,407	..
	1981	263	1,001	467	385	321	..	2,446	..
	1982	284	928	569	350	292	..	2,425	..
	1983	205	820	434	276	255	..	1,998	..
	1984	218	767	437	280	269	..	1,976	..
	1985	208	831	487	308	284	..	2,120	..
	1986	201	757	501	305	290	..	2,059	..
	1987	176	718	486	282	285	..	1,950	..
	1988	184	747	500	303	312	..	2,053	..
	1989	187	693	529	303	118	151	1,986	34
	1990	155	561	403	264	97	152	1,634	34
	1991	135	501	360	246	98	143	1,484	35
	1992	132	430	358	217	88	120	1,348	35
	1993	102	467	354	254	81	134	1,393	36
	1994	111	418	325	232	95	157	1,338	37
	1995	104	463	375	224	100	145	1,413	37
	1996	118	446	343	264	91	142	1,406	36
	1997	107	379	307	216	72	118	1,207	36
	1998	104	356	306	262	66	131	1,232	37
	1999	71	361	346	220	85	125	1,215	37
2000	99	369	361	257	77	138	1,301	37	
2001	91	368	328	247	86	145	1,265	38	
Females	1980	157	209	140	140	217	..	865	..
	1981	155	232	135	154	195	..	875	..
	1982	126	226	119	126	223	..	827	..
	1983	130	190	116	123	195	..	757	..
	1984	138	207	142	136	220	..	845	..
	1985	118	209	147	145	199	..	821	..
	1986	126	231	140	136	194	..	829	..
	1987	117	221	138	135	207	..	822	..
	1988	109	210	142	144	226	..	834	..
	1989	109	219	138	135	90	120	815	39
	1990	83	188	119	107	83	116	697	40
	1991	63	145	129	99	71	119	629	42
	1992	59	170	109	106	65	113	625	41
	1993	76	125	125	86	60	86	560	40
	1994	72	125	106	106	66	114	589	42
	1995	73	133	111	124	52	109	604	41
	1996	72	108	106	113	53	111	564	43
	1997	57	134	106	108	49	104	561	42
	1998	62	103	91	100	45	116	522	44
	1999	76	112	96	102	60	100	546	42
2000	58	122	97	103	42	99	521	41	
2001	44	82	82	127	45	90	470	45	
Persons	1980	415	1,197	641	481	535	..	3,272	..
	1981	418	1,233	602	539	516	..	3,321	..
	1982	410	1,154	688	476	515	..	3,252	..
	1983	335	1,010	550	399	450	..	2,755	..
	1984	357	974	579	416	489	..	2,822	..
	1985	326	1,040	634	453	483	..	2,941	..
	1986	327	988	641	441	484	..	2,888	..
	1987	293	939	624	417	492	..	2,772	..
	1988	293	957	642	447	538	..	2,887	..
	1989	296	912	667	438	208	271	2,801	35
	1990	238	749	522	371	180	268	2,331	36
	1991	198	646	489	345	169	262	2,113	37
	1992	191	600	467	323	153	233	1,974	37
	1993	178	592	479	340	141	220	1,953	37
	1994	184	543	431	338	161	271	1,928	39
	1995	177	596	486	348	152	254	2,017	38
	1996	190	554	449	377	144	253	1,970	38
	1997	164	513	413	324	121	222	1,768	38
	1998	167	459	397	362	111	247	1,755	39
	1999	147	473	442	322	145	225	1,763	39
2000	157	491	458	360	119	237	1,822	38	
2001	136	450	410	374	131	235	1,736	40	

.. Average age not calculated

* 60+ for years 1980-88

Table 32 Fatalities by month, Australia, 1990 to 2001

	1990	1991	1992	1993	1994	1995	1996	1997	1998	1999	2000	2001
Month												
<i>January</i>	174	171	175	137	158	160	142	171	133	153	146	138
<i>February</i>	166	153	148	136	131	156	170	135	138	126	125	123
<i>March</i>	221	205	161	158	185	161	161	140	156	155	171	139
<i>April</i>	175	179	185	162	152	150	168	134	149	154	147	132
<i>May</i>	186	160	152	150	146	172	154	164	148	157	165	155
<i>June</i>	221	150	168	146	158	187	160	114	134	132	147	154
<i>July</i>	205	187	159	148	158	155	153	156	156	138	166	142
<i>August</i>	189	194	157	185	147	167	199	158	139	135	126	148
<i>September</i>	233	181	148	158	141	166	178	127	142	157	161	143
<i>October</i>	167	177	193	207	199	187	148	149	150	154	147	163
<i>November</i>	171	166	151	170	184	175	171	161	153	154	156	152
<i>December</i>	223	190	177	196	169	181	166	159	157	148	165	147
Total	2,331	2,113	1,974	1,953	1,928	2,017	1,970	1,768	1,755	1,763	1,822	1,736