



**Australian Government**

**Department of Infrastructure and Regional Development**

Bureau of Infrastructure, Transport and Regional Economics

STATISTICAL REPORT



# Aviation

Domestic aviation activity  
Annual 2013-14

© Commonwealth of Australia 2014

ISSN: 1832 - 1968

### **Ownership of intellectual property rights in this publication**

Unless otherwise noted, copyright (and any other intellectual property rights, if any) in this publication is owned by the Commonwealth of Australia (referred to below as the Commonwealth).

### **Disclaimer**

The material contained in this publication is made available on the understanding that the Commonwealth is not providing professional advice, and that users exercise their own skill and care with respect to its use, and seek independent advice if necessary.

The Commonwealth makes no representations or warranties as to the contents or accuracy of the information contained in this publication. To the extent permitted by law, the Commonwealth disclaims liability to any person or organisation in respect of anything done, or omitted to be done, in reliance upon information contained in this publication.

### **Creative Commons licence**

With the exception of (a) the Coat of Arms; and (b) the Department of Infrastructure's photos and graphics, copyright in this publication is licensed under a Creative Commons Attribution 3.0 Australia Licence.

Creative Commons Attribution 3.0 Australia Licence is a standard form licence agreement that allows you to copy, communicate and adapt this publication provided that you attribute the work to the Commonwealth and abide by the other licence terms. A summary of the licence terms is available from <http://creativecommons.org/licenses/by/3.0/au/deed.en>. The full licence terms are available from <http://creativecommons.org/licenses/by/3.0/au/legalcode>.

### **Use of the Coat of Arms**

The Department of the Prime Minister and Cabinet sets the terms under which the Coat of Arms is used. Please refer to the Department's Commonwealth Coat of Arms and Government branding web page <http://www.dpmc.gov.au/guidelines/index.cfm#brand> and, in particular, the Guidelines on the use of the Commonwealth Coat of Arms publication.

An appropriate citation for this report is:

Bureau of Infrastructure, Transport and Regional Economics (BITRE), 2014, Domestic airline activity, Statistical Report, BITRE, Canberra ACT.

### **Contact us**

This publication is available in PDF format. All other rights are reserved, including in relation to any Departmental logos or trade marks which may exist. For enquiries regarding the licence and any use of this publication, please contact:

Bureau of Infrastructure, Transport and Regional Economics (BITRE)  
Department of Infrastructure and Transport  
GPO Box 501, Canberra ACT 2601, Australia  
Telephone: (international) +61 2 6274 7210  
Fax: (international) +61 2 6274 6855  
Email: [bitre@infrastructure.gov.au](mailto:bitre@infrastructure.gov.au)  
Website: [www.bitre.gov.au](http://www.bitre.gov.au)

### **Inquiries**

Should you require additional information about the statistics contained in this publication:

Nebojsa Pavlovic

Telephone (02) 6274 6817 or Facsimile (02) 6274 7727

Electronic mail: [AVSTATS@infrastructure.gov.au](mailto:AVSTATS@infrastructure.gov.au)

[Nebojsa.Pavlovic@infrastructure.gov.au](mailto:Nebojsa.Pavlovic@infrastructure.gov.au)

Web site: <http://www.bitre.gov.au/statistics/aviation/domestic.aspx>

## FOREWORD

This report provides an overview of domestic (including charter) commercial aviation activity in Australia for the year ending June 2014.

The data cover revenue passengers carried by Australian-registered operators of scheduled regular public transport services over Australian flight stages and fixed-wing charter operators. These estimates include passengers carried between domestic airports on international flights operated by these carriers. The passengers carried refer to traffic on board by stages.

Estimates of passengers and aircraft movements for charter aviation are included in this publication, where BITRE confidentiality standards are met.

Individual routes shown are restricted to those with an average exceeding 8 000 passengers per month where two or more airlines operate in competition. For the year ending June 2014 there were 64 such routes: 61 routes met these criteria for all twelve months of the year while three routes did so for a period shorter than one year.

Information on the total network for the year ending June 2014 and on the Regular Public Transport (RPT) network for the year ending June 2014 is presented on page 2.

Detailed information on the 64 individual routes can be found in the RPT summary pages 3–10 of this publication.

The top ten airports in terms of RPT passenger movements are shown on page 11.

Data on domestic RPT cargo movements at the top five cargo airports are provided on page 12. The table includes cargo carried on passenger flights operated by the Qantas group (including Jetstar), Virgin Australia, Air North, Skippers and Skytrans as well as the cargo carried by dedicated freighter aircraft operated by Qantas Freight and Toll Priority.

The long-term trends for the top twenty competitive RPT routes are presented graphically on pages 13–22.

Domestic RPT passenger movements at the top 50 regional airports are presented on page 23.

Tables providing estimates of domestic charter aviation activity are shown on page 24. BITRE confidentiality standards restrict publication of detailed airport-level estimates for all Australian airports, with the exception of Perth Airport.

A list of definitions can be found on page 25.

This report was prepared by the Aviation Statistics Section of the Bureau of Infrastructure, Transport and Regional Economics with data provided by airlines.

Estimates are included where data were not available and data presented in this publication may contain revisions to previously published data.

Where figures have been rounded, discrepancies may occur between sums of component items and totals, and in percentage changes which are derived from figures prior to rounding.

# CONTENTS

<b>Highlights</b> .....	<b>1</b>
<b>RPT network</b> .....	<b>2</b>
<b>Top competitive routes</b> .....	<b>3</b>
<b>Top ten airports – passenger movements</b> .....	<b>11</b>
<b>Top five airports – cargo movements</b> .....	<b>12</b>
<b>Top twenty routes</b> .....	<b>13</b>
1. Melbourne – Sydney .....	13
2. Brisbane – Sydney .....	13
3. Brisbane – Melbourne .....	14
4. Gold Coast – Sydney .....	14
5. Adelaide – Melbourne .....	15
6. Melbourne – Perth .....	15
7. Perth – Sydney .....	16
8. Adelaide – Sydney .....	16
9. Gold Coast – Melbourne .....	17
10. Hobart – Melbourne.....	17
11. Brisbane – Cairns.....	18
12. Brisbane – Perth.....	18
13. Cairns – Sydney .....	19
14. Canberra – Sydney .....	19
15. Canberra – Melbourne .....	20
16. Brisbane – Townsville .....	20
17. Launceston – Melbourne.....	21
18. Brisbane – Mackay.....	21
19. Adelaide – Brisbane .....	22
20. Cairns – Melbourne.....	22
<b>Top fifty regional airports</b> .....	<b>23</b>
<b>Domestic charter activity</b> .....	<b>24</b>
<b>Definitions</b> .....	<b>25</b>

This page is intentionally left blank.

## HIGHLIGHTS

There were 60.38 million passengers carried on Australian domestic commercial aviation (including charter operations) for the year ending June 2014, an increase of 1.5 per cent on the year ending June 2013. For the year ending June 2014 there were 698 856 aircraft trips, a decrease of 0.2 per cent compared to the previous year.

57.72 million passengers were carried on RPT flights in the year ending June 2014, an increase of 1.0 per cent on the year ending June 2013.

RPT revenue passenger kilometres (RPKs) performed were 68.08 billion for the year, up 1.3 per cent on the year ending June 2013. Capacity, measured by available seat kilometres (ASKs), increased 2.3 per cent compared with the year ending June 2013, to a total of 89.54 billion.

With RPT capacity increasing at a faster rate than passenger traffic, the industry wide load factor (RPKs/ASKs) decreased from 76.7 per cent for the year ending June 2013 to 76.0 per cent for the year ending June 2014. Load factors on individual routes decreased on 30 of the 56 RPT routes for which data is available in both years.

For the year ending June 2014, Melbourne – Sydney remained Australia's busiest RPT route with 8.28 million passengers, an increase of 1.0 per cent compared with the year ending June 2013. It was followed by Brisbane – Sydney with 4.45 million passengers (up 0.6 per cent) and Brisbane – Melbourne with 3.28 million passengers (up 3.6 per cent).

The greatest percentage increase in RPT passenger numbers, compared to the year ending June 2013, was on the Melbourne – Sunshine Coast route (up 24.0 per cent). There were large increases on a number of other routes, including Launceston – Sydney (up 16.0 per cent), Dubbo – Sydney (up 11.9 per cent), Adelaide – Gold Coast (up 11.7 per cent), Cairns – Melbourne (up 11.4 per cent) and Ballina – Sydney (up 11.1 per cent).

RPT routes with traffic decreases in the year ending June 2014 compared with the year ending June 2013, included Ayers Rock (Uluru) – Sydney (down 13.8 per cent), Brisbane – Emerald (down 11.0 per cent), Brisbane – Mackay (down 10.9 per cent), Karratha – Perth (down 10.2 per cent) and Kalgoorlie – Perth (down 8.0 per cent).

For the year ending June 2014, Sydney remained Australia's busiest domestic airport with 25.59 million passenger movements, followed by Melbourne with 23.32 million passenger movements and Brisbane with 17.14 million passenger movements.

For the year ending June 2014, the number of domestic aviation passengers travelling through regional airports was 24.65 million, 0.3 per cent higher than for the year ending June 2013. Out of the top 50 regional airports, the strongest growth was at Roma airport, up 42.1 per cent on the year ending June 2013, while the strongest fall was at Paraburdoo airport, down 21.4 per cent on the year ending June 2013.

Total cargo movements at Australian airports on domestic RPT flights were 407.1 thousand tonnes in the year ending June 2014, a decrease of 5.4 per cent compared to the previous year. For the year ending June 2014, Sydney was the busiest airport in terms of cargo movements (108.7 thousand tonnes, down 8.0 per cent compared to the year ending June 2013), followed by Melbourne (108.1 thousand tonnes, down 4.2 per cent) and Brisbane (65.9 thousand tonnes, down 2.3 per cent).

Fixed-wing charter operators carried 2.67 million passengers for the year ending June 2014, an increase of 12.4 per cent on the year ending June 2013. More than one third of all charter passengers in Australia took flights either to or from Perth Airport.

## TOTAL NETWORK

### Summary of annual commercial aviation activity

	YE Jun 2013	YE Jun 2014	% Change
Total passengers carried (millions)	59.50	60.38	1.5
Aircraft trips (000s)	700.5	698.9	-0.2

Note: Regular Public Transport and charter aviation activity

Helicopter and leisure charter flights not included

## RPT NETWORK

### Summary of annual RPT activity

	YE Jun 2013	YE Jun 2014	% Change
Total passengers carried (millions)	57.12	57.72	1.0
Revenue passenger kilometres (billions)	67.18	68.08	1.3
Available seats (millions)	76.69	77.74	1.4
Available seat kilometres (billions)	87.55	89.54	2.3
Load factors %	76.7	76.0	-0.7 *
Aircraft trips (000s)	642.0	643.1	0.2

\* percentage point difference

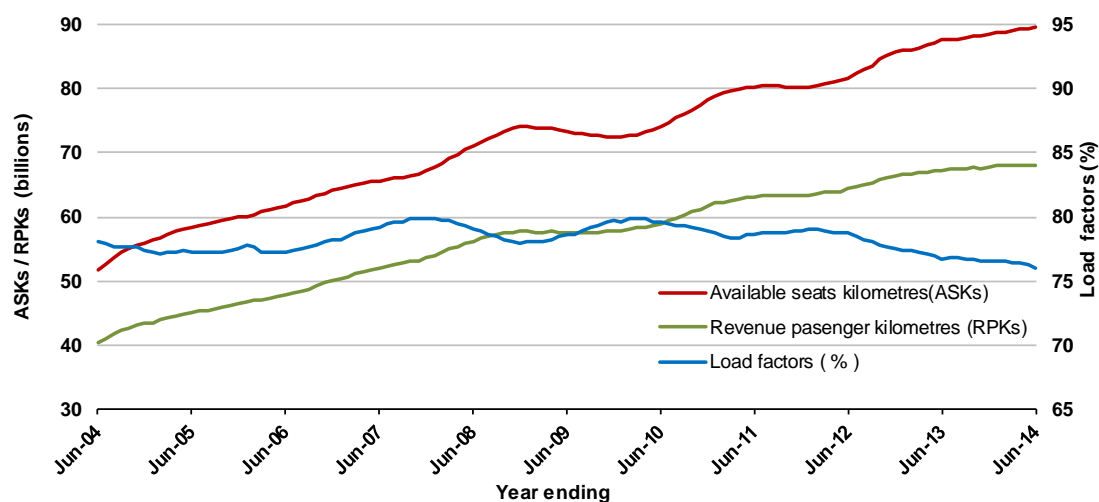
### Domestic RPT passenger traffic

(moving annual totals)



### RPT Network utilisation

(moving annual totals)





## TOP COMPETITIVE ROUTES

**Table 1: Passengers carried (000s) — annual activity**

	City-Pair	YE Jun 2013	YE Jun 2014	% Change
1	Melbourne - Sydney	8 200.6	8 280.3	1.0
2	Brisbane - Sydney	4 426.4	4 454.2	0.6
3	Brisbane - Melbourne	3 162.5	3 276.2	3.6
4	Gold Coast - Sydney	2 541.8	2 588.5	1.8
5	Adelaide - Melbourne	2 114.8	2 242.4	6.0
6	Melbourne - Perth	2 216.5	2 193.9	-1.0
7	Perth - Sydney	1 804.8	1 805.3	0.0
8	Adelaide - Sydney	1 753.6	1 778.7	1.4
9	Gold Coast - Melbourne	1 735.9	1 713.6	-1.3
10	Hobart - Melbourne	1 337.2	1 391.9	4.1
11	Brisbane - Cairns	1 191.9	1 227.7	3.0
12	Brisbane - Perth	981.4	1 059.6	8.0
13	Cairns - Sydney	941.1	1 006.6	7.0
14	Canberra - Sydney	1 041.3	994.1	-4.5
15	Canberra - Melbourne	1 000.6	972.8	-2.8
16	Brisbane - Townsville	965.9	955.9	-1.0
17	Launceston - Melbourne	861.7	887.3	3.0
18	Brisbane - Mackay	916.5	816.7	-10.9
19	Adelaide - Brisbane	743.8	761.9	2.4
20	Cairns - Melbourne	631.9	703.8	11.4
21	Karratha - Perth	763.0	685.2	-10.2
22	Brisbane - Rockhampton	623.9	638.7	2.4
23	Adelaide - Perth	624.0	623.5	-0.1
24	Brisbane - Newcastle	579.7	584.4	0.8
25	Brisbane - Canberra	585.9	570.0	-2.7
26	Hobart - Sydney	494.9	529.6	7.0
27	Perth - Port Hedland	477.0	476.8	0.0
28	Sunshine Coast - Sydney	461.9	472.2	2.2
29	Brisbane - Gladstone	441.9	469.8	6.3
30	Melbourne - Newcastle	430.0	434.7	1.1
31	Melbourne - Sunshine Coast	338.8	420.1	24.0
32	Newman - Perth	438.9	407.1	-7.3
33	Brisbane - Darwin	364.8	382.0	4.7
34	Coffs Harbour - Sydney	338.2	366.3	8.3
35	Darwin - Sydney	358.8	344.9	-3.9
36	Ballina - Sydney	293.2	325.7	11.1
37	Broome - Perth	322.4	312.8	-3.0
38	Launceston - Sydney	247.4	286.9	16.0
39	Darwin - Melbourne	284.1	281.3	-1.0
40	Brisbane - Emerald	296.2	263.5	-11.0
41	Brisbane - Proserpine	234.8	236.2	0.6
42	Albury - Sydney	240.8	230.2	-4.4
43	Kalgoorlie - Perth	233.9	215.2	-8.0
44	Adelaide - Gold Coast	189.9	212.0	11.7
45	Melbourne - Mildura	197.4	199.3	0.9
46	Hamilton Island - Sydney	201.2	197.4	-1.9
47	Dubbo - Sydney	172.5	193.0	11.9
48	Port Macquarie - Sydney	192.9	190.6	-1.2
49	Adelaide - Port Lincoln	195.9	187.7	-4.2
50	Sydney - Wagga Wagga	179.3	185.6	3.5

(continued)

**Table 1: (continued): Passengers carried (000s) — annual activity**

	<b>City-Pair</b>	<b>YE Jun 2013</b>	<b>YE Jun 2014</b>	<b>% Change</b>
51	Brisbane - Moranbah	33.5	181.5	NA (a)
52	Adelaide - Canberra	178.2	178.7	0.3
53	Darwin - Perth	165.8	175.2	5.7
54	Sydney - Townsville	184.1	175.1	-4.9
55	Brisbane - Mount Isa	145.7	158.4	NA (b)
56	Brisbane - Hamilton Island	155.3	153.3	-1.3
57	Alice Springs - Sydney	12.9	148.4	NA (c)
58	Alice Springs - Melbourne	23.7	141.5	NA (d)
59	Brisbane - Hobart	..	136.6	NA (e)
60	Geraldton - Perth	132.9	131.9	-0.7
61	Ayers Rock - Sydney	148.7	128.2	-13.8
62	Brisbane - Bundaberg	26.8	118.0	NA (f)
63	Hamilton Island - Melbourne	..	102.2	NA (g)
64	Armidale - Sydney	..	21.4	NA (h)
	<b>Total domestic network</b>	<b>57 122.9</b>	<b>57 715.7</b>	<b>1.0</b>

(a) Brisbane - Moranbah route included from May 2013, prior data not shown.

(b) Brisbane - Mount Isa route included from September 2012, prior data not shown.

(c) Alice Springs - Sydney route included from June 2013, prior data not shown.

(d) Alice Springs - Melbourne route included from May 2013, prior data not shown.

(e) Brisbane - Hobart route included from October 2013, prior data not shown.

(f) Brisbane - Bundaberg route included from May 2013, prior data not shown.

(g) Hamilton Island - Melbourne route included from August 2013, prior data not shown.

(h) Armidale - Sydney route included from May 2014, prior data not shown.

**Table 2: Available seats (000s) — annual activity**

	<b>City-Pair</b>	<b>YE Jun 2013</b>	<b>YE Jun 2014</b>	<b>% Change</b>
1	Melbourne - Sydney	10 280.3	10 024.7	-2.5
2	Brisbane - Sydney	5 631.8	5 664.7	0.6
3	Brisbane - Melbourne	4 026.5	4 182.5	3.9
4	Gold Coast - Sydney	3 197.3	3 212.7	0.5
5	Adelaide - Melbourne	2 721.1	2 870.2	5.5
6	Melbourne - Perth	2 897.6	2 848.9	-1.7
7	Perth - Sydney	2 216.0	2 260.3	2.0
8	Adelaide - Sydney	2 249.0	2 240.6	-0.4
9	Gold Coast - Melbourne	2 015.6	1 999.0	-0.8
10	Hobart - Melbourne	1 733.1	1 751.5	1.1
11	Brisbane - Cairns	1 505.8	1 549.8	2.9
12	Brisbane - Perth	1 186.9	1 353.3	14.0
13	Cairns - Sydney	1 177.8	1 227.3	4.2
14	Canberra - Sydney	1 653.0	1 615.4	-2.3
15	Canberra - Melbourne	1 515.8	1 445.4	-4.6
16	Brisbane - Townsville	1 317.1	1 337.9	1.6
17	Launceston - Melbourne	1 182.5	1 140.2	-3.6
18	Brisbane - Mackay	1 271.6	1 185.0	-6.8
19	Adelaide - Brisbane	955.8	970.0	1.5
20	Cairns - Melbourne	780.5	884.7	13.4
21	Karratha - Perth	1 211.2	1 243.7	2.7
22	Brisbane - Rockhampton	879.7	931.4	5.9
23	Adelaide - Perth	785.1	767.7	-2.2
24	Brisbane - Newcastle	741.2	778.3	5.0
25	Brisbane - Canberra	803.1	806.9	0.5
26	Hobart - Sydney	639.1	647.5	1.3
27	Perth - Port Hedland	781.0	791.3	1.3
28	Sunshine Coast - Sydney	565.3	574.9	1.7
29	Brisbane - Gladstone	297.7	315.9	6.1
30	Melbourne - Newcastle	556.7	568.0	2.0
31	Melbourne - Sunshine Coast	398.1	520.7	30.8
32	Newman - Perth	692.6	755.5	9.1
33	Brisbane - Darwin	448.9	501.3	11.7
34	Coffs Harbour - Sydney	462.0	493.3	6.8
35	Darwin - Sydney	477.8	467.6	-2.1
36	Ballina - Sydney	388.2	420.6	8.4
37	Broome - Perth	427.2	452.7	6.0
38	Launceston - Sydney	334.9	380.0	13.4
39	Darwin - Melbourne	363.7	348.1	-4.3
40	Brisbane - Emerald	510.0	459.1	-10.0
41	Brisbane - Proserpine	301.7	305.9	1.4
42	Albury - Sydney	346.9	333.8	-3.8
43	Kalgoorlie - Perth	458.4	445.8	-2.7
44	Adelaide - Gold Coast	239.1	272.5	14.0
45	Melbourne - Mildura	289.1	289.4	0.1
46	Hamilton Island - Sydney	244.3	242.7	-0.6
47	Dubbo - Sydney	269.2	301.2	11.9
48	Port Macquarie - Sydney	275.0	263.9	-4.0
49	Adelaide - Port Lincoln	325.8	327.0	0.4
50	Sydney - Wagga Wagga	275.5	277.0	0.5

(continued)

**Table 2: (continued): Available seats (000s) — annual activity**

	<b>City-Pair</b>	<b>YE Jun 2013</b>	<b>YE Jun 2014</b>	<b>% Change</b>
51	Brisbane - Moranbah	63.4	380.9	NA (a)
52	Adelaide - Canberra	262.3	272.6	3.9
53	Darwin - Perth	223.7	232.0	3.7
54	Sydney - Townsville	228.1	222.6	-2.4
55	Brisbane - Mount Isa	229.7	280.1	NA (b)
56	Brisbane - Hamilton Island	199.9	197.3	-1.3
57	Alice Springs - Sydney	16.0	196.4	NA (c)
58	Alice Springs - Melbourne	33.1	194.3	NA (d)
59	Brisbane - Hobart	..	173.7	NA (e)
60	Geraldton - Perth	209.4	228.1	8.9
61	Ayers Rock - Sydney	193.3	160.2	-17.2
62	Brisbane - Bundaberg	35.6	173.8	NA (f)
63	Hamilton Island - Melbourne	..	142.0	NA (g)
64	Armidale - Sydney	..	35.1	NA (h)
	<b>Total domestic network</b>	<b>76 690.0</b>	<b>77 739.7</b>	<b>1.4</b>

(a) Brisbane - Moranbah route included from May 2013, prior data not shown.

(b) Brisbane - Mount Isa route included from September 2012, prior data not shown.

(c) Alice Springs - Sydney route included from June 2013, prior data not shown.

(d) Alice Springs - Melbourne route included from May 2013, prior data not shown.

(e) Brisbane - Hobart route included from October 2013, prior data not shown.

(f) Brisbane - Bundaberg route included from May 2013, prior data not shown.

(g) Hamilton Island - Melbourne route included from August 2013, prior data not shown.

(h) Armidale - Sydney route included from May 2014, prior data not shown.

**Table 3: Load factors (%) — annual activity**

	<b>City-Pair</b>	<b>YE Jun 2013</b>	<b>YE Jun 2014</b>	<b>% Change</b>
1	Melbourne - Sydney	79.8	82.6	2.8
2	Brisbane - Sydney	78.6	78.6	0.0
3	Brisbane - Melbourne	78.5	78.3	-0.2
4	Gold Coast - Sydney	79.4	80.6	1.2
5	Adelaide - Melbourne	77.7	78.1	0.4
6	Melbourne - Perth	76.5	77.0	0.5
7	Perth - Sydney	81.4	79.9	-1.6
8	Adelaide - Sydney	78.0	79.4	1.4
9	Gold Coast - Melbourne	86.1	85.7	-0.4
10	Hobart - Melbourne	77.2	79.5	2.3
11	Brisbane - Cairns	79.2	79.2	0.0
12	Brisbane - Perth	82.7	78.3	-4.4
13	Cairns - Sydney	79.8	82.0	2.2
14	Canberra - Sydney	63.1	61.6	-1.5
15	Canberra - Melbourne	66.0	67.3	1.3
16	Brisbane - Townsville	73.3	71.5	-1.9
17	Launceston - Melbourne	72.9	77.8	4.9
18	Brisbane - Mackay	72.1	68.9	-3.2
19	Adelaide - Brisbane	77.8	78.5	0.7
20	Cairns - Melbourne	81.0	79.6	-1.4
21	Karratha - Perth	63.0	55.1	-7.9
22	Brisbane - Rockhampton	70.9	68.6	-2.3
23	Adelaide - Perth	79.5	81.2	1.7
24	Brisbane - Newcastle	78.2	75.1	-3.1
25	Brisbane - Canberra	73.0	70.6	-2.3
26	Hobart - Sydney	77.4	81.8	4.4
27	Perth - Port Hedland	61.1	60.3	-0.8
28	Sunshine Coast - Sydney	81.7	82.1	0.4
29	Brisbane - Gladstone	62.1	59.5	-2.6
30	Melbourne - Newcastle	77.2	76.5	-0.7
31	Melbourne - Sunshine Coast	85.1	80.7	-4.5
32	Newman - Perth	63.4	53.9	-9.5
33	Brisbane - Darwin	82.0	76.2	-5.8
34	Coffs Harbour - Sydney	73.2	74.3	1.0
35	Darwin - Sydney	75.1	73.8	-1.3
36	Ballina - Sydney	75.5	77.4	1.9
37	Broome - Perth	75.5	69.1	-6.4
38	Launceston - Sydney	73.9	75.5	1.6
39	Darwin - Melbourne	78.6	80.8	2.2
40	Brisbane - Emerald	58.1	57.4	-0.7
41	Brisbane - Proserpine	77.8	77.2	-0.6
42	Albury - Sydney	69.4	69.0	-0.4
43	Kalgoorlie - Perth	51.0	48.3	-2.8
44	Adelaide - Gold Coast	79.4	77.8	-1.6
45	Melbourne - Mildura	68.3	68.9	0.6
46	Hamilton Island - Sydney	82.4	81.3	-1.0
47	Dubbo - Sydney	64.1	64.1	0.0
48	Port Macquarie - Sydney	70.2	72.2	2.1
49	Adelaide - Port Lincoln	60.1	57.4	-2.7
50	Sydney - Wagga Wagga	65.1	67.0	1.9

(continued)

**Table 3: (continued): Load factors (%) — annual activity**

	<b>City-Pair</b>	<b>YE Jun 2013</b>	<b>YE Jun 2014</b>	<b>% Change</b>
51	Brisbane - Moranbah	52.9	47.6	NA (a)
52	Adelaide - Canberra	67.9	65.6	-2.4
53	Darwin - Perth	74.1	75.5	1.4
54	Sydney - Townsville	80.7	78.6	-2.1
55	Brisbane - Mount Isa	63.4	56.6	NA (b)
56	Brisbane - Hamilton Island	77.7	77.7	0.0
57	Alice Springs - Sydney	80.5	75.6	NA (c)
58	Alice Springs - Melbourne	71.6	72.8	NA (d)
59	Brisbane - Hobart	..	78.6	NA (e)
60	Geraldton - Perth	63.4	57.8	-5.6
61	Ayers Rock - Sydney	76.9	80.0	3.1
62	Brisbane - Bundaberg	75.4	67.9	NA (f)
63	Hamilton Island - Melbourne	..	71.9	NA (g)
64	Armidale - Sydney	..	60.9	NA (h)
	<b>Total domestic network</b>	<b>76.7</b>	<b>76.0</b>	<b>-0.7</b>

(a) Brisbane - Moranbah route included from May 2013, prior data not shown.

(b) Brisbane - Mount Isa route included from September 2012, prior data not shown.

(c) Alice Springs - Sydney route included from June 2013, prior data not shown.

(d) Alice Springs - Melbourne route included from May 2013, prior data not shown.

(e) Brisbane - Hobart route included from October 2013, prior data not shown.

(f) Brisbane - Bundaberg route included from May 2013, prior data not shown.

(g) Hamilton Island - Melbourne route included from August 2013, prior data not shown.

(h) Armidale - Sydney route included from May 2014, prior data not shown.

**Table 4: Aircraft trips <sup>(a)</sup> — annual activity**

	<b>City-Pair</b>	<b>YE Jun 2013</b>	<b>YE Jun 2014</b>	<b>% Change</b>
1	Melbourne - Sydney	55 255	54 829	-0.8
2	Brisbane - Sydney	32 610	32 260	-1.1
3	Brisbane - Melbourne	24 315	24 922	2.5
4	Gold Coast - Sydney	18 283	18 681	2.2
5	Adelaide - Melbourne	18 221	18 189	-0.2
6	Melbourne - Perth	13 017	12 552	-3.6
7	Perth - Sydney	8 833	8 825	-0.1
8	Adelaide - Sydney	13 394	13 284	-0.8
9	Gold Coast - Melbourne	11 115	10 747	-3.3
10	Hobart - Melbourne	10 359	10 649	2.8
11	Brisbane - Cairns	9 835	9 625	-2.1
12	Brisbane - Perth	5 477	5 759	5.1
13	Cairns - Sydney	6 539	6 738	3.0
14	Canberra - Sydney	18 994	19 104	0.6
15	Canberra - Melbourne	10 996	10 913	-0.8
16	Brisbane - Townsville	8 751	8 501	-2.9
17	Launceston - Melbourne	8 995	9 056	0.7
18	Brisbane - Mackay	9 307	8 451	-9.2
19	Adelaide - Brisbane	6 033	6 061	0.5
20	Cairns - Melbourne	4 266	4 710	10.4
21	Karratha - Perth	8 047	8 435	4.8
22	Brisbane - Rockhampton	10 125	10 030	-0.9
23	Adelaide - Perth	5 357	5 247	-2.1
24	Brisbane - Newcastle	6 045	6 179	2.2
25	Brisbane - Canberra	6 270	6 077	-3.1
26	Hobart - Sydney	4 071	4 000	-1.7
27	Perth - Port Hedland	5 420	5 183	-4.4
28	Sunshine Coast - Sydney	3 204	3 227	0.7
29	Brisbane - Gladstone	8 491	8 948	5.4
30	Melbourne - Newcastle	3 202	3 218	0.5
31	Melbourne - Sunshine Coast	2 254	2 916	29.4
32	Newman - Perth	4 648	4 866	4.7
33	Brisbane - Darwin	2 243	2 546	13.5
34	Coffs Harbour - Sydney	5 044	5 493	8.9
35	Darwin - Sydney	2 728	2 669	-2.2
36	Ballina - Sydney	2 749	2 905	5.7
37	Broome - Perth	3 458	3 500	1.2
38	Launceston - Sydney	1 979	2 160	9.1
39	Darwin - Melbourne	2 019	2 071	2.6
40	Brisbane - Emerald	6 474	6 204	-4.2
41	Brisbane - Proserpine	1 924	1 918	-0.3
42	Albury - Sydney	6 597	6 588	-0.1
43	Kalgoorlie - Perth	3 443	3 427	-0.5
44	Adelaide - Gold Coast	1 519	1 593	4.9
45	Melbourne - Mildura	4 765	4 758	-0.1
46	Hamilton Island - Sydney	1 390	1 370	-1.4
47	Dubbo - Sydney	6 361	6 374	0.2
48	Port Macquarie - Sydney	4 573	4 638	1.4
49	Adelaide - Port Lincoln	6 972	7 031	0.8
50	Sydney - Wagga Wagga	5 367	5 649	5.3

(continued)

**Table 4: (continued): Aircraft trips <sup>(a)</sup>— annual activity**

	<b>City-Pair</b>	<b>YE Jun 2013</b>	<b>YE Jun 2014</b>	<b>% Change</b>
51	Brisbane - Moranbah	896	5 396	NA (b)
52	Adelaide - Canberra	2 080	2 172	4.4
53	Darwin - Perth	1 403	1 426	1.6
54	Sydney - Townsville	1 410	1 314	-6.8
55	Brisbane - Mount Isa	1 627	1 913	NA (c)
56	Brisbane - Hamilton Island	1 146	1 135	-1.0
57	Alice Springs - Sydney	93	1 167	NA (d)
58	Alice Springs - Melbourne	208	1 179	NA (e)
59	Brisbane - Hobart	..	1 002	NA (f)
60	Geraldton - Perth	3 383	3 720	10.0
61	Ayers Rock - Sydney	1 435	1 151	-19.8
62	Brisbane - Bundaberg	588	2 721	NA (g)
63	Hamilton Island - Melbourne	..	799	NA (h)
64	Armidale - Sydney	..	5 043	NA (i)
	<b>Total domestic network</b>	<b>641 998</b>	<b>643 119</b>	<b>0.2</b>

(a) Includes RPT Cargo flights.

(b) Brisbane - Moranbah route included from May 2013, prior data not shown.

(c) Brisbane - Mount Isa route included from September 2012, prior data not shown.

(d) Alice Springs - Sydney route included from June 2013, prior data not shown.

(e) Alice Springs - Melbourne route included from May 2013, prior data not shown.

(f) Brisbane - Hobart route included from October 2013, prior data not shown.

(g) Brisbane - Bundaberg route included from May 2013, prior data not shown.

(h) Hamilton Island - Melbourne route included from August 2013, prior data not shown.

(i) Armidale - Sydney route included from May 2014, prior data not shown.



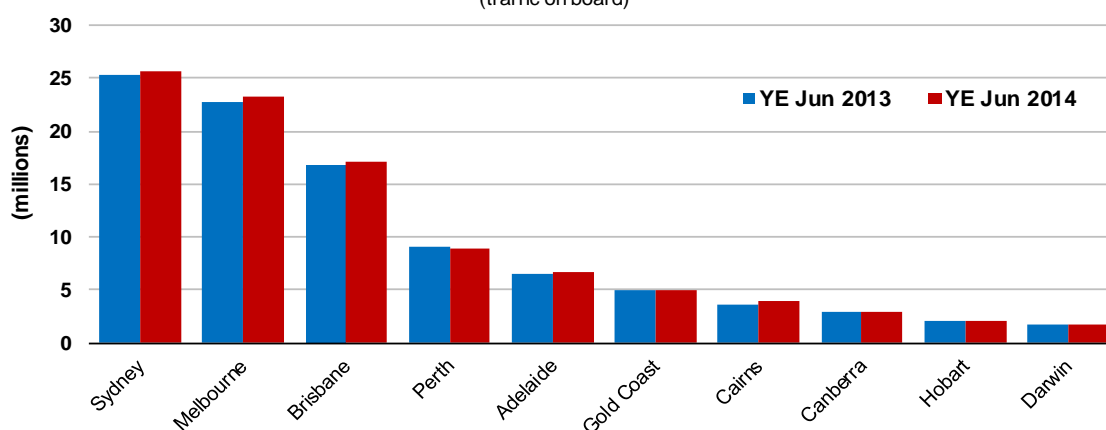
## TOP TEN AIRPORTS – PASSENGER MOVEMENTS

Table 5: Top ten airports, RPT passenger movements (000s) — annual activity

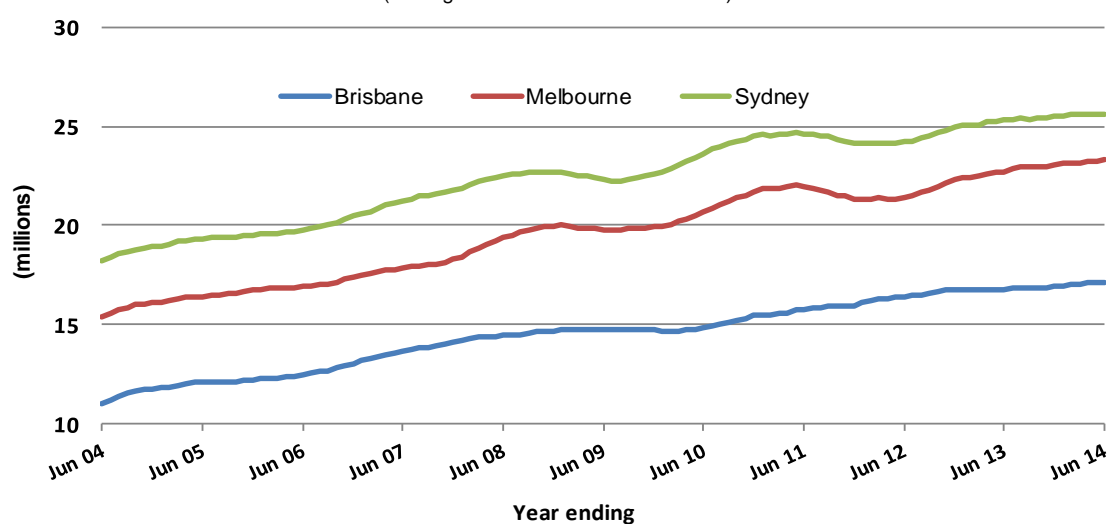
Airport	YE Jun 2013	YE Jun 2014	% Change	% of Total
1 Sydney	25 288.1	25 590.5	1.2	22.2
2 Melbourne	22 711.5	23 322.2	2.7	20.2
3 Brisbane	16 790.1	17 144.4	2.1	14.9
4 Perth	9 090.8	8 880.7	-2.3	7.7
5 Adelaide	6 495.0	6 671.9	2.7	5.8
6 Gold Coast	4 956.0	4 937.3	-0.4	4.3
7 Cairns	3 702.0	3 878.7	4.8	3.4
8 Canberra	3 015.5	2 858.2	-5.2	2.5
9 Hobart	2 026.6	2 106.6	4.0	1.8
10 Darwin	1 808.7	1 791.2	-1.0	1.6
<b>Total top ten airports</b>	<b>95 884.2</b>	<b>97 181.8</b>	<b>1.4</b>	<b>84.2</b>
<b>Total domestic network</b>	<b>114 245.8</b>	<b>115 431.4</b>	<b>1.0</b>	<b>100.0</b>

Note: Airport passenger movement numbers are the sum of passenger arrivals and departures at each airport.

### Top ten airports, RPT passenger movements (traffic on board)



### Top three airports, RPT passenger movements (moving annual totals - traffic on board)

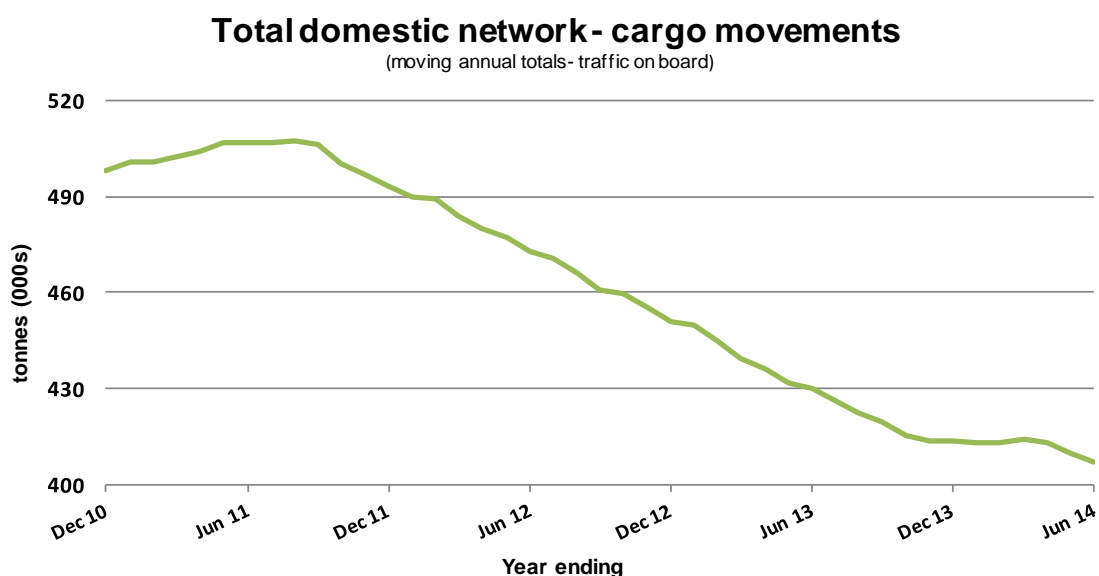
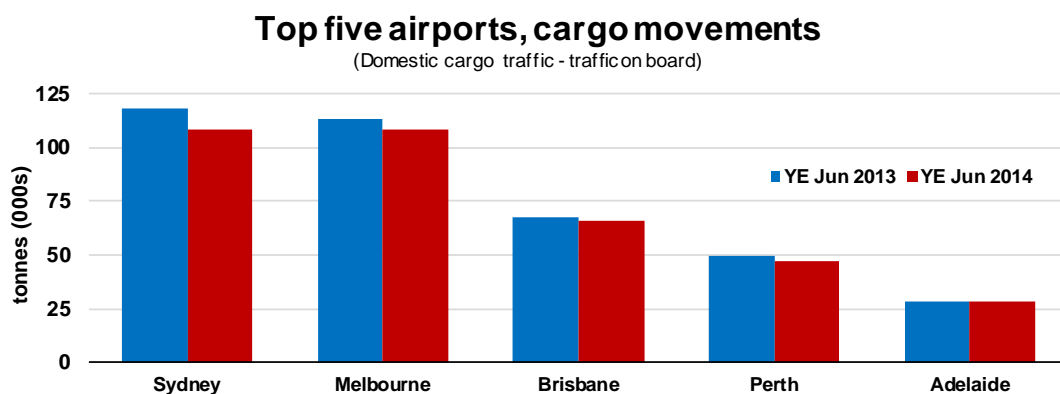


## TOP FIVE AIRPORTS – CARGO MOVEMENTS

**Table 6: Top five airports, domestic RPT cargo movements (000s tonnes) - annual activity**

Airport	YE Jun 2013	YE Jun 2014	% Change	% of Total
1 Sydney	118.2	108.7	-8.0	26.7
2 Melbourne	112.9	108.1	-4.2	26.6
3 Brisbane	67.5	65.9	-2.3	16.2
4 Perth	49.4	47.3	-4.2	11.6
5 Adelaide	28.4	28.0	-1.6	6.9
<b>Total top five airports</b>	<b>376.3</b>	<b>357.9</b>	<b>-4.9</b>	<b>87.9</b>
<b>Total domestic network</b>	<b>430.2</b>	<b>407.1</b>	<b>-5.4</b>	<b>100.0</b>

Note: Airport cargo tonnes are the sum of cargo tonnes on arrivals and departures at each airport.



Note: Airport cargo tonnes are the sum of cargo tonnes on arrivals and departures at each airport.

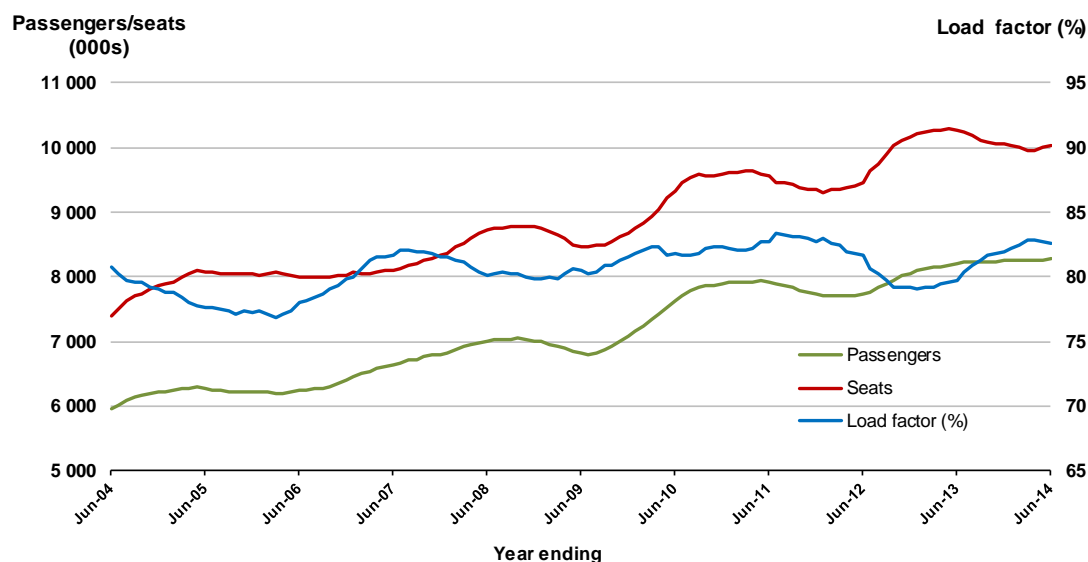
## TOP TWENTY ROUTES

### 1. Melbourne - Sydney

#### Moving annual data

	YE Jun 2013	YE Jun 2014	% Change
Passengers carried (000s)	8 200.6	8 280.3	1.0
Seats (000s)	10 280.3	10 024.7	-2.5
Load factor %	79.8	82.6	2.8 *
Aircraft trips	55 255	54 829	-0.8

\* percentage point difference

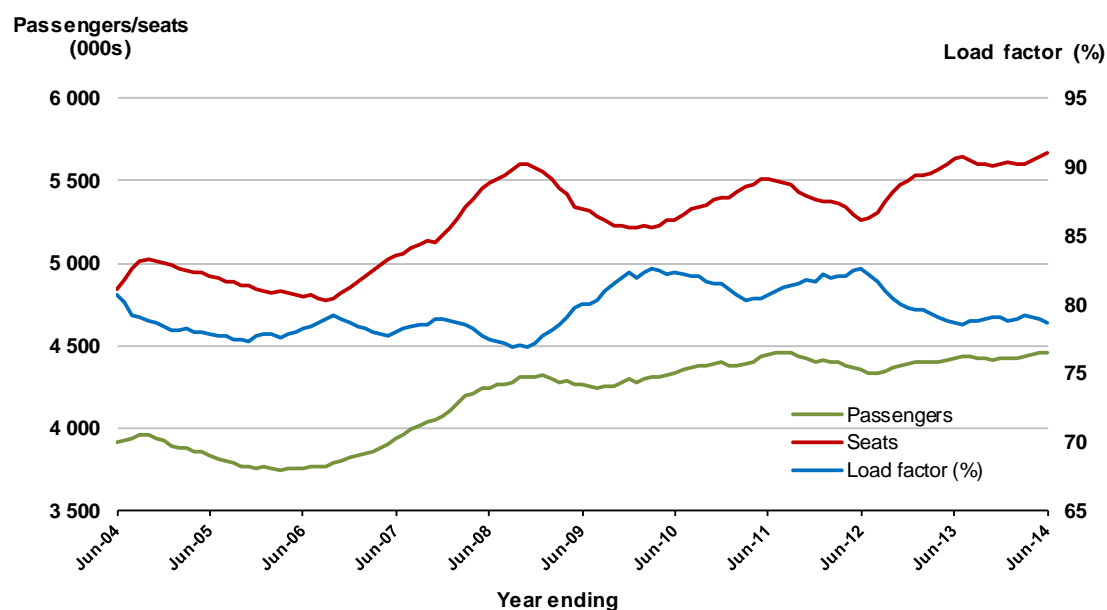


### 2. Brisbane - Sydney

#### Moving annual data

	YE Jun 2013	YE Jun 2014	% Change
Passengers carried (000s)	4 426.4	4 454.2	0.6
Seats (000s)	5 631.8	5 664.7	0.6
Load factor %	78.6	78.6	0.0 *
Aircraft trips	32 610	32 260	-1.1

\* percentage point difference

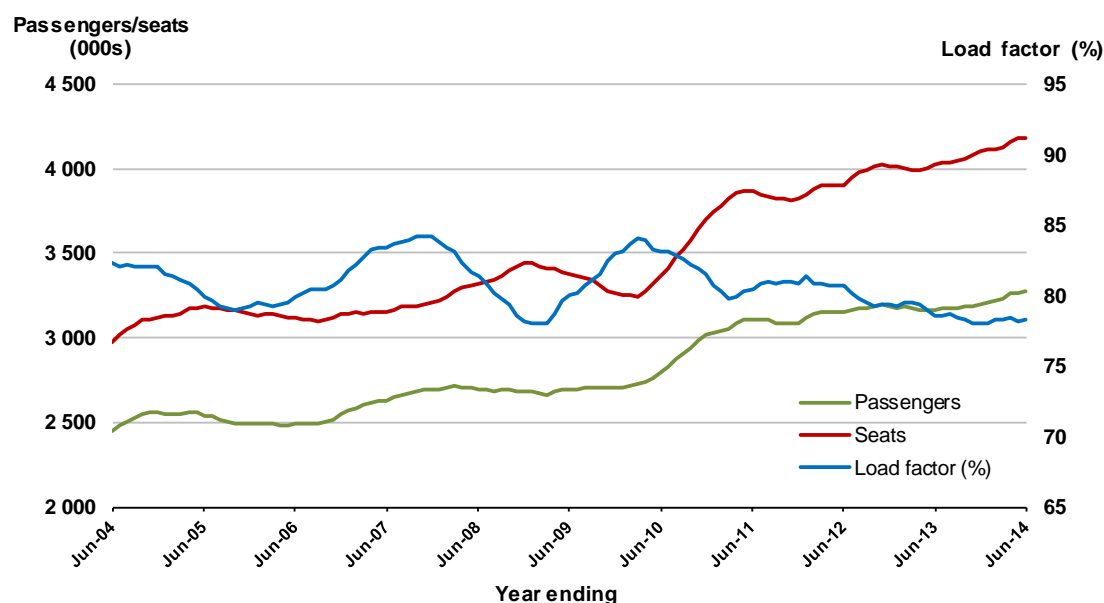


### 3. Brisbane - Melbourne

#### Moving annual data

	YE Jun 2013	YE Jun 2014	% Change
Passengers carried (000s)	3 162.5	3 276.2	3.6
Seats (000s)	4 026.5	4 182.5	3.9
Load factor %	78.5	78.3	-0.2*
Aircraft trips	24 315	24 922	2.5

\* percentage point difference

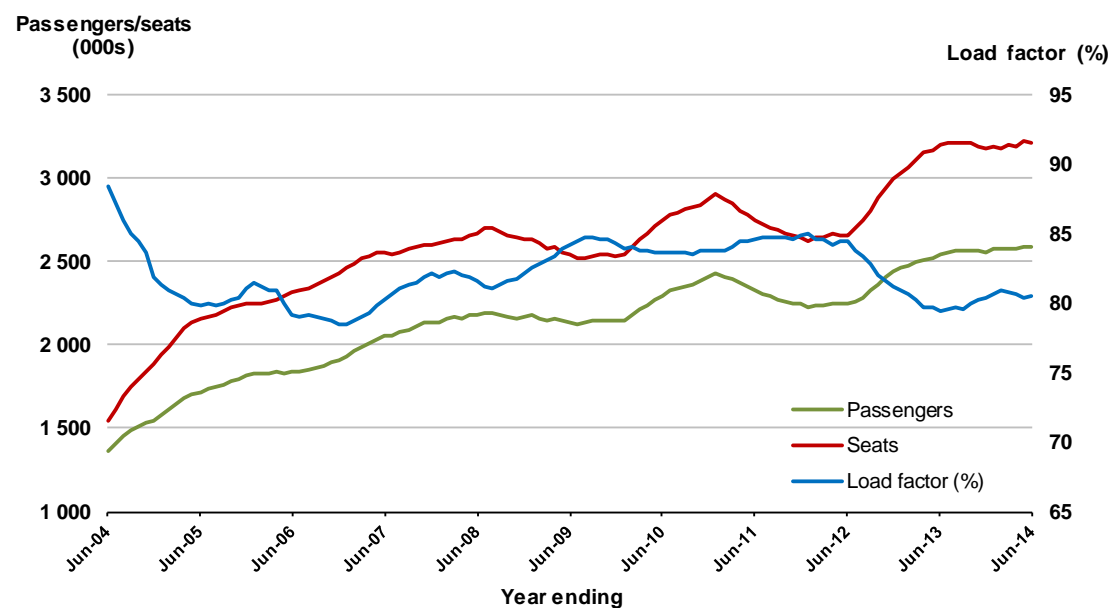


### 4. Gold Coast - Sydney

#### Moving annual data

	YE Jun 2013	YE Jun 2014	% Change
Passengers carried (000s)	2 541.8	2 588.5	1.8
Seats (000s)	3 197.3	3 212.7	0.5
Load factor %	79.4	80.6	1.2*
Aircraft trips	18 283	18 681	2.2

\* percentage point difference

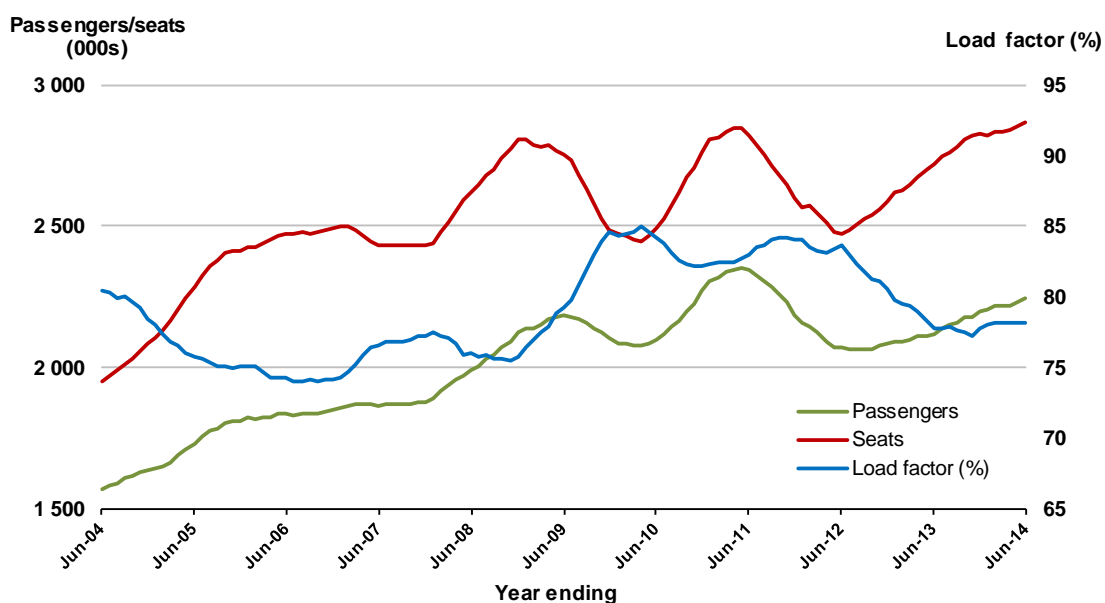


## 5. Adelaide - Melbourne

### Moving annual data

	YE Jun 2013	YE Jun 2014	% Change
Passengers carried (000s)	2 114.8	2 242.4	6.0
Seats (000s)	2 721.1	2 870.2	5.5
Load factor %	77.7	78.1	0.4 *
Aircraft trips	18 221	18 189	-0.2

\* percentage point difference

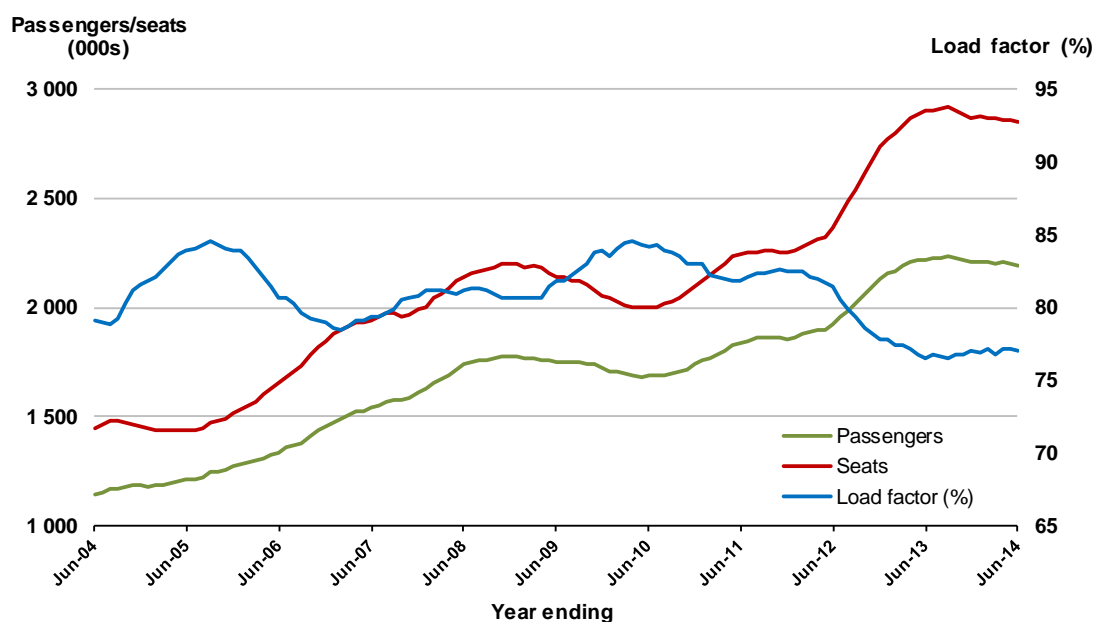


## 6. Melbourne - Perth

### Moving annual data

	YE Jun 2013	YE Jun 2014	% Change
Passengers carried (000s)	2 216.5	2 193.9	-1.0
Seats (000s)	2 897.6	2 848.9	-1.7 *
Load factor %	76.5	77.0	0.5 *
Aircraft trips	13 017	12 552	-3.6

\* percentage point difference

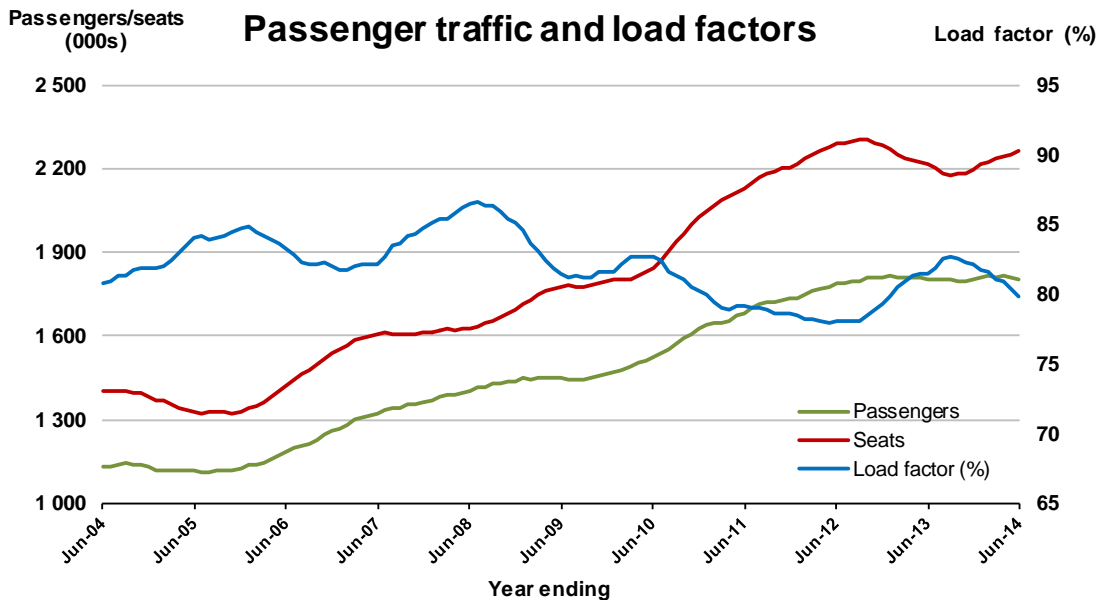


## 7. Perth - Sydney

### Moving annual data

	YE Jun 2013	YE Jun 2014	% Change
Passengers carried (000s)	1 804.8	1 805.3	0.0
Seats (000s)	2 216.0	2 260.3	2.0
Load factor %	81.4	79.9	-1.6 *
Aircraft trips	8 833	8 825	-0.1

\* percentage point difference

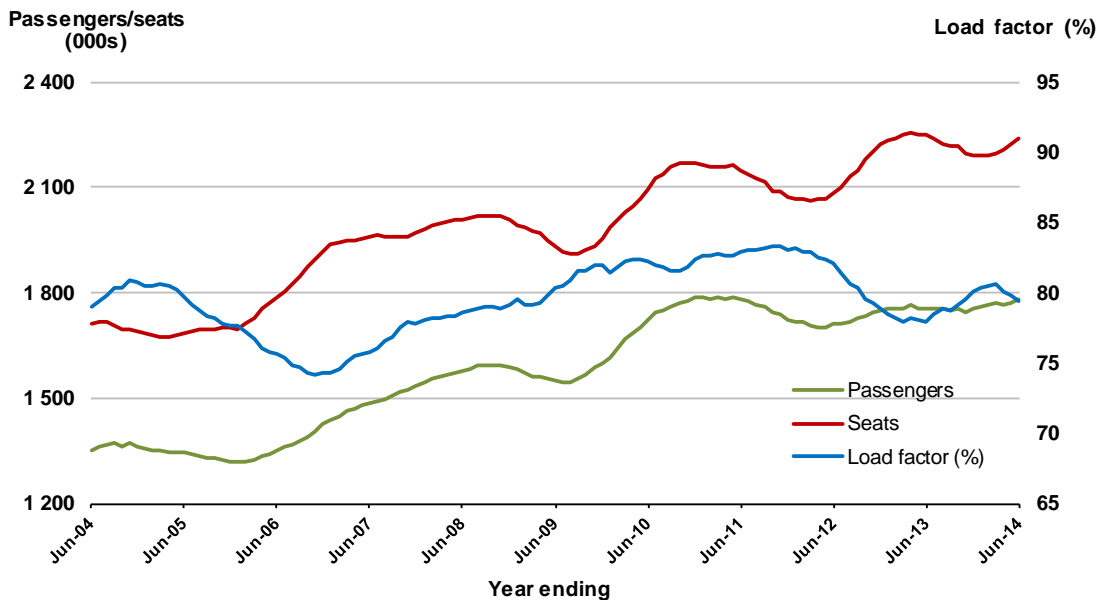


## 8. Adelaide - Sydney

### Moving annual data

	YE Jun 2013	YE Jun 2014	% Change
Passengers carried (000s)	1 753.6	1 778.7	1.4
Seats (000s)	2 249.0	2 240.6	-0.4
Load factor %	78.0	79.4	1.4 *
Aircraft trips	13 394	13 284	-0.8

\* percentage point difference

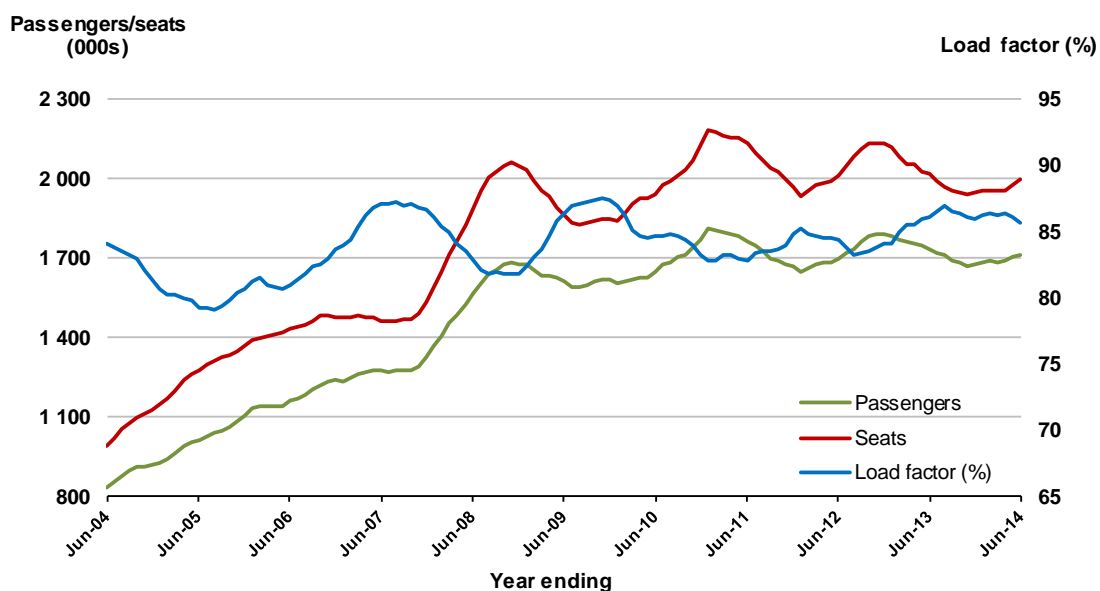


## 9. Gold Coast - Melbourne

### Moving annual data

	YE Jun 2013	YE Jun 2014	% Change
Passengers carried (000s)	1 735.9	1 713.6	-1.3
Seats (000s)	2 015.6	1 999.0	-0.8
Load factor %	86.1	85.7	-0.4 *
Aircraft trips	11 115	10 747	-3.3

\* percentage point difference

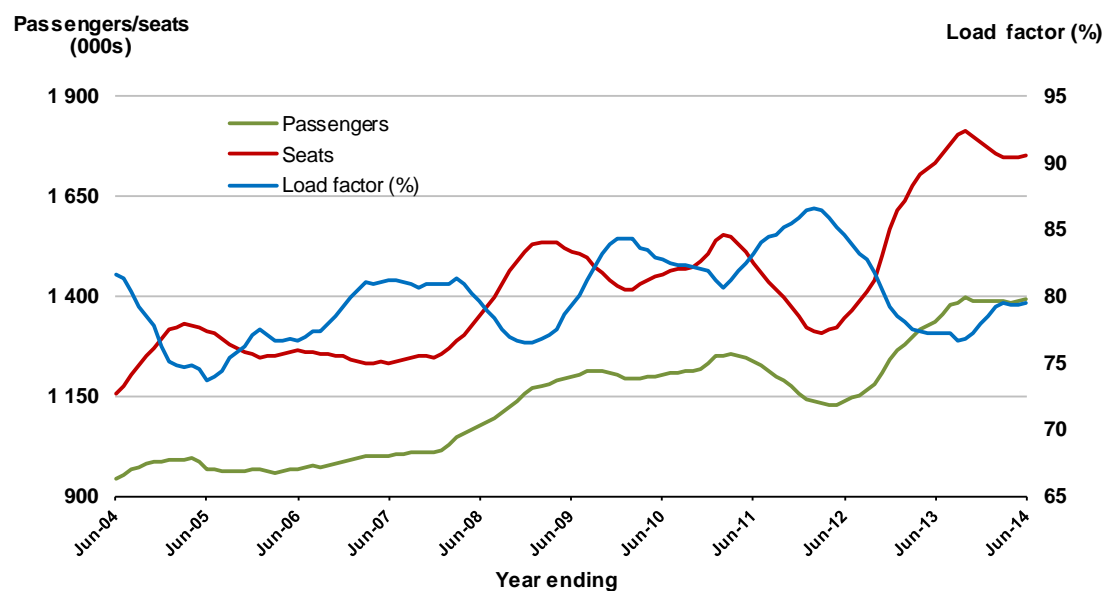


## 10. Hobart - Melbourne

### Moving annual data

	YE Jun 2013	YE Jun 2014	% Change
Passengers carried (000s)	1 337.2	1 391.9	4.1
Seats (000s)	1 733.1	1 751.5	1.1
Load factor %	77.2	79.5	2.3 *
Aircraft trips	10 359	10 649	2.8

\* percentage point difference

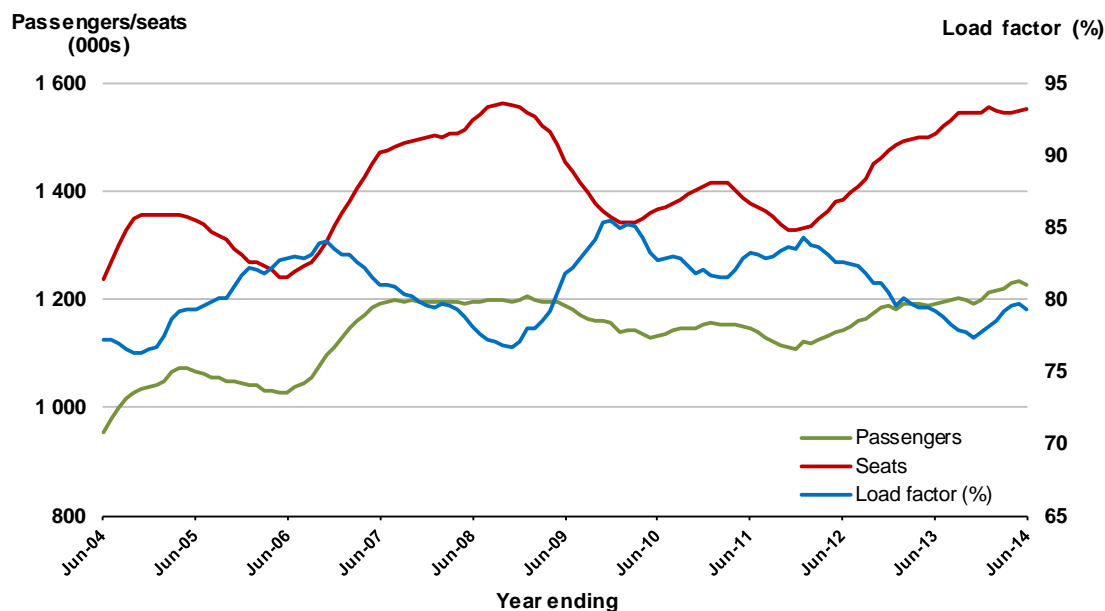


## 11. Brisbane - Cairns

### Moving annual data

	YE Jun 2013	YE Jun 2014	% Change
Passengers carried (000s)	1 191.9	1 227.7	3.0
Seats (000s)	1 505.8	1 549.8	2.9
Load factor %	79.2	79.2	0.0*
Aircraft trips	9 835	9 625	-2.1

\* percentage point difference

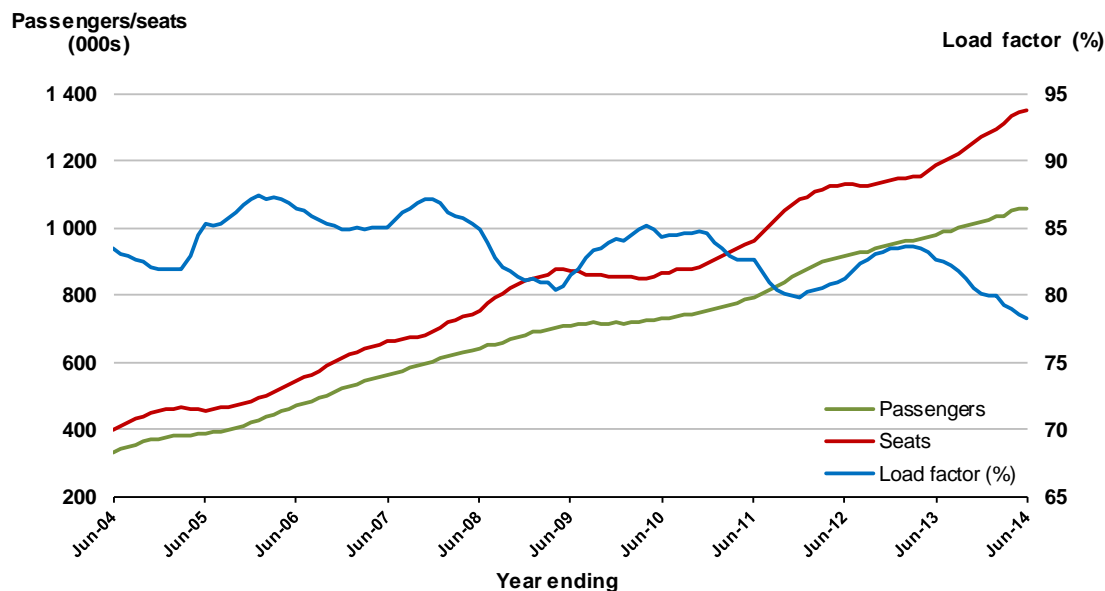


## 12. Brisbane - Perth

### Moving annual data

	YE Jun 2013	YE Jun 2014	% Change
Passengers carried (000s)	981.4	1 059.6	8.0
Seats (000s)	1 186.9	1 353.3	14.0
Load factor %	82.7	78.3	-4.4*
Aircraft trips	5 477	5 759	5.1

\* percentage point difference



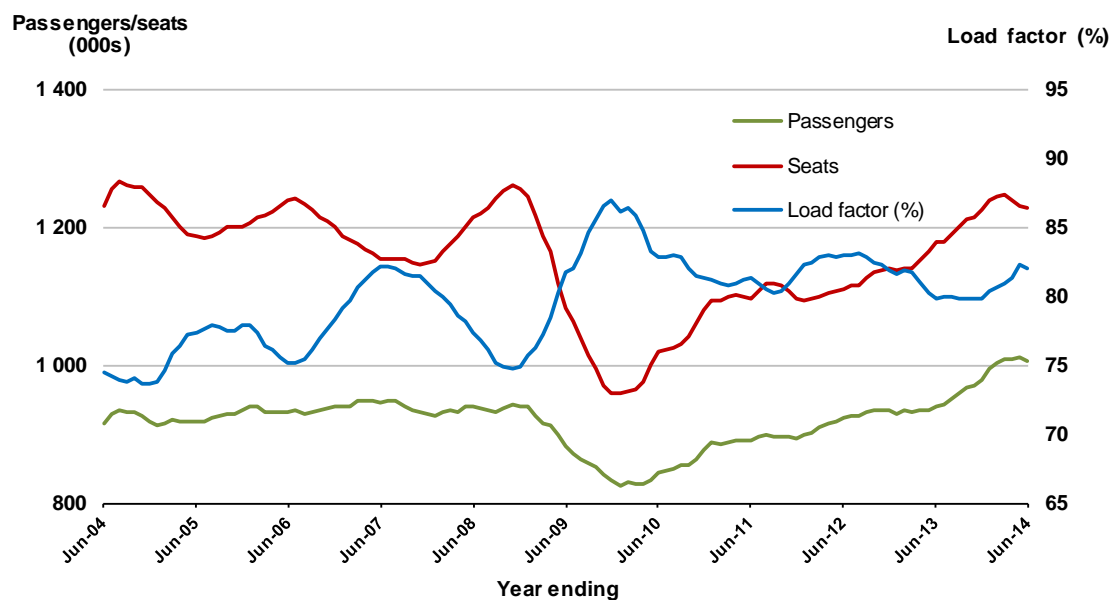


### 13. Cairns - Sydney

#### Moving annual data

	YE Jun 2013	YE Jun 2014	% Change
Passengers carried (000s)	941.1	1 006.6	7.0
Seats (000s)	1 177.8	1 227.3	4.2
Load factor %	79.8	82.0	2.2 *
Aircraft trips	6 539	6 738	3.0

\* percentage point difference

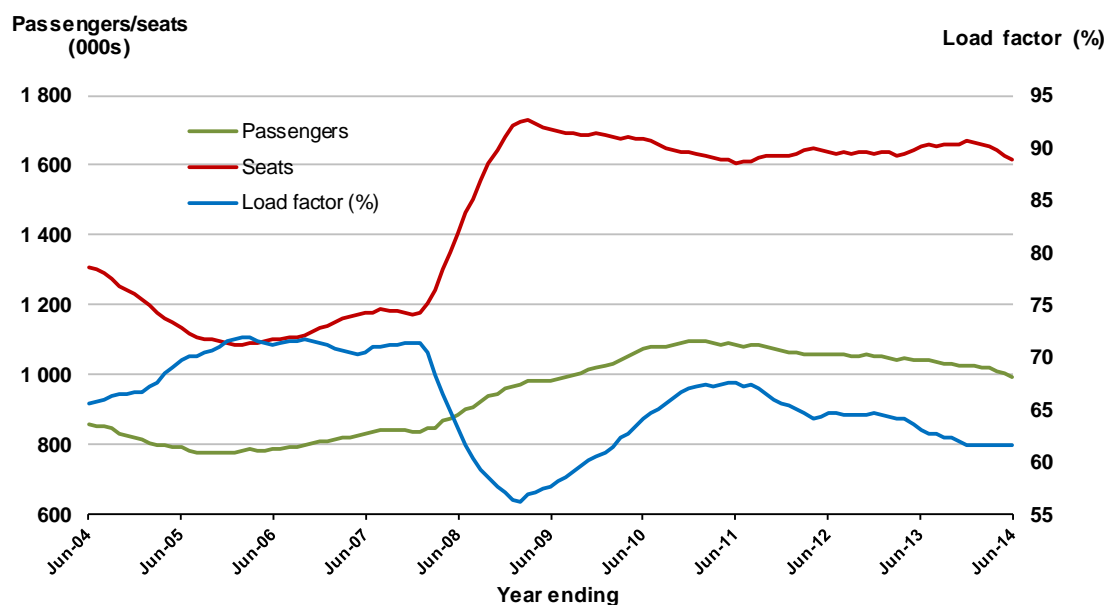


### 14. Canberra - Sydney

#### Moving annual data

	YE Jun 2013	YE Jun 2014	% Change
Passengers carried (000s)	1 041.3	994.1	-4.5
Seats (000s)	1 653.0	1 615.4	-2.3
Load factor %	63.1	61.6	-1.5 *
Aircraft trips	18 994	19 104	0.6

\* percentage point difference

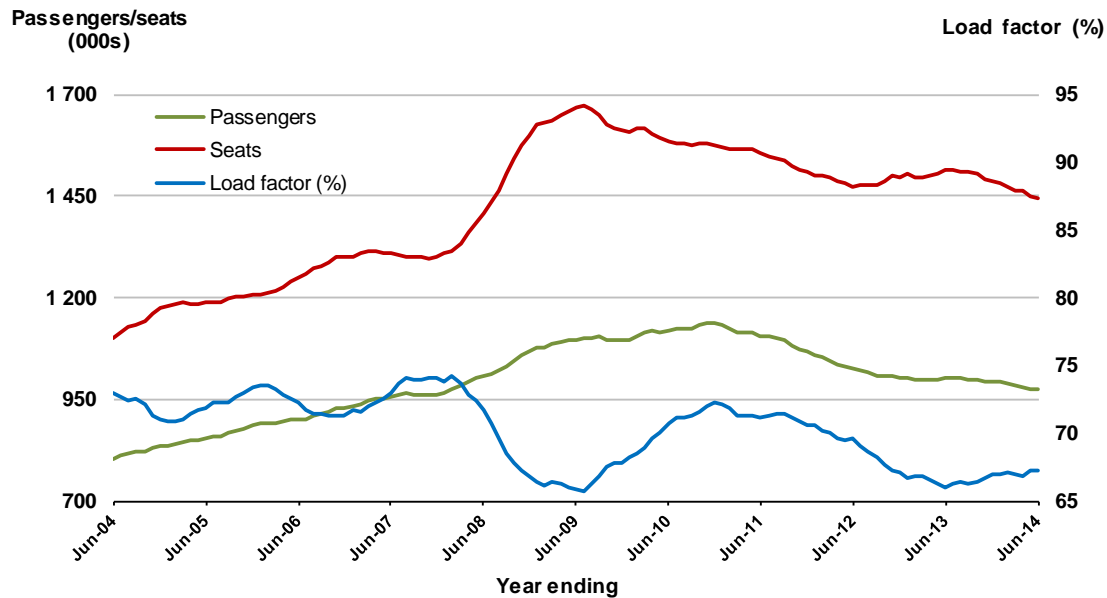


## 15. Canberra - Melbourne

### Moving annual data

	YE Jun 2013	YE Jun 2014	% Change
Passengers carried (000s)	1 000.6	972.8	-2.8
Seats (000s)	1 515.8	1 445.4	-4.6
Load factor %	66.0	67.3	1.3*
Aircraft trips	10 996	10 913	-0.8

\* percentage point difference

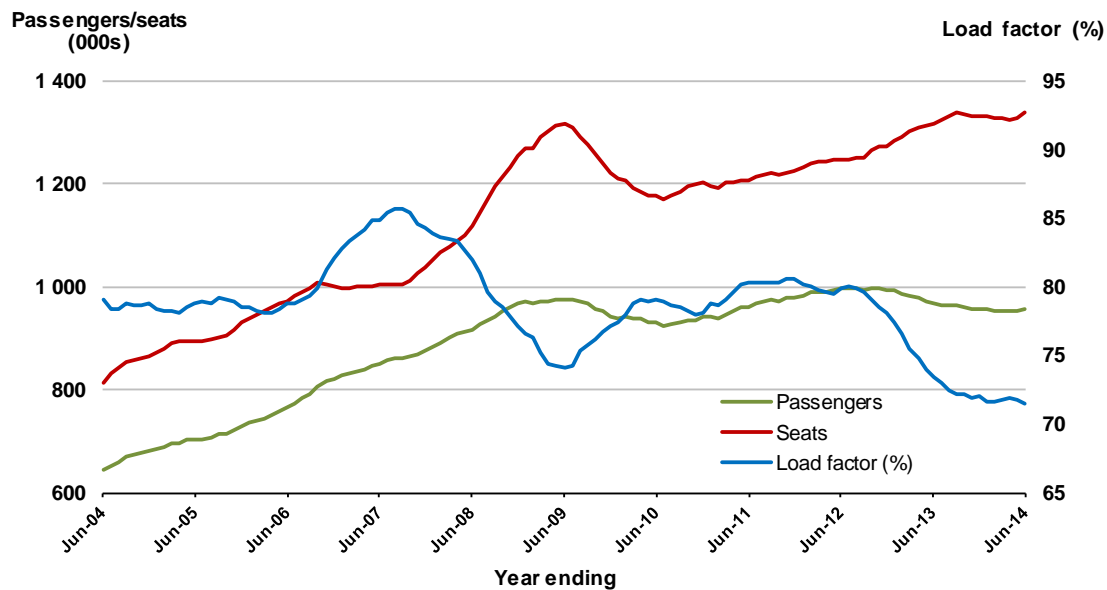


## 16. Brisbane - Townsville

### Moving annual data

	YE Jun 2013	YE Jun 2014	% Change
Passengers carried (000s)	965.9	955.9	-1.0
Seats (000s)	1 317.1	1 337.9	1.6
Load factor %	73.3	71.5	-1.9*
Aircraft trips	8 751	8 501	-2.9

\* percentage point difference

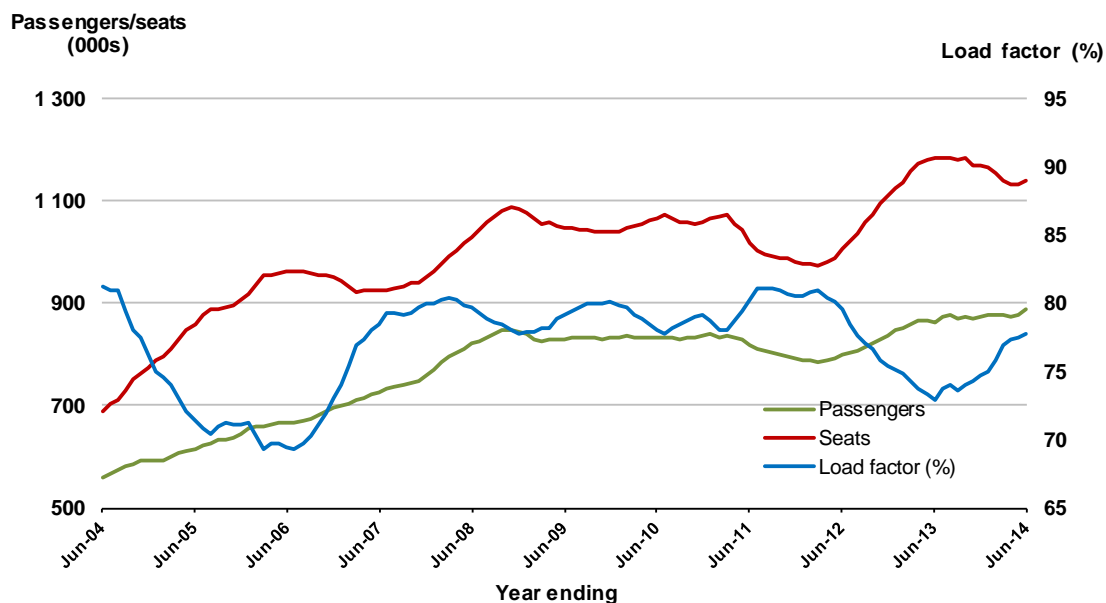


## 17. Launceston - Melbourne

### Moving annual data

	YE Jun 2013	YE Jun 2014	% Change
Passengers carried (000s)	861.7	887.3	3.0
Seats (000s)	1 182.5	1 140.2	-3.6
Load factor %	72.9	77.8	4.9 *
Aircraft trips	8 995	9 056	0.7

\* percentage point difference

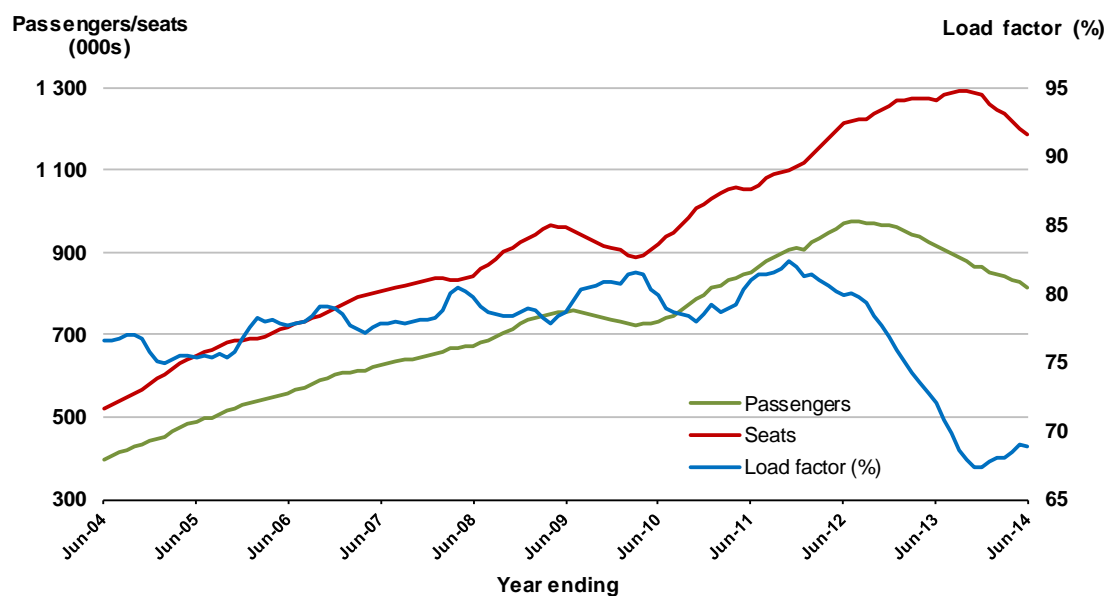


## 18. Brisbane - Mackay

### Moving annual data

	YE Jun 2013	YE Jun 2014	% Change
Passengers carried (000s)	916.5	816.7	-10.9
Seats (000s)	1 271.6	1 185.0	-6.8
Load factor %	72.1	68.9	-3.2 *
Aircraft trips	9 307	8 451	-9.2

\* percentage point difference

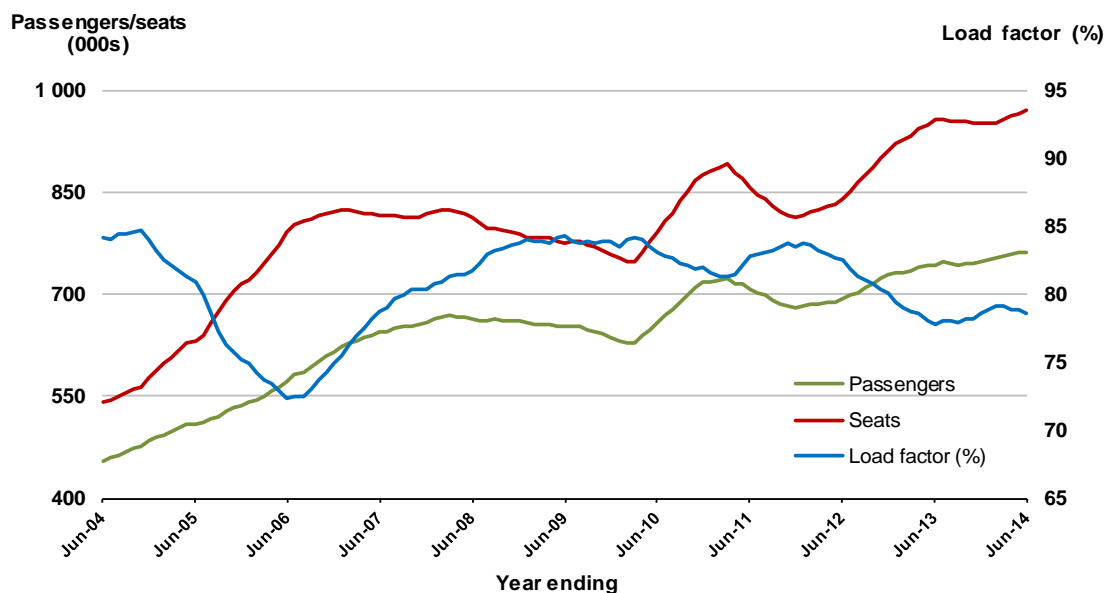


## 19. Adelaide - Brisbane

### Moving annual data

	YE Jun 2013	YE Jun 2014	% Change
Passengers carried (000s)	743.8	761.9	2.4
Seats (000s)	955.8	970.0	1.5
Load factor %	77.8	78.5	0.7*
Aircraft trips	6 033	6 061	0.5

\* percentage point difference

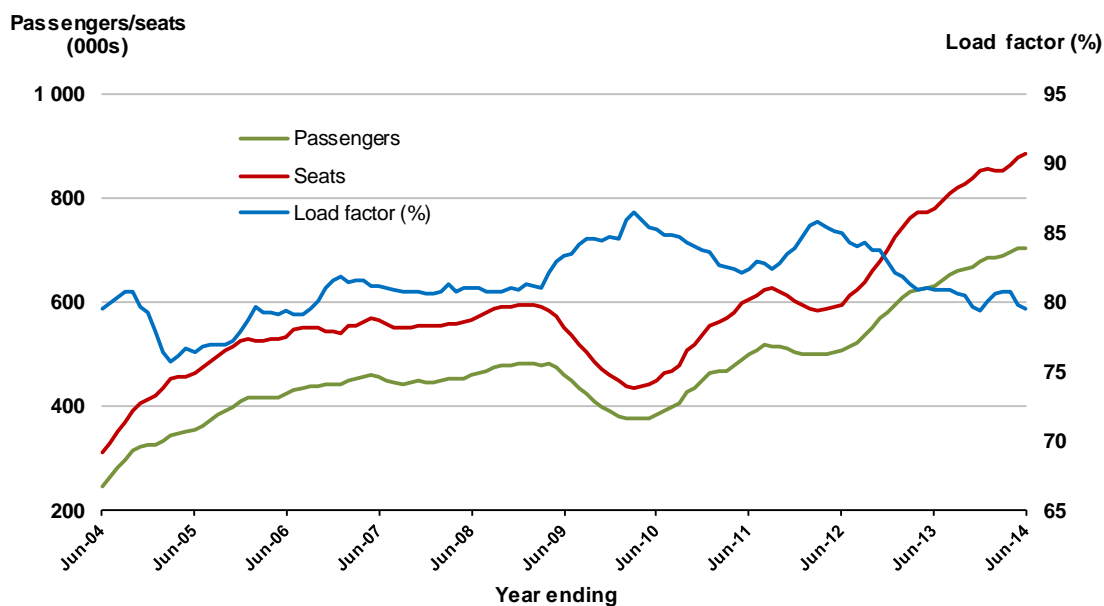


## 20. Cairns - Melbourne

### Moving annual data

	YE Jun 2013	YE Jun 2014	% Change
Passengers carried (000s)	631.9	703.8	11.4
Seats (000s)	780.5	884.7	13.4
Load factor %	81.0	79.6	-1.4*
Aircraft trips	4 266	4 710	10.4

\* percentage point difference



## TOP FIFTY REGIONAL AIRPORTS

**Table 7: Top fifty regional airports (000s) — passenger movements, annual**

Airport	YE Jun 2013	YE Jun 2014	% Change
1 Cairns	3 702.0	3 878.7	4.8
2 Hobart	2 026.6	2 106.6	4.0
3 Darwin	1 808.7	1 791.2	-1.0
4 Townsville	1 635.9	1 581.2	-3.3
5 Launceston	1 223.5	1 286.6	5.2
6 Williamstown	1 195.9	1 213.0	1.4
7 Mackay	1 171.7	1 087.2	-7.2
8 Karratha	815.6	727.8	-10.8
9 Rockhampton	746.1	712.2	-4.5
10 Alice Springs	596.0	677.5	13.7
11 Gladstone	471.4	516.7	9.6
12 Port Hedland	517.9	509.9	-1.5
13 Hamilton Island	446.7	477.3	6.8
14 Broome	445.0	424.8	-4.5
15 Newman	439.8	408.3	-7.2
16 Ballina	359.9	399.3	11.0
17 Coffs Harbour	357.8	383.6	7.2
18 Emerald	296.5	263.9	-11.0
19 Albury	268.8	255.4	-5.0
20 Roma	179.1	254.4	42.1
21 Mount Isa	278.1	249.6	-10.2
22 Proserpine	235.1	244.5	4.0
23 Mildura	243.0	244.1	0.4
24 Kalgoorlie	259.1	237.5	-8.4
25 Ayers Rock	257.2	236.8	-7.9
26 Port Macquarie	228.8	230.2	0.6
27 Wagga Wagga	208.0	211.6	1.7
28 Dubbo	183.9	209.3	13.8
29 Paraburdoo	266.1	209.1	-21.4
30 Port Lincoln	196.0	187.7	-4.2
31 Moranbah	149.5	185.3	24.0
32 Tamworth	155.1	160.4	3.4
33 Bundaberg	134.4	159.7	18.8
34 Hervey Bay	150.5	149.9	-0.4
35 Geraldton	140.5	134.9	-4.0
36 Devonport	125.3	131.7	5.1
37 Armidale	107.5	114.4	6.4
38 Kununurra	118.0	114.3	-3.1
39 Gove	113.0	110.8	-1.9
40 Learmonth	93.0	90.5	-2.8
41 Thursday Island	93.4	87.8	-6.0
42 Mount Gambier	83.0	79.0	-4.9
43 Olympic Dam	83.6	76.1	-8.9
44 Weipa	68.5	70.3	2.6
45 Griffith	64.3	67.6	5.2
46 Burnie	67.1	66.8	-0.5
47 Whyalla	71.8	63.3	-11.8
48 Albany	58.4	59.8	2.4
49 Broken Hill	65.4	59.7	-8.6
50 Merimbula	55.2	55.4	NA (a)
<b>Total top 50 regional airports</b>	<b>23 057.7</b>	<b>23 253.7</b>	<b>0.9</b>
<b>Total regional airports</b>	<b>24 580.2</b>	<b>24 646.2</b>	<b>0.3</b>
<b>Total domestic network</b>	<b>114 245.8</b>	<b>115 431.4</b>	<b>1.0</b>

(a) Data not comparable due to the partial closure of Merimbula airport in June 2013 for major works on the runway.

Note: Airport passenger movement numbers are the sum of passenger arrivals and departures at each airport.

## DOMESTIC CHARTER ACTIVITY

**Table 8: Domestic charter passengers carried and aircraft trips**

	YE Jun 2013	YE Jun 2014	% Change
Total domestic charter passengers	2 375 236	2 668 764	12.4
Total domestic charter aircraft trips	58 521	55 737	-4.8

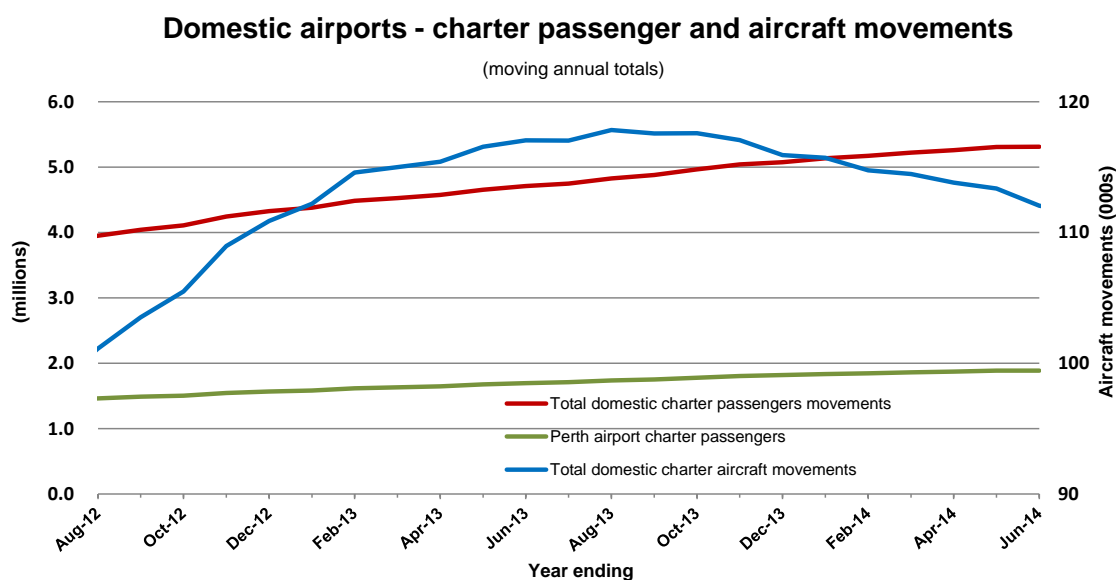
Note: data prior July 2011 not available, helicopter and leisure charter flights not included.

**Table 9: Domestic airports - charter passengers and aircraft movements**

	YE Jun 2013	YE Jun 2014	% Change
Total domestic charter passenger movements	4 750 472	5 337 528	12.4
Total domestic charter aircraft movements	117 042	111 474	-4.8
Perth airport charter passenger movements	1 713 054	1 893 227	10.5
Perth airport charter aircraft movements	40 342	36 423	-9.7

Note: data prior July 2011 not available, helicopter and leisure charter flights not included.

Charter passenger and aircraft movement numbers are the sum of arrivals and departures at each airport.



Note: data prior July 2011 not available

## DEFINITIONS

Aircraft Trips	The number of flight stages. A return flight counts as two aircraft trips.
Airport Movements	Airport movements (passenger and cargo) are measured once on arrival and once on departure. Each domestic trip generates two movements at airports. For example, a trip from Melbourne to Sydney will be counted twice, as a passenger departure at Melbourne and as a passenger arrival at Sydney. At the national level, the sum of all domestic airport traffic will therefore be equal to twice the number of trips undertaken.
Available Seat Kilometres (ASKs)	Calculated by multiplying the number of seats available on each flight stage, by the distance in kilometres between the ports. The distances used are Great Circle Distances.
City-Pair	The ports shown make up the city-pair route. Passenger movements shown for a city pair reflect total traffic in both directions.
Flight Stage	The operation of an aircraft from take-off to landing.
Load Factor	The total revenue passenger kilometres performed as a percentage of the total available seat kilometres.
Passengers Carried	Revenue passengers carried.
Regular Public Transport Services (RPT)	All air service operations in which aircraft are available for the transport of members of public and are conducted in accordance with fixed schedules. It does not include charter or other non-scheduled operations.
Revenue Passengers	All passengers paying any fare. Frequent flyer redemption travellers are regarded as revenue passengers.
Revenue Passenger Kilometres (RPKs)	Calculated by multiplying the number of revenue passengers travelling on each flight stage, by the distance in kilometres between the ports. The distances used are Great Circle Distances.
Traffic on board by stages	The total of all traffic (revenue passengers) on each flight stage between two directly connected airports.
..	Data not included
NA	Not applicable