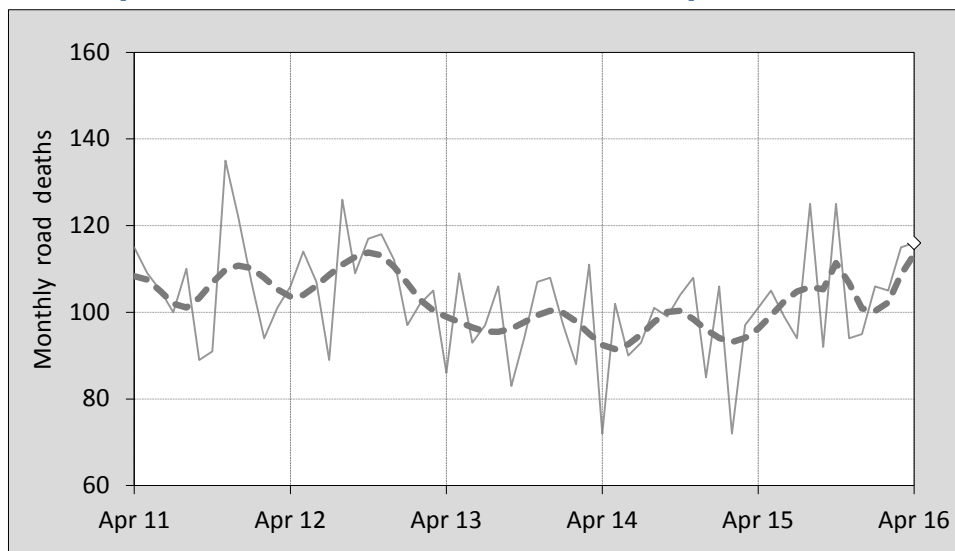




This month's key figures

- There was a total of 116 road deaths during the month of April 2016. In comparison to the average for April over the previous five years, the current figure is 20.8 per cent higher.
- During the 12 months ended April, there were 1,271 road deaths. This is a 9.8 per cent increase compared to the total for the 12-month period ended April 2015.
- Presently, the rate of annual deaths per 100,000 population stands at 5.3. Compared to the figure for the 12-month period ending April 2015, this is an 8.3 per cent increase.

Monthly Australian road deaths — last five years, with trend



Data Sources

Data are obtained from

- Transport for NSW
- Vicroads
- Department of Transport and Main Roads, Queensland
- Department of Planning, Transport and Infrastructure, S.A.
- Western Australia Police
- Department of State Growth, Tasmania
- Department of Transport, Northern Territory
- Territory and Municipal Services Directorate, ACT
- Australian Bureau of Statistics (3101.0)

Inquiries

For further information about data in this bulletin, contact:

Bureau of Infrastructure, Transport and Regional Economics
Web : www.bitre.gov.au
Email : roadsafety@infrastructure.gov.au

Road deaths from recent months are preliminary and subject to revision.

© Copyright. Commonwealth of Australia

1. Deaths by jurisdiction

Table 1.1 Current month

Current month	NSW	Vic	Qld	SA	WA	Tas	NT	ACT	Australia
April 2015	24	22	29	9	14	0	2	1	101
April 2016	45	18	20	11	11	7	4	0	116
Per cent change	87.5	-18.2	-31.0	22.2	-21.4	-	100.0	-100.0	14.9

Table 1.2 Year to date

Year to date	NSW	Vic	Qld	SA	WA	Tas	NT	ACT	Australia
January 2015 - April 2015	101	88	76	29	59	11	10	2	376
January 2016 - April 2016	138	100	76	31	64	18	13	2	442
Per cent change	36.6	13.6	0.0	6.9	8.5	63.6	30.0	0.0	17.6

Table 1.3 Year ending April

12 months ended April	NSW	Vic	Qld	SA	WA	Tas	NT	ACT	Australia
2012	373	278	273	99	173	22	50	1	1,269
2013	350	269	296	94	177	34	47	15	1,282
2014	338	247	236	92	170	35	40	7	1,165
2015	299	251	235	106	186	35	38	8	1,158
2016	387	264	243	104	165	41	52	15	1,271
Latest per cent change	29.4	5.2	3.4	-1.9	-11.3	17.1	36.8	87.5	9.8
Average trend change per year (per cent)	-0.8	-1.7	-4.5	2.2	-0.4	13.6	-1.3	61.4	-1.0

2. Deaths by road user, age-group and gender

Table 2.1 By road user

12 months ended April	Driver	Passenger	Pedestrian	Motorcyclist ^b	Pedal ^b cyclist	Total ^c
2012	571	274	189	200	33	1,269
2013	626	246	153	217	36	1,282
2014	531	214	164	193	58	1,165
2015	528	231	159	204	33	1,158
2016	608	237	162	224	38	1,271
Latest per cent change	15.2	2.6	1.9	9.8	15.2	9.8
Average trend change per year (per cent)	-0.4	-3.5	-2.7	1.7	2.0	-1.0

Table 2.2 By age-group^a (years)

12 months ended April	0 to 16	17 to 25	26 to 39	40 to 64	65 to 74	≥ 75	Total ^c
2012	90	283	305	370	83	138	1,269
2013	72	283	282	405	100	139	1,282
2014	60	210	247	373	118	157	1,165
2015	69	233	248	359	106	140	1,158
2016	61	250	272	393	124	169	1,271
Latest per cent change	-11.6	7.3	9.7	9.5	17.0	20.7	9.8
Average trend change per year (per cent)	-7.9	-4.3	-3.5	0.0	9.0	4.2	-1.0

2. Deaths by road user, age-group and gender (continued)

Table 2.3 By gender

12 months ended April	<i>Males</i>	<i>Females</i>	<i>Total^d</i>
2012	907	361	1,269
2013	912	369	1,282
2014	849	316	1,165
2015	815	342	1,158
2016	922	349	1,271
<i>Latest per cent change</i>	13.1	2.0	9.8
<i>Average trend change per year (per cent)</i>	-0.8	-1.4	-1.0

a Age groups were changed in March 2014.

b Includes pillion passengers.

c Includes deaths to persons with either age or road user type not recorded.

d Includes deaths to persons with gender not recorded.

3. Annual deaths per 100,000 population

Table 3.1 Year ended April

12 months ended April	<i>NSW</i>	<i>Vic</i>	<i>Qld</i>	<i>SA</i>	<i>WA</i>	<i>Tas</i>	<i>NT</i>	<i>ACT</i>	<i>Australia</i>
2012	5.15	4.99	6.06	6.02	7.27	4.30	21.50	0.27	5.65
2013	4.77	4.75	6.44	5.66	7.18	6.64	19.72	3.98	5.61
2014	4.54	4.28	5.05	5.49	6.72	6.82	16.46	1.83	5.01
2015	3.96	4.27	4.95	6.27	7.24	6.79	15.59	2.07	4.91
2016	5.06	4.42	5.07	6.11	6.34	7.92	21.26	3.82	5.32
<i>Latest per cent change</i>	27.7	3.4	2.2	-2.6	-12.4	16.6	36.4	84.9	8.3
<i>Average trend change per year (per cent)</i>	-2.2	-3.4	-6.0	1.3	-2.6	13.3	-2.5	59.1	-2.5

Table 3.2 Calendar year period

Calendar year	<i>NSW</i>	<i>Vic</i>	<i>Qld</i>	<i>SA</i>	<i>WA</i>	<i>Tas</i>	<i>NT</i>	<i>ACT</i>	<i>Australia</i>
2011	5.04	5.18	6.01	6.28	7.61	4.69	19.46	1.63	5.72
2012	5.05	5.01	6.13	5.68	7.51	6.05	20.77	3.20	5.72
2013	4.50	4.24	5.83	5.87	6.44	7.02	15.25	1.84	5.13
2014	4.09	4.25	4.72	6.35	7.16	6.41	16.03	2.60	4.90
2015	4.59	4.24	5.08	6.00	6.18	6.58	20.06	3.84	5.07
<i>Latest per cent change</i>	12.4	-0.1	7.6	-5.4	-13.7	2.7	25.2	47.9	3.4

4. Monthly deaths by jurisdiction — last 24 months

— raw
 - - - smoothed
 (13-point moving average)

Figure 4.1 NSW

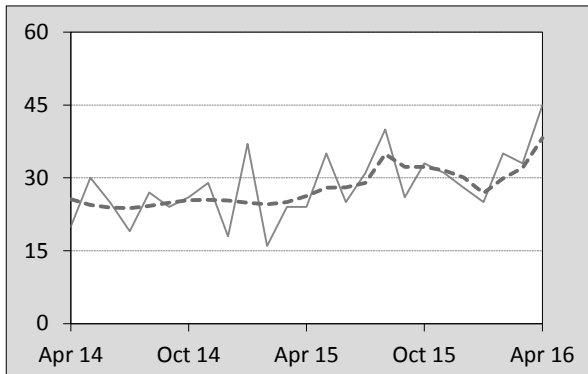


Figure 4.2 Vic

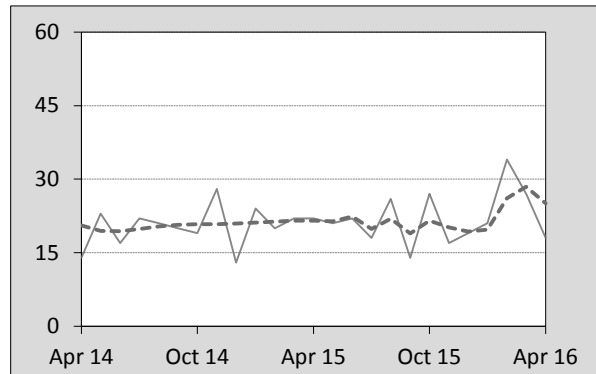


Figure 4.3 Qld

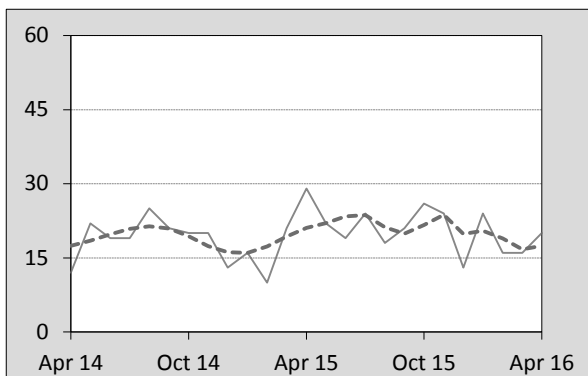


Figure 4.4 SA

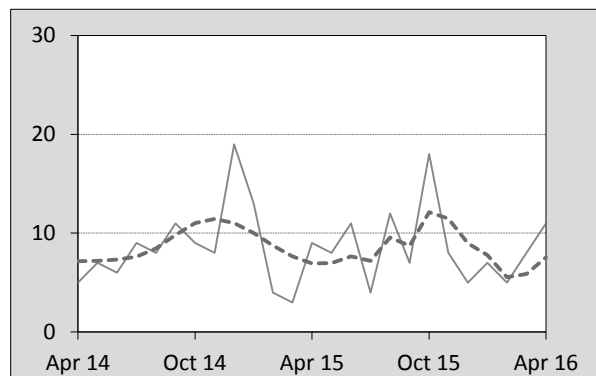


Figure 4.5 WA

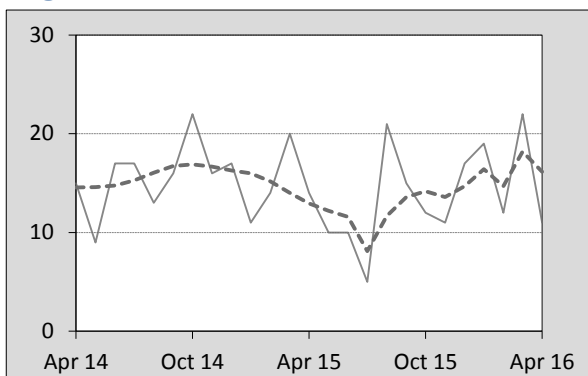


Figure 4.6 Tas

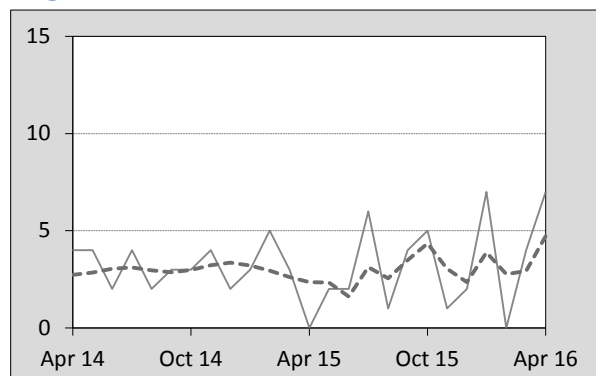


Figure 4.7 NT

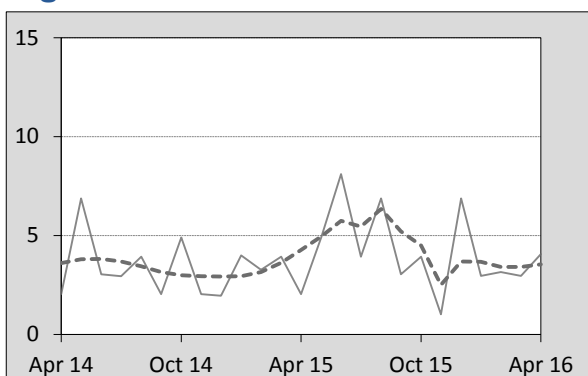
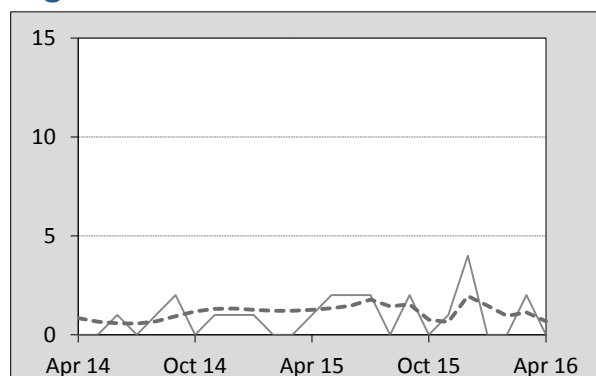


Figure 4.8 ACT



5. Fatal crashes: counts and characteristics

Table 5.1 By Crash type and Posted speed limit

12 months ended April	Crash type ^a			Posted speed limit				Total ^b
	Single	Multiple	Pedestrian	0 to 60	70 to 90	100	≥ 110	
2012	504	463	185	364	251	387	136	1,152
2013	543	477	153	384	270	361	148	1,173
2014	472	442	162	335	239	364	126	1,076
2015	472	424	157	335	229	341	137	1,053
2016	524	484	156	359	251	362	160	1,164
Latest per cent change	11.0	14.2	-0.6	7.2	9.6	6.2	16.8	10.5
Average trend change per year (per cent)	-0.6	-0.3	-3.1	-1.6	-1.6	-1.9	2.5	-0.9

Table 5.2 By Day of week and Time of day

12 months ended April	Day of week ^c		Time of Day ^d	
	Weekday	Weekend	Day	Night
2012	681	471	713	439
2013	735	438	729	444
2014	648	428	682	394
2015	644	409	671	382
2016	730	434	728	436
Latest per cent change	13.4	6.1	8.5	14.1
Average trend change per year (per cent)	0.1	-2.3	-0.4	-1.6

a 'Single' and 'Multiple' refer to the number of vehicles involved in a fatal crash where there is no pedestrian killed.

b Includes crashes where speed limit is unknown.

c 'Weekday' refers to 6am Monday through to 5:59pm Friday.

d 'Day' refers to 6am through to 5:59 pm.

Appendix

Definition

The road safety agencies in each jurisdiction use detailed criteria to define road crashes and road deaths. Briefly, a death is classified as resulting from a road crash if the crash occurred on a public road, is unintentional and the death occurred within 30 days from injuries sustained in the crash.

Population rates

Rates per population are based on the deaths to the current 12-month period, and the population at the midpoint of the period. The population at midpoints is interpolated if necessary.

Average trend change (% per year)

Calculated by fitting an exponential curve through the five data points, and quoting the constant (annual) change of this curve.

Other sources for the tables in this bulletin

The underlying database used to produce this bulletin — the *Australian Road Deaths Database* is available for data extraction at <http://www.bitre.gov.au/statistics/safety/fatal_road_crash_database.aspx>.

Road deaths from recent months are preliminary and subject to revision.