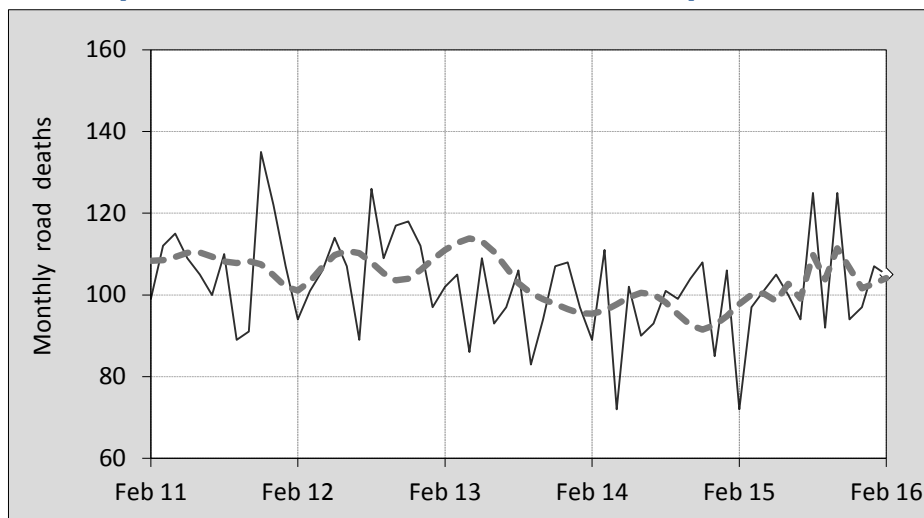




This month's key figures

- There was a total of 105 road deaths during the month of February 2016. In comparison to the average for February over the previous five years, the current figure is 15.1 per cent higher.
- During the 12 months ended February, there were 1,242 road deaths. This is a 8.7 per cent increase compared to the total for the 12-month period ended February 2015.
- Presently, the rate of annual deaths per 100,000 population stands at 5.2. Compared to the figure for the 12-month period ending February 2015, this is a 7.2 per cent increase.

Monthly Australian road deaths — last five years, with trend



Data Sources

Data are obtained from

- Transport for NSW
- Vicroads
- Department of Transport and Main Roads, Queensland
- Department of Planning, Transport and Infrastructure, S.A.
- Western Australia Police
- Department of State Growth, Tasmania
- Department of Transport, Northern Territory
- Territory and Municipal Services Directorate, ACT
- Australian Bureau of Statistics (3101.0)

Inquiries

For further information about data in this bulletin, contact:

Bureau of Infrastructure, Transport and
Regional Economics
Web : www.bitre.gov.au
Email : roadsafety@infrastructure.gov.au

Road deaths from recent months are preliminary and subject to revision.

© Copyright. Commonwealth of Australia

I. Deaths by jurisdiction

Table 1.1 Current month

Current month	NSW	Vic	Qld	SA	WA	Tas	NT	ACT	Australia
February 2015	16	20	10	4	14	5	3	0	72
February 2016	34	34	17	5	12	0	3	0	105
Per cent change	112.5	70.0	70.0	25.0	-14.3	-100.0	0.0	-	45.8

Table 1.2 Year to date

Year to date	NSW	Vic	Qld	SA	WA	Tas	NT	ACT	Australia
January 2015 - February 2015	53	44	26	17	25	8	4	1	178
January 2016 - February 2016	60	55	41	12	31	7	6	0	212
Per cent change	13.2	25.0	57.7	-29.4	24.0	-12.5	50.0	-100.0	19.1

Table 1.3 Year ending February

12 months ended February	NSW	Vic	Qld	SA	WA	Tas	NT	ACT	Australia
2012	363	299	278	97	176	24	48	4	1,289
2013	360	270	294	94	189	31	47	13	1,298
2014	348	251	245	96	151	35	40	8	1,174
2015	297	246	219	111	186	38	37	9	1,143
2016	358	263	259	97	166	34	51	14	1,242
Latest per cent change	20.5	6.9	18.3	-12.6	-10.8	-10.5	37.8	55.6	8.7
Average trend change per year (per cent)	-2.2	-3.4	-4.3	1.7	-1.3	9.4	-1.2	23.8	-2.0

2. Deaths by road user, age-group and gender

Table 2.1 By road user

12 months ended February	Driver	Passenger	Pedestrian	Motorcyclist ^b	Pedal ^b cyclist	Total ^c
2012	571	290	192	200	34	1,289
2013	622	248	163	225	36	1,298
2014	543	215	156	207	49	1,174
2015	531	220	149	196	43	1,143
2016	570	244	177	217	32	1,242
Latest per cent change	7.3	10.9	18.8	10.7	-25.6	8.7
Average trend change per year (per cent)	-1.6	-4.5	-2.5	0.3	0.6	-2.0

Table 2.2 By age-group^a (years)

12 months ended February	0 to 16	17 to 25	26 to 39	40 to 64	65 to 74	≥ 75	Total ^c
2012	95	293	298	383	77	143	1,289
2013	73	280	294	402	103	145	1,298
2014	64	220	238	384	112	156	1,174
2015	61	231	254	349	112	133	1,143
2016	61	245	267	387	120	157	1,242
Latest per cent change	0.0	6.1	5.1	10.9	7.1	18.0	8.7
Average trend change per year (per cent)	-10.1	-5.4	-3.6	-1.2	10.2	1.0	-2.0

2. Deaths by road user, age-group and gender (continued)

Table 2.3 By gender

12 months ended February	<i>Males</i>	<i>Females</i>	<i>Total^d</i>
2012	940	347	1,289
2013	921	376	1,298
2014	846	328	1,174
2015	811	331	1,143
2016	894	348	1,242
<i>Latest per cent change</i>	10.2	5.1	8.7
<i>Average trend change per year (per cent)</i>	-2.2	-1.2	-2.0

a Age groups were changed in March 2014.

b Includes pillion passengers.

c Includes deaths to persons with either age or road user type not recorded.

d Includes deaths to persons with gender not recorded.

3. Annual deaths per 100,000 population

Table 3.1 Year ended February

12 months ended February	<i>NSW</i>	<i>Vic</i>	<i>Qld</i>	<i>SA</i>	<i>WA</i>	<i>Tas</i>	<i>NT</i>	<i>ACT</i>	<i>Australia</i>
2012	5.02	5.38	6.19	5.91	7.44	4.69	20.68	1.08	5.75
2013	4.92	4.78	6.41	5.67	7.71	6.05	19.81	3.45	5.69
2014	4.69	4.36	5.25	5.74	5.98	6.82	16.47	2.10	5.07
2015	3.95	4.20	4.63	6.58	7.25	7.38	15.15	2.33	4.86
2016	4.69	4.42	5.41	5.71	6.39	6.58	20.78	3.58	5.21
<i>Latest per cent change</i>	18.9	5.1	16.8	-13.3	-11.8	-10.9	37.1	53.3	7.2
<i>Average trend change per year (per cent)</i>	-3.5	-5.1	-5.8	0.8	-3.6	9.1	-2.6	22.1	-3.5

Table 3.2 Calendar year period

Calendar year	<i>NSW</i>	<i>Vic</i>	<i>Qld</i>	<i>SA</i>	<i>WA</i>	<i>Tas</i>	<i>NT</i>	<i>ACT</i>	<i>Australia</i>
2011	5.04	5.18	6.01	6.28	7.61	4.69	19.46	1.63	5.72
2012	5.05	5.01	6.13	5.68	7.51	6.05	20.77	3.20	5.72
2013	4.50	4.24	5.83	5.87	6.44	7.02	15.25	1.84	5.13
2014	4.09	4.25	4.72	6.35	7.15	6.60	16.01	2.59	4.91
2015	4.61	4.24	5.11	6.00	6.17	6.77	20.03	3.84	5.08
<i>Latest per cent change</i>	12.8	-0.1	8.1	-5.4	-13.7	2.6	25.2	47.9	3.6

4. Monthly deaths by jurisdiction — last 24 months

— raw
 - - - smoothed
 (13-point moving average)

Figure 4.1 NSW

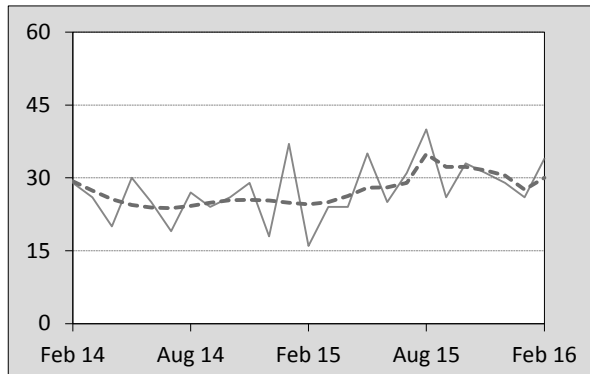


Figure 4.2 Vic

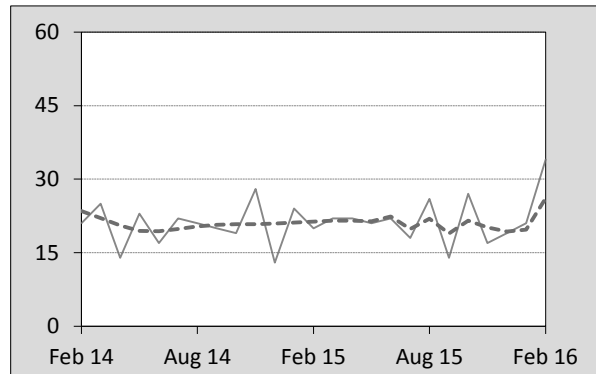


Figure 4.3 Qld

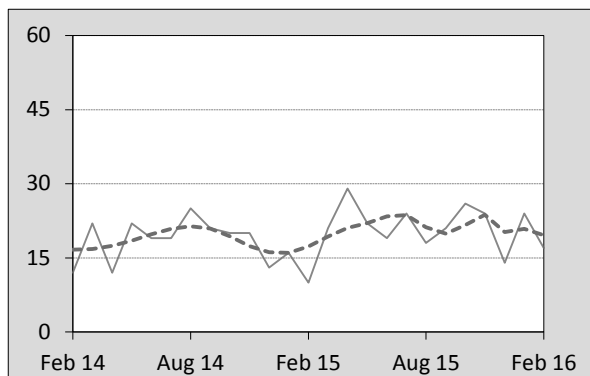


Figure 4.4 SA

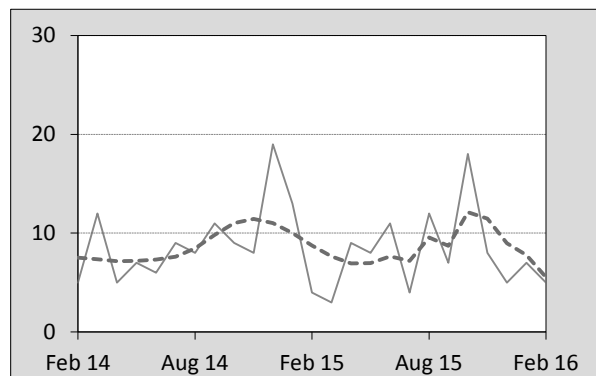


Figure 4.5 WA

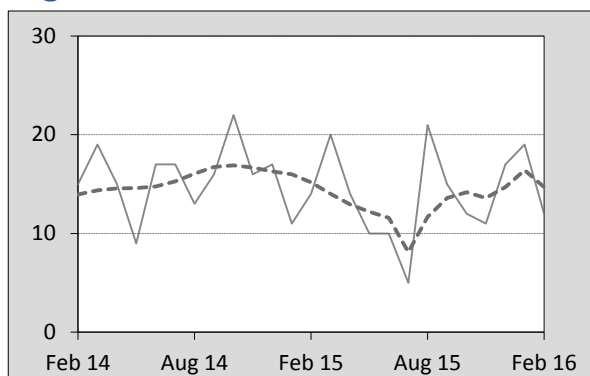


Figure 4.6 Tas

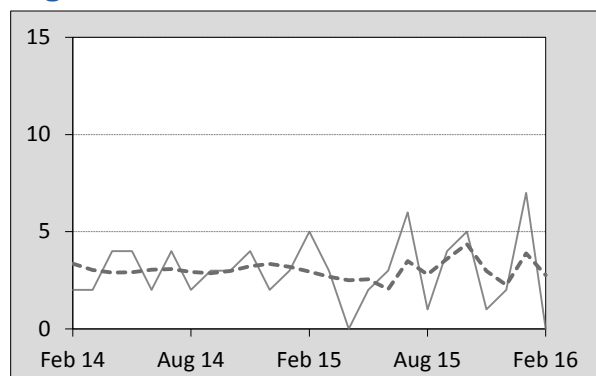


Figure 4.7 NT

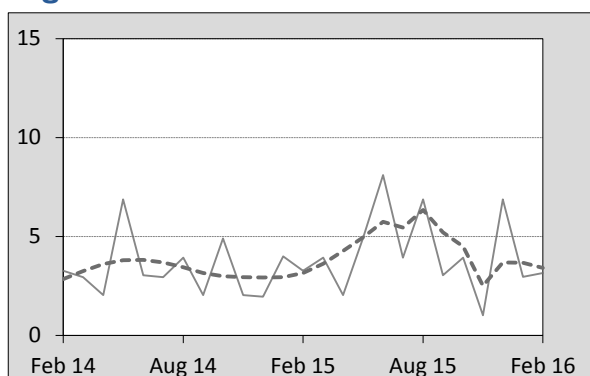
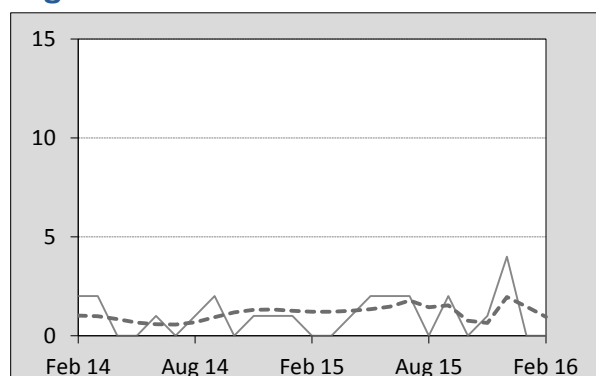


Figure 4.8 ACT



5. Fatal crashes: counts and characteristics

Table 5.1 By Crash type and Posted speed limit

12 months ended February	Crash type ^a			Posted speed limit				Total ^b
	Single	Multiple	Pedestrian	0 to 60	70 to 90	100	≥ 110	
2012	518	460	188	346	247	414	148	1,167
2013	527	495	163	409	272	343	144	1,180
2014	498	434	154	338	251	381	124	1,104
2015	461	436	147	328	229	353	135	1,057
2016	504	462	174	333	240	340	150	1,097
Latest per cent change	9.3	6.0	18.4	1.5	4.8	-3.7	11.1	3.8
Average trend change per year (per cent)	-1.9	-1.2	-2.5	-2.9	-2.3	-3.6	-0.4	-2.3

Table 5.2 By Day of week and Time of day

12 months ended February	Day of week ^c		Time of Day ^d	
	Weekday	Weekend	Day	Night
2012	692	474	711	455
2013	729	456	733	452
2014	655	431	694	392
2015	653	391	661	383
2016	701	439	697	443
Latest per cent change	7.4	12.3	5.4	15.7
Average trend change per year (per cent)	-0.8	-3.0	-1.4	-2.2

a 'Single' and 'Multiple' refer to the number of vehicles involved in a fatal crash where there is no pedestrian killed.

b Includes crashes where speed limit is unknown.

c 'Weekday' refers to 6am Monday through to 5:59pm Friday.

d 'Day' refers to 6am through to 5:59 pm.

Appendix

Definition

The road safety agencies in each jurisdiction use detailed criteria to define road crashes and road deaths. Briefly, a death is classified as resulting from a road crash if the crash occurred on a public road, is unintentional and the death occurred within 30 days from injuries sustained in the crash.

Population rates

Rates per population are based on the deaths to the current 12-month period, and the population at the midpoint of the period. The population at midpoints is interpolated if necessary.

Average trend change (% per year)

Calculated by fitting an exponential curve through the five data points, and quoting the constant (annual) change of this curve.

Other sources for the tables in this bulletin

The underlying database used to produce this bulletin — the *Australian Road Deaths Database* is available for data extraction at <http://www.bitre.gov.au/statistics/safety/fatal_road_crash_database.aspx>.

Road deaths from recent months are preliminary and subject to revision.