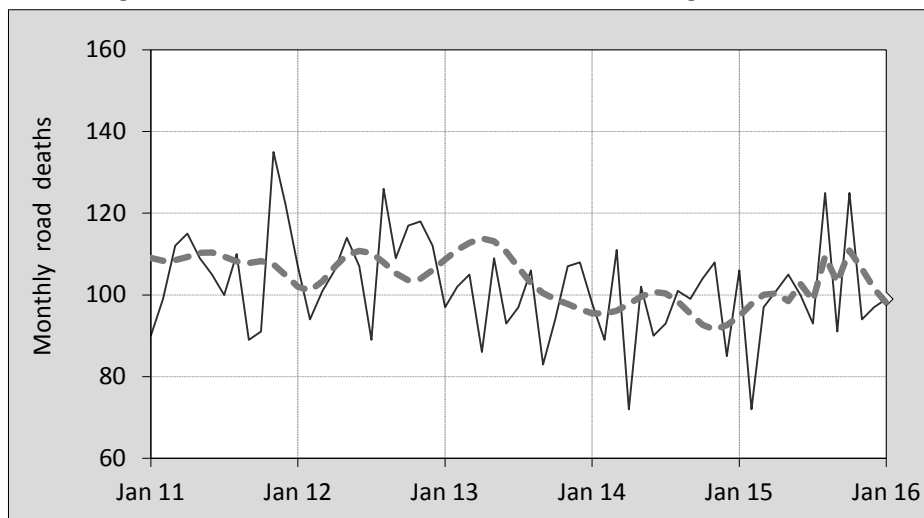




This month's key figures

- There was a total of 99 road deaths during the month of January 2016. In comparison to the average for January over the previous five years, the current figure is 0.6 per cent lower.
- During the 12 months ended January, there were 1,199 road deaths. This is a 3.4 per cent increase compared to the total for the 12-month period ended January 2015.
- Presently, the rate of annual deaths per 100,000 population stands at 5.0. Compared to the figure for the 12-month period ending January 2015, this is a 2.0 per cent increase.

Monthly Australian road deaths — last five years, with trend



Data Sources

Data are obtained from

- Transport for NSW
- Vicroads
- Department of Transport and Main Roads, Queensland
- Department of Planning, Transport and Infrastructure, S.A.
- Western Australia Police
- Department of State Growth, Tasmania
- Department of Transport, Northern Territory
- Territory and Municipal Services Directorate, ACT
- Australian Bureau of Statistics (3101.0)

Inquiries

For further information about data in this bulletin, contact:

Bureau of Infrastructure, Transport and
Regional Economics
Web : www.bitre.gov.au
Email : roadsafety@infrastructure.gov.au

Road deaths from recent months are preliminary and subject to revision.

© Copyright. Commonwealth of Australia

I. Deaths by jurisdiction

Table I.1 Current month

Current month	NSW	Vic	Qld	SA	WA	Tas	NT	ACT	Australia
January 2015	37	24	16	13	11	3	1	1	106
January 2016	24	17	24	6	18	7	3	0	99
Per cent change	-35.1	-29.2	50.0	-53.8	63.6	133.3	200.0	-100.0	-6.6

Table I.2 Year to date

Year to date	NSW	Vic	Qld	SA	WA	Tas	NT	ACT	Australia
January 2015 - January 2015	37	24	16	13	11	3	1	1	106
January 2016 - January 2016	24	17	24	6	18	7	3	0	99
Per cent change	-35.1	-29.2	50.0	-53.8	63.6	133.3	200.0	-100.0	-6.6

Table I.3 Year ending January

12 months ended January	NSW	Vic	Qld	SA	WA	Tas	NT	ACT	Australia
2012	368	299	277	97	178	23	48	4	1,294
2013	352	266	287	99	194	31	48	13	1,290
2014	352	254	257	95	149	37	38	6	1,188
2015	310	247	221	112	187	35	37	11	1,160
2016	338	245	250	95	167	39	51	14	1,199
Latest per cent change	9.0	-0.8	13.1	-15.2	-10.7	11.4	37.8	27.3	3.4
Average trend change per year (per cent)	-2.9	-4.6	-4.6	0.8	-1.6	12.5	-1.4	26.3	-2.6

2. Deaths by road user, age-group and gender

Table 2.1 By road user

12 months ended January	Driver	Passenger	Pedestrian	Motorcyclist ^b	Pedal ^b cyclist	Total ^c
2012	579	294	186	204	30	1,294
2013	606	250	167	226	36	1,290
2014	564	204	161	207	48	1,188
2015	534	229	146	203	45	1,160
2016	559	244	166	198	29	1,199
Latest per cent change	4.7	6.6	13.7	-2.5	-35.6	3.4
Average trend change per year (per cent)	-1.9	-4.5	-3.6	-1.7	1.6	-2.6

Table 2.2 By age-group^a (years)

12 months ended January	0 to 16	17 to 25	26 to 39	40 to 64	65 to 74	≥ 75	Total ^c
2012	91	285	289	402	79	148	1,294
2013	75	285	294	390	101	144	1,290
2014	63	223	246	381	115	160	1,188
2015	64	233	254	365	111	130	1,160
2016	65	230	261	375	116	151	1,199
Latest per cent change	1.6	-1.3	2.8	2.7	4.5	16.2	3.4
Average trend change per year (per cent)	-8.0	-6.1	-3.4	-2.0	9.0	-0.6	-2.6

2. Deaths by road user, age-group and gender (continued)

Table 2.3 By gender

12 months ended January	<i>Males</i>	<i>Females</i>	<i>Total^d</i>
2012	937	355	1,294
2013	919	370	1,290
2014	856	332	1,188
2015	827	332	1,160
2016	863	336	1,199
<i>Latest per cent change</i>	4.4	1.2	3.4
<i>Average trend change per year (per cent)</i>	-2.7	-2.2	-2.6

a Age groups were changed in March 2014.

b Includes pillion passengers.

c Includes deaths to persons with either age or road user type not recorded.

d Includes deaths to persons with gender not recorded.

3. Annual deaths per 100,000 population

Table 3.1 Year ended January

12 months ended January	<i>NSW</i>	<i>Vic</i>	<i>Qld</i>	<i>SA</i>	<i>WA</i>	<i>Tas</i>	<i>NT</i>	<i>ACT</i>	<i>Australia</i>
2012	5.09	5.39	6.18	5.91	7.54	4.50	20.72	1.09	5.78
2013	4.81	4.72	6.27	5.97	7.93	6.05	20.29	3.46	5.67
2014	4.75	4.42	5.52	5.68	5.91	7.21	15.65	1.57	5.13
2015	4.12	4.23	4.68	6.64	7.30	6.80	15.17	2.85	4.94
2016	4.43	4.12	5.23	5.59	6.44	7.55	20.82	3.58	5.04
<i>Latest per cent change</i>	7.5	-2.5	11.7	-15.8	-11.8	11.0	37.2	25.5	2.0
<i>Average trend change per year (per cent)</i>	-4.2	-6.3	-6.1	-0.1	-3.9	12.2	-2.8	24.5	-4.1

Table 3.2 Calendar year period

Calendar year	<i>NSW</i>	<i>Vic</i>	<i>Qld</i>	<i>SA</i>	<i>WA</i>	<i>Tas</i>	<i>NT</i>	<i>ACT</i>	<i>Australia</i>
2011	5.04	5.18	6.01	6.28	7.61	4.69	19.46	1.63	5.72
2012	5.05	5.01	6.13	5.68	7.51	6.05	20.77	3.20	5.72
2013	4.50	4.24	5.83	5.87	6.44	7.02	15.25	1.84	5.13
2014	4.09	4.25	4.72	6.35	7.15	6.80	16.01	2.59	4.91
2015	4.61	4.24	5.06	6.00	6.17	6.77	20.03	3.84	5.07
<i>Latest per cent change</i>	12.8	-0.1	7.2	-5.4	-13.7	-0.4	25.2	47.9	3.3

4. Monthly deaths by jurisdiction — last 24 months

— raw
 - - - smoothed
 (13-point moving average)

Figure 4.1 NSW

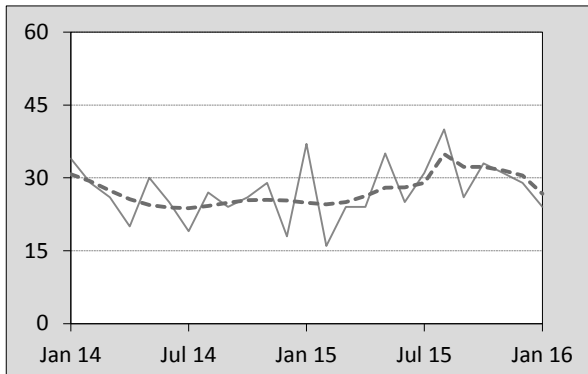


Figure 4.2 Vic

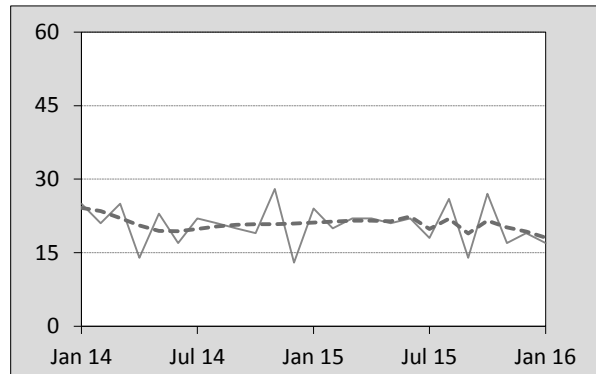


Figure 4.3 Qld

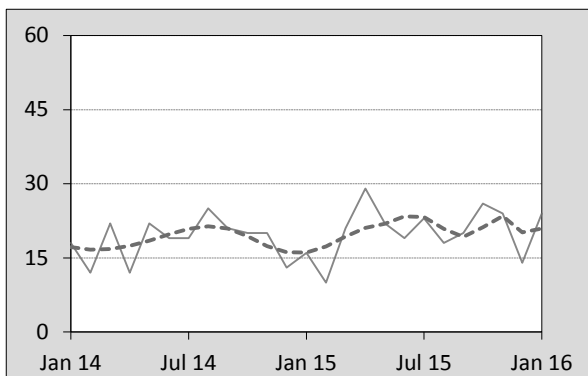


Figure 4.4 SA

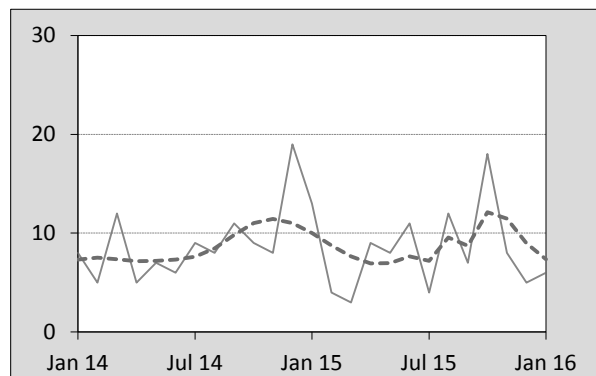


Figure 4.5 WA

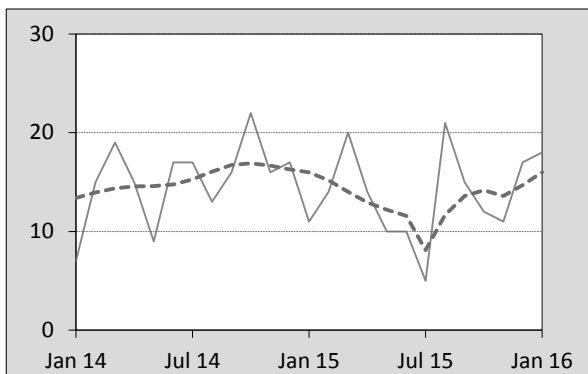


Figure 4.6 Tas

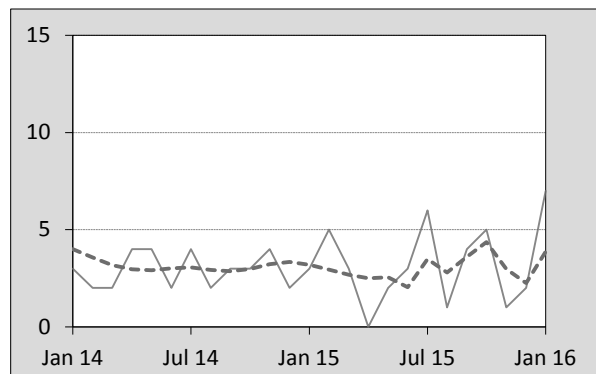


Figure 4.7 NT

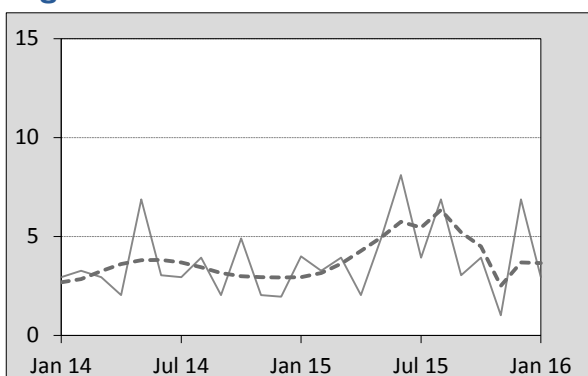
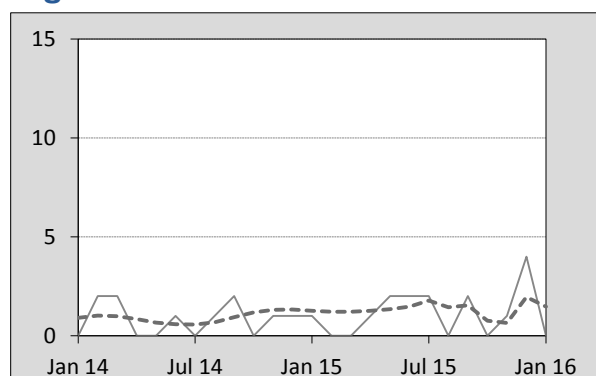


Figure 4.8 ACT



5. Fatal crashes: counts and characteristics

Table 5.1 By Crash type and Posted speed limit

12 months ended January	Crash type ^a			Posted speed limit				Total ^b
	Single	Multiple	Pedestrian	0 to 60	70 to 90	100	≥ 110	
2012	519	466	182	346	247	414	148	1,167
2013	516	498	166	409	272	343	144	1,180
2014	516	429	159	338	251	381	124	1,104
2015	464	449	144	328	229	353	135	1,057
2016	490	443	164	333	240	340	150	1,097
Latest per cent change	5.6	-1.3	13.9	1.5	4.8	-3.7	11.1	3.8
Average trend change per year (per cent)	-2.2	-2.0	-3.4	-2.9	-2.3	-3.6	-0.4	-2.3

Table 5.2 By Day of week and Time of day

12 months ended January	Day of week ^c		Time of Day ^d	
	Weekday	Weekend	Day	Night
2012	693	474	714	453
2013	730	450	736	444
2014	658	446	701	403
2015	659	398	663	394
2016	677	420	678	419
Latest per cent change	2.7	5.5	2.3	6.3
Average trend change per year (per cent)	-1.5	-3.6	-2.1	-2.7

a 'Single' and 'Multiple' refer to the number of vehicles involved in a fatal crash where there is no pedestrian killed.

b Includes crashes where speed limit is unknown.

c 'Weekday' refers to 6am Monday through to 5:59pm Friday.

d 'Day' refers to 6am through to 5:59 pm.

Appendix

Definition

The road safety agencies in each jurisdiction use detailed criteria to define road crashes and road deaths. Briefly, a death is classified as resulting from a road crash if the crash occurred on a public road, is unintentional and the death occurred within 30 days from injuries sustained in the crash.

Population rates

Rates per population are based on the deaths to the current 12-month period, and the population at the midpoint of the period. The population at midpoints is interpolated if necessary.

Average trend change (% per year)

Calculated by fitting an exponential curve through the five data points, and quoting the constant (annual) change of this curve.

Other sources for the tables in this bulletin

The underlying database used to produce this bulletin — the *Australian Road Deaths Database* is available for data extraction at <http://www.bitre.gov.au/statistics/safety/fatal_road_crash_database.aspx>.

Road deaths from recent months are preliminary and subject to revision.

6. Supplementary data — Christmas 2015

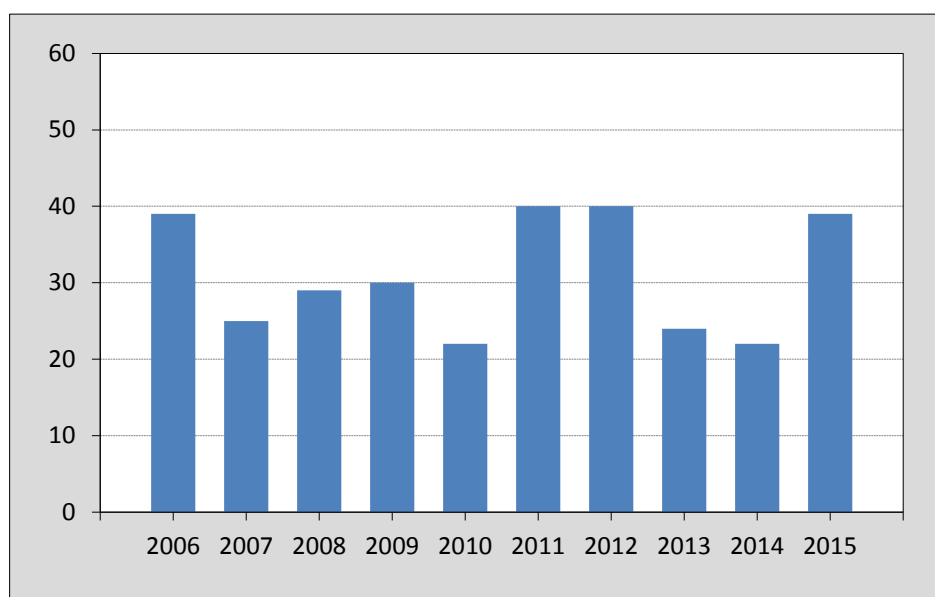
This month's supplementary section presents an analysis of a 12-day Christmas period. There is no uniformly defined 'Christmas holiday period' amongst Australia's road safety authorities. In some or all jurisdictions, there are defined periods of more stringent road safety enforcement, but the types and start-finish dates vary. The Australia and New Zealand Police Advisory Agency (ANZPAA) no longer publish the series of 'Christmas holiday period' fatalities.

The following analyses are based on a fixed 12-day period starting on 23rd December each year, which is referred to here as the 'Christmas period'.

Table 6.1 Fatalities during Christmas period

	<i>NSW</i>	<i>Vic</i>	<i>Qld</i>	<i>SA</i>	<i>WA</i>	<i>Tas</i>	<i>NT</i>	<i>ACT</i>	<i>Australia</i>
2006	14	12	8	2	3	0	0	0	39
2007	5	10	4	0	4	1	1	0	25
2008	4	6	6	1	10	1	1	0	29
2009	10	8	7	1	3	1	0	0	30
2010	5	10	4	0	0	0	3	0	22
2011	14	6	8	3	7	1	1	0	40
2012	12	9	3	6	6	3	1	0	40
2013	8	4	2	1	5	2	1	1	24
2014	7	3	2	7	2	1	0	0	22
2015	13	8	7	2	2	4	1	2	39

Figure 6.1 Fatalities during Christmas period — Australia



6. Supplementary data — Christmas 2015 (continued)

Figure 6.2 Fatalities during Christmas period — by jurisdiction

