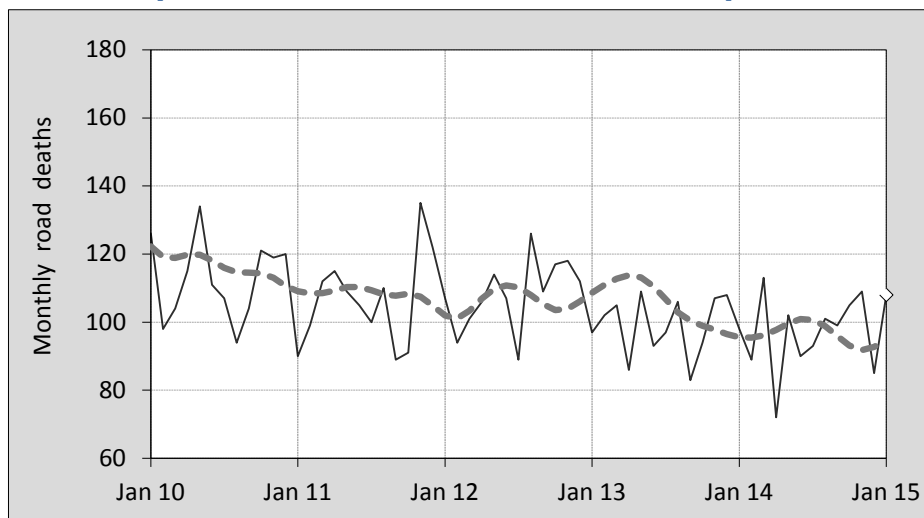




## This month's key figures

- There was a total of 108 road deaths during the month of January 2015. In comparison to the average for January over the previous five years, the current figure is 4.2 per cent higher.
- During the 12 months ended January there were 1,166 road deaths. This is a 1.9 per cent reduction compared to the total for the 12-monthly period ended January 2014.
- Presently the rate of annual deaths per 100,000 population stands at 5.0. Compared to the figure for the 12-monthly period ending January 2014, this is a 3.3 per cent reduction.

## Monthly Australian road deaths — last five years, with trend



### Data Sources

Data are obtained from

- Transport for NSW
- Vicroads
- Department of Transport and Main Roads, Queensland
- Department of Planning, Transport and Infrastructure, S.A.
- Western Australia Police
- Department of State Growth, Tasmania
- Department of Transport, Northern Territory
- Territory and Municipal Services Directorate, ACT
- Australian Bureau of Statistics (3101.0)

### Inquiries

For further information about data in this bulletin, contact:

Bureau of Infrastructure, Transport and  
Regional Economics  
Web : [www.bitre.gov.au](http://www.bitre.gov.au)  
Email : [roadsafety@infrastructure.gov.au](mailto:roadsafety@infrastructure.gov.au)

Road deaths from recent months are preliminary and subject to revision.

© Copyright. Commonwealth of Australia

## I. Deaths by jurisdiction

**Table I.1** Current month

Current month	NSW	Vic	Qld	SA	WA	Tas	NT	ACT	Australia
January 2014	34	25	18	8	7	3	3	0	98
January 2015	38	26	16	13	10	3	1	1	108
Per cent change	11.8	4.0	-11.1	62.5	42.9	0.0	-66.7	-	10.2

**Table I.2** Year to date

Year to date	NSW	Vic	Qld	SA	WA	Tas	NT	ACT	Australia
January 2014 - January 2014	34	25	18	8	7	3	3	0	98
January 2015 - January 2015	38	26	16	13	10	3	1	1	108
Per cent change	11.8	4.0	-11.1	62.5	42.9	0.0	-66.7	-	10.2

**Table I.3** Year ending January

12 months ended January	NSW	Vic	Qld	SA	WA	Tas	NT	ACT	Australia
2011	390	280	251	109	192	30	45	20	1,317
2012	368	299	277	97	178	23	48	4	1,294
2013	352	266	287	99	194	31	48	13	1,290
2014	352	254	257	95	149	37	38	6	1,188
2015	316	250	221	112	184	35	37	11	1,166
Latest per cent change	-10.2	-1.6	-14.0	17.9	23.5	-5.4	-2.6	83.3	-1.9
Average trend change per year (per cent)	-4.5	-3.8	-3.2	0.3	-2.6	8.2	-6.1	-7.6	-3.2

## 2. Deaths by road user, age-group and gender

**Table 2.1** By road user

12 months ended January	Driver	Passenger	Pedestrian	Motorcyclist <sup>b</sup>	Pedal <sup>b</sup> cyclist	Total <sup>c</sup>
2011	610	276	170	221	39	1,317
2012	579	294	186	204	30	1,294
2013	606	250	167	226	36	1,290
2014	564	204	161	207	48	1,188
2015	536	229	148	205	45	1,166
Latest per cent change	-5.0	12.3	-8.1	-1.0	-6.3	-1.9
Average trend change per year (per cent)	-2.8	-2.8	-2.8	-2.8	7.9	-3.2

**Table 2.2** By age-group<sup>a</sup> (years)

12 months ended January	0 to 16	17 to 25	26 to 39	40 to 64	65 to 74	≥ 75	Total <sup>c</sup>
2011	70	321	298	407	99	121	1,317
2012	91	285	289	402	79	148	1,294
2013	75	285	294	390	101	144	1,290
2014	63	223	246	381	115	160	1,188
2015	65	230	253	367	115	128	1,166
Latest per cent change	3.2	3.1	2.8	-3.7	0.0	-20.0	-1.9
Average trend change per year (per cent)	-5.0	-8.7	-4.8	-2.6	7.0	1.9	-3.2

## 2. Deaths by road user, age-group and gender (continued)

**Table 2.3** By gender

<b>12 months ended January</b>	<i>Males</i>	<i>Females</i>	<i>Total<sup>d</sup></i>
2011	951	365	1,317
2012	937	355	1,294
2013	919	370	1,290
2014	856	332	1,188
2015	834	331	1,166
<i>Latest per cent change</i>	-2.6	-0.3	-1.9
<i>Average trend change per year (per cent)</i>	-3.5	-2.6	-3.2

a Age groups were changed in March 2014.

b Includes pillion passengers

c Includes deaths to persons with either age or road ruser type not recorded.

d Includes deaths to persons with gender not recorded.

## 3. Annual deaths per 100,000 population

**Table 3.1** Year ended December

<b>12 months ended January</b>	<i>NSW</i>	<i>Vic</i>	<i>Qld</i>	<i>SA</i>	<i>WA</i>	<i>Tas</i>	<i>NT</i>	<i>ACT</i>	<i>Australia</i>
2011	5.45	5.12	5.69	6.69	8.36	5.89	19.56	5.52	5.97
2012	5.09	5.39	6.18	5.91	7.54	4.50	20.72	1.09	5.78
2013	4.81	4.72	6.27	5.97	7.93	6.05	20.29	3.46	5.67
2014	4.74	4.42	5.52	5.68	5.90	7.21	15.65	1.57	5.13
2015	4.20	4.27	4.67	6.64	7.14	6.80	15.08	2.85	4.96
<i>Latest per cent change</i>	-11.5	-3.3	-15.3	16.8	21.0	-5.7	-3.6	81.2	-3.3
<i>Average trend change per year (per cent)</i>	-5.8	-5.4	-4.9	-0.6	-5.5	7.9	-7.7	-9.1	-4.8

**Table 3.2** Calendar year period

<b>Calendar year</b>	<i>NSW</i>	<i>Vic</i>	<i>Qld</i>	<i>SA</i>	<i>WA</i>	<i>Tas</i>	<i>NT</i>	<i>ACT</i>	<i>Australia</i>
2010	5.67	5.27	5.65	7.25	8.42	6.09	21.76	5.25	6.14
2011	5.04	5.18	6.01	6.28	7.61	4.69	19.46	1.63	5.72
2012	5.05	5.01	6.13	5.68	7.51	6.05	20.77	3.20	5.72
2013	4.49	4.24	5.83	5.87	6.43	7.02	15.26	1.84	5.13
2014	4.15	4.26	4.72	6.35	7.03	6.80	15.91	2.59	4.92
<i>Latest per cent change</i>	-7.7	0.6	-18.9	8.2	9.4	-3.1	4.3	41.1	-4.1

4. Monthly deaths by jurisdiction — last 24 months

— raw  
 - - - smoothed  
 (unweighted 5-point moving average)

Figure 4.1 NSW

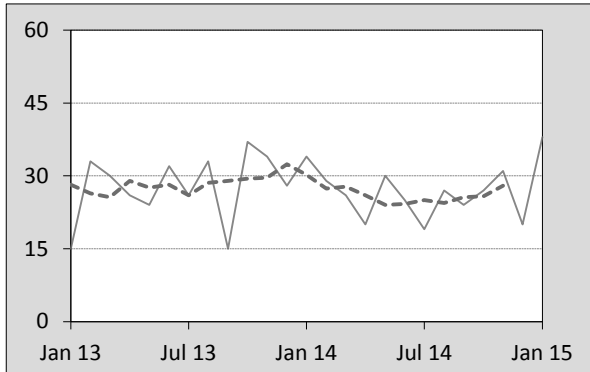


Figure 4.2 Vic

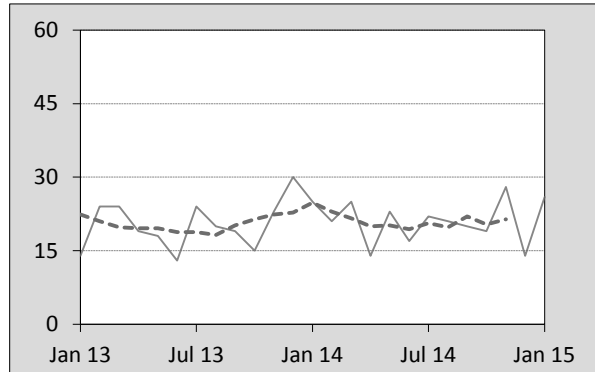


Figure 4.3 Qld

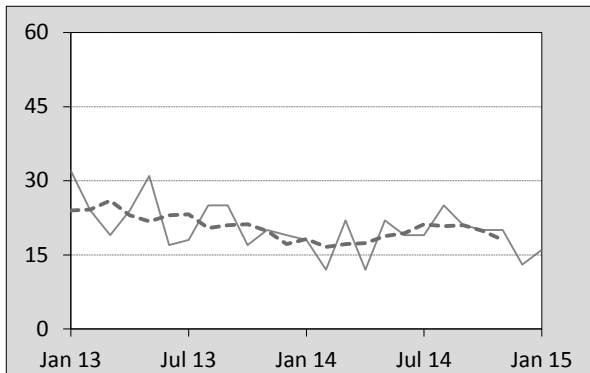


Figure 4.4 SA

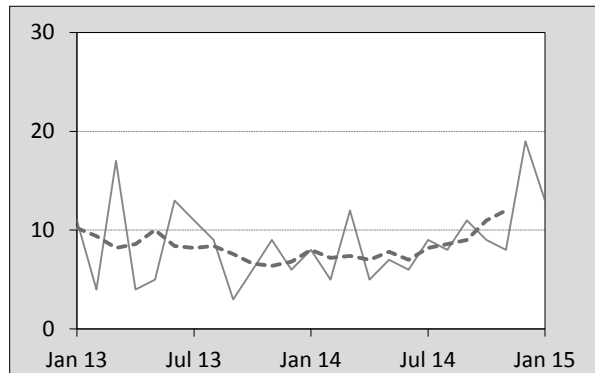


Figure 4.5 WA

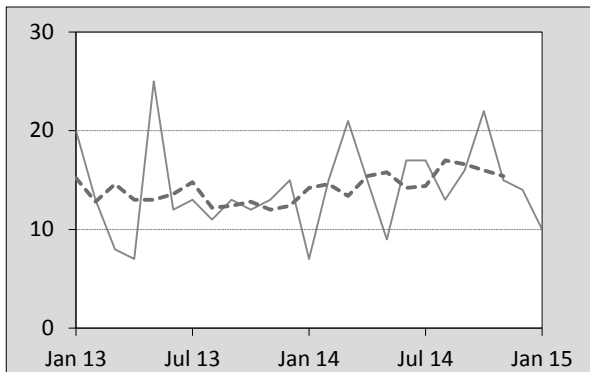


Figure 4.6 Tas

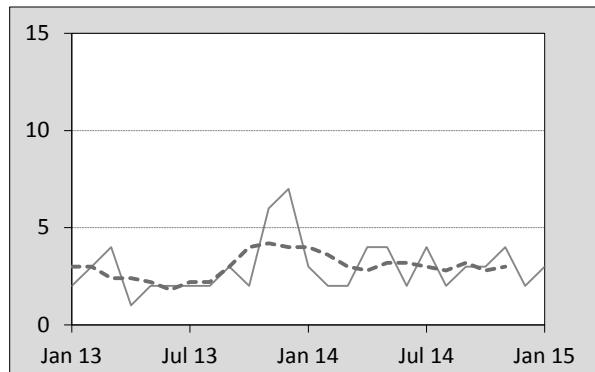


Figure 4.7 NT

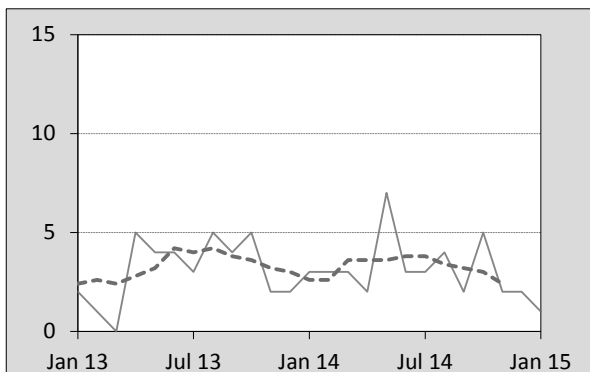
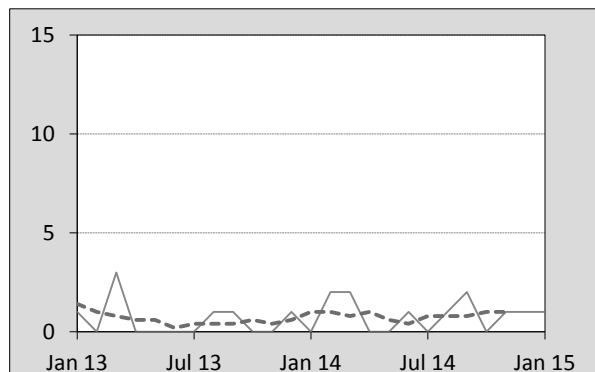


Figure 4.8 ACT



## 5. Fatal crashes: counts and characteristics

**Table 5.1** By Crash type and Posted speed limit

12 months ended January	Crash type <sup>a</sup>			Posted speed limit				Total <sup>b</sup>
	Single	Multiple	Pedestrian	0 to 60	70 to 90	100	≥ 110	
2011	527	517	169	360	278	412	159	1,213
2012	519	466	182	346	247	414	148	1,167
2013	516	498	166	409	272	343	144	1,180
2014	516	429	159	338	251	381	124	1,104
2015	468	449	146	320	225	352	132	1,063
Latest per cent change	-9.3	4.7	-8.2	-5.3	-10.4	-7.6	6.5	-3.7
Average trend change per year (per cent)	-2.4	-3.6	-4.2	-2.6	-4.0	-3.9	-5.3	-3.1

**Table 5.2** By Day of week and Time of day

12 months ended January	Day of week <sup>c</sup>		Time of Day <sup>d</sup>	
	Weekday	Weekend	Day	Night
2011	701	512	718	495
2012	693	474	714	453
2013	730	450	736	444
2014	658	446	701	403
2015	663	400	670	393
Latest per cent change	0.8	-10.3	-4.4	-2.5
Average trend change per year (per cent)	-1.6	-5.4	-1.6	-5.6

a 'Single' and 'Multiple' refer to the number of vehicles involved in a fatal crash where there is no pedestrian killed.

b Includes crashes where speed limit is unknown

c 'Weekday' refers to 6am Monday through to 5:59pm Friday.

d 'Day' refers to 6am through to 5:59 pm.

## Appendix

### Definition

The road safety agencies in each jurisdiction use detailed criteria to define road crashes and road deaths. Briefly, a death is classified as resulting from a road crash if the crash occurred on a public road, is unintentional and the death occurred within 30 days from injuries sustained in the crash.

### Population rates

Rates per population are based on the deaths to the current 12 monthly period, and the population at the midpoint of the period. The population at midpoints are interpolated if necessary.

### Average trend change ( % per year )

Calculated by fitting an exponential curve through the five data points, and quoting the constant (annual) change of this curve.

### Other sources for the tables in this bulletin

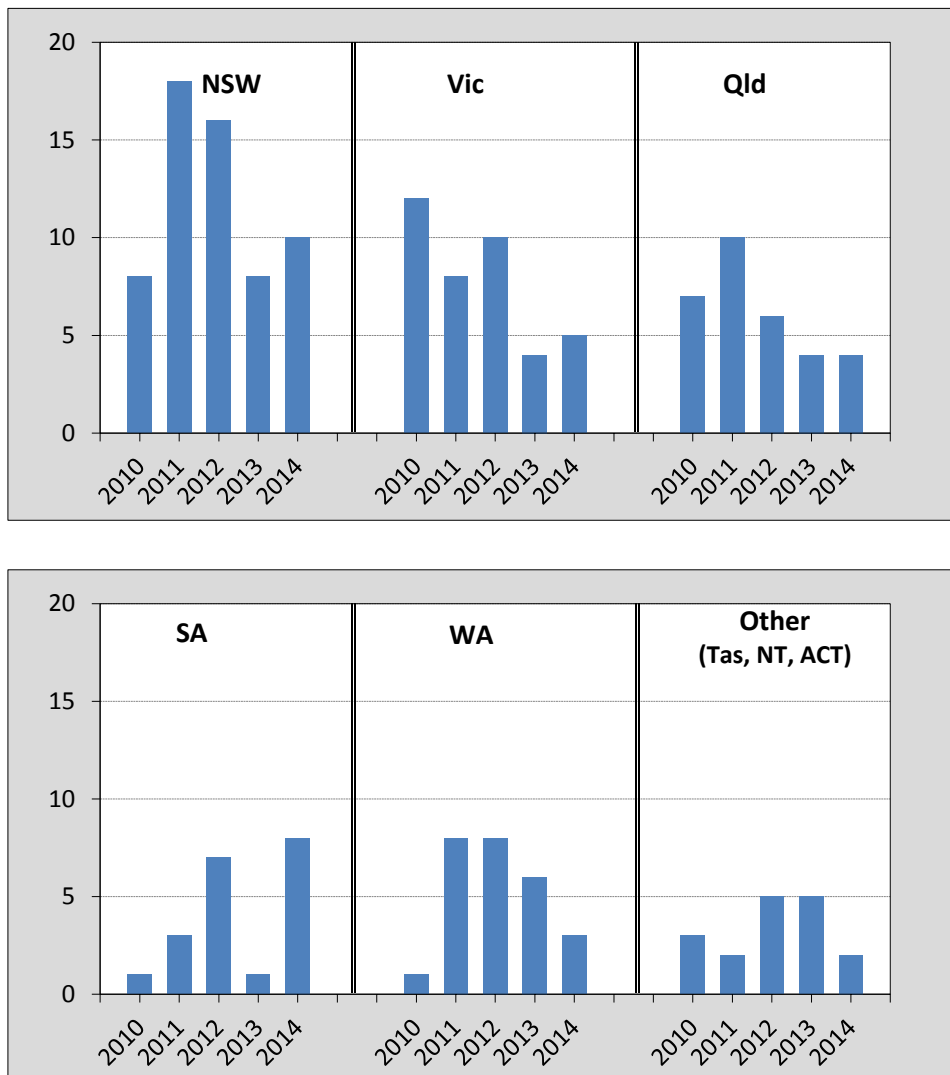
The underlying database used to produce this bulletin — *the Australian Road Deaths Database* is available for data extraction at <[http://www.bitre.gov.au/statistics/safety/fatal\\_road\\_crash\\_database.aspx](http://www.bitre.gov.au/statistics/safety/fatal_road_crash_database.aspx)>.

Road deaths from recent months are preliminary and subject to revision.

## 6. Supplementary data — Christmas 2014

This month's supplementary section presents a graphical analysis of the 12-day Christmas period.

**Figure 6.1 Deaths over the 12-day Christmas period by jurisdiction**



**Figure 6.2 Comparing deaths over Christmas with the whole year**

