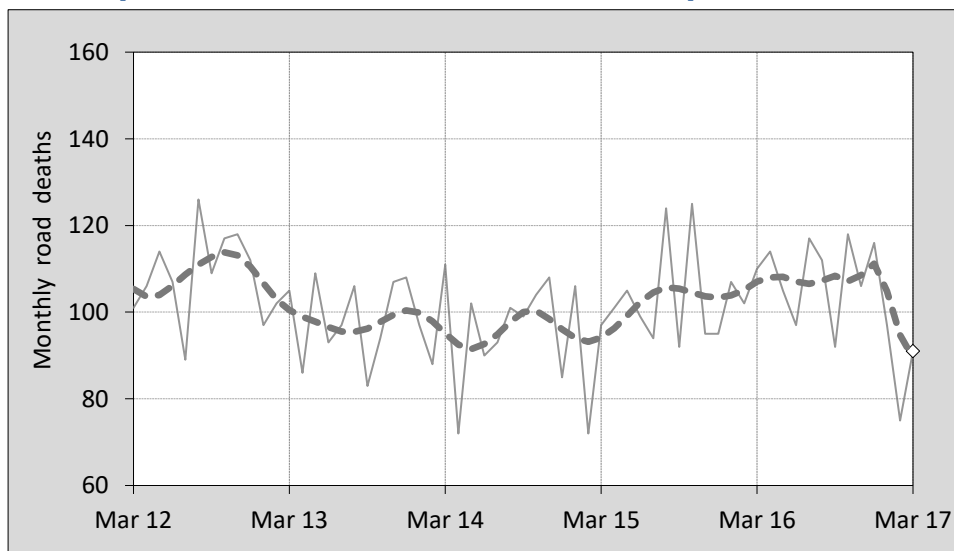




This month's key figures

- There was a total of 91 road deaths during the month of March 2017. In comparison to the average for March over the previous five years, the current figure is 13.2 per cent lower.
- During the 12 months ended March 2017, there were 1,240 road deaths. This is a 0.7 per cent decrease compared to the total for the 12-month period ended March 2016.
- Presently, the rate of annual deaths per 100,000 population stands at 5.1. Compared to the figure for the 12-month period ending March 2016, this is a 2.1 per cent decrease.

Monthly Australian road deaths — last five years, with trend



Data Sources

Data are obtained from

- Transport for NSW
- Vicroads
- Department of Transport and Main Roads, Queensland
- Department of Planning, Transport and Infrastructure, S.A.
- Western Australia Police
- Department of State Growth, Tasmania
- Department of Transport, Northern Territory
- Territory and Municipal Services Directorate, ACT
- Australian Bureau of Statistics (3101.0)

Inquiries

For further information about data in this bulletin, contact:

Bureau of Infrastructure, Transport and Regional Economics
 Web : www.bitre.gov.au
 Email : roadsafety@infrastructure.gov.au

Road deaths from recent months are preliminary and subject to revision.

© Copyright. Commonwealth of Australia

1. Deaths by jurisdiction

Table 1.1 Current month

Current month	NSW	Vic	Qld	SA	WA	Tas	NT	ACT	Australia
March 2016	32	25	15	8	22	4	3	1	110
March 2017	29	22	14	8	13	2	2	1	91
Per cent change	-9.4	-12.0	-6.7	0.0	-40.9	-50.0	-33.3	0.0	-17.3

Table 1.2 Year to date

Year to date	NSW	Vic	Qld	SA	WA	Tas	NT	ACT	Australia
January 2016 - March 2016	91	79	56	19	53	11	9	1	319
January 2017 - March 2017	79	58	56	18	37	5	8	2	263
Per cent change	-13.2	-26.6	0.0	-5.3	-30.2	-54.5	-11.1	100.0	-17.6

Table 1.3 Year ending March

12 months ended March	NSW	Vic	Qld	SA	WA	Tas	NT	ACT	Australia
2013	357	269	298	101	181	34	46	16	1,302
2014	344	252	248	91	162	32	43	7	1,179
2015	295	243	218	102	187	39	38	7	1,129
2016	364	265	252	101	168	34	50	15	1,249
2017	372	270	251	85	177	31	44	10	1,240
Latest per cent change	2.2	1.9	-0.4	-15.8	5.4	-8.8	-12.0	-33.3	-0.7
Average trend change per year (per cent)	1.4	0.6	-3.2	-2.4	-0.1	-1.2	0.6	-1.8	-0.4

2. Deaths by road user, age-group and gender

Table 2.1 By road user

12 months ended March	Driver	Passenger	Pedestrian	Motorcyclist ^b	Pedal ^b cyclist	Total ^c
2013	628	249	160	222	39	1,302
2014	541	213	166	202	52	1,179
2015	518	221	152	196	39	1,129
2016	583	242	164	223	35	1,249
2017	610	208	172	225	21	1,240
Latest per cent change	4.6	-14.0	4.9	0.9	-40.0	-0.7
Average trend change per year (per cent)	0.2	-2.3	1.3	1.3	-15.1	-0.4

Table 2.2 By age-group^a (years)

12 months ended March	0 to 16	17 to 25	26 to 39	40 to 64	65 to 74	≥ 75	Total ^c
2013	74	288	286	409	100	144	1,302
2014	62	212	241	385	118	161	1,179
2015	63	225	251	348	106	133	1,129
2016	58	245	270	384	123	169	1,249
2017	70	256	279	395	94	146	1,240
Latest per cent change	20.7	4.5	3.3	2.9	-23.6	-13.6	-0.7
Average trend change per year (per cent)	-1.8	-0.9	0.6	-0.7	-0.8	0.8	-0.4

2. Deaths by road user, age-group and gender (continued)

Table 2.3 By gender

12 months ended March	<i>Males</i>	<i>Females</i>	<i>Total^d</i>
2013	916	385	1,302
2014	857	322	1,179
2015	802	326	1,129
2016	902	347	1,249
2017	912	327	1,240
<i>Latest per cent change</i>	1.1	-5.8	-0.7
<i>Average trend change per year (per cent)</i>	0.4	-2.5	-0.4

a Age groups were changed in March 2014.

b Includes pillion passengers.

c Includes deaths to persons with either age or road user type not recorded.

d Includes deaths to persons with gender not recorded.

3. Annual deaths per 100,000 population

Table 3.1 Year ended March

12 months ended March	<i>NSW</i>	<i>Vic</i>	<i>Qld</i>	<i>SA</i>	<i>WA</i>	<i>Tas</i>	<i>NT</i>	<i>ACT</i>	<i>Australia</i>
2013	4.87	4.76	6.49	6.09	7.36	6.64	19.34	4.24	5.70
2014	4.63	4.37	5.31	5.44	6.41	6.23	17.69	1.83	5.08
2015	3.91	4.14	4.60	6.04	7.29	7.57	15.59	1.81	4.79
2016	4.76	4.44	5.26	5.94	6.47	6.57	20.42	3.82	5.23
2017	4.80	4.43	5.16	4.97	6.75	5.96	17.91	2.51	5.12
<i>Latest per cent change</i>	0.8	-0.2	-1.8	-16.3	4.3	-9.3	-12.3	-34.3	-2.1
<i>Average trend change per year (per cent)</i>	0.0	-1.3	-4.6	-3.1	-1.6	-1.6	-0.1	-3.1	-1.8

Table 3.2 Calendar year period

Calendar year	<i>NSW</i>	<i>Vic</i>	<i>Qld</i>	<i>SA</i>	<i>WA</i>	<i>Tas</i>	<i>NT</i>	<i>ACT</i>	<i>Australia</i>
2012	5.05	5.01	6.13	5.68	7.51	6.05	20.77	3.20	5.72
2013	4.50	4.24	5.83	5.87	6.44	7.02	15.25	1.84	5.13
2014	4.09	4.25	4.72	6.35	7.16	6.41	16.03	2.60	4.90
2015	4.59	4.24	5.09	6.00	6.18	6.58	20.03	3.83	5.06
2016	4.97	4.79	5.18	5.03	7.37	7.13	18.35	2.27	5.37
<i>Latest per cent change</i>	8.2	13.1	1.9	-16.1	19.4	8.3	-8.4	-40.8	6.0

4. Monthly deaths by jurisdiction — last 24 months

— raw
 - - - smoothed
 (13-point moving average)

Figure 4.1 NSW

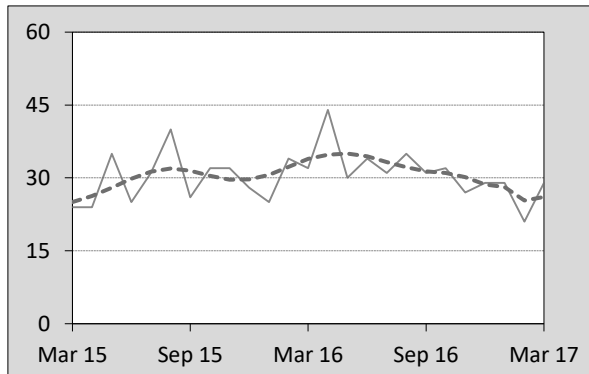


Figure 4.2 Vic

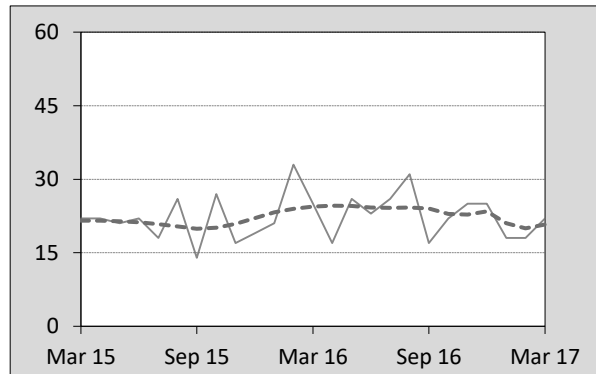


Figure 4.3 Qld

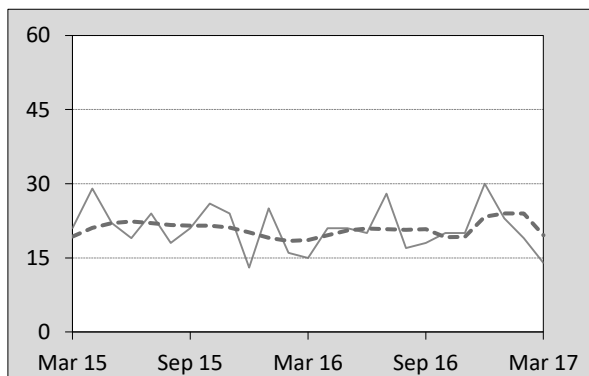


Figure 4.4 SA

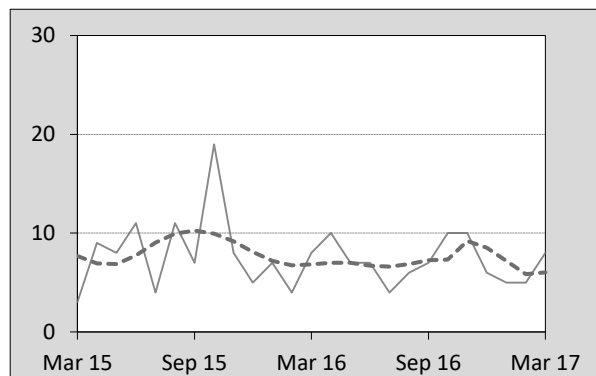


Figure 4.5 WA

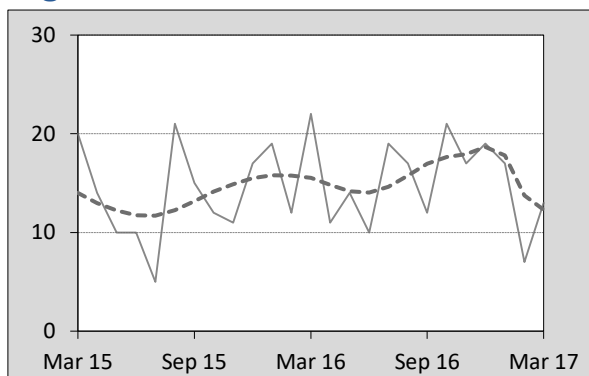


Figure 4.6 Tas

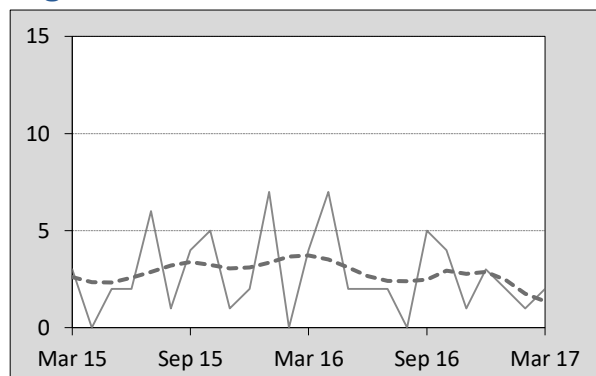


Figure 4.7 NT

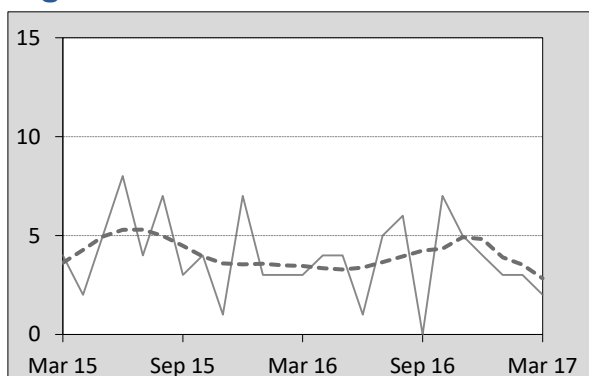
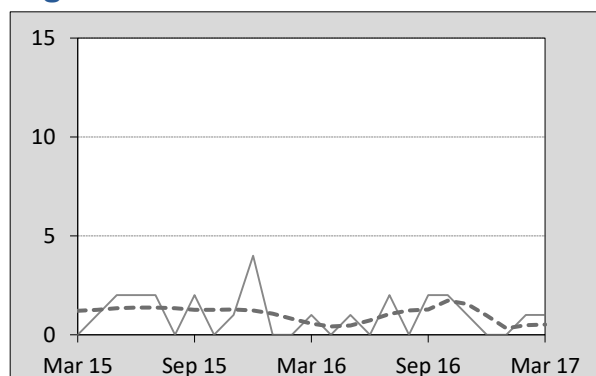


Figure 4.8 ACT



5. Fatal crashes: counts and characteristics

Table 5.1 By Crash type and Posted speed limit

12 months ended March	Crash type ^a			Posted speed limit						Total ^b
	Single	Multiple	Pedestrian	40	50	60	70 to 90	100	≥ 110	
2013	544	490	160	21	135	241	279	356	144	1,194
2014	484	441	164	9	128	200	242	370	125	1,089
2015	453	425	150	19	110	189	219	337	140	1,028
2016	514	472	160	9	124	232	253	363	153	1,146
2017	515	482	158	16	123	195	286	360	147	1,155
Latest per cent change	0.2	2.1	-1.3	77.8	-0.8	-15.9	13.0	-0.8	-3.9	0.8
Average trend change per year (per cent)	-0.5	0.4	-0.5	-5.3	-2.2	-2.7	0.9	0.0	2.5	-0.2

Table 5.2 By Day of week and Time of day

12 months ended March	Day of week ^c		Time of Day ^d	
	Weekday	Weekend	Day	Night
2013	738	456	742	452
2014	664	425	692	397
2015	632	396	650	378
2016	722	424	715	431
2017	696	459	678	477
Latest per cent change	-3.6	8.3	-5.2	10.7
Average trend change per year (per cent)	-0.3	0.1	-1.5	1.9

a 'Single' and 'Multiple' refer to the number of vehicles involved in a fatal crash where there is no pedestrian killed.

b Includes crashes where speed limit is unknown or where the posted speed limit is 30km/hr or less.

c 'Weekday' refers to 6am Monday through to 5:59pm Friday.

d 'Day' refers to 6am through to 5:59 pm.

Appendix

Definition

The road safety agencies in each jurisdiction use detailed criteria to define road crashes and road deaths. Briefly, a death is classified as resulting from a road crash if the crash occurred on a public road, is unintentional and the death occurred within 30 days from injuries sustained in the crash.

Population rates

Rates per population are based on the deaths to the current 12-month period, and the population at the midpoint of the period. The population at midpoints is interpolated if necessary.

Average trend change (% per year)

Calculated by fitting an exponential curve through the five data points, and quoting the constant (annual) change of this curve.

Other sources for the tables in this bulletin

The underlying database used to produce this bulletin — *the Australian Road Deaths Database* is available for data extraction at <http://www.bitre.gov.au/statistics/safety/fatal_road_crash_database.aspx>.

Road deaths from recent months are preliminary and subject to revision.