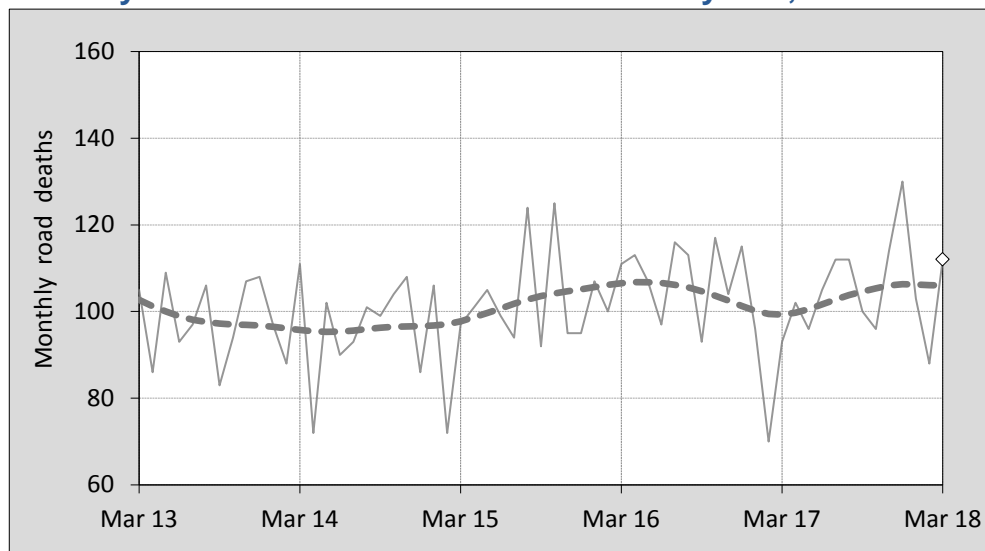




### This month's key figures

- There was a total of 112 road deaths during the month of March 2018. In comparison to the average for March over the previous five years, the current figure is 8.3 per cent higher.
- During the 12 months ended March 2018, there were 1,270 road deaths. This is a 2.9 per cent increase compared to the total for the 12-month period ended March 2017.
- Presently, the rate of annual deaths per 100,000 population stands at 5.1. Compared to the figure for the 12-month period ending March 2017, this is a 1.3 per cent increase.

### Monthly Australian road deaths — last five years, with trend



#### Data Sources

Data are obtained from

- Transport for NSW
- Vicroads
- Department of Transport and Main Roads, Queensland
- Department of Planning, Transport and Infrastructure, S.A.
- Western Australia Police
- Department of State Growth, Tasmania
- Department of Transport, Northern Territory
- Transport Canberra and City Services Directorate, ACT
- Australian Bureau of Statistics (3101.0)

#### Inquiries

For further information about data in this bulletin, contact:

Bureau of Infrastructure, Transport and Regional Economics  
Web : [www.bitre.gov.au](http://www.bitre.gov.au)  
Email : [roadsafety@infrastructure.gov.au](mailto:roadsafety@infrastructure.gov.au)

Road deaths from recent months are preliminary and subject to revision.

See [www.roadsafety.gov.au](http://www.roadsafety.gov.au) for performance indicators used to monitor progress under the National Road Safety Strategy 2011-2020 (NRSS).

© Copyright. Commonwealth of Australia

## 1. Deaths by jurisdiction

**Table 1.1** Current month

Current month	NSW	Vic	Qld	SA	WA	Tas	NT	ACT	Australia
March 2017	29	22	14	8	15	2	2	1	93
March 2018	25	21	28	11	14	4	9	0	112
Per cent change	-13.8	-4.5	100.0	37.5	-6.7	100.0	350.0	-100.0	20.4

**Table 1.2** Year to date

Year to date	NSW	Vic	Qld	SA	WA	Tas	NT	ACT	Australia
January 2017 - March 2017	76	57	55	17	38	5	8	3	259
January 2018 - March 2018	95	58	63	19	38	12	15	3	303
Per cent change	25.0	1.8	14.5	11.8	0.0	140.0	87.5	0.0	17.0

**Table 1.3** Year ending March

12 months ended March	NSW	Vic	Qld	SA	WA	Tas	NT	ACT	Australia
2014	344	252	248	91	162	32	43	7	1,179
2015	295	243	218	103	187	39	38	7	1,130
2016	362	265	252	101	168	34	50	16	1,248
2017	367	268	250	84	178	31	44	12	1,234
2018	412	255	255	103	159	43	38	5	1,270
Latest per cent change	12.3	-4.9	2.0	22.6	-10.7	38.7	-13.6	-58.3	2.9
Average trend change per year (per cent)	6.0	1.2	1.9	0.4	-0.9	3.7	-1.0	-1.3	2.4

## 2. Deaths by road user, age-group and gender

**Table 2.1** By road user

12 months ended March	Driver	Passenger	Pedestrian	Motorcyclist <sup>b</sup>	Pedal <sup>b</sup> cyclist	Total <sup>c</sup>
2014	541	213	166	202	52	1,179
2015	519	221	152	196	39	1,130
2016	583	242	163	223	35	1,248
2017	600	210	172	226	21	1,234
2018	594	236	178	213	43	1,270
Latest per cent change	-1.0	12.4	3.5	-5.8	104.8	2.9
Average trend change per year (per cent)	3.4	1.6	2.7	2.5	-9.5	2.4

**Table 2.2** By age-group<sup>a</sup> (years)

12 months ended March	0 to 16	17 to 25	26 to 39	40 to 64	65 to 74	≥ 75	Total <sup>c</sup>
2014	62	213	240	385	118	161	1,179
2015	63	225	251	348	107	134	1,130
2016	58	245	270	385	123	167	1,248
2017	69	254	276	390	93	152	1,234
2018	46	233	245	396	127	171	1,270
Latest per cent change	-33.3	-8.3	-11.2	1.5	36.6	12.5	2.9
Average trend change per year (per cent)	-4.9	3.1	1.4	1.7	0.1	2.5	2.4

## 2. Deaths by road user, age-group and gender (continued)

**Table 2.3** By gender

<b>12 months ended March</b>	<i>Males</i>	<i>Females</i>	<i>Total<sup>d</sup></i>
2014	857	322	1,179
2015	803	326	1,130
2016	901	347	1,248
2017	907	326	1,234
2018	918	346	1,270
<i>Latest per cent change</i>	1.2	6.1	2.9
<i>Average trend change per year (per cent)</i>	2.6	1.4	2.4

a Age groups were changed in March 2014.

b Includes pillion passengers.

c Includes deaths to persons with either age or road user type not recorded.

d Includes deaths to persons with gender not recorded.

## 3. Annual deaths per 100,000 population

**Table 3.1** Year ended March

<b>12 months ended March</b>	<i>NSW</i>	<i>Vic</i>	<i>Qld</i>	<i>SA</i>	<i>WA</i>	<i>Tas</i>	<i>NT</i>	<i>ACT</i>	<i>Australia</i>
2014	4.63	4.34	5.31	5.43	6.47	6.24	17.68	1.82	5.07
2015	3.91	4.09	4.60	6.09	7.39	7.59	15.57	1.79	4.79
2016	4.73	4.37	5.25	5.92	6.59	6.59	20.41	4.02	5.21
2017	4.72	4.31	5.14	4.89	6.94	5.98	17.89	2.96	5.08
2018	5.22	4.01	5.15	5.96	6.15	8.24	15.44	1.21	5.14
<i>Latest per cent change</i>	10.5	-7.1	0.3	21.9	-11.4	37.7	-13.7	-59.1	1.3
<i>Average trend change per year (per cent)</i>	4.4	-1.0	0.5	-0.3	-1.7	3.2	-1.3	-3.0	0.9

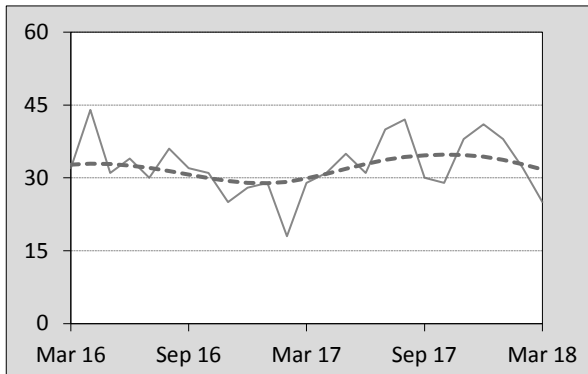
**Table 3.2** Calendar year period

<b>Calendar year</b>	<i>NSW</i>	<i>Vic</i>	<i>Qld</i>	<i>SA</i>	<i>WA</i>	<i>Tas</i>	<i>NT</i>	<i>ACT</i>	<i>Australia</i>
2013	4.49	4.21	5.82	5.86	6.50	7.02	15.24	1.82	5.13
2014	4.08	4.20	4.72	6.40	7.25	6.42	16.01	2.57	4.90
2015	4.59	4.18	5.08	5.99	6.29	6.60	20.00	3.78	5.05
2016	4.91	4.69	5.18	5.02	7.54	7.15	18.31	2.73	5.34
2017	5.00	4.02	5.01	5.86	6.16	6.91	12.60	1.22	4.98
<i>Latest per cent change</i>	1.8	-14.4	-3.2	16.7	-18.3	-3.3	-31.2	-55.3	-6.7

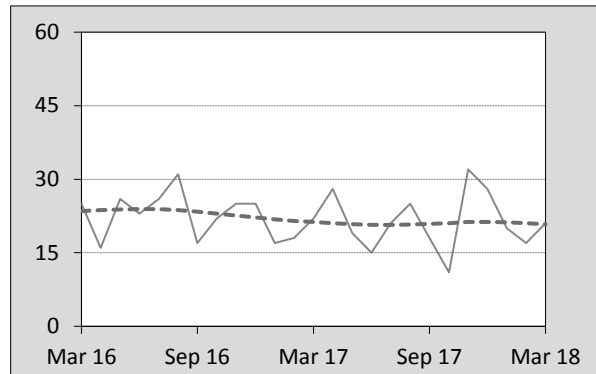
#### 4. Monthly deaths by jurisdiction — last 24 months

— raw  
 - - - smoothed  
 (13-point moving average)

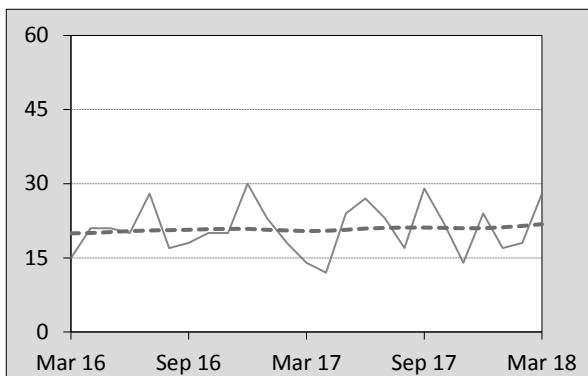
**Figure 4.1 NSW**



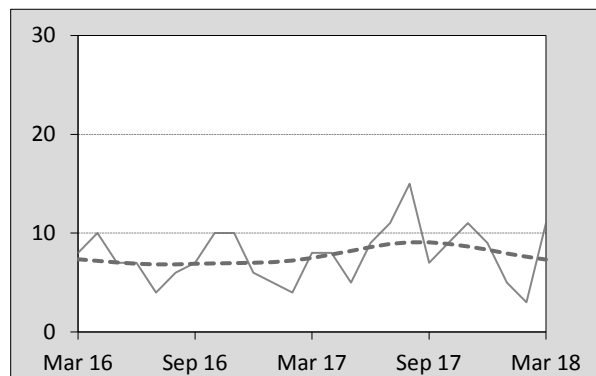
**Figure 4.2 Vic**



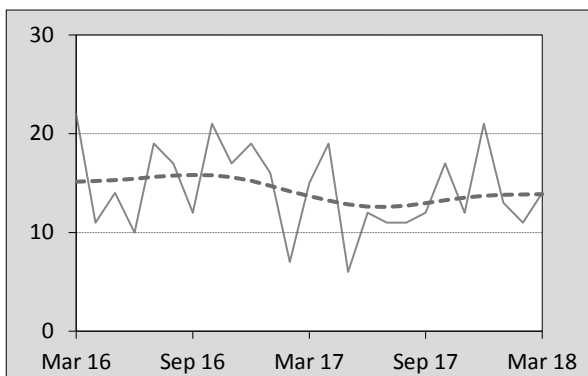
**Figure 4.3 Qld**



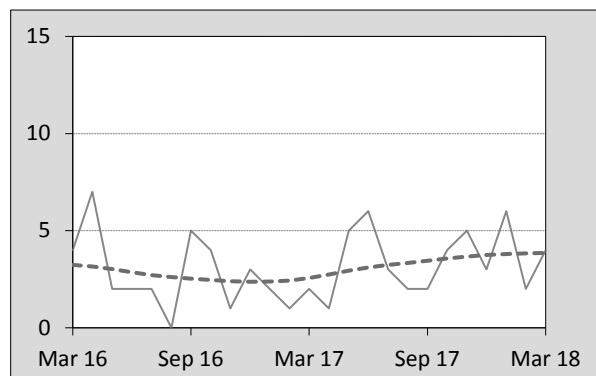
**Figure 4.4 SA**



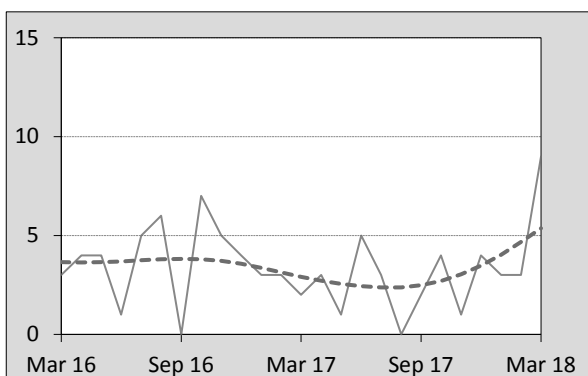
**Figure 4.5 WA**



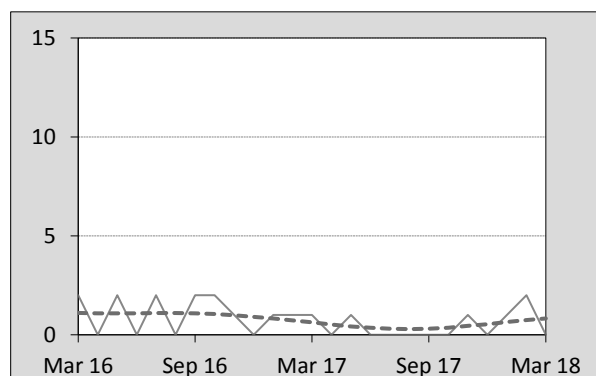
**Figure 4.6 Tas**



**Figure 4.7 NT**



**Figure 4.8 ACT**



## 5. Fatal crashes: counts and characteristics

**Table 5.1** By Crash type and Posted speed limit

12 months ended March	Crash type <sup>a</sup>			Posted speed limit						Total <sup>b</sup>
	Single	Multiple	Pedestrian	40	50	60	70 to 90	100	≥ 110	
2014	484	441	164	9	128	200	242	370	125	1,089
2015	455	424	150	19	110	189	219	338	140	1,029
2016	522	464	159	9	124	231	253	363	153	1,145
2017	507	484	159	17	123	198	288	363	147	1,150
2018	509	498	161	26	153	215	245	315	135	1,168
Latest per cent change	0.4	2.9	1.3	52.9	24.4	8.6	-14.9	-13.2	-8.2	1.6
Average trend change per year (per cent)	2.1	3.8	0.2	22.3	4.8	1.9	3.0	-2.5	2.0	2.5

**Table 5.2** By Day of week and Time of day

12 months ended March	Day of week <sup>c</sup>		Time of Day <sup>d</sup>	
	Weekday	Weekend	Day	Night
2014	664	425	693	396
2015	634	395	650	379
2016	720	425	715	430
2017	693	457	681	469
2018	724	444	746	422
Latest per cent change	4.5	-2.8	9.5	-10.0
Average trend change per year (per cent)	2.7	2.4	2.0	3.5

a 'Single' and 'Multiple' refer to the number of vehicles involved in a fatal crash where there is no pedestrian killed.

b Includes crashes where speed limit is unknown or where the posted speed limit is 30km/hr or less.

c 'Weekday' refers to 6am Monday through to 5:59pm Friday.

d 'Day' refers to 6am through to 5:59 pm.

## Appendix

### Definition

The road safety agencies in each jurisdiction use detailed criteria to define road crashes and road deaths. Briefly, a death is classified as resulting from a road crash if the crash occurred on a public road, is unintentional and the death occurred within 30 days from injuries sustained in the crash.

### Population rates

Rates per population are based on the deaths to the current 12-month period, and the population at the midpoint of the period. The population at midpoints is interpolated if necessary.

### Average trend change ( % per year )

Calculated by fitting an exponential curve through the five data points, and quoting the constant (annual) change of this curve.

### Smooth trend lines

Whittaker-Henderson smoothers are used with value of 80 for the smoothing parameter. The application R (package pracma) can be used for such trend lines.

### Other sources for the tables in this bulletin

The underlying database used to produce this bulletin — *the Australian Road Deaths Database* is available for data extraction at <[http://www.bitre.gov.au/statistics/safety/fatal\\_road\\_crash\\_database.aspx](http://www.bitre.gov.au/statistics/safety/fatal_road_crash_database.aspx)>.

Road deaths from recent months are preliminary and subject to revision.