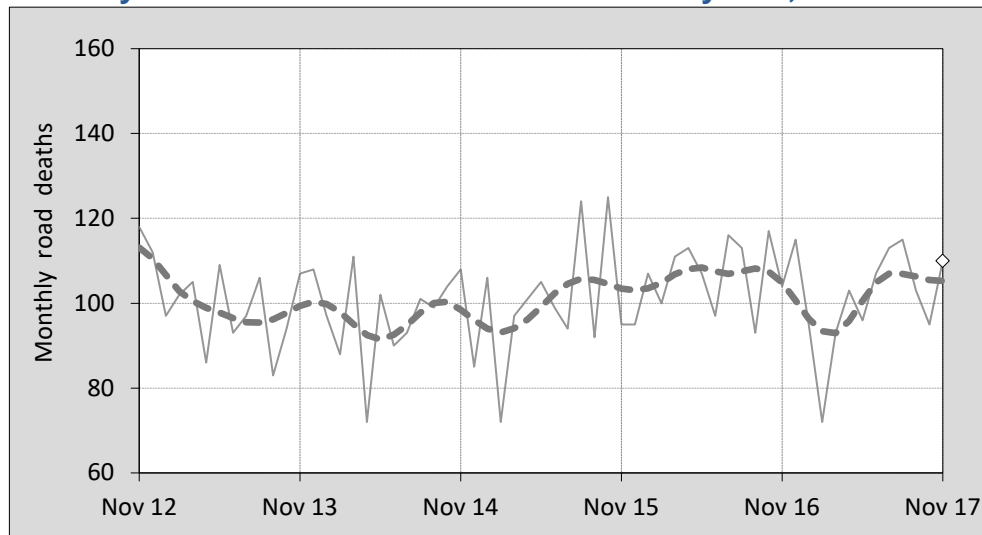




This month's key figures

- There was a total of 110 road deaths during the month of November 2017. In comparison to the average for November over the previous five years, the current figure is 3.4 per cent higher.
- During the 12 months ended November 2017, there were 1,209 road deaths. This is a 5.0 per cent decrease compared to the total for the 12-month period ended November 2016.
- Presently, the rate of annual deaths per 100,000 population stands at 4.9. Compared to the figure for the 12-month period ending November 2016, this is a 6.6 per cent decrease.

Monthly Australian road deaths — last five years, with trend



Data Sources

Data are obtained from

- Transport for NSW
- Vicroads
- Department of Transport and Main Roads, Queensland
- Department of Planning, Transport and Infrastructure, S.A.
- Western Australia Police
- Department of State Growth, Tasmania
- Department of Transport, Northern Territory
- Transport Canberra and City Services Directorate, ACT
- Australian Bureau of Statistics (3101.0)

Inquiries

For further information about data in this bulletin, contact:

Bureau of Infrastructure, Transport and Regional Economics

Web : www.bitre.gov.au

Email : roadsafety@infrastructure.gov.au

Road deaths from recent months are preliminary and subject to revision.

See www.roadsafety.gov.au for performance indicators used to monitor progress under the National Road Safety Strategy 2011-2020 (NRSS).

© Copyright. Commonwealth of Australia

1. Deaths by jurisdiction

Table 1.1 Current month

Current month	NSW	Vic	Qld	SA	WA	Tas	NT	ACT	Australia
November 2016	25	25	20	10	17	1	5	1	104
November 2017	37	31	13	10	12	5	1	1	110
Per cent change	48.0	24.0	-35.0	0.0	-29.4	400.0	-80.0	0.0	5.8

Table 1.2 Year to date

Year to date	NSW	Vic	Qld	SA	WA	Tas	NT	ACT	Australia
January 2016 - November 2016	352	265	221	80	174	34	41	11	1,178
January 2017 - November 2017	351	225	223	93	137	33	27	5	1,094
Per cent change	-0.3	-15.1	0.9	16.3	-21.3	-2.9	-34.1	-54.5	-7.1

Table 1.3 Year ending November

12 months ended November	NSW	Vic	Qld	SA	WA	Tas	NT	ACT	Australia
2013	333	237	274	103	163	34	40	7	1,191
2014	317	265	229	94	181	38	39	10	1,173
2015	340	246	243	117	160	34	44	12	1,196
2016	380	284	234	85	191	36	48	15	1,273
2017	379	250	253	99	156	36	31	5	1,209
Latest per cent change	-0.3	-12.0	8.1	16.5	-18.3	0.0	-35.4	-66.7	-5.0
Average trend change per year (per cent)	4.5	1.8	-1.4	-1.8	-0.3	0.6	-3.0	-2.6	1.1

2. Deaths by road user, age-group and gender

Table 2.1 By road user

12 months ended November	Driver	Passenger	Pedestrian	Motorcyclist ^b	Pedal ^b cyclist	Total ^c
2013	581	207	150	200	45	1,191
2014	531	232	158	200	49	1,173
2015	553	246	162	203	29	1,196
2016	615	207	176	241	32	1,273
2017	561	231	161	213	37	1,209
Latest per cent change	-8.8	11.6	-8.5	-11.6	15.6	-5.0
Average trend change per year (per cent)	0.8	1.1	2.5	3.2	-7.9	1.1

Table 2.2 By age-group^a (years)

12 months ended November	0 to 16	17 to 25	26 to 39	40 to 64	65 to 74	≥ 75	Total ^c
2013	63	242	246	377	114	149	1,191
2014	66	235	255	364	117	134	1,173
2015	64	230	264	368	119	151	1,196
2016	56	258	284	409	102	164	1,273
2017	56	239	251	379	117	165	1,209
Latest per cent change	0.0	-7.4	-11.6	-7.3	14.7	0.6	-5.0
Average trend change per year (per cent)	-3.9	0.7	1.5	1.3	-0.8	4.1	1.1

2. Deaths by road user, age-group and gender (continued)

Table 2.3 By gender

12 months ended November	Males	Females	Total ^d
2013	849	341	1,191
2014	843	329	1,173
2015	856	340	1,196
2016	935	338	1,273
2017	890	315	1,209
Latest per cent change	-4.8	-6.8	-5.0
Average trend change per year (per cent)	2.0	-1.3	1.1

a Age groups were changed in March 2014.

b Includes pillion passengers.

c Includes deaths to persons with either age or road user type not recorded.

d Includes deaths to persons with gender not recorded.

3. Annual deaths per 100,000 population

Table 3.1 Year ended November

12 months ended November	NSW	Vic	Qld	SA	WA	Tas	NT	ACT	Australia
2013	4.50	4.11	5.90	6.17	6.55	6.63	16.52	1.83	5.15
2014	4.22	4.50	4.85	5.57	7.18	7.40	16.02	2.57	5.00
2015	4.46	4.08	5.08	6.88	6.29	6.60	18.00	3.03	5.02
2016	4.92	4.61	4.83	4.96	7.47	6.96	19.56	3.72	5.26
2017	4.82	3.95	5.14	5.74	6.04	6.91	12.66	1.22	4.92
Latest per cent change	-2.0	-14.1	6.4	15.7	-19.1	-0.7	-35.3	-67.3	-6.6
Average trend change per year (per cent)	2.9	-0.5	-2.8	-2.5	-1.2	0.2	-3.3	-4.3	-0.4

Table 3.2 Calendar year period

Calendar year	NSW	Vic	Qld	SA	WA	Tas	NT	ACT	Australia
2012	5.05	4.99	6.13	5.67	7.54	6.06	20.77	3.19	5.72
2013	4.49	4.21	5.82	5.86	6.50	7.02	15.24	1.82	5.13
2014	4.08	4.20	4.72	6.40	7.25	6.42	16.01	2.57	4.90
2015	4.59	4.18	5.08	5.99	6.29	6.60	20.00	3.78	5.05
2016	4.91	4.69	5.18	5.02	7.54	7.15	18.31	2.73	5.34
Latest per cent change	7.0	12.4	1.9	-16.2	19.9	8.4	-8.5	-27.9	5.7

4. Monthly deaths by jurisdiction — last 24 months

— raw
 - - - smoothed
 (13-point moving average)

Figure 4.1 NSW

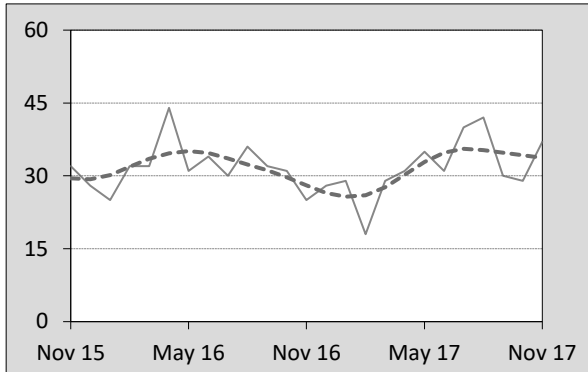


Figure 4.2 Vic

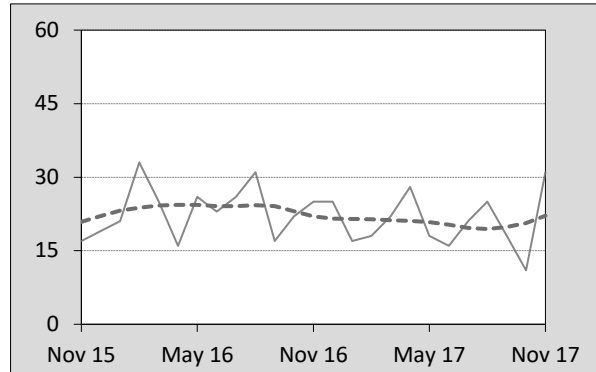


Figure 4.3 Qld

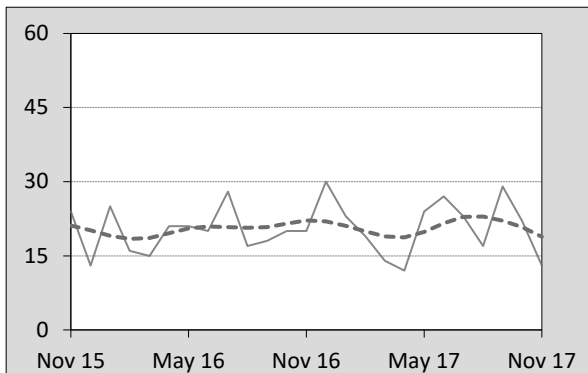


Figure 4.4 SA

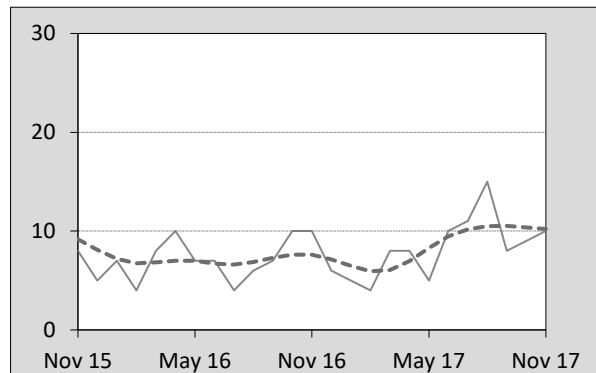


Figure 4.5 WA

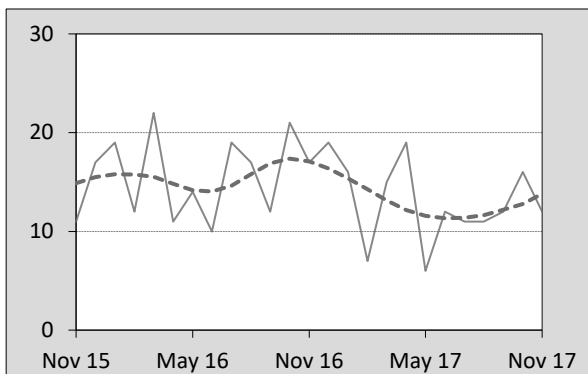


Figure 4.6 Tas

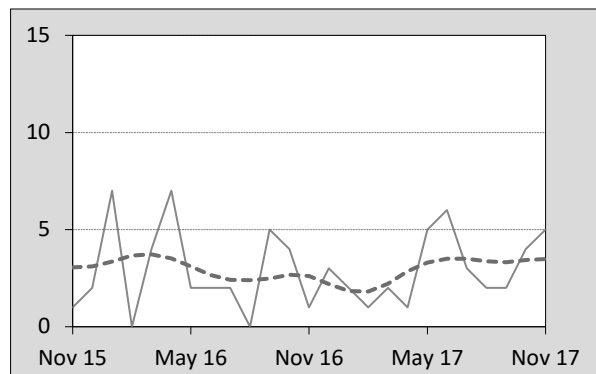


Figure 4.7 NT

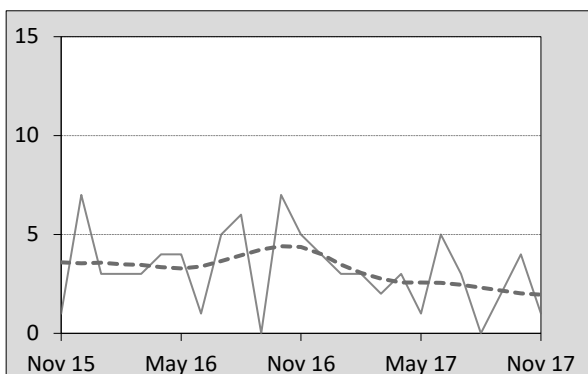
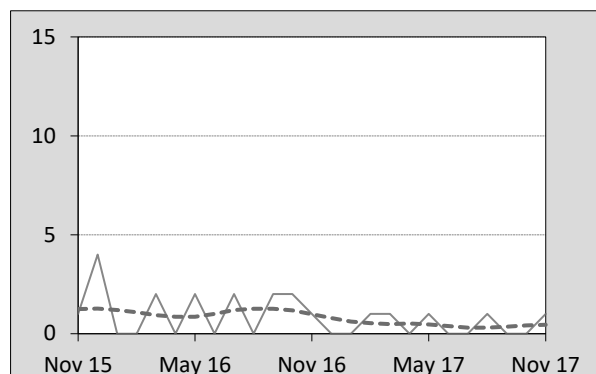


Figure 4.8 ACT



5. Fatal crashes: counts and characteristics

Table 5.1 By Crash type and Posted speed limit

12 months ended November	Crash type ^a			Posted speed limit						Total ^b
	Single	Multiple	Pedestrian	40	50	60	70 to 90	100	≥ 110	
2013	519	432	148	13	127	199	250	366	134	1,099
2014	476	440	157	15	115	196	234	368	128	1,073
2015	492	440	160	14	119	215	246	345	139	1,092
2016	515	502	162	17	127	216	288	356	167	1,179
2017	495	476	147	21	142	197	234	341	141	1,118
Latest per cent change	-3.9	-5.2	-9.3	23.5	11.8	-8.8	-18.8	-4.2	-15.6	-5.2
Average trend change per year (per cent)	-0.2	3.3	0.2	11.5	3.3	0.8	0.8	-1.7	3.7	1.3

Table 5.2 By Day of week and Time of day

12 months ended November	Day of week ^c		Time of Day ^d	
	Weekday	Weekend	Day	Night
2013	649	450	693	406
2014	671	402	683	390
2015	668	424	673	419
2016	719	460	709	470
2017	698	420	700	418
Latest per cent change	-2.9	-8.7	-1.3	-11.1
Average trend change per year (per cent)	2.2	0.0	0.6	2.5

a 'Single' and 'Multiple' refer to the number of vehicles involved in a fatal crash where there is no pedestrian killed.

b Includes crashes where speed limit is unknown or where the posted speed limit is 30km/hr or less.

c 'Weekday' refers to 6am Monday through to 5:59pm Friday.

d 'Day' refers to 6am through to 5:59 pm.

Appendix

Definition

The road safety agencies in each jurisdiction use detailed criteria to define road crashes and road deaths. Briefly, a death is classified as resulting from a road crash if the crash occurred on a public road, is unintentional and the death occurred within 30 days from injuries sustained in the crash.

Population rates

Rates per population are based on the deaths to the current 12-month period, and the population at the midpoint of the period. The population at midpoints is interpolated if necessary.

Average trend change (% per year)

Calculated by fitting an exponential curve through the five data points, and quoting the constant (annual) change of this curve.

Other sources for the tables in this bulletin

The underlying database used to produce this bulletin — *the Australian Road Deaths Database* is available for data extraction at <http://www.bitre.gov.au/statistics/safety/fatal_road_crash_database.aspx>.

Road deaths from recent months are preliminary and subject to revision.