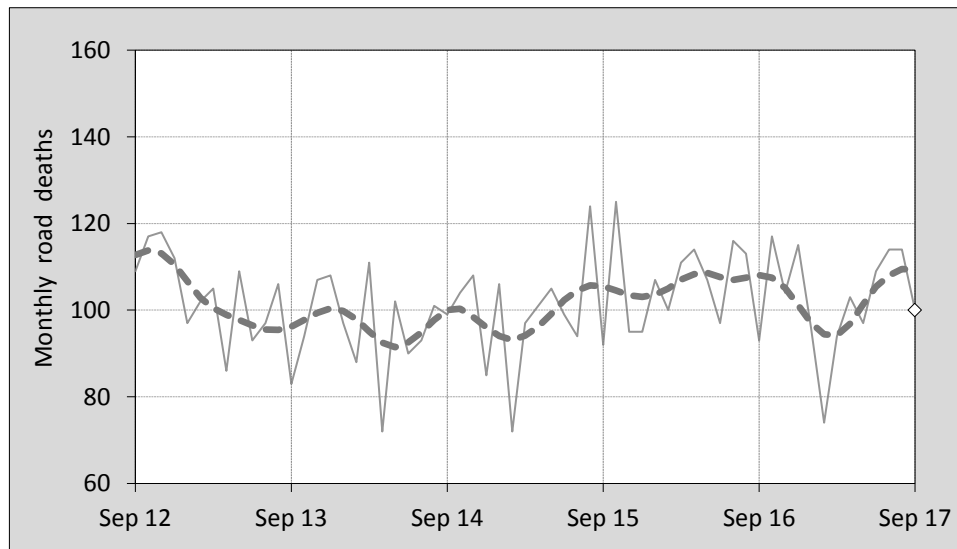




This month's key figures

- There was a total of 100 road deaths during the month of September 2017. In comparison to the average for September over the previous five years, the current figure is 5.0 per cent higher.
- During the 12 months ended September 2017, there were 1,237 road deaths. This is a 2.8 per cent decrease compared to the total for the 12-month period ended September 2016.
- Presently, the rate of annual deaths per 100,000 population stands at 5.0. Compared to the figure for the 12-month period ending September 2016, this is a 4.4 per cent decrease.

Monthly Australian road deaths — last five years, with trend



Data Sources

Data are obtained from

- Transport for NSW
- Vicroads
- Department of Transport and Main Roads, Queensland
- Department of Planning, Transport and Infrastructure, S.A.
- Western Australia Police
- Department of State Growth, Tasmania
- Department of Transport, Northern Territory
- Transport Canberra and City Services Directorate, ACT
- Australian Bureau of Statistics (3101.0)

Inquiries

For further information about data in this bulletin, contact:

Bureau of Infrastructure, Transport and Regional Economics

Web : www.bitre.gov.au

Email : roadsafety@infrastructure.gov.au

Road deaths from recent months are preliminary and subject to revision.

See www.roadsafety.gov.au for performance indicators used to monitor progress under the National Road Safety Strategy 2011-2020 (NRSS).

© Copyright. Commonwealth of Australia

1. Deaths by jurisdiction

Table 1.1 Current month

Current month	NSW	Vic	Qld	SA	WA	Tas	NT	ACT	Australia
September 2016	32	17	18	7	12	5	0	2	93
September 2017	30	18	27	10	11	2	2	0	100
Per cent change	-6.3	5.9	50.0	42.9	-8.3	-60.0	-	-100.0	7.5

Table 1.2 Year to date

Year to date	NSW	Vic	Qld	SA	WA	Tas	NT	ACT	Australia
January 2016 - September 2016	296	219	181	60	136	29	29	8	958
January 2017 - September 2017	289	184	188	82	108	24	22	4	901
Per cent change	-2.4	-16.0	3.9	36.7	-20.6	-17.2	-24.1	-50.0	-5.9

Table 1.3 Year ending September

12 months ended September	NSW	Vic	Qld	SA	WA	Tas	NT	ACT	Australia
2013	325	259	285	101	176	29	40	10	1,225
2014	333	256	226	92	168	39	39	9	1,162
2015	331	249	233	106	175	35	46	12	1,187
2016	388	282	244	92	176	37	41	13	1,273
2017	373	256	258	108	165	32	38	7	1,237
Latest per cent change	-3.9	-9.2	5.7	17.4	-6.3	-13.5	-7.3	-46.2	-2.8
Average trend change per year (per cent)	4.4	0.7	-1.2	1.3	-0.8	1.5	-0.5	-3.4	1.1

2. Deaths by road user, age-group and gender

Table 2.1 By road user

12 months ended September	Driver	Passenger	Pedestrian	Motorcyclist ^b	Pedal ^b cyclist	Total ^c
2013	597	230	151	203	36	1,225
2014	528	229	157	194	53	1,162
2015	536	249	161	206	30	1,187
2016	620	210	174	232	35	1,273
2017	590	223	160	226	31	1,237
Latest per cent change	-4.8	6.2	-8.0	-2.6	-11.4	-2.8
Average trend change per year (per cent)	1.4	-1.5	2.2	4.0	-6.9	1.1

Table 2.2 By age-group^a (years)

12 months ended September	0 to 16	17 to 25	26 to 39	40 to 64	65 to 74	≥ 75	Total ^c
2013	70	264	265	372	102	152	1,225
2014	61	219	231	384	123	141	1,162
2015	76	242	267	351	105	146	1,187
2016	47	244	284	418	115	165	1,273
2017	63	248	266	381	109	170	1,237
Latest per cent change	34.0	1.6	-6.3	-8.9	-5.2	3.0	-2.8
Average trend change per year (per cent)	-4.6	-0.2	2.2	1.3	0.7	3.9	1.1

2. Deaths by road user, age-group and gender (continued)

Table 2.3 By gender

12 months ended September	<i>Males</i>	<i>Females</i>	<i>Total^d</i>
2013	874	350	1,225
2014	843	318	1,162
2015	851	336	1,187
2016	923	350	1,273
2017	902	332	1,237
<i>Latest per cent change</i>	-2.3	-5.1	-2.8
<i>Average trend change per year (per cent)</i>	1.5	-0.1	1.1

a Age groups were changed in March 2014.

b Includes pillion passengers.

c Includes deaths to persons with either age or road user type not recorded.

d Includes deaths to persons with gender not recorded.

3. Annual deaths per 100,000 population

Table 3.1 Year ended September

12 months ended September	<i>NSW</i>	<i>Vic</i>	<i>Qld</i>	<i>SA</i>	<i>WA</i>	<i>Tas</i>	<i>NT</i>	<i>ACT</i>	<i>Australia</i>
2013	4.40	4.51	6.15	6.05	7.09	5.66	16.60	2.62	5.31
2014	4.44	4.36	4.80	5.46	6.67	7.59	16.04	2.32	4.96
2015	4.35	4.15	4.88	6.24	6.89	6.79	18.89	3.04	4.99
2016	5.03	4.59	5.05	5.38	6.88	7.16	16.76	3.23	5.28
2017	4.76	4.07	5.26	6.28	6.41	6.15	15.51	1.71	5.05
<i>Latest per cent change</i>	-5.4	-11.4	4.1	16.7	-6.9	-14.0	-7.4	-47.1	-4.4
<i>Average trend change per year (per cent)</i>	2.9	-1.5	-2.6	0.6	-1.7	1.1	-0.9	-5.0	-0.4

Table 3.2 Calendar year period

Calendar year	<i>NSW</i>	<i>Vic</i>	<i>Qld</i>	<i>SA</i>	<i>WA</i>	<i>Tas</i>	<i>NT</i>	<i>ACT</i>	<i>Australia</i>
2012	5.05	4.99	6.13	5.67	7.54	6.06	20.77	3.19	5.72
2013	4.49	4.21	5.82	5.86	6.50	7.02	15.24	1.82	5.13
2014	4.08	4.20	4.72	6.34	7.25	6.42	16.01	2.57	4.89
2015	4.59	4.18	5.08	5.99	6.29	6.60	20.00	3.78	5.05
2016	4.91	4.71	5.18	5.02	7.54	7.15	18.31	2.73	5.34
<i>Latest per cent change</i>	7.0	12.7	1.9	-16.2	19.9	8.4	-8.5	-27.9	5.8

4. Monthly deaths by jurisdiction — last 24 months

— raw
 - - - smoothed
 (13-point moving average)

Figure 4.1 NSW

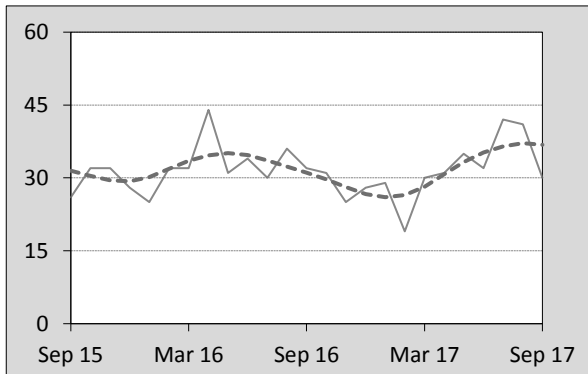


Figure 4.2 Vic

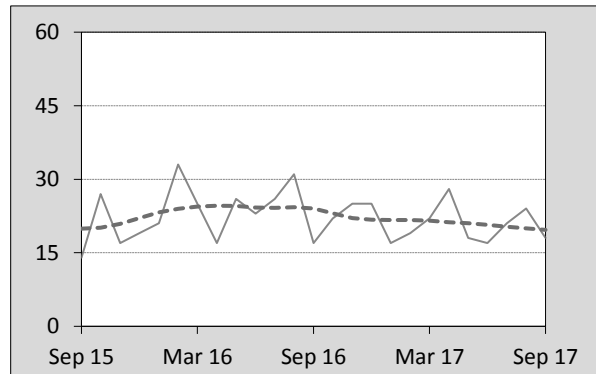


Figure 4.3 Qld

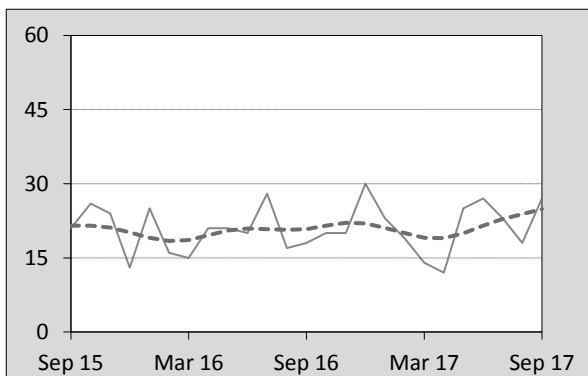


Figure 4.4 SA

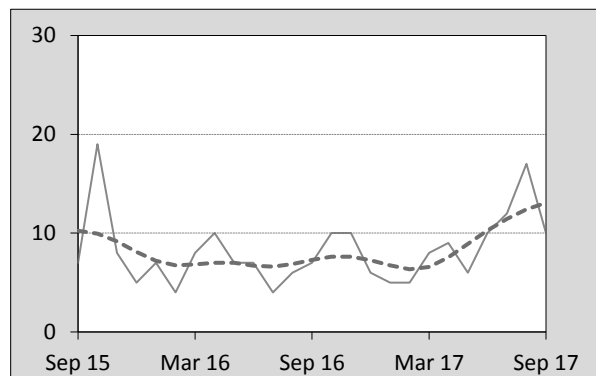


Figure 4.5 WA

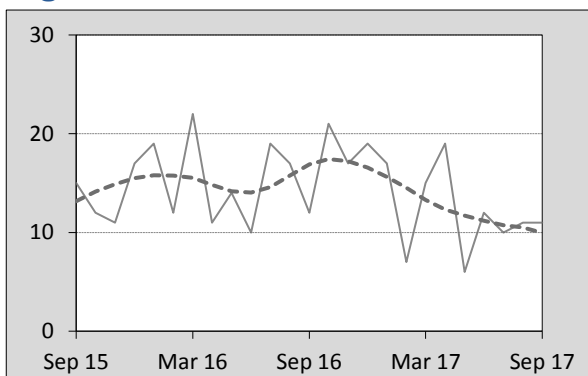


Figure 4.6 Tas

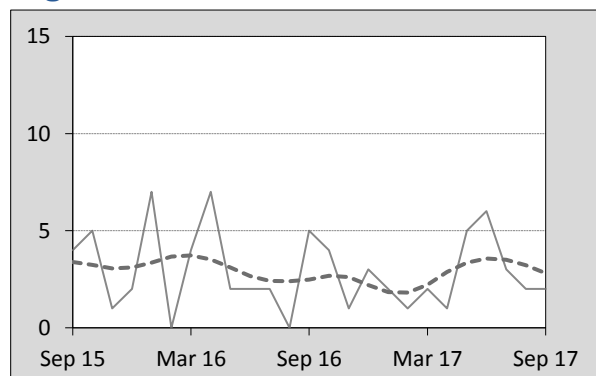


Figure 4.7 NT

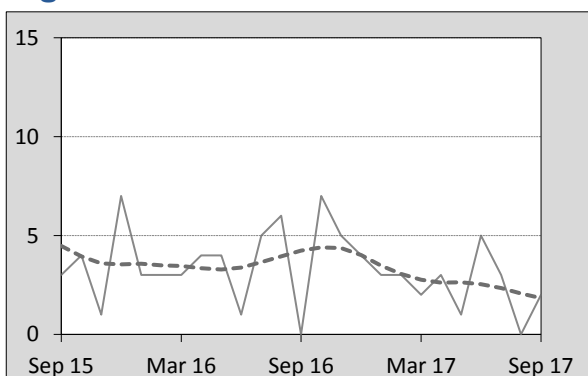
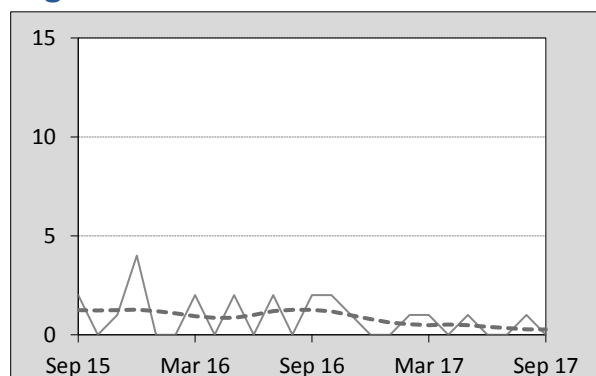


Figure 4.8 ACT



5. Fatal crashes: counts and characteristics

Table 5.1 By Crash type and Posted speed limit

12 months ended September	Crash type ^a			Posted speed limit						Total ^b
	Single	Multiple	Pedestrian	40	50	60	70 to 90	100	≥ 110	
2013	527	443	150	18	126	211	254	359	138	1,120
2014	478	432	155	15	115	189	241	365	123	1,065
2015	523	403	159	13	124	206	236	352	141	1,085
2016	579	426	173	14	124	222	283	369	157	1,178
2017	564	422	159	20	135	200	239	333	153	1,145
Latest per cent change	-2.6	-0.9	-8.1	42.9	8.9	-9.9	-15.5	-9.8	-2.5	-2.8
Average trend change per year (per cent)	3.3	-1.1	2.3	1.4	2.2	0.5	0.4	-1.4	4.6	1.5

Table 5.2 By Day of week and Time of day

12 months ended September	Day of week ^c		Time of Day ^d	
	Weekday	Weekend	Day	Night
2013	685	435	705	415
2014	662	403	677	388
2015	655	430	662	423
2016	728	450	713	465
2017	720	425	741	404
Latest per cent change	-1.1	-5.6	3.9	-13.1
Average trend change per year (per cent)	2.0	0.6	1.5	1.3

a 'Single' and 'Multiple' refer to the number of vehicles involved in a fatal crash where there is no pedestrian killed.

b Includes crashes where speed limit is unknown or where the posted speed limit is 30km/hr or less.

c 'Weekday' refers to 6am Monday through to 5:59pm Friday.

d 'Day' refers to 6am through to 5:59 pm.

Appendix

Definition

The road safety agencies in each jurisdiction use detailed criteria to define road crashes and road deaths. Briefly, a death is classified as resulting from a road crash if the crash occurred on a public road, is unintentional and the death occurred within 30 days from injuries sustained in the crash.

Population rates

Rates per population are based on the deaths to the current 12-month period, and the population at the midpoint of the period. The population at midpoints is interpolated if necessary.

Average trend change (% per year)

Calculated by fitting an exponential curve through the five data points, and quoting the constant (annual) change of this curve.

Other sources for the tables in this bulletin

The underlying database used to produce this bulletin — *the Australian Road Deaths Database* is available for data extraction at <http://www.bitre.gov.au/statistics/safety/fatal_road_crash_database.aspx>.

Road deaths from recent months are preliminary and subject to revision.