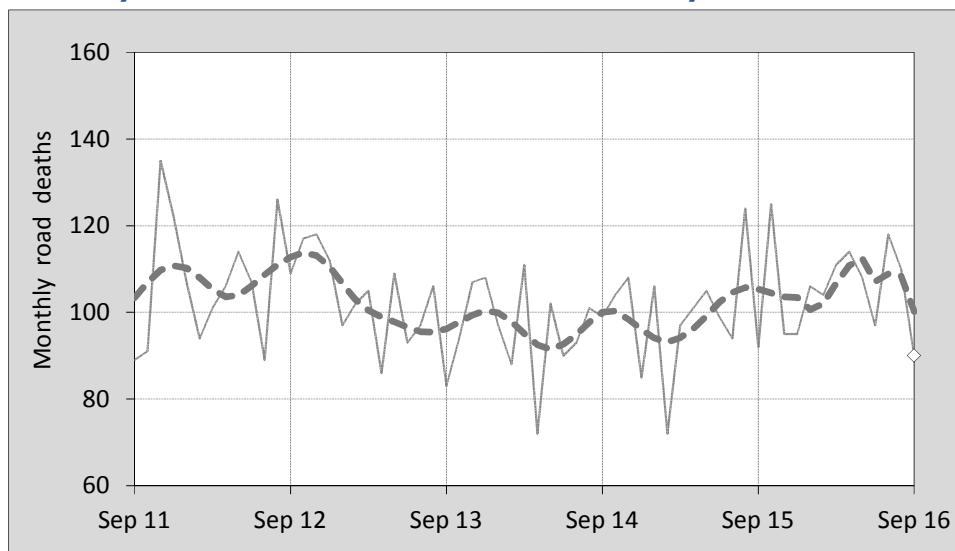




This month's key figures

- There was a total of 90 road deaths during the month of September 2016. In comparison to the average for September over the previous five years, the current figure is 4.7 per cent lower.
- During the 12 months ended September, there were 1,273 road deaths. This is a 7.2 per cent increase compared to the total for the 12-month period ended September 2015.
- Presently, the rate of annual deaths per 100,000 population stands at 5.3. Compared to the figure for the 12-month period ending September 2015, this is a 5.8 per cent increase.

Monthly Australian road deaths — last five years, with trend



Data Sources

Data are obtained from

- Transport for NSW
- Vicroads
- Department of Transport and Main Roads, Queensland
- Department of Planning, Transport and Infrastructure, S.A.
- Western Australia Police
- Department of State Growth, Tasmania
- Department of Transport, Northern Territory
- Territory and Municipal Services Directorate, ACT
- Australian Bureau of Statistics (3101.0)

Inquiries

For further information about data in this bulletin, contact:

Bureau of Infrastructure, Transport and Regional Economics
 Web : www.bitre.gov.au
 Email : roadsafety@infrastructure.gov.au

Road deaths from recent months are preliminary and subject to revision.

© Copyright. Commonwealth of Australia

1. Deaths by jurisdiction

Table 1.1 Current month

Current month	NSW	Vic	Qld	SA	WA	Tas	NT	ACT	Australia
September 2015	26	14	21	7	15	4	3	2	92
September 2016	28	17	18	9	11	5	0	2	90
Per cent change	7.7	21.4	-14.3	28.6	-26.7	25.0	-100.0	0.0	-2.2

Table 1.2 Year to date

Year to date	NSW	Vic	Qld	SA	WA	Tas	NT	ACT	Australia
January 2015 - September 2015	258	189	180	70	120	26	37	10	890
January 2016 - September 2016	295	221	179	64	134	29	29	7	958
Per cent change	14.3	16.9	-0.6	-8.6	11.7	11.5	-21.6	-30.0	7.6

Table 1.3 Year ending September

12 months ended September	NSW	Vic	Qld	SA	WA	Tas	NT	ACT	Australia
2012	380	277	284	90	179	29	54	8	1,301
2013	325	259	285	101	176	29	40	10	1,225
2014	333	256	226	92	168	39	39	9	1,162
2015	331	249	233	106	175	35	46	12	1,187
2016	387	284	242	96	174	37	41	12	1,273
Latest per cent change	16.9	14.1	3.9	-9.4	-0.6	5.7	-10.9	0.0	7.2
Average trend change per year (per cent)	0.5	0.1	-5.1	1.8	-0.6	7.0	-4.0	10.4	-0.7

2. Deaths by road user, age-group and gender

Table 2.1 By road user

12 months ended September	Driver	Passenger	Pedestrian	Motorcyclist ^b	Pedal ^b cyclist	Total ^c
2012	598	266	174	229	33	1,301
2013	597	230	151	203	36	1,225
2014	528	229	157	194	53	1,162
2015	536	249	161	206	30	1,187
2016	628	208	171	230	34	1,273
Latest per cent change	17.2	-16.5	6.2	11.7	13.3	7.2
Average trend change per year (per cent)	-0.1	-4.0	0.3	0.2	-1.2	-0.7

Table 2.2 By age-group^a (years)

12 months ended September	0 to 16	17 to 25	26 to 39	40 to 64	65 to 74	≥ 75	Total ^c
2012	80	274	309	392	94	151	1,301
2013	70	264	265	372	102	152	1,225
2014	61	219	231	384	123	141	1,162
2015	76	242	267	351	105	146	1,187
2016	48	243	284	415	118	165	1,273
Latest per cent change	-36.8	0.4	6.4	18.2	12.4	13.0	7.2
Average trend change per year (per cent)	-9.0	-3.2	-1.6	0.6	5.0	1.4	-0.7

2. Deaths by road user, age-group and gender (continued)

Table 2.3 By gender

12 months ended September	<i>Males</i>	<i>Females</i>	<i>Total^d</i>
2012	928	373	1,301
2013	874	350	1,225
2014	843	318	1,162
2015	851	336	1,187
2016	920	353	1,273
<i>Latest per cent change</i>	8.1	5.1	7.2
<i>Average trend change per year (per cent)</i>	-0.4	-1.5	-0.7

a Age groups were changed in March 2014.

b Includes pillion passengers.

c Includes deaths to persons with either age or road user type not recorded.

d Includes deaths to persons with gender not recorded.

3. Annual deaths per 100,000 population

Table 3.1 Year ended September

12 months ended September	<i>NSW</i>	<i>Vic</i>	<i>Qld</i>	<i>SA</i>	<i>WA</i>	<i>Tas</i>	<i>NT</i>	<i>ACT</i>	<i>Australia</i>
2012	5.21	4.94	6.25	5.45	7.41	5.66	23.10	2.14	5.75
2013	4.40	4.54	6.15	6.06	7.04	5.65	16.61	2.63	5.32
2014	4.44	4.40	4.80	5.47	6.59	7.58	16.06	2.34	4.97
2015	4.35	4.20	4.89	6.25	6.77	6.78	18.92	3.08	5.00
2016	5.02	4.70	5.01	5.63	6.66	7.14	16.80	3.04	5.29
<i>Latest per cent change</i>	15.4	11.9	2.5	-10.0	-1.7	5.3	-11.2	-1.3	5.8
<i>Average trend change per year (per cent)</i>	-0.8	-1.7	-6.5	1.0	-2.5	6.7	-4.9	8.9	-2.2

Table 3.2 Calendar year period

Calendar year	<i>NSW</i>	<i>Vic</i>	<i>Qld</i>	<i>SA</i>	<i>WA</i>	<i>Tas</i>	<i>NT</i>	<i>ACT</i>	<i>Australia</i>
2011	5.04	5.18	6.01	6.28	7.61	4.69	19.46	1.63	5.72
2012	5.05	5.01	6.13	5.68	7.51	6.05	20.77	3.20	5.72
2013	4.50	4.24	5.83	5.87	6.44	7.02	15.25	1.84	5.13
2014	4.09	4.25	4.72	6.35	7.16	6.41	16.03	2.60	4.90
2015	4.59	4.24	5.08	6.00	6.18	6.58	20.06	3.84	5.07
<i>Latest per cent change</i>	12.4	-0.2	7.6	-5.4	-13.7	2.6	25.2	47.8	3.3

4. Monthly deaths by jurisdiction — last 24 months

— raw
 - - - smoothed
 (13-point moving average)

Figure 4.1 NSW

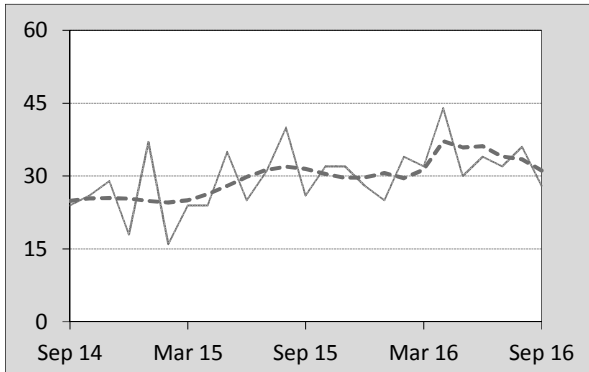


Figure 4.2 Vic

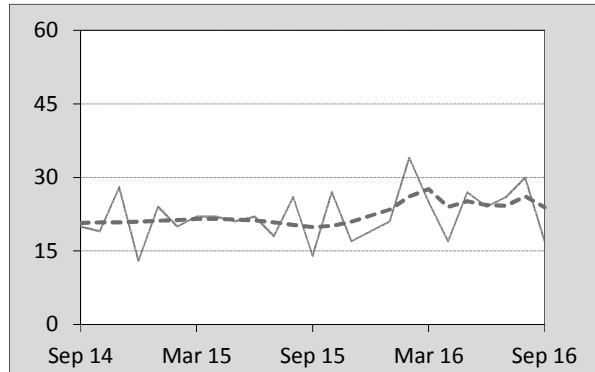


Figure 4.3 Qld

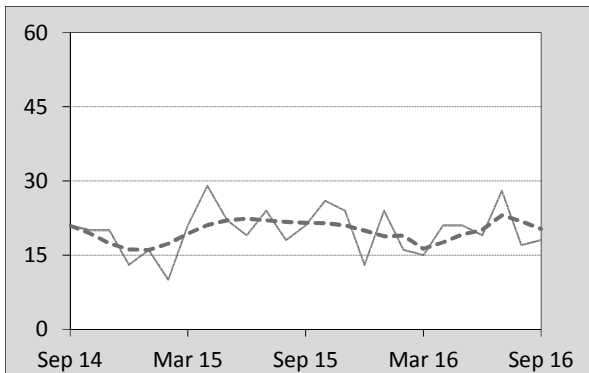


Figure 4.4 SA

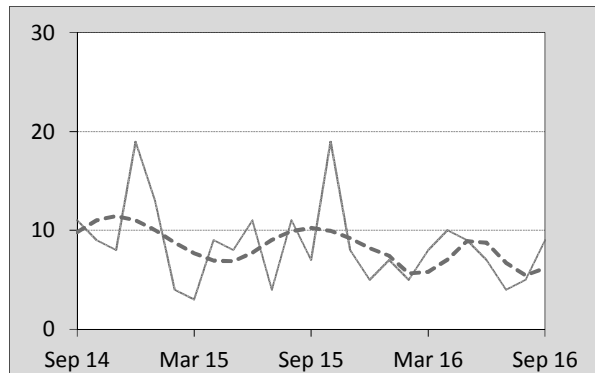


Figure 4.5 WA

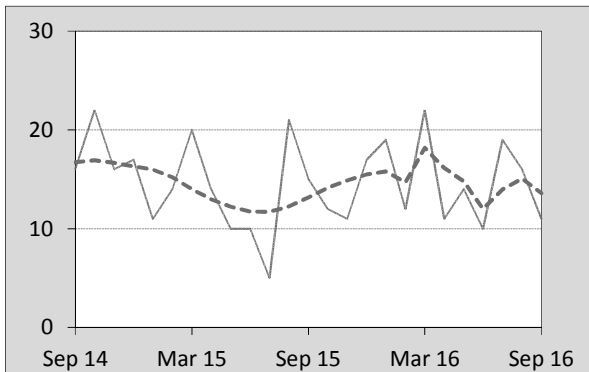


Figure 4.6 Tas

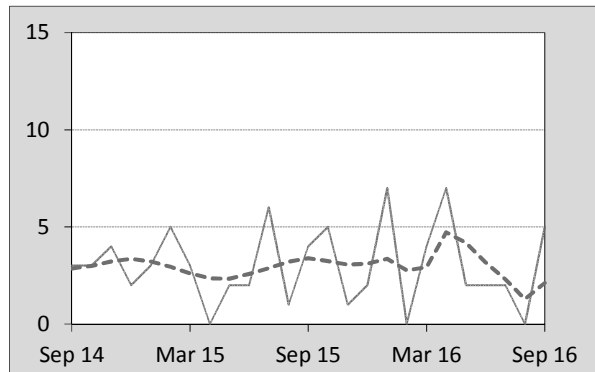


Figure 4.7 NT

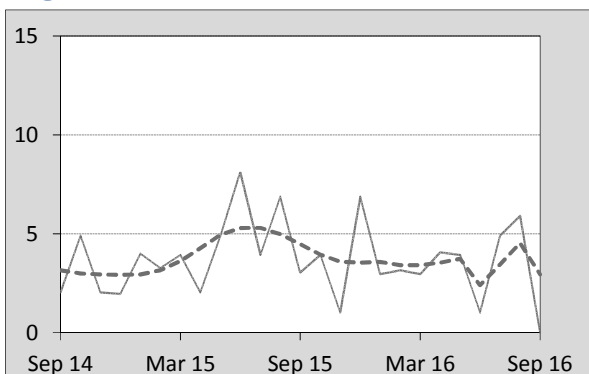
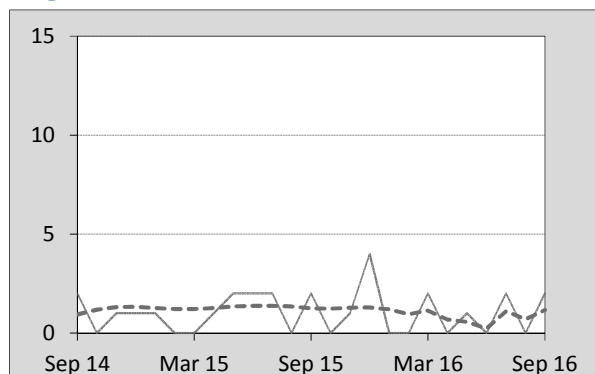


Figure 4.8 ACT



5. Fatal crashes: counts and characteristics

Table 5.1 By Crash type and Posted speed limit

12 months ended September	Crash type ^a			Posted speed limit				Total ^b
	Single	Multiple	Pedestrian	0 to 60	70 to 90	100	≥ 110	
2012	515	498	171	400	266	365	140	1,184
2013	527	443	150	359	254	359	138	1,120
2014	477	433	155	321	241	365	123	1,065
2015	485	441	159	348	236	352	141	1,085
2016	524	492	162	356	278	358	155	1,178
Latest per cent change	8.0	11.6	1.9	2.3	17.8	1.7	9.9	8.6
Average trend change per year (per cent)	-0.5	-0.3	-0.5	-2.6	0.1	-0.6	2.3	-0.4

Table 5.2 By Day of week and Time of day

12 months ended September	Day of week ^c		Time of Day ^d	
	Weekday	Weekend	Day	Night
2012	706	478	743	441
2013	685	435	705	415
2014	662	403	677	388
2015	655	430	663	422
2016	727	451	713	465
Latest per cent change	11.0	4.9	7.5	10.2
Average trend change per year (per cent)	0.1	-1.3	-1.4	1.2

a 'Single' and 'Multiple' refer to the number of vehicles involved in a fatal crash where there is no pedestrian killed.

b Includes crashes where speed limit is unknown.

c 'Weekday' refers to 6am Monday through to 5:59pm Friday.

d 'Day' refers to 6am through to 5:59 pm.

Appendix

Definition

The road safety agencies in each jurisdiction use detailed criteria to define road crashes and road deaths. Briefly, a death is classified as resulting from a road crash if the crash occurred on a public road, is unintentional and the death occurred within 30 days from injuries sustained in the crash.

Population rates

Rates per population are based on the deaths to the current 12-month period, and the population at the midpoint of the period. The population at midpoints is interpolated if necessary.

Average trend change (% per year)

Calculated by fitting an exponential curve through the five data points, and quoting the constant (annual) change of this curve.

Other sources for the tables in this bulletin

The underlying database used to produce this bulletin — the *Australian Road Deaths Database* is available for data extraction at <http://www.bitre.gov.au/statistics/safety/fatal_road_crash_database.aspx>.

Road deaths from recent months are preliminary and subject to revision.