



**Australian Government**

**Department of Infrastructure and Regional Development**

Bureau of Infrastructure, Transport and Regional Economics

STATISTICAL REPORT



## Aviation

Domestic airline on time performance 2014

© Commonwealth of Australia 2015

ISSN: 1832-0759

### **Ownership of intellectual property rights in this publication**

Unless otherwise noted, copyright (and any other intellectual property rights, if any) in this publication is owned by the Commonwealth of Australia (referred to below as the Commonwealth).

### **Disclaimer**

The material contained in this publication is made available on the understanding that the Commonwealth is not providing professional advice, and that users exercise their own skill and care with respect to its use, and seek independent advice if necessary.

The Commonwealth makes no representations or warranties as to the contents or accuracy of the information contained in this publication. To the extent permitted by law, the Commonwealth disclaims liability to any person or organisation in respect of anything done, or omitted to be done, in reliance upon information contained in this publication.

### **Creative Commons licence**

With the exception of (a) the Coat of Arms; and (b) the Department of Infrastructure and Regional Development's photos and graphics, copyright in this publication is licensed under a Creative Commons Attribution 3.0 Australia Licence.

Creative Commons Attribution 3.0 Australia Licence is a standard form licence agreement that allows you to copy, communicate and adapt this publication provided that you attribute the work to the Commonwealth and abide by the other licence terms. A summary of the licence terms is available from <http://creativecommons.org/licenses/by/3.0/au/deed.en>. The full licence terms are available from <http://creativecommons.org/licenses/by/3.0/au/legalcode>.

### **Use of the Coat of Arms**

The Department of the Prime Minister and Cabinet sets the terms under which the Coat of Arms is used. Please refer to the Department's Commonwealth Coat of Arms and Government branding web page <http://www.dpmmc.gov.au/guidelines/index.cfm#brand> and, in particular, the Guidelines on the use of the Commonwealth Coat of Arms publication.

An appropriate citation for this report is:

Bureau of Infrastructure, Transport and Regional Economics (BITRE), 2015, Domestic airline on time performance, Statistical Report, BITRE, Canberra ACT.

### **Contact us**

This publication is available in PDF format. All other rights are reserved, including in relation to any Departmental logos or trade marks which may exist. For enquiries regarding the licence and any use of this publication, please contact:

Bureau of Infrastructure, Transport and Regional Economics (BITRE)  
Department of Infrastructure and Regional Development  
GPO Box 501, Canberra ACT 2601, Australia  
Telephone: (international) +61 2 6274 7210  
Fax: (international) +61 2 6274 6855  
Email: [bitre@infrastructure.gov.au](mailto:bitre@infrastructure.gov.au)  
Website: [www.bitre.gov.au](http://www.bitre.gov.au)

### **Inquiries**

Should you require additional information about the statistics contained in this publication:

Telephone (02) 6274 7790 or Facsimile (02) 6274 7727

Electronic mail: [AVSTATS@infrastructure.gov.au](mailto:AVSTATS@infrastructure.gov.au)

Web site: <http://www.bitre.gov.au/statistics/aviation/otphome.aspx>

# Foreword

The Bureau of Infrastructure, Transport and Regional Economics (BITRE) monitors the punctuality and reliability of major domestic airlines operating between Australian airports. The purpose of this is to allow for evaluation of overall industry and individual airline performance, so that consumers of air travel can make informed decisions.

The following domestic airlines currently report this information monthly to the BITRE: Jetstar, Qantas, QantasLink, Regional Express, Tigerair, Virgin Australia and Virgin Australia Regional Airlines. Data has been gathered since November 2003, although some airlines commenced reporting at a later date, including Jetstar which first reported in May 2004, MacAir in July 2005 and Tigerair in April 2008. MacAir ceased operations in February 2009 and data was not received for December 2008 onwards. Virgin Blue was rebranded as Virgin Australia in May 2011 and Tiger Airways was rebranded as Tigerair in July 2013 and time series data in Microsoft Excel spreadsheet format on the BITRE website have been revised to reflect these changes. Virgin Australia Regional Airlines commenced operations in May 2013. It was formed after the acquisition of Skywest by Virgin Australia and represents a combination of operations previously reported under Skywest and Virgin Australia – ATR/F100 Operations. Services operated by Skywest on behalf of Virgin Australia using ATR/F100 aircraft commenced in November 2011 and were shown separately as Virgin Australia – ATR/F100 Operations until April 2013.

Information presented in this report is for Australian domestic routes for which the passenger load averaged 8 000 or more passengers per month over the previous six months and where two or more airlines operated in competition on those routes. There were 60 routes that met these criteria for all twelve months in 2014 and another 5 routes did so for a shorter period of the year. Over time, routes which meet these criteria change as airline networks and traffic levels vary.

Participating airlines report their overall monthly network performance where this is possible.

Total industry figures encompass all services operated by reporting airlines only. These airlines collectively carried over 95 per cent of total domestic passengers (regular public transport only) in 2013.

The method of capturing on time performance varies between airlines utilising different recording systems. Jetstar and Qantas jet aircraft use Aircraft Communication Addressing and Reporting System (ACARS) to electronically measure on time performance. Regional Express, Tigerair, Virgin Australia, Virgin Australia Regional Airlines and the Qantas non-jet fleet record on time performance manually using records from pilots, gate agents and/or ground crews.

After initial data is collected, aggregate reports are audited internally by participating airlines prior to publication.

Reports and detailed time series data in Microsoft Excel spreadsheet format are available from the BITRE website at: <http://www.bitre.gov.au/statistics/aviation/otphome.aspx>.



# Contents

	Page
Industry performance .....	1
Individual routes .....	8
Airports .....	21
Definitions .....	28



## Industry performance

For the year ended December 2014, on time performance over all routes operated by participating airlines (Jetstar, Qantas, QantasLink, Regional Express, Tigerair, Virgin Australia and Virgin Australia Regional Airlines) averaged 85.8 per cent for on time departures and 84.3 per cent for on time arrivals. Cancellations represented 1.5 per cent of all scheduled flights. The equivalent figures for 2013 were 81.0 per cent for departures, 79.0 per cent for arrivals and 1.8 per cent for cancellations.

The figures for 2014 were better than the long term average performance for all routes (83.8 per cent for departures and 82.3 per cent for arrivals). The rate of cancellations was above the long term average of 1.3 per cent.

Of the major domestic airlines, Qantas achieved the highest level of on time departures for 2014 at 88.1 per cent, followed by Virgin Australia at 86.2 per cent, Jetstar at 82.3 per cent and Tigerair at 77.8 per cent. The regional airlines were led by Regional Express at 88.8 per cent, followed by Virgin Australia Regional Airlines at 86.5 per cent and QantasLink at 85.6 per cent.

Qantas also achieved the highest on time arrivals among the major domestic airlines at 87.0 per cent, followed by Virgin Australia at 84.9 per cent, Jetstar at 83.1 per cent and Tigerair at 75.0 per cent. Regional Express was the best performing regional airline for on time arrivals at 85.9 per cent, followed by Virgin Australia Regional Airlines at 84.8 per cent and QantasLink at 82.7 per cent.

QantasLink had the highest percentage of cancellations (2.1 per cent) during 2014, followed by Virgin Australia (1.8 per cent), Tigerair (1.5 per cent), Jetstar (1.4 per cent), Qantas (1.2 per cent), Virgin Australia Regional Airlines (also 1.2 per cent) and Regional Express (0.3 per cent).

Of the 60 routes which met the criteria for on time performance reporting for all 12 months in 2014, the Perth-Port Hedland route had the highest percentage of on time departures (95.4 per cent) and the highest percentage of on time arrivals (95.5 per cent). The Hobart-Brisbane route had the lowest percentage of on time departures (69.1 per cent) and the Port Macquarie-Sydney route had the lowest percentage of on time arrivals (66.9 per cent).

Cancellations were highest on the Canberra-Sydney route at 4.3 per cent, followed by the Moranbah-Brisbane and Brisbane-Moranbah routes at 4.1 per cent, Sydney-Canberra at 3.8 per cent and the Melbourne-Sydney and Sydney-Melbourne routes at 3.4 per cent.

Of the airports with on time reporting for all 12 months in 2014, Newman Airport recorded the highest percentage of on time departures (93.9 per cent) and Port Hedland Airport recorded the highest percentage of on time arrivals (95.5 per cent). Port Macquarie Airport recorded the lowest percentage of on time departures (74.3 per cent) and the lowest percentage of on time arrivals (74.9 per cent). These figures only refer to reported routes and do not cover all flights at these airports.

Table 1 On time performance for the year ended December 2014 — Total Industry

	<i>Sectors</i>		<i>Departures On Time</i>		<i>Arrivals On Time</i>		<i>Cancellations</i>	
	<i>Scheduled</i>	<i>Flown</i>	<i>No.</i>	<i>%</i>	<i>No.</i>	<i>%</i>	<i>No.</i>	<i>%</i>
Jetstar	84 353	83 157	68 461	82.3	69 110	83.1	1 196	1.4
Qantas	116 386	114 952	101 219	88.1	100 045	87.0	1 434	1.2
QantasLink	124 452	121 804	104 212	85.6	100 716	82.7	2 648	2.1
Regional Express	64 141	63 936	56 802	88.8	54 915	85.9	205	0.3
Tigerair	22 787	22 456	17 471	77.8	16 840	75.0	331	1.5
Virgin Australia	130 872	128 523	110 764	86.2	109 088	84.9	2 349	1.8
Virgin Australia Regional Airlines	30 241	29 884	25 863	86.5	25 332	84.8	357	1.2
All Airlines	573 232	564 712	484 792	85.8	476 046	84.3	8 520	1.5

Total airline network data (including routes not shown in this report).

Table 2 Top ten routes for on time performance for the year ended December 2014 (participating airlines only)

<i>Departures</i>		<i>Arrivals</i>	
<i>Route</i>	<i>On Time (%)</i>	<i>Route</i>	<i>On Time (%)</i>
Perth-Port Hedland	95.4	Perth-Port Hedland	95.5
Brisbane-Mount Isa	94.3	Perth-Newman	94.2
Adelaide-Port Lincoln	93.9	Newman-Perth	94.2
Newman-Perth	93.9	Perth-Karratha	93.8
Perth-Newman	93.8	Brisbane-Mount Isa	93.6
Perth-Karratha	93.4	Perth-Adelaide	93.2
Adelaide-Gold Coast	93.1	Adelaide-Gold Coast	93.1
Port Lincoln-Adelaide	92.8	Gold Coast-Adelaide	92.0
Brisbane-Hamilton Island	92.0	Adelaide-Port Lincoln	91.9
Gold Coast-Adelaide	92.0	Perth-Kalgoorlie	91.9

Table 3 Top ten airports for on time performance for the year ended December 2014 (participating airlines and reported routes only)

<i>Departures</i>		<i>Arrivals</i>	
<i>Airport</i>	<i>On Time (%)</i>	<i>Airport</i>	<i>On Time (%)</i>
Newman	93.9	Port Hedland	95.5
Port Lincoln	92.8	Newman	94.2
Karratha	91.9	Karratha	93.8
Port Hedland	90.8	Mount Isa	93.6
Geraldton	90.4	Port Lincoln	91.9
Kalgoorlie	90.2	Kalgoorlie	91.9
Perth	89.6	Moranbah	91.3
Mount Isa	89.5	Proserpine	90.8
Proserpine	88.3	Broome	90.5
Adelaide	88.2	Ayers Rock	89.5



## Total industry on time performance

Figure 1 On time performance (by month from December 2009)—Total Industry

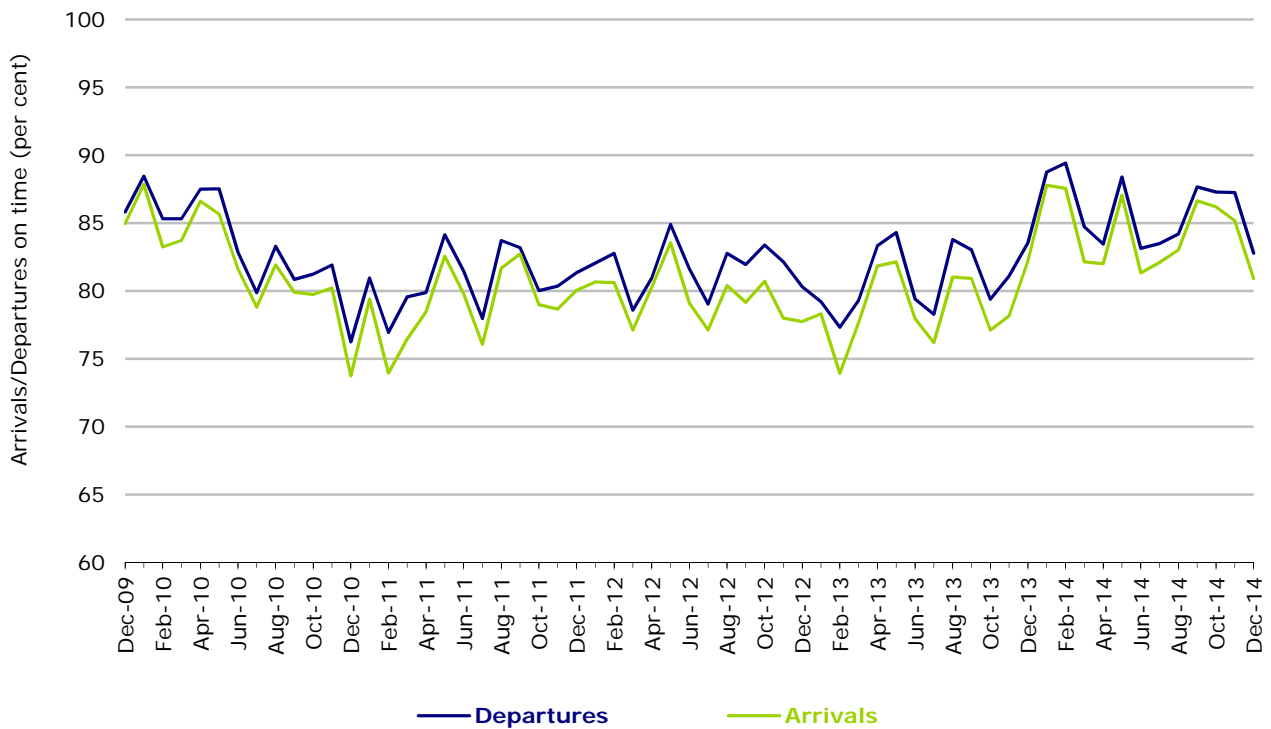
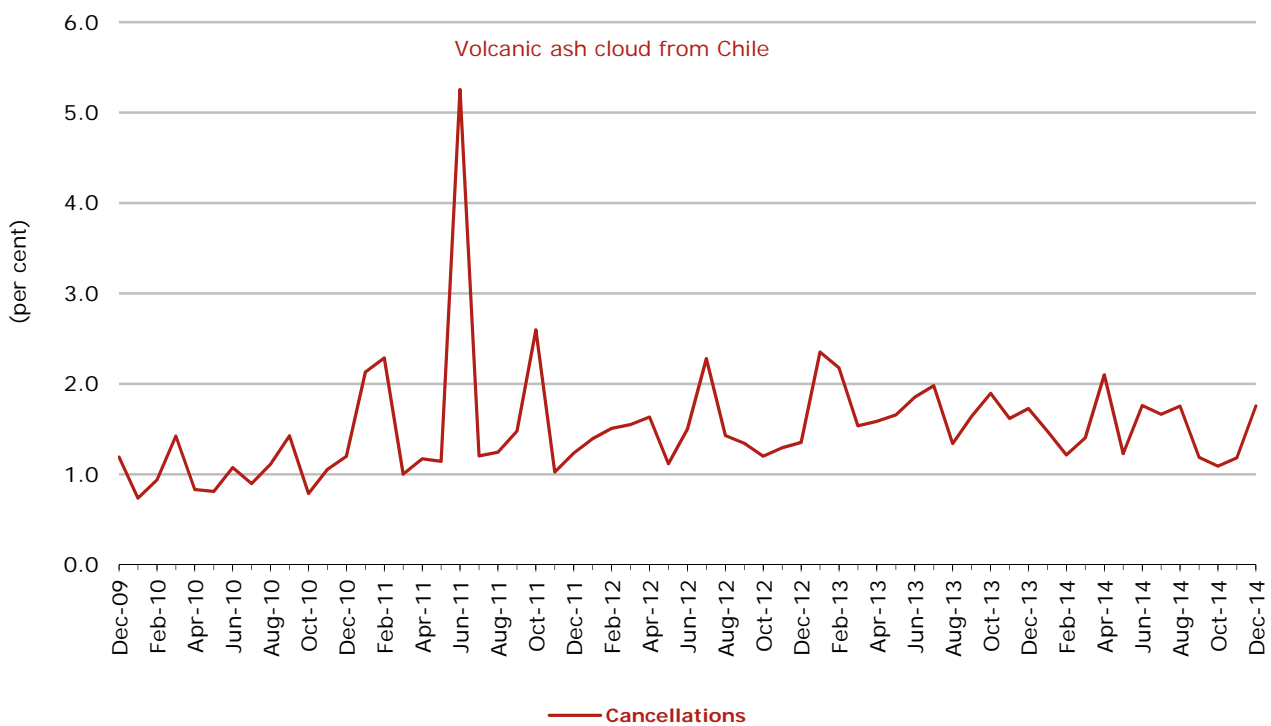


Figure 2 Cancellations (by month from December 2009)—Total Industry



## Major domestic airlines on time performance

Figure 3 On time performance (by month from December 2009)—Jetstar

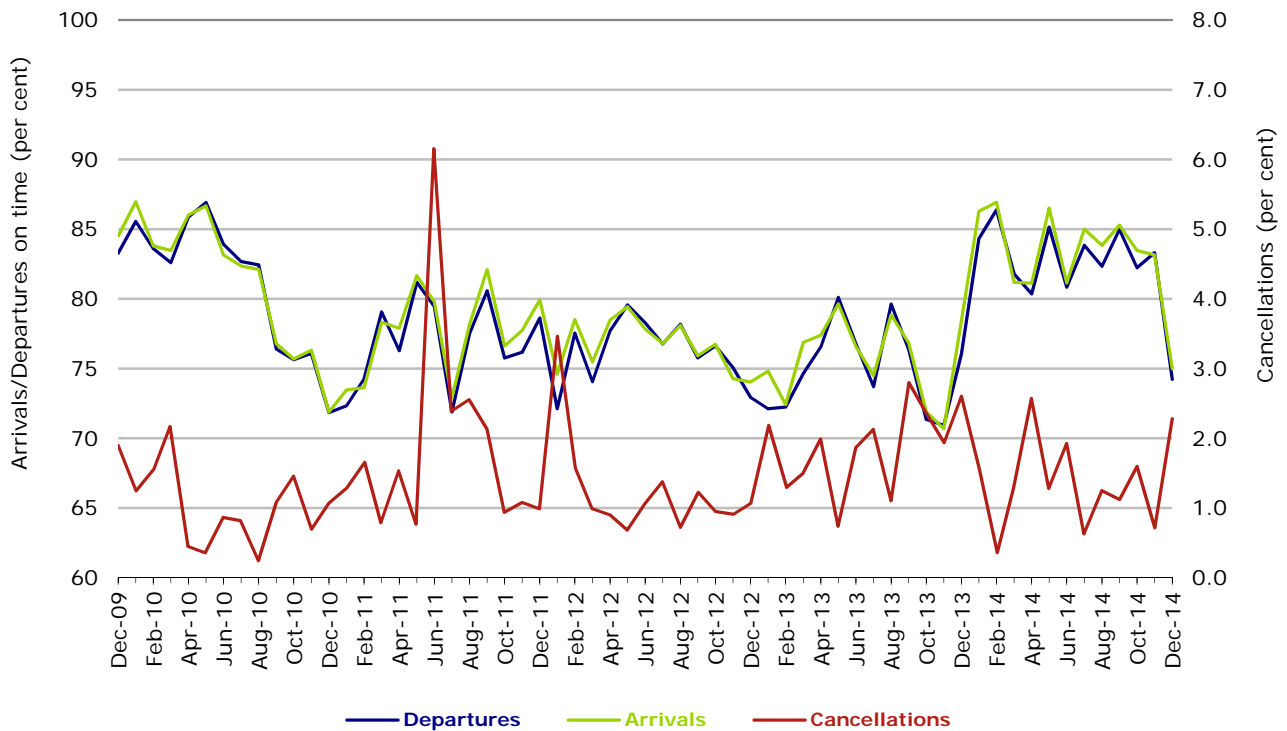
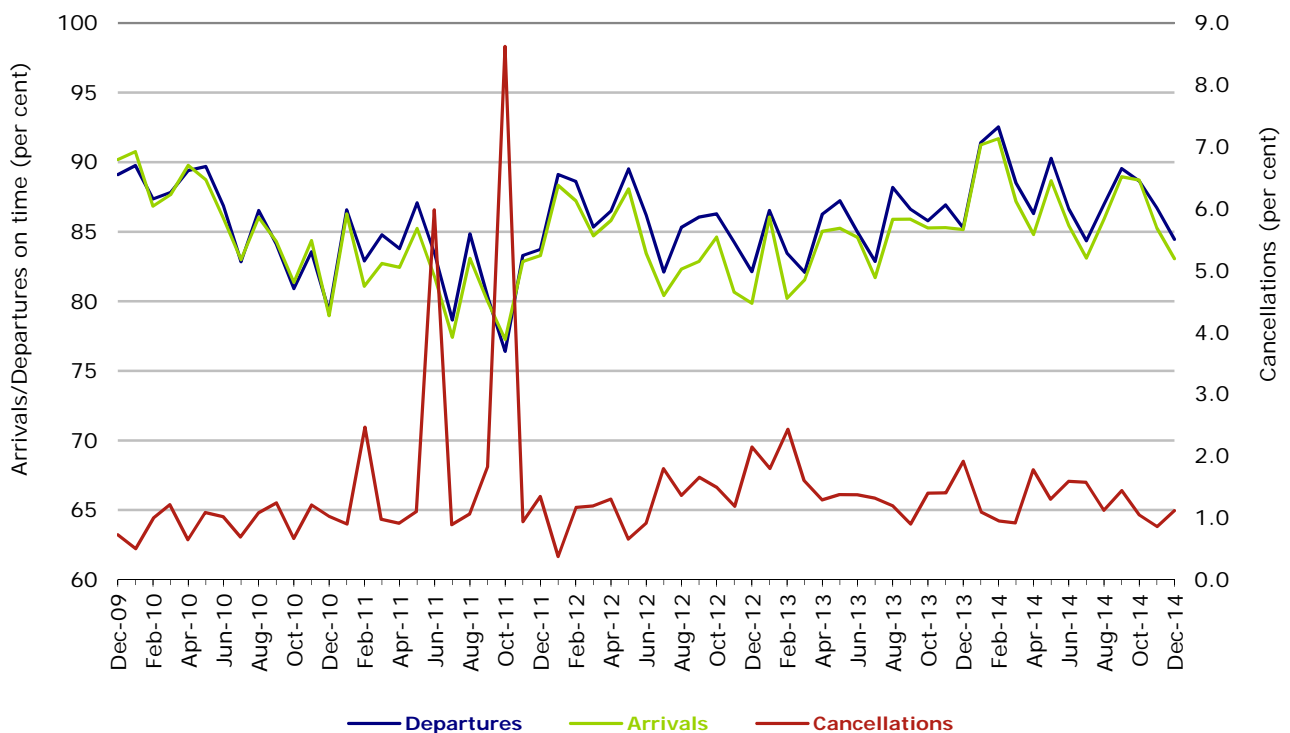
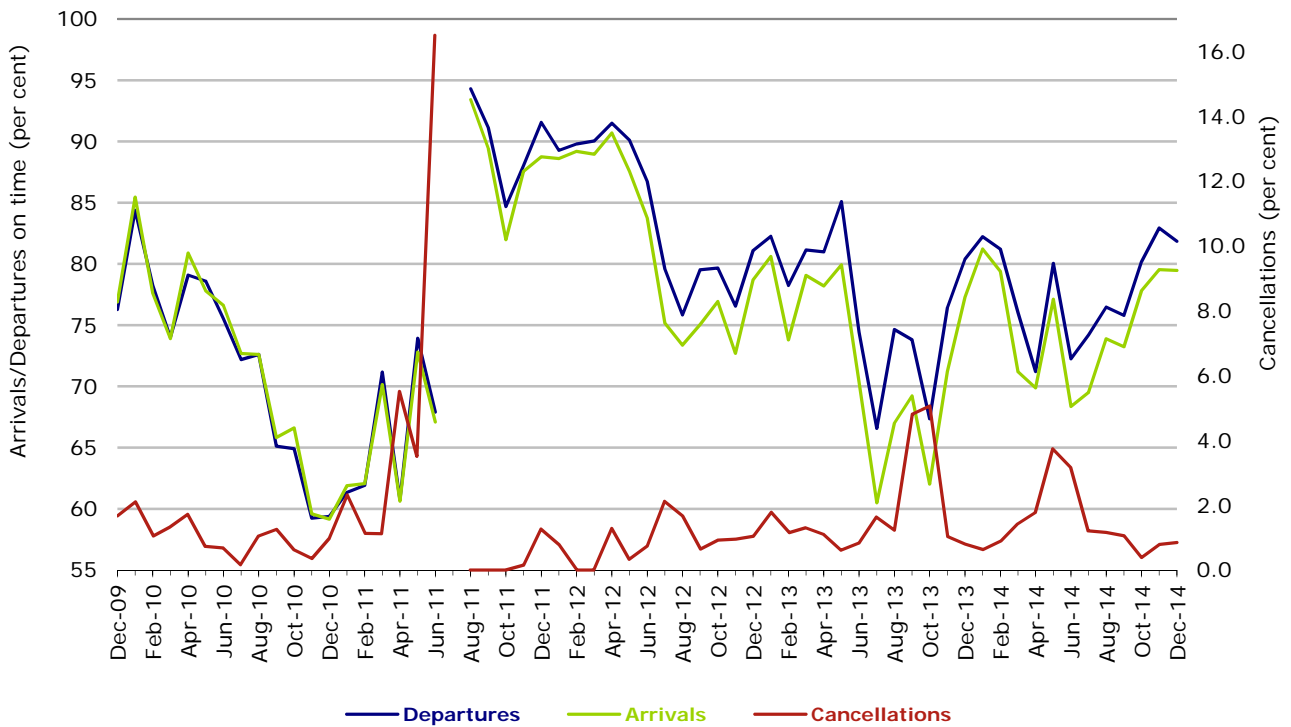


Figure 4 On time performance (by month from December 2009)—Qantas



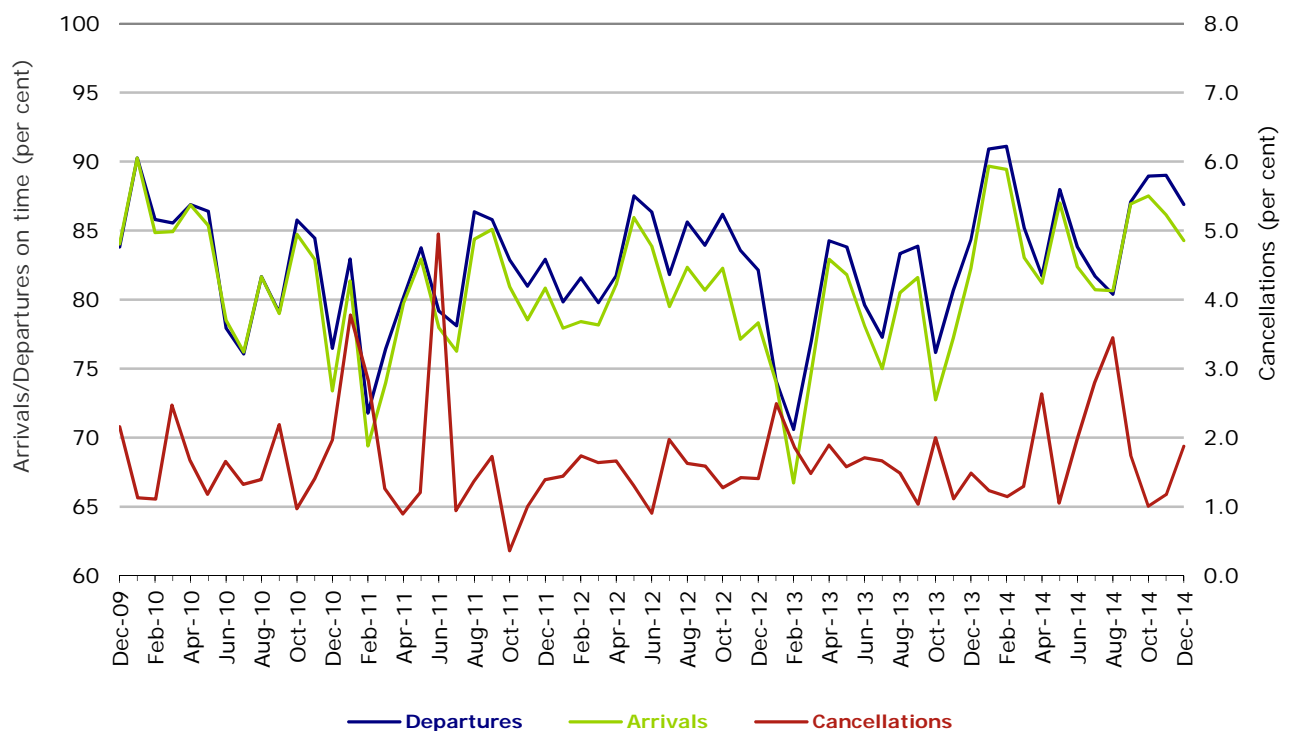
During October 2011 there were disruptions to Qantas services on several days due to industrial disputes and the entire fleet was grounded for nearly 48 hours at the end of the month.

Figure 5 On time performance (by month from December 2009)—Tigerair



No data for Tigerair for July 2011 as it was grounded by CASA from 2/7/2011 to 11/8/2011.

Figure 6 On time performance (by month from December 2009)—Virgin Australia



## Major regional airlines on time performance

Figure 7 On time performance (by month from December 2009)—QantasLink

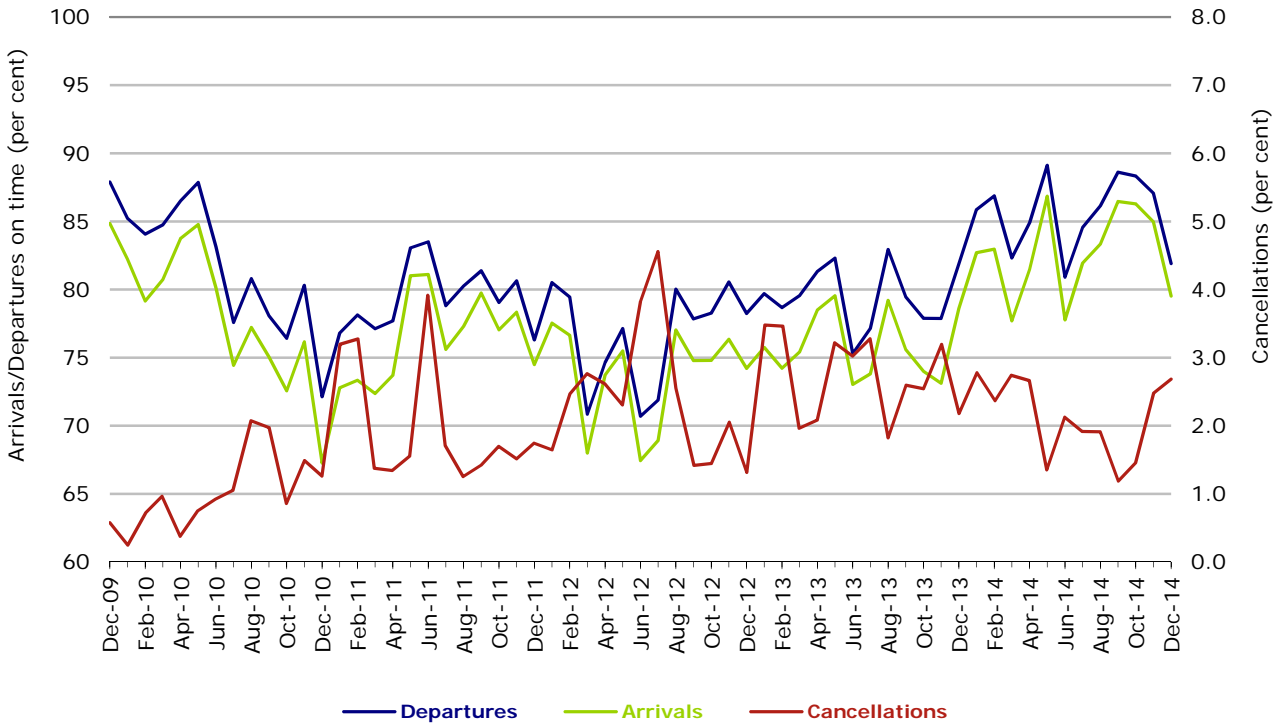


Figure 8 On time performance (by month from December 2009)—Regional Express

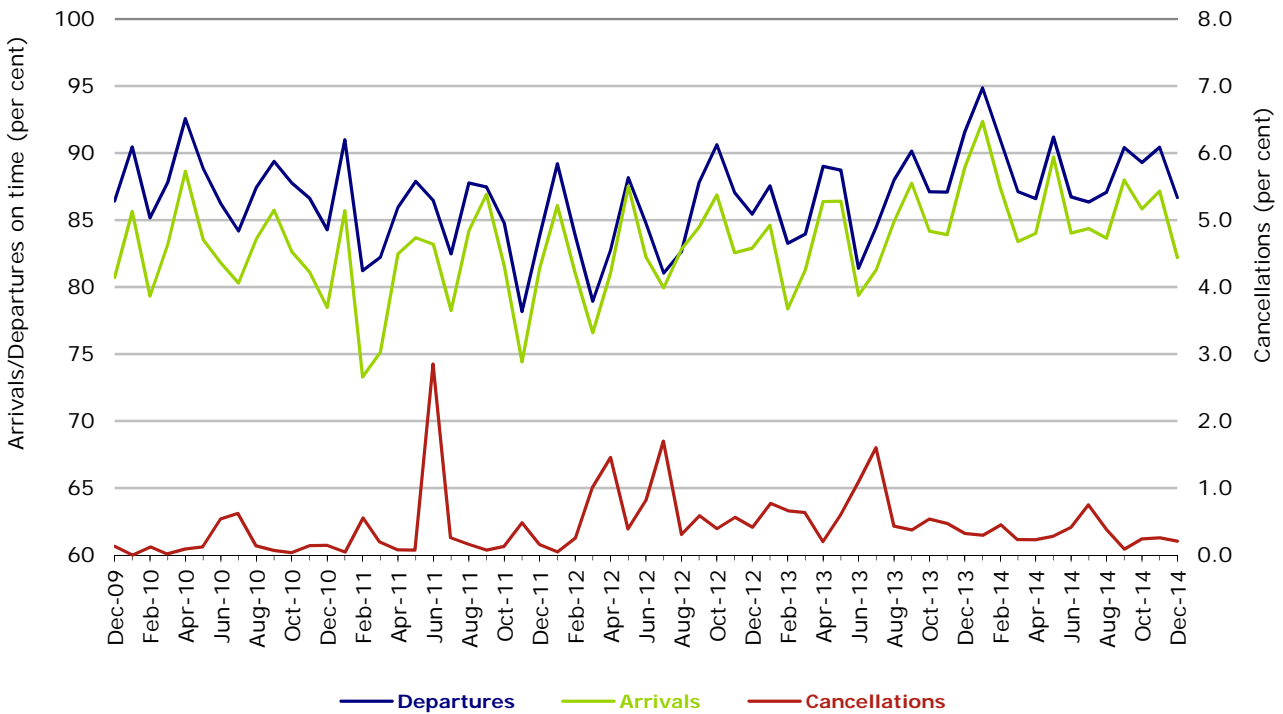
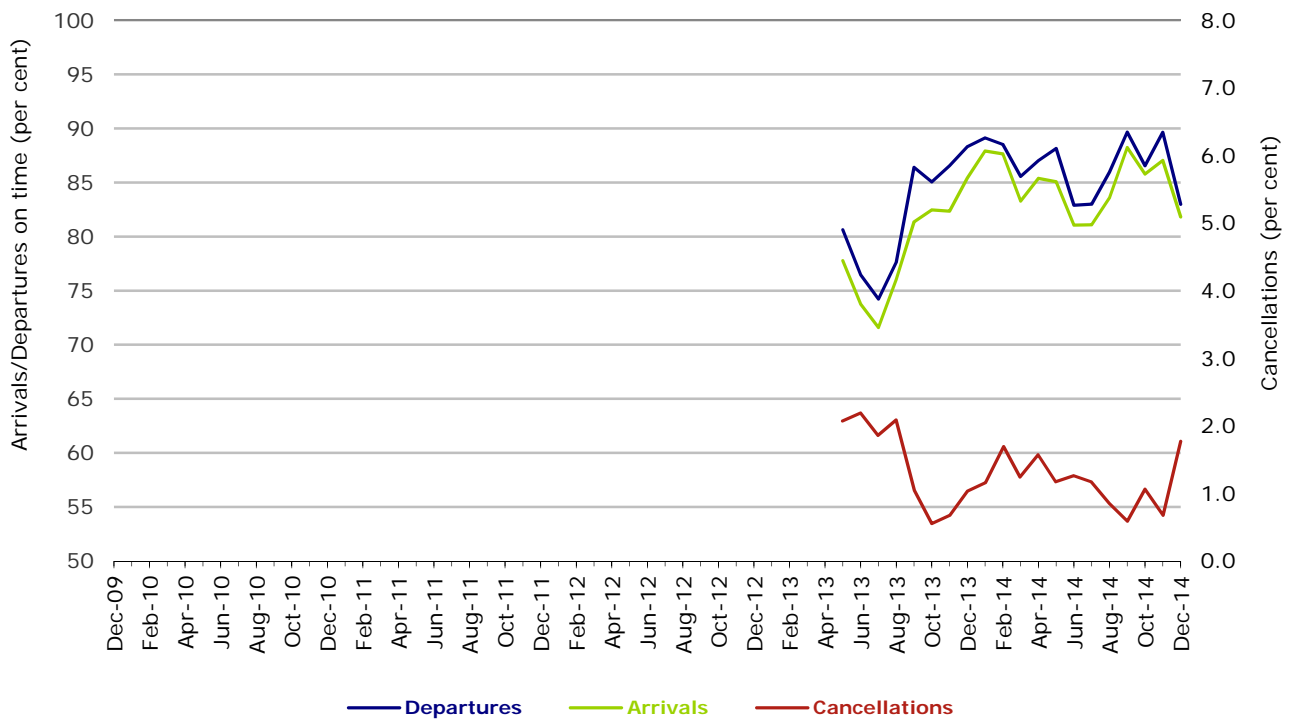


Figure 9 On time performance (by month from December 2009)  
Virgin Australia Regional Airlines



Virgin Australia Regional Airlines commenced operations in May 2013. It was formed after the acquisition of Skywest by Virgin Australia and represents a combination of operations previously reported under Skywest and Virgin Australia – ATR/F100 Operations.

## Individual routes

On time performance is reported for all routes where the passenger load averages over 8000 passengers per month over the previous six months, and where two or more airlines operate in competition on those routes. There are now 62 routes which meet this definition. Over time, however, routes which meet this definition may change as airline networks and traffic levels vary.

	<i>Sectors</i>		<i>Departures On Time</i>		<i>Arrivals On Time</i>		<i>Cancellations</i>	
	<i>Sched.</i>	<i>Flown</i>	<i>No.</i>	<i>%</i>	<i>No.</i>	<i>%</i>	<i>No.</i>	<i>%</i>
<b>Adelaide-Brisbane</b>								
Jetstar	333	333	304	91.3	309	92.8	0	0.0
Qantas	1 282	1 281	1 170	91.3	1 146	89.5	1	0.1
Tigerair	234	234	219	93.6	220	94.0	0	0.0
Virgin Australia	1 342	1 331	1 216	91.4	1 217	91.4	11	0.8
All Airlines	3 191	3 179	2 909	91.5	2 892	91.0	12	0.4
<b>Adelaide-Canberra</b>								
Qantas	518	518	486	93.8	487	94.0	0	0.0
QantasLink	239	233	178	76.4	192	82.4	6	2.5
Virgin Australia	313	309	292	94.5	292	94.5	4	1.3
All Airlines	1 070	1 060	956	90.2	971	91.6	10	0.9
<b>Adelaide-Gold Coast</b>								
Jetstar	420	418	382	91.4	378	90.4	2	0.5
Virgin Australia	365	365	347	95.1	351	96.2	0	0.0
All Airlines	785	783	729	93.1	729	93.1	2	0.3
<b>Adelaide-Melbourne</b>								
Jetstar	1 272	1 258	1 037	82.4	1 013	80.5	14	1.1
Qantas	3 404	3 387	2 963	87.5	3 029	89.4	17	0.5
QantasLink	131	126	115	91.3	111	88.1	5	3.8
Tigerair	855	841	684	81.3	658	78.2	14	1.6
Virgin Australia	3 268	3 219	2 791	86.7	2 777	86.3	49	1.5
All Airlines	8 930	8 831	7 590	85.9	7 588	85.9	99	1.1
<b>Adelaide-Perth</b>								
Jetstar	409	409	343	83.9	340	83.1	0	0.0
Qantas	1 337	1 335	1 191	89.2	1 216	91.1	2	0.1
Virgin Australia	766	760	677	89.1	690	90.8	6	0.8
All Airlines	2 512	2 504	2 211	88.3	2 246	89.7	8	0.3
<b>Adelaide-Port Lincoln</b>								
QantasLink	1 158	1 145	1 037	90.6	1 025	89.5	13	1.1
Regional Express	2 385	2 380	2 272	95.5	2 215	93.1	5	0.2
All Airlines	3 543	3 525	3 309	93.9	3 240	91.9	18	0.5
<b>Adelaide-Sydney</b>								
Jetstar	1 469	1 448	1 086	75.0	1 109	76.6	21	1.4
Qantas	2 965	2 956	2 644	89.4	2 704	91.5	9	0.3
QantasLink	184	175	100	57.1	114	65.1	9	4.9
Tigerair	269	266	220	82.7	238	89.5	3	1.1
Virgin Australia	1 999	1 994	1 817	91.1	1 838	92.2	5	0.3
All Airlines	6 886	6 839	5 867	85.8	6 003	87.8	47	0.7
<b>Albury-Sydney</b>								
QantasLink	1 270	1 260	1 009	80.1	968	76.8	10	0.8
Regional Express	1 225	1 222	1 098	89.9	1 075	88.0	3	0.2
Virgin Australia Regional Airlines	725	720	614	85.3	562	78.1	5	0.7
All Airlines	3 220	3 202	2 721	85.0	2 605	81.4	18	0.6
<b>Alice Springs-Melbourne</b>								
(To July 2014 only)								
Qantas	212	212	143	67.5	162	76.4	0	0.0
Tigerair	109	109	73	67.0	74	67.9	0	0.0
All Airlines	321	321	216	67.3	236	73.5	0	0.0

	<i>Sectors</i>		<i>Departures On Time</i>		<i>Arrivals On Time</i>		<i>Cancellations</i>	
	<i>Sched.</i>	<i>Flown</i>	<i>No.</i>	<i>%</i>	<i>No.</i>	<i>%</i>	<i>No.</i>	<i>%</i>
<b>Alice Springs-Sydney</b>			(To July 2014 only)					
Qantas	212	212	154	72.6	184	86.8	0	0.0
Tigerair	113	113	90	79.6	86	76.1	0	0.0
All Airlines	325	325	244	75.1	270	83.1	0	0.0
<b>Armidale-Sydney</b>			(From July 2014 only)					
QantasLink	799	781	609	78.0	638	81.7	18	2.3
Regional Express	457	455	390	85.7	321	70.5	2	0.4
All Airlines	1 256	1 236	999	80.8	959	77.6	20	1.6
<b>Ayers Rock-Sydney</b>								
Jetstar	285	282	244	86.5	217	77.0	3	1.1
Virgin Australia	367	366	318	86.9	335	91.5	1	0.3
All Airlines	652	648	562	86.7	552	85.2	4	0.6
<b>Ballina-Sydney</b>								
Jetstar	785	778	594	76.3	610	78.4	7	0.9
Regional Express	286	286	224	78.3	208	72.7	0	0.0
Virgin Australia	366	359	307	85.5	311	86.6	7	1.9
All Airlines	1 437	1 423	1 125	79.1	1 129	79.3	14	1.0
<b>Brisbane-Adelaide</b>								
Jetstar	327	327	311	95.1	316	96.6	0	0.0
Qantas	1 282	1 281	1 132	88.4	1 160	90.6	1	0.1
Tigerair	235	235	205	87.2	198	84.3	0	0.0
Virgin Australia	1 342	1 339	1 152	86.0	1 138	85.0	3	0.2
All Airlines	3 186	3 182	2 800	88.0	2 812	88.4	4	0.1
<b>Brisbane-Bundaberg</b>								
QantasLink	1 416	1 408	1 245	88.4	1 228	87.2	8	0.6
Virgin Australia Regional Airlines	454	454	397	87.4	394	86.8	0	0.0
All Airlines	1 870	1 862	1 642	88.2	1 622	87.1	8	0.4
<b>Brisbane-Cairns</b>								
Jetstar	1 254	1 244	1 066	85.7	1 066	85.7	10	0.8
Qantas	1 407	1 404	1 220	86.9	1 250	89.0	3	0.2
QantasLink	52	51	46	90.2	42	82.4	1	1.9
Tigerair	234	233	145	62.2	146	62.7	1	0.4
Virgin Australia	1 642	1 635	1 404	85.9	1 413	86.4	7	0.4
All Airlines	4 589	4 567	3 881	85.0	3 917	85.8	22	0.5
<b>Brisbane-Canberra</b>								
Qantas	508	506	452	89.3	465	91.9	2	0.4
QantasLink	1 401	1 391	1 194	85.8	1 204	86.6	10	0.7
Virgin Australia	1 117	1 115	956	85.7	950	85.2	2	0.2
All Airlines	3 026	3 012	2 602	86.4	2 619	87.0	14	0.5
<b>Brisbane-Darwin</b>								
Jetstar	258	255	219	85.9	219	85.9	3	1.2
Qantas	537	535	485	90.7	470	87.9	2	0.4
Tigerair	198	193	189	97.9	164	85.0	5	2.5
Virgin Australia	367	366	319	87.2	307	83.9	1	0.3
All Airlines	1 360	1 349	1 212	89.8	1 160	86.0	11	0.8
<b>Brisbane-Emerald</b>								
QantasLink	1 826	1 803	1 666	92.4	1 479	82.0	23	1.3
Virgin Australia Regional Airlines	1 020	1 014	917	90.4	834	82.2	6	0.6
All Airlines	2 846	2 817	2 583	91.7	2 313	82.1	29	1.0
<b>Brisbane-Gladstone</b>								
QantasLink	2 570	2 498	2 288	91.6	2 217	88.8	72	2.8
Virgin Australia	25	24	18	75.0	18	75.0	1	4.0
Virgin Australia Regional Airlines	1 746	1 738	1 502	86.4	1 459	83.9	8	0.5
All Airlines	4 341	4 260	3 808	89.4	3 694	86.7	81	1.9

	<i>Sectors</i>		<i>Departures On Time</i>		<i>Arrivals On Time</i>		<i>Cancellations</i>	
	<i>Sched.</i>	<i>Flown</i>	<i>No.</i>	<i>%</i>	<i>No.</i>	<i>%</i>	<i>No.</i>	<i>%</i>
<b>Brisbane-Hamilton Island</b>								
Jetstar	167	163	149	91.4	150	92.0	4	2.4
QantasLink	20	20	17	85.0	18	90.0	0	0.0
Virgin Australia	363	357	331	92.7	328	91.9	6	1.7
All Airlines	550	540	497	92.0	496	91.9	10	1.8
<b>Brisbane-Hobart</b>								
Jetstar	342	342	316	92.4	306	89.5	0	0.0
Virgin Australia	365	365	320	87.7	289	79.2	0	0.0
All Airlines	707	707	636	90.0	595	84.2	0	0.0
<b>Brisbane-Mackay</b>								
Jetstar	782	766	623	81.3	639	83.4	16	2.0
QantasLink	1 290	1 276	1 155	90.5	1 168	91.5	14	1.1
Virgin Australia	1 757	1 734	1 497	86.3	1 494	86.2	23	1.3
All Airlines	3 829	3 776	3 275	86.7	3 301	87.4	53	1.4
<b>Brisbane-Melbourne</b>								
Jetstar	1 371	1 351	1 029	76.2	1 088	80.5	20	1.5
Qantas	5 071	5 039	4 292	85.2	4 229	83.9	32	0.6
Tigerair	1 311	1 299	907	69.8	891	68.6	12	0.9
Virgin Australia	4 493	4 369	3 679	84.2	3 344	76.5	124	2.8
All Airlines	12 246	12 058	9 907	82.2	9 552	79.2	188	1.5
<b>Brisbane-Moranbah</b>								
QantasLink	1 617	1 520	1 400	92.1	1 383	91.0	97	6.0
Virgin Australia Regional Airlines	1 016	1 005	903	89.9	922	91.7	11	1.1
All Airlines	2 633	2 525	2 303	91.2	2 305	91.3	108	4.1
<b>Brisbane-Mount Isa</b>								
Qantas	671	671	639	95.2	634	94.5	0	0.0
Virgin Australia	260	260	239	91.9	237	91.2	0	0.0
All Airlines	931	931	878	94.3	871	93.6	0	0.0
<b>Brisbane-Newcastle</b>								
Jetstar	1 217	1 213	1 080	89.0	1 085	89.4	4	0.3
QantasLink	836	817	700	85.7	556	68.1	19	2.3
Virgin Australia	952	951	828	87.1	828	87.1	1	0.1
All Airlines	3 005	2 981	2 608	87.5	2 469	82.8	24	0.8
<b>Brisbane-Perth</b>								
Jetstar	130	130	109	83.8	116	89.2	0	0.0
Qantas	1 526	1 523	1 243	81.6	1 244	81.7	3	0.2
Virgin Australia	1 085	1 079	810	75.1	830	76.9	6	0.6
All Airlines	2 741	2 732	2 162	79.1	2 190	80.2	9	0.3
<b>Brisbane-Proserpine</b>								
Jetstar	352	350	299	85.4	310	88.6	2	0.6
Virgin Australia	622	614	559	91.0	565	92.0	8	1.3
All Airlines	974	964	858	89.0	875	90.8	10	1.0
<b>Brisbane-Rockhampton</b>								
QantasLink	2 611	2 559	2 206	86.2	2 176	85.0	52	2.0
Virgin Australia	1 220	1 201	1 035	86.2	1 053	87.7	19	1.6
Virgin Australia Regional Airlines	1 299	1 261	1 043	82.7	1 022	81.0	38	2.9
All Airlines	5 130	5 021	4 284	85.3	4 251	84.7	109	2.1
<b>Brisbane-Sydney</b>								
Jetstar	1 953	1 857	1 430	77.0	1 517	81.7	96	4.9
Qantas	7 240	7 084	6 251	88.2	6 205	87.6	156	2.2
Tigerair	1 012	999	728	72.9	728	72.9	13	1.3
Virgin Australia	6 364	6 203	5 489	88.5	5 379	86.7	161	2.5
All Airlines	16 569	16 143	13 898	86.1	13 829	85.7	426	2.6



	<i>Sectors</i>		<i>Departures On Time</i>		<i>Arrivals On Time</i>		<i>Cancellations</i>	
	<i>Sched.</i>	<i>Flown</i>	<i>No.</i>	<i>%</i>	<i>No.</i>	<i>%</i>	<i>No.</i>	<i>%</i>
<b>Brisbane-Townsville</b>								
Jetstar	565	560	488	87.1	473	84.5	5	0.9
Qantas	1 767	1 761	1 511	85.8	1 557	88.4	6	0.3
Virgin Australia	1 844	1 822	1 576	86.5	1 575	86.4	22	1.2
All Airlines	4 176	4 143	3 575	86.3	3 605	87.0	33	0.8
<b>Broome-Perth</b>								
Qantas	394	394	341	86.5	358	90.9	0	0.0
QantasLink	615	605	559	92.4	555	91.7	10	1.6
Virgin Australia	470	457	370	81.0	375	82.1	13	2.8
Virgin Australia Regional Airlines	227	225	154	68.4	126	56.0	2	0.9
All Airlines	1 706	1 681	1 424	84.7	1 414	84.1	25	1.5
<b>Bundaberg-Brisbane</b>								
QantasLink	1 415	1 408	1 229	87.3	1 172	83.2	7	0.5
Virgin Australia Regional Airlines	454	454	375	82.6	371	81.7	0	0.0
All Airlines	1 869	1 862	1 604	86.1	1 543	82.9	7	0.4
<b>Cairns-Brisbane</b>								
Jetstar	1 255	1 245	1 113	89.4	1 108	89.0	10	0.8
Qantas	1 407	1 401	1 217	86.9	1 194	85.2	6	0.4
QantasLink	52	51	45	88.2	43	84.3	1	1.9
Tigerair	235	233	134	57.5	125	53.6	2	0.9
Virgin Australia	1 641	1 634	1 384	84.7	1 374	84.1	7	0.4
All Airlines	4 590	4 564	3 893	85.3	3 844	84.2	26	0.6
<b>Cairns-Melbourne</b>								
Jetstar	1 098	1 085	874	80.6	883	81.4	13	1.2
Qantas	365	364	268	73.6	300	82.4	1	0.3
Tigerair	418	410	306	74.6	301	73.4	8	1.9
Virgin Australia	393	391	277	70.8	290	74.2	2	0.5
All Airlines	2 274	2 250	1 725	76.7	1 774	78.8	24	1.1
<b>Cairns-Sydney</b>								
Jetstar	1 103	1 089	947	87.0	962	88.3	14	1.3
Qantas	832	830	671	80.8	720	86.7	2	0.2
Tigerair	346	343	253	73.8	280	81.6	3	0.9
Virgin Australia	1 043	1 035	916	88.5	961	92.9	8	0.8
All Airlines	3 324	3 297	2 787	84.5	2 923	88.7	27	0.8
<b>Cairns-Townsville</b>								
			(To February 2014 only)					
QantasLink	343	332	299	90.1	297	89.5	11	3.2
Virgin Australia Regional Airlines	16	15	15	100.0	15	100.0	1	6.3
All Airlines	359	347	314	90.5	312	89.9	12	3.3
<b>Canberra-Adelaide</b>								
Qantas	518	518	481	92.9	486	93.8	0	0.0
QantasLink	239	234	182	77.8	181	77.4	5	2.1
Virgin Australia	313	309	281	90.9	284	91.9	4	1.3
All Airlines	1 070	1 061	944	89.0	951	89.6	9	0.8
<b>Canberra-Brisbane</b>								
Qantas	509	506	488	96.4	490	96.8	3	0.6
QantasLink	1 401	1 390	1 149	82.7	1 125	80.9	11	0.8
Virgin Australia	1 120	1 115	959	86.0	932	83.6	5	0.4
All Airlines	3 030	3 011	2 596	86.2	2 547	84.6	19	0.6
<b>Canberra-Melbourne</b>								
Qantas	2 230	2 215	2 008	90.7	1 993	90.0	15	0.7
QantasLink	1 148	1 121	901	80.4	871	77.7	27	2.4
Virgin Australia	2 056	2 024	1 692	83.6	1 671	82.6	32	1.6
Virgin Australia Regional Airlines	51	50	45	90.0	40	80.0	1	2.0
All Airlines	5 485	5 410	4 646	85.9	4 575	84.6	75	1.4

	<i>Sectors</i>		<i>Departures On Time</i>		<i>Arrivals On Time</i>		<i>Cancellations</i>	
	<i>Sched.</i>	<i>Flown</i>	<i>No.</i>	<i>%</i>	<i>No.</i>	<i>%</i>	<i>No.</i>	<i>%</i>
<b>Canberra-Sydney</b>								
Qantas	400	393	364	92.6	359	91.3	7	1.8
QantasLink	5 952	5 631	4 849	86.1	4 831	85.8	321	5.4
Virgin Australia	547	528	465	88.1	460	87.1	19	3.5
Virgin Australia Regional Airlines	2 905	2 833	2 572	90.8	2 575	90.9	72	2.5
All Airlines	9 804	9 385	8 250	87.9	8 225	87.6	419	4.3
<b>Coffs Harbour-Sydney</b>								
Qantas	3	2	1	50.0	1	50.0	1	33.3
QantasLink	1 813	1 803	1 461	81.0	1 496	83.0	10	0.6
Tigerair	174	170	131	77.1	132	77.6	4	2.3
Virgin Australia	712	693	621	89.6	630	90.9	19	2.7
All Airlines	2 702	2 668	2 214	83.0	2 259	84.7	34	1.3
<b>Darwin-Brisbane</b>								
Jetstar	260	257	211	82.1	233	90.7	3	1.2
Qantas	537	534	411	77.0	386	72.3	3	0.6
Tigerair	194	190	174	91.6	165	86.8	4	2.1
Virgin Australia	368	363	269	74.1	208	57.3	5	1.4
All Airlines	1 359	1 344	1 065	79.2	992	73.8	15	1.1
<b>Darwin-Melbourne</b>								
Jetstar	358	357	250	70.0	289	81.0	1	0.3
Qantas	348	347	261	75.2	257	74.1	1	0.3
Virgin Australia	366	363	310	85.4	298	82.1	3	0.8
All Airlines	1 072	1 067	821	76.9	844	79.1	5	0.5
<b>Darwin-Perth</b>								
Qantas	427	426	383	89.9	391	91.8	1	0.2
Virgin Australia	313	312	274	87.8	266	85.3	1	0.3
All Airlines	740	738	657	89.0	657	89.0	2	0.3
<b>Darwin-Sydney</b>								
Jetstar	335	327	219	67.0	246	75.2	8	2.4
Qantas	624	623	537	86.2	542	87.0	1	0.2
Virgin Australia	365	363	264	72.7	265	73.0	2	0.5
All Airlines	1 324	1 313	1 020	77.7	1 053	80.2	11	0.8
<b>Dubbo-Sydney</b>								
QantasLink	1 468	1 463	1 220	83.4	1 178	80.5	5	0.3
Regional Express	1 730	1 713	1 540	89.9	1 471	85.9	17	1.0
All Airlines	3 198	3 176	2 760	86.9	2 649	83.4	22	0.7
<b>Emerald-Brisbane</b>								
QantasLink	1 824	1 798	1 453	80.8	1 441	80.1	26	1.4
Virgin Australia Regional Airlines	1 019	1 009	884	87.6	890	88.2	10	1.0
All Airlines	2 843	2 807	2 337	83.3	2 331	83.0	36	1.3
<b>Geraldton-Perth</b>								
QantasLink	633	628	593	94.4	588	93.6	5	0.8
Virgin Australia Regional Airlines	1 142	1 135	1 000	88.1	974	85.8	7	0.6
All Airlines	1 775	1 763	1 593	90.4	1 562	88.6	12	0.7
<b>Gladstone-Brisbane</b>								
QantasLink	2 789	2 710	2 303	85.0	2 178	80.4	79	2.8
Virgin Australia	25	24	17	70.8	14	58.3	1	4.0
Virgin Australia Regional Airlines	1 744	1 734	1 442	83.2	1 369	79.0	10	0.6
All Airlines	4 558	4 468	3 762	84.2	3 561	79.7	90	2.0
<b>Gold Coast-Adelaide</b>								
Jetstar	420	420	385	91.7	386	91.9	0	0.0
Virgin Australia	365	365	337	92.3	336	92.1	0	0.0
All Airlines	785	785	722	92.0	722	92.0	0	0.0

	<i>Sectors</i>		<i>Departures On Time</i>		<i>Arrivals On Time</i>		<i>Cancellations</i>	
	<i>Sched.</i>	<i>Flown</i>	<i>No.</i>	<i>%</i>	<i>No.</i>	<i>%</i>	<i>No.</i>	<i>%</i>
<b>Gold Coast-Melbourne</b>								
Jetstar	2 644	2 625	2 228	84.9	2 235	85.1	19	0.7
Tigerair	805	795	482	60.6	500	62.9	10	1.2
Virgin Australia	2 118	2 095	1 751	83.6	1 770	84.5	23	1.1
All Airlines	5 567	5 515	4 461	80.9	4 505	81.7	52	0.9
<b>Gold Coast-Sydney</b>								
Jetstar	3 980	3 876	3 301	85.2	3 355	86.6	104	2.6
Qantas	1 077	1 075	942	87.6	961	89.4	2	0.2
Tigerair	791	778	599	77.0	609	78.3	13	1.6
Virgin Australia	3 498	3 420	2 991	87.5	3 037	88.8	78	2.2
All Airlines	9 346	9 149	7 833	85.6	7 962	87.0	197	2.1
<b>Hamilton Island-Brisbane</b>								
Jetstar	169	164	146	89.0	146	89.0	5	3.0
QantasLink	20	20	16	80.0	18	90.0	0	0.0
Virgin Australia	366	356	317	89.0	310	87.1	10	2.7
All Airlines	555	540	479	88.7	474	87.8	15	2.7
<b>Hamilton Island-Melbourne</b>								
			(From February 2014 only)					
Jetstar	220	217	186	85.7	189	87.1	3	1.4
Virgin Australia	188	184	152	82.6	158	85.9	4	2.1
All Airlines	408	401	338	84.3	347	86.5	7	1.7
<b>Hamilton Island-Sydney</b>								
Jetstar	331	325	266	81.8	267	82.2	6	1.8
Qantas	40	40	22	55.0	27	67.5	0	0.0
Virgin Australia	366	357	295	82.6	304	85.2	9	2.5
All Airlines	737	722	583	80.7	598	82.8	15	2.0
<b>Hobart-Brisbane</b>								
Jetstar	345	345	255	73.9	247	71.6	0	0.0
Virgin Australia	365	364	235	64.6	264	72.5	1	0.3
All Airlines	710	709	490	69.1	511	72.1	1	0.1
<b>Hobart-Melbourne</b>								
Jetstar	2 182	2 161	1 710	79.1	1 704	78.9	21	1.0
Qantas	302	302	272	90.1	257	85.1	0	0.0
QantasLink	969	956	649	67.9	605	63.3	13	1.3
Tigerair	342	341	217	63.6	194	56.9	1	0.3
Virgin Australia	1 659	1 645	1 358	82.6	1 329	80.8	14	0.8
All Airlines	5 454	5 405	4 206	77.8	4 089	75.7	49	0.9
<b>Hobart-Sydney</b>								
Jetstar	921	916	721	78.7	715	78.1	5	0.5
Qantas	105	105	98	93.3	96	91.4	0	0.0
QantasLink	274	272	216	79.4	199	73.2	2	0.7
Virgin Australia	713	713	621	87.1	623	87.4	0	0.0
All Airlines	2 013	2 006	1 656	82.6	1 633	81.4	7	0.3
<b>Kalgoorlie-Perth</b>								
Qantas	445	439	412	93.8	411	93.6	6	1.3
QantasLink	567	556	507	91.2	492	88.5	11	1.9
Virgin Australia	507	498	439	88.2	434	87.1	9	1.8
Virgin Australia Regional Airlines	159	157	130	82.8	126	80.3	2	1.3
All Airlines	1 678	1 650	1 488	90.2	1 463	88.7	28	1.7
<b>Karratha-Perth</b>								
Qantas	1 714	1 655	1 559	94.2	1 561	94.3	59	3.4
QantasLink	960	926	865	93.4	852	92.0	34	3.5
Virgin Australia	904	889	792	89.1	788	88.6	15	1.7
Virgin Australia Regional Airlines	125	122	86	70.5	93	76.2	3	2.4
All Airlines	3 703	3 592	3 302	91.9	3 294	91.7	111	3.0

	<i>Sectors</i>		<i>Departures On Time</i>		<i>Arrivals On Time</i>		<i>Cancellations</i>	
	<i>Sched.</i>	<i>Flown</i>	<i>No.</i>	<i>%</i>	<i>No.</i>	<i>%</i>	<i>No.</i>	<i>%</i>
<b>Launceston-Melbourne</b>								
Jetstar	1 508	1 497	1 171	78.2	1 147	76.6	11	0.7
QantasLink	1 454	1 422	1 182	83.1	1 131	79.5	32	2.2
Virgin Australia	1 371	1 359	1 196	88.0	1 122	82.6	12	0.9
Virgin Australia Regional Airlines	8	8	4	50.0	3	37.5	0	0.0
All Airlines	4 341	4 286	3 553	82.9	3 403	79.4	55	1.3
<b>Launceston-Sydney</b>								
Jetstar	690	687	518	75.4	538	78.3	3	0.4
Virgin Australia	365	365	300	82.2	302	82.7	0	0.0
All Airlines	1 055	1 052	818	77.8	840	79.8	3	0.3
<b>Mackay-Brisbane</b>								
Jetstar	782	765	583	76.2	581	75.9	17	2.2
QantasLink	1 291	1 270	1 106	87.1	1 111	87.5	21	1.6
Virgin Australia	1 758	1 733	1 505	86.8	1 504	86.8	25	1.4
All Airlines	3 831	3 768	3 194	84.8	3 196	84.8	63	1.6
<b>Melbourne-Adelaide</b>								
Jetstar	1 270	1 264	1 018	80.5	1 026	81.2	6	0.5
Qantas	3 401	3 388	3 077	90.8	3 007	88.8	13	0.4
QantasLink	131	126	111	88.1	109	86.5	5	3.8
Tigerair	856	843	754	89.4	708	84.0	13	1.5
Virgin Australia	3 265	3 228	2 785	86.3	2 736	84.8	37	1.1
All Airlines	8 923	8 849	7 745	87.5	7 586	85.7	74	0.8
<b>Melbourne-Alice Springs</b>								
			(To July 2014 only)					
Qantas	212	212	172	81.1	165	77.8	0	0.0
Tigerair	109	109	97	89.0	81	74.3	0	0.0
All Airlines	321	321	269	83.8	246	76.6	0	0.0
<b>Melbourne-Brisbane</b>								
Jetstar	1 370	1 352	936	69.2	1 009	74.6	18	1.3
Qantas	5 067	5 032	4 313	85.7	4 064	80.8	35	0.7
Tigerair	1 313	1 303	960	73.7	845	64.9	10	0.8
Virgin Australia	4 486	4 358	3 609	82.8	3 363	77.2	128	2.9
All Airlines	12 236	12 045	9 818	81.5	9 281	77.1	191	1.6
<b>Melbourne-Cairns</b>								
Jetstar	1 093	1 082	910	84.1	900	83.2	11	1.0
Qantas	365	364	299	82.1	285	78.3	1	0.3
Tigerair	416	409	362	88.5	354	86.6	7	1.7
Virgin Australia	392	390	322	82.6	290	74.4	2	0.5
All Airlines	2 266	2 245	1 893	84.3	1 829	81.5	21	0.9
<b>Melbourne-Canberra</b>								
Qantas	2 231	2 220	2 031	91.5	2 012	90.6	11	0.5
QantasLink	1 144	1 114	929	83.4	828	74.3	30	2.6
Virgin Australia	2 057	2 026	1 725	85.1	1 698	83.8	31	1.5
Virgin Australia Regional Airlines	51	49	34	69.4	26	53.1	2	3.9
All Airlines	5 483	5 409	4 719	87.2	4 564	84.4	74	1.3
<b>Melbourne-Darwin</b>								
Jetstar	354	353	297	84.1	290	82.2	1	0.3
Qantas	348	347	299	86.2	267	76.9	1	0.3
Virgin Australia	365	362	329	90.9	321	88.7	3	0.8
All Airlines	1 067	1 062	925	87.1	878	82.7	5	0.5
<b>Melbourne-Gold Coast</b>								
Jetstar	2 641	2 625	2 123	80.9	2 129	81.1	16	0.6
Tigerair	806	801	643	80.3	556	69.4	5	0.6
Virgin Australia	2 118	2 093	1 747	83.5	1 737	83.0	25	1.2
All Airlines	5 565	5 519	4 513	81.8	4 422	80.1	46	0.8

	<i>Sectors</i>		<i>Departures On Time</i>		<i>Arrivals On Time</i>		<i>Cancellations</i>	
	<i>Sched.</i>	<i>Flown</i>	<i>No.</i>	<i>%</i>	<i>No.</i>	<i>%</i>	<i>No.</i>	<i>%</i>
<b>Melbourne-Hamilton Island</b>			(From February 2014 only)					
Jetstar	221	219	197	90.0	202	92.2	2	0.9
Virgin Australia	187	186	170	91.4	163	87.6	1	0.5
All Airlines	408	405	367	90.6	365	90.1	3	0.7
<b>Melbourne-Hobart</b>								
Jetstar	2 177	2 158	1 781	82.5	1 833	84.9	19	0.9
Qantas	302	302	282	93.4	280	92.7	0	0.0
QantasLink	970	956	556	58.2	521	54.5	14	1.4
Tigerair	342	342	255	74.6	238	69.6	0	0.0
Virgin Australia	1 658	1 646	1 420	86.3	1 370	83.2	12	0.7
All Airlines	5 449	5 404	4 294	79.5	4 242	78.5	45	0.8
<b>Melbourne-Launceston</b>								
Jetstar	1 500	1 490	1 253	84.1	1 260	84.6	10	0.7
QantasLink	1 456	1 424	1 220	85.7	1 120	78.7	32	2.2
Virgin Australia	1 371	1 357	1 153	85.0	1 121	82.6	14	1.0
Virgin Australia Regional Airlines	8	8	5	62.5	6	75.0	0	0.0
All Airlines	4 335	4 279	3 631	84.9	3 507	82.0	56	1.3
<b>Melbourne-Mildura</b>								
QantasLink	1 042	1 041	894	85.9	825	79.3	1	0.1
Regional Express	967	967	904	93.5	871	90.1	0	0.0
Virgin Australia	365	364	302	83.0	295	81.0	1	0.3
All Airlines	2 374	2 372	2 100	88.5	1 991	83.9	2	0.1
<b>Melbourne-Newcastle</b>								
Jetstar	1 210	1 205	976	81.0	994	82.5	5	0.4
Virgin Australia	364	363	320	88.2	312	86.0	1	0.3
All Airlines	1 574	1 568	1 296	82.7	1 306	83.3	6	0.4
<b>Melbourne-Perth</b>								
Jetstar	949	931	793	85.2	794	85.3	18	1.9
Qantas	2 608	2 601	2 135	82.1	2 067	79.5	7	0.3
Tigerair	697	686	562	81.9	553	80.6	11	1.6
Virgin Australia	1 639	1 624	1 305	80.4	1 342	82.6	15	0.9
All Airlines	5 893	5 842	4 795	82.1	4 756	81.4	51	0.9
<b>Melbourne-Sunshine Coast</b>								
Jetstar	828	821	677	82.5	682	83.1	7	0.8
Tigerair	177	175	151	86.3	132	75.4	2	1.1
Virgin Australia	371	368	300	81.5	277	75.3	3	0.8
All Airlines	1 376	1 364	1 128	82.7	1 091	80.0	12	0.9
<b>Melbourne-Sydney</b>								
Jetstar	3 864	3 741	2 838	75.9	2 873	76.8	123	3.2
Qantas	10 700	10 366	9 130	88.1	8 776	84.7	334	3.1
Tigerair	2 636	2 581	1 998	77.4	2 012	78.0	55	2.1
Virgin Australia	9 133	8 746	7 664	87.6	7 417	84.8	387	4.2
All Airlines	26 333	25 434	21 630	85.0	21 078	82.9	899	3.4
<b>Mildura-Melbourne</b>								
QantasLink	1 043	1 041	891	85.6	862	82.8	2	0.2
Regional Express	970	969	852	87.9	820	84.6	1	0.1
Virgin Australia	365	364	294	80.8	300	82.4	1	0.3
All Airlines	2 378	2 374	2 037	85.8	1 982	83.5	4	0.2
<b>Moranbah-Brisbane</b>								
QantasLink	1 553	1 464	1 254	85.7	1 234	84.3	89	5.7
Virgin Australia Regional Airlines	1 017	1 000	896	89.6	865	86.5	17	1.7
All Airlines	2 570	2 464	2 150	87.3	2 099	85.2	106	4.1

	<i>Sectors</i>		<i>Departures On Time</i>		<i>Arrivals On Time</i>		<i>Cancellations</i>	
	<i>Sched.</i>	<i>Flown</i>	<i>No.</i>	<i>%</i>	<i>No.</i>	<i>%</i>	<i>No.</i>	<i>%</i>
<b>Mount Isa-Brisbane</b>								
Qantas	671	667	600	90.0	607	91.0	4	0.6
Virgin Australia	260	260	230	88.5	235	90.4	0	0.0
All Airlines	931	927	830	89.5	842	90.8	4	0.4
<b>Newcastle-Brisbane</b>								
Jetstar	1 221	1 214	1 002	82.5	978	80.6	7	0.6
QantasLink	834	816	566	69.4	535	65.6	18	2.2
Virgin Australia	954	948	768	81.0	752	79.3	6	0.6
All Airlines	3 009	2 978	2 336	78.4	2 265	76.1	31	1.0
<b>Newcastle-Melbourne</b>								
Jetstar	1 216	1 206	1 015	84.2	994	82.4	10	0.8
Virgin Australia	365	362	284	78.5	281	77.6	3	0.8
All Airlines	1 581	1 568	1 299	82.8	1 275	81.3	13	0.8
<b>Newman-Perth</b>								
Qantas	1 406	1 368	1 298	94.9	1 302	95.2	38	2.7
QantasLink	434	423	404	95.5	406	96.0	11	2.5
Virgin Australia	386	382	349	91.4	349	91.4	4	1.0
Virgin Australia Regional Airlines	96	95	78	82.1	79	83.2	1	1.0
All Airlines	2 322	2 268	2 129	93.9	2 136	94.2	54	2.3
<b>Perth-Adelaide</b>								
Jetstar	409	404	324	80.2	332	82.2	5	1.2
Qantas	1 388	1 386	1 292	93.2	1 321	95.3	2	0.1
Virgin Australia	765	755	702	93.0	718	95.1	10	1.3
All Airlines	2 562	2 545	2 318	91.1	2 371	93.2	17	0.7
<b>Perth-Brisbane</b>								
Jetstar	130	129	99	76.7	93	72.1	1	0.8
Qantas	1 527	1 525	1 358	89.0	1 311	86.0	2	0.1
Virgin Australia	1 085	1 084	955	88.1	919	84.8	1	0.1
All Airlines	2 742	2 738	2 412	88.1	2 323	84.8	4	0.1
<b>Perth-Broome</b>								
Qantas	394	394	367	93.1	365	92.6	0	0.0
QantasLink	616	609	573	94.1	568	93.3	7	1.1
Virgin Australia	469	457	419	91.7	418	91.5	12	2.6
Virgin Australia Regional Airlines	191	189	146	77.2	141	74.6	2	1.0
All Airlines	1 670	1 649	1 505	91.3	1 492	90.5	21	1.3
<b>Perth-Darwin</b>								
Qantas	427	426	405	95.1	398	93.4	1	0.2
Virgin Australia	313	313	272	86.9	268	85.6	0	0.0
All Airlines	740	739	677	91.6	666	90.1	1	0.1
<b>Perth-Geraldton</b>								
QantasLink	633	630	586	93.0	577	91.6	3	0.5
Virgin Australia Regional Airlines	1 093	1 091	984	90.2	943	86.4	2	0.2
All Airlines	1 726	1 721	1 570	91.2	1 520	88.3	5	0.3
<b>Perth-Kalgoorlie</b>								
Qantas	444	439	419	95.4	418	95.2	5	1.1
QantasLink	568	559	520	93.0	521	93.2	9	1.6
Virgin Australia	504	501	439	87.6	451	90.0	3	0.6
Virgin Australia Regional Airlines	160	160	135	84.4	134	83.8	0	0.0
All Airlines	1 676	1 659	1 513	91.2	1 524	91.9	17	1.0

	<i>Sectors</i>		<i>Departures On Time</i>		<i>Arrivals On Time</i>		<i>Cancellations</i>	
	<i>Sched.</i>	<i>Flown</i>	<i>No.</i>	<i>%</i>	<i>No.</i>	<i>%</i>	<i>No.</i>	<i>%</i>
<b>Perth-Karratha</b>								
Qantas	1 714	1 670	1 595	95.5	1 596	95.6	44	2.6
QantasLink	957	923	859	93.1	856	92.7	34	3.6
Virgin Australia	905	891	819	91.9	830	93.2	14	1.5
Virgin Australia Regional Airlines	125	123	96	78.0	103	83.7	2	1.6
All Airlines	3 701	3 607	3 369	93.4	3 385	93.8	94	2.5
<b>Perth-Melbourne</b>								
Jetstar	952	927	712	76.8	701	75.6	25	2.6
Qantas	2 612	2 597	2 229	85.8	2 286	88.0	15	0.6
Tigerair	697	680	518	76.2	500	73.5	17	2.4
Virgin Australia	1 638	1 624	1 421	87.5	1 419	87.4	14	0.9
All Airlines	5 899	5 828	4 880	83.7	4 906	84.2	71	1.2
<b>Perth-Newman</b>								
Qantas	1 406	1 373	1 301	94.8	1 307	95.2	33	2.3
QantasLink	434	423	408	96.5	406	96.0	11	2.5
Virgin Australia	384	382	341	89.3	343	89.8	2	0.5
Virgin Australia Regional Airlines	96	95	82	86.3	85	89.5	1	1.0
All Airlines	2 320	2 273	2 132	93.8	2 141	94.2	47	2.0
<b>Perth-Port Hedland</b>								
Qantas	1 389	1 368	1 316	96.2	1 315	96.1	21	1.5
QantasLink	535	526	500	95.1	498	94.7	9	1.7
Virgin Australia	561	556	521	93.7	527	94.8	5	0.9
All Airlines	2 485	2 450	2 337	95.4	2 340	95.5	35	1.4
<b>Perth-Sydney</b>								
Jetstar	402	387	299	77.3	289	74.7	15	3.7
Qantas	2 394	2 393	2 086	87.2	2 144	89.6	1	0.0
Tigerair	296	285	248	87.0	249	87.4	11	3.7
Virgin Australia	1 377	1 365	1 203	88.1	1 275	93.4	12	0.9
All Airlines	4 469	4 430	3 836	86.6	3 957	89.3	39	0.9
<b>Port Hedland-Perth</b>								
Qantas	1 389	1 363	1 230	90.2	1 245	91.3	26	1.9
QantasLink	538	530	490	92.5	491	92.6	8	1.5
Virgin Australia	560	553	500	90.4	491	88.8	7	1.3
All Airlines	2 487	2 446	2 220	90.8	2 227	91.0	41	1.6
<b>Port Lincoln-Adelaide</b>								
QantasLink	1 158	1 144	1 049	91.7	1 027	89.8	14	1.2
Regional Express	2 385	2 376	2 218	93.4	2 180	91.8	9	0.4
All Airlines	3 543	3 520	3 267	92.8	3 207	91.1	23	0.6
<b>Port Macquarie-Sydney</b>								
QantasLink	1 609	1 597	1 143	71.6	1 004	62.9	12	0.7
Virgin Australia Regional Airlines	723	718	578	80.5	544	75.8	5	0.7
All Airlines	2 332	2 315	1 721	74.3	1 548	66.9	17	0.7
<b>Proserpine-Brisbane</b>								
Jetstar	352	350	318	90.9	317	90.6	2	0.6
Virgin Australia	626	613	532	86.8	512	83.5	13	2.1
All Airlines	978	963	850	88.3	829	86.1	15	1.5
<b>Rockhampton-Brisbane</b>								
QantasLink	2 352	2 301	1 850	80.4	1 774	77.1	51	2.2
Virgin Australia	1 218	1 196	1 030	86.1	999	83.5	22	1.8
Virgin Australia Regional Airlines	1 288	1 251	1 124	89.8	1 108	88.6	37	2.9
All Airlines	4 858	4 748	4 004	84.3	3 881	81.7	110	2.3

	<i>Sectors</i>		<i>Departures On Time</i>		<i>Arrivals On Time</i>		<i>Cancellations</i>	
	<i>Sched.</i>	<i>Flown</i>	<i>No.</i>	<i>%</i>	<i>No.</i>	<i>%</i>	<i>No.</i>	<i>%</i>
<b>Sunshine Coast-Melbourne</b>								
Jetstar	832	820	633	77.2	638	77.8	12	1.4
Tigerair	178	176	131	74.4	129	73.3	2	1.1
Virgin Australia	371	367	244	66.5	258	70.3	4	1.1
All Airlines	1 381	1 363	1 008	74.0	1 025	75.2	18	1.3
<b>Sunshine Coast-Sydney</b>								
Jetstar	1 214	1 203	1 034	86.0	1 036	86.1	11	0.9
Virgin Australia	374	370	303	81.9	313	84.6	4	1.1
All Airlines	1 588	1 573	1 337	85.0	1 349	85.8	15	0.9
<b>Sydney-Adelaide</b>								
Jetstar	1 464	1 450	1 126	77.7	1 135	78.3	14	1.0
Qantas	2 918	2 912	2 603	89.4	2 603	89.4	6	0.2
QantasLink	184	176	121	68.8	112	63.6	8	4.3
Tigerair	270	267	243	91.0	234	87.6	3	1.1
Virgin Australia	2 003	1 994	1 773	88.9	1 803	90.4	9	0.4
All Airlines	6 839	6 799	5 866	86.3	5 887	86.6	40	0.6
<b>Sydney-Albury</b>								
QantasLink	1 270	1 261	1 008	79.9	954	75.7	9	0.7
Regional Express	1 225	1 221	1 018	83.4	1 024	83.9	4	0.3
Virgin Australia Regional Airlines	725	721	629	87.2	623	86.4	4	0.6
All Airlines	3 220	3 203	2 655	82.9	2 601	81.2	17	0.5
<b>Sydney-Alice Springs</b>								
			(To July 2014 only)					
Qantas	212	212	194	91.5	192	90.6	0	0.0
Tigerair	113	113	102	90.3	102	90.3	0	0.0
All Airlines	325	325	296	91.1	294	90.5	0	0.0
<b>Sydney-Armidale</b>								
			(From July 2014 only)					
QantasLink	800	788	652	82.7	618	78.4	12	1.5
Regional Express	454	453	386	85.2	388	85.7	1	0.2
All Airlines	1 254	1 241	1 038	83.6	1 006	81.1	13	1.0
<b>Sydney-Ayers Rock</b>								
Jetstar	283	282	252	89.4	255	90.4	1	0.4
Virgin Australia	366	365	333	91.2	324	88.8	1	0.3
All Airlines	649	647	585	90.4	579	89.5	2	0.3
<b>Sydney-Ballina</b>								
Jetstar	785	782	659	84.3	639	81.7	3	0.4
Regional Express	332	330	287	87.0	287	87.0	2	0.6
Virgin Australia	365	359	321	89.4	313	87.2	6	1.6
All Airlines	1 482	1 471	1 267	86.1	1 239	84.2	11	0.7
<b>Sydney-Brisbane</b>								
Jetstar	1 944	1 853	1 392	75.1	1 444	77.9	91	4.7
Qantas	6 968	6 833	5 813	85.1	5 453	79.8	135	1.9
Tigerair	1 014	1 002	798	79.6	722	72.1	12	1.2
Virgin Australia	6 377	6 199	5 343	86.2	5 120	82.6	178	2.8
All Airlines	16 303	15 887	13 346	84.0	12 739	80.2	416	2.6
<b>Sydney-Cairns</b>								
Jetstar	1 096	1 088	961	88.3	975	89.6	8	0.7
Qantas	832	830	721	86.9	735	88.6	2	0.2
Tigerair	346	344	307	89.2	283	82.3	2	0.6
Virgin Australia	1 043	1 034	910	88.0	879	85.0	9	0.9
All Airlines	3 317	3 296	2 899	88.0	2 872	87.1	21	0.6



	<i>Sectors</i>		<i>Departures On Time</i>		<i>Arrivals On Time</i>		<i>Cancellations</i>	
	<i>Sched.</i>	<i>Flown</i>	<i>No.</i>	<i>%</i>	<i>No.</i>	<i>%</i>	<i>No.</i>	<i>%</i>
<b>Sydney-Canberra</b>								
Qantas	398	395	367	92.9	351	88.9	3	0.8
QantasLink	5 953	5 670	4 861	85.7	4 810	84.8	283	4.8
Virgin Australia	543	531	475	89.5	475	89.5	12	2.2
Virgin Australia Regional Airlines	2 912	2 840	2 484	87.5	2 499	88.0	72	2.5
All Airlines	9 806	9 436	8 187	86.8	8 135	86.2	370	3.8
<b>Sydney-Coffs Harbour</b>								
Qantas	2	2	2	100.0	2	100.0	0	0.0
QantasLink	1 813	1 804	1 537	85.2	1 495	82.9	9	0.5
Tigerair	174	170	133	78.2	132	77.6	4	2.3
Virgin Australia	711	694	634	91.4	636	91.6	17	2.4
All Airlines	2 700	2 670	2 306	86.4	2 265	84.8	30	1.1
<b>Sydney-Darwin</b>								
Jetstar	337	333	294	88.3	287	86.2	4	1.2
Qantas	624	623	513	82.3	513	82.3	1	0.2
Virgin Australia	363	362	327	90.3	303	83.7	1	0.3
All Airlines	1 324	1 318	1 134	86.0	1 103	83.7	6	0.5
<b>Sydney-Dubbo</b>								
QantasLink	1 468	1 463	1 187	81.1	1 120	76.6	5	0.3
Regional Express	1 687	1 680	1 468	87.4	1 499	89.2	7	0.4
All Airlines	3 155	3 143	2 655	84.5	2 619	83.3	12	0.4
<b>Sydney-Gold Coast</b>								
Jetstar	3 977	3 884	3 362	86.6	3 365	86.6	93	2.3
Qantas	1 077	1 077	1 003	93.1	1 014	94.2	0	0.0
Tigerair	789	780	651	83.5	632	81.0	9	1.1
Virgin Australia	3 496	3 429	2 980	86.9	2 929	85.4	67	1.9
All Airlines	9 339	9 170	7 996	87.2	7 940	86.6	169	1.8
<b>Sydney-Hamilton Island</b>								
Jetstar	328	323	273	84.5	275	85.1	5	1.5
Qantas	40	40	34	85.0	37	92.5	0	0.0
Virgin Australia	367	361	320	88.6	312	86.4	6	1.6
All Airlines	735	724	627	86.6	624	86.2	11	1.5
<b>Sydney-Hobart</b>								
Jetstar	917	915	770	84.2	808	88.3	2	0.2
Qantas	104	104	95	91.3	101	97.1	0	0.0
QantasLink	273	272	228	83.8	220	80.9	1	0.4
Virgin Australia	713	713	659	92.4	655	91.9	0	0.0
All Airlines	2 007	2 004	1 752	87.4	1 784	89.0	3	0.1
<b>Sydney-Launceston</b>								
Jetstar	686	686	549	80.0	567	82.7	0	0.0
Virgin Australia	365	365	323	88.5	323	88.5	0	0.0
All Airlines	1 051	1 051	872	83.0	890	84.7	0	0.0
<b>Sydney-Melbourne</b>								
Jetstar	3 862	3 748	2 981	79.5	2 964	79.1	114	3.0
Qantas	10 694	10 357	9 066	87.5	8 739	84.4	337	3.2
Tigerair	2 634	2 577	1 946	75.5	1 885	73.1	57	2.2
Virgin Australia	9 131	8 746	7 432	85.0	7 209	82.4	385	4.2
All Airlines	26 321	25 428	21 425	84.3	20 797	81.8	893	3.4
<b>Sydney-Perth</b>								
Jetstar	399	392	316	80.6	343	87.5	7	1.8
Qantas	2 445	2 444	2 000	81.8	2 001	81.9	1	0.0
Tigerair	299	292	254	87.0	243	83.2	7	2.3
Virgin Australia	1 377	1 365	1 129	82.7	1 163	85.2	12	0.9
All Airlines	4 520	4 493	3 699	82.3	3 750	83.5	27	0.6

	<i>Sectors</i>		<i>Departures On Time</i>		<i>Arrivals On Time</i>		<i>Cancellations</i>	
	<i>Sched.</i>	<i>Flown</i>	<i>No.</i>	<i>%</i>	<i>No.</i>	<i>%</i>	<i>No.</i>	<i>%</i>
<b>Sydney-Port Macquarie</b>								
QantasLink	1 609	1 597	1 314	82.3	1 129	70.7	12	0.7
Virgin Australia Regional Airlines	722	719	614	85.4	606	84.3	3	0.4
All Airlines	2 331	2 316	1 928	83.2	1 735	74.9	15	0.6
<b>Sydney-Sunshine Coast</b>								
Jetstar	1 216	1 211	1 080	89.2	1 095	90.4	5	0.4
Virgin Australia	374	371	325	87.6	327	88.1	3	0.8
All Airlines	1 590	1 582	1 405	88.8	1 422	89.9	8	0.5
<b>Sydney-Townsville</b>								
Jetstar	281	279	247	88.5	240	86.0	2	0.7
Virgin Australia	346	343	305	88.9	279	81.3	3	0.9
All Airlines	627	622	552	88.7	519	83.4	5	0.8
<b>Sydney-Wagga Wagga</b>								
QantasLink	1 340	1 336	1 109	83.0	1 061	79.4	4	0.3
Regional Express	1 495	1 490	1 367	91.7	1 348	90.5	5	0.3
All Airlines	2 835	2 826	2 476	87.6	2 409	85.2	9	0.3
<b>Townsville-Brisbane</b>								
Jetstar	568	562	445	79.2	448	79.7	6	1.1
Qantas	1 767	1 761	1 624	92.2	1 580	89.7	6	0.3
Virgin Australia	1 845	1 820	1 557	85.5	1 581	86.9	25	1.4
All Airlines	4 180	4 143	3 626	87.5	3 609	87.1	37	0.9
<b>Townsville-Cairns</b>								
			(To February 2014 only)					
QantasLink	343	332	276	83.1	280	84.3	11	3.2
Virgin Australia Regional Airlines	16	15	15	100.0	15	100.0	1	6.3
All Airlines	359	347	291	83.9	295	85.0	12	3.3
<b>Townsville-Sydney</b>								
Jetstar	284	281	228	81.1	234	83.3	3	1.1
Virgin Australia	346	343	243	70.8	271	79.0	3	0.9
All Airlines	630	624	471	75.5	505	80.9	6	1.0
<b>Wagga Wagga-Sydney</b>								
QantasLink	1 340	1 336	1 057	79.1	1 057	79.1	4	0.3
Regional Express	1 487	1 483	1 351	91.1	1 289	86.9	4	0.3
All Airlines	2 827	2 819	2 408	85.4	2 346	83.2	8	0.3

# Airports

On time performance is reported for all routes where the passenger load averages over 8000 passengers per month, and where two or more airlines operate in competition. The following data reports by airport against flights operated on those routes only.

Airport	Departures			Arrivals		
	Sectors	On Time		Sectors	On Time	
	Flown	No.	%	Flown	No.	%
<b>Adelaide</b>						
Jetstar	3 866	3 152	81.5	3 865	3 195	82.7
Qantas	9 477	8 454	89.2	9 485	8 577	90.4
QantasLink	1 679	1 430	85.2	1 680	1 429	85.1
Regional Express	2 380	2 272	95.5	2 376	2 180	91.8
Tigerair	1 341	1 123	83.7	1 345	1 140	84.8
Virgin Australia	7 978	7 140	89.5	7 990	7 015	87.8
All Airlines	26 721	23 571	88.2	26 741	23 536	88.0
Relates to services to and from Brisbane, Canberra, Gold Coast, Melbourne, Perth, Port Lincoln and Sydney.						
<b>Albury</b>						
QantasLink	1 260	1 009	80.1	1 261	954	75.7
Regional Express	1 222	1 098	89.9	1 221	1 024	83.9
Virgin Australia Regional Airlines	720	614	85.3	721	623	86.4
All Airlines	3 202	2 721	85.0	3 203	2 601	81.2
Relates to services to and from Sydney only.						
<b>Alice Springs</b>						
	(To July 2014 only)					
Qantas	424	297	70.0	424	357	84.2
Tigerair	222	163	73.4	222	183	82.4
All Airlines	646	460	71.2	646	540	83.6
Relates to services to and from Melbourne and Sydney.						
<b>Armidale</b>						
	(From July 2014 only)					
QantasLink	781	609	78.0	788	618	78.4
Regional Express	455	390	85.7	453	388	85.7
All Airlines	1 236	999	80.8	1 241	1 006	81.1
Relates to services to and from Melbourne and Sydney.						
<b>Ayers Rock</b>						
Jetstar	282	244	86.5	282	255	90.4
Virgin Australia	366	318	86.9	365	324	88.8
All Airlines	648	562	86.7	647	579	89.5
Relates to services to and from Sydney only.						
<b>Ballina</b>						
Jetstar	778	594	76.3	782	639	81.7
Regional Express	286	224	78.3	330	287	87.0
Virgin Australia	359	307	85.5	359	313	87.2
All Airlines	1 423	1 125	79.1	1 471	1 239	84.2
Relates to services to and from Sydney only.						

Airport	Departures			Arrivals		
	Sectors	On Time		Sectors	On Time	
	Flown	No.	%	Flown	No.	%
<b>Brisbane</b>						
Jetstar	8 558	7 119	83.2	8 569	6 913	80.7
Qantas	19 804	17 225	87.0	19 540	16 231	83.1
QantasLink	13 343	11 917	89.3	13 228	10 631	80.4
Tigerair	2 959	2 174	73.5	2 962	2 077	70.1
Virgin Australia	23 434	20 212	86.3	23 398	19 304	82.5
Virgin Australia Regional Airlines	5 472	4 762	87.0	5 448	4 603	84.5
All Airlines	73 570	63 409	86.2	73 145	59 759	81.7

Relates to services to and from Adelaide, Bundaberg, Cairns, Canberra, Darwin, Emerald, Gladstone, Hamilton Island, Hobart, Mackay, Melbourne, Moranbah, Mount Isa, Newcastle, Perth, Proserpine, Rockhampton, Sydney and Townsville.

#### Broome

Qantas	394	341	86.5	394	365	92.6
QantasLink	605	559	92.4	609	568	93.3
Virgin Australia	457	370	81.0	457	418	91.5
Virgin Australia Regional Airlines	225	154	68.4	189	141	74.6
All Airlines	1 681	1 424	84.7	1 649	1 492	90.5

Relates to services to and from Perth only.

#### Bundaberg

QantasLink	1 408	1 229	87.3	1 408	1 228	87.2
Virgin Australia Regional Airlines	454	375	82.6	454	394	86.8
All Airlines	1 862	1 604	86.1	1 862	1 622	87.1

Relates to services to and from Brisbane only.

#### Cairns

Jetstar	3 419	2 934	85.8	3 414	2 941	86.1
Qantas	2 595	2 156	83.1	2 598	2 270	87.4
QantasLink	383	344	89.8	383	322	84.1
Tigerair	986	693	70.3	986	783	79.4
Virgin Australia	3 060	2 577	84.2	3 059	2 582	84.4
Virgin Australia Regional Airlines	15	15	100.0	15	15	100.0
All Airlines	10 458	8 719	83.4	10 455	8 913	85.3

Relates to services to and from Brisbane, Melbourne, Sydney and Townsville.

#### Canberra

Qantas	3 632	3 341	92.0	3 639	3 315	91.1
QantasLink	8 376	7 081	84.5	8 408	7 034	83.7
Virgin Australia	3 976	3 397	85.4	3 981	3 415	85.8
Virgin Australia Regional Airlines	2 883	2 617	90.8	2 889	2 525	87.4
All Airlines	18 867	16 436	87.1	18 917	16 289	86.1

Relates to services to and from Adelaide, Brisbane, Melbourne and Sydney.

#### Coffs Harbour

Qantas	2	1	50.0	2	2	100.0
QantasLink	1 803	1 461	81.0	1 804	1 495	82.9
Tigerair	170	131	77.1	170	132	77.6
Virgin Australia	693	621	89.6	694	636	91.6
All Airlines	2 668	2 214	83.0	2 670	2 265	84.8

Relates to services to and from Sydney only.

Airport	Departures			Arrivals		
	Sectors Flown	On Time		Sectors Flown	On Time	
		No.	%		No.	%
<b>Darwin</b>						
Jetstar	941	680	72.3	941	796	84.6
Qantas	1 930	1 592	82.5	1 931	1 648	85.3
Tigerair	190	174	91.6	193	164	85.0
Virgin Australia	1 401	1 117	79.7	1 403	1 199	85.5
All Airlines	4 462	3 563	79.9	4 468	3 807	85.2
Relates to services to and from Brisbane, Melbourne, Perth and Sydney.						
<b>Dubbo</b>						
QantasLink	1 463	1 220	83.4	1 463	1 120	76.6
Regional Express	1 713	1 540	89.9	1 680	1 499	89.2
All Airlines	3 176	2 760	86.9	3 143	2 619	83.3
Relates to services to and from Sydney only.						
<b>Emerald</b>						
QantasLink	1 798	1 453	80.8	1 803	1 479	82.0
Virgin Australia Regional Airlines	1 009	884	87.6	1 014	834	82.2
All Airlines	2 807	2 337	83.3	2 817	2 313	82.1
Relates to services to and from Brisbane only.						
<b>Geraldton</b>						
QantasLink	628	593	94.4	630	577	91.6
Virgin Australia Regional Airlines	1 135	1 000	88.1	1 091	943	86.4
All Airlines	1 763	1 593	90.4	1 721	1 520	88.3
Relates to services to and from Perth only.						
<b>Gladstone</b>						
QantasLink	2 710	2 303	85.0	2 498	2 217	88.8
Virgin Australia	24	17	70.8	24	18	75.0
Virgin Australia Regional Airlines	1 734	1 442	83.2	1 738	1 459	83.9
All Airlines	4 468	3 762	84.2	4 260	3 694	86.7
Relates to services to and from Brisbane only.						
<b>Gold Coast</b>						
Jetstar	6 921	5 914	85.5	6 927	5 872	84.8
Qantas	1 075	942	87.6	1 077	1 014	94.2
Tigerair	1 573	1 081	68.7	1 581	1 188	75.1
Virgin Australia	5 880	5 079	86.4	5 887	5 017	85.2
All Airlines	15 449	13 016	84.3	15 472	13 091	84.6
Relates to services to and from Adelaide, Melbourne and Sydney.						
<b>Hamilton Island</b>						
Jetstar	706	598	84.7	705	627	88.9
Qantas	40	22	55.0	40	37	92.5
QantasLink	20	16	80.0	20	18	90.0
Virgin Australia	897	764	85.2	904	803	88.8
All Airlines	1 663	1 400	84.2	1 669	1 485	89.0
Relates to services to and from Brisbane, Melbourne and Sydney.						

Airport	Departures			Arrivals		
	Sectors Flown	On Time		Sectors Flown	On Time	
		No.	%		No.	%
<b>Hobart</b>						
Jetstar	3 422	2 686	78.5	3 415	2 947	86.3
Qantas	407	370	90.9	406	381	93.8
QantasLink	1 228	865	70.4	1 228	741	60.3
Tigerair	341	217	63.6	342	238	69.6
Virgin Australia	2 722	2 214	81.3	2 724	2 314	84.9
All Airlines	8 120	6 352	78.2	8 115	6 621	81.6
Relates to services to and from Brisbane, Melbourne and Sydney.						
<b>Kalgoorlie</b>						
Qantas	439	412	93.8	439	418	95.2
QantasLink	556	507	91.2	559	521	93.2
Virgin Australia	498	439	88.2	501	451	90.0
Virgin Australia Regional Airlines	157	130	82.8	160	134	83.8
All Airlines	1 650	1 488	90.2	1 659	1 524	91.9
Relates to services to and from Perth only.						
<b>Karratha</b>						
Qantas	1 655	1 559	94.2	1 670	1 596	95.6
QantasLink	926	865	93.4	923	856	92.7
Virgin Australia	889	792	89.1	891	830	93.2
Virgin Australia Regional Airlines	122	86	70.5	123	103	83.7
All Airlines	3 592	3 302	91.9	3 607	3 385	93.8
Relates to services to and from Perth only.						
<b>Launceston</b>						
Jetstar	2 184	1 689	77.3	2 176	1 827	84.0
QantasLink	1 422	1 182	83.1	1 424	1 120	78.7
Virgin Australia	1 724	1 496	86.8	1 722	1 444	83.9
Virgin Australia Regional Airlines	8	4	50.0	8	6	75.0
All Airlines	5 338	4 371	81.9	5 330	4 397	82.5
Relates to services to and from Melbourne and Sydney.						
<b>Mackay</b>						
Jetstar	765	583	76.2	766	639	83.4
QantasLink	1 270	1 106	87.1	1 276	1 168	91.5
Virgin Australia	1 733	1 505	86.8	1 734	1 494	86.2
All Airlines	3 768	3 194	84.8	3 776	3 301	87.4
Relates to services to and from Brisbane only.						
<b>Melbourne</b>						
Jetstar	17 241	13 799	80.0	17 252	13 845	80.3
Qantas	24 832	21 738	87.5	24 820	21 252	85.6
QantasLink	4 661	3 710	79.6	4 666	3 580	76.7
Regional Express	967	904	93.5	969	820	84.6
Tigerair	7 249	5 782	79.8	7 228	5 132	71.0
Virgin Australia	27 111	23 151	85.4	27 112	22 226	82.0
Virgin Australia Regional Airlines	57	39	68.4	58	43	74.1
All Airlines	82 118	69 123	84.2	82 105	66 898	81.5
Relates to services to and from Adelaide, Alice Springs, Brisbane, Cairns, Canberra, Darwin, Gold Coast, Hamilton Island, Hobart, Launceston, Mildura, Newcastle, Perth, Sunshine Coast and Sydney.						

Airport	Departures			Arrivals		
	Sectors Flown	On Time		Sectors Flown	On Time	
		No.	%		No.	%
<b>Mildura</b>						
QantasLink	1 041	891	85.6	1 041	825	79.3
Regional Express	969	852	87.9	967	871	90.1
Virgin Australia	364	294	80.8	364	295	81.0
All Airlines	2 374	2 037	85.8	2 372	1 991	83.9
Relates to services to and from Melbourne only.						
<b>Moranbah</b>						
QantasLink	1 464	1 254	85.7	1 520	1 383	91.0
Virgin Australia Regional Airlines	1 000	896	89.6	1 005	922	91.7
All Airlines	2 464	2 150	87.3	2 525	2 305	91.3
Relates to services to and from Brisbane only.						
<b>Mount Isa</b>						
Qantas	667	600	90.0	671	634	94.5
Virgin Australia	260	230	88.5	260	237	91.2
All Airlines	927	830	89.5	931	871	93.6
Relates to services to and from Brisbane only.						
<b>Newcastle</b>						
Jetstar	2 420	2 017	83.3	2 418	2 079	86.0
QantasLink	816	566	69.4	817	556	68.1
Virgin Australia	1 310	1 052	80.3	1 314	1 140	86.8
All Airlines	4 546	3 635	80.0	4 549	3 775	83.0
Relates to services to and from Brisbane and Melbourne.						
<b>Newman</b>						
Qantas	1 368	1 298	94.9	1 373	1 307	95.2
QantasLink	423	404	95.5	423	406	96.0
Virgin Australia	382	349	91.4	382	343	89.8
Virgin Australia Regional Airlines	95	78	82.1	95	85	89.5
All Airlines	2 268	2 129	93.9	2 273	2 141	94.2
Relates to services to and from Perth only.						
<b>Perth</b>						
Jetstar	1 847	1 434	77.6	1 862	1 593	85.6
Qantas	13 571	12 368	91.1	13 548	11 796	87.1
QantasLink	3 670	3 446	93.9	3 668	3 384	92.3
Tigerair	965	766	79.4	978	796	81.4
Virgin Australia	7 928	7 092	89.5	7 919	6 728	85.0
Virgin Australia Regional Airlines	1 658	1 443	87.0	1 734	1 398	80.6
All Airlines	29 639	26 549	89.6	29 709	25 695	86.5
Relates to services to and from Adelaide, Brisbane, Broome, Darwin, Geraldton, Kalgoorlie, Karratha, Melbourne, Newman, Port Hedland and Sydney.						
<b>Port Hedland</b>						
Qantas	1 363	1 230	90.2	1 368	1 315	96.1
QantasLink	530	490	92.5	526	498	94.7
Virgin Australia	553	500	90.4	556	527	94.8
All Airlines	2 446	2 220	90.8	2 450	2 340	95.5
Relates to services to and from Perth only.						

Airport	Departures			Arrivals		
	Sectors	On Time		Sectors	On Time	
	Flown	No.	%	Flown	No.	%
<b>Port Lincoln</b>						
QantasLink	1 144	1 049	91.7	1 145	1 025	89.5
Regional Express	2 376	2 218	93.4	2 380	2 215	93.1
All Airlines	3 520	3 267	92.8	3 525	3 240	91.9
Relates to services to and from Adelaide only.						
<b>Port Macquarie</b>						
QantasLink	1 597	1 143	71.6	1 597	1 129	70.7
Virgin Australia Regional Airlines	718	578	80.5	719	606	84.3
All Airlines	2 315	1 721	74.3	2 316	1 735	74.9
Relates to services to and from Sydney only.						
<b>Proserpine</b>						
Jetstar	350	318	90.9	350	310	88.6
Virgin Australia	613	532	86.8	614	565	92.0
All Airlines	963	850	88.3	964	875	90.8
Relates to services to and from Brisbane only.						
<b>Rockhampton</b>						
QantasLink	2 301	1 850	80.4	2 559	2 176	85.0
Virgin Australia	1 196	1 030	86.1	1 201	1 053	87.7
Virgin Australia Regional Airlines	1 251	1 124	89.8	1 261	1 022	81.0
All Airlines	4 748	4 004	84.3	5 021	4 251	84.7
Relates to services to and from Brisbane only.						
<b>Sunshine Coast</b>						
Jetstar	2 023	1 667	82.4	2 032	1 777	87.5
Tigerair	176	131	74.4	175	132	75.4
Virgin Australia	737	547	74.2	739	604	81.7
All Airlines	2 936	2 345	79.9	2 946	2 513	85.3
Relates to services to and from Melbourne and Sydney.						
<b>Sydney</b>						
Jetstar	17 226	14 262	82.8	17 197	13 968	81.2
Qantas	25 829	22 411	86.8	26 079	22 719	87.1
QantasLink	14 367	12 017	83.6	14 318	11 485	80.2
Regional Express	5 174	4 526	87.5	5 159	4 364	84.6
Tigerair	5 545	4 434	80.0	5 535	4 334	78.3
Virgin Australia	27 231	23 589	86.6	27 220	23 721	87.1
Virgin Australia Regional Airlines	4 280	3 727	87.1	4 271	3 681	86.2
All Airlines	99 652	84 966	85.3	99 779	84 272	84.5
Relates to services to and from Adelaide, Albury, Alice Springs, Armidale, Ayers Rock, Ballina, Brisbane, Cairns, Canberra, Coffs Harbour, Darwin, Dubbo, Gold Coast, Hamilton Island, Hobart, Launceston, Melbourne, Perth, Port Macquarie, Sunshine Coast, Townsville and Wagga Wagga.						
<b>Townsville</b>						
Jetstar	843	673	79.8	839	713	85.0
Qantas	1 761	1 624	92.2	1 761	1 557	88.4
QantasLink	332	276	83.1	332	297	89.5
Virgin Australia	2 163	1 800	83.2	2 165	1 854	85.6
Virgin Australia Regional Airlines	15	15	100.0	15	15	100.0
All Airlines	5 114	4 388	85.8	5 112	4 436	86.8
Relates to services to and from Brisbane, Cairns and Sydney.						



<i>Airport</i>	<i>Departures</i>			<i>Arrivals</i>		
	<i>Sectors</i>	<i>On Time</i>		<i>Sectors</i>	<i>On Time</i>	
	<i>Flown</i>	<i>No.</i>	<i>%</i>	<i>Flown</i>	<i>No.</i>	<i>%</i>
<b>Wagga Wagga</b>						
QantasLink	1 336	1 057	79.1	1 336	1 061	79.4
Regional Express	1 483	1 351	91.1	1 490	1 348	90.5
All Airlines	2 819	2 408	85.4	2 826	2 409	85.2

Relates to services to and from Sydney only.

## Definitions

---

On time departure                      A flight departure is counted as "on time" if it departs the gate before 15 minutes after the scheduled departure time shown in the carriers' schedule.

---

On time arrival                         A flight arrival is counted as "on time" if it arrived at the gate before 15 minutes after the scheduled arrival time shown in the carriers' schedule.  
Neither diverted nor cancelled flights count as on time.

---

Cancellation                            A flight removed from service within 7 days of scheduled departure is regarded as a cancellation.

---

On time departure percentage                      The percentage of on time departures is measured against the number of departures *operated* on any particular sector.

---

On time arrival percentage                         The percentage of on time arrivals is measured against the number of arrivals *operated* on any particular sector.

---

Cancellation percentage                            The percentage of cancellations is measured against the number of services *scheduled* on any particular sector.

---