



**Australian Government**

**Department of Infrastructure, Regional Development and Cities**

Bureau of Infrastructure, Transport and Regional Economics

STATISTICAL REPORT



## Aviation

Domestic airline on time performance 2017

© Commonwealth of Australia 2018

ISSN: 1832-0759

### **Ownership of intellectual property rights in this publication**

Unless otherwise noted, copyright (and any other intellectual property rights, if any) in this publication is owned by the Commonwealth of Australia (referred to below as the Commonwealth).

### **Disclaimer**

The material contained in this publication is made available on the understanding that the Commonwealth is not providing professional advice, and that users exercise their own skill and care with respect to its use, and seek independent advice if necessary.

The Commonwealth makes no representations or warranties as to the contents or accuracy of the information contained in this publication. To the extent permitted by law, the Commonwealth disclaims liability to any person or organisation in respect of anything done, or omitted to be done, in reliance upon information contained in this publication.

### **Creative Commons licence**

With the exception of (a) the Coat of Arms; and (b) the Department of Infrastructure, Regional Development and Cities' photos and graphics, copyright in this publication is licensed under a Creative Commons Attribution 3.0 Australia Licence.

Creative Commons Attribution 3.0 Australia Licence is a standard form licence agreement that allows you to copy, communicate and adapt this publication provided that you attribute the work to the Commonwealth and abide by the other licence terms. A summary of the licence terms is available from <http://creativecommons.org/licenses/by/3.0/au/deed.en>. The full licence terms are available from <http://creativecommons.org/licenses/by/3.0/au/legalcode>.

### **Use of the Coat of Arms**

The Department of the Prime Minister and Cabinet sets the terms under which the Coat of Arms is used. Please refer to the Department's Commonwealth Coat of Arms and Government branding web page <http://www.dpmmc.gov.au/guidelines/index.cfm#brand> and, in particular, the Guidelines on the use of the Commonwealth Coat of Arms publication.

An appropriate citation for this report is:

Bureau of Infrastructure, Transport and Regional Economics (BITRE), 2018, Domestic airline on time performance, Statistical Report, BITRE, Canberra ACT.

### **Contact us**

This publication is available in PDF format. All other rights are reserved, including in relation to any Departmental logos or trade marks which may exist. For enquiries regarding the licence and any use of this publication, please contact:

Bureau of Infrastructure, Transport and Regional Economics (BITRE)  
Department of Infrastructure, Regional Development and Cities  
GPO Box 501, Canberra ACT 2601, Australia  
Telephone: (international) +61 2 6274 7210  
Fax: (international) +61 2 6274 6855  
Email: [bitre@infrastructure.gov.au](mailto:bitre@infrastructure.gov.au)  
Website: [www.bitre.gov.au](http://www.bitre.gov.au)

### **Inquiries**

Should you require additional information about the statistics contained in this publication:

Telephone (02) 6274 7790 or Facsimile (02) 6274 7727

Electronic mail: [AVSTATS@infrastructure.gov.au](mailto:AVSTATS@infrastructure.gov.au)

Web site: <http://www.bitre.gov.au/statistics/aviation/otphome.aspx>

# Foreword

The Bureau of Infrastructure, Transport and Regional Economics (BITRE) monitors the punctuality and reliability of major domestic airlines operating between Australian airports. The purpose of this is to allow for evaluation of overall industry and individual airline performance, so that consumers of air travel can make informed decisions.

The following domestic airlines currently report this information monthly to the BITRE: Jetstar, Qantas, QantasLink, Regional Express, Tigerair Australia, Virgin Australia and Virgin Australia Regional Airlines. Data has been gathered since November 2003, although some airlines commenced reporting at a later date, including Jetstar which first reported in May 2004, MacAir in July 2005, Tigerair Australia in April 2008 and Virgin Australia Regional Airlines in May 2013. MacAir ceased operations in February 2009 and data was not received for December 2008 onwards. Virgin Blue was rebranded as Virgin Australia in May 2011 and Tiger Airways was rebranded as Tigerair Australia in July 2013 and time series data in Microsoft Excel spreadsheet format on the BITRE website have been revised to reflect these changes. Services operated by Skywest on behalf of Virgin Australia using ATR/F100 aircraft commenced in November 2011 and were shown separately as Virgin Australia – ATR/F100 Operations. Virgin Australia Regional Airlines commenced operations in May 2013. It was formed after the acquisition of Skywest by Virgin Australia and represented a combination of operations previously reported under Skywest and Virgin Australia – ATR/F100 Operations. In January 2016, Virgin Australia transferred their ATR fleet from Virgin Australia Regional Airlines to Virgin Australia.

Information presented in this report is for Australian domestic routes for which the passenger load averaged 8 000 or more passengers per month over the previous six months and where two or more airlines operated in competition on those routes. There were 64 routes that met these criteria for all twelve months in 2017. Over time, routes which meet these criteria change as airline networks and traffic levels vary.

Participating airlines report their overall monthly network performance where this is possible.

Total industry figures encompass all services operated by reporting airlines only. These airlines collectively carried over 95 per cent of total domestic passengers (regular public transport only) in 2016.

The method of capturing on time performance varies between airlines utilising different recording systems. Jetstar and Qantas jet aircraft use Aircraft Communication Addressing and Reporting System (ACARS) to electronically measure on time performance. Regional Express, Tigerair Australia, Virgin Australia, Virgin Australia Regional Airlines and the Qantas non-jet fleet record on time performance manually using records from pilots, gate agents and/or ground crews.

After initial data is collected, aggregate reports are audited internally by participating airlines prior to publication.

Reports and detailed time series data in Microsoft Excel spreadsheet format are available from the BITRE website at: <http://www.bitre.gov.au/statistics/aviation/otphome.aspx>.



# Contents

	Page
Industry performance .....	1
Individual routes .....	9
Airports .....	23
Definitions .....	30



# Industry performance

For the year ended December 2017, on time performance over all routes operated by participating airlines (Jetstar, Qantas, QantasLink, Regional Express, Tigerair Australia, Virgin Australia and Virgin Australia Regional Airlines) averaged 82.0 per cent for on time arrivals and 82.7 per cent for on time departures. Cancellations represented 1.9 per cent of all scheduled flights. The equivalent figures for 2016 were 84.2 per cent for arrivals, 85.1 per cent for departures and 1.7 per cent for cancellations.

The 2017 on time arrivals figure was below the long term average performance for all routes of 82.7 per cent and the on time departures figure was also below the long term average of 84.0 per cent. The rate of cancellations was higher than the long term average of 1.4 per cent.

Qantas achieved the highest on time arrivals among the major domestic airlines at 84.7 per cent, followed by Virgin Australia at 83.4 per cent, Jetstar at 77.2 per cent and Tigerair Australia at 71.4 per cent. QantasLink was the best performing regional airline for on time arrivals at 84.2 per cent, followed by Virgin Australia Regional Airlines at 83.0 per cent and Regional Express at 81.2 per cent. The Qantas network (Qantas and QantasLink combined operations) recorded 84.4 per cent for on time arrivals while the Virgin Australia network (Virgin Australia and Virgin Australia Regional Airlines combined operations) recorded 83.4 per cent.

Qantas also achieved the highest level of on time departures for 2017 at 85.8 per cent, followed by Virgin Australia at 85.3 per cent, Jetstar at 74.1 per cent and Tigerair Australia at 72.7 per cent. The regional airlines were led by Virgin Australia Regional Airlines at 85.0 per cent, followed by QantasLink at 84.4 per cent and Regional Express at 84.0 per cent. The Qantas network recorded 85.1 per cent for on time departures while the Virgin Australia network recorded 85.3 per cent.

QantasLink had the highest percentage of cancellations (2.9 per cent) during 2017, followed by Tigerair Australia and Virgin Australia Regional Airlines (both at 2.1 per cent), Virgin Australia (2.0 per cent), Regional Express (1.5 per cent), Qantas (1.3 per cent) and Jetstar (1.2 per cent).

Airlines' on time performance varies across the routes they serve. Individual route data by specific airline for 68 routes are shown on pages 9-22.

Of the 64 routes which met the criteria for on time performance reporting for all 12 months in 2017, the Adelaide-Gold Coast and Townsville-Cairns routes had the highest percentage of on time arrivals (92.8 per cent) and the Darwin-Alice Springs route had the highest percentage of on time departures (93.8 per cent). The Armidale-Sydney and Launceston-Sydney routes had the lowest percentage of on time arrivals (69.2 per cent) and the Sunshine Coast-Melbourne route had the lowest percentage of on time departures (64.8 per cent).

Cancellations were highest on the Sydney-Hamilton Island route at 6.2 per cent, followed by the Hamilton Island-Sydney route at 6.1 per cent, the Melbourne-Hamilton Island route at 5.2

per cent, the Hamilton Island-Brisbane and Canberra-Sydney routes at 5.1 per cent and the Brisbane-Hamilton Island route at 5.0 per cent.

Port Lincoln Airport recorded the highest percentage of on time arrivals (91.4 per cent) and Newman Airport and Port Lincoln Airport recorded the highest percentage of on time departures (both at 91.6 per cent). Armidale Airport recorded the lowest percentage of on time arrivals (72.3 per cent) and Ayers Rock Airport recorded the lowest percentage of on time departures (68.2 per cent). These figures only refer to reported routes and do not cover all flights at these airports.



Table 1 On time performance for the year ended December 2017 — Total Industry

	<i>Sectors</i>		<i>Arrivals On Time</i>		<i>Departures On Time</i>		<i>Cancellations</i>	
	<i>Scheduled</i>	<i>Flown</i>	<i>No.</i>	<i>%</i>	<i>No.</i>	<i>%</i>	<i>No.</i>	<i>%</i>
Jetstar	85 761	84 700	65 422	77.2	62 753	74.1	1 061	1.2
Qantas	106 758	105 351	89 239	84.7	90 387	85.8	1 407	1.3
QantasLink	123 417	119 808	100 854	84.2	101 118	84.4	3 609	2.9
Regional Express	75 617	74 509	60 518	81.2	62 610	84.0	1 108	1.5
Tigerair Australia	29 431	28 812	20 571	71.4	20 932	72.7	619	2.1
Virgin Australia	138 844	136 027	113 478	83.4	116 053	85.3	2 817	2.0
Virgin Australia Regional Airlines	9 059	8 872	7 361	83.0	7 541	85.0	187	2.1
All Airlines	568 887	558 079	457 443	82.0	461 394	82.7	10 808	1.9
Qantas - all QF designated services	230 175	225 159	190 093	84.4	191 505	85.1	5 016	2.2
Virgin Australia - all VA designated services	147 903	144 899	120 839	83.4	123 594	85.3	3 004	2.0

Total airline network data (including routes not shown in this report).

Airlines' on time performance varies across the routes they serve. Individual route data by specific airline for 66 routes are shown on pages 9-22.

Table 2 Top ten routes for on time performance for the year ended December 2017 (participating airlines only)

<i>Arrivals</i>		<i>Departures</i>	
<i>Route</i>	<i>On Time (%)</i>	<i>Route</i>	<i>On Time (%)</i>
Adelaide-Gold Coast	92.8	Darwin-Alice Springs	93.8
Townsville-Cairns	92.8	Adelaide-Port Lincoln	93.6
Darwin-Alice Springs	92.7	Cairns-Townsville	92.7
Cairns-Townsville	92.5	Townsville-Cairns	92.6
Perth-Darwin	91.6	Perth-Newman	92.4
Adelaide-Port Lincoln	91.4	Perth-Darwin	92.0
Perth-Newman	91.3	Brisbane-Hobart	91.7
Newman-Perth	90.9	Newman-Perth	91.6
Kalgoorlie-Perth	90.7	Port Lincoln-Adelaide	91.6
Perth-Kalgoorlie	90.5	Adelaide-Gold Coast	91.4

Table 3 Top ten airports for on time performance for the year ended December 2017 (participating airlines and reported routes only)

<i>Arrivals</i>		<i>Departures</i>	
<i>Airport</i>	<i>On Time (%)</i>	<i>Airport</i>	<i>On Time (%)</i>
Port Lincoln	91.4	Newman	91.6
Newman	91.3	Port Lincoln	91.6
Kalgoorlie	90.5	Kalgoorlie	90.3
Karratha	89.8	Karratha	88.8
Alice Springs	89.1	Port Hedland	88.7
Proserpine	88.1	Moranbah	88.2
Broome	87.6	Perth	87.3
Port Hedland	87.5	Alice Springs	86.8
Moranbah	87.5	Mount Isa	86.1
Emerald	87.0	Townsville	86.0

## Total industry on time performance

Figure 1 On time performance (by month from December 2012)—Total Industry

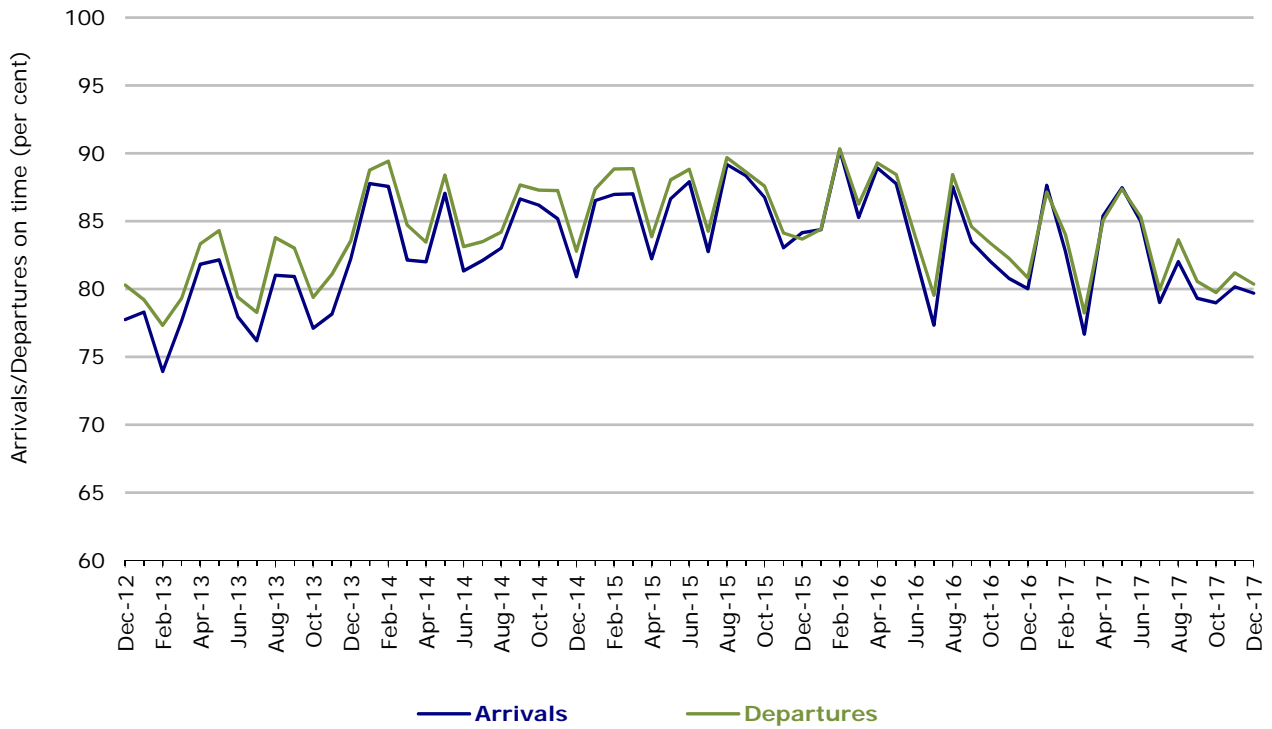
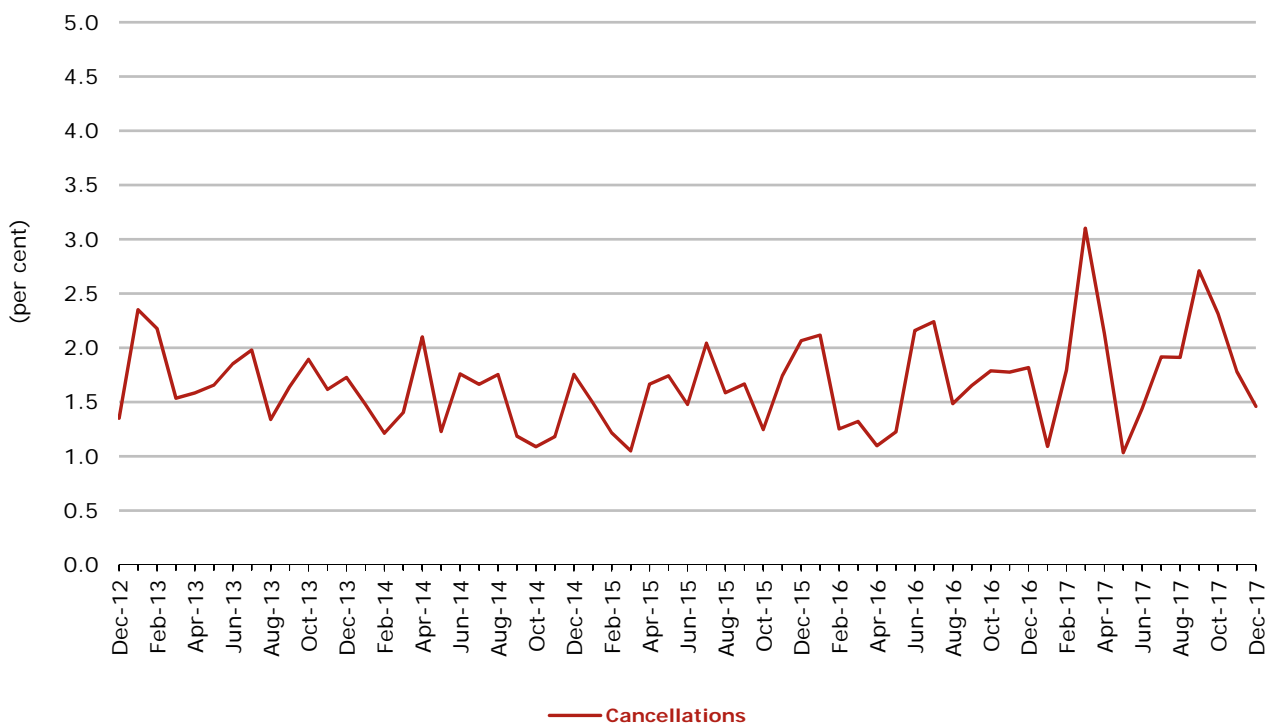


Figure 2 Cancellations (by month from December 2012)—Total Industry



## Major domestic airlines on time performance

Figure 3 On time performance (by month from December 2012)—Jetstar

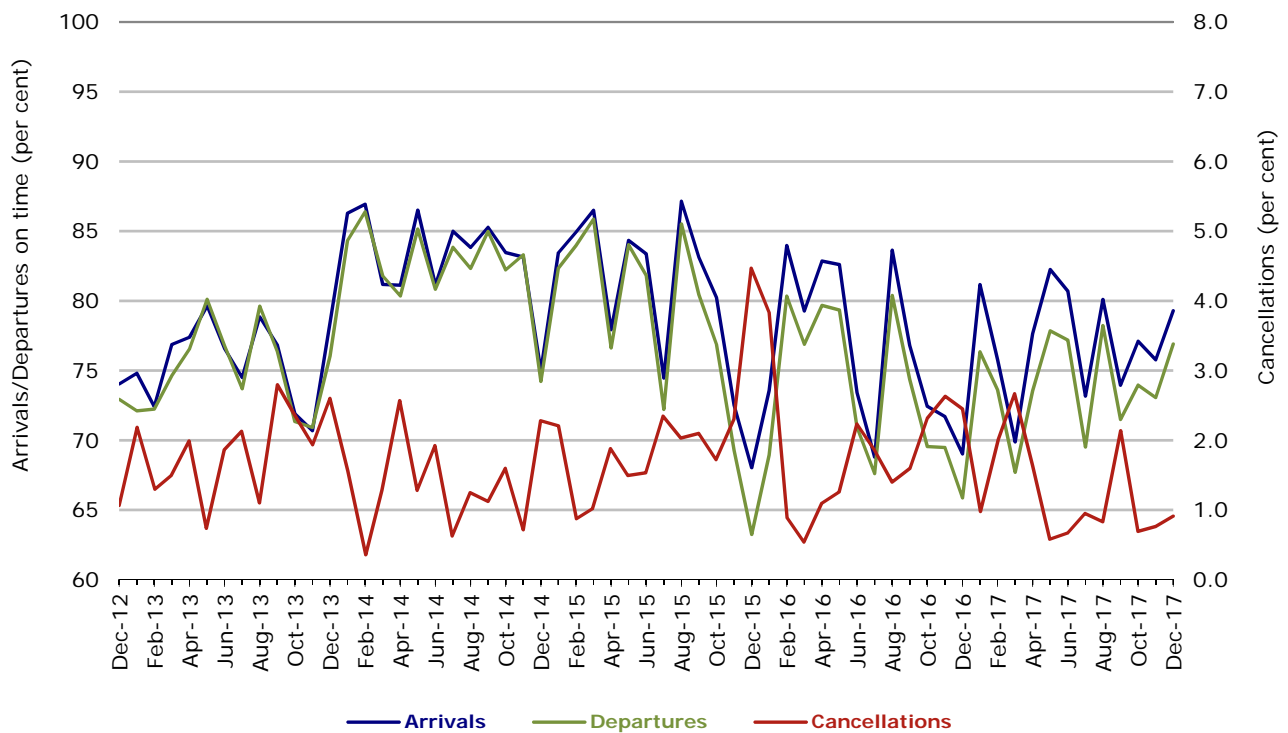


Figure 4 On time performance (by month from December 2012)—Qantas

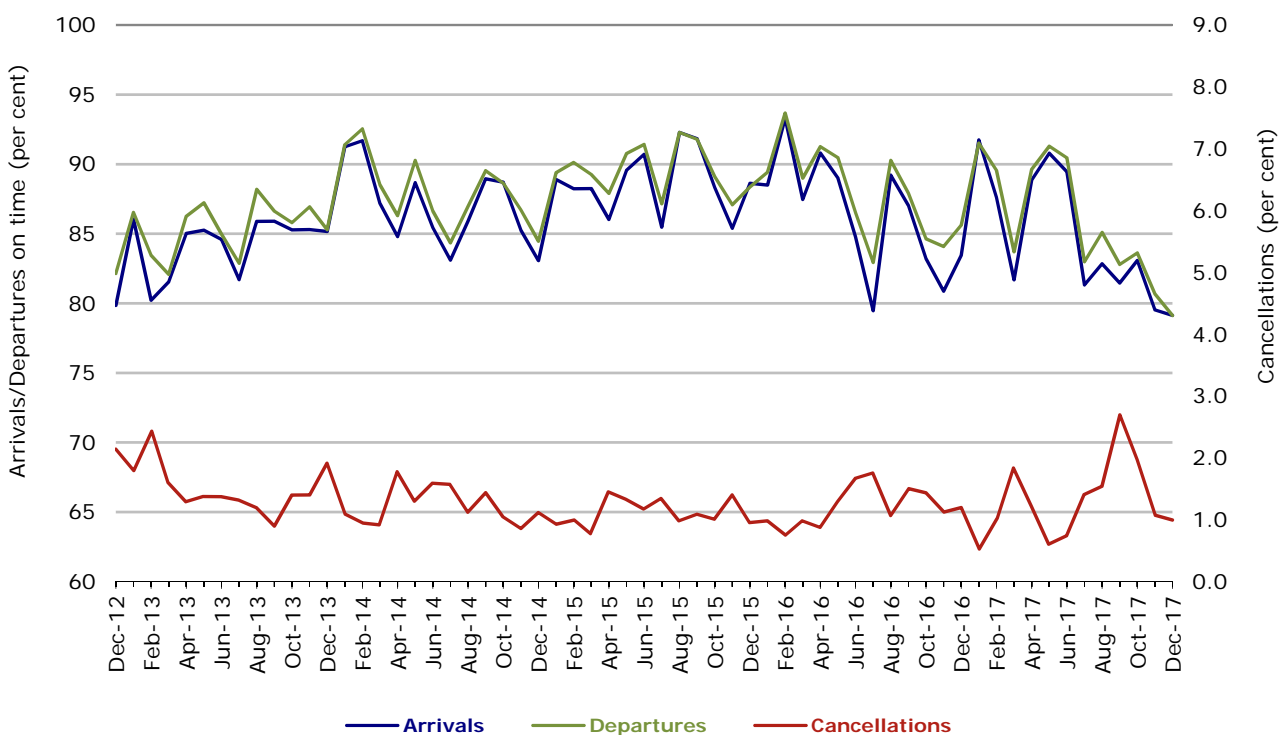


Figure 5 On time performance (by month from December 2012)—Tigerair Australia

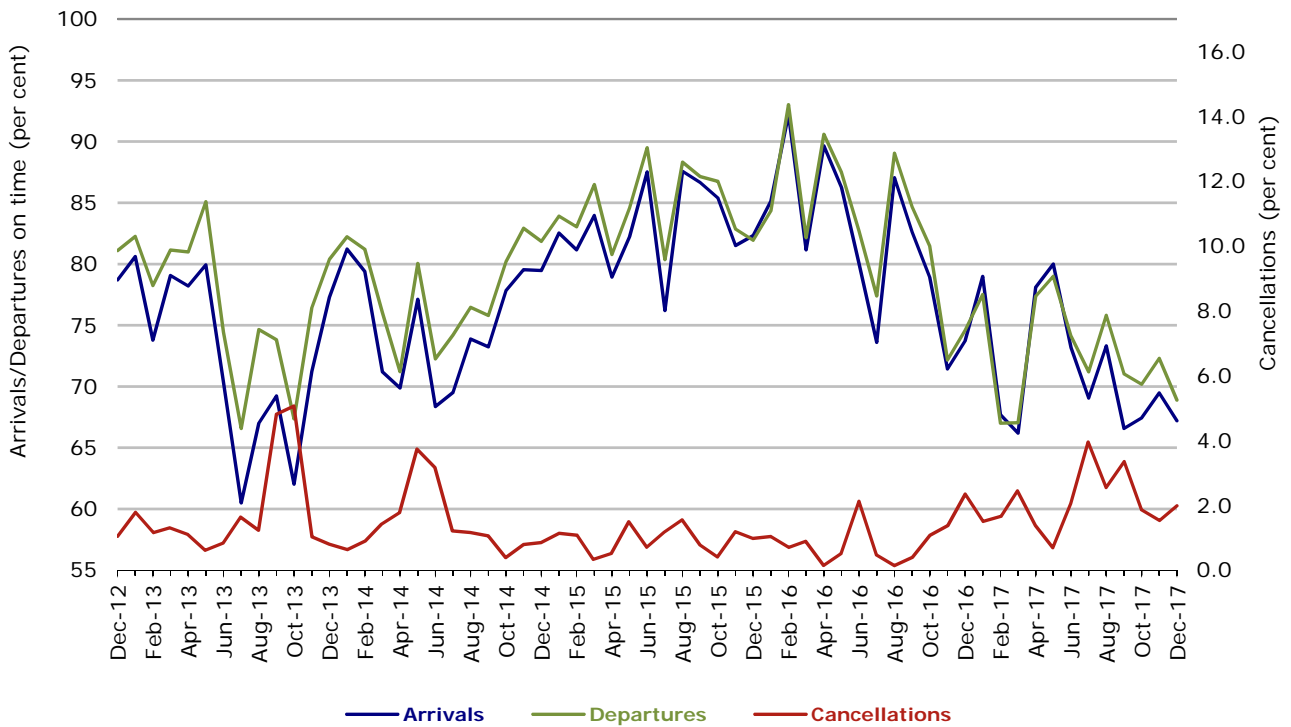
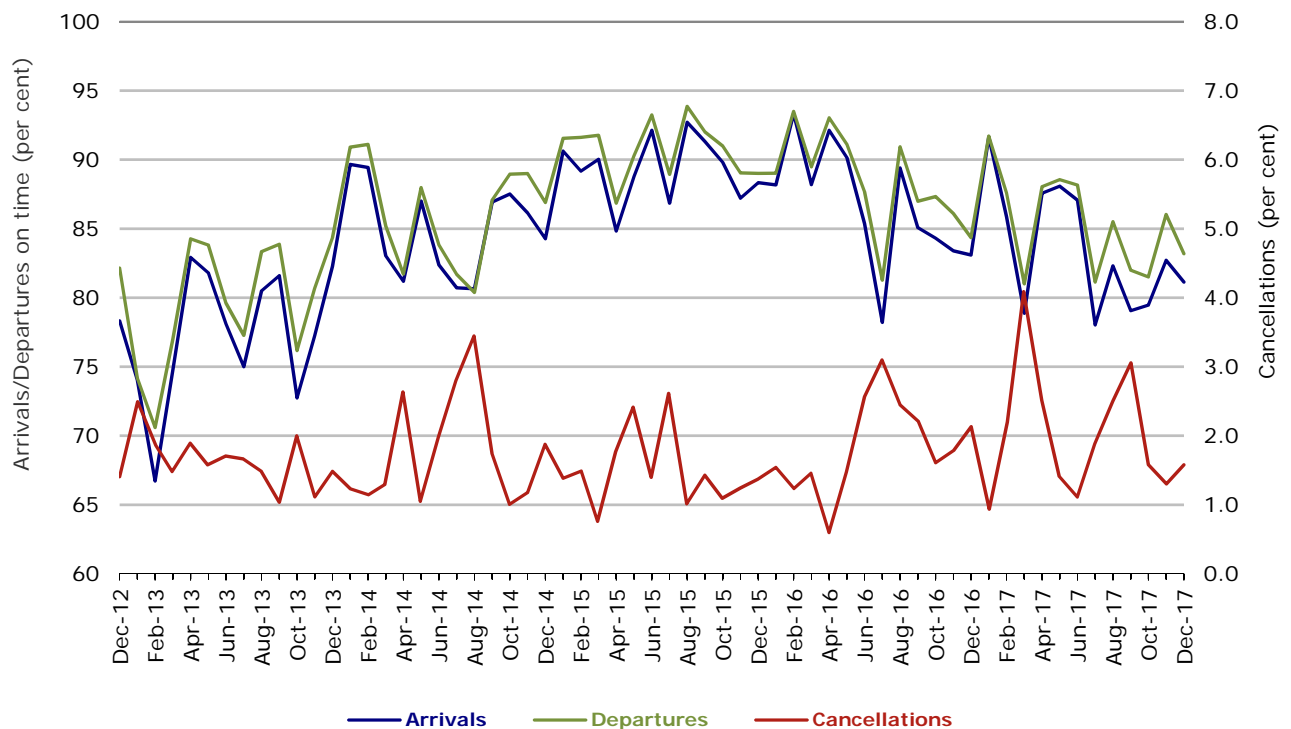


Figure 6 On time performance (by month from December 2012)—Virgin Australia



In January 2016, Virgin Australia transferred their ATR fleet from Virgin Australia Regional Airlines to Virgin Australia.

## Major regional airlines on time performance

Figure 7 On time performance (by month from December 2012)—QantasLink

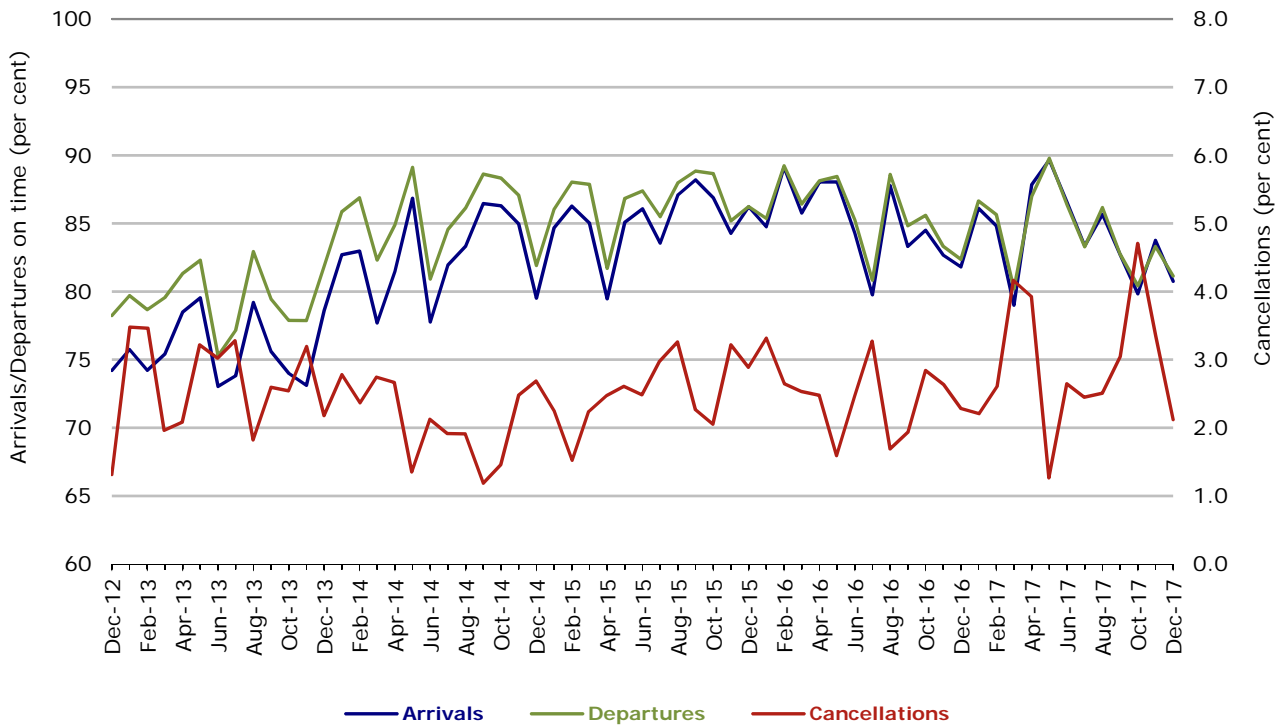


Figure 8 On time performance (by month from December 2012)—Regional Express

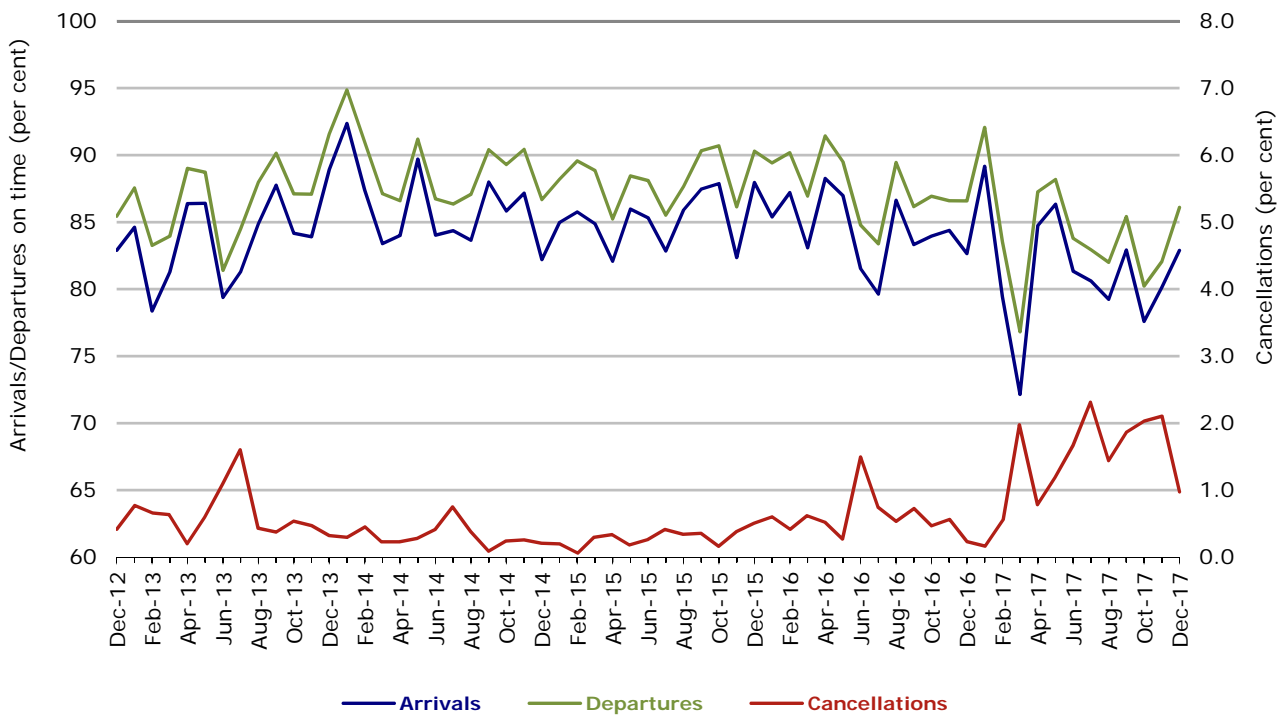
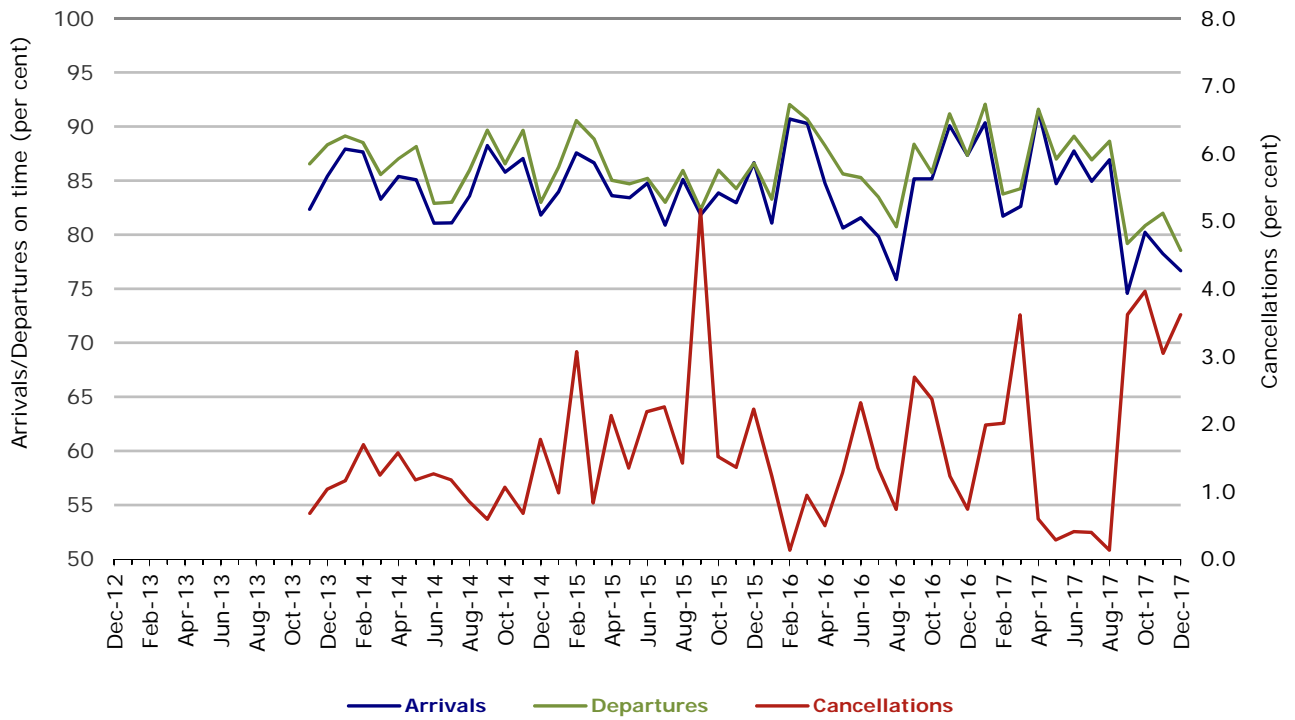


Figure 9 On time performance (by month from December 2012)  
Virgin Australia Regional Airlines



In January 2016, Virgin Australia transferred their ATR fleet from Virgin Australia Regional Airlines to Virgin Australia.

## Individual routes

On time performance is reported for all routes where the passenger load averages over 8000 passengers per month over the previous six months, and where two or more airlines operate in competition on those routes. There are now 66 routes which meet this definition. Over time, however, routes which meet this definition may change as airline networks and traffic levels vary.

	<i>Sectors</i>		<i>Arrivals On Time</i>		<i>Departures On Time</i>		<i>Cancellations</i>	
	<i>Sched.</i>	<i>Flown</i>	<i>No.</i>	<i>%</i>	<i>No.</i>	<i>%</i>	<i>No.</i>	<i>%</i>
<b>Adelaide-Alice Springs</b>								
Qantas	364	364	317	87.1	302	83.0	0	0.0
Virgin Australia	122	122	112	91.8	114	93.4	0	0.0
Virgin Australia Regional Airlines	73	67	35	52.2	41	61.2	6	8.2
All Airlines	559	553	464	83.9	457	82.6	6	1.1
<b>Adelaide-Brisbane</b>								
Jetstar	324	323	245	75.9	230	71.2	1	0.3
Qantas	1 124	1 122	1 016	90.6	1 002	89.3	2	0.2
QantasLink	308	289	228	78.9	251	86.9	19	6.2
Tigerair Australia	346	343	253	73.8	262	76.4	3	0.9
Virgin Australia	1 283	1 277	1 155	90.4	1 131	88.6	6	0.5
All Airlines	3 385	3 354	2 897	86.4	2 876	85.7	31	0.9
<b>Adelaide-Canberra</b>								
Qantas	523	523	465	88.9	462	88.3	0	0.0
Virgin Australia	313	312	275	88.1	265	84.9	1	0.3
All Airlines	836	835	740	88.6	727	87.1	1	0.1
<b>Adelaide-Gold Coast</b>								
Jetstar	374	373	341	91.4	327	87.7	1	0.3
Virgin Australia	367	367	346	94.3	349	95.1	0	0.0
All Airlines	741	740	687	92.8	676	91.4	1	0.1
<b>Adelaide-Melbourne</b>								
Jetstar	1 282	1 262	990	78.4	914	72.4	20	1.6
Qantas	3 305	3 286	2 856	86.9	2 864	87.2	19	0.6
Tigerair Australia	900	887	609	68.7	613	69.1	13	1.4
Virgin Australia	3 255	3 205	2 724	85.0	2 709	84.5	50	1.5
All Airlines	8 742	8 640	7 179	83.1	7 100	82.2	102	1.2
<b>Adelaide-Perth</b>								
Jetstar	327	324	273	84.3	263	81.2	3	0.9
Qantas	1 050	1 049	925	88.2	921	87.8	1	0.1
QantasLink	289	267	219	82.0	241	90.3	22	7.6
Virgin Australia	725	720	647	89.9	661	91.8	5	0.7
Virgin Australia Regional Airlines	131	126	64	50.8	85	67.5	5	3.8
All Airlines	2 522	2 486	2 128	85.6	2 171	87.3	36	1.4
<b>Adelaide-Port Lincoln</b>								
QantasLink	1 282	1 260	1 150	91.3	1 163	92.3	22	1.7
Regional Express	2 479	2 441	2 234	91.5	2 302	94.3	38	1.5
All Airlines	3 761	3 701	3 384	91.4	3 465	93.6	60	1.6
<b>Adelaide-Sydney</b>								
Jetstar	1 305	1 265	1 027	81.2	991	78.3	40	3.1
Qantas	2 756	2 744	2 403	87.6	2 466	89.9	12	0.4
QantasLink	334	301	244	81.1	225	74.8	33	9.9
Tigerair Australia	559	552	329	59.6	339	61.4	7	1.3
Virgin Australia	1 903	1 885	1 629	86.4	1 648	87.4	18	0.9
All Airlines	6 857	6 747	5 632	83.5	5 669	84.0	110	1.6

	<i>Sectors</i>		<i>Arrivals On Time</i>		<i>Departures On Time</i>		<i>Cancellations</i>	
	<i>Sched.</i>	<i>Flown</i>	<i>No.</i>	<i>%</i>	<i>No.</i>	<i>%</i>	<i>No.</i>	<i>%</i>
<b>Albury-Sydney</b>								
QantasLink	1 204	1 178	902	76.6	905	76.8	26	2.2
Regional Express	1 171	1 150	952	82.8	988	85.9	21	1.8
Virgin Australia	705	697	538	77.2	538	77.2	8	1.1
All Airlines	3 080	3 025	2 392	79.1	2 431	80.4	55	1.8
<b>Alice Springs-Adelaide</b>								
Qantas	365	364	321	88.2	308	84.6	1	0.3
Virgin Australia	122	122	106	86.9	104	85.2	0	0.0
Virgin Australia Regional Airlines	68	66	47	71.2	47	71.2	2	2.9
All Airlines	555	552	474	85.9	459	83.2	3	0.5
<b>Alice Springs-Darwin</b>								
QantasLink	638	626	579	92.5	575	91.9	12	1.9
Virgin Australia	120	120	108	90.0	107	89.2	0	0.0
Virgin Australia Regional Airlines	69	63	40	63.5	40	63.5	6	8.7
All Airlines	827	809	727	89.9	722	89.2	18	2.2
<b>Armidale-Sydney</b>								
QantasLink	1 389	1 338	930	69.5	931	69.6	51	3.7
Regional Express	870	853	586	68.7	634	74.3	17	2.0
All Airlines	2 259	2 191	1 516	69.2	1 565	71.4	68	3.0
<b>Ayers Rock-Sydney</b>								
Jetstar	332	330	254	77.0	208	63.0	2	0.6
Virgin Australia	365	364	290	79.7	265	72.8	1	0.3
All Airlines	697	694	544	78.4	473	68.2	3	0.4
<b>Ballina-Sydney</b>								
Jetstar	971	966	748	77.4	659	68.2	5	0.5
Regional Express	293	283	183	64.7	190	67.1	10	3.4
Virgin Australia	406	403	325	80.6	321	79.7	3	0.7
All Airlines	1 670	1 652	1 256	76.0	1 170	70.8	18	1.1
<b>Brisbane-Adelaide</b>								
Jetstar	324	323	277	85.8	269	83.3	1	0.3
Qantas	1 124	1 121	1 010	90.1	1 026	91.5	3	0.3
QantasLink	308	288	238	82.6	258	89.6	20	6.5
Tigerair Australia	347	344	294	85.5	298	86.6	3	0.9
Virgin Australia	1 272	1 267	1 085	85.6	1 119	88.3	5	0.4
All Airlines	3 375	3 343	2 904	86.9	2 970	88.8	32	0.9
<b>Brisbane-Bundaberg</b>								
QantasLink	1 531	1 501	1 260	83.9	1 263	84.1	30	2.0
Virgin Australia	365	363	303	83.5	306	84.3	2	0.5
All Airlines	1 896	1 864	1 563	83.9	1 569	84.2	32	1.7
<b>Brisbane-Cairns</b>								
Jetstar	1 251	1 235	1 031	83.5	951	77.0	16	1.3
Qantas	1 414	1 413	1 283	90.8	1 265	89.5	1	0.1
QantasLink	56	56	43	76.8	43	76.8	0	0.0
Tigerair Australia	510	504	416	82.5	419	83.1	6	1.2
Virgin Australia	1 493	1 490	1 329	89.2	1 287	86.4	3	0.2
All Airlines	4 724	4 698	4 102	87.3	3 965	84.4	26	0.6
<b>Brisbane-Canberra</b>								
Qantas	465	465	417	89.7	416	89.5	0	0.0
QantasLink	1 339	1 300	1 017	78.2	1 040	80.0	39	2.9
Tigerair Australia	47	47	28	59.6	37	78.7	0	0.0
Virgin Australia	1 173	1 171	1 015	86.7	1 027	87.7	2	0.2
All Airlines	3 024	2 983	2 477	83.0	2 520	84.5	41	1.4



	<i>Sectors</i>		<i>Arrivals On Time</i>		<i>Departures On Time</i>		<i>Cancellations</i>		
	<i>Sched.</i>	<i>Flown</i>	<i>No.</i>	<i>%</i>	<i>No.</i>	<i>%</i>	<i>No.</i>	<i>%</i>	
<b>Brisbane-Darwin</b>									
Jetstar	289	289	258	89.3	244	84.4	0	0.0	
Qantas	555	555	513	92.4	518	93.3	0	0.0	
Tigerair Australia	232	227	181	79.7	180	79.3	5	2.2	
Virgin Australia	368	368	293	79.6	306	83.2	0	0.0	
All Airlines	1 444	1 439	1 245	86.5	1 248	86.7	5	0.3	
<b>Brisbane-Emerald</b>									
QantasLink	1 359	1 335	1 128	84.5	1 128	84.5	24	1.8	
Virgin Australia	693	688	633	92.0	644	93.6	5	0.7	
All Airlines	2 052	2 023	1 761	87.0	1 772	87.6	29	1.4	
<b>Brisbane-Gladstone</b>									
QantasLink	1 634	1 615	1 339	82.9	1 350	83.6	19	1.2	
Virgin Australia	954	949	784	82.6	831	87.6	5	0.5	
All Airlines	2 588	2 564	2 123	82.8	2 181	85.1	24	0.9	
<b>Brisbane-Hamilton Island</b>									
Qantas	5	4	3	75.0	3	75.0	1	20.0	
QantasLink	429	399	345	86.5	335	84.0	30	7.0	
Virgin Australia	363	354	320	90.4	322	91.0	9	2.5	
All Airlines	797	757	668	88.2	660	87.2	40	5.0	
<b>Brisbane-Hobart</b>									
Jetstar	331	331	305	92.1	306	92.4	0	0.0	
Qantas	6	6	5	83.3	6	100.0	0	0.0	
Virgin Australia	375	375	331	88.3	341	90.9	0	0.0	
All Airlines	712	712	641	90.0	653	91.7	0	0.0	
<b>Brisbane-Mackay</b>									
Jetstar	504	498	370	74.3	339	68.1	6	1.2	
QantasLink	1 291	1 258	1 072	85.2	1 071	85.1	33	2.6	
Virgin Australia	1 631	1 607	1 408	87.6	1 402	87.2	24	1.5	
All Airlines	3 426	3 363	2 850	84.7	2 812	83.6	63	1.8	
<b>Brisbane-Melbourne</b>									
Jetstar	1 425	1 399	1 070	76.5	989	70.7	26	1.8	
Qantas	4 931	4 898	4 096	83.6	4 270	87.2	33	0.7	
QantasLink	80	77	58	75.3	66	85.7	3	3.8	
Tigerair Australia	1 555	1 514	1 073	70.9	1 114	73.6	41	2.6	
Virgin Australia	4 568	4 444	3 459	77.8	3 876	87.2	124	2.7	
All Airlines	12 559	12 332	9 756	79.1	10 315	83.6	227	1.8	
<b>Brisbane-Moranbah</b>									
			(To September 2017 only)						
QantasLink	707	691	595	86.1	611	88.4	16	2.3	
Virgin Australia	485	476	426	89.5	431	90.5	9	1.9	
All Airlines	1 192	1 167	1 021	87.5	1 042	89.3	25	2.1	
<b>Brisbane-Mount Isa</b>									
Qantas	5	5	5	100.0	5	100.0	0	0.0	
QantasLink	655	645	562	87.1	563	87.3	10	1.5	
Virgin Australia	208	208	178	85.6	195	93.8	0	0.0	
All Airlines	868	858	745	86.8	763	88.9	10	1.2	
<b>Brisbane-Newcastle</b>									
Jetstar	1 029	1 018	816	80.2	790	77.6	11	1.1	
QantasLink	1 081	1 042	876	84.1	876	84.1	39	3.6	
Virgin Australia	1 020	1 013	920	90.8	922	91.0	7	0.7	
All Airlines	3 130	3 073	2 612	85.0	2 588	84.2	57	1.8	

	<i>Sectors</i>		<i>Arrivals On Time</i>		<i>Departures On Time</i>		<i>Cancellations</i>	
	<i>Sched.</i>	<i>Flown</i>	<i>No.</i>	<i>%</i>	<i>No.</i>	<i>%</i>	<i>No.</i>	<i>%</i>
<b>Brisbane-Perth</b>								
Qantas	1 574	1 570	1 285	81.8	1 353	86.2	4	0.3
Tigerair Australia	136	134	112	83.6	115	85.8	2	1.5
Virgin Australia	1 281	1 280	1 007	78.7	1 037	81.0	1	0.1
All Airlines	2 991	2 984	2 404	80.6	2 505	83.9	7	0.2
<b>Brisbane-Proserpine</b>								
Jetstar	383	370	320	86.5	303	81.9	13	3.4
Tigerair Australia	164	159	146	91.8	149	93.7	5	3.0
Virgin Australia	386	372	336	90.3	334	89.8	14	3.6
All Airlines	933	901	802	89.0	786	87.2	32	3.4
<b>Brisbane-Rockhampton</b>								
QantasLink	2 122	2 062	1 690	82.0	1 721	83.5	60	2.8
Virgin Australia	1 694	1 641	1 232	75.1	1 329	81.0	53	3.1
All Airlines	3 816	3 703	2 922	78.9	3 050	82.4	113	3.0
<b>Brisbane-Sydney</b>								
Jetstar	2 074	2 004	1 482	74.0	1 457	72.7	70	3.4
Qantas	7 403	7 286	6 196	85.0	6 287	86.3	117	1.6
QantasLink	57	53	39	73.6	38	71.7	4	7.0
Tigerair Australia	1 318	1 285	913	71.1	939	73.1	33	2.5
Virgin Australia	6 233	6 045	5 083	84.1	5 242	86.7	188	3.0
All Airlines	17 085	16 673	13 713	82.2	13 963	83.7	412	2.4
<b>Brisbane-Townsville</b>								
Jetstar	524	521	431	82.7	431	82.7	3	0.6
Qantas	856	849	729	85.9	715	84.2	7	0.8
QantasLink	907	866	722	83.4	735	84.9	41	4.5
Virgin Australia	1 666	1 643	1 434	87.3	1 427	86.9	23	1.4
All Airlines	3 953	3 879	3 316	85.5	3 308	85.3	74	1.9
<b>Broome-Perth</b>								
Qantas	95	94	80	85.1	76	80.9	1	1.1
QantasLink	996	977	867	88.7	832	85.2	19	1.9
Virgin Australia	49	49	45	91.8	35	71.4	0	0.0
Virgin Australia Regional Airlines	697	689	534	77.5	535	77.6	8	1.1
All Airlines	1 837	1 809	1 526	84.4	1 478	81.7	28	1.5
<b>Bundaberg-Brisbane</b>								
QantasLink	1 531	1 503	1 236	82.2	1 279	85.1	28	1.8
Virgin Australia	365	362	281	77.6	283	78.2	3	0.8
All Airlines	1 896	1 865	1 517	81.3	1 562	83.8	31	1.6
<b>Cairns-Brisbane</b>								
Jetstar	1 248	1 234	1 037	84.0	989	80.1	14	1.1
Qantas	1 413	1 412	1 267	89.7	1 260	89.2	1	0.1
QantasLink	57	57	48	84.2	48	84.2	0	0.0
Tigerair Australia	510	502	408	81.3	395	78.7	8	1.6
Virgin Australia	1 491	1 487	1 326	89.2	1 299	87.4	4	0.3
All Airlines	4 719	4 692	4 086	87.1	3 991	85.1	27	0.6
<b>Cairns-Melbourne</b>								
Jetstar	1 217	1 213	901	74.3	895	73.8	4	0.3
Qantas	487	486	338	69.5	357	73.5	1	0.2
Tigerair Australia	451	447	303	67.8	308	68.9	4	0.9
Virgin Australia	388	388	276	71.1	281	72.4	0	0.0
All Airlines	2 543	2 534	1 818	71.7	1 841	72.7	9	0.4

	<i>Sectors</i>		<i>Arrivals On Time</i>		<i>Departures On Time</i>		<i>Cancellations</i>	
	<i>Sched.</i>	<i>Flown</i>	<i>No.</i>	<i>%</i>	<i>No.</i>	<i>%</i>	<i>No.</i>	<i>%</i>
<b>Cairns-Sydney</b>								
Jetstar	1 181	1 164	940	80.8	944	81.1	17	1.4
Qantas	934	934	816	87.4	795	85.1	0	0.0
Tigerair Australia	528	523	391	74.8	394	75.3	5	0.9
Virgin Australia	1 015	1 012	879	86.9	855	84.5	3	0.3
All Airlines	3 658	3 633	3 026	83.3	2 988	82.2	25	0.7
<b>Cairns-Townsville</b>								
QantasLink	1 684	1 664	1 559	93.7	1 557	93.6	20	1.2
Regional Express	465	446	392	87.9	399	89.5	19	4.1
All Airlines	2 149	2 110	1 951	92.5	1 956	92.7	39	1.8
<b>Canberra-Adelaide</b>								
Qantas	523	523	483	92.4	481	92.0	0	0.0
Virgin Australia	313	312	261	83.7	264	84.6	1	0.3
All Airlines	836	835	744	89.1	745	89.2	1	0.1
<b>Canberra-Brisbane</b>								
Qantas	466	466	439	94.2	444	95.3	0	0.0
QantasLink	1 336	1 298	1 059	81.6	1 030	79.4	38	2.8
Tigerair Australia	47	47	28	59.6	24	51.1	0	0.0
Virgin Australia	1 170	1 165	1 014	87.0	1 020	87.6	5	0.4
All Airlines	3 019	2 976	2 540	85.3	2 518	84.6	43	1.4
<b>Canberra-Melbourne</b>								
Qantas	2 355	2 343	2 125	90.7	2 144	91.5	12	0.5
QantasLink	1 067	986	814	82.6	836	84.8	81	7.6
Tigerair Australia	392	386	228	59.1	231	59.8	6	1.5
Virgin Australia	1 979	1 917	1 609	83.9	1 670	87.1	62	3.1
All Airlines	5 793	5 632	4 776	84.8	4 881	86.7	161	2.8
<b>Canberra-Sydney</b>								
Qantas	128	125	111	88.8	116	92.8	3	2.3
QantasLink	5 369	5 097	4 306	84.5	4 273	83.8	272	5.1
Virgin Australia	2 935	2 779	2 331	83.9	2 346	84.4	156	5.3
All Airlines	8 432	8 001	6 748	84.3	6 735	84.2	431	5.1
<b>Coffs Harbour-Sydney</b>								
QantasLink	1 806	1 764	1 406	79.7	1 420	80.5	42	2.3
Tigerair Australia	157	156	117	75.0	112	71.8	1	0.6
Virgin Australia	634	616	528	85.7	540	87.7	18	2.8
All Airlines	2 597	2 536	2 051	80.9	2 072	81.7	61	2.3
<b>Darwin-Alice Springs</b>								
QantasLink	638	625	591	94.6	592	94.7	13	2.0
Virgin Australia	120	120	109	90.8	112	93.3	0	0.0
Virgin Australia Regional Airlines	68	63	49	77.8	54	85.7	5	7.4
All Airlines	826	808	749	92.7	758	93.8	18	2.2
<b>Darwin-Brisbane</b>								
Jetstar	290	288	244	84.7	218	75.7	2	0.7
Qantas	555	554	505	91.2	470	84.8	1	0.2
Tigerair Australia	231	226	205	90.7	203	89.8	5	2.2
Virgin Australia	368	368	278	75.5	296	80.4	0	0.0
All Airlines	1 444	1 436	1 232	85.8	1 187	82.7	8	0.6
<b>Darwin-Melbourne</b>								
Jetstar	328	328	257	78.4	213	64.9	0	0.0
Qantas	388	388	340	87.6	320	82.5	0	0.0
Virgin Australia	370	369	331	89.7	326	88.3	1	0.3
All Airlines	1 086	1 085	928	85.5	859	79.2	1	0.1

	<i>Sectors</i>		<i>Arrivals On Time</i>		<i>Departures On Time</i>		<i>Cancellations</i>	
	<i>Sched.</i>	<i>Flown</i>	<i>No.</i>	<i>%</i>	<i>No.</i>	<i>%</i>	<i>No.</i>	<i>%</i>
<b>Darwin-Perth</b>								
Qantas	388	388	359	92.5	344	88.7	0	0.0
Virgin Australia	322	322	266	82.6	269	83.5	0	0.0
Virgin Australia Regional Airlines	35	31	22	71.0	22	71.0	4	11.4
All Airlines	745	741	647	87.3	635	85.7	4	0.5
<b>Darwin-Sydney</b>								
Jetstar	294	293	226	77.1	222	75.8	1	0.3
Qantas	582	580	475	81.9	454	78.3	2	0.3
Virgin Australia	363	363	251	69.1	263	72.5	0	0.0
All Airlines	1 239	1 236	952	77.0	939	76.0	3	0.2
<b>Dubbo-Sydney</b>								
QantasLink	1 423	1 382	1 047	75.8	1 082	78.3	41	2.9
Regional Express	1 731	1 693	1 311	77.4	1 395	82.4	38	2.2
All Airlines	3 154	3 075	2 358	76.7	2 477	80.6	79	2.5
<b>Emerald-Brisbane</b>								
QantasLink	1 359	1 329	1 068	80.4	1 074	80.8	30	2.2
Virgin Australia	694	688	621	90.3	628	91.3	6	0.9
All Airlines	2 053	2 017	1 689	83.7	1 702	84.4	36	1.8
<b>Geraldton-Perth</b>								
QantasLink	554	544	496	91.2	487	89.5	10	1.8
Virgin Australia Regional Airlines	626	621	516	83.1	509	82.0	5	0.8
All Airlines	1 180	1 165	1 012	86.9	996	85.5	15	1.3
<b>Gladstone-Brisbane</b>								
QantasLink	1 629	1 610	1 358	84.3	1 332	82.7	19	1.2
Virgin Australia	956	947	787	83.1	804	84.9	9	0.9
All Airlines	2 585	2 557	2 145	83.9	2 136	83.5	28	1.1
<b>Gold Coast-Adelaide</b>								
Jetstar	374	374	330	88.2	337	90.1	0	0.0
Virgin Australia	367	367	298	81.2	318	86.6	0	0.0
All Airlines	741	741	628	84.8	655	88.4	0	0.0
<b>Gold Coast-Melbourne</b>								
Jetstar	2 303	2 289	1 839	80.3	1 662	72.6	14	0.6
Qantas	383	383	318	83.0	296	77.3	0	0.0
QantasLink	1	1	1	100.0	1	100.0	0	0.0
Tigerair Australia	987	978	637	65.1	636	65.0	9	0.9
Virgin Australia	2 164	2 146	1 687	78.6	1 676	78.1	18	0.8
All Airlines	5 838	5 797	4 482	77.3	4 271	73.7	41	0.7
<b>Gold Coast-Sydney</b>								
Jetstar	3 464	3 404	2 622	77.0	2 518	74.0	60	1.7
Qantas	1 157	1 157	1 011	87.4	997	86.2	0	0.0
QantasLink	192	181	123	68.0	120	66.3	11	5.7
Tigerair Australia	1 415	1 377	915	66.4	897	65.1	38	2.7
Virgin Australia	2 933	2 878	2 301	80.0	2 285	79.4	55	1.9
All Airlines	9 161	8 997	6 972	77.5	6 817	75.8	164	1.8
<b>Hamilton Island-Brisbane</b>								
Qantas	5	4	3	75.0	3	75.0	1	20.0
QantasLink	430	398	338	84.9	337	84.7	32	7.4
Virgin Australia	365	357	322	90.2	316	88.5	8	2.2
All Airlines	800	759	663	87.4	656	86.4	41	5.1
<b>Hamilton Island-Melbourne</b>								
			(To March 2017 only)					
Qantas	53	51	47	92.2	47	92.2	2	3.8
Virgin Australia	62	60	52	86.7	49	81.7	2	3.2
All Airlines	115	111	99	89.2	96	86.5	4	3.5

	<i>Sectors</i>		<i>Arrivals On Time</i>		<i>Departures On Time</i>		<i>Cancellations</i>	
	<i>Sched.</i>	<i>Flown</i>	<i>No.</i>	<i>%</i>	<i>No.</i>	<i>%</i>	<i>No.</i>	<i>%</i>
<b>Hamilton Island-Sydney</b>								
Jetstar	310	296	228	77.0	224	75.7	14	4.5
Qantas	179	172	155	90.1	147	85.5	7	3.9
QantasLink	149	132	104	78.8	103	78.0	17	11.4
Virgin Australia	313	293	253	86.3	244	83.3	20	6.4
All Airlines	951	893	740	82.9	718	80.4	58	6.1
<b>Hobart-Brisbane</b>								
Jetstar	331	331	274	82.8	262	79.2	0	0.0
Qantas	6	6	5	83.3	4	66.7	0	0.0
Virgin Australia	375	375	284	75.7	278	74.1	0	0.0
All Airlines	712	712	563	79.1	544	76.4	0	0.0
<b>Hobart-Melbourne</b>								
Jetstar	2 137	2 127	1 318	62.0	1 219	57.3	10	0.5
Qantas	20	20	17	85.0	18	90.0	0	0.0
QantasLink	1 596	1 537	1 256	81.7	1 295	84.3	59	3.7
Tigerair Australia	407	407	271	66.6	268	65.8	0	0.0
Virgin Australia	1 672	1 667	1 280	76.8	1 331	79.8	5	0.3
All Airlines	5 832	5 758	4 142	71.9	4 131	71.7	74	1.3
<b>Hobart-Sydney</b>								
Jetstar	972	968	691	71.4	661	68.3	4	0.4
Qantas	34	34	24	70.6	21	61.8	0	0.0
QantasLink	643	628	466	74.2	509	81.1	15	2.3
Virgin Australia	804	796	649	81.5	658	82.7	8	1.0
All Airlines	2 453	2 426	1 830	75.4	1 849	76.2	27	1.1
<b>Kalgoorlie-Perth</b>								
Qantas	109	108	101	93.5	98	90.7	1	0.9
QantasLink	847	836	761	91.0	761	91.0	11	1.3
Virgin Australia	301	294	266	90.5	263	89.5	7	2.3
Virgin Australia Regional Airlines	462	459	411	89.5	410	89.3	3	0.6
All Airlines	1 719	1 697	1 539	90.7	1 532	90.3	22	1.3
<b>Karratha-Perth</b>								
Qantas	187	186	180	96.8	179	96.2	1	0.5
QantasLink	2 020	1 947	1 742	89.5	1 752	90.0	73	3.6
Virgin Australia	35	33	23	69.7	23	69.7	2	5.7
Virgin Australia Regional Airlines	847	816	680	83.3	695	85.2	31	3.7
All Airlines	3 089	2 982	2 625	88.0	2 649	88.8	107	3.5
<b>Launceston-Melbourne</b>								
Jetstar	1 579	1 563	1 079	69.0	1 029	65.8	16	1.0
QantasLink	1 400	1 352	1 146	84.8	1 150	85.1	48	3.4
Virgin Australia	1 134	1 132	927	81.9	993	87.7	2	0.2
All Airlines	4 113	4 047	3 152	77.9	3 172	78.4	66	1.6
<b>Launceston-Sydney</b>								
Jetstar	589	583	385	66.0	361	61.9	6	1.0
Virgin Australia	361	361	268	74.2	273	75.6	0	0.0
All Airlines	950	944	653	69.2	634	67.2	6	0.6
<b>Mackay-Brisbane</b>								
Jetstar	504	495	382	77.2	308	62.2	9	1.8
QantasLink	1 300	1 264	1 033	81.7	1 045	82.7	36	2.8
Virgin Australia	1 630	1 608	1 432	89.1	1 421	88.4	22	1.3
All Airlines	3 434	3 367	2 847	84.6	2 774	82.4	67	2.0

	<i>Sectors</i>		<i>Arrivals On Time</i>		<i>Departures On Time</i>		<i>Cancellations</i>		
	<i>Sched.</i>	<i>Flown</i>	<i>No.</i>	<i>%</i>	<i>No.</i>	<i>%</i>	<i>No.</i>	<i>%</i>	
<b>Melbourne-Adelaide</b>									
Jetstar	1 283	1 269	838	66.0	871	68.6	14	1.1	
Qantas	3 315	3 303	2 865	86.7	2 916	88.3	12	0.4	
Tigerair Australia	900	888	704	79.3	717	80.7	12	1.3	
Virgin Australia	3 204	3 155	2 673	84.7	2 751	87.2	49	1.5	
All Airlines	8 702	8 615	7 080	82.2	7 255	84.2	87	1.0	
<b>Melbourne-Brisbane</b>									
Jetstar	1 424	1 407	1 008	71.6	913	64.9	17	1.2	
Qantas	4 985	4 951	4 233	85.5	4 262	86.1	34	0.7	
QantasLink	81	78	59	75.6	62	79.5	3	3.7	
Tigerair Australia	1 556	1 518	1 115	73.5	1 095	72.1	38	2.4	
Virgin Australia	4 507	4 386	3 713	84.7	3 873	88.3	121	2.7	
All Airlines	12 553	12 340	10 128	82.1	10 205	82.7	213	1.7	
<b>Melbourne-Cairns</b>									
Jetstar	1 216	1 215	931	76.6	892	73.4	1	0.1	
Qantas	487	487	402	82.5	403	82.8	0	0.0	
Tigerair Australia	451	447	356	79.6	371	83.0	4	0.9	
Virgin Australia	388	388	313	80.7	338	87.1	0	0.0	
All Airlines	2 542	2 537	2 002	78.9	2 004	79.0	5	0.2	
<b>Melbourne-Canberra</b>									
Qantas	2 353	2 342	2 077	88.7	2 085	89.0	11	0.5	
QantasLink	1 069	988	811	82.1	822	83.2	81	7.6	
Tigerair Australia	392	389	295	75.8	302	77.6	3	0.8	
Virgin Australia	1 977	1 914	1 637	85.5	1 684	88.0	63	3.2	
All Airlines	5 791	5 633	4 820	85.6	4 893	86.9	158	2.7	
<b>Melbourne-Darwin</b>									
Jetstar	328	328	263	80.2	262	79.9	0	0.0	
Qantas	388	388	330	85.1	350	90.2	0	0.0	
Virgin Australia	370	369	281	76.2	313	84.8	1	0.3	
All Airlines	1 086	1 085	874	80.6	925	85.3	1	0.1	
<b>Melbourne-Gold Coast</b>									
Jetstar	2 302	2 294	1 746	76.1	1 762	76.8	8	0.3	
Qantas	383	383	333	86.9	344	89.8	0	0.0	
QantasLink	1	1	1	100.0	1	100.0	0	0.0	
Tigerair Australia	987	978	736	75.3	756	77.3	9	0.9	
Virgin Australia	2 165	2 145	1 816	84.7	1 845	86.0	20	0.9	
All Airlines	5 838	5 801	4 632	79.8	4 708	81.2	37	0.6	
<b>Melbourne-Hamilton Island</b>									
			(To March 2017 only)						
Qantas	53	50	47	94.0	46	92.0	3	5.7	
Virgin Australia	62	59	48	81.4	54	91.5	3	4.8	
All Airlines	115	109	95	87.2	100	91.7	6	5.2	
<b>Melbourne-Hobart</b>									
Jetstar	2 137	2 134	1 586	74.3	1 630	76.4	3	0.1	
Qantas	20	20	18	90.0	19	95.0	0	0.0	
QantasLink	1 593	1 534	1 207	78.7	1 263	82.3	59	3.7	
Tigerair Australia	407	406	306	75.4	318	78.3	1	0.2	
Virgin Australia	1 673	1 668	1 380	82.7	1 441	86.4	5	0.3	
All Airlines	5 830	5 762	4 497	78.0	4 671	81.1	68	1.2	
<b>Melbourne-Launceston</b>									
Jetstar	1 579	1 566	1 196	76.4	1 185	75.7	13	0.8	
QantasLink	1 400	1 354	1 154	85.2	1 156	85.4	46	3.3	
Virgin Australia	1 132	1 130	917	81.2	983	87.0	2	0.2	
All Airlines	4 111	4 050	3 267	80.7	3 324	82.1	61	1.5	

	<i>Sectors</i>		<i>Arrivals On Time</i>		<i>Departures On Time</i>		<i>Cancellations</i>	
	<i>Sched.</i>	<i>Flown</i>	<i>No.</i>	<i>%</i>	<i>No.</i>	<i>%</i>	<i>No.</i>	<i>%</i>
<b>Melbourne-Mildura</b>								
QantasLink	1 130	1 121	976	87.1	982	87.6	9	0.8
Regional Express	956	948	790	83.3	824	86.9	8	0.8
Virgin Australia	365	365	295	80.8	313	85.8	0	0.0
All Airlines	2 451	2 434	2 061	84.7	2 119	87.1	17	0.7
<b>Melbourne-Newcastle</b>								
Jetstar	1 307	1 304	995	76.3	935	71.7	3	0.2
Virgin Australia	389	388	323	83.2	338	87.1	1	0.3
All Airlines	1 696	1 692	1 318	77.9	1 273	75.2	4	0.2
<b>Melbourne-Perth</b>								
Jetstar	632	618	538	87.1	520	84.1	14	2.2
Qantas	2 354	2 351	1 795	76.4	1 825	77.6	3	0.1
Tigerair Australia	638	627	480	76.6	486	77.5	11	1.7
Virgin Australia	1 594	1 586	1 239	78.1	1 221	77.0	8	0.5
All Airlines	5 218	5 182	4 052	78.2	4 052	78.2	36	0.7
<b>Melbourne-Sunshine Coast</b>								
Jetstar	1 006	1 002	824	82.2	789	78.7	4	0.4
QantasLink	24	24	16	66.7	15	62.5	0	0.0
Virgin Australia	592	589	498	84.6	496	84.2	3	0.5
All Airlines	1 622	1 615	1 338	82.8	1 300	80.5	7	0.4
<b>Melbourne-Sydney</b>								
Jetstar	4 448	4 333	2 968	68.5	3 042	70.2	115	2.6
Qantas	11 885	11 425	9 222	80.7	9 615	84.2	460	3.9
QantasLink	23	20	18	90.0	19	95.0	3	13.0
Tigerair Australia	3 022	2 927	1 852	63.3	1 918	65.5	95	3.1
Virgin Australia	8 920	8 497	7 055	83.0	7 405	87.1	423	4.7
All Airlines	28 298	27 202	21 115	77.6	21 999	80.9	1 096	3.9
<b>Melbourne-Townsville</b>								
			(From November 2017 only)					
Jetstar	55	55	41	74.5	36	65.5	0	0.0
Tigerair Australia	35	35	30	85.7	30	85.7	0	0.0
All Airlines	90	90	71	78.9	66	73.3	0	0.0
<b>Mildura-Melbourne</b>								
QantasLink	1 130	1 121	976	87.1	982	87.6	9	0.8
Regional Express	956	945	705	74.6	766	81.1	11	1.2
Virgin Australia	365	364	286	78.6	296	81.3	1	0.3
All Airlines	2 451	2 430	1 967	80.9	2 044	84.1	21	0.9
<b>Moranbah-Brisbane</b>								
			(To September 2017 only)					
QantasLink	669	648	548	84.6	555	85.6	21	3.1
Virgin Australia	485	474	428	90.3	435	91.8	11	2.3
All Airlines	1 154	1 122	976	87.0	990	88.2	32	2.8
<b>Mount Isa-Brisbane</b>								
Qantas	5	5	5	100.0	5	100.0	0	0.0
QantasLink	655	635	532	83.8	551	86.8	20	3.1
Virgin Australia	208	208	141	67.8	174	83.7	0	0.0
All Airlines	868	848	678	80.0	730	86.1	20	2.3
<b>Newcastle-Brisbane</b>								
Jetstar	1 027	1 017	847	83.3	866	85.2	10	1.0
QantasLink	1 080	1 036	893	86.2	877	84.7	44	4.1
Virgin Australia	1 020	1 011	918	90.8	919	90.9	9	0.9
All Airlines	3 127	3 064	2 658	86.7	2 662	86.9	63	2.0
<b>Newcastle-Melbourne</b>								
Jetstar	1 307	1 302	1 000	76.8	1 018	78.2	5	0.4
Virgin Australia	389	388	274	70.6	299	77.1	1	0.3
All Airlines	1 696	1 690	1 274	75.4	1 317	77.9	6	0.4

	<i>Sectors</i>		<i>Arrivals On Time</i>		<i>Departures On Time</i>		<i>Cancellations</i>	
	<i>Sched.</i>	<i>Flown</i>	<i>No.</i>	<i>%</i>	<i>No.</i>	<i>%</i>	<i>No.</i>	<i>%</i>
<b>Newman-Perth</b>								
Qantas	704	698	668	95.7	668	95.7	6	0.9
QantasLink	839	798	698	87.5	707	88.6	41	4.9
Virgin Australia	202	202	191	94.6	189	93.6	0	0.0
Virgin Australia Regional Airlines	268	266	229	86.1	236	88.7	2	0.7
All Airlines	2 013	1 964	1 786	90.9	1 800	91.6	49	2.4
<b>Perth-Adelaide</b>								
Jetstar	331	316	260	82.3	234	74.1	15	4.5
Qantas	1 101	1 100	1 020	92.7	1 017	92.5	1	0.1
QantasLink	288	270	241	89.3	252	93.3	18	6.3
Virgin Australia	742	737	689	93.5	680	92.3	5	0.7
Virgin Australia Regional Airlines	130	127	78	61.4	108	85.0	3	2.3
All Airlines	2 592	2 550	2 288	89.7	2 291	89.8	42	1.6
<b>Perth-Brisbane</b>								
Qantas	1 520	1 520	1 359	89.4	1 350	88.8	0	0.0
Tigerair Australia	139	137	116	84.7	107	78.1	2	1.4
Virgin Australia	1 278	1 277	1 150	90.1	1 149	90.0	1	0.1
All Airlines	2 937	2 934	2 625	89.5	2 606	88.8	3	0.1
<b>Perth-Broome</b>								
Qantas	95	94	79	84.0	82	87.2	1	1.1
QantasLink	1 003	986	897	91.0	850	86.2	17	1.7
Virgin Australia	49	49	43	87.8	41	83.7	0	0.0
Virgin Australia Regional Airlines	694	689	574	83.3	594	86.2	5	0.7
All Airlines	1 841	1 818	1 593	87.6	1 567	86.2	23	1.2
<b>Perth-Darwin</b>								
Qantas	388	388	358	92.3	368	94.8	0	0.0
Virgin Australia	322	322	293	91.0	289	89.8	0	0.0
Virgin Australia Regional Airlines	35	31	28	90.3	25	80.6	4	11.4
All Airlines	745	741	679	91.6	682	92.0	4	0.5
<b>Perth-Geraldton</b>								
QantasLink	553	543	467	86.0	462	85.1	10	1.8
Virgin Australia Regional Airlines	626	622	510	82.0	501	80.5	4	0.6
All Airlines	1 179	1 165	977	83.9	963	82.7	14	1.2
<b>Perth-Kalgoorlie</b>								
Qantas	108	108	98	90.7	96	88.9	0	0.0
QantasLink	847	836	767	91.7	757	90.6	11	1.3
Virgin Australia	300	295	271	91.9	273	92.5	5	1.7
Virgin Australia Regional Airlines	462	459	401	87.4	409	89.1	3	0.6
All Airlines	1 717	1 698	1 537	90.5	1 535	90.4	19	1.1
<b>Perth-Karratha</b>								
Qantas	187	186	177	95.2	179	96.2	1	0.5
QantasLink	2 028	1 988	1 802	90.6	1 779	89.5	40	2.0
Virgin Australia	36	34	29	85.3	31	91.2	2	5.6
Virgin Australia Regional Airlines	847	817	708	86.7	747	91.4	30	3.5
All Airlines	3 098	3 025	2 716	89.8	2 736	90.4	73	2.4
<b>Perth-Melbourne</b>								
Jetstar	632	613	503	82.1	445	72.6	19	3.0
Qantas	2 354	2 349	2 015	85.8	2 015	85.8	5	0.2
Tigerair Australia	637	625	518	82.9	491	78.6	12	1.9
Virgin Australia	1 587	1 580	1 332	84.3	1 349	85.4	7	0.4
All Airlines	5 210	5 167	4 368	84.5	4 300	83.2	43	0.8



	<i>Sectors</i>		<i>Arrivals On Time</i>		<i>Departures On Time</i>		<i>Cancellations</i>	
	<i>Sched.</i>	<i>Flown</i>	<i>No.</i>	<i>%</i>	<i>No.</i>	<i>%</i>	<i>No.</i>	<i>%</i>
<b>Perth-Newman</b>								
Qantas	704	699	661	94.6	666	95.3	5	0.7
QantasLink	838	810	708	87.4	721	89.0	28	3.3
Virgin Australia	202	202	194	96.0	195	96.5	0	0.0
Virgin Australia Regional Airlines	267	266	242	91.0	245	92.1	1	0.4
All Airlines	2 011	1 977	1 805	91.3	1 827	92.4	34	1.7
<b>Perth-Port Hedland</b>								
Qantas	370	364	343	94.2	344	94.5	6	1.6
QantasLink	1 208	1 173	992	84.6	1 028	87.6	35	2.9
Virgin Australia	177	177	166	93.8	167	94.4	0	0.0
Virgin Australia Regional Airlines	448	445	388	87.2	403	90.6	3	0.7
All Airlines	2 203	2 159	1 889	87.5	1 942	89.9	44	2.0
<b>Perth-Sydney</b>								
Jetstar	345	342	276	80.7	211	61.7	3	0.9
Qantas	2 460	2 455	2 157	87.9	2 081	84.8	5	0.2
Tigerair Australia	324	302	281	93.0	267	88.4	22	6.8
Virgin Australia	1 411	1 404	1 264	90.0	1 208	86.0	7	0.5
All Airlines	4 540	4 503	3 978	88.3	3 767	83.7	37	0.8
<b>Port Hedland-Perth</b>								
Qantas	371	363	340	93.7	335	92.3	8	2.2
QantasLink	1 210	1 146	994	86.7	991	86.5	64	5.3
Virgin Australia	178	178	164	92.1	166	93.3	0	0.0
Virgin Australia Regional Airlines	447	444	398	89.6	398	89.6	3	0.7
All Airlines	2 206	2 131	1 896	89.0	1 890	88.7	75	3.4
<b>Port Lincoln-Adelaide</b>								
QantasLink	1 280	1 257	1 132	90.1	1 139	90.6	23	1.8
Regional Express	2 490	2 446	2 213	90.5	2 254	92.2	44	1.8
All Airlines	3 770	3 703	3 345	90.3	3 393	91.6	67	1.8
<b>Port Macquarie-Sydney</b>								
QantasLink	1 548	1 499	1 081	72.1	1 034	69.0	49	3.2
Virgin Australia	694	685	509	74.3	510	74.5	9	1.3
All Airlines	2 242	2 184	1 590	72.8	1 544	70.7	58	2.6
<b>Proserpine-Brisbane</b>								
Jetstar	384	371	299	80.6	298	80.3	13	3.4
Tigerair Australia	164	158	143	90.5	144	91.1	6	3.7
Virgin Australia	386	372	326	87.6	316	84.9	14	3.6
All Airlines	934	901	768	85.2	758	84.1	33	3.5
<b>Proserpine-Sydney</b>								
			(From November 2017 only)					
Jetstar	26	26	21	80.8	21	80.8	0	0.0
Tigerair Australia	57	57	40	70.2	37	64.9	0	0.0
All Airlines	83	83	61	73.5	58	69.9	0	0.0
<b>Rockhampton-Brisbane</b>								
QantasLink	2 130	2 045	1 657	81.0	1 683	82.3	85	4.0
Virgin Australia	1 692	1 640	1 330	81.1	1 284	78.3	52	3.1
All Airlines	3 822	3 685	2 987	81.1	2 967	80.5	137	3.6
<b>Sunshine Coast-Melbourne</b>								
Jetstar	1 005	996	685	68.8	608	61.0	9	0.9
QantasLink	24	24	15	62.5	15	62.5	0	0.0
Virgin Australia	592	587	419	71.4	419	71.4	5	0.8
All Airlines	1 621	1 607	1 119	69.6	1 042	64.8	14	0.9

	<i>Sectors</i>		<i>Arrivals On Time</i>		<i>Departures On Time</i>		<i>Cancellations</i>	
	<i>Sched.</i>	<i>Flown</i>	<i>No.</i>	<i>%</i>	<i>No.</i>	<i>%</i>	<i>No.</i>	<i>%</i>
<b>Sunshine Coast-Sydney</b>								
Jetstar	1 301	1 287	934	72.6	847	65.8	14	1.1
QantasLink	416	398	303	76.1	325	81.7	18	4.3
Virgin Australia	504	501	389	77.6	408	81.4	3	0.6
All Airlines	2 221	2 186	1 626	74.4	1 580	72.3	35	1.6
<b>Sydney-Adelaide</b>								
Jetstar	1 304	1 270	1 014	79.8	995	78.3	34	2.6
Qantas	2 694	2 687	2 267	84.4	2 277	84.7	7	0.3
QantasLink	334	302	240	79.5	248	82.1	32	9.6
Tigerair Australia	558	551	391	71.0	386	70.1	7	1.3
Virgin Australia	1 951	1 936	1 596	82.4	1 686	87.1	15	0.8
All Airlines	6 841	6 746	5 508	81.6	5 592	82.9	95	1.4
<b>Sydney-Albury</b>								
QantasLink	1 204	1 180	888	75.3	882	74.7	24	2.0
Regional Express	1 165	1 142	903	79.1	913	79.9	23	2.0
Virgin Australia	705	699	555	79.4	556	79.5	6	0.9
All Airlines	3 074	3 021	2 346	77.7	2 351	77.8	53	1.7
<b>Sydney-Armidale</b>								
QantasLink	1 390	1 356	919	67.8	925	68.2	34	2.4
Regional Express	872	862	684	79.4	670	77.7	10	1.1
All Airlines	2 262	2 218	1 603	72.3	1 595	71.9	44	1.9
<b>Sydney-Ayers Rock</b>								
Jetstar	331	331	259	78.2	276	83.4	0	0.0
Virgin Australia	365	365	302	82.7	331	90.7	0	0.0
All Airlines	696	696	561	80.6	607	87.2	0	0.0
<b>Sydney-Ballina</b>								
Jetstar	970	968	798	82.4	810	83.7	2	0.2
Regional Express	294	290	232	80.0	240	82.8	4	1.4
Virgin Australia	406	404	346	85.6	350	86.6	2	0.5
All Airlines	1 670	1 662	1 376	82.8	1 400	84.2	8	0.5
<b>Sydney-Brisbane</b>								
Jetstar	2 070	2 013	1 556	77.3	1 467	72.9	57	2.8
Qantas	7 399	7 295	6 067	83.2	6 207	85.1	104	1.4
QantasLink	57	51	42	82.4	43	84.3	6	10.5
Tigerair Australia	1 318	1 286	961	74.7	1 021	79.4	32	2.4
Virgin Australia	6 286	6 090	4 952	81.3	5 094	83.6	196	3.1
All Airlines	17 130	16 735	13 578	81.1	13 832	82.7	395	2.3
<b>Sydney-Cairns</b>								
Jetstar	1 179	1 166	969	83.1	889	76.2	13	1.1
Qantas	934	934	814	87.2	812	86.9	0	0.0
Tigerair Australia	528	526	446	84.8	472	89.7	2	0.4
Virgin Australia	1 015	1 014	864	85.2	872	86.0	1	0.1
All Airlines	3 656	3 640	3 093	85.0	3 045	83.7	16	0.4
<b>Sydney-Canberra</b>								
Qantas	129	125	108	86.4	109	87.2	4	3.1
QantasLink	5 362	5 109	4 221	82.6	4 145	81.1	253	4.7
Virgin Australia	2 935	2 781	2 299	82.7	2 232	80.3	154	5.2
All Airlines	8 426	8 015	6 628	82.7	6 486	80.9	411	4.9
<b>Sydney-Coffs Harbour</b>								
QantasLink	1 804	1 764	1 437	81.5	1 380	78.2	40	2.2
Tigerair Australia	158	157	125	79.6	125	79.6	1	0.6
Virgin Australia	634	617	544	88.2	548	88.8	17	2.7
All Airlines	2 596	2 538	2 106	83.0	2 053	80.9	58	2.2

	<i>Sectors</i>		<i>Arrivals On Time</i>		<i>Departures On Time</i>		<i>Cancellations</i>	
	<i>Sched.</i>	<i>Flown</i>	<i>No.</i>	<i>%</i>	<i>No.</i>	<i>%</i>	<i>No.</i>	<i>%</i>
<b>Sydney-Darwin</b>								
Jetstar	294	294	259	88.1	250	85.0	0	0.0
Qantas	582	582	476	81.8	451	77.5	0	0.0
Virgin Australia	363	362	302	83.4	312	86.2	1	0.3
All Airlines	1 239	1 238	1 037	83.8	1 013	81.8	1	0.1
<b>Sydney-Dubbo</b>								
QantasLink	1 423	1 385	1 027	74.2	1 044	75.4	38	2.7
Regional Express	1 718	1 687	1 404	83.2	1 355	80.3	31	1.8
All Airlines	3 141	3 072	2 431	79.1	2 399	78.1	69	2.2
<b>Sydney-Gold Coast</b>								
Jetstar	3 464	3 414	2 700	79.1	2 625	76.9	50	1.4
Qantas	1 157	1 157	999	86.3	975	84.3	0	0.0
QantasLink	193	181	130	71.8	142	78.5	12	6.2
Tigerair Australia	1 415	1 379	1 027	74.5	1 081	78.4	36	2.5
Virgin Australia	2 934	2 885	2 353	81.6	2 417	83.8	49	1.7
All Airlines	9 163	9 016	7 209	80.0	7 240	80.3	147	1.6
<b>Sydney-Hamilton Island</b>								
Jetstar	309	295	262	88.8	248	84.1	14	4.5
Qantas	177	170	148	87.1	147	86.5	7	4.0
QantasLink	150	134	97	72.4	96	71.6	16	10.7
Virgin Australia	314	292	253	86.6	260	89.0	22	7.0
All Airlines	950	891	760	85.3	751	84.3	59	6.2
<b>Sydney-Hobart</b>								
Jetstar	970	968	819	84.6	802	82.9	2	0.2
Qantas	34	34	29	85.3	28	82.4	0	0.0
QantasLink	645	634	509	80.3	497	78.4	11	1.7
Virgin Australia	803	796	711	89.3	715	89.8	7	0.9
All Airlines	2 452	2 432	2 068	85.0	2 042	84.0	20	0.8
<b>Sydney-Launceston</b>								
Jetstar	584	584	488	83.6	453	77.6	0	0.0
Virgin Australia	363	363	329	90.6	312	86.0	0	0.0
All Airlines	947	947	817	86.3	765	80.8	0	0.0
<b>Sydney-Melbourne</b>								
Jetstar	4 452	4 338	3 068	70.7	2 966	68.4	114	2.6
Qantas	11 950	11 495	8 970	78.0	9 374	81.5	455	3.8
QantasLink	23	21	20	95.2	19	90.5	2	8.7
Tigerair Australia	3 019	2 928	1 759	60.1	1 824	62.3	91	3.0
Virgin Australia	8 815	8 382	6 731	80.3	7 155	85.4	433	4.9
All Airlines	28 259	27 164	20 548	75.6	21 338	78.6	1 095	3.9
<b>Sydney-Perth</b>								
Jetstar	345	344	277	80.5	287	83.4	1	0.3
Qantas	2 463	2 460	1 925	78.3	1 963	79.8	3	0.1
Tigerair Australia	321	304	251	82.6	263	86.5	17	5.3
Virgin Australia	1 420	1 413	1 092	77.3	1 126	79.7	7	0.5
All Airlines	4 549	4 521	3 545	78.4	3 639	80.5	28	0.6
<b>Sydney-Port Macquarie</b>								
QantasLink	1 547	1 498	1 058	70.6	1 049	70.0	49	3.2
Virgin Australia	694	689	530	76.9	522	75.8	5	0.7
All Airlines	2 241	2 187	1 588	72.6	1 571	71.8	54	2.4
<b>Sydney-Proserpine</b>								
			(From November 2017 only)					
Jetstar	26	26	24	92.3	25	96.2	0	0.0
Tigerair Australia	57	57	41	71.9	41	71.9	0	0.0
All Airlines	83	83	65	78.3	66	79.5	0	0.0

	<i>Sectors</i>		<i>Arrivals On Time</i>		<i>Departures On Time</i>		<i>Cancellations</i>	
	<i>Sched.</i>	<i>Flown</i>	<i>No.</i>	<i>%</i>	<i>No.</i>	<i>%</i>	<i>No.</i>	<i>%</i>
<b>Sydney-Sunshine Coast</b>								
Jetstar	1 303	1 293	1 041	80.5	970	75.0	10	0.8
QantasLink	415	399	326	81.7	330	82.7	16	3.9
Virgin Australia	504	502	439	87.5	442	88.0	2	0.4
All Airlines	2 222	2 194	1 806	82.3	1 742	79.4	28	1.3
<b>Sydney-Tamworth</b>								
QantasLink	1 758	1 698	1 355	79.8	1 332	78.4	60	3.4
Virgin Australia	567	561	457	81.5	466	83.1	6	1.1
All Airlines	2 325	2 259	1 812	80.2	1 798	79.6	66	2.8
<b>Sydney-Townsville</b>								
Jetstar	307	305	207	67.9	198	64.9	2	0.7
Qantas	4	3	2	66.7	3	100.0	1	25.0
Virgin Australia	303	300	268	89.3	267	89.0	3	1.0
All Airlines	614	608	477	78.5	468	77.0	6	1.0
<b>Sydney-Wagga Wagga</b>								
QantasLink	1 327	1 307	1 061	81.2	1 040	79.6	20	1.5
Regional Express	1 483	1 448	1 227	84.7	1 242	85.8	35	2.4
All Airlines	2 810	2 755	2 288	83.0	2 282	82.8	55	2.0
<b>Tamworth-Sydney</b>								
QantasLink	1 760	1 693	1 372	81.0	1 364	80.6	67	3.8
Virgin Australia	567	561	478	85.2	486	86.6	6	1.1
All Airlines	2 327	2 254	1 850	82.1	1 850	82.1	73	3.1
<b>Townsville-Brisbane</b>								
Jetstar	524	521	419	80.4	401	77.0	3	0.6
Qantas	858	851	741	87.1	741	87.1	7	0.8
QantasLink	906	861	689	80.0	717	83.3	45	5.0
Virgin Australia	1 666	1 640	1 493	91.0	1 454	88.7	26	1.6
All Airlines	3 954	3 873	3 342	86.3	3 313	85.5	81	2.0
<b>Townsville-Cairns</b>								
QantasLink	1 656	1 631	1 518	93.1	1 509	92.5	25	1.5
Regional Express	463	444	407	91.7	412	92.8	19	4.1
All Airlines	2 119	2 075	1 925	92.8	1 921	92.6	44	2.1
<b>Townsville-Melbourne</b>								
			(From November 2017 only)					
Jetstar	55	55	39	70.9	39	70.9	0	0.0
Tigerair Australia	35	35	21	60.0	22	62.9	0	0.0
All Airlines	90	90	60	66.7	61	67.8	0	0.0
<b>Townsville-Sydney</b>								
Jetstar	309	303	213	70.3	169	55.8	6	1.9
Qantas	4	3	2	66.7	2	66.7	1	25.0
Virgin Australia	302	299	246	82.3	245	81.9	3	1.0
All Airlines	615	605	461	76.2	416	68.8	10	1.6
<b>Wagga Wagga-Sydney</b>								
QantasLink	1 329	1 308	1 081	82.6	1 088	83.2	21	1.6
Regional Express	1 476	1 441	1 121	77.8	1 206	83.7	35	2.4
All Airlines	2 805	2 749	2 202	80.1	2 294	83.4	56	2.0

## Airports

On time performance is reported for all routes where the passenger load averages over 8000 passengers per month, and where two or more airlines operate in competition. The following data reports by airport against flights operated on those routes only. This year, 8 major city airports and 33 regional city airports are covered.

Airport	Arrivals			Departures		
	Sectors	On Time		Sectors	On Time	
	Flown	No.	%	Flown	No.	%
<b>Adelaide</b>						
Jetstar	3 552	2 719	76.5	3 547	2 725	76.8
Qantas	9 098	7 966	87.6	9 088	8 017	88.2
QantasLink	2 117	1 851	87.4	2 117	1 880	88.8
Regional Express	2 446	2 213	90.5	2 441	2 302	94.3
Tigerair Australia	1 783	1 389	77.9	1 782	1 214	68.1
Virgin Australia	7 896	6 708	85.0	7 888	6 877	87.2
Virgin Australia Regional Airlines	193	125	64.8	193	126	65.3
All Airlines	27 085	22 971	84.8	27 056	23 141	85.5

Relates to services to and from Alice Springs, Brisbane, Canberra, Gold Coast, Melbourne, Perth, Port Lincoln and Sydney.

### Albury

QantasLink	1 180	888	75.3	1 178	905	76.8
Regional Express	1 142	903	79.1	1 150	988	85.9
Virgin Australia	699	555	79.4	697	538	77.2
All Airlines	3 021	2 346	77.7	3 025	2 431	80.4

Relates to services to and from Sydney only.

### Alice Springs

Qantas	364	317	87.1	364	308	84.6
QantasLink	625	591	94.6	626	575	91.9
Virgin Australia	242	221	91.3	242	211	87.2
Virgin Australia Regional Airlines	130	84	64.6	129	87	67.4
All Airlines	1 361	1 213	89.1	1 361	1 181	86.8

Relates to services to and from Adelaide and Darwin.

### Armidale

QantasLink	1 356	919	67.8	1 338	931	69.6
Regional Express	862	684	79.4	853	634	74.3
All Airlines	2 218	1 603	72.3	2 191	1 565	71.4

Relates to services to and from Sydney only.

### Ayers Rock

Jetstar	331	259	78.2	330	208	63.0
Virgin Australia	365	302	82.7	364	265	72.8
All Airlines	696	561	80.6	694	473	68.2

Relates to services to and from Sydney only.

### Ballina

Jetstar	968	798	82.4	966	659	68.2
Regional Express	290	232	80.0	283	190	67.1
Virgin Australia	404	346	85.6	403	321	79.7
All Airlines	1 662	1 376	82.8	1 652	1 170	70.8

Relates to services to and from Sydney only.

Airport	Arrivals			Departures		
	Sectors Flown	On Time		Sectors Flown	On Time	
		No.	%		No.	%
<b>Brisbane</b>						
Jetstar	8 000	6 311	78.9	7 988	6 079	76.1
Qantas	18 186	15 640	86.0	18 172	15 864	87.3
QantasLink	13 102	10 788	82.3	13 188	11 098	84.2
Tigerair Australia	4 217	3 229	76.6	4 214	3 251	77.1
Virgin Australia	25 732	21 951	85.3	25 754	22 378	86.9
All Airlines	69 237	57 919	83.7	69 316	58 670	84.6
Relates to services to and from Adelaide, Bundaberg, Cairns, Canberra, Darwin, Emerald, Gladstone, Hamilton Island, Hobart, Mackay, Melbourne, Moranbah (to September 2017), Mount Isa, Newcastle, Perth, Proserpine, Rockhampton, Sydney and Townsville.						
<b>Broome</b>						
Qantas	94	79	84.0	94	76	80.9
QantasLink	986	897	91.0	977	832	85.2
Virgin Australia	49	43	87.8	49	35	71.4
Virgin Australia Regional Airlines	689	574	83.3	689	535	77.6
All Airlines	1 818	1 593	87.6	1 809	1 478	81.7
Relates to services to and from Perth only.						
<b>Bundaberg</b>						
QantasLink	1 501	1 260	83.9	1 503	1 279	85.1
Virgin Australia	363	303	83.5	362	283	78.2
All Airlines	1 864	1 563	83.9	1 865	1 562	83.8
Relates to services to and from Brisbane only.						
<b>Cairns</b>						
Jetstar	3 616	2 931	81.1	3 611	2 828	78.3
Qantas	2 834	2 499	88.2	2 832	2 412	85.2
QantasLink	1 687	1 561	92.5	1 721	1 605	93.3
Regional Express	444	407	91.7	446	399	89.5
Tigerair Australia	1 477	1 218	82.5	1 472	1 097	74.5
Virgin Australia	2 892	2 506	86.7	2 887	2 435	84.3
All Airlines	12 950	11 122	85.9	12 969	10 776	83.1
Relates to services to and from Brisbane, Melbourne, Sydney and Townsville.						
<b>Canberra</b>						
Qantas	3 455	3 067	88.8	3 457	3 185	92.1
QantasLink	7 397	6 049	81.8	7 381	6 139	83.2
Tigerair Australia	436	323	74.1	433	255	58.9
Virgin Australia	6 178	5 226	84.6	6 173	5 300	85.9
All Airlines	17 466	14 665	84.0	17 444	14 879	85.3
Relates to services to and from Adelaide, Brisbane, Melbourne and Sydney.						
<b>Coffs Harbour</b>						
QantasLink	1 764	1 437	81.5	1 764	1 420	80.5
Tigerair Australia	157	125	79.6	156	112	71.8
Virgin Australia	617	544	88.2	616	540	87.7
All Airlines	2 538	2 106	83.0	2 536	2 072	81.7
Relates to services to and from Sydney only.						

Airport	Arrivals			Departures		
	Sectors Flown	On Time		Sectors Flown	On Time	
		No.	%		No.	%
<b>Darwin</b>						
Jetstar	911	780	85.6	909	653	71.8
Qantas	1 913	1 677	87.7	1 910	1 588	83.1
QantasLink	626	579	92.5	625	592	94.7
Tigerair Australia	227	181	79.7	226	203	89.8
Virgin Australia	1 541	1 277	82.9	1 542	1 266	82.1
Virgin Australia Regional Airlines	94	68	72.3	94	76	80.9
All Airlines	5 312	4 562	85.9	5 306	4 378	82.5
Relates to services to and from Alice Springs, Brisbane, Melbourne, Perth and Sydney.						
<b>Dubbo</b>						
QantasLink	1 385	1 027	74.2	1 382	1 082	78.3
Regional Express	1 687	1 404	83.2	1 693	1 395	82.4
All Airlines	3 072	2 431	79.1	3 075	2 477	80.6
Relates to services to and from Sydney only.						
<b>Emerald</b>						
QantasLink	1 335	1 128	84.5	1 329	1 074	80.8
Virgin Australia	688	633	92.0	688	628	91.3
All Airlines	2 023	1 761	87.0	2 017	1 702	84.4
Relates to services to and from Brisbane only.						
<b>Geraldton</b>						
QantasLink	543	467	86.0	544	487	89.5
Virgin Australia Regional Airlines	622	510	82.0	621	509	82.0
All Airlines	1 165	977	83.9	1 165	996	85.5
Relates to services to and from Perth only.						
<b>Gladstone</b>						
QantasLink	1 615	1 339	82.9	1 610	1 332	82.7
Virgin Australia	949	784	82.6	947	804	84.9
All Airlines	2 564	2 123	82.8	2 557	2 136	83.5
Relates to services to and from Brisbane only.						
<b>Gold Coast</b>						
Jetstar	6 081	4 787	78.7	6 067	4 517	74.5
Qantas	1 540	1 332	86.5	1 540	1 293	84.0
QantasLink	182	131	72.0	182	121	66.5
Tigerair Australia	2 357	1 763	74.8	2 355	1 533	65.1
Virgin Australia	5 397	4 515	83.7	5 391	4 279	79.4
All Airlines	15 557	12 528	80.5	15 535	11 743	75.6
Relates to services to and from Adelaide, Melbourne and Sydney.						
<b>Hamilton Island</b>						
Jetstar	295	262	88.8	296	224	75.7
Qantas	224	198	88.4	227	197	86.8
QantasLink	533	442	82.9	530	440	83.0
Virgin Australia	705	621	88.1	710	609	85.8
All Airlines	1 757	1 523	86.7	1 763	1 470	83.4
Relates to services to and from Brisbane, Melbourne (to March 2017) and Sydney.						

Airport	Arrivals			Departures		
	Sectors Flown	On Time		Sectors Flown	On Time	
		No.	%		No.	%
<b>Hobart</b>						
Jetstar	3 433	2 710	78.9	3 426	2 142	62.5
Qantas	60	52	86.7	60	43	71.7
QantasLink	2 168	1 716	79.2	2 165	1 804	83.3
Tigerair Australia	406	306	75.4	407	268	65.8
Virgin Australia	2 839	2 422	85.3	2 838	2 267	79.9
All Airlines	8 906	7 206	80.9	8 896	6 524	73.3
Relates to services to and from Brisbane, Melbourne and Sydney.						
<b>Kalgoorlie</b>						
Qantas	108	98	90.7	108	98	90.7
QantasLink	836	767	91.7	836	761	91.0
Virgin Australia	295	271	91.9	294	263	89.5
Virgin Australia Regional Airlines	459	401	87.4	459	410	89.3
All Airlines	1 698	1 537	90.5	1 697	1 532	90.3
Relates to services to and from Perth only.						
<b>Karratha</b>						
Qantas	186	177	95.2	186	179	96.2
QantasLink	1 988	1 802	90.6	1 947	1 752	90.0
Virgin Australia	34	29	85.3	33	23	69.7
Virgin Australia Regional Airlines	817	708	86.7	816	695	85.2
All Airlines	3 025	2 716	89.8	2 982	2 649	88.8
Relates to services to and from Perth only.						
<b>Launceston</b>						
Jetstar	2 150	1 684	78.3	2 146	1 390	64.8
QantasLink	1 354	1 154	85.2	1 352	1 150	85.1
Virgin Australia	1 493	1 246	83.5	1 493	1 266	84.8
All Airlines	4 997	4 084	81.7	4 991	3 806	76.3
Relates to services to and from Melbourne and Sydney.						
<b>Mackay</b>						
Jetstar	498	370	74.3	495	308	62.2
QantasLink	1 258	1 072	85.2	1 264	1 045	82.7
Virgin Australia	1 607	1 408	87.6	1 608	1 421	88.4
All Airlines	3 363	2 850	84.7	3 367	2 774	82.4
Relates to services to and from Brisbane only.						
<b>Melbourne</b>						
Jetstar	17 485	12 749	72.9	17 525	12 837	73.2
Qantas	25 699	21 122	82.2	25 700	21 865	85.1
QantasLink	5 119	4 286	83.7	5 120	4 320	84.4
Regional Express	945	705	74.6	948	824	86.9
Tigerair Australia	8 207	5 419	66.0	8 215	5 993	73.0
Virgin Australia	26 629	21 387	80.3	26 639	23 055	86.5
All Airlines	84 084	65 668	78.1	84 147	68 894	81.9
Relates to services to and from Adelaide, Brisbane, Cairns, Canberra, Darwin, Gold Coast, Hamilton Island (to March 2017), Hobart, Launceston, Mildura, Newcastle, Perth, Sunshine Coast, Sydney and Townsville (from November 2017).						



Airport	Arrivals			Departures		
	Sectors	On Time		Sectors	On Time	
	Flown	No.	%	Flown	No.	%
<b>Mildura</b>						
QantasLink	1 121	976	87.1	1 121	982	87.6
Regional Express	948	790	83.3	945	766	81.1
Virgin Australia	365	295	80.8	364	296	81.3
All Airlines	2 434	2 061	84.7	2 430	2 044	84.1
Relates to services to and from Melbourne only.						
<b>Moranbah</b> (To September 2017 only)						
QantasLink	691	595	86.1	648	555	85.6
Virgin Australia	476	426	89.5	474	435	91.8
All Airlines	1 167	1 021	87.5	1 122	990	88.2
Relates to services to and from Brisbane only (to September 2017).						
<b>Mount Isa</b>						
Qantas	5	5	100.0	5	5	100.0
QantasLink	645	562	87.1	635	551	86.8
Virgin Australia	208	178	85.6	208	174	83.7
All Airlines	858	745	86.8	848	730	86.1
Relates to services to and from Brisbane only.						
<b>Newcastle</b>						
Jetstar	2 322	1 811	78.0	2 319	1 884	81.2
QantasLink	1 042	876	84.1	1 036	877	84.7
Virgin Australia	1 401	1 243	88.7	1 399	1 218	87.1
All Airlines	4 765	3 930	82.5	4 754	3 979	83.7
Relates to services to and from Brisbane and Melbourne.						
<b>Newman</b>						
Qantas	699	661	94.6	698	668	95.7
QantasLink	810	708	87.4	798	707	88.6
Virgin Australia	202	194	96.0	202	189	93.6
Virgin Australia Regional Airlines	266	242	91.0	266	236	88.7
All Airlines	1 977	1 805	91.3	1 964	1 800	91.6
Relates to services to and from Perth only.						
<b>Perth</b>						
Jetstar	1 286	1 088	84.6	1 271	890	70.0
Qantas	9 267	7 658	82.6	9 263	8 198	88.5
QantasLink	6 515	5 777	88.7	6 606	5 849	88.5
Tigerair Australia	1 065	843	79.2	1 064	865	81.3
Virgin Australia	6 077	4 940	81.3	6 077	5 382	88.6
Virgin Australia Regional Airlines	3 452	2 854	82.7	3 456	3 032	87.7
All Airlines	27 662	23 160	83.7	27 737	24 216	87.3
Relates to services to and from Adelaide, Brisbane, Broome, Darwin, Geraldton, Kalgoorlie, Karratha, Melbourne, Newman, Port Hedland and Sydney.						
<b>Port Hedland</b>						
Qantas	364	343	94.2	363	335	92.3
QantasLink	1 173	992	84.6	1 146	991	86.5
Virgin Australia	177	166	93.8	178	166	93.3
Virgin Australia Regional Airlines	445	388	87.2	444	398	89.6
All Airlines	2 159	1 889	87.5	2 131	1 890	88.7
Relates to services to and from Perth only.						

Airport	Arrivals			Departures		
	Sectors	On Time		Sectors	On Time	
	Flown	No.	%	Flown	No.	%
<b>Port Lincoln</b>						
QantasLink	1 260	1 150	91.3	1 257	1 139	90.6
Regional Express	2 441	2 234	91.5	2 446	2 254	92.2
All Airlines	3 701	3 384	91.4	3 703	3 393	91.6
Relates to services to and from Adelaide only.						
<b>Port Macquarie</b>						
QantasLink	1 498	1 058	70.6	1 499	1 034	69.0
Virgin Australia	689	530	76.9	685	510	74.5
All Airlines	2 187	1 588	72.6	2 184	1 544	70.7
Relates to services to and from Sydney only.						
<b>Proserpine</b>						
Jetstar	396	344	86.9	397	319	80.4
Tigerair Australia	216	187	86.6	215	181	84.2
Virgin Australia	372	336	90.3	372	316	84.9
All Airlines	984	867	88.1	984	816	82.9
Relates to services to and from Brisbane and Sydney (from November 2017).						
<b>Rockhampton</b>						
QantasLink	2 062	1 690	82.0	2 045	1 683	82.3
Virgin Australia	1 641	1 232	75.1	1 640	1 284	78.3
All Airlines	3 703	2 922	78.9	3 685	2 967	80.5
Relates to services to and from Brisbane only.						
<b>Sunshine Coast</b>						
Jetstar	2 295	1 865	81.3	2 283	1 455	63.7
QantasLink	423	342	80.9	422	340	80.6
Virgin Australia	1 091	937	85.9	1 088	827	76.0
All Airlines	3 809	3 144	82.5	3 793	2 622	69.1
Relates to services to and from Melbourne and Sydney.						
<b>Sydney</b>						
Jetstar	17 564	13 015	74.1	17 609	13 261	75.3
Qantas	26 915	22 572	83.9	26 942	22 346	82.9
QantasLink	16 972	13 422	79.1	17 019	13 172	77.4
Regional Express	5 420	4 153	76.6	5 429	4 420	81.4
Tigerair Australia	7 179	4 838	67.4	7 188	5 213	72.5
Virgin Australia	30 439	25 266	83.0	30 451	25 663	84.3
All Airlines	104 489	83 266	79.7	104 638	84 075	80.3
Relates to services to and from Adelaide, Albury, Armidale, Ayers Rock, Ballina, Brisbane, Cairns, Canberra, Coffs Harbour, Darwin, Dubbo, Gold Coast, Hamilton Island, Hobart, Launceston, Melbourne, Perth, Port Macquarie, Proserpine (from November 2017), Sunshine Coast, Tamworth, Townsville and Wagga Wagga.						
<b>Tamworth</b>						
QantasLink	1 698	1 355	79.8	1 693	1 364	80.6
Virgin Australia	561	457	81.5	561	486	86.6
All Airlines	2 259	1 812	80.2	2 254	1 850	82.1
Relates to services to and from Sydney only.						

<i>Airport</i>	<i>Arrivals</i>			<i>Departures</i>		
	<i>Sectors</i>	<i>On Time</i>		<i>Sectors</i>	<i>On Time</i>	
	<i>Flown</i>	<i>No.</i>	<i>%</i>	<i>Flown</i>	<i>No.</i>	<i>%</i>
<b>Townsville</b>						
Jetstar	881	679	77.1	879	609	69.3
Qantas	852	731	85.8	854	743	87.0
QantasLink	2 530	2 281	90.2	2 492	2 226	89.3
Regional Express	446	392	87.9	444	412	92.8
Tigerair Australia	35	30	85.7	35	22	62.9
Virgin Australia	1 943	1 702	87.6	1 939	1 699	87.6
All Airlines	6 687	5 815	87.0	6 643	5 711	86.0

Relates to services to and from Brisbane, Cairns, Melbourne (from November 2017) and Sydney.

#### **Wagga Wagga**

QantasLink	1 307	1 061	81.2	1 308	1 088	83.2
Regional Express	1 448	1 227	84.7	1 441	1 206	83.7
All Airlines	2 755	2 288	83.0	2 749	2 294	83.4

Relates to services to and from Sydney only.

## Definitions

---

On time arrival	A flight arrival is counted as "on time" if it arrived at the gate before 15 minutes after the scheduled arrival time shown in the carriers' schedule. Neither diverted nor cancelled flights count as on time.
On time departure	A flight departure is counted as "on time" if it departs the gate before 15 minutes after the scheduled departure time shown in the carriers' schedule.
Cancellation	A flight removed from service within 7 days of scheduled departure is regarded as a cancellation.
On time departure percentage	The percentage of on time departures is measured against the number of departures <i>operated</i> on any particular sector.
On time arrival percentage	The percentage of on time arrivals is measured against the number of arrivals <i>operated</i> on any particular sector.
Cancellation percentage	The percentage of cancellations is measured against the number of services <i>scheduled</i> on any particular sector.

---