



Australian Government

Department of Infrastructure, Regional Development and Cities

Bureau of Infrastructure, Transport and Regional Economics

STATISTICAL REPORT



Aviation

Domestic airline on time performance
December 2018

© Commonwealth of Australia 2019

ISSN: 1832-0759

Ownership of intellectual property rights in this publication

Unless otherwise noted, copyright (and any other intellectual property rights, if any) in this publication is owned by the Commonwealth of Australia (referred to below as the Commonwealth).

Disclaimer

The material contained in this publication is made available on the understanding that the Commonwealth is not providing professional advice, and that users exercise their own skill and care with respect to its use, and seek independent advice if necessary.

The Commonwealth makes no representations or warranties as to the contents or accuracy of the information contained in this publication. To the extent permitted by law, the Commonwealth disclaims liability to any person or organisation in respect of anything done, or omitted to be done, in reliance upon information contained in this publication.

Creative Commons licence

With the exception of (a) the Coat of Arms; and (b) the Department of Infrastructure, Regional Development and Cities' photos and graphics, copyright in this publication is licensed under a Creative Commons Attribution 3.0 Australia Licence.

Creative Commons Attribution 3.0 Australia Licence is a standard form licence agreement that allows you to copy, communicate and adapt this publication provided that you attribute the work to the Commonwealth and abide by the other licence terms. A summary of the licence terms is available from <http://creativecommons.org/licenses/by/3.0/au/deed.en>. The full licence terms are available from <http://creativecommons.org/licenses/by/3.0/au/legalcode>.

Use of the Coat of Arms

The Department of the Prime Minister and Cabinet sets the terms under which the Coat of Arms is used. Please refer to the Department's Commonwealth Coat of Arms and Government branding web page <http://www.dpmc.gov.au/guidelines/index.cfm#brand> and, in particular, the Guidelines on the use of the Commonwealth Coat of Arms publication.

An appropriate citation for this report is:

Bureau of Infrastructure, Transport and Regional Economics (BITRE), 2019, Domestic airline on time performance, Statistical Report, BITRE, Canberra ACT.

Contact us

This publication is available in PDF format. All other rights are reserved, including in relation to any Departmental logos or trade marks which may exist. For enquiries regarding the licence and any use of this publication, please contact:

Bureau of Infrastructure, Transport and Regional Economics (BITRE)
Department of Infrastructure, Regional Development and Cities
GPO Box 501, Canberra ACT 2601, Australia
Telephone: (international) +61 2 6274 7210
Fax: (international) +61 2 6274 6855
Email: bitre@infrastructure.gov.au
Website: www.bitre.gov.au

Inquiries

Should you require additional information about the statistics contained in this publication:

Telephone (02) 6274 7790 or Facsimile (02) 6274 7727

Electronic mail: AVSTATS@infrastructure.gov.au

Web site: <http://www.bitre.gov.au/statistics/aviation/otphome.aspx>

Foreword

The Bureau of Infrastructure, Transport and Regional Economics (BITRE) monitors the punctuality and reliability of major domestic airlines operating between Australian airports. The purpose of this is to allow for evaluation of overall industry and individual airline performance, so that consumers of air travel can make informed decisions.

The following domestic airlines currently report this information monthly to the BITRE: Jetstar, Qantas, QantasLink, Regional Express, Tigerair Australia, Virgin Australia and Virgin Australia Regional Airlines. Data has been gathered since November 2003, although some airlines commenced reporting at a later date, including Jetstar which first reported in May 2004, MacAir in July 2005, Tigerair Australia in April 2008 and Virgin Australia Regional Airlines in May 2013. MacAir ceased operations in February 2009 and data was not received for December 2008 onwards. Virgin Blue was rebranded as Virgin Australia in May 2011 and Tiger Airways was rebranded as Tigerair Australia in July 2013 and time series data in Microsoft Excel spreadsheet format on the BITRE website have been revised to reflect these changes. Services operated by Skywest on behalf of Virgin Australia using ATR/F100 aircraft commenced in November 2011 and were shown separately as Virgin Australia – ATR/F100 Operations. Virgin Australia Regional Airlines commenced operations in May 2013. It was formed after the acquisition of Skywest by Virgin Australia and represented a combination of operations previously reported under Skywest and Virgin Australia – ATR/F100 Operations. In January 2016, Virgin Australia transferred their ATR fleet from Virgin Australia Regional Airlines to Virgin Australia.

Information presented in this report is for Australian domestic routes for which the passenger load averaged 8 000 or more passengers per month over the previous six months and where two or more airlines operated in competition on those routes. There were 65 routes that met this definition in December 2018. Over time, routes which meet these criteria change as airline networks and traffic levels vary.

Participating airlines report their overall monthly network performance where this is possible.

Total industry figures encompass all services operated by reporting airlines only. These airlines collectively carried over 95 per cent of total domestic passengers (regular public transport only) in 2017.

The method of capturing on time performance varies between airlines utilising different recording systems. Jetstar and Qantas jet aircraft use Aircraft Communication Addressing and Reporting System (ACARS) to electronically measure on time performance. Regional Express, Tigerair Australia, Virgin Australia, Virgin Australia Regional Airlines and the Qantas non-jet fleet record on time performance manually using records from pilots, gate agents and/or ground crews.

After initial data is collected, aggregate reports are audited internally by participating airlines prior to publication.

Reports and detailed time series data in Microsoft Excel spreadsheet format are available from the BITRE website at: <http://www.bitre.gov.au/statistics/aviation/otphome.aspx>.

Contents

	Page
Industry performance	1
Individual routes	10
Airports.....	24
Definitions	30

Industry performance

For December 2018, on time performance over all routes operated by participating airlines (Jetstar, Qantas, QantasLink, Regional Express, Tigerair Australia, Virgin Australia and Virgin Australia Regional Airlines) averaged 75.3 per cent for on time arrivals and 76.2 per cent for on time departures. Cancellations represented 2.9 per cent of all scheduled flights. The equivalent figures for December 2017 were 79.7 per cent for on time arrivals, 80.4 per cent for on time departures and 1.5 per cent for cancellations.

This month's on time arrivals figure was lower than the long term average performance for all routes (82.5 per cent) and the on time departures figure was also lower than the long term average (83.8 per cent). The rate of cancellations was higher than the long term average of 1.5 per cent.

Qantas achieved the highest on time arrivals among the major domestic airlines at 76.8 per cent followed by Virgin Australia at 74.7 per cent, Jetstar at 68.3 per cent and Tigerair Australia at 60.0 per cent. Of the regional airlines, QantasLink recorded 82.2 per cent for on time arrivals, followed by Regional Express at 78.8 per cent and Virgin Australia Regional Airlines at 77.3 per cent. The Qantas network (Qantas and QantasLink combined operations) recorded 79.7 per cent for on time arrivals while the Virgin Australia network (Virgin Australia and Virgin Australia Regional Airlines combined operations) recorded 74.9 per cent.

Qantas also achieved the highest level of on time departures among the major domestic airlines for December 2018 at 77.9 per cent, followed by Virgin Australia at 76.4 per cent, Jetstar at 66.0 per cent and Tigerair Australia at 59.8 per cent. Of the regional airlines, QantasLink recorded 83.1 per cent for on time departures, followed by Regional Express at 82.2 per cent and Virgin Australia Regional Airlines at 80.8 per cent. The Qantas network recorded 80.7 per cent for on time departures while the Virgin Australia network recorded 76.7 per cent.

Tigerair Australia recorded the highest percentage of cancellations (6.7 per cent) during the month, followed by Jetstar (4.8 per cent), Virgin Australia (2.9 per cent), Qantas (2.6 per cent) and then by QantasLink, Virgin Australia Regional Airlines and Regional Express (all at 1.5 per cent).

Airlines' on time performance varies across the routes they serve. Individual route data by specific airline for 65 routes are shown on pages 10-23.

Of the 65 routes which met the criteria for on time performance reporting in December 2018, the Alice Springs-Darwin route had the highest percentage of on time arrivals (94.7 per cent) and the Pert-Newman route had the highest percentage of on time departures (94.1 per cent). The Sunshine Coast-Sydney route had the lowest percentage of on time arrivals (58.7 per cent) and the Proserpine-Sydney route had the lowest percentage of on time departures (54.8 per cent).

Cancellations were highest on the Melbourne-Sydney route at 8.0 per cent, followed by the Sydney-Melbourne route at 7.8 per cent, the Gold Coast-Sydney route at 6.1 per cent, the Sydney-Brisbane route at 5.4 per cent and the Sydney-Gold Coast route at 5.3 per cent.

Mount Isa Airport recorded the highest percentage of on time arrivals (92.7 per cent) and Newman Airport recorded the highest percentage of on time departures (90.9 per cent). Sydney Airport recorded the lowest percentage of on time arrivals (69.9 per cent) followed by Melbourne Airport (70.1 per cent) and Gold Coast Airport (70.8 per cent). Ayers Rock Airport recorded the lowest percentage of on time departures (57.1 per cent). These figures only refer to reported routes and do not cover all flights at these airports.

Table 1 On time performance for December 2018 – Total Industry

	<i>Sectors</i>		<i>Arrivals On Time</i>		<i>Departures On Time</i>		<i>Cancellations</i>	
	<i>Scheduled</i>	<i>Flown</i>	<i>No.</i>	<i>%</i>	<i>No.</i>	<i>%</i>	<i>No.</i>	<i>%</i>
Jetstar	8 094	7 704	5 262	68.3	5 082	66.0	390	4.8
Qantas	8 454	8 232	6 326	76.8	6 415	77.9	222	2.6
QantasLink	9 727	9 581	7 872	82.2	7 960	83.1	146	1.5
Regional Express	5 315	5 236	4 126	78.8	4 302	82.2	79	1.5
Tigerair Australia	2 577	2 404	1 442	60.0	1 437	59.8	173	6.7
Virgin Australia	11 940	11 590	8 660	74.7	8 859	76.4	350	2.9
Virgin Australia Regional Airlines	802	790	611	77.3	638	80.8	12	1.5
All Airlines	46 909	45 537	34 299	75.3	34 693	76.2	1 372	2.9
Qantas - all QF designated services	18 181	17 813	14 198	79.7	14 375	80.7	368	2.0
Virgin Australia - all VA designated services	12 742	12 380	9 271	74.9	9 497	76.7	362	2.8

Total airline network data (including routes not shown in this report).

Airlines' on time performance varies across the routes they serve. Individual route data by specific airline for 65 routes are shown on pages 10-23.

Table 2 Top ten routes for on time performance for December 2018 (participating airlines only)

<i>Arrivals</i>		<i>Departures</i>	
<i>Route</i>	<i>On Time (%)</i>	<i>Route</i>	<i>On Time (%)</i>
Alice Springs-Darwin	94.7	Perth-Newman	94.1
Brisbane-Mount Isa	92.7	Darwin-Alice Springs	93.1
Perth-Broome	91.0	Perth-Geraldton	92.2
Newman-Perth	90.9	Perth-Kalgoorlie	92.0
Perth-Darwin	90.5	Adelaide-Port Lincoln	91.4
Geraldton-Perth	89.9	Newman-Perth	90.9
Adelaide-Port Lincoln	89.7	Brisbane-Mount Isa	90.9
Port Lincoln-Adelaide	89.7	Perth-Karratha	90.6
Perth-Port Hedland	89.7	Perth-Broome	90.3
Perth-Newman	89.5	Port Lincoln-Adelaide	90.0

Table 3 Top ten airports for on time performance for December 2018 (participating airlines and reported routes only)

<i>Arrivals</i>		<i>Departures</i>	
<i>Airport</i>	<i>On Time (%)</i>	<i>Airport</i>	<i>On Time (%)</i>
Mount Isa	92.7	Newman	90.9
Broome	91.0	Port Lincoln	90.0
Port Lincoln	89.7	Port Hedland	89.6
Port Hedland	89.7	Bundaberg	87.2
Newman	89.5	Karratha	86.3
Geraldton	88.9	Geraldton	85.4
Kalgoorlie	88.4	Kalgoorlie	85.0
Karratha	88.0	Alice Springs	83.8
Bundaberg	85.9	Emerald	82.9
Emerald	84.9	Gladstone	81.4

Total industry on time performance

Figure 1 On time performance (by month from December 2015)—Total Industry

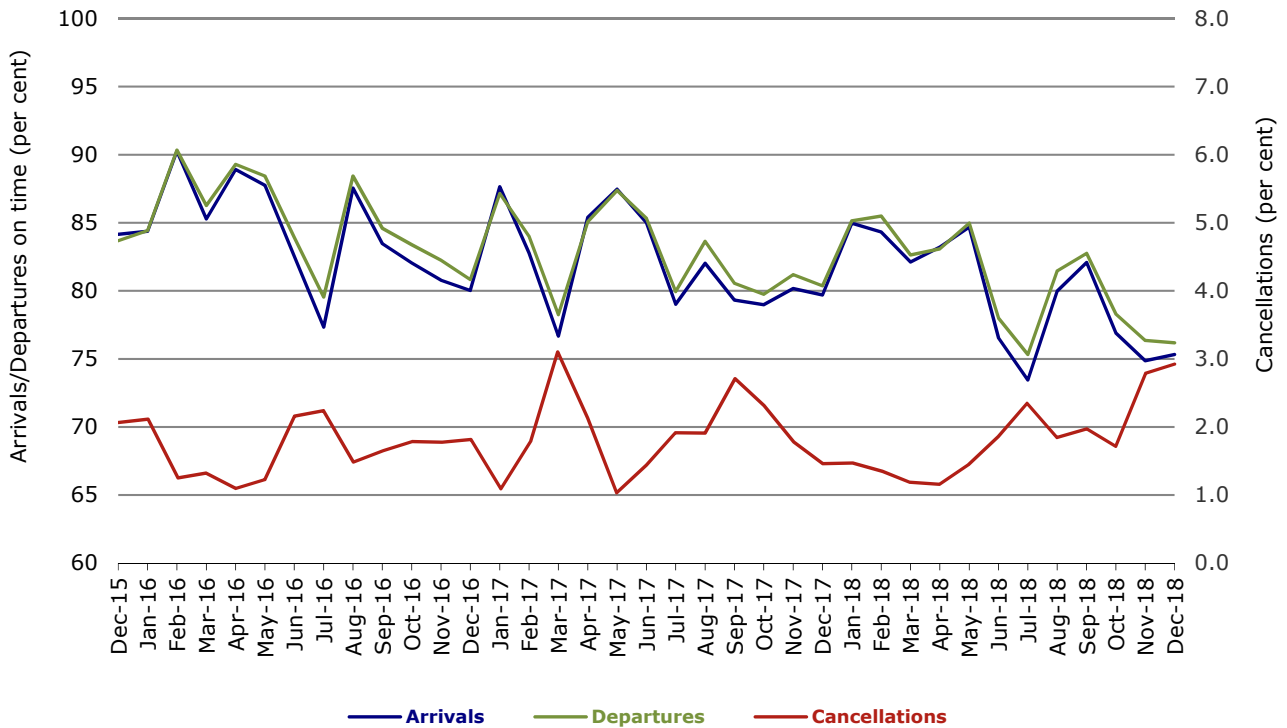


Figure 2 Arrivals on time (by month from December 2017)

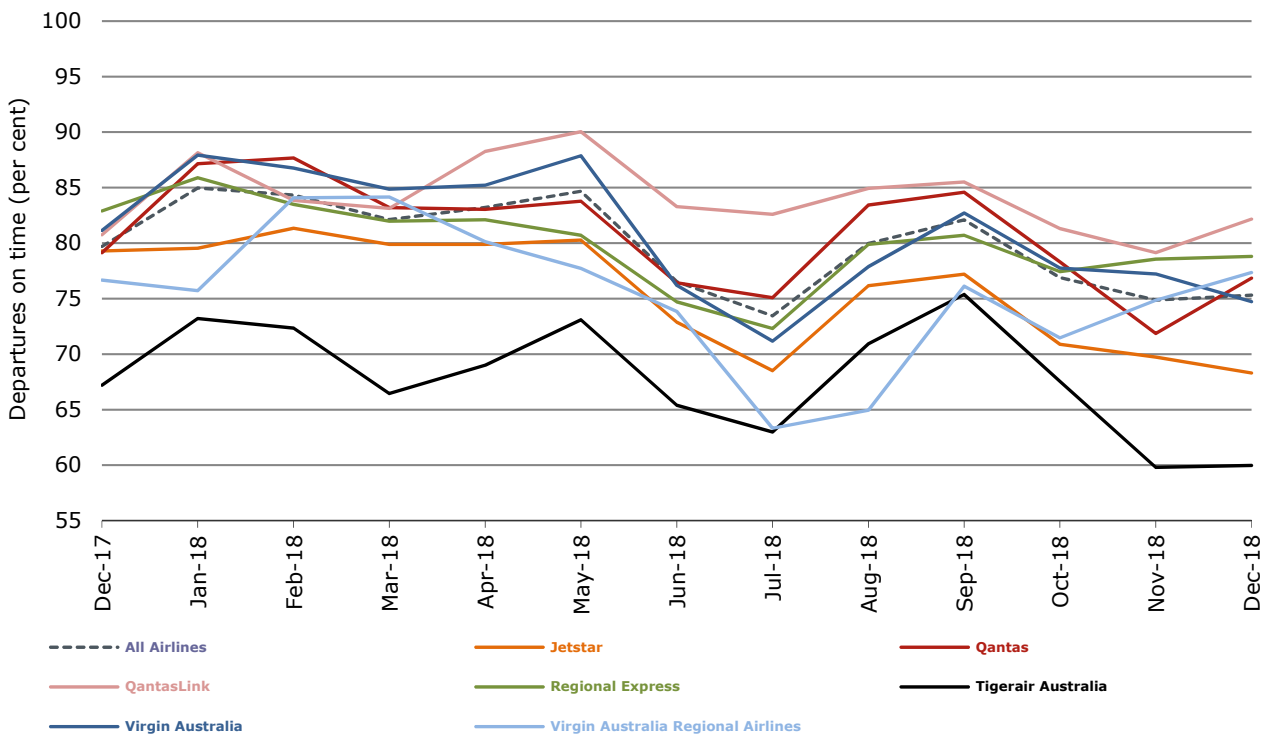


Figure 3 Departures on time (by month from December 2017)

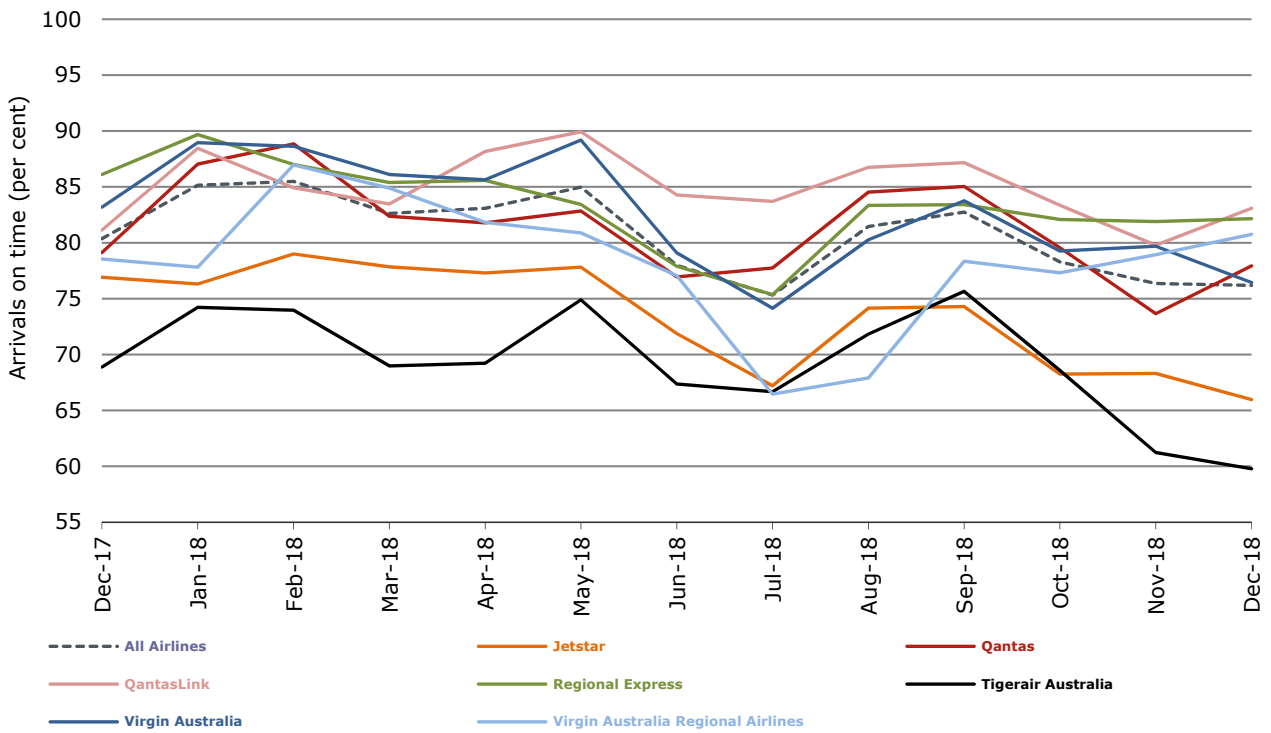
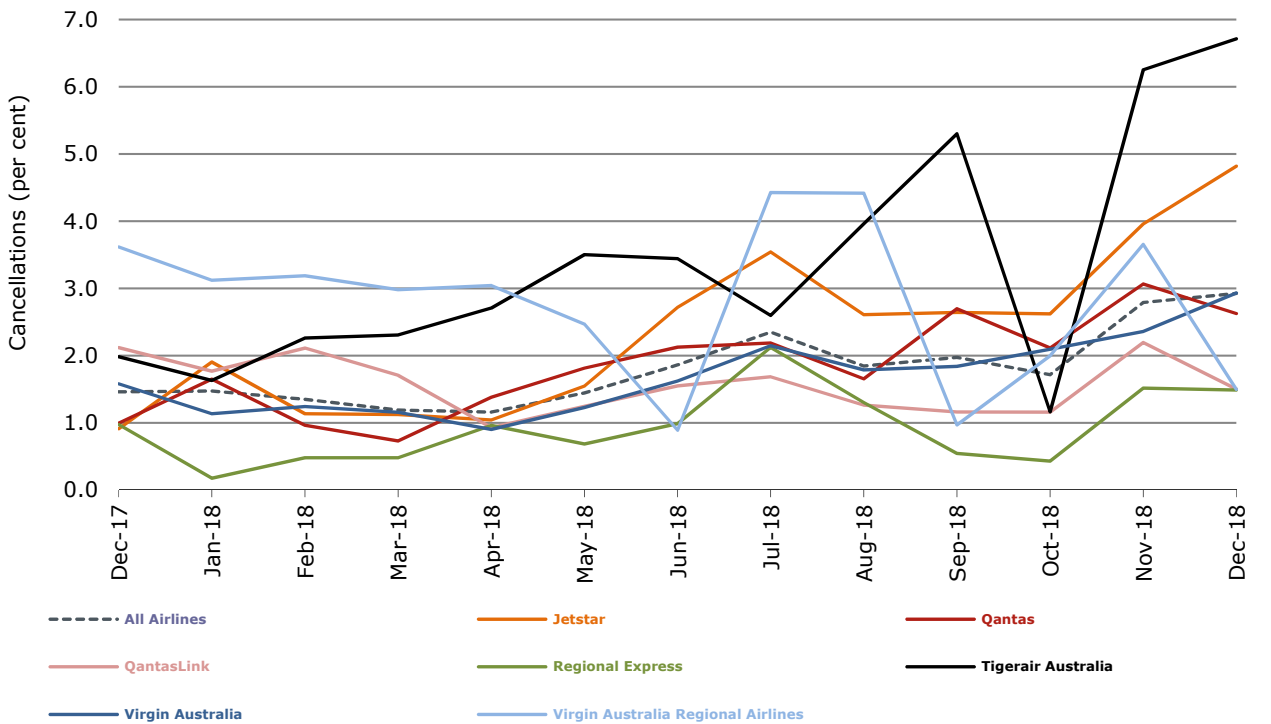


Figure 4 Cancellations (by month from December 2017)



Major domestic airlines on time performance

Figure 5 On time performance (by month from December 2015)—Jetstar

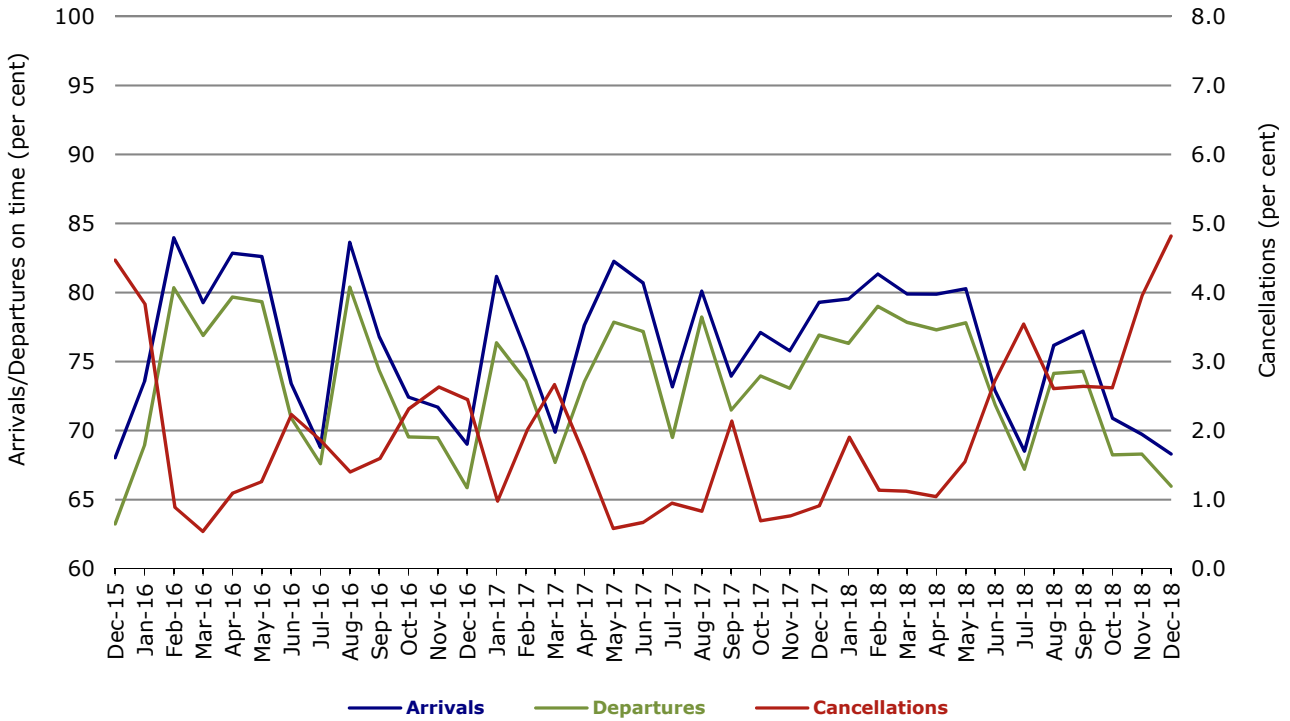


Figure 6 On time performance (by month from December 2015)—Qantas

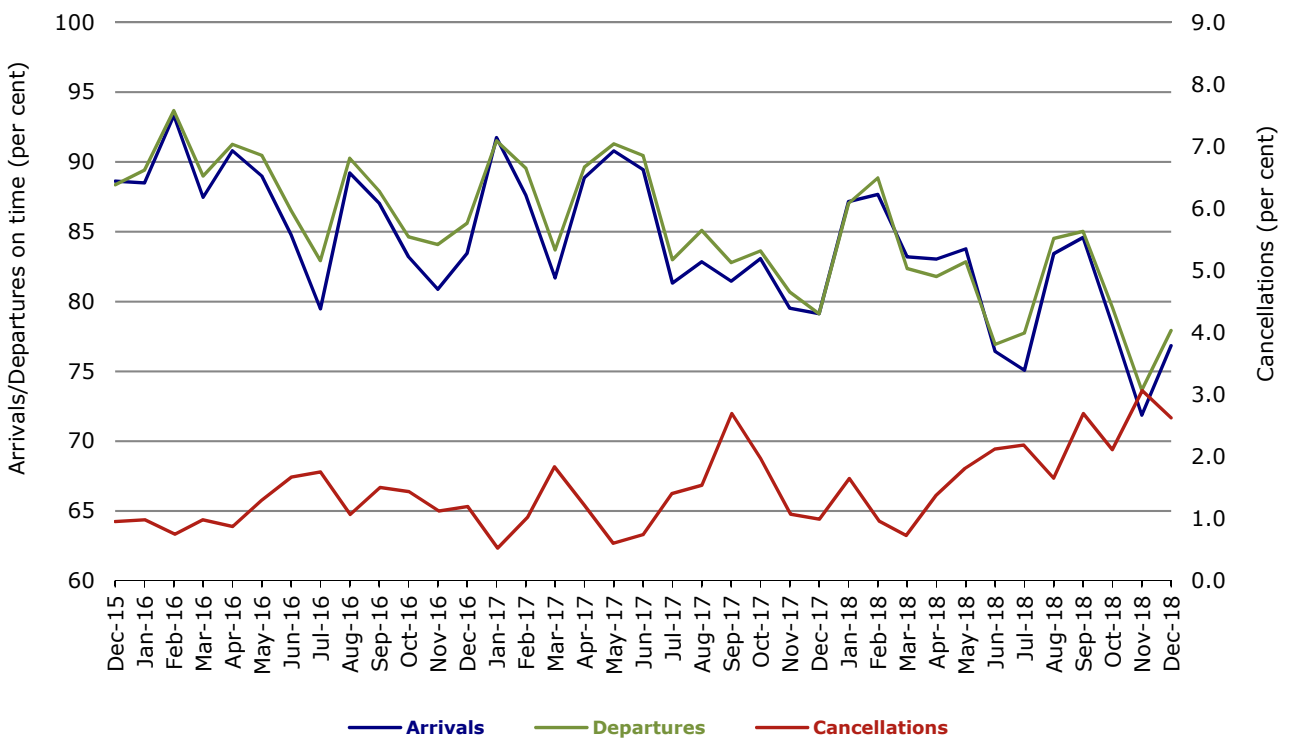


Figure 7 On time performance (by month from December 2015)—Tigerair Australia

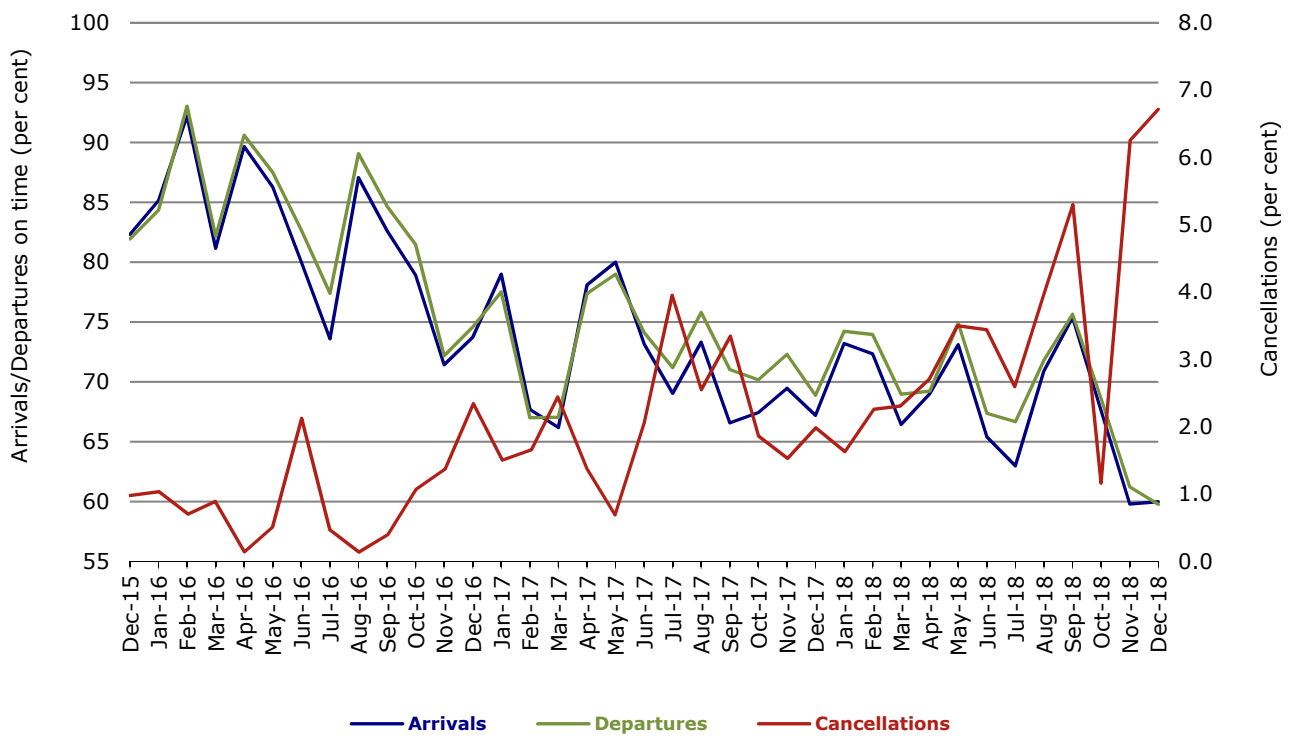
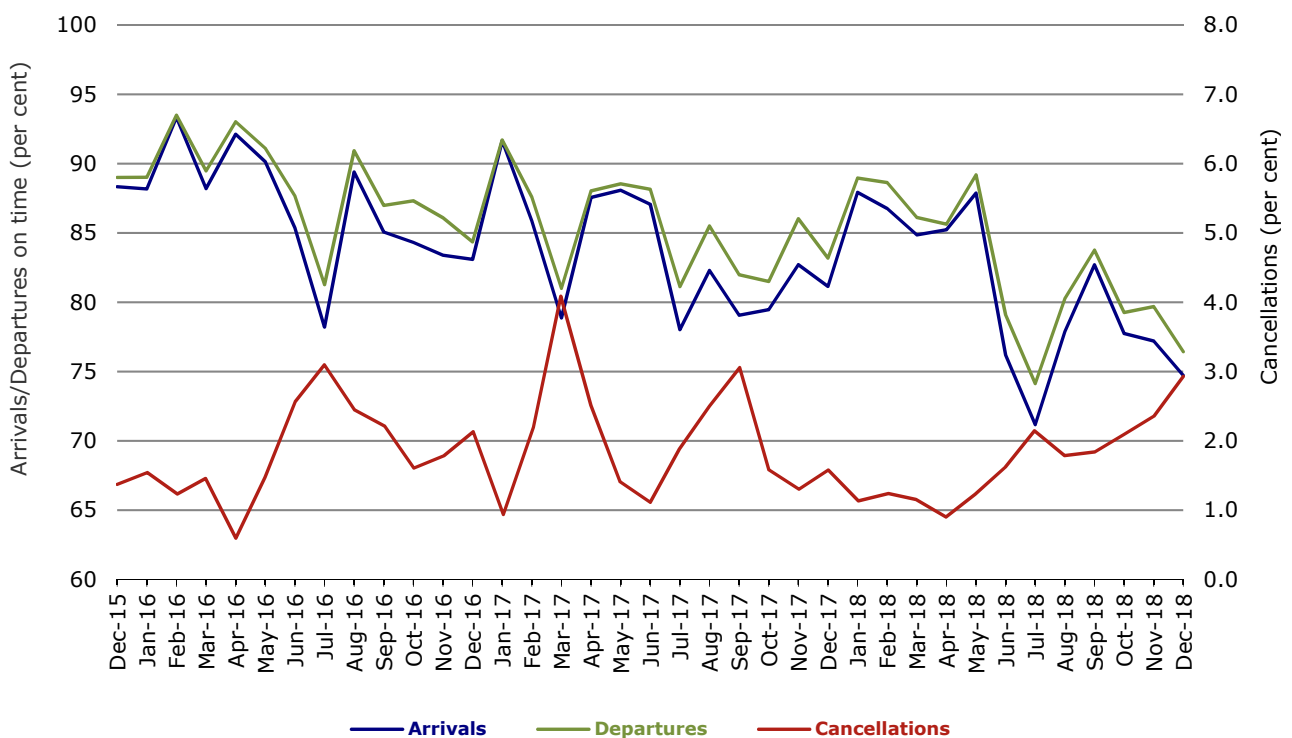


Figure 8 On time performance (by month from December 2015)—Virgin Australia



In January 2016, Virgin Australia transferred their ATR fleet from Virgin Australia Regional Airlines to Virgin Australia.

Major regional airlines on time performance

Figure 9 On time performance (by month from December 2015)—QantasLink

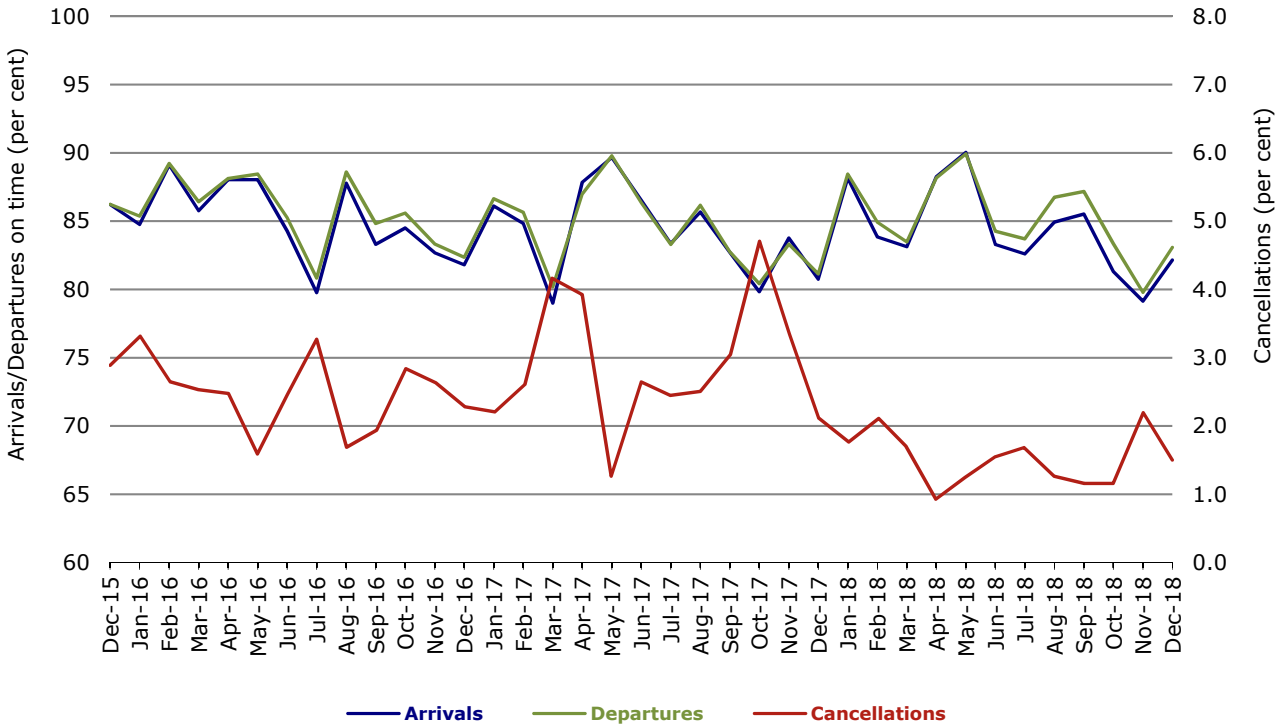


Figure 10 On time performance (by month from December 2015)—Regional Express

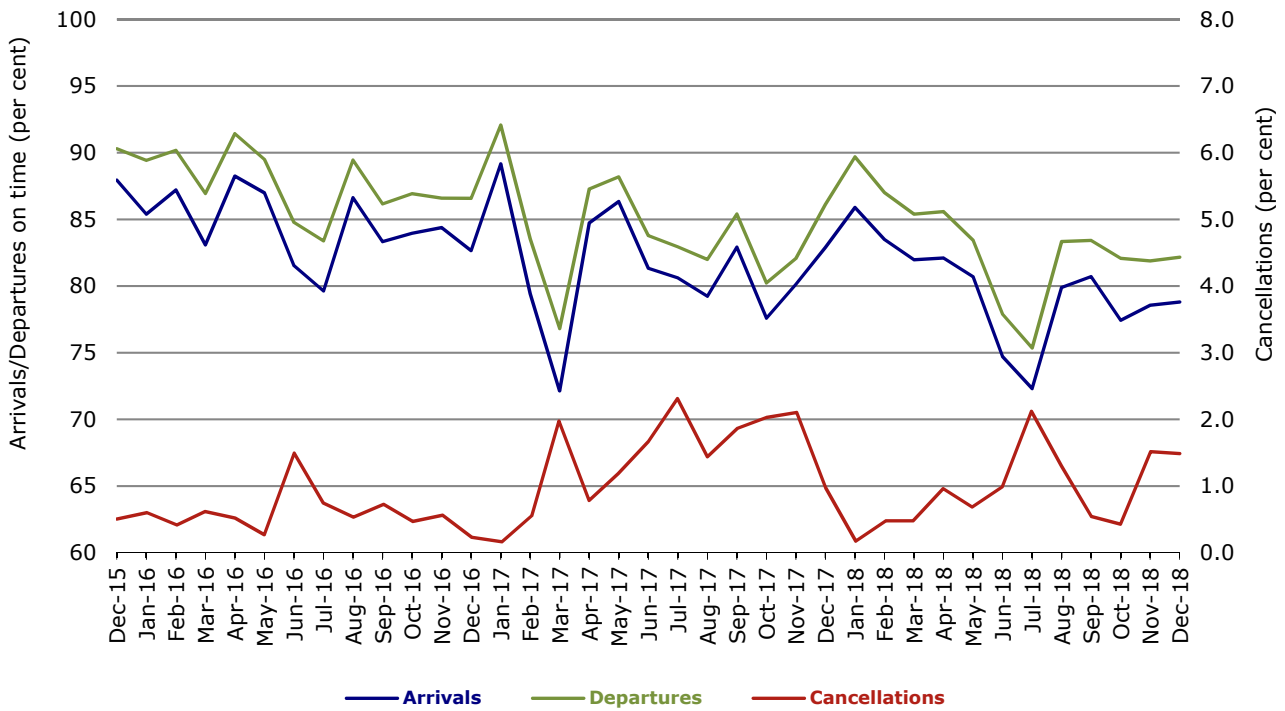
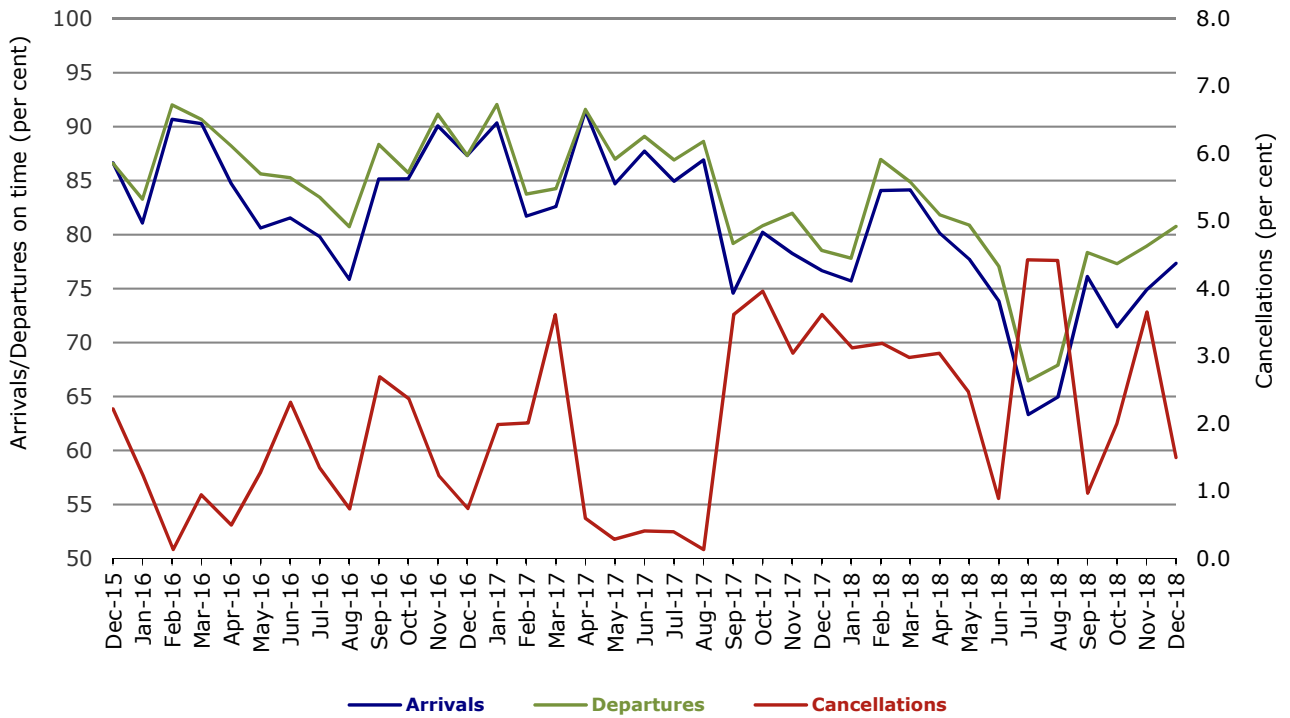


Figure 11 On time performance (by month from December 2015)
Virgin Australia Regional Airlines



In January 2016, Virgin Australia transferred their ATR fleet from Virgin Australia Regional Airlines to Virgin Australia.

Individual routes

On time performance is reported for all routes where the passenger load averages over 8000 passengers per month over the previous six months, and where two or more airlines operate in competition on those routes. There are now 65 routes which meet this definition. Over time, however, routes which meet this definition may change as airline networks and traffic levels vary.

	Sectors		Arrivals On Time		Departures On Time		Cancellations	
	Sched.	Flown	No.	%	No.	%	No.	%
Adelaide-Alice Springs								
Qantas	31	31	26	83.9	24	77.4	0	0.0
Virgin Australia	22	22	15	68.2	17	77.3	0	0.0
All Airlines	53	53	41	77.4	41	77.4	0	0.0
Adelaide-Brisbane								
Jetstar	27	25	15	60.0	19	76.0	2	7.4
Qantas	62	62	54	87.1	50	80.6	0	0.0
QantasLink	50	50	44	88.0	43	86.0	0	0.0
Tigerair Australia	31	29	18	62.1	18	62.1	2	6.5
Virgin Australia	112	110	96	87.3	91	82.7	2	1.8
All Airlines	282	276	227	82.2	221	80.1	6	2.1
Adelaide-Canberra								
Qantas	36	36	28	77.8	25	69.4	0	0.0
QantasLink	5	5	3	60.0	3	60.0	0	0.0
Virgin Australia	26	25	24	96.0	24	96.0	1	3.8
All Airlines	67	66	55	83.3	52	78.8	1	1.5
Adelaide-Gold Coast								
Jetstar	34	34	28	82.4	30	88.2	0	0.0
Virgin Australia	34	34	31	91.2	29	85.3	0	0.0
All Airlines	68	68	59	86.8	59	86.8	0	0.0
Adelaide-Melbourne								
Jetstar	116	110	71	64.5	67	60.9	6	5.2
Qantas	264	260	219	84.2	223	85.8	4	1.5
Tigerair Australia	80	76	45	59.2	41	53.9	4	5.0
Virgin Australia	255	246	185	75.2	195	79.3	9	3.5
Virgin Australia Regional Airlines	14	11	6	54.5	6	54.5	3	21.4
All Airlines	729	703	526	74.8	532	75.7	26	3.6
Adelaide-Perth								
Jetstar	29	28	23	82.1	20	71.4	1	3.4
Qantas	107	107	87	81.3	82	76.6	0	0.0
Virgin Australia	30	29	26	89.7	26	89.7	1	3.3
Virgin Australia Regional Airlines	52	52	18	34.6	31	59.6	0	0.0
All Airlines	218	216	154	71.3	159	73.6	2	0.9
Adelaide-Port Lincoln								
QantasLink	110	109	98	89.9	97	89.0	1	0.9
Regional Express	195	192	172	89.6	178	92.7	3	1.5
All Airlines	305	301	270	89.7	275	91.4	4	1.3
Adelaide-Sydney								
Jetstar	134	121	79	65.3	78	64.5	13	9.7
Qantas	212	208	161	77.4	160	76.9	4	1.9
QantasLink	34	34	28	82.4	24	70.6	0	0.0
Tigerair Australia	34	31	8	25.8	11	35.5	3	8.8
Virgin Australia	163	161	128	79.5	129	80.1	2	1.2
All Airlines	577	555	404	72.8	402	72.4	22	3.8

	Sectors		Arrivals On Time		Departures On Time		Cancellations	
	Sched.	Flown	No.	%	No.	%	No.	%
Albury-Sydney								
QantasLink	92	91	64	70.3	63	69.2	1	1.1
Regional Express	77	75	55	73.3	54	72.0	2	2.6
Virgin Australia	55	55	35	63.6	32	58.2	0	0.0
All Airlines	224	221	154	69.7	149	67.4	3	1.3
Alice Springs-Adelaide								
Qantas	31	31	21	67.7	21	67.7	0	0.0
Virgin Australia	23	23	21	91.3	21	91.3	0	0.0
All Airlines	54	54	42	77.8	42	77.8	0	0.0
Alice Springs-Darwin								
QantasLink	38	38	36	94.7	36	94.7	0	0.0
Virgin Australia	19	19	18	94.7	15	78.9	0	0.0
All Airlines	57	57	54	94.7	51	89.5	0	0.0
Armidale-Sydney								
QantasLink	107	102	71	69.6	70	68.6	5	4.7
Regional Express	60	59	40	67.8	42	71.2	1	1.7
All Airlines	167	161	111	68.9	112	69.6	6	3.6
Ayers Rock-Sydney								
Jetstar	26	26	11	42.3	10	38.5	0	0.0
Virgin Australia	31	30	24	80.0	22	73.3	1	3.2
All Airlines	57	56	35	62.5	32	57.1	1	1.8
Ballina-Sydney								
Jetstar	92	91	62	68.1	53	58.2	1	1.1
Regional Express	18	17	9	52.9	9	52.9	1	5.6
Virgin Australia	45	44	31	70.5	30	68.2	1	2.2
All Airlines	155	152	102	67.1	92	60.5	3	1.9
Brisbane-Adelaide								
Jetstar	27	26	23	88.5	23	88.5	1	3.7
Qantas	58	57	46	80.7	47	82.5	1	1.7
QantasLink	50	50	35	70.0	44	88.0	0	0.0
Tigerair Australia	31	29	23	79.3	24	82.8	2	6.5
Virgin Australia	111	108	89	82.4	87	80.6	3	2.7
All Airlines	277	270	216	80.0	225	83.3	7	2.5
Brisbane-Bundaberg								
QantasLink	119	118	104	88.1	101	85.6	1	0.8
Virgin Australia	31	31	24	77.4	23	74.2	0	0.0
All Airlines	150	149	128	85.9	124	83.2	1	0.7
Brisbane-Cairns								
Jetstar	107	105	81	77.1	73	69.5	2	1.9
Qantas	33	33	32	97.0	30	90.9	0	0.0
QantasLink	91	91	70	76.9	75	82.4	0	0.0
Tigerair Australia	31	30	13	43.3	12	40.0	1	3.2
Virgin Australia	134	134	101	75.4	99	73.9	0	0.0
All Airlines	396	393	297	75.6	289	73.5	3	0.8
Brisbane-Canberra								
QantasLink	147	145	115	79.3	120	82.8	2	1.4
Tigerair Australia	17	16	9	56.3	13	81.3	1	5.9
Virgin Australia	93	92	65	70.7	69	75.0	1	1.1
All Airlines	257	253	189	74.7	202	79.8	4	1.6

	<i>Sectors</i>		<i>Arrivals On Time</i>		<i>Departures On Time</i>		<i>Cancellations</i>	
	<i>Sched.</i>	<i>Flown</i>	<i>No.</i>	<i>%</i>	<i>No.</i>	<i>%</i>	<i>No.</i>	<i>%</i>
Brisbane-Darwin								
Jetstar	25	24	23	95.8	22	91.7	1	4.0
Qantas	37	37	34	91.9	33	89.2	0	0.0
Tigerair Australia	25	23	18	78.3	19	82.6	2	8.0
Virgin Australia	35	34	26	76.5	27	79.4	1	2.9
All Airlines	122	118	101	85.6	101	85.6	4	3.3
Brisbane-Emerald								
QantasLink	101	100	86	86.0	87	87.0	1	1.0
Virgin Australia	52	52	43	82.7	41	78.8	0	0.0
All Airlines	153	152	129	84.9	128	84.2	1	0.7
Brisbane-Gladstone								
QantasLink	131	130	100	76.9	102	78.5	1	0.8
Virgin Australia	64	64	57	89.1	56	87.5	0	0.0
All Airlines	195	194	157	80.9	158	81.4	1	0.5
Brisbane-Hamilton Island								
QantasLink	31	31	19	61.3	21	67.7	0	0.0
Virgin Australia	31	31	26	83.9	27	87.1	0	0.0
All Airlines	62	62	45	72.6	48	77.4	0	0.0
Brisbane-Hobart								
Jetstar	38	38	35	92.1	33	86.8	0	0.0
Qantas	3	3	1	33.3	3	100.0	0	0.0
Virgin Australia	47	47	35	74.5	32	68.1	0	0.0
All Airlines	88	88	71	80.7	68	77.3	0	0.0
Brisbane-Mackay								
Jetstar	31	31	27	87.1	27	87.1	0	0.0
QantasLink	122	121	92	76.0	99	81.8	1	0.8
Virgin Australia	135	135	101	74.8	107	79.3	0	0.0
All Airlines	288	287	220	76.7	233	81.2	1	0.3
Brisbane-Melbourne								
Jetstar	161	149	106	71.1	103	69.1	12	7.5
Qantas	405	401	285	71.1	327	81.5	4	1.0
QantasLink	11	11	11	100.0	11	100.0	0	0.0
Tigerair Australia	126	117	69	59.0	70	59.8	9	7.1
Virgin Australia	398	374	266	71.1	306	81.8	24	6.0
All Airlines	1 101	1 052	737	70.1	817	77.7	49	4.5
Brisbane-Mount Isa								
Qantas	31	31	28	90.3	28	90.3	0	0.0
QantasLink	7	7	6	85.7	6	85.7	0	0.0
Virgin Australia	17	17	17	100.0	16	94.1	0	0.0
All Airlines	55	55	51	92.7	50	90.9	0	0.0
Brisbane-Newcastle								
Jetstar	91	87	64	73.6	65	74.7	4	4.4
QantasLink	85	82	66	80.5	66	80.5	3	3.5
Virgin Australia	81	80	56	70.0	65	81.3	1	1.2
All Airlines	257	249	186	74.7	196	78.7	8	3.1
Brisbane-Perth								
Qantas	156	156	121	77.6	127	81.4	0	0.0
Virgin Australia	110	110	58	52.7	69	62.7	0	0.0
All Airlines	266	266	179	67.3	196	73.7	0	0.0

	Sectors		Arrivals On Time		Departures On Time		Cancellations	
	Sched.	Flown	No.	%	No.	%	No.	%
Brisbane-Proserpine								
Jetstar	38	38	31	81.6	29	76.3	0	0.0
Virgin Australia	48	48	34	70.8	40	83.3	0	0.0
All Airlines	86	86	65	75.6	69	80.2	0	0.0
Brisbane-Rockhampton								
QantasLink	176	174	134	77.0	144	82.8	2	1.1
Virgin Australia	137	136	100	73.5	94	69.1	1	0.7
All Airlines	313	310	234	75.5	238	76.8	3	1.0
Brisbane-Sydney								
Jetstar	180	165	104	63.0	109	66.1	15	8.3
Qantas	568	552	430	77.9	465	84.2	16	2.8
QantasLink	21	20	13	65.0	15	75.0	1	4.8
Tigerair Australia	130	117	70	59.8	74	63.2	13	10.0
Virgin Australia	516	489	339	69.3	372	76.1	27	5.2
All Airlines	1 415	1 343	956	71.2	1 035	77.1	72	5.1
Brisbane-Townsville								
Jetstar	47	46	41	89.1	38	82.6	1	2.1
Qantas	34	34	25	73.5	24	70.6	0	0.0
QantasLink	105	104	85	81.7	94	90.4	1	1.0
Virgin Australia	144	141	110	78.0	108	76.6	3	2.1
All Airlines	330	325	261	80.3	264	81.2	5	1.5
Broome-Perth								
QantasLink	84	84	76	90.5	67	79.8	0	0.0
Virgin Australia Regional Airlines	61	61	52	85.2	50	82.0	0	0.0
All Airlines	145	145	128	88.3	117	80.7	0	0.0
Bundaberg-Brisbane								
QantasLink	119	117	108	92.3	105	89.7	2	1.7
Virgin Australia	31	31	23	74.2	24	77.4	0	0.0
All Airlines	150	148	131	88.5	129	87.2	2	1.3
Cairns-Brisbane								
Jetstar	108	105	78	74.3	72	68.6	3	2.8
Qantas	33	33	29	87.9	29	87.9	0	0.0
QantasLink	91	91	71	78.0	77	84.6	0	0.0
Tigerair Australia	31	30	14	46.7	12	40.0	1	3.2
Virgin Australia	134	134	116	86.6	107	79.9	0	0.0
All Airlines	397	393	308	78.4	297	75.6	4	1.0
Cairns-Melbourne								
Jetstar	107	105	73	69.5	73	69.5	2	1.9
Qantas	43	43	37	86.0	33	76.7	0	0.0
Tigerair Australia	44	42	28	66.7	26	61.9	2	4.5
Virgin Australia	39	39	26	66.7	29	74.4	0	0.0
All Airlines	233	229	164	71.6	161	70.3	4	1.7
Cairns-Sydney								
Jetstar	108	102	65	63.7	69	67.6	6	5.6
Qantas	67	66	51	77.3	52	78.8	1	1.5
Tigerair Australia	43	41	30	73.2	27	65.9	2	4.7
Virgin Australia	94	92	74	80.4	69	75.0	2	2.1
All Airlines	312	301	220	73.1	217	72.1	11	3.5
Cairns-Townsville								
QantasLink	134	134	118	88.1	120	89.6	0	0.0
Regional Express	6	6	6	100.0	6	100.0	0	0.0
All Airlines	140	140	124	88.6	126	90.0	0	0.0

	<i>Sectors</i>		<i>Arrivals On Time</i>		<i>Departures On Time</i>		<i>Cancellations</i>	
	<i>Sched.</i>	<i>Flown</i>	<i>No.</i>	<i>%</i>	<i>No.</i>	<i>%</i>	<i>No.</i>	<i>%</i>
Canberra-Adelaide								
Qantas	36	36	33	91.7	34	94.4	0	0.0
QantasLink	5	5	3	60.0	3	60.0	0	0.0
Virgin Australia	26	25	19	76.0	20	80.0	1	3.8
All Airlines	67	66	55	83.3	57	86.4	1	1.5
Canberra-Brisbane								
QantasLink	147	147	117	79.6	115	78.2	0	0.0
Tigerair Australia	17	16	7	43.8	7	43.8	1	5.9
Virgin Australia	93	92	71	77.2	70	76.1	1	1.1
All Airlines	257	255	195	76.5	192	75.3	2	0.8
Canberra-Melbourne								
Qantas	202	200	167	83.5	172	86.0	2	1.0
QantasLink	37	37	28	75.7	29	78.4	0	0.0
Tigerair Australia	38	36	16	44.4	17	47.2	2	5.3
Virgin Australia	152	151	107	70.9	107	70.9	1	0.7
All Airlines	429	424	318	75.0	325	76.7	5	1.2
Canberra-Sydney								
QantasLink	403	386	298	77.2	301	78.0	17	4.2
Virgin Australia	206	196	142	72.4	152	77.6	10	4.9
All Airlines	609	582	440	75.6	453	77.8	27	4.4
Coffs Harbour-Sydney								
QantasLink	128	126	91	72.2	96	76.2	2	1.6
Tigerair Australia	22	21	11	52.4	12	57.1	1	4.5
Virgin Australia	35	34	26	76.5	24	70.6	1	2.9
All Airlines	185	181	128	70.7	132	72.9	4	2.2
Darwin-Alice Springs								
QantasLink	38	38	35	92.1	36	94.7	0	0.0
Virgin Australia	20	20	16	80.0	18	90.0	0	0.0
All Airlines	58	58	51	87.9	54	93.1	0	0.0
Darwin-Brisbane								
Jetstar	25	24	24	100.0	21	87.5	1	4.0
Qantas	37	37	34	91.9	33	89.2	0	0.0
Tigerair Australia	24	22	20	90.9	19	86.4	2	8.3
Virgin Australia	36	35	23	65.7	26	74.3	1	2.8
All Airlines	122	118	101	85.6	99	83.9	4	3.3
Darwin-Melbourne								
Jetstar	27	27	21	77.8	20	74.1	0	0.0
Qantas	29	29	24	82.8	22	75.9	0	0.0
Virgin Australia	31	30	22	73.3	25	83.3	1	3.2
All Airlines	87	86	67	77.9	67	77.9	1	1.1
Darwin-Perth								
Qantas	31	31	26	83.9	22	71.0	0	0.0
Virgin Australia	21	21	19	90.5	18	85.7	0	0.0
Virgin Australia Regional Airlines	12	12	10	83.3	9	75.0	0	0.0
All Airlines	64	64	55	85.9	49	76.6	0	0.0
Darwin-Sydney								
Jetstar	25	23	9	39.1	12	52.2	2	8.0
Qantas	46	46	34	73.9	30	65.2	0	0.0
Virgin Australia	31	31	24	77.4	24	77.4	0	0.0
All Airlines	102	100	67	67.0	66	66.0	2	2.0

	<i>Sectors</i>		<i>Arrivals On Time</i>		<i>Departures On Time</i>		<i>Cancellations</i>	
	<i>Sched.</i>	<i>Flown</i>	<i>No.</i>	<i>%</i>	<i>No.</i>	<i>%</i>	<i>No.</i>	<i>%</i>
Dubbo-Sydney								
QantasLink	106	103	77	74.8	79	76.7	3	2.8
Regional Express	99	97	63	64.9	69	71.1	2	2.0
All Airlines	205	200	140	70.0	148	74.0	5	2.4
Emerald-Brisbane								
QantasLink	101	100	80	80.0	82	82.0	1	1.0
Virgin Australia	52	52	44	84.6	44	84.6	0	0.0
All Airlines	153	152	124	81.6	126	82.9	1	0.7
Geraldton-Perth								
QantasLink	44	43	39	90.7	39	90.7	1	2.3
Virgin Australia Regional Airlines	46	46	41	89.1	37	80.4	0	0.0
All Airlines	90	89	80	89.9	76	85.4	1	1.1
Gladstone-Brisbane								
QantasLink	131	130	100	76.9	101	77.7	1	0.8
Virgin Australia	64	64	55	85.9	57	89.1	0	0.0
All Airlines	195	194	155	79.9	158	81.4	1	0.5
Gold Coast-Adelaide								
Jetstar	34	34	26	76.5	24	70.6	0	0.0
Virgin Australia	34	34	26	76.5	24	70.6	0	0.0
All Airlines	68	68	52	76.5	48	70.6	0	0.0
Gold Coast-Melbourne								
Jetstar	214	204	135	66.2	126	61.8	10	4.7
Qantas	39	39	24	61.5	23	59.0	0	0.0
Tigerair Australia	89	84	46	54.8	41	48.8	5	5.6
Virgin Australia	216	212	163	76.9	155	73.1	4	1.9
All Airlines	558	539	368	68.3	345	64.0	19	3.4
Gold Coast-Sydney								
Jetstar	319	295	196	66.4	194	65.8	24	7.5
Qantas	99	97	70	72.2	73	75.3	2	2.0
QantasLink	21	21	13	61.9	15	71.4	0	0.0
Tigerair Australia	103	94	67	71.3	65	69.1	9	8.7
Virgin Australia	273	258	194	75.2	189	73.3	15	5.5
All Airlines	815	765	540	70.6	536	70.1	50	6.1
Hamilton Island-Brisbane								
QantasLink	31	31	22	71.0	20	64.5	0	0.0
Virgin Australia	31	31	25	80.6	26	83.9	0	0.0
All Airlines	62	62	47	75.8	46	74.2	0	0.0
Hamilton Island-Sydney								
Jetstar	25	25	15	60.0	12	48.0	0	0.0
Qantas	15	15	13	86.7	12	80.0	0	0.0
QantasLink	16	16	11	68.8	10	62.5	0	0.0
Virgin Australia	26	25	15	60.0	14	56.0	1	3.8
All Airlines	82	81	54	66.7	48	59.3	1	1.2
Hobart-Brisbane								
Jetstar	38	38	37	97.4	32	84.2	0	0.0
Qantas	3	3	1	33.3	1	33.3	0	0.0
Virgin Australia	47	46	36	78.3	32	69.6	1	2.1
All Airlines	88	87	74	85.1	65	74.7	1	1.1

	<i>Sectors</i>		<i>Arrivals On Time</i>		<i>Departures On Time</i>		<i>Cancellations</i>	
	<i>Sched.</i>	<i>Flown</i>	<i>No.</i>	<i>%</i>	<i>No.</i>	<i>%</i>	<i>No.</i>	<i>%</i>
Hobart-Melbourne								
Jetstar	222	216	119	55.1	110	50.9	6	2.7
Qantas	119	119	91	76.5	98	82.4	0	0.0
Tigerair Australia	61	58	32	55.2	30	51.7	3	4.9
Virgin Australia	160	159	100	62.9	113	71.1	1	0.6
All Airlines	562	552	342	62.0	351	63.6	10	1.8
Hobart-Sydney								
Jetstar	116	113	55	48.7	64	56.6	3	2.6
Qantas	19	19	15	78.9	12	63.2	0	0.0
QantasLink	43	41	37	90.2	36	87.8	2	4.7
Virgin Australia	82	77	54	70.1	58	75.3	5	6.1
All Airlines	260	250	161	64.4	170	68.0	10	3.8
Kalgoorlie-Perth								
Qantas	7	7	5	71.4	5	71.4	0	0.0
QantasLink	65	62	61	98.4	61	98.4	3	4.6
Virgin Australia	32	31	25	80.6	25	80.6	1	3.1
Virgin Australia Regional Airlines	40	40	29	72.5	28	70.0	0	0.0
All Airlines	144	140	120	85.7	119	85.0	4	2.8
Karratha-Perth								
Qantas	9	9	7	77.8	6	66.7	0	0.0
QantasLink	162	158	144	91.1	143	90.5	4	2.5
Virgin Australia	3	3	1	33.3	1	33.3	0	0.0
Virgin Australia Regional Airlines	64	63	49	77.8	51	81.0	1	1.6
All Airlines	238	233	201	86.3	201	86.3	5	2.1
Launceston-Melbourne								
Jetstar	181	170	112	65.9	111	65.3	11	6.1
QantasLink	120	119	101	84.9	106	89.1	1	0.8
Virgin Australia	113	112	89	79.5	87	77.7	1	0.9
All Airlines	414	401	302	75.3	304	75.8	13	3.1
Launceston-Sydney								
Jetstar	76	72	44	61.1	46	63.9	4	5.3
Virgin Australia	34	34	26	76.5	23	67.6	0	0.0
All Airlines	110	106	70	66.0	69	65.1	4	3.6
Mackay-Brisbane								
Jetstar	31	31	25	80.6	24	77.4	0	0.0
QantasLink	120	119	96	80.7	95	79.8	1	0.8
Virgin Australia	135	135	112	83.0	112	83.0	0	0.0
All Airlines	286	285	233	81.8	231	81.1	1	0.3
Melbourne-Adelaide								
Jetstar	116	111	65	58.6	71	64.0	5	4.3
Qantas	263	260	209	80.4	210	80.8	3	1.1
Tigerair Australia	80	76	45	59.2	46	60.5	4	5.0
Virgin Australia	252	246	185	75.2	191	77.6	6	2.4
Virgin Australia Regional Airlines	14	11	4	36.4	5	45.5	3	21.4
All Airlines	725	704	508	72.2	523	74.3	21	2.9
Melbourne-Brisbane								
Jetstar	160	150	106	70.7	97	64.7	10	6.3
Qantas	405	402	321	79.9	322	80.1	3	0.7
QantasLink	11	11	9	81.8	10	90.9	0	0.0
Tigerair Australia	126	117	76	65.0	72	61.5	9	7.1
Virgin Australia	393	371	284	76.5	306	82.5	22	5.6
All Airlines	1 095	1 051	796	75.7	807	76.8	44	4.0

	Sectors		Arrivals On Time		Departures On Time		Cancellations	
	Sched.	Flown	No.	%	No.	%	No.	%
Melbourne-Cairns								
Jetstar	107	104	73	70.2	69	66.3	3	2.8
Qantas	43	43	35	81.4	32	74.4	0	0.0
Tigerair Australia	44	42	29	69.0	25	59.5	2	4.5
Virgin Australia	39	39	33	84.6	31	79.5	0	0.0
All Airlines	233	228	170	74.6	157	68.9	5	2.1
Melbourne-Canberra								
Qantas	201	199	167	83.9	164	82.4	2	1.0
QantasLink	37	35	27	77.1	28	80.0	2	5.4
Tigerair Australia	38	36	19	52.8	19	52.8	2	5.3
Virgin Australia	153	151	108	71.5	111	73.5	2	1.3
All Airlines	429	421	321	76.2	322	76.5	8	1.9
Melbourne-Darwin								
Jetstar	27	27	22	81.5	20	74.1	0	0.0
Qantas	29	29	23	79.3	24	82.8	0	0.0
Virgin Australia	31	31	23	74.2	23	74.2	0	0.0
All Airlines	87	87	68	78.2	67	77.0	0	0.0
Melbourne-Gold Coast								
Jetstar	212	202	119	58.9	117	57.9	10	4.7
Qantas	39	39	29	74.4	30	76.9	0	0.0
Tigerair Australia	89	84	51	60.7	50	59.5	5	5.6
Virgin Australia	217	211	164	77.7	173	82.0	6	2.8
All Airlines	557	536	363	67.7	370	69.0	21	3.8
Melbourne-Hobart								
Jetstar	223	217	145	66.8	147	67.7	6	2.7
Qantas	119	119	94	79.0	96	80.7	0	0.0
Tigerair Australia	61	59	33	55.9	35	59.3	2	3.3
Virgin Australia	159	157	110	70.1	114	72.6	2	1.3
All Airlines	562	552	382	69.2	392	71.0	10	1.8
Melbourne-Launceston								
Jetstar	182	170	120	70.6	112	65.9	12	6.6
QantasLink	120	119	107	89.9	103	86.6	1	0.8
Virgin Australia	111	111	83	74.8	83	74.8	0	0.0
All Airlines	413	400	310	77.5	298	74.5	13	3.1
Melbourne-Mildura								
QantasLink	88	87	72	82.8	73	83.9	1	1.1
Regional Express	63	63	48	76.2	55	87.3	0	0.0
Virgin Australia	31	31	24	77.4	28	90.3	0	0.0
All Airlines	182	181	144	79.6	156	86.2	1	0.5
Melbourne-Newcastle								
Jetstar	112	108	69	63.9	68	63.0	4	3.6
Virgin Australia	33	32	23	71.9	24	75.0	1	3.0
All Airlines	145	140	92	65.7	92	65.7	5	3.4
Melbourne-Perth								
Jetstar	58	53	46	86.8	45	84.9	5	8.6
Qantas	208	208	134	64.4	131	63.0	0	0.0
Tigerair Australia	60	59	42	71.2	40	67.8	1	1.7
Virgin Australia	164	163	105	64.4	111	68.1	1	0.6
All Airlines	490	483	327	67.7	327	67.7	7	1.4

	<i>Sectors</i>		<i>Arrivals On Time</i>		<i>Departures On Time</i>		<i>Cancellations</i>	
	<i>Sched.</i>	<i>Flown</i>	<i>No.</i>	<i>%</i>	<i>No.</i>	<i>%</i>	<i>No.</i>	<i>%</i>
Melbourne-Sunshine Coast								
Jetstar	86	84	63	75.0	63	75.0	2	2.3
Virgin Australia	83	83	70	84.3	70	84.3	0	0.0
All Airlines	169	167	133	79.6	133	79.6	2	1.2
Melbourne-Sydney								
Jetstar	428	385	216	56.1	225	58.4	43	10.0
Qantas	911	840	603	71.8	655	78.0	71	7.8
Tigerair Australia	272	247	137	55.5	141	57.1	25	9.2
Virgin Australia	700	654	477	72.9	513	78.4	46	6.6
All Airlines	2 311	2 126	1 433	67.4	1 534	72.2	185	8.0
Mildura-Melbourne								
QantasLink	88	87	71	81.6	74	85.1	1	1.1
Regional Express	63	63	41	65.1	46	73.0	0	0.0
Virgin Australia	31	31	23	74.2	27	87.1	0	0.0
All Airlines	182	181	135	74.6	147	81.2	1	0.5
Mount Isa-Brisbane								
Qantas	31	31	24	77.4	20	64.5	0	0.0
QantasLink	7	7	7	100.0	7	100.0	0	0.0
Virgin Australia	16	16	11	68.8	13	81.3	0	0.0
All Airlines	54	54	42	77.8	40	74.1	0	0.0
Newcastle-Brisbane								
Jetstar	91	87	73	83.9	75	86.2	4	4.4
QantasLink	85	83	66	79.5	66	79.5	2	2.4
Virgin Australia	82	80	54	67.5	54	67.5	2	2.4
All Airlines	258	250	193	77.2	195	78.0	8	3.1
Newcastle-Melbourne								
Jetstar	111	106	75	70.8	69	65.1	5	4.5
Virgin Australia	33	31	20	64.5	23	74.2	2	6.1
All Airlines	144	137	95	69.3	92	67.2	7	4.9
Newman-Perth								
Qantas	25	24	24	100.0	24	100.0	1	4.0
QantasLink	94	92	82	89.1	83	90.2	2	2.1
Virgin Australia	10	10	10	100.0	10	100.0	0	0.0
Virgin Australia Regional Airlines	29	28	24	85.7	23	82.1	1	3.4
All Airlines	158	154	140	90.9	140	90.9	4	2.5
Perth-Adelaide								
Jetstar	29	28	24	85.7	26	92.9	1	3.4
Qantas	110	110	94	85.5	90	81.8	0	0.0
Virgin Australia	34	32	28	87.5	29	90.6	2	5.9
Virgin Australia Regional Airlines	52	52	32	61.5	45	86.5	0	0.0
All Airlines	225	222	178	80.2	190	85.6	3	1.3
Perth-Brisbane								
Qantas	149	149	126	84.6	115	77.2	0	0.0
Virgin Australia	109	108	89	82.4	78	72.2	1	0.9
All Airlines	258	257	215	83.7	193	75.1	1	0.4
Perth-Broome								
QantasLink	84	84	76	90.5	75	89.3	0	0.0
Virgin Australia Regional Airlines	61	61	56	91.8	56	91.8	0	0.0
All Airlines	145	145	132	91.0	131	90.3	0	0.0

	<i>Sectors</i>		<i>Arrivals On Time</i>		<i>Departures On Time</i>		<i>Cancellations</i>	
	<i>Sched.</i>	<i>Flown</i>	<i>No.</i>	<i>%</i>	<i>No.</i>	<i>%</i>	<i>No.</i>	<i>%</i>
Perth-Darwin								
Qantas	31	31	29	93.5	28	90.3	0	0.0
Virgin Australia	21	20	17	85.0	17	85.0	1	4.8
Virgin Australia Regional Airlines	12	12	11	91.7	9	75.0	0	0.0
All Airlines	64	63	57	90.5	54	85.7	1	1.6
Perth-Geraldton								
QantasLink	44	44	40	90.9	40	90.9	0	0.0
Virgin Australia Regional Airlines	46	46	40	87.0	43	93.5	0	0.0
All Airlines	90	90	80	88.9	83	92.2	0	0.0
Perth-Kalgoorlie								
Qantas	7	7	6	85.7	7	100.0	0	0.0
QantasLink	65	63	57	90.5	59	93.7	2	3.1
Virgin Australia	32	31	26	83.9	27	87.1	1	3.1
Virgin Australia Regional Airlines	37	37	33	89.2	34	91.9	0	0.0
All Airlines	141	138	122	88.4	127	92.0	3	2.1
Perth-Karratha								
Qantas	9	9	7	77.8	7	77.8	0	0.0
QantasLink	162	158	138	87.3	142	89.9	4	2.5
Virgin Australia	3	3	3	100.0	3	100.0	0	0.0
Virgin Australia Regional Airlines	64	63	57	90.5	59	93.7	1	1.6
All Airlines	238	233	205	88.0	211	90.6	5	2.1
Perth-Melbourne								
Jetstar	58	54	43	79.6	39	72.2	4	6.9
Qantas	208	207	150	72.5	143	69.1	1	0.5
Tigerair Australia	60	59	46	78.0	42	71.2	1	1.7
Virgin Australia	159	158	123	77.8	121	76.6	1	0.6
All Airlines	485	478	362	75.7	345	72.2	7	1.4
Perth-Newman								
Qantas	25	24	23	95.8	23	95.8	1	4.0
QantasLink	94	92	83	90.2	86	93.5	2	2.1
Virgin Australia	10	10	10	100.0	10	100.0	0	0.0
Virgin Australia Regional Airlines	27	27	21	77.8	25	92.6	0	0.0
All Airlines	156	153	137	89.5	144	94.1	3	1.9
Perth-Port Hedland								
Qantas	33	33	31	93.9	28	84.8	0	0.0
QantasLink	90	90	77	85.6	77	85.6	0	0.0
Virgin Australia	21	21	20	95.2	20	95.2	0	0.0
Virgin Australia Regional Airlines	30	30	28	93.3	28	93.3	0	0.0
All Airlines	174	174	156	89.7	153	87.9	0	0.0
Perth-Sydney								
Jetstar	29	29	18	62.1	14	48.3	0	0.0
Qantas	216	210	159	75.7	155	73.8	6	2.8
Tigerair Australia	31	29	16	55.2	15	51.7	2	6.5
Virgin Australia	136	134	104	77.6	102	76.1	2	1.5
All Airlines	412	402	297	73.9	286	71.1	10	2.4
Port Hedland-Perth								
Qantas	33	33	29	87.9	28	84.8	0	0.0
QantasLink	90	89	76	85.4	81	91.0	1	1.1
Virgin Australia	21	21	21	100.0	20	95.2	0	0.0
Virgin Australia Regional Airlines	30	30	26	86.7	26	86.7	0	0.0
All Airlines	174	173	152	87.9	155	89.6	1	0.6

	<i>Sectors</i>		<i>Arrivals On Time</i>		<i>Departures On Time</i>		<i>Cancellations</i>	
	<i>Sched.</i>	<i>Flown</i>	<i>No.</i>	<i>%</i>	<i>No.</i>	<i>%</i>	<i>No.</i>	<i>%</i>
Port Lincoln-Adelaide								
QantasLink	110	109	102	93.6	100	91.7	1	0.9
Regional Express	195	192	168	87.5	171	89.1	3	1.5
All Airlines	305	301	270	89.7	271	90.0	4	1.3
Port Macquarie-Sydney								
QantasLink	101	99	80	80.8	80	80.8	2	2.0
Virgin Australia	60	60	37	61.7	36	60.0	0	0.0
All Airlines	161	159	117	73.6	116	73.0	2	1.2
Proserpine-Brisbane								
Jetstar	38	38	25	65.8	24	63.2	0	0.0
Virgin Australia	49	48	38	79.2	34	70.8	1	2.0
All Airlines	87	86	63	73.3	58	67.4	1	1.1
Proserpine-Sydney								
Jetstar	13	13	8	61.5	7	53.8	0	0.0
Tigerair Australia	19	18	11	61.1	10	55.6	1	5.3
All Airlines	32	31	19	61.3	17	54.8	1	3.1
Rockhampton-Brisbane								
QantasLink	180	177	128	72.3	133	75.1	3	1.7
Virgin Australia	137	136	104	76.5	100	73.5	1	0.7
All Airlines	317	313	232	74.1	233	74.4	4	1.3
Sunshine Coast-Melbourne								
Jetstar	86	83	53	63.9	55	66.3	3	3.5
Virgin Australia	83	83	58	69.9	68	81.9	0	0.0
All Airlines	169	166	111	66.9	123	74.1	3	1.8
Sunshine Coast-Sydney								
Jetstar	122	118	61	51.7	70	59.3	4	3.3
QantasLink	36	35	24	68.6	26	74.3	1	2.8
Virgin Australia	74	72	47	65.3	54	75.0	2	2.7
All Airlines	232	225	132	58.7	150	66.7	7	3.0
Sydney-Adelaide								
Jetstar	131	120	80	66.7	82	68.3	11	8.4
Qantas	214	209	155	74.2	154	73.7	5	2.3
QantasLink	34	34	25	73.5	32	94.1	0	0.0
Tigerair Australia	34	33	15	45.5	18	54.5	1	2.9
Virgin Australia	162	161	122	75.8	120	74.5	1	0.6
All Airlines	575	557	397	71.3	406	72.9	18	3.1
Sydney-Albury								
QantasLink	92	91	68	74.7	68	74.7	1	1.1
Regional Express	77	75	56	74.7	57	76.0	2	2.6
Virgin Australia	55	55	39	70.9	37	67.3	0	0.0
All Airlines	224	221	163	73.8	162	73.3	3	1.3
Sydney-Armidale								
QantasLink	107	104	75	72.1	77	74.0	3	2.8
Regional Express	58	58	51	87.9	50	86.2	0	0.0
All Airlines	165	162	126	77.8	127	78.4	3	1.8
Sydney-Ayers Rock								
Jetstar	27	27	19	70.4	10	37.0	0	0.0
Virgin Australia	31	30	25	83.3	25	83.3	1	3.2
All Airlines	58	57	44	77.2	35	61.4	1	1.7

	<i>Sectors</i>		<i>Arrivals On Time</i>		<i>Departures On Time</i>		<i>Cancellations</i>	
	<i>Sched.</i>	<i>Flown</i>	<i>No.</i>	<i>%</i>	<i>No.</i>	<i>%</i>	<i>No.</i>	<i>%</i>
Sydney-Ballina								
Jetstar	93	92	68	73.9	69	75.0	1	1.1
Regional Express	16	16	11	68.8	12	75.0	0	0.0
Virgin Australia	45	44	33	75.0	34	77.3	1	2.2
All Airlines	154	152	112	73.7	115	75.7	2	1.3
Sydney-Brisbane								
Jetstar	180	165	106	64.2	95	57.6	15	8.3
Qantas	569	552	423	76.6	409	74.1	17	3.0
QantasLink	21	18	9	50.0	9	50.0	3	14.3
Tigerair Australia	130	117	77	65.8	78	66.7	13	10.0
Virgin Australia	523	494	357	72.3	360	72.9	29	5.5
All Airlines	1 423	1 346	972	72.2	951	70.7	77	5.4
Sydney-Cairns								
Jetstar	108	104	76	73.1	64	61.5	4	3.7
Qantas	67	66	55	83.3	56	84.8	1	1.5
Tigerair Australia	43	41	30	73.2	30	73.2	2	4.7
Virgin Australia	94	92	70	76.1	65	70.7	2	2.1
All Airlines	312	303	231	76.2	215	71.0	9	2.9
Sydney-Canberra								
QantasLink	402	391	302	77.2	291	74.4	11	2.7
Virgin Australia	206	196	151	77.0	143	73.0	10	4.9
All Airlines	608	587	453	77.2	434	73.9	21	3.5
Sydney-Coffs Harbour								
QantasLink	127	124	106	85.5	101	81.5	3	2.4
Tigerair Australia	22	21	11	52.4	11	52.4	1	4.5
Virgin Australia	35	34	29	85.3	29	85.3	1	2.9
All Airlines	184	179	146	81.6	141	78.8	5	2.7
Sydney-Darwin								
Jetstar	25	24	14	58.3	12	50.0	1	4.0
Qantas	45	45	32	71.1	27	60.0	0	0.0
Virgin Australia	32	31	26	83.9	23	74.2	1	3.1
All Airlines	102	100	72	72.0	62	62.0	2	2.0
Sydney-Dubbo								
QantasLink	104	103	81	78.6	82	79.6	1	1.0
Regional Express	103	102	79	77.5	77	75.5	1	1.0
All Airlines	207	205	160	78.0	159	77.6	2	1.0
Sydney-Gold Coast								
Jetstar	318	296	201	67.9	191	64.5	22	6.9
Qantas	98	96	66	68.8	66	68.8	2	2.0
QantasLink	21	21	18	85.7	18	85.7	0	0.0
Tigerair Australia	103	94	71	75.5	76	80.9	9	8.7
Virgin Australia	272	262	194	74.0	197	75.2	10	3.7
All Airlines	812	769	550	71.5	548	71.3	43	5.3
Sydney-Hamilton Island								
Jetstar	25	25	19	76.0	19	76.0	0	0.0
Qantas	15	15	12	80.0	12	80.0	0	0.0
QantasLink	16	16	11	68.8	11	68.8	0	0.0
Virgin Australia	26	26	19	73.1	19	73.1	0	0.0
All Airlines	82	82	61	74.4	61	74.4	0	0.0

	<i>Sectors</i>		<i>Arrivals On Time</i>		<i>Departures On Time</i>		<i>Cancellations</i>	
	<i>Sched.</i>	<i>Flown</i>	<i>No.</i>	<i>%</i>	<i>No.</i>	<i>%</i>	<i>No.</i>	<i>%</i>
Sydney-Hobart								
Jetstar	116	113	77	68.1	70	61.9	3	2.6
Qantas	19	19	16	84.2	17	89.5	0	0.0
QantasLink	43	41	29	70.7	34	82.9	2	4.7
Virgin Australia	81	76	60	78.9	62	81.6	5	6.2
All Airlines	259	249	182	73.1	183	73.5	10	3.9
Sydney-Launceston								
Jetstar	76	75	54	72.0	49	65.3	1	1.3
Virgin Australia	35	34	26	76.5	26	76.5	1	2.9
All Airlines	111	109	80	73.4	75	68.8	2	1.8
Sydney-Melbourne								
Jetstar	429	387	228	58.9	213	55.0	42	9.8
Qantas	907	839	605	72.1	628	74.9	68	7.5
Tigerair Australia	271	246	120	48.8	126	51.2	25	9.2
Virgin Australia	690	645	472	73.2	494	76.6	45	6.5
All Airlines	2 297	2 117	1 425	67.3	1 461	69.0	180	7.8
Sydney-Perth								
Jetstar	29	29	20	69.0	14	48.3	0	0.0
Qantas	215	210	132	62.9	135	64.3	5	2.3
Tigerair Australia	31	29	17	58.6	17	58.6	2	6.5
Virgin Australia	137	135	74	54.8	75	55.6	2	1.5
All Airlines	412	403	243	60.3	241	59.8	9	2.2
Sydney-Port Macquarie								
QantasLink	100	97	83	85.6	77	79.4	3	3.0
Virgin Australia	60	60	42	70.0	41	68.3	0	0.0
All Airlines	160	157	125	79.6	118	75.2	3	1.9
Sydney-Proserpine								
Jetstar	13	13	10	76.9	10	76.9	0	0.0
Tigerair Australia	20	19	12	63.2	11	57.9	1	5.0
All Airlines	33	32	22	68.8	21	65.6	1	3.0
Sydney-Sunshine Coast								
Jetstar	122	118	90	76.3	86	72.9	4	3.3
QantasLink	36	36	29	80.6	25	69.4	0	0.0
Virgin Australia	73	70	56	80.0	53	75.7	3	4.1
All Airlines	231	224	175	78.1	164	73.2	7	3.0
Sydney-Tamworth								
QantasLink	115	112	87	77.7	89	79.5	3	2.6
Virgin Australia	52	51	36	70.6	40	78.4	1	1.9
All Airlines	167	163	123	75.5	129	79.1	4	2.4
Sydney-Townsville								
Jetstar	27	27	17	63.0	12	44.4	0	0.0
Virgin Australia	31	30	24	80.0	23	76.7	1	3.2
All Airlines	58	57	41	71.9	35	61.4	1	1.7
Sydney-Wagga Wagga								
QantasLink	90	90	69	76.7	64	71.1	0	0.0
Regional Express	98	96	81	84.4	85	88.5	2	2.0
All Airlines	188	186	150	80.6	149	80.1	2	1.1
Tamworth-Sydney								
QantasLink	116	113	88	77.9	88	77.9	3	2.6
Virgin Australia	53	52	38	73.1	41	78.8	1	1.9
All Airlines	169	165	126	76.4	129	78.2	4	2.4

	<i>Sectors</i>		<i>Arrivals On Time</i>		<i>Departures On Time</i>		<i>Cancellations</i>	
	<i>Sched.</i>	<i>Flown</i>	<i>No.</i>	<i>%</i>	<i>No.</i>	<i>%</i>	<i>No.</i>	<i>%</i>
Townsville-Brisbane								
Jetstar	48	46	39	84.8	37	80.4	2	4.2
Qantas	34	34	29	85.3	29	85.3	0	0.0
QantasLink	105	103	74	71.8	80	77.7	2	1.9
Virgin Australia	144	141	117	83.0	119	84.4	3	2.1
All Airlines	331	324	259	79.9	265	81.8	7	2.1
Townsville-Cairns								
QantasLink	133	132	115	87.1	116	87.9	1	0.8
Regional Express	6	6	6	100.0	6	100.0	0	0.0
All Airlines	139	138	121	87.7	122	88.4	1	0.7
Townsville-Sydney								
Jetstar	27	26	14	53.8	15	57.7	1	3.7
Virgin Australia	31	30	21	70.0	18	60.0	1	3.2
All Airlines	58	56	35	62.5	33	58.9	2	3.4
Wagga Wagga-Sydney								
QantasLink	91	91	64	70.3	65	71.4	0	0.0
Regional Express	95	93	64	68.8	68	73.1	2	2.1
All Airlines	186	184	128	69.6	133	72.3	2	1.1

Airports

On time performance is reported for all routes where the passenger load averages over 8000 passengers per month, and where two or more airlines operate in competition. The following data reports by airport against flights operated on those routes only. This month, 8 major city airports and 32 regional city airports are covered.

Airport	Arrivals			Departures		
	Sectors Flown	On Time No.	%	Sectors Flown	On Time No.	%
Adelaide						
Jetstar	319	218	68.3	318	214	67.3
Qantas	703	558	79.4	704	564	80.1
QantasLink	198	165	83.3	198	167	84.3
Regional Express	192	168	87.5	192	178	92.7
Tigerair Australia	138	83	60.1	136	70	51.5
Virgin Australia	629	490	77.9	627	511	81.5
Virgin Australia Regional Airlines	63	36	57.1	63	37	58.7
All Airlines	2 242	1 718	76.6	2 238	1 741	77.8
Relates to services to and from Alice Springs, Brisbane, Canberra, Gold Coast, Melbourne, Perth, Port Lincoln and Sydney.						
Albury						
QantasLink	91	68	74.7	91	63	69.2
Regional Express	75	56	74.7	75	54	72.0
Virgin Australia	55	39	70.9	55	32	58.2
All Airlines	221	163	73.8	221	149	67.4
Relates to services to and from Sydney only.						
Alice Springs						
Qantas	31	26	83.9	31	21	67.7
QantasLink	38	35	92.1	38	36	94.7
Virgin Australia	42	31	73.8	42	36	85.7
All Airlines	111	92	82.9	111	93	83.8
Relates to services to and from Adelaide and Darwin.						
Armidale						
QantasLink	104	75	72.1	102	70	68.6
Regional Express	58	51	87.9	59	42	71.2
All Airlines	162	126	77.8	161	112	69.6
Relates to services to and from Sydney only.						
Ayers Rock						
Jetstar	27	19	70.4	26	10	38.5
Virgin Australia	30	25	83.3	30	22	73.3
All Airlines	57	44	77.2	56	32	57.1
Relates to services to and from Sydney only.						
Ballina						
Jetstar	92	68	73.9	91	53	58.2
Regional Express	16	11	68.8	17	9	52.9
Virgin Australia	44	33	75.0	44	30	68.2
All Airlines	152	112	73.7	152	92	60.5
Relates to services to and from Sydney only.						

Airport	Arrivals			Departures		
	Sectors	On Time		Sectors	On Time	
	Flown	No.	%	Flown	No.	%
Brisbane						
Jetstar	709	528	74.5	709	522	73.6
Qantas	1 303	1 041	79.9	1 304	1 084	83.1
QantasLink	1 184	931	78.6	1 184	985	83.2
Tigerair Australia	331	212	64.0	332	212	63.9
Virgin Australia	2 124	1 655	77.9	2 123	1 638	77.2
All Airlines	5 651	4 367	77.3	5 652	4 441	78.6

Relates to services to and from Adelaide, Bundaberg, Cairns, Canberra, Darwin, Emerald, Gladstone, Hamilton Island, Hobart, Mackay, Melbourne, Mount Isa, Newcastle, Perth, Proserpine, Rockhampton, Sydney and Townsville.

Broome

QantasLink	84	76	90.5	84	67	79.8
Virgin Australia Regional Airlines	61	56	91.8	61	50	82.0
All Airlines	145	132	91.0	145	117	80.7

Relates to services to and from Perth only.

Bundaberg

QantasLink	118	104	88.1	117	105	89.7
Virgin Australia	31	24	77.4	31	24	77.4
All Airlines	149	128	85.9	148	129	87.2

Relates to services to and from Brisbane only.

Cairns

Jetstar	313	230	73.5	312	214	68.6
Qantas	142	122	85.9	142	114	80.3
QantasLink	223	185	83.0	225	197	87.6
Regional Express	6	6	100.0	6	6	100.0
Tigerair Australia	113	72	63.7	113	65	57.5
Virgin Australia	265	204	77.0	265	205	77.4
All Airlines	1 062	819	77.1	1 063	801	75.4

Relates to services to and from Brisbane, Melbourne, Sydney and Townsville.

Canberra

Qantas	235	195	83.0	236	206	87.3
QantasLink	576	447	77.6	575	448	77.9
Tigerair Australia	52	28	53.8	52	24	46.2
Virgin Australia	464	348	75.0	464	349	75.2
All Airlines	1 327	1 018	76.7	1 327	1 027	77.4

Relates to services to and from Adelaide, Brisbane, Melbourne and Sydney.

Coffs Harbour

QantasLink	124	106	85.5	126	96	76.2
Tigerair Australia	21	11	52.4	21	12	57.1
Virgin Australia	34	29	85.3	34	24	70.6
All Airlines	179	146	81.6	181	132	72.9

Relates to services to and from Sydney only.

Airport	Arrivals			Departures		
	Sectors	On Time		Sectors	On Time	
	Flown	No.	%	Flown	No.	%
Darwin						
Jetstar	75	59	78.7	74	53	71.6
Qantas	142	118	83.1	143	107	74.8
QantasLink	38	36	94.7	38	36	94.7
Tigerair Australia	23	18	78.3	22	19	86.4
Virgin Australia	135	110	81.5	137	111	81.0
Virgin Australia Regional Airlines	12	11	91.7	12	9	75.0
All Airlines	425	352	82.8	426	335	78.6
Relates to services to and from Alice Springs, Brisbane, Melbourne, Perth and Sydney.						
Dubbo						
QantasLink	103	81	78.6	103	79	76.7
Regional Express	102	79	77.5	97	69	71.1
All Airlines	205	160	78.0	200	148	74.0
Relates to services to and from Sydney only.						
Emerald						
QantasLink	100	86	86.0	100	82	82.0
Virgin Australia	52	43	82.7	52	44	84.6
All Airlines	152	129	84.9	152	126	82.9
Relates to services to and from Brisbane only.						
Geraldton						
QantasLink	44	40	90.9	43	39	90.7
Virgin Australia Regional Airlines	46	40	87.0	46	37	80.4
All Airlines	90	80	88.9	89	76	85.4
Relates to services to and from Perth only.						
Gladstone						
QantasLink	130	100	76.9	130	101	77.7
Virgin Australia	64	57	89.1	64	57	89.1
All Airlines	194	157	80.9	194	158	81.4
Relates to services to and from Brisbane only.						
Gold Coast						
Jetstar	532	348	65.4	533	344	64.5
Qantas	135	95	70.4	136	96	70.6
QantasLink	21	18	85.7	21	15	71.4
Tigerair Australia	178	122	68.5	178	106	59.6
Virgin Australia	507	389	76.7	504	368	73.0
All Airlines	1 373	972	70.8	1 372	929	67.7
Relates to services to and from Adelaide, Melbourne and Sydney.						
Hamilton Island						
Jetstar	25	19	76.0	25	12	48.0
Qantas	15	12	80.0	15	12	80.0
QantasLink	47	30	63.8	47	30	63.8
Virgin Australia	57	45	78.9	56	40	71.4
All Airlines	144	106	73.6	143	94	65.7
Relates to services to and from Brisbane and Sydney.						

Airport	Arrivals			Departures		
	Sectors Flown	On Time		Sectors Flown	On Time	
		No.	%		No.	%
Hobart						
Jetstar	368	257	69.8	367	206	56.1
Qantas	141	111	78.7	141	111	78.7
QantasLink	41	29	70.7	41	36	87.8
Tigerair Australia	59	33	55.9	58	30	51.7
Virgin Australia	280	205	73.2	282	203	72.0
All Airlines	889	635	71.4	889	586	65.9
Relates to services to and from Brisbane, Melbourne and Sydney.						
Kalgoorlie						
Qantas	7	6	85.7	7	5	71.4
QantasLink	63	57	90.5	62	61	98.4
Virgin Australia	31	26	83.9	31	25	80.6
Virgin Australia Regional Airlines	37	33	89.2	40	28	70.0
All Airlines	138	122	88.4	140	119	85.0
Relates to services to and from Perth only.						
Karratha						
Qantas	9	7	77.8	9	6	66.7
QantasLink	158	138	87.3	158	143	90.5
Virgin Australia	3	3	100.0	3	1	33.3
Virgin Australia Regional Airlines	63	57	90.5	63	51	81.0
All Airlines	233	205	88.0	233	201	86.3
Relates to services to and from Perth only.						
Launceston						
Jetstar	245	174	71.0	242	157	64.9
QantasLink	119	107	89.9	119	106	89.1
Virgin Australia	145	109	75.2	146	110	75.3
All Airlines	509	390	76.6	507	373	73.6
Relates to services to and from Melbourne and Sydney.						
Mackay						
Jetstar	31	27	87.1	31	24	77.4
QantasLink	121	92	76.0	119	95	79.8
Virgin Australia	135	101	74.8	135	112	83.0
All Airlines	287	220	76.7	285	231	81.1
Relates to services to and from Brisbane only.						
Melbourne						
Jetstar	1 611	1 036	64.3	1 611	1 034	64.2
Qantas	2 137	1 602	75.0	2 139	1 664	77.8
QantasLink	254	211	83.1	252	214	84.9
Regional Express	63	41	65.1	63	55	87.3
Tigerair Australia	718	402	56.0	720	428	59.4
Virgin Australia	2 271	1 654	72.8	2 280	1 778	78.0
Virgin Australia Regional Airlines	11	6	54.5	11	5	45.5
All Airlines	7 065	4 952	70.1	7 076	5 178	73.2
Relates to services to and from Adelaide, Brisbane, Cairns, Canberra, Darwin, Gold Coast, Hobart, Launceston, Mildura, Newcastle, Perth, Sunshine Coast and Sydney.						
Mildura						
QantasLink	87	72	82.8	87	74	85.1
Regional Express	63	48	76.2	63	46	73.0
Virgin Australia	31	24	77.4	31	27	87.1
All Airlines	181	144	79.6	181	147	81.2
Relates to services to and from Melbourne only.						

Airport	Arrivals			Departures		
	Sectors Flown	On Time		Sectors Flown	On Time	
		No.	%		No.	%
Mount Isa						
Qantas	31	28	90.3	31	20	64.5
QantasLink	7	6	85.7	7	7	100.0
Virgin Australia	17	17	100.0	16	13	81.3
All Airlines	55	51	92.7	54	40	74.1
Relates to services to and from Brisbane only.						
Newcastle						
Jetstar	195	133	68.2	193	144	74.6
QantasLink	82	66	80.5	83	66	79.5
Virgin Australia	112	79	70.5	111	77	69.4
All Airlines	389	278	71.5	387	287	74.2
Relates to services to and from Brisbane and Melbourne.						
Newman						
Qantas	24	23	95.8	24	24	100.0
QantasLink	92	83	90.2	92	83	90.2
Virgin Australia	10	10	100.0	10	10	100.0
Virgin Australia Regional Airlines	27	21	77.8	28	23	82.1
All Airlines	153	137	89.5	154	140	90.9
Relates to services to and from Perth only.						
Perth						
Jetstar	110	89	80.9	111	79	71.2
Qantas	785	565	72.0	780	596	76.4
QantasLink	528	478	90.5	531	479	90.2
Tigerair Australia	88	59	67.0	88	57	64.8
Virgin Australia	523	339	64.8	517	407	78.7
Virgin Australia Regional Airlines	332	249	75.0	328	299	91.2
All Airlines	2 366	1 779	75.2	2 355	1 917	81.4
Relates to services to and from Adelaide, Brisbane, Broome, Darwin, Geraldton, Kalgoorlie, Karratha, Melbourne, Newman, Port Hedland and Sydney.						
Port Hedland						
Qantas	33	31	93.9	33	28	84.8
QantasLink	90	77	85.6	89	81	91.0
Virgin Australia	21	20	95.2	21	20	95.2
Virgin Australia Regional Airlines	30	28	93.3	30	26	86.7
All Airlines	174	156	89.7	173	155	89.6
Relates to services to and from Perth only.						
Port Lincoln						
QantasLink	109	98	89.9	109	100	91.7
Regional Express	192	172	89.6	192	171	89.1
All Airlines	301	270	89.7	301	271	90.0
Relates to services to and from Adelaide only.						
Port Macquarie						
QantasLink	97	83	85.6	99	80	80.8
Virgin Australia	60	42	70.0	60	36	60.0
All Airlines	157	125	79.6	159	116	73.0
Relates to services to and from Sydney only.						

Airport	Arrivals			Departures		
	Sectors Flown	On Time		Sectors Flown	On Time	
		No.	%		No.	%
Proserpine						
Jetstar	51	41	80.4	51	31	60.8
Tigerair Australia	19	12	63.2	18	10	55.6
Virgin Australia	48	34	70.8	48	34	70.8
All Airlines	118	87	73.7	117	75	64.1
Relates to services to and from Brisbane and Sydney.						
Rockhampton						
QantasLink	174	134	77.0	177	133	75.1
Virgin Australia	136	100	73.5	136	100	73.5
All Airlines	310	234	75.5	313	233	74.4
Relates to services to and from Brisbane only.						
Sunshine Coast						
Jetstar	202	153	75.7	201	125	62.2
QantasLink	36	29	80.6	35	26	74.3
Virgin Australia	153	126	82.4	155	122	78.7
All Airlines	391	308	78.8	391	273	69.8
Relates to services to and from Melbourne and Sydney.						
Sydney						
Jetstar	1 604	957	59.7	1 615	996	61.7
Qantas	2 053	1 536	74.8	2 051	1 504	73.3
QantasLink	1 278	959	75.0	1 278	978	76.5
Regional Express	341	231	67.7	347	281	81.0
Tigerair Australia	598	350	58.5	600	367	61.2
Virgin Australia	2 528	1 836	72.6	2 526	1 866	73.9
All Airlines	8 402	5 869	69.9	8 417	5 992	71.2
Relates to services to and from Adelaide, Albury, Armidale, Ayers Rock, Ballina, Brisbane, Cairns, Canberra, Coffs Harbour, Darwin, Dubbo, Gold Coast, Hamilton Island, Hobart, Launceston, Melbourne, Perth, Port Macquarie, Proserpine, Sunshine Coast, Tamworth, Townsville and Wagga Wagga.						
Tamworth						
QantasLink	112	87	77.7	113	88	77.9
Virgin Australia	51	36	70.6	52	41	78.8
All Airlines	163	123	75.5	165	129	78.2
Relates to services to and from Sydney only.						
Townsville						
Jetstar	73	58	79.5	72	52	72.2
Qantas	34	25	73.5	34	29	85.3
QantasLink	238	203	85.3	235	196	83.4
Regional Express	6	6	100.0	6	6	100.0
Virgin Australia	171	134	78.4	171	137	80.1
All Airlines	522	426	81.6	518	420	81.1
Relates to services to and from Brisbane, Cairns and Sydney.						
Wagga Wagga						
QantasLink	90	69	76.7	91	65	71.4
Regional Express	96	81	84.4	93	68	73.1
All Airlines	186	150	80.6	184	133	72.3
Relates to services to and from Sydney only.						

Definitions

On time arrival	A flight arrival is counted as "on time" if it arrived at the gate before 15 minutes after the scheduled arrival time shown in the carriers' schedule. Neither diverted nor cancelled flights count as on time.
On time departure	A flight departure is counted as "on time" if it departs the gate before 15 minutes after the scheduled departure time shown in the carriers' schedule.
Cancellation	A flight removed from service within 7 days of scheduled departure is regarded as a cancellation.
On time departure percentage	The percentage of on time departures is measured against the number of departures <i>operated</i> on any particular sector.
On time arrival percentage	The percentage of on time arrivals is measured against the number of arrivals <i>operated</i> on any particular sector.
Cancellation percentage	The percentage of cancellations is measured against the number of services <i>scheduled</i> on any particular sector.
