



Australian Government

Department of Infrastructure, Regional Development and Cities

Bureau of Infrastructure, Transport and Regional Economics

STATISTICAL REPORT



Aviation

Domestic aviation activity
February 2018

© Commonwealth of Australia 2018

ISSN: 1832 - 1968

Ownership of intellectual property rights in this publication

Unless otherwise noted, copyright (and any other intellectual property rights, if any) in this publication is owned by the Commonwealth of Australia (referred to below as the Commonwealth).

Disclaimer

The material contained in this publication is made available on the understanding that the Commonwealth is not providing professional advice, and that users exercise their own skill and care with respect to its use, and seek independent advice if necessary.

The Commonwealth makes no representations or warranties as to the contents or accuracy of the information contained in this publication. To the extent permitted by law, the Commonwealth disclaims liability to any person or organisation in respect of anything done, or omitted to be done, in reliance upon information contained in this publication.

Creative Commons licence

With the exception of (a) the Coat of Arms; and (b) the Department of Infrastructure, Regional Development and Cities' photos and graphics, copyright in this publication is licensed under a Creative Commons Attribution 3.0 Australia Licence.

Creative Commons Attribution 3.0 Australia Licence is a standard form licence agreement that allows you to copy, communicate and adapt this publication provided that you attribute the work to the Commonwealth and abide by the other licence terms. A summary of the licence terms is available from <http://creativecommons.org/licenses/by/3.0/au/deed.en>. The full licence terms are available from <http://creativecommons.org/licenses/by/3.0/au/legalcode>.

Use of the Coat of Arms

The Department of the Prime Minister and Cabinet sets the terms under which the Coat of Arms is used. Please refer to the Department's Commonwealth Coat of Arms and Government branding web page <http://www.dpmc.gov.au/guidelines/index.cfm#brand> and, in particular, the Guidelines on the use of the Commonwealth Coat of Arms publication.

An appropriate citation for this report is:

Bureau of Infrastructure, Transport and Regional Economics (BITRE), 2018, Domestic aviation activity, Statistical Report, BITRE, Canberra ACT.

Contact us

This publication is available in PDF format. All other rights are reserved, including in relation to any Departmental logos or trade marks which may exist. For enquiries regarding the licence and any use of this publication, please contact:

Bureau of Infrastructure, Transport and Regional Economics (BITRE)
Department of Infrastructure, Regional Development and Cities
GPO Box 501, Canberra ACT 2601, Australia
Telephone: (international) +61 2 6274 7210
Fax: (international) +61 2 6274 6855
Email: bitre@infrastructure.gov.au
Website: www.bitre.gov.au

Inquiries

Should you require additional information about the statistics contained in this publication:

Nebojsa Pavlovic

Telephone (02) 6274 6817 or Facsimile (02) 6274 7727

Electronic mail: AVSTATS@infrastructure.gov.au

Nebojsa.Pavlovic@infrastructure.gov.au

Web site: <http://www.bitre.gov.au/statistics/aviation/domestic.aspx>

FOREWORD

This report provides an overview of domestic (including charter) commercial aviation activity in Australia for the month of February 2018.

The data cover revenue passengers carried by Australian-registered operators of scheduled regular public transport services over Australian flight stages and fixed-wing charter operators. These estimates include passengers carried between domestic airports on international flights operated by these carriers. The passengers carried refer to traffic on board by stages.

Estimates of passengers and aircraft movements for charter aviation are included in this publication, where BITRE confidentiality standards are met.

Individual routes shown are restricted to those with an average exceeding 8 000 passengers per month over the previous six months where two or more airlines operate in competition. For the month of February 2018 there were 66 such routes.

Information on the total network for the month of February 2018 and on the Regular Public Transport (RPT) network for the month of February 2018 is presented on page 2, with estimates for the year ended February 2018 presented on page 3.

Detailed information on the 66 individual routes can be found in the RPT summary pages 4-13 of this publication.

The top ten airports in terms of RPT passenger movements are shown on page 14.

Data on domestic RPT cargo movements at the top five cargo airports are provided on page 15. The table includes cargo carried on passenger flights operated by the Qantas group (including Jetstar), Virgin Australia, Air North and Skippers as well as the cargo carried by dedicated freighter aircraft operated by Qantas Freight, Toll Priority and Virgin Australia Cargo.

The long-term trends for the top ten competitive RPT routes are presented graphically on pages 16-25.

Domestic RPT passenger movements at the top 50 regional airports are presented on pages 26-27.

Tables providing estimates of domestic charter aviation activity are shown on page 28. BITRE confidentiality standards restrict publication of detailed estimates for individual Australian airports, with the exception of Perth Airport.

A list of definitions can be found on page 29.

This report was prepared by the Aviation Statistics Section of the Bureau of Infrastructure, Transport and Regional Economics with data provided by airlines.

Estimates are included where data were not available and data presented in this publication may contain revisions to previously published data.

Where figures have been rounded, discrepancies may occur between sums of component items and totals, and in percentage changes which are derived from figures prior to rounding.

CONTENTS

Highlights	1
Total network	2
RPT network	2
Top competitive routes	4
Top ten airports – passenger movements	14
Top five airports – cargo movements	15
Top ten routes	16
1. Melbourne – Sydney	16
2. Brisbane – Sydney	17
3. Brisbane – Melbourne	18
4. Gold Coast – Sydney	19
5. Adelaide – Melbourne	20
6. Melbourne – Perth	21
7. Adelaide – Sydney	22
8. Hobart – Melbourne	23
9. Gold Coast – Melbourne	24
10. Perth – Sydney	25
Top fifty regional airports	26
Domestic charter activity	28
Definitions	29

This page is intentionally left blank.

HIGHLIGHTS

There were 4.72 million passengers carried on Australian domestic commercial aviation (including charter operations) in February 2018, an increase of 3.9 per cent on February 2017. For the month of February 2018 there were 52 067 aircraft trips, a decrease of 0.9 per cent compared to February 2017.

4.53 million passengers were carried on RPT flights in February 2018, an increase of 4.1 per cent on February 2017.

For the year ending February 2018 there were 60.26 million RPT passengers, an increase of 2.1 per cent on the year ending February 2017.

RPT revenue passenger kilometres (RPKs) performed were 5.13 billion for the month, up 4.0 per cent compared with February 2017. Capacity, measured by available seat kilometres (ASKs), increased by 0.3 per cent compared with February 2017 to a total of 6.58 billion.

With RPT passenger traffic increasing at faster rate than capacity, the industry wide load factor (RPKs/ASKs) increased from 75.3 per cent in February 2017 to 78.0 per cent in February 2018. Load factors on individual routes increased on 42 of the 64 RPT routes for which data is available for publishing in both years.

For the month of February 2018, Melbourne – Sydney remained Australia's busiest RPT route with 747 784 passengers, an increase of 4.8 per cent compared with February 2017. It was followed by Brisbane – Sydney with 365 386 passengers (up 4.5 per cent) and Brisbane – Melbourne with 249 342 passengers (up 3.7 per cent).

The greatest percentage increase in RPT passenger numbers, compared to February 2017, was on the Broome – Perth route (up 38.6 per cent). There were large increases on a number of other routes, including Brisbane – Proserpine (up 34.8 per cent), Melbourne – Sunshine Coast (up 21.0 per cent), Geraldton – Perth (up 16.7 per cent) and Darwin – Perth (up 16.3 per cent).

Routes with traffic decreases in February 2018 compared with February 2017 included Brisbane – Emerald (down 14.5 per cent), Brisbane – Hamilton Island (down 13.4 per cent), Alice Springs – Darwin (down 11.6 per cent) and Brisbane – Rockhampton (down 10.8 per cent).

In February 2018, Sydney remained Australia's busiest domestic airport with 2.14 million passenger movements, followed by Melbourne with 1.94 million passenger movements and Brisbane with 1.26 million passenger movements.

Total cargo movements at Australian airports on domestic RPT flights were 38.0 thousand tonnes in February 2018, an increase of 7.9 per cent compared with February 2017.

In February 2018, there were 1.81 million domestic passenger movements through regional airports, 4.3 per cent higher than in February 2017. Out of the top 50 regional airports, the strongest growth was at Proserpine airport (up 53.2 per cent on February 2017), while the largest decrease was at Moranbah airport (down 20.6 per cent on February 2017).

Fixed-wing charter operators carried 187.8 thousand passengers in February 2018, a decrease of 0.9 per cent on February 2017. Perth airport accounted for 37.2 per cent of all charter passengers in Australia.

TOTAL NETWORK

Summary of monthly commercial aviation activity

	Feb 2017	Feb 2018	% Change
Total passengers carried (millions)	4.54	4.72	3.9
Aircraft trips (000s)	52.5	52.1	-0.9

Note: Regular Public Transport and charter aviation activity
Helicopter, joyflights and sightseeing charter flights not included.

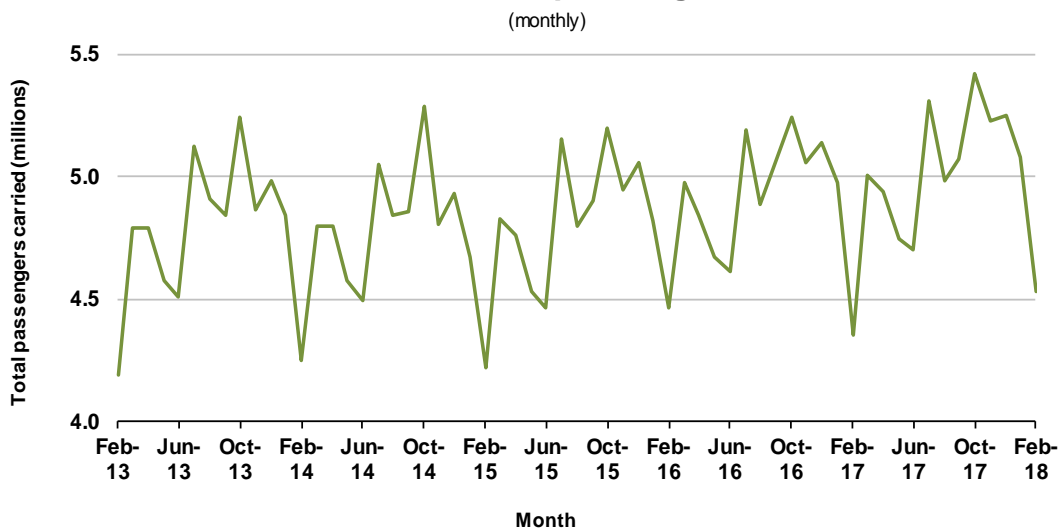
RPT NETWORK

Summary of monthly RPT activity

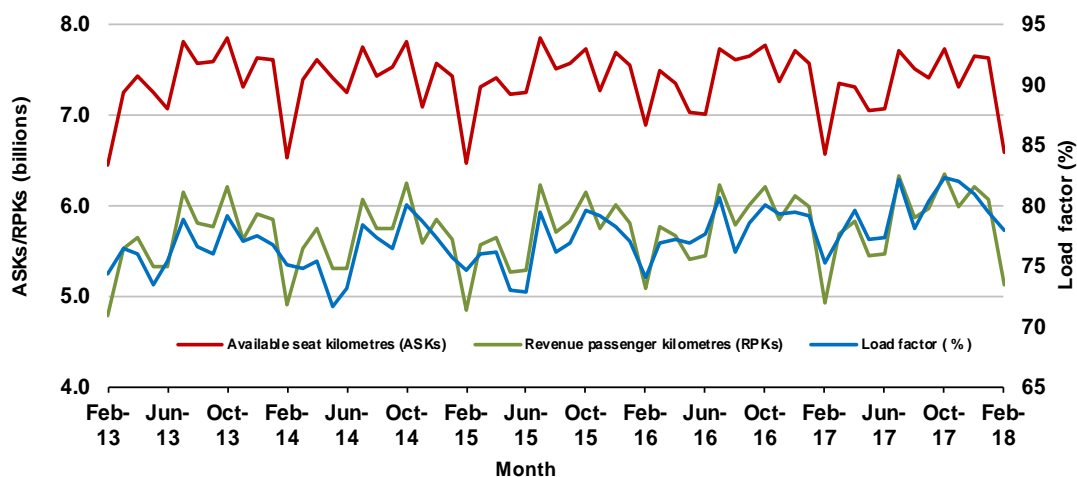
	Feb 2017	Feb 2018	% Change
Total passengers carried (millions)	4.36	4.53	4.1
Revenue passenger kilometres (billions)	4.93	5.13	4.0
Available seats (millions)	5.84	5.90	1.1
Available seat kilometres (billions)	6.56	6.58	0.3
Load factor %	75.3	78.0	2.7 *
Aircraft trips (000s)	49.0	48.6	-0.7

* percentage point difference

Domestic RPT passenger traffic



RPT Network utilisation



TOTAL NETWORK

Summary of annual commercial aviation activity

	YE Feb 2017	YE Feb 2018	% Change
Total passengers carried (millions)	61.41	62.70	2.1
Aircraft trips (000s)	686.6	684.5	-0.3

Note: Regular Public Transport and charter aviation activity
Helicopter, joyflights and sightseeing charter flights not included.

RPT NETWORK

Summary of annual RPT activity

	YE Feb 2017	YE Feb 2018	% Change
Total passengers carried (millions)	59.01	60.26	2.1
Revenue passenger kilometres (billions)	69.36	70.29	1.3
Available seats (millions)	77.21	77.28	0.1
Available seat kilometres (billions)	88.79	88.28	-0.6
Load factor %	78.1	79.6	1.5 *
Aircraft trips (000s)	642.0	638.6	-0.5

* percentage point difference

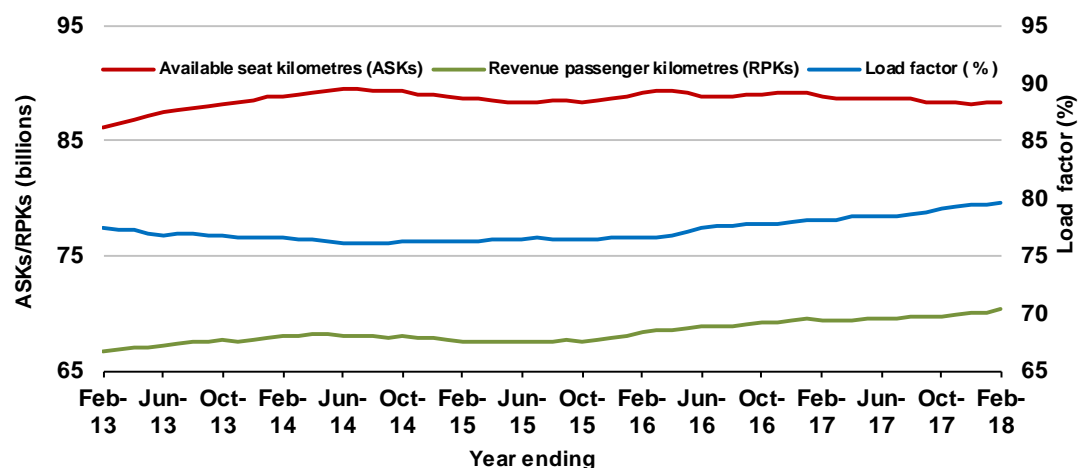
Domestic RPT passenger traffic

(moving annual totals)



RPT Network utilisation

(moving annual totals)



TOP COMPETITIVE ROUTES

Table 1: Passengers carried (000s) — annual activity

	City-Pair	YE Feb 2017	YE Feb 2018	% Change
1	Melbourne - Sydney	8 885.8	9 164.7	3.1
2	Brisbane - Sydney	4 666.2	4 754.3	1.9
3	Brisbane - Melbourne	3 487.5	3 548.1	1.7
4	Gold Coast - Sydney	2 692.4	2 750.5	2.2
5	Adelaide - Melbourne	2 400.4	2 468.2	2.8
6	Melbourne - Perth	2 062.3	2 035.3	-1.3
7	Gold Coast - Melbourne	1 970.5	2 025.2	2.8
8	Adelaide - Sydney	1 873.1	1 897.2	1.3
9	Perth - Sydney	1 747.9	1 712.1	-2.1
10	Hobart - Melbourne	1 575.3	1 631.7	3.6
11	Brisbane - Cairns	1 341.0	1 385.1	3.3
12	Canberra - Melbourne	1 037.8	1 138.2	9.7
13	Cairns - Sydney	1 117.1	1 134.8	1.6
14	Brisbane - Perth	976.5	971.4	-0.5
15	Brisbane - Townsville	972.2	966.4	-0.6
16	Canberra - Sydney	955.7	946.5	-1.0
17	Launceston - Melbourne	919.4	926.9	0.8
18	Adelaide - Brisbane	830.2	854.2	2.9
19	Cairns - Melbourne	826.2	842.0	1.9
20	Brisbane - Mackay	677.3	705.3	4.1
21	Hobart - Sydney	624.6	667.5	6.9
22	Adelaide - Perth	621.8	614.4	-1.2
23	Brisbane - Canberra	579.4	601.7	3.9
24	Sunshine Coast - Sydney	543.6	595.2	9.5
25	Brisbane - Newcastle	578.4	587.4	1.6
26	Brisbane - Rockhampton	563.2	515.7	-8.4
27	Melbourne - Sunshine Coast	451.4	499.9	10.7
28	Melbourne - Newcastle	456.9	478.5	4.7
29	Karratha - Perth	479.9	435.2	-9.3
30	Ballina - Sydney	385.7	416.0	7.9
31	Brisbane - Darwin	410.1	402.9	-1.7
32	Coffs Harbour - Sydney	339.7	346.6	2.0
33	Perth - Port Hedland	338.2	338.5	0.1
34	Broome - Perth	291.9	324.4	11.1
35	Darwin - Sydney	320.7	320.3	-0.1
36	Darwin - Melbourne	303.5	304.5	0.3
37	Newman - Perth	304.7	287.1	-5.8
38	Launceston - Sydney	292.1	284.8	-2.5
39	Brisbane - Gladstone	319.8	277.3	-13.3
40	Brisbane - Proserpine	225.7	270.0	19.6
41	Kalgoorlie - Perth	233.0	246.6	5.8
42	Albury - Sydney	223.1	224.2	0.5
43	Adelaide - Gold Coast	218.8	217.4	-0.6
44	Brisbane - Hobart	205.4	216.8	5.5
45	Melbourne - Mildura	205.8	213.8	3.9
46	Darwin - Perth	186.7	201.6	8.0
47	Brisbane - Emerald	198.5	195.4	-1.5
48	Ayers Rock - Sydney	187.7	192.8	2.7
49	Port Macquarie - Sydney	193.2	192.0	-0.6
50	Dubbo - Sydney	187.6	190.3	1.4

continued

Table 1: (continued) Passengers carried (000s) — annual activity

	City-Pair	YE Feb 2017	YE Feb 2018	% Change
51	Hamilton Island - Sydney	266.4	188.1	-29.4
52	Adelaide - Canberra	175.2	183.5	4.7
53	Sydney - Wagga Wagga	186.7	180.8	-3.2
54	Sydney - Tamworth	175.6	180.5	2.8
55	Brisbane - Bundaberg	173.9	172.2	-1.0
56	Adelaide - Port Lincoln	176.2	171.4	-2.7
57	Sydney - Townsville	157.4	161.5	2.6
58	Cairns - Townsville	139.9	142.3	1.7
59	Adelaide - Alice Springs	121.3	126.6	4.4
60	Armidale - Sydney	126.7	125.5	-1.0
61	Brisbane - Mount Isa	119.7	125.4	4.8
62	Brisbane - Hamilton Island	151.3	122.0	-19.3
63	Alice Springs - Darwin	116.2	117.1	0.7
64	Geraldton - Perth	117.6	112.9	-4.0
65	Melbourne - Townsville	..	75.2	NA (a)
66	Proserpine - Sydney	..	70.7	NA (b)
	Total domestic network	59 012.5	60 261.6	2.1

(a) Melbourne - Townsville route included from September 2017, prior data not shown.

(b) Proserpine - Sydney route included from September 2017, prior data not shown.

Table 2: Passengers carried (000s) — monthly activity

	City-Pair	Feb 2017	Feb 2018	% Change
1	Melbourne - Sydney	713.5	747.8	4.8
2	Brisbane - Sydney	349.7	365.4	4.5
3	Brisbane - Melbourne	240.5	249.3	3.7
4	Gold Coast - Sydney	207.4	210.8	1.7
5	Adelaide - Melbourne	182.5	191.0	4.6
6	Melbourne - Perth	145.1	148.6	2.4
7	Adelaide - Sydney	144.4	146.2	1.2
8	Hobart - Melbourne	136.0	139.3	2.4
9	Gold Coast - Melbourne	134.8	138.4	2.7
10	Perth - Sydney	128.2	128.2	0.0
11	Brisbane - Cairns	93.6	102.3	9.2
12	Canberra - Melbourne	86.9	88.7	2.1
13	Cairns - Sydney	78.1	86.3	10.6
14	Launceston - Melbourne	76.1	77.0	1.2
15	Canberra - Sydney	75.1	75.3	0.3
16	Brisbane - Perth	67.5	70.3	4.1
17	Brisbane - Townsville	62.8	65.5	4.2
18	Adelaide - Brisbane	56.9	60.6	6.5
19	Hobart - Sydney	52.5	59.5	13.4
20	Brisbane - Mackay	49.1	51.3	4.5
21	Cairns - Melbourne	47.7	50.1	5.2
22	Adelaide - Perth	47.4	47.7	0.7
23	Brisbane - Canberra	39.6	43.3	9.5
24	Sunshine Coast - Sydney	38.8	43.1	11.1
25	Brisbane - Newcastle	43.1	42.7	-1.0
26	Brisbane - Rockhampton	39.9	35.6	-10.8
27	Melbourne - Newcastle	32.4	35.0	8.0
28	Melbourne - Sunshine Coast	27.9	33.8	21.0
29	Ballina - Sydney	29.0	33.1	14.4
30	Karratha - Perth	33.1	32.3	-2.3
31	Coffs Harbour - Sydney	25.8	26.0	0.8
32	Perth - Port Hedland	24.8	25.5	2.9
33	Launceston - Sydney	26.7	24.9	-6.5
34	Newman - Perth	22.6	23.3	3.2
35	Brisbane - Darwin	24.3	23.3	-4.5
36	Brisbane - Proserpine	15.8	21.3	34.8
37	Kalgoorlie - Perth	17.8	19.9	11.8
38	Broome - Perth	14.1	19.5	38.6
39	Brisbane - Gladstone	20.9	18.6	-10.7
40	Darwin - Melbourne	18.5	17.2	-6.7
41	Brisbane - Hobart	16.9	16.6	-1.8
42	Hamilton Island - Sydney	17.9	16.4	-8.6
43	Melbourne - Mildura	15.4	16.1	4.7
44	Darwin - Sydney	16.8	15.6	-6.9
45	Adelaide - Gold Coast	15.5	15.4	-0.5
46	Albury - Sydney	15.2	15.1	-0.6
47	Ayers Rock - Sydney	13.9	14.7	5.3
48	Adelaide - Canberra	13.3	14.5	8.8
49	Dubbo - Sydney	14.2	14.0	-1.1
50	Port Macquarie - Sydney	14.4	14.0	-2.7

continued

Table 2: (continued) Passengers carried (000s) — monthly activity

	City-Pair	Feb 2017	Feb 2018	% Change
51	Adelaide - Port Lincoln	13.8	13.7	-0.9
52	Darwin - Perth	11.6	13.5	16.3
53	Sydney - Wagga Wagga	13.9	12.9	-7.1
54	Sydney - Tamworth	12.9	12.6	-2.8
55	Brisbane - Emerald	14.6	12.5	-14.5
56	Brisbane - Bundaberg	12.6	12.0	-5.1
57	Cairns - Townsville	10.4	11.0	5.6
58	Proserpine - Sydney	..	10.8	NA (a)
59	Brisbane - Hamilton Island	12.4	10.8	-13.4
60	Geraldton - Perth	8.8	10.2	16.7
61	Adelaide - Alice Springs	8.1	9.2	13.1
62	Armidale - Sydney	9.2	9.2	-0.7
63	Sydney - Townsville	8.4	8.7	3.6
64	Brisbane - Mount Isa	8.5	8.7	2.3
65	Melbourne - Townsville	..	8.1	NA (b)
66	Alice Springs - Darwin	7.2	6.4	-11.6
	Total domestic network	4 355.3	4 534.0	4.1

(a) Proserpine - Sydney route included from September 2017, prior data not shown.

(b) Melbourne - Townsville route included from September 2017, prior data not shown.

Table 3: Available seats (000s) — monthly activity

	City-Pair	Feb 2017	Feb 2018	% Change
1	Melbourne - Sydney	852.0	859.6	0.9
2	Brisbane - Sydney	443.7	445.1	0.3
3	Brisbane - Melbourne	319.6	327.4	2.4
4	Gold Coast - Sydney	235.7	236.0	0.2
5	Adelaide - Melbourne	231.3	243.7	5.3
6	Melbourne - Perth	189.2	176.8	-6.5
7	Adelaide - Sydney	183.7	180.9	-1.5
8	Hobart - Melbourne	160.9	170.5	6.0
9	Gold Coast - Melbourne	155.8	156.0	0.1
10	Perth - Sydney	165.0	156.2	-5.4
11	Brisbane - Cairns	111.3	115.7	3.9
12	Canberra - Melbourne	135.8	141.3	4.1
13	Cairns - Sydney	95.4	97.8	2.5
14	Launceston - Melbourne	94.4	96.6	2.3
15	Canberra - Sydney	109.2	111.5	2.2
16	Brisbane - Perth	89.0	91.8	3.2
17	Brisbane - Townsville	89.1	94.4	5.9
18	Adelaide - Brisbane	82.2	85.1	3.5
19	Hobart - Sydney	58.8	71.6	21.7
20	Brisbane - Mackay	67.5	69.4	2.9
21	Cairns - Melbourne	59.7	58.2	-2.6
22	Adelaide - Perth	68.5	64.1	-6.4
23	Brisbane - Canberra	69.8	66.1	-5.3
24	Sunshine Coast - Sydney	49.4	53.4	8.0
25	Brisbane - Newcastle	61.0	61.2	0.3
26	Brisbane - Rockhampton	56.0	46.9	-16.2
27	Melbourne - Newcastle	40.8	39.7	-2.6
28	Melbourne - Sunshine Coast	33.9	43.6	28.7
29	Ballina - Sydney	36.4	40.1	10.1
30	Karratha - Perth	55.6	53.2	-4.3
31	Coffs Harbour - Sydney	37.7	38.9	3.2
32	Perth - Port Hedland	40.8	41.2	1.0
33	Launceston - Sydney	29.9	28.6	-4.2
34	Newman - Perth	42.0	41.5	-1.3
35	Brisbane - Darwin	35.5	31.2	-12.1
36	Brisbane - Proserpine	18.2	25.4	39.1
37	Kalgoorlie - Perth	31.1	34.6	11.2
38	Broome - Perth	26.0	28.8	10.7
39	Brisbane - Gladstone	30.5	28.1	-7.8
40	Darwin - Melbourne	26.0	25.2	-2.8
41	Brisbane - Hobart	19.8	19.8	0.3
42	Hamilton Island - Sydney	20.8	20.7	-0.6
43	Melbourne - Mildura	25.7	26.8	4.6
44	Darwin - Sydney	28.1	26.3	-6.5
45	Adelaide - Gold Coast	19.8	19.8	0.1
46	Albury - Sydney	26.7	22.9	-14.5
47	Ayers Rock - Sydney	18.3	18.6	1.6
48	Adelaide - Canberra	22.0	23.8	8.2
49	Dubbo - Sydney	22.3	20.0	-10.4
50	Port Macquarie - Sydney	19.5	17.7	-9.0

continued

Table 3: (continued) Available seats (000s) — monthly activity

	City-Pair	Feb 2017	Feb 2018	% Change
51	Adelaide - Port Lincoln	22.5	21.8	-3.4
52	Darwin - Perth	18.7	19.3	3.3
53	Sydney - Wagga Wagga	22.8	20.1	-12.0
54	Sydney - Tamworth	21.8	19.8	-9.1
55	Brisbane - Emerald	26.7	18.4	-31.2
56	Brisbane - Bundaberg	18.0	18.4	2.5
57	Cairns - Townsville	22.0	19.8	-10.0
58	Proserpine - Sydney	..	13.0	NA (a)
59	Brisbane - Hamilton Island	15.1	13.1	-13.1
60	Geraldton - Perth	18.2	20.4	12.3
61	Adelaide - Alice Springs	13.8	13.8	-0.4
62	Armidale - Sydney	14.5	13.4	-7.8
63	Sydney - Townsville	12.9	12.7	-1.3
64	Brisbane - Mount Isa	14.5	13.3	-8.3
65	Melbourne - Townsville	..	11.5	NA (b)
66	Alice Springs - Darwin	13.6	13.9	2.1
	Total domestic network	5 836.6	5 900.6	1.1

(a) Proserpine - Sydney route included from September 2017, prior data not shown.

(b) Melbourne - Townsville route included from September 2017, prior data not shown.

Table 4: Load factors (%) — monthly activity

	City-Pair	Feb 2017	Feb 2018	% Point diff
1	Melbourne - Sydney	83.7	87.0	3.3
2	Brisbane - Sydney	78.8	82.1	3.3
3	Brisbane - Melbourne	75.2	76.2	1.0
4	Gold Coast - Sydney	88.0	89.3	1.3
5	Adelaide - Melbourne	78.9	78.4	-0.5
6	Melbourne - Perth	76.7	84.1	7.4
7	Adelaide - Sydney	78.6	80.8	2.2
8	Hobart - Melbourne	84.6	81.7	-2.9
9	Gold Coast - Melbourne	86.5	88.8	2.3
10	Perth - Sydney	77.7	82.1	4.4
11	Brisbane - Cairns	84.1	88.4	4.3
12	Canberra - Melbourne	64.0	62.8	-1.2
13	Cairns - Sydney	81.8	88.3	6.5
14	Launceston - Melbourne	80.6	79.8	-0.8
15	Canberra - Sydney	68.8	67.5	-1.3
16	Brisbane - Perth	75.9	76.6	0.7
17	Brisbane - Townsville	70.5	69.4	-1.1
18	Adelaide - Brisbane	69.2	71.2	2.0
19	Hobart - Sydney	89.2	83.1	-6.1
20	Brisbane - Mackay	72.8	73.9	1.1
21	Cairns - Melbourne	79.9	86.2	6.3
22	Adelaide - Perth	69.3	74.5	5.2
23	Brisbane - Canberra	56.8	65.6	8.8
24	Sunshine Coast - Sydney	78.5	80.8	2.3
25	Brisbane - Newcastle	70.8	69.8	-1.0
26	Brisbane - Rockhampton	71.2	75.8	4.6
27	Melbourne - Newcastle	79.4	88.1	8.7
28	Melbourne - Sunshine Coast	82.5	77.6	-4.9
29	Ballina - Sydney	79.6	82.7	3.1
30	Karratha - Perth	59.5	60.8	1.3
31	Coffs Harbour - Sydney	68.4	66.7	-1.7
32	Perth - Port Hedland	61.4	62.0	0.6
33	Launceston - Sydney	89.3	87.1	-2.2
34	Newman - Perth	53.7	56.2	2.5
35	Brisbane - Darwin	68.6	74.6	6.0
36	Brisbane - Proserpine	86.8	84.2	-2.6
37	Kalgoorlie - Perth	57.0	57.3	0.3
38	Broome - Perth	54.2	67.9	13.7
39	Brisbane - Gladstone	68.4	66.3	-2.1
40	Darwin - Melbourne	71.2	68.4	-2.8
41	Brisbane - Hobart	85.4	83.6	-1.8
42	Hamilton Island - Sydney	85.9	78.9	-7.0
43	Melbourne - Mildura	60.0	60.0	0.0
44	Darwin - Sydney	59.6	59.3	-0.3
45	Adelaide - Gold Coast	78.1	77.7	-0.4
46	Albury - Sydney	56.9	66.1	9.2
47	Ayers Rock - Sydney	76.3	79.1	2.8
48	Adelaide - Canberra	60.5	60.9	0.4
49	Dubbo - Sydney	63.4	70.0	6.6
50	Port Macquarie - Sydney	73.8	78.9	5.1

continued

Table 4: (continued) Load factors (%) — monthly activity

	City-Pair	Feb 2017	Feb 2018	% Point diff
51	Adelaide - Port Lincoln	61.3	62.8	1.5
52	Darwin - Perth	62.3	70.1	7.8
53	Sydney - Wagga Wagga	60.8	64.2	3.4
54	Sydney - Tamworth	59.3	63.4	4.1
55	Brisbane - Emerald	54.8	68.1	13.3
56	Brisbane - Bundaberg	70.1	64.9	-5.2
57	Cairns - Townsville	47.4	55.7	8.3
58	Proserpine - Sydney	..	83.6	NA (a)
59	Brisbane - Hamilton Island	82.5	82.2	-0.3
60	Geraldton - Perth	49.3	50.0	0.7
61	Adelaide - Alice Springs	58.8	66.8	8.0
62	Armidale - Sydney	63.5	68.4	4.9
63	Sydney - Townsville	65.1	68.4	3.3
64	Brisbane - Mount Isa	58.5	65.3	6.8
65	Melbourne - Townsville	..	70.2	NA (b)
66	Alice Springs - Darwin	53.2	46.0	-7.2
	Total domestic network	75.3	78.0	2.7

(a) Proserpine - Sydney route included from September 2017, prior data not shown.

(b) Melbourne - Townsville route included from September 2017, prior data not shown.

Table 5: Aircraft trips ^(a) — monthly activity

	City-Pair	Feb 2017	Feb 2018	% Change
1	Melbourne - Sydney	4 762	4 762	0.0
2	Brisbane - Sydney	2 759	2 712	-1.7
3	Brisbane - Melbourne	1 889	1 942	2.8
4	Gold Coast - Sydney	1 383	1 329	-3.9
5	Adelaide - Melbourne	1 488	1 523	2.4
6	Melbourne - Perth	869	828	-4.7
7	Adelaide - Sydney	1 104	1 086	-1.6
8	Hobart - Melbourne	991	990	-0.1
9	Gold Coast - Melbourne	840	833	-0.8
10	Perth - Sydney	688	683	-0.7
11	Brisbane - Cairns	707	720	1.8
12	Canberra - Melbourne	910	933	2.5
13	Cairns - Sydney	534	540	1.1
14	Launceston - Melbourne	724	733	1.2
15	Canberra - Sydney	1 361	1 294	-4.9
16	Brisbane - Perth	442	464	5.0
17	Brisbane - Townsville	679	667	-1.8
18	Adelaide - Brisbane	502	505	0.6
19	Hobart - Sydney	360	392	8.9
20	Brisbane - Mackay	563	537	-4.6
21	Cairns - Melbourne	321	296	-7.8
22	Adelaide - Perth	440	437	-0.7
23	Brisbane - Canberra	462	472	2.2
24	Sunshine Coast - Sydney	301	323	7.3
25	Brisbane - Newcastle	474	411	-13.3
26	Brisbane - Rockhampton	704	566	-19.6
27	Melbourne - Newcastle	229	223	-2.6
28	Melbourne - Sunshine Coast	191	246	28.8
29	Ballina - Sydney	240	258	7.5
30	Karratha - Perth	491	468	-4.7
31	Coffs Harbour - Sydney	411	393	-4.4
32	Perth - Port Hedland	332	340	2.4
33	Launceston - Sydney	172	164	-4.7
34	Newman - Perth	307	308	0.3
35	Brisbane - Darwin	222	197	-11.3
36	Brisbane - Proserpine	104	142	36.5
37	Kalgoorlie - Perth	261	274	5.0
38	Broome - Perth	229	261	14.0
39	Brisbane - Gladstone	408	369	-9.6
40	Darwin - Melbourne	148	144	-2.7
41	Brisbane - Hobart	112	112	0.0
42	Hamilton Island - Sydney	127	126	-0.8
43	Melbourne - Mildura	376	373	-0.8
44	Darwin - Sydney	167	158	-5.4
45	Adelaide - Gold Coast	112	112	0.0
46	Albury - Sydney	490	416	-15.1
47	Ayers Rock - Sydney	104	104	0.0
48	Adelaide - Canberra	142	140	-1.4
49	Dubbo - Sydney	497	433	-12.9
50	Port Macquarie - Sydney	343	307	-10.5

continued

Table 5: (continued) Aircraft trips ^(a) — monthly activity

	City-Pair	Feb 2017	Feb 2018	% Change
51	Adelaide - Port Lincoln	582	560	-3.8
52	Darwin - Perth	116	116	0.0
53	Sydney - Wagga Wagga	441	381	-13.6
54	Sydney - Tamworth	346	312	-9.8
55	Brisbane - Emerald	352	245	-30.4
56	Brisbane - Bundaberg	294	258	-12.2
57	Cairns - Townsville	372	334	-10.2
58	Proserpine - Sydney	..	72	NA (b)
59	Brisbane - Hamilton Island	128	102	-20.3
60	Geraldton - Perth	182	214	17.6
61	Adelaide - Alice Springs	88	102	15.9
62	Armidale - Sydney	360	325	-9.7
63	Sydney - Townsville	96	74	-22.9
64	Brisbane - Mount Isa	144	142	-1.4
65	Melbourne - Townsville	..	64	NA (c)
66	Alice Springs - Darwin	111	126	13.5
	Total domestic network	48 965	48 634	-0.7

(a) Includes RPT Cargo flights.

(b) Proserpine - Sydney route included from September 2017, prior data not shown.

(c) Melbourne - Townsville route included from September 2017, prior data not shown.

TOP TEN AIRPORTS – PASSENGER MOVEMENTS

Table 6: Top ten airports, RPT passenger movements (000s) - annual activity

Airport	YE Feb 2017	YE Feb 2018	% Change	% of Total
1 Sydney	26 926.2	27 446.9	1.9	22.8
2 Melbourne	24 809.6	25 466.2	2.6	21.1
3 Brisbane	17 070.5	17 332.5	1.5	14.4
4 Perth	8 092.7	8 020.2	-0.9	6.7
5 Adelaide	7 015.0	7 189.6	2.5	6.0
6 Gold Coast	5 317.7	5 461.0	2.7	4.5
7 Cairns	4 246.9	4 330.0	2.0	3.6
8 Canberra	2 899.8	3 038.2	4.8	2.5
9 Hobart	2 405.4	2 544.3	5.8	2.1
10 Darwin	1 812.5	1 795.5	-0.9	1.5
Total top ten airports	100 596.3	102 624.6	2.0	85.1
Total domestic network	118 025.0	120 523.2	2.1	100.0

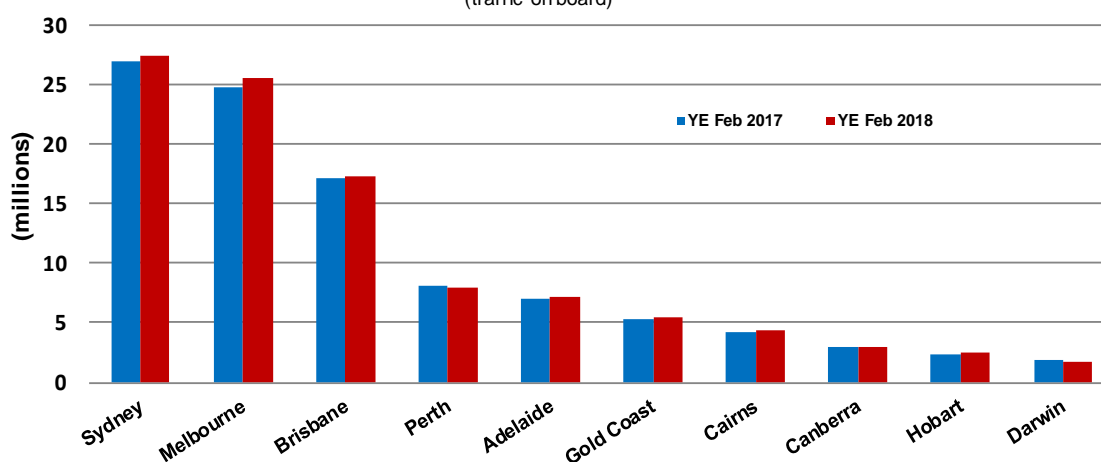
Table 7: Top ten airports, RPT passenger movements (000s) - monthly activity

Airport	Feb 2017	Feb 2018	% Change	% of Total
1 Sydney	2 060.6	2 142.6	4.0	23.6
2 Melbourne	1 866.8	1 935.6	3.7	21.3
3 Brisbane	1 215.1	1 259.5	3.7	13.9
4 Perth	569.8	589.0	3.4	6.5
5 Adelaide	524.2	547.4	4.4	6.0
6 Gold Coast	387.5	401.5	3.6	4.4
7 Cairns	281.5	304.3	8.1	3.4
8 Canberra	226.2	234.4	3.6	2.6
9 Hobart	205.4	223.0	8.6	2.5
10 Launceston	114.3	114.0	-0.3	1.3
Total top ten airports	7 451.4	7 751.3	4.0	85.5
Total domestic network	8 710.6	9 068.1	4.1	100.0

Note: Airport passenger movement numbers are the sum of passenger arrivals and departures at each airport. This table has been amended since the initial release of the February publication.

Top ten airports, RPT passenger movements

(traffic on board)



TOP FIVE AIRPORTS – CARGO MOVEMENTS

Table 8: Top five airports, domestic RPT cargo movements (000s tonnes) - annual activity

Airport	YE Feb 2017	YE Feb 2018	% Change	% of Total
1 Melbourne	124.8	133.3	6.8	29.0
2 Sydney	104.6	106.6	1.9	23.2
3 Brisbane	66.6	67.7	1.6	14.7
4 Perth	59.8	65.4	9.3	14.2
5 Adelaide	24.8	27.1	9.2	5.9
Total top five airports	380.7	400.1	5.1	87.1
Total domestic network	438.3	459.4	4.8	100.0

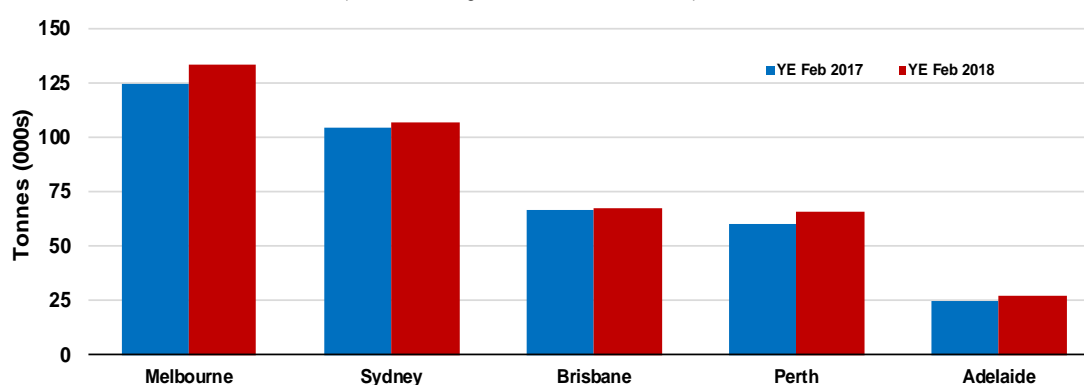
Table 9: Top five airports, domestic RPT cargo movements (000s tonnes) - monthly activity

Airport	Feb 2017	Feb 2018	% Change	% of Total
1 Melbourne	10.1	11.0	8.8	29.0
2 Sydney	8.6	8.6	1.1	22.7
3 Brisbane	5.0	5.6	12.4	14.8
4 Perth	4.8	5.3	11.5	14.0
5 Adelaide	2.2	2.2	1.0	5.9
Total top five airports	30.7	32.9	7.1	86.4
Total domestic network	35.2	38.0	7.9	100.0

Note: Airport cargo tonnes are the sum of cargo tonnes on arrivals and departures at each airport.

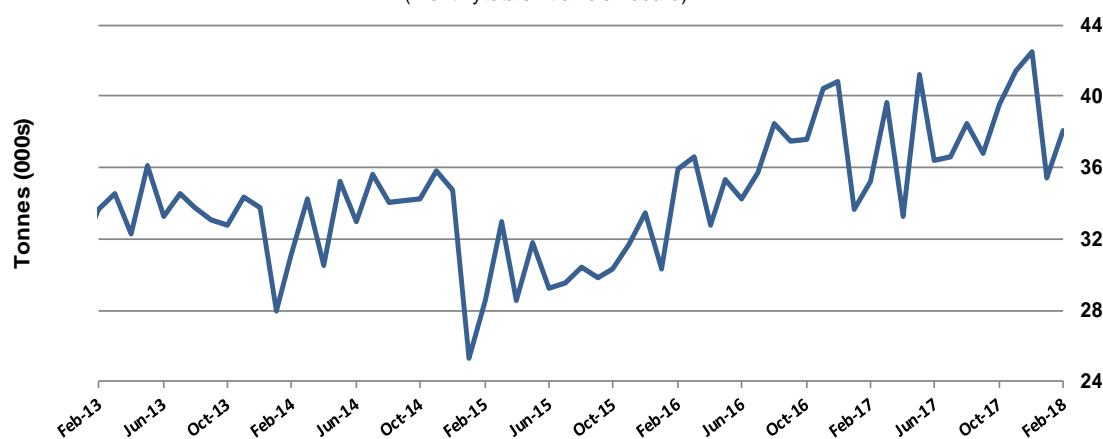
Top five airports, cargo movements

(Domestic cargo traffic - traffic on board)



Total domestic network - cargo movement

(monthly totals - traffic on board)



Note: Airport cargo tonnes are the sum of cargo tonnes on arrivals and departures at each airport.

TOP TEN ROUTES

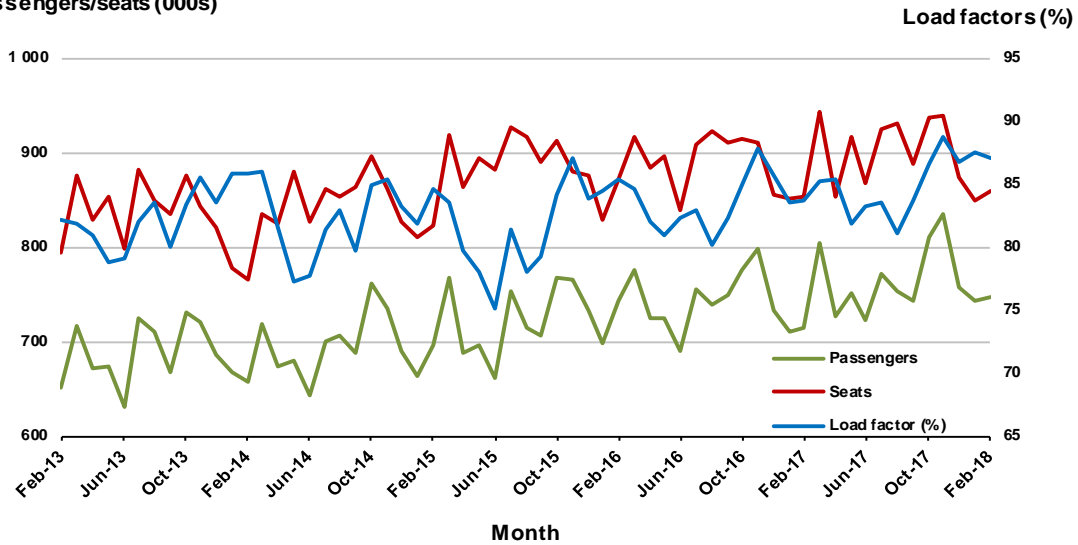
1. Melbourne - Sydney

Monthly data

	Feb 2017	Feb 2018	% Change
Passengers carried (000s)	713.5	747.8	4.8
Seats (000s)	852.0	859.6	0.9
Load factor %	83.7	87.0	3.3 *
Aircraft trips	4 762	4 762	0.0

* percentage point difference

Passengers/seats (000s)

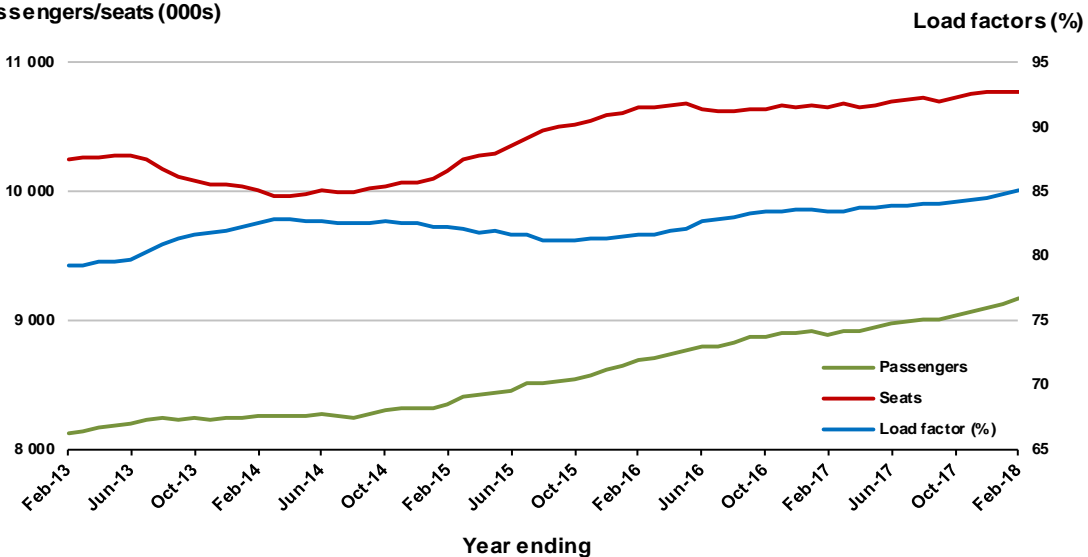


Moving annual data

	YE Feb 2017	YE Feb 2018	% Change
Passengers carried (000s)	8 885.8	9 164.7	3.1
Seats (000s)	10 655.3	10 779.2	1.2
Load factor %	83.4	85.0	1.6 *
Aircraft trips	59 233	60 092	1.5

* percentage point difference

Passengers/seats (000s)

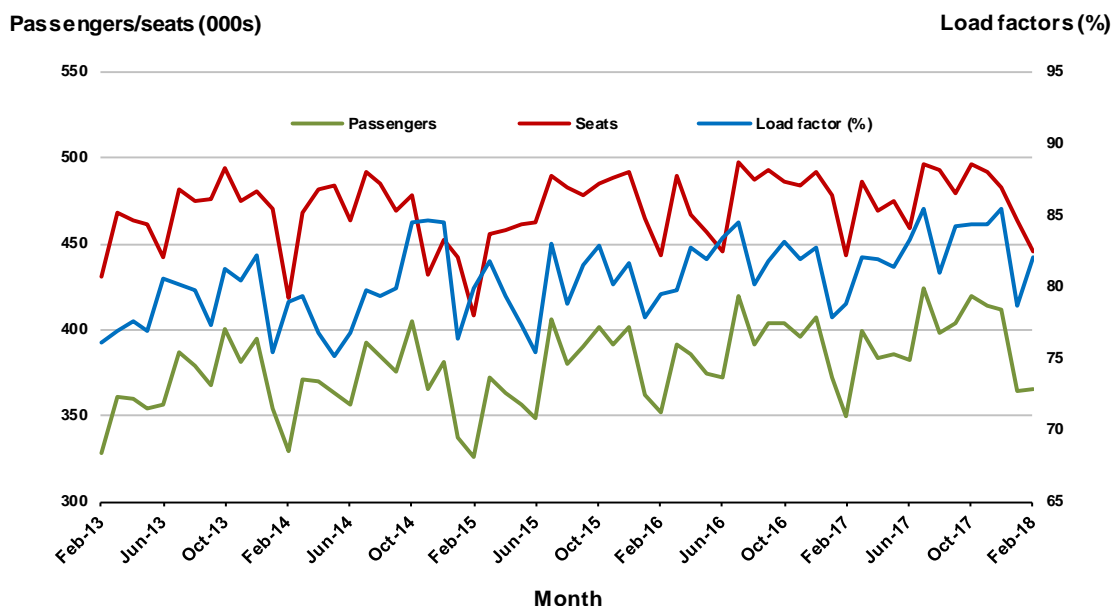


2. Brisbane - Sydney

Monthly data

	Feb 2017	Feb 2018	% Change
Passengers carried (000s)	349.7	365.4	4.5
Seats (000s)	443.7	445.1	0.3
Load factor %	78.8	82.1	3.3 *
Aircraft trips	2 759	2 712	-1.7

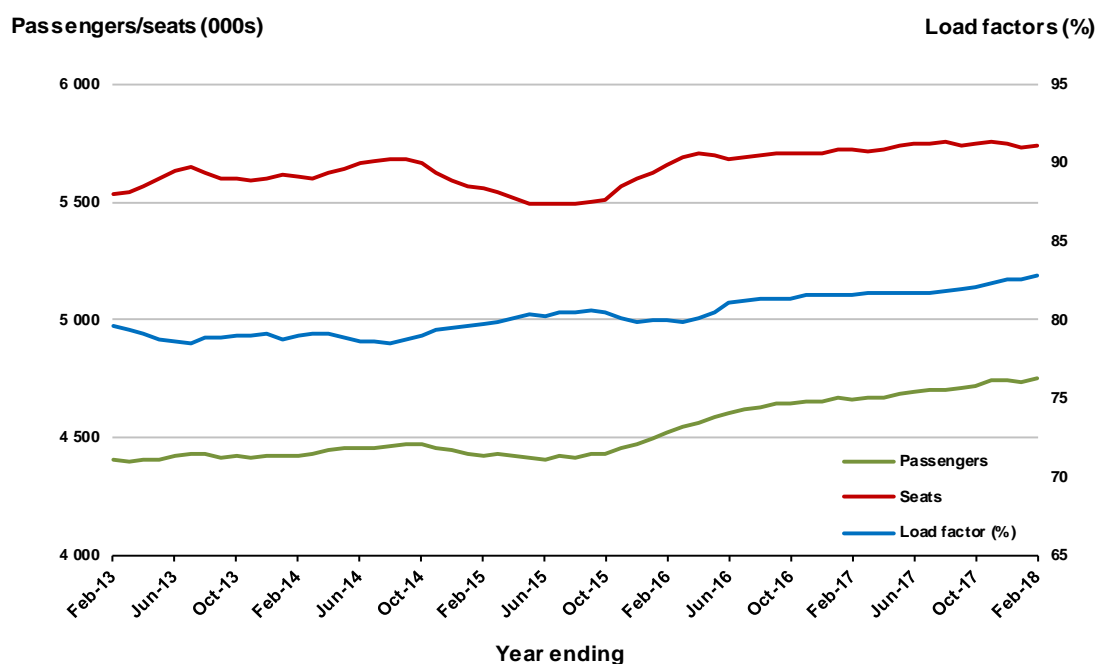
* percentage point difference



Moving annual data

	YE Feb 2017	YE Feb 2018	% Change
Passengers carried (000s)	4 666.2	4 754.3	1.9
Seats (000s)	5 720.7	5 735.7	0.3
Load factor %	81.6	82.9	1.3 *
Aircraft trips	35 450	35 230	-0.6

* percentage point difference

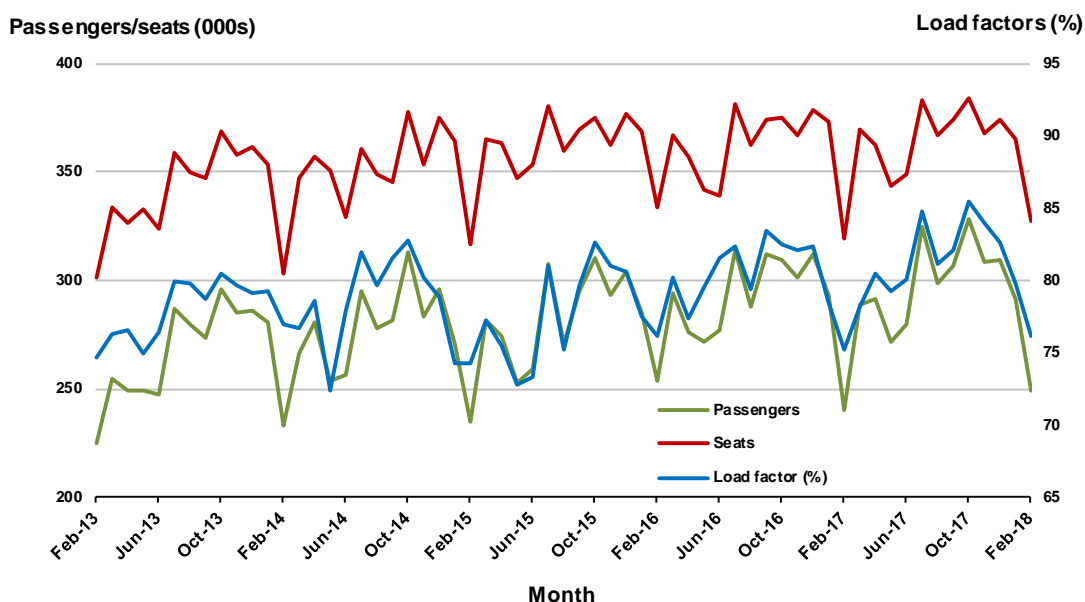


3. Brisbane - Melbourne

Monthly data

	Feb 2017	Feb 2018	% Change
Passengers carried (000s)	240.5	249.3	3.7
Seats (000s)	319.6	327.4	2.4
Load factor %	75.2	76.2	1.0 *
Aircraft trips	1 889	1 942	2.8

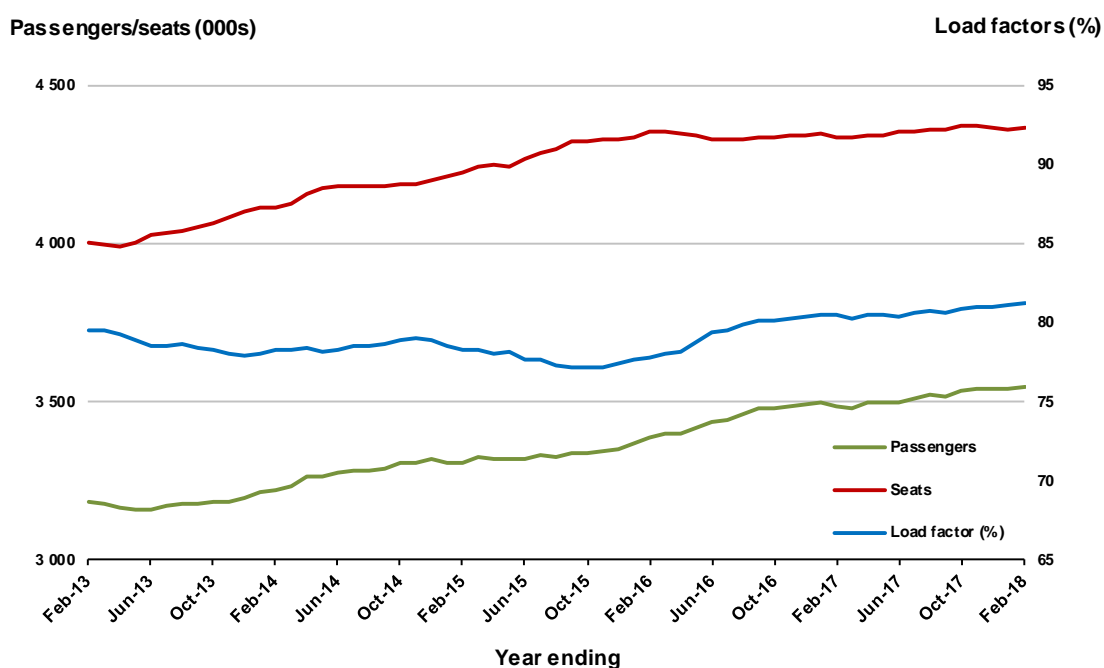
* percentage point difference



Moving annual data

	YE Feb 2017	YE Feb 2018	% Change
Passengers carried (000s)	3 487.5	3 548.1	1.7
Seats (000s)	4 334.3	4 367.0	0.8
Load factor %	80.5	81.2	0.8 *
Aircraft trips	25 802	25 816	0.1

* percentage point difference



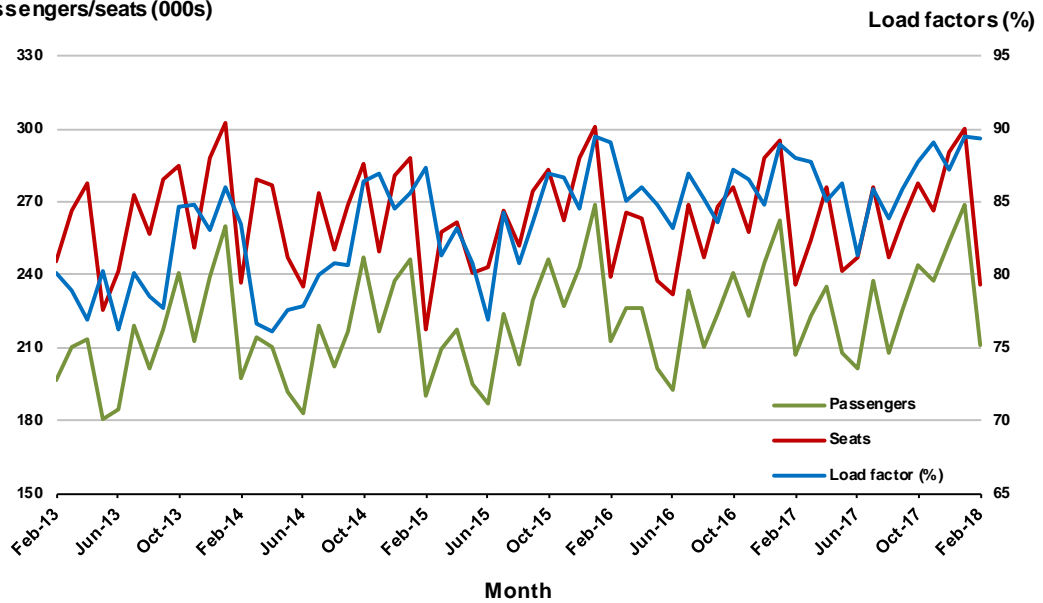
4. Gold Coast - Sydney

Monthly data

	Feb 2017	Feb 2018	% Change
Passengers carried (000s)	207.4	210.8	1.7
Seats (000s)	235.7	236.0	0.2
Load factor %	88.0	89.3	1.3 *
Aircraft trips	1 383	1 329	-3.9

* percentage point difference

Passengers/seats (000s)

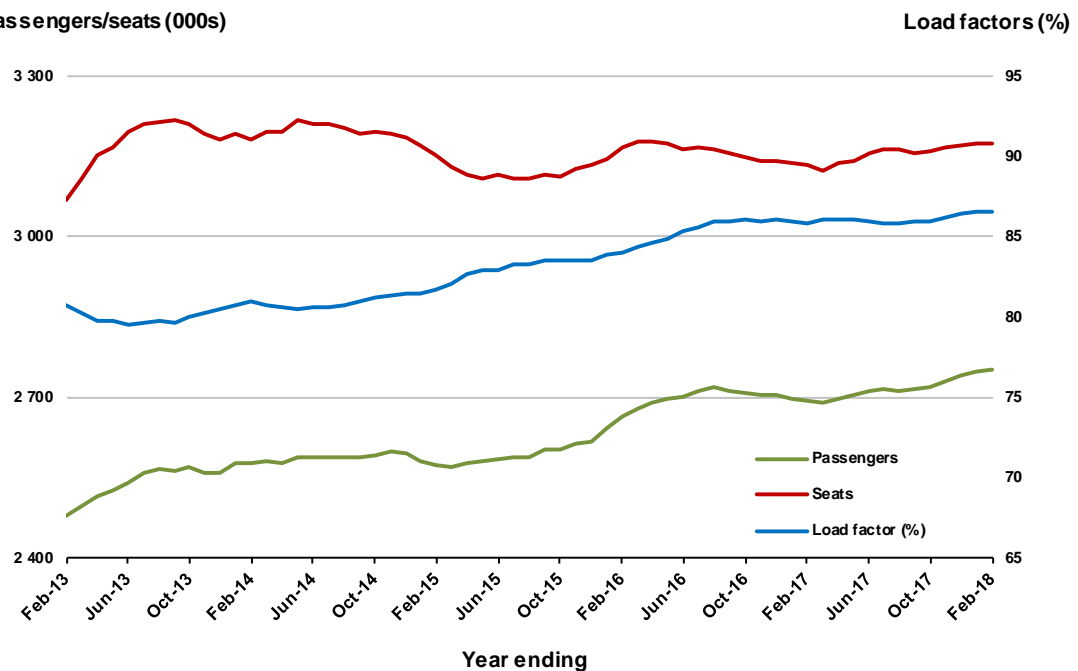


Moving annual data

	YE Feb 2017	YE Feb 2018	% Change
Passengers carried (000s)	2 692.4	2 750.5	2.2
Seats (000s)	3 134.6	3 175.8	1.3
Load factor %	85.9	86.6	0.7 *
Aircraft trips	18 312	17 983	-1.8

* percentage point difference

Passengers/seats (000s)



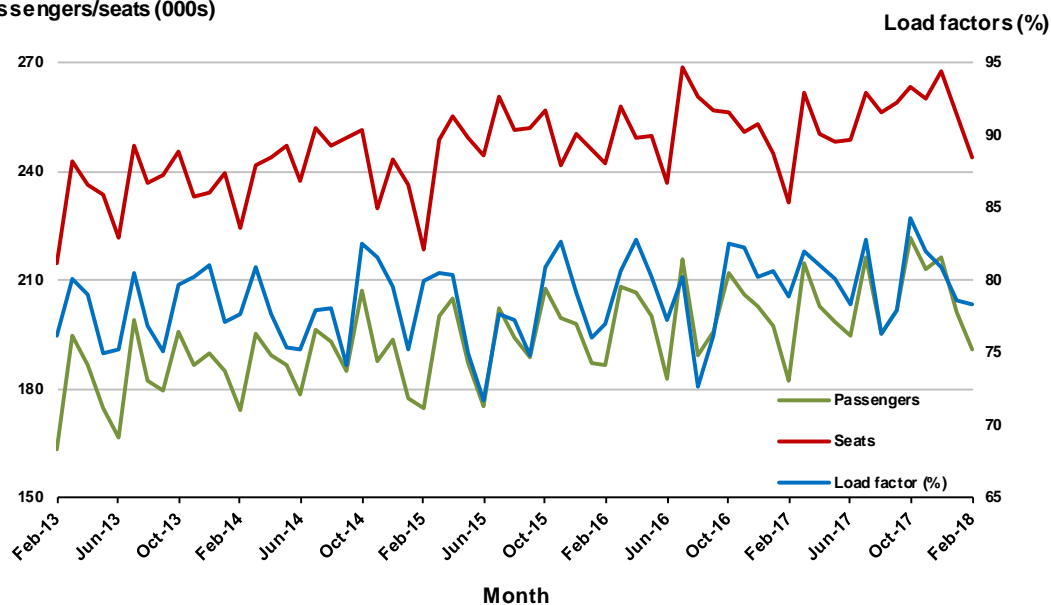
5. Adelaide - Melbourne

Monthly data

	Feb 2017	Feb 2018	% Change
Passengers carried (000s)	182.5	191.0	4.6
Seats (000s)	231.3	243.7	5.3
Load factor %	78.9	78.4	-0.5 *
Aircraft trips	1 488	1 523	2.4

* percentage point difference

Passengers/seats (000s)

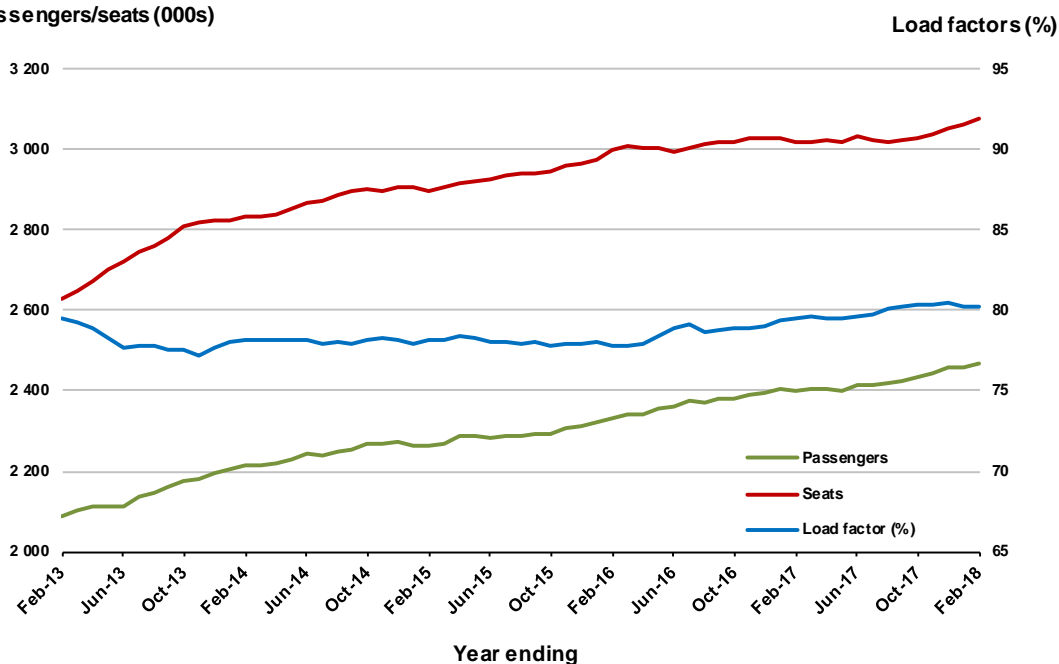


Moving annual data

	YE Feb 2017	YE Feb 2018	% Change
Passengers carried (000s)	2 400.4	2 468.2	2.8
Seats (000s)	3 017.2	3 076.1	2.0
Load factor %	79.6	80.2	0.7 *
Aircraft trips	19 252	19 209	-0.2

* percentage point difference

Passengers/seats (000s)



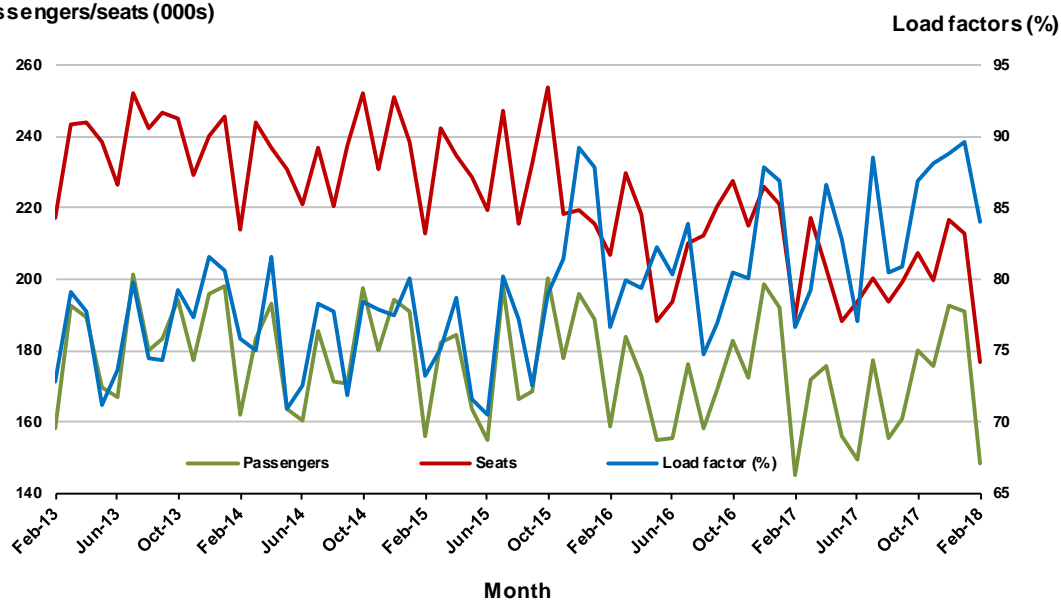
6. Melbourne - Perth

Monthly data

	Feb 2017	Feb 2018	% Change
Passengers carried (000s)	145.1	148.6	2.4
Seats (000s)	189.2	176.8	-6.5
Load factor %	76.7	84.1	7.4 *
Aircraft trips	869	828	-4.7

* percentage point difference

Passengers/seats (000s)

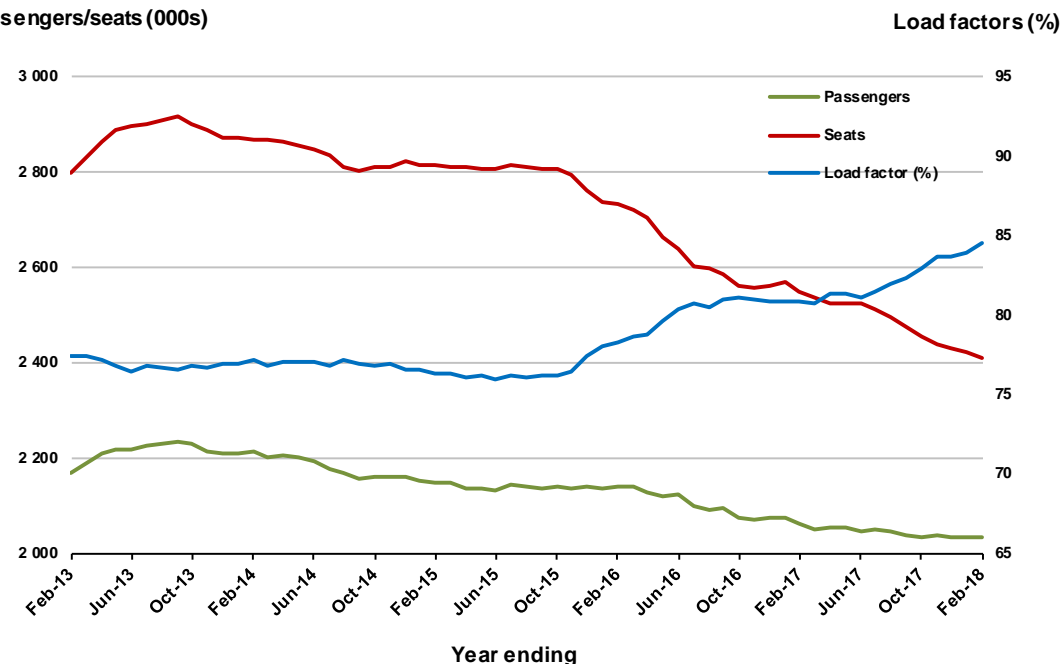


Moving annual data

	YE Feb 2017	YE Feb 2018	% Change
Passengers carried (000s)	2 062.3	2 035.3	-1.3
Seats (000s)	2 551.1	2 408.5	-5.6
Load factor %	80.8	84.5	3.7 *
Aircraft trips	11 538	11 070	-4.1

* percentage point difference

Passengers/seats (000s)



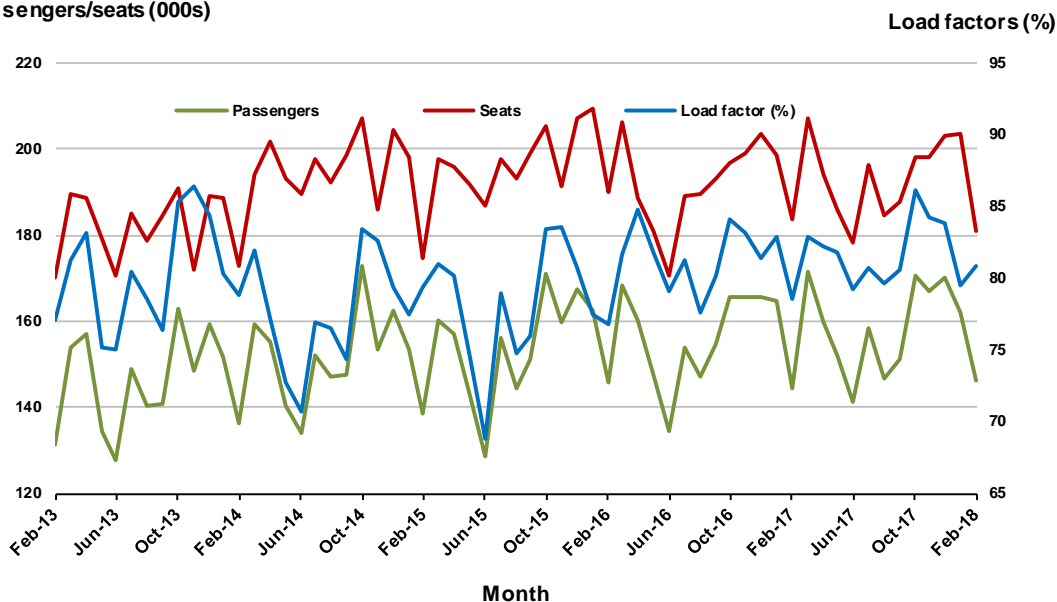
7. Adelaide - Sydney

Monthly data

	Feb 2017	Feb 2018	% Change
Passengers carried (000s)	144.4	146.2	1.2
Seats (000s)	183.7	180.9	-1.5
Load factor %	78.6	80.8	2.2 *
Aircraft trips	1 104	1 086	-1.6

* percentage point difference

Passengers/seats (000s)

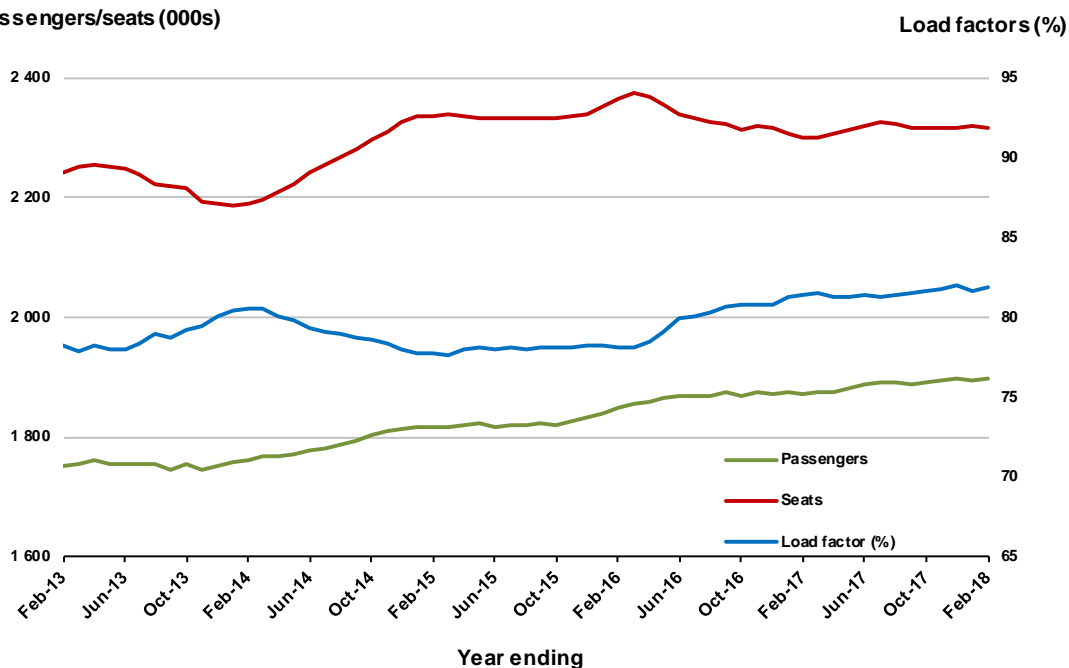


Moving annual data

	YE Feb 2017	YE Feb 2018	% Change
Passengers carried (000s)	1 873.1	1 897.2	1.3
Seats (000s)	2 300.2	2 317.8	0.8
Load factor %	81.4	81.9	0.4 *
Aircraft trips	14 006	13 929	-0.5

* percentage point difference

Passengers/seats (000s)



8. Hobart - Melbourne

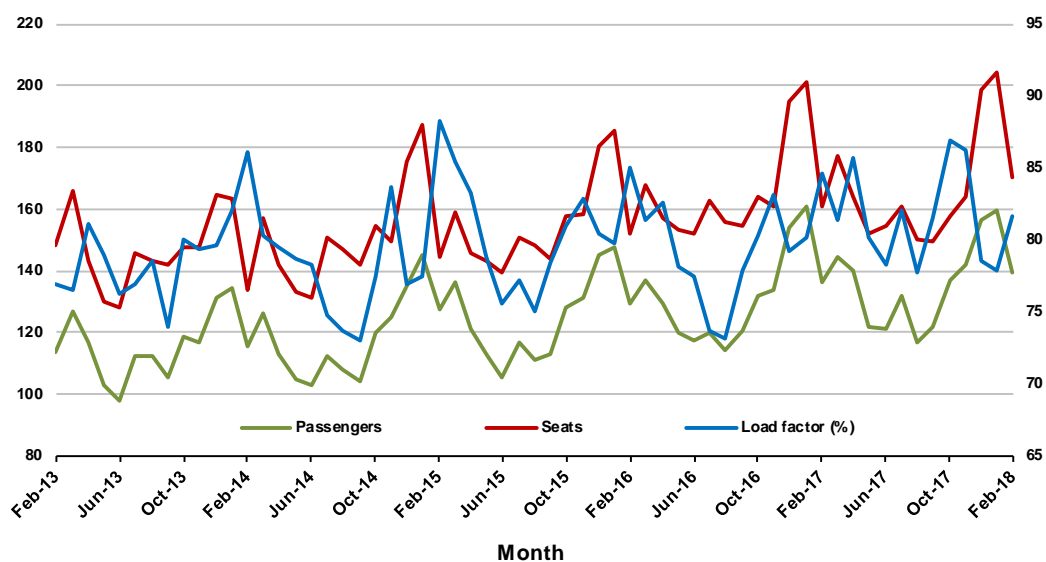
Monthly data

	Feb 2017	Feb 2018	% Change
Passengers carried (000s)	136.0	139.3	2.4
Seats (000s)	160.9	170.5	6.0
Load factor %	84.6	81.7	-2.9 *
Aircraft trips	991	990	-0.1

* percentage point difference

Passengers/seats (000s)

Load factors (%)



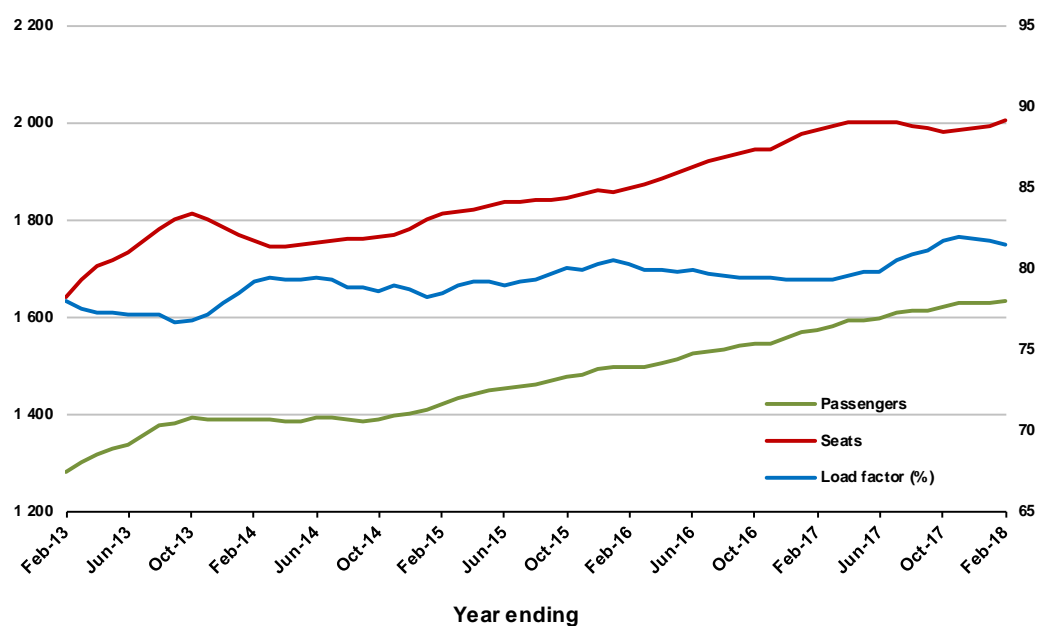
Moving annual data

	YE Feb 2017	YE Feb 2018	% Change
Passengers carried (000s)	1 575.3	1 631.7	3.6
Seats (000s)	1 985.1	2 003.5	0.9
Load factor %	79.4	81.4	2.1 *
Aircraft trips	12 401	12 152	-2.0

* percentage point difference

Passengers/seats (000s)

Load factors (%)



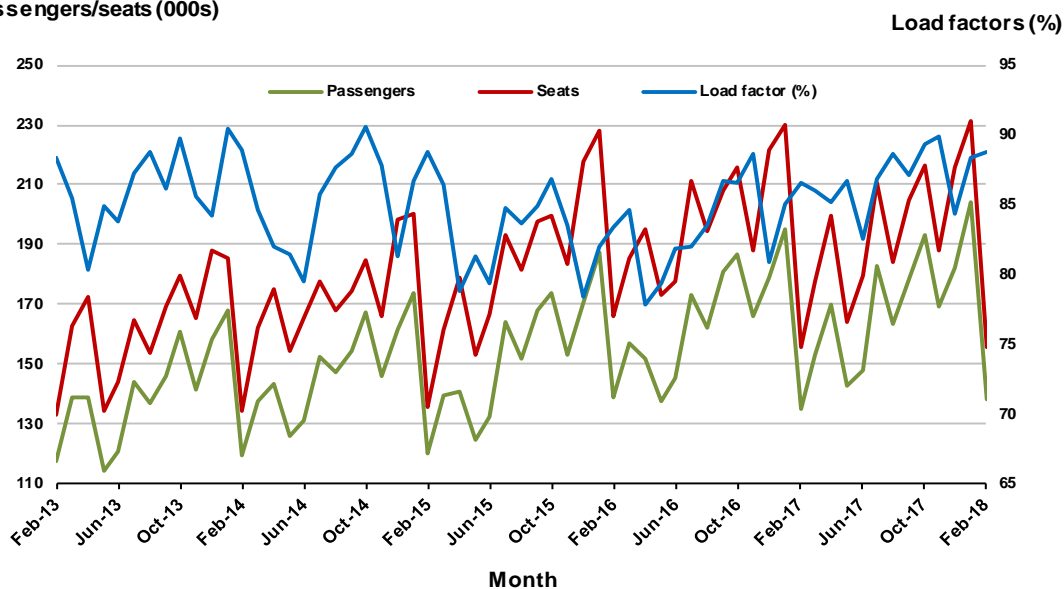
9. Gold Coast - Melbourne

Monthly data

	Feb 2017	Feb 2018	% Change
Passengers carried (000s)	134.8	138.4	2.7
Seats (000s)	155.8	156.0	0.1
Load factor %	86.5	88.8	2.3 *
Aircraft trips	840	833	-0.8

* percentage point difference

Passengers/seats (000s)

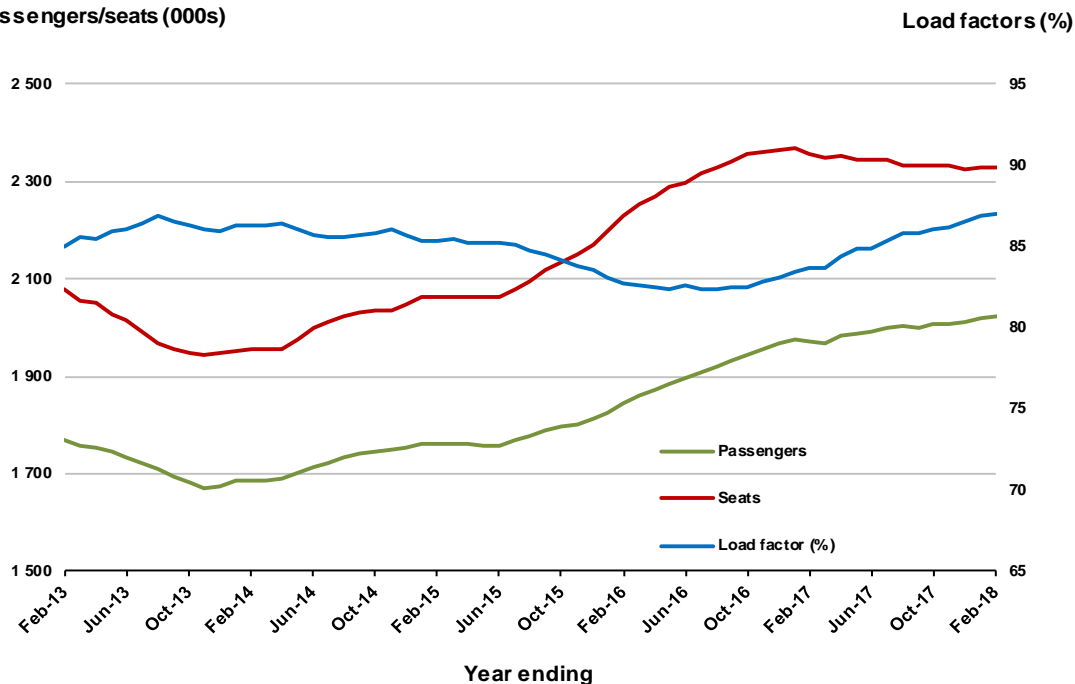


Moving annual data

	YE Feb 2017	YE Feb 2018	% Change
Passengers carried (000s)	1 970.5	2 025.2	2.8
Seats (000s)	2 356.3	2 328.0	-1.2
Load factor %	83.6	87.0	3.4 *
Aircraft trips	12 607	12 393	-1.7

* percentage point difference

Passengers/seats (000s)



10. Perth - Sydney

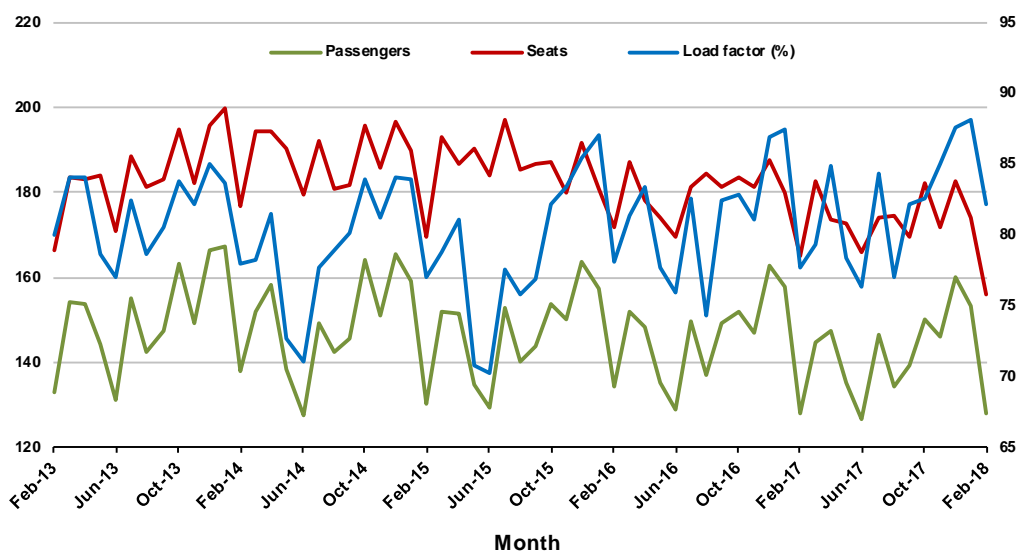
Monthly data

	Feb 2017	Feb 2018	% Change
Passengers carried (000s)	128.2	128.2	0.0
Seats (000s)	165.0	156.2	-5.4
Load factor %	77.7	82.1	4.4 *
Aircraft trips	688	683	-0.7

* percentage point difference

Passengers/seats (000s)

Load factors (%)



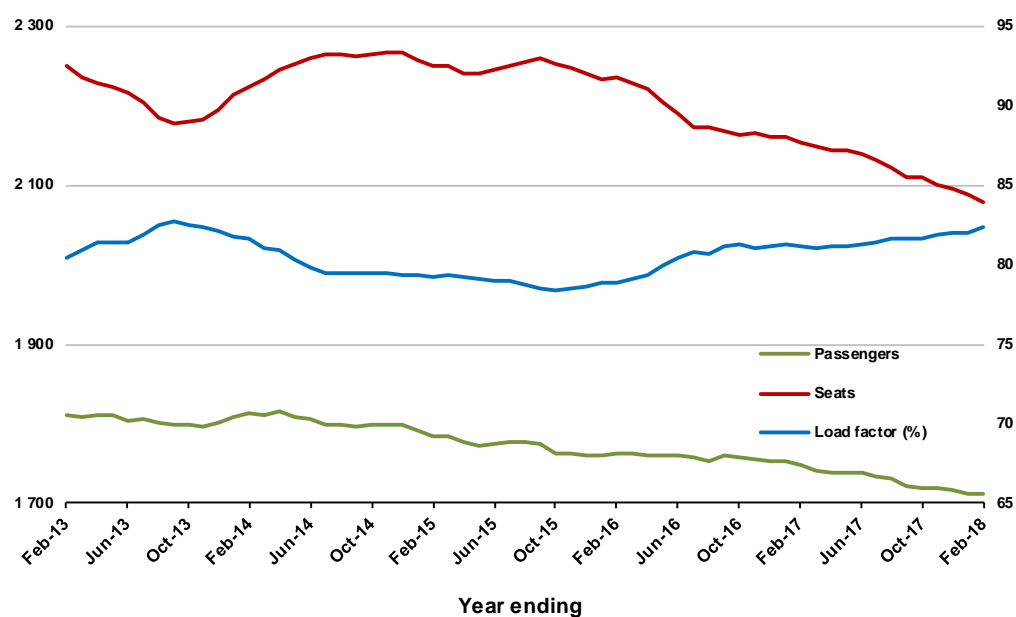
Moving annual data

	YE Feb 2017	YE Feb 2018	% Change
Passengers carried (000s)	1 747.9	1 712.1	-2.1
Seats (000s)	2 152.8	2 079.3	-3.4
Load factor %	81.2	82.3	1.1 *
Aircraft trips	9 087	9 037	-0.6

* percentage point difference

Passengers/seats (000s)

Load factors (%)



TOP FIFTY REGIONAL AIRPORTS

Table 10: Top fifty regional airports (000s) — passenger movements, monthly

	Airport	Feb 2017	Feb 2018	% Change
1	Cairns	281.5	304.3	8.1
2	Hobart	205.4	223.0	8.6
3	Launceston	114.3	114.0	-0.3
4	Townsville	100.2	108.1	7.9
5	Darwin	107.3	103.5	-3.6
6	Newcastle	92.0	92.8	0.9
7	Mackay	55.9	58.6	4.8
8	Ballina	36.9	41.6	12.8
9	Alice Springs	41.1	41.3	0.4
10	Rockhampton	42.0	38.7	-7.7
11	Proserpine	24.3	37.3	53.2
12	Hamilton Island	40.4	33.3	-17.7
13	Karratha	33.3	32.4	-2.7
14	Coffs Harbour	30.6	30.2	-1.1
15	Ayers Rock	27.3	29.0	6.2
16	Port Hedland	25.6	26.3	2.9
17	Newman	22.7	23.3	2.9
18	Broome	16.5	21.8	32.4
19	Kalgoorlie	18.4	20.6	11.8
20	Mildura	18.7	19.9	6.4
21	Gladstone	20.9	18.7	-10.2
22	Albury	18.0	18.2	1.0
23	Dubbo	17.8	16.9	-4.9
24	Wagga Wagga	16.2	16.3	0.8
25	Port Macquarie	16.9	16.3	-3.6
26	Mount Isa	13.9	14.7	5.4
27	Tamworth	13.9	13.8	-0.8
28	Port Lincoln	13.8	13.7	-0.9
29	Paraburdoo	12.9	12.6	-1.8
30	Emerald	14.6	12.5	-14.5
31	Bundaberg	12.6	12.0	-5.1
32	Hervey Bay	11.7	11.7	-0.5
33	Devonport	11.5	11.0	-4.2
34	Geraldton	8.8	10.2	16.7
35	Toowoomba Wellcamp	9.9	10.2	2.1
36	Armidale	9.3	9.7	3.7
37	Moranbah	9.6	7.6	-20.6
38	Roma	6.5	6.3	-3.1
39	Mount Gambier	6.3	6.3	-0.6
40	Thursday Island	6.0	6.2	3.2
41	Gove	5.5	5.8	6.5
42	Orange	4.4	5.7	30.4
43	Whyalla	4.8	5.6	17.4
44	Griffith	5.3	5.4	2.3
45	Kununurra	5.4	5.4	-0.9
46	Olympic Dam	4.1	5.4	31.4
47	Broken Hill	4.4	5.3	20.7
48	Weipa	5.2	5.1	-1.1
49	Norfolk Island	4.6	5.1	11.5
50	Merimbula	5.0	5.1	1.2
Total top 50 regional airports		1 634.0	1 698.6	4.0
Total regional airports		1 730.9	1 805.5	4.3
Total domestic network		8 710.6	9 068.1	4.1

Note: Airport passenger movement numbers are the sum of passenger arrivals and departures at each airport.

Table 11: Top fifty regional airports (000s) — passenger movements, annual

Airport	YE Feb 2017	YE Feb 2018	% Change
1 Cairns	4 246.9	4 330.0	2.0
2 Hobart	2 405.4	2 544.3	5.8
3 Darwin	1 812.5	1 795.5	-0.9
4 Townsville	1 533.6	1 607.9	4.8
5 Launceston	1 340.0	1 345.6	0.4
6 Newcastle	1 250.2	1 286.6	2.9
7 Mackay	784.9	794.9	1.3
8 Alice Springs	614.6	617.0	0.4
9 Rockhampton	586.2	552.3	-5.8
10 Ballina	493.2	519.2	5.3
11 Proserpine	340.4	451.8	32.7
12 Karratha	483.7	436.9	-9.7
13 Coffs Harbour	398.3	415.6	4.3
14 Hamilton Island	557.1	399.7	-28.3
15 Broome	368.5	398.6	8.2
16 Ayers Rock	362.9	368.5	1.5
17 Port Hedland	353.9	348.1	-1.6
18 Newman	306.5	288.0	-6.0
19 Gladstone	320.5	278.0	-13.2
20 Albury	254.4	270.5	6.3
21 Mildura	247.3	257.6	4.2
22 Kalgoorlie	241.7	256.9	6.3
23 Dubbo	212.4	236.1	11.1
24 Port Macquarie	227.3	226.9	-0.2
25 Wagga Wagga	213.1	226.5	6.3
26 Mount Isa	188.8	201.7	6.8
27 Tamworth	180.9	198.6	9.7
28 Emerald	198.8	195.7	-1.6
29 Hervey Bay	170.6	172.9	1.3
30 Bundaberg	174.3	172.3	-1.2
31 Port Lincoln	176.3	171.6	-2.7
32 Paraburdoo	164.8	167.6	1.7
33 Toowoomba Wellcamp	129.7	151.7	17.0
34 Devonport	146.0	148.2	1.4
35 Armidale	128.4	132.8	3.5
36 Geraldton	117.7	113.0	-4.0
37 Moranbah	118.3	112.3	-5.1
38 Kununurra	105.8	104.0	-1.7
39 Thursday Island	100.6	99.9	-0.7
40 Gove	83.9	84.5	0.7
41 Roma	85.9	84.1	-2.2
42 Learmonth	83.9	83.4	-0.6
43 Mount Gambier	76.6	81.1	5.9
44 Weipa	78.2	78.1	0.0
45 Griffith	70.2	74.2	5.6
46 Olympic Dam	51.3	72.7	41.8
47 Orange	52.4	66.8	27.5
48 Whyalla	62.1	66.2	6.7
49 Merimbula	63.5	65.6	3.4
50 Broken Hill	54.1	63.3	16.9
Total top 50 regional airports	22 818.6	23 215.2	1.7
Total regional airports	24 126.8	24 581.7	1.9
Total domestic network	118 025.0	120 523.2	2.1

Note: Airport passenger movement numbers are the sum of passenger arrivals and departures at each airport.

DOMESTIC CHARTER ACTIVITY

Table 12: Charter passengers carried and aircraft trips - annual activity

	YE Feb 2017	YE Feb 2018	% Change
Total domestic charter passengers	2 400 162	2 437 906	1.6
Total domestic charter aircraft trips	44 555	45 973	3.2

Note: Helicopter, joyflights and sightseeing charter flights not included.

Table 13: Charter passengers carried and aircraft trips - monthly activity

	Feb 2017	Feb 2018	% Change
Total domestic charter passengers	189 569	187 826	-0.9
Total domestic charter aircraft trips	3 582	3 433	-4.2

Note: Helicopter, joyflights and sightseeing charter flights not included.

Table 14: Domestic airports - charter activity - annual

	YE Feb 2017	YE Feb 2018	% Change
Total domestic charter passenger movements	4 800 324	4 875 812	1.6
Total domestic charter aircraft movements	89 110	91 946	3.2
Perth airport charter passenger movements	1 868 043	1 838 098	-1.6
Perth airport charter aircraft movements	31 511	30 856	-2.1

Note: Helicopter, joyflights and sightseeing charter flights not included.

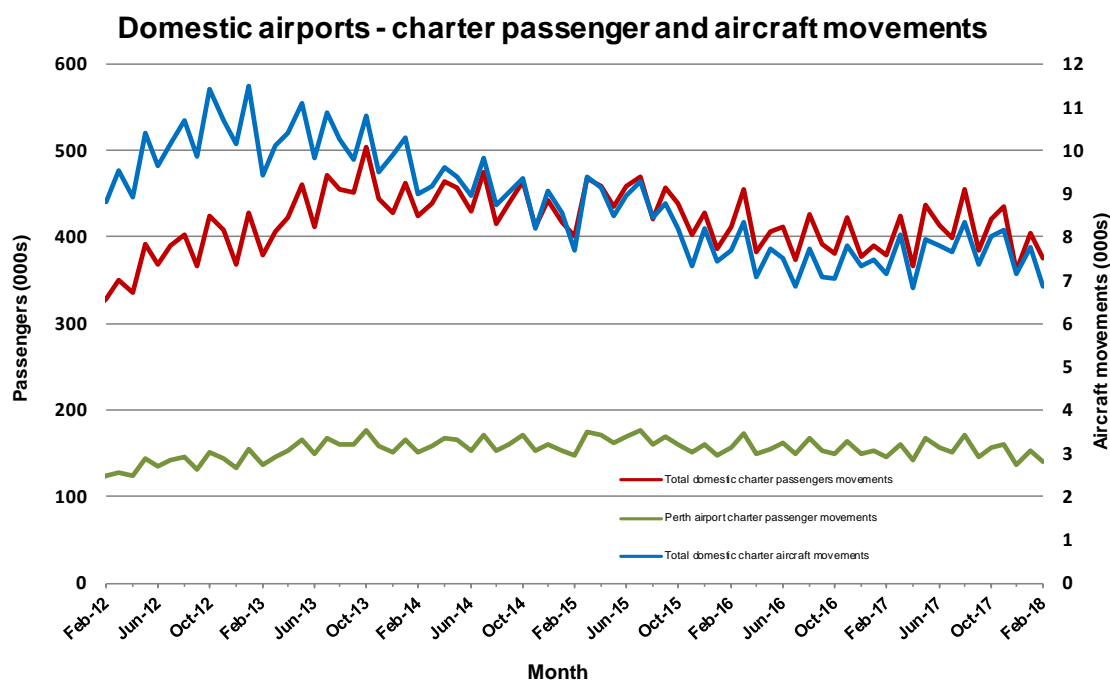
Charter passenger and aircraft movement numbers are the sum of arrivals and departures at each airport.

Table 15: Domestic airports - charter activity - monthly

	Feb 2017	Feb 2018	% Change
Total domestic charter passenger movements	379 138	375 652	-0.9
Total domestic charter aircraft movements	7 164	6 866	-4.2
Perth airport charter passenger movements	146 001	139 791	-4.3
Perth airport charter aircraft movements	2 554	2 263	-11.4

Note: Helicopter, joyflights and sightseeing charter flights not included.

Charter passenger and aircraft movement numbers are the sum of arrivals and departures at each airport.



DEFINITIONS

Aircraft Trips	The number of flight stages. A return flight counts as two aircraft trips.
Airport Movements	Airport movements (passenger and cargo) are measured once on arrival and once on departure. Each domestic trip generates two movements at airports. For example, a trip from Melbourne to Sydney will be counted twice, as a passenger departure at Melbourne and as a passenger arrival at Sydney. At the national level, the sum of all domestic airport traffic will therefore be equal to twice the number of trips undertaken.
Available Seat Kilometres (ASKs)	Calculated by multiplying the number of seats available on each flight stage, by the distance in kilometres between the ports. The distances used are Great Circle Distances.
City-Pair	The ports shown make up the city-pair route. Passenger movements shown for a city pair reflect total traffic in both directions.
Flight Stage	The operation of an aircraft from take-off to landing.
Load Factor	The total revenue passenger kilometres performed as a percentage of the total available seat kilometres.
Passengers Carried	Revenue passengers carried.
Regular Public Transport Services (RPT)	All air service operations in which aircraft are available for the transport of members of the public and are conducted in accordance with fixed schedules. It does not include charter or other non-scheduled operations.
Revenue Passengers	All passengers paying any fare. Frequent flyer redemption travellers are regarded as revenue passengers.
Revenue Passenger Kilometres (RPKs)	Calculated by multiplying the number of revenue passengers travelling on each flight stage, by the distance in kilometres between the ports. The distances used are Great Circle Distances.
Traffic on board by stages	The total of all traffic (revenue passengers) on each flight stage between two directly connected airports.
..	Data not included
NA	Not applicable