



Australian Government

Department of Infrastructure, Regional Development and Cities

Bureau of Infrastructure, Transport and Regional Economics

STATISTICAL REPORT



Aviation

Domestic aviation activity
January 2018

© Commonwealth of Australia 2018

ISSN: 1832 - 1968

Ownership of intellectual property rights in this publication

Unless otherwise noted, copyright (and any other intellectual property rights, if any) in this publication is owned by the Commonwealth of Australia (referred to below as the Commonwealth).

Disclaimer

The material contained in this publication is made available on the understanding that the Commonwealth is not providing professional advice, and that users exercise their own skill and care with respect to its use, and seek independent advice if necessary.

The Commonwealth makes no representations or warranties as to the contents or accuracy of the information contained in this publication. To the extent permitted by law, the Commonwealth disclaims liability to any person or organisation in respect of anything done, or omitted to be done, in reliance upon information contained in this publication.

Creative Commons licence

With the exception of (a) the Coat of Arms; and (b) the Department of Infrastructure, Regional Development and Cities' photos and graphics, copyright in this publication is licensed under a Creative Commons Attribution 3.0 Australia Licence.

Creative Commons Attribution 3.0 Australia Licence is a standard form licence agreement that allows you to copy, communicate and adapt this publication provided that you attribute the work to the Commonwealth and abide by the other licence terms. A summary of the licence terms is available from <http://creativecommons.org/licenses/by/3.0/au/deed.en>. The full licence terms are available from <http://creativecommons.org/licenses/by/3.0/au/legalcode>.

Use of the Coat of Arms

The Department of the Prime Minister and Cabinet sets the terms under which the Coat of Arms is used. Please refer to the Department's Commonwealth Coat of Arms and Government branding web page <http://www.dpmc.gov.au/guidelines/index.cfm#brand> and, in particular, the Guidelines on the use of the Commonwealth Coat of Arms publication.

An appropriate citation for this report is:

Bureau of Infrastructure, Transport and Regional Economics (BITRE), 2018, Domestic aviation activity, Statistical Report, BITRE, Canberra ACT.

Contact us

This publication is available in PDF format. All other rights are reserved, including in relation to any Departmental logos or trade marks which may exist. For enquiries regarding the licence and any use of this publication, please contact:

Bureau of Infrastructure, Transport and Regional Economics (BITRE)
Department of Infrastructure, Regional Development and Cities
GPO Box 501, Canberra ACT 2601, Australia
Telephone: (international) +61 2 6274 7210
Fax: (international) +61 2 6274 6855
Email: bitre@infrastructure.gov.au
Website: www.bitre.gov.au

Inquiries

Should you require additional information about the statistics contained in this publication:

Nebojsa Pavlovic

Telephone (02) 6274 6817 or Facsimile (02) 6274 7727

Electronic mail: AVSTATS@infrastructure.gov.au

Nebojsa.Pavlovic@infrastructure.gov.au

Web site: <http://www.bitre.gov.au/statistics/aviation/domestic.aspx>

FOREWORD

This report provides an overview of domestic (including charter) commercial aviation activity in Australia for the month of January 2018.

The data cover revenue passengers carried by Australian-registered operators of scheduled regular public transport services over Australian flight stages and fixed-wing charter operators. These estimates include passengers carried between domestic airports on international flights operated by these carriers. The passengers carried refer to traffic on board by stages.

Estimates of passengers and aircraft movements for charter aviation are included in this publication, where BITRE confidentiality standards are met.

Individual routes shown are restricted to those with an average exceeding 8 000 passengers per month over the previous six months where two or more airlines operate in competition. For the month of January 2018 there were 66 such routes.

Information on the total network for the month of January 2018 and on the Regular Public Transport (RPT) network for the month of January 2018 is presented on page 2, with estimates for the year ended January 2018 presented on page 3.

Detailed information on the 66 individual routes can be found in the RPT summary pages 4-13 of this publication.

The top ten airports in terms of RPT passenger movements are shown on page 14.

Data on domestic RPT cargo movements at the top five cargo airports are provided on page 15. The table includes cargo carried on passenger flights operated by the Qantas group (including Jetstar), Virgin Australia, Air North and Skippers as well as the cargo carried by dedicated freighter aircraft operated by Qantas Freight, Toll Priority and Virgin Australia Cargo.

The long-term trends for the top ten competitive RPT routes are presented graphically on pages 16-25.

Domestic RPT passenger movements at the top 50 regional airports are presented on pages 26-27.

Tables providing estimates of domestic charter aviation activity are shown on page 28. BITRE confidentiality standards restrict publication of detailed estimates for individual Australian airports, with the exception of Perth Airport.

A list of definitions can be found on page 29.

This report was prepared by the Aviation Statistics Section of the Bureau of Infrastructure, Transport and Regional Economics with data provided by airlines.

Estimates are included where data were not available and data presented in this publication may contain revisions to previously published data.

Where figures have been rounded, discrepancies may occur between sums of component items and totals, and in percentage changes which are derived from figures prior to rounding.

CONTENTS

Highlights	1
Total network	2
RPT network	2
Top competitive routes	4
Top ten airports – passenger movements	14
Top five airports – cargo movements	15
Top ten routes	16
1. Melbourne – Sydney	16
2. Brisbane – Sydney	17
3. Brisbane – Melbourne	18
4. Gold Coast – Sydney	19
5. Gold Coast – Melbourne	20
6. Adelaide – Melbourne	21
7. Melbourne – Perth	22
8. Adelaide – Sydney	23
9. Hobart – Melbourne	24
10. Perth – Sydney	25
Top fifty regional airports	26
Domestic charter activity	28
Definitions	29

This page is intentionally left blank.

HIGHLIGHTS

There were 5.28 million passengers carried on Australian domestic commercial aviation (including charter operations) in January 2018, an increase of 2.2 per cent on January 2017. For the month of January 2018 there were 55 540 aircraft trips, an increase of 0.6 per cent compared to January 2017.

5.08 million passengers were carried on RPT flights in January 2018, an increase of 2.1 per cent on January 2017.

For the year ending January 2018 there were 60.08 million RPT passengers, an increase of 1.6 per cent on the year ending January 2017.

RPT revenue passenger kilometres (RPKs) performed were 6.06 billion for the month, up 1.4 per cent compared with January 2017. Capacity, measured by available seat kilometres (ASKs), increased by 0.9 per cent compared with January 2017 to a total of 7.63 billion.

With RPT passenger traffic increasing at faster rate than capacity, the industry wide load factor (RPKs/ASKs) increased from 79.1 per cent in January 2017 to 79.5 per cent in January 2018. Load factors on individual routes increased on 38 of the 64 RPT routes for which data is available for publishing in both years.

For the month of January 2018, Melbourne – Sydney remained Australia's busiest RPT route with 742 761 passengers, an increase of 4.7 per cent compared with January 2017. It was followed by Brisbane – Sydney with 364 590 passengers (down 2.0 per cent) and Brisbane – Melbourne with 291 254 passengers (down 0.6 per cent).

The greatest percentage increase in RPT passenger numbers, compared to January 2017, was on the Broome – Perth route (up 30.9 per cent). There were large increases on a number of other routes, including Ballina – Sydney (up 24.6 per cent), Brisbane – Proserpine (up 23.3 per cent), Brisbane – Hobart (up 23.0 per cent) and Melbourne – Sunshine Coast (up 19.0 per cent).

Routes with traffic decreases in January 2018 compared with January 2017 included Brisbane – Hamilton Island (down 33.0 per cent), Hamilton Island – Sydney (down 23.3 per cent), Alice Springs – Darwin (down 14.4 per cent) and Brisbane – Gladstone (down 9.6 per cent).

In January 2018, Sydney remained Australia's busiest domestic airport with 2.30 million passenger movements, followed by Melbourne with 2.18 million passenger movements and Brisbane with 1.38 million passenger movements.

Total cargo movements at Australian airports on domestic RPT flights were 35.4 thousand tonnes in January 2018, an increase of 5.3 per cent compared with January 2017.

In January 2018 there were 2.05 million domestic passenger movements through regional airports, 2.0 per cent higher than in January 2017. Out of the top 50 regional airports, the strongest growth was at Olympic Dam airport (up 47.9 per cent on January 2017), while the largest decrease was at Hamilton Island airport (down 30.1 per cent on January 2017).

Fixed-wing charter operators carried 202.60 thousand passengers in January 2018, an increase of 3.7 per cent on January 2017. Perth airport accounted for 37.7 per cent of all charter passengers in Australia.

TOTAL NETWORK

Summary of monthly commercial aviation activity

	Jan 2017	Jan 2018	% Change
Total passengers carried (millions)	5.17	5.28	2.2
Aircraft trips (000s)	55.2	55.5	0.6

Note: Regular Public Transport and charter aviation activity
Helicopter, joyflights and sightseeing charter flights not included.

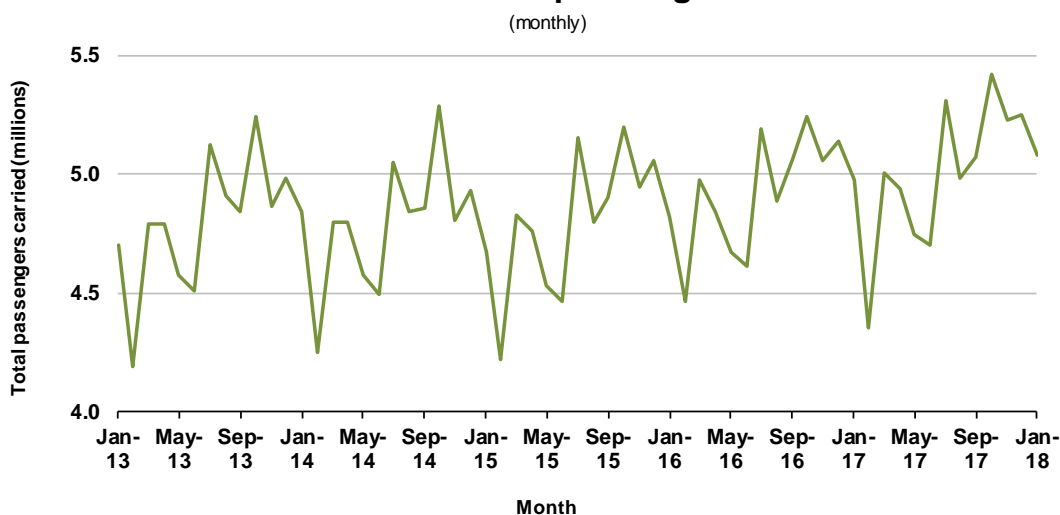
RPT NETWORK

Summary of monthly RPT activity

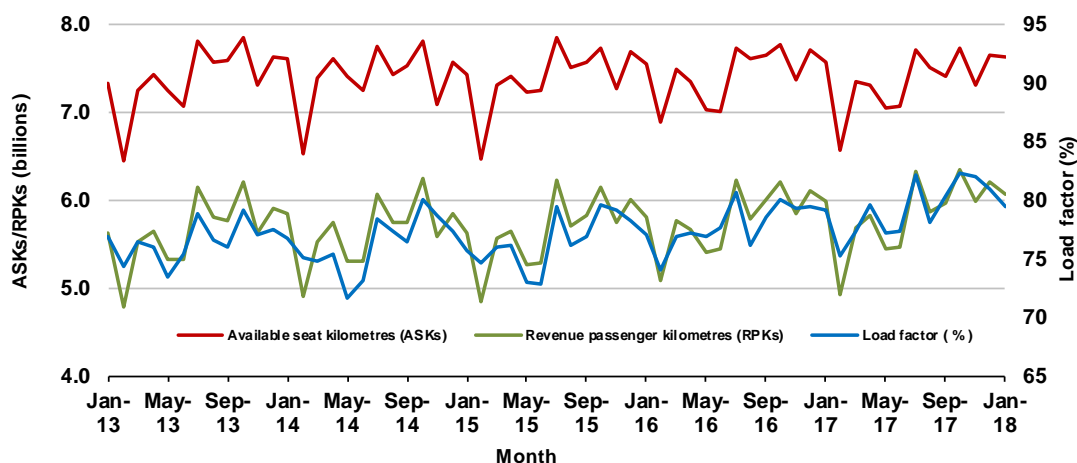
	Jan 2017	Jan 2018	% Change
Total passengers carried (millions)	4.98	5.08	2.1
Revenue passenger kilometres (billions)	5.98	6.06	1.4
Available seats (millions)	6.48	6.55	1.1
Available seat kilometres (billions)	7.56	7.63	0.9
Load factor %	79.1	79.5	0.4 *
Aircraft trips (000s)	51.5	51.7	0.4

* percentage point difference

Domestic RPT passenger traffic



RPT Network utilisation



TOTAL NETWORK

Summary of annual commercial aviation activity

	YE Jan 2017	YE Jan 2018	% Change
Total passengers carried (millions)	61.54	62.52	1.6
Aircraft trips (000s)	688.8	685.0	-0.6

Note: Regular Public Transport and charter aviation activity
Helicopter, joyflights and sightseeing charter flights not included.

RPT NETWORK

Summary of annual RPT activity

	YE Jan 2017	YE Jan 2018	% Change
Total passengers carried (millions)	59.12	60.08	1.6
Revenue passenger kilometres (billions)	69.52	70.09	0.8
Available seats (millions)	77.43	77.22	-0.3
Available seat kilometres (billions)	89.11	88.26	-0.9
Load factor %	78.0	79.4	1.4 *
Aircraft trips (000s)	644.0	638.9	-0.8

* percentage point difference

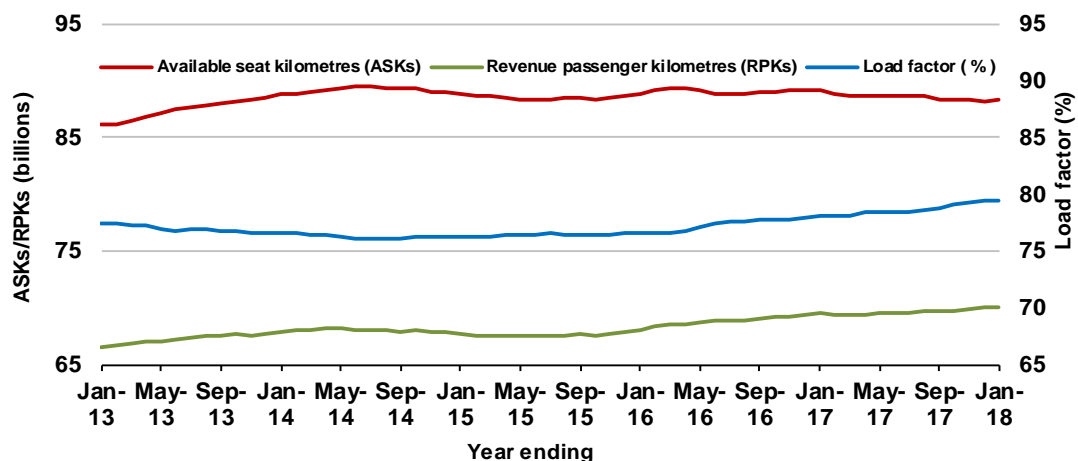
Domestic RPT passenger traffic

(moving annual totals)



RPT Network utilisation

(moving annual totals)



TOP COMPETITIVE ROUTES

Table 1: Passengers carried (000s) — annual activity

	City-Pair	YE Jan 2017	YE Jan 2018	% Change
1	Melbourne - Sydney	8 915.5	9 130.4	2.4
2	Brisbane - Sydney	4 668.4	4 738.6	1.5
3	Brisbane - Melbourne	3 501.0	3 539.2	1.1
4	Gold Coast - Sydney	2 697.8	2 747.1	1.8
5	Adelaide - Melbourne	2 404.3	2 459.8	2.3
6	Melbourne - Perth	2 076.1	2 031.8	-2.1
7	Gold Coast - Melbourne	1 974.3	2 021.5	2.4
8	Adelaide - Sydney	1 874.4	1 895.4	1.1
9	Perth - Sydney	1 754.0	1 712.1	-2.4
10	Hobart - Melbourne	1 568.8	1 628.5	3.8
11	Brisbane - Cairns	1 351.5	1 376.5	1.9
12	Canberra - Melbourne	1 034.0	1 136.4	9.9
13	Cairns - Sydney	1 121.5	1 126.5	0.4
14	Brisbane - Perth	981.1	968.6	-1.3
15	Brisbane - Townsville	975.0	963.7	-1.2
16	Canberra - Sydney	957.9	946.3	-1.2
17	Launceston - Melbourne	921.6	925.9	0.5
18	Adelaide - Brisbane	832.3	850.5	2.2
19	Cairns - Melbourne	829.3	839.6	1.2
20	Brisbane - Mackay	677.9	703.1	3.7
21	Hobart - Sydney	621.3	660.4	6.3
22	Adelaide - Perth	620.7	614.1	-1.1
23	Brisbane - Canberra	579.3	598.0	3.2
24	Sunshine Coast - Sydney	541.5	590.9	9.1
25	Brisbane - Newcastle	577.0	587.9	1.9
26	Brisbane - Rockhampton	564.3	520.0	-7.8
27	Melbourne - Sunshine Coast	449.8	494.0	9.8
28	Melbourne - Newcastle	457.3	475.9	4.1
29	Karratha - Perth	485.5	435.9	-10.2
30	Ballina - Sydney	385.2	411.8	6.9
31	Brisbane - Darwin	410.2	404.0	-1.5
32	Coffs Harbour - Sydney	339.4	346.4	2.0
33	Perth - Port Hedland	340.1	337.7	-0.7
34	Darwin - Sydney	320.3	321.5	0.4
35	Broome - Perth	293.8	319.0	8.6
36	Darwin - Melbourne	302.5	305.7	1.1
37	Launceston - Sydney	291.3	286.5	-1.6
38	Newman - Perth	307.1	286.4	-6.8
39	Brisbane - Gladstone	325.0	279.6	-14.0
40	Brisbane - Proserpine	228.4	264.5	15.8
41	Kalgoorlie - Perth	232.7	244.5	5.1
42	Albury - Sydney	224.4	224.3	0.0
43	Adelaide - Gold Coast	218.9	217.5	-0.6
44	Brisbane - Hobart	205.7	217.1	5.5
45	Melbourne - Mildura	205.7	213.1	3.6
46	Darwin - Perth	186.0	199.7	7.4
47	Brisbane - Emerald	199.0	197.6	-0.7
48	Port Macquarie - Sydney	193.4	192.4	-0.5
49	Ayers Rock - Sydney	185.7	192.0	3.4
50	Dubbo - Sydney	188.0	190.5	1.3

continued

Table 1: (continued) Passengers carried (000s) — annual activity

	City-Pair	YE Jan 2017	YE Jan 2018	% Change
51	Hamilton Island - Sydney	269.6	189.7	-29.6
52	Adelaide - Canberra	175.3	182.3	4.0
53	Sydney - Wagga Wagga	187.8	181.8	-3.2
54	Sydney - Tamworth	175.4	180.9	3.1
55	Brisbane - Bundaberg	173.9	172.8	-0.7
56	Adelaide - Port Lincoln	177.2	171.6	-3.2
57	Sydney - Townsville	157.6	161.2	2.2
58	Cairns - Townsville	139.8	141.7	1.4
59	Adelaide - Alice Springs	121.2	125.5	3.5
60	Armidale - Sydney	127.4	125.5	-1.5
61	Brisbane - Mount Isa	119.6	125.2	4.7
62	Brisbane - Hamilton Island	150.8	123.7	-18.0
63	Alice Springs - Darwin	116.7	117.9	1.0
64	Geraldton - Perth	118.0	111.4	-5.6
65	Melbourne - Townsville	..	67.1	NA (a)
66	Proserpine - Sydney	..	59.9	NA (b)
	Total domestic network	59 121.8	60 082.9	1.6

(a) Melbourne - Townsville route included from September 2017, prior data not shown.

(b) Proserpine - Sydney route included from September 2017, prior data not shown.

Table 2: Passengers carried (000s) — monthly activity

	City-Pair	Jan 2017	Jan 2018	% Change
1	Melbourne - Sydney	709.5	742.8	4.7
2	Brisbane - Sydney	372.2	364.6	-2.0
3	Brisbane - Melbourne	293.1	291.3	-0.6
4	Gold Coast - Sydney	262.5	268.8	2.4
5	Gold Coast - Melbourne	195.3	204.2	4.6
6	Adelaide - Melbourne	197.6	201.0	1.7
7	Melbourne - Perth	192.2	190.8	-0.8
8	Adelaide - Sydney	164.9	162.0	-1.8
9	Hobart - Melbourne	161.1	159.3	-1.1
10	Perth - Sydney	157.7	153.3	-2.8
11	Brisbane - Cairns	112.1	110.7	-1.3
12	Cairns - Sydney	105.4	102.6	-2.7
13	Launceston - Melbourne	92.7	95.4	3.0
14	Brisbane - Perth	86.3	85.9	-0.5
15	Canberra - Melbourne	74.0	77.4	4.7
16	Hobart - Sydney	70.1	74.7	6.5
17	Cairns - Melbourne	75.6	73.9	-2.3
18	Brisbane - Townsville	70.1	73.6	5.0
19	Adelaide - Brisbane	71.3	72.1	1.2
20	Sunshine Coast - Sydney	55.9	64.1	14.7
21	Brisbane - Mackay	52.1	57.2	9.9
22	Adelaide - Perth	55.7	55.7	-0.1
23	Melbourne - Sunshine Coast	43.4	51.6	19.0
24	Canberra - Sydney	50.5	47.6	-5.7
25	Brisbane - Canberra	43.7	47.4	8.5
26	Ballina - Sydney	36.8	45.9	24.6
27	Brisbane - Newcastle	47.9	45.1	-5.8
28	Melbourne - Newcastle	44.9	44.7	-0.3
29	Launceston - Sydney	37.8	37.9	0.3
30	Brisbane - Rockhampton	39.5	37.4	-5.2
31	Karratha - Perth	34.4	33.5	-2.8
32	Brisbane - Darwin	33.0	30.9	-6.6
33	Coffs Harbour - Sydney	27.5	26.7	-3.0
34	Perth - Port Hedland	26.2	26.6	1.5
35	Brisbane - Proserpine	21.5	26.5	23.3
36	Broome - Perth	18.1	23.7	30.9
37	Brisbane - Hobart	19.1	23.4	23.0
38	Darwin - Melbourne	23.9	23.3	-2.4
39	Newman - Perth	21.8	23.3	6.8
40	Darwin - Sydney	22.3	22.1	-0.8
41	Adelaide - Gold Coast	18.6	21.9	17.9
42	Hamilton Island - Sydney	27.2	20.9	-23.3
43	Brisbane - Gladstone	21.6	19.6	-9.6
44	Kalgoorlie - Perth	16.3	18.9	16.1
45	Darwin - Perth	14.6	15.9	9.2
46	Melbourne - Mildura	14.5	15.7	7.7
47	Albury - Sydney	15.3	15.5	1.7
48	Port Macquarie - Sydney	14.9	15.0	0.5
49	Brisbane - Emerald	14.8	14.8	-0.1
50	Adelaide - Port Lincoln	14.0	14.1	0.5

continued

Table 2: (continued) Passengers carried (000s) — monthly activity

	City-Pair	Jan 2017	Jan 2018	% Change
51	Sydney - Townsville	13.4	14.0	4.5
52	Ayers Rock - Sydney	13.4	14.0	4.1
53	Sydney - Tamworth	13.9	14.0	0.9
54	Brisbane - Bundaberg	14.0	12.9	-7.6
55	Melbourne - Townsville	..	12.9	NA (a)
56	Proserpine - Sydney	..	12.5	NA (b)
57	Adelaide - Canberra	11.6	12.3	6.4
58	Dubbo - Sydney	12.5	12.2	-2.6
59	Sydney - Wagga Wagga	12.0	11.0	-8.4
60	Adelaide - Alice Springs	8.8	9.9	12.2
61	Cairns - Townsville	9.5	9.4	-1.2
62	Brisbane - Hamilton Island	13.6	9.1	-33.0
63	Brisbane - Mount Isa	8.6	8.6	-0.3
64	Armidale - Sydney	9.2	8.5	-7.1
65	Geraldton - Perth	7.6	7.1	-7.2
66	Alice Springs - Darwin	6.1	5.2	-14.4
	Total domestic network	4 975.2	5 079.2	2.1

(a) Melbourne - Townsville route included from September 2017, prior data not shown.

(b) Proserpine - Sydney route included from September 2017, prior data not shown.

Table 3: Available seats (000s) — monthly activity

	City-Pair	Jan 2017	Jan 2018	% Change
1	Melbourne - Sydney	850.1	849.2	-0.1
2	Brisbane - Sydney	478.6	463.2	-3.2
3	Brisbane - Melbourne	373.4	364.9	-2.3
4	Gold Coast - Sydney	295.3	300.3	1.7
5	Gold Coast - Melbourne	229.8	231.0	0.5
6	Adelaide - Melbourne	245.1	255.6	4.3
7	Melbourne - Perth	221.2	212.8	-3.8
8	Adelaide - Sydney	198.8	203.7	2.5
9	Hobart - Melbourne	201.1	204.4	1.7
10	Perth - Sydney	180.1	173.9	-3.5
11	Brisbane - Cairns	147.1	141.6	-3.7
12	Cairns - Sydney	123.9	123.5	-0.3
13	Launceston - Melbourne	121.7	125.0	2.7
14	Brisbane - Perth	98.0	99.9	2.0
15	Canberra - Melbourne	109.6	120.9	10.3
16	Hobart - Sydney	83.5	96.1	15.1
17	Cairns - Melbourne	86.7	89.5	3.2
18	Brisbane - Townsville	103.8	109.1	5.1
19	Adelaide - Brisbane	90.5	95.4	5.5
20	Sunshine Coast - Sydney	67.4	78.1	15.9
21	Brisbane - Mackay	66.5	76.8	15.6
22	Adelaide - Perth	73.3	72.6	-0.9
23	Melbourne - Sunshine Coast	50.6	61.1	20.6
24	Canberra - Sydney	71.0	64.9	-8.6
25	Brisbane - Canberra	69.2	72.2	4.5
26	Ballina - Sydney	42.7	53.6	25.4
27	Brisbane - Newcastle	66.0	61.3	-7.1
28	Melbourne - Newcastle	57.6	53.6	-7.0
29	Launceston - Sydney	44.1	44.5	1.1
30	Brisbane - Rockhampton	52.0	51.3	-1.4
31	Karratha - Perth	60.5	58.4	-3.5
32	Brisbane - Darwin	44.9	39.0	-13.1
33	Coffs Harbour - Sydney	38.0	34.9	-8.3
34	Perth - Port Hedland	43.4	43.5	0.2
35	Brisbane - Proserpine	26.2	33.7	28.3
36	Broome - Perth	28.3	31.6	11.8
37	Brisbane - Hobart	22.8	29.4	28.5
38	Darwin - Melbourne	31.9	32.7	2.6
39	Newman - Perth	45.9	45.0	-2.0
40	Darwin - Sydney	33.9	32.9	-3.0
41	Adelaide - Gold Coast	21.9	26.6	21.1
42	Hamilton Island - Sydney	32.7	31.8	-2.7
43	Brisbane - Gladstone	31.9	28.7	-10.1
44	Kalgoorlie - Perth	29.2	34.9	19.7
45	Darwin - Perth	20.2	21.9	8.1
46	Melbourne - Mildura	24.1	25.3	4.9
47	Albury - Sydney	25.8	22.3	-13.5
48	Port Macquarie - Sydney	23.0	20.4	-11.1
49	Brisbane - Emerald	28.0	23.2	-17.3
50	Adelaide - Port Lincoln	22.0	22.6	3.0

continued

Table 3: (continued) Available seats (000s) — monthly activity

	City-Pair	Jan 2017	Jan 2018	% Change
51	Sydney - Townsville	18.3	17.6	-4.1
52	Ayers Rock - Sydney	18.7	18.7	0.0
53	Sydney - Tamworth	24.8	21.4	-13.9
54	Brisbane - Bundaberg	19.5	20.5	5.0
55	Melbourne - Townsville	..	16.6	NA (a)
56	Proserpine - Sydney	..	14.1	NA (b)
57	Adelaide - Canberra	18.4	20.4	10.8
58	Dubbo - Sydney	22.0	17.3	-21.2
59	Sydney - Wagga Wagga	20.0	17.4	-13.1
60	Adelaide - Alice Springs	14.9	15.6	5.1
61	Cairns - Townsville	22.4	20.1	-10.2
62	Brisbane - Hamilton Island	17.1	14.7	-14.1
63	Brisbane - Mount Isa	16.2	14.1	-13.2
64	Armidale - Sydney	14.1	12.9	-8.3
65	Geraldton - Perth	19.0	16.8	-11.6
66	Alice Springs - Darwin	12.0	12.7	5.6
	Total domestic network	6 484.5	6 553.2	1.1

(a) Melbourne - Townsville route included from September 2017, prior data not shown.

(b) Proserpine - Sydney route included from September 2017, prior data not shown.

Table 4: Load factors (%) — monthly activity

	City-Pair	Jan 2017	Jan 2018	% Point diff
1	Melbourne - Sydney	83.5	87.5	4.0
2	Brisbane - Sydney	77.8	78.7	0.9
3	Brisbane - Melbourne	78.5	79.8	1.3
4	Gold Coast - Sydney	88.9	89.5	0.6
5	Gold Coast - Melbourne	85.0	88.4	3.4
6	Adelaide - Melbourne	80.6	78.6	-2.0
7	Melbourne - Perth	86.9	89.6	2.7
8	Adelaide - Sydney	82.9	79.5	-3.4
9	Hobart - Melbourne	80.1	77.9	-2.2
10	Perth - Sydney	87.5	88.1	0.6
11	Brisbane - Cairns	76.2	78.1	1.9
12	Cairns - Sydney	85.1	83.1	-2.0
13	Launceston - Melbourne	76.1	76.4	0.3
14	Brisbane - Perth	88.1	85.9	-2.2
15	Canberra - Melbourne	67.5	64.0	-3.5
16	Hobart - Sydney	84.0	77.7	-6.3
17	Cairns - Melbourne	87.2	82.6	-4.6
18	Brisbane - Townsville	67.5	67.4	-0.1
19	Adelaide - Brisbane	78.8	75.6	-3.2
20	Sunshine Coast - Sydney	82.9	82.0	-0.9
21	Brisbane - Mackay	78.3	74.5	-3.8
22	Adelaide - Perth	76.0	76.6	0.6
23	Melbourne - Sunshine Coast	85.7	84.5	-1.2
24	Canberra - Sydney	71.1	73.4	2.3
25	Brisbane - Canberra	63.1	65.6	2.5
26	Ballina - Sydney	82.5	85.7	3.2
27	Brisbane - Newcastle	72.6	73.6	1.0
28	Melbourne - Newcastle	77.9	83.5	5.6
29	Launceston - Sydney	85.8	85.1	-0.7
30	Brisbane - Rockhampton	75.9	73.0	-2.9
31	Karratha - Perth	55.1	57.3	2.2
32	Brisbane - Darwin	73.5	79.1	5.6
33	Coffs Harbour - Sydney	72.4	76.6	4.2
34	Perth - Port Hedland	60.3	61.1	0.8
35	Brisbane - Proserpine	82.1	78.8	-3.3
36	Broome - Perth	63.9	75.1	11.2
37	Brisbane - Hobart	83.4	79.9	-3.5
38	Darwin - Melbourne	75.0	71.3	-3.7
39	Newman - Perth	47.6	51.8	4.2
40	Darwin - Sydney	65.8	67.2	1.4
41	Adelaide - Gold Coast	84.8	82.6	-2.2
42	Hamilton Island - Sydney	83.3	65.6	-17.7
43	Brisbane - Gladstone	67.8	68.2	0.4
44	Kalgoorlie - Perth	55.9	54.2	-1.7
45	Darwin - Perth	71.9	72.6	0.7
46	Melbourne - Mildura	60.4	62.0	1.6
47	Albury - Sydney	59.2	69.6	10.4
48	Port Macquarie - Sydney	64.8	73.3	8.5
49	Brisbane - Emerald	52.9	63.8	10.9
50	Adelaide - Port Lincoln	63.8	62.2	-1.6

continued

Table 4: (continued) Load factors (%) — monthly activity

	City-Pair	Jan 2017	Jan 2018	% Point diff
51	Sydney - Townsville	73.1	79.7	6.6
52	Ayers Rock - Sydney	71.8	74.8	3.0
53	Sydney - Tamworth	55.9	65.5	9.6
54	Brisbane - Bundaberg	71.7	63.1	-8.6
55	Melbourne - Townsville	..	77.7	NA (a)
56	Proserpine - Sydney	..	88.8	NA (b)
57	Adelaide - Canberra	62.8	60.3	-2.5
58	Dubbo - Sydney	56.9	70.4	13.5
59	Sydney - Wagga Wagga	59.9	63.2	3.3
60	Adelaide - Alice Springs	59.4	63.5	4.1
61	Cairns - Townsville	42.5	46.8	4.3
62	Brisbane - Hamilton Island	79.4	61.9	-17.5
63	Brisbane - Mount Isa	53.3	61.2	7.9
64	Armidale - Sydney	65.1	65.9	0.8
65	Geraldton - Perth	40.7	42.2	1.5
66	Alice Springs - Darwin	50.8	41.2	-9.6
	Total domestic network	79.1	79.5	0.4

(a) Melbourne - Townsville route included from September 2017, prior data not shown.

(b) Proserpine - Sydney route included from September 2017, prior data not shown.

Table 5: Aircraft trips ^(a) — monthly activity

	City-Pair	Jan 2017	Jan 2018	% Change
1	Melbourne - Sydney	4 728	4 761	0.7
2	Brisbane - Sydney	2 936	2 812	-4.2
3	Brisbane - Melbourne	2 192	2 149	-2.0
4	Gold Coast - Sydney	1 678	1 677	-0.1
5	Gold Coast - Melbourne	1 223	1 234	0.9
6	Adelaide - Melbourne	1 549	1 595	3.0
7	Melbourne - Perth	987	988	0.1
8	Adelaide - Sydney	1 195	1 211	1.3
9	Hobart - Melbourne	1 204	1 196	-0.7
10	Perth - Sydney	757	768	1.5
11	Brisbane - Cairns	910	875	-3.8
12	Cairns - Sydney	688	695	1.0
13	Launceston - Melbourne	876	911	4.0
14	Brisbane - Perth	477	503	5.5
15	Canberra - Melbourne	750	825	10.0
16	Hobart - Sydney	503	533	6.0
17	Cairns - Melbourne	466	467	0.2
18	Brisbane - Townsville	753	750	-0.4
19	Adelaide - Brisbane	545	565	3.7
20	Sunshine Coast - Sydney	406	463	14.0
21	Brisbane - Mackay	597	592	-0.8
22	Adelaide - Perth	458	478	4.4
23	Melbourne - Sunshine Coast	294	359	22.1
24	Canberra - Sydney	955	885	-7.3
25	Brisbane - Canberra	491	526	7.1
26	Ballina - Sydney	260	307	18.1
27	Brisbane - Newcastle	547	417	-23.8
28	Melbourne - Newcastle	323	296	-8.4
29	Launceston - Sydney	252	254	0.8
30	Brisbane - Rockhampton	660	612	-7.3
31	Karratha - Perth	543	517	-4.8
32	Brisbane - Darwin	266	234	-12.0
33	Coffs Harbour - Sydney	440	393	-10.7
34	Perth - Port Hedland	360	366	1.7
35	Brisbane - Proserpine	150	190	26.7
36	Broome - Perth	253	285	12.6
37	Brisbane - Hobart	131	167	27.5
38	Darwin - Melbourne	181	186	2.8
39	Newman - Perth	326	346	6.1
40	Darwin - Sydney	202	195	-3.5
41	Adelaide - Gold Coast	124	150	21.0
42	Hamilton Island - Sydney	190	186	-2.1
43	Brisbane - Gladstone	432	376	-13.0
44	Kalgoorlie - Perth	253	286	13.0
45	Darwin - Perth	128	130	1.6
46	Melbourne - Mildura	345	330	-4.3
47	Albury - Sydney	422	378	-10.4
48	Port Macquarie - Sydney	373	348	-6.7
49	Brisbane - Emerald	378	305	-19.3
50	Adelaide - Port Lincoln	556	573	3.1

continued

Table 5: (continued) Aircraft trips ^(a) — monthly activity

	City-Pair	Jan 2017	Jan 2018	% Change
51	Sydney - Townsville	108	107	-0.9
52	Ayers Rock - Sydney	106	106	0.0
53	Sydney - Tamworth	385	340	-11.7
54	Brisbane - Bundaberg	322	282	-12.4
55	Melbourne - Townsville	..	94	NA (b)
56	Proserpine - Sydney	..	78	NA (c)
57	Adelaide - Canberra	124	122	-1.6
58	Dubbo - Sydney	419	356	-15.0
59	Sydney - Wagga Wagga	350	318	-9.1
60	Adelaide - Alice Springs	94	115	22.3
61	Cairns - Townsville	353	326	-7.6
62	Brisbane - Hamilton Island	142	116	-18.3
63	Brisbane - Mount Isa	159	150	-5.7
64	Armidale - Sydney	333	301	-9.6
65	Geraldton - Perth	190	168	-11.6
66	Alice Springs - Darwin	98	117	19.4
	Total domestic network	51 471	51 652	0.4

(a) Includes RPT Cargo flights.

(b) Melbourne - Townsville route included from September 2017, prior data not shown.

(c) Proserpine - Sydney route included from September 2017, prior data not shown.

TOP TEN AIRPORTS – PASSENGER MOVEMENTS

Table 6: Top ten airports, RPT passenger movements (000s) - annual activity

Airport	YE Jan 2017	YE Jan 2018	% Change	% of Total
1 Sydney	26 978.4	27 364.9	1.4	22.8
2 Melbourne	24 865.8	25 397.4	2.1	21.1
3 Brisbane	17 111.6	17 288.1	1.0	14.4
4 Perth	8 128.1	8 001.1	-1.6	6.7
5 Adelaide	7 018.3	7 166.5	2.1	6.0
6 Gold Coast	5 330.1	5 447.0	2.2	4.5
7 Cairns	4 265.9	4 307.2	1.0	3.6
8 Canberra	2 897.1	3 030.0	4.6	2.5
9 Hobart	2 395.9	2 526.7	5.5	2.1
10 Darwin	1 811.7	1 799.4	-0.7	1.5
Total top ten airports	100 803.0	102 328.3	1.5	85.2
Total domestic network	118 243.6	120 165.8	1.6	100.0

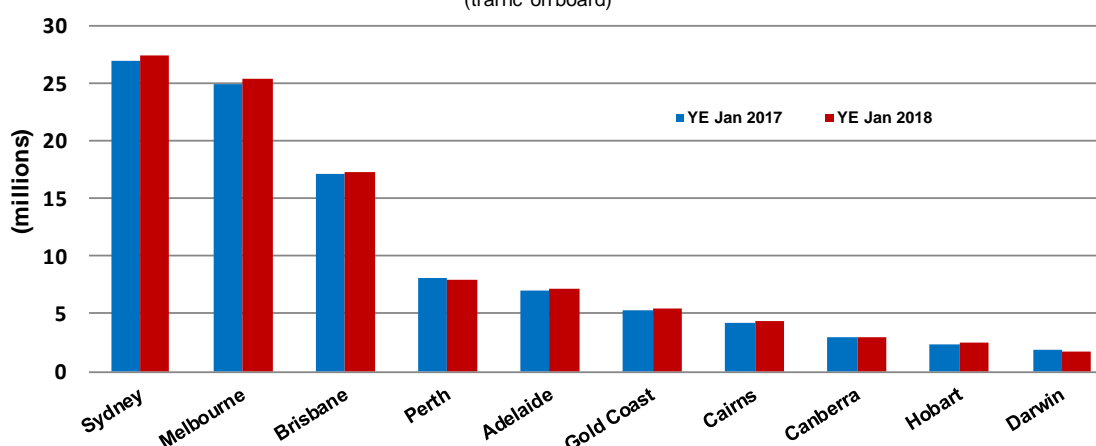
Table 7: Top ten airports, RPT passenger movements (000s) - monthly activity

Airport	Jan 2017	Jan 2018	% Change	% of Total
1 Sydney	2 259.7	2 298.1	1.7	22.6
2 Melbourne	2 133.2	2 184.2	2.4	21.5
3 Brisbane	1 385.5	1 384.1	-0.1	13.6
4 Perth	690.6	695.0	0.6	6.8
5 Adelaide	587.8	605.1	2.9	6.0
6 Gold Coast	519.3	546.3	5.2	5.4
7 Cairns	372.9	368.0	-1.3	3.6
8 Hobart	250.3	266.6	6.5	2.6
9 Canberra	191.7	199.4	4.0	2.0
10 Launceston	143.2	147.3	2.9	1.4
Total top ten airports	8 534.2	8 694.0	1.9	85.6
Total domestic network	9 950.4	10 158.5	2.1	100.0

Note: Airport passenger movement numbers are the sum of passenger arrivals and departures at each airport.

Top ten airports, RPT passenger movements

(traffic on board)



TOP FIVE AIRPORTS – CARGO MOVEMENTS

Table 8: Top five airports, domestic RPT cargo movements (000s tonnes) - annual activity

Airport	YE Jan 2017	YE Jan 2018	% Change	% of Total
1 Melbourne	125.0	132.4	5.9	29.0
2 Sydney	104.6	106.5	1.8	23.3
3 Brisbane	67.1	67.1	-0.1	14.7
4 Perth	60.1	64.9	7.9	14.2
5 Adelaide	24.6	27.1	10.1	5.9
Total top five airports	381.5	397.9	4.3	87.2
Total domestic network	439.0	456.6	4.0	100.0

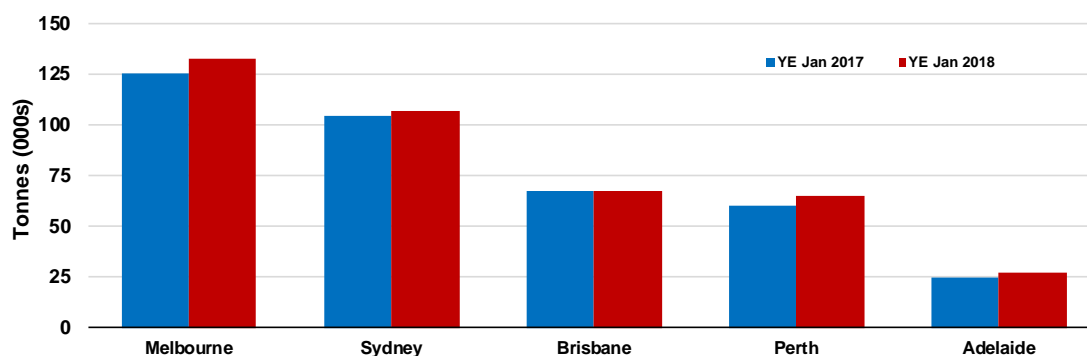
Table 9: Top five airports, domestic RPT cargo movements (000s tonnes) - monthly activity

Airport	Jan 2017	Jan 2018	% Change	% of Total
1 Melbourne	9.9	10.4	4.5	29.3
2 Sydney	7.9	8.2	3.1	23.0
3 Brisbane	4.7	5.3	13.1	14.9
4 Perth	4.6	4.9	6.0	13.8
5 Adelaide	2.0	2.1	8.2	6.0
Total top five airports	29.1	30.8	6.0	87.0
Total domestic network	33.7	35.4	5.3	100.0

Note: Airport cargo tonnes are the sum of cargo tonnes on arrivals and departures at each airport.

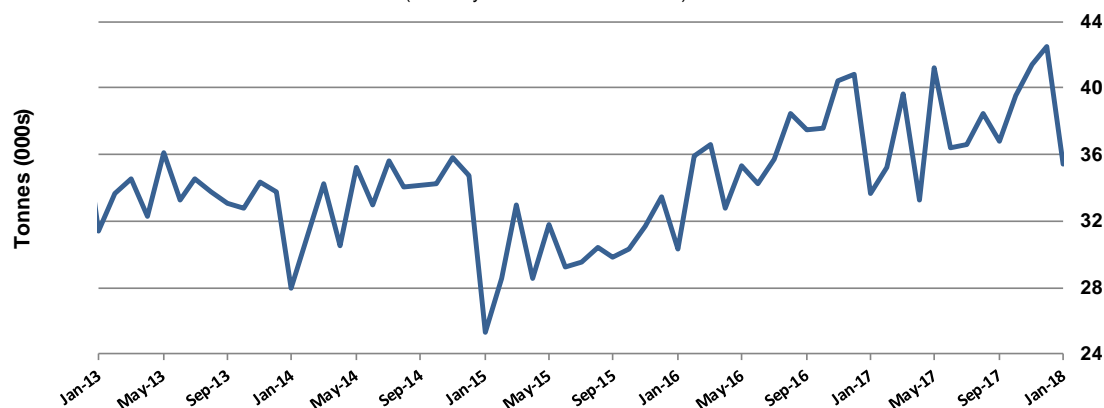
Top five airports, cargo movements

(Domestic cargo traffic - traffic on board)



Total domestic network - cargo movement

(monthly totals - traffic on board)



Note: Airport cargo tonnes are the sum of cargo tonnes on arrivals and departures at each airport.

TOP TEN ROUTES

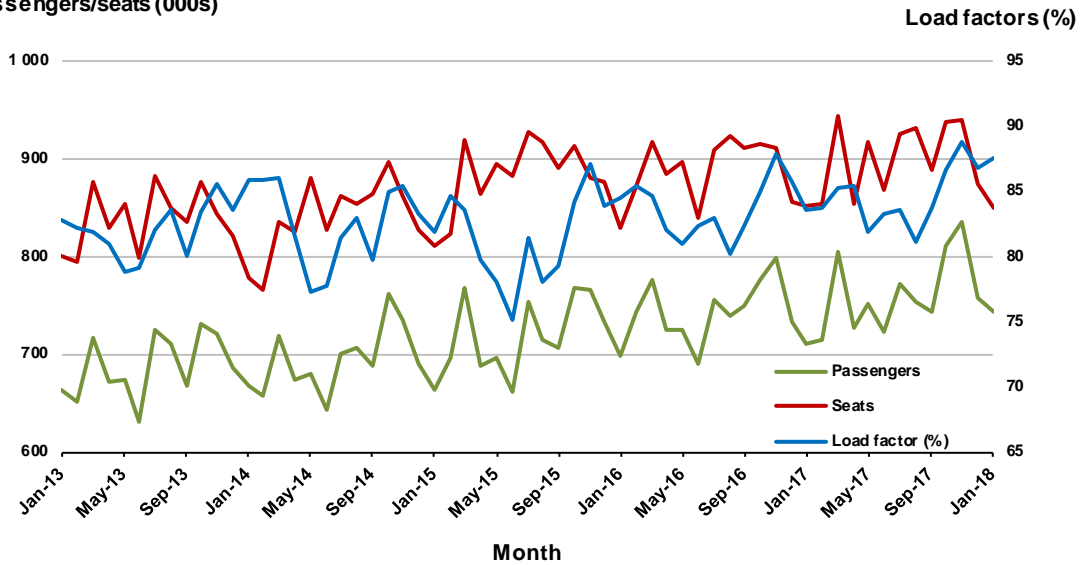
1. Melbourne - Sydney

Monthly data

	Jan 2017	Jan 2018	% Change
Passengers carried (000s)	709.5	742.8	4.7
Seats (000s)	850.1	849.2	-0.1
Load factor %	83.5	87.5	4.0 *
Aircraft trips	4 728	4 761	0.7

* percentage point difference

Passengers/seats (000s)

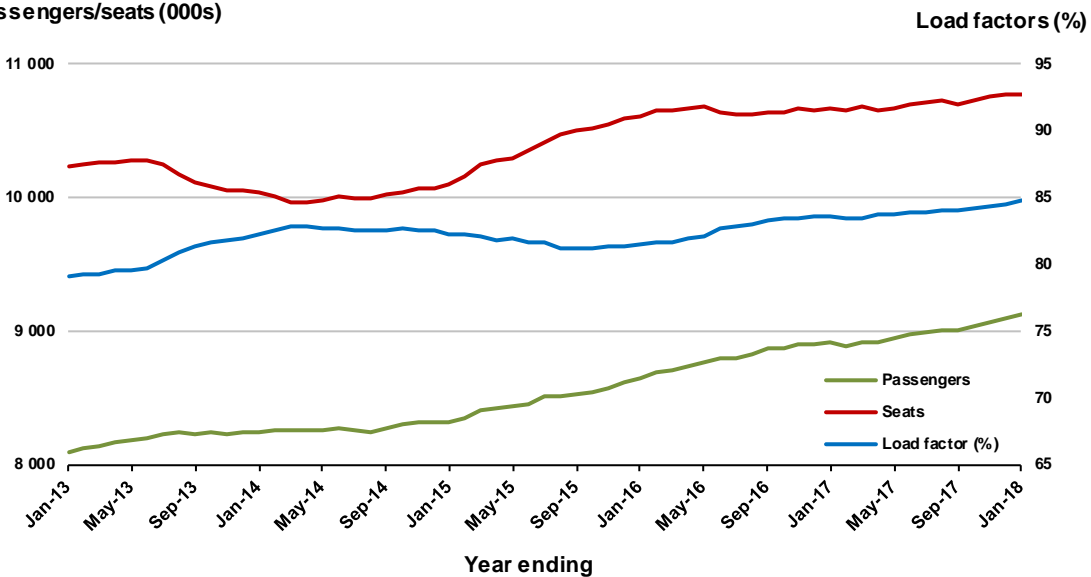


Moving annual data

	YE Jan 2017	YE Jan 2018	% Change
Passengers carried (000s)	8 915.5	9 130.4	2.4
Seats (000s)	10 674.6	10 771.6	0.9
Load factor %	83.5	84.8	1.2 *
Aircraft trips	59 361	60 092	1.2

* percentage point difference

Passengers/seats (000s)

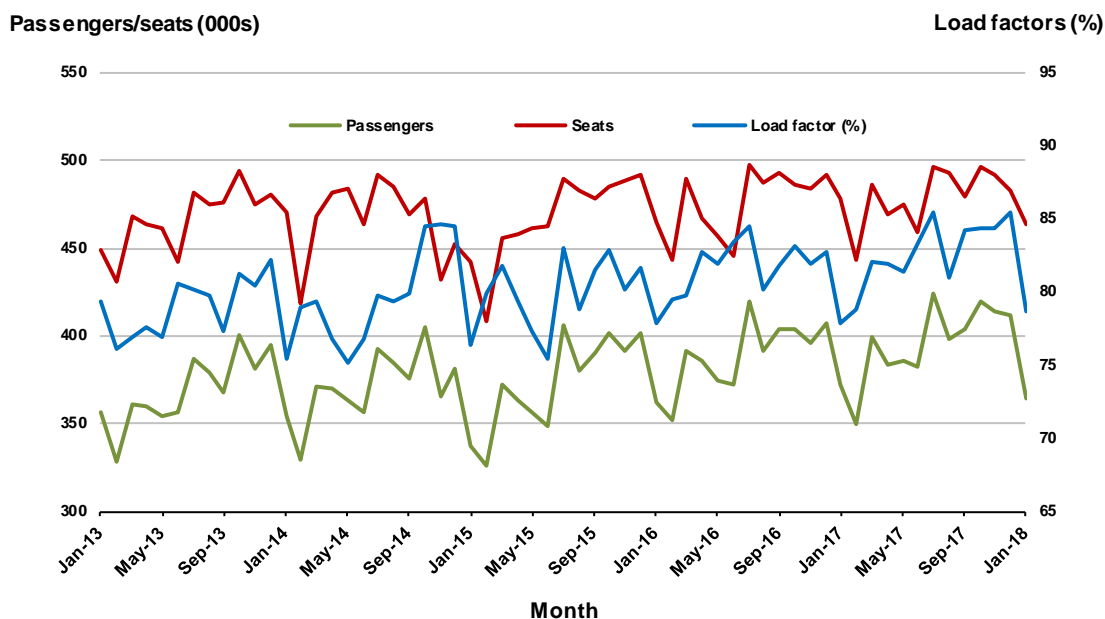


2. Brisbane - Sydney

Monthly data

	Jan 2017	Jan 2018	% Change
Passengers carried (000s)	372.2	364.6	-2.0
Seats (000s)	478.6	463.2	-3.2
Load factor %	77.8	78.7	0.9 *
Aircraft trips	2 936	2 812	-4.2

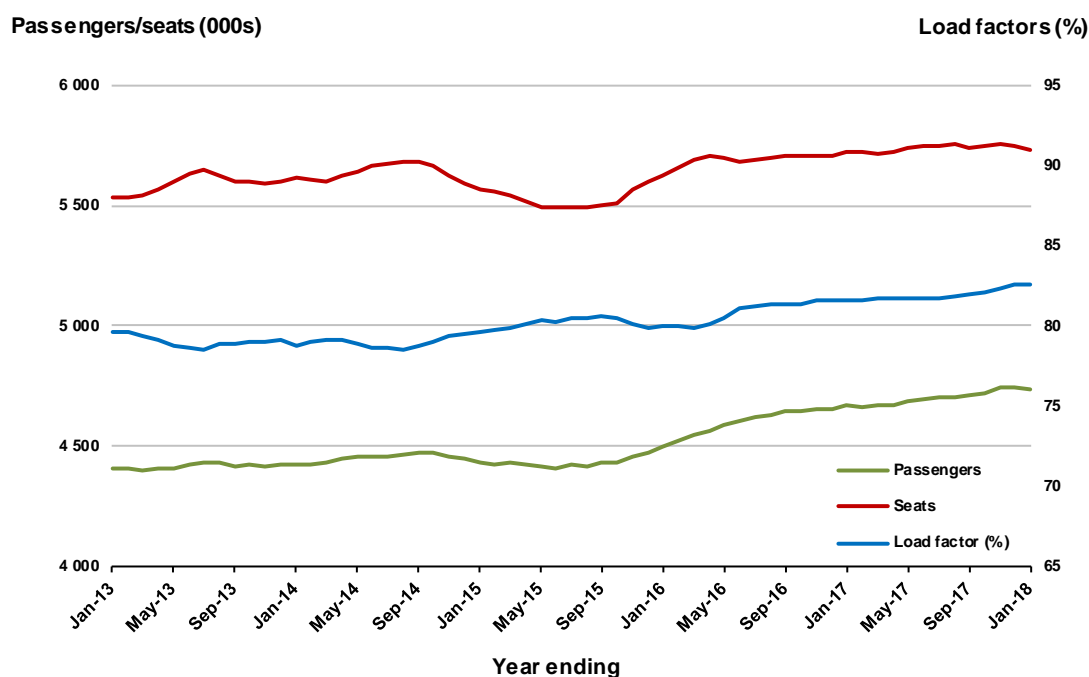
* percentage point difference



Moving annual data

	YE Jan 2017	YE Jan 2018	% Change
Passengers carried (000s)	4 668.4	4 738.6	1.5
Seats (000s)	5 719.9	5 734.3	0.3
Load factor %	81.6	82.6	1.0 *
Aircraft trips	35 473	35 277	-0.6

* percentage point difference

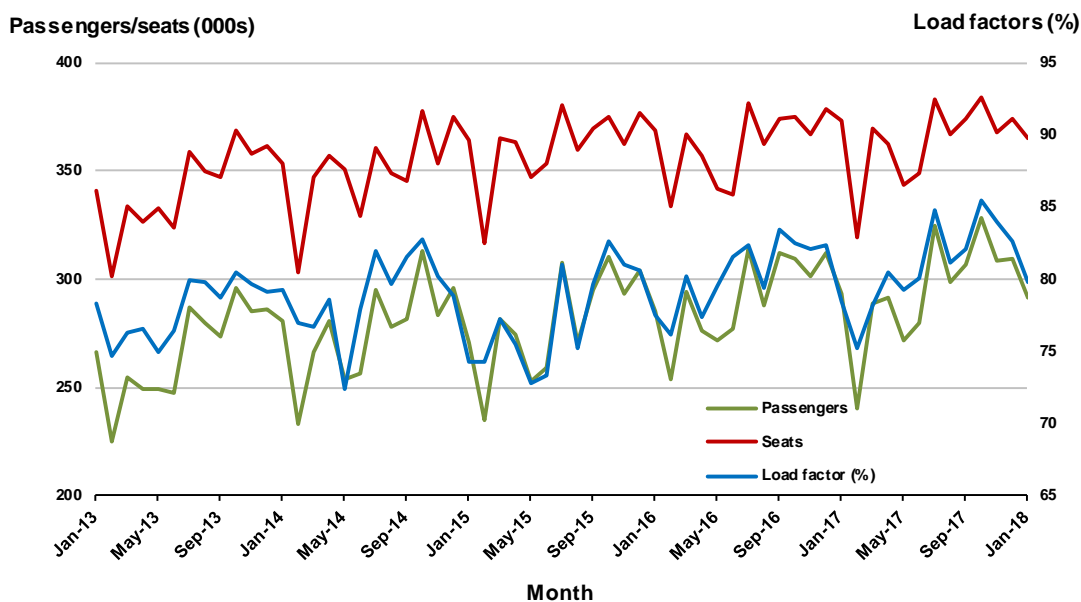


3. Brisbane - Melbourne

Monthly data

	Jan 2017	Jan 2018	% Change
Passengers carried (000s)	293.1	291.3	-0.6
Seats (000s)	373.4	364.9	-2.3
Load factor %	78.5	79.8	1.3 *
Aircraft trips	2 192	2 149	-2.0

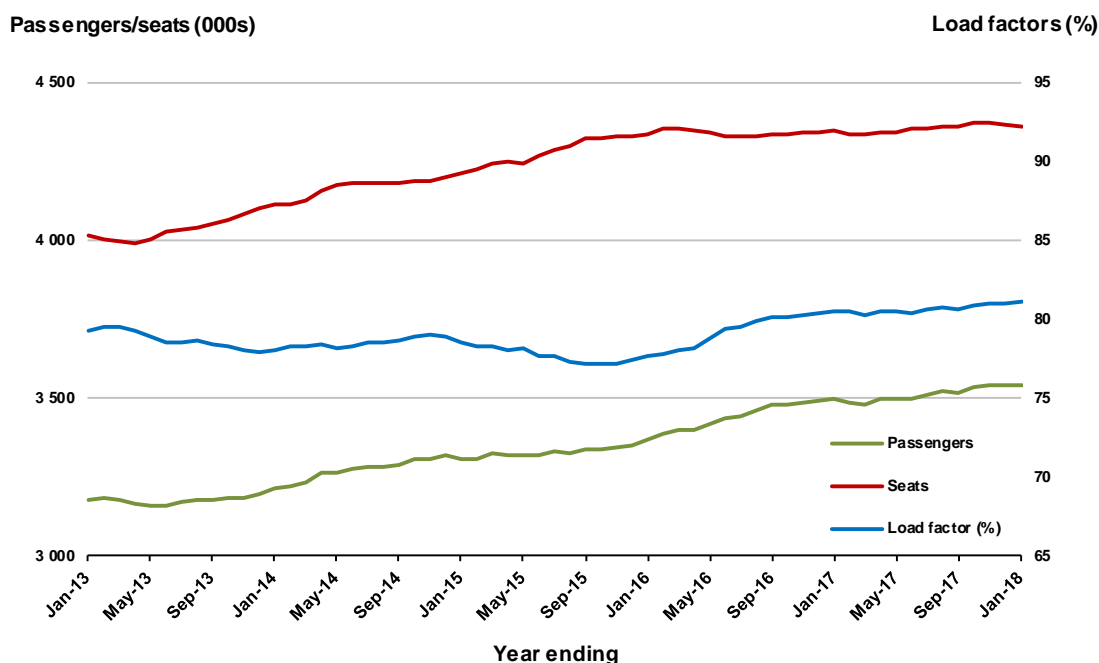
* percentage point difference



Moving annual data

	YE Jan 2017	YE Jan 2018	% Change
Passengers carried (000s)	3 501.0	3 539.2	1.1
Seats (000s)	4 348.2	4 359.2	0.3
Load factor %	80.5	81.2	0.7 *
Aircraft trips	25 922	25 763	-0.6

* percentage point difference



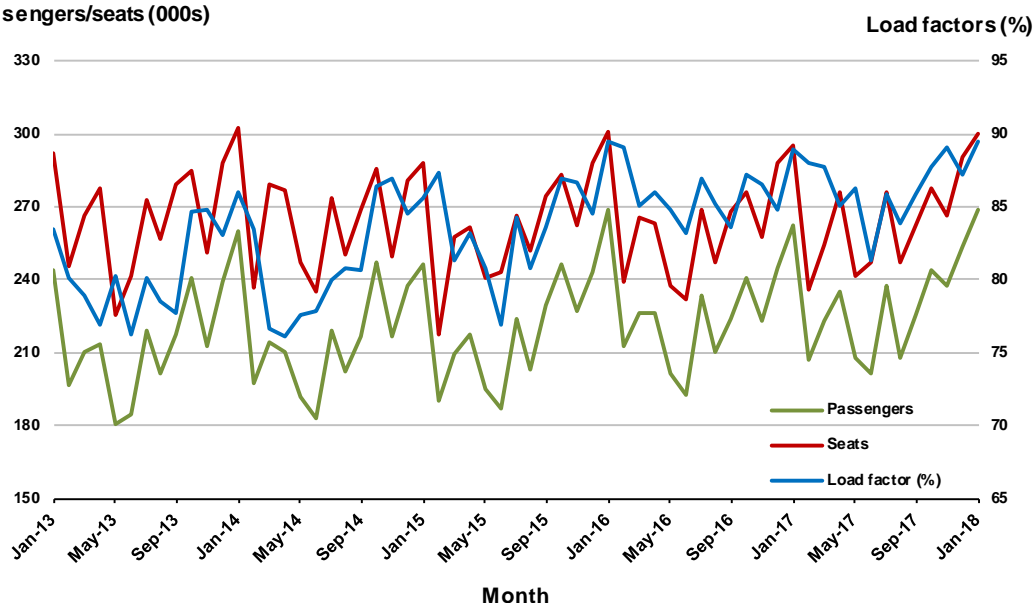
4. Gold Coast - Sydney

Monthly data

	Jan 2017	Jan 2018	% Change
Passengers carried (000s)	262.5	268.8	2.4
Seats (000s)	295.3	300.3	1.7
Load factor %	88.9	89.5	0.6 *
Aircraft trips	1 678	1 677	-0.1

* percentage point difference

Passengers/seats (000s)

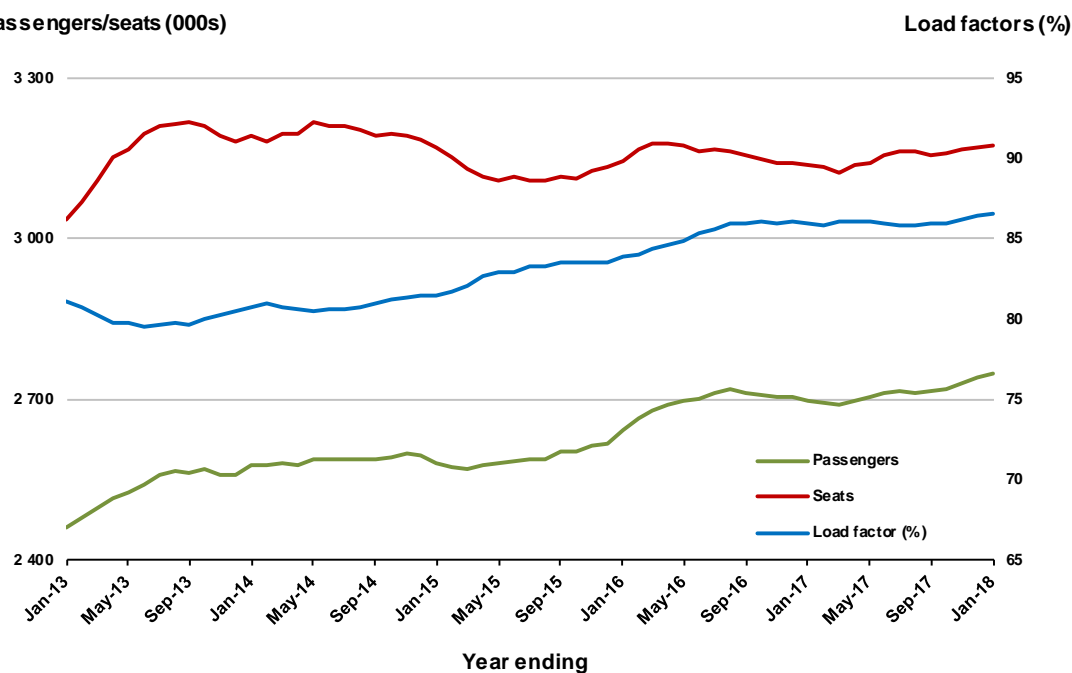


Moving annual data

	YE Jan 2017	YE Jan 2018	% Change
Passengers carried (000s)	2 697.8	2 747.1	1.8
Seats (000s)	3 137.8	3 175.4	1.2
Load factor %	86.0	86.5	0.5 *
Aircraft trips	18 318	18 037	-1.5

* percentage point difference

Passengers/seats (000s)



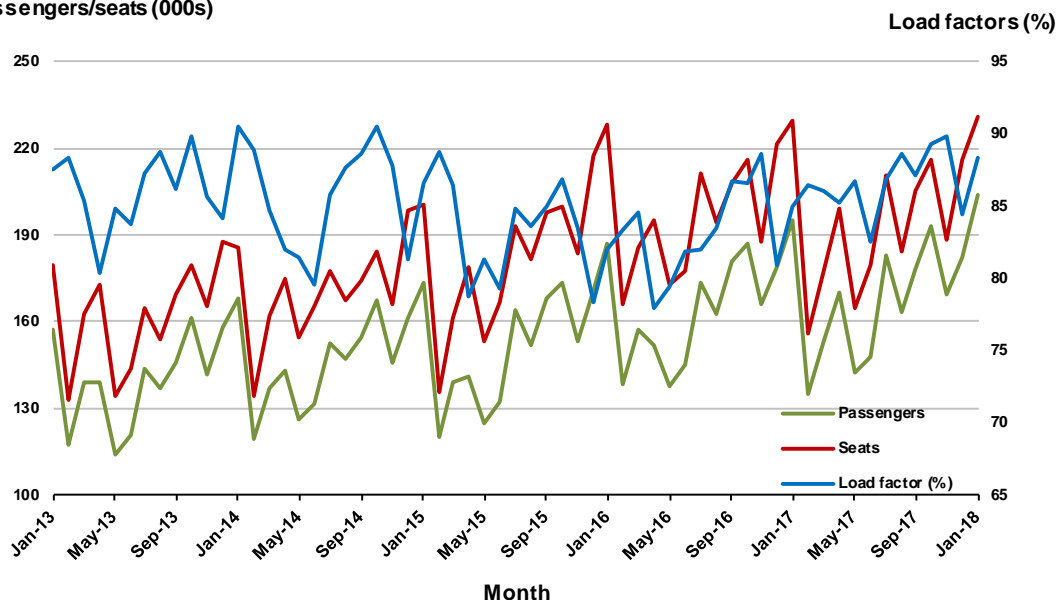
5. Gold Coast - Melbourne

Monthly data

	Jan 2017	Jan 2018	% Change
Passengers carried (000s)	195.3	204.2	4.6
Seats (000s)	229.8	231.0	0.5
Load factor %	85.0	88.4	3.4 *
Aircraft trips	1 223	1 234	0.9

* percentage point difference

Passengers/seats (000s)

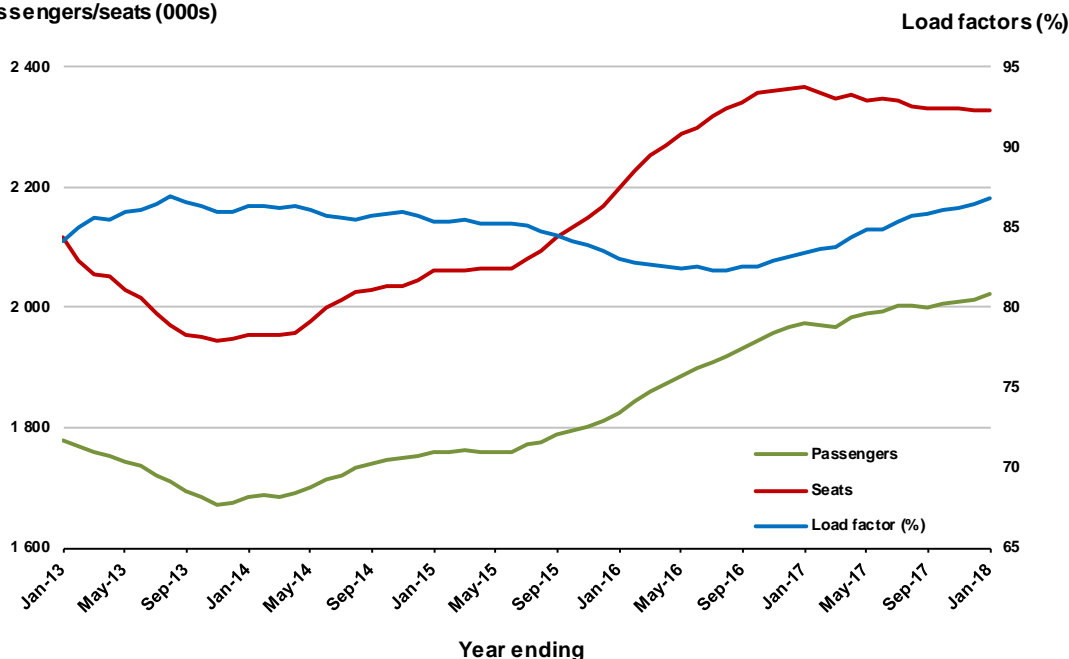


Moving annual data

	YE Jan 2017	YE Jan 2018	% Change
Passengers carried (000s)	1 974.3	2 021.5	2.4
Seats (000s)	2 366.8	2 327.8	-1.6
Load factor %	83.4	86.8	3.4 *
Aircraft trips	12 666	12 400	-2.1

* percentage point difference

Passengers/seats (000s)



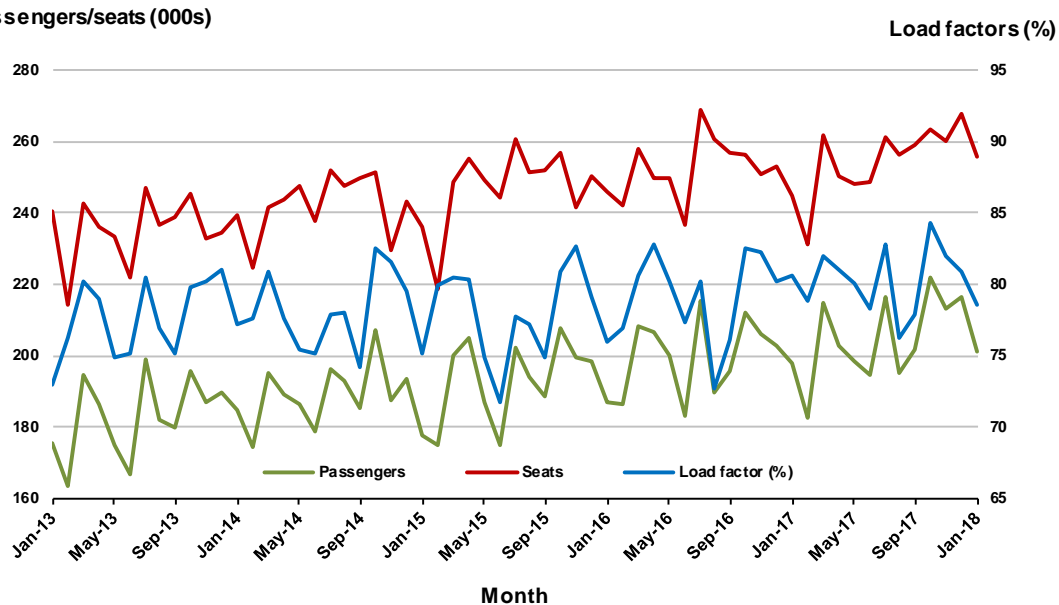
6. Adelaide - Melbourne

Monthly data

	Jan 2017	Jan 2018	% Change
Passengers carried (000s)	197.6	201.0	1.7
Seats (000s)	245.1	255.6	4.3
Load factor %	80.6	78.6	-2.0 *
Aircraft trips	1 549	1 595	3.0

* percentage point difference

Passengers/seats (000s)

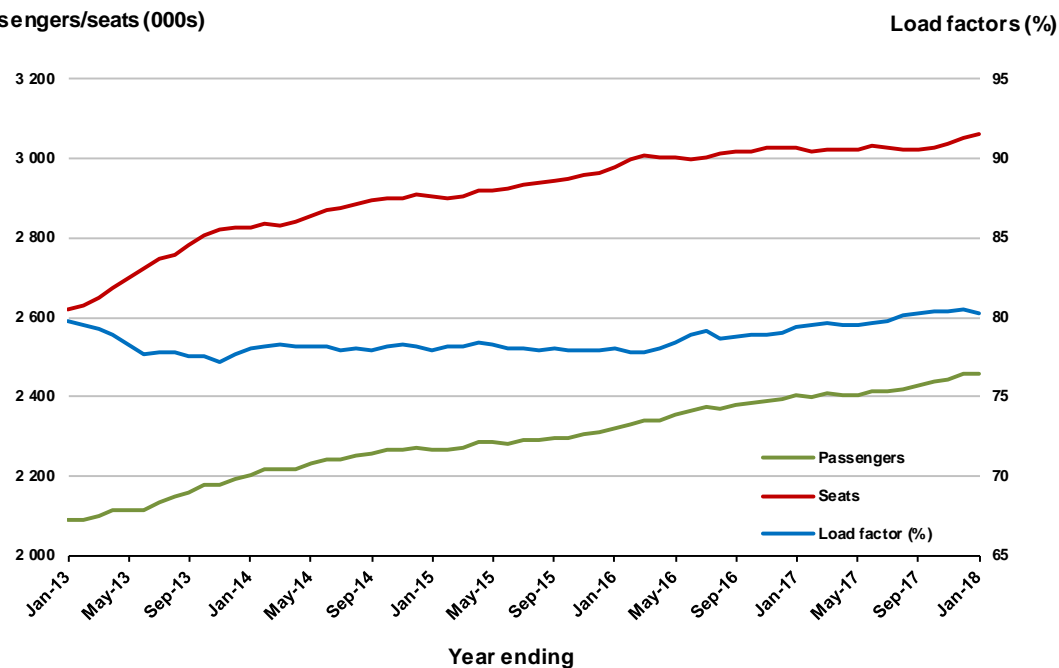


Moving annual data

	YE Jan 2017	YE Jan 2018	% Change
Passengers carried (000s)	2 404.3	2 459.8	2.3
Seats (000s)	3 028.2	3 063.8	1.2
Load factor %	79.4	80.3	0.9 *
Aircraft trips	19 336	19 174	-0.8

* percentage point difference

Passengers/seats (000s)



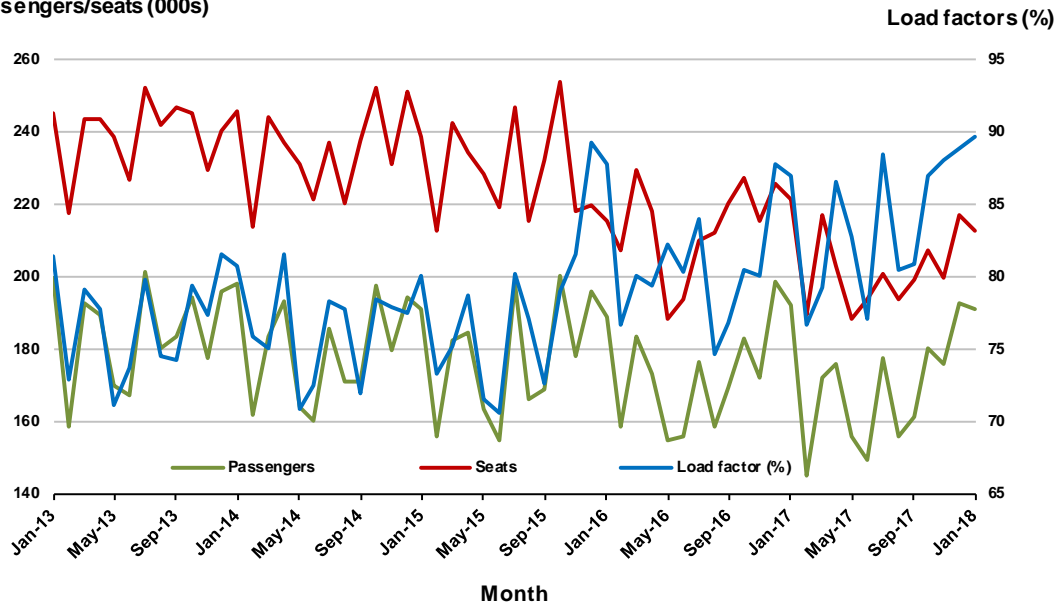
7. Melbourne - Perth

Monthly data

	Jan 2017	Jan 2018	% Change
Passengers carried (000s)	192.2	190.8	-0.8
Seats (000s)	221.2	212.8	-3.8
Load factor %	86.9	89.6	2.7 *
Aircraft trips	987	988	0.1

* percentage point difference

Passengers/seats (000s)

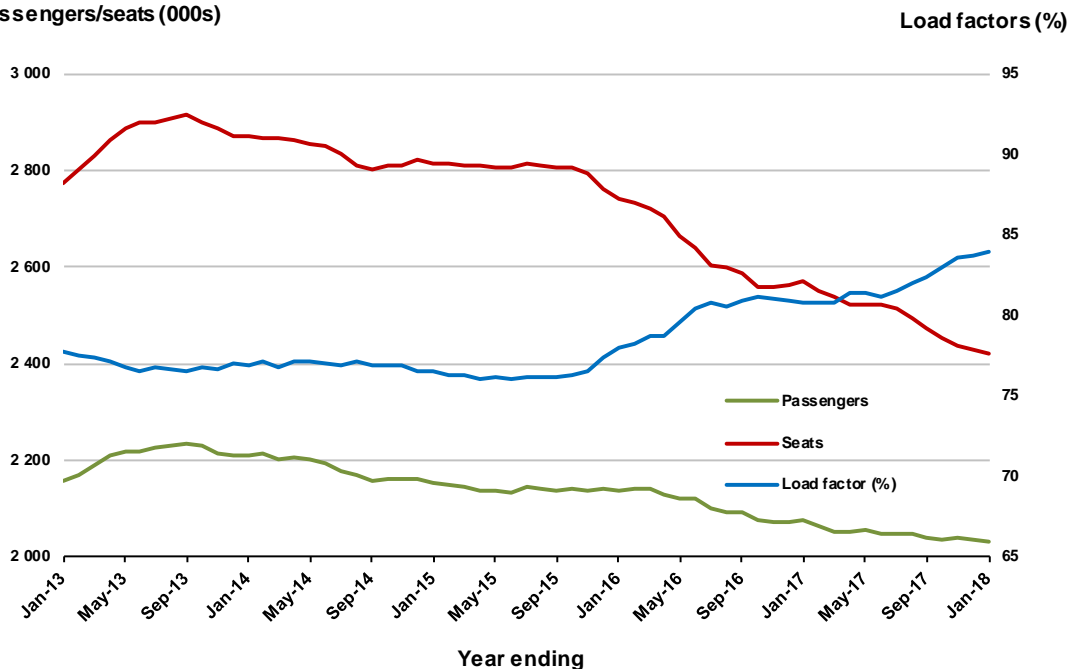


Moving annual data

	YE Jan 2017	YE Jan 2018	% Change
Passengers carried (000s)	2 076.1	2 031.8	-2.1
Seats (000s)	2 568.9	2 420.9	-5.8
Load factor %	80.8	83.9	3.1 *
Aircraft trips	11 606	11 111	-4.3

* percentage point difference

Passengers/seats (000s)



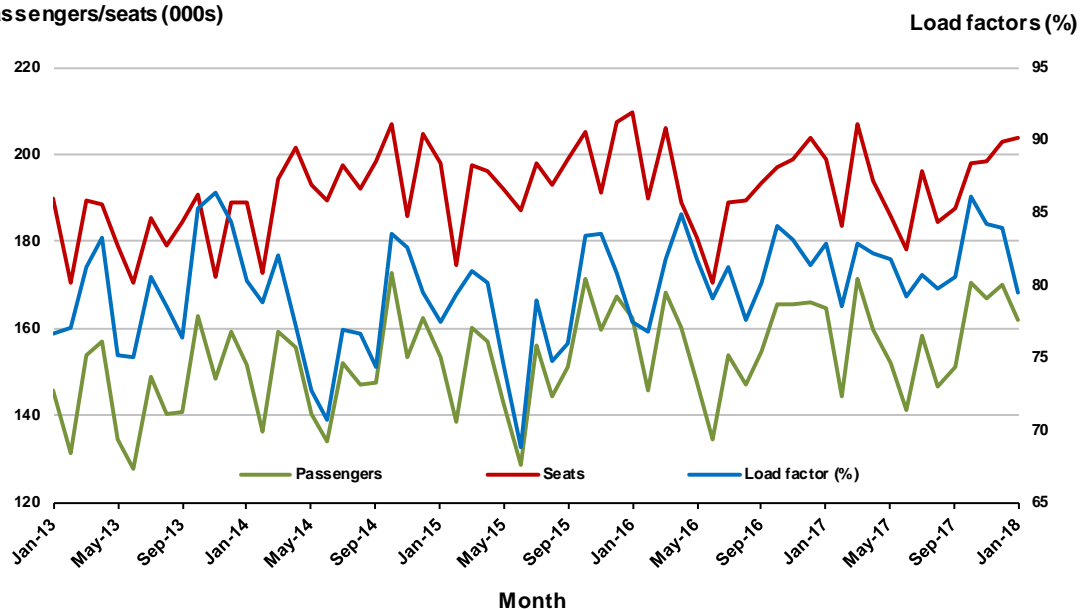
8. Adelaide - Sydney

Monthly data

	Jan 2017	Jan 2018	% Change
Passengers carried (000s)	164.9	162.0	-1.8
Seats (000s)	198.8	203.7	2.5
Load factor %	82.9	79.5	-3.4 *
Aircraft trips	1 195	1 211	1.3

* percentage point difference

Passengers/seats (000s)

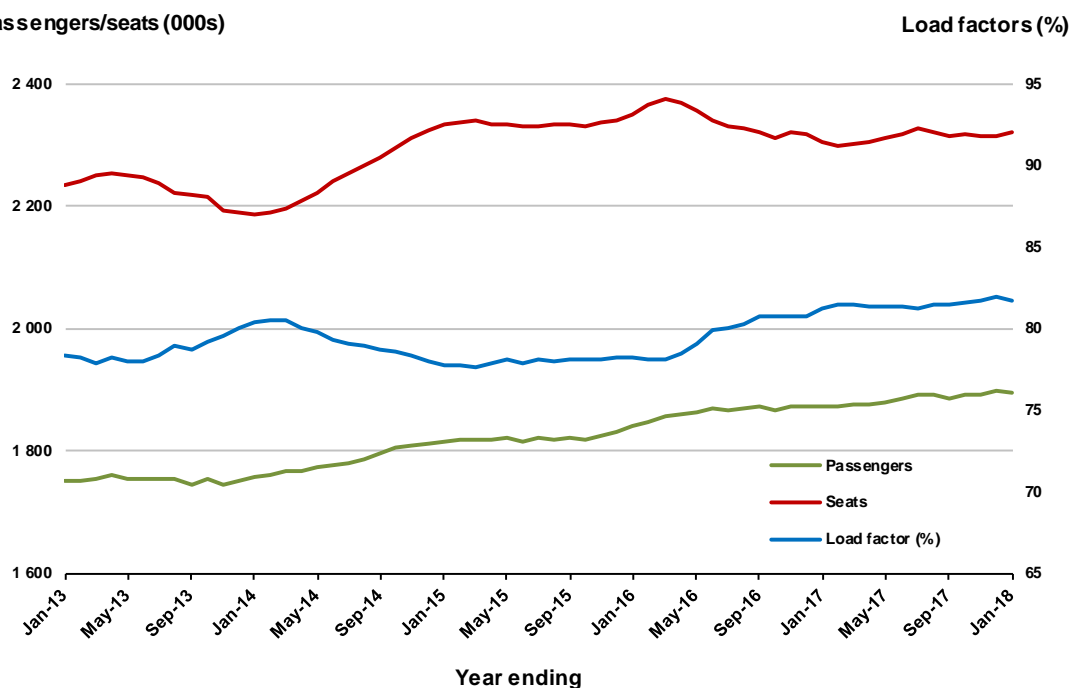


Moving annual data

	YE Jan 2017	YE Jan 2018	% Change
Passengers carried (000s)	1 874.4	1 895.4	1.1
Seats (000s)	2 306.3	2 320.7	0.6
Load factor %	81.3	81.7	0.4 *
Aircraft trips	14 063	13 947	-0.8

* percentage point difference

Passengers/seats (000s)



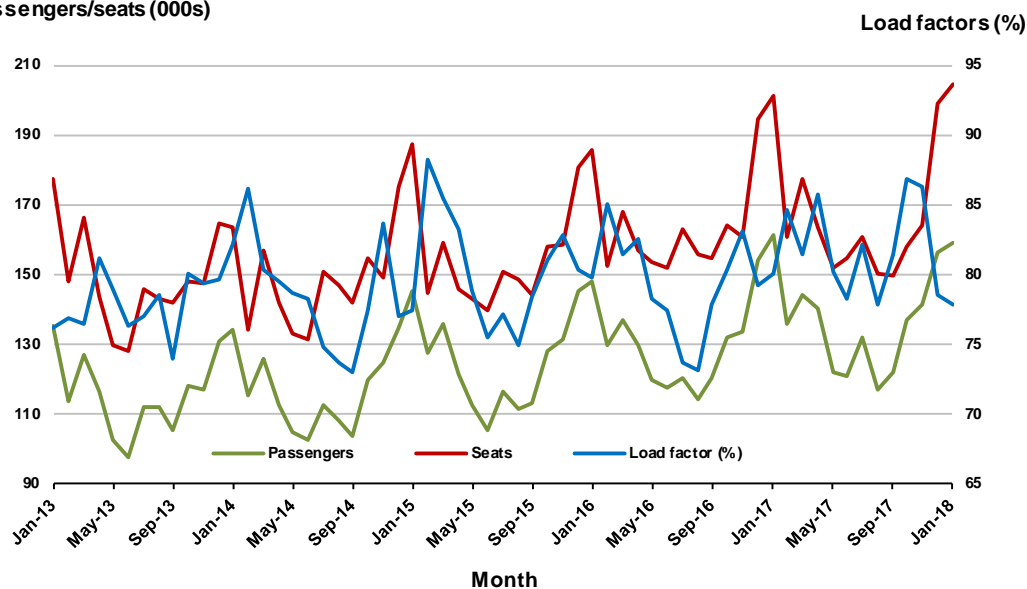
9. Hobart - Melbourne

Monthly data

	Jan 2017	Jan 2018	% Change
Passengers carried (000s)	161.1	159.3	-1.1
Seats (000s)	201.1	204.4	1.7
Load factor %	80.1	77.9	-2.2 *
Aircraft trips	1 204	1 196	-0.7

* percentage point difference

Passengers/seats (000s)

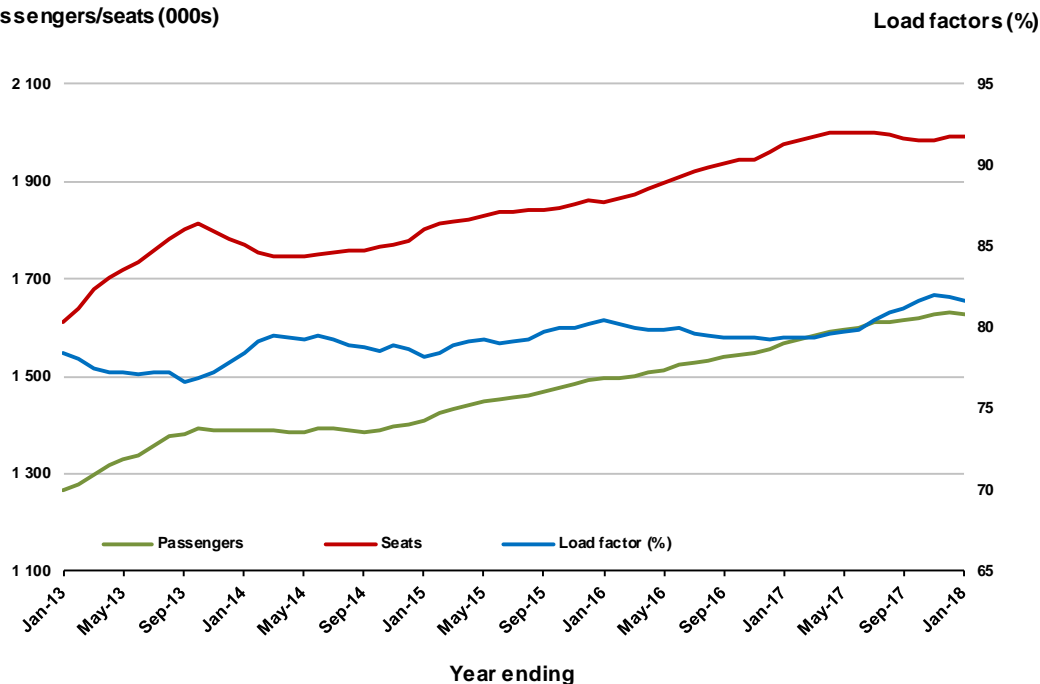


Moving annual data

	YE Jan 2017	YE Jan 2018	% Change
Passengers carried (000s)	1 568.8	1 628.5	3.8
Seats (000s)	1 976.6	1 993.9	0.9
Load factor %	79.4	81.7	2.3 *
Aircraft trips	12 357	12 153	-1.7

* percentage point difference

Passengers/seats (000s)



10. Perth - Sydney

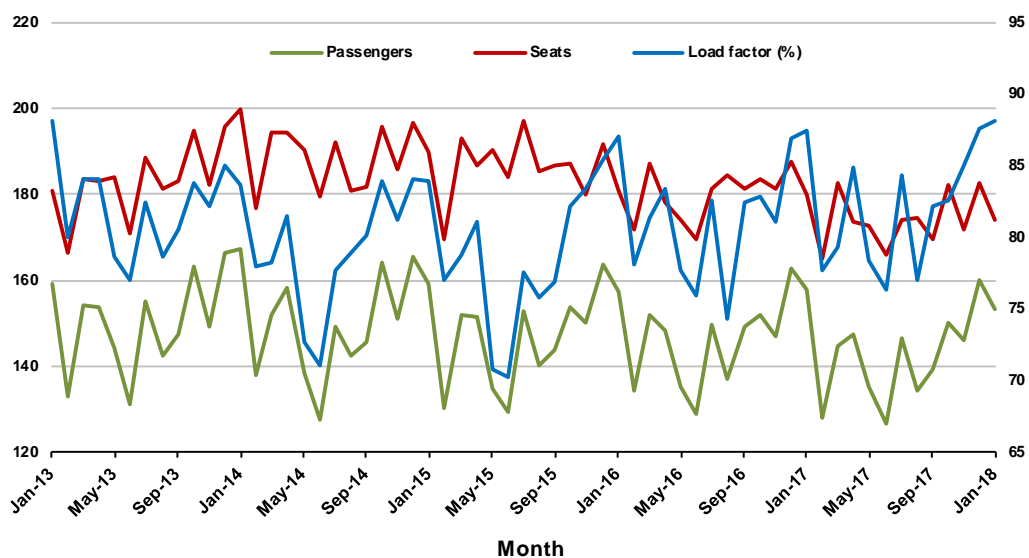
Monthly data

	Jan 2017	Jan 2018	% Change
Passengers carried (000s)	157.7	153.3	-2.8
Seats (000s)	180.1	173.9	-3.5
Load factor %	87.5	88.1	0.6 *
Aircraft trips	757	768	1.5

* percentage point difference

Passengers/seats (000s)

Load factors (%)



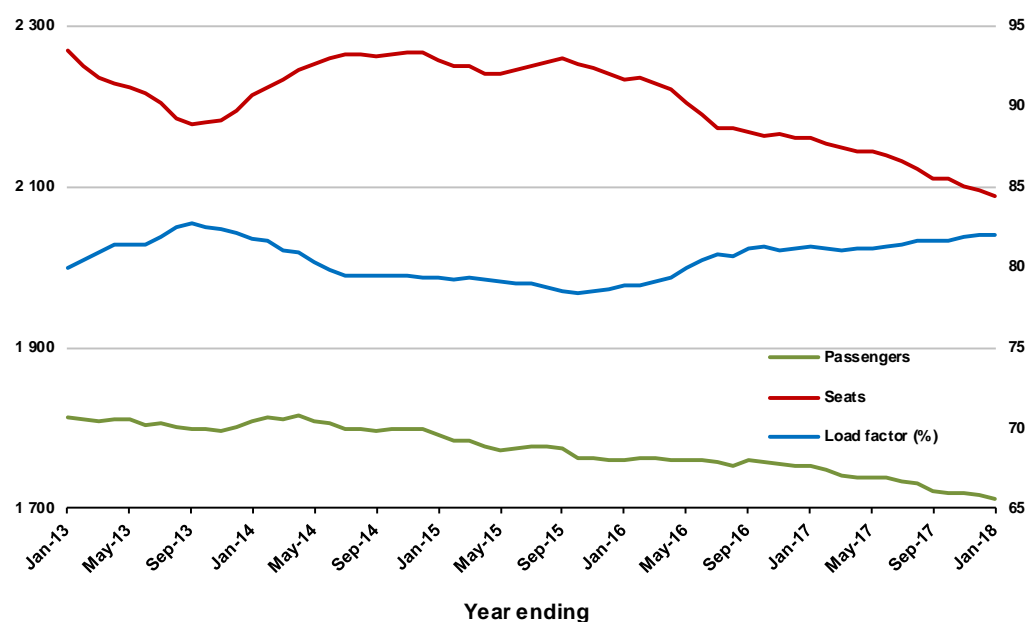
Moving annual data

	YE Jan 2017	YE Jan 2018	% Change
Passengers carried (000s)	1 754.0	1 712.1	-2.4
Seats (000s)	2 159.6	2 088.2	-3.3
Load factor %	81.2	82.0	0.8 *
Aircraft trips	9 139	9 042	-1.1

* percentage point difference

Passengers/seats (000s)

Load factors (%)



TOP FIFTY REGIONAL AIRPORTS

Table 10: Top fifty regional airports (000s) — passenger movements, monthly

Airport	Jan 2017	Jan 2018	% Change
1 Cairns	372.9	368.0	-1.3
2 Hobart	250.3	266.6	6.5
3 Launceston	143.2	147.3	2.9
4 Darwin	133.0	129.9	-2.3
5 Townsville	114.4	124.0	8.3
6 Newcastle	109.6	105.6	-3.7
7 Mackay	57.4	63.3	10.2
8 Ballina	51.9	56.7	9.2
9 Proserpine	31.6	44.9	42.0
10 Alice Springs	44.0	42.4	-3.7
11 Rockhampton	41.9	40.4	-3.6
12 Hamilton Island	55.7	38.9	-30.1
13 Karratha	34.8	33.5	-3.8
14 Coffs Harbour	33.4	33.2	-0.6
15 Ayers Rock	27.5	28.3	3.1
16 Port Hedland	27.4	27.3	-0.7
17 Broome	21.0	25.8	22.5
18 Newman	21.9	23.3	6.6
19 Kalgoorlie	17.1	19.8	15.6
20 Gladstone	21.7	19.6	-9.9
21 Mildura	18.2	19.2	5.6
22 Albury	18.2	18.8	3.1
23 Port Macquarie	18.2	17.7	-3.1
24 Dubbo	15.7	15.4	-2.1
25 Tamworth	14.7	15.0	2.4
26 Hervey Bay	15.9	14.9	-6.5
27 Emerald	14.8	14.8	0.0
28 Wagga Wagga	13.2	14.5	9.7
29 Port Lincoln	14.0	14.1	0.5
30 Mount Isa	13.7	14.0	2.4
31 Paraburdoo	12.3	13.7	11.4
32 Bundaberg	14.1	12.9	-8.0
33 Devonport	11.5	12.5	9.1
34 Toowoomba Wellcamp	11.5	11.0	-4.7
35 Armidale	9.2	8.7	-5.0
36 Moranbah	9.0	7.6	-15.7
37 Thursday Island	7.8	7.1	-8.8
38 Geraldton	7.6	7.1	-7.2
39 Gove	6.5	6.4	-0.6
40 Merimbula	6.2	6.2	0.9
41 Weipa	6.0	6.1	1.5
42 Roma	5.3	5.8	9.5
43 Kununurra	6.3	5.7	-9.3
44 Norfolk Island	5.3	5.7	6.0
45 Kingscote	3.8	5.5	47.8
46 Mount Gambier	4.7	5.5	17.0
47 Olympic Dam	3.6	5.4	47.9
48 Burnie	4.7	5.1	9.6
49 Learmonth	4.9	5.1	3.0
50 Griffith	4.4	4.7	7.2
Total top 50 regional airports	1 912.2	1 944.9	1.7
Total regional airports	2 005.9	2 045.2	2.0
Total domestic network	9 950.4	10 158.5	2.1

Note: Airport passenger movement numbers are the sum of passenger arrivals and departures at each airport.

Table 11: Top fifty regional airports (000s) — passenger movements, annual

	Airport	YE Jan 2017	YE Jan 2018	% Change
1	Cairns	4 265.9	4 307.2	1.0
2	Hobart	2 395.9	2 526.7	5.5
3	Darwin	1 811.7	1 799.4	-0.7
4	Townsville	1 534.8	1 600.0	4.2
5	Launceston	1 339.8	1 345.9	0.5
6	Newcastle	1 249.2	1 285.7	2.9
7	Mackay	786.7	792.3	0.7
8	Alice Springs	615.6	616.9	0.2
9	Rockhampton	586.5	555.6	-5.3
10	Ballina	492.9	514.5	4.4
11	Proserpine	343.3	438.9	27.8
12	Karratha	489.6	437.8	-10.6
13	Coffs Harbour	397.0	415.9	4.8
14	Hamilton Island	558.1	406.8	-27.1
15	Broome	370.7	393.2	6.1
16	Ayers Rock	362.0	366.8	1.3
17	Port Hedland	356.8	347.4	-2.6
18	Newman	308.9	287.3	-7.0
19	Gladstone	325.6	280.1	-14.0
20	Albury	254.8	270.3	6.1
21	Mildura	246.8	256.4	3.9
22	Kalgoorlie	241.3	254.7	5.5
23	Dubbo	210.3	236.9	12.7
24	Port Macquarie	227.2	227.5	0.2
25	Wagga Wagga	214.1	226.4	5.7
26	Mount Isa	188.3	201.0	6.8
27	Tamworth	179.8	198.7	10.5
28	Emerald	199.3	197.8	-0.8
29	Bundaberg	174.4	172.9	-0.8
30	Hervey Bay	170.6	172.9	1.4
31	Port Lincoln	177.4	171.8	-3.2
32	Paraburdoo	164.8	167.9	1.9
33	Toowoomba Wellcamp	126.0	151.4	20.2
34	Devonport	146.2	148.6	1.6
35	Armidale	129.0	132.5	2.7
36	Moranbah	118.3	114.2	-3.4
37	Geraldton	118.2	111.5	-5.6
38	Kununurra	106.6	104.0	-2.4
39	Thursday Island	100.7	99.7	-1.0
40	Roma	86.9	84.3	-3.0
41	Gove	83.2	84.1	1.0
42	Learmonth	84.1	82.7	-1.6
43	Mount Gambier	76.3	81.1	6.3
44	Weipa	77.8	78.2	0.5
45	Griffith	70.1	74.0	5.5
46	Olympic Dam	51.5	71.4	38.7
47	Merimbula	63.3	65.6	3.6
48	Orange	52.3	65.4	25.2
49	Whyalla	62.5	65.4	4.6
50	Broken Hill	53.7	62.4	16.2
	Total top 50 regional airports	22 847.0	23 150.5	1.3
	Total regional airports	24 157.5	24 507.1	1.4
	Total domestic network	118 243.6	120 165.8	1.6

Note: Airport passenger movement numbers are the sum of passenger arrivals and departures at each airport.

DOMESTIC CHARTER ACTIVITY

Table 12: Charter passengers carried and aircraft trips - annual activity

	YE Jan 2017	YE Jan 2018	% Change
Total domestic charter passengers	2 416 168	2 439 628	1.0
Total domestic charter aircraft trips	44 819	46 130	2.9

Note: Helicopter, joyflights and sightseeing charter flights not included.

Table 13: Charter passengers carried and aircraft trips - monthly activity

	Jan 2017	Jan 2018	% Change
Total domestic charter passengers	195 343	202 600	3.7
Total domestic charter aircraft trips	3 739	3 888	4.0

Note: Helicopter, joyflights and sightseeing charter flights not included.

Table 14: Domestic airports - charter activity - annual

	YE Jan 2017	YE Jan 2018	% Change
Total domestic charter passenger movements	4 832 336	4 879 256	1.0
Total domestic charter aircraft movements	89 638	92 260	2.9
Perth airport charter passenger movements	1 879 382	1 844 308	-1.9
Perth airport charter aircraft movements	31 672	31 147	-1.7

Note: Helicopter, joyflights and sightseeing charter flights not included.

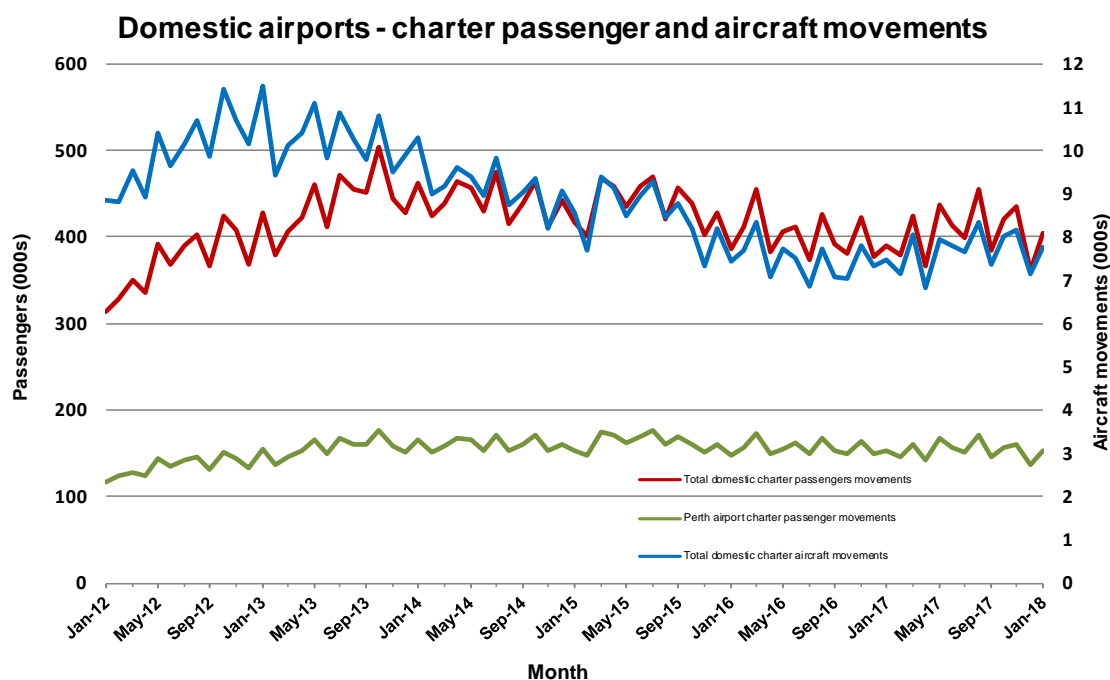
Charter passenger and aircraft movement numbers are the sum of arrivals and departures at each airport.

Table 15: Domestic airports - charter activity - monthly

	Jan 2017	Jan 2018	% Change
Total domestic charter passenger movements	390 686	405 200	3.7
Total domestic charter aircraft movements	7 478	7 776	4.0
Perth airport charter passenger movements	153 383	152 739	-0.4
Perth airport charter aircraft movements	2 685	2 603	-3.1

Note: Helicopter, joyflights and sightseeing charter flights not included.

Charter passenger and aircraft movement numbers are the sum of arrivals and departures at each airport.



DEFINITIONS

Aircraft Trips	The number of flight stages. A return flight counts as two aircraft trips.
Airport Movements	Airport movements (passenger and cargo) are measured once on arrival and once on departure. Each domestic trip generates two movements at airports. For example, a trip from Melbourne to Sydney will be counted twice, as a passenger departure at Melbourne and as a passenger arrival at Sydney. At the national level, the sum of all domestic airport traffic will therefore be equal to twice the number of trips undertaken.
Available Seat Kilometres (ASKs)	Calculated by multiplying the number of seats available on each flight stage, by the distance in kilometres between the ports. The distances used are Great Circle Distances.
City-Pair	The ports shown make up the city-pair route. Passenger movements shown for a city pair reflect total traffic in both directions.
Flight Stage	The operation of an aircraft from take-off to landing.
Load Factor	The total revenue passenger kilometres performed as a percentage of the total available seat kilometres.
Passengers Carried	Revenue passengers carried.
Regular Public Transport Services (RPT)	All air service operations in which aircraft are available for the transport of members of the public and are conducted in accordance with fixed schedules. It does not include charter or other non-scheduled operations.
Revenue Passengers	All passengers paying any fare. Frequent flyer redemption travellers are regarded as revenue passengers.
Revenue Passenger Kilometres (RPKs)	Calculated by multiplying the number of revenue passengers travelling on each flight stage, by the distance in kilometres between the ports. The distances used are Great Circle Distances.
Traffic on board by stages	The total of all traffic (revenue passengers) on each flight stage between two directly connected airports.
..	Data not included
NA	Not applicable