



**Australian Government**

**Department of Infrastructure, Regional Development and Cities**

Bureau of Infrastructure, Transport and Regional Economics

STATISTICAL REPORT



# Aviation

Domestic aviation activity  
November 2017

© Commonwealth of Australia 2018

ISSN: 1832 - 1968

### **Ownership of intellectual property rights in this publication**

Unless otherwise noted, copyright (and any other intellectual property rights, if any) in this publication is owned by the Commonwealth of Australia (referred to below as the Commonwealth).

### **Disclaimer**

The material contained in this publication is made available on the understanding that the Commonwealth is not providing professional advice, and that users exercise their own skill and care with respect to its use, and seek independent advice if necessary.

The Commonwealth makes no representations or warranties as to the contents or accuracy of the information contained in this publication. To the extent permitted by law, the Commonwealth disclaims liability to any person or organisation in respect of anything done, or omitted to be done, in reliance upon information contained in this publication.

### **Creative Commons licence**

With the exception of (a) the Coat of Arms; and (b) the Department of Infrastructure, Regional Development and Cities' photos and graphics, copyright in this publication is licensed under a Creative Commons Attribution 3.0 Australia Licence.

Creative Commons Attribution 3.0 Australia Licence is a standard form licence agreement that allows you to copy, communicate and adapt this publication provided that you attribute the work to the Commonwealth and abide by the other licence terms. A summary of the licence terms is available from <http://creativecommons.org/licenses/by/3.0/au/deed.en>. The full licence terms are available from <http://creativecommons.org/licenses/by/3.0/au/legalcode>.

### **Use of the Coat of Arms**

The Department of the Prime Minister and Cabinet sets the terms under which the Coat of Arms is used. Please refer to the Department's Commonwealth Coat of Arms and Government branding web page <http://www.dpmc.gov.au/guidelines/index.cfm#brand> and, in particular, the Guidelines on the use of the Commonwealth Coat of Arms publication.

An appropriate citation for this report is:

Bureau of Infrastructure, Transport and Regional Economics (BITRE), 2018, Domestic aviation activity, Statistical Report, BITRE, Canberra ACT.

### **Contact us**

This publication is available in PDF format. All other rights are reserved, including in relation to any Departmental logos or trade marks which may exist. For enquiries regarding the licence and any use of this publication, please contact:

Bureau of Infrastructure, Transport and Regional Economics (BITRE)  
Department of Infrastructure, Regional Development and Cities  
GPO Box 501, Canberra ACT 2601, Australia  
Telephone: (international) +61 2 6274 7210  
Fax: (international) +61 2 6274 6855  
Email: [bitre@infrastructure.gov.au](mailto:bitre@infrastructure.gov.au)  
Website: [www.bitre.gov.au](http://www.bitre.gov.au)

### **Inquiries**

Should you require additional information about the statistics contained in this publication:

Nebojsa Pavlovic

Telephone (02) 6274 6817 or Facsimile (02) 6274 7727

Electronic mail: [AVSTATS@infrastructure.gov.au](mailto:AVSTATS@infrastructure.gov.au)

[Nebojsa.Pavlovic@infrastructure.gov.au](mailto:Nebojsa.Pavlovic@infrastructure.gov.au)

Web site: <http://www.bitre.gov.au/statistics/aviation/domestic.aspx>

## FOREWORD

This report provides an overview of domestic (including charter) commercial aviation activity in Australia for the month of November 2017.

The data cover revenue passengers carried by Australian-registered operators of scheduled regular public transport services over Australian flight stages and fixed-wing charter operators. These estimates include passengers carried between domestic airports on international flights operated by these carriers. The passengers carried refer to traffic on board by stages.

Estimates of passengers and aircraft movements for charter aviation are included in this publication, where BITRE confidentiality standards are met.

Individual routes shown are restricted to those with an average exceeding 8 000 passengers per month over the previous six months where two or more airlines operate in competition. For the month of November 2017 there were 66 such routes.

Information on the total network for the month of November 2017 and on the Regular Public Transport (RPT) network for the month of November 2017 is presented on page 2, with estimates for the year ended November 2017 presented on page 3.

Detailed information on the 66 individual routes can be found in the RPT summary pages 4-13 of this publication.

The top ten airports in terms of RPT passenger movements are shown on page 14.

Data on domestic RPT cargo movements at the top five cargo airports are provided on page 15. The table includes cargo carried on passenger flights operated by the Qantas group (including Jetstar), Virgin Australia, Air North and Skippers as well as the cargo carried by dedicated freighter aircraft operated by Qantas Freight, Toll Priority and Virgin Australia Cargo.

The long-term trends for the top ten competitive RPT routes are presented graphically on pages 16-25.

Domestic RPT passenger movements at the top 50 regional airports are presented on pages 26-27.

Tables providing estimates of domestic charter aviation activity are shown on page 28. BITRE confidentiality standards restrict publication of detailed estimates for individual Australian airports, with the exception of Perth Airport.

A list of definitions can be found on page 29.

This report was prepared by the Aviation Statistics Section of the Bureau of Infrastructure, Transport and Regional Economics with data provided by airlines.

Estimates are included where data were not available and data presented in this publication may contain revisions to previously published data.

Where figures have been rounded, discrepancies may occur between sums of component items and totals, and in percentage changes which are derived from figures prior to rounding.

# CONTENTS

<b>Highlights .....</b>	<b>1</b>
<b>Total network.....</b>	<b>2</b>
<b>RPT network.....</b>	<b>2</b>
<b>Top competitive routes.....</b>	<b>4</b>
<b>Top ten airports – passenger movements.....</b>	<b>14</b>
<b>Top five airports – cargo movements.....</b>	<b>15</b>
<b>Top ten routes .....</b>	<b>16</b>
1. Melbourne – Sydney .....	16
2. Brisbane – Sydney .....	17
3. Brisbane – Melbourne .....	18
4. Gold Coast – Sydney .....	19
5. Adelaide – Melbourne .....	20
6. Melbourne – Perth .....	21
7. Gold Coast – Melbourne .....	22
8. Adelaide – Sydney .....	23
9. Perth – Sydney .....	24
10. Hobart – Melbourne .....	25
<b>Top fifty regional airports .....</b>	<b>26</b>
<b>Domestic charter activity.....</b>	<b>28</b>
<b>Definitions .....</b>	<b>29</b>

This page is intentionally left blank.

## HIGHLIGHTS

There were 5.44 million passengers carried on Australian domestic commercial aviation (including charter operations) in November 2017, an increase of 3.3 per cent on November 2016. For the month of November 2017 there were 58 082 aircraft trips, an increase of 0.2 per cent compared to November 2016.

5.23 million passengers were carried on RPT flights in November 2017, an increase of 3.3 per cent on November 2016.

For the year ending November 2017 there were 59.86 million RPT passengers, an increase of 1.7 per cent on the year ending November 2016.

RPT revenue passenger kilometres (RPKs) performed were 5.99 billion for the month, up 2.5 per cent compared with November 2016. Capacity, measured by available seat kilometres (ASKs), decreased by 0.8 per cent compared with November 2016 to a total of 7.31 billion.

With RPT passenger traffic increasing and capacity decreasing, the industry wide load factor (RPKs/ASKs) increased from 79.3 per cent in November 2016 to 82.0 per cent in November 2017. Load factors on individual routes increased on 49 of the 64 RPT routes for which data is available for publishing in both years.

For the month of November 2017, Melbourne – Sydney remained Australia's busiest RPT route with 834 284 passengers, an increase of 4.6 per cent compared with November 2016. It was followed by Brisbane – Sydney with 413 987 passengers (up 4.5 per cent) and Brisbane – Melbourne with 308 588 passengers (up 2.4 per cent).

The greatest percentage increase in RPT passenger numbers, compared to November 2016, was on the Brisbane – Proserpine route (up 28.7 per cent). There were large increases on a number of other routes, including Broome – Perth (up 25.2 per cent), Melbourne – Sunshine Coast (up 14.3 per cent) and Darwin – Perth (up 14.1 per cent).

Routes with traffic decreases in November 2017 compared with November 2016 included Hamilton Island – Sydney (down 24.2 per cent), Brisbane – Hamilton Island (down 15.8 per cent), Brisbane – Gladstone (down 14.3 per cent) and Karratha – Perth (down 10.6 per cent).

In November 2017, Sydney remained Australia's busiest domestic airport with 2.42 million passenger movements, followed by Melbourne with 2.24 million passenger movements and Brisbane with 1.49 million passenger movements.

Total cargo movements at Australian airports on domestic RPT flights were 41.4 thousand tonnes in November 2017, an increase of 2.5 per cent compared with November 2016.

In November 2017 there were 2.10 million domestic passenger movements through regional airports, 3.3 per cent higher than in November 2016. Out of the top 50 regional airports, the strongest growth was at Olympic Dam airport (up 68.2 per cent on November 2016), while the largest decrease was at Hamilton Island airport (down 24.8 per cent on November 2016).

Fixed-wing charter operators carried 214.69 thousand passengers in November 2017, an increase of 1.5 per cent on November 2016. Perth airport accounted for 38.0 per cent of all charter passengers in Australia.

## TOTAL NETWORK

### Summary of monthly commercial aviation activity

	Nov 2016	Nov 2017	% Change
Total passengers carried (millions)	5.27	5.44	3.3
Aircraft trips (000s)	58.0	58.1	0.2

Note: Regular Public Transport and charter aviation activity  
Helicopter, joyflights and sightseeing charter flights not included.

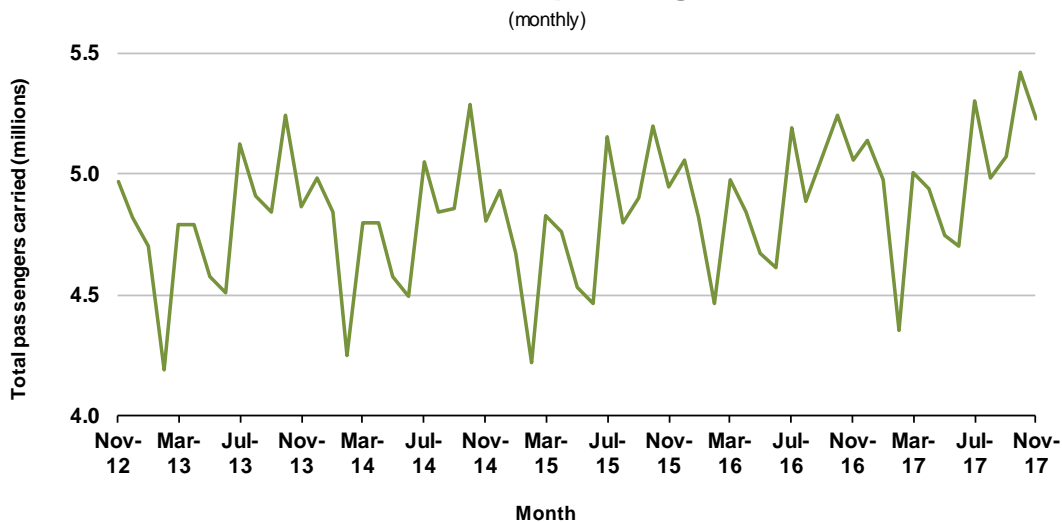
## RPT NETWORK

### Summary of monthly RPT activity

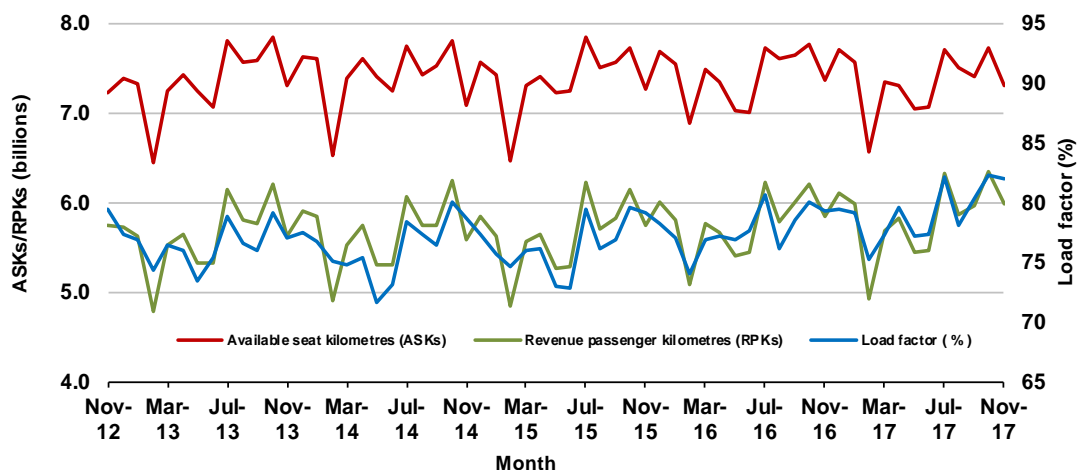
	Nov 2016	Nov 2017	% Change
Total passengers carried (millions)	5.06	5.23	3.3
Revenue passenger kilometres (billions)	5.84	5.99	2.5
Available seats (millions)	6.45	6.49	0.6
Available seat kilometres (billions)	7.37	7.31	-0.8
Load factor %	79.3	82.0	2.7 *
Aircraft trips (000s)	54.1	54.1	0.1

\* percentage point difference

### Domestic RPT passenger traffic



### RPT Network utilisation





## TOTAL NETWORK

### Summary of annual commercial aviation activity

	YE Nov 2016	YE Nov 2017	% Change
Total passengers carried (millions)	61.32	62.30	1.6
Aircraft trips (000s)	688.2	685.3	-0.4

Note: Regular Public Transport and charter aviation activity  
Helicopter, joyflights and sightseeing charter flights not included.

## RPT NETWORK

### Summary of annual RPT activity

	YE Nov 2016	YE Nov 2017	% Change
Total passengers carried (millions)	58.88	59.86	1.7
Revenue passenger kilometres (billions)	69.24	69.91	1.0
Available seats (millions)	77.36	77.15	-0.3
Available seat kilometres (billions)	89.07	88.24	-0.9
Load factor %	77.7	79.2	1.5 *
Aircraft trips (000s)	642.9	639.5	-0.5

\* percentage point difference

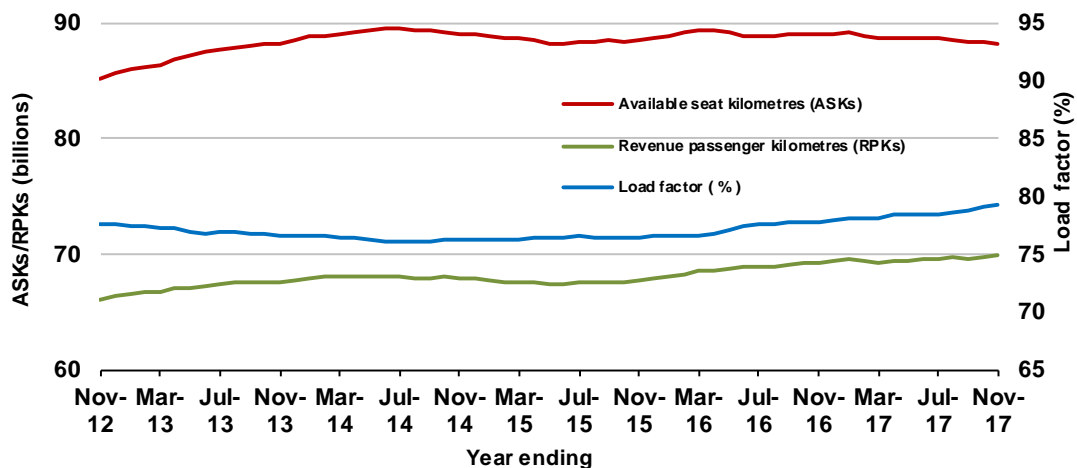
### Domestic RPT passenger traffic

(moving annual totals)



### RPT Network utilisation

(moving annual totals)



## TOP COMPETITIVE ROUTES

**Table 1: Passengers carried (000s) — annual activity**

	<b>City-Pair</b>	<b>YE Nov 2016</b>	<b>YE Nov 2017</b>	<b>% Change</b>
1	Melbourne - Sydney	8 906.4	9 071.1	1.8
2	Brisbane - Sydney	4 652.9	4 741.0	1.9
3	Brisbane - Melbourne	3 485.7	3 543.7	1.7
4	Gold Coast - Sydney	2 703.5	2 731.9	1.1
5	Adelaide - Melbourne	2 388.8	2 443.0	2.3
6	Melbourne - Perth	2 070.3	2 038.9	-1.5
7	Gold Coast - Melbourne	1 957.8	2 009.4	2.6
8	Adelaide - Sydney	1 873.7	1 893.8	1.1
9	Perth - Sydney	1 754.4	1 719.4	-2.0
10	Hobart - Melbourne	1 546.4	1 628.1	5.3
11	Brisbane - Cairns	1 346.7	1 380.2	2.5
12	Canberra - Melbourne	1 017.4	1 128.3	10.9
13	Cairns - Sydney	1 112.9	1 126.8	1.2
14	Brisbane - Perth	985.8	969.0	-1.7
15	Brisbane - Townsville	979.3	958.1	-2.2
16	Canberra - Sydney	958.2	950.7	-0.8
17	Launceston - Melbourne	918.0	919.4	0.1
18	Adelaide - Brisbane	831.0	842.8	1.4
19	Cairns - Melbourne	818.4	841.3	2.8
20	Brisbane - Mackay	682.8	694.0	1.6
21	Hobart - Sydney	613.9	653.8	6.5
22	Adelaide - Perth	616.1	615.0	-0.2
23	Brisbane - Canberra	572.3	592.4	3.5
24	Brisbane - Newcastle	571.5	589.8	3.2
25	Sunshine Coast - Sydney	537.0	576.5	7.4
26	Brisbane - Rockhampton	562.8	529.0	-6.0
27	Melbourne - Sunshine Coast	436.3	480.0	10.0
28	Melbourne - Newcastle	446.4	473.7	6.1
29	Karratha - Perth	500.5	439.2	-12.2
30	Brisbane - Darwin	407.2	407.3	0.0
31	Ballina - Sydney	381.1	401.2	5.3
32	Coffs Harbour - Sydney	338.4	347.2	2.6
33	Perth - Port Hedland	340.8	342.6	0.5
34	Darwin - Sydney	316.7	321.7	1.6
35	Broome - Perth	296.7	308.3	3.9
36	Darwin - Melbourne	299.2	307.3	2.7
37	Launceston - Sydney	287.5	287.1	-0.1
38	Brisbane - Gladstone	337.9	285.8	-15.4
39	Newman - Perth	311.8	284.7	-8.7
40	Brisbane - Proserpine	227.1	255.3	12.4
41	Kalgoorlie - Perth	231.4	241.1	4.2
42	Albury - Sydney	224.9	224.7	-0.1
43	Adelaide - Gold Coast	223.7	211.9	-5.3
44	Melbourne - Mildura	206.0	211.0	2.4
45	Brisbane - Hobart	203.8	210.4	3.2
46	Hamilton Island - Sydney	262.9	201.0	-23.5
47	Brisbane - Emerald	199.6	198.8	-0.4
48	Darwin - Perth	183.6	197.3	7.4
49	Port Macquarie - Sydney	193.7	192.7	-0.5
50	Dubbo - Sydney	187.6	191.7	2.2

continued

**Table 1: (continued) Passengers carried (000s) — annual activity**

	<b>City-Pair</b>	<b>YE Nov 2016</b>	<b>YE Nov 2017</b>	<b>% Change</b>
51	Ayers Rock - Sydney	182.4	190.3	4.3
52	Sydney - Wagga Wagga	189.0	184.3	-2.5
53	Sydney - Tamworth	174.5	181.4	4.0
54	Adelaide - Canberra	173.2	181.0	4.5
55	Brisbane - Bundaberg	172.4	174.6	1.3
56	Adelaide - Port Lincoln	179.1	172.5	-3.7
57	Sydney - Townsville	157.8	159.8	1.3
58	Cairns - Townsville	139.1	142.1	2.2
59	Brisbane - Hamilton Island	148.8	130.1	-12.6
60	Armidale - Sydney	127.9	126.8	-0.8
61	Brisbane - Mount Isa	120.4	125.4	4.1
62	Adelaide - Alice Springs	120.5	124.3	3.2
63	Alice Springs - Darwin	116.0	118.8	2.4
64	Geraldton - Perth	118.1	112.6	-4.7
65	Melbourne - Townsville	..	40.5	NA (a)
66	Proserpine - Sydney	..	35.0	NA (b)
	<b>Total domestic network</b>	<b>58 883.9</b>	<b>59 863.2</b>	<b>1.7</b>

(a) Melbourne - Townsville route included from September 2017, prior data not shown.

(b) Proserpine - Sydney route included from September 2017, prior data not shown.

**Table 2: Passengers carried (000s) — monthly activity**

	<b>City-Pair</b>	<b>Nov 2016</b>	<b>Nov 2017</b>	<b>% Change</b>
1	Melbourne - Sydney	797.7	834.3	4.6
2	Brisbane - Sydney	396.2	414.0	4.5
3	Brisbane - Melbourne	301.4	308.6	2.4
4	Gold Coast - Sydney	222.8	237.2	6.4
5	Adelaide - Melbourne	206.3	213.2	3.3
6	Melbourne - Perth	172.3	175.9	2.1
7	Gold Coast - Melbourne	166.4	169.1	1.7
8	Adelaide - Sydney	165.5	167.0	0.9
9	Perth - Sydney	146.9	146.1	-0.6
10	Hobart - Melbourne	133.6	141.6	6.0
11	Brisbane - Cairns	112.8	117.9	4.5
12	Canberra - Melbourne	95.1	104.0	9.3
13	Cairns - Sydney	93.3	92.9	-0.4
14	Canberra - Sydney	91.2	87.9	-3.6
15	Brisbane - Perth	81.3	83.0	2.1
16	Launceston - Melbourne	78.2	81.3	3.9
17	Brisbane - Townsville	76.4	78.5	2.8
18	Adelaide - Brisbane	71.1	75.0	5.4
19	Cairns - Melbourne	67.5	66.5	-1.4
20	Brisbane - Mackay	54.9	59.3	7.9
21	Hobart - Sydney	55.4	58.7	5.9
22	Adelaide - Perth	52.5	53.6	2.0
23	Sunshine Coast - Sydney	49.1	53.0	7.9
24	Brisbane - Newcastle	50.4	52.5	4.2
25	Brisbane - Canberra	49.1	51.9	5.8
26	Melbourne - Sunshine Coast	38.7	44.2	14.3
27	Brisbane - Rockhampton	47.7	43.0	-9.7
28	Melbourne - Newcastle	38.1	41.0	7.6
29	Karratha - Perth	41.9	37.4	-10.6
30	Coffs Harbour - Sydney	30.8	32.9	6.8
31	Ballina - Sydney	30.2	32.4	7.3
32	Brisbane - Darwin	30.1	30.5	1.3
33	Perth - Port Hedland	30.0	28.7	-4.4
34	Broome - Perth	20.9	26.2	25.2
35	Newman - Perth	27.1	25.9	-4.5
36	Launceston - Sydney	25.2	24.3	-3.8
37	Brisbane - Proserpine	18.3	23.6	28.7
38	Darwin - Sydney	21.5	22.3	3.9
39	Brisbane - Gladstone	26.0	22.3	-14.3
40	Kalgoorlie - Perth	21.1	21.9	3.8
41	Darwin - Melbourne	21.6	21.6	0.2
42	Albury - Sydney	19.1	19.2	0.3
43	Melbourne - Mildura	17.9	18.3	2.6
44	Hamilton Island - Sydney	24.0	18.2	-24.2
45	Adelaide - Canberra	17.1	18.0	5.4
46	Brisbane - Hobart	18.0	18.0	0.0
47	Adelaide - Gold Coast	17.6	17.8	1.4
48	Dubbo - Sydney	16.8	17.0	1.6
49	Brisbane - Emerald	17.2	17.0	-1.3
50	Port Macquarie - Sydney	16.7	16.6	-1.1

continued

**Table 2: (continued) Passengers carried (000s) — monthly activity**

	<b>City-Pair</b>	<b>Nov 2016</b>	<b>Nov 2017</b>	<b>% Change</b>
51	Sydney - Wagga Wagga	16.8	16.3	-2.7
52	Darwin - Perth	14.1	16.1	14.1
53	Ayers Rock - Sydney	15.8	15.7	-0.7
54	Sydney - Tamworth	15.1	14.9	-1.2
55	Adelaide - Port Lincoln	14.6	14.7	0.7
56	Brisbane - Bundaberg	14.7	13.9	-5.6
57	Cairns - Townsville	11.6	12.6	9.1
58	Melbourne - Townsville	..	12.2	NA (a)
59	Proserpine - Sydney	..	12.2	NA (b)
60	Sydney - Townsville	11.7	12.0	2.7
61	Armidale - Sydney	11.8	11.6	-1.3
62	Brisbane - Mount Isa	10.2	11.1	8.3
63	Brisbane - Hamilton Island	13.0	10.9	-15.8
64	Adelaide - Alice Springs	10.3	10.9	5.9
65	Alice Springs - Darwin	9.1	10.2	12.2
66	Geraldton - Perth	10.3	9.3	-9.6
	<b>Total domestic network</b>	<b>5 056.7</b>	<b>5 225.6</b>	<b>3.3</b>

(a) Melbourne - Townsville route included from September 2017, prior data not shown.

(b) Proserpine - Sydney route included from September 2017, prior data not shown.

**Table 3: Available seats (000s) — monthly activity**

	City-Pair	Nov 2016	Nov 2017	% Change
1	Melbourne - Sydney	909.2	939.5	3.3
2	Brisbane - Sydney	484.0	491.2	1.5
3	Brisbane - Melbourne	367.3	367.6	0.1
4	Gold Coast - Sydney	257.6	266.3	3.4
5	Adelaide - Melbourne	250.8	260.1	3.7
6	Melbourne - Perth	215.2	199.6	-7.2
7	Gold Coast - Melbourne	187.7	188.2	0.2
8	Adelaide - Sydney	199.1	198.2	-0.4
9	Perth - Sydney	181.3	171.9	-5.2
10	Hobart - Melbourne	160.7	164.2	2.2
11	Brisbane - Cairns	130.1	131.4	1.0
12	Canberra - Melbourne	130.7	151.0	15.6
13	Cairns - Sydney	103.0	101.3	-1.6
14	Canberra - Sydney	127.3	114.9	-9.8
15	Brisbane - Perth	100.6	99.8	-0.8
16	Launceston - Melbourne	97.9	100.4	2.5
17	Brisbane - Townsville	103.4	102.9	-0.5
18	Adelaide - Brisbane	95.0	97.6	2.8
19	Cairns - Melbourne	77.1	74.2	-3.8
20	Brisbane - Mackay	74.1	73.2	-1.1
21	Hobart - Sydney	65.5	66.4	1.4
22	Adelaide - Perth	75.2	69.4	-7.7
23	Sunshine Coast - Sydney	61.3	64.6	5.3
24	Brisbane - Newcastle	67.0	70.4	5.1
25	Brisbane - Canberra	69.2	72.1	4.2
26	Melbourne - Sunshine Coast	44.5	51.0	14.5
27	Brisbane - Rockhampton	60.4	53.1	-12.0
28	Melbourne - Newcastle	43.5	47.0	8.0
29	Karratha - Perth	66.5	56.6	-14.9
30	Coffs Harbour - Sydney	38.0	43.5	14.4
31	Ballina - Sydney	34.5	35.9	4.1
32	Brisbane - Darwin	40.6	39.2	-3.5
33	Perth - Port Hedland	47.8	44.7	-6.6
34	Broome - Perth	30.4	36.6	20.3
35	Newman - Perth	50.7	44.6	-12.1
36	Launceston - Sydney	29.0	27.4	-5.3
37	Brisbane - Proserpine	21.2	28.6	34.9
38	Darwin - Sydney	33.2	33.0	-0.5
39	Brisbane - Gladstone	38.6	30.0	-22.3
40	Kalgoorlie - Perth	33.0	34.8	5.6
41	Darwin - Melbourne	29.1	28.6	-1.6
42	Albury - Sydney	28.9	26.9	-7.0
43	Melbourne - Mildura	26.5	29.2	10.4
44	Hamilton Island - Sydney	29.5	27.5	-6.8
45	Adelaide - Canberra	23.8	25.9	8.8
46	Brisbane - Hobart	21.2	21.3	0.3
47	Adelaide - Gold Coast	20.7	21.2	2.3
48	Dubbo - Sydney	24.6	22.4	-9.2
49	Brisbane - Emerald	29.2	23.8	-18.5
50	Port Macquarie - Sydney	21.6	19.9	-7.6

continued

**Table 3: (continued) Available seats (000s) — monthly activity**

	<b>City-Pair</b>	<b>Nov 2016</b>	<b>Nov 2017</b>	<b>% Change</b>
51	Sydney - Wagga Wagga	25.4	23.9	-5.9
52	Darwin - Perth	22.1	19.9	-9.9
53	Ayers Rock - Sydney	19.4	18.4	-5.3
54	Sydney - Tamworth	23.1	20.6	-10.8
55	Adelaide - Port Lincoln	24.1	23.9	-0.6
56	Brisbane - Bundaberg	18.7	19.2	2.8
57	Cairns - Townsville	23.2	21.9	-5.7
58	Melbourne - Townsville	..	15.5	NA (a)
59	Proserpine - Sydney	..	15.5	NA (b)
60	Sydney - Townsville	16.7	15.6	-6.6
61	Armidale - Sydney	16.5	15.3	-7.1
62	Brisbane - Mount Isa	15.5	16.0	3.1
63	Brisbane - Hamilton Island	16.1	15.8	-1.8
64	Adelaide - Alice Springs	14.9	15.3	2.7
65	Alice Springs - Darwin	17.0	17.6	3.6
66	Geraldton - Perth	21.7	18.9	-12.9
	<b>Total domestic network</b>	<b>6 455.0</b>	<b>6 490.7</b>	<b>0.6</b>

(a) Melbourne - Townsville route included from September 2017, prior data not shown.

(b) Proserpine - Sydney route included from September 2017, prior data not shown.

**Table 4: Load factors (%) — monthly activity**

	City-Pair	Nov 2016	Nov 2017	% Point diff
1	Melbourne - Sydney	87.7	88.8	1.1
2	Brisbane - Sydney	81.9	84.3	2.4
3	Brisbane - Melbourne	82.1	83.9	1.8
4	Gold Coast - Sydney	86.5	89.1	2.6
5	Adelaide - Melbourne	82.3	82.0	-0.3
6	Melbourne - Perth	80.1	88.1	8.0
7	Gold Coast - Melbourne	88.6	89.9	1.3
8	Adelaide - Sydney	83.1	84.2	1.1
9	Perth - Sydney	81.1	85.0	3.9
10	Hobart - Melbourne	83.1	86.3	3.2
11	Brisbane - Cairns	86.7	89.7	3.0
12	Canberra - Melbourne	72.8	68.8	-4.0
13	Cairns - Sydney	90.6	91.7	1.1
14	Canberra - Sydney	71.6	76.5	4.9
15	Brisbane - Perth	80.8	83.2	2.4
16	Launceston - Melbourne	79.9	81.0	1.1
17	Brisbane - Townsville	73.9	76.3	2.4
18	Adelaide - Brisbane	74.9	76.8	1.9
19	Cairns - Melbourne	87.5	89.7	2.2
20	Brisbane - Mackay	74.2	80.9	6.7
21	Hobart - Sydney	84.6	88.4	3.8
22	Adelaide - Perth	69.9	77.2	7.3
23	Sunshine Coast - Sydney	80.1	82.1	2.0
24	Brisbane - Newcastle	75.3	74.7	-0.6
25	Brisbane - Canberra	70.9	72.0	1.1
26	Melbourne - Sunshine Coast	86.8	86.7	-0.1
27	Brisbane - Rockhampton	78.9	81.0	2.1
28	Melbourne - Newcastle	87.5	87.2	-0.3
29	Karratha - Perth	62.9	66.1	3.2
30	Coffs Harbour - Sydney	81.1	75.7	-5.4
31	Ballina - Sydney	87.5	90.2	2.7
32	Brisbane - Darwin	74.2	77.8	3.6
33	Perth - Port Hedland	62.8	64.2	1.4
34	Broome - Perth	68.9	71.7	2.8
35	Newman - Perth	53.5	58.2	4.7
36	Launceston - Sydney	87.0	88.4	1.4
37	Brisbane - Proserpine	86.6	82.6	-4.0
38	Darwin - Sydney	64.7	67.6	2.9
39	Brisbane - Gladstone	67.4	74.3	6.9
40	Kalgoorlie - Perth	64.1	63.0	-1.1
41	Darwin - Melbourne	74.1	75.5	1.4
42	Albury - Sydney	66.0	71.2	5.2
43	Melbourne - Mildura	67.5	62.7	-4.8
44	Hamilton Island - Sydney	81.5	66.3	-15.2
45	Adelaide - Canberra	72.0	69.7	-2.3
46	Brisbane - Hobart	84.8	84.6	-0.2
47	Adelaide - Gold Coast	85.0	84.2	-0.8
48	Dubbo - Sydney	68.1	76.2	8.1
49	Brisbane - Emerald	58.9	71.3	12.4
50	Port Macquarie - Sydney	77.5	83.0	5.5

continued



**Table 4: (continued) Load factors (%) — monthly activity**

	<b>City-Pair</b>	<b>Nov 2016</b>	<b>Nov 2017</b>	<b>% Point diff</b>
51	Sydney - Wagga Wagga	66.1	68.3	2.2
52	Darwin - Perth	63.8	80.8	17.0
53	Ayers Rock - Sydney	81.4	85.3	3.9
54	Sydney - Tamworth	65.4	72.5	7.1
55	Adelaide - Port Lincoln	60.8	61.6	0.8
56	Brisbane - Bundaberg	79.0	72.6	-6.4
57	Cairns - Townsville	49.9	57.7	7.8
58	Melbourne - Townsville	..	79.1	NA (a)
59	Proserpine - Sydney	..	78.8	NA (b)
60	Sydney - Townsville	70.3	77.3	7.0
61	Armidale - Sydney	71.5	76.0	4.5
62	Brisbane - Mount Isa	65.9	69.2	3.3
63	Brisbane - Hamilton Island	80.6	69.2	-11.4
64	Adelaide - Alice Springs	69.0	71.1	2.1
65	Alice Springs - Darwin	53.5	57.9	4.4
66	Geraldton - Perth	47.4	49.2	1.8
	<b>Total domestic network</b>	<b>79.3</b>	<b>82.0</b>	<b>2.7</b>

(a) Melbourne - Townsville route included from September 2017, prior data not shown.

(b) Proserpine - Sydney route included from September 2017, prior data not shown.

**Table 5: Aircraft trips <sup>(a)</sup> — monthly activity**

	<b>City-Pair</b>	<b>Nov 2016</b>	<b>Nov 2017</b>	<b>% Change</b>
1	Melbourne - Sydney	5 014	5 244	4.6
2	Brisbane - Sydney	2 992	3 009	0.6
3	Brisbane - Melbourne	2 158	2 181	1.1
4	Gold Coast - Sydney	1 483	1 498	1.0
5	Adelaide - Melbourne	1 615	1 619	0.2
6	Melbourne - Perth	953	929	-2.5
7	Gold Coast - Melbourne	1 012	1 002	-1.0
8	Adelaide - Sydney	1 209	1 183	-2.2
9	Perth - Sydney	760	737	-3.0
10	Hobart - Melbourne	1 003	979	-2.4
11	Brisbane - Cairns	821	832	1.3
12	Canberra - Melbourne	897	995	10.9
13	Cairns - Sydney	587	556	-5.3
14	Canberra - Sydney	1 496	1 432	-4.3
15	Brisbane - Perth	461	496	7.6
16	Launceston - Melbourne	759	763	0.5
17	Brisbane - Townsville	743	725	-2.4
18	Adelaide - Brisbane	587	582	-0.9
19	Cairns - Melbourne	402	381	-5.2
20	Brisbane - Mackay	617	590	-4.4
21	Hobart - Sydney	411	403	-1.9
22	Adelaide - Perth	470	470	0.0
23	Sunshine Coast - Sydney	372	388	4.3
24	Brisbane - Newcastle	535	513	-4.1
25	Brisbane - Canberra	497	511	2.8
26	Melbourne - Sunshine Coast	250	287	14.8
27	Brisbane - Rockhampton	762	670	-12.1
28	Melbourne - Newcastle	244	264	8.2
29	Karratha - Perth	579	502	-13.3
30	Coffs Harbour - Sydney	440	432	-1.8
31	Ballina - Sydney	241	242	0.4
32	Brisbane - Darwin	250	246	-1.6
33	Perth - Port Hedland	387	369	-4.7
34	Broome - Perth	247	330	33.6
35	Newman - Perth	372	342	-8.1
36	Launceston - Sydney	168	158	-6.0
37	Brisbane - Proserpine	120	161	34.2
38	Darwin - Sydney	198	197	-0.5
39	Brisbane - Gladstone	527	394	-25.2
40	Kalgoorlie - Perth	286	298	4.2
41	Darwin - Melbourne	166	163	-1.8
42	Albury - Sydney	540	500	-7.4
43	Melbourne - Mildura	412	413	0.2
44	Hamilton Island - Sydney	180	166	-7.8
45	Adelaide - Canberra	152	153	0.7
46	Brisbane - Hobart	120	120	0.0
47	Adelaide - Gold Coast	117	120	2.6
48	Dubbo - Sydney	551	511	-7.3
49	Brisbane - Emerald	389	315	-19.0
50	Port Macquarie - Sydney	381	346	-9.2

continued

**Table 5: (continued) Aircraft trips <sup>(a)</sup> — monthly activity**

	<b>City-Pair</b>	<b>Nov 2016</b>	<b>Nov 2017</b>	<b>% Change</b>
51	Sydney - Wagga Wagga	494	462	-6.5
52	Darwin - Perth	134	120	-10.4
53	Ayers Rock - Sydney	110	104	-5.5
54	Sydney - Tamworth	374	334	-10.7
55	Adelaide - Port Lincoln	620	619	-0.2
56	Brisbane - Bundaberg	319	299	-6.3
57	Cairns - Townsville	386	367	-4.9
58	Melbourne - Townsville	..	86	NA (b)
59	Proserpine - Sydney	..	86	NA (c)
60	Sydney - Townsville	106	90	-15.1
61	Armidale - Sydney	392	370	-5.6
62	Brisbane - Mount Isa	155	155	0.0
63	Brisbane - Hamilton Island	136	132	-2.9
64	Adelaide - Alice Springs	94	113	20.2
65	Alice Springs - Darwin	138	157	13.8
66	Geraldton - Perth	217	189	-12.9
	<b>Total domestic network</b>	<b>54 090</b>	<b>54 132</b>	<b>0.1</b>

(a) Includes RPT Cargo flights.

(b) Melbourne - Townsville route included from September 2017, prior data not shown.

(c) Proserpine - Sydney route included from September 2017, prior data not shown.

## TOP TEN AIRPORTS – PASSENGER MOVEMENTS

**Table 6: Top ten airports, RPT passenger movements (000s) - annual activity**

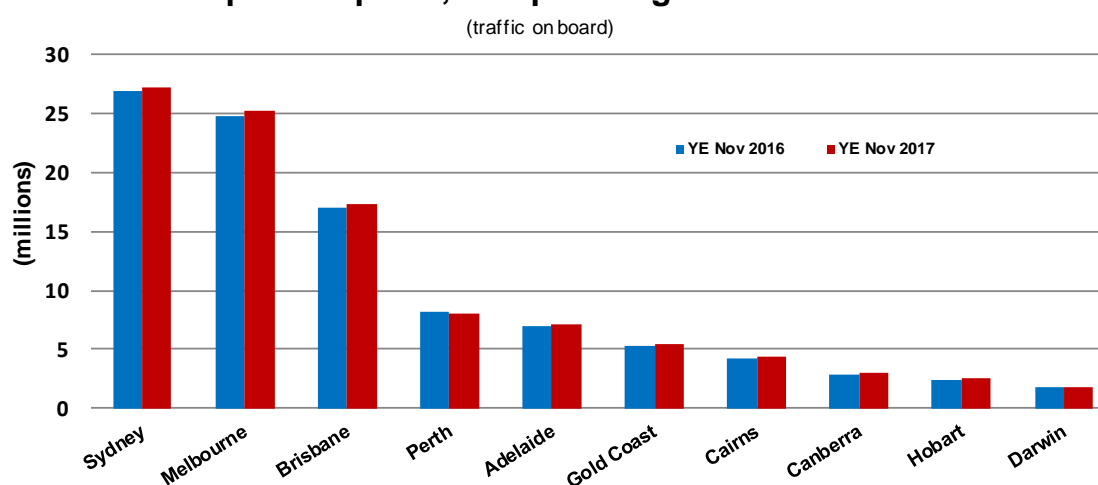
Airport	YE Nov 2016	YE Nov 2017	% Change	% of Total
1 Sydney	26 916.6	27 276.9	1.3	22.8
2 Melbourne	24 726.7	25 297.9	2.3	21.1
3 Brisbane	17 070.7	17 274.9	1.2	14.4
4 Perth	8 142.3	8 004.1	-1.7	6.7
5 Adelaide	6 990.7	7 114.3	1.8	5.9
6 Gold Coast	5 316.3	5 395.1	1.5	4.5
7 Cairns	4 232.0	4 312.1	1.9	3.6
8 Canberra	2 871.7	3 015.1	5.0	2.5
9 Hobart	2 364.3	2 495.7	5.6	2.1
10 Darwin	1 797.8	1 805.1	0.4	1.5
<b>Total top ten airports</b>	<b>100 429.2</b>	<b>101 991.3</b>	<b>1.6</b>	<b>85.2</b>
<b>Total domestic network</b>	<b>117 767.7</b>	<b>119 726.4</b>	<b>1.7</b>	<b>100.0</b>

**Table 7: Top ten airports, RPT passenger movements (000s) - monthly activity**

Airport	Nov 2016	Nov 2017	% Change	% of Total
1 Sydney	2 340.7	2 418.0	3.3	23.1
2 Melbourne	2 155.8	2 235.9	3.7	21.4
3 Brisbane	1 442.9	1 486.6	3.0	14.2
4 Perth	677.6	682.8	0.8	6.5
5 Adelaide	610.6	627.9	2.8	6.0
6 Gold Coast	440.5	458.8	4.2	4.4
7 Cairns	351.1	355.7	1.3	3.4
8 Canberra	265.7	276.3	4.0	2.6
9 Hobart	207.0	221.1	6.8	2.1
10 Darwin	137.1	136.4	-0.5	1.3
<b>Total top ten airports</b>	<b>8 629.1</b>	<b>8 899.6</b>	<b>3.1</b>	<b>85.2</b>
<b>Total domestic network</b>	<b>10 113.3</b>	<b>10 451.2</b>	<b>3.3</b>	<b>100.0</b>

Note: Airport passenger movement numbers are the sum of passenger arrivals and departures at each airport.

### Top ten airports, RPT passenger movements



## TOP FIVE AIRPORTS – CARGO MOVEMENTS

**Table 8: Top five airports, domestic RPT cargo movements (000s tonnes) - annual activity**

Airport	YE Nov 2016	YE Nov 2017	% Change	% of Total
1 Melbourne	121.2	131.2	8.3	29.0
2 Sydney	102.8	106.0	3.1	23.4
3 Brisbane	65.6	66.5	1.3	14.7
4 Perth	58.8	64.2	9.3	14.2
5 Adelaide	24.3	26.6	9.6	5.9
<b>Total top five airports</b>	<b>372.7</b>	<b>394.6</b>	<b>5.9</b>	<b>87.1</b>
<b>Total domestic network</b>	<b>428.2</b>	<b>453.2</b>	<b>5.8</b>	<b>100.0</b>

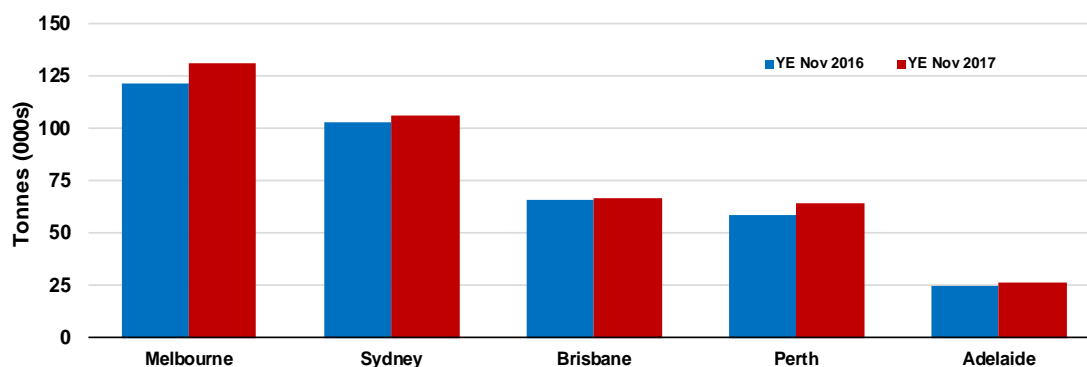
**Table 9: Top five airports, domestic RPT cargo movements (000s tonnes) - monthly activity**

Airport	Nov 2016	Nov 2017	% Change	% of Total
1 Melbourne	11.7	11.9	2.4	28.8
2 Sydney	9.4	10.1	6.9	24.3
3 Brisbane	6.0	6.2	3.2	14.9
4 Perth	5.6	5.6	0.9	13.5
5 Adelaide	2.5	2.4	-1.8	5.8
<b>Total top five airports</b>	<b>35.1</b>	<b>36.2</b>	<b>3.2</b>	<b>87.5</b>
<b>Total domestic network</b>	<b>40.4</b>	<b>41.4</b>	<b>2.5</b>	<b>100.0</b>

Note: Airport cargo tonnes are the sum of cargo tonnes on arrivals and departures at each airport.

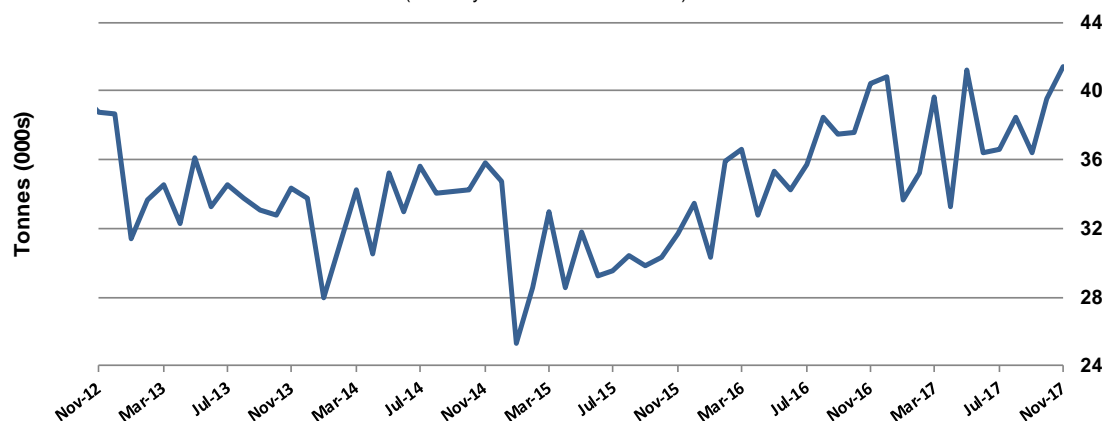
### Top five airports, cargo movements

(Domestic cargo traffic - traffic on board)



### Total domestic network - cargo movement

(monthly totals - traffic on board)



Note: Airport cargo tonnes are the sum of cargo tonnes on arrivals and departures at each airport.

## TOP TEN ROUTES

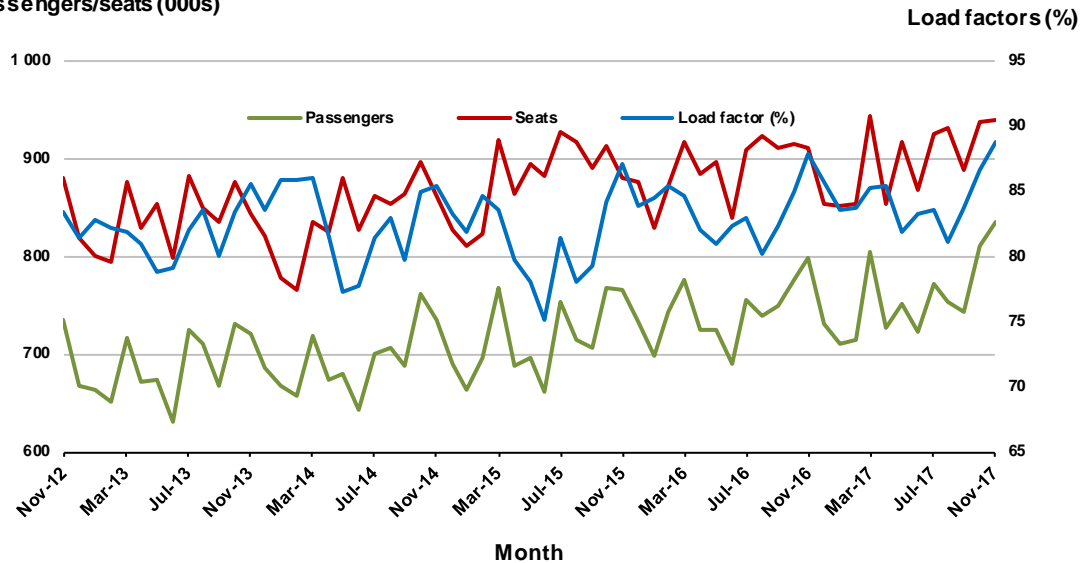
### 1. Melbourne - Sydney

#### Monthly data

	Nov 2016	Nov 2017	% Change
Passengers carried (000s)	797.7	834.3	4.6
Seats (000s)	909.2	939.5	3.3
Load factor %	87.7	88.8	1.1 *
Aircraft trips	5 014	5 244	4.6

\* percentage point difference

#### Passengers/seats (000s)

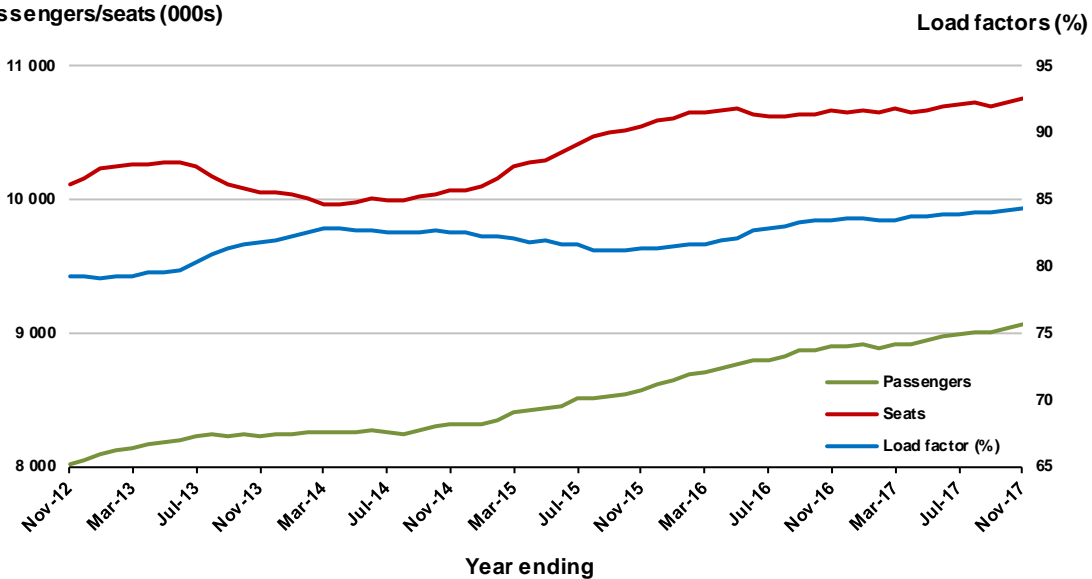


#### Moving annual data

	YE Nov 2016	YE Nov 2017	% Change
Passengers carried (000s)	8 906.4	9 071.1	1.8
Seats (000s)	10 673.1	10 753.3	0.8
Load factor %	83.4	84.4	0.9 *
Aircraft trips	59 450	59 929	0.8

\* percentage point difference

#### Passengers/seats (000s)

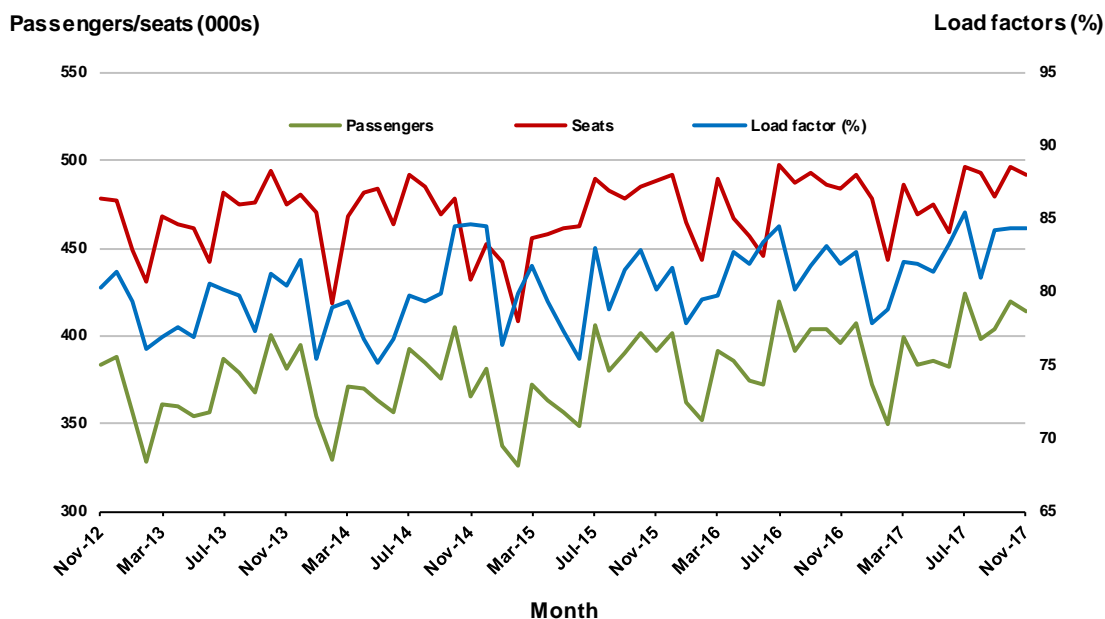


## 2. Brisbane - Sydney

### Monthly data

	Nov 2016	Nov 2017	% Change
Passengers carried (000s)	396.2	414.0	4.5
Seats (000s)	484.0	491.2	1.5
Load factor %	81.9	84.3	2.4 *
Aircraft trips	2 992	3 009	0.6

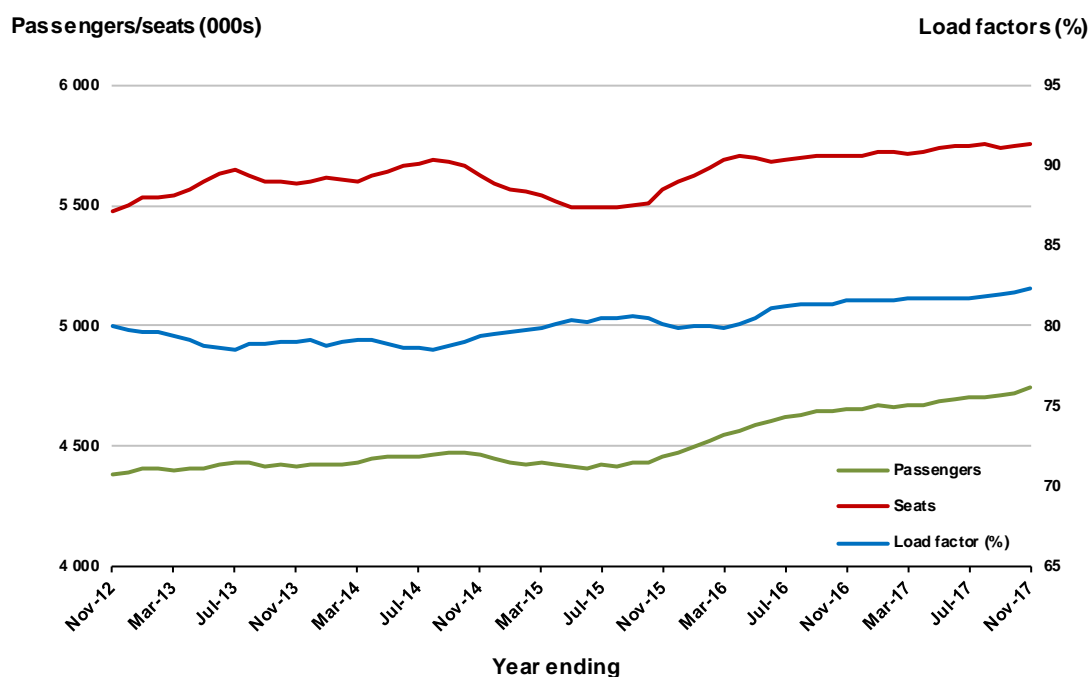
\* percentage point difference



### Moving annual data

	YE Nov 2016	YE Nov 2017	% Change
Passengers carried (000s)	4 652.9	4 741.0	1.9
Seats (000s)	5 706.2	5 758.4	0.9
Load factor %	81.5	82.3	0.8 *
Aircraft trips	35 418	35 476	0.2

\* percentage point difference

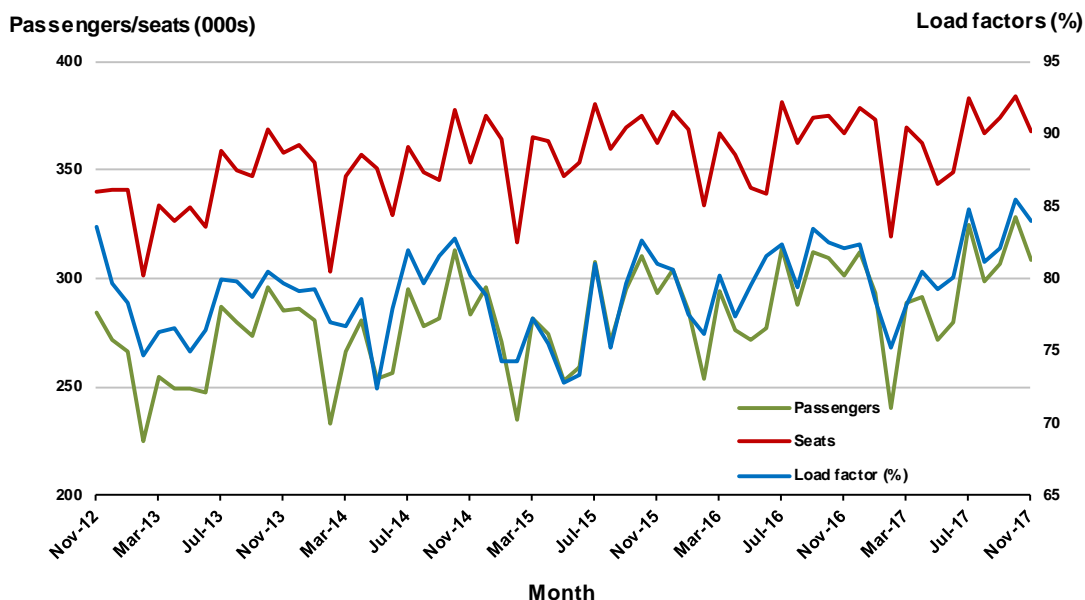


### 3. Brisbane - Melbourne

#### Monthly data

	Nov 2016	Nov 2017	% Change
Passengers carried (000s)	301.4	308.6	2.4
Seats (000s)	367.3	367.6	0.1
Load factor %	82.1	83.9	1.8 *
Aircraft trips	2 158	2 181	1.1

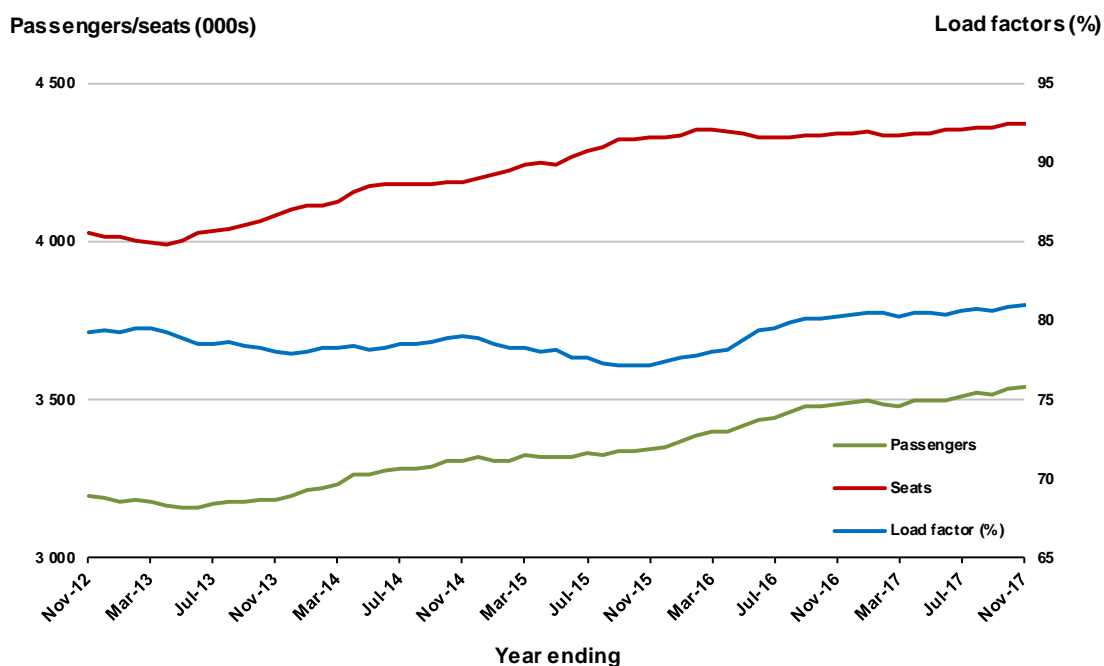
\* percentage point difference



#### Moving annual data

	YE Nov 2016	YE Nov 2017	% Change
Passengers carried (000s)	3 485.7	3 543.7	1.7
Seats (000s)	4 341.8	4 371.8	0.7
Load factor %	80.3	81.1	0.8 *
Aircraft trips	25 942	25 841	-0.4

\* percentage point difference





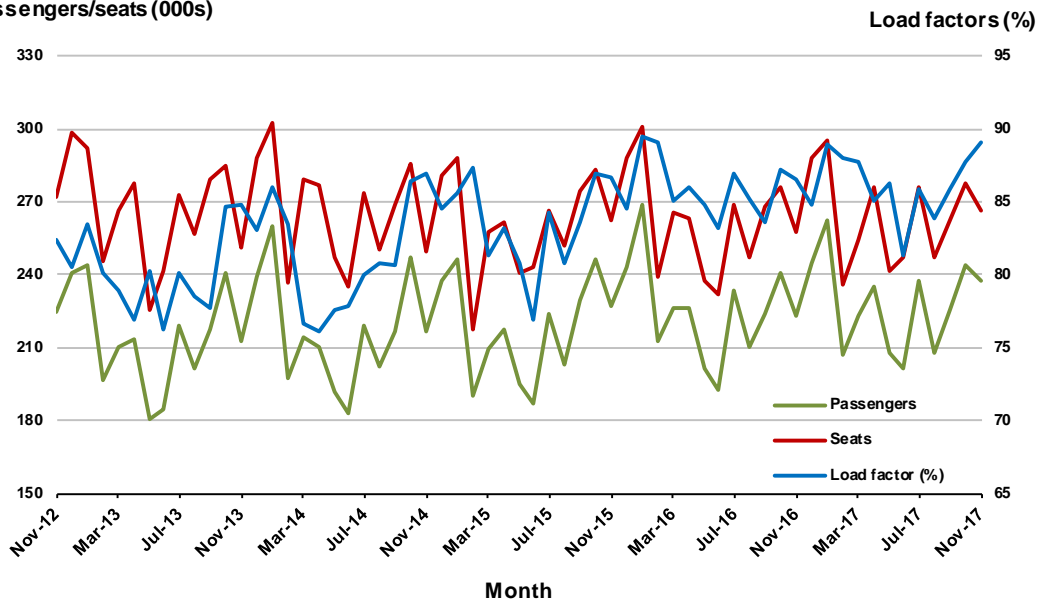
## 4. Gold Coast - Sydney

### Monthly data

	Nov 2016	Nov 2017	% Change
Passengers carried (000s)	222.8	237.2	6.4
Seats (000s)	257.6	266.3	3.4
Load factor %	86.5	89.1	2.6 *
Aircraft trips	1 483	1 498	1.0

\* percentage point difference

### Passengers/seats (000s)

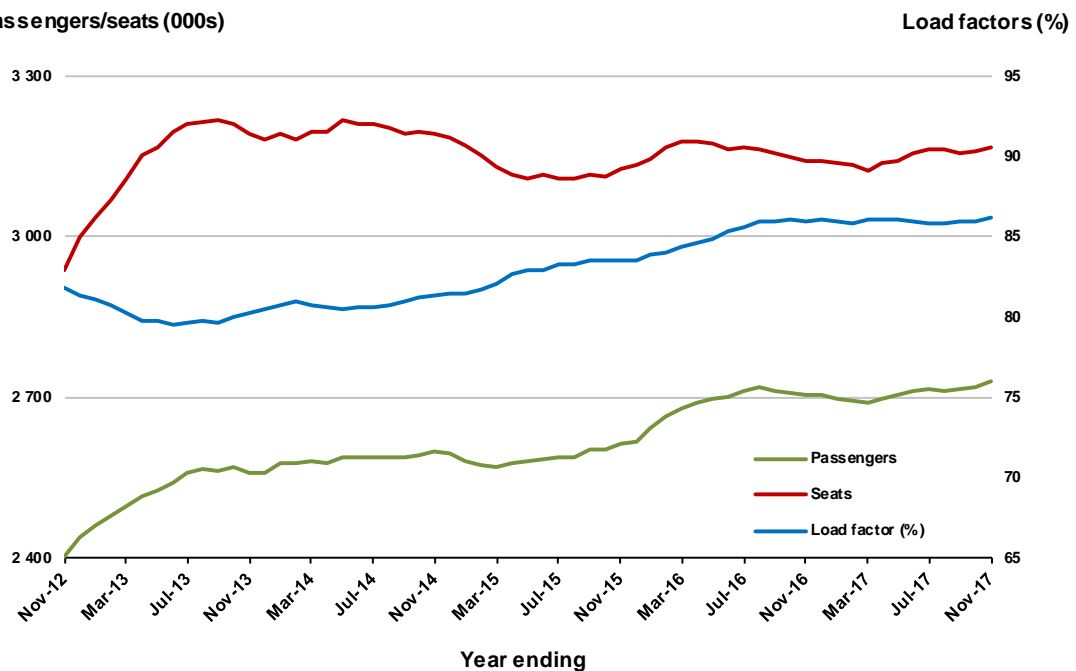


### Moving annual data

	YE Nov 2016	YE Nov 2017	% Change
Passengers carried (000s)	2 703.5	2 731.9	1.1
Seats (000s)	3 143.2	3 168.3	0.8
Load factor %	86.0	86.2	0.2 *
Aircraft trips	18 396	18 062	-1.8

\* percentage point difference

### Passengers/seats (000s)



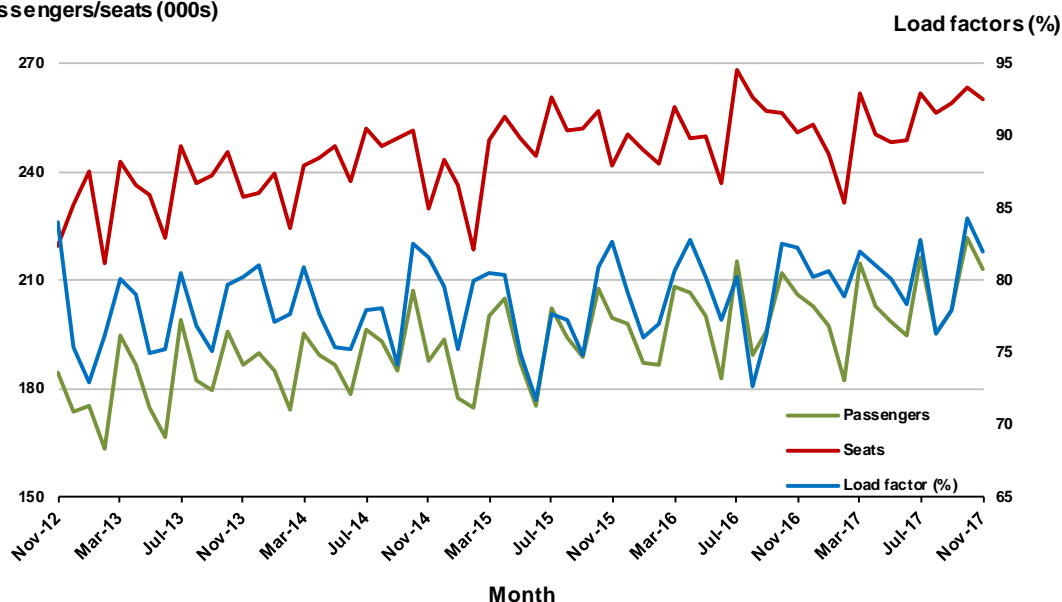
## 5. Adelaide - Melbourne

### Monthly data

	Nov 2016	Nov 2017	% Change
Passengers carried (000s)	206.3	213.2	3.3
Seats (000s)	250.8	260.1	3.7
Load factor %	82.3	82.0	-0.3 *
Aircraft trips	1 615	1 619	0.2

\* percentage point difference

### Passengers/seats (000s)

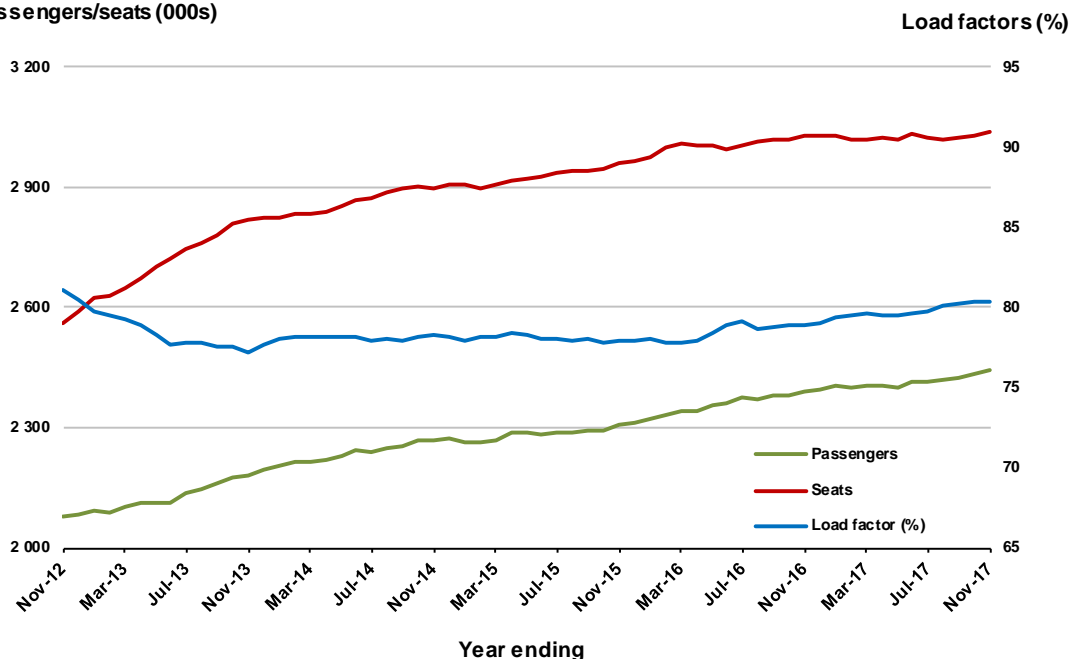


### Moving annual data

	YE Nov 2016	YE Nov 2017	% Change
Passengers carried (000s)	2 388.8	2 443.0	2.3
Seats (000s)	3 026.5	3 038.7	0.4
Load factor %	78.9	80.4	1.5 *
Aircraft trips	19 347	19 065	-1.5

\* percentage point difference

### Passengers/seats (000s)



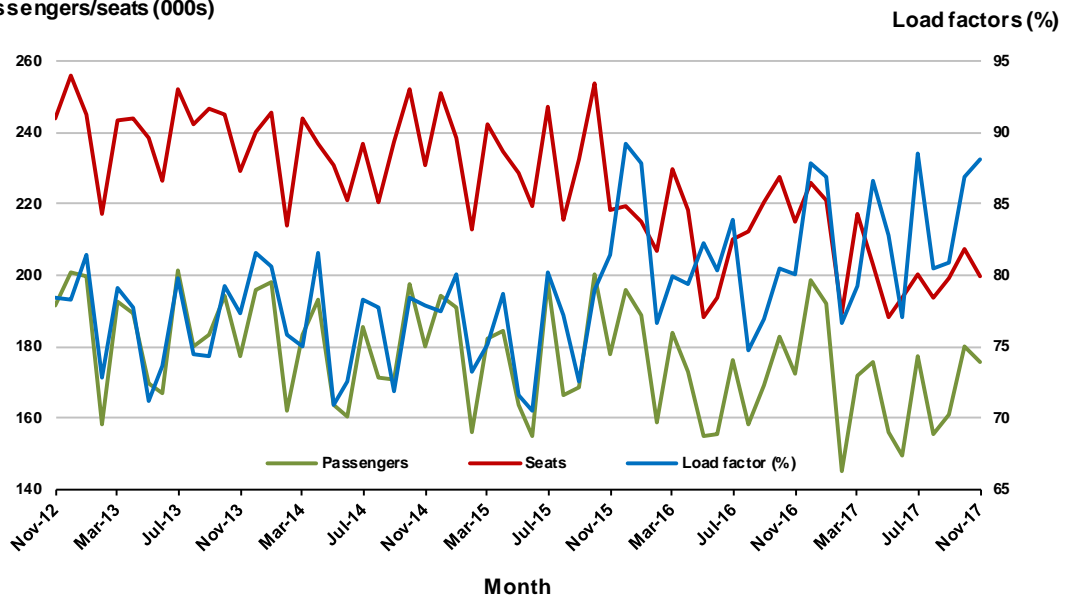
## 6. Melbourne - Perth

### Monthly data

	Nov 2016	Nov 2017	% Change
Passengers carried (000s)	172.3	175.9	2.1
Seats (000s)	215.2	199.6	-7.2
Load factor %	80.1	88.1	8.0 *
Aircraft trips	953	929	-2.5

\* percentage point difference

### Passengers/seats (000s)

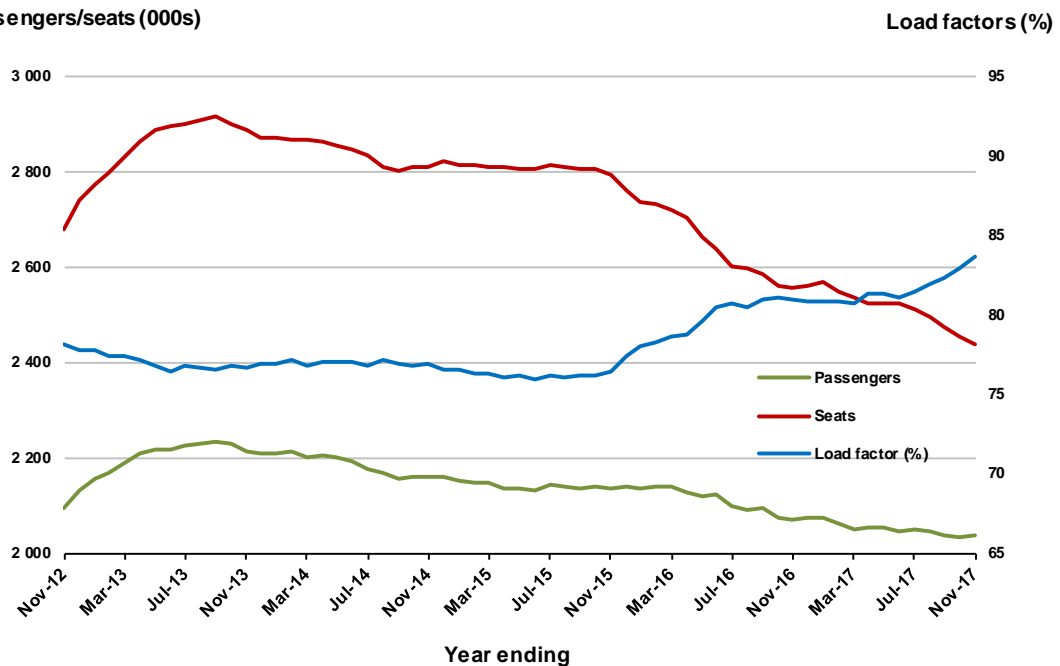


### Moving annual data

	YE Nov 2016	YE Nov 2017	% Change
Passengers carried (000s)	2 070.3	2 038.9	-1.5
Seats (000s)	2 556.5	2 438.2	-4.6
Load factor %	81.0	83.6	2.6 *
Aircraft trips	11 570	11 140	-3.7

\* percentage point difference

### Passengers/seats (000s)



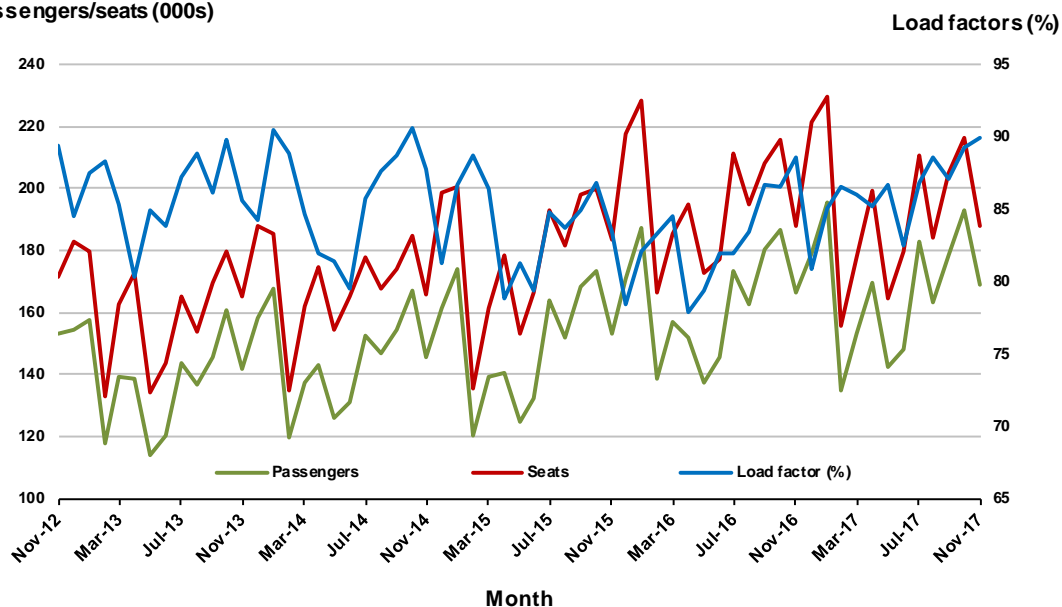
## 7. Gold Coast - Melbourne

### Monthly data

	Nov 2016	Nov 2017	% Change
Passengers carried (000s)	166.4	169.1	1.7
Seats (000s)	187.7	188.2	0.2
Load factor %	88.6	89.9	1.3 *
Aircraft trips	1 012	1 002	-1.0

\* percentage point difference

### Passengers/seats (000s)

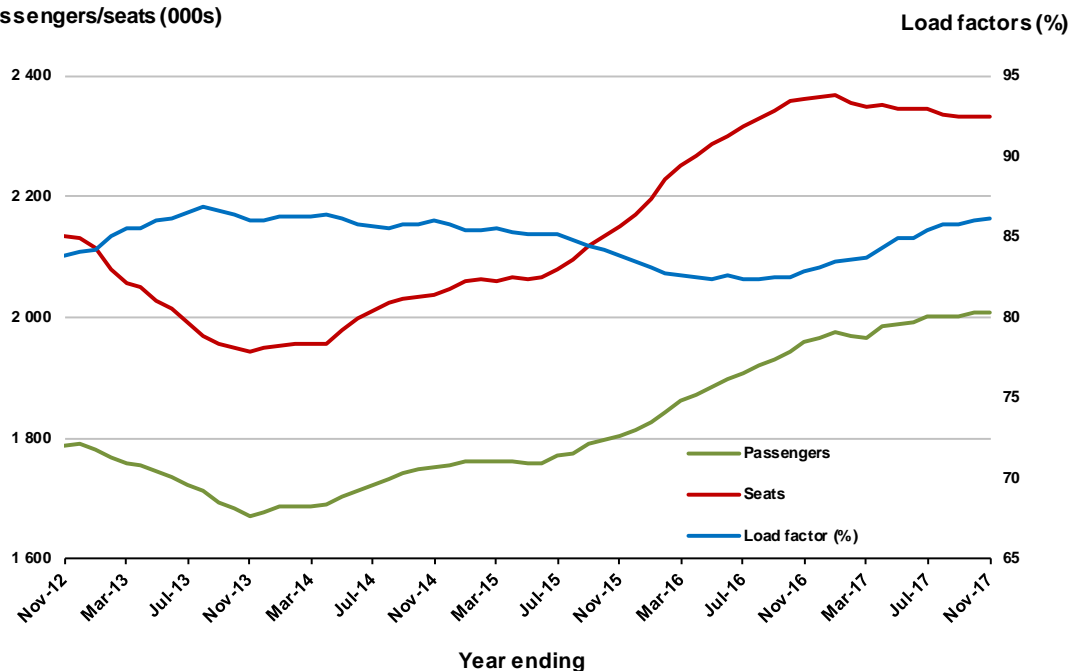


### Moving annual data

	YE Nov 2016	YE Nov 2017	% Change
Passengers carried (000s)	1 957.8	2 009.4	2.6
Seats (000s)	2 361.4	2 332.0	-1.2
Load factor %	82.9	86.2	3.3 *
Aircraft trips	12 646	12 423	-1.8

\* percentage point difference

### Passengers/seats (000s)



## 8. Adelaide - Sydney

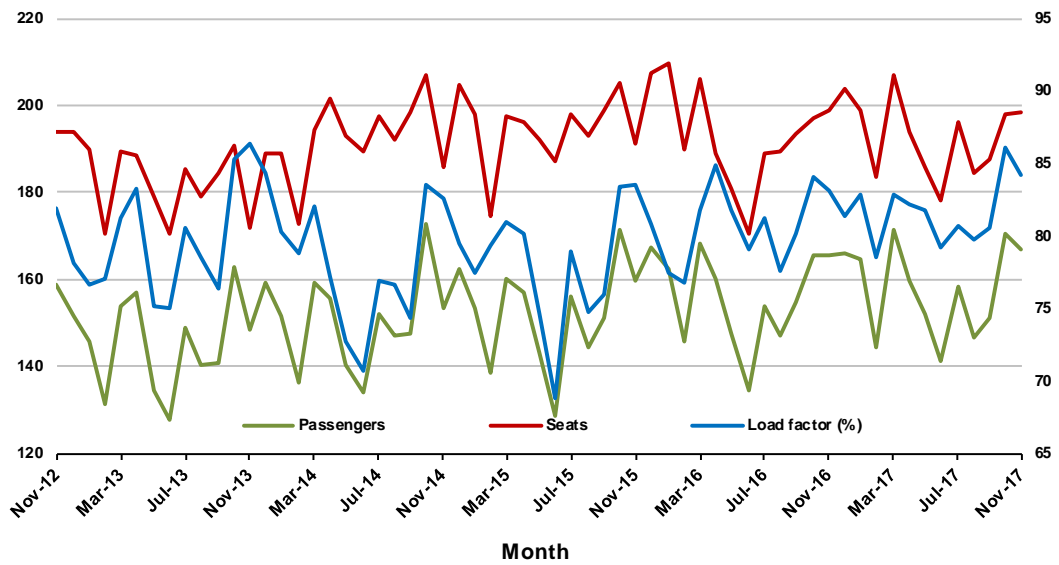
### Monthly data

	Nov 2016	Nov 2017	% Change
Passengers carried (000s)	165.5	167.0	0.9
Seats (000s)	199.1	198.2	-0.4
Load factor %	83.1	84.2	1.1 *
Aircraft trips	1 209	1 183	-2.2

\* percentage point difference

### Passengers/seats (000s)

### Load factors (%)



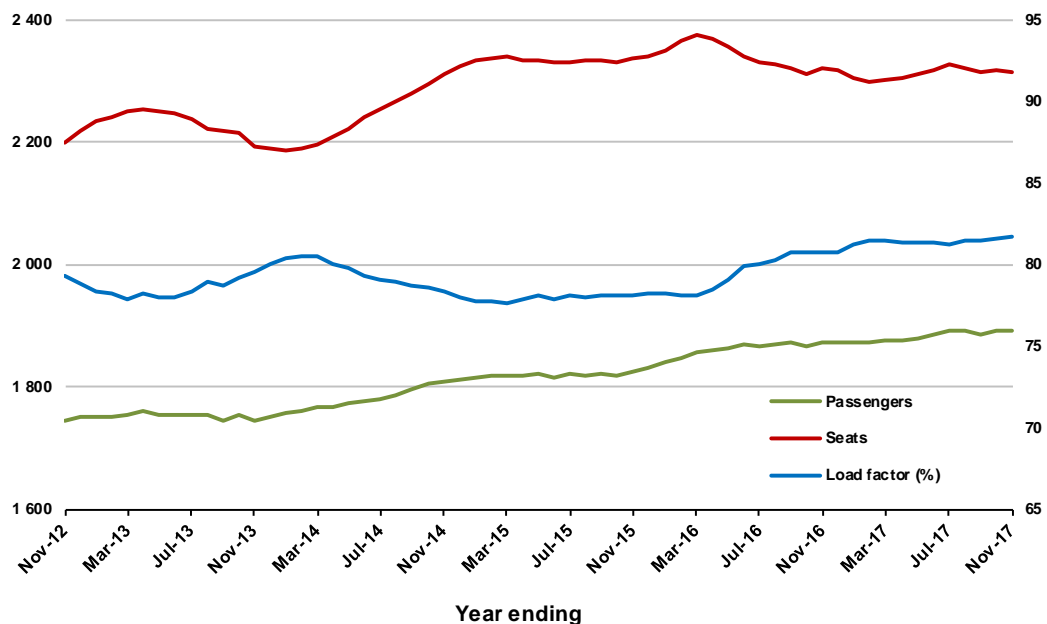
### Moving annual data

	YE Nov 2016	YE Nov 2017	% Change
Passengers carried (000s)	1 873.7	1 893.8	1.1
Seats (000s)	2 320.8	2 316.4	-0.2
Load factor %	80.7	81.8	1.0 *
Aircraft trips	14 121	13 989	-0.9

\* percentage point difference

### Passengers/seats (000s)

### Load factors (%)



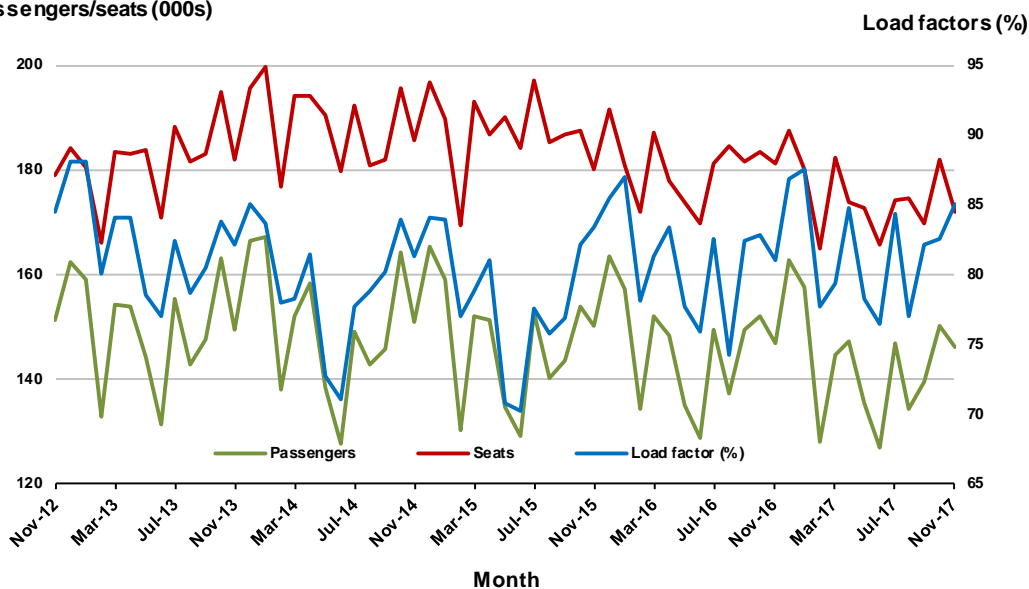
## 9. Perth - Sydney

### Monthly data

	Nov 2016	Nov 2017	% Change
Passengers carried (000s)	146.9	146.1	-0.6
Seats (000s)	181.3	171.9	-5.2
Load factor %	81.1	85.0	3.9 *
Aircraft trips	760	737	-3.0

\* percentage point difference

### Passengers/seats (000s)

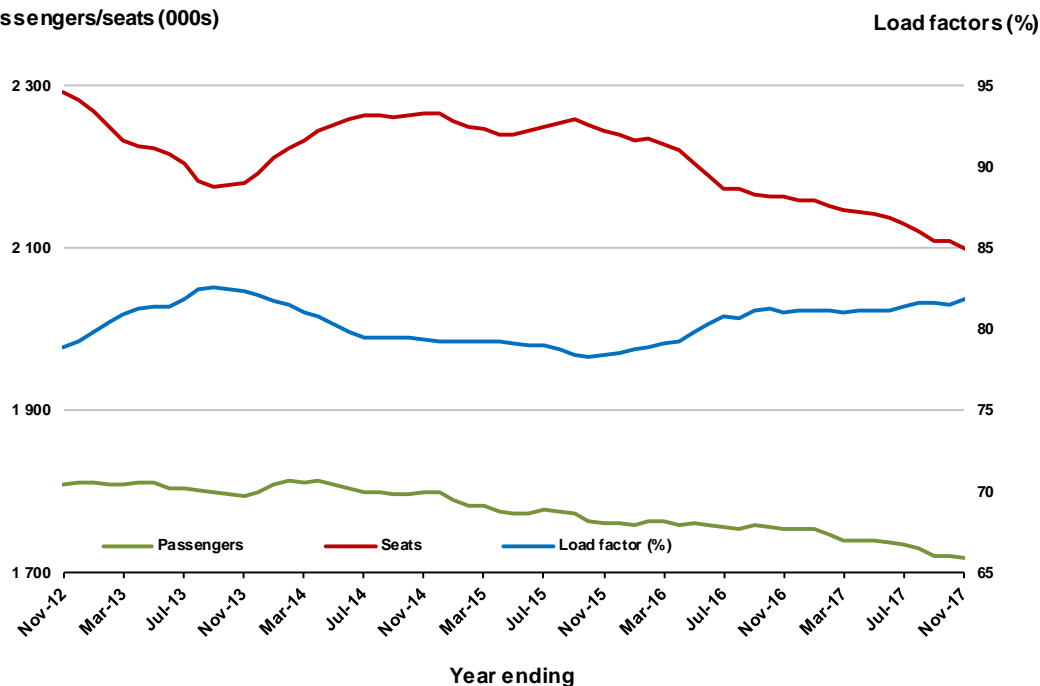


### Moving annual data

	YE Nov 2016	YE Nov 2017	% Change
Passengers carried (000s)	1 754.4	1 719.4	-2.0
Seats (000s)	2 164.5	2 099.3	-3.0
Load factor %	81.1	81.9	0.8 *
Aircraft trips	9 160	9 034	-1.4

\* percentage point difference

### Passengers/seats (000s)

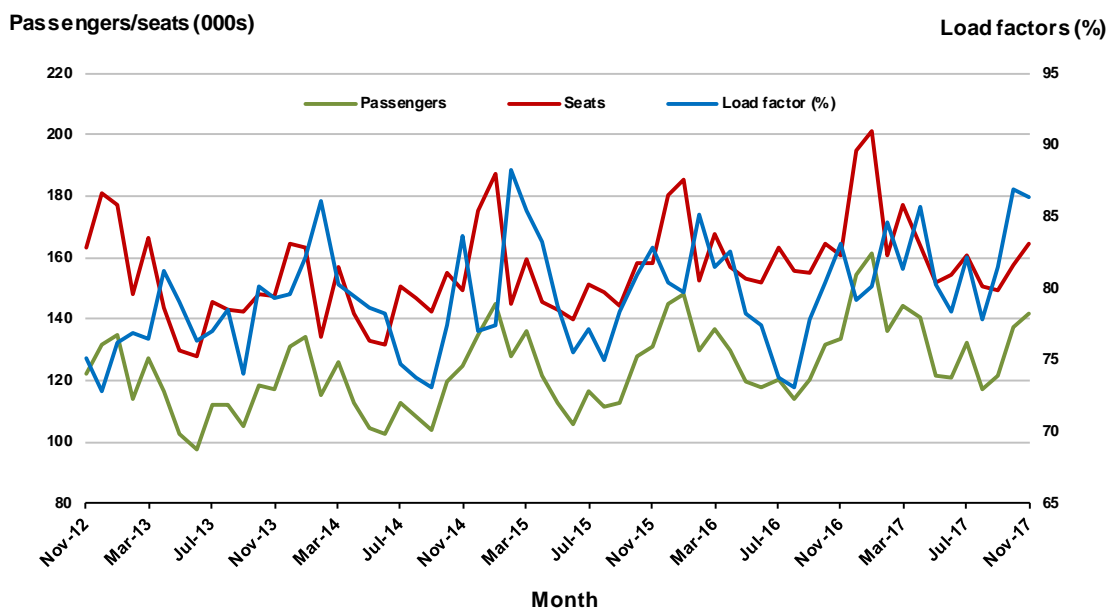


## 10. Hobart - Melbourne

### Monthly data

	Nov 2016	Nov 2017	% Change
Passengers carried (000s)	133.6	141.6	6.0
Seats (000s)	160.7	164.2	2.2
Load factor %	83.1	86.3	3.2 *
Aircraft trips	1 003	979	-2.4

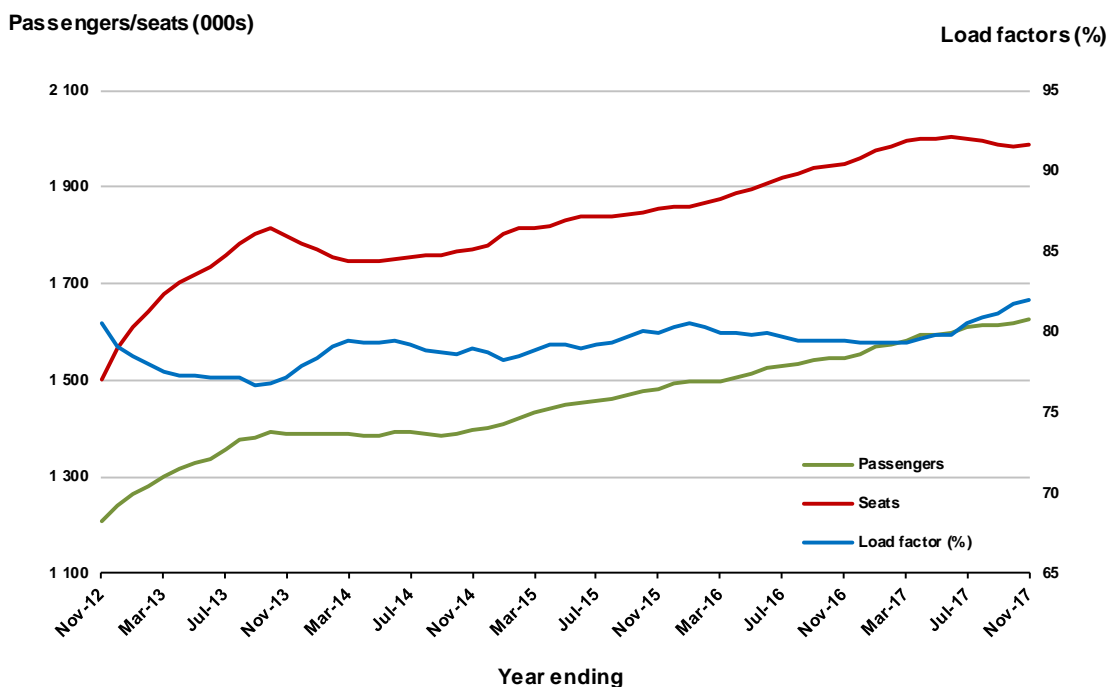
\* percentage point difference



### Moving annual data

	YE Nov 2016	YE Nov 2017	% Change
Passengers carried (000s)	1 546.4	1 628.1	5.3
Seats (000s)	1 946.7	1 986.4	2.0
Load factor %	79.4	82.0	2.5 *
Aircraft trips	12 225	12 159	-0.5

\* percentage point difference



## TOP FIFTY REGIONAL AIRPORTS

**Table 10: Top fifty regional airports (000s) — passenger movements, monthly**

	<b>Airport</b>	<b>Nov 2016</b>	<b>Nov 2017</b>	<b>% Change</b>
1	Cairns	351.1	355.7	1.3
2	Hobart	207.0	221.1	6.8
3	Darwin	137.1	136.4	-0.5
4	Townsville	121.7	133.0	9.3
5	Launceston	115.2	117.2	1.8
6	Newcastle	108.2	113.7	5.1
7	Mackay	63.5	67.6	6.4
8	Alice Springs	50.3	54.6	8.4
9	Rockhampton	49.8	46.9	-5.8
10	Ballina	40.3	43.1	6.7
11	Proserpine	27.7	41.3	49.4
12	Coffs Harbour	36.1	38.9	7.7
13	Karratha	42.0	37.7	-10.3
14	Hamilton Island	49.7	37.4	-24.8
15	Ayers Rock	31.5	32.1	1.6
16	Broome	24.3	29.7	22.4
17	Port Hedland	31.0	29.5	-5.1
18	Newman	27.3	26.0	-4.8
19	Albury	22.6	23.1	2.1
20	Kalgoorlie	21.8	22.7	4.0
21	Gladstone	26.1	22.5	-13.9
22	Mildura	21.3	22.3	4.4
23	Dubbo	19.8	20.7	4.7
24	Wagga Wagga	19.3	20.7	7.5
25	Port Macquarie	19.8	19.3	-2.6
26	Mount Isa	16.3	17.9	9.9
27	Emerald	17.2	17.0	-1.6
28	Tamworth	16.1	16.3	1.2
29	Port Lincoln	14.7	14.8	0.9
30	Paraburdoo	14.6	14.5	-0.6
31	Bundaberg	14.8	13.9	-5.8
32	Hervey Bay	14.1	13.8	-2.1
33	Devonport	12.0	12.7	5.6
34	Armidale	11.8	12.4	5.1
35	Toowoomba Wellcamp	11.4	11.9	4.7
36	Geraldton	10.3	9.3	-9.6
37	Moranbah	11.1	9.0	-19.3
38	Thursday Island	8.1	8.4	4.3
39	Roma	7.9	8.1	2.2
40	Olympic Dam	4.6	7.7	68.2
41	Mount Gambier	7.2	7.6	5.6
42	Gove	7.0	7.2	1.9
43	Kununurra	6.7	6.9	3.4
44	Orange	5.4	6.7	24.2
45	Weipa	6.3	6.7	6.1
46	Griffith	6.1	6.6	8.0
47	Broken Hill	5.0	6.3	25.1
48	Whyalla	5.6	6.2	10.2
49	Learmonth	5.3	5.7	8.1
50	Merimbula	5.4	5.4	0.0
<b>Total top 50 regional airports</b>		<b>1 909.5</b>	<b>1 965.9</b>	<b>3.0</b>
<b>Total regional airports</b>		<b>2 028.9</b>	<b>2 095.6</b>	<b>3.3</b>
<b>Total domestic network</b>		<b>10 113.3</b>	<b>10 451.2</b>	<b>3.3</b>

Note: Airport passenger movement numbers are the sum of passenger arrivals and departures at each airport.



**Table 11: Top fifty regional airports (000s) — passenger movements, annual**

<b>Airport</b>	<b>YE Nov 2016</b>	<b>YE Nov 2017</b>	<b>% Change</b>
1 Cairns	4 232.0	4 312.1	1.9
2 Hobart	2 364.3	2 495.7	5.6
3 Darwin	1 797.8	1 805.1	0.4
4 Townsville	1 534.9	1 580.3	3.0
5 Launceston	1 329.3	1 337.6	0.6
6 Newcastle	1 227.5	1 285.5	4.7
7 Mackay	796.1	783.8	-1.5
8 Alice Springs	610.3	618.4	1.3
9 Rockhampton	582.7	560.5	-3.8
10 Ballina	481.1	508.7	5.7
11 Karratha	505.4	441.3	-12.7
12 Hamilton Island	544.8	435.1	-20.1
13 Coffs Harbour	393.7	416.0	5.7
14 Proserpine	341.8	413.3	20.9
15 Broome	375.3	383.0	2.0
16 Ayers Rock	357.2	363.4	1.7
17 Port Hedland	359.5	349.5	-2.8
18 Gladstone	338.5	286.2	-15.5
19 Newman	313.7	285.6	-8.9
20 Albury	251.9	265.8	5.5
21 Mildura	246.9	254.3	3.0
22 Kalgoorlie	240.0	250.9	4.6
23 Dubbo	205.2	237.9	16.0
24 Port Macquarie	225.8	230.8	2.2
25 Wagga Wagga	215.6	221.0	2.5
26 Mount Isa	188.9	200.5	6.2
27 Emerald	200.0	198.9	-0.5
28 Tamworth	177.2	198.7	12.2
29 Bundaberg	172.8	175.3	1.5
30 Hervey Bay	170.0	174.5	2.6
31 Port Lincoln	179.2	172.8	-3.6
32 Paraburdoo	165.2	166.6	0.8
33 Toowoomba Wellcamp	114.9	151.4	31.8
34 Devonport	148.7	147.9	-0.5
35 Armidale	129.4	133.2	2.9
36 Moranbah	118.5	117.8	-0.6
37 Geraldton	118.6	112.7	-4.9
38 Kununurra	107.6	104.9	-2.5
39 Thursday Island	100.1	100.4	0.3
40 Gove	80.2	84.0	4.8
41 Roma	90.0	83.5	-7.2
42 Learmonth	85.1	82.7	-2.8
43 Mount Gambier	76.1	80.1	5.3
44 Weipa	78.1	78.1	0.1
45 Griffith	69.4	73.4	5.8
46 Olympic Dam	50.6	67.6	33.5
47 Merimbula	62.7	65.8	4.9
48 Whyalla	63.2	64.6	2.2
49 Orange	52.1	62.9	20.7
50 Broken Hill	53.2	61.0	14.8
<b>Total top 50 regional airports</b>	<b>22 723.1</b>	<b>23 081.3</b>	<b>1.6</b>
<b>Total regional airports</b>	<b>24 051.3</b>	<b>24 477.0</b>	<b>1.8</b>
<b>Total domestic network</b>	<b>117 767.7</b>	<b>119 726.4</b>	<b>1.7</b>

Note: Airport passenger movement numbers are the sum of passenger arrivals and departures at each airport.

## DOMESTIC CHARTER ACTIVITY

**Table 12: Charter passengers carried and aircraft trips - annual activity**

	YE Nov 2016	YE Nov 2017	% Change
Total domestic charter passengers	2 439 345	2 434 663	-0.2
Total domestic charter aircraft trips	45 236	45 817	1.3

Note: Helicopter, joyflights and sightseeing charter flights not included.

**Table 13: Charter passengers carried and aircraft trips - monthly activity**

	Nov 2016	Nov 2017	% Change
Total domestic charter passengers	211 616	214 694	1.5
Total domestic charter aircraft trips	3 891	3 950	1.5

Note: Helicopter, joyflights and sightseeing charter flights not included.

**Table 14: Domestic airports - charter activity - annual**

	YE Nov 2016	YE Nov 2017	% Change
Total domestic charter passenger movements	4 878 690	4 869 326	-0.2
Total domestic charter aircraft movements	90 472	91 634	1.3
Perth airport charter passenger movements	1 885 276	1 860 702	-1.3
Perth airport charter aircraft movements	31 634	31 480	-0.5

Note: Helicopter, joyflights and sightseeing charter flights not included.

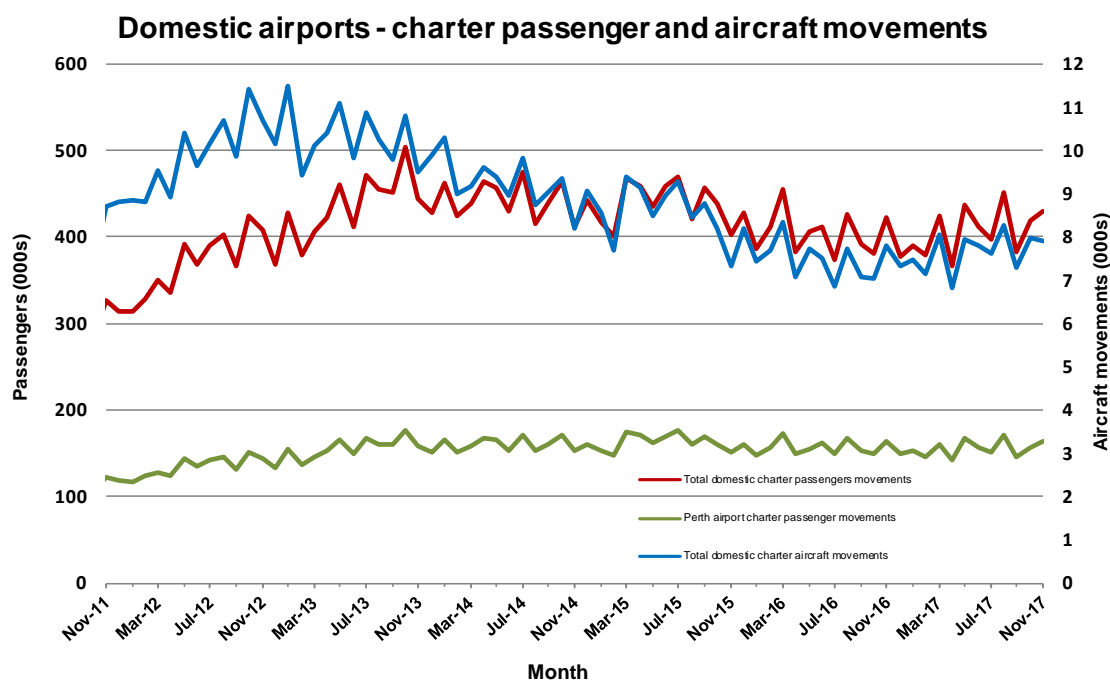
Charter passenger and aircraft movement numbers are the sum of arrivals and departures at each airport.

**Table 15: Domestic airports - charter activity - monthly**

	Nov 2016	Nov 2017	% Change
Total domestic charter passenger movements	423 232	429 388	1.5
Total domestic charter aircraft movements	7 782	7 900	1.5
Perth airport charter passenger movements	163 005	163 237	0.1
Perth airport charter aircraft movements	2 757	2 680	-2.8

Note: Helicopter, joyflights and sightseeing charter flights not included.

Charter passenger and aircraft movement numbers are the sum of arrivals and departures at each airport.



## DEFINITIONS

Aircraft Trips	The number of flight stages. A return flight counts as two aircraft trips.
Airport Movements	Airport movements (passenger and cargo) are measured once on arrival and once on departure. Each domestic trip generates two movements at airports. For example, a trip from Melbourne to Sydney will be counted twice, as a passenger departure at Melbourne and as a passenger arrival at Sydney. At the national level, the sum of all domestic airport traffic will therefore be equal to twice the number of trips undertaken.
Available Seat Kilometres (ASKs)	Calculated by multiplying the number of seats available on each flight stage, by the distance in kilometres between the ports. The distances used are Great Circle Distances.
City-Pair	The ports shown make up the city-pair route. Passenger movements shown for a city pair reflect total traffic in both directions.
Flight Stage	The operation of an aircraft from take-off to landing.
Load Factor	The total revenue passenger kilometres performed as a percentage of the total available seat kilometres.
Passengers Carried	Revenue passengers carried.
Regular Public Transport Services (RPT)	All air service operations in which aircraft are available for the transport of members of the public and are conducted in accordance with fixed schedules. It does not include charter or other non-scheduled operations.
Revenue Passengers	All passengers paying any fare. Frequent flyer redemption travellers are regarded as revenue passengers.
Revenue Passenger Kilometres (RPKs)	Calculated by multiplying the number of revenue passengers travelling on each flight stage, by the distance in kilometres between the ports. The distances used are Great Circle Distances.
Traffic on board by stages	The total of all traffic (revenue passengers) on each flight stage between two directly connected airports.
..	Data not included
NA	Not applicable