



DEPARTMENT OF TRANSPORT AND REGIONAL SERVICES

# AIR TRANSPORT STATISTICS

## INTERNATIONAL AIRLINES

2002





**INTERNATIONAL SCHEDULED  
AIR TRANSPORT**

**2002**

**BUREAU OF  
TRANSPORT AND REGIONAL ECONOMICS**

**DEPARTMENT OF  
TRANSPORT AND REGIONAL SERVICES**

**Issue Number 1/115**

© COMMONWEALTH OF AUSTRALIA

CANBERRA

AUGUST 2003

ISSN 1324-5074

**This work is copyright and the data contained in this publication should not be reproduced or used in any form without acknowledgment.**

**INQUIRIES**

Should you require additional information about the statistics contained in this publication, please contact Mrs Betty Kell in Canberra by telephone (02) 6274 7791 or by facsimile (02) 6274 7727

or write to:

AVSTATS, Bureau of Transport and Regional Economics  
Department of Transport and Regional Services  
GPO Box 594  
Canberra ACT 2601  
Electronic Mail: AVSTATS@dotars.gov.au

**CONTENTS**

Table		Page
..	Explanatory Notes .....	iv-v
..	Data Status & Airlines Commencing/Withdrawing Services .....	vi
..	Industry Analysis .....	vii-xi
..	Summary .....	xii
1	Scheduled International Air Traffic to and from Australia .....	1-3
2	Scheduled Operator Market Shares and Growth .....	4-8
3	Airline Passenger Capacity and Utilisation to and from Australia by Operator .....	9-11
4	Australian International Airport Scheduled Traffic and Aircraft Movements .....	12-13
5	Scheduled International Passengers and Freight by City Pairs .....	14-23
6	International Airlines Own Stopover Revenue Passengers, Australian City Pairs .....	24
7	Total Aircraft Movements at Australian International Airports by Aircraft Types .....	25

## EXPLANATORY NOTES

### INTRODUCTION

1. This publication continues the series of publications on a calendar year basis presenting statistical information on the scheduled operations of international airlines operating into/out of Australia.
2. The figures in this publication were obtained from reports submitted by scheduled international carriers and are the best available at the time of publication.

### COVERAGE

3. These statistics show **uplift/discharge** data – These data detail, by direction, the revenue traffic between the actual points of uplift and discharge within each flight, aggregated for all flights within the period. It shows the movement of traffic between two airports not necessarily directly connected but within the same flight number. Typically, flight numbers change when an aircraft reaches its home country. This means that uplift/discharge data for the port in the operator's home country are likely to be overstated by traffic whose origin/destination point is beyond that port. For example, uplift/discharge traffic reported in this publication as Singapore could include traffic whose origin/destination is Europe.
4. These statistics cover **revenue** traffic carried by the operators of scheduled regular public international air transport services only and **do not include charter traffic**.
5. Some airlines (generally, dedicated freighter operators) operate scheduled services into Australia but operate non-scheduled services out of Australia and therefore outbound activity is not recorded in this data collection.

### PRODUCTION AND INTERPRETATION

6. **Tables 1 and 2** show the country of the relevant uplift or discharge port served by that airline. For example, traffic uplifted/discharged between Sydney and Singapore by British Airways would be shown as Singapore traffic in Tables 1 and 2.
7. **Table 3** shows figures for the country of service (or route) for each airline and therefore may not equate to the data in Tables 1 and 2. For example, the British Airways UK service identified in Table 3 could include passengers uplifted or discharged in Singapore or Thailand as well as the UK; these passengers would be shown individually under those countries in Tables 1 and 2. The difference in treatment of data between Tables 1 and 2 and Table 3 is necessary in order to work out a meaningful Seat Utilisation figure for Table 3.

Figures shown in Table 3 may include **total traffic** into and out of Australia for airlines that fly through Australia (also necessary in order to work out a meaningful Seat Utilisation figure). Therefore, figures in Table 3 may not equate to figures in Tables 1 and 2. For example, passengers carried by Qantas Airways from New Zealand **via** Australia to the UK will be included in Table 3 but will not be included in Tables 1 or 2 as these passengers were not uplifted/discharged in Australia.

8. **Table 5** – shows uplift/discharge passenger and freight data for directly connected city pairs. Statistics reported in this table for city pairs without direct international flight connections, mainly reflect carriage on interconnecting international services by Qantas Airways. This traffic should be interpreted as increasing the volume of traffic between the primary international ports rather than as an indicator of traffic volumes between ports without direct international flight connections. It should be noted however, that there is no double counting of traffic. For example, there is no direct connection between Adelaide and London and the traffic reported between Adelaide and London should be interpreted as adding to traffic between Adelaide and Singapore or Melbourne/Sydney and London.
9. Where figures have been rounded, discrepancies may occur between sums of component items and totals, and in percentage changes which are derived from figures prior to rounding.
10. Published figures may be revised where figures missing at the time of publication are received or misreporting/miscalculation necessitates revisions.

## 11. Reporting of Code Share services:

Reporting of traffic split by airline code for code share arrangements was discontinued as of June 2000. From July 2000, ALL traffic carried is reported under the operating airline regardless of code share arrangements.

Monthly airline market share figures for July 2001 onwards will be comparable with the same month in the previous year. However, these figures may not be comparable with monthly data prior to July 2000.

## DEFINITIONS

### 12. The following definitions have been used in this publication:

- (a) Aircraft Movement: A landing or a take off.
- (b) Freight: The aggregate of all revenue freight uplifted.
- (c) Inbound: Inbound to Australia/Australian international airport.
- (d) Mail: The aggregate of all mail uplifted.
- (e) Outbound: Outbound from Australia/Australian international airport.
- (f) Revenue Passengers:

From July 2000 onwards: All passengers paying any fare (frequent flyer redemption passengers are regarded as revenue passengers). In most cases, Revenue Passengers will now include all passengers excluding Free Of Charge passengers and positioning crew.

To December 1999: The aggregate of all passengers paying 25% or more of the standard air fare (as defined by ICAO).

January 2000 to June 2000: Transition period.

The Revenue Passenger definition change could result in approximately a three per cent increase in passenger numbers over a full period (month or year).

- (g) Seat Utilisation: The ratio of passengers carried to seats available, expressed as a percentage.
- (h) Seats Available: Generally based on standard aircraft configuration, the aggregate of seats available on all flights operated over a particular service.
- (i) Services: Scheduled flights over authorised routes which are listed according to the main ports involved.

## SYMBOLS AND OTHER USAGE

- nil or zero
- .. not applicable

## INDEMNITY STATEMENT

The Bureau of Transport and Regional Economics has taken due care in preparing the information contained in this publication. However, noting that data have been provided by third parties, the Commonwealth gives no warranty as to the accuracy, reliability, fitness for purpose, or otherwise of the information.

## **NO/INCOMPLETE DATA FOR 2002 PROVIDED BY THE FOLLOWING AIRLINES PRIOR TO FINALISATION OF THIS PUBLICATION**

<b>Lauda Air</b>	No outbound freight data for September 2000 onwards. No inbound freight data for April 2001 onwards.
<b>Merpati Nusantara Airlines</b>	Jakarta/Christmas Island services commenced in August 2001. No data has been received for these services.
<b>Olympic Airways</b>	Data not received for operations to/from Sydney for September, October and November 2002. Data not received for operations to/from Melbourne for October 2002. All operations ceased in November 2002.
<b>Vietnam Airlines</b>	Data not received for operations to/from Sydney for August 2002 onwards.

## **AIRLINES COMMENCING/WITHDRAWING SERVICES DURING 2002**

- The following airlines commenced operated services to/from Australia
  - Australian Airlines
  - Gemini Air Cargo
  - Lan Chile
  - Royal Tongan Airlines (recommenced)
  
- The following airlines ceased operated services to/from Australia
  - EgyptAir
  - Gulf Air
  - Olympic Airways



# INTERNATIONAL AVIATION INDUSTRY ANALYSIS

## YEAR ENDED DECEMBER 2002

- The year ended December 2002 saw a decrease of 0.8% in the number of revenue passengers carried and an increase of 0.9% in freight carried on international scheduled air services to and from Australia when compared with the previous year.

### Passenger Traffic

- Chart I shows total passenger traffic for the years ended December 1992 to 2002.
- Over this period, 2002 was the only year to have recorded a decrease in traffic compared to the previous year.
- Passenger traffic in 2002 was affected by the terrorist attacks on the USA in September 2001 and the flow on effects such as the war on terrorism, heightened tensions and security concerns the world over.
- The collapse of Ansett International (also in September 2001) may have also affected traffic levels in 2002. In the year ended August 2001 (last full year of operations), it carried 559,756 passengers (3.2% of the total) on 2,961 flights with 823,825 seats made available.
- Chart II shows total passenger traffic by month for 2000, 2001 and 2002.
- Monthly passenger traffic for October, November and December 2002 was higher than for the same months in 2001 as there was a significant drop in traffic after the September 2001 terrorist attacks and the collapse of Ansett International. The only other month in 2002 to record higher traffic levels over the same month in 2001 was March 2002 where there may have been some transfer of traffic from April because the Easter holiday period commenced in March in 2002.
- Chart III shows the passenger market shares for the top ten airlines for 2002. The top ten airlines accounted for 81.5% of the total market.
- The Australian airline market share has dropped from 37.1% in 2001 to 34.0% in 2002. Qantas Airways' market share has dropped from 34.7% to 33.5% while its wholly owned subsidiary Australian Airlines which commenced operations in October 2002 had 0.5% of the total for the 2002 year. The rest of the drop is accounted for by the cessation of Ansett International which had 2.4% of the total in 2001.
- Singapore Airlines was the second largest carrier in 2002 increasing its market share from 11.0% in 2001 to 11.9% in 2002. Air New Zealand was the third largest carrier but its share has dropped from 10.7% to 9.2% while its wholly owned subsidiary Freedom Air has increased its share from 1.4% to 2.3% over the same period.
- Table I shows total passenger traffic carried by uplift/discharge city pairs for 2000, 2001 and 2002.
- Table III provides a breakdown of passenger traffic by major uplift/discharge countries for 2000, 2001 and 2002.
- After the Bali bombings in October 2002, uplift/discharge traffic to and from Indonesia decreased by 46.8% for November 2002 compared to November 2001 and by 39.6% for December 2002 compared to December 2001. Traffic to and from Indonesia for 2002 has decreased by 19.3% compared to 2001. It should be noted however that Indonesian traffic has been decreasing for some time – the year ended September 2002 (a full year before the Bali bombings) recorded a decrease of 17.5% compared to the year ended September 2001.

- Table IV provides a breakdown of passenger traffic through Australian international airports for 2000, 2001 and 2002.
- Sydney, Melbourne and Brisbane have all recorded negative growth for 2002 compared to 2001.
- Gold Coast/Coolangatta has recorded an increase of 172.2% over the same period to displace Darwin as the seventh major gateway.

### **Airline Operations**

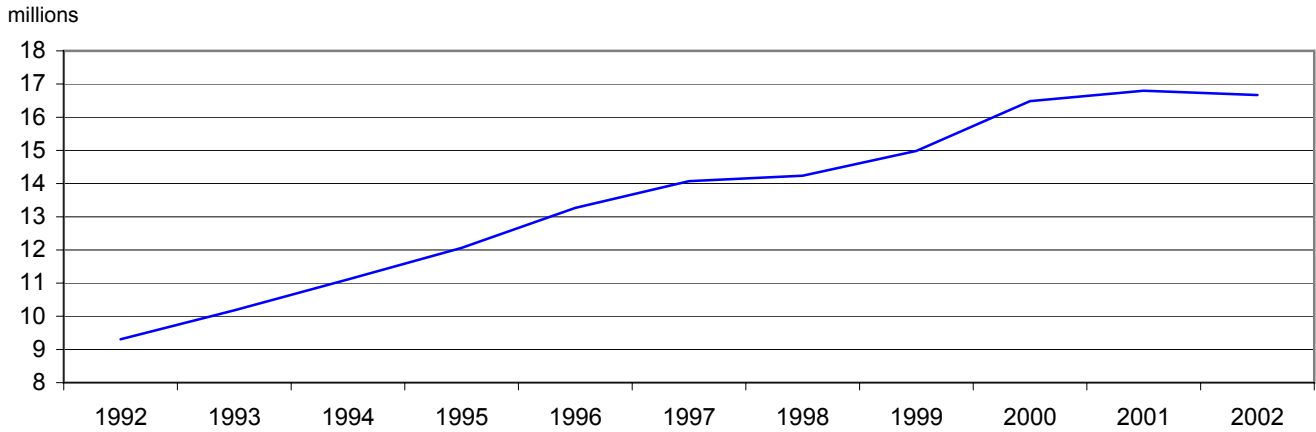
- During 2001 and 2002, 50 international scheduled airlines operated services to/from Australia of which 8 were dedicated freight only operators (airlines operating only via code share arrangements have been excluded).
- Total flights operated have increased from 91,188 in 2000 to 92,147 in 2001 and then decreased to 87,422 in 2002.
- Total seats made available have increased from 23.9 million in 2000 to 24.2 million in 2001 and then decreased to 22.8 million in 2002.
- Overall seat utilisation percentage (load factor) was 70.2% in 2000, 70.9% in 2001 and 75.6% in 2002.
- The Boeing 747 (including Combi) was the most popular aircraft type operated to and from Australia, accounting for 30.1% of total aircraft movements in 2002. The next most popular type was the Boeing 767 with 26.5%, followed by the Boeing 737 with 16.9% and the Boeing 777 with 11.2%. All Airbus types accounted for a total of 8.6% and the McDonnell Douglas MD11 accounted for 2.4%.

### **Freight**

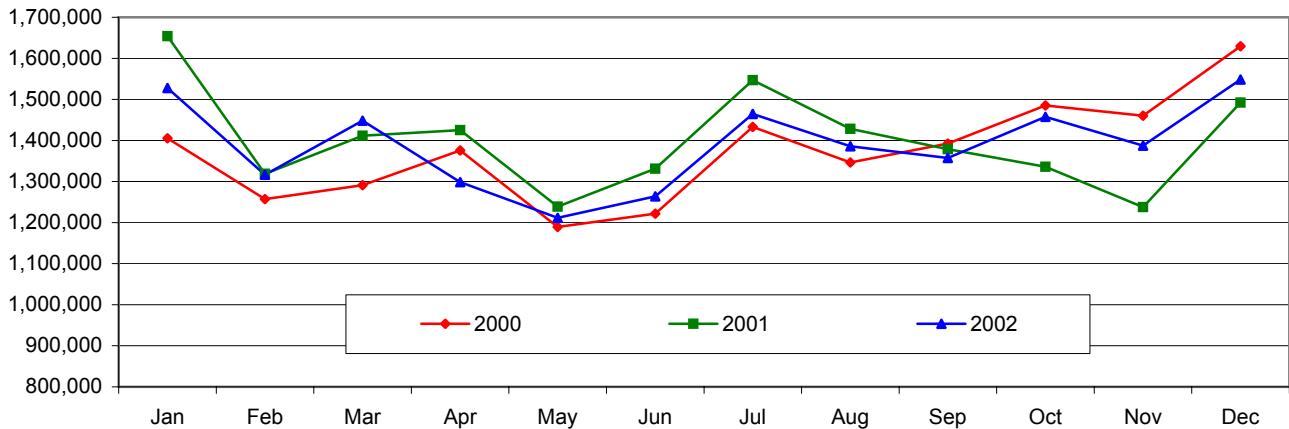
- The average annual growth for total freight was 4.8% over the last ten years (inbound 5.1% and outbound 4.5%).
- Asian Express Airlines, Cargolux Airlines International, Federal Express Corporation, Gemini Air Cargo (on behalf of Qantas Airways), Lufthansa German Airlines, Martinair Holland, Polar Air Cargo and United Parcel Service operated dedicated freighter services to/from Australia during 2002.
- As well as the above freight only operators, Cathay Pacific, Korean Air, Malaysia Airlines and Singapore Airlines operated dedicated freighter services in addition to their regular passenger services.
- Freight carried on dedicated freight aircraft accounted for 27.4% of inbound freight to Australia, 13.1% of outbound freight from Australia and 19.9% of total freight. Note that some freighters operate as charters out of Australia or do not pick up freight in Australia – this accounts for the difference in inbound and outbound percentages.
- Table II shows total freight carried by uplift/discharge city pairs for 2000, 2001 and 2002.

Please refer to Explanatory Notes.

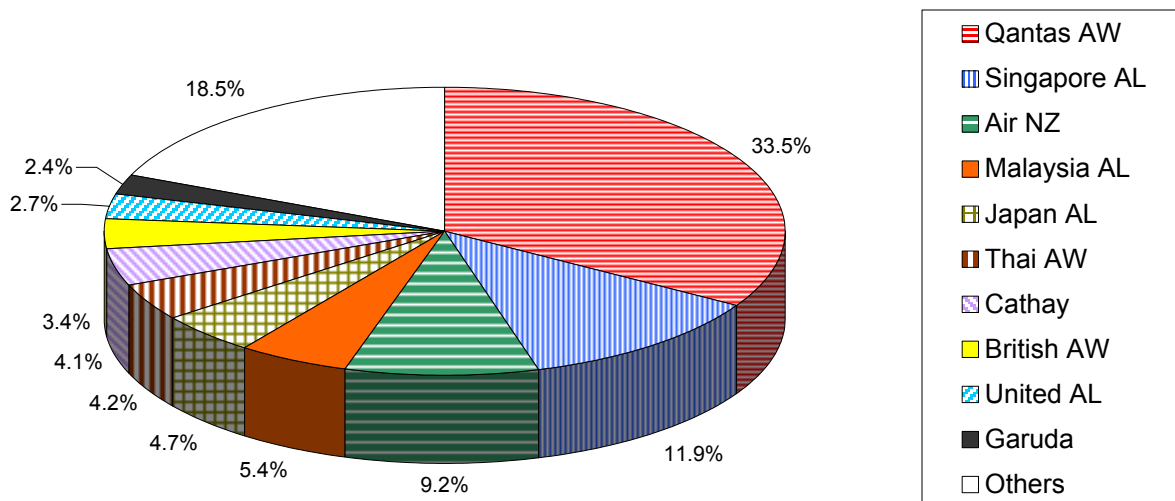
**CHART I: TOTAL INTERNATIONAL PASSENGERS CARRIED  
YEARS ENDED DECEMBER 1992 TO 2002**



**CHART II: TOTAL INTERNATIONAL PASSENGERS CARRIED BY MONTH**



**CHART III: INTERNATIONAL PASSENGERS BY MAJOR AIRLINES  
YEAR ENDED DECEMBER 2002**



Please refer to explanatory notes.

**TABLE I: INTERNATIONAL PASSENGERS BY UPLIFT/DISCHARGE CITY PAIRS  
YEARS ENDED DECEMBER 2000, 2001 AND 2002**

Foreign Port	Australian Port	Year ended December 2000	Year ended December 2001	Year ended December 2002	% of Total	% Change 2002 over 2001
Auckland	Sydney	937,056	1,012,766	971,936	5.8	-4.0
Singapore	Sydney	869,802	942,288	947,055	5.7	0.5
Singapore	Perth	622,826	659,996	682,600	4.1	3.4
Los Angeles	Sydney	811,149	720,778	666,440	4.0	-7.5
Singapore	Melbourne	582,318	644,591	661,704	4.0	2.7
Hong Kong	Sydney	668,701	607,608	587,172	3.5	-3.4
Auckland	Melbourne	435,314	522,403	502,237	3.0	-3.9
Bangkok	Sydney	419,370	440,270	459,754	2.8	4.4
Singapore	Brisbane	328,112	409,520	450,805	2.7	10.1
Auckland	Brisbane	463,496	489,663	443,384	2.7	-9.5
<b>Top 10 City Pairs</b>		<b>6,138,144</b>	<b>6,449,883</b>	<b>6,373,087</b>	<b>38.2</b>	<b>-1.2</b>
Other City Pairs		10,349,530	10,349,832	10,294,462	61.8	-0.5
<b>ALL CITY PAIRS</b>		<b>16,487,674</b>	<b>16,799,715</b>	<b>16,667,549</b>	<b>100.0</b>	<b>-0.8</b>

**TABLE II: INTERNATIONAL FREIGHT (TONNES) BY UPLIFT/DISCHARGE CITY PAIRS  
YEARS ENDED DECEMBER 2000, 2001 AND 2002**

Foreign Port	Australian Port	Year ended December 2000	Year ended December 2001	Year ended December 2002	% of Total	% Change 2002 over 2001
Singapore	Melbourne	48,580	48,457	51,012	7.9	5.3
Singapore	Sydney	46,313	48,164	48,540	7.5	0.8
Auckland	Sydney	50,090	49,142	47,930	7.4	-2.5
Auckland	Melbourne	29,571	30,355	32,961	5.1	8.6
Hong Kong	Sydney	33,976	30,658	30,170	4.7	-1.6
Los Angeles	Sydney	32,721	27,672	27,753	4.3	0.3
Singapore	Perth	27,822	30,073	25,436	3.9	-15.4
Hong Kong	Melbourne	25,888	23,632	23,929	3.7	1.3
Kuala Lumpur	Melbourne	17,092	12,943	21,121	3.3	63.2
Singapore	Brisbane	18,341	18,293	18,734	2.9	2.4
<b>Top 10 City Pairs</b>		<b>330,392</b>	<b>319,388</b>	<b>327,586</b>	<b>50.7</b>	<b>2.6</b>
Other City Pairs		349,618	320,734	318,340	49.3	-0.7
<b>ALL CITY PAIRS</b>		<b>680,010</b>	<b>640,121</b>	<b>645,926</b>	<b>100.0</b>	<b>0.9</b>

**TABLE III: INTERNATIONAL PASSENGERS BY UPLIFT/DISCHARGE COUNTRY  
YEARS ENDED DECEMBER 2000, 2001 AND 2002**

Country	Year ended December 2000	Year ended December 2001	Year ended December 2002	% of Total	% Change 2002 over 2001
New Zealand	3,282,102	3,591,785	3,548,783	21.3	-1.2
Singapore	2,672,275	2,866,455	2,908,328	17.4	1.5
Japan	1,607,930	1,573,549	1,644,631	9.9	4.5
USA	1,563,864	1,442,551	1,359,590	8.2	-5.8
Hong Kong	1,193,460	1,147,824	1,186,406	7.1	3.4
Malaysia	1,004,640	936,531	904,107	5.4	-3.5
Thailand	745,495	834,760	816,937	4.9	-2.1
Indonesia	809,803	806,697	650,988	3.9	-19.3
UK	667,607	636,438	615,231	3.7	-3.3
Korea	318,318	339,440	387,156	2.3	14.1
<b>Top 10 Countries</b>	<b>13,865,494</b>	<b>14,176,030</b>	<b>14,022,157</b>	<b>84.1</b>	<b>-1.1</b>
Other Countries	2,622,180	2,623,685	2,645,392	15.9	0.8
<b>ALL COUNTRIES</b>	<b>16,487,674</b>	<b>16,799,715</b>	<b>16,667,549</b>	<b>100.0</b>	<b>-0.8</b>

Please refer to explanatory notes.

**TABLE IV: INTERNATIONAL PASSENGER TRAFFIC  
THROUGH AUSTRALIAN INTERNATIONAL AIRPORTS  
YEARS ENDED DECEMBER 2000, 2001 AND 2002**

Airport	Year ended December 2000	Year ended December 2001	Year ended December 2002	% of Total	% Change 2002 over 2001
Sydney	8,237,223	8,228,973	7,997,479	48.0	-2.8
Melbourne	3,043,629	3,315,572	3,311,548	19.9	-0.1
Brisbane	2,461,378	2,547,720	2,493,494	15.0	-2.1
Perth	1,580,622	1,587,379	1,634,931	9.8	3.0
Cairns	680,133	665,118	764,072	4.6	14.9
Adelaide	270,099	241,844	224,302	1.3	-7.3
Gold Coast/Coolangatta	28,138	41,581	113,179	0.7	172.2
Darwin	169,496	151,623	103,146	0.6	-32.0
Norfolk Island	14,073	16,367	15,891	0.1	-2.9
Newcastle (a)	..	1,054	9,507	0.1	802.0
Broome (b)	2,883	2,337	..	..	..
Townsville (c)	..	147	..	..	..
<b>ALL AIRPORTS</b>	<b>16,487,674</b>	<b>16,799,715</b>	<b>16,667,549</b>	<b>100.0</b>	<b>-0.8</b>

(a) International operations commenced December 2001 and ceased September 2002.

(b) International operations recommenced April 2000 and ceased again in July 2001.

(c) International operations recommenced October 2001 and ceased again in March 2002.

Please refer to explanatory notes.

# YEAR ENDED DECEMBER 2002 - SUMMARY

Number of international scheduled airlines that operated services to/from Australia during 2002:  
(includes dedicated freight airlines but excludes airlines operating only via code share arrangements)

50

## Traffic carried:

	Inbound	Outbound	Total
Passengers Carried (millions)	8.4	8.3	16.7
Available Seats (millions)	11.4	11.4	22.8
Freight (tonnes, thousands)	305.1	340.8	645.9
Mail (tonnes, thousands)	14.1	14.6	28.7
Aircraft Movements (thousands)	52.8	52.6	105.3

<b>Growth in Passenger traffic:</b>	Compared to 2001	-0.8%
	Compared to 2000	1.1%

<b>Growth in Freight traffic:</b>	Compared to 2001	0.9%
	Compared to 2000	-5.0%

## Top five airlines:

Passengers	% of Total	Freight	% of Total
Qantas Airways	33.5%	Qantas Airways	22.7%
Singapore Airlines	11.9%	Singapore Airlines	15.5%
Air New Zealand	9.2%	Cathay Pacific Airways	8.1%
Malaysia Airlines	5.4%	Air New Zealand	6.8%
Japan Airlines	4.7%	Malaysia Airlines	6.4%

## Top five city pairs:

Passengers	% of Total	Freight	% of Total
Sydney Auckland	5.8%	Melbourne Singapore	7.9%
Sydney Singapore	5.7%	Sydney Singapore	7.5%
Perth Singapore	4.1%	Sydney Auckland	7.4%
Sydney Los Angeles	4.0%	Melbourne Auckland	5.1%
Melbourne Singapore	4.0%	Sydney Hong Kong	4.7%

## Major International Airports:

Passengers	% of Total	Freight	% of Total
Sydney	48.0%	Sydney	47.3%
Melbourne	19.9%	Melbourne	29.7%
Brisbane	15.0%	Brisbane	11.5%
Perth	9.8%	Perth	7.9%

Please refer to explanatory notes.

TABLE 1: SCHEDULED INTERNATIONAL AIR TRAFFIC TO AND FROM AUSTRALIA: Year ended December 2002

Scheduled Operator	Country to/from	Inbound			Outbound		
		Passengers	Freight (tonnes)	Mail (tonnes)	Passengers	Freight (tonnes)	Mail (tonnes)
Aerolineas Argentinas	Argentina	9,469	79.6	7.5	9,449	129.3	0.0
"	New Zealand	7,400	854.7	-	9,088	441.8	-
"	ALL SERVICES	16,869	934.3	7.5	18,537	571.1	0.0
Air Caledonie	New Caledonia	37,086	43.6	6.3	37,363	434.3	19.9
Air Canada	Canada	41,485	851.3	158.7	45,453	2,809.3	0.5
"	USA	34,027	1,850.8	162.7	33,016	1,837.5	4.5
"	ALL SERVICES	75,512	2,702.1	321.5	78,469	4,646.7	5.0
Air China	China	66,121	771.5	38.2	59,639	760.3	-
Air Mauritius	Mauritius	13,069	421.6	0.5	13,020	670.3	0.0
Air Nauru	Nauru	6,659	11.3	1.0	6,288	262.2	10.6
Air New Zealand	New Zealand	707,687	20,383.8	1,649.2	718,432	20,557.0	18.9
"	USA	49,989	1,011.6	71.5	54,395	2,095.5	-
"	ALL SERVICES	757,676	21,395.4	1,720.7	772,827	22,652.5	18.9
Air Niugini	Papua New Guinea	53,528	1,473.0	50.6	52,901	1,948.7	118.1
Air Pacific	Fiji	173,770	4,328.4	36.4	174,346	3,904.5	148.2
Air Vanuatu	Vanuatu	29,308	100.1	27.6	29,226	321.0	46.8
Asian Express Airlines	New Zealand	..	3,668.7	-	..	4,187.7	-
Asiana Airlines	Korea	77,426	2,440.7	119.0	74,852	4,493.4	-
Australian Airlines (a)	Hong Kong	3,068	40.0	-	2,486	320.9	-
"	Japan	30,627	95.0	-	28,730	718.3	-
"	Singapore	3,686	43.4	-	3,454	168.7	-
"	Taiwan	2,129	84.4	-	2,091	22.0	-
"	ALL SERVICES	39,510	262.8	-	36,761	1,229.9	-
British Airways	Singapore	91,423	2,130.3	2.1	71,293	8,594.7	7.6
"	Thailand	69,296	1,325.0	0.8	71,730	1,206.9	-
"	UK	128,161	4,905.5	151.9	128,114	1,842.6	151.2
"	ALL SERVICES	288,880	8,360.8	154.8	271,137	11,644.1	158.8
Cargolux Airlines Intl	Luxembourg	..	4,321.8	-	..	..	..
"	Malaysia	..	640.2	-	..	..	..
"	New Zealand	..	..	..	..	5,037.1	-
"	ALL SERVICES	-	4,962.0	-	-	5,037.1	-
Cathay Pacific Airways	Hong Kong	351,470	21,229.4	117.9	335,065	31,293.1	53.9
China Airlines	Taiwan	31,953	871.1	110.7	32,729	1,526.5	-
China Eastern Airlines	China	35,293	1,528.3	5.7	32,396	515.3	5.2
China Southern Airlines	China	36,514	1,824.3	38.4	35,637	516.9	-
Continental Micronesia	Guam	10,809	0.2	0.5	11,160	43.7	-
EgyptAir (b)	Egypt	8,085	197.6	27.8	8,178	207.9	-
"	Singapore	2,541	269.3	33.4	2,253	355.9	-
"	ALL SERVICES	10,626	466.9	61.2	10,431	563.8	-
Emirates	Singapore	32,288	2,252.9	60.5	27,846	5,233.4	10.6
"	United Arab Emirates	140,352	4,087.6	62.3	139,827	6,745.6	11.1
"	ALL SERVICES	172,640	6,340.6	122.8	167,673	11,979.0	21.7
Eva Air	Taiwan	32,897	1,521.2	38.0	32,832	1,819.6	-
Federal Express Corporation	Philippines	..	..	..	..	9,243.9	-
"	USA	..	13,103.4	167.2	..	..	..
"	ALL SERVICES	-	13,103.4	167.2	-	9,243.9	-
Freedom Air International	New Zealand	188,619	-	-	188,427	-	-
Garuda Indonesia	Indonesia	182,951	4,831.5	3.3	185,857	5,776.9	0.0
"	New Zealand	16,092	1,313.8	-	16,477	591.4	-
"	ALL SERVICES	199,043	6,145.4	3.3	202,334	6,368.3	0.0
Gemini Air Cargo (c) (d)	Fiji	..	..	..	..	0.4	-
"	USA	..	3,820.7	111.3	..	936.8	19.3
"	ALL SERVICES	-	3,820.7	111.3	-	937.2	19.3
Gulf Air (e)	Bahrain	5,223	138.8	5.7	5,941	525.2	-
"	Singapore	2,879	160.6	12.7	2,136	115.9	-
"	ALL SERVICES	8,102	299.4	18.4	8,077	641.1	-
Japan Airlines	Japan	386,854	5,605.0	985.0	391,108	13,256.5	46.2
Korean Air	Korea	120,211	4,327.9	562.7	114,667	8,492.0	10.3
Lan Chile (f)	Chile	8,310	156.3	-	10,023	127.0	3.8
"	New Zealand	3,682	355.4	7.6	4,766	269.3	20.0
"	ALL SERVICES	11,992	511.8	7.6	14,789	396.3	23.8
Lauda Air (g)	Austria	76,902	-	-	76,979	-	-
"	Malaysia	10,740	-	-	10,888	-	-
"	ALL SERVICES	87,642	-	-	87,867	-	-
Lufthansa German Airlines	Germany	..	363.0	-	..	1,095.4	1.8
"	India	..	..	..	..	55.0	-
"	Malaysia	..	..	..	..	1,310.9	-

TABLE 1: SCHEDULED INTERNATIONAL AIR TRAFFIC TO AND FROM AUSTRALIA: Year ended December 2002

Scheduled Operator	Country to/from	Inbound			Outbound		
		Passengers	Freight (tonnes)	Mail (tonnes)	Passengers	Freight (tonnes)	Mail (tonnes)
Lufthansa German Airlines	New Zealand	..	3,160.5	1.4	..	..	..
"	Pakistan	..	..	..	..	18.7	-
"	USA	..	5,116.5	-	..	..	..
"	ALL SERVICES	-	8,640.0	1.4	-	2,480.0	1.8
Malaysia Airlines	Malaysia	442,295	22,235.1	48.0	440,184	18,242.7	-
"	New Zealand	9,794	509.2	-	9,538	537.5	-
"	ALL SERVICES	452,089	22,744.4	48.0	449,722	18,780.2	-
Martinair Holland	Hong Kong	..	..	..	..	307.6	-
"	Netherlands	..	10,914.5	-	..	2,068.0	-
"	Thailand	..	..	..	..	26.6	-
"	United Arab Emirates	..	..	..	..	2.9	-
"	ALL SERVICES	-	10,914.5	-	-	2,404.9	-
Merpati Nusantara Airlines (h)	Indonesia	..	-	-	..	-	-
Olympic Airways (i) (j) (k)	Greece	13,451	152.0	69.1	17,637	66.4	0.7
"	Thailand	1,844	174.6	-	1,589	0.2	-
"	ALL SERVICES	15,295	326.6	69.1	19,226	66.6	0.7
Philippine Airlines	Philippines	34,253	907.3	8.6	31,110	1,066.7	-
Polar Air Cargo	USA	..	7,522.2	-	..	..	..
Polynesian Airlines	New Zealand	6,540	0.4	0.1	7,203	38.8	11.5
"	Niue	12	-	-	..	..	..
"	Tahiti	..	..	..	3,146	3.5	52.8
"	Tonga	1,550	106.9	0.1	1,770	10.1	3.0
"	Western Samoa	4,449	58.5	2.5	4,159	34.7	6.1
"	ALL SERVICES	12,551	165.8	2.7	16,278	87.1	73.5
Qantas Airways	Argentina	11,676	119.7	-	11,626	96.9	9.4
"	Fiji	195	11.4	-	489	3.1	0.2
"	France	29,340	642.1	208.4	31,226	97.3	89.0
"	Germany	64,035	3,242.9	557.6	69,743	970.3	1,124.0
"	Hong Kong	251,237	8,047.7	187.6	243,080	10,699.8	829.9
"	India	5,070	39.1	6.8	3,757	37.6	23.0
"	Indonesia	142,648	813.0	30.0	139,532	1,939.0	53.9
"	Italy	39,269	1,106.3	7.0	38,164	34.7	94.3
"	Japan	406,784	6,149.8	432.4	400,528	10,996.1	1,896.8
"	New Caledonia	22,092	5.9	2.2	20,344	182.2	31.6
"	New Zealand	727,345	21,416.0	231.5	752,991	21,817.0	2,375.1
"	Papua New Guinea	13,374	108.3	0.8	12,828	639.1	122.1
"	Philippines	35,791	883.5	19.7	34,707	879.0	51.7
"	Singapore	348,801	9,691.4	79.1	329,963	24,486.0	1,377.8
"	South Africa	62,500	1,140.5	32.6	57,842	332.5	126.8
"	Taiwan	17,860	711.5	-	16,323	285.7	59.2
"	Thailand	63,578	677.9	29.2	58,933	1,198.6	265.6
"	UK	176,430	4,681.9	2,969.0	182,526	434.9	2,517.9
"	USA	376,642	6,737.4	930.3	389,334	4,953.9	2,572.3
"	ALL SERVICES	2,794,667	66,226.1	5,724.0	2,793,936	80,083.7	13,620.6
Royal Brunei Airlines	Brunei	54,126	796.6	0.4	57,054	2,774.6	-
Royal Tongan Airlines (l)	New Zealand	6	-	-	..	..	..
"	Tonga	314	1.2	-	473	-	-
"	ALL SERVICES	320	1.2	-	473	-	-
Singapore Airlines	New Zealand	..	46.0	-	..	2,611.4	-
"	Singapore	1,005,656	44,520.6	1,198.0	984,109	53,026.6	88.5
"	ALL SERVICES	1,005,656	44,566.6	1,198.0	984,109	55,638.0	88.5
Solomon Airlines	Solomon Islands	7,733	100.1	-	8,000	71.9	-
South African Airways	South Africa	49,844	1,202.7	31.4	44,276	2,131.0	18.2
Thai Airways International	New Zealand	74,737	2,270.1	1.1	68,597	3,575.5	0.1
"	Thailand	278,059	10,481.3	801.3	271,908	11,412.9	6.7
"	ALL SERVICES	352,796	12,751.5	802.4	340,505	14,988.4	6.8
United Airlines	New Zealand	16,884	416.8	0.9	14,478	539.2	1.8
"	USA	209,943	2,633.0	1,340.9	212,244	8,877.4	116.1
"	ALL SERVICES	226,827	3,049.8	1,341.8	226,722	9,416.6	117.9
United Parcel Service	USA	..	4,860.7	-	..	..	..
Vietnam Airlines (m)	Vietnam	40,173	846.8	16.0	39,171	484.1	-
<b>TOTAL</b>		<b>8,366,409</b>	<b>305,094.8</b>	<b>14,078.4</b>	<b>8,301,140</b>	<b>340,830.8</b>	<b>14,634.4</b>



TABLE 1: SCHEDULED INTERNATIONAL AIR TRAFFIC TO AND FROM AUSTRALIA: Year ended December 2002

Scheduled Operator	Country to/from	Inbound			Outbound		
		Passengers	Freight (tonnes)	Mail (tonnes)	Passengers	Freight (tonnes)	Mail (tonnes)

Please refer to explanatory notes.

(a) Service commenced October 2002.

(b) Service ceased July 2002.

(c) Traffic carried on behalf of Qantas Airways.

(d) Service commenced March 2002.

(e) Service ceased March 2002.

(f) Operated services commenced July 2002.

(g) No outbound freight data for September 2000 onwards. No inbound freight data for April 2001 onwards.

(h) Jakarta/Christmas Island services commenced in August 2001. No data has been received for these services.

(i) Data not received for operations to/from Sydney for September, October and November 2002.

(j) Data not received for operations to/from Melbourne for October 2002.

(k) Service ceased November 2002.

(l) Operated services recommenced December 2002.

(m) Data not received for operations to/from Sydney for August 2002 onwards.

TABLE 2: SCHEDULED OPERATOR MARKET SHARES AND GROWTH: Year ended December

Scheduled Operators	Country to/from	Total Passengers				Total Freight (tonnes)				Total Mail (tonnes)			
		2001	2002	(%) of TOTAL	(%) Change	2001	2002	(%) of TOTAL	(%) Change	2001	2002	(%) of TOTAL	(%) Change
Aerolineas Argentinas (a)	Argentina	12,308	18,918	0.1	53.7	324.9	208.8	0.0	-35.7	4.2	7.6	0.0	79.4
"	New Zealand	5,045	16,488	0.1	226.8	446.6	1,296.6	0.2	190.3	0.1	-	-	-100.0
"	ALL SERVICES	17,353	35,406	0.2	104.0	771.5	1,505.4	0.2	95.1	4.3	7.6	0.0	74.1
Air Caledonie	New Caledonia	72,264	74,449	0.4	3.0	476.4	477.9	0.1	0.3	28.0	26.1	0.1	-6.6
Air Canada	Canada	61,231	86,938	0.5	42.0	2,143.6	3,660.6	0.6	70.8	66.6	159.2	0.6	139.2
"	USA	53,125	67,043	0.4	26.2	2,299.7	3,688.3	0.6	60.4	153.9	167.2	0.6	8.6
"	ALL SERVICES	114,356	153,981	0.9	34.7	4,443.4	7,348.9	1.1	65.4	220.5	326.4	1.1	48.1
Air China	China	105,603	125,760	0.8	19.1	1,545.2	1,531.8	0.2	-0.9	35.7	38.2	0.1	6.8
"	New Zealand	4,505	..	..	-100.0	117.6	..	..	-100.0	0.1	..	..	-100.0
"	ALL SERVICES	110,108	125,760	0.8	14.2	1,662.8	1,531.8	0.2	-7.9	35.9	38.2	0.1	6.4
Air Mauritius	Mauritius	28,297	26,089	0.2	-7.8	932.5	1,091.9	0.2	17.1	0.7	0.6	0.0	-25.0
Air Nauru	Nauru	10,181	12,947	0.1	27.2	216.0	273.6	0.0	26.7	9.2	11.6	0.0	25.6
Air New Zealand	New Zealand	1,637,890	1,426,119	8.6	-12.9	44,341.1	40,940.8	6.3	-7.7	1,340.1	1,668.1	5.8	24.5
"	USA	153,111	104,384	0.6	-31.8	4,634.3	3,107.1	0.5	-33.0	152.4	71.5	0.2	-53.1
"	ALL SERVICES	1,791,001	1,530,503	9.2	-14.5	48,975.3	44,047.9	6.8	-10.1	1,492.5	1,739.6	6.1	16.6
Air Niugini	Papua New Guinea	105,449	106,429	0.6	0.9	3,370.4	3,421.7	0.5	1.5	105.6	168.6	0.6	59.8
Air Pacific	Fiji	248,963	348,116	2.1	39.8	6,912.8	8,232.9	1.3	19.1	189.8	184.6	0.6	-2.7
Air Vanuatu	Vanuatu	66,716	58,534	0.4	-12.3	540.3	421.1	0.1	-22.1	73.0	74.4	0.3	2.0
Ansett International (b)	Fiji	17,523	..	..	-100.0	444.1	..	..	-100.0	0.8	..	..	-100.0
"	Hong Kong	137,194	..	..	-100.0	6,486.4	..	..	-100.0	109.7	..	..	-100.0
"	Indonesia	72,931	..	..	-100.0	384.5	..	..	-100.0	0.0	..	..	-100.0
"	Japan	168,887	..	..	-100.0	4,302.5	..	..	-100.0	41.0	..	..	-100.0
"	ALL SERVICES	396,535	-	-	-100.0	11,617.5	-	-	-100.0	151.6	-	-	-100.0
Asian Express Airlines	New Zealand	..	..	..	..	7,602.3	7,856.5	1.2	3.3	-	-	-	..
Asiana Airlines	Korea	120,114	152,278	0.9	26.8	3,811.8	6,934.1	1.1	81.9	145.4	119.0	0.4	-18.2
Australian Airlines (c)	Hong Kong	..	5,554	0.0	..	..	360.9	0.1	..	..	-	-	..
"	Japan	..	59,357	0.4	..	..	813.3	0.1	..	..	-	-	..
"	Singapore	..	7,140	0.0	..	..	212.1	0.0	..	..	-	-	..
"	Taiwan	..	4,220	0.0	..	..	106.4	0.0	..	..	-	-	..
"	ALL SERVICES	-	76,271	0.5	..	-	1,492.7	0.2	..	-	-	-	..
British Airways	Singapore	110,269	162,716	1.0	47.6	7,201.6	10,725.0	1.7	48.9	10.4	9.6	0.0	-7.4
"	Thailand	127,586	141,026	0.8	10.5	1,402.5	2,531.9	0.4	80.5	31.8	0.8	0.0	-97.4
"	UK	243,923	256,275	1.5	5.1	5,824.7	6,748.0	1.0	15.9	821.9	303.1	1.1	-63.1
"	ALL SERVICES	481,778	560,017	3.4	16.2	14,428.9	20,004.9	3.1	38.6	864.1	313.6	1.1	-63.7
Cargolux Airlines Intl	Luxembourg	-	..	..	..	4,131.3	4,321.8	0.7	4.6	-	-	-	..
"	Malaysia	..	..	..	..	326.5	640.2	0.1	96.1	-	-	-	..
"	New Zealand	-	..	..	..	6,357.8	5,037.1	0.8	-20.8	-	-	-	..
"	Thailand	-	..	..	..	204.8	..	..	-100.0	-	..	..	..
"	ALL SERVICES	-	-	-	..	11,020.4	9,999.1	1.5	-9.3	-	-	-	..
Cathay Pacific Airways	Hong Kong	586,781	686,535	4.1	17.0	47,716.9	52,522.5	8.1	10.1	308.0	171.7	0.6	-44.2
China Airlines	New Zealand	31,278	..	..	-100.0	2,148.2	..	..	-100.0	39.0	..	..	-100.0
"	Taiwan	52,759	64,682	0.4	22.6	2,395.4	2,397.6	0.4	0.1	117.3	110.7	0.4	-5.6
"	ALL SERVICES	84,037	64,682	0.4	-23.0	4,543.6	2,397.6	0.4	-47.2	156.3	110.7	0.4	-29.1
China Eastern Airlines	China	60,230	67,689	0.4	12.4	1,855.1	2,043.6	0.3	10.2	2.4	10.8	0.0	348.8

TABLE 2: SCHEDULED OPERATOR MARKET SHARES AND GROWTH: Year ended December

Scheduled Operators	Country to/from	Total Passengers				Total Freight (tonnes)				Total Mail (tonnes)			
		2001	2002	(%) of TOTAL	(%) Change	2001	2002	(%) of TOTAL	(%) Change	2001	2002	(%) of TOTAL	(%) Change
China Southern Airlines	China	59,318	72,151	0.4	21.6	1,824.8	2,341.1	0.4	28.3	9.3	38.4	0.1	311.5
Continental Micronesia	Guam	21,408	21,969	0.1	2.6	40.2	43.9	0.0	9.1	-	0.5	0.0	..
EgyptAir (d)	Egypt	29,696	16,263	0.1	-45.2	630.4	405.4	0.1	-35.7	80.9	27.8	0.1	-65.7
"	Singapore	8,117	4,794	0.0	-40.9	641.6	625.2	0.1	-2.6	68.7	33.4	0.1	-51.4
"	ALL SERVICES	37,813	21,057	0.1	-44.3	1,271.9	1,030.6	0.2	-19.0	149.7	61.2	0.2	-59.1
Emirates	Singapore	49,332	60,134	0.4	21.9	6,155.3	7,486.3	1.2	21.6	26.0	71.1	0.2	173.8
"	United Arab Emirates	196,775	280,179	1.7	42.4	9,339.7	10,833.2	1.7	16.0	49.5	73.4	0.3	48.3
"	ALL SERVICES	246,107	340,313	2.0	38.3	15,495.0	18,319.6	2.8	18.2	75.4	144.5	0.5	91.5
Eva Air	Taiwan	73,263	65,729	0.4	-10.3	2,978.3	3,340.8	0.5	12.2	24.0	38.0	0.1	58.1
Evergreen Intl Airlines (e) (f)	American Samoa	..	..	..	..	0.3	..	..	-100.0	-	..	..	..
"	Fiji	..	..	..	..	41.7	..	..	-100.0	-	..	..	..
"	New Zealand	..	..	..	..	593.3	..	..	-100.0	5.8	..	..	-100.0
"	USA	..	..	..	..	8,722.5	..	..	-100.0	110.3	..	..	-100.0
"	ALL SERVICES	-	-	-	..	9,357.8	-	-	-100.0	116.2	-	-	-100.0
Federal Express Corporation	Philippines	..	..	..	..	10,163.2	9,243.9	1.4	-9.0	-	-	-	..
"	USA	..	..	..	..	13,104.1	13,103.4	2.0	0.0	153.5	167.2	0.6	8.9
"	ALL SERVICES	-	-	-	..	23,267.3	22,347.2	3.5	-4.0	153.5	167.2	0.6	8.9
Freedom Air International	New Zealand	242,390	377,046	2.3	55.6	-	-	-	..	-	-	-	..
Garuda Indonesia	Indonesia	394,858	368,808	2.2	-6.6	9,495.0	10,608.4	1.6	11.7	1.8	3.3	0.0	88.7
"	New Zealand	26,248	32,569	0.2	24.1	618.3	1,905.3	0.3	208.1	-	-	-	..
"	ALL SERVICES	421,106	401,377	2.4	-4.7	10,113.4	12,513.7	1.9	23.7	1.8	3.3	0.0	88.7
Gemini Air Cargo (e) (g)	Fiji	..	..	..	..	..	0.4	0.0	..	..	-	-	..
"	USA	..	..	..	..	..	4,757.5	0.7	..	..	130.6	0.5	..
"	ALL SERVICES	-	-	-	..	-	4,758.0	0.7	..	-	130.6	0.5	..
Gulf Air (h)	Bahrain	66,957	11,164	0.1	-83.3	3,777.7	664.0	0.1	-82.4	32.5	5.7	0.0	-82.4
"	Singapore	19,601	5,015	0.0	-74.4	1,306.8	276.5	0.0	-78.8	9.6	12.7	0.0	32.3
"	United Arab Emirates	6,874	..	..	-100.0	297.1	..	..	-100.0	0.0	..	..	-100.0
"	ALL SERVICES	93,432	16,179	0.1	-82.7	5,381.6	940.5	0.1	-82.5	42.2	18.4	0.1	-56.2
Japan Airlines	Japan	707,983	777,962	4.7	9.9	21,165.2	18,861.4	2.9	-10.9	950.9	1,031.3	3.6	8.4
KLM Royal Dutch Airlines (i)	Netherlands	21,338	..	..	-100.0	755.7	..	..	-100.0	103.7	..	..	-100.0
"	Singapore	961	..	..	-100.0	-	..	..	..	-	..	..	..
"	ALL SERVICES	22,299	-	-	-100.0	755.7	-	-	-100.0	103.7	-	-	-100.0
Korean Air	Korea	219,326	234,878	1.4	7.1	15,008.0	12,819.9	2.0	-14.6	319.2	572.9	2.0	79.5
Lan Chile (j)	Chile	..	18,333	0.1	..	..	283.3	0.0	..	..	3.8	0.0	..
"	New Zealand	..	8,448	0.1	..	..	624.8	0.1	..	..	27.6	0.1	..
"	ALL SERVICES	-	26,781	0.2	..	-	908.1	0.1	..	-	31.4	0.1	..
Lauda Air (k)	Austria	123,055	153,881	0.9	25.1	301.7	-	-	-100.0	-	-	-	..
"	Malaysia	12,326	21,628	0.1	75.5	-	-	-	..	-	-	-	..
"	ALL SERVICES	135,381	175,509	1.1	29.6	301.7	-	-	-100.0	-	-	-	..
Lufthansa German Airlines (l)	Germany	..	..	..	..	889.4	1,458.4	0.2	64.0	7.6	1.8	0.0	-76.8
"	India	..	..	..	..	..	55.0	0.0	..	..	-	-	..
"	Malaysia	..	..	..	..	1,069.9	1,310.9	0.2	22.5	-	-	-	..
"	New Zealand	..	..	..	..	2,200.7	3,160.5	0.5	43.6	-	1.4	0.0	..
"	Pakistan	..	..	..	..	29.5	18.7	0.0	-36.5	-	-	-	..

TABLE 2: SCHEDULED OPERATOR MARKET SHARES AND GROWTH: Year ended December

Scheduled Operators	Country to/from	Total Passengers				Total Freight (tonnes)				Total Mail (tonnes)			
		2001	2002	(%) of TOTAL	(%) Change	2001	2002	(%) of TOTAL	(%) Change	2001	2002	(%) of TOTAL	(%) Change
Lufthansa German Airlines	Tahiti	..	..	..	..	3.8	..	..	-100.0	-	..	..	..
"	United Arab Emirates	..	..	..	..	3.0	..	..	-100.0	-	..	..	..
"	USA	..	..	..	..	2,834.8	5,116.5	0.8	80.5	2.1	-	-	-100.0
"	ALL SERVICES	-	-	-	..	7,031.1	11,120.0	1.7	58.2	9.7	3.1	0.0	-67.7
Malaysia Airlines	Malaysia	924,205	882,479	5.3	-4.5	33,651.9	40,477.8	6.3	20.3	49.4	48.0	0.2	-2.9
"	New Zealand	..	19,332	0.1	..	..	1,046.7	0.2	..	..	-	-	..
"	ALL SERVICES	924,205	901,811	5.4	-2.4	33,651.9	41,524.5	6.4	23.4	49.4	48.0	0.2	-2.9
Martinair Holland	Hong Kong	..	..	..	..	..	307.6	0.0	..	..	-	-	..
"	Netherlands	..	..	..	..	10,036.1	12,982.5	2.0	29.4	-	-	-	..
"	Thailand	..	..	..	..	..	26.6	0.0	..	..	-	-	..
"	United Arab Emirates	..	..	..	..	27.0	2.9	0.0	-89.4	-	-	-	..
"	ALL SERVICES	-	-	-	..	10,063.1	13,319.5	2.1	32.4	-	-	-	..
Merpati Nusantara Airlines (m) (n)	East Timor	146	..	..	-100.0	-	..	..	..	-	..	..	..
"	Indonesia	953	..	..	-100.0	1.7	-	-	-100.0	-	-	-	..
"	ALL SERVICES	1,099	-	-	-100.0	1.7	-	-	-100.0	-	-	-	..
Olympic Airways (o) (p) (q)	Greece	58,808	31,088	0.2	-47.1	473.6	218.4	0.0	-53.9	359.4	69.8	0.2	-80.6
"	Thailand	8,395	3,433	0.0	-59.1	183.8	174.8	0.0	-4.9	-	-	-	..
"	ALL SERVICES	67,203	34,521	0.2	-48.6	657.4	393.2	0.1	-40.2	359.4	69.8	0.2	-80.6
Philippine Airlines	Philippines	50,181	65,363	0.4	30.3	1,779.5	1,974.0	0.3	10.9	0.8	8.6	0.0	925.2
Polar Air Cargo	USA	..	..	..	..	6,951.4	7,522.2	1.2	8.2	-	-	-	..
Polynesian Airlines	New Zealand	8,846	13,743	0.1	55.4	46.3	39.2	0.0	-15.4	1.9	11.6	0.0	507.5
"	Niue	..	12	0.0	..	..	-	-	..	..	-	-	..
"	Tahiti	3,051	3,146	0.0	3.1	10.1	3.5	0.0	-65.1	26.6	52.8	0.2	98.5
"	Tonga	4,907	3,320	0.0	-32.3	51.5	117.0	0.0	127.2	8.0	3.1	0.0	-61.6
"	Western Samoa	8,966	8,608	0.1	-4.0	147.3	93.2	0.0	-36.7	4.5	8.7	0.0	91.7
"	ALL SERVICES	25,770	28,829	0.2	11.9	255.2	252.9	0.0	-0.9	41.1	76.1	0.3	85.4
Qantas Airways	Argentina	49,143	23,302	0.1	-52.6	444.7	216.5	0.0	-51.3	23.5	9.4	0.0	-60.1
"	Canada	18,283	..	..	-100.0	158.8	..	..	-100.0	63.4	..	..	-100.0
"	China	19,145	..	..	-100.0	320.2	..	..	-100.0	1.1	..	..	-100.0
"	East Timor	1,560	..	..	-100.0	6.6	..	..	-100.0	1.4	..	..	-100.0
"	Fiji	..	684	0.0	..	..	14.5	0.0	..	..	0.2	0.0	..
"	France	61,320	60,566	0.4	-1.2	1,072.5	739.4	0.1	-31.1	261.2	297.4	1.0	13.9
"	Germany	133,050	133,778	0.8	0.5	5,133.2	4,213.2	0.7	-17.9	1,453.3	1,681.6	5.9	15.7
"	Hong Kong	423,849	494,317	3.0	16.6	16,011.2	18,747.5	2.9	17.1	816.2	1,017.5	3.5	24.7
"	India	35,205	8,827	0.1	-74.9	401.2	76.7	0.0	-80.9	193.3	29.8	0.1	-84.6
"	Indonesia	337,955	282,180	1.7	-16.5	2,491.9	2,752.0	0.4	10.4	123.2	83.9	0.3	-31.9
"	Italy	89,267	77,433	0.5	-13.3	1,760.4	1,141.1	0.2	-35.2	110.6	101.3	0.4	-8.4
"	Japan	696,679	807,312	4.8	15.9	14,781.1	17,145.9	2.7	16.0	1,997.3	2,329.2	8.1	16.6
"	New Caledonia	40,063	42,436	0.3	5.9	169.6	188.1	0.0	10.9	28.3	33.8	0.1	19.5
"	New Zealand	1,471,427	1,480,336	8.9	0.6	37,408.0	43,232.9	6.7	15.6	2,806.1	2,606.6	9.1	-7.1
"	Papua New Guinea	44,743	26,202	0.2	-41.4	1,015.0	747.4	0.1	-26.4	224.3	122.9	0.4	-45.2
"	Philippines	78,225	70,498	0.4	-9.9	1,654.6	1,762.5	0.3	6.5	72.2	71.3	0.2	-1.2
"	Singapore	825,034	678,764	4.1	-17.7	41,036.5	34,177.4	5.3	-16.7	1,471.1	1,456.9	5.1	-1.0
"	South Africa	119,684	120,342	0.7	0.5	1,800.0	1,473.0	0.2	-18.2	107.9	159.3	0.6	47.7

TABLE 2: SCHEDULED OPERATOR MARKET SHARES AND GROWTH: Year ended December

Scheduled Operators	Country to/from	Total Passengers				Total Freight (tonnes)				Total Mail (tonnes)			
		2001	2002	(%) of TOTAL	(%) Change	2001	2002	(%) of TOTAL	(%) Change	2001	2002	(%) of TOTAL	(%) Change
Qantas Airways	Taiwan	56,175	34,183	0.2	-39.1	1,414.4	997.1	0.2	-29.5	47.8	59.2	0.2	23.9
"	Thailand	171,488	122,511	0.7	-28.6	3,895.7	1,876.4	0.3	-51.8	299.8	294.8	1.0	-1.7
"	UK	392,515	358,956	2.2	-8.5	6,257.9	5,116.8	0.8	-18.2	5,127.7	5,486.9	19.1	7.0
"	USA	765,274	765,976	4.6	0.1	14,524.2	11,691.3	1.8	-19.5	2,978.3	3,502.6	12.2	17.6
"	ALL SERVICES	5,830,084	5,588,603	33.5	-4.1	151,757.7	146,309.8	22.7	-3.6	18,207.7	19,344.6	67.4	6.2
Royal Brunei Airlines	Brunei	106,891	111,180	0.7	4.0	3,017.4	3,571.2	0.6	18.4	0.4	0.4	0.0	-8.7
Royal Tongan Airlines (r)	New Zealand	..	6	0.0	..	..	-	-	..	..	-	-	..
"	Tonga	..	787	0.0	..	..	1.2	0.0	..	..	-	-	..
"	ALL SERVICES	-	793	0.0	..	-	1.2	0.0	..	-	-	-	..
Singapore Airlines	Malaysia	..	..	..	..	201.7	..	..	-100.0	-	..	..	..
"	New Zealand	..	..	..	..	1,882.5	2,657.4	0.4	41.2	-	-	-	..
"	Singapore	1,853,141	1,989,765	11.9	7.4	97,240.6	97,547.3	15.1	0.3	1,515.9	1,286.4	4.5	-15.1
"	ALL SERVICES	1,853,141	1,989,765	11.9	7.4	99,324.7	100,204.6	15.5	0.9	1,515.9	1,286.4	4.5	-15.1
Solomon Airlines	Solomon Islands	13,734	15,733	0.1	14.6	185.5	172.1	0.0	-7.3	-	-	-	..
South African Airways	South Africa	84,761	94,120	0.6	11.0	2,511.5	3,333.7	0.5	32.7	36.5	49.6	0.2	35.9
SriLankan Airlines (s)	Sri Lanka	31,124	..	..	-100.0	1,240.8	..	..	-100.0	3.1	..	..	-100.0
Thai Airways International	New Zealand	119,782	143,334	0.9	19.7	7,918.6	5,845.7	0.9	-26.2	3.6	1.2	0.0	-67.7
"	Thailand	527,291	549,967	3.3	4.3	17,275.7	21,894.3	3.4	26.7	788.9	808.0	2.8	2.4
"	ALL SERVICES	647,073	693,301	4.2	7.1	25,194.3	27,739.9	4.3	10.1	792.5	809.2	2.8	2.1
United Airlines	American Samoa	290	..	..	-100.0	1.3	..	..	-100.0	0.8	..	..	-100.0
"	New Zealand	44,374	31,362	0.2	-29.3	2,764.8	956.1	0.1	-65.4	16.2	2.8	0.0	-82.9
"	USA	471,041	422,187	2.5	-10.4	10,093.9	11,510.3	1.8	14.0	1,973.2	1,457.0	5.1	-26.2
"	ALL SERVICES	515,705	453,549	2.7	-12.1	12,860.1	12,466.4	1.9	-3.1	1,990.1	1,459.7	5.1	-26.7
United Parcel Service	USA	..	..	..	..	4,300.2	4,860.7	0.8	13.0	-	-	-	..
Vietnam Airlines (t)	Vietnam	74,755	79,344	0.5	6.1	1,479.3	1,330.9	0.2	-10.0	26.4	16.0	0.1	-39.3
TOTAL		16,799,715	16,667,549	100.0	-0.8	640,121.4	645,925.6	100.0	0.9	28,766.3	28,712.8	100.0	-0.2

TABLE 2: SCHEDULED OPERATOR MARKET SHARES AND GROWTH: Year ended December

Scheduled Operators	Country to/from	Total Passengers				Total Freight (tonnes)				Total Mail (tonnes)			
		2001	2002	(%) of TOTAL	(%) Change	2001	2002	(%) of TOTAL	(%) Change	2001	2002	(%) of TOTAL	(%) Change

Please refer to explanatory notes.

- (a) Nil Operations for July 2001 to November 2001.
- (b) Service ceased September 2001.
- (c) Service commenced October 2002.
- (d) Service ceased July 2002.
- (e) Traffic carried on behalf of Qantas Airways.
- (f) Service ceased December 2001.
- (g) Service commenced March 2002.
- (h) Service ceased March 2002.
- (i) Service ceased March 2001.
- (j) Operated services commenced July 2002.
- (k) No outbound freight data for September 2000 onwards. No inbound freight data for April 2001 onwards.
- (l) Service recommenced March 2001.
- (m) Nil operations for May and July 2001.
- (n) Jakarta/Christmas Island services commenced in August 2001. No data has been received for these services.
- (o) Data not received for operations to/from Sydney for September, October and November 2002.
- (p) Data not received for operations to/from Melbourne for October 2002.
- (q) Service ceased November 2002.
- (r) Operated services recommenced December 2002.
- (s) Service ceased July 2001.
- (t) Data not received for operations to/from Sydney for August 2002 onwards.

TABLE 3: AIRLINE PASSENGER CAPACITY AND UTILISATION TO AND FROM AUSTRALIA BY OPERATOR: Year ended December 2002

Scheduled Operator	Service to/from	Inbound				Outbound			
		No. of Flights	Pax Carried	Seats Available	Seat Utilisation %	No. of Flights	Pax Carried	Seats Available	Seat Utilisation %
Aerolineas Argentinas	Argentina	104	16,869	25,532	66.1	104	18,537	25,532	72.6
Air Caledonie	New Caledonia	349	37,086	50,486	73.5	350	37,363	50,686	73.7
Air Canada	Canada	446	75,512	109,164	69.2	449	78,469	109,271	71.8
Air China	China	279	66,121	89,031	74.3	279	59,639	89,031	67.0
Air Mauritius	Mauritius	58	13,069	17,052	76.6	58	13,020	17,052	76.4
Air Nauru	Nauru	105	6,659	11,580	57.5	103	6,288	11,190	56.2
Air New Zealand	New Zealand	5,597	707,687	928,916	76.2	5,591	718,432	928,808	77.3
"	USA	186	49,989	72,743	68.7	184	54,395	71,934	75.6
"	ALL SERVICES	5,783	757,676	1,001,659	75.6	5,775	772,827	1,000,742	77.2
Air Niugini	Papua New Guinea	867	53,528	100,735	53.1	865	52,901	100,458	52.7
Air Pacific	Fiji	886	173,770	228,472	76.1	886	174,346	228,472	76.3
Air Vanuatu	Vanuatu	405	29,308	50,982	57.5	406	29,226	51,124	57.2
Asian Express Airlines (a)	New Zealand	221	..	-	..	222	..	-	..
Asiana Airlines	Korea	366	77,426	112,038	69.1	366	74,852	112,038	66.8
Australian Airlines (b)	Hong Kong	18	3,103	4,878	63.6	18	2,532	4,878	51.9
"	Japan	150	30,919	40,614	76.1	150	30,228	40,634	74.4
"	Singapore	18	3,809	4,858	78.4	18	3,521	4,877	72.2
"	Taiwan	17	2,147	4,607	46.6	17	2,121	4,607	46.0
"	ALL SERVICES	203	39,978	54,957	72.7	203	38,402	54,996	69.8
British Airways	UK	1,050	288,880	381,350	75.8	1,051	271,137	381,651	71.0
Cargolux Airlines Intl (a)	Luxembourg	101	..	..	..	-	..	-	..
"	New Zealand	-	..	-	..	101	..	..	..
"	ALL SERVICES	101	-	-	..	101	-	-	..
Cathay Pacific Airways	Hong Kong	1,616	351,470	461,647	76.1	1,616	335,065	461,647	72.6
China Airlines	Taiwan	173	31,953	44,634	71.6	173	32,729	44,634	73.3
China Eastern Airlines	China	166	35,293	47,642	74.1	166	32,396	47,642	68.0
China Southern Airlines	China	178	36,514	51,239	71.3	178	35,637	51,239	69.6
Continental Micronesia	Guam	102	10,809	15,708	68.8	104	11,160	16,016	69.7
EgyptAir (c)	Egypt	61	10,626	15,860	67.0	61	10,431	15,860	65.8
Emirates	United Arab Emirates	659	172,640	218,856	78.9	659	167,673	218,856	76.6
Eva Air	Taiwan	174	32,897	45,989	71.5	174	32,832	45,989	71.4
Federal Express Corporation (a)	Philippines	-	..	-	..	259	..	..	..
"	USA	260	..	..	..	-	..	-	..
"	ALL SERVICES	260	-	-	..	259	-	-	..
Freedom Air International	New Zealand	1,828	188,619	248,408	75.9	1,830	188,427	259,713	72.6
Garuda Indonesia	Indonesia	1,133	182,951	298,195	61.4	1,134	185,857	298,488	62.3
"	New Zealand	144	16,092	42,192	38.1	144	16,477	42,192	39.1
"	ALL SERVICES	1,277	199,043	340,387	58.5	1,278	202,334	340,680	59.4
Gemini Air Cargo (a) (d) (e)	USA	68	..	-	..	42	..	-	..

TABLE 3: AIRLINE PASSENGER CAPACITY AND UTILISATION TO AND FROM AUSTRALIA BY OPERATOR: Year ended December 2002

Scheduled Operator	Service to/from	Inbound				Outbound			
		No. of Flights	Pax Carried	Seats Available	Seat Utilisation %	No. of Flights	Pax Carried	Seats Available	Seat Utilisation %
Gulf Air (f)	Bahrain	38	8,102	11,134	72.8	38	8,077	11,134	72.5
Japan Airlines	Japan	1,100	386,854	473,448	81.7	1,100	391,108	471,908	82.9
Korean Air	Korea	434	120,211	152,486	78.8	434	114,667	152,478	75.2
Lan Chile (g)	Chile	79	11,992	20,461	58.6	78	14,789	20,202	73.2
Lauda Air	Austria	343	87,642	117,992	74.3	343	87,867	117,992	74.5
Lufthansa German Airlines (a)	Germany	143	..	-	..	144	..	-	..
Malaysia Airlines	Malaysia	2,002	442,295	593,750	74.5	1,999	440,184	593,998	74.1
"	New Zealand	130	9,794	50,180	19.5	131	9,538	50,566	18.9
"	ALL SERVICES	2,132	452,089	643,930	70.2	2,130	449,722	644,564	69.8
Martinair Holland (a)	Netherlands	132	..	-	..	125	..	-	..
Merpati Nusantara Airlines (h)	Indonesia	-	..	-	..	-	..	-	..
Olympic Airways (i) (j) (k)	Greece	81	15,295	23,895	64.0	81	19,226	23,895	80.5
Philippine Airlines	Philippines	156	34,253	47,252	72.5	156	31,110	47,252	65.8
Polar Air Cargo (a)	USA	114	..	-	..	-	..	-	..
Polynesian Airlines	Tahiti	-	..	-	..	84	9,739	12,936	75.3
"	Western Samoa	141	12,551	21,714	57.8	60	6,539	9,252	70.7
"	ALL SERVICES	141	12,551	21,714	57.8	144	16,278	22,188	73.4
Qantas Airways	Argentina	64	20,758	25,352	81.9	64	21,883	25,347	86.3
"	Fiji	4	240	908	26.4	4	507	908	55.8
"	France	156	55,959	60,643	92.3	156	51,875	60,572	85.6
"	Germany	359	114,899	129,901	88.5	361	112,243	131,148	85.6
"	Hong Kong	1,487	326,783	399,439	81.8	1,503	308,242	400,281	77.0
"	India	68	12,195	17,859	68.3	68	15,501	18,598	83.3
"	Indonesia	789	142,490	181,457	78.5	785	139,311	180,507	77.2
"	Italy	165	46,582	53,427	87.2	166	50,769	60,294	84.2
"	Japan	1,774	424,080	562,410	75.4	1,779	414,857	562,619	73.7
"	New Caledonia	218	27,205	38,378	70.9	217	25,754	37,949	67.9
"	New Zealand	4,521	740,451	957,643	77.3	4,532	764,937	959,872	79.7
"	Papua New Guinea	107	14,355	24,282	59.1	107	15,389	24,275	63.4
"	Philippines	209	40,798	47,751	85.4	209	38,826	47,733	81.3
"	Singapore	1,011	217,456	256,478	84.8	1,007	210,575	248,164	84.9
"	South Africa	219	74,052	84,803	87.3	219	65,648	80,987	81.1
"	Taiwan	93	19,200	22,015	87.2	93	17,561	21,993	79.8
"	UK	897	309,508	351,707	88.0	898	311,767	352,034	88.6
"	USA	1,609	473,787	585,068	81.0	1,618	493,174	589,567	83.7
"	ALL SERVICES	13,750	3,060,798	3,799,521	80.6	13,786	3,058,819	3,802,848	80.4
Royal Brunei Airlines	Brunei	470	54,126	92,646	58.4	469	57,054	92,448	61.7
Royal Tongan Airlines (l)	Tonga	4	320	664	48.2	4	473	664	71.2



TABLE 3: AIRLINE PASSENGER CAPACITY AND UTILISATION TO AND FROM AUSTRALIA BY OPERATOR: Year ended December 2002

Scheduled Operator	Service to/from	Inbound				Outbound			
		No. of Flights	Pax Carried	Seats Available	Seat Utilisation %	No. of Flights	Pax Carried	Seats Available	Seat Utilisation %
Singapore Airlines	New Zealand	1	..	..	..	-	..	-	..
"	Singapore	3,723	1,005,656	1,230,541	81.7	3,724	984,109	1,230,541	80.0
"	ALL SERVICES	3,724	1,005,656	1,230,541	81.7	3,724	984,109	1,230,541	80.0
Solomon Airlines	Solomon Islands	110	7,733	14,960	51.7	108	8,000	14,688	54.5
South African Airways	South Africa	214	49,844	62,725	79.5	215	44,276	63,014	70.3
Thai Airways International	New Zealand	453	74,737	172,665	43.3	454	68,597	172,950	39.7
"	Thailand	1,310	278,059	429,850	64.7	1,307	271,908	428,855	63.4
"	ALL SERVICES	1,763	352,796	602,515	58.6	1,761	340,505	601,805	56.6
United Airlines	USA	823	226,827	285,581	79.4	824	226,722	285,234	79.5
United Parcel Service (a)	USA	104	..	..	..	-	..	-	..
Vietnam Airlines (m)	Vietnam	180	40,173	48,332	83.1	180	39,171	48,336	81.0
<b>TOTAL</b>		<b>43,820</b>	<b>8,633,008</b>	<b>11,373,205</b>	<b>75.9</b>	<b>43,602</b>	<b>8,567,664</b>	<b>11,385,710</b>	<b>75.2</b>

NOTE 1: Some flights out of Australia are non-scheduled and therefore outbound activity is not recorded (see Explanatory Notes, paragraphs 4 and 5).

NOTE 2: Traffic shown in this table for airlines which fly through Australia may differ from traffic in Tables 1 and 2 because of the inclusion in this table of total traffic into and ex Australia (for seat factor purposes) whereas Tables 1 and 2 include uplift/discharge traffic only.

(a) Freight flights only.

(b) Service commenced October 2002.

(c) Service ceased July 2002.

(d) Traffic carried on behalf of Qantas Airways.

(e) Service commenced March 2002.

(f) Service ceased March 2002.

(g) Operated services commenced July 2002.

(h) Jakarta/Christmas Island services commenced in August 2001. No data has been received for these services.

(i) Data not received for operations to/from Sydney for September, October and November 2002.

(j) Data not received for operations to/from Melbourne for October 2002.

(k) Service ceased November 2002.

(l) Operated services recommenced December 2002.

(m) Data not received for operations to/from Sydney for August 2002 onwards.

TABLE 4: SCHEDULED INTERNATIONAL AIRPORT TRAFFIC AND AIRCRAFT MOVEMENTS: Year ended December

		Inbound		(%)	Outbound		(%)	Total		(%)	(%)
		2001	2002	Change	2001	2002	Change	2001	2002	Change	TOTAL
Adelaide	Passengers	124,361	115,621	-7.0	117,483	108,681	-7.5	241,844	224,302	-7.3	1.3
"	Freight (Tonnes)	3,743	4,752	27.0	8,104	7,083	-12.6	11,846	11,835	-0.1	1.8
"	Aircraft Movements	879	820	-6.7	937	883	-5.8	1,816	1,703	-6.2	1.6
Brisbane	Passengers	1,348,856	1,290,959	-4.3	1,198,864	1,202,535	0.3	2,547,720	2,493,494	-2.1	15.0
"	Freight (Tonnes)	25,294	27,950	10.5	51,010	46,602	-8.6	76,304	74,552	-2.3	11.5
"	Aircraft Movements	8,762	8,698	-0.7	8,687	8,702	0.2	17,449	17,400	-0.3	16.5
Broome	Passengers	1,192	..	-100.0	1,145	..	-100.0	2,337	-	-100.0	..
"	Freight (Tonnes)	-	..	..	-	..	..	-	-	..	..
"	Aircraft Movements	29	..	-100.0	29	..	-100.0	58	-	-100.0	..
Cairns	Passengers	333,952	385,864	15.5	331,166	378,208	14.2	665,118	764,072	14.9	4.6
"	Freight (Tonnes)	1,678	2,331	38.9	7,428	7,758	4.4	9,105	10,089	10.8	1.6
"	Aircraft Movements	2,971	3,513	18.2	2,933	3,516	19.9	5,904	7,029	19.1	6.7
Darwin	Passengers	79,069	51,493	-34.9	72,554	51,653	-28.8	151,623	103,146	-32.0	0.6
"	Freight (Tonnes)	634	283	-55.4	1,072	529	-50.6	1,706	812	-52.4	0.1
"	Aircraft Movements	1,434	689	-52.0	1,434	687	-52.1	2,868	1,376	-52.0	1.3
Gold Coast/Coolangatta	Passengers	20,931	56,931	172.0	20,650	56,248	172.4	41,581	113,179	172.2	0.7
"	Freight (Tonnes)	-	10	..	-	101	..	-	112	..	0.0
"	Aircraft Movements	224	575	156.7	223	572	156.5	447	1,147	156.6	1.1
Melbourne	Passengers	1,667,877	1,677,822	0.6	1,647,695	1,633,726	-0.8	3,315,572	3,311,548	-0.1	19.9
"	Freight (Tonnes)	82,906	91,633	10.5	97,604	100,417	2.9	180,510	192,049	6.4	29.7
"	Aircraft Movements	11,656	10,716	-8.1	11,765	10,782	-8.4	23,421	21,498	-8.2	20.4
Newcastle	Passengers	493	4,876	889.0	561	4,631	725.5	1,054	9,507	802.0	0.1
"	Freight (Tonnes)	-	-	..	-	-	..	-	-	..	..
"	Aircraft Movements	5	68	1260.0	5	68	1260.0	10	136	1260.0	0.1
Norfolk Island	Passengers	8,306	7,924	-4.6	8,061	7,967	-1.2	16,367	15,891	-2.9	0.1
"	Freight (Tonnes)	113	111	-1.8	17	23	31.1	130	134	2.5	0.0
"	Aircraft Movements	106	102	-3.8	104	101	-2.9	210	203	-3.3	0.2
Perth	Passengers	814,035	836,691	2.8	773,344	798,240	3.2	1,587,379	1,634,931	3.0	9.8
"	Freight (Tonnes)	14,062	14,986	6.6	40,639	35,977	-11.5	54,701	50,962	-6.8	7.9
"	Aircraft Movements	4,577	4,170	-8.9	4,564	4,165	-8.7	9,141	8,335	-8.8	7.9

TABLE 4: SCHEDULED INTERNATIONAL AIRPORT TRAFFIC AND AIRCRAFT MOVEMENTS: Year ended December

		Inbound		(%)	Outbound		(%)	Total		(%)	(%) of
		2001	2002	Change	2001	2002	Change	2001	2002	Change	TOTAL
Sydney	Passengers	4,050,012	3,938,228	-2.8	4,178,961	4,059,251	-2.9	8,228,973	7,997,479	-2.8	48.0
"	Freight (Tonnes)	161,231	163,038	1.1	144,586	142,342	-1.6	305,817	305,380	-0.1	47.3
"	Aircraft Movements	24,420	23,397	-4.2	23,934	23,061	-3.6	48,354	46,458	-3.9	44.1
Townsville	Passengers	68	..	-100.0	79	..	-100.0	147	-	-100.0	..
"	Freight (Tonnes)	-	..	..	0	..	-100.0	0	-	-100.0	..
"	Aircraft Movements	18	21	16.7	16	22	37.5	34	43	26.5	0.0
TOTAL	Passengers	8,449,152	8,366,409	-1.0	8,350,563	8,301,140	-0.6	16,799,715	16,667,549	-0.8	100.0
	Freight (Tonnes)	289,661	305,095	5.3	350,461	340,831	-2.7	640,121	645,926	0.9	100.0
	Aircraft Movements	55,081	52,769	-4.2	54,631	52,559	-3.8	109,712	105,328	-4.0	100.0

TABLE 5: SCHEDULED INTERNATIONAL TRAFFIC BY CITY PAIRS: Year ended December

Foreign Port	Australian Port	Passengers						Freight (tonnes)					
		2001			2002			2001			2002		
		Inbound	Outbound	Total	Inbound	Outbound	Total	Inbound	Outbound	Total	Inbound	Outbound	Total
Amsterdam	Adelaide	0	0	0	0	0	0	0.0	0.0	0.0	172.0	0.0	172.0
Auckland	"	32	867	899	100	56	156	150.4	160.7	311.1	143.9	207.1	351.0
Bangkok	"	28	4	32	8	30	38	11.0	78.5	89.5	13.9	13.7	27.6
Bombay	"	114	34	148	29	32	61	4.6	0.0	4.6	1.1	0.0	1.1
Buenos Aires	"	0	91	91	0	0	0	0.3	11.5	11.8	2.9	0.2	3.1
Chicago	"	0	0	0	0	0	0	0.0	0.0	0.0	0.0	0.0	0.0
Christchurch	"	141	12	153	597	43	640	46.3	46.5	92.9	59.9	41.6	101.5
Denpasar	"	14,436	14,658	29,094	10,510	10,562	21,072	150.3	193.8	344.0	245.0	332.9	577.8
Frankfurt	"	2,505	1,686	4,191	1,128	1,141	2,269	12.2	2.5	14.7	35.8	2.0	37.7
Hong Kong	"	12,511	9,537	22,048	15,980	11,718	27,698	447.8	613.8	1,061.5	460.3	681.2	1,141.5
Honolulu	"	111	242	353	20	0	20	0.0	5.7	5.7	0.0	1.8	1.8
Jakarta	"	180	135	315	25	36	61	11.9	8.7	20.6	0.7	22.0	22.7
Johannesburg	"	0	0	0	0	0	0	15.1	14.9	29.9	26.2	14.2	40.5
Kuala Lumpur	"	33,613	32,313	65,926	33,212	32,865	66,077	728.2	1,388.7	2,116.9	1,248.7	1,118.4	2,367.1
London	"	4,236	3,910	8,146	1,448	1,469	2,917	46.5	45.7	92.2	34.8	15.8	50.5
Los Angeles	"	128	126	254	1,130	400	1,530	16.1	273.1	289.3	9.6	136.8	146.4
Manila	"	62	86	148	43	85	128	12.2	0.5	12.7	22.1	3.7	25.7
Nagoya	"	78	23	101	0	0	0	30.2	8.8	39.0	1.2	26.4	27.6
New York	"	14	14	28	0	0	0	6.2	22.9	29.1	1.5	1.6	3.2
Noumea	"	0	0	0	0	0	0	0.0	0.7	0.7	0.0	0.4	0.5
Osaka	"	1	0	1	0	0	0	0.0	0.0	0.0	17.6	32.8	50.4
Paris	"	26	361	387	15	195	210	6.5	26.1	32.6	9.4	0.8	10.2
Port Moresby	"	0	0	0	0	0	0	2.6	3.0	5.6	0.0	0.7	0.7
Queenstown	"	0	0	0	6	2	8	0.0	0.0	0.0	0.0	0.0	0.0
Rome	"	0	1	1	434	638	1,072	14.7	0.2	14.9	16.1	0.0	16.1
Shanghai	"	0	4	4	0	0	0	5.2	0.3	5.5	0.0	0.0	0.0
Singapore	"	56,021	53,302	109,323	50,532	49,396	99,928	1,842.7	4,679.9	6,522.6	1,968.9	4,310.4	6,279.3
Taipei	"	0	27	27	0	0	0	0.1	0.5	0.6	5.7	1.6	7.3
Tokyo	"	83	6	89	390	4	394	175.8	507.6	683.4	254.4	114.3	368.7
Vancouver	"	8	31	39	0	0	0	1.9	7.2	9.1	0.0	0.0	0.0
Wellington	"	33	13	46	14	9	23	3.9	1.8	5.7	0.4	2.7	3.1
<b>Total</b>	<b>Adelaide</b>	124,361	117,483	241,844	115,621	108,681	224,302	3,742.9	8,103.6	11,846.5	4,752.3	7,082.9	11,835.2
Atlanta	Brisbane	0	0	0	0	0	0	28.1	0.0	28.1	0.0	0.0	0.0
Auckland	"	241,982	247,681	489,663	221,084	222,300	443,384	6,383.7	8,207.3	14,591.0	6,987.4	7,905.4	14,892.8
Bandar Seri Begawan	"	25,192	26,752	51,944	26,673	28,456	55,129	351.0	1,523.1	1,874.1	617.5	1,705.9	2,323.4
Bangkok	"	31,901	32,088	63,989	25,324	26,968	52,292	514.1	1,249.9	1,764.0	740.1	1,303.6	2,043.7
Bombay	"	2,215	900	3,115	494	227	721	34.7	2.1	36.8	4.1	0.9	4.9
Buenos Aires	"	2,532	112	2,644	968	10	978	0.9	1.3	2.2	2.1	3.6	5.7
Chicago	"	0	0	0	0	0	0	56.2	0.0	56.2	2.0	0.0	2.0
Christchurch	"	96,504	95,815	192,319	72,877	74,506	147,383	1,251.8	1,837.7	3,089.5	820.3	1,003.5	1,823.8
Denpasar	"	24,415	24,754	49,169	25,120	24,831	49,951	461.4	401.3	862.6	596.8	665.2	1,262.0
Dunedin	"	14,492	14,663	29,155	16,387	16,625	33,012	0.0	0.0	0.0	0.0	0.0	0.0
Frankfurt	"	4,589	5,103	9,692	7,612	8,202	15,814	84.0	4.8	88.8	252.2	18.5	270.6
Fukuoka	"	192	0	192	268	268	536	0.0	0.0	0.0	0.0	0.0	0.0

TABLE 5: SCHEDULED INTERNATIONAL TRAFFIC BY CITY PAIRS: Year ended December

Foreign Port	Australian Port	Passengers						Freight (tonnes)					
		2001			2002			2001			2002		
		Inbound	Outbound	Total	Inbound	Outbound	Total	Inbound	Outbound	Total	Inbound	Outbound	Total
Hamilton	Brisbane	22,921	22,964	45,885	24,254	24,539	48,793	0.0	0.0	0.0	0.0	0.0	0.0
Hong Kong	"	60,020	55,787	115,807	66,288	67,079	133,367	1,784.5	4,239.6	6,024.0	2,528.5	3,979.6	6,508.1
Honiara	"	7,035	6,699	13,734	7,733	8,000	15,733	104.8	80.7	185.5	100.1	71.9	172.1
Honolulu	"	640	369	1,009	1,326	29	1,355	5.5	50.1	55.5	4.5	55.3	59.8
Jakarta	"	1,835	726	2,561	2,345	312	2,657	2.5	195.1	197.6	0.6	21.7	22.3
Johannesburg	"	0	221	221	0	250	250	82.0	10.3	92.3	14.2	6.3	20.6
Kuala Lumpur	"	66,224	63,251	129,475	51,328	52,132	103,460	2,333.0	2,533.7	4,866.8	1,403.7	1,625.8	3,029.5
London	"	14,839	13,199	28,038	15,211	14,524	29,735	175.0	46.7	221.8	201.1	39.7	240.8
Los Angeles	"	31,397	27,893	59,290	34,185	29,024	63,209	790.7	449.3	1,240.0	893.7	530.6	1,424.3
Manila	"	5,327	5,396	10,723	6,860	5,796	12,656	13.5	144.2	157.7	5.7	56.1	61.8
Nadi	"	19,580	19,976	39,556	28,813	27,863	56,676	165.5	254.0	419.5	127.2	240.1	367.3
Nagoya	"	7,876	701	8,577	6,446	1,346	7,792	14.4	260.1	274.5	4.9	537.7	542.6
Nauru	"	3,492	3,273	6,765	5,174	4,773	9,947	10.5	149.3	159.8	9.8	201.8	211.6
New York	"	242	76	318	288	131	419	113.1	58.7	171.8	60.8	5.1	65.9
Noumea	"	14,076	15,085	29,161	17,000	18,028	35,028	14.7	147.7	162.4	25.3	176.4	201.7
Osaka	"	154,267	27,644	181,911	106,621	29,655	136,276	1,949.8	2,691.7	4,641.5	566.2	1,775.8	2,342.1
Palmerston	"	13,195	13,582	26,777	17,310	17,257	34,567	0.0	0.0	0.0	0.0	0.0	0.0
Paris	"	2,463	2,760	5,223	2,343	2,674	5,017	16.5	29.6	46.0	13.5	3.5	17.0
Port Moresby	"	32,922	36,178	69,100	29,044	31,554	60,598	856.3	1,863.7	2,720.0	1,049.6	1,804.9	2,854.5
Port Vila	"	11,037	10,868	21,905	10,180	10,222	20,402	33.4	156.9	190.4	37.6	132.6	170.2
Queenstown	"	2,106	2,162	4,268	2,564	2,533	5,097	0.0	0.0	0.0	0.0	0.0	0.0
Rome	"	114	2	116	3,009	4,428	7,437	6.7	1.1	7.9	137.0	2.3	139.4
Seoul	"	24,549	20,767	45,316	26,983	23,154	50,137	517.6	1,329.1	1,846.7	481.3	1,829.1	2,310.3
Shanghai	"	222	100	322	0	0	0	6.9	22.6	29.5	0.0	0.0	0.0
Singapore	"	207,126	202,394	409,520	226,424	224,381	450,805	3,829.3	14,463.5	18,292.8	6,079.2	12,654.9	18,734.1
Taipei	"	37,803	35,982	73,785	30,727	30,300	61,027	1,243.9	1,835.5	3,079.4	1,455.4	1,691.2	3,146.6
Tokyo	"	115,328	116,141	231,469	123,818	123,589	247,407	1,982.6	6,716.8	8,699.4	2,695.1	6,524.8	9,219.9
Toledo	"	0	0	0	0	0	0	25.2	0.0	25.2	7.4	0.0	7.4
Vancouver	"	236	293	529	0	0	0	1.4	0.3	1.7	0.0	0.0	0.0
Wellington	"	47,970	46,507	94,477	47,878	46,569	94,447	48.5	52.6	101.1	25.4	27.8	53.3
<b>Total</b>	<b>Brisbane</b>	1,348,856	1,198,864	2,547,720	1,290,959	1,202,535	2,493,494	25,293.8	51,010.4	76,304.1	27,950.5	46,601.7	74,552.2
Denpasar	Broome	1,192	1,145	2,337	0	0	0	0.0	0.0	0.0	0.0	0.0	0.0
<b>Total</b>	<b>Broome</b>	1,192	1,145	2,337	0	0	0	0.0	0.0	0.0	0.0	0.0	0.0
Auckland	Cairns	9,629	15,004	24,633	19,654	24,442	44,096	145.0	37.2	182.3	248.9	110.7	359.6
Bangkok	"	321	79	400	410	133	543	0.6	3.4	4.0	3.0	3.5	6.6
Bombay	"	676	287	963	104	17	121	8.0	0.1	8.1	0.1	0.1	0.2
Buenos Aires	"	26	289	315	25	68	93	0.0	0.0	0.0	0.0	0.2	0.2
Christchurch	"	1,695	1,632	3,327	757	2,250	3,007	14.0	2.6	16.6	3.5	3.4	6.9
Denpasar	"	4,389	4,999	9,388	194	295	489	19.9	1.6	21.5	10.1	2.6	12.6
Dili	"	1	0	1	0	0	0	0.0	1.3	1.3	0.0	0.0	0.0
Frankfurt	"	3,474	8,411	11,885	4,165	9,202	13,367	9.2	3.9	13.1	7.9	3.9	11.8
Fukuoka	"	0	13	13	2,707	2,709	5,416	0.0	0.0	0.0	3.8	2.5	6.3
Guam	"	10,562	10,846	21,408	10,809	11,160	21,969	1.0	39.2	40.2	0.2	43.7	43.9
Hong Kong	"	33,785	23,543	57,328	40,291	27,904	68,195	244.4	3,147.7	3,392.1	321.2	3,880.5	4,201.7

TABLE 5: SCHEDULED INTERNATIONAL TRAFFIC BY CITY PAIRS: Year ended December

Foreign Port	Australian Port	Passengers						Freight (tonnes)					
		2001			2002			2001			2002		
		Inbound	Outbound	Total	Inbound	Outbound	Total	Inbound	Outbound	Total	Inbound	Outbound	Total
Honolulu	Cairns	76	850	926	271	506	777	0.5	0.3	0.8	0.0	1.9	1.9
Jakarta	"	253	198	451	122	176	298	0.1	14.6	14.7	0.1	4.5	4.7
Johannesburg	"	0	273	273	2	150	152	0.6	0.6	1.2	0.5	0.6	1.2
Kuala Lumpur	"	11,518	14,949	26,467	1,088	1,516	2,604	32.5	174.1	206.6	3.5	22.0	25.6
London	"	7,122	9,032	16,154	5,701	6,373	12,074	1.2	14.6	15.8	0.8	8.9	9.7
Los Angeles	"	4,074	4,615	8,689	4,750	7,535	12,285	9.3	227.9	237.2	9.7	203.0	212.7
Manila	"	76	75	151	63	69	132	0.0	8.3	8.3	0.1	6.4	6.5
Nagoya	"	64,692	50,215	114,907	62,508	65,388	127,896	52.4	392.9	445.2	240.5	767.4	1,007.9
New York	"	4	207	211	20	36	56	0.0	10.6	10.6	0.1	4.6	4.7
Noumea	"	0	3	3	2	9	11	0.0	0.8	0.8	0.0	0.7	0.7
Osaka	"	6,757	5,347	12,104	54,416	42,675	97,091	112.1	230.9	343.0	610.8	440.5	1,051.2
Paris	"	859	2,536	3,395	889	2,028	2,917	1.8	0.2	2.0	0.1	0.3	0.4
Port Moresby	"	28,767	27,415	56,182	26,193	23,614	49,807	387.1	425.8	813.0	174.1	317.7	491.8
Queenstown	"	4	7	11	35	30	65	0.0	0.0	0.0	0.0	0.0	0.0
Rome	"	70	41	111	517	1,734	2,251	1.3	0.2	1.5	0.8	2.8	3.6
Shanghai	"	0	18	18	0	0	0	0.0	0.0	0.0	0.0	0.0	0.0
Singapore	"	28,677	31,027	59,704	21,136	19,563	40,699	203.3	1,037.1	1,240.4	154.0	431.1	585.2
Taipei	"	19	43	62	1,513	1,590	3,103	0.1	0.4	0.5	84.4	22.0	106.4
Tokyo	"	116,089	118,266	234,355	126,571	126,501	253,072	432.8	1,650.8	2,083.7	452.5	1,471.1	1,923.7
Vancouver	"	17	169	186	0	0	0	0.0	0.2	0.2	0.0	0.0	0.0
Wellington	"	320	777	1,097	951	535	1,486	0.3	0.5	0.8	0.0	1.6	1.6
<b>Total</b>	<b>Cairns</b>	333,952	331,166	665,118	385,864	378,208	764,072	1,677.6	7,427.7	9,105.4	2,330.9	7,758.1	10,089.0
Auckland	Darwin	165	58	223	36	252	288	31.0	8.4	39.4	2.0	0.9	2.9
Bandar Seri Begawan	"	5,804	5,984	11,788	6,704	6,957	13,661	56.7	27.9	84.6	38.6	57.9	96.5
Bangkok	"	0	0	0	11	15	26	8.6	1.2	9.8	0.1	0.3	0.4
Bombay	"	115	85	200	32	20	52	15.7	0.0	15.7	1.7	0.0	1.7
Buenos Aires	"	0	0	0	0	0	0	0.0	0.3	0.3	0.0	0.1	0.1
Christchurch	"	4	39	43	18	137	155	2.9	2.5	5.4	0.0	0.0	0.0
Denpasar	"	22,473	24,104	46,577	20,945	22,307	43,252	27.8	2.2	30.0	12.4	4.5	16.9
Dili	"	788	917	1,705	0	0	0	0.8	0.8	1.5	0.0	0.0	0.0
Frankfurt	"	6,034	4,339	10,373	5,076	4,163	9,239	12.3	2.5	14.8	2.7	2.0	4.7
Hong Kong	"	866	208	1,074	378	26	404	2.7	140.8	143.5	27.7	96.7	124.3
Honolulu	"	0	0	0	4	0	4	0.8	3.9	4.6	0.0	0.0	0.0
Jakarta	"	207	137	344	9	7	16	1.8	2.2	4.0	0.0	0.7	0.7
Johannesburg	"	0	0	0	0	0	0	3.7	2.6	6.3	0.0	0.8	0.8
Kuala Lumpur	"	12,845	10,683	23,528	912	604	1,516	185.7	176.5	362.2	10.0	19.0	29.0
Kupang	"	541	412	953	0	0	0	0.6	1.1	1.7	0.0	0.0	0.0
London	"	5,186	4,962	10,148	3,640	3,985	7,625	10.8	25.6	36.3	7.5	31.8	39.3
Los Angeles	"	153	81	234	106	139	245	19.3	22.2	41.5	0.2	2.5	2.6
Manila	"	1	3	4	0	0	0	0.2	0.4	0.6	0.0	0.0	0.0
Nagoya	"	174	73	247	0	0	0	1.0	0.1	1.1	0.0	0.0	0.0
New York	"	0	0	0	0	0	0	14.8	3.9	18.6	0.0	0.2	0.2
Osaka	"	10	9	19	0	0	0	0.1	0.0	0.1	0.1	0.0	0.1
Paris	"	1,284	1,239	2,523	15	658	673	3.0	11.7	14.7	0.7	6.4	7.1

TABLE 5: SCHEDULED INTERNATIONAL TRAFFIC BY CITY PAIRS: Year ended December

Foreign Port	Australian Port	Passengers						Freight (tonnes)					
		2001			2002			2001			2002		
		Inbound	Outbound	Total	Inbound	Outbound	Total	Inbound	Outbound	Total	Inbound	Outbound	Total
Port Moresby	Darwin	0	0	0	0	0	0	0.0	0.0	0.0	0.0	0.1	0.1
Rome	"	0	2	2	623	456	1,079	11.9	0.5	12.4	0.5	1.1	1.6
Singapore	"	21,934	18,961	40,895	12,969	11,878	24,847	215.7	617.0	832.7	160.5	302.5	463.0
Taipei	"	0	0	0	0	0	0	0.0	0.0	0.0	0.0	0.0	0.0
Tokyo	"	457	249	706	8	20	28	5.0	14.5	19.5	18.3	2.0	20.3
Vancouver	"	2	0	2	0	0	0	0.8	3.0	3.8	0.0	0.0	0.0
Wellington	"	26	9	35	7	29	36	0.5	0.4	0.9	0.0	0.0	0.0
<b>Total</b>	<b>Darwin</b>	79,069	72,554	151,623	51,493	51,653	103,146	633.9	1,072.2	1,706.1	283.0	529.5	812.4
Auckland	Gold Coast/Coolangatta	3,055	3,123	6,178	30,926	30,704	61,630	0.0	0.0	0.0	0.0	0.0	0.0
Christchurch	"	0	0	0	2,473	2,392	4,865	0.0	0.0	0.0	0.0	0.0	0.0
Dunedin	"	0	0	0	4,018	3,928	7,946	0.0	0.0	0.0	0.0	0.0	0.0
Fukuoka	"	0	0	0	834	599	1,433	0.0	0.0	0.0	0.0	0.0	0.0
Hamilton	"	9,639	9,481	19,120	9,669	9,558	19,227	0.0	0.0	0.0	0.0	0.0	0.0
Hong Kong	"	0	0	0	91	586	677	0.0	0.0	0.0	0.0	0.0	0.0
Nagoya	"	0	0	0	1,606	1,427	3,033	0.0	0.0	0.0	0.0	46.2	46.2
Noumea	"	1,100	1,127	2,227	0	0	0	0.0	0.0	0.0	0.0	0.0	0.0
Osaka	"	0	0	0	1,971	1,491	3,462	0.0	0.0	0.0	10.5	54.9	65.4
Palmerston	"	7,137	6,919	14,056	4,684	4,366	9,050	0.0	0.0	0.0	0.0	0.0	0.0
Singapore	"	0	0	0	0	690	690	0.0	0.0	0.0	0.0	0.0	0.0
Taipei	"	0	0	0	659	507	1,166	0.0	0.0	0.0	0.0	0.0	0.0
<b>Total</b>	<b>Gold Coast/Coolangatta</b>	20,931	20,650	41,581	56,931	56,248	113,179	0.0	0.0	0.0	10.5	101.1	111.6
Abu Dhabi	Melbourne	4,737	2,137	6,874	0	0	0	71.1	226.0	297.1	0.0	0.0	0.0
Amsterdam	"	0	0	0	0	0	0	0.0	2.0	2.0	0.0	0.0	0.0
Apia	"	274	282	556	0	0	0	2.9	6.3	9.2	0.0	0.0	0.0
Athens	"	10,765	11,651	22,416	6,363	7,973	14,336	141.7	90.4	232.1	68.7	26.9	95.6
Atlanta	"	0	0	0	0	0	0	1,309.3	0.0	1,309.3	1,088.8	0.0	1,088.8
Auckland	"	261,239	261,164	522,403	249,038	253,199	502,237	13,155.3	17,199.3	30,354.6	16,062.9	16,898.2	32,961.1
Bahrain	"	13,482	12,335	25,817	1,749	2,193	3,942	559.4	1,788.2	2,347.6	77.0	366.2	443.1
Bangkok	"	117,061	118,641	235,702	105,541	100,220	205,761	3,786.4	5,838.4	9,624.8	4,654.4	5,916.2	10,570.6
Beijing	"	7,586	3,014	10,600	10,466	5,465	15,931	66.3	181.8	248.0	74.4	210.3	284.8
Bombay	"	4,823	432	5,255	1,625	66	1,691	97.7	71.7	169.4	13.6	7.9	21.6
Buenos Aires	"	4,544	4,459	9,003	2,273	1,855	4,128	21.4	7.0	28.5	2.9	1.2	4.2
Chicago	"	1,924	1,837	3,761	1,198	1,342	2,540	3,098.8	0.0	3,098.8	4,711.4	0.0	4,711.4
Christchurch	"	88,332	82,896	171,228	78,207	75,596	153,803	2,879.4	2,021.9	4,901.3	2,251.8	1,454.2	3,705.9
Denpasar	"	64,465	61,506	125,971	46,906	43,616	90,522	2,168.1	2,116.7	4,284.8	1,710.0	2,179.7	3,889.7
Dili	"	0	0	0	0	0	0	0.0	0.1	0.1	0.0	0.0	0.0
Dubai	"	58,332	56,450	114,782	71,896	72,181	144,077	1,713.4	4,210.0	5,923.5	1,860.9	4,212.3	6,073.2
Dunedin	"	5,484	5,317	10,801	7,747	7,620	15,367	0.0	0.0	0.0	0.0	0.0	0.0
Frankfurt	"	15,753	16,501	32,254	11,798	10,911	22,709	2,274.0	1,661.5	3,935.5	1,942.4	1,932.6	3,875.0
Fukuoka	"	0	1	1	0	0	0	0.0	0.0	0.0	0.0	0.0	0.0
Guangzhou	"	15,562	8,552	24,114	19,793	12,077	31,870	1,059.4	151.7	1,211.1	972.8	420.0	1,392.8
Hamilton	"	10,598	9,847	20,445	12,578	12,174	24,752	0.0	0.0	0.0	0.0	0.0	0.0
Hanoi	"	1,752	1,637	3,389	2,064	2,203	4,267	38.0	106.2	144.3	4.6	25.2	29.7
Ho Chi Minh City	"	16,509	14,981	31,490	21,333	21,527	42,860	298.3	219.1	517.3	477.6	226.4	704.0

TABLE 5: SCHEDULED INTERNATIONAL TRAFFIC BY CITY PAIRS: Year ended December

Foreign Port	Australian Port	Passengers						Freight (tonnes)					
		2001			2002			2001			2002		
		Inbound	Outbound	Total	Inbound	Outbound	Total	Inbound	Outbound	Total	Inbound	Outbound	Total
Hong Kong	Melbourne	131,396	137,294	268,690	137,241	139,356	276,597	9,754.6	13,876.9	23,631.5	9,822.7	14,105.8	23,928.5
Honolulu	"	1,836	7,933	9,769	10,259	13,475	23,734	82.6	71.7	154.3	356.1	398.7	754.8
Jakarta	"	10,254	6,153	16,407	6,933	978	7,911	88.7	562.4	651.0	29.6	227.8	257.4
Johannesburg	"	322	330	652	138	1,409	1,547	195.1	120.2	315.3	58.8	15.9	74.8
Karachi	"	0	0	0	0	0	0	0.0	26.2	26.2	0.0	2.6	2.6
Kuala Lumpur	"	96,717	101,730	198,447	115,372	123,804	239,176	5,397.1	7,546.0	12,943.1	11,422.7	9,698.3	21,121.0
Lahore	"	0	0	0	0	0	0	0.0	3.3	3.3	0.0	16.1	16.1
London	"	79,513	81,974	161,487	85,507	85,415	170,922	2,394.1	629.4	3,023.5	3,219.2	569.0	3,788.2
Los Angeles	"	125,997	128,875	254,872	99,294	104,490	203,784	4,262.9	4,554.2	8,817.1	2,570.9	3,083.9	5,654.7
Luxembourg	"	0	0	0	0	0	0	4,131.3	0.0	4,131.3	4,321.8	0.0	4,321.8
Manila	"	4,684	3,008	7,692	14,470	10,708	25,178	191.7	266.5	458.2	401.9	822.0	1,223.9
Mauritius	"	8,240	7,913	16,153	7,700	7,569	15,269	259.3	173.8	433.0	357.8	240.4	598.2
Nadi	"	22,467	22,004	44,471	34,010	33,276	67,286	318.2	497.9	816.2	910.9	992.4	1,903.3
Nagoya	"	61	903	964	46	147	193	355.2	108.3	463.4	8.2	32.1	40.3
Nauru	"	1,312	1,367	2,679	1,415	1,515	2,930	2.4	51.0	53.4	1.6	60.5	62.0
New Delhi	"	0	0	0	0	0	0	0.0	0.0	0.0	0.0	55.0	55.0
New York	"	6,271	7,486	13,757	4,597	5,089	9,686	2,487.5	149.9	2,637.4	507.1	237.5	744.6
Noumea	"	19	90	109	4	41	45	0.2	7.7	7.9	0.0	5.1	5.1
Osaka	"	0	1	1	1	182	183	0.1	0.7	0.7	39.6	62.8	102.3
Pago Pago	"	0	290	290	0	0	0	0.0	1.3	1.3	0.0	0.0	0.0
Palmerston	"	7,274	6,618	13,892	8,572	8,388	16,960	0.0	0.0	0.0	0.0	0.0	0.0
Papeete	"	0	0	0	0	0	0	3.8	0.0	3.8	0.0	0.0	0.0
Paris	"	3,742	3,450	7,192	4,155	4,932	9,087	138.6	24.8	163.4	52.7	7.6	60.3
Penang	"	0	0	0	0	0	0	0.0	181.3	181.3	561.5	197.2	758.7
Port Moresby	"	222	19	241	42	2	44	5.9	39.5	45.4	0.1	13.6	13.6
Port Vila	"	6,626	6,512	13,138	1,344	1,261	2,605	3.0	38.2	41.3	0.8	7.5	8.3
Queenstown	"	266	221	487	1,227	1,104	2,331	0.0	0.0	0.0	0.0	0.0	0.0
Rome	"	26,844	28,378	55,222	16,559	13,619	30,178	834.9	91.7	926.6	380.6	17.7	398.3
San Francisco	"	763	955	1,718	16,110	16,472	32,582	0.0	58.6	58.6	180.3	1,206.5	1,386.8
Shanghai	"	13	1,242	1,255	2,294	1,487	3,781	100.0	67.4	167.4	4.9	3.5	8.4
Sharjah	"	0	0	0	0	0	0	0.0	3.0	3.0	0.0	0.0	0.0
Singapore	"	325,957	318,634	644,591	336,780	324,924	661,704	17,430.0	31,026.8	48,456.9	19,013.0	31,999.1	51,012.2
Taipei	"	1,084	1,090	2,174	842	576	1,418	108.1	99.5	207.6	6.8	16.5	23.3
Tokyo	"	27,938	19,349	47,287	45,012	23,157	68,169	929.1	1,096.2	2,025.3	1,007.9	1,710.8	2,718.7
Toledo	"	0	0	0	0	0	0	346.5	0.0	346.5	22.2	0.0	22.2
Tongatapu	"	172	606	778	0	0	0	6.7	2.3	9.0	0.0	0.0	0.0
Toronto	"	964	650	1,614	4,288	4,797	9,085	24.5	66.3	90.8	229.5	608.9	838.4
Vancouver	"	218	2,015	2,233	0	0	0	3.2	74.6	77.8	0.0	0.0	0.0
Vienna	"	20,503	21,984	42,487	21,526	20,837	42,363	119.7	0.0	119.7	0.0	0.0	0.0
Wellington	"	52,980	54,981	107,961	51,509	54,498	106,007	190.0	188.0	378.0	169.7	124.6	294.3
<b>Total</b>	<b>Melbourne</b>	1,667,877	1,647,695	3,315,572	1,677,822	1,633,726	3,311,548	82,906.1	97,604.0	180,510.0	91,632.9	100,416.6	192,049.5
Auckland	Newcastle	493	561	1,054	4,876	4,631	9,507	0.0	0.0	0.0	0.0	0.0	0.0
<b>Total</b>	<b>Newcastle</b>	493	561	1,054	4,876	4,631	9,507	0.0	0.0	0.0	0.0	0.0	0.0
Auckland	Norfolk Island	8,306	8,061	16,367	7,924	7,967	15,891	113.2	17.2	130.5	111.2	22.6	133.7



TABLE 5: SCHEDULED INTERNATIONAL TRAFFIC BY CITY PAIRS: Year ended December

Foreign Port	Australian Port	Passengers						Freight (tonnes)					
		2001			2002			2001			2002		
		Inbound	Outbound	Total	Inbound	Outbound	Total	Inbound	Outbound	Total	Inbound	Outbound	Total
<b>Total</b>	<b>Norfolk Island</b>	8,306	8,061	16,367	7,924	7,967	15,891	113.2	17.2	130.5	111.2	22.6	133.7
Auckland	Perth	30,222	30,552	60,774	39,200	38,326	77,526	1,596.8	783.6	2,380.4	1,588.8	764.8	2,353.6
Bandar Seri Begawan	"	21,420	21,739	43,159	20,749	21,641	42,390	183.0	875.7	1,058.7	140.5	1,010.8	1,151.3
Bangkok	"	34,349	32,514	66,863	37,736	37,374	75,110	775.5	1,983.0	2,758.5	910.9	1,842.5	2,753.5
Bombay	"	1,641	1,366	3,007	491	366	857	13.5	1.6	15.0	1.6	7.6	9.3
Buenos Aires	"	6	0	6	4	0	4	6.1	5.1	11.2	0.0	0.0	0.0
Chicago	"	0	0	0	0	0	0	4.2	0.0	4.2	0.1	0.0	0.1
Christchurch	"	79	43	122	385	0	385	65.3	11.2	76.5	4.2	1.7	5.9
Denpasar	"	97,472	97,098	194,570	78,595	77,081	155,676	276.0	458.3	734.3	314.1	620.4	934.5
Dubai	"	0	0	0	21,996	17,889	39,885	0.0	0.0	0.0	146.7	572.2	718.9
Frankfurt	"	4,805	4,794	9,599	6,684	7,091	13,775	35.5	28.9	64.4	14.8	44.5	59.3
Hong Kong	"	38,398	36,871	75,269	47,471	44,825	92,296	1,064.2	4,240.0	5,304.1	1,264.8	4,599.4	5,864.1
Honolulu	"	14	0	14	0	0	0	0.0	66.3	66.3	0.0	5.5	5.5
Jakarta	"	19,094	17,598	36,692	16,666	16,633	33,299	108.7	367.3	476.0	183.2	364.9	548.1
Johannesburg	"	46,692	39,752	86,444	50,914	45,797	96,711	765.1	1,723.0	2,488.1	1,202.7	2,132.9	3,335.6
Kuala Lumpur	"	108,841	101,522	210,363	87,611	86,498	174,109	1,997.2	4,085.6	6,082.7	1,883.8	3,285.8	5,169.6
Kuching	"	4,089	4,477	8,566	4,272	4,428	8,700	0.1	487.5	487.6	0.9	348.1	349.0
London	"	20,586	20,834	41,420	23,023	20,374	43,397	114.2	19.8	134.0	75.1	12.2	87.3
Los Angeles	"	37	92	129	28	0	28	20.5	171.2	191.7	0.6	4.8	5.4
Manila	"	1	0	1	0	0	0	1.6	5.2	6.8	0.6	0.3	1.0
Mauritius	"	6,092	6,052	12,144	5,369	5,451	10,820	81.4	418.0	499.4	63.8	429.9	493.7
Nagoya	"	0	0	0	0	0	0	0.4	31.7	32.1	0.0	0.0	0.0
New York	"	0	0	0	5	0	5	19.6	144.9	164.5	3.5	0.0	3.5
Noumea	"	0	0	0	0	0	0	0.4	0.1	0.5	0.0	0.0	0.0
Osaka	"	0	0	0	0	0	0	0.0	0.0	0.0	0.0	0.0	0.0
Paris	"	2,643	2,617	5,260	4,502	3,912	8,414	7.2	24.7	31.9	71.2	42.9	114.0
Phuket	"	13,582	13,922	27,504	11,947	11,466	23,413	0.1	0.6	0.7	0.0	44.9	44.9
Port Moresby	"	0	0	0	0	0	0	3.6	2.6	6.1	0.0	0.0	0.0
Queenstown	"	0	2	2	6	0	6	0.0	0.0	0.0	0.0	0.0	0.0
Rome	"	1	0	1	3,452	2,395	5,847	5.7	0.0	5.8	31.3	1.5	32.9
Shanghai	"	0	0	0	0	0	0	5.5	0.1	5.6	0.0	0.0	0.0
Singapore	"	340,122	319,874	659,996	350,001	332,599	682,600	6,560.4	23,512.5	30,072.9	6,722.0	18,713.7	25,435.7
Taipei	"	0	0	0	0	0	0	0.0	0.3	0.3	0.4	0.3	0.7
Tokyo	"	23,829	21,614	45,443	25,480	24,094	49,574	346.7	1,175.8	1,522.5	360.2	1,125.0	1,485.2
Vancouver	"	16	0	16	0	0	0	0.0	9.9	9.9	0.0	0.0	0.0
Wellington	"	4	11	15	104	0	104	3.6	4.6	8.3	0.0	0.0	0.0
<b>Total</b>	<b>Perth</b>	814,035	773,344	1,587,379	836,691	798,240	1,634,931	14,061.9	40,639.0	54,700.9	14,985.7	35,976.7	50,962.4
Abu Dhabi	Sydney	0	0	0	0	0	0	0.0	24.0	24.0	0.0	0.0	0.0
Amsterdam	"	9,905	11,433	21,338	0	0	0	8,982.7	1,807.1	10,789.8	10,742.6	2,068.0	12,810.5
Apia	"	5,275	3,135	8,410	4,449	4,159	8,608	114.9	23.3	138.1	58.5	34.7	93.2
Athens	"	18,633	17,759	36,392	7,088	9,664	16,752	163.9	77.6	241.5	83.4	39.5	122.8
Atlanta	"	0	0	0	0	0	0	1,052.9	2.0	1,054.8	191.7	0.0	191.7
Auckland	"	500,250	512,516	1,012,766	476,805	495,131	971,936	21,601.2	27,541.2	49,142.4	21,201.9	26,727.8	47,929.7
Bahrain	"	22,227	18,913	41,140	3,474	3,748	7,222	720.4	709.7	1,430.1	61.8	159.1	220.9

TABLE 5: SCHEDULED INTERNATIONAL TRAFFIC BY CITY PAIRS: Year ended December

Foreign Port	Australian Port	Passengers						Freight (tonnes)					
		2001			2002			2001			2002		
		Inbound	Outbound	Total	Inbound	Outbound	Total	Inbound	Outbound	Total	Inbound	Outbound	Total
Bangkok	Sydney	229,585	210,685	440,270	231,800	227,954	459,754	5,314.9	3,396.3	8,711.2	6,336.3	4,720.4	11,056.7
Beijing	"	28,085	29,484	57,569	29,205	30,740	59,945	174.2	481.9	656.1	281.2	509.4	790.5
Bombay	"	9,954	12,561	22,515	2,295	3,029	5,324	98.4	53.1	151.5	16.9	21.1	37.9
Buenos Aires	"	22,853	26,539	49,392	17,875	19,142	37,017	86.3	629.4	715.7	191.3	220.9	412.2
Cairo	"	14,919	14,777	29,696	8,085	8,178	16,263	325.6	304.7	630.4	197.6	207.9	405.4
Cebu	"	158	163	321	0	0	0	3.5	3.4	6.9	0.0	0.0	0.0
Chicago	"	8,344	9,312	17,656	7,987	6,690	14,677	3,875.4	0.0	3,875.4	3,388.8	0.0	3,388.8
Christchurch	"	199,789	205,880	405,669	195,021	195,566	390,587	4,591.3	3,546.5	8,137.8	4,278.6	4,760.1	9,038.7
Colombo	"	17,118	14,006	31,124	0	0	0	655.4	585.4	1,240.8	0.0	0.0	0.0
Denpasar	"	102,747	107,550	210,297	77,279	78,901	156,180	2,192.4	1,602.9	3,795.2	1,798.8	1,527.7	3,326.5
Dili	"	0	0	0	0	0	0	0.0	3.7	3.7	0.0	0.0	0.0
Dubai	"	39,318	42,675	81,993	46,460	49,757	96,217	1,693.9	1,725.3	3,419.2	2,080.0	1,964.0	4,044.0
Dunedin	"	7,697	7,540	15,237	9,616	9,396	19,012	0.0	0.0	0.0	0.0	0.0	0.0
Frankfurt	"	25,692	29,363	55,055	27,572	29,033	56,605	1,729.6	161.7	1,891.3	1,350.1	62.2	1,412.4
Fukuoka	"	605	1,122	1,727	272	270	542	0.0	0.0	0.0	0.0	0.0	0.0
Guangzhou	"	24,667	30,489	55,156	28,512	34,038	62,550	810.2	132.3	942.5	1,112.7	212.0	1,324.7
Hamilton	"	10,945	10,803	21,748	11,424	11,526	22,950	0.0	0.0	0.0	0.0	0.0	0.0
Hanoi	"	2,966	2,928	5,894	1,994	1,978	3,972	3.8	68.1	71.8	0.0	26.7	26.7
Ho Chi Minh City	"	17,518	16,464	33,982	14,782	13,463	28,245	490.8	255.0	745.8	364.6	205.9	570.5
Hong Kong	"	310,182	297,426	607,608	298,035	289,137	587,172	14,073.5	16,584.3	30,657.8	14,891.8	15,278.3	30,170.1
Honolulu	"	66,018	59,585	125,603	66,333	63,502	129,835	1,264.4	1,543.4	2,807.8	1,763.5	1,917.2	3,680.7
Jakarta	"	38,852	42,719	81,571	39,950	49,654	89,604	340.0	595.1	935.1	743.2	1,741.4	2,484.6
Johannesburg	"	61,846	55,009	116,855	61,290	54,512	115,802	1,009.5	369.0	1,378.5	1,040.7	292.6	1,333.3
Kuala Lumpur	"	142,393	131,366	273,759	159,240	149,225	308,465	5,143.5	2,859.1	8,002.7	6,340.4	3,239.1	9,579.5
London	"	181,792	189,252	371,044	170,061	178,500	348,561	6,614.1	1,944.9	8,559.0	6,049.0	1,600.0	7,649.0
Los Angeles	"	363,872	356,906	720,778	326,615	339,825	666,440	19,872.8	7,799.1	27,671.9	20,264.0	7,489.1	27,753.1
Louisville	"	0	0	0	0	0	0	4,300.2	0.0	4,300.2	4,860.7	0.0	4,860.7
Manila	"	55,542	53,824	109,366	48,608	49,159	97,767	1,118.9	1,663.9	2,782.8	1,360.4	1,057.2	2,417.6
Nadi	"	86,721	88,550	175,271	103,945	104,549	208,494	3,242.3	2,899.8	6,142.1	3,299.7	2,661.3	5,961.1
Nagoya	"	24,520	41,857	66,377	15,426	21,002	36,428	931.2	1,009.9	1,941.0	464.0	340.4	804.4
Nauru	"	370	367	737	70	0	70	0.4	2.5	2.8	0.0	0.0	0.0
New York	"	24,979	25,940	50,919	16,365	15,248	31,613	4,617.5	278.3	4,895.9	3,694.0	550.6	4,244.7
Niue	"	0	0	0	12	0	12	0.0	0.0	0.0	0.0	0.0	0.0
Noumea	"	41,209	39,618	80,827	42,172	39,629	81,801	20.2	453.5	473.7	24.2	433.8	458.1
Osaka	"	61,533	177,854	239,387	44,700	122,305	167,005	1,164.5	4,878.5	6,043.0	1,403.3	2,769.6	4,172.9
Pago Pago	"	0	0	0	0	0	0	0.3	0.0	0.3	0.0	0.0	0.0
Palmerston	"	9,505	8,717	18,222	9,406	9,397	18,803	0.0	0.0	0.0	0.0	0.0	0.0
Papeete	"	768	2,283	3,051	0	3,146	3,146	0.0	10.1	10.1	0.0	3.5	3.5
Paris	"	17,501	19,839	37,340	17,421	16,827	34,248	724.2	57.7	781.9	494.5	35.9	530.4
Port Moresby	"	12,785	11,884	24,669	11,623	10,559	22,182	270.8	524.4	795.2	357.5	450.9	808.4
Port Vila	"	15,871	15,802	31,673	17,784	17,743	35,527	126.6	182.1	308.7	61.8	180.9	242.7
Queenstown	"	6,591	7,085	13,676	8,876	9,881	18,757	0.0	0.0	0.0	0.0	0.0	0.0
Rome	"	17,517	16,297	33,814	14,675	14,894	29,569	765.6	25.8	791.3	539.9	9.3	549.2
San Francisco	"	85,402	86,861	172,263	79,710	85,056	164,766	458.5	3,144.7	3,603.3	1,177.4	2,863.7	4,041.1

TABLE 5: SCHEDULED INTERNATIONAL TRAFFIC BY CITY PAIRS: Year ended December

Foreign Port	Australian Port	Passengers						Freight (tonnes)					
		2001			2002			2001			2002		
		Inbound	Outbound	Total	Inbound	Outbound	Total	Inbound	Outbound	Total	Inbound	Outbound	Total
Santiago	Sydney	0	0	0	8,310	10,023	18,333	0.0	0.0	0.0	156.3	127.0	283.3
Seoul	"	148,521	145,603	294,124	170,654	166,365	337,019	8,018.7	8,954.3	16,973.0	6,287.4	11,156.3	17,443.7
Shanghai	"	50,375	44,883	95,258	47,658	43,865	91,523	1,643.6	635.8	2,279.5	1,678.1	437.2	2,115.3
Singapore	"	476,505	465,783	942,288	489,432	457,623	947,055	24,410.6	23,753.3	48,163.9	24,970.9	23,569.4	48,540.4
Subic Bay	"	0	0	0	0	0	0	0.0	10,163.2	10,163.2	0.0	9,243.9	9,243.9
Suva	"	3,417	3,771	7,188	7,197	9,147	16,344	12.2	8.5	20.8	2.0	14.1	16.1
Taipei	"	54,567	51,582	106,149	51,098	51,002	102,100	1,712.0	1,787.6	3,499.6	1,635.4	1,922.2	3,557.6
Tokyo	"	183,368	204,303	387,671	205,164	233,537	438,701	3,280.1	7,710.3	10,990.4	3,690.7	7,133.7	10,824.4
Toledo	"	0	0	0	0	0	0	192.6	0.0	192.6	885.7	0.0	885.7
Tongatapu	"	2,674	1,455	4,129	1,864	2,243	4,107	26.3	16.1	42.5	108.1	10.1	118.2
Toronto	"	0	0	0	205	0	205	0.0	0.0	0.0	1.7	5.9	7.7
Vancouver	"	37,227	37,668	74,895	36,992	40,656	77,648	626.6	1,482.6	2,109.2	620.1	2,194.4	2,814.5
Vienna	"	36,624	43,944	80,568	55,376	56,142	111,518	182.0	0.0	182.0	0.0	0.0	0.0
Wellington	"	111,715	114,831	226,546	109,966	112,535	222,501	385.9	113.7	499.6	434.7	145.1	579.8
<b>Total</b>	<b>Sydney</b>	4,050,012	4,178,961	8,228,973	3,938,228	4,059,251	7,997,479	161,231.3	144,586.1	305,817.4	163,038.0	142,341.6	305,379.6
Auckland	Townsville	4	0	4	0	0	0	0.0	0.0	0.0	0.0	0.0	0.0
Bombay	"	2	0	2	0	0	0	0.0	0.0	0.0	0.0	0.0	0.0
Frankfurt	"	0	1	1	0	0	0	0.0	0.0	0.0	0.0	0.0	0.0
London	"	0	1	1	0	0	0	0.0	0.0	0.0	0.0	0.0	0.0
Los Angeles	"	0	0	0	0	0	0	0.0	0.2	0.2	0.0	0.0	0.0
Manila	"	0	0	0	0	0	0	0.0	0.0	0.0	0.0	0.0	0.0
Singapore	"	62	76	138	0	0	0	0.0	0.2	0.2	0.0	0.0	0.0
Wellington	"	0	1	1	0	0	0	0.0	0.0	0.0	0.0	0.0	0.0
<b>Total</b>	<b>Townsville</b>	68	79	147	0	0	0	0.0	0.5	0.5	0.0	0.0	0.0
Abu Dhabi	Australia	4,737	2,137	6,874	0	0	0	71.1	250.0	321.1	0.0	0.0	0.0
Amsterdam	"	9,905	11,433	21,338	0	0	0	8,982.7	1,809.1	10,791.8	10,914.5	2,068.0	12,982.5
Apia	"	5,549	3,417	8,966	4,449	4,159	8,608	117.8	29.5	147.3	58.5	34.7	93.2
Athens	"	29,398	29,410	58,808	13,451	17,637	31,088	305.7	167.9	473.6	152.0	66.4	218.4
Atlanta	"	0	0	0	0	0	0	2,390.2	2.0	2,392.2	1,280.5	0.0	1,280.5
Auckland	"	1,055,377	1,079,587	2,134,964	1,049,643	1,077,008	2,126,651	43,176.6	53,955.0	97,131.6	46,346.9	52,637.5	98,984.4
Bahrain	"	35,709	31,248	66,957	5,223	5,941	11,164	1,279.8	2,497.9	3,777.7	138.8	525.2	664.0
Bandar Seri Begawan	"	52,416	54,475	106,891	54,126	57,054	111,180	590.7	2,426.7	3,017.4	796.6	2,774.6	3,571.2
Bangkok	"	413,245	394,011	807,256	400,830	392,694	793,524	10,411.1	12,550.6	22,961.8	12,658.8	13,800.2	26,459.0
Beijing	"	35,671	32,498	68,169	39,671	36,205	75,876	240.4	663.7	904.1	355.6	719.7	1,075.3
Bombay	"	19,540	15,665	35,205	5,070	3,757	8,827	272.7	128.6	401.2	39.1	37.6	76.7
Buenos Aires	"	29,961	31,490	61,451	21,145	21,075	42,220	115.0	654.7	769.7	199.2	226.1	425.4
Cairo	"	14,919	14,777	29,696	8,085	8,178	16,263	325.6	304.7	630.4	197.6	207.9	405.4
Cebu	"	158	163	321	0	0	0	3.5	3.4	6.9	0.0	0.0	0.0
Chicago	"	10,268	11,149	21,417	9,185	8,032	17,217	7,034.7	0.0	7,034.7	8,102.3	0.0	8,102.3
Christchurch	"	386,544	386,317	772,861	350,335	350,490	700,825	8,851.2	7,468.9	16,320.1	7,418.3	7,264.5	14,682.8
Colombo	"	17,118	14,006	31,124	0	0	0	655.4	585.4	1,240.8	0.0	0.0	0.0
Denpasar	"	331,589	335,814	667,403	259,549	257,593	517,142	5,295.8	4,776.7	10,072.5	4,687.0	5,332.9	10,020.0
Dili	"	789	917	1,706	0	0	0	0.8	5.8	6.6	0.0	0.0	0.0
Dubai	"	97,650	99,125	196,775	140,352	139,827	280,179	3,407.3	5,935.4	9,342.7	4,087.6	6,748.5	10,836.1

TABLE 5: SCHEDULED INTERNATIONAL TRAFFIC BY CITY PAIRS: Year ended December

Foreign Port	Australian Port	Passengers						Freight (tonnes)					
		2001			2002			2001			2002		
		Inbound	Outbound	Total	Inbound	Outbound	Total	Inbound	Outbound	Total	Inbound	Outbound	Total
Dunedin	Australia	27,673	27,520	55,193	37,768	37,569	75,337	0.0	0.0	0.0	0.0	0.0	0.0
Frankfurt	"	62,852	70,198	133,050	64,035	69,743	133,778	4,156.9	1,865.7	6,022.6	3,605.8	2,065.7	5,671.5
Fukuoka	"	797	1,136	1,933	4,081	3,846	7,927	0.0	0.0	0.0	3.8	2.5	6.3
Guam	"	10,562	10,846	21,408	10,809	11,160	21,969	1.0	39.2	40.2	0.2	43.7	43.9
Guangzhou	"	40,229	39,041	79,270	48,305	46,115	94,420	1,869.6	284.0	2,153.6	2,085.5	632.0	2,717.5
Hamilton	"	54,103	53,095	107,198	57,925	57,797	115,722	0.0	0.0	0.0	0.0	0.0	0.0
Hanoi	"	4,718	4,565	9,283	4,058	4,181	8,239	41.8	174.3	216.1	4.6	51.8	56.4
Ho Chi Minh City	"	34,027	31,445	65,472	36,115	34,990	71,105	789.0	474.1	1,263.2	842.2	432.3	1,274.5
Hong Kong	"	587,158	560,666	1,147,824	605,775	580,631	1,186,406	27,371.5	42,843.0	70,214.5	29,317.0	42,621.4	71,938.4
Honiara	"	7,035	6,699	13,734	7,733	8,000	15,733	104.8	80.7	185.5	100.1	71.9	172.1
Honolulu	"	68,695	68,979	137,674	78,213	77,512	155,725	1,353.8	1,741.4	3,095.2	2,124.1	2,380.4	4,504.5
Jakarta	"	70,675	67,666	138,341	66,050	67,796	133,846	553.8	1,745.2	2,299.0	957.5	2,382.9	3,340.4
Johannesburg	"	108,860	95,585	204,445	112,344	102,118	214,462	2,071.0	2,240.5	4,311.6	2,343.2	2,463.5	4,806.7
Karachi	"	0	0	0	0	0	0	0.0	26.2	26.2	0.0	2.6	2.6
Kuala Lumpur	"	472,151	455,814	927,965	448,763	446,644	895,407	15,817.2	18,763.8	34,581.0	22,312.9	19,008.3	41,321.2
Kuching	"	4,089	4,477	8,566	4,272	4,428	8,700	0.1	487.5	487.6	0.9	348.1	349.0
Kupang	"	541	412	953	0	0	0	0.6	1.1	1.7	0.0	0.0	0.0
Lahore	"	0	0	0	0	0	0	0.0	3.3	3.3	0.0	16.1	16.1
London	"	313,274	323,164	636,438	304,591	310,640	615,231	9,355.9	2,726.8	12,082.6	9,587.3	2,277.5	11,864.8
Los Angeles	"	525,658	518,588	1,044,246	466,108	481,413	947,521	24,991.6	13,497.3	38,488.9	23,748.6	11,450.8	35,199.4
Louisville	"	0	0	0	0	0	0	4,300.2	0.0	4,300.2	4,860.7	0.0	4,860.7
Luxembourg	"	0	0	0	0	0	0	4,131.3	0.0	4,131.3	4,321.8	0.0	4,321.8
Manila	"	65,693	62,392	128,085	70,044	65,817	135,861	1,338.1	2,089.1	3,427.2	1,790.8	1,945.7	3,736.5
Mauritius	"	14,332	13,965	28,297	13,069	13,020	26,089	340.7	591.8	932.5	421.6	670.3	1,091.9
Nadi	"	128,768	130,530	259,298	166,768	165,688	332,456	3,726.1	3,651.7	7,377.8	4,337.9	3,893.8	8,231.7
Nagoya	"	97,401	93,772	191,173	86,032	89,310	175,342	1,384.7	1,811.7	3,196.5	718.8	1,750.2	2,469.0
Nauru	"	5,174	5,007	10,181	6,659	6,288	12,947	13.2	202.8	216.0	11.3	262.2	273.6
New Delhi	"	0	0	0	0	0	0	0.0	0.0	0.0	0.0	55.0	55.0
New York	"	31,510	33,723	65,233	21,275	20,504	41,779	7,258.7	669.2	7,927.9	4,267.0	799.7	5,066.7
Niue	"	0	0	0	12	0	12	0.0	0.0	0.0	0.0	0.0	0.0
Noumea	"	56,404	55,923	112,327	59,178	57,707	116,885	35.5	610.5	646.0	49.5	616.5	666.0
Osaka	"	222,568	210,855	433,423	207,709	196,308	404,017	3,226.6	7,801.7	11,028.2	2,648.0	5,136.4	7,784.4
Pago Pago	"	0	290	290	0	0	0	0.3	1.3	1.6	0.0	0.0	0.0
Palmerston	"	37,111	35,836	72,947	39,972	39,408	79,380	0.0	0.0	0.0	0.0	0.0	0.0
Papeete	"	768	2,283	3,051	0	3,146	3,146	3.8	10.1	13.9	0.0	3.5	3.5
Paris	"	28,518	32,802	61,320	29,340	31,226	60,566	897.8	174.7	1,072.5	642.1	97.3	739.4
Penang	"	0	0	0	0	0	0	0.0	181.3	181.3	561.5	197.2	758.7
Phuket	"	13,582	13,922	27,504	11,947	11,466	23,413	0.1	0.6	0.7	0.0	44.9	44.9
Port Moresby	"	74,696	75,496	150,192	66,902	65,729	132,631	1,526.4	2,858.9	4,385.3	1,581.3	2,587.8	4,169.1
Port Vila	"	33,534	33,182	66,716	29,308	29,226	58,534	163.1	377.2	540.3	100.1	321.0	421.1
Queenstown	"	8,967	9,477	18,444	12,714	13,550	26,264	0.0	0.0	0.0	0.0	0.0	0.0
Rome	"	44,546	44,721	89,267	39,269	38,164	77,433	1,640.8	119.6	1,760.4	1,106.3	34.7	1,141.1
San Francisco	"	86,165	87,816	173,981	95,820	101,528	197,348	458.6	3,203.3	3,661.9	1,357.7	4,070.2	5,427.9
Santiago	"	0	0	0	8,310	10,023	18,333	0.0	0.0	0.0	156.3	127.0	283.3

TABLE 5: SCHEDULED INTERNATIONAL TRAFFIC BY CITY PAIRS: Year ended December

Foreign Port	Australian Port	Passengers						Freight (tonnes)					
		2001			2002			2001			2002		
		Inbound	Outbound	Total	Inbound	Outbound	Total	Inbound	Outbound	Total	Inbound	Outbound	Total
Seoul	Australia	173,070	166,370	339,440	197,637	189,519	387,156	8,536.3	10,283.4	18,819.8	6,768.6	12,985.4	19,754.0
Shanghai	"	50,610	46,247	96,857	49,952	45,352	95,304	1,761.3	726.3	2,487.6	1,683.0	440.8	2,123.7
Sharjah	"	0	0	0	0	0	0	0.0	3.0	3.0	0.0	0.0	0.0
Singapore	"	1,456,404	1,410,051	2,866,455	1,487,274	1,421,054	2,908,328	54,492.0	99,090.4	153,582.3	59,068.7	91,981.1	151,049.8
Subic Bay	"	0	0	0	0	0	0	0.0	10,163.2	10,163.2	0.0	9,243.9	9,243.9
Suva	"	3,417	3,771	7,188	7,197	9,147	16,344	12.2	8.5	20.8	2.0	14.1	16.1
Taipei	"	93,473	88,724	182,197	84,839	83,975	168,814	3,064.3	3,723.7	6,788.0	3,188.2	3,653.7	6,841.9
Tokyo	"	467,092	479,928	947,020	526,443	530,902	1,057,345	7,152.1	18,872.0	26,024.1	8,479.1	18,081.7	26,560.8
Toledo	"	0	0	0	0	0	0	564.3	0.0	564.3	915.3	0.0	915.3
Tongatapu	"	2,846	2,061	4,907	1,864	2,243	4,107	33.0	18.4	51.5	108.1	10.1	118.2
Toronto	"	964	650	1,614	4,493	4,797	9,290	24.5	66.3	90.8	231.2	614.8	846.0
Vancouver	"	37,724	40,176	77,900	36,992	40,656	77,648	633.8	1,577.8	2,211.6	620.1	2,194.4	2,814.5
Vienna	"	57,127	65,928	123,055	76,902	76,979	153,881	301.7	0.0	301.7	0.0	0.0	0.0
Wellington	"	213,048	217,130	430,178	210,429	214,175	424,604	632.7	361.7	994.5	630.3	301.9	932.2
<b>Total</b>	<b>Australia</b>	<b>8,449,152</b>	<b>8,350,563</b>	<b>16,799,715</b>	<b>8,366,409</b>	<b>8,301,140</b>	<b>16,667,549</b>	<b>289,660.8</b>	<b>350,460.6</b>	<b>640,121.4</b>	<b>305,094.8</b>	<b>340,830.8</b>	<b>645,925.6</b>

Please refer to explanatory notes - paragraph 8 in particular

**TABLE 6 : INTERNATIONAL AIRLINES  
OWN STOPOVER REVENUE PASSENGERS,  
AUSTRALIAN CITY PAIRS**

**YEAR ENDED DECEMBER 2002**

<b>City Pair Route</b>	<b>Total Passengers</b>
Brisbane/Sydney	54,422
Melbourne/Sydney	43,330
Brisbane/Cairns	2,417
Adelaide/Melbourne	204
Cairns/Darwin	18
<b>TOTAL</b>	<b>100,391</b>

Notes:

1. Own Stopover Revenue Passengers : The aggregate of revenue passengers uplifted at one Australian airport and discharged (excluding transit passengers) at another Australian airport by the same foreign registered international airline on which they entered or left Australia.
2. City Pair Route represents the aggregation of passengers travelling in both directions.
3. This data are supplementary to the information previously supplied to the Department by most international airlines. Tables 1-5 cover only those passengers travelling to/from overseas airports. The inclusion of this additional data provides a more complete coverage of international airline activity.

**TABLE 7: TOTAL AIRCRAFT MOVEMENTS AT AUSTRALIAN INTERNATIONAL AIRPORTS BY AIRCRAFT TYPES: Year ended December 2002**

Airport	Aircraft Types																
	Passenger/Mixed												Freighters				All Types
	310	330	340	737	747	74M	757	767	777	M11	D10	F28	72F	74F	76F	M1F	
Adelaide		268			313			566	554					2			1,703
Brisbane	413	1,214		4,774	3,965	13		4,881	1,345	790		3		2			17,400
Cairns	42	435		206	1,337	8		3,791				1,210					7,029
Darwin		38		441	2		192	703									1,376
Gold Coast/Coolangatta				1,015				132									1,147
Melbourne		1,341	341	3,402	5,446			5,567	3,259	1,084				725		333	21,498
Newcastle				136													136
Norfolk Island				203													203
Perth		1,260	200	627	614		4	2,712	2,816		66			36			8,335
Sydney	253	1,648	1,616	7,001	19,942	37	9	9,558	3,784	610			443	823	52	682	46,458
Townsville								43									43
<b>Australia</b>	<b>708</b>	<b>6,204</b>	<b>2,157</b>	<b>17,805</b>	<b>31,619</b>	<b>58</b>	<b>205</b>	<b>27,953</b>	<b>11,758</b>	<b>2,484</b>	<b>66</b>	<b>1,213</b>	<b>443</b>	<b>1,588</b>	<b>52</b>	<b>1,015</b>	<b>105,328</b>

% of All Types	0.7	5.9	2.0	16.9	30.0	0.1	0.2	26.5	11.2	2.4	0.1	1.2	0.4	1.5	0.0	1.0	100.0
----------------	-----	-----	-----	------	------	-----	-----	------	------	-----	-----	-----	-----	-----	-----	-----	-------

**NOTE:**

These figures only cover scheduled operations of the airlines listed in this publication. Charter/ferry operations are not included.

These figures are available electronically for January 2001 onwards. Prior to this, aircraft type data is not readily accessible.

**Aircraft Types (all series)**

Airbus	310	330	340														
Boeing	737	74M	757	767	777	72F	74F	76F									
McDonnell Douglas	M11	M1F	D10														
Fokker	F28																