



Australian Government

Department of Transport and Regional Services

Bureau of Transport and Regional Economics

AIR TRANSPORT STATISTICS

INTERNATIONAL AIRLINES

2003

**INTERNATIONAL SCHEDULED
AIR TRANSPORT**

2003

**BUREAU OF
TRANSPORT AND REGIONAL ECONOMICS**

**DEPARTMENT OF
TRANSPORT AND REGIONAL SERVICES**

Issue Number 1/117

© COMMONWEALTH OF AUSTRALIA

CANBERRA

JUNE 2004

ISSN 1324-5074

This work is copyright and the data contained in this publication should not be reproduced or used in any form without acknowledgment.

INQUIRIES

Should you require additional information about the statistics contained in this publication, please contact Mrs Betty Kell in Canberra by telephone (02) 6274 7791 or by facsimile (02) 6274 7727

or write to:

AVSTATS, Bureau of Transport and Regional Economics
Department of Transport and Regional Services
GPO Box 594
Canberra ACT 2601
Electronic Mail: AVSTATS@dotars.gov.au

CONTENTS

Table		Page
..	Explanatory Notes	iv-vi
..	Data Status & Airlines Commencing/Withdrawing Services	vii
..	Overview	viii-xi
1	Scheduled International Air Traffic to and from Australia	1-3
2	Scheduled Operator Market Shares and Growth.....	4-7
3	Airline Passenger Capacity and Utilisation to and from Australia by Operator	8-10
4	Australian International Airport Scheduled Traffic and Aircraft Movements	11
5	Scheduled International Passengers and Freight by City Pairs	12-20
6	International Airlines Own Stopover Revenue Passengers, Australian City Pairs	21
7	Total Aircraft Movements at Australian International Airports by Aircraft Types	22

EXPLANATORY NOTES

INTRODUCTION

1. This publication continues the series of publications on a calendar year basis presenting statistical information on the scheduled operations of international airlines operating into/out of Australia.
2. The figures in this publication were obtained from reports submitted by scheduled international carriers and are the best available at the time of publication.

COVERAGE

3. These statistics show **uplift/discharge** data – These data detail, by direction, the revenue traffic between the actual points of uplift and discharge within each flight, aggregated for all flights within the period. It shows the movement of traffic between two airports not necessarily directly connected but within the same flight number. Typically, flight numbers change when an aircraft reaches its home country. This means that uplift/discharge data for the port in the operator's home country are likely to be overstated by traffic whose origin/destination point is beyond that port. For example, uplift/discharge traffic reported in this publication as Singapore could include traffic whose origin/destination is Europe.
4. These statistics cover **revenue** traffic carried by the operators of scheduled regular public international air transport services only and **do not include charter traffic**.
5. Some airlines (generally, dedicated freighter operators) operate scheduled services into Australia but operate non-scheduled services out of Australia and therefore outbound activity is not recorded in this data collection.

PRODUCTION AND INTERPRETATION

6. **Tables 1 and 2** show the country of the relevant uplift or discharge port served by that airline. For example, traffic uplifted/discharged between Sydney and Singapore by British Airways would be shown as Singapore traffic in Tables 1 and 2.
7. **Table 3** shows figures for the country of service (or route) for each airline and therefore may not equate to the data in Tables 1 and 2. For example, the British Airways UK service identified in Table 3 could include passengers uplifted or discharged in Singapore or Thailand as well as the UK; these passengers would be shown individually under those countries in Tables 1 and 2. The difference in treatment of data between Tables 1 and 2 and Table 3 is necessary in order to work out a meaningful Seat Utilisation figure for Table 3.

Figures shown in Table 3 may include **total traffic** into and out of Australia for airlines that fly through Australia (also necessary in order to work out a meaningful Seat Utilisation figure). Therefore, figures in Table 3 may not equate to figures in Tables 1 and 2. For example, passengers carried by Qantas Airways from New Zealand **via** Australia to the UK will be included in Table 3 but will not be included in Tables 1 or 2 as these passengers were not uplifted/discharged in Australia.

8. **Table 5** – shows uplift/discharge passenger and freight data for city pairs with same flight number international flight connections.
9. Where figures have been rounded, discrepancies may occur between sums of component items and totals, and in percentage changes which are derived from figures prior to rounding.
10. Published figures may be revised where figures missing at the time of publication are received or misreporting/miscalculation necessitates revisions.

DEFINITIONS

11. The following definitions have been used in this publication:
 - (a) Aircraft Movement: A landing or a take off.
 - (b) Freight: The aggregate of all revenue freight uplifted.
 - (c) Inbound: Inbound to Australia/Australian international airport.
 - (d) Mail: The aggregate of all mail uplifted.
 - (e) Outbound: Outbound from Australia/Australian international airport.
 - (f) Revenue Passengers: please refer to paragraph 12.

- (g) Seat Utilisation: The ratio of passengers carried to seats available, expressed as a percentage.
- (h) Seats Available: Generally based on standard aircraft configuration, the aggregate of seats available on all flights operated over a particular service.
- (i) Services: Scheduled flights over authorised routes which are listed according to the main ports involved.

COMPARABILITY OF DATA OVER TIME

12. Revenue Passengers:

- For July 2000 and onwards: All passengers paying any fare (frequent flyer redemption passengers are regarded as revenue passengers). In most cases, Revenue Passengers will now include all passengers excluding Free Of Charge passengers and positioning crew.
- To December 1999: The aggregate of all passengers paying 25% or more of the standard air fare (as defined by ICAO).
- January 2000 to June 2000: Transition period.

The Revenue Passenger definition change could result in approximately a three per cent increase in passenger numbers over a full period (month or year).

13. Country and City data – reporting of Uplift/Discharge data by Qantas Airways:

- Prior to January 2003: Uplift/Discharge within Qantas Airways' international network.
- For January 2003 and onwards: Uplift/Discharge within flight number – as per the standard definition.

For example, what was previously reported as Adelaide to London (no direct services between these two cities) will now be reported as either Adelaide to Singapore or Melbourne/Sydney to London.

This change has been introduced in order to make the data comparable across all airlines operating services to/from Australia.

The effect of this change – comparing data under the two methods of reporting:

- Country of Port data (Tables 1 & 2) – There will be a shift in traffic to countries such as Singapore which are used as hubs and away from countries such as France, Germany and Italy which previously received traffic channelled through hubs. The total volume of traffic is not affected.
- Country of Service data (Table 3) – no change, as the Uplift/Discharge definition is not applicable to classifying the country of service.
- Australian International Airports (Table 4) – there may be a shift of traffic to the major airports.
- City Pairs (Table 5) – There will be a shift in traffic to cities such as Singapore which are used as hubs and away from cities such as Paris, Frankfurt and Rome which previously received traffic channelled through hubs. The total volume of traffic is not affected.

Prior to the change, statistics reported for city pairs without “same flight number” international flight connections mainly reflected carriage on interconnecting international services by Qantas Airways. That traffic should have been interpreted as increasing the volume of traffic between the primary international ports rather than as an indicator of traffic volumes between ports without “same flight number” international flight connections. It should be noted however, that there was no double counting of traffic.

14. Country of Service classification by Qantas Airways:

- For July 2002 and onwards: based on the foreign country where same flight number services commence or cease – as per the standard definition. For example, Sydney-Denpasar-Singapore services would be classified as Country of Service = Singapore.
- Prior to July 2002: based on Qantas classification – this mainly affected Indonesia and Singapore Countries of Service. For example, Sydney-Denpasar-Singapore services were classified as Country of Service = Indonesia.

15. Airline data – Reporting of code share services:

Reporting of traffic split by airline code for code share arrangements was discontinued as of June 2000. For July 2000 and onwards, ALL traffic carried is reported under the operating airline regardless of code share arrangements.

Monthly airline market share figures for July 2001 onwards will be comparable with the same month in the previous year. However, these figures may not be comparable with monthly data prior to July 2000.

SYMBOLS AND OTHER USAGE

- nil or zero
- .. not applicable

INDEMNITY STATEMENT

The Bureau of Transport and Regional Economics has taken due care in preparing the information contained in this publication. However, noting that data have been provided by third parties, the Commonwealth gives no warranty as to the accuracy, reliability, fitness for purpose, or otherwise of the information.

NO/INCOMPLETE DATA FOR 2003 PROVIDED BY THE FOLLOWING AIRLINES PRIOR TO FINALISATION OF THIS PUBLICATION

Lauda Air	No outbound freight data for September 2000 onwards. No inbound freight data for April 2001 onwards.
Merpati Nusantara Airlines	Jakarta/Christmas Island services commenced in August 2001. No data has been received for these services.
Polar Air Cargo	No data received for March 2003 and onwards.
Royal Tongan Airlines	No data received for July 2003 and onwards.
Vietnam Airlines	No data received for inbound operations to Sydney for August 2002 onwards. Data for Outbound operations have been received for July 2003 onwards.

AIRLINES COMMENCING/WITHDRAWING SERVICES DURING 2003

- o The following airlines commenced operated services to/from Australia
 - Air Paradise International
 - Gulf Air

- o The following airlines ceased operated services to/from Australia
 - Gemini Air Cargo

YEAR ENDED DECEMBER 2003

Forty-nine international scheduled airlines operated services to/from Australia during 2003 (includes dedicated freight airlines but excludes airlines operating only via code share arrangements).

International scheduled passenger traffic in the year ended December 2003 decreased by 1.4% over the previous year to 16.446 million.

Chart I shows total passenger traffic for the years ended December 1993 to 2003. Over this period, 2002 and 2003 were the only years that recorded a decrease in traffic compared to the previous year.

Passenger traffic in 2002 was affected by the continuing effects of the terrorist attacks on the USA in September 2001 and the collapse of Ansett International (also in September 2001). Passenger traffic in 2003 was affected by the SARS crisis (April, May and June 2003 in particular) and the war in Iraq.

This can be seen in Chart II which shows total passenger traffic by month for 2001, 2002 and 2003. There has been a recovery in month on month passenger traffic since September 2003 with November 2003 recording the highest level of traffic for a November month followed by December 2003 which recorded the highest level of traffic for a December month.

This recovery has continued into 2004 with January 2004 recording the highest level of traffic ever and February 2004 recording the highest level of traffic for a February month (note 29 days).

Chart III shows the passenger market shares for the top ten airlines for 2003. The top ten airlines accounted for 78.9% of the total market. Freedom Air and Emirates have made it into the top ten airline list in 2003 replacing United Airlines and Garuda Indonesia when compared to 2002.

The Australian airline market share has increased very slightly from 34.0% in 2002 to 34.1% in 2003. Qantas Airways' market share has dropped from 33.6% to 31.4% while its wholly owned subsidiary Australian Airlines which commenced operations in October 2002 had 2.6% of the total for the 2003 year.

Table IV provides a breakdown of passenger traffic through Australian international airports for 2001, 2002 and 2003. Brisbane and Gold Coast/Coolangatta were the only airports in 2003 to record an increase in traffic over 2002.

International scheduled freight traffic in 2003 decreased by 5.4% compared to 2002 to 611,168 tonnes. Inbound freight increased by 2.8% while outbound freight traffic decreased by 12.7%.

Freight carried on dedicated freight aircraft accounted for 26.1% of inbound freight to Australia, 14.1% of outbound freight from Australia and 20.2% of total freight. Note that some freighters operate as charters out of Australia or do not pick up freight in Australia – this accounts for the difference in inbound and outbound percentages.

**CHART I: TOTAL INTERNATIONAL PASSENGERS CARRIED
YEARS ENDED DECEMBER 1993 TO 2003**

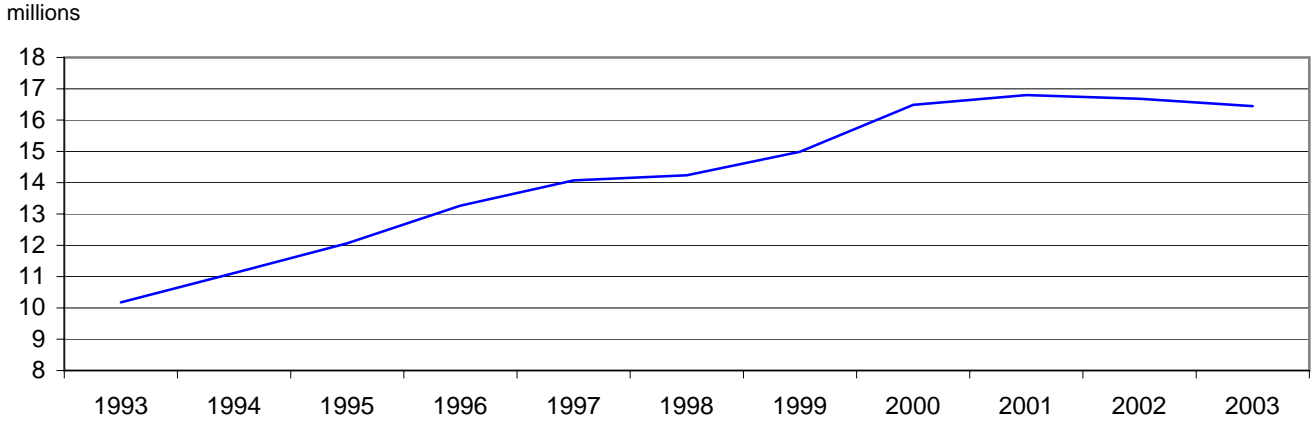
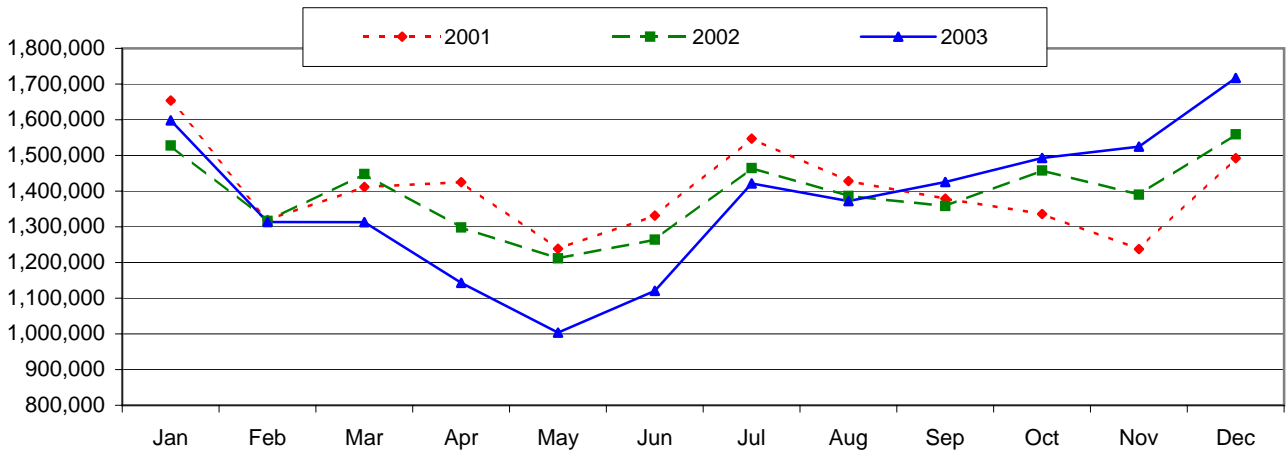
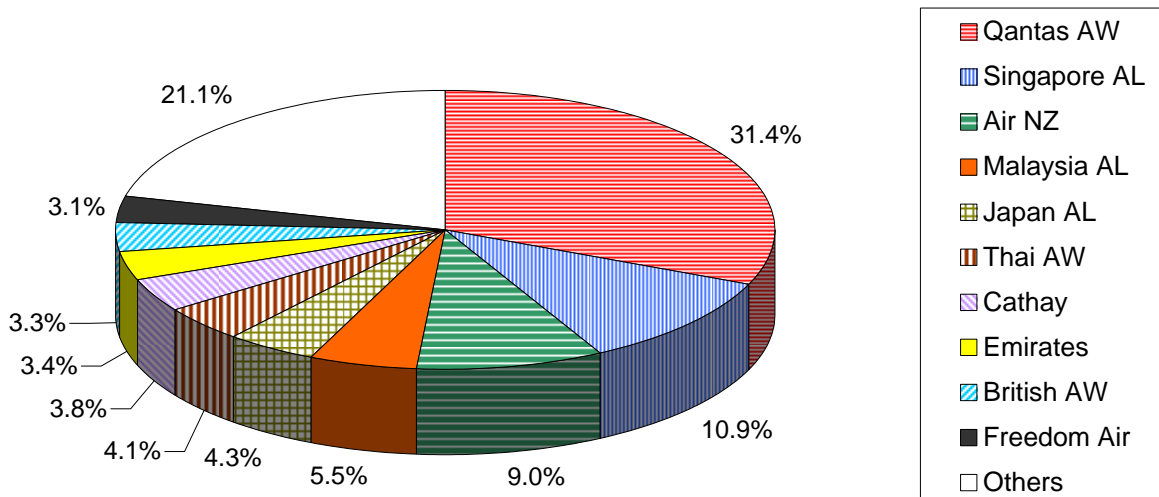


CHART II: TOTAL INTERNATIONAL PASSENGERS CARRIED BY MONTH



**CHART III: INTERNATIONAL PASSENGERS BY MAJOR AIRLINES
YEAR ENDED DECEMBER 2003**



**TABLE I: INTERNATIONAL PASSENGERS BY UPLIFT/DISCHARGE CITY PAIRS
YEARS ENDED DECEMBER 2001, 2002 AND 2003**

Foreign Port	Australian Port	Year ended December 2001	Year ended December 2002	Year ended December 2003	% of Total	% Change 2003 over 2002
Auckland	Sydney	1,012,766	973,117	1,137,536	6.9	16.9
Singapore	Sydney	942,288	947,649	917,367	5.6	-3.2
Singapore	Perth	659,996	683,785	665,063	4.0	-2.7
Singapore	Melbourne	644,591	661,916	625,305	3.8	-5.5
Los Angeles	Sydney	720,778	667,350	612,352	3.7	-8.2
Singapore	Brisbane	409,520	450,870	552,094	3.4	22.5
Auckland	Melbourne	522,403	503,070	536,031	3.3	6.6
Auckland	Brisbane	489,663	443,267	530,866	3.2	19.8
Hong Kong	Sydney	607,608	587,989	504,054	3.1	-14.3
Christchurch	Sydney	405,669	391,024	444,022	2.7	13.6
Top 10 City Pairs		6,415,282	6,310,037	6,524,690	39.7	3.4
Other City Pairs		10,384,433	10,372,336	9,920,818	60.3	-4.4
ALL CITY PAIRS		16,799,715	16,682,373	16,445,508	100.0	-1.4

**TABLE II: INTERNATIONAL FREIGHT (TONNES) BY UPLIFT/DISCHARGE CITY PAIRS
YEARS ENDED DECEMBER 2001, 2002 AND 2003**

Foreign Port	Australian Port	Year ended December 2001	Year ended December 2002	Year ended December 2003	% of Total	% Change 2003 over 2002
Auckland	Sydney	49,142	47,930	51,466	8.4	7.4
Singapore	Melbourne	48,457	51,012	51,210	8.4	0.4
Singapore	Sydney	48,164	48,540	43,279	7.1	-10.8
Auckland	Melbourne	30,355	32,961	32,668	5.3	-0.9
Hong Kong	Sydney	30,658	30,170	29,970	4.9	-0.7
Singapore	Perth	30,073	25,436	26,129	4.3	2.7
Hong Kong	Melbourne	23,632	23,929	23,817	3.9	-0.5
Los Angeles	Sydney	27,672	27,753	22,218	3.6	-19.9
Kuala Lumpur	Melbourne	12,943	21,121	19,976	3.3	-5.4
Singapore	Brisbane	18,293	18,734	18,633	3.0	-0.5
Top 10 City Pairs		319,388	327,586	319,365	52.3	-2.5
Other City Pairs		320,734	318,340	291,802	47.7	-8.3
ALL CITY PAIRS		640,121	645,926	611,168	100.0	-5.4

**TABLE III: INTERNATIONAL PASSENGERS BY UPLIFT/DISCHARGE COUNTRY
YEARS ENDED DECEMBER 2001, 2002 AND 2003**

Country	Year ended December 2001	Year ended December 2002	Year ended December 2003	% of Total	% Change 2003 over 2002
New Zealand	3,591,785	3,552,488	3,870,190	23.5	8.9
Singapore	2,866,455	2,910,771	2,953,619	18.0	1.5
Japan	1,573,549	1,646,635	1,544,807	9.4	-6.2
USA	1,442,551	1,360,925	1,306,782	7.9	-4.0
Hong Kong	1,147,824	1,187,924	1,006,528	6.1	-15.3
Malaysia	936,531	904,107	908,852	5.5	0.5
Thailand	834,760	817,576	775,709	4.7	-5.1
UK	636,438	616,716	585,587	3.6	-5.0
Indonesia	806,697	651,358	516,913	3.1	-20.6
United Arab Emirates	203,649	280,179	429,335	2.6	53.2
Top 10 Countries	14,040,239	13,928,679	13,898,322	84.5	-0.2
Other Countries	2,759,476	2,753,694	2,547,186	15.5	-7.5
ALL COUNTRIES	16,799,715	16,682,373	16,445,508	100.0	-1.4

**TABLE IV: INTERNATIONAL PASSENGER TRAFFIC
THROUGH AUSTRALIAN INTERNATIONAL AIRPORTS
YEARS ENDED DECEMBER 2001, 2002 AND 2003**

Airport	Year ended December 2001	Year ended December 2002	Year ended December 2003	% of Total	% Change 2003 over 2002
Sydney	8,228,973	8,006,775	7,924,618	48.2	-1.0
Melbourne	3,315,572	3,313,751	3,199,534	19.5	-3.4
Brisbane	2,547,720	2,493,082	2,549,444	15.5	2.3
Perth	1,587,379	1,636,422	1,586,622	9.6	-3.0
Cairns	665,118	766,256	746,561	4.5	-2.6
Adelaide	241,844	224,351	206,849	1.3	-7.8
Gold Coast/Coolangatta	41,581	113,127	138,938	0.8	22.8
Darwin	151,623	103,211	77,690	0.5	-24.7
Norfolk Island	16,367	15,891	15,252	0.1	-4.0
Newcastle (a)	1,054	9,507
Broome (b)	2,337
Townsville (c)	147
ALL AIRPORTS	16,799,715	16,682,373	16,445,508	100.0	-1.4

(a) International operations commenced December 2001 and ceased September 2002.

(b) International operations recommenced April 2000 and ceased again in July 2001.

(c) International operations recommenced October 2001 and ceased again in March 2002.

TABLE V: SUMMARY STATISTICS

	Year ended December 2001	Year ended December 2002	Year ended December 2003	Growth compared to 2002 2001	
Passengers Carried	16,799,715	16,682,373	16,445,508	-1.4	-2.1
Freight (tonnes)	640,121	645,926	611,168	-5.4	-4.5
Mail (tonnes)	28,766	28,770	28,314	-1.6	-1.6
Available Seats	24,157,585	22,758,915	23,748,105	4.3	-1.7
Flights	92,147	87,421	92,168	5.4	0.0
Aircraft Movements	109,712	105,285	108,512	3.1	-1.1
Seat Utilisation (%)	70.9	75.6	70.8		

Please refer to explanatory notes - paragraphs 3 & 13 in particular.

TABLE 1: SCHEDULED INTERNATIONAL AIR TRAFFIC TO AND FROM AUSTRALIA: Year ended December 2003

Scheduled Operator	Country to/from	Inbound			Outbound		
		Passengers	Freight (tonnes)	Mail (tonnes)	Passengers	Freight (tonnes)	Mail (tonnes)
Aerolineas Argentinas	Argentina	14,470	80.8	4.6	14,763	156.4	-
"	New Zealand	4,648	907.0	-	6,510	704.7	-
"	ALL SERVICES	19,118	987.8	4.6	21,273	861.1	-
Air Caledonie	New Caledonia	37,033	26.8	6.3	37,271	592.4	15.4
Air Canada	Canada	43,968	324.4	37.1	49,114	309.7	0.0
"	USA	27,912	1,894.8	212.4	23,912	2,512.0	4.4
"	ALL SERVICES	71,880	2,219.2	249.5	73,026	2,821.7	4.5
Air China	China	60,302	869.4	18.3	58,204	656.2	-
Air Mauritius	Mauritius	14,704	341.6	1.6	14,720	483.6	0.0
Air Nauru	Nauru	5,652	35.8	1.7	5,311	255.8	7.3
"	Solomon Islands	19	-	-	6	-	-
"	ALL SERVICES	5,671	35.8	1.7	5,317	255.8	7.3
Air New Zealand	New Zealand	710,862	17,572.5	1,809.6	727,168	17,338.8	91.2
"	USA	18,809	240.5	17.4	19,522	493.7	-
"	ALL SERVICES	729,671	17,812.9	1,827.0	746,690	17,832.5	91.2
Air Niugini	Papua New Guinea	62,967	1,190.3	23.3	64,164	2,093.9	254.2
Air Pacific	Fiji	189,592	3,209.3	86.3	189,017	4,000.9	377.3
Air Paradise International (a)	Indonesia	44,596	215.0	-	48,048	142.8	-
Air Vanuatu	Vanuatu	28,493	102.2	110.3	28,331	309.4	48.4
Asian Express Airlines	New Zealand	..	3,559.4	-	..	4,278.2	-
Asiana Airlines	Korea	72,311	2,944.5	100.4	69,105	3,254.2	-
Australian Airlines	Hong Kong	20,152	546.2	-	16,406	1,686.8	-
"	Indonesia	17,785	80.6	-	18,414	12.2	0.0
"	Japan	144,140	1,477.7	13.5	143,415	3,275.4	4.7
"	Malaysia	4,474	189.8	-	5,147	70.9	-
"	Singapore	25,770	863.4	2.3	27,733	418.8	13.1
"	Taiwan	6,230	289.2	-	6,124	86.7	18.0
"	ALL SERVICES	218,551	3,446.9	15.8	217,239	5,550.9	35.8
British Airways	Singapore	74,037	2,020.5	5.1	67,790	5,523.6	-
"	Thailand	61,253	1,628.6	0.0	65,381	1,147.2	-
"	UK	147,367	4,604.4	65.4	131,419	1,412.6	4.3
"	ALL SERVICES	282,657	8,253.5	70.6	264,590	8,083.4	4.3
Cargolux Airlines Intl	Luxembourg	..	4,106.4	-
"	Malaysia	..	518.5	-
"	New Zealand	5,163.0	-
"	ALL SERVICES	-	4,624.9	-	-	5,163.0	-
Cathay Pacific Airways	Hong Kong	321,929	25,849.2	246.6	305,009	27,853.4	86.1
China Airlines	Taiwan	42,882	1,358.6	109.0	44,327	1,052.8	-
China Eastern Airlines	China	35,334	2,250.5	12.1	34,358	300.3	0.9
China Southern Airlines	China	29,538	1,782.3	22.6	26,885	318.3	0.0
Continental Micronesia	Guam	12,363	0.3	0.2	12,830	37.5	-
Emirates	New Zealand	42,897	3,496.4	-	42,780	2,616.5	0.1
"	Singapore	23,587	2,971.1	134.8	18,362	4,807.1	4.4
"	United Arab Emirates	217,658	5,660.5	123.0	211,677	8,449.8	8.2
"	ALL SERVICES	284,142	12,128.0	257.9	272,819	15,873.4	12.7
Eva Air	Taiwan	38,688	1,647.2	44.7	36,833	2,000.3	-
Federal Express Corporation	Philippines	6,765.7	-
"	USA	..	13,540.3	71.6
"	ALL SERVICES	-	13,540.3	71.6	-	6,765.7	-
Freedom Air International	New Zealand	255,830	-	-	255,800	-	-
Garuda Indonesia	Indonesia	117,544	3,250.7	6.6	117,943	3,343.4	0.2
"	New Zealand	9,710	1,356.8	-	9,317	1,032.0	-
"	ALL SERVICES	127,254	4,607.5	6.6	127,260	4,375.4	0.2
Gemini Air Cargo (b) (c)	USA	..	479.5	3.7	..	18.4	0.6
Gulf Air (d)	Bahrain	2,969	79.0	0.2	4,923	80.5	19.8
"	Singapore	3,013	49.4	0.1	2,767	72.5	-
"	ALL SERVICES	5,982	128.4	0.3	7,690	153.0	19.8
Japan Airlines	Japan	354,074	6,307.2	1,111.9	352,976	10,234.1	56.3
Korean Air	Korea	129,266	4,104.1	572.3	121,031	6,885.2	7.0
Lan Chile	Chile	18,866	859.9	-	19,214	284.4	25.5
"	New Zealand	7,433	310.8	6.8	8,985	311.1	23.1
"	ALL SERVICES	26,299	1,170.7	6.8	28,199	595.6	48.7
Lauda Air (e)	Austria	78,404	-	-	83,051	-	-
"	Malaysia	11,818	-	-	12,277	-	-

TABLE 1: SCHEDULED INTERNATIONAL AIR TRAFFIC TO AND FROM AUSTRALIA: Year ended December 2003

Scheduled Operator	Country to/from	Inbound			Outbound		
		Passengers	Freight (tonnes)	Mail (tonnes)	Passengers	Freight (tonnes)	Mail (tonnes)
Lauda Air	ALL SERVICES	90,222	-	-	95,328	-	-
Lufthansa German Airlines	Germany	..	278.3	-	..	1,102.8	6.0
"	India	1.4	-
"	Malaysia	520.7	-
"	New Zealand	..	3,009.6	7.3
"	Pakistan	27.7	-
"	Thailand	3.8	-
"	United Arab Emirates	17.1	-
"	USA	..	4,882.0	-
"	ALL SERVICES	-	8,169.9	7.3	-	1,673.5	6.0
Malaysia Airlines	Malaysia	450,282	29,202.6	54.6	424,854	15,772.5	1.7
"	New Zealand	13,787	1,007.3	-	13,317	407.8	-
"	ALL SERVICES	464,069	30,209.9	54.6	438,171	16,180.3	1.7
Martinair Holland	China	146.2	-
"	Hong Kong	853.5	-
"	Ireland	25.7	-
"	Japan	105.0	-
"	Netherlands	..	8,788.4	-	..	1,329.8	-
"	Taiwan	32.6	-
"	Thailand	176.7	-
"	UK	7.5	-
"	United Arab Emirates	153.2	-
"	ALL SERVICES	-	8,788.4	-	-	2,830.2	-
Merpati Nusantara Airlines (f)	Indonesia	..	-	-	..	-	-
Philippine Airlines	Philippines	32,432	1,203.5	24.5	31,155	847.1	0.6
Polar Air Cargo (g)	USA	..	994.4	-
Polynesian Airlines	New Zealand	3,478	0.1	0.1	2,552	8.2	3.5
"	Niue	96	0.9	0.4
"	Tahiti	380	1.2	3.9
"	Tonga	585	10.0	0.2	852	11.2	5.0
"	Western Samoa	5,114	43.5	1.2	6,048	32.7	6.0
"	ALL SERVICES	9,273	54.5	2.0	9,832	53.2	18.4
Qantas Airways	Fiji	715	9.0	-	402	6.1	0.5
"	France	9,632	419.9	14.6	6,977	28.5	10.7
"	Germany	42,910	1,894.1	432.1	38,452	199.4	520.5
"	Hong Kong	176,507	6,988.2	226.2	166,525	5,071.8	763.7
"	Indonesia	72,718	514.6	12.3	79,865	1,633.8	58.5
"	Italy	8,213	542.6	0.0	5,783	18.1	7.6
"	Japan	273,638	4,343.1	447.5	276,564	7,609.2	1,879.0
"	New Caledonia	20,842	13.3	2.8	19,459	171.0	26.6
"	New Zealand	792,454	21,453.4	84.1	825,052	22,426.4	2,306.2
"	Philippines	36,950	1,000.0	31.8	36,909	841.6	34.6
"	Singapore	476,099	12,509.8	1,028.7	437,469	21,584.6	2,380.0
"	South Africa	68,116	1,286.8	38.4	61,078	336.2	113.7
"	Thailand	52,145	672.5	105.0	47,142	904.6	239.4
"	UK	143,894	4,798.9	1,543.4	162,907	653.4	2,231.6
"	USA	412,249	7,540.8	1,275.8	414,262	4,778.5	2,270.7
"	ALL SERVICES	2,587,082	63,987.1	5,242.6	2,578,846	66,263.1	12,843.3
Royal Brunei Airlines	Brunei	47,133	1,156.2	1.1	50,675	2,546.6	-
"	New Zealand	1,918	67.8	-	1,919	115.7	-
"	ALL SERVICES	49,051	1,223.9	1.1	52,594	2,662.4	-
Royal Tongan Airlines (h)	New Zealand	645	0.3	-	571	-	-
"	Tonga	1,479	16.3	-	1,449	-	-
"	ALL SERVICES	2,124	16.6	-	2,020	-	-
Singapore Airlines	Indonesia	2.9	-
"	New Zealand	..	29.3	-	..	3,032.1	-
"	Singapore	910,551	50,418.3	1,119.8	886,441	47,458.5	58.2
"	ALL SERVICES	910,551	50,447.6	1,119.8	886,441	50,493.4	58.2
Solomon Airlines	Solomon Islands	8,983	97.5	-	9,063	72.9	-
South African Airways	South Africa	49,805	1,517.0	34.1	42,951	1,878.2	17.5
Thai Airways International	New Zealand	69,868	2,764.5	0.7	62,689	3,807.2	0.3
"	Thailand	273,618	12,138.3	1,297.7	276,170	11,074.6	5.3
"	ALL SERVICES	343,486	14,902.8	1,298.4	338,859	14,881.8	5.7
United Airlines	USA	192,732	1,569.3	1,382.5	197,384	6,248.9	143.3

TABLE 1: SCHEDULED INTERNATIONAL AIR TRAFFIC TO AND FROM AUSTRALIA: Year ended December 2003

Scheduled Operator	Country to/from	Inbound			Outbound		
		Passengers	Freight (tonnes)	Mail (tonnes)	Passengers	Freight (tonnes)	Mail (tonnes)
United Parcel Service	Hong Kong	55.1	-
"	Philippines	202.7	-
"	Taiwan	29.9	-
"	USA	..	4,685.5	-
"	ALL SERVICES	-	4,685.5	-	-	287.6	-
Vietnam Airlines (i)	Vietnam	22,193	557.5	-	36,722	332.6	-
TOTAL		8,263,130	313,618.9	14,148.8	8,182,378	297,548.8	14,165.4

Please refer to explanatory notes - paragraphs 3, 6 and 13 in particular.

(a) Service commenced February 2003.

(b) Traffic carried on behalf of Qantas Airways.

(c) Service commenced March 2002 and ceased March 2003.

(d) Service recommenced November 2003.

(e) No outbound freight data for September 2000 onwards. No inbound freight data for April 2001 onwards.

(f) Jakarta/Christmas Island services commenced in August 2001. No data has been received for these services.

(g) Data not received for March 2003 and onwards.

(h) No data received for July 2003 and onwards.

(i) No data received for inbound operations to Sydney for August 2002 onwards. Data for outbound operations have been received for July 2003 onwards.

TABLE 2: SCHEDULED OPERATOR MARKET SHARES AND GROWTH: Year ended December

Scheduled Operators	Country to/from	Total Passengers				Total Freight (tonnes)				Total Mail (tonnes)			
		2002	2003	(%) of TOTAL	(%) Change	2002	2003	(%) of TOTAL	(%) Change	2002	2003	(%) of TOTAL	(%) Change
Aerolineas Argentinas	Argentina	18,918	29,233	0.2	54.5	208.8	237.2	0.0	13.6	7.6	4.6	0.0	-39.1
"	New Zealand	16,488	11,158	0.1	-32.3	1,296.6	1,611.8	0.3	24.3	-	-	-	..
"	ALL SERVICES	35,406	40,391	0.2	14.1	1,505.4	1,848.9	0.3	22.8	7.6	4.6	0.0	-39.1
Air Caledonie	New Caledonia	74,449	74,304	0.5	-0.2	477.9	619.2	0.1	29.6	26.1	21.7	0.1	-17.0
Air Canada	Canada	86,938	93,082	0.6	7.1	3,660.6	634.1	0.1	-82.7	159.2	37.1	0.1	-76.7
"	USA	67,043	51,824	0.3	-22.7	3,688.3	4,406.8	0.7	19.5	167.2	216.9	0.8	29.7
"	ALL SERVICES	153,981	144,906	0.9	-5.9	7,348.9	5,040.9	0.8	-31.4	326.4	254.0	0.9	-22.2
Air China	China	125,760	118,506	0.7	-5.8	1,531.8	1,525.6	0.2	-0.4	38.2	18.3	0.1	-51.9
Air Mauritius	Mauritius	26,089	29,424	0.2	12.8	1,091.9	825.2	0.1	-24.4	0.6	1.6	0.0	188.5
Air Nauru	Nauru	12,947	10,963	0.1	-15.3	273.6	291.6	0.0	6.6	11.6	9.0	0.0	-21.9
"	Solomon Islands	..	25	0.0	-	-	-	-	..
"	ALL SERVICES	12,947	10,988	0.1	-15.1	273.6	291.6	0.0	6.6	11.6	9.0	0.0	-21.9
Air New Zealand	New Zealand	1,426,119	1,438,030	8.7	0.8	40,940.8	34,911.2	5.7	-14.7	1,668.1	1,900.8	6.7	13.9
"	USA	104,384	38,331	0.2	-63.3	3,107.1	734.2	0.1	-76.4	71.5	17.4	0.1	-75.7
"	ALL SERVICES	1,530,503	1,476,361	9.0	-3.5	44,047.9	35,645.4	5.8	-19.1	1,739.6	1,918.2	6.8	10.3
Air Niugini	Papua New Guinea	106,429	127,131	0.8	19.5	3,421.7	3,284.2	0.5	-4.0	168.6	277.5	1.0	64.5
Air Pacific	Fiji	348,116	378,609	2.3	8.8	8,232.9	7,210.2	1.2	-12.4	184.6	463.6	1.6	151.1
Air Paradise International (a)	Indonesia	..	92,644	0.6	357.8	0.1	-	-	..
Air Vanuatu	Vanuatu	58,534	56,824	0.3	-2.9	421.1	411.6	0.1	-2.3	74.4	158.8	0.6	113.4
Asian Express Airlines	New Zealand	7,856.5	7,837.6	1.3	-0.2	-	-	-	..
Asiana Airlines	Korea	152,278	141,416	0.9	-7.1	6,934.1	6,198.7	1.0	-10.6	119.0	100.4	0.4	-15.6
Australian Airlines (b)	Hong Kong	5,536	36,558	0.2	560.4	360.9	2,233.0	0.4	518.7	0.1	-	-	-100.0
"	Indonesia	..	36,199	0.2	92.9	0.0	0.0	0.0	..
"	Japan	59,363	287,555	1.7	384.4	813.3	4,753.1	0.8	484.5	29.9	18.2	0.1	-39.2
"	Malaysia	..	9,621	0.1	260.7	0.0	-	-	..
"	Singapore	7,119	53,503	0.3	651.6	212.1	1,282.2	0.2	504.6	1.1	15.4	0.1	1304.7
"	Taiwan	4,196	12,354	0.1	194.4	106.4	375.9	0.1	253.3	4.5	18.0	0.1	299.2
"	ALL SERVICES	76,214	435,790	2.6	471.8	1,492.7	8,997.9	1.5	502.8	35.6	51.6	0.2	44.9
British Airways	Singapore	162,716	141,827	0.9	-12.8	10,725.0	7,544.1	1.2	-29.7	9.6	5.1	0.0	-46.8
"	Thailand	141,026	126,634	0.8	-10.2	2,531.9	2,775.8	0.5	9.6	0.8	0.0	0.0	-95.3
"	UK	256,275	278,786	1.7	8.8	6,748.0	6,017.0	1.0	-10.8	303.1	69.8	0.2	-77.0
"	ALL SERVICES	560,017	547,247	3.3	-2.3	20,004.9	16,336.9	2.7	-18.3	313.6	74.9	0.3	-76.1
Cargolux Airlines Intl	Luxembourg	4,321.8	4,106.4	0.7	-5.0	-	-	-	..
"	Malaysia	640.2	518.5	0.1	-19.0	-	-	-	..
"	New Zealand	5,037.1	5,163.0	0.8	2.5	-	-	-	..
"	ALL SERVICES	-	-	-	..	9,999.1	9,787.9	1.6	-2.1	-	-	-	..
Cathay Pacific Airways	Hong Kong	686,535	626,938	3.8	-8.7	52,522.5	53,702.6	8.8	2.2	171.7	332.7	1.2	93.7
China Airlines	Taiwan	64,682	87,209	0.5	34.8	2,397.6	2,411.4	0.4	0.6	110.7	109.0	0.4	-1.6
China Eastern Airlines	China	67,689	69,692	0.4	3.0	2,043.6	2,550.8	0.4	24.8	10.8	13.0	0.0	20.0
China Southern Airlines	China	72,151	56,423	0.3	-21.8	2,341.1	2,100.6	0.3	-10.3	38.4	22.6	0.1	-41.1
Continental Micronesia	Guam	21,969	25,193	0.2	14.7	43.9	37.8	0.0	-14.0	0.5	0.2	0.0	-56.2
EgyptAir (c)	Egypt	16,263	-100.0	405.4	-100.0	27.8	-100.0

TABLE 2: SCHEDULED OPERATOR MARKET SHARES AND GROWTH: Year ended December

Scheduled Operators	Country to/from	Total Passengers				Total Freight (tonnes)				Total Mail (tonnes)			
		2002	2003	(%) of TOTAL	(%) Change	2002	2003	(%) of TOTAL	(%) Change	2002	2003	(%) of TOTAL	(%) Change
EgyptAir	Singapore	4,794	-100.0	625.2	-100.0	33.4	-100.0
"	ALL SERVICES	21,057	-	-	-100.0	1,030.6	-	-	-100.0	61.2	-	-	-100.0
Emirates	New Zealand	..	85,677	0.5	6,112.9	1.0	0.1	0.0	..
"	Singapore	60,134	41,949	0.3	-30.2	7,486.3	7,778.2	1.3	3.9	71.1	139.2	0.5	95.8
"	United Arab Emirates	280,179	429,335	2.6	53.2	10,833.2	14,110.3	2.3	30.2	73.4	131.2	0.5	78.8
"	ALL SERVICES	340,313	556,961	3.4	63.7	18,319.6	28,001.4	4.6	52.8	144.5	270.5	1.0	87.3
Eva Air	Taiwan	65,729	75,521	0.5	14.9	3,340.8	3,647.5	0.6	9.2	38.0	44.7	0.2	17.7
Federal Express Corporation	Philippines	9,243.9	6,765.7	1.1	-26.8	-	-	-	..
"	USA	13,103.4	13,540.3	2.2	3.3	167.2	71.6	0.3	-57.2
"	ALL SERVICES	-	-	-	..	22,347.2	20,306.0	3.3	-9.1	167.2	71.6	0.3	-57.2
Freedom Air International	New Zealand	377,046	511,630	3.1	35.7	-	-	-	..	-	-	-	..
Garuda Indonesia	Indonesia	368,808	235,487	1.4	-36.1	10,608.4	6,594.1	1.1	-37.8	3.3	6.8	0.0	105.4
"	New Zealand	32,569	19,027	0.1	-41.6	1,905.3	2,388.8	0.4	25.4	-	-	-	..
"	ALL SERVICES	401,377	254,514	1.5	-36.6	12,513.7	8,982.9	1.5	-28.2	3.3	6.8	0.0	105.4
Gemini Air Cargo (d) (e)	Fiji	0.4	-100.0	-
"	USA	4,757.5	498.0	0.1	-89.5	130.6	4.2	0.0	-96.8
"	ALL SERVICES	-	-	-	..	4,758.0	498.0	0.1	-89.5	130.6	4.2	0.0	-96.8
Gulf Air (f)	Bahrain	11,164	7,892	0.0	-29.3	664.0	159.5	0.0	-76.0	5.7	20.0	0.1	249.4
"	Singapore	5,015	5,780	0.0	15.3	276.5	122.0	0.0	-55.9	12.7	0.1	0.0	-99.4
"	ALL SERVICES	16,179	13,672	0.1	-15.5	940.5	281.5	0.0	-70.1	18.4	20.0	0.1	8.6
Japan Airlines	Japan	777,962	707,050	4.3	-9.1	18,861.4	16,541.2	2.7	-12.3	1,031.3	1,168.2	4.1	13.3
Korean Air	Korea	234,878	250,297	1.5	6.6	12,819.9	10,989.4	1.8	-14.3	572.9	579.3	2.0	1.1
Lan Chile (g)	Chile	18,333	38,080	0.2	107.7	283.3	1,144.3	0.2	303.9	3.8	25.5	0.1	566.4
"	New Zealand	8,448	16,418	0.1	94.3	624.8	621.9	0.1	-0.5	27.6	29.9	0.1	8.7
"	ALL SERVICES	26,781	54,498	0.3	103.5	908.1	1,766.2	0.3	94.5	31.4	55.5	0.2	76.7
Lauda Air (h)	Austria	153,881	161,455	1.0	4.9	-	-	-	..	-	-	-	..
"	Malaysia	21,628	24,095	0.1	11.4	-	-	-	..	-	-	-	..
"	ALL SERVICES	175,509	185,550	1.1	5.7	-	-	-	..	-	-	-	..
Lufthansa German Airlines	Germany	1,458.4	1,381.1	0.2	-5.3	1.8	6.0	0.0	242.4
"	India	55.0	1.4	0.0	-97.4	-	-	-	..
"	Malaysia	1,310.9	520.7	0.1	-60.3	-	-	-	..
"	New Zealand	3,160.5	3,009.6	0.5	-4.8	1.4	7.3	0.0	434.8
"	Pakistan	18.7	27.7	0.0	48.1	-	-	-	..
"	Thailand	3.8	0.0	-	-	..
"	United Arab Emirates	17.1	0.0	-	-	..
"	USA	5,116.5	4,882.0	0.8	-4.6	-	-	-	..
"	ALL SERVICES	-	-	-	..	11,120.0	9,843.4	1.6	-11.5	3.1	13.4	0.0	326.4
Malaysia Airlines	Malaysia	882,479	875,136	5.3	-0.8	40,477.8	44,975.1	7.4	11.1	48.0	56.3	0.2	17.3
"	New Zealand	19,332	27,104	0.2	40.2	1,046.7	1,415.1	0.2	35.2	-	-	-	..
"	ALL SERVICES	901,811	902,240	5.5	0.0	41,524.5	46,390.2	7.6	11.7	48.0	56.3	0.2	17.3
Martinair Holland	China	146.2	0.0	-	-	..
"	Hong Kong	307.6	853.5	0.1	177.5	-	-	-	..

TABLE 2: SCHEDULED OPERATOR MARKET SHARES AND GROWTH: Year ended December

Scheduled Operators	Country to/from	Total Passengers				Total Freight (tonnes)				Total Mail (tonnes)			
		2002	2003	(%) of TOTAL	(%) Change	2002	2003	(%) of TOTAL	(%) Change	2002	2003	(%) of TOTAL	(%) Change
Martinair Holland	Ireland	25.7	0.0	-	-	..
"	Japan	105.0	0.0	-	-	..
"	Netherlands	12,982.5	10,118.2	1.7	-22.1	-	-	-	..
"	Taiwan	32.6	0.0	-	-	..
"	Thailand	26.6	176.7	0.0	564.9	-	-	-	..
"	UK	7.5	0.0	-	-	..
"	United Arab Emirates	2.9	153.2	0.0	5277.1	-	-	-	..
"	ALL SERVICES	-	-	-	..	13,319.5	11,618.7	1.9	-12.8	-	-	-	..
Merpati Nusantara Airlines (i)	Indonesia	-	-	-	..	-	-	-	..
Olympic Airways (j) (k) (l)	Greece	31,088	-100.0	218.4	-100.0	69.8	-100.0
"	Thailand	3,433	-100.0	174.8	-100.0	-
"	ALL SERVICES	34,521	-	-	-100.0	393.2	-	-	-100.0	69.8	-	-	-100.0
Philippine Airlines	Philippines	65,363	63,587	0.4	-2.7	1,974.0	2,050.7	0.3	3.9	8.6	25.2	0.1	192.9
Polar Air Cargo (m)	USA	7,522.2	994.4	0.2	-86.8	-	-	-	..
Polynesian Airlines	New Zealand	13,743	6,030	0.0	-56.1	39.2	8.3	0.0	-78.7	11.6	3.5	0.0	-69.4
"	Niue	12	96	0.0	700.0	-	0.9	0.0	..	-	0.4	0.0	..
"	Tahiti	3,146	380	0.0	-87.9	3.5	1.2	0.0	-66.5	52.8	3.9	0.0	-92.5
"	Tonga	3,320	1,437	0.0	-56.7	117.0	21.2	0.0	-81.9	3.1	5.3	0.0	70.5
"	Western Samoa	8,608	11,162	0.1	29.7	93.2	76.2	0.0	-18.3	8.7	7.2	0.0	-17.2
"	ALL SERVICES	28,829	19,105	0.1	-33.7	252.9	107.7	0.0	-57.4	76.1	20.4	0.1	-73.3
Qantas Airways	Argentina	23,302	-100.0	216.5	-100.0	9.4	-100.0
"	Fiji	732	1,117	0.0	52.6	14.5	15.1	0.0	4.6	0.2	0.5	0.0	95.7
"	France	60,634	16,609	0.1	-72.6	739.4	448.5	0.1	-39.4	297.9	25.3	0.1	-91.5
"	Germany	134,173	81,362	0.5	-39.4	4,213.2	2,093.5	0.3	-50.3	1,681.6	952.7	3.4	-43.3
"	Hong Kong	495,853	343,032	2.1	-30.8	18,747.5	12,060.0	2.0	-35.7	1,017.5	989.9	3.5	-2.7
"	India	8,827	-100.0	76.7	-100.0	29.8	-100.0
"	Indonesia	282,550	152,583	0.9	-46.0	2,752.0	2,148.4	0.4	-21.9	83.9	70.9	0.3	-15.6
"	Italy	77,702	13,996	0.1	-82.0	1,141.1	560.7	0.1	-50.9	101.4	7.6	0.0	-92.5
"	Japan	809,310	550,202	3.3	-32.0	17,145.9	11,952.2	2.0	-30.3	2,329.2	2,326.5	8.2	-0.1
"	New Caledonia	42,471	40,301	0.2	-5.1	188.1	184.4	0.0	-2.0	33.8	29.3	0.1	-13.2
"	New Zealand	1,484,041	1,617,506	9.8	9.0	43,232.9	43,879.7	7.2	1.5	2,608.6	2,390.3	8.4	-8.4
"	Papua New Guinea	26,205	-100.0	747.4	-100.0	122.9	-100.0
"	Philippines	70,760	73,859	0.4	4.4	1,762.5	1,841.6	0.3	4.5	71.3	66.5	0.2	-6.8
"	Singapore	681,228	913,568	5.6	34.1	34,177.4	34,094.4	5.6	-0.2	1,458.0	3,408.7	12.0	133.8
"	South Africa	120,609	129,194	0.8	7.1	1,473.0	1,623.0	0.3	10.2	159.4	152.1	0.5	-4.6
"	Taiwan	34,185	-100.0	997.1	-100.0	59.2	-100.0
"	Thailand	123,150	99,287	0.6	-19.4	1,876.4	1,577.0	0.3	-16.0	294.8	344.4	1.2	16.8
"	UK	360,441	306,801	1.9	-14.9	5,116.8	5,452.3	0.9	6.6	5,499.7	3,775.0	13.3	-31.4
"	USA	767,311	826,511	5.0	7.7	11,691.3	12,319.3	2.0	5.4	3,507.0	3,546.4	12.5	1.1
"	ALL SERVICES	5,603,484	5,165,928	31.4	-7.8	146,309.8	130,250.2	21.3	-11.0	19,365.7	18,085.9	63.9	-6.6
Royal Brunei Airlines	Brunei	111,180	97,808	0.6	-12.0	3,571.2	3,702.8	0.6	3.7	0.4	1.1	0.0	180.2
"	New Zealand	..	3,837	0.0	183.5	0.0	-	-	..

TABLE 2: SCHEDULED OPERATOR MARKET SHARES AND GROWTH: Year ended December

Scheduled Operators	Country to/from	Total Passengers				Total Freight (tonnes)				Total Mail (tonnes)			
		2002	2003	(%) of TOTAL	(%) Change	2002	2003	(%) of TOTAL	(%) Change	2002	2003	(%) of TOTAL	(%) Change
Royal Brunei Airlines	ALL SERVICES	111,180	101,645	0.6	-8.6	3,571.2	3,886.3	0.6	8.8	0.4	1.1	0.0	180.2
Royal Tongan Airlines (n) (o)	New Zealand	6	1,216	0.0	>999.9	-	0.3	0.0	..	-	-	-	..
"	Tonga	787	2,928	0.0	272.0	1.2	16.3	0.0	1244.2	-	-	-	..
"	ALL SERVICES	793	4,144	0.0	422.6	1.2	16.6	0.0	1269.7	-	-	-	..
Singapore Airlines	Indonesia	2.9	0.0	-	-	..
"	New Zealand	2,657.4	3,061.4	0.5	15.2	-	-	-	..
"	Singapore	1,989,765	1,796,992	10.9	-9.7	97,547.3	97,876.8	16.0	0.3	1,286.4	1,178.0	4.2	-8.4
"	ALL SERVICES	1,989,765	1,796,992	10.9	-9.7	100,204.6	100,941.0	16.5	0.7	1,286.4	1,178.0	4.2	-8.4
Solomon Airlines	Solomon Islands	15,733	18,046	0.1	14.7	172.1	170.3	0.0	-1.0	-	-	-	..
South African Airways	South Africa	94,120	92,756	0.6	-1.4	3,333.7	3,395.2	0.6	1.8	49.6	51.6	0.2	3.9
Thai Airways International	New Zealand	143,334	132,557	0.8	-7.5	5,845.7	6,571.7	1.1	12.4	1.2	1.0	0.0	-11.5
"	Thailand	549,967	549,788	3.3	0.0	21,894.3	23,212.9	3.8	6.0	808.0	1,303.0	4.6	61.3
"	ALL SERVICES	693,301	682,345	4.1	-1.6	27,739.9	29,784.6	4.9	7.4	809.2	1,304.0	4.6	61.2
United Airlines	New Zealand	31,362	-100.0	956.1	-100.0	2.8	-100.0
"	USA	422,187	390,116	2.4	-7.6	11,510.3	7,818.2	1.3	-32.1	1,457.0	1,525.8	5.4	4.7
"	ALL SERVICES	453,549	390,116	2.4	-14.0	12,466.4	7,818.2	1.3	-37.3	1,459.7	1,525.8	5.4	4.5
United Parcel Service	Hong Kong	55.1	0.0	-	-	..
"	Philippines	202.7	0.0	-	-	..
"	Taiwan	29.9	0.0	-	-	..
"	USA	4,860.7	4,685.5	0.8	-3.6	-	-	-	..
"	ALL SERVICES	-	-	-	..	4,860.7	4,973.1	0.8	2.3	-	-	-	..
Vietnam Airlines (p)	Vietnam	79,344	58,915	0.4	-25.7	1,330.9	890.1	0.1	-33.1	16.0	-	-	-100.0
TOTAL		16,682,373	16,445,508	100.0	-1.4	645,925.6	611,167.7	100.0	-5.4	28,769.5	28,314.2	100.0	-1.6

Please refer to explanatory notes - paragraphs 3, 6 and 13 in particular.

(a) Service commenced February 2003.

(b) Service commenced October 2002.

(c) Service ceased July 2002.

(d) Traffic carried on behalf of Qantas Airways.

(e) Service commenced March 2002 and ceased March 2003.

(f) Service ceased March 2002 and recommenced in November 2003.

(g) Operated services commenced July 2002.

(h) No outbound freight data for September 2000 onwards. No inbound freight data for April 2001 onwards.

(i) Jakarta/Christmas Island services commenced in August 2001. No data has been received for these services.

(j) Data not received for operations to/from Sydney for September, October and November 2002.

(k) Data not received for operations to/from Melbourne for October 2002.

(l) Service ceased November 2002.

(m) Data not received for March 2003 and onwards.

(n) Operated services recommenced December 2002.

(o) No data received for July 2003 and onwards.

(p) No data received for inbound operations to Sydney for August 2002 onwards. Data for outbound operations have been received for July 2003 onwards.

TABLE 3: AIRLINE PASSENGER CAPACITY AND UTILISATION TO AND FROM AUSTRALIA BY OPERATOR: Year ended December 2003

Scheduled Operator	Service to/from	Inbound				Outbound			
		No. of Flights	Pax Carried	Seats Available	Seat Utilisation %	No. of Flights	Pax Carried	Seats Available	Seat Utilisation %
Aerolineas Argentinas	Argentina	109	19,118	26,923	71.0	111	21,273	27,417	77.6
Air Caledonie	New Caledonia	318	37,033	54,361	68.1	318	37,271	54,361	68.6
Air Canada	Canada	373	71,880	101,598	70.7	372	73,026	101,339	72.1
Air China	China	295	60,302	91,771	65.7	295	58,204	91,771	63.4
Air Mauritius	Mauritius	65	14,704	17,932	82.0	66	14,720	18,226	80.8
Air Nauru	Nauru	103	5,671	11,330	50.1	103	5,317	11,320	47.0
Air New Zealand	New Zealand	5,631	710,862	951,963	74.7	5,616	727,168	951,451	76.4
"	USA	72	18,809	28,161	66.8	70	19,522	27,369	71.3
"	ALL SERVICES	5,703	729,671	980,124	74.4	5,686	746,690	978,820	76.3
Air Niugini	Papua New Guinea	897	62,967	113,434	55.5	892	64,164	113,048	56.8
Air Pacific	Fiji	973	189,592	270,395	70.1	973	189,017	270,395	69.9
Air Paradise International (a)	Indonesia	335	44,596	70,360	63.4	335	48,048	70,360	68.3
Air Vanuatu	Vanuatu	420	28,493	52,555	54.2	420	28,331	52,416	54.1
Asian Express Airlines (b)	New Zealand	225	..	-	..	225	..	-	..
Asiana Airlines	Korea	365	72,311	113,150	63.9	365	69,105	113,150	61.1
Australian Airlines	Hong Kong	120	20,206	31,862	63.4	120	16,552	31,939	51.8
"	Indonesia	37	7,123	9,702	73.4	37	7,040	9,446	74.5
"	Japan	795	144,397	213,933	67.5	796	143,531	214,212	67.0
"	Malaysia	62	9,990	16,384	61.0	62	10,437	16,348	63.8
"	Singapore	199	32,914	52,819	62.3	199	35,371	52,783	67.0
"	Taiwan	49	6,246	13,150	47.5	49	6,157	13,150	46.8
"	ALL SERVICES	1,262	220,876	337,850	65.4	1,263	219,088	337,878	64.8
British Airways	UK	1,047	282,657	380,897	74.2	1,047	264,590	380,847	69.5
Cargolux Airlines Intl (b)	Luxembourg	98	-	..	-	..
"	New Zealand	-	..	-	..	101
"	ALL SERVICES	98	-	-	..	101	-	-	..
Cathay Pacific Airways	Hong Kong	1,686	321,929	442,276	72.8	1,686	305,009	442,276	69.0
China Airlines	Taiwan	238	42,882	62,922	68.2	238	44,327	62,922	70.4
China Eastern Airlines	China	201	35,334	57,722	61.2	201	34,358	57,722	59.5
China Southern Airlines	China	150	29,538	43,050	68.6	150	26,885	43,050	62.5
Continental Micronesia	Guam	134	12,363	20,645	59.9	134	12,830	20,645	62.1
Emirates	New Zealand	368	42,897	129,631	33.1	368	42,780	129,631	33.0
"	United Arab Emirates	1,064	241,245	360,371	66.9	1,064	230,039	360,371	63.8
"	ALL SERVICES	1,432	284,142	490,002	58.0	1,432	272,819	490,002	55.7
Eva Air	Taiwan	230	38,688	53,056	72.9	230	36,833	53,056	69.4
Federal Express Corporation (b)	Philippines	-	..	-	..	257
"	USA	261	-	..	-	..
"	ALL SERVICES	261	-	-	..	257	-	-	..
Freedom Air International	New Zealand	2,562	255,830	350,536	73.0	2,559	255,800	362,084	70.6
Garuda Indonesia	Indonesia	932	117,544	203,630	57.7	932	117,943	203,630	57.9
"	New Zealand	134	9,710	38,950	24.9	134	9,317	38,950	23.9
"	ALL SERVICES	1,066	127,254	242,580	52.5	1,066	127,260	242,580	52.5

TABLE 3: AIRLINE PASSENGER CAPACITY AND UTILISATION TO AND FROM AUSTRALIA BY OPERATOR: Year ended December 2003

Scheduled Operator	Service to/from	Inbound				Outbound			
		No. of Flights	Pax Carried	Seats Available	Seat Utilisation %	No. of Flights	Pax Carried	Seats Available	Seat Utilisation %
Gemini Air Cargo (b) (c) (d)	USA	11	..	-	..	2	..	-	..
Gulf Air (e)	Bahrain	38	5,982	10,070	59.4	38	7,690	10,070	76.4
Japan Airlines	Japan	1,099	354,074	482,376	73.4	1,098	352,976	480,061	73.5
Korean Air	Korea	465	129,266	168,586	76.7	465	121,031	168,576	71.8
Lan Chile	Chile	152	26,299	39,277	67.0	152	28,199	39,368	71.6
Lauda Air	Austria	353	90,222	121,432	74.3	352	95,328	121,088	78.7
Lufthansa German Airlines (b)	Germany	148	..	-	..	146	..	-	..
Malaysia Airlines	Malaysia	2,273	450,282	654,195	68.8	2,257	424,854	653,285	65.0
"	New Zealand	212	13,787	81,755	16.9	213	13,317	82,137	16.2
"	ALL SERVICES	2,485	464,069	735,950	63.1	2,470	438,171	735,422	59.6
Martinair Holland (b)	Netherlands	108	..	-	..	109	..	-	..
Merpati Nusantara Airlines (f)	Indonesia	-	..	-	..	-	..	-	..
Philippine Airlines	Philippines	159	32,432	47,866	67.8	159	31,155	47,866	65.1
Polar Air Cargo (b) (g)	USA	22	..	-	..	-	..	-	..
Polynesian Airlines	Tahiti	-	..	-	..	12	1,328	1,848	71.9
"	Western Samoa	105	9,273	16,170	57.3	92	8,504	14,168	60.0
"	ALL SERVICES	105	9,273	16,170	57.3	104	9,832	16,016	61.4
Qantas Airways	Fiji	4	718	908	79.1	4	404	908	44.5
"	France	133	43,433	56,084	77.4	133	42,188	56,160	75.1
"	Germany	365	126,185	154,770	81.5	365	127,805	154,666	82.6
"	Hong Kong	930	196,774	261,219	75.3	929	183,999	258,300	71.2
"	Indonesia	488	64,999	95,423	68.1	489	67,057	95,686	70.1
"	Italy	98	21,041	29,539	71.2	98	30,974	40,475	76.5
"	Japan	1,272	281,669	380,162	74.1	1,271	284,693	379,923	74.9
"	New Caledonia	213	25,728	35,869	71.7	214	24,562	35,979	68.3
"	New Zealand	5,254	791,805	1,019,809	77.6	5,260	808,244	1,025,712	78.8
"	Philippines	198	41,063	50,798	80.8	198	40,293	50,792	79.3
"	Singapore	1,070	250,247	333,928	74.9	1,065	226,127	323,582	69.9
"	South Africa	238	80,621	97,978	82.3	238	71,584	91,438	78.3
"	UK	1,022	333,540	399,900	83.4	1,022	334,583	399,996	83.6
"	USA	1,710	508,586	624,623	81.4	1,710	517,034	625,721	82.6
"	ALL SERVICES	12,995	2,766,409	3,541,010	78.1	12,996	2,759,547	3,539,338	78.0
Royal Brunei Airlines	Brunei	478	47,133	90,892	51.9	476	50,675	90,550	56.0
"	New Zealand	37	1,918	7,326	26.2	37	1,919	7,326	26.2
"	ALL SERVICES	515	49,051	98,218	49.9	513	52,594	97,876	53.7
Royal Tongan Airlines (h)	New Zealand	2	249	332	75.0	3	283	498	56.8
"	Tonga	34	1,875	5,644	33.2	33	1,737	5,478	31.7
"	ALL SERVICES	36	2,124	5,976	35.5	36	2,020	5,976	33.8
Singapore Airlines	Singapore	3,701	910,551	1,185,212	76.8	3,700	886,441	1,185,212	74.8
Solomon Airlines	Solomon Islands	106	8,983	14,416	62.3	109	9,063	14,828	61.1
South African Airways	South Africa	229	49,805	71,579	69.6	228	42,951	71,343	60.2
Thai Airways International	New Zealand	519	69,868	191,355	36.5	519	62,689	191,355	32.8

TABLE 3: AIRLINE PASSENGER CAPACITY AND UTILISATION TO AND FROM AUSTRALIA BY OPERATOR: Year ended December 2003

Scheduled Operator	Service to/from	Inbound				Outbound			
		No. of Flights	Pax Carried	Seats Available	Seat Utilisation %	No. of Flights	Pax Carried	Seats Available	Seat Utilisation %
"	Thailand	1,358	273,618	459,145	59.6	1,356	276,170	458,575	60.2
"	ALL SERVICES	1,877	343,486	650,500	52.8	1,875	338,859	649,930	52.1
United Airlines	USA	715	192,732	248,105	77.7	713	197,384	247,411	79.8
United Parcel Service (b)	Hong Kong	-	..	-	..	12
"	Philippines	-	..	-	..	21
"	Taiwan	-	..	-	..	13
"	USA	104	-	..	-	..
"	ALL SERVICES	104	-	-	..	46	-	-	..
Vietnam Airlines (i)	Vietnam	180	22,193	49,779	44.6	181	36,722	50,048	73.4
TOTAL		46,151	8,444,782	11,871,991	71.1	46,017	8,364,928	11,876,114	70.4

Please refer to explanatory notes - paragraphs 4, 5, 7 and 14 in particular.

Traffic shown in this table for airlines which fly through Australia may differ from traffic in Tables 1 and 2 because of the inclusion in this table of total traffic into and ex Australia (for seat factor purposes) whereas Tables 1 and 2 include uplift/discharge traffic only.

(a) Service commenced February 2003.

(b) Freight flights only.

(c) Traffic carried on behalf of Qantas Airways.

(d) Service commenced March 2002 and ceased March 2003.

(e) Service recommenced November 2003.

(f) Jakarta/Christmas Island services commenced in August 2001. No data has been received for these services.

(g) Data not received for March 2003 and onwards.

(h) No data received for July 2003 and onwards.

(i) No data received for inbound operations to Sydney for August 2002 onwards. Data for outbound operations have been received for July 2003 onwards.

TABLE 4: SCHEDULED INTERNATIONAL AIRPORT TRAFFIC AND AIRCRAFT MOVEMENTS: Year ended December

		Inbound		Change	Outbound		Change	Total		Change	(% of TOTAL)
		2002	2003		2002	2003		2002	2003		
Adelaide	Passengers	115,448	107,577	-6.8	108,903	99,272	-8.8	224,351	206,849	-7.8	1.3
"	Freight (Tonnes)	4,752	5,225	9.9	7,083	7,400	4.5	11,835	12,625	6.7	2.1
"	Aircraft Movements	820	888	8.3	883	885	0.2	1,703	1,773	4.1	1.6
Brisbane	Passengers	1,290,423	1,303,068	1.0	1,202,659	1,246,376	3.6	2,493,082	2,549,444	2.3	15.5
"	Freight (Tonnes)	27,950	29,319	4.9	46,602	37,592	-19.3	74,552	66,911	-10.2	10.9
"	Aircraft Movements	8,698	8,350	-4.0	8,702	8,350	-4.0	17,400	16,700	-4.0	15.4
Cairns	Passengers	387,072	375,819	-2.9	379,184	370,742	-2.2	766,256	746,561	-2.6	4.5
"	Freight (Tonnes)	2,331	2,206	-5.3	7,758	9,541	23.0	10,089	11,748	16.4	1.9
"	Aircraft Movements	3,513	3,682	4.8	3,516	3,698	5.2	7,029	7,380	5.0	6.8
Darwin	Passengers	51,563	38,276	-25.8	51,648	39,414	-23.7	103,211	77,690	-24.7	0.5
"	Freight (Tonnes)	283	271	-4.3	529	460	-13.2	812	730	-10.1	0.1
"	Aircraft Movements	689	637	-7.5	687	637	-7.3	1,376	1,274	-7.4	1.2
Gold Coast/Coolangatta	Passengers	56,816	70,007	23.2	56,311	68,931	22.4	113,127	138,938	22.8	0.8
"	Freight (Tonnes)	10	911	8581.1	101	0	-99.9	112	911	716.6	0.1
"	Aircraft Movements	575	997	73.4	572	967	69.1	1,147	1,964	71.2	1.8
Melbourne	Passengers	1,677,808	1,620,653	-3.4	1,635,943	1,578,881	-3.5	3,313,751	3,199,534	-3.4	19.5
"	Freight (Tonnes)	91,633	90,962	-0.7	100,417	88,695	-11.7	192,049	179,658	-6.5	29.4
"	Aircraft Movements	10,716	10,674	-0.4	10,782	10,655	-1.2	21,498	21,329	-0.8	19.7
Newcastle	Passengers	4,876	..	-100.0	4,631	..	-100.0	9,507	-	-100.0	..
"	Freight (Tonnes)	-	-	-	-
"	Aircraft Movements	68	..	-100.0	68	..	-100.0	136	-	-100.0	..
Norfolk Island	Passengers	7,924	7,777	-1.9	7,967	7,475	-6.2	15,891	15,252	-4.0	0.1
"	Freight (Tonnes)	111	118	6.4	23	14	-39.2	134	132	-1.3	0.0
"	Aircraft Movements	102	105	2.9	101	101	..	203	206	1.5	0.2
Perth	Passengers	837,755	817,616	-2.4	798,667	769,006	-3.7	1,636,422	1,586,622	-3.0	9.6
"	Freight (Tonnes)	14,986	18,165	21.2	35,977	33,169	-7.8	50,962	51,334	0.7	8.4
"	Aircraft Movements	4,170	4,374	4.9	4,165	4,424	6.2	8,335	8,798	5.6	8.1
Sydney	Passengers	3,942,082	3,922,337	-0.5	4,064,693	4,002,281	-1.5	8,006,775	7,924,618	-1.0	48.2
"	Freight (Tonnes)	163,038	166,441	2.1	142,342	120,678	-15.2	305,380	287,119	-6.0	47.0
"	Aircraft Movements	23,397	24,620	5.2	23,061	24,468	6.1	46,458	49,088	5.7	45.2
TOTAL	Passengers	8,371,767	8,263,130	-1.3	8,310,606	8,182,378	-1.5	16,682,373	16,445,508	-1.4	100.0
	Freight (Tonnes)	305,095	313,619	2.8	340,831	297,549	-12.7	645,926	611,168	-5.4	100.0
	Aircraft Movements	52,748	54,327	3.0	52,537	54,185	3.1	105,285	108,512	3.1	100.0

TABLE 5: SCHEDULED INTERNATIONAL TRAFFIC BY CITY PAIRS: Year ended December

Foreign Port	Australian Port	Passengers						Freight (tonnes)					
		2002			2003			2002			2003		
		Inbound	Outbound	Total	Inbound	Outbound	Total	Inbound	Outbound	Total	Inbound	Outbound	Total
Amsterdam	Adelaide	0	0	0	0	0	0	172.0	0.0	172.0	0.0	0.0	0.0
Auckland	"	72	63	135	0	0	0	143.9	207.1	351.0	0.0	0.0	0.0
Bangkok	"	8	20	28	0	0	0	13.9	13.7	27.6	0.0	0.0	0.0
Bombay	"	29	32	61	0	0	0	1.1	0.0	1.1	0.0	0.0	0.0
Buenos Aires	"	0	0	0	0	0	0	2.9	0.2	3.1	0.0	0.0	0.0
Chicago	"	0	0	0	0	0	0	0.0	0.0	0.0	0.0	0.0	0.0
Christchurch	"	541	43	584	0	0	0	59.9	41.6	101.5	0.0	0.0	0.0
Denpasar	"	10,507	10,598	21,105	5,918	5,790	11,708	245.0	332.9	577.8	158.7	49.4	208.1
Frankfurt	"	1,123	1,148	2,271	0	0	0	35.8	2.0	37.7	0.0	0.0	0.0
Hong Kong	"	15,942	11,723	27,665	13,001	9,162	22,163	460.3	681.2	1,141.5	519.4	781.3	1,300.7
Honolulu	"	20	0	20	0	0	0	0.0	1.8	1.8	0.0	0.0	0.0
Jakarta	"	25	36	61	0	0	0	0.7	22.0	22.7	0.0	0.0	0.0
Johannesburg	"	0	0	0	0	0	0	26.2	14.2	40.5	0.0	0.0	0.0
Kuala Lumpur	"	33,212	32,865	66,077	36,071	33,326	69,397	1,248.7	1,118.4	2,367.1	1,810.4	1,206.7	3,017.0
London	"	1,483	1,484	2,967	0	0	0	34.8	15.8	50.5	0.0	0.0	0.0
Los Angeles	"	1,082	377	1,459	0	0	0	9.6	136.8	146.4	0.0	0.0	0.0
Manila	"	43	80	123	0	0	0	22.1	3.7	25.7	0.0	0.0	0.0
Nagoya	"	0	0	0	0	0	0	1.2	26.4	27.6	0.0	0.0	0.0
New York	"	2	0	2	0	0	0	1.5	1.6	3.2	0.0	0.0	0.0
Noumea	"	0	0	0	0	0	0	0.0	0.4	0.5	0.0	0.0	0.0
Osaka	"	0	0	0	0	0	0	17.6	32.8	50.4	0.0	0.0	0.0
Paris	"	15	189	204	0	0	0	9.4	0.8	10.2	0.0	0.0	0.0
Port Moresby	"	0	0	0	0	0	0	0.0	0.7	0.7	0.0	0.0	0.0
Queenstown	"	6	2	8	0	0	0	0.0	0.0	0.0	0.0	0.0	0.0
Rome	"	434	661	1,095	0	0	0	16.1	0.0	16.1	0.0	0.0	0.0
Singapore	"	50,527	49,569	100,096	52,587	50,994	103,581	1,968.9	4,310.4	6,279.3	2,736.1	5,362.7	8,098.8
Taipei	"	0	0	0	0	0	0	5.7	1.6	7.3	0.0	0.0	0.0
Tokyo	"	363	4	367	0	0	0	254.4	114.3	368.7	0.0	0.0	0.0
Wellington	"	14	9	23	0	0	0	0.4	2.7	3.1	0.0	0.0	0.0
Total	Adelaide	115,448	108,903	224,351	107,577	99,272	206,849	4,752.3	7,082.9	11,835.2	5,224.5	7,400.1	12,624.6
Auckland	Brisbane	220,815	222,452	443,267	263,583	267,283	530,866	6,987.4	7,905.4	14,892.8	7,353.2	7,441.9	14,795.1
Bandar Seri Begawan	"	26,673	28,456	55,129	22,464	24,412	46,876	617.5	1,705.9	2,323.4	889.5	1,415.2	2,304.8
Bangkok	"	25,313	27,001	52,314	28,386	28,192	56,578	740.1	1,303.6	2,043.7	903.1	1,452.0	2,355.1
Bombay	"	494	227	721	0	0	0	4.1	0.9	4.9	0.0	0.0	0.0
Buenos Aires	"	968	10	978	0	0	0	2.1	3.6	5.7	0.0	0.0	0.0
Chicago	"	0	0	0	0	0	0	2.0	0.0	2.0	0.0	0.0	0.0
Christchurch	"	72,845	74,409	147,254	73,242	71,039	144,281	820.3	1,003.5	1,823.8	623.0	791.5	1,414.5
Denpasar	"	25,135	24,820	49,955	17,978	17,891	35,869	596.8	665.2	1,262.0	495.6	408.6	904.2
Dubai	"	0	0	0	10,803	8,093	18,896	0.0	0.0	0.0	88.2	198.5	286.7
Dunedin	"	16,387	16,625	33,012	15,456	15,840	31,296	0.0	0.0	0.0	0.0	0.0	0.0
Frankfurt	"	7,605	8,019	15,624	0	0	0	252.2	18.5	270.6	0.0	0.0	0.0
Fukuoka	"	268	268	536	0	0	0	0.0	0.0	0.0	0.0	0.0	0.0
Hamilton	"	24,254	24,539	48,793	21,203	22,012	43,215	0.0	0.0	0.0	0.0	0.0	0.0
Hong Kong	"	66,125	67,228	133,353	49,855	45,876	95,731	2,528.5	3,979.6	6,508.1	2,597.3	2,888.9	5,486.2

TABLE 5: SCHEDULED INTERNATIONAL TRAFFIC BY CITY PAIRS: Year ended December

Foreign Port	Australian Port	Passengers						Freight (tonnes)					
		2002			2003			2002			2003		
		Inbound	Outbound	Total	Inbound	Outbound	Total	Inbound	Outbound	Total	Inbound	Outbound	Total
Honiara	Brisbane	7,733	8,000	15,733	9,002	9,069	18,071	100.1	71.9	172.1	97.5	72.9	170.3
Honolulu	"	1,360	29	1,389	2	0	2	4.5	55.3	59.8	0.0	0.0	0.0
Jakarta	"	2,257	264	2,521	0	0	0	0.6	21.7	22.3	0.0	0.0	0.0
Johannesburg	"	0	199	199	0	0	0	14.2	6.3	20.6	0.0	0.0	0.0
Kota Kinabalu	"	0	0	0	0	0	0	0.0	0.0	0.0	0.0	70.3	70.3
Kuala Lumpur	"	51,328	52,132	103,460	50,488	47,580	98,068	1,403.7	1,625.8	3,029.5	1,608.0	1,043.1	2,651.1
London	"	15,299	14,456	29,755	9	0	9	201.1	39.7	240.8	0.0	0.0	0.0
Los Angeles	"	34,004	29,032	63,036	39,641	39,776	79,417	893.7	530.6	1,424.3	754.3	466.8	1,221.1
Manila	"	6,928	5,702	12,630	6,388	5,775	12,163	5.7	56.1	61.8	11.8	49.0	60.9
Nadi	"	28,813	27,863	56,676	34,819	34,383	69,202	127.2	240.1	367.3	156.2	350.6	506.8
Nagoya	"	6,504	1,555	8,059	0	0	0	4.9	537.7	542.6	0.0	0.0	0.0
Nauru	"	5,174	4,773	9,947	4,294	3,889	8,183	9.8	201.8	211.6	34.9	212.6	247.4
New York	"	273	53	326	9	0	9	60.8	5.1	65.9	0.0	0.0	0.0
Noumea	"	17,004	18,037	35,041	16,226	17,648	33,874	25.3	176.4	201.7	10.0	154.0	163.9
Osaka	"	106,558	29,696	136,254	83,848	25,074	108,922	566.2	1,775.8	2,342.1	698.3	1,288.3	1,986.6
Palmerston	"	17,310	17,257	34,567	18,690	18,331	37,021	0.0	0.0	0.0	0.0	0.0	0.0
Paris	"	2,348	2,637	4,985	0	0	0	13.5	3.5	17.0	0.0	0.0	0.0
Port Moresby	"	29,022	31,552	60,574	27,908	31,321	59,229	1,049.6	1,804.9	2,854.5	872.3	1,710.7	2,583.0
Port Vila	"	10,180	10,222	20,402	10,611	10,536	21,147	37.6	132.6	170.2	42.5	129.1	171.6
Queenstown	"	2,568	2,530	5,098	2,257	2,626	4,883	0.0	0.0	0.0	0.0	0.0	0.0
Rome	"	3,000	4,489	7,489	0	4,607	4,607	137.0	2.3	139.4	0.0	12.5	12.5
Seoul	"	26,983	23,154	50,137	30,728	25,322	56,050	481.3	1,829.1	2,310.3	406.2	1,371.6	1,777.9
Singapore	"	226,389	224,481	450,870	275,279	276,815	552,094	6,079.2	12,654.9	18,734.1	7,781.4	10,851.2	18,632.7
Taipei	"	30,723	30,300	61,023	27,090	28,382	55,472	1,455.4	1,691.2	3,146.6	1,196.7	977.4	2,174.1
Tokyo	"	123,790	123,618	247,408	118,588	119,780	238,368	2,695.1	6,524.8	9,219.9	2,694.3	4,222.9	6,917.2
Toledo	"	0	0	0	0	0	0	7.4	0.0	7.4	0.0	0.0	0.0
Wellington	"	47,993	46,574	94,567	44,221	44,824	89,045	25.4	27.8	53.3	5.0	12.4	17.4
Total	Brisbane	1,290,423	1,202,659	2,493,082	1,303,068	1,246,376	2,549,444	27,950.5	46,601.7	74,552.2	29,319.2	37,592.2	66,911.4
Auckland	Cairns	19,873	24,516	44,389	21,194	23,471	44,665	248.9	110.7	359.6	170.3	179.6	349.8
Bangkok	"	404	186	590	0	0	0	3.0	3.5	6.6	0.0	0.0	0.0
Bombay	"	104	17	121	0	0	0	0.1	0.1	0.2	0.0	0.0	0.0
Buenos Aires	"	25	68	93	0	0	0	0.0	0.2	0.2	0.0	0.0	0.0
Christchurch	"	833	2,415	3,248	0	0	0	3.5	3.4	6.9	0.0	0.0	0.0
Denpasar	"	186	287	473	0	0	0	10.1	2.6	12.6	0.0	0.0	0.0
Frankfurt	"	4,218	9,498	13,716	0	0	0	7.9	3.9	11.8	0.0	0.0	0.0
Fukuoka	"	2,707	2,709	5,416	16,660	18,949	35,609	3.8	2.5	6.3	19.1	330.1	349.2
Guam	"	10,809	11,160	21,969	12,363	12,830	25,193	0.2	43.7	43.9	0.3	37.5	37.8
Hong Kong	"	40,320	27,820	68,140	38,105	33,540	71,645	321.2	3,880.5	4,201.7	710.9	3,839.4	4,550.3
Honolulu	"	263	499	762	0	0	0	0.0	1.9	1.9	0.0	0.0	0.0
Jakarta	"	118	176	294	0	0	0	0.1	4.5	4.7	0.0	0.0	0.0
Johannesburg	"	34	150	184	0	0	0	0.5	0.6	1.2	0.0	0.0	0.0
Kota Kinabalu	"	0	0	0	206	317	523	0.0	0.0	0.0	6.2	0.0	6.2
Kuala Lumpur	"	1,088	1,516	2,604	0	0	0	3.5	22.0	25.6	0.0	0.0	0.0
London	"	5,673	6,463	12,136	0	0	0	0.8	8.9	9.7	0.0	0.0	0.0

TABLE 5: SCHEDULED INTERNATIONAL TRAFFIC BY CITY PAIRS: Year ended December

Foreign Port	Australian Port	Passengers						Freight (tonnes)					
		2002			2003			2002			2003		
		Inbound	Outbound	Total	Inbound	Outbound	Total	Inbound	Outbound	Total	Inbound	Outbound	Total
Los Angeles	Cairns	5,038	7,398	12,436	0	0	0	9.7	203.0	212.7	0.0	0.0	0.0
Manila	"	67	65	132	0	0	0	0.1	6.4	6.5	0.0	0.0	0.0
Nagoya	"	62,627	65,251	127,878	65,696	64,854	130,550	240.5	767.6	1,008.1	99.9	1,352.9	1,452.7
New York	"	21	27	48	0	0	0	0.1	4.6	4.7	0.0	0.0	0.0
Noumea	"	2	9	11	0	0	0	0.0	0.7	0.7	0.0	0.0	0.0
Osaka	"	54,555	42,775	97,330	49,077	46,116	95,193	610.8	440.5	1,051.2	153.8	1,456.2	1,610.0
Paris	"	895	2,029	2,924	0	0	0	0.1	0.3	0.4	0.0	0.0	0.0
Port Moresby	"	26,193	23,614	49,807	24,335	21,336	45,671	174.1	317.7	491.8	76.0	188.6	264.6
Queenstown	"	35	30	65	0	0	0	0.0	0.0	0.0	0.0	0.0	0.0
Rome	"	521	1,730	2,251	0	0	0	0.8	2.8	3.6	0.0	0.0	0.0
Sapporo	"	0	96	96	0	0	0	0.0	0.0	0.0	0.0	0.0	0.0
Singapore	"	21,266	19,565	40,831	24,480	26,630	51,110	154.0	431.1	585.2	471.0	267.2	738.2
Taipei	"	1,610	1,566	3,176	6,230	6,124	12,354	84.4	22.0	106.4	289.2	86.7	375.9
Tokyo	"	126,633	126,962	253,595	117,473	116,575	234,048	452.5	1,470.9	1,923.5	209.9	1,803.2	2,013.1
Wellington	"	954	587	1,541	0	0	0	0.0	1.6	1.6	0.0	0.0	0.0
Total	Cairns	387,072	379,184	766,256	375,819	370,742	746,561	2,330.9	7,758.1	10,089.0	2,206.4	9,541.5	11,747.9
Auckland	Darwin	36	243	279	0	0	0	2.0	0.9	2.9	0.0	0.0	0.0
Bandar Seri Begawan	"	6,704	6,957	13,661	6,326	6,539	12,865	38.6	57.9	96.5	50.9	59.1	110.0
Bangkok	"	11	15	26	0	233	233	0.1	0.3	0.4	0.0	0.0	0.0
Bombay	"	32	20	52	0	0	0	1.7	0.0	1.7	0.0	0.0	0.0
Buenos Aires	"	0	0	0	0	0	0	0.0	0.1	0.1	0.0	0.0	0.0
Christchurch	"	18	131	149	0	0	0	0.0	0.0	0.0	0.0	0.0	0.0
Denpasar	"	20,940	22,286	43,226	11,567	13,926	25,493	12.4	4.5	16.9	6.5	3.7	10.1
Frankfurt	"	5,079	4,167	9,246	0	0	0	2.7	2.0	4.7	0.0	0.0	0.0
Hong Kong	"	378	24	402	0	0	0	27.7	96.7	124.3	0.0	0.0	0.0
Honolulu	"	4	0	4	0	0	0	0.0	0.0	0.0	0.0	0.0	0.0
Jakarta	"	9	7	16	0	0	0	0.0	0.7	0.7	0.0	0.0	0.0
Johannesburg	"	0	0	0	0	0	0	0.0	0.8	0.8	0.0	0.0	0.0
Kuala Lumpur	"	912	604	1,516	0	0	0	10.0	19.0	29.0	0.0	0.0	0.0
Kupang	"	0	0	0	0	0	0	0.0	0.0	0.0	0.0	0.0	0.0
London	"	3,639	3,992	7,631	0	0	0	7.5	31.8	39.3	0.0	0.0	0.0
Los Angeles	"	104	141	245	0	0	0	0.2	2.5	2.6	0.0	0.0	0.0
Manila	"	0	0	0	0	0	0	0.0	0.0	0.0	0.0	0.0	0.0
New York	"	0	0	0	0	0	0	0.0	0.2	0.2	0.0	0.0	0.0
Osaka	"	0	0	0	0	0	0	0.1	0.0	0.1	0.0	0.0	0.0
Paris	"	15	663	678	0	0	0	0.7	6.4	7.1	0.0	0.0	0.0
Port Moresby	"	0	0	0	0	0	0	0.0	0.1	0.1	0.0	0.0	0.0
Rome	"	624	456	1,080	0	0	0	0.5	1.1	1.6	0.0	0.0	0.0
Singapore	"	13,043	11,891	24,934	20,383	18,716	39,099	160.5	302.5	463.0	213.4	396.9	610.3
Tokyo	"	8	22	30	0	0	0	18.3	2.0	20.3	0.0	0.0	0.0
Wellington	"	7	29	36	0	0	0	0.0	0.0	0.0	0.0	0.0	0.0
Total	Darwin	51,563	51,648	103,211	38,276	39,414	77,690	283.0	529.5	812.4	270.9	459.6	730.5
Auckland	Gold Coast/Coolangatta	30,926	30,704	61,630	32,033	32,412	64,445	0.0	0.0	0.0	0.0	0.0	0.0
Christchurch	"	2,473	2,392	4,865	13,613	13,372	26,985	0.0	0.0	0.0	0.0	0.0	0.0

TABLE 5: SCHEDULED INTERNATIONAL TRAFFIC BY CITY PAIRS: Year ended December

Foreign Port	Australian Port	Passengers						Freight (tonnes)					
		2002			2003			2002			2003		
		Inbound	Outbound	Total	Inbound	Outbound	Total	Inbound	Outbound	Total	Inbound	Outbound	Total
Dunedin	Gold Coast/Coolangatta	4,018	3,928	7,946	6,445	6,262	12,707	0.0	0.0	0.0	0.0	0.0	0.0
Fukuoka	"	834	599	1,433	499	0	499	0.0	0.0	0.0	6.0	0.0	6.0
Hamilton	"	9,669	9,558	19,227	8,964	8,641	17,605	0.0	0.0	0.0	0.0	0.0	0.0
Hong Kong	"	91	586	677	0	0	0	0.0	0.0	0.0	0.0	0.0	0.0
Nagoya	"	1,590	1,528	3,118	2,038	1,627	3,665	0.0	46.2	46.2	138.0	0.1	138.0
Osaka	"	1,969	1,453	3,422	6,415	6,617	13,032	10.5	54.9	65.4	767.2	0.0	767.2
Palmerston	"	4,684	4,366	9,050	0	0	0	0.0	0.0	0.0	0.0	0.0	0.0
Singapore	"	0	690	690	0	0	0	0.0	0.0	0.0	0.0	0.0	0.0
Taipei	"	562	507	1,069	0	0	0	0.0	0.0	0.0	0.0	0.0	0.0
Total	Gold Coast/Coolangatta	56,816	56,311	113,127	70,007	68,931	138,938	10.5	101.1	111.6	911.2	0.1	911.2
Amsterdam	Melbourne	0	0	0	0	0	0	0.0	0.0	0.0	113.5	4.1	117.6
Athens	"	6,363	7,973	14,336	0	0	0	68.7	26.9	95.6	0.0	0.0	0.0
Atlanta	"	0	0	0	0	0	0	1,088.8	0.0	1,088.8	879.4	0.0	879.4
Auckland	"	249,143	253,927	503,070	266,802	269,229	536,031	16,062.9	16,898.2	32,961.1	15,731.1	16,936.7	32,667.9
Bahrain	"	1,749	2,193	3,942	0	0	0	77.0	366.2	443.1	0.0	0.0	0.0
Bangkok	"	105,567	100,222	205,789	96,761	94,663	191,424	4,654.4	5,916.2	10,570.6	4,924.7	5,169.2	10,093.9
Beijing	"	10,466	5,465	15,931	9,414	5,203	14,617	74.4	210.3	284.8	169.9	194.3	364.2
Bombay	"	1,625	66	1,691	0	0	0	13.6	7.9	21.6	0.0	0.0	0.0
Buenos Aires	"	2,273	1,855	4,128	0	0	0	2.9	1.2	4.2	0.0	0.0	0.0
Chicago	"	1,198	1,342	2,540	2,049	2,525	4,574	4,711.4	0.0	4,711.4	4,186.3	0.0	4,186.3
Christchurch	"	78,279	75,873	154,152	79,889	79,107	158,996	2,251.8	1,454.2	3,705.9	1,407.4	873.5	2,280.9
Denpasar	"	46,997	43,579	90,576	41,462	40,783	82,245	1,710.0	2,179.7	3,889.7	1,239.8	1,697.1	2,936.9
Dubai	"	71,896	72,181	144,077	73,571	73,314	146,885	1,860.9	4,212.3	6,073.2	1,962.7	4,220.7	6,183.4
Dunedin	"	7,747	7,620	15,367	8,472	8,452	16,924	0.0	0.0	0.0	0.0	0.0	0.0
Frankfurt	"	11,843	10,921	22,764	0	0	0	1,942.4	1,932.6	3,875.0	278.3	1,102.8	1,381.1
Guangzhou	"	19,793	12,077	31,870	12,292	9,399	21,691	972.8	420.0	1,392.8	594.6	239.4	834.0
Hamilton	"	12,578	12,174	24,752	12,327	12,319	24,646	0.0	0.0	0.0	0.0	0.0	0.0
Hanoi	"	2,064	2,203	4,267	2,311	2,660	4,971	4.6	25.2	29.7	0.0	61.1	61.1
Ho Chi Minh City	"	21,333	21,527	42,860	19,882	19,973	39,855	477.6	226.4	704.0	557.5	192.1	749.6
Hong Kong	"	137,453	139,933	277,386	124,343	122,276	246,619	9,822.7	14,105.8	23,928.5	10,883.6	12,933.0	23,816.6
Honiara	"	0	0	0	0	0	0	0.0	0.0	0.0	0.0	0.0	0.0
Honolulu	"	9,848	13,425	23,273	0	6,208	6,208	356.1	398.7	754.8	0.0	33.4	33.4
Jakarta	"	6,871	1,111	7,982	0	0	0	29.6	227.8	257.4	0.0	2.9	2.9
Johannesburg	"	120	1,519	1,639	0	0	0	58.8	15.9	74.8	0.0	0.0	0.0
Karachi	"	0	0	0	0	0	0	0.0	2.6	2.6	0.0	20.1	20.1
Kuala Lumpur	"	115,372	123,804	239,176	123,003	121,367	244,370	11,422.7	9,698.3	21,121.0	11,924.2	8,052.2	19,976.4
Lahore	"	0	0	0	0	0	0	0.0	16.1	16.1	0.0	7.7	7.7
London	"	85,472	85,554	171,026	102,500	95,585	198,085	3,219.2	569.0	3,788.2	3,447.1	450.7	3,897.8
Los Angeles	"	99,404	104,664	204,068	130,844	127,071	257,915	2,570.9	3,083.9	5,654.7	2,232.1	3,919.5	6,151.5
Luxembourg	"	0	0	0	0	0	0	4,321.8	0.0	4,321.8	4,106.4	0.0	4,106.4
Manila	"	14,513	10,571	25,084	12,478	10,582	23,060	401.9	822.0	1,223.9	548.3	735.8	1,284.1
Mauritius	"	7,700	7,569	15,269	8,355	8,060	16,415	357.8	240.4	598.2	296.3	236.7	533.1
Nadi	"	34,049	33,283	67,332	37,882	36,990	74,872	910.9	992.4	1,903.3	751.7	1,083.2	1,835.0
Nagoya	"	46	147	193	0	0	0	8.2	32.1	40.3	0.0	0.0	0.0

TABLE 5: SCHEDULED INTERNATIONAL TRAFFIC BY CITY PAIRS: Year ended December

Foreign Port	Australian Port	Passengers						Freight (tonnes)					
		2002			2003			2002			2003		
		Inbound	Outbound	Total	Inbound	Outbound	Total	Inbound	Outbound	Total	Inbound	Outbound	Total
Nauru	Melbourne	1,415	1,515	2,930	1,358	1,422	2,780	1.6	60.5	62.0	1.0	43.2	44.2
New Delhi	"	0	0	0	0	0	0	0.0	55.0	55.0	0.0	1.4	1.4
New York	"	4,664	5,073	9,737	176	268	444	507.1	237.5	744.6	81.5	0.0	81.5
Noumea	"	7	41	48	0	0	0	0.0	5.1	5.1	0.0	0.0	0.0
Osaka	"	1	175	176	0	0	0	39.6	62.8	102.3	0.0	0.0	0.0
Palmerston	"	8,572	8,388	16,960	8,708	8,360	17,068	0.0	0.0	0.0	0.0	0.0	0.0
Paris	"	4,121	4,941	9,062	0	0	0	52.7	7.6	60.3	0.0	0.0	0.0
Penang	"	0	0	0	0	0	0	561.5	197.2	758.7	372.9	62.6	435.5
Phuket	"	0	0	0	0	1,140	1,140	0.0	0.0	0.0	0.0	0.4	0.4
Port Moresby	"	43	2	45	0	0	0	0.1	13.6	13.6	0.0	0.0	0.0
Port Vila	"	1,344	1,261	2,605	0	0	0	0.8	7.5	8.3	0.0	0.0	0.0
Queenstown	"	1,228	1,111	2,339	0	0	0	0.0	0.0	0.0	0.0	0.0	0.0
Rome	"	16,596	13,631	30,227	5,566	0	5,566	380.6	17.7	398.3	326.7	0.0	326.7
San Francisco	"	16,110	16,472	32,582	0	0	0	180.3	1,206.5	1,386.8	0.0	0.0	0.0
Shanghai	"	2,294	1,487	3,781	8,243	7,060	15,303	4.9	3.5	8.4	22.5	26.8	49.4
Sharjah	"	0	0	0	0	0	0	0.0	0.0	0.0	0.0	17.1	17.1
Singapore	"	336,869	325,047	661,916	316,197	309,108	625,305	19,013.0	31,999.1	51,012.2	22,722.5	28,487.3	51,209.9
Taipei	"	831	547	1,378	0	0	0	6.8	16.5	23.3	0.0	0.0	0.0
Tianjin	"	0	0	0	0	0	0	0.0	0.0	0.0	0.0	61.0	61.0
Tokyo	"	44,608	23,226	67,834	44,391	29,317	73,708	1,007.9	1,710.8	2,718.7	1,062.7	1,706.3	2,769.0
Toledo	"	0	0	0	0	0	0	22.2	0.0	22.2	0.0	0.0	0.0
Toronto	"	4,288	4,797	9,085	0	0	0	229.5	608.9	838.4	0.0	0.0	0.0
Vienna	"	21,526	20,837	42,363	21,948	23,937	45,885	0.0	0.0	0.0	0.0	0.0	0.0
Wellington	"	51,529	54,614	106,143	49,429	52,503	101,932	169.7	124.6	294.3	137.5	123.0	260.5
Total	Melbourne	1,677,808	1,635,943	3,313,751	1,620,653	1,578,881	3,199,534	91,632.9	100,416.6	192,049.5	90,962.4	88,695.2	179,657.6
Auckland	Newcastle	4,876	4,631	9,507	0	0	0	0.0	0.0	0.0	0.0	0.0	0.0
Total	Newcastle	4,876	4,631	9,507	0	0	0	0.0	0.0	0.0	0.0	0.0	0.0
Auckland	Norfolk Island	7,924	7,967	15,891	7,777	7,475	15,252	111.2	22.6	133.7	118.3	13.7	132.0
Total	Norfolk Island	7,924	7,967	15,891	7,777	7,475	15,252	111.2	22.6	133.7	118.3	13.7	132.0
Auckland	Perth	39,217	38,326	77,543	38,479	38,588	77,067	1,588.8	764.8	2,353.6	1,516.4	993.2	2,509.6
Bandar Seri Begawan	"	20,749	21,641	42,390	18,343	19,724	38,067	140.5	1,010.8	1,151.3	215.7	1,072.3	1,288.0
Bangkok	"	37,736	37,374	75,110	33,904	31,863	65,767	910.9	1,842.5	2,753.5	1,580.0	2,024.6	3,604.6
Bombay	"	491	366	857	0	0	0	1.6	7.6	9.3	0.0	0.0	0.0
Buenos Aires	"	4	0	4	0	0	0	0.0	0.0	0.0	0.0	0.0	0.0
Chicago	"	0	0	0	0	0	0	0.1	0.0	0.1	0.0	0.0	0.0
Christchurch	"	405	0	405	0	0	0	4.2	1.7	5.9	0.0	0.0	0.0
Denpasar	"	78,600	77,085	155,685	68,404	70,667	139,071	314.1	620.4	934.5	117.5	221.7	339.2
Dubai	"	21,996	17,889	39,885	61,340	57,059	118,399	146.7	572.2	718.9	957.9	1,409.0	2,366.9
Frankfurt	"	6,712	7,116	13,828	0	0	0	14.8	44.5	59.3	0.0	0.0	0.0
Hong Kong	"	47,481	44,831	92,312	34,148	32,168	66,316	1,264.8	4,599.4	5,864.1	1,102.9	2,677.3	3,780.1
Honolulu	"	0	0	0	0	0	0	0.0	5.5	5.5	0.0	0.0	0.0
Jakarta	"	16,677	16,643	33,320	12,138	15,383	27,521	183.2	364.9	548.1	61.9	538.4	600.4
Johannesburg	"	50,914	45,769	96,683	51,777	43,975	95,752	1,202.7	2,132.9	3,335.6	1,518.7	1,878.7	3,397.4
Kuala Lumpur	"	87,611	86,498	174,109	95,520	88,569	184,089	1,883.8	3,285.8	5,169.6	2,058.1	2,321.6	4,379.7

TABLE 5: SCHEDULED INTERNATIONAL TRAFFIC BY CITY PAIRS: Year ended December

Foreign Port	Australian Port	Passengers						Freight (tonnes)					
		2002			2003			2002			2003		
		Inbound	Outbound	Total	Inbound	Outbound	Total	Inbound	Outbound	Total	Inbound	Outbound	Total
Kuching	Perth	4,272	4,428	8,700	5,077	4,920	9,997	0.9	348.1	349.0	0.6	261.6	262.2
London	"	23,058	20,423	43,481	45	0	45	75.1	12.2	87.3	0.0	0.0	0.0
Los Angeles	"	47	0	47	0	0	0	0.6	4.8	5.4	0.0	0.0	0.0
Manila	"	0	0	0	0	0	0	0.6	0.3	1.0	0.0	0.0	0.0
Mauritius	"	5,369	5,451	10,820	6,349	6,660	13,009	63.8	429.9	493.7	45.2	246.9	292.1
Nagoya	"	0	0	0	0	0	0	0.0	0.0	0.0	0.0	0.0	0.0
New York	"	3	0	3	0	0	0	3.5	0.0	3.5	0.0	0.0	0.0
Noumea	"	0	0	0	0	0	0	0.0	0.0	0.0	0.0	0.0	0.0
Osaka	"	0	0	0	0	0	0	0.0	0.0	0.0	0.0	0.0	0.0
Paris	"	4,513	3,913	8,426	9,506	6,970	16,476	71.2	42.9	114.0	419.9	26.8	446.7
Phuket	"	11,947	11,466	23,413	7,616	8,535	16,151	0.0	44.9	44.9	0.0	80.0	80.0
Port Moresby	"	0	0	0	0	0	0	0.0	0.0	0.0	0.0	0.0	0.0
Queenstown	"	10	0	10	0	0	0	0.0	0.0	0.0	0.0	0.0	0.0
Rome	"	3,479	2,425	5,904	2,119	0	2,119	31.3	1.5	32.9	207.0	0.0	207.0
Singapore	"	350,876	332,909	683,785	346,664	318,399	665,063	6,722.0	18,713.7	25,435.7	7,862.9	18,265.9	26,128.8
Taipei	"	0	0	0	0	0	0	0.4	0.3	0.7	0.0	0.0	0.0
Tokyo	"	25,488	24,114	49,602	26,187	25,526	51,713	360.2	1,125.0	1,485.2	500.1	1,150.8	1,650.9
Wellington	"	100	0	100	0	0	0	0.0	0.0	0.0	0.0	0.0	0.0
Total	Perth	837,755	798,667	1,636,422	817,616	769,006	1,586,622	14,985.7	35,976.7	50,962.4	18,164.8	33,168.8	51,333.6
Abu Dhabi	Sydney	0	0	0	0	0	0	0.0	0.0	0.0	0.0	42.8	42.8
Amsterdam	"	0	0	0	0	0	0	10,742.6	2,068.0	12,810.5	8,675.0	1,325.6	10,000.6
Apia	"	4,449	4,159	8,608	5,114	6,048	11,162	58.5	34.7	93.2	43.5	32.7	76.2
Athens	"	7,088	9,664	16,752	0	0	0	83.4	39.5	122.8	0.0	0.0	0.0
Atlanta	"	0	0	0	0	0	0	191.7	0.0	191.7	52.4	0.0	52.4
Auckland	"	477,102	496,015	973,117	556,831	580,705	1,137,536	21,201.9	26,727.8	47,929.7	22,948.3	28,517.8	51,466.1
Bahrain	"	3,474	3,748	7,222	2,969	4,923	7,892	61.8	159.1	220.9	79.0	80.5	159.5
Bangkok	"	232,147	228,159	460,306	220,349	223,290	443,639	6,336.3	4,720.4	11,056.7	7,031.6	4,580.6	11,612.3
Beijing	"	29,205	30,740	59,945	21,810	23,888	45,698	281.2	509.4	790.5	221.5	357.6	579.1
Bombay	"	2,295	3,029	5,324	0	0	0	16.9	21.1	37.9	0.0	0.0	0.0
Buenos Aires	"	17,875	19,142	37,017	14,470	14,763	29,233	191.3	220.9	412.2	80.8	156.4	237.2
Cairo	"	8,085	8,178	16,263	0	0	0	197.6	207.9	405.4	0.0	0.0	0.0
Chicago	"	7,987	6,690	14,677	7,138	6,975	14,113	3,388.8	0.0	3,388.8	204.4	0.0	204.4
Christchurch	"	195,025	195,999	391,024	219,577	224,445	444,022	4,278.6	4,760.1	9,038.7	5,173.4	5,208.4	10,381.8
Denpasar	"	77,270	79,009	156,279	59,688	63,702	123,390	1,798.8	1,527.7	3,326.5	1,564.4	1,159.5	2,723.8
Dubai	"	46,460	49,757	96,217	71,944	73,211	145,155	2,080.0	1,964.0	4,044.0	2,651.8	2,653.9	5,305.7
Dunedin	"	9,616	9,396	19,012	8,949	8,879	17,828	0.0	0.0	0.0	0.0	0.0	0.0
Frankfurt	"	27,631	29,093	56,724	42,910	38,452	81,362	1,350.1	62.2	1,412.4	1,894.1	199.4	2,093.5
Fukuoka	"	272	270	542	0	0	0	0.0	0.0	0.0	0.0	0.0	0.0
Guangzhou	"	28,512	34,038	62,550	26,011	26,786	52,797	1,112.7	212.0	1,324.7	1,507.6	167.8	1,675.4
Hamilton	"	11,424	11,526	22,950	11,518	11,398	22,916	0.0	0.0	0.0	0.0	0.0	0.0
Hanoi	"	1,994	1,978	3,972	0	2,153	2,153	0.0	26.7	26.7	0.0	0.0	0.0
Ho Chi Minh City	"	14,782	13,463	28,245	0	11,936	11,936	364.6	205.9	570.5	0.0	79.5	79.5
Hong Kong	"	298,281	289,708	587,989	259,136	244,918	504,054	14,891.8	15,278.3	30,170.1	17,569.6	12,400.7	29,970.3
Honolulu	"	66,587	63,654	130,241	65,358	53,006	118,364	1,763.5	1,917.2	3,680.7	2,395.9	2,826.3	5,222.2

TABLE 5: SCHEDULED INTERNATIONAL TRAFFIC BY CITY PAIRS: Year ended December

Foreign Port	Australian Port	Passengers						Freight (tonnes)					
		2002			2003			2002			2003		
		Inbound	Outbound	Total	Inbound	Outbound	Total	Inbound	Outbound	Total	Inbound	Outbound	Total
Jakarta	Sydney	40,165	49,700	89,865	35,488	36,128	71,616	743.2	1,741.4	2,484.6	416.5	1,053.9	1,470.4
Johannesburg	"	61,468	54,556	116,024	66,144	60,054	126,198	1,040.7	292.6	1,333.3	1,285.2	335.7	1,620.9
Kota Kinabalu	"	0	0	0	4,268	4,830	9,098	0.0	0.0	0.0	183.6	70.9	254.5
Kuala Lumpur	"	159,240	149,225	308,465	151,941	141,369	293,310	6,340.4	3,239.1	9,579.5	11,947.0	3,275.1	15,222.1
London	"	170,756	178,964	349,720	188,707	198,741	387,448	6,049.0	1,600.0	7,649.0	5,956.2	1,622.8	7,578.9
Los Angeles	"	326,871	340,479	667,350	302,689	309,663	612,352	20,264.0	7,489.1	27,753.1	18,255.7	3,961.9	22,217.6
Louisville	"	0	0	0	0	0	0	4,860.7	0.0	4,860.7	4,685.5	0.0	4,685.5
Luzon Island	"	0	0	0	0	0	0	0.0	0.0	0.0	0.0	202.7	202.7
Manila	"	48,508	49,646	98,154	50,516	51,707	102,223	1,360.4	1,057.2	2,417.6	1,643.4	903.9	2,547.3
Nadi	"	103,947	104,549	208,496	109,782	107,103	216,885	3,299.7	2,661.3	5,961.1	2,309.5	2,559.2	4,868.6
Nagoya	"	15,421	20,960	36,381	3,755	5,252	9,007	464.0	340.4	804.4	293.9	136.1	430.0
Nauru	"	70	0	70	0	0	0	0.0	0.0	0.0	0.0	0.0	0.0
New York	"	16,509	15,405	31,914	19,078	19,462	38,540	3,694.0	550.6	4,244.7	1,033.8	155.4	1,189.2
Niue	"	12	0	12	96	0	96	0.0	0.0	0.0	0.9	0.0	0.9
Noumea	"	42,180	39,640	81,820	41,649	39,082	80,731	24.2	433.8	458.1	30.2	609.5	639.7
Osaka	"	44,767	122,318	167,085	37,894	90,799	128,693	1,403.3	2,769.6	4,172.9	1,160.2	2,108.9	3,269.2
Palmerston	"	9,406	9,397	18,803	8,829	8,697	17,526	0.0	0.0	0.0	0.0	0.0	0.0
Papeete	"	0	3,146	3,146	0	380	380	0.0	3.5	3.5	0.0	1.2	1.2
Paris	"	17,457	16,898	34,355	126	7	133	494.5	35.9	530.4	0.0	1.7	1.7
Phuket	"	0	0	0	0	777	777	0.0	0.0	0.0	0.0	0.0	0.0
Port Moresby	"	11,647	10,561	22,208	10,724	11,507	22,231	357.5	450.9	808.4	242.0	194.5	436.6
Port Vila	"	17,784	17,743	35,527	17,882	17,795	35,677	61.8	180.9	242.7	59.7	180.3	240.0
Queenstown	"	8,883	9,885	18,768	6,585	7,534	14,119	0.0	0.0	0.0	0.0	0.0	0.1
Rome	"	14,736	14,920	29,656	528	1,176	1,704	539.9	9.3	549.2	9.0	5.6	14.6
San Francisco	"	79,710	85,056	164,766	84,718	90,126	174,844	1,177.4	2,863.7	4,041.1	985.5	2,688.3	3,673.8
Santiago	"	8,310	10,023	18,333	18,866	19,214	38,080	156.3	127.0	283.3	859.9	284.4	1,144.3
Sapporo	"	0	0	0	0	0	0	0.0	0.0	0.0	0.0	25.0	25.0
Seoul	"	170,654	166,365	337,019	170,849	164,814	335,663	6,287.4	11,156.3	17,443.7	6,642.4	8,767.8	15,410.2
Shanghai	"	47,658	43,865	91,523	47,404	47,111	94,515	1,678.1	437.2	2,115.3	2,386.1	316.6	2,702.7
Shannon	"	0	0	0	0	0	0	0.0	0.0	0.0	0.0	25.7	25.7
Sharjah	"	0	0	0	0	0	0	0.0	0.0	0.0	0.0	78.1	78.1
Singapore	"	489,735	457,914	947,649	477,467	439,900	917,367	24,970.9	23,569.4	48,540.4	27,045.1	16,234.0	43,279.1
Subic Bay	"	0	0	0	0	0	0	0.0	9,243.9	9,243.9	0.0	6,765.7	6,765.7
Suva	"	7,197	9,147	16,344	7,824	10,943	18,767	2.0	14.1	16.1	0.9	14.0	14.9
Taipei	"	51,113	51,033	102,146	54,480	52,778	107,258	1,635.4	1,922.2	3,557.6	1,809.1	2,138.3	3,947.4
Tianjin	"	0	0	0	0	0	0	0.0	0.0	0.0	0.0	57.4	57.4
Tokyo	"	205,909	233,971	439,880	199,331	222,469	421,800	3,690.7	7,133.7	10,824.4	4,324.7	5,642.8	9,967.5
Toledo	"	0	0	0	0	0	0	885.7	0.0	885.7	80.3	0.0	80.3
Tongatapu	"	1,864	2,243	4,107	2,064	2,301	4,365	108.1	10.1	118.2	26.4	11.2	37.5
Toronto	"	205	0	205	0	0	0	1.7	5.9	7.7	0.0	0.0	0.0
Vancouver	"	36,992	40,656	77,648	43,968	49,114	93,082	620.1	2,194.4	2,814.5	324.4	309.7	634.1
Vienna	"	55,376	56,142	111,518	56,456	59,114	115,570	0.0	0.0	0.0	0.0	0.0	0.0
Wellington	"	109,971	112,871	222,842	108,457	112,856	221,313	434.7	145.1	579.8	351.1	149.9	501.0
Total	Sydney	3,942,082	4,064,693	8,006,775	3,922,337	4,002,281	7,924,618	163,038.0	142,341.6	305,379.6	166,441.3	120,677.6	287,118.9

TABLE 5: SCHEDULED INTERNATIONAL TRAFFIC BY CITY PAIRS: Year ended December

Foreign Port	Australian Port	Passengers						Freight (tonnes)					
		2002			2003			2002			2003		
		Inbound	Outbound	Total	Inbound	Outbound	Total	Inbound	Outbound	Total	Inbound	Outbound	Total
Abu Dhabi	Australia	0	0	0	0	0	0	0.0	0.0	0.0	0.0	42.8	42.8
Amsterdam	"	0	0	0	0	0	0	10,914.5	2,068.0	12,982.5	8,788.4	1,329.8	10,118.2
Apia	"	4,449	4,159	8,608	5,114	6,048	11,162	58.5	34.7	93.2	43.5	32.7	76.2
Athens	"	13,451	17,637	31,088	0	0	0	152.0	66.4	218.4	0.0	0.0	0.0
Atlanta	"	0	0	0	0	0	0	1,280.5	0.0	1,280.5	931.8	0.0	931.8
Auckland	"	1,049,984	1,078,844	2,128,828	1,186,699	1,219,163	2,405,862	46,346.9	52,637.5	98,984.4	47,837.6	54,082.9	101,920.6
Bahrain	"	5,223	5,941	11,164	2,969	4,923	7,892	138.8	525.2	664.0	79.0	80.5	159.5
Bandar Seri Begawan	"	54,126	57,054	111,180	47,133	50,675	97,808	796.6	2,774.6	3,571.2	1,156.2	2,546.6	3,702.8
Bangkok	"	401,186	392,977	794,163	379,400	378,241	757,641	12,658.8	13,800.2	26,459.0	14,439.4	13,226.5	27,665.9
Beijing	"	39,671	36,205	75,876	31,224	29,091	60,315	355.6	719.7	1,075.3	391.4	552.0	943.4
Bombay	"	5,070	3,757	8,827	0	0	0	39.1	37.6	76.7	0.0	0.0	0.0
Buenos Aires	"	21,145	21,075	42,220	14,470	14,763	29,233	199.2	226.1	425.4	80.8	156.4	237.2
Cairo	"	8,085	8,178	16,263	0	0	0	197.6	207.9	405.4	0.0	0.0	0.0
Chicago	"	9,185	8,032	17,217	9,187	9,500	18,687	8,102.3	0.0	8,102.3	4,390.7	0.0	4,390.7
Christchurch	"	350,419	351,262	701,681	386,321	387,963	774,284	7,418.3	7,264.5	14,682.8	7,203.8	6,873.4	14,077.3
Denpasar	"	259,635	257,664	517,299	205,017	212,759	417,776	4,687.0	5,332.9	10,020.0	3,582.5	3,539.9	7,122.4
Dubai	"	140,352	139,827	280,179	217,658	211,677	429,335	4,087.6	6,748.5	10,836.1	5,660.5	8,482.2	14,142.7
Dunedin	"	37,768	37,569	75,337	39,322	39,433	78,755	0.0	0.0	0.0	0.0	0.0	0.0
Frankfurt	"	64,211	69,962	134,173	42,910	38,452	81,362	3,605.8	2,065.7	5,671.5	2,172.4	1,302.2	3,474.6
Fukuoka	"	4,081	3,846	7,927	17,159	18,949	36,108	3.8	2.5	6.3	25.1	330.1	355.2
Guam	"	10,809	11,160	21,969	12,363	12,830	25,193	0.2	43.7	43.9	0.3	37.5	37.8
Guangzhou	"	48,305	46,115	94,420	38,303	36,185	74,488	2,085.5	632.0	2,717.5	2,102.2	407.2	2,509.4
Hamilton	"	57,925	57,797	115,722	54,012	54,370	108,382	0.0	0.0	0.0	0.0	0.0	0.0
Hanoi	"	4,058	4,181	8,239	2,311	4,813	7,124	4.6	51.8	56.4	0.0	61.1	61.1
Ho Chi Minh City	"	36,115	34,990	71,105	19,882	31,909	51,791	842.2	432.3	1,274.5	557.5	271.6	829.1
Hong Kong	"	606,071	581,853	1,187,924	518,588	487,940	1,006,528	29,317.0	42,621.4	71,938.4	33,383.6	35,520.6	68,904.2
Honiara	"	7,733	8,000	15,733	9,002	9,069	18,071	100.1	71.9	172.1	97.5	72.9	170.3
Honolulu	"	78,082	77,607	155,689	65,360	59,214	124,574	2,124.1	2,380.4	4,504.5	2,395.9	2,859.7	5,255.6
Jakarta	"	66,122	67,937	134,059	47,626	51,511	99,137	957.5	2,382.9	3,340.4	478.4	1,595.2	2,073.6
Johannesburg	"	112,536	102,193	214,729	117,921	104,029	221,950	2,343.2	2,463.5	4,806.7	2,803.9	2,214.4	5,018.3
Karachi	"	0	0	0	0	0	0	0.0	2.6	2.6	0.0	20.1	20.1
Kota Kinabalu	"	0	0	0	4,474	5,147	9,621	0.0	0.0	0.0	189.8	141.2	331.0
Kuala Lumpur	"	448,763	446,644	895,407	457,023	432,211	889,234	22,312.9	19,008.3	41,321.2	29,347.6	15,898.8	45,246.3
Kuching	"	4,272	4,428	8,700	5,077	4,920	9,997	0.9	348.1	349.0	0.6	261.6	262.2
Kupang	"	0	0	0	0	0	0	0.0	0.0	0.0	0.0	0.0	0.0
Lahore	"	0	0	0	0	0	0	0.0	16.1	16.1	0.0	7.7	7.7
London	"	305,380	311,336	616,716	291,261	294,326	585,587	9,587.3	2,277.5	11,864.8	9,403.3	2,073.5	11,476.7
Los Angeles	"	466,550	482,091	948,641	473,174	476,510	949,684	23,748.6	11,450.8	35,199.4	21,242.1	8,348.1	29,590.2
Louisville	"	0	0	0	0	0	0	4,860.7	0.0	4,860.7	4,685.5	0.0	4,685.5
Luxembourg	"	0	0	0	0	0	0	4,321.8	0.0	4,321.8	4,106.4	0.0	4,106.4
Luzon Island	"	0	0	0	0	0	0	0.0	0.0	0.0	0.0	202.7	202.7
Manila	"	70,059	66,064	136,123	69,382	68,064	137,446	1,790.8	1,945.7	3,736.5	2,203.6	1,688.7	3,892.2
Mauritius	"	13,069	13,020	26,089	14,704	14,720	29,424	421.6	670.3	1,091.9	341.6	483.6	825.2
Nadi	"	166,809	165,695	332,504	182,483	178,476	360,959	4,337.9	3,893.8	8,231.7	3,217.4	3,993.0	7,210.4

TABLE 5: SCHEDULED INTERNATIONAL TRAFFIC BY CITY PAIRS: Year ended December

Foreign Port	Australian Port	Passengers						Freight (tonnes)					
		2002			2003			2002			2003		
		Inbound	Outbound	Total	Inbound	Outbound	Total	Inbound	Outbound	Total	Inbound	Outbound	Total
Nagoya	Australia	86,188	89,441	175,629	71,489	71,733	143,222	718.8	1,750.4	2,469.2	531.7	1,489.1	2,020.7
Nauru	"	6,659	6,288	12,947	5,652	5,311	10,963	11.3	262.2	273.6	35.8	255.8	291.6
New Delhi	"	0	0	0	0	0	0	0.0	55.0	55.0	0.0	1.4	1.4
New York	"	21,472	20,558	42,030	19,263	19,730	38,993	4,267.0	799.7	5,066.7	1,115.3	155.4	1,270.7
Niue	"	12	0	12	96	0	96	0.0	0.0	0.0	0.9	0.0	0.9
Noumea	"	59,193	57,727	116,920	57,875	56,730	114,605	49.5	616.5	666.0	40.1	763.5	803.6
Osaka	"	207,850	196,417	404,267	177,234	168,606	345,840	2,648.0	5,136.4	7,784.4	2,779.6	4,853.5	7,633.0
Palmerston	"	39,972	39,408	79,380	36,227	35,388	71,615	0.0	0.0	0.0	0.0	0.0	0.0
Papeete	"	0	3,146	3,146	0	380	380	0.0	3.5	3.5	0.0	1.2	1.2
Paris	"	29,364	31,270	60,634	9,632	6,977	16,609	642.1	97.3	739.4	419.9	28.5	448.5
Penang	"	0	0	0	0	0	0	561.5	197.2	758.7	372.9	62.6	435.5
Phuket	"	11,947	11,466	23,413	7,616	10,452	18,068	0.0	44.9	44.9	0.0	80.4	80.4
Port Moresby	"	66,905	65,729	132,634	62,967	64,164	127,131	1,581.3	2,587.8	4,169.1	1,190.3	2,093.9	3,284.2
Port Vila	"	29,308	29,226	58,534	28,493	28,331	56,824	100.1	321.0	421.1	102.2	309.4	411.6
Queenstown	"	12,730	13,558	26,288	8,842	10,160	19,002	0.0	0.0	0.0	0.0	0.0	0.1
Rome	"	39,390	38,312	77,702	8,213	5,783	13,996	1,106.3	34.7	1,141.1	542.6	18.1	560.7
San Francisco	"	95,820	101,528	197,348	84,718	90,126	174,844	1,357.7	4,070.2	5,427.9	985.5	2,688.3	3,673.8
Santiago	"	8,310	10,023	18,333	18,866	19,214	38,080	156.3	127.0	283.3	859.9	284.4	1,144.3
Sapporo	"	0	96	96	0	0	0	0.0	0.0	0.0	0.0	25.0	25.0
Seoul	"	197,637	189,519	387,156	201,577	190,136	391,713	6,768.6	12,985.4	19,754.0	7,048.7	10,139.4	17,188.1
Shanghai	"	49,952	45,352	95,304	55,647	54,171	109,818	1,683.0	440.8	2,123.7	2,408.6	343.4	2,752.0
Shannon	"	0	0	0	0	0	0	0.0	0.0	0.0	0.0	25.7	25.7
Sharjah	"	0	0	0	0	0	0	0.0	0.0	0.0	0.0	95.2	95.2
Singapore	"	1,488,705	1,422,066	2,910,771	1,513,057	1,440,562	2,953,619	59,068.7	91,981.1	151,049.8	68,832.5	79,865.2	148,697.8
Subic Bay	"	0	0	0	0	0	0	0.0	9,243.9	9,243.9	0.0	6,765.7	6,765.7
Suva	"	7,197	9,147	16,344	7,824	10,943	18,767	2.0	14.1	16.1	0.9	14.0	14.9
Taipei	"	84,839	83,953	168,792	87,800	87,284	175,084	3,188.2	3,653.7	6,841.9	3,295.0	3,202.4	6,497.4
Tianjin	"	0	0	0	0	0	0	0.0	0.0	0.0	0.0	118.4	118.4
Tokyo	"	526,799	531,917	1,058,716	505,970	513,667	1,019,637	8,479.1	18,081.5	26,560.6	8,791.7	14,526.0	23,317.7
Toledo	"	0	0	0	0	0	0	915.3	0.0	915.3	80.3	0.0	80.3
Tongatapu	"	1,864	2,243	4,107	2,064	2,301	4,365	108.1	10.1	118.2	26.4	11.2	37.5
Toronto	"	4,493	4,797	9,290	0	0	0	231.2	614.8	846.0	0.0	0.0	0.0
Vancouver	"	36,992	40,656	77,648	43,968	49,114	93,082	620.1	2,194.4	2,814.5	324.4	309.7	634.1
Vienna	"	76,902	76,979	153,881	78,404	83,051	161,455	0.0	0.0	0.0	0.0	0.0	0.0
Wellington	"	210,568	214,684	425,252	202,107	210,183	412,290	630.3	301.9	932.2	493.6	285.3	778.9
Total	Australia	8,371,767	8,310,606	16,682,373	8,263,130	8,182,378	16,445,508	305,094.8	340,830.8	645,925.6	313,618.9	297,548.8	611,167.7

Please refer to explanatory notes - paragraphs 3, 8 and 13 in particular.

**TABLE 6 : INTERNATIONAL AIRLINES
OWN STOPOVER REVENUE PASSENGERS,
AUSTRALIAN CITY PAIRS**

YEAR ENDED DECEMBER 2003

City Pair Route	Total Passengers
Brisbane/Sydney	39,502
Melbourne/Sydney	35,908
Brisbane/Cairns	2,175
Adelaide/Melbourne	100
Perth/Sydney	2
TOTAL	77,687

Notes:

1. Own Stopover Revenue Passengers : The aggregate of revenue passengers uplifted at one Australian airport and discharged (excluding transit passengers) at another Australian airport by the same foreign registered international airline on which they entered or left Australia.
2. City Pair Route represents the aggregation of passengers travelling in both directions.
3. This data are supplementary to the information previously supplied to the Department by most international airlines. Tables 1-5 cover only those passengers travelling to/from overseas airports. The inclusion of this additional data provides a more complete coverage of international airline activity.

TABLE 7: TOTAL AIRCRAFT MOVEMENTS AT AUSTRALIAN INTERNATIONAL AIRPORTS BY AIRCRAFT TYPES: Year ended December 2003

Airport	Aircraft Types																			All Types	
	Passenger/Mixed														Freighters						
	AB6	310	319	320	330	340	737	747	757	767	777	M11	D10	F28	72F	74F	76F	M1F	D1F		
Adelaide					336	8		68		588	699										1,773
Brisbane		4		4	1,460	62	5,199	4,960	4	2,721	1,586	696									16,700
Cairns					418		268	702		4,813				1,179							7,380
Darwin		38	26	3			377	12	110	708											1,274
Gold Coast/Coolangatta							1,273			691											1,964
Melbourne	136	124		103	1,779	149	3,254	4,984		4,995	3,901	796				808		300			21,329
Norfolk Island							206														206
Perth		340			1,082	211	936	1,087	4	2,166	2,948			4							8,798
Sydney	128	20		601	1,598	2,280	8,690	18,887	72	10,173	4,357	360			450	896	86	488	2		49,088
Australia	264	526	26	711	6,673	2,710	20,203	30,700	190	26,855	13,491	1,852	4	1,179	450	1,802	86	788	2		108,512

% of All Types 0.2% 0.5% 0.0% 0.7% 6.1% 2.5% 18.6% 28.3% 0.2% 24.7% 12.4% 1.7% 0.0% 1.1% 0.4% 1.7% 0.1% 0.7% 0.0% 100.0%

NOTE:
These figures only cover scheduled operations of the airlines listed in this publication. Charter/ferry operations are not included.

Aircraft Types (all series)	% of All Types										
Airbus	10.1%	AB6	310	319	320	330	340				
Boeing	86.4%	737	747	74M	757	767	777	72F	74F	76F	
McDonnell Douglas	2.4%	M11	D10	M1F	D1F						
Fokker	1.1%	F28									