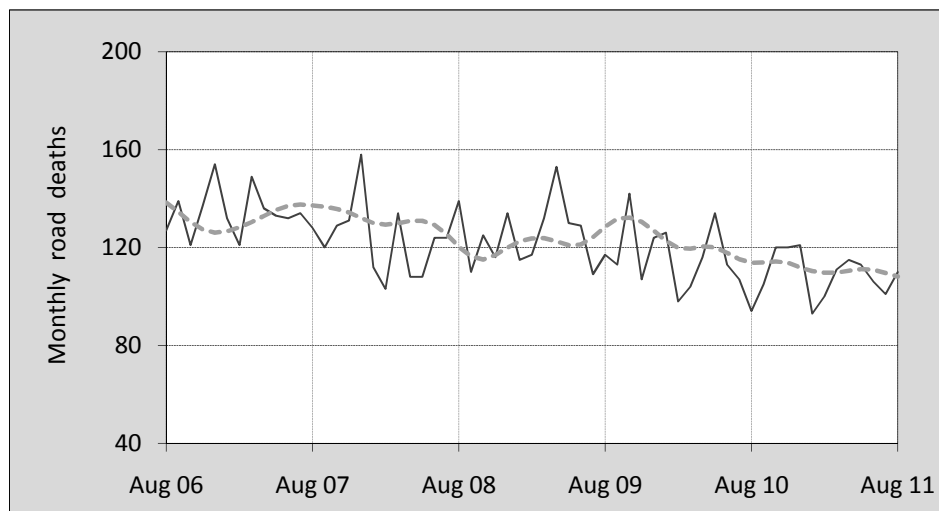




This month's key figures

- There was a total of 110 road deaths in August 2011. Compared to the average for the month of August over the last five years, this is an 9.1 per cent decrease.
- During the 12 months ended August 2011 there were 1,315 deaths. This is a 4.6 per cent decrease from the 12-monthly period ending August 2010.
- The rate of annual deaths per population presently stands at 5.9. This is an 5.0 per cent decrease from the 12-monthly period ending August 2010.

Monthly Australian road deaths — last five years, with trend



Data Sources

Data are obtained from

- Roads and Traffic Authority, NSW
- Vicroads
- Department of Transport and Main Roads, Queensland
- Department for Transport, Energy and Infrastructure, S.A.
- Western Australia Police
- Department of Infrastructure, Energy and Resources, Tasmania
- Department of Lands and Planning, Northern Territory
- Department of Territory and Municipal Services, ACT
- Australian Bureau of Statistics (3101.0)

Inquiries

For further information about data in this bulletin, contact:

Bureau of Infrastructure, Transport and
Regional Economics
Web : www.bitre.gov.au
Email : roadsafety@infrastructure.gov.au

Road deaths from recent months are preliminary and subject to revision.

© Copyright. Commonwealth of Australia

I. Current month and year to date

Deaths by jurisdiction

Current month	NSW	Vic	Qld	SA	WA	Tas	NT	ACT	Australia
August 2010	27	18	15	7	17	3	7	0	94
August 2011	41	16	29	8	12	1	3	0	110
Per cent change	51.9	-11.1	93.3	14.3	-29.4	-66.7	-57.1	-	17.0

Year to date	NSW	Vic	Qld	SA	WA	Tas	NT	ACT	Australia
January 2010 - August 2010	268	195	157	83	116	22	34	17	892
January 2011 - August 2011	246	198	175	77	106	19	22	6	849
Latest per cent change	-8.2	1.5	11.5	-7.2	-8.6	-13.6	-35.3	-64.7	-4.8

2. Yearly deaths — last five 12 monthly periods

Deaths by jurisdiction

12 months ended August	NSW	Vic	Qld	SA	WA	Tas	NT	ACT	Australia
2007	445	338	379	106	226	58	46	18	1,616
2008	374	336	331	108	214	38	74	15	1,490
2009	439	287	340	123	184	61	43	10	1,487
2010	421	292	252	118	194	33	47	21	1,378
2011	389	291	267	112	183	28	37	8	1,315
Latest per cent change	-7.6	-0.3	6.0	-5.1	-5.7	-15.2	-21.3	-61.9	-4.6
Average change per year (per cent)	-1.5	-4.3	-9.3	2.0	-5.1	-14.8	-8.5	-12.1	-4.8

Deaths by road user

12 months ended August	Driver	Passenger	Pedestrian	Motorcyclist	Cyclist	Total ^a
2007	800	327	207	240	42	1,616
2008	716	317	185	245	26	1,490
2009	667	331	203	250	35	1,487
2010	665	288	174	212	37	1,378
2011	607	275	189	204	39	1,315
latest per cent change	-8.7	-4.5	8.6	-3.8	5.4	-4.6
Average change per year (per cent)	-6.1	-4.3	-2.4	-4.6	2.1	-4.8

^a Includes deaths of unknown road user type

Deaths by age-group (years)

12 months ended August	0 to 16	17 to 25	26 to 39	40 to 59	60 to 69	≥ 70	Total ^a
2007	106	402	413	381	121	193	1,616
2008	88	394	355	376	81	195	1,490
2009	99	387	365	359	104	173	1,487
2010	84	309	323	373	113	175	1,378
2011	77	313	274	356	113	174	1,315
latest per cent change	-8.3	1.3	-15.2	-4.6	0.0	-0.6	-4.6
Average change per year (per cent)	-6.6	-7.2	-8.7	-1.4	2.0	-3.1	-4.8

a Includes deaths to persons with age not recorded.

Deaths by gender

12 months ended August	Males	Females	Total ^b
2007	1,183	433	1,616
2008	1,111	378	1,490
2009	1,088	397	1,487
2010	993	382	1,378
2011	942	370	1,315
latest per cent change	-5.1	-3.1	-4.6
Average change per year (per cent)	-5.5	-3.0	-4.8

b Includes deaths to persons with gender not recorded.

3. Annual deaths per 100,000 population

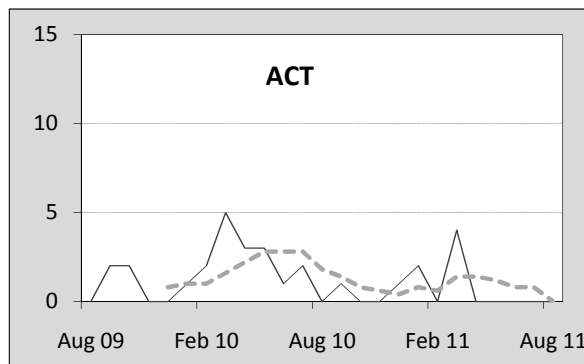
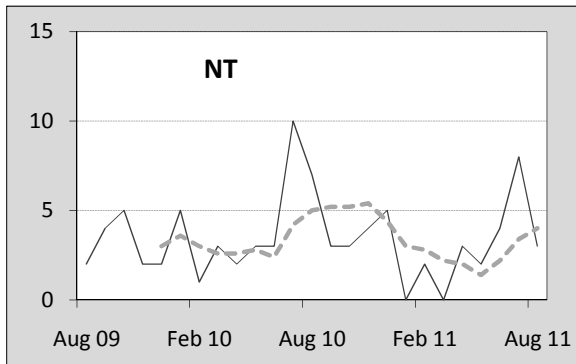
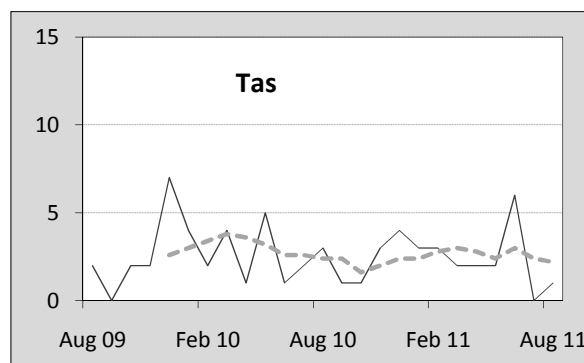
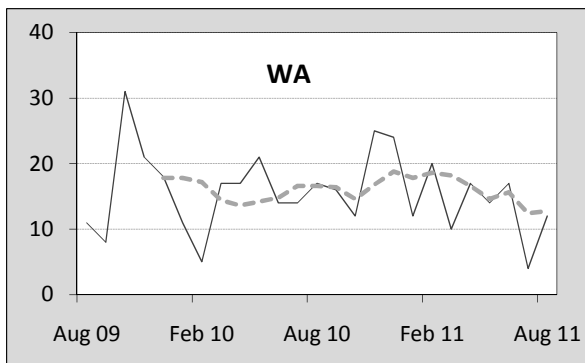
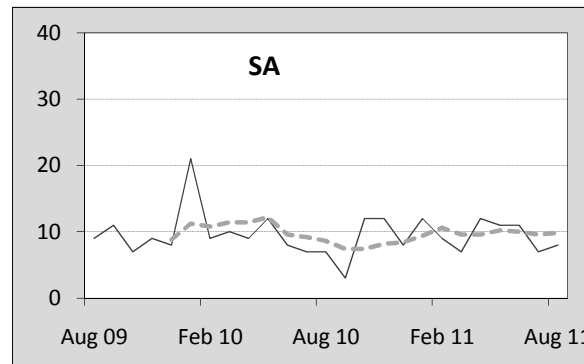
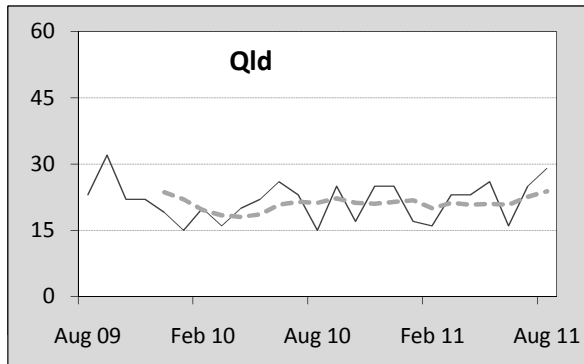
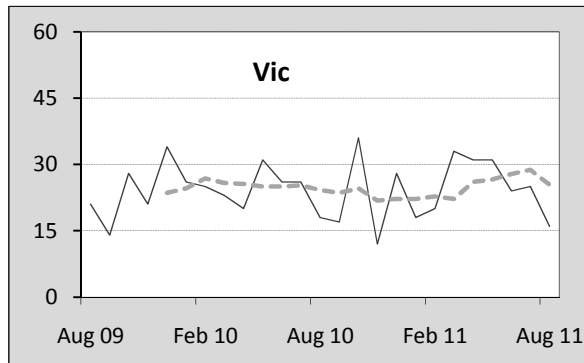
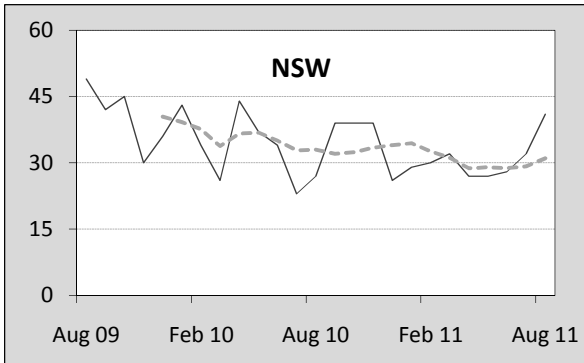
By jurisdiction

12 months ended August	NSW	Vic	Qld	SA	WA	Tas	NT	ACT	Australia
2007	6.47	6.51	9.11	6.71	10.78	11.78	21.58	5.32	7.71
2008	5.36	6.35	7.75	6.76	9.93	7.65	33.90	4.36	6.98
2009	6.19	5.31	7.75	7.60	8.26	12.15	19.66	2.86	6.82
2010	5.84	5.29	5.61	7.20	8.51	6.51	20.58	5.89	6.20
2011	5.39	5.27	5.87	6.80	7.98	5.51	16.06	2.24	5.89
latest per cent change	-7.7	-0.5	4.6	-5.6	-6.2	-15.5	-22.0	-62.0	-5.0

Calendar year	NSW	Vic	Qld	SA	WA	Tas	NT	ACT	Australia
2006	7.28	6.57	8.19	7.46	9.71	11.23	21.84	3.89	7.73
2007	6.30	6.36	8.58	7.82	11.12	9.12	27.00	4.10	7.61
2008	5.33	5.69	7.61	6.17	9.42	7.83	34.01	4.04	6.68
2009	6.36	5.32	7.48	7.33	8.47	12.52	13.70	3.41	6.78
2010	5.68	5.19	5.52	7.18	8.42	6.11	21.33	5.30	6.08
latest per cent change	-10.6	-2.5	-26.3	-2.1	-0.6	-51.2	55.7	55.6	-10.3

Monthly deaths by jurisdiction — last 24 months

— raw
 - - - smoothed (unweighted 5-point moving average)



5. Characteristics of fatal crashes

12 months ended August	Crash type ^a			Posted speed limit				Total ^b
	Single	Multiple	Pedestrian	0 to 60	70 to 90	100	≥ 110	
2007	692	580	206	475	308	478	174	1,478
2008	651	517	184	389	306	468	153	1,352
2009	640	501	200	433	326	405	154	1,341
2010	572	521	170	354	266	436	178	1,263
2011	523	494	186	327	260	400	149	1,203
Average change per year (per cent)	-6.7	-3.1	-2.8	-8.1	-4.7	-4.2	-1.6	-4.7

12 months ended August	Day of week ^c		Time of Day ^d	
	Weekday	Weekend	Day	Night
2007	852	604	836	642
2008	783	553	752	600
2009	831	497	765	576
2010	739	508	737	526
2011	728	457	721	482
Average change per year (per cent)	-3.7	-6.2	-3.1	-6.8

- a 'Single' and 'Multiple' refer to the the number of vehicles involved in a fatal crash where there is no pedestrian killed.
 b Includes crashes where speed limit is unknown
 c 'Weekday' refers to 6am Monday through to 5:59pm Friday.
 d 'Day' refers to 6am through to 5:59 pm.

Appendix

Definition

The road safety agencies in each jurisdiction use detailed criteria to define road crashes and road deaths. Briefly, a death is classified as resulting from a road crash if the crash occurred on a public road, is unintentional and the death occurred within 30 days from injuries sustained in the crash.

Population rates

Rates per population are based on the deaths to the current 12 monthly period, and the population at the midpoint of the period. The population at midpoints are interpolated if necessary.

Average (%) change per year

Calculated by fitting an exponential curve through the five data points, and quoting the constant (annual) change of this curve.

Other sources for the tables in this bulletin

The underlying database used to produce this bulletin — *the Australian Road Deaths Database* is available for online querying and data extraction at <http://www.bitre.gov.au/info.aspx?Nodetd=167>

Road deaths from recent months are preliminary and subject to revision.