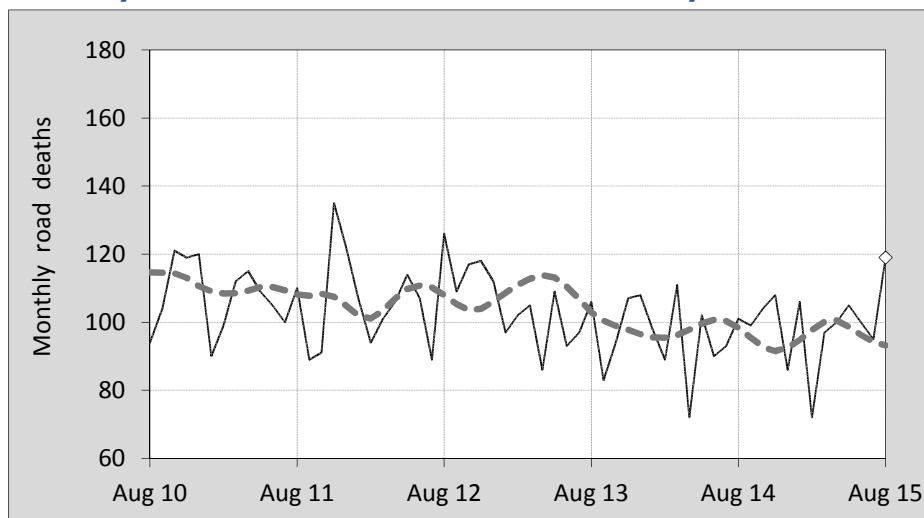




This month's key figures

- There was a total of 119 road deaths during the month of August 2015. In comparison to the average for August over the previous five years, the current figure is 10.8 per cent higher.
- During the 12 months ended August there were 1,191 road deaths. This is a 3.7 per cent increase compared to the total for the 12-monthly period ended August 2014.
- Presently the rate of annual deaths per 100,000 population stands at 5.0. Compared to the figure for the 12-monthly period ending August 2014, this is a 2.6 per cent increase.

Monthly Australian road deaths — last five years, with trend



Data Sources

Data are obtained from

- Transport for NSW
- Vicroads
- Department of Transport and Main Roads, Queensland
- Department of Planning, Transport and Infrastructure, S.A.
- Western Australia Police
- Department of State Growth, Tasmania
- Department of Transport, Northern Territory
- Territory and Municipal Services Directorate, ACT
- Australian Bureau of Statistics (3101.0)

Inquiries

For further information about data in this bulletin, contact:

Bureau of Infrastructure, Transport and
Regional Economics
Web : www.bitre.gov.au
Email : roadsafety@infrastructure.gov.au

Road deaths from recent months are preliminary and subject to revision.

© Copyright. Commonwealth of Australia

I. Deaths by jurisdiction

Table I.1 Current month

Current month	NSW	Vic	Qld	SA	WA	Tas	NT	ACT	Australia
August 2014	27	21	25	8	13	2	4	1	101
August 2015	40	25	15	10	21	1	7	0	119
Per cent change	48.1	19.0	-40.0	25.0	61.5	-50.0	75.0	-	17.8

Table I.2 Year to date

Year to date	NSW	Vic	Qld	SA	WA	Tas	NT	ACT	Australia
January 2014 - August 2014	210	168	149	60	112	23	28	6	756
January 2015 - August 2015	234	174	154	61	106	23	34	8	794
Per cent change	11.4	3.6	3.4	1.7	-5.4	0.0	21.4	33.3	5.0

Table I.3 Year ending August

12 months ended August	NSW	Vic	Qld	SA	WA	Tas	NT	ACT	Australia
2011	372	289	267	112	190	27	39	8	1,304
2012	379	272	274	88	183	23	56	6	1,281
2013	340	257	290	106	176	32	39	11	1,251
2014	324	255	230	84	165	41	41	8	1,148
2015	331	255	228	108	177	35	45	12	1,191
Latest per cent change	2.2	0.0	-0.9	28.6	7.3	-14.6	9.8	50.0	3.7
Average trend change per year (per cent)	-3.8	-3.1	-4.8	-1.2	-2.4	11.6	-0.3	11.6	-2.9

2. Deaths by road user, age-group and gender

Table 2.1 By road user

12 months ended August	Driver	Passenger	Pedestrian	Motorcyclist ^b	Pedal ^b cyclist	Total ^c
2011	599	278	182	208	36	1,304
2012	582	264	177	227	30	1,281
2013	606	240	157	200	40	1,251
2014	527	219	156	193	52	1,148
2015	531	249	163	211	32	1,191
Latest per cent change	0.8	13.7	4.5	9.3	-38.5	3.7
Average trend change per year (per cent)	-3.3	-4.0	-3.4	-1.3	3.2	-2.9

Table 2.2 By age-group^a (years)

12 months ended August	0 to 16	17 to 25	26 to 39	40 to 64	65 to 74	≥ 75	Total ^c
2011	80	315	271	414	88	136	1,304
2012	83	270	314	378	83	153	1,281
2013	70	265	260	391	112	152	1,251
2014	63	216	235	377	118	137	1,148
2015	73	248	275	350	103	140	1,191
Latest per cent change	15.9	14.8	17.0	-7.2	-12.7	2.2	3.7
Average trend change per year (per cent)	-4.5	-6.8	-2.6	-3.3	6.9	-0.5	-2.9

2. Deaths by road user, age-group and gender (continued)

Table 2.3 By gender

12 months ended August	<i>Males</i>	<i>Females</i>	<i>Total^d</i>
2011	935	367	1,304
2012	922	359	1,281
2013	891	359	1,251
2014	835	312	1,148
2015	845	346	1,191
<i>Latest per cent change</i>	1.2	10.9	3.7
<i>Average trend change per year (per cent)</i>	-3.0	-2.5	-2.9

a Age groups were changed in March 2014.

b Includes pillion passengers

c Includes deaths to persons with either age or road user type not recorded.

d Includes deaths to persons with gender not recorded.

3. Annual deaths per 100,000 population

Table 3.1 Year ended August

12 months ended August	<i>NSW</i>	<i>Vic</i>	<i>Qld</i>	<i>SA</i>	<i>WA</i>	<i>Tas</i>	<i>NT</i>	<i>ACT</i>	<i>Australia</i>
2011	5.17	5.24	6.00	6.85	8.15	5.28	16.94	2.19	5.86
2012	5.21	4.86	6.04	5.33	7.60	4.49	23.99	1.61	5.67
2013	4.61	4.51	6.27	6.36	7.06	6.24	16.23	2.90	5.44
2014	4.33	4.40	4.90	5.00	6.47	7.97	16.84	2.08	4.92
2015	4.41	4.29	4.81	6.38	6.88	6.79	18.45	3.09	5.04
<i>Latest per cent change</i>	1.7	-2.5	-1.7	27.4	6.4	-14.8	9.6	48.4	2.6
<i>Average trend change per year (per cent)</i>	-4.9	-4.9	-6.3	-2.0	-4.9	11.4	-1.8	10.0	-4.3

Table 3.2 Calendar year period

Calendar year	<i>NSW</i>	<i>Vic</i>	<i>Qld</i>	<i>SA</i>	<i>WA</i>	<i>Tas</i>	<i>NT</i>	<i>ACT</i>	<i>Australia</i>
2010	5.67	5.27	5.65	7.25	8.42	6.09	21.76	5.25	6.14
2011	5.04	5.18	6.01	6.28	7.61	4.69	19.46	1.63	5.72
2012	5.05	5.01	6.13	5.68	7.51	6.05	20.77	3.20	5.72
2013	4.50	4.24	5.83	5.87	6.44	7.02	15.25	1.84	5.13
2014	4.11	4.26	4.72	6.35	7.13	6.80	15.94	2.59	4.92
<i>Latest per cent change</i>	-8.5	0.6	-18.9	8.2	10.8	-3.1	4.5	41.2	-4.2

4. Monthly deaths by jurisdiction — last 24 months

— raw
 - - - smoothed
 (unweighted 5-point moving average)

Figure 4.1 NSW

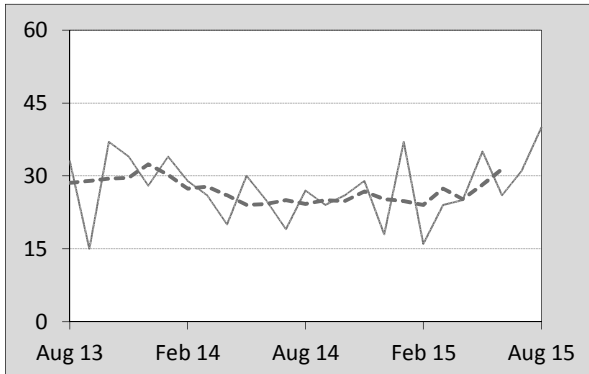


Figure 4.2 Vic

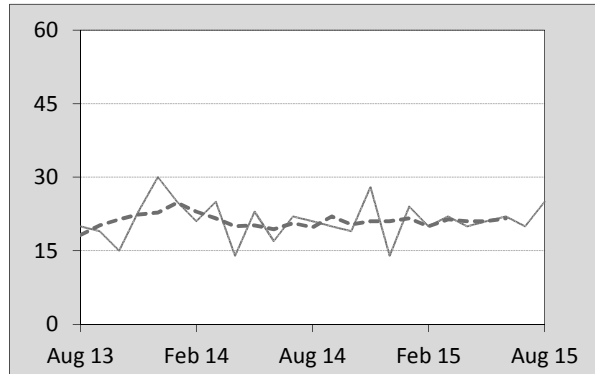


Figure 4.3 Qld

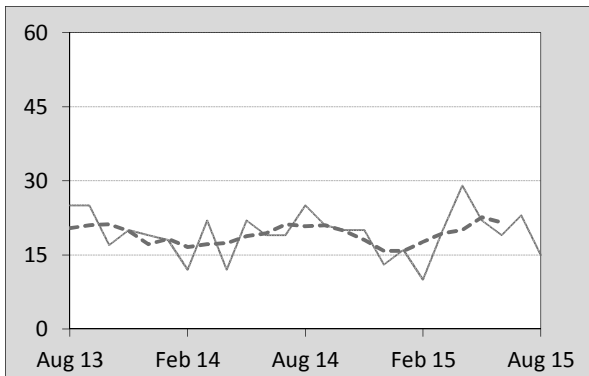


Figure 4.4 SA

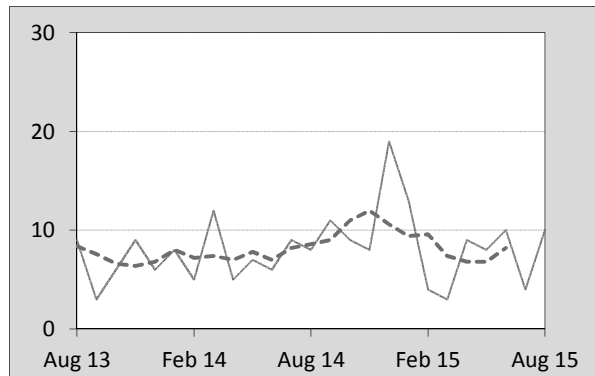


Figure 4.5 WA

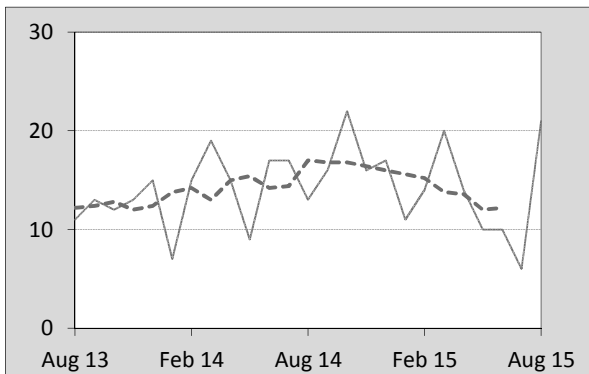


Figure 4.6 Tas

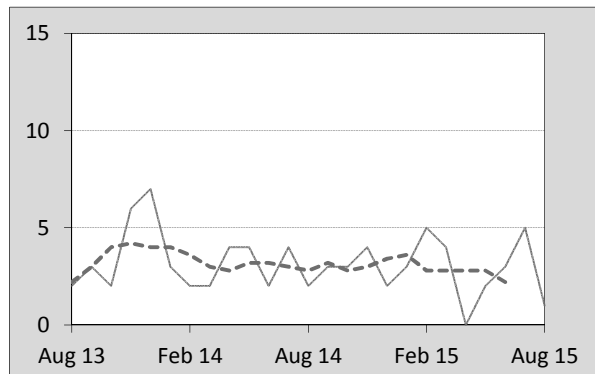


Figure 4.7 NT

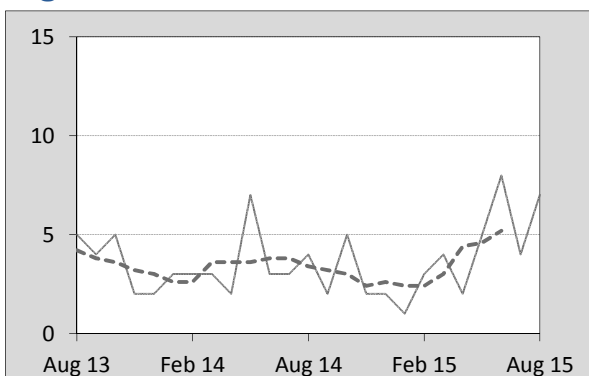
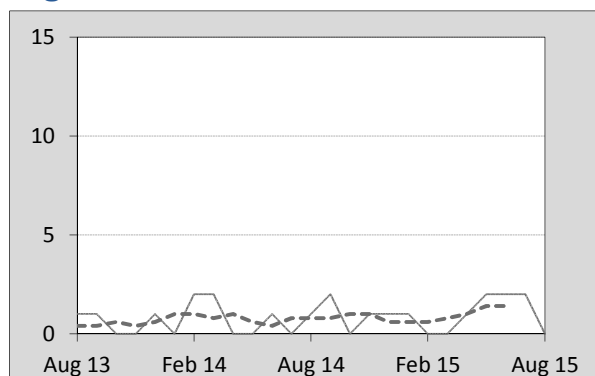


Figure 4.8 ACT



5. Fatal crashes: counts and characteristics

Table 5.1 By Crash type and Posted speed limit

12 months ended August	Crash type ^a			Posted speed limit				Total ^b
	Single	Multiple	Pedestrian	0 to 60	70 to 90	100	≥ 110	
2011	520	491	179	336	273	420	151	1,190
2012	505	488	174	408	251	361	136	1,167
2013	538	448	156	365	261	363	141	1,142
2014	469	434	154	316	244	355	128	1,057
2015	515	407	161	350	221	342	144	1,083
Latest per cent change	9.8	-6.2	4.5	10.8	-9.4	-3.7	12.5	2.5
Average trend change per year (per cent)	-0.9	-4.8	-3.3	-1.7	-4.4	-4.2	-1.5	-2.8

Table 5.2 By Day of week and Time of day

12 months ended August	Day of week ^c		Time of Day ^d	
	Weekday	Weekend	Day	Night
2011	714	476	713	477
2012	706	461	737	430
2013	701	441	711	431
2014	637	420	674	383
2015	662	421	665	418
Latest per cent change	3.9	0.2	-1.3	9.1
Average trend change per year (per cent)	-2.5	-3.3	-2.3	-3.7

a 'Single' and 'Multiple' refer to the number of vehicles involved in a fatal crash where there is no pedestrian killed.

b Includes crashes where speed limit is unknown

c 'Weekday' refers to 6am Monday through to 5:59pm Friday.

d 'Day' refers to 6am through to 5:59 pm.

Appendix

Definition

The road safety agencies in each jurisdiction use detailed criteria to define road crashes and road deaths. Briefly, a death is classified as resulting from a road crash if the crash occurred on a public road, is unintentional and the death occurred within 30 days from injuries sustained in the crash.

Population rates

Rates per population are based on the deaths to the current 12 monthly period, and the population at the midpoint of the period. The population at midpoints are interpolated if necessary.

Average trend change (% per year)

Calculated by fitting an exponential curve through the five data points, and quoting the constant (annual) change of this curve.

Other sources for the tables in this bulletin

The underlying database used to produce this bulletin — *the Australian Road Deaths Database* is available for data extraction at <http://www.bitre.gov.au/statistics/safety/fatal_road_crash_database.aspx>.

Road deaths from recent months are preliminary and subject to revision.