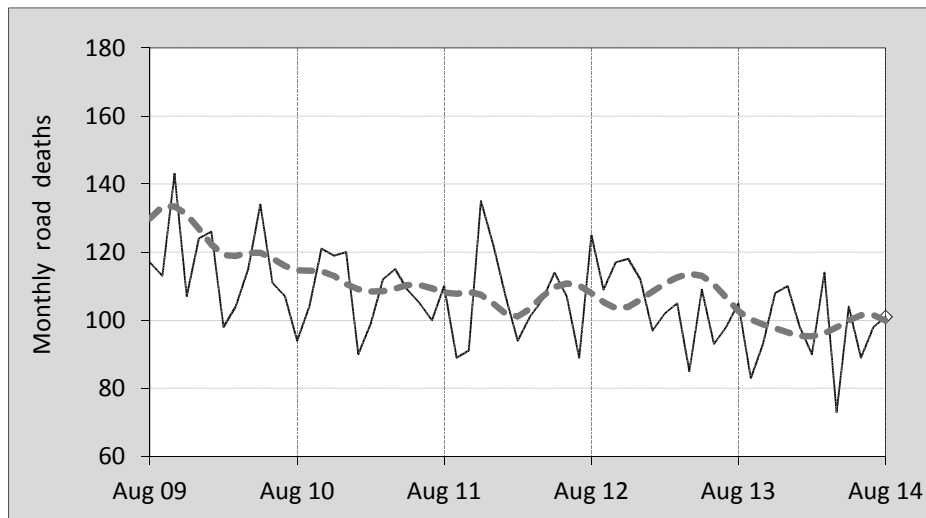




This month's key figures

- There was a total of 101 road deaths during the month of August 2014. In comparison to the average for August over the previous five years, the current figure is 8.3 per cent lower.
- During the 12 months ended August there were 1,161 road deaths. This is a 7.1 per cent reduction compared to the total for the 12-monthly period ended August 2013.
- Presently the rate of annual deaths per 100,000 population stands at 5.0. Compared to the figure for the 12-monthly period ending August 2013, this is a 8.6 per cent reduction.

Monthly Australian road deaths — last five years, with trend



Data Sources

Data are obtained from

- Transport for NSW
- Vicroads
- Department of Transport and Main Roads, Queensland
- Department of Planning, Transport and Infrastructure, S.A.
- Western Australia Police
- Department of State Growth, Tasmania
- Department of Transport, Northern Territory
- Territory and Municipal Services Directorate, ACT
- Australian Bureau of Statistics (3101.0)

Inquiries

For further information about data in this bulletin, contact:

Bureau of Infrastructure, Transport and
Regional Economics
Web : www.bitre.gov.au
Email : roadsafety@infrastructure.gov.au

Road deaths from recent months are preliminary and subject to revision.

© Copyright. Commonwealth of Australia

I. Deaths by jurisdiction

Table 1.1 Current month

Current month	NSW	Vic	Qld	SA	WA	Tas	NT	ACT	Australia
August 2013	32	20	25	9	11	2	5	1	105
August 2014	29	20	25	8	12	2	4	1	101
Per cent change	-9.4	0.0	0.0	-11.1	9.1	0.0	-20.0	-	-3.8

Table 1.2 Year to date

Year to date	NSW	Vic	Qld	SA	WA	Tas	NT	ACT	Australia
January 2013 - August 2013	218	156	190	74	109	18	24	5	794
January 2014 - August 2014	217	169	151	59	114	23	28	6	767
Per cent change	-0.5	8.3	-20.5	-20.3	4.6	27.8	16.7	20.0	-3.4

Table 1.3 Year ending August

12 months ended August	NSW	Vic	Qld	SA	WA	Tas	NT	ACT	Australia
2010	419	292	252	118	194	33	47	21	1,376
2011	372	289	267	112	190	27	39	8	1,304
2012	379	272	274	88	182	23	56	6	1,280
2013	339	257	290	106	176	32	39	11	1,250
2014	334	255	232	83	167	41	41	8	1,161
Latest per cent change	-1.5	-0.8	-20.0	-21.7	-5.1	28.1	5.1	-27.3	-7.1
Average trend change per year (per cent)	-5.3	-3.8	-0.8	-7.3	-3.7	6.2	-2.7	-14.9	-3.7

2. Deaths by road user, age-group and gender

Table 2.1 By road user

12 months ended August	Driver	Passenger	Pedestrian	Motorcyclist ^b	Pedal ^b cyclist	Total ^c
2010	663	290	173	212	37	1,376
2011	599	278	182	208	36	1,304
2012	582	264	176	227	30	1,280
2013	607	240	155	200	40	1,250
2014	534	216	162	191	53	1,161
Latest per cent change	-12.0	-10.0	4.5	-4.5	32.5	-7.1
Average trend change per year (per cent)	-4.1	-7.1	-2.9	-2.4	8.6	-3.7

Table 2.2 By age-group^a (years)

12 months ended August	0 to 16	17 to 25	26 to 39	40 to 64	65 to 74	≥ 75	Total ^c
2010	85	309	323	433	102	123	1,376
2011	80	315	271	414	88	136	1,304
2012	83	270	313	378	83	153	1,280
2013	70	264	261	391	112	151	1,250
2014	63	216	239	380	120	141	1,161
Latest per cent change	-10.0	-18.2	-8.4	-2.8	7.1	-6.6	-7.1
Average trend change per year (per cent)	-7.1	-6.2	-6.2	-3.1	5.8	3.9	-3.7

2. Deaths by road user, age-group and gender (continued)

Table 2.3 By gender

12 months ended August	<i>Males</i>	<i>Females</i>	<i>Total^d</i>
2010	994	380	1,376
2011	935	367	1,304
2012	921	359	1,280
2013	890	359	1,250
2014	843	316	1,161
<i>Latest per cent change</i>	-5.3	-12.0	-7.1
<i>Average trend change per year (per cent)</i>	-3.7	-3.8	-3.7

a Age groups were changed in March 2014.

b Includes pillion passengers

c Includes deaths to persons with age not recorded.

d Includes deaths to persons with gender not recorded.

3. Annual deaths per 100,000 population

Table 3.1 Year ended August

12 months ended August	<i>NSW</i>	<i>Vic</i>	<i>Qld</i>	<i>SA</i>	<i>WA</i>	<i>Tas</i>	<i>NT</i>	<i>ACT</i>	<i>Australia</i>
2010	5.89	5.37	5.75	7.27	8.53	6.50	20.58	5.84	6.27
2011	5.17	5.24	6.00	6.85	8.15	5.28	16.94	2.19	5.86
2012	5.21	4.86	6.04	5.33	7.56	4.49	23.99	1.61	5.66
2013	4.60	4.51	6.27	6.36	7.05	6.24	16.31	2.90	5.43
2014	4.46	4.39	4.93	4.94	6.52	7.97	16.89	2.08	4.97
<i>Latest per cent change</i>	-2.9	-2.5	-21.3	-22.3	-7.5	27.7	3.5	-28.4	-8.6
<i>Average trend change per year (per cent)</i>	-6.5	-5.4	-2.6	-8.1	-6.6	5.9	-4.2	-16.3	-5.3

Table 3.2 Calendar year period

Calendar year	<i>NSW</i>	<i>Vic</i>	<i>Qld</i>	<i>SA</i>	<i>WA</i>	<i>Tas</i>	<i>NT</i>	<i>ACT</i>	<i>Australia</i>
2009	6.44	5.40	7.65	7.40	8.53	12.49	13.72	3.38	6.87
2010	5.67	5.27	5.65	7.25	8.42	6.09	21.76	5.25	6.14
2011	5.04	5.18	6.01	6.28	7.61	4.69	19.46	1.63	5.72
2012	5.05	5.01	6.13	5.68	7.47	6.05	20.77	3.20	5.72
2013	4.52	4.22	5.82	5.87	6.43	7.02	15.34	1.84	5.14
<i>Latest per cent change</i>	-10.5	-15.8	-5.0	3.3	-13.9	15.9	-26.2	-42.6	-10.1

4. Monthly deaths by jurisdiction — last 24 months

— raw
 - - - smoothed
 (unweighted 5-point moving average)

Figure 4.1 NSW

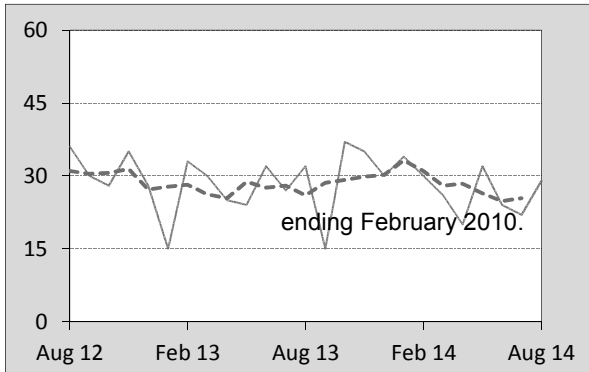


Figure 4.2 Vic

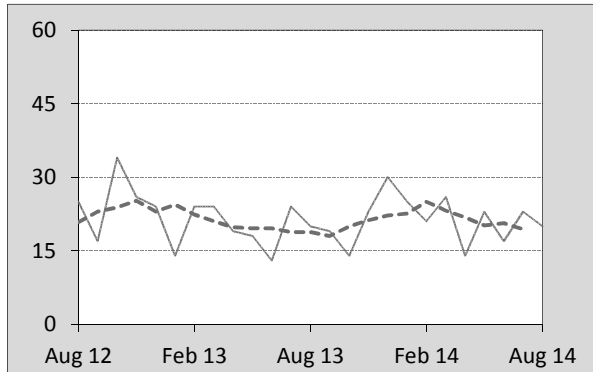


Figure 4.3 Qld

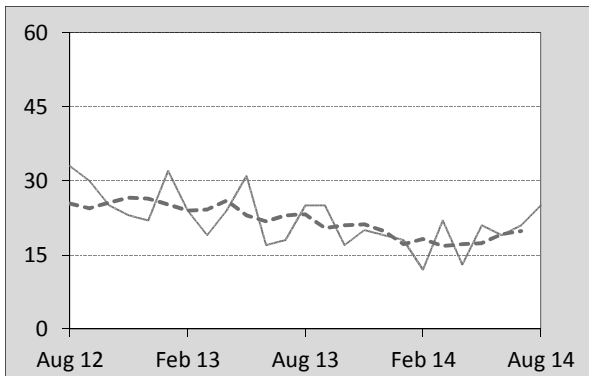


Figure 4.4 SA

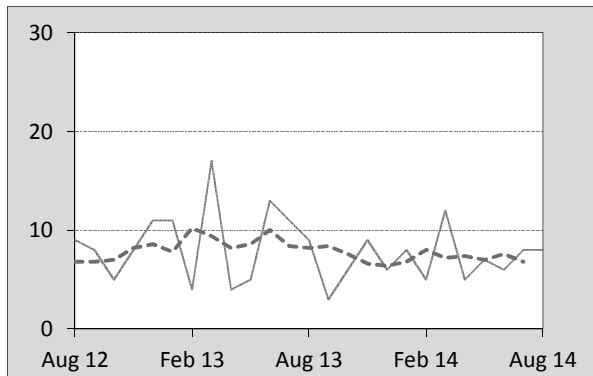


Figure 4.5 WA

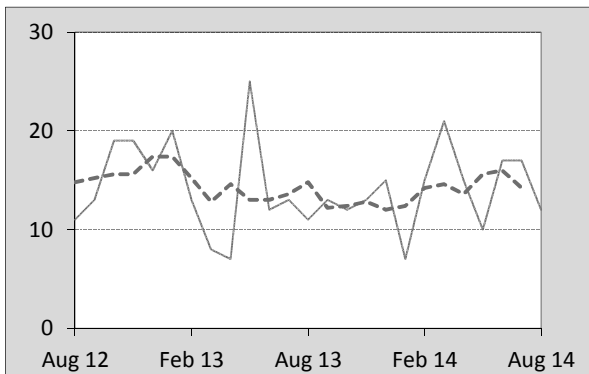


Figure 4.6 Tas

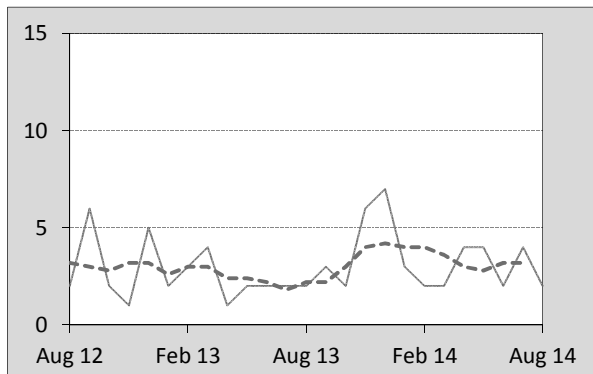


Figure 4.7 NT

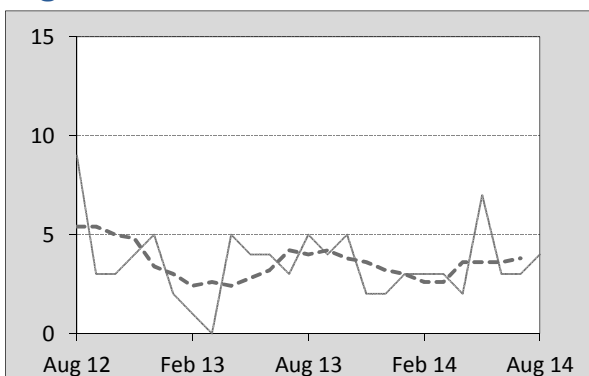
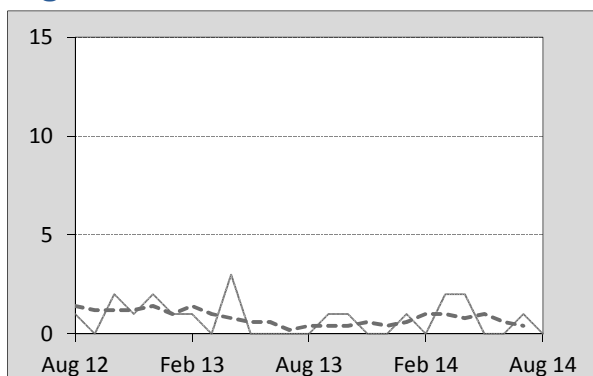


Figure 4.8 ACT



5. Fatal crashes: counts and characteristics

Table 5.1 By Crash type and Posted speed limit

12 months ended August	Crash type ^a			Posted speed limit				Total ^b
	Single	Multiple	Pedestrian	0 to 60	70 to 90	100	≥ 110	
2010	569	522	169	364	271	436	182	1,260
2011	520	491	179	336	273	420	151	1,190
2012	505	488	173	407	251	361	136	1,166
2013	539	448	154	364	261	363	141	1,141
2014	470	438	160	319	238	351	131	1,068
Latest per cent change	-12.8	-2.2	3.9	-12.4	-8.8	-3.3	-7.1	-6.4
Average trend change per year (per cent)	-3.4	-4.3	-2.6	-1.8	-3.0	-5.6	-7.0	-3.7

Table 5.2 By Day of week and Time of day

12 months ended August	Day of week ^c		Time of Day ^d	
	Weekday	Weekend	Day	Night
2010	737	523	734	526
2011	714	476	713	477
2012	705	461	736	430
2013	701	440	710	431
2014	641	427	680	388
Latest per cent change	-8.6	-3.0	-4.2	-10.0
Average trend change per year (per cent)	-2.9	-4.7	-1.6	-6.9

a 'Single' and 'Multiple' refer to the number of vehicles involved in a fatal crash where there is no pedestrian killed.

b Includes crashes where speed limit is unknown

c 'Weekday' refers to 6am Monday through to 5:59pm Friday.

d 'Day' refers to 6am through to 5:59 pm.

Appendix

Definition

The road safety agencies in each jurisdiction use detailed criteria to define road crashes and road deaths. Briefly, a death is classified as resulting from a road crash if the crash occurred on a public road, is unintentional and the death occurred within 30 days from injuries sustained in the crash.

Population rates

Rates per population are based on the deaths to the current 12 monthly period, and the population at the midpoint of the period. The population at midpoints are interpolated if necessary.

Average trend change (% per year)

Calculated by fitting an exponential curve through the five data points, and quoting the constant (annual) change of this curve.

Other sources for the tables in this bulletin

The underlying database used to produce this bulletin — *the Australian Road Deaths Database* is available for data extraction at <http://www.bitre.gov.au/statistics/safety/fatal_road_crash_database.aspx>.

Road deaths from recent months are preliminary and subject to revision.