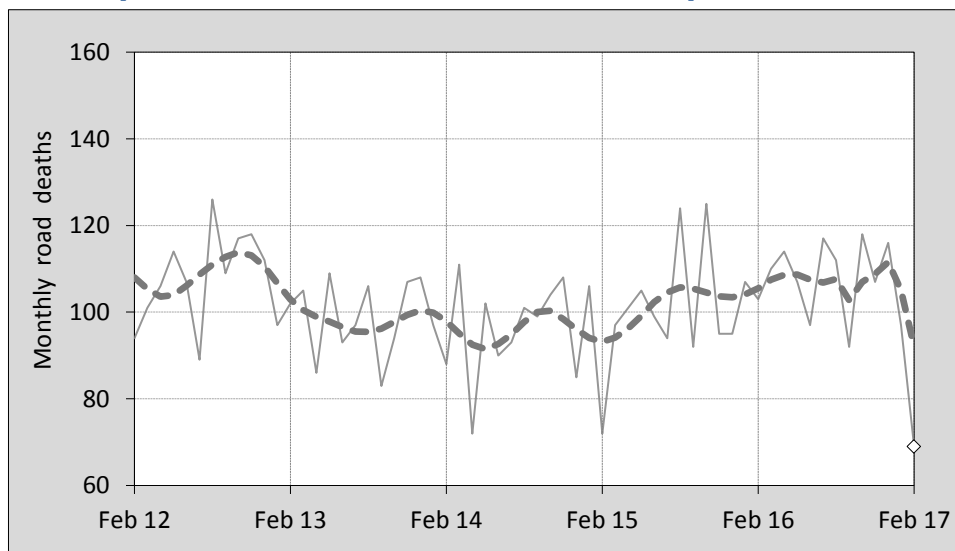




## This month's key figures

- There was a total of 69 road deaths during the month of February 2017. In comparison to the average for February over the previous five years, the current figure is 24.8 per cent lower.
- During the 12 months ended February 2017, there were 1,256 road deaths. This is a 1.5 per cent increase compared to the total for the 12-month period ended February 2016.
- Presently, the rate of annual deaths per 100,000 population stands at 5.2. Compared to the figure for the 12-month period ending February 2016, this is a 0.1 per cent increase.

## Monthly Australian road deaths — last five years, with trend



### Data Sources

Data are obtained from

- Transport for NSW
- Vicroads
- Department of Transport and Main Roads, Queensland
- Department of Planning, Transport and Infrastructure, S.A.
- Western Australia Police
- Department of State Growth, Tasmania
- Department of Transport, Northern Territory
- Territory and Municipal Services Directorate, ACT
- Australian Bureau of Statistics (3101.0)

### Inquiries

For further information about data in this bulletin, contact:

Bureau of Infrastructure, Transport and Regional Economics  
 Web : [www.bitre.gov.au](http://www.bitre.gov.au)  
 Email : [roadsafety@infrastructure.gov.au](mailto:roadsafety@infrastructure.gov.au)

Road deaths from recent months are preliminary and subject to revision.

© Copyright. Commonwealth of Australia

## 1. Deaths by jurisdiction

**Table 1.1** Current month

Current month	NSW	Vic	Qld	SA	WA	Tas	NT	ACT	Australia
February 2016	34	33	16	5	12	0	3	0	103
February 2017	17	16	20	5	6	1	3	1	69
Per cent change	-50.0	-51.5	25.0	0.0	-50.0	-	0.0	-	-33.0

**Table 1.2** Year to date

Year to date	NSW	Vic	Qld	SA	WA	Tas	NT	ACT	Australia
January 2016 - February 2016	59	54	41	12	31	7	6	0	210
January 2017 - February 2017	46	35	43	10	22	3	6	1	166
Per cent change	-22.0	-35.2	4.9	-16.7	-29.0	-57.1	0.0	-	-21.0

**Table 1.3** Year ending February

12 months ended February	NSW	Vic	Qld	SA	WA	Tas	NT	ACT	Australia
2013	360	270	294	94	189	31	47	13	1,298
2014	348	251	245	96	151	34	40	8	1,173
2015	297	246	219	111	186	38	37	9	1,143
2016	356	262	258	97	166	33	51	14	1,237
2017	371	272	254	87	184	33	45	10	1,256
Latest per cent change	4.2	3.8	-1.6	-10.3	10.8	0.0	-11.8	-28.6	1.5
Average trend change per year (per cent)	0.8	0.6	-2.4	-1.4	0.4	1.0	1.6	0.3	-0.1

## 2. Deaths by road user, age-group and gender

**Table 2.1** By road user

12 months ended February	Driver	Passenger	Pedestrian	Motorcyclist <sup>b</sup>	Pedal <sup>b</sup> cyclist	Total <sup>c</sup>
2013	622	248	163	225	36	1,298
2014	542	215	156	207	49	1,173
2015	531	221	148	196	43	1,143
2016	564	246	176	217	32	1,237
2017	627	204	172	227	23	1,256
Latest per cent change	11.2	-17.1	-2.3	4.6	-28.1	1.5
Average trend change per year (per cent)	0.6	-2.5	2.3	0.7	-12.4	-0.1

**Table 2.2** By age-group<sup>a</sup> (years)

12 months ended February	0 to 16	17 to 25	26 to 39	40 to 64	65 to 74	≥ 75	Total <sup>c</sup>
2013	73	280	294	402	103	145	1,298
2014	64	220	238	383	112	156	1,173
2015	61	231	254	349	112	133	1,143
2016	61	241	269	387	120	159	1,237
2017	66	258	273	398	99	161	1,256
Latest per cent change	8.2	7.1	1.5	2.8	-17.5	1.3	1.5
Average trend change per year (per cent)	-2.5	-0.7	-0.3	-0.1	-0.1	2.3	-0.1

## 2. Deaths by road user, age-group and gender (continued)

**Table 2.3** By gender

<b>12 months ended February</b>	<i>Males</i>	<i>Females</i>	<i>Total<sup>d</sup></i>
2013	921	376	1,298
2014	845	328	1,173
2015	811	331	1,143
2016	887	350	1,237
2017	922	333	1,256
<i>Latest per cent change</i>	3.9	-4.9	1.5
<i>Average trend change per year (per cent)</i>	0.5	-1.8	-0.1

a Age groups were changed in March 2014.

b Includes pillion passengers.

c Includes deaths to persons with either age or road user type not recorded.

d Includes deaths to persons with gender not recorded.

## 3. Annual deaths per 100,000 population

**Table 3.1** Year ended February

<b>12 months ended February</b>	<i>NSW</i>	<i>Vic</i>	<i>Qld</i>	<i>SA</i>	<i>WA</i>	<i>Tas</i>	<i>NT</i>	<i>ACT</i>	<i>Australia</i>
2013	4.92	4.78	6.41	5.67	7.71	6.05	19.81	3.45	5.69
2014	4.69	4.36	5.25	5.74	5.98	6.62	16.47	2.10	5.06
2015	3.95	4.20	4.63	6.58	7.26	7.38	15.18	2.33	4.86
2016	4.66	4.40	5.39	5.70	6.40	6.38	20.80	3.57	5.19
2017	4.79	4.47	5.23	5.09	7.02	6.35	18.34	2.52	5.19
<i>Latest per cent change</i>	2.8	1.6	-2.9	-10.8	9.8	-0.5	-11.9	-29.5	0.1
<i>Average trend change per year (per cent)</i>	-0.6	-1.3	-3.8	-2.2	-1.2	0.6	0.8	-1.0	-1.6

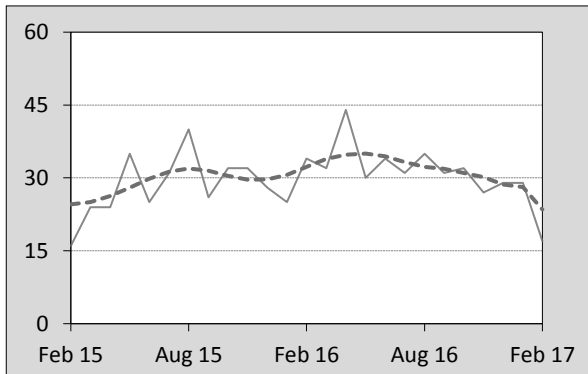
**Table 3.2** Calendar year period

<b>Calendar year</b>	<i>NSW</i>	<i>Vic</i>	<i>Qld</i>	<i>SA</i>	<i>WA</i>	<i>Tas</i>	<i>NT</i>	<i>ACT</i>	<i>Australia</i>
2012	5.05	5.01	6.13	5.68	7.51	6.05	20.77	3.20	5.72
2013	4.50	4.24	5.83	5.87	6.44	7.02	15.25	1.84	5.13
2014	4.09	4.25	4.72	6.35	7.16	6.41	16.03	2.60	4.90
2015	4.59	4.24	5.08	6.00	6.18	6.58	20.05	3.84	5.07
2016	4.97	4.80	5.20	5.21	7.37	7.13	18.38	2.27	5.39
<i>Latest per cent change</i>	8.2	13.1	2.3	-13.2	19.4	8.3	-8.4	-40.8	6.4

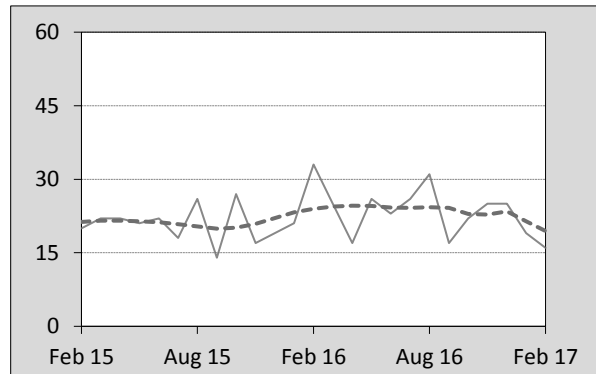
#### 4. Monthly deaths by jurisdiction — last 24 months

— raw  
 - - - smoothed  
 (13-point moving average)

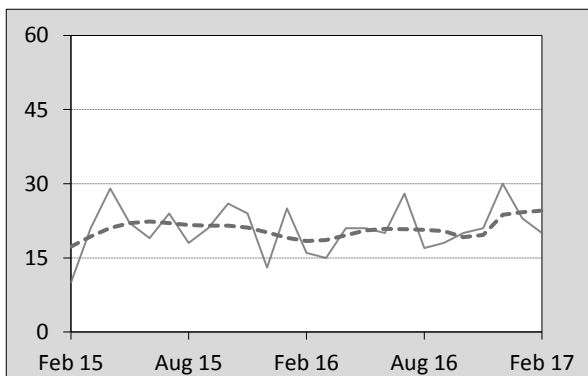
**Figure 4.1 NSW**



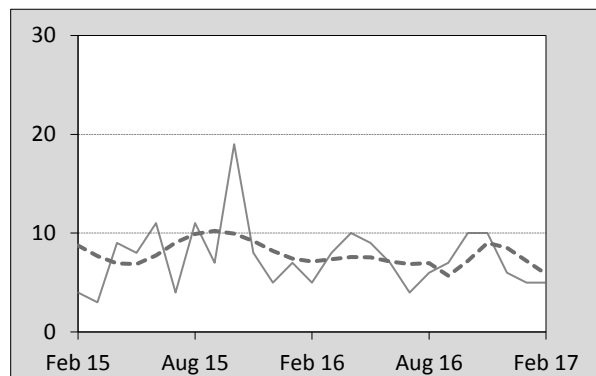
**Figure 4.2 Vic**



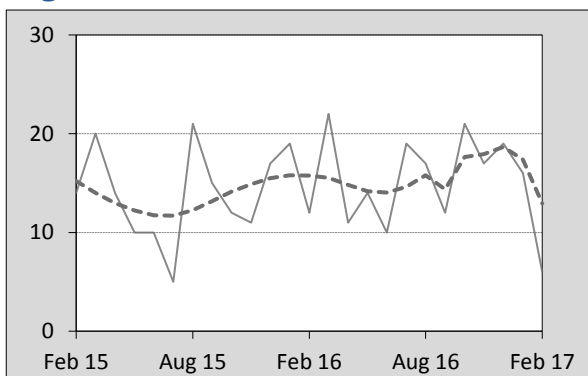
**Figure 4.3 Qld**



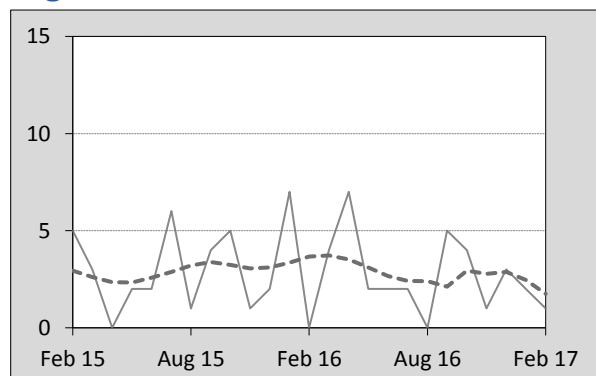
**Figure 4.4 SA**



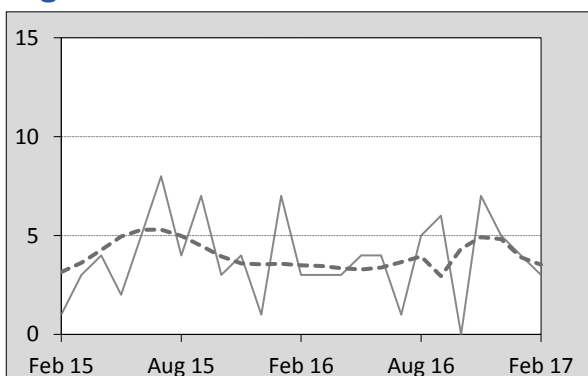
**Figure 4.5 WA**



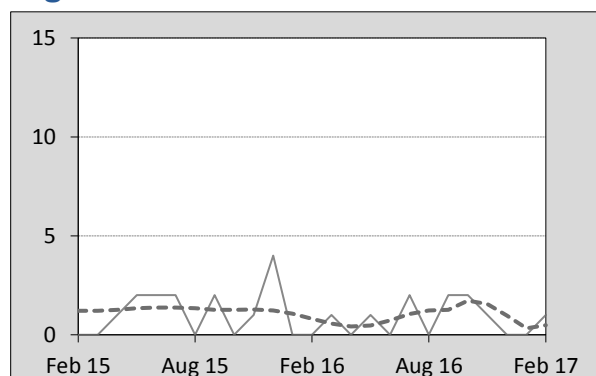
**Figure 4.6 Tas**



**Figure 4.7 NT**



**Figure 4.8 ACT**



## 5. Fatal crashes: counts and characteristics

**Table 5.1** By Crash type and Posted speed limit

12 months ended February	Crash type <sup>a</sup>			Posted speed limit						Total <sup>b</sup>
	Single	Multiple	Pedestrian	40	50	60	70 to 90	100	≥ 110	
2013	527	495	163	20	134	251	273	350	141	1,185
2014	497	434	154	10	122	189	250	369	130	1,085
2015	461	437	146	17	116	192	220	349	136	1,044
2016	503	459	173	12	119	232	249	362	147	1,135
2017	512	494	158	12	124	201	290	350	156	1,164
Latest per cent change	1.8	7.6	-8.7	0.0	4.2	-13.4	16.5	-3.3	6.1	2.6
Average trend change per year (per cent)	-0.5	0.5	0.5	-8.1	-1.8	-2.4	1.2	-0.2	3.3	0.1

**Table 5.2** By Day of week and Time of day

12 months ended February	Day of week <sup>c</sup>		Time of Day <sup>d</sup>	
	Weekday	Weekend	Day	Night
2013	729	456	733	452
2014	655	430	693	392
2015	653	391	661	383
2016	699	436	695	440
2017	701	463	696	468
Latest per cent change	0.3	6.2	0.1	6.4
Average trend change per year (per cent)	-0.1	0.4	-1.0	1.9

a 'Single' and 'Multiple' refer to the number of vehicles involved in a fatal crash where there is no pedestrian killed.

b Includes crashes where speed limit is unknown or where the posted speed limit is 30km/hr or less.

c 'Weekday' refers to 6am Monday through to 5:59pm Friday.

d 'Day' refers to 6am through to 5:59 pm.

## Appendix

### Definition

The road safety agencies in each jurisdiction use detailed criteria to define road crashes and road deaths. Briefly, a death is classified as resulting from a road crash if the crash occurred on a public road, is unintentional and the death occurred within 30 days from injuries sustained in the crash.

### Population rates

Rates per population are based on the deaths to the current 12-month period, and the population at the midpoint of the period. The population at midpoints is interpolated if necessary.

### Average trend change ( % per year )

Calculated by fitting an exponential curve through the five data points, and quoting the constant (annual) change of this curve.

### Other sources for the tables in this bulletin

The underlying database used to produce this bulletin — *the Australian Road Deaths Database* is available for data extraction at <[http://www.bitre.gov.au/statistics/safety/fatal\\_road\\_crash\\_database.aspx](http://www.bitre.gov.au/statistics/safety/fatal_road_crash_database.aspx)>.

Road deaths from recent months are preliminary and subject to revision.