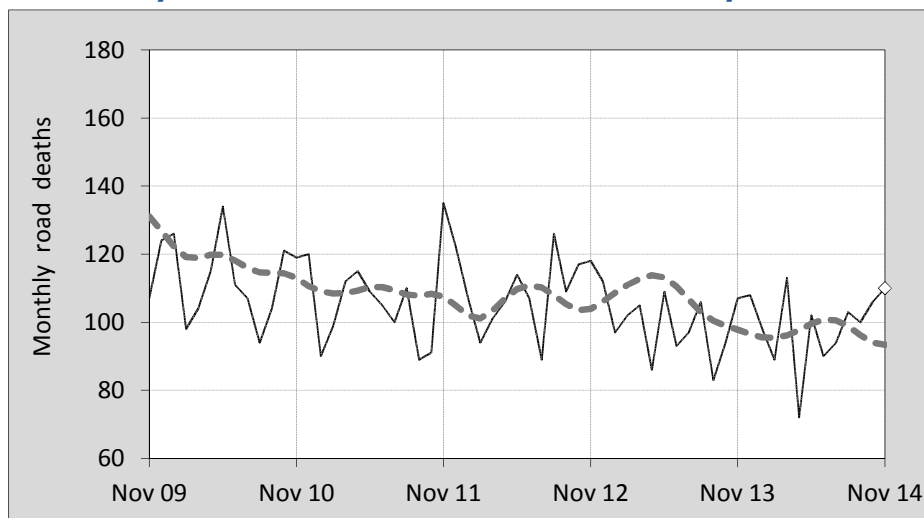




## This month's key figures

- There was a total of 110 road deaths during the month of November 2014. In comparison to the average for November over the previous five years, the current figure is 6.1 per cent lower.
- During the 12 months ended November there were 1,185 road deaths. This is a 0.5 per cent reduction compared to the total for the 12-monthly period ended November 2013.
- Presently the rate of annual deaths per 100,000 population stands at 5.0. Compared to the figure for the 12-monthly period ending November 2013, this is a 2.2 per cent reduction.

## Monthly Australian road deaths — last five years, with trend



### Data Sources

Data are obtained from

- Transport for NSW
- Vicroads
- Department of Transport and Main Roads, Queensland
- Department of Planning, Transport and Infrastructure, S.A.
- Western Australia Police
- Department of State Growth, Tasmania
- Department of Transport, Northern Territory
- Territory and Municipal Services Directorate, ACT
- Australian Bureau of Statistics (3101.0)

### Inquiries

For further information about data in this bulletin, contact:

Bureau of Infrastructure, Transport and  
Regional Economics  
Web : [www.bitre.gov.au](http://www.bitre.gov.au)  
Email : [roadsafety@infrastructure.gov.au](mailto:roadsafety@infrastructure.gov.au)

Road deaths from recent months are preliminary and subject to revision.

© Copyright. Commonwealth of Australia

## I. Deaths by jurisdiction

**Table I.1** Current month

Current month	NSW	Vic	Qld	SA	WA	Tas	NT	ACT	Australia
November 2013	34	23	20	9	13	6	2	0	107
November 2014	30	29	21	8	15	4	2	1	110
Per cent change	-11.8	26.1	5.0	-11.1	15.4	-33.3	0.0	-	2.8

**Table I.2** Year to date

Year to date	NSW	Vic	Qld	SA	WA	Tas	NT	ACT	Australia
January 2013 - November 2013	305	213	252	92	147	29	35	6	1,079
January 2014 - November 2014	296	235	211	88	167	33	37	10	1,077
Per cent change	-3.0	10.3	-16.3	-4.3	13.6	13.8	5.7	66.7	-0.2

**Table I.3** Year ending November

12 months ended November	NSW	Vic	Qld	SA	WA	Tas	NT	ACT	Australia
2010	416	294	243	118	187	34	47	18	1,357
2011	349	288	269	104	188	26	44	7	1,275
2012	381	285	283	90	182	28	50	11	1,310
2013	333	237	274	103	163	34	40	7	1,191
2014	324	265	230	94	182	40	39	11	1,185
Latest per cent change	-2.7	11.8	-16.1	-8.7	11.7	17.6	-2.5	57.1	-0.5
Average trend change per year (per cent)	-5.3	-3.9	-0.9	-4.5	-1.9	6.1	-4.6	-9.4	-3.3

## 2. Deaths by road user, age-group and gender

**Table 2.1** By road user

12 months ended November	Driver	Passenger	Pedestrian	Motorcyclist <sup>b</sup>	Pedal <sup>b</sup> cyclist	Total <sup>c</sup>
2010	634	285	171	228	38	1,357
2011	582	281	183	196	32	1,275
2012	595	274	177	226	37	1,310
2013	581	205	150	200	45	1,191
2014	538	234	158	202	50	1,185
Latest per cent change	-7.4	14.1	5.3	1.0	11.1	-0.5
Average trend change per year (per cent)	-3.2	-6.9	-3.5	-2.2	9.3	-3.3

**Table 2.2** By age-group<sup>a</sup> (years)

12 months ended November	0 to 16	17 to 25	26 to 39	40 to 64	65 to 74	≥ 75	Total <sup>c</sup>
2010	75	328	316	424	97	116	1,357
2011	89	285	272	397	84	148	1,275
2012	81	275	305	395	91	162	1,310
2013	63	242	246	377	114	149	1,191
2014	69	235	255	372	118	133	1,185
Latest per cent change	9.5	-2.9	3.7	-1.3	3.5	-10.7	-0.5
Average trend change per year (per cent)	-5.0	-8.0	-5.2	-3.1	7.2	2.8	-3.3

## 2. Deaths by road user, age-group and gender (continued)

**Table 2.3** By gender

<b>12 months ended November</b>	<i>Males</i>	<i>Females</i>	<i>Total<sup>d</sup></i>
2010	983	372	1,357
2011	918	355	1,275
2012	937	373	1,310
2013	849	341	1,191
2014	850	332	1,185
<i>Latest per cent change</i>	0.1	-2.6	-0.5
<i>Average trend change per year (per cent)</i>	-3.6	-2.6	-3.3

a Age groups were changed in March 2014.

b Includes pillion passengers

c Includes deaths to persons with either age or road ruser type not recorded.

d Includes deaths to persons with gender not recorded.

## 3. Annual deaths per 100,000 population

**Table 3.1** Year ended November

<b>12 months ended November</b>	<i>NSW</i>	<i>Vic</i>	<i>Qld</i>	<i>SA</i>	<i>WA</i>	<i>Tas</i>	<i>NT</i>	<i>ACT</i>	<i>Australia</i>
2010	5.83	5.39	5.52	7.26	8.18	6.68	20.49	4.98	6.17
2011	4.84	5.21	6.02	6.35	8.01	5.08	19.05	1.90	5.71
2012	5.22	5.07	6.21	5.44	7.45	5.47	21.26	2.94	5.77
2013	4.50	4.14	5.90	6.17	6.48	6.63	16.57	1.84	5.16
2014	4.31	4.54	4.87	5.57	7.07	7.76	15.99	2.85	5.04
<i>Latest per cent change</i>	-4.3	9.6	-17.4	-9.6	9.0	17.2	-3.5	54.9	-2.2
<i>Average trend change per year (per cent)</i>	-6.6	-5.6	-2.7	-5.4	-4.9	5.8	-6.2	-10.9	-4.9

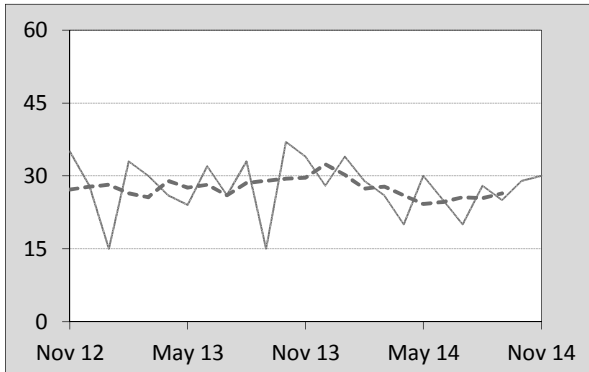
**Table 3.2** Calendar year period

<b>Calendar year</b>	<i>NSW</i>	<i>Vic</i>	<i>Qld</i>	<i>SA</i>	<i>WA</i>	<i>Tas</i>	<i>NT</i>	<i>ACT</i>	<i>Australia</i>
2009	6.44	5.40	7.65	7.40	8.53	12.49	13.72	3.38	6.87
2010	5.67	5.27	5.65	7.25	8.42	6.09	21.76	5.25	6.14
2011	5.04	5.18	6.01	6.28	7.61	4.69	19.46	1.63	5.72
2012	5.05	5.01	6.13	5.68	7.47	6.05	20.77	3.20	5.72
2013	4.49	4.24	5.82	5.87	6.43	7.02	15.29	1.84	5.13
<i>Latest per cent change</i>	-11.0	-15.4	-5.0	3.3	-13.9	15.9	-26.4	-42.6	-10.2

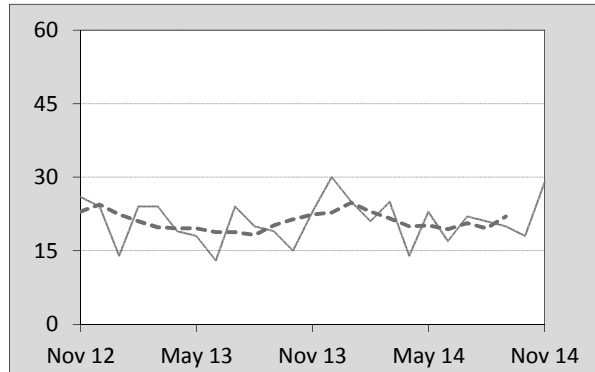
#### 4. Monthly deaths by jurisdiction — last 24 months

— raw  
 - - - smoothed  
 (unweighted 5-point moving average)

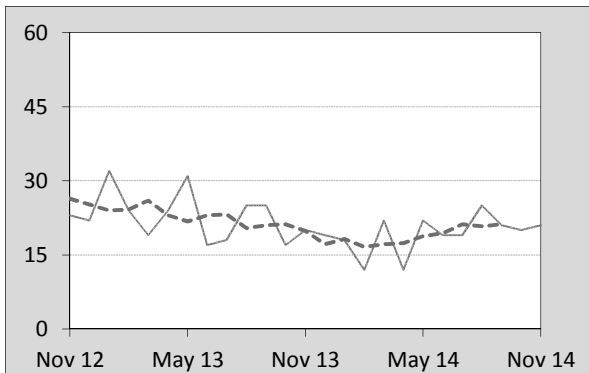
**Figure 4.1 NSW**



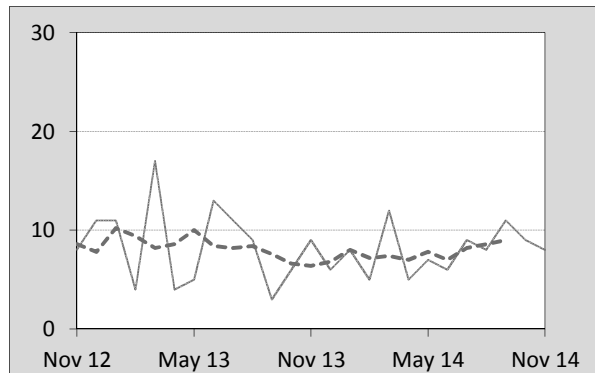
**Figure 4.2 Vic**



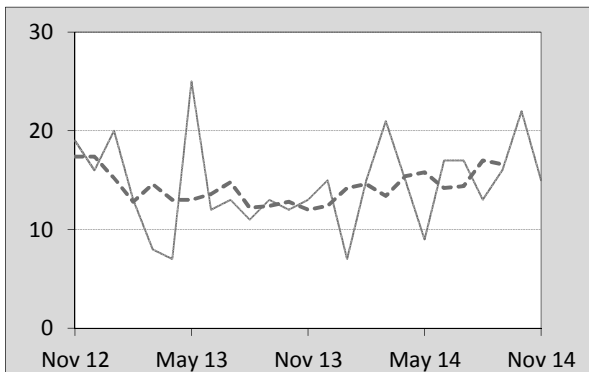
**Figure 4.3 Qld**



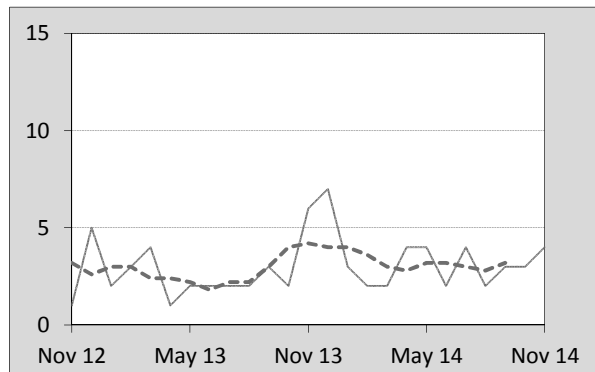
**Figure 4.4 SA**



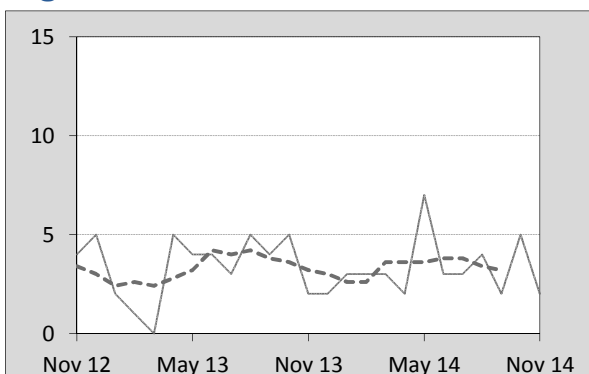
**Figure 4.5 WA**



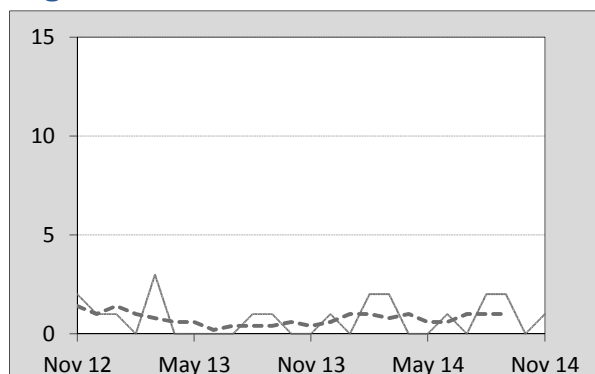
**Figure 4.6 Tas**



**Figure 4.7 NT**



**Figure 4.8 ACT**



## 5. Fatal crashes: counts and characteristics

**Table 5.1** By Crash type and Posted speed limit

12 months ended November	Crash type <sup>a</sup>			Posted speed limit				Total <sup>b</sup>
	Single	Multiple	Pedestrian	0 to 60	70 to 90	100	≥ 110	
2010	550	520	169	362	278	434	162	1,239
2011	499	470	181	349	242	391	157	1,150
2012	521	506	174	405	282	368	131	1,201
2013	519	432	148	342	250	366	134	1,099
2014	488	440	157	323	231	362	128	1,085
Latest per cent change	-6.0	1.9	6.1	-5.6	-7.6	-1.1	-4.5	-1.3
Average trend change per year (per cent)	-2.0	-4.1	-3.4	-2.5	-3.3	-4.2	-6.1	-3.1

**Table 5.2** By Day of week and Time of day

12 months ended November	Day of week <sup>c</sup>		Time of Day <sup>d</sup>	
	Weekday	Weekend	Day	Night
2010	713	526	726	513
2011	684	466	700	450
2012	745	456	756	445
2013	649	450	693	406
2014	678	407	692	393
Latest per cent change	4.5	-9.6	-0.1	-3.2
Average trend change per year (per cent)	-1.5	-5.3	-1.1	-6.2

- a 'Single' and 'Multiple' refer to the number of vehicles involved in a fatal crash where there is no pedestrian killed.  
 b Includes crashes where speed limit is unknown  
 c 'Weekday' refers to 6am Monday through to 5:59pm Friday.  
 d 'Day' refers to 6am through to 5:59 pm.

## Appendix

### Definition

The road safety agencies in each jurisdiction use detailed criteria to define road crashes and road deaths. Briefly, a death is classified as resulting from a road crash if the crash occurred on a public road, is unintentional and the death occurred within 30 days from injuries sustained in the crash.

### Population rates

Rates per population are based on the deaths to the current 12 monthly period, and the population at the midpoint of the period. The population at midpoints are interpolated if necessary.

### Average trend change ( % per year )

Calculated by fitting an exponential curve through the five data points, and quoting the constant (annual) change of this curve.

### Other sources for the tables in this bulletin

The underlying database used to produce this bulletin — *the Australian Road Deaths Database* is available for data extraction at <[http://www.bitre.gov.au/statistics/safety/fatal\\_road\\_crash\\_database.aspx](http://www.bitre.gov.au/statistics/safety/fatal_road_crash_database.aspx)>.

Road deaths from recent months are preliminary and subject to revision.