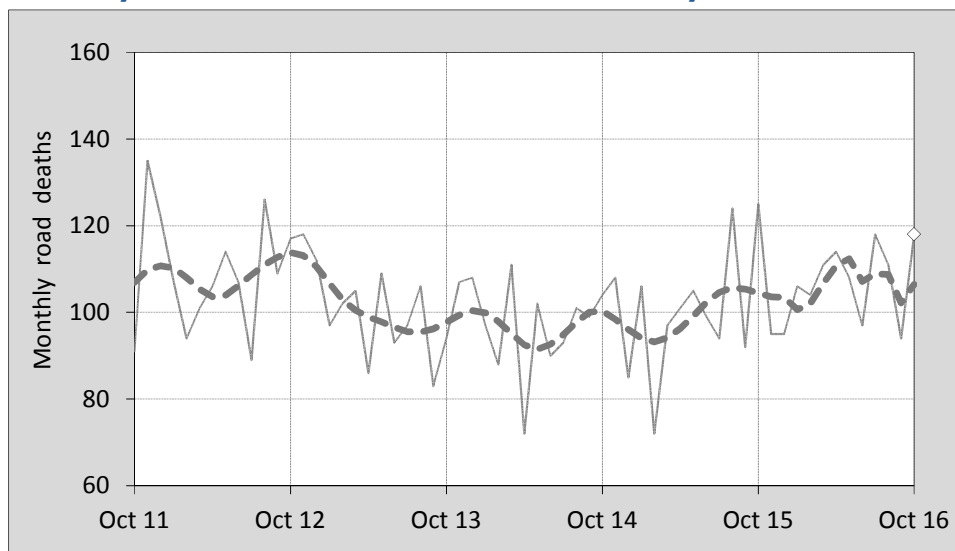




This month's key figures

- There was a total of 118 road deaths during the month of October 2016. In comparison to the average for October over the previous five years, the current figure is 11.1 per cent higher.
- During the 12 months ended October, there were 1,271 road deaths. This is a 5.2 per cent increase compared to the total for the 12-month period ended October 2015.
- Presently, the rate of annual deaths per 100,000 population stands at 5.3. Compared to the figure for the 12-month period ending October 2015, this is a 3.8 per cent increase.

Monthly Australian road deaths — last five years, with trend



Data Sources

Data are obtained from

- Transport for NSW
- Vicroads
- Department of Transport and Main Roads, Queensland
- Department of Planning, Transport and Infrastructure, S.A.
- Western Australia Police
- Department of State Growth, Tasmania
- Department of Transport, Northern Territory
- Territory and Municipal Services Directorate, ACT
- Australian Bureau of Statistics (3101.0)

Inquiries

For further information about data in this bulletin, contact:

Bureau of Infrastructure, Transport and Regional Economics
 Web : www.bitre.gov.au
 Email : roadsafety@infrastructure.gov.au

Road deaths from recent months are preliminary and subject to revision.

© Copyright. Commonwealth of Australia

1. Deaths by jurisdiction

Table 1.1 Current month

Current month	NSW	Vic	Qld	SA	WA	Tas	NT	ACT	Australia
October 2015	32	27	26	19	12	5	4	0	125
October 2016	34	21	20	11	19	4	7	2	118
Per cent change	6.3	-22.2	-23.1	-42.1	58.3	-20.0	75.0	-	-5.6

Table 1.2 Year to date

Year to date	NSW	Vic	Qld	SA	WA	Tas	NT	ACT	Australia
January 2015 - October 2015	290	216	206	89	132	31	41	10	1,015
January 2016 - October 2016	332	242	199	75	155	33	36	9	1,081
Per cent change	14.5	12.0	-3.4	-15.7	17.4	6.5	-12.2	-10.0	6.5

Table 1.3 Year ending October

12 months ended October	NSW	Vic	Qld	SA	WA	Tas	NT	ACT	Australia
2012	385	289	293	88	181	30	52	9	1,327
2013	334	240	277	102	169	29	42	9	1,202
2014	322	260	229	95	178	40	39	9	1,172
2015	337	257	239	116	165	37	45	12	1,208
2016	392	278	236	88	183	36	44	14	1,271
Latest per cent change	16.3	8.2	-1.3	-24.1	10.9	-2.7	-2.2	16.7	5.2
Average trend change per year (per cent)	0.5	-0.1	-5.6	1.3	0.0	6.3	-2.6	12.4	-0.8

2. Deaths by road user, age-group and gender

Table 2.1 By road user

12 months ended October	Driver	Passenger	Pedestrian	Motorcyclist ^b	Pedal ^b cyclist	Total ^c
2012	617	271	175	228	35	1,327
2013	572	219	155	206	42	1,202
2014	539	233	157	191	49	1,172
2015	555	249	159	211	31	1,208
2016	627	203	171	238	29	1,271
Latest per cent change	13.0	-18.5	7.5	12.8	-6.5	5.2
Average trend change per year (per cent)	0.0	-4.4	-0.2	1.1	-6.6	-0.8

Table 2.2 By age-group^a (years)

12 months ended October	0 to 16	17 to 25	26 to 39	40 to 64	65 to 74	≥ 75	Total ^c
2012	78	277	318	402	95	156	1,327
2013	67	253	250	369	108	155	1,202
2014	64	229	244	380	115	137	1,172
2015	69	237	268	369	117	148	1,208
2016	53	248	281	414	111	164	1,271
Latest per cent change	-23.2	4.6	4.9	12.2	-5.1	10.8	5.2
Average trend change per year (per cent)	-7.2	-2.8	-1.8	0.6	4.0	0.5	-0.8

2. Deaths by road user, age-group and gender (continued)

Table 2.3 By gender

12 months ended October	<i>Males</i>	<i>Females</i>	<i>Total^d</i>
2012	948	379	1,327
2013	860	341	1,202
2014	844	327	1,172
2015	865	343	1,208
2016	926	345	1,271
<i>Latest per cent change</i>	7.1	0.6	5.2
<i>Average trend change per year (per cent)</i>	-0.4	-1.8	-0.8

a Age groups were changed in March 2014.

b Includes pillion passengers.

c Includes deaths to persons with either age or road user type not recorded.

d Includes deaths to persons with gender not recorded.

3. Annual deaths per 100,000 population

Table 3.1 Year ended October

12 months ended October	<i>NSW</i>	<i>Vic</i>	<i>Qld</i>	<i>SA</i>	<i>WA</i>	<i>Tas</i>	<i>NT</i>	<i>ACT</i>	<i>Australia</i>
2012	5.28	5.14	6.44	5.32	7.47	5.86	22.18	2.41	5.85
2013	4.52	4.20	5.97	6.11	6.74	5.65	17.40	2.37	5.21
2014	4.29	4.46	4.86	5.64	6.97	7.77	16.05	2.33	5.00
2015	4.43	4.33	5.01	6.83	6.38	7.16	18.51	3.07	5.08
2016	5.08	4.59	4.88	5.15	6.99	6.94	18.02	3.54	5.28
<i>Latest per cent change</i>	14.8	6.1	-2.5	-24.5	9.7	-3.1	-2.6	15.2	3.8
<i>Average trend change per year (per cent)</i>	-1.0	-1.9	-7.0	0.5	-1.9	5.9	-3.5	10.9	-2.3

Table 3.2 Calendar year period

Calendar year	<i>NSW</i>	<i>Vic</i>	<i>Qld</i>	<i>SA</i>	<i>WA</i>	<i>Tas</i>	<i>NT</i>	<i>ACT</i>	<i>Australia</i>
2011	5.04	5.18	6.01	6.28	7.61	4.69	19.46	1.63	5.72
2012	5.05	5.01	6.13	5.68	7.51	6.05	20.77	3.20	5.72
2013	4.50	4.24	5.83	5.87	6.44	7.02	15.25	1.84	5.13
2014	4.09	4.25	4.72	6.35	7.16	6.41	16.03	2.60	4.90
2015	4.59	4.24	5.08	6.00	6.18	6.58	20.06	3.84	5.07
<i>Latest per cent change</i>	12.4	-0.2	7.6	-5.4	-13.7	2.6	25.2	47.8	3.3

4. Monthly deaths by jurisdiction — last 24 months

— raw
 - - - smoothed
 (13-point moving average)

Figure 4.1 NSW

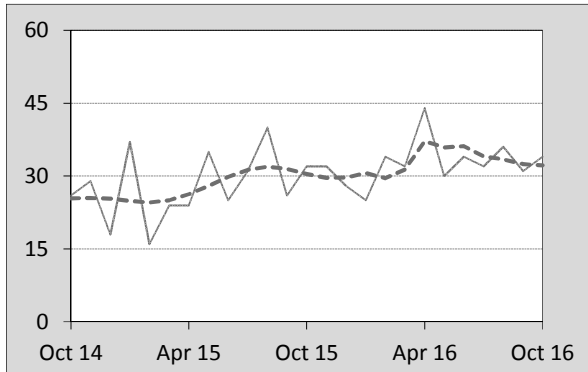


Figure 4.2 Vic

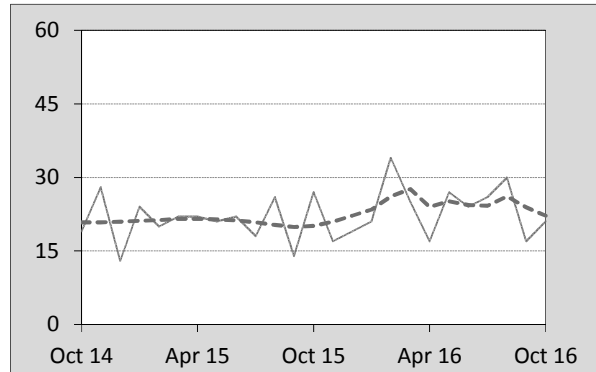


Figure 4.3 Qld

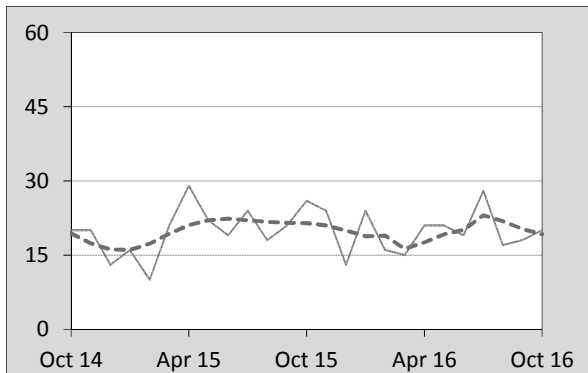


Figure 4.4 SA

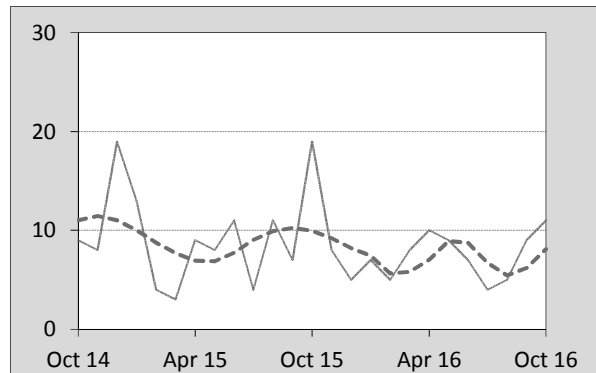


Figure 4.5 WA

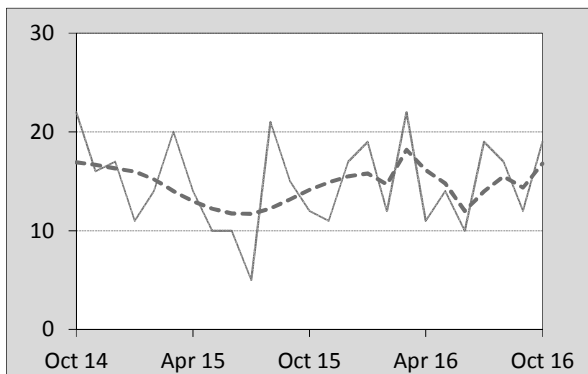


Figure 4.6 Tas

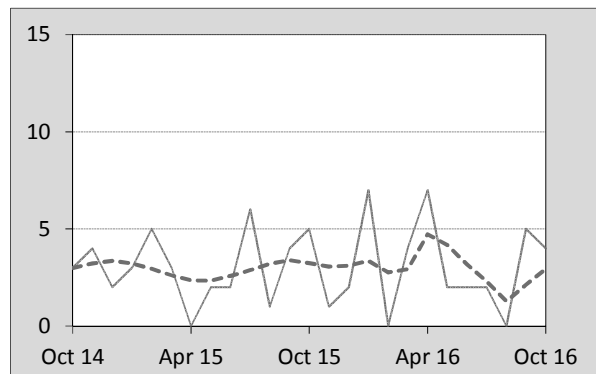


Figure 4.7 NT

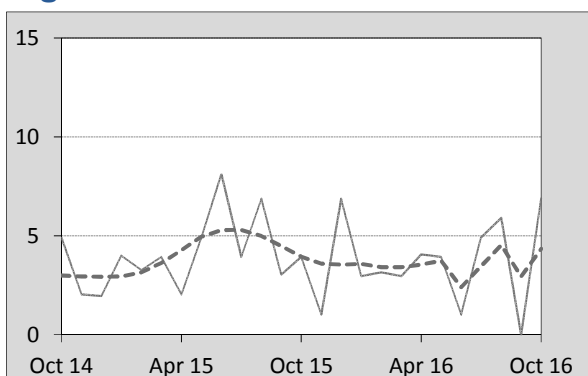
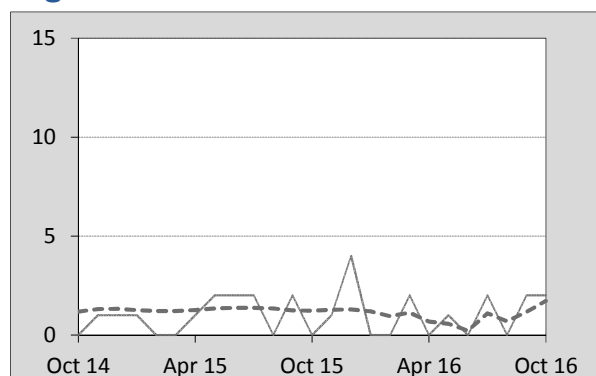


Figure 4.8 ACT



5. Fatal crashes: counts and characteristics

Table 5.1 By Crash type and Posted speed limit

12 months ended October	Crash type ^a			Posted speed limit				Total ^b
	Single	Multiple	Pedestrian	0 to 60	70 to 90	100	≥ 110	
2012	525	513	172	406	274	374	141	1,210
2013	517	431	153	355	254	353	132	1,101
2014	486	431	156	323	234	373	128	1,073
2015	488	460	157	356	252	347	140	1,105
2016	526	489	161	349	270	354	165	1,176
Latest per cent change	7.8	6.3	2.5	-2.0	7.1	2.0	17.9	6.4
Average trend change per year (per cent)	-0.5	-0.3	-1.1	-3.0	-0.4	-1.3	3.8	-0.5

Table 5.2 By Day of week and Time of day

12 months ended October	Day of week ^c		Time of Day ^d	
	Weekday	Weekend	Day	Night
2012	742	468	755	455
2013	661	440	696	405
2014	671	402	681	392
2015	665	440	677	428
2016	720	456	709	467
Latest per cent change	8.3	3.6	4.7	9.1
Average trend change per year (per cent)	-0.5	-0.5	-1.5	1.1

a 'Single' and 'Multiple' refer to the number of vehicles involved in a fatal crash where there is no pedestrian killed.

b Includes crashes where speed limit is unknown.

c 'Weekday' refers to 6am Monday through to 5:59pm Friday.

d 'Day' refers to 6am through to 5:59 pm.

Appendix

Definition

The road safety agencies in each jurisdiction use detailed criteria to define road crashes and road deaths. Briefly, a death is classified as resulting from a road crash if the crash occurred on a public road, is unintentional and the death occurred within 30 days from injuries sustained in the crash.

Population rates

Rates per population are based on the deaths to the current 12-month period, and the population at the midpoint of the period. The population at midpoints is interpolated if necessary.

Average trend change (% per year)

Calculated by fitting an exponential curve through the five data points, and quoting the constant (annual) change of this curve.

Other sources for the tables in this bulletin

The underlying database used to produce this bulletin — the *Australian Road Deaths Database* is available for data extraction at <http://www.bitre.gov.au/statistics/safety/fatal_road_crash_database.aspx>.

Road deaths from recent months are preliminary and subject to revision.