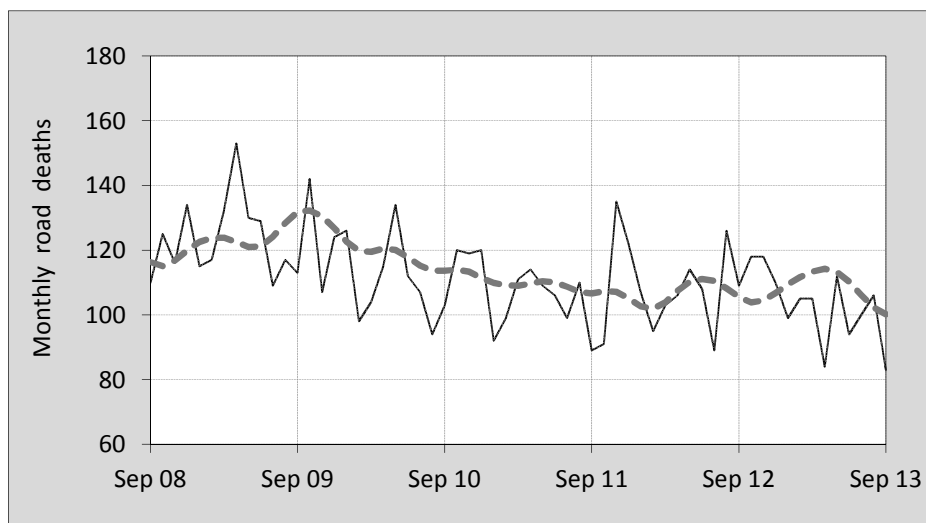




## This month's key figures

- There was a total of 83 road deaths in September 2013. In comparison to the average for September over the previous five years, the current figure is 20.8 per cent lower.
- During the 12 months ended September there were 1,234 road deaths. This is a 5.4 per cent decrease over the total for the 12-monthly period ending September 2012.
- Presently the rate of annual deaths per 100,000 population stands at 5.4. Compared to the figure for the 12-monthly period ending September 2012, this is a 7.1 per cent reduction.

## Monthly Australian road deaths — last five years, with trend



### Data Sources

Data are obtained from

- Transport for NSW
- Vicroads
- Department of Transport and Main Roads, Queensland
- Department for Transport, Energy and Infrastructure, S.A.
- Western Australia Police
- Department of Infrastructure, Energy and Resources, Tasmania
- Department of Lands and Planning, Northern Territory
- Department of Territory and Municipal Services, ACT
- Australian Bureau of Statistics (3101.0)

### Inquiries

For further information about data in this bulletin, contact:

Bureau of Infrastructure, Transport and Regional Economics

Web : [www.bitre.gov.au](http://www.bitre.gov.au)

Email : [roadsafety@infrastructure.gov.au](mailto:roadsafety@infrastructure.gov.au)

Road deaths from recent months are preliminary and subject to revision.

© Copyright. Commonwealth of Australia

## I. Current month and year to date

### Deaths by jurisdiction

Current month	NSW	Vic	Qld	SA	WA	Tas	NT	ACT	Australia
September 2012	30	17	30	8	13	6	3	2	109
September 2013	17	20	23	3	13	2	4	1	83
Per cent change	-43.3	17.6	-23.3	-62.5	0.0	-66.7	33.3	-	-23.9

Year to date	NSW	Vic	Qld	SA	WA	Tas	NT	ACT	Australia
January 2012 - September 2012	278	198	210	70	133	23	37	8	957
January 2013 - September 2013	243	175	213	77	124	22	28	6	888
Per cent change	-12.6	-11.6	1.4	10.0	-6.8	-4.3	-24.3	-25.0	-7.2

## 2. Yearly deaths — last five 12 monthly periods

### Deaths by jurisdiction

12 months ended September	NSW	Vic	Qld	SA	WA	Tas	NT	ACT	Australia
2009	448	283	347	120	181	61	39	11	1,490
2010	414	295	245	110	202	34	46	20	1,366
2011	364	284	262	115	191	26	39	7	1,288
2012	380	277	284	90	183	29	54	8	1,305
2013	334	259	283	101	176	32	39	10	1,234
Latest per cent change	-12.1	-6.5	-0.4	12.2	-3.8	10.3	-27.8	25.0	-5.4
Average trend change per year (per cent)	-6.5	-2.4	-2.6	-5.3	-1.5	-13.5	1.6	-10.5	-4.1

### Deaths by road user

12 months ended September	Driver	Passenger	Pedestrian	Motorcyclist	Cyclist	Total <sup>a</sup>
2009	686	325	204	240	33	1,490
2010	655	289	169	214	38	1,366
2011	579	275	190	206	37	1,288
2012	601	265	176	229	33	1,305
2013	610	229	147	203	37	1,234
Latest per cent change	1.5	-13.6	-16.5	-11.4	12.1	-5.4
Average trend change per year (per cent)	-3.2	-7.6	-6.0	-2.6	0.9	-4.1

a Includes deaths where road user type is unknown

## Deaths by age-group (years)

<b>12 months ended September</b>	<i>0 to 16</i>	<i>17 to 25</i>	<i>26 to 39</i>	<i>40 to 59</i>	<i>60 to 69</i>	<i>≥ 70</i>	<i>Total<sup>b</sup></i>
2009	101	388	356	373	101	171	1,490
2010	84	314	320	365	116	166	1,366
2011	81	300	272	348	105	182	1,288
2012	81	275	309	312	134	193	1,305
2013	70	260	266	312	124	199	1,234
<i>Latest per cent change</i>	-13.6	-5.5	-13.9	0.0	-7.5	3.1	-5.4
<i>Average trend change per year (per cent)</i>	-7.4	-8.9	-6.0	-5.0	5.7	4.6	-4.1

b Includes deaths to persons with age not recorded.

## Deaths by gender

<b>12 months ended September</b>	<i>Males</i>	<i>Females</i>	<i>Total<sup>c</sup></i>
2009	1,100	388	1,490
2010	983	380	1,366
2011	928	358	1,288
2012	931	374	1,305
2013	887	346	1,234
<i>Latest per cent change</i>	-4.7	-7.5	-5.4
<i>Average trend change</i>	-4.7	-2.4	-4.1

c Includes deaths to persons with gender not recorded.

## 3. Annual deaths per 100,000 population

### By jurisdiction

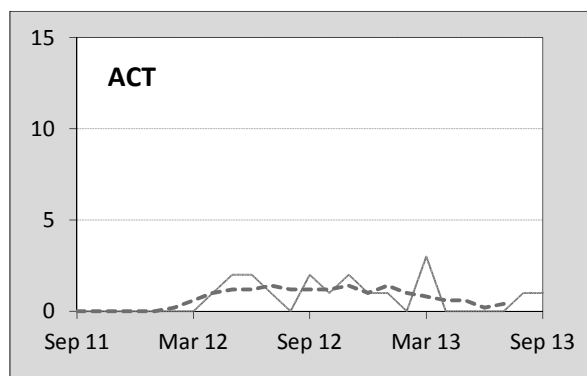
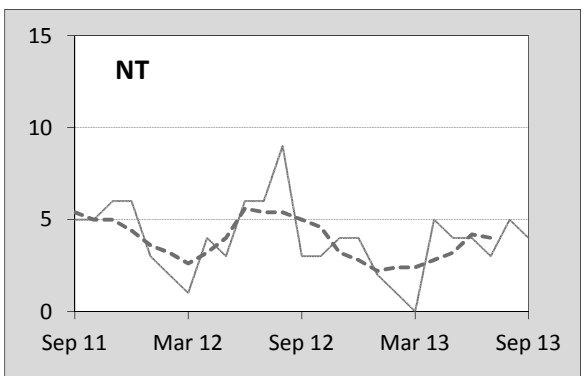
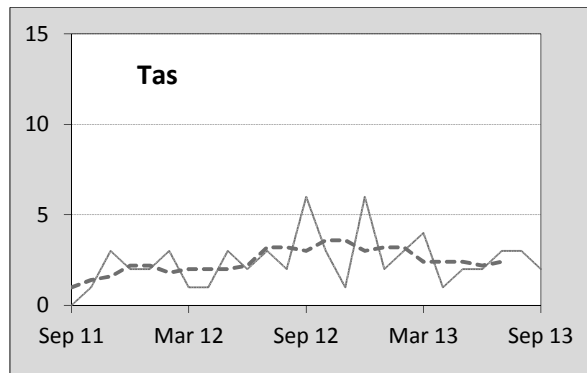
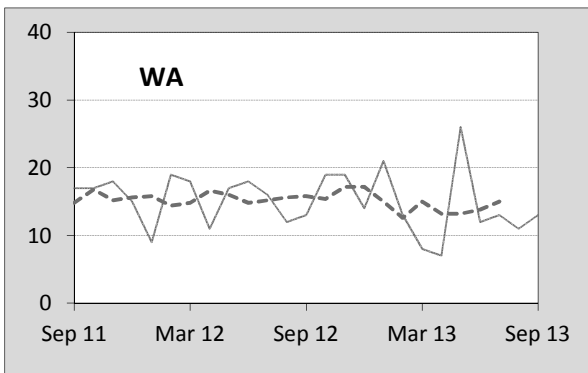
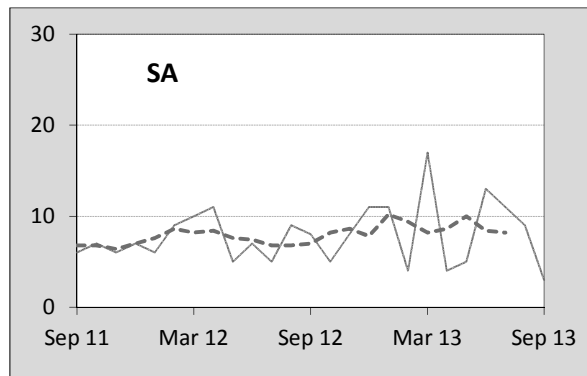
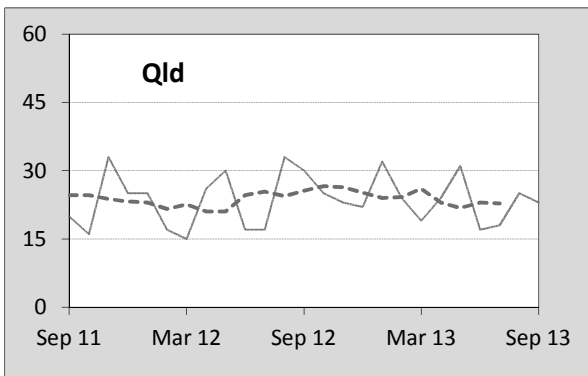
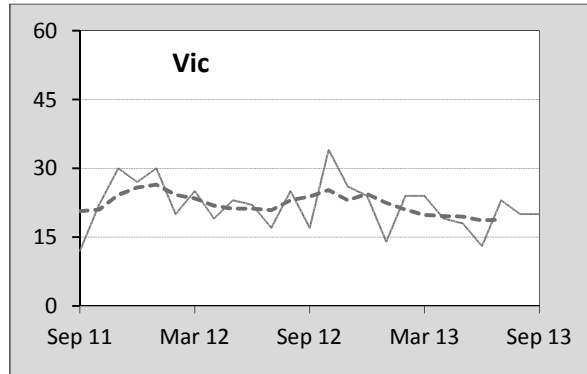
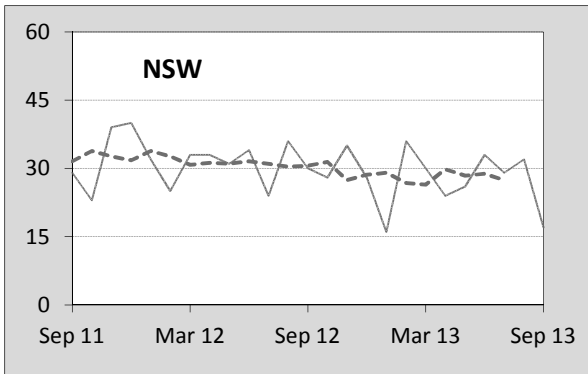
<b>12 months ended September</b>	<i>NSW</i>	<i>Vic</i>	<i>Qld</i>	<i>SA</i>	<i>WA</i>	<i>Tas</i>	<i>NT</i>	<i>ACT</i>	<i>Australia</i>
2009	6.37	5.30	8.07	7.48	8.14	12.13	17.39	3.12	6.90
2010	5.81	5.42	5.59	6.78	8.87	6.70	20.11	5.56	6.22
2011	5.05	5.14	5.88	7.03	8.17	5.09	16.94	1.91	5.78
2012	5.21	4.94	6.25	5.45	7.58	5.66	23.10	2.14	5.77
2013	4.53	4.53	6.10	6.06	7.05	6.24	16.40	2.62	5.36
<i>Latest per cent change</i>	-13.2	-8.2	-2.3	11.2	-7.0	10.2	-29.0	22.3	-7.1
<i>Average trend change per year (per cent)</i>	-7.6	-4.0	-4.4	-6.2	-4.4	-13.9	0.2	-12.2	-5.7

<b>Calendar year</b>	<i>NSW</i>	<i>Vic</i>	<i>Qld</i>	<i>SA</i>	<i>WA</i>	<i>Tas</i>	<i>NT</i>	<i>ACT</i>	<i>Australia</i>
2008	5.39	5.76	7.77	6.23	9.44	7.82	34.11	4.02	6.76
2009	6.42	5.40	7.65	7.40	8.48	12.49	13.27	3.38	6.86
2010	5.67	5.27	5.65	7.25	8.42	6.09	21.32	5.25	6.14
2011	5.04	5.18	6.01	6.28	7.65	4.69	19.02	1.63	5.72
2012	5.05	5.01	6.13	5.67	7.60	6.44	20.41	3.20	5.73
<i>Latest per cent change</i>	0.2	-3.4	2.0	-9.7	-0.7	37.3	7.3	96.2	0.3

#### 4. Monthly deaths by jurisdiction — last 24 months

— raw  
 - - - smoothed (unweighted 5-point moving average)



## 5. Fatal crashes: counts and characteristics

12 months ended September	Crash type <sup>d</sup>			Posted speed limit				Total <sup>e</sup>
	Single	Multiple	Pedestrian	0 to 60	70 to 90	100	≥ 110	
2009	650	497	200	424	324	418	160	1,347
2010	563	523	166	355	268	429	172	1,252
2011	514	476	187	343	259	405	151	1,177
2012	517	498	173	401	264	365	143	1,188
2013	538	443	146	350	258	346	137	1,127
<i>Average trend change per year (per cent)</i>	-4.5	-2.8	-5.7	-2.6	-4.6	-5.3	-4.8	-4.0

12 months ended September	Day of week <sup>f</sup>		Time of Day <sup>g</sup>	
	Weekday	Weekend	Day	Night
2009	840	507	773	574
2010	733	519	730	522
2011	706	471	714	463
2012	710	478	747	441
2013	698	429	714	413
<i>Average trend change per year (per cent)</i>	-3.9	-4.1	-1.3	-7.9

d 'Single' and 'Multiple' refer to the number of vehicles involved in a fatal crash where there is no pedestrian killed.

e Includes crashes where speed limit is unknown

f 'Weekday' refers to 6am Monday through to 5:59pm Friday.

g 'Day' refers to 6am through to 5:59 pm.

## Appendix

### Definition

The road safety agencies in each jurisdiction use detailed criteria to define road crashes and road deaths. Briefly, a death is classified as resulting from a road crash if the crash occurred on a public road, is unintentional and the death occurred within 30 days from injuries sustained in the crash.

### Population rates

Rates per population are based on the deaths to the current 12 monthly period, and the population at the midpoint of the period. The population at midpoints are interpolated if necessary.

### Average trend change ( % per year )

Calculated by fitting an exponential curve through the five data points, and quoting the constant (annual) change of this curve.

### Other sources for the tables in this bulletin

The underlying database used to produce this bulletin — the Australian Road Deaths Database is available for online querying and data extraction at

< [http://www.bitre.gov.au/statistics/safety/fatal\\_road\\_crash\\_database.aspx](http://www.bitre.gov.au/statistics/safety/fatal_road_crash_database.aspx) >

Road deaths from recent months are preliminary and subject to revision.