



Australian Government

**Department of Infrastructure, Transport,
Regional Development, Communications and the Arts**
Bureau of Infrastructure and Transport Research Economics

STATISTICAL REPORT



Aviation

**Domestic airline on time performance
2021-22**

© Commonwealth of Australia 2022

ISSN: 1832-0759

Ownership of intellectual property rights in this publication

Unless otherwise noted, copyright (and any other intellectual property rights, if any) in this publication is owned by the Commonwealth of Australia (referred to below as the Commonwealth).

Disclaimer

The material contained in this publication is made available on the understanding that the Commonwealth is not providing professional advice, and that users exercise their own skill and care with respect to its use, and seek independent advice if necessary.

The Commonwealth makes no representations or warranties as to the contents or accuracy of the information contained in this publication. To the extent permitted by law, the Commonwealth disclaims liability to any person or organisation in respect of anything done, or omitted to be done, in reliance upon information contained in this publication.

Creative Commons licence

With the exception of (a) the Coat of Arms; and (b) the Department of Infrastructure, Transport, Regional Development, Communications and the Arts' photos and graphics, copyright in this publication is licensed under a Creative Commons Attribution 3.0 Australia Licence.

Creative Commons Attribution 3.0 Australia Licence is a standard form licence agreement that allows you to copy, communicate and adapt this publication provided that you attribute the work to the Commonwealth and abide by the other licence terms. A summary of the licence terms is available from <http://creativecommons.org/licenses/by/3.0/au/deed.en>. The full licence terms are available from <http://creativecommons.org/licenses/by/3.0/au/legalcode>.

Use of the Coat of Arms

The Department of the Prime Minister and Cabinet sets the terms under which the Coat of Arms is used. Please refer to the Department's Commonwealth Coat of Arms and Government branding web page <http://www.dpmc.gov.au/guidelines/index.cfm#brand> and, in particular, the Guidelines on the use of the Commonwealth Coat of Arms publication.

An appropriate citation for this report is:

Bureau of Infrastructure and Transport Research Economics (BITRE), 2022, Domestic airline on time performance, Statistical Report, BITRE, Canberra ACT.

Contact us

This publication is available in PDF format. All other rights are reserved, including in relation to any Departmental logos or trade marks which may exist. For enquiries regarding the licence and any use of this publication, please contact:

Bureau of Infrastructure and Transport Research Economics (BITRE)
Department of Infrastructure, Transport, Regional Development, Communications and the Arts
GPO Box 501, Canberra ACT 2601, Australia
Telephone: (international) +61 2 6274 7210
Fax: (international) +61 2 6274 6855
Email: bitre@infrastructure.gov.au
Website: www.bitre.gov.au

Inquiries

Should you require additional information about the statistics contained in this publication:

Telephone (02) 6274 7790 or Facsimile (02) 6274 7727

Electronic mail: AVSTATS@infrastructure.gov.au

Web site: <http://www.bitre.gov.au/statistics/aviation/otphome.aspx>

Foreword

The Bureau of Infrastructure and Transport Research Economics (BITRE) monitors the punctuality and reliability of major domestic airlines operating between Australian airports. The purpose of this is to allow for evaluation of overall industry and individual airline performance, so that consumers of air travel can make informed decisions.

The following domestic airlines currently report this information monthly to the BITRE: Jetstar, Qantas, QantasLink, Rex Airlines, Virgin Australia and Virgin Australia Regional Airlines.

Data has been gathered since November 2003, although some airlines commenced reporting at a later date, including Jetstar which first reported in May 2004, MacAir in July 2005, Tigerair Australia in April 2008 and Virgin Australia Regional Airlines in May 2013. MacAir ceased operations in February 2009 and data was not received for December 2008 onwards. Tigerair Australia ceased operations in March 2020 and data was not received for that month.

Virgin Blue was rebranded as Virgin Australia in May 2011 and Tiger Airways was rebranded as Tigerair Australia in July 2013 and time series data in Microsoft Excel spread sheet format on the BITRE website have been revised to reflect these changes. With effect from July 2021, Regional Express is reported as Rex Airlines.

Services operated by Skywest on behalf of Virgin Australia using ATR/F100 aircraft commenced in November 2011 and were shown separately as Virgin Australia – ATR/F100 Operations. Virgin Australia Regional Airlines commenced operations in May 2013. It was formed after the acquisition of Skywest by Virgin Australia and represented a combination of operations previously reported under Skywest and Virgin Australia – ATR/F100 Operations. In January 2016, Virgin Australia transferred their ATR fleet from Virgin Australia Regional Airlines to Virgin Australia.

Information presented in this report is for Australian domestic routes for which the passenger load averaged 8 000 or more passengers per month over the previous six months and where two or more airlines operated in competition on those routes. In order to present data for more routes during the period impacted by COVID-19, the passenger load restriction is not being applied. Data are presented for 58 routes - 44 of these routes cover the whole 12 months of 2021-22 while 14 of these routes cover only some months of 2021-22. Over time, routes which meet these criteria change as airline networks and traffic levels vary.

Participating airlines report their overall monthly network performance where this is possible.

Total industry figures encompass all services operated by reporting airlines only. These airlines collectively carried over 95 per cent of total domestic passengers (regular public transport only) in 2019.

The method of capturing on time performance varies between airlines utilising different recording systems. Jetstar and Qantas jet aircraft use Aircraft Communication Addressing and Reporting System (ACARS) to electronically measure on time performance. Rex Airlines, Virgin Australia, Virgin Australia Regional Airlines and the Qantas non-jet fleet record on time performance manually using records from pilots, gate agents and/or ground crews.

After initial data is collected, aggregate reports are reviewed by participating airlines prior to publication.

Reports and detailed time series data in Microsoft Excel spreadsheet format are available from the BITRE website at: <http://www.bitre.gov.au/statistics/aviation/otphome.aspx>

Contents

	Page
Industry performance	1
Individual routes	8
Airports.....	21
Definitions	27

Industry performance

For the year ended June 2022, on time performance over all routes operated by participating airlines (Jetstar, Qantas, QantasLink, Rex Airlines, Virgin Australia and Virgin Australia Regional Airlines) averaged 76.8 per cent for on time arrivals and 76.1 per cent for on time departures. The cancellation rate for the year was 8.3 per cent. The equivalent figures for 2020-21 were 86.1 per cent for on time arrivals, 85.6 per cent for on time departures and 7.6 per cent for cancellations.

This year's on time arrivals figure was lower than the long term average performance for all routes (82.1 per cent) and the on time departures figure was also lower than the long term average (83.3 per cent). The rate of cancellations was higher than the long term average of 2.1 per cent.

The Qantas network (Qantas and QantasLink combined operations) recorded 77.1 per cent for on time arrivals while the Virgin Australia network (Virgin Australia and Virgin Australia Regional Airlines combined operations) recorded 75.6 per cent. Qantas achieved the highest on time arrivals among the major domestic airlines at 77.5 per cent followed by Virgin Australia at 75.5 per cent and Jetstar at 71.0 per cent. Of the regional airlines, Rex Airlines recorded 83.2 per cent for on time arrivals, followed by QantasLink at 76.9 per cent and Virgin Australia Regional Airlines at 76.0 per cent.

The Qantas network recorded 77.1 per cent for on time departures while the Virgin Australia network recorded 73.6 per cent. Qantas achieved the highest level of on time departures among the major domestic airlines for 2021-22 at 77.9 per cent, followed by Virgin Australia at 73.6 per cent and Jetstar at 67.9 per cent. Of the regional airlines, Rex Airlines recorded 85.4 per cent for on time departures, followed by QantasLink at 76.6 per cent and Virgin Australia Regional Airlines at 74.6 per cent.

Jetstar recorded the highest percentage of cancellations (at 11.9 per cent) during the year, followed by Qantas (at 10.0 per cent), Virgin Australia (at 8.5 per cent), QantasLink (at 8.4 per cent), Virgin Australia Regional Airlines (at 3.3 per cent) and Rex Airlines (at 2.3 per cent).

Airlines' on time performance varies across the routes they serve. Individual route data by specific airline for 58 routes are shown on pages 8-20.

Of the 44 routes which met the criteria for on time performance reporting for all 12 months in 2021-22, the Cairns-Townsville route had the highest percentage of on time arrivals (90.5 per cent) and the Brisbane-Hamilton Island route had the highest percentage of on time departures (91.3 per cent). The Perth-Melbourne route had the lowest percentage of on time arrivals (58.6 per cent) and the Melbourne-Perth route had the lowest percentage of on time departures (52.4 per cent).

Cancellations were highest on the Sydney-Melbourne route at 15.0 per cent, followed by the Melbourne-Sydney route at 14.8 per cent, the Brisbane-Melbourne route at 13.3 per cent, the Sydney-Brisbane and Melbourne-Brisbane routes at 13.0 per cent, the Brisbane-Sydney route at 12.9 per cent and the Brisbane-Perth and Perth-Brisbane routes at 11.9 per cent.

Of the airports with on time performance reporting for all 12 months in 2021-22, Emerald Airport recorded the highest percentage of on time arrivals (88.7 per cent) and the highest percentage of on time departures (87.0 per cent). Launceston Airport recorded the lowest percentage of on time arrivals (67.7 per cent) and Darwin Airport recorded the lowest percentage of on time departures (61.8 per cent). These figures only refer to reported routes and do not cover all flights at these airports.

Table 1 On time performance for the year ended June 2022 — Total Industry

	<i>Sectors</i>		<i>Arrivals On Time</i>		<i>Departures On Time</i>		<i>Cancellations</i>	
	<i>Scheduled</i>	<i>Flown</i>	<i>No.</i>	<i>%</i>	<i>No.</i>	<i>%</i>	<i>No.</i>	<i>%</i>
Jetstar	56 884	50 141	35 608	71.0	34 039	67.9	6 743	11.9
Qantas - all QF designated services	164 668	149 766	115 501	77.1	115 510	77.1	14 902	9.0
Rex Airlines	52 438	51 212	42 633	83.2	43 711	85.4	1 226	2.3
Virgin Australia - all VA designated services	91 928	84 381	63 766	75.6	62 138	73.6	7 547	8.2
All Airlines	365 918	335 500	257 508	76.8	255 398	76.1	30 418	8.3
Individual operating entities								
Qantas	66 277	59 656	46 248	77.5	46 475	77.9	6 621	10.0
QantasLink	98 391	90 110	69 253	76.9	69 035	76.6	8 281	8.4
Virgin Australia	86 934	79 553	60 097	75.5	58 538	73.6	7 381	8.5
Virgin Australia Regional Airlines	4 994	4 828	3 669	76.0	3 600	74.6	166	3.3

Total airline network data (including routes not shown in this report).

Airlines' on time performance varies across the routes they serve. Individual route data by specific airline are shown on pages 9 and onwards.

 Table 2 Top ten routes for on time performance for the year ended June 2022
 (routes for participating airlines only and with published data for the 12 month period)

<i>Arrivals</i>		<i>Departures</i>	
<i>Route</i>	<i>On Time (%)</i>	<i>Route</i>	<i>On Time (%)</i>
Cairns-Townsville	90.5	Brisbane-Hamilton Island	91.3
Townsville-Cairns	89.1	Cairns-Townsville	89.7
Brisbane-Emerald	88.7	Adelaide-Port Lincoln	88.4
Brisbane-Hamilton Island	88.3	Brisbane-Emerald	88.1
Perth-Newman	88.3	Adelaide-Canberra	88.0
Emerald-Brisbane	87.6	Perth-Newman	87.6
Perth-Broome	87.2	Perth-Karratha	87.5
Brisbane-Hobart	86.6	Adelaide-Alice Springs	87.5
Adelaide-Port Lincoln	86.2	Perth-Port Hedland	87.4
Perth-Port Hedland	85.2	Brisbane-Mount Isa	87.3

 Table 3 Top ten airports for on time performance for the year ended June 2022
 (airports for participating airlines and reported routes only and with published data for the 12 month period)

<i>Arrivals</i>		<i>Departures</i>	
<i>Airport</i>	<i>On Time (%)</i>	<i>Airport</i>	<i>On Time (%)</i>
Emerald	88.7	Emerald	87.0
Newman	88.3	Port Lincoln	85.5
Broome	87.2	Gladstone	83.6
Port Lincoln	86.2	Wagga Wagga	83.5
Port Hedland	85.2	Mount Isa	83.4
Alice Springs	85.2	Albury	83.3
Hamilton Island	85.0	Townsville	82.1
Albury	84.9	Mackay	81.3
Karratha	84.8	Rockhampton	81.2
Mount Isa	84.5	Karratha	80.7

Total industry on time performance

Figure 1 On time performance (by month from June 2017)—Total Industry

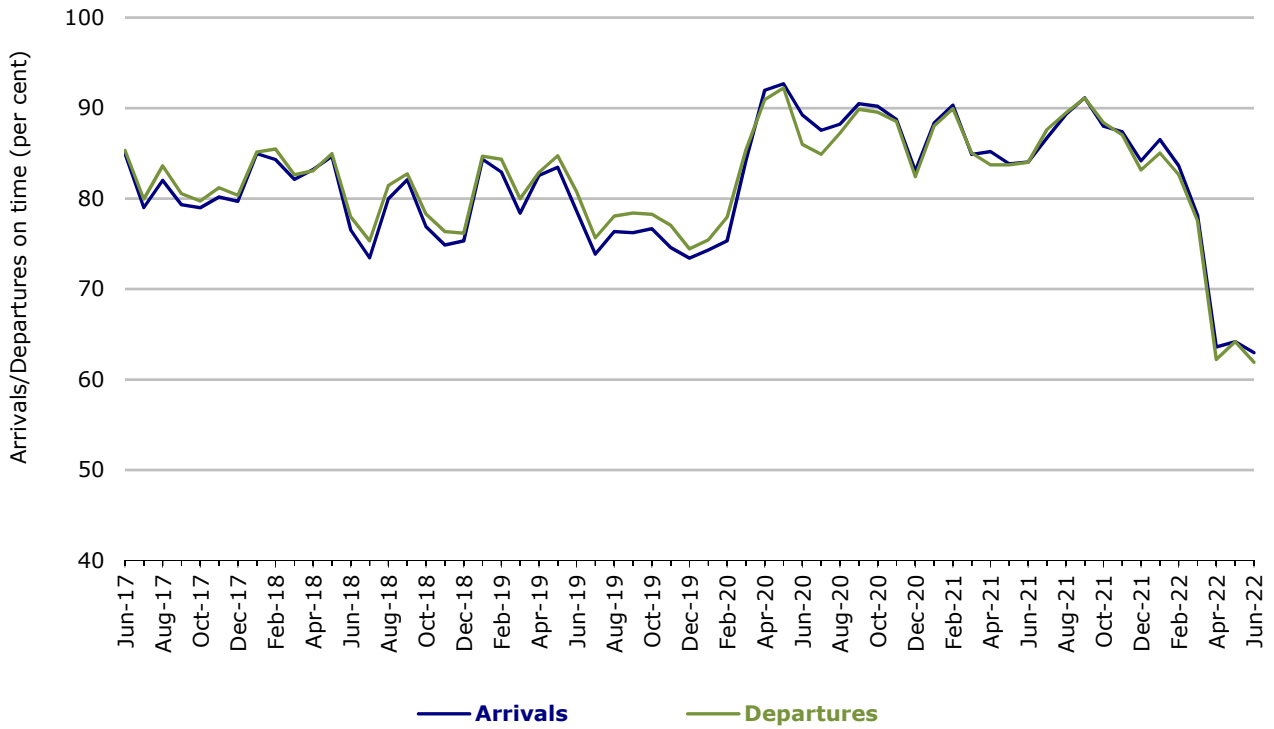
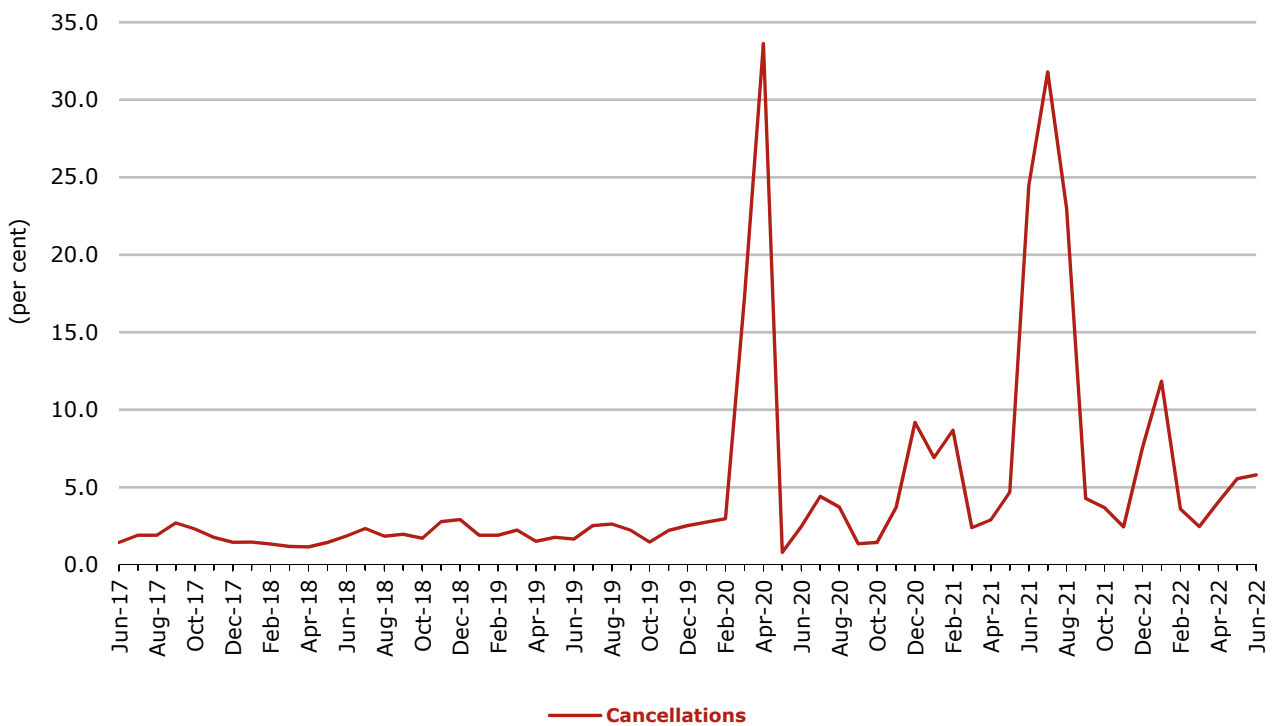


Figure 2 Cancellations (by month from June 2017)—Total Industry



Major domestic airlines on time performance

Figure 3 On time performance (by month from June 2017)—Jetstar

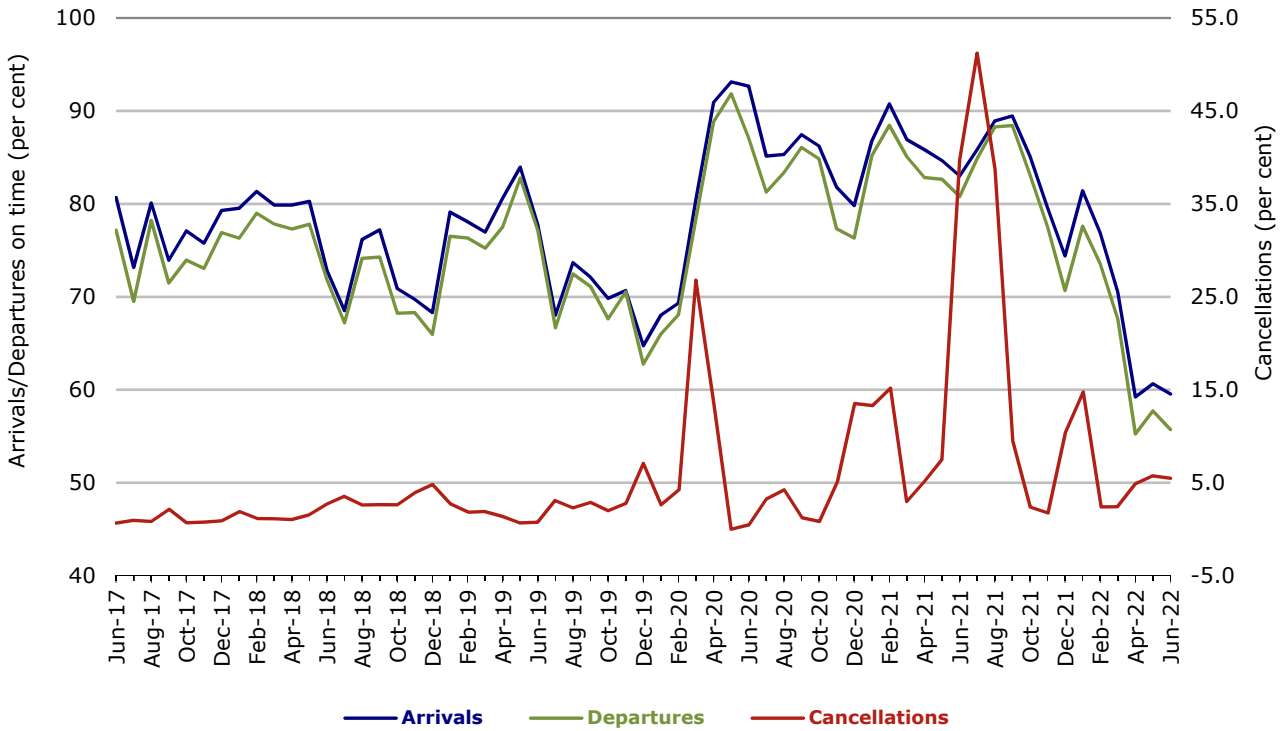


Figure 4 On time performance (by month from June 2017)—Qantas

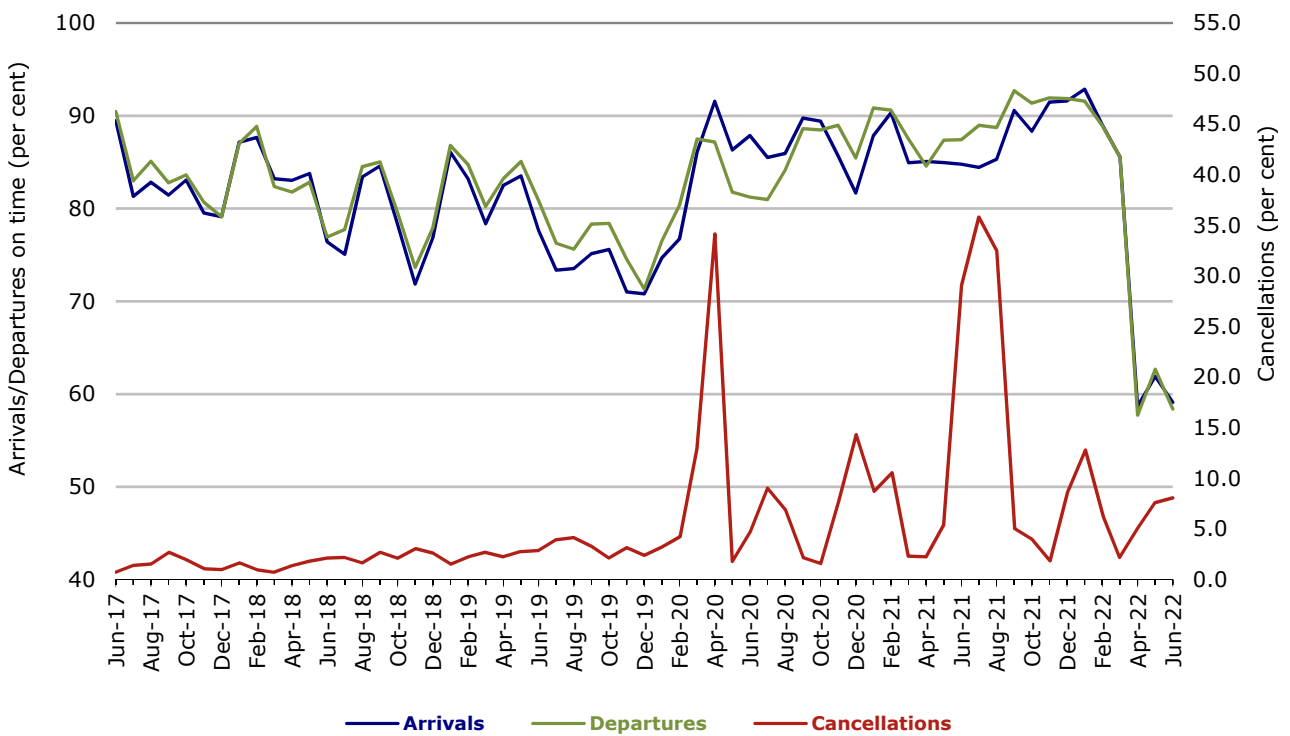
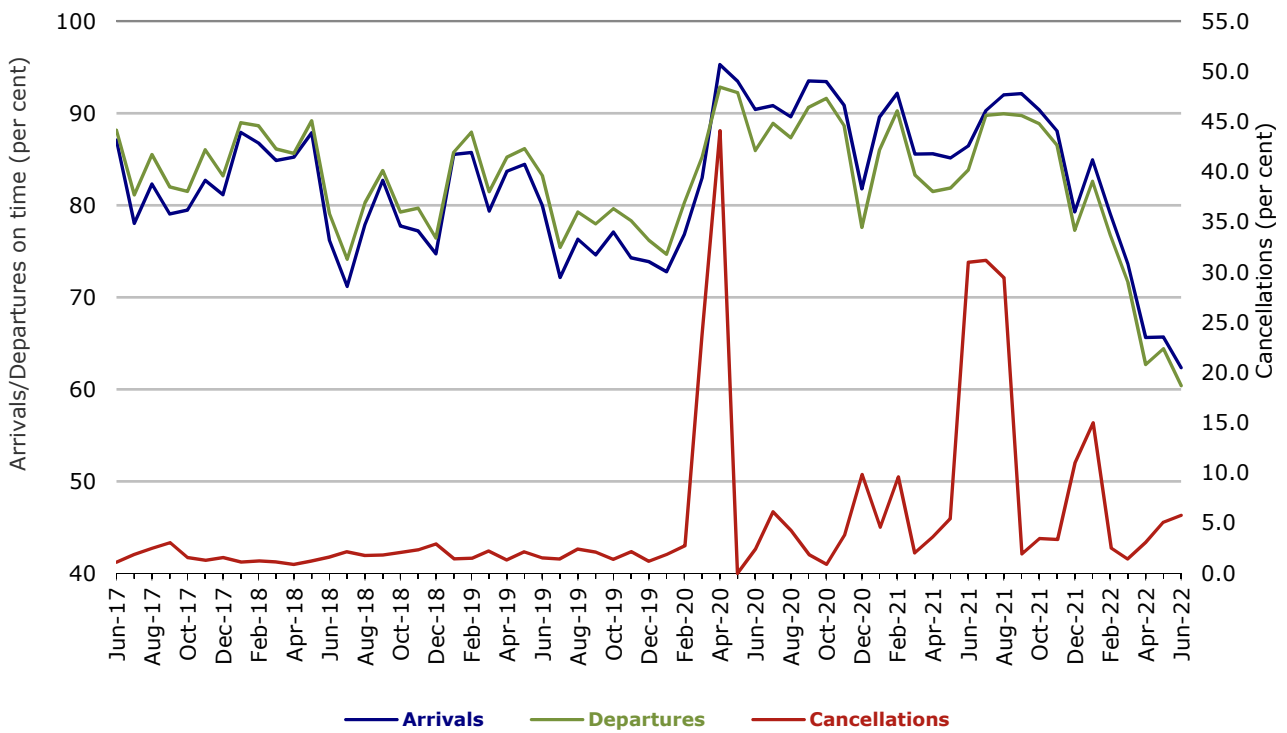


Figure 5 On time performance (by month from June 2017)—Virgin Australia



Major regional airlines on time performance

Figure 6 On time performance (by month from June 2017)—QantasLink

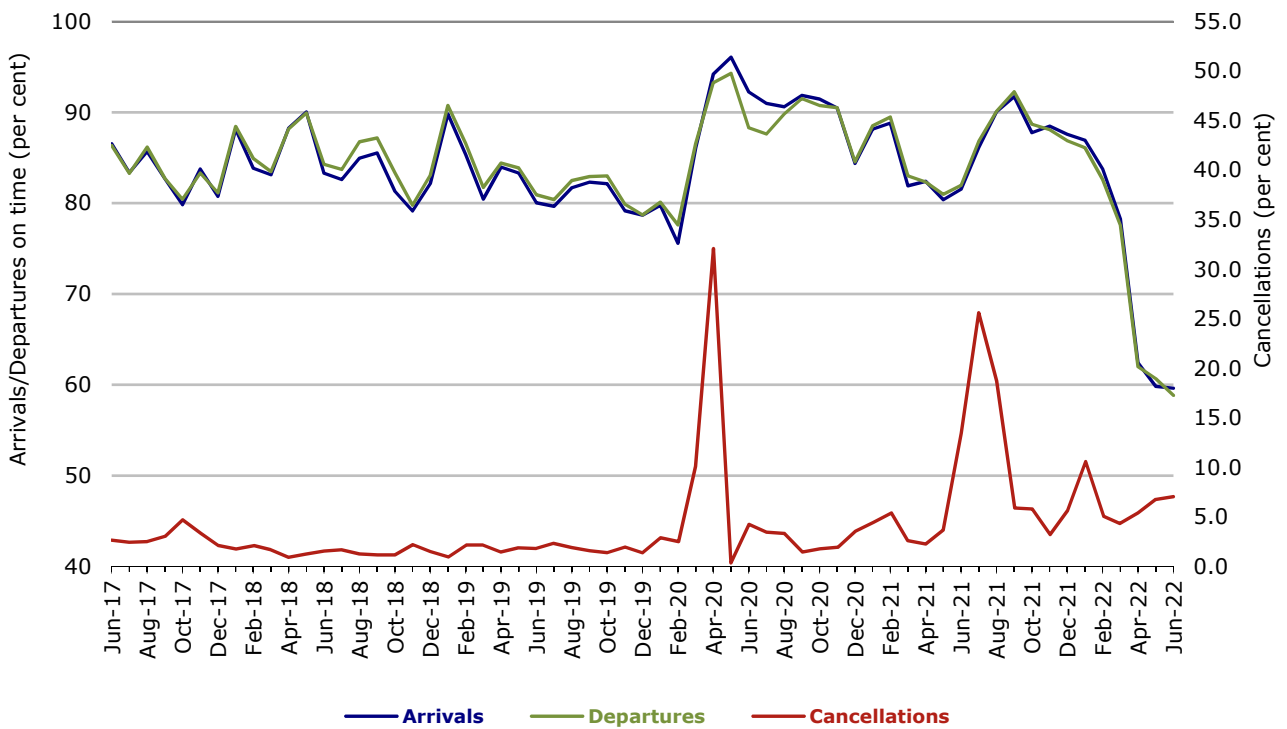
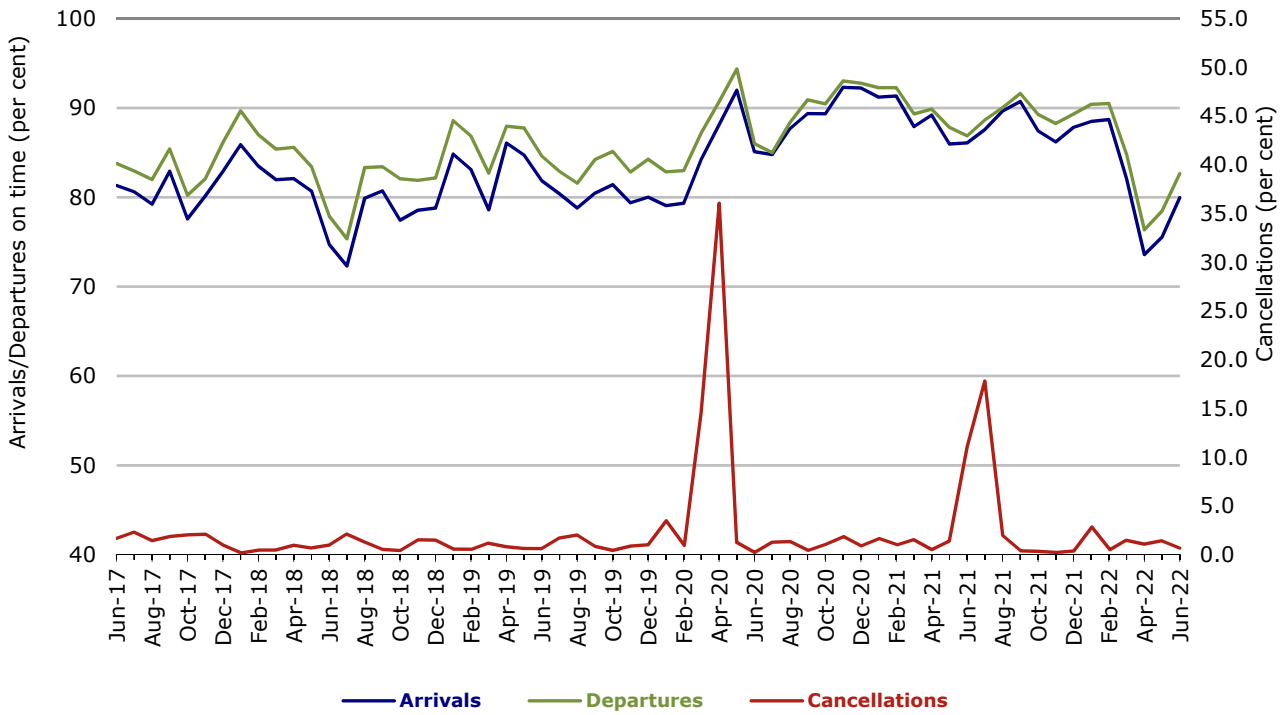
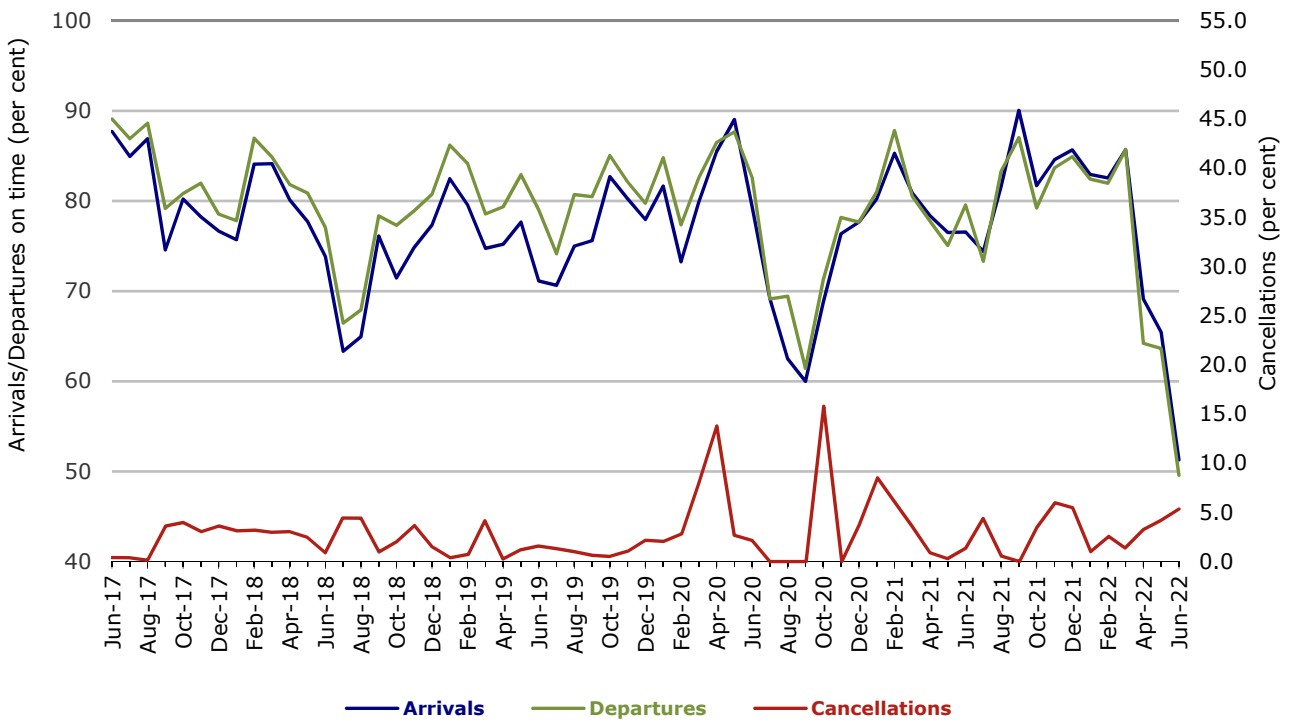


Figure 7 On time performance (by month from June 2017)—Rex Airlines



With effect from July 2021, Regional Express is reported as Rex Airlines

Figure 8 On time performance (by month from June 2017) Virgin Australia Regional Airlines



Individual routes

On time performance is reported for all routes where the passenger load averages over 8000 passengers per month over the previous six months, and where two or more airlines operate in competition on those routes. In order to present data for more routes during the period impacted by COVID-19, the passenger load restriction is not being applied. In June 2022, there were 58 routes for which data was presented.

	<i>Sectors</i>		<i>Arrivals On Time</i>		<i>Departures On Time</i>		<i>Cancellations</i>	
	<i>Sched.</i>	<i>Flown</i>	<i>No.</i>	<i>%</i>	<i>No.</i>	<i>%</i>	<i>No.</i>	<i>%</i>
Adelaide-Alice Springs								
Qantas	161	151	142	94.0	144	95.4	10	6.2
QantasLink	240	221	174	78.7	182	82.4	19	7.9
Virgin Australia	141	140	120	85.7	122	87.1	1	0.7
All Airlines	542	512	436	85.2	448	87.5	30	5.5
Adelaide-Brisbane								
Jetstar	368	313	246	78.6	250	79.9	55	14.9
Qantas	815	751	675	89.9	672	89.5	64	7.9
QantasLink	197	181	51	28.2	60	33.1	16	8.1
Virgin Australia	1 000	898	811	90.3	779	86.7	102	10.2
All Airlines	2 380	2 143	1 783	83.2	1 761	82.2	237	10.0
Adelaide-Canberra								
Qantas	137	112	106	94.6	105	93.8	25	18.2
QantasLink	332	322	249	77.3	270	83.9	10	3.0
Virgin Australia	201	192	177	92.2	176	91.7	9	4.5
All Airlines	670	626	532	85.0	551	88.0	44	6.6
Adelaide-Gold Coast (Data not available for one or more months during 2021-22)								
Jetstar	274	244	220	90.2	222	91.0	30	10.9
QantasLink	81	63	50	79.4	52	82.5	18	22.2
Virgin Australia	294	255	226	88.6	232	91.0	39	13.3
All Airlines	649	562	496	88.3	506	90.0	87	13.4
Adelaide-Melbourne								
Jetstar	815	704	521	74.0	490	69.6	111	13.6
Qantas	1 658	1 451	1 203	82.9	1 192	82.2	207	12.5
QantasLink	13	13	7	53.8	7	53.8	0	0.0
Rex Airlines	358	333	309	92.8	307	92.2	25	7.0
Virgin Australia	1 935	1 731	1 217	70.3	1 143	66.0	204	10.5
All Airlines	4 779	4 232	3 257	77.0	3 139	74.2	547	11.4
Adelaide-Perth (Data not available for one or more months during 2021-22)								
Jetstar	211	185	149	80.5	148	80.0	26	12.3
Qantas	774	706	551	78.0	583	82.6	68	8.8
Virgin Australia	219	194	155	79.9	159	82.0	25	11.4
Virgin Australia Regional Airlines	184	170	96	56.5	67	39.4	14	7.6
All Airlines	1 388	1 255	951	75.8	957	76.3	133	9.6
Adelaide-Port Lincoln								
QantasLink	1 169	1 074	936	87.2	924	86.0	95	8.1
Rex Airlines	1 942	1 896	1 624	85.7	1 700	89.7	46	2.4
All Airlines	3 111	2 970	2 560	86.2	2 624	88.4	141	4.5
Adelaide-Sydney								
Jetstar	815	684	516	75.4	515	75.3	131	16.1
Qantas	1 467	1 353	1 003	74.1	1 055	78.0	114	7.8
Virgin Australia	923	862	652	75.6	660	76.6	61	6.6
All Airlines	3 205	2 899	2 171	74.9	2 230	76.9	306	9.5

	Sectors		Arrivals On Time		Departures On Time		Cancellations	
	Sched.	Flown	No.	%	No.	%	No.	%
Albury-Sydney								
QantasLink	755	695	555	79.9	539	77.6	60	7.9
Rex Airlines	684	675	587	87.0	602	89.2	9	1.3
All Airlines	1 439	1 370	1 142	83.4	1 141	83.3	69	4.8
Alice Springs-Adelaide								
Qantas	161	151	127	84.1	125	82.8	10	6.2
QantasLink	240	220	147	66.8	138	62.7	20	8.3
Virgin Australia	141	140	104	74.3	98	70.0	1	0.7
All Airlines	542	511	378	74.0	361	70.6	31	5.7
Armidale-Sydney								
QantasLink	735	658	502	76.3	501	76.1	77	10.5
Rex Airlines	503	484	298	61.6	340	70.2	19	3.8
All Airlines	1 238	1 142	800	70.1	841	73.6	96	7.8
Ballina-Sydney								
Jetstar	746	637	413	64.8	376	59.0	109	14.6
Qantas	63	63	51	81.0	47	74.6	0	0.0
QantasLink	765	665	436	65.6	450	67.7	100	13.1
Rex Airlines	220	207	161	77.8	164	79.2	13	5.9
Virgin Australia	675	616	487	79.1	473	76.8	59	8.7
All Airlines	2 469	2 188	1 548	70.7	1 510	69.0	281	11.4
Brisbane-Adelaide								
Jetstar	367	312	210	67.3	178	57.1	55	15.0
Qantas	815	747	680	91.0	671	89.8	68	8.3
QantasLink	198	181	75	41.4	75	41.4	17	8.6
Virgin Australia	1 004	896	796	88.8	735	82.0	108	10.8
All Airlines	2 384	2 136	1 761	82.4	1 659	77.7	248	10.4
Brisbane-Cairns								
Jetstar	1 057	993	698	70.3	693	69.8	64	6.1
Qantas	1 359	1 292	1 105	85.5	1 127	87.2	67	4.9
QantasLink	227	215	150	69.8	156	72.6	12	5.3
Virgin Australia	1 639	1 538	1 208	78.5	1 214	78.9	101	6.2
All Airlines	4 282	4 038	3 161	78.3	3 190	79.0	244	5.7
Brisbane-Canberra								
Jetstar	97	96	74	77.1	54	56.3	1	1.0
Qantas	221	178	161	90.4	157	88.2	43	19.5
QantasLink	1 002	889	640	72.0	617	69.4	113	11.3
Virgin Australia	715	662	542	81.9	505	76.3	53	7.4
All Airlines	2 035	1 825	1 417	77.6	1 333	73.0	210	10.3
Brisbane-Darwin								
Jetstar	283	256	202	78.9	203	79.3	27	9.5
Qantas	530	499	373	74.7	407	81.6	31	5.8
Virgin Australia	424	395	346	87.6	335	84.8	29	6.8
All Airlines	1 237	1 150	921	80.1	945	82.2	87	7.0
Brisbane-Emerald								
QantasLink	1 302	1 192	1 056	88.6	1 055	88.5	110	8.4
Virgin Australia	315	308	275	89.3	266	86.4	7	2.2
All Airlines	1 617	1 500	1 331	88.7	1 321	88.1	117	7.2
Brisbane-Gladstone								
QantasLink	1 363	1 208	978	81.0	975	80.7	155	11.4
Virgin Australia	534	485	417	86.0	437	90.1	49	9.2
All Airlines	1 897	1 693	1 395	82.4	1 412	83.4	204	10.8

	<i>Sectors</i>		<i>Arrivals On Time</i>		<i>Departures On Time</i>		<i>Cancellations</i>	
	<i>Sched.</i>	<i>Flown</i>	<i>No.</i>	<i>%</i>	<i>No.</i>	<i>%</i>	<i>No.</i>	<i>%</i>
Brisbane-Hamilton Island								
Qantas	406	386	340	88.1	359	93.0	20	4.9
Virgin Australia	543	520	460	88.5	468	90.0	23	4.2
All Airlines	949	906	800	88.3	827	91.3	43	4.5
Brisbane-Hobart								
Jetstar	356	340	300	88.2	278	81.8	16	4.5
Qantas	87	77	71	92.2	73	94.8	10	11.5
QantasLink	276	263	208	79.1	204	77.6	13	4.7
Virgin Australia	598	554	490	88.4	449	81.0	44	7.4
All Airlines	1 317	1 234	1 069	86.6	1 004	81.4	83	6.3
Brisbane-Mackay								
Jetstar	358	348	250	71.8	236	67.8	10	2.8
Qantas	1 100	1 009	901	89.3	912	90.4	91	8.3
QantasLink	176	150	119	79.3	123	82.0	26	14.8
Virgin Australia	1 256	1 187	961	81.0	957	80.6	69	5.5
All Airlines	2 890	2 694	2 231	82.8	2 228	82.7	196	6.8
Brisbane-Melbourne								
Jetstar	1 193	951	630	66.2	545	57.3	242	20.3
Qantas	2 572	2 292	1 834	80.0	1 756	76.6	280	10.9
Rex Airlines	204	197	162	82.2	157	79.7	7	3.4
Virgin Australia	2 448	2 125	1 197	56.3	1 109	52.2	323	13.2
All Airlines	6 417	5 565	3 823	68.7	3 567	64.1	852	13.3
Brisbane-Mount Isa								
Qantas	427	412	381	92.5	392	95.1	15	3.5
QantasLink	182	175	120	68.6	116	66.3	7	3.8
Virgin Australia	182	176	144	81.8	158	89.8	6	3.3
All Airlines	791	763	645	84.5	666	87.3	28	3.5
Brisbane-Newcastle								
Jetstar	413	363	280	77.1	273	75.2	50	12.1
QantasLink	676	605	427	70.6	413	68.3	71	10.5
Virgin Australia	589	565	459	81.2	477	84.4	24	4.1
All Airlines	1 678	1 533	1 166	76.1	1 163	75.9	145	8.6
Brisbane-Perth								
Jetstar	117	112	66	58.9	52	46.4	5	4.3
Qantas	940	795	564	70.9	613	77.1	145	15.4
Virgin Australia	523	485	373	76.9	330	68.0	38	7.3
All Airlines	1 580	1 392	1 003	72.1	995	71.5	188	11.9
Brisbane-Proserpine								
Jetstar	419	413	273	66.1	302	73.1	6	1.4
QantasLink	299	274	212	77.4	235	85.8	25	8.4
Virgin Australia	531	513	436	85.0	439	85.6	18	3.4
All Airlines	1 249	1 200	921	76.8	976	81.3	49	3.9
Brisbane-Rockhampton								
QantasLink	1 743	1 599	1 335	83.5	1 354	84.7	144	8.3
Virgin Australia	1 089	1 034	777	75.1	851	82.3	55	5.1
All Airlines	2 832	2 633	2 112	80.2	2 205	83.7	199	7.0
Brisbane-Sydney								
Jetstar	1 015	790	527	66.7	476	60.3	225	22.2
Qantas	3 587	3 149	2 463	78.2	2 471	78.5	438	12.2
Rex Airlines	309	299	265	88.6	275	92.0	10	3.2
Virgin Australia	2 855	2 527	1 748	69.2	1 595	63.1	328	11.5
All Airlines	7 766	6 765	5 003	74.0	4 817	71.2	1 001	12.9

	Sectors		Arrivals On Time		Departures On Time		Cancellations	
	Sched.	Flown	No.	%	No.	%	No.	%
Brisbane-Townsville								
Jetstar	642	622	486	78.1	494	79.4	20	3.1
Qantas	1 285	1 220	1 016	83.3	1 046	85.7	65	5.1
QantasLink	80	77	40	51.9	47	61.0	3	3.8
Virgin Australia	1 276	1 195	987	82.6	981	82.1	81	6.3
All Airlines	3 283	3 114	2 529	81.2	2 568	82.5	169	5.1
Broome-Perth								
Qantas	476	456	403	88.4	387	84.9	20	4.2
QantasLink	609	561	418	74.5	399	71.1	48	7.9
Virgin Australia	336	327	274	83.8	236	72.2	9	2.7
Virgin Australia Regional Airlines	349	337	251	74.5	212	62.9	12	3.4
All Airlines	1 770	1 681	1 346	80.1	1 234	73.4	89	5.0
Cairns-Brisbane								
Jetstar	1 054	992	748	75.4	777	78.3	62	5.9
Qantas	1 349	1 284	1 135	88.4	1 150	89.6	65	4.8
QantasLink	228	213	127	59.6	140	65.7	15	6.6
Virgin Australia	1 635	1 538	1 347	87.6	1 226	79.7	97	5.9
All Airlines	4 266	4 027	3 357	83.4	3 293	81.8	239	5.6
Cairns-Melbourne								
Jetstar	709	654	481	73.5	443	67.7	55	7.8
Qantas	365	341	226	66.3	242	71.0	24	6.6
Virgin Australia	597	545	360	66.1	351	64.4	52	8.7
All Airlines	1 671	1 540	1 067	69.3	1 036	67.3	131	7.8
Cairns-Sydney								
Jetstar	653	566	448	79.2	428	75.6	87	13.3
Qantas	421	386	252	65.3	254	65.8	35	8.3
Virgin Australia	555	504	409	81.2	397	78.8	51	9.2
All Airlines	1 629	1 456	1 109	76.2	1 079	74.1	173	10.6
Cairns-Townsville								
QantasLink	1 496	1 456	1 315	90.3	1 301	89.4	40	2.7
Rex Airlines	190	187	172	92.0	173	92.5	3	1.6
All Airlines	1 686	1 643	1 487	90.5	1 474	89.7	43	2.6
Canberra-Adelaide								
Qantas	137	112	107	95.5	107	95.5	25	18.2
QantasLink	332	320	249	77.8	239	74.7	12	3.6
Virgin Australia	200	192	173	90.1	171	89.1	8	4.0
All Airlines	669	624	529	84.8	517	82.9	45	6.7
Canberra-Brisbane								
Jetstar	101	98	52	53.1	48	49.0	3	3.0
Qantas	219	176	155	88.1	148	84.1	43	19.6
QantasLink	995	891	626	70.3	654	73.4	104	10.5
Virgin Australia	719	665	533	80.2	530	79.7	54	7.5
All Airlines	2 034	1 830	1 366	74.6	1 380	75.4	204	10.0
Canberra-Melbourne								
Qantas	33	30	23	76.7	24	80.0	3	9.1
QantasLink	1 815	1 583	1 068	67.5	1 101	69.6	232	12.8
Rex Airlines	141	141	114	80.9	113	80.1	0	0.0
Virgin Australia	925	882	648	73.5	624	70.7	43	4.6
All Airlines	2 914	2 636	1 853	70.3	1 862	70.6	278	9.5

	<i>Sectors</i>		<i>Arrivals On Time</i>		<i>Departures On Time</i>		<i>Cancellations</i>	
	<i>Sched.</i>	<i>Flown</i>	<i>No.</i>	<i>%</i>	<i>No.</i>	<i>%</i>	<i>No.</i>	<i>%</i>
Canberra-Sydney	(Data not available for one or more months during 2021-22)							
Qantas	5	0	0	na	0	na	5	100.0
QantasLink	2 922	2 433	1 808	74.3	1 885	77.5	489	16.7
Rex Airlines	649	600	491	81.8	548	91.3	49	7.6
Virgin Australia	820	813	691	85.0	694	85.4	7	0.9
All Airlines	4 396	3 846	2 990	77.7	3 127	81.3	550	12.5
Coffs Harbour-Sydney	(Data not available for one or more months during 2021-22)							
QantasLink	873	792	608	76.8	603	76.1	81	9.3
Rex Airlines	609	588	449	76.4	476	81.0	21	3.4
Virgin Australia	118	116	100	86.2	94	81.0	2	1.7
All Airlines	1 600	1 496	1 157	77.3	1 173	78.4	104	6.5
Darwin-Brisbane								
Jetstar	284	254	156	61.4	153	60.2	30	10.6
Qantas	516	489	301	61.6	306	62.6	27	5.2
Virgin Australia	421	391	322	82.4	280	71.6	30	7.1
All Airlines	1 221	1 134	779	68.7	739	65.2	87	7.1
Darwin-Melbourne	(Data not available for one or more months during 2021-22)							
Jetstar	129	102	44	43.1	36	35.3	27	20.9
Qantas	269	246	155	63.0	156	63.4	23	8.6
Virgin Australia	209	176	94	53.4	92	52.3	33	15.8
All Airlines	607	524	293	55.9	284	54.2	83	13.7
Darwin-Perth	(Data not available for one or more months during 2021-22)							
Qantas	335	310	256	82.6	267	86.1	25	7.5
QantasLink	78	75	17	22.7	15	20.0	3	3.8
Virgin Australia	67	66	47	71.2	46	69.7	1	1.5
Virgin Australia Regional Airlines	159	149	101	67.8	95	63.8	10	6.3
All Airlines	639	600	421	70.2	423	70.5	39	6.1
Darwin-Sydney	(May and June 2022 only)							
Jetstar	56	54	36	66.7	14	25.9	2	3.6
Qantas	82	82	18	22.0	12	14.6	0	0.0
Virgin Australia	37	36	34	94.4	30	83.3	1	2.7
All Airlines	175	172	88	51.2	56	32.6	3	1.7
Dubbo-Sydney								
QantasLink	748	687	552	80.3	533	77.6	61	8.2
Rex Airlines	763	750	567	75.6	602	80.3	13	1.7
All Airlines	1 511	1 437	1 119	77.9	1 135	79.0	74	4.9
Emerald-Brisbane								
QantasLink	1 299	1 187	1 031	86.9	1 026	86.4	112	8.6
Virgin Australia	313	309	280	90.6	276	89.3	4	1.3
All Airlines	1 612	1 496	1 311	87.6	1 302	87.0	116	7.2
Gladstone-Brisbane								
QantasLink	1 360	1 204	1 000	83.1	999	83.0	156	11.5
Virgin Australia	534	484	374	77.3	413	85.3	50	9.4
All Airlines	1 894	1 688	1 374	81.4	1 412	83.6	206	10.9
Gold Coast-Adelaide	(Data not available for one or more months during 2021-22)							
Jetstar	274	244	217	88.9	196	80.3	30	10.9
QantasLink	81	62	43	69.4	34	54.8	19	23.5
Virgin Australia	294	254	207	81.5	194	76.4	40	13.6
All Airlines	649	560	467	83.4	424	75.7	89	13.7

	<i>Sectors</i>		<i>Arrivals</i>		<i>Departures</i>		<i>Cancellations</i>	
	<i>Sched.</i>	<i>Flown</i>	<i>On Time</i> <i>No.</i>	<i>%</i>	<i>On Time</i> <i>No.</i>	<i>%</i>	<i>No.</i>	<i>%</i>
Gold Coast-Melbourne	(Data not available for one or more months during 2021-22)							
Jetstar	1 595	1 364	988	72.4	904	66.3	231	14.5
Qantas	436	394	286	72.6	270	68.5	42	9.6
QantasLink	158	129	70	54.3	54	41.9	29	18.4
Rex Airlines	384	346	268	77.5	285	82.4	38	9.9
Virgin Australia	2 328	2 040	1 483	72.7	1 284	62.9	288	12.4
All Airlines	4 901	4 273	3 095	72.4	2 797	65.5	628	12.8
Gold Coast-Sydney	(Data not available for one or more months during 2021-22)							
Jetstar	1 804	1 520	1 118	73.6	1 064	70.0	284	15.7
Qantas	604	558	389	69.7	389	69.7	46	7.6
QantasLink	124	110	56	50.9	56	50.9	14	11.3
Rex Airlines	321	286	254	88.8	251	87.8	35	10.9
Virgin Australia	2 128	1 861	1 360	73.1	1 275	68.5	267	12.5
All Airlines	4 981	4 335	3 177	73.3	3 035	70.0	646	13.0
Hamilton Island-Brisbane								
Qantas	404	382	311	81.4	308	80.6	22	5.4
Virgin Australia	542	519	435	83.8	409	78.8	23	4.2
All Airlines	946	901	746	82.8	717	79.6	45	4.8
Hamilton Island-Sydney	(Data not available for one or more months during 2021-22)							
Jetstar	179	158	95	60.1	82	51.9	21	11.7
Qantas	229	203	156	76.8	150	73.9	26	11.4
Virgin Australia	190	179	131	73.2	121	67.6	11	5.8
All Airlines	598	540	382	70.7	353	65.4	58	9.7
Hobart-Brisbane								
Jetstar	356	339	257	75.8	259	76.4	17	4.8
Qantas	87	77	67	87.0	67	87.0	10	11.5
QantasLink	276	262	199	76.0	195	74.4	14	5.1
Virgin Australia	598	551	395	71.7	415	75.3	47	7.9
All Airlines	1 317	1 229	918	74.7	936	76.2	88	6.7
Hobart-Melbourne								
Jetstar	1 185	1 057	697	65.9	675	63.9	128	10.8
Qantas	23	23	11	47.8	11	47.8	0	0.0
QantasLink	811	740	517	69.9	505	68.2	71	8.8
Virgin Australia	917	852	534	62.7	577	67.7	65	7.1
All Airlines	2 936	2 672	1 759	65.8	1 768	66.2	264	9.0
Hobart-Sydney								
Jetstar	641	564	374	66.3	394	69.9	77	12.0
Qantas	198	179	143	79.9	146	81.6	19	9.6
QantasLink	328	300	143	47.7	188	62.7	28	8.5
Virgin Australia	573	536	410	76.5	439	81.9	37	6.5
All Airlines	1 740	1 579	1 070	67.8	1 167	73.9	161	9.3
Kalgoorlie-Perth								
Qantas	219	215	175	81.4	158	73.5	4	1.8
QantasLink	667	625	480	76.8	456	73.0	42	6.3
Virgin Australia	345	343	214	62.4	195	56.9	2	0.6
Virgin Australia Regional Airlines	368	362	267	73.8	256	70.7	6	1.6
All Airlines	1 599	1 545	1 136	73.5	1 065	68.9	54	3.4
Karratha-Perth								
Qantas	522	504	460	91.3	449	89.1	18	3.4
QantasLink	1 205	1 131	928	82.1	911	80.5	74	6.1
Virgin Australia	360	360	308	85.6	280	77.8	0	0.0
Virgin Australia Regional Airlines	268	268	197	73.5	186	69.4	0	0.0
All Airlines	2 355	2 263	1 893	83.7	1 826	80.7	92	3.9

	Sectors		Arrivals On Time		Departures On Time		Cancellations	
	Sched.	Flown	No.	%	No.	%	No.	%
Launceston-Melbourne								
Jetstar	712	632	374	59.2	352	55.7	80	11.2
QantasLink	802	687	371	54.0	391	56.9	115	14.3
Virgin Australia	674	632	462	73.1	484	76.6	42	6.2
All Airlines	2 188	1 951	1 207	61.9	1 227	62.9	237	10.8
Launceston-Sydney								
Jetstar	398	367	238	64.9	230	62.7	31	7.8
QantasLink	144	136	91	66.9	84	61.8	8	5.6
Virgin Australia	283	276	236	85.5	245	88.8	7	2.5
All Airlines	825	779	565	72.5	559	71.8	46	5.6
Mackay-Brisbane								
Jetstar	358	344	231	67.2	219	63.7	14	3.9
Qantas	1 098	1 002	867	86.5	878	87.6	96	8.7
QantasLink	227	193	162	83.9	156	80.8	34	15.0
Virgin Australia	1 256	1 186	1 022	86.2	963	81.2	70	5.6
All Airlines	2 939	2 725	2 282	83.7	2 216	81.3	214	7.3
Melbourne-Adelaide								
Jetstar	815	707	519	73.4	468	66.2	108	13.3
Qantas	1 657	1 451	1 089	75.1	1 070	73.7	206	12.4
QantasLink	13	12	0	0.0	0	0.0	1	7.7
Rex Airlines	361	332	286	86.1	289	87.0	29	8.0
Virgin Australia	1 940	1 737	1 176	67.7	1 160	66.8	203	10.5
All Airlines	4 786	4 239	3 070	72.4	2 987	70.5	547	11.4
Melbourne-Brisbane								
Jetstar	1 194	952	543	57.0	552	58.0	242	20.3
Qantas	2 578	2 315	1 629	70.4	1 673	72.3	263	10.2
Rex Airlines	203	197	163	82.7	171	86.8	6	3.0
Virgin Australia	2 451	2 127	1 324	62.2	1 358	63.8	324	13.2
All Airlines	6 426	5 591	3 659	65.4	3 754	67.1	835	13.0
Melbourne-Cairns								
Jetstar	714	661	403	61.0	343	51.9	53	7.4
Qantas	363	340	241	70.9	228	67.1	23	6.3
Virgin Australia	597	544	401	73.7	392	72.1	53	8.9
All Airlines	1 674	1 545	1 045	67.6	963	62.3	129	7.7
Melbourne-Canberra								
Qantas	34	31	22	71.0	24	77.4	3	8.8
QantasLink	1 817	1 589	1 047	65.9	1 043	65.6	228	12.5
Rex Airlines	141	141	119	84.4	121	85.8	0	0.0
Virgin Australia	923	884	649	73.4	642	72.6	39	4.2
All Airlines	2 915	2 645	1 837	69.5	1 830	69.2	270	9.3
Melbourne-Darwin								
	(Data not available for one or more months during 2021-22)							
Jetstar	127	102	60	58.8	64	62.7	25	19.7
Qantas	275	248	176	71.0	173	69.8	27	9.8
Virgin Australia	201	175	121	69.1	131	74.9	26	12.9
All Airlines	603	525	357	68.0	368	70.1	78	12.9
Melbourne-Gold Coast								
	(Data not available for one or more months during 2021-22)							
Jetstar	1 592	1 364	843	61.8	812	59.5	228	14.3
Qantas	438	394	324	82.2	325	82.5	44	10.0
QantasLink	158	129	69	53.5	75	58.1	29	18.4
Rex Airlines	383	345	297	86.1	301	87.2	38	9.9
Virgin Australia	2 335	2 046	1 377	67.3	1 382	67.5	289	12.4
All Airlines	4 906	4 278	2 910	68.0	2 895	67.7	628	12.8

	<i>Sectors</i>		<i>Arrivals On Time</i>		<i>Departures On Time</i>		<i>Cancellations</i>	
	<i>Sched.</i>	<i>Flown</i>	<i>No.</i>	<i>%</i>	<i>No.</i>	<i>%</i>	<i>No.</i>	<i>%</i>
Melbourne-Hobart								
Jetstar	1 180	1 054	771	73.1	712	67.6	126	10.7
Qantas	23	23	16	69.6	13	56.5	0	0.0
QantasLink	823	750	487	64.9	465	62.0	73	8.9
Virgin Australia	916	853	615	72.1	629	73.7	63	6.9
All Airlines	2 942	2 680	1 889	70.5	1 819	67.9	262	8.9
Melbourne-Launceston								
Jetstar	710	632	417	66.0	396	62.7	78	11.0
QantasLink	803	699	407	58.2	449	64.2	104	13.0
Virgin Australia	676	633	433	68.4	449	70.9	43	6.4
All Airlines	2 189	1 964	1 257	64.0	1 294	65.9	225	10.3
Melbourne-Mildura								
QantasLink	995	931	615	66.1	583	62.6	64	6.4
Rex Airlines	608	595	459	77.1	472	79.3	13	2.1
All Airlines	1 603	1 526	1 074	70.4	1 055	69.1	77	4.8
Melbourne-Newcastle								
Jetstar	587	546	342	62.6	363	66.5	41	7.0
QantasLink	320	282	160	56.7	169	59.9	38	11.9
Virgin Australia	315	304	224	73.7	224	73.7	11	3.5
All Airlines	1 222	1 132	726	64.1	756	66.8	90	7.4
Melbourne-Perth								
Jetstar	254	214	148	69.2	120	56.1	40	15.7
Qantas	827	769	395	51.4	370	48.1	58	7.0
Virgin Australia	659	622	454	73.0	351	56.4	37	5.6
All Airlines	1 740	1 605	997	62.1	841	52.4	135	7.8
Melbourne-Sunshine Coast								
	(Data not available for one or more months during 2021-22)							
Jetstar	576	507	331	65.3	347	68.4	69	12.0
Qantas	221	219	181	82.6	179	81.7	2	0.9
QantasLink	167	152	85	55.9	94	61.8	15	9.0
Virgin Australia	886	778	547	70.3	537	69.0	108	12.2
All Airlines	1 850	1 656	1 144	69.1	1 157	69.9	194	10.5
Melbourne-Sydney								
Jetstar	2 766	2 275	1 544	67.9	1 466	64.4	491	17.8
Qantas	6 367	5 332	4 020	75.4	4 148	77.8	1 035	16.3
QantasLink	129	88	36	40.9	45	51.1	41	31.8
Rex Airlines	803	727	635	87.3	646	88.9	76	9.5
Virgin Australia	5 184	4 570	3 267	71.5	3 315	72.5	614	11.8
All Airlines	15 249	12 992	9 502	73.1	9 620	74.0	2 257	14.8
Mildura-Melbourne								
QantasLink	993	928	580	62.5	593	63.9	65	6.5
Rex Airlines	603	592	478	80.7	500	84.5	11	1.8
All Airlines	1 596	1 520	1 058	69.6	1 093	71.9	76	4.8
Mount Isa-Brisbane								
Qantas	427	408	375	91.9	361	88.5	19	4.4
QantasLink	182	173	134	77.5	126	72.8	9	4.9
Virgin Australia	182	176	134	76.1	144	81.8	6	3.3
All Airlines	791	757	643	84.9	631	83.4	34	4.3
Newcastle-Brisbane								
Jetstar	413	364	253	69.5	262	72.0	49	11.9
QantasLink	669	601	432	71.9	431	71.7	68	10.2
Virgin Australia	589	564	459	81.4	492	87.2	25	4.2
All Airlines	1 671	1 529	1 144	74.8	1 185	77.5	142	8.5

	<i>Sectors</i>		<i>Arrivals On Time</i>		<i>Departures On Time</i>		<i>Cancellations</i>	
	<i>Sched.</i>	<i>Flown</i>	<i>No.</i>	<i>%</i>	<i>No.</i>	<i>%</i>	<i>No.</i>	<i>%</i>
Newcastle-Melbourne								
Jetstar	587	545	367	67.3	323	59.3	42	7.2
QantasLink	325	290	208	71.7	208	71.7	35	10.8
Virgin Australia	310	303	204	67.3	213	70.3	7	2.3
All Airlines	1 222	1 138	779	68.5	744	65.4	84	6.9
Newman-Perth								
Qantas	241	225	176	78.2	178	79.1	16	6.6
QantasLink	1 145	1 083	846	78.1	868	80.1	62	5.4
Virgin Australia	356	353	275	77.9	274	77.6	3	0.8
Virgin Australia Regional Airlines	318	310	226	72.9	234	75.5	8	2.5
All Airlines	2 060	1 971	1 523	77.3	1 554	78.8	89	4.3
Perth-Adelaide (Data not available for one or more months during 2021-22)								
Jetstar	212	185	113	61.1	86	46.5	27	12.7
Qantas	775	706	568	80.5	553	78.3	69	8.9
Virgin Australia	214	196	174	88.8	176	89.8	18	8.4
Virgin Australia Regional Airlines	184	171	109	63.7	118	69.0	13	7.1
All Airlines	1 385	1 258	964	76.6	933	74.2	127	9.2
Perth-Brisbane								
Jetstar	117	111	35	31.5	31	27.9	6	5.1
Qantas	934	797	612	76.8	619	77.7	137	14.7
Virgin Australia	527	483	338	70.0	265	54.9	44	8.3
All Airlines	1 578	1 391	985	70.8	915	65.8	187	11.9
Perth-Broome								
Qantas	471	457	432	94.5	422	92.3	14	3.0
QantasLink	605	568	487	85.7	454	79.9	37	6.1
Virgin Australia	336	328	283	86.3	264	80.5	8	2.4
Virgin Australia Regional Airlines	349	338	272	80.5	267	79.0	11	3.2
All Airlines	1 761	1 691	1 474	87.2	1 407	83.2	70	4.0
Perth-Darwin (Data not available for one or more months during 2021-22)								
Qantas	337	312	279	89.4	288	92.3	25	7.4
QantasLink	78	75	39	52.0	35	46.7	3	3.8
Virgin Australia	66	65	54	83.1	54	83.1	1	1.5
Virgin Australia Regional Airlines	160	150	119	79.3	118	78.7	10	6.3
All Airlines	641	602	491	81.6	495	82.2	39	6.1
Perth-Kalgoorlie								
Qantas	219	216	198	91.7	201	93.1	3	1.4
QantasLink	666	630	496	78.7	508	80.6	36	5.4
Virgin Australia	345	344	309	89.8	309	89.8	1	0.3
Virgin Australia Regional Airlines	367	362	299	82.6	307	84.8	5	1.4
All Airlines	1 597	1 552	1 302	83.9	1 325	85.4	45	2.8
Perth-Karratha								
Qantas	528	515	471	91.5	470	91.3	13	2.5
QantasLink	1 203	1 139	926	81.3	967	84.9	64	5.3
Virgin Australia	360	360	323	89.7	335	93.1	0	0.0
Virgin Australia Regional Airlines	268	268	215	80.2	225	84.0	0	0.0
All Airlines	2 359	2 282	1 935	84.8	1 997	87.5	77	3.3
Perth-Melbourne								
Jetstar	251	210	81	38.6	70	33.3	41	16.3
Qantas	822	760	499	65.7	563	74.1	62	7.5
Virgin Australia	659	628	356	56.7	311	49.5	31	4.7
All Airlines	1 732	1 598	936	58.6	944	59.1	134	7.7

	<i>Sectors</i>		<i>Arrivals On Time</i>		<i>Departures On Time</i>		<i>Cancellations</i>	
	<i>Sched.</i>	<i>Flown</i>	<i>No.</i>	<i>%</i>	<i>No.</i>	<i>%</i>	<i>No.</i>	<i>%</i>
Perth-Newman								
Qantas	242	226	202	89.4	196	86.7	16	6.6
QantasLink	1 143	1 086	958	88.2	944	86.9	57	5.0
Virgin Australia	356	354	321	90.7	325	91.8	2	0.6
Virgin Australia Regional Airlines	317	309	262	84.8	266	86.1	8	2.5
All Airlines	2 058	1 975	1 743	88.3	1 731	87.6	83	4.0
Perth-Port Hedland								
Qantas	497	492	447	90.9	458	93.1	5	1.0
QantasLink	998	946	776	82.0	805	85.1	52	5.2
Virgin Australia	160	160	134	83.8	140	87.5	0	0.0
Virgin Australia Regional Airlines	467	459	395	86.1	394	85.8	8	1.7
All Airlines	2 122	2 057	1 752	85.2	1 797	87.4	65	3.1
Perth-Sydney	(Data not available for one or more months during 2021-22)							
Jetstar	181	139	59	42.4	35	25.2	42	23.2
Qantas	806	760	539	70.9	548	72.1	46	5.7
Virgin Australia	477	453	328	72.4	224	49.4	24	5.0
All Airlines	1 464	1 352	926	68.5	807	59.7	112	7.7
Port Hedland-Perth								
Qantas	499	491	402	81.9	394	80.2	8	1.6
QantasLink	1 006	947	708	74.8	717	75.7	59	5.9
Virgin Australia	160	160	100	62.5	94	58.8	0	0.0
Virgin Australia Regional Airlines	466	455	318	69.9	325	71.4	11	2.4
All Airlines	2 131	2 053	1 528	74.4	1 530	74.5	78	3.7
Port Lincoln-Adelaide								
QantasLink	1 165	1 072	941	87.8	941	87.8	93	8.0
Rex Airlines	1 936	1 891	1 567	82.9	1 593	84.2	45	2.3
All Airlines	3 101	2 963	2 508	84.6	2 534	85.5	138	4.5
Port Macquarie-Sydney	(Data not available for one or more months during 2021-22)							
QantasLink	757	689	549	79.7	550	79.8	68	9.0
Rex Airlines	600	587	396	67.5	486	82.8	13	2.2
All Airlines	1 357	1 276	945	74.1	1 036	81.2	81	6.0
Proserpine-Brisbane								
Jetstar	424	413	248	60.0	235	56.9	11	2.6
QantasLink	298	271	203	74.9	195	72.0	27	9.1
Virgin Australia	536	513	402	78.4	363	70.8	23	4.3
All Airlines	1 258	1 197	853	71.3	793	66.2	61	4.8
Rockhampton-Brisbane								
QantasLink	1 742	1 585	1 234	77.9	1 263	79.7	157	9.0
Virgin Australia	1 087	1 034	875	84.6	864	83.6	53	4.9
All Airlines	2 829	2 619	2 109	80.5	2 127	81.2	210	7.4
Sunshine Coast-Melbourne	(Data not available for one or more months during 2021-22)							
Jetstar	574	501	317	63.3	310	61.9	73	12.7
Qantas	222	219	169	77.2	166	75.8	3	1.4
QantasLink	166	149	85	57.0	81	54.4	17	10.2
Virgin Australia	881	775	438	56.5	459	59.2	106	12.0
All Airlines	1 843	1 644	1 009	61.4	1 016	61.8	199	10.8
Sunshine Coast-Sydney	(Data not available for one or more months during 2021-22)							
Jetstar	594	506	335	66.2	348	68.8	88	14.8
Qantas	376	360	278	77.2	263	73.1	16	4.3
QantasLink	24	7	7	100.0	7	100.0	17	70.8
Virgin Australia	641	566	313	55.3	375	66.3	75	11.7
All Airlines	1 635	1 439	933	64.8	993	69.0	196	12.0

	Sectors		Arrivals On Time		Departures On Time		Cancellations	
	Sched.	Flown	No.	%	No.	%	No.	%
Sydney-Adelaide								
Jetstar	814	685	499	72.8	408	59.6	129	15.8
Qantas	1 477	1 365	1 008	73.8	1 012	74.1	112	7.6
Virgin Australia	925	867	665	76.7	654	75.4	58	6.3
All Airlines	3 216	2 917	2 172	74.5	2 074	71.1	299	9.3
Sydney-Albury								
QantasLink	760	696	581	83.5	539	77.4	64	8.4
Rex Airlines	687	678	585	86.3	578	85.3	9	1.3
All Airlines	1 447	1 374	1 166	84.9	1 117	81.3	73	5.0
Sydney-Armidale								
QantasLink	729	662	484	73.1	460	69.5	67	9.2
Rex Airlines	501	482	352	73.0	355	73.7	19	3.8
All Airlines	1 230	1 144	836	73.1	815	71.2	86	7.0
Sydney-Ballina								
Jetstar	746	638	496	77.7	500	78.4	108	14.5
Qantas	63	63	58	92.1	59	93.7	0	0.0
QantasLink	771	670	427	63.7	489	73.0	101	13.1
Rex Airlines	221	210	174	82.9	173	82.4	11	5.0
Virgin Australia	675	621	484	77.9	509	82.0	54	8.0
All Airlines	2 476	2 202	1 639	74.4	1 730	78.6	274	11.1
Sydney-Brisbane								
Jetstar	1 017	801	479	59.8	476	59.4	216	21.2
Qantas	3 593	3 136	2 127	67.8	2 163	69.0	457	12.7
Rex Airlines	312	302	235	77.8	248	82.1	10	3.2
Virgin Australia	2 845	2 517	1 890	75.1	1 909	75.8	328	11.5
All Airlines	7 767	6 756	4 731	70.0	4 796	71.0	1 011	13.0
Sydney-Cairns								
Jetstar	652	567	412	72.7	401	70.7	85	13.0
Qantas	421	386	249	64.5	248	64.2	35	8.3
Virgin Australia	557	505	441	87.3	416	82.4	52	9.3
All Airlines	1 630	1 458	1 102	75.6	1 065	73.0	172	10.6
Sydney-Canberra								
	(Data not available for one or more months during 2021-22)							
Qantas	7	0	0	na	0	na	7	100.0
QantasLink	2 926	2 448	1 762	72.0	1 744	71.2	478	16.3
Rex Airlines	651	601	450	74.9	502	83.5	50	7.7
Virgin Australia	820	813	671	82.5	620	76.3	7	0.9
All Airlines	4 404	3 862	2 883	74.7	2 866	74.2	542	12.3
Sydney-Coffs Harbour								
	(Data not available for one or more months during 2021-22)							
QantasLink	879	798	592	74.2	575	72.1	81	9.2
Rex Airlines	613	594	477	80.3	474	79.8	19	3.1
Virgin Australia	118	116	101	87.1	101	87.1	2	1.7
All Airlines	1 610	1 508	1 170	77.6	1 150	76.3	102	6.3
Sydney-Darwin								
	(May and June 2022 only)							
Jetstar	56	54	35	64.8	31	57.4	2	3.6
Qantas	83	83	35	42.2	37	44.6	0	0.0
Virgin Australia	35	35	28	80.0	26	74.3	0	0.0
All Airlines	174	172	98	57.0	94	54.7	2	1.1
Sydney-Dubbo								
QantasLink	758	692	508	73.4	495	71.5	66	8.7
Rex Airlines	786	774	619	80.0	596	77.0	12	1.5
All Airlines	1 544	1 466	1 127	76.9	1 091	74.4	78	5.1

	Sectors		Arrivals On Time		Departures On Time		Cancellations	
	Sched.	Flown	No.	%	No.	%	No.	%
Sydney-Gold Coast	(Data not available for one or more months during 2021-22)							
Jetstar	1 804	1 527	1 099	72.0	1 106	72.4	277	15.4
Qantas	612	561	390	69.5	399	71.1	51	8.3
QantasLink	124	111	70	63.1	72	64.9	13	10.5
Rex Airlines	321	284	240	84.5	256	90.1	37	11.5
Virgin Australia	2 134	1 864	1 261	67.7	1 320	70.8	270	12.7
All Airlines	4 995	4 347	3 060	70.4	3 153	72.5	648	13.0
Sydney-Hamilton Island	(Data not available for one or more months during 2021-22)							
Jetstar	179	158	123	77.8	125	79.1	21	11.7
Qantas	228	203	156	76.8	154	75.9	25	11.0
Virgin Australia	190	179	150	83.8	157	87.7	11	5.8
All Airlines	597	540	429	79.4	436	80.7	57	9.5
Sydney-Hobart								
Jetstar	642	569	472	83.0	423	74.3	73	11.4
Qantas	205	179	155	86.6	153	85.5	26	12.7
QantasLink	337	306	138	45.1	127	41.5	31	9.2
Virgin Australia	576	538	471	87.5	451	83.8	38	6.6
All Airlines	1 760	1 592	1 236	77.6	1 154	72.5	168	9.5
Sydney-Launceston								
Jetstar	396	365	266	72.9	261	71.5	31	7.8
QantasLink	144	136	90	66.2	82	60.3	8	5.6
Virgin Australia	282	276	243	88.0	222	80.4	6	2.1
All Airlines	822	777	599	77.1	565	72.7	45	5.5
Sydney-Melbourne								
Jetstar	2 775	2 279	1 662	72.9	1 457	63.9	496	17.9
Qantas	6 199	5 171	4 085	79.0	3 933	76.1	1 028	16.6
QantasLink	130	90	24	26.7	35	38.9	40	30.8
Rex Airlines	797	721	631	87.5	631	87.5	76	9.5
Virgin Australia	5 181	4 566	3 204	70.2	2 937	64.3	615	11.9
All Airlines	15 082	12 827	9 606	74.9	8 993	70.1	2 255	15.0
Sydney-Perth	(Data not available for one or more months during 2021-22)							
Jetstar	174	142	94	66.2	64	45.1	32	18.4
Qantas	806	756	363	48.0	337	44.6	50	6.2
Virgin Australia	474	450	315	70.0	296	65.8	24	5.1
All Airlines	1 454	1 348	772	57.3	697	51.7	106	7.3
Sydney-Port Macquarie	(Data not available for one or more months during 2021-22)							
QantasLink	761	692	528	76.3	490	70.8	69	9.1
Rex Airlines	599	586	442	75.4	443	75.6	13	2.2
All Airlines	1 360	1 278	970	75.9	933	73.0	82	6.0
Sydney-Sunshine Coast	(Data not available for one or more months during 2021-22)							
Jetstar	588	508	375	73.8	390	76.8	80	13.6
Qantas	378	365	244	66.8	269	73.7	13	3.4
QantasLink	28	7	7	100.0	7	100.0	21	75.0
Virgin Australia	642	566	426	75.3	450	79.5	76	11.8
All Airlines	1 636	1 446	1 052	72.8	1 116	77.2	190	11.6
Sydney-Wagga Wagga								
QantasLink	734	675	527	78.1	499	73.9	59	8.0
Rex Airlines	588	580	437	75.3	424	73.1	8	1.4
All Airlines	1 322	1 255	964	76.8	923	73.5	67	5.1

	<i>Sectors</i>		<i>Arrivals On Time</i>		<i>Departures On Time</i>		<i>Cancellations</i>	
	<i>Sched.</i>	<i>Flown</i>	<i>No.</i>	<i>%</i>	<i>No.</i>	<i>%</i>	<i>No.</i>	<i>%</i>
Townsville-Brisbane								
Jetstar	643	621	443	71.3	435	70.0	22	3.4
Qantas	1 279	1 217	1 017	83.6	1 037	85.2	62	4.8
QantasLink	80	76	35	46.1	34	44.7	4	5.0
Virgin Australia	1 275	1 193	1 027	86.1	967	81.1	82	6.4
All Airlines	3 277	3 107	2 522	81.2	2 473	79.6	170	5.2
Townsville-Cairns								
QantasLink	1 496	1 446	1 284	88.8	1 247	86.2	50	3.3
Rex Airlines	191	188	172	91.5	171	91.0	3	1.6
All Airlines	1 687	1 634	1 456	89.1	1 418	86.8	53	3.1
Wagga Wagga-Sydney								
QantasLink	731	674	570	84.6	556	82.5	57	7.8
Rex Airlines	591	581	455	78.3	492	84.7	10	1.7
All Airlines	1 322	1 255	1 025	81.7	1 048	83.5	67	5.1

Airports

The following data reports by airport against flights operated on published routes only. Some routes were not reported on for all months in 2021-22. In 2021-22, 8 major city airports and 28 regional city airports are covered.

Airport	Arrivals			Departures		
	Sectors	On Time		Sectors	On Time	
	Flown	No.	%	Flown	No.	%
Adelaide						
Jetstar	2 133	1 558	73.0	2 130	1 625	76.3
Qantas	4 532	3 579	79.0	4 524	3 751	82.9
QantasLink	1 867	1 455	77.9	1 874	1 495	79.8
Rex Airlines	2 223	1 853	83.4	2 229	2 007	90.0
Virgin Australia	4 282	3 295	77.0	4 272	3 271	76.6
Virgin Australia Regional Airlines	171	109	63.7	170	67	39.4
All Airlines	15 208	11 849	77.9	15 199	12 216	80.4

Relates to services to and from Alice Springs, Brisbane, Canberra, Gold Coast, Melbourne, Perth, Port Lincoln and Sydney only.

Albury

QantasLink	696	581	83.5	695	539	77.6
Rex Airlines	678	585	86.3	675	602	89.2
All Airlines	1 374	1 166	84.9	1 370	1 141	83.3

Relates to services to and from Sydney only.

Alice Springs

Qantas	151	142	94.0	151	125	82.8
QantasLink	221	174	78.7	220	138	62.7
Virgin Australia	140	120	85.7	140	98	70.0
All Airlines	512	436	85.2	511	361	70.6

Relates to services to and from Adelaide only.

Armidale

QantasLink	662	484	73.1	658	501	76.1
Rex Airlines	482	352	73.0	484	340	70.2
All Airlines	1 144	836	73.1	1 142	841	73.6

Relates to services to and from Sydney only.

Ballina

Jetstar	638	496	77.7	637	376	59.0
Qantas	63	58	92.1	63	47	74.6
QantasLink	670	427	63.7	665	450	67.7
Rex Airlines	210	174	82.9	207	164	79.2
Virgin Australia	621	484	77.9	616	473	76.8
All Airlines	2 202	1 639	74.4	2 188	1 510	69.0

Relates to services to and from Sydney only.

Airport	Arrivals			Departures		
	Sectors	On Time		Sectors	On Time	
	Flown	No.	%	Flown	No.	%
Brisbane						
Jetstar	5 602	3 691	65.9	5 596	3 784	67.6
Qantas	12 034	9 271	77.0	12 056	9 984	82.8
QantasLink	6 837	5 234	76.6	6 828	5 370	78.6
Rex Airlines	499	398	79.8	496	432	87.1
Virgin Australia	15 148	11 968	79.0	15 165	11 306	74.6
All Airlines	40 120	30 562	76.2	40 141	30 876	76.9

Relates to services to and from Adelaide, Cairns, Canberra, Darwin, Emerald, Gladstone, Hamilton Island, Hobart, Mackay, Melbourne, Mount Isa, Newcastle, Perth, Proserpine, Rockhampton, Sydney and Townsville only.

Broome

Qantas	457	432	94.5	456	387	84.9
QantasLink	568	487	85.7	561	399	71.1
Virgin Australia	328	283	86.3	327	236	72.2
Virgin Australia Regional Airlines	338	272	80.5	337	212	62.9
All Airlines	1 691	1 474	87.2	1 681	1 234	73.4

Relates to services to and from Perth only.

Cairns

Jetstar	2 221	1 513	68.1	2 212	1 648	74.5
Qantas	2 018	1 595	79.0	2 011	1 646	81.8
QantasLink	1 661	1 434	86.3	1 669	1 441	86.3
Rex Airlines	188	172	91.5	187	173	92.5
Virgin Australia	2 587	2 050	79.2	2 587	1 974	76.3
All Airlines	8 675	6 764	78.0	8 666	6 882	79.4

Relates to services to and from Brisbane, Melbourne, Sydney and Townsville only.

Canberra

Jetstar	96	74	77.1	98	48	49.0
Qantas	321	289	90.0	318	279	87.7
QantasLink	5 248	3 698	70.5	5 227	3 879	74.2
Rex Airlines	742	569	76.7	741	661	89.2
Virgin Australia	2 551	2 039	79.9	2 552	2 019	79.1
All Airlines	8 958	6 669	74.4	8 936	6 886	77.1

Relates to services to and from Adelaide, Brisbane, Melbourne and Sydney only.

Coffs Harbour

(Data not available for one or more months during 2021-22)

QantasLink	798	592	74.2	792	603	76.1
Rex Airlines	594	477	80.3	588	476	81.0
Virgin Australia	116	101	87.1	116	94	81.0
All Airlines	1 508	1 170	77.6	1 496	1 173	78.4

Relates to services to and from Sydney only.

Darwin

Jetstar	412	297	72.1	410	203	49.5
Qantas	1 142	863	75.6	1 127	741	65.7
QantasLink	75	39	52.0	75	15	20.0
Virgin Australia	670	549	81.9	669	448	67.0
Virgin Australia Regional Airlines	150	119	79.3	149	95	63.8
All Airlines	2 449	1 867	76.2	2 430	1 502	61.8

Relates to services to and from Brisbane, Melbourne, Perth and Sydney only.

Airport	Arrivals			Departures		
	Sectors	On Time		Sectors	On Time	
	Flown	No.	%	Flown	No.	%
Dubbo						
QantasLink	692	508	73.4	687	533	77.6
Rex Airlines	774	619	80.0	750	602	80.3
All Airlines	1 466	1 127	76.9	1 437	1 135	79.0
Relates to services to and from Sydney only.						
Emerald						
QantasLink	1 192	1 056	88.6	1 187	1 026	86.4
Virgin Australia	308	275	89.3	309	276	89.3
All Airlines	1 500	1 331	88.7	1 496	1 302	87.0
Relates to services to and from Brisbane only.						
Gladstone						
QantasLink	1 208	978	81.0	1 204	999	83.0
Virgin Australia	485	417	86.0	484	413	85.3
All Airlines	1 693	1 395	82.4	1 688	1 412	83.6
Relates to services to and from Brisbane only.						
Gold Coast						
	(Data not available for one or more months during 2021-22)					
Jetstar	3 135	2 162	69.0	3 128	2 164	69.2
Qantas	955	714	74.8	952	659	69.2
QantasLink	303	189	62.4	301	144	47.8
Rex Airlines	629	537	85.4	632	536	84.8
Virgin Australia	4 165	2 864	68.8	4 155	2 753	66.3
All Airlines	9 187	6 466	70.4	9 168	6 256	68.2
Relates to services to and from Adelaide, Melbourne and Sydney only.						
Hamilton Island						
Jetstar	158	123	77.8	158	82	51.9
Qantas	589	496	84.2	585	458	78.3
Virgin Australia	699	610	87.3	698	530	75.9
All Airlines	1 446	1 229	85.0	1 441	1 070	74.3
Relates to services to and from Brisbane and Sydney only.						
Hobart						
Jetstar	1 963	1 543	78.6	1 960	1 328	67.8
Qantas	279	242	86.7	279	224	80.3
QantasLink	1 319	833	63.2	1 302	888	68.2
Virgin Australia	1 945	1 576	81.0	1 939	1 431	73.8
All Airlines	5 506	4 194	76.2	5 480	3 871	70.6
Relates to services to and from Brisbane, Melbourne and Sydney only.						
Kalgoorlie						
Qantas	216	198	91.7	215	158	73.5
QantasLink	630	496	78.7	625	456	73.0
Virgin Australia	344	309	89.8	343	195	56.9
Virgin Australia Regional Airlines	362	299	82.6	362	256	70.7
All Airlines	1 552	1 302	83.9	1 545	1 065	68.9
Relates to services to and from Perth only.						

Airport	Arrivals			Departures		
	Sectors	On Time		Sectors	On Time	
	Flown	No.	%	Flown	No.	%
Karratha						
Qantas	515	471	91.5	504	449	89.1
QantasLink	1 139	926	81.3	1 131	911	80.5
Virgin Australia	360	323	89.7	360	280	77.8
Virgin Australia Regional Airlines	268	215	80.2	268	186	69.4
All Airlines	2 282	1 935	84.8	2 263	1 826	80.7
Relates to services to and from Perth only.						
Launceston						
Jetstar	997	683	68.5	999	582	58.3
QantasLink	835	497	59.5	823	475	57.7
Virgin Australia	909	676	74.4	908	729	80.3
All Airlines	2 741	1 856	67.7	2 730	1 786	65.4
Relates to services to and from Melbourne and Sydney only.						
Mackay						
Jetstar	348	250	71.8	344	219	63.7
Qantas	1 009	901	89.3	1 002	878	87.6
QantasLink	150	119	79.3	193	156	80.8
Virgin Australia	1 187	961	81.0	1 186	963	81.2
All Airlines	2 694	2 231	82.8	2 725	2 216	81.3
Relates to services to and from Brisbane only.						
Melbourne						
Jetstar	8 999	6 162	68.5	9 014	5 643	62.6
Qantas	10 927	8 491	77.7	11 122	8 203	73.8
QantasLink	4 609	2 930	63.6	4 632	2 923	63.1
Rex Airlines	2 330	1 962	84.2	2 337	2 000	85.6
Virgin Australia	15 255	10 197	66.8	15 273	10 570	69.2
All Airlines	42 120	29 742	70.6	42 378	29 339	69.2
Relates to services to and from Adelaide, Brisbane, Cairns, Canberra, Darwin, Gold Coast, Hobart, Launceston, Mildura, Newcastle, Perth, Sunshine Coast and Sydney only.						
Mildura						
QantasLink	931	615	66.1	928	593	63.9
Rex Airlines	595	459	77.1	592	500	84.5
All Airlines	1 526	1 074	70.4	1 520	1 093	71.9
Relates to services to and from Melbourne only.						
Mount Isa						
Qantas	412	381	92.5	408	361	88.5
QantasLink	175	120	68.6	173	126	72.8
Virgin Australia	176	144	81.8	176	144	81.8
All Airlines	763	645	84.5	757	631	83.4
Relates to services to and from Brisbane only.						
Newcastle						
Jetstar	909	622	68.4	909	585	64.4
QantasLink	887	587	66.2	891	639	71.7
Virgin Australia	869	683	78.6	867	705	81.3
All Airlines	2 665	1 892	71.0	2 667	1 929	72.3
Relates to services to and from Brisbane and Melbourne only.						

Airport	Arrivals			Departures		
	Sectors	On Time		Sectors	On Time	
	Flown	No.	%	Flown	No.	%
Newman						
Qantas	226	202	89.4	225	178	79.1
QantasLink	1 086	958	88.2	1 083	868	80.1
Virgin Australia	354	321	90.7	353	274	77.6
Virgin Australia Regional Airlines	309	262	84.8	310	234	75.5
All Airlines	1 975	1 743	88.3	1 971	1 554	78.8
Relates to services to and from Perth only.						
Perth						
Jetstar	653	457	70.0	645	222	34.4
Qantas	5 227	3 745	71.6	5 241	4 318	82.4
QantasLink	4 422	3 397	76.8	4 444	3 713	83.6
Virgin Australia	3 360	2 515	74.9	3 371	2 403	71.3
Virgin Australia Regional Airlines	2 051	1 456	71.0	2 057	1 695	82.4
All Airlines	15 713	11 570	73.6	15 758	12 351	78.4
Relates to services to and from Adelaide, Brisbane, Broome, Darwin, Kalgoorlie, Karratha, Melbourne, Newman, Port Hedland and Sydney only.						
Port Hedland						
Qantas	492	447	90.9	491	394	80.2
QantasLink	946	776	82.0	947	717	75.7
Virgin Australia	160	134	83.8	160	94	58.8
Virgin Australia Regional Airlines	459	395	86.1	455	325	71.4
All Airlines	2 057	1 752	85.2	2 053	1 530	74.5
Relates to services to and from Perth only.						
Port Lincoln						
QantasLink	1 074	936	87.2	1 072	941	87.8
Rex Airlines	1 896	1 624	85.7	1 891	1 593	84.2
All Airlines	2 970	2 560	86.2	2 963	2 534	85.5
Relates to services to and from Adelaide only.						
Port Macquarie						
	(Data not available for one or more months during 2021-22)					
QantasLink	692	528	76.3	689	550	79.8
Rex Airlines	586	442	75.4	587	486	82.8
All Airlines	1 278	970	75.9	1 276	1 036	81.2
Relates to services to and from Sydney only.						
Proserpine						
Jetstar	413	273	66.1	413	235	56.9
QantasLink	274	212	77.4	271	195	72.0
Virgin Australia	513	436	85.0	513	363	70.8
All Airlines	1 200	921	76.8	1 197	793	66.2
Relates to services to and from Brisbane only.						
Rockhampton						
QantasLink	1 599	1 335	83.5	1 585	1 263	79.7
Virgin Australia	1 034	777	75.1	1 034	864	83.6
All Airlines	2 633	2 112	80.2	2 619	2 127	81.2
Relates to services to and from Brisbane only.						

Airport	Arrivals			Departures		
	Sectors	On Time		Sectors	On Time	
	Flown	No.	%	Flown	No.	%
Sunshine Coast	(Data not available for one or more months during 2021-22)					
Jetstar	1 015	706	69.6	1 007	658	65.3
Qantas	584	425	72.8	579	429	74.1
QantasLink	159	92	57.9	156	88	56.4
Virgin Australia	1 344	973	72.4	1 341	834	62.2
All Airlines	3 102	2 196	70.8	3 083	2 009	65.2
Relates to services to and from Melbourne and Sydney only.						
Sydney						
Jetstar	8 260	5 703	69.0	8 293	5 642	68.0
Qantas	12 425	9 312	74.9	12 268	8 764	71.4
QantasLink	7 934	5 913	74.5	7 983	5 614	70.3
Rex Airlines	5 784	4 558	78.8	5 812	4 680	80.5
Virgin Australia	13 915	10 166	73.1	13 913	10 068	72.4
All Airlines	48 318	35 652	73.8	48 269	34 768	72.0
Relates to services to and from Adelaide, Albury, Armidale, Ballina, Brisbane, Cairns, Canberra, Coffs Harbour, Darwin, Dubbo, Gold Coast, Hamilton Island, Hobart, Launceston, Melbourne, Perth, Port Macquarie, Sunshine Coast and Wagga Wagga only.						
Townsville						
Jetstar	622	486	78.1	621	435	70.0
Qantas	1 220	1 016	83.3	1 217	1 037	85.2
QantasLink	1 533	1 355	88.4	1 522	1 281	84.2
Rex Airlines	187	172	92.0	188	171	91.0
Virgin Australia	1 195	987	82.6	1 193	967	81.1
All Airlines	4 757	4 016	84.4	4 741	3 891	82.1
Relates to services to and from Brisbane and Cairns only.						
Wagga Wagga						
QantasLink	675	527	78.1	674	556	82.5
Rex Airlines	580	437	75.3	581	492	84.7
All Airlines	1 255	964	76.8	1 255	1 048	83.5
Relates to services to and from Sydney only.						

Definitions

On time arrival	A flight arrival is counted as "on time" if it arrived at the gate before 15 minutes after the scheduled arrival time shown in the carriers' schedule. Neither diverted nor cancelled flights count as on time.
On time departure	A flight departure is counted as "on time" if it departs the gate before 15 minutes after the scheduled departure time shown in the carriers' schedule.
Cancellation	A flight removed from service within 7 days of scheduled departure is regarded as a cancellation.
On time departure percentage	The percentage of on time departures is measured against the number of departures <i>operated</i> on any particular sector.
On time arrival percentage	The percentage of on time arrivals is measured against the number of arrivals <i>operated</i> on any particular sector.
Cancellation percentage	The percentage of cancellations is measured against the number of services <i>scheduled</i> on any particular sector.
