



Australian Government

**Department of Infrastructure, Transport,
Regional Development, Communications and the Arts**
Bureau of Infrastructure and Transport Research Economics

STATISTICAL REPORT



bitre

Aviation

**Domestic airline on time performance
2022-23**

The Department of Infrastructure, Transport, Regional Development, Communications and the Arts acknowledges the Traditional Custodians of Country of the land on which we work and live.

We recognise and respect the continuing connections to land, waters and communities.

We pay our respects to them and their cultures and to their Elders both past and present and to all Aboriginal and Torres Strait Islander people.

© Commonwealth of Australia 2024

ISSN: 1832-0759

Ownership of intellectual property rights in this publication

Unless otherwise noted, copyright (and any other intellectual property rights, if any) in this publication is owned by the Commonwealth of Australia (referred to below as the Commonwealth).

Disclaimer

The material contained in this publication is made available on the understanding that the Commonwealth is not providing professional advice, and that users exercise their own skill and care with respect to its use, and seek independent advice if necessary.

The Commonwealth makes no representations or warranties as to the contents or accuracy of the information contained in this publication. To the extent permitted by law, the Commonwealth disclaims liability to any person or organisation in respect of anything done, or omitted to be done, in reliance upon information contained in this publication.

Creative Commons licence

With the exception of (a) the Coat of Arms; and (b) the Department of Infrastructure, Transport, Regional Development, Communications and the Arts' photos and graphics, copyright in this publication is licensed under a Creative Commons Attribution 3.0 Australia Licence.

Creative Commons Attribution 3.0 Australia Licence is a standard form licence agreement that allows you to copy, communicate and adapt this publication provided that you attribute the work to the Commonwealth and abide by the other licence terms. A summary of the licence terms is available from <http://creativecommons.org/licenses/by/3.0/au/deed.en>. The full licence terms are available from <http://creativecommons.org/licenses/by/3.0/au/legalcode>.

Use of the Coat of Arms

The Department of the Prime Minister and Cabinet sets the terms under which the Coat of Arms is used. Please refer to the Department's Commonwealth Coat of Arms and Government branding web page <http://www.dpmmc.gov.au/guidelines/index.cfm#brand> and, in particular, the Guidelines on the use of the Commonwealth Coat of Arms publication.

An appropriate citation for this report is:

Bureau of Infrastructure and Transport Research Economics (BITRE), 2024, Domestic airline on time performance 2022-23, Statistical Report, BITRE, Canberra ACT.

Contact us

All other rights are reserved, including in relation to any Departmental logos or trade marks which may exist. For enquiries regarding the licence and any use of this publication, please contact:

Bureau of Infrastructure and Transport Research Economics (BITRE)
Department of Infrastructure, Transport, Regional Development, Communications and the Arts
GPO Box 501, Canberra ACT 2601, Australia
Telephone: (international) +61 2 6274 7210
Email: bitre@infrastructure.gov.au
Website: www.bitre.gov.au

Inquiries

Should you require additional information about the statistics contained in this publication:

Telephone (02) 6274 6135

Electronic mail: AVSTATS@infrastructure.gov.au

Web site: <http://www.bitre.gov.au/statistics/aviation/otphome.aspx>

Foreword

The Bureau of Infrastructure and Transport Research Economics (BITRE) monitors the punctuality and reliability of major domestic airlines operating between Australian airports. The purpose of this is to allow for evaluation of overall industry and individual airline performance, so that consumers of air travel can make informed decisions.

The following domestic airlines currently report this information monthly to the BITRE: Jetstar, Qantas, QantasLink, Rex Airlines, Skytrans, Virgin Australia and Virgin Australia Regional Airlines.

Information presented in this report is for Australian domestic routes for which the passenger load averaged 8,000 or more passengers per month over the previous six months and where two or more airlines operated in competition on those routes. In order to present data for more routes during the period impacted by COVID-19, the passenger load restriction is not being applied. Data are presented for 63 routes which operated for at least part of the 2022-23 financial year. Over time, routes which meet these criteria change as airline networks and traffic levels vary. Participating airlines report their overall monthly network performance where this is possible.

Total industry figures encompass all services operated by reporting airlines only. These airlines collectively carried over 98 per cent of total domestic passengers (regular public transport only) in 2022-23.

The method of capturing on time performance varies between airlines utilising different recording systems. Jetstar and Qantas jet aircraft use Aircraft Communication Addressing and Reporting System (ACARS) to electronically measure on time performance. Rex Airlines, Skytrans, Virgin Australia, Virgin Australia Regional Airlines and the Qantas non-jet fleet record on time performance manually using records from pilots, gate agents and/or ground crews.

After initial data is collected, aggregate reports are reviewed by participating airlines prior to publication.

Reports and detailed time series data in Microsoft Excel spreadsheet format are available from the BITRE website at: <http://www.bitre.gov.au/statistics/aviation/otphome.aspx>

Contents

	Page
Industry performance	1
Individual routes	9
Airports.....	22
Definitions	28

Industry performance

For the year ended June 2023, on time performance over all routes operated by participating airlines (Jetstar, Qantas, QantasLink, Rex Airlines, Skytrans, Virgin Australia and Virgin Australia Regional Airlines) averaged 69.5 per cent for on time arrivals and 69.5 per cent for on time departures. The cancellation rate for the year was 3.7 per cent. The equivalent figures for 2021-22 were 76.8 per cent for on time arrivals, 76.1 per cent for on time departures and 8.3 per cent for cancellations.

This year's on time arrivals figure was lower than the long term average performance for all routes (82.1 per cent) and the on time departures figure was also lower than the long term average (83.3 per cent). The rate of cancellations was higher than the long term average of 2.1 per cent.

The Qantas network (Qantas and QantasLink combined operations) recorded 72.7 per cent for on time arrivals while the Virgin Australia network (Virgin Australia and Virgin Australia Regional Airlines combined operations) recorded 67.2 per cent. Qantas achieved the highest on time arrivals among the major domestic airlines at 68.7 per cent followed by Virgin Australia at 67.3 per cent and Jetstar at 61.7 per cent. Of the regional airlines, Skytrans recorded 79.7 per cent for on time arrivals, followed by QantasLink at 75.4 per cent, Rex Airlines at 72.3 per cent and Virgin Australia Regional Airlines at 65.7 per cent.

The Qantas network recorded 72.4 per cent for on time departures while the Virgin Australia network recorded 67.4 per cent. Qantas achieved the highest level of on time departures among the major domestic airlines for 2022-23 at 68.3 per cent, followed by Virgin Australia at 67.6 per cent and Jetstar at 59.5 per cent. Of the regional airlines, Skytrans recorded 78.1 per cent for on time departures, followed by QantasLink at 75.3 per cent, Rex Airlines at 74.7 per cent and Virgin Australia Regional Airlines at 63.8 per cent.

Jetstar recorded the highest percentage of cancellations (at 6.6 per cent) during the year, followed by Virgin Australia Regional Airlines (at 5.0 per cent), Virgin Australia and Skytrans (both at 3.5 per cent), Qantas and QantasLink (both at 3.4 per cent) and Rex Airlines (at 1.9 per cent).

Airlines' on time performance varies across the routes they serve. Individual route data by specific airline for 63 routes are shown on pages 9-21.

Of the 63 routes which met the criteria for on time performance reporting for all 12 months in 2022-23, the Cairns-Townsville route had the highest percentage of on time arrivals (89.1 per cent) and the highest percentage of on time departures (88.7 per cent). The Darwin-Sydney route had the lowest percentage of on time arrivals (42.9 per cent) and the lowest percentage of on time departures (49.2 per cent).

Cancellations were highest on the Melbourne-Sydney route at 9.4 per cent, followed by the Sydney-Melbourne route at 9.3 per cent, the Canberra-Sydney route at 7.8 per cent, the Sydney-Canberra route at 7.5 per cent, the Brisbane-Sydney route at 6.0 per cent and the Sydney-Brisbane route at 5.9 per cent.

Of the airports with on time performance reporting for all 12 months in 2022-23, Emerald Airport recorded the highest percentage of on time arrivals (83.0 per cent) and the highest percentage of on time departures (80.4 per cent). Darwin Airport recorded the lowest percentage of on time arrivals (54.0 per cent) and the lowest percentage of on time departures (63.4 per cent). These figures only refer to reported routes and do not cover all flights at these airports.

Table 1 On time performance for the year ended June 2023 — Total Industry

	<i>Sectors</i>		<i>Arrivals On Time</i>		<i>Departures On Time</i>		<i>Cancellations</i>	
	<i>Scheduled</i>	<i>Flown</i>	<i>No.</i>	<i>%</i>	<i>No.</i>	<i>%</i>	<i>No.</i>	<i>%</i>
Jetstar	81 547	76 146	46 963	61.7	45 338	59.5	5 401	6.6
Qantas - all QF designated services	228 039	220 227	160 045	72.7	159 424	72.4	7 812	3.4
Rex Airlines	77 336	75 833	54 800	72.3	56 662	74.7	1 503	1.9
Skytrans	824	795	634	79.7	621	78.1	29	3.5
Virgin Australia - all VA designated services	141 236	136 176	91 526	67.2	91 755	67.4	5 060	3.6
All Airlines	528 574	508 783	353 667	69.5	353 502	69.5	19 791	3.7
<i>Individual operating entities</i>								
Qantas	93 731	90 540	62 209	68.7	61 815	68.3	3 191	3.4
QantasLink	134 308	129 687	97 836	75.4	97 609	75.3	4 621	3.4
Virgin Australia	134 592	129 863	87 378	67.3	87 726	67.6	4 729	3.5
Virgin Australia Regional Airlines	6 644	6 313	4 148	65.7	4 029	63.8	331	5.0

Total airline network data (including routes not shown in this report).

Airlines' on time performance varies across the routes they serve. Individual route data by specific airline are shown on pages 9 and onwards.

Table 2 Top ten routes for on time performance for the year ended June 2023 (routes for participating airlines only and with published data for the 12 month period)

<i>Arrivals</i>		<i>Departures</i>	
<i>Route</i>	<i>On Time (%)</i>	<i>Route</i>	<i>On Time (%)</i>
Cairns-Townsville	89.1	Cairns-Townsville	88.7
Townsville-Cairns	86.2	Adelaide-Alice Springs	85.2
Darwin-Adelaide	86.1	Townsville-Cairns	84.3
Brisbane-Emerald	83.0	Adelaide-Canberra	83.7
Adelaide-Canberra	82.1	Brisbane-Emerald	83.0
Emerald-Brisbane	81.4	Brisbane-Mount Isa	82.9
Brisbane-Hamilton Island	80.9	Brisbane-Hamilton Island	81.6
Brisbane-Mount Isa	80.1	Emerald-Brisbane	80.4
Perth-Newman	79.1	Perth-Newman	80.1
Sydney-Armidale	78.7	Adelaide-Gold Coast	78.2

Table 3 Top ten airports for on time performance for the year ended June 2023 (airports for participating airlines and reported routes only and with published data for the 12 month period)

<i>Arrivals</i>		<i>Departures</i>	
<i>Airport</i>	<i>On Time (%)</i>	<i>Airport</i>	<i>On Time (%)</i>
Emerald	83.0	Emerald	80.4
Mount Isa	83.0	Port Lincoln	78.0
Newman	80.1	Gladstone	77.5
Armidale	79.1	Armidale	77.4
Devonport	78.7	Port Macquarie	77.1
Port Hedland	78.7	Wagga Wagga	76.9
Alice Springs	75.9	Mount Isa	76.7
Coffs Harbour	75.9	Albury	76.5
Broome	75.8	Dubbo	76.5
Port Lincoln	75.7	Devonport	75.3

Total industry on time performance

Figure 1 On time performance (by month from June 2018)—Total Industry

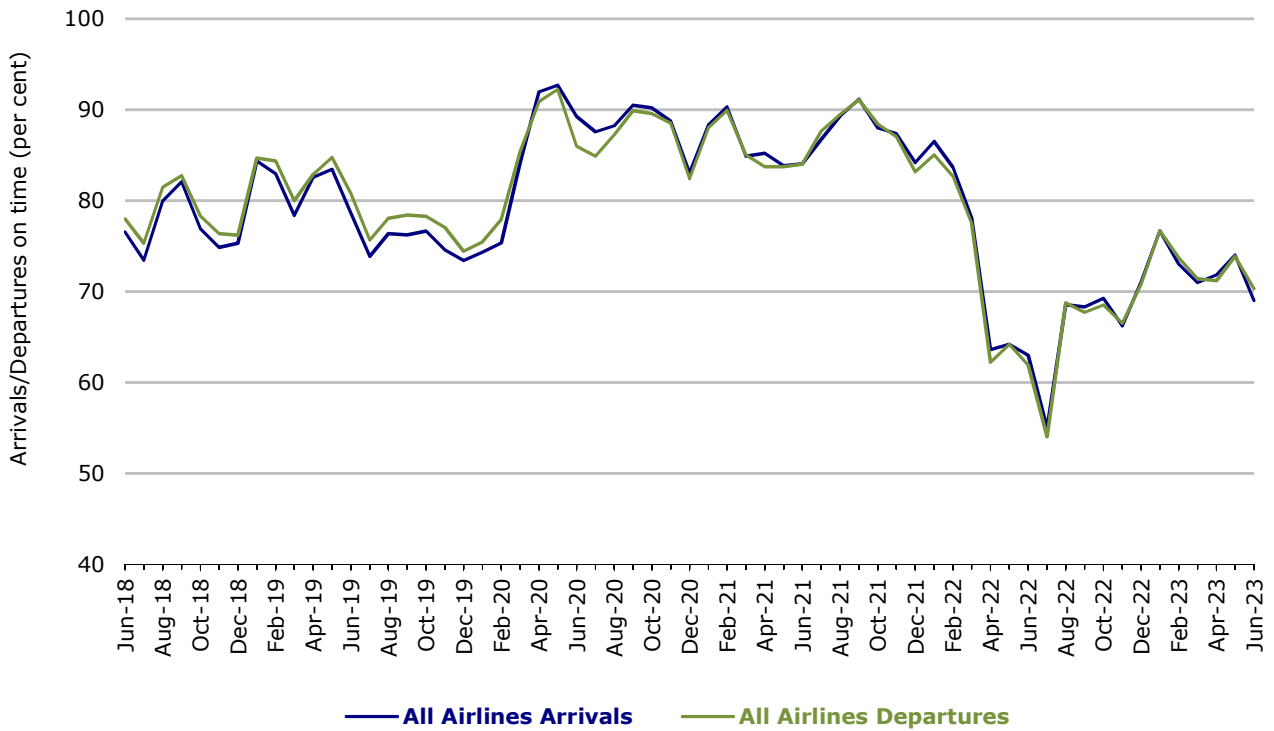
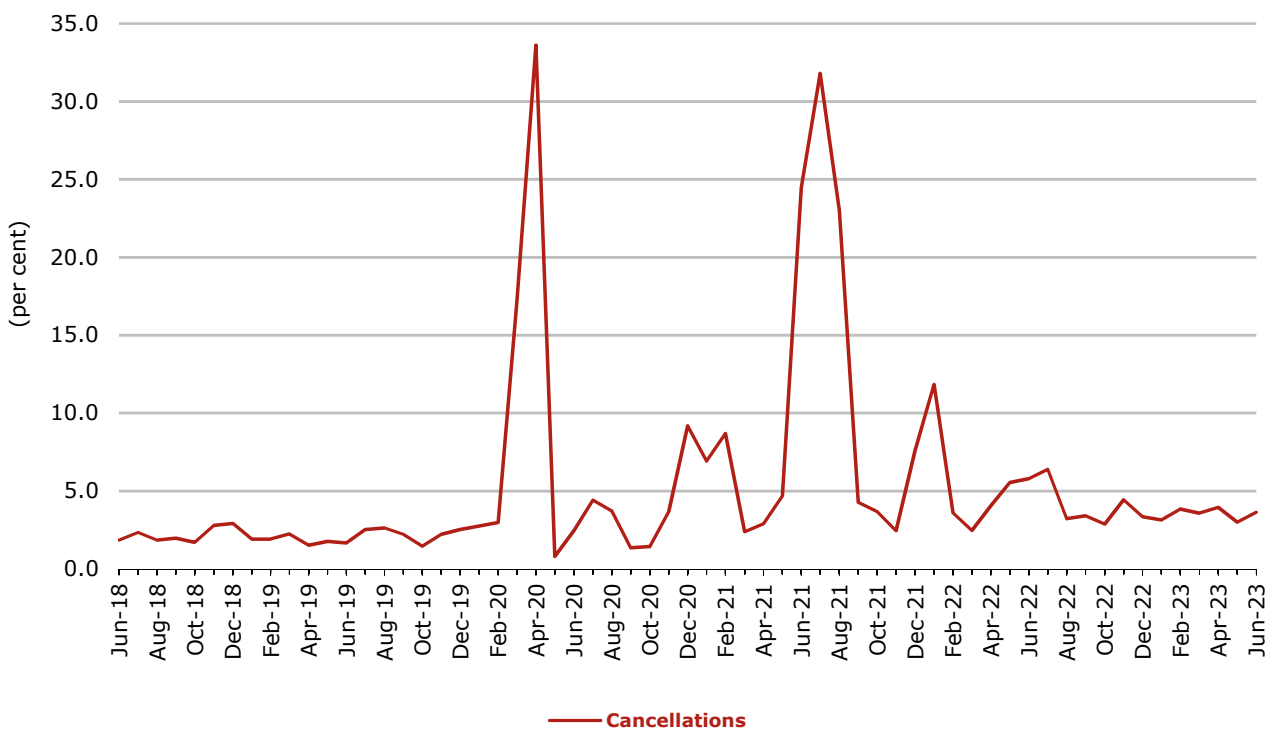


Figure 2 Cancellations (by month from June 2018)—Total Industry



Major domestic airlines on time performance

Figure 3 On time performance (by month from June 2018)—Jetstar

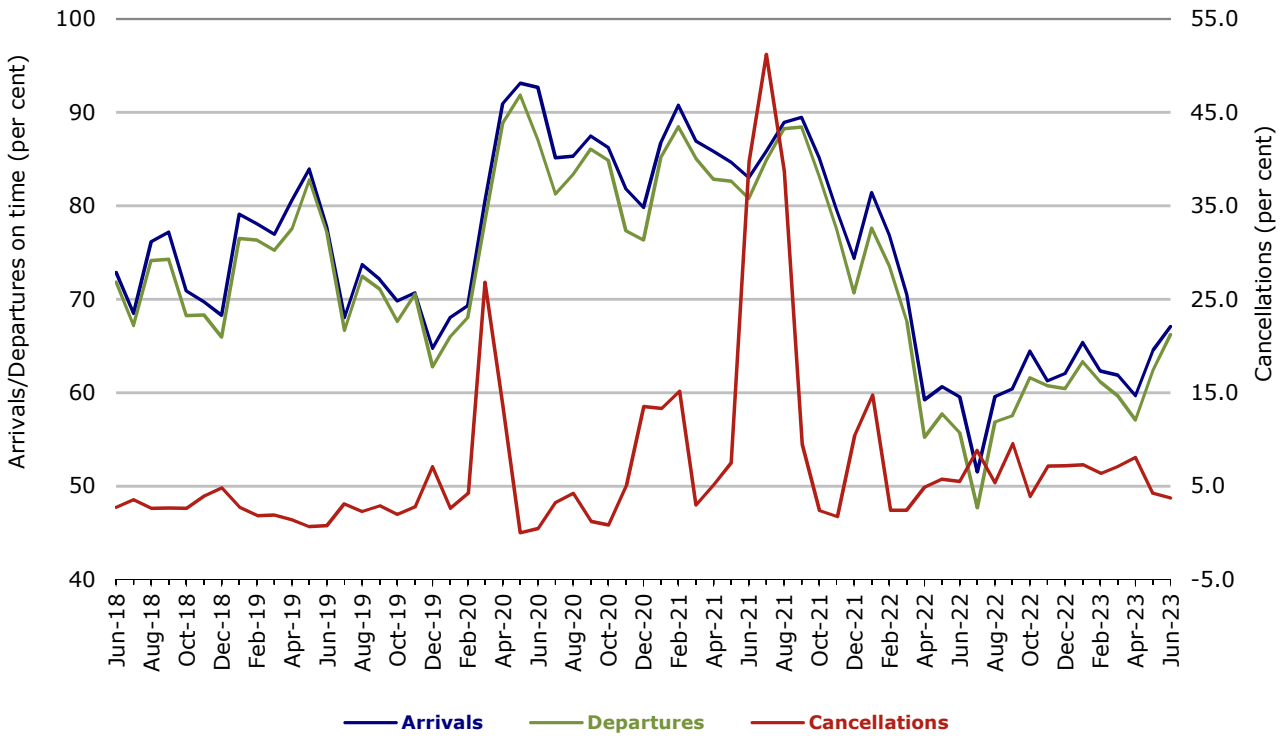


Figure 4 On time performance (by month from June 2018)—Qantas

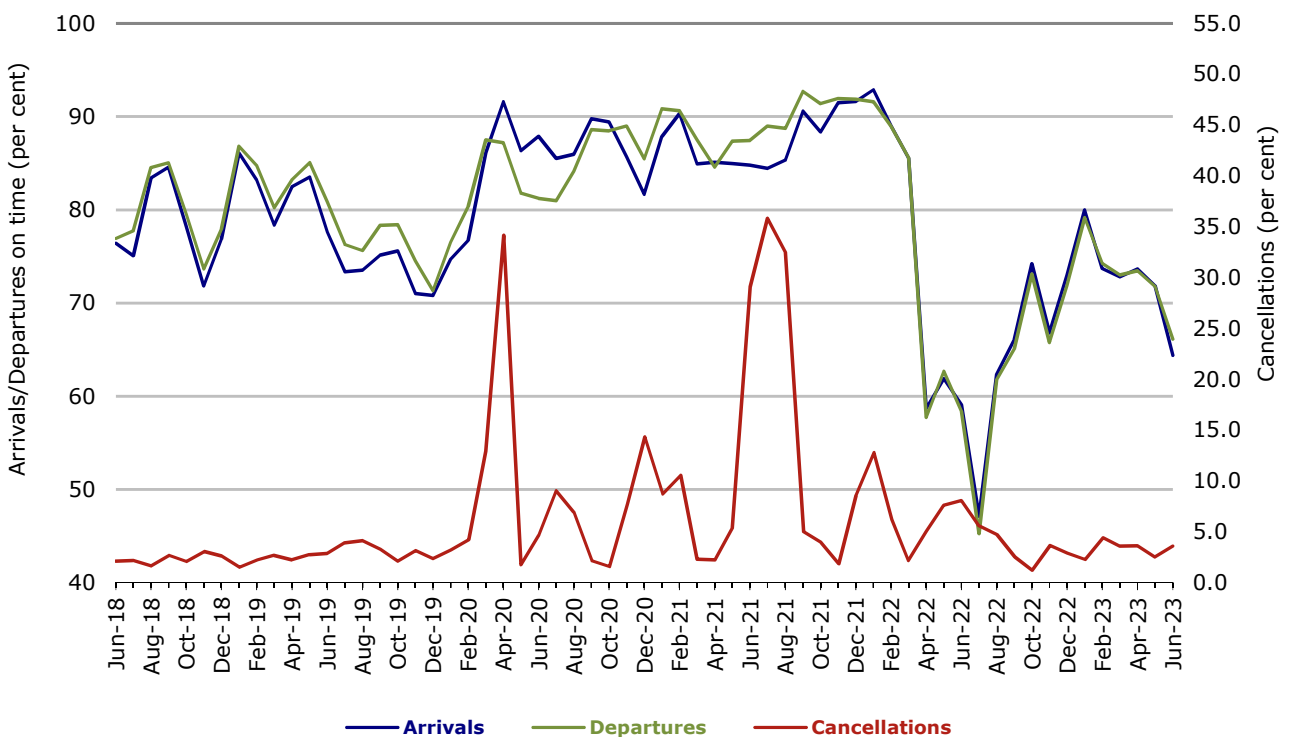
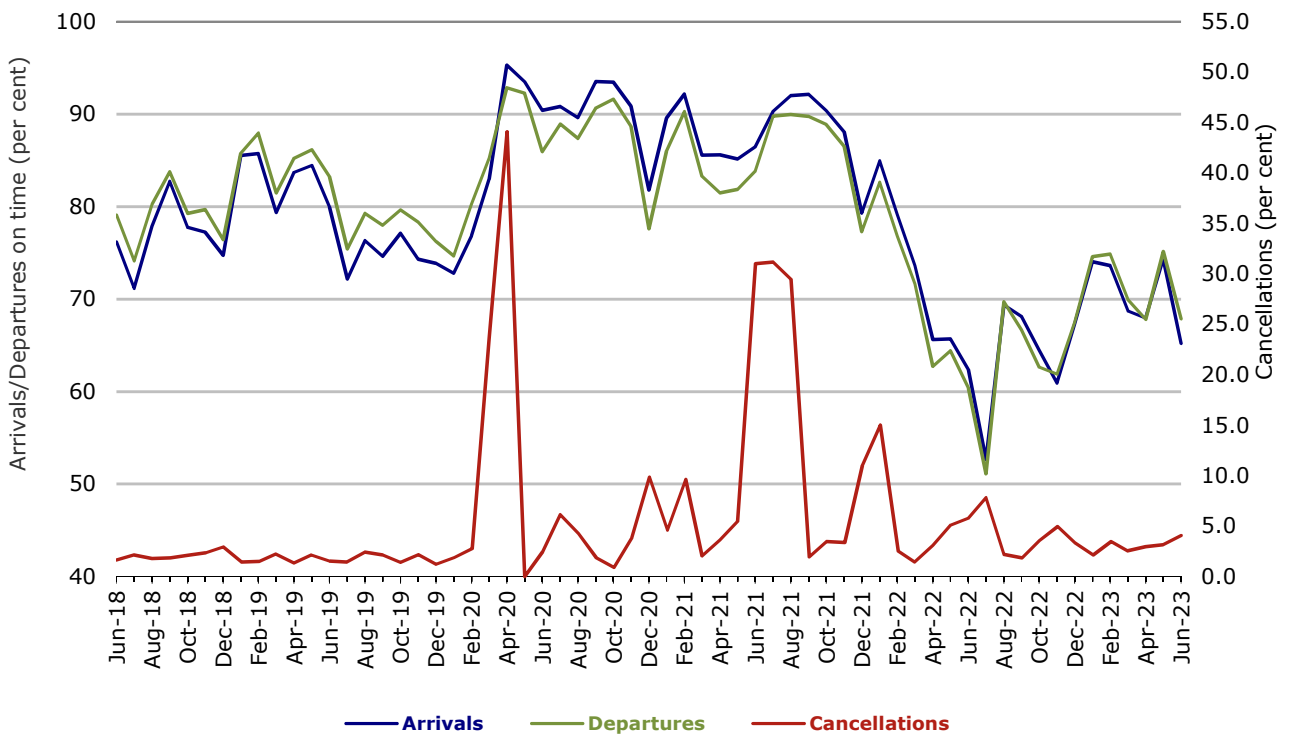


Figure 5 On time performance (by month from June 2018)—Virgin Australia



Major regional airlines on time performance

Figure 6 On time performance (by month from June 2018)—QantasLink

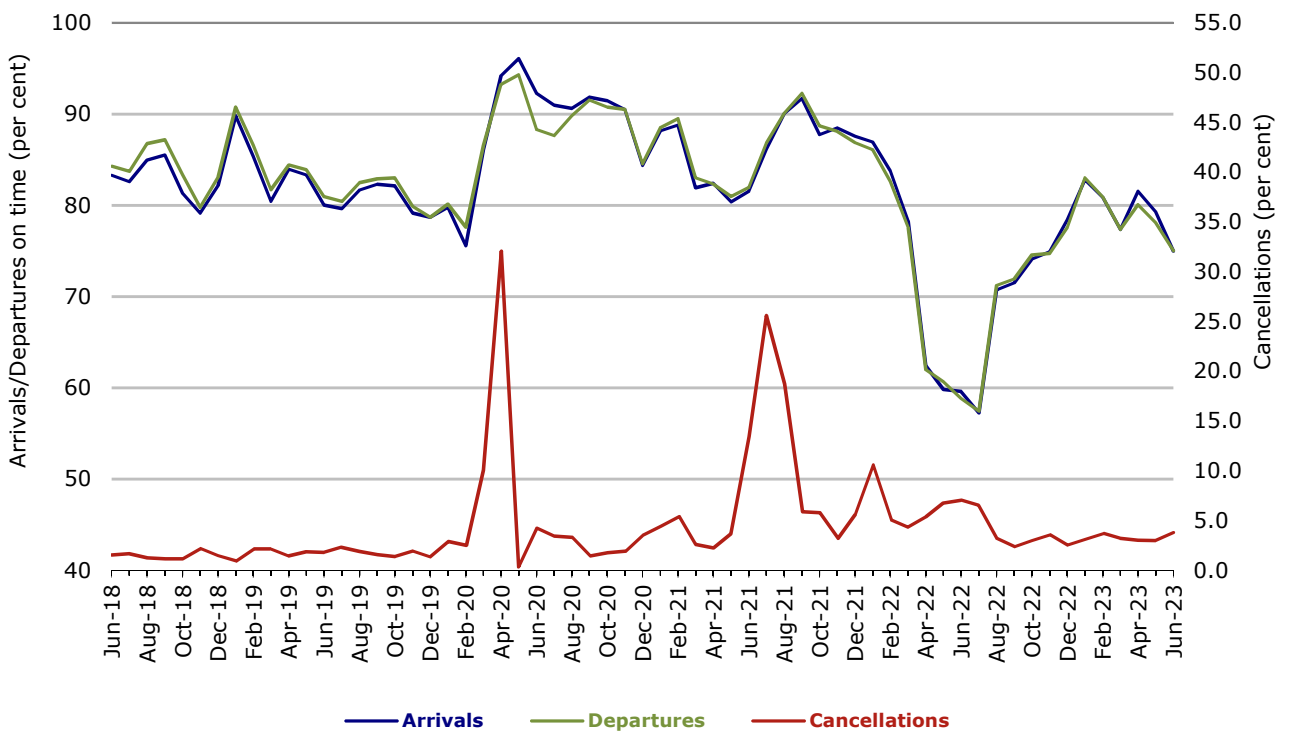
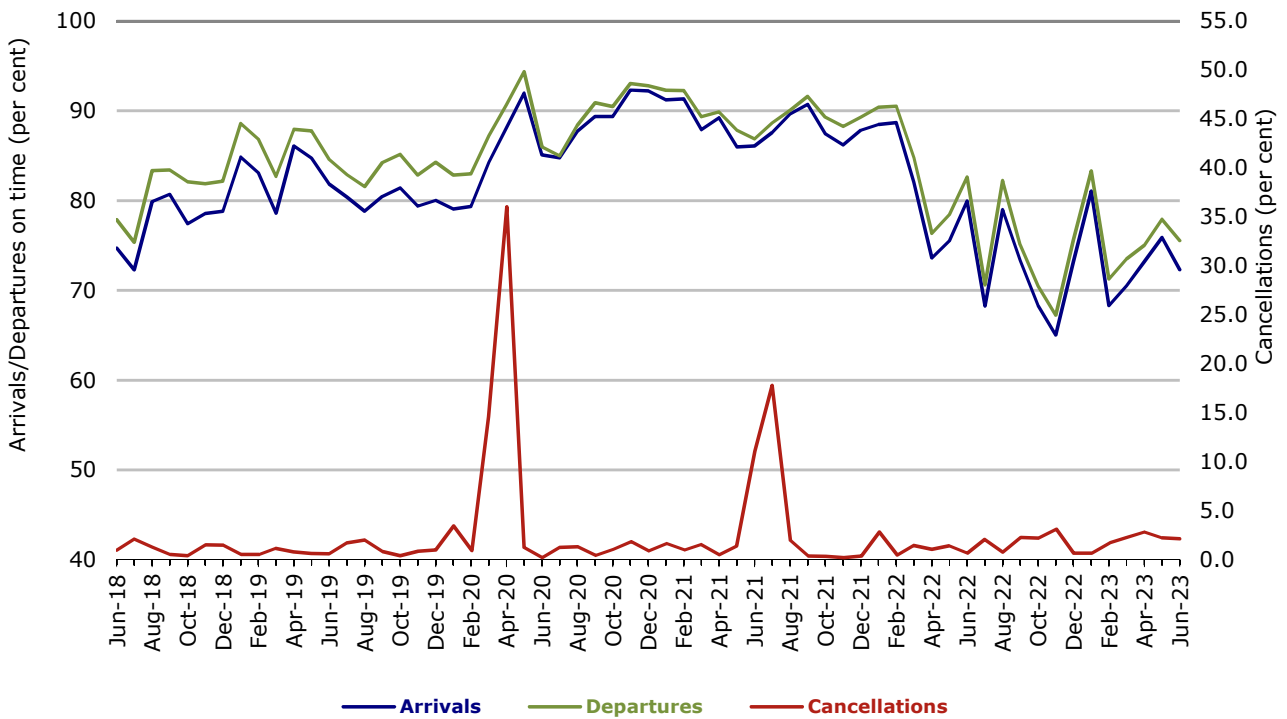


Figure 7 On time performance (by month from June 2018)—Rex Airlines



With effect from July 2021, Regional Express is reported as Rex Airlines

Figure 8 On time performance (by month from June 2018) Virgin Australia Regional Airlines

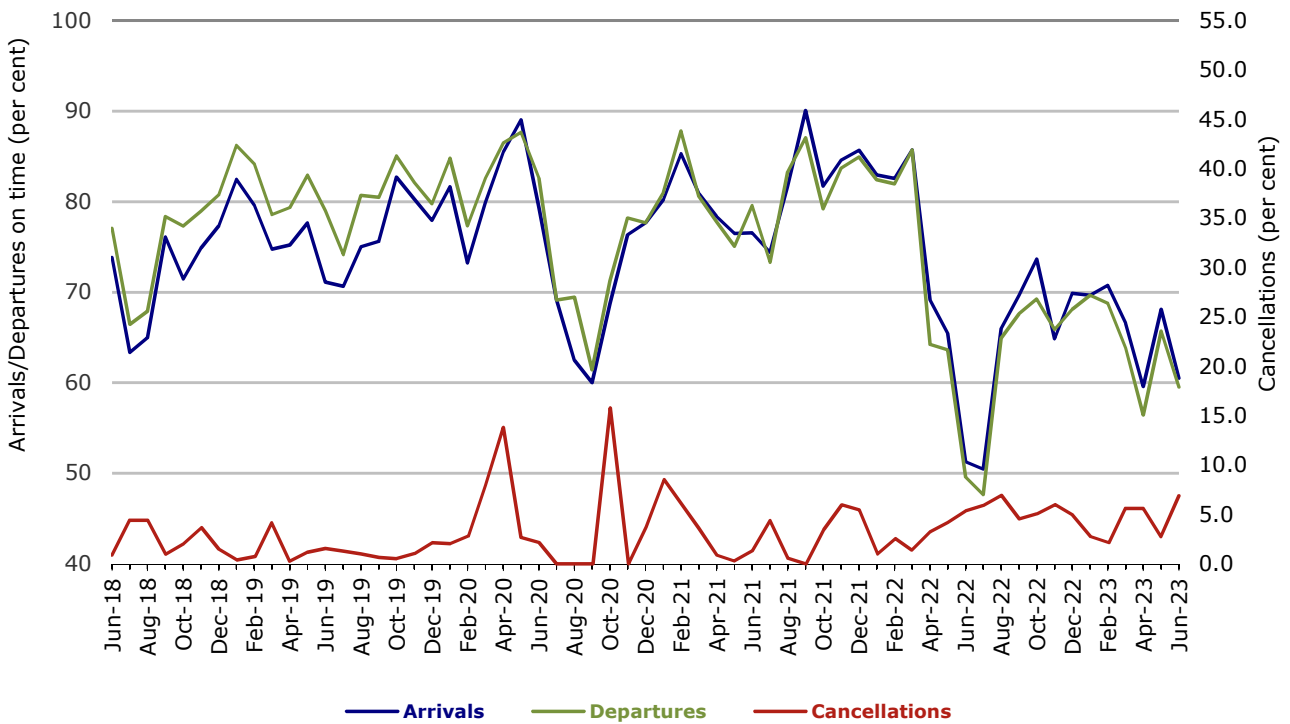
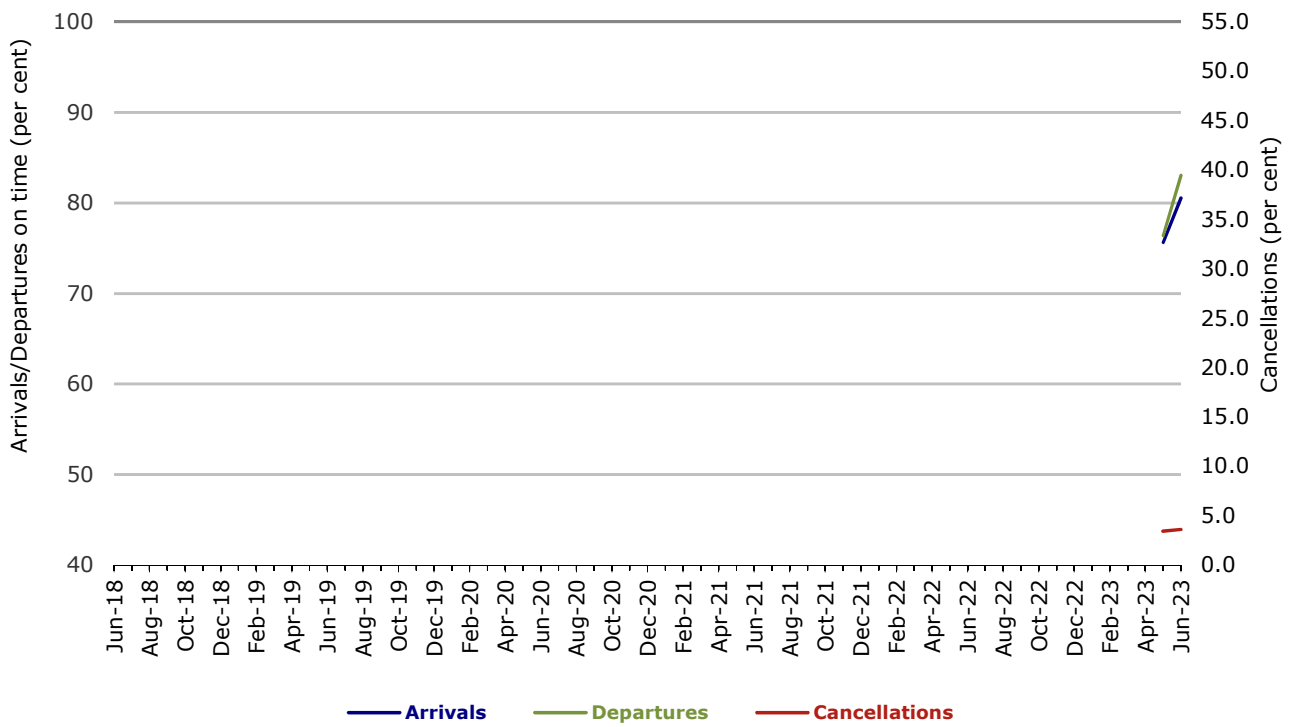


Figure 9 On time performance (by month from June 2018)
Skytrans



Individual routes

On time performance is reported for all routes where the passenger load averages over 8,000 passengers per month over the previous six months, and where two or more airlines operate in competition on those routes. In order to present data for more routes during the period impacted by COVID-19, the passenger load restriction is not being applied. There are now 63 routes for which data are presented.

	Sectors		Arrivals On Time		Departures On Time		Cancellations	
	Sched.	Flown	No.	%	No.	%	No.	%
Adelaide-Alice Springs								
Qantas	20	19	18	94.7	19	100.0	1	5.0
QantasLink	511	510	392	76.9	444	87.1	1	0.2
Virgin Australia	147	147	103	70.1	113	76.9	0	0.0
All Airlines	678	676	513	75.9	576	85.2	2	0.3
Adelaide-Brisbane								
Jetstar	387	361	243	67.3	249	69.0	26	6.7
Qantas	475	473	362	76.5	322	68.1	2	0.4
QantasLink	1 138	1 132	784	69.3	756	66.8	6	0.5
Virgin Australia	1 563	1 498	1 117	74.6	1 055	70.4	65	4.2
All Airlines	3 563	3 464	2 506	72.3	2 382	68.8	99	2.8
Adelaide-Canberra								
QantasLink	1 016	1 009	861	85.3	892	88.4	7	0.7
Virgin Australia	255	247	170	68.8	159	64.4	8	3.1
All Airlines	1 271	1 256	1 031	82.1	1 051	83.7	15	1.2
Adelaide-Darwin								
Jetstar	52	52	28	53.8	36	69.2	0	0.0
QantasLink	116	115	59	51.3	94	81.7	1	0.9
Virgin Australia	27	27	17	63.0	20	74.1	0	0.0
All Airlines	195	194	104	53.6	150	77.3	1	0.5
Adelaide-Gold Coast								
Jetstar	335	329	252	76.6	263	79.9	6	1.8
Virgin Australia	435	427	332	77.8	328	76.8	8	1.8
All Airlines	770	756	584	77.2	591	78.2	14	1.8
Adelaide-Melbourne								
Jetstar	1 215	1 137	714	62.8	656	57.7	78	6.4
Qantas	2 869	2 807	1 972	70.3	1 935	68.9	62	2.2
QantasLink	155	144	110	76.4	120	83.3	11	7.1
Rex Airlines	675	673	536	79.6	533	79.2	2	0.3
Virgin Australia	3 113	3 044	2 050	67.3	1 986	65.2	69	2.2
All Airlines	8 027	7 805	5 382	69.0	5 230	67.0	222	2.8
Adelaide-Perth								
Jetstar	314	301	227	75.4	225	74.8	13	4.1
Qantas	1 127	1 122	866	77.2	836	74.5	5	0.4
Virgin Australia	226	221	113	51.1	111	50.2	5	2.2
Virgin Australia Regional Airlines	522	468	224	47.9	171	36.5	54	10.3
All Airlines	2 189	2 112	1 430	67.7	1 343	63.6	77	3.5
Adelaide-Port Lincoln								
QantasLink	1 566	1 513	1 293	85.5	1 273	84.1	53	3.4
Rex Airlines	1 912	1 835	1 243	67.7	1 339	73.0	77	4.0
All Airlines	3 478	3 348	2 536	75.7	2 612	78.0	130	3.7

	Sectors		Arrivals On Time		Departures On Time		Cancellations	
	Sched.	Flown	No.	%	No.	%	No.	%
Adelaide-Sydney								
Jetstar	1 199	1 070	711	66.4	724	67.7	129	10.8
Qantas	2 629	2 580	1 667	64.6	1 630	63.2	49	1.9
Virgin Australia	1 804	1 727	1 059	61.3	1 074	62.2	77	4.3
All Airlines	5 632	5 377	3 437	63.9	3 428	63.8	255	4.5
Albury-Sydney								
QantasLink	1 175	1 153	872	75.6	870	75.5	22	1.9
Rex Airlines	1 389	1 352	1 001	74.0	1 046	77.4	37	2.7
All Airlines	2 564	2 505	1 873	74.8	1 916	76.5	59	2.3
Alice Springs-Adelaide								
Qantas	20	19	12	63.2	14	73.7	1	5.0
QantasLink	513	510	352	69.0	330	64.7	3	0.6
Virgin Australia	147	147	82	55.8	74	50.3	0	0.0
All Airlines	680	676	446	66.0	418	61.8	4	0.6
Armidale-Sydney								
QantasLink	1 170	1 090	911	83.6	921	84.5	80	6.8
Rex Airlines	812	788	447	56.7	532	67.5	24	3.0
All Airlines	1 982	1 878	1 358	72.3	1 453	77.4	104	5.2
Ballina-Sydney								
Jetstar	836	822	436	53.0	451	54.9	14	1.7
QantasLink	1 063	1 032	684	66.3	721	69.9	31	2.9
Rex Airlines	2	2	1	50.0	1	50.0	0	0.0
Virgin Australia	588	571	335	58.7	340	59.5	17	2.9
All Airlines	2 489	2 427	1 456	60.0	1 513	62.3	62	2.5
Brisbane-Adelaide								
Jetstar	387	361	203	56.2	182	50.4	26	6.7
Qantas	477	476	391	82.1	388	81.5	1	0.2
QantasLink	1 137	1 130	659	58.3	785	69.5	7	0.6
Virgin Australia	1 564	1 505	1 120	74.4	1 055	70.1	59	3.8
All Airlines	3 565	3 472	2 373	68.3	2 410	69.4	93	2.6
Brisbane-Cairns								
Jetstar	946	917	543	59.2	527	57.5	29	3.1
Qantas	1 186	1 186	960	80.9	922	77.7	0	0.0
QantasLink	468	466	270	57.9	243	52.1	2	0.4
Virgin Australia	1 614	1 603	1 102	68.7	1 087	67.8	11	0.7
All Airlines	4 214	4 172	2 875	68.9	2 779	66.6	42	1.0
Brisbane-Canberra								
Jetstar	360	358	267	74.6	251	70.1	2	0.6
Qantas	173	166	153	92.2	149	89.8	7	4.0
QantasLink	1 708	1 667	1 142	68.5	1 163	69.8	41	2.4
Virgin Australia	1 174	1 142	871	76.3	820	71.8	32	2.7
All Airlines	3 415	3 333	2 433	73.0	2 383	71.5	82	2.4
Brisbane-Darwin								
Jetstar	249	238	171	71.8	158	66.4	11	4.4
Qantas	256	254	196	77.2	192	75.6	2	0.8
QantasLink	177	177	93	52.5	69	39.0	0	0.0
Virgin Australia	424	422	303	71.8	278	65.9	2	0.5
All Airlines	1 106	1 091	763	69.9	697	63.9	15	1.4
Brisbane-Emerald								
QantasLink	1 376	1 362	1 157	84.9	1 157	84.9	14	1.0
Virgin Australia	314	314	234	74.5	234	74.5	0	0.0
All Airlines	1 690	1 676	1 391	83.0	1 391	83.0	14	0.8

	Sectors		Arrivals On Time		Departures On Time		Cancellations	
	Sched.	Flown	No.	%	No.	%	No.	%
Brisbane-Gladstone								
QantasLink	1 511	1 442	1 111	77.0	1 101	76.4	69	4.6
Virgin Australia	617	603	426	70.6	453	75.1	14	2.3
All Airlines	2 128	2 045	1 537	75.2	1 554	76.0	83	3.9
Brisbane-Hamilton Island								
Qantas	255	255	211	82.7	216	84.7	0	0.0
Virgin Australia	449	442	353	79.9	353	79.9	7	1.6
All Airlines	704	697	564	80.9	569	81.6	7	1.0
Brisbane-Hobart								
Jetstar	293	292	235	80.5	222	76.0	1	0.3
QantasLink	252	249	187	75.1	191	76.7	3	1.2
Virgin Australia	594	584	440	75.3	427	73.1	10	1.7
All Airlines	1 139	1 125	862	76.6	840	74.7	14	1.2
Brisbane-Launceston								
Jetstar	264	261	154	59.0	150	57.5	3	1.1
Virgin Australia	246	244	190	77.9	189	77.5	2	0.8
All Airlines	510	505	344	68.1	339	67.1	5	1.0
Brisbane-Mackay								
Jetstar	331	322	182	56.5	182	56.5	9	2.7
Qantas	1 236	1 230	942	76.6	915	74.4	6	0.5
QantasLink	139	136	102	75.0	106	77.9	3	2.2
Virgin Australia	1 569	1 544	919	59.5	963	62.4	25	1.6
All Airlines	3 275	3 232	2 145	66.4	2 166	67.0	43	1.3
Brisbane-Melbourne								
Jetstar	1 767	1 567	996	63.6	918	58.6	200	11.3
Qantas	4 125	4 043	2 869	71.0	2 894	71.6	82	2.0
Rex Airlines	701	689	512	74.3	508	73.7	12	1.7
Virgin Australia	4 454	4 296	2 549	59.3	2 660	61.9	158	3.5
All Airlines	11 047	10 595	6 926	65.4	6 980	65.9	452	4.1
Brisbane-Mount Isa								
Qantas	469	469	433	92.3	427	91.0	0	0.0
QantasLink	138	135	89	65.9	86	63.7	3	2.2
Virgin Australia	156	156	87	55.8	117	75.0	0	0.0
All Airlines	763	760	609	80.1	630	82.9	3	0.4
Brisbane-Newcastle								
Jetstar	650	640	492	76.9	495	77.3	10	1.5
QantasLink	1 538	1 446	1 141	78.9	1 117	77.2	92	6.0
Virgin Australia	987	974	623	64.0	692	71.0	13	1.3
All Airlines	3 175	3 060	2 256	73.7	2 304	75.3	115	3.6
Brisbane-Perth								
Jetstar	264	254	131	51.6	115	45.3	10	3.8
Qantas	1 775	1 754	1 191	67.9	1 239	70.6	21	1.2
Virgin Australia	1 370	1 338	895	66.9	800	59.8	32	2.3
All Airlines	3 409	3 346	2 217	66.3	2 154	64.4	63	1.8
Brisbane-Proserpine								
Jetstar	397	390	257	65.9	267	68.5	7	1.8
QantasLink	312	304	234	77.0	253	83.2	8	2.6
Virgin Australia	448	440	348	79.1	346	78.6	8	1.8
All Airlines	1 157	1 134	839	74.0	866	76.4	23	2.0

	Sectors		Arrivals On Time		Departures On Time		Cancellations	
	Sched.	Flown	No.	%	No.	%	No.	%
Brisbane-Rockhampton								
QantasLink	1 870	1 814	1 451	80.0	1 444	79.6	56	3.0
Virgin Australia	1 558	1 550	778	50.2	1 021	65.9	8	0.5
All Airlines	3 428	3 364	2 229	66.3	2 465	73.3	64	1.9
Brisbane-Sydney								
Jetstar	1 916	1 648	1 036	62.9	996	60.4	268	14.0
Qantas	6 127	5 861	4 453	76.0	4 613	78.7	266	4.3
Rex Airlines	1 508	1 483	1 105	74.5	1 159	78.2	25	1.7
Virgin Australia	5 440	5 098	3 273	64.2	3 417	67.0	342	6.3
All Airlines	14 991	14 090	9 867	70.0	10 185	72.3	901	6.0
Brisbane-Townsville								
Jetstar	595	579	395	68.2	402	69.4	16	2.7
Qantas	1 060	1 055	809	76.7	783	74.2	5	0.5
QantasLink	458	455	307	67.5	330	72.5	3	0.7
Virgin Australia	1 586	1 540	977	63.4	1 000	64.9	46	2.9
All Airlines	3 699	3 629	2 488	68.6	2 515	69.3	70	1.9
Broome-Perth								
Qantas	126	123	69	56.1	62	50.4	3	2.4
QantasLink	856	828	539	65.1	518	62.6	28	3.3
Virgin Australia	212	202	113	55.9	92	45.5	10	4.7
Virgin Australia Regional Airlines	458	426	272	63.8	225	52.8	32	7.0
All Airlines	1 652	1 579	993	62.9	897	56.8	73	4.4
Cairns-Brisbane								
Jetstar	941	917	540	58.9	581	63.4	24	2.6
Qantas	1 183	1 181	1 000	84.7	1 004	85.0	2	0.2
QantasLink	469	465	208	44.7	202	43.4	4	0.9
Virgin Australia	1 612	1 602	1 227	76.6	1 115	69.6	10	0.6
All Airlines	4 205	4 165	2 975	71.4	2 902	69.7	40	1.0
Cairns-Gold Coast								
Jetstar	104	103	55	53.4	53	51.5	1	1.0
Virgin Australia	30	30	24	80.0	25	83.3	0	0.0
All Airlines	134	133	79	59.4	78	58.6	1	0.7
Cairns-Melbourne								
Jetstar	1 155	1 106	699	63.2	640	57.9	49	4.2
Qantas	459	457	264	57.8	282	61.7	2	0.4
Virgin Australia	764	752	416	55.3	432	57.4	12	1.6
All Airlines	2 378	2 315	1 379	59.6	1 354	58.5	63	2.6
Cairns-Sydney								
Jetstar	1 083	1 018	651	63.9	622	61.1	65	6.0
Qantas	637	635	346	54.5	366	57.6	2	0.3
Virgin Australia	927	912	666	73.0	684	75.0	15	1.6
All Airlines	2 647	2 565	1 663	64.8	1 672	65.2	82	3.1
Cairns-Townsville								
QantasLink	1 715	1 664	1 488	89.4	1 482	89.1	51	3.0
Rex Airlines	182	173	149	86.1	148	85.5	9	4.9
All Airlines	1 897	1 837	1 637	89.1	1 630	88.7	60	3.2
Canberra-Adelaide								
QantasLink	1 014	1 005	741	73.7	792	78.8	9	0.9
Virgin Australia	255	247	161	65.2	169	68.4	8	3.1
All Airlines	1 269	1 252	902	72.0	961	76.8	17	1.3

	Sectors		Arrivals On Time		Departures On Time		Cancellations	
	Sched.	Flown	No.	%	No.	%	No.	%
Canberra-Brisbane								
Jetstar	359	357	242	67.8	221	61.9	2	0.6
Qantas	172	165	150	90.9	149	90.3	7	4.1
QantasLink	1 706	1 654	1 207	73.0	1 188	71.8	52	3.0
Virgin Australia	1 174	1 143	888	77.7	849	74.3	31	2.6
All Airlines	3 411	3 319	2 487	74.9	2 407	72.5	92	2.7
Canberra-Gold Coast								
Jetstar	169	164	86	52.4	72	43.9	5	3.0
QantasLink	22	22	14	63.6	11	50.0	0	0.0
Virgin Australia	352	351	256	72.9	255	72.6	1	0.3
All Airlines	543	537	356	66.3	338	62.9	6	1.1
Canberra-Melbourne								
Jetstar	366	350	197	56.3	174	49.7	16	4.4
Qantas	35	33	25	75.8	22	66.7	2	5.7
QantasLink	2 811	2 662	1 957	73.5	1 993	74.9	149	5.3
Rex Airlines	366	365	259	71.0	268	73.4	1	0.3
Virgin Australia	1 381	1 362	865	63.5	860	63.1	19	1.4
All Airlines	4 959	4 772	3 303	69.2	3 317	69.5	187	3.8
Canberra-Sydney								
QantasLink	5 037	4 529	3 293	72.7	3 407	75.2	508	10.1
Virgin Australia	2 919	2 803	2 199	78.5	2 180	77.8	116	4.0
All Airlines	7 956	7 332	5 492	74.9	5 587	76.2	624	7.8
Coffs Harbour-Sydney								
QantasLink	1 335	1 307	943	72.1	983	75.2	28	2.1
Rex Airlines	1 447	1 433	973	67.9	1 065	74.3	14	1.0
All Airlines	2 782	2 740	1 916	69.9	2 048	74.7	42	1.5
Darwin-Adelaide								
Jetstar	52	52	34	65.4	24	46.2	0	0.0
QantasLink	117	116	107	92.2	92	79.3	1	0.9
Virgin Australia	26	26	26	100.0	21	80.8	0	0.0
All Airlines	195	194	167	86.1	137	70.6	1	0.5
Darwin-Brisbane								
Jetstar	249	238	122	51.3	127	53.4	11	4.4
Qantas	256	253	123	48.6	129	51.0	3	1.2
QantasLink	178	178	156	87.6	158	88.8	0	0.0
Virgin Australia	423	419	280	66.8	214	51.1	4	0.9
All Airlines	1 106	1 088	681	62.6	628	57.7	18	1.6
Darwin-Melbourne								
Jetstar	295	283	110	38.9	100	35.3	12	4.1
Qantas	343	340	264	77.6	249	73.2	3	0.9
Virgin Australia	359	352	186	52.8	155	44.0	7	1.9
All Airlines	997	975	560	57.4	504	51.7	22	2.2
Darwin-Perth								
Qantas	147	147	110	74.8	101	68.7	0	0.0
QantasLink	223	218	107	49.1	88	40.4	5	2.2
Virgin Australia	73	73	48	65.8	48	65.8	0	0.0
Virgin Australia Regional Airlines	204	198	138	69.7	128	64.6	6	2.9
All Airlines	647	636	403	63.4	365	57.4	11	1.7

	Sectors		Arrivals On Time		Departures On Time		Cancellations	
	Sched.	Flown	No.	%	No.	%	No.	%
Darwin-Sydney								
Jetstar	167	155	69	44.5	48	31.0	12	7.2
Qantas	324	321	140	43.6	149	46.4	3	0.9
Virgin Australia	184	182	115	63.2	85	46.7	2	1.1
All Airlines	675	658	324	49.2	282	42.9	17	2.5
Devonport-Melbourne								
QantasLink	214	212	160	75.5	164	77.4	2	0.9
Rex Airlines	98	92	62	67.4	65	70.7	6	6.1
All Airlines	312	304	222	73.0	229	75.3	8	2.6
Dubbo-Sydney								
QantasLink	1 286	1 238	1 001	80.9	967	78.1	48	3.7
Rex Airlines	1 427	1 417	985	69.5	1 063	75.0	10	0.7
All Airlines	2 713	2 655	1 986	74.8	2 030	76.5	58	2.1
Emerald-Brisbane								
QantasLink	1 374	1 357	1 104	81.4	1 090	80.3	17	1.2
Virgin Australia	314	314	256	81.5	254	80.9	0	0.0
All Airlines	1 688	1 671	1 360	81.4	1 344	80.4	17	1.0
Gladstone-Brisbane								
QantasLink	1 508	1 432	1 148	80.2	1 148	80.2	76	5.0
Virgin Australia	617	602	317	52.7	428	71.1	15	2.4
All Airlines	2 125	2 034	1 465	72.0	1 576	77.5	91	4.3
Gold Coast-Adelaide								
Jetstar	335	329	247	75.1	234	71.1	6	1.8
Virgin Australia	435	426	266	62.4	277	65.0	9	2.1
All Airlines	770	755	513	67.9	511	67.7	15	1.9
Gold Coast-Cairns								
Jetstar	102	100	71	71.0	78	78.0	2	2.0
Virgin Australia	31	31	26	83.9	24	77.4	0	0.0
All Airlines	133	131	97	74.0	102	77.9	2	1.5
Gold Coast-Canberra								
Jetstar	167	165	94	57.0	78	47.3	2	1.2
QantasLink	22	22	11	50.0	12	54.5	0	0.0
Virgin Australia	352	351	238	67.8	242	68.9	1	0.3
All Airlines	541	538	343	63.8	332	61.7	3	0.6
Gold Coast-Melbourne								
Jetstar	2 496	2 269	1 409	62.1	1 406	62.0	227	9.1
Qantas	478	475	326	68.6	304	64.0	3	0.6
QantasLink	156	153	92	60.1	83	54.2	3	1.9
Rex Airlines	388	388	252	64.9	270	69.6	0	0.0
Virgin Australia	3 261	3 169	2 193	69.2	2 025	63.9	92	2.8
All Airlines	6 779	6 454	4 272	66.2	4 088	63.3	325	4.8
Gold Coast-Sydney								
Jetstar	2 924	2 640	1 692	64.1	1 724	65.3	284	9.7
Qantas	1 039	1 033	632	61.2	714	69.1	6	0.6
QantasLink	280	265	150	56.6	147	55.5	15	5.4
Rex Airlines	377	374	295	78.9	281	75.1	3	0.8
Virgin Australia	3 680	3 566	2 369	66.4	2 394	67.1	114	3.1
All Airlines	8 300	7 878	5 138	65.2	5 260	66.8	422	5.1
Hamilton Island-Brisbane								
Qantas	253	253	183	72.3	171	67.6	0	0.0
Virgin Australia	447	441	328	74.4	294	66.7	6	1.3
All Airlines	700	694	511	73.6	465	67.0	6	0.9

	Sectors		Arrivals On Time		Departures On Time		Cancellations	
	Sched.	Flown	No.	%	No.	%	No.	%
Hamilton Island-Sydney								
Jetstar	276	268	114	42.5	114	42.5	8	2.9
Qantas	369	365	216	59.2	211	57.8	4	1.1
Virgin Australia	345	335	185	55.2	211	63.0	10	2.9
All Airlines	990	968	515	53.2	536	55.4	22	2.2
Hobart-Brisbane								
Jetstar	293	292	190	65.1	191	65.4	1	0.3
QantasLink	252	245	167	68.2	161	65.7	7	2.8
Virgin Australia	593	582	350	60.1	360	61.9	11	1.9
All Airlines	1 138	1 119	707	63.2	712	63.6	19	1.7
Hobart-Melbourne								
Jetstar	1 701	1 596	926	58.0	894	56.0	105	6.2
Qantas	336	330	222	67.3	219	66.4	6	1.8
QantasLink	982	943	584	61.9	597	63.3	39	4.0
Virgin Australia	1 587	1 566	861	55.0	989	63.2	21	1.3
All Airlines	4 606	4 435	2 593	58.5	2 699	60.9	171	3.7
Hobart-Sydney								
Jetstar	922	877	545	62.1	563	64.2	45	4.9
Qantas	337	336	225	67.0	209	62.2	1	0.3
QantasLink	661	636	394	61.9	443	69.7	25	3.8
Virgin Australia	871	839	535	63.8	580	69.1	32	3.7
All Airlines	2 791	2 688	1 699	63.2	1 795	66.8	103	3.7
Kalgoorlie-Perth								
Qantas	292	284	181	63.7	149	52.5	8	2.7
QantasLink	570	552	381	69.0	362	65.6	18	3.2
Virgin Australia	412	403	235	58.3	237	58.8	9	2.2
Virgin Australia Regional Airlines	461	451	315	69.8	310	68.7	10	2.2
All Airlines	1 735	1 690	1 112	65.8	1 058	62.6	45	2.6
Karratha-Perth								
Qantas	311	298	219	73.5	198	66.4	13	4.2
QantasLink	1 373	1 343	952	70.9	848	63.1	30	2.2
Virgin Australia	308	306	229	74.8	234	76.5	2	0.6
Virgin Australia Regional Airlines	322	317	195	61.5	180	56.8	5	1.6
All Airlines	2 314	2 264	1 595	70.5	1 460	64.5	50	2.2
Launceston-Brisbane								
Jetstar	267	260	122	46.9	104	40.0	7	2.6
Virgin Australia	245	243	175	72.0	171	70.4	2	0.8
All Airlines	512	503	297	59.0	275	54.7	9	1.8
Launceston-Melbourne								
Jetstar	1 064	1 017	528	51.9	462	45.4	47	4.4
QantasLink	1 140	1 064	747	70.2	740	69.5	76	6.7
Virgin Australia	1 206	1 192	859	72.1	918	77.0	14	1.2
All Airlines	3 410	3 273	2 134	65.2	2 120	64.8	137	4.0
Launceston-Sydney								
Jetstar	494	476	260	54.6	253	53.2	18	3.6
QantasLink	303	298	208	69.8	187	62.8	5	1.7
Virgin Australia	355	345	212	61.4	240	69.6	10	2.8
All Airlines	1 152	1 119	680	60.8	680	60.8	33	2.9
Mackay-Brisbane								
Jetstar	336	321	154	48.0	146	45.5	15	4.5
Qantas	1 238	1 226	912	74.4	895	73.0	12	1.0
QantasLink	190	184	143	77.7	134	72.8	6	3.2
Virgin Australia	1 570	1 541	1 014	65.8	958	62.2	29	1.8
All Airlines	3 334	3 272	2 223	67.9	2 133	65.2	62	1.9

	Sectors		Arrivals On Time		Departures On Time		Cancellations	
	Sched.	Flown	No.	%	No.	%	No.	%
Melbourne-Adelaide								
Jetstar	1 215	1 145	753	65.8	724	63.2	70	5.8
Qantas	2 868	2 821	1 917	68.0	1 893	67.1	47	1.6
QantasLink	156	144	96	66.7	113	78.5	12	7.7
Rex Airlines	675	674	486	72.1	498	73.9	1	0.1
Virgin Australia	3 113	3 049	1 987	65.2	2 100	68.9	64	2.1
All Airlines	8 027	7 833	5 239	66.9	5 328	68.0	194	2.4
Melbourne-Brisbane								
Jetstar	1 770	1 571	821	52.3	815	51.9	199	11.2
Qantas	4 125	4 033	2 910	72.2	2 786	69.1	92	2.2
Rex Airlines	698	692	534	77.2	561	81.1	6	0.9
Virgin Australia	4 464	4 297	2 906	67.6	2 932	68.2	167	3.7
All Airlines	11 057	10 593	7 171	67.7	7 094	67.0	464	4.2
Melbourne-Cairns								
Jetstar	1 155	1 112	683	61.4	614	55.2	43	3.7
Qantas	459	459	331	72.1	298	64.9	0	0.0
Virgin Australia	763	751	568	75.6	544	72.4	12	1.6
All Airlines	2 377	2 322	1 582	68.1	1 456	62.7	55	2.3
Melbourne-Canberra								
Jetstar	367	350	205	58.6	196	56.0	17	4.6
Qantas	35	33	25	75.8	21	63.6	2	5.7
QantasLink	2 811	2 674	2 036	76.1	2 042	76.4	137	4.9
Rex Airlines	365	364	280	76.9	294	80.8	1	0.3
Virgin Australia	1 381	1 362	920	67.5	926	68.0	19	1.4
All Airlines	4 959	4 783	3 466	72.5	3 479	72.7	176	3.5
Melbourne-Darwin								
Jetstar	294	286	157	54.9	159	55.6	8	2.7
Qantas	342	340	202	59.4	168	49.4	2	0.6
Virgin Australia	356	352	193	54.8	187	53.1	4	1.1
All Airlines	992	978	552	56.4	514	52.6	14	1.4
Melbourne-Devonport								
QantasLink	214	212	169	79.7	166	78.3	2	0.9
Rex Airlines	99	93	71	76.3	70	75.3	6	6.1
All Airlines	313	305	240	78.7	236	77.4	8	2.6
Melbourne-Gold Coast								
Jetstar	2 495	2 278	1 342	58.9	1 268	55.7	217	8.7
Qantas	474	471	397	84.3	375	79.6	3	0.6
QantasLink	155	153	104	68.0	105	68.6	2	1.3
Rex Airlines	388	388	300	77.3	311	80.2	0	0.0
Virgin Australia	3 261	3 173	2 231	70.3	2 138	67.4	88	2.7
All Airlines	6 773	6 463	4 374	67.7	4 197	64.9	310	4.6
Melbourne-Hobart								
Jetstar	1 704	1 604	929	57.9	897	55.9	100	5.9
Qantas	337	333	222	66.7	214	64.3	4	1.2
QantasLink	981	951	612	64.4	597	62.8	30	3.1
Virgin Australia	1 586	1 567	1 002	63.9	1 061	67.7	19	1.2
All Airlines	4 608	4 455	2 765	62.1	2 769	62.2	153	3.3
Melbourne-Launceston								
Jetstar	1 056	1 012	579	57.2	577	57.0	44	4.2
QantasLink	1 146	1 083	762	70.4	779	71.9	63	5.5
Virgin Australia	1 206	1 191	720	60.5	797	66.9	15	1.2
All Airlines	3 408	3 286	2 061	62.7	2 153	65.5	122	3.6

	Sectors		Arrivals On Time		Departures On Time		Cancellations	
	Sched.	Flown	No.	%	No.	%	No.	%
Melbourne-Mildura								
QantasLink	1 292	1 258	811	64.5	828	65.8	34	2.6
Rex Airlines	1 209	1 195	762	63.8	806	67.4	14	1.2
All Airlines	2 501	2 453	1 573	64.1	1 634	66.6	48	1.9
Melbourne-Newcastle								
Jetstar	562	553	350	63.3	354	64.0	9	1.6
QantasLink	634	611	401	65.6	426	69.7	23	3.6
Virgin Australia	387	384	255	66.4	271	70.6	3	0.8
All Airlines	1 583	1 548	1 006	65.0	1 051	67.9	35	2.2
Melbourne-Perth								
Jetstar	836	763	495	64.9	462	60.6	73	8.7
Qantas	2 300	2 276	1 304	57.3	1 330	58.4	24	1.0
Virgin Australia	2 003	1 956	1 392	71.2	1 231	62.9	47	2.3
All Airlines	5 139	4 995	3 191	63.9	3 023	60.5	144	2.8
Melbourne-Sunshine Coast								
Jetstar	803	783	495	63.2	492	62.8	20	2.5
Qantas	215	211	171	81.0	159	75.4	4	1.9
QantasLink	260	251	157	62.5	169	67.3	9	3.5
Virgin Australia	1 056	1 033	745	72.1	719	69.6	23	2.2
All Airlines	2 334	2 278	1 568	68.8	1 539	67.6	56	2.4
Melbourne-Sydney								
Jetstar	4 604	3 954	2 381	60.2	2 230	56.4	650	14.1
Qantas	9 726	8 767	5 948	67.8	6 305	71.9	959	9.9
Rex Airlines	1 977	1 919	1 573	82.0	1 610	83.9	58	2.9
Virgin Australia	9 116	8 399	5 529	65.8	6 059	72.1	717	7.9
All Airlines	25 423	23 039	15 431	67.0	16 204	70.3	2 384	9.4
Mildura-Melbourne								
QantasLink	1 294	1 258	718	57.1	777	61.8	36	2.8
Rex Airlines	1 203	1 187	781	65.8	846	71.3	16	1.3
All Airlines	2 497	2 445	1 499	61.3	1 623	66.4	52	2.1
Mount Isa-Brisbane								
Qantas	469	466	414	88.8	389	83.5	3	0.6
QantasLink	137	130	90	69.2	90	69.2	7	5.1
Virgin Australia	156	156	72	46.2	98	62.8	0	0.0
All Airlines	762	752	576	76.6	577	76.7	10	1.3
Newcastle-Brisbane								
Jetstar	652	640	467	73.0	465	72.7	12	1.8
QantasLink	1 545	1 435	1 193	83.1	1 177	82.0	110	7.1
Virgin Australia	987	973	675	69.4	716	73.6	14	1.4
All Airlines	3 184	3 048	2 335	76.6	2 358	77.4	136	4.3
Newcastle-Melbourne								
Jetstar	569	548	351	64.1	314	57.3	21	3.7
QantasLink	636	618	412	66.7	438	70.9	18	2.8
Virgin Australia	387	384	189	49.2	220	57.3	3	0.8
All Airlines	1 592	1 550	952	61.4	972	62.7	42	2.6
Newman-Perth								
Qantas	267	257	193	75.1	204	79.4	10	3.7
QantasLink	1 070	1 021	664	65.0	712	69.7	49	4.6
Virgin Australia	280	268	179	66.8	183	68.3	12	4.3
Virgin Australia Regional Airlines	392	378	263	69.6	275	72.8	14	3.6
All Airlines	2 009	1 924	1 299	67.5	1 374	71.4	85	4.2

	Sectors		Arrivals On Time		Departures On Time		Cancellations	
	Sched.	Flown	No.	%	No.	%	No.	%
Perth-Adelaide								
Jetstar	317	301	176	58.5	155	51.5	16	5.0
Qantas	1 132	1 126	800	71.0	732	65.0	6	0.5
Virgin Australia	226	222	150	67.6	160	72.1	4	1.8
Virgin Australia Regional Airlines	513	465	279	60.0	297	63.9	48	9.4
All Airlines	2 188	2 114	1 405	66.5	1 344	63.6	74	3.4
Perth-Brisbane								
Jetstar	270	252	91	36.1	73	29.0	18	6.7
Qantas	1 774	1 764	1 347	76.4	1 234	70.0	10	0.6
Virgin Australia	1 352	1 314	989	75.3	758	57.7	38	2.8
All Airlines	3 396	3 330	2 427	72.9	2 065	62.0	66	1.9
Perth-Broome								
Qantas	127	125	102	81.6	90	72.0	2	1.6
QantasLink	854	832	679	81.6	609	73.2	22	2.6
Virgin Australia	211	201	126	62.7	109	54.2	10	4.7
Virgin Australia Regional Airlines	459	429	296	69.0	272	63.4	30	6.5
All Airlines	1 651	1 587	1 203	75.8	1 080	68.1	64	3.9
Perth-Darwin								
Qantas	147	147	113	76.9	111	75.5	0	0.0
QantasLink	223	219	146	66.7	148	67.6	4	1.8
Virgin Australia	73	73	44	60.3	46	63.0	0	0.0
Virgin Australia Regional Airlines	204	199	136	68.3	125	62.8	5	2.5
All Airlines	647	638	439	68.8	430	67.4	9	1.4
Perth-Kalgoorlie								
Qantas	291	285	215	75.4	218	76.5	6	2.1
QantasLink	566	550	406	73.8	411	74.7	16	2.8
Virgin Australia	412	404	305	75.5	320	79.2	8	1.9
Virgin Australia Regional Airlines	461	452	327	72.3	346	76.5	9	2.0
All Airlines	1 730	1 691	1 253	74.1	1 295	76.6	39	2.3
Perth-Karratha								
Qantas	312	299	250	83.6	253	84.6	13	4.2
QantasLink	1 382	1 358	991	73.0	986	72.6	24	1.7
Virgin Australia	308	306	249	81.4	259	84.6	2	0.6
Virgin Australia Regional Airlines	320	316	192	60.8	217	68.7	4	1.3
All Airlines	2 322	2 279	1 682	73.8	1 715	75.3	43	1.9
Perth-Melbourne								
Jetstar	835	750	341	45.5	261	34.8	85	10.2
Qantas	2 308	2 279	1 547	67.9	1 460	64.1	29	1.3
Virgin Australia	2 081	2 024	1 483	73.3	1 401	69.2	57	2.7
All Airlines	5 224	5 053	3 371	66.7	3 122	61.8	171	3.3
Perth-Newman								
Qantas	267	260	231	88.8	227	87.3	7	2.6
QantasLink	1 071	1 029	793	77.1	795	77.3	42	3.9
Virgin Australia	280	270	217	80.4	229	84.8	10	3.6
Virgin Australia Regional Airlines	390	379	292	77.0	302	79.7	11	2.8
All Airlines	2 008	1 938	1 533	79.1	1 553	80.1	70	3.5
Perth-Port Hedland								
Qantas	458	450	354	78.7	344	76.4	8	1.7
QantasLink	1 052	1 023	784	76.6	795	77.7	29	2.8
Virgin Australia	182	177	136	76.8	136	76.8	5	2.7
Virgin Australia Regional Airlines	433	416	294	70.7	304	73.1	17	3.9
All Airlines	2 125	2 066	1 568	75.9	1 579	76.4	59	2.8

	Sectors		Arrivals On Time		Departures On Time		Cancellations	
	Sched.	Flown	No.	%	No.	%	No.	%
Perth-Sydney								
Jetstar	532	489	231	47.2	128	26.2	43	8.1
Qantas	2 318	2 284	1 553	68.0	1 396	61.1	34	1.5
Virgin Australia	1 677	1 623	1 273	78.4	1 005	61.9	54	3.2
All Airlines	4 527	4 396	3 057	69.5	2 529	57.5	131	2.9
Port Hedland-Perth								
Qantas	458	448	295	65.8	275	61.4	10	2.2
QantasLink	1 053	1 022	664	65.0	644	63.0	31	2.9
Virgin Australia	184	179	89	49.7	80	44.7	5	2.7
Virgin Australia Regional Airlines	434	416	236	56.7	229	55.0	18	4.1
All Airlines	2 129	2 065	1 284	62.2	1 228	59.5	64	3.0
Port Lincoln-Adelaide								
QantasLink	1 565	1 507	1 312	87.1	1 326	88.0	58	3.7
Rex Airlines	1 916	1 835	1 262	68.8	1 281	69.8	81	4.2
All Airlines	3 481	3 342	2 574	77.0	2 607	78.0	139	4.0
Port Macquarie-Sydney								
QantasLink	1 273	1 247	957	76.7	967	77.5	26	2.0
Rex Airlines	1 168	1 125	705	62.7	862	76.6	43	3.7
All Airlines	2 441	2 372	1 662	70.1	1 829	77.1	69	2.8
Proserpine-Brisbane								
Jetstar	405	397	233	58.7	219	55.2	8	2.0
QantasLink	312	300	204	68.0	204	68.0	12	3.8
Virgin Australia	449	441	300	68.0	290	65.8	8	1.8
All Airlines	1 166	1 138	737	64.8	713	62.7	28	2.4
Rockhampton-Brisbane								
QantasLink	1 872	1 793	1 315	73.3	1 320	73.6	79	4.2
Virgin Australia	1 560	1 548	917	59.2	999	64.5	12	0.8
All Airlines	3 432	3 341	2 232	66.8	2 319	69.4	91	2.7
Sunshine Coast-Melbourne								
Jetstar	804	779	422	54.2	454	58.3	25	3.1
Qantas	215	210	132	62.9	126	60.0	5	2.3
QantasLink	261	248	114	46.0	107	43.1	13	5.0
Virgin Australia	1 056	1 029	580	56.4	654	63.6	27	2.6
All Airlines	2 336	2 266	1 248	55.1	1 341	59.2	70	3.0
Sunshine Coast-Sydney								
Jetstar	1 033	962	449	46.7	538	55.9	71	6.9
Qantas	469	464	282	60.8	292	62.9	5	1.1
QantasLink	350	339	241	71.1	266	78.5	11	3.1
Virgin Australia	969	939	486	51.8	648	69.0	30	3.1
All Airlines	2 821	2 704	1 458	53.9	1 744	64.5	117	4.1
Sydney-Adelaide								
Jetstar	1 200	1 075	645	60.0	625	58.1	125	10.4
Qantas	2 633	2 590	1 594	61.5	1 724	66.6	43	1.6
Virgin Australia	1 804	1 727	1 074	62.2	1 144	66.2	77	4.3
All Airlines	5 637	5 392	3 313	61.4	3 493	64.8	245	4.3
Sydney-Albury								
QantasLink	1 174	1 157	915	79.1	884	76.4	17	1.4
Rex Airlines	1 382	1 351	982	72.7	964	71.4	31	2.2
All Airlines	2 556	2 508	1 897	75.6	1 848	73.7	48	1.9

	Sectors		Arrivals On Time		Departures On Time		Cancellations	
	Sched.	Flown	No.	%	No.	%	No.	%
Sydney-Armidale								
QantasLink	1 164	1 095	919	83.9	822	75.1	69	5.9
Rex Airlines	807	791	566	71.6	558	70.5	16	2.0
All Airlines	1 971	1 886	1 485	78.7	1 380	73.2	85	4.3
Sydney-Ballina								
Jetstar	836	823	553	67.2	549	66.7	13	1.6
QantasLink	1 066	1 036	713	68.8	714	68.9	30	2.8
Rex Airlines	1	1	1	100.0	1	100.0	0	0.0
Virgin Australia	588	572	379	66.3	397	69.4	16	2.7
All Airlines	2 491	2 432	1 646	67.7	1 661	68.3	59	2.4
Sydney-Brisbane								
Jetstar	1 913	1 651	994	60.2	968	58.6	262	13.7
Qantas	6 148	5 889	3 736	63.4	3 752	63.7	259	4.2
Rex Airlines	1 509	1 482	1 112	75.0	1 166	78.7	27	1.8
Virgin Australia	5 444	5 109	3 674	71.9	3 730	73.0	335	6.2
All Airlines	15 014	14 131	9 516	67.3	9 616	68.0	883	5.9
Sydney-Cairns								
Jetstar	1 076	1 020	675	66.2	632	62.0	56	5.2
Qantas	635	632	365	57.8	357	56.5	3	0.5
Virgin Australia	922	912	750	82.2	677	74.2	10	1.1
All Airlines	2 633	2 564	1 790	69.8	1 666	65.0	69	2.6
Sydney-Canberra								
QantasLink	5 040	4 562	3 424	75.1	3 372	73.9	478	9.5
Virgin Australia	2 915	2 793	2 241	80.2	2 065	73.9	122	4.2
All Airlines	7 955	7 355	5 665	77.0	5 437	73.9	600	7.5
Sydney-Coffs Harbour								
QantasLink	1 342	1 314	965	73.4	885	67.4	28	2.1
Rex Airlines	1 448	1 438	1 122	78.0	1 055	73.4	10	0.7
All Airlines	2 790	2 752	2 087	75.8	1 940	70.5	38	1.4
Sydney-Darwin								
Jetstar	164	155	91	58.7	90	58.1	9	5.5
Qantas	323	321	191	59.5	186	57.9	2	0.6
Virgin Australia	183	182	118	64.8	110	60.4	1	0.5
All Airlines	670	658	400	60.8	386	58.7	12	1.8
Sydney-Dubbo								
QantasLink	1 287	1 247	934	74.9	861	69.0	40	3.1
Rex Airlines	1 487	1 479	1 067	72.1	1 016	68.7	8	0.5
All Airlines	2 774	2 726	2 001	73.4	1 877	68.9	48	1.7
Sydney-Gold Coast								
Jetstar	2 914	2 640	1 722	65.2	1 691	64.1	274	9.4
Qantas	1 041	1 036	698	67.4	654	63.1	5	0.5
QantasLink	279	266	176	66.2	179	67.3	13	4.7
Rex Airlines	378	375	308	82.1	316	84.3	3	0.8
Virgin Australia	3 683	3 569	2 277	63.8	2 407	67.4	114	3.1
All Airlines	8 295	7 886	5 181	65.7	5 247	66.5	409	4.9
Sydney-Hamilton Island								
Jetstar	274	271	171	63.1	157	57.9	3	1.1
Qantas	369	366	229	62.6	204	55.7	3	0.8
Virgin Australia	343	339	259	76.4	252	74.3	4	1.2
All Airlines	986	976	659	67.5	613	62.8	10	1.0

	Sectors		Arrivals On Time		Departures On Time		Cancellations	
	Sched.	Flown	No.	%	No.	%	No.	%
Sydney-Hobart								
Jetstar	919	878	618	70.4	561	63.9	41	4.5
Qantas	338	338	251	74.3	239	70.7	0	0.0
QantasLink	664	644	415	64.4	401	62.3	20	3.0
Virgin Australia	871	843	664	78.8	666	79.0	28	3.2
All Airlines	2 792	2 703	1 948	72.1	1 867	69.1	89	3.2
Sydney-Launceston								
Jetstar	490	477	305	63.9	299	62.7	13	2.7
QantasLink	302	299	202	67.6	211	70.6	3	1.0
Virgin Australia	355	347	270	77.8	246	70.9	8	2.3
All Airlines	1 147	1 123	777	69.2	756	67.3	24	2.1
Sydney-Melbourne								
Jetstar	4 588	3 958	2 496	63.1	2 333	58.9	630	13.7
Qantas	9 719	8 782	5 886	67.0	5 867	66.8	937	9.6
Rex Airlines	1 973	1 920	1 435	74.7	1 517	79.0	53	2.7
Virgin Australia	9 046	8 321	5 348	64.3	5 312	63.8	725	8.0
All Airlines	25 326	22 981	15 165	66.0	15 029	65.4	2 345	9.3
Sydney-Perth								
Jetstar	522	496	284	57.3	250	50.4	26	5.0
Qantas	2 322	2 297	1 137	49.5	1 258	54.8	25	1.1
Virgin Australia	1 740	1 680	1 067	63.5	1 004	59.8	60	3.4
All Airlines	4 584	4 473	2 488	55.6	2 512	56.2	111	2.4
Sydney-Port Macquarie								
QantasLink	1 273	1 253	953	76.1	867	69.2	20	1.6
Rex Airlines	1 170	1 127	844	74.9	829	73.6	43	3.7
All Airlines	2 443	2 380	1 797	75.5	1 696	71.3	63	2.6
Sydney-Sunshine Coast								
Jetstar	1 026	969	651	67.2	676	69.8	57	5.6
Qantas	469	466	294	63.1	281	60.3	3	0.6
QantasLink	350	341	223	65.4	232	68.0	9	2.6
Virgin Australia	968	939	663	70.6	697	74.2	29	3.0
All Airlines	2 813	2 715	1 831	67.4	1 886	69.5	98	3.5
Sydney-Wagga Wagga								
QantasLink	1 111	1 087	799	73.5	775	71.3	24	2.2
Rex Airlines	1 393	1 363	981	72.0	989	72.6	30	2.2
All Airlines	2 504	2 450	1 780	72.7	1 764	72.0	54	2.2
Townsville-Brisbane								
Jetstar	598	578	360	62.3	360	62.3	20	3.3
Qantas	1 057	1 052	802	76.2	813	77.3	5	0.5
QantasLink	458	453	235	51.9	267	58.9	5	1.1
Virgin Australia	1 586	1 536	1 019	66.3	966	62.9	50	3.2
All Airlines	3 699	3 619	2 416	66.8	2 406	66.5	80	2.2
Townsville-Cairns								
QantasLink	1 715	1 663	1 427	85.8	1 391	83.6	52	3.0
Rex Airlines	182	173	156	90.2	157	90.8	9	4.9
All Airlines	1 897	1 836	1 583	86.2	1 548	84.3	61	3.2
Wagga Wagga-Sydney								
QantasLink	1 109	1 080	873	80.8	839	77.7	29	2.6
Rex Airlines	1 378	1 344	940	69.9	1 025	76.3	34	2.5
All Airlines	2 487	2 424	1 813	74.8	1 864	76.9	63	2.5

Airports

The following data reports by airport against flights operated on published routes only. Some routes were not reported on for all months in 2022-23. In 2022-23, 8 major city airports and 29 regional city airports are covered.

Airport	Arrivals			Departures		
	Sectors Flown	On Time		Sectors Flown	On Time	
		No.	%		No.	%
Adelaide						
Jetstar	3 263	2 058	63.1	3 250	2 153	66.2
Qantas	7 032	4 714	67.0	7 001	4 742	67.7
QantasLink	4 412	3 267	74.0	4 423	3 579	80.9
Rex Airlines	2 509	1 748	69.7	2 508	1 872	74.6
Virgin Australia	7 349	4 866	66.2	7 338	4 846	66.0
Virgin Australia Regional Airlines	465	279	60.0	468	171	36.5
All Airlines	25 030	16 932	67.6	24 988	17 363	69.5

Relates to services to and from Alice Springs, Brisbane, Canberra, Darwin, Gold Coast, Melbourne, Perth, Port Lincoln and Sydney only.

Albury

QantasLink	1 157	915	79.1	1 153	870	75.5
Rex Airlines	1 351	982	72.7	1 352	1 046	77.4
All Airlines	2 508	1 897	75.6	2 505	1 916	76.5

Relates to services to and from Sydney only.

Alice Springs

Qantas	19	18	94.7	19	14	73.7
QantasLink	510	392	76.9	510	330	64.7
Virgin Australia	147	103	70.1	147	74	50.3
All Airlines	676	513	75.9	676	418	61.8

Relates to services to and from Adelaide only.

Armidale

QantasLink	1 095	919	83.9	1 090	921	84.5
Rex Airlines	791	566	71.6	788	532	67.5
All Airlines	1 886	1 485	78.7	1 878	1 453	77.4

Relates to services to and from Sydney only.

Ballina

Jetstar	823	553	67.2	822	451	54.9
QantasLink	1 036	713	68.8	1 032	721	69.9
Rex Airlines	1	1	100.0	2	1	50.0
Virgin Australia	572	379	66.3	571	340	59.5
All Airlines	2 432	1 646	67.7	2 427	1 513	62.3

Relates to services to and from Sydney only.

Airport	Arrivals			Departures		
	Sectors	On Time		Sectors	On Time	
	Flown	No.	%	Flown	No.	%
Brisbane						
Jetstar	7 835	4 579	58.4	7 827	4 865	62.2
Qantas	16 755	11 939	71.3	16 749	12 738	76.1
QantasLink	10 758	7 954	73.9	10 783	8 045	74.6
Rex Airlines	2 174	1 646	75.7	2 172	1 667	76.7
Virgin Australia	23 759	16 504	69.5	23 795	15 912	66.9
All Airlines	61 281	42 622	69.6	61 326	43 227	70.5

Relates to services to and from Adelaide, Cairns, Canberra, Darwin, Emerald, Gladstone, Hamilton Island, Hobart, Launceston, Mackay, Melbourne, Mount Isa, Newcastle, Perth, Proserpine, Rockhampton, Sydney and Townsville only.

Broome

Qantas	125	102	81.6	123	62	50.4
QantasLink	832	679	81.6	828	518	62.6
Virgin Australia	201	126	62.7	202	92	45.5
Virgin Australia Regional Airlines	429	296	69.0	426	225	52.8
All Airlines	1 587	1 203	75.8	1 579	897	56.8

Relates to services to and from Perth only.

Cairns

Jetstar	3 149	1 972	62.6	3 144	1 896	60.3
Qantas	2 277	1 656	72.7	2 273	1 652	72.7
QantasLink	2 129	1 697	79.7	2 129	1 684	79.1
Rex Airlines	173	156	90.2	173	148	85.5
Virgin Australia	3 297	2 446	74.2	3 296	2 256	68.4
All Airlines	11 025	7 927	71.9	11 015	7 636	69.3

Relates to services to and from Brisbane, Gold Coast, Melbourne, Sydney and Townsville only.

Canberra

Jetstar	873	566	64.8	871	467	53.6
Qantas	199	178	89.4	198	171	86.4
QantasLink	9 934	7 474	75.2	9 872	7 391	74.9
Rex Airlines	364	280	76.9	365	268	73.4
Virgin Australia	5 895	4 440	75.3	5 906	4 313	73.0
All Airlines	17 265	12 938	74.9	17 212	12 610	73.3

Relates to services to and from Adelaide, Brisbane, Gold Coast, Melbourne and Sydney only.

Coffs Harbour

QantasLink	1 314	965	73.4	1 307	983	75.2
Rex Airlines	1 438	1 122	78.0	1 433	1 065	74.3
All Airlines	2 752	2 087	75.8	2 740	2 048	74.7

Relates to services to and from Sydney only.

Darwin

Jetstar	731	447	61.1	728	299	41.1
Qantas	1 062	702	66.1	1 061	628	59.2
QantasLink	511	298	58.3	512	338	66.0
Virgin Australia	1 056	675	63.9	1 052	523	49.7
Virgin Australia Regional Airlines	199	136	68.3	198	128	64.6
All Airlines	3 559	2 258	63.4	3 551	1 916	54.0

Relates to services to and from Adelaide, Brisbane, Melbourne, Perth and Sydney only.

Devonport

QantasLink	212	169	79.7	212	164	77.4
Rex Airlines	93	71	76.3	92	65	70.7
All Airlines	305	240	78.7	304	229	75.3

Relates to services to and from Melbourne only.

Airport	Arrivals			Departures		
	Sectors	On Time		Sectors	On Time	
	Flown	No.	%	Flown	No.	%
Dubbo						
QantasLink	1 247	934	74.9	1 238	967	78.1
Rex Airlines	1 479	1 067	72.1	1 417	1 063	75.0
All Airlines	2 726	2 001	73.4	2 655	2 030	76.5
Relates to services to and from Sydney only.						
Emerald						
QantasLink	1 362	1 157	84.9	1 357	1 090	80.3
Virgin Australia	314	234	74.5	314	254	80.9
All Airlines	1 676	1 391	83.0	1 671	1 344	80.4
Relates to services to and from Brisbane only.						
Gladstone						
QantasLink	1 442	1 111	77.0	1 432	1 148	80.2
Virgin Australia	603	426	70.6	602	428	71.1
All Airlines	2 045	1 537	75.2	2 034	1 576	77.5
Relates to services to and from Brisbane only.						
Gold Coast						
Jetstar	5 514	3 457	62.7	5 503	3 520	64.0
Qantas	1 507	1 095	72.7	1 508	1 018	67.5
QantasLink	441	294	66.7	440	242	55.0
Rex Airlines	763	608	79.7	762	551	72.3
Virgin Australia	7 550	5 120	67.8	7 543	4 962	65.8
All Airlines	15 775	10 574	67.0	15 756	10 293	65.3
Relates to services to and from Adelaide, Cairns, Canberra, Melbourne and Sydney only.						
Hamilton Island						
Jetstar	271	171	63.1	268	114	42.5
Qantas	621	440	70.9	618	382	61.8
Virgin Australia	781	612	78.4	776	505	65.1
All Airlines	1 673	1 223	73.1	1 662	1 001	60.2
Relates to services to and from Brisbane and Sydney only.						
Hobart						
Jetstar	2 774	1 782	64.2	2 765	1 648	59.6
Qantas	671	473	70.5	666	428	64.3
QantasLink	1 844	1 214	65.8	1 824	1 201	65.8
Virgin Australia	2 994	2 106	70.3	2 987	1 929	64.6
All Airlines	8 283	5 575	67.3	8 242	5 206	63.2
Relates to services to and from Brisbane, Melbourne and Sydney only.						
Kalgoorlie						
Qantas	285	215	75.4	284	149	52.5
QantasLink	550	406	73.8	552	362	65.6
Virgin Australia	404	305	75.5	403	237	58.8
Virgin Australia Regional Airlines	452	327	72.3	451	310	68.7
All Airlines	1 691	1 253	74.1	1 690	1 058	62.6
Relates to services to and from Perth only.						

Airport	Arrivals			Departures		
	Sectors	On Time		Sectors	On Time	
	Flown	No.	%	Flown	No.	%
Karratha						
Qantas	299	250	83.6	298	198	66.4
QantasLink	1 358	991	73.0	1 343	848	63.1
Virgin Australia	306	249	81.4	306	234	76.5
Virgin Australia Regional Airlines	316	192	60.8	317	180	56.8
All Airlines	2 279	1 682	73.8	2 264	1 460	64.5
Relates to services to and from Perth only.						
Launceston						
Jetstar	1 750	1 038	59.3	1 753	819	46.7
QantasLink	1 382	964	69.8	1 362	927	68.1
Virgin Australia	1 782	1 180	66.2	1 780	1 329	74.7
All Airlines	4 914	3 182	64.8	4 895	3 075	62.8
Relates to services to and from Brisbane, Melbourne and Sydney only.						
Mackay						
Jetstar	322	182	56.5	321	146	45.5
Qantas	1 230	942	76.6	1 226	895	73.0
QantasLink	136	102	75.0	184	134	72.8
Virgin Australia	1 544	919	59.5	1 541	958	62.2
All Airlines	3 232	2 145	66.4	3 272	2 133	65.2
Relates to services to and from Brisbane only.						
Melbourne						
Jetstar	15 360	9 189	59.8	15 411	8 788	57.0
Qantas	19 756	13 507	68.4	19 744	13 549	68.6
QantasLink	7 302	4 894	67.0	7 337	5 225	71.2
Rex Airlines	5 314	3 837	72.2	5 325	4 150	77.9
Virgin Australia	27 491	17 579	63.9	27 514	18 965	68.9
All Airlines	75 223	49 006	65.1	75 331	50 677	67.3
Relates to services to and from Adelaide, Brisbane, Cairns, Canberra, Darwin, Devonport, Gold Coast, Hobart, Launceston, Mildura, Newcastle, Perth, Sunshine Coast and Sydney only.						
Mildura						
QantasLink	1 258	811	64.5	1 258	777	61.8
Rex Airlines	1 195	762	63.8	1 187	846	71.3
All Airlines	2 453	1 573	64.1	2 445	1 623	66.4
Relates to services to and from Melbourne only.						
Mount Isa						
Qantas	469	433	92.3	466	389	83.5
QantasLink	135	89	65.9	130	90	69.2
Virgin Australia	156	87	55.8	156	98	62.8
All Airlines	760	609	80.1	752	577	76.7
Relates to services to and from Brisbane only.						
Newcastle						
Jetstar	1 193	842	70.6	1 188	779	65.6
QantasLink	2 057	1 542	75.0	2 053	1 615	78.7
Virgin Australia	1 358	878	64.7	1 357	936	69.0
All Airlines	4 608	3 262	70.8	4 598	3 330	72.4
Relates to services to and from Brisbane and Melbourne only.						

Airport	Arrivals			Departures		
	Sectors	On Time		Sectors	On Time	
	Flown	No.	%	Flown	No.	%
Newman						
Qantas	260	231	88.8	257	204	79.4
QantasLink	1 029	793	77.1	1 021	712	69.7
Virgin Australia	270	217	80.4	268	183	68.3
Virgin Australia Regional Airlines	379	292	77.0	378	275	72.8
All Airlines	1 938	1 533	79.1	1 924	1 374	71.4
Relates to services to and from Perth only.						
Perth						
Jetstar	1 814	1 137	62.7	1 792	617	34.4
Qantas	9 006	5 565	61.8	9 019	6 065	67.2
QantasLink	4 984	3 307	66.4	5 011	3 744	74.7
Virgin Australia	6 626	4 360	65.8	6 614	4 423	66.9
Virgin Australia Regional Airlines	2 654	1 643	61.9	2 656	1 863	70.1
All Airlines	25 084	16 012	63.8	25 092	16 712	66.6
Relates to services to and from Adelaide, Brisbane, Broome, Darwin, Kalgoorlie, Karratha, Melbourne, Newman, Port Hedland and Sydney only.						
Port Hedland						
Qantas	450	354	78.7	448	275	61.4
QantasLink	1 023	784	76.6	1 022	644	63.0
Virgin Australia	177	136	76.8	179	80	44.7
Virgin Australia Regional Airlines	416	294	70.7	416	229	55.0
All Airlines	2 066	1 568	75.9	2 065	1 228	59.5
Relates to services to and from Perth only.						
Port Lincoln						
QantasLink	1 513	1 293	85.5	1 507	1 326	88.0
Rex Airlines	1 835	1 243	67.7	1 835	1 281	69.8
All Airlines	3 348	2 536	75.7	3 342	2 607	78.0
Relates to services to and from Adelaide only.						
Port Macquarie						
QantasLink	1 253	953	76.1	1 247	967	77.5
Rex Airlines	1 127	844	74.9	1 125	862	76.6
All Airlines	2 380	1 797	75.5	2 372	1 829	77.1
Relates to services to and from Sydney only.						
Proserpine						
Jetstar	390	257	65.9	397	219	55.2
QantasLink	304	234	77.0	300	204	68.0
Virgin Australia	440	348	79.1	441	290	65.8
All Airlines	1 134	839	74.0	1 138	713	62.7
Relates to services to and from Brisbane only.						
Rockhampton						
QantasLink	1 814	1 451	80.0	1 793	1 320	73.6
Virgin Australia	1 550	778	50.2	1 548	999	64.5
All Airlines	3 364	2 229	66.3	3 341	2 319	69.4
Relates to services to and from Brisbane only.						

Airport	Arrivals			Departures		
	Sectors	On Time		Sectors	On Time	
	Flown	No.	%	Flown	No.	%
Sunshine Coast						
Jetstar	1 752	1 146	65.4	1 741	992	57.0
Qantas	677	465	68.7	674	418	62.0
QantasLink	592	380	64.2	587	373	63.5
Virgin Australia	1 972	1 408	71.4	1 968	1 302	66.2
All Airlines	4 993	3 399	68.1	4 970	3 085	62.1

Relates to services to and from Melbourne and Sydney only.

Sydney

Jetstar	14 379	8 575	59.6	14 413	8 831	61.3
Qantas	22 646	15 462	68.3	22 717	14 522	63.9
QantasLink	14 214	10 527	74.1	14 301	10 203	71.3
Rex Airlines	11 237	8 025	71.4	11 327	8 411	74.3
Virgin Australia	27 339	18 236	66.7	27 333	18 707	68.4
All Airlines	89 815	60 825	67.7	90 091	60 674	67.3

Relates to services to and from Adelaide, Albury, Armidale, Ballina, Brisbane, Cairns, Canberra, Coffs Harbour, Darwin, Dubbo, Gold Coast, Hamilton Island, Hobart, Launceston, Melbourne, Perth, Port Macquarie, Sunshine Coast and Wagga Wagga only.

Townsville

Jetstar	579	395	68.2	578	360	62.3
Qantas	1 055	809	76.7	1 052	813	77.3
QantasLink	2 119	1 795	84.7	2 116	1 658	78.4
Rex Airlines	173	149	86.1	173	157	90.8
Virgin Australia	1 540	977	63.4	1 536	966	62.9
All Airlines	5 466	4 125	75.5	5 455	3 954	72.5

Relates to services to and from Brisbane and Cairns only.

Wagga Wagga

QantasLink	1 087	799	73.5	1 080	839	77.7
Rex Airlines	1 363	981	72.0	1 344	1 025	76.3
All Airlines	2 450	1 780	72.7	2 424	1 864	76.9

Relates to services to and from Sydney only.

Definitions

On time arrival	A flight arrival is counted as "on time" if it arrived at the gate before 15 minutes after the scheduled arrival time shown in the carriers' schedule. Neither diverted nor cancelled flights count as on time.
On time departure	A flight departure is counted as "on time" if it departs the gate before 15 minutes after the scheduled departure time shown in the carriers' schedule.
Cancellation	A flight removed from service within 7 days of scheduled departure is regarded as a cancellation.
On time departure percentage	The percentage of on time departures is measured against the number of departures <i>operated</i> on any particular sector.
On time arrival percentage	The percentage of on time arrivals is measured against the number of arrivals <i>operated</i> on any particular sector.
Cancellation percentage	The percentage of cancellations is measured against the number of services <i>scheduled</i> on any particular sector.
