



Australian Government

**Department of Infrastructure, Transport,
Regional Development, Communications and the Arts**
Bureau of Infrastructure and Transport Research Economics

STATISTICAL REPORT



Aviation

**Domestic airline on time performance
2023**

The Department of Infrastructure, Transport, Regional Development, Communications and the Arts acknowledges the Traditional Custodians of Country of the land on which we work and live.

We recognise and respect the continuing connections to land, waters and communities.

We pay our respects to them and their cultures and to their Elders both past and present and to all Aboriginal and Torres Strait Islander people.

© Commonwealth of Australia 2024

ISSN: 1832-0759

Ownership of intellectual property rights in this publication

Unless otherwise noted, copyright (and any other intellectual property rights, if any) in this publication is owned by the Commonwealth of Australia (referred to below as the Commonwealth).

Disclaimer

The material contained in this publication is made available on the understanding that the Commonwealth is not providing professional advice, and that users exercise their own skill and care with respect to its use, and seek independent advice if necessary.

The Commonwealth makes no representations or warranties as to the contents or accuracy of the information contained in this publication. To the extent permitted by law, the Commonwealth disclaims liability to any person or organisation in respect of anything done, or omitted to be done, in reliance upon information contained in this publication.

Creative Commons licence

With the exception of (a) the Coat of Arms; and (b) the Department of Infrastructure, Transport, Regional Development and Communications' photos and graphics, copyright in this publication is licensed under a Creative Commons Attribution 3.0 Australia Licence.

Creative Commons Attribution 3.0 Australia Licence is a standard form licence agreement that allows you to copy, communicate and adapt this publication provided that you attribute the work to the Commonwealth and abide by the other licence terms. A summary of the licence terms is available from <http://creativecommons.org/licenses/by/3.0/au/deed.en>. The full licence terms are available from <http://creativecommons.org/licenses/by/3.0/au/legalcode>.

Use of the Coat of Arms

The Department of the Prime Minister and Cabinet sets the terms under which the Coat of Arms is used. Please refer to the Department's Commonwealth Coat of Arms and Government branding web page <http://www.dpmmc.gov.au/guidelines/index.cfm#brand> and, in particular, the Guidelines on the use of the Commonwealth Coat of Arms publication.

An appropriate citation for this report is:

Bureau of Infrastructure and Transport Research Economics (BITRE), 2024, Domestic airline on OTP 2023, Statistical Report, BITRE, Canberra ACT.

Contact us

All other rights are reserved, including in relation to any Departmental logos or trademarks which may exist. For enquiries regarding the licence and any use of this publication, please contact:

Bureau of Infrastructure and Transport Research Economics (BITRE)
Department of Infrastructure, Transport, Regional Development, Communications and the Arts
GPO Box 501, Canberra ACT 2601, Australia
Telephone: (international) +61 2 6274 7210
Email: bitre@infrastructure.gov.au
Website: www.bitre.gov.au

Inquiries

Should you require additional information about the statistics contained in this publication:

Telephone (02) 6163 8541

Electronic mail: AVSTATS@infrastructure.gov.au

Web site: <http://www.bitre.gov.au/statistics/aviation/otphome.aspx>

Foreword

The Bureau of Infrastructure and Transport Research Economics (BITRE) monitors the punctuality and reliability of major domestic airlines operating between Australian airports. The purpose of this is to allow for evaluation of overall industry and individual airline performance, so that consumers of air travel can make informed decisions.

Total industry figures encompass all services operated by reporting airlines only. These airlines collectively carried over 98 per cent of total domestic passengers (regular public transport only) in 2023.

The following domestic airlines currently report this information monthly to the BITRE: Bonza, Jetstar, Qantas, QantasLink, Rex Airlines, Skytrans, Virgin Australia and Virgin Australia Regional Airlines.

Information presented in this report is for Australian domestic routes with load averaged 8,000 or more passengers per month over the previous six months with two or more airlines operating in competition on those routes. Data for 63 routes which operated for at least part of the 2023 calendar year are presented. Over time, routes which meet these criteria change as airline networks and traffic levels vary.

The method of capturing on time performance varies between airlines utilising different recording systems. Jetstar and Qantas jet aircraft use Aircraft Communication Addressing and Reporting System (ACARS) to electronically measure OTP. Rex Airlines, Skytrans, Virgin Australia, Virgin Australia Regional Airlines and the Qantas non-jet fleet use records from pilots, gate agents and/or ground crews to manually record OTP.

After initial data is collected, aggregate reports are reviewed by participating airlines prior to publication.

Reports and detailed time series data in Microsoft Excel spreadsheet format are available from the BITRE website at: <http://www.bitre.gov.au/statistics/aviation/otphome.aspx>

Contents

	Page
Industry performance	1
Individual routes	9
Airports.....	23
Definitions	29

Industry performance

For the year ended December 2023, on time performance (OTP) over all routes operated by participating airlines (Bonza, Jetstar, Qantas, QantasLink, Rex Airlines, Skytrans, Virgin Australia and Virgin Australia Regional Airlines) averaged 70.6 per cent for on time arrivals and 71.0 per cent for on time departures. The cancellation rate for the year was 3.7 per cent. The equivalent figures for 2022 were 68.8 per cent for on time arrivals, 68.2 per cent for on time departures and 4.7 per cent for cancellations. Airlines' on time performance varies across the routes they serve. Individual route data by specific airline for 63 routes are shown on pages 9-22.

The 2023 on time arrivals figure was lower than the long-term average performance for all routes (81.1 per cent) and the on time departures figure was also lower than the long-term average (82.2 per cent). The rate of cancellations was higher than the long-term average of 2.2 per cent.

On time arrivals

The Qantas network (Qantas and QantasLink combined operations) recorded 68.3 per cent for on time arrivals while the Virgin Australia network (Virgin Australia and Virgin Australia Regional Airlines combined operations) recorded 66.2 per cent. Qantas achieved the highest on time arrivals among the major domestic airlines at 70.5 per cent followed by Virgin Australia at 66.2 per cent and Jetstar at 65.8 per cent. Of the regional airlines, Qantaslink recorded 76.3 per cent on time arrivals, followed by Skytrans with 73.8 per cent for on time arrivals, Rex Airlines at 73.6 per cent, Virgin Australia Regional Airlines at 66.4 per cent and Bonza at 64.2 per cent.

On time departures

The Qantas network recorded 67.6 per cent for on time departures while the Virgin Australia network recorded 67.1 per cent. Qantas achieved the highest level of on time departures among the major domestic airlines for 2023 at 70.7 per cent, followed by Virgin Australia at 67.2 per cent and Jetstar at 64.1 per cent. Of the regional airlines, QantasLink recorded 76.4 per cent for on time departures, followed by Rex Airlines at 76.3 per cent, Skytrans at 73.1 per cent, Virgin Australia Regional Airlines at 64.2 per cent and Bonza at 62.6 per cent.

Cancellations

Bonza recorded the highest percentage of cancellations (12.7 per cent) during the year, although data were only collected from Bonza for the last two months of the year. The second highest cancellation rate was from Skytrans at 5.4 per cent (data only collected from May 2023), followed by Virgin Australia Regional Airlines (5.2 per cent), Jetstar (5.1 per cent), Virgin Australia (4.2 per cent), Qantaslink (3.6 per cent), Qantas (3.4 per cent) and Rex Airlines (1.9 per cent).

Routes

Of the 63 routes which met the criteria for OTP reporting, the Townsville-Cairns route had the highest percentage of on time arrivals (87.6 per cent) and the Cairns-Townsville route had the highest percentage of on time departures (87.8 per cent). The Hamilton Island-Sydney route had the lowest percentage of on time arrivals (51.8 per cent) and the Launceston-Brisbane route had the lowest percentage of on time departures (46.9 per cent).

Cancellations were highest on the Melbourne-Sydney route at 9.0 per cent, followed by the Sydney-Melbourne route at 8.8 per cent, the Canberra-Sydney route at 8.2 per cent, the Sydney-Canberra route at 7.6 per cent and the Armidale-Sydney route at 6.4 per cent.

Airports

Of the airports with OTP reporting for 2023, Mt Isa Airport recorded the highest percentage of on time arrivals (85.9 per cent) and Port Lincoln recorded highest percentage of on time departures (84.1 per cent). Launceston Airport recorded the lowest percentage of on time arrivals (64.0 per cent) and Hamilton Island Airport recorded the lowest percentage of on time departures (58.5 per cent). These figures only refer to reported routes and do not cover all flights at these airports.

Table 1 On time performance for the year ended December 2023 — Total Industry

	<i>Sectors</i>		<i>Arrivals On Time</i>		<i>Departures On Time</i>		<i>Cancellations</i>	
	<i>Scheduled</i>	<i>Flown</i>	<i>No.</i>	<i>%</i>	<i>No.</i>	<i>%</i>	<i>No.</i>	<i>%</i>
Bonza	1 253	1 094	702	64.2	685	62.6	159	12.7
Jetstar	85 648	81 318	53 530	65.8	52 107	64.1	4 330	5.1
Qantas - all QF designated services	237 987	172 440	117 728	68.3	116 569	67.6	7 519	3.2
Rex Airlines	72 833	71 483	52 605	73.6	54 558	76.3	1 350	1.9
Skytrans	2 820	2 667	1 969	73.8	1 950	73.1	153	5.4
Virgin Australia - all VA designated services	143 856	137 745	91 201	66.2	92 414	67.1	6 111	4.2
All Airlines	543 989	523 593	369 567	70.6	371 696	71.0	20 396	3.7

Individual operating entities

Qantas	94 311	91 122	64 198	70.5	64 462	70.7	3 189	3.4
QantasLink	143 676	138 558	105 663	76.3	105 818	76.4	5 118	3.6
Virgin Australia	138 329	132 506	87 724	66.2	89 052	67.2	5 823	4.2
Virgin Australia Regional Airlines	5 527	5 239	3 477	66.4	3 362	64.2	288	5.2

Total airline network data (including routes not shown in this report).

Airlines’ on time performance varies across the routes they serve. Individual route data by specific airline are shown on pages 9-23.

Table 2 Top ten routes for on time performance for the year ended December 2023 (routes for participating airlines only)

<i>Arrivals</i>		<i>Departures</i>	
<i>Route</i>	<i>On Time (%)</i>	<i>Route</i>	<i>On Time (%)</i>
Townsville-Cairns	87.6	Cairns-Townsville	87.8
Cairns-Townsville	87.5	Townsville-Cairns	86.6
Brisbane-Mount Isa	85.9	Brisbane-Mount Isa	85.2
Adelaide-Canberra	83.9	Adelaide-Canberra	85.0
Port Lincoln-Adelaide	83.3	Adelaide-Port Lincoln	84.5
Darwin-Adelaide	83.1	Port Lincoln-Adelaide	84.1
Adelaide-Gold Coast	83.0	Adelaide-Cairns	84.1
Adelaide-Cairns	82.8	Perth-Newman	83.5
Adelaide-Port Lincoln	82.3	Adelaide-Alice Springs	83.2
Perth-Newman	81.7	Adelaide-Gold Coast	81.4

Table 3 Top ten airports for on time performance for the year ended December 2023 (airports for participating airlines and reported routes only)

<i>Arrivals</i>		<i>Departures</i>	
<i>Airport</i>	<i>On Time (%)</i>	<i>Airport</i>	<i>On Time (%)</i>
Mount Isa	85.9	Port Lincoln	84.1
Port Lincoln	82.3	Emerald	80.6
Newman	81.7	Mount Isa	80.0
Armidale	81.6	Armidale	80.0
Emerald	81.4	Wagga Wagga	78.8
Port Hedland	78.4	Dubbo	77.2
Broome	78.2	Devonport	77.2
Proserpine	77.7	Port Macquarie	77.2
Karratha	77.7	Albury	76.7
Devonport	77.4	Gladstone	76.6

Total industry on time performance

Figure 1 On time performance (by month from December 2018)—Total Industry

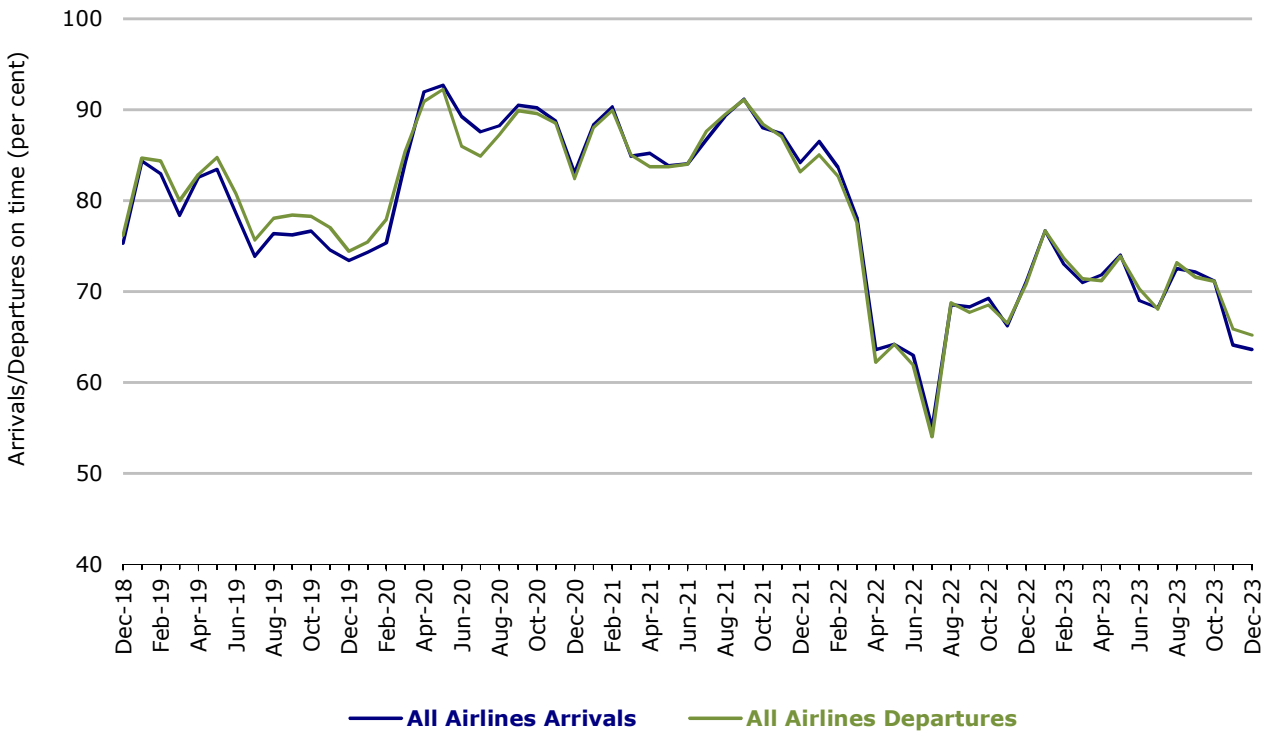
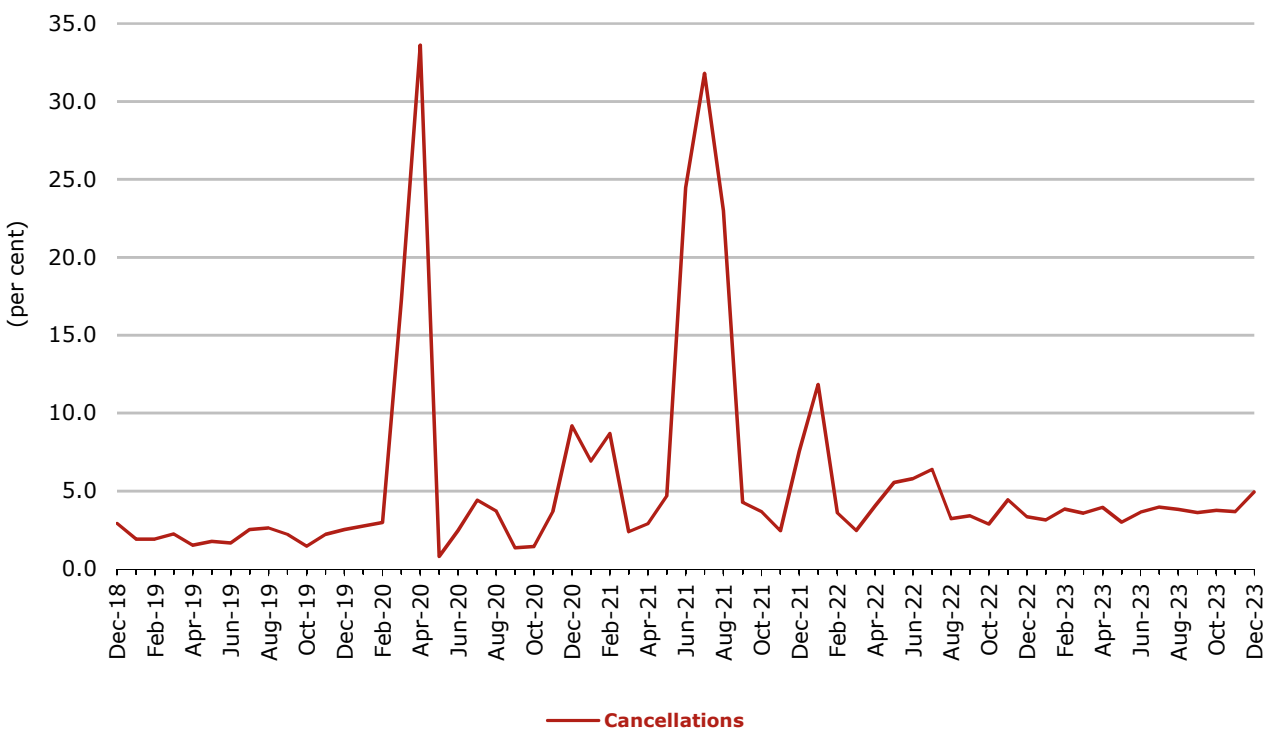


Figure 2 Cancellations (by month from December 2018)—Total Industry



Major domestic airlines on time performance

Figure 3 On time performance (by month from December 2018)—Jetstar

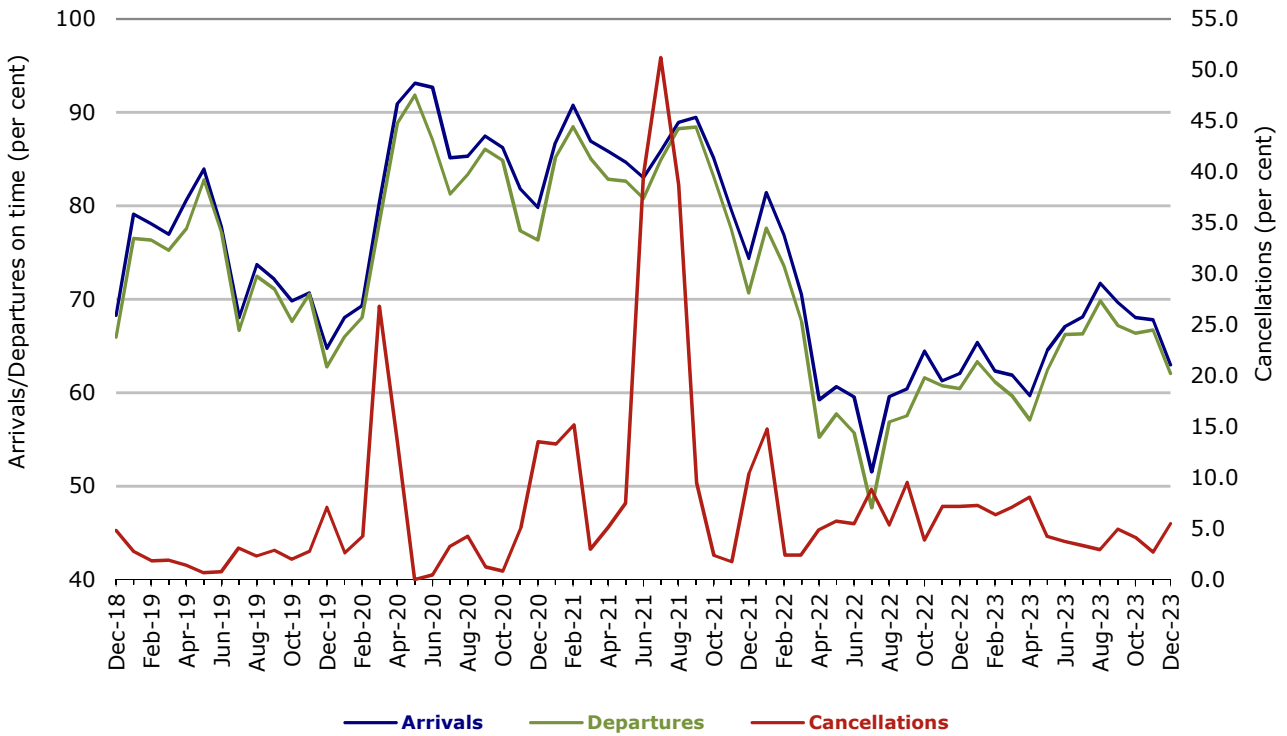


Figure 4 On time performance (by month from December 2018)—Qantas

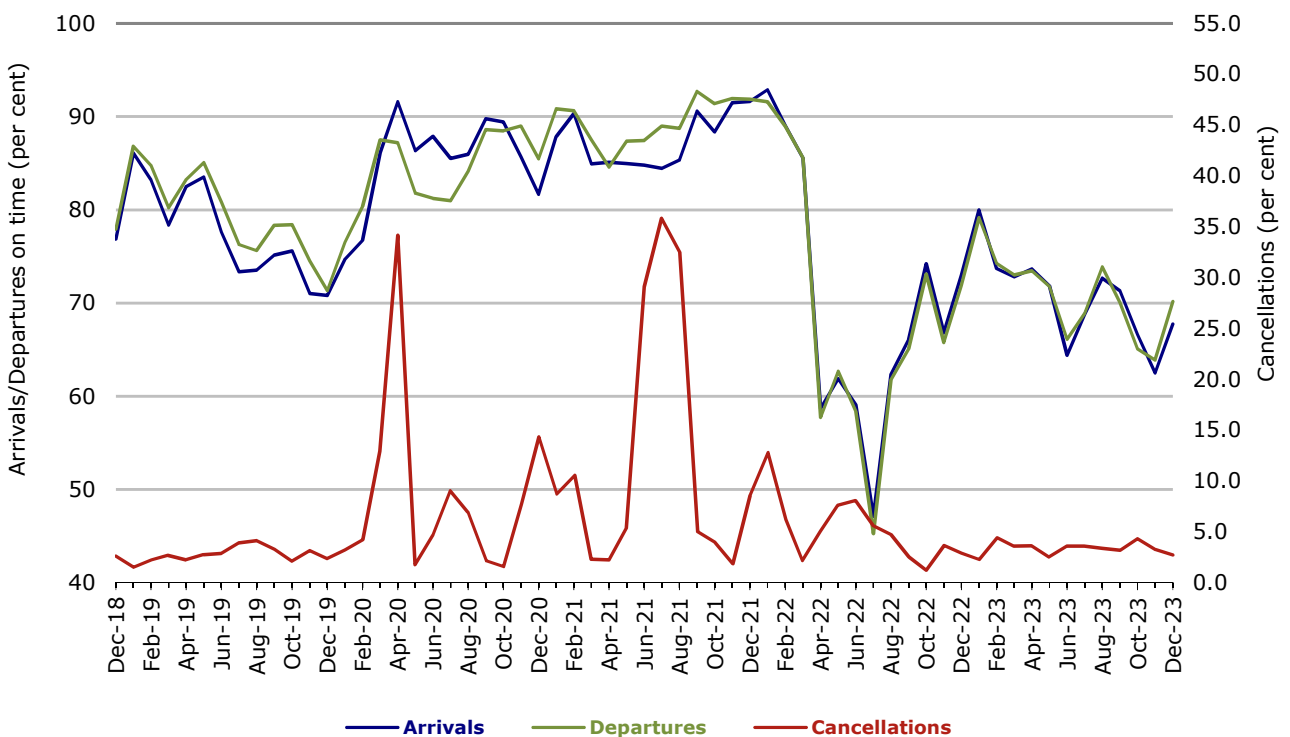
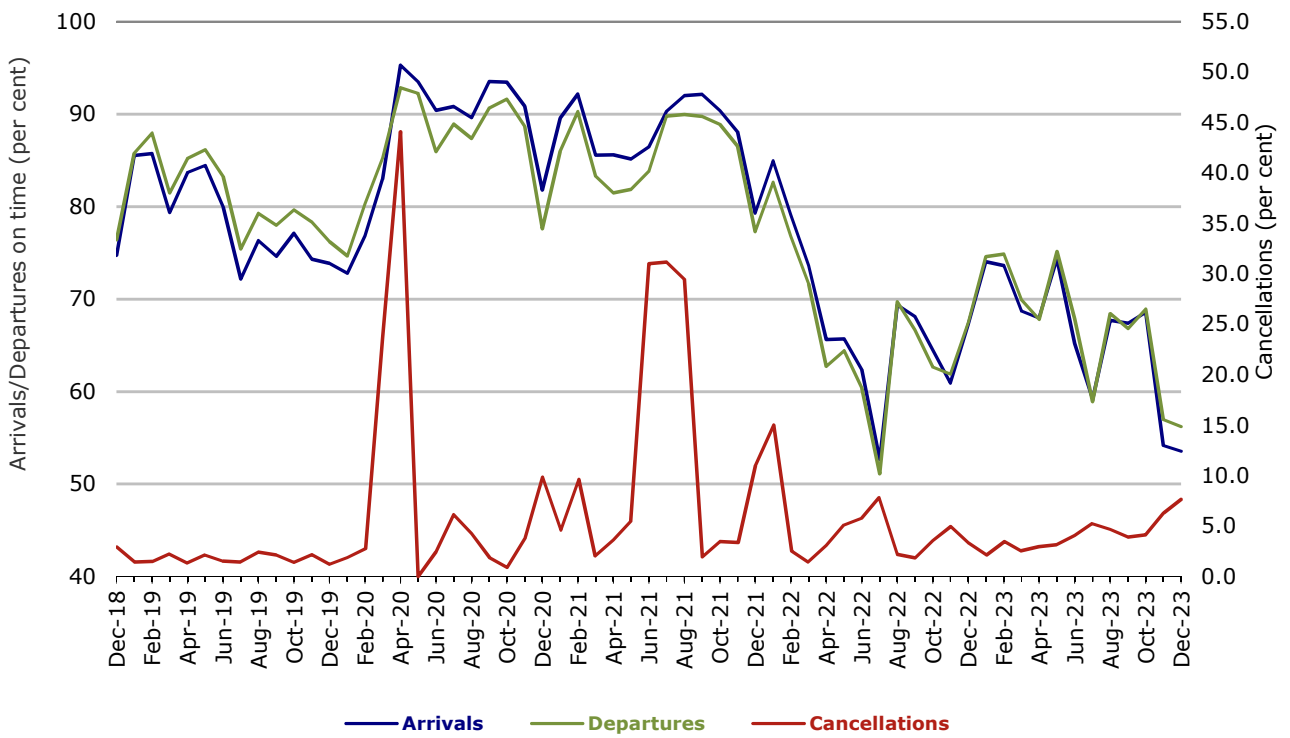


Figure 5 On time performance (by month from December 2018)—Virgin Australia



Major regional airlines on time performance

Figure 6 On time performance (by month from December 2018)—QantasLink

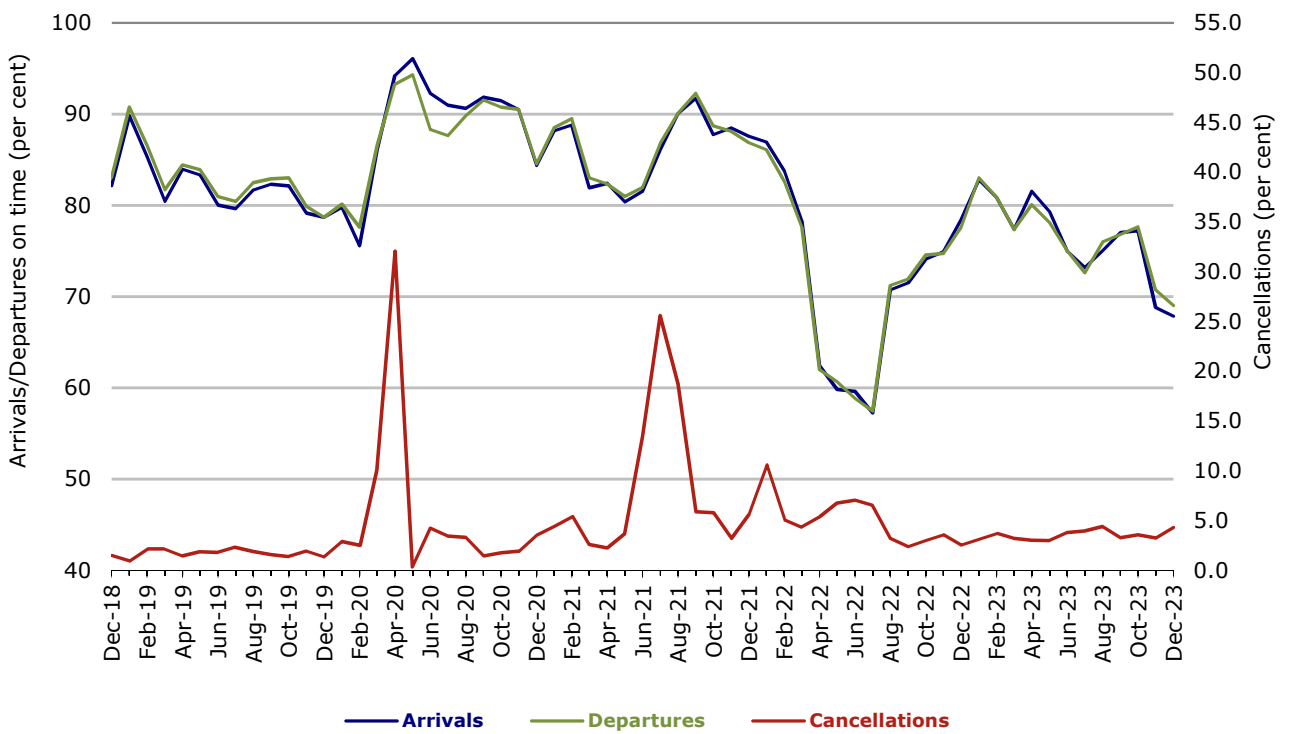
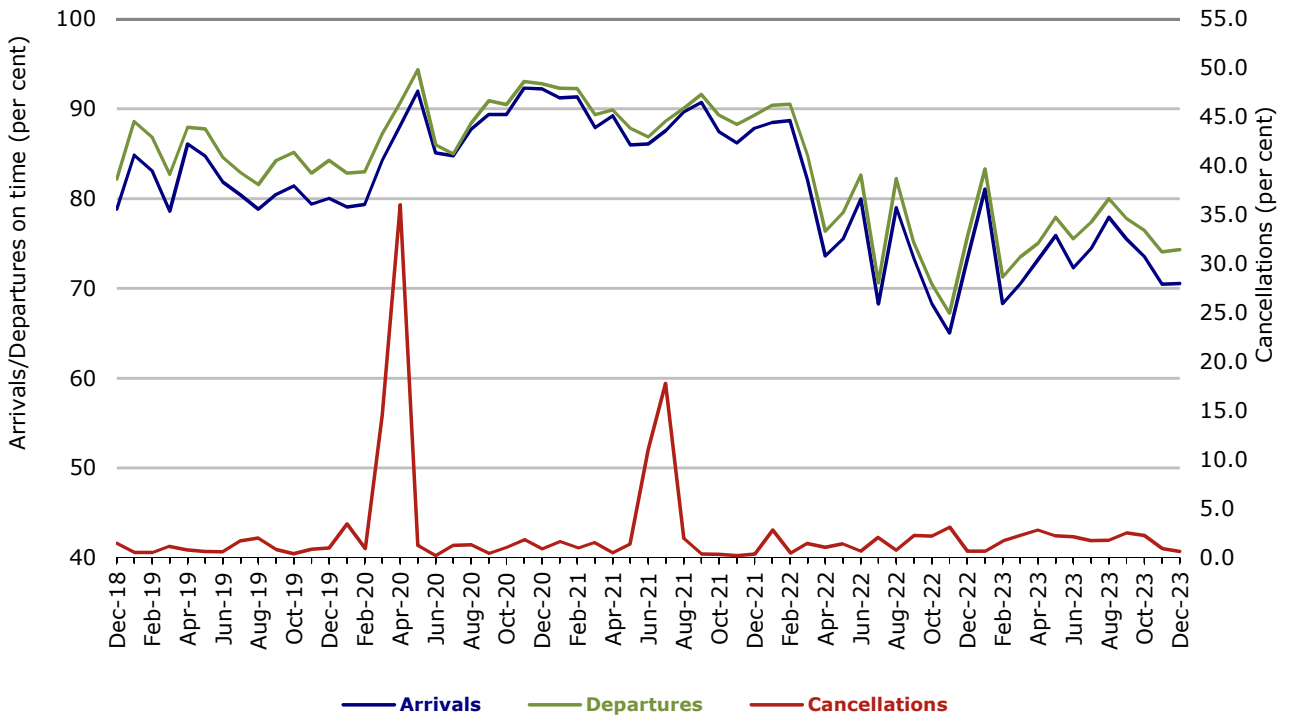


Figure 7 On time performance (by month from December 2018)—Rex Airlines



With effect from July 2021, Regional Express is reported as Rex Airlines

Figure 8 On time performance (by month from December 2018) —Virgin Australia Regional Airlines

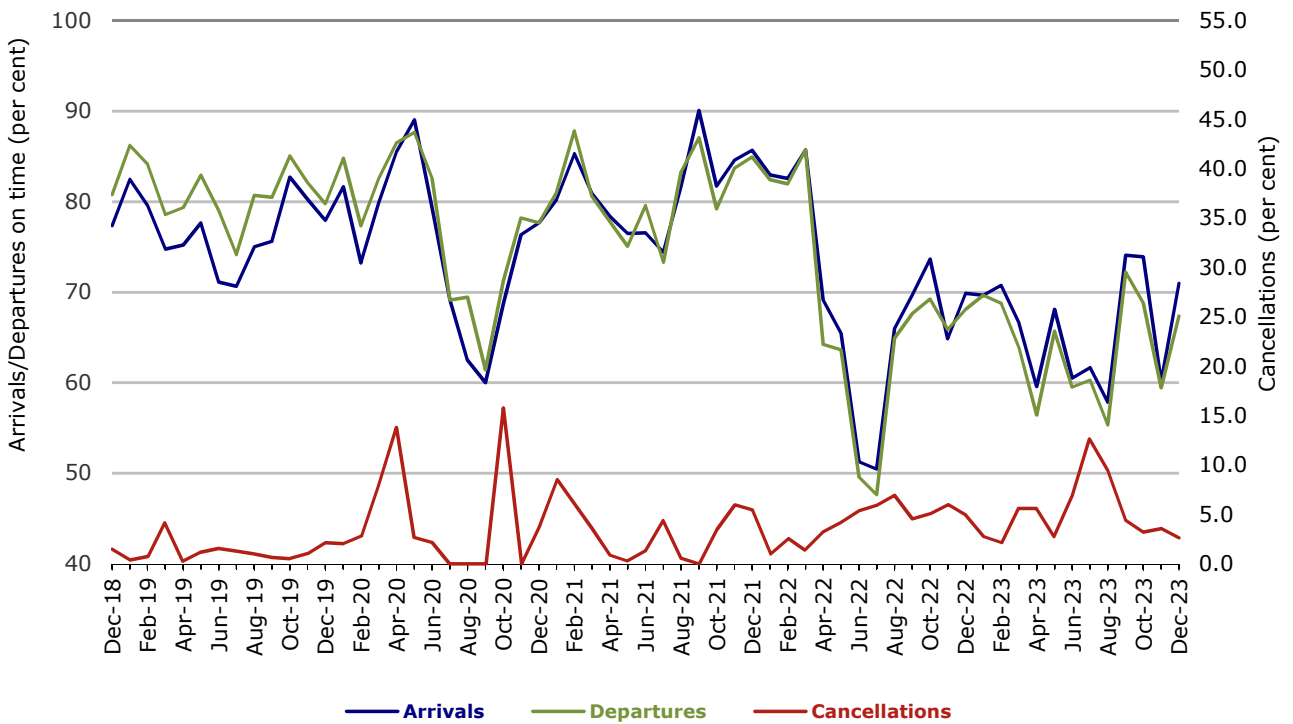


Figure 9 On time performance (by month from December 2018)—Skytrans

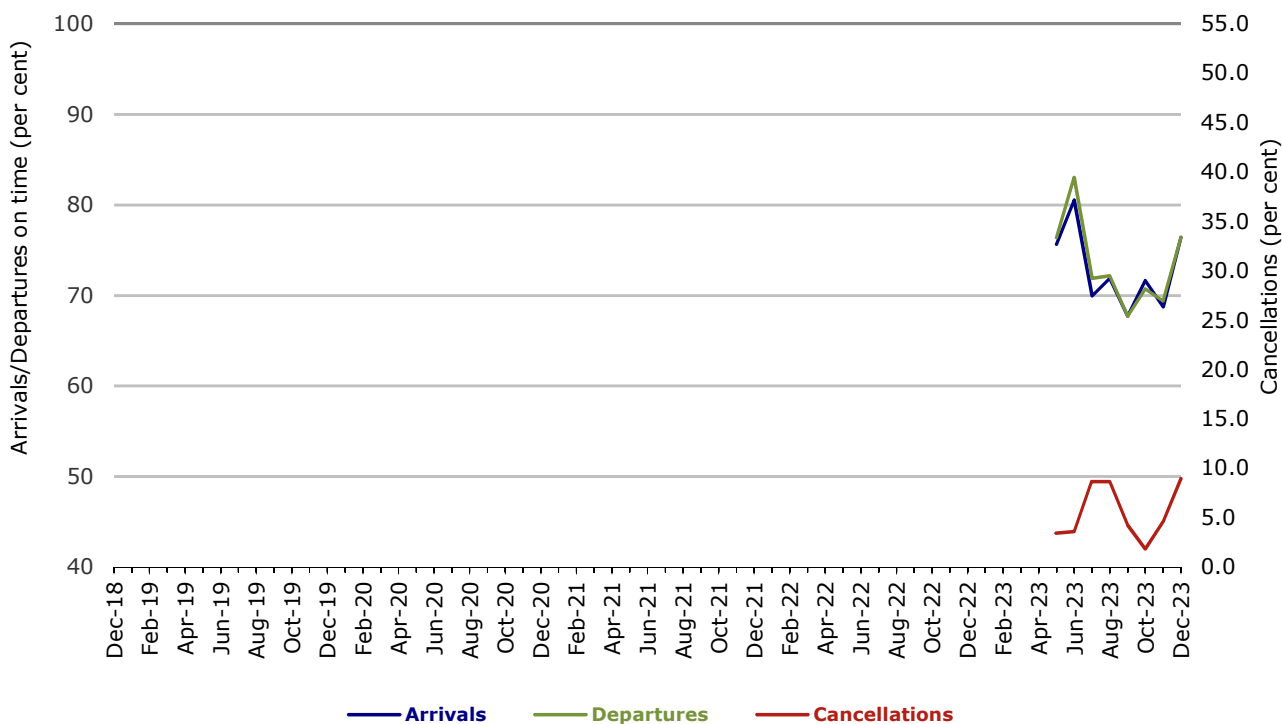
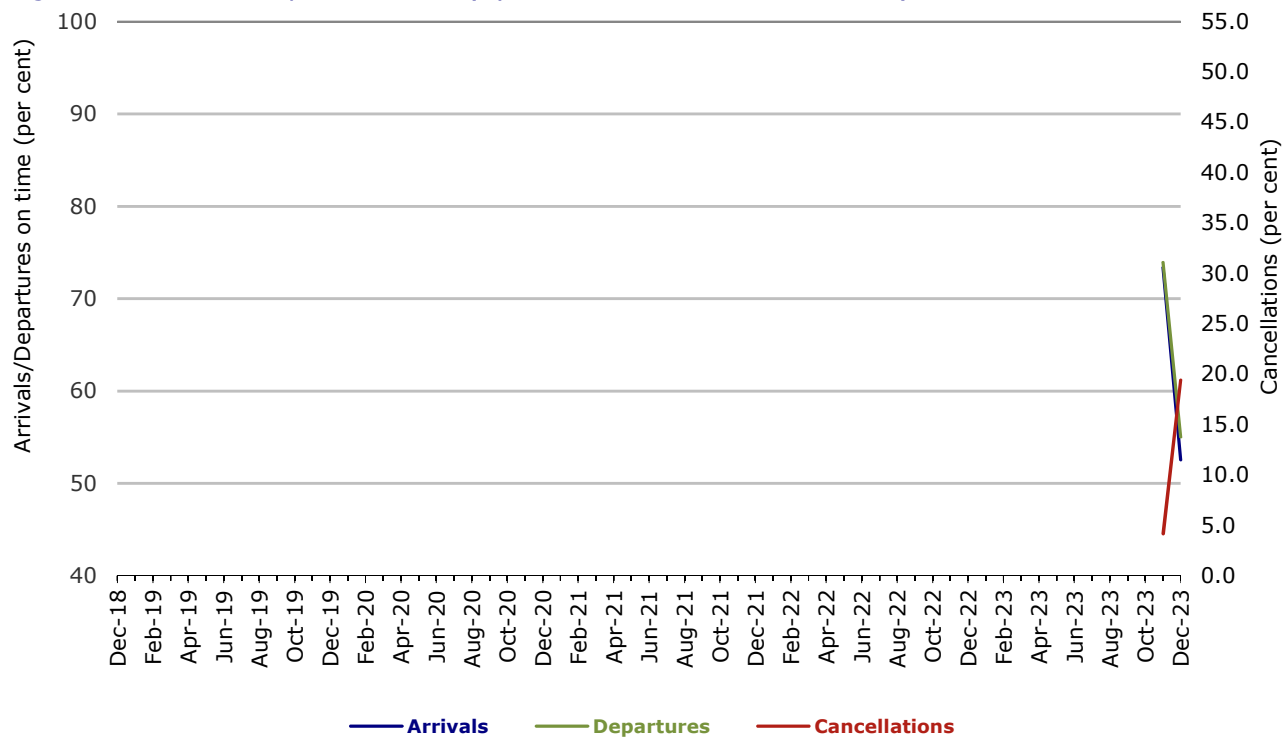


Figure 10 On time performance (by month from December 2018)—Bonza



Individual routes

On time performance is reported for all routes where the passenger load averages over 8,000 passengers per month over the previous six months, and where two or more airlines operate in competition on those routes. There are now 63 routes for which data are presented.

	<i>Sectors</i>		<i>Arrivals On Time</i>		<i>Departures On Time</i>		<i>Cancellations</i>	
	<i>Sched.</i>	<i>Flown</i>	<i>No.</i>	<i>%</i>	<i>No.</i>	<i>%</i>	<i>No.</i>	<i>%</i>
Adelaide-Alice Springs								
QantasLink	576	574	455	79.3	499	86.9	2	0.3
Virgin Australia	149	148	88	59.5	102	68.9	1	0.7
All Airlines	725	722	543	75.2	601	83.2	3	0.4
Adelaide-Brisbane								
Jetstar	384	361	256	70.9	243	67.3	23	6.0
Qantas	25	25	23	92.0	22	88.0	0	0.0
QantasLink	2 045	2 023	1 451	71.7	1 400	69.2	22	1.1
Virgin Australia	1 671	1 593	1 113	69.9	1 090	68.4	78	4.7
All Airlines	4 125	4 002	2 843	71.0	2 755	68.8	123	3.0
Adelaide-Cairns								
Jetstar	101	99	89	89.9	89	89.9	2	2.0
QantasLink	9	9	6	66.7	9	100.0	0	0.0
Virgin Australia	38	37	25	67.6	24	64.9	1	2.6
All Airlines	148	145	120	82.8	122	84.1	3	2.0
Adelaide-Canberra								
QantasLink	1 201	1 191	1 029	86.4	1 046	87.8	10	0.8
Virgin Australia	246	234	166	70.9	165	70.5	12	4.9
All Airlines	1 447	1 425	1 195	83.9	1 211	85.0	22	1.5
Adelaide-Darwin								
Jetstar	163	159	111	69.8	122	76.7	4	2.5
QantasLink	359	356	242	68.0	301	84.6	3	0.8
Virgin Australia	72	72	52	72.2	54	75.0	0	0.0
All Airlines	594	587	405	69.0	477	81.3	7	1.2
Adelaide-Gold Coast								
Jetstar	353	343	281	81.9	282	82.2	10	2.8
QantasLink	20	20	19	95.0	18	90.0	0	0.0
Virgin Australia	429	423	352	83.2	340	80.4	6	1.4
All Airlines	802	786	652	83.0	640	81.4	16	2.0
Adelaide-Melbourne								
Jetstar	1 251	1 193	744	62.4	688	57.7	58	4.6
Qantas	2 988	2 927	2 079	71.0	2 074	70.9	61	2.0
QantasLink	155	143	102	71.3	104	72.7	12	7.7
Rex Airlines	678	676	534	79.0	533	78.8	2	0.3
Virgin Australia	3 134	3 063	2 045	66.8	2 025	66.1	71	2.3
All Airlines	8 206	8 002	5 504	68.8	5 424	67.8	204	2.5
Adelaide-Perth								
Jetstar	336	325	260	80.0	265	81.5	11	3.3
Qantas	1 111	1 104	920	83.3	875	79.3	7	0.6
Virgin Australia	328	315	165	52.4	160	50.8	13	4.0
Virgin Australia Regional Airlines	482	435	221	50.8	161	37.0	47	9.8
All Airlines	2 257	2 179	1 566	71.9	1 461	67.0	78	3.5

	Sectors		Arrivals On Time		Departures On Time		Cancellations	
	Sched.	Flown	No.	%	No.	%	No.	%
Adelaide-Port Lincoln								
QantasLink	1 604	1 553	1 365	87.9	1 363	87.8	51	3.2
Rex Airlines	1 780	1 726	1 335	77.3	1 409	81.6	54	3.0
All Airlines	3 384	3 279	2 700	82.3	2 772	84.5	105	3.1
Adelaide-Sydney								
Jetstar	1 380	1 222	861	70.5	874	71.5	158	11.4
Qantas	2 666	2 612	1 792	68.6	1 792	68.6	54	2.0
Rex Airlines	122	122	64	52.5	60	49.2	0	0.0
Virgin Australia	2 109	1 984	1 260	63.5	1 280	64.5	125	5.9
All Airlines	6 277	5 940	3 977	67.0	4 006	67.4	337	5.4
Albury-Sydney								
QantasLink	1 241	1 214	885	72.9	881	72.6	27	2.2
Rex Airlines	1 200	1 177	910	77.3	952	80.9	23	1.9
All Airlines	2 441	2 391	1 795	75.1	1 833	76.7	50	2.0
Alice Springs-Adelaide								
QantasLink	577	573	415	72.4	414	72.3	4	0.7
Virgin Australia	149	148	54	36.5	44	29.7	1	0.7
All Airlines	726	721	469	65.0	458	63.5	5	0.7
Armidale-Sydney								
QantasLink	1 042	966	815	84.4	817	84.6	76	7.3
Rex Airlines	562	535	340	63.6	384	71.8	27	4.8
All Airlines	1 604	1 501	1 155	76.9	1 201	80.0	103	6.4
Ballina-Sydney								
Jetstar	907	900	573	63.7	567	63.0	7	0.8
QantasLink	1 000	954	736	77.1	750	78.6	46	4.6
Virgin Australia	580	568	333	58.6	333	58.6	12	2.1
All Airlines	2 487	2 422	1 642	67.8	1 650	68.1	65	2.6
Brisbane-Adelaide								
Jetstar	390	361	248	68.7	224	62.0	29	7.4
Qantas	28	28	23	82.1	24	85.7	0	0.0
QantasLink	2 043	2 017	1 240	61.5	1 393	69.1	26	1.3
Virgin Australia	1 668	1 593	1 108	69.6	1 066	66.9	75	4.5
All Airlines	4 129	3 999	2 619	65.5	2 707	67.7	130	3.1
Brisbane-Cairns								
Jetstar	1 008	977	658	67.3	662	67.8	31	3.1
Qantas	1 083	1 072	882	82.3	849	79.2	11	1.0
QantasLink	725	715	431	60.3	415	58.0	10	1.4
Virgin Australia	1 674	1 646	1 093	66.4	1 091	66.3	28	1.7
All Airlines	4 490	4 410	3 064	69.5	3 017	68.4	80	1.8
Brisbane-Canberra								
Jetstar	364	362	236	65.2	240	66.3	2	0.5
Qantas	97	93	86	92.5	84	90.3	4	4.1
QantasLink	1 849	1 827	1 346	73.7	1 364	74.7	22	1.2
Virgin Australia	1 239	1 203	880	73.2	858	71.3	36	2.9
All Airlines	3 549	3 485	2 548	73.1	2 546	73.1	64	1.8
Brisbane-Darwin								
Jetstar	268	256	177	69.1	170	66.4	12	4.5
Qantas	282	281	231	82.2	233	82.9	1	0.4
QantasLink	153	153	94	61.4	70	45.8	0	0.0
Virgin Australia	392	390	293	75.1	265	67.9	2	0.5
All Airlines	1 095	1 080	795	73.6	738	68.3	15	1.4

	Sectors		Arrivals On Time		Departures On Time		Cancellations	
	Sched.	Flown	No.	%	No.	%	No.	%
Brisbane-Emerald								
QantasLink	1 424	1 395	1 159	83.1	1 119	80.2	29	2.0
Virgin Australia	312	312	230	73.7	220	70.5	0	0.0
All Airlines	1 736	1 707	1 389	81.4	1 339	78.4	29	1.7
Brisbane-Gladstone								
QantasLink	1 658	1 543	1 231	79.8	1 173	76.0	115	6.9
Virgin Australia	614	601	404	67.2	399	66.4	13	2.1
All Airlines	2 272	2 144	1 635	76.3	1 572	73.3	128	5.6
Brisbane-Hamilton Island								
Qantas	271	271	223	82.3	217	80.1	0	0.0
QantasLink	7	7	3	42.9	4	57.1	0	0.0
Virgin Australia	424	421	314	74.6	307	72.9	3	0.7
All Airlines	702	699	540	77.3	528	75.5	3	0.4
Brisbane-Hobart								
Jetstar	297	295	235	79.7	229	77.6	2	0.7
Qantas	14	14	13	92.9	13	92.9	0	0.0
QantasLink	301	295	217	73.6	238	80.7	6	2.0
Virgin Australia	548	536	393	73.3	387	72.2	12	2.2
All Airlines	1 160	1 140	858	75.3	867	76.1	20	1.7
Brisbane-Launceston								
Jetstar	291	290	169	58.3	159	54.8	1	0.3
QantasLink	11	11	3	27.3	4	36.4	0	0.0
Virgin Australia	237	229	153	66.8	151	65.9	8	3.4
All Airlines	539	530	325	61.3	314	59.2	9	1.7
Brisbane-Mackay								
Jetstar	336	333	185	55.6	177	53.2	3	0.9
Qantas	1 034	1 031	848	82.3	824	79.9	3	0.3
QantasLink	425	418	244	58.4	249	59.6	7	1.6
Virgin Australia	1 643	1 626	911	56.0	928	57.1	17	1.0
All Airlines	3 438	3 408	2 188	64.2	2 178	63.9	30	0.9
Brisbane-Melbourne								
Jetstar	1 873	1 698	1 053	62.0	985	58.0	175	9.3
Qantas	4 486	4 377	3 271	74.7	3 349	76.5	109	2.4
Rex Airlines	724	717	491	68.5	501	69.9	7	1.0
Virgin Australia	4 813	4 547	2 807	61.7	2 922	64.3	266	5.5
All Airlines	11 896	11 339	7 622	67.2	7 757	68.4	557	4.7
Brisbane-Mount Isa								
Qantas	550	550	509	92.5	487	88.5	0	0.0
QantasLink	55	53	46	86.8	43	81.1	2	3.6
Virgin Australia	155	155	96	61.9	116	74.8	0	0.0
All Airlines	760	758	651	85.9	646	85.2	2	0.3
Brisbane-Newcastle								
Jetstar	680	669	519	77.6	525	78.5	11	1.6
QantasLink	1 538	1 425	1 160	81.4	1 121	78.7	113	7.3
Virgin Australia	983	969	560	57.8	581	60.0	14	1.4
All Airlines	3 201	3 063	2 239	73.1	2 227	72.7	138	4.3

	Sectors		Arrivals On Time		Departures On Time		Cancellations	
	Sched.	Flown	No.	%	No.	%	No.	%
Brisbane-Perth								
Jetstar	273	264	183	69.3	136	51.5	9	3.3
Qantas	1 822	1 814	1 408	77.6	1 292	71.2	8	0.4
Virgin Australia	1 446	1 380	947	68.6	756	54.8	66	4.6
All Airlines	3 541	3 458	2 538	73.4	2 184	63.2	83	2.3
Brisbane-Proserpine								
Jetstar	404	399	275	68.9	270	67.7	5	1.2
QantasLink	322	316	279	88.3	274	86.7	6	1.9
Virgin Australia	441	434	339	78.1	333	76.7	7	1.6
All Airlines	1 167	1 149	893	77.7	877	76.3	18	1.5
Brisbane-Rockhampton								
QantasLink	2 144	2 055	1 687	82.1	1 640	79.8	89	4.2
Virgin Australia	1 648	1 640	857	52.3	987	60.2	8	0.5
All Airlines	3 792	3 695	2 544	68.8	2 627	71.1	97	2.6
Brisbane-Sydney								
Jetstar	2 130	1 924	1 311	68.1	1 259	65.4	206	9.7
Qantas	6 315	6 048	4 700	77.7	4 897	81.0	267	4.2
Rex Airlines	1 716	1 694	1 252	73.9	1 304	77.0	22	1.3
Virgin Australia	5 621	5 198	3 348	64.4	3 502	67.4	423	7.5
All Airlines	15 782	14 864	10 611	71.4	10 962	73.7	918	5.8
Brisbane-Townsville								
Jetstar	591	584	413	70.7	424	72.6	7	1.2
Qantas	845	843	674	80.0	627	74.4	2	0.2
QantasLink	720	713	512	71.8	521	73.1	7	1.0
Virgin Australia	1 680	1 650	935	56.7	1 016	61.6	30	1.8
All Airlines	3 836	3 790	2 534	66.9	2 588	68.3	46	1.2
Broome-Perth								
Qantas	53	52	33	63.5	29	55.8	1	1.9
QantasLink	933	914	629	68.8	608	66.5	19	2.0
Virgin Australia	294	285	180	63.2	139	48.8	9	3.1
Virgin Australia Regional Airlines	294	277	175	63.2	136	49.1	17	5.8
All Airlines	1 574	1 528	1 017	66.6	912	59.7	46	2.9
Cairns-Adelaide								
Jetstar	101	99	71	71.7	69	69.7	2	2.0
QantasLink	9	9	1	11.1	6	66.7	0	0.0
Virgin Australia	38	37	19	51.4	18	48.6	1	2.6
All Airlines	148	145	91	62.8	93	64.1	3	2.0
Cairns-Brisbane								
Jetstar	1 010	981	706	72.0	711	72.5	29	2.9
Qantas	1 081	1 070	940	87.9	923	86.3	11	1.0
QantasLink	726	713	318	44.6	334	46.8	13	1.8
Virgin Australia	1 674	1 645	1 189	72.3	1 065	64.7	29	1.7
All Airlines	4 491	4 409	3 153	71.5	3 033	68.8	82	1.8
Cairns-Melbourne								
Jetstar	1 204	1 148	769	67.0	713	62.1	56	4.7
Qantas	395	390	233	59.7	221	56.7	5	1.3
Virgin Australia	819	787	428	54.4	417	53.0	32	3.9
All Airlines	2 418	2 325	1 430	61.5	1 351	58.1	93	3.8
Cairns-Sydney								
Jetstar	1 160	1 082	768	71.0	717	66.3	78	6.7
Qantas	540	535	304	56.8	289	54.0	5	0.9
Virgin Australia	987	958	665	69.4	657	68.6	29	2.9
All Airlines	2 687	2 575	1 737	67.5	1 663	64.6	112	4.2

	Sectors		Arrivals On Time		Departures On Time		Cancellations	
	Sched.	Flown	No.	%	No.	%	No.	%
Cairns-Townsville								
QantasLink	1 781	1 693	1 485	87.7	1 493	88.2	88	4.9
Rex Airlines	154	142	120	84.5	118	83.1	12	7.8
All Airlines	1 935	1 835	1 605	87.5	1 611	87.8	100	5.2
Canberra-Adelaide								
QantasLink	1 201	1 189	934	78.6	985	82.8	12	1.0
Virgin Australia	246	234	162	69.2	160	68.4	12	4.9
All Airlines	1 447	1 423	1 096	77.0	1 145	80.5	24	1.7
Canberra-Brisbane								
Jetstar	366	361	228	63.2	199	55.1	5	1.4
Qantas	96	92	85	92.4	86	93.5	4	4.2
QantasLink	1 850	1 824	1 440	78.9	1 406	77.1	26	1.4
Virgin Australia	1 240	1 205	906	75.2	895	74.3	35	2.8
All Airlines	3 552	3 482	2 659	76.4	2 586	74.3	70	2.0
Canberra-Gold Coast								
Jetstar	221	219	153	69.9	122	55.7	2	0.9
Virgin Australia	379	378	257	68.0	257	68.0	1	0.3
All Airlines	600	597	410	68.7	379	63.5	3	0.5
Canberra-Melbourne								
Jetstar	366	355	193	54.4	171	48.2	11	3.0
Qantas	9	9	5	55.6	5	55.6	0	0.0
QantasLink	3 045	2 896	2 035	70.3	2 080	71.8	149	4.9
Rex Airlines	364	364	248	68.1	254	69.8	0	0.0
Virgin Australia	1 439	1 416	852	60.2	900	63.6	23	1.6
All Airlines	5 223	5 040	3 333	66.1	3 410	67.7	183	3.5
Canberra-Sydney								
Qantas	24	24	24	100.0	24	100.0	0	0.0
QantasLink	5 179	4 633	3 252	70.2	3 370	72.7	546	10.5
Virgin Australia	2 875	2 761	2 144	77.7	2 130	77.1	114	4.0
All Airlines	8 078	7 418	5 420	73.1	5 524	74.5	660	8.2
Coffs Harbour-Sydney								
QantasLink	1 343	1 306	955	73.1	998	76.4	37	2.8
Rex Airlines	1 244	1 236	832	67.3	930	75.2	8	0.6
All Airlines	2 587	2 542	1 787	70.3	1 928	75.8	45	1.7
Darwin-Adelaide								
Jetstar	166	161	111	68.9	77	47.8	5	3.0
QantasLink	360	357	314	88.0	289	81.0	3	0.8
Virgin Australia	72	72	65	90.3	50	69.4	0	0.0
All Airlines	598	590	490	83.1	416	70.5	8	1.3
Darwin-Brisbane								
Jetstar	267	254	151	59.4	145	57.1	13	4.9
Qantas	281	278	212	76.3	170	61.2	3	1.1
QantasLink	154	154	122	79.2	132	85.7	0	0.0
Virgin Australia	391	386	282	73.1	218	56.5	5	1.3
All Airlines	1 093	1 072	767	71.5	665	62.0	21	1.9

	Sectors		Arrivals On Time		Departures On Time		Cancellations	
	Sched.	Flown	No.	%	No.	%	No.	%
Darwin-Melbourne								
Jetstar	306	299	145	48.5	125	41.8	7	2.3
Qantas	314	310	248	80.0	229	73.9	4	1.3
QantasLink	70	70	33	47.1	49	70.0	0	0.0
Virgin Australia	351	340	209	61.5	165	48.5	11	3.1
All Airlines	1 041	1 019	635	62.3	568	55.7	22	2.1
Darwin-Perth								
Qantas	70	70	62	88.6	54	77.1	0	0.0
QantasLink	332	329	191	58.1	165	50.2	3	0.9
Virgin Australia	97	97	67	69.1	70	72.2	0	0.0
Virgin Australia Regional Airlines	163	155	109	70.3	105	67.7	8	4.9
All Airlines	662	651	429	65.9	394	60.5	11	1.7
Darwin-Sydney								
Jetstar	24	24	15	62.5	11	45.8	0	0.0
Qantas	31	31	23	74.2	25	80.6	0	0.0
Virgin Australia	7	7	6	85.7	5	71.4	0	0.0
All Airlines	62	62	44	71.0	41	66.1	0	0.0
Devonport-Melbourne								
QantasLink	918	893	643	72.0	684	76.6	25	2.7
Rex Airlines	371	350	255	72.9	276	78.9	21	5.7
All Airlines	1 289	1 243	898	72.2	960	77.2	46	3.6
Dubbo-Sydney								
QantasLink	1 312	1 276	1 020	79.9	1 015	79.5	36	2.7
Rex Airlines	1 368	1 351	932	69.0	1 014	75.1	17	1.2
All Airlines	2 680	2 627	1 952	74.3	2 029	77.2	53	2.0
Emerald-Brisbane								
QantasLink	1 422	1 387	1 096	79.0	1 127	81.3	35	2.5
Virgin Australia	312	312	240	76.9	243	77.9	0	0.0
All Airlines	1 734	1 699	1 336	78.6	1 370	80.6	35	2.0
Gladstone-Brisbane								
QantasLink	1 656	1 531	1 233	80.5	1 235	80.7	125	7.5
Virgin Australia	614	601	317	52.7	399	66.4	13	2.1
All Airlines	2 270	2 132	1 550	72.7	1 634	76.6	138	6.1
Gold Coast-Adelaide								
Jetstar	353	343	286	83.4	268	78.1	10	2.8
QantasLink	20	20	12	60.0	14	70.0	0	0.0
Virgin Australia	429	422	261	61.8	265	62.8	7	1.6
All Airlines	802	785	559	71.2	547	69.7	17	2.1
Gold Coast-Canberra								
Jetstar	218	217	152	70.0	142	65.4	1	0.5
Virgin Australia	379	377	246	65.3	254	67.4	2	0.5
All Airlines	597	594	398	67.0	396	66.7	3	0.5
Gold Coast-Melbourne								
Bonza	23	15	2	13.3	4	26.7	8	34.8
Jetstar	2 545	2 390	1 589	66.5	1 556	65.1	155	6.1
Qantas	362	361	240	66.5	222	61.5	1	0.3
QantasLink	82	79	49	62.0	48	60.8	3	3.7
Rex Airlines	366	366	260	71.0	280	76.5	0	0.0
Virgin Australia	3 214	3 100	2 000	64.5	1 854	59.8	114	3.5
All Airlines	6 592	6 311	4 140	65.6	3 964	62.8	281	4.3

	Sectors		Arrivals On Time		Departures On Time		Cancellations	
	Sched.	Flown	No.	%	No.	%	No.	%
Gold Coast-Sydney								
Jetstar	3 082	2 880	2 006	69.7	2 021	70.2	202	6.6
Qantas	1 016	1 011	662	65.5	727	71.9	5	0.5
QantasLink	239	224	142	63.4	143	63.8	15	6.3
Rex Airlines	365	365	287	78.6	275	75.3	0	0.0
Virgin Australia	3 627	3 517	2 328	66.2	2 297	65.3	110	3.0
All Airlines	8 329	7 997	5 425	67.8	5 463	68.3	332	4.0
Hamilton Island-Brisbane								
Qantas	271	270	201	74.4	190	70.4	1	0.4
QantasLink	7	7	1	14.3	1	14.3	0	0.0
Virgin Australia	423	420	295	70.2	268	63.8	3	0.7
All Airlines	701	697	497	71.3	459	65.9	4	0.6
Hamilton Island-Sydney								
Jetstar	281	279	128	45.9	137	49.1	2	0.7
Qantas	361	357	217	60.8	200	56.0	4	1.1
Virgin Australia	347	342	162	47.4	184	53.8	5	1.4
All Airlines	989	978	507	51.8	521	53.3	11	1.1
Hobart-Brisbane								
Jetstar	299	297	194	65.3	201	67.7	2	0.7
Qantas	14	14	10	71.4	12	85.7	0	0.0
QantasLink	302	292	205	70.2	202	69.2	10	3.3
Virgin Australia	547	532	317	59.6	334	62.8	15	2.7
All Airlines	1 162	1 135	726	64.0	749	66.0	27	2.3
Hobart-Melbourne								
Jetstar	1 731	1 659	968	58.3	952	57.4	72	4.2
Qantas	451	446	329	73.8	326	73.1	5	1.1
QantasLink	779	759	448	59.0	498	65.6	20	2.6
Rex Airlines	133	133	71	53.4	82	61.7	0	0.0
Virgin Australia	1 543	1 529	857	56.0	1 039	68.0	14	0.9
All Airlines	4 637	4 526	2 673	59.1	2 897	64.0	111	2.4
Hobart-Sydney								
Jetstar	1 011	983	678	69.0	688	70.0	28	2.8
Qantas	239	237	179	75.5	171	72.2	2	0.8
QantasLink	758	734	494	67.3	518	70.6	24	3.2
Virgin Australia	908	880	590	67.0	627	71.3	28	3.1
All Airlines	2 916	2 834	1 941	68.5	2 004	70.7	82	2.8
Kalgoorlie-Perth								
Qantas	286	274	198	72.3	191	69.7	12	4.2
QantasLink	598	584	393	67.3	409	70.0	14	2.3
Virgin Australia	604	585	418	71.5	433	74.0	19	3.1
Virgin Australia Regional Airlines	391	379	265	69.9	264	69.7	12	3.1
All Airlines	1 879	1 822	1 274	69.9	1 297	71.2	57	3.0
Karratha-Perth								
Qantas	236	227	173	76.2	174	76.7	9	3.8
QantasLink	1 481	1 466	1 071	73.1	1 032	70.4	15	1.0
Virgin Australia	411	400	314	78.5	307	76.8	11	2.7
Virgin Australia Regional Airlines	251	242	138	57.0	133	55.0	9	3.6
All Airlines	2 379	2 335	1 696	72.6	1 646	70.5	44	1.8
Launceston-Brisbane								
Jetstar	296	291	143	49.1	104	35.7	5	1.7
QantasLink	10	10	7	70.0	6	60.0	0	0.0
Virgin Australia	236	228	137	60.1	138	60.5	8	3.4
All Airlines	542	529	287	54.3	248	46.9	13	2.4

	Sectors		Arrivals On Time		Departures On Time		Cancellations	
	Sched.	Flown	No.	%	No.	%	No.	%
Launceston-Melbourne								
Jetstar	1 177	1 145	593	51.8	525	45.9	32	2.7
QantasLink	1 356	1 279	942	73.7	907	70.9	77	5.7
Virgin Australia	1 124	1 112	781	70.2	841	75.6	12	1.1
All Airlines	3 657	3 536	2 316	65.5	2 273	64.3	121	3.3
Launceston-Sydney								
Jetstar	568	551	325	59.0	317	57.5	17	3.0
QantasLink	377	367	253	68.9	235	64.0	10	2.7
Virgin Australia	353	351	215	61.3	248	70.7	2	0.6
All Airlines	1 298	1 269	793	62.5	800	63.0	29	2.2
Mackay-Brisbane								
Jetstar	342	332	176	53.0	161	48.5	10	2.9
Qantas	1 037	1 027	822	80.0	804	78.3	10	1.0
QantasLink	472	461	269	58.4	280	60.7	11	2.3
Virgin Australia	1 644	1 622	986	60.8	932	57.5	22	1.3
All Airlines	3 495	3 442	2 253	65.5	2 177	63.2	53	1.5
Melbourne-Adelaide								
Jetstar	1 252	1 204	770	64.0	747	62.0	48	3.8
Qantas	2 985	2 939	2 035	69.2	2 074	70.6	46	1.5
QantasLink	156	143	94	65.7	112	78.3	13	8.3
Rex Airlines	677	677	482	71.2	505	74.6	0	0.0
Virgin Australia	3 136	3 068	1 947	63.5	2 093	68.2	68	2.2
All Airlines	8 206	8 031	5 328	66.3	5 531	68.9	175	2.1
Melbourne-Brisbane								
Jetstar	1 886	1 711	910	53.2	934	54.6	175	9.3
Qantas	4 486	4 384	3 139	71.6	3 114	71.0	102	2.3
Rex Airlines	723	720	546	75.8	578	80.3	3	0.4
Virgin Australia	4 840	4 581	2 963	64.7	3 101	67.7	259	5.4
All Airlines	11 935	11 396	7 558	66.3	7 727	67.8	539	4.5
Melbourne-Cairns								
Jetstar	1 204	1 153	760	65.9	722	62.6	51	4.2
Qantas	397	395	278	70.4	268	67.8	2	0.5
Virgin Australia	820	789	564	71.5	580	73.5	31	3.8
All Airlines	2 421	2 337	1 602	68.5	1 570	67.2	84	3.5
Melbourne-Canberra								
Jetstar	366	356	196	55.1	197	55.3	10	2.7
Qantas	12	12	7	58.3	9	75.0	0	0.0
QantasLink	3 043	2 913	2 146	73.7	2 177	74.7	130	4.3
Rex Airlines	363	363	267	73.6	285	78.5	0	0.0
Virgin Australia	1 440	1 420	915	64.4	935	65.8	20	1.4
All Airlines	5 224	5 064	3 531	69.7	3 603	71.1	160	3.1
Melbourne-Darwin								
Jetstar	308	304	182	59.9	193	63.5	4	1.3
Qantas	313	309	175	56.6	165	53.4	4	1.3
QantasLink	70	70	8	11.4	20	28.6	0	0.0
Virgin Australia	347	341	190	55.7	199	58.4	6	1.7
All Airlines	1 038	1 024	555	54.2	577	56.3	14	1.3
Melbourne-Devonport								
QantasLink	915	896	677	75.6	655	73.1	19	2.1
Rex Airlines	374	354	290	81.9	286	80.8	20	5.3
All Airlines	1 289	1 250	967	77.4	941	75.3	39	3.0

	Sectors		Arrivals On Time		Departures On Time		Cancellations	
	Sched.	Flown	No.	%	No.	%	No.	%
Melbourne-Gold Coast								
Bonza	23	15	6	40.0	7	46.7	8	34.8
Jetstar	2 546	2 399	1 509	62.9	1 438	59.9	147	5.8
Qantas	358	358	282	78.8	268	74.9	0	0.0
QantasLink	82	79	57	72.2	60	75.9	3	3.7
Rex Airlines	366	366	308	84.2	327	89.3	0	0.0
Virgin Australia	3 212	3 101	2 076	66.9	2 064	66.6	111	3.5
All Airlines	6 587	6 318	4 238	67.1	4 164	65.9	269	4.1
Melbourne-Hobart								
Jetstar	1 732	1 667	983	59.0	973	58.4	65	3.8
Qantas	452	450	267	59.3	261	58.0	2	0.4
QantasLink	778	763	526	68.9	547	71.7	15	1.9
Rex Airlines	134	134	91	67.9	101	75.4	0	0.0
Virgin Australia	1 543	1 531	959	62.6	1 024	66.9	12	0.8
All Airlines	4 639	4 545	2 826	62.2	2 906	63.9	94	2.0
Melbourne-Launceston								
Jetstar	1 166	1 138	675	59.3	675	59.3	28	2.4
QantasLink	1 360	1 292	888	68.7	903	69.9	68	5.0
Virgin Australia	1 125	1 112	651	58.5	718	64.6	13	1.2
All Airlines	3 651	3 542	2 214	62.5	2 296	64.8	109	3.0
Melbourne-Mildura								
Bonza	17	16	4	25.0	4	25.0	1	5.9
QantasLink	1 358	1 330	888	66.8	916	68.9	28	2.1
Rex Airlines	1 154	1 135	751	66.2	800	70.5	19	1.6
All Airlines	2 529	2 481	1 643	66.2	1 720	69.3	48	1.9
Melbourne-Newcastle								
Jetstar	629	622	428	68.8	424	68.2	7	1.1
QantasLink	643	618	388	62.8	411	66.5	25	3.9
Virgin Australia	464	461	312	67.7	324	70.3	3	0.6
All Airlines	1 736	1 701	1 128	66.3	1 159	68.1	35	2.0
Melbourne-Perth								
Jetstar	859	798	564	70.7	553	69.3	61	7.1
Qantas	2 487	2 445	1 514	61.9	1 549	63.4	42	1.7
Virgin Australia	2 229	2 150	1 425	66.3	1 259	58.6	79	3.5
All Airlines	5 575	5 393	3 503	65.0	3 361	62.3	182	3.3
Melbourne-Sunshine Coast								
Bonza	29	29	16	55.2	16	55.2	0	0.0
Jetstar	816	804	524	65.2	533	66.3	12	1.5
Qantas	315	312	244	78.2	229	73.4	3	1.0
QantasLink	90	90	63	70.0	69	76.7	0	0.0
Virgin Australia	932	921	671	72.9	665	72.2	11	1.2
All Airlines	2 182	2 156	1 518	70.4	1 512	70.1	26	1.2
Melbourne-Sydney								
Jetstar	4 604	4 097	2 674	65.3	2 598	63.4	507	11.0
Qantas	10 583	9 666	6 532	67.6	7 138	73.8	917	8.7
QantasLink	7	7	5	71.4	6	85.7	0	0.0
Rex Airlines	2 152	2 109	1 704	80.8	1 755	83.2	43	2.0
Virgin Australia	9 258	8 343	5 458	65.4	6 076	72.8	915	9.9
All Airlines	26 604	24 222	16 373	67.6	17 573	72.5	2 382	9.0
Mildura-Melbourne								
Bonza	17	16	1	6.3	1	6.3	1	5.9
QantasLink	1 361	1 323	832	62.9	850	64.2	38	2.8
Rex Airlines	1 150	1 125	733	65.2	795	70.7	25	2.2
All Airlines	2 528	2 464	1 566	63.6	1 646	66.8	64	2.5

	Sectors		Arrivals On Time		Departures On Time		Cancellations	
	Sched.	Flown	No.	%	No.	%	No.	%
Mount Isa-Brisbane								
Qantas	551	550	486	88.4	461	83.8	1	0.2
QantasLink	55	52	38	73.1	43	82.7	3	5.5
Virgin Australia	156	154	76	49.4	101	65.6	2	1.3
All Airlines	762	756	600	79.4	605	80.0	6	0.8
Newcastle-Brisbane								
Jetstar	683	670	479	71.5	480	71.6	13	1.9
QantasLink	1 538	1 401	1 213	86.6	1 139	81.3	137	8.9
Virgin Australia	983	968	601	62.1	611	63.1	15	1.5
All Airlines	3 204	3 039	2 293	75.5	2 230	73.4	165	5.1
Newcastle-Melbourne								
Jetstar	635	621	406	65.4	381	61.4	14	2.2
QantasLink	644	622	443	71.2	464	74.6	22	3.4
Virgin Australia	465	460	249	54.1	280	60.9	5	1.1
All Airlines	1 744	1 703	1 098	64.5	1 125	66.1	41	2.4
Newman-Perth								
Qantas	254	246	188	76.4	208	84.6	8	3.1
QantasLink	1 108	1 080	704	65.2	816	75.6	28	2.5
Virgin Australia	388	372	235	63.2	267	71.8	16	4.1
Virgin Australia Regional Airlines	285	273	201	73.6	205	75.1	12	4.2
All Airlines	2 035	1 971	1 328	67.4	1 496	75.9	64	3.1
Perth-Adelaide								
Jetstar	338	325	231	71.1	224	68.9	13	3.8
Qantas	1 117	1 111	869	78.2	805	72.5	6	0.5
Virgin Australia	331	317	206	65.0	234	73.8	14	4.2
Virgin Australia Regional Airlines	481	436	261	59.9	297	68.1	45	9.4
All Airlines	2 267	2 189	1 567	71.6	1 560	71.3	78	3.4
Perth-Brisbane								
Jetstar	279	262	140	53.4	120	45.8	17	6.1
Qantas	1 821	1 810	1 359	75.1	1 358	75.0	11	0.6
Virgin Australia	1 440	1 371	1 020	74.4	862	62.9	69	4.8
All Airlines	3 540	3 443	2 519	73.2	2 340	68.0	97	2.7
Perth-Broome								
Qantas	54	53	43	81.1	39	73.6	1	1.9
QantasLink	932	917	757	82.6	689	75.1	15	1.6
Virgin Australia	291	280	195	69.6	168	60.0	11	3.8
Virgin Australia Regional Airlines	297	280	202	72.1	183	65.4	17	5.7
All Airlines	1 574	1 530	1 197	78.2	1 079	70.5	44	2.8
Perth-Darwin								
Qantas	70	70	55	78.6	55	78.6	0	0.0
QantasLink	333	331	239	72.2	253	76.4	2	0.6
Virgin Australia	97	97	66	68.0	65	67.0	0	0.0
Virgin Australia Regional Airlines	163	158	111	70.3	105	66.5	5	3.1
All Airlines	663	656	471	71.8	478	72.9	7	1.1
Perth-Kalgoorlie								
Qantas	285	274	235	85.8	240	87.6	11	3.9
QantasLink	598	587	428	72.9	440	75.0	11	1.8
Virgin Australia	605	587	465	79.2	486	82.8	18	3.0
Virgin Australia Regional Airlines	389	378	279	73.8	297	78.6	11	2.8
All Airlines	1 877	1 826	1 407	77.1	1 463	80.1	51	2.7

	Sectors		Arrivals On Time		Departures On Time		Cancellations	
	Sched.	Flown	No.	%	No.	%	No.	%
Perth-Karratha								
Qantas	236	229	207	90.4	206	90.0	7	3.0
QantasLink	1 489	1 476	1 144	77.5	1 130	76.6	13	0.9
Virgin Australia	411	400	326	81.5	340	85.0	11	2.7
Virgin Australia Regional Airlines	251	242	146	60.3	163	67.4	9	3.6
All Airlines	2 387	2 347	1 823	77.7	1 839	78.4	40	1.7
Perth-Melbourne								
Jetstar	866	792	475	60.0	413	52.1	74	8.5
Qantas	2 494	2 444	1 665	68.1	1 562	63.9	50	2.0
Virgin Australia	2 336	2 246	1 618	72.0	1 579	70.3	90	3.9
All Airlines	5 696	5 482	3 758	68.6	3 554	64.8	214	3.8
Perth-Newman								
Qantas	254	247	224	90.7	223	90.3	7	2.8
QantasLink	1 110	1 092	891	81.6	908	83.2	18	1.6
Virgin Australia	388	374	297	79.4	314	84.0	14	3.6
Virgin Australia Regional Airlines	283	274	211	77.0	215	78.5	9	3.2
All Airlines	2 035	1 987	1 623	81.7	1 660	83.5	48	2.4
Perth-Port Hedland								
Qantas	316	309	256	82.8	251	81.2	7	2.2
QantasLink	1 295	1 274	1 012	79.4	1 029	80.8	21	1.6
Virgin Australia	304	288	223	77.4	230	79.9	16	5.3
Virgin Australia Regional Airlines	329	314	221	70.4	222	70.7	15	4.6
All Airlines	2 244	2 185	1 712	78.4	1 732	79.3	59	2.6
Perth-Sydney								
Jetstar	588	560	292	52.1	224	40.0	28	4.8
Qantas	2 502	2 453	1 631	66.5	1 555	63.4	49	2.0
Virgin Australia	1 708	1 647	1 274	77.4	1 055	64.1	61	3.6
All Airlines	4 798	4 660	3 197	68.6	2 834	60.8	138	2.9
Port Hedland-Perth								
Qantas	316	306	226	73.9	216	70.6	10	3.2
QantasLink	1 290	1 263	840	66.5	893	70.7	27	2.1
Virgin Australia	303	288	171	59.4	176	61.1	15	5.0
Virgin Australia Regional Airlines	329	313	183	58.5	166	53.0	16	4.9
All Airlines	2 238	2 170	1 420	65.4	1 451	66.9	68	3.0
Port Lincoln-Adelaide								
QantasLink	1 603	1 545	1 379	89.3	1 396	90.4	58	3.6
Rex Airlines	1 784	1 722	1 344	78.0	1 353	78.6	62	3.5
All Airlines	3 387	3 267	2 723	83.3	2 749	84.1	120	3.5
Port Macquarie-Sydney								
QantasLink	1 314	1 288	958	74.4	988	76.7	26	2.0
Rex Airlines	1 027	982	672	68.4	765	77.9	45	4.4
All Airlines	2 341	2 270	1 630	71.8	1 753	77.2	71	3.0
Proserpine-Brisbane								
Jetstar	408	401	227	56.6	225	56.1	7	1.7
QantasLink	323	312	238	76.3	245	78.5	11	3.4
Virgin Australia	441	434	273	62.9	281	64.7	7	1.6
All Airlines	1 172	1 147	738	64.3	751	65.5	25	2.1
Rockhampton-Brisbane								
QantasLink	2 147	2 031	1 546	76.1	1 535	75.6	116	5.4
Virgin Australia	1 649	1 637	900	55.0	1 042	63.7	12	0.7
All Airlines	3 796	3 668	2 446	66.7	2 577	70.3	128	3.4

	Sectors		Arrivals On Time		Departures On Time		Cancellations	
	Sched.	Flown	No.	%	No.	%	No.	%
Sunshine Coast-Melbourne								
Bonza	29	29	15	51.7	12	41.4	0	0.0
Jetstar	822	801	450	56.2	450	56.2	21	2.6
Qantas	313	309	175	56.6	151	48.9	4	1.3
QantasLink	90	89	57	64.0	51	57.3	1	1.1
Virgin Australia	932	920	515	56.0	587	63.8	12	1.3
All Airlines	2 186	2 148	1 212	56.4	1 251	58.2	38	1.7
Sunshine Coast-Sydney								
Jetstar	1 143	1 091	643	58.9	716	65.6	52	4.5
Qantas	488	485	323	66.6	316	65.2	3	0.6
QantasLink	249	239	168	70.3	190	79.5	10	4.0
Virgin Australia	825	820	421	51.3	537	65.5	5	0.6
All Airlines	2 705	2 635	1 555	59.0	1 759	66.8	70	2.6
Sydney-Adelaide								
Jetstar	1 378	1 226	796	64.9	754	61.5	152	11.0
Qantas	2 668	2 622	1 666	63.5	1 783	68.0	46	1.7
Rex Airlines	122	122	62	50.8	63	51.6	0	0.0
Virgin Australia	2 109	1 994	1 326	66.5	1 399	70.2	115	5.5
All Airlines	6 277	5 964	3 850	64.6	3 999	67.1	313	5.0
Sydney-Albury								
QantasLink	1 241	1 218	887	72.8	873	71.7	23	1.9
Rex Airlines	1 195	1 176	917	78.0	927	78.8	19	1.6
All Airlines	2 436	2 394	1 804	75.4	1 800	75.2	42	1.7
Sydney-Armidale								
QantasLink	1 040	970	823	84.8	735	75.8	70	6.7
Rex Airlines	550	525	397	75.6	390	74.3	25	4.5
All Airlines	1 590	1 495	1 220	81.6	1 125	75.3	95	6.0
Sydney-Ballina								
Jetstar	907	901	655	72.7	654	72.6	6	0.7
QantasLink	1 001	958	744	77.7	685	71.5	43	4.3
Virgin Australia	580	569	380	66.8	399	70.1	11	1.9
All Airlines	2 488	2 428	1 779	73.3	1 738	71.6	60	2.4
Sydney-Brisbane								
Jetstar	2 124	1 931	1 205	62.4	1 213	62.8	193	9.1
Qantas	6 347	6 086	4 110	67.5	4 157	68.3	261	4.1
Rex Airlines	1 718	1 696	1 244	73.3	1 310	77.2	22	1.3
Virgin Australia	5 590	5 174	3 642	70.4	3 726	72.0	416	7.4
All Airlines	15 779	14 887	10 201	68.5	10 406	69.9	892	5.7
Sydney-Cairns								
Jetstar	1 153	1 085	755	69.6	735	67.7	68	5.9
Qantas	538	534	298	55.8	310	58.1	4	0.7
Virgin Australia	982	957	749	78.3	721	75.3	25	2.5
All Airlines	2 673	2 576	1 802	70.0	1 766	68.6	97	3.6
Sydney-Canberra								
Qantas	24	24	24	100.0	24	100.0	0	0.0
QantasLink	5 180	4 681	3 488	74.5	3 529	75.4	499	9.6
Virgin Australia	2 871	2 754	2 212	80.3	2 060	74.8	117	4.1
All Airlines	8 075	7 459	5 724	76.7	5 613	75.3	616	7.6
Sydney-Coffs Harbour								
QantasLink	1 345	1 312	965	73.6	899	68.5	33	2.5
Rex Airlines	1 241	1 236	984	79.6	918	74.3	5	0.4
All Airlines	2 586	2 548	1 949	76.5	1 817	71.3	38	1.5

	Sectors		Arrivals On Time		Departures On Time		Cancellations	
	Sched.	Flown	No.	%	No.	%	No.	%
Sydney-Darwin								
Jetstar	24	24	14	58.3	11	45.8	0	0.0
Qantas	31	31	24	77.4	22	71.0	0	0.0
Virgin Australia	7	7	2	28.6	2	28.6	0	0.0
All Airlines	62	62	40	64.5	35	56.5	0	0.0
Sydney-Dubbo								
QantasLink	1 313	1 281	956	74.6	855	66.7	32	2.4
Rex Airlines	1 419	1 408	1 090	77.4	1 045	74.2	11	0.8
All Airlines	2 732	2 689	2 046	76.1	1 900	70.7	43	1.6
Sydney-Gold Coast								
Jetstar	3 067	2 880	2 049	71.1	2 026	70.3	187	6.1
Qantas	1 013	1 011	683	67.6	636	62.9	2	0.2
QantasLink	239	224	159	71.0	167	74.6	15	6.3
Rex Airlines	365	365	289	79.2	304	83.3	0	0.0
Virgin Australia	3 629	3 524	2 264	64.2	2 392	67.9	105	2.9
All Airlines	8 313	8 004	5 444	68.0	5 525	69.0	309	3.7
Sydney-Hamilton Island								
Jetstar	281	281	191	68.0	184	65.5	0	0.0
Qantas	361	358	217	60.6	223	62.3	3	0.8
Virgin Australia	345	343	245	71.4	256	74.6	2	0.6
All Airlines	987	982	653	66.5	663	67.5	5	0.5
Sydney-Hobart								
Jetstar	1 009	984	716	72.8	673	68.4	25	2.5
Qantas	239	238	188	79.0	174	73.1	1	0.4
QantasLink	762	740	504	68.1	494	66.8	22	2.9
Virgin Australia	908	882	675	76.5	693	78.6	26	2.9
All Airlines	2 918	2 844	2 083	73.2	2 034	71.5	74	2.5
Sydney-Launceston								
Jetstar	568	557	369	66.2	364	65.4	11	1.9
QantasLink	377	370	243	65.7	258	69.7	7	1.9
Virgin Australia	353	352	271	77.0	260	73.9	1	0.3
All Airlines	1 298	1 279	883	69.0	882	69.0	19	1.5
Sydney-Melbourne								
Jetstar	4 594	4 100	2 710	66.1	2 658	64.8	494	10.8
Qantas	10 571	9 670	6 371	65.9	6 554	67.8	901	8.5
QantasLink	7	7	6	85.7	6	85.7	0	0.0
Rex Airlines	2 151	2 114	1 539	72.8	1 651	78.1	37	1.7
Virgin Australia	9 179	8 268	5 479	66.3	5 694	68.9	911	9.9
All Airlines	26 502	24 159	16 105	66.7	16 563	68.6	2 343	8.8
Sydney-Perth								
Jetstar	586	568	346	60.9	328	57.7	18	3.1
Qantas	2 507	2 471	1 368	55.4	1 386	56.1	36	1.4
Virgin Australia	1 817	1 741	1 155	66.3	1 048	60.2	76	4.2
All Airlines	4 910	4 780	2 869	60.0	2 762	57.8	130	2.6
Sydney-Port Macquarie								
QantasLink	1 315	1 294	983	76.0	910	70.3	21	1.6
Rex Airlines	1 042	998	780	78.2	771	77.3	44	4.2
All Airlines	2 357	2 292	1 763	76.9	1 681	73.3	65	2.8
Sydney-Sunshine Coast								
Jetstar	1 140	1 097	820	74.7	818	74.6	43	3.8
Qantas	490	488	316	64.8	284	58.2	2	0.4
QantasLink	248	241	156	64.7	158	65.6	7	2.8
Virgin Australia	823	819	535	65.3	587	71.7	4	0.5
All Airlines	2 701	2 645	1 827	69.1	1 847	69.8	56	2.1

	Sectors		Arrivals On Time		Departures On Time		Cancellations	
	Sched.	Flown	No.	%	No.	%	No.	%
Sydney-Wagga Wagga								
QantasLink	1 263	1 225	945	77.1	902	73.6	38	3.0
Rex Airlines	1 141	1 119	846	75.6	856	76.5	22	1.9
All Airlines	2 404	2 344	1 791	76.4	1 758	75.0	60	2.5
Townsville-Brisbane								
Jetstar	593	580	369	63.6	372	64.1	13	2.2
Qantas	843	841	694	82.5	678	80.6	2	0.2
QantasLink	720	715	421	58.9	454	63.5	5	0.7
Virgin Australia	1 679	1 647	879	53.4	903	54.8	32	1.9
All Airlines	3 835	3 783	2 363	62.5	2 407	63.6	52	1.4
Townsville-Cairns								
QantasLink	1 781	1 687	1 476	87.5	1 458	86.4	94	5.3
Rex Airlines	153	142	126	88.7	126	88.7	11	7.2
All Airlines	1 934	1 829	1 602	87.6	1 584	86.6	105	5.4
Wagga Wagga-Sydney								
QantasLink	1 262	1 215	996	82.0	955	78.6	47	3.7
Rex Airlines	1 136	1 110	806	72.6	877	79.0	26	2.3
All Airlines	2 398	2 325	1 802	77.5	1 832	78.8	73	3.0

Airports

The following data reports by airport against flights operated on published routes only. In 2023, 8 capital city airports and 29 regional city airports are covered.

Airport	Arrivals			Departures		
	Sectors	On Time		Sectors	On Time	
	Flown	No.	%	Flown	No.	%
Adelaide						
Jetstar	3 719	2 513	67.6	3 702	2 563	69.2
Qantas	6 700	4 593	68.6	6 668	4 763	71.4
QantasLink	5 853	4 389	75.0	5 869	4 740	80.8
Rex Airlines	2 521	1 888	74.9	2 524	2 002	79.3
Virgin Australia	7 885	5 148	65.3	7 869	5 240	66.6
Virgin Australia Regional Airlines	436	261	59.9	435	161	37.0
All Airlines	27 114	18 792	69.3	27 067	19 469	71.9
Relates to services to and from Alice Springs, Brisbane, Cairns, Canberra, Darwin, Gold Coast, Melbourne, Perth, Port Lincoln and Sydney only.						
Albury						
QantasLink	1 218	887	72.8	1 214	881	72.6
Rex Airlines	1 176	917	78.0	1 177	952	80.9
All Airlines	2 394	1 804	75.4	2 391	1 833	76.7
Relates to services to and from Sydney only.						
Alice Springs						
QantasLink	574	455	79.3	573	414	72.3
Virgin Australia	148	88	59.5	148	44	29.7
All Airlines	722	543	75.2	721	458	63.5
Relates to services to and from Adelaide only.						
Armidale						
QantasLink	970	823	84.8	966	817	84.6
Rex Airlines	525	397	75.6	535	384	71.8
All Airlines	1 495	1 220	81.6	1 501	1 201	80.0
Relates to services to and from Sydney only.						
Ballina						
Jetstar	901	655	72.7	900	567	63.0
QantasLink	958	744	77.7	954	750	78.6
Virgin Australia	569	380	66.8	568	333	58.6
All Airlines	2 428	1 779	73.3	2 422	1 650	68.1
Relates to services to and from Sydney only.						
Brisbane						
Jetstar	8 432	5 184	61.5	8 412	5 460	64.9
Qantas	16 447	12 081	73.5	16 422	12 896	78.5
QantasLink	12 913	9 598	74.3	12 943	9 628	74.4
Rex Airlines	2 416	1 790	74.1	2 411	1 805	74.9
Virgin Australia	24 510	16 136	65.8	24 530	15 885	64.8
All Airlines	64 718	44 789	69.2	64 718	45 674	70.6
Relates to services to and from Adelaide, Cairns, Canberra, Darwin, Emerald, Gladstone, Hamilton Island, Hobart, Launceston, Mackay, Melbourne, Mount Isa, Newcastle, Perth, Proserpine, Rockhampton, Sydney and Townsville only.						

Airport	Arrivals			Departures		
	Sectors	On Time		Sectors	On Time	
	Flown	No.	%	Flown	No.	%
Broome						
Qantas	53	43	81.1	52	29	55.8
QantasLink	917	757	82.6	914	608	66.5
Virgin Australia	280	195	69.6	285	139	48.8
Virgin Australia Regional Airlines	280	202	72.1	277	136	49.1
All Airlines	1 530	1 197	78.2	1 528	912	59.7
Relates to services to and from Perth only.						
Cairns						
Jetstar	3 314	2 262	68.3	3 310	2 210	66.8
Qantas	2 001	1 458	72.9	1 995	1 433	71.8
QantasLink	2 411	1 913	79.3	2 415	1 833	75.9
Rex Airlines	142	126	88.7	142	118	83.1
Virgin Australia	3 429	2 431	70.9	3 427	2 157	62.9
All Airlines	11 297	8 190	72.5	11 289	7 751	68.7
Relates to services to and from Adelaide, Brisbane, Melbourne, Sydney and Townsville only.						
Canberra						
Jetstar	935	584	62.5	935	492	52.6
Qantas	129	117	90.7	125	115	92.0
QantasLink	10 612	8 009	75.5	10 542	7 841	74.4
Rex Airlines	363	267	73.6	364	254	69.8
Virgin Australia	5 988	4 419	73.8	5 994	4 342	72.4
All Airlines	18 027	13 396	74.3	17 960	13 044	72.6
Relates to services to and from Adelaide, Brisbane, Gold Coast, Melbourne and Sydney only.						
Coffs Harbour						
QantasLink	1 312	965	73.6	1 306	998	76.4
Rex Airlines	1 236	984	79.6	1 236	930	75.2
All Airlines	2 548	1 949	76.5	2 542	1 928	75.8
Relates to services to and from Sydney only.						
Darwin						
Jetstar	743	484	65.1	738	358	48.5
Qantas	691	485	70.2	689	478	69.4
QantasLink	910	583	64.1	910	635	69.8
Virgin Australia	907	603	66.5	902	508	56.3
Virgin Australia Regional Airlines	158	111	70.3	155	105	67.7
All Airlines	3 409	2 266	66.5	3 394	2 084	61.4
Relates to services to and from Adelaide, Brisbane, Melbourne, Perth and Sydney only.						
Devonport						
QantasLink	896	677	75.6	893	684	76.6
Rex Airlines	354	290	81.9	350	276	78.9
All Airlines	1 250	967	77.4	1 243	960	77.2
Relates to services to and from Melbourne only.						
Dubbo						
QantasLink	1 281	956	74.6	1 276	1 015	79.5
Rex Airlines	1 408	1 090	77.4	1 351	1 014	75.1
All Airlines	2 689	2 046	76.1	2 627	2 029	77.2
Relates to services to and from Sydney only.						

Airport	Arrivals			Departures		
	Sectors Flown	On Time		Sectors Flown	On Time	
		No.	%		No.	%
Emerald						
QantasLink	1 395	1 159	83.1	1 387	1 127	81.3
Virgin Australia	312	230	73.7	312	243	77.9
All Airlines	1 707	1 389	81.4	1 699	1 370	80.6
Relates to services to and from Brisbane only.						
Gladstone						
QantasLink	1 543	1 231	79.8	1 531	1 235	80.7
Virgin Australia	601	404	67.2	601	399	66.4
All Airlines	2 144	1 635	76.3	2 132	1 634	76.6
Relates to services to and from Brisbane only.						
Gold Coast						
Bonza	15	6	40.0	15	4	26.7
Jetstar	5 841	3 992	68.3	5 830	3 987	68.4
Qantas	1 369	965	70.5	1 372	949	69.2
QantasLink	323	235	72.8	323	205	63.5
Rex Airlines	731	597	81.7	731	555	75.9
Virgin Australia	7 426	4 949	66.6	7 416	4 670	63.0
All Airlines	15 705	10 744	68.4	15 687	10 370	66.1
Relates to services to and from Adelaide, Canberra, Melbourne and Sydney only.						
Hamilton Island						
Jetstar	281	191	68.0	279	137	49.1
Qantas	629	440	70.0	627	390	62.2
QantasLink	7	3	42.9	7	1	14.3
Virgin Australia	764	559	73.2	762	452	59.3
All Airlines	1 681	1 193	71.0	1 675	980	58.5
Relates to services to and from Brisbane and Sydney only.						
Hobart						
Jetstar	2 946	1 934	65.6	2 939	1 841	62.6
Qantas	702	468	66.7	697	509	73.0
QantasLink	1 798	1 247	69.4	1 785	1 218	68.2
Rex Airlines	134	91	67.9	133	82	61.7
Virgin Australia	2 949	2 027	68.7	2 941	2 000	68.0
All Airlines	8 529	5 767	67.6	8 495	5 650	66.5
Relates to services to and from Brisbane, Melbourne and Sydney only.						
Kalgoorlie						
Qantas	274	235	85.8	274	191	69.7
QantasLink	587	428	72.9	584	409	70.0
Virgin Australia	587	465	79.2	585	433	74.0
Virgin Australia Regional Airlines	378	279	73.8	379	264	69.7
All Airlines	1 826	1 407	77.1	1 822	1 297	71.2
Relates to services to and from Perth only.						
Karratha						
Qantas	229	207	90.4	227	174	76.7
QantasLink	1 476	1 144	77.5	1 466	1 032	70.4
Virgin Australia	400	326	81.5	400	307	76.8
Virgin Australia Regional Airlines	242	146	60.3	242	133	55.0
All Airlines	2 347	1 823	77.7	2 335	1 646	70.5
Relates to services to and from Perth only.						

Airport	Arrivals			Departures		
	Sectors	On Time		Sectors	On Time	
	Flown	No.	%	Flown	No.	%
Launceston						
Jetstar	1 985	1 213	61.1	1 987	946	47.6
QantasLink	1 673	1 134	67.8	1 656	1 148	69.3
Virgin Australia	1 693	1 075	63.5	1 691	1 227	72.6
All Airlines	5 351	3 422	64.0	5 334	3 321	62.3
Relates to services to and from Brisbane, Melbourne and Sydney only.						
Mackay						
Jetstar	333	185	55.6	332	161	48.5
Qantas	1 031	848	82.3	1 027	804	78.3
QantasLink	418	244	58.4	461	280	60.7
Virgin Australia	1 626	911	56.0	1 622	932	57.5
All Airlines	3 408	2 188	64.2	3 442	2 177	63.2
Relates to services to and from Brisbane only.						
Melbourne						
Bonza	60	18	30.0	60	27	45.0
Jetstar	16 201	10 095	62.3	16 253	9 987	61.4
Qantas	21 243	14 616	68.8	21 270	15 075	70.9
QantasLink	8 160	5 590	68.5	8 201	5 876	71.6
Rex Airlines	5 845	4 131	70.7	5 858	4 637	79.2
Virgin Australia	27 788	17 840	64.2	27 818	19 038	68.4
All Airlines	79 297	52 290	65.9	79 460	54 640	68.8
Relates to services to and from Adelaide, Brisbane, Cairns, Canberra, Darwin, Devonport, Gold Coast, Hobart, Launceston, Mildura, Newcastle, Perth, Sunshine Coast and Sydney only.						
Mildura						
Bonza	16	4	25.0	16	1	6.3
QantasLink	1 330	888	66.8	1 323	850	64.2
Rex Airlines	1 135	751	66.2	1 125	795	70.7
All Airlines	2 481	1 643	66.2	2 464	1 646	66.8
Relates to services to and from Melbourne only.						
Mount Isa						
Qantas	550	509	92.5	550	461	83.8
QantasLink	53	46	86.8	52	43	82.7
Virgin Australia	155	96	61.9	154	101	65.6
All Airlines	758	651	85.9	756	605	80.0
Relates to services to and from Brisbane only.						
Newcastle						
Jetstar	1 291	947	73.4	1 291	861	66.7
QantasLink	2 043	1 548	75.8	2 023	1 603	79.2
Virgin Australia	1 430	872	61.0	1 428	891	62.4
All Airlines	4 764	3 367	70.7	4 742	3 355	70.8
Relates to services to and from Brisbane and Melbourne only.						
Newman						
Qantas	247	224	90.7	246	208	84.6
QantasLink	1 092	891	81.6	1 080	816	75.6
Virgin Australia	374	297	79.4	372	267	71.8
Virgin Australia Regional Airlines	274	211	77.0	273	205	75.1
All Airlines	1 987	1 623	81.7	1 971	1 496	75.9
Relates to services to and from Perth only.						

Airport	Arrivals			Departures		
	Sectors	On Time		Sectors	On Time	
	Flown	No.	%	Flown	No.	%
Perth						
Jetstar	1 955	1 353	69.2	1 939	981	50.6
Qantas	9 009	6 090	67.6	9 000	6 294	69.9
QantasLink	5 636	3 828	67.9	5 677	4 449	78.4
Virgin Australia	7 613	5 077	66.7	7 607	5 333	70.1
Virgin Australia Regional Airlines	2 074	1 292	62.3	2 082	1 482	71.2
All Airlines	26 287	17 640	67.1	26 305	18 539	70.5
Relates to services to and from Adelaide, Brisbane, Broome, Darwin, Kalgoorlie, Karratha, Melbourne, Newman, Port Hedland and Sydney only.						
Port Hedland						
Qantas	309	256	82.8	306	216	70.6
QantasLink	1 274	1 012	79.4	1 263	893	70.7
Virgin Australia	288	223	77.4	288	176	61.1
Virgin Australia Regional Airlines	314	221	70.4	313	166	53.0
All Airlines	2 185	1 712	78.4	2 170	1 451	66.9
Relates to services to and from Perth only.						
Port Lincoln						
QantasLink	1 553	1 365	87.9	1 545	1 396	90.4
Rex Airlines	1 726	1 335	77.3	1 722	1 353	78.6
All Airlines	3 279	2 700	82.3	3 267	2 749	84.1
Relates to services to and from Adelaide only.						
Port Macquarie						
QantasLink	1 294	983	76.0	1 288	988	76.7
Rex Airlines	998	780	78.2	982	765	77.9
All Airlines	2 292	1 763	76.9	2 270	1 753	77.2
Relates to services to and from Sydney only.						
Proserpine						
Jetstar	399	275	68.9	401	225	56.1
QantasLink	316	279	88.3	312	245	78.5
Virgin Australia	434	339	78.1	434	281	64.7
All Airlines	1 149	893	77.7	1 147	751	65.5
Relates to services to and from Brisbane only.						
Rockhampton						
QantasLink	2 055	1 687	82.1	2 031	1 535	75.6
Virgin Australia	1 640	857	52.3	1 637	1 042	63.7
All Airlines	3 695	2 544	68.8	3 668	2 577	70.3
Relates to services to and from Brisbane only.						
Sunshine Coast						
Bonza	29	16	55.2	29	12	41.4
Jetstar	1 901	1 344	70.7	1 892	1 166	61.6
Qantas	800	560	70.0	794	467	58.8
QantasLink	331	219	66.2	328	241	73.5
Virgin Australia	1 740	1 206	69.3	1 740	1 124	64.6
All Airlines	4 801	3 345	69.7	4 783	3 010	62.9
Relates to services to and from Melbourne and Sydney only.						

Airport	Arrivals			Departures		
	Sectors	On Time		Sectors	On Time	
	Flown	No.	%	Flown	No.	%
Sydney						
Jetstar	15 593	10 274	65.9	15 634	10 418	66.6
Qantas	23 459	16 387	69.9	23 533	15 553	66.1
QantasLink	14 423	10 679	74.0	14 521	10 471	72.1
Rex Airlines	10 681	7 799	73.0	10 759	8 235	76.5
Virgin Australia	27 376	18 204	66.5	27 384	19 237	70.2
All Airlines	91 532	63 343	69.2	91 831	63 914	69.6

Relates to services to and from Adelaide, Albury, Armidale, Ballina, Brisbane, Cairns, Canberra, Coffs Harbour, Darwin, Dubbo, Gold Coast, Hamilton Island, Hobart, Launceston, Melbourne, Perth, Port Macquarie, Sunshine Coast, and Wagga Wagga only.

Townsville

Jetstar	584	413	70.7	580	372	64.1
Qantas	843	674	80.0	841	678	80.6
QantasLink	2 406	1 997	83.0	2 402	1 912	79.6
Rex Airlines	142	120	84.5	142	126	88.7
Virgin Australia	1 650	935	56.7	1 647	903	54.8
All Airlines	5 625	4 139	73.6	5 612	3 991	71.1

Relates to services to and from Brisbane and Cairns only.

Wagga Wagga

QantasLink	1 225	945	77.1	1 215	955	78.6
Rex Airlines	1 119	846	75.6	1 110	877	79.0
All Airlines	2 344	1 791	76.4	2 325	1 832	78.8

Relates to services to and from Sydney only.

Definitions

On time arrival	A flight arrival is counted as "on time" if it arrived at the gate before 15 minutes after the scheduled arrival time shown in the carriers' schedule. Neither diverted nor cancelled flights count as on time.
On time departure	A flight departure is counted as "on time" if it departs the gate before 15 minutes after the scheduled departure time shown in the carriers' schedule.
Cancellation	A flight removed from service within 7 days of scheduled departure is regarded as a cancellation.
On time departure percentage	The percentage of on time departures is measured against the number of departures <i>operated</i> on any particular sector.
On time arrival percentage	The percentage of on time arrivals is measured against the number of arrivals <i>operated</i> on any particular sector.
Cancellation percentage	The percentage of cancellations is measured against the number of services <i>scheduled</i> on any particular sector.
