



Australian Government

**Department of Infrastructure, Transport,
Regional Development, Communications and the Arts**
Bureau of Infrastructure and Transport Research Economics

STATISTICAL REPORT



Aviation

**Domestic airline on time performance
April 2024**

The Department of Infrastructure, Transport, Regional Development, Communications and the Arts acknowledges the Traditional Custodians of Country of the land on which we work and live.

We recognise and respect the continuing connections to land, waters and communities.

We pay our respects to them and their cultures and to their Elders both past and present and to all Aboriginal and Torres Strait Islander people.

© Commonwealth of Australia 2024

ISSN: 1832-0759

Ownership of intellectual property rights in this publication

Unless otherwise noted, copyright (and any other intellectual property rights, if any) in this publication is owned by the Commonwealth of Australia (referred to below as the Commonwealth).

Disclaimer

The material contained in this publication is made available on the understanding that the Commonwealth is not providing professional advice, and that users exercise their own skill and care with respect to its use, and seek independent advice if necessary.

The Commonwealth makes no representations or warranties as to the contents or accuracy of the information contained in this publication. To the extent permitted by law, the Commonwealth disclaims liability to any person or organisation in respect of anything done, or omitted to be done, in reliance upon information contained in this publication.

Creative Commons licence

With the exception of (a) the Coat of Arms; and (b) the Department of Infrastructure, Transport, Regional Development, Communications and the Arts' photos and graphics, copyright in this publication is licensed under a Creative Commons Attribution 3.0 Australia Licence.

Creative Commons Attribution 3.0 Australia Licence is a standard form licence agreement that allows you to copy, communicate and adapt this publication provided that you attribute the work to the Commonwealth and abide by the other licence terms. A summary of the licence terms is available from <http://creativecommons.org/licenses/by/3.0/au/deed.en>. The full licence terms are available from <http://creativecommons.org/licenses/by/3.0/au/legalcode>.

Use of the Coat of Arms

The Department of the Prime Minister and Cabinet sets the terms under which the Coat of Arms is used. Please refer to the Department's Commonwealth Coat of Arms and Government branding web page <http://www.dpmmc.gov.au/guidelines/index.cfm#brand> and, in particular, the Guidelines on the use of the Commonwealth Coat of Arms publication.

An appropriate citation for this report is:

Bureau of Infrastructure and Transport Research Economics (BITRE), 2024, Domestic airline on time performance, Statistical Report, BITRE, Canberra ACT.

Contact us

All other rights are reserved, including in relation to any Departmental logos or trade marks which may exist. For enquiries regarding the licence and any use of this publication, please contact:

Bureau of Infrastructure and Transport Research Economics (BITRE)
Department of Infrastructure, Transport, Regional Development, Communications and the Arts
GPO Box 501, Canberra ACT 2601, Australia
Telephone: (international) +61 2 6136 8687
Email: bitre@infrastructure.gov.au
Website: www.bitre.gov.au

Inquiries

Should you require additional information about the statistics contained in this publication:

Telephone (02) 6136 7250

Electronic mail: AVSTATS@infrastructure.gov.au

Web site: <http://www.bitre.gov.au/statistics/aviation/otphome.aspx>

Foreword

The Bureau of Infrastructure and Transport Research Economics (BITRE) monitors the punctuality and reliability of major domestic airlines operating between Australian airports. The purpose of this is to allow for evaluation of overall industry and individual airline performance, so that consumers of air travel can make informed decisions.

The following domestic airlines currently report this information monthly to the BITRE: Hinterland, Jetstar, Qantas, QantasLink, Rex Airlines, Skytrans, Virgin Australia and Virgin Australia Regional Airlines. Hinterland has joined from March 2024.

Information presented in this report is for Australian domestic routes for which the passenger load averaged 8,000 or more passengers per month over the previous six months and where two or more airlines operated in competition on those routes. In order to present data for more routes during the period impacted by COVID-19, the passenger load restriction was not applied between March 2020 and January 2023. From February 2023, the passenger load restriction was reinstated due to the continued recovery of passenger numbers. Data are presented for 59 routes in April 2024. Over time, routes which meet these criteria change as airline networks and traffic levels vary. Participating airlines report their overall monthly network performance where this is possible.

Total industry figures encompass all services operated by reporting airlines only. These airlines collectively carried over 98 per cent of total domestic passengers (regular public transport only) in 2023.

The method of capturing on time performance varies between airlines utilising different recording systems. Jetstar and Qantas jet aircraft use Aircraft Communication Addressing and Reporting System (ACARS) to electronically measure on time performance. Rex Airlines, Virgin Australia, Virgin Australia Regional Airlines and the Qantas non-jet fleet record on time performance manually using records from pilots, gate agents and/or ground crews.

After initial data is collected, aggregate reports are reviewed by participating airlines prior to publication.

Reports and detailed time series data in Microsoft Excel spreadsheet format are available from the BITRE website at: <http://www.bitre.gov.au/statistics/aviation/otphome.aspx>

Contents

	Page
Industry performance	1
Individual routes	10
Airports.....	22
Definitions	28
Airlines and Reporting	29

Industry performance

For April 2024, on time performance over all routes operated by participating airlines (Hinterland, Jetstar, Qantas, QantasLink, Rex Airlines, Skytrans, Virgin Australia and Virgin Australia Regional Airlines) averaged 79.2 per cent for on time arrivals and 79.9 per cent for on time departures. The cancellation rate for the month was 2.3 per cent. The equivalent figures for April 2023 were 71.8 per cent for on time arrivals, 71.2 per cent for on time departures and 3.9 per cent for cancellations.

This month's on time arrivals figure was lower than the long term average performance for all routes (81.0 per cent) and the on time departures figure was also significantly lower than the long term average (82.1 per cent). The rate of cancellations was higher than the long term average of 2.2 per cent.

The Virgin Australia network (Virgin Australia and Virgin Australia Regional Airlines combined operations) recorded 81.2 per cent for on time arrivals while the Qantas network (Qantas and QantasLink combined operations) recorded 79.0 per cent. Skytrans achieved the highest on time arrivals at 86.4 per cent, followed by Hinterland at 81.6 per cent, Virgin Australia at 81.4 per cent, Rex Airlines at 80.7 per cent, QantasLink at 79.5 per cent, Qantas at 78.2 per cent, Jetstar at 74.9 per cent and Virgin Australia Regional Airlines at 74.5 per cent.

The Virgin Australia network recorded 82.1 per cent for on time departures while the Qantas network recorded 79.9 per cent. Hinterland achieved the highest level of on time departures for April 2024 at 88.5 per cent, followed by Skytrans at 87.8 per cent, Rex Airlines at 83.3 per cent, Virgin Australia at 82.6 per cent, QantasLink at 80.5 per cent, Qantas at 79.1 per cent, Jetstar at 72.7 per cent and Virgin Australia Regional Airlines at 68.4 per cent.

Skytrans recorded the highest percentage of cancellations at 17.5 per cent during the month, followed by QantasLink at 2.4 per cent, Jetstar and Qantas both at 2.2 per cent, Virgin Australia Regional Airlines at 1.8 per cent, Virgin Australia at 1.7 per cent, Hinterland at 1.2 per cent and Rex Airlines at 1.0 per cent.

Airlines' on time performance varies across the routes they serve. Individual route data by specific airline for 59 routes are shown on pages 11-22.

Of the 59 routes which met the criteria for on time performance reporting in April 2024, the Adelaide-Alice Springs route had the highest percentage of on time arrivals (95.4 per cent), and the highest percentage of on time departures (95.4 per cent). The Hamilton Island-Sydney route had the lowest percentage of on time arrivals (58.2 per cent), and the lowest percentage of on time departures (58.2 per cent).

Cancellations were highest on the Cairns-Townsville route at 6.0 per cent, followed by the Townsville-Cairns route at 5.3 per cent, the Sydney-Melbourne route at 4.9 per cent, the Melbourne-Sydney route at 4.6 per cent and the Kalgoorlie-Perth and Perth-Kalgoorlie routes at 4.4 per cent.

Alice Springs Airport recorded the highest percentage of on time arrivals (95.4 per cent), while Port Lincoln Airport had the highest percentage of on time departures (91.5 per cent). Newcastle Airport recorded the lowest percentage of on time arrivals (70.9 per cent), while Darwin Airport had the lowest percentage of on time departures (62.4 per cent). These figures only refer to reported routes and do not cover all flights at these airports.

Table 1 On time performance for April 2024 — Total Industry

	<i>Sectors</i>		<i>Arrivals On Time</i>		<i>Departures On Time</i>		<i>Cancellations</i>	
	<i>Scheduled</i>	<i>Flown</i>	<i>No.</i>	<i>%</i>	<i>No.</i>	<i>%</i>	<i>No.</i>	<i>%</i>
Hinterland	1,015	1,003	818	81.6	888	88.5	12	1.2
Jetstar	8,373	8,186	6,130	74.9	5,954	72.7	187	2.2
Qantas - all QF designated services	19,687	19,238	15,203	79.0	15,375	79.9	449	2.3
Rex Airlines	5,780	5,722	4,619	80.7	4,768	83.3	58	1.0
Skytrans	981	809	699	86.4	710	87.8	172	17.5
Virgin Australia - all VA designated services	11,690	11,489	9,327	81.2	9,431	82.1	201	1.7
All Airlines	47,526	46,447	36,796	79.2	37,126	79.9	1,079	2.3
Individual operating entities								
Qantas	7,800	7,631	5,970	78.2	6,037	79.1	169	2.2
QantasLink	11,887	11,607	9,233	79.5	9,338	80.5	280	2.4
Virgin Australia	11,306	11,112	9,046	81.4	9,173	82.6	194	1.7
Virgin Australia Regional Airlines	384	377	281	74.5	258	68.4	7	1.8

Total airline network data (including routes not shown in this report).

Airlines’ on time performance varies across the routes they serve. Individual route data by specific airline are shown on page 9 and onwards.

Table 2 Top ten routes for on time performance for April 2024 (participating airlines only)

<i>Arrivals</i>		<i>Departures</i>	
<i>Route</i>	<i>On Time (%)</i>	<i>Route</i>	<i>On Time (%)</i>
Adelaide-Alice Springs	95.4	Adelaide-Alice Springs	95.4
Brisbane-Launceston	93.5	Port Lincoln-Adelaide	91.5
Brisbane-Hobart	92.3	Adelaide-Canberra	90.6
Brisbane-Adelaide	91.9	Perth-Newman	90.1
Port Lincoln-Adelaide	91.5	Adelaide-Port Lincoln	89.8
Adelaide-Port Lincoln	91.2	Perth-Kalgoorlie	89.7
Brisbane-Perth	91.0	Adelaide-Brisbane	89.4
Brisbane-Mount Isa	90.2	Hobart-Brisbane	88.9
Cairns-Townsville	89.4	Brisbane-Hobart	87.9
Hobart-Brisbane	88.9	Alice Springs-Adelaide	87.7

Table 3 Top ten airports for on time performance for April 2024 (participating airlines and reported routes only)

<i>Arrivals</i>		<i>Departures</i>	
<i>Airport</i>	<i>On Time (%)</i>	<i>Airport</i>	<i>On Time (%)</i>
Alice Springs	95.4	Port Lincoln	91.5
Port Lincoln	91.2	Alice Springs	87.7
Mount Isa	90.2	Newman	85.9
Newman	88.3	Emerald	85.3
Kalgoorlie	86.3	Wagga Wagga	85.1
Proserpine	86.0	Mount Isa	85.0
Emerald	86.0	Albury	82.9
Wagga Wagga	85.2	Perth	82.7
Townsville	83.6	Gladstone	82.3
Ballina	83.1	Adelaide	82.3

Total industry on time performance

Figure 1 On time performance (by month from April 2021)—Total Industry

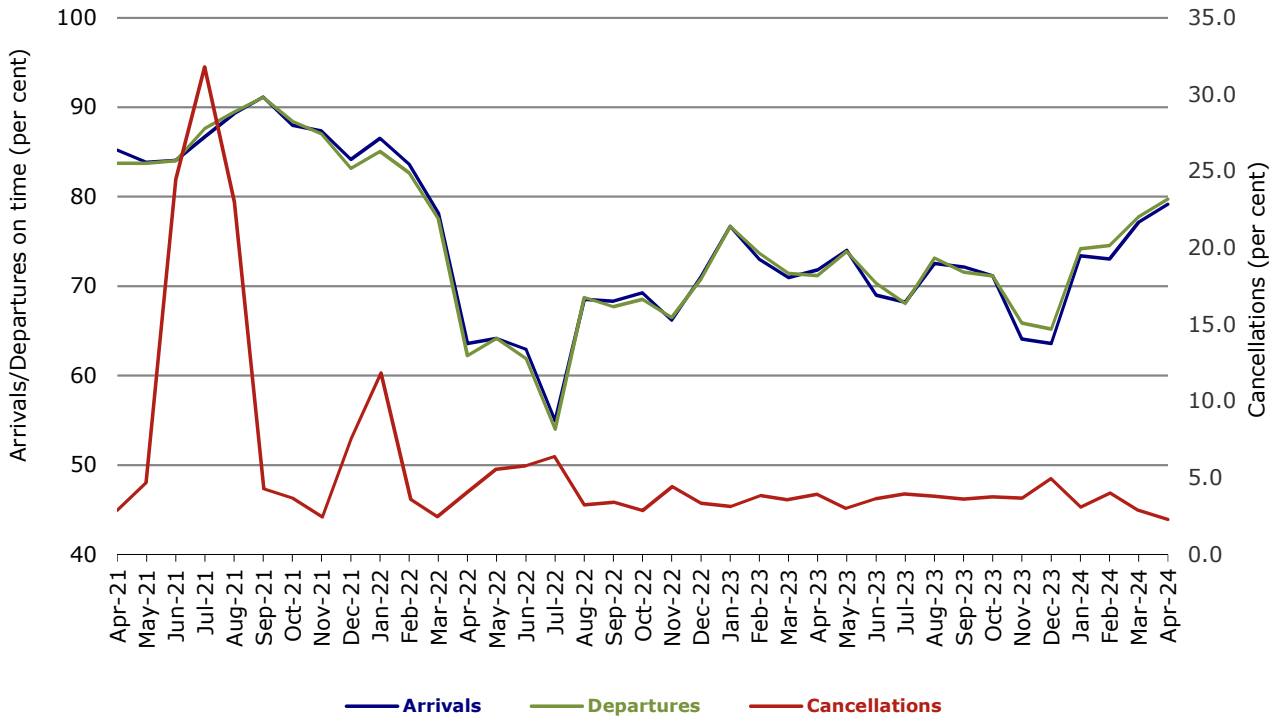


Figure 2 Arrivals on time (by month from April 2023)

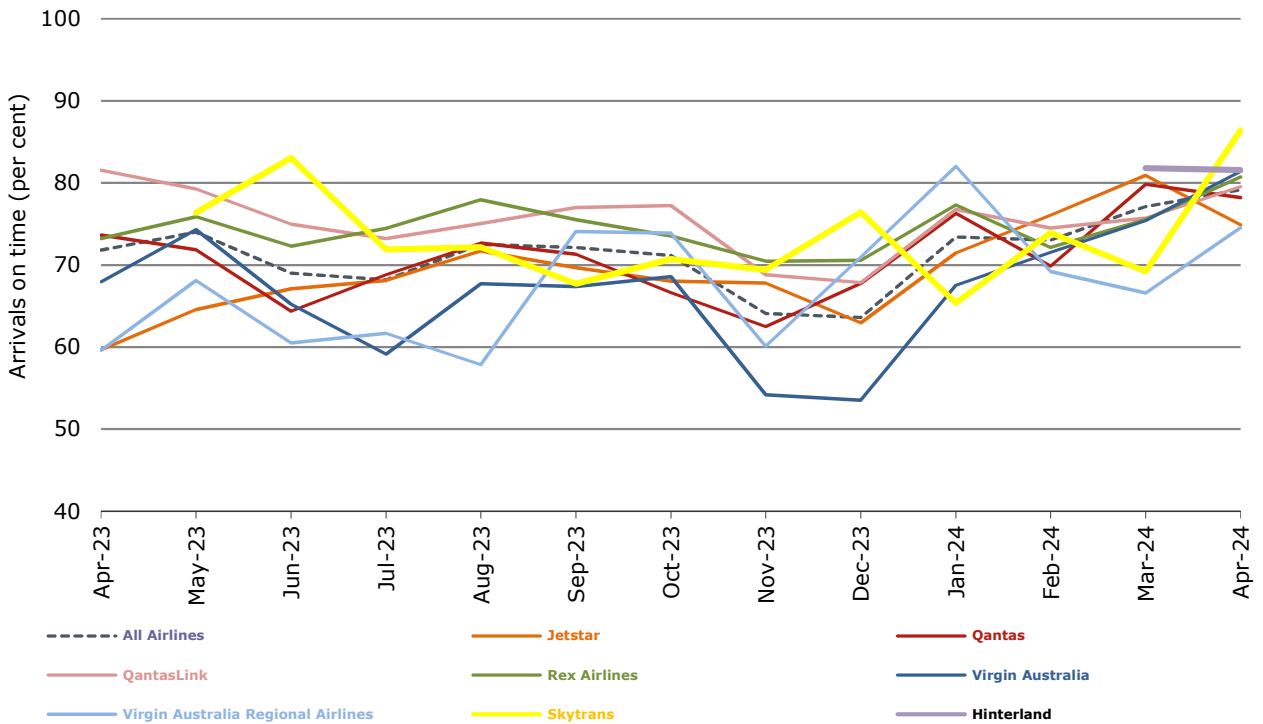


Figure 3 Departures on time (by month from April 2023)

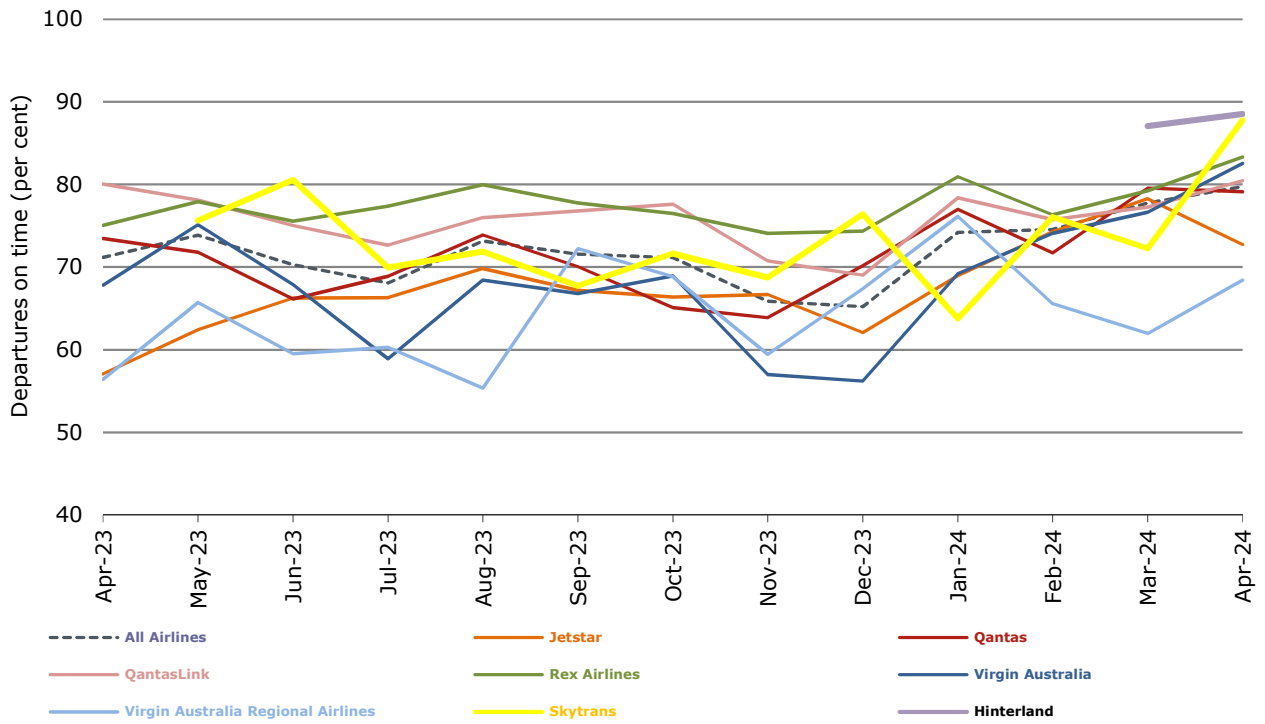
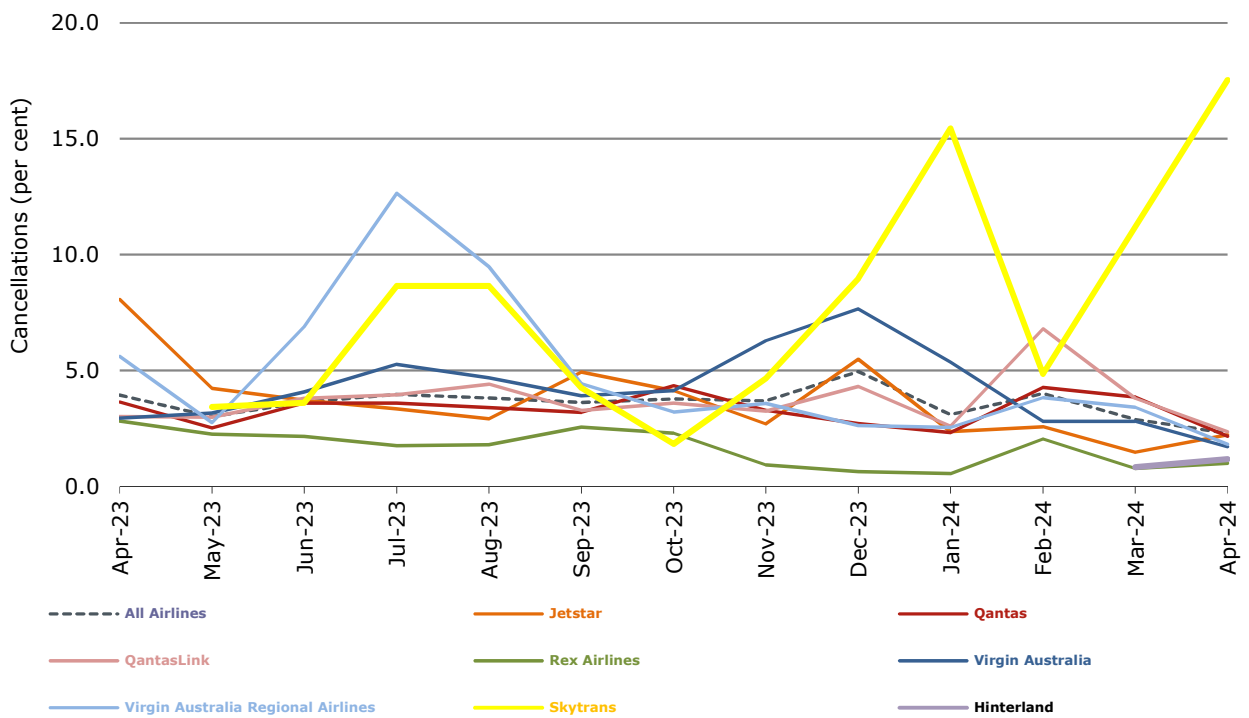


Figure 4 Cancellations (by month from April 2023)



Airlines on time performance

Figure 5 On time performance (by month from April 2021)—Jetstar

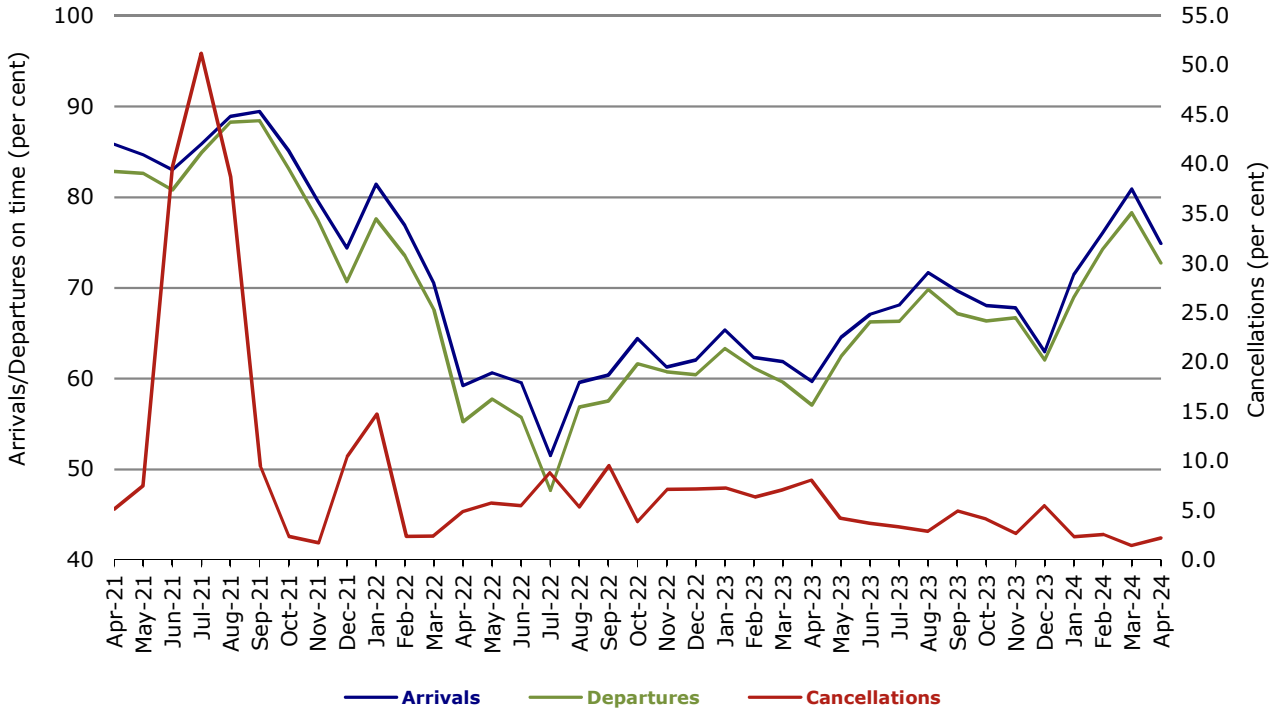


Figure 6 On time performance (by month from April 2021)—Qantas

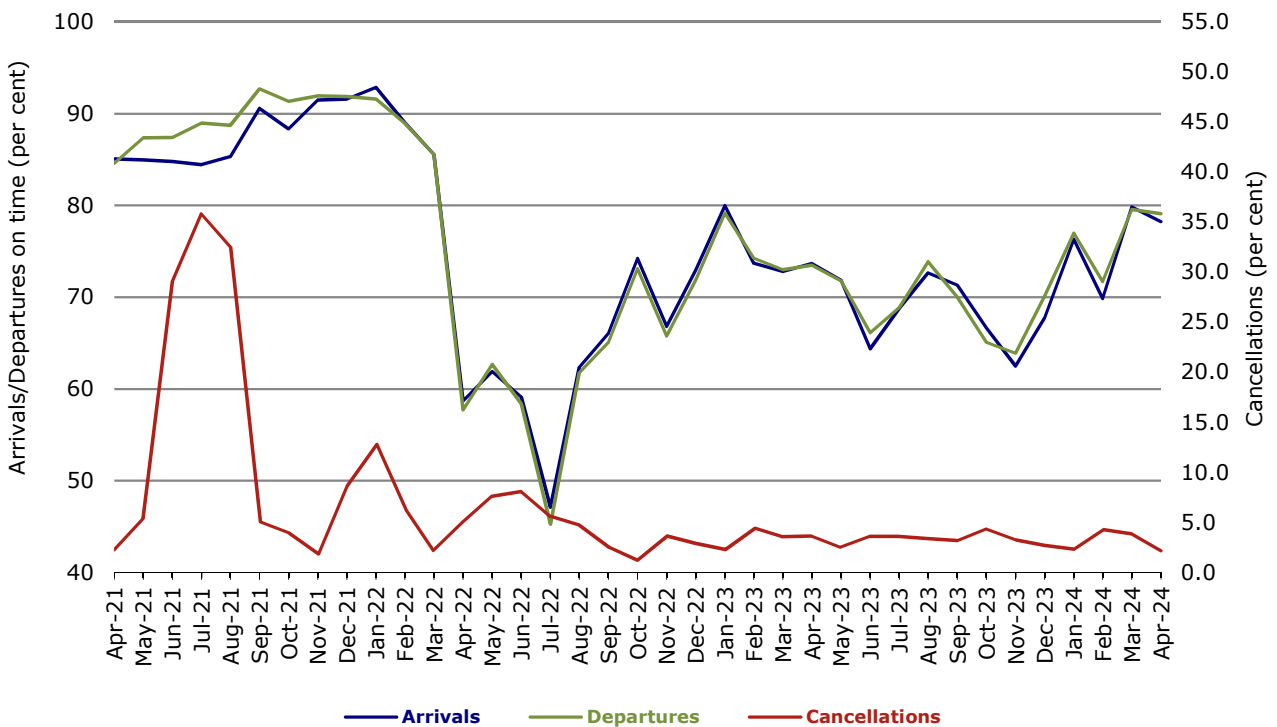


Figure 7 On time performance (by month from April 2021)—Virgin Australia

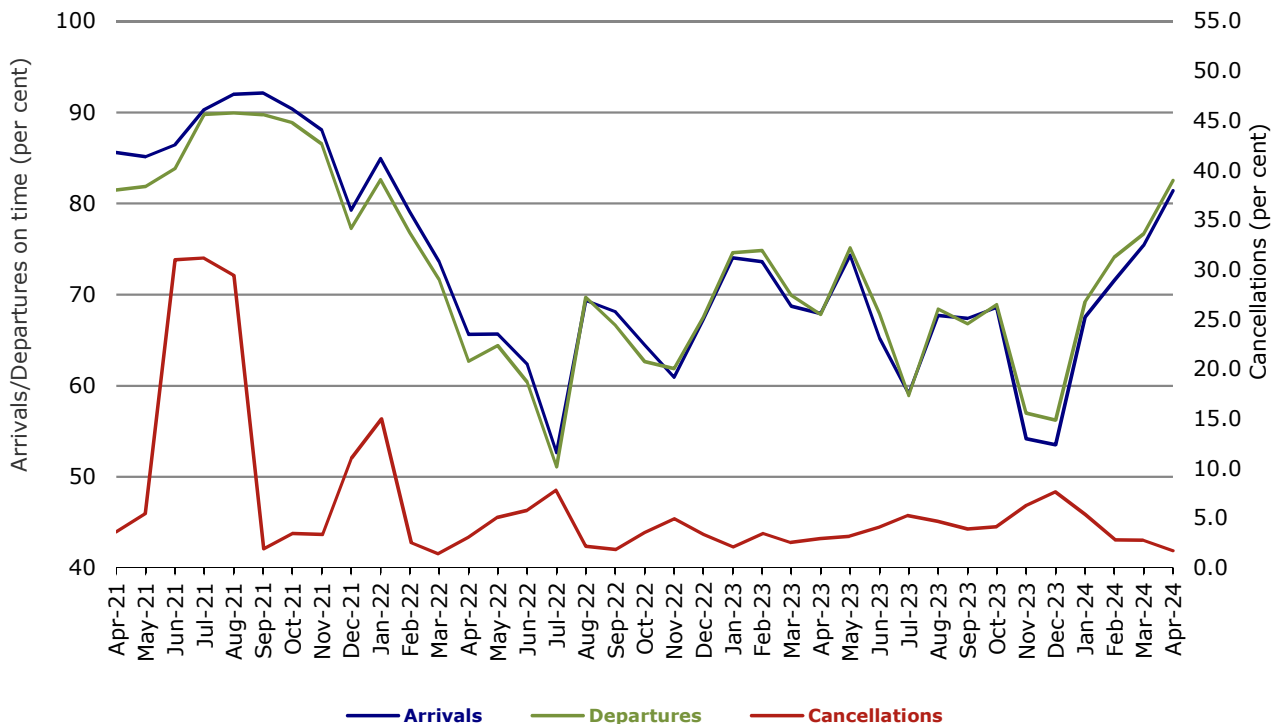


Figure 8 On time performance (by month from April 2021)—QantasLink

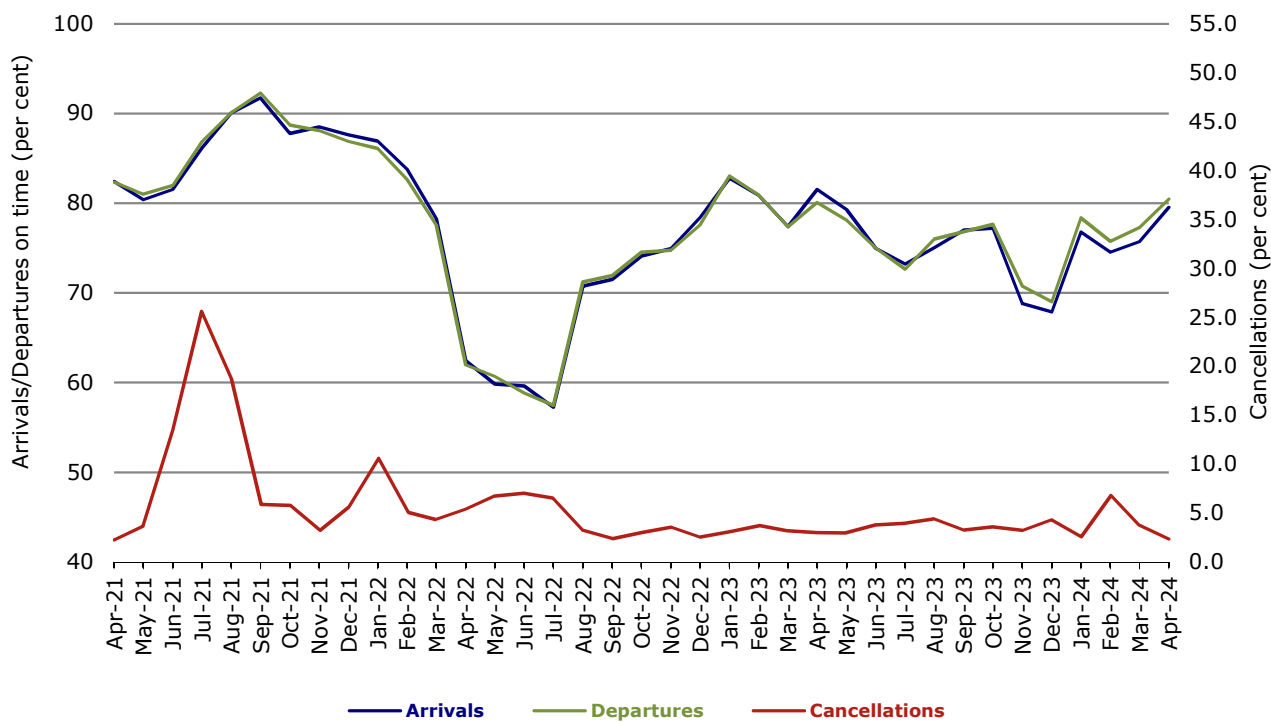


Figure 9 On time performance (by month from April 2021)—Rex Airlines

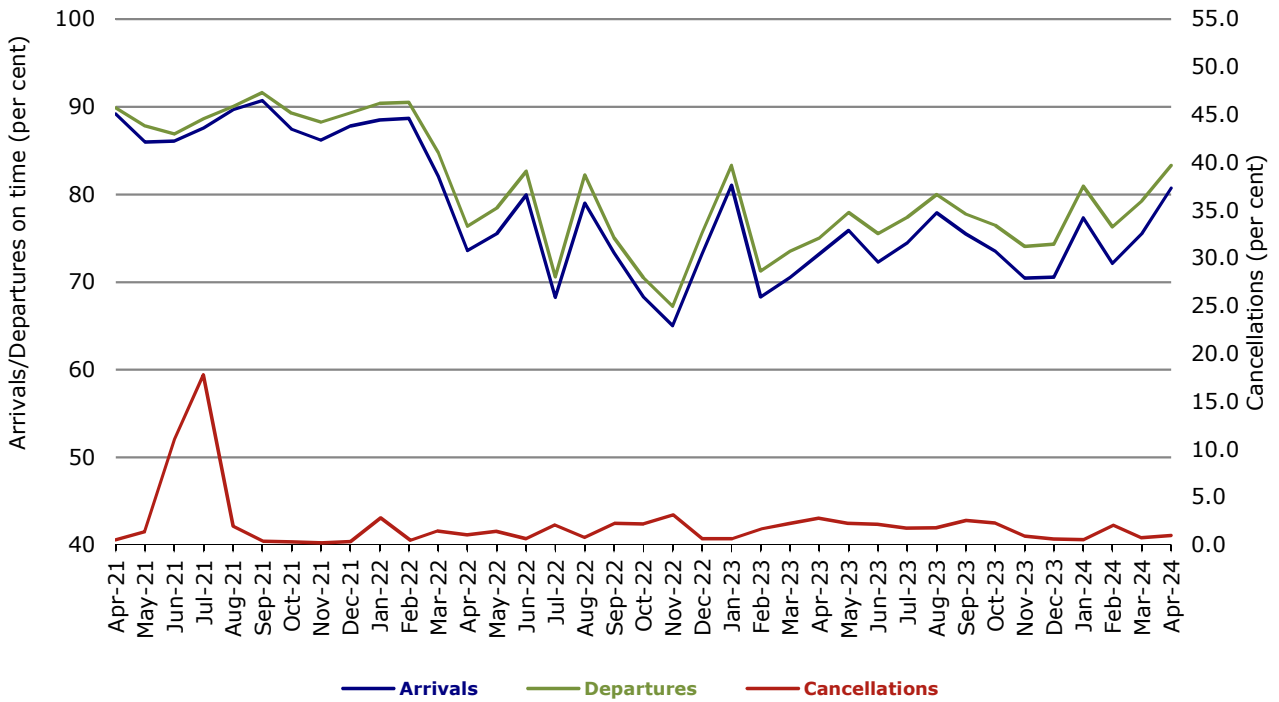


Figure 10 On time performance (by month from April 2021)—Virgin Australia Regional Airlines

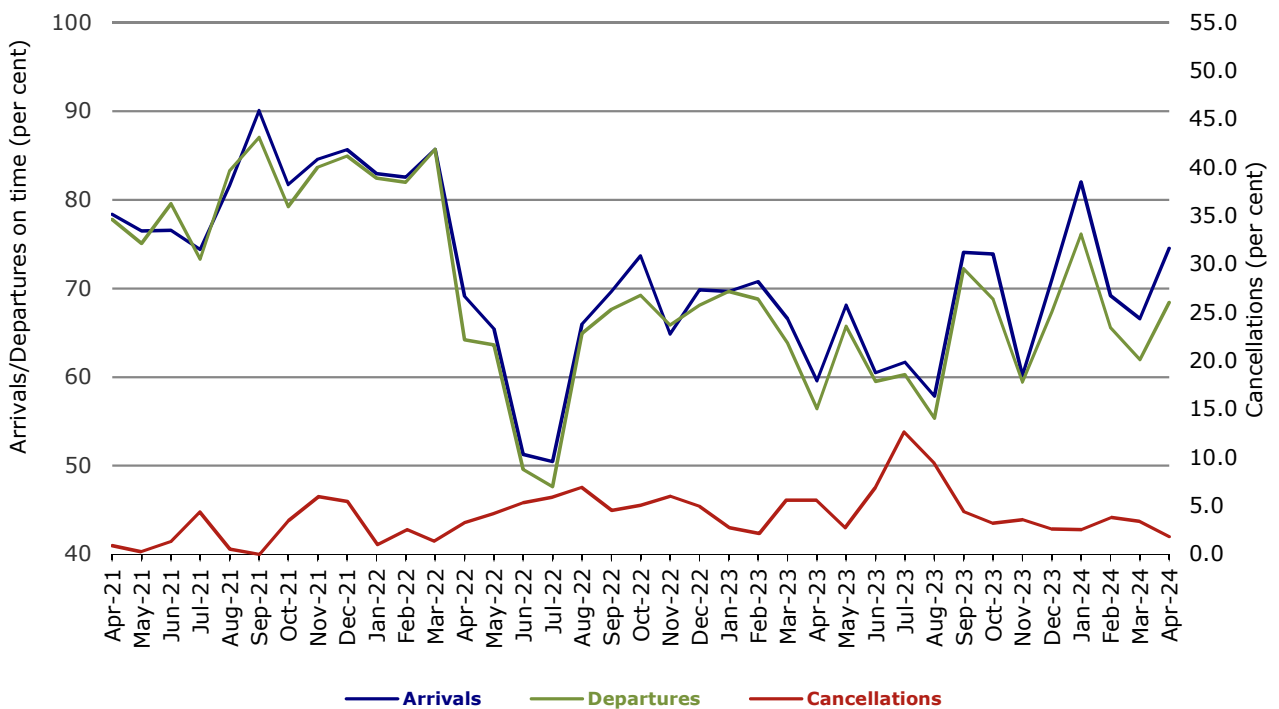
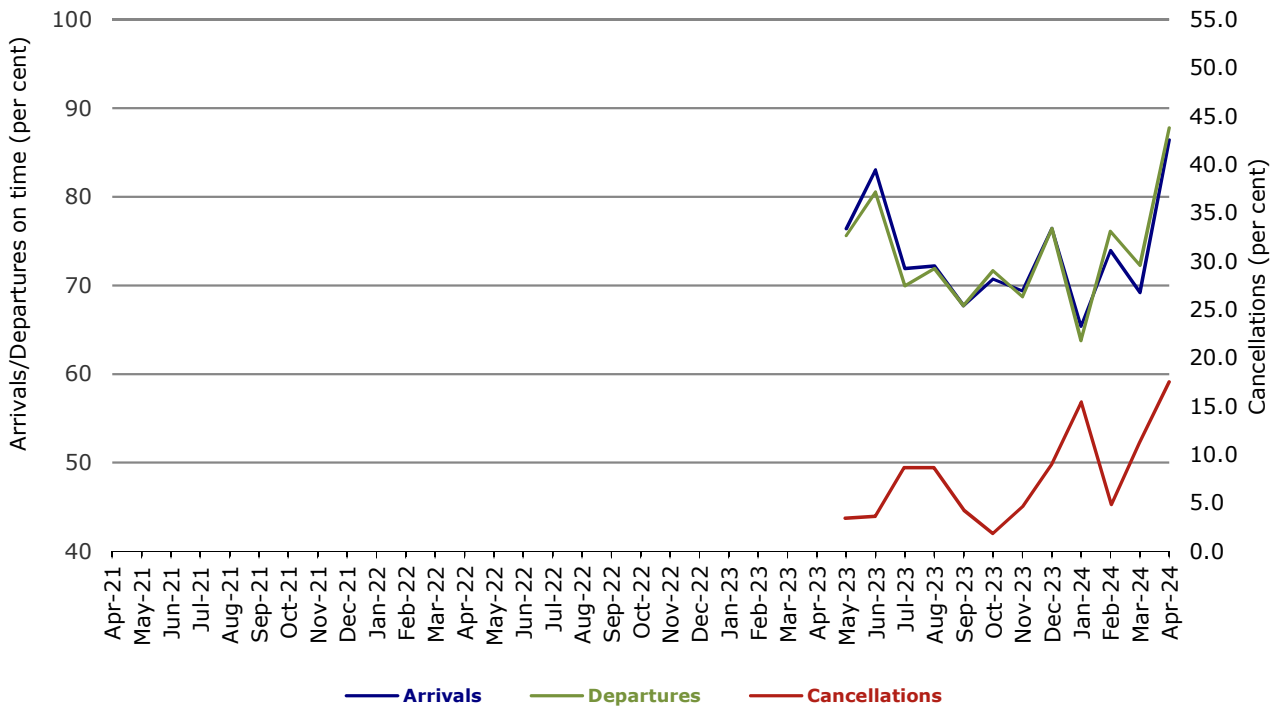
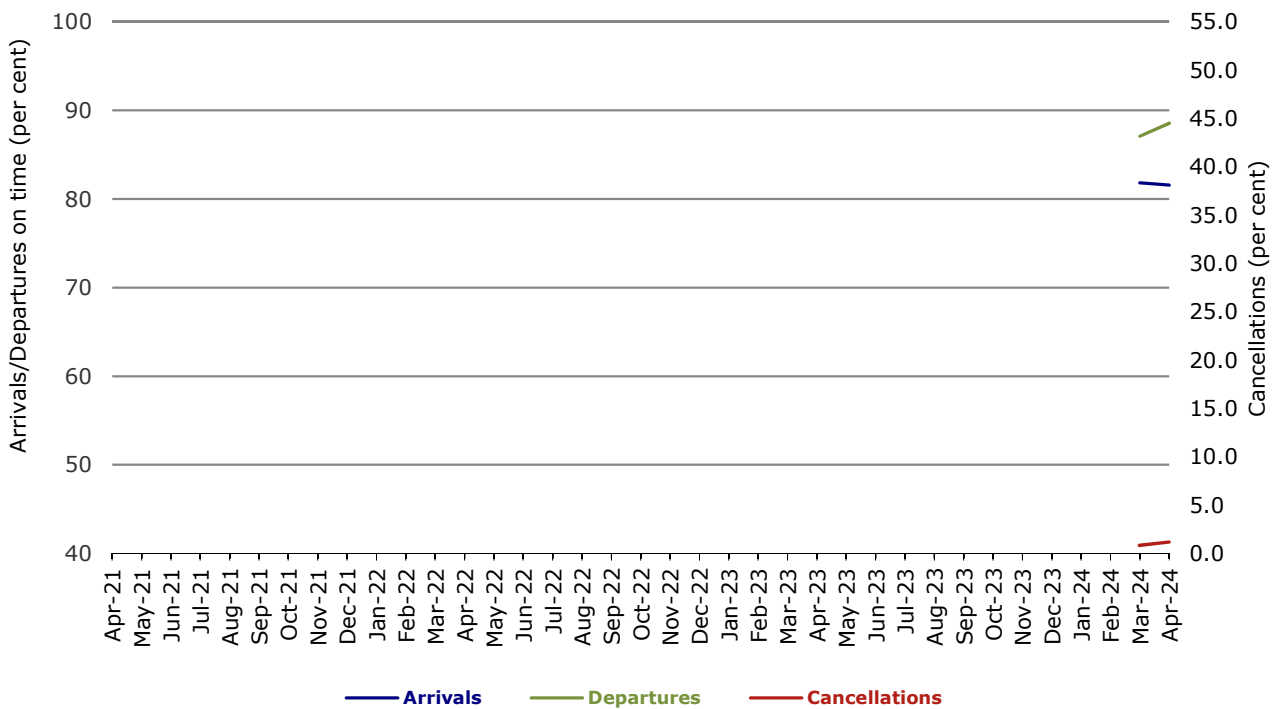


Figure 11 On time performance (by month from April 2021)—Skytrans



Note: Skytrans data included from May 2023

Figure 12 On time performance (by month from April 2021)—Hinterland



Note: Hinterland data included from March 2024

Individual routes

On time performance is reported for all routes where the passenger load averages over 8,000 passengers per month over the previous six months, and where two or more airlines operate in competition on those routes. In order to present data for more routes during the period impacted by COVID-19, the passenger load restriction is not being applied. There are now 59 routes for which data are presented.

	<i>Sectors</i>		<i>Arrivals On Time</i>		<i>Departures On Time</i>		<i>Cancellations</i>	
	<i>Sched.</i>	<i>Flown</i>	<i>No.</i>	<i>%</i>	<i>No.</i>	<i>%</i>	<i>No.</i>	<i>%</i>
Adelaide-Alice Springs								
QantasLink	52	52	51	98.1	50	96.2	0	0.0
Virgin Australia	13	13	11	84.6	12	92.3	0	0.0
All Airlines	65	65	62	95.4	62	95.4	0	0.0
Adelaide-Brisbane								
Jetstar	34	34	31	91.2	33	97.1	0	0.0
Qantas	6	6	6	100.0	6	100.0	0	0.0
QantasLink	150	150	127	84.7	132	88.0	0	0.0
Rex Airlines	30	30	28	93.3	27	90.0	0	0.0
Virgin Australia	138	138	122	88.4	122	88.4	0	0.0
All Airlines	358	358	314	87.7	320	89.4	0	0.0
Adelaide-Canberra								
QantasLink	81	81	72	88.9	73	90.1	0	0.0
Virgin Australia	15	15	13	86.7	14	93.3	0	0.0
All Airlines	96	96	85	88.5	87	90.6	0	0.0
Adelaide-Gold Coast								
Jetstar	29	28	19	67.9	23	82.1	1	3.4
QantasLink	9	9	8	88.9	8	88.9	0	0.0
Virgin Australia	32	32	20	62.5	24	75.0	0	0.0
All Airlines	70	69	47	68.1	55	79.7	1	1.4
Adelaide-Melbourne								
Jetstar	115	112	78	69.6	80	71.4	3	2.6
Qantas	272	266	228	85.7	224	84.2	6	2.2
QantasLink	13	13	9	69.2	9	69.2	0	0.0
Rex Airlines	61	61	49	80.3	54	88.5	0	0.0
Virgin Australia	260	257	210	81.7	202	78.6	3	1.2
All Airlines	721	709	574	81.0	569	80.3	12	1.7
Adelaide-Perth								
Jetstar	30	30	26	86.7	26	86.7	0	0.0
Qantas	99	99	90	90.9	73	73.7	0	0.0
Virgin Australia	35	34	27	79.4	17	50.0	1	2.9
Virgin Australia Regional Airlines	41	39	25	64.1	12	30.8	2	4.9
All Airlines	205	202	168	83.2	128	63.4	3	1.5
Adelaide-Port Lincoln								
QantasLink	138	138	126	91.3	119	86.2	0	0.0
Rex Airlines	146	146	133	91.1	136	93.2	0	0.0
All Airlines	284	284	259	91.2	255	89.8	0	0.0
Adelaide-Sydney								
Jetstar	151	142	102	71.8	107	75.4	9	6.0
Qantas	241	237	174	73.4	195	82.3	4	1.7
Rex Airlines	30	30	22	73.3	24	80.0	0	0.0
Virgin Australia	183	181	129	71.3	151	83.4	2	1.1
All Airlines	605	590	427	72.4	477	80.8	15	2.5

	Sectors		Arrivals On Time		Departures On Time		Cancellations	
	Sched.	Flown	No.	%	No.	%	No.	%
Albury-Sydney								
QantasLink	106	104	69	66.3	83	79.8	2	1.9
Rex Airlines	80	77	61	79.2	67	87.0	3	3.8
All Airlines	186	181	130	71.8	150	82.9	5	2.7
Alice Springs-Adelaide								
QantasLink	52	52	45	86.5	47	90.4	0	0.0
Virgin Australia	13	13	10	76.9	10	76.9	0	0.0
All Airlines	65	65	55	84.6	57	87.7	0	0.0
Ballina-Sydney								
Jetstar	88	86	63	73.3	64	74.4	2	2.3
QantasLink	56	56	50	89.3	51	91.1	0	0.0
Virgin Australia	35	35	26	74.3	24	68.6	0	0.0
All Airlines	179	177	139	78.5	139	78.5	2	1.1
Brisbane-Adelaide								
Jetstar	35	35	32	91.4	27	77.1	0	0.0
Qantas	6	6	6	100.0	6	100.0	0	0.0
QantasLink	150	150	134	89.3	121	80.7	0	0.0
Rex Airlines	30	30	27	90.0	28	93.3	0	0.0
Virgin Australia	139	139	132	95.0	130	93.5	0	0.0
All Airlines	360	360	331	91.9	312	86.7	0	0.0
Brisbane-Cairns								
Jetstar	102	102	83	81.4	79	77.5	0	0.0
Qantas	101	99	85	85.9	87	87.9	2	2.0
QantasLink	71	71	40	56.3	40	56.3	0	0.0
Rex Airlines	9	9	7	77.8	7	77.8	0	0.0
Virgin Australia	162	162	144	88.9	141	87.0	0	0.0
All Airlines	445	443	359	81.0	354	79.9	2	0.4
Brisbane-Canberra								
Jetstar	30	30	25	83.3	24	80.0	0	0.0
QantasLink	153	152	129	84.9	127	83.6	1	0.7
Virgin Australia	101	101	92	91.1	89	88.1	0	0.0
All Airlines	284	283	246	86.9	240	84.8	1	0.4
Brisbane-Darwin								
Jetstar	25	25	22	88.0	23	92.0	0	0.0
Qantas	8	8	5	62.5	5	62.5	0	0.0
QantasLink	30	30	16	53.3	20	66.7	0	0.0
Virgin Australia	32	31	21	67.7	21	67.7	1	3.1
All Airlines	95	94	64	68.1	69	73.4	1	1.1
Brisbane-Emerald								
QantasLink	129	124	108	87.1	110	88.7	5	3.9
Virgin Australia	26	26	21	80.8	20	76.9	0	0.0
All Airlines	155	150	129	86.0	130	86.7	5	3.2
Brisbane-Gladstone								
QantasLink	134	129	100	77.5	100	77.5	5	3.7
Virgin Australia	35	35	31	88.6	28	80.0	0	0.0
All Airlines	169	164	131	79.9	128	78.0	5	3.0
Brisbane-Hamilton Island								
QantasLink	25	25	18	72.0	19	76.0	0	0.0
Virgin Australia	35	35	33	94.3	33	94.3	0	0.0
All Airlines	60	60	51	85.0	52	86.7	0	0.0
Brisbane-Hobart								
Jetstar	29	29	26	89.7	26	89.7	0	0.0
QantasLink	17	17	17	100.0	14	82.4	0	0.0
Virgin Australia	45	45	41	91.1	40	88.9	0	0.0
All Airlines	91	91	84	92.3	80	87.9	0	0.0

	Sectors		Arrivals On Time		Departures On Time		Cancellations	
	Sched.	Flown	No.	%	No.	%	No.	%
Brisbane-Launceston								
Jetstar	29	29	26	89.7	24	82.8	0	0.0
Virgin Australia	17	17	17	100.0	16	94.1	0	0.0
All Airlines	46	46	43	93.5	40	87.0	0	0.0
Brisbane-Mackay								
Jetstar	30	30	18	60.0	19	63.3	0	0.0
Qantas	108	108	85	78.7	81	75.0	0	0.0
QantasLink	8	8	6	75.0	6	75.0	0	0.0
Virgin Australia	122	122	94	77.0	91	74.6	0	0.0
All Airlines	268	268	203	75.7	197	73.5	0	0.0
Brisbane-Melbourne								
Jetstar	236	232	177	76.3	152	65.5	4	1.7
Qantas	375	368	315	85.6	293	79.6	7	1.9
QantasLink	36	22	7	31.8	9	40.9	14	38.9
Rex Airlines	54	54	47	87.0	42	77.8	0	0.0
Virgin Australia	374	364	305	83.8	300	82.4	10	2.7
All Airlines	1 075	1 040	851	81.8	796	76.5	35	3.3
Brisbane-Mount Isa								
Qantas	48	48	44	91.7	42	87.5	0	0.0
Virgin Australia	13	13	11	84.6	10	76.9	0	0.0
All Airlines	61	61	55	90.2	52	85.2	0	0.0
Brisbane-Newcastle								
Jetstar	56	56	47	83.9	45	80.4	0	0.0
QantasLink	82	82	63	76.8	64	78.0	0	0.0
Virgin Australia	82	82	61	74.4	65	79.3	0	0.0
All Airlines	220	220	171	77.7	174	79.1	0	0.0
Brisbane-Perth								
Jetstar	29	28	21	75.0	14	50.0	1	3.4
Qantas	149	147	131	89.1	115	78.2	2	1.3
Virgin Australia	126	126	122	96.8	107	84.9	0	0.0
All Airlines	304	301	274	91.0	236	78.4	3	1.0
Brisbane-Proserpine								
Jetstar	30	30	25	83.3	24	80.0	0	0.0
QantasLink	17	17	14	82.4	13	76.5	0	0.0
Virgin Australia	39	39	35	89.7	35	89.7	0	0.0
All Airlines	86	86	74	86.0	72	83.7	0	0.0
Brisbane-Rockhampton								
QantasLink	189	186	150	80.6	149	80.1	3	1.6
Virgin Australia	150	149	88	59.1	109	73.2	1	0.7
All Airlines	339	335	238	71.0	258	77.0	4	1.2
Brisbane-Sydney								
Jetstar	202	189	142	75.1	137	72.5	13	6.4
Qantas	515	499	403	80.8	405	81.2	16	3.1
Rex Airlines	146	146	125	85.6	131	89.7	0	0.0
Virgin Australia	408	396	320	80.8	330	83.3	12	2.9
All Airlines	1 271	1 230	990	80.5	1 003	81.5	41	3.2
Brisbane-Townsville								
Jetstar	60	60	46	76.7	45	75.0	0	0.0
Qantas	47	47	42	89.4	42	89.4	0	0.0
QantasLink	99	99	71	71.7	74	74.7	0	0.0
Virgin Australia	135	135	118	87.4	114	84.4	0	0.0
All Airlines	341	341	277	81.2	275	80.6	0	0.0

	Sectors		Arrivals On Time		Departures On Time		Cancellations	
	Sched.	Flown	No.	%	No.	%	No.	%
Broome-Perth								
QantasLink	86	86	68	79.1	67	77.9	0	0.0
Virgin Australia	39	38	34	89.5	28	73.7	1	2.6
Virgin Australia Regional Airlines	13	13	8	61.5	5	38.5	0	0.0
All Airlines	138	137	110	80.3	100	73.0	1	0.7
Cairns-Brisbane								
Jetstar	103	103	86	83.5	84	81.6	0	0.0
Qantas	101	99	86	86.9	83	83.8	2	2.0
QantasLink	71	70	48	68.6	52	74.3	1	1.4
Rex Airlines	9	9	8	88.9	8	88.9	0	0.0
Virgin Australia	163	163	146	89.6	139	85.3	0	0.0
All Airlines	447	444	374	84.2	366	82.4	3	0.7
Cairns-Melbourne								
Jetstar	117	117	88	75.2	78	66.7	0	0.0
Qantas	30	30	25	83.3	19	63.3	0	0.0
Virgin Australia	68	68	55	80.9	54	79.4	0	0.0
All Airlines	215	215	168	78.1	151	70.2	0	0.0
Cairns-Sydney								
Jetstar	115	114	100	87.7	93	81.6	1	0.9
Qantas	48	48	32	66.7	33	68.8	0	0.0
Virgin Australia	92	91	83	91.2	84	92.3	1	1.1
All Airlines	255	253	215	85.0	210	83.0	2	0.8
Cairns-Townsville								
QantasLink	138	130	117	90.0	113	86.9	8	5.8
Rex Airlines	13	12	10	83.3	10	83.3	1	7.7
All Airlines	151	142	127	89.4	123	86.6	9	6.0
Canberra-Adelaide								
QantasLink	82	82	71	86.6	71	86.6	0	0.0
Virgin Australia	15	15	15	100.0	14	93.3	0	0.0
All Airlines	97	97	86	88.7	85	87.6	0	0.0
Canberra-Brisbane								
Jetstar	30	30	22	73.3	22	73.3	0	0.0
QantasLink	152	148	112	75.7	117	79.1	4	2.6
Virgin Australia	101	100	88	88.0	88	88.0	1	1.0
All Airlines	283	278	222	79.9	227	81.7	5	1.8
Canberra-Gold Coast								
Jetstar	25	25	22	88.0	22	88.0	0	0.0
Virgin Australia	30	30	21	70.0	24	80.0	0	0.0
All Airlines	55	55	43	78.2	46	83.6	0	0.0
Canberra-Melbourne								
Jetstar	29	29	17	58.6	15	51.7	0	0.0
QantasLink	236	222	129	58.1	134	60.4	14	5.9
Rex Airlines	30	30	24	80.0	23	76.7	0	0.0
Virgin Australia	112	112	91	81.3	90	80.4	0	0.0
All Airlines	407	393	261	66.4	262	66.7	14	3.4
Canberra-Sydney								
Qantas	46	44	31	70.5	34	77.3	2	4.3
QantasLink	358	344	266	77.3	294	85.5	14	3.9
Virgin Australia	235	227	193	85.0	196	86.3	8	3.4
All Airlines	639	615	490	79.7	524	85.2	24	3.8
Coffs Harbour-Sydney								
QantasLink	112	111	88	79.3	83	74.8	1	0.9
Rex Airlines	88	88	66	75.0	71	80.7	0	0.0
All Airlines	200	199	154	77.4	154	77.4	1	0.5

	Sectors		Arrivals On Time		Departures On Time		Cancellations	
	Sched.	Flown	No.	%	No.	%	No.	%
Darwin-Brisbane								
Jetstar	26	26	24	92.3	23	88.5	0	0.0
Qantas	8	8	7	87.5	6	75.0	0	0.0
QantasLink	30	30	10	33.3	13	43.3	0	0.0
Virgin Australia	31	31	22	71.0	20	64.5	0	0.0
All Airlines	95	95	63	66.3	62	65.3	0	0.0
Darwin-Melbourne								
Jetstar	31	29	17	58.6	15	51.7	2	6.5
Qantas	30	30	21	70.0	23	76.7	0	0.0
Virgin Australia	29	29	19	65.5	16	55.2	0	0.0
All Airlines	90	88	57	64.8	54	61.4	2	2.2
Darwin-Perth								
QantasLink	30	30	13	43.3	14	46.7	0	0.0
Virgin Australia	4	4	3	75.0	3	75.0	0	0.0
Virgin Australia Regional Airlines	17	17	15	88.2	13	76.5	0	0.0
All Airlines	51	51	31	60.8	30	58.8	0	0.0
Devonport-Melbourne								
QantasLink	116	115	96	83.5	94	81.7	1	0.9
Rex Airlines	42	41	35	85.4	39	95.1	1	2.4
All Airlines	158	156	131	84.0	133	85.3	2	1.3
Dubbo-Sydney								
QantasLink	111	108	89	82.4	94	87.0	3	2.7
Rex Airlines	121	116	82	70.7	90	77.6	5	4.1
All Airlines	232	224	171	76.3	184	82.1	8	3.4
Emerald-Brisbane								
QantasLink	129	124	105	84.7	106	85.5	5	3.9
Virgin Australia	26	26	23	88.5	22	84.6	0	0.0
All Airlines	155	150	128	85.3	128	85.3	5	3.2
Gladstone-Brisbane								
QantasLink	134	129	103	79.8	104	80.6	5	3.7
Virgin Australia	35	35	32	91.4	31	88.6	0	0.0
All Airlines	169	164	135	82.3	135	82.3	5	3.0
Gold Coast-Adelaide								
Jetstar	29	28	23	82.1	21	75.0	1	3.4
QantasLink	9	9	7	77.8	6	66.7	0	0.0
Virgin Australia	32	32	18	56.3	16	50.0	0	0.0
All Airlines	70	69	48	69.6	43	62.3	1	1.4
Gold Coast-Canberra								
Jetstar	25	25	22	88.0	21	84.0	0	0.0
Virgin Australia	30	30	22	73.3	22	73.3	0	0.0
All Airlines	55	55	44	80.0	43	78.2	0	0.0
Gold Coast-Melbourne								
Jetstar	240	230	174	75.7	166	72.2	10	4.2
Qantas	36	36	32	88.9	25	69.4	0	0.0
Rex Airlines	30	30	24	80.0	22	73.3	0	0.0
Virgin Australia	260	258	203	78.7	175	67.8	2	0.8
All Airlines	566	554	433	78.2	388	70.0	12	2.1
Gold Coast-Sydney								
Jetstar	304	296	240	81.1	234	79.1	8	2.6
Qantas	99	99	81	81.8	79	79.8	0	0.0
Rex Airlines	30	30	26	86.7	26	86.7	0	0.0
Virgin Australia	301	295	226	76.6	223	75.6	6	2.0
All Airlines	734	720	573	79.6	562	78.1	14	1.9

	Sectors		Arrivals On Time		Departures On Time		Cancellations	
	Sched.	Flown	No.	%	No.	%	No.	%
Hamilton Island-Brisbane								
QantasLink	25	25	13	52.0	15	60.0	0	0.0
Virgin Australia	35	35	31	88.6	31	88.6	0	0.0
All Airlines	60	60	44	73.3	46	76.7	0	0.0
Hamilton Island-Sydney								
Jetstar	20	20	9	45.0	10	50.0	0	0.0
Qantas	30	30	16	53.3	15	50.0	0	0.0
Virgin Australia	29	29	21	72.4	21	72.4	0	0.0
All Airlines	79	79	46	58.2	46	58.2	0	0.0
Hobart-Brisbane								
Jetstar	28	28	24	85.7	24	85.7	0	0.0
QantasLink	17	17	16	94.1	17	100.0	0	0.0
Virgin Australia	45	45	40	88.9	39	86.7	0	0.0
All Airlines	90	90	80	88.9	80	88.9	0	0.0
Hobart-Melbourne								
Jetstar	148	148	105	70.9	97	65.5	0	0.0
Qantas	1	1	1	100.0	1	100.0	0	0.0
QantasLink	115	114	76	66.7	83	72.8	1	0.9
Rex Airlines	30	30	28	93.3	28	93.3	0	0.0
Virgin Australia	131	131	97	74.0	101	77.1	0	0.0
All Airlines	425	424	307	72.4	310	73.1	1	0.2
Hobart-Sydney								
Jetstar	84	82	69	84.1	68	82.9	2	2.4
Qantas	74	74	51	68.9	52	70.3	0	0.0
QantasLink	8	8	8	100.0	8	100.0	0	0.0
Virgin Australia	76	76	63	82.9	65	85.5	0	0.0
All Airlines	242	240	191	79.6	193	80.4	2	0.8
Kalgoorlie-Perth								
Qantas	19	18	17	94.4	16	88.9	1	5.3
QantasLink	58	52	41	78.8	41	78.8	6	10.3
Virgin Australia	69	69	61	88.4	58	84.1	0	0.0
Virgin Australia Regional Airlines	36	35	29	82.9	23	65.7	1	2.8
All Airlines	182	174	148	85.1	138	79.3	8	4.4
Karratha-Perth								
Qantas	4	3	0	0.0	0	0.0	1	25.0
QantasLink	144	140	91	65.0	95	67.9	4	2.8
Virgin Australia	59	57	46	80.7	46	80.7	2	3.4
Virgin Australia Regional Airlines	19	19	15	78.9	11	57.9	0	0.0
All Airlines	226	219	152	69.4	152	69.4	7	3.1
Launceston-Brisbane								
Jetstar	29	29	21	72.4	21	72.4	0	0.0
Virgin Australia	17	17	17	100.0	17	100.0	0	0.0
All Airlines	46	46	38	82.6	38	82.6	0	0.0
Launceston-Melbourne								
Jetstar	113	111	65	58.6	60	54.1	2	1.8
QantasLink	76	73	66	90.4	64	87.7	3	3.9
Virgin Australia	105	105	83	79.0	87	82.9	0	0.0
All Airlines	294	289	214	74.0	211	73.0	5	1.7
Launceston-Sydney								
Jetstar	52	51	32	62.7	33	64.7	1	1.9
QantasLink	30	30	27	90.0	27	90.0	0	0.0
Virgin Australia	30	30	20	66.7	21	70.0	0	0.0
All Airlines	112	111	79	71.2	81	73.0	1	0.9

	Sectors		Arrivals On Time		Departures On Time		Cancellations	
	Sched.	Flown	No.	%	No.	%	No.	%
Mackay-Brisbane								
Jetstar	31	30	19	63.3	19	63.3	1	3.2
Qantas	108	108	80	74.1	80	74.1	0	0.0
QantasLink	13	13	9	69.2	9	69.2	0	0.0
Virgin Australia	122	121	106	87.6	98	81.0	1	0.8
All Airlines	274	272	214	78.7	206	75.7	2	0.7
Melbourne-Adelaide								
Jetstar	115	112	85	75.9	78	69.6	3	2.6
Qantas	272	269	225	83.6	219	81.4	3	1.1
QantasLink	13	13	9	69.2	8	61.5	0	0.0
Rex Airlines	61	61	49	80.3	47	77.0	0	0.0
Virgin Australia	259	256	207	80.9	212	82.8	3	1.2
All Airlines	720	711	575	80.9	564	79.3	9	1.3
Melbourne-Brisbane								
Jetstar	237	233	155	66.5	166	71.2	4	1.7
Qantas	373	363	287	79.1	294	81.0	10	2.7
QantasLink	37	23	9	39.1	14	60.9	14	37.8
Rex Airlines	54	54	42	77.8	46	85.2	0	0.0
Virgin Australia	380	373	293	78.6	320	85.8	7	1.8
All Airlines	1 081	1 046	786	75.1	840	80.3	35	3.2
Melbourne-Cairns								
Jetstar	116	116	78	67.2	80	69.0	0	0.0
Qantas	30	30	21	70.0	23	76.7	0	0.0
Virgin Australia	69	69	60	87.0	63	91.3	0	0.0
All Airlines	215	215	159	74.0	166	77.2	0	0.0
Melbourne-Canberra								
Jetstar	29	29	18	62.1	19	65.5	0	0.0
QantasLink	236	226	137	60.6	140	61.9	10	4.2
Rex Airlines	30	30	22	73.3	23	76.7	0	0.0
Virgin Australia	113	113	93	82.3	98	86.7	0	0.0
All Airlines	408	398	270	67.8	280	70.4	10	2.5
Melbourne-Darwin								
Jetstar	30	29	23	79.3	19	65.5	1	3.3
Qantas	30	30	26	86.7	23	76.7	0	0.0
Virgin Australia	30	30	24	80.0	25	83.3	0	0.0
All Airlines	90	89	73	82.0	67	75.3	1	1.1
Melbourne-Devonport								
QantasLink	116	115	95	82.6	95	82.6	1	0.9
Rex Airlines	41	40	39	97.5	39	97.5	1	2.4
All Airlines	157	155	134	86.5	134	86.5	2	1.3
Melbourne-Gold Coast								
Jetstar	239	229	158	69.0	158	69.0	10	4.2
Qantas	36	36	33	91.7	32	88.9	0	0.0
Rex Airlines	30	30	27	90.0	28	93.3	0	0.0
Virgin Australia	260	257	208	80.9	221	86.0	3	1.2
All Airlines	565	552	426	77.2	439	79.5	13	2.3
Melbourne-Hobart								
Jetstar	148	148	101	68.2	100	67.6	0	0.0
Qantas	1	1	1	100.0	1	100.0	0	0.0
QantasLink	115	114	66	57.9	75	65.8	1	0.9
Rex Airlines	30	30	28	93.3	28	93.3	0	0.0
Virgin Australia	131	131	100	76.3	103	78.6	0	0.0
All Airlines	425	424	296	69.8	307	72.4	1	0.2
Melbourne-Launceston								
Jetstar	113	111	76	68.5	79	71.2	2	1.8
QantasLink	76	73	60	82.2	60	82.2	3	3.9
Virgin Australia	105	105	82	78.1	90	85.7	0	0.0
All Airlines	294	289	218	75.4	229	79.2	5	1.7

	Sectors		Arrivals On Time		Departures On Time		Cancellations	
	Sched.	Flown	No.	%	No.	%	No.	%
Melbourne-Mildura								
QantasLink	108	107	88	82.2	85	79.4	1	0.9
Rex Airlines	92	92	69	75.0	72	78.3	0	0.0
All Airlines	200	199	157	78.9	157	78.9	1	0.5
Melbourne-Newcastle								
Jetstar	66	66	46	69.7	49	74.2	0	0.0
QantasLink	52	51	19	37.3	30	58.8	1	1.9
Virgin Australia	37	37	29	78.4	33	89.2	0	0.0
All Airlines	155	154	94	61.0	112	72.7	1	0.6
Melbourne-Perth								
Jetstar	88	86	71	82.6	58	67.4	2	2.3
Qantas	201	198	161	81.3	151	76.3	3	1.5
Virgin Australia	213	213	194	91.1	157	73.7	0	0.0
All Airlines	502	497	426	85.7	366	73.6	5	1.0
Melbourne-Sunshine Coast								
Jetstar	89	89	65	73.0	73	82.0	0	0.0
Qantas	29	29	22	75.9	26	89.7	0	0.0
Virgin Australia	77	77	69	89.6	70	90.9	0	0.0
All Airlines	195	195	156	80.0	169	86.7	0	0.0
Melbourne-Sydney								
Jetstar	483	466	328	70.4	329	70.6	17	3.5
Qantas	859	822	641	78.0	709	86.3	37	4.3
QantasLink	11	9	8	88.9	9	100.0	2	18.2
Rex Airlines	205	204	172	84.3	180	88.2	1	0.5
Virgin Australia	666	621	481	77.5	542	87.3	45	6.8
All Airlines	2 224	2 122	1 630	76.8	1 769	83.4	102	4.6
Mildura-Melbourne								
QantasLink	108	106	84	79.2	79	74.5	2	1.9
Rex Airlines	91	91	61	67.0	67	73.6	0	0.0
All Airlines	199	197	145	73.6	146	74.1	2	1.0
Mount Isa-Brisbane								
Qantas	48	47	44	93.6	42	89.4	1	2.1
Virgin Australia	13	13	9	69.2	9	69.2	0	0.0
All Airlines	61	60	53	88.3	51	85.0	1	1.6
Newcastle-Brisbane								
Jetstar	56	56	46	82.1	44	78.6	0	0.0
QantasLink	82	81	60	74.1	63	77.8	1	1.2
Virgin Australia	81	81	64	79.0	68	84.0	0	0.0
All Airlines	219	218	170	78.0	175	80.3	1	0.5
Newcastle-Melbourne								
Jetstar	66	66	45	68.2	43	65.2	0	0.0
QantasLink	52	51	41	80.4	42	82.4	1	1.9
Virgin Australia	37	37	23	62.2	26	70.3	0	0.0
All Airlines	155	154	109	70.8	111	72.1	1	0.6
Newman-Perth								
Qantas	18	17	15	88.2	16	94.1	1	5.6
QantasLink	97	96	68	70.8	82	85.4	1	1.0
Virgin Australia	41	41	30	73.2	35	85.4	0	0.0
Virgin Australia Regional Airlines	17	16	13	81.3	13	81.3	1	5.9
All Airlines	173	170	126	74.1	146	85.9	3	1.7

	Sectors		Arrivals On Time		Departures On Time		Cancellations	
	Sched.	Flown	No.	%	No.	%	No.	%
Perth-Adelaide								
Jetstar	30	30	23	76.7	24	80.0	0	0.0
Qantas	99	99	64	64.6	83	83.8	0	0.0
Virgin Australia	34	33	16	48.5	27	81.8	1	2.9
Virgin Australia Regional Airlines	41	40	22	55.0	30	75.0	1	2.4
All Airlines	204	202	125	61.9	164	81.2	2	1.0
Perth-Brisbane								
Jetstar	31	29	13	44.8	13	44.8	2	6.5
Qantas	148	147	93	63.3	128	87.1	1	0.7
Virgin Australia	125	125	107	85.6	111	88.8	0	0.0
All Airlines	304	301	213	70.8	252	83.7	3	1.0
Perth-Broome								
QantasLink	86	86	66	76.7	68	79.1	0	0.0
Virgin Australia	39	38	33	86.8	32	84.2	1	2.6
Virgin Australia Regional Airlines	13	13	10	76.9	10	76.9	0	0.0
All Airlines	138	137	109	79.6	110	80.3	1	0.7
Perth-Darwin								
QantasLink	30	30	16	53.3	18	60.0	0	0.0
Virgin Australia	4	4	3	75.0	3	75.0	0	0.0
Virgin Australia Regional Airlines	17	17	14	82.4	15	88.2	0	0.0
All Airlines	51	51	33	64.7	36	70.6	0	0.0
Perth-Kalgoorlie								
Qantas	20	18	17	94.4	17	94.4	2	10.0
QantasLink	58	53	41	77.4	42	79.2	5	8.6
Virgin Australia	69	69	62	89.9	66	95.7	0	0.0
Virgin Australia Regional Airlines	36	35	31	88.6	32	91.4	1	2.8
All Airlines	183	175	151	86.3	157	89.7	8	4.4
Perth-Karratha								
Qantas	4	3	3	100.0	2	66.7	1	25.0
QantasLink	145	141	104	73.8	109	77.3	4	2.8
Virgin Australia	59	57	45	78.9	53	93.0	2	3.4
Virgin Australia Regional Airlines	19	19	12	63.2	13	68.4	0	0.0
All Airlines	227	220	164	74.5	177	80.5	7	3.1
Perth-Melbourne								
Jetstar	89	85	63	74.1	61	71.8	4	4.5
Qantas	201	198	136	68.7	169	85.4	3	1.5
Virgin Australia	221	221	163	73.8	193	87.3	0	0.0
All Airlines	511	504	362	71.8	423	83.9	7	1.4
Perth-Newman								
Qantas	18	18	17	94.4	17	94.4	0	0.0
QantasLink	97	96	84	87.5	87	90.6	1	1.0
Virgin Australia	41	41	37	90.2	36	87.8	0	0.0
Virgin Australia Regional Airlines	17	16	13	81.3	14	87.5	1	5.9
All Airlines	173	171	151	88.3	154	90.1	2	1.2
Perth-Port Hedland								
QantasLink	145	143	109	76.2	115	80.4	2	1.4
Virgin Australia	32	31	28	90.3	29	93.5	1	3.1
Virgin Australia Regional Airlines	25	25	20	80.0	19	76.0	0	0.0
All Airlines	202	199	157	78.9	163	81.9	3	1.5
Perth-Sydney								
Jetstar	59	58	32	55.2	44	75.9	1	1.7
Qantas	198	197	110	55.8	150	76.1	1	0.5
Virgin Australia	152	152	126	82.9	128	84.2	0	0.0
All Airlines	409	407	268	65.8	322	79.1	2	0.5

	Sectors		Arrivals On Time		Departures On Time		Cancellations	
	Sched.	Flown	No.	%	No.	%	No.	%
Port Hedland-Perth								
QantasLink	144	142	90	63.4	100	70.4	2	1.4
Virgin Australia	32	30	18	60.0	24	80.0	2	6.3
Virgin Australia Regional Airlines	25	25	15	60.0	11	44.0	0	0.0
All Airlines	201	197	123	62.4	135	68.5	4	2.0
Port Lincoln-Adelaide								
QantasLink	138	137	125	91.2	124	90.5	1	0.7
Rex Airlines	146	146	134	91.8	135	92.5	0	0.0
All Airlines	284	283	259	91.5	259	91.5	1	0.4
Port Macquarie-Sydney								
QantasLink	112	110	92	83.6	91	82.7	2	1.8
Rex Airlines	51	51	35	68.6	40	78.4	0	0.0
All Airlines	163	161	127	78.9	131	81.4	2	1.2
Proserpine-Brisbane								
Jetstar	30	30	22	73.3	23	76.7	0	0.0
QantasLink	17	17	14	82.4	13	76.5	0	0.0
Virgin Australia	39	39	31	79.5	32	82.1	0	0.0
All Airlines	86	86	67	77.9	68	79.1	0	0.0
Rockhampton-Brisbane								
QantasLink	188	182	141	77.5	149	81.9	6	3.2
Virgin Australia	149	148	97	65.5	105	70.9	1	0.7
All Airlines	337	330	238	72.1	254	77.0	7	2.1
Sunshine Coast-Melbourne								
Jetstar	89	89	68	76.4	59	66.3	0	0.0
Qantas	29	29	23	79.3	19	65.5	0	0.0
Virgin Australia	77	77	65	84.4	64	83.1	0	0.0
All Airlines	195	195	156	80.0	142	72.8	0	0.0
Sunshine Coast-Sydney								
Jetstar	87	84	59	70.2	63	75.0	3	3.4
Qantas	56	56	38	67.9	41	73.2	0	0.0
Virgin Australia	74	72	39	54.2	49	68.1	2	2.7
All Airlines	217	212	136	64.2	153	72.2	5	2.3
Sydney-Adelaide								
Jetstar	150	142	110	77.5	99	69.7	8	5.3
Qantas	241	238	203	85.3	189	79.4	3	1.2
Rex Airlines	30	30	24	80.0	23	76.7	0	0.0
Virgin Australia	183	181	142	78.5	144	79.6	2	1.1
All Airlines	604	591	479	81.0	455	77.0	13	2.2
Sydney-Albury								
QantasLink	106	104	86	82.7	82	78.8	2	1.9
Rex Airlines	79	77	60	77.9	55	71.4	2	2.5
All Airlines	185	181	146	80.7	137	75.7	4	2.2
Sydney-Ballina								
Jetstar	88	86	69	80.2	69	80.2	2	2.3
QantasLink	56	56	52	92.9	51	91.1	0	0.0
Virgin Australia	35	35	26	74.3	28	80.0	0	0.0
All Airlines	179	177	147	83.1	148	83.6	2	1.1
Sydney-Brisbane								
Jetstar	200	188	141	75.0	138	73.4	12	6.0
Qantas	516	501	352	70.3	361	72.1	15	2.9
Rex Airlines	146	146	119	81.5	123	84.2	0	0.0
Virgin Australia	406	393	325	82.7	336	85.5	13	3.2
All Airlines	1 268	1 228	937	76.3	958	78.0	40	3.2

	Sectors		Arrivals On Time		Departures On Time		Cancellations	
	Sched.	Flown	No.	%	No.	%	No.	%
Sydney-Cairns								
Jetstar	117	115	92	80.0	90	78.3	2	1.7
Qantas	48	48	35	72.9	37	77.1	0	0.0
Virgin Australia	92	91	86	94.5	83	91.2	1	1.1
All Airlines	257	254	213	83.9	210	82.7	3	1.2
Sydney-Canberra								
Qantas	46	44	41	93.2	40	90.9	2	4.3
QantasLink	358	348	296	85.1	284	81.6	10	2.8
Virgin Australia	234	226	203	89.8	193	85.4	8	3.4
All Airlines	638	618	540	87.4	517	83.7	20	3.1
Sydney-Coffs Harbour								
QantasLink	112	111	81	73.0	80	72.1	1	0.9
Rex Airlines	88	88	73	83.0	71	80.7	0	0.0
All Airlines	200	199	154	77.4	151	75.9	1	0.5
Sydney-Dubbo								
QantasLink	111	108	91	84.3	81	75.0	3	2.7
Rex Airlines	125	120	84	70.0	83	69.2	5	4.0
All Airlines	236	228	175	76.8	164	71.9	8	3.4
Sydney-Gold Coast								
Jetstar	302	295	224	75.9	221	74.9	7	2.3
Qantas	99	99	74	74.7	68	68.7	0	0.0
Rex Airlines	30	30	26	86.7	28	93.3	0	0.0
Virgin Australia	302	297	240	80.8	248	83.5	5	1.7
All Airlines	733	721	564	78.2	565	78.4	12	1.6
Sydney-Hamilton Island								
Jetstar	20	20	11	55.0	14	70.0	0	0.0
Qantas	30	30	22	73.3	17	56.7	0	0.0
Virgin Australia	29	29	26	89.7	25	86.2	0	0.0
All Airlines	79	79	59	74.7	56	70.9	0	0.0
Sydney-Hobart								
Jetstar	84	82	70	85.4	69	84.1	2	2.4
Qantas	73	73	56	76.7	50	68.5	0	0.0
QantasLink	9	9	9	100.0	9	100.0	0	0.0
Virgin Australia	76	76	69	90.8	72	94.7	0	0.0
All Airlines	242	240	204	85.0	200	83.3	2	0.8
Sydney-Launceston								
Jetstar	52	51	37	72.5	30	58.8	1	1.9
QantasLink	30	30	26	86.7	26	86.7	0	0.0
Virgin Australia	30	30	25	83.3	18	60.0	0	0.0
All Airlines	112	111	88	79.3	74	66.7	1	0.9
Sydney-Melbourne								
Jetstar	481	463	343	74.1	322	69.5	18	3.7
Qantas	864	821	652	79.4	632	77.0	43	5.0
QantasLink	11	9	8	88.9	7	77.8	2	18.2
Rex Airlines	205	204	168	82.4	166	81.4	1	0.5
Virgin Australia	657	612	484	79.1	500	81.7	45	6.8
All Airlines	2 218	2 109	1 655	78.5	1 627	77.1	109	4.9
Sydney-Perth								
Jetstar	60	60	49	81.7	40	66.7	0	0.0
Qantas	198	198	175	88.4	138	69.7	0	0.0
Virgin Australia	164	164	146	89.0	124	75.6	0	0.0
All Airlines	422	422	370	87.7	302	71.6	0	0.0
Sydney-Port Macquarie								
QantasLink	112	112	87	77.7	87	77.7	0	0.0
Rex Airlines	51	51	42	82.4	45	88.2	0	0.0
All Airlines	163	163	129	79.1	132	81.0	0	0.0

	Sectors		Arrivals On Time		Departures On Time		Cancellations	
	Sched.	Flown	No.	%	No.	%	No.	%
Sydney-Sunshine Coast								
Jetstar	88	85	68	80.0	66	77.6	3	3.4
Qantas	56	56	42	75.0	43	76.8	0	0.0
Virgin Australia	72	72	48	66.7	48	66.7	0	0.0
All Airlines	216	213	158	74.2	157	73.7	3	1.4
Sydney-Wagga Wagga								
QantasLink	111	109	95	87.2	89	81.7	2	1.8
Rex Airlines	88	87	72	82.8	69	79.3	1	1.1
All Airlines	199	196	167	85.2	158	80.6	3	1.5
Townsville-Brisbane								
Jetstar	60	60	41	68.3	43	71.7	0	0.0
Qantas	47	47	40	85.1	40	85.1	0	0.0
QantasLink	99	99	68	68.7	68	68.7	0	0.0
Virgin Australia	135	135	119	88.1	114	84.4	0	0.0
All Airlines	341	341	268	78.6	265	77.7	0	0.0
Townsville-Cairns								
QantasLink	137	129	112	86.8	110	85.3	8	5.8
Rex Airlines	13	13	11	84.6	11	84.6	0	0.0
All Airlines	150	142	123	86.6	121	85.2	8	5.3
Wagga Wagga-Sydney								
QantasLink	111	109	99	90.8	99	90.8	2	1.8
Rex Airlines	87	85	61	71.8	66	77.6	2	2.3
All Airlines	198	194	160	82.5	165	85.1	4	2.0

Airports

The following data reports by airport against flights operated on published routes only. This month, 8 major city airports and 28 regional city airports are covered.

Airport	Arrivals			Departures		
	Sectors	On Time		Sectors	On Time	
	Flown	No.	%	Flown	No.	%
Adelaide						
Jetstar	347	273	78.7	346	269	77.7
Qantas	612	498	81.4	608	498	81.9
QantasLink	443	391	88.3	443	391	88.3
Rex Airlines	267	234	87.6	267	241	90.3
Virgin Australia	669	540	80.7	670	542	80.9
Virgin Australia Regional Airlines	40	22	55.0	39	12	30.8
All Airlines	2,378	1,958	82.3	2,373	1,953	82.3

Relates to services to and from Alice Springs, Brisbane, Canberra, Gold Coast, Melbourne, Perth, Port Lincoln and Sydney only.

Albury						
QantasLink	104	86	82.7	104	83	79.8
Rex Airlines	77	60	77.9	77	67	87.0
All Airlines	181	146	80.7	181	150	82.9

Relates to services to and from Sydney only.

Alice Springs						
QantasLink	52	51	98.1	52	47	90.4
Virgin Australia	13	11	84.6	13	10	76.9
All Airlines	65	62	95.4	65	57	87.7

Relates to services to and from Adelaide only.

Ballina						
Jetstar	86	69	80.2	86	64	74.4
QantasLink	56	52	92.9	56	51	91.1
Virgin Australia	35	26	74.3	35	24	68.6
All Airlines	177	147	83.1	177	139	78.5

Relates to services to and from Sydney only.

Brisbane						
Jetstar	876	645	73.6	875	639	73.0
Qantas	1,326	995	75.0	1,330	1,076	80.9
QantasLink	1,108	835	75.4	1,112	866	77.9
Rex Airlines	239	197	82.4	239	208	87.0
Virgin Australia	2,018	1,672	82.9	2,017	1,679	83.2
All Airlines	5,567	4,344	78.0	5,573	4,468	80.2

Relates to services to and from Adelaide, Cairns, Canberra, Darwin, Emerald, Gladstone, Hamilton Island, Hobart, Launceston, Mackay, Melbourne, Mount Isa, Newcastle, Perth, Proserpine, Rockhampton, Sydney and Townsville only.

Broome						
QantasLink	86	66	76.7	86	67	77.9
Virgin Australia	38	33	86.8	38	28	73.7
Virgin Australia Regional Airlines	13	10	76.9	13	5	38.5
All Airlines	137	109	79.6	137	100	73.0

Relates to services to and from Perth only.

Airport	Arrivals			Departures		
	Sectors Flown	On Time		Sectors Flown	On Time	
		No.	%		No.	%
Cairns						
Jetstar	333	253	76.0	334	255	76.3
Qantas	177	141	79.7	177	135	76.3
QantasLink	200	152	76.0	200	165	82.5
Rex Airlines	22	18	81.8	21	18	85.7
Virgin Australia	322	290	90.1	322	277	86.0
All Airlines	1,054	854	81.0	1,054	850	80.6
Relates to services to and from Brisbane, Melbourne, Sydney and Townsville only.						
Canberra						
Jetstar	84	65	77.4	84	59	70.2
Qantas	44	41	93.2	44	34	77.3
QantasLink	807	634	78.6	796	616	77.4
Rex Airlines	30	22	73.3	30	23	76.7
Virgin Australia	485	423	87.2	484	412	85.1
All Airlines	1,450	1,185	81.7	1,438	1,144	79.6
Relates to services to and from Adelaide, Brisbane, Gold Coast, Melbourne and Sydney only.						
Coffs Harbour						
QantasLink	111	81	73.0	111	83	74.8
Rex Airlines	88	73	83.0	88	71	80.7
All Airlines	199	154	77.4	199	154	77.4
Relates to services to and from Sydney only.						
Darwin						
Jetstar	54	45	83.3	55	38	69.1
Qantas	38	31	81.6	38	29	76.3
QantasLink	60	32	53.3	60	27	45.0
Virgin Australia	65	48	73.8	64	39	60.9
Virgin Australia Regional Airlines	17	14	82.4	17	13	76.5
All Airlines	234	170	72.6	234	146	62.4
Relates to services to and from Brisbane, Melbourne and Perth only.						
Devonport						
QantasLink	115	95	82.6	115	94	81.7
Rex Airlines	40	39	97.5	41	39	95.1
All Airlines	155	134	86.5	156	133	85.3
Relates to services to and from Melbourne only.						
Dubbo						
QantasLink	108	91	84.3	108	94	87.0
Rex Airlines	120	84	70.0	116	90	77.6
All Airlines	228	175	76.8	224	184	82.1
Relates to services to and from Sydney only.						
Emerald						
QantasLink	124	108	87.1	124	106	85.5
Virgin Australia	26	21	80.8	26	22	84.6
All Airlines	150	129	86.0	150	128	85.3
Relates to services to and from Brisbane only.						

Airport	Arrivals			Departures		
	Sectors	On Time		Sectors	On Time	
	Flown	No.	%	Flown	No.	%
Gladstone						
QantasLink	129	100	77.5	129	104	80.6
Virgin Australia	35	31	88.6	35	31	88.6
All Airlines	164	131	79.9	164	135	82.3
Relates to services to and from Brisbane only.						
Gold Coast						
Jetstar	577	423	73.3	579	442	76.3
Qantas	135	107	79.3	135	104	77.0
QantasLink	9	8	88.9	9	6	66.7
Rex Airlines	60	53	88.3	60	48	80.0
Virgin Australia	616	489	79.4	615	436	70.9
All Airlines	1,397	1,080	77.3	1,398	1,036	74.1
Relates to services to and from Adelaide, Canberra, Melbourne and Sydney only.						
Hamilton Island						
Jetstar	20	11	55.0	20	10	50.0
Qantas	30	22	73.3	30	15	50.0
QantasLink	25	18	72.0	25	15	60.0
Virgin Australia	64	59	92.2	64	52	81.3
All Airlines	139	110	79.1	139	92	66.2
Relates to services to and from Brisbane and Sydney only.						
Hobart						
Jetstar	259	197	76.1	258	189	73.3
Qantas	74	57	77.0	75	53	70.7
QantasLink	140	92	65.7	139	108	77.7
Rex Airlines	30	28	93.3	30	28	93.3
Virgin Australia	252	210	83.3	252	205	81.3
All Airlines	755	584	77.4	754	583	77.3
Relates to services to and from Brisbane, Melbourne and Sydney only.						
Kalgoorlie						
Qantas	18	17	94.4	18	16	88.9
QantasLink	53	41	77.4	52	41	78.8
Virgin Australia	69	62	89.9	69	58	84.1
Virgin Australia Regional Airlines	35	31	88.6	35	23	65.7
All Airlines	175	151	86.3	174	138	79.3
Relates to services to and from Perth only.						
Karratha						
Qantas	3	3	100.0	3	0	0.0
QantasLink	141	104	73.8	140	95	67.9
Virgin Australia	57	45	78.9	57	46	80.7
Virgin Australia Regional Airlines	19	12	63.2	19	11	57.9
All Airlines	220	164	74.5	219	152	69.4
Relates to services to and from Perth only.						
Launceston						
Jetstar	191	139	72.8	191	114	59.7
QantasLink	103	86	83.5	103	91	88.3
Virgin Australia	152	124	81.6	152	125	82.2
All Airlines	446	349	78.3	446	330	74.0
Relates to services to and from Brisbane, Melbourne and Sydney only.						

Airport	Arrivals			Departures		
	Sectors	On Time		Sectors	On Time	
	Flown	No.	%	Flown	No.	%
Mackay						
Jetstar	30	18	60.0	30	19	63.3
Qantas	108	85	78.7	108	80	74.1
QantasLink	8	6	75.0	13	9	69.2
Virgin Australia	122	94	77.0	121	98	81.0
All Airlines	268	203	75.7	272	206	75.7

Relates to services to and from Brisbane only.

Melbourne

Jetstar	1,711	1,240	72.5	1,714	1,208	70.5
Qantas	1,779	1,433	80.6	1,778	1,478	83.1
QantasLink	725	516	71.2	731	516	70.6
Rex Airlines	541	436	80.6	541	463	85.6
Virgin Australia	2,271	1,798	79.2	2,282	1,934	84.8
All Airlines	7,027	5,423	77.2	7,046	5,599	79.5

Relates to services to and from Adelaide, Brisbane, Cairns, Canberra, Darwin, Devonport, Gold Coast, Hobart, Launceston, Mildura, Newcastle, Perth, Sunshine Coast and Sydney only.

Mildura

QantasLink	107	88	82.2	106	79	74.5
Rex Airlines	92	69	75.0	91	67	73.6
All Airlines	199	157	78.9	197	146	74.1

Relates to services to and from Melbourne only.

Mount Isa

Qantas	48	44	91.7	47	42	89.4
Virgin Australia	13	11	84.6	13	9	69.2
All Airlines	61	55	90.2	60	51	85.0

Relates to services to and from Brisbane only.

Newcastle

Jetstar	122	93	76.2	122	87	71.3
QantasLink	133	82	61.7	132	105	79.5
Virgin Australia	119	90	75.6	118	94	79.7
All Airlines	374	265	70.9	372	286	76.9

Relates to services to and from Brisbane and Melbourne only.

Newman

Qantas	18	17	94.4	17	16	94.1
QantasLink	96	84	87.5	96	82	85.4
Virgin Australia	41	37	90.2	41	35	85.4
Virgin Australia Regional Airlines	16	13	81.3	16	13	81.3
All Airlines	171	151	88.3	170	146	85.9

Relates to services to and from Perth only.

Airport	Arrivals			Departures		
	Sectors	On Time		Sectors	On Time	
	Flown	No.	%	Flown	No.	%
Perth						
Jetstar	204	167	81.9	202	142	70.3
Qantas	680	589	86.6	680	566	83.2
QantasLink	546	371	67.9	549	439	80.0
Virgin Australia	776	681	87.8	771	678	87.9
Virgin Australia Regional Airlines	164	120	73.2	165	133	80.6
All Airlines	2,370	1,928	81.4	2,367	1,958	82.7
Relates to services to and from Adelaide, Brisbane, Broome, Darwin, Kalgoorlie, Karratha, Melbourne, Newman, Port Hedland and Sydney only.						
Port Hedland						
QantasLink	143	109	76.2	142	100	70.4
Virgin Australia	31	28	90.3	30	24	80.0
Virgin Australia Regional Airlines	25	20	80.0	25	11	44.0
All Airlines	199	157	78.9	197	135	68.5
Relates to services to and from Perth only.						
Port Lincoln						
QantasLink	138	126	91.3	137	124	90.5
Rex Airlines	146	133	91.1	146	135	92.5
All Airlines	284	259	91.2	283	259	91.5
Relates to services to and from Adelaide only.						
Port Macquarie						
QantasLink	112	87	77.7	110	91	82.7
Rex Airlines	51	42	82.4	51	40	78.4
All Airlines	163	129	79.1	161	131	81.4
Relates to services to and from Sydney only.						
Proserpine						
Jetstar	30	25	83.3	30	23	76.7
QantasLink	17	14	82.4	17	13	76.5
Virgin Australia	39	35	89.7	39	32	82.1
All Airlines	86	74	86.0	86	68	79.1
Relates to services to and from Brisbane only.						
Rockhampton						
QantasLink	186	150	80.6	182	149	81.9
Virgin Australia	149	88	59.1	148	105	70.9
All Airlines	335	238	71.0	330	254	77.0
Relates to services to and from Brisbane only.						
Sunshine Coast						
Jetstar	174	133	76.4	173	122	70.5
Qantas	85	64	75.3	85	60	70.6
Virgin Australia	149	117	78.5	149	113	75.8
All Airlines	408	314	77.0	407	295	72.5
Relates to services to and from Melbourne and Sydney only.						

Airport	Arrivals			Departures		
	Sectors	On Time		Sectors	On Time	
	Flown	No.	%	Flown	No.	%
Sydney						
Jetstar	1,588	1,176	74.1	1,587	1,158	73.0
Qantas	2,106	1,577	74.9	2,108	1,575	74.7
QantasLink	989	796	80.5	996	796	79.9
Rex Airlines	827	650	78.6	833	663	79.6
Virgin Australia	2,205	1,727	78.3	2,206	1,819	82.5
All Airlines	7,715	5,926	76.8	7,730	6,011	77.8

Relates to services to and from Adelaide, Albury, Ballina, Brisbane, Cairns, Canberra, Coffs Harbour, Dubbo, Gold Coast, Hamilton Island, Hobart, Launceston, Melbourne, Perth, Port Macquarie, Sunshine Coast and Wagga Wagga only.

Townsville

Jetstar	60	46	76.7	60	43	71.7
Qantas	47	42	89.4	47	40	85.1
QantasLink	229	188	82.1	228	178	78.1
Rex Airlines	12	10	83.3	13	11	84.6
Virgin Australia	135	118	87.4	135	114	84.4
All Airlines	483	404	83.6	483	386	79.9

Relates to services to and from Brisbane and Cairns only.

Wagga Wagga

QantasLink	109	95	87.2	109	99	90.8
Rex Airlines	87	72	82.8	85	66	77.6
All Airlines	196	167	85.2	194	165	85.1

Relates to services to and from Sydney only.

Definitions

On time arrival	A flight arrival is counted as "on time" if it arrived at the gate before 15 minutes after the scheduled arrival time shown in the carriers' schedule. Neither diverted nor cancelled flights count as on time.
On time departure	A flight departure is counted as "on time" if it departs the gate before 15 minutes after the scheduled departure time shown in the carriers' schedule.
Cancellation	A flight removed from service within 7 days of scheduled departure is regarded as a cancellation.
On time departure percentage	The percentage of on time departures is measured against the number of departures <i>operated</i> on any particular sector.
On time arrival percentage	The percentage of on time arrivals is measured against the number of arrivals <i>operated</i> on any particular sector.
Cancellation percentage	The percentage of cancellations is measured against the number of services <i>scheduled</i> on any particular sector.

Airlines and Reporting

Data has been gathered since November 2003, although some airlines commenced reporting at a later date, including Jetstar which first reported in May 2004, Tigerair Australia in April 2008, Virgin Australia Regional Airlines in May 2013, Skytrans in May 2024 and Bonza in November 2024. Tigerair Australia ceased operations in March 2020 and data was not received for that month. Bonza ceased operations at the end of April 2024 and no data was received for this month.

Virgin Blue was rebranded as Virgin Australia in May 2011 and Tiger Airways was rebranded as Tigerair Australia in August 2013 and time series data in Microsoft Excel spread sheet format on the BITRE website have been revised to reflect these changes. With effect from August 2021, Regional Express is reported as Rex Airlines.

Services operated by Skywest on behalf of Virgin Australia using ATR/F100 aircraft commenced in November 2011 and were shown separately as Virgin Australia – ATR/F100 Operations. Virgin Australia Regional Airlines commenced operations in May 2013. It was formed after the acquisition of Skywest by Virgin Australia and represented a combination of operations previously reported under Skywest and Virgin Australia – ATR/F100 Operations. In February 2016, Virgin Australia transferred their ATR fleet from Virgin Australia Regional Airlines to Virgin Australia.