



Australian Government

**Department of Infrastructure, Transport,
Regional Development, Communications and the Arts**
Bureau of Infrastructure and Transport Research Economics

STATISTICAL REPORT



Aviation

**Domestic airline on time performance
August 2022**

© Commonwealth of Australia 2022

ISSN: 1832-0759

Ownership of intellectual property rights in this publication

Unless otherwise noted, copyright (and any other intellectual property rights, if any) in this publication is owned by the Commonwealth of Australia (referred to below as the Commonwealth).

Disclaimer

The material contained in this publication is made available on the understanding that the Commonwealth is not providing professional advice, and that users exercise their own skill and care with respect to its use, and seek independent advice if necessary.

The Commonwealth makes no representations or warranties as to the contents or accuracy of the information contained in this publication. To the extent permitted by law, the Commonwealth disclaims liability to any person or organisation in respect of anything done, or omitted to be done, in reliance upon information contained in this publication.

Creative Commons licence

With the exception of (a) the Coat of Arms; and (b) the Department of Infrastructure, Transport, Regional Development, Communications and the Arts' photos and graphics, copyright in this publication is licensed under a Creative Commons Attribution 3.0 Australia Licence.

Creative Commons Attribution 3.0 Australia Licence is a standard form licence agreement that allows you to copy, communicate and adapt this publication provided that you attribute the work to the Commonwealth and abide by the other licence terms. A summary of the licence terms is available from <http://creativecommons.org/licenses/by/3.0/au/deed.en>. The full licence terms are available from <http://creativecommons.org/licenses/by/3.0/au/legalcode>.

Use of the Coat of Arms

The Department of the Prime Minister and Cabinet sets the terms under which the Coat of Arms is used. Please refer to the Department's Commonwealth Coat of Arms and Government branding web page <http://www.dpmc.gov.au/guidelines/index.cfm#brand> and, in particular, the Guidelines on the use of the Commonwealth Coat of Arms publication.

An appropriate citation for this report is:

Bureau of Infrastructure and Transport Research Economics (BITRE), 2022, Domestic airline on time performance, Statistical Report, BITRE, Canberra ACT.

Contact us

This publication is available in PDF format. All other rights are reserved, including in relation to any Departmental logos or trade marks which may exist. For enquiries regarding the licence and any use of this publication, please contact:

Bureau of Infrastructure and Transport Research Economics (BITRE)
Department of Infrastructure, Transport, Regional Development, Communications and the Arts
GPO Box 501, Canberra ACT 2601, Australia
Telephone: (international) +61 2 6274 7210
Fax: (international) +61 2 6274 6855
Email: bitre@infrastructure.gov.au
Website: www.bitre.gov.au

Inquiries

Should you require additional information about the statistics contained in this publication:

Telephone (02) 6274 7790 or Facsimile (02) 6274 7727

Electronic mail: AVSTATS@infrastructure.gov.au

Web site: <http://www.bitre.gov.au/statistics/aviation/otphome.aspx>

Foreword

The Bureau of Infrastructure and Transport Research Economics (BITRE) monitors the punctuality and reliability of major domestic airlines operating between Australian airports. The purpose of this is to allow for evaluation of overall industry and individual airline performance, so that consumers of air travel can make informed decisions.

The following domestic airlines currently report this information monthly to the BITRE: Jetstar, Qantas, QantasLink, Rex Airlines, Virgin Australia and Virgin Australia Regional Airlines.

Data has been gathered since November 2003, although some airlines commenced reporting at a later date, including Jetstar which first reported in May 2004, MacAir in July 2005, Tigerair Australia in April 2008 and Virgin Australia Regional Airlines in May 2013. MacAir ceased operations in February 2009 and data was not received for December 2008 onwards. Tigerair Australia ceased operations in March 2020 and data was not received for that month.

Virgin Blue was rebranded as Virgin Australia in May 2011 and Tiger Airways was rebranded as Tigerair Australia in July 2013 and time series data in Microsoft Excel spreadsheet format on the BITRE website have been revised to reflect these changes. With effect from July 2021, Regional Express is reported as Rex Airlines.

Services operated by Skywest on behalf of Virgin Australia using ATR/F100 aircraft commenced in November 2011 and were shown separately as Virgin Australia – ATR/F100 Operations. Virgin Australia Regional Airlines commenced operations in May 2013. It was formed after the acquisition of Skywest by Virgin Australia and represented a combination of operations previously reported under Skywest and Virgin Australia – ATR/F100 Operations. In January 2016, Virgin Australia transferred their ATR fleet from Virgin Australia Regional Airlines to Virgin Australia.

Information presented in this report is for Australian domestic routes for which the passenger load averaged 8 000 or more passengers per month over the previous six months and where two or more airlines operated in competition on those routes. In order to present data for more routes during the period impacted by COVID-19, the passenger load restriction is not being applied. Data are presented for 61 routes in August 2022. Over time, routes which meet these criteria change as airline networks and traffic levels vary.

Participating airlines report their overall monthly network performance where this is possible.

Total industry figures encompass all services operated by reporting airlines only. These airlines collectively carried over 95 per cent of total domestic passengers (regular public transport only) in 2019.

The method of capturing on time performance varies between airlines utilising different recording systems. Jetstar and Qantas jet aircraft use Aircraft Communication Addressing and Reporting System (ACARS) to electronically measure on time performance. Rex Airlines, Virgin Australia, Virgin Australia Regional Airlines and the Qantas non-jet fleet record on time performance manually using records from pilots, gate agents and/or ground crews.

After initial data is collected, aggregate reports are reviewed by participating airlines prior to publication.

Reports and detailed time series data in Microsoft Excel spreadsheet format are available from the BITRE website at: <http://www.bitre.gov.au/statistics/aviation/otphome.aspx>

Contents

	Page
Industry performance	1
Individual routes	9
Airports	22
Definitions	28

Industry performance

For August 2022, on time performance over all routes operated by participating airlines (Jetstar, Qantas, QantasLink, Rex Airlines, Virgin Australia and Virgin Australia Regional Airlines) averaged 68.5 per cent for on time arrivals and 68.8 per cent for on time departures. The cancellation rate for the month was 3.2 per cent. This month's figures were impacted by weather related events and COVID-19 related issues. The equivalent figures for August 2021 were 89.3 per cent for on time arrivals, 89.5 per cent for on time departures and 23.0 per cent for cancellations.

This month's on time arrivals figure was significantly lower than the long term average performance for all routes (81.9 per cent) and the on time departures figure was also significantly lower than the long term average (83.1 per cent). The rate of cancellations was higher than the long term average of 2.1 per cent.

The Virgin Australia network (Virgin Australia and Virgin Australia Regional Airlines combined operations) recorded 69.2 per cent for on time arrivals while the Qantas network (Qantas and QantasLink combined operations) recorded 67.2 per cent. Virgin Australia achieved the highest on time arrivals among the major domestic airlines at 69.4 per cent followed by Qantas at 62.4 per cent and Jetstar at 59.6 per cent. Of the regional airlines, Rex Airlines recorded 79.0 per cent for on time arrivals, followed by QantasLink at 70.8 per cent and Virgin Australia Regional Airlines at 66.0 per cent.

The Virgin Australia network recorded 69.5 per cent for on time departures while the Qantas network recorded 67.2 per cent. Virgin Australia achieved the highest level of on time departures among the major domestic airlines for August 2022 at 69.7 per cent, followed by Qantas at 61.8 per cent and Jetstar at 56.9 per cent. Of the regional airlines, Rex Airlines recorded 82.2 per cent for on time departures, followed by QantasLink at 71.2 per cent and Virgin Australia Regional Airlines at 64.9 per cent.

Virgin Australia Regional Airlines recorded the highest percentage of cancellations (at 6.9 per cent) during the month, followed by Jetstar (at 5.4 per cent), Qantas (at 4.7 per cent), QantasLink (at 3.2 per cent), Virgin Australia (at 2.2 per cent) and Rex Airlines (at 0.8 per cent).

Airlines' on time performance varies across the routes they serve. Individual route data by specific airline for 61 routes are shown on pages 9-21.

Of the 61 routes which met the criteria for on time performance reporting in August 2022, the Brisbane-Hamilton Island route had the highest percentage of on time arrivals (91.5 per cent) and the Port Macquarie-Sydney route recorded the highest percentage of on time departures (90.9 per cent). The Darwin-Brisbane route had the lowest percentage of on time arrivals (31.0 per cent) and the Darwin-Sydney route had the lowest percentage of on time departures (24.3 per cent).

Cancellations were highest on the Melbourne-Sydney route at 11.3 per cent followed by the Sydney-Melbourne route at 11.0 per cent, the Newman-Perth route at 8.7 per cent, the Broome-Perth route at 7.7 per cent and the Perth-Newman route at 7.6 per cent.

Port Macquarie Airport recorded the highest percentage of on time arrivals (84.1 per cent) and the highest percentage of on time departures (90.9 per cent). Launceston Airport recorded the lowest percentage of on time arrivals (54.4 per cent) and Darwin Airport recorded the lowest percentage of on time departures (34.8 per cent). These figures only refer to reported routes and do not cover all flights at these airports.

Table 1 On time performance for August 2022 — Total Industry

	<i>Sectors</i>		<i>Arrivals On Time</i>		<i>Departures On Time</i>		<i>Cancellations</i>	
	<i>Scheduled</i>	<i>Flown</i>	<i>No.</i>	<i>%</i>	<i>No.</i>	<i>%</i>	<i>No.</i>	<i>%</i>
Jetstar	6 253	5 918	3 527	59.6	3 365	56.9	335	5.4
Qantas - all QF designated services	18 916	18 182	12 213	67.2	12 216	67.2	734	3.9
Rex Airlines	6 823	6 769	5 348	79.0	5 566	82.2	54	0.8
Virgin Australia - all VA designated services	11 121	10 848	7 505	69.2	7 534	69.5	273	2.5
All Airlines	43 113	41 717	28 593	68.5	28 681	68.8	1 396	3.2
Individual operating entities								
Qantas	8 147	7 761	4 840	62.4	4 795	61.8	386	4.7
QantasLink	10 769	10 421	7 373	70.8	7 421	71.2	348	3.2
Virgin Australia	10 502	10 272	7 125	69.4	7 160	69.7	230	2.2
Virgin Australia Regional Airlines	619	576	380	66.0	374	64.9	43	6.9

Total airline network data (including routes not shown in this report).

Airlines' on time performance varies across the routes they serve. Individual route data by specific airline are shown on page 9 and onwards.

Table 2 Top ten routes for on time performance for August 2022 (participating airlines only)

<i>Arrivals</i>		<i>Departures</i>	
<i>Route</i>	<i>On Time (%)</i>	<i>Route</i>	<i>On Time (%)</i>
Brisbane-Hamilton Island	91.5	Port Macquarie-Sydney	90.9
Cairns-Townsville	88.5	Brisbane-Hamilton Island	89.8
Townsville-Cairns	86.6	Armidale-Sydney	86.9
Adelaide-Gold Coast	84.9	Cairns-Townsville	86.6
Brisbane-Hobart	84.3	Brisbane-Emerald	85.1
Sydney-Port Macquarie	84.1	Adelaide-Gold Coast	84.9
Sydney-Albury	83.3	Townsville-Cairns	84.7
Brisbane-Emerald	83.1	Sydney-Albury	82.5
Brisbane-Darwin	81.6	Dubbo-Sydney	81.2
Sydney-Armidale	80.9	Albury-Sydney	80.9

Table 3 Top ten airports for on time performance for August 2022 (participating airlines and reported routes only)

<i>Arrivals</i>		<i>Departures</i>	
<i>Airport</i>	<i>On Time (%)</i>	<i>Airport</i>	<i>On Time (%)</i>
Port Macquarie	84.1	Port Macquarie	90.9
Albury	83.3	Armidale	86.9
Emerald	83.1	Dubbo	81.2
Armidale	80.9	Albury	80.9
Hamilton Island	80.0	Emerald	79.7
Coffs Harbour	76.4	Coffs Harbour	78.0
Dubbo	76.0	Mildura	76.7
Townsville	75.9	Wagga Wagga	75.6
Canberra	73.3	Port Lincoln	74.8
Port Lincoln	73.2	Gladstone	74.1

Total industry on time performance

Figure 1 On time performance (by month from August 2019)—Total Industry

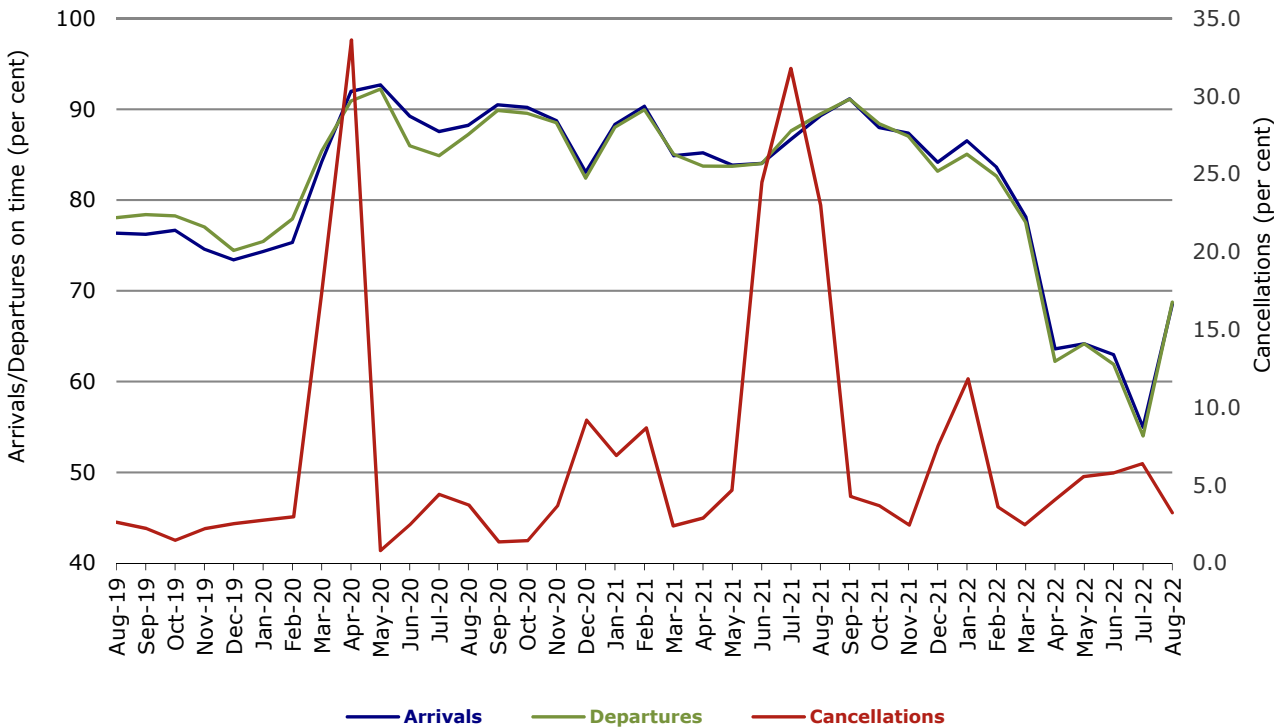


Figure 2 Arrivals on time (by month from August 2021)

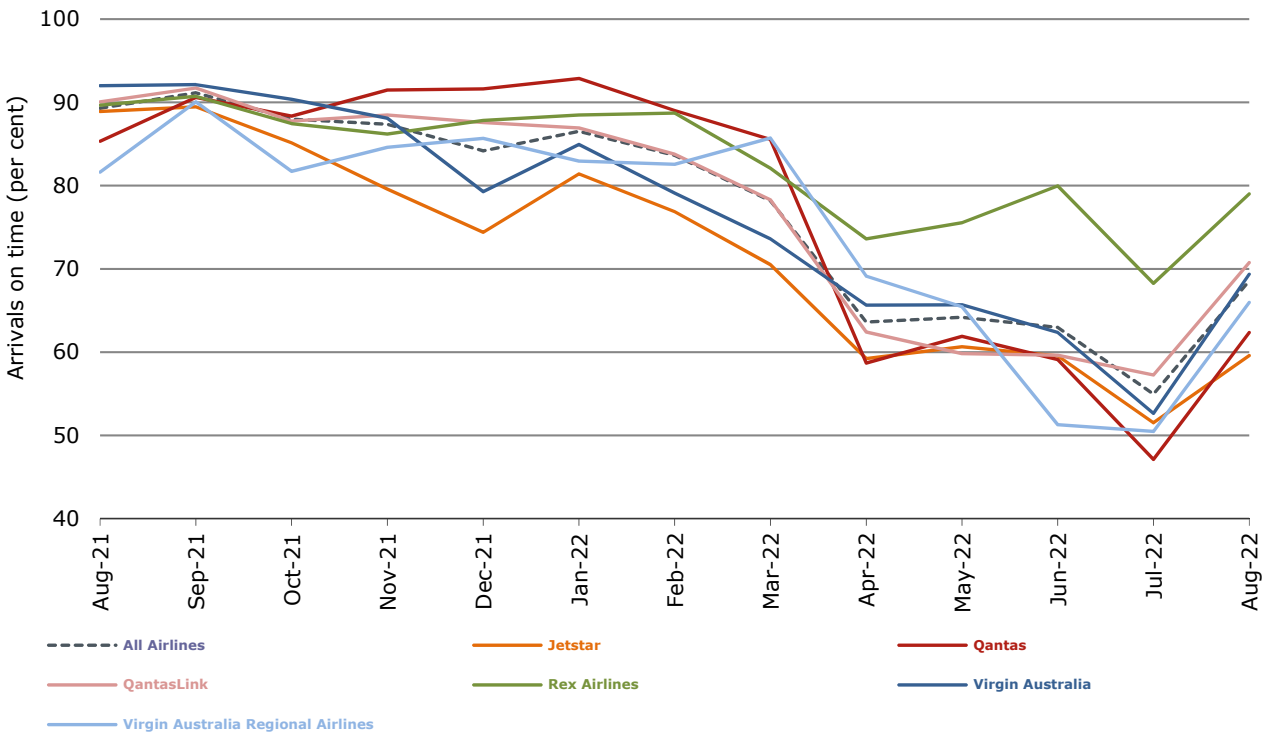


Figure 3 Departures on time (by month from August 2021)

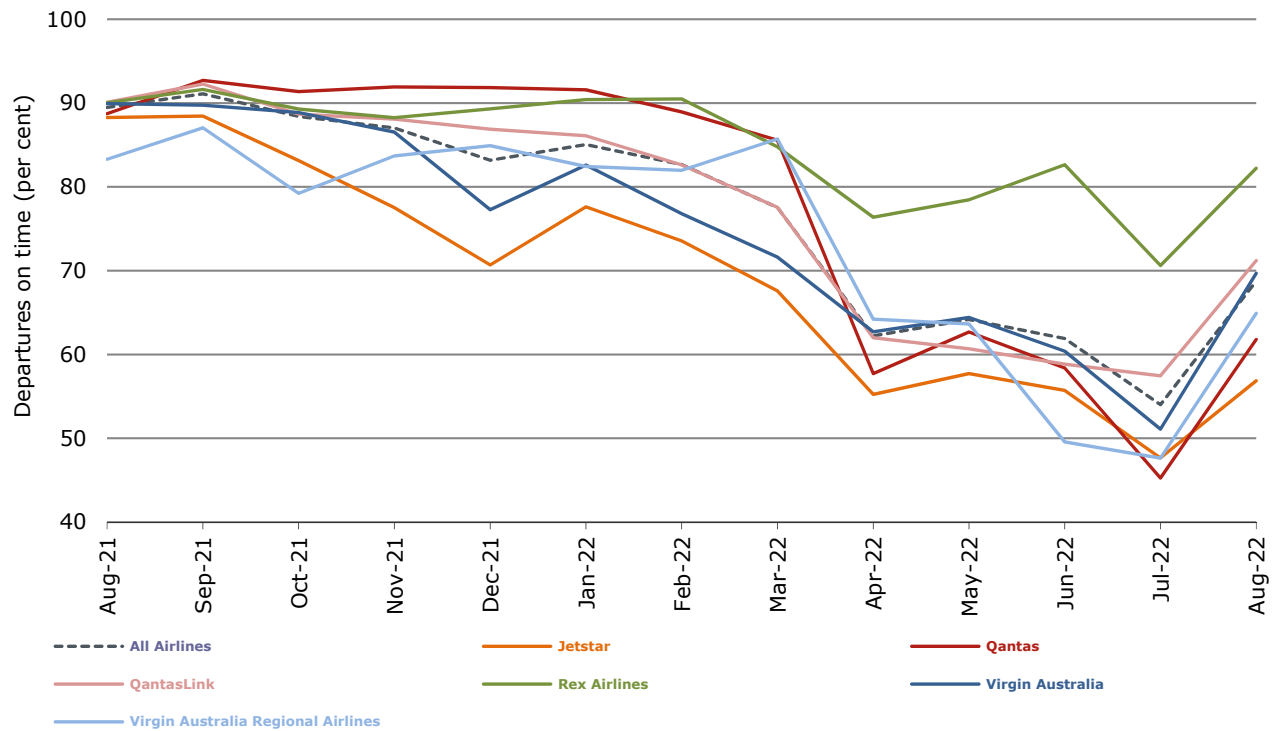
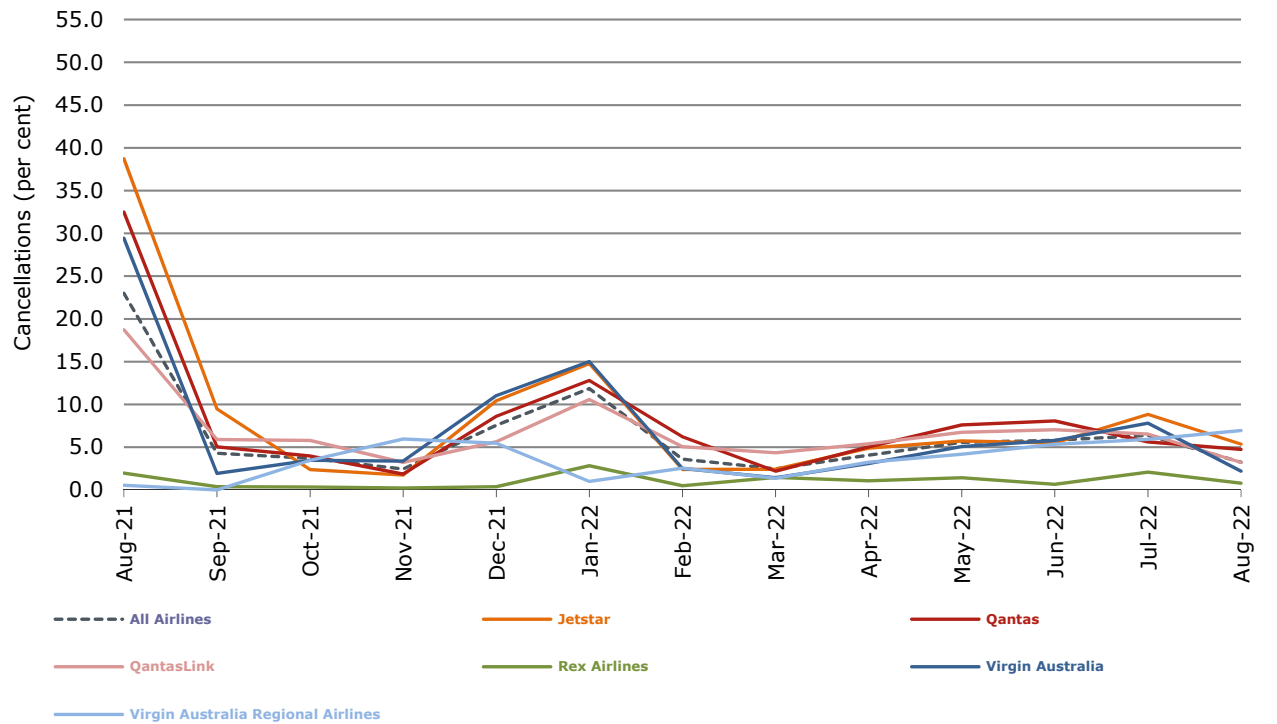


Figure 4 Cancellations (by month from August 2021)



Major domestic airlines on time performance

Figure 5 On time performance (by month from August 2019)—Jetstar

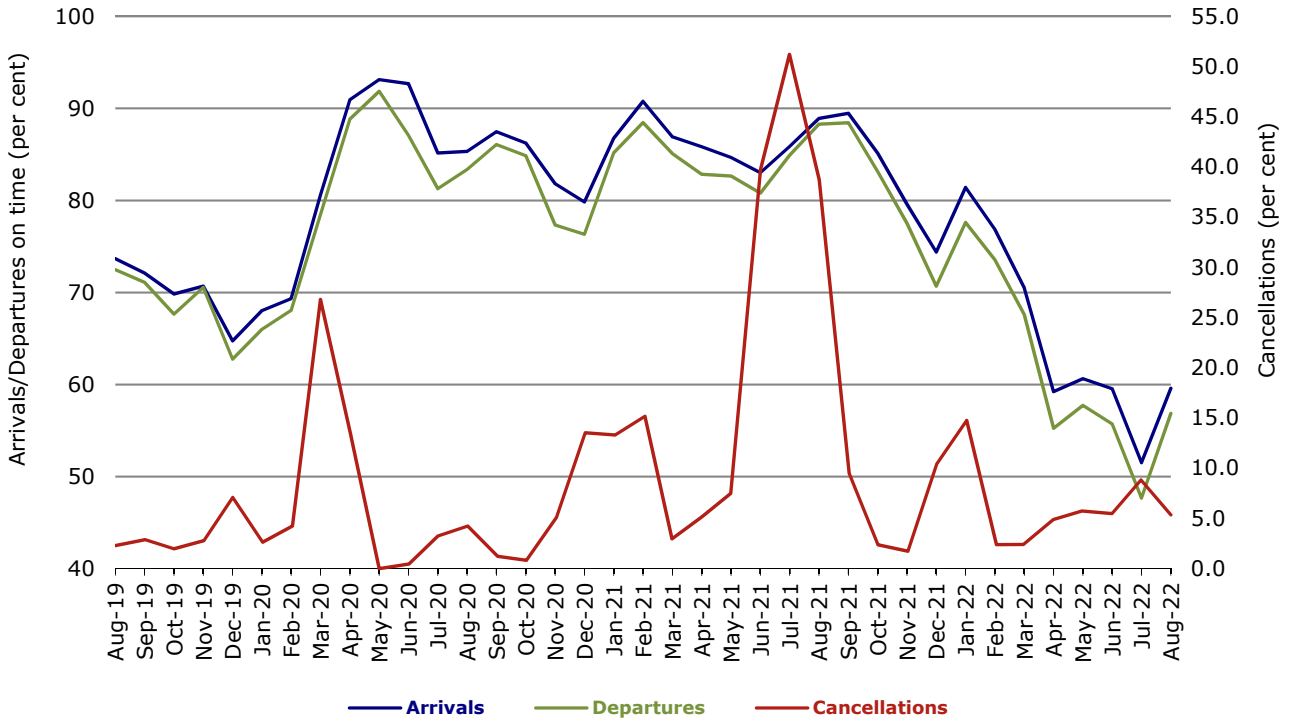


Figure 6 On time performance (by month from August 2019)—Qantas

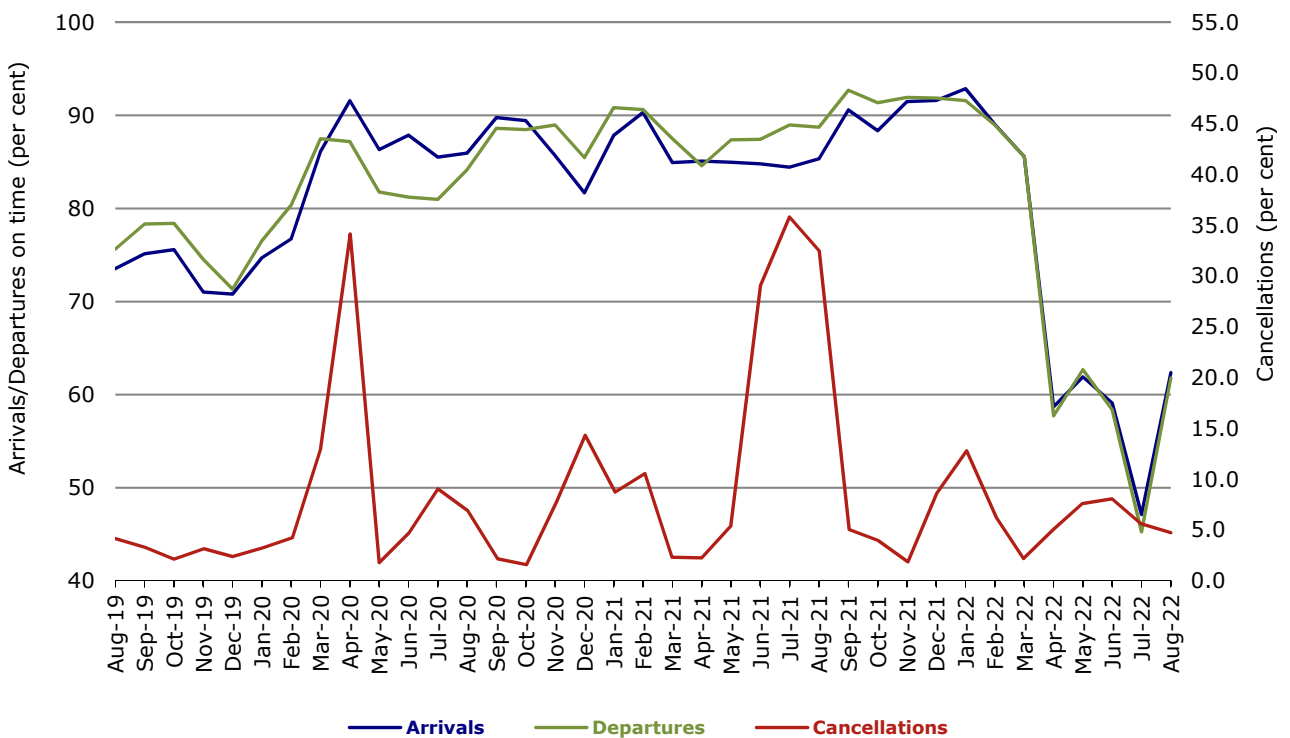
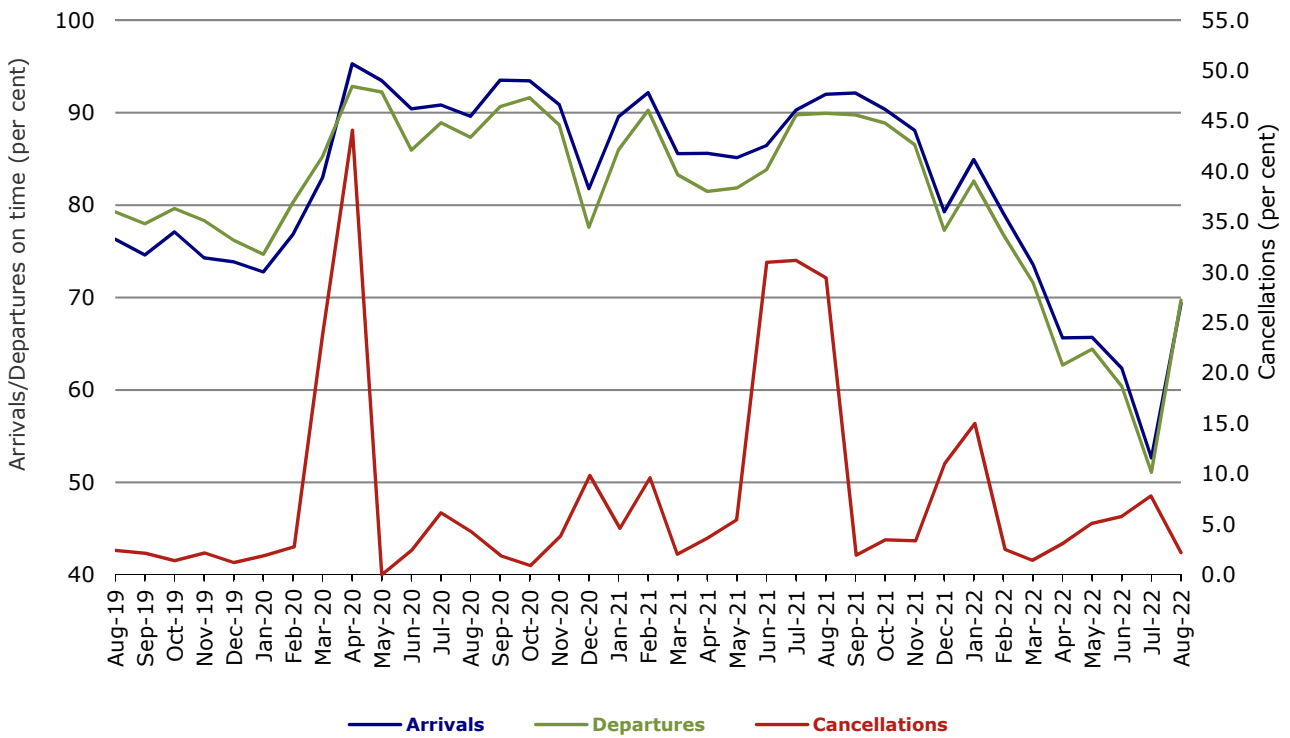


Figure 7 On time performance (by month from August 2019)—Virgin Australia



Major regional airlines on time performance

Figure 8 On time performance (by month from August 2019)—QantasLink

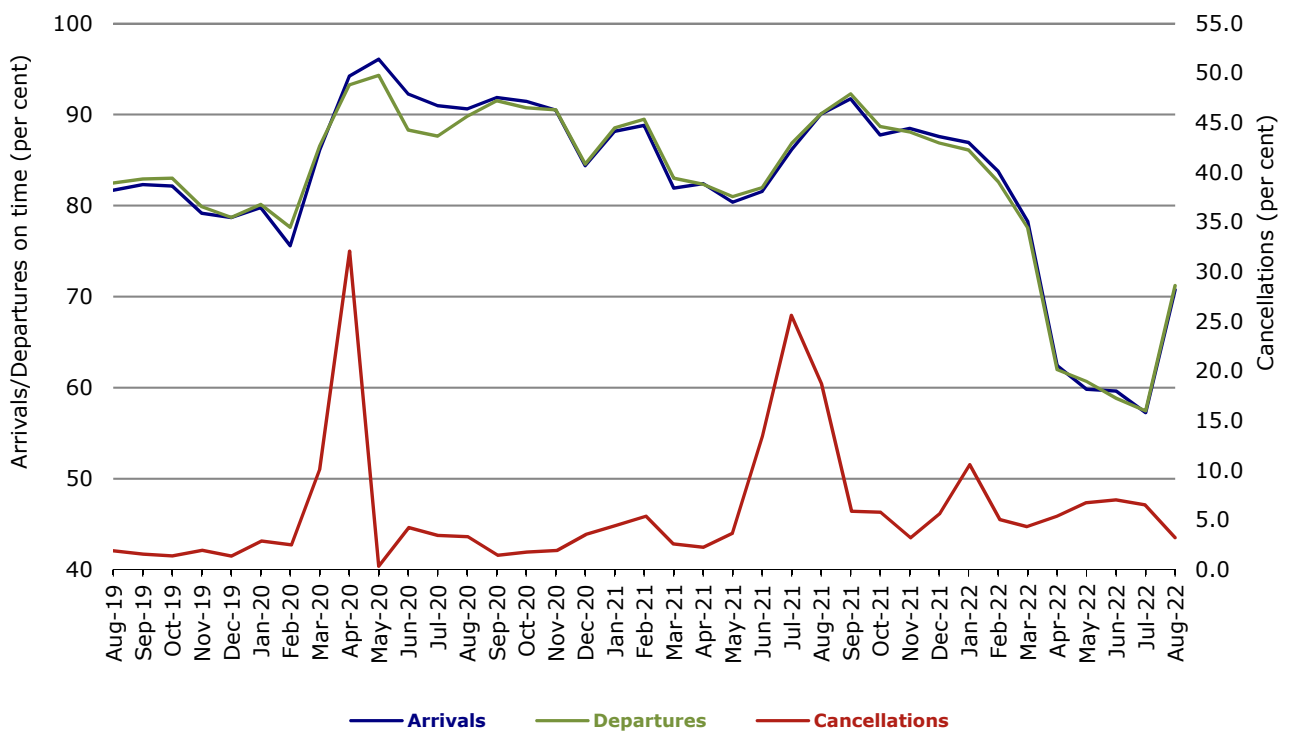


Figure 9 On time performance (by month from August 2019)—Rex Airlines

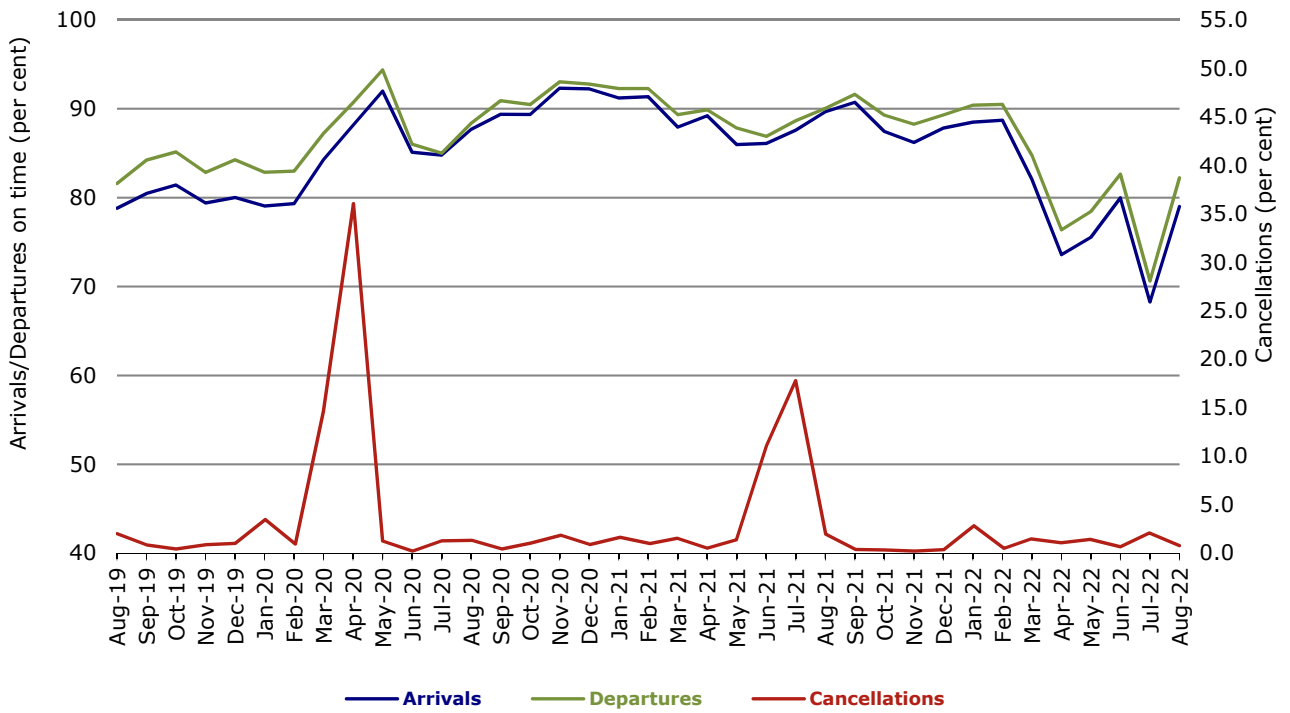
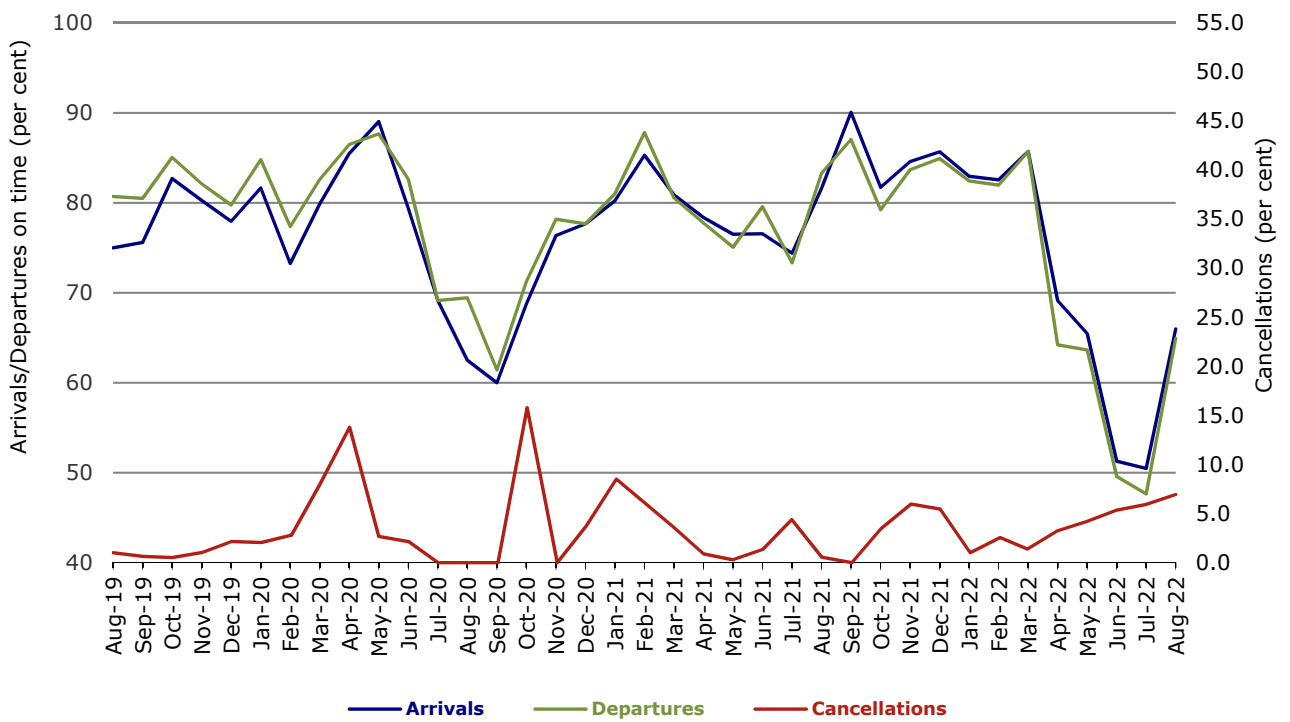


Figure 10 On time performance (by month from August 2019) Virgin Australia Regional Airlines



Individual routes

On time performance is reported for all routes where the passenger load averages over 8000 passengers per month over the previous six months, and where two or more airlines operate in competition on those routes. In order to present data for more routes during the period impacted by COVID-19, the passenger load restriction is not being applied. There are now 61 routes for which data are presented.

	<i>Sectors</i>		<i>Arrivals On Time</i>		<i>Departures On Time</i>		<i>Cancellations</i>	
	<i>Sched.</i>	<i>Flown</i>	<i>No.</i>	<i>%</i>	<i>No.</i>	<i>%</i>	<i>No.</i>	<i>%</i>
Adelaide-Alice Springs								
QantasLink	44	44	29	65.9	32	72.7	0	0.0
Virgin Australia	14	14	12	85.7	12	85.7	0	0.0
All Airlines	58	58	41	70.7	44	75.9	0	0.0
Adelaide-Brisbane								
Jetstar	36	34	19	55.9	16	47.1	2	5.6
Qantas	91	91	67	73.6	61	67.0	0	0.0
Virgin Australia	102	101	85	84.2	77	76.2	1	1.0
All Airlines	229	226	171	75.7	154	68.1	3	1.3
Adelaide-Canberra								
QantasLink	71	70	54	77.1	56	80.0	1	1.4
Virgin Australia	17	17	14	82.4	11	64.7	0	0.0
All Airlines	88	87	68	78.2	67	77.0	1	1.1
Adelaide-Gold Coast								
Jetstar	22	22	15	68.2	16	72.7	0	0.0
Virgin Australia	31	31	30	96.8	29	93.5	0	0.0
All Airlines	53	53	45	84.9	45	84.9	0	0.0
Adelaide-Melbourne								
Jetstar	93	85	49	57.6	43	50.6	8	8.6
Qantas	238	231	165	71.4	148	64.1	7	2.9
QantasLink	13	13	13	100.0	13	100.0	0	0.0
Rex Airlines	58	58	49	84.5	51	87.9	0	0.0
Virgin Australia	239	236	162	68.6	155	65.7	3	1.3
All Airlines	641	623	438	70.3	410	65.8	18	2.8
Adelaide-Perth								
Jetstar	22	20	8	40.0	10	50.0	2	9.1
Qantas	98	98	59	60.2	62	63.3	0	0.0
Virgin Australia	6	6	3	50.0	3	50.0	0	0.0
Virgin Australia Regional Airlines	52	45	23	51.1	18	40.0	7	13.5
All Airlines	178	169	93	55.0	93	55.0	9	5.1
Adelaide-Port Lincoln								
QantasLink	139	134	113	84.3	117	87.3	5	3.6
Rex Airlines	182	180	117	65.0	135	75.0	2	1.1
All Airlines	321	314	230	73.2	252	80.3	7	2.2
Adelaide-Sydney								
Jetstar	62	59	38	64.4	33	55.9	3	4.8
Qantas	234	231	149	64.5	147	63.6	3	1.3
Virgin Australia	126	123	77	62.6	81	65.9	3	2.4
All Airlines	422	413	264	63.9	261	63.2	9	2.1
Albury-Sydney								
QantasLink	110	108	76	70.4	77	71.3	2	1.8
Rex Airlines	131	127	109	85.8	113	89.0	4	3.1
All Airlines	241	235	185	78.7	190	80.9	6	2.5

	<i>Sectors</i>		<i>Arrivals On Time</i>		<i>Departures On Time</i>		<i>Cancellations</i>	
	<i>Sched.</i>	<i>Flown</i>	<i>No.</i>	<i>%</i>	<i>No.</i>	<i>%</i>	<i>No.</i>	<i>%</i>
Alice Springs-Adelaide								
QantasLink	44	44	27	61.4	26	59.1	0	0.0
Virgin Australia	14	14	9	64.3	7	50.0	0	0.0
All Airlines	58	58	36	62.1	33	56.9	0	0.0
Armidale-Sydney								
QantasLink	104	97	84	86.6	87	89.7	7	6.7
Rex Airlines	79	79	48	60.8	66	83.5	0	0.0
All Airlines	183	176	132	75.0	153	86.9	7	3.8
Ballina-Sydney								
Jetstar	57	57	29	50.9	32	56.1	0	0.0
QantasLink	90	88	42	47.7	54	61.4	2	2.2
Virgin Australia	55	53	33	62.3	36	67.9	2	3.6
All Airlines	202	198	104	52.5	122	61.6	4	2.0
Brisbane-Adelaide								
Jetstar	36	34	14	41.2	10	29.4	2	5.6
Qantas	91	91	69	75.8	70	76.9	0	0.0
Virgin Australia	102	101	82	81.2	80	79.2	1	1.0
All Airlines	229	226	165	73.0	160	70.8	3	1.3
Brisbane-Cairns								
Jetstar	49	49	24	49.0	27	55.1	0	0.0
Qantas	119	119	90	75.6	84	70.6	0	0.0
QantasLink	19	19	12	63.2	12	63.2	0	0.0
Virgin Australia	131	131	92	70.2	87	66.4	0	0.0
All Airlines	318	318	218	68.6	210	66.0	0	0.0
Brisbane-Canberra								
Jetstar	32	32	23	71.9	21	65.6	0	0.0
Qantas	17	17	16	94.1	13	76.5	0	0.0
QantasLink	144	137	76	55.5	80	58.4	7	4.9
Virgin Australia	87	87	64	73.6	60	69.0	0	0.0
All Airlines	280	273	179	65.6	174	63.7	7	2.5
Brisbane-Darwin								
Jetstar	14	14	12	85.7	8	57.1	0	0.0
Qantas	43	42	33	78.6	34	81.0	1	2.3
Virgin Australia	31	31	26	83.9	22	71.0	0	0.0
All Airlines	88	87	71	81.6	64	73.6	1	1.1
Brisbane-Emerald								
QantasLink	121	121	103	85.1	104	86.0	0	0.0
Virgin Australia	27	27	20	74.1	22	81.5	0	0.0
All Airlines	148	148	123	83.1	126	85.1	0	0.0
Brisbane-Gladstone								
QantasLink	110	109	73	67.0	83	76.1	1	0.9
Virgin Australia	54	53	44	83.0	47	88.7	1	1.9
All Airlines	164	162	117	72.2	130	80.2	2	1.2
Brisbane-Hamilton Island								
Qantas	24	24	22	91.7	23	95.8	0	0.0
Virgin Australia	38	35	32	91.4	30	85.7	3	7.9
All Airlines	62	59	54	91.5	53	89.8	3	4.8
Brisbane-Hobart								
Jetstar	17	17	16	94.1	14	82.4	0	0.0
QantasLink	11	11	7	63.6	8	72.7	0	0.0
Virgin Australia	43	42	36	85.7	29	69.0	1	2.3
All Airlines	71	70	59	84.3	51	72.9	1	1.4

	<i>Sectors</i>		<i>Arrivals On Time</i>		<i>Departures On Time</i>		<i>Cancellations</i>	
	<i>Sched.</i>	<i>Flown</i>	<i>No.</i>	<i>%</i>	<i>No.</i>	<i>%</i>	<i>No.</i>	<i>%</i>
Brisbane-Launceston								
Jetstar	19	19	11	57.9	10	52.6	0	0.0
Virgin Australia	21	21	14	66.7	14	66.7	0	0.0
All Airlines	40	40	25	62.5	24	60.0	0	0.0
Brisbane-Mackay								
Jetstar	28	27	14	51.9	16	59.3	1	3.6
Qantas	106	105	64	61.0	67	63.8	1	0.9
QantasLink	10	10	5	50.0	5	50.0	0	0.0
Virgin Australia	119	119	97	81.5	92	77.3	0	0.0
All Airlines	263	261	180	69.0	180	69.0	2	0.8
Brisbane-Melbourne								
Jetstar	123	113	82	72.6	78	69.0	10	8.1
Qantas	335	331	203	61.3	191	57.7	4	1.2
Rex Airlines	54	54	47	87.0	47	87.0	0	0.0
Virgin Australia	310	305	155	50.8	163	53.4	5	1.6
All Airlines	822	803	487	60.6	479	59.7	19	2.3
Brisbane-Mount Isa								
Qantas	31	31	28	90.3	26	83.9	0	0.0
QantasLink	23	23	12	52.2	12	52.2	0	0.0
Virgin Australia	15	15	7	46.7	12	80.0	0	0.0
All Airlines	69	69	47	68.1	50	72.5	0	0.0
Brisbane-Newcastle								
Jetstar	44	43	29	67.4	30	69.8	1	2.3
QantasLink	121	117	75	64.1	74	63.2	4	3.3
Virgin Australia	85	84	58	69.0	71	84.5	1	1.2
All Airlines	250	244	162	66.4	175	71.7	6	2.4
Brisbane-Perth								
Jetstar	18	17	3	17.6	8	47.1	1	5.6
Qantas	145	137	64	46.7	100	73.0	8	5.5
Virgin Australia	102	102	71	69.6	71	69.6	0	0.0
All Airlines	265	256	138	53.9	179	69.9	9	3.4
Brisbane-Proserpine								
Jetstar	31	31	19	61.3	23	74.2	0	0.0
QantasLink	22	22	11	50.0	17	77.3	0	0.0
Virgin Australia	32	32	26	81.3	25	78.1	0	0.0
All Airlines	85	85	56	65.9	65	76.5	0	0.0
Brisbane-Rockhampton								
QantasLink	131	129	92	71.3	87	67.4	2	1.5
Virgin Australia	116	116	53	45.7	79	68.1	0	0.0
All Airlines	247	245	145	59.2	166	67.8	2	0.8
Brisbane-Sydney								
Jetstar	117	106	72	67.9	72	67.9	11	9.4
Qantas	541	518	379	73.2	398	76.8	23	4.3
Rex Airlines	85	85	73	85.9	79	92.9	0	0.0
Virgin Australia	453	438	305	69.6	325	74.2	15	3.3
All Airlines	1 196	1 147	829	72.3	874	76.2	49	4.1
Brisbane-Townsville								
Jetstar	47	46	26	56.5	24	52.2	1	2.1
Qantas	105	105	62	59.0	66	62.9	0	0.0
QantasLink	26	26	17	65.4	18	69.2	0	0.0
Virgin Australia	120	119	100	84.0	89	74.8	1	0.8
All Airlines	298	296	205	69.3	197	66.6	2	0.7

	Sectors		Arrivals On Time		Departures On Time		Cancellations	
	Sched.	Flown	No.	%	No.	%	No.	%
Broome-Perth								
Qantas	42	40	18	45.0	15	37.5	2	4.8
QantasLink	57	51	19	37.3	21	41.2	6	10.5
Virgin Australia	17	16	4	25.0	4	25.0	1	5.9
Virgin Australia Regional Airlines	53	49	28	57.1	23	46.9	4	7.5
All Airlines	169	156	69	44.2	63	40.4	13	7.7
Cairns-Brisbane								
Jetstar	49	49	27	55.1	30	61.2	0	0.0
Qantas	118	118	84	71.2	96	81.4	0	0.0
QantasLink	19	19	10	52.6	10	52.6	0	0.0
Virgin Australia	131	131	98	74.8	93	71.0	0	0.0
All Airlines	317	317	219	69.1	229	72.2	0	0.0
Cairns-Gold Coast								
Jetstar	32	32	17	53.1	14	43.8	0	0.0
Virgin Australia	14	14	11	78.6	11	78.6	0	0.0
All Airlines	46	46	28	60.9	25	54.3	0	0.0
Cairns-Melbourne								
Jetstar	128	126	81	64.3	73	57.9	2	1.6
Qantas	48	48	16	33.3	22	45.8	0	0.0
Virgin Australia	70	70	36	51.4	37	52.9	0	0.0
All Airlines	246	244	133	54.5	132	54.1	2	0.8
Cairns-Sydney								
Jetstar	106	103	45	43.7	41	39.8	3	2.8
Qantas	62	62	30	48.4	34	54.8	0	0.0
Virgin Australia	68	68	52	76.5	53	77.9	0	0.0
All Airlines	236	233	127	54.5	128	54.9	3	1.3
Cairns-Townsville								
QantasLink	138	136	118	86.8	115	84.6	2	1.4
Rex Airlines	21	21	21	100.0	21	100.0	0	0.0
All Airlines	159	157	139	88.5	136	86.6	2	1.3
Canberra-Adelaide								
QantasLink	70	69	43	62.3	48	69.6	1	1.4
Virgin Australia	17	17	15	88.2	15	88.2	0	0.0
All Airlines	87	86	58	67.4	63	73.3	1	1.1
Canberra-Brisbane								
Jetstar	31	31	21	67.7	15	48.4	0	0.0
Qantas	17	17	13	76.5	12	70.6	0	0.0
QantasLink	143	135	76	56.3	74	54.8	8	5.6
Virgin Australia	87	87	63	72.4	57	65.5	0	0.0
All Airlines	278	270	173	64.1	158	58.5	8	2.9
Canberra-Gold Coast								
QantasLink	11	11	8	72.7	6	54.5	0	0.0
Virgin Australia	31	31	18	58.1	19	61.3	0	0.0
All Airlines	42	42	26	61.9	25	59.5	0	0.0
Canberra-Melbourne								
Jetstar	31	29	21	72.4	22	75.9	2	6.5
Qantas	8	8	8	100.0	8	100.0	0	0.0
QantasLink	248	235	171	72.8	172	73.2	13	5.2
Rex Airlines	31	31	25	80.6	27	87.1	0	0.0
Virgin Australia	102	101	56	55.4	57	56.4	1	1.0
All Airlines	420	404	281	69.6	286	70.8	16	3.8

	<i>Sectors</i>		<i>Arrivals On Time</i>		<i>Departures On Time</i>		<i>Cancellations</i>	
	<i>Sched.</i>	<i>Flown</i>	<i>No.</i>	<i>%</i>	<i>No.</i>	<i>%</i>	<i>No.</i>	<i>%</i>
Canberra-Sydney								
QantasLink	449	405	292	72.1	303	74.8	44	9.8
Virgin Australia	262	254	215	84.6	219	86.2	8	3.1
All Airlines	711	659	507	76.9	522	79.2	52	7.3
Coffs Harbour-Sydney								
QantasLink	115	115	72	62.6	78	67.8	0	0.0
Rex Airlines	136	135	106	78.5	117	86.7	1	0.7
All Airlines	251	250	178	71.2	195	78.0	1	0.4
Darwin-Brisbane								
Jetstar	14	14	4	28.6	7	50.0	0	0.0
Qantas	43	42	8	19.0	12	28.6	1	2.3
Virgin Australia	31	31	15	48.4	13	41.9	0	0.0
All Airlines	88	87	27	31.0	32	36.8	1	1.1
Darwin-Melbourne								
Jetstar	22	22	3	13.6	4	18.2	0	0.0
Qantas	32	32	21	65.6	17	53.1	0	0.0
Virgin Australia	31	31	9	29.0	6	19.4	0	0.0
All Airlines	85	85	33	38.8	27	31.8	0	0.0
Darwin-Perth								
Qantas	17	17	11	64.7	9	52.9	0	0.0
QantasLink	18	17	10	58.8	8	47.1	1	5.6
Virgin Australia	9	9	3	33.3	3	33.3	0	0.0
Virgin Australia Regional Airlines	21	20	13	65.0	14	70.0	1	4.8
All Airlines	65	63	37	58.7	34	54.0	2	3.1
Darwin-Sydney								
Jetstar	23	22	6	27.3	4	18.2	1	4.3
Qantas	54	54	16	29.6	13	24.1	0	0.0
Virgin Australia	32	31	14	45.2	9	29.0	1	3.1
All Airlines	109	107	36	33.6	26	24.3	2	1.8
Dubbo-Sydney								
QantasLink	118	113	86	76.1	83	73.5	5	4.2
Rex Airlines	133	132	112	84.8	116	87.9	1	0.8
All Airlines	251	245	198	80.8	199	81.2	6	2.4
Emerald-Brisbane								
QantasLink	121	121	97	80.2	95	78.5	0	0.0
Virgin Australia	27	27	22	81.5	23	85.2	0	0.0
All Airlines	148	148	119	80.4	118	79.7	0	0.0
Gladstone-Brisbane								
QantasLink	110	109	75	68.8	77	70.6	1	0.9
Virgin Australia	54	53	36	67.9	43	81.1	1	1.9
All Airlines	164	162	111	68.5	120	74.1	2	1.2
Gold Coast-Adelaide								
Jetstar	22	22	10	45.5	13	59.1	0	0.0
Virgin Australia	31	31	21	67.7	23	74.2	0	0.0
All Airlines	53	53	31	58.5	36	67.9	0	0.0
Gold Coast-Cairns								
Jetstar	32	32	26	81.3	28	87.5	0	0.0
Virgin Australia	14	14	11	78.6	10	71.4	0	0.0
All Airlines	46	46	37	80.4	38	82.6	0	0.0

	<i>Sectors</i>		<i>Arrivals On Time</i>		<i>Departures On Time</i>		<i>Cancellations</i>	
	<i>Sched.</i>	<i>Flown</i>	<i>No.</i>	<i>%</i>	<i>No.</i>	<i>%</i>	<i>No.</i>	<i>%</i>
Gold Coast-Canberra								
QantasLink	11	11	7	63.6	7	63.6	0	0.0
Virgin Australia	31	31	14	45.2	15	48.4	0	0.0
All Airlines	42	42	21	50.0	22	52.4	0	0.0
Gold Coast-Melbourne								
Jetstar	220	205	150	73.2	150	73.2	15	6.8
Qantas	30	30	21	70.0	13	43.3	0	0.0
QantasLink	27	26	21	80.8	19	73.1	1	3.7
Rex Airlines	31	31	15	48.4	18	58.1	0	0.0
Virgin Australia	215	215	141	65.6	121	56.3	0	0.0
All Airlines	523	507	348	68.6	321	63.3	16	3.1
Gold Coast-Sydney								
Jetstar	244	224	140	62.5	142	63.4	20	8.2
Qantas	67	67	44	65.7	46	68.7	0	0.0
QantasLink	45	44	27	61.4	23	52.3	1	2.2
Rex Airlines	31	31	27	87.1	27	87.1	0	0.0
Virgin Australia	302	296	202	68.2	220	74.3	6	2.0
All Airlines	689	662	440	66.5	458	69.2	27	3.9
Hamilton Island-Brisbane								
Qantas	24	24	21	87.5	18	75.0	0	0.0
Virgin Australia	35	34	24	70.6	23	67.6	1	2.9
All Airlines	59	58	45	77.6	41	70.7	1	1.7
Hamilton Island-Sydney								
Jetstar	23	21	12	57.1	13	61.9	2	8.7
Qantas	31	31	16	51.6	17	54.8	0	0.0
Virgin Australia	30	27	18	66.7	23	85.2	3	10.0
All Airlines	84	79	46	58.2	53	67.1	5	6.0
Hobart-Brisbane								
Jetstar	17	17	14	82.4	16	94.1	0	0.0
QantasLink	11	11	5	45.5	4	36.4	0	0.0
Virgin Australia	43	42	29	69.0	25	59.5	1	2.3
All Airlines	71	70	48	68.6	45	64.3	1	1.4
Hobart-Melbourne								
Jetstar	125	121	79	65.3	76	62.8	4	3.2
Qantas	8	8	5	62.5	5	62.5	0	0.0
QantasLink	95	91	58	63.7	58	63.7	4	4.2
Virgin Australia	105	105	53	50.5	67	63.8	0	0.0
All Airlines	333	325	195	60.0	206	63.4	8	2.4
Hobart-Sydney								
Jetstar	44	44	14	31.8	19	43.2	0	0.0
Qantas	31	31	20	64.5	19	61.3	0	0.0
QantasLink	53	51	26	51.0	38	74.5	2	3.8
Virgin Australia	62	60	43	71.7	44	73.3	2	3.2
All Airlines	190	186	103	55.4	120	64.5	4	2.1
Kalgoorlie-Perth								
Qantas	32	32	16	50.0	12	37.5	0	0.0
QantasLink	45	43	22	51.2	19	44.2	2	4.4
Virgin Australia	38	36	14	38.9	14	38.9	2	5.3
Virgin Australia Regional Airlines	40	37	29	78.4	28	75.7	3	7.5
All Airlines	155	148	81	54.7	73	49.3	7	4.5

	Sectors		Arrivals On Time		Departures On Time		Cancellations	
	Sched.	Flown	No.	%	No.	%	No.	%
Karratha-Perth								
Qantas	44	42	28	66.7	23	54.8	2	4.5
QantasLink	106	97	58	59.8	48	49.5	9	8.5
Virgin Australia	28	28	17	60.7	21	75.0	0	0.0
Virgin Australia Regional Airlines	26	25	16	64.0	13	52.0	1	3.8
All Airlines	204	192	119	62.0	105	54.7	12	5.9
Launceston-Brisbane								
Jetstar	19	18	7	38.9	6	33.3	1	5.3
Virgin Australia	21	21	12	57.1	13	61.9	0	0.0
All Airlines	40	39	19	48.7	19	48.7	1	2.5
Launceston-Melbourne								
Jetstar	62	62	25	40.3	20	32.3	0	0.0
QantasLink	36	35	11	31.4	15	42.9	1	2.8
Virgin Australia	85	85	55	64.7	61	71.8	0	0.0
All Airlines	183	182	91	50.0	96	52.7	1	0.5
Launceston-Sydney								
Jetstar	30	30	18	60.0	19	63.3	0	0.0
QantasLink	12	12	9	75.0	10	83.3	0	0.0
Virgin Australia	31	31	25	80.6	26	83.9	0	0.0
All Airlines	73	73	52	71.2	55	75.3	0	0.0
Mackay-Brisbane								
Jetstar	28	27	9	33.3	10	37.0	1	3.6
Qantas	106	104	73	70.2	71	68.3	2	1.9
QantasLink	14	14	9	64.3	8	57.1	0	0.0
Virgin Australia	119	119	98	82.4	91	76.5	0	0.0
All Airlines	267	264	189	71.6	180	68.2	3	1.1
Melbourne-Adelaide								
Jetstar	93	85	48	56.5	47	55.3	8	8.6
Qantas	238	233	137	58.8	135	57.9	5	2.1
QantasLink	13	13	12	92.3	12	92.3	0	0.0
Rex Airlines	58	58	44	75.9	45	77.6	0	0.0
Virgin Australia	239	236	171	72.5	174	73.7	3	1.3
All Airlines	641	625	412	65.9	413	66.1	16	2.5
Melbourne-Brisbane								
Jetstar	123	113	64	56.6	54	47.8	10	8.1
Qantas	332	326	246	75.5	222	68.1	6	1.8
Rex Airlines	54	54	48	88.9	50	92.6	0	0.0
Virgin Australia	310	305	216	70.8	206	67.5	5	1.6
All Airlines	819	798	574	71.9	532	66.7	21	2.6
Melbourne-Cairns								
Jetstar	128	126	65	51.6	53	42.1	2	1.6
Qantas	48	48	29	60.4	26	54.2	0	0.0
Virgin Australia	70	70	52	74.3	52	74.3	0	0.0
All Airlines	246	244	146	59.8	131	53.7	2	0.8
Melbourne-Canberra								
Jetstar	31	29	25	86.2	25	86.2	2	6.5
Qantas	8	8	8	100.0	7	87.5	0	0.0
QantasLink	248	238	171	71.8	166	69.7	10	4.0
Rex Airlines	31	31	27	87.1	29	93.5	0	0.0
Virgin Australia	102	101	73	72.3	76	75.2	1	1.0
All Airlines	420	407	304	74.7	303	74.4	13	3.1

	Sectors		Arrivals On Time		Departures On Time		Cancellations	
	Sched.	Flown	No.	%	No.	%	No.	%
Melbourne-Darwin								
Jetstar	22	22	10	45.5	10	45.5	0	0.0
Qantas	31	31	19	61.3	12	38.7	0	0.0
Virgin Australia	31	31	18	58.1	14	45.2	0	0.0
All Airlines	84	84	47	56.0	36	42.9	0	0.0
Melbourne-Gold Coast								
Jetstar	221	207	149	72.0	137	66.2	14	6.3
Qantas	32	32	26	81.3	24	75.0	0	0.0
QantasLink	27	26	21	80.8	21	80.8	1	3.7
Rex Airlines	31	31	23	74.2	23	74.2	0	0.0
Virgin Australia	215	215	152	70.7	143	66.5	0	0.0
All Airlines	526	511	371	72.6	348	68.1	15	2.9
Melbourne-Hobart								
Jetstar	125	121	88	72.7	86	71.1	4	3.2
Qantas	8	8	8	100.0	6	75.0	0	0.0
QantasLink	95	92	59	64.1	53	57.6	3	3.2
Virgin Australia	105	105	66	62.9	72	68.6	0	0.0
All Airlines	333	326	221	67.8	217	66.6	7	2.1
Melbourne-Launceston								
Jetstar	62	62	25	40.3	24	38.7	0	0.0
QantasLink	36	36	13	36.1	18	50.0	0	0.0
Virgin Australia	85	85	41	48.2	52	61.2	0	0.0
All Airlines	183	183	79	43.2	94	51.4	0	0.0
Melbourne-Mildura								
QantasLink	116	115	67	58.3	73	63.5	1	0.9
Rex Airlines	111	111	88	79.3	96	86.5	0	0.0
All Airlines	227	226	155	68.6	169	74.8	1	0.4
Melbourne-Newcastle								
Jetstar	31	31	18	58.1	18	58.1	0	0.0
QantasLink	53	53	35	66.0	36	67.9	0	0.0
Virgin Australia	21	21	12	57.1	13	61.9	0	0.0
All Airlines	105	105	65	61.9	67	63.8	0	0.0
Melbourne-Perth								
Jetstar	80	69	45	65.2	43	62.3	11	13.8
Qantas	168	167	87	52.1	83	49.7	1	0.6
Virgin Australia	138	135	95	70.4	98	72.6	3	2.2
All Airlines	386	371	227	61.2	224	60.4	15	3.9
Melbourne-Sunshine Coast								
Jetstar	54	51	34	66.7	27	52.9	3	5.6
Qantas	7	7	4	57.1	4	57.1	0	0.0
QantasLink	33	33	19	57.6	21	63.6	0	0.0
Virgin Australia	76	76	52	68.4	48	63.2	0	0.0
All Airlines	170	167	109	65.3	100	59.9	3	1.8
Melbourne-Sydney								
Jetstar	380	327	195	59.6	176	53.8	53	13.9
Qantas	801	667	435	65.2	436	65.4	134	16.7
Rex Airlines	138	137	122	89.1	124	90.5	1	0.7
Virgin Australia	760	714	510	71.4	547	76.6	46	6.1
All Airlines	2 079	1 845	1 262	68.4	1 283	69.5	234	11.3
Mildura-Melbourne								
QantasLink	116	116	67	57.8	74	63.8	0	0.0
Rex Airlines	111	111	96	86.5	100	90.1	0	0.0
All Airlines	227	227	163	71.8	174	76.7	0	0.0

	<i>Sectors</i>		<i>Arrivals On Time</i>		<i>Departures On Time</i>		<i>Cancellations</i>	
	<i>Sched.</i>	<i>Flown</i>	<i>No.</i>	<i>%</i>	<i>No.</i>	<i>%</i>	<i>No.</i>	<i>%</i>
Mount Isa-Brisbane								
Qantas	31	31	25	80.6	22	71.0	0	0.0
QantasLink	23	22	15	68.2	12	54.5	1	4.3
Virgin Australia	15	15	7	46.7	6	40.0	0	0.0
All Airlines	69	68	47	69.1	40	58.8	1	1.4
Newcastle-Brisbane								
Jetstar	44	43	30	69.8	27	62.8	1	2.3
QantasLink	120	116	86	74.1	86	74.1	4	3.3
Virgin Australia	85	84	68	81.0	69	82.1	1	1.2
All Airlines	249	243	184	75.7	182	74.9	6	2.4
Newcastle-Melbourne								
Jetstar	31	31	18	58.1	17	54.8	0	0.0
QantasLink	54	54	29	53.7	32	59.3	0	0.0
Virgin Australia	21	21	8	38.1	10	47.6	0	0.0
All Airlines	106	106	55	51.9	59	55.7	0	0.0
Newman-Perth								
Qantas	31	27	18	66.7	18	66.7	4	12.9
QantasLink	92	84	43	51.2	50	59.5	8	8.7
Virgin Australia	24	22	12	54.5	10	45.5	2	8.3
Virgin Australia Regional Airlines	36	34	20	58.8	24	70.6	2	5.6
All Airlines	183	167	93	55.7	102	61.1	16	8.7
Perth-Adelaide								
Jetstar	22	20	6	30.0	4	20.0	2	9.1
Qantas	98	97	53	54.6	54	55.7	1	1.0
Virgin Australia	6	6	4	66.7	3	50.0	0	0.0
Virgin Australia Regional Airlines	52	46	29	63.0	29	63.0	6	11.5
All Airlines	178	169	92	54.4	90	53.3	9	5.1
Perth-Brisbane								
Jetstar	18	17	3	17.6	1	5.9	1	5.6
Qantas	146	144	102	70.8	82	56.9	2	1.4
Virgin Australia	101	98	74	75.5	56	57.1	3	3.0
All Airlines	265	259	179	69.1	139	53.7	6	2.3
Perth-Broome								
Qantas	42	41	31	75.6	24	58.5	1	2.4
QantasLink	56	50	38	76.0	30	60.0	6	10.7
Virgin Australia	17	16	8	50.0	6	37.5	1	5.9
Virgin Australia Regional Airlines	53	50	34	68.0	34	68.0	3	5.7
All Airlines	168	157	111	70.7	94	59.9	11	6.5
Perth-Darwin								
Qantas	17	17	11	64.7	11	64.7	0	0.0
QantasLink	18	17	14	82.4	13	76.5	1	5.6
Virgin Australia	9	9	3	33.3	2	22.2	0	0.0
Virgin Australia Regional Airlines	21	20	14	70.0	13	65.0	1	4.8
All Airlines	65	63	42	66.7	39	61.9	2	3.1
Perth-Kalgoorlie								
Qantas	32	32	16	50.0	18	56.3	0	0.0
QantasLink	45	43	23	53.5	23	53.5	2	4.4
Virgin Australia	38	36	21	58.3	23	63.9	2	5.3
Virgin Australia Regional Airlines	40	38	28	73.7	31	81.6	2	5.0
All Airlines	155	149	88	59.1	95	63.8	6	3.9

	<i>Sectors</i>		<i>Arrivals On Time</i>		<i>Departures On Time</i>		<i>Cancellations</i>	
	<i>Sched.</i>	<i>Flown</i>	<i>No.</i>	<i>%</i>	<i>No.</i>	<i>%</i>	<i>No.</i>	<i>%</i>
Perth-Karratha								
Qantas	45	42	26	61.9	28	66.7	3	6.7
QantasLink	107	101	63	62.4	60	59.4	6	5.6
Virgin Australia	28	28	19	67.9	23	82.1	0	0.0
Virgin Australia Regional Airlines	26	25	13	52.0	15	60.0	1	3.8
All Airlines	206	196	121	61.7	126	64.3	10	4.9
Perth-Melbourne								
Jetstar	78	68	33	48.5	24	35.3	10	12.8
Qantas	167	164	100	61.0	93	56.7	3	1.8
Virgin Australia	137	135	96	71.1	87	64.4	2	1.5
All Airlines	382	367	229	62.4	204	55.6	15	3.9
Perth-Newman								
Qantas	31	28	22	78.6	21	75.0	3	9.7
QantasLink	93	86	56	65.1	53	61.6	7	7.5
Virgin Australia	24	22	13	59.1	15	68.2	2	8.3
Virgin Australia Regional Airlines	36	34	26	76.5	28	82.4	2	5.6
All Airlines	184	170	117	68.8	117	68.8	14	7.6
Perth-Port Hedland								
Qantas	56	54	33	61.1	33	61.1	2	3.6
QantasLink	79	73	42	57.5	44	60.3	6	7.6
Virgin Australia	17	17	12	70.6	13	76.5	0	0.0
Virgin Australia Regional Airlines	37	34	24	70.6	26	76.5	3	8.1
All Airlines	189	178	111	62.4	116	65.2	11	5.8
Perth-Sydney								
Jetstar	49	44	18	40.9	6	13.6	5	10.2
Qantas	177	172	108	62.8	93	54.1	5	2.8
Virgin Australia	138	134	110	82.1	81	60.4	4	2.9
All Airlines	364	350	236	67.4	180	51.4	14	3.8
Port Hedland-Perth								
Qantas	56	55	24	43.6	24	43.6	1	1.8
QantasLink	81	75	40	53.3	38	50.7	6	7.4
Virgin Australia	17	17	11	64.7	11	64.7	0	0.0
Virgin Australia Regional Airlines	37	34	21	61.8	19	55.9	3	8.1
All Airlines	191	181	96	53.0	92	50.8	10	5.2
Port Lincoln-Adelaide								
QantasLink	139	133	114	85.7	114	85.7	6	4.3
Rex Airlines	184	181	120	66.3	121	66.9	3	1.6
All Airlines	323	314	234	74.5	235	74.8	9	2.8
Port Macquarie-Sydney								
QantasLink	104	103	94	91.3	95	92.2	1	1.0
Rex Airlines	108	105	69	65.7	94	89.5	3	2.8
All Airlines	212	208	163	78.4	189	90.9	4	1.9
Proserpine-Brisbane								
Jetstar	32	32	18	56.3	15	46.9	0	0.0
QantasLink	22	22	9	40.9	7	31.8	0	0.0
Virgin Australia	32	32	25	78.1	20	62.5	0	0.0
All Airlines	86	86	52	60.5	42	48.8	0	0.0
Rockhampton-Brisbane								
QantasLink	133	129	75	58.1	79	61.2	4	3.0
Virgin Australia	116	116	69	59.5	73	62.9	0	0.0
All Airlines	249	245	144	58.8	152	62.0	4	1.6

	<i>Sectors</i>		<i>Arrivals On Time</i>		<i>Departures On Time</i>		<i>Cancellations</i>	
	<i>Sched.</i>	<i>Flown</i>	<i>No.</i>	<i>%</i>	<i>No.</i>	<i>%</i>	<i>No.</i>	<i>%</i>
Sunshine Coast-Melbourne								
Jetstar	54	51	24	47.1	26	51.0	3	5.6
Qantas	7	7	1	14.3	2	28.6	0	0.0
QantasLink	34	34	9	26.5	7	20.6	0	0.0
Virgin Australia	76	76	31	40.8	39	51.3	0	0.0
All Airlines	171	168	65	38.7	74	44.0	3	1.8
Sunshine Coast-Sydney								
Jetstar	75	73	33	45.2	40	54.8	2	2.7
Qantas	44	44	21	47.7	23	52.3	0	0.0
Virgin Australia	92	92	54	58.7	74	80.4	0	0.0
All Airlines	211	209	108	51.7	137	65.6	2	0.9
Sydney-Adelaide								
Jetstar	63	60	20	33.3	20	33.3	3	4.8
Qantas	234	231	135	58.4	154	66.7	3	1.3
Virgin Australia	125	122	71	58.2	84	68.9	3	2.4
All Airlines	422	413	226	54.7	258	62.5	9	2.1
Sydney-Albury								
QantasLink	109	107	84	78.5	83	77.6	2	1.8
Rex Airlines	130	127	111	87.4	110	86.6	3	2.3
All Airlines	239	234	195	83.3	193	82.5	5	2.1
Sydney-Armidale								
QantasLink	105	98	82	83.7	62	63.3	7	6.7
Rex Airlines	80	80	62	77.5	63	78.8	0	0.0
All Airlines	185	178	144	80.9	125	70.2	7	3.8
Sydney-Ballina								
Jetstar	57	57	43	75.4	40	70.2	0	0.0
QantasLink	90	88	45	51.1	52	59.1	2	2.2
Virgin Australia	55	53	35	66.0	39	73.6	2	3.6
All Airlines	202	198	123	62.1	131	66.2	4	2.0
Sydney-Brisbane								
Jetstar	118	108	66	61.1	62	57.4	10	8.5
Qantas	541	519	284	54.7	283	54.5	22	4.1
Rex Airlines	85	85	66	77.6	68	80.0	0	0.0
Virgin Australia	453	436	352	80.7	358	82.1	17	3.8
All Airlines	1 197	1 148	768	66.9	771	67.2	49	4.1
Sydney-Cairns								
Jetstar	106	103	64	62.1	57	55.3	3	2.8
Qantas	62	62	34	54.8	31	50.0	0	0.0
Virgin Australia	68	68	60	88.2	57	83.8	0	0.0
All Airlines	236	233	158	67.8	145	62.2	3	1.3
Sydney-Canberra								
QantasLink	449	406	290	71.4	292	71.9	43	9.6
Virgin Australia	262	253	214	84.6	192	75.9	9	3.4
All Airlines	711	659	504	76.5	484	73.4	52	7.3
Sydney-Coffs Harbour								
QantasLink	115	115	74	64.3	67	58.3	0	0.0
Rex Airlines	135	135	117	86.7	114	84.4	0	0.0
All Airlines	250	250	191	76.4	181	72.4	0	0.0
Sydney-Darwin								
Jetstar	23	22	13	59.1	12	54.5	1	4.3
Qantas	53	53	18	34.0	24	45.3	0	0.0
Virgin Australia	31	31	21	67.7	17	54.8	0	0.0
All Airlines	107	106	52	49.1	53	50.0	1	0.9

	Sectors		Arrivals On Time		Departures On Time		Cancellations	
	Sched.	Flown	No.	%	No.	%	No.	%
Sydney-Dubbo								
QantasLink	118	115	80	69.6	83	72.2	3	2.5
Rex Airlines	136	135	110	81.5	110	81.5	1	0.7
All Airlines	254	250	190	76.0	193	77.2	4	1.6
Sydney-Gold Coast								
Jetstar	244	224	145	64.7	141	62.9	20	8.2
Qantas	68	68	47	69.1	42	61.8	0	0.0
QantasLink	45	44	30	68.2	30	68.2	1	2.2
Rex Airlines	31	31	29	93.5	29	93.5	0	0.0
Virgin Australia	302	296	198	66.9	209	70.6	6	2.0
All Airlines	690	663	449	67.7	451	68.0	27	3.9
Sydney-Hamilton Island								
Jetstar	21	21	17	81.0	14	66.7	0	0.0
Qantas	31	31	14	45.2	14	45.2	0	0.0
Virgin Australia	29	29	27	93.1	27	93.1	0	0.0
All Airlines	81	81	58	71.6	55	67.9	0	0.0
Sydney-Hobart								
Jetstar	44	44	24	54.5	19	43.2	0	0.0
Qantas	31	31	21	67.7	21	67.7	0	0.0
QantasLink	52	50	24	48.0	18	36.0	2	3.8
Virgin Australia	62	60	53	88.3	51	85.0	2	3.2
All Airlines	189	185	122	65.9	109	58.9	4	2.1
Sydney-Launceston								
Jetstar	30	30	20	66.7	20	66.7	0	0.0
QantasLink	12	12	9	75.0	9	75.0	0	0.0
Virgin Australia	31	31	28	90.3	26	83.9	0	0.0
All Airlines	73	73	57	78.1	55	75.3	0	0.0
Sydney-Melbourne								
Jetstar	380	329	207	62.9	190	57.8	51	13.4
Qantas	798	666	431	64.7	418	62.8	132	16.5
Rex Airlines	138	137	111	81.0	117	85.4	1	0.7
Virgin Australia	759	714	438	61.3	429	60.1	45	5.9
All Airlines	2 075	1 846	1 187	64.3	1 154	62.5	229	11.0
Sydney-Perth								
Jetstar	47	45	25	55.6	29	64.4	2	4.3
Qantas	177	173	70	40.5	96	55.5	4	2.3
Virgin Australia	138	134	82	61.2	82	61.2	4	2.9
All Airlines	362	352	177	50.3	207	58.8	10	2.8
Sydney-Port Macquarie								
QantasLink	104	103	84	81.6	73	70.9	1	1.0
Rex Airlines	108	104	90	86.5	87	83.7	4	3.7
All Airlines	212	207	174	84.1	160	77.3	5	2.4
Sydney-Sunshine Coast								
Jetstar	74	73	51	69.9	55	75.3	1	1.4
Qantas	43	43	26	60.5	27	62.8	0	0.0
Virgin Australia	92	92	78	84.8	79	85.9	0	0.0
All Airlines	209	208	155	74.5	161	77.4	1	0.5
Sydney-Wagga Wagga								
QantasLink	80	80	46	57.5	47	58.8	0	0.0
Rex Airlines	143	142	116	81.7	109	76.8	1	0.7
All Airlines	223	222	162	73.0	156	70.3	1	0.4

	<i>Sectors</i>		<i>Arrivals On Time</i>		<i>Departures On Time</i>		<i>Cancellations</i>	
	<i>Sched.</i>	<i>Flown</i>	<i>No.</i>	<i>%</i>	<i>No.</i>	<i>%</i>	<i>No.</i>	<i>%</i>
Townsville-Brisbane								
Jetstar	47	46	18	39.1	17	37.0	1	2.1
Qantas	105	105	58	55.2	62	59.0	0	0.0
QantasLink	26	24	13	54.2	18	75.0	2	7.7
Virgin Australia	120	119	100	84.0	100	84.0	1	0.8
All Airlines	298	294	189	64.3	197	67.0	4	1.3
Townsville-Cairns								
QantasLink	138	136	115	84.6	112	82.4	2	1.4
Rex Airlines	21	21	21	100.0	21	100.0	0	0.0
All Airlines	159	157	136	86.6	133	84.7	2	1.3
Wagga Wagga-Sydney								
QantasLink	80	80	53	66.3	48	60.0	0	0.0
Rex Airlines	142	141	105	74.5	119	84.4	1	0.7
All Airlines	222	221	158	71.5	167	75.6	1	0.5

Airports

The following data reports by airport against flights operated on published routes only. This month, 8 major city airports and 28 regional city airports are covered.

Airport	Arrivals			Departures		
	Sectors Flown	On Time No.	%	Sectors Flown	On Time No.	%
Adelaide						
Jetstar	221	98	44.3	220	118	53.6
Qantas	652	394	60.4	651	418	64.2
QantasLink	259	196	75.7	261	218	83.5
Rex Airlines	239	164	68.6	238	186	78.2
Virgin Australia	527	373	70.8	528	368	69.7
Virgin Australia Regional Airlines	46	29	63.0	45	18	40.0
All Airlines	1 944	1 254	64.5	1 943	1 326	68.2
Relates to services to and from Alice Springs, Brisbane, Canberra, Gold Coast, Melbourne, Perth, Port Lincoln and Sydney only.						
Albury						
QantasLink	107	84	78.5	108	77	71.3
Rex Airlines	127	111	87.4	127	113	89.0
All Airlines	234	195	83.3	235	190	80.9
Relates to services to and from Sydney only.						
Alice Springs						
QantasLink	44	29	65.9	44	26	59.1
Virgin Australia	14	12	85.7	14	7	50.0
All Airlines	58	41	70.7	58	33	56.9
Relates to services to and from Adelaide only.						
Armidale						
QantasLink	98	82	83.7	97	87	89.7
Rex Airlines	80	62	77.5	79	66	83.5
All Airlines	178	144	80.9	176	153	86.9
Relates to services to and from Sydney only.						
Ballina						
Jetstar	57	43	75.4	57	32	56.1
QantasLink	88	45	51.1	88	54	61.4
Virgin Australia	53	35	66.0	53	36	67.9
All Airlines	198	123	62.1	198	122	61.6
Relates to services to and from Sydney only.						
Brisbane						
Jetstar	549	300	54.6	548	341	62.2
Qantas	1 521	981	64.5	1 520	1 072	70.5
QantasLink	722	470	65.1	724	500	69.1
Rex Airlines	139	114	82.0	139	126	90.6
Virgin Australia	1 851	1 393	75.3	1 858	1 318	70.9
All Airlines	4 782	3 258	68.1	4 789	3 357	70.1
Relates to services to and from Adelaide, Cairns, Canberra, Darwin, Emerald, Gladstone, Hamilton Island, Hobart, Launceston, Mackay, Melbourne, Mount Isa, Newcastle, Perth, Proserpine, Rockhampton, Sydney and Townsville only.						

Airport	Arrivals			Departures		
	Sectors Flown	On Time		Sectors Flown	On Time	
		No.	%		No.	%
Broome						
Qantas	41	31	75.6	40	15	37.5
QantasLink	50	38	76.0	51	21	41.2
Virgin Australia	16	8	50.0	16	4	25.0
Virgin Australia Regional Airlines	50	34	68.0	49	23	46.9
All Airlines	157	111	70.7	156	63	40.4
Relates to services to and from Perth only.						
Cairns						
Jetstar	310	179	57.7	310	158	51.0
Qantas	229	153	66.8	228	152	66.7
QantasLink	155	127	81.9	155	125	80.6
Rex Airlines	21	21	100.0	21	21	100.0
Virgin Australia	283	215	76.0	283	194	68.6
All Airlines	998	695	69.6	997	650	65.2
Relates to services to and from Brisbane, Gold Coast, Melbourne, Sydney and Townsville only.						
Canberra						
Jetstar	61	48	78.7	60	37	61.7
Qantas	25	24	96.0	25	20	80.0
QantasLink	862	598	69.4	855	603	70.5
Rex Airlines	31	27	87.1	31	27	87.1
Virgin Australia	489	379	77.5	490	367	74.9
All Airlines	1 468	1 076	73.3	1 461	1 054	72.1
Relates to services to and from Adelaide, Brisbane, Gold Coast, Melbourne and Sydney only.						
Coffs Harbour						
QantasLink	115	74	64.3	115	78	67.8
Rex Airlines	135	117	86.7	135	117	86.7
All Airlines	250	191	76.4	250	195	78.0
Relates to services to and from Sydney only.						
Darwin						
Jetstar	58	35	60.3	58	15	25.9
Qantas	143	81	56.6	145	51	35.2
QantasLink	17	14	82.4	17	8	47.1
Virgin Australia	102	68	66.7	102	31	30.4
Virgin Australia Regional Airlines	20	14	70.0	20	14	70.0
All Airlines	340	212	62.4	342	119	34.8
Relates to services to and from Brisbane, Melbourne, Perth and Sydney only.						
Dubbo						
QantasLink	115	80	69.6	113	83	73.5
Rex Airlines	135	110	81.5	132	116	87.9
All Airlines	250	190	76.0	245	199	81.2
Relates to services to and from Sydney only.						
Emerald						
QantasLink	121	103	85.1	121	95	78.5
Virgin Australia	27	20	74.1	27	23	85.2
All Airlines	148	123	83.1	148	118	79.7
Relates to services to and from Brisbane only.						

Airport	Arrivals			Departures		
	Sectors Flown	On Time		Sectors Flown	On Time	
		No.	%		No.	%
Gladstone						
QantasLink	109	73	67.0	109	77	70.6
Virgin Australia	53	44	83.0	53	43	81.1
All Airlines	162	117	72.2	162	120	74.1
Relates to services to and from Brisbane only.						
Gold Coast						
Jetstar	485	326	67.2	483	333	68.9
Qantas	100	73	73.0	97	59	60.8
QantasLink	81	59	72.8	81	49	60.5
Rex Airlines	62	52	83.9	62	45	72.6
Virgin Australia	587	409	69.7	587	389	66.3
All Airlines	1 315	919	69.9	1 310	875	66.8
Relates to services to and from Adelaide, Cairns, Canberra, Melbourne and Sydney only.						
Hamilton Island						
Jetstar	21	17	81.0	21	13	61.9
Qantas	55	36	65.5	55	35	63.6
Virgin Australia	64	59	92.2	61	46	75.4
All Airlines	140	112	80.0	137	94	68.6
Relates to services to and from Brisbane and Sydney only.						
Hobart						
Jetstar	182	128	70.3	182	111	61.0
Qantas	39	29	74.4	39	24	61.5
QantasLink	153	90	58.8	153	100	65.4
Virgin Australia	207	155	74.9	207	136	65.7
All Airlines	581	402	69.2	581	371	63.9
Relates to services to and from Brisbane, Melbourne and Sydney only.						
Kalgoorlie						
Qantas	32	16	50.0	32	12	37.5
QantasLink	43	23	53.5	43	19	44.2
Virgin Australia	36	21	58.3	36	14	38.9
Virgin Australia Regional Airlines	38	28	73.7	37	28	75.7
All Airlines	149	88	59.1	148	73	49.3
Relates to services to and from Perth only.						
Karratha						
Qantas	42	26	61.9	42	23	54.8
QantasLink	101	63	62.4	97	48	49.5
Virgin Australia	28	19	67.9	28	21	75.0
Virgin Australia Regional Airlines	25	13	52.0	25	13	52.0
All Airlines	196	121	61.7	192	105	54.7
Relates to services to and from Perth only.						
Launceston						
Jetstar	111	56	50.5	110	45	40.9
QantasLink	48	22	45.8	47	25	53.2
Virgin Australia	137	83	60.6	137	100	73.0
All Airlines	296	161	54.4	294	170	57.8
Relates to services to and from Brisbane, Melbourne and Sydney only.						

Airport	Arrivals			Departures		
	Sectors	On Time		Sectors	On Time	
	Flown	No.	%	Flown	No.	%
Mackay						
Jetstar	27	14	51.9	27	10	37.0
Qantas	105	64	61.0	104	71	68.3
QantasLink	10	5	50.0	14	8	57.1
Virgin Australia	119	97	81.5	119	91	76.5
All Airlines	261	180	69.0	264	180	68.2
Relates to services to and from Brisbane only.						
Melbourne						
Jetstar	1 242	772	62.2	1 243	700	56.3
Qantas	1 525	971	63.7	1 527	955	62.5
QantasLink	604	379	62.7	606	400	66.0
Rex Airlines	422	343	81.3	422	367	87.0
Virgin Australia	2 094	1 240	59.2	2 094	1 495	71.4
All Airlines	5 887	3 705	62.9	5 892	3 917	66.5
Relates to services to and from Adelaide, Brisbane, Cairns, Canberra, Darwin, Gold Coast, Hobart, Launceston, Mildura, Newcastle, Perth, Sunshine Coast and Sydney only.						
Mildura						
QantasLink	115	67	58.3	116	74	63.8
Rex Airlines	111	88	79.3	111	100	90.1
All Airlines	226	155	68.6	227	174	76.7
Relates to services to and from Melbourne only.						
Mount Isa						
Qantas	31	28	90.3	31	22	71.0
QantasLink	23	12	52.2	22	12	54.5
Virgin Australia	15	7	46.7	15	6	40.0
All Airlines	69	47	68.1	68	40	58.8
Relates to services to and from Brisbane only.						
Newcastle						
Jetstar	74	47	63.5	74	44	59.5
QantasLink	170	110	64.7	170	118	69.4
Virgin Australia	105	70	66.7	105	79	75.2
All Airlines	349	227	65.0	349	241	69.1
Relates to services to and from Brisbane and Melbourne only.						
Newman						
Qantas	28	22	78.6	27	18	66.7
QantasLink	86	56	65.1	84	50	59.5
Virgin Australia	22	13	59.1	22	10	45.5
Virgin Australia Regional Airlines	34	26	76.5	34	24	70.6
All Airlines	170	117	68.8	167	102	61.1
Relates to services to and from Perth only.						
Perth						
Jetstar	151	81	53.6	149	35	23.5
Qantas	788	395	50.1	791	457	57.8
QantasLink	367	192	52.3	370	223	60.3
Virgin Australia	505	312	61.8	501	309	61.7
Virgin Australia Regional Airlines	244	150	61.5	247	176	71.3
All Airlines	2 055	1 130	55.0	2 058	1 200	58.3
Relates to services to and from Adelaide, Brisbane, Broome, Darwin, Kalgoorlie, Karratha, Melbourne, Newman, Port Hedland and Sydney only.						

Airport	Arrivals			Departures		
	Sectors Flown	On Time		Sectors Flown	On Time	
		No.	%		No.	%
Port Hedland						
Qantas	54	33	61.1	55	24	43.6
QantasLink	73	42	57.5	75	38	50.7
Virgin Australia	17	12	70.6	17	11	64.7
Virgin Australia Regional Airlines	34	24	70.6	34	19	55.9
All Airlines	178	111	62.4	181	92	50.8
Relates to services to and from Perth only.						
Port Lincoln						
QantasLink	134	113	84.3	133	114	85.7
Rex Airlines	180	117	65.0	181	121	66.9
All Airlines	314	230	73.2	314	235	74.8
Relates to services to and from Adelaide only.						
Port Macquarie						
QantasLink	103	84	81.6	103	95	92.2
Rex Airlines	104	90	86.5	105	94	89.5
All Airlines	207	174	84.1	208	189	90.9
Relates to services to and from Sydney only.						
Proserpine						
Jetstar	31	19	61.3	32	15	46.9
QantasLink	22	11	50.0	22	7	31.8
Virgin Australia	32	26	81.3	32	20	62.5
All Airlines	85	56	65.9	86	42	48.8
Relates to services to and from Brisbane only.						
Rockhampton						
QantasLink	129	92	71.3	129	79	61.2
Virgin Australia	116	53	45.7	116	73	62.9
All Airlines	245	145	59.2	245	152	62.0
Relates to services to and from Brisbane only.						
Sunshine Coast						
Jetstar	124	85	68.5	124	66	53.2
Qantas	50	30	60.0	51	25	49.0
QantasLink	33	19	57.6	34	7	20.6
Virgin Australia	168	130	77.4	168	113	67.3
All Airlines	375	264	70.4	377	211	56.0
Relates to services to and from Melbourne and Sydney only.						
Sydney						
Jetstar	1 110	620	55.9	1 116	659	59.1
Qantas	1 877	1 218	64.9	1 877	1 110	59.1
QantasLink	1 216	861	70.8	1 218	816	67.0
Rex Airlines	972	771	79.3	976	807	82.7
Virgin Australia	2 321	1 658	71.4	2 319	1 650	71.2
All Airlines	7 496	5 128	68.4	7 506	5 042	67.2

Relates to services to and from Adelaide, Albury, Armidale, Ballina, Brisbane, Cairns, Canberra, Coffs Harbour, Darwin, Dubbo, Gold Coast, Hamilton Island, Hobart, Launceston, Melbourne, Perth, Port Macquarie, Sunshine Coast and Wagga Wagga only.

<i>Airport</i>	<i>Arrivals</i>			<i>Departures</i>		
	<i>Sectors</i>	<i>On Time</i>		<i>Sectors</i>	<i>On Time</i>	
	<i>Flown</i>	<i>No.</i>	<i>%</i>	<i>Flown</i>	<i>No.</i>	<i>%</i>
Townsville						
Jetstar	46	26	56.5	46	17	37.0
Qantas	105	62	59.0	105	62	59.0
QantasLink	162	135	83.3	160	130	81.3
Rex Airlines	21	21	100.0	21	21	100.0
Virgin Australia	119	100	84.0	119	100	84.0
All Airlines	453	344	75.9	451	330	73.2

Relates to services to and from Brisbane and Cairns only.

Wagga Wagga

QantasLink	80	46	57.5	80	48	60.0
Rex Airlines	142	116	81.7	141	119	84.4
All Airlines	222	162	73.0	221	167	75.6

Relates to services to and from Sydney only.

Definitions

On time arrival	A flight arrival is counted as "on time" if it arrived at the gate before 15 minutes after the scheduled arrival time shown in the carriers' schedule. Neither diverted nor cancelled flights count as on time.
On time departure	A flight departure is counted as "on time" if it departs the gate before 15 minutes after the scheduled departure time shown in the carriers' schedule.
Cancellation	A flight removed from service within 7 days of scheduled departure is regarded as a cancellation.
On time departure percentage	The percentage of on time departures is measured against the number of departures <i>operated</i> on any particular sector.
On time arrival percentage	The percentage of on time arrivals is measured against the number of arrivals <i>operated</i> on any particular sector.
Cancellation percentage	The percentage of cancellations is measured against the number of services <i>scheduled</i> on any particular sector.
