



Australian Government

**Department of Infrastructure, Transport,
Regional Development, Communications and the Arts**
Bureau of Infrastructure and Transport Research Economics

STATISTICAL REPORT



Aviation

**Domestic airline on time performance
August 2023**

The Department of Infrastructure, Transport, Regional Development, Communications and the Arts acknowledges the Traditional Custodians of Country of the land on which we work and live.

We recognise and respect the continuing connections to land, waters and communities.

We pay our respects to them and their cultures and to their Elders both past and present and to all Aboriginal and Torres Strait Islander people.

© Commonwealth of Australia 2023

ISSN: 1832-0759

Ownership of intellectual property rights in this publication

Unless otherwise noted, copyright (and any other intellectual property rights, if any) in this publication is owned by the Commonwealth of Australia (referred to below as the Commonwealth).

Disclaimer

The material contained in this publication is made available on the understanding that the Commonwealth is not providing professional advice, and that users exercise their own skill and care with respect to its use, and seek independent advice if necessary.

The Commonwealth makes no representations or warranties as to the contents or accuracy of the information contained in this publication. To the extent permitted by law, the Commonwealth disclaims liability to any person or organisation in respect of anything done, or omitted to be done, in reliance upon information contained in this publication.

Creative Commons licence

With the exception of (a) the Coat of Arms; and (b) the Department of Infrastructure, Transport, Regional Development, Communications and the Arts' photos and graphics, copyright in this publication is licensed under a Creative Commons Attribution 3.0 Australia Licence.

Creative Commons Attribution 3.0 Australia Licence is a standard form licence agreement that allows you to copy, communicate and adapt this publication provided that you attribute the work to the Commonwealth and abide by the other licence terms. A summary of the licence terms is available from <http://creativecommons.org/licenses/by/3.0/au/deed.en>. The full licence terms are available from <http://creativecommons.org/licenses/by/3.0/au/legalcode>.

Use of the Coat of Arms

The Department of the Prime Minister and Cabinet sets the terms under which the Coat of Arms is used. Please refer to the Department's Commonwealth Coat of Arms and Government branding web page <http://www.dpmmc.gov.au/guidelines/index.cfm#brand> and, in particular, the Guidelines on the use of the Commonwealth Coat of Arms publication.

An appropriate citation for this report is:

Bureau of Infrastructure and Transport Research Economics (BITRE), 2023, Domestic airline on time performance, Statistical Report, BITRE, Canberra ACT.

Contact us

All other rights are reserved, including in relation to any Departmental logos or trade marks which may exist. For enquiries regarding the licence and any use of this publication, please contact:

Bureau of Infrastructure and Transport Research Economics (BITRE)
Department of Infrastructure, Transport, Regional Development, Communications and the Arts
GPO Box 501, Canberra ACT 2601, Australia
Telephone: (international) +61 2 6274 7210
Email: bitre@infrastructure.gov.au
Website: www.bitre.gov.au

Inquiries

Should you require additional information about the statistics contained in this publication:

Telephone (02) 6274 6135

Electronic mail: AVSTATS@infrastructure.gov.au

Web site: <http://www.bitre.gov.au/statistics/aviation/otphome.aspx>

Foreword

The Bureau of Infrastructure and Transport Research Economics (BITRE) monitors the punctuality and reliability of major domestic airlines operating between Australian airports. The purpose of this is to allow for evaluation of overall industry and individual airline performance, so that consumers of air travel can make informed decisions.

The following domestic airlines currently report this information monthly to the BITRE: Jetstar, Qantas, QantasLink, Rex Airlines, Skytrans, Virgin Australia and Virgin Australia Regional Airlines.

Information presented in this report is for Australian domestic routes for which the passenger load averaged 8,000 or more passengers per month over the previous six months and where two or more airlines operated in competition on those routes. In order to present data for more routes during the period impacted by COVID-19, the passenger load restriction was not applied between March 2020 and January 2023. From February 2023, the passenger load restriction was reinstated due to the continued recovery of passenger numbers. Data are presented for 62 routes in August 2023. Over time, routes which meet these criteria change as airline networks and traffic levels vary. Participating airlines report their overall monthly network performance where this is possible.

Total industry figures encompass all services operated by reporting airlines only. These airlines collectively carried over 95 per cent of total domestic passengers (regular public transport only) in 2019.

The method of capturing on time performance varies between airlines utilising different recording systems. Jetstar and Qantas jet aircraft use Aircraft Communication Addressing and Reporting System (ACARS) to electronically measure on time performance. Rex Airlines, Virgin Australia, Virgin Australia Regional Airlines and the Qantas non-jet fleet record on time performance manually using records from pilots, gate agents and/or ground crews.

After initial data is collected, aggregate reports are reviewed by participating airlines prior to publication.

Reports and detailed time series data in Microsoft Excel spreadsheet format are available from the BITRE website at: <http://www.bitre.gov.au/statistics/aviation/otphome.aspx>

Contents

	Page
Industry performance	1
Individual routes	10
Airports.....	23
Definitions	29
Airlines and Reporting	30

Industry performance

For August 2023, on time performance over all routes operated by participating airlines (Jetstar, Qantas, QantasLink, Rex Airlines, Skytrans, Virgin Australia and Virgin Australia Regional Airlines) averaged 72.5 per cent for on time arrivals and 73.2 per cent for on time departures. The cancellation rate for the month was 3.8 per cent. The equivalent figures for August 2022 were 68.5 per cent for on time arrivals, 68.8 per cent for on time departures and 3.2 per cent for cancellations.

This month's on time arrivals figure was significantly lower than the long term average performance for all routes (81.3 per cent) and the on time departures figure was also significantly lower than the long term average (82.4 per cent). The rate of cancellations was higher than the long term average of 2.2 per cent.

The Qantas network (Qantas and QantasLink combined operations) recorded 74.1 per cent for on time arrivals while the Virgin Australia network (Virgin Australia and Virgin Australia Regional Airlines combined operations) recorded 67.4 per cent. Qantas achieved the highest on time arrivals among the major domestic airlines at 72.7 per cent followed by Jetstar at 71.7 per cent and Virgin Australia at 67.7 per cent. Of the regional airlines, Rex Airlines recorded 77.9 per cent for on time arrivals, followed by QantasLink at 75.0 per cent, Skytrans at 72.2 per cent and Virgin Australia Regional Airlines at 57.9 per cent.

The Qantas network recorded 75.2 per cent for on time departures while the Virgin Australia network recorded 68.0 per cent. Qantas achieved the highest level of on time departures among the major domestic airlines for August 2023 at 73.9 per cent, followed by Jetstar at 69.8 per cent and Virgin Australia at 68.4 per cent. Of the regional airlines, Rex Airlines recorded 80.0 per cent for on time departures, followed by QantasLink at 76.0 per cent, Skytrans at 71.9 per cent and Virgin Australia Regional Airlines at 55.4 per cent.

Virgin Australia Regional Airlines recorded the highest percentage of cancellations at 9.5 per cent during the month, followed by Skytrans at 8.6 per cent, Virgin Australia at 4.7 per cent, QantasLink at 4.4 per cent, Qantas at 3.4 per cent, Jetstar at 2.9 per cent and Rex Airlines at 1.8 per cent.

Airlines' on time performance varies across the routes they serve. Individual route data by specific airline for 62 routes are shown on pages 9-21.

Of the 62 routes which met the criteria for on time performance reporting in August 2023, the Brisbane-Mount Isa route had the highest percentage of on time arrivals (94.1 per cent), while the Adelaide-Port Lincoln route had the highest percentage of on time departures (89.2 per cent). The Sunshine Coast-Melbourne route had the lowest percentage of on time arrivals (50.0 per cent), while the Darwin-Perth route had the lowest percentage of on time departures (44.1 per cent).

Cancellations were highest on the Canberra-Sydney route at 11.0 per cent, followed by the Sydney-Canberra route at 10.8 per cent, the Melbourne-Sydney route at 9.5 per cent and the Sydney-Melbourne route at 9.3 per cent.

Mount Isa Airport recorded the highest percentage of on time arrivals (94.1 per cent) and Port Lincoln Airport recorded the highest percentage of on time departures (88.7 per cent). Perth Airport recorded the lowest percentage of on time arrivals (61.1 per cent) and Broome Airport had the lowest percentage of on time departures (47.9 per cent). These figures only refer to reported routes and do not cover all flights at these airports.

Table 1 On time performance for August 2023 – Total Industry

	Sectors		Arrivals On Time		Departures On Time		Cancellations	
	Scheduled	Flown	No.	%	No.	%	No.	%
Jetstar	6,919	6,717	4,816	71.7	4,690	69.8	202	2.9
Qantas - all QF designated services	21,132	20,283	15,033	74.1	15,248	75.2	849	4.0
Rex Airlines	6,270	6,157	4,798	77.9	4,925	80.0	113	1.8
Skytrans	370	338	244	72.2	243	71.9	32	8.6
Virgin Australia - all VA designated services	12,249	11,653	7,851	67.4	7,922	68.0	596	4.9
All Airlines	46,940	45,148	32,742	72.5	33,028	73.2	1,792	3.8
Individual operating entities								
Qantas	8,210	7,931	5,763	72.7	5,860	73.9	279	3.4
QantasLink	12,922	12,352	9,270	75.0	9,388	76.0	570	4.4
Virgin Australia	11,806	11,252	7,619	67.7	7,700	68.4	554	4.7
Virgin Australia Regional Airlines	443	401	232	57.9	222	55.4	42	9.5

Total airline network data (including routes not shown in this report).

Airlines’ on time performance varies across the routes they serve. Individual route data by specific airline are shown on page 9 and onwards.

Table 2 Top ten routes for on time performance for August 2023 (participating airlines only)

Arrivals		Departures	
Route	On Time (%)	Route	On Time (%)
Brisbane-Mount Isa	94.1	Adelaide-Port Lincoln	89.2
Adelaide-Gold Coast	90.9	Port Lincoln-Adelaide	88.7
Townsville-Cairns	88.6	Townsville-Cairns	87.4
Adelaide-Port Lincoln	86.3	Brisbane-Mount Isa	86.8
Port Lincoln-Adelaide	86.2	Adelaide-Gold Coast	85.5
Cairns-Townsville	84.5	Perth-Newman	85.1
Perth-Newman	84.0	Cairns-Townsville	83.3
Sydney-Armidale	83.9	Adelaide-Alice Springs	83.1
Brisbane-Darwin	83.5	Dubbo-Sydney	82.8
Dubbo-Sydney	82.8	Emerald-Brisbane	82.8

Table 3 Top ten airports for on time performance for August 2023 (participating airlines and reported routes only)

Arrivals		Departures	
Airport	On Time (%)	Airport	On Time (%)
Mount Isa	94.1	Port Lincoln	88.7
Port Lincoln	86.3	Dubbo	82.8
Newman	84.0	Emerald	82.8
Armidale	83.9	Coffs Harbour	81.8
Coffs Harbour	81.7	Newman	80.6
Emerald	81.5	Armidale	80.1
Dubbo	80.6	Gladstone	79.9
Gladstone	79.9	Mount Isa	77.9
Kalgoorlie	78.2	Port Macquarie	77.8
Port Hedland	78.2	Ballina	75.6

Total industry on time performance

Figure 1 On time performance (by month from August 2020)—Total Industry

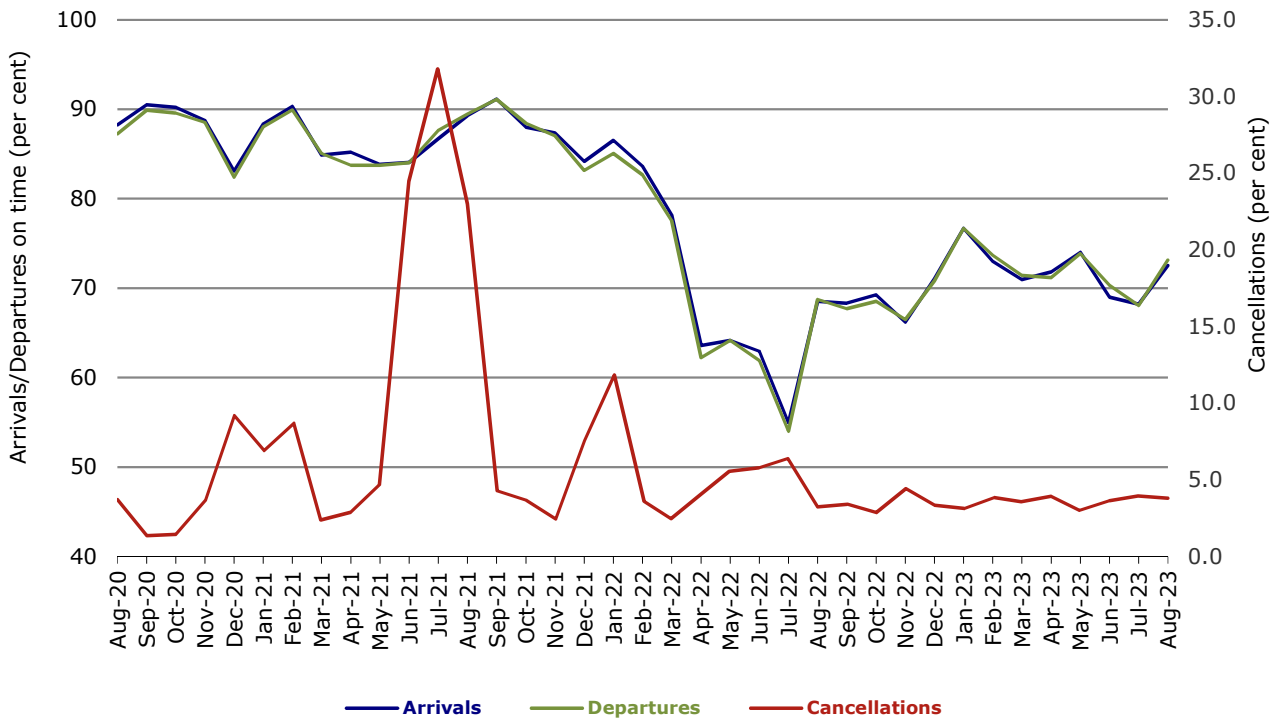


Figure 2 Arrivals on time (by month from August 2022)

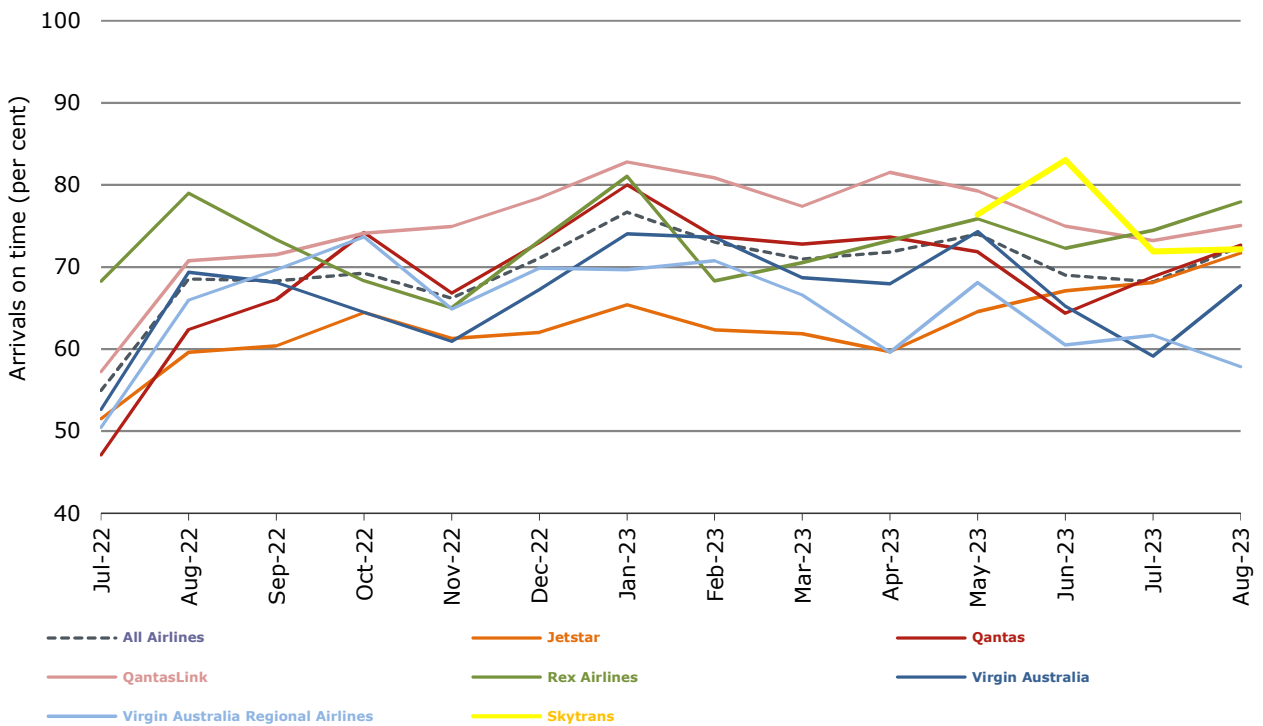


Figure 3 Departures on time (by month from August 2022)

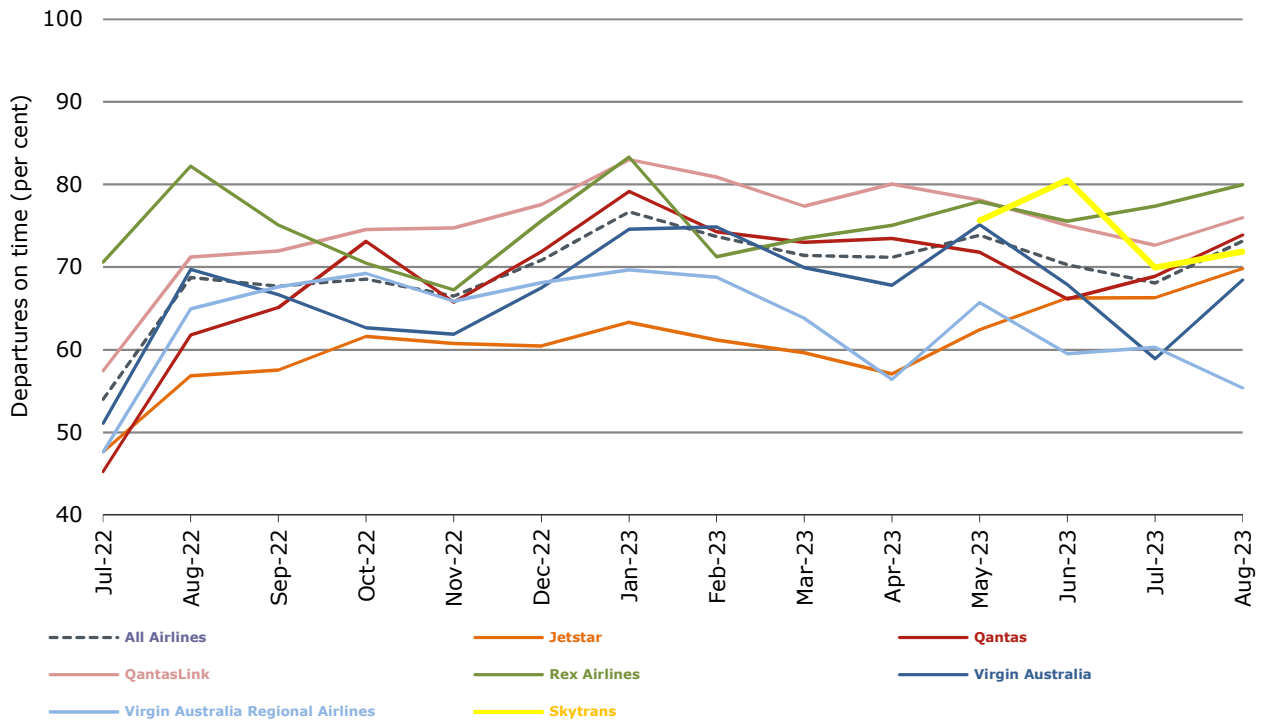
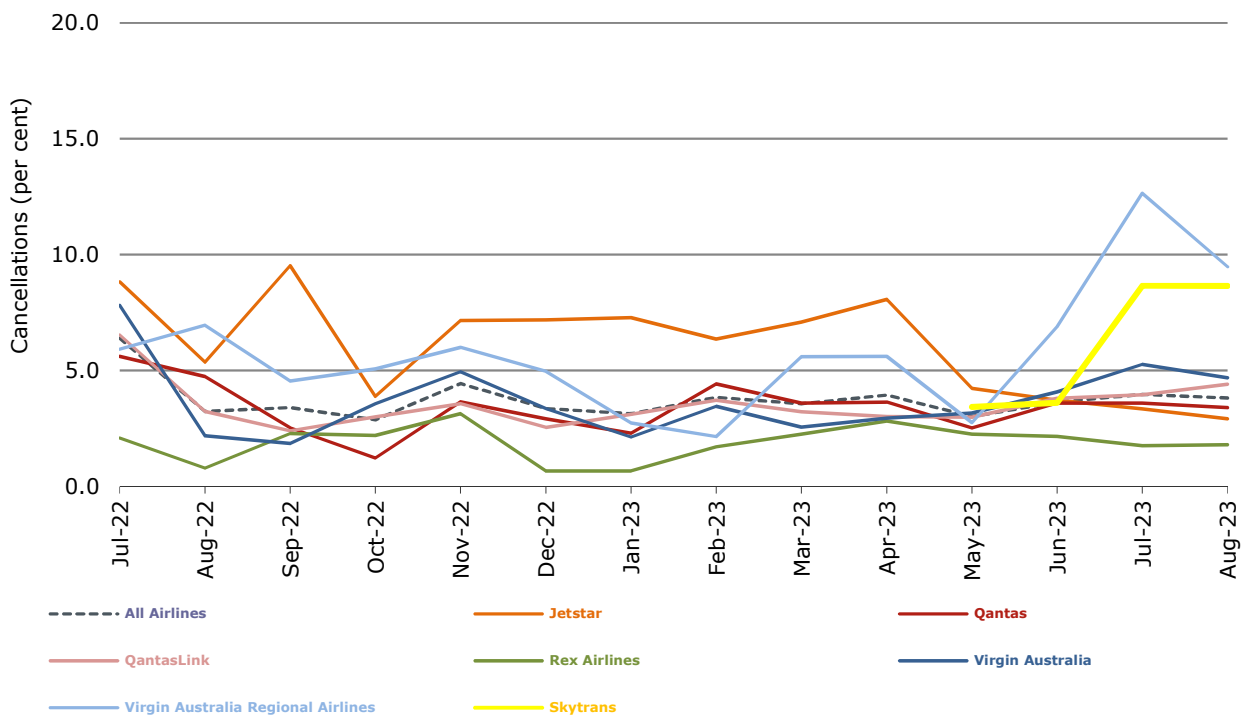


Figure 4 Cancellations (by month from August 2022)



Major domestic airlines on time performance

Figure 5 On time performance (by month from August 2020)—Jetstar

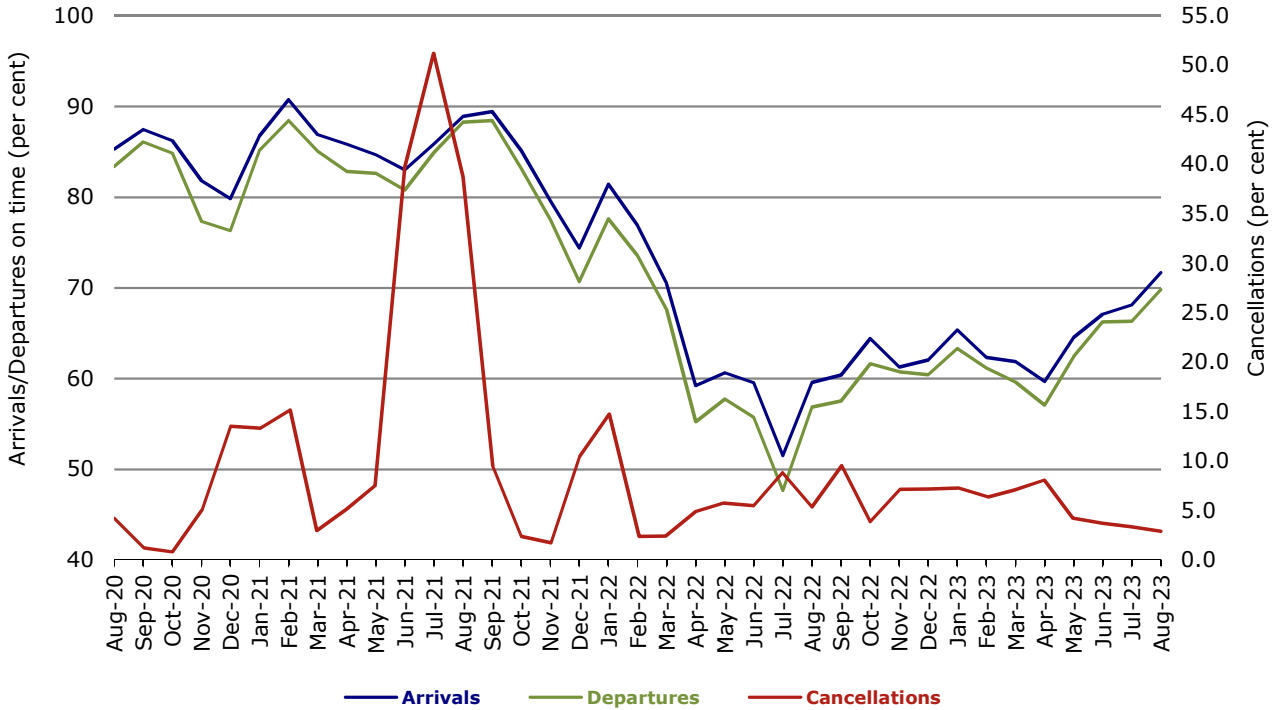


Figure 6 On time performance (by month from August 2020)—Qantas

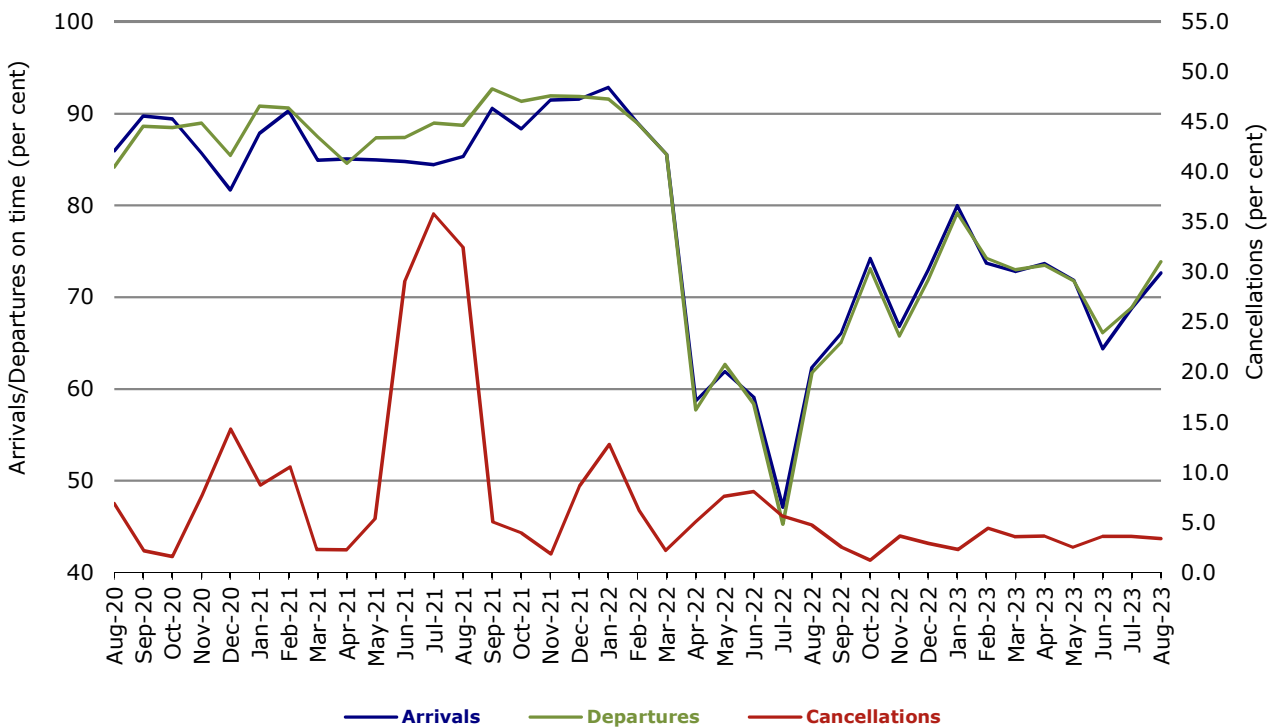
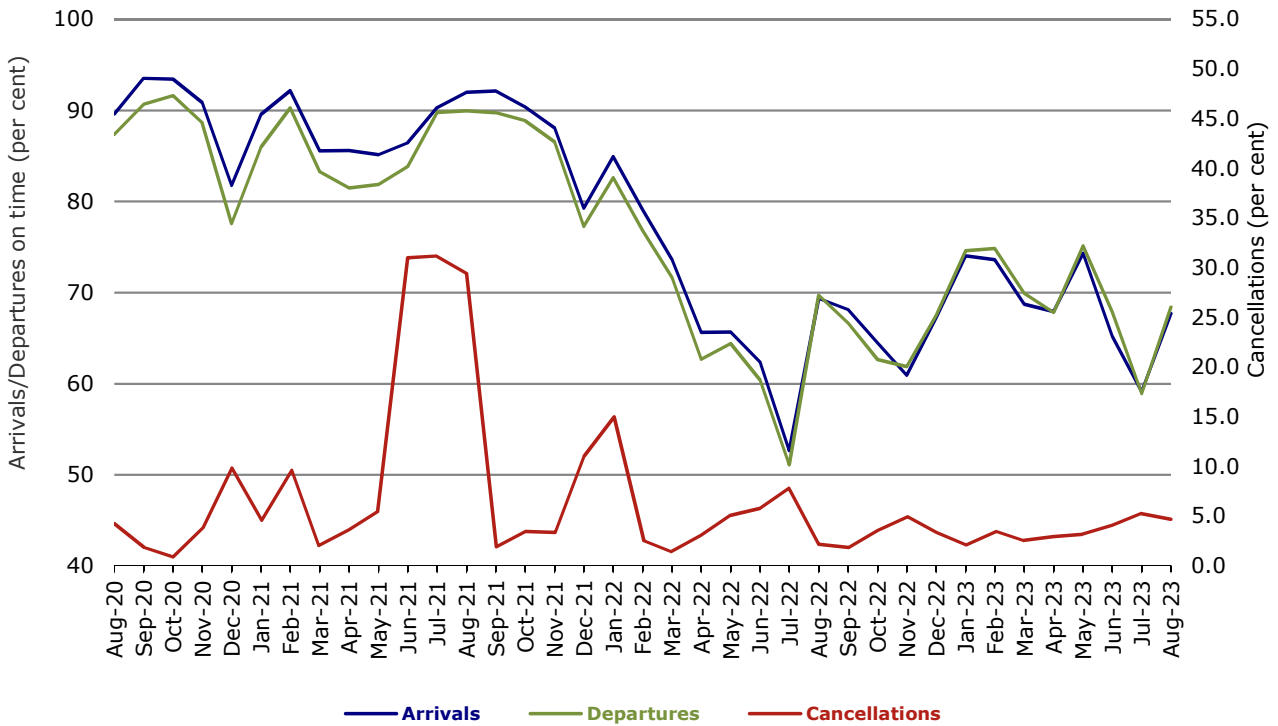


Figure 7 On time performance (by month from August 2020)—Virgin Australia



Major regional airlines on time performance

Figure 8 On time performance (by month from August 2020)—QantasLink

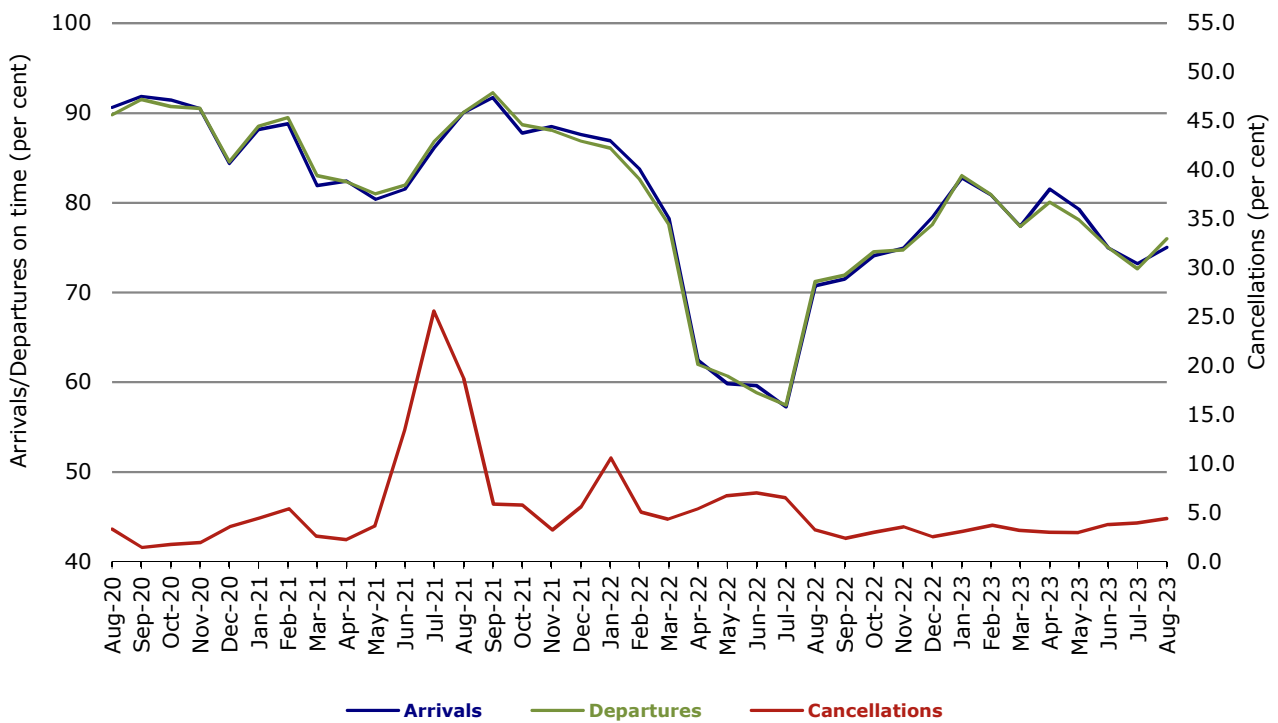


Figure 9 On time performance (by month from August 2020)—Rex Airlines

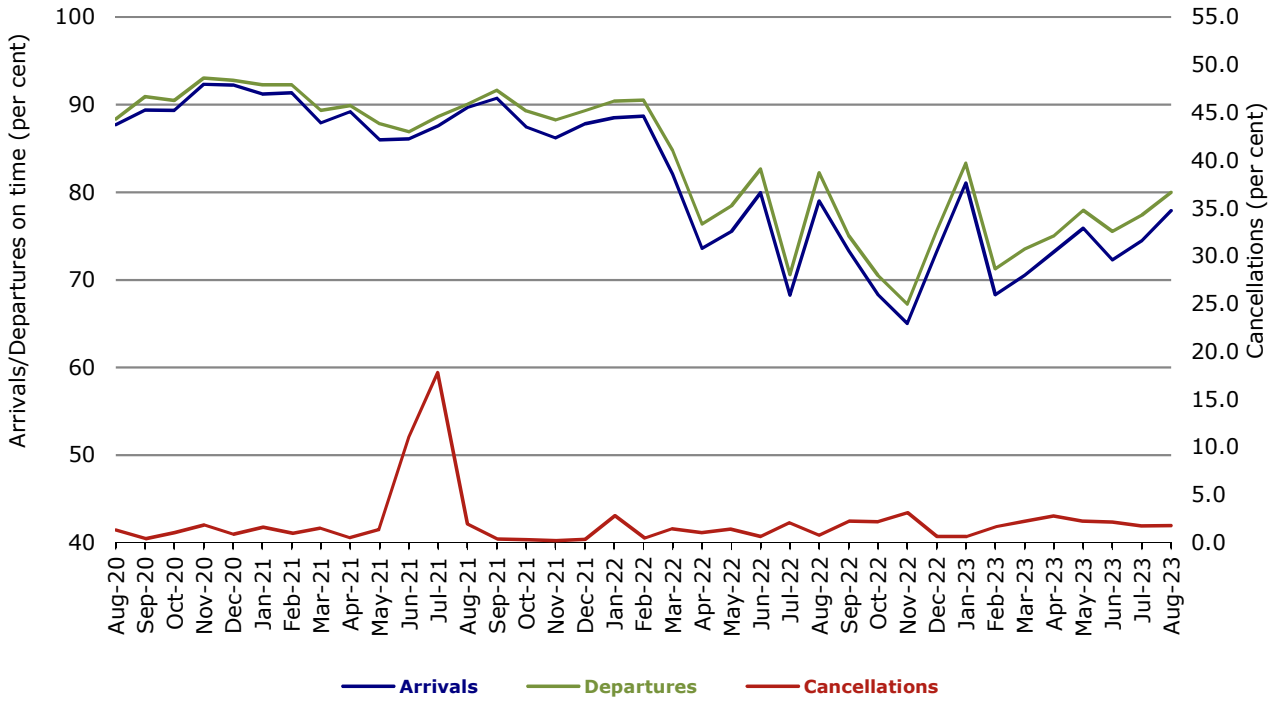


Figure 10 On time performance (by month from August 2020)—Virgin Australia Regional Airlines

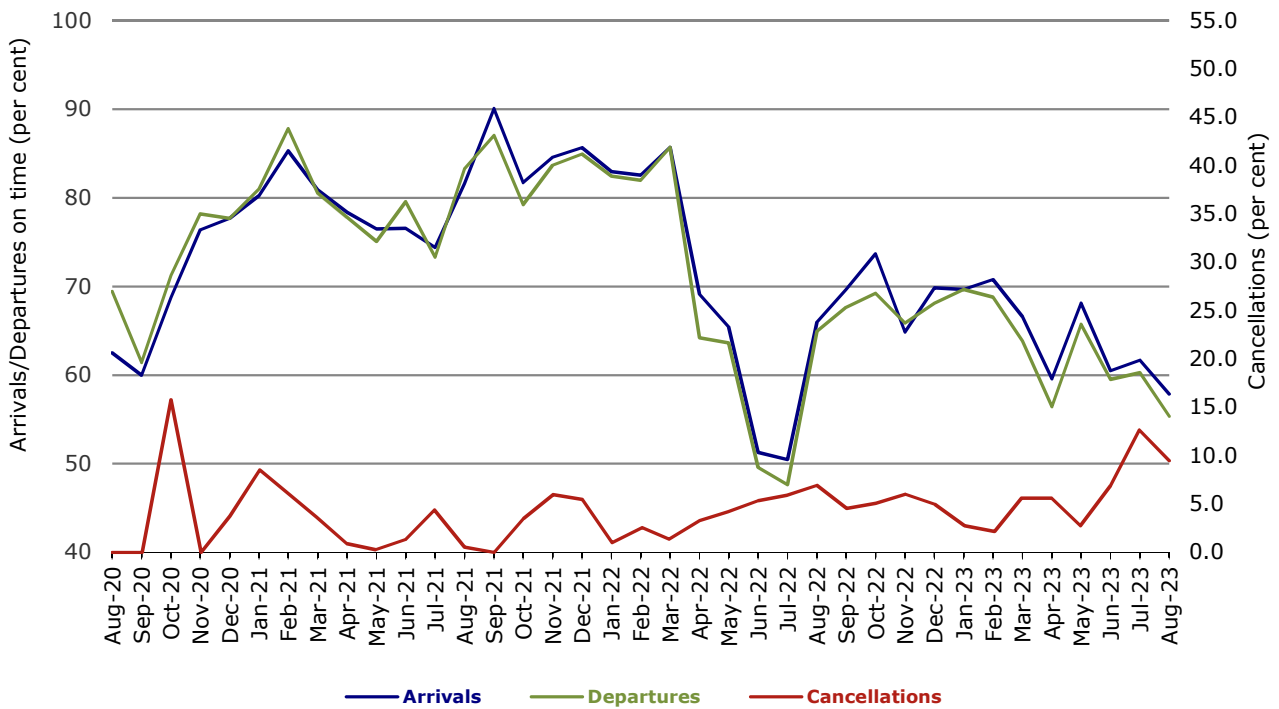
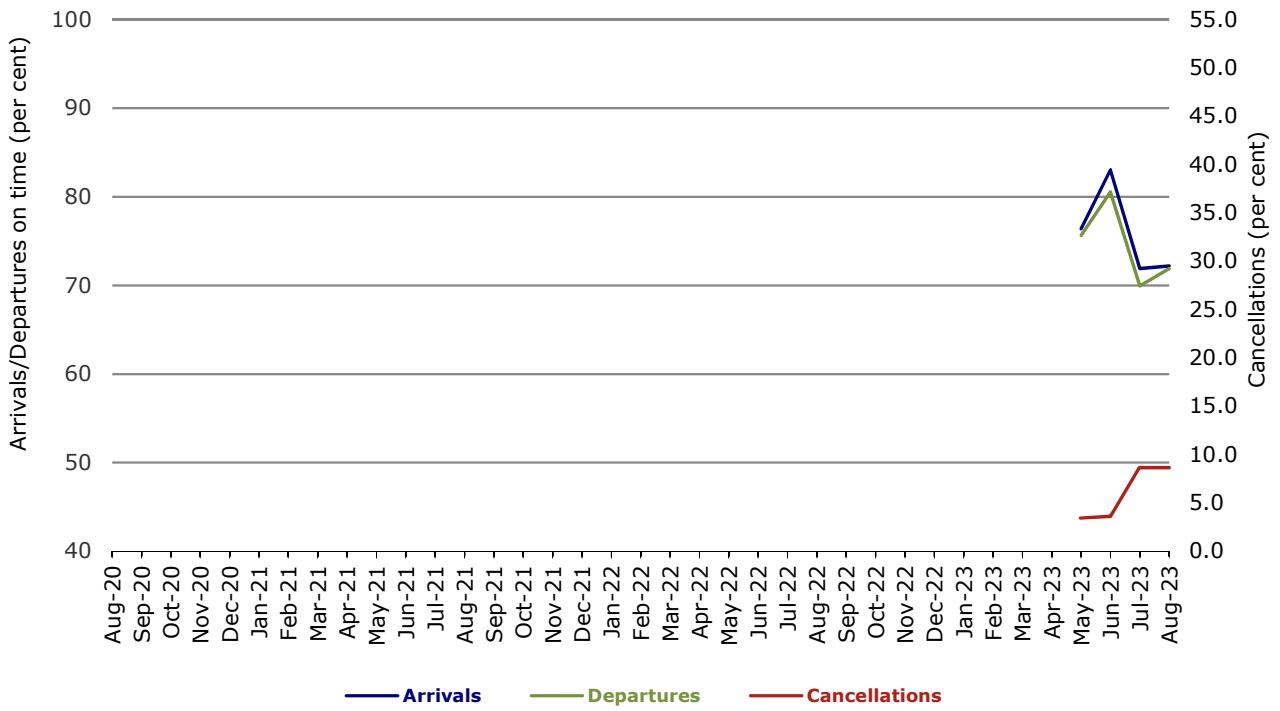


Figure 11 On time performance (by month from August 2020)—Skytrans



Individual routes

On time performance is reported for all routes where the passenger load averages over 8,000 passengers per month over the previous six months, and where two or more airlines operate in competition on those routes. There are now 62 routes for which data are presented.

	Sectors		Arrivals On Time		Departures On Time		Cancellations	
	Sched.	Flown	No.	%	No.	%	No.	%
Adelaide-Alice Springs								
QantasLink	54	52	40	76.9	44	84.6	2	3.7
Virgin Australia	13	13	8	61.5	10	76.9	0	0.0
All Airlines	67	65	48	73.8	54	83.1	2	3.0
Adelaide-Brisbane								
Jetstar	31	30	22	73.3	17	56.7	1	3.2
QantasLink	185	183	140	76.5	125	68.3	2	1.1
Virgin Australia	143	140	103	73.6	94	67.1	3	2.1
All Airlines	359	353	265	75.1	236	66.9	6	1.7
Adelaide-Cairns								
Jetstar	31	31	31	100.0	29	93.5	0	0.0
Virgin Australia	14	14	8	57.1	8	57.1	0	0.0
All Airlines	45	45	39	86.7	37	82.2	0	0.0
Adelaide-Canberra								
QantasLink	115	113	89	78.8	92	81.4	2	1.7
Virgin Australia	17	17	14	82.4	14	82.4	0	0.0
All Airlines	132	130	103	79.2	106	81.5	2	1.5
Adelaide-Darwin								
Jetstar	26	26	24	92.3	23	88.5	0	0.0
QantasLink	62	62	43	69.4	49	79.0	0	0.0
Virgin Australia	13	13	11	84.6	9	69.2	0	0.0
All Airlines	101	101	78	77.2	81	80.2	0	0.0
Adelaide-Gold Coast								
Jetstar	26	25	20	80.0	19	76.0	1	3.8
Virgin Australia	31	30	30	100.0	28	93.3	1	3.2
All Airlines	57	55	50	90.9	47	85.5	2	3.5
Adelaide-Melbourne								
Jetstar	105	100	69	69.0	66	66.0	5	4.8
Qantas	258	257	192	74.7	186	72.4	1	0.4
QantasLink	14	11	8	72.7	8	72.7	3	21.4
Rex Airlines	58	58	49	84.5	48	82.8	0	0.0
Virgin Australia	263	259	180	69.5	172	66.4	4	1.5
All Airlines	698	685	498	72.7	480	70.1	13	1.9
Adelaide-Perth								
Jetstar	27	27	19	70.4	24	88.9	0	0.0
Qantas	92	92	81	88.0	80	87.0	0	0.0
Virgin Australia	37	34	17	50.0	20	58.8	3	8.1
Virgin Australia Regional Airlines	35	26	16	61.5	15	57.7	9	25.7
All Airlines	191	179	133	74.3	139	77.7	12	6.3
Adelaide-Port Lincoln								
QantasLink	143	134	116	86.6	119	88.8	9	6.3
Rex Airlines	146	143	123	86.0	128	89.5	3	2.1
All Airlines	289	277	239	86.3	247	89.2	12	4.2

	Sectors		Arrivals On Time		Departures On Time		Cancellations	
	Sched.	Flown	No.	%	No.	%	No.	%
Adelaide-Sydney								
Jetstar	93	87	66	75.9	70	80.5	6	6.5
Qantas	229	223	165	74.0	170	76.2	6	2.6
Virgin Australia	190	176	118	67.0	116	65.9	14	7.4
All Airlines	512	486	349	71.8	356	73.3	26	5.1
Albury-Sydney								
QantasLink	116	113	79	69.9	77	68.1	3	2.6
Rex Airlines	113	110	83	75.5	86	78.2	3	2.7
All Airlines	229	223	162	72.6	163	73.1	6	2.6
Alice Springs-Adelaide								
QantasLink	54	52	36	69.2	42	80.8	2	3.7
Virgin Australia	13	13	2	15.4	2	15.4	0	0.0
All Airlines	67	65	38	58.5	44	67.7	2	3.0
Armidale-Sydney								
QantasLink	116	107	91	85.0	91	85.0	9	7.8
Rex Airlines	54	49	31	63.3	34	69.4	5	9.3
All Airlines	170	156	122	78.2	125	80.1	14	8.2
Ballina-Sydney								
Jetstar	78	78	56	71.8	54	69.2	0	0.0
QantasLink	101	95	75	78.9	79	83.2	6	5.9
Virgin Australia	48	48	30	62.5	34	70.8	0	0.0
All Airlines	227	221	161	72.9	167	75.6	6	2.6
Brisbane-Adelaide								
Jetstar	31	30	21	70.0	18	60.0	1	3.2
QantasLink	185	183	104	56.8	133	72.7	2	1.1
Virgin Australia	143	140	96	68.6	93	66.4	3	2.1
All Airlines	359	353	221	62.6	244	69.1	6	1.7
Brisbane-Cairns								
Jetstar	93	93	71	76.3	72	77.4	0	0.0
Qantas	119	119	100	84.0	96	80.7	0	0.0
QantasLink	51	51	35	68.6	36	70.6	0	0.0
Virgin Australia	148	147	109	74.1	97	66.0	1	0.7
All Airlines	411	410	315	76.8	301	73.4	1	0.2
Brisbane-Canberra								
Jetstar	31	31	21	67.7	22	71.0	0	0.0
Qantas	5	5	5	100.0	5	100.0	0	0.0
QantasLink	172	168	114	67.9	119	70.8	4	2.3
Virgin Australia	115	110	74	67.3	74	67.3	5	4.3
All Airlines	323	314	214	68.2	220	70.1	9	2.8
Brisbane-Darwin								
Jetstar	21	21	14	66.7	12	57.1	0	0.0
Qantas	45	45	43	95.6	40	88.9	0	0.0
Virgin Australia	31	31	24	77.4	15	48.4	0	0.0
All Airlines	97	97	81	83.5	67	69.1	0	0.0
Brisbane-Emerald								
QantasLink	126	124	99	79.8	93	75.0	2	1.6
Virgin Australia	27	27	24	88.9	23	85.2	0	0.0
All Airlines	153	151	123	81.5	116	76.8	2	1.3
Brisbane-Gladstone								
QantasLink	148	135	112	83.0	108	80.0	13	8.8
Virgin Australia	54	54	39	72.2	39	72.2	0	0.0
All Airlines	202	189	151	79.9	147	77.8	13	6.4

	Sectors		Arrivals On Time		Departures On Time		Cancellations	
	Sched.	Flown	No.	%	No.	%	No.	%
Brisbane-Hamilton Island								
Qantas	22	22	18	81.8	18	81.8	0	0.0
Virgin Australia	31	31	23	74.2	21	67.7	0	0.0
All Airlines	53	53	41	77.4	39	73.6	0	0.0
Brisbane-Hobart								
Jetstar	17	17	12	70.6	12	70.6	0	0.0
QantasLink	26	26	14	53.8	20	76.9	0	0.0
Virgin Australia	39	39	21	53.8	24	61.5	0	0.0
All Airlines	82	82	47	57.3	56	68.3	0	0.0
Brisbane-Launceston								
Jetstar	21	21	15	71.4	12	57.1	0	0.0
Virgin Australia	15	15	9	60.0	8	53.3	0	0.0
All Airlines	36	36	24	66.7	20	55.6	0	0.0
Brisbane-Mackay								
Jetstar	26	26	13	50.0	12	46.2	0	0.0
Qantas	101	101	86	85.1	83	82.2	0	0.0
QantasLink	15	15	12	80.0	11	73.3	0	0.0
Virgin Australia	143	143	101	70.6	84	58.7	0	0.0
All Airlines	285	285	212	74.4	190	66.7	0	0.0
Brisbane-Melbourne								
Jetstar	130	123	73	59.3	71	57.7	7	5.4
Qantas	395	387	299	77.3	319	82.4	8	2.0
Rex Airlines	59	59	34	57.6	37	62.7	0	0.0
Virgin Australia	423	393	234	59.5	255	64.9	30	7.1
All Airlines	1 007	962	640	66.5	682	70.9	45	4.5
Brisbane-Mount Isa								
Qantas	49	49	47	95.9	43	87.8	0	0.0
QantasLink	5	5	5	100.0	4	80.0	0	0.0
Virgin Australia	14	14	12	85.7	12	85.7	0	0.0
All Airlines	68	68	64	94.1	59	86.8	0	0.0
Brisbane-Newcastle								
Jetstar	53	52	40	76.9	41	78.8	1	1.9
QantasLink	138	122	90	73.8	88	72.1	16	11.6
Virgin Australia	85	84	53	63.1	57	67.9	1	1.2
All Airlines	276	258	183	70.9	186	72.1	18	6.5
Brisbane-Perth								
Jetstar	22	21	16	76.2	12	57.1	1	4.5
Qantas	158	158	113	71.5	121	76.6	0	0.0
Virgin Australia	118	112	59	52.7	63	56.3	6	5.1
All Airlines	298	291	188	64.6	196	67.4	7	2.3
Brisbane-Proserpine								
Jetstar	31	31	21	67.7	20	64.5	0	0.0
QantasLink	30	30	25	83.3	25	83.3	0	0.0
Virgin Australia	31	31	24	77.4	25	80.6	0	0.0
All Airlines	92	92	70	76.1	70	76.1	0	0.0
Brisbane-Rockhampton								
QantasLink	187	178	144	80.9	139	78.1	9	4.8
Virgin Australia	147	147	95	64.6	99	67.3	0	0.0
All Airlines	334	325	239	73.5	238	73.2	9	2.7

	Sectors		Arrivals On Time		Departures On Time		Cancellations	
	Sched.	Flown	No.	%	No.	%	No.	%
Brisbane-Sydney								
Jetstar	178	169	122	72.2	119	70.4	9	5.1
Qantas	562	539	432	80.1	453	84.0	23	4.1
Rex Airlines	147	146	107	73.3	111	76.0	1	0.7
Virgin Australia	503	459	300	65.4	312	68.0	44	8.7
All Airlines	1 390	1 313	961	73.2	995	75.8	77	5.5
Brisbane-Townsville								
Jetstar	36	36	22	61.1	21	58.3	0	0.0
Qantas	68	68	58	85.3	54	79.4	0	0.0
QantasLink	69	69	61	88.4	58	84.1	0	0.0
Virgin Australia	147	146	86	58.9	83	56.8	1	0.7
All Airlines	320	319	227	71.2	216	67.7	1	0.3
Broome-Perth								
Qantas	6	6	4	66.7	3	50.0	0	0.0
QantasLink	87	87	52	59.8	50	57.5	0	0.0
Virgin Australia	26	26	10	38.5	8	30.8	0	0.0
Virgin Australia Regional Airlines	28	27	12	44.4	9	33.3	1	3.6
All Airlines	147	146	78	53.4	70	47.9	1	0.7
Cairns-Adelaide								
Jetstar	31	31	23	74.2	25	80.6	0	0.0
Virgin Australia	14	14	4	28.6	4	28.6	0	0.0
All Airlines	45	45	27	60.0	29	64.4	0	0.0
Cairns-Brisbane								
Jetstar	93	93	73	78.5	78	83.9	0	0.0
Qantas	119	119	105	88.2	107	89.9	0	0.0
QantasLink	51	51	16	31.4	28	54.9	0	0.0
Virgin Australia	148	146	105	71.9	98	67.1	2	1.4
All Airlines	411	409	299	73.1	311	76.0	2	0.5
Cairns-Melbourne								
Jetstar	116	114	79	69.3	80	70.2	2	1.7
Qantas	32	32	12	37.5	12	37.5	0	0.0
Virgin Australia	78	77	43	55.8	48	62.3	1	1.3
All Airlines	226	223	134	60.1	140	62.8	3	1.3
Cairns-Sydney								
Jetstar	108	104	76	73.1	80	76.9	4	3.7
Qantas	39	39	18	46.2	21	53.8	0	0.0
Virgin Australia	83	83	56	67.5	60	72.3	0	0.0
All Airlines	230	226	150	66.4	161	71.2	4	1.7
Cairns-Townsville								
QantasLink	158	154	129	83.8	128	83.1	4	2.5
Rex Airlines	14	14	13	92.9	12	85.7	0	0.0
All Airlines	172	168	142	84.5	140	83.3	4	2.3
Canberra-Adelaide								
QantasLink	115	113	76	67.3	82	72.6	2	1.7
Virgin Australia	17	17	14	82.4	14	82.4	0	0.0
All Airlines	132	130	90	69.2	96	73.8	2	1.5
Canberra-Brisbane								
Jetstar	31	31	24	77.4	15	48.4	0	0.0
Qantas	5	5	5	100.0	4	80.0	0	0.0
QantasLink	172	168	116	69.0	111	66.1	4	2.3
Virgin Australia	115	110	87	79.1	84	76.4	5	4.3
All Airlines	323	314	232	73.9	214	68.2	9	2.8

	Sectors		Arrivals On Time		Departures On Time		Cancellations	
	Sched.	Flown	No.	%	No.	%	No.	%
Canberra-Gold Coast								
Jetstar	18	17	13	76.5	12	70.6	1	5.6
Virgin Australia	31	31	19	61.3	20	64.5	0	0.0
All Airlines	49	48	32	66.7	32	66.7	1	2.0
Canberra-Melbourne								
Jetstar	31	29	17	58.6	17	58.6	2	6.5
QantasLink	280	271	191	70.5	194	71.6	9	3.2
Rex Airlines	31	31	21	67.7	21	67.7	0	0.0
Virgin Australia	131	127	77	60.6	84	66.1	4	3.1
All Airlines	473	458	306	66.8	316	69.0	15	3.2
Canberra-Sydney								
QantasLink	486	414	271	65.5	279	67.4	72	14.8
Virgin Australia	262	252	213	84.5	214	84.9	10	3.8
All Airlines	748	666	484	72.7	493	74.0	82	11.0
Coffs Harbour-Sydney								
QantasLink	116	108	86	79.6	89	82.4	8	6.9
Rex Airlines	112	112	88	78.6	91	81.3	0	0.0
All Airlines	228	220	174	79.1	180	81.8	8	3.5
Darwin-Adelaide								
Jetstar	27	27	17	63.0	15	55.6	0	0.0
QantasLink	62	62	53	85.5	53	85.5	0	0.0
virgin Australia	14	14	13	92.9	9	64.3	0	0.0
All Airlines	103	103	83	80.6	77	74.8	0	0.0
Darwin-Brisbane								
Jetstar	22	22	12	54.5	11	50.0	0	0.0
Qantas	46	46	37	80.4	36	78.3	0	0.0
Virgin Australia	31	31	18	58.1	17	54.8	0	0.0
All Airlines	99	99	67	67.7	64	64.6	0	0.0
Darwin-Melbourne								
Jetstar	30	30	20	66.7	15	50.0	0	0.0
Qantas	31	31	15	48.4	16	51.6	0	0.0
Virgin Australia	31	31	22	71.0	16	51.6	0	0.0
All Airlines	92	92	57	62.0	47	51.1	0	0.0
Darwin-Perth								
QantasLink	40	39	20	51.3	15	38.5	1	2.5
Virgin Australia	5	5	3	60.0	3	60.0	0	0.0
Virgin Australia Regional Airlines	17	15	10	66.7	8	53.3	2	11.8
All Airlines	62	59	33	55.9	26	44.1	3	4.8
Devonport-Melbourne								
QantasLink	120	111	73	65.8	76	68.5	9	7.5
Rex Airlines	52	48	36	75.0	38	79.2	4	7.7
All Airlines	172	159	109	68.6	114	71.7	13	7.6
Dubbo-Sydney								
QantasLink	116	111	94	84.7	94	84.7	5	4.3
Rex Airlines	131	128	104	81.3	104	81.3	3	2.3
All Airlines	247	239	198	82.8	198	82.8	8	3.2
Emerald-Brisbane								
QantasLink	126	124	95	76.6	100	80.6	2	1.6
Virgin Australia	27	27	25	92.6	25	92.6	0	0.0
All Airlines	153	151	120	79.5	125	82.8	2	1.3

	Sectors		Arrivals On Time		Departures On Time		Cancellations	
	Sched.	Flown	No.	%	No.	%	No.	%
Gladstone-Brisbane								
QantasLink	147	135	112	83.0	113	83.7	12	8.2
Virgin Australia	54	54	26	48.1	38	70.4	0	0.0
All Airlines	201	189	138	73.0	151	79.9	12	6.0
Gold Coast-Adelaide								
Jetstar	26	25	24	96.0	24	96.0	1	3.8
Virgin Australia	31	30	17	56.7	20	66.7	1	3.2
All Airlines	57	55	41	74.5	44	80.0	2	3.5
Gold Coast-Canberra								
Jetstar	17	17	14	82.4	14	82.4	0	0.0
Virgin Australia	31	31	19	61.3	19	61.3	0	0.0
All Airlines	48	48	33	68.8	33	68.8	0	0.0
Gold Coast-Melbourne								
Jetstar	212	206	148	71.8	149	72.3	6	2.8
Qantas	15	15	9	60.0	9	60.0	0	0.0
QantasLink	16	15	13	86.7	12	80.0	1	6.3
Rex Airlines	31	31	22	71.0	26	83.9	0	0.0
Virgin Australia	254	244	152	62.3	142	58.2	10	3.9
All Airlines	528	511	344	67.3	338	66.1	17	3.2
Gold Coast-Sydney								
Jetstar	269	257	204	79.4	204	79.4	12	4.5
Qantas	56	56	39	69.6	47	83.9	0	0.0
QantasLink	37	37	22	59.5	22	59.5	0	0.0
Rex Airlines	31	31	28	90.3	29	93.5	0	0.0
Virgin Australia	288	282	197	69.9	207	73.4	6	2.1
All Airlines	681	663	490	73.9	509	76.8	18	2.6
Hamilton Island-Brisbane								
Qantas	22	22	15	68.2	16	72.7	0	0.0
Virgin Australia	31	31	25	80.6	23	74.2	0	0.0
All Airlines	53	53	40	75.5	39	73.6	0	0.0
Hamilton Island-Sydney								
Jetstar	26	25	11	44.0	16	64.0	1	3.8
Qantas	30	30	20	66.7	20	66.7	0	0.0
Virgin Australia	28	28	15	53.6	19	67.9	0	0.0
All Airlines	84	83	46	55.4	55	66.3	1	1.2
Hobart-Brisbane								
Jetstar	17	17	10	58.8	10	58.8	0	0.0
QantasLink	26	26	18	69.2	16	61.5	0	0.0
Virgin Australia	39	38	20	52.6	17	44.7	1	2.6
All Airlines	82	81	48	59.3	43	53.1	1	1.2
Hobart-Melbourne								
Jetstar	112	110	71	64.5	73	66.4	2	1.8
Qantas	40	38	26	68.4	27	71.1	2	5.0
QantasLink	58	57	29	50.9	36	63.2	1	1.7
Virgin Australia	116	116	62	53.4	77	66.4	0	0.0
All Airlines	326	321	188	58.6	213	66.4	5	1.5
Hobart-Sydney								
Jetstar	62	62	38	61.3	45	72.6	0	0.0
Qantas	4	4	2	50.0	2	50.0	0	0.0
QantasLink	81	80	54	67.5	55	68.8	1	1.2
Virgin Australia	77	75	56	74.7	56	74.7	2	2.6
All Airlines	224	221	150	67.9	158	71.5	3	1.3

	Sectors		Arrivals On Time		Departures On Time		Cancellations	
	Sched.	Flown	No.	%	No.	%	No.	%
Kalgoorlie-Perth								
Qantas	28	26	17	65.4	20	76.9	2	7.1
QantasLink	56	56	36	64.3	41	73.2	0	0.0
Virgin Australia	67	63	47	74.6	48	76.2	4	6.0
Virgin Australia Regional Airlines	27	26	16	61.5	18	69.2	1	3.7
All Airlines	178	171	116	67.8	127	74.3	7	3.9
Karratha-Perth								
Qantas	25	25	18	72.0	20	80.0	0	0.0
QantasLink	129	128	88	68.8	88	68.8	1	0.8
Virgin Australia	33	32	21	65.6	20	62.5	1	3.0
Virgin Australia Regional Airlines	21	21	7	33.3	6	28.6	0	0.0
All Airlines	208	206	134	65.0	134	65.0	2	1.0
Launceston-Brisbane								
Jetstar	21	21	13	61.9	9	42.9	0	0.0
Virgin Australia	15	15	7	46.7	8	53.3	0	0.0
All Airlines	36	36	20	55.6	17	47.2	0	0.0
Launceston-Melbourne								
Jetstar	83	82	45	54.9	41	50.0	1	1.2
QantasLink	119	111	79	71.2	75	67.6	8	6.7
Virgin Australia	89	88	51	58.0	62	70.5	1	1.1
All Airlines	291	281	175	62.3	178	63.3	10	3.4
Launceston-Sydney								
Jetstar	35	34	21	61.8	21	61.8	1	2.9
QantasLink	31	31	19	61.3	17	54.8	0	0.0
Virgin Australia	30	30	20	66.7	22	73.3	0	0.0
All Airlines	96	95	60	63.2	60	63.2	1	1.0
Mackay-Brisbane								
Jetstar	26	26	13	50.0	12	46.2	0	0.0
Qantas	101	100	82	82.0	81	81.0	1	1.0
QantasLink	20	20	13	65.0	14	70.0	0	0.0
Virgin Australia	143	143	114	79.7	98	68.5	0	0.0
All Airlines	290	289	222	76.8	205	70.9	1	0.3
Melbourne-Adelaide								
Jetstar	105	102	74	72.5	70	68.6	3	2.9
Qantas	258	257	182	70.8	179	69.6	1	0.4
QantasLink	14	10	9	90.0	9	90.0	4	28.6
Rex Airlines	58	58	42	72.4	44	75.9	0	0.0
Virgin Australia	260	256	166	64.8	177	69.1	4	1.5
All Airlines	695	683	473	69.3	479	70.1	12	1.7
Melbourne-Brisbane								
Jetstar	130	122	66	54.1	72	59.0	8	6.2
Qantas	395	388	307	79.1	288	74.2	7	1.8
Rex Airlines	58	58	50	86.2	48	82.8	0	0.0
Virgin Australia	425	400	257	64.3	251	62.8	25	5.9
All Airlines	1 008	968	680	70.2	659	68.1	40	4.0
Melbourne-Cairns								
Jetstar	116	115	90	78.3	76	66.1	1	0.9
Qantas	32	32	18	56.3	16	50.0	0	0.0
Virgin Australia	78	77	63	81.8	61	79.2	1	1.3
All Airlines	226	224	171	76.3	153	68.3	2	0.9

	Sectors		Arrivals On Time		Departures On Time		Cancellations	
	Sched.	Flown	No.	%	No.	%	No.	%
Melbourne-Canberra								
Jetstar	31	30	18	60.0	20	66.7	1	3.2
QantasLink	280	272	194	71.3	199	73.2	8	2.9
Rex Airlines	31	31	22	71.0	19	61.3	0	0.0
Virgin Australia	131	127	78	61.4	80	63.0	4	3.1
All Airlines	473	460	312	67.8	318	69.1	13	2.7
Melbourne-Darwin								
Jetstar	31	31	24	77.4	25	80.6	0	0.0
Qantas	31	31	16	51.6	17	54.8	0	0.0
Virgin Australia	31	31	27	87.1	24	77.4	0	0.0
All Airlines	93	93	67	72.0	66	71.0	0	0.0
Melbourne-Devonport								
QantasLink	120	112	80	71.4	75	67.0	8	6.7
Rex Airlines	52	48	41	85.4	41	85.4	4	7.7
All Airlines	172	160	121	75.6	116	72.5	12	7.0
Melbourne-Gold Coast								
Jetstar	212	207	151	72.9	141	68.1	5	2.4
Qantas	15	15	10	66.7	8	53.3	0	0.0
QantasLink	16	15	14	93.3	13	86.7	1	6.3
Rex Airlines	31	31	28	90.3	29	93.5	0	0.0
Virgin Australia	254	242	177	73.1	160	66.1	12	4.7
All Airlines	528	510	380	74.5	351	68.8	18	3.4
Melbourne-Hobart								
Jetstar	112	111	74	66.7	76	68.5	1	0.9
Qantas	40	40	24	60.0	21	52.5	0	0.0
QantasLink	58	57	40	70.2	44	77.2	1	1.7
Virgin Australia	116	116	63	54.3	73	62.9	0	0.0
All Airlines	326	324	201	62.0	214	66.0	2	0.6
Melbourne-Launceston								
Jetstar	83	82	52	63.4	53	64.6	1	1.2
QantasLink	119	111	72	64.9	77	69.4	8	6.7
Virgin Australia	89	88	40	45.5	42	47.7	1	1.1
All Airlines	291	281	164	58.4	172	61.2	10	3.4
Melbourne-Mildura								
QantasLink	137	133	87	65.4	86	64.7	4	2.9
Rex Airlines	106	106	79	74.5	81	76.4	0	0.0
All Airlines	243	239	166	69.5	167	69.9	4	1.6
Melbourne-Newcastle								
Jetstar	43	43	33	76.7	33	76.7	0	0.0
QantasLink	58	57	36	63.2	36	63.2	1	1.7
Virgin Australia	39	39	28	71.8	28	71.8	0	0.0
All Airlines	140	139	97	69.8	97	69.8	1	0.7
Melbourne-Perth								
Jetstar	59	58	40	69.0	39	67.2	1	1.7
Qantas	208	205	106	51.7	123	60.0	3	1.4
Virgin Australia	193	179	107	59.8	103	57.5	14	7.3
All Airlines	460	442	253	57.2	265	60.0	18	3.9
Melbourne-Sunshine Coast								
Jetstar	62	62	37	59.7	37	59.7	0	0.0
Qantas	31	31	24	77.4	20	64.5	0	0.0
Virgin Australia	67	67	55	82.1	45	67.2	0	0.0
All Airlines	160	160	116	72.5	102	63.8	0	0.0

	Sectors		Arrivals On Time		Departures On Time		Cancellations	
	Sched.	Flown	No.	%	No.	%	No.	%
Melbourne-Sydney								
Jetstar	398	364	278	76.4	269	73.9	34	8.5
Qantas	964	876	625	71.3	684	78.1	88	9.1
QantasLink	2	2	1	50.0	1	50.0	0	0.0
Rex Airlines	155	155	132	85.2	135	87.1	0	0.0
Virgin Australia	806	708	469	66.2	505	71.3	98	12.2
All Airlines	2 325	2 105	1 505	71.5	1 594	75.7	220	9.5
Mildura-Melbourne								
QantasLink	137	132	82	62.1	88	66.7	5	3.6
Rex Airlines	107	107	80	74.8	85	79.4	0	0.0
All Airlines	244	239	162	67.8	173	72.4	5	2.0
Mount Isa-Brisbane								
Qantas	49	49	45	91.8	42	85.7	0	0.0
QantasLink	5	5	3	60.0	4	80.0	0	0.0
Virgin Australia	14	14	8	57.1	7	50.0	0	0.0
All Airlines	68	68	56	82.4	53	77.9	0	0.0
Newcastle-Brisbane								
Jetstar	54	53	42	79.2	38	71.7	1	1.9
QantasLink	138	121	105	86.8	86	71.1	17	12.3
Virgin Australia	85	84	53	63.1	51	60.7	1	1.2
All Airlines	277	258	200	77.5	175	67.8	19	6.9
Newcastle-Melbourne								
Jetstar	43	42	28	66.7	26	61.9	1	2.3
QantasLink	58	56	47	83.9	45	80.4	2	3.4
Virgin Australia	39	39	22	56.4	26	66.7	0	0.0
All Airlines	140	137	97	70.8	97	70.8	3	2.1
Newman-Perth								
Qantas	20	19	14	73.7	17	89.5	1	5.0
QantasLink	106	105	61	58.1	85	81.0	1	0.9
Virgin Australia	37	35	19	54.3	30	85.7	2	5.4
Virgin Australia Regional Airlines	23	21	15	71.4	13	61.9	2	8.7
All Airlines	186	180	109	60.6	145	80.6	6	3.2
Perth-Adelaide								
Jetstar	27	27	19	70.4	17	63.0	0	0.0
Qantas	92	92	78	84.8	62	67.4	0	0.0
Virgin Australia	40	36	30	83.3	26	72.2	4	10.0
Virgin Australia Regional Airlines	35	26	18	69.2	18	69.2	9	25.7
All Airlines	194	181	145	80.1	123	68.0	13	6.7
Perth-Brisbane								
Jetstar	22	21	18	85.7	10	47.6	1	4.5
Qantas	160	159	125	78.6	108	67.9	1	0.6
Virgin Australia	119	113	95	84.1	73	64.6	6	5.0
All Airlines	301	293	238	81.2	191	65.2	8	2.7
Perth-Broome								
Qantas	6	6	6	100.0	4	66.7	0	0.0
QantasLink	87	87	74	85.1	66	75.9	0	0.0
Virgin Australia	25	25	15	60.0	13	52.0	0	0.0
Virgin Australia Regional Airlines	29	28	18	64.3	17	60.7	1	3.4
All Airlines	147	146	113	77.4	100	68.5	1	0.7
Perth-Darwin								
QantasLink	40	40	25	62.5	27	67.5	0	0.0
Virgin Australia	5	5	2	40.0	2	40.0	0	0.0
Virgin Australia Regional Airlines	17	15	10	66.7	10	66.7	2	11.8
All Airlines	62	60	37	61.7	39	65.0	2	3.2

	Sectors		Arrivals On Time		Departures On Time		Cancellations	
	Sched.	Flown	No.	%	No.	%	No.	%
Perth-Kalgoorlie								
Qantas	27	25	22	88.0	22	88.0	2	7.4
QantasLink	56	56	43	76.8	43	76.8	0	0.0
Virgin Australia	67	63	49	77.8	50	79.4	4	6.0
Virgin Australia Regional Airlines	27	26	19	73.1	19	73.1	1	3.7
All Airlines	177	170	133	78.2	134	78.8	7	4.0
Perth-Karratha								
Qantas	25	25	23	92.0	22	88.0	0	0.0
QantasLink	128	128	98	76.6	97	75.8	0	0.0
Virgin Australia	33	32	23	71.9	25	78.1	1	3.0
Virgin Australia Regional Airlines	21	21	7	33.3	10	47.6	0	0.0
All Airlines	207	206	151	73.3	154	74.8	1	0.5
Perth-Melbourne								
Jetstar	60	59	41	69.5	38	64.4	1	1.7
Qantas	208	204	147	72.1	129	63.2	4	1.9
Virgin Australia	199	184	150	81.5	131	71.2	15	7.5
All Airlines	467	447	338	75.6	298	66.7	20	4.3
Perth-Newman								
Qantas	20	19	17	89.5	18	94.7	1	5.0
QantasLink	106	106	92	86.8	93	87.7	0	0.0
Virgin Australia	37	35	28	80.0	30	85.7	2	5.4
Virgin Australia Regional Airlines	23	21	15	71.4	13	61.9	2	8.7
All Airlines	186	181	152	84.0	154	85.1	5	2.7
Perth-Port Hedland								
Qantas	27	26	22	84.6	22	84.6	1	3.7
QantasLink	124	124	103	83.1	107	86.3	0	0.0
Virgin Australia	36	31	21	67.7	23	74.2	5	13.9
Virgin Australia Regional Airlines	18	16	8	50.0	8	50.0	2	11.1
All Airlines	205	197	154	78.2	160	81.2	8	3.9
Perth-Sydney								
Jetstar	48	45	28	62.2	14	31.1	3	6.3
Qantas	219	213	145	68.1	125	58.7	6	2.7
Virgin Australia	141	135	115	85.2	81	60.0	6	4.3
All Airlines	408	393	288	73.3	220	56.0	15	3.7
Port Hedland-Perth								
Qantas	27	25	15	60.0	19	76.0	2	7.4
QantasLink	124	124	83	66.9	95	76.6	0	0.0
Virgin Australia	36	31	15	48.4	15	48.4	5	13.9
Virgin Australia Regional Airlines	18	15	6	40.0	5	33.3	3	16.7
All Airlines	205	195	119	61.0	134	68.7	10	4.9
Port Lincoln-Adelaide								
QantasLink	143	133	119	89.5	122	91.7	10	7.0
Rex Airlines	146	142	118	83.1	122	85.9	4	2.7
All Airlines	289	275	237	86.2	244	88.7	14	4.8
Port Macquarie-Sydney								
QantasLink	116	110	75	68.2	79	71.8	6	5.2
Rex Airlines	83	79	61	77.2	68	86.1	4	4.8
All Airlines	199	189	136	72.0	147	77.8	10	5.0
Proserpine-Brisbane								
Jetstar	32	32	18	56.3	17	53.1	0	0.0
QantasLink	30	30	19	63.3	21	70.0	0	0.0
Virgin Australia	31	31	22	71.0	24	77.4	0	0.0
All Airlines	93	93	59	63.4	62	66.7	0	0.0

	Sectors		Arrivals On Time		Departures On Time		Cancellations	
	Sched.	Flown	No.	%	No.	%	No.	%
Rockhampton-Brisbane								
QantasLink	188	172	119	69.2	118	68.6	16	8.5
Virgin Australia	147	147	97	66.0	111	75.5	0	0.0
All Airlines	335	319	216	67.7	229	71.8	16	4.8
Sunshine Coast-Melbourne								
Jetstar	62	62	30	48.4	30	48.4	0	0.0
Qantas	31	31	17	54.8	14	45.2	0	0.0
Virgin Australia	67	67	33	49.3	37	55.2	0	0.0
All Airlines	160	160	80	50.0	81	50.6	0	0.0
Sunshine Coast-Sydney								
Jetstar	83	82	50	61.0	53	64.6	1	1.2
Qantas	28	28	16	57.1	14	50.0	0	0.0
Virgin Australia	62	62	33	53.2	44	71.0	0	0.0
All Airlines	173	172	99	57.6	111	64.5	1	0.6
Sydney-Adelaide								
Jetstar	93	87	61	70.1	58	66.7	6	6.5
Qantas	230	226	153	67.7	174	77.0	4	1.7
Virgin Australia	190	178	125	70.2	133	74.7	12	6.3
All Airlines	513	491	339	69.0	365	74.3	22	4.3
Sydney-Albury								
QantasLink	116	113	80	70.8	82	72.6	3	2.6
Rex Airlines	111	110	81	73.6	81	73.6	1	0.9
All Airlines	227	223	161	72.2	163	73.1	4	1.8
Sydney-Armidale								
QantasLink	115	106	90	84.9	78	73.6	9	7.8
Rex Airlines	54	49	40	81.6	38	77.6	5	9.3
All Airlines	169	155	130	83.9	116	74.8	14	8.3
Sydney-Ballina								
Jetstar	78	78	59	75.6	57	73.1	0	0.0
QantasLink	101	95	76	80.0	72	75.8	6	5.9
Virgin Australia	48	48	36	75.0	39	81.3	0	0.0
All Airlines	227	221	171	77.4	168	76.0	6	2.6
Sydney-Brisbane								
Jetstar	176	169	117	69.2	115	68.0	7	4.0
Qantas	563	542	409	75.5	416	76.8	21	3.7
Rex Airlines	147	146	108	74.0	111	76.0	1	0.7
Virgin Australia	499	450	327	72.7	341	75.8	49	9.8
All Airlines	1 385	1 307	961	73.5	983	75.2	78	5.6
Sydney-Cairns								
Jetstar	106	104	74	71.2	66	63.5	2	1.9
Qantas	39	39	19	48.7	22	56.4	0	0.0
Virgin Australia	83	83	72	86.7	66	79.5	0	0.0
All Airlines	228	226	165	73.0	154	68.1	2	0.9
Sydney-Canberra								
QantasLink	486	415	298	71.8	320	77.1	71	14.6
Virgin Australia	262	252	211	83.7	204	81.0	10	3.8
All Airlines	748	667	509	76.3	524	78.6	81	10.8
Sydney-Coffs Harbour								
QantasLink	115	108	87	80.6	75	69.4	7	6.1
Rex Airlines	111	111	92	82.9	85	76.6	0	0.0
All Airlines	226	219	179	81.7	160	73.1	7	3.1

	Sectors		Arrivals On Time		Departures On Time		Cancellations	
	Sched.	Flown	No.	%	No.	%	No.	%
Sydney-Dubbo								
QantasLink	116	111	84	75.7	71	64.0	5	4.3
Rex Airlines	134	131	111	84.7	104	79.4	3	2.2
All Airlines	250	242	195	80.6	175	72.3	8	3.2
Sydney-Gold Coast								
Jetstar	269	259	213	82.2	206	79.5	10	3.7
Qantas	56	56	39	69.6	34	60.7	0	0.0
QantasLink	37	37	25	67.6	28	75.7	0	0.0
Rex Airlines	31	31	29	93.5	30	96.8	0	0.0
Virgin Australia	288	285	188	66.0	202	70.9	3	1.0
All Airlines	681	668	494	74.0	500	74.9	13	1.9
Sydney-Hamilton Island								
Jetstar	26	26	20	76.9	19	73.1	0	0.0
Qantas	30	30	20	66.7	20	66.7	0	0.0
Virgin Australia	28	28	19	67.9	21	75.0	0	0.0
All Airlines	84	84	59	70.2	60	71.4	0	0.0
Sydney-Hobart								
Jetstar	62	62	48	77.4	43	69.4	0	0.0
Qantas	4	4	2	50.0	2	50.0	0	0.0
QantasLink	81	79	52	65.8	53	67.1	2	2.5
Virgin Australia	77	75	55	73.3	59	78.7	2	2.6
All Airlines	224	220	157	71.4	157	71.4	4	1.8
Sydney-Launceston								
Jetstar	35	34	24	70.6	22	64.7	1	2.9
QantasLink	31	31	16	51.6	21	67.7	0	0.0
Virgin Australia	30	30	24	80.0	23	76.7	0	0.0
All Airlines	96	95	64	67.4	66	69.5	1	1.0
Sydney-Melbourne								
Jetstar	398	366	265	72.4	267	73.0	32	8.0
Qantas	961	872	606	69.5	651	74.7	89	9.3
QantasLink	2	2	2	100.0	2	100.0	0	0.0
Rex Airlines	154	154	114	74.0	128	83.1	0	0.0
Virgin Australia	801	706	475	67.3	517	73.2	95	11.9
All Airlines	2 316	2 100	1 462	69.6	1 565	74.5	216	9.3
Sydney-Perth								
Jetstar	48	46	25	54.3	32	69.6	2	4.2
Qantas	217	212	107	50.5	135	63.7	5	2.3
Virgin Australia	149	141	91	64.5	89	63.1	8	5.4
All Airlines	414	399	223	55.9	256	64.2	15	3.6
Sydney-Port Macquarie								
QantasLink	116	110	78	70.9	74	67.3	6	5.2
Rex Airlines	85	82	70	85.4	66	80.5	3	3.5
All Airlines	201	192	148	77.1	140	72.9	9	4.5
Sydney-Sunshine Coast								
Jetstar	83	82	64	78.0	62	75.6	1	1.2
Qantas	28	28	20	71.4	17	60.7	0	0.0
Virgin Australia	62	62	45	72.6	47	75.8	0	0.0
All Airlines	173	172	129	75.0	126	73.3	1	0.6
Sydney-Wagga Wagga								
QantasLink	116	112	86	76.8	84	75.0	4	3.4
Rex Airlines	91	91	59	64.8	60	65.9	0	0.0
All Airlines	207	203	145	71.4	144	70.9	4	1.9

	<i>Sectors</i>		<i>Arrivals On Time</i>		<i>Departures On Time</i>		<i>Cancellations</i>	
	<i>Sched.</i>	<i>Flown</i>	<i>No.</i>	<i>%</i>	<i>No.</i>	<i>%</i>	<i>No.</i>	<i>%</i>
Townsville-Brisbane								
Jetstar	36	36	20	55.6	19	52.8	0	0.0
Qantas	68	68	57	83.8	57	83.8	0	0.0
QantasLink	69	69	54	78.3	56	81.2	0	0.0
Virgin Australia	147	146	64	43.8	77	52.7	1	0.7
All Airlines	320	319	195	61.1	209	65.5	1	0.3
Townsville-Cairns								
QantasLink	158	153	135	88.2	133	86.9	5	3.2
Rex Airlines	14	14	13	92.9	13	92.9	0	0.0
All Airlines	172	167	148	88.6	146	87.4	5	2.9
Wagga Wagga-Sydney								
QantasLink	116	113	87	77.0	85	75.2	3	2.6
Rex Airlines	90	89	59	66.3	62	69.7	1	1.1
All Airlines	206	202	146	72.3	147	72.8	4	1.9

Airports

The following data reports by airport against flights operated on published routes only. This month, 8 major city airports and 29 regional city airports are covered.

Airport	Arrivals			Departures		
	Sectors	On Time		Sectors	On Time	
	Flown	No.	%	Flown	No.	%
Adelaide						
Jetstar	329	239	72.6	326	248	76.1
Qantas	575	413	71.8	572	436	76.2
QantasLink	553	397	71.8	555	437	78.7
Rex Airlines	200	160	80.0	201	176	87.6
Virgin Australia	698	467	66.9	696	471	67.7
Virgin Australia Regional Airlines	26	18	69.2	26	15	57.7
All Airlines	2,381	1,694	71.1	2,376	1,783	75.0
Relates to services to and from Alice Springs, Brisbane, Canberra, Gold Coast, Melbourne, Perth, Port Lincoln and Sydney only.						
Albury						
QantasLink	113	80	70.8	113	77	68.1
Rex Airlines	110	81	73.6	110	86	78.2
All Airlines	223	161	72.2	223	163	73.1
Relates to services to and from Sydney only.						
Alice Springs						
QantasLink	52	40	76.9	52	42	80.8
Virgin Australia	13	8	61.5	13	2	15.4
All Airlines	65	48	73.8	65	44	67.7
Relates to services to and from Adelaide only.						
Armidale						
QantasLink	106	90	84.9	107	91	85.0
Rex Airlines	49	40	81.6	49	34	69.4
All Airlines	155	130	83.9	156	125	80.1
Relates to services to and from Sydney only.						
Ballina						
Jetstar	78	59	75.6	78	54	69.2
QantasLink	95	76	80.0	95	79	83.2
Virgin Australia	48	36	75.0	48	34	70.8
All Airlines	221	171	77.4	221	167	75.6
Relates to services to and from Sydney only.						
Brisbane						
Jetstar	673	448	66.6	671	444	66.2
Qantas	1,498	1,187	79.2	1,493	1,232	82.5
QantasLink	1,104	810	73.4	1,106	834	75.4
Rex Airlines	204	158	77.5	205	148	72.2
Virgin Australia	2,120	1,453	68.5	2,123	1,384	65.2
All Airlines	5,599	4,056	72.4	5,598	4,042	72.2
Relates to services to and from Adelaide, Cairns, Canberra, Darwin, Emerald, Gladstone, Hamilton Island, Hobart, Launceston, Mackay, Melbourne, Mount Isa, Newcastle, Perth, Proserpine, Rockhampton, Sydney and Townsville only.						

Airport	Arrivals			Departures		
	Sectors Flown	No.	On Time %	Sectors Flown	No.	On Time %
Broome						
Qantas	6	6	100.0	6	3	50.0
QantasLink	87	74	85.1	87	50	57.5
Virgin Australia	25	15	60.0	26	8	30.8
Virgin Australia Regional Airlines	28	18	64.3	27	9	33.3
All Airlines	146	113	77.4	146	70	47.9
Relates to services to and from Perth only.						
Cairns						
Jetstar	343	266	77.6	342	263	76.9
Qantas	190	137	72.1	190	140	73.7
QantasLink	204	170	83.3	205	156	76.1
Rex Airlines	14	13	92.9	14	12	85.7
Virgin Australia	321	252	78.5	320	210	65.6
All Airlines	1,072	838	78.2	1,071	781	72.9
Relates to services to and from Brisbane, Melbourne, Sydney and Townsville only.						
Canberra						
Jetstar	78	53	67.9	77	44	57.1
Qantas	5	5	100.0	5	4	80.0
QantasLink	968	695	71.8	966	666	68.9
Rex Airlines	31	22	71.0	31	21	67.7
Virgin Australia	537	396	73.7	537	416	77.5
All Airlines	1,619	1,171	72.3	1,616	1,151	71.2
Relates to services to and from Adelaide, Brisbane, Gold Coast, Melbourne and Sydney only.						
Coffs Harbour						
QantasLink	108	87	80.6	108	89	82.4
Rex Airlines	111	92	82.9	112	91	81.3
All Airlines	219	179	81.7	220	180	81.8
Relates to services to and from Sydney only.						
Darwin						
Jetstar	78	62	79.5	79	41	51.9
Qantas	76	59	77.6	77	52	67.5
QantasLink	102	68	66.7	101	68	67.3
Virgin Australia	80	64	80.0	81	45	55.6
Virgin Australia Regional Airlines	15	10	66.7	15	8	53.3
All Airlines	351	263	74.9	353	214	60.6
Relates to services to and from Brisbane, Melbourne, Perth and Sydney only.						
Devonport						
QantasLink	112	80	71.4	111	76	68.5
Rex Airlines	48	41	85.4	48	38	79.2
All Airlines	160	121	75.6	159	114	71.7
Relates to services to and from Sydney only.						
Dubbo						
QantasLink	111	84	75.7	111	94	84.7
Rex Airlines	131	111	84.7	128	104	81.3
All Airlines	242	195	80.6	239	198	82.8
Relates to services to and from Sydney only.						

Airport	Arrivals			Departures		
	Sectors	On Time		Sectors	On Time	
	Flown	No.	%	Flown	No.	%
Emerald						
QantasLink	124	99	79.8	124	100	80.6
Virgin Australia	27	24	88.9	27	25	92.6
All Airlines	151	123	81.5	151	125	82.8
Relates to services to and from Brisbane only.						
Gladstone						
QantasLink	135	112	83.0	135	113	83.7
Virgin Australia	54	39	72.2	54	38	70.4
All Airlines	189	151	79.9	189	151	79.9
Relates to services to and from Brisbane only.						
Gold Coast						
Jetstar	508	397	78.1	505	391	77.4
Qantas	71	49	69.0	71	56	78.9
QantasLink	52	39	75.0	52	34	65.4
Rex Airlines	62	57	91.9	62	55	88.7
Virgin Australia	588	414	70.4	587	388	66.1
All Airlines	1,281	956	74.6	1,277	924	72.4
Relates to services to and from Adelaide, Canberra, Melbourne and Sydney only.						
Hamilton Island						
Jetstar	26	20	76.9	25	16	64.0
Qantas	52	38	73.1	52	36	69.2
Virgin Australia	59	42	71.2	59	42	71.2
All Airlines	137	100	73.0	136	94	69.1
Relates to services to and from Brisbane and Sydney only.						
Hobart						
Jetstar	190	134	70.5	189	128	67.7
Qantas	44	26	59.1	42	29	69.0
QantasLink	162	106	65.4	163	107	65.6
Virgin Australia	230	139	60.4	229	150	65.5
All Airlines	626	405	64.7	623	414	66.5
Relates to services to and from Brisbane, Melbourne and Sydney only.						
Kalgoorlie						
Qantas	25	22	88.0	26	20	76.9
QantasLink	56	43	76.8	56	41	73.2
Virgin Australia	63	49	77.8	63	48	76.2
Virgin Australia Regional Airlines	26	19	73.1	26	18	69.2
All Airlines	170	133	78.2	171	127	74.3
Relates to services to and from Perth only.						
Karratha						
Qantas	25	23	92.0	25	20	80.0
QantasLink	128	98	76.6	128	88	68.8
Virgin Australia	32	23	71.9	32	20	62.5
Virgin Australia Regional Airlines	21	7	33.3	21	6	28.6
All Airlines	206	151	73.3	206	134	65.0
Relates to services to and from Perth only.						

Airport	Arrivals			Departures		
	Sectors Flown	On Time		Sectors Flown	On Time	
		No.	%		No.	%
Launceston						
Jetstar	137	91	66.4	137	71	51.8
QantasLink	142	88	62.0	142	92	64.8
Virgin Australia	133	73	54.9	133	92	69.2
All Airlines	412	252	61.2	412	255	61.9
Relates to services to and from Brisbane, Melbourne and Sydney only.						
Mackay						
Jetstar	26	13	50.0	26	12	46.2
Qantas	101	86	85.1	100	81	81.0
QantasLink	15	12	80.0	20	14	70.0
Virgin Australia	143	101	70.6	143	98	68.5
All Airlines	285	212	74.4	289	205	70.9
Relates to services to and from Brisbane only.						
Melbourne						
Jetstar	1,323	886	67.0	1,327	911	68.7
Qantas	1,867	1,323	70.9	1,875	1,356	72.3
QantasLink	766	524	68.4	769	540	70.2
Rex Airlines	488	356	73.0	487	397	81.5
Virgin Australia	2,331	1,501	64.4	2,330	1,549	66.5
All Airlines	6,775	4,590	67.7	6,788	4,753	70.0
Relates to services to and from Adelaide, Brisbane, Cairns, Canberra, Darwin, Gold Coast, Hobart, Launceston, Mildura, Newcastle, Perth, Sunshine Coast and Sydney only.						
Mildura						
QantasLink	133	87	65.4	132	88	66.7
Rex Airlines	106	79	74.5	107	85	79.4
All Airlines	239	166	69.5	239	173	72.4
Relates to services to and from Melbourne only.						
Mount Isa						
Qantas	49	47	95.9	49	42	85.7
QantasLink	5	5	100.0	5	4	80.0
Virgin Australia	14	12	85.7	14	7	50.0
All Airlines	68	64	94.1	68	53	77.9
Relates to services to and from Brisbane only.						
Newcastle						
Jetstar	95	73	76.8	95	64	67.4
QantasLink	179	126	70.4	177	131	74.0
Virgin Australia	123	81	65.9	123	77	62.6
All Airlines	397	280	70.5	395	272	68.9
Relates to services to and from Brisbane and Melbourne only.						
Newman						
Qantas	19	17	89.5	19	17	89.5
QantasLink	106	92	86.8	105	85	81.0
Virgin Australia	35	28	80.0	35	30	85.7
Virgin Australia Regional Airlines	21	15	71.4	21	13	61.9
All Airlines	181	152	84.0	180	145	80.6
Relates to services to and from Perth only.						

Airport	Arrivals			Departures		
	Sectors	On Time		Sectors	On Time	
	Flown	No.	%	Flown	No.	%
Perth						
Jetstar	152	100	65.8	152	79	52.0
Qantas	768	475	61.8	769	512	66.6
QantasLink	539	340	63.1	541	433	80.0
Virgin Australia	658	389	59.1	659	454	68.9
Virgin Australia Regional Airlines	151	82	54.3	153	95	62.1
All Airlines	2,268	1,386	61.1	2,274	1,573	69.2
Relates to services to and from Adelaide, Brisbane, Broome, Darwin, Kalgoorlie, Karratha, Melbourne, Newman, Port Hedland and Sydney only.						
Port Hedland						
Qantas	26	22	84.6	25	19	76.0
QantasLink	124	103	83.1	124	95	76.6
Virgin Australia	31	21	67.7	31	15	48.4
Virgin Australia Regional Airlines	16	8	50.0	15	5	33.3
All Airlines	197	154	78.2	195	134	68.7
Relates to services to and from Perth only.						
Port Lincoln						
QantasLink	134	116	86.6	133	122	91.7
Rex Airlines	143	123	86.0	142	122	85.9
All Airlines	277	239	86.3	275	244	88.7
Relates to services to and from Adelaide only.						
Port Macquarie						
QantasLink	110	78	70.9	110	79	71.8
Rex Airlines	82	70	85.4	79	68	86.1
All Airlines	192	148	77.1	189	147	77.8
Relates to services to and from Sydney only.						
Proserpine						
Jetstar	31	21	67.7	32	17	53.1
QantasLink	30	25	83.3	30	21	70.0
Virgin Australia	31	24	77.4	31	24	77.4
All Airlines	92	70	76.1	93	62	66.7
Relates to services to and from Brisbane only.						
Rockhampton						
QantasLink	178	144	80.9	172	118	68.6
Virgin Australia	147	95	64.6	147	111	75.5
All Airlines	325	239	73.5	319	229	71.8
Relates to services to and from Brisbane only.						
Sunshine Coast						
Jetstar	144	101	70.1	144	83	57.6
Qantas	59	44	74.6	59	28	47.5
Virgin Australia	129	100	77.5	129	81	62.8
All Airlines	332	245	73.8	332	192	57.8
Relates to services to and from Melbourne and Sydney only.						

Airport	Arrivals			Departures		
	Sectors	On Time		Sectors	On Time	
	Flown	No.	%	Flown	No.	%
Sydney						
Jetstar	1,307	950	72.7	1,313	947	72.1
Qantas	2,008	1,462	72.8	2,009	1,471	73.2
QantasLink	1,321	954	72.2	1,319	960	72.8
Rex Airlines	899	693	77.1	905	703	77.7
Virgin Australia	2,338	1,622	69.4	2,338	1,741	74.5
All Airlines	7,873	5,681	72.2	7,884	5,822	73.8

Relates to services to and from Adelaide, Albury, Armidale, Ballina, Brisbane, Cairns, Canberra, Coffs Harbour, Darwin, Dubbo, Gold Coast, Hamilton Island, Hobart, Launceston, Melbourne, Perth, Port Macquarie, Sunshine Coast and Wagga Wagga only.

Townsville

Jetstar	36	22	61.1	36	19	52.8
Qantas	68	58	85.3	68	57	83.8
QantasLink	223	190	85.2	222	189	85.1
Rex Airlines	14	13	92.9	14	13	92.9
Virgin Australia	146	86	58.9	146	77	52.7
All Airlines	487	369	75.8	486	355	73.0

Relates to services to and from Brisbane and Cairns only.

Wagga Wagga

QantasLink	112	86	76.8	113	85	75.2
Rex Airlines	91	59	64.8	89	62	69.7
All Airlines	203	145	71.4	202	147	72.8

Relates to services to and from Sydney only.

Definitions

On time arrival	A flight arrival is counted as "on time" if it arrived at the gate before 15 minutes after the scheduled arrival time shown in the carriers' schedule. Neither diverted nor cancelled flights count as on time.
On time departure	A flight departure is counted as "on time" if it departs the gate before 15 minutes after the scheduled departure time shown in the carriers' schedule.
Cancellation	A flight removed from service within 7 days of scheduled departure is regarded as a cancellation.
On time departure percentage	The percentage of on time departures is measured against the number of departures <i>operated</i> on any particular sector.
On time arrival percentage	The percentage of on time arrivals is measured against the number of arrivals <i>operated</i> on any particular sector.
Cancellation percentage	The percentage of cancellations is measured against the number of services <i>scheduled</i> on any particular sector.

Airlines and Reporting

Data has been gathered since November 2003, although some airlines commenced reporting at a later date, including Jetstar which first reported in May 2004, MacAir in August 2005, Tigerair Australia in April 2008 and Virgin Australia Regional Airlines in May 2013. MacAir ceased operations in February 2009 and data was not received for December 2008 onwards. Tigerair Australia ceased operations in March 2020 and data was not received for that month.

Virgin Blue was rebranded as Virgin Australia in May 2011 and Tiger Airways was rebranded as Tigerair Australia in August 2013 and time series data in Microsoft Excel spread sheet format on the BITRE website have been revised to reflect these changes. With effect from August 2021, Regional Express is reported as Rex Airlines.

Services operated by Skywest on behalf of Virgin Australia using ATR/F100 aircraft commenced in November 2011 and were shown separately as Virgin Australia – ATR/F100 Operations. Virgin Australia Regional Airlines commenced operations in May 2013. It was formed after the acquisition of Skywest by Virgin Australia and represented a combination of operations previously reported under Skywest and Virgin Australia – ATR/F100 Operations. In February 2016, Virgin Australia transferred their ATR fleet from Virgin Australia Regional Airlines to Virgin Australia.