



**Australian Government**

**Department of Infrastructure, Transport,  
Regional Development, Communications and the Arts**  
Bureau of Infrastructure and Transport Research Economics

STATISTICAL REPORT



# Aviation

**Domestic airline on time performance  
August 2024**

The Department of Infrastructure, Transport, Regional Development, Communications and the Arts acknowledges the Traditional Custodians of Country of the land on which we work and live.

We recognise and respect the continuing connections to land, waters and communities.

We pay our respects to them and their cultures and to their Elders both past and present and to all Aboriginal and Torres Strait Islander people.

---

© Commonwealth of Australia 2024

ISSN: 1832-0759

BITRE reference: 2024-1183

### **Ownership of intellectual property rights in this publication**

Unless otherwise noted, copyright (and any other intellectual property rights, if any) in this publication is owned by the Commonwealth of Australia (referred to below as the Commonwealth).

### **Disclaimer**

The material contained in this publication is made available on the understanding that the Commonwealth is not providing professional advice, and that users exercise their own skill and care with respect to its use, and seek independent advice if necessary.

The Commonwealth makes no representations or warranties as to the contents or accuracy of the information contained in this publication. To the extent permitted by law, the Commonwealth disclaims liability to any person or organisation in respect of anything done, or omitted to be done, in reliance upon information contained in this publication.

### **Creative Commons licence**

With the exception of (a) the Coat of Arms; and (b) the Department of Infrastructure, Transport, Regional Development, Communications and the Arts' photos and graphics, copyright in this publication is licensed under a Creative Commons Attribution 3.0 Australia Licence.

Creative Commons Attribution 3.0 Australia Licence is a standard form licence agreement that allows you to copy, communicate and adapt this publication provided that you attribute the work to the Commonwealth and abide by the other licence terms. A summary of the licence terms is available from <http://creativecommons.org/licenses/by/3.0/au/deed.en>. The full licence terms are available from <http://creativecommons.org/licenses/by/3.0/au/legalcode>.

### **Use of the Coat of Arms**

The Department of the Prime Minister and Cabinet sets the terms under which the Coat of Arms is used. Please refer to the Department's Commonwealth Coat of Arms and Government branding web page <http://www.dpmc.gov.au/guidelines/index.cfm#brand> and, in particular, the Guidelines on the use of the Commonwealth Coat of Arms publication.

An appropriate citation for this report is:

Bureau of Infrastructure and Transport Research Economics (BITRE), 2024, Domestic airline on time performance, Statistical Report, BITRE, Canberra ACT.

### **Contact us**

All other rights are reserved, including in relation to any Departmental logos or trade marks which may exist. For enquiries regarding the licence and any use of this publication, please contact:

Bureau of Infrastructure and Transport Research Economics (BITRE)  
Department of Infrastructure, Transport, Regional Development, Communications and the Arts  
GPO Box 501, Canberra ACT 2601, Australia  
Telephone: (international) +61 2 6136 8687  
Email: [bitre@infrastructure.gov.au](mailto:bitre@infrastructure.gov.au)  
Website: [www.bitre.gov.au](http://www.bitre.gov.au)

### **Inquiries**

Should you require additional information about the statistics contained in this publication:

Telephone (02) 6136 7250

Electronic mail: [AVSTATS@infrastructure.gov.au](mailto:AVSTATS@infrastructure.gov.au)

Web site: <http://www.bitre.gov.au/statistics/aviation/otphome.aspx>

# Foreword

The Bureau of Infrastructure and Transport Research Economics (BITRE) monitors the punctuality and reliability of major domestic airlines operating between Australian airports. The purpose of this is to allow for evaluation of overall industry and individual airline performance, so that consumers of air travel can make informed decisions.

The following domestic airlines currently report this information monthly to the BITRE: Hinterland, Jetstar, Qantas, QantasLink, Rex Airlines, Skytrans, Virgin Australia and Virgin Australia Regional Airlines. Hinterland has joined from March 2024.

Information presented in this report is for Australian domestic routes for which the passenger load averaged 8,000 or more passengers per month over the previous six months and where two or more airlines operated in competition on those routes. In order to present data for more routes during the period impacted by COVID-19, the passenger load restriction was not applied between March 2020 and January 2023. From February 2023, the passenger load restriction was reinstated due to the continued recovery of passenger numbers. Data are presented for 59 routes in August 2024. Over time, routes which meet these criteria change as airline networks and traffic levels vary. Participating airlines report their overall monthly network performance where this is possible.

Total industry figures encompass all services operated by reporting airlines only. These airlines collectively carried over 98 per cent of total domestic passengers (regular public transport only) in 2023.

The method of capturing on time performance varies between airlines utilising different recording systems. Jetstar and Qantas jet aircraft use Aircraft Communication Addressing and Reporting System (ACARS) to electronically measure on time performance. Rex Airlines, Virgin Australia, Virgin Australia Regional Airlines and the Qantas non-jet fleet record on time performance manually using records from pilots, gate agents and/or ground crews.

After initial data is collected, aggregate reports are reviewed by participating airlines prior to publication.

Reports and detailed time series data in Microsoft Excel spreadsheet format are available from the BITRE website at: <http://www.bitre.gov.au/statistics/aviation/otphome.aspx>



# Contents

	Page
Industry performance .....	1
Individual routes .....	10
Airports.....	22
Definitions .....	28
Airlines and Reporting .....	29

# Industry performance

For August 2024, on time performance over all routes operated by participating airlines (Hinterland, Jetstar, Qantas, QantasLink, Rex Airlines, Skytrans, Virgin Australia and Virgin Australia Regional Airlines) averaged 72.7 per cent for on time arrivals and 74.1 per cent for on time departures. The cancellation rate for the month was 2.9 per cent. The equivalent figures for August 2023 were 72.5 per cent for on time arrivals, 73.2 per cent for on time departures and 3.8 per cent for cancellations.

This month's on time arrivals figure was lower than the long term average performance for all routes (80.8 per cent) and the on time departures figure was also lower than the long term average (82.0 per cent). The rate of cancellations was higher than the long term average of 2.2 per cent.

The Qantas network (Qantas and QantasLink combined operations) recorded 73.2 per cent for on time arrivals while the Virgin Australia network (Virgin Australia and Virgin Australia Regional Airlines combined operations) recorded 69.9 per cent. Hinterland achieved the highest on time arrivals at 88.3 per cent, followed by Skytrans at 81.9 per cent, QantasLink at 76.6 per cent, Rex Airlines at 73.0 per cent, Jetstar at 72.1 per cent, Virgin Australia at 70.1 per cent, Qantas at 68.0 per cent and Virgin Australia Regional Airlines at 60.0 per cent.

The Qantas network recorded 74.7 per cent for on time departures while the Virgin Australia network recorded 71.9 per cent. Hinterland achieved the highest level of on time departures for August 2024 at 92.2 per cent, followed by Skytrans at 82.0 per cent, QantasLink at 77.4 per cent, Rex Airlines at 76.7 per cent, Virgin Australia at 72.3 per cent, Qantas at 70.5 per cent, Jetstar at 70.3 per cent and Virgin Australia Regional Airlines at 56.2 per cent.

Skytrans recorded the highest percentage of cancellations at 7.4 per cent during the month, followed by Rex Airlines at 6.9 per cent, Qantas at 4.0 per cent, QantasLink at 2.8 per cent, Jetstar at 1.7 per cent, Virgin Australia at 1.3 per cent, Virgin Australia Regional Airlines at 1.3 per cent and Hinterland at 1.0 per cent.

While Rex reported a cancellation rate of 6.9% for the month of August, 243 of the 338 reported cancellations were domestic services operated between capital cities where Rex ceased operating on 31 July. These 243 cancelled domestic services operating between capital cities are captured by the 7-day reporting window up to 6 August. Excluding these services, Rex saw a cancellation rate of 2.1% of scheduled regional flights.

Airlines' on time performance varies across the routes they serve. Individual route data by specific airline for 59 routes are shown on pages 10-21.

Of the 59 routes which met the criteria for on time performance reporting in August 2024, the Sydney-Ballina route had the highest percentage of on time arrivals (90.3 per cent) and the highest percentage of on time departures (92.0 per cent). The Launceston-Brisbane route had the lowest percentage of on time arrivals (25.0 per cent) and the lowest percentage of on time departures (28.1 per cent).

Cancellations were highest on the Melbourne-Sydney route at 8.1 per cent, followed by the Sydney-Melbourne route at 8.0 per cent, the Port Lincoln-Adelaide route at 7.4 per cent, the Adelaide-Port Lincoln route at 6.7 per cent and the Adelaide-Sydney route at 6.1 per cent.

Ballina Airport recorded the highest percentage of on time arrivals (90.3 per cent), while Devonport Airport had the highest percentage of on time departures (86.0 per cent). Perth Airport recorded the lowest percentage of on time arrivals (58.3 per cent), while Darwin Airport had the lowest percentage of on time departures (49.5 per cent). These figures only refer to reported routes and do not cover all flights at these airports.

Table 1 On time performance for August 2024 – Total Industry

	<i>Sectors</i>		<i>Arrivals On Time</i>		<i>Departures On Time</i>		<i>Cancellations</i>	
	<i>Scheduled</i>	<i>Flown</i>	<i>No.</i>	<i>%</i>	<i>No.</i>	<i>%</i>	<i>No.</i>	<i>%</i>
Hinterland	1,220	1,208	1,067	88.3	1,114	92.2	12	1.0
Jetstar	7,273	7,150	5,156	72.1	5,025	70.3	123	1.7
Qantas - all QF designated services	20,370	19,707	14,421	73.2	14,716	74.7	663	3.3
Rex Airlines	4,887	4,549	3,322	73.0	3,487	76.7	338	6.9
Skytrans	1,070	991	812	81.9	813	82.0	79	7.4
Virgin Australia - all VA designated services	11,827	11,673	8,154	69.9	8,389	71.9	154	1.3
All Airlines	46,647	45,278	32,932	72.7	33,544	74.1	1,369	2.9
Individual operating entities								
Qantas	8,147	7,825	5,318	68.0	5,518	70.5	322	4.0
QantasLink	12,223	11,882	9,103	76.6	9,198	77.4	341	2.8
Virgin Australia	11,508	11,358	7,965	70.1	8,212	72.3	150	1.3
Virgin Australia Regional Airlines	319	315	189	60.0	177	56.2	4	1.3

Total airline network data (including routes not shown in this report).

Airlines’ on time performance varies across the routes they serve. Individual route data by specific airline are shown on page 10 and onwards.

Table 2 Top ten routes for on time performance for August 2024 (participating airlines only)

<i>Arrivals</i>		<i>Departures</i>	
<i>Route</i>	<i>On Time (%)</i>	<i>Route</i>	<i>On Time (%)</i>
Sydney-Ballina	90.3	Sydney-Ballina	92.0
Melbourne-Devonport	89.0	Adelaide-Alice Springs	87.9
Adelaide-Alice Springs	86.4	Melbourne-Devonport	87.7
Brisbane-Hamilton Island	86.2	Canberra-Adelaide	86.5
Devonport-Melbourne	86.0	Brisbane-Hamilton Island	86.2
Adelaide-Canberra	85.7	Devonport-Melbourne	86.0
Sydney-Canberra	84.7	Ballina-Sydney	85.7
Alice Springs-Adelaide	84.6	Alice Springs-Adelaide	84.6
Cairns-Townsville	84.6	Townsville-Cairns	84.5
Canberra-Sydney	84.2	Canberra-Gold Coast	84.1

Table 3 Top ten airports for on time performance for August 2024 (participating airlines and reported routes only)

<i>Arrivals</i>		<i>Departures</i>	
<i>Airport</i>	<i>On Time (%)</i>	<i>Airport</i>	<i>On Time (%)</i>
Ballina	90.3	Devonport	86.0
Devonport	89.0	Ballina	85.7
Alice Springs	86.4	Alice Springs	84.6
Coffs Harbour	81.3	Wagga Wagga	82.3
Sunshine Coast	80.9	Port Lincoln	81.2
Port Macquarie	80.5	Coffs Harbour	78.7
Hamilton Island	80.5	Canberra	78.4
Wagga Wagga	80.3	Newman	77.5
Kalgoorlie	79.3	Port Macquarie	76.4
Canberra	79.2	Sydney	76.2



## Total industry on time performance

Figure 1 On time performance (by month from Aug 2021)—Total Industry

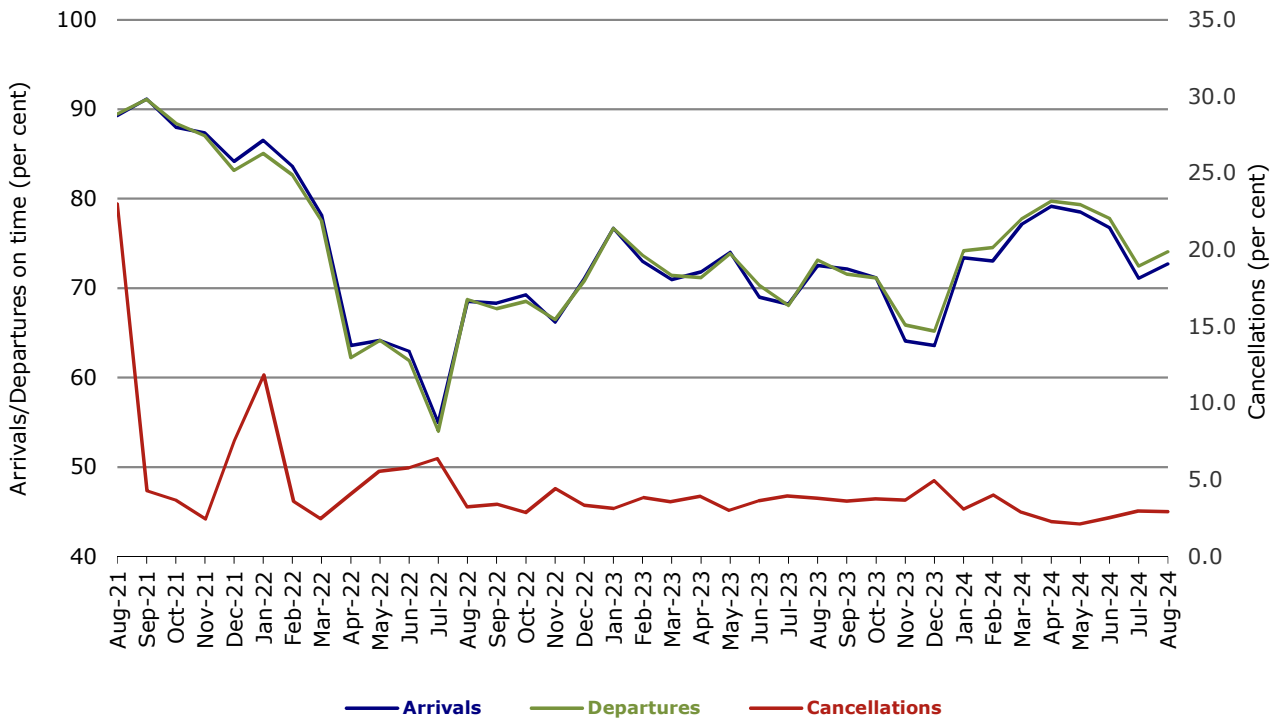


Figure 2 Arrivals on time (by month from Aug 2023)

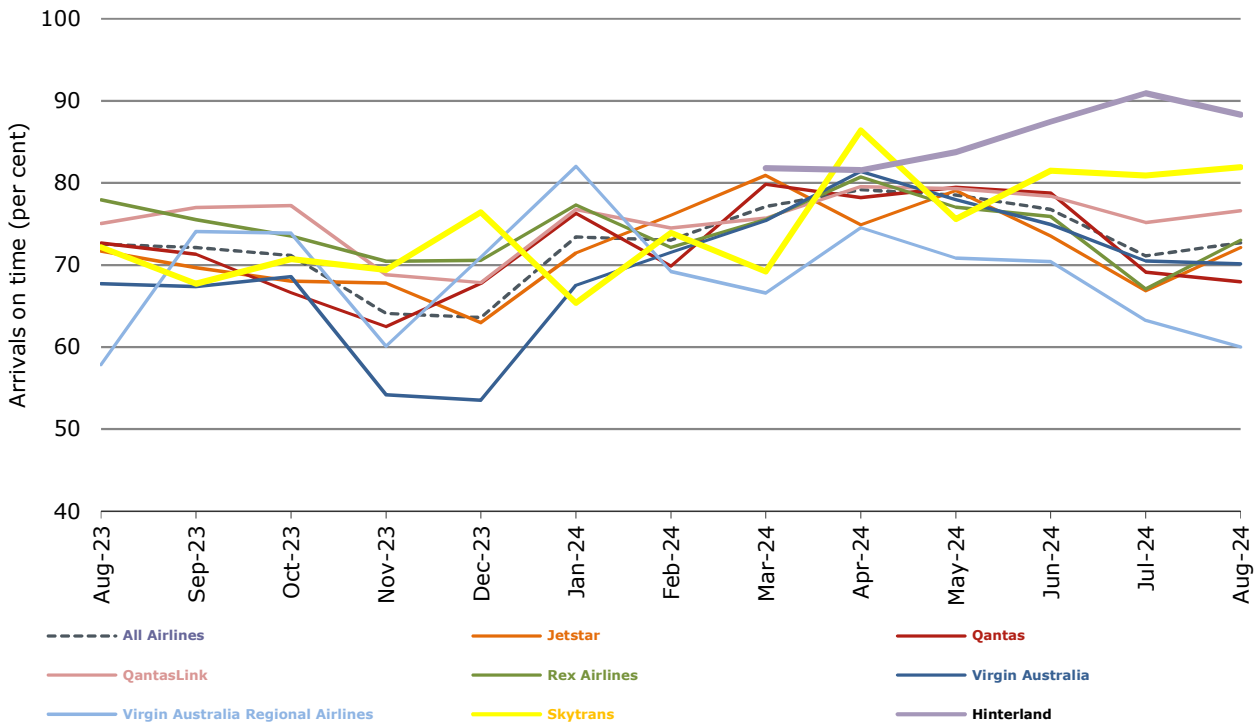


Figure 3 Departures on time (by month from Aug 2023)

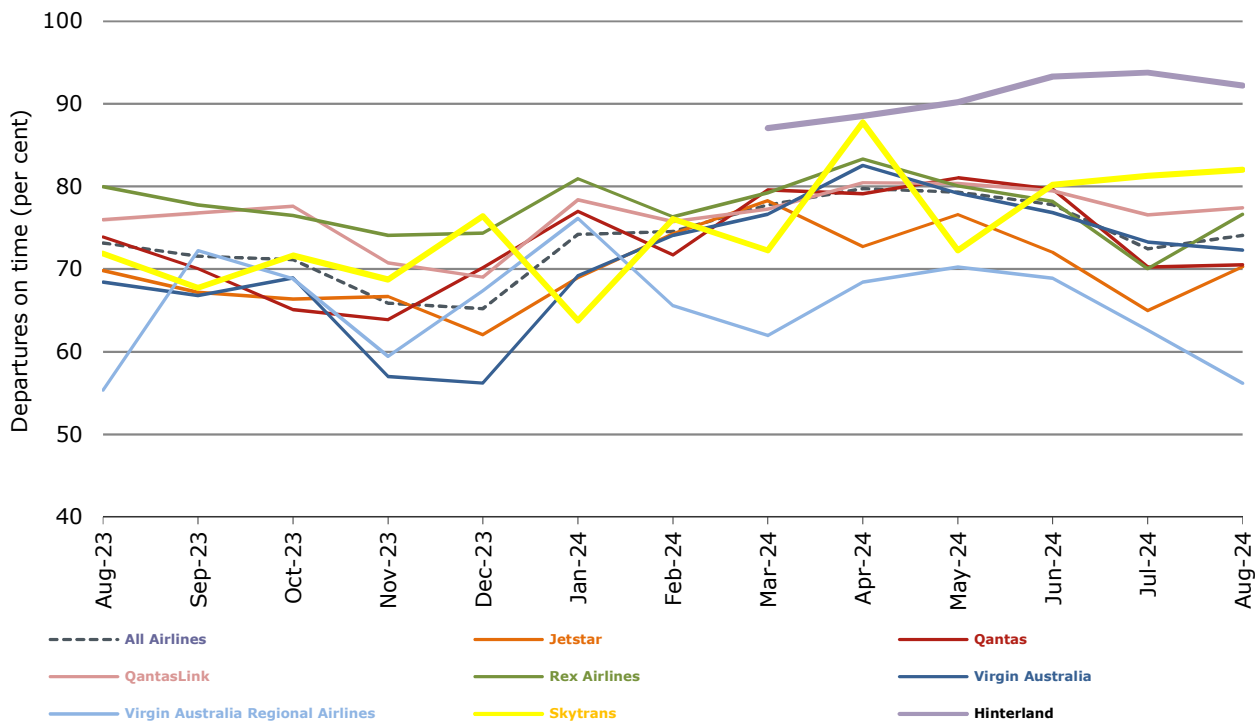
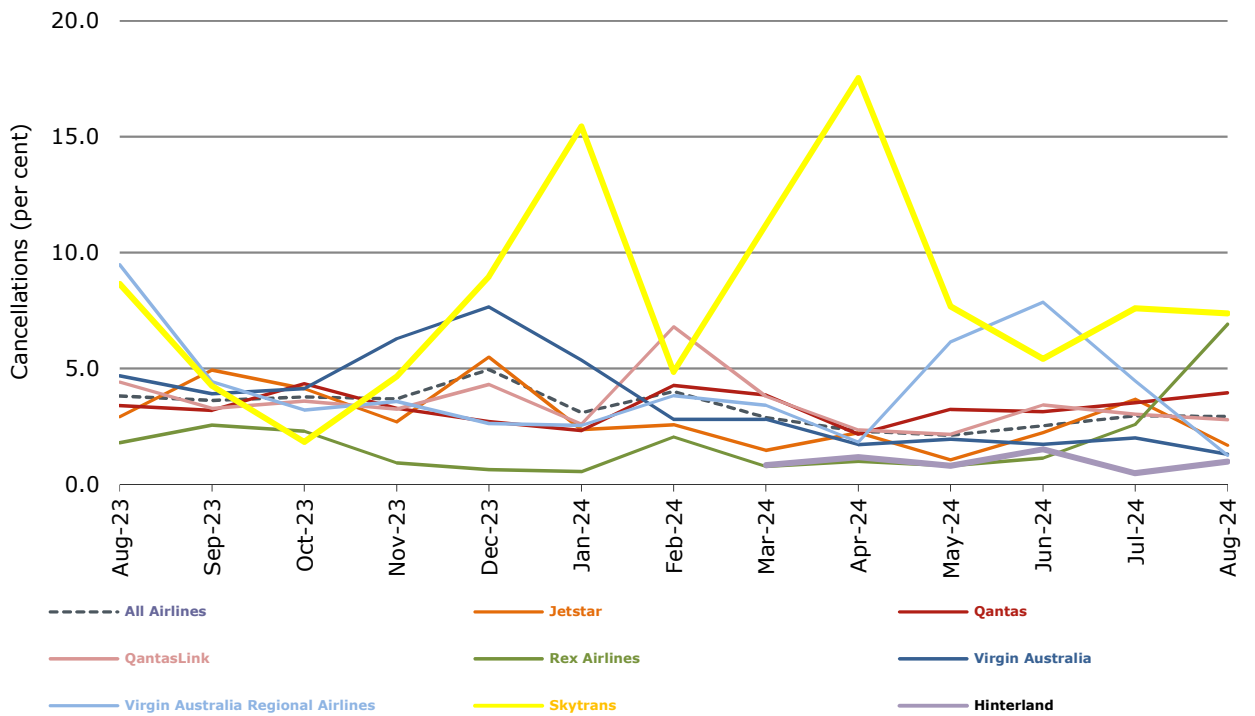


Figure 4 Cancellations (by month from Aug 2023)



## Airlines on time performance

Figure 5 On time performance (by month from Aug 2021)—Jetstar

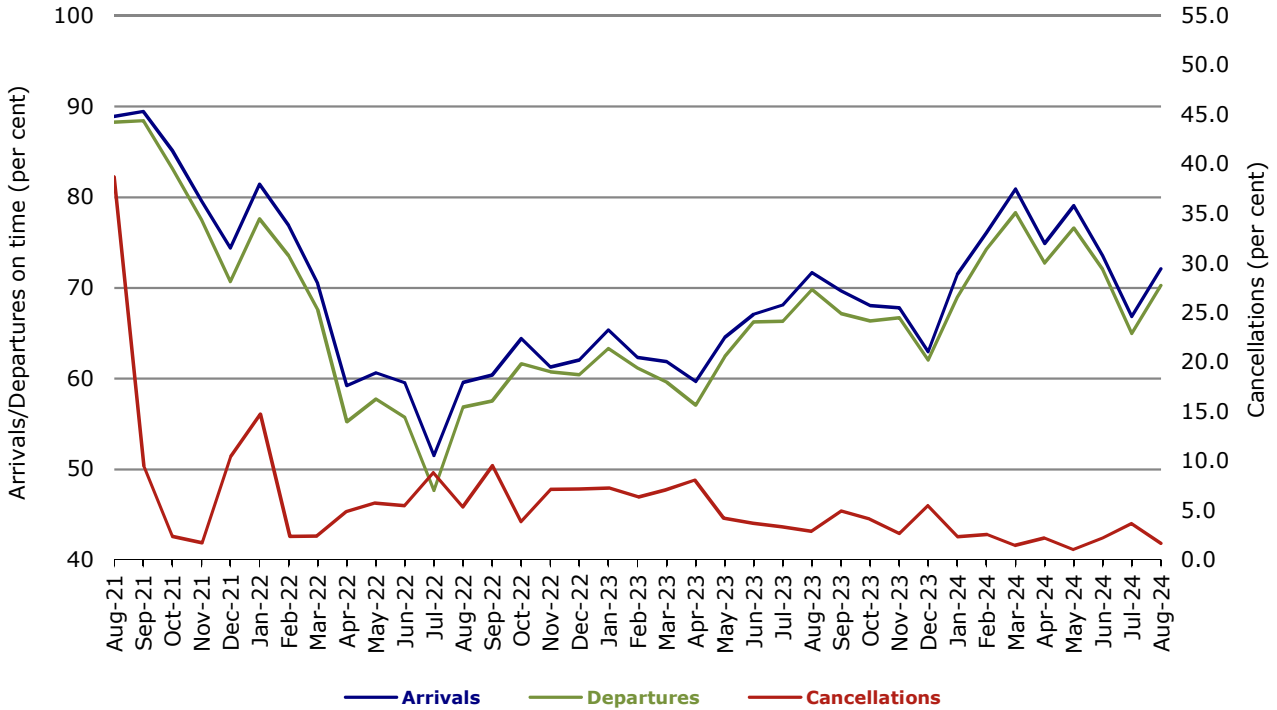


Figure 6 On time performance (by month from Aug 2021)—Qantas

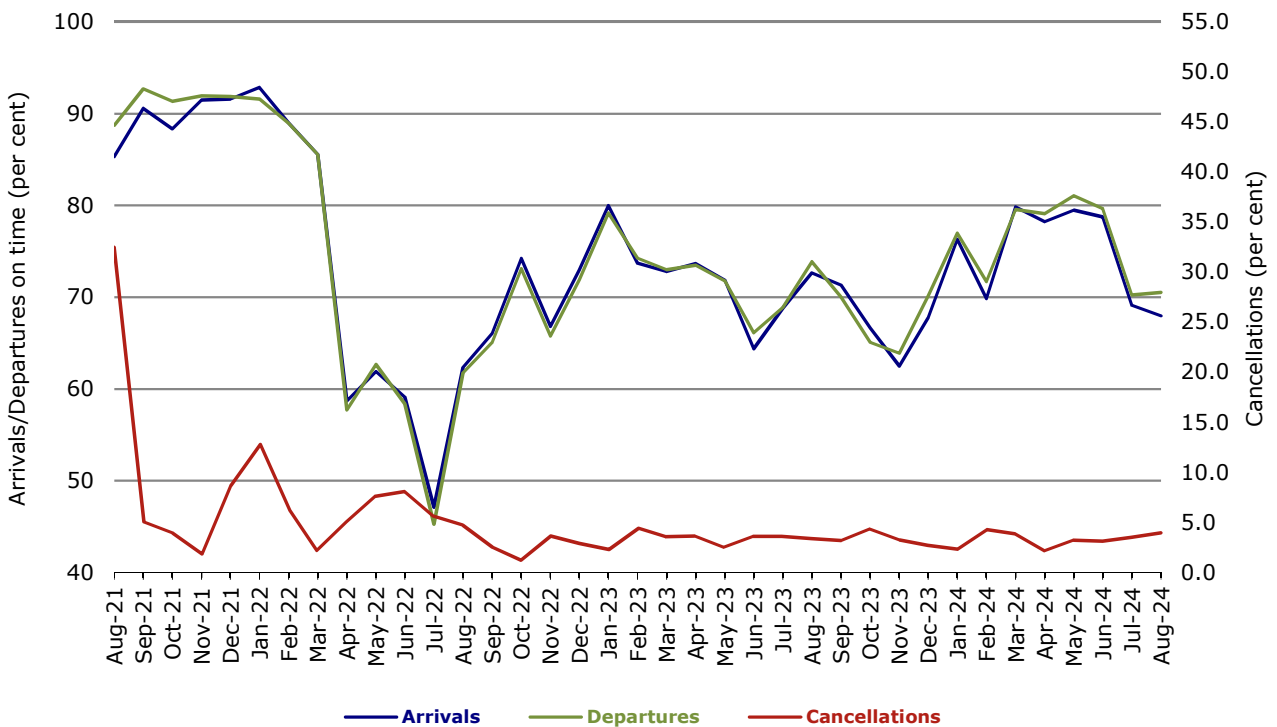


Figure 7 On time performance (by month from Aug 2021)—Virgin Australia

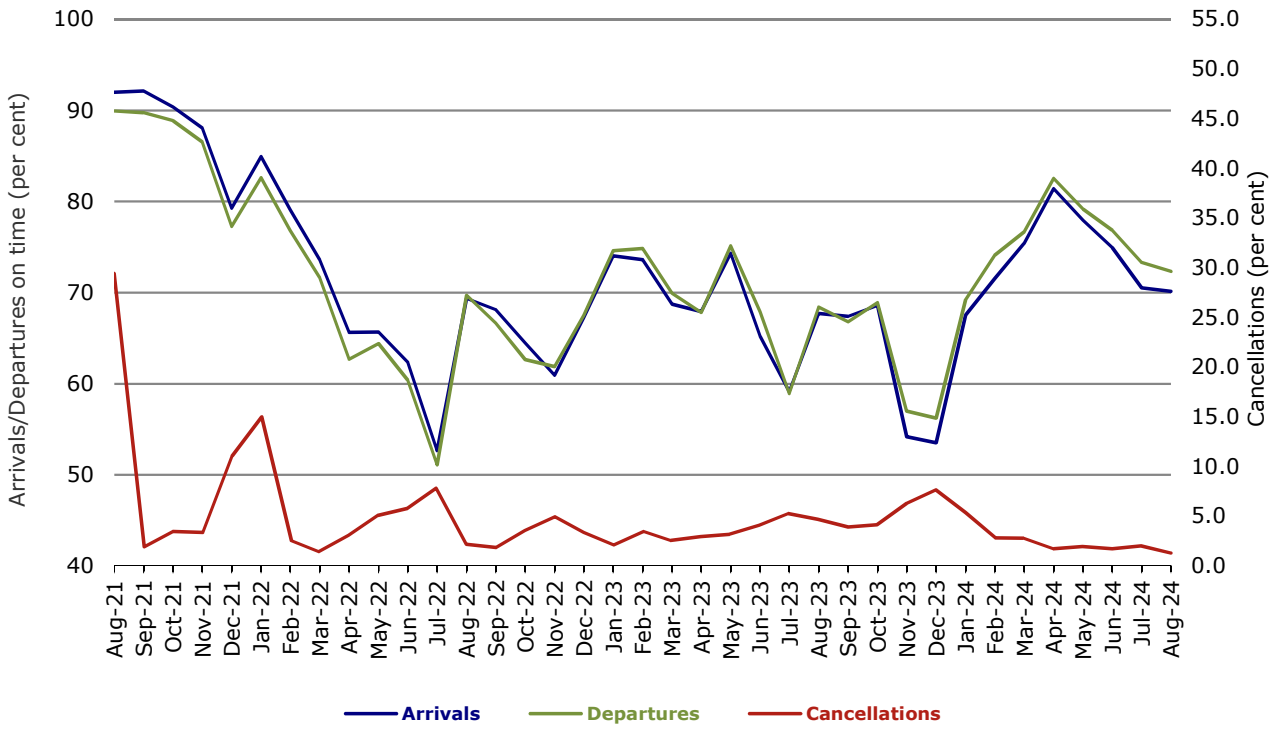


Figure 8 On time performance (by month from Aug 2021)—QantasLink

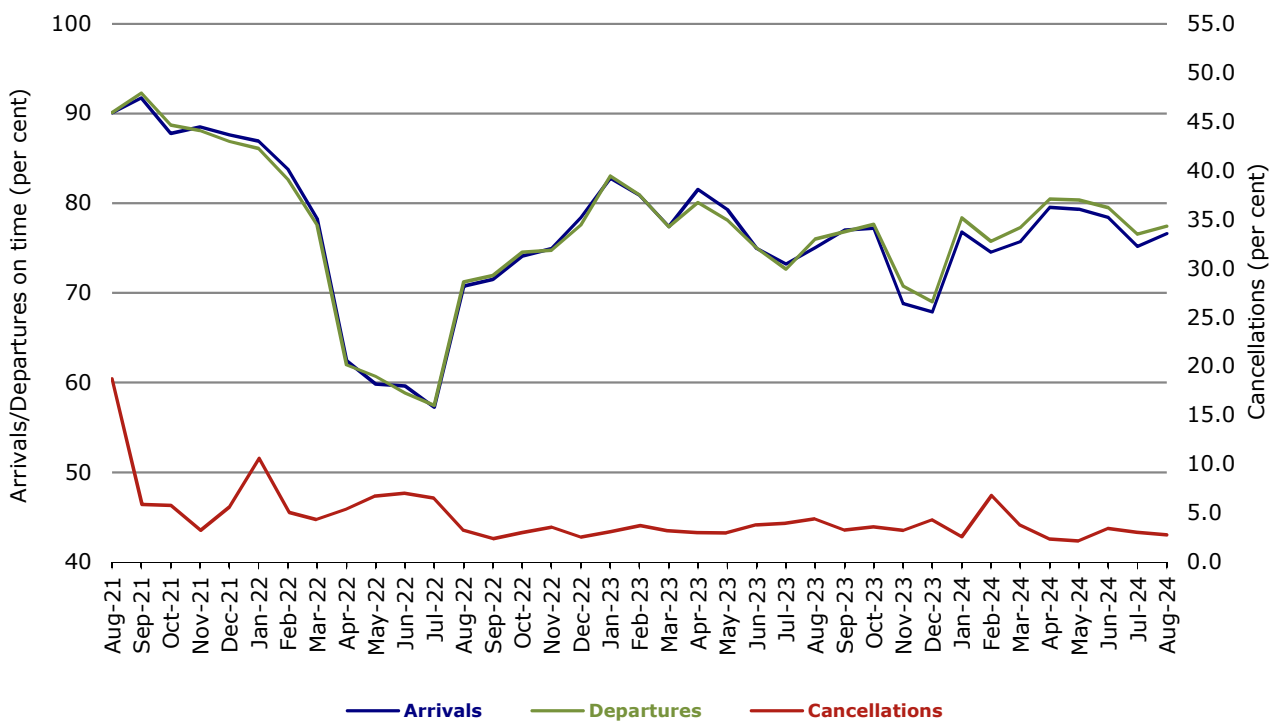


Figure 9 On time performance (by month from Aug 2021)—Rex Airlines

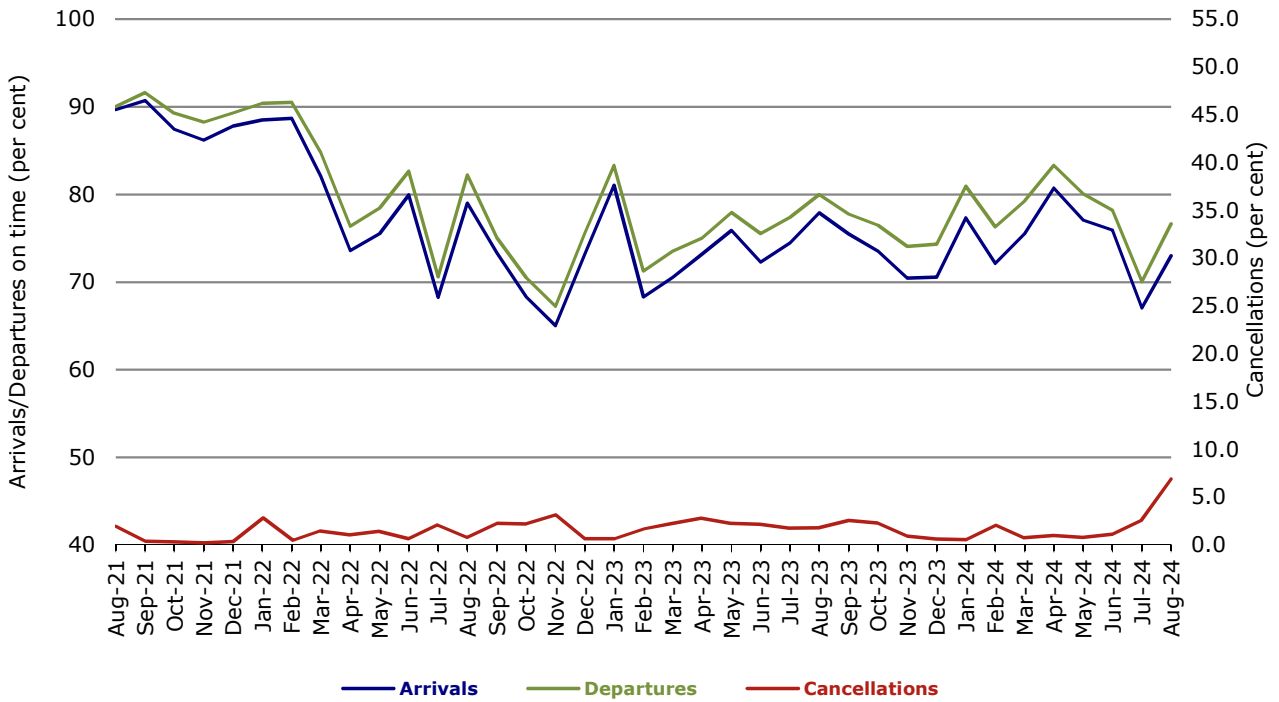


Figure 10 On time performance (by month from Aug 2021)—Virgin Australia Regional Airlines

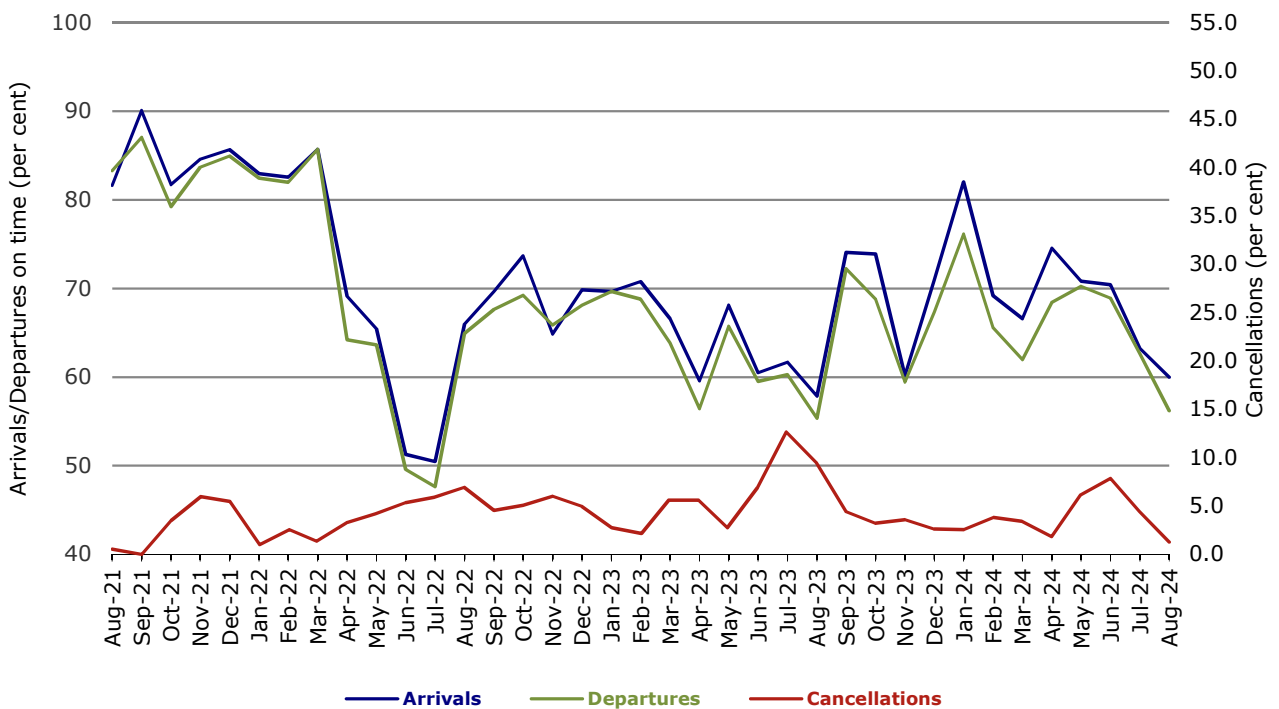
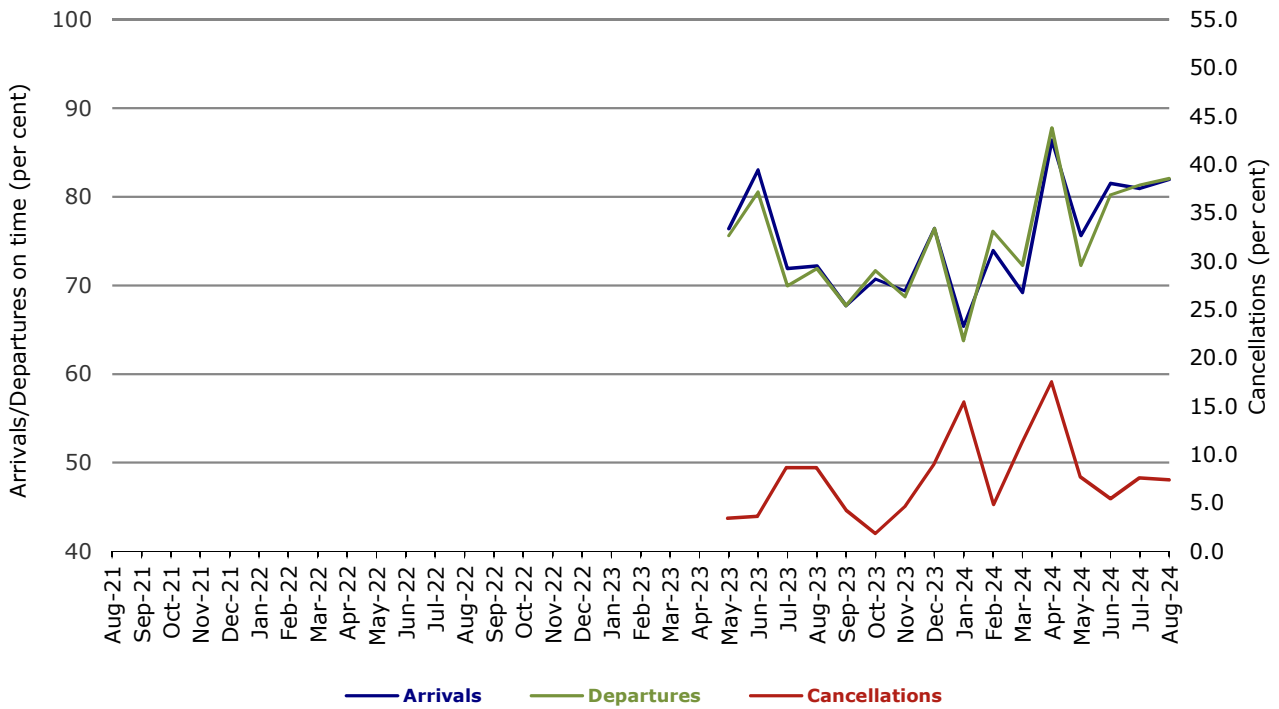
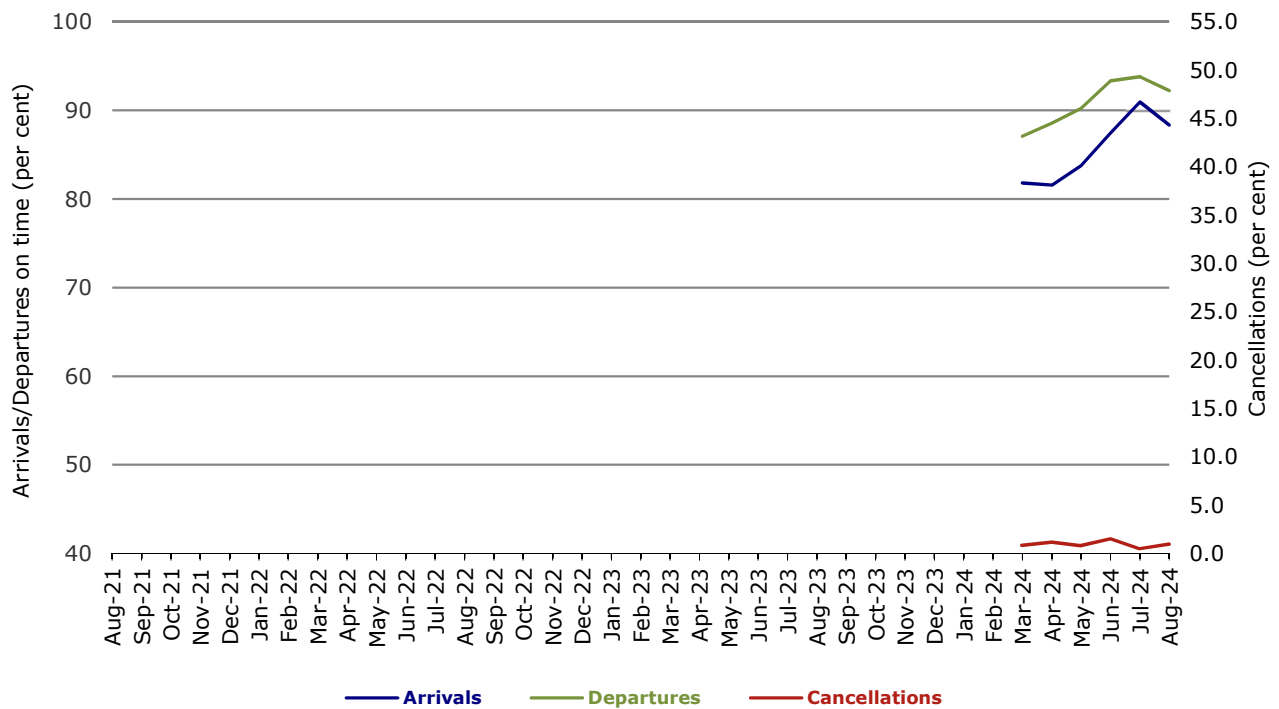


Figure 11 On time performance (by month from Aug 2021)—Skytrans



Note: Skytrans data included from May 2023

Figure 12 On time performance (by month from Aug 2021)—Hinterland



Note: Hinterland data included from March 2024

## Individual routes

On time performance is reported for all routes where the passenger load averages over 8,000 passengers per month over the previous six months, and where two or more airlines operate in competition on those routes. There are now 59 routes for which data are presented.

	Sectors		Arrivals On Time		Departures On Time		Cancellations	
	Sched.	Flown	No.	%	No.	%	No.	%
<b>Adelaide-Alice Springs</b>								
QantasLink	53	53	47	88.7	48	90.6	0	0.0
Virgin Australia	13	13	10	76.9	10	76.9	0	0.0
All Airlines	66	66	57	86.4	58	87.9	0	0.0
<b>Adelaide-Brisbane</b>								
Jetstar	37	37	30	81.1	31	83.8	0	0.0
QantasLink	155	151	114	75.5	108	71.5	4	2.6
Rex Airlines	5	0	0	n/a	0	n/a	5	100.0
Virgin Australia	127	125	99	79.2	91	72.8	2	1.6
All Airlines	324	313	243	77.6	230	73.5	11	3.4
<b>Adelaide-Canberra</b>								
QantasLink	89	88	81	92.0	78	88.6	1	1.1
Virgin Australia	18	17	9	52.9	9	52.9	1	5.6
All Airlines	107	105	90	85.7	87	82.9	2	1.9
<b>Adelaide-Gold Coast</b>								
Jetstar	31	31	25	80.6	25	80.6	0	0.0
Virgin Australia	31	31	27	87.1	23	74.2	0	0.0
All Airlines	62	62	52	83.9	48	77.4	0	0.0
<b>Adelaide-Melbourne</b>								
Jetstar	115	114	83	72.8	77	67.5	1	0.9
Qantas	267	264	191	72.3	175	66.3	3	1.1
QantasLink	13	10	10	100.0	9	90.0	3	23.1
Rex Airlines	10	0	0	n/a	0	n/a	10	100.0
Virgin Australia	240	239	181	75.7	176	73.6	1	0.4
All Airlines	645	627	465	74.2	437	69.7	18	2.8
<b>Adelaide-Perth</b>								
Jetstar	31	31	17	54.8	20	64.5	0	0.0
Qantas	92	92	63	68.5	74	80.4	0	0.0
Rex Airlines	6	1	1	100.0	1	100.0	5	83.3
Virgin Australia	46	43	18	41.9	23	53.5	3	6.5
Virgin Australia Regional Airlines	28	28	6	21.4	8	28.6	0	0.0
All Airlines	203	195	105	53.8	126	64.6	8	3.9
<b>Adelaide-Port Lincoln</b>								
QantasLink	141	132	113	85.6	117	88.6	9	6.4
Rex Airlines	158	147	104	70.7	115	78.2	11	7.0
All Airlines	299	279	217	77.8	232	83.2	20	6.7
<b>Adelaide-Sydney</b>								
Jetstar	125	120	93	77.5	90	75.0	5	4.0
Qantas	256	235	176	74.9	164	69.8	21	8.2
Rex Airlines	5	0	0	n/a	0	n/a	5	100.0
Virgin Australia	168	165	117	70.9	117	70.9	3	1.8
All Airlines	554	520	386	74.2	371	71.3	34	6.1

	Sectors		Arrivals On Time		Departures On Time		Cancellations	
	Sched.	Flown	No.	%	No.	%	No.	%
<b>Albury-Sydney</b>								
QantasLink	111	110	77	70.0	74	67.3	1	0.9
Rex Airlines	84	83	64	77.1	69	83.1	1	1.2
All Airlines	195	193	141	73.1	143	74.1	2	1.0
<b>Alice Springs-Adelaide</b>								
QantasLink	53	53	47	88.7	47	88.7	0	0.0
Virgin Australia	13	12	8	66.7	8	66.7	1	7.7
All Airlines	66	65	55	84.6	55	84.6	1	1.5
<b>Ballina-Sydney</b>								
Jetstar	71	71	59	83.1	61	85.9	0	0.0
QantasLink	57	55	50	90.9	53	96.4	2	3.5
Virgin Australia	50	49	35	71.4	36	73.5	1	2.0
All Airlines	178	175	144	82.3	150	85.7	3	1.7
<b>Brisbane-Adelaide</b>								
Jetstar	37	37	23	62.2	23	62.2	0	0.0
QantasLink	154	153	104	68.0	115	75.2	1	0.6
Rex Airlines	5	0	0	n/a	0	n/a	5	100.0
Virgin Australia	127	124	91	73.4	85	68.5	3	2.4
All Airlines	323	314	218	69.4	223	71.0	9	2.8
<b>Brisbane-Cairns</b>								
Jetstar	93	93	69	74.2	62	66.7	0	0.0
Qantas	70	70	52	74.3	49	70.0	0	0.0
QantasLink	106	106	57	53.8	51	48.1	0	0.0
Rex Airlines	3	0	0	n/a	0	n/a	3	100.0
Virgin Australia	155	155	109	70.3	104	67.1	0	0.0
All Airlines	427	424	287	67.7	266	62.7	3	0.7
<b>Brisbane-Canberra</b>								
Jetstar	31	31	25	80.6	27	87.1	0	0.0
Qantas	5	5	5	100.0	5	100.0	0	0.0
QantasLink	148	145	105	72.4	104	71.7	3	2.0
Virgin Australia	109	106	63	59.4	63	59.4	3	2.8
All Airlines	293	287	198	69.0	199	69.3	6	2.0
<b>Brisbane-Darwin</b>								
Jetstar	32	31	28	90.3	27	87.1	1	3.1
Qantas	22	22	15	68.2	13	59.1	0	0.0
QantasLink	31	31	19	61.3	24	77.4	0	0.0
Virgin Australia	31	31	24	77.4	23	74.2	0	0.0
All Airlines	116	115	86	74.8	87	75.7	1	0.9
<b>Brisbane-Emerald</b>								
QantasLink	136	130	104	80.0	106	81.5	6	4.4
Virgin Australia	26	26	15	57.7	18	69.2	0	0.0
All Airlines	162	156	119	76.3	124	79.5	6	3.7
<b>Brisbane-Gladstone</b>								
QantasLink	141	137	102	74.5	104	75.9	4	2.8
Virgin Australia	35	35	20	57.1	19	54.3	0	0.0
All Airlines	176	172	122	70.9	123	71.5	4	2.3
<b>Brisbane-Hamilton Island</b>								
QantasLink	28	27	23	85.2	24	88.9	1	3.6
Virgin Australia	31	31	27	87.1	26	83.9	0	0.0
All Airlines	59	58	50	86.2	50	86.2	1	1.7
<b>Brisbane-Hobart</b>								
Jetstar	22	22	18	81.8	18	81.8	0	0.0
QantasLink	18	18	16	88.9	17	94.4	0	0.0
Virgin Australia	37	37	29	78.4	27	73.0	0	0.0
All Airlines	77	77	63	81.8	62	80.5	0	0.0



	Sectors		Arrivals On Time		Departures On Time		Cancellations	
	Sched.	Flown	No.	%	No.	%	No.	%
<b>Brisbane-Launceston</b>								
Jetstar	22	22	7	31.8	7	31.8	0	0.0
Virgin Australia	10	10	6	60.0	8	80.0	0	0.0
All Airlines	32	32	13	40.6	15	46.9	0	0.0
<b>Brisbane-Mackay</b>								
Jetstar	31	31	23	74.2	23	74.2	0	0.0
Qantas	110	110	87	79.1	80	72.7	0	0.0
QantasLink	4	3	2	66.7	2	66.7	1	25.0
Virgin Australia	136	136	94	69.1	88	64.7	0	0.0
All Airlines	281	280	206	73.6	193	68.9	1	0.4
<b>Brisbane-Melbourne</b>								
Jetstar	118	115	54	47.0	58	50.4	3	2.5
Qantas	370	364	246	67.6	269	73.9	6	1.6
QantasLink	27	23	6	26.1	9	39.1	4	14.8
Rex Airlines	9	0	0	n/a	0	n/a	9	100.0
Virgin Australia	385	381	226	59.3	258	67.7	4	1.0
All Airlines	909	883	532	60.2	594	67.3	26	2.9
<b>Brisbane-Mount Isa</b>								
Qantas	48	48	40	83.3	38	79.2	0	0.0
QantasLink	5	5	5	100.0	5	100.0	0	0.0
Virgin Australia	14	14	7	50.0	10	71.4	0	0.0
All Airlines	67	67	52	77.6	53	79.1	0	0.0
<b>Brisbane-Newcastle</b>								
Jetstar	54	54	36	66.7	35	64.8	0	0.0
QantasLink	84	84	56	66.7	60	71.4	0	0.0
Virgin Australia	83	83	36	43.4	43	51.8	0	0.0
All Airlines	221	221	128	57.9	138	62.4	0	0.0
<b>Brisbane-Perth</b>								
Jetstar	27	26	17	65.4	14	53.8	1	3.7
Qantas	154	154	102	66.2	123	79.9	0	0.0
Virgin Australia	113	113	77	68.1	70	61.9	0	0.0
All Airlines	294	293	196	66.9	207	70.6	1	0.3
<b>Brisbane-Proserpine</b>								
Jetstar	31	31	21	67.7	21	67.7	0	0.0
QantasLink	18	18	17	94.4	14	77.8	0	0.0
Virgin Australia	31	31	24	77.4	20	64.5	0	0.0
All Airlines	80	80	62	77.5	55	68.8	0	0.0
<b>Brisbane-Rockhampton</b>								
QantasLink	193	186	133	71.5	136	73.1	7	3.6
Virgin Australia	162	162	78	48.1	86	53.1	0	0.0
All Airlines	355	348	211	60.6	222	63.8	7	2.0
<b>Brisbane-Sydney</b>								
Jetstar	181	174	116	66.7	113	64.9	7	3.9
Qantas	554	544	384	70.6	412	75.7	10	1.8
Rex Airlines	25	0	0	n/a	0	n/a	25	100.0
Virgin Australia	480	471	327	69.4	338	71.8	9	1.9
All Airlines	1 240	1 189	827	69.6	863	72.6	51	4.1
<b>Brisbane-Townsville</b>								
Jetstar	62	62	46	74.2	46	74.2	0	0.0
Qantas	20	20	16	80.0	14	70.0	0	0.0
QantasLink	160	160	108	67.5	110	68.8	0	0.0
Virgin Australia	140	140	80	57.1	85	60.7	0	0.0
All Airlines	382	382	250	65.4	255	66.8	0	0.0

	Sectors		Arrivals On Time		Departures On Time		Cancellations	
	Sched.	Flown	No.	%	No.	%	No.	%
<b>Broome-Perth</b>								
Qantas	5	5	2	40.0	4	80.0	0	0.0
QantasLink	83	83	43	51.8	52	62.7	0	0.0
Virgin Australia	40	40	26	65.0	23	57.5	0	0.0
Virgin Australia Regional Airlines	15	15	6	40.0	2	13.3	0	0.0
All Airlines	143	143	77	53.8	81	56.6	0	0.0
<b>Cairns-Brisbane</b>								
Jetstar	94	92	69	75.0	72	78.3	2	2.1
Qantas	70	70	51	72.9	48	68.6	0	0.0
QantasLink	106	106	51	48.1	52	49.1	0	0.0
Rex Airlines	4	0	0	n/a	0	n/a	4	100.0
Virgin Australia	155	155	104	67.1	96	61.9	0	0.0
All Airlines	429	423	275	65.0	268	63.4	6	1.4
<b>Cairns-Melbourne</b>								
Jetstar	122	119	78	65.5	75	63.0	3	2.5
Qantas	31	30	16	53.3	14	46.7	1	3.2
Virgin Australia	69	69	44	63.8	49	71.0	0	0.0
All Airlines	222	218	138	63.3	138	63.3	4	1.8
<b>Cairns-Sydney</b>								
Jetstar	121	118	86	72.9	90	76.3	3	2.5
Qantas	45	45	25	55.6	21	46.7	0	0.0
QantasLink	17	17	14	82.4	13	76.5	0	0.0
Virgin Australia	73	73	52	71.2	54	74.0	0	0.0
All Airlines	256	253	177	70.0	178	70.4	3	1.2
<b>Cairns-Townsville</b>								
QantasLink	144	143	119	83.2	116	81.1	1	0.7
Rex Airlines	13	13	13	100.0	13	100.0	0	0.0
All Airlines	157	156	132	84.6	129	82.7	1	0.6
<b>Canberra-Adelaide</b>								
QantasLink	88	87	74	85.1	78	89.7	1	1.1
Virgin Australia	18	17	12	70.6	12	70.6	1	5.6
All Airlines	106	104	86	82.7	90	86.5	2	1.9
<b>Canberra-Brisbane</b>								
Jetstar	32	31	26	83.9	24	77.4	1	3.1
Qantas	5	5	4	80.0	5	100.0	0	0.0
QantasLink	148	145	97	66.9	100	69.0	3	2.0
Virgin Australia	109	105	69	65.7	70	66.7	4	3.7
All Airlines	294	286	196	68.5	199	69.6	8	2.7
<b>Canberra-Gold Coast</b>								
Jetstar	13	13	11	84.6	10	76.9	0	0.0
Virgin Australia	31	31	25	80.6	27	87.1	0	0.0
All Airlines	44	44	36	81.8	37	84.1	0	0.0
<b>Canberra-Melbourne</b>								
Jetstar	31	31	23	74.2	25	80.6	0	0.0
Qantas	4	3	3	100.0	2	66.7	1	25.0
QantasLink	212	196	150	76.5	149	76.0	16	7.5
Rex Airlines	5	0	0	n/a	0	n/a	5	100.0
Virgin Australia	131	131	85	64.9	94	71.8	0	0.0
All Airlines	383	361	261	72.3	270	74.8	22	5.7
<b>Canberra-Sydney</b>								
Qantas	66	60	46	76.7	44	73.3	6	9.1
QantasLink	359	334	286	85.6	280	83.8	25	7.0
Virgin Australia	256	246	207	84.1	205	83.3	10	3.9
All Airlines	681	640	539	84.2	529	82.7	41	6.0

	Sectors		Arrivals On Time		Departures On Time		Cancellations	
	Sched.	Flown	No.	%	No.	%	No.	%
<b>Coffs Harbour-Sydney</b>								
QantasLink	111	110	91	82.7	86	78.2	1	0.9
Rex Airlines	93	92	65	70.7	73	79.3	1	1.1
All Airlines	204	202	156	77.2	159	78.7	2	1.0
<b>Darwin-Brisbane</b>								
Jetstar	32	31	17	54.8	20	64.5	1	3.1
Qantas	23	23	9	39.1	4	17.4	0	0.0
QantasLink	31	30	10	33.3	10	33.3	1	3.2
Virgin Australia	31	31	13	41.9	23	74.2	0	0.0
All Airlines	117	115	49	42.6	57	49.6	2	1.7
<b>Darwin-Melbourne</b>								
Jetstar	31	31	27	87.1	20	64.5	0	0.0
Qantas	31	31	13	41.9	11	35.5	0	0.0
Virgin Australia	31	31	14	45.2	17	54.8	0	0.0
All Airlines	93	93	54	58.1	48	51.6	0	0.0
<b>Darwin-Perth</b>								
QantasLink	49	49	17	34.7	19	38.8	0	0.0
Virgin Australia Regional Airlines	20	18	12	66.7	12	66.7	2	10.0
All Airlines	69	67	29	43.3	31	46.3	2	2.9
<b>Devonport-Melbourne</b>								
QantasLink	120	114	97	85.1	97	85.1	6	5.0
Rex Airlines	52	50	44	88.0	44	88.0	2	3.8
All Airlines	172	164	141	86.0	141	86.0	8	4.7
<b>Dubbo-Sydney</b>								
QantasLink	112	111	94	84.7	93	83.8	1	0.9
Rex Airlines	131	125	87	69.6	86	68.8	6	4.6
All Airlines	243	236	181	76.7	179	75.8	7	2.9
<b>Emerald-Brisbane</b>								
QantasLink	136	129	99	76.7	97	75.2	7	5.1
Virgin Australia	26	26	17	65.4	16	61.5	0	0.0
All Airlines	162	155	116	74.8	113	72.9	7	4.3
<b>Gladstone-Brisbane</b>								
QantasLink	142	137	103	75.2	107	78.1	5	3.5
Virgin Australia	35	35	22	62.9	21	60.0	0	0.0
All Airlines	177	172	125	72.7	128	74.4	5	2.8
<b>Gold Coast-Adelaide</b>								
Jetstar	31	31	22	71.0	24	77.4	0	0.0
Virgin Australia	31	31	16	51.6	18	58.1	0	0.0
All Airlines	62	62	38	61.3	42	67.7	0	0.0
<b>Gold Coast-Canberra</b>								
Jetstar	13	13	10	76.9	9	69.2	0	0.0
Virgin Australia	31	31	21	67.7	21	67.7	0	0.0
All Airlines	44	44	31	70.5	30	68.2	0	0.0
<b>Gold Coast-Melbourne</b>								
Jetstar	178	175	114	65.1	112	64.0	3	1.7
Qantas	32	32	20	62.5	21	65.6	0	0.0
Rex Airlines	5	0	0	n/a	0	n/a	5	100.0
Virgin Australia	203	203	132	65.0	133	65.5	0	0.0
All Airlines	418	410	266	64.9	266	64.9	8	1.9
<b>Gold Coast-Sydney</b>								
Jetstar	248	244	203	83.2	203	83.2	4	1.6
Qantas	92	91	66	72.5	66	72.5	1	1.1
Rex Airlines	5	0	0	n/a	0	n/a	5	100.0
Virgin Australia	286	285	208	73.0	208	73.0	1	0.3
All Airlines	631	620	477	76.9	477	76.9	11	1.7

	Sectors		Arrivals On Time		Departures On Time		Cancellations	
	Sched.	Flown	No.	%	No.	%	No.	%
<b>Hamilton Island-Brisbane</b>								
QantasLink	28	27	21	77.8	23	85.2	1	3.6
Virgin Australia	31	30	23	76.7	22	73.3	1	3.2
All Airlines	59	57	44	77.2	45	78.9	2	3.4
<b>Hamilton Island-Sydney</b>								
Jetstar	18	18	11	61.1	9	50.0	0	0.0
Qantas	31	30	13	43.3	13	43.3	1	3.2
Virgin Australia	27	27	10	37.0	13	48.1	0	0.0
All Airlines	76	75	34	45.3	35	46.7	1	1.3
<b>Hobart-Brisbane</b>								
Jetstar	22	22	17	77.3	16	72.7	0	0.0
QantasLink	18	18	17	94.4	16	88.9	0	0.0
Virgin Australia	37	37	22	59.5	23	62.2	0	0.0
All Airlines	77	77	56	72.7	55	71.4	0	0.0
<b>Hobart-Melbourne</b>								
Jetstar	126	126	80	63.5	74	58.7	0	0.0
QantasLink	114	106	73	68.9	66	62.3	8	7.0
Rex Airlines	5	0	0	n/a	0	n/a	5	100.0
Virgin Australia	115	114	93	81.6	92	80.7	1	0.9
All Airlines	360	346	246	71.1	232	67.1	14	3.9
<b>Hobart-Sydney</b>								
Jetstar	62	62	46	74.2	45	72.6	0	0.0
Qantas	76	76	66	86.8	61	80.3	0	0.0
QantasLink	8	7	4	57.1	6	85.7	1	12.5
Virgin Australia	73	73	62	84.9	62	84.9	0	0.0
All Airlines	219	218	178	81.7	174	79.8	1	0.5
<b>Kalgoorlie-Perth</b>								
Qantas	21	21	18	85.7	18	85.7	0	0.0
QantasLink	75	70	40	57.1	51	72.9	5	6.7
Virgin Australia	88	87	61	70.1	63	72.4	1	1.1
Virgin Australia Regional Airlines	20	20	16	80.0	13	65.0	0	0.0
All Airlines	204	198	135	68.2	145	73.2	6	2.9
<b>Karratha-Perth</b>								
Qantas	4	4	3	75.0	3	75.0	0	0.0
QantasLink	151	149	103	69.1	101	67.8	2	1.3
Virgin Australia	66	65	49	75.4	55	84.6	1	1.5
Virgin Australia Regional Airlines	15	15	9	60.0	10	66.7	0	0.0
All Airlines	236	233	164	70.4	169	72.5	3	1.3
<b>Launceston-Brisbane</b>								
Jetstar	23	22	3	13.6	4	18.2	1	4.3
Virgin Australia	10	10	5	50.0	5	50.0	0	0.0
All Airlines	33	32	8	25.0	9	28.1	1	3.0
<b>Launceston-Melbourne</b>								
Jetstar	80	80	44	55.0	36	45.0	0	0.0
QantasLink	98	91	69	75.8	70	76.9	7	7.1
Virgin Australia	91	90	69	76.7	67	74.4	1	1.1
All Airlines	269	261	182	69.7	173	66.3	8	3.0
<b>Launceston-Sydney</b>								
Jetstar	31	31	19	61.3	17	54.8	0	0.0
QantasLink	31	31	29	93.5	29	93.5	0	0.0
Virgin Australia	31	31	16	51.6	18	58.1	0	0.0
All Airlines	93	93	64	68.8	64	68.8	0	0.0

	Sectors		Arrivals On Time		Departures On Time		Cancellations	
	Sched.	Flown	No.	%	No.	%	No.	%
<b>Mackay-Brisbane</b>								
Jetstar	31	31	22	71.0	22	71.0	0	0.0
Qantas	111	111	76	68.5	86	77.5	0	0.0
QantasLink	8	6	4	66.7	4	66.7	2	25.0
Virgin Australia	136	136	94	69.1	93	68.4	0	0.0
All Airlines	286	284	196	69.0	205	72.2	2	0.7
<b>Melbourne-Adelaide</b>								
Jetstar	115	114	85	74.6	84	73.7	1	0.9
Qantas	266	263	157	59.7	187	71.1	3	1.1
QantasLink	13	11	11	100.0	11	100.0	2	15.4
Rex Airlines	9	0	0	n/a	0	n/a	9	100.0
Virgin Australia	239	239	161	67.4	183	76.6	0	0.0
All Airlines	642	627	414	66.0	465	74.2	15	2.3
<b>Melbourne-Brisbane</b>								
Jetstar	117	114	60	52.6	65	57.0	3	2.6
Qantas	373	367	250	68.1	255	69.5	6	1.6
QantasLink	27	23	12	52.2	15	65.2	4	14.8
Rex Airlines	9	0	0	n/a	0	n/a	9	100.0
Virgin Australia	389	387	277	71.6	295	76.2	2	0.5
All Airlines	915	891	599	67.2	630	70.7	24	2.6
<b>Melbourne-Cairns</b>								
Jetstar	120	119	77	64.7	75	63.0	1	0.8
Qantas	31	30	20	66.7	22	73.3	1	3.2
Virgin Australia	69	69	58	84.1	59	85.5	0	0.0
All Airlines	220	218	155	71.1	156	71.6	2	0.9
<b>Melbourne-Canberra</b>								
Jetstar	31	31	25	80.6	23	74.2	0	0.0
Qantas	4	3	2	66.7	2	66.7	1	25.0
QantasLink	213	199	155	77.9	155	77.9	14	6.6
Rex Airlines	5	0	0	n/a	0	n/a	5	100.0
Virgin Australia	131	131	97	74.0	97	74.0	0	0.0
All Airlines	384	364	279	76.6	277	76.1	20	5.2
<b>Melbourne-Darwin</b>								
Jetstar	31	31	28	90.3	25	80.6	0	0.0
Qantas	31	31	19	61.3	14	45.2	0	0.0
Virgin Australia	31	31	20	64.5	17	54.8	0	0.0
All Airlines	93	93	67	72.0	56	60.2	0	0.0
<b>Melbourne-Devonport</b>								
QantasLink	120	113	100	88.5	99	87.6	7	5.8
Rex Airlines	52	50	45	90.0	44	88.0	2	3.8
All Airlines	172	163	145	89.0	143	87.7	9	5.2
<b>Melbourne-Gold Coast</b>								
Jetstar	177	176	127	72.2	108	61.4	1	0.6
Qantas	33	33	28	84.8	28	84.8	0	0.0
Rex Airlines	5	0	0	n/a	0	n/a	5	100.0
Virgin Australia	203	203	159	78.3	152	74.9	0	0.0
All Airlines	418	412	314	76.2	288	69.9	6	1.4
<b>Melbourne-Hobart</b>								
Jetstar	126	126	80	63.5	84	66.7	0	0.0
QantasLink	115	106	60	56.6	64	60.4	9	7.8
Rex Airlines	5	0	0	n/a	0	n/a	5	100.0
Virgin Australia	115	115	78	67.8	83	72.2	0	0.0
All Airlines	361	347	218	62.8	231	66.6	14	3.9
<b>Melbourne-Launceston</b>								
Jetstar	80	80	47	58.8	46	57.5	0	0.0
QantasLink	96	89	65	73.0	65	73.0	7	7.3
Virgin Australia	90	90	57	63.3	61	67.8	0	0.0
All Airlines	266	259	169	65.3	172	66.4	7	2.6

	Sectors		Arrivals On Time		Departures On Time		Cancellations	
	Sched.	Flown	No.	%	No.	%	No.	%
<b>Melbourne-Mildura</b>								
QantasLink	110	110	78	70.9	89	80.9	0	0.0
Rex Airlines	105	105	87	82.9	91	86.7	0	0.0
All Airlines	215	215	165	76.7	180	83.7	0	0.0
<b>Melbourne-Newcastle</b>								
Jetstar	63	62	49	79.0	49	79.0	1	1.6
QantasLink	52	50	32	64.0	35	70.0	2	3.8
Virgin Australia	41	41	30	73.2	32	78.0	0	0.0
All Airlines	156	153	111	72.5	116	75.8	3	1.9
<b>Melbourne-Perth</b>								
Jetstar	80	78	45	57.7	57	73.1	2	2.5
Qantas	207	199	104	52.3	151	75.9	8	3.9
Rex Airlines	4	0	0	n/a	0	n/a	4	100.0
Virgin Australia	208	204	118	57.8	134	65.7	4	1.9
All Airlines	499	481	267	55.5	342	71.1	18	3.6
<b>Melbourne-Sunshine Coast</b>								
Jetstar	66	66	56	84.8	55	83.3	0	0.0
Qantas	32	32	19	59.4	19	59.4	0	0.0
Virgin Australia	58	58	52	89.7	51	87.9	0	0.0
All Airlines	156	156	127	81.4	125	80.1	0	0.0
<b>Melbourne-Sydney</b>								
Jetstar	395	376	290	77.1	269	71.5	19	4.8
Qantas	950	855	636	74.4	656	76.7	95	10.0
Rex Airlines	35	0	0	n/a	0	n/a	35	100.0
Virgin Australia	750	726	542	74.7	570	78.5	24	3.2
All Airlines	2 130	1 957	1 468	75.0	1 495	76.4	173	8.1
<b>Mildura-Melbourne</b>								
QantasLink	110	110	84	76.4	78	70.9	0	0.0
Rex Airlines	106	106	82	77.4	85	80.2	0	0.0
All Airlines	216	216	166	76.9	163	75.5	0	0.0
<b>Mount Isa-Brisbane</b>								
Qantas	48	48	34	70.8	37	77.1	0	0.0
QantasLink	5	5	2	40.0	4	80.0	0	0.0
Virgin Australia	14	14	5	35.7	7	50.0	0	0.0
All Airlines	67	67	41	61.2	48	71.6	0	0.0
<b>Newcastle-Brisbane</b>								
Jetstar	54	54	32	59.3	32	59.3	0	0.0
QantasLink	84	84	59	70.2	62	73.8	0	0.0
Virgin Australia	84	84	42	50.0	46	54.8	0	0.0
All Airlines	222	222	133	59.9	140	63.1	0	0.0
<b>Newcastle-Melbourne</b>								
Jetstar	63	62	45	72.6	46	74.2	1	1.6
QantasLink	53	51	46	90.2	47	92.2	2	3.8
Virgin Australia	42	41	30	73.2	30	73.2	1	2.4
All Airlines	158	154	121	78.6	123	79.9	4	2.5
<b>Newman-Perth</b>								
Qantas	16	16	15	93.8	15	93.8	0	0.0
QantasLink	101	101	63	62.4	80	79.2	0	0.0
Virgin Australia	40	40	24	60.0	28	70.0	0	0.0
Virgin Australia Regional Airlines	16	16	9	56.3	11	68.8	0	0.0
All Airlines	173	173	111	64.2	134	77.5	0	0.0
<b>Perth-Adelaide</b>								
Jetstar	31	31	23	74.2	18	58.1	0	0.0
Qantas	92	92	69	75.0	61	66.3	0	0.0
Rex Airlines	6	1	1	100.0	1	100.0	5	83.3
Virgin Australia	47	45	35	77.8	37	82.2	2	4.3
Virgin Australia Regional Airlines	28	28	16	57.1	15	53.6	0	0.0
All Airlines	204	197	144	73.1	132	67.0	7	3.4

	Sectors		Arrivals On Time		Departures On Time		Cancellations	
	Sched.	Flown	No.	%	No.	%	No.	%
<b>Perth-Brisbane</b>								
Jetstar	27	26	13	50.0	10	38.5	1	3.7
Qantas	156	156	118	75.6	114	73.1	0	0.0
Virgin Australia	114	112	85	75.9	69	61.6	2	1.8
All Airlines	297	294	216	73.5	193	65.6	3	1.0
<b>Perth-Broome</b>								
Qantas	5	5	3	60.0	4	80.0	0	0.0
QantasLink	83	83	55	66.3	49	59.0	0	0.0
Virgin Australia	39	39	30	76.9	28	71.8	0	0.0
Virgin Australia Regional Airlines	16	16	13	81.3	9	56.3	0	0.0
All Airlines	143	143	101	70.6	90	62.9	0	0.0
<b>Perth-Darwin</b>								
QantasLink	49	49	37	75.5	38	77.6	0	0.0
Virgin Australia Regional Airlines	20	18	13	72.2	14	77.8	2	10.0
All Airlines	69	67	50	74.6	52	77.6	2	2.9
<b>Perth-Kalgoorlie</b>								
Qantas	20	20	19	95.0	19	95.0	0	0.0
QantasLink	75	71	53	74.6	59	83.1	4	5.3
Virgin Australia	88	87	71	81.6	73	83.9	1	1.1
Virgin Australia Regional Airlines	20	20	14	70.0	15	75.0	0	0.0
All Airlines	203	198	157	79.3	166	83.8	5	2.5
<b>Perth-Karratha</b>								
Qantas	4	4	3	75.0	3	75.0	0	0.0
QantasLink	152	150	111	74.0	104	69.3	2	1.3
Virgin Australia	67	66	51	77.3	60	90.9	1	1.5
Virgin Australia Regional Airlines	15	15	9	60.0	10	66.7	0	0.0
All Airlines	238	235	174	74.0	177	75.3	3	1.3
<b>Perth-Melbourne</b>								
Jetstar	80	78	59	75.6	39	50.0	2	2.5
Qantas	207	197	157	79.7	129	65.5	10	4.8
Rex Airlines	5	0	0	n/a	0	n/a	5	100.0
Virgin Australia	223	218	188	86.2	166	76.1	5	2.2
All Airlines	515	493	404	81.9	334	67.7	22	4.3
<b>Perth-Newman</b>								
Qantas	16	16	15	93.8	15	93.8	0	0.0
QantasLink	100	100	74	74.0	79	79.0	0	0.0
Virgin Australia	40	40	30	75.0	32	80.0	0	0.0
Virgin Australia Regional Airlines	16	16	11	68.8	12	75.0	0	0.0
All Airlines	172	172	130	75.6	138	80.2	0	0.0
<b>Perth-Port Hedland</b>								
QantasLink	144	143	115	80.4	114	79.7	1	0.7
Virgin Australia	37	35	22	62.9	27	77.1	2	5.4
Virgin Australia Regional Airlines	20	20	13	65.0	12	60.0	0	0.0
All Airlines	201	198	150	75.8	153	77.3	3	1.5
<b>Perth-Sydney</b>								
Jetstar	54	51	28	54.9	23	45.1	3	5.6
Qantas	198	192	129	67.2	98	51.0	6	3.0
Virgin Australia	153	153	131	85.6	93	60.8	0	0.0
All Airlines	405	396	288	72.7	214	54.0	9	2.2

	Sectors		Arrivals On Time		Departures On Time		Cancellations	
	Sched.	Flown	No.	%	No.	%	No.	%
<b>Port Hedland-Perth</b>								
QantasLink	142	141	83	58.9	102	72.3	1	0.7
Virgin Australia	37	35	13	37.1	15	42.9	2	5.4
Virgin Australia Regional Airlines	20	20	10	50.0	7	35.0	0	0.0
All Airlines	199	196	106	54.1	124	63.3	3	1.5
<b>Port Lincoln-Adelaide</b>								
QantasLink	141	130	115	88.5	111	85.4	11	7.8
Rex Airlines	158	147	112	76.2	114	77.6	11	7.0
All Airlines	299	277	227	81.9	225	81.2	22	7.4
<b>Port Macquarie-Sydney</b>								
QantasLink	115	113	87	77.0	89	78.8	2	1.7
Rex Airlines	54	52	36	69.2	37	71.2	2	3.7
All Airlines	169	165	123	74.5	126	76.4	4	2.4
<b>Proserpine-Brisbane</b>								
Jetstar	31	31	18	58.1	19	61.3	0	0.0
QantasLink	18	18	16	88.9	15	83.3	0	0.0
Virgin Australia	31	31	19	61.3	20	64.5	0	0.0
All Airlines	80	80	53	66.3	54	67.5	0	0.0
<b>Rockhampton-Brisbane</b>								
QantasLink	194	184	121	65.8	129	70.1	10	5.2
Virgin Australia	163	163	73	44.8	83	50.9	0	0.0
All Airlines	357	347	194	55.9	212	61.1	10	2.8
<b>Sunshine Coast-Melbourne</b>								
Jetstar	66	66	50	75.8	48	72.7	0	0.0
Qantas	31	31	7	22.6	12	38.7	0	0.0
Virgin Australia	58	58	40	69.0	40	69.0	0	0.0
All Airlines	155	155	97	62.6	100	64.5	0	0.0
<b>Sunshine Coast-Sydney</b>								
Jetstar	86	84	65	77.4	68	81.0	2	2.3
Qantas	60	59	37	62.7	42	71.2	1	1.7
Virgin Australia	62	62	34	54.8	45	72.6	0	0.0
All Airlines	208	205	136	66.3	155	75.6	3	1.4
<b>Sydney-Adelaide</b>								
Jetstar	125	120	86	71.7	95	79.2	5	4.0
Qantas	256	236	149	63.1	169	71.6	20	7.8
Rex Airlines	5	0	0	n/a	0	n/a	5	100.0
Virgin Australia	168	165	109	66.1	132	80.0	3	1.8
All Airlines	554	521	344	66.0	396	76.0	33	6.0
<b>Sydney-Albury</b>								
QantasLink	111	109	79	72.5	86	78.9	2	1.8
Rex Airlines	84	83	67	80.7	68	81.9	1	1.2
All Airlines	195	192	146	76.0	154	80.2	3	1.5
<b>Sydney-Ballina</b>								
Jetstar	71	71	66	93.0	66	93.0	0	0.0
QantasLink	56	55	53	96.4	54	98.2	1	1.8
Virgin Australia	49	49	39	79.6	41	83.7	0	0.0
All Airlines	176	175	158	90.3	161	92.0	1	0.6
<b>Sydney-Brisbane</b>								
Jetstar	181	174	107	61.5	102	58.6	7	3.9
Qantas	547	537	333	62.0	370	68.9	10	1.8
Rex Airlines	25	0	0	n/a	0	n/a	25	100.0
Virgin Australia	476	466	346	74.2	364	78.1	10	2.1
All Airlines	1 229	1 177	786	66.8	836	71.0	52	4.2



	Sectors		Arrivals On Time		Departures On Time		Cancellations	
	Sched.	Flown	No.	%	No.	%	No.	%
<b>Sydney-Cairns</b>								
Jetstar	121	119	91	76.5	88	73.9	2	1.7
Qantas	45	45	31	68.9	29	64.4	0	0.0
QantasLink	17	17	15	88.2	14	82.4	0	0.0
Virgin Australia	73	73	66	90.4	65	89.0	0	0.0
All Airlines	256	254	203	79.9	196	77.2	2	0.8
<b>Sydney-Canberra</b>								
Qantas	66	59	50	84.7	51	86.4	7	10.6
QantasLink	359	337	280	83.1	277	82.2	22	6.1
Virgin Australia	256	245	213	86.9	207	84.5	11	4.3
All Airlines	681	641	543	84.7	535	83.5	40	5.9
<b>Sydney-Coffs Harbour</b>								
QantasLink	112	111	87	78.4	83	74.8	1	0.9
Rex Airlines	93	92	78	84.8	76	82.6	1	1.1
All Airlines	205	203	165	81.3	159	78.3	2	1.0
<b>Sydney-Dubbo</b>								
QantasLink	112	112	92	82.1	88	78.6	0	0.0
Rex Airlines	134	129	86	66.7	85	65.9	5	3.7
All Airlines	246	241	178	73.9	173	71.8	5	2.0
<b>Sydney-Gold Coast</b>								
Jetstar	248	244	198	81.1	192	78.7	4	1.6
Qantas	93	93	66	71.0	62	66.7	0	0.0
Rex Airlines	5	0	0	n/a	0	n/a	5	100.0
Virgin Australia	285	284	196	69.0	214	75.4	1	0.4
All Airlines	631	621	460	74.1	468	75.4	10	1.6
<b>Sydney-Hamilton Island</b>								
Jetstar	18	18	14	77.8	14	77.8	0	0.0
Qantas	30	30	20	66.7	21	70.0	0	0.0
Virgin Australia	27	27	23	85.2	24	88.9	0	0.0
All Airlines	75	75	57	76.0	59	78.7	0	0.0
<b>Sydney-Hobart</b>								
Jetstar	62	62	49	79.0	50	80.6	0	0.0
Qantas	75	75	57	76.0	51	68.0	0	0.0
QantasLink	7	7	4	57.1	4	57.1	0	0.0
Virgin Australia	73	73	63	86.3	65	89.0	0	0.0
All Airlines	217	217	173	79.7	170	78.3	0	0.0
<b>Sydney-Launceston</b>								
Jetstar	31	31	25	80.6	25	80.6	0	0.0
QantasLink	31	31	28	90.3	27	87.1	0	0.0
Virgin Australia	31	31	21	67.7	18	58.1	0	0.0
All Airlines	93	93	74	79.6	70	75.3	0	0.0
<b>Sydney-Melbourne</b>								
Jetstar	396	383	294	76.8	294	76.8	13	3.3
Qantas	960	862	590	68.4	628	72.9	98	10.2
Rex Airlines	35	0	0	n/a	0	n/a	35	100.0
Virgin Australia	745	720	510	70.8	575	79.9	25	3.4
All Airlines	2 136	1 965	1 394	70.9	1 497	76.2	171	8.0
<b>Sydney-Perth</b>								
Jetstar	54	52	28	53.8	36	69.2	2	3.7
Qantas	197	193	88	45.6	125	64.8	4	2.0
Virgin Australia	165	164	87	53.0	116	70.7	1	0.6
All Airlines	416	409	203	49.6	277	67.7	7	1.7
<b>Sydney-Port Macquarie</b>								
QantasLink	114	112	92	82.1	86	76.8	2	1.8
Rex Airlines	54	52	40	76.9	41	78.8	2	3.7
All Airlines	168	164	132	80.5	127	77.4	4	2.4

	Sectors		Arrivals On Time		Departures On Time		Cancellations	
	Sched.	Flown	No.	%	No.	%	No.	%
<b>Sydney-Sunshine Coast</b>								
Jetstar	85	85	71	83.5	70	82.4	0	0.0
Qantas	59	59	42	71.2	41	69.5	0	0.0
Virgin Australia	62	62	53	85.5	53	85.5	0	0.0
All Airlines	206	206	166	80.6	164	79.6	0	0.0
<b>Sydney-Wagga Wagga</b>								
QantasLink	112	111	94	84.7	91	82.0	1	0.9
Rex Airlines	93	92	69	75.0	72	78.3	1	1.1
All Airlines	205	203	163	80.3	163	80.3	2	1.0
<b>Townsville-Brisbane</b>								
Jetstar	62	62	31	50.0	38	61.3	0	0.0
Qantas	20	20	10	50.0	13	65.0	0	0.0
QantasLink	160	160	92	57.5	96	60.0	0	0.0
Virgin Australia	140	140	73	52.1	74	52.9	0	0.0
All Airlines	382	382	206	53.9	221	57.9	0	0.0
<b>Townsville-Cairns</b>								
QantasLink	146	143	118	82.5	120	83.9	3	2.1
Rex Airlines	13	12	10	83.3	11	91.7	1	7.7
All Airlines	159	155	128	82.6	131	84.5	4	2.5
<b>Wagga Wagga-Sydney</b>								
QantasLink	112	111	100	90.1	96	86.5	1	0.9
Rex Airlines	93	92	66	71.7	71	77.2	1	1.1
All Airlines	205	203	166	81.8	167	82.3	2	1.0

## Airports

The following data reports by airport against flights operated on published routes only. This month, 8 major city airports and 28 regional city airports are covered.

Airport	Arrivals			Departures		
	Sectors	On Time		Sectors	On Time	
	Flown	No.	%	Flown	No.	%
<b>Adelaide</b>						
Jetstar	333	239	71.8	333	243	73.0
Qantas	591	375	63.5	591	413	69.9
QantasLink	434	351	80.9	434	360	82.9
Rex Airlines	148	113	76.4	148	116	78.4
Virgin Australia	633	432	68.2	633	449	70.9
Virgin Australia Regional Airlines	28	16	57.1	28	8	28.6
All Airlines	2,167	1,526	70.4	2,167	1,589	73.3

Relates to services to and from Alice Springs, Brisbane, Canberra, Gold Coast, Melbourne, Perth, Port Lincoln and Sydney only.

### Albury

QantasLink	109	79	72.5	110	74	67.3
Rex Airlines	83	67	80.7	83	69	83.1
All Airlines	192	146	76.0	193	143	74.1

Relates to services to and from Sydney only.

### Alice Springs

QantasLink	53	47	88.7	53	47	88.7
Virgin Australia	13	10	76.9	12	8	66.7
All Airlines	66	57	86.4	65	55	84.6

Relates to services to and from Adelaide only.

### Ballina

Jetstar	71	66	93.0	71	61	85.9
QantasLink	55	53	96.4	55	53	96.4
Virgin Australia	49	39	79.6	49	36	73.5
All Airlines	175	158	90.3	175	150	85.7

Relates to services to and from Sydney only.

### Brisbane

Jetstar	727	445	61.2	729	474	65.0
Qantas	1,337	885	66.2	1,337	1,003	75.0
QantasLink	1,223	818	66.9	1,226	881	71.9
Virgin Australia	2,087	1,388	66.5	2,086	1,371	65.7
All Airlines	5,374	3,536	65.8	5,378	3,729	69.3

Relates to services to and from Adelaide, Cairns, Canberra, Darwin, Emerald, Gladstone, Hamilton Island, Hobart, Launceston, Mackay, Melbourne, Mount Isa, Newcastle, Perth, Proserpine, Rockhampton, Sydney and Townsville only.

### Broome

Qantas	5	3	60.0	5	4	80.0
QantasLink	83	55	66.3	83	52	62.7
Virgin Australia	39	30	76.9	40	23	57.5
Virgin Australia Regional Airlines	16	13	81.3	15	2	13.3
All Airlines	143	101	70.6	143	81	56.6

Relates to services to and from Perth only.

Airport	Arrivals			Departures		
	Sectors	On Time		Sectors	On Time	
	Flown	No.	%	Flown	No.	%
<b>Cairns</b>						
Jetstar	331	237	71.6	329	237	72.0
Qantas	145	103	71.0	145	83	57.2
QantasLink	266	190	71.4	266	181	68.0
Rex Airlines	12	10	83.3	13	13	100.0
Virgin Australia	297	233	78.5	297	199	67.0
All Airlines	1,051	773	73.5	1,050	713	67.9
Relates to services to and from Brisbane, Melbourne, Sydney and Townsville only.						
<b>Canberra</b>						
Jetstar	75	60	80.0	75	59	78.7
Qantas	67	57	85.1	68	51	75.0
QantasLink	769	621	80.8	762	607	79.7
Virgin Australia	530	403	76.0	530	408	77.0
All Airlines	1,441	1,141	79.2	1,435	1,125	78.4
Relates to services to and from Adelaide, Brisbane, Gold Coast, Melbourne and Sydney only.						
<b>Coffs Harbour</b>						
QantasLink	111	87	78.4	110	86	78.2
Rex Airlines	92	78	84.8	92	73	79.3
All Airlines	203	165	81.3	202	159	78.7
Relates to services to and from Sydney only.						
<b>Darwin</b>						
Jetstar	62	56	90.3	62	40	64.5
Qantas	53	34	64.2	54	15	27.8
QantasLink	80	56	70.0	79	29	36.7
Virgin Australia	62	44	71.0	62	40	64.5
Virgin Australia Regional Airlines	18	13	72.2	18	12	66.7
All Airlines	275	203	73.8	275	136	49.5
Relates to services to and from Brisbane, Melbourne and Perth only.						
<b>Devonport</b>						
QantasLink	113	100	88.5	114	97	85.1
Rex Airlines	50	45	90.0	50	44	88.0
All Airlines	163	145	89.0	164	141	86.0
Relates to services to and from Melbourne only.						
<b>Dubbo</b>						
QantasLink	112	92	82.1	111	93	83.8
Rex Airlines	129	86	66.7	125	86	68.8
All Airlines	241	178	73.9	236	179	75.8
Relates to services to and from Sydney only.						
<b>Emerald</b>						
QantasLink	130	104	80.0	129	97	75.2
Virgin Australia	26	15	57.7	26	16	61.5
All Airlines	156	119	76.3	155	113	72.9
Relates to services to and from Brisbane only.						

Airport	Arrivals			Departures		
	Sectors Flown	On Time		Sectors Flown	On Time	
		No.	%		No.	%
<b>Gladstone</b>						
QantasLink	137	102	74.5	137	107	78.1
Virgin Australia	35	20	57.1	35	21	60.0
All Airlines	172	122	70.9	172	128	74.4
Relates to services to and from Brisbane only.						
<b>Gold Coast</b>						
Jetstar	464	361	77.8	463	348	75.2
Qantas	126	94	74.6	123	87	70.7
Virgin Australia	549	407	74.1	550	380	69.1
All Airlines	1,139	862	75.7	1,136	815	71.7
Relates to services to and from Adelaide, Canberra, Melbourne and Sydney only.						
<b>Hamilton Island</b>						
Jetstar	18	14	77.8	18	9	50.0
Qantas	30	20	66.7	30	13	43.3
QantasLink	27	23	85.2	27	23	85.2
Virgin Australia	58	50	86.2	57	35	61.4
All Airlines	133	107	80.5	132	80	60.6
Relates to services to and from Brisbane and Sydney only.						
<b>Hobart</b>						
Jetstar	210	147	70.0	210	135	64.3
Qantas	75	57	76.0	76	61	80.3
QantasLink	131	80	61.1	131	88	67.2
Virgin Australia	225	170	75.6	224	177	79.0
All Airlines	641	454	70.8	641	461	71.9
Relates to services to and from Brisbane, Melbourne and Sydney only.						
<b>Kalgoorlie</b>						
Qantas	20	19	95.0	21	18	85.7
QantasLink	71	53	74.6	70	51	72.9
Virgin Australia	87	71	81.6	87	63	72.4
Virgin Australia Regional Airlines	20	14	70.0	20	13	65.0
All Airlines	198	157	79.3	198	145	73.2
Relates to services to and from Perth only.						
<b>Karratha</b>						
Qantas	4	3	75.0	4	3	75.0
QantasLink	150	111	74.0	149	101	67.8
Virgin Australia	66	51	77.3	65	55	84.6
Virgin Australia Regional Airlines	15	9	60.0	15	10	66.7
All Airlines	235	174	74.0	233	169	72.5
Relates to services to and from Perth only.						
<b>Launceston</b>						
Jetstar	133	79	59.4	133	57	42.9
QantasLink	120	93	77.5	122	99	81.1
Virgin Australia	131	84	64.1	131	90	68.7
All Airlines	384	256	66.7	386	246	63.7
Relates to services to and from Brisbane, Melbourne and Sydney only.						

Airport	Arrivals			Departures		
	Sectors Flown	On Time		Sectors Flown	On Time	
		No.	%		No.	%
<b>Mackay</b>						
Jetstar	31	23	74.2	31	22	71.0
Qantas	110	87	79.1	111	86	77.5
QantasLink	3	2	66.7	6	4	66.7
Virgin Australia	136	94	69.1	136	93	68.4
All Airlines	280	206	73.6	284	205	72.2

Relates to services to and from Brisbane only.

### Melbourne

Jetstar	1,380	951	68.9	1,373	940	68.5
Qantas	1,814	1,243	68.5	1,813	1,334	73.6
QantasLink	701	535	76.3	701	533	76.0
Rex Airlines	156	126	80.8	155	135	87.1
Virgin Australia	2,295	1,612	70.2	2,294	1,734	75.6
All Airlines	6,346	4,467	70.4	6,336	4,676	73.8

Relates to services to and from Adelaide, Brisbane, Cairns, Canberra, Darwin, Devonport, Gold Coast, Hobart, Launceston, Mildura, Newcastle, Perth, Sunshine Coast and Sydney only.

### Mildura

QantasLink	110	78	70.9	110	78	70.9
Rex Airlines	105	87	82.9	106	85	80.2
All Airlines	215	165	76.7	216	163	75.5

Relates to services to and from Melbourne only.

### Mount Isa

Qantas	48	40	83.3	48	37	77.1
QantasLink	5	5	100.0	5	4	80.0
Virgin Australia	14	7	50.0	14	7	50.0
All Airlines	67	52	77.6	67	48	71.6

Relates to services to and from Brisbane only.

### Newcastle

Jetstar	116	85	73.3	116	78	67.2
QantasLink	134	88	65.7	135	109	80.7
Virgin Australia	124	66	53.2	125	76	60.8
All Airlines	374	239	63.9	376	263	69.9

Relates to services to and from Brisbane and Melbourne only.

### Newman

Qantas	16	15	93.8	16	15	93.8
QantasLink	100	74	74.0	101	80	79.2
Virgin Australia	40	30	75.0	40	28	70.0
Virgin Australia Regional Airlines	16	11	68.8	16	11	68.8
All Airlines	172	130	75.6	173	134	77.5

Relates to services to and from Perth only.

Airport	Arrivals			Departures		
	Sectors	On Time		Sectors	On Time	
	Flown	No.	%	Flown	No.	%
<b>Perth</b>						
Jetstar	187	107	57.2	186	90	48.4
Qantas	684	395	57.7	682	443	65.0
QantasLink	593	349	58.9	596	443	74.3
Rex Airlines	1	1	100.0	1	1	100.0
Virgin Australia	791	473	59.8	795	585	73.6
Virgin Australia Regional Airlines	132	68	51.5	133	87	65.4
All Airlines	2,388	1,393	58.3	2,393	1,649	68.9
Relates to services to and from Adelaide, Brisbane, Broome, Darwin, Kalgoorlie, Karratha, Melbourne, Newman, Port Hedland and Sydney only.						
<b>Port Hedland</b>						
QantasLink	143	115	80.4	141	102	72.3
Virgin Australia	35	22	62.9	35	15	42.9
Virgin Australia Regional Airlines	20	13	65.0	20	7	35.0
All Airlines	198	150	75.8	196	124	63.3
Relates to services to and from Perth only.						
<b>Port Lincoln</b>						
QantasLink	132	113	85.6	130	111	85.4
Rex Airlines	147	104	70.7	147	114	77.6
All Airlines	279	217	77.8	277	225	81.2
Relates to services to and from Adelaide only.						
<b>Port Macquarie</b>						
QantasLink	112	92	82.1	113	89	78.8
Rex Airlines	52	40	76.9	52	37	71.2
All Airlines	164	132	80.5	165	126	76.4
Relates to services to and from Sydney only.						
<b>Proserpine</b>						
Jetstar	31	21	67.7	31	19	61.3
QantasLink	18	17	94.4	18	15	83.3
Virgin Australia	31	24	77.4	31	20	64.5
All Airlines	80	62	77.5	80	54	67.5
Relates to services to and from Brisbane only.						
<b>Rockhampton</b>						
QantasLink	186	133	71.5	184	129	70.1
Virgin Australia	162	78	48.1	163	83	50.9
All Airlines	348	211	60.6	347	212	61.1
Relates to services to and from Brisbane only.						
<b>Sunshine Coast</b>						
Jetstar	151	127	84.1	150	116	77.3
Qantas	91	61	67.0	90	54	60.0
Virgin Australia	120	105	87.5	120	85	70.8
All Airlines	362	293	80.9	360	255	70.8
Relates to services to and from Melbourne and Sydney only.						

Airport	Arrivals			Departures		
	Sectors	On Time		Sectors	On Time	
	Flown	No.	%	Flown	No.	%
<b>Sydney</b>						
Jetstar	1,349	1,016	75.3	1,359	1,032	75.9
Qantas	2,187	1,578	72.2	2,189	1,547	70.7
QantasLink	999	832	83.3	1,002	810	80.8
Rex Airlines	444	318	71.6	448	342	76.3
Virgin Australia	2,361	1,741	73.7	2,359	1,874	79.4
All Airlines	7,340	5,485	74.7	7,357	5,605	76.2

Relates to services to and from Adelaide, Albury, Ballina, Brisbane, Cairns, Canberra, Coffs Harbour, Dubbo, Gold Coast, Hamilton Island, Hobart, Launceston, Melbourne, Perth, Port Macquarie, Sunshine Coast and Wagga Wagga only.

#### Townsville

Jetstar	62	46	74.2	62	38	61.3
Qantas	20	16	80.0	20	13	65.0
QantasLink	303	227	74.9	303	216	71.3
Rex Airlines	13	13	100.0	12	11	91.7
Virgin Australia	140	80	57.1	140	74	52.9
All Airlines	538	382	71.0	537	352	65.5

Relates to services to and from Brisbane and Cairns only.

#### Wagga Wagga

QantasLink	111	94	84.7	111	96	86.5
Rex Airlines	92	69	75.0	92	71	77.2
All Airlines	203	163	80.3	203	167	82.3

Relates to services to and from Sydney only.



## Definitions

---

On time arrival	A flight arrival is counted as "on time" if it arrived at the gate before 15 minutes after the scheduled arrival time shown in the carriers' schedule. Neither diverted nor cancelled flights count as on time.
On time departure	A flight departure is counted as "on time" if it departs the gate before 15 minutes after the scheduled departure time shown in the carriers' schedule.
Cancellation	A flight removed from service within 7 days of scheduled departure is regarded as a cancellation.
On time departure percentage	The percentage of on time departures is measured against the number of departures <i>operated</i> on any particular sector.
On time arrival percentage	The percentage of on time arrivals is measured against the number of arrivals <i>operated</i> on any particular sector.
Cancellation percentage	The percentage of cancellations is measured against the number of services <i>scheduled</i> on any particular sector.

---

## Airlines and Reporting

Data has been gathered since November 2003, although some airlines commenced reporting at a later date, including Jetstar which first reported in May 2004, Tigerair Australia in April 2008, Virgin Australia Regional Airlines in May 2013, Skytrans in May 2023, Bonza in November 2023 and Hinterland in March 2024. Tigerair Australia ceased operations in March 2020 and data was not received for that month. Bonza ceased operations at the end of April 2024 and data was not received for that month.

Virgin Blue was rebranded as Virgin Australia in May 2011 and Tiger Airways was rebranded as Tigerair Australia in August 2013 and time series data in Microsoft Excel spread sheet format on the BITRE website have been revised to reflect these changes. With effect from August 2021, Regional Express is reported as Rex Airlines.

Services operated by Skywest on behalf of Virgin Australia using ATR/F100 aircraft commenced in November 2011 and were shown separately as Virgin Australia – ATR/F100 Operations. Virgin Australia Regional Airlines commenced operations in May 2013. It was formed after the acquisition of Skywest by Virgin Australia and represented a combination of operations previously reported under Skywest and Virgin Australia – ATR/F100 Operations. In February 2016, Virgin Australia transferred their ATR fleet from Virgin Australia Regional Airlines to Virgin Australia.