



Australian Government

**Department of Infrastructure, Transport,
Regional Development, Communications and the Arts**
Bureau of Infrastructure and Transport Research Economics

STATISTICAL REPORT



Aviation

**Domestic airline on time performance
December 2022**

© Commonwealth of Australia 2023

ISSN: 1832-0759

Ownership of intellectual property rights in this publication

Unless otherwise noted, copyright (and any other intellectual property rights, if any) in this publication is owned by the Commonwealth of Australia (referred to below as the Commonwealth).

Disclaimer

The material contained in this publication is made available on the understanding that the Commonwealth is not providing professional advice, and that users exercise their own skill and care with respect to its use, and seek independent advice if necessary.

The Commonwealth makes no representations or warranties as to the contents or accuracy of the information contained in this publication. To the extent permitted by law, the Commonwealth disclaims liability to any person or organisation in respect of anything done, or omitted to be done, in reliance upon information contained in this publication.

Creative Commons licence

With the exception of (a) the Coat of Arms; and (b) the Department of Infrastructure, Transport, Regional Development, Communications and the Arts' photos and graphics, copyright in this publication is licensed under a Creative Commons Attribution 3.0 Australia Licence.

Creative Commons Attribution 3.0 Australia Licence is a standard form licence agreement that allows you to copy, communicate and adapt this publication provided that you attribute the work to the Commonwealth and abide by the other licence terms. A summary of the licence terms is available from <http://creativecommons.org/licenses/by/3.0/au/deed.en>. The full licence terms are available from <http://creativecommons.org/licenses/by/3.0/au/legalcode>.

Use of the Coat of Arms

The Department of the Prime Minister and Cabinet sets the terms under which the Coat of Arms is used. Please refer to the Department's Commonwealth Coat of Arms and Government branding web page <http://www.dpmmc.gov.au/guidelines/index.cfm#brand> and, in particular, the Guidelines on the use of the Commonwealth Coat of Arms publication.

An appropriate citation for this report is:

Bureau of Infrastructure and Transport Research Economics (BITRE), 2022, Domestic airline on time performance, Statistical Report, BITRE, Canberra ACT.

Contact us

This publication is available in PDF format. All other rights are reserved, including in relation to any Departmental logos or trade marks which may exist. For enquiries regarding the licence and any use of this publication, please contact:

Bureau of Infrastructure and Transport Research Economics (BITRE)
Department of Infrastructure, Transport, Regional Development, Communications and the Arts
GPO Box 501, Canberra ACT 2601, Australia
Telephone: (international) +61 2 6274 7210
Fax: (international) +61 2 6274 6855
Email: bitre@infrastructure.gov.au
Website: www.bitre.gov.au

Inquiries

Should you require additional information about the statistics contained in this publication:

Telephone (02) 6274 6135

Electronic mail: AVSTATS@infrastructure.gov.au

Web site: <http://www.bitre.gov.au/statistics/aviation/otphome.aspx>

Foreword

The Bureau of Infrastructure and Transport Research Economics (BITRE) monitors the punctuality and reliability of major domestic airlines operating between Australian airports. The purpose of this is to allow for evaluation of overall industry and individual airline performance, so that consumers of air travel can make informed decisions.

The following domestic airlines currently report this information monthly to the BITRE: Jetstar, Qantas, QantasLink, Rex Airlines, Virgin Australia and Virgin Australia Regional Airlines.

Information presented in this report is for Australian domestic routes for which the passenger load averaged 8,000 or more passengers per month over the previous six months and where two or more airlines operated in competition on those routes. In order to present data for more routes during the period impacted by COVID-19, the passenger load restriction is not being applied. Data are presented for 60 routes in December 2022. Over time, routes which meet these criteria change as airline networks and traffic levels vary.

Participating airlines report their overall monthly network performance where this is possible.

Total industry figures encompass all services operated by reporting airlines only. These airlines collectively carried over 95 per cent of total domestic passengers (regular public transport only) in 2019.

The method of capturing on time performance varies between airlines utilising different recording systems. Jetstar and Qantas jet aircraft use Aircraft Communication Addressing and Reporting System (ACARS) to electronically measure on time performance. Rex Airlines, Virgin Australia, Virgin Australia Regional Airlines and the Qantas non-jet fleet record on time performance manually using records from pilots, gate agents and/or ground crews.

After initial data is collected, aggregate reports are reviewed by participating airlines prior to publication.

Reports and detailed time series data in Microsoft Excel spreadsheet format are available from the BITRE website at: <http://www.bitre.gov.au/statistics/aviation/otphome.aspx>

Contents

	Page
Industry performance	1
Individual routes	9
Airports.....	22
Definitions	28
Airlines and Reporting	29

Industry performance

For December 2022, on time performance over all routes operated by participating airlines (Jetstar, Qantas, QantasLink, Rex Airlines, Virgin Australia and Virgin Australia Regional Airlines) averaged 71.1 per cent for on time arrivals and 70.8 per cent for on time departures. The cancellation rate for the month was 3.4 per cent. The equivalent figures for December 2021 were 84.2 per cent for on time arrivals, 83.2 per cent for on time departures and 7.6 per cent for cancellations.

This month's on time arrivals figure was significantly lower than the long term average performance for all routes (81.6 per cent) and the on time departures figure was also significantly lower than the long term average (82.8 per cent). The rate of cancellations was higher than the long term average of 2.1 per cent.

The Qantas network (Qantas and QantasLink combined operations) recorded 76.2 per cent for on time arrivals while the Virgin Australia network (Virgin Australia and Virgin Australia Regional Airlines combined operations) recorded 67.4 per cent. Qantas achieved the highest on time arrivals among the major domestic airlines at 73.0 per cent followed by Virgin Australia at 67.3 per cent and Jetstar at 62.0 per cent. Of the regional airlines, QantasLink recorded 78.4 per cent for on time arrivals, followed by Rex Airlines at 73.2 per cent and Virgin Australia Regional Airlines at 69.9 per cent.

The Qantas network recorded 75.3 per cent for on time departures while the Virgin Australia network recorded 67.5 per cent. Qantas achieved the highest level of on time departures among the major domestic airlines for December 2022 at 71.9 per cent, followed by Virgin Australia at 67.5 per cent and Jetstar at 60.4 per cent. Of the regional airlines, QantasLink recorded 77.6 per cent for on time departures, followed by Rex Airlines at 75.6 per cent and Virgin Australia Regional Airlines at 68.1 per cent.

Jetstar recorded the highest percentage of cancellations at 7.2 per cent during the month, followed by Virgin Australia Regional Airlines at 5.0 per cent, Virgin Australia at 3.4 per cent, Qantas at 2.9 per cent, QantasLink at 2.5 per cent, and Rex Airlines at 0.7 per cent.

Airlines' on time performance varies across the routes they serve. Individual route data by specific airline for 60 routes are shown on pages 9-21.

Of the 60 routes which met the criteria for on time performance reporting in December 2022, the Adelaide-Canberra route had the highest percentage of on time arrivals (90.2 per cent) and the highest percentage of on time departures (89.2 per cent). The Darwin-Perth route had the lowest percentage of on time arrivals (50.0 per cent) and the lowest percentage of on time departures (also 46.2 per cent).

Cancellations were highest on the Sydney-Melbourne route at 9.3 per cent followed by the Melbourne-Sydney route at 9.1 per cent, the Sunshine Coast-Sydney route at 8.1 per cent, the Sydney-Canberra route at 7.1 per cent and the Canberra-Sydney route at 6.8 per cent.

Armidale Airport recorded the highest percentage of on time arrivals (86.9 per cent) and Mount Isa Airport recorded the highest percentage of on time departures (85.7 per cent). Mildura Airport recorded the lowest percentage of on time arrivals (57.1 per cent) and Darwin Airport recorded the lowest percentage of on time departures (54.1 per cent). These figures only refer to reported routes and do not cover all flights at these airports.

Table 1 On time performance for December 2022 – Total Industry

	Sectors		Arrivals On Time		Departures On Time		Cancellations	
	Scheduled	Flown	No.	%	No.	%	No.	%
Jetstar	7,283	6,760	4,194	62.0	4,086	60.4	523	7.2
Qantas - all QF designated services	18,528	18,029	13,742	76.2	13,574	75.3	499	2.7
Rex Airlines	6,148	6,107	4,470	73.2	4,617	75.6	41	0.7
Virgin Australia - all VA designated services	12,366	11,941	8,046	67.4	8,064	67.5	425	3.4
All Airlines	44,325	42,837	30,452	71.1	30,341	70.8	1,488	3.4
Individual operating entities								
Qantas	7,472	7,254	5,294	73.0	5,215	71.9	218	2.9
QantasLink	11,056	10,775	8,448	78.4	8,359	77.6	281	2.5
Virgin Australia	11,762	11,367	7,645	67.3	7,673	67.5	395	3.4
Virgin Australia Regional Airlines	604	574	401	69.9	391	68.1	30	5.0

Total airline network data (including routes not shown in this report).

Airlines' on time performance varies across the routes they serve. Individual route data by specific airline are shown on page 9 and onwards.

Table 2 Top ten routes for on time performance for December 2022 (participating airlines only)

Arrivals		Departures	
Route	On Time (%)	Route	On Time (%)
Adelaide-Canberra	90.2	Adelaide-Canberra	89.2
Townsville-Cairns	89.3	Cairns-Townsville	87.0
Sydney-Armidale	86.9	Townsville-Cairns	86.8
Cairns-Townsville	86.3	Adelaide-Alice Springs	86.4
Brisbane-Emerald	84.2	Brisbane-Mount Isa	85.9
Sydney-Port Macquarie	84.1	Brisbane-Emerald	85.7
Albury-Sydney	84.0	Mount Isa-Brisbane	85.7
Sydney-Coffs Harbour	83.9	Armidale-Sydney	85.5
Sydney-Canberra	83.9	Canberra-Adelaide	84.5
Perth-Karratha	82.8	Gladstone-Brisbane	84.2

Table 3 Top ten airports for on time performance for December 2022 (participating airlines and reported routes only)

Arrivals		Departures	
Airport	On Time (%)	Airport	On Time (%)
Armidale	86.9	Mount Isa	85.7
Emerald	84.2	Armidale	85.5
Port Macquarie	84.1	Gladstone	84.2
Coffs Harbour	83.9	Wagga Wagga	82.7
Karratha	82.8	Port Macquarie	82.3
Newman	82.7	Coffs Harbour	81.3
Broome	81.7	Albury	80.9
Mount Isa	81.3	Emerald	79.7
Port Hedland	81.1	Port Lincoln	79.0
Albury	79.9	Dubbo	78.7

Total industry on time performance

Figure 1 On time performance (by month from December 2019)—Total Industry

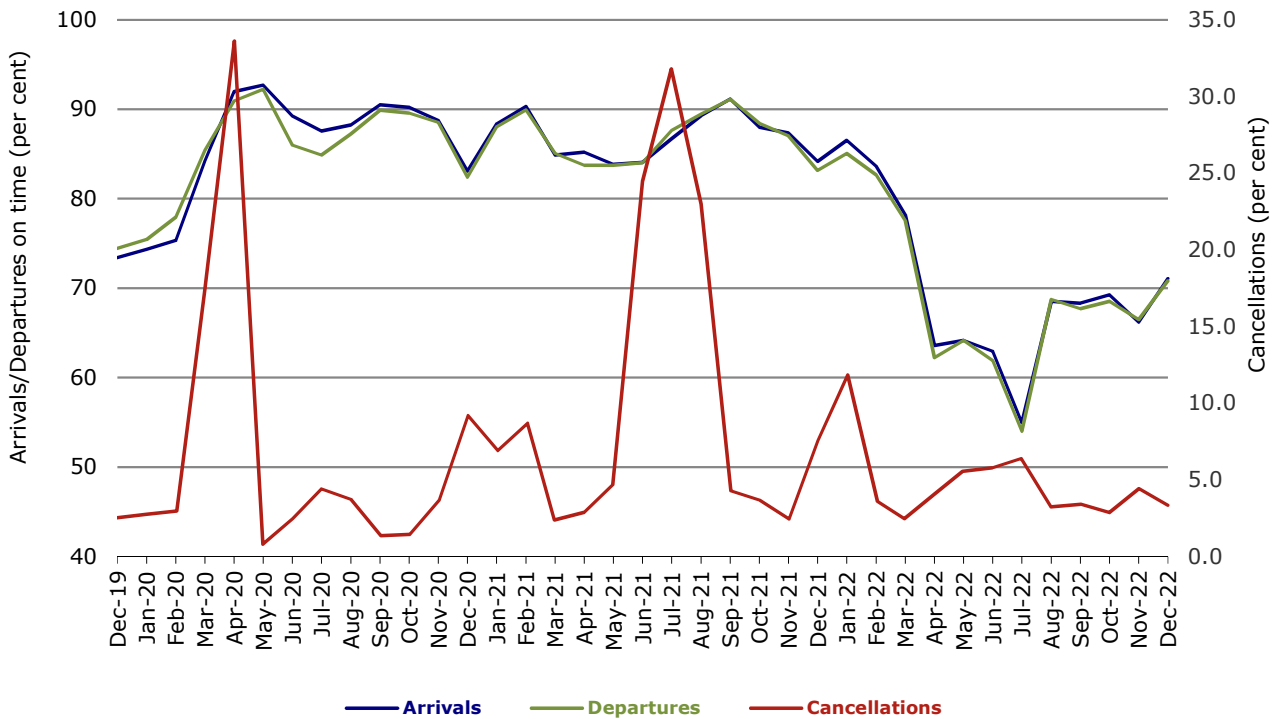


Figure 2 Arrivals on time (by month from December 2021)

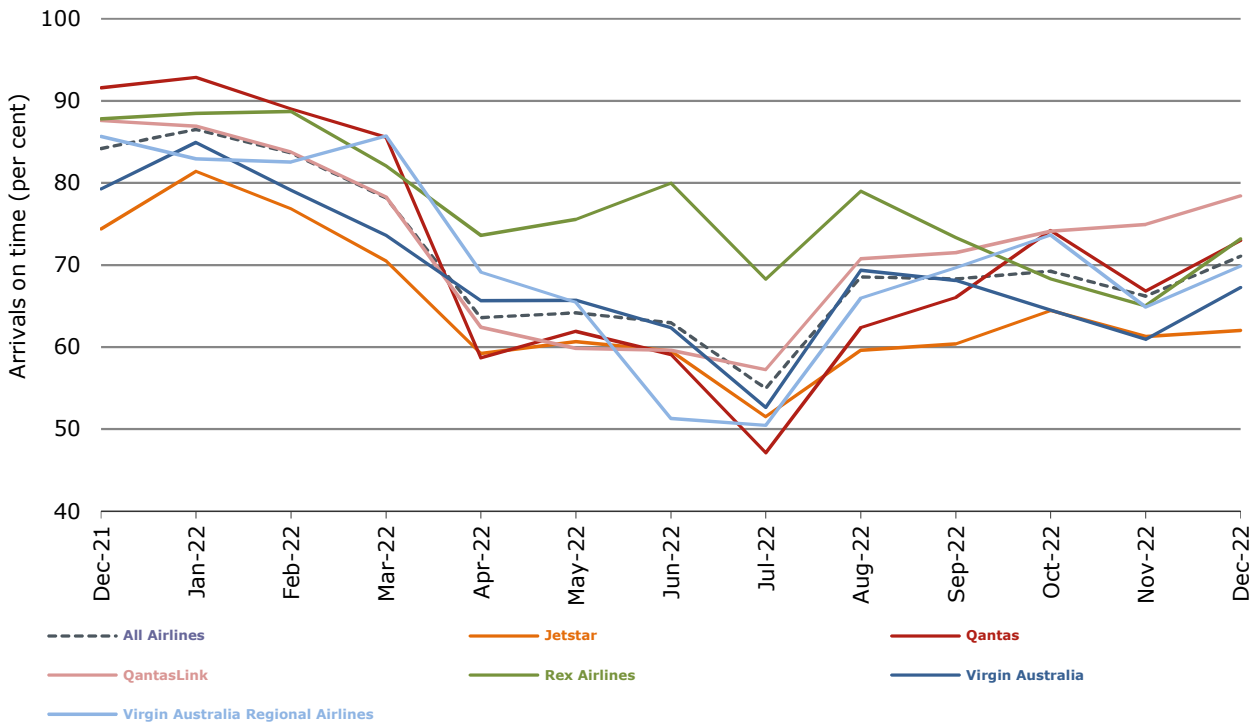


Figure 3 Departures on time (by month from December 2021)

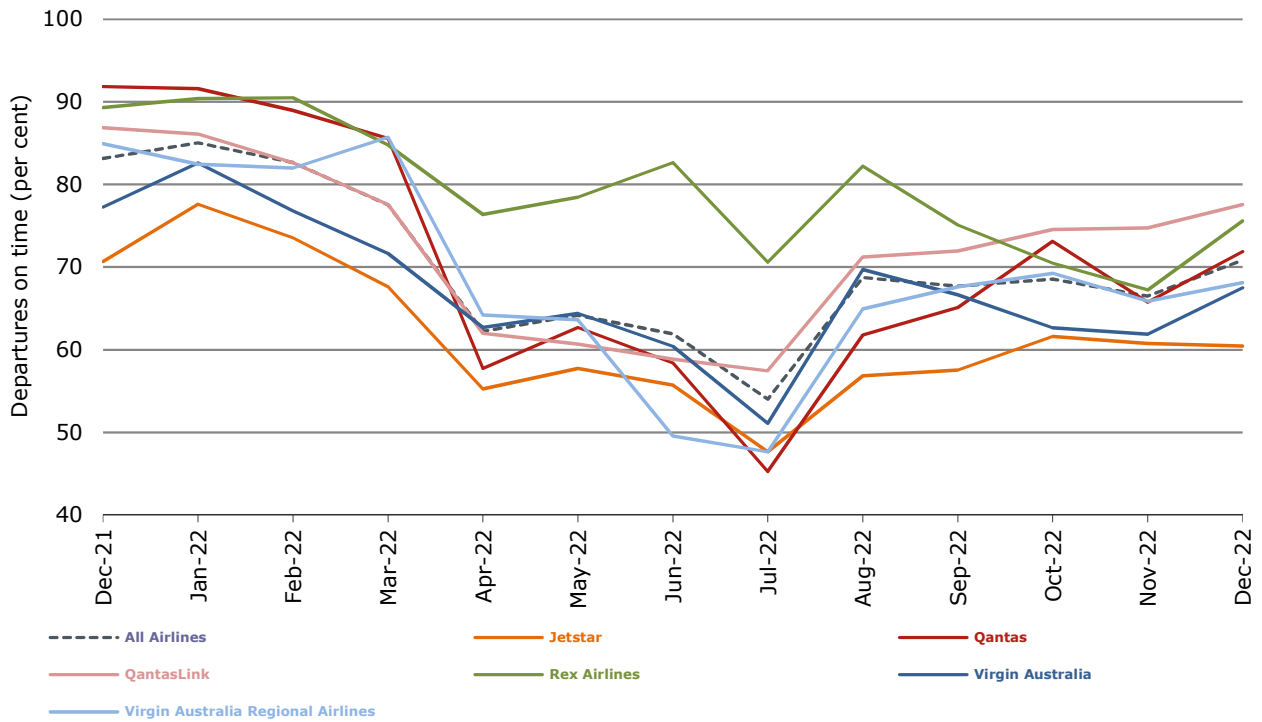
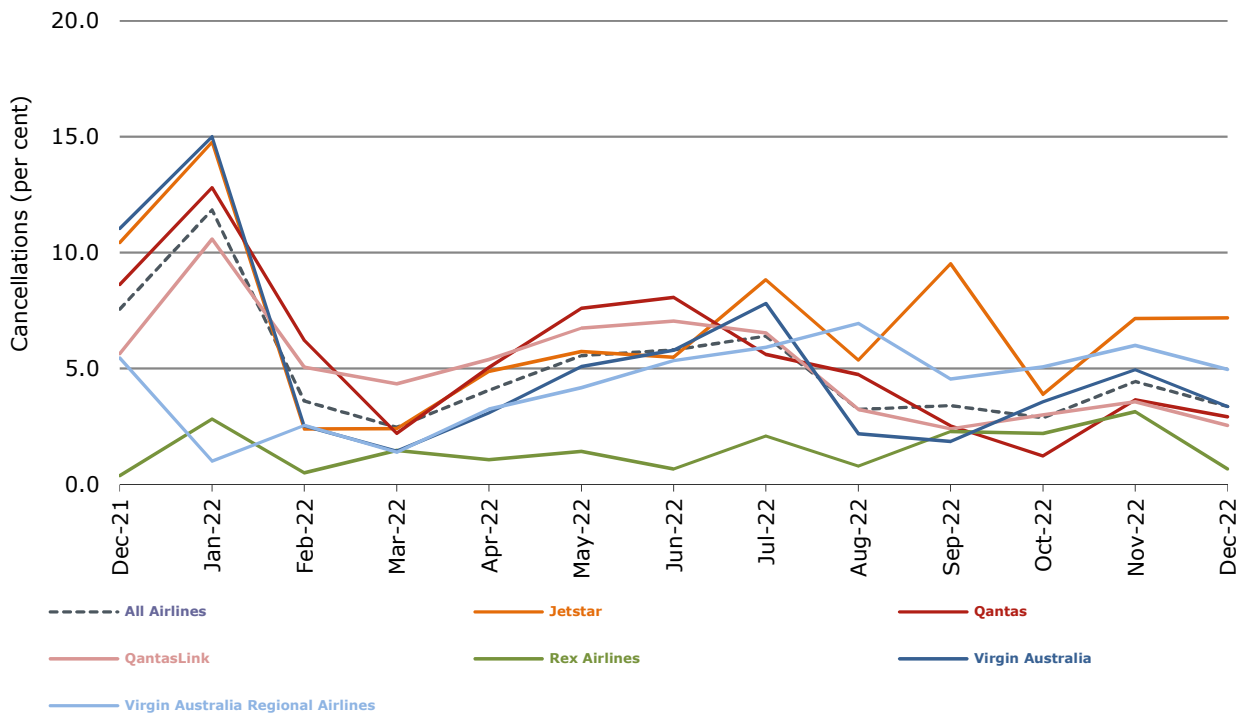


Figure 4 Cancellations (by month from December 2021)



Major domestic airlines on time performance

Figure 5 On time performance (by month from December 2019)—Jetstar

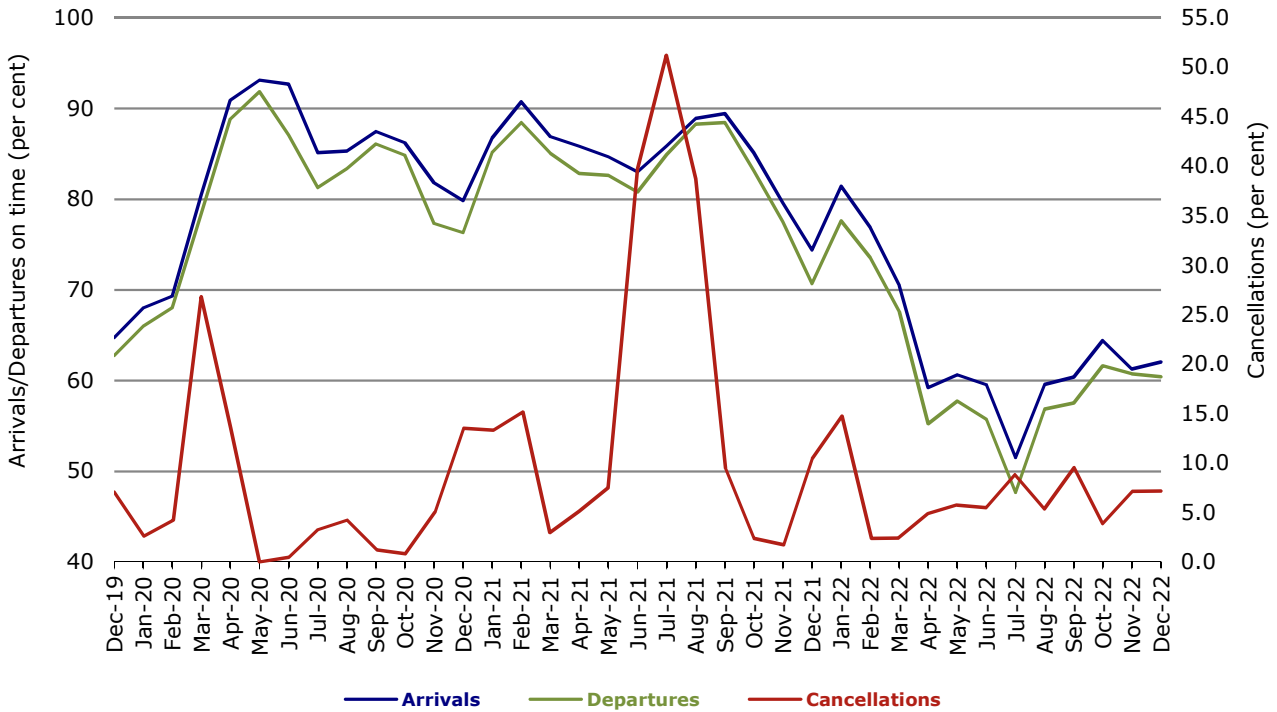


Figure 6 On time performance (by month from December 2019)—Qantas

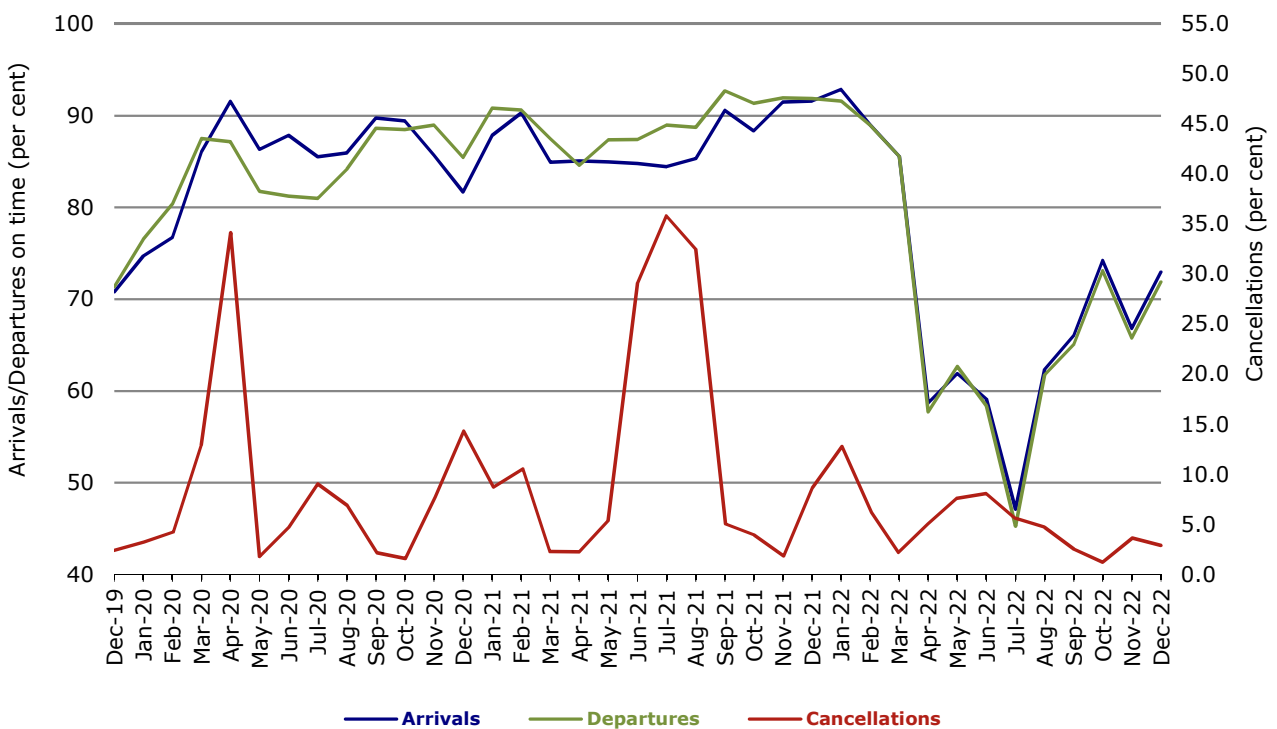
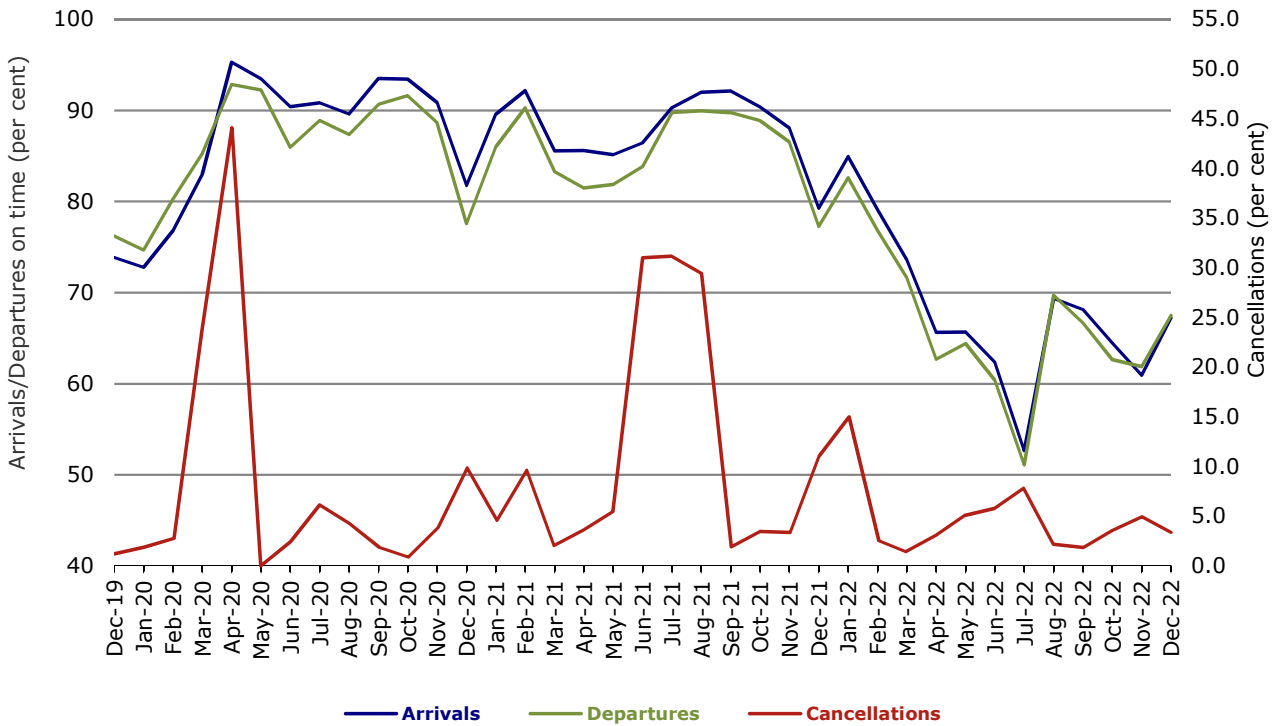


Figure 7 On time performance (by month from December 2019)—Virgin Australia



Major regional airlines on time performance

Figure 8 On time performance (by month from December 2019)—QantasLink

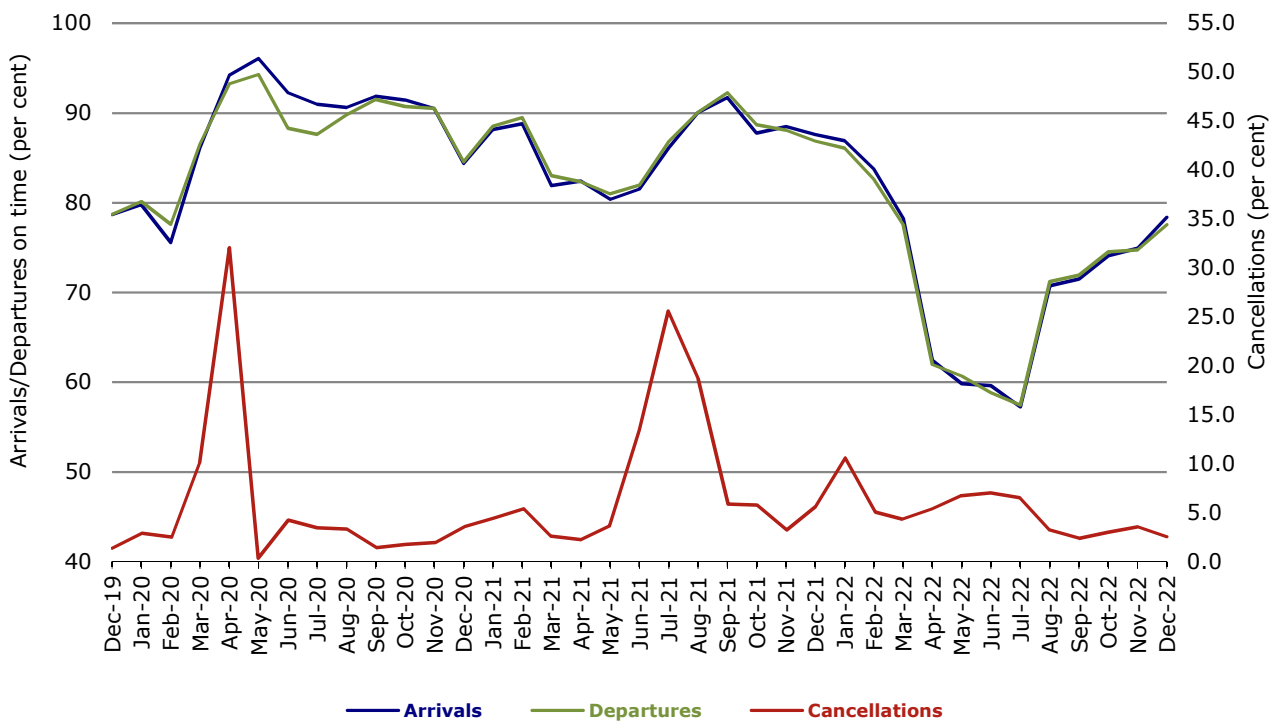


Figure 9 On time performance (by month from December 2019)—Rex Airlines

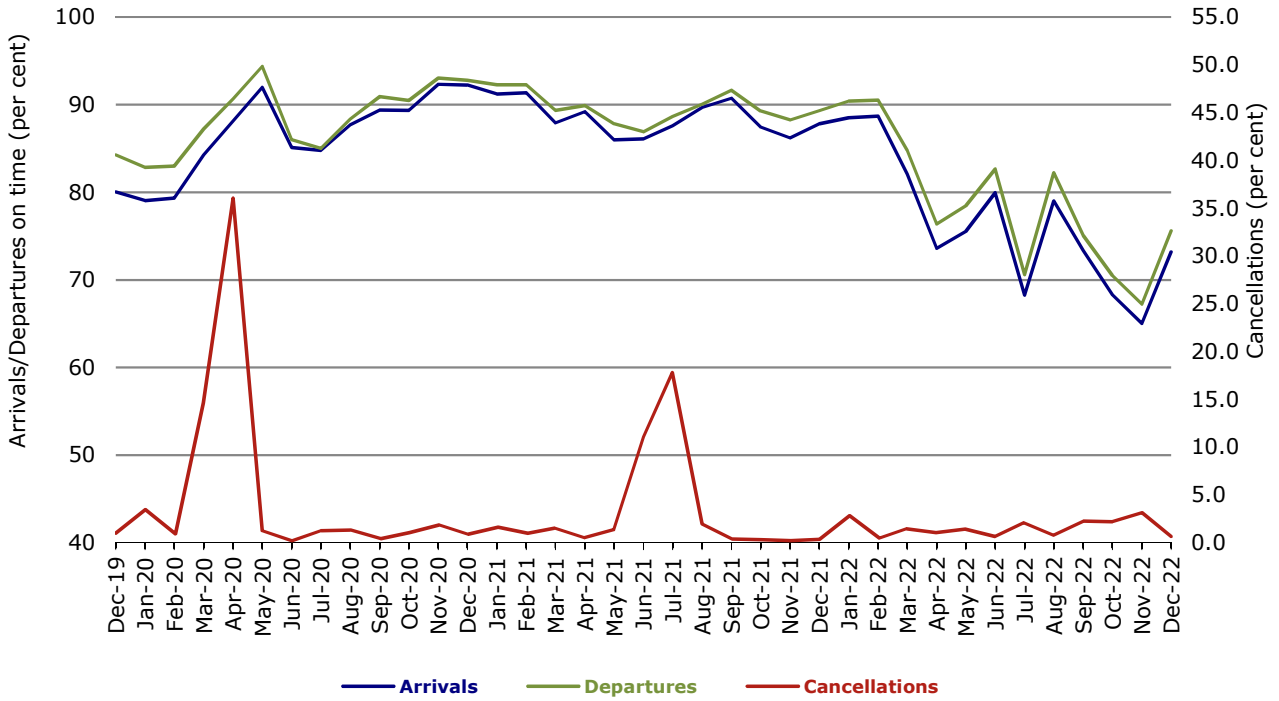
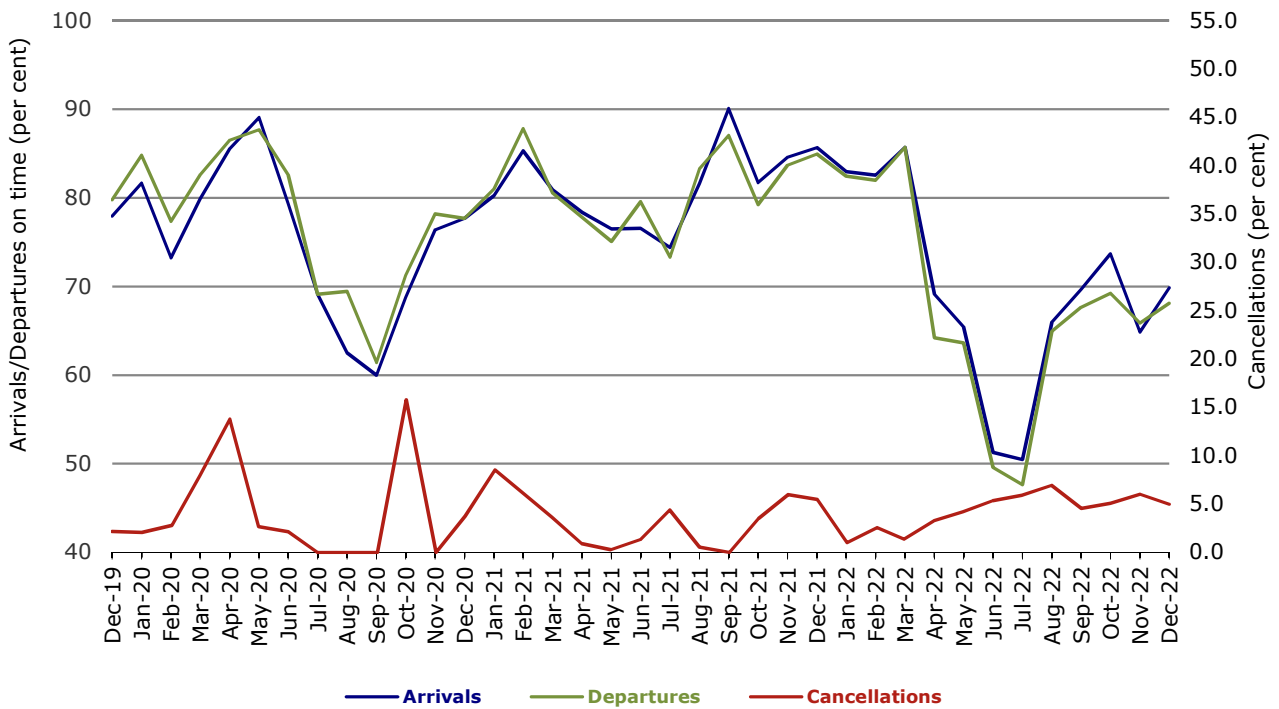


Figure 10 On time performance (by month from December 2019)—Virgin Australia Regional Airlines



Individual routes

On time performance is reported for all routes where the passenger load averages over 8000 passengers per month over the previous six months, and where two or more airlines operate in competition on those routes. In order to present data for more routes during the period impacted by COVID-19, the passenger load restriction is not being applied. There are now 60 routes for which data are presented.

	<i>Sectors</i>		<i>Arrivals On Time</i>		<i>Departures On Time</i>		<i>Cancellations</i>	
	<i>Sched.</i>	<i>Flown</i>	<i>No.</i>	<i>%</i>	<i>No.</i>	<i>%</i>	<i>No.</i>	<i>%</i>
Adelaide-Alice Springs								
QantasLink	48	48	36	75.0	42	87.5	0	0.0
Virgin Australia	11	11	8	72.7	9	81.8	0	0.0
All Airlines	59	59	44	74.6	51	86.4	0	0.0
Adelaide-Brisbane								
Jetstar	32	31	22	71.0	23	74.2	1	3.1
Qantas	35	35	30	85.7	29	82.9	0	0.0
QantasLink	100	99	58	58.6	57	57.6	1	1.0
Virgin Australia	143	140	110	78.6	95	67.9	3	2.1
All Airlines	310	305	220	72.1	204	66.9	5	1.6
Adelaide-Canberra								
QantasLink	79	79	75	94.9	76	96.2	0	0.0
Virgin Australia	23	23	17	73.9	15	65.2	0	0.0
All Airlines	102	102	92	90.2	91	89.2	0	0.0
Adelaide-Gold Coast								
Jetstar	34	33	28	84.8	29	87.9	1	2.9
Virgin Australia	43	42	29	69.0	32	76.2	1	2.3
All Airlines	77	75	57	76.0	61	81.3	2	2.6
Adelaide-Melbourne								
Jetstar	111	106	63	59.4	58	54.7	5	4.5
Qantas	225	222	152	68.5	154	69.4	3	1.3
QantasLink	14	14	9	64.3	12	85.7	0	0.0
Rex Airlines	58	58	44	75.9	46	79.3	0	0.0
Virgin Australia	263	253	177	70.0	169	66.8	10	3.8
All Airlines	671	653	445	68.1	439	67.2	18	2.7
Adelaide-Perth								
Jetstar	30	28	21	75.0	21	75.0	2	6.7
Qantas	99	99	82	82.8	72	72.7	0	0.0
Virgin Australia	18	17	7	41.2	7	41.2	1	5.6
Virgin Australia Regional Airlines	52	43	25	58.1	17	39.5	9	17.3
All Airlines	199	187	135	72.2	117	62.6	12	6.0
Adelaide-Port Lincoln								
QantasLink	117	113	102	90.3	99	87.6	4	3.4
Rex Airlines	137	135	95	70.4	98	72.6	2	1.5
All Airlines	254	248	197	79.4	197	79.4	6	2.4
Adelaide-Sydney								
Jetstar	118	105	78	74.3	74	70.5	13	11.0
Qantas	210	207	153	73.9	139	67.1	3	1.4
Virgin Australia	145	138	95	68.8	89	64.5	7	4.8
All Airlines	473	450	326	72.4	302	67.1	23	4.9

	Sectors		Arrivals On Time		Departures On Time		Cancellations	
	Sched.	Flown	No.	%	No.	%	No.	%
Albury-Sydney								
QantasLink	98	96	87	90.6	81	84.4	2	2.0
Rex Airlines	99	98	76	77.6	76	77.6	1	1.0
All Airlines	197	194	163	84.0	157	80.9	3	1.5
Alice Springs-Adelaide								
QantasLink	48	48	29	60.4	24	50.0	0	0.0
Virgin Australia	11	11	8	72.7	8	72.7	0	0.0
All Airlines	59	59	37	62.7	32	54.2	0	0.0
Armidale-Sydney								
QantasLink	97	96	83	86.5	86	89.6	1	1.0
Rex Airlines	57	56	38	67.9	44	78.6	1	1.8
All Airlines	154	152	121	79.6	130	85.5	2	1.3
Ballina-Sydney								
Jetstar	79	79	45	57.0	49	62.0	0	0.0
QantasLink	98	94	77	81.9	73	77.7	4	4.1
Virgin Australia	51	50	33	66.0	32	64.0	1	2.0
All Airlines	228	223	155	69.5	154	69.1	5	2.2
Brisbane-Adelaide								
Jetstar	31	31	16	51.6	18	58.1	0	0.0
Qantas	35	35	29	82.9	29	82.9	0	0.0
QantasLink	99	98	52	53.1	67	68.4	1	1.0
Virgin Australia	143	140	102	72.9	104	74.3	3	2.1
All Airlines	308	304	199	65.5	218	71.7	4	1.3
Brisbane-Cairns								
Jetstar	89	87	54	62.1	51	58.6	2	2.2
Qantas	124	124	104	83.9	101	81.5	0	0.0
QantasLink	10	10	7	70.0	7	70.0	0	0.0
Virgin Australia	138	136	72	52.9	84	61.8	2	1.4
All Airlines	361	357	237	66.4	243	68.1	4	1.1
Brisbane-Canberra								
Jetstar	30	30	28	93.3	27	90.0	0	0.0
Qantas	19	19	18	94.7	19	100.0	0	0.0
QantasLink	134	133	104	78.2	107	80.5	1	0.7
Virgin Australia	104	102	76	74.5	70	68.6	2	1.9
All Airlines	287	284	226	79.6	223	78.5	3	1.0
Brisbane-Darwin								
Jetstar	23	22	14	63.6	19	86.4	1	4.3
Qantas	13	13	10	76.9	10	76.9	0	0.0
QantasLink	31	31	12	38.7	15	48.4	0	0.0
Virgin Australia	40	40	23	57.5	31	77.5	0	0.0
All Airlines	107	106	59	55.7	75	70.8	1	0.9
Brisbane-Emerald								
QantasLink	106	106	90	84.9	90	84.9	0	0.0
Virgin Australia	27	27	22	81.5	24	88.9	0	0.0
All Airlines	133	133	112	84.2	114	85.7	0	0.0
Brisbane-Gladstone								
QantasLink	122	118	95	80.5	93	78.8	4	3.3
Virgin Australia	49	47	35	74.5	41	87.2	2	4.1
All Airlines	171	165	130	78.8	134	81.2	6	3.5

	Sectors		Arrivals On Time		Departures On Time		Cancellations	
	Sched.	Flown	No.	%	No.	%	No.	%
Brisbane-Hamilton Island								
Qantas	19	19	17	89.5	18	94.7	0	0.0
Virgin Australia	46	46	31	67.4	36	78.3	0	0.0
All Airlines	65	65	48	73.8	54	83.1	0	0.0
Brisbane-Hobart								
Jetstar	31	31	26	83.9	26	83.9	0	0.0
QantasLink	24	23	13	56.5	14	60.9	1	4.2
Virgin Australia	68	65	47	72.3	47	72.3	3	4.4
All Airlines	123	119	86	72.3	87	73.1	4	3.3
Brisbane-Launceston								
Jetstar	30	29	19	65.5	18	62.1	1	3.3
Virgin Australia	31	31	23	74.2	25	80.6	0	0.0
All Airlines	61	60	42	70.0	43	71.7	1	1.6
Brisbane-Mackay								
Jetstar	31	30	22	73.3	22	73.3	1	3.2
Qantas	109	108	87	80.6	80	74.1	1	0.9
QantasLink	10	10	7	70.0	7	70.0	0	0.0
Virgin Australia	138	137	55	40.1	72	52.6	1	0.7
All Airlines	288	285	171	60.0	181	63.5	3	1.0
Brisbane-Melbourne								
Jetstar	143	131	77	58.8	73	55.7	12	8.4
Qantas	313	307	228	74.3	238	77.5	6	1.9
Rex Airlines	64	60	39	65.0	36	60.0	4	6.3
Virgin Australia	386	370	191	51.6	207	55.9	16	4.1
All Airlines	906	868	535	61.6	554	63.8	38	4.2
Brisbane-Mount Isa								
Qantas	39	39	37	94.9	37	94.9	0	0.0
QantasLink	13	13	11	84.6	11	84.6	0	0.0
Virgin Australia	12	12	4	33.3	7	58.3	0	0.0
All Airlines	64	64	52	81.3	55	85.9	0	0.0
Brisbane-Newcastle								
Jetstar	48	48	38	79.2	39	81.3	0	0.0
QantasLink	125	121	100	82.6	98	81.0	4	3.2
Virgin Australia	79	78	48	61.5	56	71.8	1	1.3
All Airlines	252	247	186	75.3	193	78.1	5	2.0
Brisbane-Perth								
Jetstar	24	22	13	59.1	10	45.5	2	8.3
Qantas	148	148	105	70.9	113	76.4	0	0.0
Virgin Australia	129	123	68	55.3	73	59.3	6	4.7
All Airlines	301	293	186	63.5	196	66.9	8	2.7
Brisbane-Proserpine								
Jetstar	38	38	24	63.2	30	78.9	0	0.0
QantasLink	27	27	23	85.2	24	88.9	0	0.0
Virgin Australia	43	43	31	72.1	35	81.4	0	0.0
All Airlines	108	108	78	72.2	89	82.4	0	0.0
Brisbane-Rockhampton								
QantasLink	166	161	130	80.7	127	78.9	5	3.0
Virgin Australia	134	133	71	53.4	91	68.4	1	0.7
All Airlines	300	294	201	68.4	218	74.1	6	2.0

	Sectors		Arrivals On Time		Departures On Time		Cancellations	
	Sched.	Flown	No.	%	No.	%	No.	%
Brisbane-Sydney								
Jetstar	156	128	83	64.8	75	58.6	28	17.9
Qantas	460	438	342	78.1	342	78.1	22	4.8
Rex Airlines	144	144	114	79.2	116	80.6	0	0.0
Virgin Australia	442	418	276	66.0	277	66.3	24	5.4
All Airlines	1 202	1 128	815	72.3	810	71.8	74	6.2
Brisbane-Townsville								
Jetstar	49	48	37	77.1	42	87.5	1	2.0
Qantas	94	92	76	82.6	78	84.8	2	2.1
QantasLink	32	32	18	56.3	19	59.4	0	0.0
Virgin Australia	135	129	67	51.9	78	60.5	6	4.4
All Airlines	310	301	198	65.8	217	72.1	9	2.9
Broome-Perth								
QantasLink	76	74	56	75.7	57	77.0	2	2.6
Virgin Australia	9	9	4	44.4	4	44.4	0	0.0
Virgin Australia Regional Airlines	40	38	25	65.8	23	60.5	2	5.0
All Airlines	125	121	85	70.2	84	69.4	4	3.2
Cairns-Brisbane								
Jetstar	88	87	50	57.5	57	65.5	1	1.1
Qantas	124	124	111	89.5	104	83.9	0	0.0
QantasLink	10	10	7	70.0	7	70.0	0	0.0
Virgin Australia	137	135	89	65.9	82	60.7	2	1.5
All Airlines	359	356	257	72.2	250	70.2	3	0.8
Cairns-Melbourne								
Jetstar	96	90	42	46.7	44	48.9	6	6.3
Qantas	38	38	30	78.9	28	73.7	0	0.0
Virgin Australia	61	57	42	73.7	41	71.9	4	6.6
All Airlines	195	185	114	61.6	113	61.1	10	5.1
Cairns-Sydney								
Jetstar	91	90	62	68.9	64	71.1	1	1.1
Qantas	68	68	47	69.1	48	70.6	0	0.0
Virgin Australia	99	95	73	76.8	72	75.8	4	4.0
All Airlines	258	253	182	71.9	184	72.7	5	1.9
Cairns-Townsville								
QantasLink	153	148	130	87.8	131	88.5	5	3.3
Rex Airlines	13	13	9	69.2	9	69.2	0	0.0
All Airlines	166	161	139	86.3	140	87.0	5	3.0
Canberra-Adelaide								
QantasLink	80	80	60	75.0	69	86.3	0	0.0
Virgin Australia	23	23	14	60.9	18	78.3	0	0.0
All Airlines	103	103	74	71.8	87	84.5	0	0.0
Canberra-Brisbane								
Jetstar	30	30	29	96.7	28	93.3	0	0.0
Qantas	19	19	18	94.7	18	94.7	0	0.0
QantasLink	134	132	98	74.2	100	75.8	2	1.5
Virgin Australia	104	102	80	78.4	72	70.6	2	1.9
All Airlines	287	283	225	79.5	218	77.0	4	1.4
Canberra-Gold Coast								
Jetstar	19	16	10	62.5	9	56.3	3	15.8
Virgin Australia	35	35	26	74.3	24	68.6	0	0.0
All Airlines	54	51	36	70.6	33	64.7	3	5.6

	Sectors		Arrivals On Time		Departures On Time		Cancellations	
	Sched.	Flown	No.	%	No.	%	No.	%
Canberra-Melbourne								
Jetstar	32	30	12	40.0	10	33.3	2	6.3
QantasLink	182	176	138	78.4	146	83.0	6	3.3
Rex Airlines	32	32	16	50.0	18	56.3	0	0.0
Virgin Australia	114	113	75	66.4	71	62.8	1	0.9
All Airlines	360	351	241	68.7	245	69.8	9	2.5
Canberra-Sydney								
QantasLink	392	360	262	72.8	267	74.2	32	8.2
Virgin Australia	242	231	196	84.8	191	82.7	11	4.5
All Airlines	634	591	458	77.5	458	77.5	43	6.8
Coffs Harbour-Sydney								
QantasLink	112	111	86	77.5	87	78.4	1	0.9
Rex Airlines	120	119	94	79.0	100	84.0	1	0.8
All Airlines	232	230	180	78.3	187	81.3	2	0.9
Darwin-Brisbane								
Jetstar	23	22	13	59.1	9	40.9	1	4.3
Qantas	14	14	12	85.7	11	78.6	0	0.0
QantasLink	31	31	26	83.9	24	77.4	0	0.0
Virgin Australia	40	40	29	72.5	16	40.0	0	0.0
All Airlines	108	107	80	74.8	60	56.1	1	0.9
Darwin-Melbourne								
Jetstar	25	24	11	45.8	9	37.5	1	4.0
Qantas	29	29	24	82.8	24	82.8	0	0.0
Virgin Australia	29	28	17	60.7	14	50.0	1	3.4
All Airlines	83	81	52	64.2	47	58.0	2	2.4
Darwin-Perth								
Qantas	16	16	11	68.8	9	56.3	0	0.0
QantasLink	15	15	6	40.0	5	33.3	0	0.0
Virgin Australia	3	3	1	33.3	1	33.3	0	0.0
Virgin Australia Regional Airlines	18	18	8	44.4	9	50.0	0	0.0
All Airlines	52	52	26	50.0	24	46.2	0	0.0
Darwin-Sydney								
Jetstar	24	22	15	68.2	10	45.5	2	8.3
Qantas	36	34	27	79.4	22	64.7	2	5.6
Virgin Australia	31	31	27	87.1	14	45.2	0	0.0
All Airlines	91	87	69	79.3	46	52.9	4	4.4
Dubbo-Sydney								
QantasLink	106	103	86	83.5	84	81.6	3	2.8
Rex Airlines	113	113	79	69.9	86	76.1	0	0.0
All Airlines	219	216	165	76.4	170	78.7	3	1.4
Emerald-Brisbane								
QantasLink	106	106	85	80.2	83	78.3	0	0.0
Virgin Australia	27	27	23	85.2	23	85.2	0	0.0
All Airlines	133	133	108	81.2	106	79.7	0	0.0
Gladstone-Brisbane								
QantasLink	124	119	103	86.6	102	85.7	5	4.0
Virgin Australia	49	46	24	52.2	37	80.4	3	6.1
All Airlines	173	165	127	77.0	139	84.2	8	4.6

	Sectors		Arrivals On Time		Departures On Time		Cancellations	
	Sched.	Flown	No.	%	No.	%	No.	%
Gold Coast-Adelaide								
Jetstar	34	33	27	81.8	27	81.8	1	2.9
Virgin Australia	43	42	29	69.0	28	66.7	1	2.3
All Airlines	77	75	56	74.7	55	73.3	2	2.6
Gold Coast-Canberra								
Jetstar	18	18	11	61.1	10	55.6	0	0.0
Virgin Australia	35	35	23	65.7	23	65.7	0	0.0
All Airlines	53	53	34	64.2	33	62.3	0	0.0
Gold Coast-Melbourne								
Jetstar	210	190	118	62.1	135	71.1	20	9.5
Qantas	60	58	38	65.5	44	75.9	2	3.3
QantasLink	4	4	3	75.0	3	75.0	0	0.0
Rex Airlines	33	33	22	66.7	24	72.7	0	0.0
Virgin Australia	325	317	220	69.4	207	65.3	8	2.5
All Airlines	632	602	401	66.6	413	68.6	30	4.7
Gold Coast-Sydney								
Jetstar	275	247	166	67.2	170	68.8	28	10.2
Qantas	89	89	54	60.7	66	74.2	0	0.0
QantasLink	20	20	13	65.0	14	70.0	0	0.0
Rex Airlines	32	32	26	81.3	21	65.6	0	0.0
Virgin Australia	321	316	229	72.5	230	72.8	5	1.6
All Airlines	737	704	488	69.3	501	71.2	33	4.5
Hamilton Island-Brisbane								
Qantas	19	19	16	84.2	15	78.9	0	0.0
Virgin Australia	46	46	33	71.7	29	63.0	0	0.0
All Airlines	65	65	49	75.4	44	67.7	0	0.0
Hamilton Island-Sydney								
Jetstar	24	24	10	41.7	10	41.7	0	0.0
Qantas	30	29	17	58.6	16	55.2	1	3.3
Virgin Australia	30	30	15	50.0	17	56.7	0	0.0
All Airlines	84	83	42	50.6	43	51.8	1	1.2
Hobart-Brisbane								
Jetstar	31	31	23	74.2	22	71.0	0	0.0
QantasLink	24	22	12	54.5	11	50.0	2	8.3
Virgin Australia	68	65	49	75.4	48	73.8	3	4.4
All Airlines	123	118	84	71.2	81	68.6	5	4.1
Hobart-Melbourne								
Jetstar	178	161	94	58.4	85	52.8	17	9.6
Qantas	70	66	46	69.7	46	69.7	4	5.7
QantasLink	85	81	56	69.1	55	67.9	4	4.7
Virgin Australia	146	144	85	59.0	87	60.4	2	1.4
All Airlines	479	452	281	62.2	273	60.4	27	5.6
Hobart-Sydney								
Jetstar	90	88	56	63.6	55	62.5	2	2.2
Qantas	45	45	33	73.3	25	55.6	0	0.0
QantasLink	41	40	30	75.0	33	82.5	1	2.4
Virgin Australia	84	83	63	75.9	65	78.3	1	1.2
All Airlines	260	256	182	71.1	178	69.5	4	1.5

	Sectors		Arrivals On Time		Departures On Time		Cancellations	
	Sched.	Flown	No.	%	No.	%	No.	%
Kalgoorlie-Perth								
Qantas	16	16	10	62.5	8	50.0	0	0.0
QantasLink	47	47	37	78.7	36	76.6	0	0.0
Virgin Australia	29	29	19	65.5	18	62.1	0	0.0
Virgin Australia Regional Airlines	42	42	31	73.8	32	76.2	0	0.0
All Airlines	134	134	97	72.4	94	70.1	0	0.0
Karratha-Perth								
Qantas	24	24	18	75.0	17	70.8	0	0.0
QantasLink	104	102	73	71.6	66	64.7	2	1.9
Virgin Australia	22	22	18	81.8	18	81.8	0	0.0
Virgin Australia Regional Airlines	32	32	25	78.1	25	78.1	0	0.0
All Airlines	182	180	134	74.4	126	70.0	2	1.1
Launceston-Brisbane								
Jetstar	30	29	17	58.6	14	48.3	1	3.3
Virgin Australia	31	31	24	77.4	22	71.0	0	0.0
All Airlines	61	60	41	68.3	36	60.0	1	1.6
Launceston-Melbourne								
Jetstar	114	108	64	59.3	58	53.7	6	5.3
QantasLink	108	98	72	73.5	69	70.4	10	9.3
Virgin Australia	114	113	91	80.5	88	77.9	1	0.9
All Airlines	336	319	227	71.2	215	67.4	17	5.1
Launceston-Sydney								
Jetstar	55	54	30	55.6	28	51.9	1	1.8
QantasLink	31	31	22	71.0	18	58.1	0	0.0
Virgin Australia	31	30	15	50.0	18	60.0	1	3.2
All Airlines	117	115	67	58.3	64	55.7	2	1.7
Mackay-Brisbane								
Jetstar	31	30	20	66.7	19	63.3	1	3.2
Qantas	110	109	86	78.9	80	73.4	1	0.9
QantasLink	14	14	11	78.6	9	64.3	0	0.0
Virgin Australia	138	137	67	48.9	66	48.2	1	0.7
All Airlines	293	290	184	63.4	174	60.0	3	1.0
Melbourne-Adelaide								
Jetstar	110	105	68	64.8	68	64.8	5	4.5
Qantas	225	221	156	70.6	158	71.5	4	1.8
QantasLink	14	12	6	50.0	6	50.0	2	14.3
Rex Airlines	57	57	39	68.4	38	66.7	0	0.0
Virgin Australia	264	255	149	58.4	171	67.1	9	3.4
All Airlines	670	650	418	64.3	441	67.8	20	3.0
Melbourne-Brisbane								
Jetstar	142	131	69	52.7	61	46.6	11	7.7
Qantas	314	309	231	74.8	224	72.5	5	1.6
Rex Airlines	62	59	36	61.0	40	67.8	3	4.8
Virgin Australia	384	362	246	68.0	240	66.3	22	5.7
All Airlines	902	861	582	67.6	565	65.6	41	4.5
Melbourne-Cairns								
Jetstar	96	91	52	57.1	45	49.5	5	5.2
Qantas	38	38	30	78.9	28	73.7	0	0.0
Virgin Australia	61	57	47	82.5	44	77.2	4	6.6
All Airlines	195	186	129	69.4	117	62.9	9	4.6

	Sectors		Arrivals On Time		Departures On Time		Cancellations	
	Sched.	Flown	No.	%	No.	%	No.	%
Melbourne-Canberra								
Jetstar	32	30	12	40.0	12	40.0	2	6.3
QantasLink	184	179	148	82.7	149	83.2	5	2.7
Rex Airlines	31	31	19	61.3	20	64.5	0	0.0
Virgin Australia	114	113	70	61.9	70	61.9	1	0.9
All Airlines	361	353	249	70.5	251	71.1	8	2.2
Melbourne-Darwin								
Jetstar	25	24	16	66.7	14	58.3	1	4.0
Qantas	29	29	13	44.8	13	44.8	0	0.0
Virgin Australia	30	28	16	57.1	16	57.1	2	6.7
All Airlines	84	81	45	55.6	43	53.1	3	3.6
Melbourne-Gold Coast								
Jetstar	210	191	111	58.1	99	51.8	19	9.0
Qantas	59	57	49	86.0	50	87.7	2	3.4
QantasLink	4	4	4	100.0	4	100.0	0	0.0
Rex Airlines	33	33	25	75.8	27	81.8	0	0.0
Virgin Australia	325	318	219	68.9	207	65.1	7	2.2
All Airlines	631	603	408	67.7	387	64.2	28	4.4
Melbourne-Hobart								
Jetstar	178	161	79	49.1	80	49.7	17	9.6
Qantas	70	67	51	76.1	51	76.1	3	4.3
QantasLink	84	80	58	72.5	56	70.0	4	4.8
Virgin Australia	146	144	91	63.2	102	70.8	2	1.4
All Airlines	478	452	279	61.7	289	63.9	26	5.4
Melbourne-Launceston								
Jetstar	114	109	65	59.6	66	60.6	5	4.4
QantasLink	108	102	75	73.5	80	78.4	6	5.6
Virgin Australia	114	113	74	65.5	80	70.8	1	0.9
All Airlines	336	324	214	66.0	226	69.8	12	3.6
Melbourne-Mildura								
QantasLink	93	91	58	63.7	52	57.1	2	2.2
Rex Airlines	93	93	47	50.5	50	53.8	0	0.0
All Airlines	186	184	105	57.1	102	55.4	2	1.1
Melbourne-Newcastle								
Jetstar	54	54	35	64.8	35	64.8	0	0.0
QantasLink	53	52	38	73.1	38	73.1	1	1.9
Virgin Australia	31	31	20	64.5	24	77.4	0	0.0
All Airlines	138	137	93	67.9	97	70.8	1	0.7
Melbourne-Perth								
Jetstar	86	80	45	56.3	46	57.5	6	7.0
Qantas	202	201	110	54.7	106	52.7	1	0.5
Virgin Australia	193	189	127	67.2	114	60.3	4	2.1
All Airlines	481	470	282	60.0	266	56.6	11	2.3
Melbourne-Sunshine Coast								
Jetstar	71	69	51	73.9	50	72.5	2	2.8
Qantas	18	17	17	100.0	15	88.2	1	5.6
QantasLink	33	33	24	72.7	22	66.7	0	0.0
Virgin Australia	107	105	74	70.5	71	67.6	2	1.9
All Airlines	229	224	166	74.1	158	70.5	5	2.2

	Sectors		Arrivals On Time		Departures On Time		Cancellations	
	Sched.	Flown	No.	%	No.	%	No.	%
Melbourne-Sydney								
Jetstar	395	328	186	56.7	176	53.7	67	17.0
Qantas	686	628	433	68.9	456	72.6	58	8.5
Rex Airlines	205	197	152	77.2	159	80.7	8	3.9
Virgin Australia	754	702	447	63.7	507	72.2	52	6.9
All Airlines	2 040	1 855	1 218	65.7	1 298	70.0	185	9.1
Mildura-Melbourne								
QantasLink	93	91	39	42.9	44	48.4	2	2.2
Rex Airlines	94	94	57	60.6	59	62.8	0	0.0
All Airlines	187	185	96	51.9	103	55.7	2	1.1
Mount Isa-Brisbane								
Qantas	39	38	36	94.7	35	92.1	1	2.6
QantasLink	13	13	11	84.6	11	84.6	0	0.0
Virgin Australia	12	12	5	41.7	8	66.7	0	0.0
All Airlines	64	63	52	82.5	54	85.7	1	1.6
Newcastle-Brisbane								
Jetstar	48	47	36	76.6	36	76.6	1	2.1
QantasLink	128	124	109	87.9	104	83.9	4	3.1
Virgin Australia	80	79	56	70.9	63	79.7	1	1.3
All Airlines	256	250	201	80.4	203	81.2	6	2.3
Newcastle-Melbourne								
Jetstar	53	52	34	65.4	32	61.5	1	1.9
QantasLink	52	51	33	64.7	38	74.5	1	1.9
Virgin Australia	31	31	20	64.5	21	67.7	0	0.0
All Airlines	136	134	87	64.9	91	67.9	2	1.5
Newman-Perth								
Qantas	12	11	9	81.8	10	90.9	1	8.3
QantasLink	91	87	60	69.0	59	67.8	4	4.4
Virgin Australia	14	14	8	57.1	9	64.3	0	0.0
Virgin Australia Regional Airlines	38	37	27	73.0	27	73.0	1	2.6
All Airlines	155	149	104	69.8	105	70.5	6	3.9
Perth-Adelaide								
Jetstar	29	27	14	51.9	15	55.6	2	6.9
Qantas	100	100	76	76.0	72	72.0	0	0.0
Virgin Australia	18	17	11	64.7	13	76.5	1	5.6
Virgin Australia Regional Airlines	50	42	23	54.8	27	64.3	8	16.0
All Airlines	197	186	124	66.7	127	68.3	11	5.6
Perth-Brisbane								
Jetstar	26	23	12	52.2	7	30.4	3	11.5
Qantas	149	147	129	87.8	110	74.8	2	1.3
Virgin Australia	126	122	91	74.6	64	52.5	4	3.2
All Airlines	301	292	232	79.5	181	62.0	9	3.0
Perth-Broome								
QantasLink	75	73	64	87.7	60	82.2	2	2.7
Virgin Australia	9	9	7	77.8	6	66.7	0	0.0
Virgin Australia Regional Airlines	40	38	27	71.1	24	63.2	2	5.0
All Airlines	124	120	98	81.7	90	75.0	4	3.2

	Sectors		Arrivals On Time		Departures On Time		Cancellations	
	Sched.	Flown	No.	%	No.	%	No.	%
Perth-Darwin								
Qantas	16	16	11	68.8	11	68.8	0	0.0
QantasLink	15	15	10	66.7	10	66.7	0	0.0
Virgin Australia	3	3	1	33.3	1	33.3	0	0.0
Virgin Australia Regional Airlines	18	18	11	61.1	11	61.1	0	0.0
All Airlines	52	52	33	63.5	33	63.5	0	0.0
Perth-Kalgoorlie								
Qantas	16	16	13	81.3	13	81.3	0	0.0
QantasLink	47	47	38	80.9	39	83.0	0	0.0
Virgin Australia	29	29	22	75.9	22	75.9	0	0.0
Virgin Australia Regional Airlines	42	42	32	76.2	32	76.2	0	0.0
All Airlines	134	134	105	78.4	106	79.1	0	0.0
Perth-Karratha								
Qantas	24	24	22	91.7	22	91.7	0	0.0
QantasLink	104	102	80	78.4	82	80.4	2	1.9
Virgin Australia	22	22	21	95.5	20	90.9	0	0.0
Virgin Australia Regional Airlines	32	32	26	81.3	26	81.3	0	0.0
All Airlines	182	180	149	82.8	150	83.3	2	1.1
Perth-Melbourne								
Jetstar	85	77	27	35.1	24	31.2	8	9.4
Qantas	202	201	127	63.2	122	60.7	1	0.5
Virgin Australia	206	201	140	69.7	133	66.2	5	2.4
All Airlines	493	479	294	61.4	279	58.2	14	2.8
Perth-Newman								
Qantas	12	11	11	100.0	11	100.0	1	8.3
QantasLink	91	88	68	77.3	66	75.0	3	3.3
Virgin Australia	14	14	13	92.9	13	92.9	0	0.0
Virgin Australia Regional Airlines	38	37	32	86.5	32	86.5	1	2.6
All Airlines	155	150	124	82.7	122	81.3	5	3.2
Perth-Port Hedland								
Qantas	31	31	28	90.3	28	90.3	0	0.0
QantasLink	88	87	69	79.3	73	83.9	1	1.1
Virgin Australia	13	13	10	76.9	9	69.2	0	0.0
Virgin Australia Regional Airlines	35	33	26	78.8	26	78.8	2	5.7
All Airlines	167	164	133	81.1	136	82.9	3	1.8
Perth-Sydney								
Jetstar	44	41	18	43.9	7	17.1	3	6.8
Qantas	195	194	126	64.9	114	58.8	1	0.5
Virgin Australia	146	141	101	71.6	89	63.1	5	3.4
All Airlines	385	376	245	65.2	210	55.9	9	2.3
Port Hedland-Perth								
Qantas	31	31	23	74.2	23	74.2	0	0.0
QantasLink	87	86	55	64.0	54	62.8	1	1.1
Virgin Australia	13	13	3	23.1	1	7.7	0	0.0
Virgin Australia Regional Airlines	36	33	17	51.5	18	54.5	3	8.3
All Airlines	167	163	98	60.1	96	58.9	4	2.4
Port Lincoln-Adelaide								
QantasLink	117	112	100	89.3	102	91.1	5	4.3
Rex Airlines	138	136	90	66.2	94	69.1	2	1.4
All Airlines	255	248	190	76.6	196	79.0	7	2.7

	Sectors		Arrivals On Time		Departures On Time		Cancellations	
	Sched.	Flown	No.	%	No.	%	No.	%
Port Macquarie-Sydney								
QantasLink	110	109	93	85.3	93	85.3	1	0.9
Rex Airlines	89	89	62	69.7	70	78.7	0	0.0
All Airlines	199	198	155	78.3	163	82.3	1	0.5
Proserpine-Brisbane								
Jetstar	38	38	23	60.5	23	60.5	0	0.0
QantasLink	27	27	23	85.2	23	85.2	0	0.0
Virgin Australia	43	43	29	67.4	26	60.5	0	0.0
All Airlines	108	108	75	69.4	72	66.7	0	0.0
Rockhampton-Brisbane								
QantasLink	167	159	125	78.6	123	77.4	8	4.8
Virgin Australia	135	134	89	66.4	92	68.7	1	0.7
All Airlines	302	293	214	73.0	215	73.4	9	3.0
Sunshine Coast-Melbourne								
Jetstar	72	69	41	59.4	45	65.2	3	4.2
Qantas	18	17	14	82.4	13	76.5	1	5.6
QantasLink	32	32	16	50.0	16	50.0	0	0.0
Virgin Australia	107	104	59	56.7	69	66.3	3	2.8
All Airlines	229	222	130	58.6	143	64.4	7	3.1
Sunshine Coast-Sydney								
Jetstar	105	89	32	36.0	41	46.1	16	15.2
Qantas	24	24	16	66.7	15	62.5	0	0.0
QantasLink	74	71	54	76.1	60	84.5	3	4.1
Virgin Australia	92	87	62	71.3	70	80.5	5	5.4
All Airlines	295	271	164	60.5	186	68.6	24	8.1
Sydney-Adelaide								
Jetstar	120	108	75	69.4	69	63.9	12	10.0
Qantas	212	211	133	63.0	146	69.2	1	0.5
Virgin Australia	145	138	90	65.2	91	65.9	7	4.8
All Airlines	477	457	298	65.2	306	67.0	20	4.2
Sydney-Albury								
QantasLink	96	96	79	82.3	71	74.0	0	0.0
Rex Airlines	98	98	76	77.6	78	79.6	0	0.0
All Airlines	194	194	155	79.9	149	76.8	0	0.0
Sydney-Armidale								
QantasLink	96	95	84	88.4	76	80.0	1	1.0
Rex Airlines	58	58	49	84.5	48	82.8	0	0.0
All Airlines	154	153	133	86.9	124	81.0	1	0.6
Sydney-Ballina								
Jetstar	79	79	54	68.4	51	64.6	0	0.0
QantasLink	99	95	75	78.9	71	74.7	4	4.0
Virgin Australia	51	50	34	68.0	35	70.0	1	2.0
All Airlines	229	224	163	72.8	157	70.1	5	2.2
Sydney-Brisbane								
Jetstar	155	126	79	62.7	75	59.5	29	18.7
Qantas	461	440	305	69.3	296	67.3	21	4.6
Rex Airlines	145	145	119	82.1	119	82.1	0	0.0
Virgin Australia	444	421	303	72.0	301	71.5	23	5.2
All Airlines	1 205	1 132	806	71.2	791	69.9	73	6.1

	Sectors		Arrivals On Time		Departures On Time		Cancellations	
	Sched.	Flown	No.	%	No.	%	No.	%
Sydney-Cairns								
Jetstar	91	90	65	72.2	62	68.9	1	1.1
Qantas	68	68	44	64.7	45	66.2	0	0.0
Virgin Australia	99	96	72	75.0	73	76.0	3	3.0
All Airlines	258	254	181	71.3	180	70.9	4	1.6
Sydney-Canberra								
QantasLink	392	358	291	81.3	273	76.3	34	8.7
Virgin Australia	242	231	203	87.9	194	84.0	11	4.5
All Airlines	634	589	494	83.9	467	79.3	45	7.1
Sydney-Coffs Harbour								
QantasLink	112	111	87	78.4	79	71.2	1	0.9
Rex Airlines	119	119	106	89.1	101	84.9	0	0.0
All Airlines	231	230	193	83.9	180	78.3	1	0.4
Sydney-Darwin								
Jetstar	22	21	13	61.9	13	61.9	1	4.5
Qantas	36	35	31	88.6	31	88.6	1	2.8
Virgin Australia	30	30	16	53.3	20	66.7	0	0.0
All Airlines	88	86	60	69.8	64	74.4	2	2.3
Sydney-Dubbo								
QantasLink	105	102	79	77.5	69	67.6	3	2.9
Rex Airlines	116	116	95	81.9	86	74.1	0	0.0
All Airlines	221	218	174	79.8	155	71.1	3	1.4
Sydney-Gold Coast								
Jetstar	275	247	164	66.4	154	62.3	28	10.2
Qantas	89	89	68	76.4	67	75.3	0	0.0
QantasLink	20	20	17	85.0	16	80.0	0	0.0
Rex Airlines	32	32	24	75.0	26	81.3	0	0.0
Virgin Australia	320	315	223	70.8	233	74.0	5	1.6
All Airlines	736	703	496	70.6	496	70.6	33	4.5
Sydney-Hamilton Island								
Jetstar	24	24	11	45.8	11	45.8	0	0.0
Qantas	30	29	19	65.5	19	65.5	1	3.3
Virgin Australia	30	30	21	70.0	20	66.7	0	0.0
All Airlines	84	83	51	61.4	50	60.2	1	1.2
Sydney-Hobart								
Jetstar	90	89	62	69.7	54	60.7	1	1.1
Qantas	45	45	34	75.6	31	68.9	0	0.0
QantasLink	40	39	32	82.1	32	82.1	1	2.5
Virgin Australia	84	83	72	86.7	75	90.4	1	1.2
All Airlines	259	256	200	78.1	192	75.0	3	1.2
Sydney-Launceston								
Jetstar	53	53	35	66.0	32	60.4	0	0.0
QantasLink	31	31	19	61.3	22	71.0	0	0.0
Virgin Australia	31	30	23	76.7	20	66.7	1	3.2
All Airlines	115	114	77	67.5	74	64.9	1	0.9
Sydney-Melbourne								
Jetstar	394	325	196	60.3	178	54.8	69	17.5
Qantas	687	629	461	73.3	445	70.7	58	8.4
Rex Airlines	203	195	147	75.4	155	79.5	8	3.9
Virgin Australia	743	689	445	64.6	424	61.5	54	7.3
All Airlines	2 027	1 838	1 249	68.0	1 202	65.4	189	9.3

	Sectors		Arrivals On Time		Departures On Time		Cancellations	
	Sched.	Flown	No.	%	No.	%	No.	%
Sydney-Perth								
Jetstar	44	42	22	52.4	16	38.1	2	4.5
Qantas	194	193	105	54.4	112	58.0	1	0.5
Virgin Australia	156	152	90	59.2	79	52.0	4	2.6
All Airlines	394	387	217	56.1	207	53.5	7	1.8
Sydney-Port Macquarie								
QantasLink	109	108	93	86.1	86	79.6	1	0.9
Rex Airlines	87	87	71	81.6	66	75.9	0	0.0
All Airlines	196	195	164	84.1	152	77.9	1	0.5
Sydney-Sunshine Coast								
Jetstar	104	92	48	52.2	54	58.7	12	11.5
Qantas	24	24	19	79.2	18	75.0	0	0.0
QantasLink	73	71	50	70.4	54	76.1	2	2.7
Virgin Australia	92	87	70	80.5	73	83.9	5	5.4
All Airlines	293	274	187	68.2	199	72.6	19	6.5
Sydney-Wagga Wagga								
QantasLink	105	102	79	77.5	74	72.5	3	2.9
Rex Airlines	101	101	83	82.2	86	85.1	0	0.0
All Airlines	206	203	162	79.8	160	78.8	3	1.5
Townsville-Brisbane								
Jetstar	49	48	40	83.3	39	81.3	1	2.0
Qantas	93	91	80	87.9	77	84.6	2	2.2
QantasLink	33	33	12	36.4	14	42.4	0	0.0
Virgin Australia	136	130	75	57.7	62	47.7	6	4.4
All Airlines	311	302	207	68.5	192	63.6	9	2.9
Townsville-Cairns								
QantasLink	153	146	132	90.4	128	87.7	7	4.6
Rex Airlines	13	13	10	76.9	10	76.9	0	0.0
All Airlines	166	159	142	89.3	138	86.8	7	4.2
Wagga Wagga-Sydney								
QantasLink	105	102	85	83.3	84	82.4	3	2.9
Rex Airlines	95	95	74	77.9	79	83.2	0	0.0
All Airlines	200	197	159	80.7	163	82.7	3	1.5

Airports

The following data reports by airport against flights operated on published routes only. This month, 8 major city airports and 28 regional city airports are covered.

Airport	Arrivals			Departures		
	Sectors	On Time		Sectors	On Time	
	Flown	No.	%	Flown	No.	%
Adelaide						
Jetstar	304	200	65.8	303	205	67.7
Qantas	567	394	69.5	563	394	70.0
QantasLink	350	247	70.6	353	286	81.0
Rex Airlines	193	129	66.8	193	144	74.6
Virgin Australia	626	403	64.4	624	416	66.7
Virgin Australia Regional Airlines	42	23	54.8	43	17	39.5
All Airlines	2,082	1,396	67.1	2,079	1,462	70.3

Relates to services to and from Alice Springs, Brisbane, Canberra, Gold Coast, Melbourne, Perth, Port Lincoln and Sydney only.

Albury

QantasLink	96	79	82.3	96	81	84.4
Rex Airlines	98	76	77.6	98	76	77.6
All Airlines	194	155	79.9	194	157	80.9

Relates to services to and from Sydney only.

Alice Springs

QantasLink	48	36	75.0	48	24	50.0
Virgin Australia	11	8	72.7	11	8	72.7
All Airlines	59	44	74.6	59	32	54.2

Relates to services to and from Adelaide only.

Armidale

QantasLink	95	84	88.4	96	86	89.6
Rex Airlines	58	49	84.5	56	44	78.6
All Airlines	153	133	86.9	152	130	85.5

Relates to services to and from Sydney only.

Ballina

Jetstar	79	54	68.4	79	49	62.0
QantasLink	95	75	78.9	94	73	77.7
Virgin Australia	50	34	68.0	50	32	64.0
All Airlines	224	163	72.8	223	154	69.1

Relates to services to and from Sydney only.

Brisbane

Jetstar	673	433	64.3	675	450	66.7
Qantas	1,345	1,054	78.4	1,342	1,065	79.4
QantasLink	889	680	76.5	883	679	76.9
Rex Airlines	204	155	76.0	204	152	74.5
Virgin Australia	2,072	1,422	68.6	2,077	1,358	65.4
All Airlines	5,183	3,744	72.2	5,181	3,704	71.5

Relates to services to and from Adelaide, Cairns, Canberra, Darwin, Emerald, Gladstone, Hamilton Island, Hobart, Launceston, Mackay, Melbourne, Mount Isa, Newcastle, Perth, Proserpine, Rockhampton, Sydney and Townsville only.

Airport	Arrivals			Departures		
	Sectors	On Time		Sectors	On Time	
	Flown	No.	%	Flown	No.	%
Broome						
QantasLink	73	64	87.7	74	57	77.0
Virgin Australia	9	7	77.8	9	4	44.4
Virgin Australia Regional Airlines	38	27	71.1	38	23	60.5
All Airlines	120	98	81.7	121	84	69.4
Relates to services to and from Perth only.						
Cairns						
Jetstar	268	171	63.8	267	165	61.8
Qantas	230	178	77.4	230	180	78.3
QantasLink	156	139	89.1	158	138	87.3
Rex Airlines	13	10	76.9	13	9	69.2
Virgin Australia	289	191	66.1	287	195	67.9
All Airlines	956	689	72.1	955	687	71.9
Relates to services to and from Brisbane, Melbourne, Sydney and Townsville only.						
Canberra						
Jetstar	78	51	65.4	76	47	61.8
Qantas	19	18	94.7	19	18	94.7
QantasLink	749	618	82.5	748	582	77.8
Rex Airlines	31	19	61.3	32	18	56.3
Virgin Australia	504	389	77.2	504	376	74.6
All Airlines	1,381	1,095	79.3	1,379	1,041	75.5
Relates to services to and from Adelaide, Brisbane, Gold Coast, Melbourne and Sydney only.						
Coffs Harbour						
QantasLink	111	87	78.4	111	87	78.4
Rex Airlines	119	106	89.1	119	100	84.0
All Airlines	230	193	83.9	230	187	81.3
Relates to services to and from Sydney only.						
Darwin						
Jetstar	67	43	64.2	68	28	41.2
Qantas	93	65	69.9	93	66	71.0
QantasLink	46	22	47.8	46	29	63.0
Virgin Australia	101	56	55.4	102	45	44.1
Virgin Australia Regional Airlines	18	11	61.1	18	9	50.0
All Airlines	325	197	60.6	327	177	54.1
Relates to services to and from Brisbane, Melbourne, Perth and Sydney only.						
Dubbo						
QantasLink	102	79	77.5	103	84	81.6
Rex Airlines	116	95	81.9	113	86	76.1
All Airlines	218	174	79.8	216	170	78.7
Relates to services to and from Sydney only.						
Emerald						
QantasLink	106	90	84.9	106	83	78.3
Virgin Australia	27	22	81.5	27	23	85.2
All Airlines	133	112	84.2	133	106	79.7
Relates to services to and from Brisbane only.						

Airport	Arrivals			Departures		
	Sectors Flown	On Time		Sectors Flown	On Time	
		No.	%		No.	%
Gladstone						
QantasLink	118	95	80.5	119	102	85.7
Virgin Australia	47	35	74.5	46	37	80.4
All Airlines	165	130	78.8	165	139	84.2
Relates to services to and from Brisbane only.						
Gold Coast						
Jetstar	487	313	64.3	488	342	70.1
Qantas	146	117	80.1	147	110	74.8
QantasLink	24	21	87.5	24	17	70.8
Rex Airlines	65	49	75.4	65	45	69.2
Virgin Australia	710	497	70.0	710	488	68.7
All Airlines	1,432	997	69.6	1,434	1,002	69.9
Relates to services to and from Adelaide, Canberra, Melbourne and Sydney only.						
Hamilton Island						
Jetstar	24	11	45.8	24	10	41.7
Qantas	48	36	75.0	48	31	64.6
Virgin Australia	76	52	68.4	76	46	60.5
All Airlines	148	99	66.9	148	87	58.8
Relates to services to and from Brisbane and Sydney only.						
Hobart						
Jetstar	281	167	59.4	280	162	57.9
Qantas	112	85	75.9	111	71	64.0
QantasLink	142	103	72.5	143	99	69.2
Virgin Australia	292	210	71.9	292	200	68.5
All Airlines	827	565	68.3	826	532	64.4
Relates to services to and from Brisbane, Melbourne and Sydney only.						
Kalgoorlie						
Qantas	16	13	81.3	16	8	50.0
QantasLink	47	38	80.9	47	36	76.6
Virgin Australia	29	22	75.9	29	18	62.1
Virgin Australia Regional Airlines	42	32	76.2	42	32	76.2
All Airlines	134	105	78.4	134	94	70.1
Relates to services to and from Perth only.						
Karratha						
Qantas	24	22	91.7	24	17	70.8
QantasLink	102	80	78.4	102	66	64.7
Virgin Australia	22	21	95.5	22	18	81.8
Virgin Australia Regional Airlines	32	26	81.3	32	25	78.1
All Airlines	180	149	82.8	180	126	70.0
Relates to services to and from Perth only.						
Launceston						
Jetstar	191	119	62.3	191	100	52.4
QantasLink	133	94	70.7	129	87	67.4
Virgin Australia	174	120	69.0	174	128	73.6
All Airlines	498	333	66.9	494	315	63.8
Relates to services to and from Brisbane, Melbourne and Sydney only.						

Airport	Arrivals			Departures		
	Sectors	On Time		Sectors	On Time	
	Flown	No.	%	Flown	No.	%
Mackay						
Jetstar	30	22	73.3	30	19	63.3
Qantas	108	87	80.6	109	80	73.4
QantasLink	10	7	70.0	14	9	64.3
Virgin Australia	137	55	40.1	137	66	48.2
All Airlines	285	171	60.0	290	174	60.0

Relates to services to and from Brisbane only.

Melbourne

Jetstar	1,363	779	57.2	1,373	752	54.8
Qantas	1,567	1,120	71.5	1,567	1,101	70.3
QantasLink	547	366	66.9	553	407	73.6
Rex Airlines	472	325	68.9	470	334	71.1
Virgin Australia	2,420	1,562	64.5	2,417	1,646	68.1
All Airlines	6,369	4,152	65.2	6,380	4,240	66.5

Relates to services to and from Adelaide, Brisbane, Cairns, Canberra, Darwin, Gold Coast, Hobart, Launceston, Mildura, Newcastle, Perth, Sunshine Coast and Sydney only.

Mildura

QantasLink	91	58	63.7	91	44	48.4
Rex Airlines	93	47	50.5	94	59	62.8
All Airlines	184	105	57.1	185	103	55.7

Relates to services to and from Melbourne only.

Mount Isa

Qantas	39	37	94.9	38	35	92.1
QantasLink	13	11	84.6	13	11	84.6
Virgin Australia	12	4	33.3	12	8	66.7
All Airlines	64	52	81.3	63	54	85.7

Relates to services to and from Brisbane only.

Newcastle

Jetstar	102	73	71.6	99	68	68.7
QantasLink	173	138	79.8	175	142	81.1
Virgin Australia	109	68	62.4	110	84	76.4
All Airlines	384	279	72.7	384	294	76.6

Relates to services to and from Brisbane and Melbourne only.

Newman

Qantas	11	11	100.0	11	10	90.9
QantasLink	88	68	77.3	87	59	67.8
Virgin Australia	14	13	92.9	14	9	64.3
Virgin Australia Regional Airlines	37	32	86.5	37	27	73.0
All Airlines	150	124	82.7	149	105	70.5

Relates to services to and from Perth only.

Perth

Jetstar	172	101	58.7	168	53	31.5
Qantas	739	473	64.0	740	503	68.0
QantasLink	411	287	69.8	412	330	80.1
Virgin Australia	571	345	60.4	571	370	64.8
Virgin Australia Regional Airlines	243	158	65.0	242	178	73.6
All Airlines	2,136	1,364	63.9	2,133	1,434	67.2

Relates to services to and from Adelaide, Brisbane, Broome, Darwin, Kalgoorlie, Karratha, Melbourne, Newman, Port Hedland and Sydney only.

Airport	Arrivals			Departures		
	Sectors	On Time		Sectors	On Time	
	Flown	No.	%	Flown	No.	%
Port Hedland						
Qantas	31	28	90.3	31	23	74.2
QantasLink	87	69	79.3	86	54	62.8
Virgin Australia	13	10	76.9	13	1	7.7
Virgin Australia Regional Airlines	33	26	78.8	33	18	54.5
All Airlines	164	133	81.1	163	96	58.9
Relates to services to and from Perth only.						
Port Lincoln						
QantasLink	113	102	90.3	112	102	91.1
Rex Airlines	135	95	70.4	136	94	69.1
All Airlines	248	197	79.4	248	196	79.0
Relates to services to and from Adelaide only.						
Port Macquarie						
QantasLink	108	93	86.1	109	93	85.3
Rex Airlines	87	71	81.6	89	70	78.7
All Airlines	195	164	84.1	198	163	82.3
Relates to services to and from Sydney only.						
Proserpine						
Jetstar	38	24	63.2	38	23	60.5
QantasLink	27	23	85.2	27	23	85.2
Virgin Australia	43	31	72.1	43	26	60.5
All Airlines	108	78	72.2	108	72	66.7
Relates to services to and from Brisbane only.						
Rockhampton						
QantasLink	161	130	80.7	159	123	77.4
Virgin Australia	133	71	53.4	134	92	68.7
All Airlines	294	201	68.4	293	215	73.4
Relates to services to and from Brisbane only.						
Sunshine Coast						
Jetstar	161	99	61.5	158	86	54.4
Qantas	41	36	87.8	41	28	68.3
QantasLink	104	74	71.2	103	76	73.8
Virgin Australia	192	144	75.0	191	139	72.8
All Airlines	498	353	70.9	493	329	66.7
Relates to services to and from Melbourne and Sydney only.						
Sydney						
Jetstar	1,295	781	60.3	1,296	769	59.3
Qantas	1,756	1,248	71.1	1,763	1,210	68.6
QantasLink	1,233	978	79.3	1,228	923	75.2
Rex Airlines	943	715	75.8	951	765	80.4
Virgin Australia	2,352	1,632	69.4	2,352	1,638	69.6
All Airlines	7,579	5,354	70.6	7,590	5,305	69.9

Relates to services to and from Adelaide, Albury, Armidale, Ballina, Brisbane, Cairns, Canberra, Coffs Harbour, Darwin, Dubbo, Gold Coast, Hamilton Island, Hobart, Launceston, Melbourne, Perth, Port Macquarie, Sunshine Coast and Wagga Wagga only.

Airport	Arrivals			Departures		
	Sectors	On Time		Sectors	On Time	
	Flown	No.	%	Flown	No.	%
Townsville						
Jetstar	48	37	77.1	48	39	81.3
Qantas	92	76	82.6	91	77	84.6
QantasLink	180	148	82.2	179	142	79.3
Rex Airlines	13	9	69.2	13	10	76.9
Virgin Australia	129	67	51.9	130	62	47.7
All Airlines	462	337	72.9	461	330	71.6

Relates to services to and from Brisbane and Cairns only.

Wagga Wagga

QantasLink	102	79	77.5	102	84	82.4
Rex Airlines	101	83	82.2	95	79	83.2
All Airlines	203	162	79.8	197	163	82.7

Relates to services to and from Sydney only.

Definitions

On time arrival	A flight arrival is counted as "on time" if it arrived at the gate before 15 minutes after the scheduled arrival time shown in the carriers' schedule. Neither diverted nor cancelled flights count as on time.
On time departure	A flight departure is counted as "on time" if it departs the gate before 15 minutes after the scheduled departure time shown in the carriers' schedule.
Cancellation	A flight removed from service within 7 days of scheduled departure is regarded as a cancellation.
On time departure percentage	The percentage of on time departures is measured against the number of departures <i>operated</i> on any particular sector.
On time arrival percentage	The percentage of on time arrivals is measured against the number of arrivals <i>operated</i> on any particular sector.
Cancellation percentage	The percentage of cancellations is measured against the number of services <i>scheduled</i> on any particular sector.

Airlines and Reporting

Data has been gathered since November 2003, although some airlines commenced reporting at a later date, including Jetstar which first reported in May 2004, MacAir in July 2005, Tigerair Australia in April 2008 and Virgin Australia Regional Airlines in May 2013. MacAir ceased operations in February 2009 and data was not received for December 2008 onwards. Tigerair Australia ceased operations in March 2020 and data was not received for that month.

Virgin Blue was rebranded as Virgin Australia in May 2011 and Tiger Airways was rebranded as Tigerair Australia in July 2013 and time series data in Microsoft Excel spread sheet format on the BITRE website have been revised to reflect these changes. With effect from July 2021, Regional Express is reported as Rex Airlines.

Services operated by Skywest on behalf of Virgin Australia using ATR/F100 aircraft commenced in November 2011 and were shown separately as Virgin Australia – ATR/F100 Operations. Virgin Australia Regional Airlines commenced operations in May 2013. It was formed after the acquisition of Skywest by Virgin Australia and represented a combination of operations previously reported under Skywest and Virgin Australia – ATR/F100 Operations. In January 2016, Virgin Australia transferred their ATR fleet from Virgin Australia Regional Airlines to Virgin Australia.