



**Australian Government**

**Department of Infrastructure, Transport,  
Regional Development, Communications and the Arts**  
Bureau of Infrastructure and Transport Research Economics

STATISTICAL REPORT



## Aviation

**Domestic airline on time performance  
December 2023**

The Department of Infrastructure, Transport, Regional Development, Communications and the Arts acknowledges the Traditional Custodians of Country of the land on which we work and live.

We recognise and respect the continuing connections to land, waters and communities.

We pay our respects to them and their cultures and to their Elders both past and present and to all Aboriginal and Torres Strait Islander people.

---

© Commonwealth of Australia 2024

ISSN: 1832-0759

### **Ownership of intellectual property rights in this publication**

Unless otherwise noted, copyright (and any other intellectual property rights, if any) in this publication is owned by the Commonwealth of Australia (referred to below as the Commonwealth).

### **Disclaimer**

The material contained in this publication is made available on the understanding that the Commonwealth is not providing professional advice, and that users exercise their own skill and care with respect to its use, and seek independent advice if necessary.

The Commonwealth makes no representations or warranties as to the contents or accuracy of the information contained in this publication. To the extent permitted by law, the Commonwealth disclaims liability to any person or organisation in respect of anything done, or omitted to be done, in reliance upon information contained in this publication.

### **Creative Commons licence**

With the exception of (a) the Coat of Arms; and (b) the Department of Infrastructure, Transport, Regional Development, Communications and the Arts' photos and graphics, copyright in this publication is licensed under a Creative Commons Attribution 3.0 Australia Licence.

Creative Commons Attribution 3.0 Australia Licence is a standard form licence agreement that allows you to copy, communicate and adapt this publication provided that you attribute the work to the Commonwealth and abide by the other licence terms. A summary of the licence terms is available from <http://creativecommons.org/licenses/by/3.0/au/deed.en>. The full licence terms are available from <http://creativecommons.org/licenses/by/3.0/au/legalcode>.

### **Use of the Coat of Arms**

The Department of the Prime Minister and Cabinet sets the terms under which the Coat of Arms is used. Please refer to the Department's Commonwealth Coat of Arms and Government branding web page <http://www.dpmmc.gov.au/guidelines/index.cfm#brand> and, in particular, the Guidelines on the use of the Commonwealth Coat of Arms publication.

An appropriate citation for this report is:

Bureau of Infrastructure and Transport Research Economics (BITRE), 2024, Domestic airline on time performance, Statistical Report, BITRE, Canberra ACT.

### **Contact us**

All other rights are reserved, including in relation to any Departmental logos or trade marks which may exist. For enquiries regarding the licence and any use of this publication, please contact:

Bureau of Infrastructure and Transport Research Economics (BITRE)  
Department of Infrastructure, Transport, Regional Development, Communications and the Arts  
GPO Box 501, Canberra ACT 2601, Australia  
Telephone: (international) +61 2 6274 7210  
Email: [bitre@infrastructure.gov.au](mailto:bitre@infrastructure.gov.au)  
Website: [www.bitre.gov.au](http://www.bitre.gov.au)

### **Inquiries**

Should you require additional information about the statistics contained in this publication:

Telephone (02) 6136 7250

Electronic mail: [AVSTATS@infrastructure.gov.au](mailto:AVSTATS@infrastructure.gov.au)

Web site: <http://www.bitre.gov.au/statistics/aviation/otphome.aspx>

# Foreword

The Bureau of Infrastructure and Transport Research Economics (BITRE) monitors the punctuality and reliability of major domestic airlines operating between Australian airports. The purpose of this is to allow for evaluation of overall industry and individual airline performance, so that consumers of air travel can make informed decisions.

The following domestic airlines currently report this information monthly to the BITRE: Bonza, Jetstar, Qantas, QantasLink, Rex Airlines, Skytrans, Virgin Australia and Virgin Australia Regional Airlines. Bonza has joined from November 2023.

Information presented in this report is for Australian domestic routes for which the passenger load averaged 8,000 or more passengers per month over the previous six months and where two or more airlines operated in competition on those routes. In order to present data for more routes during the period impacted by COVID-19, the passenger load restriction was not applied between March 2020 and January 2023. From February 2023, the passenger load restriction was reinstated due to the continued recovery of passenger numbers. Data are presented for 59 routes in December 2023. Over time, routes which meet these criteria change as airline networks and traffic levels vary. Participating airlines report their overall monthly network performance where this is possible.

Total industry figures encompass all services operated by reporting airlines only. These airlines collectively carried over 98 per cent of total domestic passengers (regular public transport only) in 2023.

The method of capturing on time performance varies between airlines utilising different recording systems. Jetstar and Qantas jet aircraft use Aircraft Communication Addressing and Reporting System (ACARS) to electronically measure on time performance. Rex Airlines, Virgin Australia, Virgin Australia Regional Airlines and the Qantas non-jet fleet record on time performance manually using records from pilots, gate agents and/or ground crews.

After initial data is collected, aggregate reports are reviewed by participating airlines prior to publication.

Reports and detailed time series data in Microsoft Excel spreadsheet format are available from the BITRE website at: <http://www.bitre.gov.au/statistics/aviation/otphome.aspx>



# Contents

	Page
Industry performance .....	1
Individual routes .....	10
Airports.....	22
Definitions .....	28
Airlines and Reporting .....	29

# Industry performance

For December 2023, on time performance over all routes operated by participating airlines (Bonza, Jetstar, Qantas, QantasLink, Rex Airlines, Skytrans, Virgin Australia and Virgin Australia Regional Airlines) averaged 63.6 per cent for on time arrivals and 65.2 per cent for on time departures. The cancellation rate for the month was 5.0 per cent. The equivalent figures for December 2022 were 71.1 per cent for on time arrivals, 70.8 per cent for on time departures and 3.4 per cent for cancellations.

This month's on time arrivals figure was significantly lower than the long term average performance for all routes (81.1 per cent) and the on time departures figure was also significantly lower than the long term average (82.2 per cent). The rate of cancellations was higher than the long term average of 2.2 per cent.

The Qantas network (Qantas and QantasLink combined operations) recorded 67.8 per cent for on time arrivals while the Virgin Australia network (Virgin Australia and Virgin Australia Regional Airlines combined operations) recorded 54.0 per cent. Qantas achieved the highest on time arrivals among the major domestic airlines at 67.8 per cent, followed by Jetstar at 63.0 per cent and Virgin Australia at 53.5 per cent. Of the regional airlines, Skytrans recorded 76.4 per cent for on time arrivals, followed by Rex Airlines at 70.6 per cent, Virgin Australia Regional Airlines at 71.0 per cent, QantasLink at 67.9 per cent and Bonza at 55.0 per cent.

The Qantas network recorded 69.5 per cent for on time departures while the Virgin Australia network recorded 56.5 per cent. Qantas achieved the highest level of on time departures among the major domestic airlines for December 2023 at 70.2 per cent, followed by Jetstar at 62.1 per cent and Virgin Australia at 56.2 per cent. Of the regional airlines, Skytrans recorded 76.4 per cent for on time departures, followed by Rex Airlines at 74.3 per cent, QantasLink at 69.0 per cent, Virgin Australia Regional Airlines at 67.4 per cent and Bonza at 52.6 per cent.

Bonza recorded the highest percentage of cancellations at 19.4 per cent during the month, followed by Skytrans at 9.0 per cent, Virgin Australia at 7.7 per cent, Jetstar at 5.5 per cent, QantasLink at 4.3 per cent, Qantas at 2.7 per cent, Virgin Australia Regional Airlines at 2.6 per cent, and Rex Airlines at 0.6 per cent.

Airlines' on time performance varies across the routes they serve. Individual route data by specific airline for 59 routes are shown on pages 10-22.

Of the 59 routes which met the criteria for on time performance reporting in December 2023, the Brisbane-Mount Isa route had the highest percentage of on time arrivals (85.7 per cent), and the highest percentage of on time departures (88.9 per cent). The Launceston-Brisbane route had the lowest percentage of on time arrivals (32.8 per cent), and the lowest percentage of on time departures (25.0 per cent).

Cancellations were highest on routes in and out of Cairns, as Cairns Airport closed for several days because of Cyclone Jasper. Cancellations were highest on the Cairns-Townsville route at

14.8 per cent, followed by the Cairns-Sydney route at 14.6 per cent, the Sydney-Cairns route at 14.3 per cent and the Cairns-Melbourne route at 13.5 per cent.

Mount Isa Airport recorded the highest percentage of on time arrivals (85.7 per cent), while Port Lincoln Airport recorded the highest percentage of on time departures (84.3 per cent). Mackay Airport recorded the lowest percentage of on time arrivals (47.3 per cent) and the lowest percentage of on time departures (47.9 per cent). These figures only refer to reported routes and do not cover all flights at these airports.

Table 1 On time performance for December 2023 – Total Industry

	<i>Sectors</i>		<i>Arrivals On Time</i>		<i>Departures On Time</i>		<i>Cancellations</i>	
	<i>Scheduled</i>	<i>Flown</i>	<i>No.</i>	<i>%</i>	<i>No.</i>	<i>%</i>	<i>No.</i>	<i>%</i>
Bonza	701	565	311	55.0	297	52.6	136	19.4
Jetstar	8,193	7,743	4,876	63.0	4,805	62.1	450	5.5
Qantas - all QF designated services	18,807	18,110	12,282	67.8	12,579	69.5	697	3.7
Rex Airlines	5,429	5,394	3,806	70.6	4,010	74.3	35	0.6
Skytrans	312	284	217	76.4	217	76.4	28	9.0
Virgin Australia - all VA designated services	12,182	11,266	6,089	54.0	6,370	56.5	916	7.5
All Airlines	45,624	43,362	27,581	63.6	28,278	65.2	2,262	5.0
Individual operating entities								
Qantas	7,178	6,983	4,732	67.8	4,899	70.2	195	2.7
QantasLink	11,629	11,127	7,550	67.9	7,680	69.0	502	4.3
Virgin Australia	11,839	10,932	5,852	53.5	6,145	56.2	907	7.7
Virgin Australia Regional Airlines	343	334	237	71.0	225	67.4	9	2.6

Total airline network data (including routes not shown in this report).

Airlines’ on time performance varies across the routes they serve. Individual route data by specific airline are shown on page 9 and onwards.

Table 2 Top ten routes for on time performance for December 2023 (participating airlines only)

<i>Arrivals</i>		<i>Departures</i>	
<i>Route</i>	<i>On Time (%)</i>	<i>Route</i>	<i>On Time (%)</i>
Brisbane-Mount Isa	85.7	Brisbane-Mount Isa	88.9
Perth-Darwin	83.9	Perth-Darwin	87.5
Adelaide-Port Lincoln	83.6	Perth-Newman	86.4
Port Lincoln-Adelaide	83.6	Adelaide-Port Lincoln	84.3
Perth-Newman	82.5	Port Lincoln-Adelaide	84.3
Cairns-Townsville	81.8	Adelaide-Alice Springs	83.6
Perth-Broome	81.4	Cairns-Townsville	83.3
Adelaide-Canberra	81.1	Perth-Port Hedland	80.9
Adelaide-Alice Springs	80.0	Perth-Karratha	80.3
Perth-Karratha	79.3	Adelaide-Canberra	78.9

Table 3 Top ten airports for on time performance for December 2023 (participating airlines and reported routes only)

<i>Arrivals</i>		<i>Departures</i>	
<i>Airport</i>	<i>On Time (%)</i>	<i>Airport</i>	<i>On Time (%)</i>
Mount Isa	85.7	Port Lincoln	84.3
Port Lincoln	83.6	Mount Isa	77.8
Newman	82.5	Dubbo	76.5
Broome	81.4	Port Macquarie	76.0
Alice Springs	80.0	Kalgoorlie	75.0
Karratha	79.3	Wagga Wagga	74.6
Kalgoorlie	78.2	Karratha	74.0
Port Hedland	77.0	Ballina	70.9
Dubbo	76.6	Coffs Harbour	70.6
Emerald	73.6	Newman	70.6



## Total industry on time performance

Figure 1 On time performance (by month from December 2020)—Total Industry

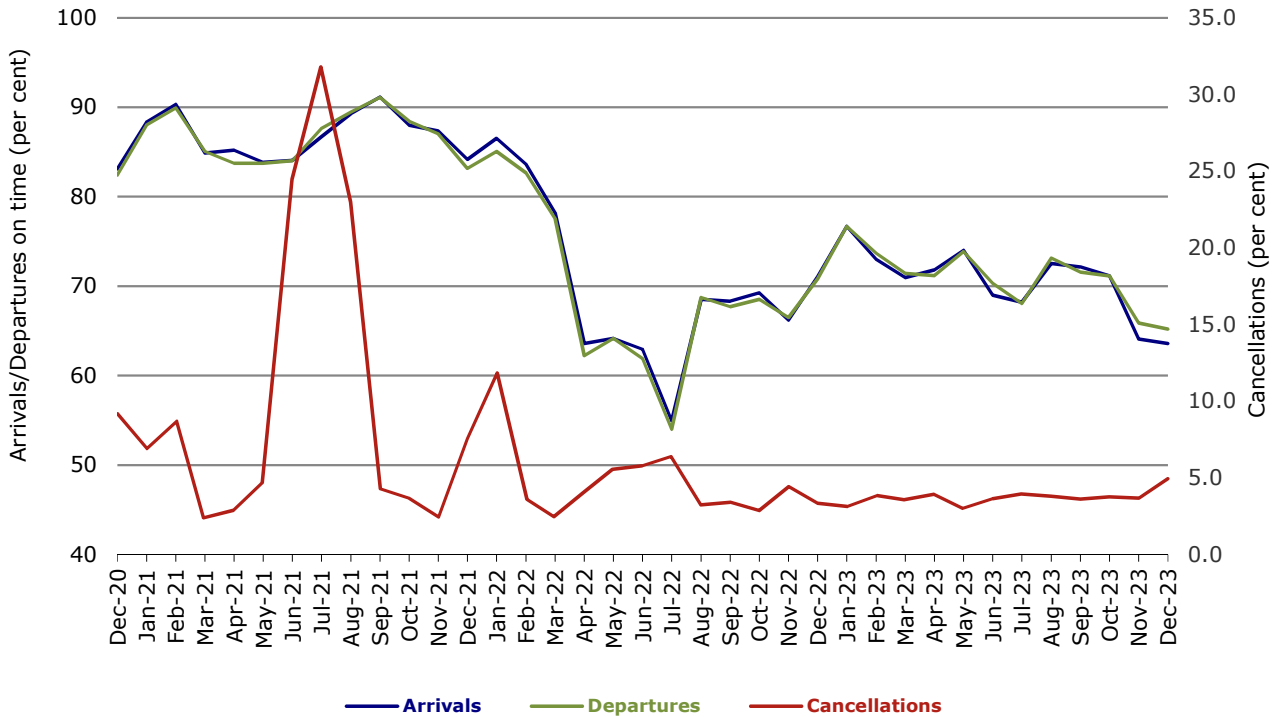


Figure 2 Arrivals on time (by month from December 2022)

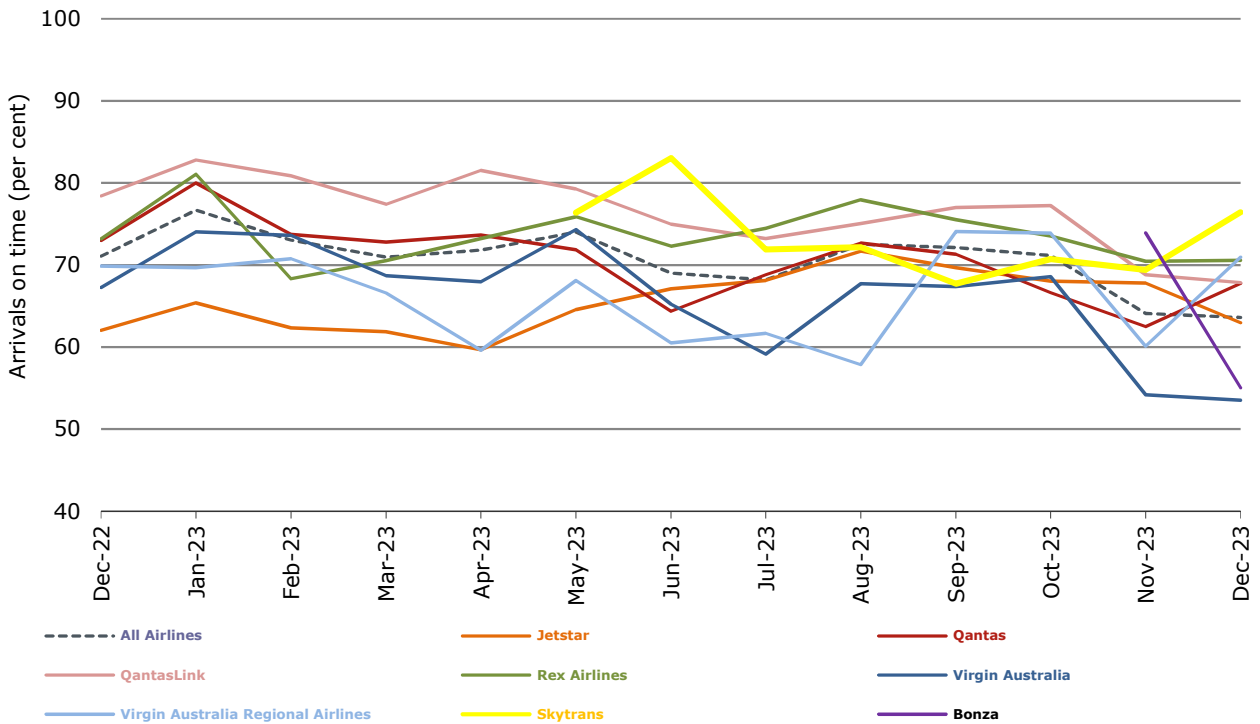


Figure 3 Departures on time (by month from December 2022)

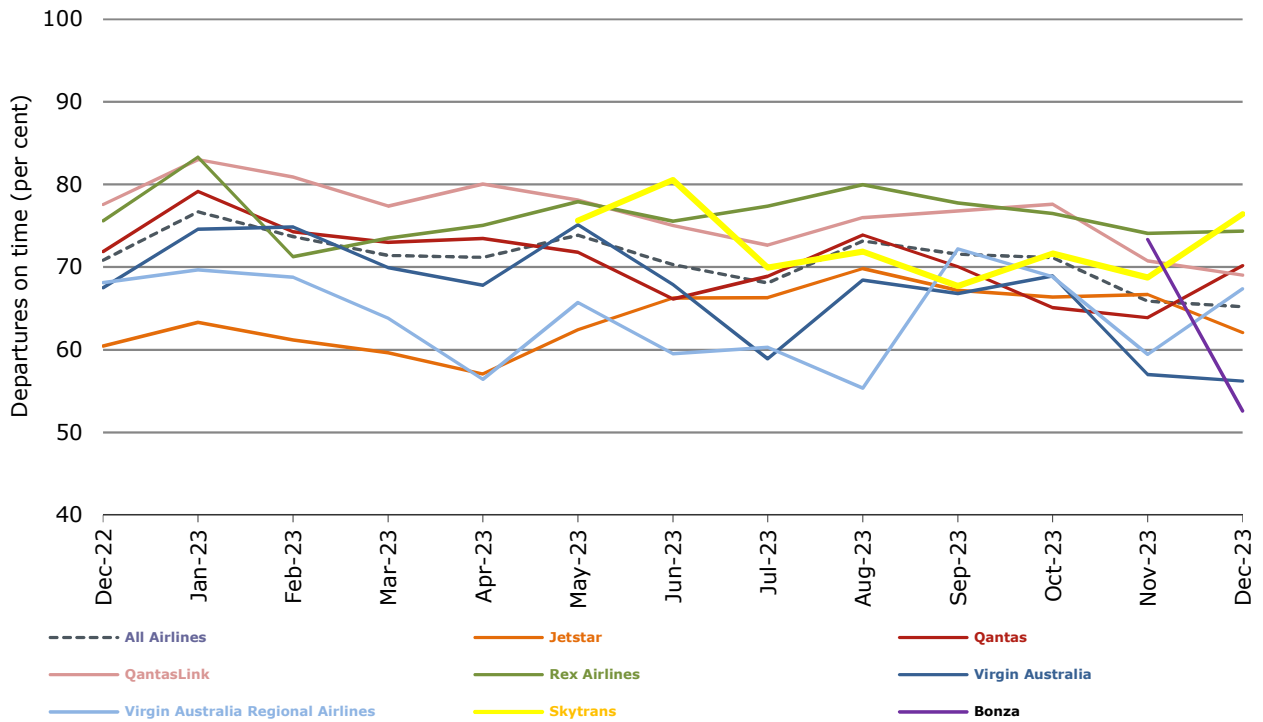
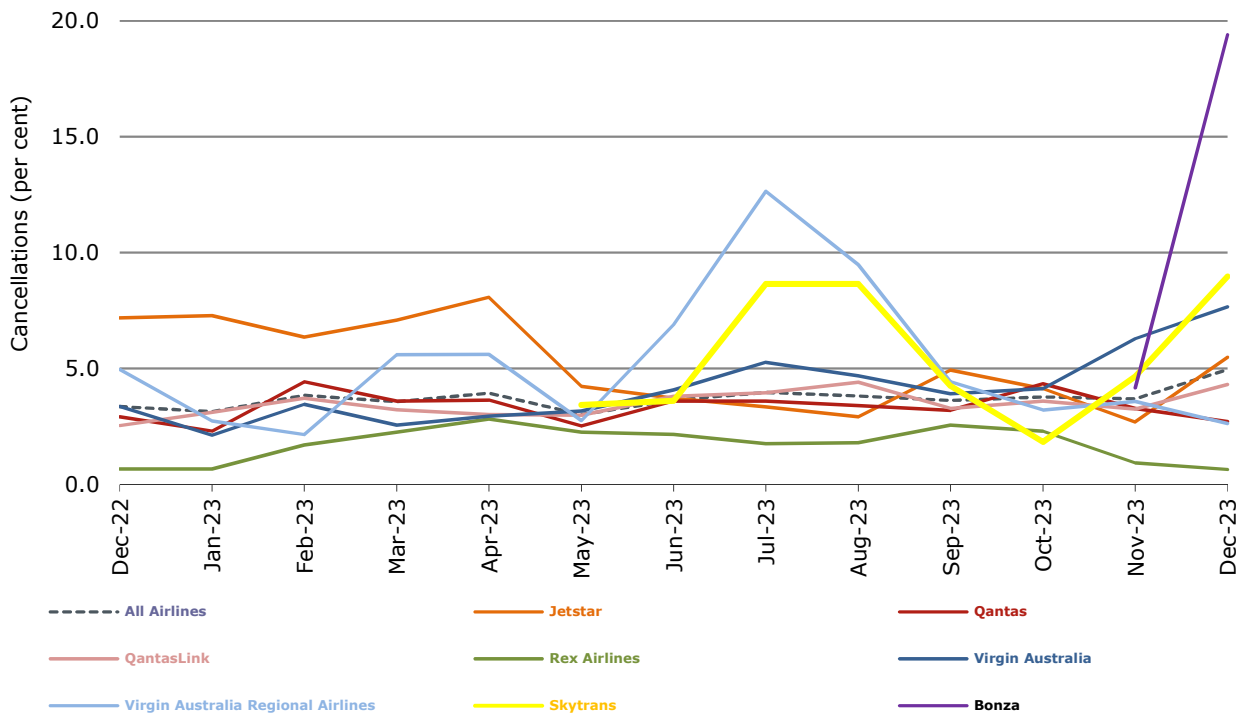


Figure 4 Cancellations (by month from December 2022)



## Major domestic airlines on time performance

Figure 5 On time performance (by month from December 2020)—Jetstar

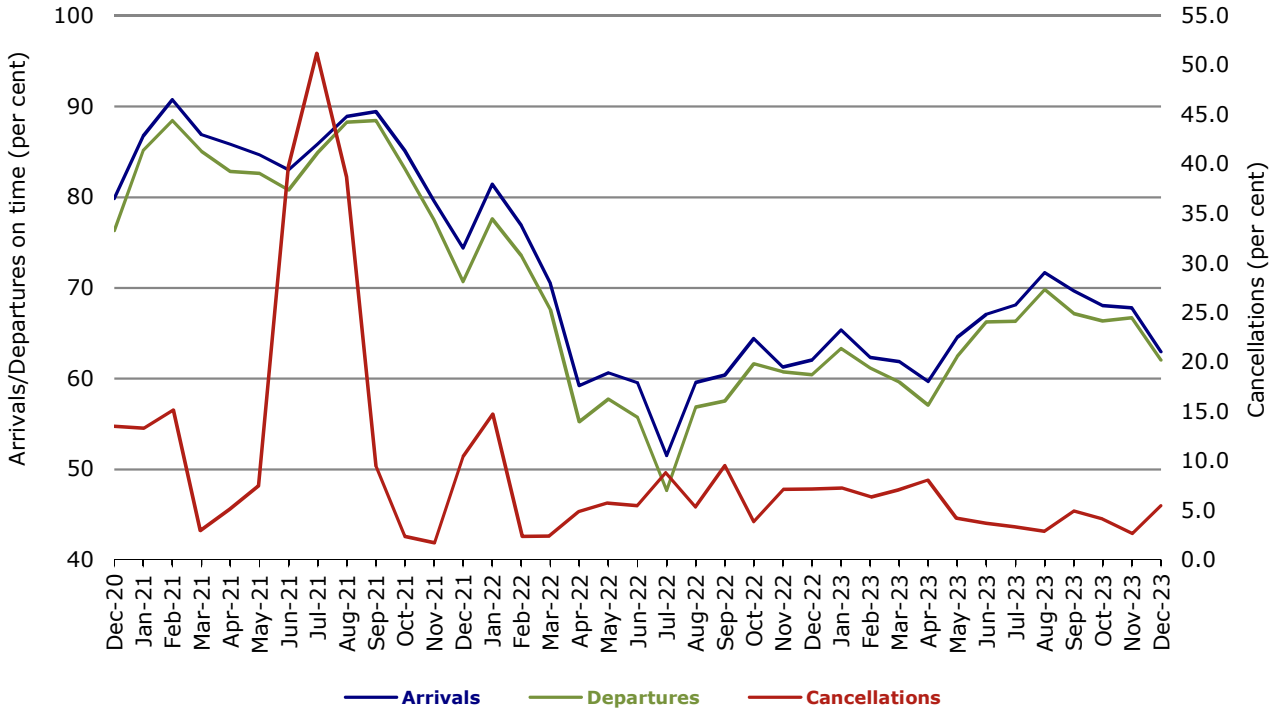


Figure 6 On time performance (by month from December 2020)—Qantas

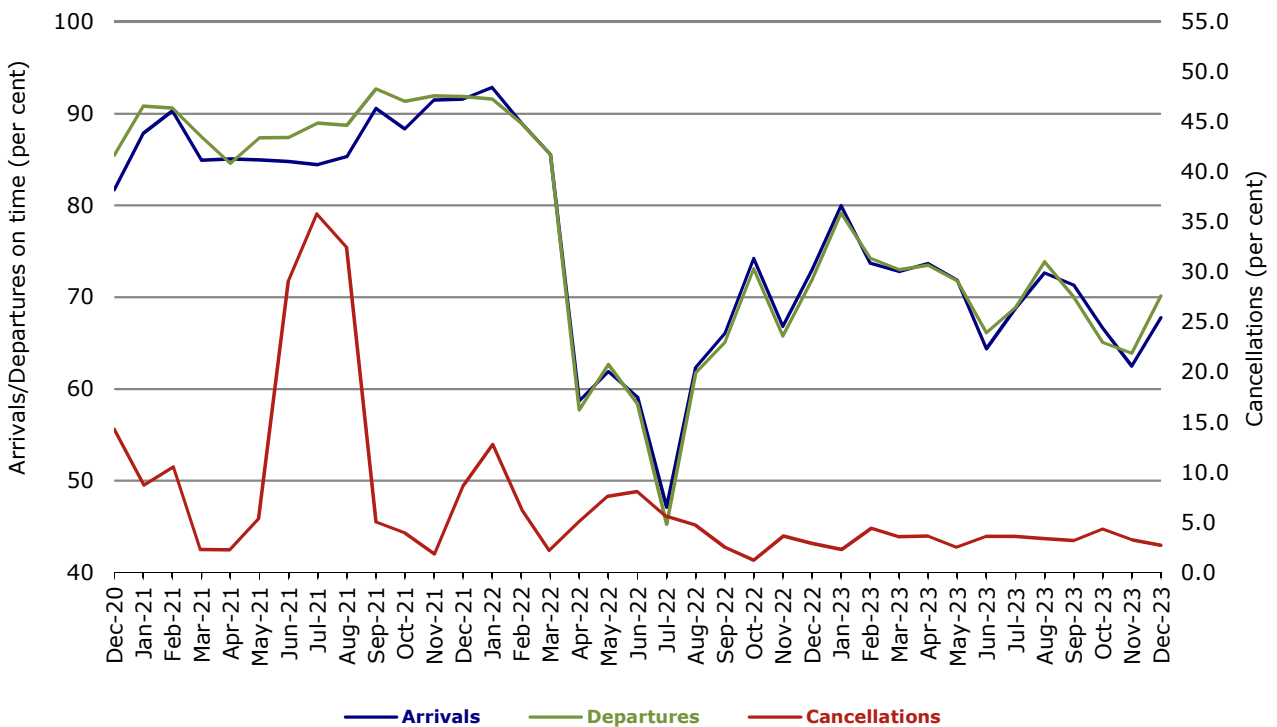
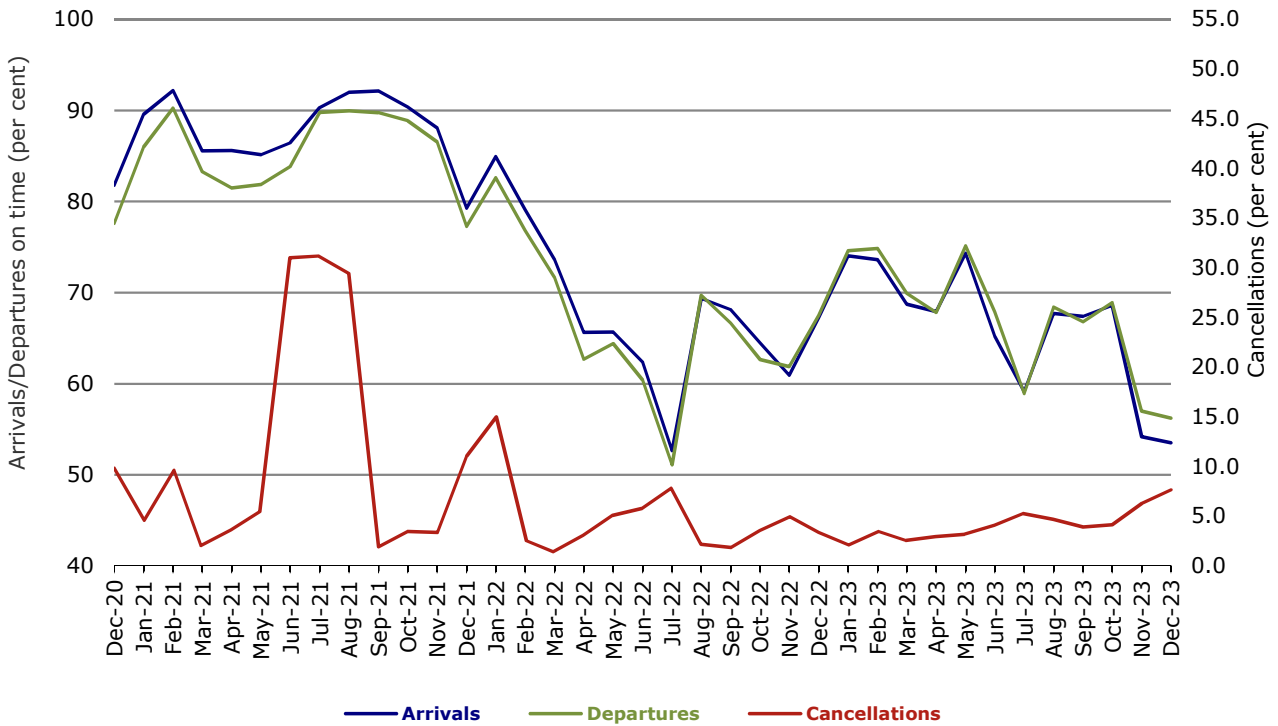


Figure 7 On time performance (by month from December 2020)—Virgin Australia



## Major regional airlines on time performance

Figure 8 On time performance (by month from December 2020)—QantasLink

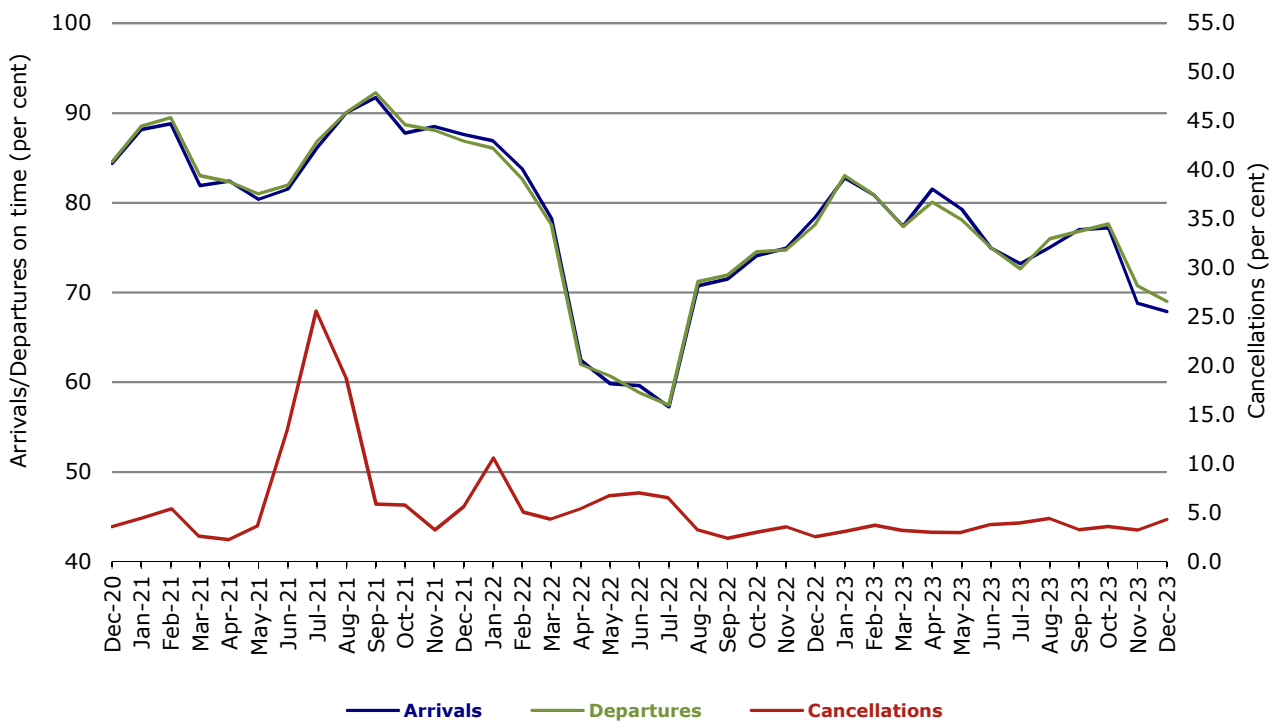


Figure 9 On time performance (by month from December 2020)—Rex Airlines

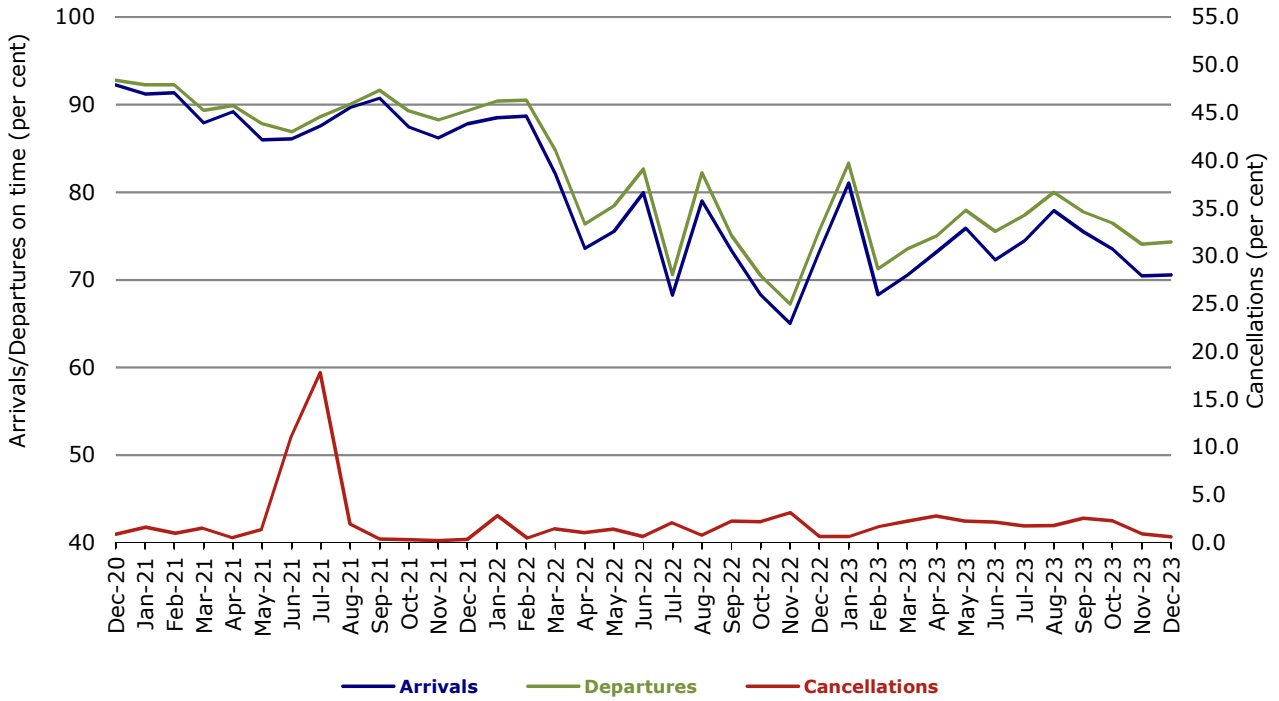


Figure 10 On time performance (by month from December 2020)—Virgin Australia Regional Airlines

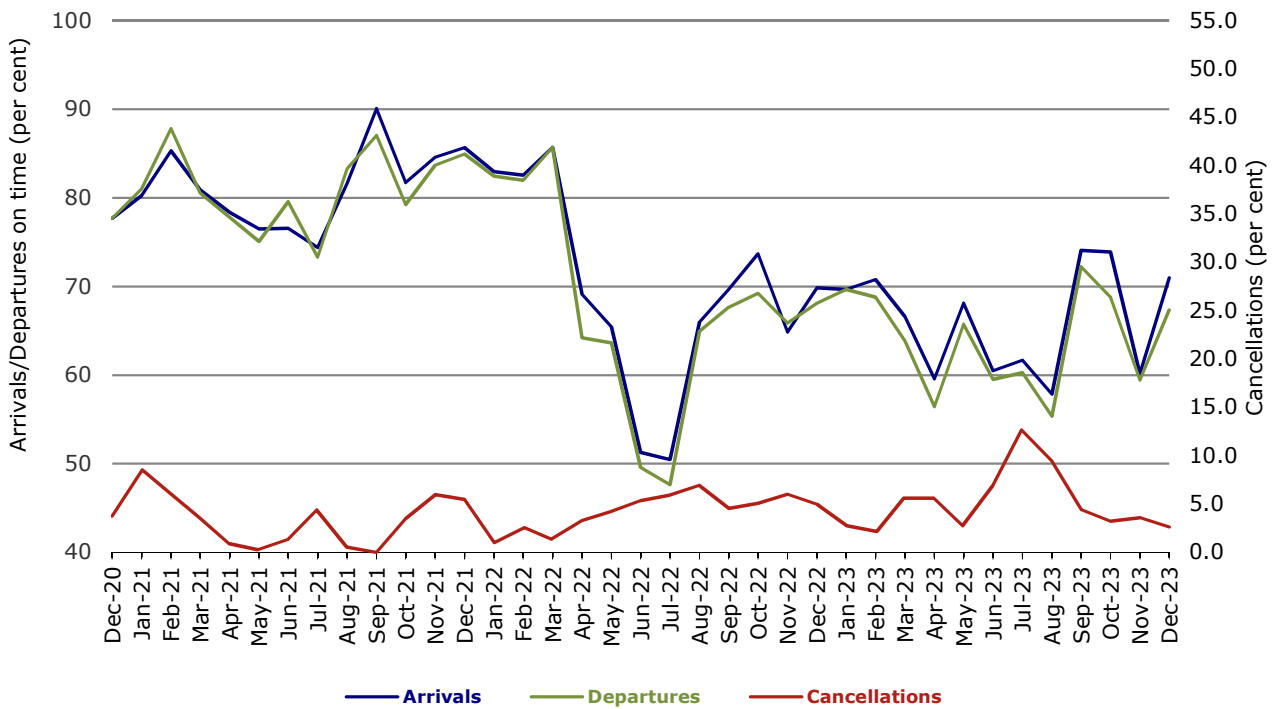
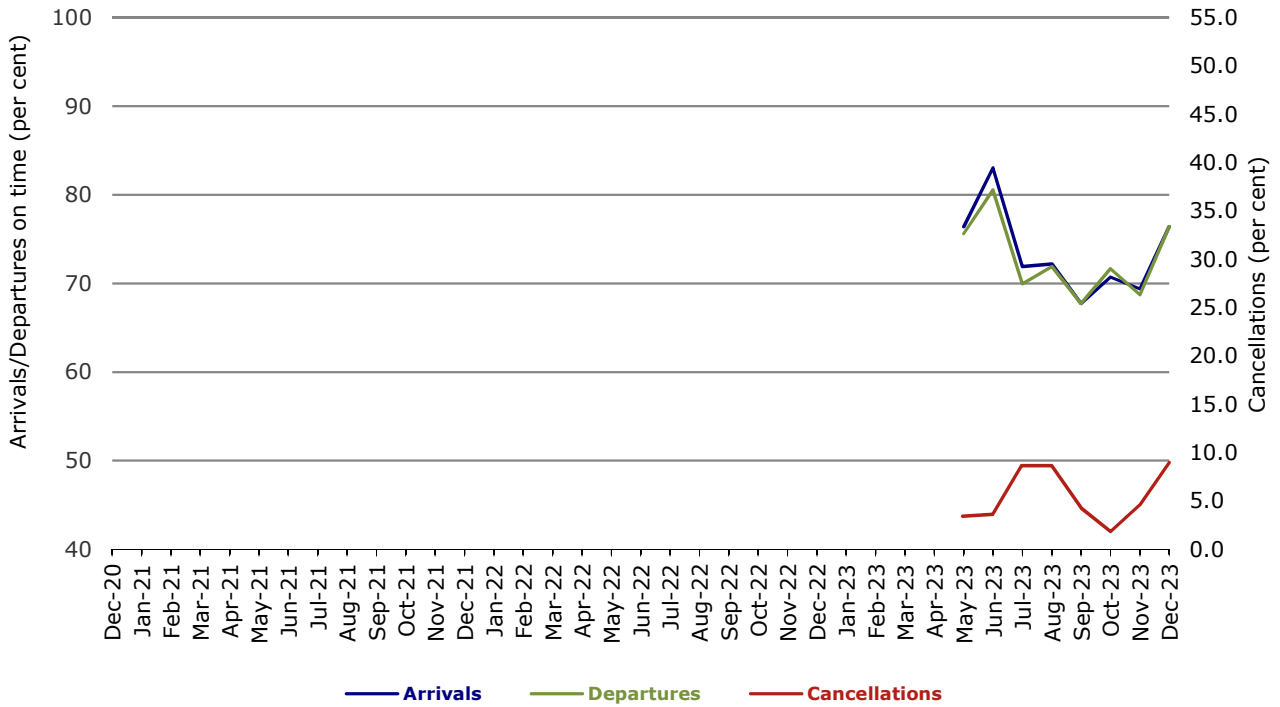
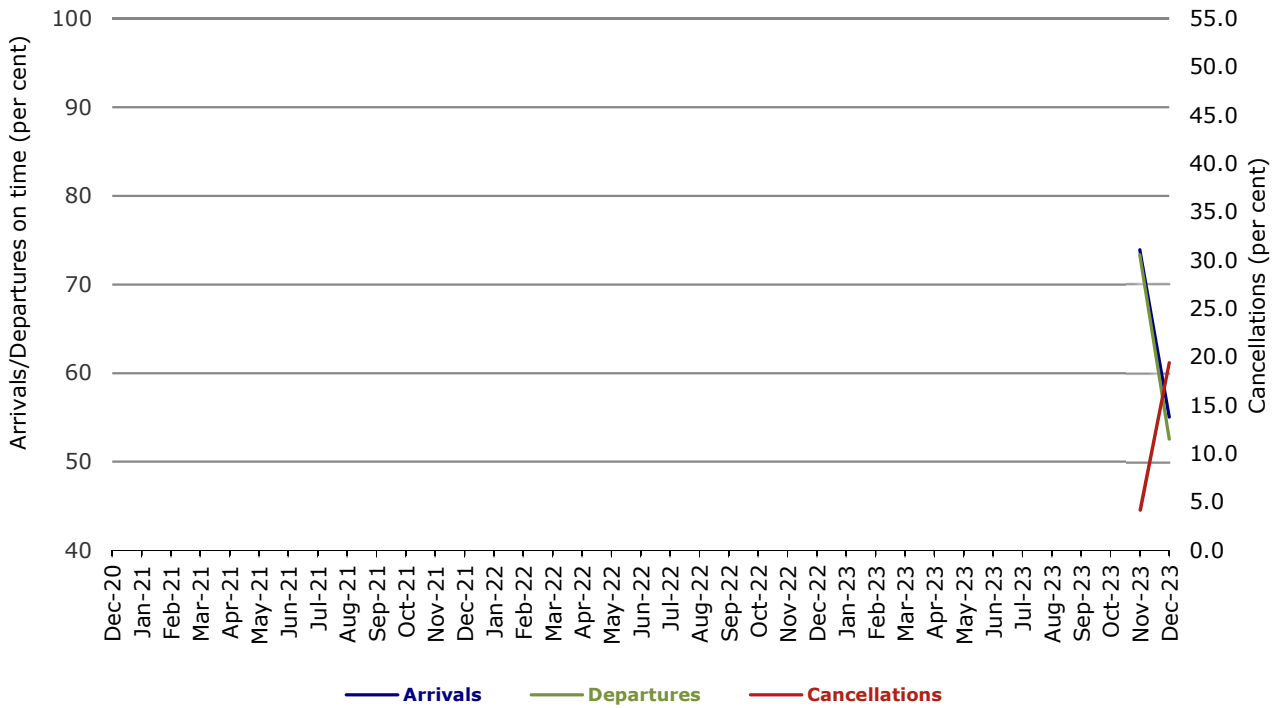


Figure 11 On time performance (by month from December 2020)—Skytrans



Note: Skytrans data included from May 2023

Figure 12 On time performance (by month from December 2020)—Bonza



Note: Bonza data included from November 2023

## Individual routes

On time performance is reported for all routes where the passenger load averages over 8,000 passengers per month over the previous six months, and where two or more airlines operate in competition on those routes. In order to present data for more routes during the period impacted by COVID-19, the passenger load restriction is not being applied. There are now 59 routes for which data are presented.

	Sectors		Arrivals On Time		Departures On Time		Cancellations	
	Sched.	Flown	No.	%	No.	%	No.	%
<b>Adelaide-Alice Springs</b>								
QantasLink	43	43	38	88.4	38	88.4	0	0.0
Virgin Australia	13	12	6	50.0	8	66.7	1	7.7
All Airlines	56	55	44	80.0	46	83.6	1	1.8
<b>Adelaide-Brisbane</b>								
Jetstar	30	30	18	60.0	18	60.0	0	0.0
QantasLink	173	168	111	66.1	122	72.6	5	2.9
Virgin Australia	137	125	81	64.8	76	60.8	12	8.8
All Airlines	340	323	210	65.0	216	66.9	17	5.0
<b>Adelaide-Canberra</b>								
QantasLink	80	80	67	83.8	65	81.3	0	0.0
Virgin Australia	16	15	10	66.7	10	66.7	1	6.3
All Airlines	96	95	77	81.1	75	78.9	1	1.0
<b>Adelaide-Gold Coast</b>								
Jetstar	33	31	23	74.2	24	77.4	2	6.1
QantasLink	8	8	8	100.0	8	100.0	0	0.0
Virgin Australia	41	41	30	73.2	30	73.2	0	0.0
All Airlines	82	80	61	76.3	62	77.5	2	2.4
<b>Adelaide-Melbourne</b>								
Jetstar	102	96	55	57.3	51	53.1	6	5.9
Qantas	237	235	134	57.0	152	64.7	2	0.8
QantasLink	12	12	11	91.7	11	91.7	0	0.0
Rex Airlines	55	55	40	72.7	42	76.4	0	0.0
Virgin Australia	247	233	131	56.2	133	57.1	14	5.7
All Airlines	653	631	371	58.8	389	61.6	22	3.4
<b>Adelaide-Perth</b>								
Jetstar	31	31	22	71.0	22	71.0	0	0.0
Qantas	93	93	67	72.0	70	75.3	0	0.0
Virgin Australia	41	36	7	19.4	10	27.8	5	12.2
Virgin Australia Regional Airlines	42	40	15	37.5	14	35.0	2	4.8
All Airlines	207	200	111	55.5	116	58.0	7	3.4
<b>Adelaide-Port Lincoln</b>								
QantasLink	127	124	109	87.9	105	84.7	3	2.4
Rex Airlines	144	144	115	79.9	121	84.0	0	0.0
All Airlines	271	268	224	83.6	226	84.3	3	1.1
<b>Adelaide-Sydney</b>								
Jetstar	136	123	77	62.6	79	64.2	13	9.6
Qantas	218	214	166	77.6	163	76.2	4	1.8
Rex Airlines	31	31	15	48.4	11	35.5	0	0.0
Virgin Australia	180	162	91	56.2	97	59.9	18	10.0
All Airlines	565	530	349	65.8	350	66.0	35	6.2
<b>Albury-Sydney</b>								
QantasLink	99	97	57	58.8	58	59.8	2	2.0
Rex Airlines	77	77	59	76.6	64	83.1	0	0.0
All Airlines	176	174	116	66.7	122	70.1	2	1.1

	Sectors		Arrivals On Time		Departures On Time		Cancellations	
	Sched.	Flown	No.	%	No.	%	No.	%
<b>Alice Springs-Adelaide</b>								
QantasLink	43	43	29	67.4	32	74.4	0	0.0
Virgin Australia	13	12	3	25.0	1	8.3	1	7.7
All Airlines	56	55	32	58.2	33	60.0	1	1.8
<b>Ballina-Sydney</b>								
Jetstar	89	89	67	75.3	64	71.9	0	0.0
QantasLink	56	55	39	70.9	38	69.1	1	1.8
Virgin Australia	47	45	36	80.0	32	71.1	2	4.3
All Airlines	192	189	142	75.1	134	70.9	3	1.6
<b>Brisbane-Adelaide</b>								
Jetstar	34	30	15	50.0	13	43.3	4	11.8
QantasLink	173	166	108	65.1	104	62.7	7	4.0
Virgin Australia	135	123	72	58.5	69	56.1	12	8.9
All Airlines	342	319	195	61.1	186	58.3	23	6.7
<b>Brisbane-Cairns</b>								
Jetstar	97	86	59	68.6	59	68.6	11	11.3
Qantas	90	80	67	83.8	63	78.8	10	11.1
QantasLink	61	55	23	41.8	24	43.6	6	9.8
Virgin Australia	146	126	63	50.0	65	51.6	20	13.7
All Airlines	394	347	212	61.1	211	60.8	47	11.9
<b>Brisbane-Canberra</b>								
Jetstar	31	31	14	45.2	13	41.9	0	0.0
QantasLink	142	142	98	69.0	105	73.9	0	0.0
Virgin Australia	94	92	57	62.0	50	54.3	2	2.1
All Airlines	267	265	169	63.8	168	63.4	2	0.7
<b>Brisbane-Darwin</b>								
Jetstar	27	24	8	33.3	8	33.3	3	11.1
Qantas	17	17	15	88.2	15	88.2	0	0.0
QantasLink	24	24	14	58.3	17	70.8	0	0.0
Virgin Australia	31	31	24	77.4	24	77.4	0	0.0
All Airlines	99	96	61	63.5	64	66.7	3	3.0
<b>Brisbane-Emerald</b>								
QantasLink	109	104	79	76.0	71	68.3	5	4.6
Virgin Australia	25	25	16	64.0	15	60.0	0	0.0
All Airlines	134	129	95	73.6	86	66.7	5	3.7
<b>Brisbane-Gladstone</b>								
QantasLink	122	109	62	56.9	63	57.8	13	10.7
Virgin Australia	47	44	27	61.4	24	54.5	3	6.4
All Airlines	169	153	89	58.2	87	56.9	16	9.5
<b>Brisbane-Hamilton Island</b>								
Qantas	23	23	22	95.7	20	87.0	0	0.0
QantasLink	7	7	3	42.9	4	57.1	0	0.0
Virgin Australia	46	44	31	70.5	31	70.5	2	4.3
All Airlines	76	74	56	75.7	55	74.3	2	2.6
<b>Brisbane-Hobart</b>								
Jetstar	36	35	26	74.3	25	71.4	1	2.8
Qantas	14	14	13	92.9	13	92.9	0	0.0
QantasLink	15	15	8	53.3	9	60.0	0	0.0
Virgin Australia	56	54	31	57.4	29	53.7	2	3.6
All Airlines	121	118	78	66.1	76	64.4	3	2.5



	Sectors		Arrivals On Time		Departures On Time		Cancellations	
	Sched.	Flown	No.	%	No.	%	No.	%
<b>Brisbane-Launceston</b>								
Jetstar	26	26	9	34.6	7	26.9	0	0.0
QantasLink	11	11	3	27.3	4	36.4	0	0.0
Virgin Australia	29	26	10	38.5	8	30.8	3	10.3
All Airlines	66	63	22	34.9	19	30.2	3	4.5
<b>Brisbane-Mackay</b>								
Jetstar	31	31	23	74.2	22	71.0	0	0.0
Qantas	22	22	20	90.9	19	86.4	0	0.0
QantasLink	128	126	54	42.9	54	42.9	2	1.6
Virgin Australia	137	134	51	38.1	62	46.3	3	2.2
All Airlines	318	313	148	47.3	157	50.2	5	1.6
<b>Brisbane-Melbourne</b>								
Jetstar	153	141	78	55.3	72	51.1	12	7.8
Qantas	360	351	242	68.9	261	74.4	9	2.5
Rex Airlines	72	72	36	50.0	32	44.4	0	0.0
Virgin Australia	384	344	164	47.7	172	50.0	40	10.4
All Airlines	969	908	520	57.3	537	59.1	61	6.3
<b>Brisbane-Mount Isa</b>								
Qantas	44	44	41	93.2	41	93.2	0	0.0
QantasLink	6	6	6	100.0	5	83.3	0	0.0
Virgin Australia	13	13	7	53.8	10	76.9	0	0.0
All Airlines	63	63	54	85.7	56	88.9	0	0.0
<b>Brisbane-Newcastle</b>								
Jetstar	59	57	47	82.5	47	82.5	2	3.4
QantasLink	115	108	64	59.3	73	67.6	7	6.1
Virgin Australia	75	73	29	39.7	32	43.8	2	2.7
All Airlines	249	238	140	58.8	152	63.9	11	4.4
<b>Brisbane-Perth</b>								
Jetstar	24	22	13	59.1	7	31.8	2	8.3
Qantas	153	152	117	77.0	115	75.7	1	0.7
Virgin Australia	129	115	57	49.6	54	47.0	14	10.9
All Airlines	306	289	187	64.7	176	60.9	17	5.6
<b>Brisbane-Proserpine</b>								
Jetstar	49	48	25	52.1	21	43.8	1	2.0
QantasLink	22	20	16	80.0	15	75.0	2	9.1
Virgin Australia	47	46	34	73.9	35	76.1	1	2.1
All Airlines	118	114	75	65.8	71	62.3	4	3.4
<b>Brisbane-Rockhampton</b>								
QantasLink	176	164	104	63.4	99	60.4	12	6.8
Virgin Australia	121	120	58	48.3	59	49.2	1	0.8
All Airlines	297	284	162	57.0	158	55.6	13	4.4
<b>Brisbane-Sydney</b>								
Jetstar	200	184	118	64.1	108	58.7	16	8.0
Qantas	481	462	364	78.8	376	81.4	19	4.0
Rex Airlines	145	142	97	68.3	94	66.2	3	2.1
Virgin Australia	447	400	222	55.5	225	56.3	47	10.5
All Airlines	1 273	1 188	801	67.4	803	67.6	85	6.7
<b>Brisbane-Townsville</b>								
Jetstar	52	52	24	46.2	28	53.8	0	0.0
Qantas	52	52	42	80.8	42	80.8	0	0.0
QantasLink	81	80	43	53.8	45	56.3	1	1.2
Virgin Australia	143	139	56	40.3	64	46.0	4	2.8
All Airlines	328	323	165	51.1	179	55.4	5	1.5

	Sectors		Arrivals On Time		Departures On Time		Cancellations	
	Sched.	Flown	No.	%	No.	%	No.	%
<b>Broome-Perth</b>								
QantasLink	83	82	60	73.2	61	74.4	1	1.2
Virgin Australia	21	20	12	60.0	11	55.0	1	4.8
Virgin Australia Regional Airlines	16	16	12	75.0	8	50.0	0	0.0
All Airlines	120	118	84	71.2	80	67.8	2	1.7
<b>Cairns-Brisbane</b>								
Jetstar	98	87	59	67.8	56	64.4	11	11.2
Qantas	91	81	68	84.0	68	84.0	10	11.0
QantasLink	61	54	19	35.2	20	37.0	7	11.5
Virgin Australia	148	126	61	48.4	58	46.0	22	14.9
All Airlines	398	348	207	59.5	202	58.0	50	12.6
<b>Cairns-Melbourne</b>								
Jetstar	110	95	61	64.2	62	65.3	15	13.6
Qantas	39	37	28	75.7	26	70.3	2	5.1
Virgin Australia	80	66	39	59.1	37	56.1	14	17.5
All Airlines	229	198	128	64.6	125	63.1	31	13.5
<b>Cairns-Sydney</b>								
Jetstar	110	93	57	61.3	56	60.2	17	15.5
Qantas	62	58	37	63.8	38	65.5	4	6.5
Virgin Australia	96	78	42	53.8	37	47.4	18	18.8
All Airlines	268	229	136	59.4	131	57.2	39	14.6
<b>Cairns-Townsville</b>								
QantasLink	143	121	100	82.6	102	84.3	22	15.4
Rex Airlines	12	11	8	72.7	8	72.7	1	8.3
All Airlines	155	132	108	81.8	110	83.3	23	14.8
<b>Canberra-Adelaide</b>								
QantasLink	81	81	61	75.3	57	70.4	0	0.0
Virgin Australia	16	15	8	53.3	8	53.3	1	6.3
All Airlines	97	96	69	71.9	65	67.7	1	1.0
<b>Canberra-Brisbane</b>								
Jetstar	32	31	12	38.7	12	38.7	1	3.1
QantasLink	142	142	98	69.0	103	72.5	0	0.0
Virgin Australia	94	93	44	47.3	42	45.2	1	1.1
All Airlines	268	266	154	57.9	157	59.0	2	0.7
<b>Canberra-Gold Coast</b>								
Jetstar	23	23	17	73.9	12	52.2	0	0.0
Virgin Australia	31	31	19	61.3	18	58.1	0	0.0
All Airlines	54	54	36	66.7	30	55.6	0	0.0
<b>Canberra-Melbourne</b>								
Jetstar	32	32	16	50.0	13	40.6	0	0.0
Qantas	5	5	4	80.0	3	60.0	0	0.0
QantasLink	205	201	115	57.2	114	56.7	4	2.0
Rex Airlines	29	29	12	41.4	13	44.8	0	0.0
Virgin Australia	113	111	39	35.1	41	36.9	2	1.8
All Airlines	384	378	186	49.2	184	48.7	6	1.6
<b>Canberra-Sydney</b>								
Qantas	8	8	8	100.0	8	100.0	0	0.0
QantasLink	336	315	201	63.8	199	63.2	21	6.3
Virgin Australia	216	208	144	69.2	130	62.5	8	3.7
All Airlines	560	531	353	66.5	337	63.5	29	5.2

	Sectors		Arrivals On Time		Departures On Time		Cancellations	
	Sched.	Flown	No.	%	No.	%	No.	%
<b>Coffs Harbour-Sydney</b>								
QantasLink	108	103	72	69.9	75	72.8	5	4.6
Rex Airlines	84	84	49	58.3	57	67.9	0	0.0
All Airlines	192	187	121	64.7	132	70.6	5	2.6
<b>Darwin-Brisbane</b>								
Jetstar	25	22	9	40.9	5	22.7	3	12.0
Qantas	16	16	11	68.8	12	75.0	0	0.0
QantasLink	25	25	15	60.0	17	68.0	0	0.0
Virgin Australia	31	30	13	43.3	9	30.0	1	3.2
All Airlines	97	93	48	51.6	43	46.2	4	4.1
<b>Darwin-Melbourne</b>								
Jetstar	23	23	8	34.8	7	30.4	0	0.0
QantasLink	31	31	16	51.6	28	90.3	0	0.0
Virgin Australia	31	29	9	31.0	5	17.2	2	6.5
All Airlines	85	83	33	39.8	40	48.2	2	2.4
<b>Darwin-Perth</b>								
QantasLink	31	31	21	67.7	21	67.7	0	0.0
Virgin Australia	14	14	10	71.4	9	64.3	0	0.0
Virgin Australia Regional Airlines	11	11	6	54.5	7	63.6	0	0.0
All Airlines	56	56	37	66.1	37	66.1	0	0.0
<b>Devonport-Melbourne</b>								
QantasLink	121	120	86	71.7	93	77.5	1	0.8
Rex Airlines	48	47	35	74.5	39	83.0	1	2.1
All Airlines	169	167	121	72.5	132	79.0	2	1.2
<b>Dubbo-Sydney</b>								
QantasLink	105	101	83	82.2	84	83.2	4	3.8
Rex Airlines	104	103	61	59.2	72	69.9	1	1.0
All Airlines	209	204	144	70.6	156	76.5	5	2.4
<b>Emerald-Brisbane</b>								
QantasLink	109	101	63	62.4	70	69.3	8	7.3
Virgin Australia	25	25	11	44.0	13	52.0	0	0.0
All Airlines	134	126	74	58.7	83	65.9	8	6.0
<b>Gladstone-Brisbane</b>								
QantasLink	122	105	57	54.3	62	59.0	17	13.9
Virgin Australia	47	44	15	34.1	20	45.5	3	6.4
All Airlines	169	149	72	48.3	82	55.0	20	11.8
<b>Gold Coast-Adelaide</b>								
Jetstar	33	31	26	83.9	24	77.4	2	6.1
QantasLink	8	8	7	87.5	6	75.0	0	0.0
Virgin Australia	41	40	21	52.5	17	42.5	1	2.4
All Airlines	82	79	54	68.4	47	59.5	3	3.7
<b>Gold Coast-Canberra</b>								
Jetstar	23	23	18	78.3	17	73.9	0	0.0
Virgin Australia	31	31	12	38.7	12	38.7	0	0.0
All Airlines	54	54	30	55.6	29	53.7	0	0.0

	Sectors		Arrivals On Time		Departures On Time		Cancellations	
	Sched.	Flown	No.	%	No.	%	No.	%
<b>Gold Coast-Melbourne</b>								
Bonza	14	6	1	16.7	1	16.7	8	57.1
Jetstar	249	234	153	65.4	141	60.3	15	6.0
Qantas	39	38	22	57.9	20	52.6	1	2.6
QantasLink	15	14	11	78.6	11	78.6	1	6.7
Rex Airlines	31	31	20	64.5	19	61.3	0	0.0
Virgin Australia	317	287	133	46.3	116	40.4	30	9.5
All Airlines	665	610	340	55.7	308	50.5	55	8.3
<b>Gold Coast-Sydney</b>								
Jetstar	265	253	180	71.1	178	70.4	12	4.5
Qantas	108	107	66	61.7	66	61.7	1	0.9
QantasLink	18	15	14	93.3	12	80.0	3	16.7
Rex Airlines	31	31	17	54.8	14	45.2	0	0.0
Virgin Australia	326	306	177	57.8	162	52.9	20	6.1
All Airlines	748	712	454	63.8	432	60.7	36	4.8
<b>Hamilton Island-Brisbane</b>								
Qantas	23	23	18	78.3	18	78.3	0	0.0
QantasLink	7	7	1	14.3	1	14.3	0	0.0
Virgin Australia	46	44	27	61.4	28	63.6	2	4.3
All Airlines	76	74	46	62.2	47	63.5	2	2.6
<b>Hamilton Island-Sydney</b>								
Jetstar	23	23	16	69.6	14	60.9	0	0.0
Qantas	30	30	14	46.7	14	46.7	0	0.0
Virgin Australia	31	30	8	26.7	13	43.3	1	3.2
All Airlines	84	83	38	45.8	41	49.4	1	1.2
<b>Hobart-Brisbane</b>								
Jetstar	36	35	17	48.6	18	51.4	1	2.8
Qantas	14	14	10	71.4	12	85.7	0	0.0
QantasLink	15	15	6	40.0	8	53.3	0	0.0
Virgin Australia	56	54	23	42.6	26	48.1	2	3.6
All Airlines	121	118	56	47.5	64	54.2	3	2.5
<b>Hobart-Melbourne</b>								
Jetstar	211	200	121	60.5	119	59.5	11	5.2
Qantas	57	57	41	71.9	40	70.2	0	0.0
QantasLink	57	56	32	57.1	39	69.6	1	1.8
Rex Airlines	42	42	28	66.7	30	71.4	0	0.0
Virgin Australia	128	126	57	45.2	73	57.9	2	1.6
All Airlines	495	481	279	58.0	301	62.6	14	2.8
<b>Hobart-Sydney</b>								
Jetstar	103	102	77	75.5	75	73.5	1	1.0
Qantas	23	23	9	39.1	12	52.2	0	0.0
QantasLink	62	62	45	72.6	50	80.6	0	0.0
Virgin Australia	78	74	47	63.5	51	68.9	4	5.1
All Airlines	266	261	178	68.2	188	72.0	5	1.9
<b>Kalgoorlie-Perth</b>								
Qantas	15	14	11	78.6	12	85.7	1	6.7
QantasLink	52	49	34	69.4	37	75.5	3	5.8
Virgin Australia	66	64	42	65.6	45	70.3	2	3.0
Virgin Australia Regional Airlines	17	17	14	82.4	14	82.4	0	0.0
All Airlines	150	144	101	70.1	108	75.0	6	4.0
<b>Karratha-Perth</b>								
Qantas	6	6	4	66.7	5	83.3	0	0.0
QantasLink	128	125	87	69.6	91	72.8	3	2.3
Virgin Australia	51	51	41	80.4	40	78.4	0	0.0
Virgin Australia Regional Airlines	11	10	6	60.0	6	60.0	1	9.1
All Airlines	196	192	138	71.9	142	74.0	4	2.0

	Sectors		Arrivals On Time		Departures On Time		Cancellations	
	Sched.	Flown	No.	%	No.	%	No.	%
<b>Launceston-Brisbane</b>								
Jetstar	29	28	9	32.1	5	17.9	1	3.4
QantasLink	10	10	7	70.0	6	60.0	0	0.0
Virgin Australia	29	26	5	19.2	5	19.2	3	10.3
All Airlines	68	64	21	32.8	16	25.0	4	5.9
<b>Launceston-Melbourne</b>								
Jetstar	154	148	84	56.8	77	52.0	6	3.9
QantasLink	102	95	68	71.6	71	74.7	7	6.9
Virgin Australia	103	97	63	64.9	64	66.0	6	5.8
All Airlines	359	340	215	63.2	212	62.4	19	5.3
<b>Launceston-Sydney</b>								
Jetstar	59	59	44	74.6	43	72.9	0	0.0
QantasLink	42	40	32	80.0	34	85.0	2	4.8
Virgin Australia	31	30	12	40.0	16	53.3	1	3.2
All Airlines	132	129	88	68.2	93	72.1	3	2.3
<b>Mackay-Brisbane</b>								
Jetstar	31	31	19	61.3	19	61.3	0	0.0
Qantas	22	22	17	77.3	19	86.4	0	0.0
QantasLink	131	126	49	38.9	55	43.7	5	3.8
Virgin Australia	137	132	43	32.6	56	42.4	5	3.6
All Airlines	321	311	128	41.2	149	47.9	10	3.1
<b>Melbourne-Adelaide</b>								
Jetstar	102	98	56	57.1	55	56.1	4	3.9
Qantas	236	235	150	63.8	164	69.8	1	0.4
QantasLink	12	12	6	50.0	6	50.0	0	0.0
Rex Airlines	54	54	30	55.6	34	63.0	0	0.0
Virgin Australia	248	233	98	42.1	130	55.8	15	6.0
All Airlines	652	632	340	53.8	389	61.6	20	3.1
<b>Melbourne-Brisbane</b>								
Jetstar	156	145	69	47.6	74	51.0	11	7.1
Qantas	359	350	226	64.6	232	66.3	9	2.5
Rex Airlines	72	72	35	48.6	41	56.9	0	0.0
Virgin Australia	386	346	157	45.4	193	55.8	40	10.4
All Airlines	973	913	487	53.3	540	59.1	60	6.2
<b>Melbourne-Cairns</b>								
Jetstar	111	96	53	55.2	56	58.3	15	13.5
Qantas	40	38	26	68.4	29	76.3	2	5.0
Virgin Australia	81	67	40	59.7	46	68.7	14	17.3
All Airlines	232	201	119	59.2	131	65.2	31	13.4
<b>Melbourne-Canberra</b>								
Jetstar	32	32	15	46.9	17	53.1	0	0.0
Qantas	6	6	4	66.7	6	100.0	0	0.0
QantasLink	205	202	123	60.9	132	65.3	3	1.5
Rex Airlines	29	29	17	58.6	21	72.4	0	0.0
Virgin Australia	113	113	56	49.6	60	53.1	0	0.0
All Airlines	385	382	215	56.3	236	61.8	3	0.8
<b>Melbourne-Darwin</b>								
Jetstar	23	23	15	65.2	16	69.6	0	0.0
QantasLink	31	31	7	22.6	11	35.5	0	0.0
Virgin Australia	31	29	8	27.6	10	34.5	2	6.5
All Airlines	85	83	30	36.1	37	44.6	2	2.4
<b>Melbourne-Devonport</b>								
QantasLink	120	120	85	70.8	79	65.8	0	0.0
Rex Airlines	48	47	44	93.6	43	91.5	1	2.1
All Airlines	168	167	129	77.2	122	73.1	1	0.6

	Sectors		Arrivals On Time		Departures On Time		Cancellations	
	Sched.	Flown	No.	%	No.	%	No.	%
<b>Melbourne-Gold Coast</b>								
Bonza	14	6	1	16.7	1	16.7	8	57.1
Jetstar	249	235	137	58.3	149	63.4	14	5.6
Qantas	39	39	26	66.7	27	69.2	0	0.0
QantasLink	15	14	12	85.7	12	85.7	1	6.7
Rex Airlines	31	31	22	71.0	26	83.9	0	0.0
Virgin Australia	315	289	140	48.4	162	56.1	26	8.3
All Airlines	663	614	338	55.0	377	61.4	49	7.4
<b>Melbourne-Hobart</b>								
Jetstar	210	199	132	66.3	133	66.8	11	5.2
Qantas	57	57	36	63.2	38	66.7	0	0.0
QantasLink	57	56	41	73.2	46	82.1	1	1.8
Rex Airlines	42	42	31	73.8	31	73.8	0	0.0
Virgin Australia	129	126	60	47.6	65	51.6	3	2.3
All Airlines	495	480	300	62.5	313	65.2	15	3.0
<b>Melbourne-Launceston</b>								
Jetstar	152	148	92	62.2	89	60.1	4	2.6
QantasLink	102	96	56	58.3	63	65.6	6	5.9
Virgin Australia	103	97	48	49.5	52	53.6	6	5.8
All Airlines	357	341	196	57.5	204	59.8	16	4.5
<b>Melbourne-Mildura</b>								
Bonza	9	8	2	25.0	2	25.0	1	11.1
QantasLink	104	102	53	52.0	65	63.7	2	1.9
Rex Airlines	86	86	52	60.5	59	68.6	0	0.0
All Airlines	199	196	107	54.6	126	64.3	3	1.5
<b>Melbourne-Newcastle</b>								
Jetstar	65	64	36	56.3	39	60.9	1	1.5
QantasLink	42	39	25	64.1	30	76.9	3	7.1
Virgin Australia	44	44	24	54.5	29	65.9	0	0.0
All Airlines	151	147	85	57.8	98	66.7	4	2.6
<b>Melbourne-Perth</b>								
Jetstar	87	86	58	67.4	64	74.4	1	1.1
Qantas	203	202	111	55.0	122	60.4	1	0.5
Virgin Australia	217	209	89	42.6	99	47.4	8	3.7
All Airlines	507	497	258	51.9	285	57.3	10	2.0
<b>Melbourne-Sunshine Coast</b>								
Bonza	12	12	7	58.3	7	58.3	0	0.0
Jetstar	89	89	66	74.2	71	79.8	0	0.0
Qantas	11	11	5	45.5	6	54.5	0	0.0
QantasLink	28	28	13	46.4	15	53.6	0	0.0
Virgin Australia	98	93	56	60.2	62	66.7	5	5.1
All Airlines	238	233	147	63.1	161	69.1	5	2.1
<b>Melbourne-Sydney</b>								
Jetstar	428	386	227	58.8	221	57.3	42	9.8
Qantas	752	708	449	63.4	507	71.6	44	5.9
Rex Airlines	200	200	136	68.0	140	70.0	0	0.0
Virgin Australia	725	615	297	48.3	372	60.5	110	15.2
All Airlines	2 105	1 909	1 109	58.1	1 240	65.0	196	9.3
<b>Mildura-Melbourne</b>								
Bonza	9	8	1	12.5	1	12.5	1	11.1
QantasLink	105	102	58	56.9	50	49.0	3	2.9
Rex Airlines	87	87	47	54.0	51	58.6	0	0.0
All Airlines	201	197	106	53.8	102	51.8	4	2.0

	Sectors		Arrivals On Time		Departures On Time		Cancellations	
	Sched.	Flown	No.	%	No.	%	No.	%
<b>Mount Isa-Brisbane</b>								
Qantas	45	45	33	73.3	36	80.0	0	0.0
QantasLink	6	6	4	66.7	6	100.0	0	0.0
Virgin Australia	13	12	5	41.7	7	58.3	1	7.7
All Airlines	64	63	42	66.7	49	77.8	1	1.6
<b>Newcastle-Brisbane</b>								
Jetstar	59	56	38	67.9	37	66.1	3	5.1
QantasLink	115	107	75	70.1	75	70.1	8	7.0
Virgin Australia	76	74	36	48.6	39	52.7	2	2.6
All Airlines	250	237	149	62.9	151	63.7	13	5.2
<b>Newcastle-Melbourne</b>								
Jetstar	64	63	28	44.4	30	47.6	1	1.6
QantasLink	42	38	19	50.0	20	52.6	4	9.5
Virgin Australia	44	44	18	40.9	22	50.0	0	0.0
All Airlines	150	145	65	44.8	72	49.7	5	3.3
<b>Newman-Perth</b>								
Qantas	16	15	15	100.0	13	86.7	1	6.3
QantasLink	91	88	56	63.6	60	68.2	3	3.3
Virgin Australia	42	39	23	59.0	27	69.2	3	7.1
Virgin Australia Regional Airlines	11	11	8	72.7	8	72.7	0	0.0
All Airlines	160	153	102	66.7	108	70.6	7	4.4
<b>Perth-Adelaide</b>								
Jetstar	31	31	25	80.6	26	83.9	0	0.0
Qantas	93	93	77	82.8	78	83.9	0	0.0
Virgin Australia	42	38	15	39.5	23	60.5	4	9.5
Virgin Australia Regional Airlines	42	40	22	55.0	24	60.0	2	4.8
All Airlines	208	202	139	68.8	151	74.8	6	2.9
<b>Perth-Brisbane</b>								
Jetstar	24	22	9	40.9	8	36.4	2	8.3
Qantas	152	151	111	73.5	112	74.2	1	0.7
Virgin Australia	132	122	80	65.6	65	53.3	10	7.6
All Airlines	308	295	200	67.8	185	62.7	13	4.2
<b>Perth-Broome</b>								
QantasLink	83	82	67	81.7	63	76.8	1	1.2
Virgin Australia	21	20	13	65.0	13	65.0	1	4.8
Virgin Australia Regional Airlines	16	16	16	100.0	13	81.3	0	0.0
All Airlines	120	118	96	81.4	89	75.4	2	1.7
<b>Perth-Darwin</b>								
QantasLink	31	31	28	90.3	30	96.8	0	0.0
Virgin Australia	14	14	12	85.7	11	78.6	0	0.0
Virgin Australia Regional Airlines	11	11	7	63.6	8	72.7	0	0.0
All Airlines	56	56	47	83.9	49	87.5	0	0.0
<b>Perth-Kalgoorlie</b>								
Qantas	15	15	14	93.3	14	93.3	0	0.0
QantasLink	52	51	38	74.5	37	72.5	1	1.9
Virgin Australia	66	64	49	76.6	50	78.1	2	3.0
Virgin Australia Regional Airlines	17	17	14	82.4	14	82.4	0	0.0
All Airlines	150	147	115	78.2	115	78.2	3	2.0
<b>Perth-Karratha</b>								
Qantas	6	6	6	100.0	6	100.0	0	0.0
QantasLink	128	126	95	75.4	98	77.8	2	1.6
Virgin Australia	51	51	45	88.2	44	86.3	0	0.0
Virgin Australia Regional Airlines	11	10	7	70.0	7	70.0	1	9.1
All Airlines	196	193	153	79.3	155	80.3	3	1.5

	Sectors		Arrivals On Time		Departures On Time		Cancellations	
	Sched.	Flown	No.	%	No.	%	No.	%
<b>Perth-Melbourne</b>								
Jetstar	88	85	57	67.1	50	58.8	3	3.4
Qantas	202	200	117	58.5	105	52.5	2	1.0
Virgin Australia	227	218	134	61.5	133	61.0	9	4.0
All Airlines	517	503	308	61.2	288	57.3	14	2.7
<b>Perth-Newman</b>								
Qantas	16	15	15	100.0	13	86.7	1	6.3
QantasLink	91	89	70	78.7	75	84.3	2	2.2
Virgin Australia	42	39	34	87.2	36	92.3	3	7.1
Virgin Australia Regional Airlines	11	11	8	72.7	9	81.8	0	0.0
All Airlines	160	154	127	82.5	133	86.4	6	3.8
<b>Perth-Port Hedland</b>								
QantasLink	125	124	96	77.4	104	83.9	1	0.8
Virgin Australia	34	32	24	75.0	25	78.1	2	5.9
Virgin Australia Regional Airlines	23	22	17	77.3	15	68.2	1	4.3
All Airlines	182	178	137	77.0	144	80.9	4	2.2
<b>Perth-Sydney</b>								
Jetstar	58	58	32	55.2	31	53.4	0	0.0
Qantas	201	201	127	63.2	118	58.7	0	0.0
Virgin Australia	172	158	97	61.4	90	57.0	14	8.1
All Airlines	431	417	256	61.4	239	57.3	14	3.2
<b>Port Hedland-Perth</b>								
QantasLink	124	123	85	69.1	91	74.0	1	0.8
Virgin Australia	33	32	24	75.0	22	68.8	1	3.0
Virgin Australia Regional Airlines	23	22	13	59.1	11	50.0	1	4.3
All Airlines	180	177	122	68.9	124	70.1	3	1.7
<b>Port Lincoln-Adelaide</b>								
QantasLink	127	123	108	87.8	110	89.4	4	3.1
Rex Airlines	145	145	116	80.0	116	80.0	0	0.0
All Airlines	272	268	224	83.6	226	84.3	4	1.5
<b>Port Macquarie-Sydney</b>								
QantasLink	109	106	79	74.5	80	75.5	3	2.8
Rex Airlines	69	69	48	69.6	53	76.8	0	0.0
All Airlines	178	175	127	72.6	133	76.0	3	1.7
<b>Proserpine-Brisbane</b>								
Jetstar	49	48	17	35.4	22	45.8	1	2.0
QantasLink	23	20	14	70.0	14	70.0	3	13.0
Virgin Australia	47	46	25	54.3	31	67.4	1	2.1
All Airlines	119	114	56	49.1	67	58.8	5	4.2
<b>Rockhampton-Brisbane</b>								
QantasLink	177	163	91	55.8	95	58.3	14	7.9
Virgin Australia	121	120	54	45.0	73	60.8	1	0.8
All Airlines	298	283	145	51.2	168	59.4	15	5.0
<b>Sunshine Coast-Melbourne</b>								
Bonza	12	12	4	33.3	4	33.3	0	0.0
Jetstar	92	88	60	68.2	50	56.8	4	4.3
Qantas	10	10	1	10.0	2	20.0	0	0.0
QantasLink	28	28	11	39.3	9	32.1	0	0.0
Virgin Australia	98	93	39	41.9	54	58.1	5	5.1
All Airlines	240	231	115	49.8	119	51.5	9	3.8



	Sectors		Arrivals On Time		Departures On Time		Cancellations	
	Sched.	Flown	No.	%	No.	%	No.	%
<b>Sunshine Coast-Sydney</b>								
Jetstar	120	115	71	61.7	71	61.7	5	4.2
Qantas	57	57	42	73.7	38	66.7	0	0.0
Virgin Australia	70	70	35	50.0	40	57.1	0	0.0
All Airlines	247	242	148	61.2	149	61.6	5	2.0
<b>Sydney-Adelaide</b>								
Jetstar	136	123	75	61.0	71	57.7	13	9.6
Qantas	218	214	153	71.5	155	72.4	4	1.8
Rex Airlines	31	31	11	35.5	13	41.9	0	0.0
Virgin Australia	180	164	96	58.5	97	59.1	16	8.9
All Airlines	565	532	335	63.0	336	63.2	33	5.8
<b>Sydney-Albury</b>								
QantasLink	98	96	55	57.3	57	59.4	2	2.0
Rex Airlines	77	77	61	79.2	64	83.1	0	0.0
All Airlines	175	173	116	67.1	121	69.9	2	1.1
<b>Sydney-Ballina</b>								
Jetstar	89	89	70	78.7	68	76.4	0	0.0
QantasLink	55	55	32	58.2	32	58.2	0	0.0
Virgin Australia	47	45	33	73.3	37	82.2	2	4.3
All Airlines	191	189	135	71.4	137	72.5	2	1.0
<b>Sydney-Brisbane</b>								
Jetstar	198	183	101	55.2	101	55.2	15	7.6
Qantas	483	467	312	66.8	322	69.0	16	3.3
Rex Airlines	146	145	86	59.3	88	60.7	1	0.7
Virgin Australia	441	389	239	61.4	248	63.8	52	11.8
All Airlines	1 268	1 184	738	62.3	759	64.1	84	6.6
<b>Sydney-Cairns</b>								
Jetstar	109	93	55	59.1	64	68.8	16	14.7
Qantas	61	57	39	68.4	41	71.9	4	6.6
Virgin Australia	96	78	49	62.8	54	69.2	18	18.8
All Airlines	266	228	143	62.7	159	69.7	38	14.3
<b>Sydney-Canberra</b>								
Qantas	8	8	8	100.0	8	100.0	0	0.0
QantasLink	335	316	207	65.5	207	65.5	19	5.7
Virgin Australia	216	208	157	75.5	138	66.3	8	3.7
All Airlines	559	532	372	69.9	353	66.4	27	4.8
<b>Sydney-Coffs Harbour</b>								
QantasLink	107	102	64	62.7	63	61.8	5	4.7
Rex Airlines	83	83	66	79.5	56	67.5	0	0.0
All Airlines	190	185	130	70.3	119	64.3	5	2.6
<b>Sydney-Dubbo</b>								
QantasLink	104	101	74	73.3	66	65.3	3	2.9
Rex Airlines	104	104	83	79.8	79	76.0	0	0.0
All Airlines	208	205	157	76.6	145	70.7	3	1.4
<b>Sydney-Gold Coast</b>								
Jetstar	263	251	178	70.9	185	73.7	12	4.6
Qantas	107	107	69	64.5	69	64.5	0	0.0
QantasLink	18	15	14	93.3	13	86.7	3	16.7
Rex Airlines	31	31	19	61.3	21	67.7	0	0.0
Virgin Australia	326	307	167	54.4	182	59.3	19	5.8
All Airlines	745	711	447	62.9	470	66.1	34	4.6

	Sectors		Arrivals On Time		Departures On Time		Cancellations	
	Sched.	Flown	No.	%	No.	%	No.	%
<b>Sydney-Hamilton Island</b>								
Jetstar	24	24	13	54.2	16	66.7	0	0.0
Qantas	30	30	16	53.3	19	63.3	0	0.0
Virgin Australia	31	30	17	56.7	23	76.7	1	3.2
All Airlines	85	84	46	54.8	58	69.0	1	1.2
<b>Sydney-Hobart</b>								
Jetstar	105	104	79	76.0	76	73.1	1	1.0
Qantas	23	23	17	73.9	12	52.2	0	0.0
QantasLink	62	62	46	74.2	41	66.1	0	0.0
Virgin Australia	78	74	59	79.7	59	79.7	4	5.1
All Airlines	268	263	201	76.4	188	71.5	5	1.9
<b>Sydney-Launceston</b>								
Jetstar	61	61	50	82.0	47	77.0	0	0.0
QantasLink	42	40	35	87.5	33	82.5	2	4.8
Virgin Australia	31	31	19	61.3	18	58.1	0	0.0
All Airlines	134	132	104	78.8	98	74.2	2	1.5
<b>Sydney-Melbourne</b>								
Jetstar	429	388	235	60.6	238	61.3	41	9.6
Qantas	751	706	460	65.2	476	67.4	45	6.0
Rex Airlines	200	200	124	62.0	131	65.5	0	0.0
Virgin Australia	719	608	307	50.5	333	54.8	111	15.4
All Airlines	2 099	1 902	1 126	59.2	1 178	61.9	197	9.4
<b>Sydney-Perth</b>								
Jetstar	58	58	37	63.8	35	60.3	0	0.0
Qantas	201	201	90	44.8	111	55.2	0	0.0
Virgin Australia	184	173	87	50.3	78	45.1	11	6.0
All Airlines	443	432	214	49.5	224	51.9	11	2.5
<b>Sydney-Port Macquarie</b>								
QantasLink	108	107	79	73.8	73	68.2	1	0.9
Rex Airlines	68	68	49	72.1	47	69.1	0	0.0
All Airlines	176	175	128	73.1	120	68.6	1	0.6
<b>Sydney-Sunshine Coast</b>								
Jetstar	120	116	83	71.6	82	70.7	4	3.3
Qantas	58	58	37	63.8	36	62.1	0	0.0
Virgin Australia	70	70	44	62.9	49	70.0	0	0.0
All Airlines	248	244	164	67.2	167	68.4	4	1.6
<b>Sydney-Wagga Wagga</b>								
QantasLink	98	92	58	63.0	51	55.4	6	6.1
Rex Airlines	77	77	61	79.2	62	80.5	0	0.0
All Airlines	175	169	119	70.4	113	66.9	6	3.4
<b>Townsville-Brisbane</b>								
Jetstar	53	50	20	40.0	19	38.0	3	5.7
Qantas	53	53	41	77.4	43	81.1	0	0.0
QantasLink	80	79	30	38.0	38	48.1	1	1.3
Virgin Australia	143	139	51	36.7	52	37.4	4	2.8
All Airlines	329	321	142	44.2	152	47.4	8	2.4
<b>Townsville-Cairns</b>								
QantasLink	143	125	97	77.6	97	77.6	18	12.6
Rex Airlines	11	11	10	90.9	10	90.9	0	0.0
All Airlines	154	136	107	78.7	107	78.7	18	11.7
<b>Wagga Wagga-Sydney</b>								
QantasLink	99	93	67	72.0	61	65.6	6	6.1
Rex Airlines	77	76	58	76.3	65	85.5	1	1.3
All Airlines	176	169	125	74.0	126	74.6	7	4.0

# Airports

The following data reports by airport against flights operated on published routes only. This month, 8 major city airports and 28 regional city airports are covered.

Airport	Arrivals			Departures		
	Sectors	On Time		Sectors	On Time	
	Flown	No.	%	Flown	No.	%
<b>Adelaide</b>						
Jetstar	313	197	62.9	311	194	62.4
Qantas	542	380	70.1	542	385	71.0
QantasLink	433	319	73.7	435	349	80.2
Rex Airlines	230	157	68.3	230	174	75.7
Virgin Australia	625	313	50.1	624	364	58.3
Virgin Australia Regional Airlines	40	22	55.0	40	14	35.0
All Airlines	2,183	1,388	63.6	2,182	1,480	67.8

Relates to services to and from Alice Springs, Brisbane, Canberra, Gold Coast, Melbourne, Perth, Port Lincoln and Sydney only.

## Albury

QantasLink	96	55	57.3	97	58	59.8
Rex Airlines	77	61	79.2	77	64	83.1
All Airlines	173	116	67.1	174	122	70.1

Relates to services to and from Sydney only.

## Alice Springs

QantasLink	43	38	88.4	43	32	74.4
Virgin Australia	12	6	50.0	12	1	8.3
All Airlines	55	44	80.0	55	33	60.0

Relates to services to and from Adelaide only.

## Ballina

Jetstar	89	70	78.7	89	64	71.9
QantasLink	55	32	58.2	55	38	69.1
Virgin Australia	45	33	73.3	45	32	71.1
All Airlines	189	135	71.4	189	134	70.9

Relates to services to and from Sydney only.

## Brisbane

Jetstar	768	397	51.7	767	430	56.1
Qantas	1,222	847	69.3	1,217	965	79.3
QantasLink	1,128	640	56.7	1,137	692	60.9
Rex Airlines	217	121	55.8	214	126	58.9
Virgin Australia	1,947	970	49.8	1,949	1,028	52.7
All Airlines	5,282	2,975	56.3	5,284	3,241	61.3

Relates to services to and from Adelaide, Cairns, Canberra, Darwin, Emerald, Gladstone, Hamilton Island, Hobart, Launceston, Mackay, Melbourne, Mount Isa, Newcastle, Perth, Proserpine, Rockhampton, Sydney and Townsville only.

Airport	Arrivals			Departures		
	Sectors Flown	On Time No.	On Time %	Sectors Flown	On Time No.	On Time %
<b>Broome</b>						
QantasLink	82	67	81.7	82	61	74.4
Virgin Australia	20	13	65.0	20	11	55.0
Virgin Australia Regional Airlines	16	16	100.0	16	8	50.0
All Airlines	118	96	81.4	118	80	67.8
Relates to services to and from Perth only.						
<b>Cairns</b>						
Jetstar	275	167	60.7	275	174	63.3
Qantas	175	132	75.4	176	132	75.0
QantasLink	180	120	66.7	175	122	69.7
Rex Airlines	11	10	90.9	11	8	72.7
Virgin Australia	271	152	56.1	270	132	48.9
All Airlines	912	581	63.7	907	568	62.6
Relates to services to and from Brisbane, Melbourne, Sydney and Townsville only.						
<b>Canberra</b>						
Jetstar	86	47	54.7	86	37	43.0
Qantas	14	12	85.7	13	11	84.6
QantasLink	740	495	66.9	739	473	64.0
Rex Airlines	29	17	58.6	29	13	44.8
Virgin Australia	459	292	63.6	458	239	52.2
All Airlines	1,328	863	65.0	1,325	773	58.3
Relates to services to and from Adelaide, Brisbane, Gold Coast, Melbourne and Sydney only.						
<b>Coffs Harbour</b>						
QantasLink	102	64	62.7	103	75	72.8
Rex Airlines	83	66	79.5	84	57	67.9
All Airlines	185	130	70.3	187	132	70.6
Relates to services to and from Sydney only.						
<b>Darwin</b>						
Jetstar	47	23	48.9	45	12	26.7
Qantas	17	15	88.2	16	12	75.0
QantasLink	86	49	57.0	87	66	75.9
Virgin Australia	74	44	59.5	73	23	31.5
Virgin Australia Regional Airlines	11	7	63.6	11	7	63.6
All Airlines	235	138	58.7	232	120	51.7
Relates to services to and from Brisbane, Melbourne and Perth only.						
<b>Devonport</b>						
QantasLink	120	85	70.8	120	93	77.5
Rex Airlines	47	44	93.6	47	39	83.0
All Airlines	167	129	77.2	167	132	79.0
Relates to services to and from Melbourne and Sydney only.						
<b>Dubbo</b>						
QantasLink	101	74	73.3	101	84	83.2
Rex Airlines	104	83	79.8	103	72	69.9
All Airlines	205	157	76.6	204	156	76.5
Relates to services to and from Sydney only.						

Airport	Arrivals			Departures		
	Sectors	On Time		Sectors	On Time	
	Flown	No.	%	Flown	No.	%
<b>Emerald</b>						
QantasLink	104	79	76.0	101	70	69.3
Virgin Australia	25	16	64.0	25	13	52.0
All Airlines	129	95	73.6	126	83	65.9
Relates to services to and from Brisbane only.						
<b>Gladstone</b>						
QantasLink	109	62	56.9	105	62	59.0
Virgin Australia	44	27	61.4	44	20	45.5
All Airlines	153	89	58.2	149	82	55.0
Relates to services to and from Brisbane only.						
<b>Gold Coast</b>						
Bonza	6	1	16.7	6	1	16.7
Jetstar	540	355	65.7	541	360	66.5
Qantas	146	95	65.1	145	86	59.3
QantasLink	37	34	91.9	37	29	78.4
Rex Airlines	62	41	66.1	62	33	53.2
Virgin Australia	668	356	53.3	664	307	46.2
All Airlines	1,459	882	60.5	1,455	816	56.1
Relates to services to and from Adelaide, Canberra, Melbourne and Sydney only.						
<b>Hamilton Island</b>						
Jetstar	24	13	54.2	23	14	60.9
Qantas	53	38	71.7	53	32	60.4
QantasLink	7	3	42.9	7	1	14.3
Virgin Australia	74	48	64.9	74	41	55.4
All Airlines	158	102	64.6	157	88	56.1
Relates to services to and from Brisbane and Sydney only.						
<b>Hobart</b>						
Jetstar	338	237	70.1	337	212	62.9
Qantas	94	66	70.2	94	64	68.1
QantasLink	133	95	71.4	133	97	72.9
Rex Airlines	42	31	73.8	42	30	71.4
Virgin Australia	254	150	59.1	254	150	59.1
All Airlines	861	579	67.2	860	553	64.3
Relates to services to and from Brisbane, Melbourne and Sydney only.						
<b>Kalgoorlie</b>						
Qantas	15	14	93.3	14	12	85.7
QantasLink	51	38	74.5	49	37	75.5
Virgin Australia	64	49	76.6	64	45	70.3
Virgin Australia Regional Airlines	17	14	82.4	17	14	82.4
All Airlines	147	115	78.2	144	108	75.0
Relates to services to and from Perth only.						
<b>Karratha</b>						
Qantas	6	6	100.0	6	5	83.3
QantasLink	126	95	75.4	125	91	72.8
Virgin Australia	51	45	88.2	51	40	78.4
Virgin Australia Regional Airlines	10	7	70.0	10	6	60.0
All Airlines	193	153	79.3	192	142	74.0
Relates to services to and from Perth only.						

Airport	Arrivals			Departures		
	Sectors Flown	On Time No.	%	Sectors Flown	On Time No.	%
<b>Launceston</b>						
Jetstar	235	151	64.3	235	125	53.2
QantasLink	147	94	63.9	145	111	76.6
Virgin Australia	154	77	50.0	153	85	55.6
All Airlines	536	322	60.1	533	321	60.2
Relates to services to and from Brisbane, Melbourne and Sydney only.						
<b>Mackay</b>						
Jetstar	31	23	74.2	31	19	61.3
Qantas	22	20	90.9	22	19	86.4
QantasLink	126	54	42.9	126	55	43.7
Virgin Australia	134	51	38.1	132	56	42.4
All Airlines	313	148	47.3	311	149	47.9
Relates to services to and from Brisbane only.						
<b>Melbourne</b>						
Bonza	26	6	23.1	26	10	38.5
Jetstar	1,593	956	60.0	1,601	984	61.5
Qantas	1,639	1,049	64.0	1,646	1,131	68.7
QantasLink	697	427	61.3	700	459	65.6
Rex Airlines	563	342	60.7	561	395	70.4
Virgin Australia	2,256	1,133	50.2	2,261	1,280	56.6
All Airlines	6,774	3,913	57.8	6,795	4,259	62.7
Relates to services to and from Adelaide, Brisbane, Cairns, Canberra, Darwin, Devonport, Gold Coast, Hobart, Launceston, Mildura, Newcastle, Perth, Sunshine Coast and Sydney only.						
<b>Mildura</b>						
Bonza	8	2	25.0	8	1	12.5
QantasLink	102	53	52.0	102	50	49.0
Rex Airlines	86	52	60.5	87	51	58.6
All Airlines	196	107	54.6	197	102	51.8
Relates to services to and from Melbourne only.						
<b>Mount Isa</b>						
Qantas	44	41	93.2	45	36	80.0
QantasLink	6	6	100.0	6	6	100.0
Virgin Australia	13	7	53.8	12	7	58.3
All Airlines	63	54	85.7	63	49	77.8
Relates to services to and from Brisbane only.						
<b>Newcastle</b>						
Jetstar	121	83	68.6	119	67	56.3
QantasLink	147	89	60.5	145	95	65.5
Virgin Australia	117	53	45.3	118	61	51.7
All Airlines	385	225	58.4	382	223	58.4
Relates to services to and from Brisbane and Melbourne only.						
<b>Newman</b>						
Qantas	15	15	100.0	15	13	86.7
QantasLink	89	70	78.7	88	60	68.2
Virgin Australia	39	34	87.2	39	27	69.2
Virgin Australia Regional Airlines	11	8	72.7	11	8	72.7
All Airlines	154	127	82.5	153	108	70.6
Relates to services to and from Perth only.						

Airport	Arrivals			Departures		
	Sectors	On Time		Sectors	On Time	
	Flown	No.	%	Flown	No.	%
<b>Perth</b>						
Jetstar	197	130	66.0	196	115	58.7
Qantas	683	415	60.8	681	446	65.5
QantasLink	498	343	68.9	503	407	80.9
Virgin Australia	753	392	52.1	756	490	64.8
Virgin Australia Regional Airlines	127	74	58.3	127	90	70.9
All Airlines	2,258	1,354	60.0	2,263	1,548	68.4
Relates to services to and from Adelaide, Brisbane, Broome, Darwin, Kalgoorlie, Karratha, Melbourne, Newman, Port Hedland and Sydney only.						
<b>Port Hedland</b>						
QantasLink	124	96	77.4	123	91	74.0
Virgin Australia	32	24	75.0	32	22	68.8
Virgin Australia Regional Airlines	22	17	77.3	22	11	50.0
All Airlines	178	137	77.0	177	124	70.1
Relates to services to and from Perth only.						
<b>Port Lincoln</b>						
QantasLink	124	109	87.9	123	110	89.4
Rex Airlines	144	115	79.9	145	116	80.0
All Airlines	268	224	83.6	268	226	84.3
Relates to services to and from Adelaide only.						
<b>Port Macquarie</b>						
QantasLink	107	79	73.8	106	80	75.5
Rex Airlines	68	49	72.1	69	53	76.8
All Airlines	175	128	73.1	175	133	76.0
Relates to services to and from Sydney only.						
<b>Proserpine</b>						
Jetstar	48	25	52.1	48	22	45.8
QantasLink	20	16	80.0	20	14	70.0
Virgin Australia	46	34	73.9	46	31	67.4
All Airlines	114	75	65.8	114	67	58.8
Relates to services to and from Brisbane only.						
<b>Rockhampton</b>						
QantasLink	164	104	63.4	163	95	58.3
Virgin Australia	120	58	48.3	120	73	60.8
All Airlines	284	162	57.0	283	168	59.4
Relates to services to and from Brisbane only.						
<b>Sunshine Coast</b>						
Bonza	12	7	58.3	12	4	33.3
Jetstar	205	149	72.7	203	121	59.6
Qantas	69	42	60.9	67	40	59.7
QantasLink	28	13	46.4	28	9	32.1
Virgin Australia	163	100	61.3	163	94	57.7
All Airlines	477	311	65.2	473	268	56.7
Relates to services to and from Melbourne and Sydney only.						

Airport	Arrivals			Departures		
	Sectors Flown	On Time		Sectors Flown	On Time	
		No.	%		No.	%
<b>Sydney</b>						
Jetstar	1,485	966	65.1	1,490	983	66.0
Qantas	1,868	1,282	68.6	1,871	1,249	66.8
QantasLink	987	689	69.8	986	636	64.5
Rex Airlines	813	540	66.4	816	561	68.8
Virgin Australia	2,176	1,208	55.5	2,177	1,316	60.5
All Airlines	7,329	4,685	63.9	7,340	4,745	64.6

Relates to services to and from Adelaide, Albury, Ballina, Brisbane, Cairns, Canberra, Coffs Harbour, Dubbo, Gold Coast, Hamilton Island, Hobart, Launceston, Melbourne, Perth, Port Macquarie, Sunshine Coast and Wagga Wagga only.

#### Townsville

Jetstar	52	24	46.2	50	19	38.0
Qantas	52	42	80.8	53	43	81.1
QantasLink	201	143	71.1	204	135	66.2
Rex Airlines	11	8	72.7	11	10	90.9
Virgin Australia	139	56	40.3	139	52	37.4
All Airlines	455	273	60.0	457	259	56.7

Relates to services to and from Brisbane and Cairns only.

#### Wagga Wagga

QantasLink	92	58	63.0	93	61	65.6
Rex Airlines	77	61	79.2	76	65	85.5
All Airlines	169	119	70.4	169	126	74.6

Relates to services to and from Sydney only.



## Definitions

---

On time arrival	A flight arrival is counted as "on time" if it arrived at the gate before 15 minutes after the scheduled arrival time shown in the carriers' schedule. Neither diverted nor cancelled flights count as on time.
On time departure	A flight departure is counted as "on time" if it departs the gate before 15 minutes after the scheduled departure time shown in the carriers' schedule.
Cancellation	A flight removed from service within 7 days of scheduled departure is regarded as a cancellation.
On time departure percentage	The percentage of on time departures is measured against the number of departures <i>operated</i> on any particular sector.
On time arrival percentage	The percentage of on time arrivals is measured against the number of arrivals <i>operated</i> on any particular sector.
Cancellation percentage	The percentage of cancellations is measured against the number of services <i>scheduled</i> on any particular sector.

---

## Airlines and Reporting

Data has been gathered since November 2003, although some airlines commenced reporting at a later date, including Jetstar which first reported in May 2004, Tigerair Australia in April 2008 and Virgin Australia Regional Airlines in May 2013. Tigerair Australia ceased operations in March 2020 and data was not received for that month.

Virgin Blue was rebranded as Virgin Australia in May 2011 and Tiger Airways was rebranded as Tigerair Australia in August 2013 and time series data in Microsoft Excel spread sheet format on the BITRE website have been revised to reflect these changes. With effect from August 2021, Regional Express is reported as Rex Airlines.

Services operated by Skywest on behalf of Virgin Australia using ATR/F100 aircraft commenced in November 2011 and were shown separately as Virgin Australia – ATR/F100 Operations. Virgin Australia Regional Airlines commenced operations in May 2013. It was formed after the acquisition of Skywest by Virgin Australia and represented a combination of operations previously reported under Skywest and Virgin Australia – ATR/F100 Operations. In February 2016, Virgin Australia transferred their ATR fleet from Virgin Australia Regional Airlines to Virgin Australia.