



Australian Government

**Department of Infrastructure, Transport,
Regional Development, Communications and the Arts**
Bureau of Infrastructure and Transport Research Economics

STATISTICAL REPORT



Aviation

**Domestic airline on time performance
December 2024**

The Department of Infrastructure, Transport, Regional Development, Communications and the Arts acknowledges the Traditional Custodians of Country of the land on which we work and live.

We recognise and respect the continuing connections to land, waters and communities.

We pay our respects to them and their cultures and to their Elders both past and present and to all Aboriginal and Torres Strait Islander people.

© Commonwealth of Australia 2025

ISSN: 1832-0759

BITRE reference: 2025-010

Ownership of intellectual property rights in this publication

Unless otherwise noted, copyright (and any other intellectual property rights, if any) in this publication is owned by the Commonwealth of Australia (referred to below as the Commonwealth).

Disclaimer

The material contained in this publication is made available on the understanding that the Commonwealth is not providing professional advice, and that users exercise their own skill and care with respect to its use, and seek independent advice if necessary.

The Commonwealth makes no representations or warranties as to the contents or accuracy of the information contained in this publication. To the extent permitted by law, the Commonwealth disclaims liability to any person or organisation in respect of anything done, or omitted to be done, in reliance upon information contained in this publication.

Creative Commons licence

With the exception of (a) the Coat of Arms; and (b) the Department of Infrastructure, Transport, Regional Development, Communications and the Arts' photos and graphics, copyright in this publication is licensed under a Creative Commons Attribution 3.0 Australia Licence.

Creative Commons Attribution 3.0 Australia Licence is a standard form licence agreement that allows you to copy, communicate and adapt this publication provided that you attribute the work to the Commonwealth and abide by the other licence terms. A summary of the licence terms is available from <http://creativecommons.org/licenses/by/3.0/au/deed.en>. The full licence terms are available from <http://creativecommons.org/licenses/by/3.0/au/legalcode>.

Use of the Coat of Arms

The Department of the Prime Minister and Cabinet sets the terms under which the Coat of Arms is used. Please refer to the Department's Commonwealth Coat of Arms and Government branding web page <http://www.dpmc.gov.au/guidelines/index.cfm#brand> and, in particular, the Guidelines on the use of the Commonwealth Coat of Arms publication.

An appropriate citation for this report is:

Bureau of Infrastructure and Transport Research Economics (BITRE), 2025, Domestic airline on time performance, Statistical Report, BITRE, Canberra ACT.

Contact us

All other rights are reserved, including in relation to any Departmental logos or trade marks which may exist. For enquiries regarding the licence and any use of this publication, please contact:

Bureau of Infrastructure and Transport Research Economics (BITRE)
Department of Infrastructure, Transport, Regional Development, Communications and the Arts
GPO Box 501, Canberra ACT 2601, Australia
Telephone: (international) +61 2 6136 8687
Email: bitre@infrastructure.gov.au
Website: www.bitre.gov.au

Inquiries

Should you require additional information about the statistics contained in this publication:

Telephone (02) 6136 7250

Electronic mail: AVSTATS@infrastructure.gov.au

Web site: <http://www.bitre.gov.au/statistics/aviation/otphome.aspx>

Foreword

The Bureau of Infrastructure and Transport Research Economics (BITRE) monitors the punctuality and reliability of major domestic airlines operating between Australian airports. The purpose of this is to allow for evaluation of overall industry and individual airline performance, so that consumers of air travel can make informed decisions.

The following domestic airlines currently report this information monthly to the BITRE: Hinterland, Jetstar, Qantas, QantasLink, Rex Airlines, Skytrans, Virgin Australia and Virgin Australia Regional Airlines.

Information presented in this report is for Australian domestic routes for which the passenger load averaged 8,000 or more passengers per month over the previous six months and where two or more airlines operated in competition on those routes. In order to present data for more routes during the period impacted by COVID-19, the passenger load restriction was not applied between March 2020 and January 2023. From February 2023, the passenger load restriction was reinstated due to the continued recovery of passenger numbers. Data are presented for 59 routes in December 2024. Over time, routes which meet these criteria change as airline networks and traffic levels vary. Participating airlines report their overall monthly network performance where this is possible.

Total industry figures encompass all services operated by reporting airlines only. These airlines collectively carried over 98 per cent of total domestic passengers (regular public transport only) in 2023.

The method of capturing on time performance varies between airlines utilising different recording systems. Jetstar and Qantas jet aircraft use Aircraft Communication Addressing and Reporting System (ACARS) to electronically measure on time performance. Rex Airlines, Virgin Australia, Virgin Australia Regional Airlines and the Qantas non-jet fleet record on time performance manually using records from pilots, gate agents and/or ground crews.

After initial data is collected, aggregate reports are reviewed by participating airlines prior to publication.

Reports and detailed time series data in Microsoft Excel spreadsheet format are available from the BITRE website at: <http://www.bitre.gov.au/statistics/aviation/otphome.aspx>

Contents

	Page
Industry performance	1
Individual routes	10
Airports.....	22
Definitions	28
Airlines and Reporting	29

Industry performance

For December 2024, on time performance over all routes operated by participating airlines (Hinterland, Jetstar, Qantas, QantasLink, Rex Airlines, Skytrans, Virgin Australia and Virgin Australia Regional Airlines) averaged 74.7 per cent for on time arrivals and 74.0 per cent for on time departures. The cancellation rate for the month was 1.8 per cent. The equivalent figures for December 2023 were 63.6 per cent for on time arrivals, 65.2 per cent for on time departures and 5.0 per cent for cancellations.

This month's on time arrivals figure was lower than the long term average performance for all routes (80.7 per cent) and the on time departures figure was also lower than the long term average (81.8 per cent). The rate of cancellations was lower than the long term average of 2.2 per cent.

The Virgin Australia network (Virgin Australia and Virgin Australia Regional Airlines combined operations) recorded 75.1 per cent for on time arrivals while the Qantas network (Qantas and QantasLink combined operations) recorded 73.7 per cent. Hinterland achieved the highest on time arrivals at 87.3 per cent, followed by Skytrans at 78.9 per cent, Rex Airlines at 75.9 per cent, Virgin Australia at 75.3 per cent, QantasLink at 74.3 per cent, Jetstar at 73.3 per cent, Qantas at 72.9 per cent and Virgin Australia Regional Airlines at 70.9 per cent.

The Virgin Australia network recorded 74.4 per cent for on time departures while the Qantas network recorded 73.1 per cent. Hinterland achieved the highest level of on time departures for December 2024 at 92.2 per cent, followed by Skytrans at 78.9 per cent, Rex Airlines at 78.6 per cent, Virgin Australia at 74.7 per cent, QantasLink at 74.3 per cent, Qantas at 71.3 per cent, Jetstar at 70.1 per cent and Virgin Australia Regional Airlines at 64.5 per cent.

Skytrans recorded the highest percentage of cancellations at 2.9 per cent during the month, followed by QantasLink at 2.7 per cent, Qantas at 2.6 per cent, Rex Airlines at 2.5 per cent, Jetstar at 1.5 per cent, Virgin Australia Regional Airlines at 1.1 per cent, Hinterland at 0.9 per cent and Virgin Australia at 0.6 per cent.

Airlines' on time performance varies across the routes they serve. Individual route data by specific airline for 59 routes are shown on pages 10-21.

Of the 59 routes which met the criteria for on time performance reporting in December 2024, the Canberra-Gold Coast route had the highest percentage of on time arrivals (95.8 per cent), while the Adelaide-Gold Coast route had the highest percentage of on time departures (91.9 per cent). The Broome-Perth route had the lowest percentage of on time arrivals (47.9 per cent) and the lowest percentage of on time departures (39.7 per cent).

Cancellations were highest on the Brisbane-Proserpine and Proserpine-Brisbane routes at 6.8 per cent, followed by the Kalgoorlie-Perth and Perth-Kalgoorlie routes at 5.4 per cent, the Devonport-Melbourne route at 5.2 per cent, the Port Lincoln-Adelaide route at 4.6 per cent and the Adelaide-Port Lincoln route at 4.2 per cent.

Devonport Airport recorded the highest percentage of on time arrivals (85.7 per cent), while Mildura Airport had the highest percentage of on time departures (90.4 per cent). Mount Isa Airport recorded the lowest percentage of on time arrivals (59.6 per cent), while Broome Airport had the lowest percentage of on time departures (39.7 per cent). These figures only refer to reported routes and do not cover all flights at these airports.

Table 1 On time performance for December 2024 – Total Industry

	<i>Sectors</i>		<i>Arrivals On Time</i>		<i>Departures On Time</i>		<i>Cancellations</i>	
	<i>Scheduled</i>	<i>Flown</i>	<i>No.</i>	<i>%</i>	<i>No.</i>	<i>%</i>	<i>No.</i>	<i>%</i>
Hinterland	1,191	1,180	1,030	87.3	1,088	92.2	11	0.9
Jetstar	8,412	8,290	6,074	73.3	5,815	70.1	122	1.5
Qantas - all QF designated services	18,301	17,810	13,133	73.7	13,017	73.1	491	2.7
Rex Airlines	4,141	4,039	3,067	75.9	3,173	78.6	102	2.5
Skytrans	791	768	606	78.9	606	78.9	23	2.9
Virgin Australia - all VA designated services	12,536	12,458	9,360	75.1	9,272	74.4	78	0.6
All Airlines	45,372	44,545	33,270	74.7	32,971	74.0	827	1.8
Individual operating entities								
Qantas	7,194	7,004	5,103	72.9	4,992	71.3	190	2.6
QantasLink	11,107	10,806	8,030	74.3	8,025	74.3	301	2.7
Virgin Australia	12,157	12,083	9,094	75.3	9,030	74.7	74	0.6
Virgin Australia Regional Airlines	379	375	266	70.9	242	64.5	4	1.1

Total airline network data (including routes not shown in this report).

Airlines’ on time performance varies across the routes they serve. Individual route data by specific airline are shown on page 10 and onwards.

Table 2 Top ten routes for on time performance for December 2024 (participating airlines only)

<i>Arrivals</i>		<i>Departures</i>	
<i>Route</i>	<i>On Time (%)</i>	<i>Route</i>	<i>On Time (%)</i>
Canberra-Gold Coast	95.8	Adelaide-Gold Coast	91.9
Mildura-Melbourne	93.1	Canberra-Gold Coast	91.7
Adelaide-Gold Coast	91.9	Gold Coast-Adelaide	90.7
Gold Coast-Adelaide	91.9	Mildura-Melbourne	90.4
Gold Coast-Canberra	89.6	Devonport-Melbourne	87.7
Devonport-Melbourne	86.3	Gold Coast-Canberra	87.5
Melbourne-Devonport	85.7	Melbourne-Mildura	86.7
Brisbane-Darwin	84.9	Perth-Port Hedland	85.8
Darwin-Perth	84.2	Wagga Wagga-Sydney	85.0
Melbourne-Mildura	84.0	Melbourne-Devonport	84.4

Table 3 Top ten airports for on time performance for December 2024 (participating airlines and reported routes only)

<i>Arrivals</i>		<i>Departures</i>	
<i>Airport</i>	<i>On Time (%)</i>	<i>Airport</i>	<i>On Time (%)</i>
Devonport	85.7	Mildura	90.4
Mildura	84.0	Devonport	87.7
Wagga Wagga	82.1	Wagga Wagga	85.0
Port Hedland	82.0	Emerald	82.8
Newman	81.7	Port Lincoln	82.0
Darwin	80.9	Port Macquarie	79.8
Gold Coast	80.6	Dubbo	79.7
Port Lincoln	80.5	Gladstone	79.3
Emerald	78.7	Karratha	78.3
Karratha	77.5	Ballina	77.4

Total industry on time performance

Figure 1 On time performance (by month from Dec 2021)—Total Industry

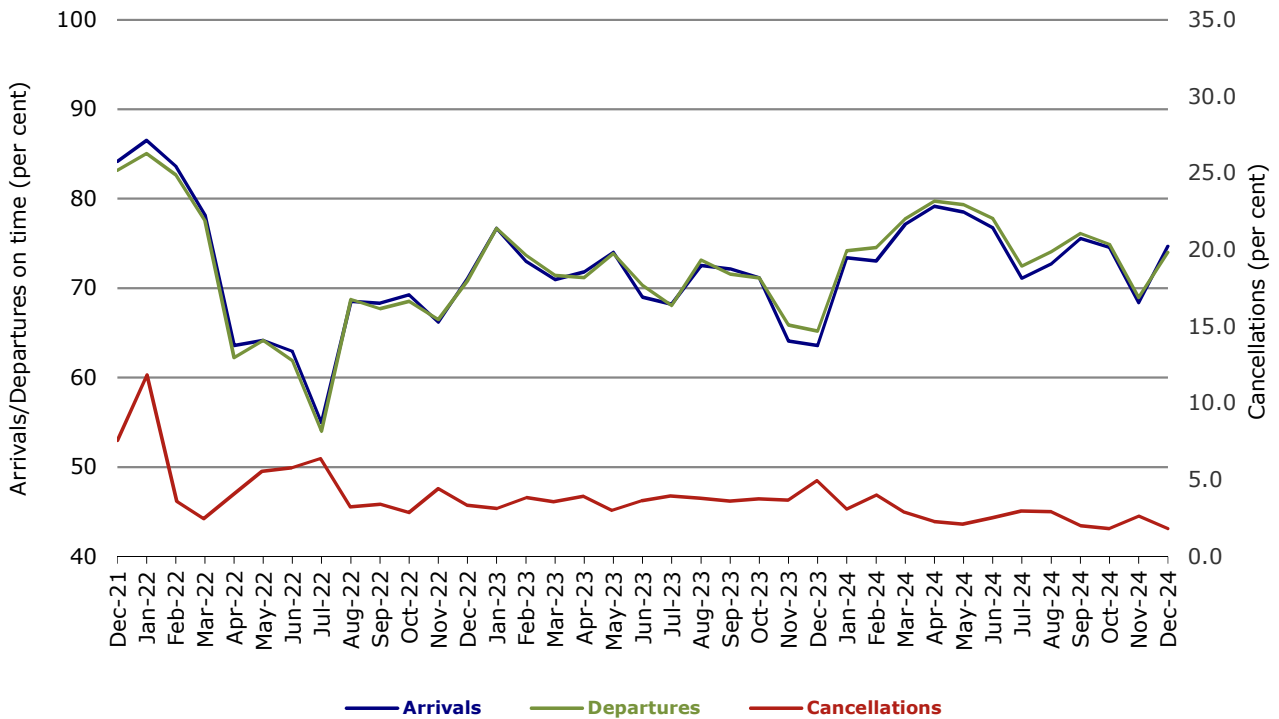


Figure 2 Arrivals on time (by month from Dec 2023)

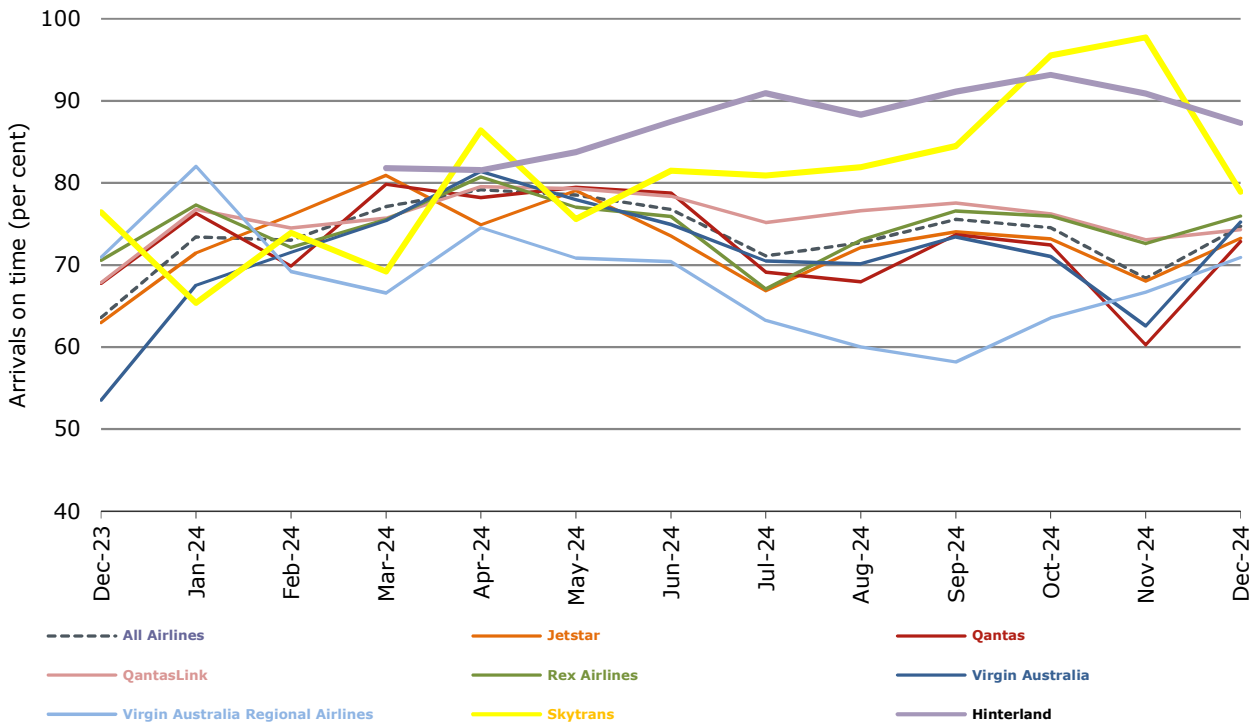


Figure 3 Departures on time (by month from Dec 2023)

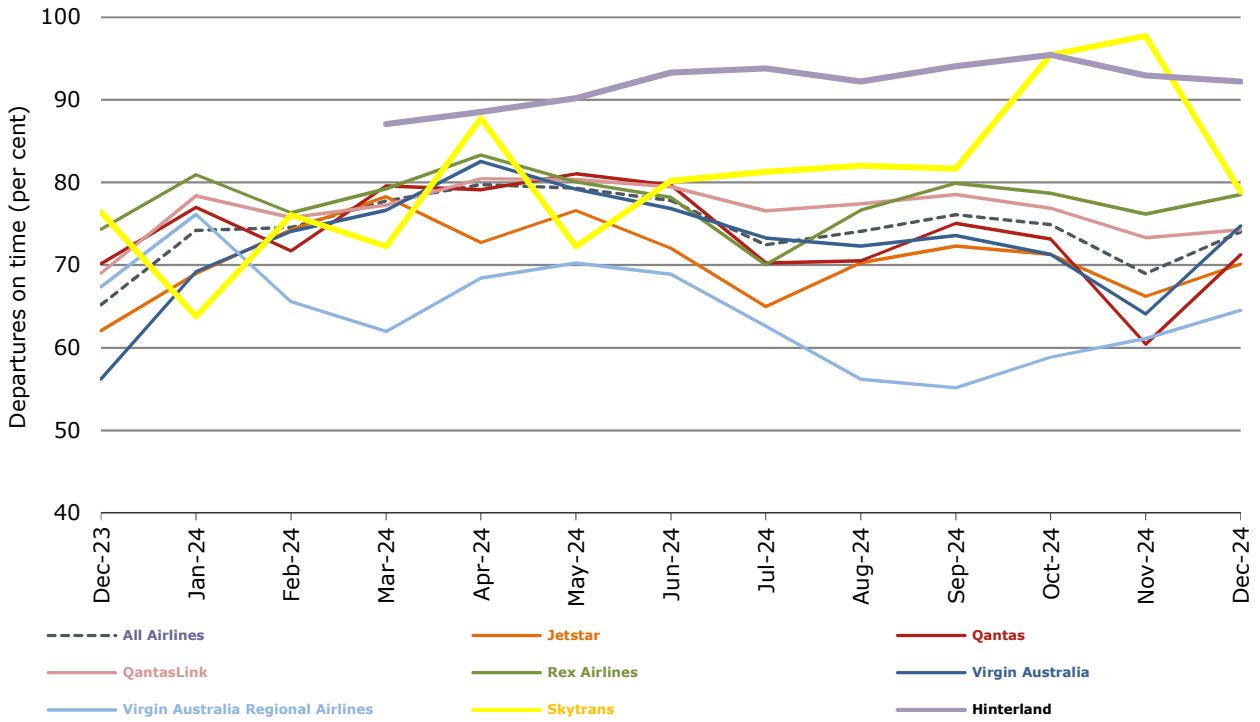
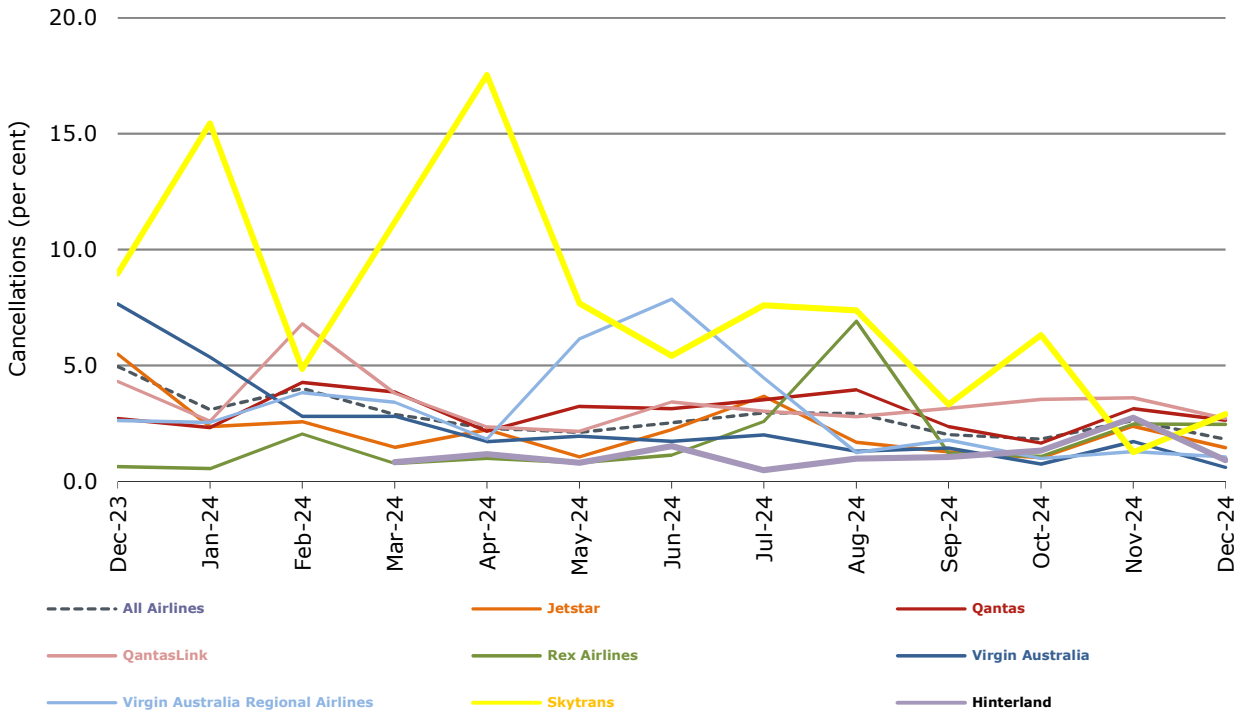


Figure 4 Cancellations (by month from Dec 2023)



Airlines on time performance

Figure 5 On time performance (by month from Dec 2021)—Jetstar

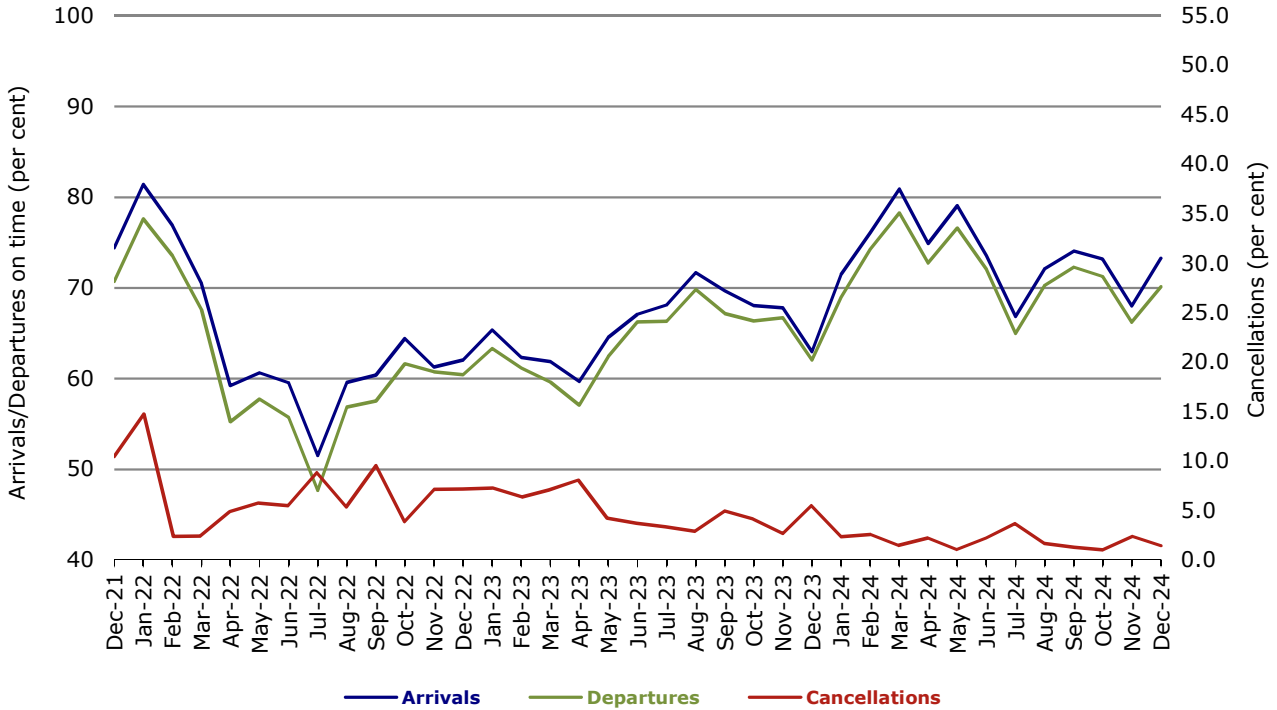


Figure 6 On time performance (by month from Dec 2021)—Qantas

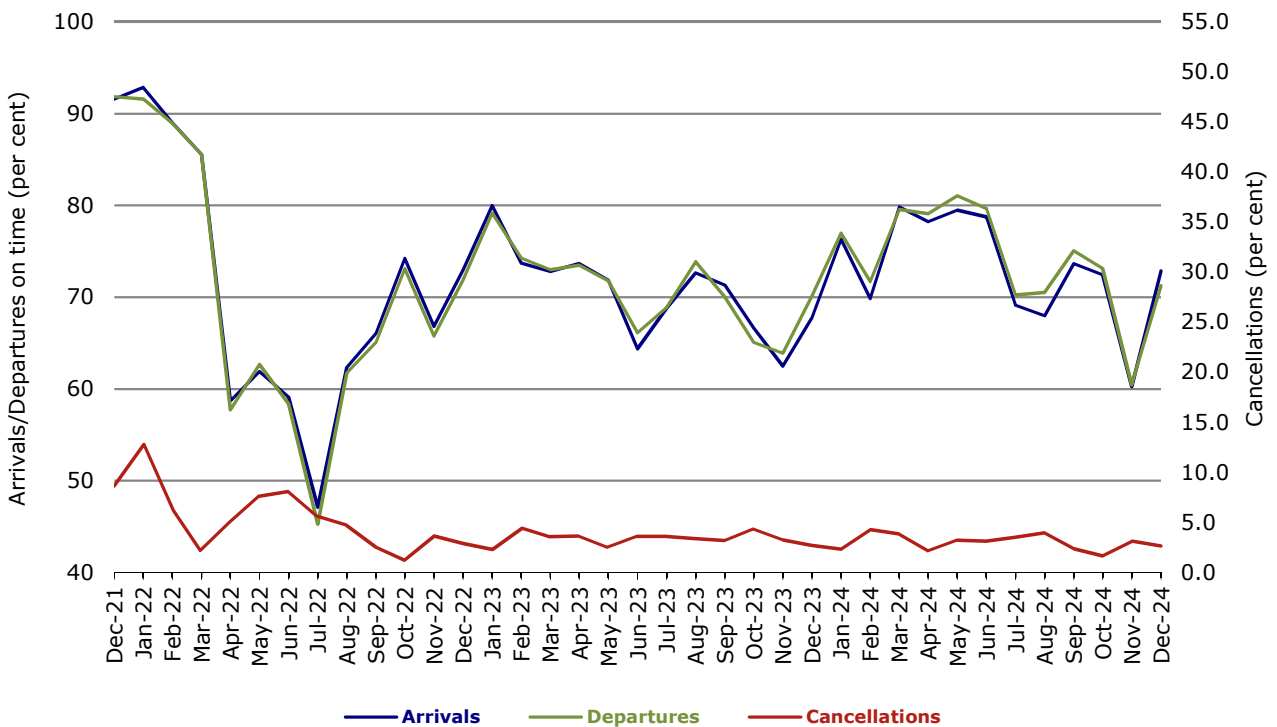


Figure 7 On time performance (by month from Dec 2021)—Virgin Australia

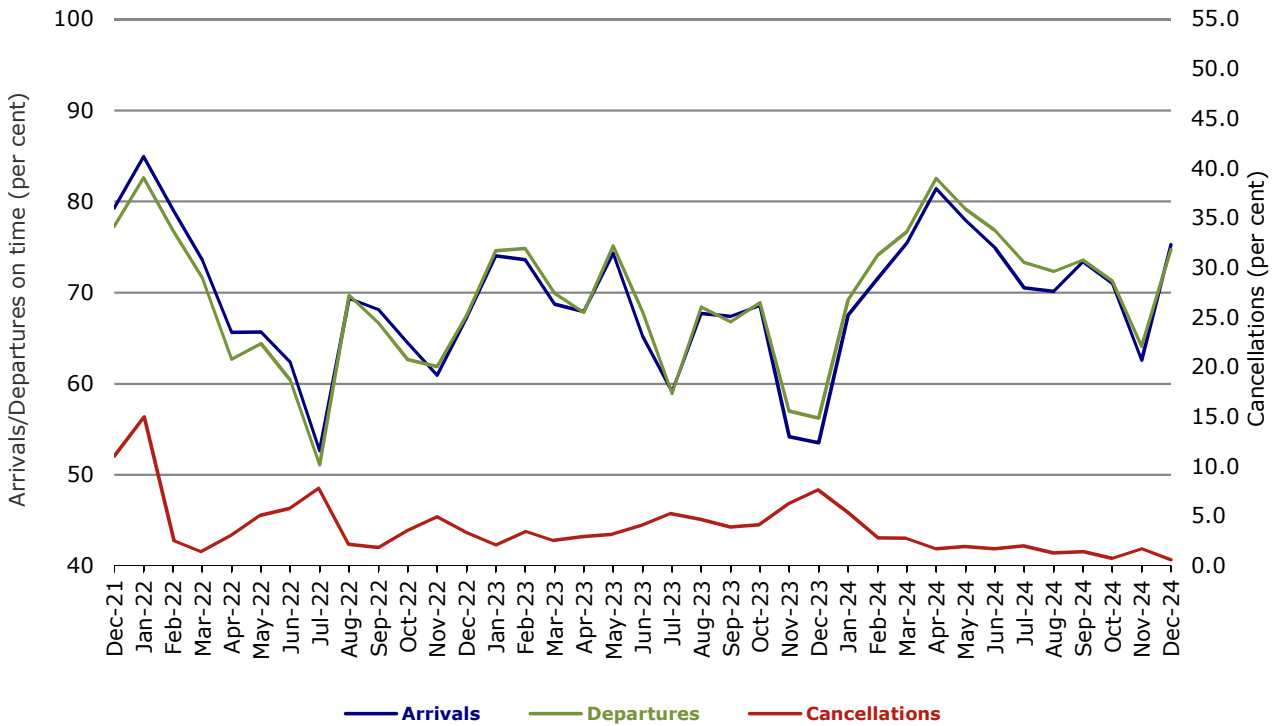


Figure 8 On time performance (by month from Dec 2021)—QantasLink

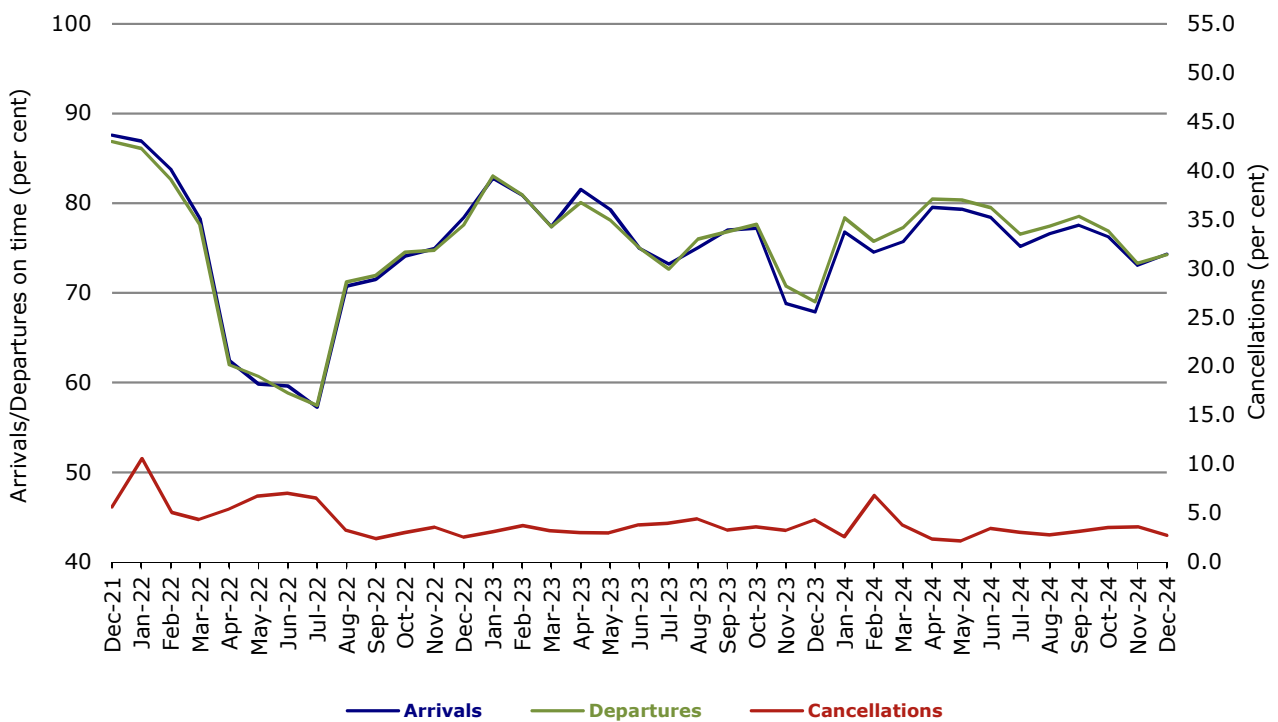


Figure 9 On time performance (by month from Dec 2021)—Rex Airlines

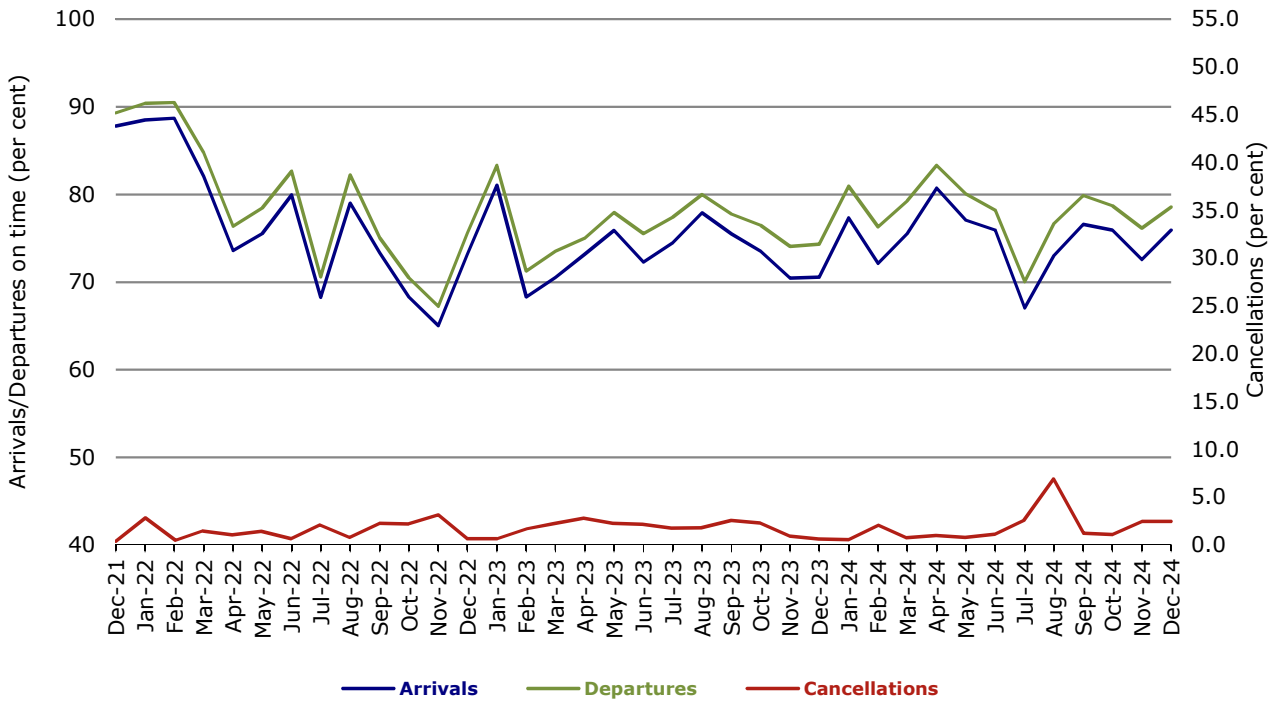


Figure 10 On time performance (by month from Dec 2021)—Virgin Australia Regional Airlines

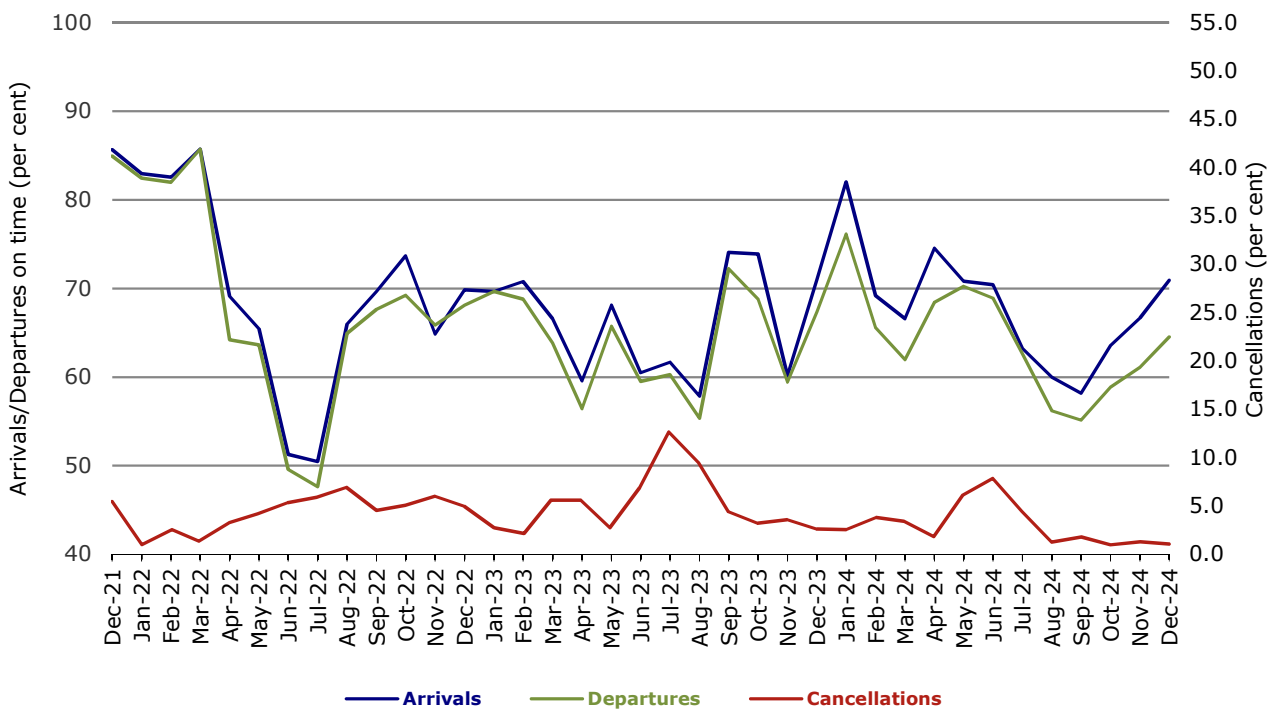
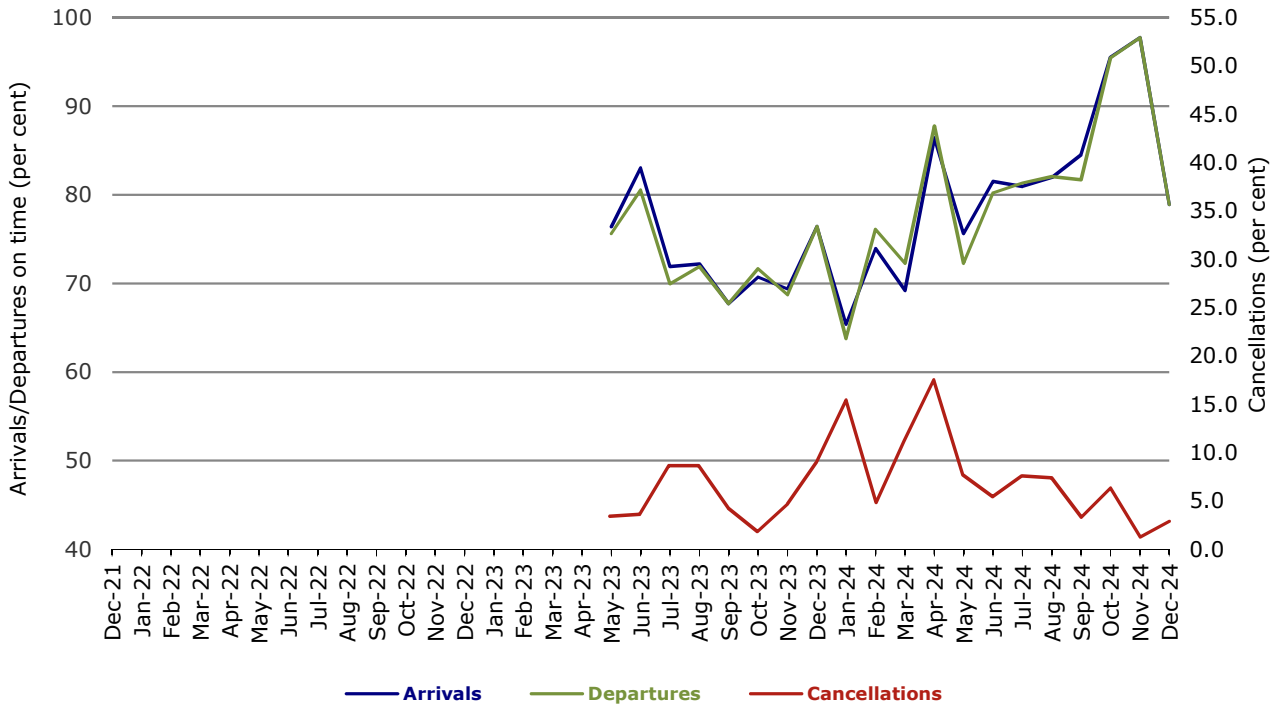
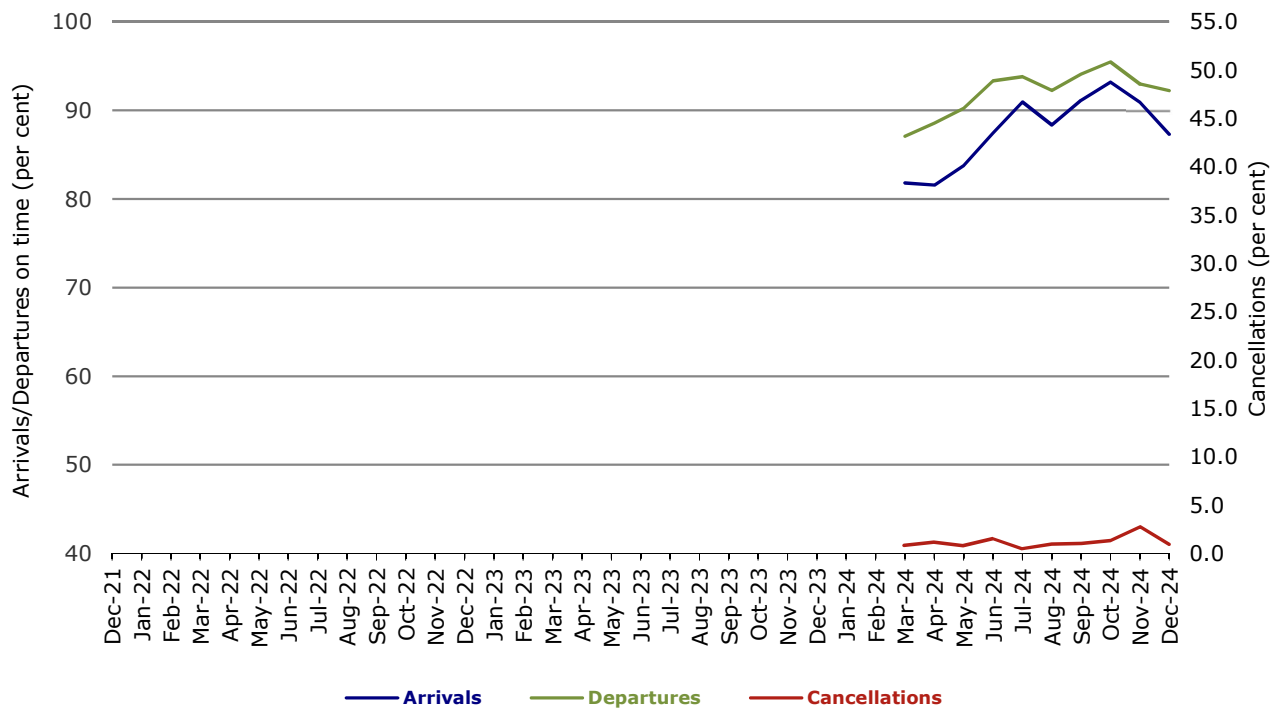


Figure 11 On time performance (by month from Dec 2021)—Skytrans



Note: Skytrans data included from May 2023

Figure 12 On time performance (by month from Dec 2021)—Hinterland



Note: Hinterland data included from March 2024

Individual routes

On time performance is reported for all routes where the passenger load averages over 8,000 passengers per month over the previous six months, and where two or more airlines operate in competition on those routes. There are now 59 routes for which data are presented.

	Sectors		Arrivals On Time		Departures On Time		Cancellations	
	Sched.	Flown	No.	%	No.	%	No.	%
Adelaide-Alice Springs								
QantasLink	33	33	26	78.8	26	78.8	0	0.0
Virgin Australia	13	13	9	69.2	7	53.8	0	0.0
All Airlines	46	46	35	76.1	33	71.7	0	0.0
Adelaide-Brisbane								
Jetstar	36	36	27	75.0	24	66.7	0	0.0
QantasLink	166	165	127	77.0	119	72.1	1	0.6
Virgin Australia	136	136	107	78.7	100	73.5	0	0.0
All Airlines	338	337	261	77.4	243	72.1	1	0.3
Adelaide-Canberra								
QantasLink	78	77	59	76.6	60	77.9	1	1.3
Virgin Australia	19	18	11	61.1	11	61.1	1	5.3
All Airlines	97	95	70	73.7	71	74.7	2	2.1
Adelaide-Gold Coast								
Jetstar	31	31	27	87.1	27	87.1	0	0.0
QantasLink	10	10	8	80.0	8	80.0	0	0.0
Virgin Australia	45	45	44	97.8	44	97.8	0	0.0
All Airlines	86	86	79	91.9	79	91.9	0	0.0
Adelaide-Melbourne								
Jetstar	124	124	80	64.5	71	57.3	0	0.0
Qantas	250	243	202	83.1	192	79.0	7	2.8
QantasLink	5	3	3	100.0	3	100.0	2	40.0
Virgin Australia	260	259	203	78.4	191	73.7	1	0.4
All Airlines	639	629	488	77.6	457	72.7	10	1.6
Adelaide-Perth								
Jetstar	31	31	18	58.1	20	64.5	0	0.0
Qantas	91	90	77	85.6	77	85.6	1	1.1
Virgin Australia	64	64	37	57.8	34	53.1	0	0.0
Virgin Australia Regional Airlines	19	19	6	31.6	6	31.6	0	0.0
All Airlines	205	204	138	67.6	137	67.2	1	0.5
Adelaide-Port Lincoln								
QantasLink	112	111	95	85.6	96	86.5	1	0.9
Rex Airlines	150	140	107	76.4	109	77.9	10	6.7
All Airlines	262	251	202	80.5	205	81.7	11	4.2
Adelaide-Sydney								
Jetstar	148	141	95	67.4	96	68.1	7	4.7
Qantas	240	233	181	77.7	159	68.2	7	2.9
Virgin Australia	174	173	135	78.0	120	69.4	1	0.6
All Airlines	562	547	411	75.1	375	68.6	15	2.7
Albury-Sydney								
QantasLink	96	95	66	69.5	67	70.5	1	1.0
Rex Airlines	62	62	41	66.1	47	75.8	0	0.0
All Airlines	158	157	107	68.2	114	72.6	1	0.6

	Sectors		Arrivals On Time		Departures On Time		Cancellations	
	Sched.	Flown	No.	%	No.	%	No.	%
Alice Springs-Adelaide								
QantasLink	33	33	26	78.8	26	78.8	0	0.0
Virgin Australia	13	13	3	23.1	3	23.1	0	0.0
All Airlines	46	46	29	63.0	29	63.0	0	0.0
Ballina-Sydney								
Jetstar	88	88	75	85.2	75	85.2	0	0.0
QantasLink	39	39	27	69.2	25	64.1	0	0.0
Virgin Australia	50	50	38	76.0	37	74.0	0	0.0
All Airlines	177	177	140	79.1	137	77.4	0	0.0
Brisbane-Adelaide								
Jetstar	36	36	24	66.7	20	55.6	0	0.0
QantasLink	166	163	100	61.3	107	65.6	3	1.8
Virgin Australia	136	136	108	79.4	106	77.9	0	0.0
All Airlines	338	335	232	69.3	233	69.6	3	0.9
Brisbane-Cairns								
Jetstar	98	98	68	69.4	65	66.3	0	0.0
Qantas	15	15	13	86.7	12	80.0	0	0.0
QantasLink	148	147	87	59.2	88	59.9	1	0.7
Virgin Australia	146	146	99	67.8	99	67.8	0	0.0
All Airlines	407	406	267	65.8	264	65.0	1	0.2
Brisbane-Canberra								
Jetstar	31	31	17	54.8	15	48.4	0	0.0
QantasLink	141	140	96	68.6	96	68.6	1	0.7
Virgin Australia	101	101	71	70.3	77	76.2	0	0.0
All Airlines	273	272	184	67.6	188	69.1	1	0.4
Brisbane-Darwin								
Jetstar	27	27	18	66.7	15	55.6	0	0.0
Qantas	35	35	32	91.4	31	88.6	0	0.0
Virgin Australia	31	31	29	93.5	26	83.9	0	0.0
All Airlines	93	93	79	84.9	72	77.4	0	0.0
Brisbane-Emerald								
QantasLink	99	95	77	81.1	75	78.9	4	4.0
Virgin Australia	27	27	19	70.4	17	63.0	0	0.0
All Airlines	126	122	96	78.7	92	75.4	4	3.2
Brisbane-Gladstone								
QantasLink	115	114	81	71.1	80	70.2	1	0.9
Virgin Australia	36	36	27	75.0	24	66.7	0	0.0
All Airlines	151	150	108	72.0	104	69.3	1	0.7
Brisbane-Hamilton Island								
QantasLink	34	33	21	63.6	22	66.7	1	2.9
Virgin Australia	49	49	42	85.7	44	89.8	0	0.0
All Airlines	83	82	63	76.8	66	80.5	1	1.2
Brisbane-Hobart								
Jetstar	39	39	29	74.4	30	76.9	0	0.0
QantasLink	32	32	19	59.4	21	65.6	0	0.0
Virgin Australia	57	57	35	61.4	37	64.9	0	0.0
All Airlines	128	128	83	64.8	88	68.8	0	0.0

	Sectors		Arrivals On Time		Departures On Time		Cancellations	
	Sched.	Flown	No.	%	No.	%	No.	%
Brisbane-Launceston								
Jetstar	31	29	22	75.9	23	79.3	2	6.5
QantasLink	10	10	6	60.0	6	60.0	0	0.0
Virgin Australia	23	23	15	65.2	12	52.2	0	0.0
All Airlines	64	62	43	69.4	41	66.1	2	3.1
Brisbane-Mackay								
Jetstar	31	31	13	41.9	13	41.9	0	0.0
Qantas	95	95	66	69.5	68	71.6	0	0.0
QantasLink	14	14	6	42.9	6	42.9	0	0.0
Virgin Australia	137	137	102	74.5	89	65.0	0	0.0
All Airlines	277	277	187	67.5	176	63.5	0	0.0
Brisbane-Melbourne								
Jetstar	163	158	113	71.5	104	65.8	5	3.1
Qantas	343	330	231	70.0	232	70.3	13	3.8
QantasLink	18	13	4	30.8	4	30.8	5	27.8
Virgin Australia	426	423	283	66.9	296	70.0	3	0.7
All Airlines	950	924	631	68.3	636	68.8	26	2.7
Brisbane-Mount Isa								
QantasLink	78	76	45	59.2	48	63.2	2	2.6
Virgin Australia	13	13	8	61.5	7	53.8	0	0.0
All Airlines	91	89	53	59.6	55	61.8	2	2.2
Brisbane-Newcastle								
Jetstar	56	56	31	55.4	32	57.1	0	0.0
QantasLink	77	75	52	69.3	54	72.0	2	2.6
Virgin Australia	78	78	40	51.3	39	50.0	0	0.0
All Airlines	211	209	123	58.9	125	59.8	2	0.9
Brisbane-Perth								
Jetstar	33	31	17	54.8	13	41.9	2	6.1
Qantas	161	159	118	74.2	119	74.8	2	1.2
Virgin Australia	141	141	78	55.3	78	55.3	0	0.0
All Airlines	335	331	213	64.4	210	63.4	4	1.2
Brisbane-Proserpine								
Jetstar	42	39	22	56.4	21	53.8	3	7.1
QantasLink	18	17	12	70.6	13	76.5	1	5.6
Virgin Australia	43	40	31	77.5	33	82.5	3	7.0
All Airlines	103	96	65	67.7	67	69.8	7	6.8
Brisbane-Rockhampton								
QantasLink	168	166	110	66.3	110	66.3	2	1.2
Virgin Australia	149	149	99	66.4	97	65.1	0	0.0
All Airlines	317	315	209	66.3	207	65.7	2	0.6
Brisbane-Sydney								
Jetstar	234	228	140	61.4	140	61.4	6	2.6
Qantas	486	482	344	71.4	360	74.7	4	0.8
Virgin Australia	451	446	309	69.3	318	71.3	5	1.1
All Airlines	1 171	1 156	793	68.6	818	70.8	15	1.3
Brisbane-Townsville								
Jetstar	60	60	28	46.7	21	35.0	0	0.0
Qantas	11	11	8	72.7	9	81.8	0	0.0
QantasLink	145	145	79	54.5	83	57.2	0	0.0
Virgin Australia	144	144	91	63.2	95	66.0	0	0.0
All Airlines	360	360	206	57.2	208	57.8	0	0.0

	Sectors		Arrivals On Time		Departures On Time		Cancellations	
	Sched.	Flown	No.	%	No.	%	No.	%
Broome-Perth								
QantasLink	75	75	36	48.0	32	42.7	0	0.0
Virgin Australia	22	22	11	50.0	13	59.1	0	0.0
Virgin Australia Regional Airlines	24	24	11	45.8	3	12.5	0	0.0
All Airlines	121	121	58	47.9	48	39.7	0	0.0
Cairns-Brisbane								
Jetstar	98	98	73	74.5	72	73.5	0	0.0
Qantas	15	15	12	80.0	11	73.3	0	0.0
QantasLink	150	145	82	56.6	80	55.2	5	3.3
Virgin Australia	146	146	110	75.3	91	62.3	0	0.0
All Airlines	409	404	277	68.6	254	62.9	5	1.2
Cairns-Melbourne								
Jetstar	92	92	66	71.7	62	67.4	0	0.0
Qantas	31	31	28	90.3	29	93.5	0	0.0
Virgin Australia	78	78	64	82.1	61	78.2	0	0.0
All Airlines	201	201	158	78.6	152	75.6	0	0.0
Cairns-Sydney								
Jetstar	107	106	83	78.3	80	75.5	1	0.9
Qantas	45	44	34	77.3	34	77.3	1	2.2
Virgin Australia	99	97	83	85.6	82	84.5	2	2.0
All Airlines	251	247	200	81.0	196	79.4	4	1.6
Cairns-Townsville								
QantasLink	119	116	95	81.9	94	81.0	3	2.5
Rex Airlines	14	14	12	85.7	12	85.7	0	0.0
All Airlines	133	130	107	82.3	106	81.5	3	2.3
Canberra-Adelaide								
QantasLink	79	78	63	80.8	63	80.8	1	1.3
Virgin Australia	19	18	13	72.2	12	66.7	1	5.3
All Airlines	98	96	76	79.2	75	78.1	2	2.0
Canberra-Brisbane								
Jetstar	31	31	16	51.6	13	41.9	0	0.0
QantasLink	141	138	96	69.6	97	70.3	3	2.1
Virgin Australia	101	101	85	84.2	73	72.3	0	0.0
All Airlines	273	270	197	73.0	183	67.8	3	1.1
Canberra-Gold Coast								
Jetstar	17	17	16	94.1	15	88.2	0	0.0
Virgin Australia	31	31	30	96.8	29	93.5	0	0.0
All Airlines	48	48	46	95.8	44	91.7	0	0.0
Canberra-Melbourne								
Jetstar	31	31	27	87.1	27	87.1	0	0.0
Qantas	18	17	12	70.6	9	52.9	1	5.6
QantasLink	145	134	84	62.7	83	61.9	11	7.6
Virgin Australia	117	117	104	88.9	102	87.2	0	0.0
All Airlines	311	299	227	75.9	221	73.9	12	3.9
Canberra-Sydney								
Qantas	61	59	49	83.1	49	83.1	2	3.3
QantasLink	248	244	172	70.5	174	71.3	4	1.6
Virgin Australia	203	200	166	83.0	165	82.5	3	1.5
All Airlines	512	503	387	76.9	388	77.1	9	1.8

	Sectors		Arrivals On Time		Departures On Time		Cancellations	
	Sched.	Flown	No.	%	No.	%	No.	%
Coffs Harbour-Sydney								
Qantas	27	27	18	66.7	19	70.4	0	0.0
QantasLink	69	65	46	70.8	48	73.8	4	5.8
Rex Airlines	84	84	56	66.7	56	66.7	0	0.0
All Airlines	180	176	120	68.2	123	69.9	4	2.2
Darwin-Brisbane								
Jetstar	26	26	13	50.0	13	50.0	0	0.0
Qantas	35	33	21	63.6	24	72.7	2	5.7
Virgin Australia	31	31	21	67.7	21	67.7	0	0.0
All Airlines	92	90	55	61.1	58	64.4	2	2.2
Darwin-Melbourne								
Jetstar	28	27	17	63.0	15	55.6	1	3.6
Qantas	31	31	29	93.5	25	80.6	0	0.0
Virgin Australia	27	27	17	63.0	15	55.6	0	0.0
All Airlines	86	85	63	74.1	55	64.7	1	1.2
Darwin-Perth								
Qantas	31	31	27	87.1	26	83.9	0	0.0
QantasLink	2	2	1	50.0	1	50.0	0	0.0
Virgin Australia Regional Airlines	24	24	20	83.3	19	79.2	0	0.0
All Airlines	57	57	48	84.2	46	80.7	0	0.0
Devonport-Melbourne								
QantasLink	104	100	84	84.0	86	86.0	4	3.8
Rex Airlines	50	46	42	91.3	42	91.3	4	8.0
All Airlines	154	146	126	86.3	128	87.7	8	5.2
Dubbo-Sydney								
QantasLink	106	103	86	83.5	86	83.5	3	2.8
Rex Airlines	92	89	64	71.9	67	75.3	3	3.3
All Airlines	198	192	150	78.1	153	79.7	6	3.0
Emerald-Brisbane								
QantasLink	99	95	78	82.1	79	83.2	4	4.0
Virgin Australia	27	27	20	74.1	22	81.5	0	0.0
All Airlines	126	122	98	80.3	101	82.8	4	3.2
Gladstone-Brisbane								
QantasLink	115	114	79	69.3	88	77.2	1	0.9
Virgin Australia	36	36	29	80.6	31	86.1	0	0.0
All Airlines	151	150	108	72.0	119	79.3	1	0.7
Gold Coast-Adelaide								
Jetstar	31	31	28	90.3	28	90.3	0	0.0
QantasLink	10	10	8	80.0	8	80.0	0	0.0
Virgin Australia	45	45	43	95.6	42	93.3	0	0.0
All Airlines	86	86	79	91.9	78	90.7	0	0.0
Gold Coast-Canberra								
Jetstar	17	17	15	88.2	14	82.4	0	0.0
Virgin Australia	31	31	28	90.3	28	90.3	0	0.0
All Airlines	48	48	43	89.6	42	87.5	0	0.0

	Sectors		Arrivals On Time		Departures On Time		Cancellations	
	Sched.	Flown	No.	%	No.	%	No.	%
Gold Coast-Melbourne								
Jetstar	249	245	209	85.3	200	81.6	4	1.6
Qantas	54	54	36	66.7	31	57.4	0	0.0
Virgin Australia	335	333	267	80.2	247	74.2	2	0.6
All Airlines	638	632	512	81.0	478	75.6	6	0.9
Gold Coast-Sydney								
Jetstar	258	251	205	81.7	200	79.7	7	2.7
Qantas	106	105	78	74.3	83	79.0	1	0.9
Virgin Australia	341	336	254	75.6	247	73.5	5	1.5
All Airlines	705	692	537	77.6	530	76.6	13	1.8
Hamilton Island-Brisbane								
QantasLink	35	33	23	69.7	23	69.7	2	5.7
Virgin Australia	47	47	39	83.0	37	78.7	0	0.0
All Airlines	82	80	62	77.5	60	75.0	2	2.4
Hamilton Island-Sydney								
Jetstar	18	18	13	72.2	16	88.9	0	0.0
Qantas	31	31	17	54.8	14	45.2	0	0.0
Virgin Australia	32	31	16	51.6	19	61.3	1	3.1
All Airlines	81	80	46	57.5	49	61.3	1	1.2
Hobart-Brisbane								
Jetstar	37	37	26	70.3	22	59.5	0	0.0
QantasLink	32	31	11	35.5	10	32.3	1	3.1
Virgin Australia	57	57	34	59.6	28	49.1	0	0.0
All Airlines	126	125	71	56.8	60	48.0	1	0.8
Hobart-Melbourne								
Jetstar	191	191	121	63.4	115	60.2	0	0.0
Qantas	20	19	13	68.4	11	57.9	1	5.0
QantasLink	97	91	54	59.3	56	61.5	6	6.2
Virgin Australia	131	131	112	85.5	105	80.2	0	0.0
All Airlines	439	432	300	69.4	287	66.4	7	1.6
Hobart-Sydney								
Jetstar	108	108	60	55.6	57	52.8	0	0.0
QantasLink	86	80	38	47.5	38	47.5	6	7.0
Virgin Australia	80	80	60	75.0	59	73.8	0	0.0
All Airlines	274	268	158	59.0	154	57.5	6	2.2
Kalgoorlie-Perth								
Qantas	13	11	9	81.8	6	54.5	2	15.4
QantasLink	57	51	35	68.6	33	64.7	6	10.5
Virgin Australia	66	66	44	66.7	51	77.3	0	0.0
Virgin Australia Regional Airlines	32	31	21	67.7	18	58.1	1	3.1
All Airlines	168	159	109	68.6	108	67.9	9	5.4
Karratha-Perth								
QantasLink	135	131	95	72.5	101	77.1	4	3.0
Virgin Australia	51	51	43	84.3	44	86.3	0	0.0
Virgin Australia Regional Airlines	26	25	18	72.0	17	68.0	1	3.8
All Airlines	212	207	156	75.4	162	78.3	5	2.4
Launceston-Brisbane								
Jetstar	31	29	18	62.1	18	62.1	2	6.5
QantasLink	10	10	7	70.0	5	50.0	0	0.0
Virgin Australia	23	23	16	69.6	13	56.5	0	0.0
All Airlines	64	62	41	66.1	36	58.1	2	3.1

	Sectors		Arrivals On Time		Departures On Time		Cancellations	
	Sched.	Flown	No.	%	No.	%	No.	%
Launceston-Melbourne								
Jetstar	111	111	83	74.8	71	64.0	0	0.0
QantasLink	69	64	32	50.0	30	46.9	5	7.2
Virgin Australia	93	93	84	90.3	82	88.2	0	0.0
All Airlines	273	268	199	74.3	183	68.3	5	1.8
Launceston-Sydney								
Jetstar	58	57	49	86.0	47	82.5	1	1.7
QantasLink	32	31	26	83.9	24	77.4	1	3.1
Virgin Australia	31	31	20	64.5	19	61.3	0	0.0
All Airlines	121	119	95	79.8	90	75.6	2	1.7
Mackay-Brisbane								
Jetstar	31	31	12	38.7	13	41.9	0	0.0
Qantas	94	94	60	63.8	61	64.9	0	0.0
QantasLink	21	19	9	47.4	11	57.9	2	9.5
Virgin Australia	137	136	99	72.8	101	74.3	1	0.7
All Airlines	283	280	180	64.3	186	66.4	3	1.1
Melbourne-Adelaide								
Jetstar	124	124	79	63.7	81	65.3	0	0.0
Qantas	251	244	186	76.2	176	72.1	7	2.8
QantasLink	5	3	3	100.0	3	100.0	2	40.0
Virgin Australia	259	259	171	66.0	203	78.4	0	0.0
All Airlines	639	630	439	69.7	463	73.5	9	1.4
Melbourne-Brisbane								
Jetstar	164	159	107	67.3	95	59.7	5	3.0
Qantas	345	332	246	74.1	227	68.4	13	3.8
QantasLink	19	14	8	57.1	8	57.1	5	26.3
Virgin Australia	431	427	344	80.6	357	83.6	4	0.9
All Airlines	959	932	705	75.6	687	73.7	27	2.8
Melbourne-Cairns								
Jetstar	95	95	69	72.6	71	74.7	0	0.0
Qantas	31	31	29	93.5	29	93.5	0	0.0
Virgin Australia	78	78	70	89.7	65	83.3	0	0.0
All Airlines	204	204	168	82.4	165	80.9	0	0.0
Melbourne-Canberra								
Jetstar	31	31	28	90.3	24	77.4	0	0.0
Qantas	20	18	9	50.0	10	55.6	2	10.0
QantasLink	139	129	70	54.3	75	58.1	10	7.2
Virgin Australia	117	117	101	86.3	99	84.6	0	0.0
All Airlines	307	295	208	70.5	208	70.5	12	3.9
Melbourne-Darwin								
Jetstar	28	27	18	66.7	23	85.2	1	3.6
Qantas	31	31	27	87.1	25	80.6	0	0.0
Virgin Australia	27	27	22	81.5	20	74.1	0	0.0
All Airlines	86	85	67	78.8	68	80.0	1	1.2
Melbourne-Devonport								
QantasLink	103	100	83	83.0	81	81.0	3	2.9
Rex Airlines	50	47	43	91.5	43	91.5	3	6.0
All Airlines	153	147	126	85.7	124	84.4	6	3.9
Melbourne-Gold Coast								
Jetstar	248	244	196	80.3	180	73.8	4	1.6
Qantas	53	53	37	69.8	36	67.9	0	0.0
Virgin Australia	335	333	284	85.3	263	79.0	2	0.6
All Airlines	636	630	517	82.1	479	76.0	6	0.9

	Sectors		Arrivals On Time		Departures On Time		Cancellations	
	Sched.	Flown	No.	%	No.	%	No.	%
Melbourne-Hobart								
Jetstar	189	189	140	74.1	136	72.0	0	0.0
Qantas	20	19	16	84.2	15	78.9	1	5.0
QantasLink	96	91	49	53.8	48	52.7	5	5.2
Virgin Australia	132	131	105	80.2	96	73.3	1	0.8
All Airlines	437	430	310	72.1	295	68.6	7	1.6
Melbourne-Launceston								
Jetstar	110	110	78	70.9	74	67.3	0	0.0
QantasLink	70	65	34	52.3	39	60.0	5	7.1
Virgin Australia	94	93	84	90.3	81	87.1	1	1.1
All Airlines	274	268	196	73.1	194	72.4	6	2.2
Melbourne-Mildura								
QantasLink	98	96	76	79.2	78	81.3	2	2.0
Rex Airlines	92	92	82	89.1	85	92.4	0	0.0
All Airlines	190	188	158	84.0	163	86.7	2	1.1
Melbourne-Newcastle								
Jetstar	61	61	46	75.4	42	68.9	0	0.0
QantasLink	41	40	23	57.5	19	47.5	1	2.4
Virgin Australia	41	41	35	85.4	33	80.5	0	0.0
All Airlines	143	142	104	73.2	94	66.2	1	0.7
Melbourne-Perth								
Jetstar	87	86	53	61.6	64	74.4	1	1.1
Qantas	205	200	119	59.5	139	69.5	5	2.4
Virgin Australia	243	243	167	68.7	188	77.4	0	0.0
All Airlines	535	529	339	64.1	391	73.9	6	1.1
Melbourne-Sunshine Coast								
Jetstar	83	83	60	72.3	59	71.1	0	0.0
Qantas	42	42	34	81.0	32	76.2	0	0.0
Virgin Australia	102	102	95	93.1	93	91.2	0	0.0
All Airlines	227	227	189	83.3	184	81.1	0	0.0
Melbourne-Sydney								
Jetstar	473	463	358	77.3	338	73.0	10	2.1
Qantas	739	696	488	70.1	513	73.7	43	5.8
Virgin Australia	729	720	522	72.5	566	78.6	9	1.2
All Airlines	1 941	1 879	1 368	72.8	1 417	75.4	62	3.2
Mildura-Melbourne								
QantasLink	98	96	88	91.7	84	87.5	2	2.0
Rex Airlines	92	92	87	94.6	86	93.5	0	0.0
All Airlines	190	188	175	93.1	170	90.4	2	1.1
Mount Isa-Brisbane								
QantasLink	78	76	41	53.9	47	61.8	2	2.6
Virgin Australia	13	13	7	53.8	9	69.2	0	0.0
All Airlines	91	89	48	53.9	56	62.9	2	2.2
Newcastle-Brisbane								
Jetstar	56	56	36	64.3	30	53.6	0	0.0
QantasLink	77	75	55	73.3	59	78.7	2	2.6
Virgin Australia	78	78	48	61.5	51	65.4	0	0.0
All Airlines	211	209	139	66.5	140	67.0	2	0.9

	Sectors		Arrivals On Time		Departures On Time		Cancellations	
	Sched.	Flown	No.	%	No.	%	No.	%
Newcastle-Melbourne								
Jetstar	61	61	48	78.7	39	63.9	0	0.0
QantasLink	41	40	29	72.5	33	82.5	1	2.4
Virgin Australia	41	41	35	85.4	35	85.4	0	0.0
All Airlines	143	142	112	78.9	107	75.4	1	0.7
Newman-Perth								
Qantas	11	11	11	100.0	10	90.9	0	0.0
QantasLink	105	100	75	75.0	72	72.0	5	4.8
Virgin Australia	39	39	28	71.8	30	76.9	0	0.0
Virgin Australia Regional Airlines	18	18	12	66.7	12	66.7	0	0.0
All Airlines	173	168	126	75.0	124	73.8	5	2.9
Perth-Adelaide								
Jetstar	31	31	21	67.7	23	74.2	0	0.0
Qantas	91	91	74	81.3	71	78.0	0	0.0
Virgin Australia	64	64	47	73.4	53	82.8	0	0.0
Virgin Australia Regional Airlines	19	19	12	63.2	11	57.9	0	0.0
All Airlines	205	205	154	75.1	158	77.1	0	0.0
Perth-Brisbane								
Jetstar	34	31	10	32.3	11	35.5	3	8.8
Qantas	161	160	136	85.0	126	78.8	1	0.6
Virgin Australia	141	141	79	56.0	80	56.7	0	0.0
All Airlines	336	332	225	67.8	217	65.4	4	1.2
Perth-Broome								
QantasLink	76	76	45	59.2	53	69.7	0	0.0
Virgin Australia	22	22	16	72.7	18	81.8	0	0.0
Virgin Australia Regional Airlines	24	24	20	83.3	15	62.5	0	0.0
All Airlines	122	122	81	66.4	86	70.5	0	0.0
Perth-Darwin								
Qantas	31	31	27	87.1	27	87.1	0	0.0
QantasLink	2	2	1	50.0	1	50.0	0	0.0
Virgin Australia Regional Airlines	24	24	16	66.7	14	58.3	0	0.0
All Airlines	57	57	44	77.2	42	73.7	0	0.0
Perth-Kalgoorlie								
Qantas	13	11	9	81.8	9	81.8	2	15.4
QantasLink	57	51	34	66.7	35	68.6	6	10.5
Virgin Australia	66	66	50	75.8	54	81.8	0	0.0
Virgin Australia Regional Airlines	32	31	23	74.2	25	80.6	1	3.1
All Airlines	168	159	116	73.0	123	77.4	9	5.4
Perth-Karratha								
QantasLink	136	132	101	76.5	105	79.5	4	2.9
Virgin Australia	51	51	41	80.4	41	80.4	0	0.0
Virgin Australia Regional Airlines	26	26	20	76.9	18	69.2	0	0.0
All Airlines	213	209	162	77.5	164	78.5	4	1.9
Perth-Melbourne								
Jetstar	87	86	69	80.2	49	57.0	1	1.1
Qantas	205	199	149	74.9	119	59.8	6	2.9
Virgin Australia	252	252	208	82.5	174	69.0	0	0.0
All Airlines	544	537	426	79.3	342	63.7	7	1.3
Perth-Newman								
Qantas	11	11	11	100.0	11	100.0	0	0.0
QantasLink	105	101	80	79.2	81	80.2	4	3.8
Virgin Australia	39	39	32	82.1	33	84.6	0	0.0
Virgin Australia Regional Airlines	18	18	15	83.3	16	88.9	0	0.0
All Airlines	173	169	138	81.7	141	83.4	4	2.3

	Sectors		Arrivals On Time		Departures On Time		Cancellations	
	Sched.	Flown	No.	%	No.	%	No.	%
Perth-Port Hedland								
QantasLink	130	128	103	80.5	113	88.3	2	1.5
Virgin Australia	40	40	35	87.5	33	82.5	0	0.0
Virgin Australia Regional Airlines	15	15	12	80.0	11	73.3	0	0.0
All Airlines	185	183	150	82.0	157	85.8	2	1.1
Perth-Sydney								
Jetstar	63	62	47	75.8	30	48.4	1	1.6
Qantas	201	197	151	76.6	127	64.5	4	2.0
Virgin Australia	173	173	145	83.8	126	72.8	0	0.0
All Airlines	437	432	343	79.4	283	65.5	5	1.1
Port Hedland-Perth								
QantasLink	130	126	86	68.3	91	72.2	4	3.1
Virgin Australia	40	39	21	53.8	23	59.0	1	2.5
Virgin Australia Regional Airlines	15	15	8	53.3	7	46.7	0	0.0
All Airlines	185	180	115	63.9	121	67.2	5	2.7
Port Lincoln-Adelaide								
QantasLink	113	111	98	88.3	97	87.4	2	1.8
Rex Airlines	149	139	107	77.0	108	77.7	10	6.7
All Airlines	262	250	205	82.0	205	82.0	12	4.6
Port Macquarie-Sydney								
QantasLink	110	109	91	83.5	93	85.3	1	0.9
Rex Airlines	66	64	40	62.5	45	70.3	2	3.0
All Airlines	176	173	131	75.7	138	79.8	3	1.7
Proserpine-Brisbane								
Jetstar	42	39	16	41.0	17	43.6	3	7.1
QantasLink	18	17	12	70.6	13	76.5	1	5.6
Virgin Australia	43	40	30	75.0	26	65.0	3	7.0
All Airlines	103	96	58	60.4	56	58.3	7	6.8
Rockhampton-Brisbane								
QantasLink	165	160	98	61.3	111	69.4	5	3.0
Virgin Australia	148	148	89	60.1	102	68.9	0	0.0
All Airlines	313	308	187	60.7	213	69.2	5	1.6
Sunshine Coast-Melbourne								
Jetstar	84	83	57	68.7	53	63.9	1	1.2
Qantas	42	42	32	76.2	29	69.0	0	0.0
Virgin Australia	102	102	93	91.2	94	92.2	0	0.0
All Airlines	228	227	182	80.2	176	77.5	1	0.4
Sunshine Coast-Sydney								
Jetstar	118	116	90	77.6	84	72.4	2	1.7
Qantas	58	58	41	70.7	45	77.6	0	0.0
Virgin Australia	65	65	43	66.2	44	67.7	0	0.0
All Airlines	241	239	174	72.8	173	72.4	2	0.8
Sydney-Adelaide								
Jetstar	149	141	95	67.4	90	63.8	8	5.4
Qantas	240	236	169	71.6	178	75.4	4	1.7
Virgin Australia	174	172	121	70.3	124	72.1	2	1.1
All Airlines	563	549	385	70.1	392	71.4	14	2.5

	Sectors		Arrivals On Time		Departures On Time		Cancellations	
	Sched.	Flown	No.	%	No.	%	No.	%
Sydney-Albury								
QantasLink	95	94	70	74.5	66	70.2	1	1.1
Rex Airlines	61	61	39	63.9	40	65.6	0	0.0
All Airlines	156	155	109	70.3	106	68.4	1	0.6
Sydney-Ballina								
Jetstar	88	88	71	80.7	74	84.1	0	0.0
QantasLink	40	40	27	67.5	31	77.5	0	0.0
Virgin Australia	50	50	38	76.0	40	80.0	0	0.0
All Airlines	178	178	136	76.4	145	81.5	0	0.0
Sydney-Brisbane								
Jetstar	232	228	153	67.1	142	62.3	4	1.7
Qantas	490	481	315	65.5	309	64.2	9	1.8
Virgin Australia	441	436	334	76.6	332	76.1	5	1.1
All Airlines	1 163	1 145	802	70.0	783	68.4	18	1.5
Sydney-Cairns								
Jetstar	105	105	76	72.4	75	71.4	0	0.0
Qantas	45	44	35	79.5	32	72.7	1	2.2
Virgin Australia	98	97	82	84.5	85	87.6	1	1.0
All Airlines	248	246	193	78.5	192	78.0	2	0.8
Sydney-Canberra								
Qantas	62	60	48	80.0	50	83.3	2	3.2
QantasLink	248	244	185	75.8	180	73.8	4	1.6
Virgin Australia	204	201	175	87.1	170	84.6	3	1.5
All Airlines	514	505	408	80.8	400	79.2	9	1.8
Sydney-Coffs Harbour								
Qantas	27	27	19	70.4	20	74.1	0	0.0
QantasLink	69	68	50	73.5	47	69.1	1	1.4
Rex Airlines	83	83	62	74.7	57	68.7	0	0.0
All Airlines	179	178	131	73.6	124	69.7	1	0.6
Sydney-Dubbo								
QantasLink	106	104	83	79.8	81	77.9	2	1.9
Rex Airlines	87	85	61	71.8	52	61.2	2	2.3
All Airlines	193	189	144	76.2	133	70.4	4	2.1
Sydney-Gold Coast								
Jetstar	258	252	204	81.0	200	79.4	6	2.3
Qantas	106	105	83	79.0	73	69.5	1	0.9
Virgin Australia	338	336	245	72.9	254	75.6	2	0.6
All Airlines	702	693	532	76.8	527	76.0	9	1.3
Sydney-Hamilton Island								
Jetstar	18	18	16	88.9	16	88.9	0	0.0
Qantas	30	30	18	60.0	17	56.7	0	0.0
Virgin Australia	31	31	19	61.3	24	77.4	0	0.0
All Airlines	79	79	53	67.1	57	72.2	0	0.0
Sydney-Hobart								
Jetstar	108	108	75	69.4	71	65.7	0	0.0
QantasLink	86	80	40	50.0	35	43.8	6	7.0
Virgin Australia	80	80	63	78.8	65	81.3	0	0.0
All Airlines	274	268	178	66.4	171	63.8	6	2.2

	Sectors		Arrivals On Time		Departures On Time		Cancellations	
	Sched.	Flown	No.	%	No.	%	No.	%
Sydney-Launceston								
Jetstar	59	58	50	86.2	50	86.2	1	1.7
QantasLink	32	31	8	25.8	8	25.8	1	3.1
Virgin Australia	31	31	23	74.2	27	87.1	0	0.0
All Airlines	122	120	81	67.5	85	70.8	2	1.6
Sydney-Melbourne								
Jetstar	473	464	349	75.2	335	72.2	9	1.9
Qantas	739	698	505	72.3	481	68.9	41	5.5
Virgin Australia	723	713	542	76.0	528	74.1	10	1.4
All Airlines	1 935	1 875	1 396	74.5	1 344	71.7	60	3.1
Sydney-Perth								
Jetstar	62	62	36	58.1	40	64.5	0	0.0
Qantas	203	200	100	50.0	113	56.5	3	1.5
Virgin Australia	190	190	136	71.6	135	71.1	0	0.0
All Airlines	455	452	272	60.2	288	63.7	3	0.7
Sydney-Port Macquarie								
QantasLink	109	108	92	85.2	84	77.8	1	0.9
Rex Airlines	67	65	41	63.1	41	63.1	2	3.0
All Airlines	176	173	133	76.9	125	72.3	3	1.7
Sydney-Sunshine Coast								
Jetstar	118	117	89	76.1	94	80.3	1	0.8
Qantas	60	60	38	63.3	40	66.7	0	0.0
Virgin Australia	65	65	45	69.2	46	70.8	0	0.0
All Airlines	243	242	172	71.1	180	74.4	1	0.4
Sydney-Wagga Wagga								
QantasLink	106	103	84	81.6	84	81.6	3	2.8
Rex Airlines	66	65	54	83.1	53	81.5	1	1.5
All Airlines	172	168	138	82.1	137	81.5	4	2.3
Townsville-Brisbane								
Jetstar	60	60	30	50.0	29	48.3	0	0.0
Qantas	11	11	9	81.8	9	81.8	0	0.0
QantasLink	143	143	81	56.6	88	61.5	0	0.0
Virgin Australia	144	143	94	65.7	96	67.1	1	0.7
All Airlines	358	357	214	59.9	222	62.2	1	0.3
Townsville-Cairns								
QantasLink	118	115	90	78.3	93	80.9	3	2.5
Rex Airlines	15	15	12	80.0	12	80.0	0	0.0
All Airlines	133	130	102	78.5	105	80.8	3	2.3
Wagga Wagga-Sydney								
QantasLink	106	102	87	85.3	90	88.2	4	3.8
Rex Airlines	65	65	50	76.9	52	80.0	0	0.0
All Airlines	171	167	137	82.0	142	85.0	4	2.3

Airports

The following data reports by airport against flights operated on published routes only. This month, 8 major city airports and 28 regional city airports are covered.

Airport	Arrivals			Departures		
	Sectors	On Time		Sectors	On Time	
	Flown	No.	%	Flown	No.	%
Adelaide						
Jetstar	363	247	68.0	363	238	65.6
Qantas	571	429	75.1	566	428	75.6
QantasLink	398	298	74.9	399	312	78.2
Rex Airlines	139	107	77.0	140	109	77.9
Virgin Australia	707	506	71.6	708	507	71.6
Virgin Australia Regional Airlines	19	12	63.2	19	6	31.6
All Airlines	2,197	1,599	72.8	2,195	1,600	72.9

Relates to services to and from Alice Springs, Brisbane, Canberra, Gold Coast, Melbourne, Perth, Port Lincoln and Sydney only.

Albury

QantasLink	94	70	74.5	95	67	70.5
Rex Airlines	61	39	63.9	62	47	75.8
All Airlines	155	109	70.3	157	114	72.6

Relates to services to and from Sydney only.

Alice Springs

QantasLink	33	26	78.8	33	26	78.8
Virgin Australia	13	9	69.2	13	3	23.1
All Airlines	46	35	76.1	46	29	63.0

Relates to services to and from Adelaide only.

Ballina

Jetstar	88	71	80.7	88	75	85.2
QantasLink	40	27	67.5	39	25	64.1
Virgin Australia	50	38	76.0	50	37	74.0
All Airlines	178	136	76.4	177	137	77.4

Relates to services to and from Sydney only.

Brisbane

Jetstar	861	537	62.4	863	512	59.3
Qantas	1,126	799	71.0	1,127	831	73.7
QantasLink	1,235	807	65.3	1,240	813	65.6
Virgin Australia	2,166	1,585	73.2	2,177	1,494	68.6
All Airlines	5,388	3,728	69.2	5,407	3,650	67.5

Relates to services to and from Adelaide, Cairns, Canberra, Darwin, Emerald, Gladstone, Hamilton Island, Hobart, Launceston, Mackay, Melbourne, Mount Isa, Newcastle, Perth, Proserpine, Rockhampton, Sydney and Townsville only.

Broome

QantasLink	76	45	59.2	75	32	42.7
Virgin Australia	22	16	72.7	22	13	59.1
Virgin Australia Regional Airlines	24	20	83.3	24	3	12.5
All Airlines	122	81	66.4	121	48	39.7

Relates to services to and from Perth only.

Airport	Arrivals			Departures		
	Sectors Flown	On Time		Sectors Flown	On Time	
		No.	%		No.	%
Cairns						
Jetstar	298	213	71.5	296	214	72.3
Qantas	90	77	85.6	90	74	82.2
QantasLink	262	177	67.6	261	174	66.7
Rex Airlines	15	12	80.0	14	12	85.7
Virgin Australia	321	251	78.2	321	234	72.9
All Airlines	986	730	74.0	982	708	72.1
Relates to services to and from Brisbane, Melbourne, Sydney and Townsville only.						
Canberra						
Jetstar	79	60	75.9	79	55	69.6
Qantas	78	57	73.1	76	58	76.3
QantasLink	590	410	69.5	594	417	70.2
Virgin Australia	468	386	82.5	467	381	81.6
All Airlines	1,215	913	75.1	1,216	911	74.9
Relates to services to and from Adelaide, Brisbane, Gold Coast, Melbourne and Sydney only.						
Coffs Harbour						
Qantas	27	19	70.4	27	19	70.4
QantasLink	68	50	73.5	65	48	73.8
Rex Airlines	83	62	74.7	84	56	66.7
All Airlines	178	131	73.6	176	123	69.9
Relates to services to and from Sydney only.						
Darwin						
Jetstar	54	36	66.7	53	28	52.8
Qantas	97	86	88.7	95	75	78.9
QantasLink	2	1	50.0	2	1	50.0
Virgin Australia	58	51	87.9	58	36	62.1
Virgin Australia Regional Airlines	24	16	66.7	24	19	79.2
All Airlines	235	190	80.9	232	159	68.5
Relates to services to and from Brisbane, Melbourne and Perth only.						
Devonport						
QantasLink	100	83	83.0	100	86	86.0
Rex Airlines	47	43	91.5	46	42	91.3
All Airlines	147	126	85.7	146	128	87.7
Relates to services to and from Melbourne only.						
Dubbo						
QantasLink	104	83	79.8	103	86	83.5
Rex Airlines	85	61	71.8	89	67	75.3
All Airlines	189	144	76.2	192	153	79.7
Relates to services to and from Sydney only.						
Emerald						
QantasLink	95	77	81.1	95	79	83.2
Virgin Australia	27	19	70.4	27	22	81.5
All Airlines	122	96	78.7	122	101	82.8
Relates to services to and from Brisbane only.						

Airport	Arrivals			Departures		
	Sectors Flown	On Time		Sectors Flown	On Time	
		No.	%		No.	%
Gladstone						
QantasLink	114	81	71.1	114	88	77.2
Virgin Australia	36	27	75.0	36	31	86.1
All Airlines	150	108	72.0	150	119	79.3
Relates to services to and from Brisbane only.						
Gold Coast						
Jetstar	544	443	81.4	544	442	81.3
Qantas	158	120	75.9	159	114	71.7
QantasLink	10	8	80.0	10	8	80.0
Virgin Australia	745	603	80.9	745	564	75.7
All Airlines	1,457	1,174	80.6	1,458	1,128	77.4
Relates to services to and from Adelaide, Canberra, Melbourne and Sydney only.						
Hamilton Island						
Jetstar	18	16	88.9	18	16	88.9
Qantas	30	18	60.0	31	14	45.2
QantasLink	33	21	63.6	33	23	69.7
Virgin Australia	80	61	76.3	78	56	71.8
All Airlines	161	116	72.0	160	109	68.1
Relates to services to and from Brisbane and Sydney only.						
Hobart						
Jetstar	336	244	72.6	336	194	57.7
Qantas	19	16	84.2	19	11	57.9
QantasLink	203	108	53.2	202	104	51.5
Virgin Australia	268	203	75.7	268	192	71.6
All Airlines	826	571	69.1	825	501	60.7
Relates to services to and from Brisbane, Melbourne and Sydney only.						
Kalgoorlie						
Qantas	11	9	81.8	11	6	54.5
QantasLink	51	34	66.7	51	33	64.7
Virgin Australia	66	50	75.8	66	51	77.3
Virgin Australia Regional Airlines	31	23	74.2	31	18	58.1
All Airlines	159	116	73.0	159	108	67.9
Relates to services to and from Perth only.						
Karratha						
QantasLink	132	101	76.5	131	101	77.1
Virgin Australia	51	41	80.4	51	44	86.3
Virgin Australia Regional Airlines	26	20	76.9	25	17	68.0
All Airlines	209	162	77.5	207	162	78.3
Relates to services to and from Perth only.						
Launceston						
Jetstar	197	150	76.1	197	136	69.0
QantasLink	106	48	45.3	105	59	56.2
Virgin Australia	147	122	83.0	147	114	77.6
All Airlines	450	320	71.1	449	309	68.8
Relates to services to and from Brisbane, Melbourne and Sydney only.						

Airport	Arrivals			Departures		
	Sectors Flown	On Time		Sectors Flown	On Time	
		No.	%		No.	%
Mackay						
Jetstar	31	13	41.9	31	13	41.9
Qantas	95	66	69.5	94	61	64.9
QantasLink	14	6	42.9	19	11	57.9
Virgin Australia	137	102	74.5	136	101	74.3
All Airlines	277	187	67.5	280	186	66.4

Relates to services to and from Brisbane only.

Melbourne

Jetstar	1,673	1,239	74.1	1,672	1,187	71.0
Qantas	1,664	1,237	74.3	1,666	1,202	72.1
QantasLink	541	378	69.9	538	351	65.2
Rex Airlines	138	129	93.5	139	128	92.1
Virgin Australia	2,569	2,012	78.3	2,571	2,064	80.3
All Airlines	6,585	4,995	75.9	6,586	4,932	74.9

Relates to services to and from Adelaide, Brisbane, Cairns, Canberra, Darwin, Devonport, Gold Coast, Hobart, Launceston, Mildura, Newcastle, Perth, Sunshine Coast and Sydney only.

Mildura

QantasLink	96	76	79.2	96	84	87.5
Rex Airlines	92	82	89.1	92	86	93.5
All Airlines	188	158	84.0	188	170	90.4

Relates to services to and from Melbourne only.

Mount Isa

QantasLink	76	45	59.2	76	47	61.8
Virgin Australia	13	8	61.5	13	9	69.2
All Airlines	89	53	59.6	89	56	62.9

Relates to services to and from Brisbane only.

Newcastle

Jetstar	117	77	65.8	117	69	59.0
QantasLink	115	75	65.2	115	92	80.0
Virgin Australia	119	75	63.0	119	86	72.3
All Airlines	351	227	64.7	351	247	70.4

Relates to services to and from Brisbane and Melbourne only.

Newman

Qantas	11	11	100.0	11	10	90.9
QantasLink	101	80	79.2	100	72	72.0
Virgin Australia	39	32	82.1	39	30	76.9
Virgin Australia Regional Airlines	18	15	83.3	18	12	66.7
All Airlines	169	138	81.7	168	124	73.8

Relates to services to and from Perth only.

Airport	Arrivals			Departures		
	Sectors	On Time		Sectors	On Time	
	Flown	No.	%	Flown	No.	%
Perth						
Jetstar	210	124	59.0	210	113	53.8
Qantas	702	461	65.7	700	490	70.0
QantasLink	485	328	67.6	490	388	79.2
Virgin Australia	855	565	66.1	848	612	72.2
Virgin Australia Regional Airlines	156	96	61.5	157	110	70.1
All Airlines	2,408	1,574	65.4	2,405	1,713	71.2
Relates to services to and from Adelaide, Brisbane, Broome, Darwin, Kalgoorlie, Karratha, Melbourne, Newman, Port Hedland and Sydney only.						
Port Hedland						
QantasLink	128	103	80.5	126	91	72.2
Virgin Australia	40	35	87.5	39	23	59.0
Virgin Australia Regional Airlines	15	12	80.0	15	7	46.7
All Airlines	183	150	82.0	180	121	67.2
Relates to services to and from Perth only.						
Port Lincoln						
QantasLink	111	95	85.6	111	97	87.4
Rex Airlines	140	107	76.4	139	108	77.7
All Airlines	251	202	80.5	250	205	82.0
Relates to services to and from Adelaide only.						
Port Macquarie						
QantasLink	108	92	85.2	109	93	85.3
Rex Airlines	65	41	63.1	64	45	70.3
All Airlines	173	133	76.9	173	138	79.8
Relates to services to and from Sydney only.						
Proserpine						
Jetstar	39	22	56.4	39	17	43.6
QantasLink	17	12	70.6	17	13	76.5
Virgin Australia	40	31	77.5	40	26	65.0
All Airlines	96	65	67.7	96	56	58.3
Relates to services to and from Brisbane only.						
Rockhampton						
QantasLink	166	110	66.3	160	111	69.4
Virgin Australia	149	99	66.4	148	102	68.9
All Airlines	315	209	66.3	308	213	69.2
Relates to services to and from Brisbane only.						
Sunshine Coast						
Jetstar	200	149	74.5	199	137	68.8
Qantas	102	72	70.6	100	74	74.0
Virgin Australia	167	140	83.8	167	138	82.6
All Airlines	469	361	77.0	466	349	74.9
Relates to services to and from Melbourne and Sydney only.						

Airport	Arrivals			Departures		
	Sectors	On Time		Sectors	On Time	
	Flown	No.	%	Flown	No.	%
Sydney						
Jetstar	1,638	1,215	74.2	1,641	1,187	72.3
Qantas	1,932	1,401	72.5	1,941	1,313	67.6
QantasLink	868	639	73.6	872	616	70.6
Rex Airlines	364	251	69.0	359	243	67.7
Virgin Australia	2,402	1,791	74.6	2,402	1,830	76.2
All Airlines	7,204	5,297	73.5	7,215	5,189	71.9

Relates to services to and from Adelaide, Albury, Ballina, Brisbane, Cairns, Canberra, Coffs Harbour, Dubbo, Gold Coast, Hamilton Island, Hobart, Launceston, Melbourne, Perth, Port Macquarie, Sunshine Coast and Wagga Wagga only.

Townsville

Jetstar	60	28	46.7	60	29	48.3
Qantas	11	8	72.7	11	9	81.8
QantasLink	261	174	66.7	258	181	70.2
Rex Airlines	14	12	85.7	15	12	80.0
Virgin Australia	144	91	63.2	143	96	67.1
All Airlines	490	313	63.9	487	327	67.1

Relates to services to and from Brisbane and Cairns only.

Wagga Wagga

QantasLink	103	84	81.6	102	90	88.2
Rex Airlines	65	54	83.1	65	52	80.0
All Airlines	168	138	82.1	167	142	85.0

Relates to services to and from Sydney only.

Definitions

On time arrival	A flight arrival is counted as "on time" if it arrived at the gate before 15 minutes after the scheduled arrival time shown in the carriers' schedule. Neither diverted nor cancelled flights count as on time.
On time departure	A flight departure is counted as "on time" if it departs the gate before 15 minutes after the scheduled departure time shown in the carriers' schedule.
Cancellation	A flight removed from service within 7 days of scheduled departure is regarded as a cancellation.
On time departure percentage	The percentage of on time departures is measured against the number of departures <i>operated</i> on any particular sector.
On time arrival percentage	The percentage of on time arrivals is measured against the number of arrivals <i>operated</i> on any particular sector.
Cancellation percentage	The percentage of cancellations is measured against the number of services <i>scheduled</i> on any particular sector.

Airlines and Reporting

Data has been gathered since November 2003, although some airlines commenced reporting at a later date, including Jetstar which first reported in May 2004, Tigerair Australia in April 2008, Virgin Australia Regional Airlines in May 2013, Skytrans in May 2023, Bonza in November 2023 and Hinterland in March 2024. Tigerair Australia ceased operations in March 2020 and data was not received for that month. Bonza ceased operations at the end of April 2024 and data was not received for that month.

Virgin Blue was rebranded as Virgin Australia in May 2011 and Tiger Airways was rebranded as Tigerair Australia in August 2013 and time series data in Microsoft Excel spread sheet format on the BITRE website have been revised to reflect these changes. With effect from August 2021, Regional Express is reported as Rex Airlines.

Services operated by Skywest on behalf of Virgin Australia using ATR/F100 aircraft commenced in November 2011 and were shown separately as Virgin Australia – ATR/F100 Operations. Virgin Australia Regional Airlines commenced operations in May 2013. It was formed after the acquisition of Skywest by Virgin Australia and represented a combination of operations previously reported under Skywest and Virgin Australia – ATR/F100 Operations. In February 2016, Virgin Australia transferred their ATR fleet from Virgin Australia Regional Airlines to Virgin Australia.